

QUICK DESPATCH

HOBBDAYS

WIRELESS

SUPPLEMENT

1931-2

HOBBDAY
BROS. LTD.

LONDON
MANCHESTER
WOLVERHAMPTON

April

CONTRACTORS TO HIS MAJESTY'S GOVERNMENT.

HOBDAY BROS. LTD.

THE
"QUICK DESPATCH" FACTORS,

21, 23, 25, & 27 GREAT EASTERN STREET, LONDON, E.C.2.

Telephones—Bishopsgate 4343 (10 lines)
Telegrams—"Yadboh, Finsquare, London."

Cables—"Yadboh, London."
Code—A B C (Sixth Edition).

BRANCH DEPOTS AT

MANCHESTER:
16, 18, 20 TURNER STREET
Telephone—Central 7020—7021.
Telegrams—"Yadboh, Manchester."

AND

WOLVERHAMPTON:
32, 33 CLEVELAND ROAD
Telephone—1702—1703 Wolverhampton.
Telegrams—"Yadboh, Wolverhampton."

APRIL, 1931.

Supplement to Wireless Catalogue No. 77.

New and attractive lines for 1931 are featured in this second Supplement to our main WIRELESS CATALOGUE No. 77, and we strongly advise every trader to stock and push these new lines, as they are all chosen as good sellers and representative of the latest developments or refinements in Radio.

Our Main Wireless Catalogue No. 77, augmented by the November, 1930, and April, 1931, Supplements constitutes a Buyers' Guide of immense value, and the key to better buying in the keenest markets. Allied to our FAMOUS "QUICK DESPATCH" SERVICE—a carefully controlled organisation ensuring efficient execution, careful packing and regular despatch of all orders—it offers you service surpassed by none.

Our FREE VAN DELIVERY SERVICE from LONDON and our MANCHESTER and WOLVERHAMPTON DEPOTS now operating in 38 COUNTIES is being rapidly augmented and extended, and a full schedule of towns served in your area, together with delivery days is published on pages 4 to 10 of WIRELESS CATALOGUE, No. 77.

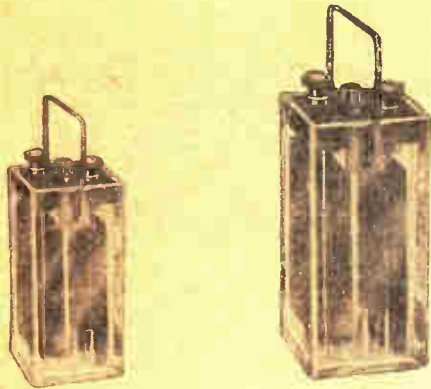
PRICES RIGHT! SERVICE RIGHT! DELIVERIES RIGHT!

Wire or 'Phone that Urgent Demand, we shall welcome the opportunity of proving our efficiency to a new Customer, or of retaining the valued confidence of a regular Customer. Every Post Order will receive equally efficient attention, and goods are usually despatched the day of receipt of Order.

All Quotations, Sales, and Despatch subject to the Terms and Conditions published in Catalogue No. 77.

HOBDAY BROS. LTD.

ACCUMULATORS



" PERTRIX " ACCUMULATORS.

Specially designed for stow discharge, these accumulators are provided with a ball in a small cage at the top of the cell which indicates the state of charge. A metal carrier is also fitted which can be folded down when the accumulator is being used.

No.	Type.	Capacity	each
ZA246	C302 PAC1	20 amp.	4/6
ZA247	C602 PAC2	45 "	8/6



FULLER'S " SPARTA " ACCUMULATORS.

These accumulators are designed for low intermittent discharge, and are comprised in glass containers. They hold their charge for long periods when not in use, and will give their full capacity with discharge periods extending over several months. Metal carriers are provided, and each accumulator is ready dry charged.

No.	Type.	Volts.	Cap.*	each
ZA450	C303 MSG	2	22 amps.	4/6
ZA452	C400 SDG	2	25 "	5/6
ZA454	C611 LDG	2	60 "	9/6

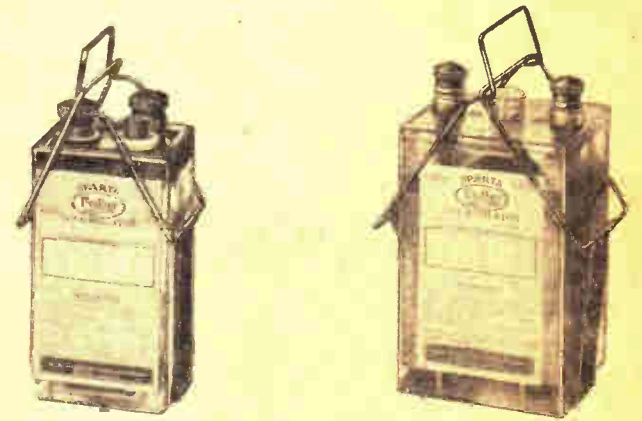
* Capacities are at a low intermittent rating.



THE " ANDY " ACCUMULATOR CARRIER

This accumulator carrier, on account of its unique design, will carry any size of accumulator, within its capacity, firmly and securely. The metal is specially treated, rendering it acid resisting. It is a really attractive line, and its low price enables rapid sales to be effected.

No.	Capacity	each
ZA142	C105	1/11



FULLER'S " SPARTA " ACCUMULATORS.

These " Sparta " accumulators are of the well-known standard type, and are suitable for comparatively heavy and constant discharges. They incorporate many exclusive features—micro-porous pasted plates, double grease-cup terminals, moulded covers, large filling vents, indestructible separators. Each accumulator is supplied with a free metal carrier as illustrated. Stocked with celluloid or glass containers as under :—

Type " SWX " (Celluloid Containers).

No.	Type.	Volts.	Act. Cap. (20-hr. Rate).	each
ZA460	C606 SWX5	2	20	9/-
ZA461	C800 SWX7	2	30	11/-
ZA462	C903 SWX9	2	40	12/9
ZA463	C1008 SWX11	2	50	14/9
ZA464	C1201½ SWX13	2	60	16/9

Type " SWG " (Glass Containers).

No.	Type.	Volts.	Act. Cap. (20-hr. Rate).	each
ZA472	C606 SWG5	2	20	9/-
ZA473	C800 SWG7	2	30	11/-
ZA474	C903 SWG9	2	40	12/9
ZA475	C1008 SWG11	2	50	14/9
ZA476	C1201½ SWG13	2	60	16/9

ALL THE LINES WE LIST ARE STOCKED IN OUR LONDON, MANCHESTER AND WOLVERHAMPTON DEPOTS.

BATTERIES



"CARLTON" HIGH TENSION BATTERIES.

"Carlton" High Tension Batteries are entirely British made by British labour, and although offered at extremely competitive prices, incorporate the finest possible materials, resulting in the production of a battery that will provide a steady supply of H.T. current over a considerable period. Each battery is tapped at 6 volt intervals, and is comprised in an attractive carton.

No.						
ZB820	C400	..	60 volts	each 6/-
ZB821	C608	..	100 "	" 10/-
ZB822	C710	..	120 "	" 11/9

"CARLTON" GRID BIAS BATTERY.

Tapped every 1.5 volts. E.M.F. 9 volts. Guaranteed to give long service. British made.

No.					
ZB826	C10	each 1/3
	C900	..	1 doz. lots	..	per doz. 15/-
	C806	..	3 "	..	" 15/-

Important.

Traders ordering "Carlton" High Tension Batteries to the retail value of £5 and upwards in one delivery will be allowed a special further discount of 5%.



"C.A.V." HIGH TENSION BATTERY.

Model G103.

Specially made for use with receivers using power valves. The capacity is 5,000 milliampere hours. Comprised in a strong glass container, dry charged. British manufacture throughout.

No.				
ZB205	C408½	10 volt unit	..	each 6/6

"DRYDEX" BATTERIES.

Addition to those listed on this page, "Drydex" Batteries are also made to suit pocket lamps, and also for bell operation. Stocked as under.

No.				
ZB860	C400	Standard Pocket Lamp	..	per doz. 6/-
EB406	C105½	Red Triangle Bell Cell	..	each 2/2
EB407	C109	Green Triangle Bell Cell	..	" 2/7



"DRYDEX" HIGH TENSION BATTERIES.

(Red Triangle Series.)

Intended for use with one, two, or three-valve receivers, and are suitable for sets of this type not employing super power or pentode valves. Under these conditions the batteries will give entirely satisfactory service, and represent extreme value for money.

No.					
ZB780	C408	..	60 volts	..	each 7/-
ZB781	C500	..	66 "	..	" 7/6
ZB782	C708	..	99 "	..	" 11/6
ZB783	C994	..	120 "	..	" 14/-

(Green Triangle Series.)

These batteries are intended for use with sets similar to those above, and as they are superior so far as quality and construction, they will, at the slightly higher prices, give the utmost satisfaction.

No.					
ZB790	C604	..	60 volts	..	each 9/6
ZB791	C700	..	66 "	..	" 10/6
ZB792	C1004	..	99 "	..	" 15/6
ZB793	C1204	..	120 "	..	" 18/6

(Orange Triangle Series.)

Triple capacity for receivers using three, four, or five valves, and where the emission is of the order of 10 milliamperes and upwards. Ideal for use with sets employing power or pentode valves in the last stage, and will give very economical service over long periods.

No.					
ZB800	C904	..	60 volts	..	each 14/-
ZB801	C1604	..	105 "	..	" 24/6
ZB802	C1800	..	120 "	..	" 27/-

(Blue Triangle Series.)

Specially designed for use in portable receivers and will be found suitable for most popular sets.

No.			L.	W.	H.			
ZB808	C600	..	6"	5"	3"	..	63 volts	each 9/-
ZB809	C904	..	9"	5"	3"	..	99 "	" 14/-
ZB810	C1004	..	10"	5"	3"	..	108 "	" 15/6

"DRYDEX" GRID BIAS BATTERIES.

(Red Triangle Series.)

The Red Triangle Grid Bias Batteries correspond with the Red Triangle series of H.T. batteries, with which they should be used. Under these conditions they will last for an extremely long period.

No.				
ZB850	C11	..	9 volts	each 1/4
ZB851	C106	..	16.5 volts	" 2/3

(Green Triangle Series.)

For the best results Green Triangle Grid Bias Batteries should be used in conjunction with Green Triangle or Orange Triangle H.T. Batteries. They will, however, give entirely satisfactory service used with other high tension batteries.

No.				
ZB856	C102	..	9 volts	each 1/9
ZB857	C110	..	16.5 volts	" 2/9

BATTERY ELIMINATORS.



"REGENTONE"
D.C. COMBINED UNIT.
Model 11.

This unit is designed for use on D.C. mains, and provides both H.T. and L.T. The H.T. output is 120 volts at 25 milliamps, and three tapings are now fitted—60/70, S.G., and Power. L.T. $\frac{1}{2}$ amp. to 1 amp., Trickle charger.

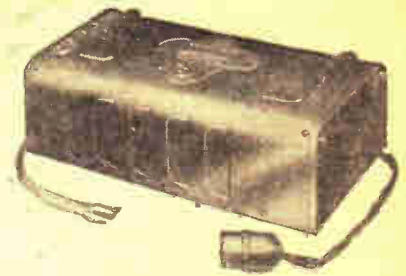
No.
ZB575 C3609 each £2 12 6



"REGENTONE"
A.C. MAINS UNIT.
Model W.1. D.

Designed for use with A.C. mains, this unit is fitted with three fixed tapings as follows: 60/70, S.G., and 120 volts, providing a smoothed output of 120 volts at 15 milliamps.

No.
ZB536 C4703 each £3 7 6

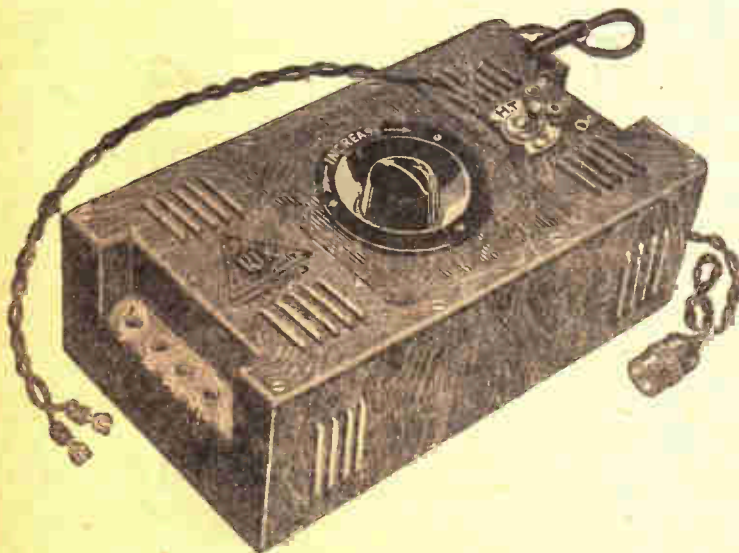


"REGENTONE"
A.C. COMBINED UNIT.
Model W.5. A.

This combined unit is for A.C. mains operation, supplying both H.T. and L.T. The H.T. output is 120 volts at 20 milliamps., and three fixed tapings are provided: 60/70, S.G., and Power. L.T. is supplied by means of a trickle charger.

No.
ZB576 C6606 each £4 15 0

ALL "REGENTONE" UNITS
ARE REGULARLY STOCKED
AT ALL DEPOTS.



"R.I." ALL MAINS UNIT.
Type C20/3 (For A.C. Mains).

Although only as big as the smallest H.T. battery, 9" x 5" x 3", the "R.I." combined L.T. and H.T. unit supersedes in efficiency. Super-reliability is assured by the employment of specially large and robust components, the necessary space for which is made possible by the use of small but marvellously efficient chokes, in which are incorporated cores of that metallurgical discovery—Nickalloy. H.T. output, S.G. + 60-80 volts; Det. + variable 0-150 volts; Power, 120-150 volts, at 20 milliamperes. L.T. arranged to charge at $\frac{1}{4}$ amp. for either 2, 4, or 6 volt accumulator. A switching arrangement from H.T. to L.T. charging is provided, the accumulator charging when the receiver is not in use, by simply switching over to H.T. The unit is comprised in an attractive bakelite case which additionally provides adequate insulation and safety.

No.
ZB513 C8400 each £6 0 0



"ATLAS" MAINS UNIT.
Model A.C. 188.

This model is designed for A.C. mains of 200/250 volts, 40/120 cycles, and incorporates the Westinghouse Metal Rectifier. Two variable tapings are provided, 0-100 and 0-120 volts, respectively, and one fixed of 150 volts. The output is 35 milliamps. The combined trickle charger for charging L.T. accumulators from the mains caters for either 2, 4, or 6 volt accumulators.

No.
ZB585 C8400 each £6 0 0

EDISON BELL SCRATCH FILTER AND VOLUME CONTROL.



For use with electrical gramophone pick-ups, this unique device permits smooth control of volume, and the special filter circuit incorporated in no way depreciates the quality or volume. Easily and quickly introduced into the circuit, being comprised in a metal case with a brown leatherette finish. The base is felt covered, enabling it to be accommodated on the gramophone itself, or, permanently fixed at a convenient point.

No.
ZC4810 C1004 each 15/6

BATTERY SUNDRIES—CABINETS—COILS



**BELLING-LEE
MIDGET WANDER PLUGS.**

These Wander Plugs grip all battery sockets from the largest to the smallest, as they are provided with three separate prongs of hard drawn segmental wire, which eliminates side play as well as giving three point contact. Side entry for flex with instant grip. The small diameter of the plug enables it to enter sockets near the edge of a grid bias battery, or through eccentric holes in a cardboard top battery. Twelve indications are available as under:—

No.					
ZB149A	C105	H.T.	+	per doz.	2/-
ZB149B	C105	H.T.	+ 1	"	2/-
ZB149C	C105	H.T.	+ 2	"	2/-
ZB149D	C105	H.T.	+ 3	"	2/-
ZB149E	C105	H.T.	+ 4	"	2/-
ZB149F	C105	Grid	+	"	2/-
ZB149G	C105	Screen	"	"	2/-
ZB149H	C105	H.T.	-	"	2/-
ZB149J	C105	Grid	-	"	2/-
ZB149K	C105	Grid	1	"	2/-
ZB149L	C105	Grid	2	"	2/-
ZB149M	C105	Grid	3	"	2/-
ZB149N	C105	Plain	"	"	2/-

**COMPREHENSIVE STOCKS
OF
BELLING-LEE TERMINALS
ALWAYS IN STOCK.**

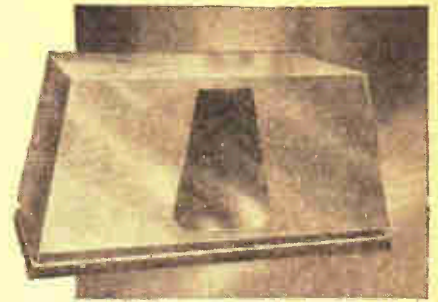


**"UNIVERSAL"
BATTERY WANDER PLUGS.**

These plugs are neatly made, small in size, and incorporate a novel wiring method which enables perfect wire contact to be established. In addition, the plugs have heads of various colours which are engraved. Boxes containing 1 gross make an exceedingly attractive display, and comprise the following indications and colours:—

20	Black	Plugs	Grid -
20	Red	"	Grid +
16	Black	"	Grid 2
20	Black	"	H.T. -
7	Red	"	H.T. +
9	Red	"	H.T. + H.F.
4	Yellow	"	H.T. + Screen
18	Yellow	"	H.T. + Det.
16	Green	"	H.T. + L.F.
14	Green	"	H.T. + Power

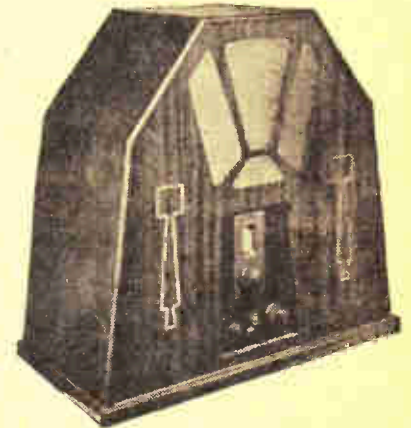
No. ZB110 C1600 per box 24/-



CAMCO "EMPIRE" CABINET.

This cabinet is designed on modern lines, resting on an ebonised base, which forms part of the cabinet. A baseboard, 18" long by 10" deep, is included, and an opening measuring 4 3/4" across the top, and 5 1/4" across the bottom, and 7 1/2" high, is provided for the operating panel. Specially suitable for the "1931 Ether Searcher" set.

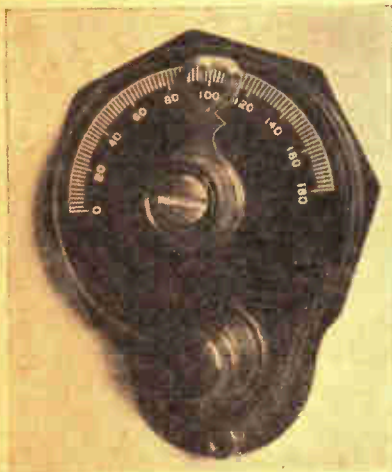
No. C1610 1/2 .. Oak each 22/6
ZC921



CAMCO "EMBASSY" CABINET.

Similar to the cabinet above, but with provision for the addition of loud speaker. The upper portion will also accommodate batteries or eliminator. Baseboard, size as "Empire" cabinet. Overall height, 18 1/2".

No. C2603 .. Oak each 35/-
ZC928
ZC929 C3000 .. Mahogany , 40/-



"CONTAX" SLOW MOTION DIALS.

These dials incorporate an ingenious arrangement whereby either slow or fast motion can be instantly selected. Attractive in appearance, robustly made in bakelite, with nickel-plated fittings.

No. ZC3842 C110 Black each 2/6
ZC3843 C110 Walnut , 2/6



"READI-RAD"

"STAR TURN" SELECTOR COIL.

A tapped aerial coil made strictly to specification in leading "Modern Wireless" and "Popular Wireless" circuits. Panel mounting with selector switch incorporated.

No. ZC1253 C809 each 12/6



"READI-RAD"

"P.W." DUAL RANGE COIL.

Constructed strictly in accordance with the "Popular Wireless" and "Modern Wireless" specification. Covers medium and long wavelengths. Dead end losses eliminated.

No. ZC1254 C809 each 12/6

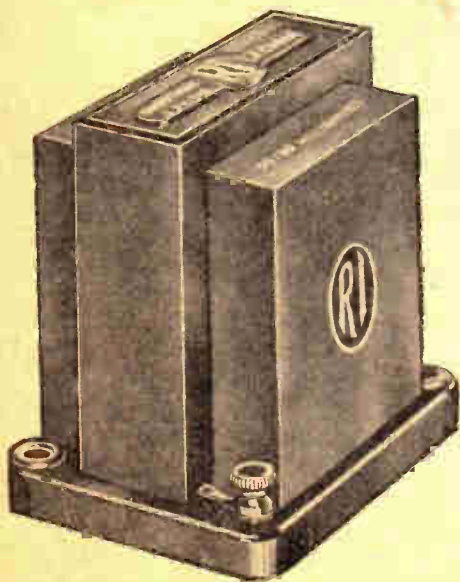
COILS—Continued



R.I. "PENTOMITE" L.F. CHOKE.

A choke with a nicalloy core which gives astonishingly high inductance, with minimum weight and size. Specially recommended as an output filter choke with the A.C. pentode valve. It will also give excellent results as a smoothing choke. It is soundly constructed throughout, and up to the high standard of all "R.I." products.

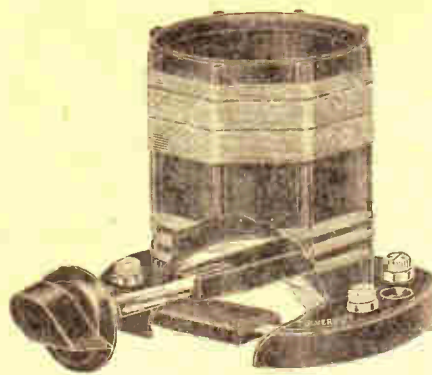
No. ZC4630 C1408 each 21/-



"R.I." GENERAL PURPOSE FILTER OUTPUT CHOKE.

Supplies the demand for a really good choke of unquestionable reliability at a popular price. It is small and compact, and comprised in a green bakelite case. D.C. resistance, 400 ohms. Inductance 26 henries. Maximum D.C. 30/60 milliamps. Size, 2" x 2½" x 2½".

No. ZC4629 C809 each 12/6



"COLVERN" COILS.

"Colvern" coils are well known and appreciated on account of their uniformly high efficiency. They are stocked as under for the leading circuits.

Type TGSC.

A dual wave coil designed for ganging. Two of these together with one Type TGSR coil and operating link as listed hereunder are specified for the "1931 Ether Searcher."

No. ZC1225 C604 each 9/6

Type TGSR.

Used in conjunction with Type TGSC coils above.

No. ZC1226 C604 each 9/6

"COLVERN" SCREENS.

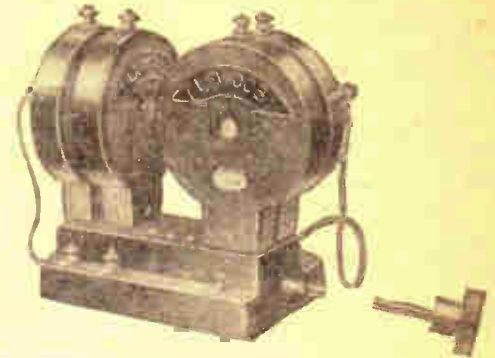
Specially made to suit the coils above.

No. ZC1227 C204 each 3/6

OPERATING LINK.

Comprising crank and switch control rod used in conjunction with coils above.

No. ZC1229 C100 each 1/6



"LEWCOS" TWIN TWO-PIN BASE.

This component comprises a moulded base with four two-pin coil mounts in sets of two, placed at right angles to each other, thus enabling four coils to be utilised which cover all wave-lengths from 235 to 2,000 metres, together with appropriate reaction coils. A switching mechanism is also embodied in the base which follows telephone practice, being fitted with cam-operated blades with silver contacts, operated by a rotary knob protruding through the panel of the receiver.

No. ZC1892 C809 each 12/6

Note.—"Lewcos" coils recommended for use with above.

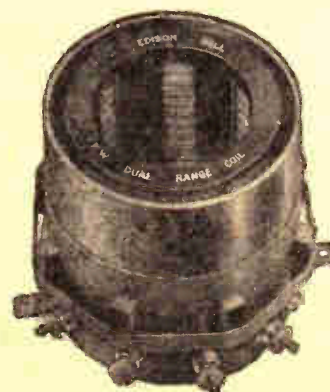
1—60X Aerial Coil 1 CT40 Reaction Coil.
1—250X " " 1 CT100 " "



"R.I." DUAL RANGE COIL.

This coil has achieved great popularity, and can be relied upon to conform accurately to the specification created by "Popular Wireless" and "Modern Wireless" for use in a large number of up-to-date circuits. Built for high efficiency, the windings are silk covered on paxolin and ebonite formers.

No. ZC1205 C809 each 12/6



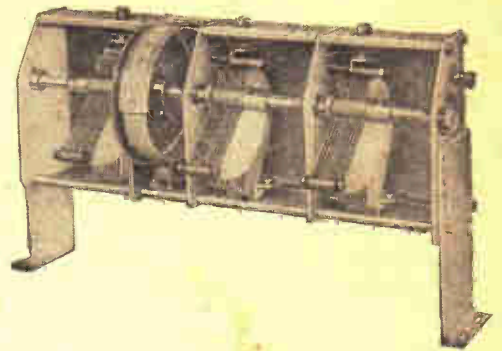
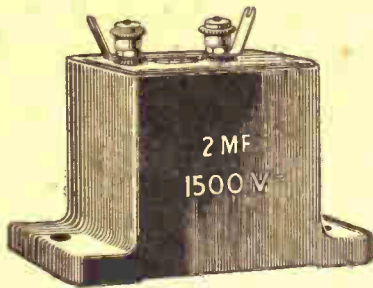
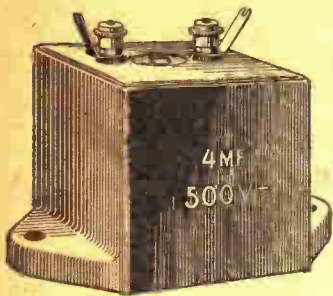
"EDISON-BELL" DUAL RANGE COIL.

This coil incorporates distinctive features, and conforms strictly to the specification laid down in the present series of "Popular Wireless" and "Modern Wireless" circuits.

No. ZC1240 C700 each 10/6

OUR FREE VAN DELIVERY SERVICE ENSURES "QUICK DESPATCH."

CONDENSERS.



"FRANKLIN" MOULDED CONDENSERS.

These condensers are comprised in attractive moulded cases, and are stocked in a range of the capacities chiefly demanded. Two ranges tested at 500 volts D.C. and 1,500 volts D.C., respectively, are stocked, and will meet all general requirements. Screw terminals and soldering tags are fitted as illustrated.

Working Voltage 200-v. D.C., or 160-v. A.C. Tested at 500-v. D.C.

No.						
ZC2180	C11	..	.1 mfd.	each 1/6
ZC2181	C100½	..	.25 "	" 1/9
ZC2182	C102½	..	.5 "	" 2/-
ZC2183	C103½	..	1 "	" 2/2
ZC2184	C109½	..	2 "	" 3/-
ZC2185	C300	..	4 "	" 5/-

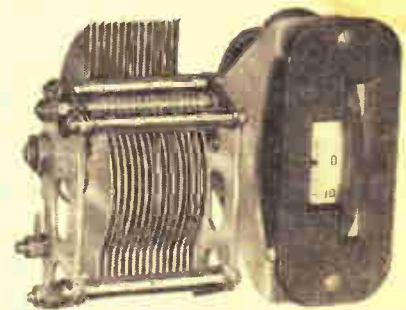
Working Voltage 700-v. D.C., or 300-v. A.C. Tested at 1,500-v. D.C.

No.						
ZC2190	C104	..	.1 mfd.	each 2/3
ZC2191	C108	..	.25 "	" 2/9
ZC2192	C201	..	.5 "	" 3/6
ZC2193	C205	..	1 "	" 4/-
ZC2194	C305½	..	2 "	" 5/9
ZC2195	C600	..	4 "	" 10/-

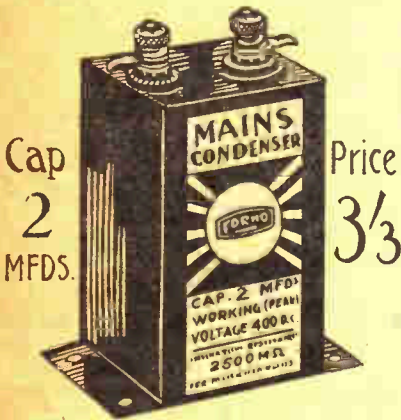
J.B. "CHASSIMOUNT" CONDENSER.

A triple-gang .0005-mfd. variable condenser mounted in a frame, which serves as an effective screen. Specified for the "1931 Ether Searcher" Receiver.

No.					
ZC3317	C2406	each 35/-



MAINS CONDENSERS



Cap 2 MFDS. Price 3/3

ALL BRITISH.

"FORMO" MAINS CONDENSERS

These condensers are made under a newly discovered process which makes leakage infinitesimal, whilst working voltages have been greatly increased. Attractive in appearance, and fitted with screw terminals as illustrated.

No.					
ZC2170	C109	1 mfd.	..	each	2/6
ZC2171	C203	2 "	..	"	3/3
ZC2172	C310	4 "	..	"	5/6



THE "POLARGANG" CONDENSER.

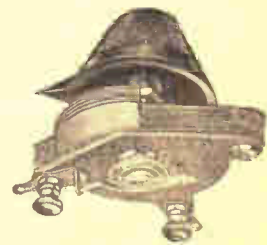
The illustration shows the new "Polar-gang" condenser which is efficiently screened, and fitted with a trimmer conveniently situated at the top of the screens, easily accessible, and operated by a screwdriver. The unit may be mounted on a baseboard at various heights, by means of the two adjustable supports. The condensers each have a capacity of .0005 mfd., and the assembly is complete with drum drive. The triple-gang condenser is illustrated above, but two and four-gang assemblies can also be supplied if required as under:—

No.					
ZC2687	C1806	2-Gang	..	each	26/6
ZC2688	C2406	3- "	..	"	35/-
ZC2689	C2909	4- "	..	"	42/6

"CYLDON" SINGLE DRUM-DRIVE VARIABLE CONDENSER.

An entirely new condenser with many outstanding features and constructed with high-grade materials throughout. Supplied complete with bakelite escutcheon plate, drum dial and drilling template. Specified for the "Comet 3" Receiver.

No.					
ZC2875	C800½	..	.0005 mfd.	..	each 11/6



READI-RAD "BROOKMAN'S" CONDENSER.

These condensers are suitable for tuning and reaction. Heavy-gauge brass vanes of true logarithmic design are used in conjunction with bakelite dielectric. Phosphor-bronze spring pig-tail provides thorough noiseless contact with the moving vanes. One-hole fixing, particularly small dimensions and light weight are features of this condenser. Complete with bakelite pointer knob.

No.					
ZC2650	C109	..	.0001	..	each 2/6
ZC2651	C205½	..	.0003	..	" 3/6

EBONITE—GRID LEAKS AND RESISTANCES



“ PERMCOL ” EBONITE PANELS.

These panels possess remarkable mirror-polished surface, which in brilliance and beauty is unique. High-grade quality, cut dead square to size, and carefully packed.

Black.

No.	C200	Size	7" x 12" x 3/16"	each	3/-
ZE470	C200	7" x 12" x 3/16"	..	each	3/-
ZE471	C204	7" x 14" x 3/16"	3/6
ZE472	C300	7" x 18" x 3/16"	4/6
ZE473	C306	7" x 21" x 3/16"	5/3
ZE474	C204	8" x 12" x 3/16"	3/5
ZE475	C300	8" x 16" x 3/16"	4/7

Mahogany.

No.	C205	Size	7" x 12" x 3/16"	each	3/7
ZE490	C205	7" x 12" x 3/16"	..	each	3/7
ZE491	C210	7" x 14" x 3/16"	4/3
ZE492	C308	7" x 18" x 3/16"	5/6
ZE493	C403	7" x 21" x 3/16"	6/4
ZE494	C209	8" x 12" x 3/16"	4/1
ZE495	C308	8" x 16" x 3/16"	5/6



“ COLVERSTAT ” WIRE-WOUND RESISTANCES.

For use in resistance-coupled amplification, for voltage regulation by series resistance, automatic grid bias, centre-point tapping, potential dividing, resistance-fed transformer circuits, anode resistances, etc. Guaranteed correct within 2 per cent. and stocked as under:—

No.	C108	1,000 ohms	each	2/6
ZG390	C108	1,000 ohms	..	2/6
ZG391	C108	2,000 "	..	2/6
ZG392	C108	3,000 "	..	2/6
ZG393	C108	5,000 "	..	2/6
ZG394	C108	10,000 "	..	2/6
ZG395	C108	15,000 "	..	2/6
ZG396	C108	20,000 "	..	2/6
ZG397	C108	25,000 "	..	2/6
ZG399	C108	35,000 "	..	2/6
ZG401	C204	50,000 "	..	3/6
ZG402	C204	60,000 "	..	3/6
ZG404	C204	80,000 "	..	3/6
ZG406	C204	100,000 "	..	3/6

Note.—Any of the above resistances can be supplied tapped at 1/- each extra retail on above prices.

POST, WIRE OR PHONE THAT URGENT ORDER TO YOUR NEAREST DEPOT FOR PROMPT DELIVERY.



REDFERN'S LOW-LOSS COIL FORMERS.

These coil formers are made from the finest ebonite, and ensure efficiency in single-layer windings. The ribs are shaped to reduce contact. Stocked in sizes as under:—

No.	Diam.	Length.	Ribs.	each
ZE156	C100 2"	6"	6	1/6
ZE157	C102 2 1/2"	6"	6	1/9
ZE158	C102 2 3/4"	6"	6	1/9
ZE159	C104 3"	6"	6	2/-



“ LEWCOS ” SPAGHETTI RESISTANCES.

A new line of resistances of the “Spaghetti” type, made in a range to suit all requirements. Each resistance is covered with black insulating sleeving, and permanently marked with the value, and equipped with suitable terminals.

No.	Resistance Ohms.	Capacity Mamps.	each
ZG420	C6 1/2 600	50	9d.
ZG422	C6 1/2 1,000	30	9d.
ZG423	C8 1/2 2,000	15	1/-
ZG424	C8 1/2 3,000	15	1/-
ZG425	C8 1/2 4,000	15	1/-
ZG426	C8 1/2 5,000	10	1/-
ZG427	C8 1/2 7,500	10	1/-
ZG428	C8 1/2 10,000	10	1/-
ZG429	C100 1/2 15,000	7.5	1/6
ZG430	C100 1/2 20,000	7.5	1/6
ZG431	C100 1/2 25,000	6	1/6
ZG432	C100 1/2 30,000	6	1/6
ZG433	C100 1/2 40,000	6	1/6
ZG435	C100 1/2 60,000	5	1/6
ZG436	C100 1/2 75,000	5	1/6
ZG437	C100 1/2 100,000	5	1/6



TELSEN GRID LEAKS.

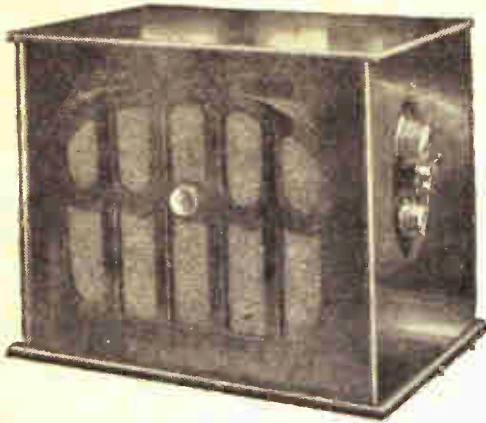
These grid leaks are accurately made in a range of the most useful values used in radio circuits. Neatly boxed. A good selling line.

No.	Resistance	each
ZG47A	C8 1/2 .5 megohms	1/-
ZG47B	C8 1/2 .25 "	1/-
ZG47C	C8 1/2 1 "	1/-
ZG47D	C8 1/2 2 "	1/-
ZG47E	C8 1/2 3 "	1/-
ZG47F	C8 1/2 4 "	1/-
ZG47G	C8 1/2 5 "	1/-

WE HOLD LARGE STOCKS OF ALL TELSEN COMPONENTS.

SUPPLEMENT TO WIRELESS CATALOGUE No. 77.

New and Profitable Lines for 1931 of Special interest to the up-to-date Radio Trader.



THE "BROWNIE BABY GRAND."

This two-valve combined loud speaker and receiver is enclosed in a solid oak cabinet, with controls conveniently placed on the side panel. The receiver is transformer coupled, using detector and power valves. A loud speaker is incorporated in the cabinet capable of giving faithful reproduction, and at considerable volume, on an unequalled range of tonal frequencies. Three aerial tappings are provided for varying degrees of selectivity, and cutting out interference from the local station. The cabinet is of oak, neatly and strongly constructed, with an attractive design of fret for the loud speaker and with room to accommodate batteries inside. Complete with Cossor valves.

No.
ZR674 C3806 each **£2 15 0**

The above receiver can also be supplied with combined H.T. and grid battery and accumulator at price as under:—

No.
ZR673 C5206 each **£3 15 0**

Note.—Marconi Royalty of 10/- nett must be added when ordering.

ARE YOU A "BROWNIE" AGENT ?
IF NOT—
 Apply for particulars of Agency, they are interesting.



"AMPLION" TRANSPORTABLE RECEIVER.

This receiver is comprised in a handsome polished walnut cabinet, with neat handles, and fitted with turntable. The controls are located beneath a hinged lid, whilst the back has a removable partition for the batteries. The reception obtained has remarkable quality, whilst the frequency response is very good. The circuit employs two screen grid amplifiers, detector, and pentode, and the total anode consumption is about 9 m.a.—very low considering the extremely good volume and quality from local and distant transmissions.

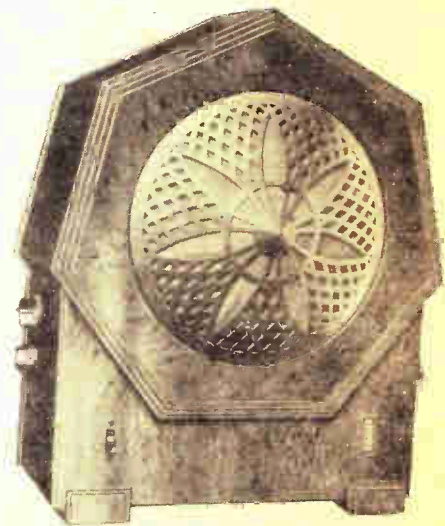
No.
ZR671 C30800 each **£23 2 0**



PHILIPS' ALL-ELECTRIC RECEIVER. Type 2534.

An A.C. All-electric Receiver for either local station or long distance, which in most parts of the country will give a wide choice of British and Continental programmes. Comprised in a brown metal case, the circuit employed is H.F.—detector—pentode; wave-length range of 200-2,100 metres. Many refinements are incorporated, which include sockets for gramophone pick-up connection, selectivity variable by three tappings in aerial circuit, tapped mains transformer for use on all standard A.C. voltages between 100 and 260 volts, 40-100 cycles. Complete with Mullard S4V 5-pin, 244V 5-pin, and PM24 5-pin valves, also Philips' 506K rectifying valve.

No.
ZR803 C22006 Complete as above each **£15 15 0**

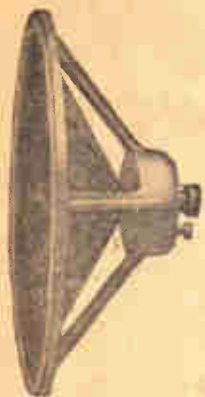


PHILIPS' ALL-ELECTRIC "RADIO-PLAYER." Type 2634.

An entirely new three-valve all-electric receiver, with built-in loud speaker, employing an H.F.-det.-pentode circuit, and having a wave-length range of 200 to 2,100 metres, controlled by a rotary switch. Designed for use with A.C. mains, its power consumption is but 21 watts., and many up-to-date improvements are incorporated, including universal voltage transformer, enabling it to be used on all standard voltages between 100 and 260 volts, 40-100 cycles, sockets for gramophone pick-up, safety fuse, mains switch. The loud speaker has a four-pole balanced armature movement, with cobalt steel magnets permanently adjusted, and is housed in a Philite case having a beautiful mahogany finish. Supplied with Mullard S4V 5-pin, 244V 5-pin, PM24A 5-pin, and Philips' 506K rectifying valve.

No.
ZR801 C35000 Complete as above each **£25 0 0**

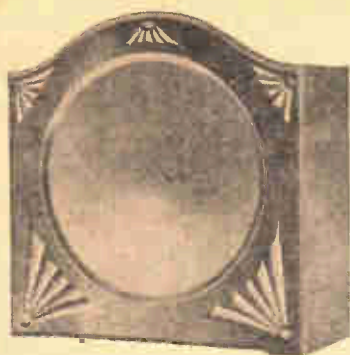
LOUD SPEAKERS



CELESTION CONE CHASSIS.
Model D20.

Comprising an excellent cone unit and cone mounted to a really substantial chassis frame of improved design. The reproduction obtainable is superb and fully in keeping with the admittedly high standard attained by Celestion loud speakers.

No. ZL527 C4200 each 63/-



THE "SKYLARK" LOUD SPEAKER.

An attractive loud speaker, comprised in a handsome bakelite cabinet of neat design, with mahogany-mottled finish. Ideal for use with any average two- or three-valve receiver. Size 10 1/2" high, 10 1/2" wide, 4" deep.

No. ZL412 C1606 each 27/6



MULLARD PURE MUSIC SPEAKER.
Model "M."

This new cabinet speaker has a balanced armature movement, the armature being supported in the field of a powerful permanent magnet. Its vibrations are transmitted to a large cone diaphragm, which provides perfect reproduction. Large volume can be handled without risk of damage. Comprised in a polished oak cabinet which matches the Mullard Orgola Receiver.

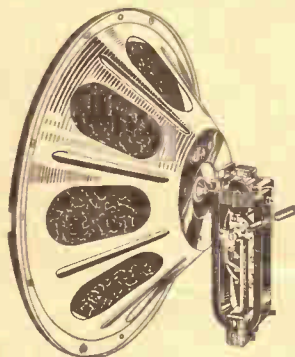
No. ZL451 C5206 each 75/-



"WUFA" SUPER-POWER UNIT.

This unit is equipped with a large and powerful magnet, 60 well-insulated separated poles. Three alternative resistances are provided, 1,750, 1,200, and 500 ohms. The adjustment enables the finest results to be obtained on the most weak or strong impulses.

No. ZL478 C2007 1/2 each 27/6



"WUFA" SUPER-POWER UNIT AND CHASSIS.

With the "Wufa" Giant Chassis the "Wufa" unit gives superlative results. The diaphragm is accurately suspended, and it is only necessary to screw a baffle board on to secure results that will favourably compare with many moving-coil loud speakers.

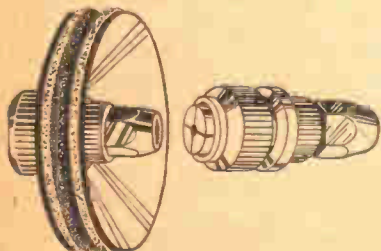
No. ZL479 C3000 each 40/-



"HARLIE" TONE SELECTOR.

The "Harlie" Tone Selector enables reproduction to be obtained to suit the taste of the user, giving five different tones to be obtained at will. It can also be used as a scratch filter when used with a Radiogram. Suitable for any set or speaker. Complete with plugs for connecting to set and to loud speaker.

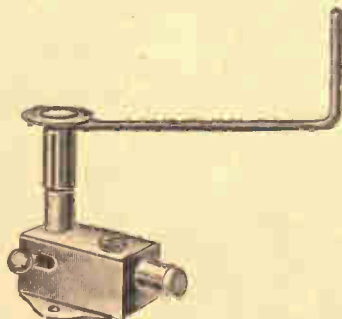
No. ZL570 C608 each 10/-



"TONAX" CONE ADAPTOR.

This cone adaptor is of superior construction and incorporates distinctive features. The special chuck takes all sizes of spindle. Complete with metal, felt, and flexible washers in carton.

No. ZL476 C8 each 1/-



"EX" AUTOMATIC GRAMOPHONE BRAKE. Model FE.

This model is specially designed for use with spring-driven gramophone motors, and is just the thing for use with Radiograms. Strongly made. Nickel plated.

No. ZM28 C206 each 3/9



CONE UNIT EXTENSION ROD.

Specially made for use with cone units where the existing rod is not of sufficient length. Comprises a screwed rod, 4" in length, with screw chuck, and two washers for securing cone diaphragm. Nickel plated.

No. ZL475 C203 per doz. 3/6

LOUD SPEAKERS—Continued



GOODMAN'S "CABINETCONE" LOUD SPEAKER.

This loud speaker has been specially designed to appeal to the average domestic set owner. It is comprised in a real oak cabinet, and incorporates a balanced differential unit with cobalt-steel magnets. The reproduction is particularly good, being true and undistorted. British made throughout, and priced at an amazing figure, constituting remarkable value.

No. 1
ZL425 C1308 each 19/6



**CELESTION LOUD SPEAKER.
 Model D10.**

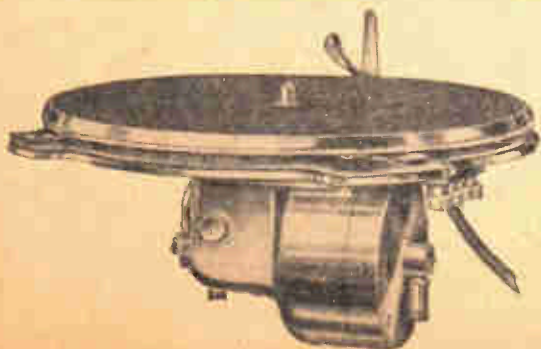
This popular model is now available either in oak or mahogany cabinets. A quality speaker having great sensitivity, and capable of handling volume, and giving a clear and natural response. Size 12" x 12" x 5 1/4".

No.
ZL1000 C4000 .. Oak each 60/-
ZL1001 C4608 .. Mahogany 70/-

"RIVAL" CONE CHASSIS.

Ideal for almost any type of unit, this chassis consists of two opposed cones of parchment mounted on ply-wood frames and assembled. Complete with steel supports, cone washers and spindle chuck. Diam.—large cone 10", small cone 6".

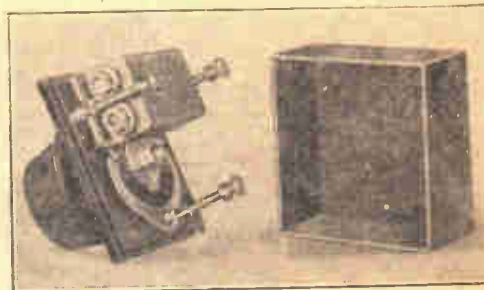
No.
ZL545 C209 each 4/-



THE "A.E.D." PICK-UP AND TONE ARM.

The "A.E.D." Pick-up represents a further material advance in the art of electrical reproduction. It employs special patented features of design which are unique, and fitting is rendered exceedingly simple, the correct position being obtained by the use of a template, and of the distance pieces if required. The pick-up head rotates through 180° to enable the needle to be changed. The pedestal is fitted with a double ball race to save record wear. The maximum tracking error is threequarters of a degree. The tonal quality and volume are excellent, the output voltage being higher than is usually obtained. Black bakelite and nickel finish.

No.
ZL413 C2800 each 42/-



THE "A.E.D." LOG-LAW VOLUME CONTROL.

A new and really sound device for the efficient control of volume, constructed on a new principle. The tapered resistance pack consists of metal plates interleaved with special resistance elements clamped and securely held together. The wiping arm is operated by an ingenious friction movement, which is positive in action. Comprised in a black bakelite case. Single-hole fixing. Standard range as under:—

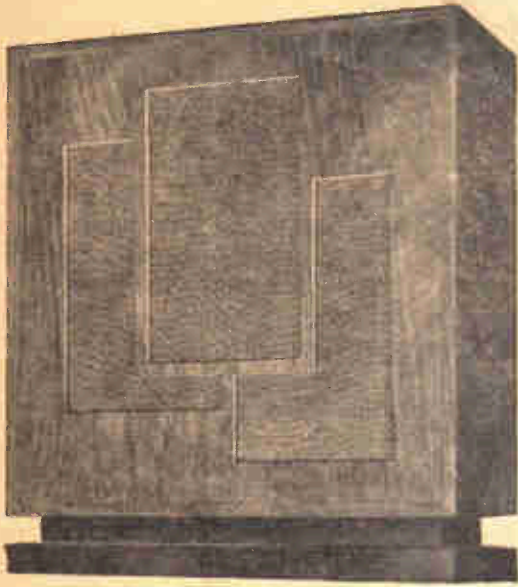
No.	C508	50,000 ohms	each	8/6
ZR185	C508	100,000	"	"	8/6
ZR186	C508	250,000	"	"	8/6
ZR187	C508	500,000	"	"	8/6
ZR188	C508		"	"	8/6

THE "COLLARO" INDUCTION ELECTRIC MOTOR.

This motor is designed for alternating current of voltages between 100-130 and 200-260; 40-60 cycles. Alteration to any voltage within its range is effected by the simple switching device which is a feature of the motor. As will be seen by the illustration the motor is totally enclosed, ensuring that no grit gets into the bearings, and that all working parts are protected from possible damage. A patent cushioned drive is incorporated which ensures regular playing speed, even should variation occur in the electric supply. Lubrication of the main bearings is continuous, being effected by means of wick-feed lubrication. The electro-mechanical auto-stop simultaneously stops the turntable and switches off the electric current. Installation is perfectly simple, and with each motor a template and instruction leaflet are packed. The cost of running is so small as to be almost negligible, and, when used in conjunction with the most sensitive wireless units, will cause no interference.

No.
ZM5 C4000 each £3 0 0

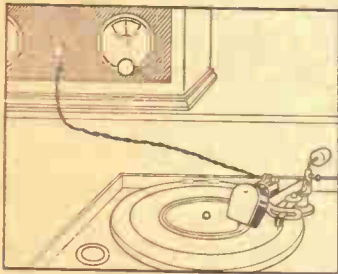
LOUD SPEAKERS, Etc.—Continued.



“GRAHAM-FARISH” LOUD SPEAKER.

This inexpensive loud speaker is driven by a balanced armature movement that will handle power without distress. The sensitivity is distinctly above the average, whilst the cabinet is designed on modern lines that will please the most exacting.

No.						
ZL455	C2800	..	Oak	each 42/-
ZL456	C2800	..	Mahogany	” 42/-



THE “KINGSTON” HOME RECORDER.

The “Kingston” Home Recorder is an exceedingly simple contrivance by means of which good records can be simply made by speaking into a short horn fitted to a special sound-box. There are only four main parts—(1) a master disc with tracking grooves, and (2) a carrier arm for either (3) a special sound-box provided with a short horn for acoustic recording, or (4) a cutter pick-up for electrical recording. Any ordinary spring-driven gramophone can be used for the production of records, it being only necessary to fit the Recorder in the proper position on the motor board, as indicated by the wire jig which is supplied. The record discs are made of a special aluminium alloy, and are held on the master disc for recording by means of three pins which engage through three specially shaped slots in the disc. Where it is desired to make records of broadcast items a specially damped cutter pick-up can be supplied separately or comprised in a complete outfit. This pick-up is connected to any standard receiver having terminals for gramophone pick-up, and the desired broadcast can be immediately recorded permanently. Each outfit includes two cutting needles (each good for 40 recordings), and six tracking needles (each good for 20 records), also two fibre needles for reproduction. Complete with two aluminium discs.

No.					
ZM20	C3106	Acoustic model	each 45/-
ZM22	C2200	Electrical cutter pick-up only	” 31/6
ZM24	C5306	Broadcast model	” 76/6
ZM26	C406	Aluminium discs	..	per doz.	6/-



“EDISON-BELL” PERMANENT MAGNET MOVING COIL LOUD SPEAKER.

A superb model of the permanent magnet moving coil type. Two models are made, one having a speech coil of high impedance, and designed for use with pentode output, whilst the other has a low impedance winding suitable for power or super-power valves, and has an input transformer. The large cobalt-steel permanent magnet is of unique construction, and will retain its flux density indefinitely. Both models are supplied with 14-in. baffle. Reproduction is of an entirely pleasing character, bass being correctly rendered in proportion to the treble, whilst large volume is easily handled without overloading.

No.					
ZL705	C7000	Pentode output	each £5 5 0
ZL706	C7000	Power output	” £5 5 0



LAMPLUGH “SILVER GHOST” INDUCTOR DYNAMIC SPEAKER.

This new cabinet model has been designed to meet the demand for an inductor dynamic cabinet speaker of moderate size which will give results that are unsurpassed even by a moving-coil speaker. The reproduction is realistic, and volume is such as to satisfy the large run of users. The cabinet is substantially made in medium antique oak.

No.				
ZL696	C6304	each £4 15 0

NOTE.

We stock the Lamplugh Inductor Dynamic Chassis.

Particulars and Price, see previous Supplementary List.

LOUD SPEAKERS—Continued



"AMPLION" CONE SPEAKER.

Type A.C.6.

A cabinet cone speaker of delightful appearance, and even better performance. This model incorporates a new design of unit that is extremely sensitive. Size of cabinet—base 13½", height 13¼", front to back 6".

No.					
ZL1154	C1608	each	25/-

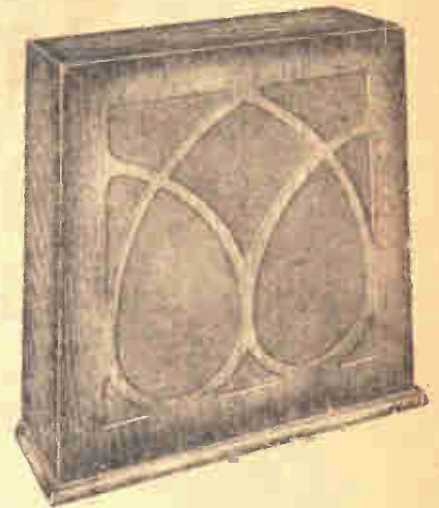


"AMPLION" CONE SPEAKER.

Type A.C.2A.

An open cone speaker at a really low price, but with a better performance than the famous "Amplion" Guinea Cone, owing to a new unit of vastly improved design. Finished in black and silver to the metal rim, and cone to match. This model will either stand or hang. Diameter of rim 13".

No.					
ZL1150	C1000	each	15/-



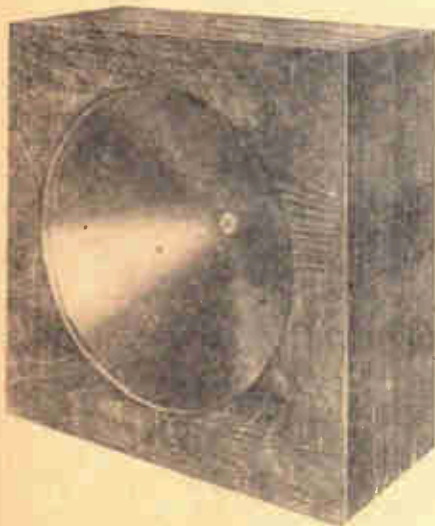
"AMPLION" CONE SPEAKER.

Type A.B.4.

A balanced-armature speaker with a most attractive cabinet design. By means of a series parallel connection provided at the back of cabinet the speaker can be matched to the output of any set. Wonderful tone over the whole audible range.

No.					
ZL1156	C3304	Oak	..	each	50/-
ZL1157	C3908	Walnut	59/6

These New Season "Amplion" Loud Speakers, on account of their distinctive designs and attractive prices will be "Red Hot" Sellers. Get your samples from any depot to-day.



"AMPLION" CONE ASSEMBLY.

The unit as fitted in the famous "Amplion" Portable Set is now available as a complete cone assembly. Mounted in a strong case, which can be utilised as a cabinet if desired.

Type AB14, with 14" Cone.

No.					
ZL1160	C3304	17½" × 17½" × 8½"	Size	Each	50/-

Type AB18, with 18" Cone.

No.					
ZL1162	C4000	21½" × 21½" × 9½"	Size	Each	60/-

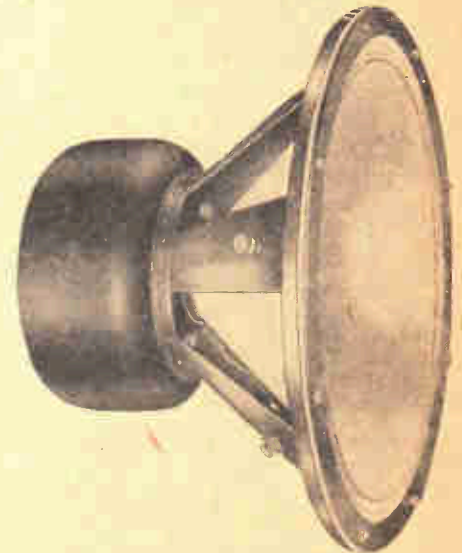


"AMPLION" MOVING-COIL UNIT.

Type M.C.6.

A small and very sensitive moving-coil unit of the permanent magnet type, with a really remarkable performance, but at an attractive price. Supplied complete with special high-ratio transformer, nicely finished throughout. This unit will prove a ready seller.

No.					
ZL574	C4500	each	67/6



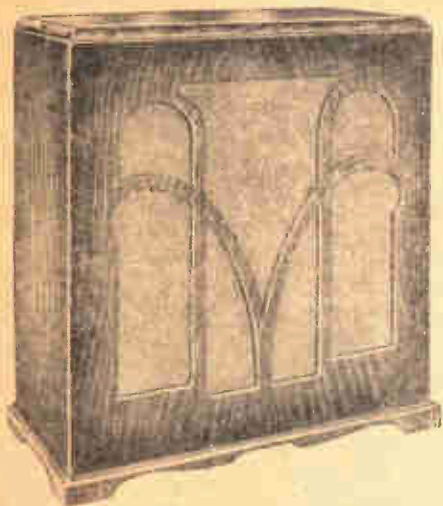
"AMPLION" MOVING-COIL UNIT.

Type M.C.9.

A large unit, also of the permanent magnet type, capable of giving the most perfect reproduction possible of both high and low frequencies. Will deliver enormous volume, and it is at the same time sufficiently sensitive to respond to the output of a small set (10 m/a.). Complete with transformer, with high, medium, and low impedance values.

No.					
ZL580	C8000	each	£6 0 0

LOUD SPEAKERS, Etc.—Continued



“AMPLION” MOVING-COIL SPEAKERS.

These cabinet speakers incorporate the permanent magnet moving-coil units illustrated on the previous page. The cabinet work is of the finest possible quality, whilst the reproduction is really superb. Complete with special transformer, with high, medium, and low impedance values, enabling perfect matching to any output.

		Type M.C.6.			
No.				Each	
ZL576	C7304	With Oak Cabinet	..	£5 10 0	
ZL577	C7908	With Walnut Cabinet	..	£5 19 6	
		Type M.C.9.			
No.				Each	
ZL582	C12600	With Oak Cabinet	..	£9 9 0	
ZL583	C14000	With Walnut Cabinet	..	£10 10 0	

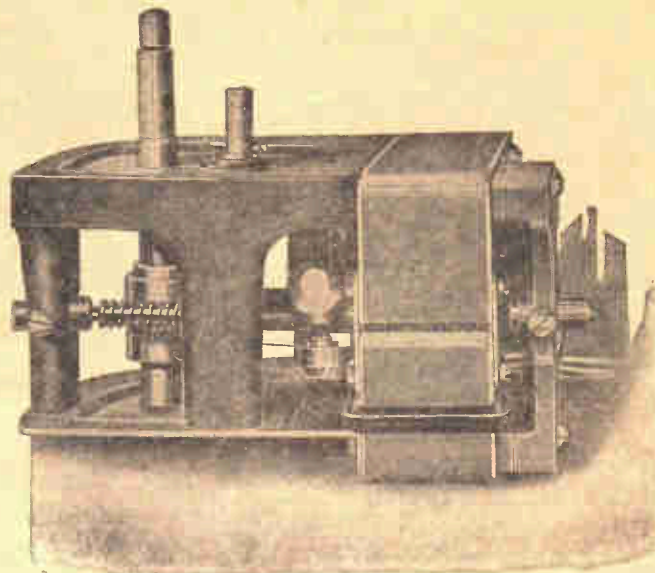


“W.B.” PERMANENT MAGNET MOVING COIL LOUD SPEAKER.

Model P.M.2.

This model is essentially the same as the P.M. 1, except that a less massive cobalt steel magnet is employed, enabling it to be offered at a considerably lower figure. Supplied completely assembled with a baffle board measuring overall 11½" x 11". The “W.B.” gives remarkable reproduction from any 2- or 3-valve receiver.

No.					
ZL691	C5609	each	£4 10 0



“PAILLARD” ELECTRIC GRAMOPHONE MOTOR.
(Small Induction Type. For A.C. only.)

The “Paillard” Induction Motor is a double-pole asynochron type, and is for alternating current 50 to 60 cycles. Dimensions, 4½" x 4" x 2½". Is without resistance, collector, or belt. Absolutely silent, and ideal for radio. The spindle is of hardened polished steel, and runs in special bronze self-lubricating bearings. The motor being of two parts only, the magnetic field is simple. Only one coil is used, which avoids breakage of wires and connections inside the motor. The speed can be regulated between 79 and 95 revolutions per minute. Complete with 12" turntable. For 200 to 250 volts.

No.					
S3269	C3000	each	£2 5 0



EDISON BELL PORTABLE PICK-UP UNITS.

These Portable Units have been designed (when connected to wireless receivers or amplifiers) for the demonstration and amplification of gramophone records. Comprised in a leatherette-covered cabinet, with carrying handle, two nickel-plated bolt locks, corner needle tray, and clips for needle box. The pick-up is standard Edison Bell, with nickel-plated ball-bearing carrier arm. A scratch filter is incorporated, and a volume control is fitted. An automatic stop is provided, thus rendering this instrument ideal in every respect. Two models are listed, either single or double spring drive motors being fitted, which play either one 12" or two 12" records at one winding.

No.					
ZL465	C5304	Single Spring Model	..	each	£4 0 0
ZL466	C6000	Double ,, ,,	£4 10 0

SWITCHES, TRANSFORMERS, ETC.

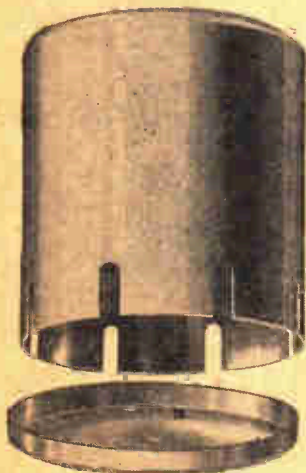


VARIABLE "COLVERSTATS."

Designed essentially for use as a volume control, either as a signal potentiometer or by regulation of the working potentials of a valve. Exactness and uniformity of control together with heavy current carrying ability are features that are outstanding. Available in the following standard sizes:—

No.					
ZR166	C308	1,000 ohms	..	each	5/6
ZR167	C308	2,500 "	..	"	5/6
ZR168	C308	5,000 "	..	"	5/6
ZR169	C308	10,000 "	..	"	5/6
ZR170	C308	25,000 "	..	"	5/6
ZR171	C308	50,000 "	..	"	5/6

Note.—The above controls are rated at 10 watts, and are suitable for mains units, regulating voltage on S.G. valves, volume control, etc.



"READI-RAD" STANDARD COIL SCREENING BOX.

Suitable for all types of modern baseboard mounting coils. Provides complete screening with easy accessibility to the coils. Holes are provided in the base for attaching to baseboard, and slots are provided in the cover through which connecting wires can pass. Extremely well finished. Size 3 1/2" diameter, 4" high, giving ample clearance from coils to avoid damping.

No.					
ZS523	C111	2/9

COPPER FOIL.
 Best quality Copper Foil for Baseboard use. Size 18" x 10".

No.					
ZS540	C109	each 2/6



"READI-RAD" ON AND OFF SWITCH.

A push-pull on and off switch of exceptionally clean design and robust construction. All metal parts are heavily nickel plated and polished. Specially designed to maintain constant and noiseless contact and smooth, easy movement. One-hole fixing. Fitted with attractive knob.

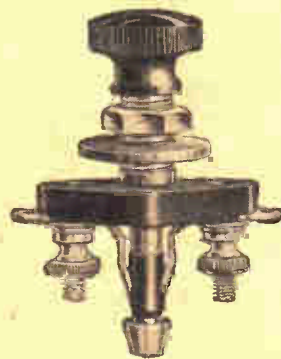
No.					
ZS320	C7	each 10d.



"READI-RAD" WAVE-CHANGE SWITCH.

A three-point push-pull switch particularly suitable for use in circuits employing dual range coils. Designed on low-loss principles giving certain contact, smooth action, and reliable service. Heavily nickel-plated polished metal parts and accessible terminals. One-hole fixing. Fitted with attractive knob.

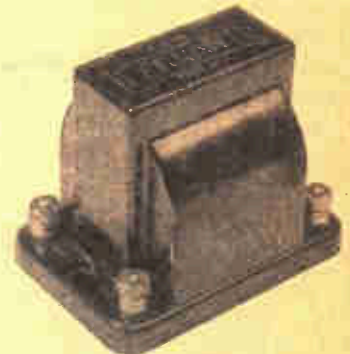
No.					
ZS322	C100 1/2	each 1/6



"W.B." TWO-POINT SWITCH.

Owing to the unique method employed in establishing contact this switch is a particularly efficient one in use. Neatly made, with bakelite mouldings and nickel-plated metal parts.

No.					
ZS325	C8	each 1/-



FERRANTI L.F. TRANSFORMER. Type A.F.8.

This model has been designed and made to compete with the lower-priced transformers. It has an excellent performance, and is comprised in a bakelite case. Ratio 1—3.5.

No.					
ZT320	C808	each 11/6



"W.B." THREE-POINT SWITCH.

Similar in design to the switch above, this switch is suitable for wave-changing or any other use for which a three-point switch is necessary.

No.					
ZS327	C10	each 1/3



FERRANTI L.F. TRANSFORMER. Type A.F.7.

A newly introduced model which retains all the best features of transformer design. It has a ratio of 1—1 1/2, and can be relied upon to give the finest possible results.

No.					
ZT316	C2206	each 30/-

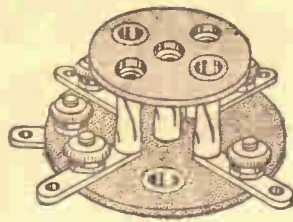
VALVE SUNDRIES, Etc.



"COLVERN" VALVE SCREEN.

This screen is comprised of three parts : A base for attaching to baseboard, a screen for the valve, and a top cover which is adjustable for any length of valve. Suitable slots are provided for the wiring, and an insulating ring is fitted to the top, which enables a lead to be taken from a screened-grid valve. Made throughout of drawn aluminium.

No.					
ZV333	C110	each	2'9	

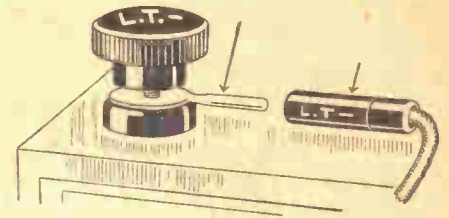


"CLIX" VALVE HOLDERS.

Scientifically designed and technically correct, these valve holders have resilient sockets air-dielectrically insulated, and self-aligning. Suitable for solid and all other types of valve pins. Fitted with screw terminals.

No.					
ZV420	C6½	4-pin	.. each	10d.	
ZV421	C8	5-pin	1/-	

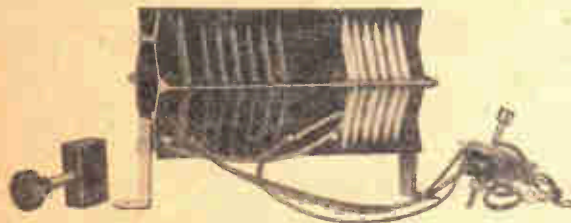
**WE STOCK MANY OTHER
"CLIX" SPECIALITIES.
FOR PARTICULARS & PRICES—
SEE GENERAL CATALOGUE.**



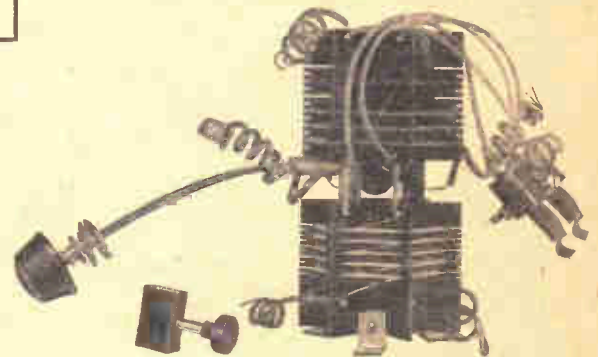
"CLIX" ACCUMULATOR CONNECTOR.

A speedy plug and socket L.T. connection which can be used with perfect safety on all accumulators, and which is ideal where space is limited. The solid pin tag will fit all standard accumulator terminals, remains permanently fixed to the accumulator, and is lead-coated to prevent corrosion. The socket is of the new "Clix" resilient type, red or black, and engraved as illustrated.

No.					
ZA146A	C200	Positive, Red ..	per doz.	3/-	
ZA146B	C200	Negative, Black	3/-	



**THE
FERRANTI
1931
H.F. SCREENED-GRID
KIT.**



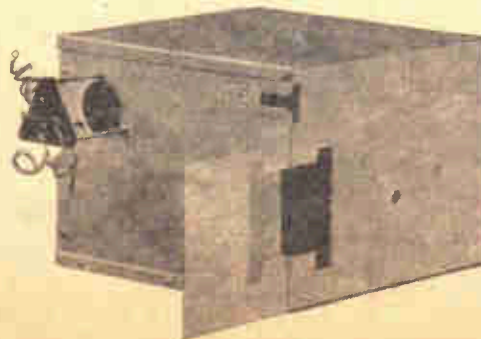
As will be seen by the three illustrations, this kit comprises an H.F. transformer, type R.F. 3, with wave-change switch, an H.F. transformer type R.F. 4, with wave-change switch and Bowden drive, reaction control, and a collapsible screening box with screened-grid valve holder. The transformer windings are on ebonite formers, and all connections are brought out to leads, rendering the wiring up into the circuit particularly simple. A complete chart with instructions is also included, which indicates the complete set of parts required to construct a highly efficient 3-valve screened receiver of up-to-date design. Packed in strong carton.

No.					
ZR781	C3106	Complete as above	each £2 2 0

"ELECTRON" AERIAL WIRE.

Where is it undesirable in the interests of selectivity to use standard length aerials, we can supply "Electron" aerial wire in cartons, each containing 25 ft.

No.				
ZA73	C4½	each	6d.

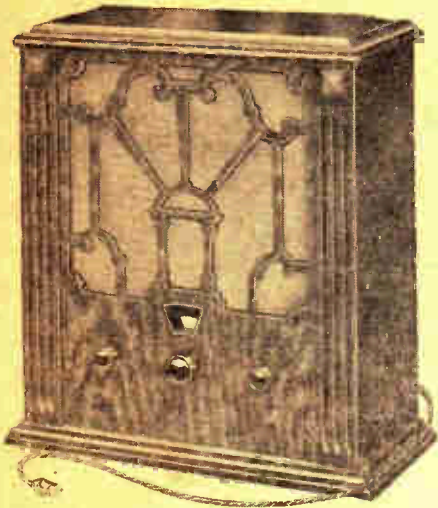


"KONDUCTITE."

"Konductite" is a new product which meets the need for the more efficient screening of circuits. It consists of a sheet of aluminium foil homogeneously secured to a backing of super quality paper, which renders its attachment to baseboard or panel an easy matter, whilst it can readily be cut to any size or shape. Each sheet measures 30" x 20".

No.				
ZS545	C104	..	per sheet	2/-

RECEIVERS—continued

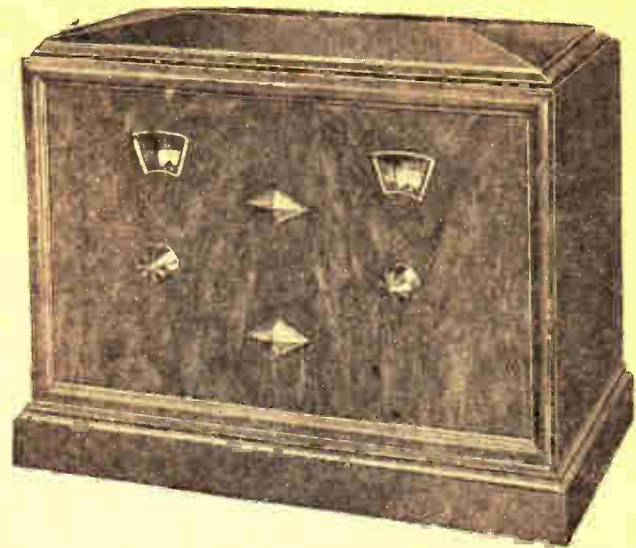


“ULTRA” TWIN CUB RECEIVER.

This is a two-valve all-electric receiver, including an air chrome loud speaker, and enclosed in a handsome walnut finished cabinet. It is designed essentially to receive the National and Regional programmes in every part of the country, and under favourable conditions several foreign stations as well. It will operate from all standard voltage A.C. supplies from 200 to 250 volts, 50/100 cycles, being provided with a tapped mains transformer. Full instructions for installing are provided, and each receiver is complete with Mazda valves.

No. ZR918 C11608 each £8 15 0

Note.—Marconi Royalty of 15/- nett must be added when ordering.

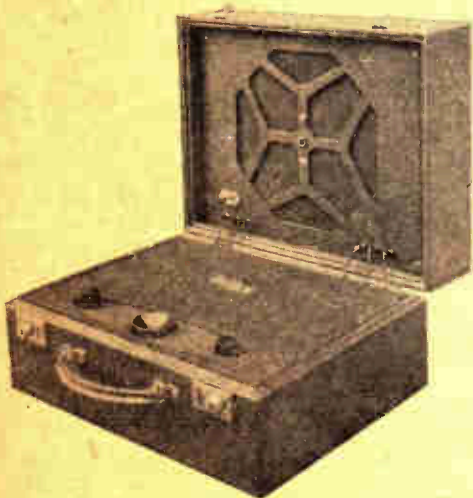


“BROWNE DOMINION” MAINS SCREEN GRID THREE.

This receiver can now be supplied in addition to the original walnut cabinet model, in an oak cabinet, at an exceedingly attractive figure. The circuit comprises screened grid H.F., detector, and one low-frequency stage with power valve, and is designed to operate from A.C. mains of all standard voltages, 40/90 cycles. The wave-lengths covered are 200 to 600, and 900 to 2,000 metres. Tuning is easy, and a feature of the receiver is the use of a “secret” potentiometer for the adjustment of the voltage of the S.G. valve. Terminals for pick-up are provided, and each receiver is complete with valves.

No.						
ZR783	C24500	Walnut Cabinet	each	£17 10 0
ZR785	C20606	Oak Cabinet	„	£14 15 0

Note.—Marconi Royalty of 20/- nett must be added when ordering.



ROLLS-CAYDON JUNIOR SCREEN GRID FOUR.

This receiver is outwardly identical in appearance to the well-known “Rondo” Portable, but the circuit incorporated comprises a screen grid H.F. amplifier, thus yielding really exceptional results. The weight has been kept low—24 lb. Both normal and high wave-lengths are covered, and a large range of stations are always available. The Celestion loud speaker provides perfection of reception. Complete with valves, batteries, and unspillable accumulator.

No. ZR726 C16108 each £11 11 0



FERRANTI THREE-VALVE MAINS RECEIVERS.

These receivers incorporate a screen grid H.F. valve, a detector, and an output stage. They are capable of receiving the National and Regional transmissions, and, in addition, several Continental stations at ample volume with a purity hitherto considered unobtainable. Designed to operate from A.C. mains of any standard voltage, and made either with a metal cabinet, covered with rexine, or, alternatively, comprised in walnut, oak, or mahogany cabinets, highly finished and polished. At the new prices these receivers represent really excellent value for money.

No.						
ZR920	C27906	Rexine-covered Cabinet	each	£19 19 0
ZR921	C30809	Walnut Cabinet	„	£22 1 0
ZR922	C29400	Oak Cabinet	„	£21 0 0
ZR923	C30809	Mahogany Cabinet	„	£22 1 0

We can supply all Ferranti Receivers promptly.

ADDITIONAL PROFITABLE BUSINESS

may be transacted without any risk or outlay of capital, if you take advantage of the many schemes introduced by the Manufacturers to enable you to supply their products to those seeking

EASY PAYMENT TERMS

We outline below some of the facilities offered, and will be glad to send you proposal forms respecting any of these schemes.

RADIO RECEIVERS and RADIO GRAMOPHONES

AMPLION D.P. 15% Deposit, and 12 Monthly Payments on certain models. (*) FULL DEALER'S TERMS.	FERRANTI H.P. Deposits from £2, and 12 Payments. Radio Apparatus over £5. FULL DEALER'S TERMS.	OSRAM MUSIC MAGNET H.P. £1/3/6 Deposit, and 12 Monthly Payments of 18/6. FULL DEALER'S TERMS.
BROWNIE D.P. From 7/6 down, and 12 Payments. Baby Grand, Dominion Valve and Mainsets. Dealer's terms, less 5% accommodation.	"GECOPHONE" H.P. 10% Deposit, and 6 or 12 Monthly Payments. All apparatus to the value of £5. FULL DEALER'S TERMS.	PHILIPS H.P. Deposits from 30/., and 10 Payments. All PHILIPS Receivers. (*) Dealer's terms, less 3% accommodation.
B.T.H./EDISWAN H.P. 10% Deposit, and 6 or 12 Payments. Receivers over £5 in value. (*) Dealer's terms, less 2½% accommodation.	"LOTUS" H.P. Deposits from 26/6, and 11 Monthly Payments. ALL TYPES. Dealer's terms, less 5% accommodation.	PYE H.P. Deposits from 13/., and 11 Monthly Payments. All Pye Receivers. Dealer's terms, less 2½% accommodation.
COSSOR H.P. Deposits from 18/., and 5 to 11 Monthly Payments according to Model chosen. FULL DEALER'S TERMS.	McMICHAEL H.P. Approximately 20% Deposit, and 10 Payments, on Certain Models only. Dealer's terms, less 5% accommodation.	REGENTONE H.P. £5 Deposit, and 12 Monthly Payments. On 4 Valve All Electric Receiver. Dealer's terms, less 3% accommodation.
"EKCO" D.P. Small Deposit, and 11 or 23 Monthly Payments. All EKCO Receivers. (*) Dealer's terms, less 5% accommodation.	MARCONIPHONE† D.P. Deposits from £1, and 12 Payments. All Marconiphone Receivers. (*) Dealer's terms, less 2½% accommodation.	ULTRA H.P. Deposits from 17/9, and 11 or 12 Monthly Payments. All-Electric Receivers. Dealer's terms, less 2½% accommodation.

† Trader must be a registered Marconiphone Dealer.

* These facilities are also available on other products.

H.P. = Hire Purchase.

D.P. = Deferred Payments.

Eliminators and Mains Power Devices

"ATLAS" D.P. Deposit of 10/- or 20/., and equal Monthly Payments according to Model chosen. FULL DEALER'S TERMS.	MARCONIPHONE† D.P. Deposits from £1, and Monthly Payments of 12/6. On certain Power Units over £5 in value. Dealer's terms, less 2½% accommodation.	REGENTONE H.P. Deposits from 10/., and 4, 6, 9 or 10 Monthly Payments. Dealer's terms, less 3% accommodation.
"EKCO" D.P. Deposits from 10/., and 11 Payments. Available on Mains-Power Radio Devices. Dealer's terms, less 5% accommodation.	PHILIPS H.P. 10/- Deposit, and 10 Monthly Payments. Available on H.T. Supply Units. Dealer's Terms, less 2½% accommodation.	R.I. H.P. Deposits from 10/6, and 8 or 10 Monthly Payments. Dealer's terms, less 5% accommodation.

PLEASE NOTE

A MINOR or a NON-HOUSEHOLDER cannot be accepted without a guarantor.

A MARRIED WOMAN cannot usually be accepted unless the husband counter-signs as guarantor.

A WIFE may not witness her husband's signature.

INSURANCE (incurring a small additional fee) is compulsory in some instances.

THE CUSTOMER must sign over a 6d. stamp affixed to the agreement, and the signature witnessed by a person over 21 years of age.

THE DEPOSIT in Brownie, Philips, Regentone, R.I., and Ultra transactions is retained by the trader as part of their profit, but in all other transactions the deposit must accompany the proposal form.

THE PROPOSAL FORM should be complete in every detail, signed and witnessed, and in all instances FORWARDED TO US.

Hobdays for Service



The
“Quick Despatch”
Factors