

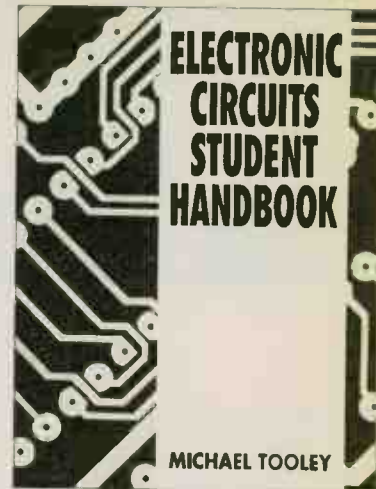
# HIFI

## WORLD

NO.30 AUGUST 1997

SUPPLEMENT

BOOKS



# SWEET SOUNDS FROM WILMSLOW'S KEVLAR 1 KIT



**FREE D.I.Y. SUPPLEMENT No. 30**

PRICE VALIDITY TO END JULY 1997 - ASK ABOUT ANY TYPES NOT ON THIS LIST



**CHELMER  
VALVE  
COMPANY**

## for High Quality Audio Tubes

Everybody in the tube business knows that the justly famous Brand names of yesteryear like BRIMAR. GEC. MULLARD. RCA & TELEFUNKEN Etc. Etc. are scarce and often very expensive.

Although we supply all major brands when available (and have many in stock) our policy is to offer a range of tubes, mostly of current manufacture, the best we can find from factories around the world, which we process specially to suit audio applications. The result - CVC PREMIUM BRAND.

Our special processing includes selection for LOW NOISE, HUM & MICROPHONY and controlled BURN - IN on all power tubes to improve STABILITY and select out tubes with weaknesses Etc.

### A selection of CVC PREMIUM Audio Tubes

PRE-AMP TUBES		POWER TUBES		POWER TUBES	SOCKETS ETC.	
ECC81	5.00	EL34G	7.50	(Continued)		B9A (Chassis or PCB) 1.60
ECC82	5.00	EL34 (TESLA)	8.00	6336A	46.00	B9A (Ch. or PCB) Gold Plated 3.00
ECC83	5.00	EL34 (Large Dia.)	8.50	6550A	11.00	Octal (Ch. or PCB) 1.80
ECC85	5.00	EL84/6BQ5	4.70	6550WA or WB	13.50	Octal (Ch. or PCB) Gold Plated 4.20
ECC88	5.00	EL509/519	13.00	7581A	11.00	4 Pin (For 2A3, 300B etc.) 3.30
ECF82	5.00	E84L/7189A	6.50	807	9.00	4 Pin (For 2A3, 300B etc.) G/Plated 5.00
ECL82	5.00	KT66	9.50	811A	11.00	4 Pin Jumba (For 211 etc.) 11.00
ECL86	5.00	KT77	12.00	812A	34.00	4 Pin Jumba (For 211 etc.) 11.00
EF86	5.50	KT88 (Standard)	12.50	845	30.00	Gold Plated 15.00
E80F Gold Pin	10.00	KT88 (Gold Special)	21.00	<b>RECTIFIER TUBES</b>		5 Pin (For 807) 3.00
E81CC Gold Pin	6.80	KT88 (Gold Lion/Pair)	60.00	EZ80	4.00	7 Pin (For 6C33C-B) 4.50
E82 CC Gold Pin	8.00	PL509/519	9.00	EZ81	4.50	9 Pin (For EL, PL509, Ch. or PCB) 5.00
E83CC Gold Pin	7.50	2A3 (4 or 8 Pin)	14.50	GZ32	9.00	Screening Can 2.00
E88CC Gold Pin	8.00	211	22.00	GZ33	7.50	(For ECC83 etc.)
6EU7	6.00	300B	50.00	GZ34	6.50	Anode Connector 1.50
6SL7GT	4.50	6C33C-B	27.00	GZ37	6.50	(For 807 etc.)
6SN7GT	4.50	6L6GC	6.50	5U4G	5.00	Anode Connector 1.70
6922	5.20	6L6WGC/5881	8.00	5V4GT	4.50	(For EL509 etc.)
7025	6.50	6V6GT	5.00	5Y3GT	4.00	Retainer (For 6L6WGC etc.) 2.00
		6080	11.50	5Z4GT	4.50	
		6146B	10.50			

### ...and a few "Other Brands" (inc. Scarce types).

5AR4/GZ34 MULLARD	16.00	6B4G RAYTHEON	27.00	6SN7GT BRIMAR	5.50	13E1 STC	135.00
5R4GY RCA, STC	7.00	6BW6 BRIMAR	5.00	12AT7WA MULLARD	5.00	805 CETRON	50.00
5R4WGY CHATHAM USA	10.00	6BX7 GT SYLVANIA	8.50	12AY7 GE-SYLVANIA	7.75	5842A GEC	15.00
5U4GB RCA or GE	12.00	6CG7/6FQ7 SYLVANIA	7.50	12AZ7 GE	7.50	6080W TUNGSOL	12.50
5Y3WGT SYLVANIA	5.00	6CL6 RCA or GE	5.00	12BH7A GE	13.00	6550A GE	22.00
6AS7G RCA or SEIMENS	12.00	6CW4 RCA	11.00	12BY7A GE	9.00	6146B GE	17.00
6AU6WC SYLVANIA	3.50	6SL7GT STC	5.50	12E1 STC	12.50		

ALL PRICES IN U.K. POUNDS £

Please note carriage extra + VAT (EEC only) - When ordering state if matching required (add £1.00 per tube).

Payment by CREDIT CARD (ACCESS, VISA, MASTERCARD) or BANKERS DRAFT, TRANSFER or CHEQUE (UK ONLY).

FAX or POST your ORDER - We shall send PROFORMA INVOICE if necessary.

*Valve Amplifiers sound better still fitted with CVC PREMIUM Valves!*

Chelmer Valve Company, 130 New London Road,  
Chelmsford, Essex CM2 0RG. England.

☎ 44 (0)1245 355296/265865 Fax: 44 (0)1245 490064

All rights to the designs are reserved by World Audio Design Ltd. They are published for single use by private individuals. They are not to be used for commercial gain without prior permission from World Audio Design Ltd.  
 Audio Publishing Ltd and World Audio Design Ltd accept no responsibility for accident or injury arising from the construction or use of any of the designs published.  
 All of the projects in this supplement have gone through rigorous listening and test procedures. The performance and specification of these projects can only be guaranteed on kits bought directly from World Audio Design Ltd.

## KIT NEWS

The latest news in kits and components for the active DIYer.

5

## WILMSLOW KEVLAR 1 SPEAKER KIT

If you're looking for a medium sized stand mounter using high quality drivers, this impressively engineered £420 Wilmslow kit is a very good place to start.

7

## HIDDEN TREASURE DIY CABLES

This month we delve further into the field of home-made interconnects with three more cables from the Maplin catalogue.

13

## LspCAD SPEAKER AND ROOM ANALYSIS SOFTWARE

Noel Keywood finds that with a Macintosh computer and Loudspeaker Computer Aided Design (LspCAD), you can not only come up with your own 'speakers but optimise your room for the best sound.

15

## BOOK REVIEWS:

### ELECTRONIC CIRCUITS STUDENT HANDBOOK

Aimed at providing students with a grounding in the basics of electronics, this book by Michael Tooley covers all the fundamentals, from passive components to amplifiers

21

### PRACTICAL ANALOG ELECTRONICS FOR TECHNICIANS

While it concentrates purely on analogue circuits, Will Kimber's book is also aimed at students. But is it the first step in electronics understanding many DIYers look for? Noel Keywood finds out.

23

### DIY Q&A

The ideal DIY forum to discuss technical problems and electronic theory. If you have a problem, try these pages for an answer.

25

**α****Billington Gold****Ω**

Long known as specialists in rare tube brands, Billington Export provides a line of premium-grade valves to fill the increasing demand for hard-to-find tubes! BILLINGTON GOLD features specially tested valves selected for long life, low microphony and low noise. Versions with gold plated pins are available. BILLINGTON GOLD brand comes from a variety of countries around the world. We have carefully

chosen the best manufacturer for each type, with an emphasis on the highest audio quality and product reliability. We stock one million valves including: BRIMAR, GE USA, GEC UK, MAZDA, MULLARD, RCA, RUSSIAN/SOVTEK/SVETLANA, SYLVANIA, TESLA, THERMIONIC, TUNGSRAM and other rare brands, as well as stockets and CRTs.

**BILLINGTON GOLD**

2A3	17.50
6L6GC	9.50
12AX7	5.25
300B	66.00
811A	12.00
845	33.00
6550B	16.43
E81CC	5.25
E81CC-01	9.50
E82CC	4.50
E82CC-01	8.50
E83CC-01	8.50
E88CC	7.50
ECC81	5.25
ECC82	5.50
ECC83	5.50
ECC88	4.50
EL34	9.95
EL84	3.60
KT66	9.50
KT88	18.50

**RARE BRANDS**

5R4GY RCA	2.90	POA	6550A GE USA	42.00
5Y3GT RCA	2.48		CV4004 Brimar UK	POA
6BH6 RCA	6.75		DG7-32 Tungstram Hungary	21.00
6CG7 Yugoslavian	5.93		ECC81 Mullard UK (CV4024)	7.50
6V6GT STC UK	3.00		ECC82 Mullard UK (CV4003)	POA
6X4W Raytheon USA	66.00		ECC83/ECC803S Tesla	13.13
6336A	6.90		ECC83 Yugoslavian	2.93
12BH7 Yugoslavian	15.00		ECC85 Tungstram	3.45
12E1 STC/ITT UK	120.00		ECC86 Tungstram	3.45
13E1 STC UK	4.50		EF86 GEC UK (CV4085)	19.50
85A2 Mullard	10.50		GZ32 Mazda	9.00
807 USA	6.45		GZ37/CV378 Mullard UK	6.90
5687 Sylvania			KT90 Yugoslavian	25.50
			PL519 Tungstram	8.40

**SOVTEK**

5881/6L6WGC	6.30
6SL7GT	2.50
12AX7WB	3.75
EL34G	6.20
EL84	1.99

**RUSSIAN / SVETLANA**

6550B-2	18.00	EL34 Svetlana	8.92
6550C	27.00	SV811-3	22.75
6B4G	19.50	SV811-10	22.75
6SN7GT	3.30		

Try us for ALL Russian/Svetlana valves

**SPECIAL OFFERS**

6AS7G Russian	2.99
6AU6WC Sylvania	1.20
6AU8A RCA/SYLVANIA	0.75
6BE6 Brimar/ECG PHILIPS	1.20
6CM7 RCA	2.70
6SN7GT Russian	3.30
6550B3 Russian Zirconium	16.43
7119/e182cc Mullard USA	9.45
Russian ECC83 near equivalent (8M2x centre tapped heaters)	1.80
ECC86 Mullard	2.93
ECF80/6BL8 ECG PHILIPS	0.60
EF184 RFT	0.99

You may deduct 33.3% discount for one order totalling £600.00 GBP or more

**TOPCAPS**

For 2C34, 807 etc.	£1.20
For 12E1 5B-254M PL519	£2.93

**MATCHED TESTING**

£2.00 Per Valve  
(£4.00 per pair)

**SOCKETS**

Jumbo 4-Pin for 211, 845, etc	10.50
Jumbo 4-Pin, Gold Plated, for 211	13.50
UX4 for 2A3, 300B, 811A, etc	1.95
UX4 Large Locking Type for 300B	4.80
B9A Ceramic, skirted, chassis, screening can; Russian	0.90
B9A PCB, gold pins	1.88
B9D Magnoval, chassis, for PL519	1.80
TOPCAP for 2C34, 807, etc	1.20
TOPCAP for 12 E1, 5B-254M, PL519	2.93
MATCHED TESTING	£2.00 per valve (£4.00 per pair)

**RARE SOCKETS**

Previously unavailable anywhere in the world!  
Handmade in UK exclusively for Billington's

4212E for 4212E	(ORDER CODE 47E)	£37.50
B4 for PX4	(ORDER CODE 4B4/5BB)	£3.60
DA100 for DA100	(ORDER CODE 45DA)	£15.00
B5 for ML4	(ORDER CODE 4B4/B5B)	£3.60
PO5 for Aa, Ba	(ORDER CODE 5PO)	£11.70
OCTAL GOLD PLATED CHASSIS MOUNT for EL34 (ORDER CODE 8GC)		£1.35
8 PIN SIDE CONTACT for AZ1	(ORDER CODE 8SC/8P)	£10.43
E2E for F2a, E2e	(ORDER CODE 9E2E)	£13.50
10Y for EL156	(ORDER CODE 10Y)	£5.63

All items in stock at the time of going to press. Prices in GB Pounds and subject to fluctuation: please check before placing your order. Please ask for our free 60 page catalogue of valves and/or our CRT catalogue. Payment is accepted by: ACCESS, AMERICAN EXPRESS, DEBIT CARD, JCB, MASTERCARD, VISA, Bankers Draft, Bank Telex, Eurocheque and Cheque (UK only). MINIMUM ORDER: UK £50.00 + VAT & Carriage. Export £100.00 (US\$150.00) + Carriage. 3,000 OTHER TYPES OF VALVES IN STOCK! PLEASE INQUIRE FOR ANY TYPE NOT LISTED.



**IE GILLMANS TRADING ESTATE**  
**BILLINGHURST**  
**WEST SUSSEX RH14 9EZ UK**  
**TEL: (0)1403 784961 FAX: (0)1403 783519**  
VISITORS STRICTLY BY APPOINTMENT PLEASE

# KIT NEWS

## RIBBON DRIVEN

If you're taken by the crisp, fast sound of ribbon tweeters but have found the prices slightly less attractive, then Tandy



have some good news. They have made available the Optimus ribbon tweeter, used in their Genexxa LX5 Pro stand mounters and more expensive models.

This driver is a dipole unit which comes with its own crossover, rolling its response off at a relatively low 2.5kHz, making the Optimus suitable for use in two-way systems. Cost is £39.99 each and power handling 50watts. While no sensitivity figure is given with the tweeter, we hope to be putting it through its paces in a forthcoming supplement.

**Tandy**  
Leamore Lane,  
Walsall,  
West Mids. WS2 7PS  
Tel: 0500 300666

## PRECIOUS LINK

Cambridge Scientific Supplies, suppliers of specialist silver wire, have added to their range with a heavy gauge cable, which they say is ideal for loudspeaker wiring. This cable is succinctly named CSS045 x 19AgCu and is rated at 38A continuous. 19AgCu comprises 19 strands of 0.45mm silver-coated OFHC copper with heavy PTFE insulation. Pre-

terminated lengths with protective black nylon braid are available at a cost of £24 per stereo metre, with cable at £3.50 per metre.

**Cambridge Scientific Supplies**  
12 Willow Walk,  
Cambridge CB1 1LA  
Tel: 01223 811716

## FALCON EXTEND THEIR WINGS

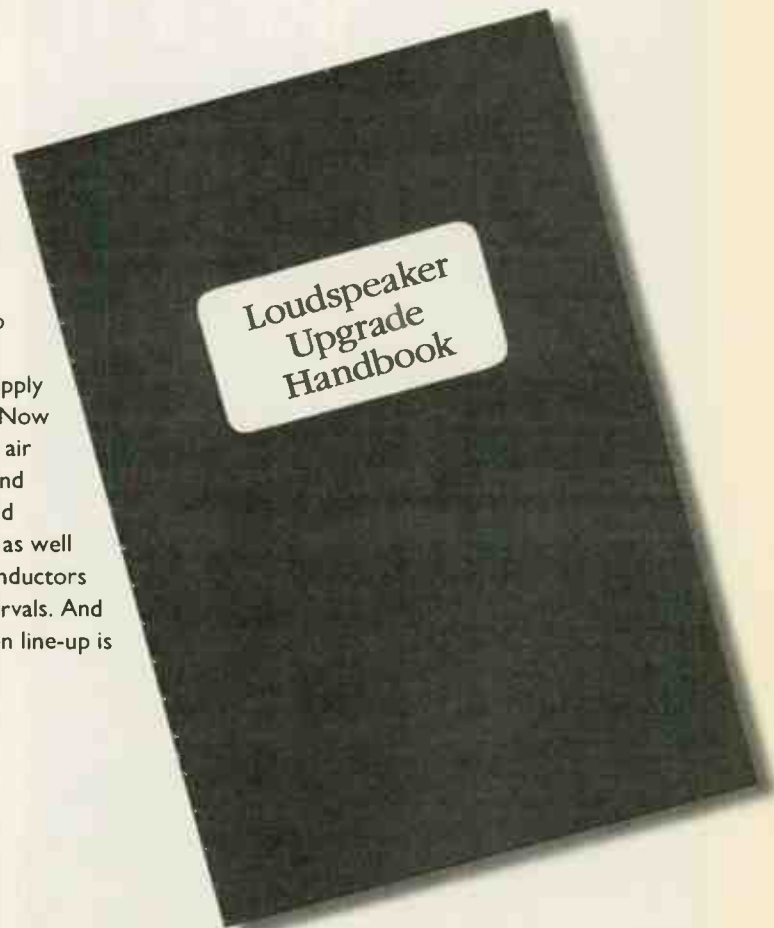
The Norwich based specialist component supplier Falcon Acoustics is adding to the range of components it can supply to 'speaker builders. Now available are 0-10mH air cored inductors wound with 1.25mm wire and tapped at 1mH steps as well as 0-1mH air cored inductors tapped at 0.1mH intervals. And joining the 630V Solen line-up is a 0.68mF capacitor.

**Falcon Acoustics**  
Tabor House,  
Norwich Road,  
Mulbarton,  
Norwich,  
Norfolk NR14 8JT  
Tel: 01508 578272

## UPGRADE AHOY

New for summer '97 is a fresh Catalogue from Russ Andrews, containing a smorgasbord of audiophile capacitors, resistors, inductors, cables and kits. The separate Accessories booklet has also been updated and contains a range of ready-made cables, contact enhancers and CD cleaners, for example. Last in this literary flowering is the Loudspeaker Upgrade Handbook, which has details of how to modify crossover components and drivers for best results. The Handbook costs £9.95.

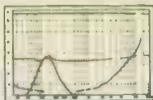
**RATA**  
Edge Bank House,  
Skelsmergh,  
Cumbria LA8 9AS  
Tel: 01539 823247



**£89-00**  
INC VAT

## AudioCad Pro

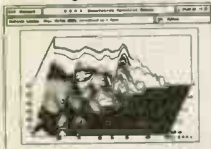
A Computer Aided  
Loudspeaker Design Software



As Featured In the Hi-Fi World DIY Supplement  
No.s 22 & 23 (June, August 1996). Still available to  
Hi-Fi World readers at the Reduced price: **£89-00 Inc**  
Plus **£5-00 P&P**

### DAAS3L+ Digital Audio Analyser System

DAAS3L+ is amongst the best Audio Analysers on the market today. It offers an excellent price performance ratio as it comes complete with calibrated microphone, GUI software, full manual and includes a PC half Card. DAAS3L+ is capable of measuring Thiele-Small parameters, Frequency response near and far field, Phase, Distortion and much more. This versatile piece of test equipment will analyse most audio signals enabling the user to test Amplifiers, crossover Etc. Ideal For Schools, Colleges, Universities, R&D, & Production Line testing.



Price **£586-33 Inc**  
Plus **£5-00 P&P**

#### System Requirement

AT386 or better, EGA,VGA, 2MB RAM,4MB of hard disk space. Will run under Windows 3.1 OS/2 in DOS window

### 12" Hi-Fi Sub Woofer Driver Elite 12-100

100 Watts RMS 8 Ohm  
As used in an **AWARD WINNING**

Hi-Fi Sub Woofer system.

Qms:—	3.03	Vas:—	260L
Qes:—	0.364	Pwr:—	120W
Qts:—	0.32	Re:—	6.7 Ohm
Mms:—	38.4g	Sens:—	90dB
Fs:—	27Hz	Fmax:—	1319Hz
Freq Response:—	30 - 2500Hz		
Magnet Weight:—	730g		
Coil Diameter:—	50.5mm		



Price: **£23-50 Inc**  
Plus **£5-00 P&P any Quantity**

The above items may be ordered by post, fax or telephone and payment is welcome by cheque, draft, postal orders, Mastercard or Visa. Additionally, Official Orders are welcome from schools, colleges, government departments etc.



**B.K. ELECTRONICS**



Unit 1 Comet Way  
Southend-On-Sea Essex SS2 6TR  
Tel: 01702- 527572 Fax: 01702-420243

## Falcon Acoustics Ltd

Incorporating Falcon Electronics Falcon Components

New: Tapped Inductors.  
0-10mH in 1mH steps & 0-1mH in 0.1mH steps  
New and updated FOCAL 'State of the Art' Kit Designs  
& JMLab Speaker Systems.

Increased range of SOLEN 630v Polypropylene capacitors.

DRIVE UNITS: by FOCAL, and a pick of the best from other manufacturers.

CROSSOVER NETWORKS: - Active & Passive, Components, Accessories,  
Large range of Capacitors: + Falcon Custom-wound Inductors.

AUDIO AMATEUR PUBLICATIONS

Loudspeaker Design Cookbook. NEW - A Beginners Guide to Tube Audio Design, plus lots more in P/L.  
Back year sets of Speaker Builder, Audio Amateur & Glass Audio, plus the Audio Anthology Set.

COMPUTER PROGRAMS

Large selection of Programs available from the very comprehensive Liberty AudioSuite test program via AIRR  
LoudSpeaker Ver.6, BassBox 5.1, to the basic Bullock/White Boxresponse.

Also the IMP FFT Test Kit, the Miley Mic Kit and Mic/Preamp kit for Audiosuite or AIRR

**FOCAL**  
TECHNOLOGIE D'AVANT-GARDE

COMPACT B300



Compact column 8.5litre, 88.5dB/watt system with a -3dB point of 60Hz  
One of the comprehensive range of Focal kits from an even wider range of high-tech  
loudspeaker units

Send for our FREE price list PL26. Just send a large S.A.E. (38p stamp) or US\$2 bill overseas.  
Europe US\$1 bill or 3 International Reply Coupons (IRC) to: Dept HFW, Tabor House,  
Norwich Road, MULBARTON, Norwich, Norfolk, NR14 8JT Tel: (01508) 578272

## ANOTHER BIG HIT!

Following in the path of the original and extremely well received Assemblage DAC-1, the DAC-2 appears to be another big hit with customers and reviewers alike. The DAC-2 builds on the strengths of the original DAC-1, with its dual Burr-Brown PCM 1702 20 bit DACs, Crystal CS8412 input receiver, toroidal power transformer and Analog Devices based output stage, but adds HDCD capability with the PMD-100 digital filter chip, an extra co-ax digital input on a BNC jack, a phase invert switch, three more power supply regulation stages with greatly increased power supply capacitance, and improved parts quality in the analog output stage. The best news is that all these improvements come with a very small price, the DAC-2 digital processor kit is \$499.00 U.S.! Of course, the DAC-2 also comes with our 30 day satisfaction guarantee, two year limited warranty, AND our assembly guarantee, (If you can't get it to work, we will!).

For those of you with the upgrade bug, we also have a parts upgrade kit available for the DAC-2. This kit includes Caddock resistors and MultiCap capacitors for the analog output stage, Kimber silver and Illuminati hook-up wire, EAR and Soundcoat isolation and damping materials, Linear Technology voltage regulators, and more parts that make a significant improvement in the performance of the stock DAC-2. The parts upgrade kit is available at a special package price of \$149.00, which makes it even more good news!

For more information on any of our products, please call, write, Fax or E-mail us and we will be happy to assist you.

**THE PARTS CONNECTION**  
A DIVISION OF SONIC FRONTIERS LTD



2790 Brighton Road, Oakville, Ontario, Canada L6H 5T4  
Telephone (905) 829-5858 Facsimile (905) 829-5388  
E-Mail TPC@sonicfrontiers.com

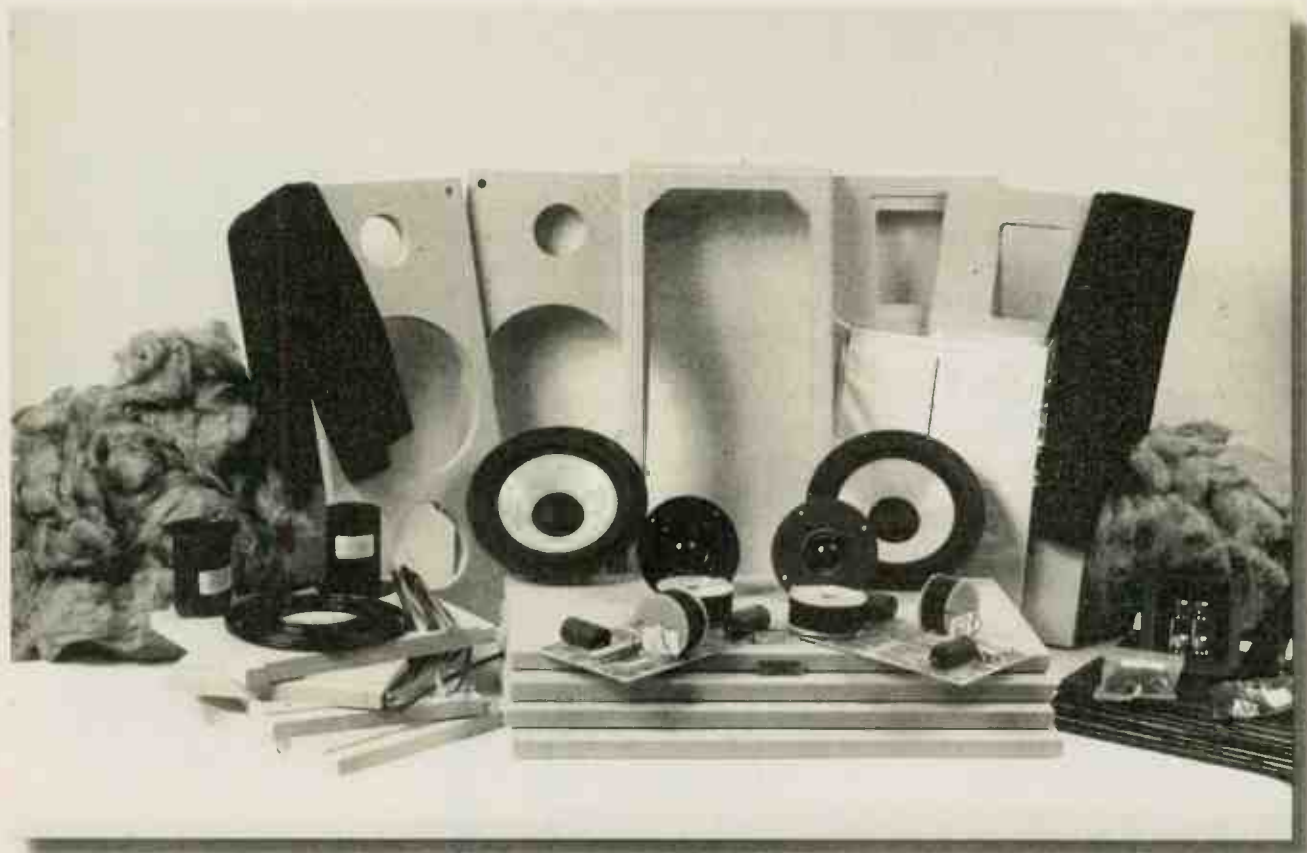
## At Last!



At the printers - Quarterly Journal  
"Ultra High Fidelity"  
Tel: 01992 620905

# Captivated by KEVLAR

**Nick Lucas, 'speaker builder extraordinaire, gets to grips with Wilmslow Audio's £420 Kevlar I loudspeaker kit.**



If DIY happens to be your middle name and 'speakers are your game then one company you'll probably be familiar with is Wilmslow Audio. They've been around for over 30 years now and have a range of kits that runs to over 25 different loudspeaker designs. One of these is the Kevlar I, which we chose to

build because it uses, surprisingly, high-technology Kevlar coned mid/bass drivers similar in sound to the Carbon Fibre we've come to know and love.

The Kevlar I is a front-ported two-way stand mounter, measuring 27cm x 22cm x 48cm (including grille). The driver line-up consists of a 28mm textile dome

tweeter and a 7in Kevlar mid/bass unit housed in a cast alloy frame which sports a seriously substantial magnet. Both units come from Danish manufacturer Scan Speak. They specialise in high performance drive units which put in appearances in Spondor, Linn and Wilson Watt 'speakers, to name but a few.

# feature

The simple crossover relies on a second-order filter in both high and low frequency sections. The components used are standard high power ceramic resistors, good quality Ansar polypropylene capacitors and Volt air-cored inductors.

On opening the 30kg box and cross-checking components against the parts' list provided I soon realised that Wilmslow had thought of everything.

Contained inside were the drive units, assembled crossovers, reflex tubes, Dedshete panels, gold-plated bi-wireable binding trays, grille fixing studs with black fabric, GAW (Garnet Acrylic Waste) fibre for internal wadding, multi-strand copper 'speaker cable, sealing strip, screws, instructions and a 15mm MDF flat pack set. The only thing I had to provide was Evostick Resin W glue, 10mm steel tacks for mounting the grille fabric to its frame and five metres of Fablon self-adhesive vinyl for that quick and easy Mahogany veneer finish.

The assembly instructions contained a parts' list, assembly procedure, a diagram of the crossover board (clearly labelling all link points) and an exploded view of the cabinet. In my view, instructions should never be too lengthy. For example, Heath Kits used to accompany their kits, a very detailed format that never leaves much to the imagination. In my experience DIYers feel a sense of achievement if they can work things out for themselves. So if you are expecting pages and pages of diagrams and text you will be disappointed in this case. The only instructional shortfall was a lack of technical data - driver data sheets, the measured performance of the finished product and a crossover schematic would have been useful.

The assembly steps generally

followed a common sense sequence, though I found it easier to screw-mount the crossover PCB prior to gluing the cabinet as trying to fit parts in the limited space of a half-constructed enclosure is fiddly and can cause unnecessary stress on the box.

While on the subject of the crossover it's worth



The Kevlar 1s use high quality drivers from Scan Speak; a mid/bass unit with woven Kevlar cone and oversize magnet and a soft dome tweeter.

mentioning that even though the board is assembled it is up to you to attach the cabling. The 'speaker wire length dictates the orientation of the PCB with respect to the drive units and binding post trays. Careful attention also needs to be paid to the diagram of the PCB as this is a multi-purpose unit and comes etched with some markings which don't relate to the Kevlar 1. No fixing holes are provided so all soldering is carried out track side.

As is standard with Wilmslow kits,



All of the enclosure's panels come rebated which makes assembly quick, accurate and easy.

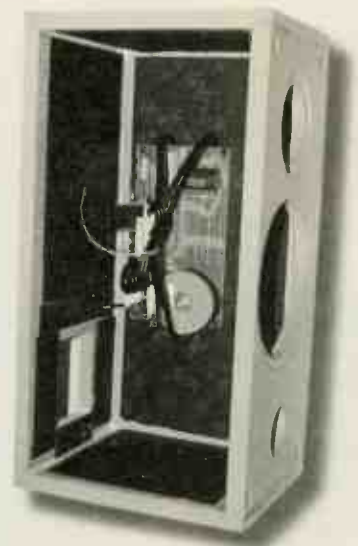
the cabinets when supplied in flat pack form are fully rebated, which makes construction easy. The cabinets fitted together perfectly. I used one of the side panels as a base, thus exposing all

joins for easy removal of excess glue.

Instead of good old felt lining, Wilmslow have opted for Dedshete panels (2mm thick bitumen sheets). The panels are self-adhesive so fixing is easy, though warming up the adhesive beneath a lamp or with a hair drier before fixing makes it tackier. If you forget to warm it up the sheets have a tendency to fall off.

The front panel and grille frame provided come pre-drilled with holes for the fixing of the studs - a blessing, as any kit builder will tell you. The only tricky manoeuvre is attaching the cloth to its frame.

I used 10mm steel tacks and a needle and thread to achieve a good tension and to line up the tiny



It's a good idea to build the cabinet up on one of the side panels having already screwed the crossover in place.

perforations horizontally. Once they were tacked in place I trimmed the cloth and applied glue around the fabric edge to prevent fraying.

Connecting the studs to the frame required a little extra work. I had to open up the holes with a drill bit and push the studs into the holes as far as they would go before finishing off with a few light taps around the base with a hammer and a flat head screw driver. Never try hammering the 7mm





The grille cloth can be held in place on its pre-drilled frame with 10mm steel tacks.

diameter plastic extension directly as it will snap very easily.

Once the cabinets were constructed and lined internally with Dedshete, all that remained was applying the decoration, fixing the ports and a bit of soldering.

I opted for a Fablon self-adhesive vinyl Mahogany finish, costing around £2.00 a metre. I needed five metres to finish off both 'speakers. Fablon is quick and easy to use but won't stand the test of time as well as a true veneer. Application is relatively straight forward though a scalpel is essential to trim off the excess. Any holes should be cut out when the Fablon has been applied, cutting 15mm in from the edge. The borders around the hole can then be folded over and stuck down.

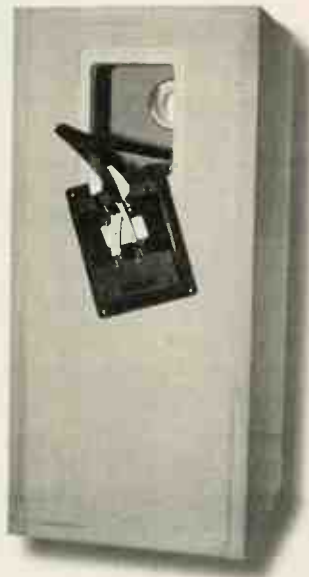
When fixing the ports, tap them into place with a wooden block so as



The Fablon should be applied and cut to shape before the drive units are screwed into their rebated holes.

not to damage the plastic. Ample wadding was supplied for damping - the quantities are actually measured out for you in two plastic bags.

Soldering the drive units and binding trays to respective leads is



As long as the flying leads from the drivers are long enough, soldering on the binding post tray poses no problems.

straight forward enough as long as your flying leads are well marked. As the drive unit cut outs were rebated the units fell into place snugly. The flange head screws supplied were a touch on the weak side - one actually broke. I would prefer to have used T-nuts for a stronger join.

Once finished, the Kevlar 1s certainly look impressive, but do they work? After a quick DC resistance check (both 'speakers read around 6ohms) I plugged them in and found the answer was yes. A 40-hour running-in time is recommended so I will leave it up to our reviewing team to make an assessment.

Wilmslow offer 'speakers in various forms to suit everybody's needs. The kit we received (all parts plus the flat pack) cost £423.00. All the parts except for the cabinets go for £373.00 while a pair of fully constructed and veneered cabinets plus all the parts costs £535.00. Wilmslow also sell rolls of iron-on

veneer with four finishes: Ash, Oak, Teak and Mahogany. These cost £6.75 a roll and for Kevlar 1, two rolls are required. £15.00 for postage and packaging needs to be added to each order as well.

Both Terry and Sean at Wilmslow are happy to answer fax and telephone queries and they can receive e-mail.

Thank you Wilmslow for 12 hours of enjoyable build time and an overall presentation that gets the thumbs up from me.

## SOUND QUALITY

When the finished Kevlar 1s arrived in our listening room they certainly looked professional, with their driver and binding post tray rebating, along with those eye-catching Kevlar mid/bass cones. They felt the part too, I realised as I hefted the weighty enclosures onto a pair of Atacama SE24 sand filled stands.

A first listen demonstrated the Kevlar 1s' clarity, Chaka Demus and Pliers' vocals coming over with crystal clarity. What also became clear, however, was that with the amount of stuffing supplied as standard in the kits the 'speakers were a bit short on bass. A quick glance down the Wilmslows' ports revealed the fact that there was so much wadding in the cabinets it was actually blocking the ports, stopping them working effectively.

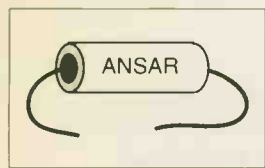
Unscrewing the mid/bass unit on each Kevlar 1, I removed about two-thirds of the fibre wadding that filled the entire enclosure volume. Infinite baffle (sealed box) loudspeakers tend to be stuffed to about half their internal volume for best sound quality although the exact amount varies according to tuning. Ported loudspeakers on the other hand need little wadding, because the air inside must act as a spring. Wadding acts to suppress "springiness", by applying resistive damping.

The Kevlar 1s sounded a lot happier in the bass on their reduced fibre diet, basslines which had previously sounded emasculated now benefiting from a bass that possessed excellent control and transparency. In terms of positioning,

# CRICKLEWOOD ELECTRONICS

ANSAR SUPERSOUND  
Audio Polypropylene 400VDC±5%

The secret's in the metallised film!



Manufactured specifically for high end audio, these polypropylene capacitors offer exceptional value for money as they use a specially imported high purity metallised polypropylene film, ensuring smooth, detailed and transparent sound quality and extremely low distortion, whether they are placed directly in the signal path such as in crossovers or for decoupling etc. Ideal for repairing old, stale and lanky capacitors.

Part No	Value	Price
CW100N	CAP PROPYL 100nF	£1.25
CW150N	CAP PROPYL 150nF	£1.25
CW220N	CAP PROPYL 220nF	£1.25
CW330N	CAP PROPYL 330nF	£1.25
CW470N	CAP PROPYL 470nF	£1.25
CW680N	CAP PROPYL 680nF	£1.25
CW100N	CAP PROPYL 1µF	£1.25
CW150N	CAP PROPYL 1.5µF	£1.50
CW220N	CAP PROPYL 2.2µF	£1.50
CW330N	CAP PROPYL 3.3µF	£1.85
CW470N	CAP PROPYL 4.7µF	£2.00
CW680N	CAP PROPYL 6.8µF	£2.50
CW100N	CAP PROPYL 10µF	£3.50
CW150N	CAP PROPYL 15µF	£4.50
CW220N	CAP PROPYL 22µF	£6.50
CW330N	CAP PROPYL 33µF	£9.95
CW500N	CAP PROPYL 50µF	£20.00

Low value capacitors are extensively used in amps & preamps (especially in tone control, bass & treble etc). By changing to polypropylene you can enjoy an enhanced lighter - brighter sound especially in the treble and mid bass range, and a transparent lower bass improvement. Close tolerance & high stability ensure that both channels can be very closely matched.

Part No	Value	Voltage	Price
CPP47P	CAP PROPYL 47pF	250V	£0.35
CPP100P	CAP PROPYL 100pF	250V	£0.35
CPP150P	CAP PROPYL 150pF	250V	£0.35
CPP220P	CAP PROPYL 220pF	250V	£0.35
CPP330P	CAP PROPYL 330pF	250V	£0.35
CPP470P	CAP PROPYL 470pF	250V	£0.35

## Low Impedance High Temperature (105° C) Radial Electrolytics ± 5%

Superior electrolytics at affordable prices. The low impedance end resistance maximises signal purity, whilst the superior temperature characteristics allow the capacitor to remain very stable under the most varying conditions.

Part No.	Value	Voltage	Price
1H50	LO 2 HI TEMP 1µF	50V	£0.25
2U2H50	LO 2 HI TEMP 2.2µF	50V	£0.25
4U7H63	LO 2 HI TEMP 4.7µF	63V	£0.25
10H63	LO 2 HI TEMP 10µF	63V	£0.25
22H63	LO 2 HI TEMP 22µF	63V	£0.30
47H63	LO 2 HI TEMP 47µF	63V	£0.35
100H63	LO 2 HI TEMP 100µF	63V	£0.50
220H50	LO 2 HI TEMP 220µF	50V	£0.75
470H63	LO 2 HI TEMP 470µF	63V	£1.25
1000H35	LO 2 HI TEMP 1000µF	35V	£1.50
2200H50	LO 2 HI TEMP 2200µF	50V	£2.25
4700H25	LO 2 HI TEMP 4700µF	25V	£2.50

## Elna Solder Lug Reservoir Capacitor 10,000µF 80V

Choosing the right electrolytic for power supply use is very important in keeping down hum whilst allowing maximum current flow for good transient & bass response. Elna capacitors are respected the World over for their exceptional audio attributes.

Part No	µF/Voltage	Price
10000CB0	CAL ELNA1000µF/80V	£11.00

## Monacor Air Cored Inductors.



A range of professional air cored inductors for 8Ω or 4Ω crossovers/filters for use up to 300W 1.7mm enamelled copper wire wound on high quality plastic bobbin.

Part No	Specification	Price
P15	150µH 0.15Ω 8x19mm	£2.00
P22	220µH 0.15Ω 48x19mm	£2.50
P33	330µH 0.20 8x19mm	£3.00
P47	470µH 0.25Ω 50x19mm	£3.50
P68	680µH 0.35Ω 59x19mm	£4.50
P100	1mH 0.40 59x19mm	£5.50
P150	1.5mH 0.50 70x30mm	£6.50
P220	2.2mH 0.60 70x30mm	£8.00
P330	3.3mH 0.75Ω 70x30	£10.00

## Monacor Ferrite Inductors



A range of professional high efficiency ferrite cored inductors with very low ohmic losses for 8Ω or 4Ω crossovers or filters for use up to 400W. 1.4mm enamelled copper wire (1.3mm on F1000) wound on plastic bobbin.

Part No	Specification	Price
F220	2.2mH 0.15Ω 400W 55x31mm	£6.50
F330	3.3mH 0.20 330W 65x39mm	£9.50
F470	4.7mH 0.25Ω 140W 65x30mm	£11.00
F680	6.8mH 0.35Ω 120W 65x39mm	£12.00
F1000	10mH 0.45Ω 100W 65x39mm	£13.50

## Quality Valves Affordable range of High Quality Valves

Part No.	Description	Price
6550C	OUTPUT VALVE	£26.00
616GT	OUTPUT VALVE	£4.50
65N7GT	OUTPUT VALVE	£4.50
6V6GT	OUTPUT VALVE	£3.95
ECC81	TRIODE	£4.50
ECC82	TRIODE	£4.50
ECC83	TRIODE	£4.50
EF86	LOW NOISE PENTODE	£3.50
EL34	OUTPUT VALVE	£8.50
EL84	OUTPUT VALVE	£3.50
G234	RECTIFIER	£6.50
KT88	OUTPUT VALVE	£20.00

Valve Holders - High quality valve bases. Chassis mounting with screw fittings.

Part No.	Description	Price
B9AC	B9A VALVE HOLDER CERAMIC	£1.50
B9AU	B9A VALVE HOLDER CERAMIC + SCREENING CAN	£2.00
CC	SCREENING CAN	£2.25

OCTC	OCTAL VALVE HOLDER CERAMIC	£2.00
OCTF	OCTAL VALVE HOLDER PHENOL	£1.50

## Fully Gold Plated Phono (RCA) Plugs with spring coil cable grip.



Part No.	Description	Price
PFG5A2	PAIR GOLD PLUGS for up to 5mm CABLE	£1.50 pair
PFG8A2	PAIR GOLD PLUGS for up to 8mm CABLE	£1.50 pair

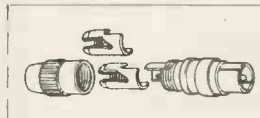
## Very High Quality Phono (RCA) Plugs



Very high quality satin grey metal with heavy gold plated connections. Top collet cable grip & PTFE insulators. Very low noise.

Part No.	Description	Price
PPG6H2	GOLD PTFE PLUGS for up to 6mm CABLE	£3.50 pair
PPG8H2	GOLD PTFE PLUGS for up to 8mm CABLE	£3.50 pair

## Neutrik Pro Audio Super Quality Gold Plated Phono (RCA) Plugs



Impedance of 100Ω each. Includes 2 cable grip parts 3.5-5.5mm & 5.5-7.3mm (all) then suitable.

for a wide range of cables. These connectors make contact with ground first at insertion to eliminate pop.

Part No	Description	Price
PPN2	NEUTRIK PRO AUDIO	£12.00/pair

## Extra High Quality Gold Plated Phono Oxygen Free (RCA) Leads (pairs)

Available in 2 colours & 3 lengths. Highly flexible oxygen free cable with extra moulded-in control / grounding wire.



Part No	Length/Colour	Price
LPP1QG	0.8 Metres/Green	£5.50
LPP1QV	0.8 Metres/Violet	£5.50
LPP2QG	1.5 Metres/Green	£6.50
LPP2QV	1.5 Metres/Violet	£6.50
LPP5QG	5 Metres/Green	£11.00
LPP5QV	5 Metres/Violet	£11.00

## Bas Reflex Tuning Ports



A range of adjustable plastic ports for use in various sizes of loudspeaker cabinets. d= diameter. L=adjustable length (mm).

Part No.	Dimensions	Price
R35	d=35L=110-210	£2.50
R50	d=50L=150-280	£3.00
R70	d=70L=128-245	£3.50
R100	d=110L=160-122	£5.50
R85	d=85 angled 45° for narrow cabinets L=210-310	£6.50

High Quality Components at the right price. Please add £2.00 carriage & VAT to all orders. Credit Card phone orders accepted.

Cricklewood Electronics Ltd, 40 & 42 Cricklewood Broadway, London NW2 3ET. Tel: 0181 452 0161 Fax: 0181 208 1441

## Arcadia Valve Amplifiers

Available Now

### New Line Level Pre-Amplifiers

Two Models Available.

6 line inputs, 10dB of gain, zero feedback finest quality components, musical results

Model 1 £995, Model 2 £1995

Available May '97

### New MM Phono Amplifier

Two Models available.

MM phono input, 40dB of gain, zero feedback finest quality components, musical results

Model 1 £1495, Model 2 £2495

OEM, TRADE AND RETAIL ENQUIRIES WELCOME

Ben-Dor, Cumb Carr Rd, Holcombe, Bury, Lancs BL8 4NN, England

Tel/Fax: +44 (0)1706 823025

EMAIL: SJS@AUDIOPHILE.COM

HTTP://WWW.NETFORWARD.COM/AUDIOPHILE/75JS

SJS Electroacoustics

HAND WOUND INTERSTAGE, OUTPUT AND MAINS TRANSFORMERS FOR VALVE AMPS



## Liberty Audiosuite v.2

PC based DOS and WINDOWS 16 bit audio analysis and measurement system, from the author of IMP and IMP/m

- \*MLS and SINEWAVE stimulus for Driver, Loudspeaker and Circuit testing
- \*REAL TIME ANALYSER and pink noise generator, with THIRD and SIXTH OCTAVE analysis, for IN-ROOM speaker measurements
- \*DISTORTION ANALYSER giving harmonic distortion levels across the audio frequency band
- \*SPECTRUM ANALYSER with white noise generator
- \*AUTOMATIC input level setting for optimum dynamic range
- \*ASCII DATA EXPORT capability to other programs for crossover development and optimisation
- \*No prior knowledge or experience required to use the system with the full range of EASY SCRIPTS provided
- \*Powerful programmable SCRIPT INTERPRETER to tailor the system for use by unskilled operators

plus many other functions, making this the most feature rich system available

Obtain the complete system with Software and manual, Calibrated mic, Preamp, Probes, DSP ISA soundcard, and cables for only **£630.00 incl. VAT**

call or fax for FREE DEMO DISK

Tony Seaford  
MARTON MUSIC  
phone/fax 01282-773198

also demonstrated at:

IPL Acoustics, Westbury, Wilts 01373-823333  
Horsham HI-FI, Horsham, W. Sussex 01403-251587  
other locations—please call me

the 'speakers were now about 1.5ft into the room and toed in so their axes crossed in front of the listening position (which gives the same listening angle as having the 'speakers firing down the room but reduces reflections off the rear wall and thus sharpens imaging).

Hooked up to Roksan's Caspian integrated amplifier the Wilmslows duly put together one of the most accomplished and stirring renditions of Tori Amos' Boys For

heavy loudspeakers or shrill and cold through 'speakers with rising treble and dry bass. The Kevlar 1s struck just the right balance, avoiding emphasis of sibilants and packing a taut, extended bass punch that gave piano weight and definition without slurring its lower registers.

Returning to Chaka Demus and Pliers I discovered Tease Me now had the bass muscle it needs to hit the spot and basslines had the kind of speed and transparency that comes

And while they missed out on the kind of lower octaves reached only by a subwoofer or a floor stander really worth its salt, they had impressive bass depth and control for a 'speaker of this size. The light, stiff Kevlar cones made their presence felt here, with upper organ notes wonderfully crisp and clean. The same weight and speed were evident on Rimsky-Korsakov's Scheherazade, where Samuel Magad's solo violin floated holographically in front of the spread of the



Pele album I've heard in a long time. A DIY 'speaker costing about £400 should be able to compete sonically with a ready built commercial 'speaker at £800-£1000. The Kevlar 1s certainly succeeded here, combining the kind of clarity and imaging precision of a loudspeaker like Harbeth's £1000 HL-K6s with the tonal sweetness that characterises Kevlar and Carbon Fibre cones.

Boys For Pele also showed the overall even-handedness of the Wilmslows. This album tends to sound either fat and bloated through bass

from a very capable mid/bass driver in a good, solid cabinet. From the position of the Caspian's volume control though, it's obvious the Kevlar 1s like to be driven quite hard - the sound stage really opens up when they're being fed a bit of power. I suspect a hefty 50watter is the minimum necessary to get the best out of these 'speakers.

The next spell of mettle-testing took the form of Iain Simcock performing a selection of Bach's organ works on Bach is Back. Here the Kevlar 1s proved they were well able to play at high levels without sounding harsh or compressed.

orchestra and crescendos burst with truly explosive power.

Wilmslow have come up with a good allround loudspeaker in the Kevlar 1 that's sure to win fans. Building it is a pleasure rather than a chore, it can be decorated to match any domestic environment (not something to be sniffed at) and it sounds great to boot.

JM

**Measured Performance**  
see p 103

# HART

## The Home of *Hi-Finesse*. Its not what you do, its HOW you do it that counts!.

Hart Audio Kits and factory assembled units use the unique combination of circuit designs by the renowned John Linsley Hood, the very best audiophile components, and our own engineering expertise, to give you unbeatable performance and unbelievable value for money.

We have always led the field for easy home construction to professional standards, even in the sixties we were using easily assembled printed circuits when Heathkit in America were still using tagboards! Many years of experience and innovation, going back to the early Dinsdale and Bailey classics gives us incomparable design background in the needs of the home constructor. This simply means that building a Hart kit is a real pleasure, resulting in a piece of equipment that not only saves you money but you will be proud to own.

Why not buy the reprints and construction manual for the kit you are interested in to see how easy it is to build your own equipment the HART way. The FULL cost can be credited against your subsequent kit purchase.

### 'AUDIO DESIGN' 80 WATT POWER AMPLIFIER.



This fantastic John Linsley Hood designed amplifier is the flagship of our range, and the ideal powerhouse for your ultimate hi-fi system. This kit is your way to get EK performance at bargain basement prices. Unique design features such as fully FET stabilised power supplies give this amplifier World Class performance with startling clarity and transparency of sound, allied to the famous HART quality components and ease of construction. Standard model comes with a versatile passive front-end giving 3 switched inputs, with ALPS precision "Blue Velvet" low-noise volume and balance controls, no need for an external preamp. Construction is very simple and enjoyable with all the difficult work done for you, even the wiring is pre-terminated, ready for instant use! All versions are available with Standard components or specially selected Super Audiophile components and Gold Plated speaker terminals and all are also available factory assembled.

K1100 Complete STANDARD Stereo Amplifier Kit, ..... £415.21  
 K1100S Complete SLAVE Amplifier Kit, ..... £353.62  
 K1100M Complete MONOBLOC Amplifier Kit, ..... £271.20  
 RLH11 Reprints of latest Amplifier articles ..... £1.80  
 K1100CM Construction Manual with full parts lists ..... £5.50

### ALPS "Blue Velvet" PRECISION AUDIO CONTROLS.



Now you can throw out those noisy ill-matched carbon pots and replace with the famous Hart exclusive ALPS 'Blue Velvet' range components only used selectively in the very top flight of World class amplifiers. The improvement in track accuracy and matching really is incredible giving better tonal balance between channels and rock solid image stability. Motorised versions have 5v DC motor.

### MANUAL POTENTIOMETERS

2-Gang 100K Lin. .... £15.67  
 2-Gang 10K, 50K or 100K Log. .... £16.40  
 2-Gang 10K Special Balance, zero crosstalk and zero centre loss. .... £17.48

### MOTORISED POTENTIOMETERS

2-Gang 20K Log Volume Control ..... £26.20  
 2-Gang 10K RD Special Balance, zero crosstalk and less than 10% loss in centre position ..... £26.98

### TOROIDAL MAINS & OUTPUT TRANSFORMERS for EL34, 32W VALVE AMPLIFIER

Special set of toroidal transformers, 2 output & 1 mains for the "Hot Audio Power" valve amplifier design described in the Oct. 1995 issue of "Wireless World". Total Wt 4.8Kg. Special price for the set. £99, Post £8

RJM1. Photocopies of the Article by Jeff Macaulay, £2

### PRECISION Triple Purpose TEST CASSETTE TC1D.

Are you sure your tape recorder is set up to give its best? Our latest triple purpose test cassette checks the three most important tape parameters without test equipment. Ideal when fitting new heads. A professional quality, digitally mastered test tape at a price anyone can afford. Test Cassette TC1D. Our price only ..... £9.99

### SHUNT FEEDBACK PICKUP PREAMPLIFIER



If you want the very best sound out of vinyl discs then you need our high quality preamplifier with Shunt Feedback equalisation. The K1450 also has an advanced front end, specially optimised for low impedance moving coil cartridges as well as moving magnet types. Selected discrete components are used throughout for ultimate sound quality. The combination of John Linsley Hood design, high quality components and an advanced double sided printed circuit board layout make this a product at the leading edge of technology that you will be proud to own. A recent review in "Gramophone" magazine endorsing this view. Bought in kit form our step by step instructions it is very easy and satisfying to assemble, or you can buy a factory assembled version if you wish.

This magnificent kit, comes complete with all parts ready to assemble inside the fully finished 228 x 134 x 63mm case. Comes with full, easy to follow, instructions as well as the Hart Guide to PCB Construction, we even throw in enough Hart Audiograde Silver Solder to construct your kit!  
 K1450 Complete Kit ..... £116.58  
 K1450SA Audiophile Kit ..... £138.94  
 A1450SA Factory assembled Audiophile unit ..... £188.94

### "CHIARA" HEADPHONE AMPLIFIER.



Highest quality, purpose designed, 'single ended' class 'A' headphone amplifier for 'stand alone' use or to supplement those many power amplifiers that do not have a headphone facility. Easy installation with special signal link-through feature, the unit uses our 'Andante' Ultra High Quality power supply.

Housed in the neat, black finished, Hart minibox it features the wide frequency response, low-distortion and 'musicality' that one associates with designs from the renowned John Linsley Hood. Volume and balance controls are Alps "Blue Velvet" components. Very easy to build, or available factory assembled, the kit has very detailed instructions, and comes with Hart audiograde silver solder. A valuable personal listening option and an attractive and harmonious addition to any hi-fi system.

K2100 Complete Standard Kit ..... £112.50  
 K2100SA 'Series Audiophile' Kit with selected audiophile components ..... £115.46  
 A2100SA 'Series Audiophile', Factory Assembled ..... £115.46  
 CM2100 Construction Manual ..... £2.50

### "Andante" Linear Technology AUDIOFILM POWER SUPPLIES

The HART "Andante" series power supplies are specially designed for exacting audio use requiring absolute minimum noise, low hum field and total freedom from mechanical noise.

Utilising linear technology throughout for smoothness and musicality makes it the perfect partner for the above units, or any equipment requiring fully stabilised  $\pm 15v$  supplies. There are two versions, K3550 has 2  $\pm 15v$  supplies and a single 15v for relays etc. K3565 is identical in appearance and has one  $\pm 15v$ . Both are in cases to match our 'Chiara' Headphone Amplifier and our K1450 'Shunt Feedback' Pickup preamp.

K3550 Full Supply with all outputs ..... £94.75  
 K3565 Power Supply for K1450 or K2100 ..... £84.42  
 A3550 Factory Assembled Full Supply ..... £147.25

### ROARING SUBWOOFER!

Ever heard, or rather felt, a speaker that is still only -3dB down at 15Hz? Normally you would expect to have to move out of the house and live in the speaker, but no, this one is in an enclosure only 380 x 335 x 335mm, that's about 15" x 13" x 13" in old money. Clever electronics and a pair of GF250 Visaton drivers with a 35mm maximum cone displacement combine to really kick some air about and bring some real presence to the hi-fi experience. Send for further details.

### SPEAKER DAMPING MATERIALS

Polyester Wool and Pure Lambs Wool both have optimal damping properties and are pleasant to handle. Standard 125g pack is sufficient for 20 litres enclosure volume.  
 5070 Polyester Wool. 125g ..... £3.20  
 5069 Pure Lambs Wool. 125g ..... £6.73

### SPEAKER DESIGN SOFTWARE.

VISATON "Speaker Pro 6" is a complete speaker design program for use on IBM machines. Covers cabinet and crossover design and contains a full expandable database of drive units. Earning a "most recommendable" accolade it tests this program is ideal for the professional speaker builder or serious audiophile.  
 0303 Speaker Pro 6. 3.5"Disk ..... £45.51  
 0309 Demo Version with Database ..... £9.28

### HART TECHNICAL BOOKSHELF

Try us for:- Bigger Range of Books, Better Prices, NO "28 Day Wait"

"AUDIO ELECTRONICS" John Linsley Hood ..... £18.99\*  
 "THE ART OF LINEAR ELECTRONICS" John Linsley Hood. 1994 ..... £16.95\*  
 "THE ART OF ELECTRONICS" Horowitz & Hill ..... £35.00\*  
 "DIGITAL AUDIO AND COMPACT DISC TECHNOLOGY" 3rd.Edn. 0-240 51397 5 ..... £19.95\*  
 "INTRODUCING DIGITAL AUDIO CD, DAT AND SAMPLING" ISBN 1870775 22 8 ..... £7.95  
 "ACTIVE FILTER COOKBOOK" Don Lancaster ..... £19.95  
 "THE ART OF SOLDERING" 0-85935-324-3. 0 ..... £3.95  
 "TOWERS' INTERNATIONAL TRANSISTOR SELECTOR" 0-572-01062-1 ..... £19.95\*  
 "AUDIO" F.A.Wilson. BP111 ..... £3.95  
 "HOW TO USE OSCILLOSCOPES & OTHER TEST EQUIPMENT" R.A.Penfold. BP267 ..... £3.50  
 "THE HART PRINTED CIRCUIT BOARD CONSTRUCTION GUIDE." ..... £2.50  
 "A SIMPLE CLASS A AMPLIFIER" J.L.Linsley Hood M.I.E.E. 1969. RLH12 ..... £2.75  
 "CLASS-A POWER" Single Ended 15W Amp. J.L.Linsley Hood M.I.E.E. 1996. RLH13 ..... £2.50

### LOUDSPEAKERS; THE WHY AND HOW OF GOOD REPRODUCTION. G.Bnggs. 1949.

..... £8.95  
 "THE LOUDSPEAKER DESIGN COOKBOOK" Vance Dickason. (5th Edn.) ..... £23.95\*  
 ELECTROSTATIC LOUDSPEAKER DESIGN AND CONSTRUCTION Ronald Wagner BKT6 ..... £15.95  
 "THE ELECTROSTATIC LOUDSPEAKER DESIGN COOKBOOK" Roger P.Sanders. 1995 ..... £24.95  
 "BULLOCK ON BOXES" Bullock & White ..... £10.95  
 "AN INTRODUCTION TO LOUDSPEAKERS & ENCLOSURE DESIGN" V. Capel. BP256 ..... £3.95  
 "LOUDSPEAKERS FOR MUSICIANS" BP297 ..... £3.95  
 "THEORY & DESIGN OF LOUDSPEAKER ENCLOSURES" J.E.Benson ..... £21.95  
 "QUICK & EASY TRANSMISSION LINE SPEAKER DESIGN" Larry D.Sharp ..... £8.95  
 "THE COUPLED CAVITY HANDBOOK" David Purton ..... £4.90  
 "VISATON. HOME HI FI CATALOGUE." Full Specifications and Thiele Small Data on all Drive Units ..... £4.50  
 "VISATON. CAR HI FI CATALOGUE." In car guide ..... £3.50  
 "VISATON. CABINET PROPOSALS." Book 1. In GERMAN £6.50  
 "VISATON. CABINET PROPOSALS." Book 2. In GERMAN ..... £15.50  
 "SPEAKER PRO 6." VISATON Cabinet Design Software. £45.51  
 "SPEAKER PRO 6." Demo Version with drive unit database £9.28

"VALVE AMPLIFIERS" Morgan Jones. 1995/6 ..... £24.50  
 THE VTL BOOK David Manley 1994. BKVT1 ..... £17.95  
 MULLARD TUBE CIRCUITS FOR AUDIO AMPLIFIERS BKAA27 ..... £11.95  
 "THE WILLIAMSON AMPLIFIER." 0-9624-1918-4 ..... £6.95  
 AN APPROACH TO AUDIO FREQUENCY AMPLIFIER DESIGN. GEC 1957 ..... £17.95  
 AUDIO ANTHOLOGIES, articles from Audio Engineering. Six volumes covering the days when audio was young and valves were king! BKAA3/1 to 6. All £12.95 each  
 "THE RADIOTRON DESIGNERS HANDBOOK" (CD) ..... £49.00  
 "PRINCIPLES OF ELECTRON TUBES" H.D.Reich PH.D. £25.95  
 "POWER AMP PROJECTS" Anthology. 1970-1989. £15.50  
 "WORLD TUBE DIRECTORY" 1996-7 Sourcebook of valve related products ..... £5.95  
 Fuller descriptions of the contents of all our books is given in our full catalogue, price ..... £4.50

Postage on all books, unless starred, is only £2 per book, maximum £4.50 for any number, any size! Starred items are heavy books costing £3.50 to send.

Don't forget No waiting at HART! All listed books are normally in stock! Just ring with your Credit Card Number for instant despatch!

POSTAGE on UK Orders up to £20 is £2. Over £20 is £4.50.

OVERSEAS Please Enquire.

Fuller Details of ALL kits are given in our List, FREE on request.

Send for Your FREE copy of our LISTS

24 Hr. ORDERLINE 01691 652894 Fax. 01691 662864

All Prices include UK/EC VAT.

**HART**  
 HART ELECTRONIC KITS LTD.  
 2 Penylan Mill, OSWESTRY,  
 Shropes. SY10 9AF,  
 UK

# CABLE QUEST

**This month finds Ketan Bharadia soldering up three more bargain DIY interconnects from Maplins.**



## **High Grade Audio Pair (order code: EL 12), £3.49/m.**

Seeing as it's the most expensive in the group, I was expecting this cable to turn in a good performance. I'm pleased to say it obliged.

Choral music enjoyed a sound stage that was both wide and deep, with choristers' voices well focused within this framework. Tonally it was slightly bright overall but not enough to cause any problems in a well balanced system. Detailing, tonal colour and texture also impressed and, even when the musical going got tough, the Audio Pair didn't get confused.

Switching to Rock showed dynamics were sprightly and bass had plenty of weight and power. Still, for all their substance, the lower frequencies sounded faintly blurred and loose. This didn't impair the rhythmic flow that helped make this cable enjoyable to listen to.

The Audio Pair is the best all rounder of the group and fully justifies its cost. Used as a 1m interconnect, its performance is comparable to ready-made cables costing £20-£30.



## **Van Damme Star Quad Professional Microphone Cable (order code: VU 31), £1.49/m.**

The "Quad" in this blue cable's name refers to the fact that it has two pairs of multi-strand conductors making up its innards, which results in a dramatically different presentation to the cable above. The Star Quad's overall tonal balance was far closer to neutral, deviating only in the higher frequencies, which were just a touch more prominent than they should have been. Dynamics were very good, as was bass weight and power.

Where this cable started revealing its weaknesses was in a lack of fine detail when compared to the other two cables on test. And whilst tonal balance was good, tonal colour itself was 'bleached', vocal and instrumental textures losing out here. In addition to this there was a lack of projection to the music which prevented it breaking free of the 'speaker cabinets'. In terms of value, the Quad Star is on a par with the Professional Microphone below - which one you use is down to system matching.



## **Van Damme Professional Microphone Cable (order code: VU 17), £1.29/m.**

The first piece of music this cable faced was Daboa's From The Gekko, which is highly rhythmic World music. The van Damme made a good first impression, its presentation full of tonal colour and expression. Instrument and vocal textures were very well portrayed and had a pleasant richness. This was, in part, due to the fact that the treble was rolled off fairly steeply, though this effect wasn't severe enough to make the cable sound dull or bass heavy.

Unfortunately, there was also a down side to this cable's sound. Dynamics were noticeably restrained, so music tended to sound rather flat and undemanding. And when orchestral works were in full flow, things could become muddled. In spite of this, stereo information was capably presented and sharply focused in both depth and width planes.

This cable has a smooth, relaxed sound which is well detailed but don't expect any dynamic fireworks.

# AUDIO LINKS

1997

## SPECIALIST COMPONENTS CATALOGUE

OUT NOW - £2.00

7 Fairmont Crescent, Scunthorpe  
North Lincolnshire DN16 1EL  
TEL/FAX (+44) 01724 - 870432

# FINAL HIGH END SALE!

We clear the remaining stock  
Another 15 - 25% off!



### WELL TEMPERED

Record Player (new)..... £ 459\*  
Classic (new)..... £ 789\*  
Classic (first version, demo)..... £ 849\*

### AUDIO RESEARCH

DAC1 D/A conv. (new)..... £ 1 200\*  
LS1 line pre-amp (new)..... £ 780\*  
SP9 pre-amp (demo)..... £ 940\*  
SP15 pre-amp (new)..... £ 2 680\*  
D250 MkII S power amp (new)..... £ 3 090\*  
M300 MkII S power amp (new)..... £ 4 890\*  
Classic150 power amp (new)..... £ 4 490\*

### MARK LEVINSON

HQD-system. The systems consists of: 2xML6A pre-amp, 2xLNC2 crossover, 6xML2 power-amp, 2xHarley 24" subwoofers in 12Cx180x75cm oak boxes, 2xQuad ESL mid-range in oak cabinets, 2xDecca Ribbon Tweeter in oak cabinets. The system is run for 100 hours only, absolute mint condition..... £ 15 900\* (or best offer)

Also: Berning, Cotter, Eureka, Moersch, Win and more...

Call for the complete list!

\* Freight costs and VAT not included.

Glotta AB - Phone: (int.) +46 8 345251, Fax: (int.) +46 8 346533,  
E-mail: alexander.sovre@mailbox.swipnet.se



### GOLDMUND

Studetto+T5, table+arm (new)..... £ 1 880\*  
Studio+T3F, table+arm (demo)..... £ 4 990\*  
ST4, table+arm (new)..... £ 2 439\*  
Mimesis 2PH pre-amp (new)..... £ 3 359\*  
Mimesis 3 power amp (new)..... £ 2 799\*  
Super-Dialogue, speakers (new)..... £ 4 990\*  
Apologue, speaker system, 185x84  
x115cm (new)..... £ 29 900\* (or best offer)

## Riverside Audio

18, Riverside, Cambridge CB5 8HL. Telephone/FAX: (01223) 51225399

Our aim at Riverside Audio is to enable the home constructor to build valve amplifiers which combine superb sound quality with the professional finish of the best high-end products - at a low price. Our rigorous and conservative designs ensure that you get long and trouble free service from your amplifier. We offer our amplifiers in various forms, from circuit designs, through printed circuit boards, to full kits and even fully assembled amplifiers for those who cannot wait to listen to them.

The Riverside 4040 is our integrated amplifier. It features dual mono construction and has five line level inputs and both 4Ω and 8Ω outputs. The output stage is configured in the classic McIntosh connection, which gives stable, wide-band operation even with difficult and transformer cover are hand polished to a mirror finish, and come with a semi-matt black valve cover, 4xECL34, 4xECC83, 2xECC82. A full description, including circuit diagram, is given in the 4040 reference manual, £6.50. Kit £780, fully assembled £995.

Technical specification: dual mono construction, 40W/channel, 12Hz to 25kHz power bandwidth, distortion <0.1%, five line level inputs, tape output, 230/240V mains input.

Stereo amplifier circuit board: board only £49.50; component pack (including valve bases), add £63; populated board £125; full valve set, add £45. Power supply board: board only £20.50; component pack, add £44; populated board £66. Input board: board only £15.50; component pack, add £16; populated board £33.

The output transformers are configured for the McIntosh connection and have excellent low frequency response and a primary reflected impedance of 3800Ω. Full connection instructions provided. Price £70. The mains transformer is wound for dual mono construction, as this gives superior isolation between channels which sharpens imaging and eliminates inter-channel ground loops in the amplifier. Primary 0-230-240V. Secondaries 2x295V @ 0.25A (0.4A int.), 2x70V @ 30mA, 2x6.3V @ 5A. Price £60. Other primary voltages can be supplied to special order. Data sheets giving connection diagrams, specifications, as well as circuits for using each transformer, £2.50 each.

The chassis, comprising main chassis and transformer cover, is hand polished, welded 1/16" stainless steel - NC machine tooling for a perfect fit and clean finish. Each kit also includes a mesh valve cover and baseplate,

finished in semi matt black. Price £310. Also available in mild steel finished in black, £195. For those who wish to use one of these high quality chassis for their own projects, details of the chassis are given in the 4040 reference manual, £6.50.

Connector kit: twelve gold plated phono connectors, two sets of loudspeaker terminals, an IEC mains socket with integral fuse and switch, and an IEC mains lead with fitted 13A plug, £51.50. Cable kit: all cables required for the 4040, £6.

The Riverside P2 phono preamplifier is designed to partner the Riverside 4040 for those who enjoy the vinyl sound. Equalization is provided for mono magnet output to line level. The P2 features a high accuracy feedback RIAA equalization circuit, ensuring a natural tonality, a regulated high voltage supply per channel and cathode follower outputs, 3xECC83, 1xECC81, 2xECC82. Full details and circuit diagram in the P2 reference manual, £6.50. Kit £225, fully assembled £275.

Technical specification: 47kΩ input impedance, 1kΩ impedance output for driving long interconnects.

Stereo circuit board: board only £25; component pack, add £37.50; populated board £70; full valve set £20.

The mains transformer is wound for dual mono construction and is toroidal for low leakage flux. Primary 0-230-240V. Secondaries 2x295V @ 20mA, 2x6.3V @ 0.45A, 16V @ 1A. Price £30. Other primary voltages can be supplied to special order. These transformers are also suitable for power supplies in preamplifiers and other line level valve circuits - see data sheet for details, £ 2.50.

The chassis (main chassis and transformer cover) is made from mild steel. Each kit comes complete with a mesh valve cover and baseplate, finished in black. Price £110. For those who wish to use a high quality chassis for their own projects, details of the chassis are given in the P2 manual, £6.50.

Connector kit: four gold plated phono connectors, IEC mains socket with integral fuse and switch, and IEC mains lead with fitted 13 A plug, £15.

We normally ship within three working days. If we do not have the item in stock we will advise you of expected delivery and confirm before despatch. P&P (in UK): £2 for each part of £40, maximum of £10; manuals free of charge. Assembled units despatched by courier free; courier service on other items £10.

Write, phone or FAX for a catalogue sheet of the full range of Riverside products.

## TECHNICAL & GENERAL

SOME NECESSITIES - FROM THE ORIGINAL CLASSIC TURNTABLE SPECIALISTS

CONNOISSEUR		P&P
BD1/2 Drive Belt	£10.55	£1.85
BD1/2 Motor Suspension kit	£13.95	£2.45
SAU.2 Headshell	£16.75	£2.55
SAU.2 Connecting Lead	£15.95	£3.55
GARRARD Standard Models		
Wired arm tubes	from	£12.75 £2.5
Cartridge carriers (sliders)	£10.55	£1.85
Idler wheels	£9.85	£2.25
301/401 Transcription models		
Original Thrust pad assembly	£10.85	£2.25
Original Idler tension spring	£2.95	£1.85
Original Brake pad	£2.20	£1.85
Xeroxcopy Owners Manual 301 incl. full size mounting template	£8.85	£1.85
" " " " " " " " " "	£6.70	£1.85
Replacement Intermediate drive wheel	£11.95	£2.85
Replacement 301 control knobs On-Off/Speed select pair	£20.25	£2.55
Replacement 301 suppressor unit	£5.65	£2.25
Replacement 301 motor pulley (-2%), (-1%), (Std.), (+1%) each	£15.65	£2.25
Replacement 301 Chrome plated mounting bolts	£5.70	£2.25
Recommended Lubrication set - early 301 or 301/401 (specify)	£5.60	£1.85
GOLDRING/LENCO		
Idler wheel (lock-nut or clip fixing)	£19.95	£2.85
Arm pivot bearings with instructions	£8.55	£1.85
Spindle/Main bearing assembly complete	£24.85	£3.85
Headshells	from	£21.95 £2.55
Instruction books	from	£4.20 £1.85
THORENS		
TD.124 series		
Idler wheel original	£27.50	£2.85
Idler wheel our redesigned replacement	£15.35	£2.55
Drive belt	£15.25	£1.85
Chassis spring suspension (replaces 'mushrooms')	£15.85	£2.55
TD.150/160		
Drive Belt	£10.55	£1.85
Suspension springs (-1%), (Std.), (+1%) set	£12.85	£2.55
Suspension bushes (set of 3)	£12.50	£2.55
Armboards for most models	from	£16.90 £2.55
CECIL WATTS		
Dustbugs/Parastats/Spares - incl. Preener wicks		

### THORENS

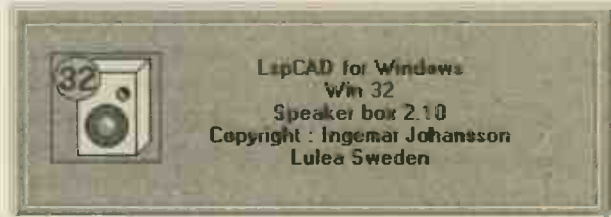
TD.124 series		
Idler wheel original	£27.50	£2.85
Idler wheel our redesigned replacement	£15.35	£2.55
Drive belt	£15.25	£1.85
Chassis spring suspension (replaces 'mushrooms')	£15.85	£2.55
TD.150/160		
Drive Belt	£10.55	£1.85
Suspension springs (-1%), (Std.), (+1%) set	£12.85	£2.55
Suspension bushes (set of 3)	£12.50	£2.55
Armboards for most models	from	£16.90 £2.55
CECIL WATTS		
Dustbugs/Parastats/Spares - incl. Preener wicks		

Cartridges and styli for 78s and Mono LPs in addition to current Stereo LPs

### TECHNICAL & GENERAL

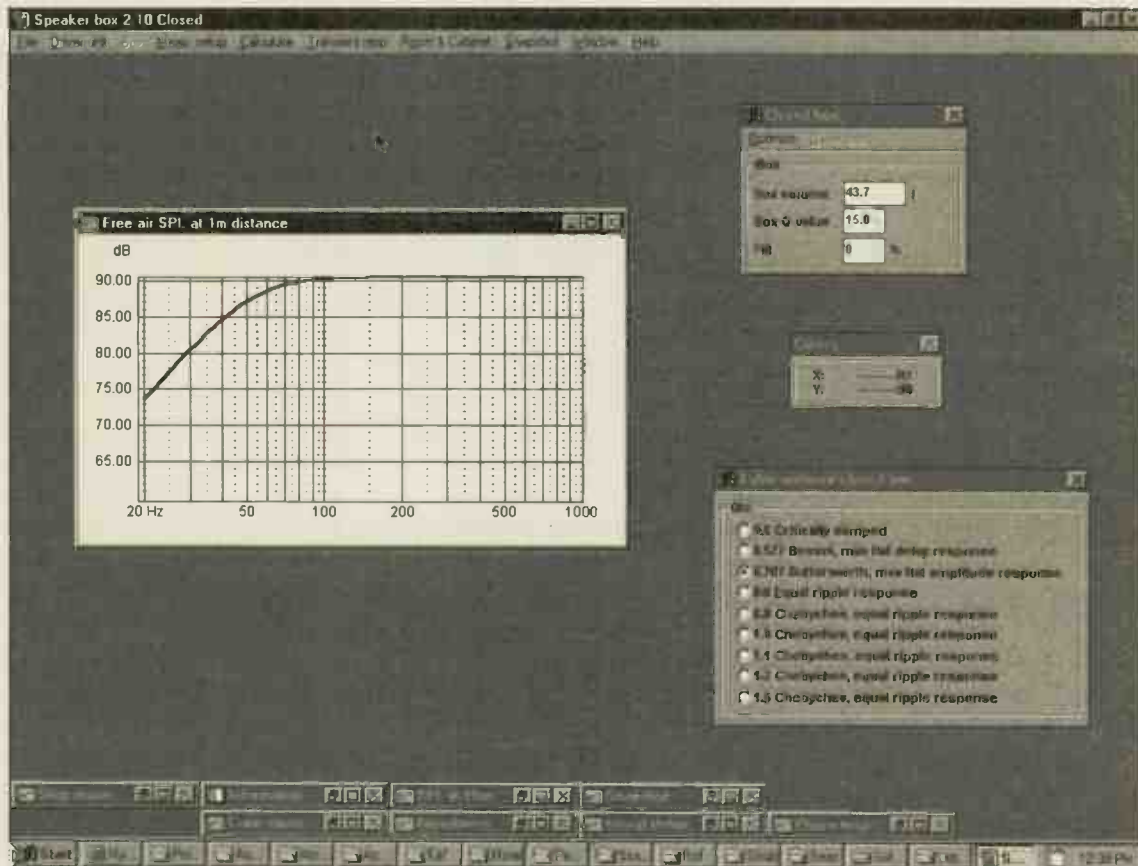
PO BOX 53. CROWBOROUGH, EAST SUSSEX. TN6 2BY  
Telephone: (01892) 654 534

# LspCAD



# LOUDSPEAKER DESIGN SOFTWARE

*Reviewed by Noel Keywood.*



## Introduction

Getting a computer to design things for you is a nice idea. With loudspeakers it is

best if you have a good idea just what the design process is all about and what it is you are trying to achieve before you start out with a computer design package

like LspCAD (Loudspeaker Computer Aided Design). You also need to be able to spot a flying pig when you see it, for LspCAD throws out some peculiar



Closed Box



Bass Reflex



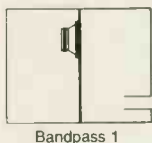
Double Tuned  
Bass Reflex 1



Double Tuned  
Bass Reflex 2



Passive Radiator



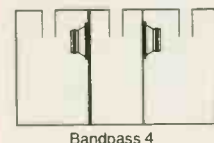
Bandpass 1



Bandpass 2



Bandpass 3



Bandpass 4



Isobaric

results at times. All of which is to say that LspCAD is not really for rank beginners looking for an easy way to design a loudspeaker. But it does offer a lot of analysis at a low price of £60 including VAT and postage. It would suit anyone with a computer and some technical knowledge.

The absence of a crossover network designer (most are rudimentary, but they do get you going) means this package does not offer a total system design solution. But it does have a room effects analyser, which is why I asked to review it.

This is a rare adjunct and potentially a very valuable one because room effects are both complex and disturbing - in every sense of the word. They are disturbingly complex to 'speaker designers, they disturb frequency response severely and they disturb end users who are sonically assailed by their effects, such as 'room boom'. I wondered just how effectively LspCAD could handle this difficult problem, bearing in mind how much this concerns Hi-Fi World readers trying to get the best from their loudspeakers at home.

First thing to consider is what value for money LspCAD offers. The professional packages like LEAP cost considerably more, but there is a slew of inexpensive loudspeaker design programmes, available mainly from the USA for around \$60-\$100. Most have crossover analysers (for what they are worth), so for the average home constructor they are perhaps more attractive. LspCAD offers a different balance of abilities for a price similar to less expensive packages.

The next consideration is ease of use. The documentation was minimal and largely of the genre "To switch on, press the ON button". In particular I was perplexed by the almost complete absence of instruction on how to use the programme itself. And LspCAD was good at coming up with a blank screen or a Calculate button greyed out. It did not take me long to figure out which

At left, the many cabinet types LspCAD can analyse. Only transmission lines and horns are omitted.

menu had to be addressed to move the programme on, but newcomers may end up very frustrated. Such idiosyncrasies do tend to become familiar and acceptable with usage though. I'll explain what I encountered in this respect shortly.

LspCAD takes up 2.5Mb of disc space, so it is relatively modest in its requirements. It is available for Windows 3.11 or higher, Windows '95 or NT. A 286 CPU (minimum) is recommended, plus 3Mb of disc space and 4Mb of RAM. Display resolution is 640x480 minimum, but 800x600 or more is recommended, as is a maths co-processor.

I ran the programme on SoftWindows '95 for a 180MHz PowerMac and experienced no speed or display problems, except that graph axes were slow to redraw, especially on a full 21in screen.

You get not just a 'speaker box size/frequency response calculator programme with LspCAD but also a library of drive units and their parameters. This was comprehensive, with 21 makes covering around 200 drivers.

As a test of the programme I created a file for the Audax HM210ZO HDA drive unit, which meant selecting the type of enclosure to be used: sealed, ported, etc. Calling up this file resulted in a blank desktop. To check that the relevant info had loaded I had to access the Driver menu. Going straight to Free Air SPL threw up a frequency response based on a default value in the box menu of 10litres, again hidden from view. A message should have asked me to enter either a box volume or a set of response limits. LspCAD's user interface is unhelpful, although once learnt this ceases to be a problem.

Most of the drive unit parameters were conventional except for the elusive Cas, mentioned but not defined in the user manual, nor the Loudspeaker Design Cookbook I found. This is the acoustic suspension compliance, from which the equivalent volume of air having such a compliance, Vas, can be calculated ( $Cas = Vas / Po.C^2$ ). Again, the user manual could usefully be improved to eliminate this sort of omission.



## Designing a Loudspeaker

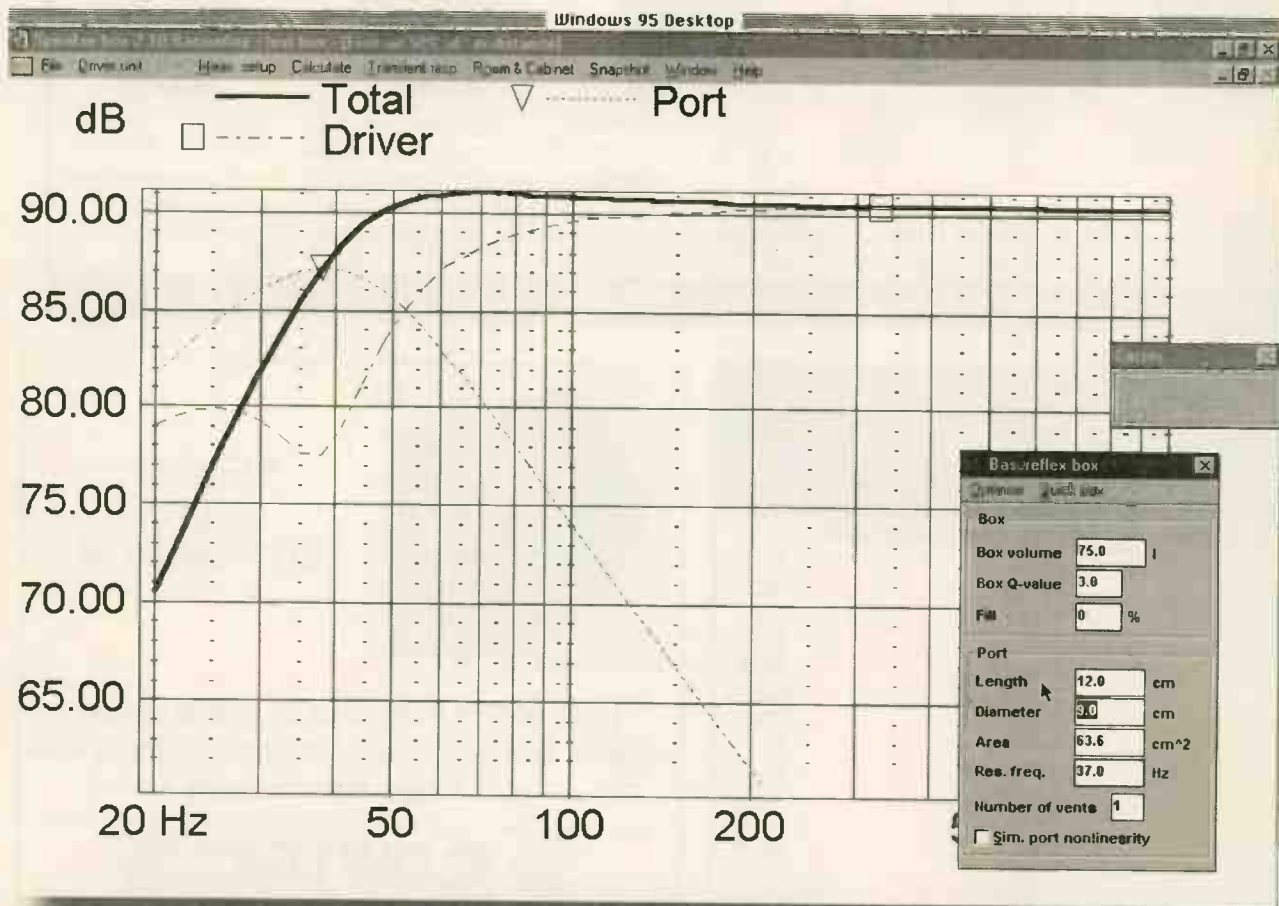
This is a comprehensive programme, that's for sure. It simulates the box configurations shown in the diagrams, which cover most common types except transmission lines and horns. The bandpass types have a high frequency

Electrical Impedance, Port Air Speed, SPL at 1m (anechoic and in-room) and Non-Linearity at high power levels due to voice coil heating and port compression.

Frequency response can be found by typing in response limits and asking the programme to sort out how to achieve it by iterative curve fitting. Sounds good, but I found you get impractical results. Quickbox - a fast calculator - also gave a result that was impractical in my view,

system 'alignments'. These take certain standard forms, in this programme: SBB4/BB4, QB3/SQB3, SC4/C4, with Q values of 3 or 15, which give a sensible set of properties. I wasn't surprised to find they came up with the volume I expected for the HM210ZO - around 75litres. Closed box gave nine response options, from Qtc of 0.5 (critically damped) up to Qtc of 1.5, a peaky Chebychev response.

The port seemed to have an



acoustic roll-off (i.e. low-pass) as well as a low frequency limit (high-pass) and are used mainly as bass cabs. for larger 'speakers, as well as subwoofers.

LspCAD will simulate a wide range of measurements too, giving Transient Response, Frequency Response ('Free Air SPL' in loudspeaker parlance), Group Delay characteristics, Acoustic Phase,

suggesting, for example, the HM210ZO needed a vast 150litre ported enclosure. This monster cabinet certainly gave the lowest bass extension, but with an enormous +3dB peak. Few designers would choose this result, because of size and poor damping.

A sensible result was turned up by selecting one from a variety of ported

unusually large effect upon reflex enclosure response. This struck me as a bit unrealistic; in practice, port size has less effect than the programme suggests. But then I did get the impression that this programme had been compiled from all the maths available for loudspeakers, irrespective of its efficacy. I only use these loudspeaker programmes to

# SPEAKER KITS FROM IPL ACOUSTICS

Over a 9 year period I.P.L. ACOUSTICS have developed a range of high quality speaker kits, using the best units from SEAS, MOREL, AUDAX, and I.P.L. and have produced a comprehensive range of speakers which will compete with the most expensive of commercial designs.

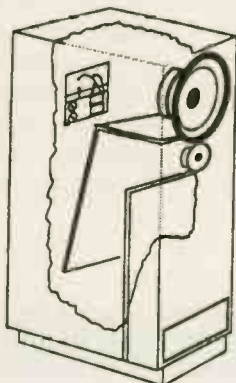
All speakers have biwired crossover kits containing high quality components and terminals.

**S5TL  
TRANSMISSION LINE**



PLUS KIT .....£383.00  
TOTAL KIT .....£506.00

**FIVE  
TRANSMISSION  
LINE KITS**



TRANSMISSION LINE  
PLUS KITS .....£172.00 -  
.....£383.00

**M3TL  
TRANSMISSION LINE**



PLUS KITS .....£172.00  
TOTAL KIT .....£236.00

**A2 H.D.A.  
AEROGEL KIT**



PLUS KIT .....£187.50  
TOTAL KIT .....£259.00

**S3TLM METAL  
TRANSMISSION LINE**



PLUS KIT .....£224.00  
TOTAL KIT .....£302.50

PRE-VENEERED CABINET KITS NOW AVAILABLE. Carriage charge extra on all kits.

If you would like further details please send large SAE with 36p stamp for PAGE SPEAKER BUILDING CATALOGUE, comprising VALUABLE ADVICE on DESIGNING, BUILDING, and TESTING speakers and full technical specifications including response curves of eight kits, drive units, and details of SPECIALIST CABLES and ACCESSORIES. KITS FOR A.V. USE NOW AVAILABLE.

**I.P.L. Acoustics, 2 Laverton Road, Westbury, Wiltshire, BA13 3RS. Tel: 01373 823333**

## Watford Valves

3 Ryall Close  
Bricket Wood,  
St Albans  
Herts AL2 3TS  
Phone: 01923 893270  
Fax: 01923 679207

### Professional advice and low prices

ECC81	Brimar	£4.00
ECC82/6189W	Philips	£4.50
ECC83/12AX7WA	Philips	£5.11
ECC83/5751	G.E.	£7.00
ECC83/CV4004	Mullard	£8.00
E83CC	Siemens	£10.00
ECC88	Brimar	£5.00
ECL86	National	£4.00
EF86	R.F.T.	£6.00
EL34	Sovtek	£4.90
EL34	Svetlana	£8.50
E34L HI SPEC	Tesla	£8.50
EL84/6BQ5	Philips	£12.00
EL84M	Sovtek	£5.00
EL519	E.I.	£12.00
GZ34	Harma	£5.00
KT61	G.E.C.	£22.50
KT66/7581A	Philips	£20.00
KT88	Tesla	£20.00
6CG7	E.I.	£8.00
6L6WGB/5881	Philips	£10.00
6080WC JAN	G.E.	£8.00
6550C	Svetlana	£16.00
6922	Sovtek	£4.00
12AX7WA/WB	Sovtek	£3.25
12AX7 Premium	Sovtek	£4.50
12BH7A	E.I.	£8.00
300B	Sovtek	£65.00

We Offer free matching, full specialist testing  
and no quibble guarantee



Fast & Efficient mail order service. All valves are new, boxed and guaranteed.  
Prices exclude VAT and carriage.



## SERVICE FOR ENTHUSIASTS

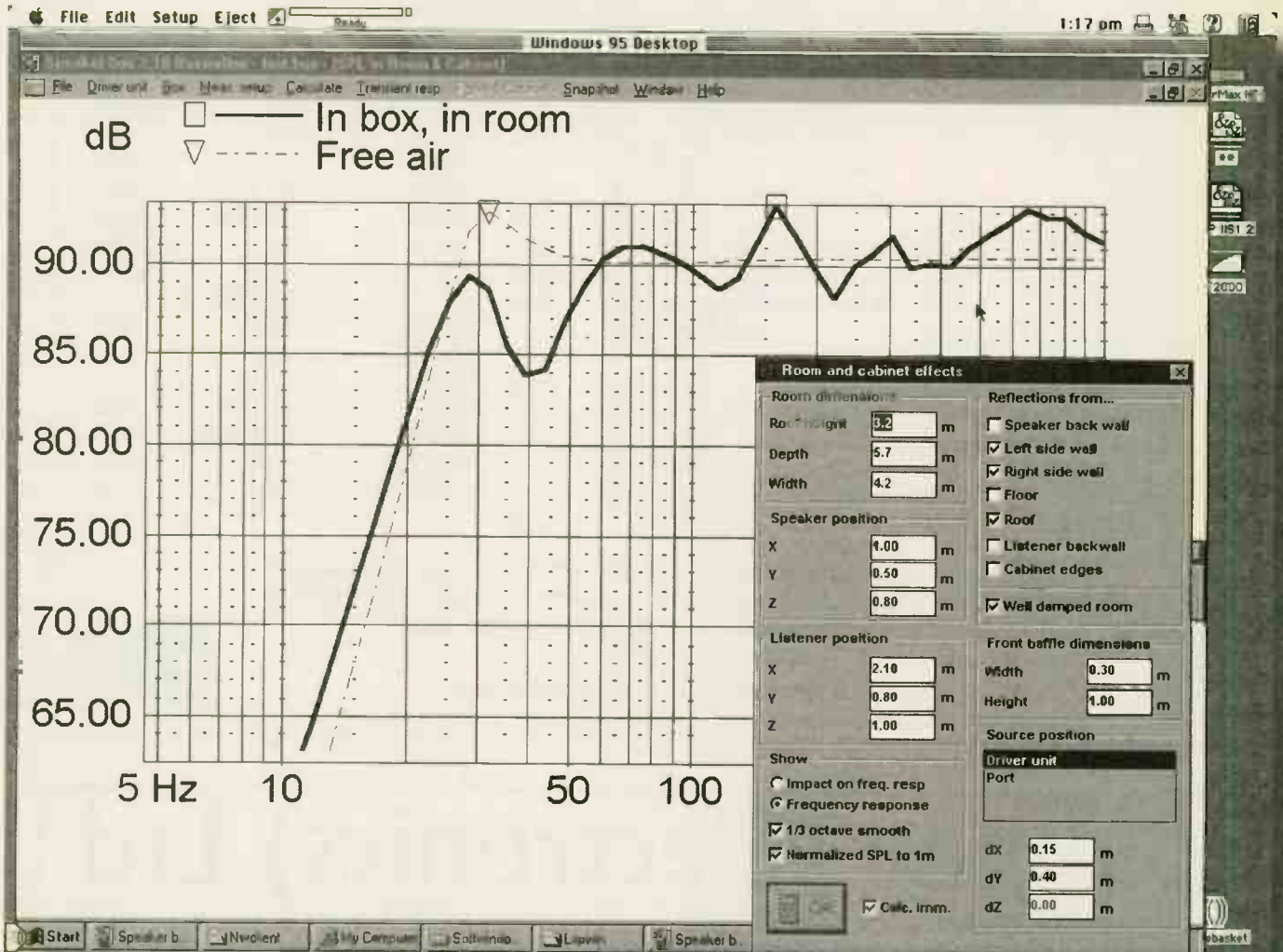
High quality Push-Pull or single ended  
Output, Mains, Chokes, Interstage, Input and  
Cartridge Transformers



Choose from our catalogue or specify a custom design at no extra charge. Range of package options: full or half shrouded or open frame. Encapsulation, as illustrated for our popular size "P+" for output or mains. All transformers built to order by our craftsmen. Usually 6-8 weeks delivery. Free technical support for all our products (Phone, Fax or internet). Free catalogue. Competitive prices.

E A Sowter Ltd  
PO Box 36 IPSWICH  
IP1 2EI England  
Tel: (+44) (0) 1473 252794  
Fax: (+44) (0) 1473 236188

E-Mail: sales@sowter.co.uk  
techsupport@sowter.co.uk  
Catalogue and overseas  
agents on our Website:  
http://www.sowter.co.uk



The room analysis programme can handle reflections from six walls, including the ceiling ('Roof' to the Swedish!). There is an option to increase the damping (rate of loss of energy), plus a third-octave smoothing mode. The programme can only cope with reflections up to 40mS (one cycle at 25Hz), since this is the limit of its time window. Equivalents suffer the same limitation. Listener position is entered into the analysis, as well as speaker position, so the impact of seating position is shown too.

provide target figures after which experimentation starts, so mediocre correlation with practice does not worry me. It is best to bear in mind that these programmes should not be treated as offering absolute truths when it comes to loudspeaker design.

That this is so became more apparent with the room programme, where the theoretical response of a room is compared with a measured response, demonstrating the efficacy of the method and the maths used. I was impressed by this. The result for our own listening room mimicked our measurements.

Even better, LspCAD not only showed loudspeaker in-room response but the impact of the room upon this

response. This type of analysis nicely complements a DIY idea I have had, where a loudspeaker is designed to peak gently just below a room's natural roll-off point so as to extend bass response downward. This means a loudspeaker must be tailored for a specific room (which is how it should be by the way).

Another bonus is that LspCAD shows the effect listener position has too, a vital component in the equation. It can account for six reflective surfaces (i.e. four walls, ceiling and floor) and only fails to comprehensively model absorption and dispersion characteristics. To do this, however, would take Finite Element Analysis, replete with mathematical models of settees - definitely one for the boffins!

## Conclusion

I felt the room programme analysis of LspCAD alone was sufficiently powerful, accurate and informative to justify the programme's price. Since it can be used independently of the speaker design functions, to show room behaviour on its own, this is a great option for fervent DIYers. Irrespective of my gripes about the user interface, flying pigs and skimpy instructions, LspCAD offers a lot of analysis for the price; I was impressed. But it is for the technical of mind and it should be used in conjunction with *The Loudspeaker Design Cookbook* or similar, if misleading results are to be avoided.

# LANGREX SUPPLIES LTD

DISTRIBUTORS OF ELECTRONIC VALVES, TUBES AND SEMI-CONDUCTORS AND I.C.S.

1 MAYO ROAD • CROYDON • SURREY CR0 2QP

24 HOURS EXPRESS MAIL ORDER SERVICE ON STOCK ITEMS

PHONE  
0181 684 1166

FAX  
0181 684 3056

A selection of our stocks of New Original Valves / Tubes.

Many other brands available.

STANDARD TYPES			SPECIAL QUALITY TYPES			12AX7WA	SYLVANIA	8.00
ECC88	MULLARD	6.00	A2900/CV6091	GEC	17.50	12BY7A	GE	7.00
ECH81	MULLARD	3.00	E88CC/CV2492	MULLARD	8.50	6072A	GE	6.00
ECL82	SIEMENS	5.00	E88CC	SIEMENS	7.50	6146B	GE	15.00
ECL86	SIEMENS	5.00	ECC81/CV4024	MULLARD	6.00	6336A	RCA	35.00
EF86	MULLARD	10.00	ECC81/6201	MULLARD	8.50	6550A	JAN GE	25.00
EL36	MULLARD	5.00	ECC82/CV4003	MULLARD	6.00	7027A	GE	25.00
EZ80	MULLARD	3.50	ECC83/CV4004	MULLARD	10.00	7581A	SYL	15.00
GZ33/37	MULLARD	6.00	ECC83/CV4004	BRIMAR	6.50		OTHER TYPES	
GZ34	MULLARD	15.00		AMERICAN TYPES		ECC82	RFT	3.50
5Z4G	BRIMAR	5.00	5R4GY	RCA	7.50	ECC83	RFT	5.00
6V6GT	BRIMAR	4.25	5UBGB	SYLVANIA	10.00	EF86	USSR	5.00
12E1	STC	10.00	5Y3 WGT	SYLVANIA	3.50	EL84	USSR	2.25
13E1	STC	85.00	6B4G	SYLVANIA	22.00	EL34G	SOVTEK	6.00
807	HYTRON	7.50	6FQ7	SYLVANIA	7.50	6SL7GT	USA	5.00
811A	RCA	25.00	6L6GC	GE	15.00	6SN7GT	USA	5.00
6080	MULLARD	10.00	6L6WGB	SYL	10.00			

THESE ARE A SELECTION FROM OUR STOCK OF OVER 6000 TYPES. PLEASE CALL OR FAX FOR AN IMMEDIATE QUOTATION ON ANY TYPES NOT LISTED. WE ARE ONE OF THE LARGEST DISTRIBUTORS OF VALVES IN THE UK.

SAME DAY DESPATCH VISA/ACCESS ACCEPTABLE. OBSOLETE TYPES A SPECIALITY.

CREDIT CARD MIN ORDER £10.00.

OPEN TO CALLERS MON.-FRI. 9AM - 4PM. CLOSED SATURDAY

U.K. P&P 1-3 VALVES £2.00, 4-6 VALVES £3.00 ADD 17.5% VAT TO TOTAL INC P+P. O'SEAS P & P PLEASE ENQUIRE



# Colomor (Electronics) Ltd

170 Goldhawk Road, London W12 8HJ Tel: 0181 743 0899 Fax: 0181 749 3934

Celebrating 30 Years 1967 - 1997 Over 6000 Types of Valves In Stock, Please Ask For Quote

£ p	£ p	£ p
ECC81 2.50	EL84 Sovtek 2.50	6L6GC Sylvania 17.50
ECC81(CV455) 5.85	EL84 Mazda 6.00	6L6GT/C 2.95
ECC81(CV4024) 8.85	EZ80 2.20	6L6WGA Sylvania 14.10
ECC82 2.90	EZ80 Mullard 7.05	6L6WGB 14.10
ECC82 Brimar 8.50	EZ81 2.85	6SL7GT 2.75
ECC82 Mullard 9.41	EZ81 Mullard 7.05	6SL7GT Brimar 9.40
ECC82 (CV4003) Brimar 11.75	GZ33 Mullard 15.30	6SL7GT USA 5.30
ECC82 (CV4003) Mullard 14.70	GZ34 4.05	6SN7GT 4.20
ECC83 Sovtek 3.90	GZ34 Mullard 17.65	6SN7GT Brimar 9.40
ECC83 Mullard 11.15	GZ37 Mullard 8.25	6V6 9.45
ECC85 2.70	KT66 Matched Pair 61.00	6V6GT 6.00
ECC85 Mullard 4.70	KT88 20.95	6V6G 7.65
ECC88 Testa 2.30	VT4C-GE 141.00	6X4 2.35
ECC88 Siemens 5.80	5R4GA 7.20	6X4WA 3.85
ECC88 Mullard 11.75	5R4GY 6.80	12BY7 RCA 9.95
E88CC Telefunken 11.75	5R4GYB 7.65	12BY7A GE 9.95
E88CC Mullard 11.75	5R4WGA 7.65	12E1 STC 9.00
E88CC/01 11.75	5R4WGB 8.40	12E1 Black Anode 15.00
E88CC/01 Mullard 19.90	5R4WGY 8.40	12E1 Old Shape 14.00
ECH81 1.90	5U4G 5.80	13E1 STC. UK 90.00
ECH81 Philips 4.10	5U4G Brimar 7.05	85A2 2.60
ECL82 1.80	5U4GB 8.80	85A2 Mullard 5.80
ECL82 German 5.30	5Z3GT 4.20	807 4.80
EF86 5.10	5Z4GT 2.25	807 USA 8.80
EF86 Mullard 12.95	5Z4G 7.05	6072A 8.75
EL33/CV1438 Mull 15.00	6B4G Sylvania 34.00	6146 16.25
EL34 Sovtek 7.10	6B4G Shouldered 41.15	6336A USA 57.55
EL34B 7.20	6BH6 3.05	6550A 11.20
EL34 GE USA 41.15	6FQ7 11.10	6550-B2 Svetlana 15.00
EL37 Mullard 35.25	6L6G (CV1947) 35.25	6550A GE 28.35
	6L6 Metal 11.50	6550A Svetlana matched pairs 37.60
	6L6G Colomor 7.50	

## Also available

Oil filled transformers, chokes, block filled capacitors, diodes, ICs, transistors, etc.

Electronic Universal Vade-Mecum Books (Audio Valve Data Book) Buy 2, get 1 free £50.00 ea.

Oil Filled Transformer Gardeners Primary 110-240V, Secondary 250-0-250 180mA 6.3V, 7A, 5V, 3A £58.75

New Mains Isolation Transformers 250V, 50Hz, 1 to 13kVA, 13A fused class F, 13A Skt & Plug £112.00 ea

240V Transformer, output 0 18.5V, 26V, 29V 35A and 26V, 5A £32.25 ea

Filled / Chokes by Parmeko / Gardeners

2.5H, 220mA £35.25 ea  
2.5H, 350mA £35.25 ea  
4.5H, 150mA £35.25 ea  
4.5H, 220mA £35.25 ea  
4.5H, 280mA £35.25 ea  
5H, 110mA £35.25 ea

5H, 200mA £35.25 ea  
5H, 250mA £35.25 ea  
5H, 400mA £38.78 ea  
7.5H, 250mA £35.25 ea  
10H, 75mA £23.50 ea  
10H, 170mA £38.78 ea  
20H, 50mA £35.25 ea

Resin Filled:  
10H, 70mA £23.50 ea  
12H, 60mA £23.50 ea  
10H, 75mA, Varnished £11.75 ea

Block Capacitors by TCC

Dublier  
.5µF, 600V £7.05 ea  
1µF, 600V £7.05 ea  
2µF, 600V £7.05 ea  
4µF, 600V £7.05 ea  
8µF, 600V £9.40 ea  
.5µF, 1KV £9.40 ea  
1µF, 1KV £9.40 ea  
2µF, 800V £9.40 ea  
4µF, 1KV £9.40 ea  
8µF, 800V £11.75 ea

1µF, 1KV Axial TCC super metal pack, ceramic end plates, oil Visconol £4.00 ea

Valve Holders  
B7G - unskirted £0.31 ea  
B7G - skirted £0.65 ea  
B9A - unskirted £0.75 ea  
B9A - skirted £1.05 ea  
B4 - Paxolin £0.60 ea  
B5 - Paxolin £0.60 ea  
Octals - ceramic, E F Johnson £4.00 ea

Other types also in Stock

## Valves Wanted - New & Boxed

KT66 - GEC	£40.00 each	4212E - STC, UK	£ 50.00 each
KT88 - GEC	£60.00 each	PX25 -	
EL34 - Mullard	£15.00 each	Globe shaped	£100.00 each
EL37 - Mullard	£12.00 each	PX4 -	
DA30 - GEC	£80.00 each	Globe shaped	£60.00 each
PT15	£10.00 each	ECC83/EF86	£3.50 each
DA100 - GEC	£100.00 each	V503	£100.00 each

Telephone or Fax list for offers. Please quote ref HF

P&P - Orders up to £3.00 @ £1.95, £3.00 - £5.00 @ £2.25, £5.00 - £15.00 @ £2.50, £15.00 - £20.00 @ £3.35, Over £20.00 @ £4.55. Over 2 Kg. at cost.

VAT included in all prices. Please ring for availability and price.

# ELECTRONIC CIRCUITS STUDENT HANDBOOK

by Michael Tooley

Reviewed by Noel Keywood.

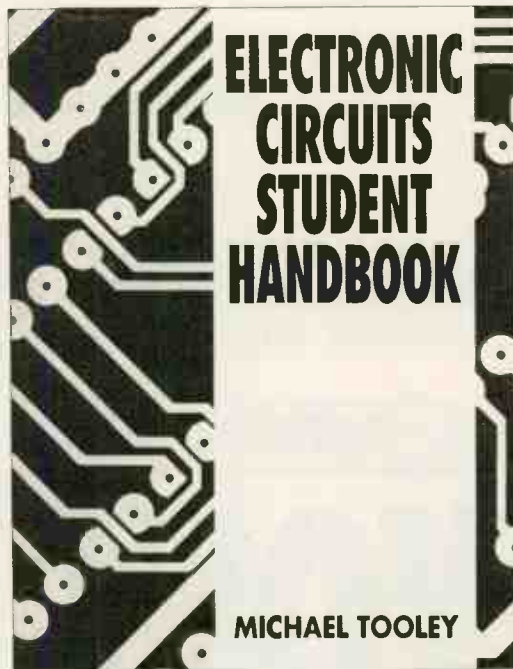
In the preface to this book, author Michael Tooley, Dean of the Faculty of Technology at Brooklands College, states the book assumes, "little previous knowledge" other than an ability to cope with simple maths. He also claims the book is ideal for students following formal courses, such as GCSE, GNVQ, etc, in schools, sixth form colleges and further/higher education colleges. Bearing this in mind I was surprised to be confronted by an example question on the very first page dealing with flux density in  $\text{Wb/m}^2$  at a point when the Weber (Wb) hadn't even been mentioned! And so it went on.

This book has not been structured to lead a reader from first principles succinctly explained into progressively more complex electronics. It puts the cart before the horse by diving into, for example, reluctance and permeability before it has even mentioned Ohm's Law, and lumping magnetic properties into the opening chapter entitled Electrical Fundamentals.

I found all this peculiar. Even the permittivity of free space gets a look in, and where I expected to find the usual explanation necessary to make a link between Joules and the Kilowatt Hours of your electricity bill, there was nothing. I should have known better - it was posed as a question at the end of the chapter, without the benefit of previous explanation.

To be fair, I suppose this book does follow a reductionist academic logic where the properties of the universe first have to be elucidated before any sense can or should be made of their workings. It surely isn't how human beings learn things, though, and seems to me an intimidating way to start a book

aimed at people "with little previous knowledge". As an accompaniment to lectures however, perhaps this book forms a useful background reference and should be seen in such a context. It's thorough enough in cataloguing all the primary relationships in electrostatics, magnetics and electrics, all with clear diagrams, but there is no serious attempt to work explanations through, and few helpful analogies.



The second chapter on passive components looked more friendly, but even this seemed peculiarly positioned in the overall scheme of things, capacitors being explained in some detail before electric current, AC or DC, had been referred to. Nevertheless, all the usual explanations, such as capacitors being charged by a DC potential, were rigorously assembled and well diagrammed.

After dealing with DC then AC

circuits, the book moves on to discrete semiconductors in Chapter Five, with diodes, transistors and FETs. Chapter Six stays resolutely sensible but comprehensive in its explanations of amplifiers, usefully concentrating on determining the DC and AC working conditions for single-transistor circuit stages.

Operational amplifiers come next, then oscillators and finally, but usefully, logic circuits. By moving into logic the book takes a first step into digital from analogue, with truth tables, logic gates and what have you. This is just enough to give a student a good idea of the sort of view one has to take when dealing with digital and how far removed it is from analogue in most senses, even if all digital signals are analogue in the end, as transmission line problems in data busses remind us.

This book is no great read. Nor does it attempt to cover anything other than the usual academic electronic syllabus. It was comprehensive and rigorous within these limits and presumably offers an effective reference source for students. While any student who ends up with a good grasp of all the many equations in the book would be in possession of a lot of useful knowledge, those with a more casual interest might find it perplexing and hard work ●

**Electronic Circuits Student Handbook**  
£14.99

ISBN: 0 7506 2118 4

Customer Services Dept.

Heinemann Publishers Oxford

PO Box 382,

Oxford OX2 8RU

Tel: 01865 314301

Fax: 01865 314029

# HAND-MADE LOUDSPEAKERS

At **South Coast Speakers** we now have our own range of hand-made loudspeaker systems available. Individuality is our stronghold! All our loudspeakers are hand-made which means that we can offer you, the customer, a wide variety of beautiful real-wood finishes, including: Cherry, Pine, Walnut, Rosewood, Oak, Ash, Teak.

Every care is taken in the construction of our high-performance loudspeaker systems, which ensures that our cabinets and crossover network deliver the optimum results that the driver units can provide. The end result is that **South Coast Speakers** offer more than a beautiful sound with its unique range of loudspeaker systems tailored to your individual requirements.

## VISATON® Loudspeaker Kits!!

We stock a large range of **VISATION** loudspeaker kits, suitable for enthusiasts of any experience. Home-building is a great way to cut the cost of a new loudspeaker system, without losing quality or performance. From the traditional all round speaker, to the top-class high-end systems, home building will help you realise your own ideas of sound & design, being easily adapted to your living environment and your budget.

All Kits are supplied with simple instructions and cabinet dimensions. No soldering is required as the crossover comes ready wired & fixed to gold plated connection terminals.

Kit prices from £119.00



## Design Services!

At **South Coast Speakers** we want to help you realise your own ideas. Our design team offers a Theoretical Crossover Design Service as well as a Cabinet Design Service. So if you need some assistance with your own ideas we are able to help.

## Listening Room!

**South Coast Speakers** has a comfortable listening area, modelled on the average family living room, giving you, the customer, a realistic idea of how your loudspeakers will sound when you plug them in at home. We have 10 kits on demonstration as well as our own range of loudspeaker systems. There is ample free parking, so bring along your favourite CD/record for a listen.

## Suppliers of Driver Units

**VISATON®**  
VISION OF SOUND

**seas**  
HØYTTALERE - LOUDSPEAKERS

scan-speak

R.C.I.

**VOLT**

morel

PRECISION DEVICES

For a free catalogue/price list please contact:



# SOUTH COAST SPEAKERS LTD.

# PRACTICAL ANALOG ELECTRONICS FOR TECHNICIANS

By Will Kimber

Reviewed by Noel Keywood.

I was surprised to find this book claims to be for much the same group of students as the other book reviewed in this month's Supplement. Yet it differs significantly in its approach and its coverage. Author Will Kimber seeks to explain the action of electronic circuits through practical example. Whilst I have seen many forms of practical approach before, I have never encountered a book that contains nothing other than practical exercises. In this case they comprise small circuit blocks (usually one active device) to show how DC bias conditions are established as well as why and how this affects AC performance. Sensibly in my view, the author uses simple active devices like BC109 transistors, which are cheap and commonly available.

There are drawbacks to this approach. In places there are circles with the letters CRO inside, meaning Cathode Ray Oscilloscope. At £350 apiece - and that's a cheap one - oscilloscopes might be beyond novices' reach, even though they're all but essential when engaged in practical work. Students may well have access to a 'scope at college, but others will not. The only alternative is to get a second-hand one and hope to be able to keep it going. For years as an impoverished engineer I maintained a huge Schlumberger valve 'scope. It had 64 valves, needed two men to lift it and was disastrously unreliable, but it did the job. If you adopt this approach, you'll need a service manual.

That's just one way the 'scope problem can be solved. A good DC and AC voltmeter is necessary too, but today's multimeters are often able to measure AC from 10Hz to 10kHz without too much error. With these instruments wave forms can be seen and graphs of DC operating conditions drawn up. If this all sounds like intense work, you'd be right. For this book to be really useful quite a lot of time-consuming practical work needs to be undertaken. The maths has been kept simple yet effective and in this area the book scores strongly I feel. Too many books dwell on theory at the expense of

the simple basic equations and views of a circuit needed to get it up and running. As first-step guidance on such matters, Practical Analog Electronics for Technicians is very strong and unusual for being so.

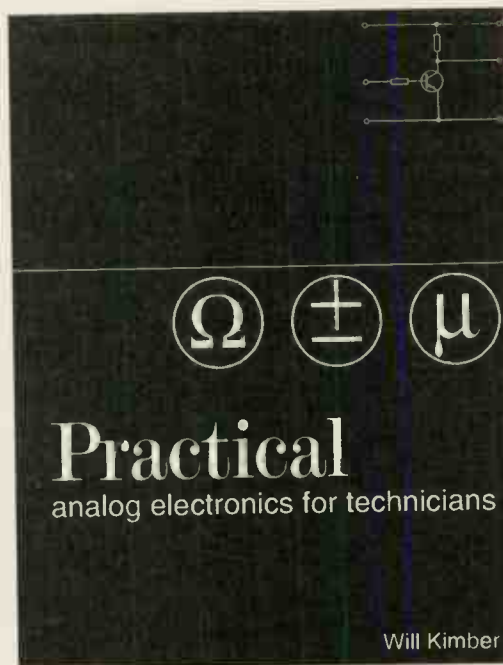
I found the sequence of topics a bit peculiar. The first chapter deals with DC power supplies, an unusual way to start out. It has some merits, introducing transformers, for example. But I would have thought Small Signal Amplifiers, with an introduction to the transistor

A valuable feature of the book is that all the circuits can be built, component values being clearly listed.

Audio amplification is clearly a major interest, since there's a chapter on Logarithmic units and another on Feedback. This is followed by Operational Amplifiers. I don't quite know what to make of a chapter on Feedback that obdurately ignores phase shift at spectrum extremes and the need for gain to be unity or lower for stability to be maintained. It would have been

easy enough to make some mention of the fact that applying excessive feedback makes an amplifier unstable. Some engineers even believe feedback=stability, when the reverse is true. It's a pity that this most crucial understanding is not mentioned. Feedback phase gets an airing in a chapter on oscillators, but the connection with amplifiers is still not made. This underlines the non-discursive nature of the book and the way it sticks firmly to basics. After Oscillators come chapters on Test and Measuring Equipment (brief) and Fault Finding.

This book is valuable for its circuit basics. It is very practical and should allow anyone with an ability to add, subtract, multiply and divide to get a circuit up and running. This is quite rare; those who write



and the notion of amplification, was best as a starter, yet it is Chapter Two in this book.

Most books dealing with Small Signal Amplifiers go on to deal with Large Signal Amplifiers next, but not this one. It doesn't cover them at all, so there is no discussion of output stages, heat sinks, thermal stability in such stages and what have you. There is, however, plenty of good, solid stuff on load lines, biasing and circuit basics, but only in the form of build and investigate exercises. I found this a somewhat barren approach as I expected to see some discussion on limitations, alternatives and the like. But the book sticks to its unusual style, which is good for reference purposes perhaps, rather than general reading.

books are too often far removed from such practicalities. I found its style of curtailed discussion peculiar and at times perplexing though. It has a well focused but narrow approach and really needs to be accompanied by an 'expert audio' tome, such as Linsley Hood's excellent Art of Linear Electronics, to raise important issues this book ignores ●

**Practical Analog Electronics for Technicians** £12.99  
**ISBN: 0 7506 2952 5**  
**Customer Services Dept.**  
**Heinemann Publishers Oxford,**  
**PO Box 382,**  
**Oxford OX2 8RU**  
**Tel: 01865 314301**  
**Fax: 01865 314029**

# KIT & COMPONENT SUPPLIERS

## LOUDSPEAKER KIT SUPPLIERS

**Wilmslow Audio, 50 Main Street, Broughton Astley, Leicesters LE9 6RO**  
Tel. (01455) 286603  
Fax. (01455) 286605

UK distributors of Drive Units from ATC, COLES, DYNAUDIO, KEF, MOREL, PEERLESS, RCL, SEAS, SCANSPEAK AND VOLT. Comprehensive range of high quality crossover components, acoustic damping products, connectors and veneers. Over 20 different D.I.Y. loudspeaker kits on demonstration, including ATC S0 & 100.

**B.K. Electronics, Unit 1 Comet Way, Southend-On-Sea, Essex, SS2 6TR**  
Tel. 01702 527572  
Fax. 01702 420243

Bringing you the Audiocad Pro - a computer aided loudspeaker design software package as featured in Hi-Fi World DIY supp. Nos. 22 and 23 (June, August 1996). Find out information on this plus our other products in our main 1/4 page advert in this months supplement

**European Precision Mouldings Ltd**  
Highwyh, Sawbridgeworth,  
Herts, CM21 0JS  
Tel 01279 600428  
Fax 01279 723846

Manufacturers of the Red Scorpion range of loudspeaker terminals and binding posts.

**Falcon DIY Speakers**  
Falcon Acoustics Ltd., Tabor House,  
Norwich Road, Mulbarton,  
Norfolk NR14 8JT.  
Tel. 01508 578272

UK. distributors of FOCAL drive units, Kits, In Car and JMLab speaker systems plus SOLEN (SCR - Chateauroux) polypropylene capacitors and the largest audio inductor manufacturer in the UK. Stocking Audio Amateur Publications and Computer software.

Comprehensive range of D.I.Y Speaker kits, Parts, Accessories and Books. Please send large SAE (36p) for free price list. "Everything but the wood"

**IPL Acoustics, 2 Laverton Road, Westbury, Wiltshire BA13 3RS.**  
Tel. 0373 823333

IPL supply a range of eight speaker kits using drive units from SEAS, Morel, Audax, Visaton etc. including four transmission lines to suit all room sizes. We also supply a full range of drive units, capacitors, and cabinet accessories as well as silver plated P.T.F.E. insulated cables.

**South Coast Speakers Ltd**  
326 Portwood Road,  
Southampton, Hampshire.  
Tel 01703 559312

UK suppliers for High-Quality Driver Units from: SEAS VOLT VISATION SCAN-SPEAK also MOREL RCL & many more. Accessories / Components all of the Highest Quality inc. ProAudio MKT Capacitors, Inductors wound to order for any values. Many DIY Kits always on demonstration in our comfortable listening area. Custom design services & friendly advice!

## VALVE AND OUPUT TRANSFORMER SUPPLIERS

**Wilson Valves, 28 Banks Avenue, Golcar, Huddersfield, West Yorks HD7 4LZ.**  
Tel. 01484 654650  
Fax. 01484 655699

We stock over 2,500 different types of valves, N.O.S. and New. Please send a S.A.E. for full list. No charge for matching. Most major credit cards accepted.

**Langrex Supplies Ltd**  
1 Mayo Road, Croydon,  
Surrey CRO 2QP  
Tel. 0181 684 1166  
Fax. 0181 684 3056

One of the largest distributors of electronic valves, tubes and semi-conductors in the UK by original UK and USA manufacturers. Obsolete types are a speciality. Telephone or fax for an immediate quotation.

**Billington Export Ltd.**  
IE Gillmans Trading Estate,  
Billingshurst,  
West Sussex RH14 9EZ  
Tel. 01403 784961  
Fax. 01403 783519

Billington Export Ltd. holds large stocks of audio valves including many obsolete brands such as Mullard, GEC, Brimar etc. as well as Sovtek, Thermionic Gold Brand and the recently introduced Billington Gold range. Also Cathode Ray Tubes (eg. used in Marantz tuner 10B). 50 page catalogue available, tel or fax for a quotation. Minimum order £50.00 UK, £100 export.

**Watford Valves**  
3 Ryall Close, Bricket Wood,  
St. Albans, Herts AL2 3TS  
Tel. 01923 893270  
Fax. 01923 679207

Specialist in new old stock and current production valves. Sole UK distributor of the Harma Diamond range selected for their superior performance. Huge range held, stockists of Mullard, GE, Phillips, National, Brimar, Sylvania, Telefunken, RCA, MOV and many more. All valves are new boxed and guaranteed. For free price list and specialist advice call or fax Derek Rocco, Watford Valves.

**PM Components**  
Springhead Enterprise Park,  
Springhead Road, Gravesend,  
Kent DA11 3HD  
Tel. 0474 560521

P.M. Components Ltd are the specialist component company for High End Audio enthusiasts. We have a design and manufacturing base for audio valves and associated products and have a capability to produce custom tubes for major manufacturers. Our 70 page catalogue is available at £2.50 including U.K. postage. P.M. Components are major stockists for Golden Dragon, Mullard, GEC and Teonex valves and have a vast archive of vintage tubes gathered from every manufacturer in the world.

**Chelmer Valve Company**  
130 New London Road,  
Chelmsford, Essex CM2 0RG.  
Tel 01245 265865 Fax. 01245 490064.

Supplier of premium range of audio valves, other valves and components also available. (Please see our main advertisement in this supplement).

**Woodside Sound Engineering,**  
Arfryn, Llanboidy, Whitland, SA34 0EY  
Tel: 01994 448271 Fax: 01994 448665  
E-Mail: woodside@arfryn.demon.co.uk

As well as producing transformers for our own products, we can now offer an expanding range of audio transformers for new ventures and Renovations. We can wind transformers for most RADFORD amplifiers to original specification. Contact us with your requirements or a list of standard items is available on request.

## COMPONENT SUPPLIERS

**AudioCom (UK), 2 Swallowtree Gdns, Saundersfoot, Pembrokeshire, SA69 9DE**  
Tel 01834 814660  
Tel/Fax: 01834 814036

AudioCom are suppliers of Premium Grade components, including: Alps, BHC, Burr Brown, Caddock, Danish Audio Connect, Elna, Holco, Linear Technology, MIT Multicap, Nichicon, MUSE, Silver Wire (99.99% 4N), Sanyo OS-con, Sfernice, Vishay, WBT... plus many more products at very competitive prices. New 1997 Audiophile Parts Catalogue now available on request.

**Audio-Links**  
7 Fairmont Crescent, Scunthorpe,  
North Lincolnshire DN16 1EL.  
Tel/Fax: 01724 870432

Large range of specialist electronic components and accessories for solid state and valve enthusiasts. Mail order and a friendly service. Monday to Saturday, 10am - 7pm. Catalogue - £2.00

**Hart Electronic Kits Ltd**  
Penylan Mill, Oswestry,  
Shropshire SY10 9AF  
24 Hr salesenquiries Tel. 01691 652894

A range of Audiophile kits for 80 watt Power Amplifiers, Tuners, Pre-Amps and Moving Coil/Moving Magnet RIAA Pickup Preamps. All kits are fully engineered, with our thirty years design experience, for easy constructions from circuits by John Lindsey Hood, the most respected designer in the field. Send for lists.

**V.R.R.**  
30 Melbourne Avenue,  
Worthing, BN12 4RT.  
Tel: 01903 501158  
Vintage Radio Restoration

Bespoke output transformers for most valves, push-pull and single ended. Components and curcuits provided to construct high quality valve amplifiers. Mains transformers "C"core ideal for pre-amps. Call for spec.

**AP Electronics**  
20 Derwent Centre, Clarke Street,  
Derby, DE1 2BUT

Check out the AP ELECTRONICS catalogue. It's free with every order of over £40.00 or can be purchased for a £4.95 cheque payable to 'AUDIOKITS'. Over 80 pages include pre and power amplifier kits, high grade audiophile resistors, capacitors and semiconductors, audio and mains cables, gold and rhodium plated connectors and COMPONENT NOTES on using high grade parts. A quarterly newsletter 'AP PERFORMANCE AUDIO' has been recently launched and your first issue is free.

**Cambridge Scientific Supplies**  
12 Willow Walk,  
Cambridge CB1 1LA.  
Tel: 01223 811 716  
Fax: 01223 501 833

Specialist wire products for the knowledgeable audiophile including:- Silver wire (>99.99% purity, stress free) unique quadruple PTFE insulated Silver wire, Silver loaded solder, PTFE sleeving and Nylon braid sleeving, premium Gold plated connectors and plugs. Custom assembly available. Call Peter Bullock for a catalogue and application note.

**Russ Andrews Audiophile Components**  
Edge Bank House, Skelsmergh,  
Kendal, Westmorland. LA8 9AS  
Tel. 01539 823247  
Fax. 01539 823317

**Technical Helpline. 01539 823036**  
**Order Line. 0800 373467 (UK only)**  
World leading supplier of the highest quality premium grade components. If you want the very best sounding resistors, capacitors, inductors, volume controls, wires etc. send for our Catalogue. We also have a range of equipment upgrade kits and guides covering most popular makes of amplifiers, CD players, speakers etc. To receive your copy of our Components Catalogue and our new 1997 Accessories Brochure just mail, phone or fax the address above.

## RESTORATION

**Audio Laboratories (Leeds)**  
3, Kildare Terrace, Whitehall Road,  
Leeds, LS12 1DB  
Tel: 0113 244 0378

Have your pet hi-fi project professionally done. With over 20 years experience in factory-grade kitbuilds and overhauls, to both valve and solidstate equipment, our good reputation stems from meticulous engineering coupled with superb measurement facilities. See our main ad. in this supplement - it tells you in greater detail how we can help.

## VINTAGE DIY

**Lorcraft Audio**  
4 Big Lane, Goose Green,  
Lambourn, Berks RG16 7SQ.  
Tel. 01488 72267

Specialist restoration of 301's and 401's using genuine spares and re-manufactured parts to original pristine standards in our newly built workshops designed primarily for these purposes.

## CLASSIC TURNTABLES

**Technical & General**  
P.O. Box 53, Crowborough,  
East Sussex TN6 2BY.  
Tel. 01892 65 45 34.

The original specialist source of spares, replacements and expertise for the classic turntables. Years of actual experience and comprehensive range of parts (originals and re-manufactures), manuals, ancillaries, No dubious 'improvements' - no harmful 'modifications'. Our specialities: Connoisseur; Garrard; Goldring; Lenco; S.M.E.; Thorens; Watts; Ortofon; Shure; Cartridges and styli for 78s, Mono LPs, Stereo LPs.





# D.I.Y. Letters

## SOUND OF SILENCE

A while ago I made the Richard Brice headphone amplifier which was included in the DIY supplement a couple of years ago. I put together a simple power supply using cheap 12V regulators to achieve the +/-12V supply. This worked but there was always a low background hum which I couldn't seem to eradicate.

A while later (February 1997 DIY Supplement), there was a diagram in the letters pages showing a schematic for a choke smoothed power supply, so I ordered some chokes and had a go at soldering it together. It worked fine, but when measuring the voltages under load the supply was now giving +/-6.7V to the circuitry. The text said the regulation offered by the chokes would be much better than that from the cheap IC regulators so that was OK, but I was still left with the question of how to get +/-12V.

I decided to experiment a bit, and removed the regulators from the circuit. This gave a power supply output of about +/-25V under no load. Seeing as the circuit dropped the power supply voltage by about half, I then took a flyer and hooked up the circuit again.

At switch-on it didn't blow up, and measuring the voltages showed that I now had +/-11.7V, which is close enough. However, since I am a relative novice in electronic theory, I would like to know if there is any recognised way of working out how much a circuit will load a power supply, so I can predict how much the voltage will drop when a circuit is connected up to a power supply.

Incidentally, removing the cheap IC regulators also removed the hum and now the circuit is completely silent. I had read that it is possible to 'hear' the power supply through the circuitry,

but I didn't realise it was so obvious! One thing which has been mentioned a few times in the DIY Supplement is a discreet component voltage regulator based around power transistors and zener diodes (I think). If you are looking for articles to include in future Supplements then that would definitely be of interest to me.

**Mungo Beeston  
Winchester,  
Hampshire.**

*One other approach which seems to work well with low power circuits is battery power. Seeing as the circuit you're using draws little power, a pair of rechargeable lead/acid batteries would work very well I suspect. You wouldn't need to use any regulators, capacitors or chokes. As you said, it can be surprising how much a component's sound is influenced by its power supply and running from batteries should give an eminently quiet, clean sound.*

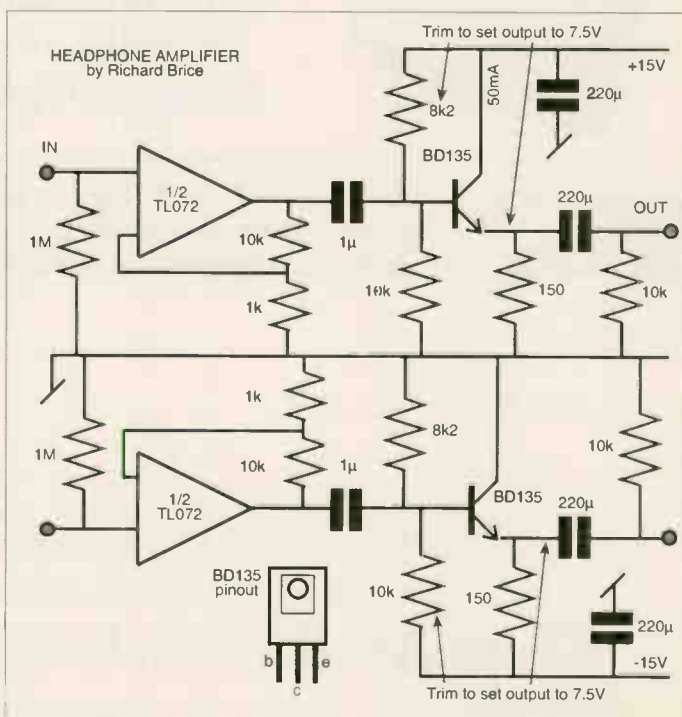
*Maplin stock a range of suitable batteries - XG77J (12V 6Ah) costs £24.05, and you'll need two of these. You will also need the correct charger - car battery types shouldn't be*

*used under any circumstances with rechargeable sealed lead-acid batteries like these. Maplin's DX20W at £24.99 would work well. JM*

*I would guess that in the original circuit you fed the output of the transformer directly to the regulators, relying upon them in effect to provide hum rejection, which they will do. Ideally, you should have put a smoothing capacitor between transformer and regulators as a first step to reducing hum (ripple), then the caboodle should have been hum free.*

*Chokes do not provide good regulation, except in comparison to 'smoother' resistors; they provide good noise rejection. That is why they sound good. Regulators put noise onto the line and it is hard to eradicate. Since ultra-tight regulation is less of a priority in audio than absence of noise and interference, chokes are usually a better choice than regulators.*

*You simply need to make a few measurements to sort your circuit out. First, using a multimeter, measure the D.C. current being drawn by the*



## THE Service Specialists

From Classic Valve to Digital LaserDisc...

You supply the Problem, We supply the Solution!

QUAD • GRANT • LEAK • RCA • REVOX • ALTOBASS • RADFORD • PIONEER • LUMLEY • TEAC • YAMAHA • AVANTIC etc.

For over 20 years we have provided un-matched technical services to Enthusiast and Pro. alike. We've satisfied customers at all points of the compass - even in Australia!

What makes us so popular? Simply, we're the best!

**RESTORATION.** Messrs, Leak, Walker, Radford *et al.* got it right! Yesteryear's great designs are, in the main, fine. They certainly don't need converting into something else, which seems to be a current trend. We will carefully restore your classic using modern high-quality components; this alone frequently improves the sound quality enormously. We will not, though, alter the original design in an attempt to "improve" it. Enjoy owning and listening to a Classic... not a latterday fad.

**REPAIR/CALIBRATION.** Even the finest equipment's will suffer an occasional breakdown and need meticulous repair, calibration and alignment. The only standards we recognise and work to are Manufacturers Original. Our Test & Measurement facilities are probably the best in this sector of the Industry... and we know how to use them!

**KIT-BUILDING.** There are numerous kits around nowadays. They all require skill/experience to build satisfactorily and, in the case of valve equipment, safely. Some designs are good, others ... well, let's just say their 'designers' would benefit from a sojourn on that celebrated desert island with only Terman and Langford-Smith for company! **Whichever kit you choose, though, it will benefit from a professional build.** We will build it, de-bug it and give you a set of Final Test figures from your sample.

**KIT-RESCUE.** In trouble? It won't work? *Nil desperandum.* Contact us about a rescue/re-furbish.

For more details of our comprehensive services, 'phone or fax:-

**(0113) 244 0378**

**AUDIO LABORATORIES (LEEDS)**

## IT'S A NEW MAGAZINE

*For the Audio Enthusiast*

*It's full of technical articles...*

*It's first aid for your Hi Fi...*

*It's Upgrades D I Y & Theory*

*It's Quarterly...*

*It's run by Enthusiast's...*

*It's your next major upgrade...*

*It's out now...*

*It's £18.00 per*

*year (U.K. & EEC)*

*(Other countries £24.00)*

*Subscription only*

**Common Ground**

**P O Box 26**

**Blyth**

**Northumberland**

**NE24 3YP**

**Fax 01670 356680**



## Vacuum Tubes for Audio Are Back!

*Glass Audio* brings together yesterday's tube with today's improved components, voltage control, and the exciting new Soviet tubes, to make smooth sound in your livingroom possible again!

# YES!

Please send my first issue of *Glass Audio*. I'll pay just \$45.00 for six issues (1 year); \$80.00 for 12 issues (2 years) of the best information on tubes to be found anywhere. I understand that my satisfaction is guaranteed!

Name \_\_\_\_\_

Street & Number \_\_\_\_\_

City \_\_\_\_\_ Postal Code \_\_\_\_\_

Country \_\_\_\_\_

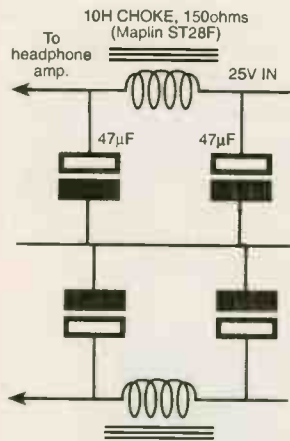
REMIT IN US \$ DRAWN ON A US BANK ONLY. PRICE GOOD THROUGH DECEMBER 31, 1995.

We Accept MC/VISA.

**Glass Audio**

PO Box 176, Dept. HFWS, Peterborough, NH 03458-0176 USA  
Phone: (603) 924-9464 or FAX 24 hours a day (603) 924-9467

**headphone amplifier. It should be around 50mA per rail. Then, using the same meter, measure the D.C. resistance of the choke. Voltage drop across the choke is then simply found by multiplying the**



**resistance by the current (in amperes)  $E = R \times I$ . You can find an IC's current draw in advance by consulting its data sheet.**

**I wonder about your chokes. They appear to have around 240ohms DCR by my calculations, when you really should expect 80-150ohms DCR. The Maplin ST28F we recommended has a DCR of 150ohms (quoted) and this would give around 7.5V voltage drop passing the 50mA or so demanded by the headphone amplifier. With transformer losses this might add up to 10V or so, giving you the 15V the circuit requires. NK**

## TRANSFORMER IMPEDANCE

Ever since your magazine began to expound the virtues of valve amplifiers I have been fascinated by them. Over the last few years I have collected sufficient components to now be dangerously close to embarking on a construction project. There is one particular problem I have not been able to resolve and it is to do with output transformers. I have several push-pull transformers (including an ultra linear I

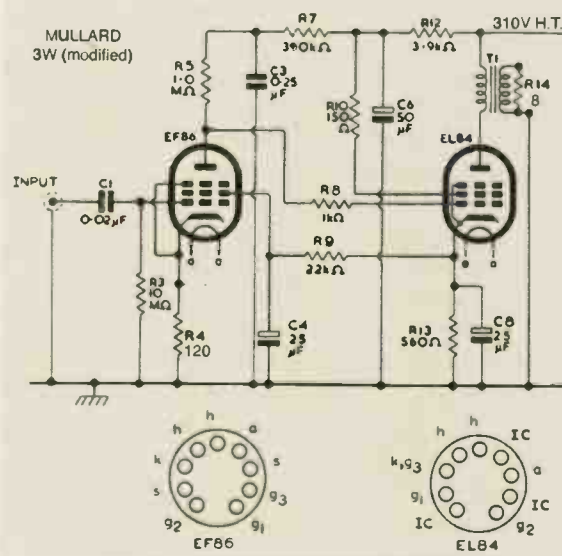
believe) in my possession, but unfortunately they are unmarked. Can you tell me how to measure the load resistance of these devices? I do have access to test equipment but am only lacking the 'modus operandi'!

Can you recommend a text book that deals with lab type measurements such as THD, frequency response, signal to noise ratio, power output etc.

Your advice would be greatly appreciated.  
**Bruno Sirignano  
Cheltenham,  
Gloucestershire.**

**Because the inductance of a transformer is affected by DC current passing through it, to assess impedance you should measure voltage across the**

**current in amperes ( $Z=V/I$ ). If you don't fancy measuring AC current, put a 1ohm or 10ohm resistor in series with the primary, measure the AC voltage across it and calculate the current through it, which is then the current through the transformer primary. A good circuit for this is Mullard's (now Philips Components) 3W design, which I've reproduced here, in modified form. Loop feedback has been removed, since this would give a false result. An eight ohm resistor has been put across the secondary (important) and you'll need to cobble up a power supply able to give 310V for the H.T. You may be able to do without the first stage if you have a signal**



**primary with a current passing through it that is close to working conditions. With a 6kohm primary having a high DCR, plus something like 30mA, you end up needing to use high voltages. The best way of organising this is to put the transformer in a simple basic output stage and pass an AC signal through it at 400Hz or 1kHz. Measure current through the transformer and voltage across it, then the impedance is equal to the voltage divided by the**

**generator with a healthy output, say 1V or so. NK**

## SPEAKER SELECTION

With a bit of luck, over the next months I will be able to replace my ancient budget hi-fi for something better. I will probably start my search for new equipment with the CD players and amplifiers that you have recommended, such as the Aura VA80SE-x, Rotel RA-970BX and Denon DCD825. The problem as I see it will be with the 'speakers. My listening room is large at 6m by 4m and I

would like a pair of floor standing 'speakers. One obvious choice would be the Celestion Impact 23 but being a capable DIYer I am sorely tempted by the likes of KLS7 and KLS9.

I fancy the challenge of building my own 'speakers and the chance of ending up with better sound for the same or less money than the Impact 23s. I feel out of the two kits the KLS9 would be the better bet as it would probably fill the room with sound more easily.

Assuming I go ahead with KLS9, I've got a few questions.

- 1) Are the amplifiers I've mentioned a good match for KLS9? Bearing in mind my budget of £350, are there better alternatives?
- 2) I would propose to position the 'speakers firing down the length of the room, about 0.6m from the side walls and in free space at the rear. Would this be okay?
- 3) I can't audition KLS9 living in Birmingham and have really no idea of what to expect from it in terms of quality or tone. Are there any 'speakers commercially available which you believe exhibit similar qualities.

Your help would be much appreciated.

**Stan Comley  
Birmingham.**

**Both of the amplifiers you mention would work well with KLS9, which is the option I'd go for. KLS7 is a relatively small floorstander and doesn't possess KLS9's bass extension and power. The Aura would give a warmer presentation than the Rotel which has a firmer, more controlled sound than the VA80SE-x - choosing between the two is a matter of personal taste.**

**Positioning the 'speakers to fire down the length of the room is fine, as is having them 0.6m away from side walls. One**

point worth mentioning is that the KLS9s should be heavily toed-in so that their axes cross in front of you. This will minimise reflections from the side walls which blur imaging. Lots of space behind the cabinets will again aid imaging by reducing reflections off the rear wall and will only produce a slight reduction in deep bass due to loss of wall reinforcement.

Commercial equivalents which have bass as deep as KLS9 are few and far between and tend to have four-figure prices. Tonally the HDA driver is relatively neutral, lacking the sweetness of carbon fibre, the slightly 'quacky' warmth of polypropylene and the hardness of paper. JM

#### BOXLESS BASS

I was fascinated to read your articles on designing a suitable subwoofer for the ESL63s. Currently I have a complete Quad 66/606 set-up working with an old and much loved pair of Spendor BC1s which I now want to replace with a pair of ESL63s. Having borrowed a pair, I know they are tricky to set up and light in the bass but I have never found a subwoofer to match properly.

I didn't find the Gradients impressive (quite apart from being seriously unacceptable aesthetically) and the RELs just seem to 'muddy' the bass. I therefore read your article avidly. Having done so, I had the following observations/questions, upon which I would welcome your comments.

#### BASS DIPOLE UNIT

Given that the bass unit has to cover a wider frequency range than is normal for a subwoofer, can a high quality bass unit such as the ATC SB75-314 be used? This is a fast, revealing unit that can easily work up to 300Hz and excels in its distortion,

transient response and power handling.

Do you need two drive units per subwoofer? Presumably if you do, then they must be in parallel and out of phase. Lastly, what sort of mounting (I hesitate to use the word 'cabinet') is needed?

#### NUMBER OF UNITS AND AMPLIFICATION

Most subwoofer manufacturers would have you believe that only one unit is needed. Is this really the case or do you have to have a pair to work with the ESL63s? Also, has the 606 got enough 'oomph' to drive a pair of subwoofers adequately or is something like the AVI S2000A needed. If so, will the 66 pre-amp drive it?

#### ACTIVE CROSSOVER

Your crossover looks fairly simple but does it compare with commercial crossovers such as those produced by Linn in their Tune Box, the Mirage LFX Series or indeed the one provided by Quad for the Gradients? Essentially, is there an existing high quality unit that can be tuned to match the 'speakers'?

Finally, you made no mention of phase matching in your article. I have been led to understand that frequency response is all very well, but it is also extremely important to be able to match the phase of the two units to ensure clarity.

I'm a convert to the ESL63s and am very keen to give them really good bass rather than going for Martin Logans and the need to spend yet more on very fancy amplification. Many thanks for the articles and I look forward to reading the next instalment before diving in with a soldering iron.

**Martin Wright  
Stirling,  
Stirlingshire.**

*I am not acquainted with the ATC bass unit you mention and have no data on it. Any reasonably sized*

*bass driver will do, but because cancellation compromises efficiency the unit has to work quite hard, so the bigger the better. A 10in unit, or larger, in a flat, open MDF baffle about 15in square is a good place to start. I suggest you use just one unit per channel to start. Two drivers give better power handling and, on the SL6000, placed the acoustic centre of the bass drivers below that of the SL600 'speaker above, Celestion tell me. Out of interest I have reproduced*

*diagrams from an early SL6000 brochure (see below), which show how Celestion intended the SL6000 to match their small SL600. The side view clearly shows the SL600 precisely positioned so its acoustic centre is above that of the SL6000.*

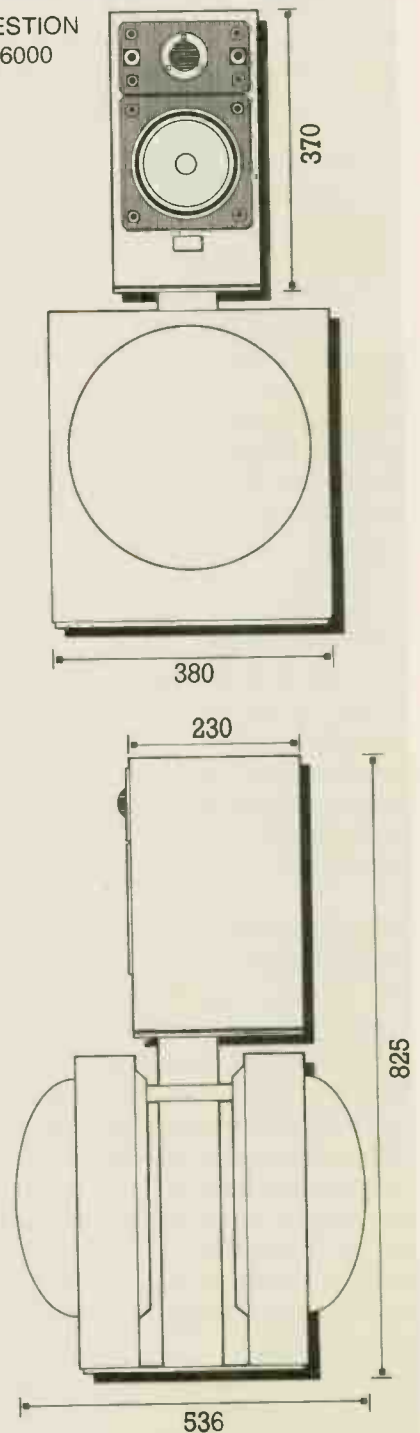
*I cannot see why this is important at such long wavelengths (5ft at 100Hz). Better to get the 'speaker running satisfactorily before diving into any more complexity. If you do use two drivers mounted face to face, as Celestion did, then yes, one must be connected 'out-of-phase' so that they end up in-phase (i.e. both cones moving in the same direction at the same*

*time). Since a lot of power is demanded, it would be best to connect two 8ohm drivers in parallel to get 4ohms, then use a chunky power amp.*

*Orientation to match the room is most important I find. As and when you are happy with results you may like to consider improving power handling, since the high-pass filter feeding the Quads lets them go very loud.*

*Open baffle dipole subwoofers need*

CELESTION  
SL6000



equalisation as well as crossover filtering. No commercial networks offer this except Celestion's and my own design, which went a few stages further by having a high pass subsonic filter to limit cone excursion and improve power handling, plus a high Q peak at 100Hz to "speed up" the sound of the heavy paper cone bass guitar drivers Celestion used.

If the REL did not sound right, it is almost certainly down to tuning. RELs are difficult to tune accurately but once done they offer outstanding bass quality. The procedure is to set volume and bandwidth to maximum, then progressively tune them both downward.

I never liked the Gradients much. Be aware that the open dipole is quite a sophisticated beast in theory and that a properly tuned REL is very good and a lot simpler. If

and outlined mods to my Aura CD100 CD player and VA80SE amp. The biggest

improvement came about when I changed the NE5534 op amps for Analogue Devices' AD711s. With this letter I would like to go into detail about how to bias the AD711.

After taking out the amp's NE5534s, remove the two 22pF capacitors - they are only there for the NE5534s' benefit. The AD711 can work in Class A if the bias current is set at 2mA. The easiest way to obtain this is to put a 6kOhm - 7kOhm resistor between -V (pin 4) and output (pin 6). This value of resistor would be right for the usual +/- 15V supply. Making these changes

simulator programmes. Looking around on the Internet, I've found the

following web sites:  
**SIMetrix**  
<http://www.newburytech.co.uk>  
**Micro-Cap V**  
<http://www.spectrum-soft.com/demo.html>  
**PADS**  
<http://www.pads.com>  
**Analog Devices**  
<http://www.analog.com>  
<http://www.nsc.com/models/spice/analog/index.html>  
<http://www.siemens.de/Semiconductor/products/35/356.html>  
<http://www.zetex.com/spice1.html>  
**Juan Raul Couto Dominguez**  
**La Coruna,**

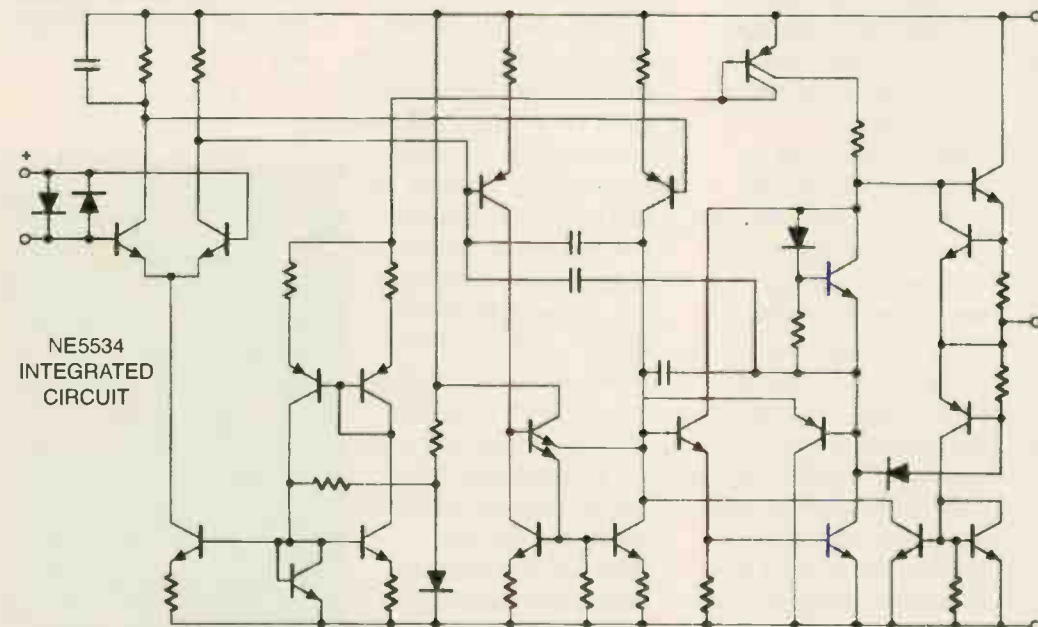
not high-end audio. In my experience the 5534 sounds a little grey and grainy, and flat and lifeless (high feedback) against superior chips, but the latter cost more, although the AD711 is available for a modest £1.30 or so.

The NE prefix is used by Signetics, part of Philips, and some useful info on phono pre-amps, etc can be found on Philips' Netsite (<http://www.semiconductors.philips.com/>). Because it is super low noise, you often find the 5534 at the heart of phono stages.

If you look at the circuit of a chip like this however, it is teeming with active devices. The 5534 boasts 22 of them, plus diodes, with two back-to-back on the input to provide overload protection. That's good for robustness and reliability, but it is not quite the stuff of high-end audio, where diodes are avoided because of their non-linearity.

The AD711 has become a favoured replacement for the 5534 and it is 'sort of' pin compatible. The 5534 may have a compensation cap between pins 5&8, and it may also have DC balancing voltages between pins 1&8. If both are present, these may affect the AD711. I do not know if there is any internal connection on the 711's NC (No Connection) pin and of course any balancing voltages on the 5534 will not provide DC offset compensation on the AD711. This will have to be newly cobbled if any small output offset is to be nulled.

The AD711 works up to +/-18V maximum, drawing 3mA or so. The NE5534 takes +/-22V absolute maximum on the rails, so experimenters need to check out supply volts.



you would prefer an easy solution then this is the best I have come across by a large margin. A REL Stadium reached down to 10Hz in our 16ft long room - and it felt like it. NK

## RE-ENGINEERING II

My first letter was published in the June 1997 supplement

improves the sound drastically. Unfortunately, because of the power supply arrangement in the CD player, the AD711 can't be biased for Class A using this method.

I've seen reviews in your magazine on programmes which design 'speaker crossovers but not circuit

## Spain.

The poor Signetics NE5534 has suffered at the hands of industry cheapskates. It's a great device, with incredibly low noise, good bandwidth and low distortion. But it is cheap - less than £1. I've been told many times it's great for audio, which is true, but

**Both appear to have an open loop gain of 100dB but the 711 has more bandwidth, so I wouldn't expect problems here. However, the AD711 has more input noise than the 5534, so if a lot of gain is being used, the AD711 will be noisier. This is likely to be consequential in phono stages, but not in output line drivers, etc. Above you can see what Analogue Devices have to say about this chip. I hope this shows you what to look for. Good luck with your experimenting. NK**

### ADDICTED TO THE BOTTLE

I have recently refurbished an amplifier. At the time, I did not know its identity and so had to work directly from it to draw a circuit diagram. I have since discovered that this amplifier is a Leak Stereo 60 and I wondered if you could help with the following questions:

- 1) The Mullard twenty-watt amplifier uses an identical output configuration but adds two 1kOhm resistors in the screen grid supply circuit to improve linearity above fifteen watts. Would the Leak benefit from the addition of these?
- 2) I have retained the original cathode biasing resistors for this refurbishment as they consist of standard, centre-tapped 880 ohm resistors. I was not sure if they were constructed in this way to couple them thermally or inductively. Would it be advisable to change these for modern precision wire-wound resistors?
- 3) In your DIY Supplement No28's letter section, AG mentions that it is possible to configure a distributed load output stage to triode operation in reply to A.

Proctor's Pentode Passion letter. Would it be possible to add a switch to the Stereo 60 to switch between distributed load and triode configuration?  
 4) At the moment I am using EL34s. I was just wondering what you would recommend as the most suitable tubes for this output stage? Do cathode bypass capacitors have much influence on sound quality? If so, would you have any recommendations as to which type I should use?

At the moment, my main aim is to build a phono and line level pre-amp from scratch. I am basing this on Shunt Regulated Push-Pull topography, a very similar design to that mentioned in Matt Rowland's letter in DIY Supplement No28. I intend to use a Mu follower for the first phono stage to give me sufficient gain to use a low-output MC cartridge. This has promoted my interests in the following areas:

- 1) The mathematical consequences of paralleling triodes to lower noise level. I would like to try this in the first stage. I wondered if you could provide me with any information on the subject?
- 2) A list of useful web sites.

Thanks for your assistance.

**John Arrant**  
**John@Arrant.prestel.co.uk**

Screen grid resistors can theoretically increase linearity because they introduce a kind of feedback, but they are usually used to prevent parasitic instability. I wouldn't bother changing the configuration you have at present. Leak should have included small value resistors anyway. If not, use 100ohm to 1k 1W resistors and see what happens - you won't blow anything up. Leave the bias resistors as they are, if they don't look fried. It's usually better to leave amps like old Leaks and so on original, otherwise it's like putting lemonade in a vintage wine to make it sweeter.

The cathode bypass caps will probably need to be replaced because they tend to dry out over time. Replace them with Black Gates if you can afford them. If they are too expensive, try Elna Cerafines.

The equation for determining noise is  $V_n = (4KT/RB)^{0.5}$ , where K is Boltzmann's constant (1.38E-23), T is absolute temperature (in Kelvin, 293 is approximately room temperature), R is the equivalent noise resistance, and B is the noise equivalent

bandwidth (about 2kHz for a RIAA pre-amp. You can estimate the enr of a triode with  $R=2.5/gm$ , but it's usually much worse than this. If you parallel valves, each time you double the amount of valves the noise voltage is reduced by the factor of 1.414 (root two), but the sound will be worse. Use a step-up transformer instead!  
**AG**

### SUPPLEMENT ADVERTISERS' INDEX

Audio Lab	26
Audio Links	14
Billington Export	4
BK Electronics	6
Colomor	20
Common Ground	26
Cricklewood	10
Falcon	6
Glass Audio	26
Glotta	14
Hart Electronics	12
I.P.L.	18
Langrex	20
Marton Music	10
Riverside	14
Silvernote	6
SJS Acoustics	10
Sonic Frontiers	6
Southcoast Speakers	22
Sowter	18
Technical & General	14
Watford Valves	18

### AD711

#### General Description

The AD711 is a high speed, precision monolithic operational amplifier offering high performance at very modest prices. Its very low offset voltage and offset voltage drift are the results of advanced laser wafer trimming technology. These performance benefits allow the user to easily upgrade existing designs that use older precision BiFETs and, in many cases, bipolar op amps.

The superior ac and dc performance of this op amp makes it suitable for active filter applications. With a slew rate of 16 V/μs and a settling time of 1 μs to ±0.01%, the AD711 is ideal as a buffer for 12-bit D/A and A/D Converters and as a high-speed integrator. The settling time is unmatched by any similar IC amplifier.

The combination of excellent noise performance and low input current also make the AD711 useful for photo diode preamps. Common-mode rejection of 88 dB and open loop gain of 400 V/mV ensure 12-bit performance even in high-speed unity gain buffer circuits.

The AD711 is pinned out in a standard op amp configuration and is available in seven performance grades. The AD711J and AD711K are rated over the commercial temperature range of 0°C to +70°C. The AD711A, AD711B and AD711C are rated over the industrial temperature range of -40°C to +85°C. The AD711S and AD711T are rated over the military temperature range of -40°C to +125°C and are available processed to MIL-STD-883B, Rev. C Extended reliability PLUS screening is available, specified over the commercial and industrial temperature ranges. PLUS screening includes 168-hour burn-in, as well as other environmental and physical tests.

The AD711 is available in an 8-pin plastic mini-DIP, small out-line, cerdip, TO-99 metal can, or in chip form.

#### Datasheets

Listed below is the datasheet for this product. This datasheet is available in Adobe Acrobat PDF format. To view Acrobat files you must install Adobe Acrobat Reader. Acrobat Reader is available free of charge. To download Adobe Acrobat visit their [website](http://www.adobe.com).



- Precision, Low Cost, High Speed, BiFET Op.Amp

#### Military Products

Listed below is the military datasheet for this product. This datasheet is available in Adobe Acrobat PDF format. To view Acrobat files you must install Adobe Acrobat Reader. Acrobat Reader is available free of charge. To download Adobe Acrobat visit their [website](http://www.adobe.com).

- Low distortion FET opamp (Contact your local Analog Devices sales office or distributor for this datasheet)

#### Spice Models

Listed below are any Spice models associated with this product. Spice models are analog circuit simulations of individual parts.

- AD711T SPICE Macro-model 191, Rev. A

# TOWERING INFERNO



WHAT ELSE SEES YOUR MUSIC  
COLLECTION ALIGHT?

BLOW YOUR MIND  
TAKE THE TUBE

GOLDEN DRAGON TUBES ARE AVAILABLE FROM:

P. M. Components  
Springhead Enterprise Park  
Springhead Road  
Gravesend  
Kent DA11 8HD  
Tel: 01474 560521, Fax 333762,  
e-mail: 101650.2424@compuserve.com

# Loudspeaker Upgrade Handbook

**Available at last !!**  
Essential reading for all enthusiasts.  
**only £9.95**



**Russ Andrews Publications** Edge Bank House, Skelsmergh, Kendal, Cumbria, LA8 9AS  
Tel: 01539 823247 Fax: 01539 823317 Orderline: 0800 373467 (UK ONLY)