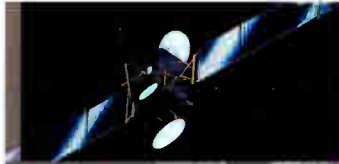


Dept. 664



RCA

1994

Changing Entertainment.
Again.™

At Home THEATRE™

THE RCA BRAND CONTINUES TO LEAD THE WAY IN PROVIDING MORE CHOICE OF EXCITING HOME THEATRE PRODUCTS.



CONSUMER DEMAND FOR EASIER OPERATION OF ADVANCED CONSUMER ELECTRONICS PRODUCTS CONTINUES TO DRIVE THE CREATION OF NEW AND INNOVATIVE TELEVISIONS, VIDEO AND AUDIO COMPONENTS, AND ACCESSORIES.



REINFORCES OUR LONG TRADITION OF INNOVATION, WITH A CONTINUING EYE ON THE FUTURE.



RCA HOME THEATRE™—LEADING THE WAY TO BETTER ENTERTAINMENT.



THE 1994 LINE OF RCA CONSUMER ELECTRONICS PRODUCTS





Introducing...



Sharper Picture.
Clearer Sound.
Greater Choice.

RCA Brand DSS™
Digital Satellite System¹ Includes:
18" Satellite Dish
Satellite Receiver/Decoder
Remote Control

Sharper Picture: Digital quality broadcast images, accurate up to 400 lines of horizontal resolution.²

Clearer Sound: Pictures never sounded so good! DSS also delivers CD-quality² theatre sound excitement.

Greater Choice: Up to 150 channels³ of programming from DIRECTV¹ and USSB⁴. The

best from cable, sports, pay-per-view movies and events and your favorite premium movie channels.

What's more, the Advanced Digital Compression technology is capable of delivering 16 x 9 widescreen pictures today, and the HDTV images of tomorrow.⁵

RCA DSS. The future of television today...and beyond.

RCA



The 18" dish unobtrusively receives a high-power 120-Watt digital KU band signal, and sends it to the receiver.

Norm Program Guide		TUE. 2/15/94 6:00 PM		
2/15	6:00 PM	6:30 PM	7:00 PM	7:30 PM
HBO 282	Star Trek VI: The Undiscovered Country			Dream On
DISN 284	Kids Incorporated	Mickey Mouse Club	Charlie Brown and Snoopy	Be Our Guest
ESPN 96	Bodyshaping	Motorworld	Sportscenter	Inside the PGA Tour
USA 97	MacGyver		Quantum Leap	
NBC 289	Looney Tunes	Doug	Bullwinkle	Partridge Family
LIFE 402	Sisters		L.A. Law	
<div style="display: flex; justify-content: space-between; align-items: center;"> ▼ Movies Sports Other All Exit </div>				



DSS User Interface

The DSS Digital Satellite System is simple to operate. The DSS program guide allows for easy access to daily programming, pay-per-view movies and exciting special events with just the touch of a remote control button.



Accessories

- Surge Protector
- Basic Self-Installation Kit
- Chimney Mount
- 6-ft. Stereo Cable
- Universal Remote Control
- Wireless Phone Jack



RCA Home Theatre™ and RCA DSS™... The ultimate digital entertainment experience.

For more information on the RCA DSS Digital Satellite System, please call: 1-800-898-4DSS.

C · I · N · E · M · A

The television made for movies.



The CinemaScreen 34" widescreen picture and 16 x 9 screen ratio let you expand the image of widescreen movies, filling the screen with movie theatre excitement and eliminating letterbox bars.*



*The majority of widescreen movies produced today can be easily expanded to the dimensions of CinemaScreen TV. For those films with extreme widescreen aspect ratios, CinemaScreen TV also lets you preserve the full screen width; in these cases, however, some portion of the letterbox bars will still be visible.



Film-Like Picture Quality

Standard television generates visible scanning lines. CinemaScreen TV uses a progressive scan system which virtually eliminates visible scanning lines to deliver a smooth, film-like image.



Simulated scan lines used for comparison purposes only.

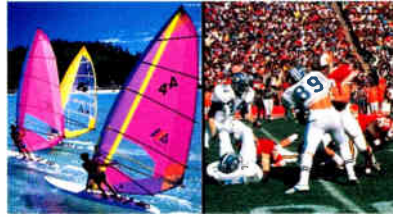
RCA

In 1993, the first 16 x 9 widescreen aspect ratio color televisions were introduced in the U.S. under the RCA Brand.

S · C · R · E · E · N[®]



Picture-In-Picture



Split Screen



Picture-Outside-Picture



Channel Guide



Custom Picture Options



Advanced Viewing Features

- Any program source—from movies on laserdisc to an off-air broadcast—can be expanded to fill the 16 x 9 screen. Three expansion options are available: 22% (expands 4 x 3 program to full screen); 34% (expands most letterbox films to full screen); and 44% (expands extreme widescreen programs to full screen).
- With Split Screen, the wide 16 x 9 CinemaScreen TV picture lets you watch two programs side-by-side. Two built-in tuners permit independent channel selection. Two viewers may listen to the audio from both programs simultaneously: one through the set's main speakers; the other through optional stereo headphones.
- With Picture-Outside-Picture (POP), you can monitor and continuously cycle through any series of 1 to 15 smaller pictures; view up to 5 without covering any portion of the main 4 x 3 program.
- Picture-In-Picture (PIP) lets you watch any program and superimpose CinemaScreen TV's second tuner picture anyplace on the screen. CinemaScreen TV PIP features also include Swap, Freeze, Move, and Expand.
- CinemaScreen TV's Channel Guide provides a quick, on-screen review by showing still pictures of all available programs, 9 channels at a time.
- After a program has been expanded to the desired screen proportion, CinemaScreen TV lets you vertically reposition the image to suit your viewing preferences (for example, to allow room for subtitles when viewing a foreign film).

Other Convenience Features

- Graphic on-screen menus allow easy and precise adjustments of picture, sound and set-up features.
- Channel Labeling lets you name channel positions for easy identification, with over 100 labels stored in memory, including over 30 actual network logos, such as NBC, HBO, and ESPN.
- Audio/video jack system is color-coded for quick hook-up and gold-plated for optimum conductivity.
- Direct RGB inputs allow outstanding picture with external signal sources such as computers or professional video equipment.
- Automatic VCR/cable setup self-selects the proper channel or video input for VCRs, laserdisc player and cable box when the Universal Remote is used.
- Commercial Skip countdown timer lets you browse other channels during program breaks.
- Sleep and alarm timers permit CinemaScreen TV to be preset to turn itself on or off automatically at the times of your choosing.
- On-screen help menus assist with set-up and operation.
- Closed caption decoder allows the display of on-screen text subtitles when viewing special closed captioned programs.



DOLBY SURROUND

P R O · L O G I C

Theatre-Quality Sound

Combining a 6-speaker audio system and powerful 24.5-Watt stereo amplifier, CinemaScreen TV offers Dolby[®] Pro Logic Surround for the ultimate in home theatre sound (with optional speakers). Other audio modes include Stereo, Expanded Stereo, Dolby[®] 3, Matrix Surround, Hall Surround, Stadium Surround and Phantom Pro Logic...all remote-adjustable via on-screen displays, including an on-screen graphic equalizer.



Optimum Contrast Screen

The dark glass picture tube and 110-degree VHF (Very High Performance) system combine to deliver outstanding picture contrast: blacker blacks, brilliant whites and deep rich colors even in bright light room conditions.

The VHP system also reduces cabinet depth while optimizing focus, convergence, and picture geometry to deliver brighter highlights and improved resolution.

Simulated contrast used for comparison purposes only.

Comb Filter

Separates black and white detail from color information to virtually eliminate edge crawls and rainbow effects while extending resolution.

Black Level Expansion

Extends black levels in bright scenes to enhance contrast and detail.

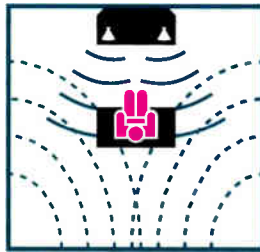
Viewing Distances

Distance From Screen	Suggested Minimum Screen Size
less than 7 feet	27"
7-10 feet	31"
10-11 feet	35"
11-15 feet	46"
15 feet or more	52"/60"



Connections

RCA televisions are equipped with color-coded monitor panels for easy connection of your VCR, laserdisc player, video game, or camcorder. You can even power optional surround sound speakers or hook-up to your stereo system. And our S-Video input optimizes performance from the latest S-VHS VCRs and laserdisc players. Simple connectivity makes assembling your home theatre easier than ever.



Home Theatre Sound Options

SRS®

Sound Retrieval System

Delivers three-dimensional realism from the television's built-in speakers by restoring the information your ears use to determine distance and direction. No additional speakers, wires or equipment required.

Matrix Surround Sound® Capability

Uses optional rear speakers to create theatre-like sound by synthesizing rear-channel audio information.

Broadcast Stereo with dbx® Noise Reduction/SAP

Improves the clarity and fidelity of stereo broadcasts by restoring dynamic range and suppressing unwanted noise.

CaptionVision¹¹ Closed Caption Capability



Closed Caption Decoder

When a program is aired with the encoded signal, the built-in closed caption decoder displays the audio portion of a program as text on the TV screen.

- Allows the hearing impaired to fully enjoy their favorite programs.

- Helps your children learn to read by seeing the words while the character is speaking them.

- Aids in teaching English as a second language because you hear the pronunciation as you read the words.

- Permits you to watch television with the sound turned off when your spouse or children are asleep.



Text Decoder

Built-in decoder on selected Home Theatre models displays text such as weather reports, stock quotes, sports scores, program information, etc., as words on the TV screen (when program is aired with text encoded signal).

RCA home theatre™

Advanced Color Picture-In-Picture¹²



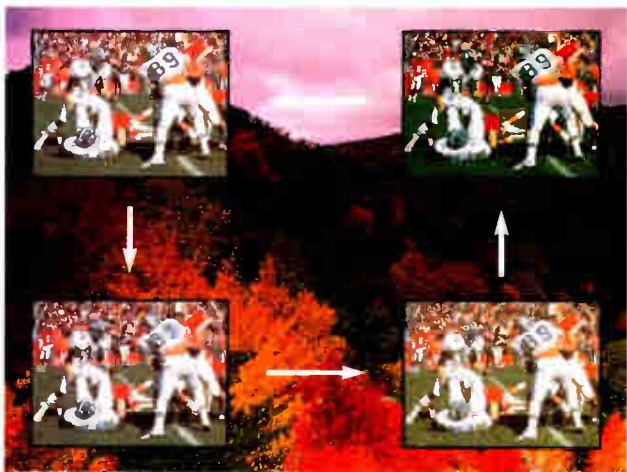
Advanced Color Picture-In-Picture¹²

Watch two programs at the same time, both in color. Remote-controlled Picture-In-Picture features include variable picture size (up to 25% of the total viewing area) which can be positioned anywhere on the screen. Additional features include Channel Guide, Zoom, and Pan.

Channel Guide
Displays a "snapshot" of up to 12 channels at a time for a visual update.



Color Picture-In-Picture¹²



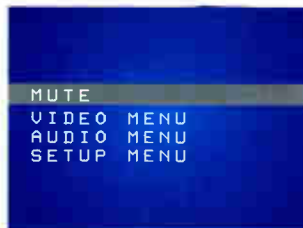
Color Picture-In-Picture¹²

Watch two programs at the same time, both in color. Complete remote control operation includes Picture-In-Picture On/Off, Move, Swap, and Freeze.

Other Features

VCR/Cable Converter Setup

Automatically selects the proper channel or video input for a VCR and cable box at the touch of a remote control button.



Remote-Controlled On-Screen Menu System

On-screen displays visually guide you through adjustments of all TV features and operations. On-screen display varies by model.



Channel Labeling

Assign up to four on-screen characters to easily identify channels (e.g., NBC, HBO, ESPN, VH-1, etc.).



Master Touch® Universal Remotes

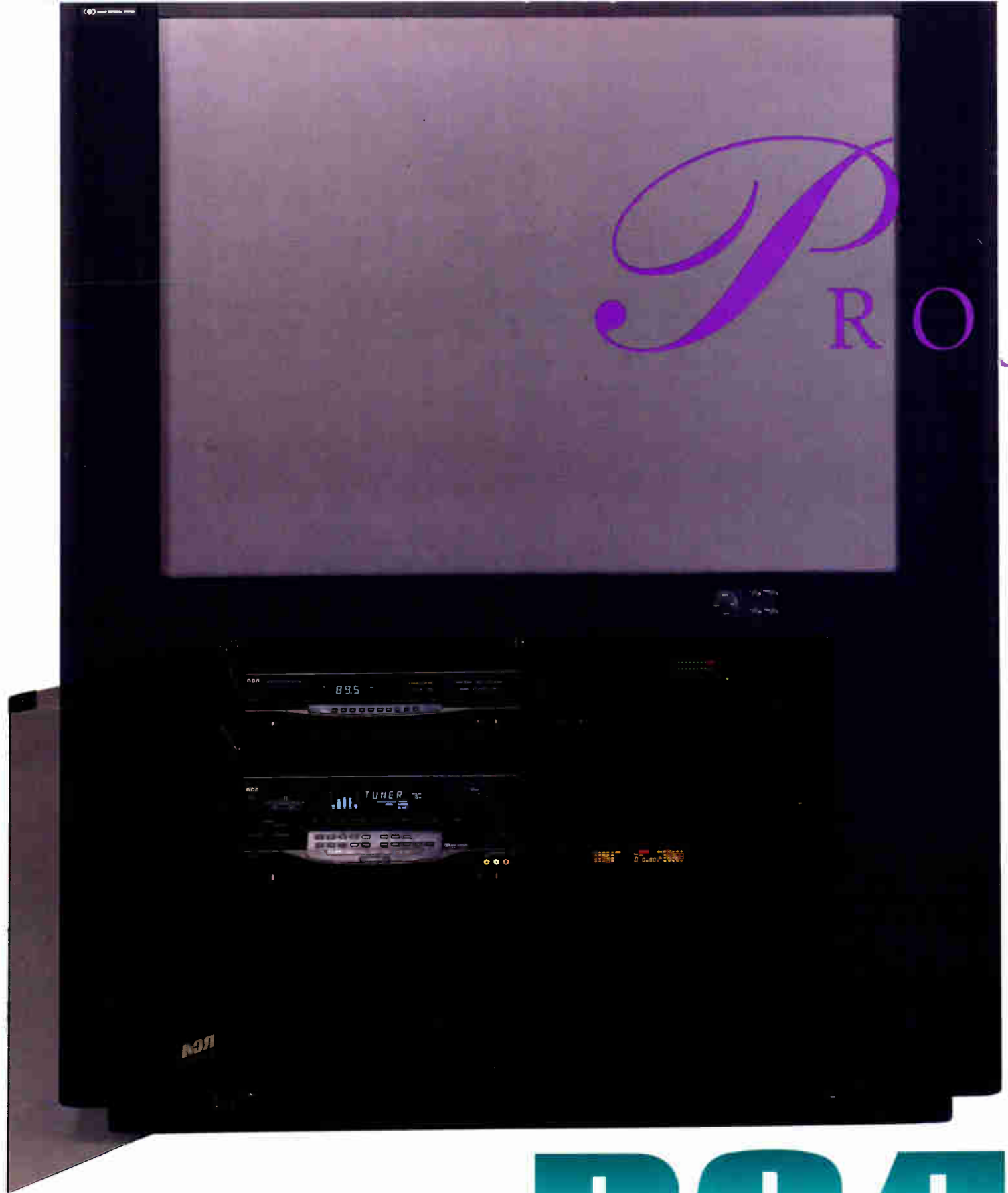
Color-coded keys make operation simple. Provide complete TV operation plus control the primary functions of virtually every brand of remote VCRs and cable boxes. Selected remotes will operate many brands of audio components.



RCA

home theatre™ projection storage

“Everything In Its Place!” All the excitement of the big projection screen with the added convenience of component storage for up to four audio/video components underneath the screen.



RCA

In 1993, the RCA Brand introduced the first projection TVs with built-in component storage below the screen.

RCA home theatre E C T I O N™

Models Feature:

• Master Touch® Universal Remote

• Remote-Controlled On-Screen Menu System

• Broadcast Stereo With dbx¹⁰ Noise Reduction

• Second Audio Program (SAP)

• Matrix Surround Sound®

• SRS (S)® Sound Retrieval System

• 13-Jack Monitor Panel With S-Video Connector

• Dual Antenna Inputs

• VCR/Cable Setup

• High Gain Picture System

• Comb Filter

• Parental Control¹¹

• Commercial Skip

• Channel Labeling

• 181-Channel Tuning Capability¹⁴

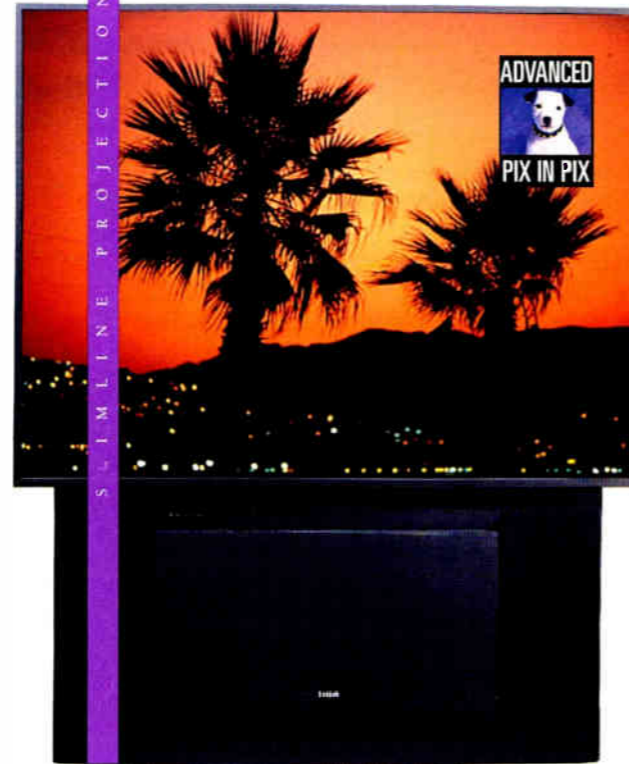
• CaptionVision  Closed Caption Capability¹¹

60"
P60752EB

Channel Guide, Zoom, Pan And Freeze

20-Watt¹⁰ Stereo Amplifier

61" H, 50 1/2" W, 24" D



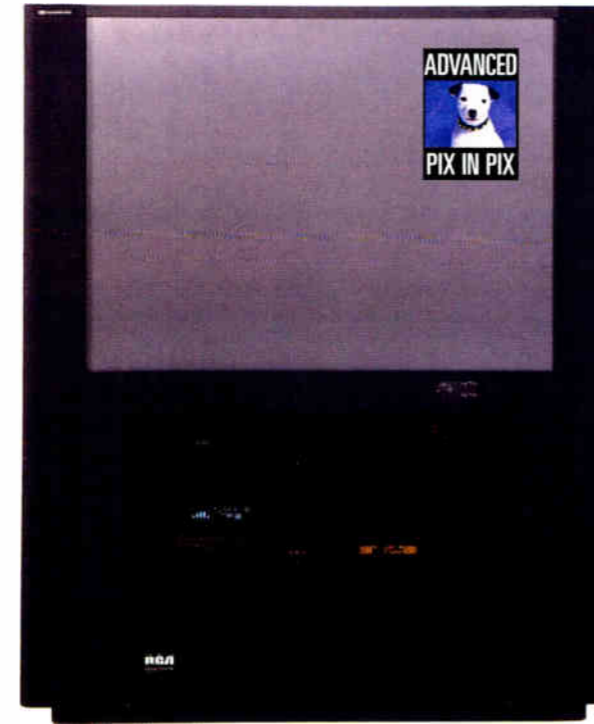
52"
P52770EB

Integrated Component Storage

Channel Guide, Zoom, Pan And Freeze

20-Watt¹⁰ Stereo Amplifier

64 1/2" H, 52 1/4" W, 31 1/4" D

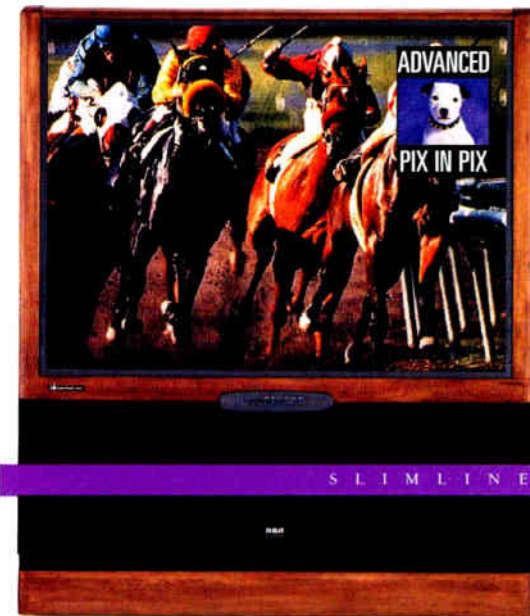
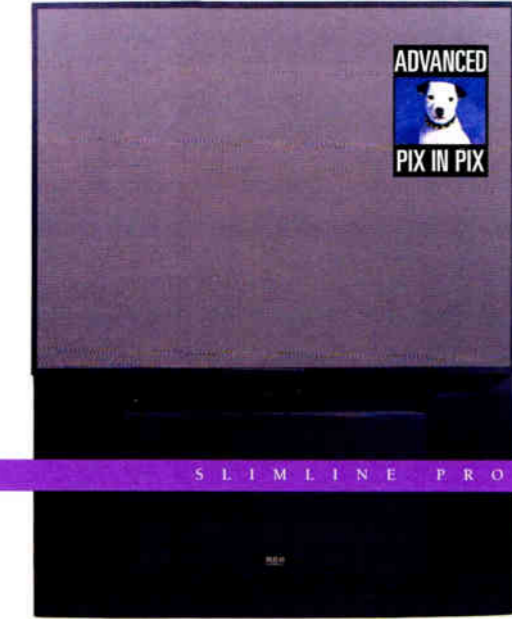


52"
P52756SB

Channel Guide, Zoom, Pan And Freeze

20-Watt¹⁰ Stereo Amplifier

56 1/2" H, 44 1/4" W, 21 1/4" D

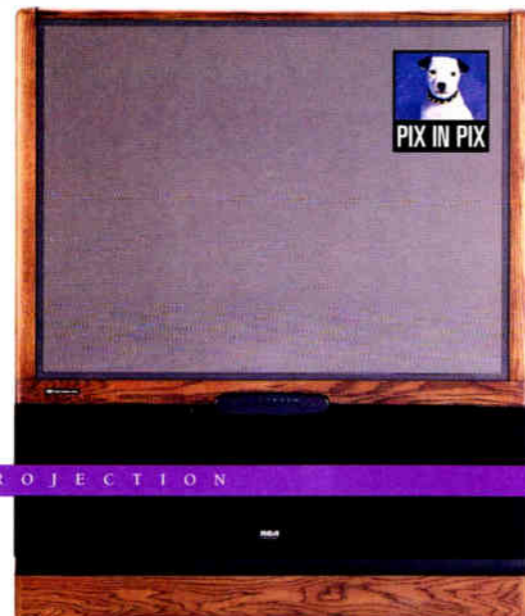


52"
P52753AT

Channel Guide, Zoom, Pan And Freeze

20-Watt¹⁰ Stereo Amplifier

56 1/2" H, 47 1/2" W, 21 1/4" D

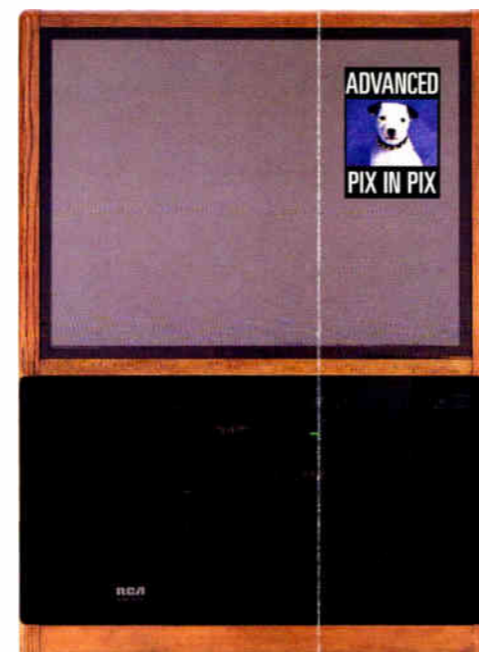


52"
P52731WK

Color Picture-In-Picture¹¹

10-Watt¹⁰ Stereo Amplifier

56 1/2" H, 47 1/2" W, 21 1/4" D



46"
P46770CK

Integrated Component Storage

Channel Guide, Zoom, Pan And Freeze

20-Watt¹⁰ Stereo Amplifier

60 1/2" H, 43 1/2" W, 30 1/2" D

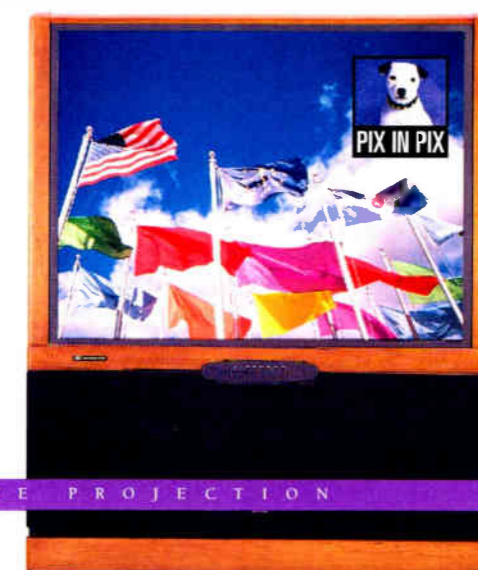


46"
P46732BA

Color Picture-In-Picture¹¹

10-Watt¹⁰ Stereo Amplifier

51 1/2" H, 42 1/4" W, 20 1/2" D

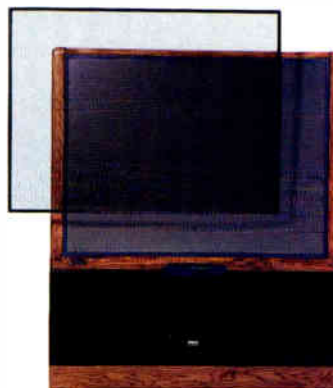


46"
P46731AT

Color Picture-In-Picture¹¹

10-Watt¹⁰ Stereo Amplifier

51 1/2" H, 42 1/4" W, 20 1/2" D



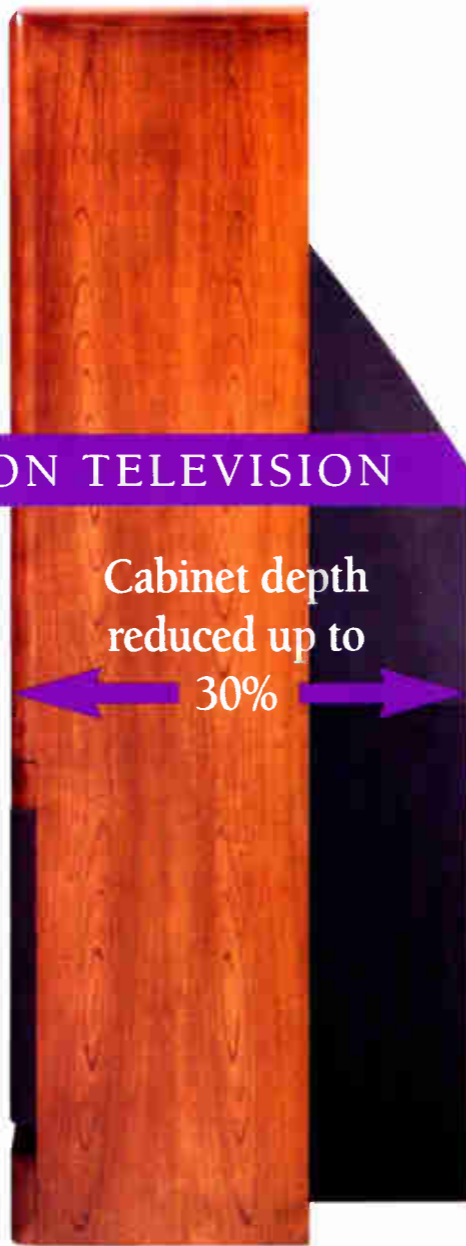
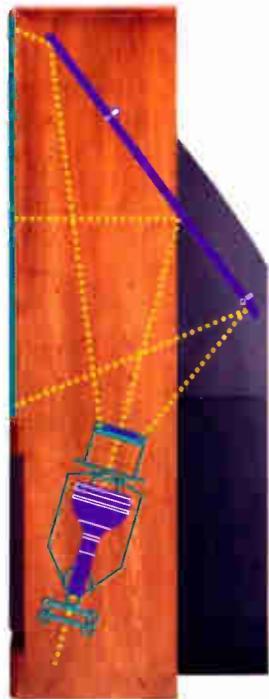
Super Shield®
Projection TV Screen Protectors
Over 100 shields available to fit every new RCA Projection TV and all brands of projection models sold in the last 5 years. Protects projection TV screen from scratches, spills and permanent damage.

RCA home theatre™ E C T I O N

NEW SLIMLINE PROJECTION TELEVISION

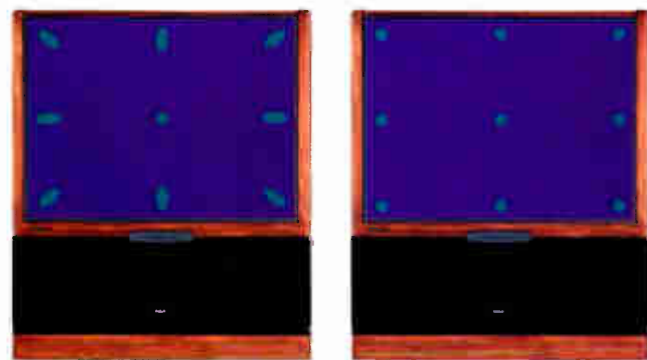
"A Bigger Picture.
Not a Bigger Television!"

RCA Slimline Projection TVs feature thinner, more attractive cabinets that offer a variety of placement choices in virtually any room.



Cabinet depth
reduced up to
30%

The new radius phosphor picture tube system optimizes picture performance in a reduced depth cabinet.



Beam Shapes with
Conventional Focus

Beam Shapes with
RCA Dynamic Focus

Dynamic Focus

Improves corner and edge focus for an overall sharper picture.

High Gain Picture System:

High Output/Liquid Cooled and Coupled CRTs

High Output Picture Tubes are liquid coupled to a precision optical system to deliver bright, clear images.

High Resolution/High Gain Screen

Utilizes double lenticular and fresnel lenses to deliver bright images over a wide viewing area.

High Transmittance Lens System

Hybrid glass/acrylic lens system optimizes focus and inhibits reflection.

First Surface Mirror

Reflects more light to the screen for a brighter picture.

RCA 35" & 31" direct view televisions

Models Feature:

- Master Touch® Universal Remote
- Remote-Controlled On-Screen Menu System
- Broadcast Stereo With dbx¹⁰ Noise Reduction
- Second Audio Program (SAP)
- Comb Filter*
- Channel Labeling
- Commercial Skip
- 181-Channel Tuning Capability**
- CaptionVision Closed Caption Capability**

35"
F35751MB
(Base Optional)

- Optimum Contrast Screen
- Channel Guide, Zoom, Pan And Freeze
- SRS Sound Retrieval System
- 13-Jack Monitor Panel With S-Video Connector
- 20-Watt¹⁰ Stereo Amplifier
- Dual Antenna Inputs
- 32 1/2" H, 34 3/8" W, 23 1/4" D



35"
F35731MB

- Optimum Contrast Screen
- SRS Sound Retrieval System
- 13-Jack Monitor Panel With S-Video Connector
- 10-Watt¹⁰ Stereo Amplifier
- 32 1/2" H, 34 3/8" W, 23 1/4" D



31"
F31700GG
(Base Optional)

- Optimum Contrast Screen
- SRS Sound Retrieval System
- 13-Jack Monitor Panel With S-Video Connector
- 10-Watt¹⁰ Stereo Amplifier
- 27 1/8" H, 30 1/4" W, 20 1/4" D



RCA home theatre™



35"
F35672MB

- Optimum Contrast Screen
- Multi-Language On-Screen Display
- 5-Jack Monitor Panel With S-Video Connector
- 32 1/2" H, 34 3/8" W, 23 1/4" D



31"
F31672ET

- Multi-Language On-Screen Display
- 5-Jack Monitor Panel With S-Video Connector
- 27 1/8" H, 30 1/4" W, 21" D



31"
F31632ET

- Multi-Language On-Screen Display
- 5-Jack Monitor Panel
- 27 1/8" H, 30 1/4" W, 21" D

35"
G35850CK

- Optimum Contrast Screen
- Channel Guide, Zoom, Pan And Freeze
- SRS **(●●)** Sound Retrieval System
- 13-Jack Monitor Panel With S-Video Connector
- 20-Watt¹⁵ Stereo Amplifier
- Dual Antenna Inputs
- 52 7/8" H, 42 1/2" W, 24 1/2" D



35"
G35830WK

- Optimum Contrast Screen
- SRS **(●●)** Sound Retrieval System
- 13-Jack Monitor Panel With S-Video Connector
- 10-Watt¹⁰ Stereo Amplifier
- 41 1/2" H, 43 1/4" W, 26 1/4" D



31"
G31750WKA

- SRS **(●●)** Sound Retrieval System
- 13-Jack Monitor Panel With S-Video Connector
- 10-Watt¹⁰ Stereo Amplifier
- 43 7/8" H, 37 1/4" W, 19 1/2" D



RCA colortrak plus™



35"
G35772AT

- Optimum Contrast Screen
- Multi-Language On-Screen Display
- 5-Jack Monitor Panel With S-Video Connector
- 42" H, 40 1/2" W, 25 1/2" D



31"
G31681AT

- Multi-Language On-Screen Display
- 5-Jack Monitor Panel With S-Video Connector
- 46 1/2" H, 36 1/2" W, 22 1/2" D



31"
G31642CK

- Multi-Language On-Screen Display
- 5-Jack Monitor Panel
- 36 1/4" H, 37 1/8" W, 22 1/2" D

RCA home theatre™ audio



Products designed to make pictures sound as good as they look.

ED3700F Dolby⁷ Pro Logic Surround System

(Shown above in optional RC2731 cabinet)

Amplifier

135 Watts/Channel* Dolby⁷ Pro Logic Surround Amplifier
30 Watts*—Center Channel, 25 Watts/Channel* Surround Channel
7 Digital Surround Settings (DSP)

Dual Cassette Deck

Dual Logic And Dual Auto Reverse
Dolby⁷ B And C Noise Reduction

Digital Tuner

30 Station Presets With AutoProgramming

5-Disc CD Changer

Simultaneous Play When Drawer Is Open

Center/Surround Speaker System

Magnetically Shielded
Integrated Wall-Mounting Bracket Included
6 Components Packaged In 1 Carton

SP2700T Tower Speakers

(Pictured Above)

250-Watt Maximum Power Handling Capability, Full-Range (40Hz-18,000Hz) Air-Suspension Speaker System

3-Way Driver Layout With 8" Woofer


Magnetically Shielded

Western Oak Finish Matches G27750WKA, G31750WKA And G35830WK RCA Televisions


43 1/4" H, 10 1/2" W, 12" D

*RMS rating into 8 ohms, 20Hz to 20,000Hz, ±3db with less than .05% THD


27", 26", 25" & 20"

- 27", 26", 25" and 20" Models Feature:
- Master Touch® Universal Remote Control*
 - 181-Channel Tuning Capability**
 - Channel Labeling
 - Remote-Controlled On-Screen Menu System
 - Commercial Skip
 - On-Screen Clock, Sleep And Alarm Timers
 - CaptionVision  Closed Caption Capability**



- 27"**
F27731BK
Home Theatre™ TV
(Base Optional)
- Optimum Contrast Screen
 - INVAR Shadow Mask
 - SRS  Sound Retrieval System
 - 10-Watt** Stereo Amplifier
 - Broadcast Stereo With dbx¹¹ Noise Reduction/SAP
 - 13-Jack Monitor Panel With S-Video Connector
 - 23 1/4" H, 27 1/2" W, 19 1/4" D



- 27"**
F27701BK
Home Theatre™ TV
(Base Optional)
- Optimum Contrast Screen
 - SRS  Sound Retrieval System
 - 10-Watt** Stereo Amplifier
 - Broadcast Stereo With dbx¹¹ Noise Reduction/SAP
 - 13-Jack Monitor Panel With S-Video Connector
 - 23 1/4" H, 27 1/2" W, 19 1/4" D

COLORTRAK PLUS™




- 27"**
F27672ET
- Optimum Contrast Screen
 - Broadcast Stereo With dbx¹¹ Noise Reduction/SAP
 - Multi-Language On-Screen Display
 - 5-Jack Monitor Panel
 - 24 1/4" H, 26 1/2" W, 19 1/4" D



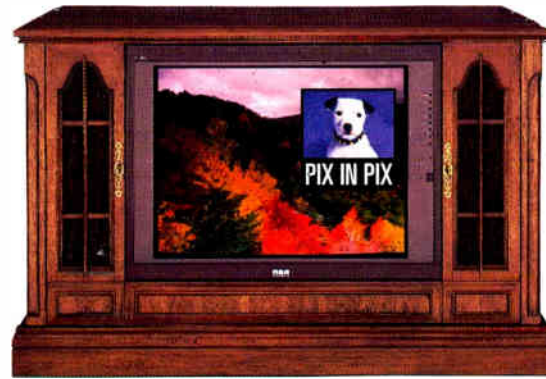
- 27"**
F27634ET
- Optimum Contrast Screen
 - Broadcast Stereo With dbx¹¹ Noise Reduction/SAP
 - Multi-Language On-Screen Display
 - 5-Jack Monitor Panel
 - 24 1/4" H, 26 1/2" W, 19 1/4" D



- 27"**
G27750WKA Home Theatre™ TV
- SRS  Sound Retrieval System
 - 10-Watt** Stereo Amplifier
 - Broadcast Stereo With dbx¹¹ Noise Reduction/SAP
 - 13-Jack Monitor Panel With S-Video Connector
 - 31" H, 31" W, 19 1/4" D



- 27"**
G27689AT
- Broadcast Stereo With dbx¹¹ Noise Reduction/SAP
 - Multi-Language On-Screen Display
 - 5-Jack Monitor Panel
 - 46" H, 31 1/2" W, 21 1/2" D



- 27"**
G27688HP
- Broadcast Stereo With dbx¹¹ Noise Reduction/SAP
 - Multi-Language On-Screen Display
 - 5-Jack Monitor Panel
 - 30 3/4" H, 47" W, 20 1/4" D



- 27"**
G27684HP
- Broadcast Stereo With dbx¹¹ Noise Reduction/SAP
 - Multi-Language On-Screen Display
 - 5-Jack Monitor Panel
 - 32 7/8" H, 32 1/2" W, 21" D



- 27"**
G27666AT
- Broadcast Stereo With dbx¹¹ Noise Reduction/SAP
 - Multi-Language On-Screen Display
 - 5-Jack Monitor Panel
 - 46" H, 31 1/2" W, 21 1/2" D



- 27"**
G27344HP
- ChannelLock™ Digital Remote
 - Broadcast Stereo With dbx¹¹ Noise Reduction/SAP
 - Multi-Language On-Screen Display
 - 5-Jack Monitor Panel
 - 30" H, 45 1/2" W, 20 1/4" D



- 20"**
F20638WH
- Broadcast Stereo With dbx¹¹ Noise Reduction/SAP
 - Multi-Language On-Screen Display
 - 5-Jack Monitor Panel
 - 19 1/2" H, 20 1/2" W, 19 1/2" D



- 20"**
F20637ET
- Broadcast Stereo With dbx¹¹ Noise Reduction/SAP
 - Multi-Language On-Screen Display
 - 5-Jack Monitor Panel
 - 19 1/2" H, 20 1/2" W, 19 1/2" D



- 20"**
F20632SE
- Broadcast Stereo With dbx¹¹ Noise Reduction/SAP
 - Multi-Language On-Screen Display
 - 5-Jack Monitor Panel
 - 19 1/2" H, 20 1/2" W, 18 7/8" D



- 20"**
F20352SF
- XS[®] Stereo
 - 3-Jack Monitor Panel
 - 19 1/2" H, 20 1/2" W, 19 1/2" D



colortrak plus performance features

REGA COLORTRAK PLUS™

PA4500M Amplifier

- 50 Watts/Channel* 4-Channel Home Theatre Amplifier
- 50 Watts*—Center Channel
- 12.5 Watts/Channel* x 2 Surrounds
- Connects Easily To Television, Without Disruption Of Current Video Connections
- Volume Controlled Through TV Remote
- Compatible With Any Stereo TV With Variable Audio Outputs (e.g. SRS ●●), Dolby Surround, Dolby Pro Logic Surround)
- 4 1/2" H, 8 1/2" W, 13" D

*RMS rating into 8 ohms, 20Hz to 20,000Hz, ± 1db with less than .5% THD



SP1420T Tower Speakers

- 160-Watt Maximum Power Handling Capability
- 3-Way Full-Range Driver Layout
- Magnetically Shielded
- Unique Contemporary Styling To Complement RCA F35731MB, F35751MB, P52756SB, P52770EB and P60752EB
- Tuned Port For Deeper Bass Response
- 45" H, 8" W, 13 1/4" D

RV3791F Dolby⁷ Pro Logic Surround Receiver

- 60W x 60W x 60W Main/Center Channels*
- 25W x 25W Front Surround Channels*
- 25W x 25W Rear Surround Channels*
- 5/7 Channel Switchable
- 4 Video/5 Audio Source Inputs
- 12 Digital Signal Processed Surround/Pro Logic Setting Modes Including An Enhanced "Cinema" Pro Logic Mode
- RCA Universal Remote Control (50-Button) Capable Of Operating All Main Functions On RCA And Many Other Brands Of Televisions, VCRs, CD Players, Cassettes And LD Players. Also controls the new RCA Brand DSS[®] receiver.
- Subwoofer Output
- 6 1/2" H, 16 1/2" W, 15" D

*RMS rating into 8 ohms, 20Hz to 20,000Hz, ± 1db with less than .05% THD



RV3681F Dolby⁷ Pro Logic Surround Receiver

- 60W x 60W x 60W Main/Center Channels*
- 15W x 15W Surround Channels*
- 3 Video/4 Audio Source Inputs
- RCA Universal Remote Control (50-Button) Capable Of Operating All Main Functions On RCA And Many Other Brands Of Televisions, VCRs, CD Players, Cassettes And LD Players. Also controls the new RCA Brand DSS[®] receiver.
- 6" H, 16 1/2" W, 14 1/2" D

*RMS rating into 8 ohms, 20Hz to 20,000Hz, ± 1db with less than .09% THD



Surround Speakers SP5065S2 White/SP5060S2 Black

- 70-Watt Maximum Power Handling Capability
- Full-Range: 100Hz-10,000Hz
- Unique Plastic Cabinet Designed For Flexible Placement
- Bass Reflex Design For Improved Bass Response
- 7 1/2" H, 6" W, 4" D

SP1320C Center Channel Speaker

- 100-Watt Maximum Power Handling Capability
- Full-Range: 100Hz-20,000Hz
- Magnetically Shielded
- Two-Way Design: Two Midwoofers—3 1/2", One Tweeter—1"
- 5 1/2" H, 17" W, 8" D

SP3350SW Powered Subwoofer

- 50-Watt¹ Built-In Amplifier
- Long-Throw Low-Distortion 8" Woofer
- Switchable Filter To Customize Installation
- Tuned Port for Deeper Bass Response
- Magnetically Shielded
- 10' Cable Included
- 17 1/2" H, 12" W, 14" D

SP3300BS2 Bookshelf Speakers

- 100-Watt Maximum Power Handling Capability
- Full-Range: 70Hz-20,000Hz
- Magnetically Shielded
- Tuned Port For Deeper Bass Response
- 14" H, 8" W, 12 1/2" D

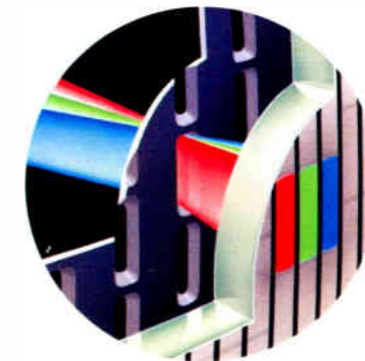
Entertainment technology made simple!

ColorTrak Plus™ makes pictures perfectly simple. So simple, so automatic that you may never adjust them. Automatic circuitry like Autocolor, Dynamic Black Expansion and Autocolor/Contrast "Trak" the signal to maintain optimum picture performance. ColorTrak Plus™ makes television viewing even more enjoyable with great features such as: Channel Labeling, Commercial Skip, and Color Picture-In-Picture (PIP)². Distinct three-dimensional designs provide visual impact to any room.



LSI Chassis Technology

ColorTrak Plus™ 20" through 35" models use an advanced LSI (Large Scale Integrated) circuit design to dramatically reduce the number of parts, improving reliability and signal processing efficiency.



Direct View System

VHP (Very High Performance) Picture Tube
Delivers brighter highlights and improves resolution.

110-Degree COTY System
Combined Optimum Tube & Yoke (COTY) system reduces cabinet depth while optimizing focus, convergence, and picture geometry.

High Drive Picture System
55 watts of picture power produces outstanding brightness and contrast for more lifelike images.



Component Connections

RCA televisions are equipped with color-coded monitor panels for easy connection of your VCR, laserdisc player, video game, or camcorder.

Sound Options

Broadcast Stereo With dbx¹⁰ Noise Reduction
Improves the clarity and fidelity of stereo broadcasts by restoring dynamic range and suppressing unwanted noise.

Second Audio Program (SAP)
Decodes the alternate second audio program available on some broadcasts.

XS[®] Stereo
Delivers stereo sound from compact cabinet designs. Patented process suppresses noise, restores dynamic range, and expands the stereo signal to create a more spacious sound effect.

27"
F27632SE
XS[®] Stereo
3-Jack Monitor Panel
24 1/4" H, 26 1/2" W, 19 1/2" D



26"
F26672FT
Broadcast Stereo With
dbx¹¹ Noise Reduction/SAP
Multi-Language On-Screen Display
5-Jack Monitor Panel
23 1/4" H, 25 1/2" W, 19 1/4" D



26"
F26634SF
Broadcast Stereo With
dbx¹¹ Noise Reduction/SAP
Multi-Language On-Screen Display
5-Jack Monitor Panel
23 1/4" H, 25 1/2" W, 19 1/4" D



25"
F25672SE
Broadcast Stereo With
dbx¹¹ Noise Reduction/SAP
Multi-Language On-Screen Display
5-Jack Monitor Panel
22 1/2" H, 24 1/2" W, 18 1/2" D



25"
F25652BL
Broadcast Stereo With
dbx¹¹ Noise Reduction/SAP
Multi-Language On-Screen Display
5-Jack Monitor Panel
22 1/2" H, 24 1/2" W, 18 1/2" D



RCA Brand color TVs have captured over 100 Industry Design & Engineering Honors during the past three years.



27"
G27342WK
ChannelLock[™] Digital Remote
Broadcast Stereo With dbx¹¹ Noise Reduction/SAP
Multi-Language On-Screen Display
5-Jack Monitor Panel
32 3/4" H, 30 3/4" W, 21" D



26"
G26686WK
Attachable Gallery Rail
Broadcast Stereo With dbx¹¹ Noise Reduction/SAP
Multi-Language On-Screen Display
5-Jack Monitor Panel
32 1/2" H, 40 1/4" W, 20 1/2" D



26"
G26682CK
Broadcast Stereo With dbx¹¹ Noise Reduction/SAP
Multi-Language On-Screen Display
5-Jack Monitor Panel
32 7/8" H, 32 1/2" W, 21 1/4" D



25"
G25343WK
ChannelLock[™] Digital Remote
XS[®] Stereo
3-Jack Monitor Panel
29 1/4" H, 38 3/4" W, 19 1/4" D



25"
G25342AT
ChannelLock[™] Digital Remote
XS[®] Stereo
3-Jack Monitor Panel
29 1/4" H, 39 3/4" W, 19 1/2" D

tv/vcr combos



20"
T20005BK
21 1/4" H, 21 1/4" W, 19 1/4" D



13"
T13005BK
15 1/4" H, 14 1/4" W, 15 1/4" D

Both TV/VCR Combo Models Feature:

- 2-Head VCR With Automatic Head Cleaner
- TV/VCR Remote (55 Functions)
- 181-Channel Tuning Capability¹¹
- On-Screen VCR Programming
- Auto Repeat
- Caption Vision Closed Caption Capability¹¹

portables: 13" & 9"

20"
F20602SE
Master Touch[®] Universal Remote
19 1/4" H, 20 1/4" W, 19 1/4" D



20"
F20301SF
ChannelLock[™] Digital Remote
19 1/4" H, 20 1/4" W, 19 1/4" D

- 13" And 9" Portable Models Feature:**
- ChannelLock[™] Digital Remote
 - 181-Channel Tuning Capability¹¹
 - Remote-Controlled On-Screen Menu System
 - On-Screen Clock, Sleep And Alarm Timers
 - Commercial Skip



13"
E13327SF
Multi-Language On-Screen Display
Remote Control FM Radio With Weather Band
AC/DC Operation
CaptionVision Closed Caption Capability¹¹
Headphone Jack
13 1/4" H, 14 1/4" W, 15 1/4" D



13"
E13324WH
Multi-Language On-Screen Display
Remote Control FM Radio With Weather Band
CaptionVision Closed Caption Capability¹¹
Headphone Jack
13 1/4" H, 14 1/4" W, 15 1/4" D



13"
E13323SE
Multi-Language On-Screen Display
CaptionVision Closed Caption Capability¹¹
13 1/4" H, 14 1/4" W, 15 1/4" D



9"
E09304WH
Spacesaver[™] Quick-Release Under-Cabinet Swivel Bracket
Remote Control FM Radio With Weather Band
AC/DC Operation
Headphone Jack
10" H, 11 1/4" W, 13" D

colortrak plus convenience features

CaptionVision Closed Caption Capability¹¹



Closed Caption Decoder
When a program is aired with the encoded signal, the built-in closed caption decoder displays the audio portion of a program as text on the TV screen.

- Allows the hearing impaired to fully enjoy their favorite programs.
- Helps your children learn to read by seeing the words while the character is speaking them.
- Aids in teaching English as a second language, because you hear the pronunciation as you read the words.
- Permits you to watch television with the sound turned off when your spouse or children are asleep.



Newly-Designed Remote Controls
Colorful, comfortable, easy-to-understand remotes operate every feature and function of your RCA television.

Master Touch® Universal Remote models also control virtually all brands of VCRs, cable boxes and RCA Home Theatre™ video components.

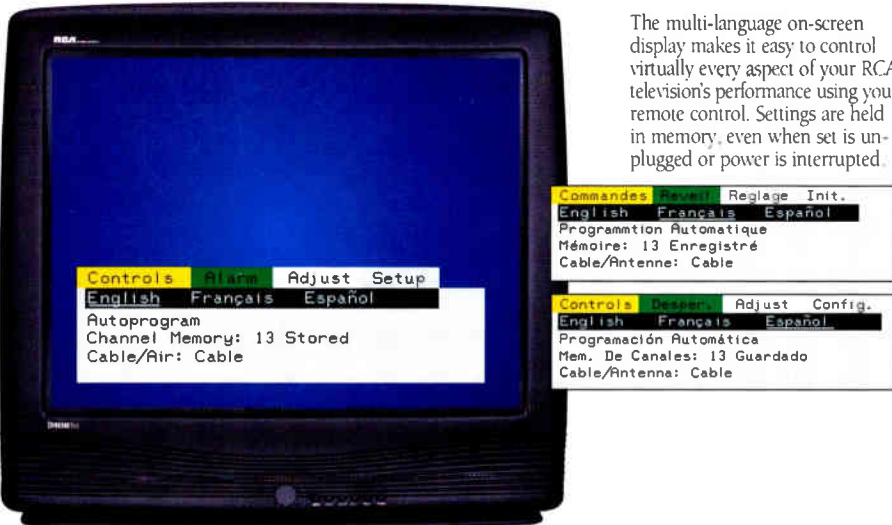
Multi-Language, Color-Coded Menu System



Controls Menu
Select features such as Closed Captioning, Sleep Timer and Picture Contrast Adjustment.

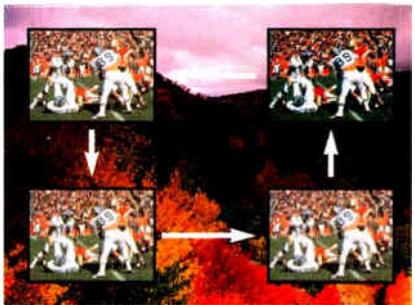
Programmable Timer System
Automatic timer system can be used as a sleep timer, an alarm timer or as a scheduling timer.

Adjust Menu
Adjust picture preference settings or activate the Autocolor feature.



The multi-language on-screen display makes it easy to control virtually every aspect of your RCA television's performance using your remote control. Settings are held in memory, even when set is unplugged or power is interrupted.

Other Features



Color Picture-In-Picture¹²
Watch two programs at the same time, both in color. Complete remote control operation includes Picture-In-Picture On/Off, Move, Swap, and Freeze.



Channel Labeling
Assign up to four on-screen characters to easily identify channels (e.g., NBC, HBO, ESPN, VH-1, etc.).

Commercial Skip
Countdown timer returns TV to original channel, so you can browse other channels during program breaks.

Parental Control
Simple control allows you to restrict the channels that your child watches. Available on channels 1-99.

Advanced AutoProgramming
Automatically finds and stores active channels into channel memory and selects cable or off-air tuning.

See footnotes on page 51. Features vary by model. Please check the feature comparison charts for model specifications. Screen sizes measured diagonally. Simulated picture.

RCA

COMBINATION LASERDISC/CD PLAYERS

LDR610

- Automatic Two-Side Playback
- High-Resolution Video Performance
- One-Bit Digital/Analog Converter
- 24-Step Programmable Playback
- S-Video Output
- Dual Audio/Video Outputs
- Direct-Access Infrared Remote Control
- 5 1/2" H, 17" W, 17 1/2" D



LDR307

- High-Resolution Video Performance
- One-Bit Digital/Analog Converter
- 32-Step Programmable Playback
- Dual Audio Outputs
- Headphone Jack With Volume Control
- Direct-Access Infrared Remote Control
- 5 1/2" H, 16 1/2" W, 14 1/4" D



HOME THEATRE™ VCRs

RCA Home Theatre™ entertainment begins with a high-performance video source. RCA Hi-Fi VCRs combine great picture excitement and sound quality comparable to CD-level performance.

V I D E O

VCR Plus+TM

This innovative system addresses the consumer demand for ease of VCR programming. Selected VCRs combine VCR Plus+ with advanced RCA on-screen display technology, which significantly simplifies the programming process. The user programs the VCR by entering a Plus CodeSM number, and selecting one-time, daily or weekly recording.SM The Plus Code numbers can be found in many local TV listings and TV Guide.SM

VCR Plus+ with End-Time Adjustment

Now you can adjust the end time of the show that you intend to record.

Cable Box Channel Control

Brings the convenience of multi-channel, multi-program recording capability by automatically selecting the proper cable box channel for recording.SM Provides programming freedom to remote-controlled cable box owners.



Large, Easy-To-Read Digital Display

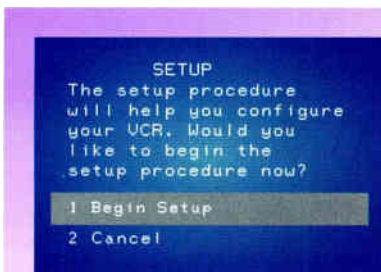
Permits easy viewing of the clock, channel, and functions from across the room.



Master Touch[®] Universal Remote

New design provides control of all VCR functions, as well as basic functions for up to 30 different television brands, cable box systems and, with selected models, the new RCA Brand DSSSM receiver.

VCR: THE RCA ADVANTAGE SYSTEM



QuickSet

Initial on-screen guide that walks you through the VCR set-up process.

Program Editor

Allows simple adjustments to previously saved timer programs.

Front Panel Menu Control

Access all functions and programming from the VCR front panel when remote is not available.

Program Express

Ability to program VCR quickly and easily without turning on the television.



Simplified On-Screen Programming

Easy-to-read and to operate—uncomplicated instructions viewed on the television screen guide the user through simple directions, taking the confusion out of the recording and operating processes.

Models Feature:

- **Simplified On-Screen Programming**
- **181-Channel Tuning Capability****
- **Digital Auto Tracking**
- **On-Screen VCR Setup Menu**
- **Quick Start Mechanism**
- **Elapsed-Time Counter**

VR721HF S-VHS

- VCR Plus+® Programming
- Built-In Cable Box Channel Control
- Master Touch® Universal Remote With Digital Jog Shuttle
- Automatic Head Cleaning System
- Flying Erase Head
- Audio/Video Dubbing
- 8-Event/1-Year Programmable Timer
- VHS Index Search System
- 3½" H, 15" W, 11½" D

VR674HF

"RCA Advantage System"
QuickSet Guide
Program Editor
Front Panel Menu Control
Program Express

- VCR Plus+® Programming With End-Time Adjust
- Built-In Cable Box Channel Control
- Master Touch® Universal Remote
- Front Audio/Video Input Jacks
- Automatic Head Cleaning System
- 8-Event/1-Year Programmable Timer
- Pro-Tect Plus™
- VHS Index/Time/Blank Search
- 3½" H, 15½" W, 12¼" D



RCA
HOME THEATRE™ 4-HEAD HI-FI VCRs

4-HEAD VCRs



VR538

"RCA Advantage System"
QuickSet Guide
Program Editor
Front Panel Menu Control
Program Express

- VCR Plus+® Programming With End-Time Adjust
- Built-In Cable Box Channel Control
- Master Touch® Universal Remote
- Front Audio/Video Input Jacks
- Automatic Head Cleaning System
- 8-Event/1-Year Programmable Timer
- Pro-Tect Plus™
- VHS Index/Time/Blank Search
- 3½" H, 15½" W, 12¼" D



VR507

- Master Touch® Universal Remote
- 8-Event/1-Year Programmable Timer
- VHS Index Search System
- 3½" H, 15" W, 10¼" D



VR528

- VCR Plus+® Programming With End-Time Adjust
- Master Touch® Universal Remote
- 8-Event/1-Year Programmable Timer
- Pro-Tect Plus™
- VHS Index/Time Search
- 3½" H, 15½" W, 12¼" D

RCA

In 1977, the RCA Brand introduced the industry's first VHS 4-hour video cassette recorder.

VR672HF

- VCR Plus+™ Programming
- Master Touch® Universal Remote
- 8-Event/1-Year Programmable Timer
- VHS Index/Time Search
- 3½" H, 15" W, 10¼" D



VR603HF

- Bilingual On-Screen Programming (English/Spanish)
- Direct-Access Infrared Remote
- 8-Event/1-Year Programmable Timer
- 3½" H, 15" W, 11¼" D



VR610HF

- Master Touch® Universal Remote
- 8-Event/1-Year Programmable Timer
- VHS Index Search System
- 3½" H, 15" W, 10¼" D



2-HEAD VCRs



VR329

- Master Touch® Universal Remote
- 4-Event/1-Year Programmable Timer
- VHS Index Search System
- 3½" H, 15" W, 10¼" D



VR503

- Bilingual On-Screen Programming (English/Spanish)
- Direct-Access Infrared Remote
- 8-Event/1-Year Programmable Timer
- 3½" H, 15" W, 11¼" D



VR327

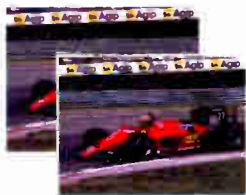
- Bilingual On-Screen Programming (English/Spanish)
- Direct-Access Infrared Remote
- 4-Event/1-Year Programmable Timer
- 3½" H, 15" W, 11¼" D

Camcorder



Scene Select AE Recording Modes

Special recording modes allow you to select the right setting for recording conditions.



High-Speed Shutter



Sports



12:1



24:1



Portrait



Twilight



Monotone



Backlight

Zoom Plus™ Optical System

Quick and easy! The Zoom Plus System goes beyond conventional camcorder's zoom to digitally double the zoom range up to 24:1. Plus... special extended zoom mode provides even greater telephoto capability— up to 100:1. (Note: Digital Zoom above 24:1 is primarily for special effects.)

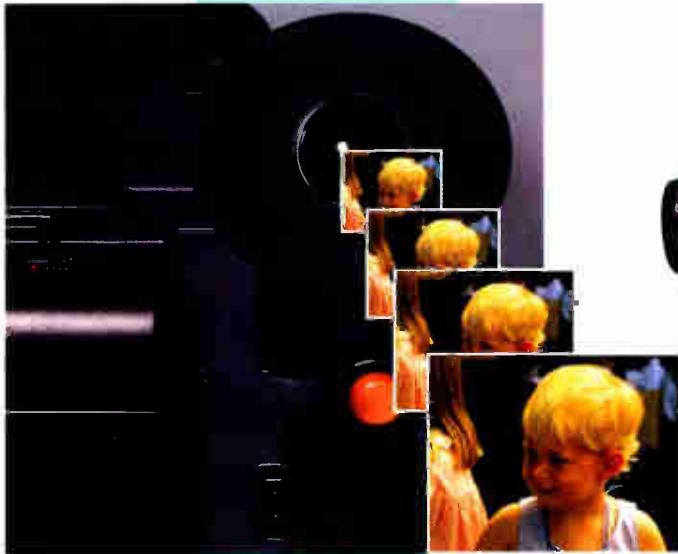
Electronic Image Stabilization (EIS)

Small camcorders can be difficult to hold steady for long time periods. Electronic Image Stabilization helps to minimize camcorder movement by digitally stabilizing the picture.

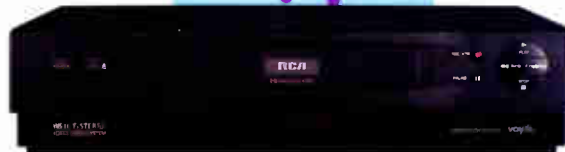
Random-Assembly Editing

Program your camcorder to selectively edit up to eight pre-recorded segments in any order onto your video tape.

R D E R S



Colorview™ Color Viewfinder
Advanced color viewfinder technology lets you see the world of color you are recording... because we don't live in a black and white world.



Camcorder compatibility with home VCR.
Full-size and compact VHS camcorder recordings playback in your VHS VCR. Convenient and easy-to-use.

RCA Camcorder Accessories



Camcorder Carrying Cases
With bags to fit every camcorder size and consumer preference, this line is functional, stylish and fills all promotional, value and premium bag needs.



Camcorder Tripods
RCA tripods add extra stability and convenience that will give videos a professional finish.



Video Tape/VHS-C Cassette Adapter
With a lifetime warranty*, RCA video tape is available in VHS, VHS-C, S-VHS and 8mm formats and is life test certified for durable and consistent performance. The universal adapter allows a VHS-C cassette to playback in any standard VHS VCR.

*See your dealer for a copy of the warranty.



Camcorder Batteries
RCA rechargeable camcorder batteries are designed to the highest-quality, durability and safety standards. Sixteen core battery models cover virtually every major brand of camcorder on the market. Informative packaging and cross-reference material make selecting the right battery easy.



Lights and Lenses
Ultra compact and lightweight, the RCA camcorder light helps fill in the shadows and dark spots with a soft, lush light and features a rechargeable battery. RCA accessory lenses make the most of camcorder use and enjoyment. The wide-angle lens captures the big picture, while the telephoto lens brings out the fine detail of extreme close-ups. Both mount in seconds to most 8mm and VHS-C camcorders.

VHS

Small Wonder
V H S P L A Y B A C K

Compact Models Feature:

Full-Range AutoFocus System

1 Lux Low Light
Mode Recording

Date/Time Insert

Flying Erase Head

Automatic Head Cleaner

RCA

C A M C O



VHS

VHS Models Feature:

Full-Range AutoFocus System

1 Lux Low Light Mode Recording

AE High-Speed Shutter
(1/60th-1/4,000th Second)

2-Line/2-Page Titler

DSP2-Digital Signal Processing

**CC547
VHS**

24:1 Zoom Plus™ System

Colorview™ Color Viewfinder

Digital Zoom to 100:1

Flying Erase Head

Built-In Light

3 Digital Fades

Microphone Wind Filter

8 7/8" H, 4 1/2" W, 12 1/4" D

**CC413
VHS**

12:1 (Wide), 2-Speed
Power Zoom Lens

Flying Erase Head

Time/Date Insert

8 7/8" H, 4 1/2" W, 12 1/4" D

CC604
Compact VHS

- 12:1 Power Zoom Lens
- Colorview™ Color Viewfinder
- Scene Select AE Recording Modes
- 8 Pre-programmed Titles Plus
1-Line/1-Page Titler
With Character Generator
- Camcorder/Multi-Brand VCR
Remote Control
- Random-Assembly Editing
- Dual Battery Charger
- 4 7/8" H, 4 1/2" W, 7 1/4" D



CC600
Compact VHS

- 12:1 Power Zoom Lens
- 1-Line Titler With
Character Generator
- Dual Battery Charger
- Built-In Lens Cap
- 4 7/8" H, 4 1/2" W, 7 1/4" D



R D E R S



PRO845
8mm

- 12:1 Power Zoom Lens
- Colorview™ Color Viewfinder
- Scene Select AE Recording Modes
- 1 Lux Low Light Mode Recording
- Automatic Head Cleaner
- 4 1/2" H, 4 1/4" W, 8 1/4" D



PRO843
8mm

- 12:1 Power Zoom Lens
- Scene Select AE Recording Modes
- 2 Lux Low Light Mode Recording
- 2-Line/1-Page Titler
- Digital Special Effects
- Digital Signal Processing
- Sports Viewfinder
- 4 7/8" H, 4 1/8" W, 9" D

8mm

8mm Models Feature:

- Full-Range
AutoFocus System
- Flying Erase Head
- Date/Time Insert
- Remote Control
Record/Playback
Functions

RCA
Universal
Remote Selling Center



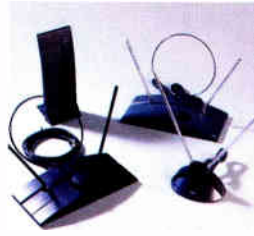
**SystemLink™
Universal
Remote
Controls**

Take control of multiple brands of video and audio components. Models are available that operate one, three, four or five different electronic components.



RCA

accessories



Indoor TV Antennas
(Unamplified and Amplified)
RCA Brand indoor TV antennas are easy to hook-up and styled to complement modern TV cabinets.



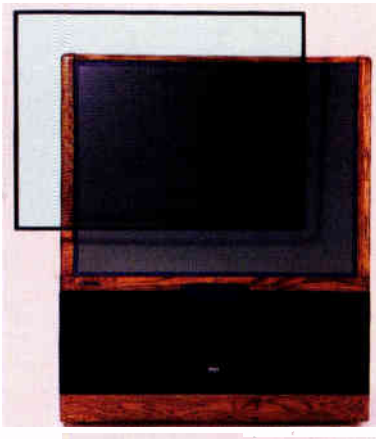
Cordless Stereo Headphones (WHP101)
Advanced 900 MHz radio frequency technology provides high quality, interference-free stereo sound without any line-of-sight restrictions found in infrared systems.

Universal



- A/V Hook-Up Accessories
- Signal Amplifier
- Surge Protectors
- CD Car Adapters
- Signal Splitters
- Dipole FM Antenna
- Coax Video Cables
- Audio Patch Cables
- Speaker Wire

Super Shield®



Projection TV Screen Protectors
Over 100 shields available to fit every new RCA Projection TV and all brands of projection models sold in the last 5 years. Protects projection TV screen from scratches, spills and permanent damage.

Video



Video Tapes
With a lifetime warranty*, RCA video tape is available in VHS, VHS-C, S-VHS, and 8mm formats.
**See your dealer for a copy of the warranty.*

Rewinder
Save wear and tear on VCRs, with the added benefit of viewing the next video while the previous one rewinds.



Wireless Phone Jack System

Industry Exclusive!
Turn any electrical outlet into a phone jack instantly. Using patented technology, the Wireless Phone Jack System uses the existing electrical circuitry inside the home. Adding an outlet is as easy as plugging in the extension unit. Additional extensions are available to expand the phone jack system.

HOME AUDIO

RP-9753 Dual Component Home Audio Mini-System with 3-Disc CD Changer

- Programmable 32-Track CD Memory
- AM/FM/FM Stereo Digital Tuning System With 24 AM/FM Station Presets
- Dual Cassette Decks With High-Speed Synchronous Dubbing
- 2 x 2-Way Speaker System With 5" Woofers And 2" Cone Tweeters
- 15 Watts Per Channel (10% THD, 90Hz-20kHz @ 8 Ohms)
- 5-Band VisEQ™ System With 5 Tone Presets
- 15" H, 26" W, 12 1/2" D



RP-8593 Home Audio Mini-System with 3-Disc CD Changer

- Programmable 45-Track CD Memory
- AM/FM/FM Stereo Digital Tuning System With 24 AM/FM Station Presets
- Dual Cassette Decks With High-Speed Synchronous Dubbing
- 2 x 2-Way Speaker System With 5" Woofers And 2" Cone Tweeters
- 5 Watts Per Channel (10% THD, 100Hz-15kHz @ 4 Ohms)
- 3-Band VisEQ™ System With 5 Tone Presets
- Bass Boost
- 16-Key Remote Control For Amplifier, Tuner And CD Player
- 11 1/2" H, 27" W, 12 1/2" D



RP-8520 Home Audio Mini-System with CD Player

- Easy Drawer-Load CD Player
- AM/FM/FM Stereo
- Single Cassette
- Ported Bass-Reflex Speaker System
- Bass Boost
- Compact Mini-Bookshelf Size
- 9 1/2" H, 21 1/4" W, 7 1/2" D



RP-7950 3-Piece Portable CD Player with AM/FM/FM Stereo Dual Cassette Recorder

- Programmable 21-Track CD Memory
- Detachable 4-Speaker Sound System With Ported 5" Woofers And 2" Cone Tweeters
- 5-Band Graphic Equalizer
- Simulated Surround Sound And Bass Boost
- Switchable High-Speed Synchronous Dubbing
- 11 1/2" H, 26 1/2" W, 8 1/2" D



RP-7971 Portable CD Player with AM/FM/FM Stereo Dual Cassette Recorder

- Two 4" Full-Range Stereo Speakers
- 3-Band Graphic Equalizer
- Programmable 21-Track CD Memory
- Switchable High-Speed Synchronous Dubbing
- Continuous Play
- 6 1/2" H, 22" W, 8 1/2" D



RP-7962 Portable CD Player with AM/FM/FM Stereo Dual Cassette Recorder

- 4-Speaker Sound System With 4" Woofers And Piezo Tweeters
- 3-Band Graphic Equalizer
- Simulated Surround Sound And Bass Boost
- Programmable 21-Track CD Memory
- Switchable High-Speed Synchronous Dubbing
- Continuous Play
- 8 1/2" H, 25 1/2" W, 8 1/2" D



RP-7944 Portable CD Player with AM/FM/FM Stereo Cassette Recorder

- 4" Full-Range Dynamic Speakers
- Separate Bass/Treble Boost Controls
- Programmable 21-Track CD Memory
- CD Intro Scan And Shuffle Play
- CD Storage Compartment
- 7 1/2" H, 19" W, 8" D

RCA

A U D I O ! S T E R E O

Advanced Technology . . . Awesome Entertainment!

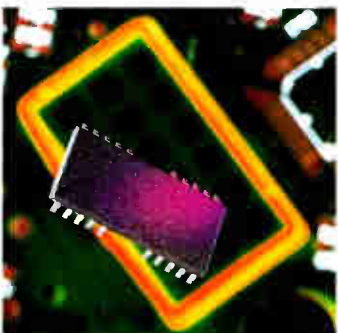
Car/Personal CD Player



Portable Audio



Home Audio Systems



Electronic Skip Protection

Shock-resistant technology delivers uninterrupted music playback.



Sound and Style

Incredible sound and smashing designs add up to powerful, portable performance!



Simultaneous Play and Load System

Change two CDs while the third one keeps playing.



RCA PRO SOUND

Car Accessories



RP-7906 Car/Personal CD Player



Electronic Skip Protection
Shock-Resistant Technology Delivers Uninterrupted Music Playback

Anti-Shock Mechanical Damper Mechanism

1-Bit D/A Converter, 8X Oversampling

Programmable 22-Track CD Memory

3-Position Bass/Treble Boost System

Lightweight Stereo Headphones

AC/DC Converter

Car DC Adapter/Car Cassette Audio Output Adapter

1 1/2" H, 5 1/8" W, 6 3/4" D



RP-7904 Car/Personal CD Player

Programmable 16-Track CD Memory

3-Position Bass Boost

CD Intro Scan And Shuffle Play

Battery Saver Auto-Off And Hold

Lightweight Stereo Headphones

AC/DC Converter

Car DC Adapter/Car Cassette Audio Output Adapter

1 1/2" H, 5 1/8" W, 6" D



RP-7903 Personal CD Player

Programmable 16-Track CD Memory

3-Position Bass Boost

CD Intro Scan And Shuffle Play

Battery Saver Auto-Off And Hold

Lightweight Stereo Headphones

AC/DC Converter

1 1/2" H, 5 1/8" W, 6" D

Stand-Alone CD Players



RP-8055 Full-Size 5-Disc CD Changer

- Programmable 32-Track CD Memory/Random Play
- 8X Oversampling
- Simultaneous Play And Load System
- 27-Key Remote Control
- Vacuum Fluorescent Display
- 4 1/2" H, 17" W, 14 1/2" D



CD1051M Midi Single CD Player

- Programmable 20-Track CD Memory
- Repeat One/All
- Search And Skip Functions
- 9-Key Remote Control
- 3 1/8" H, 14" W, 11 1/8" D



PORTABLE AUDIO



RP-7855 3-Piece AM/FM/FM Stereo Dual Cassette Recorder

- Detachable 4" Full-Range Dynamic Speakers With Tuned Ports
- Bass Boost, Stereo Enhance, And "Vivid" Controls
- Continuous Play Mode
- Switchable High-Speed Synchronous Dubbing
- 8" H, 24 1/2" W, 6 1/2" D



RP-7824 3-Piece AM/FM/FM Stereo Cassette Recorder

- Detachable 4" Full-Range Dynamic Speakers
- Bass Boost
- Simulated Surround Sound
- 6 Pushbutton Cassette Operation
- One-Button Record
- 6 1/2" H, 24 1/2" W, 5 1/2" D



RP-7770 Mini AM/FM/FM Stereo Dual Cassette Recorder

- 4-Speaker Sound System With 4" Woofers And Piezo Tweeters
- 3-Band Graphic Equalizer
- Bass Boost
- Simulated Surround Sound
- Auto Reverse On Play Deck
- 5 1/4" H, 22 1/2" W, 6 1/2" D



RP-7768 Mini AM/FM/FM Stereo Dual Cassette Recorder

- High-Speed Synchronous Dubbing
- Continuous Play
- One-Touch Recording
- Bass Boost
- 2-Way Speaker System
- 5 1/2" H, 19 1/2" W, 4" D



RP-7717 Mini AM/FM/FM Stereo Cassette Recorder

- 4-Speaker Sound System With 4" Woofers And Piezo Tweeters
- Switchable Bass Boost
- 6 Pushbutton Cassette Operation
- Built-In Microphone For "Live" Recording
- 5 1/2" H, 18 1/2" W, 5 1/2" D

PERSONAL AUDIO AVAILABLE



RP-6001 Portable Mini Disc Player
 Programmable 32-Track MD Memory
 Shock-Proof Memory (12 Seconds)
 3-Position Bass Boost
 Built-In Rechargeable Nickel Cadmium Battery
 Stereo Budphones With Wired Remote Control
 Intro Scan And Shuffle Play
 Multi-Function LCD Dot Matrix Display
 1 1/2" H, 3 3/4" W, 5 1/4" D



RP-1870 AM/FM Stereo Cassette Player
 PLL Digital Tuning With 10 Station Presets
 Liquid Crystal Display
 3-Band Graphic Equalizer
 Auto Reverse For Continuous Tape Listening
 Clock/Timer With Beeper Alarm
 5" H, 3 1/2" W, 1 1/2" D



RP-1868 AM/FM Stereo Cassette Player
 PLL Digital Tuning With 10 Station Presets
 Liquid Crystal Display
 Bass Boost
 Lightweight Stereo Headphones
 5 1/2" H, 3 3/4" W, 1 1/2" D



RP-1851 AM/FM Stereo Cassette Player
 3-Band Graphic Equalizer
 4 Pushbutton Cassette Operation
 Auto Reverse For Continuous Tape Listening
 Lightweight Stereo Headphones
 5 1/2" H, 3 3/4" W, 1 1/2" D



RP-1820 AM/FM Stereo Cassette Player
 4 Pushbutton Cassette Operation
 Bass Boost
 Lightweight Stereo Headphones
 Unique Horizontal Styling
 3 3/4" H, 5 3/4" W, 1 1/2" D

RCA Home Theatre™ Televisions

	60"		52"			46"			35"	
	P60752EB	P52770EB	P52756SB	P52753AT	P52731WK	P46770CK	P46732BA	P46731AT	F35751MB	F35731MB
Picture Performance										
Optimum Contrast Screen									*	*
Screen Size (In Inches)	60	52	52	52	52	46	46	46	35	35
High Drive Picture System									*	*
High Gain Picture System	*	*	*	*	*	*	*	*	*	*
110° VHP Picture Tube									*	*
Comb Filter	*	*	*	*	*	*	*	*	*	*
Wideband Video Amplifier									*	*
Scan Velocity Modulation									*	*
Lines of Horizontal Resolution ²¹	560	560	560	560	560	560	560	560	700	500
Light Output (Foot Lamberts)	300	400	400	400	400	500	500	500		
Sound Performance										
Broadcast Stereo Reception	*	*	*	*	*	*	*	*	*	*
dbx ¹⁰ Noise Reduction/SAP	*	*	*	*	*	*	*	*	*	*
SRS (●) ⁸ Sound Retrieval System	*	*	*	*	*	*	*	*	*	*
Audio Power (Watts) ^{15,16}	20	20	20	20	10	20	10	10	20	10
Matrix Surround Sound ⁷	*	*	*	*	*	*	*	*	*	*
Expanded Stereo	*	*	*	*	*	*	*	*	*	*
Treble/Bass/Balance Control	*	*	*	*	*	*	*	*	*	*
Convenience										
Integrated Component Storage						*				
Picture-In-Picture ¹²	Advan.	Advan.	Advan.	Advan.	Color	Advan.	Color	Color	Advan.	Color
Channel Guide /Zoom/Pan	*	*	*	*	*	*	*	*	*	*
Channel Labeling	*	*	*	*	*	*	*	*	*	*
Parental Control ¹¹	*	*	*	*	*	*	*	*	*	*
VCR/Cable Setup	*	*	*	*	*	*	*	*	*	*
Commercial Skip	*	*	*	*	*	*	*	*	*	*
Clock, Sleep and Alarm Timers	*	*	*	*	*	*	*	*	*	*
Picture Reset	*	*	*	*	*	*	*	*	*	*
Channel Tuning Capability ¹⁴	181	181	181	181	181	181	181	181	181	181
AutoProgramming (Advanced)	*	*	*	*	*	*	*	*	*	*
Remote Control (Batteries Included)										
Master Touch [®] Universal Remote (Buttons)	50	50	50	50	43	50	43	43	50	43
Remote-Controlled On-Screen Adj.	*	*	*	*	*	*	*	*	*	*
Connections										
Total Monitor Jacks	13	13	13	13	13	13	13	13	13	13
Video Inputs	2	2	2	2	2	2	2	2	2	2
Stereo Audio Inputs (Pairs)	2	2	2	2	2	2	2	2	2	2
S-VHS Input	1	1	1	1	1	1	1	1	1	1
Dual RF Antenna Inputs	*	*	*	*	*	*	*	*	*	*
Video Output	1	1	1	1	1	1	1	1	1	1
Fixed Stereo Audio Output (Pair)	1	1	1	1	1	1	1	1	1	1
Variable Stereo Audio Output (Pair)	1	1	1	1	1	1	1	1	1	1
External Speaker Terminals	*	*	*	*	*	*	*	*	*	*
Dimensions										
Height (In Inches)	61	64 1/2	56 1/4	56 1/4	56 1/4	60 1/2	51 1/4	51 1/4	32 1/4	32 1/4
Width (In Inches)	50 1/2	52 1/4	44 1/4	47 1/4	47 1/2	43 1/2	42 1/4	42 1/4	34 1/4	34 1/4
Depth (In Inches)	24	31 1/4	21 1/4	21 1/4	21 1/4	30 1/2	20 1/4	20 1/4	23 1/4	23 1/4
Approx. Shipping Weight (Lbs.)	400	418	346	346	292	387	276	276	198	184
Built-In Storage Dimensions										
Height (In Inches)		24 1/4				22 1/4				
Width (In Inches)		34				28				
Depth (In Inches)		17				17 1/2				

CinemaScreen® TV

		31"			27"			
		G35850CK	G35830WK	F31700GG	G31750WKA	F27731BK	F27701BK	G27750WKA
Screen Size								
•	•	•	•	•	•	•	•	•
35	35	31	31	27	27	27		
•	•	•	•	•	•	•	•	•
Resolution								
•	•	•	•	•	•	•	•	•
•	•	•	•	•	•	•	•	•
•	•	•	•	•	•	•	•	•
•	•	•	•	•	•	•	•	•
700	500	500	500	560	500	500		
Inputs								
•	•	•	•	•	•	•	•	•
•	•	•	•	•	•	•	•	•
•	•	•	•	•	•	•	•	•
•	•	•	•	•	•	•	•	•
20	10	10	10	10	10	10		
•	•	•	•	•	•	•	•	•
•	•	•	•	•	•	•	•	•
•	•	•	•	•	•	•	•	•
Audio								
•	•	•	•	•	•	•	•	•
Advan.	Color	Color	Color	Color	Color	Color		
•	•	•	•	•	•	•	•	•
•	•	•	•	•	•	•	•	•
•	•	•	•	•	•	•	•	•
•	•	•	•	•	•	•	•	•
•	•	•	•	•	•	•	•	•
•	•	•	•	•	•	•	•	•
•	•	•	•	•	•	•	•	•
•	•	•	•	•	•	•	•	•
181	181	181	181	181	181	181		
•	•	•	•	•	•	•	•	•
Other Features								
•	•	•	•	•	•	•	•	•
50	43	43	43	43	38	43		
•	•	•	•	•	•	•	•	•
Weight								
•	•	•	•	•	•	•	•	•
13	13	13	13	13	13	13		
2	2	2	2	2	2	2		
2	2	2	2	2	2	2		
1	1	1	1	1	1	1		
•	•	•	•	•	•	•	•	•
1	1	1	1	1	1	1		
1	1	1	1	1	1	1		
1	1	1	1	1	1	1		
•	•	•	•	•	•	•	•	•
Dimensions								
52 7/8	41 1/8	27 1/8	43 1/8	23 1/8	23 1/8	31		
42 1/2	43 1/4	30 1/4	37 1/8	27 1/2	27 1/2	31		
24 1/8	26 1/8	20 1/8	19 1/2	19 1/8	19 1/8	19 1/8		
365	318	132	260	94	94	215		
Shipping Weight								
•	•	•	•	•	•	•	•	•
16	9		12			11 1/2		
35	36 1/4		32 1/2			27 1/2		
18	17 1/4		17			17		

Specifications		
Format		16 x 9
Screen Size (In Inches)		34
Scanning System		Non-Interlaced; Progressive Scan Digital
Lines of Horizontal Resolution*		560
Built-In Stereo Amplifier		24.5-Watt
Tuning System		181-Channel FS System ²⁴
Closed Caption Decoder		Built-In
Total Monitor Jacks		21
Video Inputs		2
Stereo Audio Input (Pairs)		2
S-Video Inputs		2
S-Video Output		1
Fixed Stereo Audio Output (Pair)		1
Variable Stereo Audio Output (Pair)		1
Variable Surround Audio Output		1
Variable Center Channel Audio Output		1
RGB Inputs		1
RF Antenna Inputs		2
External Speaker Terminals (Pairs)		2
Audio Frequency Response (at rated output)		50-20,000Hz
Power Consumption		300 Watts
Internal Speaker Type		Acoustic Suspension
	Tweeters	(2) 51mm
	Mid-Range	(2) 91mm
Internal Speaker Systems	Woofers	(2) 170mm
Internal Speaker Impedance		8 Ohms, Nominal
Recommended External Speaker Impedance		8 Ohms
Power Requirements		120V AC +10%, 60Hz
Dimensions		
Height (In Inches)		51 1/8
Width (In Inches)		38 1/8
Depth (In Inches)		25 1/8
Approx. Shipping Weight (Lbs.)		430

*Based on EIA recommended measurement criteria through S-Video input, measured in "Cinema A" and "Fill" modes.

- AT-Autumn Tone
- BA-Black Ash
- BK-Black
- CK-Contemporary Oak
- EB-Black or Ebony Oak
- GG-Gray Granite
- MB-Metallic Black
- SB-Suede Black
- WK-Western Oak


• Projection TV and Console models with wood finishes are stained and lacquered on fiberboard and genuine wood solids.
 • Table models are simulated finishes on precision-molded plastic.
 Screen sizes measured diagonally.
 See footnotes on page 51.

ColorTrak Plus™ Televisions

	33"		31"				27"						26"					
	F35672MB	G35772AT	F31672ET	F31632ET	G31681AT	G31642LK	F27672ET	F27634ET	F27632SE	G27689AT	G27688HP	G27684HP	G27666AT	G27344HP	G27342WK	F26672FT	F26634SF	G26686WK
Picture Performance																		
Screen Size (In Inches)	35	35	31	31	31	31	27	27	27	27	27	27	27	27	27	26	26	26
Optimum Contrast Screen	•	•					•	•										
110° Reduced-Depth Picture Tube	VHP	VHP	VHP	VHP	VHP	VHP	VHP	VHP	VHP	VHP	VHP	VHP	VHP	VHP	VHP	•	•	•
Dynamic Black Expansion	•	•	•	•	•	•	•	•	•	•	•	•	•	•	•	•	•	•
Autocolor	•	•	•	•	•	•	•	•	•	•	•	•	•	•	•	•	•	•
Contrast/Color Tracking	•	•	•	•	•	•	•	•	•	•	•	•	•	•	•	•	•	•
Comb Filter	•	•	•	•	•	•	•	•	•	•	•	•	•	•	•	•	•	•
Lines of Horizontal Resolution	500	500	500	Std.	500	Std.	Std.	Std.	Std.	Std.	Std.	Std.	Std.	Std.	Std.	Std.	Std.	Std.
Sound Performance																		
Broadcast Stereo Reception/dbx ² Noise Reduction/SAP	•	•	•	•	•	•	•	•										
XS [®] Stereo									•									•
Tone Control	•	•	•	•	•	•	•	•	•	•	•	•	•	•	•	•	•	•
FM Radio/Weather Band																		
Convenience																		
Picture-In-Picture ¹	Color	Color	Color		Color		Color			Color	Color	Color				Color		Color
Multi-Language On-Screen Display	•	•	•	•	•	•	•	•		•	•	•	•	•	•	•	•	•
Integrated Component Storage					•					•			•					
Channel Labeling	•	•	•	•	•	•	•	•	•	•	•	•	•	•	•	•	•	•
AC/DC Operation (Car Cord)																		
Commercial Skip	•	•	•	•	•	•	•	•	•	•	•	•	•	•	•	•	•	•
Clock, Sleep & Alarm Timers	•	•	•	•	•	•	•	•	•	•	•	•	•	•	•	•	•	•
Picture Reset	•	•	•	•	•	•	•	•	•	•	•	•	•	•	•	•	•	•
Channel Tuning Capability ^{1*}	181	181	181	181	181	181	181	181	181	181	181	181	181	181	181	181	181	181
AutoProgramming (Advanced)	•	•	•	•	•	•	•	•	•	•	•	•	•	•	•	•	•	•
Remote Control (Batteries Included)																		
Master Touch [®] Universal Remote (Buttons)	43	43	43	39	43	39	43	39	39	43	43	43	39			43	39	43
ChanneLock™ Digital Remote (Buttons)														23	23			
Remote-Controlled On-Screen Adjustments	•	•	•	•	•	•	•	•	•	•	•	•	•	•	•	•	•	•
Connections																		
Total Monitor Jacks	5	5	5	5	5	5	5	5	3	5	5	5	5	5	5	5	5	5
Video Inputs	1	1	1	1	1	1	1	1	1	1	1	1	1	1	1	1	1	1
Stereo Audio Inputs (Pair)	1	1	1	1	1	1	1	1	1	1	1	1	1	1	1	1	1	1
S-VHS Input	1	1	1		1													
Variable Stereo Audio Output (Pair)	1	1	1	1	1	1	1	1		1	1	1	1	1	1	1	1	1
Headphone Jack																		
Dipole Antenna Included																		
Dimensions																		
Height (In Inches)	32 $\frac{1}{4}$	42	27 $\frac{1}{2}$	27 $\frac{1}{2}$	46 $\frac{1}{2}$	36 $\frac{1}{2}$	24 $\frac{1}{4}$	24 $\frac{1}{4}$	24 $\frac{1}{4}$	46	30 $\frac{1}{2}$	32 $\frac{1}{2}$	46	30	32 $\frac{1}{2}$	23 $\frac{1}{2}$	23 $\frac{1}{2}$	32 $\frac{1}{2}$
Width (In Inches)	34 $\frac{1}{2}$	40 $\frac{1}{2}$	30 $\frac{1}{2}$	30 $\frac{1}{2}$	36 $\frac{1}{2}$	37 $\frac{1}{2}$	26 $\frac{1}{2}$	26 $\frac{1}{2}$	26 $\frac{1}{2}$	31 $\frac{1}{2}$	47	32 $\frac{1}{2}$	31 $\frac{1}{2}$	45 $\frac{1}{2}$	30 $\frac{1}{2}$	25 $\frac{1}{2}$	25 $\frac{1}{2}$	40 $\frac{1}{2}$
Depth (In Inches)	23 $\frac{1}{2}$	25 $\frac{1}{2}$	21	21	22 $\frac{1}{2}$	22 $\frac{1}{2}$	19 $\frac{1}{4}$	19 $\frac{1}{4}$	19 $\frac{1}{2}$	21 $\frac{1}{2}$	20 $\frac{1}{4}$	21	21 $\frac{1}{2}$	20 $\frac{1}{2}$	21	19 $\frac{1}{2}$	19 $\frac{1}{2}$	20 $\frac{1}{2}$
Approx. Shipping Wt (Lbs.)	181	274	120	120	218	218	94	94	94	226	216	216	216	172	172	82	81	168
Built-In Storage Dimensions																		
Height (In Inches)					15					14 $\frac{1}{4}$			14 $\frac{1}{4}$					
Width (In Inches)					18					27			27 $\frac{1}{2}$					
Depth (In Inches)					32 $\frac{1}{2}$					17 $\frac{1}{2}$			17 $\frac{1}{2}$					

AT-Autumn Tone, BA-Black Ash, BK-Black, BL-Black Lenox, CK-Contemporary Oak, EB-Black or Ebony Oak, ET-Ebony Texture, FT-Flint Texture, GG-Gray Granite, HP-Harvest Pecan, MB-Metallic Black, SB-Suede Black, SE-Spatter Ebony, SF-Spatter Flint, ST-Slate Texture, WH-White, WK-Western Oak

25"				20"						13"			9"	
G26682CK	F23672SE	F23652BL	G25343WIK	G25342AT	F20638WVH	F20637ET	F20632SE	F20352SF	F20602SE	F20301SE	E13327SE	E13324WVH	E13323SE	E09344WVH
26	25	25	25	25	20	20	20	20	20	20	13	13	13	9
•	•	•	•	•	•	•	•	•	•	•	•	•	•	•
•	•	•	•	•	•	•	•	•	•	•	•	•	•	•
•	•	•	•	•	•	•	•	•	•	•	•	•	•	•
•	•	•	•	•	•	•	•	•	•	•	•	•	•	•
Std.	Std.	Std.	Std.	Std.	Std.	Std.	Std.	Std.	Std.	Std.	Std.	Std.	Std.	Std.
•	•	•	•	•	•	•	•	•	•	•	•	•	•	•
•	•	•	•	•	•	•	•	•	•	•	•	•	•	•
Color	Color													
•	•	•			•	•	•				•	•	•	
•	•	•	•	•	•	•	•	•	•	•				
•	•	•	•	•	•	•	•	•	•	•	•	•	•	•
•	•	•	•	•	•	•	•	•	•	•	•	•	•	•
181	181	181	181	181	181	181	181	181	181	181	181	181	181	181
•	•	•	•	•	•	•	•	•	•	•	•	•	•	•
43	43	39			39	39	39	39	39					
•	•	•	23	23						23	24	24	23	24
•	•	•	•	•	•	•	•	•	•	•	•	•	•	•
5	5	5	3	3	5	5	5	3						
1	1	1	1	1	1	1	1	1						
1	1	1	1	1	1	1	1	1						
1	1	1			1	1	1				•	•	•	•
•	•	•	•	•	•	•	•	•	•	•	•	•	•	•
32%	22%	22%	29%	29%	19%	19%	19%	19%	19%	19%	13%	13%	13%	10
32%	24%	24%	38%	39%	20%	20%	20%	20%	20%	20%	14%	14%	14%	11%
21%	18%	18%	19%	19%	19%	19%	18%	19%	19%	19%	15%	15%	15%	13
168	75	75	143	143	54	54	54	54	54	54	26	26	26	22

TV/VCR Combos		
	T20005BK	T13005BK
TV Features		
Screen Size (In Inches)	20	13
181-Channel Tuning Capability ¹⁴	•	•
AutoProgramming (Advanced)	•	•
Clock/Sleep Timer	•	•
Picture Reset	•	•
CaptionVision 	•	•
Closed Caption Capability ¹¹	•	•
VCR Features		
2-Head Video System	•	•
Slow Motion	•	•
Frame Advance	• (SLP)	• (SLP)
Digital Auto Tracking	•	•
4-Event/1-Month Programmable Timer	•	•
On-Screen VCR Programming	•	•
Automatic Head Cleaning System	•	•
Time Search	•	•
Auto Repeat	•	•
Record End Search	•	•
Quick Start Mechanism	•	•
High-Speed Rewind	•	•
Timer Back-Up	•	•
Remote Control (Batteries Included)		
Unified TV/VCR Remote	55 Function	55 Function
Remote-Controlled On-Screen Adjustments	•	•
Connections		
Total Monitor Jacks	2	2
Video Inputs	1	1
Audio Inputs	1	1
Dipole Antenna Included		•
Dimensions		
Height (In Inches)	21 1/4	15 1/4
Width (In Inches)	21 1/4	14 1/4
Depth (In Inches)	19 1/2	15 1/4
Approx. Shipping Wt (Lbs.)	61.7	28.7

LaserDisc/CD Players

Video Cassette Recorders

	LDR610	LDR30T
Specifications		
Mechanism/Description	2-Side Play/ CD Tray	Single-Side Play
Video		
Horizontal Resolution	425 lines	425 lines
Video S/N	50 dB	47 dB nom.
Comb Filter	•	
Audio		
Digital Filter	8X	8X
1-Bit D/A Converter	•	•
Audio S/N	115 dB	90 dB
Dynamic Range	98 dB	90 dB
Playback		
Program Play (Chp/Trk)	24	32
Shuttle Search Control	Local	
Intro/HiLite Scan	•	Multi-Intro
	Direct/ Sequential	Direct/ Sequential
Chapter/Track Search	•	•
Frame/Time Search	•	•
Chapter/Track Repeat	•	•
Program Repeat	•	•
Memory Repeat	•	•
Side Repeat	•	•
Random Play*	•	•
CD Auto Program Edit*	•	•
Connections		
Video Outputs	2	1
Audio Outputs	2 ea.	2 ea.
S-Video Output	•	
Headphone Jack w/Vol. Control	•	•
Remote		
Direct-Access Infrared Remote	•	•
Dimensions		
Height (In Inches)	5 7/8	5 7/8
Width (In Inches)	17	16 1/2
Depth (In Inches)	17 7/8	14 7/8
Approx. Shipping Wt. (Lbs.)	24.3	20.3

*Works only with CD/CDV/LD having table of contents.

	VR721HF	VR674HF	VR672HF	VR610HF	VR603HF	VR538	VR528	VR507
Picture Performance								
Double-Azimuth 4-Head Video System	• Anamorphic	•	•	•	•	•	•	•
Slow Motion	• Var.	• Var.	• Var.	• Var.	•	• Var.	• Var.	• Var.
Frame Advance	•	•	•	•	•	•	•	•
Flying Erase Head	•							
Digital Auto Tracking	•	•	•	•	•	•	•	•
Sound Performance								
Hi-Fi Stereo Playback	•	•	•	•	•			
Broadcast Stereo Reception	•	•	•	•	•			
Second Audio Program (SAP)	•	•	•	•	•			
Remote Control								
MasterTouch® Universal Remote	•*	•	•	•	•	•	•	•
Direct-Access Remote					•			
Convenience								
RCA Advantage System		•				•		
VCR Plus+® Programming System	•	•	•			•	•	
Cable Box Channel Control	•	•				•		
Bilingual On-Screen Programming {English/Spanish}					•			
Simplified On-Screen Programming	•	•	•	•	•	•	•	•
On-Screen VCR Setup Menu	•	•	•	•	•	•	•	•
Pro-Tect Plus™		•				•	•	•
181-Channel Tuning Capability ²²	•	•	•	•	•	•	•	•
8-Event/1-Year Timer	•	•	•	•	•	•	•	•
Audio/Video Dub	•							
Front AV Input Jacks		•				•		
S-Video In/Out	•							
Automatic Head Cleaning System	•	•				•		
VHS Index Search System	•	•	•	•	•	•	•	•
Time Search		•	•			•	•	•
Blank Search	•	•				•	•	•
Commercial Scan	•	•	•	•	•	•	•	•
Digital Fluorescent Clock/ Channel/Function Display	•	•	•	•	•	•	•	•
Quick Start Mechanism	•	•	•	•	•	•	•	•
High-Speed Rewind	•	•	•	•	•	•	•	•
Dimensions								
Height (In Inches)	3 7/8	3 7/8	3 7/8	3 7/8	3 7/8	3 7/8	3 7/8	3 7/8
Width (In Inches)	15	15 1/2	15	15	15	15 1/2	15 1/2	15
Depth (In Inches)	11 7/8	12 7/8	10 7/8	10 7/8	11 7/8	12 7/8	12 7/8	10 7/8
Approx. Shipping Wt. (Lbs.)	11.2	14.3	11.7	11.7	11	14.3	14.3	11.7

*With Digital Joy/Shuttle

Camcorders

	VR503	VR329	VR327		CC740	CC604	CC600	CC547	CC413	PRO845	PRO843
Camera Performance											
Power Zoom Lens					20:1	12:1	12:1	24:1	12:1	12:1	12:1
Maximum Digital Zoom					120:1			100:1			
Colorview™ Color Viewfinder	•		•		•	•		•		•	
Low Light Sensitivity			• (SLP)		1 Lux	1 Lux	1 Lux	1 Lux	1 Lux	1 Lux	2 Lux
Digital Signal Processing								•	•		•
Automatic Iris	•				•	•	•	•	•	•	•
Automatic White Balance					•	•	•	•	•	•	•
Auto Exposure					•			•	•	•	
High-Speed Shutter					•	•	•	•	•	•	•
Macro Focus					Auto	Auto	Auto	Auto	Auto	Auto	Auto
Lens Specification					f1.6	f1.8	f1.8	f1.8	f1.8	f1.8	f1.8
CCD Sensor—Effective Pixels					250K	250K	250K	250K	250K	250K	250K
16 x 9 Recording	•		•					•			
Electronic Image Stabilization					•						
Recorder Performance											
Flying Erase Head					•	•	•	•	•	•	•
Audio/Video Dubbing						•	•**	•	•	•	
Random-Assembly Editing						•*	•**				
MIC Mixing											
Auto Head Cleaner						•	•			•	
SP/SLP Recording											
Auto Lock Operation					•	•	•		•	•	•
Special Features											
Built-In Titler						•	•	•	•		•
Time/Date Record					•	•	•	•	•	•	•
Self Timer						•	•				
Hot Shoe					•					•	•
Digital Special Effects					•	•		•			•
Accessories											
Rechargeable Battery					•	•	•	•	•	•	•
Wireless Remote Control					•	•				•	•
AC Adapter/Batt. Charger					•	•	•	•	•	•	•
Audio/Video Output Cable					•	•	•	•	•	•	•
Shoulder Strap					•	•	•	•	•	•	•
Cassette Adapter					•	•	•				
Color Enhancement Light					•			Built-In			
Dimensions											
Height (In Inches)	3½	3½	3½		4¾	4¾	4¾	8¾	8¾	4½	4¾
Width (In Inches)	15	15	15		4¾	4½	4½	4¾	4¾	4¾	4¾
Length (In Inches)	11¼	10¾	11¼		7	7¼	7¼	12¼	12¼	8¾	9
Approx. Weight (Lbs.) (Without Battery)	10.8	11.7	10.8		2.0	1.6	1.6	4.4	4.4	1.8	1.8

*Via remote control.
**With optional remote.

Home Theatre™ Audio A/V System

Features	EDD37NFE
Simulated Surround Sound	Pro Logic
1 Carton Overpack	•
Amplifier	
Power Output:* Primary L/R	135
Center	Normal
Surround	Wide Phantom
Surround Processing Settings	6
DSP (Digital Signal Processing)	•
Test Tone	•
Electronic Equalizer	7 Band
Spectrum Analyzer	•
Unit Dimensions (HxWxD in inches)	6 $\frac{1}{2}$ x16 $\frac{1}{2}$ x14 $\frac{1}{2}$
Tuner	
Intermixable AM/FM Presets	30
PLL Digital Tuning	•
Auto Memory Programming	•
Station Name Memory	•
Direct Access Tuning	•
Alphanumeric Display	•
Unit Dimensions (HxWxD in inches)	3 $\frac{1}{2}$ x16 $\frac{1}{2}$ x10
Cassette	
Dual Logic/Dual Auto-Reverse	•
Dolby [®] B & C Noise Reduction	•
High-Speed Dubbing	•
CDRS (Computerized Dubbing Recording System)	•
Auto Tape Selector (Metal/Chrome)	•
Input Level Adjustment	•
Unit Dimensions (HxWxD in inches)	5x16 $\frac{1}{2}$ x10
5 CD Changer	
Drawer Carousel	•
8X OVS (Oversampling)	•
PWDO (Play While Drawer is Open)	•
Programmable Memory	•
Music Calendar	•
Edit Functions	•
Unit Dimensions (HxWxD in inches)	5 $\frac{1}{2}$ x16 $\frac{1}{2}$ x14 $\frac{1}{2}$
Remote	
Master Touch [®] Universal Remote	•
Number of Keys	42
Speakers (Included)	
Center/Surround	•
3 $\frac{1}{2}$ " Driver	•
Maximum Wattage	70-Watt
Tuned Port/Bass Reflex	•
Magnetically Shielded	•
Unit Dimensions (HxWxD in inches)	7 $\frac{1}{2}$ x6x4
Other Features	
Audio/Video Cables Included	•
Speaker Wire Included	•
One-Year Limited Warranty**	•

A/V Receivers

Features	RV3791F	RV3881F	PA4500M
Simulated Surround Sound	Pro Logic	Pro Logic	N/A
Power Output: Primary L/R	60*	60**	50***
Center	60	60	50
Front Surround/Channel	25	15	N/A
Rear Surround/Channel	25	15	12.5
Channels	7/5	5	4
THD% (Total Harmonic Distortion)	.05%	.09%	.5%
Surround Processing Settings	12	5	N/A
DSP (Digital Signal Processing)	•	•	•
Enhanced Pro Logic Settings	•	•	•
Programmable DSP Memory	•	•	•
Test Tone	•	•	•
Inputs: Video/Audio	4/5	4/6	N/A
Front A/V Jacks	•	•	•
Headphone Jack	•	•	•
Motorized Volume Control with LED	•	•	N/A
Tuner (AM/FM Intermixable Presets)	30	30	N/A
PLL Digital Tuner	•	•	N/A
Master Touch [®] Universal Remote	•	•	N/A
Number of Keys	50	50	N/A
Volume Levels Through TV Remote	•	•	•
Dimensions			
Height (In Inches)	6 $\frac{1}{2}$	6	4 $\frac{1}{2}$
Width (In Inches)	16 $\frac{1}{2}$	16 $\frac{1}{2}$	8 $\frac{1}{4}$
Depth (In Inches)	15	14 $\frac{1}{2}$	13
Other Features			
One-Year Limited Warranty*	•	•	•

*RMS rating into 8 ohms, 20Hz to 20,000Hz, \pm 1db with less than .05% THD.
 **RMS rating into 8 ohms, 40Hz to 20kHz, \pm 1db with less than .09% THD.
 ***RMS rating into 8 ohms, 20Hz to 20,000Hz, \pm 1db with less than .5% THD.
 *For complete details on warranties, see your nearest RCA Dealer.

A/V Speakers

Features	SP1420T	SP3300BS2	SP1320C	SP3350SW	SP2700T	SP3060S2/ SP3065S2
Type	Tower	Bookshelf	Center	Floor	Tower	Surround
Finish	Suede Black	Suede Black	Gray	Suede Black	Western Oak	Charcoal Gray/ Off-White
Cabinet Construction	Wood	Wood	Wood	Wood	Wood	Plastic Mold
Maximum Wattage	200W	100W	100W	50W	250W	70W
Tuned Port/Bass Reflex	•	•	•	•	•	•
Air Suspension	•	•	•	•	•	•
Magnetically Shielded	•	•	•	•	•	•
Drivers						
Woofer	6 $\frac{1}{2}$ "x2	6 $\frac{1}{2}$ "	3 $\frac{1}{2}$ "x2	8"	8"	•
Mid-Range	•	•	•	•	5"	•
Tweeter	1" Dome	1" Dome	1" Dome	•	1" Dome	•
Full-Range (Qty.)	•	•	•	•	•	3.5"
Dimensions						
Height (In Inches)	45	14	5 $\frac{1}{2}$	17 $\frac{1}{2}$	43 $\frac{1}{4}$	7 $\frac{1}{2}$
Width (In Inches)	8	8	17	12	10 $\frac{1}{2}$	6
Depth (In Inches)	13 $\frac{1}{4}$	12 $\frac{1}{4}$	8	14	12	4
Weight (in lbs.)/Carton	55	15 ea.	10	25	57	8 ea.
Number of Speakers/Cartons	1/Ctn.	2/Ctn.	1/Ctn.	1/Ctn.	1/Ctn.	2/Ctn.
Other Features						
One-Year Limited Warranty*	•	•	•	•	•	•

*One-Year Limited Warranty does not apply to speaker cabinets or speaker grilles.
 For complete details on warranties, see your nearest RCA Dealer.

Home Audio Systems

	RP-9753	RP-8593	RP-8520
Remote Control			
Number of Keys	22	16	
Amplifier			
Power: RMS/Channel	15W	5W	1.2W
	90Hz- 20kHz	100Hz- 15kHz	150Hz- 15kHz
Power Bandwidth	<10% THD	<10% THD	<10% THD
Speaker Impedance	8 Ohms	4 Ohms	8 Ohms
Equalizer	5 Presets	5 Presets	
Bass Boost	•	•	•
Simulated Surround Sound	•		
Tuner			
Tuning	Digital	Digital	Analog
Station Memories	24	24	
Cassette			
Cassette	Dual	Dual	Single
Off-Air Record	•	•	•
One-Button CD Synchro Dubbing	•	•	
Continuous Play/Auto Stop	•	•	
Auto Reverse	Play Deck		
High-Speed Dubbing	•	•	
Compact Disc			
Single/Changer	3 CD	3 CD	1 CD
Shuffle/Repeat	•	•	•
Play While Open	•	•	
Program Memory Key	32	45	
Speakers			
Tweeters	2" Cone	2" Cone	
Woofers	5"	5"	4"
Power/Jacks			
Stereo Headphones	•	•	•
CD/Aux.	•	•	
Surround Sound	•		
Dimensions			
Height (In Inches)	15	11½	9½
Width (In Inches)	26	27	21¼
Depth (In Inches)	12½	12½	7½
Other Features			
One-Year* Limited Warranty	•	•	•

*For complete details on warranties, see your nearest RCA Dealer.

Car/Personal CD Players And Mini Disc

	RP-7906	RP-7904	RP-7903	RP-6001
CD Player				
Programmable Memory	22	16	16	32
Shuffle Play		•	•	•
Intro Scan		•	•	•
Repeat One/All	•	•	•	•
Liquid Crystal Display	•	•	•	Dot
Drawer/Top Load	Top	Top	Top	Top
Electronic Skip Protection	•			•
Music Calendar				•
Oversampling	8X	4X	4X	8X
3-Position Bass Boost	•	•	•	•
Accessories				
Stereo Headphones	•	•	•	Buds
Carry Case				•
AC/DC Converter	•	•	•	•
RCA Type Patch Cord				•
Wired Remote				•
Cassette Adapter	•	•		
Cigarette Lighter Adapter	•	•		
Power/Jacks				
Stereo Headphones (3.5mm)	•	•	•	•
External DC	3V	3V	3V	6V
CD Line Output (3.5mm)	•	•	•	•
AC/DC Power	•	•	•	•
Battery Requirements	2 "AA"	2 "AA"	2 "AA"	3 "AA"
Rechargeable				•
Dimensions				
Height (In Inches)	1¼	1⅞	1⅞	1⅞
Width (In Inches)	5½	5½	5½	3⅞
Depth (In Inches)	6⅞	6	6	5⅞
Other Features				
One-Year* Limited Warranty	•	•	•	•

*For complete details on warranties, see your nearest RCA Dealer.

Portable CD Players

	3-Piece		1-Piece	
	RP-7950	RP-7971	RP-7902	RP-7944
CD Player				
Programmable Memory	21	21	21	21
Shuffle Play	•		•	•
Intro Scan	•		•	•
Repeat One/All	•	•	•	•
Music Calendar	•		•	
CD Storage Compartment	•		•	•
Liquid Crystal Display	•	•	•	•
Amplifier				
Graphic Equalizer	5-Band	3-Band	3-Band	
Bass Boost	•		•	•
Treble Boost				•
Simulated Surround Sound	•		•	
AM/FM Tuner				
FM Stereo LED	•	•	•	•
Cassette				
Single/Dual	Dual	Dual	Dual	Single
Pushbuttons	6/5	6/5	6/5	6
Tape Direction LED Indicators	•			
Tape-to-Tape Continuous	•	•	•	
High-Speed Dubbing	•	•	•	
Direct "Off-Air" Record Capability	•	•	•	•
Automatic End-of-Tape Shutoff	•	•	•	•
Speakers				
Woofers	5" Ported		4"	
Tweeters	2" Cone		Piezo	
Full-Range Dynamic		4"		4"
Detachable	•			
Power/Jacks				
Headphones (3.5mm)	•	•	•	•
Microphone (3.5mm)	•		•	
CD Out	•		•	
AC/DC Power	•	•	•	•
Battery Requirements	8 "D"	8 "D"	8 "D"	6 "D"
AC Line Cord	•	•	•	•
Dimensions				
Height (In Inches)	11½	6¾	8½	7½
Width (In Inches)	26¾	22	25½	19
Depth (In Inches)	8½	8½	8½	8
Other Features				
One-Year* Limited Warranty	•	•	•	•

*For complete details on warranties, see your nearest RCA Dealer.

Portable Cassette Players

	3-Piece		1-Piece		
	RP-7855	RP-7824	RP-7770	RP-7768	RP-7717
AM/FM Tuner					
FM Stereo LED	•	•	•	•	•
Graphic Equalizer			3-Band		
Bass Boost	•	•	•	•	•
Tone Control		•		•	•
Cassette					
Single/Dual	Dual	Single	Dual	Dual	Single
Auto Reverse on Play Deck			•		
Pushbuttons	6/5	6	6/6	6/5	6
Tape Direction LED Indicators			•		
Tape-to-Tape Continuous	•		•	•	
High-Speed Dubbing	•		•	•	
Direct "Off-Air" Record Capability	•	•	•	•	•
Built-In Condenser Mic					•
Automatic End-of-Tape Shutoff	•	•	•	•	•
Speakers					
Woofers			4"		4"
Tweeters			Piezo		Piezo
Full-Range Dynamic	4"	4"			
Detachable	•	•			
Power/Jacks					
Headphones (3.5mm)	•	•	•	•	•
Microphone (3.5mm)			•	•	
External DC			•	•	
CD Aux			•		
AC/DC Power	•	•	•	•	•
Battery Requirements	6 "D"	6 "D"	6 "C"	6 "C"	6 "C"
AC Line Cord	•	•	•	•	•
Rechargeable					•
Dimensions					
Height (In Inches)	8	6¾	5¾	5½	5¾
Width (In Inches)	24¾	24¾	22½	19½	18¾
Depth (In Inches)	6¾	5¾	6¾	4	5½
Other Features					
One-Year*					
Limited Warranty	•	•	•	•	•

*For complete details on warranties, see your nearest RCA Dealer.

Headset Radio/Tape Players

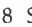
	RP-1870	RP-1868	RP-1851	RP-1820
AM/FM Tuner				
FM Stereo Indicator	•	•	•	
Liquid Crystal Display	•	•		
Digital Tuning	•	•		
Station Presets	10	10		
Graphic Equalizer	3-Band		3-Band	
Bass Boost		•		•
Cassette				
Auto Reverse	•		•	
Pushbuttons	4	4	4	4
Automatic End-of-Tape Shutoff	•	•	•	•
Power /Jacks				
Stereo Headphones (3.5mm)	Stereo	Stereo	Stereo	Stereo
Battery Requirements	2 "AA"	2 "AA"	2 "AA"	2 "AA"
Dimensions				
Height (In Inches)	5	5¼	5½	3¾
Width (In Inches)	3½	3¾	3⅞	5½
Depth (In Inches)	1½	1½	1¾	1⅞
Other Features				
Belt Clip	•	•	•	•
One-Year* Limited Warranty	•	•	•	•

*For complete details on warranties, see your nearest RCA Dealer.

Stand-Alone CD Players

	RP-8055	CD1051M
Features		
CD Player	5-Disc	Single
Size	Full	Midi
Display	VF	LED
Play While Open	•	
Shuffle Play	•	
Remote (Keys)	27	9
Dual D/A Converter (Bit)	18	16
Oversampling Digital Filter	8X	2X
Program Memory	32	20
Dimensions		
Height (In Inches)	4¼	3⅞
Width (In Inches)	17	14
Depth (In Inches)	14¼	11⅞
Other Features		
One-Year* Limited Warranty	•	•

*For complete details on warranties, see your nearest RCA Dealer.

- DSS™ and DIRECTV™ are official trademarks of DIRECTV, Inc., a unit of GM Hughes Electronics.
- Through the television's S-Video and direct audio outputs.
- Total capacity scheduled for December 1994 availability.
- USSB, Inc. is a subsidiary of Hubbard Broadcasting, Inc.
- Additional equipment may be required.
- Right and left channels = 10 Watts RMS rating into 8 ohms, 0Hz to 20,000Hz, ±3db with less than 1% THD. Rear channel = 4.5 Watts RMS rating into 4 ohms, 100Hz to 15,000Hz, ±3db with less than 1% THD.
- Dolby is a registered trademark of Dolby Laboratories Licensing Corporation.
- SRS and  are registered trademarks of Hughes Aircraft Company, a division of GM Hughes Electronics.
- Optional speakers required.
- dbx is a registered trademark of Carillon Electronics Corporation.
- This television receiver provides display of television closed captioning in accordance with §15.119 of the FCC rules. This television receiver does not support color attributes of television closed captioning.
- VCR or second video source required.
- Only available on channels 1-99.
- Check your cable company's compatibility requirements.
- 20 Watts = 10 Watts per channel, RMS rating into 8 ohms 50Hz to 20,000Hz, ±3db with less than 1% THD.
- 10 Watts = 5 Watts per channel, RMS rating into 8 ohms 50Hz to 20,000Hz, ±3db with less than 1% THD.
- 50 Watts at 4 ohms from 30Hz to 200Hz, no more than 3% THD.
- VCR Plus+ and Plus Code are trademarks of Gemstar Development Corp.
- Some antenna and most cable systems require one-time channel guide set-up. Recording of scrambled cable channels may require additional steps. See Dealer or Owner's Manual for complete details.
- TV Guide is a registered trademark of News America Publications, Inc.
- Controls most brands of remote-controllable cable boxes.
- System tunes unscrambled channels only. Check your cable company's compatibility requirements.
- Based on EIA recommended measurement criteria through S-Video input.
- Local systems may vary. Check your cable company's compatibility

1994

RCA Brand develops Advanced Digital Compression technology and joins with DIRECTV™ and USSB to introduce the RCA DSS™ Digital Satellite System.

1993

The first 16 x 9 widescreen aspect ratio color televisions are introduced in the U.S. under the RCA Brand.

1991

RCA Home Theatre™ products are introduced—raising home entertainment to new levels.

1977

RCA Brand introduces the industry's first VHS 4-hour video cassette recorder.

1975

RCA launches its first communications satellite.

1969

An RCA product, a man-pack radio, sent Neil Armstrong's immortal words from the moon, "That's one small step for a man... one giant leap for mankind."

Photo Credit: National Aeronautics and Space Administration (NASA).

1954

RCA introduces the first color television.

1949

RCA introduces the 45-rpm record and record player with a fast record changing mechanism as a new system for the reproduction of recorded music.

1939

The introduction of public television service at the New York World's Fair.

1934

The first RCA Photophone 16mm amateur sound-on-film movie camera.

1922

Introduction of the first popular radio, the RCA Radiola.

1919

The incorporation of RCA, one of the great pioneers in electronics and home entertainment.



RCA

Changing Entertainment. Again.™

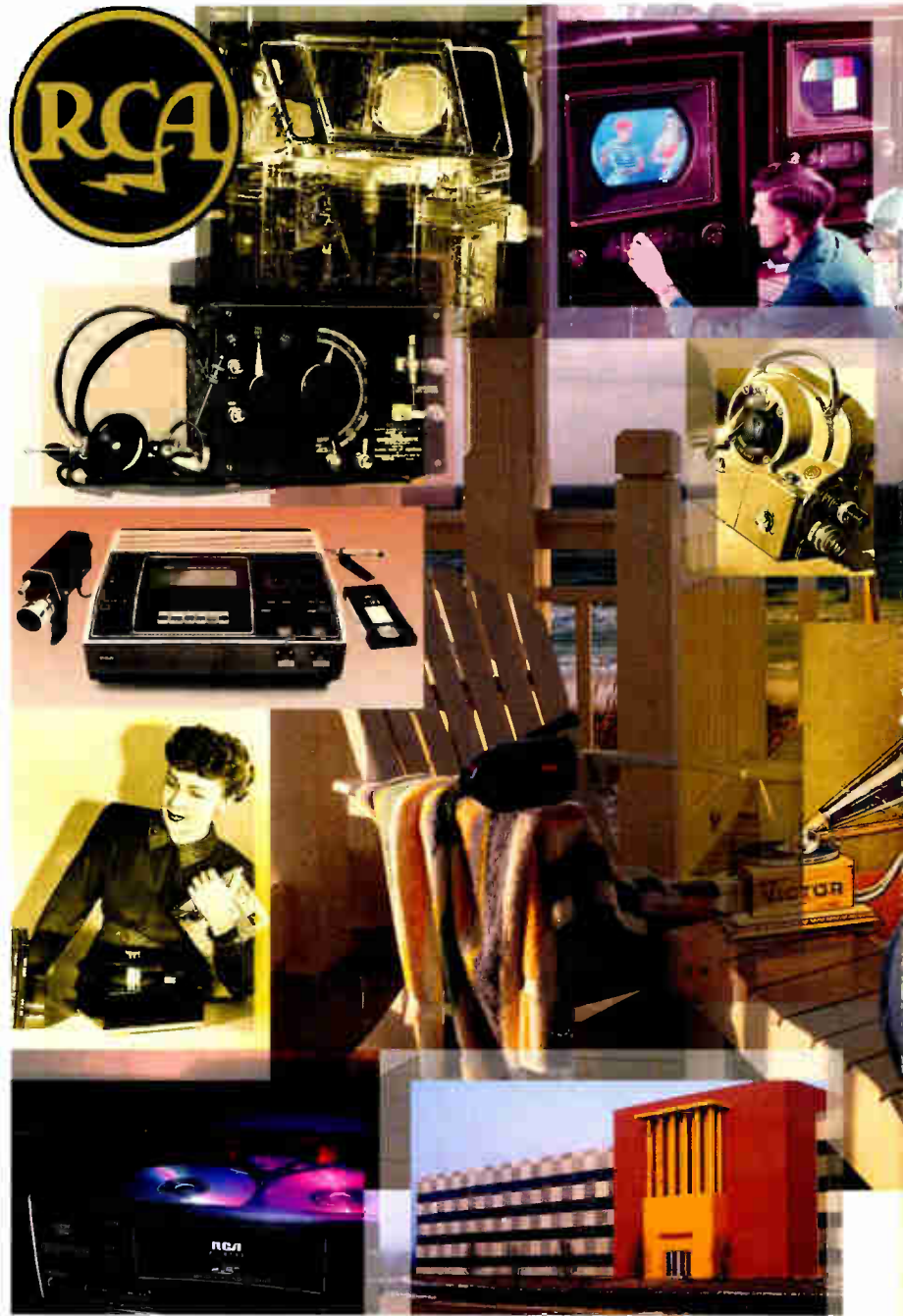
THOMSON CONSUMER ELECTRONICS

©1994 Thomson Consumer Electronics, Inc.
Printed in U.S.A. 5/94

For provisions of the limited warranty on RCA TVs, see warranty sheet, Form HC-4719. For provisions of the limited warranty on RCA VCRs, LaserDisc Players and Camcorders, see warranty sheet, Form VR-4720.

DSS™ and DIRECTV™ are official trademarks of DIRECTV, Inc., a unit of GM Hughes Electronics. USSB, Inc. is a subsidiary of Hubbard Broadcasting, Inc. Trademark(s) ® Registered Marca(s) Registrada(s) Specifications subject to change without notice. Illustration of cabinet finish may vary from actual color.

Form HC-4825



TCE North American Headquarters (est. 1994)
—Home of the RCA Brand.