A vintage advertisement for the XER radio station. The top portion features a dark red rectangular box with a thin orange border. Inside the box, the call letters 'XER' are written in a large, stylized, yellow font with red stitching, reminiscent of a baseball. To the right of the letters is a yellow sun with radiating lines. Below the call letters, the text 'The Sunshine Station' and '...Between The Nations' is written in a white, cursive script. The background of the advertisement is a painting of a vast, flat landscape under a dramatic, cloudy sky. Two tall, black lattice towers are prominent: one on the left side and one on the right side. In the foreground, a small white building with a red roof, presumably the station's transmitter building, is visible. The overall style is that of a classic radio station promotional poster.

XER

*The
Sunshine Station
...Between The Nations*

THE LARGEST BROADCASTING STATION IN AMERICA

RADIO STATION

X·E·R

"The Sunshine Station Between The Nations"

ITS PERSONNEL
AND ARTISTS



VILLA ACUNA, COAHUILA, MEXICO

♦ ♦ ♦

All Rights Reserved



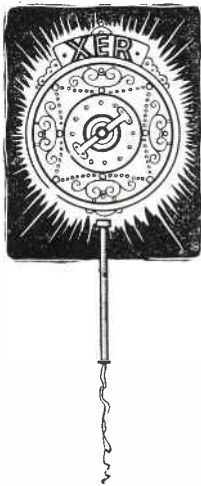
The

T IS WITH A GREAT DEAL OF SATISFACTION AND PLEASURE THAT WE, THE PUBLISHERS, PRESENT THIS PICTORIAL BOOKLET OF RADIO BROADCASTING STATION X E R. ♦ ♦ ♦ BY THIS TIME MOST EVERY RADIO LISTENER ON THE CONTINENT HAS HEARD THIS, THE LARGEST COMMERCIAL RADIO STATION IN THE WORLD, AND WE SINCERELY HOPE THEY HAVE ALL ENJOYED THE PROGRAMS. ♦ ♦ ♦ THIS BOOKLET IS MADE UP MOSTLY OF PICTURES OF THE STATION, VIEWS OF SOME OF THE CITIES ON THE ROUTE TO MEXICO, INTERESTING SCENES IN MEXICO AND TEXAS, AND PICTURES OF THE MEN AND WOMEN WHO WERE RESPONSIBLE FOR THE CONSTRUCTION AND WHO ARE NOW ACTIVE IN THE OPERATION OF X E R. ♦ ♦ ♦ WE HAVE SPENT CONSIDERABLE TIME IN THE PLAN-

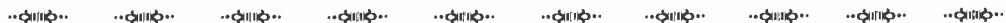
•••••

FOREWORD

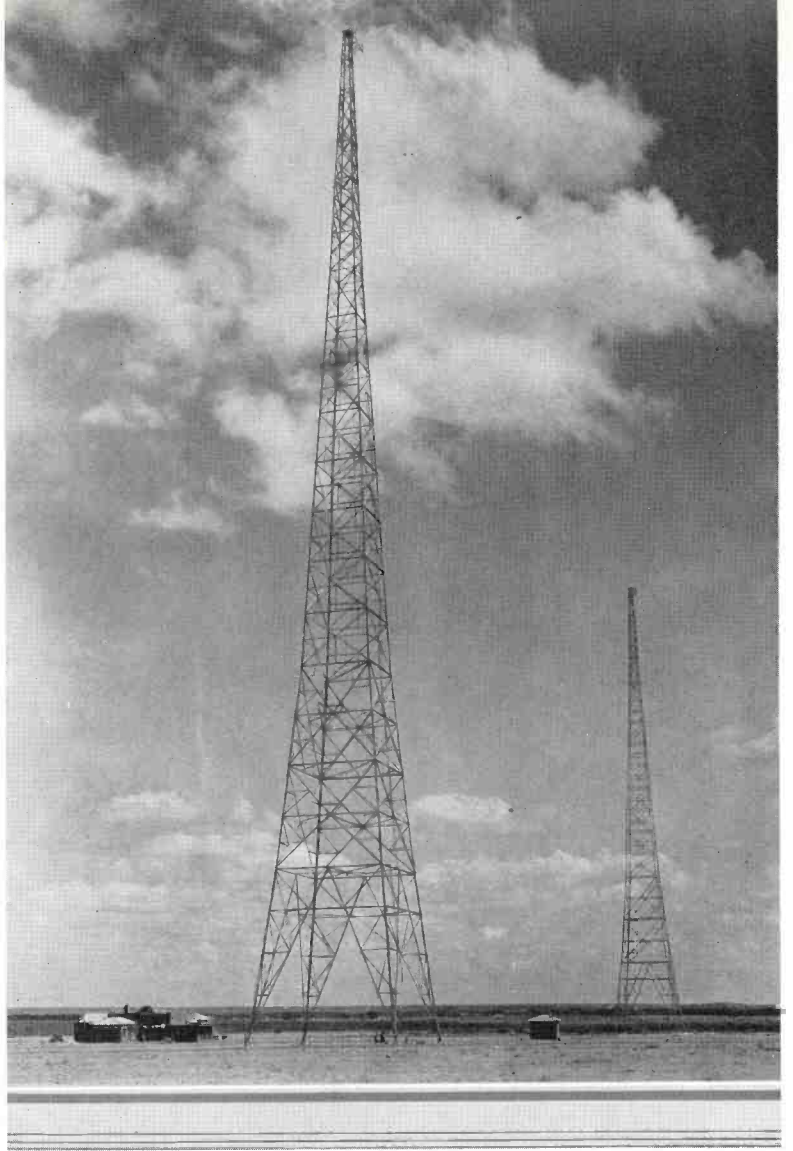
NING AND BUILDING OF THIS BOOKLET AND WE HOPE IT WILL SERVE AS A SOUVENIR THAT YOU WILL KEEP FOR MANY YEARS TO COME. ♦ ♦ ♦ FROM TIME TO TIME WE WILL ENGAGE ENTERTAINERS OTHER THAN THOSE WHOSE PICTURES APPEAR IN THIS BOOKLET AND WE WOULD APPRECIATE A WORD FROM YOU AS TO THE FEATURES THAT YOU LIKE AND DISLIKE.



THIS INFORMATION WILL HELP US IN PLANNING OUR PROGRAMS IN THE FUTURE. ♦ ♦ ♦ REMEMBER THAT X E R WAS BUILT FOR YOU—FOR YOUR ENTERTAINMENT AND YOUR CRITICISM AS WELL AS YOUR COMMENDATION WILL HELP US LIVE UP TO OUR SLOGAN "THE SUNSHINE STATION BETWEEN THE NATIONS".



THE MIGHTY THREE HUNDRED FOOT TOWERS OF THE LARGEST COMMERCIAL BROADCASTING STATION IN THE WORLD, X E R



T H E S T A T I O N

RADIO BROADCASTING STATION X E R, LOCATED AT VILLA ACUNA, COAHUILA, MEXICO, IS THE LARGEST BROADCASTING STATION ON THE AMERICAN CONTINENT, USING SEVENTY FIVE THOUSAND WATTS POWER ON A CLEARED CHANNEL. IT HAS UNLIMITED OPERATION AND IS IN CHARGE OF A VERY COMPETENT PERSONNEL, THEY HAVING HAD MANY YEARS EXPERIENCE IN RADIO BROADCASTING. ♦ ♦ ♦ X E R IS OF THE VERY LATEST EQUIPMENT, WITH CRYSTAL CONTROL, ONE HUNDRED PERCENT MODULATION, RECTIFIER POWER SUPPLY—IN FACT EVERYTHING TO MAKE IT MODERN AND EFFICIENT. ♦ ♦ ♦ THE STATION IS LOCATED ACROSS THE RIO GRANDE FROM DEL RIO, TEXAS, AND IT

PROMISES TO BE ONE OF THE SHOW PLACES OF NORTHERN MEXICO. THE STUDIOS ARE OF THE LATEST SPANISH ARCHITECTURE. ♦ ♦ ♦ THE MANAGEMENT HAD HOPED TO ENTERTAIN LISTENERS ON THE ENTIRE NORTH AMERICAN CONTINENT, AND, AS THIS BOOK GOES TO PRESS, JUST FOLLOWING THE OPENING

♦ ♦ ♦ ♦ ♦ ♦ ♦ ♦ ♦ ♦ ♦ ♦

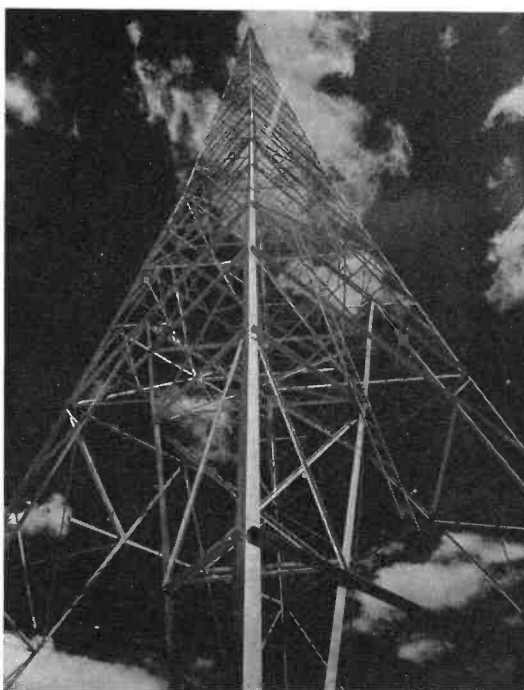
ANOTHER
VIEW OF THE
STATION AND
TOWERS





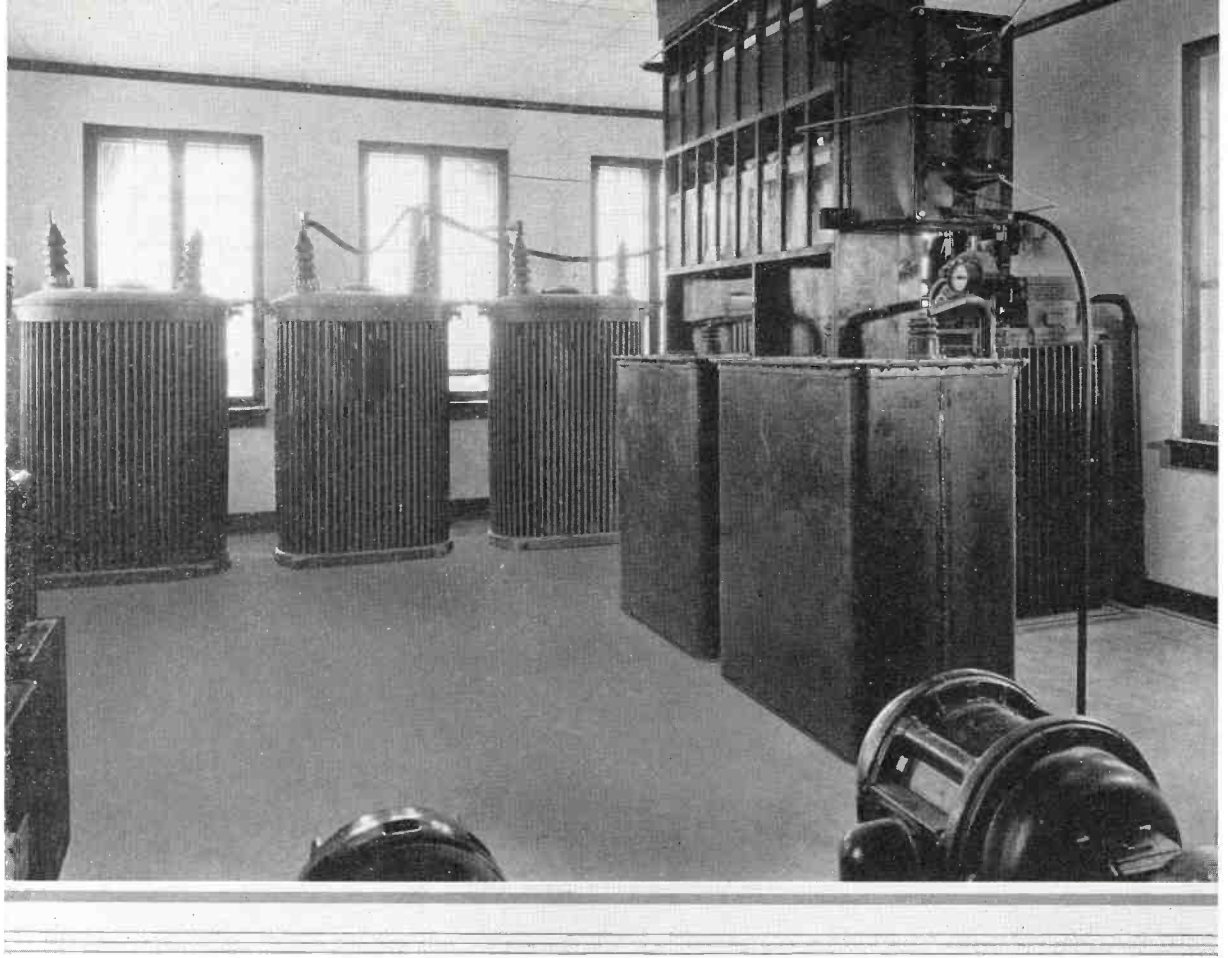
STATION X E R.
SPANISH ARCHITECTURE

PROGRAMS, THIS HOPE IS NOW A REALITY. LETTERS, TELEGRAMS, CARDS AND PHONE CALLS HAVE ALL PROVEN THAT X E R IS INDEED THE SUPER-STATION, HAVING, IN A WORD, BLANKETED A TERRITORY THAT WAS PREVIOUSLY UNHEARD OF IN RADIO BROADCASTING. ♦ ♦ ♦ THE X E R PROGRAMS WILL BE UNIQUE, DIFFERENT AND SOMETHING THAT EVERYONE WILL BE INTERESTED IN. THERE WILL BE AMERICAN ENTERTAINERS AND ALSO THE NATIVE MEXICAN ARTISTS THAT ARE LIKED SO WELL OVER THE ENTIRE NORTH AMERICAN CONTINENT. ♦ ♦ ♦ X E R "THE SUNSHINE STATION BETWEEN THE NATIONS" IS OPEN TO VISITORS AT ALL TIMES AND EVERYONE IS WELCOME. MAKE IT A POINT TO VISIT US WHEN YOU COME TO TEXAS OR MEXICO.



"NEARLY TOUCHED THE SKY"
ONE OF THE THREE HUNDRED
FOOT TOWERS

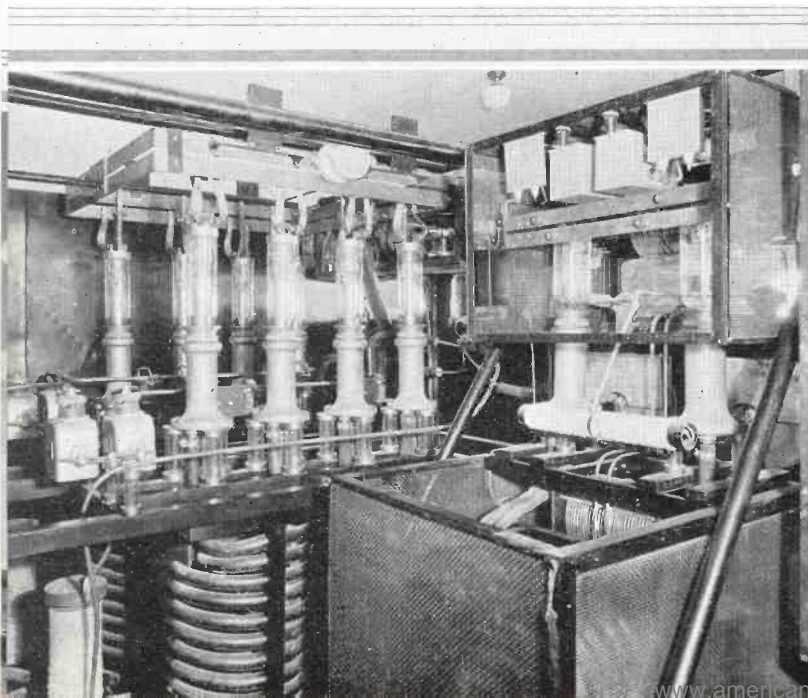




HERE IS POWER—
AND PLENTY OF IT!

◆ ◆ ◆ ON THIS AND THE NEXT PAGE ARE SHOWN A FEW EXTERIOR AND INTERIOR VIEWS OF XER, THE MODERN 75,000 WATT "SUNSHINE STATION BETWEEN THE NATIONS." ◆ ◆ ◆ NO EXPENSE OR EFFORT HAS BEEN SPARED TO MAKE XER EFFICIENT IN EVERY DETAIL—WITH THE ARDENT DESIRE TO FURNISH DESIRABLE PROGRAMS FOR ITS THOUSANDS OF LISTENERS FAR AND NEAR. ◆ ◆ ◆ XER IS ONLY A SHORT DISTANCE FROM THE BANKS OF THE RIO GRANDE, AND THE INTERNATIONAL BORDER SEPARATING DEL RIO AND VILLA ACUNA. HERE WITHIN THE TEN ACRES OCCUPIED BY THE STATION PROPER, ARE THE THREE-HUNDRED FOOT TOWERS, BETWEEN WHICH ARE THE ATTRACTIVE STYLED STUDIO AND POWER STATION. ◆ ◆ ◆ EXTENSIVE REMOTE CONTROL LINES FROM DISTANT POINTS IN THE UNITED STATES AND MEXICO WILL PROVIDE ACCESS TO SPECIAL FEATURES FOR THIS POWERFUL BROADCASTING STATION.

THE RECTIFIERS



◆ ◆ ◆ ◆ ◆ ◆ ◆ ◆ ◆ ◆ ◆ ◆

H. T. MUNAL
MANAGING DIRECTOR
OF STATION X E R.

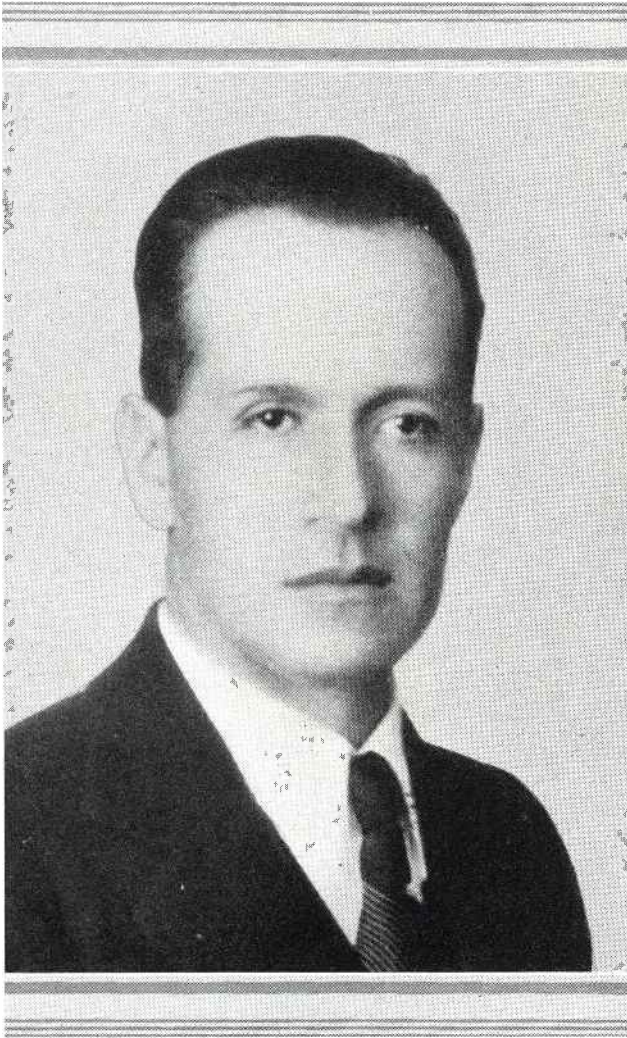


ROY FAULKNER
"THE LONESOME COWBOY"

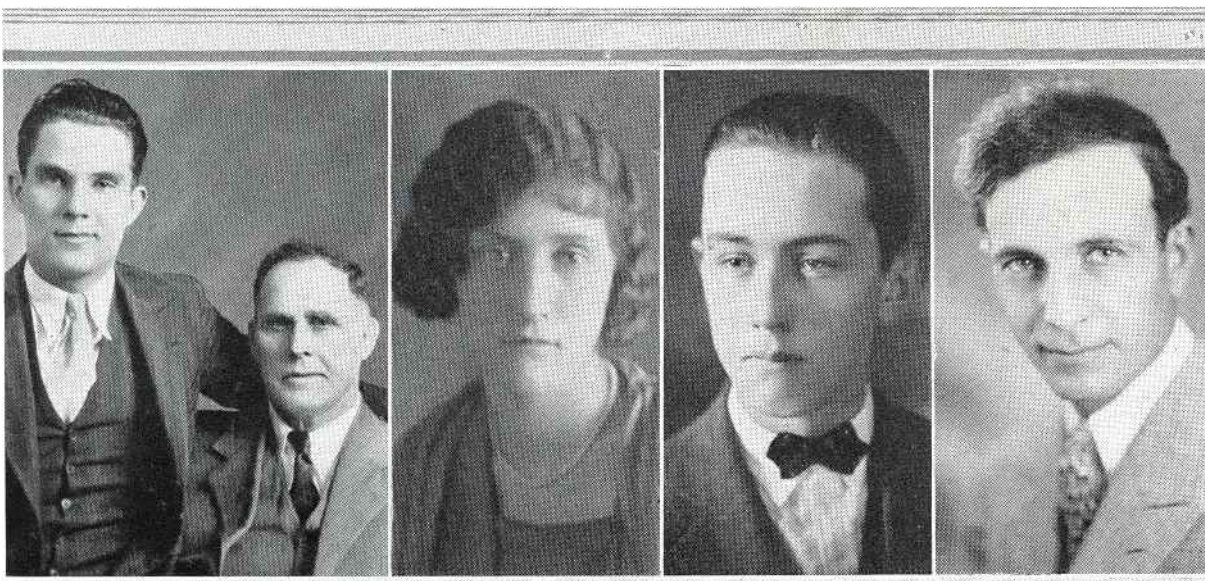
"MELROY"
PSYCHOLOGIST

H. A. DENNY
ANNOUNCER

CURTIS L. FARINGTON
ENTERTAINER



ISAIAS GALLO
CHIEF ENGINEER OF
STATION X E R.



BOBBY AND UNCLE BOB
ENTERTAINERS

DODE BAXTER
ENTERTAINER

DON BAXTER
ENTERTAINER

D. PANISSIDI
ENTERTAINER

J. O. WELDON
SUPERINTENDENT OF
STATION X E R



"THE RED PEPPERS"
FAMOUS ENTERTAINERS
FROM THE HILLS



DAN B. HOSMER
PROGRAM AND COM-
MERCIAL MANAGER OF
STATION X E R

ONE OF THE WELL KNOWN
NATIVE MEXICAN ORCHES-
TRAS THAT WILL BE HEARD
REGULARLY OVER STATION
X E R.



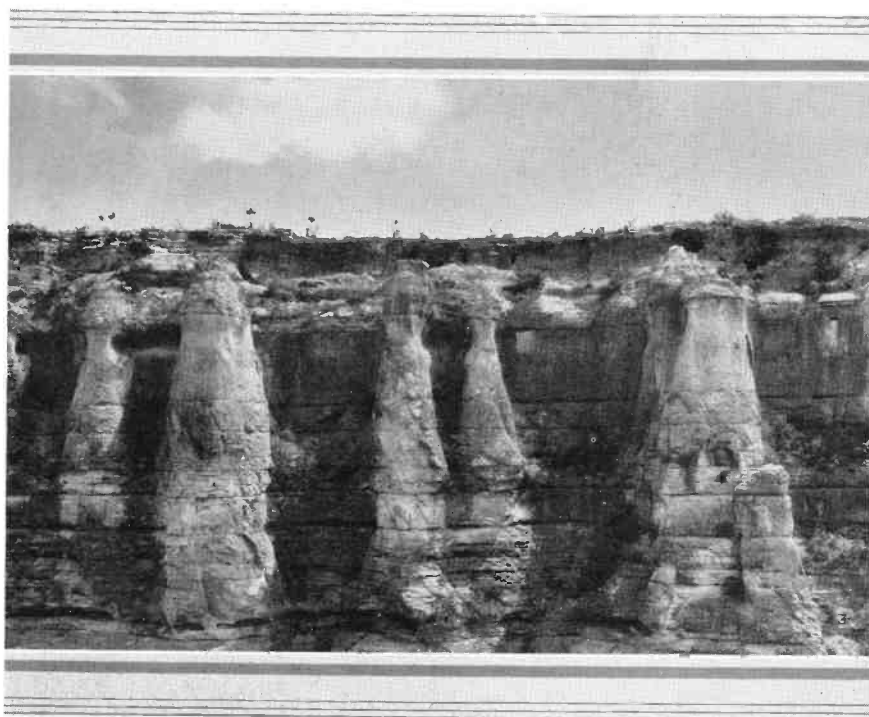


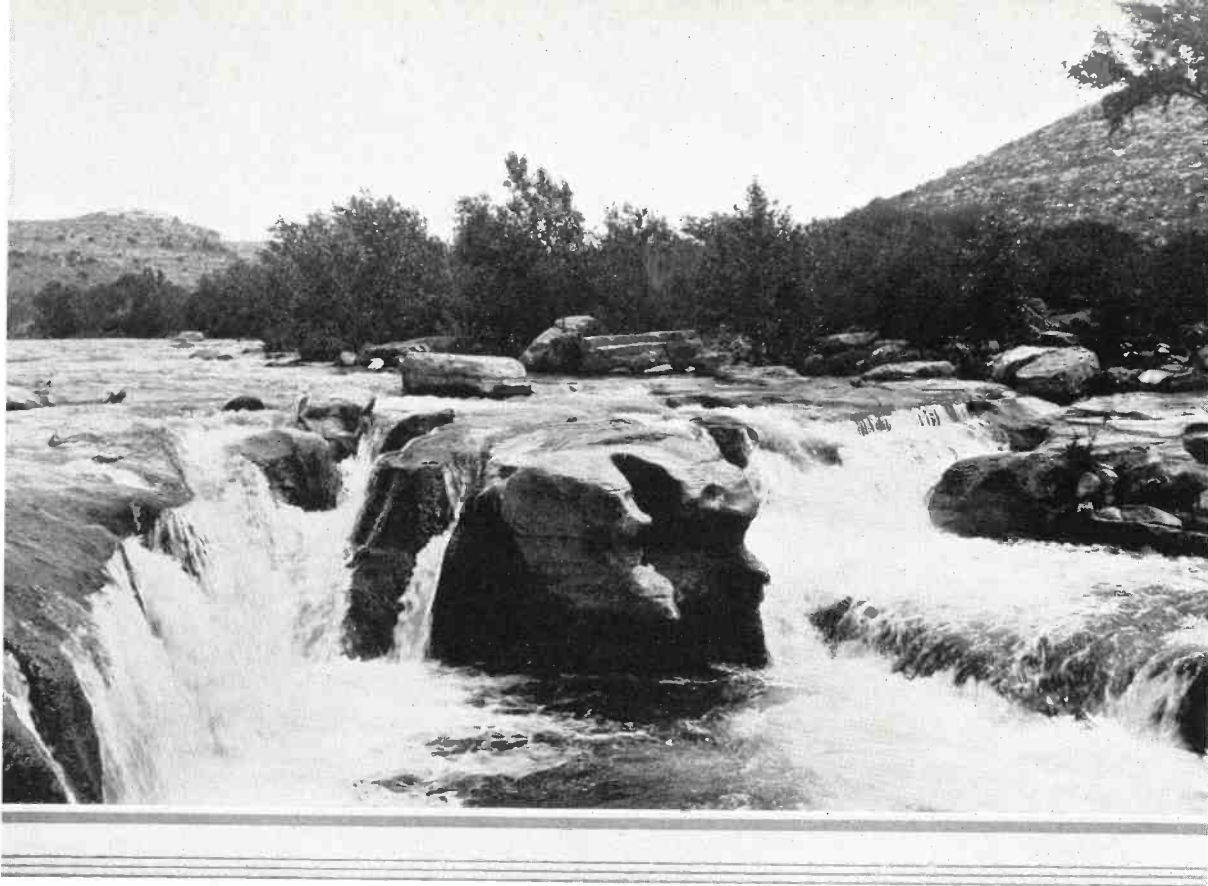
FAMOUS SPANISH SINGER



ROSA DOMINEZ
SPANISH SOPRANO

SCENE NEAR DEL RIO,
TEXAS





DEVIL'S RIVER
IN TEXAS



"PA" AND "MA"
SMITHERS
"RADIO'S MOST UNIQUE
FEATURE". A DAN B.
HOSMER PRODUCTION

RIGHT—DR. J. R. BRINKLEY OF MILFORD, KANSAS, WHOSE AMBITION, INITIATIVE AND COOPERATION, WAS RESPONSIBLE FOR THE BUILDING OF STATION X E R.

BELOW—MRS. J. R. BRINKLEY AND JOHNNY BOY. THEIR VOICES WILL BE HEARD FREQUENTLY OVER STATION X E R.



PROBABLY NO OTHER MAN HAS A RADIO ACQUAINTANCE AS EXTENSIVE AS DR. BRINKLEY. HIS LECTURES ARE FAMILIAR TO THE PEOPLE OF THE UNITED STATES, CANADA, MEXICO, ALASKA, AUSTRALIA AND NEW ZEALAND. HIS PROFOUND KNOWLEDGE OF JESUS AND HIS ABILITY TO DISCUSS HIM IN AN INSTRUCTIVE AND ENTERTAINING WAY HAS BEEN RECOGNIZED BY FRIENDS AND ENEMIES ALIKE. THOUSANDS LOOK FORWARD TO HIS MASONIC LECTURES AND BIBLE TALKS. HIS KEEN INSIGHT INTO STATE AND NATIONAL AFFAIRS AND HIS ABILITY AND FEARLESSNESS IN EXPRESSING HIS VIEWS IS NATIONALLY KNOWN. X E R CONGRATULATES ITSELF IN SECURING DR. BRINKLEY AS A CONTRIBUTOR TO ITS PROGRAMS. ♦ ♦ ♦ MRS. J. R. BRINKLEY AND JOHNNY BOY ARE WELL KNOWN TO

..❖❖❖.. ..❖❖❖.. ..❖❖❖.. ..❖❖❖.. ..❖❖❖.. ..❖❖❖.. ..❖❖❖.. ..❖❖❖..

VALERIANO VALDES
PRESIDENTE OF VILLA ACUNA,
MEXICO



VILLA ACUNA (PRONOUNCED "VEA ACUNYA"), WHERE STATION X E R IS LOCATED, SITUATED IN THE EXTREME NORTHERN PART OF THE STATE OF COAHUILA, OF THE REPUBLIC OF MEXICO, ON THE SOUTHERN BANK OF THE SILVERY WATERS OF THE RIO GRANDE, THREE MILES FROM DEL RIO, TEXAS, IS NOT BY FAR, THE LARGEST CITY ON THE MEXICAN BORDER, ALTHOUGH, IN PROPORTION TO ITS SIZE, IT PROBABLY ATTRACTS THE LARGEST NUMBER OF TOURISTS. LOCATED AT THE FOOT OF THE MOUNTAINS AND SURROUNDED BY RIVERS AND SPRINGS, VILLA ACUNA LURES THE SEEKER OF THE SCENIC, TEMPERING ITS PROGRESS WITH THE SPIRIT OF LATIN AMERICA. IT DELIGHTS THOSE WHO DESIRE A GLIMPSE OF OLD MEXICO, AND THE SURROUNDING COUNTRY, WITH AN ABUNDANCE OF FISH AND GAME, OFFERS A SPORTSMAN'S PARADISE.



THE FIRST VISIT OF DR. J. R. BRINKLEY, MRS. J. R. BRINKLEY, JOHNNY BOY AND PARTY TO VILLA ACUNA



SCENES AT VILLA ACUNA, COAHUILA, MEXICO. A FRIENDLY CITY WHERE VISITORS ARE WELCOME



DEL RIO IS A CLEAN, MODERN
AND PROGRESSIVE CITY.

LEFT—MR. LONG
MAYOR OF DEL RIO.



DEL RIO WAS STARTED AS A VILLAGE IN 1873 AND HAS BEEN STEADILY PUSHING FORWARD EVER SINCE. TODAY IT IS A SPLENDID LITTLE CITY OF MORE THAN 12,000 POPULATION, OPERATED UNDER THE MAYOR AND COUNCILMANIC FORM OF GOVERNMENT. IT IS THE COUNTY SEAT OF VAL VERDE COUNTY, WHICH HAS 1,973,120 ACRES OF LAND ALL UNDER FENCE, AND INHABITED BY STURDY RANCHMEN AND A FEW FARMERS OF TYPICAL WESTERN ZEAL AND INDUSTRY. ♦ ♦ ♦ THE CITY IS LOCATED ON THE TRUNK LINE OF THE SOUTHERN PACIFIC RAILROAD, 157

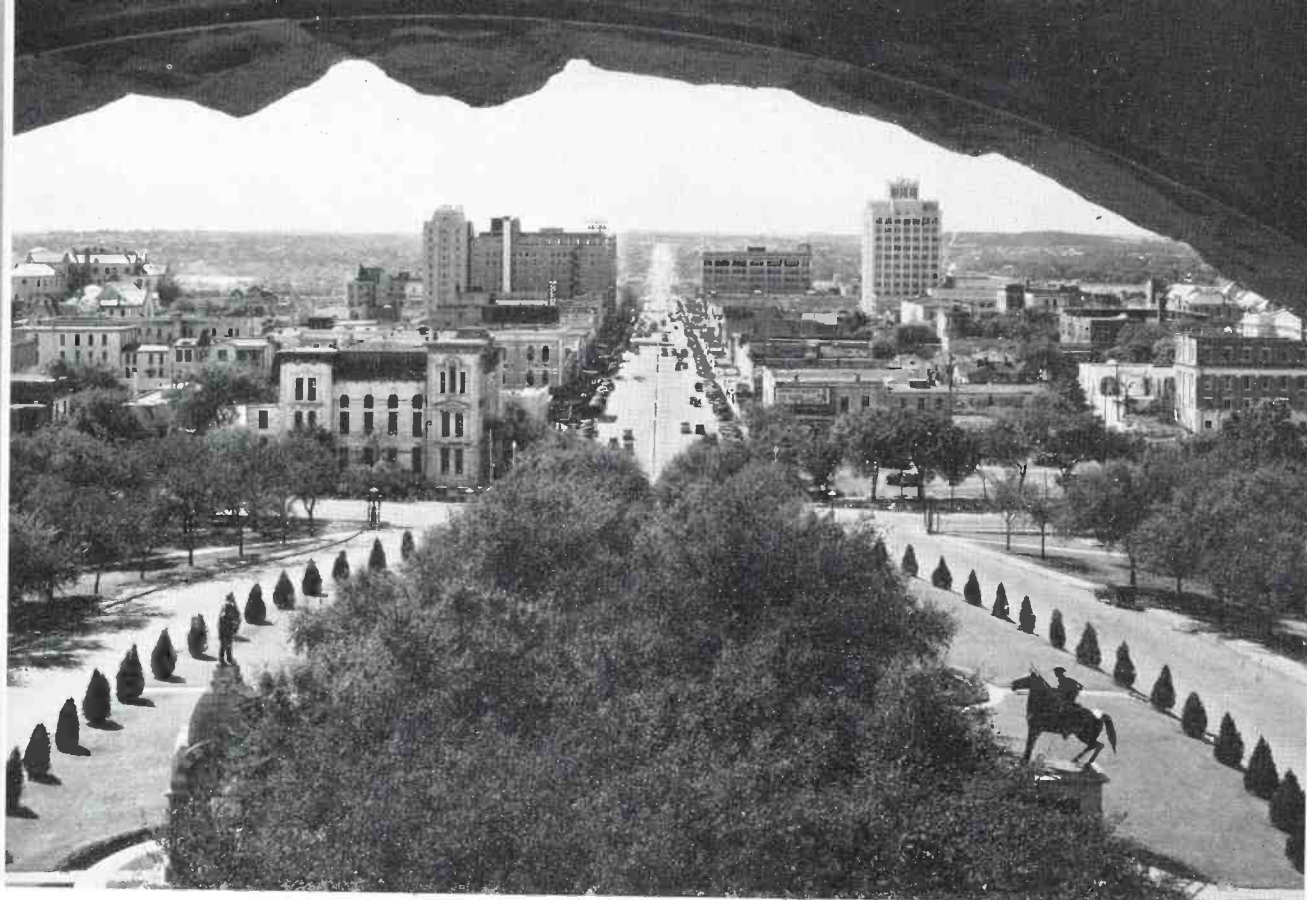




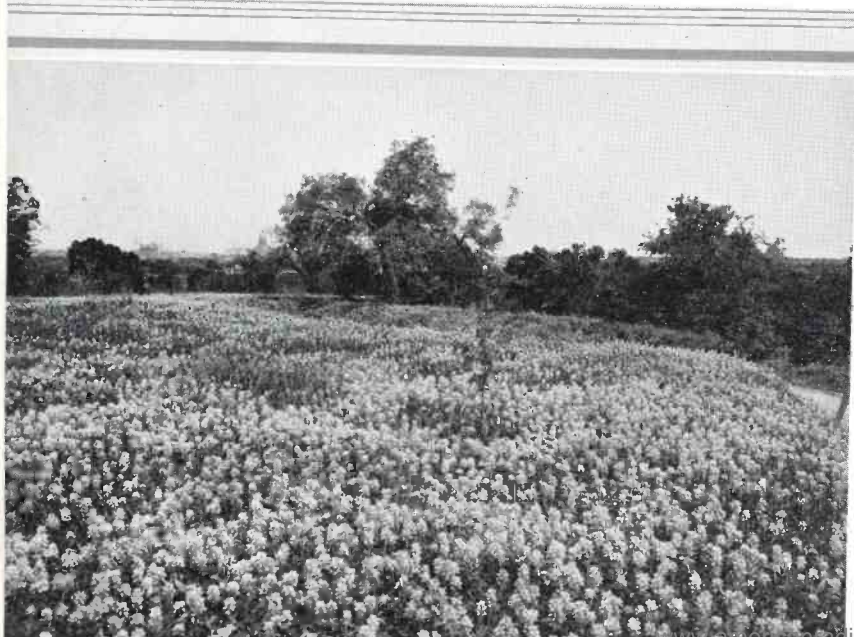
SCENES IN DEL RIO

MILES WEST OF SAN ANTONIO AND 435 MILES EAST OF EL PASO. DEL RIO IS BY FAR THE LARGEST CITY BETWEEN THESE TWO POINTS. IT IS LOCATED ON U. S. HIGHWAY NO. 90. IT IS THE FIRST BORDER TOWN REACHED AFTER LEAVING SAN ANTONIO GOING WEST. IT IS AN ALL YEAR TOURIST RESORT.





AUSTIN, THE CAPITOL OF TEXAS, IS ONE OF THE MOST BEAUTIFUL CITIES IN THE ENTIRE SOUTH. IT IS ALSO AN INDUSTRIAL, AGRICULTURAL, EDUCATIONAL AND DISTRIBUTING CENTER. ♦♦♦ THE UNIVERSITY OF TEXAS, WHICH IS THE LARGEST STATE UNIVERSITY IN THE SOUTH, IS LOCATED AT AUSTIN AND WITH THE WONDERFUL PUBLIC SCHOOL SYSTEM AND MANY OTHER SMALLER COLLEGES, THE CITY ENJOYS EDUCATIONAL ADVANTAGES EQUAL TO ANY CITY IN THE SOUTH. ♦♦♦ THE GREAT GRANITE STATE CAPITOL BUILDING COST THREE MILLION ACRES OF TEXAS LAND. SEVENTY MILES OF RAILROAD WERE BUILT TO HAUL THE GRANITE. THE DOME IS SEVEN FEET HIGHER THAN THAT OF THE NATIONAL CAPITOL AT WASHINGTON. ♦♦♦ THERE ARE MANY POINTS OF INTEREST IN AUSTIN FOR THE TOURIST AND SIGHTSEER. ♦♦♦ YOU ARE CORDIALLY INVITED TO VISIT THE STATE CAPITOL OF TEXAS ON YOUR NEXT TRIP SOUTH. THE VISIT WILL PAY YOU WELL. ♦♦♦ AUSTIN IS ON THE MAIN HIGHWAY FROM THE NORTH TO VILLA ACUNA, MEXICO, THE HOME OF RADIO BROADCASTING STATION X E R.



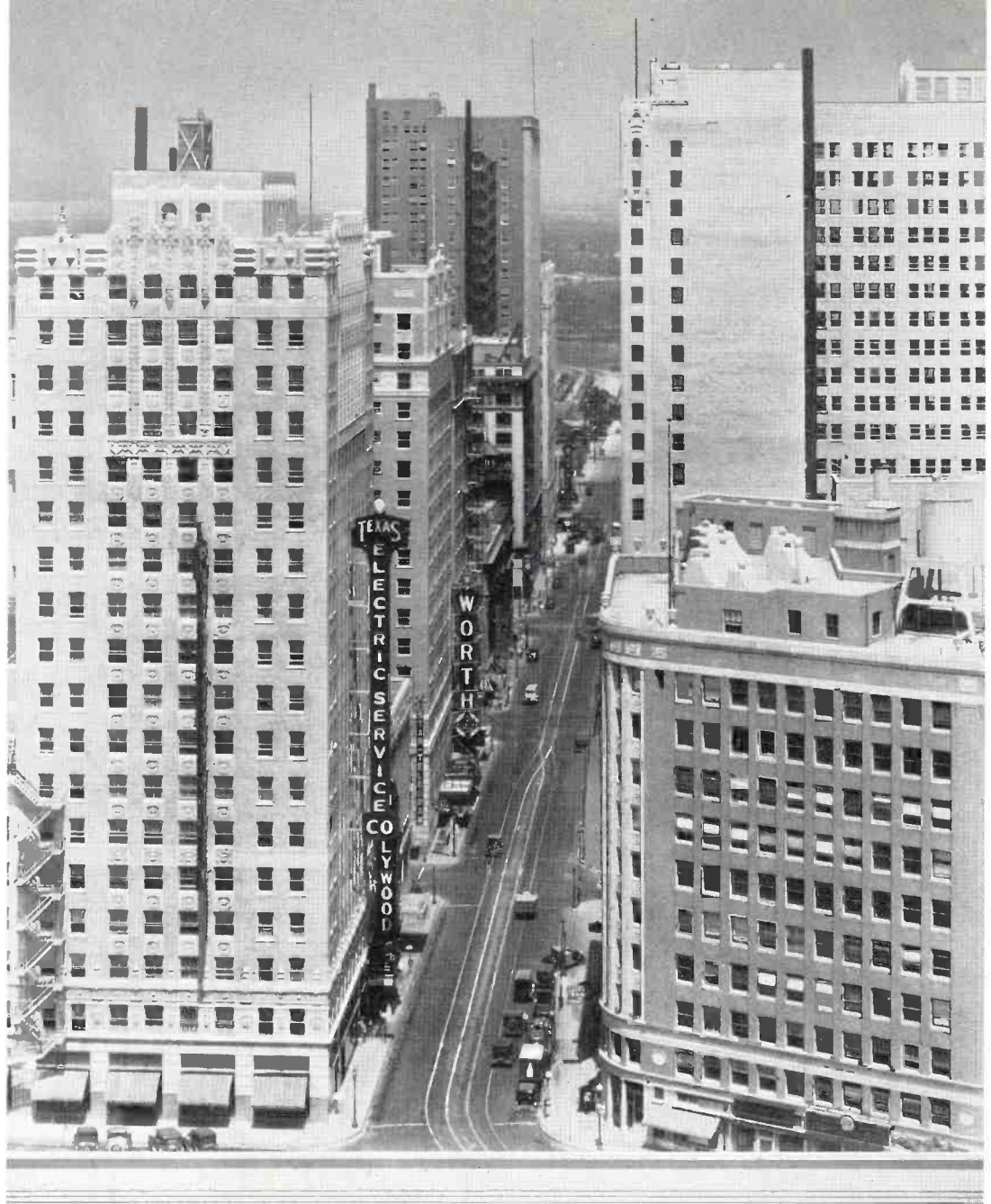
TOP—AUSTIN FROM THE CAPITOL

LEFT—TEXAS BLUE BONNETS



ABOVE—TEXAS STATE CAPITOL
LEFT CENTER—UNIVERSITY MEMORIAL STADIUM
RIGHT CENTER—HAMILTON POOL
BELOW—MT. BONNELL

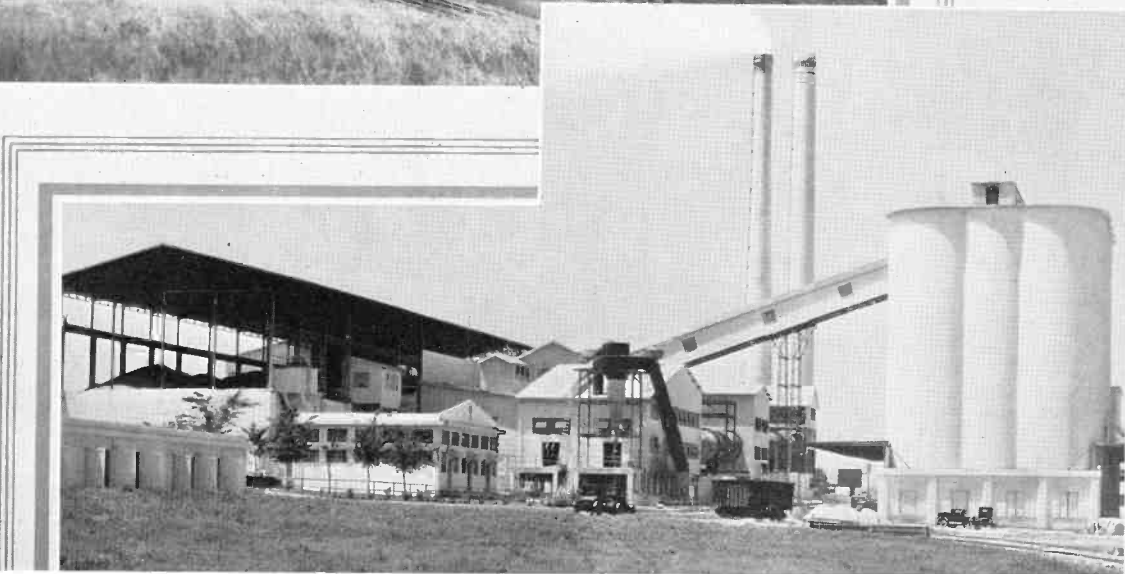
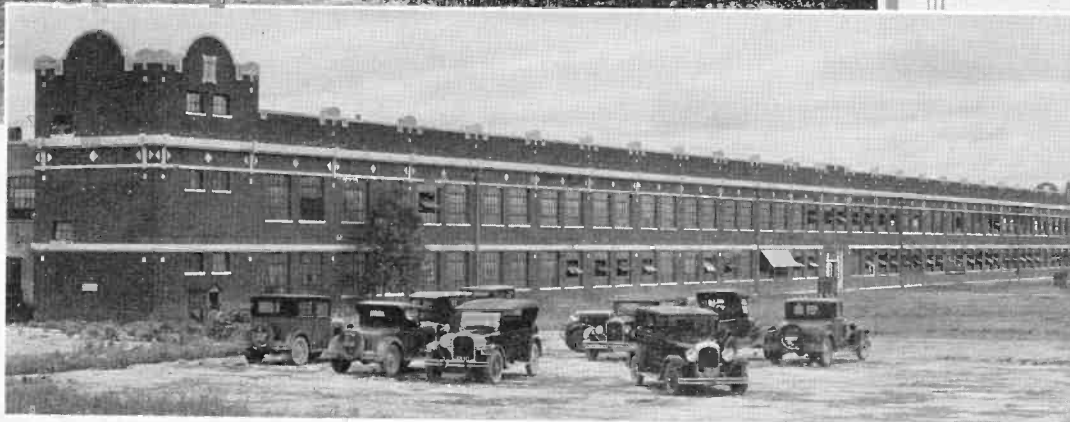
FORT WORTH HAS
BEAUTIFUL MODERN
BUILDINGS



FORT WORTH, IN ADDITION TO BEING THE LARGEST LIVESTOCK MARKET IN THE SOUTH IS ALSO THE LARGEST TERMINAL GRAIN MARKET. ♦ ♦ ♦ PRINCIPAL LINES INCLUDE LIVESTOCK AND LIVESTOCK PRODUCTS, COTTON, GRAIN, FRUITS, VEGETABLES, GROCERIES, PETROLEUM PRODUCTS, POULTRY AND DAIRY PRODUCTS, HARDWARE, BUILDING MATERIAL, MACHINERY, DRY GOODS AND APPAREL, DRUGS, FURNITURE, AUTOMOBILES AND AUTOMOTIVE EQUIPMENT.



A SCENE NEAR
FORT WORTH



SOME OF FORT WORTH'S
INDUSTRIAL PLANTS

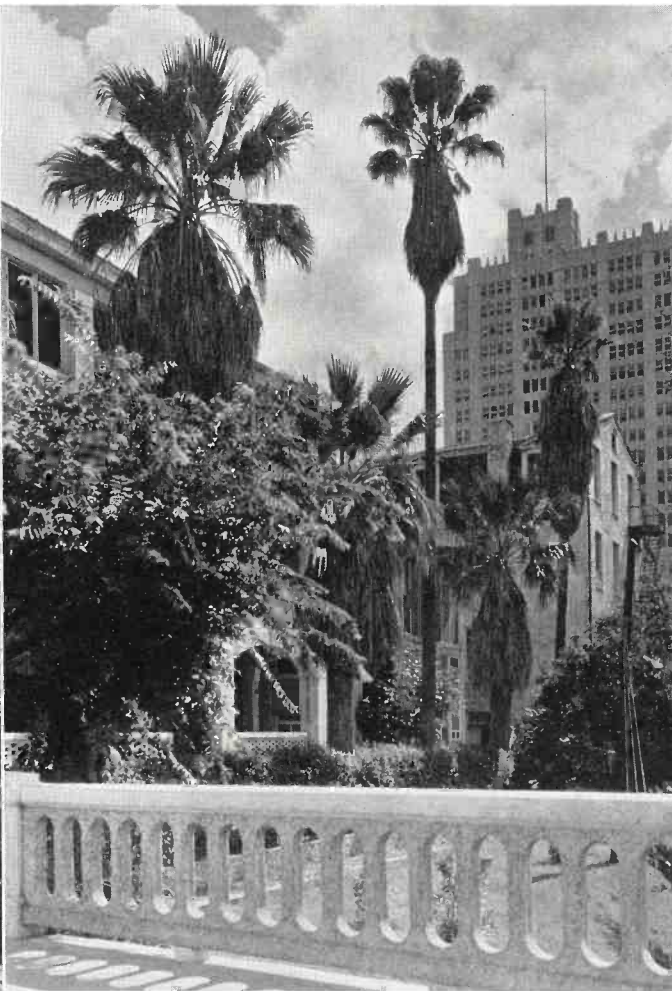
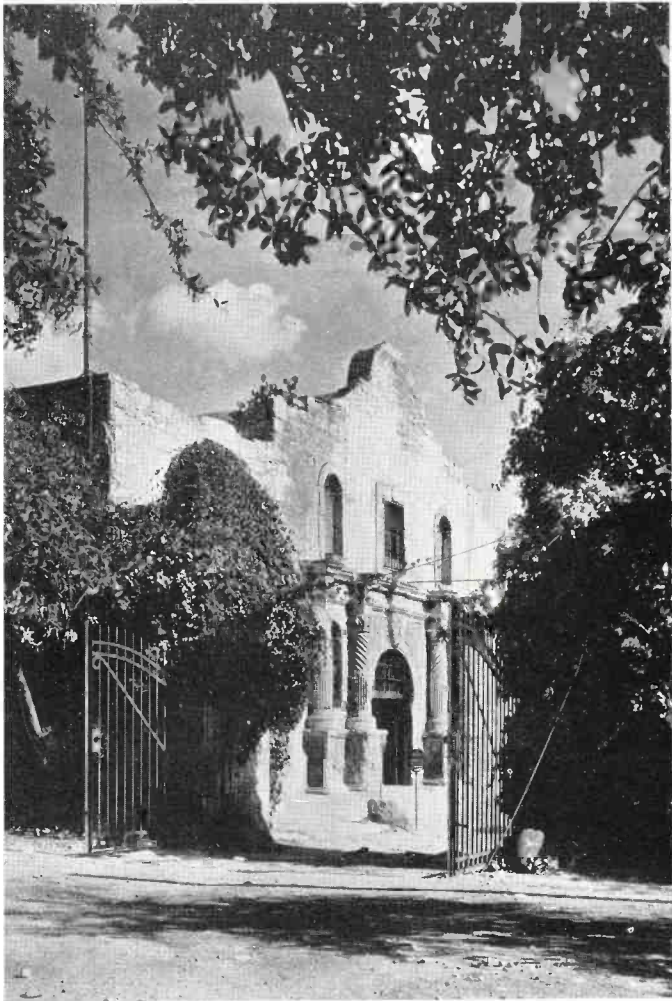
ONE OF THE BUSY STREETS
OF SAN ANTONIO



THE CENSUS OF 1930 GIVES SAN ANTONIO PROPER A TOTAL OF 254,562. IN TWO SUBURBS ARE 6,582 ADDITIONAL, NOT INCLUDED IN THE SAN ANTONIO POPULATION REPORT. ♦♦♦ THE CLIMATE OF SAN ANTONIO IS IDEAL FOR INDUSTRIAL PRODUCTION THE YEAR 'ROUND, WITHOUT INTERRUPTION DUE TO EXTREMES OF WEATHER. IT IS EQUALLY IDEAL FOR THE ENJOYMENT OF LIFE TO THE FULLEST FOR THOSE SO FORTUNATE AS TO MAKE THEIR HOMES HERE. ♦♦♦ SAN ANTONIO OCCUPIES A UNIQUE GEOGRAPHIC POSITION. ESTABLISHED IN 1718, AS AN OUTPOST OF SPAIN, THE CITY WAS LOCATED IN THE MOST VERDANT SPOT IN ALL THAT VAST STRETCH OF TERRITORY BETWEEN LOUISIANA AND MEXICO, A LOCATION STRATEGIC FROM BOTH THE MILITARY AND THE COMMERCIAL POINT OF VIEW.

NEXT PAGE—LEFT TOP—
THE ALAMO
RIGHT TOP—OLD AND
NEW SAN ANTONIO
CENTER—MUNICIPAL
GOLF COURSE
LOWER—OLD SPANISH
GOVERNOR'S PALACE







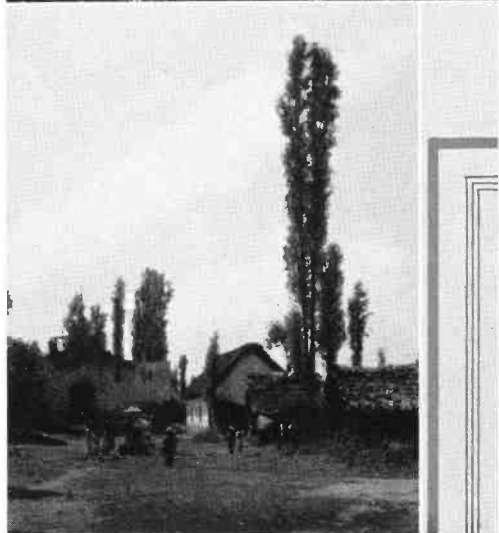
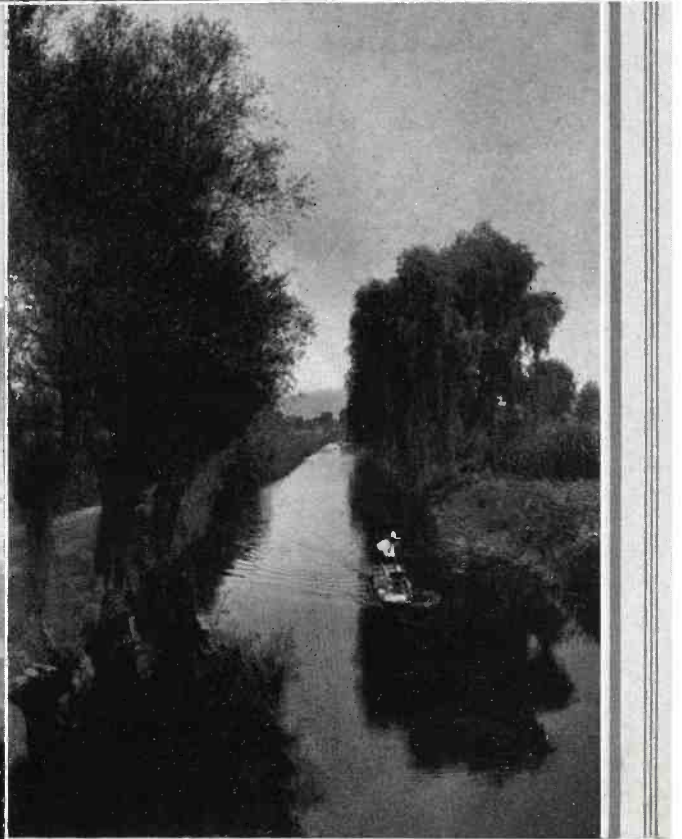
QUAINT OLD
MEXICO CITY



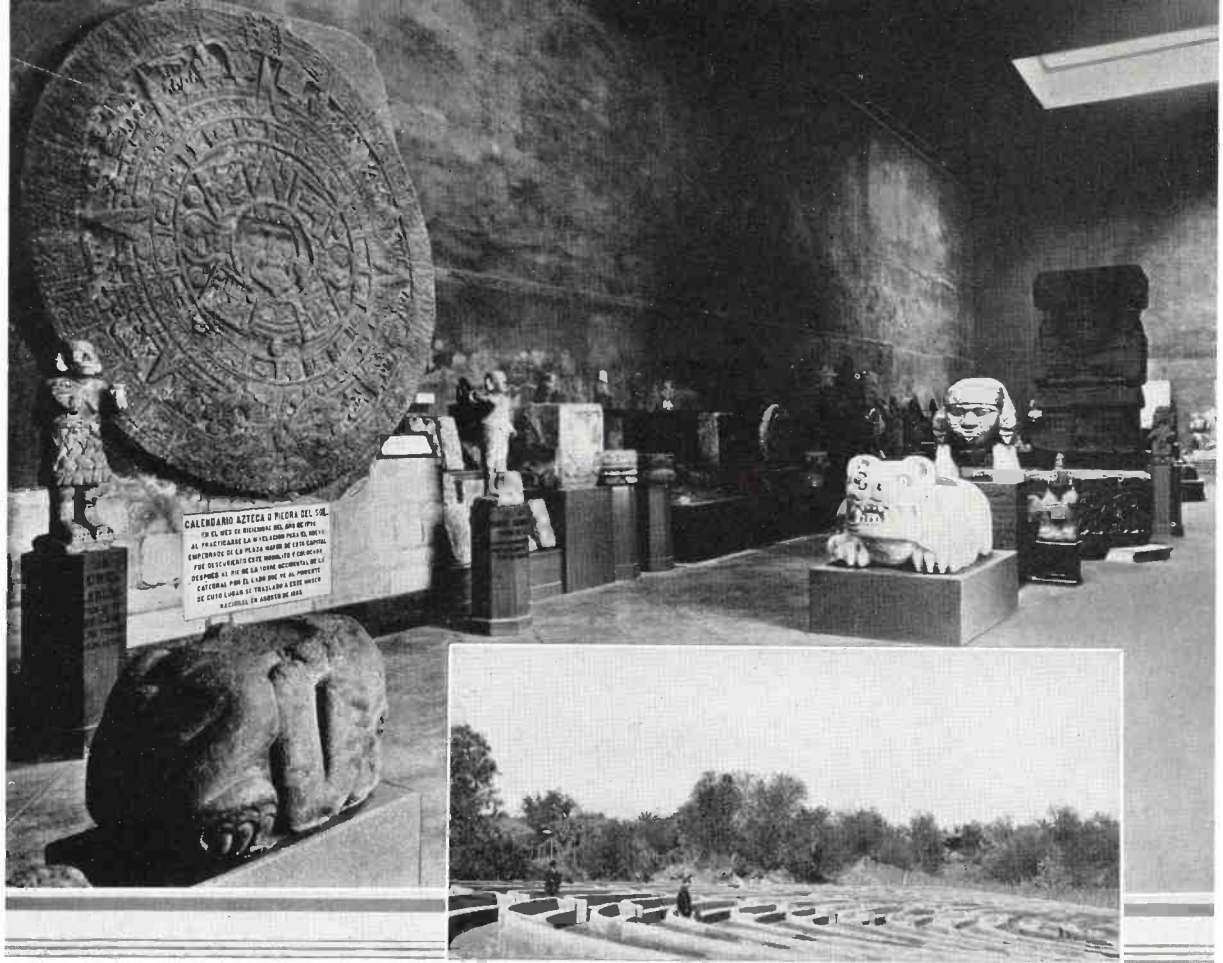
ALTHOUGH MEXICO LIES CONTIGUOUS TO THE UNITED STATES, IT IS MUCH LESS ACCURATELY KNOWN TO MOST AMERICANS THAN ITS IMPORTANCE WARRANTS. IT IS A WINSOME, SUNLIT LAND; ARTISTIC, INTELLECTUAL, EXTRAORDINARILY PICTURESQUE, AND WITH A CHARACTER AND INDIVIDUALITY PECULIARLY INTERESTING TO THE THOUGHTFUL TRAVELER. THOSE WHO VISIT THE REPUBLIC FOR THE FIRST TIME USUALLY

••❖❖•• ••❖❖•• ••❖❖•• ••❖❖•• ••❖❖•• ••❖❖••

PLAZA DE TOROS



PICTURESQUE OLD MEXICO



THE NATIONAL MUSEUM AT MEXICO CITY

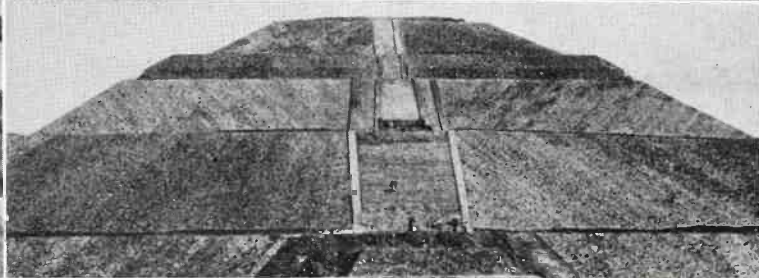
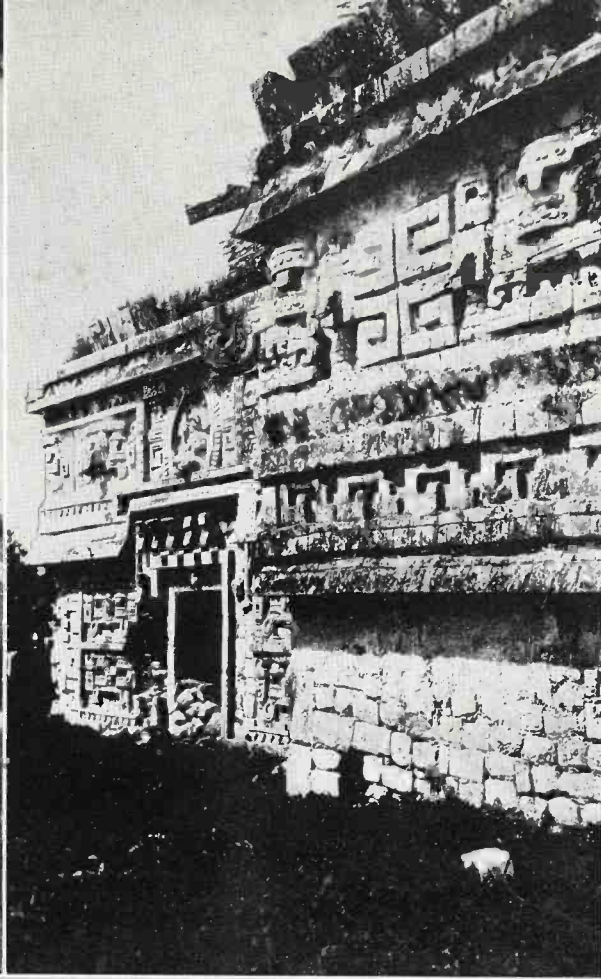
ARE CHARMED BY ITS PHYSICAL BEAUTY, ITS QUIANT CITIES AND TOWNS, ITS ALMOST PERFECT CLIMATE, AND THE BEGUILING PERMANENCY OF ITS AZURE SKIES. IN POINT OF PICTURESQUENESS AND HISTORICAL INTEREST MEXICO HAS FEW EQUALS. IT IS A FELICITOUS BLEND OF THE COLD NORTH AND THE LOWER TROPICS, OF PERSIA, INDIA, ARABIA, SPAIN AND THE HOLY LAND; COUNTRY WHERE TRAVEL IS CHEAP, COMFORTABLE AND SAFE, WHERE THE PEOPLE ARE AMIABLE, FRIENDLY AND HELPFUL, AND WHERE LIFE PRESENTS AN ASPECT OF TRANQUILITY DISTINCTLY APPEALING TO THE HURRIED NORTHERNER.

◆ ◆ ◆ FEW COUNTRIES HAVE HAD A MORE INTERESTING PAST. AN ENLIGHTENED CIVILIZATION DWELT IN PALATIAL CITIES IN MEXICO IN THE OPENING YEARS OF THE CHRISTIAN ERA, AND THE PALACES, TEMPLES AND PYRAMIDS OF THOSE SHADOWY RACES—PERCHANCE THE FIRST AMERICANS—STILL EXIST, WONDERFULLY PRESERVED, TO PUZZLE



A VERY OLD CUSTOM, BUT STILL BEING USED IN MEXICO





SOME OF THE ANCIENT STRUCTURES OF WHICH WE KNOW SO LITTLE
LOWER LEFT—WASH DAY IN MEXICO

THE HISTORIAN AND DELIGHT THE TRAVELER WHEN THE BOLD SPANISH CONQUISTADORES DISRUPTED THE BIZARRE INDIAN CONFEDERACY WHICH RULED (IN 1519) IN THE VALLEY OF MEXICO, THEY SLEW POETS AND PHILOSOPHERS WHOSE WISE SAYINGS ARE STILL CURRENT IN THE VERNACULAR, AND WHOSE ODES CONSTITUTE THE EPIC POEMS OF THE PEOPLE OF TODAY.

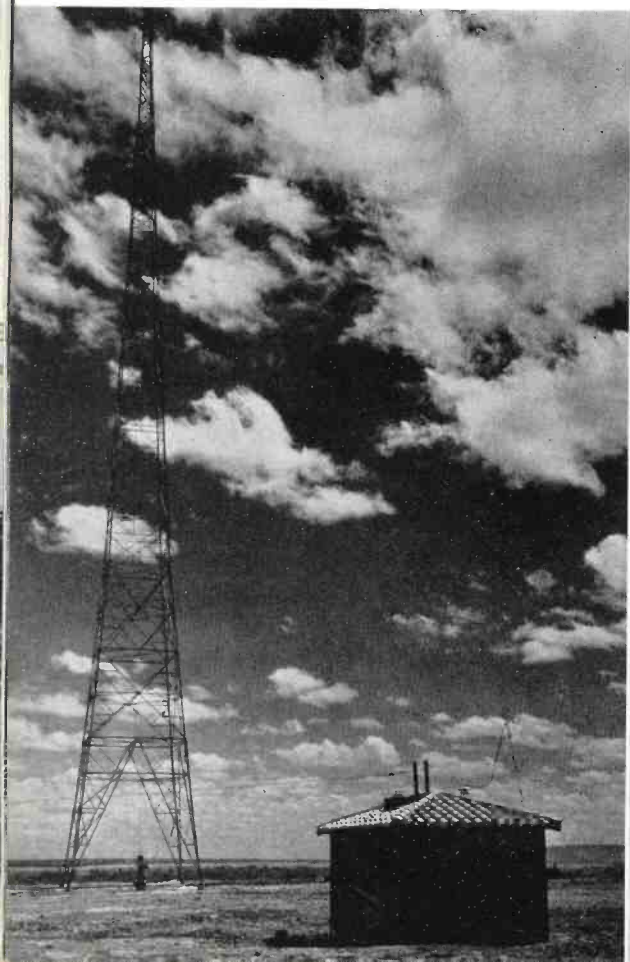


WHAT REMARKABLE RACE LEFT THESE PUZZLING PROOFS OF THEIR GREATNESS?



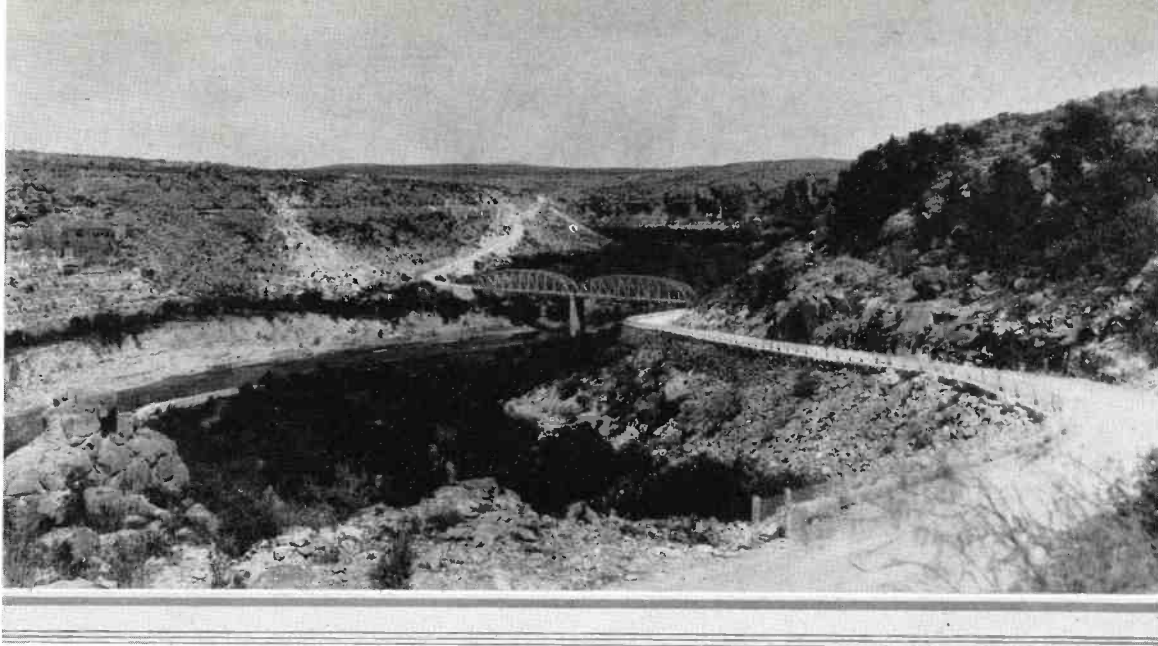


LAKE WALK DAM OF THE CENTRAL POWER AND LIGHT CO. OF TEXAS. X E R POWER IS FURNISHED BY THIS COMPANY



THE STATE OF COAHUILA, WHERE X E R IS LOCATED, HAS ABOUT 400,000 INHABITANTS, OR ABOUT ONE-FORTIETH OF THE POPULATION OF THE REPUBLIC OF MEXICO. ♦ ♦ ♦ THE GREATER PART OF THE POPULATION OF THE STATE OF COAHUILA ARE WHITE PEOPLE. THERE ARE ALSO INDIANS, DESCENDANTS PRINCIPALLY FROM TLEXCALTECA FAMILIES, A KIKAPOO COLONY AND SOME NEGROES. ♦ ♦ ♦ THERE ARE NOT MANY FOREIGNERS LIVING IN THE STATE, BUT THERE ARE SOME FROM ALMOST ALL PARTS OF THE WORLD. ♦ ♦ ♦ THIS STATE HAS BEEN AND WILL CONTINUE TO BE ONE OF THE LEADING STATES IN THE CATTLE INDUSTRY, AS IT HAS ALMOST UNLIMITED AREAS OF GOOD PASTURE LAND ♦ ♦ ♦ GOATS, SHEEP AND HORSES ABOUND IN VARIOUS

..❖❖❖.. ..❖❖❖.. ..❖❖❖.. ..❖❖❖.. ..❖❖❖.. ..❖❖❖..

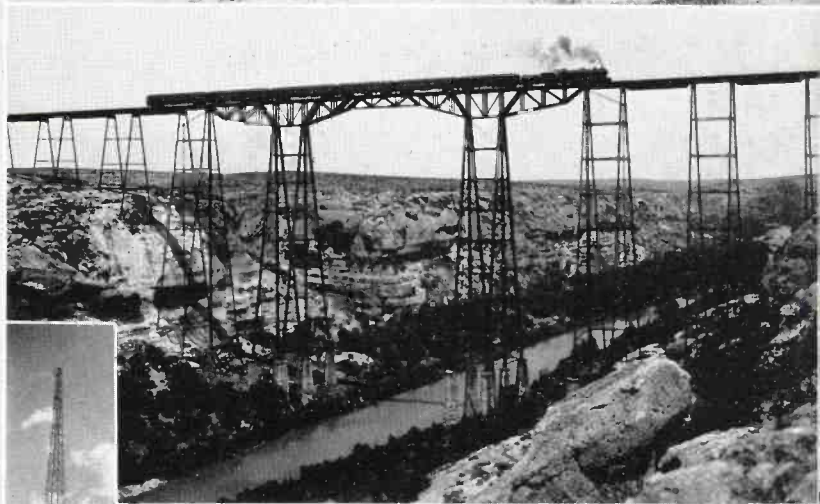
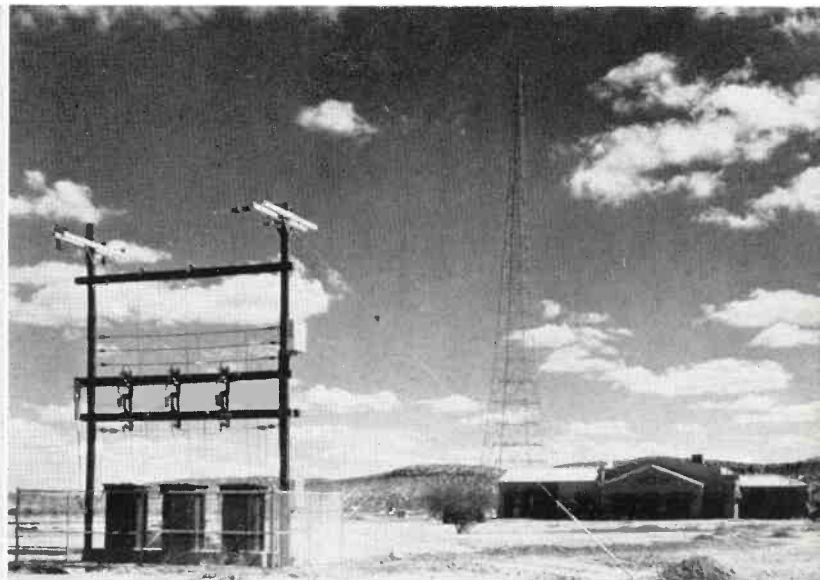


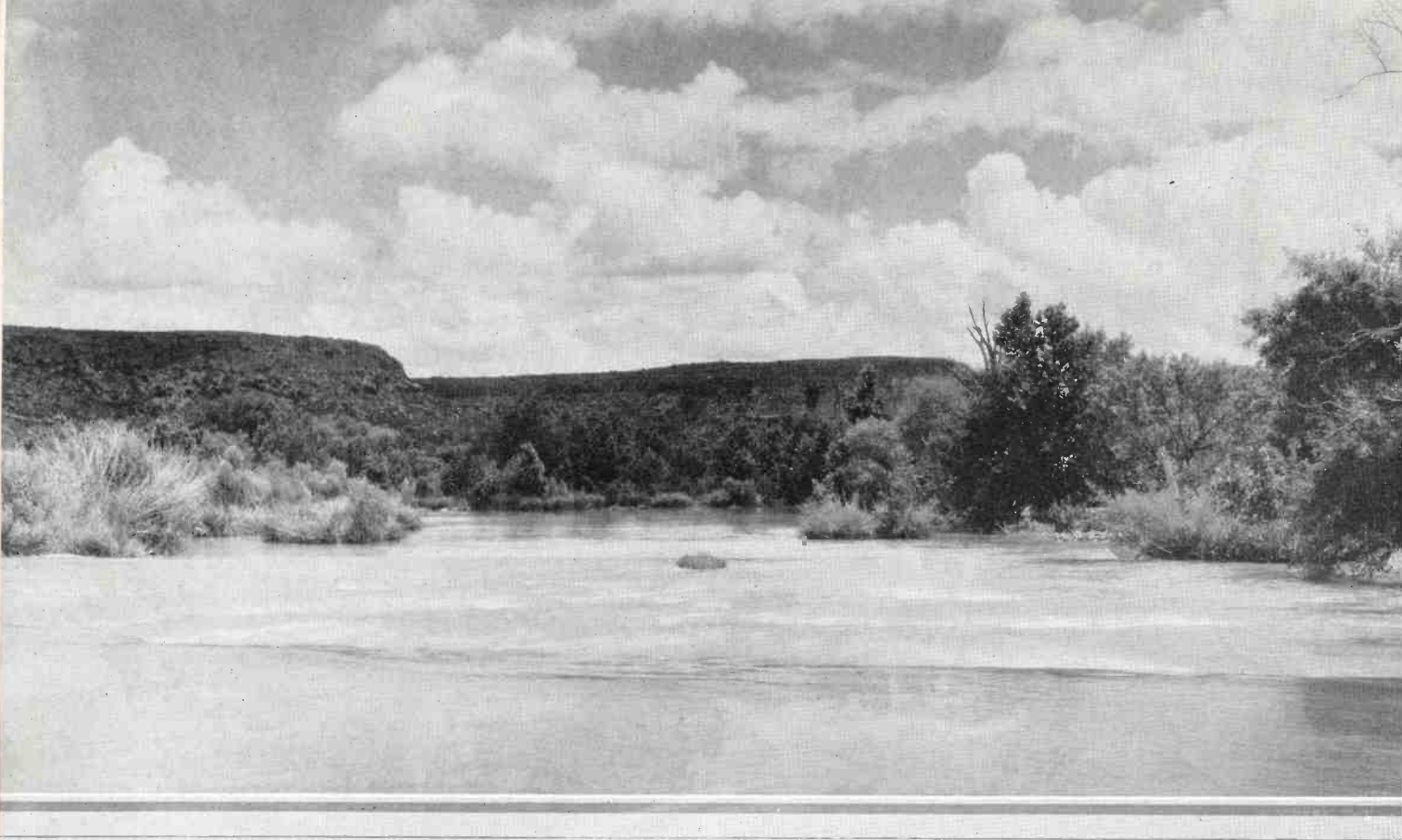
SCENE NEAR DEL REO, TEXAS

TWO MORE VIEWS OF X E R
AND ONE OF THE HIGHEST
BRIDGES IN AMERICA

PARTS OF THE STATE, PRINCIPALLY IN PARRAS, VIESCA, SABINAS, ZARAGOZA, OCAMPO, MUZQUIZ AND GUERRERO. ♦ ♦ ♦ IN THE MOUNTAINS OF PAILA, PATOS, MADERA AND IN THE NORTHERN PART OF THE STATE, THERE IS GOOD HUNTING OF WILD ANIMALS, SUCH AS DEER, BEAR, ELK, JAVALIN, MOUNTAIN LION, LEOPARD, COYOTE, FOX, OPOSSUM AND MANY OTHER WILD ANIMALS AND BIRDS. ♦ ♦ ♦ THERE ARE MANY KINDS OF DOMESTIC FOWL, AND WILD BIRDS INCLUDING GAME BIRDS SUCH AS THE QUAIL, DUCK, DOVE, PLOVER, PARTRIDGE AND TURKEY. ♦ ♦ ♦ AN ABUNDANCE OF FISH IN THE RIVERS, MOUNTAIN STREAMS AND LAKES, MAKE THIS A SPORTSMAN'S PARADISE. SUCH FISH AS THE ROBALO, EEL, SARDINE, CATFISH PILTONTE, GOLDFISH, MATALOTE, TROUT, NEEDLEFISH, AGUJAS, AGUJETAS AND SEABREAM, ARE PLENTIFUL.

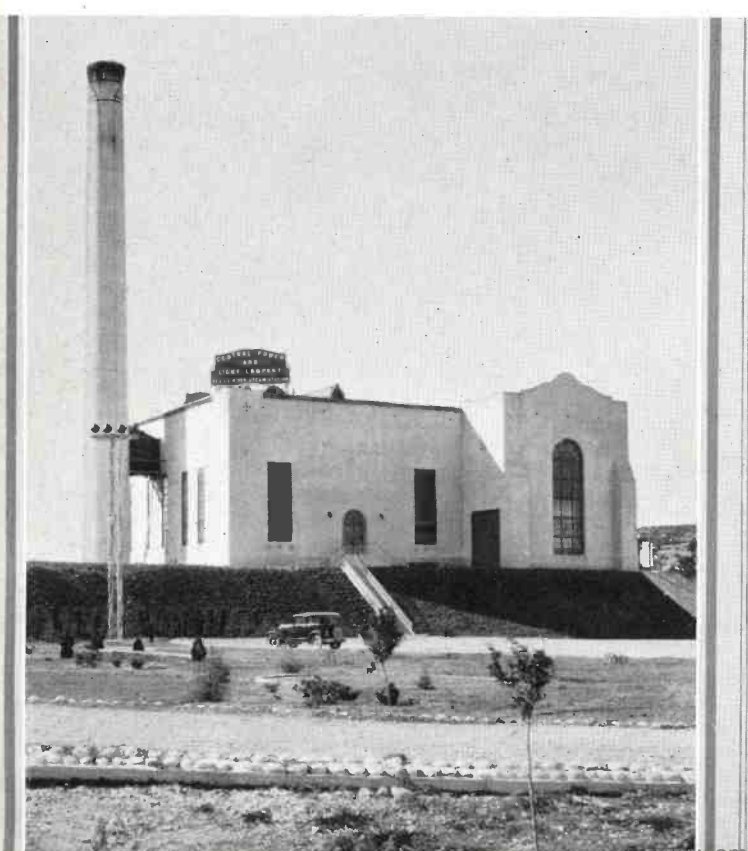
••••• ••••• ••••• ••••• ••••• •••••





FISHING IS GOOD NEAR DEL RIO

CENTRAL POWER & LIGHT COMPANY



THE STATE OF COAHUILA HAS BEEN FOR A LONG TIME ONE OF THE LEADING STATES OF THE REPUBLIC IN THE MATTER OF PUBLIC INSTRUCTION AND HAS A LARGER NUMBER OF SCHOOLS, IN PROPORTION TO ITS INHABITANTS, MOST OF WHOM HAVE ATTENDED SCHOOLS, THAN ANY OTHER STATE. ♦ ♦ ♦ THERE ARE ABOUT 500 PUBLIC PRIMARY SCHOOLS WITH MORE THAN 50,000 PUPILS AND ABOUT 1,000 TEACHERS. ♦ ♦ ♦ THERE ARE IN THE STATE OF COAHUILA NINE TEXTILE FACTORIES. FOUR ARE LOCATED IN SALTILLO AND ONE IN EACH OF THE FOLLOWING CITIES: PARRAS, TORREON, RAMOS ARIZPE, ARTEAGA AND ALLENDE. THEY MANUFACTURE ON A LARGE SCALE, CRETONNE, CANVAS, DRILLS, KHAKI, CALICOES, BLANKETS, COTTON, SHEETING, DOMESTIC FLANNELS, DENIM, GINGHAM AND SOME OTHER CLOTH OF GOOD QUALITY ♦ ♦ ♦ MINING OF VARIOUS METALS, AND MANUFACTURING OF NUMEROUS IMPORTANT ARTICLES ARE OF INTENSE IMPORTANCE IN THE STATE OF COAHUILA.





SHEEP RAISING IN TEXAS

THE IMPORTANT MINES ARE THOSE OF SIERRA MOJADA; LA REFORMA; LA MULA, MUNICIPALITY OF OCAMPO; BAJAN, MUNICIPALITY OF CASTANOS; CABRILLAS, MUNICIPALITY OF RAMOS ARIZPO; AND IN JIMUICO, MUNICIPALITY OF TORREON ◆ ◆ ◆ THE STATE OF COAHUILA PRODUCES THE GREATEST QUANTITY OF COAL IN MEXICO. ABOUT 3,000 TONS DAILY ARE MINED; SOME OF THIS COAL IS CONVERTED INTO COKE, SULPHATE OF AMMONIA, WHICH IS USED AS A FERTILIZER, TAR AND OTHER SUBSTANCES. ◆ ◆ ◆ THERE ARE STOCKING FACTORIES, LEAD SMELTERS, 50 FLOUR MILLS AND SUGAR CANE MILLS IN THE STATE. THE MOST IMPORTANT PLANTS FOR THE MANUFACTURE OF RUBBER MADE FROM GUA-YULE ARE LOCATED AT TORREON AND PARRAS. THERE ARE MORE THAN 30 COTTON GINS AND FIVE COTTON SEED OIL MILLS IN SAN PEDRO.

◆ ◆ ◆ ◆ ◆

A FRUIT FARM



IN A DEL RIO PARK





THE MAP ABOVE SHOWS THE MAIN HIGHWAYS TO VILLA ACUNA, COAHUILA, MEXICO, THE HOME OF RADIO BROADCASTING STATION X E R, JUST ACROSS THE RIO GRANDE RIVER FROM DEL RIO, TEXAS. ♦♦♦ YOU WILL FIND FIRST CLASS HIGHWAYS, MOSTLY PAVEMENT, FROM POINTS IN NEBRASKA, KANSAS, MISSOURI, NEW MEXICO, ARKANSAS, OKLAHOMA AND OTHER STATES. ♦♦♦ THERE ARE SPECIAL POINTS OF INTEREST ALL ALONG THE WAY. YOU WILL FIND THE "LATCH STRING" OUT IN ALL THE CITIES IN ALL THE STATES ON THE MAIN HIGHWAYS. ♦♦♦ THIS IS A STANDING INVITATION FROM DR. J. R. BRINKLEY, THE OFFICERS AND DIRECTORS OF THE VILLA ACUNA BROADCASTING COMPANY, THE PRESIDENT OF VILLA ACUNA AND HIS ASSOCIATES, THE CHAMBER OF COMMERCE OF DEL RIO AND ALL THE MEN AND WOMEN THAT MAKE UP THE PERSONNEL OF THE STATION TO VISIT X E R, "THE SUNSHINE STATION BETWEEN THE NATIONS". ♦♦♦ FOR FURTHER INFORMATION ON TEXAS, AND MEXICO ADDRESS THE CHAMBER OF COMMERCE, DEL RIO, TEXAS.

•••••

Radio Log

UNITED STATES BROADCASTING STATIONS

WAAF	Chicago, Ill.	500	920	WCKY	Covington, Ky.	5000	1490
WAAM	Newark, N. J.	2000	1250	WCLB	Brooklyn, N. Y.	100	1500
WAAT	Jersey City, N. J.	300	940	WCLO	Janesville, Wis.	100	1200
WAAW	Omaha, Nebr.	500	660	WCLS	Joliet, Ill.	100	1310
WBOQ	New York City	5000	860	WCMA	Culver, Ind.	500	1400
WABI	Bangor, Me.	100	1200	WCOA	Pensacola, Fla.	500	1340
WHEC	(See WHEC-WABO)			WCOC	Meridian, Miss.	1000	880
WABZ	New Orleans, La.	100	1200	WCOD	Harrisburg, Pa.	100	1200
WACO	Waco, Tex.	1000	1240	WCOH	Yonkers, N. Y.	100	1210
WADC	Tallmadge, Ohio	1000	1320	WCRW	Chicago, Ill.	100	1210
WAIU	Columbus, Ohio	500	640	WCSC	Charleston, S. C.	500	1360
WALR	Zanesville, Ohio	100	1210	WCSH	Portland, Me.	1000	940
WAPI	Birmingham, Ala.	5000	1140	WDAE	Tampa, Fla.	1000	1220
WASH	Grand Rapids, Mich.	500	1270	WDAF	Kansas City, Mo.	1000	610
WBAA	W. Lafayette, Ind.	1000	1400	WDAG	Amarillo, Tex.	250	1410
WBAK	Harrisburg, Pa.	1000	1430	WDAH	El Paso, Tex.	100	1310
WBAL	Baltimore, Md.	10000	1060	WDAY	Fargo, N. Dak.	1000	940
WBAP	Fort Worth, Tex.	50000	800	WDBJ	Roanoke, Va.	500	930
WBAX	Wilkes-Barre, Pa.	100	1210	WDBO	Orlando, Fla.	1000	1120
WBBC	Brooklyn, N. Y.	500	1400	WDEL	Wilmington, Del.	350	1120
WBBL	Richmond, Va.	100	1210	WDGY	Minneapolis, Minn.	1000	1180
WJBT	Chicago, Ill.	25000	770	WDIX	Tupelo, Miss.	100	1500
WBBR	Brooklyn, N. Y.	1000	1300	WDOD	Chattanooga, Tenn.	2500	1280
WBBZ	Ponca City, Okla.	100	1200	WDRC	Hartford, Conn.	500	1330
WBCM	Bay City, Mich.	500	1410	WDSU	New Orleans, La.	1000	1250
WBEN	Buffalo, N. Y.	1000	900	WLSI	Providence, R. I.	100	1210
WBGF	Glenn Falls, N. Y.	50	1370	WDZ	Tuscola, Ill.	100	1070
WBIG	Greensboro, N. C.	500	1440	WEAF	New York City	50000	660
WNAC	(See WNAC-WBIS)			WEAI	Ithaca, N. Y.	1000	1270
WBMS	Hackensack, N. J.	250	1450	WEAN	Providence, R. I.	500	780
WBNX	New York City	250	1350	WEAO	Columbus, Ohio	750	570
WABC	(See WABC-WBOQ)			WEBC	Superior, Wis.	2500	1290
WBOW	Terre Haute, Ind.	100	1310	WEBQ	Harrisburg, Ill.	100	1210
WBRC	Birmingham, Ala.	1000	930	WEBR	Buffalo, N. Y.	200	1310
WBRE	Wilkes-Barre, Pa.	100	1310	WEDC	Chicago, Ill.	100	1210
WBSO	Needham, Mass.	500	920	WEDH	Eric, Pa.	100	1420
WBT	Charlotte, N. C.	5000	1080	WEEI	Boston, Mass.	1000	590
WBTM	Danville, Va.	100	1370	WEHC	Emory, Va.	250	1200
WBZ	Springfield, Mass.	15000	990	WEHS	Evanston, Ill.	100	1420
WBZA	Boston, Mass.	500	990	WELK	Philadelphia, Pa.	250	1370
WCAC	Storrs, Conn.	250	600	WELL	Battle Creek, Mich.	50	1420
WCAD	Canton, N. Y.	500	1220	WBCN	Chicago, Ill.	50000	870
WCAE	Pittsburg, Pa.	1000	1220	WEVD	New York City	500	1300
WCAH	Columbus, Ohio	500	1430	WEW	St. Louis, Mo.	1000	760
WCAJ	Lincoln, Nebr.	500	590	WEXL	Royal Oak, Mich.	50	1310
WCAL	Northfield, Minn.	1000	1250	WFAA	Dallas, Tex.	50000	800
WCAM	Camden, N. J.	500	1280	WFAN	Philadelphia, Pa.	500	610
WCAO	Baltimore, Md.	250	600	WFBC	Knoxville, Tenn.	50	1200
WCAP	Asbury Park, N. J.	500	1280	WFBE	Cincinnati, Ohio	250	1200
WCAT	Rapid City, S. D.	100	1200	WFBG	Altoona, Pa.	100	1310
WCAU	Philadelphia, Pa.	10000	1170	WFBL	Syracuse, N. Y.	1000	1360
WCAX	Burlington, Vt.	100	1200	WFBM	Indianapolis, Ind.	1000	1230
WCAZ	Carthage, Ill.	50	1070	WFBR	Baltimore, Md.	500	1270
WCBA	Allentown, Pa.	250	1440	WFDL	Flint, Mich.	100	1310
WCBD	Zion, Ill.	5000	1080	WFDV	Rome, Ga.	100	1370
WCBM	Baltimore, Md.	250	1370	WFDW	Talladega, Ala.	100	1420
WCBS	Springfield, Ill.	100	1210	WFI	Philadelphia, Pa.	500	560
WCCO	Minneapolis, Minn.	7500	810	WFIW	Hopkinsville, Ky.	1000	940
WCDA	New York City	250	1350	WSUN	Clearwater, Fla.	2500	620
WCFL	Chicago, Ill.	1500	970	WFOK	Brooklyn, N. Y.	500	1400
WCGU	Brooklyn, N. Y.	500	1400	WGAL	Lancaster, Pa.	100	1310
WCHI	Chicago, Ill.	5000	1400	WGAR	Cleveland, Ohio	500	1450
				WGBB	Freeport, N. Y.	100	1210

WGBC	Memphis, Tenn.	500	1430	WJBL	Decatur, Ill.	100	1200
WGBF	Evansville, Ind.	500	630	WJBO	New Orleans, La.	100	1420
WGBI	Scranton, Pa.	250	880	WBBM	(See WBBM-WJBT)		
WGBS	New York City	500	600	WJBU	Lewisburg, Pa.	100	1210
WGCM	Gulfport, Miss.	100	1210	WJBW	New Orleans, La.	30	1200
WGCP	Newark, N. J.	250	1250	WJBY	Gadsden, Ala.	50	1210
WGES	Chicago, Ill.	500	1360	WJDX	Jackson, Miss.	1000	1270
	Sunday	1000		WJJD	Mooseheart, Ill.	20000	1130
WGH	Newport News, Va.	100	1310	WJKS	Gary, Ind.	1250	1360
WGL	Ft. Wayne, Ind.	100	1370	WJR	Detroit, Mich.	5000	750
WLIB	Chicago, Ill.	25000	720	WJSV	Alexandria, Va.	10000	1460
WGR	Buffalo, N. Y.	1000	550	WJW	Mansfield, Ohio	100	1210
WGST	Atlanta, Ga.	500	890	WJZ	New York City	30000	760
WGY	Schenectady, N. Y.	50000	790	WKAR	E. Lansing, Mich.	1000	1040
WHA	Madison, Wis.	750	940	WKAV	Laconia, N. H.	100	1310
WHAD	Milwaukee, Wis.	250	1120	WKBB	Joliet, Ill.	100	1310
WHAM	Rochester, N. Y.	5000	1150	WKBC	Birmingham, Ala.	100	1310
WHAP	New York City	1000	1300	WKBF	Indianapolis, Ind.	500	1400
WHAS	Louisville, Ky.	10000	820	WKBH	La Crosse, Wis.	1000	1380
WHAT	Philadelphia, Pa.	100	1310	WKBI	Chicago, Ill.	100	1420
WHAZ	Troy, N. Y.	500	1300	WKBN	Youngstown, Ohio	500	570
WHB	Kansas City, Mo.	500	860	WKBO	Jersey City, N. J.	250	1450
WHBC	Canton, Ohio	10	1200	WKBS	Galesburg, Ill.	100	1310
WHBD	Mt. Orab, Ohio	100	1370	WKBV	Connersville, Ind.	150	1500
WHBF	Rock Island, Ill.	100	1210	WKBW	Buffalo, N. Y.	5000	1480
WHBL	Sheboygan, Wis.	500	1410	WKBZ	Ludington, Mich.	50	1500
WHBQ	Memphis, Tenn.	100	1370	WKJC	Lancaster, Pa.	100	1200
WHBU	Anderson, Ind.	100	1210	WKRC	Cincinnati, Ohio	1000	550
WHBY	Green Bay, Wis.	100	1200	WKY	Oklahoma City, Okla.	1000	900
WHDF	Calumet, Mich.	250	1370	WKZO	Berrien Springs, Mich.	1000	590
WHDH	Boston, Mass.	1000	830	WLAC	Nashville, Tenn.	5000	1470
WHDJ	Minneapolis, Minn.	500	1180	WLAP	Louisville, Ky.	250	1200
WHDL	TUPPER Lake, N. Y.	10	1420	WGMS	Minneapolis, Minn.	1000	1250
WABO	Rochester, N. Y.	500	1440	WLBC	Muncie, Ind.	50	1310
WHFC	Cicero, Ill.	100	1420	WLBF	Kansas City, Kans.	100	1420
WHIS	Bluefield, W. Va.	100	1420	WLBG	Petersburg, Va.	250	1200
WHK	Cleveland, Ohio	1000	1390	WLBL	Stevens Pt., Wis.	2000	900
WHN	New York City	250	1010	WLBW	Oil City, Pa.	1000	1260
WHO	Des Moines, Iowa	5000	1000	WLBX	Long Island City, N. Y.	100	1500
WHOM	Jersey City, N. J.	250	1450	WLBZ	Bangor, Me.	500	620
WHP	Harrisburg, Pa.	1000	1430	WLCI	Ithaca, N. Y.	50	1210
WIAS	Ottumwa, Iowa	100	1420	WLEX	Lexington, Mass.	500	1410
WIBA	Madison, Wis.	500	1280	WLEY	Lexington, Mass.	250	1370
WIBG	Elkins Park, Pa.	50	930	WGN	(See WGN-WLIB)		
WIBM	Jackson, Mich.	100	1370	WLIT	Philadelphia, Pa.	500	560
WIBO	Chicago, Ill.	1500	560	WLOE	Boston, Mass.	250	1500
WIBR	Steubenville, Ohio	50	1420	WLS	Chicago, Ill.	5000	870
	One-half time		1040	WDWF	(See WDWF-WLSI)		
WIBU	Poynette, Wis.	100	1210	WLTH	Brooklyn, N. Y.	500	1400
WIBW	Topeka, Kans.	1000	580	WLVA	Lynchburg, Va.	100	1370
WIBX	Utica, N. Y.	300	1200	WLW	Cincinnati, Ohio	50000	700
WICC	Bridgeport, Conn.	500	1190	WLWL	New York City	5000	1100
WIL	St. Louis Mo.	250	1200	WSYR	(See WSYR-WMAC)		
WILL	Urbana, Ill.	500	890	WMAF	South Dartmouth, Mass.	500	1410
WILM	Wilmington, Del.	100	1420	WMAK	Buffalo, N. Y.	1000	1040
WMBF	Miami, Fla.	1000	1300	WMAL	Washington, D. C.	500	630
WIP	Philadelphia, Pa.	500	610	WMAQ	Chicago, Ill.	5000	670
WIS	Columbia, S. C.	1000	1010	WMAZ	Macon, Ga.	500	890
WISJ	South Madison, Wis.	500	780	WMBA	Newport, R. I.	100	1500
WISN	Milwaukee, Wis.	250	1120	WMBC	Detroit, Mich.	250	1420
WJAC	Johnstown, Pa.	100	1310	WMBD	Peoria Heights, Ill.	1000	1440
WJAG	Norfolk, Nebr.	1000	1060	WIOD	(See WIOD-WMBF)		
WJAK	Marion, Ind.	50	1310	WMBG	Richmond, Va.	100	1210
WJAR	Providence, R. I.	400	890	WMBH	Joplin, Mo.	250	1420
WJAS	Pittsburg, Pa.	2500	1290	WMBI	Chicago, Ill.	5000	1080
WJAX	Jacksonville, Fla.	1000	900	WMBO	Auburn, N. Y.	100	1310
WJAY	Cleveland, Ohio	500	610	WMBQ	Brooklyn, N. Y.	100	1500
WJAZ	Mt. Prospect, Ill.	5000	1490	WMBR	Tampa, Fla.	100	1370
WJBC	La Salle, Ill.	100	1200	WMC	Memphis, Tenn.	1000	780
WJBI	Red Bank, N. J.	100	1210	WMCA	New York City	500	570
WJBK	Highland Park, Mich.	50	1370	WMMN	Fairmont, W. Va.	500	890

WMPC	Lapeer, Mich.	100	1500	WRJN	Racine, Wis.	100	1370
WMRJ	Jamaica, N. Y.	100	1210	WRNY	New York City	250	1010
WMSG	New York City	250	1350	WROL	Knoxville, Tenn.	100	1310
WMT	Waterloo, Iowa	500	600	WRR	Dallas, Tex.	500	1280
WNAC	Boston, Mass.	1000	1230	WRUF	Gainesville, Fla.	5000	830
WNAD	Norman, Okla.	500	1010	WRVA	Richmond, Va.	5000	1110
WNAX	Yankton, S. D.	1000	570	WSAI	Cincinnati, Ohio	500	1330
WNBH	Binghamton, N. Y.	100	1500	WSAJ	Grove City, Pa.	100	1310
WNBH	New Bedford, Mass.	100	1310	WSAN	Allentown, Pa.	250	1440
WNBO	Silver Haven, Pa.	100	1200	WSAR	Fall River, Mass.	250	1450
WNBK	Memphis, Tenn.	500	1430	WSAZ	Huntington, W. Va.	250	580
WNBW	Carbondale, Pa.	10	1200	WSB	Atlanta, Ga.	5000	740
WNBX	Springfield, Vt.	10	1200	WSBC	Chicago, Ill.	100	1210
WNBZ	Saranac Lake, N. Y.	50	1290	WSBT	South Bend, Ind.	500	1230
WNJ	Newark, N. J.	250	1450	WSGH	(See WSGH-WSDA)		
WNOX	Knoxville, Tenn.	2000	560	WSEN	Columbus, Ohio	100	1210
WNYC	New York City	500	570	WSFA	Montgomery, Ala.	500	1410
WOAI	San Antonio, Tex.	50000	1190	WSIX	Springfield, Tenn.	100	1210
WREC	(See WREC-WOAN)			WSJS	Winston-Salem, N. C.	100	1310
WOAX	Trenton, N. J.	500	1280	WSM	Nashville, Tenn.	5000	650
WOBT	Union City, Tenn.	250	1310	WSMB	New Orleans, La.	500	1320
WOBU	Charleston, W. Va.	250	580	WSMK	Dayton, Ohio	200	1380
WOC	Davenport, Iowa	5000	1000	WSOC	Gastonia, N. C.	100	1210
WOCL	Jamestown, N. Y.	25	1210	WSPA	Spartanburg, S. C.	250	1420
WODA	Paterson, N. J.	1000	1250	WSPD	Toledo, Ohio	1000	1340
WODX	Mobile, Ala.	500	1410	WSSH	Boston, Mass.	500	1410
WOI	Ames, Iowa	5000	640	WSUI	Iowa City, Iowa	500	880
WOKO	Albany, N. Y.	500	1440	WFLA	(See WFLA-WSUN)		
WOL	Washington, D. C.	100	1310	WSVS	Buffalo, N. Y.	50	1370
WOMT	Manitowoc, Wis.	100	1210	WSYB	Rutland, Vt.	100	1500
WOOD	Grand Rapids, Mich.	500	1270	WMAC	Syracuse, N. Y.	250	570
WOPI	Bristol, Tenn.	100	1500	WTAD	Quincy, Ill.	500	1440
WOQ	Kansas City, Mo.	1000	1300	WTAG	Worcester, Mass.	250	580
WOR	Newark, N. J.	5000	710	WTAM	Cleveland, Ohio	50000	1070
WEPS	Worcester, Mass.	100	1200	WTAQ	Eau Claire, Wis.	1000	1330
WOS	Jefferson City, Mo.	500	630	WPOR	Norfolk, Va.	500	780
WOV	New York City	1000	1130	WTAW	College Station, Tex.	500	1120
WOW	Omaha, Nebr.	1000	590	WTAX	Springfield, Ill.	100	1210
WOWO	Ft. Wayne, Ind.	10000	1160	WTBO	Cumberland, Md.	250	1420
WPAD	Paducah, Ky.	100	1420	WTEL	Philadelphia, Pa.	50	1310
WQAO	(See WQAO-WPAP)			WTFI	Toccoa, Ga.	500	1450
WPAP	Pawtucket, R. I.	100	1210	WTIC	Hartford, Conn.	50000	1060
WPCC	Chicago, Ill.	500	560	WTMJ	Milwaukee, Wis.	2500	620
WPCH	New York City	500	810	WTOC	Savannah, Ga.	500	1260
WPEN	Philadelphia, Pa.	250	1500	WWAE	Hammond, Ind.	100	1200
WPG	Atlantic City, N. J.	5000	1100	WWJ	Detroit, Mich.	1000	920
WPOE	Patchogue, N. Y.	100	1370	WWL	New Orleans, La.	5000	850
WTAR	(See WTAR-WPOR)			WWNC	Asheville, N. C.	1000	570
WPSC	State College, Pa.	500	1230	WWRL	Woodside, N. Y.	100	1500
WPTF	Raleigh, N. C.	1000	680	WWVA	Wheeling, W. Va.	5000	1160
WQAM	Miami, Fla.	1000	560	WXYZ	Detroit, Mich.	1000	1240
WQAN	Scranton, Pa.	250	880	KBPS	Portland, Ore.	100	1420
WPAP	New York City	250	1010	KBTM	Paragould, Ark.	100	1200
WQDM	St. Albans, Vt.	5	1370	KCRC	Enid, Okla.	250	1370
WQDX	Thomasville, Ga.	50	1210	KCRJ	Jerome, Ariz.	100	1310
WRAF	La Porte, Ind.	100	1200	KDB	Santa Barba, Cal.	100	1500
WRAK	Williamspport, Pa.	50	1370	KDFN	Casper, Wyo.	100	1210
WRAW	Reading, Pa.	50	1310	KDKA	Pittsburg, Pa.	50000	980
WRAX	Philadelphia, Pa.	250	1020	KDLR	Devils Lake, N. D.	100	1210
WRBI	Tifton, Ga.	20	1310	KDYL	Salt Lake City, Utah	1000	1290
WRBJ	Hattiesburg, Miss.	10	1370	KECA	Los Angeles, Cal.	1000	1430
WRBL	Columbus, Ga.	50	1200	KELW	Burbank, Cal.	500	780
WRBQ	Greenville, Miss.	250	1210	KEX	Portland, Ore.	5000	1180
WRBT	Wilmington, N. C.	100	1370	KFAB	Lincoln, Neb.	5000	770
WRBX	Roanoke, Va.	250	1410	KFBB	Great Falls, Mont.	2500	1280
WRC	Washington, D. C.	500	950	KFBK	Sacramento, Cal.	100	1310
WRDO	Augusta, Me.	100	1370	KFBL	Everett, Wash.	50	1370
WRDW	Augusta, Ga.	100	1500	KFDM	Beaumont, Tex.	1000	560
WOAN	Memphis, Tenn.	1000	600	KFDY	Brookings, S. Dak.	1000	550
WREN	Lawrence, Kans.	1000	1220	KFEL	Denver, Colo.	500	920
WRHM	Minneapolis, Minn.	1000	1250	KFEQ	St. Joseph, Mo.	2500	680

KFGQ	Boone, Iowa	100	1310	KGFK	Moorhead, Minn.	50	1500
KFH	Wichita, Kans.	1000	1300	KGFL	Raton, N. M.	50	1370
KFI	Los Angeles, Cal.	5000	640	KGFW	Ravenna, Nebr.	100	1310
KFIO	Spokane, Wash.	100	1120	KGFX	Pierre, S. Dak.	200	580
KFIZ	Fond du Lac, Wis.	100	1420	KGGC	San Francisco, Cal.	100	1420
KFJB	Marshalltown, Iowa	250	1200	KGGF	South Coffeyville, Okla.	500	1010
KFJF	Oklahoma City, Okla.	5000	1480	KGGM	Albuquerque, N. M.	500	1230
KFJI	Astoria, Ore.	100	1370	KGHF	Pueblo, Colo.	500	1320
KFJM	Grand Forks, N. Dak.	100	1370	KGHI	Little Rock, Ark.	100	1200
KFJR	Portland, Ore.	500	1300	KGHL	Billings, Mont.	1000	950
KFJY	Fort Dodge, Iowa	100	1310	KGIR	Butte, Mont.	500	1360
KFJZ	Fort Worth, Tex.	100	1370	KGIW	Trinidad, Colo.	100	1420
KFKA	Greeley, Colo.	1000	880	KGIX	Las Vegas, Nev.	100	1420
KFBI	Milford, Kans.	5000	1050	KGIZ	Grant City, Mo.	50	1500
KFKU	Lawrence, Kans.	500	1220	KGJF	Little Rock, Ark.	250	890
KYW	(See KYW-KFKX)			KGKB	Brownwood, Tex.	100	1500
KFLV	Rockford, Ill.	500	1410	KGKL	San Angelo, Tex.	100	1370
KFLX	Galveston, Tex.	100	1370	KGKO	Wichita Falls, Tex.	500	570
KFMX	Northfield, Minn.	1000	1250	KGKX	Sandpoint, Idaho	100	1420
KFNF	Shenandoah, Iowa	1000	890	KGKY	Scottsbluff, Nebr.	100	1500
KFOR	Lincoln, Nebr.	250	1210	KGMP	Elk City, Okla.	100	1210
KFOX	Long Beach, Cal.	1000	1250	KGNF	North Platte, Nebr.	500	1430
KFPL	Dublin, Tex.	100	1310	KGNO	Dodge City, Kans.	100	1210
KFPM	Greenville, Tex.	15	1310	KGO	San Francisco, Cal.	7500	790
KFPW	Ft. Smith, Ark.	50	1340	KGRS	Amarillo, Tex.	1000	1410
KFPY	Spokane, Wash.	1000	1340	KGW	Portland, Ore.	1000	620
KFQU	Holy City, Cal.	100	1420	KGY	Lacey, Wash.	10	1200
KFQW	Seattle, Wash.	100	1420	KHJ	Los Angeles, Cal.	1000	900
KFRC	San Francisco, Cal.	1000	610	KHQ	Spokane, Wash.	2000	590
KFRU	Columbia, Mo.	500	630	KICK	Red Oak, Iowa	100	1420
KFSD	San Diego, Cal.	1000	600	KID	Idaho Falls, Idaho	500	1320
KFSG	Los Angeles, Cal.	500	1120	KIDO	Boise, Idaho	1000	1250
KFUL	Galveston, Tex.	500	1290	KIT	Yakima, Wash.	50	1310
KFUM	Colorado Springs, Colo.	1000	1270	KJBS	San Francisco, Cal.	100	1070
KFUO	Clayton, Mo.	1000	550	KJR	Seattle, Wash.	5000	970
KFUP	Denver, Colo.	100	1310	KLCN	Blytheville, Ark.	50	1290
KFVD	Culver City, Cal.	250	1000	KLO	Ogden, Utah	500	1400
KFVS	Cape Girardeau, Mo.	100	1210	KLPM	Minot, N. Dak.	100	1420
KFWB	Hollywood, Cal.	1000	950	KLRA	Little Rock, Ark.	1000	1390
KFWF	St. Louis, Mo.	100	1200	KLS	Oakland, Cal.	250	1440
KFWI	San Francisco, Cal.	500	930	KLX	Oakland, Cal.	500	880
KFXD	Nampa, Idaho	50	1420	KLZ	Denver, Colo.	1000	560
KFXF	Denver, Colo.	500	920	KMA	Shenandoah, Iowa	1000	930
KFXJ	Edgewater, Colo.	50	1310	KMAC	San Antonio, Tex.	100	1370
KFXM	San Bernardino, Cal.	100	1210	KMBC	Kansas City, Mo.	1000	950
KFXR	Oklahoma City, Okla.	250	1310	KMCS	Inglewood, Cal.	500	1120
KFXY	Flagstaff, Ariz.	100	1420	KMED	Medford, Ore.	50	1310
KFYO	Abilene, Tex.	250	1420	KMJ	Fresno, Cal.	100	1210
KFYR	Bismark, N. Dak.	1000	550	KMLB	Monroe, La.	50	1200
KGA	Spokane, Wash.	5000	1470	KMMJ	Clay Center Nebr.	1000	740
KGAR	Tucson, Ariz.	250	1370	KMO	Tacoma, Wash.	500	860
KGB	San Diego, Cal.	250	1330	KMOX	St. Louis, Mo.	50000	1090
KGBX	St. Joseph, Mo.	100	1310	KMPC	Beverly Hills, Cal.	500	710
KGBZ	York, Nebr.	1000	930	KMTR	Los Angeles, Cal.	500	570
KGCA	Decorah, Iowa	50	1270	KNX	Hollywood, Cal.	5000	1050
KGCR	Watertown, S. Dak.	100	1210	KOA	Denver, Colo.	12500	830
KGCU	Mandan, N. Dak.	100	1200	KOAC	Corvallis, Ore.	1000	550
KGCC	Wolf Point, Mont.	250	1310	KOB	State College, N. Mex.	20000	1180
KGDA	Mitchell, S. Dak.	100	1370	KOCW	Chickasha, Okla.	500	1400
KGDE	Fergus Falls, Minn.	250	1200	KOH	Reno, Nev.	500	1380
KGDM	Stockton, Cal.	250	1100	KOIL	Council Bluffs, Iowa	1000	1260
KGDY	Huron, S. Dak.	100	1200	KOIN	Portland, Ore.	1000	940
KGEF	Los Angeles, Cal.	1000	1300	KOL	Seattle, Wash.	1000	1270
KGEK	Yuma, Colo.	50	1200	KOMO	Seattle, Wash.	1000	920
KGER	Long Beach, Cal.	1000	1360	KONO	San Antonio, Tex.	100	1370
KGEW	Fort Morgan, Colo.	100	1200	KOOS	Marshfield, Ore.	100	1370
KGEZ	Kalispell, Mont.	100	1310	KORE	Eugene, Ore.	100	1420
KGFF	Alva, Okla.	100	1420	KOY	Phoenix, Ariz.	500	1390
KGFG	Oklahoma City, Okla.	100	1370	KPCB	Seattle, Wash.	100	650
KGFI	Corpus Christi, Tex.	250	1500	KPJM	Prescott, Ariz.	100	1500
KGFI	Los Angeles, Cal.	100	1200	KPO	San Francisco, Cal.	5000	680

CNRE	Edmonton, Alta.....	500	930	CNRS	Saskatoon, Sask.....	500	910
CNRH	Halifax, N. S.....	500	910	CNRT	Toronto, Ont.....	500	840
CNRL	Strathburn, Ont.....	500	910	CNRV	Vancouver, B. C.....	500	1030
CNRM	Montreal, Que.....	5000	730	CNRW	Winnipeg, Man.....	5000	780
CNRO	Ottawa, Ont.....	500	600	CNRX	Toronto, Ont.....	4000	960
CNRQ	Quebec, Que.....	50	880	CPR Y	Bowmanville, Ont.....	5000	690
CNRR	Regina, Sask.....	500	960				

MEXICAN BROADCASTING STATIONS

XEA	Guadalajara.....	100	1200	XER	Villa Acuna.....	75000	735
XEB	Mexico City.....	1000	1030	XES	Tampico.....	500	890
XEC	Toluca.....	50	1333	XET	Monterrey.....	1500	630
XED	Reynosa.....	10000	961	XETA	Mexico City.....	500	1140
XEE	Linares.....	10	1000	XETF	Vera Cruz.....	500	680
XEF	Oaxaca.....	100	1132	XEU	Vera Cruz.....	100	800
XEFA	Mexico City.....	250	1250	XEV	Puebla.....	100	1035
XEFE	Nuevo Laredo.....	100	980	XEW	Mexico City.....	5000	780
XEG	Mexico City.....	2000	910	XEX	Mexico City.....	500	1190
XEH	Mexico City.....	100	1130	XEY	Merida.....	100	547
XEI	Morelia.....	100	1000	XEZ	Mexico City.....	500	588
XEJ	Ciudad Juarez.....	100	857	XFA	Mexico City.....	50	600
XEK	Mexico City.....	100	990	XFC	Aguascalientes.....	350	804
XEL	Saltillo.....	10	1090	XFE	Villahermosa.....	350	804
XEM	Tampico.....	500	841	XFF	Chihuahua.....	250	923
XEN	Mexico City.....	1000	719	XFG	Mexico City.....	2000	638
XEO	Mexico City.....	5000	940	XFH	Mexico City.....	250	
XEP	Nuevo Laredo.....	200	1500	XFI	Mexico City.....	1000	818
XEQ	Ciudad Juarez.....	1000	750	XFZ	Mexico City.....	500	860

Designed and Printed by Thompson Brothers,
El Dorado, Kansas

Art Work and Engravings by The Mid-Continent
Engraving Company,
Wichita, Kansas

Station Photos by Harvey Patterson,
San Antonio, Texas

Photos of Del Rio and other Texas Views by Lippe,
Del Rio, Texas

Much credit is due The Chambers of Commerce of
Villa Acuna, Austin, Fort Worth, San Antonio and
Del Rio for photographs and other information
furnished.

