



WMBI

RADIO

*Personalities*

WMBI - WDLM

FAMILY ALBUM • 1947



**MOODY BIBLE INSTITUTE** 153 INSTITUTE PLACE • CHICAGO 10 • PHONE MICHIGAN 1570

*WILL H. HOUGHTON, D.D., president*

*WILLIAM CULBERTSON, D.D., dean*

Dear Listener:

Thank you for your gracious letter, and your gift for the ministry of WMBI and WDLM. The Institute's official receipt will reach you in the near future.

It is a privilege to send you our 1947 Family Album. If you enjoy looking through it even half as much as we enjoy sending the programs over the air to you, we shall be pleased indeed.

Because of the rush of work just now, we are not able to care for the special requests of our friends immediately. However, you can be sure that we will care for yours just as soon as we can.

We are faced with a pressing financial need just now, and are counting on you to back your gift with prayer that this need will be supplied. This is the Lord's work, carried on to His glory, and we do not feel that you would want the soul-winning ministry of these stations limited by reduced hours of broadcasting, made necessary by lack of sufficient funds. We know He will answer as you intercede.

May God use your life and testimony to glorify Himself all through 1947, and shower His richest blessings on you.

Sincerely in Him,

*Robert Parsons*  
Director, WMBI-WDLM

RP:D

# Table of contents

MOODY BIBLE INSTITUTE • 153 INSTITUTE PLACE • CHICAGO 10, ILLINOIS

	PAGE		PAGE
<b>"Dear Friends"</b> . . . . .	1	<b>Traffic and Production</b> . . . . .	14
A RESPONSE TO YOUR LETTER		A PROGRAM IN THE MAKING	
<b>Greetings from the Program Director</b> . . . . .	2	<b>Music—Behind the Scenes</b> . . . . .	15
MESSAGE FROM ROBERT PARSONS		GETTING A RADIO JOB	
<b>Department Supervisors</b> . . . . .	3	<b>Accompanists</b> . . . . .	16, 17
SPOTLIGHT ON STAFF EXECUTIVES		AT THE ORGAN OR THE PIANO	
<b>Twenty Years on the Air</b> . . . . .	4, 5	<b>Serving in Song</b> . . . . .	18, 19
PICTORIAL REVIEW OF WMBI HISTORY		VOCALISTS AND INSTRUMENTALISTS AT WORK	
<b>Men Behind the Mike</b> . . . . .	6, 7	<b>Program Favorites</b> . . . . .	20
CLOSE-UPS OF THE ANNOUNCERS		SAMPLE OF BROADCASTS LISTENERS ENJOY	
<b>Newscasters</b> . . . . .	8	<b>Christian Serials</b> . . . . .	21
INSIDE STORY OF THE NEWSROOM		SCENES FROM NUMBER 9 ELM STREET, AND STORIES OF GREAT CHRISTIANS	
<b>Continuity Writers</b> . . . . .	9	<b>Children's Broadcasts</b> . . . . .	22, 23
IDEAS GO DOWN ON PAPER		RADIO TIME FOR BOYS AND GIRLS	
<b>Broadcast Transmission</b> . . . . .	10, 11		
FROM CONTROL ROOM TO Y-O-U			
<b>Office Personnel</b> . . . . .	12	<b>WMBI-WDLM Schedule</b> . . . . .	Inside Back Cover
RECEPTIONISTS—6 A.M. TO 9 P.M. DAILY		HANDY ALPHABETICAL INDEX TO PROGRAMS	
<b>Radio Family</b> . . . . .	13		
ENTIRE WMBI-WDLM STAFF—FULL-TIME AND PART-TIME EMPLOYEES			

WMBI

MOODY BIBLE INSTITUTE

WILSON COLLECTION B.B. MOODY  
WILSON COLLECTION B.B. MOODY  
WILSON COLLECTION B.B. MOODY

Dear Radio Listener:  
Thank you for your letter.  
We're glad you listen to our  
broadcasts and are pleased  
whenever you take time to  
tell us so.

This family picture album  
is our gift to you. Keep it  
near your radio. Use it to  
see us when you hear our  
programs.

Your friends in Christ,  
WMBI-WDLM Family

FOUNDED BY D. L. MOODY IN 1849... RADIO STATIONS WMBI-WDLM... MOODY BIBLE INSTITUTE  
1000 N. Dearborn  
Chicago, Ill.  
WMBI-WDLM Family  
© 1950 Moody Bible Institute

DEDICATED WHOLLY TO THE SERVICE OF OUR LORD AND SAVIOUR JESUS CHRIST

# Greetings

## FROM THE DIRECTOR

It is a privilege to introduce to you, in this album, the WMBI-WDLM radio family. We thank God for every member, and for their talents, which like our stations are dedicated wholly to the service of our Lord.

ROBERT PARSONS



**MIRON CANADAY**

Assistant to the director



**THERESA WORMAN**

Children's Work



**FRANCES YOUNGREN**

Women's Programs



**HARLAN HARRIS**

Announcers



**PIERCE HISCOCK**

Production



**SHELDON FARDIG**

Music



**JOHN ROGERS**

Control Room



**STANLEY PAYNE**

Traffic



## DEPARTMENT SUPERVISORS

Administrative staff of the Tower Studios work daily with Director Robert Parsons to suggest, set-up and carry through two-station daytime operation.

# Letter Week again ...

WMBI's first annual Letter Week in 1929 had 5,375 contributors . . . and year after year the total has increased. You, the listeners, play an important role . . . WMBI-WDLM program planners refer to your commendations when scheduling broadcasts. Without you as prayer warriors and faithful supporters the stations could not stay on the air. Write again . . . and often . . . won't you?

**1925-1926**  
First Institute broadcasts—Sundays on WGES.

**1926-1939**  
Part-time WMBI broadcasting—one studio.

**1939-PRESENT**  
Four tower studios. FM station WDLM.



## TWO DECADES OF SERVICE

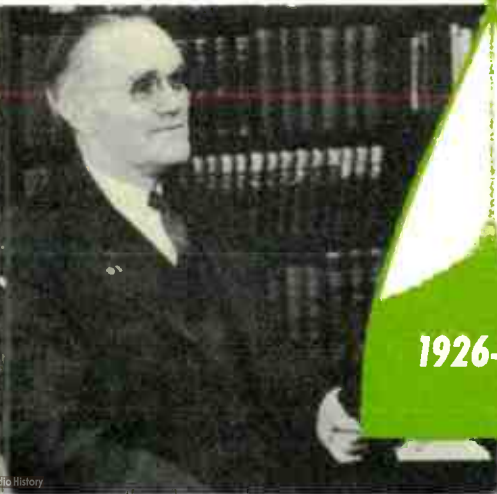
Beginning with a one-hour Sunday program in 1925 . . . building to 30 hours a week in 1927 . . . to full daytime operation in 1941 . . . WMBI now claims more than 50,000 hours of radio broadcasting. WDLM-FM, added in 1942, has 10,000 hours more.

At present WMBI and WDLM probably originate more "live" programs per week than any other station in the United States. Unique because of their "no-commercial" policy, the programs are remedial and educational—not controversial . . . they are planned to attract listeners from all walks of life.

# WMBI

### Wendell P. Loveless

A pioneer staff member and station director for almost 20 years, Mr. Loveless has watched the department grow from 2 to 150 workers. He is now teaching Bible and Broadcasting in Institute Day and Summer Schools.



1926-1947



FIRST LETTER WEEK



ANNOUNCERS' TRIO  
Loveless-Hermansen-King



MORNING GLORY CLUB



WMBI STAFF—1942





## BEHIND THE "MIKE"

**HARLAN HARRIS**  
Chief announcer, in charge of program assignments.

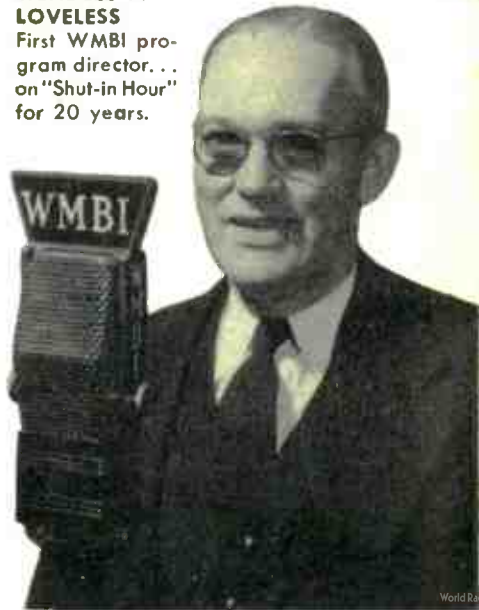


**WALTER CARLSON** . . . on "Meet the Students" and "Anniversary" programs.



**ROBERT GEERDES** . . . on "Morning Clock," "Stories of Great Christians."

**WENDELL P. LOVELESS**  
First WMBI program director. . . on "Shut-in Hour" for 20 years.





**SALVATORE LaROCCA** . . . on "Let's Praise Him," Saturday "Morning Clock."



**DON HURLBERT and KENNETH ENGLE** students, station breaking and announcing.



**SAM PAXTON** . . . on "Bandstand," "Old Favorites."

From daybreak to twilight . . . and then on to 9 P.M., WMBI and WDLM announcers offer you programs to fit every need. There's the gospel presented in word and song . . . interviews and messages . . . sacred and classical music by instrumentalists and vocalists.

Scheduled, too, are musings and reflections for the quiet time . . . news sessions on the even hours . . . informational and educational programs.

For selected audience-appeal there is Story Time, Women's Hour, young people's and children's broadcasts.

"The men behind the mike" reach into city apartments, small town homes and rural residences . . . the messages they bring gather purpose from the two stations' persistent theme: "We want you to know Christ."



**ROBERT PARSONS**  
Program director  
. . . 10 years with  
Mrs. Parsons on  
"Hymns You Love  
to Sing."

# NEWSCASTERS

News from around the world . . . collected, edited and broadcast directly from the WMBI-WDLM tenth floor newsroom . . . aired weekdays at 6:00, 8:00, 10:00 A. M.; 12 M.; 2:00, 4:00, 6:00, 7:30 P. M.

## NEWS EDITOR

Ray Brubaker in "God's News Behind the News"



## RAY BRUBAKER

introduces all guest speakers . . . on "Bread of Life," "Winona Lake"



## FRED COUKART

. . . presents "Religious News"

## WALTER WILSON

. . . gives news to early risers . . . on "Morning Clock" program.



## HARLAN HARRIS

heard on 2:00 P.M. newscasts and "News Interviews."

# Continuity

## WRITERS

... put ideas on paper ... write full copy for all broadcasts ... develop new program formats ... make changes in accordance with listeners' preference.

Deadlines must be met, so there's a brain-teasing problem for every minute of the day ... This department prepares 240 sustained programs a week for its two stations; 90 per cent are "live" broadcasts.

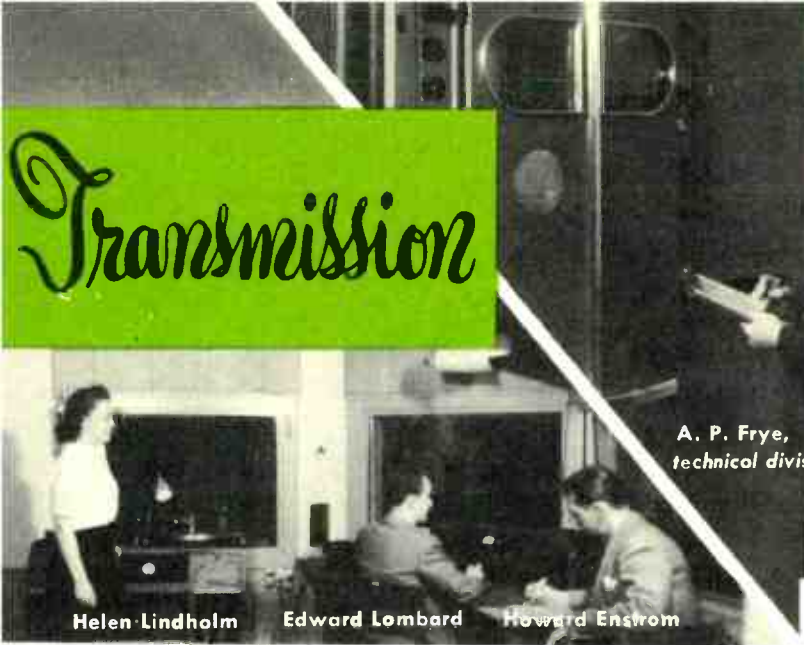
OFFICE SCENE  
Room 1002



MIRON CANADAY, supervisor,  
assigns a new program.



# Transmission



A. P. Frye,  
technical division director



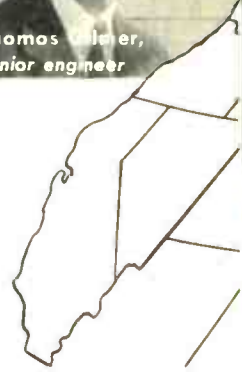
Henry Voys



Thomas Miller,  
senior engineer



Earl Kesselhuth



Helen Lindholm    Edward Lombard    Howard Enstrom

## THE TECHNICAL SIDE OF BROADCASTING

Supervisor John Rogers and his six control operators (bottom, left) are responsible for placing and fading-in microphones on cue from the producer . . . riding gain in the Crowell tower control booths . . . cutting and playing transcriptions . . . and sending out signals.

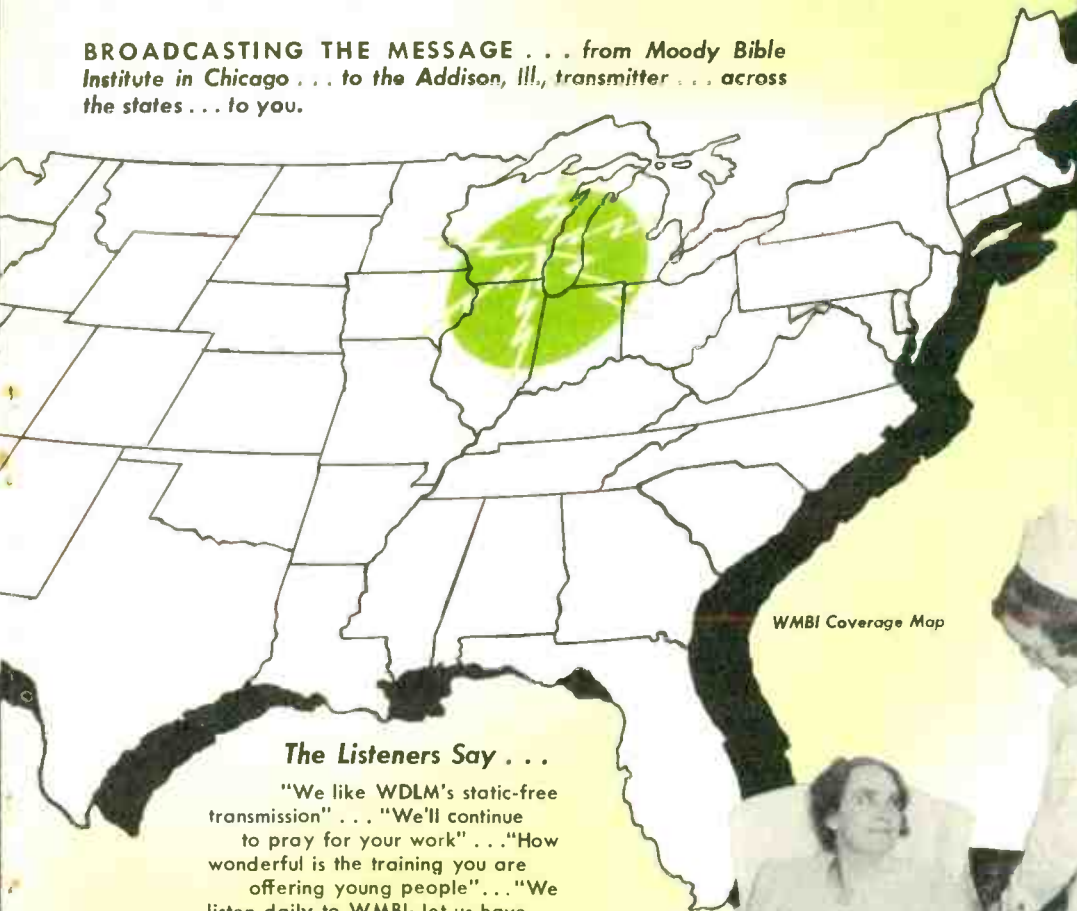
At the Addison, Illinois, transmitter, Technical Director A. P. Frye, or one of his three engineers (above), receive WMBI signals over telephone program lines. The signal is changed to a high frequency . . . amplified to 5000 watts . . . faded into the WMBI tower and radiated to AM receiving sets.

WDLM signals are beamed from the Chicago studio link transmitter to Addison . . . and radiated from an antenna atop WMBI's 490-foot tower to FM sets.



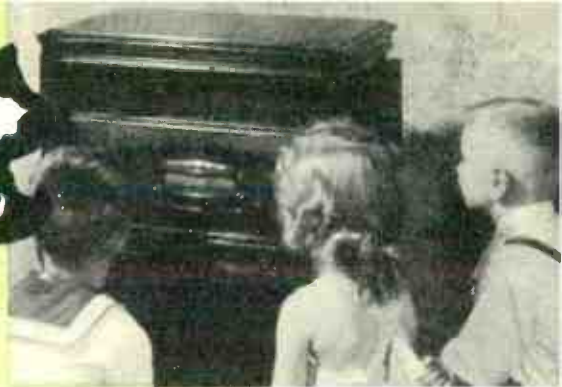
John Rogers    Henry Reuter  
Norma Carlson    Lois Wiekum

**BROADCASTING THE MESSAGE . . . from Moody Bible Institute in Chicago . . . to the Addison, Ill., transmitter . . . across the states . . . to you.**



**The Listeners Say . . .**

"We like WDLM's static-free transmission" . . . "We'll continue to pray for your work" . . . "How wonderful is the training you are offering young people" . . . "We listen daily to WMBI; let us have a small part in keeping the gospel on the air."



"When the children come home from school, they receive not only food for the body but food for the soul . . ."



"You say just the thing I need at the time I need it."



**BIRGIT GUNNARSON**

Staff receptionist . . . greets weekday guests, handles telephone and mail inquiries.



**"INFORMATION GIRLS"**

Dorislee Nicholls, part time writer.  
Bessie Wisley, "night shift" employee.  
Allyne Burrows, week-end receptionist.



**THE RADIO FAMILY** Row 1 (left to right): H. Albertz\*, N. Carlson, E. Person, C. Lightbody, M. Coulter\*, E. Joslin, H. Fissel, G. Walton\*, N. Lutz, M. Lengel, L. Hatt, M. Beebe\*, M. Nielsen, D. Nicholls, J. Rosencrantz, L. Becker, G. Yeend, A. LaRocca, S. Colenso, D. Priest, J. Tucker.

Row 2: T. Worman\*, A. Robertson, R. DeBruyn, C. Hess, K. Engle, R. Brubaker\*, W. Cox\*, E. Jordan, G. Mead, M. Landis, A. Lissy\*, E. Ahlquist, L. Richardson, L. Shepard\*, G. Perry, D. Lengel, V. Lyons, S. Paxton\*, J. Vanderlist, V. Van Hovel.

Row 3: A. Frye\*, P. McMillan, F. Coukart\*, W. Wilson, C. Bloomer\*, S. Fardlg\*, W. Carlson\*, B. Carlson, J. Blackburn\*, F. Youngren\*, W. Loveless, R. Parsons\*, V. Wennerstrom, B. Rembe, N. Robertson, E. Jidov, A. Sundin, H. Bosch\*, C. Keur, E. Kesselhuth\*, S. Payne\*, S. LaRocca.

Row 4: J. Mostert, D. Leightner, H. Enstrom\*, J. Davies, B. Wisley, A. Heaton, J. Rogers\*, M. Canaday\*, P. Hiscock\*, G. DeGroot, C. Hayward, B. Gunnarson\*, H. Voss\*, H. Reuter\*, R. Geerdes\*, R. Reetzke.  
\*Full staff member.

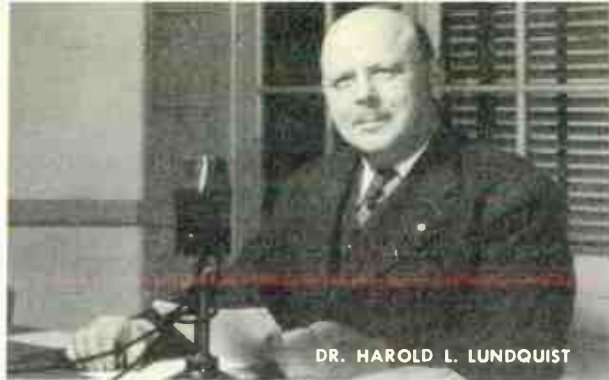
# Traffic



STANLEY PAYNE



AL LISSY LUCKY SHEPARD



DR. HAROLD L. LUNDQUIST



AL CAMPBELL WILLIAM COX

## PROGRAMS IN THE MAKING

**STANLEY PAYNE**, traffic director, contacts program personnel . . . calls speakers . . . instructs student helpers, and schedules facilities.

**DR. HAROLD L. LUNDQUIST**, representing Institute faculty heard on the air, was on WMBI's first broadcast.

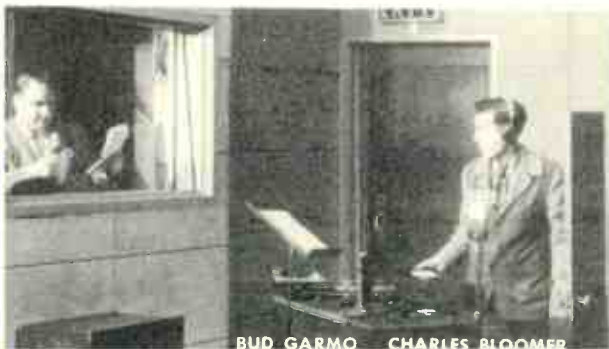
**WILLIAM COX**, traffic department, posts daily

program schedule. **AL CAMPBELL**, continuity department, checks bulletin board for his assignments.

**BUD GARMO**, assistant producer, checks sound effects during rehearsal with soundman, **CHARLES BLOOMER**.

**PIERCE HISCOCK**, production director, must start and stop programs on time. His cues direct handling of personalities and mechanics involved.

# Production



BUD GARMO CHARLES BLOOMER



PIERCE HISCOCK





MANY STUDENTS APPLY . . .



SOME AUDITION . . .



AND BEGIN WORK

## HOW TO GET "ON THE AIR"

*The story behind a singer's first day in radio . . . illustrated by WMBI student-employees.*

Digging out hidden talent is the music supervisor's task. A prospective radio singer goes to his office . . . files an application and is scheduled for an audition in Studio D. Passing

the test and hired, she seeks advice on program planning and "clearance" from an old-timer in the department.

New problems are resolved in Studio A's dress rehearsal. Preparations completed, all broadcasters pause for prayer . . . and a new employee is on the air!



THEY ENTER REHEARSALS . . .



PAUSE FOR PRAYER . . .



GO ON THE AIR



AT THE  
*Organ*



WMBI-WDLM accompanists . . . busy throughout the day behind the Hammond and pipe organs, the celeste or the grand pianos . . .

1. MARYBELLE BEEBE, KYB Club, Slumber Boat, Organ Vespers, Two Pianos.

2. GERTRUDE DE GROOT, Prayer Circle, Morning Worship, Evensong.

3. ERIC FRANKER, Institute piano-organ instructor. Sunday Organ Recital.

4. D. BLANCHARD LEIGHTNER, Shut-in Hour "Peg Leg"; Organ Moods, Komfort Korner, Mail Bag.

5. JUNE HEDMAN, From a City Tower.





Piano programs were on the first 1926 WMBI radio schedules . . . Today the keyboard contributors still play a vital part in broadcasting.

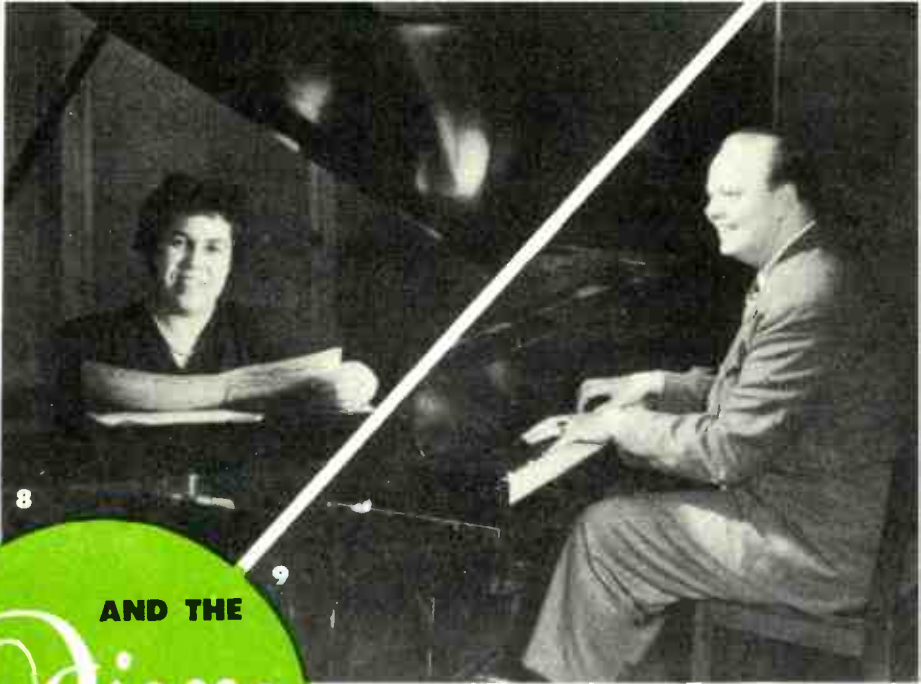
6. **LUCILLE BECKER**, Quiet Hour, Stories of Great Christians, Thoughts and Tunes.

7. **RUTH FERGUSON**, Good News in Song, Songsters, Anniversary Program.

8. **LOIS HATT**, Young People's Hour, Angelus Trio, Treble Harmonies.

9. **DON HUSTAD**, Organ Vespers, Masterworks of Music.

10. **JEAN ZIMMERMAN**, Organ Vespers, Two Pianos.





**TRIOS . . .**  
Rainbow, Sharon, and Gloria.



**JAMES P. DAVIES**  
Institute music faculty;  
student ensemble director.



**RADIO ENSEMBLE**  
"THOUGHTS AND TUNES"

**SINGING STRINGS**  
M. Seidel, violin;  
J. Kraakevik, viola;  
M. Beabout, cello; M. Gillett, violin.

**ALVIN HIRSCH**  
"Sacred Song "

**HENRY BOSCH**  
"Good News in Song."

**GERALD GREENLEE**  
"Sacred Song."

# Serving





**SATURDAY SONGSTERS**  
James Draper, director.



**COURIERS FOR CHRIST**  
Mead, accompanist; Robertson, first tenor; Van Hovel, second tenor; Ahlquist, baritone; McMillan, bass.



**CORNELIUS KEUR**  
Director, Girls' Chorus.

**TREBLE HARMONIES**  
Barbara Jane Rembe, harpist.



**RALPH NIELSEN**  
Tenor soloist.

**MEN'S VOICES**  
Sheldon Fardig, director.

# in Song

**EUGENE JORDAN**  
"Marimba Specialties."

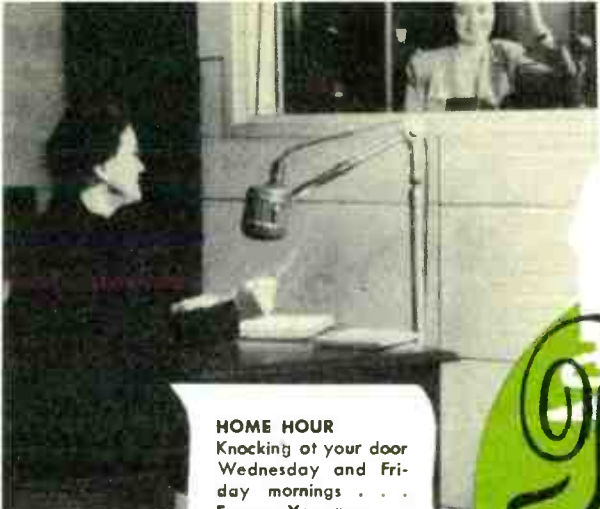


**ANITA LETHIN SUNDIN**  
"Slumber Boat."



**JOHN MOSTERT**  
"Melody Lane."





**HOME HOUR**  
Knocking at your door  
Wednesday and Fri-  
day mornings . . .  
Frances Youngren .



**LADIES' TRIO**  
The "Home Hour"  
threesome: Sundin,  
Lutz and Nielsen.

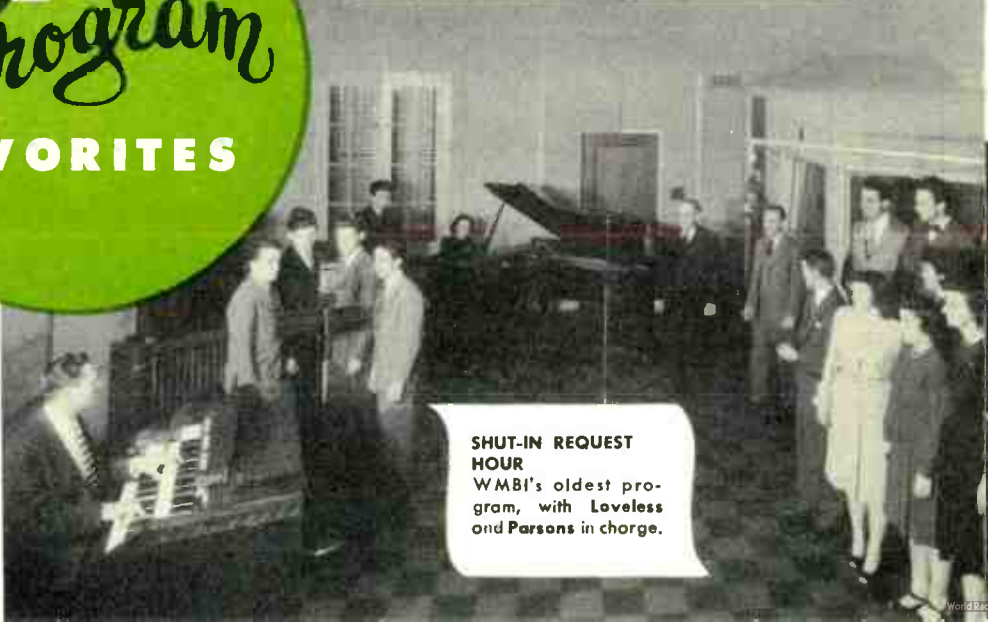


**WOMEN'S NEWS**  
Reporter Shirley  
Colenso presents a  
"Design for Better  
Living."

*Program*  
**FAVORITES**



**MEET THE STUDENTS**  
Announcer Walter  
Carlson interviews  
members of the Insti-  
tute's student body.



**SHUT-IN REQUEST  
HOUR**  
WMBI's oldest pro-  
gram, with Loveless  
and Parsons in charge.



## LET'S OPEN THE DOOR TO No. 9 Elm Street

... and listen to radio's only Christian serial story. It's the tale of a true-to-life family living in a small community, with a spiritual emphasis on life in all its phases. Folksy, and at times humorous, each episode has a specific message.



**ARNOLD TWEETON** "Corny"—the Old Feller—and his girl friend, "Widder Raines" (Grace Culton) provide laughs in Riverdale for you.



**PETER KIRK**, writer.



**RIVERDALE  
FOLKS**  
The entire cast of  
No. 9 Elm Street.



**STORIES OF  
GREAT  
CHRISTIANS**  
Dramatized biog-  
raphies . . . three  
times weekly.

# Children's TIME



**Billy and Patty Bangle** (Eddie and Margie Snyder) go up the hill to visit the **Bookstore Lady** (Gilberta Walton).



**SINGING LADY** (Jeannette Rydell) scatters sunshine to shut-in boys and girls.



## KYB (KNOW-YOUR-BIBLE) CLUB

"AUNT THERESA" . . . encircled by the tiny tots for "Story Time." For more than 16 years "youngsters and oldsters" have tuned in for Aunt Theresa Worman's juvenile programs.



**THREE LITTLE PREACHERS**  
Lonnie, Jerry and Jimmy.







**JOYCE BLACKBURN . . .**  
meets boys and girls after  
school at the "Listening  
Post" with Christian  
and classical ad-  
venture stories.



**SUZANNE . . .**  
and her accordion.



**THE MUSIC STORY LADY . . .** brings  
Karen Hedman, 5, and youngsters like  
her, music appreciation dramas every  
Tuesday at 4:05 p.m.

**BIBLE SEARCHING TIME . . .**  
Exciting, happy moments of KYB Club hour.



**"UNCLE WALT"  
WILSON**  
Explores God's won-  
der-world.



**DORIS BERNHARDT**



## IF . . .

If radio's slim fingers  
Can pluck a melody from night  
And toss it over continent or sea;  
If petaled white notes of a violin  
Are blown across a mountain  
or a city's din;

If songs like crimson roses  
Are culled from thin blue air—  
Why should mortals wonder  
If God answers prayer?



# Schedule

WMBI—1110 Kc.

WDLM—99.7 Mc.  
Channel No. 259

February—April, 1947

Afternoon Classics	M., Th., F., Sat.	4:05 P.M.
*Angelus Trio	Sun.	5:00 P.M.
Back to the Bible	Sun.	7:30 P.M.
Bandstand	Sat.	5:00 P.M.
Bible Reading	Sun.	7:00 P.M.
*Birthday and Anniversary Program	W.	3:30 P.M.
Bread of Life	weekdays	8:30 A.M.
Chapel Service	M.	8:00 A.M.
Child Evangelism Fellowship	Tue.	9:15 A.M.
Choir Loft	Sun.	3:15 P.M.
Christian Business Men	M. to F.	1:00 P.M.
Church Service	Sun.	11:00 A.M.
Continued Story Reading	M. to F.	11:30 A.M.
Dean's Quarter Hour	W.	4:30 P.M.
Editor Speaks	Sun.	4:00 P.M.
Evening Meditation	Sun.	5:15 P.M.
Evensong	weekdays	6:15 P.M.
*From a City Tower	M., W., F.	2:15 P.M.
*Gloria Trio	Sun.	9:45 A.M.
God's News Behind the News	M.	10:05 A.M.
Golden Nuggets	Tue.	2:45 P.M.
*Good News in Song	weekdays	9:00 A.M.
	M., W., F.	7:45 P.M.
Good Reading	M.	9:15 A.M.
Gospel in Music	Tue., Th., Sat.	6:30 P.M.
*Grace Notes	Sun.	8:30 A.M.
Haven of Rest	Tue.	4:30 P.M.
	M., W., F.	6:30 P.M.
Hebrew Christian Broadcast	Th.	2:45 P.M.
*Home Hour	W., F.	11:00 A.M.
*Hymn Sing	M. to Th.	12:15 P.M.
Hymns You Love to Sing	*Th.	3:00 P.M.
Keyboard Harmonies	*Sat.	10:45 A.M.
	F.	7:00 P.M.
*King's Highway	Tue.	3:15 P.M.
*Komfort Korner	M., W., F.	5:15 P.M.
*K.Y.B. Club	Sun.	2:00 P.M.

Let's Praise Him	Sun.	8:00 A.M.
Library Chats	Sat.	1:00 P.M.
*Listening Post	M. to F.	5:00 P.M.
Lutheran Hour	Sun.	4:30 P.M.
Mail Bag	Th.	9:15 A.M.
Masterworks of Music	Sat.	2:05 P.M.
*Meet the Students	F.	4:30 P.M.
*Melody Lane	M. to F.	2:30 P.M.
*Men's Voices in Song	Sun., 9:00 A.M.	6:30 P.M.
Message	M.	7:00 P.M.
Message to Israel	Sun.	8:45 A.M.
Missionary Echoes	Tue.	3:00 P.M.
*Moments of Melody	weekdays	1:30 P.M.
	Sun., Th., Sat.	7:15 P.M.
Moody Institute of Science	Sat.	10:30 A.M.
	W.	7:00 P.M.
Moody Press	Th.	3:15 P.M.
Morning Classics	weekdays	9:30 A.M.
Morning Clock	weekdays	6:30 A.M.
Morning Meditation	Sun.	9:30 A.M.
*Morning Worship	weekdays	7:30 A.M.
*Music Story	Tue.	4:05 P.M.
Music Without Words	daily	8:00 P.M.
News	weekdays, 6:00, 7:00, 8:00,	10:00 A.M.
	12:00 M., 2:00, 4:00, 6:00,	7:30 P.M.
No. 9 Elm Street	M., W., F., 2:45 P.M.	7:15 P.M.
Odz 'n' Enz	W., F.	9:15 A.M.
Old-Fashioned Revival Hour	Sun.	1:00 P.M.
*Old Favorites	W.	4:45 P.M.
Old Testament Stories	Sat.	9:15 A.M.
Open Bible	W., F.	10:05 A.M.
*Organ	weekdays	6:15 A.M.
	Tue. to Sat.	8:15 A.M.
	Sun., 10:30 A.M., Sat., 12:15 P.M.	4:30 P.M.
*Organ Recital	Sun.	12:30 P.M.
*Organ Vespers	daily	5:30 P.M.
*Pacific Garden Mission	M.	4:30 P.M.

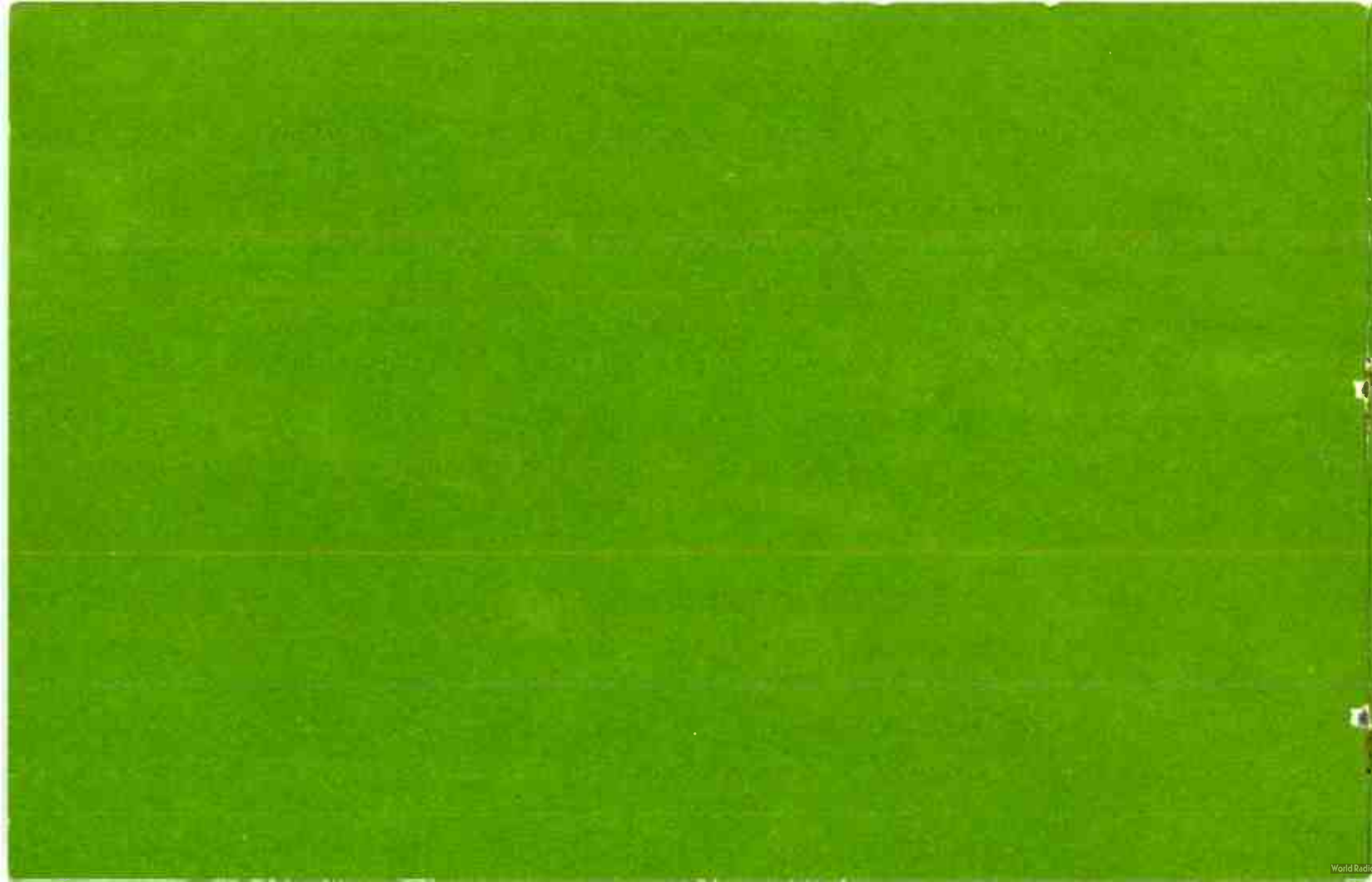
WMBI—Feb., 6:45 A.M. to 5:30 P.M.  
Mar., 6:00 A.M. to 6:00 P.M.  
Apr., 6:00 A.M. to 6:30 P.M.

WDLM—Daily, 8:00 A.M. to 9:00 P.M.

*Prayer Circle	M. to F.	8:05 A.M.
Question Box	Tue. F.	10:30 A.M.
Quiet Hour	*Tue., *Sat.	11:00 A.M.
	Sun.,	6:00 P.M.
	Tue.,	7:00 P.M.
Radio School of the Bible	M., W., F.	3:00 P.M.
*Rainbow Trio	Sat., 10:15 A.M.	7:00 P.M.
Religious News	M. to F.	2:05 P.M.
Round Table	Sun.	3:00 P.M.
*Sacred Song	weekdays	12:45 P.M.
	Tue., Th., Sat.	7:45 P.M.
*Scandinavian Service	Th.	4:30 P.M.
*Saturday Songsters	Sat.	3:00 P.M.
Shop Meeting	F.	12:15 P.M.
*Shut-in Program	M.	10:30 A.M.
*Singing Strings	Sat.	3:30 P.M.
*Slumber Boat	Tue., Th.	2:15 P.M.
Stories of Great Christians	M., W., F.	10:15 A.M.
Story Time for Boys and Girls	M., Tue., W., Th., Sat.	12:30 P.M.
Student Pulpit	Sat.	1:45 P.M.
Sunday School Lesson	W.	10:30 A.M.
*Sunday Strings	Sun.	4:15 P.M.
*Thoughts and Tunes	M., Tue., Th., F.	3:30 P.M.
*Thursday Songsters	Th.	11:00 A.M.
Tract League	Sat.	4:45 P.M.
*Treble Harmonies	Tue., Th., Sat.	5:15 P.M.
Verse by Verse	M. to F.	1:45 P.M.
Women's News	Tue., Th.	10:05 A.M.
World-Wide Missions	Th.	10:15 A.M.
Young People's Church of the Air	Sun.	10:00 A.M.
*Young People's Hour	Sun.	3:30 P.M.
Your Church School	Sat.	11:30 A.M.
*Youth for Christ	Tue.	10:15 A.M.
*Visible studio broadcasts		

Current program schedules are available upon request

Litho in U.S.A. R64





**THE RADIO FAMILY** Row 1 (left to right): H. Albertz\*, N. Carlson, E. Person, C. Lightbody, M. Coulter\*, E. Joslin, H. Fissel, G. Walton\*, N. Lutz, M. Lengel, L. Hatt, M. Beebe\*, M. Nielsen, D. Nicholls, J. Rosencrantz, L. Becker, G. Yeend, A. LaRocca, S. Calensa, D. Priest, J. Tucker.

Row 2: T. Worman\*, A. Robertson, R. DeBruyn, C. Hess, K. Engle, R. Brubaker\*, W. Cox\*, E. Jordan, G. Mead, M. Landis, A. Lissy\*, E. Ahlquist, L. Richardson, L. Shepard\*, G. Perry, D. Lengel, V. Lyons, S. Paxton\*, .. Vanderlist, V. Van Havel.

Row 3: A. Frye\*, P. McMillan, F. Coukart\*, W. Wilson, C. Bloomer\*, S. Fardig\*, W. Carlson\*, B. Carlson, J. Blackburn\*, F. Youngren\*, W. Loveless, R. Parsons\*, V. Wennerstrom, B. Rembe, N. Rabertson, E. Jidov, A. Sundin, H. Bosch\*, C. Keur, E. Kesselhuth\*, S. Payne\*, S. LaRocca.

Row 4: J. Mostert, D. Leightner, H. Enstrom\*, J. Davies, B. Wisley, A. Heaton, J. Rogers\*, M. Canaday\*, P. Hiscok\*, G. DeGroot, C. Hayward, B. Gunnarson\*, H. Vass\*, H. Reuter\*, R. Geerdes\*, R. Reetzke.  
\*Full staff member.