

The

KMA GUIDE

February, 1965



40 Years of
"LIVING" RADIO

Norman Williams New KMA Manager

Norman W. Williams, pictured with his family in the KMA Hall of Fame on our February Guide cover, was appointed Station Manager of KMA January 5. The announcement was made at a staff meeting by Owen Saddler, Executive Vice-President and General Manager of the May Broadcasting Company. Mr. Williams is pictured center with Company President Ed May, left, and Mr. Saddler, right, following the announcement. The resignation of former station manager Tony Koelker was accepted so he can engage in other business plans. Mr. Saddler also announced the appointment of Jack Katz, KMA Program Director to the position of



Sales Manager of KMA. Kenn Horrigan, recently of KSO and a KMA salesman since July, 1964, became Regional Sales Manager of KMA.

KMA Station Manager Norman Williams was formerly Production Manager of KMTV sister television station, Omaha, since 1957. Jack Parris, a KMTV Director since 1961 succeeds Mr. Williams as KMTV Production Manager.

Our February cover picture with Norman and his family was taken during their first opportunity to visit the KMA studios. As with all the folks who visit the new KMA Radio Center, they were very impressed by the hundreds of pictures of famous radio pioneers, historical pictures of KMA, and old radio sets dating back to the beginning of broadcasting.

The family will continue to reside in Omaha until the end of the spring school term. Tom, 17, is a senior at West Side High School. John, 11, is in the 5th grade. Following Tom's graduation they will move to Shenandoah.

Norman met his wife Lois, a native of Decorah, Iowa, during World War II. She was a nurse in an army hospital where Norman was recuperating.

Norman is a native of Minneapolis, Minnesota and a graduate of Luther College, Decorah, Iowa. He was active in radio during his college years as news editor and announcer. Before World War II he was engaged in radio and stage dramatics in the Minneapolis area.

Following college graduation he attended the Twin City TV Lab in the twin-cities and joined KMTV as Producer/Director in 1951, having now been with the firm over thirteen years.

Although previously having lived in Iowa only during his college days Mr. Williams has an interesting family history associated with the state. His grandfather was a native Iowan and served with an Iowa regiment in the Civil War. His father, who lives in St. Paul, served with an Iowa regiment in the Spanish American War and took his World War I training at Ft. Dodge. Norman followed the trend as a member of the National Guard 34th "Red Bull" Division when they were called to active duty in World War II. He served seven years with the armed forces.

Mr. Williams has been very active in Omaha Community affairs. He was recently named President of the Omaha Playhouse, was a member of the Board of Directors of the Lutheran Men of Omaha, is on the Board of Regents of Dana College, Blair, Nebraska.

His favorite pastimes are bridge and water skiing. His favorite hobby is photography. He has his own photo darkroom equipment and particularly enjoys shooting home movies.

The KMA Guide

Volume 12

FEBRUARY, 1965

Number 2

The KMA Guide is published the first of each month by the Tom Thumb Publishing Co., 205 North Elm St., Shenandoah, Iowa. Norman W. Williams, editorial chairman; Duane Modrow, editor; Doria Murphy, featured editor; Susan Eckley, copy editor. Subscription price \$1 per year (12 issues) in the United States, foreign countries, \$1.50 per year. Allow two week's notice for change of address and be sure to send old as well as new address.



A Chat With Edward May

For the past two months I have made reference to the onion weather forecast. Inasmuch as the forecast was made during the first twelve days of January, I will again refer to this forecast and give you the results as I read them for the year 1965.

In general, throughout 1965 we should receive more precipitation than we did in 1964, with fewer dry months and no months with an excessive amount of moisture. The total moisture should be close to average which, in the case of southwestern Iowa, is 32.45" of precipitation per year.

On a monthly basis, the forecast is broken down as follows: January, moderately dry; February, average; March, moderately moist; April, little above average; May, moderately moist; June, moderately moist; July, moderately dry; August, average; September, moderately moist; October, slightly above average; November, average; and December, dry.

There seems to be an increasing amount of interest in the onion forecast and it makes for a good conversation piece. So, there you have the onion forecast for 1965.

Have you ever had your plans all set for something, go through the motions and then find out something went wrong? This happened at our house in regard to taking a family picture. We had in mind taking a family picture for use in the May Seed spring catalog and also for a pictorial Christmas card. Inasmuch as our family likes music, we decided to take a picture gathered around the organ singing a few songs.

Just before Annette left for college in September we had several pictures taken, but something was wrong with the flash attachment on the camera. As a result, every picture was a complete failure. Since Annette had already left for school, we had to wait until she returned home for another try at a family picture. By the time Annette had a few days vacation and did come home it was too late to use the picture in the spring catalog and also too late to have the picture made into a Christmas card. However, the first time the family was all together, Guide photog-

rapher, Duane Modrow, came out and took the picture you see on this page. Standing from left to right, are Annette, 19, a student at Northwestern University, Eddie, 10, who is in the 5th grade, my good wife Eleanor, and 16-year old Karen, who is a junior in high school, Yours Truly is seated at the organ. The picture might give the impression I am a fine organist. Pictures are oftentimes misleading for I do not pretend to be a fine musician; however, I do enjoy the organ and it is a wonderful form of relaxation, and the family has had many enjoyable hours with it.

You may recognize that the picture was taken about Christmas time, for a mistletoe holder appears to be above Annette's head, but actually it is several feet away.

Needless to say, my family is growing up, and I am certain yours is too. We certainly enjoy our family, and I know you enjoy yours as much as we enjoy ours.



Holidays bring whole family together again. Favorite spot . . . the electric organ.

Frank Comments

By FRANK FIELD

Ed May has told you from time to time about his little greenhouse which is attached to the southeast corner of his house. It is partially pictured on the back cover of this issue of the Guide. He has so much fun with it that for the last couple of years, I have been toying with the idea of building a little greenhouse on the south side of our house. In fact, this last summer, I sent for a group of catalogs and even picked out one I would like, however, that is as far as it went for many reasons. For one thing, we would have to sacrifice our principal rose garden; for another thing, it would be shaded most of the day as there are four trees to the east, southeast and south and southwest of this particular spot. Two of the trees are Pin Oaks which hold their leaves all winter so it would be shaded even in the wintertime when it would need the sun the most. So, regretfully, we gave up the idea of a greenhouse attached to the house and decided to put our greenhouse in one corner of the basement.

African Violets have been very successfully grown under fluorescent lights for a number of years and just recently, the manufacturers have come out with a new type of fluorescent light bulb which throws out lots more of the red light rays which are needed by plant life much more than the white rays and the results are almost spectacular. Plants can be successfully grown under these Gro-Lux lights which

previously could only be grown where they would get plenty of sunlight.

I started out in a small way last winter with the fixture shown in the upper left hand corner of the picture. It contains two-24 inch Gro-Lux bulbs and I used it last spring for starting all my tomato plants.

Then, along in the fall, I got Gro-Lux bulbs for another old fluorescent fixture which we didn't use anymore and you can see it in action in the upper right hand portion of the photo. At that time, I started about a dozen Gloxinia bulbs in Terralite. As soon as the bulbs were properly rooted and were showing good leaf growth, I potted them up in 6 inch pots and how they do love it under those lights! Before our first killing frost, I made a bunch of cuttings of some of our favorite Coleus plants and Geraniums and they all grew very luxuriantly as you can see in the background under the upper light fixtures. One of the Geraniums is even blooming nicely.

As was to be expected, it wasn't long before I began to run out of room so the only room for expansion was to use the lower part of the work bench on which the other two fixtures were operating. The work bench is 2 feet wide and 5 feet long, which made just room for a 48 inch fluorescent fixture just below the drawers. The work bench already had a bottom shelf and two 48 inch Gro-Lux tubes furnish just the right amount of light and as soon as the Gloxinias begin to crowd, they are transferred to the lower part. Out of that dozen Gloxinia bulbs, I now have seven potted in 6 inch pots and two of them are showing bloom buds already. Look real closely in the upper section and you will see five little white stakes—each one represents a Gloxinia bulb which has not yet started leaf growth.

What has me a little worried right now is where we are going to find room to start the tomato plants this spring. Of course, the seed won't be planted until the last of February and they won't have to be potted up until about April 1. By that time, the Gloxinias should be in full bloom and Jennie can be making good use of them in the living room and we have two sunny windows in the bedrooms which will accommodate the Coleus and the Geraniums, if need be. I will let you know next month how things work out.



Basement corner, new artificial lights solve home greenhouse problem.



with
Jack
Gowing



At the time of this writing we are enjoying a Southern-type winter and I only wish it could last.

The National Western Stock Show's visitors were able to go in shirt sleeves this year. There were several days in the 60 degree range.

This year's stock show was the largest as far as entries and attendance were concerned. The Western is truly a Stockman's event. I believe you can see more cattle in one trip to the Western than any other show. This year's entries came from thirty-five states and Canada.

Iowa has brought home the Grand Champion Steer title eight times in the last ten years and this year the title went to Missouri. However, this year's steer was purchased from an Iowa herd. Iowa took the Reserve Grand Champion title.

I checked the records on what breed has taken the title the most and find that in the last ten years, the Herefords have taken the title 6 times and the Angus breed 4 times. We have to go back to 1950 to find a Shorthorn as Grand Champion of the show.

This year the Angus Breed took the entire show; Grand Champion Steer, Reserve Grand Champion, Champion Junior Steer, Champion Carload of feeders and both Grand and Reserve Grand Champion in the

carcass contest.

If you haven't ever been to the Western Stock Show I would suggest that you try and make it if you are interested in livestock.

There was a more than usual interest in crossbred cattle this year. One ranch had some Highlander cows and a Highlander steer that weighed 1400 pounds. These cattle are natives of Scotland and are being adapted to the cold weather areas of Alaska and Montana. The steer in the show this year had four foot horn spread. One characteristic of this breed is hair about 4 to 6 inches long.

There was a lot of interest shown in feeders from crossbreeding of the Highlanders with Hereford, Angus and Shorthorn. Of course, the Hereford still dominates in the carload show but the Angus Breed is crowding up to the top in the purebred division.

It is always amazing to me that they have a rather large swine show, too, but of course, the cattle and horses dominate the picture at the Western Stock Show.

This would be a good month to check over any machinery for repairs and make arrangements for your fertilizer, insecticide and herbicide. If you haven't had a soil test in the last 2 or 3 years, it would be a good idea to get some soil samples taken and have them tested. A soil test could save many dollars on your crop expense or could increase your production and in that way keep the per bushel costs low.

Our picture this month is of Randy and me busily trying to learn International Morse Code. We hope to become Ham operators during the coming year. Randy is picking it up faster than I am. The equipment you see in the picture is made for the purpose of learning the code. It has a key to practice sending and also the center part has a tray which will send code automatically when turned on. We are not using the automatic part yet because we are not fast enough to keep up with it.



Father and son team up on code.

Jr. Blackwood Brothers Renew Acquaintances

Radio Center KMA was recently honored by a visit from two young men who are former members of the KMA family circle. They are R. W. Blackwood, Jr., left, and James Blackwood, Jr., second from right, pictured visiting old-time KMA friends, Frank Field and Warren Nielson. Pictured below are James and R. W. as youngsters when their fathers were members of the famous Blackwood Brothers Quartet on KMA. Both young men spent their early years in Shenandoah. The boys have had

a quartet going for some time and just completed their first year traveling by private bus as the "Jr. Blackwood Brothers". They were appearing at the Full Gospel Tabernacle while visiting in Shenandoah. R. W., Jr. is single. James has been married a little over a year and has a month old baby daughter. Young as the Blackwoods might appear, they are slightly older than their fathers when they first started. Their singing style is the same, except in their albums they have incorporated more instrumentation. The Blackwoods also have a "Blackwood Little Brothers" group of 6 to 13 years old the coming generation. They have an album called "Blackwoods Family Album" which contains selections by all three generations. We certainly enjoyed their visit, and their singing. On the opposite page is a brief history of the start of this exceptional gospel singing family as we reminisce on memory lane.



May 1949 — R. W. Blackwood family. Winston (R. W., Jr.) age 6, Ronald, age 8½. R. W., Jr. today pictured above.



November 1946 — James Blackwood family. James, Junior, age 3, then, and now, see above.

Ambling Down Memory Lane

A Peek at the Past of 40 Wonderful Broadcast Years

As KMA approaches its 40th broadcast birthday, which arrives August 12 this year, we want to take pause and reflect back over some of the wonderful people and events of bygone days. Many of you Guide subscribers have been with us since the Guide was first printed in 1944. Some of you can recall incidents way back when KMA first went on the air in 1925. Others of more recent acquaintance in our KMA family will be interested in some of the highlights and events throughout those 40 wonderful years. Each month through August this page will be set aside to review some of the people and highlights in the 40 years of KMA history. This first of the series concerns an internationally-known musical group who you might say, got their start on KMA. Also it ties-in with the story on the preceding page of a visit by two of the second generation who are following in their fathers' footsteps.

A SPECIAL NOTE: We are searching for old photos of KMA and KMA events for possible use in the Guide and other commemorative publications. If you have any old pictures, we would like to borrow them. We will see that they are handled carefully and returned to you in good condition.

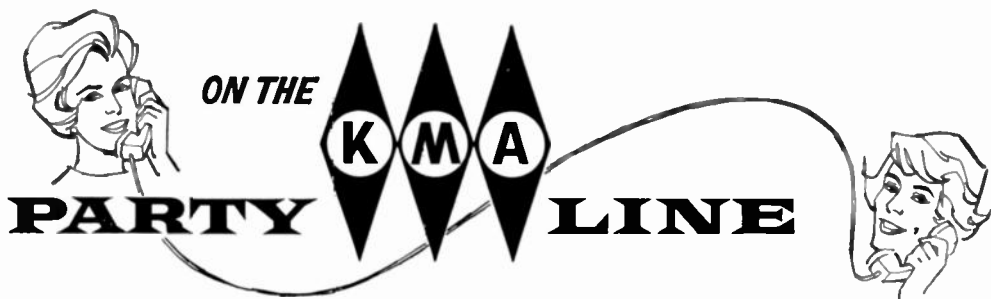
A quarter of a century ago, Roy, James, Doyle, and R. W. Blackwood came to KMA, became widely known as gospel singers,

and soon claimed national fame as the Blackwood Brother's Quartet. They were the first entertainment group to twice win top honors in the famous Arthur Godfrey "Talent Scouts" program. Shortly thereafter tragedy struck . . . R. W. Blackwood and bass singer Bill Lyles were killed in their private plane while on tour in the south. However, the famous quartet has continued under the direction of James Blackwood; still the top gospel singing group in the nation.

Pictured here are the original quartet with their wives as they appeared on KMA. They travelled hundreds of miles weekly, appearing in churches, halls, and community affairs . . . always before capacity crowds. Many times they made two appearances in a day, in different communities some distance apart. After their final performance they drove many miles back to Shenandoah and were up early in the morning for a 7:30 a.m. appearance on KMA. They were on the air again at 1:00 p.m. then on the road for personal appearances. Travel in the early days was by private auto, they slept on the road whenever they could grab a few winks. In later years as they rolled on to fame, they travelled by bus, and by plane. They became famous throughout the U. S. and Canada. James has remarked that wherever they went, they nearly always heard the remark, "We used to hear you on KMA".



Blackwoods and wives in days on KMA. Hilton Griswolds and Bill Lyles', far right.



ON THE

KMA

PARTY LINE

By **DORIS MURPHY**

It's wonderful to be feeling great again, and I am so happy to be back at my desk working with all the wonderful folks at KMA again! Why operations always seem to be necessary at such inopportune times I will never know, but my surgery was performed at Immanuel Hospital in Omaha just the day before Thanksgiving, and of course, that meant recuperation all through the Christmas holiday season. But I have gotten along beautifully and am grateful for my good health again, and for the opportunity to visit with all you KMA Guide Readers again each month. I also want to thank all of you who so kindly remembered me with your good wishes, Get Well cards and letters. It helped immensely and I

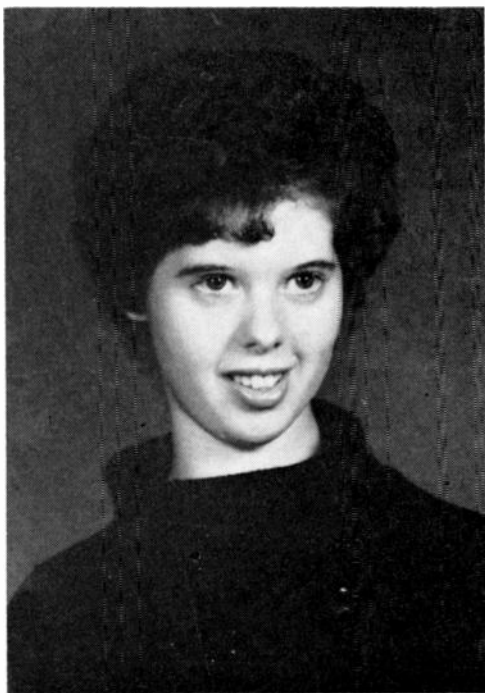
think this lovely verse helps express how I feel about all of you . . .

In the tapestry of life, Oh Lord
My thanks for every stitch—
The friends who form the pattern,
And make my life so rich.

"It was just like Santa Claus coming to the door." That was the way KMA Guide Editor Duane Modrow described his experience with a belated Christmas gift. For some time Duane has had on order a movie projector as a gift for the family. They had been notified it would arrive in time for Christmas, and had hopes of getting it, clear up until the day before Christmas. Then when it didn't arrive, they gave up in despair. Suddenly it seemed almost like a miracle on Christmas morning . . . right while all the children and family were in the midst of opening their Christmas gifts, the Post Office Delivery truck pulled up in front of the home, and the postal clerk rushed to the door with a smile on his face and handed them a package . . . the MOVIE PROJECTOR! The projector has so many wonderful features on it, they were thrilled, and in no time at all, the entire family including Grandma and Grandpa were watching every roll of movies Duane had in the house. Santa certainly arrived at an opportune time!

Late spring has been chosen as the wedding date by Miss Judith Lund to Roger Malmberg, son of Mr. and Mrs. Harold Malmberg of Shenandoah. Judy is the daughter of KMA Engineer Ralph Lund and Mrs. Lund. Miss Lund is a 1962 graduate of Shenandoah High School and is presently a senior student at Mercy Hospital School of Nursing in Council Bluffs. Her fiance, a graduate of Northwest Missouri State College, Maryville, is teaching in the Audubon, Iowa, school system. On this page you'll find a picture of the pretty future bride.

Another future wedding of interest to our KMA listeners who have heard and known John Topham, head of the garden seed department of May Seed Company, is the announcement recently of the engagement of his son John Lee Topham to Miss Natalie Gee, daughter of Dr. and Mrs.



Judy Lund, daughter of KMA Engineer Ralph Lund, announces engagement.

Kenneth Gee of Shenandoah. Miss Gee attended Colorado College, Colorado Springs for two years, and the University of the Seven Seas on its initial around-the-world study cruise. She is presently a senior in political science at the University of Iowa. John took his graduate work at Graceland College and at the University of Pennsylvania. He is now a graduate student in the Wharton School of Commerce and Finance at the University of Pennsylvania in Philadelphia. No date has been set for the wedding.

Production Mgr. Warren Nielson and 11 year old daughter Holly credit their success in cooking, to the new Teflon fry pan, Warren's wife Florence received for Christmas. Seems as tho Warren had picked out just the right gift for his wife, because she was very ill with the flu about the second week in January, and it fell upon Warren and Holly to take over the household chores. Warren said they got along fine as long as they stuck to bacon and eggs and similar "difficult?" dishes. After the cooking chores, they polished up the home a bit, but they were mighty glad when Florence was able to take back her job of "chief cook and bottle washer."

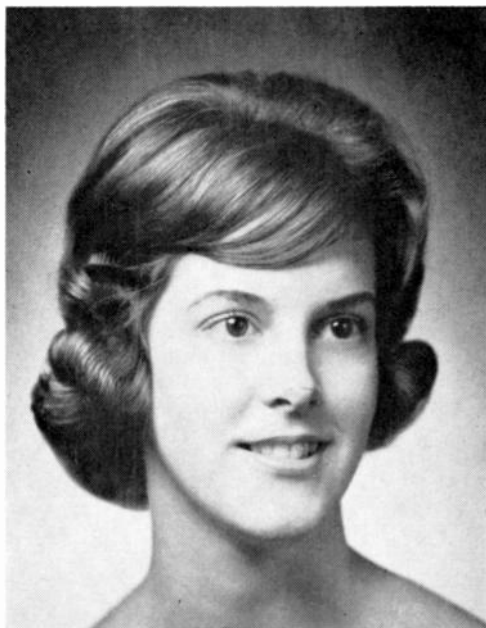
Maureen Voitenko, 13 year old daughter of announcer Pete Howard, is joining the Rainbow Chapter of Eastern Star. Maureen is an eighth grader and is looking forward to being a Rainbow member.

Three weddings within ten months! That is what is happening in the family of KMA Chief Engineer Don Burrichter and wife Esther, who is the Shenandoah School nurse. And you can bet Don and Esther are going to find things mighty quiet around the house, after a busy life with four active children, then suddenly to find marriage has taken three of them within one year. In the early fall, Constance was married to James Meyers of Shenandoah. On November 28th, Carole Ann became the bride of Stephen Peters of Merriam, Kansas, and they are now living in Lawrence, Kansas. A picture of the bride appeared on the back cover of the December KMA Guide. And now comes the announcement of the engagement of their son Edward C. Burrichter to the pretty young lady pictured on this page . . . Miss Colleen Ann, daughter of Mr. and Mrs. John A. Winters of Onaga, Kansas. Miss Winters is a graduate of Onaga High School and is now a senior in microbiology at the University of Kansas. Don graduated from the University of Kansas School of Pharmacy in 1964, and is now employed as a registered pharmacist at Blaylock Drug Co., in Topeka, Kansas. A June wedding is planned. This leaves only one daughter at home, Mary who is a Sophomore in High School. So the Burrichters still have the joy of teenage chatter, music and rush of school activities to help keep them busy these days.

Wedding anniversaries are observed in many different ways by different people, but I think KMA Announcer Dale Eichor has a nice, sentimental way of showing his affection on this very special day. He buys his wife Esther, one rose for each year of their married life. This year, on February 12th she will receive four roses in observance of their fourth wedding anniversary, and the "Happy Anniversary" song will be dedicated to her on the air by her husband. We all join in wishing the Eichors many more Happy Anniversaries.

Earle Crowley and John Sawyer are not only co-workers in the accounting department at KMA, but both have been mighty busy swinging a paint brush recently in the new home of Earle Crowley. With the assistance of John, who put three coats of varnish on all the kitchen cabinets, the Crowleys were able to move into their new home at 1203 Johnson Drive in Shenandoah, the 15th of January. The home was started September 1st, and is not completely done yet, but can be finished during their spare time. From time to time you will be seeing pictures of this attractive three bedroom home, featuring a recreation room in the basement that has the convenience of a door that takes you directly outdoors on the same level. What a thrill for the children when they spent their first night in their new home.

Continued on page 15



June wedding, Miss Colleen Winters, to Ed Burrichter, son of KMA Chief engineer Don Burrichter.

A Letter From Billie McNeilly

A whole month has passed since I last wrote to you, and since that time, I've heard from many of you. Thank you for those letters, the orders and the kind words about our Woman's World sponsors. As I look back over the month just passed, I realize we have put quite a little dent in this fresh new year we're working on. As you can see, from the items and pictures in the Guide, we've known a few changes here at the station, lots of activity in every department, and things are really humming.

My family has known a few changes, too. Marcie has decided to go into a new field of endeavor, requiring some special training, so she has transferred out of the University of Nebraska, into a special school in Omaha. I'll tell you more about that in the next few weeks on the program. This makes quite a bit of extra work for her, as she must commute between Omaha and Lincoln for a few days, in order to start her classes in Omaha . . . and get all her finals done in Lincoln. She will be happy when the shuffle is over, and eager to get into the new work. I'm proud of this little gal, and especially proud of the showing she made in **math** at the University. I can assure you, she didn't get any talents in that line from her mother! As I told you on the air, Marcie and Ed plan to be married the latter part of June, and now we're trying to make her suggested wedding date coincide with John's return date from the Air Force special IBM Training school at Biloxie, Mississippi, which comes up in June, also.

I just enjoyed a restful, and most delightful weekend at the Glenn Griswold home in Columbia, Missouri. Esther and I talked for hours, exchanged food ideas, news of our respective families, and just plain "caught up" a little on the latest. Esther and Glenn are pictured as I was showing Glenn a special story in one of the old issues of the Guide. Esther is very familiar with the magazine, but Glenn needed a little "showing", we thought. He is such a wonderful fellow, and puts up with the woman talk like a true gentleman, when Esther and I get together. They have such a lovely home in Columbia, and even though she has suffered a great deal from this broken

wrist, you can see by her smile, she's happy. Those of you who knew these people from days gone by, will enjoy seeing them again, I'm sure. I count them among the very finest friends I know.

News from the Oregon relatives is not good, weatherwise. They are all in good health, however, and for that we're always grateful.

I have a poem to send your way in this issue of the Guide. So many of you express a love of poetry, and I especially love this one.

THE JOYS OF THIS LIFE

Life is made sweet,
because of friends we have made,
And the things which in common we share;
We want to live on, not because of
ourselves,
But because of the people who care.

It's in giving and doing for somebody else—
On that, all life's splendor depends . . .
The joys of this life, when you've summed
it all up,
Are found in the making of friends.

Hope you enjoy the cherry recipes, and all of the rest of them. See you in March!

"Billie"



Delightful weekend visiting old friends Esther and Glenn Griswold.

Billie's Kitchen Tested Recipes

CHERRY CREAM PIE

A creamy smooth custard pie filling crowned with the crimson goodness of red tart cherries.

- 9-inch baked pie shell
- 1 envelope unflavored gelatin
- ¼ c. water
- 2 c. frozen sweetened cherries
- 1 t. lemon juice
- ½ t. almond flavoring
- 1 pkg. instant vanilla pudding
- 2 c. milk (Use 1½ c. milk if a firmer pie is desired)

Prepare pie shell, bake and cool. Sprinkle gelatin over water and allow to soften. Heat cherries and juice in saucepan just to boiling. Stir softened gelatin into hot cherries. Add lemon juice and almond flavoring. Chill until slightly jelled (consistency of unbeaten egg white). Meanwhile, prepare the pudding according to package directions using 1½ or 2 cups milk as desired. Turn pudding into the baked pie shell and let stand at least 15 minutes before spreading the slightly jelled cherry topping over the filling. Chill until firm. Serve with a whipped cream border if desired.

* * *

NEW MARASCHINO CAKE

Grease and flour 2 9-inch layer pans or a 13 x 9-inch oblong pan.

Sift together:

- 3 c. sifted cake flour or 2¾ c. sifted all-purpose flour
- 1¾ c. sugar
- 4 t. baking powder
- 1 t. salt

Add:

- ¾ c. soft shortening
 - ¼ c. juice from cherries
 - ¾ c. milk
 - 16 maraschino cherries, cut in eighths
- Beat for 2 minutes.

Add:

- 5 egg whites (¾ cup), unbeaten
- Beat for 2 minutes.
Fold in ½ c. chopped nuts

Pour into prepared pans. Bake. Cool. Finish with cooked white frosting made with cherry juice in place of water. Decorate with bright red cherries. Bake in a 350 degree oven for 30 to 35 minutes for layers, square or oblong 35 to 40 minutes.

* * *

BANANA CHERRY SALAD

- 1 can frozen pie cherries . . . defrost and drain well!
- 2 large bananas, diced
- ¼ c. black walnut meats

Mix above ingredients and moisten with generous amount of Whipped Fruit Salad Dressing. Serve on lettuce leaf.

SWEETHEART CHERRY COBBLER

Fashion a biscuit heart for each portion or make it a hatchet or other shape for February.

- 2 c. frozen sweetened cherries
- ½ c. sugar
- 3 T. cornstarch
- ¼ t. salt
- ½ t. almond flavoring
- 1 T. butter or margarine
- ½ recipe biscuit topping

Defrost cherries and drain. (Yield is approximately 2 cups cherries and 1½ cups juice.) Mix sugar, cornstarch and salt. Add this to a small amount of the juice and stir to make a paste. Heat remaining juice and stir paste into it gradually until thickened and clear. Remove from heat and stir in flavoring and butter or margarine. Spread drained cherries in bottom of 1½-quart casserole. Top with thickened sauce. Make biscuit topping using ½ package biscuit mix or ½ favorite biscuit recipe. Cut heart shapes and place over filling. Bake in hot oven (425 F.) about 15 minutes until biscuits are golden brown and sauce bubbly. Serve warm with cream or ice cream. Serves eight.

* * *

MARASCHINO FLUFFY FROSTING

Mix thoroughly in saucepan . . .

- 1 c. sugar
- ⅓ c. maraschino cherry juice
- ½ t. cream of tartar

Boil slowly without stirring until syrup spins a 6 to 8-inch thread (242 F.). Keep saucepan covered first 3 minutes to prevent crystals from forming on sides of pan. While syrup is cooking, beat until stiff enough to hold a point . . .

- 2 egg whites (½ cup)

Pour hot syrup very slowly in a thin stream into stiffly beaten egg whites, beating constantly. Add . . .

- 1½ t. vanilla

Beat until frosting holds its shape. Spread between layers and on top and sides.

* * *

WHIPPED FRUIT SALAD DRESSING

- 1 egg yolk
 - ½ c. sugar
 - 1 T. flour
 - ½ c. pineapple juice
 - ¼ c. lemon juice
 - 1 c. heavy cream, whipped
- Yield: 2 cups

Beat egg yolk until thick. Combine sugar and flour; blend into beaten egg yolk. Gradually add fruit juices. Cook in top of double boiler until thick, stirring constantly. Cool gradually. Fold in whipped cream. Store in covered container in refrigerator.

"My Best" Recipes for February

BAKED TUNA WITH CHEESE BISCUITS

- 1 med. onion
- 2 slices pimento
- 6 T. flour
- 1 t. salt
- Dash pepper
- 1 c. biscuit mix
- $\frac{1}{3}$ c. milk
- 1 med. green pepper
- 3 T. butter
- 3 c. milk
- 2 cans tuna (7 oz.)
- $\frac{1}{2}$ c. grated cheddar cheese

Chop onion and green pepper coarsely and cook in melted butter until limp. Stir in flour as smoothly as possible and add milk gradually. Season with salt and pepper. Cook, stirring constantly, until sauce bubbles. Mix in drained tuna and transfer to a large shallow baking dish. Start your oven at 375 F. Combine biscuit mix and milk according to package directions. Dump dough out on a lightly floured board and pat about $\frac{1}{2}$ -inch thick in a rectangular shape. Sprinkle surface with cheese and fine slivers of pimento. Roll as you would a jelly roll and cut into 8 slices. Arrange slices on top of tuna mixture and bake for 30 minutes. Serves 4.

* * *

CHICKEN & CHINESE NOODLE CASSEROLE

- 1 c. chopped celery
- 10 $\frac{1}{2}$ -oz. can condensed cream of mushroom soup
- 10 $\frac{1}{2}$ -oz. can condensed cream of chicken soup
- 6-oz can evaporated milk
- 3 c. chow mein noodles
- 1 $\frac{1}{2}$ c. cubed, cooked chicken
- 4-oz. can mushroom pieces and stems, undrained
- $\frac{1}{2}$ c. toasted slivered almonds
- $\frac{1}{2}$ c. chopped green pepper
- $\frac{1}{2}$ c. chopped pimento
- 1 t. salt

In a saucepan cook celery in a small amount of salted water until tender. Drain. Combine soups and milk in 2-quart casserole. Add celery and remaining ingredients. Stir to combine. Bake at 350 degrees for 50 to 60 minutes. 6 to 8 servings.

* * *

COUNTRY GENTLEMAN PUDDING

Butter a 9-inch square pan and pour into it a batter made of 1-cup biscuit mix, $\frac{1}{2}$ cup milk and $\frac{1}{2}$ cup sugar. Spoon over the batter 2 cups of berries, cherries, apricots, or peaches. Pour over this a syrup made of $\frac{3}{4}$ cup boiling water or peach or apricot juice, 1 $\frac{1}{2}$ cups brown sugar and 1 Table-spoon butter. Bake about 40 minutes at 375 degrees.

FLUFFY AMBROSIA SALAD

- $\frac{1}{3}$ c. evaporated milk
- 4 t. lemon juice
- $\frac{1}{4}$ t. salt
- 32 miniature marshmallows
- 1 No. 2 $\frac{1}{2}$ can pear halves or other fruit, drained
- 2 T. mayonnaise or cooked salad dressing
- 1 t. sugar
- 1 T. lemon juice
- Lettuce
- $\frac{1}{3}$ c. flaked coconut

Refrigerate evaporated milk in bowl till ice-cold. Meanwhile, mix together mayonnaise, 4 t. lemon juice, salt, and sugar; fold in marshmallows; refrigerate about 1 hour, stirring 2 or 3 times. To serve, whip evaporated milk with chilled beater; stir in 1 T. lemon juice; fold into dressing. Arrange lettuce on salad plates; top with pears. Sprinkle with coconut; spoon on marshmallow dressing.

* * *

CORN-CLAM CHOWDER

- 1 bacon slice
- 2 T. diced onion
- 1 T. diced green pepper
- 1 can (8 $\frac{3}{4}$ -oz.) cream style corn undrained
- 1 T. chopped pimiento
- $\frac{2}{3}$ c. milk
- $\frac{1}{4}$ t. salt
- $\frac{1}{4}$ t. celery salt
- Dash pepper
- 1 can (7 $\frac{1}{2}$ -oz.) minced clams, drained
- $\frac{1}{8}$ t. dried thyme leaves

In med. saucepan, saute' bacon till crisp. Drain bacon well on paper towels; crumble, set aside. In drippings, saute' onion and green pepper till tender—3 minutes. Add bacon and rest of ingredients. Over low heat bring to boiling, stirring occasionally. Serve hot. Makes 2 servings.

* * *

BANANA NUT CAKE

- 1 1-lb., 1-oz. pkg. pound cake mix
- $\frac{1}{2}$ c. milk
- $\frac{1}{2}$ c. finely chopped walnuts
- 2 eggs
- $\frac{1}{2}$ c. mashed bananas (1 ripe banana)

In small bowl of electric mixer combine pound cake mix with milk and beat 1 minute at medium low speed. Add eggs and continue beating 1 minute. Stir in mashed bananas and chopped nuts. Pour into a greased 9-inch loaf pan. Bake in a slow oven (325 F.) 1 $\frac{1}{4}$ hours or until done. Cool 30 minutes before removing from pan. Dust top with sifted confectioners' sugar before serving.

"Pitching" In

Pictured below is the Ed May Quartet performing at the KMA-May Seed Christmas party . . . really broken up with laughter over one of Bill Overbey's hilarious antics. Glen Sheirbon, rear left; Tom Beavers, center; Wayne Stevens, and Ed



May were singing "Barbershop Quartet" for the first time. They started with a pitch, then sang unaccompanied, whereas, they normally always have sung with piano accompaniment. They each are sporting identical red jackets. May Seed Company Advertising Manager Bill Overbey, who acted as master of ceremonies just happened to be wearing a bright red vest and had made a joke as he introduced them that he was already in "uniform" in case they needed a substitute.

At the start of one of the quartet's songs, they took the pitch from Mrs. John Topham at the electric organ, and got off to a bad start. They stopped, started again, still off . . . and Bill Overbey dashed forward as you see him in the picture pulling back his jacket ready to volunteer.

Old Fashioned Revival Hour — 40th Year

On Sunday, January 10, the "Old Fashioned Revival Hour", heard at 7:30 p.m., every Sunday on KMA, celebrated the

fortieth anniversary of continuous religious broadcasting by Charles E. Fuller (pictured).

Today Old Fashioned Revival Hour reaches every continent. Dr. Fuller's messages of Christian faith are carried by more than 600 stations throughout the world to a radio congregation of millions. The program even penetrates the Iron and Bamboo Curtains. Mail is received from virtually every nation in the world. Dr. Fuller preaches the simple, eternal messages of the Gospel which put in perspective the problems of a troubled humanity.

Dr. Fuller is a vigorous six-footer whose early interests ran to football, then to business, before his conversion. He was born in downtown Los Angeles, was captain of the Pomona College football team which won the Southern California championship in 1909. President of his class, he graduated cum laude in 1910, married his high school sweetheart ("Honey" of the broadcast) in 1911, supervised his own orange grove near Redlands, then became manager of a citrus packing house.

In 1917 he made his sudden decision to spend the rest of his life in Christian service. He has since spread the gospel around the world via radio and the Fuller Theological Seminary in Pasadena, which draws students from every part of the world.



KMA Daily Program for February, 1965

DAILY DAYTIME PROGRAM

MONDAY THROUGH FRIDAY

5:00 a.m.—Morning Guard Music
 6:00 a.m.—News & Weather,
 Dean Naven
 6:15 a.m.—Morning Guard Music
 6:30 p.m.—RFD 960, Jack Gowing
 7:00 a.m.—Dean Naven, News
 7:15 a.m.—Frank Field
 7:30 a.m.—Markets
 7:35 a.m.—Morning Guard Music
 8:00 a.m.—Morning Headlines
 & Weather
 8:15 a.m.—Martha Bohlsen
 8:20 a.m.—Morning Guard Music
 8:55 a.m.—News
 9:00 a.m.—Breakfast Club
 9:55 a.m.—News
 10:05 a.m.—Community Calendar
 10:10 a.m.—Morning Guard Music
 10:20 a.m.—Tater Quiz
 10:30 a.m.—It's A Woman's World,
 Billie McNeilly
 11:00 a.m.—Back To The Bible
 11:30 a.m.—Morning Guard Music
 11:45 a.m.—Markets
 12:00 noon—Dean Naven, News
 12:15 p.m.—Edward May
 12:30 p.m.—Midwest Farmer
 (Tom Beavers)
 12:45 p.m.—Markets
 1:00 p.m.—Paul Harvey
 1:15 p.m.—Afternoon Action Music
 2:15 p.m.—Martha Bohlsen
 2:20 p.m.—Afternoon Action Music
 4:15 p.m.—Martha Bohlsen
 4:20 p.m.—Afternoon Action Music
 5:40 p.m.—Tom Harmon Sports
 6:00 p.m.—Life Line
 6:15 p.m.—Paul Harvey
 6:20 p.m.—Bob Considine
 6:25 p.m.—As Naven Sees It
 6:30 p.m.—Ralph Childs, News
 6:45 p.m.—Mkts. & Weather
 Warren Nielson
 7:00 p.m.—Alex Dreier

MONDAY NIGHT

7:10 p.m.—Night Flight
 9:00 p.m.—Dick Clark Reports
 9:05 p.m.—Night Flight
 10:00 p.m.—Ralph Childs, News
 10:15 p.m.—Night Flight
 11:00 p.m.—News
 11:05 p.m.—Night Flight
 11:30 p.m.—Back To The Bible

TUESDAY NIGHT

7:10 p.m.—Night Flight
 9:00 p.m.—Dick Clark Reports
 9:05 p.m.—Night Flight
 10:00 p.m.—Ralph Childs, News
 10:15 p.m.—Night Flight
 11:00 p.m.—News
 11:05 p.m.—Night Flight
 11:30 p.m.—Back To The Bible

WEDNESDAY NIGHT

7:10 p.m.—Night Flight
 9:00 p.m.—Dick Clark Reports
 9:05 p.m.—Night Flight
 10:00 p.m.—Ralph Childs, News
 10:15 p.m.—Night Flight
 11:00 p.m.—News
 11:05 p.m.—Night Flight
 11:30 p.m.—Back To The Bible

THURSDAY NIGHT

7:10 p.m.—Night Flight
 9:00 p.m.—Dick Clark Reports
 9:05 p.m.—Night Flight
 10:00 p.m.—Ralph Childs, News
 10:15 p.m.—Night Flight
 11:00 p.m.—News
 11:05 p.m.—Night Flight
 11:30 p.m.—Back To The Bible

FRIDAY NIGHT

7:10 p.m.—Night Flight
 9:00 p.m.—Dick Clark Reports
 9:05 p.m.—Night Flight
 10:00 p.m.—Ralph Childs, News
 10:15 p.m.—Night Flight
 11:00 p.m.—News
 11:05 p.m.—Night Flight
 11:30 p.m.—Back To The Bible

SATURDAY PROGRAMS

5:00 a.m.—Morning Guard Music
 6:00 a.m.—News & Weather,
 Dean Naven
 6:15 a.m.—Morning Guard Music
 6:30 a.m.—RFD 960, Jack Gowing
 7:00 a.m.—News
 7:15 a.m.—Frank Field
 7:30 a.m.—KMA Goes Visiting With
 Tom Beavers
 7:45 a.m.—Morning Guard Music
 8:00 a.m.—Morning Headlines
 8:15 a.m.—Morning Guard Music
 9:00 a.m.—Governor Hughes
 9:05 a.m.—Morning Guard Music
 10:30 a.m.—It's A Woman's World,
 Billie McNeilly
 11:00 a.m.—Back To The Bible
 11:30 a.m.—Morning Guard Music
 12:00 noon—News
 12:15 p.m.—Edward May
 12:30 p.m.—Midwest Farmer
 (Tom Beavers)
 12:45 p.m.—Market Review
 1:00 p.m.—Paul Harvey, News
 1:15 p.m.—Wonderful
 Weekend Music
 5:30 p.m.—Man On The Go
 5:40 p.m.—Music
 6:00 p.m.—Life Line
 6:15 p.m.—Wonderful
 Weekend Music
 6:25 p.m.—Tom Harmon, Sports
 6:30 p.m.—News
 6:45 p.m.—Wonderful
 Weekend Music
 7:00 p.m.—KMA Bandstand
 Country Style
 10:00 p.m.—News
 10:15 p.m.—KMA Bandstand
 Country Style
 11:00 p.m.—News
 11:05 p.m.—KMA Bandstand
 Country Style
 11:55 p.m.—News

SUNDAY PROGRAMS

6:30 a.m.—Back To The Bible
 7:00 a.m.—News & Weather
 7:15 a.m.—Hymn Time
 7:30 a.m.—Sun. Worship Service
 7:45 a.m.—Hymn Time
 7:55 a.m.—News and Weather
 8:00 a.m.—Radio Bible Class
 8:30 a.m.—Your Worship Hour
 9:00 a.m.—Sunday School Lesson
 9:15 a.m.—Bible Truth
 9:30 a.m.—Social Security
 9:35 a.m.—Wndfl. Wknd. Music
 10:00 a.m.—U. of Iowa Commentary
 10:25 a.m.—Wndfl. Wknd. Music
 12:00 noon—News
 12:15 p.m.—Outdoor Nebr. of the Air
 12:30 p.m.—Legislative Report
 12:55 p.m.—News
 1:00 p.m.—Tarkio College Speaks
 1:15 p.m.—Wndfl. Wknd. Music
 3:55 p.m.—News
 4:00 p.m.—Wndfl. Wknd. Music
 4:45 p.m.—Mon. Morn. Headlines
 5:10 p.m.—Wndfl. Wknd. Music
 5:30 p.m.—Man On The Go
 5:40 p.m.—Music
 6:25 p.m.—Tom Harmon, Sports
 6:30 p.m.—News
 6:35 p.m.—Wndfl. Wknd. Music
 6:45 p.m.—World Space & Science
 7:00 p.m.—Wndfl. Wknd. Music
 7:30 p.m.—Revival Hour
 8:00 p.m.—N.W. Reviewing Stand
 8:30 p.m.—Issues & Answers
 9:00 p.m.—Hour of Decision
 9:25 p.m.—Wndfl. Wknd. Music
 10:00 p.m.—News
 10:05 p.m.—Wndfl. Wknd. Music
 10:15 p.m.—This Week In
 Washington
 10:30 p.m.—Revival Time
 11:00 p.m.—Wndfl. Wknd. Music
 11:55 p.m.—News
**Every Afternoon & Evening
 Monday through Saturday**
 5 Minutes Before The Hour
 ABC Network News
 On The Hour—Local, Regional News
 25 Minutes Past The Hour
 "ABC Reports"

PARTY LINE

Continued from Page 9

Salesman "Andy" Andersen got a rush phone call from his wife to come home. Andy dashed home to find THIS day of all days . . . when the wind was blowing a gale and it was extremely cold . . . that the carpenter had arrived and was putting in the new front door to the glassed in front porch. Because the door didn't fit, it was necessary to fill in about four inches with wood around the top and fill in the sides. While all this was going on, the cold wind was pouring in, and Andy could see his heat bill soaring sky high. Next time, Andy, you better pick out the good old summer for putting in a new door.

KMA announcers Mike Hoyer and Dale Eichor, calling themselves Mikendale Enterprises, have begun promoting live country music shows in the area. They presented their first show January 2nd at the new, and spacious Farragut, Iowa school auditorium. Stars of the show were Bill Anderson and the Po' Boys from the Grand Ole Opry. Bill is a longtime friend of Mike's and he's wanted to do a show for Mike and vice versa for a long time. Mike and Dale report that people came from as far away as Des Moines and Carroll, Iowa to attend the show. Promoting such shows can present headaches. About 7:30, Mike was called to the phone at the school. It was Bill Anderson calling from Atlantic, Iowa saying their bus broke down and they'd get there as soon as they could. After considerable floor pacing, chewing fingernails and visions of refunding the admissions, Bill Anderson and his band arrived by TAXI. They had to leave one musician back with the bus and also part of their instruments were left behind but the show went on before an extremely patient audience about an hour after it was due to start. Mike and Dale report that everybody enjoyed the show and urged them to bring in more country music shows in the future and many also requested that Bill Anderson and his show come back sometime. Bill said he'd sure like to, and promised to be on time next time! Mike and Dale are now in the process of arranging for another show in the spring.

For outstanding service to the University of Omaha, Owen Saddler, Executive Vice President and General Manager of May Broadcasting Co., was presented the Order of The Tower by the President of Omaha University recently. This is the highest award outside of an Honorary Degree, that the University bestows upon a citizen. Mark Gautier, News Director of KMTV, accepted the Award for Mr. Saddler who was in a hospital recuperating from an operation at the time of the presentation.

News and Special Events Director Dean

Naven and wife Claudine were among those from Shenandoah, honored with invitations to attend the inauguration of Harold Hughes as governor of Iowa in Des Moines January 14th. Dean, who is a member of the Iowa Development Committee, was invited, along with all state appointive officials, and legislators to hear the Inauguration Speech on the floor of the House Chamber. Their wives watched the Inauguration thru a closed television circuit in the Senate Chamber. All attended the reception. Because of the hundreds of special guests, the Navens stood in line for one hour before reaching the reception line of honored officials. The Inaugural Ball at the Veterans Memorial auditorium was a magnificent event, with a reported 2500 people on the dance floor, and around 5000 watching from the huge balcony. Along with Mrs. Gayle Maher of our KMA Radio office, Dean was also invited to the Inauguration in Washington of President Johnson. However, they were unable to attend.

Our KMA GUIDE EDITOR Duane Modrow finally has what he has always wanted . . . a NAME SAKE! After having four girls, he finally had given up the idea, but things turned out all right after all. On December 27th, a nephew and his wife, Mr. and Mrs. Darwin Davison of Wenatchee, Washington, named their new son DUANE RUSSELL, honoring his great uncle. When the letter arrived telling the good news, Duane was delighted and happily remarked: "Well, at LAST, I've got a boy named after me." The father of the new baby is a son of Mrs. Modrow's sister. The family have three boys and no girls . . . Duane has four girls and no boys, so with a name-sake now, this will help even things up.

Homemaker Billie McNeilly learned something at the very first dinner party she gave in her new apartment! She found out SEVEN people were too many for her small quarters . . . it was just too crowded. After this, she will confine her guest list to about five in number, which should work out about right. Billie, who has fear of flying, decided in order to visit her friends Mr. and Mrs. Glenn Griswold in Columbia, Missouri, over a weekend, she would have to take a plane. She arrived safely in Kansas City via Braniff Airlines, then was told there would be a delay as the plane had just broken down. Finally another plane was procured and she continued her flight, arriving in Columbia two hours late. Next morning, news of the terrible plane crash in Wichita came in over the radio, which made her even more tense. Nevertheless Billie arrived back safe and sound, even though her fear has not been overcome yet.

POSTMASTER

**"Return
Requested"**

**Tom Thumb Publishing Co.
Shenandoah, Iowa**

Bulk Rate

U.S. Postage

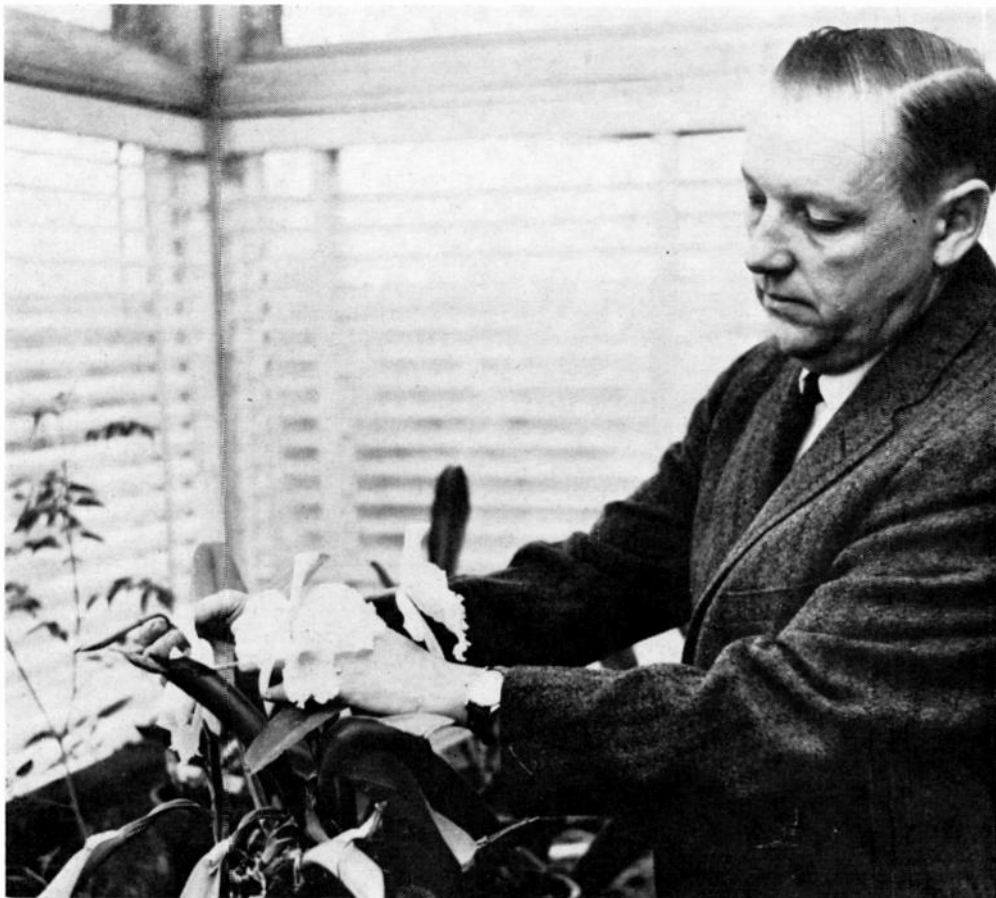
PAID

Permit No. 1

Shenandoah, Ia.

NOTE

If a red star appears by your name above, this indicates your subscription expires with this issue of the Guide. Send \$1.00 with your name and address for renewal.



The month of February is associated with the birth of two of our great presidents, and hearts and flowers for Valentines' Day. Ed May, Company President, has to go but a few steps to gather some of the most beautiful flowers in the world for his wife Eleanor . . . orchids! Ed has a home greenhouse attached to the southeast corner of their house. Starting with a few plants several years ago, he now has some 25 orchid plants. Pictured is a magnificent white cattleya. Three blooms are visible. The blooms will remain at their

peak of beauty for as long as three weeks. The plants bloom once a year, but are staggered so Ed has orchids in bloom much of the time. He also had a big lavender in bloom. He propagates the plants by separating the roots and starting new plants. They can be grown from seed, which takes about eight years. In the background of the picture you can see the outline of a tomato plant in bloom. Ed gave it a few squirts of "blossom set", and expects to have salad tomatoes in a few weeks. A very fruitful hobby!