

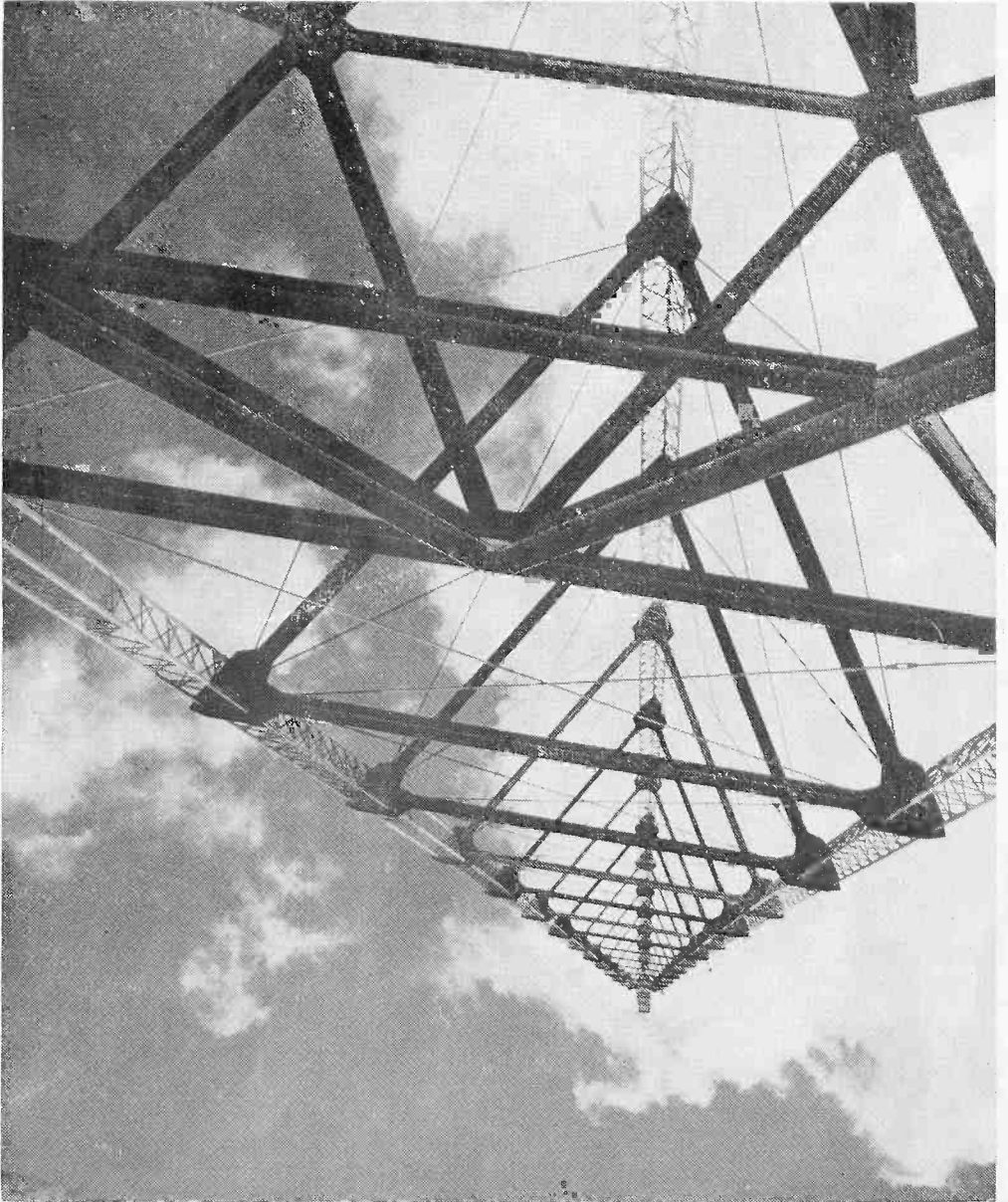
The

# KMA GUIDE



APRIL, 1956

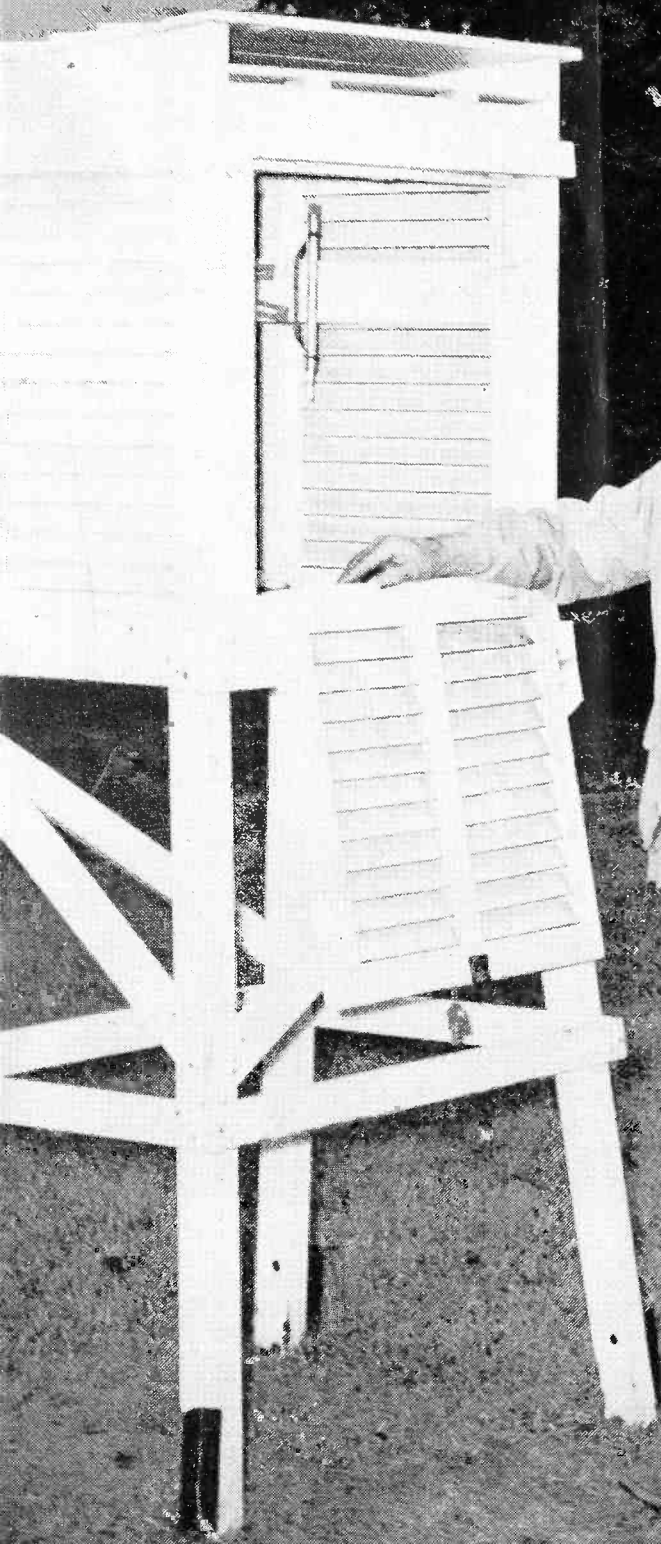
# A Guide For Tour Visitors



*May Seed and KMA Radio*

The

# KWA GUIDE



APRIL, 1956

APRIL 1, 1956

Casting his wary weather eye to the ominous, unpredictable April skies for indications of what is in store for us is KMA's weather prophet, Frank Field. Frank was just outside the studios in the garden looking at the weather instruments and checking them against his own personal judgments after viewing the sky.

"April" says the sage observer of Nature's habits, "is probably the most unpredictable month of the year. Looks, feelings, and forecasts are very deceiving, and are subject to change within minutes."

From that, we perceive, our Mr. Field relies a good deal on his own knowledge—as well as all the data he monitors on three hi-power radios and gleans from the wire services. Wherever he gets his "inside dope", Frank's weather forecasts are the most accurate, and consequently the most listened-to in Midwest radio.

The KMA Guide is published the first of each month by the Tom Thumb Publishing Co., 205 North Elm St., Shenandoah, Iowa. Owen Saddler, editorial chairman; F. S. (Toke) Nelson, editor; Doris Murphy, feature editor, Farrell Turnbull, copy editor. Subscription price \$1 per year (12 issues) in the United States, foreign countries, \$1.50 per year. Allow two week's notice for changes of address and be sure to send old as well as new address.

His morning show is heard at 7:15. Listen for his weather story, and all his other gardening, planting and human interest commentary.

SOS SOS

SOS SOS

## KMA Honors Leap Year Birthdays



Program director Warren Neilson hosted at a party on February 29 for a group of "Leap Year Babies" who were celebrating their birthday. Neilson had them revert to their actual birthdate age (and they wore hats to prove it) and to relate their past on his half hour Party Line show. From left to right are Mr. and Mrs. Luther Hansen of Red Oak, Iowa, who were celebrating their 12th wedding anniversary. They were married 48 years ago. That's Andy Hanson, 84-year-old Griswold, Iowa celebrant who was 21 birthdays old; and Mrs. Al Lundgren, Essex, Iowa, who was just turning her 12th birthday.

# KMA's Family Album

## KMA HONORED AS NEWS PIONEER

Admiring a "20 Year" certificate presented to KMA by United Press are, from left, Ralph Childs, afternoon-evening news editor; Owen Saddler, general manager who signed the original UP contract in 1935; Bill Drake, United Press midwest representative; and Dean Naven, KMA morning news specialist. Thru efforts of Mr. Saddler and other foresighted station managers United Press established a radio news system in 1935.



## DELIVERY BOY SERVES YOU MUSIC

Dave Alan, KMA announcer who has several disc jockey programs during the week, thought this would be a good "gag" shot. Dressed in white, he serves up some records for a regular "Housewives Serenade" show, heard at 10:15 each morning.

## FARMER'S WIFE AND HER DEN

Florence Falk, the Farmer's Wife, enjoys spending a good deal of time with her Cub Scout Den, shown here. From left to right are Jimmy Hillman, den chief; Bruce Falk (Florence and Byron's son); Gerald Carlson, and Mike Malstead, along with Florence. On her show at 10:30 each morning Florence has long boosted the Boy and Girl scouts and their activities.



# Ed May's KMA Straw Vote Shows "Ike" is Liked by 60 Per Cent

Ed May's Straw Vote for Presidential Preference, staged in conjunction with the Shenandoah Merchandise Show March 23 and 24, shows 60 point three percent of the people in this territory would vote for "Ike" for reelection. . . .

Second place on the ballot, which listed eight possibilities, was Estes Kefauver, the Tennessee Democratic senator. . . . who captured 19 per cent of the ballot or 317 votes to President Eisenhower's 959. Adlai Stevenson was third with 129 votes, for eight per cent of the total. . . . and in fourth place was Harry S. Truman, ex-president, who got 3 per cent of the total or 48 votes. . . .

Behind Truman came Averill Harriman, Richard Nixon, William Knowland, and Tom Dewey in that order.

Stuart Symington of Missouri received three write-ins; Governor Earl Warren, now a chief justice of the Supreme Court, had two. . . . Joe McCarthy, Douglas MacArthur, Governor Lawsche, and Marlin Brando each got one write-in.

A total of 1,589 people filled in ballots in the straw vote, which was held to try to reflect the general feelings of folks in this territory.

□ □ □

□ □ □

□ □ □

□ □ □

## You'd Better Hurry If You Want To Go To Kansas City With Us April 20

That headline pretty well tells the story, folks. If you and some of your friends would like to take in the opening baseball game of the year at Kansas City on Friday afternoon, April 20th, you'd better hurry.

As we told you last month, KMA has made arrangements for a very economical trip to see the opening game—when the A's will tangle with the Chicago White Sox.

For the low, low price of just \$7.00 you will get a bus ticket from Shenandoah to Kansas City and return, and also a very good reserved seat at the game.

KMA ran several tours to Kansas City last year, and everyone who made the trips were thrilled with the games they saw, the seats they had, and also the fun that comes from going with a group to attend a major league baseball game.

Because tickets are very limited for the opening game, we were only able to secure a limited number. And because of that, we are going to have to apply the rule of "first come—first served."

If you'll put a check or money order into the mail right away, today, for \$7.00 for each person making the trip, we may be able to take care of your requests.

And here's another bit of advice. These excursions aren't limited only to the men. We usually always have quite a number of gals who take in the games. As a matter of fact, it appears here in the Midwest like the gals are the loudest, most loyal rooters that the Kansas City A's have this season.

The A's will have a lot of new faces on the team this year, and Lou Boudreau, the personable manager, says his team will make a strong fight to finish the American League race in the first division. The A's finished a strong sixth last year, after all the experts had tabbed them for a very dismal eighth place.

The early game indications are that the A's will get a lot of help from their pitchers this season. Bob Schantz, Art Ceccarelli, Alex Kellner, and Bill Harrington have all shown signs of being terrific thus far in spring training games.

Let's really give the A's a send-off this year that will carry them all the way to the first division.

It might be advisable for those of you who want to make certain you'll get accommodations on the KMA Bus Excursion on April 20, if you'll call Toke Nelson at 192 to make sure there are still reservations available.

# A CHAT WITH EDWARD MAY

I want you to see KMA's official announcer of 1975 or thereabouts. The photograph on this page shows Edward Jr. practicing for his future job. He helps (?) me each noon while I am checking with the engineer and occasionally he will say a few words on the air. He is commencing to form sentences so it won't be long until he will be broadcasting with me. Incidentally, he is the third generation of the May family to broadcast on KMA.

One of the most important topics is weather and, if the long range forecasters are correct, it appears we are in for good growing weather for the next fifty years. According to a recent article in the Saturday Evening Post, by Dr. H. C. Willett, of the Massachusetts Institute of Technology, the next fifty years look good for ice-skating and skiing enthusiasts in America. Dr. Willett states, 'Our weather is going to be moister and colder, with plenty of snow and ice over the long run.' He goes on to state "American farmers need have no fear of another dust-bowl drought such as caused disaster on the Great Plains in the 1930's. There will be more rainfall and cooler weather in the Middle West for the remainder of this century." I certainly hope Dr. Willett is correct.

We are rapidly approaching the season of the year when many organizations are making preparations for a tour. You are cordially welcome to visit Shenandoah, and if your group would like a conducted tour we invite you to write us in order that we will expect your group and make the necessary arrangements to make your tour a memorable one.

Recently the Shenandoah Chamber of Commerce sponsored a Merchandise Show and KMA sponsored a Straw Vote in which we asked the voters to state their preference for a candidate for President of the United States. We conduct such a vote every four years and it is amazing how accurate these Straw Votes have been in the past. It might interest you to know how the people voted in this year's Straw Vote.

Of the 1,600 ballots that were cast, 60 per cent indicated they would vote for Eisenhower. Second choice was Estes Kefauver who received 19 per cent of the votes cast. In third place was Adlai Stevenson with 8 per cent of the total, and in fourth place was Harry S. Truman, Ex-President, who received 3 per cent of the total. As mentioned earlier, our Straw Votes in the past have been extremely accurate so we will check after the presidential election and see how accurate we were this time.

Everyone at our house is well and I hope the same thing can be said about you and your family. We have a birthday during the month of April. Annette will be eleven years old. She is quite a young lady and is almost as tall as her mother. In next month's column I will probably tell you about Annette's birthday party.



Fella handling the "mike" duties is 20-month old Eddie May, son of KMA's president.

# Ed May's KMA Straw Vote Shows "Ike" is Liked by 60 Per Cent

Ed May's Straw Vote for Presidential Preference, staged in conjunction with the Shenandoah Merchandise Show March 23 and 24, shows 60 point three percent of the people in this territory would vote for "Ike" for reelection. . . .

Second place on the ballot, which listed eight possibilities, was Estes Kefauver, the Tennessee Democratic senator. . . . who captured 19 per cent of the ballot or 317 votes to President Eisenhower's 959. Adlai Stevenson was third with 129 votes, for eight per cent of the total. . . . and in fourth place was Harry S. Truman, ex-president, who got 3 per cent of the total or 48 votes. . . .

Behind Truman came Averill Harriman, Richard Nixon, William Knowland, and Tom Dewey in that order.

Stuart Symington of Missouri received three write-ins; Governor Earl Warren, now a chief justice of the Supreme Court, had two. . . . Joe McCarthy, Douglas MacArthur, Governor Lawsche, and Marlin Brando each got one write-in.

A total of 1,589 people filled in ballots in the straw vote, which was held to try to reflect the general feelings of folks in this territory.



## You'd Better Hurry If You Want To Go To Kansas City With Us April 20

That headline pretty well tells the story, folks. If you and some of your friends would like to take in the opening baseball game of the year at Kansas City on Friday afternoon, April 20th, you'd better hurry.

As we told you last month, KMA has made arrangements for a very economical trip to see the opening game—when the A's will tangle with the Chicago White Sox.

For the low, low price of just \$7.00 you will get a bus ticket from Shenandoah to Kansas City and return, and also a very good reserved seat at the game.

KMA ran several tours to Kansas City last year, and everyone who made the trips were thrilled with the games they saw, the seats they had, and also the fun that comes from going with a group to attend a major league baseball game.

Because tickets are very limited for the opening game, we were only able to secure a limited number. And because of that, we are going to have to apply the rule of "first come—first served."

If you'll put a check or money order into the mail right away, today, for \$7.00 for each person making the trip, we may be able to take care of your requests.

And here's another bit of advice. These excursions aren't limited only to the men. We usually always have quite a number of gals who take in the games. As a matter of fact, it appears here in the Midwest like the gals are the loudest, most loyal rooters that the Kansas City A's have this season.

The A's will have a lot of new faces on the team this year, and Lou Boudreau, the personable manager, says his team will make a strong fight to finish the American League race in the first division. The A's finished a strong sixth last year, after all the experts had tabbed them for a very dismal eighth place.

The early game indications are that the A's will get a lot of help from their pitchers this season. Bob Schantz, Art Ceccarelli, Alex Kellner, and Bill Harrington have all shown signs of being terrific thus far in spring training games.

Let's really give the A's a send-off this year that will carry them all the way to the first division.

It might be advisable for those of you who want to make certain you'll get accommodations on the KMA Bus Excursion on April 20, if you'll call Toke Nelson at 192 to make sure there are still reservations available.



# A CHAT WITH EDWARD MAY

I want you to see KMA's official announcer of 1975 or thereabouts. The photograph on this page shows Edward Jr. practicing for his future job. He helps (?) me each noon while I am checking with the engineer and occasionally he will say a few words on the air. He is commencing to form sentences so it won't be long until he will be broadcasting with me. Incidentally, he is the third generation of the May family to broadcast on KMA.

One of the most important topics is weather and, if the long range forecasters are correct, it appears we are in for good growing weather for the next fifty years. According to a recent article in the Saturday Evening Post, by Dr. H. C. Willett, of the Massachusetts Institute of Technology, the next fifty years look good for ice-skating and skiing enthusiasts in America. Dr. Willett states, 'Our weather is going to be moister and colder, with plenty of snow and ice over the long run.' He goes on to state "American farmers need have no fear of another dust-bowl drought such as caused disaster on the Great Plains in the 1930's. There will be more rainfall and cooler weather in the Middle West for the remainder of this century." I certainly hope Dr. Willett is correct.

We are rapidly approaching the season of the year when many organizations are making preparations for a tour. You are cordially welcome to visit Shenandoah, and if your group would like a conducted tour we invite you to write us in order that we will expect your group and make the necessary arrangements to make your tour a memorable one.

Recently the Shenandoah Chamber of Commerce sponsored a Merchandise Show and KMA sponsored a Straw Vote in which we asked the voters to state their preference for a candidate for President of the United States. We conduct such a vote every four years and it is amazing how accurate these Straw Votes have been in the past. It might interest you to know how the people voted in this year's Straw Vote.

Of the 1,600 ballots that were cast, 60 per cent indicated they would vote for Eisenhower. Second choice was Estes Kefauver who received 19 per cent of the votes cast. In third place was Adlai Stevenson with 8 per cent of the total, and in fourth place was Harry S. Truman, Ex-President, who received 3 per cent of the total. As mentioned earlier, our Straw Votes in the past have been extremely accurate so we will check after the presidential election and see how accurate we were this time.

Everyone at our house is well and I hope the same thing can be said about you and your family. We have a birthday during the month of April. Annette will be eleven years old. She is quite a young lady and is almost as tall as her mother. In next month's column I will probably tell you about Annette's birthday party.



Fella handling the "mike" duties is 20-month old Eddie May, son of KMA's president.

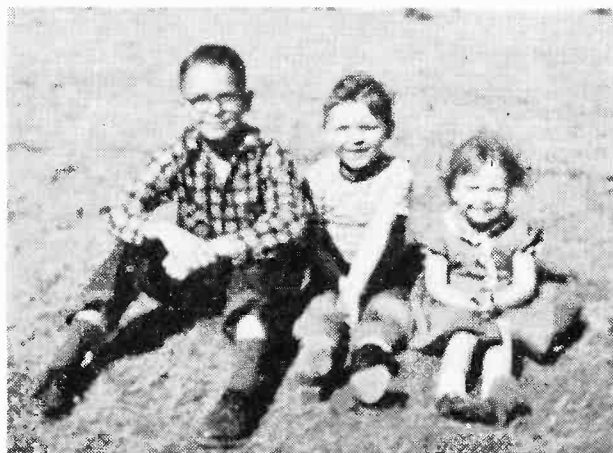
## Frank Comments

By FRANK FIELD

This picture of Bill, Danny and Polly was taken on the lawn out south of our house Sunday afternoon, March 4th, with the thermometer reading 72°. As a matter of fact it hasn't been that warm since. A few days before, Jennie had been rearranging things in our freeze box and came across a 12 pound turkey which had been in there since before Christmas. Of course, she and I could never get away with that much turkey without getting desperately tired of it, so we had just been saving it back for a special occasion. No such occasion had come along, so Jennie suggested that we have a family reunion with all of the kids and grandkids in for a turkey dinner. Of course, it was out of the question to have Peg and Jim and their kids come up from Dallas but all the rest were highly in favor of the idea. Since we had plenty of room and plenty of turkey, we also included the Sloans from Clarinda, Maxine's folks.

We stretched out the long table down in the recreation room and put in five extra leaves and seated 10 grown-ups and 4 grandchildren very nicely without any crowding. Zo brought the combination salad and Jennie fixed everything else and everything went off without a hitch. The turkey was tender and juicy and it only took us about a week to get rid of what was left.

After dinner the menfolks all took a nap while the women were washing dishes. The exception to the general rule was Johnnie Fishbaugh who decided that he wanted to go to the show that afternoon and left shortly after dinner.



Perched on the lawn at grandparents' home are three of Frank and Jenny Fields' grandchildren.

After Johnnie had gone Jennie suggested that I take a picture of the grandchildren as it had been quite a while since I had used such a picture on this page. So here is the picture. On the left is Bill Field, almost 11 and in the fifth grade of school. In the middle, Danny Field who will soon be six and in the first grade of school. On the right is Polly Field, three years old and can hardly wait until she is old enough to start to school.

Bill has had a World Herald paper route for the last year or so, and regardless of the weather he has never failed to deliver without any help from his father whatsoever. He started out with an old "clunker" of a bicycle and saved his paper route money until he had enough to get a new Schwinn bike. Bill has won several contests for getting new subscribers. In fact, just last week he won a trip to the Ice Capades in Omaha by getting the most new subscribers over a given period of time. Right now, he is saving his money for a new rod, reel and fishing outfit and it looks as if Jennie and I might have to take him up to Minnesota this summer where he can hook onto some really big ones.

This extremely changeable weather finally caught up with me about the middle of March and I was off duty for about a week with what the doctor said was starting out to be virus pneumonia. He shot me full of penicillin and fed me some of the other modern wonder drugs and got me back on my feet again very quickly. About the time I began to feel better, Jennie came down with the same thing and was laid up for about the same length of time. We are both about back to normal now except that we are still a little weak and tire rather easily. By the time you read this early in April we should be as good as ever and rarin' to go.

Yes, we gave the yard a thorough application of Maytone fertilizer several weeks ago and reseeded the thin spots with Maypark lawn grass mixture, so all we need now is some warm weather and some good soaking rain. Tonight I am going to plant about a dozen new shrubs and replace a pin oak that failed to make the grade last summer, owing to the heat and drouth. Jennie wants me to plant a weeping willow on the east side of the house to shade the patio in the mornings. It is a little too early to tell just what roses will have to be replaced, but it looks now as if four or five of them winter-killed where they were not sufficiently mulched. Will tell you about that next month.

# Grass Root Notes

By  
**MERRILL LANGFITT**  
KMA  
Farm Service Director



Tornadoes — Farm accidents! There is very little if any association between the two, but both are of concern at this season.

Many people panic at the very thought of the tornado season, but actually more people lose their lives in farm accidents every year than do in tornadoes in twenty years or more. In the spring you look to the sky for signs of an approaching storm. You watch for changes in barometric pressure, you listen to the radio for weather bulletins. When we issue a severe storm warning everyone becomes alarmed. You start thinking about what you will do when a storm approaches. Black clouds and strong winds scare the living daylight out of you. Yes, an approaching tornado is a real threat to life and limb and all of us develop a tremendous fear of such storms. In recent years several tornadoes have struck KMA communities. Lives have been lost, tremendous property damage has occurred. Severe storms are alarming to all of us.

Let's look objectively at these dangers to life and limb. Statistics tell us that more lives are lost and more costly injuries occur in every community as a result of farm accidents over a period of years than are caused by severe storms — yet we have more fear of the tornado than of the possible farm accident. A tornado strikes (without much warning) four lives are lost. Somewhere in America ten farmers start to the field with their tractors — those ten farmers through carelessness lost their lives. Each is a tragedy, but which is the more alarming? Perhaps we can not

judge, but each is a real disaster to some family or some community. We cannot prevent the tornado, but we can prevent the farm accident. The farm is not the safest place in the world to live. Tractors, balers, corn pickers, stock tanks, fires, feed grinders, falls in the home — all take their toll — a very costly toll in terms of lives lost, hours of work lost, property destroyed and the heart aches which result.

Some of you who read this will not be here when corn picking season rolls around. Some will survive the spring and summer work season only to lose their life during the corn harvest.

The farm wife is the protector of her family — being a widow is not a pleasant thought. You may have an inborn fear of the elements but perhaps you should have a greater fear of the farm accident. You homemakers have an important role to play. Urge your farmer to be safety conscious as the farm work season gets underway. Already in April several homemakers like you are widows because of a tractor accident. Already farm families have buried a son — killed in a farm accident. Keep your husband out of the obituary column. Urge him to practice safety on the farm every day. Look to the skies for an approaching storm, but look to common sense to prevent farm accidents and the loss of your husband or son.

Will you be a farm accident widow in KMAland in 1956? We hope not — practice safety on the farm every day and enjoy a happy bountiful life.

*Merrill Langfitt*



# On the KMA PARTY LINE

By DORIS MURPHY

Because she is a good homemaker. . . a good mother. . . and because of her wide variety of community interests, Florence Falk, the "Farmer's Wife" of KMA was selected Page County Homemaker for 1956. Pictured on this page is Mrs. Paul Mier of Clarinda, chairman of the Page County Farm Bureau Women's Association, as she announced the news on Florence's morning homemaker program. Florence was the unanimous choice of the Farm Bureau Women's committee appointed to select the winner, and all of us at KMA are very proud of her honor. As far as is known, she is the only woman of the Farm Bureau membership, broadcasting from a farm home. For many years, Florence has been very active in community, church, school and club activities. Always interested in youth, she is now working with three groups her Sunday School class, as leader of the Essex Senior Girl Scouts and a Cub Scout Den Mother. At present she is working on a history of Essex and surrounding community. Her background as a school teacher, and as a leader in community service activities and women's club work, coupled with everyday life on the farm, were considered an ideal background for being chosen Page County Homemaker for 1956. Arrangements have been made for Florence to attend the Family Life Conference

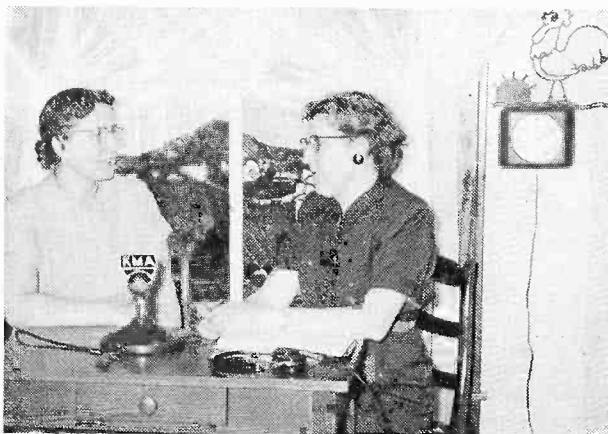
at Iowa State College in Ames April 3 and 4. I am sure Florence lives up to all the ideals for which she was chosen!

It's pretty nice to have mother take care of you when you get sick. . . but Tommy and Jeffrey, sons of Announcer Mike Heuer had extra good medical attention when they got the measles recently. Why? Because their mother is a nurse!

It was bound to happen sooner or later and sure enough, the basketball season finally caught up with newscaster Dean Naven. For months, Dean has been burning the candle at both ends. . . getting up at 3:30 a.m. to broadcast the early morning news. Then heading out several evenings a week for nearby towns where he was commercial announcer on the basketball games. By the time the season was almost over, Dean had about all he could take. He was dead tired. One morning, he failed to show up at the studio. Bill Benjamin, the control operator, and Harry Reed, the night watchman, started calling Dean's home. But Dean was dead to the world. The phone rang and rang. . . the alarm rang. . . but nothing awakened Dean in his sound sleep. Finally the boys called Ralph Childs, who rushed to the studio and had the news ready to go, when in walked Dean at 20 minutes of six, groggy and still not sure just what had happened. He was so startled when he awakened and saw what time it was, he didn't even take time to put on a coat or to fasten his shirt, but dashed to the studio, as fast as he could. Result? Next day a bedside telephone was installed in the Dean Naven home!

Kirk's TV shop, for the servicing of TV and radio sets, has been opened by two KMA engineers, William Kirk and Ronald Jennings. The boys work opposite shifts at KMA, thus enabling someone to be present at the shop at all times. Mrs. Kirk will assist with the bookkeeping on Saturdays.

There's no doubt about it. . . the Hiland Tater Quiz on KMA is strictly on the level. This was proven recently when Scotty (Warren Neilson) placed a call to a Mrs. Ewing in Creston. To his surprise, it turned out that Mrs. Ewing runs the county



Mrs. Paul Mier of Clarinda appeared on the Farmer's Wife program, to announce that Florence Falk has been selected as Page County's Outstanding Homemaker.

jail. And you can bet Warren was more surprised when Mrs. Ewing mentioned that she buys "Hiland" all the time for the boys in the "back room."

A birthday party honoring KMA's Home-maker Bernice Currier turned out to be something like "Topsy". . . it just grew! In the morning, two of Bernice's friends, Mrs. Cora Pace and Miss Carol Ambler invited Bernice to join them for a "cup of coffee" that afternoon at Miss Ambler's home. They also invited Gretta Bellamy to join them. But. . . as the day went on, the plans grew. Mrs. Pace baked an angel food cake with pink frosting. . . Carol made sandwiches, set a pretty birthday table in the living room, and first thing they knew, the "cup of coffee" turned into a real birthday party. Other friends heard about the birthday, and soon Bernice received several gifts, among them a beautiful pink carnation corsage from Mr. and Mrs. Earl Fishbaugh, Jr. That gave Toke Nelson, KMA Guide Editor an idea, so he showed up to take a picture of the party. Here you see them at the tea table celebrating Bernice's birthday. Seated left to right are Mrs. Pace, Bernice wearing her birthday corsage, Gretta and Carol. The party proved one thing. That things planned on the spur of the moment, often times are more fun than parties planned a long time in advance, with elaborate preparations.

Did you see John Field and Mayor Bick Downing of Hamburg, pictured on the front page of the Sunday World Herald recently, with a 16 foot pleasure boat they are building. John, editor of the Hamburg Reporter, is the son of Frank Field, and like his dad, John enjoys fishing. So he and the Hamburg Mayor, decided to build a cruiserette. They started last fall and hope to have it completed late this month. But, all the time they have been in the process of building it, they've had to take a lot of ribbing from the big audience of doubters standing around. The "boys" have thrown barbs about it's construction, insinuating it will sink. John says he and Bick will be the only passengers aboard for its maiden voyage and they expect a big audience of doubters to be on hand to watch the fun. The boat will be launched at the Nishna Valley Boat and Gun Club docks on the Missouri River.

Hope you saw KMA's Homemakers Bernice Currier and Florence Falk when they appeared on Bettie Tolson's show on KMTV, April

2nd. Next month we will show you a picture taken of them, while on the show.

It's off to Miami, Florida for a motor vacation trip, for your KMA Party Line editor. With my sister, Miss Carol Ambler and cousin, Miss Ora Ambler of Omaha, we left Shenandoah, March 25th. Enroute we plan to go thru Natchez and New Orleans where the gardens will be very beautiful this time of year. On the return trip, we will come up the east coast and thru the Smoky Moutains, on our way home. My aunt, Miss Lillian Paul, who has been in Miami since January, will return home with us.

Two new KMA babies arrived on the last day of March. It was a seven pound son for the Roland Jennings. Pop is a control engineer at KMA. And minutes later it was a beautiful bundle of eight pounds of feminine pulchritude for Laline and Clemmy Maher. Laline was Warren Nielson's secretary. As we go to press all babies, mothers, and even the pops are doing fine.

Say, the Guide Editor, suggested that it might be wise to put a little plug in this column about the KMA Baseball Excursion to Kansas City on April 20th. So many times women feel that this is strictly an affair for the men—but it really isn't. We had lots of ladies take part in the baseball excursions last year, and everytime, the women were very pleased that they went. You can read the specifics on another page in this issue of the Guide, but let me tell you, this tour will be just as entertaining for women as men. I know the girls around our office are really dyed-in-the-wool A's fans now, and I'll bet most of the Guide readers are, also.



Bernice is all smiles, as her friends surprise her on her birthday, at a special party.

# A LETTER FROM BERNICE CURRIER

Dear Friends:

We should really be having some spring weather by the time you get this letter but as I sit here looking out the east window of my dining room, I see snow flakes in the air, an overcast sky and a temperature of 11° above zero. But that is not unusual for March.

I have a new grand-daughter, Mary Patricia Currier, daughter of Pat and Ed in Elmhurst, Illinois. The picture at the bottom of the page was taken when she was one hour old. She weighed 8 pounds 3 ounces, and look at that head of hair. She looks very pleased to think she arrived here and that she picked out such wonderful parents, doesn't she? A letter from Helen in Houston, Texas says that she still plans on coming here about the first of May with her five children. Now that is going to be a new experience for this grandmother. The picture of the young lady on this page is Helen's oldest child, Patricia. There are lots of "Patricias" in my family. Hope I don't get them mixed up. This young lady Patricia is 13 years old and is quite an artist. Also she plays piano and has a lovely voice.

Margaret writes from New York that she is working on another book and she tells me it isn't the one she was working on while she was here. So I'll just wait until she tells me more about it.

I haven't anything now to tell about Red and Janet and their two lovely girls, but I will see them when I take my vacation

and then will have lots to tell you about their new home.

My latest project is having this house painted, and I'm trying to decide on what color it will be. I think now that I will have a coral sand main color trimmed in a rich brown. There are so many colors being used now and how do you make up your mind which you like the best? Some of the colors fade more than others and some do not seem to look the same when the whole house is done.

Just at this point in writing this letter I decided it was too dismal a day to think of anything interesting so I have waited a couple of days and the weather is beautiful again! ! ! The sun is shining, the birds are singing and it is spring once more.

I've been experimenting with some of the helps sent in by you friends. One of them was about making souffle. Have you ever made one and had it fall flat? Well, here is the answer to that problem. All you have to do is add  $\frac{1}{4}$  teaspoon cream of tartar to the beaten egg whites while you are beating them. The souffle will remain light and fluffy when you take it from the oven. That really works.

And do you know how to keep the milk from coating the pan when you scald it? Just rinse the pan with cold water before pouring the milk into it.

It is house cleaning time and I have been doing it gradually. There is never any time when I can devote a whole day or two days

Continued on Page 15



Patricia, 13, daughter of Dr. and Mrs. J. T. (Helen) Armstrong of Houston, Texas.



Mary Patricia, age one hour, daughter of Pat and Edwin Currier of Elmhurst, Ill.

# Homemaker's Guide

## HOMEMAKER'S VISIT

By BERNICE CURRIER

Here's are some ideas for sandwiches. It isn't going to be long before you will need some new ideas for picnics or for the hikes the youngsters like to take.

1. Baked beans, chili sauce, thinly sliced onion or pickle.

2. Thinly sliced radishes on buttered whole wheat or rye bread.

3. Peanut butter and tart jelly or honey.

4. Peanut butter and mayonnaise blended spread on whole wheat bread, topped with finely grated raw carrot.

5. Chopped hard cooked eggs, chopped green onion, chopped green pepper, chopped cucumber, salt to taste and mayonnaise.

6. Cottage cheese whipped until almost like whipped cream, minced green pepper, onion salt and paprika on dark bread.

7. Softened cream cheese (comes in the 3 oz. foil wrapped package), with stuffed olives.

8. Sliced American cheese, thinly sliced ham and mustard.

9. Softened 3 oz. package of cream cheese with orange marmalade or cranberry jelly or crushed pineapple.

10. Chopped cooked bacon, peanut butter and mayonnaise blended.

\* \* \* \* \*

A delicious, cooling summer salad.

### GOLD COAST SALAD

1 head lettuce

1 grapefruit

2 oranges

$\frac{1}{4}$  c. Sweet Fruit Dressing

Break lettuce into bite size pieces in salad bowl. Pare grapefruit and oranges cutting through white skin. Cut the sections close to membrane and lift out. Arrange sections of fruit over lettuce. Garnish with avocado if desired. Serve with the following dressing.

### SWEET FRUIT DRESSING

$\frac{1}{2}$  c. sugar

1 t. salt

1 t. dry mustard

1 t. celery salt

1 t. paprika

1 t. grated onion

1 c. salad oil

$\frac{1}{4}$  c. white vinegar

Mix dry ingredients. Add onion. Add oil a small amount at a time alternately with vinegar, making the last addition vinegar. Use rotary or electric beater on slow or medium speed until well blended. Makes about  $1\frac{1}{2}$  cups.

### CREAMED COLE SLAW

1 small head cabbage shredded

4 carrots grated

3 chopped green peppers

1 spanish onion minced

Dressing:

1 can sweetened condensed milk

$1\frac{1}{2}$  t. dry mustard

2 t. salt

1 T. worcestershire sauce

$\frac{3}{4}$  c. cider vinegar

Put condensed milk into top of double boiler and heat over boiling water for 10 minutes then cool. Add the mustard, salt and worcestershire sauce and beat hard. Then gradually add the vinegar beating constantly. Add the vegetables and mix well then store in refrigerator several hours or overnight.

\* \* \* \* \*

A delightful change from the gelatin varieties.

### PINEAPPLE SALAD

A—Juice from No. 2  $\frac{1}{2}$  can crushed pineapple

2 T. flour

2 T. sugar

2 beaten eggs

B—1 No. 2  $\frac{1}{2}$  can crushed pineapple drained

C—1 c. heavy cream whipped stiff

$\frac{1}{4}$  lb. marshmallows cut fine or use small size marshmallows

Combine A. Cook over low heat until thick. Remove from heat and cool after adding B. When cool add C. Store in refrigerator until ready to serve. Serve on pale green salad plates or in lettuce cups.

\* \* \* \* \*

### PIQUANT SAUCE

Combine 3 T. brown sugar,  $\frac{1}{4}$  c. catsup,  $\frac{1}{4}$  t. nutmeg and 1 t. dry mustard. Beat well. This is very good over white or green limas.

\* \* \* \* \*

### HORSERADISH SAUCE

Good with almost any meat, fowl, or non-fat fish. Fold 3 T. well-drained horseradish into  $\frac{1}{2}$  c. heavy cream whipped. Season lightly with salt.



## "THE FARMER'S WIFE"

By FLORENCE FALK

What's a more cheerful flower than the first dandelion of spring? Certainly the first day of May with its tiny baskets of cheer. Have a May party. Scout out your closest novelty store for tiny favors.

\* \* \*

Centerpiece — a Maypole with narrow colored ribbons, held by tiny dolls.

Favors — Maybaskets of every hue and shade.

Menu —

\*\*Salmon Salad in Lemon Cups

Rye Bread and Butter Sandwiches

Crispy Pickles

Orange Gelatin with Whipped Cream

Assorted Cookies or —

Sponge Cake or —

\*\*Peppermint Stick Pie

### SALMON SALAD

Soften 2 T. unflavored gelatin in

4 T. cold water.

Combine 3 egg yolks with

$\frac{3}{4}$  t. salt

1 t. prepared mustard

dash paprika

3 T. sugar

Add 1c. milk and mix well. Gradually add 5 T. vinegar or lemon juice. Cook in a double boiler or in a heavy pan over low heat until thickened. Add 1 T. butter and fold in the softened gelatin. Chill. When the mixture starts to congeal fold in 2 c. flaked salmon which has been mixed with 1 c. salad dressing and pour into ring mold and chill until firm. If you wish fold in the stiffly beaten whites of 3 eggs. Serve

in unsweetened lemon flavored meringue cups or in little lemon baskets.

\* \* \*

### PEPPERMINT STICK PIE

Combine 3 egg yolks, well beaten with

5 T. sugar

dash of salt

Slowly add 1 c. milk and heat in double boiler or heavy pan over low heat until thickened. Fold in 1 T. unflavored gelatin which has been softened in 4 T. of cold milk. Cool the mixture and add 1 c. crushed peppermint stick candy (use to suit your taste). Fold in the 3 egg whites, stiffly beaten with 1 T. sugar. Last fold in 1 c. of heavy cream which has been whipped. Pour into a baked 9" pie shell or into a crumb crust.

\* \* \*

Maybe you would like a light salad for your party this early spring—try this one—

### MOLDED CHICKEN OR TUNA SALAD

1 package lemon flavored gelatin

2 c. hot water

1½ T. vinegar

dash salt

$\frac{1}{2}$  c. mayonnaise

1 c. flaked tuna fish or cooked, chopped chicken

1 c. chopped celery

2 T. chopped pimiento (not only flavors but adds color)

$\frac{1}{2}$  c chopped pecans

Dissolve gelatin in hot water, add vinegar and salt, chill until it begins to barely set, then add other ingredients mixing lightly. Turn into mold or flat pan, or individual molds. Chill in refrigerator. Unmold or cut in squares and serve on lettuce on individual plates. Top with more dressing if you wish. Serve with an assortment of tiny crispy crackers so popular now or the new cinnamon wafers and a cup of coffee.



# Voices of our Kansas City Athletics



LARRY RAY



MERLE HARMON

## A's Broadcasts Have Started

This trio of sports authorities will provide many hours of listening pleasure for Kansas City Athletics followers this season, as they bring KMA listeners every play of the brand new baseball season.

Veteran sports observer Sam Molen, sports director of KMBC in Kansas City, will be a very welcome addition to the A's family this year. Sam comes on 10 minutes before game time with a dugout show called "Warmup" and sponsored by the bakers of Butternut Bread, which is served on the A's training tables.

Back in the harness to bring the play-by-play and color of every A's game, will be Larry Ray and Merle Harmon, who have been down in spring training with the A's since the last week in February. They will again be presented by Jos. Schlitz Brewing Company, makers of Schlitz beer.

The spring training games with Pittsburgh and St. Louis will windup on April 17, and then the season gets underway in earnest, as Skipper Lou Boudreau makes a strong effort to bring the ever improving A's home in the first division.

The A's home opener will be April 20th against Chicago's White Sox.



SAM MOLEN

# KMA Daily Programs For April, 1956

## TUESDAY NIGHT

7:00 p.m.—Club 960  
 10:00 p.m.—Ralph Childs, News  
 10:15 p.m.—Club 960  
 11:00 p.m.—News  
 11:05 p.m.—Music In The Night  
 11:30 p.m.—Back To The Bible

11:00 a.m.—Back To The Bible  
 11:30 a.m.—Electrical Reporter  
 11:45 a.m.—Practical Land Use  
 12:00 noon—Dean Naven, News  
 12:15 p.m.—Edward May  
 12:30 p.m.—Jack Gowing  
 12:45 p.m.—Market Review  
 1:00 p.m.—Sat. Matinee  
 5:45 p.m.—Bob Edge  
 6:00 p.m.—Farm Bulletin Board  
 6:15 p.m.—Songs of The Pioneers  
 6:30 p.m.—News  
 6:45 a.m.—Here's To Veterans  
 7:00 p.m.—Dancing Party  
 9:00 p.m.—Hotel Edison Orch.  
 9:30 p.m.—Lawrence Welk's Army Show

10:00 p.m.—News  
 10:15 p.m.—Let's Go To Town  
 10:30 p.m.—Revival Time  
 11:00 p.m.—News  
 11:05 p.m.—Music In The Night  
 11:55 p.m.—News

## DAILY DAYTIME PROGRAMS MONDAY THROUGH FRIDAY

5:00 a.m.—Town & Country Hour  
 6:00 a.m.—News & Weather  
 6:15 a.m.—Western Star Time  
 6:30 a.m.—Merrill Langfitt  
 7:00 a.m.—Dean Naven, News  
 7:15 a.m.—Frank Field  
 7:30 a.m.—Markets  
 7:35 a.m.—Merl Douglas  
 7:45 a.m.—Morning Headlines  
 8:00 a.m.—Breakfast Club  
 9:00 a.m.—Bernice Carrier  
 9:30 a.m.—When A Girl Marries  
 9:45 a.m.—Whispering Streets  
 10:00 a.m.—Kitchen Club  
 10:15 a.m.—Housewives Serenade  
 10:30 a.m.—Florence Falk  
 11:00 a.m.—Back To The Bible  
 11:30 a.m.—Tennessee Ernie  
 11:45 a.m.—Morning Markets  
 11:55 a.m.—Joe Feassen  
 12:00 noon—Dean Naven, News  
 12:15 p.m.—Edward May  
 12:30 p.m.—Jack Gowing  
 12:45 p.m.—Markets  
 1:00 p.m.—Dick Mills' Show  
 5:45 p.m.—Bill Stern  
 6:00 p.m.—Farm Bulletin Board  
 6:15 p.m.—Andy Parker  
 6:30 p.m.—Ralph Childs, News  
 6:45 p.m.—Edw. May, Mkts., & Weather

## WEDNESDAY NIGHT

7:00 p.m.—Club 960  
 9:05 p.m.—Boxing Bouts  
 10:00 p.m.—Ralph Childs, News  
 10:15 p.m.—Club 960  
 11:00 p.m.—News  
 11:05 p.m.—Music In The Night  
 11:30 p.m.—Back To The Bible

6:00 p.m.—Farm Bulletin Board  
 6:15 p.m.—Songs of The Pioneers  
 6:30 p.m.—News  
 6:45 a.m.—Here's To Veterans  
 7:00 p.m.—Dancing Party  
 9:00 p.m.—Hotel Edison Orch.  
 9:30 p.m.—Lawrence Welk's Army Show  
 10:00 p.m.—Dave Allen, News  
 10:15 p.m.—Guest Star  
 10:30 p.m.—Proudly We Hail  
 11:00 p.m.—News  
 11:05 p.m.—Music In The Night  
 11:55 p.m.—News

## KANSAS CITY BASEBALL SCHEDULE APRIL 1956

1	Pittsburgh	1:45 pm
2	Pittsburgh	1:45 pm
3	Pittsburgh	8:00 pm
4	Pittsburgh	1:45 pm
5	Pittsburgh	7:45 pm
6	Pittsburgh	2:15 pm
7	Pittsburgh	7:45 pm
8	Pittsburgh	1:45 pm
9	Pittsburgh	1:15 pm
10	Pittsburgh	2:15 pm
11	Pittsburgh	2:15 pm
12	Pittsburgh	1:45 pm
13	Open	
14	St. Louis	1:45 pm
15	St. Louis	1:45 pm
16	Detroit	12:45 pm
17	Detroit	12:45 pm
18	Detroit	12:45 pm
19	Detroit	12:45 pm
20	Chicago	1:45 pm
21	Chicago	1:45 pm
22	Chicago	1:45 pm
23	Detroit	8:30 pm
24	Detroit	1:45 pm
25	Cleveland	7:45 pm
26	Cleveland	1:45 pm
27	Chicago	1:15 pm
28	Chicago	1:15 pm
29	Chicago	(2 games)
30	Open	

## SUNDAY PROGRAMS

6:30 a.m.—Back To The Bible  
 7:00 a.m.—News and Weather  
 7:15 a.m.—Sunday Worship Service  
 7:30 a.m.—Wings of Healing  
 8:00 a.m.—Radio Bible Class  
 8:30 a.m.—Your Worship Hour  
 9:00 a.m.—Sunday School Lesson  
 9:15 a.m.—Bible Truth  
 9:30 a.m.—Sun. Album  
 12:00 noon—News  
 12:15 p.m.—KMA Roundtable  
 12:45 p.m.—Platter Party  
 1:00 p.m.—Baseball Game  
 4:00 p.m.—Platter Party  
 5:00 p.m.—Mon. Morn. Headlines  
 5:15 p.m.—Paul Harvey  
 5:30 p.m.—Front & Center  
 6:30 p.m.—Light & Life  
 6:45 p.m.—Travel Talk  
 7:00 p.m.—Old Fashioned Revival Hour  
 8:00 p.m.—Overseas Assignment  
 8:15 p.m.—Ted Malone  
 8:30 p.m.—Greatest Story Told  
 9:00 p.m.—Sunday In Hollywood  
 9:30 p.m.—Hour of Decision

## THURSDAY NIGHT

7:00 p.m.—Club 960  
 10:00 p.m.—Ralph Childs, News  
 10:15 p.m.—Club 960  
 11:00 p.m.—News  
 11:05 p.m.—Music In The Night  
 11:30 p.m.—Back To The Bible

## FRIDAY NIGHT

7:00 p.m.—Club 960  
 10:00 p.m.—Ralph Childs, News  
 10:15 p.m.—Club 960  
 11:00 p.m.—News  
 11:05 p.m.—Music In The Night  
 11:30 p.m.—Back To The Bible

## MONDAY NIGHT

7:00 p.m.—Club 960  
 7:30 p.m.—Voice of Firestone  
 8:00 p.m.—Club 960  
 9:00 p.m.—Town Meeting  
 10:00 p.m.—Ralph Childs, News  
 10:15 p.m.—Club 960  
 11:00 p.m.—News  
 11:05 p.m.—Music In The Night  
 11:30 p.m.—Back To The Bible

## SATURDAY PROGRAMS

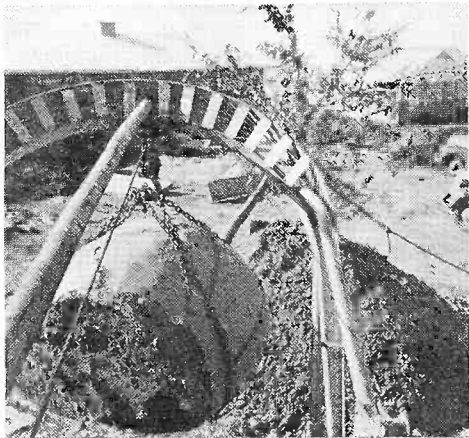
5:00 a.m.—Town & Country Hour  
 6:00 a.m.—News & Weather  
 6:15 a.m.—Western Star Time  
 6:30 a.m.—Merrill Langfitt  
 7:00 a.m.—Dean Naven, News  
 7:15 a.m.—Frank Field  
 7:30 a.m.—Merl Douglas  
 7:45 a.m.—Morning Headlines  
 8:00 a.m.—Saturday Shopper  
 9:00 a.m.—Bernice Carrier  
 9:30 a.m.—No School Today  
 10:30 a.m.—Florence Falk

Listings Correct at Time of Publication.

However, all Programs Are Subject to Change.

## PAST PRESIDENT'S PIN FOR GOWING

Recently at the annual Jaycee awards banquet here, Jack Gowing was honored by the chapter for completing a very noteworthy year as president of the organization. He was presented a past presidents pin by Bob Pratt, right—who in the photo was being pinned as president by Gowing.



## TREE TRANSPLANTION AT MRS. MAY'S NEW HOME

Workmen were busy during the good weather-days of March finishing the new home of Mrs. Earl E. May, in the south part of the city. They also transplanted five large trees. Picture shows a pin oak, balled it weighed four tons, which was set in the front yard. Mrs. May hopes to move in sometime in the next two months.

## A LETTER FROM BERNICE CURRIER - Continued from Page 10

to cleaning thoroughly so I take it by stages. One thing I never do and that is to put woolens or fur out on the line to get the sun. March and April are the two worst months for moths and when you put wool or fur outdoors they are almost sure to come back in the house with moths in them. It is better to spread them out in a light room and look them over carefully.

At the last meeting of our Chapter of the Daughter Of The American Revolution we had some delicious Frosted Ribbon Sandwiches. You just trim all the crusts from a loaf of white bread and a loaf of dark bread. Then cut each loaf lengthwise into 4 slices. Spread 3 slices with butter or margarine and sandwich filling. You can use 3 different fillings and make an interesting sandwich. Top with the fourth slice, wrap in waxed paper and chill. Wrap it quite firmly so the fillings will be pressed a little. When ready to serve, cut the loaf in slices as you usually cut bread. When putting it together use the white and dark breads alternately. For fillings use combinations that are good go-togethers like

chicken salad for one, pimento cheese and chopped ripe olives for the next two slices, and hard cooked eggs chopped very fine and mixed with pickle and mayonnaise. These are eaten with forks, of course.

I'm getting along fine on my "almost no coffee" diet. And I don't mind it at all. The worst part of having to quit something you like very much is in the old belief that it is such a habit that it will make you sick if you quit. Believe me, that just isn't so. I'm drinking postum, not as a coffee substitute but as a new drink, and I like it.

The weather is so nice now that I begin to think of the days when we can spend some time on the porch and forget that there is work to be done in the house. I guess I like all kinds of weather though because when it is blizzardy and cold I like to be all snug in the house.

The space is running short (like my time sometimes on the air) so until 9:00 o'clock in the morning,

Bless your hearts.  
Goodbye.  
Bernice

**Return Postage Guaranteed**  
**POSTMASTER.** If addressee has moved and forwarding order is on file, send form 3547, postage for which is guaranteed. If undelivered for any other reason, return to sender.

**Tom Thumb Publishing Co.**  
Shenandoah, Iowa

**Bulk Rate**  
**U. S. Postage**  
**- PAID -**  
**Permit No. 1**  
**Shenandoah, Ia.**

MISS LOIS ADELUNG  
108 EAST GRANT  
SHENANDOAH IOWA

## KMA Boys Enjoy All Comforts of the Tropics



The props were all in place for the big spring style show, held recently in KMA Auditorium. Merl Douglas, morning announcer, was doing his program from Studio One, so decided he might as well enjoy the pleasures the props afforded—so he did his show from the lawn glider, while sipping iced tea, under a colorful canopy, as potted palms waved in the breeze (provided by the control room fan).