

4-23-76

# SPEEDX

*the dx radio magazine for active shortwave listeners*

The MARTENITSAS



RADIO  
SOFIA

CRACOVIA  
TEEMUN  
MULTI  
HEUREUX  
HAPPY  
FELIZ  
DIE BESTEN  
JEZUAR  
CPPL  
SPRING  
PRIMAVERA

AWB

APRIL 1976

Vol. VI No. IV



# KEYNOTES



OLIVER ELLSWORTH, MANAGING EDITOR: 2043 W 75th ST, LOS ANGELES, CA 90047

## CONGRATULATIONS TO 7 NEW FULL MEMBERS

BRIAN BAUMGARTNER  
ONTARIO, CANADA

VERA CRABLE  
COUER D'ALENE, ID

ROBERT FRENCH  
DISTRICT HTS., MD

DENNIS DEAN  
DAYTON, OHIO

PAUL GUNN  
AURORA, IL

FRANK WOLTMAN  
CAMBRIDGE, WI

THOS. QUINN  
FOREST HILLS, NY

Certificates of Full Membership and a copy of the SPEEDX Constitution are being mailed concurrently herewith to each of the above new members.

---\*---

## SPEEDX WELCOMES THE FOLLOWING NEW ASSOCIATE MEMBERS

ROBERT WOODWARD  
WASHINGTON, D.C.

STEVE BRYANT  
BOURBONNAIS, IL

ROBERT WILSON JR  
KANSAS CITY, MO

MICHAEL FUNTSCH  
GARDEN CITY, MI

KOUJI HORI  
OKAYAMA, JAPAN

JAMES GEBHARDT  
DES MOINES, IA

SYUGI NOGAMI  
KYOTO, JAPAN

PERCIVAL BOND  
PASADENA, CA

JAMES BATES  
BIRMINGHAM, AL

CARLOS SILVA  
VAN NUYS, CA

JAMES WAILMAN  
CHUJA VISTA, CA

RODNEY BOYD  
NFLD, CANADA

NOBUYUKI HYODO  
NAGOYA, JAPAN

JAMES YOUNG  
WRIGHTWOOD, CA

LARRY GUTTER  
GLENCOE, IL

LAURIE COGHLIN  
MAN. CANADA

DAVE BOWERS  
COLCHESTER, VT

GREG HEIMS  
ELGIN, IA

CHARLES TAITON  
HIGH POINT, NC

LARRY ARNESON  
GRANDVIEW, MD

RICHARD SELBY  
ANDERSON, IN

EUNICE POLLARD  
WARWICK, RI

ROBERT KENNEY  
PEABODY, MA

GREGORY PETERS  
TORRINGTON, CT

MASAYUKI SONOJA  
FUKUOKA-KEN, JAPAN

We are looking forward to hearing from you often, SPEEDX urges you to support the various columns and sections by sharing your loggings and your thoughts with the full membership. SPEEDX needs you.

---\*---

## PEANUT POWER PREAKNESS

All the horses finally came in and it is with pleasure we announce that the winners have been notified and awarded their SPEEDX certificates and prizes.

First prize in the SWBC division was grabbed off by Mark Bixby who came in with a total of 163.5 kilowatts; R. Sofia, SIBS, FEBA, R. Capital, Radio Tropical and R Thailand. In the UTE division Hank Holbrook scored with an impressive 2.42 kilowatts; All from ships at sea. You should see the long letters he received from the radio officers aboard.

Many thanks to all who took the time and trouble to enter. We got as much fun running the contest as the winners did winning it.

Don't ask us how we came out..let's don't even talk about it...

Best of DXing to everybody

Jack

### SPEEDX DX CONTEST

Are you interested in another contest? If you are, SPEEDX would be glad to program one, but we need your suggestions. Please advise Doug Snyder, Projects Coordinator, 3130 Woodmount Dr. San Jose, CA 95118, or Jack Jones, Contest Manager, 304 Robinhood Rd. Jackson, MS 39206.

-----

### 1976 ANARC CONVENTION

By unanimous vote of ANARC member clubs, Los Angeles has been selected as the 1976 ANARC Convention site. The convention will be held on the weekend of July 23, 24 and 25. Plan your vacation to Southern California at that time, as SCADS the sponsoring committee is planning an interesting event. Program and full details will appear in the May issue of SPEEDX.

-----

### SCADS SPECIAL MEETING

Saturday April 17th, there will be a special one day SCADS meeting, at the usual site in Tustin to discuss the upcoming ANARC Convention. We'll meet from 9:00 AM at 140 West 1st Street, Tustin, California 92860, until as late as DXers care to stay and chew the fat. No registration fee, although donations to help offset the costs will be most welcome. Refreshments will be served. All DXers are welcome.

-----

Approximately 100 SPEEDXERS have returned their questionnaires so far. We urge you to return the form to headquarters as soon as possible, as the information requested is important in the guidance of SPEEDX. We want to publish the type of bulletin that you desire. One question in the questionnaire that has raised a few eyebrows and resulted in several inquiries is the one asking for the color of eyes. We have received answers, from chartreuse, polkadot, bloodshot, to a mathematical formula! This question was inserted strictly for humor to break the pace. No, we really don't think blue eyes make for better DXing, Hi.

-----

### WDX NUMBERS

Many inquiries have been received as to where to obtain the WDX call signs, such as WDX6J or whatever. Write to Hank Bennett, P.O. Box 333, Cherry Hill, NJ 08034. Numbers cost from \$1.00 to \$5.00, depending on the type of number requested. From past experiences, you can expect a long delay in reply to your inquiries. Hank must be a busy man.

-----

### ANARC COMMITTEE

Paul Mayo, a founder member of SPEEDX and a former Utility Editor, serves as the chairman of the Manufactures Liaison Committee for ANARC. Paul informs us that the committee is in search of a couple of members. Anyone interested in joining this important group, should contact; Paul D Mayo P.O. Box 6111 Newport News, Virginia 23606.

-----

### REGIONAL FUN-FESTS

SPEEDXER "SNAPPER" ESTES, has been impressed with the SCADS and BAD GUYS get-togethers, and has asked for the addresses of SPEEDX members living in Mississippi for the purpose of forming such a group. SPEEDX has a policy of not listing the names & addresses of it's members, therefore I am inserting this item. All those interested in getting acquainted with "Snapper" and others in the area, should contact: "Snapper" Estes, 5938 Whitehill Dr. Jackson, Miss. 39206. (wish I could join you, Ollie)



# DX MONTAGE

RESEARCH/COMPILATION/REDACTION by A. W. BRCKOS

74 Massachusetts Road

Oakdale, Connecticut 06370

HAPPY SPRING FROM RADIO SOFIA (or "Now You Have A Martenitsas Of Your Own"): It's that time of year again! By now you have probably received your annual "Happy Spring" card from Radio Sofia...with the "Martenitsas", those red and white tassels, mounted thereon. But did you ever wonder about the meaning of those tassels? It seems that Bulgarian folk tales passed on from generation to generation say that Grannie Marta.....for this is how the month of March was popularly called....spent the long winter nights at the hearth, spinning red and white threads. Then, with the approach of spring she went out crossing mountains and dales, tying these red and white threads to the trees so that they come into leaf and bear fruit, and to the cattle so that they keep healthy. Grannie Marta did not forget the playful children either. She tied to them a red and white thread to keep them well all year 'round nor did she forget to give the same wishes to the grown-ups. Initially the threads were woolen, but later cotton and silk were added. Gradually the threads began to turn into trimmings in red and white which is the Martenitsa of today. These Martenitsas appear in the shop windows and kiosks all over the country early as February....and, with mail service what it is, you'll get your card about April. Everyone sends them to friends with wishes for health and happiness the year round. They are usually worn by the youngsters tied to their wrists and by adults pinned on their lapels. According to the old folk custom Martenitsas are worn till swallows come back to the country....and according to recent unconfirmed rumor you should tie your Martenitsa to your receiver until good DX comes back to the shack. Try it! What have you got to lose!



### ACORNS FROM OAKDALE:

Years ago most people thought television was impossible.... today some viewers still do.

TRANSMITTER TALK: Reports of the death of Radio Gambia's SW outlet and Belgium's English programs to North America are apparently greatly exaggerated. Brussels has shifted to a 0015 time slot and Gambia is still heard on 4820....Deutsche Welle plans opening of their Antigua relay at 1976's end... Sweden's 500KW Karlsborg transmitters had been operating at only 100KW due to a burnt out transformer. Normal power is 350KW....

### INTERNATIONAL BAND RECOMMENDATIONS LISTED:

Meetings of the International Broadcasting Service Group recently in Washington produced proposals for extension of the international broadcast bands. Domestic tropical broadcast bands are to remain intact under these recommendations, but the international bands would be 3900-4060, 4450-4650, 5750-6200, 7300-7700, 9400-9900, 11500-12000, 13600-14000, 15050-15700, 17500-18000, 21450-21850, and 25600-26100 KHz. In line with this list is the proposal for ARO bands to switch to 3500-4000, 6800-7300 (Western Hemisphere), 10100-10600, 14000-14500, 18100-18600, 21000-21500, 24000-24500, and 28000-29700.....

YOU'RE NOT LIKELY TO HEAR IT ON RADIO BELGRADE, BUT... a year long campaign aimed at hunting down and silencing Yugoslavian "radio pirates" who invade Belgrade's wavelengths with local gossip, romantic messages, pop music, and "politically unsound information has proved ineffective....because of wide public support for the pirates. When the crackdown began last autumn there were an estimated 800 pirate stations operating daily. Some with elaborate and, to judge by local reaction, very popular programs. The London Sunday Times, quoting the Belgrade weekly Min, says the radio pirates use simple equipment, cobbled together from a radio receiver, parts of a record player, a condenser, and an electronic tube. The item, forwarded by our Man-In-Europe, Steve d'Adolf, lists the total cost as under \$10. The political content of some of the illegal broadcasts appears to be worrying the authorities. The trial earlier this year of a radio technician on charges of "providing a false and malicious account of social and political conditions in Yugoslavia" and "inciting listeners to overthrow the social and political system by force" has revealed how concerned the authorities are about infringements of the Communist Party's monopoly over the mass media. Some of the stations do mock party political broadcasts and satirize the nature of official stations. This article has been presented as a public "Serb"-ice!





# DX MONTAGE

...IF YOU MUST BLAME SOMEONE FOR THIS CONTINUATION, MAKE IT ALAN W. BROOKS!

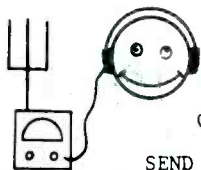
## IS THE REIGN IN SPAIN PLAINLY ON THE WANE?:

Negotiations are scheduled to open in Madrid on renewal of a lease by the U.S. for transmitters that beam broadcasts to the Soviet Union from Spanish soil, but Spain may allow the station's operations for only a few more months. According to the New York Times Spain's Foreign Minister is understood to have given assurances that one of the users, Radio Liberty, would continue.... he has not specified for how long, but other Spanish officials have talked of only a few months. For the last 15 years, Radio Liberty has been broadcasting programs in numerous dialects to the Soviet Union from a station located at Pals, just north of Barcelona... In addition, Radio Free Europe broadcasts to eastern Europe from the Pals station. Among considerations that militate against continued use of Spanish facilities by both of these broadcasters is the desire by Spain under the new monarchy to re-establish diplomatic ties with the Soviet Union as part of a program of normalization of relations with the Communist world. The presence of the transmitters could be an obstacle to a diplomatic agreement with Moscow which is believed to have raised the issue. The U.S. constructed the station but it is now technically Spanish property and is leased to Radio Liberty for \$250,000 a year. Meanwhile in Washington the Voice of America is coming under strong pressure from Congress to share its transmitting facilities with RFE and Radio Liberty. The pressure is partly in response to suggestions by the Spanish government that these two broadcasters stop using the large transmitter at Pals... the USIA has sought to maintain a distinction between the VOA and the two other stations on the grounds that VOA represents the U.S. government and has resisted proposals that the three stations share technical facilities. The problem was aggravated a year ago when it appeared that the new government of Portugal might ask RFE to close its transmitters near Lisbon as a concession to east European governments. The situation becomes even more serious with Spain advising that it would like to see the Pals transmitters closed within six months. It's been reported that the USIA had grudgingly agreed to allow the two other stations to use the VOA transmitter at Greenville on a contingency basis in the event of a loss of the transmitters in Portugal...but had balked in the case of those in Spain...



## REGIONAL "NON-CLUBS" THRIVE IN "CLUB YEAR"!

One of the more interesting developments in recent years has been growth of interest in the regional "non-club", those informal social gatherings of DXers of diverse description common to a given area of our continent. The "non-club" idea has never enjoyed more popularity than during this annum set aside to honor the more organized aspect of DXing, World DX Club Year. Perhaps it's because these informal groups are inter-club activities that they have been successful. DXers have the opportunity at one of these sessions to share experiences at a rewarding and often informative social affair. In the Boston area where the "B.A.D." Guys may have initiated this madness....so far back that Mike Macken was in his "first" DXing career...there are liable to be as many as a half-dozen gatherings yearly. Among the recent features was a presentation on foolproof Latin American reception by equally foolproof Jim Whitehead. Meanwhile on the other coast, the "S.C.A.D.'s" of southern California were busy with such diverse activities as a Hidden Hills reception for the visiting Australian DX-pert Bob Padula late in January, a HAP auction, receiver demonstrations, and...rumor has it...invention. In the "Big Apple" it was the "M.A.D." -Men those irrepressible Metropolitan Area DXers, hosting a like meeting with the guest from Down-Under and then hosting a February con-fab at which summer DX-pedition and outing plans were allowed to germinate. Slightly to the southwest of ol' Manhattan the enthusiasts in suburban Philadelphia, known far and wide as the "S.P.A.D.E.'s", have been known to stage impromptu antenna erecting parties at their gatherings. But now these and other regional groups have been joined by another informal fraternity. Five southern Illinois DXers recently converged on an unsuspecting restaurant in Carbondale and for two hours discussed their hobby while waitresses did scamper to serve them. The impromptu meeting was attended by DXers Haskell, Levesque, Straumanis, Taaffe, and Walcutt. Discussed were topics spanning SW, MW, FM, and utilities. No name for the group has yet been decided, though David Walcutt....who also footed the coffee bill...did suggest SILLI DXers...from Southern ILLINOIS DXers. Sure hope they didn't forget to leave a tip...



# TECHNICAL TOPICS

Q-MULTIPLIER?  
GAIN?

AVC?

IMAGE?

TUNER?

ANTENNA?

CROSS-MOD?

AGC?

LSB?

S-METER?



SEND YOUR TECHNICAL QUESTIONS TO:

**JOHN KOLB**  
12532 ARABIAN WAY  
POWAY, CAL. 92064

Jim Bates and John Gordon have asked about a picture in Communications World showing a Hewlett Packard frequency counter connected to a DX-150A to measure frequency. Since H-P freq counters cost from \$300 to several thousand dollars, this is not a cost effective method of improving your dial. There is NO one signal in a superhetrodyne receiver you can attach a freq counter to and read the received frequency directly. If you attach the freq counter to the local oscillator, you will find the reading is different from the received frequency by whatever the first IF is. Receiving WWV on 10 MHz, you would read about 10,455 kHz. (with the above DX-150) Furthermore, you seldom tune the receiver with the signal exactly in the center of the IF bandpass, so your freq counter reading the local oscillator will vary plus or minus one or two kHz, and you will still be properly tuned in to the signal. A special purpose counter could be constructed which would measure the local oscillator(s), and the BFO or resulting IF signal and combine the readings to determine the received freq. Spectronics and Heathkit have units which do this, however these are special purpose units and can only operate with the Heathkit and Yeasu units they were designed for. There is a way to measure the frequency you are tuned to but it is rather inconvenient and also requires a signal generator. In this method, you tune the signal generator until it's zero beat with the station you are listening to, then you measure the generator frequency with the counter. This method is very well covered in the March 76 issue of FRENEX (NASWA), so I won't give more details here.

If you do buy a freq counter for uses such as above, stay away from used equipment, unless you get a good deal from a private party. You can buy new counters cheaper and better than the counters offered by the surplus and used test equipment dealers.

The 1976 WRTH "Listen to the World" section mentions a change to the SPR-4 which makes the selectivity and mode independent. That is, when your mode switch is in AM, your selectivity can be 2.4 kHz, instead of the normal 4.8 kHz. Rich Gula writes to ask if this modification is advisable. There are two ways to split up the mode switch. The mechanical method involves cutting the mode switch before the last switch wafer, and bringing a separate shaft for the rear wafer (selectivity) out the rear. The way this is described, the shaft comes out the rear, and you have to feel for the right position as you turn it. Instead a switch detent should be mounted on the receiver rear panel to snap the switch into the right positions. This should be an easy modification with little chance of harm to the receiver if having the switch on the rear is acceptable to you. The other method is electrical, and will be described elsewhere in SPEEDX, this month or next, in an article by Sanserino. I prefer the electrical method, although it is harder and riskier. WARNING: anytime you make changes inside a receiver you void any warranty, and may even be refused future factory service. The electrical method uses a switch, which may be placed on the front panel. I must say that if I had it to do over, I would not make this modification to my receiver, although most DXers who have tried it are very happy with the change. Under bad conditions, I prefer to tune the desired station as a SSB signal, with the BFO on, and tune to zero beat. I can then choose the sideband with the least QRM by choosing USB or LSB. With the mod in, I now have two switches to throw to get from AM to SSB mode, three switches to use the calibrator. I think I would stay away from the modification to change the CW bandwidth to 1.5 kHz for use on AM stations. The problem with Drake selectivity is shape factor, not the 6 db bandwidth, and I see several possible disadvantages to the change. For best results, it may require alignment with a sweep generator for best selectivity. The change may affect the selectivity in modes other than CW, and may affect the factory calibration procedure. This modification was developed in Europe, and has not been presented in full detail in the USA yet.

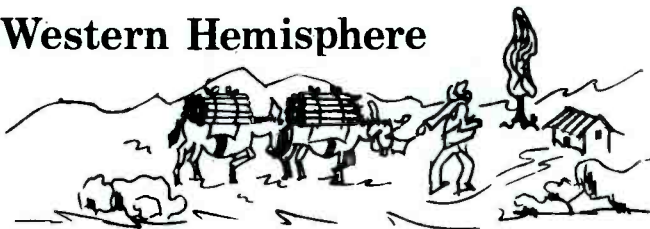
I received the new Heathkit catalog yesterday, and noticed the SB-313 was dropped, and the ham band version was marked "last call". Another good receiver bites the dust, and after I've plugged them for the last two months. Heathkit owners, send a SASE (legal size) for details on SB-310 or SB-313 modifications. I've been overhauling a SB-310 for the last two weeks and really like it.



# SWBC DX - Western Hemisphere

— EDITOR —

E.J. "Jim" Whitehead  
177 Pine Ridge Road  
Reading, Mass. 01867



## LATIN POTPOURRI

The 20 February 1976 issue of the limited circulation, weekly newsletter **LATIN AMERICA** contained an interesting article entitled "The Media in Ecuador". Although the section on radio is brief, the article provides valuable background information that should add to your overall understanding of the situation in Ecuador. For this reason it is reproduced below in unedited form. I think you'll find it interesting.

### "THE MEDIA IN ECUADOR"

A feature left virtually unreported by the foreign press in their coverage of last month's events in Ecuador was the part played by the Ecuadorian press in the destruction of the government of the former President Guillermo Rodríguez Lara. The main newspapers acted as virtual coordinators of the activities of the Junta Civica Nacional, and helped, by their constant barrage of criticism and protest, to convince the President's military colleagues that he was no longer capable of leading the government. The astonishingly low level of political awareness of the average Ecuadorean army officer, exemplified by General Gustavo Vásconez's description of General Guillermo Durán Arcentales as a left-wing extremist, is itself partially attributable to the influence of a primitively reactionary press.

The illiteracy rate in Ecuador is about 44%. More than half the population lives in isolated rural "comunidades", and only about 20% of the small urban industrial work-force is unionised. The traditional political parties and populist organizations are little more than "empresas electoreras", as Rodríguez Lara remarked in one of his last major speeches, while the left-wing groups still have very limited appeal. In these circumstances, the media assume a disproportionately influential role, as almost the sole expression of "public opinion" and articulator of the interests of urban middle-class pressure groups, which constitute the country's political elite.



### No Government Paper

A peculiarity of the Ecuadorean media, which goes a long way towards explaining Rodríguez Lara's helplessness in the face of the right-wing onslaught, is that the government has no newspaper of its own. Nor does it have a television channel, and its one and only radio station is supposed to be non-political. Consequently it has no ready means of explaining and defending its policies.

The media campaign against Rodríguez Lara began around the middle of 1974, focusing mainly on the government's oil policy. The major newspapers argued that the price of Ecuadorean crude was uncompetitively high, a view shared by the Texaco-Gulf consortium, which suspended oil exports three times last year, until the government eventually agreed to reduce the price.

The largest newspaper in the country is "El Universo", published in the port of Guayaquil, which claims a daily circulation of 100,000. It belongs to the Pérez Castro family, which also has many interests in banking and banana exporting. The main Quito newspaper is "El Comercio", with a daily sale of about 60,000 copies. It belongs to the Mantilla family, which has interests in Banco La Filantrópica, in the import business and the local textile industry.



"El Telégrafo" of Guayaquil belongs to former President Otto Arosemena Gómez, who has extensive interests in Guayaquil banking and in the agricultural export business. The tabloids "Expreso" and "Extra" are also published in Guayaquil. They mix sensationalist reporting with consistent support for the populist "caudillo" and five times President, José María Velasco Ibarra. Both papers are controlled by Galo Martínez, Velasco's former interior minister, and the 14 shareholders are also "velasquistas". The Quito daily "El Tiempo" is owned by the building magnate, Antonio Granda Centeno, a man whose ultra-conservative views are faithfully reflected in his newspaper.

News Magazines

Ecuador is very badly off for news magazines. The Guayaquil weekly "Vistazo" belongs to Xavier Alvarado Roca and follows a strong conservative line, without being directly linked to any of the main economic interests of the port.

There are also two left-wing news magazines, "Nueva" and "Mensajero", both of them monthlies. "Nueva", by far the best publication of any kind in Ecuador, sells about 6,000 copies a month, and "Mensajero" about 2,000. The lively weekly "El Mundo" ceased publication in December, despite a circulation of about 10,000. These figures suggest that a market for well-informed political commentary and analysis certainly exists in Ecuador, but the economic organisation of these publications is still inadequate.

Radio and Television

Ecuador has more radio stations per head of population than any other country in Latin America, with a total of 271, 62 of them in Quito and 51 in Guayaquil. Of these, 23 are VHF (presumably FM) and 248 are long wave (and presumably short wave though not clear). More than three-quarters of the transmitters have an installed power of one kilowatt or less. 13 stations have 10 kilowatt transmitters, and only one station, HCJB (Hoy Cristo Jesús Bendice), which belongs to a North American Protestant sect, has a 30 kilowatt (sic) output.

Of the total of 271 stations, 237 belong to private individuals or companies, 9 to private cultural institutions, 4 to state cultural institutions, 20 to religious groups and one directly to the government. The "El Comercio" group owns Radio Quito, in the capital, and Granda Centeno owns Radio Colón, also in Quito.



**"Canal Manabita"**

There are five television channels in Ecuador, three of which transmit in colour. These are Canal 8, in Quito, which belongs to "El Comercio" and the Alvarado Roca group; Canal 4, also in Quito, belonging to Granda Centeno; and Canal 10, belonging to the Issafas group, which is the only one to cover the whole country. The two black-and-white channels are Canal 2 in Guayaquil, which belongs to Alvarado Roca, and a small station in Cuenca.

\*\*\*\*\*

While speaking of Ecuador let's pass on a bit of information forwarded by Klaus Fischer. Klaus advises that Radio Iris, in a recent QSL letter, notes they have reduced their power from 10 to 5 kw because of technical difficulties. This no doubt explains why they have not been heard too often as of late.

\*\*\*\*\*

From HCJB comes word that the evangelical outreach project "Continente 75" (SPEEDX Western Hemisphere- January 1976) was a relay of a crusade conducted by the well-known evangelist, Luis Palau, in a hurricane damaged baseball stadium in Managua, Nicaragua. From Managua, signals were relayed via satellite to New York and then from New York to Quito. HCJB had five transmitters going to blanket the South American continent and many smaller stations relayed HCJB's signals to local audiences. Considering the huge success of this project one might be inclined to look for more similar hook-ups in the future.



EMISORA DE LA COMPAÑIA ANONIMA "EL COMERCIO"  
APARTADO 57 - QUITO - ECUADOR

Well, tis time to get going on the loggings. As usual, all times are GMT, dates are given in the month/day format, and the SIO code is used to record reception conditions noted. Till next month then....

### ARGENTINA

- 6060 0930 LRA31 R. Nacional:w/ TCs, PENTAGRAMA AMERICANO end, ID @ 0930  
(222 3/2 Vilar6-PR)(Zimarowski-MA)(Tannenwald-NY)
- 9690 0615 LRA32 Radiodifusión Argentina al Exterior:w/ YL in EE spins  
Latin pop mx, OM anmt, more mx (333 2/25 Jacobson-IL)(Miller-  
WA)(Redman-IL)(Cleveland-CA)(Miklejewski-MN)(Fleming-TX)  
(Dean-OH)(Butterfield-MA)(Stephenson-CA)(Van Fossen-OH)  
(Bethage-MO) EE here @ 0300 and 0600 GMT w/ 55 min pgm.
- 9710 0725 LRX2 R. El Mundo:w/ tango mx, wx info, local nx, anmt of BCB  
fqy of 1070 khz (554 3/9 Silva-CA)(334 0750 3/9 Uerlings-OR)
- 9740 0140 LRS1 R. Splendid:w/ soccer match coverage, excited tlk (333 3/5  
Miller-OH)(342 2200 3/3 Zilmer-WI)
- 11710 2300 LRA35 Radiodifusión Argentina al Exterior:w/ nx, report on plast  
plastic arts in Argentina (443 3/2 Brooks-CT)(Van Fossen-H)  
(Vilar6-PR)(Redman-IL)(Cawthorne-UK)(Yajko-PA)(Lunstrum-FL)  
(Rodriguez-PR) Sked has SS 1900, II 2000, GG 2100, FF 2200,  
and EE @ 2300 GMT beamed to Europe
- 15345 1843 LRA33 R. Nacional:w/ tlk abt Jazz, mx (444 1843 Rodriguez-PR)

### BELIZE

- 3300 0435 Radio Belize:w/ Saturday night dance mx, no TGNC (323 2/15  
Leamy-OH)(2-2 0502 2/24 Cleveland-CA)(433 0450 2/16 Vecchiola-  
PA)(433 0315 2/16 Jones-MS)(312 0430 3/10 Vikes-TX)(444 0145  
2/15 White-FL)(433 0425 2/16 Redman-IL)

### BOLIVIA

- 4845 0108 CP72 R. Fides:w/ YL nx, mx (322 2/19 Baumgartner-ONT)
- 4875 0121 CP75 La Cruz del Sur:w/ U.S. pops incl. Carpenters, OM ancr  
(333 2/15 Bixby-CA) Mark, could this be R. Jornal do Brasil  
also active here?? Programming doesn't sound like CP75.

### BRAZIL

- 3285 0940 ZYK28 R. Olinda:w/ mx, IDs TCs (211 3/10 Vilar6-PR)
- 4755 0225 ZYF23 R. Dif. do Maranhão:w/ Brazilian vocals, OM tlks, IDs as  
"R. Dif. São Luis" (422 2/17 Redman-IL)(
- 4785 0244 ZYM8 R. Ribamar:w/ Brazilian pop mx, OM DJ, ads (222 2/28  
Rodriguez-PR)
- 4806 0133 ZYS8 R. Dif. do Amazonas:w/ spts event, tlk (433 3/2 Bixby-CA)  
(444 1004 w/ ID, fqys, mx, dynamite signal 3/11 Jones-MS)
- 4855 0450 PRC5 R. Clube do Pará:w/ tlk, mx, ads, jingles (433 2/26 Zilmer-  
WI)(332 0255 w/ Beatles hits, quick ID @ 0300 3/7 Vecchiola-PA)
- 4895 0405 PRF6 R. Baré:w/ tlk, TENTATIVE ID (151 2/23 Vikes-TX)
- 4985 0421 ZYX2 R. Brasil Central:w/ lively Brazilian mx, live repts from the  
Carnival (443 3/1 Pimblett-ALTA)(Cleveland-CA)(Vilar6-PR)  
(Cohen-NJ)(Perry-QUE)(Yajko-PA)(Redman-IL)(Uerlings-OR)
- 5955 0126 ZYE226 R. Gazeta:w/ spts bcst (322 3/11 Bodell-OR)
- 5965 2340 ZYU60 R. Guaíba:w/ PP tlk by OM (323 2/22 Yajko-PA)(Jones-MS)
- 6000 0112 PRK5 R. Inconfidência:w/ ID, OM tlks abt Brazil (333 3/5 Miller-  
OH)(333 0815 2/23 Vilar6-PR)(322 2335 2/22 Yajko-PA)
- 6035 0020 ZYZ65 R. Globo:w/ tlk, mx, ads (422 2/23 Zilmer-WI)(Rodriguez-PR)
- 6125 2326 ZYR233 R. Nacional, Rio:w/ spts event cmntry (433 2/22 Yajko-PA)
- 9595 2250 ZYN29 R. Cultura da Bahia:w/ "Voz do Brasil" pgm, nx, mx, martial  
mx (444 3/9 Brooks-CT)(Trautschold-WI)(Yajko-PA)
- 9635 0247 ZYE236 R. Aparecida:w/ pgm of easy listening mx, ID, chimes, off  
@ 0300 (342 3/5 Miklejewski-MN)
- 9645 0215 ZYR78 R. Bandeirantes:w/ OM tlk, TCs, ad incl. one for beer, ID  
(343 3/5 Miklejewski-MN)(443 0115 2/13 Baumgartner-ONT) Stan,  
how is it that you recognize so many beer commercials?
- 9685 0040 ZYE227 R. Gazeta:w/ OM spts event cmntry (322 2/14 Baumgartner-ONT)
- 9695 0030 ZYB61 R. Rio Mar:w/ Bossa nova mx, tlk, IDs (432 2/29 Zilmer-WI)
- 11765 0019 ZYB8 R. Tupi, São Paulo:w/ nx, soft mx (--2 3/10 Cleveland-CA)
- 11785 0022 ZYU61 R. Guaíba:w/ PP tlk, mx (343 2/22 Yajko-PA)(Cleveland-CA)
- 11795 0005 ZYZ39 R. Nacional, Rio:w/ spts event (243 2/26 Baumgartner-ONT)
- 11780 2150 PRL8 R. Nacional, Brasília:w/ musical pgm, s/off EE @ 2200  
(353 3/6 Earhart-PA)(Redman-IL)(Cawthorne-UK)(Tannenwald-NY)

BRAZIL (cont.)

11805 2230 ZY265 R. Globo:w/ Brazilian mx (433 2/14 Tannenwald-NY)(Yajko-PA)(Cleveland-CA)(Miller-WA)(Miller-OH)  
 11865 0010 ZYB85 R. Clube de Pernambuco:w/ slow romantic mx, ID (--3 3/10 Cleveland-CA)(212 0117 2/24 Miller-WA)  
 11915 0026 PRC23 R. Gauchá:w/ PP tlk, mx (233 2/22 Yajko-PA)  
 11925 0015 ZYR78 R. Bandeirantes:w/ guest speaker, then pop mx, QRM de TWR @ 0028 (454 2/29 Earhart-PA)(--3 0014 3/10 Cleveland-CA)  
 15145 1100 ZYB87 R. Jornal do Comércio:w/ mx, ads, tlk (333 2/21 Vilar6-PR)  
 15167 \*1902 ZYN6 Ceara R. Clube:w/ ID, tlk, pop mx, fqy @ 2004, jingles, ads (433 2/12 Zilmer-WI) Possibly only for Carnival??  
 15330 0015 ZYR228 R. Gazeta:w/spts event cmntry under AFRTS, apparently off nominal 15325 khz. (322 2/13 Zilmer-WI)  
 15445 2355 PRL8 R. Nacional, Brasília:w/ tlk in EE and PP, U.S. pop mx, hvy QRM de R. Moscow (312 2/18 Miller-WA)(444 2205 2/29 Redman-IL)(332 2240 3/4 Miklejewski-MN)

CANADA

5960 0215 CBC Northern Service:w/ hockey game cmntry (332 2/23 Miller-WA)  
 5970 0945 R. Canada Intl.:w/ tlk on conversion to metric system in Canada (544 1/19 Miller-CA)  
 6070 0400 CFRX, Toronto:w/ THE WORLD TONIGHT nxcst, spts, TCs, ID into mx after nx (232 3/7 Thompson-NM)(Cohen-NJ)(Redman-IL)(Thurman-IL)  
 6085 0156 DW via Sackville:w/ IS, into relay @ 0200 (555 1/6 DeVries-MA)  
 6130 1146 CHNX, Halifax:w/ pop mx pgm, ID as CHNS (232 2/19 Jones-MS) (222 1319 3/6 Miller-OH)  
 6135 0411 R. Canada Intl.:w/ EE cmntry, spts nx, wx (333 3/3 Bethge-MO) (322 0415 2/19 Miller-WA)  
 6160 1637 CKZN, St. John's:w/ regional nx, wx (222 2/20 Meehan-CT)(322 2300 2/23 Zilmer-WI)  
 6160 0010 CKZU, Vancouver:w/ ID, pop mx, barely usable (211 2/27 Bixby-CA)  
 9510 0230 BBC Via Sackville:w/ EE ID, nx (343 2/23 Dean-OH) I thought this the Atlantic Relay. Would someone pls clarify if you know for sure. Glenn, what are current fqys for Sackville relay of BBC?  
 9570 2120 R. Canada Intl.:w/ EE MAGAZINE FROM CANADA pgm (333 3/1 Miklejewski-MN)(Pimblett-ALTA)(Miller-CA)  
 9625 1514 CBC Northern Service:w/ movie review, ID, nx @ 1600 (444 2/15 Famularo-NJ)(434 2100 2/22 Dean-OH)  
 9655 1125 R. Canada Intl.:w/ spts awards, intl. nx (454 2/23 Miller-CA)  
 9770 2100 R. Canada Intl.:w/ IS, sign-on, new fqys given, nx, wx, into "magazine" pgm (444 3/8 Miklejewski-MN)  
 11720 1930 CBC Northern Service:w/ tlk on Artic defense (444 2/21 Cawthorn Cawthorne-UK)  
 15325 1844 R. Canada Intl.:w/tlk on obsession with sex (443 2/16 Bixby-CA) Whose obsession with sex Mark? Hmm:mmm.....

CHILE

9565 0215 CE956 R. Nacional de Chile:w/ tlk on the "Wonders of Chile" (211 2/1 Stephenson-CA)(Miklejewski-MN)(Dean-OH)(Silva-CA)  
 9590 0045 CE959 R. Presidente Balmaceda:w/ pleasant mx, ID on hr. and 1/2 hr. (333 2/21 Perry-QUE)(Fleming-TX)(Vilar6-PR)(Miklejewski-MN) (white-FL)  
 9750 0032 CE975 R. Minería:w/ IDs, TCs, spts event (433 3/10 Zimarowski-MA)  
 15150 0115 CE1515 R. Nacional de Chile:w/ YL EE cmntry in "THE VOICE OF CHILE" pgm (433 2/13 Uerlings-OR)(Redman-IL)(Jones-MS)(Silva-CA)(Butterfield-MA)(Pimblett-ALTA)(Cohen-NJ)(Dean-OH) (Stephenson-CA)(Yajko-PA)(Van Fossen-OH)

CLANDESTINE

12079 2145 R. Euzkadi:w/ flute mx, OM tlk, ID (434 2/10 Van Fossen-OH)  
 13232 1945 R. Euzkadi:w/ ID as "Aqui R. Euzkadi, La Voz de la Resistencia" OM tlk, apparently off @ 1955 (342 3/1 Butterfield-MA)

COLOMBIA

4755 0400 HJKC Emisora Nuevo Mundo:w/ CARACOL network nxcst (3-3 2/24 Cleveland-CA)(Vilar6-PR)(Redman-IL)(Vokes-TX)(Butterfield-MA)  
 4785 0405 HJLW Ecos del Combeima:w/ "SUPER ROMANTICAS mx pgm, TCs, IDs (433 2/16 Redman-IL)  
 4865 0230 HJLZ LV del Cinaruco:w/ lively mx, ID, CARACOL net ID, into march mx, anthem and off (343 3/7 Vecchiola-PA)(Cleveland-CA)  
 4885 0400 HJIG Ondas del Meta:w/ tango mx, IDs (433 3/3 Redman-IL)

COLOMBIA (Cont.)

- 4915 0255 HJSG R. Guatapurí: w/ LA vocals, TCs, many exhuberant IDs (444 3/7 Vecchiola-PA)(3-3 0431 2/24 Cleveland-CA)
- 4925a 1100 HJJU R. Meridiano 70:w/ latin mx, ID, TC, frequent mentions of Arauca (222 3/8 Vilar6-PR) IS NEW FREQUENCY!!!!!!!
- 4945 0405 HJDH R. Colosal:w/ news, LA mx, ads (434 3/7 Perry-QUE)(Miller-WA)(Cleveland-CA)(Redman-IL)(Pimblett-ALTA)(Jernakoff-NY)(Yajko-PA)(Wirrell-MA)(Butterfield-MA)(Van Fossen-OH)
- 4955 0234 HJQC R. Nacional:w/ tlk on Hollywood movies, transcribed pgm from R. Nederland (454 2/25 White-FL)(Redman-IL)(Cleveland-CA)(Thompson-NM)(Pimblett-ALTA)(Butterfield-MA)(Brooker-MI)(Yajko-PA)
- 4965 0334 HJAE R. Santa Fé:w/ pop music, IDs (332 2/25 Pimblett-ALTA)(Cleveland-CA)(Redman-IL)(Tannenwald-NY)(Jernakoff-NY)(Van Fossen-OH)(Butterfield-MA)
- 4975 1050 HJ?? Ondas del Orteguzaza:w/ ID as "la emisora de los campesinos" Colombian mx (--2 2/16 Berg-MA via NEDS NEWS)
- 5020 0230 HJCP Ecos del Atrato:w/ "CANTARES VALLEMATOS" a pgm of LA mx (444 2/19 Rodriguez-PR)(Miklejewski-MN)(Fleming-TX)(Miller-OH)(Vecchiola-PA)(Baumgartner-ONT)(Yajko-PA)
- 5075 0100 HJGC R. Sutatenza:w/ 1/2 hr nxcst, ID (544 3/2 Jernakoff-NY)(Yajko-PA)(Trautschold-WI)(Redman-IL)(Famularo-NJ)
- 5095 0300 HJGG R. Sutatenza:w/ ID, pop mx pgm (323 2/11 Uerlings-OR)(433 0210 3/2 Redman-IL)
- 5962 0518 HJ?? LV de los Centauros:w/ "BUENOS DIAS COLOMBIA" pgm, LA mx w/ TC & ID between discs (--3 3/9 Cleveland-CA)(Baumgartner-ONT)(Jones-MS)(Sparks-CA)(Miller-WA)(Vilar6-PR)(Zilmer-WI)(Redman-IL)(Cleveland-CA)(Vilar6-PR)(Redman-IL)(Tannenwald-NY)
- 6065 0450 HJAX R. Super:w/ LA mx, many anmts, IDs by OM (333 2/24 Jacobson-IL)(Cleveland-CA)(Vilar6-PR)(Redman-IL)(Tannenwald-NY)
- 6115 0915 HJIE LV del Llano:w/ pop mx, ID (333 2/29 Tannenwald-NY)(322 0440 2/15 Baumgartner-ONT)
- 6120 0620 HJ?? R. Super de Cali:w/ Colombian mx, IDs (433 3/7 Trochimczyk-DC)(Fleming-TX)(Cleveland-CA)(Redman-IL)
- 6150 0205 HJJT LV del Huila:w/ ID, LA pop mx, many TCs (332 3/2 Miklejewski-MN)(Cleveland-CA)(Bixby-CA)(Miller-OH)
- 6160 0645 HJKJ Emisora Nueva Granada:w/ Colombian vocals, anmts "La radio de Colombia" (433 2/26 Redman-IL)
- 6170 1115 HJBJ LV de la Selva:w/ pop mx pgm, ID (333 3/5 Jones-MS)(433 0730 2/14 Van Fossen-OH)
- 9630v 1230 HJZM R. Nacional:w/ tlk on famous composers (444 2/15 Jones-MS)(Miklejewski-MN)(Zilmer-WI)(Yajko-PA)

COSTA RICA

- 4832 0540 TIHB R. Capital:w/ mx, ads, TC, ID (443 2/17 Wirrell-MA)(Yajko-PA)(Mercado-CA)(Famularo-NJ)(Cleveland-CA)(Butterfield-MA)(433 0550 3/10 Redman-IL)
- 6006 0126 TIHB R. Reloj:w/ OM nxcst (222 3/7 Kaufman-NY)(Brooker-MI)(Jacobson-IL)(Yajko-PA)
- 9645 1102 TIFC Faro del Caribe:w/ SS ID, into SS rel. tlk (343 2/27 White-FL)(211 0319 w/ EE rel pgm, only audible for a few minutes 3/5 Miklejewski-MN)

CUBA

- 6060 0530 RHC:w/ SS nx, cmntry, spts cmntry, ID (212 2/27 Vilar6-PR)(554 0505 2/23 Miller-WA)(544 0200 2/17 w/ Creole Fleming-TX)(333 0145 2/24 Yajko-PA)(Bethge-MO)
- 9525 0630 RHC:w/ EE nx, editorial, "SPOTLIGHT ON LATIN AMERICA" feature (545 3/6 Gebhardt-IA)
- 9550 0705 RHC:w/ "LAND OF MUSIC" pgm, "VOICE OF VIETNAM" (555 1/24 Miller-CA)
- 11725 0538 RHC:w/ "LAND OF MUSIC" pgm (444 2/18 Miller-WA)
- 11815 2120 RHC:w/ "TEMPO" pgm (444 2/26 Thurman-IL)(Yajko-PA)(Miller-WA)
- 11870 1500 RHC:w/ SS ID, tlk by YL, mx (443 1/11 Miller-CA)
- 11930 0054 RHC:w/ IS, EE ID by YL, "THIS WEEK IN THE NX" (544 3/1 Miller-WA)
- 11960 0048 RHC:w/ SS ID, Latin American nx (433 3/1 Miller-WA)
- 15230 1945 RHC:w/ SS spts cmntry, world nx & opinions (322 3/6 Silva-CA)(23 232 0135 2/27 Dean-OH)(444 2320 2/28 Miller-WA)
- 17750 1650 RHC:w/mx pgm by YL (444 2/13 Mercado-CA)(444 2055 2/15 Uerlings)

DOMINICAN REPUBLIC

- 4807 0335 HIAQ R. Norte:w/ LA pops, OM tlk & ID, anthem and off @ 0400 (333 3/7 Trautschold-WI)

DOMINICAN REPUBLIC (Cont.)

- 4825 0300 HIFA LV de las Fuerzas Armadas:w/ ID, into pgm of classical mx  
Apparently back for the summer (322 3/17 Whitehead-MA)  
4850 0520 HIRL R. Clarin:w/ nx, tlk, ID (444 2/17 Wirrell-MA)(Redman-IL)  
(Miller-OH)(Butterfield-MA)(Yajko-PA)  
4930 0117 HIBE R. Mil:w/ EE rock mx, OM ancr (433 2/15 Bixby-CA)  
11700 1440 HIRL R. Clarin:w/ ballads, ads, TC/IDs (333 3/8 Fleming-TX)  
(Zilmer-WI)(Redman-IL)(Bixby-CA)(Jones-MS)

ECUADOR

- 3280 0321 HCVN7 LV del Napo:w/ rel. pgm, off abruptly @ 0330 (222 2/14  
Rodriguez-PR)(454 1052 2/13 Jones-MS)  
3380 1107 HCDY4 R. Iris:w/ Ecuadorian mx (444 3/10 Jones-MS)  
3390 0430 HCOTI R. Zaracay:w/ Andean chorals, Pepsi ad, several IDs (433  
3/10 Redman-IL)(Vokes-TX)(Vecchiola-PA)(Cleveland-CA)(Sparks-  
CA)(Miklejewski-MN)(Miller-OH)  
4680v 0100 HCWEI R. Nacional Espejo:w/ ID, pop mx pgm (433 3/2 Fischer-WEST  
GERMANY)(Cleveland-CA)(Vokes-TX)(Thompson-NM)(Trautschold-WI)  
(Pimblett-ALTA)(Vecchiola-PA)(Butterfield-MA)(Vilar6-PR)  
(444 0415 w/ Andean choral mx, Phillip Morris ad 2/24 Redman)  
4772 0405 HCND4 R. Ceni:w/ Andean chorals, IDs & off @ 0430 with NA  
(433 3/9 Redman-IL)  
4795 0200 HCAS4 LV de los Caras:w/ OM ancr, MOR type mx, many IDs (343  
2/28 Trautschold-WI)(Rodriguez-PR)(Miller-OH)  
4800 0205 HCMB5 R. Popular Independiente:w/ mx, IDs, strong het (312  
3/2 Fleming-TX)(Vilar6-PR)(Cleveland-CA)  
4870 0120 HCGM7 R. Rio Amazonas:w/ Children's mx closing words by YL, taps  
NA and off 0138 (242 2/10 Miller-OH)(333 1200 2/19 Jones-MS)  
4875 0600 HCEV4 LV de Esmeraldas:w/ pop songs, ID but few anmts, poor  
modulation, heard 2/22 only (343 2/22 Sparks-CA)(333 0600  
2/22 Mercado-CA)(353 0817 2/22 Laves-TX)  
4910 0508 HCMJ1 Emisoras Gran Colombia:w/ lively LA mx, ID (2-2 2/27  
Cleveland-CA)  
4923 0425 HCRQ1 R. Quito:w/ ads, incl Pepsi, Ecuadorian mx (444 3/3  
Pimblett-ALTA)(Zimarowski-MA)(Vilar6-PR)(Redman-IL)  
4930 0415 HCCR1 R. Casa de la Cultura Ecuatoriana:w/ Ecuadorian mx, ID  
sign-off @ 0430 (444 2/19 Vilar6-PR)(444 0405 2/20 Redman-IL)  
4940 0139 HCXZ1 R. Nacional:w/ Instrumental Ecuadorian mx, ID (333 2/14  
Rodriguez-PR)  
4960 0255 HCSE7 R. Federaci3n:w/ lt. mx, s/off w/ anthem @ 0300 (323 3/5  
Zimarowski-MA)((433 \*1131 3/8 Jones-MS)  
5025 0348 HCEV6 R. Splendit:w/ mx, ID w/ freqs (343 2/20 Famularo-NJ)(323  
0500 3/6 Jernakoff-NY)  
5040 0500 HCGB7 R. Nacional Espejo. El Puyo:w/ Andean mx, YL ancr (--1  
3/1 Cleveland-CA)  
5060 0350 HCEH3 R. Nacional Progreso:w/ LA mx, ID (243 2/14 Baumgartner-ONT)  
6050 0130 HCJB LV de los Andes:w/ SS tlk on health (243 2/17 Fleming-TX)  
6095 0203 HCJB LV de los Andes:w/ EE "PASSPORT" pgm (333 2/7 Naylor-CA)  
(Miller-WA)(DeVries-MA)(Miller-CA)  
6130 0715 HCJB LV de los Andes:w/ EE to S. Pacific, Ecuadorian mx pgm  
(433 2/14 Van Fossen-OH)  
9560 0230 HCJB LV de los Andes:w/ "DX PARTY LINE", late nx (444 2/22  
Thompson-NM)(Miller-WA)(Dean-OH)(Jacobson-IL)  
9625 0308 HCJB LV de los Andes:w/ RR rel. pgm (344 2/24 Dean-OH)  
11740 1335 HCJB LV de los Andes:w/ EE rel. tlks, ID (333 1/11 Miller-CA)  
11885 0040 HCJB LV de los Andes:w/ GG pgm to S. America (444 2/23 Miller-WA)  
11915 0125 HCJB LV de los Andes:w/ "UNSHACKLED" (544 2/19 Miller-WA)  
15115 2132 HCJB LV de los Andes:w/ SS mx, tlk, weak (221 2/22 Miller-WA)  
15160 1930 HCJB LV de los Andes:w/ SS local nxcst, OM interviews (554 3/6  
Silva-CA)(242 1555 w/ EE nx // 15115 3/8 Fleming-TX)  
15300 1930 HCJB LV de los Andes:w/ "DX PARTY LINE", incl SPEEDX report (343  
2/28 Cawthorne-UK)(555 1930 2/23 Van Fossen-OH)(322 1910  
1/8 DeVries-MA)  
17755 1948 HCJB LV de los Andes:w/ EE svc. to Europe, rel. pgm, QRM from  
RHC on 17750 (333 2/15 Naylor-CA)

FRENCH GUYANA

- 3385 0450 France Regions 3 (FR3). Cayenne:w/ ID as "Ici Cayenne, France  
Region Trois", s/off w/ "Marsielles", and then guitar IS to  
0515\* (322 3/2 Butterfield-MA)(453 0952 w/ FF mx, nxcst @  
1000, wiped out @ 1008 by R. Barcelona sign-on (453 3/6  
Trochimczyk-DC)

GRENADA

- 9550 1708 R. Grenada:w/ "MUSIC HALL" pgm of EE & FF songs (444 2/17 White-FL)(444 1642 2/14 Rodriguez-PR)  
 15104 2055 R. Grenada:w/ BBC play, ID @ 2100, into Caribbean music pgm (142 3/10 Bodell-OR)

GUATEMALA

- 2390 0150 TGDF LV de Atitlán:w/ vocals, SS tlk (333 2/20 Thompson-NM) (343 0100 w/ Guatemalan mx, ID 2/13 White-FL)  
 3300 0235 TGNC R. Cultural:w/ relay TGW's "Sistema Nacional de Emergencia" closing @ 0559 without a local ID (--3 2/14 Hauser-IL)(422 0235 3/9 Redman-IL)(333 0325 2/29 Thompson-NM)  
 3360 1154 TGVN LV de Nahualá:w/ mixture of L.A. and American mx (353 2/15 Miller-OH)(323 0115 2/24 Yajko-PA)  
 3380 0310 TGCH R. Chortis:w/ Marimba mx, several IDs (433 2/15 Redman-IL)  
 4825 0130 TGMN R. Mam:w/ YL reading nx, OM repeating in Indian language (423 3/2 Fleming-TX)(422 0230 2/15 Redman-IL)(222 0055 2/19 Baumgartner-ONT)  
 6180 0550 TGWB R. Nacional de Guatemala:w/ nx of "operación frijol, florid s/off msg @ 0558 subtitled the Sistema Nacional de Emergencia "la voz orientadora", plugging Pres. Kjell Eugenio Laugerud, and advising they transmit "desde la Guatemala herida, pero no de muerte" before a 5½ minute multi-refrained choral anthem (--4 2/15 Hauser-IL)(Vilaró-PR)(Zilmer-WI)(Tannenwald-NY)(Vecchiola-PA)(Miller-OH)(Baumgartner-ONT)

GUYANA

- 3290 0950 GBS Action Radio:w/ pop mx, deodorant ad (433 2/24 DeVries-MA) (333 1012 1/26 Leamy-OH)  
 5950 1815 GBS Action Radio:w/ pop mx, IDs (444 2/16 Hinds-TRINIDAD)

HAITI

- 3345 1052 4VSO R. Station 4VEH:w/ SS ID, mx pgm to 1100, into FF rel. mx after anmt @ 1059 (322 2/29 Miklejewski-MN)(433 0030 2/25 Zilmer-WI)(444 1020 3/6 Trochimczyk-DC)(322 0124 2/24 Yajko-PA)  
 6156 1301 4VVA R. Citadelle:w/ FF tlk by OM, LA mx w/ FF words (322 2/28 Miller-OH)(433 1158 2/23 Zilmer-WI)  
 9770 1730 4VEH R. Station 4VEH:w/ "UNSHACKLED" (433 2/22 DeVries-MA)(433 1723 2/22 Yajko-PA)  
 11835 \*2330 4VEJ R. Station 4VEH:w/ "Amazing Grace" IS, into rel. pgm (--3, 2/13 Lunstrum-FL)(444 1225 3/12 Benson-VA)(333 2320 2/7 Naylor-CA)(444 1330 2/25 Thurman-IL)

HONDURAS

- 4820 0315 HRVC LV Evangélica:w/ HOUR OF DECISION pgm (344 3/1 Loverti-OH)(Vilaró-PR)(Redman-IL)(Trautschold-WI)(Thompson-NM)(Sparks-CA)(Thompson-NM)(Pimblett-ALTA)(Thurman-IL)(Butterfield-MA)(Cleveland-CA)(Earhart-PA)  
 4890 1225 HRVL R. Lux:w/ tlk, many IDs, QRM de Papua/New Guinea (222 3/6 Vokes-TX)(322 1150 2/21 Miller-OH)  
 4920 0020 HRPL3 R. Progreso:w/ anmts, ads (333 2/21 Butterfield-MA)(3-3 0435 w/ romantic LA mx 2/24 Cleveland-CA)  
 5874 0245 HRN LV de Honduras:w/ tlk, ID, sign-off @ 0259 (333 3/8 Zimarsowski-MA)(3-2 0400 3/3 Cleveland-CA)  
 6125 2300 HRQ R. Suyapa:w/ ads, IDs, LA mx (333 2/21 Vokes-TX)  
 12250 1435 HRQ R. Suyapa:w/ 2x 6125 harmonic noted here allowing the station to be heard at times when the fundamental is inaudible or, as now, blocked by VOA. Noted w/ enthusiastic SS DJ, TC, ads (243 2/15 Hauser-IL)

MARTINIQUE

- 3315 2337 France Region 3, Fort de France:w/ U.S. pop tunes, OM FF intros (222 1/19 Leamy-OH)

MEXICO

- 5980 0575 XERMX R. México:w/ LA mx, tlk // 9705 (--3 3/8 Cleveland-CA)(Rodríguez-PR)(Miller-WA)(Vecchiola-PA)(Stephenson-CA)  
 6105 1245 XEQM Su Pantera:w/ SS wx, nx, mx (322 2/1 Tannenwald-NY)(353 0436 2/17 Sparks-CA)  
 6115 1856 XEUDS R. Universidad de Sonora:w/ cl. mx (543 3/2 Somers-CA) (3-2 2020 2/26 Cleveland-CA)(444 2030 3/2 Thompson-NM)

MEXICO (Cont.)

- 9705 1400 XERMX R. México:w/ amnts, tlk, mx pgm (332 2/16 Tannenwald-NY)  
(Jacobson-IL)(Miller-WA)(Pimblett-ALTA)
- 15385 2230 XERMX R. México:w/ SS mx, many IDs, off abruptly @ 2300 (433  
2/12 Crable-ID)(Vilar6-PR)(Miller-WA)(Redman-IL)(Uerlings-OR)  
(Hinds-TRINIDAD)(Stephenson-CA)(Somers-CA)(Lunstrum-FL)

NETHERLANDS ANTILLES

- 6160 0312 R. Nederland, Bonaire:w/ interview, back on normal 6165 at 0540  
check (444 2/29 Bixby-CA)(544 0200 2/27 w/ DX JUKEBOX pgm  
Zilmer-WI) Interesting, perhaps a subtle frequency shift.
- 6165 0230 R. Nederland, Bonaire:w/ DX JUKEBOX pgm with beginning of trans-  
istor course (554 3/4 Gebhardt-IA)(Miller-WA)(Dean-OH)
- 6190 0341 PJB TWR, Bonaire:w/ Romanian amnts & mx, EE ID (555 3/5 Somers-  
CA)(434 0425 w/ Russian pgm, EE ID 3/6 Loverti-OH)(344 0345  
EE sign-on, into Russian pgm 2/15 Dean-OH)
- 9590 0258 R. Nederland, Bonaire:w/ SS ID (243 2/24 Dean-OH)
- 9680 \*0500 PJB TWR, Bonaire:w/ EE ID, fgy, sign-on amnts (334 3/6 Loverti-OH)
- 9715 0842 R. Nederland, Bonaire:w/ "PENTHOUSE ROUND TABLE" tlk of TV and  
radio in Holland (221 2/25 Smith-FL)
- 11925 0133 PJB TWR, Bonaire:w/ EE ID, sign-off (444 2/13 Uerlings-OR)(434  
0050 w/ "DX SPECIAL" pgm 2/19 Miller-WA)
- 15220 2158 R. Nederland, Bonaire:w/ Dutch ID, tlk pgm (223 2/28 Miller-WA)
- 15230 2330 R. Nederland, Bonaire:w/ SS mx pgm, IDs (445 2/28 Miller-WA)
- 15350 2224 PJB TWR, Bonaire:w/ PP pgm after IS, EE sign-on amnt, on at this  
time despite sked as Fri-Sunday only (434 2/28 Miller-WA)
- 17810 1705 R. Nederland, Bonaire:w/ Dutch mx pgm (343 2/13 Mercado-CA)

PARAGUAY

- 6025 1015 ZPA1 R. Nacional:w/ LA mx, OM & YL tlk, several IDs (242 3/9  
Vokes-TX)

PERU

- 3320 0410 OBZ4I R. Estrella del Sur:w/ Andean mx, ID @ 0426 sign-off w/  
anthem (333 3/10 Young-CA)
- 4790 0225 OAX8F R. Atlantida:w/pgm of "SEXTA REGION DE EDUCACION"(333 2/14  
Rodriguez-PR)(Jones-MS)(Cleveland-CA)(Redman-IL)(Cable-ID)
- 4896 0425 OAZ4T R. Chanchamayo:w/ TENTATIVE logging of SS tlk, LA & Andean  
mx, no positive ID (2-2 2/24 Cleveland-CA)
- 4996 0530 OAZ4C R. Andina:w/ romantic mx, nx (322 2/20 Butterfield-MA)
- 5970 1035 OBX4Q R. El Sol:w/ Andean mx pgm (333 3/11 Jones-MS)
- 5980 0659 OBX4M R. Panamericana:w/ LA mx, ID @ 0659, KOed by KGEI @ 0700  
(353 2/19 Jones-MS)
- 5990 0605 OAX1W R. Nacional:w/ Andean mx pgm, ID & off suddenly @ 0700  
(433 3/10 Redman-IL)
- 6020 \*1000 OAX4Q R. Nueva Victoria:w/ anthem, Beethoven theme, ID (242 3/11  
Jones-MS)
- 6045 1128 OCY4H R. Santa Rosa:w/ ID, tlk, mx (322 3/10 Jones-MS)
- 9505 1108 OAX4V R. América:w/ Guitar mx, vocals, ID (333 3/11 Jones-MS)
- 9675 1200 OAZ4L R. del Pacifico:w/ mx, SS amnts, ID on the hr. (222 2/20  
Perry-QUE)

TURKS & CAICOS

- 4788 0054 VSI8 R. VSI:w/ Special pgm, much UTE QRM (212 1/16 Leamy-OH)

URUGUAY

- 11835 0203 CXA19 R. El Espectador:w/ "INFORMA ESPECTADOR" nxcst, 2 OM  
alternating items, into promo for dept. of tourism (333 3/6  
Miklejewski-MN)(343 0101 w/ ads, ID, nx 2/14 Miller-OH)(312  
0125 w/ many IDs, nxcst 2/24 Miller-WA)

UNITED STATES OF AMERICA

- 5980 1025 KGEI LV de la Amistad:w/ mx in "GOLDEN GATE TO ASIA" pgm, nx  
(444 1/10 miller-CA)
- 5985 0232 WYFR Family Radio:w/ SS rel. tlk (433 3/2 Somers-CA)
- 6030 0155 AFRTS, Greenville:w/ EE nxcst, feed of news cuts (433 1/6 Devrie  
DeVries-MA)
- 6055 1005 U.N. Radio, via Dixon:w/ nx, into Tagalog and Thai to Asia  
(555 1/10 Miller-OH)

UNITED STATES OF AMERICA (cont.)

6155 0215 WYFR Family Radio:w/ rel. pgm to México (343 2/27 Trauttschold-WI)  
 6190 2000 VOA, Greenville:w/ sign-on anmts in EE (444 2/10 Dean-OH)  
 9525 0219 WYFR Family Radio:w/ EE rel. pgm (132 2/23 Dean-OH)  
 9565 1400 VOA, Dixon:w/ EE ID @ 1400 (343 2/24 Dean-OH)  
 9615 0115 KGEI LV de la Amistad:w/ SS ID, rel pgm (243 2/24 Dean-OH)(443  
 1401 2/11 Naylor-CA)  
 9670 0326 VOA, Greenville:w/ ID (243 2/24 Dean-OH)  
 9715 0430 WYFR Family Radio:w/ mx, rel. tlk to Central America, off @ 0445  
 (555 2/21 Van Fossen-OH)  
 11760 1915 VOA, Greenville:w/ George Mishler w/ letters from listeners incl.  
 mine (343 2/14 Cawthorne-UK)  
 11775 2125 WINB World Inter-National Broadcasters:w/ ID, religious pgm  
 (544 2/16 Lunstrum-FL)  
 11805 2230 WYFR Family Radio:w/ ID @ 2245 sign-off (444 2/16 Lunstrum-FL)  
 17845 1845\* KGEI LV de la Amistad:w/ ID at end of pgm to Europe, sign-off  
 (322 1/6 DeVries-MA)(433 1602 2/14 Miller-OH)  
 21480 1915 VOA, Bethany:w/ regular pgm to Africa (233 2/24 Dean-OH)  
 21670 1630 VOA, ?? :w/ EE pgm to Africa:w/ Uerlings-OR)

VENEZUELA

3215 1103 YVZY Ondas Panamericanas:w/ ID, relay of Rumbos network pgm  
 (343 2/20 Jones-MS)(433 1130 2/25 Zilmer-WI)  
 3245 0128 YVKT R. Libertador:w/ SS tlk by YL & OM (323 2/24 Yajko-PA)  
 (322 0240 w/ non-stop chatter 3/10 Vecchiola-PA)  
 3255 0045 YVQL LV de El Tigre:w/ LA mx, IDs, ads (333 2/26 Baumgartner-ONT)  
 (342 0142 w/ lively LA mx, ad for banco 2/29 Miller-OH)  
 3275 0300 YVMC R. Maraw/ Guitar mx, several IDs (333 2/29 Thompson-NM)  
 (433 0328 2/14 Rodriguez-PR)(444 0455 2/29 Vecchiola-PA)  
 (353 0345 w/ lt. concert mx, YL ID 3/6 Sparks-CA)  
 3355 0955 YVLC R. Impacto, Valencia:w/ calls, fqys, LA mx pgm (322 3/11  
 Jones-MS)(332 0330 w/ farmacia ad, mx 3/18 Whitehead-MA)  
 3365 2330 YVQP R. Puerto La Cruz:w/ ID, mx, tlks (322 3/1 Fischer-WEST  
 GERMANY)(343 0355 3/10 Young-CA)(3-2 0408 3/3 Cleveland-CA)  
 (333 1117 2/26 Vilar6-PR)(232 0345 2/26 Miklejewski-MN)  
 3385 1008 YVQI R. Barcelona:w/ hymn, ID mentioning Rumbos network  
 affiliation, TC, nxcst (332 3/6 Trochimczyk-DC)  
 3395 0120 YVOJ R. Universidad:w/ SS tlk, ID (322 2/24 Yajko-PA)  
 4770 0045 YVNW R. Bolivar:w/ LA mx, anmts "Fiesta de la Carnival", ad  
 string, ID (433 2/16 Redman-IL)(343 0330 w/ LA mx 2/8  
 Mercado-CA)(333 2322 2/18 Yajko-PA)  
 4780 0132 YVLA LV de Carabobo:w/ musical ID, pop mx (333 3/3 Zimarowski-  
 MA)(433 0235 3/3 Redman-IL)(333 0013 3/6 Miller-OH)  
 4800 0340 YVMO R. Lara:w/ SS tlks, LA mx pgm (333 3/5 Thompson-NM)  
 4810 0230 YVMG R. Popular:w/ LA mx, OM tlk, ID (232 2/28 Trauttschold-WI)  
 (433 0225 w/ LA vocals, several IDs 3/2 Redman-IL)  
 4840 0335 YVOI R. Valera:w/ IDs, Venezuelan mx (444 2/28 Thompson-NM)  
 4850 0255 YVKX R. Capital:w/ "NUESTRA MÚSICA" LA mx pgm (333 2/14  
 Rodriguez-PR)  
 4860 0015 YVQE R. Maracaibo:w/ LA & U.S. pop mx, beer ads, several IDs  
 (444 3/8 Redman-IL)  
 4870 0500 YVKP R. Tropical:w/ Rock & Roll mx, ID (353 3/6 Sparks-CA)  
 4880 0352 YVMS R. Universo:w/ ID, Venezuelan mx (333 3/7 Kaufman-NY)(232  
 0335 2/28 Trauttschold-WI)(444 0030 3/7 Perry-QUE)(433 0250  
 2/17 Redman-IL)(434 0036 3/2 Jernakoff-NY)(344 0045 3/9  
 Fleming-TX)  
 4890 0025 YVKB Radiodifusora Venezuela:w/ U.S. disco mc, TCs, IDs, some  
 LA pops (433 3/1 Butterfield-MA)(433 2340 2/15 Redman-IL)  
 (444 0145 3/2 Fischer-WEST GERMANY)(444 0130 2/13 Perry-QUE)  
 4900 0353 YVNK R. Juventud:w/ ID, U.S. pop mx, off @ 0355 (323 3/6  
 Uerlings-OR)(Redman-IL)(Famularo-NJ)(Fischer-WEST GERMANY)  
 (Jernakoff-NY)(Pimblett-ALTA)  
 4930 0155 YVNI LV de la Fé:w/ Ads, IDs, TCs, mx,(322 3/11 Zimarowski-MA)  
 4940 0030 YVPA R. Yaracuy:w/ anmts, ads, mx (444 2/13 Perry-QUE)(Redman-IL)  
 (Zimarowski-MA)  
 4960 0305 YVAO R. Sucre:w/ ID, U.S. & LA mx (333 3/5 Zimarowski-MA)  
 4970 0345 YVLK R. Rumbos:w/ "NOTI RUMBOS INFORMA", ads (433 2/28 Redman-IL)  
 (Cleveland-CA)(Trauttschold-WI)(Butterfield-MA)(Yajko-PA)  
 (Somers-CA)(Pimblett-ALTA)  
 6000 1250 YVNL R. Sensación:w/ LA mx, ID, TC (111 2/14 ViIar6-PR)



# SWBC DX

---

## EUROPE / AFRICA



**ROBERT BUTTERFIELD**

Editor, Europe/Africa

P.O. Box 398

Belmont, MA. 02178 USA

DEADLINE: 15<sup>th</sup> of the month

Times & Dates: GMT

Frequencies: kHz

-Africa-

### ALGERIA

- 7143m 0010 Radiodiffusion Television Algerienne: Sp w/ "La Voz de la Resistencia" prgr, commtry, tlk, ID, fqys, 0030\* (423 3/2 Fleming-TX) list 7145. rfb.
- 11835 1825 RTVA: Ar w/ "Voice of Palestine" prgr // 11810 (433 3/10 Zimarowski-MA)
- 17790 1530 RTVA: Ar w/ mx, telephone conversation, nx @ 1600 (232 2/14 Perry-QUEBEC)

### ANGOLA, PEOPLE'S REPUBLIC OF

- 7245 1655 R. Nacional de Angola: Port? w/ modern afro mx, 1700 ancmt (333 3/12 Bodell-OR);(122 0655 TENT 2/14 Fleming-TX)

### ASCENSION ISLAND

- 7105 0258 BBC, Atlantic Relay: Eng w/ IS, ID, fqy, World Service nx (444 2/27 Thompson-NM);(343 2/27 0330 Trautschold-WI)
- 9580 0130 BBC, Atlantic Relay: Eng World Service with ID (344 2/24 Dean-OH);(555 0220 2/18 Miller-WA)

### BENIN, PEOPLE'S REPUBLIC OF

- 4870 0605 Radiodiffusion Benin: Fr w/ tlk, nx?, mx @ 0611 (322 2/24 Brigham-IL)

### BOTSWANA

- 4845 \*0357 R. Botswana: Setswana/Eng w/ cowbell IS, anthem, Eng ancmts, Setswana tlk, mx (333 2/24 Thompson-NM);(232 3/2 Zimarowski-MA);(233 2/18 Leamy-OH);(343 3/7 Vecchiola-PA);(3-2 0440 2/27 Cleveland-CA)

### BURUNDI

- 4900 0415 R. Cordac: Swahili w/ native mx, orch mx, vocals, tlks (333 2/24 Thompson-NM)

### CAMEROON

- 4972.5 0535 R. Yaounde: Eng rel tlk, "Gospel Rock" mx, (332 3/7 Vecchiola-PA)
- 5010t 2200\* R. Garoua: Fr w/ brief ancmt, anthem, flute and drum IS three times, off, caught too late to be sure (444 2/22 Vecchiola-PA)

### CAPE VERDE ISLANDS

- 3885 0013 R. Clube do Cabo Verde: Port w/ instr mx, mixed with old U.S. pop mx, 0102\* (323 1/30 Leamy-OH);(333 2/11 Bixby-CA);(423 2/29 White-FL);(232 3/10 Estes-MS);(343 0713 2/23 Zimarowski-MA);(242 0745 3/3 Fleming-TX)

### CHAD

- 4904.5 2134 Radiodiffusion Nationale Tchadienne: Fr w/ afro mx, long tlks (242 2/14 Miller-OH);(333 2157 2/21 Yajko-PA);(444 2202\* 2/29 Vecchiola-PA)

CONGO. PEOPLE'S REPUBLIC OF THE

- 6115 2300 Radiodiffusion Television Congolaise: Fr tlk and vern mx (433 2/23 Zilmer-WI)
- 15190 1850 RTVC: Fr political tlks (333 3/7 Romani-MD);(342 2000 2/21 Vokes-TX);(433 2005 2/12 Baumgartner-ONTARIO);(3-3 2115 2/23 Pimblett-ALBERTA);(444 \*2130 w/ Eng nx, anncd that Eng was broadcast weekdays @ 2130, Saturday @ 2115, and Sunday @ 2250 2/25 Zimarowski-MA);(343 2130 w/ 15 minutes of nx into Fr 2/25 Wirrell-MA);(333 2132 in Eng w/ nx, native mx, IDs w/ end of prgr @ 2212, 3/12 Scannell/Butterfield-MA);(433 2215 2/29 Beaudoin-CT);(454 2/22 2215 Trautschold-WI)

EGYPT, ARAB REPUBLIC OF

- 9475 \*0200 R. Cairo: Eng s/on, prgr details, local mx (444 3/10 Estes-MS);(333 2230 in Ar 2/22 Jacobson-IL);(322 0202 2/26 Stephenson-CA)
- 9805 \*2200 R. Cairo: Eng s/on (444 2/18 Cawthorne-ENGLAND);(333 2222 2/21 Yajko-PA);(433 2245 2/24 Van Fossen-OH);(343 2300 2/29 Beaudoin-CT);(232 2125 in Ger 2/22 Trautschold-WI)

ETHIOPIA

- 6185t 0356 R. Ethiopia: Ar mx, rock mx selection, tent ID, nx, flute mx at 0400, almost sure (222 2/19 Vokes-TX)
- 7165 0340 ETLF: Swahili tlks, hymns, nx in Eng, ID @ 0400, to E Afr (333 3/4 Thompson-NM)
- 11830 2020 ETLF: Eng rel prgr to W Afr (443 2/17 White-FL)



ገጽ ስምገና፡ ግንገላ፡  
**RADIO VOICE OF THE GOSPEL**  
 P. O. Box 654  
 ADDIS ABABA, Ethiopia

EQUATORIAL GUINEA

- 4926 0445 R. Ecuatorial: Sp w/ afro mx, tlk (222 3/4 Zimarowski-MA); (333 0549 2/14 White-FL);(222 0555 2/24 Brigham-IL)

GABON

- 4777 2210 Radiodiffusion Television Gabonaise: Fr w/ afro chants, clear ID, tlk, drums (433 2/29 Vecchiola-PA);(333 2148 2/20 Yajko-PA);(433 2300 2/19 Brigham-IL);(242 0442 2/28 Brooker-MI);(--2 0500 3/9 Cleveland-CA);(333 0550 2/28 Vokes-TX)
- 4830t 2155 RTVG, Franceville: Fr tlk (322 2/20 Yajko-PA)

GAMBIA

- 4820 0650 R. Gambia: U/lang w/ tlk, buried under Ute (311 2/11 Bixby-CA) A reminder that this station will soon cease operation. rfb.

GHANA

- 4915 2150 Ghana Broadcasting Corporation 1, Accra: Vern tlk, mx, 2245 w/ Eng nx (434 2/21 Perry-QUEBEC);(433 2205 2/20 Yajko-PA);(333 2/18 Famularo-NJ);(444 3/15 Butterfield-MA);(--3 0535 3/9 Cleveland-CA);(444 0600 in Eng/Swahili/Hausa/French languages to 0700, then cycle repeated 2/29 Van Fossen-OH) (343 0600 2/22 Vokes-TX);(322 2/8 Stephenson-CA)
- 4980 2130 GBC 2, Ejura: Eng mx prgr, ID, comtry (242 2/20 Cawthorne-ENGLAND);(242 2156 2/15 Miller-OH)

GUINEA-BISSAU

- 5041m 0600 R. Bissau: Port w/ afro mx, tlk (353 3/6 Sparks-CA);(333 0600 2/28 Vokes-TX);(422 0617 2/24 Brigham-IL);(322 2257 2/20 Baumgartner-ONTARIO) Seems to be steady on 5041. rfb.

GUINEA REPUBLIC

- 7125 0712 Radiodiffusion Nationale: Fr tlk // 4910 (222 3/5 Zimarowski-MA);(242 0715 2/28 Earhart-PA);(242 0745 2/29 Beaudoin-CT);(422 2340 TENT 2/6 Bixby-CA);(343 0031 3/6 White-FL)

IVORY COAST

- 4940 2306 Radiodiffusion Television Ivoirienne: Fr w/ children singing // 7215 (522) 11920 (444), (433 2/19 Brigham-IL);(454 2242 2/14 Vecchiola-PA);(433 2/20 Yajko-PA)
- 11920 \*1845 RTVI: Eng s/on w/ nx headlines, mx, nx @ 1917 (333 2/14 Wirrell-MA);(Cawthorne-ENGLAND);(Romani-MI);(Thompson-NM);(Vokes-TX);(Kaufman-NY)

LIBERIA

3227t 2155 ELWA: Vern w/ tlk (232 2/28 Vecchiola-PA)  
 4770 2145 ELWA: Eng rel tlk (323 2/20 Yajko-PA)  
 7280 0300 VOA, Monrovia: Eng nx, mx, Correspondents Reports (343 2/28 Thompson-NM)  
 11945 2015 ELWA: Eng Gospel mx, tlk, 2045 nx, 2101\* (332 3/6 Romani-MI);  
 (--- 3/6 Perry-QUEBEC);(434 2030 3/6 Jernakoff-NY);(333 2050  
 2/26 Thurman-IL) Last two listed as 11950, which is it? rfb.  
 11955 2002 VOA, Monrovia: Eng w/ special English news (--- 2/14 Smith-AL)  
 17870 1600 VOA, Monrovia: Eng ID, nx, intvws (343 2/22 Naylor-CA)

LIBYAN ARAB REPUBLIC

• 6185t 0444 Peoples' Revolution Broadcasting: Ar chanting, TC @ 0500,  
 talking @ 0509 (232 2/29 Young-CA)  
 • 7165t 2118 PRB: Ar tlk, TC @ 2130, two men resume talking (422 2/28  
 Miller-OH) Unlisted fgy. rfb.

MALAGASY REPUBLIC

11730 2030 R. Nederland, Talata: Eng w/ mailbag, "Dutch Top 40" (333  
 3/6 Thompson-NM);(--- 2050 2/14 Smith-AL)  
 15185 1700\* R. Nederland, Talata: Dutch progr to Afr (444 2/22 Brooker-MI)  
 15220 \*2100 R. Nederland, Talata: Fr to W Afr (434 3/4 Butterfield-MA)

MALAWI

3380 0347 Malawi Broadcasting Corporation: Vern progr, Eng TC @ 0350  
 (333 3/8 Young-CA);(232 0400 2/23 Vokes-TX)

MALI

4783 0650 R. Mali: Fr mx, tlk @ 0700 (322 2/18 Brigham-IL);(242 2209  
 2/21 Miller-OH)  
 4830nf 2229 R. Mali: Fr w/ mx, TC, ID, nx // 4783 5995 (322 3/9  
 Zimarowski-MA);(233 2216 2/15 Vecchiola-PA)  
 5995 2205 R. Mali: Fr w/ afro and western mx, some DJ type tlk (333  
 3/6 Romani-MI)  
 11960t 1733 R. Mali: U/lang w/ tlk, mx, no ID hrd, several mentions of  
 Bamako and Mali, high QRN (332 2/13 Junqua-JAPAN)

MAURITANIA

4845m 2345 Radiodiffusion Nationale Mauritanie: Fr w/ nx after end of  
 Ar (333 3/4 Butterfield-MA);(333 2/20 Yajko-PA);(433 2/13  
 White-FL);(443 2/15 Vecchiola-PA);(343 2/21 Miller-OH);  
 (353 \*0556 2/27 Sparks-CA);(332 0554 2/26 Bixty-CA);(443  
 3/5 Zimarowski-MA);(353 0745 3/1 Fleming-TX)

MOROCCO

6100 0045 Radiodiffusion Television Marocaine: Ar chanting under DW  
 // 6170 (422 2/24 Zilmer-WI)  
 6170 1930 RTVM: Ar mx (333 3/6 Beaudoin-CT);(432 2230 2/23 Zilmer-WI);  
 (444 2248 2/14 Smith-AL)  
 9615 2200 RTVM: Ar w/ mx progr (132 2/22 Dean-OH)  
 11735 1230 RTVM: Ar tlk, singing (443 2/24 Famularo-NJ)  
 11945 2140 VOA, Tangier: Eng tlk on Africa, 2200\* (444 2/28 Thompson-NM)

MOZAMBIQUE

• 3210 0406 R. Mocambique: Port tlk, hvy QRN (232 2/23 White-FL)  
 • 3338 0352 R. Mocambique: Vern w/ IS to 0355, into singing ancmts, pop  
 mx (544 3/8 Young-CA)

NIGER

5020 0527 Office de Radiodiffusion Television du Niger: Fr w/ tone,  
 anthem, IS, ID, chants? (232 2/22 Leamy-OH);(343 0530 2/11  
 White-FL)

NIGERIA

3204 0501 Nigerian Broadcasting Corporation, Ibadan: Eng nx // 6195  
 (232 3/6 Young-CA)  
 4930 2144 NBC, Benin (Vern w/ afro mx, chants (242 2/14 Miller-OH)  
 4990 2215 NBC, Lagos: Eng w/ concert mx to 2300, nx, 2305\* (332 2/14  
 Vecchiola-PA)  
 6090 2200 R. Television Kaduna: Hausa w/ afro mx, tlk, no Eng @ 2300  
 as per WRTN (433 2/28 Zilmer-WI);(222 2308\* 3/7 Beaudoin-CT);  
 (232 2100 w/ nx in Eng 2/20 Cawthorne-ENGLAND)

NIGERIA (cont)

6195 0430 NBC, Sokoto: Vern w/ chants non-stop 'til 0450 (544 3/6 Young-CA);(332 2215 2/23 Zilmer-WI)  
 7275 0600 Voice of Nigeria (NBC): Eng nx, mx, tlk (433 2/22 Hinds-TRINIDAD);(333 0630 3/7 Butterfield-MA);(433 2/24 Cohen-NJ);(433 0630 3/7 Smith-AL)  
 9570 2200 R. Television Kaduna: Hausa w/ afro mx w/ lots of singing, tlk (433 2/28 Zilmer-WI)

RHODESIA

3396 0400 Rhodesia Broadcasting Corporation: Eng w/ nx, mx, TCs, IDs "This is the RBC", (323 3/8 Butterfield-MA);(433 2/28 Zilmer-WI);(343 3/6 Sparks-CA);(3-2 3/3 Cleveland-CA);(333 2/27 Thompson-NM);(534 3/8 Young-CA);(222 3/12 Bodell-OR)  
 5015 1530 RBC: Eng w/ TC, ID, pop mx, good signal clear from Vladivostok during 1500-1545 (433 3/2 Bixby-CA)

RWANDA

7225 0450 Deutsche Welle, Kigali: Eng rock mx (343 2/17 Fleming-TX)  
 9735 0220 Deutsche Welle, Kigali: Ger nx, ID (443 2/5 Smith-FL)  
 11795 \*2200 Deutsche Welle, Kigali: Ger nx (554 3/6 Earhart-PA) to NA

SENEGAL

48904 2230 Radiodiffusion du Senegal: Fr w/ nx?, afro mx, no clear ID (233 2/22 Vecchiola-PA)

SEYCHELLES

11715 1730 Far East Broadcasting Association: U/lang w/ IS, ID, then tlk (322 3/6 Zilmer-WI)

SIERRA LEONE

3316 0611 Sierra Leone Broadcasting Service: Eng ID, ads, afro mx (422 3/11 Zimarowski-MA);(322 \*0555 3/11 Butterfield-MA);(433 2230 2/29 Vecchiola-PA)

SOMALIA

9585 2050 R. Mogadishu: Somali? w/ tlk, anthem 2102\*, mixing w/ R RSA (312 3/8 Fleming-TX);(433 2/12 Famularo-NJ)

SOUTH AFRICA

3230nf 0314 R. RSA: Eng w/ "That's the Way I Like It", others (333 3/8 and daily Butterfield-MA);(322 0338 3/7 Zimarowski-MA) // 5980 7270 (343 2/23 White-FL);(333 3/12 Bodell-OR);(-3 2/27 Cleveland-CA);(343+ 3/8 Young-CA);(443 0430 in Vern 2/29 Vecchiola-PA)  
 3980 0507 SABC, Springbok R.:Eng/Afrikaans w/ pop mx, ads (--2 3/9 Cleveland-CA)  
 4810 0300 SABC, Springbok R.: Eng/Afrikaans w/ rock mx (444 3/3 Arneson-MO);(Yajko-PA);(Cleveland-CA);(Stephenson-CA);(Miller-OH);(Miller-CA);(Brooker-MI);(Pimblett-ALBERTA)  
 4835 0410 SABC: Eng tlk (332 3/5 Earhart-PA);(Zilmer-WI);(Cleveland-CA);(Uerlings-OR)  
 4875 0420 SABC; Afrikaans progr (433 3/8 Uerlinge-OR);(333 1653 2/13 Junqua-JAPAN);(3-3 0413 2/24 Cleveland-CA)  
 7270 0300 R. RSA: Eng w/ TC, ID, mx to E & C Afr and ME (433 2/16 Fleming-TX);(444 2/13 Smith-AL)  
 9585 \*2230 R. RSA: Eng nx, comntry, "Panorama" (444 3/3 Wallman-MN);(444 2/22 Pearson-PA);(343 2/18 Cawthorne-ENGLAND);(544 3/3 Arneson-MO);(343 2/6 Crable-ID);(444 3/3 Romani-MI);(433 2/20 Pimblett-ALBERTA);(433 3/3 Cohen-NJ)  
 9710 0555 SABC, Springbok R.: Eng w/ Jimmy Carter intvw, nx, mx (333 2/23 Fleming-TX)  
 11900 2300 R. RSA: Eng nx, mx, DX progr (554 3/3 Gion-MA);(Stephenson-CA);(Thompson-NM);(Smith-AL);(Pimblett-ALBERTA);(Bixby-CA)  
 21535 \*1600 R. RSA: Eng w/ progr to E and C Afr and ME (333 2/18 Brigham-IL);(354 1610 3/3 Fleming-TX)

SUDAN

9505 1547 R. Omdurman: Ar tlk by two men, 1558 ID (333 2/18 Junqua-JAPAN)

SWAZILAND

- 4980 \*0359 Swazi Music Radio: Eng w/ popcorn IS, s/on into mx (222 2/14 Baumgartner-ONTARIO);(211 0358 2/14 Smith-AL);(3-3 0438 2/24 Cleveland-CA);(333 0449 2/13 Naylor-CA);(222 1600 2/14 Bixby-CA)
- 9590 0540 Trans World Radio, Mpangela: Eng w/ rel prgr, ID, hymns (322 2/23 Fleming-TX);(333 1645 in Ger 2/19 Bodell-OR);(422 2245 in Ger 2/7 Zilmer-WI);(322 0450 in Afrikaans on 9591m 2/27 Zimarowski-MA)
- 11715 1540 TWR, Mpangela: Swahili w/ rel prgr, some Eng tlk and hymns, 1600 Eng ID and off, 1615 s/on again w/ Eng ID and into ancd Mandarin prgr (333 2/14 Junqua-JAPAN)

TOGO

- 3223t 0608 Radiodiffusion du Togo, Lama Kara: U/lang w/ afro mx, UTE QRM (211 3/6 Laves-TX) Ciao! Alan.
- 5047 2305\* Rdif du Togo: Fr w/ fqy, ancmts, s/off w/ anthem (323 3/4 Butterfield-MA);(333 2215 2/20 Yajko-PA);(433 \*0526 in Fr/ Unk lang 2/20 Brigham-IL)

TUNISIA

- 6195t 2050 Radiodiffusion Television Tunisienne: Ar tlk, mx (333 2/17 Baumgartner-ONTARIO)
- 7275t 0625 RTVT: Ar songs w/ stringed instrs, drums, not Qur'an chants (444 2/14 Earhart-PA)
- 11970 1630 RTVT: Ar mx, tlk (222 3/5 Jernakoff-NY)

UGANDA

- 9515 1517 Uganda Broadcasting Corporation: Fr tlk, mx (222 2/16 Bodell-OR)
- 9730 2050 UBC: Eng w/ children singing, address, 2100\*, to W Afr (232 3/7 Fleming-TX)
- 15325 1855 UBC: Fr w/ afro and western mx, anthem @ 1900\* (444 2/28 Vecchiola-PA)

UPPER VOLTA

- 4816v 0640 Radiodiffusion-Television Voltaique: Fr w/ afro instr mx, ID @ 0642, more afro mx (332 2/24 Brigham-IL);(242 2220 2/14 Miller-OH)

ZAIRE

- 15245 2035 La Voix du Zaire: Fr nx conference, perhaps live, w/ applause // 15350 (323 2/28 DeVries-MA);(433 2002 2/6 Baumgartner-ONTARIO);(343 1910 2/28 Vecchiola-PA);(232 0138 2/27 Dean-OH)
- 15350 1825 LV du Zaire: Fr w/ afro mx, political tlks, nx @ 1830 (333 3/7 Romani-MI);(222 2015 2/21 Vokes-TX);(353 2200 2/26 Sommers-CA);(343 2040 2/19 Meehan-CT)

ZAMBIA

- 4911m 0455 R. Zambia: Vern tlk, drums, into Eng nx @ 0500 (322 2/28 Zimarowski-)
- 7235t 0610 R. Zambia: Eng w/ jazz mx, tlk, no ID readable, ARO QRM (332 2/14 Earhart-PA)
- 9580 2105 R. Zambia: Eng nx (333 2/19 Cawthorne-ENGLAND)

## -Europe-

ALBANIA

- 5057t 0510 R. Girokaster: Albanian? w/ man & women w/ nx?, exercise pgm (242 2/16 Vecchiola-PA)
- 6200 \*0130 R. Tirana: Eng s/on, nx (544 3/7 Smith-AL);(333 2/27 Trautschold-WI);(343 2/21 Miller-OH);(343 2/27 Thompson-NM)
- 7065 1632 R. Tirana: Eng nx (232 2/29 Pimblett-ALBERTA);(233 \*2030 2/22 Yajko-PA);(433 2203 2/27 Famularo-NJ);(555 \*0000 3/8 Smith-AL);(434 0005 2/16 Fleming-TX);(333 0015 3/5 Jacobson-IL)
- 9500 0037 R. Peking via Tirana: Sp ID and prgr (322 3/6 Dean-OH)
- 11865 1105 R. Tirana: Eng comtry, mixing w/ other sta (343 3/6 Earhart-PA)

AUSTRIA

6015 0430 Osterreichischer Rundfunk: Eng nx, Olympic spts (422 2/24 Zilmer-WI)  
 6155 0150 ORF: Eng w/ nx on Olympics (222 2/24 Yajko-PA)  
 9745 1815 ORF: Eng "Panorama", Olympic nx (322 2/22 DeVries-MA)  
 11970 1245 ORF: Eng spts (343 3/2 Earhart-PA)

BELGIUM

11805 1830 Radiodiffusion Television Belge (RTB/BRT): Fr w/ spts, ancmts ID @ 1900 (323 2/22 Perry-QUEBEC)

BULGARIA

9700 \*0000 R. Sofia: Eng s/on w/ ID, nx (211 3/6 Smith-AL); (333 2/17 Yajko-PA); (333 3/5 Smith-FL); (333 1940 2/29 Earhart-PA)

CZECHOSLOVAKIA

6055 0030 R. Prague: Eng nx (434 3/5 Perry-QUEBEC)  
 9630m \*0100 R. Prague: Eng s/on, ID (333 2/11 Lunstrum-FL)  
 7345 2125\* R. Prague: ?Lang w/ mx, IS, off w/out ancmt (444 2/22 Meehan-CT); (353 2014 Cawthorne-ENGLAND)

FINLAND

15110 \*1400 R. Finland: Eng s/on (343 3/1 Jones-MS)

FRANCE

9740 1712 R. France International: Eng w/ Afr nx (333 2/22 Yajko-PA); (443 1730 2/29 Zilmer-WI); (444 1735 2/22 DeVries-MA)  
 11890 1700 RFI: Eng "Paris Calling Africa" // 11705 (322) 11930 (433) 11965 (332) (433 2/29 Zilmer-WI); (333 \*1704 3/6 Smith-AL); (434 2/22 Yajko-PA); (333 2/28 Romani-MI)  
 15210 1713 RFI: Eng "Paris Calling Africa" (333 3/1 Jones-MS); (433 2/22 Yajko-PA)  
 15300 1700 RFI: Eng nx (353 2/28 Earhart-PA); (Wirrell-MA); (Smith-FL); (Hinds-TRINIDAD)

GERMANY, DEMOCRATIC REPUBLIC OF

9730 0110 R. Berlin International: Eng nx, mx, NA svc (322 2/22 (White-FL))  
 17255 \*1800 RBI: Eng to Afr, ID, nx, comtry (332 2/28 Smith-FL)

GERMANY, FEDERAL REPUBLIC OF GERMANY

3995 2350 Deutsche Welle: Ger w/ mx, IS, ID (312 3/1 Fleming-TX)  
 6010 0130 Deutsche Welle: Eng progr (434 2/11 Lunstrum-FL); (Estes-MS); (Wallman-MN); (Thompson-NM); (Yajko-PA) // 6040 6100  
 11785 1734 Deutsche Welle: Eng w/ Asian svc (333 2/22 Yajko-PA)

GREAT BRITAIN

3975 0635 BBC: Fren comtry, ID, Eng lesson (323 2/13 Fleming-TX)  
 6175 0245 BBC: Eng "World of Islam" (433 2/23 Miller-WA); (Yajko-PA)  
 7360 2245 BBC: Eng spts, World Radio Club (333 2/18 Gebhardt-IA)

GREECE

7215 2113 Voice of Greece (EIRT): Greek progr into Eng after IS (211 2/10 Baumgartner-ONTARIO)  
 9520 \*1500 Voice of Greece (EIRT): Greek w/ flute IS, ID, nx, into Eng ID and nx, hrd under RM the strong (333 2/29 Sparks-CA)  
 9760nf 0015 Voice of Greece (EIRT): Eng nx, local mx, to 0030 into Fr (433 2/14 Zilmer-WI)

HOLLAND

11740 1357 R. Nederland: Eng "Happy Station" (444 2/1 Makishima-JAPAN)  
 15375 1900 R. Nederland: Eng w/ requests (344 3/6 Beaudoin-CT); (333 2/26 Zilmer-WI)

HUNGARY

6000 \*0200 R. Budapest: Eng nx, comtry (433 2/26 Pearson-PA)

LUXEMBOURG

6090 0000 R. Luxembourg: Eng w/ rock (233 3/6 Jernakoff-NY);(444 2/27 White-FL);(333 3/6 Beaudoin-CT)

ITALY

6010 \*0100 Radiotelevisione Italiana: Eng nx, mx (323 2/25 Cohen-NJ); (433 2/17 Fleming-TX)

MONACO

7135 0730 Trans World Radio, Monte Carlo: Eng "The Way of Truth" (311 2/14 Fleming-TX);(242 2/29 Beaudoin-CT)

NORWAY

11850 1056 R. Norway: Norw w/ tlk (333 2/2 Makishima-JAPAN)  
11895 1657 R. Norway: Norw w/ IS, Eng ID, nx in Norw (333 2/16 Crable-ID)

POLAND

9540 1845 Polish R.: Eng "This Week in Poland" to Eur (222 2/28 Smith-FL)

PORTUGAL

6025 0236 R. Portugal: Eng w/ nx (433 2/24 Stephenson-CA);(Smith-AL); (Famularo-NJ);(Arneson-MO)  
9670 1830 IBRA R. via R. Trans Europa: Russ rel pgm, Eng ID "You are tuned to IBRA Radio", into Ukrainian prgr (322 3/10 Butterfield-MA);(322 2045 in Eng 3/5 Romani-MI)

ROMANIA

5990 0140 R. Bucharest: Eng commtry (434 2/24 Yajko-PA);(433 2/24 Fleming-TX)  
9530 \*1500 R. Bucharest: Eng s/on (242 2/22 Yajko-PA);(322 2/14 Smith-AL)

SPAIN

6065 \*0100 R. Nacional de Espana: Eng w/ nx to NAM // 11880 (323 3/7 Butterfield-MA);(Estes-MO);(Stephenson-CA);(Famularo-NJ); (Lunstrum-FL)  
11880 \*0100 RNE: Eng s/on, address (444 2/26 Thurman-IL);(Smith-FL); (Naylor-CA);(Thompson-NM)

SWEDEN

15305 1417 R. Sweden: Eng w/ SCDXers (333 2/24 Brigham-IL);(Fleming-TX); (Smith-FL);(Famularo-NJ)

SWITZERLAND

3985 2100 SBC: Eng nx, SW Merry-go-round (444 2/14 Cawthorne-ENGLAND)  
17830 1532 SBC: Eng "Sunday Supplement" (333 2/15 Meehan-CT);(342 2/26 Zilmer-WI)

UNION OF SOVIET SOCIALIST REPUBLICSUkrainian SSR:

7120 0135 R. Moscow, Simferopol: Eng commtry on Angola (433 2/11 Smith-FL)

RSFSR European:

7150 \*1230 R. Peace and Progress: Eng ID, commtry (222 2/19 Smith-FL);  
1300 R. Moscow: Eng nx, mx (333 2/21 Woltman-WI);(343 2336 2/16 Lunstrum-FL)  
0030 R. Kiev: Eng nx (443 2/17 Hinds-TRINIDAD)  
7355 0025 R. Moscow: Eng tlk // 7215 7205 7150 7115 7105 (434 2/17 Yajko-PA)  
11860 1345 Radiostantsiya Rodina: Russ w/ cl mx, ancmts, ID @ 1400 (444 2/22 Perry-QUEBEC)  
15455 1630 Radiostantsiya Atlantika: Russ w/ cl mx, ID @ 1630 (444 2/22 Perry-QUEBEC)

VATICAN STATE

9605 0100 R. Vaticana: Eng nx (334 2/23 Gebhardt-IA)

YUGOSLAVIA

9620 \*2200 R. Belgrade: Eng nx, commtry (333 ?/? Pearson-PA)

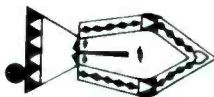
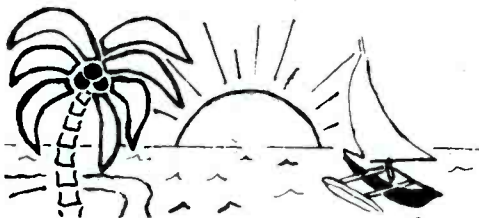
EUROPE/AFRICA ROUNDUP:

Ciao! Tnx to new rpters Larry Arneson, Jim Gebhardt, John Gion, Roland Hinds, Joseph Kurtz, Tommy Lunstrum, Jim Makishima, Jim Wallman, and W.D. Brigham. A tight squeeze this month. Next month we'll concentrate on Europe. Your editor can use some help in obtaining schematics/manuals for the following pieces of equipment: Hammarlund HQ-100, Halicrafters SX-100, Heathkit QF-1 Q Multiplier and Surplus Model 9-1074 Frequency Standard. I'd appreciate anyone having one of these manuals letting me know.

# ASIA-OCEANIA

BOB BODELL - EDITOR  
5230 S.E. 48th AVE  
PORTLAND, OR 97206

DEADLINE: 15th of the month



## OCEANIA

FREQ   TIME   SIO   LOCATION

### AUSTRALIA

4920	1300	232	NJ	ABC, Brisbane: EE w/ mx, racing results (Cohen 2/21)
5995	0755	344	TX	RA: Eng w/ tlk, ID, // 6005 (Flmeing 2/29)(Stephenson)
6005	1340	343	NM	RA: mx pgm, TPs, cmtry (Thompson 2/27) 3/14+
6035	1432	211	MN	RA-Canarvon: Eng w/pop mx, IDs, test annx (Miklejewski)
6090	1000	232	MS	ABC, Sydney: Eng ID, Time Pips (Jones 3/5)
6140	1539	444	ALB	ABC, Perth: C & W mx, sports, wx (Pimblett 2/24)
7215	1500	343	JPN	RA-Canarvon: Eng w/ nx, "Focus on Aust." (Koizumi 3/4)
7220	1320	232	QUE	RA: Eng annx, mx, ham QRM (Perry 2/22)
7290	1201	232	FL	RA: Chinese tlk, mx, ID (T. Smith 2/20)(Miklejewski)
9540	1837	433	ALB	RA: "Pacific Sunrise", // 11725 (Pimblett 2/24), and Miklejewski MN, Yajko PA, Trubee HI....*1800-2200*....
9560	1800	333	WA	RA-Canarvon: IS, ID, test annx, mx (Rojewski 3/4), and Indo @ 1300, Zilmer, Chin 1430, Naylor, Miklejewski...
9570	0830	444	AL	RA: Eng w/ ID, freqs (D. Smith 3/9), Brooker MI, Fleming TX, DeVries MA, Svinicki MI, Jacobson IL, Stephenson..
9600	1330	433	WI	RA: Thai w/ Eng ID, mx (Zilmer 3/22)
9610	1300	333	GA	ABC, Perth: Eng w/ mx, nx, wx, sprts (Bernstein 2/15), White FL, Famularo NJ, Yajko PA, Rojewski WA.....
9690M	*0800	233	OR	RA: Indo w/ Eng ID, pop mx (Uerlings 3/9)(Jacobson IL)
9750	1300	343	PA	RA: JJ w/ Eng S/on (Yajko 2/21)
9760	0930	322	MA	RA: Pidgin tlk over AFRTS (DeVries 2/24)(Svinicki 3/14)
9770	1000	343	FL	RA: Eng w/ nx, "Countdown" (T. Smith)(Earhart PA)
11725	2125	323	PA	RA: "Mailbag", ID, IS (Yajko 2/21)(Miklejewski MN)
11870	2115	343	ENG	RA: "Dxers Calling" (Cawthorne 2/7)(Yajko PA)
11965	*1500	332	NJ	RA: IS, ID, Eng w/ nx (Famularo 2/29)(Miklejewski MN)
15160	0025	333	ALB	RA: Eng nx, 0030 pop mx (Pimblett 3/7)
15320	0150	323	FL	RA: Eng w/ nx, editorials, "World of Mx" (Lunstrum), Bethge MO, Somers CA, Jacobson IL, Stephenson CA.0300*
17795	0135	323	IL	RA: Eng w/ nx, mx (Jacobson 3/5)(B. Miller CA)

### RADIO AUSTRALIA

### NEW CALEDONIA

7170	0715	344	TX	R. Noumea: Fren w/ Fren & Eng pop mx (Fleming 3/3), and Pimblett ALB, Naylor CA, Stephenson CA.....
------	------	-----	----	---

### NEW HEBRIDES BROADCASTING SERVICE

3945	0832	433	JPN	NHBS: Eng/Pidgin w/ hymns, ID at 0910* (Junqua 2/15)
------	------	-----	-----	--

### NEW ZEALAND

6105	1044*	342	MS	RNZ: Eng w/ pgm hilites, anthem (Jones 2/20)(Jacobson)
9520	0858	222	JPN	RNZ: Eng nx, tlk, wx, IS (Makishima 2/15), DeVries MA, Fleming TX, Naylor CA, Jacobson IL, 1110* Jones MS....
9585	0615	555	OH	RNZ: island mx, "sports call" (Loverli 2/29), and Pimblett ALB, Svinicki MI, Trubee in Kona.....
11780	0545	333	GA	RNZ: Eng w/ IS, ID, nx (Bernstein 2/22), also C. Miller WA, Stephenson CA, and Rojewski WA.....
11960	2330	222	HI	RNZ: Eng to Pacific, nx, mx, // 15380 (Trubee 3/10)

### PAPUA NEW GUINEA

3245	0907	322	JPN	R Gulf District: 2 OMs in Pidgin, mx (Junqua 2/15)
3360	0743	434	CA	R Milne Bay: local mx, Pidgin annx (Young 3/10)



PAPUA NEW GUINEA (continued)

3395	0931	322	JPN	R East New Britain: Pidgin w/ hymns (Junqua 2/15)
3904	0930	242	TX	R Manus: Pidgin annx, mx (Laves 3/7) 2/10)
3925	1952	343	JPN	NBC: mx IS, 1959 annx, 2000 Eng nx, NSB QRM (Koizumi
4890	0835	433	AL	NBC: Eng w/ sprts, ID D. Smith 3/9), and Loverti OH,
				Svinicki MI, Fleming, TX, Earhart PA, Cohen NJ.....
9520	0630	433	CA	NBC: Pidgin tlk, pop mx (Stephenson 2/7)

SOLOMON ISLANDS

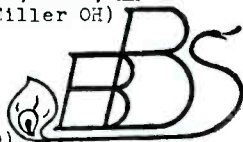
5020	0650	544	CA	SIIBS: Pidgin/Eng w/ ID, island & pop mx, request prgm (Young 3/10), also Jones MS, Uerlings OR.....
------	------	-----	----	--

TAHITI

6135	1110	342	FL	Radio-Tahiti: Polynesian mx, Tahitian tlk (White 2/13)
11825	0305	444	IL	RT: Tahitian/Fren tlk, mx (Jacobson 2/24)(Earhart PA)
15170	*1600	444	TX	RT: Fren/Tahitian w/ "Le Marsillaise", annx, mx (Fleming 3/7)(Somers CA)(Jones MS)(Miller OH)



ASIA



BRUNEI

4865	1424	333	OR	RB: modern Malaysian mx (Bodell 3/20)
7215	1247	222	OH	RB: Eng w/ YL tlk, pop songs (Miller 2/16)

BURMA

4725	1415	343	OR	BBS: YL w/ Burmese? tlk (Bodell 3/20)/(Cleveland CA)
5040	1500	322	CA	BBS: ID, "You are tuned to Rangoon", mx (Klontz 3/8)

CAMBODIA

4908	1425	323	OR	Fhnom Penh R: YL/OM Khmer tlk, usual QRM (Bodell 3/20)
------	------	-----	----	--

CHINA

2500	1418	343	CA	PLA 2: YL tlk in Amoy, piano mx, vocals (Mercado 2/21)
3000	1400	444	CA	PLA 1: Mandarin tlk by YL (Mercado 2/21)
3200	1105	242	MS	PLA 2: Amoy w/ mx tlk by YL (Jones 2/20)(Mercado CA)
3400	1348	233	CA	PLA 2: Amoy w/ YL vocals (Mercado 2/21)
3450	1343	344	CA	Beijing HS: Chinese w/ YL tlk, vocals (Mercado 2/21)
3535	1452	--3	CA	PLA 1: Mandarin w/ vocal mx (Cleveland 2/25)
3985	141*	333	JPN	R Peking: Eng w/ prgm details, cmtry, mx (Junqua 2/14)
4035	1253	122	TX	Lasa relay Beijing HS: Chinese tlk, YL sings (Laves 3/7)
4068	1300	132	TX	Huhehaote: Chin tlk, mx (Laves 3/7)(Cleveland CA)
4110	1306	131	TX	Kinjiang JKT: Chin. w/ OM wailing (Laves 3/7)
4460	1436	343	CA	Beijing HS 1: Chinese comedy (Mercado 2/21)
4525	1410	333	OR	Donsheng: Mongolian w/ tlk by OMs (Bodell 3/20)
4620	1453	434	CA	R Peking: S/off w/ "Internationale" (Mercado 2/21)
4925	0830	555	JPN	Ha'erbin: now has Korean 0830-0930 (Kiyomiya daily)
1990	1235	142	TX	Hunan JKT: play w/ emphatic tlk (Laves 3/7)
5880	2312	333	PA	RP: Chinese mx, tlk (Yajko 2/22)
6210	1553	343	CA	RP" u/lang ID "Dejaaa R. Peikinski" @ 1600 (Naylor 2/14)
6290	1347	232	MN	RP: Eng w/ Revolutionary mx (Miklejewski 2/28)(Yajko)
6750	1335	242	MN	Beijing HS 1: Chinese w/ OM/YL in play (Miklejewski)
6955	1229	222	MN	RP: JJ tlk tlk, mx (Miklejewski 3/10)
7060L	0100	222	FL	RP: Eng w/ news (Lunstrum 2/4)(D. Smith AL)
7350	2244	433	PA	RF: Chinese tlk & mx (Yajko 2/22)
9390	1230	332	WI	RF: Esperanto w/ IS, ID, tlk, mx (Zilmer 2/26)
9860	1519	444	CA	RP: Eng nx by YL, prgm annx (Mercado 2/21)
9920A	1515	444	CA	RP? w/ nx in u/lang (Mercado 2/21)
9940	*0100	433	OH	RP: Eng to NAM, cmtry (Dean 3/6)(Uerlings OR)(Yajko PA)
11505	0635	444	JPN	Beijing HS2: Chinese tlk, songs (Makishima 2/7)
11600	1355*	323	PA	RF: Eng to SEA (Yajko 2/22)
11650	000*	343	PA	RP: Spanish tlk by YL, // 9340 (Yajko 2/17)
11675	0005	344	PA	RF: Eng tlk about Chinese photox. (Yajko 2/17)
11685	1300*	443	NJ	RP: Eng cmtry, "Internationale" (Cohen 2/27)
11695	*1400	322	PA	RP: anthem, tlk in Cambodian (Yajko 2/22)
11945	*0000	333	PA	RP: Eng nx & mx (Pearson 2/14)(Somers CA)(C. Miller WA)
12055	0302	242	OR	RF: Eng prgm (Uerlings 3/8)

INDIA

3375	1232	322	JPN	AIR-Gauhati: Eng YL w/ nx, subcont mx (Junqua 2/18)
9525	2200	242	TX	AIR-Aligarh: Eng nx, YL cmtry, 2230* (Fleming 2/22), Miller OH, Yajko FA, and Zilmer WI.....

**PEKING**

INDIA (continued)

9645	1525	333	OR	AIR: prgm in u/lang, Eng nx @ 1530 (Bodell 3/20)
9912	2217	333	PA	AIR-Delhi: Eng w/ Indian mx, narrative (Yajko 2/21)
11620	2105	332	WI	AIR-Delhi: Eng w/ cmtry, local mx (Zilmer 2/29)
11740	2200	332	WI	AIR-Delhi: Eng nx, cmtry (Zilmer 2/29)
11775	1034	343	FL	AIR-Aligarh: Eng w/ Indian mx, cmtry (White 2/20)
11810	1445	432	WI	AIR-Aligarh: Eng w/ contest quest., local mx (Zilmer)
15080	1745	352	WI	AIR-Bombay: Eng w/ local mx, nx, cmtry (Zilmer 2/26)

Kashmir (Srinagar)

3277	1508	222	JPN	R Kashmir: folk mx, cmtry in u/lang (Kiyomiya 2/10)
------	------	-----	-----	---

INDONESIA

Radio Republik Indonesia

3053	1445	---	CA	RKPKD Sampang (T): Indo w/ local mx (Cleveland 2/25)
3324	1344	323	OR	RRI Jember: YL w/ Indo singing (Bodell 3/20)
3408	1346	322	OR	RAUB, Jakarta (T): Islamic mx, 2nd sta (Bodell 3/20)
3414	1348	323	OR	RRI Medan: Indo mx, YL annx (Bodell 3/20)
3905	1449	--2	CA	RRI Palangkaraya: Indo mx, "Love Ambon" (Cleveland 3/8)
3945	1020	232	TX	RRL Dempasar: Indo w/ MoR & island mx, "LA" (Laves 3/7)
3965	1357	333	OR	RRI Pontianak: Indo tlk by OM, mx (Bodell 3/20)
3974	1055	242	TX	RRI Surabaya: Indo mx, tlk, ham QRM (Laves 3/7)
4000	1049	222	TX	RRI Kendari: Indo w/ island mx, tlk (Laves 3/7)
4066	1403	332	OR	RRI Merauke: carrier on after S/off (Bodell 3/20)
4699	1120	252	TX	RKIP Surabaya: Indo songs, YL in play? (Laves 3/7)
4720	1155	242	OH	RRI Ujung Pandang: dreamy Indo mx, 1200 nx (Miller)
4805	1417	333	OR	RRI Jakarta: modern Indo mx, // 4775 (Bodell 3/20)
4845	0955	242	TX	RRI Ambon: island mx, ID, nx, // 7139 (Laves 3/7)
4871	1225	232	OH	RRI Sorong: Indo w/ pop mx, annx, "LA" (Miller 2/27)
4900	1445	--2	CA	RRI Gorontalo: Indo w/ nice orch mx (Cleveland 2/23)
4927	1443	--3	CA	RRI Jambi: Indo nx of Angola, mx (Cleveland 3/3)
4930	1429	323	OR	RRI Tanjungpinang: Indo w/ Islamic tlk (Bodell 3/20)
4955	1440	--2	CA	RRI Banda Aceh: Indo mx, chanting (Cleveland 3/1)
5259*	1135	152	TX	RRI Sibolga: Islamic wailing by OM (Laves 3/7)
7210	0933	323	OR	RRI Biak: Indo nx, mentioned Irian Jaya (Bodell 3/8)

IRAN

Voice of Iran

9022	2000	322	NJ	VOI: Eng nx, mx (Cohen 3/6)(Makishima JPN)(Miller 04)
15084	1700	333	OR	VOI: Persian mx, making its Spring return (Bodell 3/21)

IRAQ

9755	2028	333	ENG	R Baghdad: S/off (Cawthorne 2/20) Cairo here too, reb.
9758	2107	131	TX	RB: Arabic mx, fluttery, fading (Laves 3/1)

**R. B. I.**

ISRAEL

5900	*0500	555	AL	IBA: Eng w/ nx, wx, (D. Smith 3/9), also Bethge MC, Fleming TX, Yajko PA, and Cawthorne ENG @ 2000.....
7395	*0500	454	FL	IBA: Eng ID, IS, nx (T. Smith 2/28)(Earhart PA)
7412*	*2230	444	AL	IBA: Eng ID, nx (D. Smith 3/7), and Famularo NJ, T. Smith FL, Yajko PA, Zilmer WI, and Cleveland CA....
7462	2245	433	WI	IBA: Hebrew w/ tlk, ads, mx, 2305*, // 9400 (Zilmer)
9009	2002	222	JPN	IBA: Eng nx, tlk (Makishima 2/19)(Famularo NJ)(Yajko)
9495	2240	332	WI	IBA: Fren w/ tlk, mx, ads, 2255* (Zilmer 2/17)
9815	2025	132	TRIN	IBA: Eng w/ mailbag, DX prgm, nx (Hinds 2/21), and Lunstrum FL, Rojewski WA, Famularo NJ, Yajko FA.....
12077	1500	443	WI	IBA: Hebrew tlk, local & pop mx (Zilmer 2/28)

JAPAN

3910	1503	--3	CA	Far East Network: Eng w/ world nx, wx (Cleveland 2/25)
3925	1508	--3	CA	Nihon Short-wave Broadc: JJ tlk by OM (Cleveland 2/25)
6030	1345*	343	MS	R Japan: Eng/JJ annx, anthem, S/off (Jones 2/14)
6055	1305	555	CA	NSB: Japanese tlk, mx (B. Miller)
7195	1800	333	WA	RJ: German w/ nx, ID (Rojewski 2/20)
9505	2104	321	MN	RJ: Eng w/ OM cmtry, QRM (Miklejewski 2/26)(Thompson NM)
9585	1407	322	MN	RJ: Eng nx, cmtry (Miklejewski 2/26)(B. Miller CA)
9595	1607	433	ALB	NSB: Eng w/ "Tokyo Forum" (Pimblett 2/21)(C. Miller WA)
11875	2243	434	WA	RJ: IS, ID, S/on in Chinese (C. Miller 2/28)
15105	0025	243	OH	RJ: Eng/JJ in GOS (Dean 2/27), and by Jacobson IL, Thompson NM, Famularo NJ, Yajko FA.....
15195	0135	333	WA	RJ: Eng w/ nx, cmtry (C. Miller 2/19)(B. Miller CA)
15270	0014	333	MI	RJ: Eng to NA (Swinicki 3/14)(Zilmer WI)

JAPAN (continued)

15300 2300 444 ID RJ: Eng w/ "Tokyo Calling" (Crabbe 2/8)(C. Miller WA)  
 15420 0207 354 WA RJ: Eng prgm to NA (C. Miller 2/23) **RADIO JAPAN**

**NIPPON HOSO KYOKAI**JCRDAN

9560 1606 333 OR HKBS: Arabic & pop mx (Bodell 3/20)

KOREA, D.P.R.

2670 1329 332 OR Sariwon w/ Korean mx, // 2776, 2850 (Bodell 3/20)  
 2776 1415 343 CA Hamhung w/ Korean tlk, mx (Mercado 2/21)  
 3320 1341 343 OR R P'yongyang: For Svce in Korean (Bodell 3/20)  
 3340 0845+ 333 HI RP? w/ tlk in Korean, mx (Trubee 2/22)  
 4273 1406 333 OR Kanggye w/ Korean tlk by OM (Bodell 3/20)  
 9420 2105 232 OR RP: Eng w/ YL cmtry (Uerlings 3/7)  
 9977 1840 333 WA RP: Eng w/ cmtry, mx (Rojewski 2/26)  
 11535 2245 342 WI RP: Korean to LA, IS, anthem, 2250\* (Zilmer 2/17)  
 15360 2354 --3 CA RP: Eng w/ S/off annx, // 11535 (Cleveland 2/20)

## Korean Broadcasting System

KOREA, REP.

2510 1326 232 OR Taegu w/ Korean tlk by OM/YL (Bodell 3/20)  
 6348 0900 433 HI Echo of Hope: Korean w/ world nx by YL/OM (Trubee 2/15)  
 9640 1445 434 CA R Korea: Eng w/ tlk, Kor mx, // 9600 (B. Miller)  
 11850 \*0500 433 CA RK: Eng S/on, then news of Korea (Stephenson)

KUWAIT

9555 1935 332 ENG R Kuwait: Eng w/ pop mx, // 11940 (Cawthorne)  
 11940 1728 333 OH RK: Eng nx, wx, pop mx (Leamy)(Miller OR)(Famularo NJ)

MALAYSIA

3915 1505 --3 CA BBC-Tebrau: Eng w/ world nx (Cleveland 2/25)  
 6195 1725 332 CA BBC: Eng w/ "Saturday Special"; ID (Naylor 2/7)  
 7180 1705 333 WA BBC: Eng news, ID (Rojewski 3/3)

**BBC**NEPAL

3425 1447 432 CA RN: Eng nx, Nepali mx (Bixby 2/10)(White FL 3 0030)  
 5007 1232 232 OH RN: Nepali tlk, subcont mx, // 3425 (Miller 2/27)

PAKISTAN

3840 1200 333 JPN Azad Kashmir R via Rawilpindi: folk mx, nx (Kiyomiya daily)  
 6130v 0135 333 CA RP-Islamabad: Urdu w/ YL ID, site, SC mx (Bixby 2/9)  
 11672 1425 342 WI RP-Karachi: Eng nx, freqs, ID (Zilmer 2/28)(Yajko PA)

PHILIPPINES

5150 1005 333 HI VOA: Chinese prgm, // 9555 (Trubee 2/15)  
 7155 0804 444 CA VOA-Tinang: Russ tlk w/ ID (Naylor 2/7)(Trubee 2/15)  
 7225 1340 343 NM FEBC: JJ w/ vocals, organ mx, ID, tlk (Thompson 3/8)  
 9545 2300 333 NM VOA: Eng w/ "Breakfast Show" (Thompson 3/6)  
 9580 1535 423 WA VOP: Eng w/ "Musica Filipina" prgm (C. Miller 2/20),  
 Rojewski WA, Stephenson CA, and Cleveland CA.....  
 9605 1349 443 CA VOA: tlk in u/lang, ID (Naylor 2/11)  
 9630 1404 333 CA VOA-Tinang: Indo tlk by OM, ID (Naylor 2/11)(Cleveland)  
 11920 0900 444 JPN FEBC: Eng w/ "Back to the Bible" (Makishima 2/20)  
 15310 0100 343 HI R. Veritas: Eng w/ test tx, requests rpts (Trubee)  
 15440 2345 333 OH FEBC: Eng w/ "Manila Calling DXers" (Loveri 2/28),  
 Crabbe ID, C. Miller WA, Thompson NM.....

**febc**RYUKYU ISLANDS

7255 \*1000 211 HI VOA-Okinawa: prgm in Chinese (Trubee 2/15)

SARAWAK

4950 1550 323 OR R Malaysia Sarawak-Kuching: Eng pop mx, 1600\* (Uerlings 3/9)  
 5005 1440 --3 CA RMS-Sibu: Iban w/ tlk, lively pop mx (Cleveland 3/8)

SAUDI ARABIA

9730 2102 454 FL BSKSA: Arabic tlk, mx, Western mx (White 2/18) 3/5  
 11780 1600 343 MN BSKSA: Ar w/ ID "...Arabiya Al Saudiyah" (Miklejewski)  
 11825nf1500 333 JPN BSKSA: Arabic w/ Qu'ran, nx (Kiyomiya 2/16)

SINGAPORE

5052 1445 333 OR RS: Eng w/ nx, pop, classical mx, // 5010, 11940  
 (Uerlings 3/9), Thompson NM, Stephenson CA, Cleveland



Lots of room for DX news this time! If you have DX items, suggestions, or comments for use in D A T E L I N E, be sure to send them along. Before we go any further, a reminder that the items marked (BBCMS) are copyright and used by permission of the BBC Monitoring Service.....

AUSTRALIA/CANARVON--the March RA sked has the following usage for Canarvon: The 250 KW transmitter: (2130-2300) on 9770 in Viet; (2330-0300) on 15190 in Eng; (0300-0600) on 17860 in Eng; (0600-0900) on 15190 in Eng; (0930-1300) on 9560 in Mandarin; (1300-1430) on 9560 in Cantonese; (1430-1730) on 6035 in Eng. The 100 KW transmitter: (2100-2230) on 7240 in Eng; (2230-0030) on 9560 in Indo; (0030-0800) in Eng, (0800-1100) in Indo, both on 15415; (1100-1500) in Indo, (1500-1730) in Eng, both on 7215.....

BANGLADESH--Radio Bangladesh has issued this new external service sked: (0445-0515) on 15400, 21685 in Eng; (0515-0545) on 15400, 17890, 21685 in Arabic; (1120-1150) on 6085, 7250 in Nepali; (1230-1300) on 11890 in English; (1410-1430) in Pushto, (1430-1530) in Urdu, (1530-1600) in Punjabi, all on 7150; (1600-1530) on 4890, 7150 in Hindi; (1645-1815) in Bengali, (1815-1900) in English, (1900-1915) w/ slow speed Eng news, all on 6015, 7250 (NHK's DX News 3/21).....

BURMA--BBS now broadcasts these languages on its Nationalities Service on 4725; 1000 Kachin, 1030 Kayah, 1100 Sgaw Karen, 1130 Pwo Karen, 1200 Chin, 1230 Mon, 1300 Arakanese, 1330 Burmese, 1345 Shaw. (BBCMS).....

COOK ISLANDS--Cook Islands Broadcasting and Newspaper Corp. may still be broadcasting test transmissions on 3265 w/ 500 watts. Tests had been carried out from 1930-0730 to determine the ground wave coverage and experiment re-laying tests to outer islands. Reports go to Mr. Nooroa Tangaroi, P.O. Box 98, Rarotonga (NZDXL via Ralph Perry via Numero Uno).....

GILBERT ISLANDS--Look for internal self government to be granted the Gilbert Islands by the end of 1976, with full independence being granted later. Meetings with the British government on the subject are expected to take place by the middle of the year. (R Australia News 2/19) all but Ocean I., reb.....

IRAN--Radio Tehran has reactivated two freqs, 17735 and 15135, // to 9022 and 15084. 9680 has apparently been dropped (BBCMS).....

IRAQ--recent observations indicate these changes in Radio Baghdad's Svces: Persian has been retimed to 1600-1900 on 3195 and 6095; Turkish is now heard from 1900-2100 on 3195. Syriac prgm is now 1400-1600 on 3195 (BBCMS).....

ISRAEL--IBA has made changes and now has this English language External Svce sked: (0500-0515) on 5900, 5915, 7412½, 9009, 17865; (1200-1230) on 5915, 11645, 15100, 15465, 15485, 17685; (2000-2030) on 7412½, 9009, 9815 or 9820, 11645, 15100, 15485; (2230-2300) (new to North America) on 7412½, 9815 or 9820, 11645, 12035. The Home Svce Relay sked is: (0400-0600) on 5950?, 7462½, 9435, 12077½; (0600-1200) on 9435, 12077½; (1200-1900) on 9435, 12077½, 15512½; (1900-2100) on 9435, 12077½; (2100-2305) on 5882½, 7462½, 9435, 12077½. The Home Svce in Arabic is: (0415-2200) on 5882½, 5915 (RA's DXers Calling 3/22)

JORDAN--Radio Jordan has this SW sked for English Svce: (1000-1500) on 7155; (1500-1730) on 9560. Arabic Svce: (0330-0730), (1430-1730), (1900-2200) on 7155; (0930-1400) on 9530; (0330-2310) on 11810 (5KW) (BBCMS).....

KUWAIT--Radio Kuwait has added 11825 for its broadcasts to Europe (0815-1505); for the Arab Magrib 15415 has replaced 21685 (1000-1505) (BBCMS).....

LAOS--A Vientiane domestic service broadcast on February 29, announced the following frequency sked for the First Network (SWs only): (0400-0600) on 6130; (0800-1430) on 3900, 6130; (2230-0200) on 3900, 6130 (BBCMS).....

PAKISTAN--see next page.....

SAUDI ARABIA--BSKSA external service from Jiddah broadcasts in Persian from 1500-1555 on 11825, ex 15115 (BBCMS) don't confuse with Kuwait.....reb.....

PAKISTAN-Radio Pakistan's external svce sked, at least part of it. The sked appears to be incomplete: (0045-0200) on 11750 in Burmese; (0100-0230) on 9645, 11885 in Bengali; (0300-0345) in Swahili, (0345-0430) in Gujarati, (0430-0445) w/ slow speed Eng nx, all on 15325, 17830, 21590; (0500-0815) on 11672, 17665, 17750, 17830, 21570, 21730 w/ Urdu World Svce; (0830-1000) in Hindi, (1000-1045) in Tamil, (1115-1315) in Bengali, all on 15325, 17750; (1215-1315) on 7265, 9690 in Turkish; (1800-1900) on 7085, 9645 in Turkish; (1715-1845) on 7290, 9690 in Arabic; (1900-2000) on 7290, 9690 in Fren; (1915-2145) on 7150, 9645 w/ Urdu WS: (2345-0045) on 7080, 9460, 11750 w/ Urdu WS (NHR's DX News 3/7). In addition, BBCMS lists the Urdu World Svce from 1330-1630 on 9460, 11885, 17665, with Eng news bulletin at 1430.....

TAIWAN-here is a list of SW outlets, other than BCC (VOFC), as of August 1975. Published in "Broadcasting Stations in Taiwan (Formosa)(Domestic)", by Kimio Masumoto, 890-30, Kamigo, Totsuka, Yokahama, Japan: BEC87, Min Fang (Civil Defense), on 2370 MHz, 24 hours daily, address is 62-4, Sec. 3, Chungshan-peí, Taipei; BEP23, Ching Cha (Police Bdcst Network), on 5960, 24 hours daily, 1, Tientsin Rd, Taipei; BEC77, Cheng Yi Chih Sheng (Voice of Righteousness), on 5995 and 7200, 52-8, Sec. 1, Chicheng Rd, Shihlin, Taipei; BEC61, Kung Chun, Taipei (Air Force), on 6105, (2150-0200), (1055-1700), 44, Sec. 2 Renai Rd, Taipei; BEG23, Yu Shih (China Youth Bdcst Sta), on 7180, (2150-0600), (0825-1700) 131, Puhua-peí Rd, Taipei; BEC76, Cheng Yi Chih Sheng (VoRighteousness), 7200 (see 5995); BEC71, Kung Chun, Tainan (AF), on 7260, 10, Liuchiating, Tainan, (2120-0030), (0355-0700), (0955-1705); BEC62, Kung Chun, Taichung (AF), on 9745, (times same as 7260), Changeping-Rd, Peitun, Taichung (via Don Johnson).....

THAILAND-In a letter to Martin Field, Bangkok Meteorological Radio stated that it plans to return to the air soon after a 6 mos absence. Old freq didn't fit in World Meteorological Organiz. plan. New freq will be 6765 (Numero Uno).....

USSR-word from Doug Snyder that s Russian has been heard on a new freq of 3385 w/ Mayak programming, in // 7135.....thanx Doug.....

VOA-frequency list for Asian sites, valid to May 1: 5955 Philippines (1400-1700); 5965 Rhodes (0345-0600); 5995 Phil (1145-0030); 6010 Okinawa (1145-1500); 6015 Rho (1630-2200); 6020 Phil (1145-1500); 6070 Rho (0145-0400); 6075 Ok1 (2115-2200); 6095 Phil (2045-2200); 6110 Phil (1045-1600), (2115-2400); 6160 Phil (1200-1600); 6185 Phil (2200-2400); 7110 Colombo (0030-0330), Rhodes (0345-0600), Col (1230-1800); 7135 Phil (2200-0030); 7155 Phil (0945-1600); 7160 Phil (2115-2200); 7165 Ok1 (1045-1500); 7200 Phil (2130-2400); 7205 Phil (1315-1600), Rho (1615-2200); 7210 Phil (1600-1700); 7240 (1145-1500) Phil; 7255 Ok1 (0945-1600), (2115-0030); 7275 Phil (0945-1600), (2215-2330); 9530 Phil (1145-1500); 9545 Phil (2145-0100); 9555 Phil (0745-1600); 9560 Ok1 (2145-0045); 9605 Phil (2215-2330); 9625 Phil (1530-1700); 9630 Phil (0945-1545); 9650 Phil (2215-2400); 9725 Phil (1330-1500); 9735 Phil (2315-2400); 9760 Phil (1045-1545); 9770 Phil (2200-0030); 11715 Phil (0945-1500), Col (1500-1800); 11740 Col (0100-0330); 11760 Phil (2145-0330); 11805 Phil (2230-2400); 11815 Phil (0115-0230); 11830 Phil (2115-2200); 11840 Phil (0015-1200); 11880 Phil (2215-2330); 11895 Phil (1145-1500); 11930 Phil (0745-1015), (1045-1515), (2200-0030); 11935 Col (1245-1500); 11965 Phil (0730-1300), (2315-2400); 15150 Col (1245-1800); 15155 Phil (0215-0245); 15185 Col (0045-0330); 15220 Phil (0030-0330); 15250 Phil (0730-1300), (1345-1500); 15290 Phil (2145-0100); 15345 Phil (0115-0230), (0745-1100); 15410 Phil (0745-1130); 17210 Phil (1000-1030); 17250 Phil (0215-0245); 17790 Phil (0045-0330); 17800 (0115-0230); 21490 Ok1 (2300-0230).

YEMEN/SANA'-R Sana' has been noted on new 9765 (ex-9780), and 15130 (BBCMS)

\*\*\*\*\*A/O KWICKIE KWIZ\*\*\*\*\*  
 Last month's KWIZ was pretty tough, especially since the correct answer, VLADIVOSTOK, is not now part of China. After much research Bill Cleveland came up with the correct answer to keep his record in tact. This month's question involves the name of the "radio" town which is located at the base of the 3766 metre high mountain of the same name.....let's hear from YCU.....  
 \*\*\*\*\*  
 Please excuse the several mistakes made in last month's A/O. I guess that's what happens when you try to do a rush job. One thing I would like to clarify concerning the map of China is that the sites shown are, in most cases, provincial or local broadcast centers. Some of these centers broadcast on MW only. We were down to just 52 reporters this month. But condx are improving, so let's make April a record month! Get up off your Easter eggs and report, hi. This month we want to welcome the following new reporters: John Gion, Ronald Hinds in Trinidad, Takaharu Kiyomiya and James Makishima in Japan, Joe Loverti, Tom Lunstrum, David Smith, and James Young...Am in a hurry (again), 73, *Bob* ....

# WORLD SERVICE STATION SKEDS

EMISSIONS

## PROGRAMMI

TRASMISSIONI

BULLETIN DE PROGRAMMES

Editor:

PROGRAMS

ENGLISH SERVICE

MEL HICKMAN  
7409 S.E. 82nd  
PORTLAND, OR 97266

SERVIZIO

PROGRAMME SCHEDULE

Deadline: 15th

COMUNICATI NEL CORSO

### CURRENT ENGLISH SCHEDULES TO NORTH AMERICA

COUNTRY	STATION	TIMES (GMT)	FREQUENCIES	REPORTERS	
Albania	R. Tirana	0000-0030	7065, 9750	Thompson, BECMS	
		0130-0200	6200, 7300		
		0230-0300	6200, 7300		
		0330-0400	6200, 7300		
Austria	ORF	1100-1130	9500, 11985	DuRant, Wootten	
		0130-0200	6155, 9770		
		0330-0400	6155, 9770		
		0430-0500	6015		
Bulgaria	R. Sofia	0000-0100	9550, 9560, and/or 9700	Radtke, Bethge	
		0400-0430	Same as above.		
China, Rep. of	VOFC	0200-0350	11825, 15345, 17890	Hojewski	
		1830-1930	9510, 11860, 15370		
		2000-2100	17720		
Ecuador	HCJB	0100-0500	6095, 9560, 11915	Smith-FL	
		0500-0700	6095, 9560		
		1215-1230	11740		
		1230-1630	11740, 15115		
England	BBC	0000-0330	5975, 6175, 7325, 9510, 9580	Lunstrum, Brooks	
		0330-0430	5975, 6175		
		1100-1200	15070		
		1200-1330	5990, 15070		
		1500-1615	17840		
		1700-1830	9580		
		2115-2245	5975, 9580		
		2245-2300	5975, 7325, 9580		
		2300-2400	5975, 6175, 7325, 9510, 9580		
		0130-0150	6010, 6040, 6075, 6100, 9565, 9605, 11865		
Germany, F.R.	DW	0530-0550	6100, 6185, 9545	DuRant Cleveland	
		0015-0030 News	9760		
		0215-0230 "	9760		
		1215-1230 "	9520		
Greece	V. of Greece	1515-1530 "	9520		
		0200-0320	6165 (Bonaire)	Wilson, Lunstrum, Miller-WA	
		0500-0620	6165 (B), 9715 (B)		
		1642-1651 M-F	15190 (B), 17775 (B)		
2130-2250 M-Sa	9715 (Lopik), 11730 (L)				
Hungary	R. Budapest	0200-0230 Tu-Su	6000, 6115, 7220, 9833, 11910, 15220, 17710	Harding	
		0300-0330	Same as above.		
		0400-0415 W, Sa	Same as above.		
Israel	IBA	0500-0515	5900, 7412, 9009	Hojewski, Brooks	
		1200-1230	11645, 15100, 15485, 17685		
		2230-2300	7415, 9820, 11645, 12025		
		0130-0230	15195, 15420, 17725, 17825		
Japan	R. Japan	2345-0045	15270, 15300	Harding, Miller-WA Yajko, Wilson	
		0000-0030 M	6185		
Norway	R. Norway	0200-0230 M	6185	Wilson	
		0400-0430 M	6185, 9610, 9645		
		0600-0630 M	9645, 11870		
		1400-1430 Su	15170		
		1600-1630 Su	15170		
		1800-1830 Su	11895		
		2200-2230 Su	11870		
		2226-2320	5980, 9585, 11900		Lunstrum, Wilson, DuRant
		0230-0300	6045, 9695		
		South Africa	R. RSA		1230-1300
1400-1430	15305				
2300-2330	6045, 9605, 11705				
0100-0115	5995, 6165, 9605				
Sweden	R. Sweden				
Vatican State	Vatican R.			Harding	

Stations not listed are unchanged from previous bulletins.

**ALGERIA:** From BBCMS (copyrighted and used by permission) comes this external sked: Arabic - 1800-1900 on 6160, 7195, 7245, and 11810; English - 1900-2000 on 9610, 11910, and 15420; French - 2000-2100 on 7245, 9510, 9725, and 11910; Arabic/Spanish - 2100-2130 on 9610, 11910, and 15420; Spanish - 2130-2200 on 9610, 11910, and 15420; Arabic - 2200-2300 on 7195, 11810, 11835, 15160, and 15370; and Spanish - 2300-2400 on 7145, 9610, 11910, and 15420.

**AUSTRALIA:** Left out of the NA list was RA's beams: 0100-0300 on 15320 and 17795 and 1115-1245 on 9580. (Rojewski, Wilson, Bernstein, and Lunstrum)

**BELGIUM:** RTB-BRT has an English beam to Africa at 1715-1800 on 9745 and 11940. (Harding)

**CONGO, P. R.:** RTVC has this French sked: 0430-0700 1475, 3115, 3232, 4765  
0700-1030 1475, 3232, 4795, 7175, 9610  
1030-1400 Add 15190 to above.  
1400-1700 1475, 3232, 4795, 7175, 9610  
1700-2300 1475, 3232, 4765, 9715, 15190  
No mention was made of the Tuesday English beam reported at 2100. (Jernakoff, Bixby)

**ECUADOR:** Besides its English pgms to NA, HGJB also beams French at 0040-0100 on 9560 and 11915 and Spanish at 0030-0230 on 11960, 1100-1630 on 11910, and 1630-0030 on 15115. (Smith-FL)

**ENGLAND:** For our many members in Antarctica, BBC broadcasts the World Service your way at 2245-0330 on 5975, 7130, and 9915. (Brooks and Lunstrum)

**ETHIOPIA:** RVOG has English scheduled at: 0400-0425 E/Afr 7165  
0530-0610 W/Afr 11800  
1700-1710 Ethi 6015  
1810-1825 E/Afr 9705  
1830-1910 S/Afr 7145  
1945-2030 W/Afr 11930 (Cohen)

**FRANCE:** The director of RFI said in a France-Inter interview on February 9, 1976, that broadcasts to North America were to begin "quite soon". At present, RFI broadcasts externally to Europe and Africa. (BBCMS)

**INDIA:** The current English sked for AIR shows these listings:

To Europe, Africa, Australia, and N.Z.:  
1830-1945 7150, 9525, 9575, 11620, 15080  
1945-2045 7150, 9525, 9755, 9912, 11620  
2045-2230 7150, 7215, 9525, 9912, 11620, 11740  
1745-1830 7150, 9525, 9575, 11620, 15080  
To North East Asia, Australia, N.Z.:  
1000-1100 11725, 11775, 15190, 15205, 17387, 17775  
To South East Asia:  
1330-1500 11810, 15335  
To East, South East, and North East Asia:  
2245-0115 3905, 7215, 9540, 9875, 11710, 11825, 15280

Gujarati is broadcast daily at 1700-1745 on 9575 and 15080. Russian at 1630-1730 on 7105 and 9615. (Radtko and AIR)

**JAPAN:** RJ's General Service uses this sked:  
0000 - 9585, 15105, 15195  
0100, 0200, 0300 - 9585, 15105, 17880  
0400, 0500 - 9505, 9585, 17880  
0600, 0700 - 9505, 15310, 17880  
0800, 0900 - 5990, 15195, 15310  
1000 - 5990, 9585, 15195  
1100 - 5990, 9585, 15195  
1200, 1300 - 5990, 9585, 11815  
1400 - 5990, 9585, 11815  
1500, 1600, 1700, 1800 - 5990, 9585, 11815  
1900, 2000, 2100 - 9505, 9585, 11815  
2200, 2300 - 9585, 15105, 15195

Each program consists of 15 minutes of English and 15 minutes of Japanese except for 1000, 1400, and 2300 which have a half hour of each. (Harding, Miller-WA, Yajko, Wilson)

**NEW ZEALAND:** From Cohen and Miller-WA comes this sked from Wellington:

To the Pacific Islands -  
0500-0800 6105, 9655  
0815-1030 11960  
1030-1250 11960, 15380  
1300-1745 11845  
To Australia -  
0815-1010 11960  
1300-1745 15380  
2100-2330 6105, 9520.

**SOUTH AFRICA:** The SABC has this sked for its domestic services:

Afrikaans Service -	English Service -
0358-0521 3955, 4875	0358-0520 3965, 4835
0521-0636 4875, 9560	0520-0635 4835, 9680
0636-1521 9560, 11885	0635-1520 9680, 11790
1521-1621 4875, 9560	1520-1620 4835, 9680
1621-s/off 3955, 4875	1620-s/off 3965, 4835
Sundays - *0458	Sundays - *0500

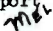
Springbok Radio - Radio South Africa -  
0300-0522 3980, 4810 English and Afrikaans  
0522-0637 4810, 9710 from 2200-0300 on 3250 and 3980.  
0637-1522 9710, 11935  
1522-1622 4810, 9710  
1622-s/off 3980, 4810 Market Reports and Meat  
Sundays - \*0400 Prices -  
1605-1650 3230, 5980  
(Reported by Glenn Thompson)

**SPAIN:** Madrid is now using 5955 instead of 6010 for its 2300-0100 Spanish broadcasts to Latin America, according to BBCMS.

**SWEDEN:** Additional beams directed towards NA from Radio Sweden include French at 0230 (6035) and 1330 (15305) and Sweden at 0100 (6035), 1430 (15305), and 2330 (6045). All programs are 30 minutes long. (Harding, Wilson, DuRant)

**TUNISIA:** RTVT has this Arabic sked for the Middle East and North Africa:  
0430-0600 6195  
0600-1700 11900, 11970, 15385\*  
1700-2300 6195, 11900, 15385  
- reported as 15225. (Baumgartner)

**U.S.S.R.:** Radio Vilnius' domestic First Program has been heard on 9710 from 0700 until 1730. The full transmission span has not been established because of reception difficulties.

Time for me to bug off for another month, so I'll close with my thanks for the support, and with wishes for good DX, God Bless, 



# UTILITY REPORT



EDITOR:

KEN COMPTON  
7 MOUNT VERNON STREET  
BRIGHTON, MA 02135

Deadline: 15th of the month

The utility editor of Benelux DX-Club in the Netherlands has compiled a list called "European Coast Stations Which Listen and Transmit on the International Calling and Emergency Channel 2182 Khz". This is an alphabetical list giving call sign, location, name of country, & station name. A series of maps shows the stations' positions. You can order from:

Paul Hogenboom, Klinkenberg 67  
Meerssen 5052, Netherlands

The price for airmail delivery to the Americas & Oceania is 4.50 Dutch guilders payable in advance through International Money Order, or 7 International Reply coupons.

Steve d'Adolf sends a clipping from the London Sunday Times announcing the closing of NST, the U.S. Navy communications base in Londonderry, Northern Ireland, in December and the moving of the station's communications equipment to the U.S. Naval Base at Thurso, Scotland.

QSLs

ALASKA: NRW1 USCG Loran Sitkinak. 5317. PFC in 14d. (Chabak-CO)

ARGENTINA: LOL Buenos Aires. 15000. Folder cd in 210d air for MS (Leamy-OH)

AUSTRALIA: VIO Broome R. CTC cd in 1m for 1 IRC (Koizumi-JAPAN)

AOTC Sydney 12952.5. Usual cd in 85d air for no RP (Mercado-CA)

AZORES: CUG27 Ponta Delgada R. 12943.5 f/d ltr in 70d for PP rpt & 1 IRC (Trochimczyk-DC)

BRITISH WEST INDIES: USCG Loran South Caicos NMA5 PFC in 36d (Chabak-CO)

ADDRESS: USCG Lorsta South Caicos c/o Southern Air Transport  
P. C. Box 1265 Miami, FL 33148

BARBADOS: 8PO C&W Bridgetown 8718 map folder cd in 34d air, 1 IRC (Mercado)

CANADA: VBH Kingston ONT 2598 PFC in 99d for ms. (Walters-NJ)

VBE Sarnia ONT 2598 PFC in 99d for ms. (Walters-NJ) VBC Warton ONT

2598 PFC in 99d for ms (Walters-NJ) all via Toronto Regional DOT.

Nordair Montreal 8903 PFC in 17d for ms (rtrnd). (French-MD)

CARLINE IS.: USCG Loran Yap 7518.4 PFC & CG ham cd in 25d for ms (Chabak-CO) ADDRESS: USCG Lorsta NRV7 Yap, Western Caroline Islands

Trust Territory Pacific Ocean 96943

Palau NRV4 7580 PFC & info packet in 37d air (Chabak-CO)

ADDRESS: USCG Lorsta Angaur USCG Activities, Code One

FPO San Francisco, CA 96637

GUANTANAMO: NAW36 A&C&R 13765 f/d cd in 17d for ms. (Trochimczyk-DC)

NETH. ANTILLES: PJC Willemstad 8694 usual cd f/d in 30d air for 1 IRC (Kurtz-MN)

ENGLAND: USAF Croughton Aeradio 3067 B&W cd in 25d air for ms (Beaudoin)

FINLAND: OFJ2 Helsinki R. 8726 mimeo ltr date & time only in 216d surface for 1 IRC (Walters-NJ)

HAWAII: NPM USN Pearl Harbor 3270 ltr w/date only (Beaudoin-ST)

USCG Loran French Frigate Shoals NRO4 4050 PFC in 28d (Chabak-CO)

GREENLAND: OXI68 GTO Godthaab 14900 f/d ltr 61d air (Winnell-MA)

HONGKONG: VPS35 C&W Cape D'Aguilar 8535 f/d cd in 45d for 1 IRC. VS:

Wong Kam Wing (Trochimczyk-DC)

VRN35 C&W Cape D'Aguilar 8619 f/d folder cd in 18d air for MS (Walters)

ICELAND: NRK USN Keflavik 8518 f/d ltr in 42d air for 1 IRC (Trochimczyk)

INDIA: VTG Bombay Naval 8634 f/d cd in 1m air for 1 IRC (Trochimczyk-DC)

VOLCANO IS.: NRT3 Loran Iwo Jima 5315.5 PFC in 19d (Chabak-CO)

ADDRESS: USCG Lorsta Iwo Jima (Volcano Islands)

FPO Seattle, WA 98781

JORDAN: JYA63 PTT Amman 13950 f/d ltr in 1m for 1 IRC (Trochimczyk-DC)

MAURITIUS: 3BM3 Mauritius R. Port Louis 6351.5 f/d ltr in 50d for 1 IRC.

Ltr states that freqs allocated to 3ZC were taken over by Mauritius R.

Dec. 1, 1975, when 3ZC ceased operation. This includes 3BM5 4kw on

12988.5 & 3BM6 8kw on 16978.4 (Trochimczyk-DC)

MEXICO: XFU Veracruz R. 6390 f/d ltr SS for 1 IRC in 45d (Kurtz-MN) 4250 same (Trochimczyk-DC)

NIGERIA: Lagos R. 13065 f/d cd in 18d for 1 IRC (Trochimczyk-DC)

**PUERTO RICO:** NMR14 USCG Loran Cape San Juan 4048 PFC in 36d (Chabak-CO)  
**SWITZERLAND:** HEB Bern color cd in 12d air for 2 IRCs (Holbrook-MD)  
**TRINIDAD:** 9YL North Post R. 8710 ltr in 38d air for 1 IRC (Trochimczyk-DC)  
**U.S.A.:** WPA RCA Port Arthur TX 6435.5 f/d ltr 23d for ms (Trochimczyk-DC)  
 NMF USCG Marshfield MA 8728 PFC in 23d for ms 10kw (Beaudoin-CT)  
 IVANHOE USN Norfolk VA NAM 6695 f/d ltr 15d air for ms (Beaudoin-CT)  
 NMR9 Milwaukee WI 2670 PFC & folders in 10d for ms (Holbrook-MD)  
 ADDRESS: 2420 S. Lincoln Memorial Dr. Milwaukee, WI 53207  
 KFS ITT Palo Alto CA PFC in 14d for ms (Kurtz-MN)  
 KOK ITT Cerritos CA 6463.5 PFC in 9d, no rp. 3kw. (Kurtz-MN)  
**SHIPS:** EISV "Irish Ash" 500 f/d ltr 6 years & 9mos! (Holbrook-MD)  
 USS "Tunny" nuclear attack sub 2716 PFC in 16d (Chabak-CC)  
 CGC "Cape Shoalwater" 2678 PFC in 10d (Chabak-CC)  
 JENU "Sealandic 3371 PFC in 5 weeks for 1 IRC (French-MD)  
 NMIB USS "America" 2716 PFC in 12d (Chabak)  
 USS "Mainwight" destroyer PFC & ltr in 10 years! (Holbrook-MD)

LOGGINGS  
NORTH AMERICA

**CANADA:** 2182 0131 VOK DOT Sept-Iles QUE clg HEJF AM (Carvin-MA)  
 5590a 2117 Gander Aeradio tfc SSB (DeVries-MA)  
 5652 2125 Gander VolMet OM EE wx AM (DeVries-MA)  
 6445.2 0110 CKN CFS Vancouver BC V mkr CW (Thompson-MM)  
 8203 1750 Nordair Montreal PQ tfc SSB (French-MD)  
**ST. PIERRE & MIQUELON:**  
 2192 0119 TKU St Pierre R. clg HEJF AM (Carvin-MA)  
 12294.7 2127 FLY321 APT St Pierre YL FF vm SSB (French-MD)  
**U.S.A.:** 2045 0145 KPH RCA SanFran CA V mkr CW (Mercado-CA)  
 2182 0941 NMR37 CG Ft Macon NC tfc AM (Chabak-CC)  
 2506 1630 KLH PT&T SanFran CA YL EE wx AM (Miller-CA)  
 2670 0119 NMR37 USCG Ft Macon MA wx AM (Carvin-MA)  
 2910a 1404 Anchorage AL Aeradio OM EE tfc AM (Mercado-CA)  
 2930 1135 Oakland CA VolMet OM EE wx AM (Miller-CA)  
 3001 0203 WSY70 New York VolMet wx AM (French-MD)  
 4870a 0241 AIR Wash DC USAF clg AFQ CW (French-MD)  
 5215 0327 WAR Army Wash DC CQ mkr CW (Thompson-MM)  
 5603 0332 San Francisco Aeradio tfc USB (Brooker-MI)  
 5652 1436 WSY70 New York VOLMET wx AM (DeVries-MA)  
 5696 1455 NOK USCG Key West FL EE tfc SSB (DeVries-MA)  
 1500 NOZ CGAS Elizabeth City NC tfc (DeVries-MA)  
 1457 NCP USCG Corpus Christi TX tfc SSB (DeVries-MA)  
 6568 2050 New Orleans Aeradio OM EE tfc AM (Gebhardt-IA)  
 2055 Miami Aeradio OM EE tfc AM (Gebhardt-IA)  
 6756 0300 AFA Andrews AFB MD tfc SSB (French-MD)  
 6721.8 0338 NMC USCG San Bruno CA tfc USB (Brooker-MI)  
 7607 0406 WOM ATT Ft Lauderdale FL OM EE vm USB (Davis-CA)  
 8550 1135 WPA RCA Fort Arthur TX V mkr CW (Kiyomiya-JAPAN)  
 8570 0920 WNU TRT Slidell LA CQ mkr CW (Kiyomiya-JAPAN)  
 8094 0241 KOK ITT Los Angeles CQ mkr CW (Somers-CA)  
 8242 0250 KMI ATT Oakland CA tfc USB (Somers-CA)  
 8789.7 1945 WOM ATT Ft Lauderdale FL YL EE tfc SSB (DeVries)  
 8903 1535 Oakland VolMet OM EE wx AM (DeVries-MA)  
 13100.5 2320 NEA USNAS Glynco GA V mkr CW (Davis-CA)

CARIBBEAN

**BERMUDA:** 2182 0044 VRT C&W clg VOWN AM (Carvin-MA)  
 6487.5 2337 VRT C&W V mkr CW (Thompson-MM)  
**CUBA:** 5058 0440 COZ67 Russian Navy tfc CW (Clisson-CT)  
 6505.5 0100 CLA Havana R. CQ mkr CW (Thompson-MM)  
 7465 0249 CLN66 Havana YL SS/EE vm SSB (French-MD)  
 7650m 0500 IRTS Bauta YL SS/EE vm SSB (Butterfield-MA)  
 8573 0315 CLA22 Havana R. CQ mkr CW (Thompson-MM)  
**JAMAICA:** 9396 1332 6YR42 JIT Kingston OM EE vm SSB (Beaudoin-CT)  
**MARTINIQUE:** 8676 0305 FFP2 PTT Fort-de-France CQ mkr CW (Thompson-MM)  
**NETHERLANDS**  
 ANTILLES: 6491.5 2248 PJC Curacao R. CQ mkr CW (Thompson-MM)

CENTRAL AMERICA

**CANAL ZONE:** 8614 1210 NBA USN Balboa CQ mkr CW (Kiyomiya-JAPAN)  
 12882 2245 NBA USN Balboa CQ mkr CW (Puckett-MS)  
**COSTARICA:** 8478 2231 TIM Limon R. CQ mkr CW (Thompson-MM)

SOUTH AMERICA

ARGENTINA: 12988.5 0220 LPD88 Gen. Pacheco R. V mkr CW (Thompson-NM)  
 BRAZIL: 4298 0215 PPO Olinda, Pernambuco R. CQ mkr CW (Thompson-NM)  
 6792 0248 PPC572 Salvador wkg PPC573 CW (Olsson-CT)  
 8635 0340 PPR Rio de Janeiro R. CQ mkr CW (Thompson-NM)  
 COLOMBIA: 8574 0345 HKC Buenaventura R. CQ mkr CW (Thompson-NM)  
 8666 2221 HKB Barranquilla R. CQ mkr CW (Thompson-NM)  
 10320 2225 HKB232 Bogota clg OAA22 CW (Olsson-CT)  
 URUGUAY: 8602 0306 CWA Cerrito R. V mkr CW (Brooker-MI) (0850Kiyomiya  
 12750 0233 CWA Montevideo-Cerrito R. CW (Thompson-NM)  
 VENEZUELA: 6100 0305 YVTC Obs. Cagigal time tick CW (Somers-CA)

EUROPE

AZORES: 10980 1816 CTD52 CPRM Ponta Delgada V mkr CW (French-MD)  
 CZECHOSLOVAKIA: 3170 0546 CLB5 Astronomical Institute Prague time tick CW  
 (Beaudoin-CT)  
 ENGLAND: 8700a 1850 KKB5 BPO Portishead R/T tfe SSB (DeVries-MA)  
 10000 1910 MSF Rugby time sig, CW ID (Beaudoin-CT)  
 FRANCE: 8522.5 0320 FFL4 Ste. Lys R. CQ mkr CW (Thompson-NM)  
 15805 1600 FTP80 FTS Paris OM FF/EE vm SSB (Gion-MA)  
 FINLAND: 8726 1523 OFJ2 PTT Helsinki ID mkr CW (Koizumi-JAPAN)  
 GERMANY, E.: 8462 1510 DHS Ruzen R. V mkr CW (Kiyomiya-JAPAN)  
 GERMANY, W.: 8483 1305 DAN Norddeich R. V mkr CW (Kiyomiya-JAPAN)  
 GREECE: 5271 0012 KWS78 U.S. Embassy Athens QRA mkr CW (Olsson-CT)  
 8537a 0025 SVA HTO Athens CQ mkr CW (Kurtz-MN)  
 IRELAND: 5533 2135 Shannon VolMet CM EE wx AM (DeVries-MA)  
 13312 1734 EIP Shannon VolMet wx AM (Carvin-MA)  
 ITALY: 5000 0000 IBF I.E.N. Turin time sigs CW (Olsson-CT)  
 8649 1455 ICB Genova R. V mkr CW (Kiyomiya-JAPAN)  
 12975 0801 IQX PTT Trieste V mkr CW (Kiyomiya-JAPAN)  
 13105.5 0735 IAR PTT Rome V mkr CW (Kiyomiya-JAPAN)  
 18103 0705 IRQ41 ITALCABLE OM It/SS/FF/EE vm SSB (Kiyomiya)  
 NORWAY: 8574.5 1518 LGB Rogaland R. V mkr CW (Kiyomiya-JAPAN)  
 PORTUGAL: 8490 0407 CUL4/7 Lisboa R. CQ mkr CW (Thompson-NM)  
 8548a 0353 CTP NATO Oerlis V mkr CW (Thompson-NM)  
 SPAIN: 8662 1610 EAD3 Aranjuez R. V mkr CW (Kiyomiya-JAPAN)  
 SWEDEN: 8498 1445 SAG Goteborg R. CQ mkr CW (Kiyomiya-JAPAN)  
 TURKEY: 8662 1505 TAH PTT Istanbul CQ mkr tfe list CW (Kiyomiya-J)  
 10347.5 1748 TAD5 PTT Ankara YL EE vm SSB (Gion-MA)  
 U.S.S.R.: 10985 1455 RCB53 Moscow YL EE vm (Beaudoin-CT)

AFRICA

AFARS&ISSAS: 8590a 2220 FUV Fr. Navy Djibouti V mkr CW (Koizumi-JAPAN)  
 8678 1425 FUV Fr. Navy Djibouti V mkr CW (Beaudoin-CT)  
 8692 1558 TXZ8 Djibouti R. CQ mkr CW (Kiyomiya-JAPAN)  
 20900 1541 PTT Djibouti YL EE/FF vm SSB (Hauser-OK)  
 CAMEROON: 9045.5 0201 TJF90 Douala YL EE/FF SSB (French-MD)  
 CONGO, P.R.: 10073 0044 VolMet Brazzaville FF wx AM (Carvin-MA) 2220  
 (Olsson-CT)  
 EGYPT: 19000 1515 B4B Egyptian Army clg B4A CW (Olsson-CT)  
 IVORY COAST: 7570 0246 TUP75 INTELCl Abidjan OM FF/YL EE vm SSB (French)  
 MAURITIUS: 6351.5 1658 3BM3 Port Louis V-CQ mkr CW (Koizumi-JAPAN)  
 SENEGAL: 9149 2250 6WV PTT Dakar V mkr CW (Olsson-CT)  
 S. AFRICA: 2500 0255 ZUO Republic Observatory Olifantsfontein time  
 signals CW (Olsson-CT)  
 4247 0225 ZRH Cape Naval R. Mynberg CQ mkr CW (Thompson-NM)  
 TOGO: 10800 0155 5VH308 FCR Lome YL FF/EE vm USB (Davis-CA)

ASIA

HONGKONG: 10730 1235 ZEN49 UPI Hongkong V mkr CW (Kiyomiya-JAPAN)  
 INDIA: 8635a 1522 VTG Navy Bombay V mkr CW (Koizumi-JAPAN)  
 INDONESIA: 8542 1420 PKI Jakarta R. CQ mkr CW (Kiyomiya-JAPAN)  
 17199 0705 FKB Medan R. CQ mkr CW (Kiyomiya-JAPAN)  
 JAPAN: 5321 1007 NRT USCG Oshima tfe (Chabak-CO)  
 1216 NRT9 USCG Kokachibute tfe (Chabak-CO)  
 12878 0240 JCU Choshi R. CQ mkr CW (Thompson-NM)  
 13063 0225 JDB Nagasaki R. CQ mkr CW (Thompson-NM)  
 LEBANON: 8702 1542 ODR3 SRC Beirut CQ mkr CW (Kiyomiya-JAPAN)  
 MALAYSIA: 8698 1205 9MG2 Penang R. CQ mkr CW (Kiyomiya-JAPAN)  
 13096.5 0138 9MG3 Penang R. CQ mkr CW (Thompson-NM)

SINGAPORE: 12267 1444 Telecom Auth YL EE vm LSB (Kiyomiya-JAPAN)  
 U.S.S.R.: 8702 1205 UXN Archangel R. V mkr CW (Kiyomiya-JAPAN)

OCEANIA

AMER. SAMOA: 15263m 2310 KUQ20 Pago Pago OM EE vm USB (Davis-CA)  
 AUSTRALIA: 4500 1030 VNG APO Lyndhurst OM EE time sigs AM (Gion-MA)  
 6468 1340 VIS Sydney R. V mkr CW (Beaudoin-CT)  
 6680 1232 VLS VolMet Sydney OM EE wx AM (Olsson-CT) 1300  
 (Beaudoin-CT)  
 7500 0726 VNG APO Lyndhurst time standard AM (Brooker-MI)  
 1555 (Miller-CA)  
 CAROLINE IS.: 7581.5 0836 NRV4 USCG Anguar Lorsta Palau tfc USB (Chabak-CO)  
 0909 NRV7 USCG Lorsta Yap tfc USB (Chabak-CO)  
 GUAM: 2686 0944 NRV USCG OM EE vm USB (Chabak-CO)  
 HAWAII: 4050 1207 NRO4 USCG Lorsta Tern Is. tfc USB (Chabak-CO)  
 5603 0330 KUA Honolulu Aeradic tfc USB (Brooker-MI)  
 5716.5 0631 NPM USN Lualualei OM EE vm USB (Chabak-CO)  
 12891a 0245 NMO USCG Honolulu V-CQ mkr CW (Thompson-NM)  
 13029 2035 KHK RCA Honolulu V mkr CW (Thompson-NM)  
 JOHNSTON IS.: 4050 0958 NRO USCG Lorsta tfc USB (Chabak-CO)  
 KURE REEF: 10063 0044 "K" beacon CW (Davis-CA)  
 MARIANA  
 ISLANDS: 7581.5 0844 NRV2 USCG Lorsta Saipan tfc USB (Chabak-CO)  
 NEW ZEALAND: 7605 0840 ZLZ20 NZPO Himatangi wx CW (Beaudoin-CT)  
 8678 1351 ZLP Navy Irirangi V mkr CW (Beaudoin-CT)  
 12943.5 0225 ZLP2 Navy Irirangi V mkr CW (Thompson-NM)  
 17126 0656 ZLP3 Navy Irirangi V mkr CW (Kiyomiya-JAPAN)  
 OKINAWA: 5321 1130 NRT2 USCG Lorsta Gesashi tfc USB (Chabak-CO)  
 VOLCANO  
 ISLANDS: 5321 1124 NRT3 USCG Lorsta Iwo Jima tfc USB (Chabak-CO)

UNIDENTIFIED

2047.5 0530 KAS-? CQ mkr CW. City? (Davis-CA)  
 10250a 1550 YL EE/unknown vm. QTH sounded like "Karachi". Is  
 this Pakistan? SSB (DeVries-MA)  
 15475 ??? "QRA de BAG47" CW (Kiyomiya-JAPAN)

---

2056 0010 S6AF "Golden Sunray" w/NMN (Carvin-MA) SHIPS  
 2142 2335 KMWJ "Mount Washington" w/WGB (Carvin-MA)  
 2341 NOUD USS "Inchon" w/WJB (Carvin-MA)  
 2166 2342 KEHJ "Western Sun" w/WAQ (Carvin-MA)  
 2182 0141 PGDN "Nederland" clg CQ requesting wx (Carvin-MA)  
 0005 WZ2035 NOAA ship "Delaware 2" clg WTDO (Carvin-MA)  
 2206 0055 GHZK "Gypsum Countess" w/VAU (Carvin-MA)  
 2209 0017 GHZF "Gypsum Empress" w/VAR (Carvin-MA)  
 2350 1033 USS "Valdes" tfc w/WJO SSB (Gion-MA)  
 2406 0040 NPCR CGC "Dallas" w/WOU SSB (Carvin-MA)  
 2670 0959 NRLD CGC "Boutwell" tfc USB (Chabak-CO)  
 2686 0216 NVAI CGC "Valiant" w/kg NMG USB (Chabak-CO)  
 2716 1036 USS "Dupont" DD-941 clg Roosevelt Roads USB (Chabak-CO)  
 1033 USS "Grayling" clg Charleston Tug Control USB (Chabak)  
 0942 USS "Silverides" clg Charleston USB (Chabak-CO)  
 1001 USS "America" CVA-64 w/Newport Tug Control (Chabak-CO)  
 4095 0715 KPCP "Mariposa" clg KMI SSB (Mercado-CA)  
 4184a 0158 OVIY "Svendborg Maersk" clg OVIY2 CW (Thompson-NM)  
 8223.6 0850 VMCA "Cape Arnhem" clg Sydney USB (Trubee-HI)  
 8367a 0239 ABAM tanker "Universe Explorer" clg WOE (French-MD)  
 8368a 0236 HJND "Rio Magdalena" clg WCC CW (French-MD)  
 12538 0218 6ZMH "Bonney" clg WOM USB (Trubee-HI)  
 12372 0225 "Cape Cod" WN3357 clg KMI USB (Trubee-HI)  
 0227 "Sea Royal" WY28940 clg KMI USB (Trubee-HI)  
 12554 2200 "Fossheim" LDZB clg WSL CW (Thompson-NM)

AIRCRAFT

3071 0507 SAM26000 AIR FORCE TWO phone patch tfc thru Andrews AFB  
 LSB (Brooker-MI)

TACTICAL

4418 1529 HOBKNOB 18 w/kg HOBKNOB 16 SSB (French-MD)  
 4725 0602 TOLLGATE OM EE tfc USB (Mercado-CA)  
 4936 0331 LIMA 5 EE drill msg w/One Kilo & ALFA FIVE USB (Brooker  
 -MI)

5700a	1150	PURSE tfc to LOLLY on ALFA UPPER USB (DeVries-MA)
5723.5	5723.5	DUNKIRK NPM Wahliawa HI OM EE freq shift anncmt USB (Chabak-CO)
6723	0209	RASPBERRY CECIL Jacksonville FL wkg CHARLIE LIMA USB (Chabak-CO)
6800a	1710	STEAMROLLER OM EE tfc to SITCOM(?) SSB (DeVries-MA)
11945	1445	KINGPIN clg GRAYFISH SSB (Hauser-OK)

-----  
 "SPY" NUMBERS STATIONS

3264m	0550	YL GG 4-digit groups SSB (Butterfield-MA)
3818	0430	YL SS 5-digit groups. Identifier: "010" group count 103 AM 2/24/76 (Svinicki-MI)
4665	0124	YL SS 4-digit groups AM 2/11/75 (Cook-MN)
	0245	"361" YL EE 5-digit groups. Off @ 0252 AM (Mercado-CA)
5210	1415	"Point 282" YL EE 4-digit groups, msg repeated AM (Hansen-NY)
5812	0114	YL SS 4-digit groups USB 2/9/76 (Svinicki-MI) 0134 2/11/75 (Cook-MN)
5813	0309	"137" long count, "grupo 120" YL 4-digit SS groups; msg repeated "Fin" @ 0331 SSB 10/18/75 (Hauser-OK)
6075	0603	YL SS 5-digit groups AM 2/20/76 (Trubee-HI)
6292	0613	YL SS 5-digit groups AM 2/20/76 (Trubee-HI)
6772	0700	YL SS 5-digit groups SSB 2/21/76 (Svinicki-MI)
	0700	YL SS 5-digit groups AM 2/14/76 (Trubee-HI)
7323	0658	"Atencion 105 134" YL SS 5-digit groups "Final" @ 0714 off @ 0715 AM 3/4/76 (Mercado-CA)
7342	0719	"Atencion 105 134" same as above AM 3/4/76 (Mercado-CA)
7344	0614	YL SS 5-digit groups 0629* AM 2/22/76 (Brooker-MI)
7403	2235	YL GG 5-digit groups following series of tones SSB 10/18/75 (Hauser-OK)
7527	0713	YL SS 5-digit groups 0720* 2/22/76 AM (Brooker-MI)
7592	0654	YL SS 5-digit groups 0710* 2/22/76 AM (Brooker-MI)
7868	0631	YL SS 5-digit groups AM 2/22/76 (Brooker-MI)
7872	0632	YL SS 5-digit groups 0650* AM 2/22/76 (Brooker-MI)
8840	0610	YL SS 5-digit groups AM 2/14/76 (Trubee-HI)
8845	0610	YL SS 5-digit groups AM 2/21/76 (Svinicki-MA)
8908	0627	YL SS 5-digit groups AM 2/14/76 (Trubee-HI)
9450	1440	YL GG 5-digit groups, the word "zunaechst" (next) often instead of a number; each group repeated. SSB 2/2/76 (Hauser-IL)
11532	1600	YL SS 4-digit groups "279" "grupo239" msg repeated twice. Off @ 1708. SSB 2/15/76 (Hauser-OK)

-----  
 RADIOTELETYPE

CHINA:	7981.5	1505	BAL6 RY test 66wpm/425 hz shift (Green-UT)
GERMANY, E.:	8068	1605	DMV7 E. Berlin test & nx 66/425 (Green-UT)
HONDURAS:	5878	0250	Tegucigalpa test 60/850 (Green-UT)
INDIA:	7777	1500	AWB Bombay? RY test 66/850 (Green-UT)
INDONESIA:	9075	1615	8BB Jakarta RY test 66/425 (Green-UT)
JORDAN:	6675	1625	Jordan News Agency EE test 66/425 (Green-UT)
N. VIETNAM:	10600	1415	VNA25 RY test & EE news 66/425 (Green-UT)
PAKISTAN:	7746	1505	ARA Karachi RY test 66/850 (Green-UT)
POLAND:	8133	1700	SOI21 Polish Press Agency Warsaw EE test 66/425 (Green-UT)
S. AFRICA:	7482	1520	ZUD82 Dept. of Information test & news Olifantsfontein 66/425 (Green-UT)
TAIWAN:	13563	0020	3MA26 Taipei test 66/850 (Green-UT)
UNKNOWN:	7477	1540	XBRB Mexican ship? RY test 60/850 (Green-UT)
		7911	0330 RUES EE test, parallel on many other freqs 100/850 Russian ship? (Green-UT)
		9151	1510 8CR Indonesia? RY test 66/170 (Green-UT)
		13047	2255 UKA USSR? RY test & RR news 66/425 (Green-UT)
U.S.A.:	6424.5	0615	NOJ USCGAS Kodiak AL EE test 100/170 (Green-UT)

-----  
 Late QSL:

Mike Hardester-CA has received a full data verification letter from The State Committee of Standards of the Council of Ministers of the USSR for a report of RKM on 10004 kHz. He received the Russian letter 90 days after sending a followup and thinks the cancelled USA stamp commemorating the USA/USSR Space Flight he enclosed did the trick. Congrats, Mike!

# QSL REPORTS



Editor: Bill Cleveland  
2441 Fairview Drive  
Visalia, Calif. 93277



Verified countries - 126

Deadline: 15th of month

Another month and time for another column. Spring will have sprung by the time you read this--looks like it has already sprung here. Lots of reporters this month with a goodly, though not overwhelming, number of reports. Thanks to all and especially to the nine first time reporters to this column.

Some old names and some new in the loggings this month. Doug Snyder checks in with R. Baku; after 15 months with no reports at all, People's Republic of the Congo has answered a few this month; and the "Voice of Greece" checks in with a few. (Note that this station, identified as EIRT (Ethnikon Idhryma Radiophonias Tileorasseos) in WRTH75 and as EIPT in WRTH76, now identifies themselves as EPT (Elliniki Radiophonia-Tileorasis)--see the QSL on the next page. Address remains the same (though the QSL lists a box number, the return address on the envelope uses the same address as in WRTH). My envelope has the old EIPT printed return covered over with a press apply label and the EPT return address typed in. Some unusual Latin Americans this month, too. On with the loggings.

## Europe

**ALBANIA:** R. Tirana, 7090, f/d cd w/soldier on a hill, 103d sfc, no rp (HINDS TRIN); 7220, date/time cd w/sketch of modern building, in 96d sfc (MILLER WA); 7300, date/time cd w/drawing of man carrying Albanian flag, 80d air (FAMULARO NJ)

**AUSTRIA:** ORF, 6155, f/d "Vorarlberg" cd in 22d air, no rp (MEEHAN CT); 9770, f/d "Tirol" cd in 22d air, no rp (MEEHAN CT), f/d "Laxenburg mit Franzenburg" cd in 53d air, no rp (DuRANT MD)

**BULGARIA:** R. Sofia, 9700, f/d cd "Climent of Ohrid University" in 90d sfc + pennant, no rp (RADTKE CA), same in 165d sfc, no rp (BETHGE MO), same in 190d sfc, no rp (SANN NJ)

**CZECHOSLOVAKIA:** R. Prague, 5930, f/d b/w photo cd of "Lipno Dam", 37d air for 1 IRC (ROMANI MI), f/d "Telc" cd in 35d air for 2 IRCs (PEARSON PA); 7245, f/d "Krkonose-Spindleruv Mlyn" cd in 35d air for 2 IRCs (PEARSON PA), f/d cd "Castle at Cesky Sternberk" in 60d air, v/s Pauli (MARTI CA), "Castle of Prague Hradcany" cd in 40d air for no rp, v/s Otto Adrian (ARNESON MO), same cd in 44d, f/d, no rp, v/s Pavlar Lona (SMITH FL), f/d town view photo cd in 21d air, no rp (HINDS TRIN)

**GERMANY (Democratic Republic):** RBI, 11890, f/d "World Festival of Youth" cd in 2 mos for 1 IRC (VOCKEROTH PA); 15125, f/d DX Club Decibel chart cd, in 132d air, no rp (BROOKER)

**GERMANY (Federal Republic):** Deutsche Welle, 6100, f/d "Circles" cd in 58d for 1 IRC (BEAUDOIN CT); 6145, same cd in 3 mo for no rp (VOCKEROTH PA); 6185, same cd in 125d sfc, no rp (MILLER WA); 15150, f/d cd, logo on circular background, in 126d air, no rp (HINDS TRIN)

**GREAT BRITAIN:** BBC, 5975, usual no data Thames cd in 28d air for 1 IRC (ROMANI MI); 9510, same cd in 7 wks (VOCKEROTH PA)

VOA, 7200, f/d "Capitol" cd in 7d sfc (SMITH FL)

**GREECE:** EPT (Elliniki Radiophonia-Tileorasis), 9520, f/d mimeo form ltr + sked in 21d for MS (WHITE FL), same in 48d air for 1 IRC (MAHONEY IN), same in 34d air for 2 IRCs (PIMBLETT ALB), same in 50d air for 2 IRCs (SNYDER CA), same in 51d air for 2 IRCs (CLEVELAND CA). v/s for all was I. Lampsas

VOA, Kavala Relay, 7170, f/d antenna cd in 7d, no rp (VOCKEROTH PA); 9620, time/fqy "Capitol" cd in 10d air (ROJEWSKI WA)

**HOLLAND:** R. Nederland, 11730, f/d "Amsterdam" cd in 25d, no rp (VOCKEROTH PA), f/d cd w/photo of bldg, in 18d air, no rp (HINDS TRIN)

**HUNGARY:** R. Budapest, 7220, f/d color cd of "Racke Castle" in 83d sfc for 2 IRCs (THOMPSON NM)

**LUXEMBOURG:** R. Luxembourg, 6090, f/d b/w antenna cd in 78d air, no rp (BAUMGARTNER ONT)

**MALTA:** Deutsche Welle Relay, 6100, f/d circles cd in 77d, no rp (HARDESTER CA); 11785, same in 51d, no rp (BEAUDOIN CT)

**MONACO:** TWR, 7105, f/d b/w cd of TWR HQ + pennant in 19d air, 1 IRC (WIRRELL MA), same in 12d for 1 IRC (CALIRI MA)

**NORWAY:** R. Norway, 17800, f/d "Winter in Norway" cd in 76d air, no rp (SMITH FL)

**POLAND:** Polish R., 7285, f/d cd w/pix of high-rise bldg, 53d air, no rp (HINDS TRIN)

**PORTUGAL:** R. Portugal, 6025, f/d "Explorers Map" cd in 26d air, no rp (HARDESTER CA), "Goldfish Pond" cd in 30d air for no rp (RADTKE CA)

**ROMANIA:** R. Bucharest, 9570, f/d cd of "Romanian Athenaeum" in 81d air for 2 IRCs (ROJEWSKI) f/d cd w/logo, map and graphic design, 87d air, no rp (MAHONEY IN)

E.P.T.

ELLINIKI RADIOPHONIA-TELEORASIS  
(GREEK RADIO-TELEVISION)

DIRECTION OF TECHNICAL SERVICES

16 MOUROUZI STREET,  
P.O. BOX 36)  
ATHENS-GREECE.

199/M-76.

Athens, 2nd February 1976

Mr. Nigel Pembrett,  
9 Granston Place,  
St Albert, Alberta, T8N 1B5  
CANADA.

Dear Sir,

In reply to your reception report dated 5.1.76 we have the pleasure to send you this verification letter for the frequency 9520 kHz on which you have heard our programme beamed to the North America at the time mentioned. 0017-0045 G.M.T.

Enclosed please, find a programme schedule of our shortwave Stations effective from 14.1. to 7.3.76.

Yours faithfully,

The Director General

J. Lampsas

I. LAMPASAS

SPAIN: RNE, 6065, date/fqy cd w/color pix of xmtr site, 65d sfc, no rp (ROMANI MI), same in 64d sfc, no rp (HINDS TRIN)

R. Liberty, 15370, date/fqy microphone and map cd in 15d air, no rp (FAMULARO NJ)

SWEDEN: R. Sweden, 6035, usual f/d blue/yellow map cd in 33d air, no rp and SS rpt (RODRIGUEZ PR); 15305, same in 69d air, no rp (SMITH FL), same in 73d air for 2 IRCs (BAUMGARTNER ONT)

SWITZERLAND: SBC, 3985, f/d b/w pix "Griffin Costumed Dancer in Basle" in 13d air for MS (LEAMY OH); 6045, "Old Town of Bern" cd in 90d air, no rp (RADTKE CA); 6135, "Griffin" cd in 35d air for 2 IRCs (THOMPSON NM); 15140, f/d "Cathedral Tower-Basle" cd in 15d air for 1 IRC (PEARSON PA), f/d b/w "Tegna Baroque Church" cd in 88d, no rp (BROOKER MI), 21520, f/d cd w/photo of Swiss Nat'l Tourist Office, 111d sfc, no rp (HINDS TRIN)

USSR:

Lithuanian SSR: R. Vilnius, 9685, f/d flower cd in 175d (COHEN NJ)

RSFSR (European): R. Moscow, 6070 (Moscow), 6170 (Zhigulevsk), 7150 (Moscow), 7170,

7200 (Armavir), 7260 (Moscow), 7350 (Moscow), 7360 (Moscow), 11700 (Serpuukhov), 12050

(Tula), 24-112d air, f/d cds; "View of Kremlin" (HARDING CA) (MAHONEY IN) (MARTI CA),

"Sputnik Memorial" (MILLER CA) (SMITH FL), "Lenin Central Stadium" (ROMANI MI), "Moscow State University" (ARNESON MO), "Grand Kremlin Palace" (SMITH FL), "Buildings in Moscow" (SMITH FL)

R. Peace and Progress, 9580, f/d blue cd w/logo on white field, 84d air (HINDS TRIN), 11765, 17765, same cds in 91-101d air/sfc (SMITH FL)

Ukrainian SSR: R. Kiev, 7150, f/d map cd in 41d air, no rp (HINDS TRIN); 7360, red/blue triangle/circle cd in 44d air, no rp (BAUMGARTNER ONT); 9280, f/d logo cd in 54d air (MARTI CA)

R. Moscow, 5940 (Vinnitsa), f/d cd w/flags of the SSR's, 7 wks, no rp (VOCKEROTH PA), 15450 (Simferopol), "Lenin Central Stadium" f/d cd in 44d air (HARDING CA)







**SOUTH AFRICA:** RSA, 9585, 11900, 11970, 15155, f/d cds in 15-83d for 0-2 IRCs; "Crowned Crane" (YAJKO PA)(LUNSTROM FL)(PEARSON PA)(MILLER CA)(WICKETT MD)(MEEHAN CT)(DOLYAK FL)(THOMPSON NM)(NO NAME ??), "Sable Antelope" (MILLER CA), "Nyala Ram" (DOLYAK FL), "Table Mountain" (RODRIGUEZ PR), Special "DX Corner" QSL (RODRIGUEZ PR)  
**SABC**, 3250, f/d multicolored industries cd, 26d air for 2 IRCs (BAUMGARTNER ONT), 15d (COHEN NJ); 4810, same in 24d for 3 IRCs (SOMERS CA), same in 26d (ARNESON MO); 4835, same in 21d for 1 IRC (THOMPSON NM)  
**SWAZILAND:** TWR, 9590, f/d "Native Warrior" folder cd in 25d air for 1 IRC (KLONTZ CA), same in 29d for 2 IRCs (MAHONEY IN)  
**TUNISIA:** Rdif. TV Tunisienne, 11970, f/d "Pottery Photos" cd in 94d, for 1 IRC, EE rpt (BEAUDOIN CT)  
**UGANDA:** R. Uganda, 9730, blue aerogram in 2 mo for EE rpt and 2 IRCs (VOKES TX)  
**ZAIRE:** LV du Zaire, 15145, date/fqy ltr in FF w/stn data, 2 mo for no rp, EE rpt, v/s N'siala Marambu. Reply registered. (STEPHENSON CA)  
**ZAMBIA:** R. Zambia, 9580, f/d plain white cd in 34d air for 2 IRCs, EE rpt, v/s Peter Musuba (PIMBLETT ALB)

Asia

**CHINA (People's Republic):** R. Peking, 7315, f/d cds in 16d, "We are all sharpshooters", "White peony", "Timber forest in Changpai Mts" (MILLER CA); 11945, "On Patrol" cd in 22d (TRAUTSCHOLD WI), "Circle with Gold Building" cd + pennant in 23d for 1 IRC (PEARSON)  
 "Timber Forests" in 17d (MAHONEY IN); 11675, 3 folder cds in 18d (no desc) (DOLYAK FL); 15060, "White peony" cd in 104d and "Bicycle Race" cd in 108d (MILLER CA)  
**INDIA:** AIR, 3268, ltr in 3 wks air, no rp, v/s A.K. Ojha (SPARKS CA); 11620, f/d "Bengal Tiger" cd in 166d for 1 IRC (MAHONEY IN)  
**INDONESIA:** RRI Banjarmasin, 5968, II ltr in 1 mo. for MS, v/s Andi Njongki BA (SPARKS CA)  
**ISRAEL:** IBA, 7412, f/d "Western Wall" cd in 58d air, no rp (SMITH FL), same in 78d, no rp (SMITH FL), "Knesseth Menorah" cd in 52d air, 1 IRC (ROMANI MI); 9815, "Western Wall" cd in 35d air, 2 IRCs (LUNSTRUM FL), "Knesseth Bldg" cd in 36d, 1 IRC (GEBHARDT IA); 11642, "Western Wall" cd in 52d air, no rp (BROOKS CT); 15165, "Museum" cd in 5 wks (VOCKEROTH); 17815, "Western Wall" cd in 58d air (SMITH FL)  
**JAPAN:** R. Japan, 5990, time/fqy "Koto" cd in 18d air, no rp (MILLER CA); 9605, "Doll" cd in 41d air + pennant for SS rpt (RODRIGUEZ PR); 11705, "Yakko" cd in 23d (YAJKO PA), "Tachibina dolls" cd in 21d (MAHONEY IN); 15105, "Yakko" cd in 12d (HARDING CA), same in 13d (THOMPSON NM); 15195, "Crimson Autumn Foliage" cd in 12d (MILLER CA); 15300, "Tachibina dolls" cd in 68d (BAUMGARTNER ONT)  
 NSB, 3925, f/d "Tokyo Forum" cd in 27d for 1 IRC (PIMBLETT ALB)  
**KOREA (Democratic People's Republic):**  
 R. Pyongyang, 9977, f/d cd of a group of people looking at a boulder, 63d air, no rp (PIMBLETT ALB)  
**KUWAIT:** R. Kuwait, 11940, f/d folder cd w/info on Kuwait, 35d w/no rp (KURITZ MN), same in 44d, 2 IRCs, (BAUMGARTNER ONT), same in 56d, 2 IRCs (ROMANI MI)  
**PHILIPPINES:** VOP, 9580, f/d pink cd w/coat of arms, in 39d air, 1 IRC, (MAHONEY IN), same + pennant in 119d sfc (ROJEWSKI WA)  
**RHODES:** VOA Relay, 7205, "Capitol" cd in 7d (ROJEWSKI WA), same in 13d (MEEHAN CT)  
**TURKEY:** Voice of Turkey, 9515, f/d cd "Nasreddin Hodja-ancient Turkish story-teller", 41d, no rp (MAHONEY), "Bosphorus Bridge" cd in 30d, 2 IRCs (PEARSON PA), "Karagöz and Hacivat" cd in 36d, 2 IRCs (THOMPSON NM)  
**USSR:**  
 Azerbaijan SSR: R. Baku, 9840, plain white paper "cd" w/very poor mimeo copy, data written in, 112d registered air, no rp (SNYDER CA)  
 RSFSR (Asiatic): R. Moscow, 7150 (Khabarovsk), f/d "Moscow Skyline" cd in 43d (SMITH FL); 7300 (Yuzhno-Sakhalinsk), "Flags of the Republics" cd in 103d sfc (SMITH FL); 15140, (Petropavlovsk-Kamchatsky), "Sputnik Memorial" 43d (SMITH FL)

Thank you for report on the  
 description on R 910 Baku s  
 copy for Baku - Bur  
 dated 27.5.75  
 Time 02.47 - 02.59  
 Reference 9840 (Azerbaijan)  
 Copy report has been checked  
 with our records and is correct  
 in every detail.

Best wishes from  
 RADIO BAKU  
 27.5.75


USSR (continued):

Uzbek SSR: R. Tashkent, 6025, f/d red/white/blue cd in 39d, no rp (VOKES TX)  
YEMEN: DYBS, 7190, date/fgy pink cd w/antenna, 59d air, no rp (FAMULARO NJ), same in 68d for 2 IRCs, FF rpt (BAUMGARTNER ONT), same in 118d, 2 IRCs (SNYDER CA)

Oceania

AUSTRALIA: ABC Perth, 9610, f/d map cds in 56-112d for 0-2 IRCs (SMITH FL)(VOCKEROTH PA) (MILLER CA)  
R. Australia, 7220, 7235, 9580, 9770, 15320, 17795 (f/d cds, v/s Peter Homfray) in 29d air to 163d sfc for no rp, 15-78d air for 1-2 IRCs. "San Michele Sheep Station" (MARTI) (MILLER CA)(DuRANT MD), "Kangaroo" cd (THOMPSON NM)(JACOBSON IL), "Kookaburra bird" cd (MARTI CA)(YAJKO PA)(DuRANT MD)(THOMPSON NM), "Stanley Chasm" (DuRANT MD)(COHEN NJ), "Wrest Point Hotel Casino" (YAJKO PA), "Flowers" (BEAUDOIN CT)  
VNG, 7500 (time and fgy), f/d cd in 43d air, no rp (KURTZ MN)  
NEW CALEDONIA: R. Noumea, 3355, f/d orange/blue/black map cd in 35d air for MS (LEAMY OH), same in 37d for 1 IRC (WICKETT MD); 7170, same in 139d for 2 IRCs, FF rpt, 54d after f/up w/ tape of their xmsn (CLEVELAND CA)

Thanks to:  
Mark Bixby  
Robb Leamy  
Larry Talbot  
Me

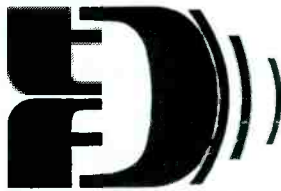


NOUVELLE CALEDONIE

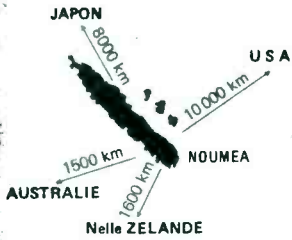
22° 18' 04" S  
166° 29' 02" E

FREQUENCES

670 KHz	-	20 Kw
1 420 KHz	-	4 Kw
3 355 KHz	-	20 Kw
7 170 KHz	-	20 Kw
11 710 KHz	-	4 Kw



TELEDIFFUSION DE FRANCE



NEW ZEALAND: R. New Zealand, 9520, f/d cd w/photo of monument, 45d air, no rp (HINDS TR), "Fishing" cd in 26d air, no rp (HARDESTER CA); 11780, same cd in 30d air for 2 IRCs (RADTKE CA), same in 42d for 1 IRC (COHEN NJ)

South America

BRAZIL: R. Nac. de Brasilia, 11780, f/d green map cd in 28d air, 1 IRC (BAUMGARTNER ONT), same in 20d, no rp (COHEN NJ), yellow map cd in 24d, no rp (TRAUTSCHOLD WI), map cd (no color stated) in 24d air, no rp (MEEHAN CT)  
R. Cl. de Pernambuco, 11865, cd w/graphic design of logo, EE/PP veri on back, in 108d air for MS, PP rpt, v/s Lucy Moreira (MAHONEY IN)  
COLOMBIA: R. Santa Fe, 4965, fgy only cd, photo of girl picking coffee beans + pennant in 11d air for 1 IRC, EE rpt (WIRRELL MA)  
LV de los Centauros, 5962, cd in 3 wks for MS, v/s Carlos Barrera Martinez (SPARKS CA)  
R. Super, 6065, cd + ltr of thanks, 30d air for 2 IRCs, SS rpt (JERNAKOFF NY), same in 75d for 2 IRCs, SS rpt (BEAUDOIN CT), same in 115d for 1 IRC, EE/SS rpt, v/s Maria Margarita Castro (BIXBY CA)  
R. Nacional, 15335, date only pc in 155d air for 1 IRC, EE/SS rpt, v/s Alberto Upeguia Acevedo (BIXBY CA), cd in 6 mo, for 2 IRCs, EE rpt (JERNAKOFF NY)  
ECUADOR: HGJB, 6095, 9560, 9745, 11745, 11915, 15115, 15315, 17755 (f/d cds, v/s Sam Rowley or Hubert Jacobson, 20-71d for no rp, 15-30d for 2 IRCs, 25-41d for MS), #2 "Woodcarving in Ecuador" (LUNSTROM FL), #4 "Woodcarving in Ecuador" (DuRANT MD)(MERCADO) "Color pix of man carving" (LUNSTROM FL), "Great Circle Map" cd (MILLER CA)(SMITH FL) "Galapagos Cactus" (VOCKEROTH PA), "Bread Owl" cd (MILLER CA)(SMITH FL)(YAJKO PA) (CRABLE ID)(THOMPSON NM)(PEARSON PA), "Bread doll" (BROOKER MI), green cd w/blue Inca design (SMITH FL), brown cd w/Inca design (SMITH FL), HGJB signboard (SMITH FL), oil pipeline (MILLER CA), bird w/fish in beak (MILLER CA)  
GALAPAGOS: LV de Galapagos, 4810, cd w/stn info, no veri statement, 35d air for MS and SS rpt (LEAMY OH)

VENEZUELA: R. Occidente, 3225, ltr in SS + bumper stickers, in 30d air for MS and SS rpt v/s Aser Ansia-Sub Director (DEAN OH)  
LV del Tigre, 3255, friendly veri ltr in 32d air, date only, for SS rpt, no rp, v/s Carmen Aquino (FAMULARO NJ)  
R. Tropical, 4870, date only SS ltr in 36d air for MS and SS rpt, v/s Angelo Grasso, also sent pennant (RODRIGUEZ PR)  
R. Juventud, 4900, date/fqy cd w/teenagers dancing, 34d air for 1 IRC, EE rpt (WIRRELL)

#### North America

CANADA: CFCX Montreal, 6005, date/fqy stn photo cds in 372/289d, after f/up and 3 IRCs (DeVRIES MA)  
CFRX Toronto, 6070, f/d "Toronto Skyline" cd in 8d for 10¢ (VOCKEROTH PA), date only "Carnival" cd in 11d for MS (WHITE FL)  
CHNX Halifax, 6130, date only small white cd in 11d for MS (WHITE FL)  
CUBA: R. Habana, 6060, f/d multicolored circles cd in 93d air for 1 IRC (MILLER CA); 11760, f/d blue circle cd in 72d air for 1 IRC (MARTI CA), same in 98d, no rp (HINDS TR), yellow circle cd in 86d, no rp (HINDS TRIN); 11815, multicolored cd in 60d, no rp (RADTKE CA); 11870, multicolored circle cd in 106d, no rp (MERCADO CA)  
GUATEMALA: R. Cultural, 3300, date/fqy "Quetzal" cd in 16d air for 1 IRC (GEBHARDT IA)  
LV de Nahuala, 3360, f/d white cd in 62d for 2 IRCs, SS rpt (THOMPSON NM)  
HONDURAS: LV Evangelica, 4820, usual red/white/blue map cd in 14d air for 1 IRC (TRAUTSCHOLD WI), same in 28d for 2 IRCs (BAUMGARTNER ONT)  
MEXICO: R. Mexico, 15125, f/d veri ltr in 9 mo, no rp (WIRRELL MA); 15385, same w/wrong fqy, in 220d, no rp (COHEN NJ)  
NETHERLANDS ANTILLES: R. Nederland Relay, 6165, f/d "EDXC" special cd in 15d air, no rp (WIRRELL MA), same in 17d (MILLER WA), same in 12d (ARNESON MO), "Fisherman" cd in 18d (ARNESON MO), "Antenna" cd in 17d (TESTA'S MA), same in 18d (TESTA'S MA), same in 14d (LUNSTRUM FL), "R. Nederland" building in 15d (LUNSTRUM FL), same in 17d (TESTA'S MA), "QSL cd to symbolize your life" in 10d (PETERS KY)  
TURK AND CAICOS ISLANDS: VSI, 4788, f/d form ltr in 42d air (spl ltr for NASWA test bcst) (MAYER IL), same in 24d for MS (BLXBY CA), same in 49d for MS (JONES MS), personal ltr + mimeo ltr, both f/d in 47d for 2 IRCs (LEISTNER CA), f/d veri ltr in 33d for MS (YOUNG CA). v/s on all ltrs William Grant  
UNITED STATES: AFRTS, 6000, f/d b/w pc in 17d (VOCKEROTH PA)  
United Nations R., 9520, f/d blue/white UN cd in 58d sfc (THOMPSON NM)  
VOA, 5745, f/d Capitol cd in 12d (THOMPSON NM) (This is LSB feeder); 15365, time/fqy Capitol cd in 9d (ROJEWSKI WA); 17710, time/fqy Capitol cd in 7d (ROJEWSKI WA)  
WINB, 11775, f/d cd w/veri, 32d air, no rp (HINDS TRIN)  
WWV, 5000, f/d "Arapahoe Chief" cd in 6d air (LUNSTRUM FL), same in 17d (ARNESON MO)  
WYFR, 6155, f/d microphone cd in 14d for MS (GEBHARDT IA); 11705, same in 7d, no rp (LUNSTRUM FL); 15440, same in 8d (LUNSTRUM FL)

Made it again. Had some good QSL duplicates that I had to leave out due to lack of room, but will try to work them in in issues to come.

No one came up with the correct translation (or even the correct language) last month, though there were a lot of guesses. Shame on you. I thought everyone would recognize Tibetan, hi! It was written by Tibetan student Penpa Dhondup and said "School Zone". I'll give you an easy one this month--easy to hear (it's reported in this issue) and easier to translate.

Whoops! Just found a report on the floor, so I'll sneak it in here.

TRAKK IKKE PA PLENNEN

CANADA: Deutsche Welle Relay, 6085, "20 Jahre DW" cd in 16 wks, no rp (VOCKEROTH PA) Sorry John--but at least I found it before I put this in the mail. While I think of it, R. Nederland on 6165 is exclusively a Bonaire fqy--so all alleged Holland reports using that fqy have been put in the Netherlands Antilles slot. Language of reports, if other than English, is indicated in every case. Where no language is indicated, it can be assumed to be English. Utility reports and QSLs go directly to Ken Compton--to send them to me wastes time (yours and mine) and postage (mine, since I have to forward them on to Ken). For example, I received some today (16th) which I have ready to forward to Ken tomorrow, but chances are he will receive them too late to print in this issue. I can take standard time and frequency stations, but all other xmsns other than broadcast go directly to Ken. Likewise, I cannot use MW reports. Sorry about that.

Thanks to all who have been sending in copies of their QSLs (and don't stop now!). As indicated above I will try to work them in as space permits. Good contrast is essential. Photos require special handling and treatment--not to mention advance permission from HQ, so to all intents and purposes photos are a non-no. Thought for the month:

Some people blame all of today's problems on high-powered automobiles, jet planes, computerization and such. Why not take the more fundamental approach--like who was the wise guy who invented the wheel?

73's, Bill

3/16/76

# Tips and Topics

The Feature Section of SPEEDX

EDITOR: ARTHUR S. GETZEL - 70-29 KISSENA BLVD - FLUSHING - NY 11367

## BINDING FOR DX MAGAZINES

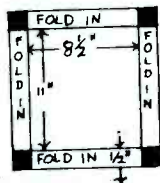
Christian P. Hansen

### PART II: Binding Loose Page Bulletins

This method is for bulletins or manuals (World Utility DX Handbook is an example) which are loose pages instead of in digest form. Clubs which use this method are: IRCA, NNRC ARDXC, among others. I would recommend that this method be used with caution on books over 1" wide; if it is done carefully, larger books may be bound, but instructions must be followed carefully or the center pages will have a tendency to fall out.

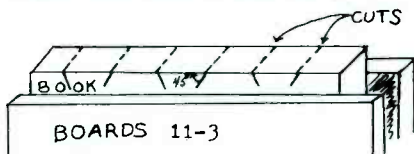
11-1) In this method, you prepare the cover first. Take two pieces of stiff paper (construction paper is ideal) the same size as one page of the bulletin (usually  $8\frac{1}{2}$  x 11), and lay them out on the work table. Lay out cloth or plastic tape on the paper so that it covers the entire surface of each piece and overlaps  $\frac{1}{2}$ " on each side.

11-2) Cut out the darkened areas in illustration at right, and then fold the overlapped edges in. You are now ready to bind.

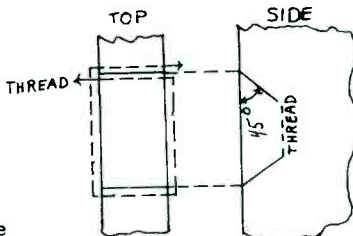


11-2

11-3) Take four pieces of bond paper, the two covers, and the pages to be bound. Put them in this order: one cover (tape side out), two pieces of bond, the pages (make sure they are in correct order), the other two pieces of bond, and then the other cover (tape side out). Put the entire thing between two boards and then clamp them in a vise as in part I. (Here is the first critical step -- if the book is not exactly even along the spine, it will not bind correctly, make sure the book is even along the spine edge. A lot of manipulation is necessary, and perhaps four hands would be better than two (one person to even up the book and hold it even in the vise while the other closes the vise on the book)). After this, make six cuts in the spine as at right, spacing does not matter, but follow the exact pattern as in the diagram.



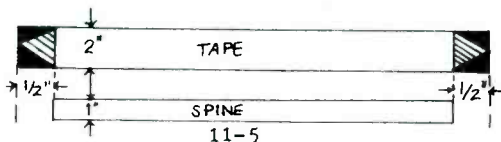
11-4) Take a piece of the same button and carpet thread mentioned in step 1-4 and thread around the middle two cuts as at right. Pull it tight, wind it around several times, and tie with a square knot. Do the same with the two end cuts on each side. This is again another critical step. If the thread is not completely in the cuts or is not wound tight, there may be some play of the middle sheets after the binding job is done. Apply white glue to and in the sawcuts and the spine and leave overnight to set.



11-4

\*\*\*\*\*  
Who are the best contributors to Tips & Topics??? Why YOU!!! Send all manuscripts typed double space on 11" x 8 $\frac{1}{2}$ " paper to the above address.  
\*\*\*\*\*

11-5) Make a strip of tape one inch wider than the spine and one inch longer (combine two strips side by side if necessary). Cut out the shaded areas as at right; fold in the striped areas and press them down. Then, stick the piece of tape to the spine and the outside covers; press down, and you are done. You may then label the spine if you like.



I would like to credit for Part II: ASWLC's "SWR" Magazine, Vol XIV, Number 10 (September, 1973), p. 44, Contributed by Mr. Bob Forman. This source has been revised and adapted by the author. This article may be used and/or reprinted providing credit is given to the author and the article is reprinted in its entirety. Comments are solicited; send them to: Christian P. Hansen, 100 West 92nd Street, Apt. 5-B, New York, NY 10025.

REBUTTAL #2

By Arthur S. Getzel

Last month Steve Kamp, in this column, wrote a rebuttal to an article written by me in November 1975 pertaining to Radio Canada's new QSL and programming policy. I, in this present article, wish to counter several statements made by Mr. Kamp last month. It is my feeling that last month's article has certain misleading statements concerning his interpretation of Radio Canada's present QSL and programming policy.

First, the fact was brought out that relinquishing the Hungarian language from their schedule would create hostility on the part of the 10,000,000 inhabitants of that nation. I find this is quite amusing, when you consider the fact that about a decade ago, Radio Canada ended her Italian language broadcast to a potential audience of 40 million people. Thus, taking this precedent into consideration, the argument that R. Canada could not have cut a minor language really holds no water when you consider the fact that RCI cut a major European language.

Secondly, to counter the remark about the laying off of Hungarian speaking staffers, I would like to say that the reasoning behind this remark is quite far fetched unless you want to conclude that the sole means of employment for Canada's Hungarian immigrant population is through RCI.

In last month's article, the false impression was brought out that the only people who write to R. Canada are DXers who belong to ANARC's four major shortwave clubs in the US. However, I was under the strange impression that stations the size of RCI received thousands of letters every month from "all over the world." By the way, what happened to all the DXers located in Europe, Australia, Asia, and Africa. Not only DXers interested in QSLs write to R. Canada but also just plain listeners who may or may not want a QSL card. Nevertheless, these plain shortwave listeners did not mind having their letters read and questions answered over the now defunct mailbag program of R. Canada. When we take all the above into consideration, we can plainly see that a great deal more than 1000 DXers may be alienated by this policy.

Thus, as you can gather by present and past statements, I am of an opposite opinion in regards to this present situation. In this situation the analogy of a TV station is very relevant. If you were the president of, for example, one of the national broadcasting networks, would you drop your number one show if you had to cut programming. I am sure we all know the answer. It is sad that Radio Canada seeked and destroyed the qualities that made it one of the most popular station on the sliderule. However, as of the present, there is nothing we can do to alter the situation.

\*\*\*\*\*  
 When was the last time you contributed to SPEEDX? Not recently! Well, come on, join the gang. You will be glad that you did.  
 \*\*\*\*\*

# HOW GOOD IS YOUR REPORT?

(This material comes from information sent out by RADIO NEW ZEALAND)

DX reports make up a large part of the mail received by international broadcasters, and for this to receive prompt attention it is important that it contains verifiable information. A limited understanding of the language being used by the station will often affect the length and detail of the report, but the report can still be of value and result in a QSL if it has specific ingredients.

The main requirements are:

1. Frequency
2. Date and time of reception (GMT)
3. Reception conditions
4. Details of program heard (15 min. or more)

## RECEPTION CONDITIONS

We want to know how well we are being received in your area, and by how well we mean how strongly, and how clearly. Signal quality is commonly rated by DXers in the SINPO code, and while this is a good overall rating system, like most stations we prefer a more descriptive signal report.

We suggest a good quality report should contain:

Comment on the readability of the signal. For example, how clearly could you follow the program? Are spoken programs understood well?

Comment on interference from other stations on the frequency.

Comment on general reception of other stations in the same geographical area.

If you provide this information your report is of interest and value. A report with these points will tell how strongly and how clearly the signal is received in your area, and provides an overall assessment of the transmission quality.

## PROGRAM CONTENT

It should be as full as possible. It is better to put too much detail in your report than too little, although it does not need to be ten pages long. Details must be specific! Actual announcements, station slogans, time and schedule announcements, program or record titles, announcers names, and news content are items that can be checked against the station log. Reports which state only the type of program being broadcast are difficult to verify, as are reports that state briefly, "Woman speaking, orchestra, announcement by a man".

## SUMMARY

In reporting reception quality, comment on; 1. Clarity of signal. 2. Signal strength by comparison with other stations in the area. 3. Interference on the same or nearby frequencies.

Detail the program content. Keep it factual but not too long, and don't forget, broadcasters welcome constructive comments of their programs.

We recognise that a QSL from low-powered broadcasters like RADIO NEW ZEALAND are eagerly sought by DXers, and we feel some responsibility towards encouraging good reporting standards, so we hope these few details on compiling a reception report will help you with your DX activities in general.

Best of DX from RADIO NEW ZEALAND

# Model DX-160



REVIEW

AND

IMPROVEMENTS

BY

RALPH SANSERINO

DX-160 FROM RADIO SHACK @ \$160.00

1 IC/5 FET's/6 Trans./15 Diodes

SELECTIVITY

4kHz at 6db

18kHz at 40db(not very good)

FREQUENCY COVERAGE

FREQUENCY COVERAGE	SENSITIVITY
Band A = 150 to 400kHz	50uv
Band B = 535 to 1600kHz	100uv
Band C = 1.55 to 4.5MHz	3uv
Band D = 4.5 to 13MHz	4uv
Band E = 13 to 30MHz	4uv

The DX-160 is not too bad a buy for the price range, but of course the buyer does not have very much choice in new receivers. Many of the problems that plagued the DX-150B are carried over to the DX-160. Bands D & E suffer from the same images, band D having images 910kHz below the actual frequency and band E 910kHz above(i.e. WWV on 15000kHz also shows up on 15910kHz, etc.). Bands B & C are not bothered as much by images. I did note some BC stations on band A.

You can help this image problem by using a preselector in the front end of the receiver. I found by running the receiver RF gain wide open and using the gain control on the preselector, keeping gain low and making sure the preselector was peaked properly, the images were eliminated. On some stations the audio must be turned up a bit.

S-METER MODIFICATION. On the DX-150A, B, & DX-160 the S-meter is pegged by all signals. You can help this by changing R24, a 3.3k resistor, on the DX-150B & DX-160, and R22 in the DX-150A. Change to a 4.7k or 5.6k resistor in all models.

BCB ANTENNA MODIFICATION. You can do away with the useless ferrite bar antenna and replace it with a low cost antenna coil. On the DX-150A & B you remove the entire ferrite bar. Just unsolder the 4 wires and take it out. On the DX-160 you leave the ferrite bar in place but unsolder the 4 wires on the right hand coil, looking from the rear of the receiver. (Left hand coil is the LW antenna). Use a Radio Shack #270-1430 antenna coil as a replacement. Remove the copper wire from around the middle of the coil and discard.

Mount new coil with brackets in an existing hole near the power transformer. A clearance hole for the adjusting screw may be needed in the rear panel. Adjust the new coil as described in the instructions that come with the coil. Peak around 1000kHz or so.

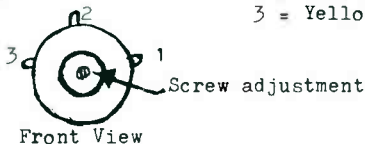
DX-150A & B

Terminal 1 = Red wire  
 " 2 = Orange/Black wires  
 " 3 = White wire

DX-160

Terminal 1 = Violet wire  
 " 2 = Green/Black wires  
 " 3 = Yellow wire

Do a good solder job. It is suggested you purchase the service manual for your set.

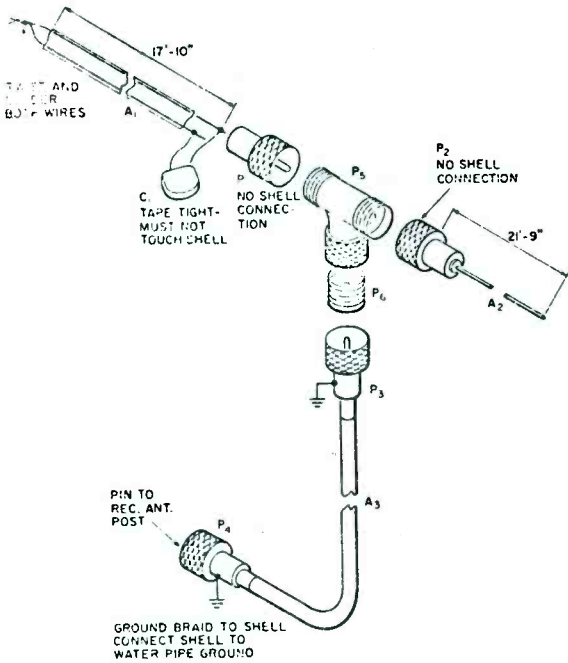


With the help of accessories, the DX-160 can be made into a fairly good DX machine. A good preselector is well worth the investment. Another very helpful accessory for receivers of this type is a crystal calibrator. One with markers at 100kHz & 10kHz will enable you to read frequencies within a few kHz. Remember that outboard accessories, while costing a few bucks, can be re-sold if you upgrade your gear and no longer need them.



## IN-OUTDOOR ANTENNA

By Barry L. Travis



As I live in an apartment it is almost impossible to erect an antenna because of the conditions of my lease. But the following antenna is just the thing that can be used by just hanging it out the window and hauling it in when not in use. The total cost is about \$6.00 and it works very well on 13 through 49 meters. I have used this system to log many countries.

### Parts List:

- A1 - 300 ohm TV twin-lead (20 gauge) 17 feet 10 inches long.
- A2 - "split" household ribbon lampcord (plastic covered) 21' 9" long.
- A3 - Coax transmission line (RG- 58/U) 10-12' long.

C1 - 22pF Disc ceramic 1KV (or smaller).

F1-4 - PL-259 Amphenol.

P5-M - 258 Amphenol.

P6-PL - 258 Amphenol.

A 13-meter halfwave is only 21 feet 9 inches long and will be used for one leg of the system. The other leg will take the form of a simple closed loop 17 feet 10 inches long. This is made up from No. 20 gauge 300-ohm TV twin lead. One end is soldered together and the other end is capacity coupled by means of a 22pF fixed capacitor. PL-259 Amphenol plugs are used to terminate each leg. The two legs are then fitted to a M-358 T adapter and fed to the receiver through ten or twelve feet of RG58-U coax fitted with PL-259's. The coax braid and shells should be grounded. The antenna system is a simple untuned broadband type that will give excellent results from 13 through 49 meters. Once the unit is finished, it will never need care or adjustment and can be simply draped out any window for convenient use.

## THE JOY OF INEXPERIENCE IS GETTING TIMBUCTU

By Bart Beal

It is a legend in the desert, a mirage in the mirror of the mind. It is challenging, like a mountain peak, enticing like a flea-power exotica, elusive as Shangri-La

If you have ever searched for a tiny voice from paradise lost, you will understand what "getting Timbuctu" means.

Search and Timbuctu. They go together for me like - well, like the moon and stars. Always out there, waiting. Sometime I'll get Timbuctu, and like any serious explorer I will chart my way, so that at the end there will remain a map, for others to follow.

Why do I believe I'll get Timbuctu? Perhaps it's a hunch; maybe it's a need. Maybe it's because nothing becomes real until you hear it. Hearing is believing, too.

But beyond the general necessity, it is the myth inherent in the very name Timbuctu. Timbuctu represents a man's dream of reaching the unattainable, like finding the pot of gold at the end of the rainbow, because you have traveled the road alone, searching, patient, so that you can say: "I have heard Timbuctu," proudly.

The joy of inexperience is the joy of getting experience to get Timbuctu.

## POWER SUPPLY DECOUPLING

By Robert H. French

The note "Free (Almost!) Low voltage Power Supply for Receiver Accessories" by Stan Rogacki in the November 1975 SPEEDX is a good idea. However, you may need to consider Power Supply Decoupling -- especially if the device is operating at RF and/or the power is obtained from the RF or IF stages of the receiver.

Basically, power supply decoupling is the practical matter of making the B+ line(s) "look like" the signal ground, which is the approximation always made to simplify analytical circuit designs. Actually, of course, this can cause interaction between circuits. To "decouple" the various receiver stages' power lines, bypass capacitors are often used between B+ connections and ground (see Diagram #1). You may have to add such a bypass to your device, as shown in Diagram #2.

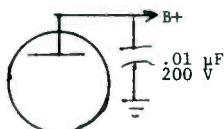


DIAGRAM #1

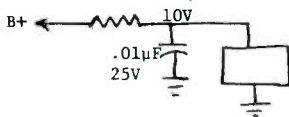


DIAGRAM #2

The effects of insufficient decoupling of signals on the power lines are insidious--they cause mysterious feedback paths ("How the #@%& can that circuit oscillate?" "Where, oh where, does that spur come from?") and can lead signals around shields to radiate into other circuits. In persistent cases, series inductors may be needed.

When all else fails, the designer will have to resort to using more wire. Instead of running one "bus" from point to point, separate leads can be brought back to one common power source. See Diagram #3. This prevents signals from sneaking along the B+ line from stage to stage--if the common node is adequately bypassed and the load ends of the lines are bypassed!

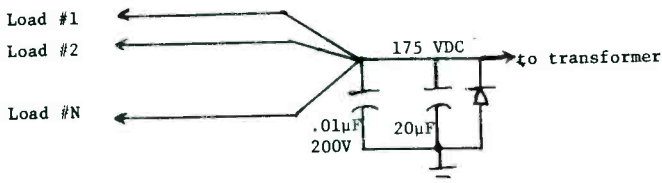


DIAGRAM #3

Finally, don't depend on the power supply filter capacitors to decouple the lines by providing a low-impedance path to ground. Electrolytic capacitors have fairly low self-resonant frequencies, and thus really look like high impedance (i.e. like an inductor!) to radio frequencies. Add a small value bypass (mica, ceramic, or similar) for RF and IF signals if your circuit either generates or is troubled by these signals.

Thats it for this month. Have a pleasant Passover and Easter this month.

APRIL CONTRIBUTORS LIST

2 ARNESON, LARRY	MD....NC-57	2 MAKISHIMA, JAMES	JAPAN..ICF5800
1 BARON, BRUCE	PA.....R4C	1 MARTI, WALTER	CA...DX-160
4 BAUMGARTNER, BRIAN	ONT...DX-160	1 MAYER, ALAN	IL...SPR-4
4 BEAUJOUIN, BOB	CT...R-388	3 MEEHAN, JIM	CT...SX-190
1 BENSON, GLENN	VA..ASTRO-4	2 MERCADO, MARJO	CA.....R4
2 BERNSTEIN, ROGER	GA...DX-160	3 MIKEJEWSKI, STAN	MN..D-7000Y
3 BETHGE, JANE	MO...SW-717	3 MILLER, AL	OH..HRO-500
5 BIXBY, MARK	CA...HA-225	4 MILLER, BILL	GA...YORK-21
3 BODELL, BOB	OR...SPR-4	4 MILLER, CARLETON	WA.....??
1 BOWEN, PETER	N.S..EDY-750	3 NAYLOR, SPENCE	GA...HQ-180
1 BRIGHAM, WARNER	IL.....??	1 NUMATA, N.	JAPAN...SSR-1
5 BROOKER, JIM	MI...SPR-4	1 OLSON, ERIC	CT...SPR-4
3 BROOKS, ALAN	CT...DX-150A	3 PEARSON, BILL	PA...DX-160
3 BUTTERFIELD, BOB	MA...HQ-100	3 PERRY, COLIN	QUE...GRUNDIG
2 CAIRI, GREG.	MA.....SW4	1 PETERS, DAVID	KY...SPR-4
1 CARVIN, NEIL	MA...S-107	4 PIMBLETT, NIGEL	ALB...DX-150A
3 CATHORNE, CEDRIC	ENG...GR-100	1 PUCKETT, LARRY	MS....R4-B
2 CHABAK, MIKE	CO...DX-150B	2 RADTKE, CARL	CA...SPR-4
5 CLEVELAND, BILL	CA...SPR-4	1 REDMAN, RON	IL...P-1660
5 COHEN, JON	NJ...SV-717	2 RODRIGUEZ, E.	PR..D-7000Y
1 COOK, MELVIN	MN...SPR-4	3 ROJEWSKI, DON	WA...DX-160
4 CRABLE, VERA	ID...SPR-4	2 ROMANI, DAVE	MI...SPR-4
1 d'ADOLF, STEVE	HOLLAND...R-530	2 S'ANN, BONNIE	NJ...DX-160
1 DAVIS, JIM	CA...R-390	1 SCANNELL, MARK	MA...SB-313
4 DEAN, DENNIS	OH...SPR-4	1 SILVA, CARIOS	CA.....??
5 DEVRIES, LINDA	MA...DX-160	2 SMITH, DAVEY	AL...S-85
1 DOLYAK, EVELYN	FL...SCR-30	5 SMITH, TOM	FL...SCR-30
2 DURANT, HENRY	MD...SPR-4	1 SMITH, WOODY	TN...TRANS-0
3 EARHARDT, KEN	PA...SX-190	2 SNYDER, DOUG	CA...SPR-4
1 ESTES, "SNAPPER"	MS.....??	5 SPOMERS, JACK	CA...SPR-4
4 FAMIJARO, RAJPH	NJ...XCR-30	3 SPARKS, BILL	CA.....R4B
1 FISCHER, KLAUS	GERMANY..GUNDORIG	2 STEPHENSON, NORM	CA...SPR-4
3 FLEMING, LEON	TX...SX-62A	2 SWINICKI, JEROME	MI...SPR-4
2 FRENCH, BOB	MO...S-108	1 TANNENWALD, LEON	NY.NORMEADE
5 GEBHARDT, JIM	IA...DX-160	1 TESTA, FRANK & KAY	MA...DX-150
3 GION, JOHN	MA...DX-150A	5 THOMPSON, GLENN	NM..HQ-145A
1 GREEN, DALE	UT...R-392	2 THURMAN, "SKIPPER"	IL..HA-600A
1 HANSEN, CHRIS	NY...HO-200	3 TRAUTSCHOLD, JOHN	WI...SB-310
2 HARDESTER, MIKE	CA...SPR-4	3 TROCHIMCZYK, J.	DC...XCR-30
2 HARDING, BARRY	CA...DX-150A	2 TRAUBEE, BILI	HI...SPR-4
2 HAUSER, GLENN	IL...HQ-160	3 UERLINGS, JIM	OH...SX-190
1 HICKMAN, MEL	OR...A-2515	1 VAN FOSSEN, JEFF	WA...DX-160
4 HINDS, RON	TRINIDAD..ICF8000	2 VECCHIOLA, JIM	PA.....R4C
1 HOIBROOK, HANK	MD...SP-600	1 VOCKEROTH, JOHN	PA...SX-190
3 JACOBSON, JOSEPH	IL...SPR-4	3 VOKES, BOB	TX...XCR-30
3 JERNAKOFF, PETE	NY...SB-313	1 VILARO, NARCISO	PR..GRF5100
4 JONES, JACK	MS...DX-150A	1 WALLMAN, JIM	CA...DX-160
2 JUNOHA, "GIB"	JAPAN....R-4C	1 WALTERS, JOHN	NJ...R-1530
2 KAUFMAN, MATCOIM	NY...SW-4A	4 WHITE, JOHN	FL...SPR-4
2 KIYOMIYA, T.	JAPAN...SPR-4	1 WICKETT, BOB	MD...S-120
2 KIONTZ, WINSTON	CA...SPR-4	1 WILSON, BOB	IL...XCR-30
3 KOIZUMI, H.	JAPAN..9R5-9DS	2 WIRREIL, BOB	MA...SX-110
5 KURTZ, JOSEPH	MN...DX-160	1 WOOTTEN, CHAS.	ITALY...R-530
3 IAVES, ALAN	TX..DX-150A	1 WOITMAN, FRANK	WI...DX-160
5 LEAMY, ROBB	OH...HQ-180	4 YAJKO, BOB	PA...SPR-4
1 LEISTNER, LOU & E.	CA...SPR-4	4 YOUNG, JIM	CA..HQ-180A
2 LOVERTI, JOSEPH	OH...HQ-200	3 ZIMMER, BOB	WI...SPR-4
5 LUNDSTRUM, TOM	FL...DX-160	2 ZIMAROWSKI, MARK	MA...DX-150
1 MAHONEY, MIKE	IN...AR-88DM		

A big welcome to 13 first time reporters, glad to see you on the pages of SPEEDX. Their names are: Arneson, Brigham, Carvin, Estes, Gebhardt, Hinds, Loverti, Lundstrum, Makishima, Numata, Silva, Wallman, and Young. Thanks to 117 reporters, including world travelers, Steve d'Adolf and Charles Wootten. Two first time reporters in Japan, with a total of five reporting from Japan.

Each contributors name is preceded by a number. This number indicates how many SPEEDX columns a specific reporter contributed to this month. Credits for columns/sections other than SWBC, NSL and UTE are not listed here. They are recorded separately by the Membership Chairman, Art Glover.

**THE OFFICIAL DX MAGAZINE PUBLISHED MONTHLY BY SPEEDX**

**BOARD OF DIRECTORS**

PRESIDENT..... DON JOHNSON  
 MEMBERS.....ALAN BROOKS, JOHN TRAUTSCHOLD  
 JIM WHITEHEAD, DOUG SNYDER, DON JOHNSON  
 MANAGING EDITOR.....OLIVER ELLSWORTH  
 BUSINESS MANAGER/PUBLISHER/TREASURER.....DON JOHNSON  
 PROJECTS COORDINATOR.....DOUG SNYDER  
 MEMBERSHIP CHAIRMAN.....ART GLOVER  
 SPEEDXGRAM EDITOR/PUBLISHER.....JOHN TRAUTSCHOLD

**SUBSCRIPTION RATES PER YEAR**

FIRST CLASS TO USA/CANADA/MEXICO.....\$12.00  
 AD (AIRMAIL) TO SOUTH AMERICA/EUROPE..... 20.50  
 AO (AIRMAIL) TO ASIA/AFRICA/OCEANIA..... 23.00  
 FIRST CLASS WORLDWIDE (OUTSIDE USA/CANADA/MEXICO)..... 14.00  
 SAMPLE COPY WORLDWIDE..... 6 IRC's or 1.00  
 (MAKE ALL MONIES PAYABLE TO SPEEDX IN US FUNDS)

Permission is granted to broadcast, publish, or reproduce any material contained herein (excepting items which state that they appear by permission from other sources) providing credit is given to: SPEEDX, P. O. BOX "E", ELSINORE, CALIFORNIA USA and to the author or contributor when stated.

**INDEX**

KEYNOTES.....OLIVER ELLSWORTH 2  
 DX MONTAGE.....ALAN BROOKS 4  
 TECHNICAL TOPICS.....JOHN KOIB 6  
 HAPPENINGS.....TED POLING 7  
 SWBC WESTERN HEMISPHERE.....JIM WHITEHEAD 8  
 EUROPE AFRICA.....BOB BUTTERFIELD 17  
 ASIA OCEANIA.....BOB BODELL 24  
 STATION SCHEDULES.....MEL HICKMAN 31  
 UTILITY SECTION.....KEN COMPTON 33  
 QSL SECTION.....BILL CLEVELAND 38  
 TIPS AND TOPICS.....ART GETZEL 45  
 CONTRIBUTORS PAGE.....OLIVER ELLSWORTH 51

**S P E E D X**  
 P O BOX E  
 ELSINORE CALIFORNIA  
 U S A  
 9 2 3 3 0

U.S. POSTAGE PAID  
 FIRST CLASS MAIL  
 PERMIT NUMBER 36  
 ELSINORE CA 92330

**FIRST CLASS MAIL**