



*Weekly Review of Radio News - Thought and Opinion*

## RADIO POLICE SURVEY PROGRAMS

The radio police are making a national survey of broadcasting programs and the service of stations to the public at the request of the Federal Radio Commission. Every one of the 600 odd stations in the country will be checked and tabulated according to its worth to the area which it covers.

Empowered by the radio law of 1927 only to order a station off the air when it does not serve "public interest, convenience and necessity," the Radio Commission wants to be certain that all broadcasters are providing this service, particularly in view of the congestion of stations in the broadcast spectrum.

The survey is being made by the nine Federal Radio Supervisors of the Radio Division of the Department of Commerce, under the direction of William D. Terrell, Chief of the Division, and their assistants. Because of the size of the task and the plan to make the check in each of the four seasons, the canvass will take at least a year.

There will be something dog if the Federal Radio Commission ever makes public the results of the classification of radio stations as shown by the survey. One observer, expressing skepticism with regard to the survey, remarked that the radio supervisors in endeavoring to appraise a station would perhaps encounter as many opinions as persons talked with.

Yet, almost any child on the street in any of the cities could tell the relative standing of the radio stations. Even in cities like New York, Chicago and others it would not be difficult to secure a fairly accurate estimate of which stations were the most popular.

Nevertheless, when Uncle Sam attempts to evaluate the stations officially, he will surely be treading upon dangerous ground.

## LAFOUNT INSPECTS MONITOR STATION

The central monitoring station, or the police headquarters of the air, which is nearing completion at Grand Island, Neb., was inspected last week by Harold A. Lafount on behalf of the Federal Radio Commission.

This station, built in accordance with plans drawn by the Navy department and under the direction of the Radio division of the Department of Commerce, will be put into operation about September 1st. It will keep check on the 20,000 government controlled radio stations throughout the world, warning them when they are off their assigned frequency.

Mr. Lafount made an inspection of the station to learn the necessary steps to be taken by the Radio Commission so as to obtain daily reports regarding the operation of stations under its jurisdiction. He conferred with Benjamin Wolfe, the superintendent, who is virtually the police chief of the air.

Secondary monitoring stations to operate in conjunction with the Grand Island "primary" station are located in the various radio districts throughout the country. On the Pacific Coast, the Portland secondary monitoring station, under the direction of Edwin Lovejoy, radio supervisor of the Seventh district, is completed and ready to be put into operation.

The San Francisco and Los Angeles Stations will soon be ready also. The Los Angeles monitoring station will be located on Point Firmin, and here precision equipment, operated by experts under the direction of James Chapple, local radio inspector for the Department of Commerce, will provide an absolutely accurate frequency check of all stations.

*The New*

# BOSCH

SUPER SCREEN GRID

# RADIO



Illustrated here is the new de luxe Bosch Radio, Model D. Gorgeously cabined in walnut, and with the new Bosch de luxe chassis. Priced at \$199.50. (Tubes, \$24.60.)

*There's no doubt about it!*

You must see and hear the new Bosch super screen grid Radio to realize how completely these new models have revolutionized the standards of modern radio reception.

Two entirely new receivers in four beautiful cabinet designs.

*The new Bosch Standard*, 8 tubes (4 screen grid), simplified and improved to meet the most exacting requirements. Reasonably priced at \$148.50 and \$163.50. (Tubes, \$21.30.)

*The new Bosch de Luxe*, the only radio combining in *one* receiver *all* the refinements now heralded as modern—plus many Bosch features not found in any other make. Priced at \$199.50 and \$257.50. (Tubes, \$24.60.)

## COLLINS-LANE CO.

DISTRIBUTORS

### BOSCH RADIO PRODUCTS

1414 W. 7<sup>TH</sup> ST.  
LOS ANGELES

DUNKIRK 3115  
CALIFORNIA



••• *The New* **BOSCH** <sup>SUPER</sup> SCREEN GRID **RADIO** •••



# STUDIO NEWS

Pounding leather straight from the cow country of Arizona, Horse Fly and his Wranglers (on this week's cover) loped into town for a two weeks' vacation. Perhaps they listened in and heard some of the pseudo-cowboys trilling their stuff over the local stations and thought the public deserved to know what cowboys really sound like. At any rate, KNX lassoed the sextette and we now have authentic cowboy songs, solo and ensemble. The white-faced horse carries Horse Fly, the boss of the outfit, and the others answer to the names of Nubbin, Iron-Tail, Shorty, Sleepy, and Slicker. See KNX's program for a schedule of their hours on the air, and then be sure to tune in.

Colonel Charles Augustus Lindbergh, whose consistent dodging of all publicity has made his rare appearances the more valuable, will talk from the studios of WABC over an international hook-up of the Columbia Broadcasting Company System on Friday night, August 8th, from 6:00 to 6:15 p. m. The subject of the short address will be "International Aviation," of which Colonel Lindbergh knows about all there is to know. Tune in your local Columbia station for this outstanding feature of the week.

Dove Irene Kilgore, Oakland's pretty, petite Irish singing colleen, who in 1928 won nation-wide recognition as one of the best voices in America, will be heard in a special broadcast over KPO Sunday evening, August 10th, 6:15 to 6:30 o'clock. Miss Kilgore, who won second place in the 1928 National Radio Audition conducted by the Atwater Kent Foundation, has a coloratura soprano voice of exquisite beauty and was selected by judges of the contest as the best of approximately 150,000 contestants.

Helene Smith, who has been heard over the radio since 1924, is now giving a series of 1:15 p. m. hour programs, except Wednesdays, over KGER

in the form of a request recital of popular numbers.

Walter Kelsey is very much pleased with his new job as assistant musical director of KFRC. With so much directing, both in rehearsals and on the air, Walter hasn't as much time for singing and playing. He plays half a dozen instruments.

Bill Sharples and his "gang" of merrymakers have been enthusiastically welcomed by KTM fans since their coming bag and baggage to that station last week. They are now a daily feature over KTM from 7 to 9 in the morning, and also are appearing on that station every Wednesday night from 8 to 9 o'clock. The "gang" consists of Grandma and Grandpa Sears, Hal Lieberman, Chester Watson, Ralph Little, Archie Wallace, Charles Cronk-hite, John Michelmore, Bunola Kay, Caroline Hermann, Leo Mannis, Hallie Campbell, Preston Lodwick and Clarence Muse, not forgetting to mention the one and only Bill Sharples, the New Idea Man himself.

The "Pennant Collegians Quartet" will be heard over KMTR Thursday evening at 6:30 o'clock. Four young men very popular at the University of Southern California, who have ventured out into the business world as exclusive artists over KMTR, are fast gaining favor. Their modern arrangements of popular melodies which they made famous on the campus are equally as popular over the air.

Meredith Wilson, KFRC's musical director, Robert Olson and "Mac" have collaborated on a new song called "In the Land Where the Lost Dreams Go." They worked upon the theory that a song must have at least three names on it to be a success. It's a deep secret which of the trio really wrote the song. At any rate, "In the Land Where Lost Dreams Go" will be heard on KFRC quite often in the future.



*Electrolytic*  
**MERSHON!**  
Condenser

*Electrolytic*  
**MERSHON!**  
Condenser

*Electrolytic*  
**MERSHON!**  
Condenser

**ENGINEERS — TECHNICIANS — AMATEURS**

A treatise on the principles and construction of Electrolytic Condensers and their application to high-voltage filter circuits in radio receivers and transmitters is yours for the asking.

**AMRAD CORPORATION**

Medford Hillside, Mass.

*Pacific Coast Representative*

C. E. FLYNN, 312 S. Palm Drive, Beverly Hills, Calif.

*Send for it Today — Use the Coupon*



**AMRAD CORPORATION,  
MEDFORD HILLSIDE, MASS.**

Please send me a copy of "Puncture-Proof Filter Condensers." Regular price 10c but FREE to me.

Name.....

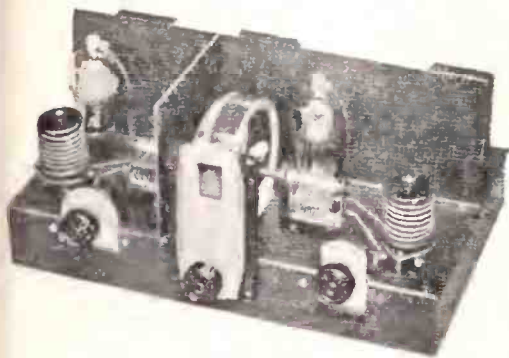
Street.....

City.....

## New National A. C. Short Wave Receiver

The National Company of Malden, Mass., has perfected an A. C. short wave receiver that satisfactorily meets the requirements of ideal S. W. reception. It is humless, has single-dial control, gives loud speaker reception from foreign broadcast stations, delivers good tone quality, is non-critical in tuning and is very neat in appearance.

The set was developed by James Milen, chief engineer of the National Com-



pany, in collaboration with Robert S. Kruse. Mr. Kruse is our leading authority in the design of short wave equipment. Nearly a year of work was devoted to the development of the set, particular attention being given the problem of hum elimination. Since it is often desirable to use head phones on the short wave set, when foreign stations are very weak, it is essential that the degree of A. C. hum present be practically nil. Furthermore, the problems involved in the elimination of hum are far greater in a short wave receiver than in a set operating over the regular broadcast band of frequencies.

When dealing with short waves, it is not so much the diagram which counts, but the manner in which the circuit is used. Little things, like the order in

which the tube heaters are wired, the insulation of the bearings in the variable condensers, the type of material used in the coil forms, and so on without end, is what makes the difference between successful design and one which is a failure.

The circuit itself comprises a tuned screen-grid radio-frequency stage, in which provision has been made, if desired, for the use of the heater type pentode tube, where slight additional gain at the expense of selectivity is wanted; a screen-grid regenerative detector; a two-stage transformer-coupled audio amplifier, employing push-pull in the second stage and with provision for plugging 'phones into the output of the first stage when desired; and a separate power pack especially designed for short-wave work.

The interstage coupling transformers are of new and special design, also the variable tuning condensers. The power unit is shielded in a steel case and is to be mounted at least three feet from the set proper. The added sensitivity of the screen grid detector over the 27 type makes possible the use of less regeneration for the same signal strength, hence an improvement in tone quality. The audio channel with the push-pull output stage also provides a high type of tone fidelity not found heretofore in short wave receivers. Single dial control is another advantage, and the use of the projection type of dial provides an accuracy in logging together with a very attractive appearance.

The National products, including this latest development in A. C. short wave receivers, are stocked in Los Angeles by the Radio Supply Company, 912 South Broadway.



**MICROPHONES**  
All Sizes and Prices for All  
Practical Uses. Mountings, Cables  
and Expert Repairs.

**Universal Microphone  
Co., Ltd.**  
THornwall 0600  
1163 Hdye Park Blvd.  
Inglewood, Calif.

Handled by All Dealers, Whole-  
salers and Jobbers Everywhere.





# New Set Owners' Page

## Name Your Favorite Stations in Radio Doings Popularity Survey

The Federal Radio Commission is desirous of ascertaining the comparative popularity of broadcast stations throughout the country, as such information will be invaluable to them in deciding the degree to which each promotes the public interest, convenience and necessity.

Every station, when presenting a case before the Commission in Washington, naturally produces voluminous evidence to support the contention that it has a vast audience and is extremely important to the public welfare. Stations obtain letters from mayors, civic organizations, clubs, etc., attesting to their merit. They offer as evidence the fact that they appear frequently among the "best bets" in the newspaper radio pages. They boast of the number of phone calls received during a request program. They get the support of Congressmen or Senators. They pull every possible political string. Some of them maintain attorneys in Washington the year around, who keep in constant touch with the Commissioners.

And all of this means nothing. If it meant anything, the Commission would be forced to believe that every station is vitally necessary to the public welfare—that every one of them has a great and appreciative audience. As a matter of fact, some of them are adequately fulfilling the obligation placed upon them when licensed to broadcast, some of them are doing a mediocre job and many are a total loss as far as any real benefit to the public is concerned. The Commission knows this, of course. But with all stations clamoring for more power, more time, or better channels, the Commission must in some manner apply a measuring stick and determine for itself the relative merit of the stations. It can then intelligently

cancel the licenses of the poorer ones, and grant the applications of the worthy.

Toward this end, the Commission has requested the assistance of the Radio Division of the Department of Commerce. The Division has instructed its radio supervisors and inspectors to make a survey. These men will compile data from every available source relative to the popularity of the stations in their districts. And it is the popularity with the listening public that is important, not the opinion of public officials or a few organizations, or the results of any survey made under conditions where prejudice may be present.

A survey obtained directly from the listening public in a manner precluding prejudice would naturally be the most valuable. Radio Doings believes that its vast family of readers is representative of the total radio audience of Southern California, and that they will gladly cooperate in assisting the radio supervisors in compiling this information for the Federal Radio Commission.

We feel that the results of a survey made by asking our readers to note their opinions and suggestions on the back of this page and mail to us, will provide something definite and comprehensive for the guidance of the Radio Inspector and the Commission. We will see that all of the filled-in and returned forms reach James Chapple, the radio inspector of the Department of Commerce in Southern California. In the interests of your own enjoyment of radio and the protection of your investment therein, fill out the reverse side of this page and mail to us this week. Be sure to write your name and address at the bottom of the page, otherwise your vote will not be counted.

# RADIO DOINGS POPULARITY SURVEY

*Below are listed twenty of the broadcast stations of Southern California, arranged in the order in which they tune in on your dial. Please indicate your opinion of the relative merit of the stations by numbering them in the order of their value to you. For example, if you like KHJ best of all, place the number "1" in the space provided, and then put "2" after your second choice, "3" for your third, etc. Stations that you do not listen to or have no interest in, just leave blank. A space is provided for your comments also. If you believe that a certain station should have more power, or more time, or that there is interference from some other station, or that any station should be eliminated, etc., just write it in the column provided for "Comments" after the call letters of the station.*

*Please fill out carefully and thoughtfully, tear out this whole page and mail to RADIO DOINGS, 407 East Pico St., Los Angeles, Calif.*

Station	Rating by Number	Comments or Suggestions
KMTR		
KFSD		
KFI		
KMPC		
KTM		
KELW		
KHJ		
KFWB		
KFVD		
KNX		
KMIC		
KFSG		
KGFJ		
KFOX		
KGEF		
KTBI		
KGB		
KGER		
KPSN		
KECA		

Name

Address



## Stations Scrap for Highest Power

The Federal Radio Commission will have to exercise the wisdom of Solomon this fall in determining which of the numerous applicants for 50,000 watts are entitled to the awards.

Since the recent issuance of a General Order limiting to 20 the cleared channels which might be used by the maximum power broadcasters, the filing of applications for authority to install 50,000-watt transmitters have increased by leaps and bounds. More than a dozen such applications have

been recorded within the last few weeks, and a total of 20 are now on file awaiting hearings.

Of the 51 stations assigned to the 40 cleared channels set aside for the exclusive use of high powered broadcasters, 35 either are licensed, hold construction permits, or have applications pending for 50,000 watts. All of the pending applications have been designated for hearing, along with any more that may be filed, this fall, when the commission reconvenes.

KNX and KFI of Los Angeles have construction permits for the maximum power. Providing the new stations are completed by the specified time, they will be automatically licensed.

# MAJESTIC

*The Mighty Monarch of the Air*

*Go today to one of the authorized Majestic Dealers listed below for a demonstration of the new Majestic Radio Receivers*

### SOUTH VERMONT

*Liberal Trade-In Allowance*

### Peoples Outfitting Co.

*Trade Away from Downtown  
Congestion*

3990 S. Vermont Ave.  
REpublic 5101.2.3

Plenty of Room to Park

*Open Daily and Sunday to 9 P. M.*

### Universal Music Co.

*Terms to Suit Every Purse*

1632 So. Maple WE. 9232

### CULVER CITY

*Convenient Location—Terms  
Trade-in Allowance—Service*

### Blunt Radio Electric Shop

9620 Culver Blvd. Phone 2286

All Majestic Radios Are the Same

**BUT OUR SERVICE IS DIFFERENT**

### Angelus Radio Shop

*"You Must Be Satisfied"*

4208 Santa Monica Blvd. OL. 7745

**DeHooq Bros.**  
RADIO  
OUR BUSINESS — NOT A SIDE LINE —  
6120 SOUTH BROADWAY  
Phone THornwall 0224

The essential features of these programs are identical with those sent us by the stations



JENNINGS PIERCE

# National Broadcasting Co., Inc.

## PACIFIC COAST NETWORK

111 Sutter St., San Francisco, Calif.  
Tel. SUTTER 1920

**KGO KGW KOMO  
KFI KECA KPO  
KHQ KOA KSL  
KTAR KFSD**

Howard Milholland  
Program Director

Jennings Pierce  
Chief Announcer

### DAILY EXCEPT SUNDAY

- 7:30 a. m.—Sunrise Serenaders.  
8:00 a. m.—Financial Service. KGO.  
8:15 a. m.—Morning Melodies.  
8:30 a. m.—Cross Cuts of the Day. KGO.  
9:00 a. m.—Meet the Folks. KGO.  
10:30 a. m.—Wouau's Magazine of the Air (except Thursdays).  
7:30 p. m.—Amos 'n' Andy.  
11:00 p. m.—Laughner-Harris Hotel St. Francis Dance Orchestra (Wed., 11:30) (except Thursday and Saturday). KGO.

### SUNDAY, AUGUST 3

- 9:00 a. m.—Bible Stories. KGO.  
10:00 a. m.—The Quiet Road. KGO.  
11:00 a. m.—Grace Cathedral Service. KGO.  
11:00 a. m.—The Friendly Hour.  
12:00 noon.—National Sunday Forum.  
1:00 p. m.—Sabbath Reveries.  
2:00 p. m.—Catholic Hour.  
3:00 p. m.—Sunday Concert.  
4:00 p. m.—Enna Jettick Melodies.  
4:00 p. m.—The Blue Boys. KGO, KECA.  
4:15 p. m.—Hacienda Melodies.  
4:30 p. m.—Goldman Band Concert.  
5:00 p. m.—News Service.  
5:15 p. m.—Atwater Kent program.  
5:15 p. m.—Candle-Light Silhouettes. KGO.  
5:45 p. m.—The Olympians. KGO.  
5:45 p. m.—In the Time of the Roses.  
6:15 p. m.—Studebaker Champions.  
6:45 p. m.—Sunday at Seth Parker's.  
7:15 p. m.—Hotel St. Francis Salon Orchestra.  
8:00 p. m.—Enna Jettick Melodies.  
8:15 p. m.—The Entertainers.  
8:30 p. m.—Gunnar Johansen, pianist.  
9:00 p. m.—Borden program.  
9:30 p. m.—The Reader's Guide.  
10:00 p. m.—Concert Jewels.  
11:00 p. m.—The Blue Boys.

### MONDAY, AUGUST 4

- 9:30 a. m.—Radio Ramblings. KGO.  
10:15 a. m.—Josephine B. Gibson, Food Talk.  
10:30 a. m.—Woman's Magazine of the Air.  
11:30 a. m.—NBC Philharmonic Organ Recital.  
12:00 noon.—Denver Municipal Band.  
1:00 p. m.—The Blue Boys.  
2:00 p. m.—Mormon Tabernacle Choir and Organ. Salt Lake City.  
2:30 p. m.—Matinee Time.  
3:15 p. m.—The World Today, by James G. McDonald.  
3:30 p. m.—Phil Cook, the Quaker Man.  
3:45 p. m.—Roxy and his Gang.  
4:00 p. m.—A Half Hour in the Nation's Capital.  
4:30 p. m.—Crime Prevention program.  
5:00 p. m.—Maytag Orchestra.  
5:30 p. m.—General Motors Family Party.  
6:00 p. m.—Stromberg-Carlson program.  
6:30 p. m.—Piano Capers.  
7:00 p. m.—Governor Young Campaign program.  
7:45 p. m.—Senator Tubbs Campaign program.  
8:00 p. m.—Rudy Seiger's Shell Symphonists.  
8:00 p. m.—Cotton Blossom Minstrels. KGO, KECA.  
9:00 p. m.—Pacific Serenaders.  
9:30 p. m.—House of Myths.  
10:00 p. m.—Harp Harmony.  
10:30 p. m.—Yir Frien' Scotty.  
10:45 p. m.—Hot Spot of Radio.

### TUESDAY, AUGUST 5

- 9:30 a. m.—William Don.  
9:45 a. m.—The Entertainers.  
10:15 a. m.—Color Harmony program.  
11:30 a. m.—NBC Philharmonic Organ Recital.  
11:45 a. m.—The Canny Cook.

- 12:00 noon.—Pacific Vagabonds.  
1:00 p. m.—Hotel St. Francis Drake Orchestra.  
2:00 p. m.—Rebroadcast of program from Tidworth Tattoo, England.  
2:30 p. m.—Vocal and instrumental soloists.  
2:45 p. m.—Matinee Time.  
3:00 p. m.—Erva Giles, soprano.  
3:15 p. m.—Laws That Safeguard Society.  
3:30 p. m.—Phil Cook, the Quaker Man.  
3:45 p. m.—NBC Philharmonic Organ Recital.  
4:00 p. m.—Hotel St. Francis Salon Orchestra.  
4:00 p. m.—Atwater Kent program.  
4:45 p. m.—News Service.  
5:00 p. m.—Eveready program.  
5:30 p. m.—Happy Wonder Bakers.  
6:00 p. m.—Westinghouse Salute.  
6:30 p. m.—Radio-Keith-Orpheum Hour.  
7:00 p. m.—Evening Reveries.  
7:45 p. m.—Sperry Sweethearts.  
8:00 p. m.—The Cosmopolitans.  
8:30 p. m.—Pacific National Singers.  
9:00 p. m.—Piano Paintings.  
9:30 p. m.—The Blue Boys.  
10:00 p. m.—Gems of the Drama.

### WEDNESDAY, AUGUST 6

- 9:30 a. m.—Betty Crocker Gold Medal Home Service talks.  
9:45 a. m.—Morning Glories.  
10:15 a. m.—Mary Hale Martin's Household Period.  
11:30 a. m.—Evening Stars.  
12:00 noon.—Radio Guild.  
1:00 p. m.—Series of Talks.  
1:15 p. m.—Breen and De Rose.  
1:30 p. m.—Tea Timers.  
2:00 p. m.—Rebroadcast of dance program from London.  
2:30 p. m.—John B. Kennedy talk.  
2:35 p. m.—Whyte's Orchestra.  
2:45 p. m.—The Blue Boys.  
3:30 p. m.—Phil Cook, the Quaker Man.  
3:45 p. m.—Back of the News in Washington.  
4:00 p. m.—East of Cairo.  
4:30 p. m.—Hotel St. Francis Salon Orchestra.  
4:45 p. m.—News Service.  
5:00 p. m.—Halsey, Stuart program.  
5:30 p. m.—Palmolive Hour.  
6:30 p. m.—Coca Cola program.  
7:00 p. m.—Southern Harmony Four. KGO.  
7:15 p. m.—The Hot Spot of Radio.  
7:45 p. m.—Governor Young Campaign program.  
8:00 p. m.—Let's Get Associated.  
8:00 p. m.—Persian Quintet. KGO, KECA.  
8:30 p. m.—Bill Billy Boys.  
9:00 p. m.—Miniature Biographies.  
9:30 p. m.—Cameo Pleasure Hour.  
10:30 p. m.—Yir Frien' Scotty.  
10:45 p. m.—Sarah Kreindler, violinist.

### THURSDAY, AUGUST 7

- 9:30 a. m.—The Entertainers.  
9:45 a. m.—Safeguarding the Nation's Food and Drug Supply.  
10:00 a. m.—Woman's Magazine of the Air.  
11:00 a. m.—NBC Organ Recital.  
11:45 a. m.—The Canny Cook.  
12:00 noon.—Hotel St. Francis Drake Orchestra.  
1:00 p. m.—Series of Talks.  
1:15 p. m.—Breen and De Rose.  
1:30 p. m.—Ballads.  
1:45 p. m.—Tea Timers.  
2:00 p. m.—Black and Gold Room Orchestra.  
2:30 p. m.—Matinee Time.  
3:30 p. m.—Phil Cook, the Quaker Man.  
3:45 p. m.—Musical Echoes.  
4:00 p. m.—Fleischmann Hour.  
5:00 p. m.—ARCO Birthday Party.  
5:30 p. m.—Maxwell House Ensemble.  
6:00 p. m.—RCA Hour.  
7:00 p. m.—The Speedway to Happiness.  
7:45 p. m.—Standard Symphony Hour.  
8:00 p. m.—B. A. Rolfe and his Lucky Strike Dance Orchestra.  
8:45 p. m.—Capt. "Bill" Royle.  
9:00 p. m.—Memory Lane.  
9:30 p. m.—The Olympians.  
10:00 p. m.—The National Concert Orchestra.

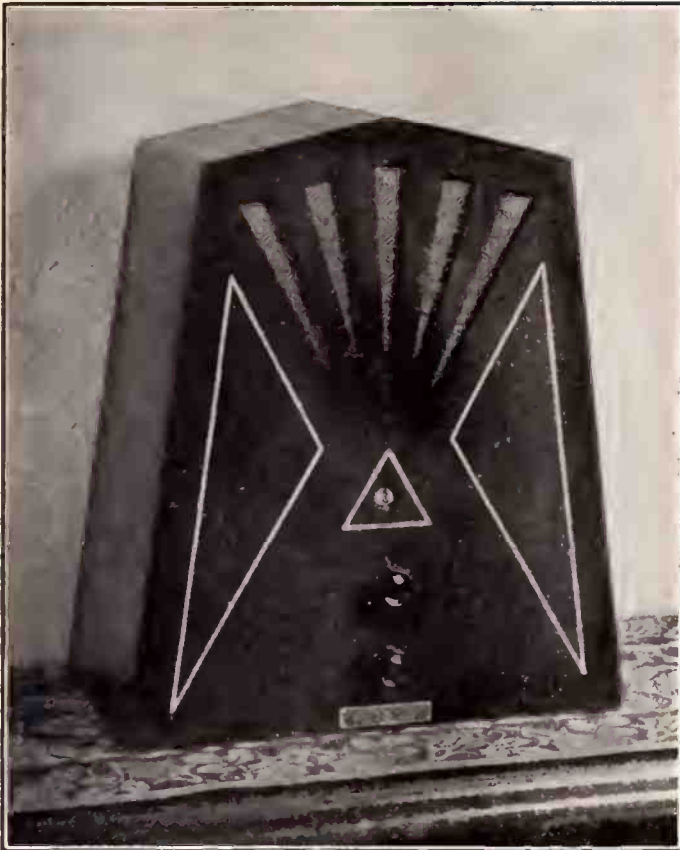
(Continued on Page 32)

## 1930 Sensation Radio

# "The Plymouth Radio Corp."

*has made it possible for every one to own a*

## **THREE SCREEN GRID RADIO**



Equipped with a Rola Full Dynamic Speaker which assures equal distribution of instrumentation in high and low tones.

### THREE SCREEN GRID

245 POWER TUBE

CABINET,

selected walnut,  
two-tone finish

ELECTRO-LYTIC  
CONDENSER

SUPERIOR TONE

SELECTIVITY

VOLUME

DISTANCE

### DYNAMIC MODEL

**\$64<sup>50</sup>**

*Complete with Tubes*

#### *Distributors*

**Vreeland Radio Corp.**

1639 Tremont St., Denver, Colo.

**Jas. J. Backer**

106 Denny Way, Seattle, Wash.

**Wholesale Radio Supply Co.**

269 7th St., San Francisco

**Arizona Radio & Supply Co.**

903 W. Moreland, Phoenix, Ariz.

**Talking Machine Co.**

Birmingham, Ala.

**Radio Television Corporation**

Detroit, Mich.

**Spedding Limited**

Auckland, New Zealand

2825 North  
Main St.

**PLYMOUTH  
RADIO CORP.**  
LOS ANGELES, CALIFORNIA

CApitol  
8293



The essential features of these programs are identical with those sent us by the stations



ROBERT HURD

# KFI Los Angeles, Calif.—640 Kc.

3000 WATTS—468.5 METERS

Radio Central Super-Station of Earle C. Anthony, Inc.  
1000 S. Hope. Phone WE. 0331. After 5 P. M., WE. 0337

## DAILY EXCEPT SUNDAY

- 6:30 a. m.—Opening Market Quotation by E. A. Pierce & Co.
- 6:45 a. m.—Health Exercises, Louis Rueb.
- 7:30 a. m.—Leslie Brigham, basso (except Saturday).
- 8:00 a. m.—Shell Happy Time, from KPO.
- 12:00 noon.—U. C. Department of Agriculture.
- 12:15 p. m.—Federal and State Market Reports.
- 4:15 p. m.—KFI News Bureau (except Wednesday).
- 4:30 p. m.—Big Brother Don (except Saturday).
- 5:00 p. m.—Baron Keyes, the Story Man, Union Oil (except Saturday).
- 5:45 p. m.—Stock Market Reports by E. A. Pierce & Co.
- 11:00 p. m.—Laughner-Harris Hotel St. Francis Orchestra (ex. Mon. and Sat.).
- 4:20 p. m.—Dr. John T. Miller, Human Nature Around the World.
- 5:30 p. m.—American Chiropractic Association.
- 6:00 p. m.—Earl Kass, baritone.
- 6:15 p. m.—Anna and Oscar.
- 6:30 p. m.—Vernon Elkins' Cotton Pickers' Orchestra.
- 7:00 p. m.—Arthur Lang and North American Ensemble
- 8:00 p. m.—KFI Symphonette.
- 9:00 p. m.—Variety Hour.
- 10:00 p. m.—Aeolian Organ Recital—remote—Alex F. Relly, organist.

## WEDNESDAY, AUGUST 6

- 10:00 a. m.—The Lure of India—by Annette Doherty.
- 10:15 a. m.—Grace Mead, soprano.
- 10:35 a. m.—Investment Talk.
- 10:50 a. m.—Third Church of Christ, Scientist.
- 12:10 p. m.—Karl Brandenburg, tenor.
- 12:30 p. m.—Ifelen Guest, ballads.
- 1:00 p. m.—Temple of the Golden Hour, with Virginia Flohri, James Burroughs and Pryor Moore Orchestra, with Pryor Moore, director. NBC.\*
- 2:00 p. m.—Sylvia's Happy Hour.
- 3:30 p. m.—"Advanced Thought," by Lella Castberg.
- 4:00 p. m.—Enna Jettick Melodies, NBC.\*
- 4:15 p. m.—Aeolian Organ Recital.
- 5:15 p. m.—Atwater Kent Hour, NBC.\*
- 5:45 p. m.—Melody Makers String Ensemble.
- 6:15 p. m.—Studebaker Champions, NBC.\*
- 6:45 p. m.—Virginia Flohri, James Burroughs and Los Caballeros Orchestra.
- 7:15 p. m.—Purcell Mayor, violin recital.
- 7:45 p. m.—Frank Kneeland, baritone.
- 8:00 p. m.—Evelyn Snow, contralto; M. K. Duncan.
- 8:15 p. m.—Sarah Padden Players.
- 9:00 p. m.—Borden Milk program, NBC.\*
- 9:30 p. m.—Jane Green and Ron Wilson, vaudeville headliner.
- 10:00 p. m.—Wally Perrin's Packard Dance Orchestra, with Two Shades of Blue, Mart and Lill.
- 11:00 p. m.—Blue Boys, NBC.\*

## MONDAY, AUGUST 4

- 9:00 a. m.—Herb Scharlin, popular songs.
- 9:30 a. m.—Germau Lesson—Annette Doherty.
- 9:45 a. m.—Karl Brandenburg, popular melodies—MRK tablet program.
- 10:00 a. m.—Wall Street Journal.
- 10:15 a. m.—Josephine Gibson, speaker, NBC.\*
- 10:30 a. m.—Woman's Magazine of the Air, NBC.\*
- 11:30 a. m.—French Lesson—Annette Doherty.
- 11:45 a. m.—Spanish Lesson—Annette Doherty.
- 12:30-2:00 p. m.—Silent.
- 2:30 p. m.—Winnie Fields Moore—Travelogue.
- 2:45 p. m.—Leonard Van Berg, popular melodies.
- 3:00 p. m.—L. A. Public Library—Book Review.
- 3:30 p. m.—Owen Evans, tenor.
- 4:00 p. m.—Jack Miller's Paramount Trio.
- 5:30 p. m.—Beauty Talk by Sadye Nathan.
- 6:00 p. m.—Stromberg Carlson program, NBC.\*
- 6:30 p. m.—Bernice Morrison, Poet of the Piano.
- 7:00 p. m.—Governor Young Campaign Talk, NBC.\*
- 7:30 p. m.—Anna Kristina, Swedish Character Sketches.
- 7:45 p. m.—Political Talk, by Senator Tubbs, NBC.\*
- 8:00 p. m.—Shell program, NBC.\*
- 9:00 p. m.—Program of Songs, with Virginia Flohri.
- 9:30 p. m.—Packard Concert, with Robert Hurd, soloist; Pryor Moore Orchestra. Pryor Moore, director.

## TUESDAY, AUGUST 5

- 9:00 a. m.—Bess Kilmer's Helpful Hints to Housewives.
- 9:15 a. m.—Karl Brandenburg, popular melodies, MRK Tablet program.
- 9:30 a. m.—Chester Foster Rand.
- 10:00 a. m.—Wall Street Journal.
- 10:15 a. m.—Color Harmony, NBC.\*
- 10:30 a. m.—Woman's Magazine of the Air, NBC.\*
- 11:30 a. m.—Sarah Ellen Barnes, Talk on Music of Hollywood Bowl.
- 12:30-2:00 p. m.—Silent.
- 2:00 p. m.—Rebroadcast of British Broadcasting Co. program from Tidworth and Tattoo, NBC.\*
- 2:30 p. m.—Winnie Fields Moore—Travelogue.
- 2:45 p. m.—Sally and Russell Hill.
- 3:00 p. m.—Jack Parker, ballads.
- 3:30 p. m.—Wedgwood Nowell.
- 9:00 a. m.—Bess Kilmer's Helpful Hints to Housewives.
- 9:15 a. m.—Karl Brandenburg, popular melodies, MRK Tablet program.
- 9:30 a. m.—Chester Foster Rand.
- 10:00 a. m.—Wall Street Journal.
- 10:15 a. m.—Color Harmony, NBC.\*
- 10:30 a. m.—Woman's Magazine of the Air, NBC.\*
- 11:30 a. m.—Sarah Ellen Barnes—Talk on Music of the Hollywood Bowl.
- 12:30-2:00 p. m.—Silent.
- 2:30 p. m.—Winnie Fields Moore—Travelogue.
- 2:45 p. m.—Sally and Russell Hill.
- 3:00 p. m.—Better American Federation.
- 3:15 p. m.—Sylvia's Happy Hour.
- 5:30 p. m.—Will E. Wing—Hollywood.
- 6:00 p. m.—Radio Victor Hour, NBC.\*
- 7:00 p. m.—The Speedway to Happiness, NBC.\*
- 7:30 p. m.—Edwin W. Hullinger, "Looking Out Upon the World."
- 7:45 p. m.—Standard Symphony Hour, NBC.\*
- 8:45 p. m.—James Regan and Cast, in "Circumstantial Evidence."
- 9:15 p. m.—Three Skippers.
- 9:30 p. m.—Packard Concert Orchestra, with Robert Hurd, soloist.
- 10:30 p. m.—Concert String Ensemble, Hans Whippler.

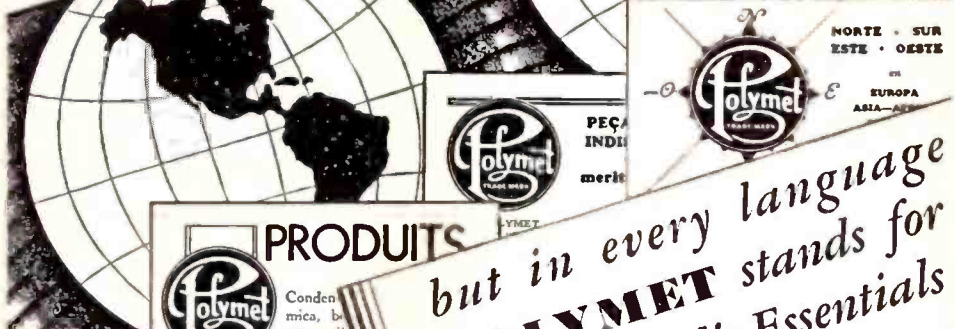
## FRIDAY, AUGUST 8

- 9:00 a. m.—Bess Kilmer's Helpful Hints to Housewives. (Continued on Page 31)

Copyright 1930 by Earle C. Anthony, Inc.

See Page 18 for NBC Program

Products  
Produits  
Productos



NORTE • SUR  
ESTE • OESTE  
EN  
EUROPA  
ASIA—



PEÇA  
INDIA  
merit

PRODUITS



Condensateurs en mica, bobines, plaques, pièces de T. S. Transformateurs, etc.



Trois énormes usines modernes sont situées au travail fabriquant les fameux articles Polymet qu'emploient 80% des principaux fabricants de T. S. Europe et Amérique.

but in every language  
**POLYMET** stands for  
Quality Radio Essentials

Wherever radio has penetrated—  
and few places exist today where  
its wonders are not known—  
there you will find Polymet  
Products.

The reason is the same which  
impels 80% of the great American  
radio manufacturers to  
employ Polymet Products—  
dependable Condensers,  
Coils, Resistances, Trans-  
formers, Magnet Wire.

Catalogs and prices will be furnished  
promptly on request.

**POLYMET**  
Manufacturing Corporation

PRODUCTOS



Condensadores de papel y de mica, enrollamientos de bobina, artículos para la radiofonía, alambre magnético esmaltado, transformadores, resistencias.



Tres gigantescas plantas industriales se encuentran siempre trabajando, produciendo estos artículos Polymet usados por el 80% de los principales fabricantes de aparatos de radio de los EE. UU. Escríbame en solicitud de catálogos, precios y descuentos.

SE  
GU  
RO  
S

POLYMET MANUFACTURING CORPORATION  
Incorporated in the United States  
115 Lexington St., New York City  
N. Y. U. S. A.  
Distribución en México y Central de América  
All Radio—Cables—Tubes

**POLYMET**

**POLYMET**  
advertisements  
which have been running in  
Journals  
reaching  
radio men  
throughout  
the world.

District Representative

**THE SPECTOR COMPANY**

RIALTO BUILDING . . . . SAN FRANCISCO





TED HUSING

# Columbia Broadcasting System

## PACIFIC COAST NETWORK

845 Madison Ave., New York

William S. Paley  
President

Henry A. Bellows  
Vice-President

**KHJ, KFRG, KVI,  
KFPY, KOIN,  
KOL, KDYL**

**DAILY EXCEPT SUNDAY**

8:00 a. m.—Columbia Revue (except Saturday).  
8:30 a. m.—Manhattan Towers Orchestra. **K**  
2:45 p. m.—"The Whoop Sisters."

**SUNDAY, AUGUST 3**

8:30 a. m.—International Broadcast.  
9:00 a. m.—The Aztecs—Latin-American and Spanish Music.  
10:00 a. m.—Ann Leaf at the organ.  
10:30 a. m.—Ballad Hour—Old and New Ballads.  
11:00 a. m.—Paul Tremaine's Orch. from Asbury Park.  
11:30 a. m.—Conclave of Nations.  
12:00 noon.—Cathedral Hour—All Musical Presentation  
1:00 p. m.—The Gauchos, Vincent Soreya Orchestra.  
1:30 p. m.—The Crockett Mountaineers.  
2:00 p. m.—Fox Fur Trapezes.  
2:30 p. m.—The Globe Trotter Act.  
3:00 p. m.—Columbia String Symphony.  
3:30 p. m.—The Round Towners—Male Quartet.  
3:45 p. m.—The World's Busshess  
4:00 p. m.—Jesse Crawford, organist.  
5:00 p. m.—Majestic Theater of the Air—Variety prog.  
6:00 p. m.—Mayhew Lake and his Band—Dance Music.  
6:30 p. m.—Around the Samovar.  
7:00 p. m.—Back Home Hour from Buffalo  
8:00 p. m.—Coral Islanders—Hawallian Music  
8:30 p. m.—Ann Leaf at the Organ.

**MONDAY, AUGUST 4**

9:30 a. m.—Harold Stern and Ambassador Orchestra.  
11:00 a. m.—Columbia Ensemble—Emery Deutsch's Orch.  
12:00 noon.—The Merry-makers-  
12:30 p. m.—The Aztecs.  
1:00 p. m.—Dancing by the Sea from Atlantic City.  
1:45 p. m.—Aunt Zelena—Stories and Songs for Children.  
2:00 p. m.—Harry Tucker and his Hotel Barclay Orch.  
2:30 p. m.—Carl Rupp and his WCPH Captivators—  
3:00 p. m.—Current Events—H. V. Kaltenborn.  
3:45 p. m.—Bernhard Levitow and his Hotel Commodore Orchestra.  
4:00 p. m.—Burbig's Syncopated History.  
4:30 p. m.—U. S. Navy Band.  
6:00 p. m.—General Cigar program.  
7:00 p. m.—Bert Lowm and his Billmore Orchestra.  
7:15 p. m.—Heywood Brown's Radio Column.  
7:30 p. m.—Ted Fiorita's Orchestra.  
8:00 p. m.—Green River program.  
8:30 p. m.—Nocturne—Ann Leaf at the Organ.

**TUESDAY, AUGUST 5**

11:00 a. m.—Columbia Ensemble—String Ensemble.  
11:30 a. m.—Columbia Educational Features—For Your Information.  
12:00 noon.—U. S. Army Band Concert.  
12:30 p. m.—Ann Leaf at the organ.  
1:00 p. m.—Rhythm Kings Dance Orchestra  
1:30 p. m.—Dancing by the Sea, from Atlantic City.  
2:00 p. m.—The New World Symphony—Classical prog.  
2:30 p. m.—Manhattan Towers Orchestra—Dance music.  
2:45 p. m.—National Security League Broadcast Series.  
3:00 p. m.—The Crockett Mountaineers  
3:15 p. m.—Columbia Educational Features—"International Sidelights."  
3:30 p. m.—Guy Lombardo and his Royal Canadians.  
4:45 p. m.—Melody Musketeers.  
5:30 p. m.—Savino Tone Pictures—Large Orchestra.  
6:00 p. m.—Graybar's "Mr. and Mrs."  
6:15 p. m.—Grand Opera Miniature—  
7:15 p. m.—Heywood Brown's Radio Column.  
7:30 p. m.—Chicago Variety program—Waring's Pennsylvanians: Al and Pete.  
8:00 p. m.—Green River program.  
8:30 p. m.—Nocturne—Ann Leaf at the Organ.

**WEDNESDAY, AUGUST 6**

9:30 a. m.—Harry Tucker and his Hotel Barclay Orchestra—Concert Music.

11:00 a. m.—Columbia Ensemble—String Ensemble, directed by Emery Deutsch in a Classical program.  
11:30 a. m.—Columbia Educational Features—For Your Information.  
12:00 noon.—Musical Album—Columbia Symphony Orchestra, with Lillian Buckman, soprano.  
1:00 p. m.—The Columbia Grenadiers—Popular Songs.  
1:15 p. m.—Footnotes—Freddie Rich's Dance Orchestra  
1:45 p. m.—Aunt Zelena  
2:00 p. m.—"Bill Schudt's Going to Press."  
2:15 p. m.—Ozzie Nelson's Glen Islanders.  
3:00 p. m.—The Crockett Mountaineers  
3:15 p. m.—Ted Fiorita's Orchestra.  
3:45 p. m.—The Aztecs—Latin-American and Spanish  
4:00 p. m.—Manhattan Moods—Combined Orchestras.  
5:00 p. m.—Serenade.  
6:00 p. m.—Voice of Columbia, Toscha Seldel, violin.  
7:15 p. m.—Heywood Brown's Radio Column.  
7:00 p. m.—Dancing by the Sea.  
7:30 p. m.—California Melodies—Orchestra and Movie Celebrities.  
8:00 p. m.—Guy Lombardo and his Royal Canadians.  
8:30 p. m.—Demitasse Revue featuring George Olsen's music

**THURSDAY, AUGUST 7**

8:00 a. m.—Manhattan Towers Orchestra—Dance music  
9:30 a. m.—Harold Stern and Ambassador Orchestra.  
11:00 a. m.—Columbia Ensemble—Emery Deutsch's Orchestra.  
11:30 a. m.—Columbia Educational Features—For Your Information.  
12:00 noon.—U. S. Navy Band Concert.  
1:00 p. m.—Columbia Educational Features—The Book Parade, Harry Hansen.  
1:15 p. m.—Dancing by the Sea, from Atlantic City.  
2:00 p. m.—The New World Symphony.  
1:30 p. m.—The Melody Musketeers—Male Trio.  
3:00 p. m.—The Crockett Mountaineers—Family of Six Crockets.  
4:00 p. m.—Symphonic Interlude—Symphony Orchestra.  
4:15 p. m.—Columbia Educational Features—"The Political Situation in Washington Tonight."  
4:30 p. m.—Kaltenborn Edits the News.  
4:45 p. m.—Rhythm Kings—Freddie Rich and his Orch.  
5:00 p. m.—Arabesque—A Modern "Thousand and One Nights."  
6:00 p. m.—Romany Patteran.  
6:30 p. m.—Columbia Educational Features.  
7:00 p. m.—Dream Boat—Emery Deutsch and his Orch.  
7:15 p. m.—Heywood Brown's Radio Column.  
7:30 p. m.—Guy Lombardo and his Royal Canadians.  
8:00 p. m.—Scrappy Lambert and his Woodmansten orchestra.  
8:30 p. m.—Nocturne—Ann Leaf at the Organ.  
9:00 p. m.—Mid-West Kodak Hour.

**FRIDAY, AUGUST 8**

9:30 a. m.—Harry Tucker and his Hotel Barclay Orch.  
10:00 a. m.—The Aztecs—Latin-American and Spanish Music.  
10:30 a. m.—Ann Leaf at the Organ.  
11:00 a. m.—Columbia Ensemble—String Ensemble.  
11:30 a. m.—Columbia Educational Features—Today in History.  
11:45 a. m.—August Meteors, Dr. Chas. P. Olliver.  
12:00 noon.—Light Opera Gems.  
12:30 p. m.—Thirty-Minute Men—Freddie Rich and Orchestra.  
1:00 p. m.—Carl Rupp and his WXYZ Captivators—  
2:45 p. m.—Aunt Zelena  
2:00 p. m.—Ozzie Nelson's Glen Islanders-  
3:00 p. m.—The Crockett Mountaineers-  
3:15 p. m.—Ted Fiorita's Orchestra.  
3:45 p. m.—Bernhard Levitow and his Hotel Commodore Orchestra—Dance Music.  
4:00 p. m.—Nit Wit Hour.  
4:30 p. m.—U. S. Army Band.  
6:30 p. m.—Gold Medal Fast Freight.  
7:00 p. m.—Bert Lowm and his Billmore Orchestra—  
7:15 p. m.—Heywood Brown's Radio Column.  
7:30 p. m.—Guy Lombardo's Royal Canadians.  
8:00 p. m.—Colonel Charles Lindbergh, address on "International Aviation."  
8:30 p. m.—Nocturne—Ann Leaf at the Organ.

(Continued on Page 23)





**KHJ**

**Los Angeles, Calif.—900 Kc.**

1000 WATTS—333.1 METERS  
Don Lee Bldg., 7th and Bixel Sts. Owned and operated by Don Lee,  
Calif. Dis. for Cadillac and LaSalle. Phone VA. 7111  
Glenn Dolberg, Manager. Raymond Paige, Musical Director

**Bob Swan**  
Chief Announcer  
**C. M. C. Raymond**  
Commercial Director  
**Harold Peery**  
Chief Engineer  
**Dick Creedon**  
Director of Features  
**Ernest G. Underwood**  
Technical Director

4:30 p. m.—Neil Larson, organ.  
4:40 p. m.—Investment and Examining Service, Mr. Dougherty.  
5:00 p. m.—California Dairy Council.  
5:30 p. m.—Boulevard Furniture Company.  
6:00 p. m.—General Cigar program, CBS.\*  
6:30 p. m.—Jesse Crawford, CBS.\*  
7:00 p. m.—Inglewood Park Orchestra.  
7:30 p. m.—Mayor Rolph, political speech, from KFRC.  
8:00 p. m.—B'ue Monday Jamboree, KFRC.  
10:05 p. m.—Anson Weeks Orchestra, from KFRC.  
11:05 p. m.—Earl Burnett's Biltmore Hotel Dance Orch.

**BDB SWAN**

**DAILY EXCEPT SUNDAY**

7:00 a. m.—Records.  
7:30 a. m.—Hale and Derry.  
8:00 a. m.—CBS, Revue (except Saturday).  
8:30 a. m.—N. Y. Stock Exchange Quotations.  
8:40 a. m.—Manhattan Towers Orch., CBS\* (ex. Sat.).  
9:30 a. m.—Feminine Fancies, KFRC.  
11:30 a. m.—Folger Coffee.  
12:00 noon—L. A. Biltmore Hotel Orchestra.  
12:30 and 10 p. m.—News Items, courtesy of L. A. Times (except Monday).  
1:30 p. m.—Times Forum.  
2:00 p. m.—Happy-Go-Lucky Hour, KFRC (ex. Sat.).  
4:45 p. m.—World-wide News (except Monday).  
4:55 p. m.—Town Topics.  
10:05 p. m.—Earl Burnett's Biltmore Hotel Orchestra (ex. Monday).  
12:00 midnight—Organ Program by Wesley Tourtellotte.

**SUNDAY, AUGUST 3**

8:00 a. m.—Recordings.  
8:15 a. m.—Anthony Euwer, poet and lecturer.  
8:30 a. m.—Talk from London, CBS.\*  
8:45 a. m.—Recordings.  
9:00 a. m.—Pacific States Sav. & Loan Concert.  
11:00 a. m.—First M. E. Church of Los Angeles, morning services.  
12:30 p. m.—Cathedral Half Hour, CBS.\*  
1:00 p. m.—The Gaucos, CBS.\*  
1:30 p. m.—Whittier Heights Memorial Park.  
2:30 p. m.—The Globe Trotters, CBS.\*  
3:00 p. m.—Columbia String Symphony, CBS.\*  
3:30 p. m.—The Round-Towners, CBS.\*  
3:45 p. m.—Dr. Julius Klefn.  
4:00 p. m.—Jesse Crawford, organ, CBS.\*  
4:30 p. m.—Colonial Dames.  
4:45 p. m.—Concert from KFRC.  
5:00 p. m.—Majestic Theatre of the Air, CBS.\*  
6:00 p. m.—Mayhew Lake and his Band, CBS.\*  
6:30 p. m.—Around the Samovar, CBS.\*  
7:00 p. m.—Melody Hour, KFRC.  
7:30 p. m.—Prof. Lindsley and organ.  
8:00 p. m.—Cadillac-LaSalle Orche-tra.  
9:00 p. m.—Val Valente and his Roof Garden Orchestra.  
10:00 p. m.—World-wide News, courtesy Times.  
10:10 p. m.—Val Valente and his Roof Garden Orch.  
11:00 p. m.—Wesley Tourtellotte's Organ Recital.

**MONDAY, AUGUST 4**

9:15 a. m.—Richardson's Music Lovers Shop.  
10:00 a. m.—Leigh Harline, organist.  
10:30 a. m.—American Institute of Food Products.  
10:45 a. m.—Elvia and Neil.  
11:15 a. m.—Records.  
11:30 a. m.—Folger Coffee—Records.  
12:45 p. m.—Normalizer.  
1:00 p. m.—Dancing Troubadors, CBS.\*  
1:15 p. m.—Zella King, Book Review.  
3:00 p. m.—Colonial Dames.  
3:15 p. m.—Girl Scouts of America.  
3:30 p. m.—Matthew Murray's Talk on Home Problems.  
3:45 p. m.—H. M. Robertson, Talk on Dogs.  
4:00 p. m.—Charlie Wellman.

**TUESDAY, AUGUST 5**

9:00 a. m.—Scientific Laboratories of America.  
9:15 a. m.—Georgia O. George Laboratories, to KFRC and KMJ.  
10:30 a. m.—Recordings.  
10:45 a. m.—Alaska-Pacific Salmon, Agnes White.  
11:00 a. m.—Agnes White; Bureau of Power and Light.  
11:15 a. m.—Recordings.  
11:45 a. m.—Normalizer.  
12:45 p. m.—Ann Leaf, organ, CBS.\*  
1:00 p. m.—Rhythm King Dance Orchestra.  
3:00 p. m.—Cicilia Collins.  
3:15 p. m.—Safety Conference, talk.  
3:30 p. m.—Midnight Mission, talk.  
3:45 p. m.—U. S. C. Trojan Period.  
4:00 p. m.—Charlie Wellman.  
4:30 p. m.—Western Air Express.  
5:00 p. m.—Mona Content.  
5:15 p. m.—Commissioner Thorps, talk.  
5:30 p. m.—Terpezoue, recordings.  
6:00 p. m.—Graybar Electric program, "Jo and Vi," CBS.\*  
6:30 p. m.—Grand Opera Miniature, CBS.\*  
7:00 p. m.—Don Lee Symphony.  
7:30 p. m.—Chicago Variety, Warnings Pennsylvanians, CBS.\*  
8:00 p. m.—Green River program, CBS.\*  
8:30 p. m.—S. & W. Forum.  
9:30 p. m.—Drama.

**WEDNESDAY, AUGUST 6**

9:15 a. m.—Richardson's Music Lovers' Shop.  
10:30 a. m.—American Institute of Food Products.  
10:45 a. m.—Log Cabin Bread, Agnes White.  
11:00 a. m.—Red Cross Shoes, CBS\*, from KHJ.  
11:15 a. m.—Columbia Ensemble, CBS.\*  
11:45 a. m.—Normalizer.  
12:45 p. m.—Kiwanis Club Luncheon.  
3:00 p. m.—Fred C. McNabb, talk on Gardens.  
3:30 p. m.—Walter Brown Murray.  
3:45 p. m.—L. A. Public Library, book review.  
4:00 p. m.—Manhattan Moods, CBS.\*  
4:30 p. m.—June and Neil.  
5:00 p. m.—Charlie Wellman.  
5:15 p. m.—U. S. Marine Band, CBS.\*  
5:30 p. m.—Boulevard Furniture Co., recordings.  
6:00 p. m.—Romance of Fashions, Peggy Hamilton.  
6:30 p. m.—Prof. Lindsley and organ.  
7:00 p. m.—Ballad Crooners.  
7:30 p. m.—California Melodies, to CBS.\*  
8:00 p. m.—"Romantic Days of '49," courtesy Standard Oil Co.  
8:30 p. m.—M. J. B. Demi-Tasse Revue, George Olsen Orchestra.  
9:00 p. m.—Mood Pictures.  
9:30 p. m.—Top o' the World Night Club, Ted White.

**THURSDAY, AUGUST 7**

9:15 a. m.—Georgia O. George Laboratories.  
10:30 a. m.—Recordings.

(Continued on Page 39)

See Page 22 for CBS Program

**C. R. SPENCER**

**Radio and Sound Laboratories**

PUBLIC ADDRESS SYSTEMS—DEALERS' SERVICE  
1109 N. VAN NESS AVE., HOLLYWOOD

Cor. Santa Monica Blvd. Just Four Blocks West of Western Ave.  
Gladstone 5781

We use the famous Supreme Diagonmeter in all service work

GRADE "A" TECHNICAL ENGINEERS, CERTIFIED BY THE RADIO TRADES ASS'N

Radio service in all parts of California. We maintain a special division of our Service Department for dealers.

Write Us About Our Special Mail Order Service to All Outside Points

The essential features of these programs are identical with those sent us by the stations



TOM WALLACE

# KNX

## Hollywood, Calif.—1050 Kc.

5000 WATTS—285.5 METERS—Los Angeles Evening Express  
Paramount-Lasky Studio, 5555 Marathon  
"The Voice of Hollywood"

Phone HEMPSTEAD 4101

Naylor Rogers  
Director-Manager

Pierre Mellonino  
Program Director

Charles H. Gabriel, Jr.  
Publicity Director

N. D. Garver  
Technical Engineer

### DAILY EXCEPT SUNDAY

- 6:45 a. m.—"Earlybirds" exercises, Dr. P. M. Seiras.  
7:15 a. m.—"Pep and Gluger" exercise.  
7:45 a. m.—"Houma Folks" exercises, Dr. P. M. Seiras.  
8:00 a. m.—Inspirational talk and morning prayer.  
8:15 a. m.—Musical program of popular recordings (except Thursday).  
9:00 a. m.—Time signals from Washington, D. C.  
9:30 a. m.—Radio Shopping News.  
10:00 a. m.—"Ba Young and Be Happy," Eddie Albricht's Ten o'Clock Family.  
10:30 a. m.—Homa Economics talk given by Kate Brew Vaughn, director of Household Economics Dept. (except Friday and Saturday).  
12:00 noon, 7:00 and 10:00 p. m.—Time Signals.  
12:30 p. m.—Broadcasting by remote control from the Silver Slipper.  
1:00 p. m.—Off the Air.  
1:30 p. m.—Eddie Albricht's reading of late fiction.  
2:00 p. m.—Jay, the Jingle Man.  
3:30 p. m.—Lost and Found and stock market (3:00 Monday; 4:00 Wednesday).  
4:30 p. m.—CPR's musical program.  
5:00 p. m.—E. C. Griffith's talk on "Travel."  
5:15 p. m.—"Big Brother Ken's Kiddie Hour."  
5:45 p. m.—Town Crier's Timely Amusement Tapa.  
7:00 p. m.—Professor Schnitzel.  
10:00-12:00 midnight.—Hotel Ambassador, Gus Arnheim's Orchestra.  
12:00 midnight—Midnight Dance music from Madame Zuca's.

### SUNDAY, AUGUST 3

- 10:00 a. m.—Musical program.  
10:15 a. m.—Musical program of late recordings.  
10:30 a. m.—Chett Mitendorfer presenting musical prog.  
11:00 a. m.—First Presbyterian Church of Hollywood.  
12:30 p. m.—Louise Johnson, astro-analyst.  
1:00 p. m.—International Bible Students Ass'n.  
2:00 p. m.—The Neapolitans and Glenn Dala.  
4:00 p. m.—Roberts Golden State Band.  
4:30 p. m.—First Radio Church of the Air.  
5:30 p. m.—Scriptural Research Bureau.  
6:00 p. m.—Dr. Ernest Holmes.  
6:30 p. m.—Dr. Theodore Curtis Abaf.  
7:00 p. m.—Horse Fly and His Wranglers.  
8:00 p. m.—First Presbyterian Church of Hollywood.  
9:00 p. m.—Calmon Luboviski, master violinist; Claire Mellonino, pianist; Rosalie Barker Frye, contralto.  
10:30 p. m.—Hollywood Pantages Theater.

### MONDAY, AUGUST 4

- 9:00 a. m.—Bundy & Albricht program.  
11:00 a. m.—Musical program of Recordings.  
11:30 a. m.—Kip Corporation musical program.  
11:45 a. m.—Beauty secrets by Georgia Fifield.  
12:00 noon.—Hungarian Ensemble.  
2:30 p. m.—Nut Cracker; Jack Carter.  
3:30 p. m.—Lucia Lee at the Wurlitzer, KNX Symphonette.  
3:10 p. m.—Hungarian Ensemble.  
4:00 p. m.—Popular Recordings.  
6:00 p. m.—Lucie Lee at the Wurlitzer.  
6:30 p. m.—Hollywood Pantages Theater.  
7:08 p. m.—"Under the Make-Up."  
7:28 p. m.—Horse Fly and His Wranglers.  
8:00 p. m.—One-act playlet directed by Georgia Fifield.  
8:30 p. m.—Luboviski Violin Choir and Claire Mellonino, pianist.  
9:00 p. m.—Rio Grande Male Quartet and the Piano Twins.  
9:30 p. m.—Rev. Ethel Duncan, the Question and Answer Lady.

### TUESDAY, AUGUST 5

- 8:30 a. m.—Clinic of the Air.  
9:00 a. m.—Recordings.  
9:10 a. m.—"Seeing Southern California."  
9:30 a. m.—Golden Rule Health Service.  
11:00 a. m.—National Canners' Association program.  
11:15 a. m.—"Miss Iris," in popular songs.  
11:30 a. m.—KNX Trio.  
12:00 noon.—Musical program.  
2:30 p. m.—KNX Symphony.  
3:30 p. m.—Lucie Lee at the Wurlitzer.  
4:00 p. m.—Hollywood Pantages Theater.  
6:00 p. m.—KNX Trio.  
6:30 p. m.—Eugene Eggloff, 'cellist.  
7:08 p. m.—Popular Science Talk by Dr. Mars Baumgardt.  
7:30 p. m.—KNX Trio and Theodore Klittay, tenor.  
8:00 p. m.—Horse Fly and His Wranglers.  
8:30 p. m.—KNX Symphony.  
9:00 p. m.—Hap and Sap, the Royal Vagabunda.  
9:30 p. m.—Presenting the "Radio Detectiva."

### WEDNESDAY, AUGUST 6

- 9:10 a. m.—"Seeing Southern California."  
9:20 a. m.—Musical program.  
11:00 a. m.—KNX Symphony.  
11:30 a. m.—Organ by Lucie Lee.  
12:00 noon.—Kip Corporation musical program.  
2:30 p. m.—Musical program.  
3:05 p. m.—KNX Symphonette.  
3:30 p. m.—Hungarian Ensemble.  
4:00 p. m.—Hiram and Simpson.  
6:00 p. m.—Lucie Lee at the Wurlitzer.  
6:30 p. m.—Hollywood Pantages Theater.  
7:08 p. m.—Mr. and Mrs. Radio Skit.  
7:38 p. m.—Sargon "Cycle of Songs."  
8:00 p. m.—Bert Butterworth and his Airdales.  
8:30 p. m.—Horse Fly and His Wranglers.  
9:00 p. m.—Sherman Oaks Serenaders.  
9:30 p. m.—Rev. Ethel Duncan.

### THURSDAY, AUGUST 7

- 8:15 a. m.—The Hollywood Breakfast Club.  
9:15 a. m.—Golden Rule Health Service.  
11:00 a. m.—National Canners' Association program.  
11:15 a. m.—Miss Iris in popular songs.  
11:30 a. m.—"Old Witch Ammonia" program.  
11:45 a. m.—Recordings.  
12:00 noon.—Kip Corporation program.  
12:15 p. m.—KNX Symphonette.  
2:30 p. m.—Prof. Edgard Leon celebrates his third anniversary over KNX.  
3:00 p. m.—Organ program by Lucie Lee.  
3:35 p. m.—Louise Johnson, astro-analyst.  
4:00 p. m.—Organ.  
6:00 p. m.—Hungarian Ensemble.  
6:30 p. m.—Rev. Ethel Duncan.  
7:08 p. m.—"Laf-o-Grafs."  
7:30 p. m.—Margot Hegedus, violinist, and Tudor Wilianis, basso.  
8:00 p. m.—Horse Fly and His Wranglers.  
8:30 p. m.—KNX Symphonette.  
9:00 p. m.—"The Nomads."  
9:30 p. m.—KNX Trio and Theodore Klittay, tenor.

### FRIDAY, AUGUST 8

- 9:10 a. m.—"Seeing Southern California."  
9:20 a. m.—Musical program.  
10:45 a. m.—Kip Corporation program.  
11:00 a. m.—Dr. John Matthews.  
11:45 a. m.—"Musical Contrasts."  
12:00 noon.—KNX Symphony.  
2:30 p. m.—Recorded Symphonies.  
3:15 p. m.—Little Joyce Coad, little movie star.  
3:30 p. m.—Federation of Women's Club's program.  
4:00 p. m.—KNX Symphony.  
6:00 p. m.—KNX Trio.  
6:30 p. m.—Rev. Ethel Duncan, the Question and Answer Lady.  
7:08 p. m.—Stove Poker Ensemble; Country Jane.  
8:00 p. m.—Royal Order of Optimistic Do-Nuts.  
9:00 p. m.—"Lion Tamers."  
9:45 p. m.—Main event from Hollywood Legion Stadium.

### SATURDAY, AUGUST 9

- 8:30 a. m.—Bundy & Albricht courtesy program.  
11:00 a. m.—Kip Corporation program.  
11:15 a. m.—Recordings.  
12:00 noon.—KNX Symphonette and Marjorie Healy.  
1:00 p. m.—First Radio Church of the Air.

(Continued on Page 30)



The essential features of these programs are identical with those sent us by the stations



GERALD KING

# KFWB

Hollywood, Calif.—950 Kc.

1000 WATTS—315.6 METERS  
WARNER BROS. MOTION PICTURE STUDIOS  
Warner Brothers' Theater, 6425 Hollywood Boulevard

Phone HO. 0315

Gerald L. King  
Manager

Leslie Hewitt  
Chief Technician

## DAILY EXCEPT SUNDAY

- 8:30 a. m.—Dorothy Burnham, pianist; Rae and her Pals (ex. Wed.).
- 10:00 a. m.—Organ Recital by Consuelo Hedge.
- 10:30 a. m.—The Srenadera.
- 11:30 a. m.—K-FWB String Orchestra.
- 12:30 p. m.—Harold Howard's Dance Band; Jean Cowan, songs.
- 2:00 p. m.—Baseball game from Wrigley Field, Oscar Reichow at microphone (ex. Mon.).  
After baseball games—Rae and her Pals
- 6:30 p. m.—Harry Jackson and Entertainers.
- 7:00 p. m.—Cecil and Sally, "The Funniest Things."
- 8:00 p. m.—Time Signals, Bulova Watch Co.

## SUNDAY, AUGUST 3

- 8:30 a. m.—The Funny Paper Man.
- 9:00 a. m.—Late Recordings.
- 9:30 a. m.—Mutual Building & Loan Association.
- 10:30 a. m.—Late Recordings.
- 12:00 noon.—Donaldson's Auto Loans.
- 12:30 p. m.—Late Recordings.
- 1:30 p. m.—Double-header Baseball Game, Oakland vs. Los Angeles.
- After Game—Late Recordings.
- 6:30 p. m.—Harry Jackson and his Pig'n whistle Entertainers.
- 7:00 p. m.—Burr McIntosh, the Cheerful Philosopher.
- 7:30 p. m.—Dale Imes' Hollywood Revelers; Buster Dees, popular songs.
- 8:00 p. m.—Time Signal, courtesy Bulova Watch Co.
- 8:00 p. m.—First National Hour, courtesy of the First National Studios, Leo Forhstein and his Orchestra; First National Stars and Players in person.
- 9:00 p. m.—Billy Van, "The Hollywood Playboy."
- 9:30 p. m.—George Olsen and his Music.
- 10:00 p. m.—Black and White Cab Company.

## MONDAY, AUGUST 4

- 2:00 p. m.—Art Pabst and his Banjo.
- 2:30 p. m.—Ann Grey, popular songs, accompanied by Don Warner.
- 3:00 p. m.—Art and Artie in popular songs.
- 3:30 p. m.—Don Warner and Ron Wilson, two pianos.
- 4:00 p. m.—Rae and her Pals.
- 6:00 p. m.—Forum Theater organ; Buster Dees.
- 7:10 p. m.—Ted Dahl's Band.
- 7:30 p. m.—Platt Music Company.
- 7:45 p. m.—Talk on Dogs by Douglas Hertz.
- 8:00 p. m.—"Musical Portrait."
- 8:30 p. m.—Dance program.
- 9:00 p. m.—Sierra Male Quintet.
- 10:00 p. m.—Ben Bernie and his orchestra.
- 10:30 p. m.—George Olsen and his Music.
- 11:00 p. m.—Dance Music from Montmartre Cafe.
- 11:30 p. m.—Ben Bernie and his orchestra.

## TUESDAY, AUGUST 5

- 10:15 a. m.—Kathleen Clifford.
- 6:00 p. m.—Julius K. Johnson at Warner Bros. organ.
- 7:10 p. m.—KFWB Concert Orchestra.
- 8:00 p. m.—Ben Bernie and his Orchestra.
- 8:30 p. m.—Strings and Bows; Maxina Castie, soprano.
- 9:00 p. m.—The Edgeworth Plantation Club.
- 9:30 p. m.—Main Bont from the Olympic Auditorium.
- 10:30 p. m.—Ben Bernie and his Orchestra.
- 11:00 p. m.—Dance Music from Montmartre Cafe.

## WEDNESDAY, AUGUST 6

- 6:00 p. m.—KFWB Salon Orchestra.
- 7:10 p. m.—Ted Dahl's Band; Buster Dees.
- 7:30 p. m.—Jean Leonard, "Wizard of the Ivories."
- 7:45 p. m.—Keorge Gramlich, tenor.
- 8:00 p. m.—Carmelita, soprano; Saldana's Castillians.

- 9:00 p. m.—Jack Joy Continuity.
- 10:00 p. m.—Ben Bernie and his Orchestra.
- 10:30 p. m.—George Olsen and his Music.
- 11:00 p. m.—Dance Music from Montmartre Cafe.

## THURSDAY, AUGUST 7

- 10:15 a. m.—Kathleen Clifford.
- 7:10 p. m.—KFWB Concert Orch.; Lewis Mehan, tenor.
- 8:00 p. m.—Ben Bernie and his Orchestra.
- 8:30 p. m.—A detective story presented by Edward Murphy.
- 9:00 p. m.—David Perry, baritone; KFWB Salon Orch.
- 9:30 p. m.—"An Old Tintype."
- 10:00 p. m.—Ben Bernie and his Orchestra.
- 10:30 p. m.—George Olsen and his Music.
- 11:00 p. m.—Dance Music from Montmartre Cafe.  
Signing off at 11:30 p. m.

## FRIDAY, AUGUST 8

- 6:00 p. m.—Herh Sharlin, popular songs.
- 7:10 p. m.—Larry Ceballos' Revue.
- 7:45 p. m.—Mac and Al.
- 8:00 p. m.—Billy Van.
- 8:30 p. m.—"Dancing Through the Years."
- 9:00 p. m.—Sports Interview by Dick Island.
- 9:30 p. m.—The National Life Concert Orch.
- 10:00 p. m.—Ben Bernie and his orchestra.
- 10:30 p. m.—George Olsen and his Music.
- 11:00 p. m.—Dance Music from Montmartre Cafe.

## SATURDAY, AUGUST 9

- 10:15 a. m.—Kathleen Clifford.
- 12:30 p. m.—Variety Serenaders.
- 6:00 p. m.—Julius K. Johnson at Vitaphone Organ.
- 7:10 p. m.—KFWB Concert Orchestra.
- 7:30 p. m.—Ted Dahl's Band and Loyce Whiteman.
- 8:00 p. m.—Mona Motor Oilers; Lewis Meelian.
- 9:00 p. m.—KFWB Salon Orchestra; Emma Kimmel.
- 10:00 p. m.—Ben Bernie and his Orchestra.
- 10:30 p. m.—George Olsen and his Music.
- 11:00 p. m.—Dance Music from Montmartre Cafe.

# Columbia Program

(Continued from Page 22)

## SATURDAY, AUGUST 9

- 8:00 a. m.—Adventures of Helen and Mary—Drama for Children.
- 9:30 a. m.—Savoy Plaza Orchestra—Concert Music.
- 11:00 a. m.—Columbia Ensemble—Vincent Sorey's Orch.
- 11:30 a. m.—Columbia Educational Features—For Your Information. Today in History.
- 12:00 noon.—The Aztecs—Latin-American and Spanish music.
- 12:30 p. m.—French Trio—Classical Music.
- 1:00 p. m.—Ozzie Nelson's Glenn Islanders.
- 2:00 p. m.—Tom, Dick and Harry.
- 2:15 p. m.—Husing's Sportsclants.
- 3:15 p. m.—The Melo-Maniac.
- 4:00 p. m.—Columbia Educational Features—Dr. Arthur Torrance.
- 4:15 p. m.—Columbia Educational Features—Romance of American Industry.
- 4:30 p. m.—Dixie Echoes—Spiritual Singers, with Taylor Gordon.
- 5:00 p. m.—Hank Simmons' Show Boat.
- 6:00 p. m.—Paramount Public Hour—Guest Screen Stars; Paul Ash with Stage Show; Paramount Orchestra; Jesse Crawford, Organist; Marcia Freer.
- 7:00 p. m.—Will Osborne and his Orchestra—Dance Music.
- 7:30 p. m.—Guy Lombardo and his Royal Canadians—Dance Music.
- 8:00 p. m.—Bert Lown and his Biltmore Orchestra—Dance Music.
- 8:30 p. m.—Nocturne—Ann Leaf at the Organ.



The essential features of these programs are identical with those sent us by the stations



DON WILSON

# KECA

## Los Angeles, Cal.—1430 Kc.

209.7 METERS—1000 WATTS

EARL C. ANTHONY, INC.

1000 South Hope St. Westmore 0331

8:30 p. m.—Will Rounds Ensemble, with Winnie Fields

Moore, travlogue.

9:00 p. m.—Will Rounds Ensemble.

9:30 p. m.—Camels Pleasure Hour, NBC.\*

Carl Haverlin  
Commercial Manager

Robert Hurd  
Program Manager

### THURSDAY, AUGUST 7

3:00 p. m.—Annette Petite, character songs.

3:15 p. m.—Max Mellinger, "Drop a-Line" program.

3:30 p. m.—Phil Cook, the Quaker Man, NBC.\*

3:45 p. m.—Haven Johnson, "The Melody Man."

4:00 p. m.—Fleischmann Sunshine Hour, NBC.\*

5:00 p. m.—Arco Birthday Party, NBC.\*

5:30 p. m.—Maxwell House Melodies, NBC.\*

6:00 p. m.—Buster Wilson's Orchestra.

6:45 p. m.—Lydia Aldrich, popular soprano.

7:00 p. m.—Wedgwood Nowell.

7:15 p. m.—Vincent and Howard.

7:45 p. m.—Bob and Monte.

8:00 p. m.—Lucky Strike program, NBC.\*

9:00 p. m.—KECA Symphonette.

9:45 p. m.—Eddie Arrstrong, hallads.

10:00 p. m.—William Kalani, Hawaiian baritone.

### FRIDAY, AUGUST 8

3:00 p. m.—Armand, baritone, popular ballads.

3:15 p. m.—Universal Safety Series, NBC.\*

3:30 p. m.—Phil Cook, the Quaker Man, NBC.\*

3:45 p. m.—Haven Johnson, the Melody Man.

4:00 p. m.—Cities Service Hour, NBC.\*

5:00 p. m.—Interwoven Pair, NBC.\*

5:30 p. m.—Armour Hour, NBC.\*

6:00 p. m.—Nick Harris program.

6:30 p. m.—Raleigh Revue, NBC.\*

7:00 p. m.—The Elgin program, NBC.\*

7:15 p. m.—Otto Plotz, dialogue, songs, popular music.

7:45 p. m.—Jack and Jill, Gene Lewis and Bebe.

8:00 p. m.—Mrs. June Snow, bridge lessons.

8:15 p. m.—Etude Ethiopian Chorus, 40 voices.

8:45 p. m.—Anna and Oscar.

9:00 p. m.—Winifred Donaldson, contralto, with L.

Ishell.

9:15 p. m.—Herbert G. Turner, tenor.

9:45 p. m.—Catherine C. Dixon, concert pianist.

10:00 p. m.—Don Abbott, program of popular songs.

### SATURDAY, AUGUST 9

3:15 p. m.—Max Mellinger, "Drop a-Line" program.

3:30 p. m.—Fuller Man program, NBC.\*

4:00 p. m.—Hendricks Music Makers.

5:00 p. m.—Haven Johnson, "The Melody Man."

5:15 p. m.—Ynez Allen, violinist.

5:30 p. m.—General Electric Hour, NBC.\*

6:00 p. m.—Fiton Hey's Virginia Ballroom Orchestra.

6:30 p. m.—Billy Hobbs Old Timers Orchestra.

7:00 p. m.—C. C. Young Speech, NBC.\*

7:45 p. m.—"Sperry Hotcakes," NBC.\*

8:00 p. m.—Night in Spain, NBC.\*

8:30 p. m.—KECA String Ensemble.

9:00 p. m.—Rainbow Harmonies, NBC.\*

9:30 p. m.—KECA String Ensemble.

10:00 p. m.—Spotlight Review, NBC.\*

KGFR, Long Beach, has a new seven days a week fifteen-minute program at 4:15 p. m. from the open-air theatre in Belmont Beach with Sydney Northcote, Australian impresario, in charge; Charles Henry, basso; John Barrie, Scotch comedian; Permelia Lee, contralto; Murray Parker and his uke; Mary Edith, harp soloist; vocal trio—Don James, lead; William Days, tenor, and Don English, baritone.

Japanese military experts are endeavoring to operate tanks by means of short waves.

### DAILY EXCEPT SUNDAY

7:30 p. m.—Amos 'n' Andy, for Pepsodent Co.

10:30 p. m.—Health Exercises, Louis Rueb (ex. Sat.).

### SUNDAY, AUGUST 3

2:00 p. m.—Catholic Services, NBC.\*

3:00 p. m.—"Trio Half-hour," with Three Skippers

and Three Minstrellets.

3:30 p. m.—Helen Clare Dudley, concert pianist.

4:00 p. m.—Blue Boys, NBC.\*

5:00 p. m.—Manly P. Hall, "Psychology."

5:30 p. m.—Dr. Walter Raymond, Unity Christian

Church.

5:45 p. m.—Memie Stark, contra-contralto; L. Isbell,

accompanist.

6:00 p. m.—Jimmie West and his Campus Orchestra,

with Tim Garrett and his guitar.

7:00 p. m.—Margaret Ruth Kernan, diversified melodies.

7:15 p. m.—Noreen Gammill, original character sketches.

7:45 p. m.—String Ensemble.

8:00 p. m.—Eunna Jettick Melodies, NBC.\*

8:15 p. m.—String Ensemble.

9:00 p. m.—Symphonette, with Raine Bennett, poet of

the air.

10:00 p. m.—The Gay Classics, NBC.\*

### MONDAY, AUGUST 4

3:00 p. m.—Katherine Spangler, whistler.

3:15 p. m.—Leonard Van Berg, popular melodies.

3:30 p. m.—Phil Cook, the Quaker Man, NBC.\*

3:45 p. m.—Haven Johnson, "The Melody Man."

4:00 p. m.—Manny Stein and his Orchestra.

5:00 p. m.—The Maytag Orchestra, NBC.\*

5:30 p. m.—General Motors Family Party, NBC.\*

6:00 p. m.—Buster Wilson's Orchestra.

6:30 p. m.—Elton Hey's Virginia Ballroom Orchestra.

7:15 p. m.—Yellow Cab Quartette.

7:45 p. m.—Jack and Jill.

8:00 p. m.—Cotton Blossom Minstrels, NBC.\*

9:00 p. m.—Ray Van Dyne's Orchestra, with Jean

Dunn, soloist.

10:00 p. m.—James Anderson, baritone.

### TUESDAY, AUGUST 5

3:00 p. m.—"Armand" Ballads.

3:15 p. m.—Laws That Safeguard Society, Dean G. L.

Archer, NBC.\*

3:30 p. m.—Phil Cook, the Quaker Man, NBC.\*

3:45 p. m.—Fredrick V. Bowers, composer.

4:00 p. m.—"Ballads on Approval."

5:00 p. m.—Annette Petite, character songs.

5:15 p. m.—Max Mellinger, popular melodies.

5:30 p. m.—Happy Wonder Bakers, NBC.\*

6:00 p. m.—Westinghouse Salute, NBC.\*

6:30 p. m.—RKO Hour, NBC.\*

7:00 p. m.—Moments Impromptu.

7:15 p. m.—Vincent and Howard.

7:45 p. m.—"Sperry Sweethearts," NBC.\*

8:00 p. m.—Royal Hidalgo Orchestra.

8:30 p. m.—Nick Harris program.

9:00 p. m.—Ray Van Dyne Orchestra, with Jean Dunn,

solist.

10:00 p. m.—Jack Parker, tenor.

### WEDNESDAY, AUGUST 6

3:30 p. m.—Phil Cook, the Quaker Man, NBC.\*

3:45 p. m.—Back of the News in Washington, Wm.

Hard, NBC.\*

4:00 p. m.—Elmer Herling, Lydia Aldrich.

4:15 p. m.—Happy Chappies, Songs of Tomorrow.

4:30 p. m.—Owen Evans, tenor.

5:00 p. m.—Halsey-Stuart program, NBC.\*

5:30 p. m.—Palmolive Hour, NBC.\*

6:30 p. m.—Coca Cola program, NBC.\*

7:00 p. m.—Noreen Gammill, character sketches.

7:15 p. m.—Otto Plotz, dialogue songs.

7:45 p. m.—Jack and Jill.

8:00 p. m.—Parisian Quintette, NBC.\*

The essential features of these programs are identical with those sent us by the stations



GERREE MIDDLETON

# KMTR

V. G. Freitag  
General Manager  
Harry Gelse  
Program Director  
Ray Bailey  
Musical Director  
Eugene Inge  
Press Relations  
Mel Lemon  
Kenneth Lee  
Announcers  
C. L. Whitney  
Technical Director

## Hollywood, Calif.—570 Kc.

500 WATTS—526 METERS  
KMTR Radio Station, 1025 N. Highland Ave. Holly 3026  
The Official Broadcasting Station of the  
Los Angeles Evening Herald

- 6:30 p. m.—Behind the Footlights.
- 7:10 p. m.—Golf Lessons, Julia Aitkin.
- 7:30 p. m.—The Meglin Kiddies, remote control.
- 8:00 p. m.—Moss Covered Melodies.
- 8:30 p. m.—Talking Picture Hits.
- 9:00 p. m.—S. C. Collegians.
- 9:30 p. m.—Vibrant Melodies.
- 10:00 p. m.—"The Old and the New," KMTR Orch.

### MONDAY, AUGUST 4

- 10:30 a. m.—Trio.
- 7:00 p. m.—Talk, Chamber of Commerce.
- 7:30 p. m.—"Broadway Hits."
- 8:00 p. m.—"Talking Picture Song Hits," Orchestra.
- 8:30 p. m.—"Galloping Gophers."
- 9:00 p. m.—Star Reporter.
- 9:30 p. m.—String Quintet.

### TUESDAY, AUGUST 5

- 5:55 p. m.—Talk on Traffic, Judge Valentine.
- 6:30 p. m.—Galloping Gophers.
- 7:00 p. m.—Orchestra.
- 8:00 p. m.—"Varieties," New Idea Man and Gang.
- 8:30 p. m.—Baseball Game, Wrigley Field, remote.

### WEDNESDAY, AUGUST 6

- 10:30 a. m.—Trio.
- 6:30 p. m.—Composers program.
- 7:00 p. m.—Hallcrofter's Book Review.
- 7:30 p. m.—"Tone Poems."
- 8:00 p. m.—"Talking Picture Song Hits," Orchestra.
- 8:30 p. m.—Baseball Game, Wrigley Field, remote.

### THURSDAY, AUGUST 7

- 6:30 p. m.—Pennant Collegians.
- 8:00 p. m.—Musical Pictures.
- 8:30 p. m.—Baseball Game, Wrigley Field, remote.
- 10:00 p. m.—"The Old and the New."
- 10:30 p. m.—Special Records.

### FRIDAY, AUGUST 8

- 10:30 a. m.—Orchestra.
- 6:30 p. m.—Talking Picture Song Hits.
- 7:30 p. m.—Salon Trio.
- 9:00 p. m.—Gems from Broadway.

### SATURDAY, AUGUST 9

- 6:30 p. m.—Ben Berman and Studio Boys.
- 7:00 p. m.—Hollycrofters Book Review.
- 7:30 p. m.—Footlight Favorites.
- 8:30 p. m.—Mann Bros. Venice Ballroom, remote.
- 9:30 p. m.—Fred Rose Orchestra, Deauville Beach Club remote.

- DAILY EXCEPT SUNDAY**
- 6:00 a. m.—"Top o' the Morning" program.
  - 7:00 a. m.—Breakfast program.
  - 8:00 a. m.—Early Stock Reports.
  - 9:00 a. m.—Mildred Klitche, Home Economics.
  - 9:30 a. m.—Good Will program.
  - 10:00 a. m.—All-Colored Minstrel Marathon, Maywood.
  - 10:15 a. m.—Louise Howatt, Happiness Girl.
  - 11:00 a. m.—Orchestra, Ye Bull Pen Inn, remote.
  - 11:45 a. m.—Selected Records.
  - 12:00 noon—"World in Review," News Bulletins.
  - 12:15 p. m.—"Prosperity Hour," Truman Bradley, Pauline Holden, Alex Buechner, Wm. Markowitz.
  - 1:15 p. m.—Records.
  - 2:15 p. m.—Popular program.
  - 2:30 p. m.—Spanish program.
  - 3:00 p. m.—Galloping Gophers.
  - 4:30 p. m.—Trading Post program.
  - 5:30 p. m.—Selected records.
  - 6:00 p. m.—Banjo Boys.
  - 7:15 p. m.—All-Colored Marathon, Maywood.
  - 10:00 p. m.—"The Old and the New," KMTR Orchestra (except Saturday).
  - 10:30 p. m.—Hollywood Sweepstakes.
  - 10:45 p. m.—The Howdy Song.
  - 11:00 p. m.—All-Colored Marathon.
  - 11:30 p. m.—Ocean Park Walkathon.
  - 12:00 midnight—8-Ball and Charley Lung.

### SUNDAY, AUGUST 3

- 7:00 a. m.—Breakfast Club.
- 9:00 a. m.—John Driscoll's Musical Revue.
- 12:00 noon—Hungarian Orchestra.
- 12:30 p. m.—Associated Glees Clubs.
- 1:00 p. m.—Victoria Orchestra.
- 1:30 p. m.—Friml Album.
- 4:00 p. m.—Maurice Gunski and Anglo Persians.
- 5:00 p. m.—Castlewood Marimba Band.
- 6:00 p. m.—Banjo Boys.

# KGEF

C. C. Hooper  
Manager  
J. Dale Stentz  
Announcer  
M. J. Hankins  
Technician

## Los Angeles, Calif.—1300 Kc.

1000 WATTS—230.6 METERS  
TRINITY METHODIST CHURCH, BOB SHULER, Pastor  
Phone WEtmore 8887

- 9:00 p. m.—South Park Christian Church Bereans.
- 9:30 p. m.—Torrance Methodist Church.
- 10:00 p. m.—Jess Blankenship, Old Time Fiddlers.

### WEDNESDAY, AUGUST 6

- 6:00 p. m.—Mother Hubbard.
- 6:40 p. m.—Mr. Rogers, soloist.
- 7:00 p. m.—Courcy Bible Class.
- 7:45 p. m.—Union Rescue Mission.
- 8:30 p. m.—Rev. E. E. Wall.
- 9:00 p. m.—Old Songs Quartet.
- 10:00 p. m.—Volunteers of America.

### THURSDAY, AUGUST 7

- 6:00 p. m.—Mrs. Tom Murray.
- 7:00 p. m.—Dr. Fredus Nelson Peters.
- 7:30 p. m.—The Hired Man.
- 8:00 p. m.—Bob Shuler's Civic Hour.
- 9:00 p. m.—Sylvia and Al.
- 10:00 p. m.—The Two Janitors.
- 10:30 p. m.—Studio program.

### TUESDAY, AUGUST 5

- 6:00 p. m.—Yette Barber Studio.
- 6:30 p. m.—W. W. Newberry.
- 7:00 p. m.—John Unfried, Radio Evangelist.
- 7:15 p. m.—Woman's Civic Hour.
- 7:45 p. m.—Jock McGlip.
- 8:00 p. m.—Bob Shuler's Civic Hour.

The essential features of these programs are identical with those sent us by the stations



GLENNHALL TAYLOR

# KTM

Glennhall Taylor  
Manager  
J. J. Quinn  
Commercial Manager  
Frank Gage  
Program Director  
Don Allen  
Asst. Program Director  
Marilah Oilney  
Dramatics  
Dick License  
Announcer

## Los Angeles, Cal.—780 Kc.

1000 WATTS—384.4 METERS  
Transmitter In Santa Monica, Calif.  
Los Angeles Stud.o: 3636 Beverly Blvd. EXposition 1341  
Pickwick Broadcasting Corporation  
Henry A. Hohman, General Manager  
Clarence B. Juneau, Chief Transmission Engineer

### DAILY EXCEPT SUNDAY

6:00 a. m.—Eye Opener.  
7:00 a. m.—Bill Sharples and his Gang. \*  
9:00 a. m.—Bert's Best Bets.  
10:00 a. m.—1:00 p. m.—Silent.  
1:00 p. m.—Beauty Salon.  
1:30 p. m.—Inspirational Poetry.  
1:45 p. m.—Popular Tunes.  
2:30 p. m.—Health Man.  
2:45 p. m.—Late Melodies.  
3:00 p. m.—Santa Monica Band.  
3:30 p. m.—Danceland Melodies.  
4:30 p. m.—Semi-classical records.  
5:00-8:00 p. m.—Silent.  
9:00 p. m.—The Ranch Hour.  
10:00 p. m.—The Georgians; Santaella's Orchestra.  
11:00 p. m.—Spizzerintum.  
12:00 midnight.—Variety Hour; popular recordings.

### SUNDAY, AUGUST 3

8:00 a. m.—Bill Sharples and his Gang.  
9:00 a. m.—Watchtower (I. B. S. A.).  
10:00 a. m.—1:00 p. m.—Silent.  
1:00 p. m.—Organ Echoes.  
1:30 p. m.—Inspirational Poetry.

2:00 p. m.—Santa Monica Band.  
3:30 p. m.—Sacred Concert.  
4:00 p. m.—Interesting Items.  
4:30 p. m.—Watchtower (I. B. S. A.).  
5:00-8:00 p. m.—Silent.  
8:00 p. m.—Santa Monica Band.  
9:00 p. m.—Ranch Hour.  
10:00 p. m.—Readers Hour.  
11:00 p. m.—Spizzerintum.

### MONDAY, AUGUST 4

3:00 p. m.—Santa Monica Band.  
8:00 p. m.—Pickwickians.  
8:30 p. m.—Charvers of History.  
9:00 p. m.—Ranch Hour.  
10:00 p. m.—Georgians.  
10:30 p. m.—Santaella's Whispering Srenaders.

### TUESDAY, AUGUST 5

4:30 p. m.—Don Allen request program.  
8:00 p. m.—Highway Highlights.  
10:30 p. m.—Poem Pictures.

### WEDNESDAY, AUGUST 6

8:00 p. m.—Bill Sharples and his Gang.  
9:00 p. m.—Rolph for Governor; talk.  
9:15 p. m.—Ranch Hour.  
10:30 p. m.—Santaella's Orchestra.

### THURSDAY, AUGUST 7

4:30 p. m.—Don Allen request program.  
8:00 p. m.—Highway Highlights.  
10:30 p. m.—Frankie and Johnnie.

### FRIDAY, AUGUST 8

8:00 p. m.—Santa Monica Band.  
8:30 p. m.—Little Theatre.  
8:30 p. m.—Intimate Sketches of Famous Composers.

### SATURDAY, AUGUST 9

3:00 p. m.—L. A. Playground; Children's program.  
8:00 p. m.—Pepper Box Revue.  
9:30 p. m.—Georgians.  
10:00 p. m.—Readers Hour.



CHRISTIAN M. BOOKS

# KTBI

## Los Angeles, Calif.—1300 Kc.

1000 Watts—230.6 Meters—1300 Kc.—Bible Institute of L. A.  
Phone MA. 1641

Christian M. Books  
Program Director and  
Announcer

Howard C. Wilson  
Technician

Gordon E. Hooker  
Accompanist

### DAILY EXCEPT SATURDAY AND SUNDAY

8:00 a. m.—Gospel Song requests.  
8:15 a. m.—Devotional Hour.  
8:45 a. m.—Ira L. Eldridge Bible Class.  
12:00 noon—Noonday Chimes.

### SUNDAY, AUGUST 3

6:00 p. m.—Studio Vesper Service.  
8:00 p. m.—Church of the Open Door.

### MONDAY, AUGUST 4

9:15 a. m.—Rev. L. Bauman of Long Beach.  
9:45 a. m.—Rev. I. A. Moon.

10:35 a. m.—Rev. A. K. Stewart.  
11:30 a. m.—Verna Remple, soprano.  
7:00 p. m.—Rev. C. A. Haskett.  
7:30 p. m.—Rev. Milo Jamison.  
8:00 p. m.—Dr. Fellman and choir of Pasadena.

### TUESDAY, AUGUST 5

9:15 a. m.—Lecture.  
9:45 a. m.—Rev. Daniel Coyner.  
10:35 a. m.—Rev. Carl Swazy.  
11:30 a. m.—Dr. W. E. Edmonds.

### WEDNESDAY, AUGUST 6

9:15 a. m.—Rev. W. A. Darsev.  
9:45 a. m.—Prof. H. W. Kellogg.  
10:35 a. m.—Rev. Frank Liudgren.  
11:30 a. m.—Book Review.

### THURSDAY, AUGUST 7

9:15 a. m.—Lecture.  
9:45 a. m.—Miss Christina Braskamp.  
10:35 a. m.—Rev. Carl Swazy.  
11:30 a. m.—Rev. Earl Edwards.

### FRIDAY, AUGUST 8

9:15 a. m.—Rev. Wm. Ogg of Sierra Madre.  
9:45 a. m.—Lecture.  
10:35 a. m.—Rev. A. P. Howell.  
11:30 a. m.—Book Review.  
7:00 p. m.—International Sunday School Lesson.  
8:00 p. m.—Musical program.

## CUSTOM WOODWORKING SHOP

Woodturning, Bandsawing, Jigsawing, Shaping, Detail Molding, Grills,  
Cabinet Work, Golden Bear Speakers.

M. J. CARLS, 1929 South Los Angeles Street

Westmore 2712



The essential features of these programs are identical with those sent us by the stations



# KMPC Beverly Hills, Cal.—710 Kc.

500 WATTS—422.3 METERS  
Operated by Macmillan Petroleum Co.  
Crestview 3101. Wilshire Blvd. at Camden Drive

Glen Rice  
Manager  
Don Chisholm  
Jonn McIntyre  
Margaret Macdonald  
Announcers  
Ray Howell  
Chief Technician

10:00 p. m.—Beverly Hill Billies.  
**MONDAY, AUGUST 4**  
9:00 a. m.—The Ad-Visor.  
3:00 p. m.—U. S. C. Lectures, remote.  
5:30 p. m.—Cuckoo Clock.  
5:45 p. m.—For Your Home.  
8:30 p. m.—Popular Trio.  
3:00 p. m.—U. S. C. Lectures—remote.  
10:00 p. m.—Ray Howell—the "And How" Boy.

MARGARET MACDONALD

DAILY EXCEPT SUNDAY

7:00 a. m.—Up and At 'Em Exercises, Haydon Phythian  
7:30 a. m.—Pot O' Gold.  
8:00 a. m.—Sooner Birds Exercises, Haydon Phythian.  
8:30 a. m.—American Prosperity Hour.  
9:30 a. m.—"Sam" program.  
9:45 a. m.—Dan Maxwell—the King of Scotland.  
10:00 a. m.—Fred Forrest—the "Stove Man."  
11:00 a. m.—Rollicking Radioliers (remote).  
12:00 noon.—Modes and Fashions.  
12:30 p. m.—Recordings.  
1:00 p. m.—Mountain Valley Water program.  
1:15 p. m.—Gene Taylor—Piano.  
1:30 p. m.—Studio program.  
1:45 p. m.—Boh, Bunny and Junior.  
2:00 p. m.—Classical and Semi-Classical program.  
2:30 p. m.—Macmillan Hawaiian program.  
5:00 p. m.—Just Kids (except Saturday).  
6:00 p. m.—Spanish-American program—Orchestra and Soloists.  
8:00 p. m.—John TeGroen and His Vibra-Harp.  
8:15 p. m.—Simmy and Mike (except Saturday).  
10:00 p. m.—Beverly Hill Billies (except Monday).

SUNDAY, AUGUST 3

9:00 a. m.—Early Morning Musicale.  
10:00 a. m.—Pipe Organ program.  
11:00 a. m.—Old Favorites.  
12:00 noon.—Piano and voice, Goodan Jenkins program.  
12:30 p. m.—On the Shores of Hawaii.  
3:00 p. m.—Church of Latter Day Saints.  
4:00 p. m.—Fred Bowers—Popular Song Writer.  
4:30 p. m.—Red Seal Hour.  
5:30 p. m.—Away Down South.  
6:00 p. m.—At Sunset.  
8:00 p. m.—John TeGroen and his Vibra-Harp.  
8:15 p. m.—Simmy and Mike—Pumpkin Center Philosophers.  
8:30 p. m.—TeGroen's Trio.  
9:00 p. m.—Gene Taylor's Music Album.  
9:30 p. m.—Benny Light, Mark Cook, Truth Tag Troubadours.

**TUESDAY, AUGUST 5**  
9:00 a. m.—The Home Builders.  
3:00 p. m.—Prof. Zancles—Piano.  
3:15 p. m.—Concert Review.  
3:45 p. m.—At the Carnival.  
4:15 p. m.—Studio program.  
8:30 p. m.—John TeGroen and his Trio, with soloist.  
9:00 p. m.—Mystery Play—remote.  
9:30 p. m.—Trio—Semi-classical Music.  
11:00 p. m.—Ray Howell, the "And How" Boy.

WEDNESDAY, AUGUST 6

9:00 a. m.—The Ad-Visor.  
3:00 p. m.—U.S.C. Lectures—remote.  
5:30 p. m.—Cuckoo Clock.  
5:45 p. m.—Harvard Furniture.  
8:30 p. m.—Popular Trio.  
9:00 p. m.—U.S.C. Lectures—remote.  
9:30 p. m.—John TeGroen's Trio, and soloist.  
11:00 p. m.—Ray Howell—the "And How" Boy.

THURSDAY, AUGUST 7

9:00 a. m.—The Home Builders.  
3:00 p. m.—Afternoon Musicale.  
3:30 p. m.—Music of the Past.  
4:00 p. m.—Playlet.  
4:30 p. m.—Dance Music.  
8:30 p. m.—TeGroen's Trio.  
9:00 p. m.—TeGroen's Trio.  
9:30 p. m.—Marmon Melodies—Pelton Motors.  
11:00 p. m.—Ray Howell—the "And How" Boy.

FRIDAY, AUGUST 8

9:00 a. m.—The Ad-Visor.  
3:00 p. m.—Popular Entertainers.  
3:30 p. m.—Afternoon Musicale.  
4:00 p. m.—Fred C. McNabb—Garden Talks.  
8:30 p. m.—TeGroen's Trio, with soloist.  
9:30 p. m.—Light and Cook, Truth Tag Troubadours.  
11:00 p. m.—Ray Howell—the "And How" Boy.

SATURDAY, AUGUST 9

9:00 a. m.—The Home Builders.  
3:00 p. m.—Hoops and Jingles Jamhoree.  
5:30 p. m.—Cuckoo Clock.  
8:45 p. m.—Jr. Chamber of Commerce program.  
11:00 p. m.—Ray Howell—the "And How" Boy.

## Radio Correspondence Education Division KMPC University of Southern California

MONDAY, AUGUST 4

3:00 p. m.—Financial Current Events, Dr. Leonard.  
3:30 p. m.—You and Your Reading, Prof. G. A. Yoa-kum, visiting professor of the Univ. of Pittsburgh.  
4:00 p. m.—Early Development of the French Language, Prof. Solomon, visiting prof., Univ. of Calif.  
4:30 p. m.—Public's Business, G. Gordon Whitnall.  
9:00 p. m.—Alvin Coolidge, James Mussatti, History Series.  
9:30 p. m.—Special Assessments—Luxuries or Necessities, Raymond Tremaine.

WEDNESDAY, AUGUST 6

3:00 p. m.—Our Helen in Magic Storyland, Helen Birdsall.  
3:30 p. m.—School of Speech, S. C.  
4:00 p. m.—Parent and the Pre-School Child, Prof. Earl C. MacInnis, Supt. of Schools, Jefferson, Wis.  
4:30 p. m.—The Quest for Certainty, Dr. R. C. Mullenix, visiting professor, Lawrence College, Appleton, Wis.  
9:00 p. m.—From Babylon to Banking, C. E. Lones.

# KELW

H. Wadsworth Cole  
Manager  
Stuart Walnwright  
Chief Engineer  
Harry Moodie  
Ralph Petit  
Announcers

DAILY EXCEPT SUNDAY

10:00 a. m.—Roy L. Medcalfe at the Fox Alexander Theater Organ.  
11:00 a. m.—Mr. Rango, the Zodiac Man.  
11:30 a. m.—Announcements.  
12:00 noon.—Dance Orchestra from The Paris Inn.  
5:00 p. m.—Rango, Zodiac Man.

## Burbank, Calif.—780 Kc

MAGNDLIA PARK—500 WATTS—384.4 METERS  
"The White Spot of the San Fernando Valley"  
Phones: Burbank 1603—Granite 3193

5:30 p. m.—Recordings.  
6:00 p. m.—Organ Concert by Roy L. Medcalfe.  
7:00 p. m.—La Vida Hour from the Paris Inn Cafe.  
**SUNDAY, JULY 27**  
10:00 a. m.—Recordings.  
12:00 noon.—Rango, Zodiac Man.  
5:00 p. m.—Episcopal Vesper Services.  
6:00 p. m.—First Baptist Church of Glendale.

The essential features of these programs are identical with those sent us by the stations



BEN S. MCGLASHAN

# KGFJ Los Angeles, Calif.—1200 Kc.

100 WATTS—249.9 METERS  
 J. V. Balwin Bldg., 15th and Figueroa Sts.  
 "Keeping Good Folks Joyful 24 Hours a Day"

Ben S. McGlashan  
 Owner  
 Duke Hancock  
 Assistant Manager  
 Thelma Kirchner  
 Publicity  
 Allan Fairchild  
 Chief Announcer  
 John Smithson  
 Technician  
 Phone:  
 Westmore 7783

10:00 a. m.—Organ Recital by Arch Fritz.  
 11:00 a. m.—KGFJ Concert Orchestra.  
 12:00 noon.—Dance Orchestra; vocalist.  
 1:00 p. m.—Unique String Quintet; vocalist.  
 2:00 p. m.—Unique String Quintet; Hazel Jones, Negro spirituals; Juanita Terry, piano.  
 3:00 p. m.—Harmony Hawa'ian Quartet.  
 5:00 p. m.—Organ Recital by Arch Fritz.  
 6:00 p. m.—Glenn Edmunds' Orchestra from Elks Club.  
 7:00 p. m.—Recordings.  
 9:00 p. m.—Mosby's Dixieland Blue Blowers.  
 10:00 p. m.—Recordings.

## MONDAY, AUGUST 4

2:00 p. m.—Tom Moore's Orchestra, from La Monica Ballroom.  
 3:00 p. m.—The Lonely Troubadour; Madame Zollars' Beauty talk.

## TUESDAY, AUGUST 5

10:00 a. m.—Lucky Four; Les Schroeder, solo pianist.  
 12:30 p. m.—Lan's Harmony Hawaiians and Harvey Brooks Orchestra.

3:00 p. m.—The Lonely Troubadour; Beauty talk.

## WEDNESDAY, AUGUST 6

2:00 p. m.—Classical Hour.  
 3:00 p. m.—The Lonely Troubadour; Mr. Croquignole.  
 11:00 p. m.—Microphone Club Frolie.

## THURSDAY, AUGUST 7

12:30 p. m.—Lan's Harmony Hawaiians and Harvey Brooks Orchestra.

2:00 p. m.—Les Hite and his famous Emancipators.

7:00 p. m.—Mayor Rolph Campaign talk.

## FRIDAY, AUGUST 8

10:00 a. m.—Lucky Four; two piano novelty.

2:00 p. m.—Classical Hour.

3:00 p. m.—The Lonely Troubadour; Beauty talk.

## SATURDAY, AUGUST 9

3:00 p. m.—The Lonely Troubadour; Mr. Croquignole.

8:30 p. m.—String Quintet; Allan Fairchild.

10:30 p. m.—Organ Melodies.

**DAILY EXCEPT SUNDAY**  
 12:00 a. m.—Mosby's Dixieland Blue Blowers.  
 1:00 a. m.—Nite Owl request program.  
 7:00 a. m.—Madame Lawry's Goodwill program.  
 8:30 a. m.—Organ Recital by Arch Fritz.  
 9:00 a. m.—Recordings.  
 10:00 a. m.—Lucky Four Ensemble.  
 11:00 a. m.—The Health Man.  
 11:30 a. m.—Spanish program.  
 12:00 noon.—Recordings.  
 12:30 p. m.—Harvey Brooks and his Blackbirds.  
 1:30 n. m.—Organ Recital by Arch Fritz.  
 3:00 p. m.—Gainsborough Beauty Shop.  
 4:00 p. m.—Recordings.  
 5:00 p. m.—Market reports; Harmony Hawaiian Quartet.  
 6:00 p. m.—Glenn Edmunds' Orch., Elks Club.  
 7:00 p. m.—Lucky Seven Orchestra.  
 8:00 p. m.—Jack Baldwin, pianist.  
 8:30 p. m.—S. A. Scherer String Quintet.  
 9:30 p. m.—Mosby's Dixieland Blue Blowers.  
 10:30 p. m.—Organ Recital by Arch Fritz.  
 11:00 p. m.—Harvey Brooks and his Blackbirds.

**SUNDAY, AUGUST 3**  
 12:00 a. m.—Nite Owl request program.  
 7:00 a. m.—Recordings.



BERTON BENNETT

# KFVD Culver City, Cal.—1000 Kc.

250 WATTS—299.8 METERS  
 AUBURN-FULLER COMPANY  
 Hal E. Roach Motion Picture Studios

Empire 1171  
 Culver City 4517  
 John W. Swallow  
 Vice-Pres. & Gen. Mgr.  
 Paul Myers  
 Advertising  
 Al Wehnert  
 Bertton Bennett  
 Announcers  
 M. S. Adams  
 Chief Technician

**MONDAY, AUGUST 4**  
 9:00 a. m.—Helpful Hints to Housewives.  
 9:30 a. m.—Zandra's Mystic Hour.  
 12:45 p. m.—Waves of Happiness.

## TUESDAY, AUGUST 5

9:00 a. m.—Beauty Hints.  
 12:45 p. m.—Diet Question Box.

## WEDNESDAY, AUGUST 6

9:30 a. m.—Zandra's Mystic Hour.  
 12:45 p. m.—Waves of Happiness.  
 9:15 p. m.—Happy-Go-Lucky Trio—Peggy Price, soloist.  
 10:00 p. m.—In Old Mexico.

## THURSDAY, AUGUST 7

9:00 a. m.—Beauty Hints.  
 10:30 a. m.—Helpful Hints to Housewives.  
 12:45 p. m.—Diet Question Box.

## FRIDAY, AUGUST 8

9:30 a. m.—Zandra's Mystic Hour.  
 12:45 p. m.—Waves of Happiness.  
 2:00 p. m.—Helpful Hints to Housewives.  
 9:15 p. m.—Happy-Go-Lucky Trio—Peggy Price, soloist.

## SATURDAY, AUGUST 9

9:00 a. m.—Beauty Hints.

# KNX Program

(Continued from Page 24)

2:00 p. m.—Lucie Lee at the Wurlitzer.  
 2:30 p. m.—Presenting an Opera (recorded).  
 5:15 p. m.—Recordings.  
 7:08 p. m.—Calmon Luboviski, master violinist, and Claire Mellonino, pianist.  
 8:00 p. m.—Musical Comedy Hour; Lois Chambers, Howard Johnson.  
 8:30 p. m.—Horse Fly and His Wranglers.  
 8:30 p. m.—Miniature Golf Tournament.  
 9:00 p. m.—Los Angeles Church Announcements.  
 9:05 p. m.—The Musical Calançis Family.  
 9:45 p. m.—"Musical Contrasts."

**DAILY EXCEPT SUNDAY**  
 6:00 a. m.—Spanish program.  
 7:00 a. m.—Hal Roach Happy-Go-Lucky Trio.  
 11:00 a. m.—Beauty Hour.  
 12:00 noon.—The Lonely Troubadour.  
 1:00 p. m.—G. Allison's Radio Home.  
 2:00 p. m.—Merchants Slogan Contest.  
 3:00 p. m.—Auburn Half Hour.  
 4:00 p. m.—Merchants S'gan Contest No. 2.  
 5:45 p. m.—Timely Topics.  
 6:45 p. m.—Health Talk (except Thursday).  
 10:00 p. m.—Organ—J. Newton Yates.  
 11:00 p. m.—Selected Recordings.  
 12:00 midnight—Organ—J. Newton Yates.

**SUNDAY, AUGUST 3**  
 8:00 a. m.—Popular Recordings.  
 9:00 a. m.—George & Johnny—Peggy Price, blues.  
 10:00 a. m.—The Lonely Troubadour.  
 11:00 a. m.—Harmony Hawaiians.  
 1:00 p. m.—"Inspiration," the Magazine of the Air.  
 2:30 p. m.—Sacred Half Hour.  
 3:00 p. m.—Light Classics on the Organ.  
 4:30 p. m.—Selected Recordings.  
 9:30 p. m.—KFVD Kut-Ups.  
 11:00 p. m.—Organ—J. Newton Yates.





BILL RAY

# KGER

Long Beach, Cal.—1360 Kc.

1000 WATTS—220.4 METERS

435 Pine Avenue Phone 632-78  
C. Merwin Dobyns, Owner and Director. Bill Ray, Manager.

**Herbert R. Connor**  
Assistant Manager  
**Dick Dixon**  
Program Manager  
**Jay Tapp**  
Chief Engineer  
**Fritz Martin**  
**Jerry Purcell**  
**Jack Strook**  
Announcers

8:55 p. m.—Long Beach Sun News Flashes.  
9:00 p. m.—Hoagland's Orchestra.  
9:30 p. m.—Organ and Piano.  
10:00 p. m.—Ho-Hum Frolic and Revue.  
11:00 p. m.—Hoagland's Orchestra.  
11:30 p. m.—Dick Dixon, Organ Program.

**MONDAY, AUGUST 4**

6:30 p. m.—Three Coeds, Vocal.  
7:00 p. m.—Syncopators Dance Band.  
7:30 p. m.—Dick Dixon, Organ Memories.  
8:00 p. m.—Mariners Concert Group and Soloists.  
9:30 p. m.—Cavaliers Dance Orchestra.  
10:00 p. m.—Studio Orchestral Music.

**TUESDAY, AUGUST 5**

6:30 p. m.—Senoritas String Trio.  
7:00 p. m.—Serenaders String Trio.  
7:30 p. m.—Rhythm Makers Dance Orchestra.  
8:00 p. m.—Mariners Concert Orchestra.  
8:30 p. m.—Organ, Tenor and Soprano.  
9:30 p. m.—Olympic Auditorium Fights.  
10:30 p. m.—Rhythm Makers Dance Orchestra.

**WEDNESDAY, AUGUST 6**

6:30 p. m.—Serenaders String Trio.  
7:00 p. m.—Senoritas String Trio.  
7:30 p. m.—Long Beach Municipal Band.  
8:00 p. m.—Mid-Week Varieties.  
9:30 p. m.—Wilmington Bowl Fights.  
10:30 p. m.—Rhythm Makers Dance Orchestra.

**THURSDAY, AUGUST 7**

6:30 p. m.—Three Coeds, Vocal.  
7:00 p. m.—Syncopators Dance Band.  
7:30 p. m.—Long Beach Municipal Band.  
8:00 p. m.—Weekly Minstrel Show.  
9:30 p. m.—Senoritas String Trio.  
10:00 p. m.—Cavaliers Dance Band.  
10:30 p. m.—Rhythm Makers Dance Orchestra.

**FRIDAY, AUGUST 8**

6:30 p. m.—Serenaders String Trio.  
7:00 p. m.—Senoritas String Trio.  
7:30 p. m.—Cavaliers Dance Orchestra.  
8:00 p. m.—Studio Orchestra and Tenor.  
8:30 p. m.—III-Steppers Orchestra and Tenor.  
9:30 p. m.—Mariners Concert Orchestra.  
10:00 p. m.—Musical Melange.  
10:30 p. m.—Rhythm Makers Dance Orchestra.

**SATURDAY, AUGUST 9**

6:30 p. m.—Three Coeds, Vocal.  
7:00 p. m.—Syncopators Dance Band.  
7:30 p. m.—Long Beach Municipal Band.  
8:00 p. m.—Mariners Concert Orch., tenor and soprano  
9:30 p. m.—Cavaliers Dance Orchestra.  
10:00 p. m.—Melodies of Bygone Days.  
10:30 p. m.—Rhythm Makers Dance Orchestra.

**DAILY EXCEPT SUNDAY**

6:00 a. m.—Recordings.  
7:00 a. m.—Sunrise Club, Exercises.  
7:30 a. m.—Novelty Records.  
8:00 a. m.—Early Morning Studio Hour.  
9:00 a. m.—Home-makers Hour, Organ Background.  
10:00 a. m.—Trilolian Trio, Vocal and Guitars.  
12:00 noon—Studio Talent.  
12:15 p. m.—Silent for Fifteen Minutes.  
12:30 p. m.—Peggy Personality.  
12:45 p. m.—Casa Venida Ensemble.  
1:15 p. m.—Helen Smith, Piano Requests (ex. Wed.).  
2:30 p. m.—Long Beach Municipal Band (ex. Mon.).  
4:00 p. m.—Serenaders String Trio and Soloist.  
4:15 p. m.—California Cadets.  
4:30 p. m.—Cecil Fry, Singer, and Orchestra.  
5:00 p. m.—Serenaders String Trio.  
5:30 p. m.—Shannon's Old-Time Orchestra.  
8:55 p. m.—Long Beach Sun News Flashes.  
9:00 p. m.—Hoagland's Orchestra.  
11:00 p. m.—Hoagland's Orchestra.  
11:30 p. m.—Organ Program, Dick Dixon.

**SUNDAY, AUGUST 3**

8:30 a. m.—M. E. Church, Radio Pulpit.  
9:00 a. m.—Funny Paper Man.  
9:30 a. m.—Taubman's Men's Bible Class.  
11:00 a. m.—Morning Studio Musicale.  
12:00 noon—Noonday Studio Program.  
12:45 p. m.—Casa Venida Ensemble.  
1:15 p. m.—Helene Smith, Piano Requests.  
2:30 p. m.—Long Beach Municipal Band.  
4:00 p. m.—Organ, Tenor and String Trio.  
4:15 p. m.—California Cadets.  
5:00 p. m.—Hoagland's Orchestra.  
5:30 p. m.—Masters Music Shelf.  
6:30 p. m.—Organ and Trio.  
7:00 p. m.—Mariners Concert Orchestra and Vocal Soloists.  
8:00 p. m.—Serenaders String Trio.  
8:30 p. m.—Organ and Tenor.

## KFI Program

(Continued from Page 20)

9:15 a. m.—Karl Brandenburg, tenor.  
9:30 a. m.—Betty Crocker Gold Medal Home Service Talk, NBC.\*  
9:45 a. m.—Chester Foster Rand, tenor.  
10:00 a. m.—Wall Street Journal.  
10:15 a. m.—Josephine Gibson Talk, NBC.\*  
10:30 a. m.—Woman's Magazine of the Air, NBC.\*  
11:30 a. m.—Sarah Ellen Barnes. Talk on music of the Hollywood Bowl.  
12:00-2:30 p. m.—Silent.  
2:00 p. m.—Winnie Fields Moore, Travelogue.  
2:45 p. m.—Sally and Russell Hill.  
3:00 p. m.—H. Scharlin, popular songs and Mrs. Jordan, lecture.  
3:15 p. m.—Wedgwood Nowell, "Playgoers Memories."  
5:30 p. m.—E. H. Rust, nurseryman.  
6:00 p. m.—Armstrongs, NBC.\*  
6:30 p. m.—Slavick String Trio.  
6:45 p. m.—G. R. Walters, Radio Talk.  
7:00 p. m.—Winifred Donaldson, contralto.  
7:15 p. m.—Jas. Rolph Jr., Political Talk, NBC.\*  
7:30 p. m.—Gordon Bread program.  
7:45 p. m.—Paul Roberts and the Schonberger Trio.  
8:00 p. m.—Maurine Dyer, contralto, and M. K. Duncan.  
8:30 p. m.—Two Shades of Blue, Mart and Lil.  
8:45 p. m.—Tone Pictures, KFI origin, NBC.\*  
9:15 p. m.—Three Co-Eds.  
9:30 p. m.—Packard Concert Orch., Proyor Moore, di-

rector, with Everton Sldham, baritone.  
10:30 p. m.—Bob and Monte "Buggvride Program."

**SATURDAY, AUGUST 9**

7:30 a. m.—Gertrude Guselle, blues; Karl Brandenburg, baritone.  
8:00 a. m.—Happy Chappies, Songs of Tomorrow.  
8:15 a. m.—Morning Melodies, NBC.\*  
8:30 a. m.—Crosscuts from the Log of the Day, NBC.\*  
9:00 a. m.—H. Scharlin, popular songs.  
9:15 a. m.—Wall Street Journal.  
9:30 a. m.—Mental Exercises, Frances Hancock.  
9:45 a. m.—National Farm and Home Hour, NBC.\*  
10:30 a. m.—Del Ray Fine Food Program, NBC.\*  
10:50 a. m.—Woman's Magazine of the Air, NBC.\*  
11:30 a. m.—Sarah Ellen Barnes. talk on Music of the Hollywood Bowl.  
12:30 to 2:00 p. m.—Silent.  
2:15 p. m.—Alma and Adele Howell, Duets.  
2:45 p. m.—Kelly Alexander, Ballads.  
3:15 p. m.—Masked Minstrel's Hour.  
4:30 p. m.—Two Shades of Blue, Mart and Lil.  
4:45 p. m.—Don Abbott, tenor.  
5:00 p. m.—Will E. Wing, Hollywood.  
5:30 p. m.—A. Malvern Christie, Mrs. Christie, acc  
6:00 p. m.—Lucky Strike Hour, NBC.\*  
7:00 p. m.—"Melodies of Nature." Rose Dirnann. James Rurorughs, Mildred Laughlin, Leslie Brigham and Pryor Moore's Orch.  
8:00 p. m.—Gilmore Circus, KFI origin, NBC.\*  
8:30 p. m.—Hollywood Bowl Program. KFI origin, NBC.\*  
10:15 p. m.—Georgia Williams, violinist.  
10:30 p. m.—Harold Spaulding, tenor.  
11:00 p. m.—KFI Midnight Frolic.



The essential features of these programs are identical with those sent us by the stations



CLARENCE CRARY

# KFOX

## Long Beach, Cal.—1250 Kc.

"Where Your Ship Comes In"

1000 WATTS—239.9 METERS—HANCOCK OIL STATION  
Telephone No. 672-81

Owner and Operated by  
Nicholas & Warriner, Inc.  
220 E. Anaheim St.

Hal G. Nichols  
Clarence Crary  
Foster Rucker  
Theodore Bliss  
Announcers

L. W. McDowell  
Chief Technician

8:00 a. m.—Family Circle Hour.  
8:30 a. m.—(lover Leaf program.  
9:00 a. m.—Old Time Music.  
10:00 a. m.—Angelus Abbey Organ Recital.  
11:00 a. m.—St. Luke's Episcopal Church.  
12:30 p. m.—Musical program for Bikel Music Co.  
1:00 p. m.—Hollywood Girls, Novelty Trio.  
2:00 p. m.—Memory Hour.  
3:00 p. m.—On with the Show.  
4:00 p. m.—A Moment with Patriarchs of Old.  
4:15 p. m.—Organ Recital, Vera Graham.  
5:00 p. m.—Hawaiian music.  
5:30 p. m.—Hollywood Girls.  
6:00 p. m.—Em and Clem.  
0:15 p. m.—Doris and Clarence.  
6:30 p. m.—Hollywood Girls.  
7:00 p. m.—Vera Graham and Harry Morton.  
8:00 p. m.—First Church of Christ, Scientist.  
9:00 p. m.—KFOX Capers.  
12:00 midnight—Records.

### MONDAY, AUGUST 4

11:45 a. m.—Steinway Duo-Art.  
12:00 noon—The Three Vagabonds.  
12:30 p. m.—The Campus Sweeties.  
1:00 p. m.—Bill and Co.  
5:00 p. m.—Organ Recital, Vera Graham.  
5:30 p. m.—Campus Sweeties.  
6:30 p. m.—Line Chittick and his Harmonica.  
6:45 p. m.—Three Vagabonds.  
7:00 p. m.—Suydam's Buttercream School.  
8:00 p. m.—Texas Cowboys.  
8:30 p. m.—Treatments of "Harmonious Suggestions"  
by Dr. J. F. Rausch.

### TUESDAY, AUGUST 5

1:00 p. m.—Kiwanis Luncheon.  
6:45 p. m.—Dr. Robert Williams.  
8:00 p. m.—The Gossipers.  
8:30 p. m.—Texas Cowboys.

### WEDNESDAY, AUGUST 6

1:00 p. m.—Rotary Luncheon.  
8:00 p. m.—Seth Parker Singing School.  
8:30 p. m.—Hermosa Club Orchestra.

### THURSDAY, AUGUST 7

1:00 p. m.—Dr. Clark, Health and Efficiency.  
8:00 p. m.—Bennie Light and Mark Cook.

### FRIDAY, AUGUST 8

1:00 p. m.—Masonic Luncheon.  
8:00 p. m.—Beverly Market program.  
8:30 p. m.—Treatments of "Harmonious Suggestions"  
by Dr. J. F. Rausch.

### SATURDAY, AUGUST 9

1:00 p. m.—Bill and Co.  
8:00 p. m.—Hermosa Club Orchestra.  
8:30 p. m.—The Three Vagabonds.

9:15 p. m.—Modern Melodists.

9:45 p. m.—John and Ned.

10:00 p. m.—The Dragon in the Sun.

10:30 p. m.—Pacific Nomads.

### SATURDAY, AUGUST 9

9:30 a. m.—The Entertainers.

9:45 a. m.—National Farm and Home Hour.

11:30 a. m.—Chicago Serenade.

12:00 noon.—Hotel Sir Francis Drake Orchestra.

1:00 p. m.—Matinee Time.

1:30 p. m.—Tea Timers.

1:45 p. m.—Matinee Time.

2:00 p. m.—The Jameses.

2:15 p. m.—Black and Gold Room Orchestra.

2:45 p. m.—William Don.

3:00 p. m.—Whyte's Orchestra.

3:30 p. m.—The Fuller Man.

4:00 p. m.—Pop Concert.

4:30 p. m.—Goldman Band Concert.

5:30 p. m.—General Electric Band.

6:00 p. m.—B. A. Rolfe and his Lucky Strike Dance  
Orchestra.

7:00 p. m.—Voice of Pan.

7:00 p. m.—Governor Young Campaign program. KGO.

7:45 p. m.—Sperry Hotcakes.

8:00 p. m.—Night in Spain. KGO, KECA.

8:00 p. m.—Gilmore Circus.

8:30 p. m.—Hollywood Bowl Symphony Concert.

8:30 p. m.—Melody Memories.

9:00 p. m.—Rainbow Harmonies.

9:30 p. m.—Golden Legends.

10:00 p. m.—Spotlight Review.

## NBC Program

(Continued from Page 18)

### FRIDAY, AUGUST 8

9:30 a. m.—Betty Crocker Gold Medal Home Service  
talks.

9:45 a. m.—Morning Glories.

10:00 a. m.—The Recitalists.

10:15 a. m.—Josephine B. Gibson, Food talk.

11:30 a. m.—NBC Philharmonic Organ Recital.

12:00 noon.—Pacific Feature Hour.

1:00 p. m.—Rembrandt Trio.

1:30 p. m.—Hotel St. Francis Salon Orchestra.

2:00 p. m.—Black and Gold Room Orchestra.

2:30 p. m.—The Blue Boys.

3:00 p. m.—Arcadie Birkenholz, violinist.

3:30 p. m.—Phil Cook, the Quaker Man.

3:45 p. m.—News Service.

4:00 p. m.—Cities Service Concert Orchestra.

5:00 p. m.—Interwoven program.

5:30 p. m.—Armour program.

6:00 p. m.—Armstrong Quakers.

6:30 p. m.—Raleigh Revue.

7:00 p. m.—Elgin program.

7:15 p. m.—Mayor Rolph Campaign program.

7:45 p. m.—NBC Concert Favorites.

8:00 p. m.—Ole and the Girls.

8:15 p. m.—World Wanderings.

8:45 p. m.—Tone Pictures.

The essential features of these programs are identical with those sent as by the stations



# KMIC

V. G. Freitag  
Manager  
Tel. TM. 1121  
Inglewood 1927  
Frank Bull  
Cliff Howell  
Announcers  
Lowrey Heaster  
Musical Director  
Charles Whitney  
Technical Director

## Inglewood, Calif.—1120 Kc.

500 WATTS—267.7 METERS  
Chamber of Commerce Bldg., Inglewood, Calif.  
Owned and Operated by Dalton's, Inc.

- 5:30 p. m.—Fred Rose and his Orchestra, by remote control from Deauville Beach Club.
- 11:00 p. m.—Ocean Park Walkathon.
- 11:30 p. m.—1930 Super Marathon, Monterey Park.

### MONDAY, AUGUST 4

- 2:00 p. m.—Records.
- 8:30 p. m.—Mann Bros. Orch., Venice Ballroom.
- 10:00 p. m.—Selected records.

### TUESDAY, AUGUST 5

- 2:00 p. m.—Popular records.
- 8:30 p. m.—Mann Bros. Orch., Venice Ballroom.
- 9:30 p. m.—Fred Rose and Orchestra, remote control from Deauville Beach Club.

### WEDNESDAY, AUGUST 6

- 6:00 p. m.—Organ Recital.
- 6:30 p. m.—Popular Frolic.
- 8:00 p. m.—Me Too Club.
- 8:30 p. m.—Mann Bros. Orch., Venice Ballroom.
- 9:30 p. m.—Fred Rose and Orch. by remote control.
- 10:30 p. m.—Selected records.

### THURSDAY, AUGUST 7

- 6:30 p. m.—Popular Frolic.
- 10:30 p. m.—Fred Rose & Orch., Deauville Beach Club.

### FRIDAY, AUGUST 8

- 6:30 p. m.—Popular Frolic.
- 8:30 p. m.—Mann Bros. Orch., Venice Ballroom.
- 9:30 p. m.—Fred Rose and Orch., Deauville Beach Club
- 10:30 p. m.—Selected Records.

### SATURDAY, AUGUST 9

- 6:30 p. m.—Popular Frolic.
- 10:30 p. m.—Records.

FRANK BULL

DAILY EXCEPT SUNDAY

- 6:00 a. m.—Andy and Gene.
  - 8:00 a. m.—Ocean Park Walkathon.
  - 8:15 a. m.—Records.
  - 9:00 a. m.—1930 Super Marathon.
  - 9:15 a. m.—Records.
  - 12:00 noon—"Radio News Reporter," direct from City Hall.
  - 12:15 p. m.—"Hi-Noon Varieties."
  - 1:00 p. m.—Popular Records.
  - 5:00 p. m.—1930 Super Marathon, Monterey Park.
  - 5:15 p. m.—Requests.
  - 6:00 p. m.—Organ Recital.
  - 6:30 p. m.—Popular Frolic, Dare Sisters, Lani McIntyre's Hawaiians, Roy Rockwood, S. C. Collegians.
  - 11:00 p. m.—Ocean Park Walkathon.
  - 11:30 p. m.—1930 Super Marathon, Monterey Park.
  - 12:00 midnight—Jack the Bell Boy.
- SUNDAY, AUGUST 3
- 12:30 p. m.—1930 Super Marathon.
  - 4:30 p. m.—Selected records.

# KFXM

## San Bernardino.—1210 Kc.

100 WATTS—247.8 METERS  
California Hotel, Fifth and E. Streets. Phone 4761  
The Voice of the Sunkist Valley

J. C. and E. W. Lee  
Owners

Frank Pierce  
Program Director

Bob Ford  
Advertising

E. F. Klernan  
Technical Director



E. W. LEE

DAILY EXCEPT SUNDAY

- 7:00 a. m.—Top o' the Morning.
- 8:00 a. m.—Sunshine Boys, Old Times (ex. Wd.).
- 9:30 a. m.—S. B. Music Co.
- 10:00 a. m.—B. S. Pearsall Co., Elgin program.
- 10:30 a. m.—Man About Town.
- 11:00 a. m.—Motor Transit Company.
- 11:15 a. m.—News Reports.
- 12:00 noon.—Fox California Theater Organ Recital.
- 5:00 p. m.—Recordings.
- 5:30 p. m.—Hunt's Theater Night Ball News.
- 5:45 p. m.—Evening Mail.
- 6:15 p. m.—News Reports.
- 7:30 p. m.—Trail Blazers.

### SUNDAY, AUGUST 3

- 3:00 p. m.—Band Concert.
- 4:00 p. m.—Rev. Olson's Bible Class.
- 5:00 p. m.—Album Hour.

### MONDAY, AUGUST 4

- 9:00 a. m.—Recordings.
- 6:30 p. m.—S. B. Bread Co. Orchestra.
- 8:00 p. m.—Studio Review.
- 9:00 p. m.—Good Luck Hour.
- 10:30 p. m.—Red Peppers.

### TUESDAY, AUGUST 5

- 9:00 a. m.—Campton's Nu-Way Shoe Co.
- 6:30 p. m.—A. G. McCrea.

- 7:00 p. m.—Calvers' Firestone Tires.
- 8:00 p. m.—Hawaiian Instrumental Trio.
- 9:30 p. m.—Happy-Go-Lucky Boys.
- 10:00 p. m.—Eagles Ballroom Orchestra.

### WEDNESDAY, AUGUST 6

- 8:00 a. m.—Sunshine Hour.
- 9:00 a. m.—Concert program.
- 6:30 p. m.—Recordings.

### THURSDAY, AUGUST 7

- 9:00 a. m.—Recordings.
- 6:30 p. m.—Dodge Bros.—Hollingsworth.
- 7:00 p. m.—Melody Maids.
- 8:00 p. m.—Cooley Hardware Co.'s program.
- 9:00 p. m.—Sunshine String Trio.
- 9:30 p. m.—Half Hour on the Campus.
- 10:00 p. m.—Penny's Dance Orchestra.

### FRIDAY, AUGUST 8

- 9:00 a. m.—Campton's Nu-Way Shoe Co.
- 6:30 p. m.—New Idea Man.
- 8:00 p. m.—Chino Boys.
- 8:30 p. m.—Rlo Grando Serenaders.
- 10:00 p. m.—Dance Orchestra.

### SATURDAY, AUGUST 9

- 9:00 a. m.—Recordings.
- 6:30 p. m.—Miss Marie La Crosse, violinist.
- 8:00 p. m.—Sunshine Girl.
- 8:30 p. m.—Kansas Kal's Old Timers.
- 9:30 p. m.—Monterey Boys.
- 11:00 p. m.—Fox California Theater Organ Recital.
- 12:00 midnight—Tramps of the Air.

Radio has been installed on the T. A. T. (Transcontinental Air Transport) planes, providing two-way voice communication with a range up to 1300 miles.

The essential features of these programs are identical with those sent us by the stations



GENE PERRY

# KFSD

San Diego, Calif.—600 Kc.

1000 WATTS—499.7 METERS  
"The Air Capitol of the West"  
Telephone Franklin 6353

Leslie Adams  
General Manager  
Walter B. Nell  
Advertising Manager  
Glen Litton  
Chief Technician  
Gene Perry  
Announcer  
Leah McMahon  
Program Director

- 1:00 p. m.—NBC, Hotel Sir Francis Drake.
- 2:00 p. m.—NBC, Rebroadcast of British program.
- 6:00 p. m.—NBC, Westinghouse Salute.
- 7:30 p. m.—NBC, RKO program.
- 7:00 p. m.—Sponsored program.
- 7:15 p. m.—Feature program.
- 8:00 p. m.—NBC, General Petroleum.
- 8:30 p. m.—Civic Symphony Orchestra.

**WEDNESDAY, AUGUST 6**

- 10:50 a. m.—NBC, Easier Housekeeping.
- 12:00 noon—NBC, Radio Guild program.
- 1:00 p. m.—NBC, Talk by Nathaniel Phillips.
- 1:15 p. m.—NBC, Breen & De Rose.
- 1:30 p. m.—NBC, Tea Timers.
- 2:00 p. m.—NBC, Rebroadcast from London.
- 4:00 p. m.—Concert program.
- 6:00 p. m.—Studio program.
- 6:30 p. m.—NBC, Coco-Cola orchestra.
- 7:00 p. m.—Safety program.
- 8:00 p. m.—Norrb American Ensemble.
- 9:00 p. m.—NBC, Miniature Biographies.
- 9:30 p. m.—NBC, Camel Pleasure Hour.
- 10:30 p. m.—Program from Kennedy's Cafe.

**THURSDAY, AUGUST 7**

- 12:30 p. m.—NBC, Novelty Five.
- 1:00 p. m.—NBC.\*
- 1:15 p. m.—NBC, Breen & De Rose.
- 1:30 p. m.—NBC, The Ballads.
- 1:45 p. m.—NBC, Tea Timers.
- 2:00 p. m.—Studio program.
- 6:00 p. m.—Feature program.
- 6:25 p. m.—Concert Trio and John Wells, baritone.
- 7:25 p. m.—Mr. Whalen.
- 8:00 p. m.—NBC, Lucky Strike Orchestra.
- 9:00 p. m.—NBC, Memory Lane.
- 9:30 p. m.—NBC, The Olympians.

**FRIDAY, AUGUST 8**

- 11:10 a. m.—NBC, Olorono Feature of Woman's Magazine.
- 11:30 a. m.—Continuation of Service Hour.
- 12:30 p. m.—Pacific Feature Hour, NBC.
- 1:00 p. m.—NBC, Rembrandt Trio.
- 1:30 p. m.—NBC, Hotel Sir Francis Oreb.
- 2:00 p. m.—Studio program.
- 5:00 p. m.—NBC, Interwoven Pair.
- 5:30 p. m.—Studio program.
- 6:00 p. m.—KFSD artists.
- 7:00 p. m.—NBC, Elgin National Watch program.
- 7:15 p. m.—Mayor Rolph's Campaign, NBC.
- 8:00 p. m.—Dan Parker's Old Time program.
- 9:00 p. m.—Feature program.
- 9:30 p. m.—NBC, Longine Time Signal.
- 9:30 p. m.—Studio program.

**SATURDAY, AUGUST 9**

- 6:00 p. m.—NBC, Lucky Strike Orchestra.
- 7:00 p. m.—NBC, Governor Young's Campaign.
- 8:00 p. m.—NBC, Longine Time Signal.
- 8:00 p. m.—Program from Fox Theatre.
- 8:30 p. m.—Organ Program from Balboa Park.
- 9:00 p. m.—NBC, Rainbow Harmonies.
- 9:30 p. m.—NBC, Golden Legends.

**DAILY EXCEPT SUNDAY**

- 8:00 a. m.—Morning Musical.
- 9:00 a. m.—Good Cbeer Program.
- 9:15 a. m.—Daily Review.
- 9:45 a. m.—Amy Lou's Shopping Hour.
- 11:00 a. m.—Service Hour.
- 12:00 noon—James Erickson at Console of Fox California Theater (ex. Wed.).
- 2:30 p. m.—Matinee Time.
- 5:45 p. m.—Late News.
- 7:30 p. m.—NBC, Amos 'n Andy.
- 7:45 p. m.—Cecil and Sally.
- 10:00 p. m.—Program from Kenendy Cafe (ex. Wed.).
- 11:00 p. m.—Request Hour.

**SUNDAY, AUGUST 3**

- 9:30 a. m.—Sponsored program.
- 10:30 a. m.—Records.
- 11:00 a. m.—NBC, Friendly Hour.
- 12:00 noon—Old Time program.
- 2:00 p. m.—Studio program.
- 2:30 p. m.—Organ recital, from Balboa Park.
- 3:30 p. m.—NBC, Sunday Concert.
- 4:00 p. m.—NBC, Enna Jettick.
- 6:45 p. m.—NBC, Sunday at Seth Parkers'.
- 7:15 p. m.—North American Ensemble.
- 8:00 p. m.—NBC, Enna Jettick.
- 8:15 p. m.—Gene Perry.
- 8:30 p. m.—NBC, Gunnar Johnson.
- 9:00 p. m.—Program from Hotel del Coronado.
- 10:00 p. m.—Program from Kennedy's Cafe.

**MONDAY, AUGUST 4**

- 12:30 p. m.—NBC, Denver Band Concert.
- 1:00 p. m.—NBC, Blue Boys.
- 2:00 p. m.—NBC, Mormon Tabernacle.
- 4:00 p. m.—NBC, Half-hour in the Nation's Capitol.
- 4:30 p. m.—NBC, Crime Prevention.
- 5:00 p. m.—Studio program.
- 6:00 p. m.—NBC, Stromberg Carlson.
- 6:30 p. m.—Piano Capers, NBC.
- 7:00 p. m.—NBC, Governor Youngs.
- 8:00 p. m.—Feature program.
- 9:00 p. m.—NBC, Pacific Serenaders.
- 9:30 p. m.—KFSD Artists.

**TUESDAY, AUGUST 5**

- 12:30 p. m.—NBC, Pacific Vagabonds.

# KFSG

Los Angeles, Calif.—1120 Kc.

500 WATTS—267.7 METERS  
Angelus Temple, Echo Park. EX. 1141  
"Four Square Gospel"



RODERICK H. MORRISON

Almee Semple McPherson  
Founder-President  
Roderick H. Morrison  
Station Director  
Noland Tuckor  
Announcer  
Maurice E. Kennedy  
Technical Director  
Florence E. Wixom  
Program Manager

- SUNDAY, AUGUST 3**
- 8:00 a. m.—Sabbath Sunrise and Symphony Orchestra
  - 10:30 a. m.—Sunday Morning Worship.
  - 2:30 p. m.—Dispensational Message.
  - 6:30 p. m.—Musical and Evangelistic Service.
  - 10:00 p. m.—Organ Recital.

**WEDNESDAY, AUGUST 6**

- 2:30 p. m.—Divine Healing Service.
- THURSDAY, AUGUST 7**
- 2:00 p. m.—Studio program.
  - 3:00 p. m.—Bethesda Hour.
  - 4:00 p. m.—Twilight Hour.
  - 7:30 p. m.—Water Baptismal Service and Symphony Orchestra.

**FRIDAY, AUGUST 8**

- 2:00 p. m.—Music Masters' Hour.
- 3:00 p. m.—Bethesda Hour.
- 4:00 p. m.—Kiddles' Hour.

**SATURDAY, AUGUST 9**

- 7:30 p. m.—Divine Healing and Band Concert.

**DAILY EXCEPT SUNDAY**

- 7:30 a. m.—Family Altar Hour.
- 10:00 a. m.—Sunshine Hour.
- 11:00 a. m.—Organ Recital (except Monday).



The essential features of these programs are identical with those sent us by the stations

# KGB San Diego, Calif.—1330 Kc.

225.4 METERS—250 WATTS  
Pickwick Terminal Hotel—Franklin 6151-2-3  
PICKWICK BROADCASTING CORPORATION  
Henry Hohman, Managing Director



LUTHER PUTNAM

Robert G. Binyon  
Manager  
Luther L. Putnam  
Studio Director  
Lilas Johnson  
Program Director  
Fred Stone  
Lloyd Snow  
Announcers  
Willis F. Farnum  
Chief Technician

- 6:00 p. m.—Church of Jesus Christ of L. D. S.
- 6:30 p. m.—Classical recordings.
- 7:00 p. m.—Robles Trio.
- 8:00 p. m.—Concert program.
- 9:00 p. m.—The Real Mexico.
- 10:00 p. m.—Recordings.

### MONDAY, AUGUST 4

- 10:30 a. m.—Music lesson, T. Morley Harvey.
- 3:30 p. m.—Church of Jesus Christ of L. D. S.
- 4:00 p. m.—Matinee program.
- 6:00 p. m.—Sponsored Spanish program.
- 7:15 p. m.—Aloha Boys.
- 8:00 p. m.—Studio program.
- 9:00 p. m.—KGB Frolic.

### TUESDAY, AUGUST 5

- 7:15 p. m.—Bill Rossi.
- 8:00 p. m.—Highway Highlights.
- 9:00 p. m.—Aeolian Male Quartette with T. Morley Harvey.

### WEDNESDAY, AUGUST 6

- 7:15 p. m.—E. M. Robles.
- 8:00 p. m.—Colored Orchestra.
- 9:00 p. m.—Concert program.

### THURSDAY, AUGUST 7

- 7:15 p. m.—Rosie Rosemann.
- 8:00 p. m.—Classical Review.
- 9:00 p. m.—Agua Caliente Hotel Mexican Serenaders.

### FRIDAY, AUGUST 8

- 7:15 p. m.—Aloha Boys.
- 8:00 p. m.—Highway Highlights.
- 9:00 p. m.—Collegiate Frolic.

### SATURDAY, AUGUST 9

- 3:00 p. m.—KGB Movie Club.
- 7:15 p. m.—Minor Twins and Jack and Jill.
- 8:15 p. m.—Marshall Mando Trio.
- 9:00 p. m.—Carolyn Lee and Harold Charles.

### DAILY EXCEPT SUNDAY

- 7:00 a. m.—Popular recordings.
- 7:45 a. m.—Health talk.
- 8:00 a. m.—Recordings.
- 10:00 a. m.—Sponsored program.
- 10:15 a. m.—Recordings (ex. Mon. and Thurs.).
- 2:30 p. m.—Recordings.
- 2:45 p. m.—News, courtesy San Diego Sun.
- 3:00 p. m.—Recordings (ex. Mon. and Sat.).
- 4:30 p. m.—U. S. Dept. of Agriculture, Farm talk.
- 4:40 p. m.—Recordings.
- 5:00 p. m.—Baron Keyes Air Castles.
- 5:15 p. m.—Merchants Air Service.
- 5:45 p. m.—Sportlogue and Lost and Found.
- 6:00 p. m.—Merchants Air Service (except Monday).
- 6:30 p. m.—Vanity Fair Birthday Party.
- 6:45 p. m.—Recordings.
- 7:00 p. m.—Sponsored program.
- 10:00 p. m.—Recordings.

### SUNDAY, AUGUST 3

- 8:00 a. m.—Through the Comics with Uncle Si.
- 9:00 a. m.—Health Talk.
- 9:15 a. m.—Classical recordings.
- 10:00 a. m.—Watchtower program.
- 11:00 a. m.—Recordings.

# KQW San Jose, California—1010 Kc.

CALIFORNIA FARM BUREAU STATION  
500 WATTS—296.6 METERS  
FRED J. HART, Manager



FRED J. HART

### DAILY EXCEPT SUNDAY

- 9:00 a. m.—Morning Music.
- 9:30 a. m.—Weather Report.
- 9:35 a. m.—Helpful Hour.
- 11:00 a. m.—Bank Credits Service Program.
- 12:00 noon—Recordings.
- 12:30 p. m.—Market Report and Weather from S. F.
- 1:00 p. m.—Hart's Half Hour.
- 1:30 p. m.—The Friendly Hour.
- 2:30 p. m.—Recordings.
- 4:30 p. m.—Children's Program.
- 5:00 p. m.—Baron Keyes Air Castle (ex. Saturday).
- 5:15 p. m.—Vesper Music.
- 5:30 p. m.—San Jose Radionics Institute.
- 6:00 p. m.—U. S. D. A. Farm Flashes (ex. Sat.).
- 6:10 p. m.—Farm Topic (except Saturday).
- 6:30 p. m.—KQW Market Reports.
- 6:35 p. m.—KQW Market Place.
- 7:00 p. m.—Weather Reports, News.

### SUNDAY, AUGUST 3

- 10:15 a. m.—Sunday School Lessons by Fred J. Hart.
- 11:00 a. m.—Morning Service, First Baptist Church.
- 7:30 p. m.—Evening Service, First Baptist Church.

### MONDAY, AUGUST 4

- 6:20 p. m.—California Grain Inspection, J. L. Finney.
- 7:15 p. m.—Silas and Susie.
- 7:30 p. m.—Mail Bag and Announcements.

- 7:45 p. m.—Editorial.
- 8:00 p. m.—Fitts for Governor Radio Hour.
- 9:00 p. m.—San Jose Pacific Little Symphony.

### TUESDAY, AUGUST 5

- 6:20 p. m.—What Residue; Finding in Fruit.
- 7:15 p. m.—Electrical Talk.
- 7:30 p. m.—KQW Players.
- 8:00 p. m.—"You Never Can Tell" program.

### WEDNESDAY, AUGUST 6

- 6:20 p. m.—Dairy Laboratory, C. F. Hoyt.
- 7:30 p. m.—Mail Bag and Announcements.
- 7:45 p. m.—Bee Talk by Carey Hartman.
- 8:00 p. m.—Rolph for Governor program.
- 8:15 p. m.—Studio program.
- 9:00 p. m.—Mauri Trio; Political Announcements.
- 9:30 p. m.—How do you do?

### THURSDAY, AUGUST 7

- 6:20 p. m.—Weights, Measures, Freight Shipments.
- 7:15 p. m.—Pacific Rural Press.
- 7:30 p. m.—Mail Bag and Announcements.
- 7:45 p. m.—Editorial.
- 8:00 p. m.—Songs of the Old Church Choir.
- 9:00 p. m.—Studio program.
- 9:15 p. m.—The Five Pretzels.
- 9:45 p. m.—San Jose Accordion Club.

### FRIDAY, AUGUST 8

- 6:20 p. m.—Commodities with no Terminal Markets.
- 6:45 p. m.—Mercury-Herald Sport Review.
- 7:15 p. m.—Sperry Flour Playlet.
- 7:30 p. m.—Mail Bag and Announcements.
- 7:45 p. m.—U. S. Dept. of Ag. Special Releases.
- 8:00 p. m.—KQW Minstrels.
- 9:00 p. m.—San Jose Pacific Little Symphony.

### SATURDAY, AUGUST 9

- 6:00 p. m.—United Conservatory program.
- 6:50 p. m.—KQW Market Place.
- 7:15 p. m.—San Jose Better Business Bureau.
- 7:30 p. m.—Musical program.
- 7:45 p. m.—Studio program.
- 8:45 p. m.—Italian program.

The essential features of these programs are identical with those sent us by the stations



J. W. LAUGHLIN

# KPO

## San Francisco, Calif.—680 Kc.

5000 WATTS—440.9 METERS  
HALE BROTHERS AND THE CHRONICLE  
"The Voice of San Francisco"

Phone Kearney 0704

J. W. Laughlin  
Managing Director  
Curtis Peck  
Technical Director

TUESDAY, AUGUST 5

- 11:30 a. m.—Julia Hayes—"Helpful Hints for Housewives."  
1:00 p. m.—KPO Salon Orchestra.  
2:00 p. m.—British Broadcasting Corporation Program from Tidworth, Tatoo, England, NBC.\*  
2:30 p. m.—Ye Towne Cryer.  
2:35 p. m.—California Crooners.  
4:30 p. m.—KPO Salon Orchestra.  
5:00 p. m.—Doug. Richardson.  
5:15 p. m.—Federal Business Association Talk.  
8:00 p. m.—Chrysler "Plymouth" program.  
8:15 p. m.—Allan Wilson, tenor.  
8:30 p. m.—Sixth Summer Symphony Concert, directed by Willem Van Hoogstraten.  
11:00 p. m.—Joe Wright's Silver Slipper Dance Orch.

WEDNESDAY, AUGUST 6

- 11:30 a. m.—Julia Hayes—"Helpful Hints for Housewives."  
1:30 p. m.—Tea Timers, NBC.\*  
2:00 p. m.—British Broadcasting Corporation Dance Music, from London, NBC.\*  
2:30 p. m.—Ye Towne Cryer.  
2:35 p. m.—Knickerbocker Piano Duo.  
8:00 p. m.—Let's Get Associated.  
8:30 p. m.—Topsy's Roosters.  
9:00 p. m.—Meeting in the Tavern.  
9:15 p. m.—A Sporting Quarter Hour.  
9:30 p. m.—Earle C. Anthony "Packard Program," NBC.\*  
11:00 p. m.—Joe Wright's Silver Slipper Dance Orch.

THURSDAY, AUGUST 7

- 10:00 a. m.—Woman's Magazine of the Air, NBC.\*  
11:00 a. m.—Floyd Wright, Organ Recital.  
1:00 p. m.—Shrine Luncheon Broadcast from Palace Hotel.  
1:30 p. m.—Jerry Jermaine, Balladist.  
2:10 p. m.—Paul Alexandroff, Russian baritone.  
8:00 p. m.—Lucky Strike Dance Orch., NBC.\*  
9:00 p. m.—Cy Trobbe's Scrap Book.  
9:30 p. m.—Earle C. Anthony "Packard Program," NBC.\*  
11:00 p. m.—Joe Wright's Silver Slipper Dance Orch.

FRIDAY, AUGUST 8

- 9:30 a. m.—Walter W. Cribbins.  
11:30 a. m.—Julia Hayes—"Helpful Hints for Housewives."  
12:45 p. m.—Commonwealth Club Luncheon at Palace Hotel.  
1:30 p. m.—Paul Lingle Piano Duo with KPO Male Trio.  
2:30 p. m.—Ye Towne Cryer.  
2:35 p. m.—California Crooners.  
6:15 p. m.—El Portal Serenader.  
8:00 p. m.—Caswell Musical Episode.  
8:30 p. m.—Nathan Abas, Violin Recital.  
9:00 p. m.—Meeting in the Tavern.  
9:15 p. m.—G. Donald Gray, Dramatic Reader.  
9:30 p. m.—Earle C. Anthony "Packard Program," NBC.\*

SATURDAY, AUGUST 9

- 8:00 a. m.—Financial Service—NBC.\*  
8:15 a. m.—Morning Melodies—NBC.\*  
8:30 a. m.—Cross Cuts from the Log of the Day—NBC.\*  
9:00 a. m.—Walter W. Cribbins.  
10:00 a. m.—National Home and Farm Hour, NBC.\*  
11:30 a. m.—Helen Gordon Barker—Art Talk.  
1:00 p. m.—KPO Salon Orchestra.  
2:05 p. m.—KPO Sequoians.  
8:00 p. m.—The Gilmore Circus, NBC.\*  
8:30 p. m.—Hollywood Bowl Symphony Orch., NBC.\*

See Page 18 for NBC Program

# KGO

## Oakland, California—790 Kc.

7500 WATTS—379.5 METERS  
PACIFIC COAST STATION, GENERAL ELECTRIC CO.  
Phone Fruitvale 5980. 557 Hotel St. Francis  
See Page 18 for Detailed Program of KGO.

The essential features of these programs are identical with those sent us by the stations



HARRISON HOLLIDAY

# KFRC San Francisco, Calif.—610 Kc.

Owned and Operated by Don Lee, Cal. Dist. for Cadillac & LaSalle  
1000 WATTS—491.5 METERS  
1000 Van Ness Telephone Prospect 0100

- Harrison Holliday  
Manager
- Edwin Wilson  
Commercial Director
- Alan N. Corwack  
Technical Director
- Frank Moss  
Musical Director

- 6:15 p. m.—Grand Opera Miniature, CBS.\*
- 6:30 p. m.—Edna Fischer and Norman Neilsen.
- 6:45 p. m.—Grand Opera Miniature, CBS.\*
- 7:00 p. m.—Edna Fischer, "Piano Moods."
- 7:15 p. m.—"Musical For-Get-Me-Nots."
- 7:30 p. m.—Chicago Variety program, Waring's Pennsylvanians.
- 8:00 p. m.—Masquerade Party.
- 8:30 p. m.—"S & W Forum of the Air."
- 9:30 p. m.—Drama for K.H.J.
- 10:00 p. m.—Frank Watanabe.
- 10:10 p. m.—Danco Music.
- 10:20 p. m.—Val Valente and His Roof Garden Orch.

### DAILY EXCEPT SUNDAY

- 7:00 a. m.—"Stimp Fitts" from Seal Rocks.
- 8:00 a. m.—CBS.\*
- 8:30 a. m.—Manhattan Towers Orchestra, CBS.\*
- 9:00 a. m.—S. F. Call Bulletin's News.
- 9:30 a. m.—Feminine Fancies (except Saturday).
- 10:30 a. m.—Wyn's Daily Chat (except Saturday).
- 12:00 noon.—Sherman Clay Concert.
- 1:00 p. m.—Cal King's Country Store.
- 2:00 p. m.—Happy-Go-Lucky Hour (except Saturday).
- 4:45 p. m.—S. F. Call-Bulletin's News Items and Town Topics.
- 10:15 p. m.—Gruen News Flashes (Wednesday, 10:00)
- 12:00 midnight.—Dance music.

### SUNDAY, AUGUST 3

- 8:00 a. m.—"Chapel of Memories."
- 9:00 a. m.—"Home Sweet Home" Concert.
- 11:00 a. m.—Paul Tremaine's Orchestra, CBS.\*
- 11:30 a. m.—Conclave of Nations, CBS.\*
- 12:00 noon.—Sherman Clay Noonday Concert.
- 1:00 p. m.—Jazz Classics.
- 2:00 p. m.—Musicales.
- 2:30 p. m.—The Globe Trotter, CBS.\*
- 3:00 p. m.—Classical Concert, featuring Frank Moss.
- 3:45 p. m.—"The World's Business," CBS.\*
- 4:00 p. m.—Jesse Crawford, Poet of the Organ, CBS.\*
- 4:30 p. m.—Tea Time Recital.
- 5:00 p. m.—Majestic Theater of the Air, CBS.\*
- 6:00 p. m.—Mayhew Lake and His Band, CBS.\*
- 6:30 p. m.—Studio program.
- 7:00 p. m.—The Melody Hour, with Robert Olsen.
- 8:00 p. m.—Cadillac LaSalle Concert.
- 9:00 p. m.—Val Valente and His Roof Garden Orchestra
- 11:00 p. m.—Organ Recital.

### MONDAY, AUGUST 4

- 9:15 a. m.—Manhattan Towers Orchestra, CBS.\*
- 11:00 a. m.—Recordings.
- 11:15 a. m.—Columbia Ensemble, CBS.\*
- 11:30 a. m.—Auditions.
- 1:30 p. m.—Dancing by the Sea, CBS.\*
- 1:45 p. m.—Aunt Zelena, CBS.\*
- 3:00 p. m.—H. V. Kaitenborn—Current Events, CBS.\*
- 3:30 p. m.—Western Air Express—Aviation Talk.
- 3:45 p. m.—Bernhard Levitow and His Commodore Ensemble, CBS.\*
- 4:00 p. m.—Burbig's Syncoated History, CBS.\*
- 4:30 p. m.—U. S. Navy Band, CBS.\*
- 5:00 p. m.—"Mac" at His Mountain Cabin.
- 5:30 p. m.—Bobs, noted sports authority.
- 5:45 p. m.—"Your Financial Problems."
- 6:00 p. m.—General Cigar Company, CBS.\*
- 6:30 p. m.—Jesse Crawford—Poet of the Organ, CBS.\*
- 7:00 p. m.—Bert Low and His Orchestra, CBS.\*
- 7:15 p. m.—Hollywood Brown's Radio Column, CBS.\*
- 7:30 p. m.—Political Talk—Mayor Rolph.
- 8:00 p. m.—"Golden State Blue Monday Jamboree."
- 10:00 p. m.—"Schwartz Ginger Band."
- 10:20 p. m.—Anson Weeks' Hotel Mark Hopkins Orch.
- 11:00 p. m.—Earl Burnett's Los Angeles Biltmore Orch.

### TUESDAY, AUGUST 5

- 9:15 a. m.—Georgia O. George.
- 11:00 a. m.—Recordings.
- 11:15 a. m.—Columbia Ensemble, CBS.\*
- 11:30 a. m.—For Your Information, CBS.\*
- 1:30 p. m.—Dancing by the Sea, CBS.\*
- 3:00 p. m.—Beauty Talks.
- 3:15 p. m.—International Sidelights—Dr. Arthur Torrence, CBS.\*
- 3:30 p. m.—Guy Lombardo and His Royal Canadians, CBS.\*
- 4:00 p. m.—Siesta Hour.
- 5:00 p. m.—KFRC Dance Band.
- 5:30 p. m.—Savino Tone Pictures, CBS.\*
- 6:00 p. m.—"Joe and VI," CBS.\*

### WEDNESDAY, AUGUST 6

- 9:15 a. m.—Manhattan Towers Orchestra, CBS.\*
- 11:00 a. m.—Red Cross Shoe program.
- 11:15 a. m.—Columbia Ensemble, CBS.\*
- 11:30 a. m.—For Your Information, CBS.\*
- 1:30 p. m.—Footnotes, CBS.\*
- 1:45 p. m.—Aunt Zelena, CBS.\*
- 3:00 p. m.—The Observer—about new books.
- 3:30 p. m.—Something About Everything.
- 3:35 p. m.—Your English, electrical transcription.
- 3:45 p. m.—The Aztecs, CBS.\*
- 4:00 p. m.—Manhattan Moods, CBS.\*
- 4:30 p. m.—Fifteen Hot Minutes.
- 5:00 p. m.—Serenade, CBS.\*
- 5:30 p. m.—Dinner Hour Concert.
- 6:30 p. m.—Prof. Linsley—Play.
- 7:00 p. m.—Dancing by the Sea, CBS.\*
- 7:30 p. m.—California Melodies.
- 8:00 p. m.—Standard Oil Company's "Romantic Fortyniners."
- 8:30 p. m.—Deml Tasse Revue, with George Olsen's Orchestra.
- 9:00 p. m.—Mood Pictures.
- 9:30 p. m.—Ted White and His Top of the World Night Club.
- 10:05 p. m.—Anson Weeks and His Hotel Mark Hopkins' Orchestra.
- 11:00 p. m.—Earl Burnett's Los Angeles Biltmore Orch.

### THURSDAY, AUGUST 7

- 9:15 a. m.—Georgia O. George.
- 11:00 a. m.—Old Witch—Electrical Transcription.
- 11:15 a. m.—Novelties.
- 11:30 a. m.—For Your Information, CBS.\*
- 1:30 p. m.—Dancing by the Sea, CBS.\*
- 3:00 p. m.—Something About Everything.
- 3:15 p. m.—Beauty Talks.
- 3:30 p. m.—KFRC Musical—Dance Orchestra.
- 4:00 p. m.—Symphonic Interlude, CBS.\*
- 4:15 p. m.—Political Situation in Washington—Fred Wm. Wile, CBS.\*
- 4:30 p. m.—Eleanor Allen at the Organ.
- 5:00 p. m.—Pacific States Organ.
- 5:30 p. m.—Studio program.
- 6:00 p. m.—Romany Patteran, CBS.\*
- 6:30 p. m.—National Radio Forum from Washington, D. C., CBS.\*
- 7:00 p. m.—Edna Fischer, "Piano Moods."
- 7:15 p. m.—Dream Boat, CBS.\*
- 7:30 p. m.—Whispering Hour.
- 8:00 p. m.—Violet Ray Merry-makers.
- 8:30 p. m.—Studio program.
- 9:30 p. m.—Singing Strings.
- 10:00 p. m.—Frank Watanabe—Eddie Holden.
- 10:10 p. m.—Dance Music.
- 10:20 p. m.—Val Valente and His Roof Garden Orchestra
- 11:10 p. m.—Anson Weeks' Hotel Mark Hopkins' Orch.

### FRIDAY, AUGUST 8

- 9:15 a. m.—Manhattan Towers Orchestra, CBS.\*
- 11:00 a. m.—Recordings.
- 11:15 a. m.—Columbia Ensemble, CBS.\*
- 11:30 a. m.—Auditions.
- 1:30 p. m.—Carl Rupp and His WXYZ Captivators, CBS.\*
- 1:45 p. m.—Aunt Zelena, CBS.\*
- 3:00 p. m.—Crockett Mountaineers, CBS.\*
- 3:15 p. m.—The Vagabonds, CBS.\*
- 3:30 p. m.—Something About Everything.
- 3:45 p. m.—Bernhard Levitow and His Commodore Orchestra, CBS.\*
- 4:00 p. m.—Nit Wit Hour, CBS.\*
- 4:30 p. m.—U. S. Army Band, CBS.\*
- 5:00 p. m.—Custo Revue.
- 5:30 p. m.—Joe Mendel and His Pep Band.

(Continued on Page 38)





HELEN O'NEILL

# KTAB

Bob Roberts  
General Manager  
Walter J. Rudolph  
Musical Director  
Helen O'Neill  
Program Director

## San Francisco—560 Kc.

1000 WATTS—535.4 METERS  
Official Pickwick State Station  
Owned and Operated by the Associated Broadcasters, Inc.  
Pickwick Terminal Hotel, Fifth and Mission Sts.  
Telephone Garfield 4700

7:45 p. m.—"Memory Bouquet" with Harry McKnight, tenor; Joan Ray, contralto; Jane Sargent Sands, accompanist; Dorothy Nichols, cellist; Alice Blue, organ and piano.

8:30 p. m.—"Pepper Box program."

### THURSDAY, AUGUST 7

7:00 p. m.—Frank Wright.  
7:30 p. m.—Walter J. Rudolph, concert pianist, and Dorothy Nichols, cellist.  
7:45 p. m.—Alice Blue, "Organ Echoes."  
8:00 p. m.—"Miniatures" with Joan Ray, contralto, and Elbert Bellows, tenor.  
9:00 p. m.—Orchestra with Harry McKnight, tenor; Jane Sands, accompanist.  
10:00 p. m.—Current Events and Book Review.  
10:15 p. m.—"Organ Echoes" with Alice Blue.

### FRIDAY, AUGUST 8

12:00 noon—Frank Wright.  
7:00 p. m.—Studio program.  
7:30 p. m.—Lou Emmel and Alice Blue.  
7:45 p. m.—Alice Blue, "Organ Echoes."  
8:00 p. m.—"Highway Highlights" with Madelaine O'Brien.  
9:00 p. m.—Lou Emmel's Breverities with Carl Tobin, tenor.  
9:30 p. m.—Orchestra with Joan Ray, contralto; Jane Sands, accompanist.

### SATURDAY, AUGUST 9

12:00 noon—Frank Wright.  
7:00 p. m.—Frank Wright.  
7:30 p. m.—Vacation program.  
7:45 p. m.—Dorothy Nichols and Alice Blue.  
8:00 p. m.—Walter J. Rudolph, concert pianist.  
8:30 p. m.—Orchestra with Carl Tobin.  
9:30 p. m.—Orchestra with Lou Emmel, popular singer and Alice Blue, pianist.

## KFRC Program

(Continued from Page 37)

6:00 p. m.—Colonel Lindberg, "International Ariation," CBS.\*  
6:15 p. m.—Columbia Male Chorus, CBS.\*  
6:30 p. m.—Gold Medal Fast Freight, CBS.\*  
7:00 p. m.—"Mac and Al," Electrical Transcription.  
7:15 p. m.—Heywood Brown's Radio Column, CBS.\*  
7:30 p. m.—Silvor Strings.  
7:45 p. m.—"Musical Forget-Me-Nots."  
8:00 p. m.—Vedol Vodvil.  
8:30 p. m.—Studio program.  
9:00 p. m.—"The Mission Isle of Golden Dreams."  
9:30 p. m.—"The Beavers."  
10:00 p. m.—"Schwartz Ginger Band."  
10:20 p. m.—Anson Weeks' Hotel Mark Hopkins' Orch.  
11:00 p. m.—Val Valente and His Roof Garden Orch.

### SATURDAY, AUGUST 9

7:30 a. m.—Capt. Vacation—Santa Cruz.  
8:00 a. m.—Adventures of Helen and Mary, CBS.\*  
9:15 a. m.—Georgia O. George.  
9:45 a. m.—Junior Artists program.  
10:00 a. m.—Song Recital from KHHJ.  
11:00 a. m.—Auditions and Church Announcements.  
1:00 p. m.—Ozzie Nelson's Glen Islanders, CBS.\*  
1:45 p. m.—Edna Fischer, pianist.  
2:00 p. m.—Tom, Dick and Harry, CBS.\*  
2:15 p. m.—Edna Fischer and Norman Nelsen.  
2:45 p. m.—The Couple Next Door, CBS.\*  
3:00 p. m.—Crockett Mountaineers, CBS.\*  
3:15 p. m.—Melo Maniacs, CBS.\*  
4:00 p. m.—Dr. Arthur Torrence—Exploring the Jungle for Science, CBS.\*  
4:15 p. m.—Romance of American Industry, CBS.\*  
4:30 p. m.—Dixie Echoes, CBS.\*  
5:00 p. m.—Hank Simon's Show Boat, CBS.\*  
6:00 p. m.—Paramount Publix Radio Hour, CBS.\*  
7:00 p. m.—Edna Fischer, "Piano Moods."  
7:15 p. m.—Will Osborne and His Orchestra, CBS.\*  
7:30 p. m.—Guy Lombardo and His Royal Canadians, CBS.\*  
8:00 p. m.—Studio program.  
8:30 p. m.—Musical Cocktails.  
9:00 p. m.—Auto Races from Ascot Speedway.  
10:00 p. m.—Frank Watanabe.  
10:10 p. m.—Dance Music.  
10:20 p. m.—Anson Weeks and His Hotel Mark Hopkins Orchestra.  
11:10 p. m.—Earl Burlinett's Los Angeles Biltmore Orch.

### DAILY EXCEPT SUNDAY

7:00 a. m.—Studio program, Frank Wright.  
9:00 a. m.—Morning Prayer Services.  
9:30 a. m.—Talk by Doctor (ex. Mon., Fri. & Sat.).  
10:00 a. m.—Household Hour with Alma LaMarr (except Saturday).  
10:30 a. m.—Dr. Correy.  
11:00 a. m.—Studio program.  
11:30 a. m.—Latin-American program.  
1:00 p. m.—Chapel of Chimes.  
1:45 p. m.—Studio program.  
2:40 p. m.—Baseball from Recreation Park (ex. Mon.).  
4:45 p. m.—Studio program (except Monday).  
6:00 p. m.—The Story Man and His Air Castle.  
5:15 p. m.—Frank Wright (ex. Sat.).  
6:30 p. m.—Brother Bob's Frolic.  
6:30 p. m.—Chapel of Chimes.  
9:30 p. m.—Studio.  
10:30 p. m.—Dance Orchestra from Sweet's Ballroom (except Monday).  
11:30 p. m.—Dance Records.

### SUNDAY, AUGUST 3

9:00 a. m.—Dr. B. L. Corley.  
10:00 a. m.—Tenth Avenue Baptist Church.  
11:00 a. m.—Church Services.  
12:30 p. m.—Chapel of Chimes.  
1:00 p. m.—Church of Latter Day Saints.  
1:30 p. m.—Masters Album.  
2:30 p. m.—Novelty Recordings.  
3:00 p. m.—Studio program.  
4:00 p. m.—Marina Tea Room program.  
4:30 p. m.—Musical Appreciation Hour.  
5:00 p. m.—Chapel of Chimes.  
6:00 p. m.—Brunswick Hour.  
6:30 p. m.—Tindall Lecture.  
7:00 p. m.—Joan Ray, contralto; Jane S. Sands, acc.  
7:30 p. m.—Chapel of Chimes, organ selections.  
7:45 p. m.—Church Services.  
9:15 p. m.—Chapel of Chimes.  
9:30 p. m.—Madelaine O'Brien, soprano; Jane Sargent Sands, accompanist.  
10:00 p. m.—Studio program.  
10:30 p. m.—Sweet's Ballroom Orchestra.

### MONDAY, AUGUST 4

8:00 a. m.—Recordings.  
8:30 a. m.—Towne Cryer; Dance Records.  
12:00 noon—Frank Wright.  
1:30 p. m.—Julia Hayes.  
2:30 p. m.—Musical Appreciation Hour.  
3:00 p. m.—Alice Blue, Organ Echoes.  
3:30 p. m.—Novelty Records.  
4:00 p. m.—Studio program.  
7:00 p. m.—Elbert Bellows, tenor; Jane Sands, acc.  
7:30 p. m.—Alice Blue presenting "Organ Echoes."  
7:45 p. m.—Alice Blue, pianist.  
8:00 p. m.—"Poem Pictures."  
9:00 p. m.—Flashlights of Yesterday.  
10:00 p. m.—Alice Blue presenting "Organ Echoes."  
10:30 p. m.—Studio program.

### TUESDAY, AUGUST 5

8:00 a. m.—Studio program.  
8:30 a. m.—Recordings.  
9:30 a. m.—Studio program.  
12:30 p. m.—Frank Wright.  
1:30 p. m.—Julia Hayes.  
7:00 p. m.—Frank Wright.  
7:30 p. m.—Alice Blue at the organ.  
7:45 p. m.—Program with Alice Blue.  
8:00 p. m.—"Highway Highlights."  
9:00 p. m.—Orchestra with Madelaine O'Brien, soprano; John Teel, baritone; Alice Blue, piano & organ.  
10:00 p. m.—"Organ Echoes" with Alice Blue.

### WEDNESDAY, AUGUST 6

1:30 p. m.—Julia Hayes.  
7:00 p. m.—Studio program.  
7:30 p. m.—Alice Blue, "Organ Echoes."

The essential features of these programs are identical with those sent us by the stations



DEAN METCALF

# KFWI

San Francisco, Cal.—930 Kc.

322.4 METERS—500 WATTS

Radio Entertainment, Inc.

Bellevue Hotel, San Francisco

Telephone Franklin 0200

John B. Gelsen  
General Manager  
Dean Metcalf  
Program Director  
E. E. Jefferson  
Technician  
Bill Sanderson  
Announcer

**DAILY EXCEPT SUNDAY**

- 7:00 a. m.—Eye Opener program.
- 7:45 a. m.—Bell Life Exercises.
- 9:00 a. m.—Records and announcements.
- 10:00 a. m.—Bellevue Hotel program (ex. Mon.).
- 10:30 a. m.—Dr. T. G. Linebarger, health talk.
- 10:50 a. m.—Items of Interest.
- 12:00 noon—Slogan Contest.
- 6:00 p. m.—Dinner Dance program.
- 12:00 p. m.—Sherman Clay Classics.
- 12:45 p. m.—Goodnight Organ program by Dean Metcalf.

**SUNDAY, AUGUST 3**

- 2:30 p. m.—Helen Bingham, pianist.
- 2:45 p. m.—Recordings.
- 3:00 p. m.—Florence Lorraine and Nadine Chriss.
- 3:30 p. m.—Jose Manzonares, tenor.
- 4:00 p. m.—Lewis Beck, baritone; Norma Lee, contralto.
- 4:30 p. m.—Recordings.
- 5:30 p. m.—Selix Popular program.
- 8:00 p. m.—Services from 1st Church of Christ, Scientist

**MONDAY, AUGUST 4**

- 11:00 a. m.—Schwabacher Frey program.
- 11:30 a. m.—Sherman Clay Concert.
- 7:00 p. m.—Weights & Measures Bureau Talk.
- 7:15 p. m.—Ed Stirm and Howard Garner.
- 8:30 p. m.—Chamber of Commerce Progress Talk.
- 8:35 p. m.—Phillip Steinman, violinist; Daniel Murphy,

- tenor; Lee Morgan, pianist.
- 9:00 p. m.—Studio Feature.
- 9:30 p. m.—Isabel Henion and Nadine Chriss.
- 10:00 p. m.—Sally Lewis, pianist.
- 10:30 p. m.—Slogan Contest.
- 11:00 p. m.—Bit of Melody Boys, dance orchestra.

**TUESDAY, AUGUST 5**

- 7:00 p. m.—Read Givens, mystery tenor, and Nadine Chriss, pianist.
- 11:00 p. m.—Slogan Contest.

**WEDNESDAY, AUGUST 6**

- 10:50 a. m.—Items of Interest.
- 11:00 a. m.—Schwabacher Frey program.
- 11:30 a. m.—Sherman Clay Concert.
- 7:00 p. m.—Dr. T. G. Linebarger, Health Talk.
- 7:15 p. m.—Rita Murray's Investment Chat.
- 8:30 p. m.—Chamber of Commerce Progress Talk.
- 8:35 p. m.—Feature.

**THURSDAY, AUGUST 7**

- 7:00 p. m.—Ed Stirm and Ed Haynes.
- 7:15 p. m.—Lovey Wolf and Nadine Chriss.
- 11:00 p. m.—Slogan Contest.

**FRIDAY, AUGUST 8**

- 11:00 a. m.—Schwabacher Frey program.
- 11:30 a. m.—Sherman Clay Concert.
- 7:00 p. m.—"Kelly and Clancy."
- 7:15 p. m.—Pianologue.
- 7:30 p. m.—Chamber of Commerce Progress Talk.
- 8:35 p. m.—Feature.
- 9:00 p. m.—Pacific Choral Society and soloists, Forist Cubbins, director.
- 9:30 p. m.—Isabel Henion and Nadine Chriss.
- 10:00 p. m.—"Old Home Town Hotel."
- 10:30 p. m.—Slogan Contest.
- 11:00 p. m.—Dance Music.

**SATURDAY, AUGUST 9**

- 7:00 p. m.—Norma Lee, contralto; Louise Gilbert.
- 11:00 p. m.—Slogan Contest.

## KHJ Program

(Continued from Page 23)

- 10:45 a. m.—Alaska-Pacific Salmon Co.
- 11:00 a. m.—Bureau of Power and Light.
- 11:15 a. m.—Columbia Ensemble, CBS.\*
- 11:45 a. m.—Normalizer.
- 12:45 p. m.—U. S. Navy Band, CBS.\*
- 1:00 p. m.—Book Parade, CBS.\*
- 1:15 p. m.—Dancing by the Sea, from Atlantic City, CBS.\*
- 3:00 p. m.—Ted White.
- 3:15 p. m.—U. S. C. Trojan Period.
- 3:30 p. m.—Y. M. C. A.
- 3:45 p. m.—Automobile Club of Southern California.
- 4:00 p. m.—Charlie Wellman.
- 4:15 p. m.—Frederick William Wile, CBS.\*
- 4:30 p. m.—Charlie Wellman.
- 5:00 p. m.—Pacific States Sav. & Loan, organ.
- 5:30 p. m.—Pearson-Taft Co. program.
- 5:45 p. m.—Coast Investor, speaker.
- 6:00 p. m.—Pianoville.
- 6:30 p. m.—Arrowhead Springs Dance Orchestra.
- 7:00 p. m.—Desmond's Broadway Melodies.
- 7:30 p. m.—Guy Lombardo and his Royal Canadians, CBS.\*
- 8:00 p. m.—General Petroleum Corp., Orch. and singers.
- 8:30 p. m.—Ray Paige Presentation.
- 9:00 p. m.—Don Lee Symphony.
- 9:30 p. m.—Singing Strings.

**FRIDAY, AUGUST 8**

- 9:15 a. m.—Richardson's Music Lovers' Shop.
- 10:00 a. m.—Elvia Allman, June Parker and Nell Larson, song and organ.
- 10:30 a. m.—American Institute of Food Products.
- 10:45 a. m.—Ted White.
- 11:00 a. m.—Recordings; Scientific Laboratories of America.
- 11:15 a. m.—Columbia Ensemble, CBS.\*
- 11:45 a. m.—Normalizer.
- 12:45 p. m.—California Home Extension.

- 1:00 p. m.—Captivators, CBS.\*
- 3:00 p. m.—Ciella Collings, talk.
- 3:15 p. m.—Dr. Walter Hertzog's School program.
- 3:30 p. m.—Walter Brown Murray.
- 3:45 p. m.—Council of International Relations.
- 4:00 p. m.—Nit Wit Hour, CBS.\*
- 4:30 p. m.—Charlie Wellman.
- 5:00 p. m.—Custo Company, orchestra, KFRC.
- 5:30 p. m.—Boulevard Furniture Co., recordings.
- 6:00 p. m.—Colonel Lindbergh, "Aviation," CBS.\*
- 6:15 p. m.—Columbia Male Chorus, CBS.\*
- 6:30 p. m.—Gold Medal Fast Freight, CBS.\*
- 7:00 p. m.—Fidelity Sav. & Loan, orchestra and singer.
- 7:30 p. m.—Dance Orchestra.
- 8:00 p. m.—Veodol Vodrill, from KFRC.
- 8:30 p. m.—Don Lee Symphony.
- 9:30 p. m.—Song Premiere.

**SATURDAY, AUGUST 9**

- 8:00 a. m.—Adventures of Helen and Mary, CBS.\*
- 8:30 a. m.—Stock Exchange reports, courtesy Walsh, O'Connor.
- 8:40 a. m.—Terpezzone, recordings.
- 9:15 a. m.—Georgia O. George Lab.
- 9:30 a. m.—Recordings, Southern Cal. Music Co.
- 10:00 a. m.—Novelty program, to KFRC.
- 11:00 a. m.—Recordings.
- 11:15 a. m.—Columbia Ensemble, CBS.\*
- 12:45 p. m.—French Trio, CBS.\*
- 1:00 p. m.—Ozzie Nelson's Glen Islanders, CBS.\*
- 2:00 p. m.—Tom, Dick and Harry, CBS.\*
- 2:15 p. m.—Ted Husling's Sportslants, CBS.\*
- 2:45 p. m.—The Couple Next Door, CBS.\*
- 3:00 p. m.—The Crockett Mountainers, CBS.\*
- 3:15 p. m.—Melo Marlas, CBS.\*
- 4:00 p. m.—Exploring the Jungle for Science, CBS.\*
- 4:15 p. m.—Industrial America, CBS.\*
- 4:30 p. m.—Dixie Echoes, CBS.\*
- 5:00 p. m.—Show Boat, CBS.\*
- 6:00 p. m.—Paramount Hour, CBS.\*
- 7:00 p. m.—KHJ Revue.
- 8:00 p. m.—Studio Program.
- 8:30 p. m.—North American Bldg. & Loan Ass'n Musical Cocktail.
- 9:00 p. m.—Night Auto Races, Lezion Ascot Speedway.



The essential features of these programs are identical with those sent us by the stations



THOMAS SMITH

# KJR Seattle, Washington—970 Kc.

309.1 METERS—5000 WATTS

Northwest Broadcasting System, Inc.

Thomas F. Smart, Manager I. Schaefer, Press Relations  
Studio Telephone, Seneca 1515—Office Main 2495  
Home Savings Building

Henri Damski  
Musical Director  
John Pearson  
Al Schuse  
Thomas F. Smith  
Chief Announcer  
Frank Coombs  
Ken Stuart  
Announcers  
J. N. Cope  
Technical Director

8:00 p. m.—J. E. Drain & Co. Gold and Silver Ensemble; J. E. Drain, speaker.  
9:00 p. m.—Musical Comedy Hour; Betty Andersen and George Maddux, duets; Sydney Dixon, tenor.  
11:00 p. m.—Vic Meyers' Club Victor Orch.

## WEDNESDAY, AUGUST 6

10:00 a. m.—Elmore Vincent, tenor; Marjorie Robillard, piano.  
6:00 p. m.—Harpers Corners.  
6:30 p. m.—Hometowners; Ragnar Salldin, accordion.  
7:00 p. m.—Old Songs for New.  
8:00 p. m.—Combo Orchestra; Ukelele Bob.  
8:30 p. m.—Harmony Aces; Eulala Dean, blues singer.  
9:00 p. m.—Neapolitans; Betty Andersen, soprano; Jan Russell, violin; Jean Kantner, baritone.  
10:30 p. m.—Music a la Carte.

## THURSDAY, AUGUST 7

1:00 p. m.—Musical program.  
1:45 p. m.—Robert Monsen, tenor.  
6:00 p. m.—American Institute of Banking.  
6:15 p. m.—Hometowners Orch.; Ed Sheldon, banjo.  
7:00 p. m.—Kelpine Twins.  
7:30 p. m.—Dream Melodies; Betty Andersen, soprano; Sydney Dixon, tenor; Jan Naylor, 'cello; Stephanie Lewis and Grant Merrill, songalogue.  
8:00 p. m.—Hits of Yesterday; Frank Horsfal, saxophone; Captivators Male Quartet; Glen Eaton, tenor.  
9:00 p. m.—Damski's Wood-Wind Ensemble.  
11:00 p. m.—Vic Meyers' Club Victor Orch.

## FRIDAY, AUGUST 8

10:00 a. m.—Robert Monsen, tenor; Marjorie Robillard piano.  
1:45 p. m.—Glen Eaton, tenor; Marjorie Robillard, piano.  
6:00 p. m.—Harpers Corners.  
6:30 p. m.—Vic Meyers' Recording Orch.  
7:30 p. m.—Thirty Minutes with the Masters; Harold Strong piano; Sydney Dixon, tenor.  
8:00 p. m.—Gold and Silver Ensemble; Ernest Gill, violin; J. E. Drain, speaker.  
9:00 p. m.—Damski's Neapolitans; Betty Andersen, soprano; Sydney Dixon, tenor; Signor Meriggioni, flute; Sam Meyer, violin.  
10:30 p. m.—Bye Bye Blues; Chet Cathers and Ivan Ditmars.

## SATURDAY, AUGUST 9

10:00 a. m.—Elmore Vincent, tenor; Grant Merrill, piano.  
1:15 p. m.—Uncle Frank's Kiddies program; Kelpine Products Company.  
5:05 p. m.—Labor talk.  
5:15 p. m.—West Coast Air Transport talk.  
6:00 p. m.—Saturday Knights; Pearle Dempsey, piano; Robert Monsen, tenor; Art Pease, accordion.  
7:00 p. m.—Flit Hour.  
8:00 p. m.—The Gondollers; Stephanie Lewis, soprano.  
9:00 p. m.—Tucker's Everstate Band.  
11:00 p. m.—Tucker's Everstate Band.

E. R. Patterson, of the Patterson Radio Corporation, Los Angeles, made a "flying" trip to Chicago last week. Leaving Los Angeles early Sunday morning, he arrived in Chicago Monday morning. After a day of business in the Windy City, he departed Monday evening and was back in Los Angeles Tuesday evening. He missed only two business days from his office here, and yet spent a full day in Chicago and slept comfortably on Pullman cars both nights.

## DAILY EXCEPT SUNDAY

7:00 a. m.—Music, News.  
8:00 a. m. and 11:00 p. m.—Time Signals.  
8:30 a. m.—Thrift Home of the Air.  
9:00 a. m.—Morning Devotional Services (ex. Wednesday and Friday).  
9:40 a. m.—Sally Jo Walker and Grant Merrill.  
10:15 a. m.—Beauty Talk, Helen Andrews.  
12:00 noon.—World in Review (except Tuesday).  
1:00 p. m.—Musical program.  
2:00 p. m.—Arcweld Entertainers.  
2:45 p. m.—Baseball Game (except Monday).  
6:15 p. m.—Aircastles in the Land of Make-Believe (except Saturday).  
5:50 p. m.—Garden Talk; Cecil Solly.  
10:00 p. m.—Ken Stuart's Sunshine program; Ivan Ditmars, piano.  
10:30 p. m.—Whirlwinds (except Monday).  
12:00 midnight to 3:00 a. m.—Midnight Revelers.

## SUNDAY, AUGUST 3

8:00 a. m.—Musical program.  
9:00 p. m.—"Joe Comic," Reading the Funny Papers.  
10:00 a. m.—El Monte Musical Hour; String Orchestra Playing entire Light Opera.  
12:00 noon.—Classical program.  
2:00 p. m.—Emmanuel Tabernacle.  
2:30 p. m.—Music a la Carte, Francis La Pine, soprano.  
3:00 p. m.—Lyric Trio—Jan Naylor, 'cello; Sam Meyer, violin; Hubert Graf, harp; Stephanie Lewis, soprano.  
4:00 p. m.—Songs of Today.  
5:00 p. m.—Seattle Park Band concert.  
6:00 p. m.—Hour on Broadway, George and Gus in Topics of the Day.  
7:00 p. m.—Hometowners Orch.; Glen Eaton, tenor; Art Pease, accordion; Captivators Male Quartet.  
8:00 p. m.—Damski's Imperial Grand Orch.; Betty Andersen, soprano; Jean Kantner, baritone; Harold Strong, piano.  
9:00 p. m.—Los Gauchos Argentine; Ed Sheldon, mandolin; Stephanie Lewis, soprano.  
10:00 p. m.—Angelus Ensemble; Sydney Dixon, tenor; Hubert Graf, harp; Jean Kantner, baritone; Mabel Mohrman, piano.  
11:00 p. m.—Tucker's Everstate Band.

## MONDAY, AUGUST 4

10:00 a. m.—Robert Monsen, tenor; Marjorie Robillard, piano.  
1:45 p. m.—Glen Eaton, tenor; Marjorie Robillard.  
3:15 p. m.—Stonewall Jackson, guitar.  
6:00 p. m.—Harpers Corners.  
6:30 p. m.—Hometowners Orch.; Glen Eaton, tenor; Ed Sheldon, banjo.  
7:00 p. m.—Kelpine Twins.  
7:30 p. m.—Dream Melodies.  
8:00 p. m.—Whirlwinds Orchestra; Ukelele Bob; Chet Cathers, baritone; Elmore Vincent, tenor; Eulala Dean, blues singer.  
9:00 p. m.—Damski's Neapolitans; Betty Andersen, soprano; Sydney Dixon, tenor.  
10:30 p. m.—Bits of Harmony.  
11:00 p. m.—Bob Newell's Plantation Orchestra.

## TUESDAY, AUGUST 5

10:00 a. m.—Glen Eaton, tenor; Marjorie Robillard, piano.  
11:00 a. m.—Classical program.  
1:45 p. m.—Caet Cathers, baritone; Marjorie Robillard piano.  
6:00 p. m.—The Six O'Clock Steppers; "Dud and Duane," saxophone.  
7:00 p. m.—Orpheus Ensemble; Betty Andersen, soprano; Hubert Graf, harp; Sydney Dixon, tenor.



The essential features of these programs are identical with those sent us by the stations



# KEX

## Portland, Oregon—1180 Kc.

5000 WATTS—254.1 METERS  
 Owned and Operated by WESTERN BROADCASTING COMPANY  
 Member of Northwest Broadcasting System, Inc.  
 Terminal Sales Building

William L. Norvell  
 Station Manager

WILLIAM L. NORVELL

DAILY EXCEPT SUNDAY

- 7:00 a. m.—Morning Serenaders.
- 8:00 a. m.—The Clock, Oregon Journal News.
- 9:00 a. m.—Classified.
- 10:00 a. m.—Town Topics, Veva Weller.
- 12:05 p. m.—Happy Hour Girls.
- 1:05 p. m.—Ron's Rhythm Review.
- 1:30 p. m.—Castle Organ Concert.
- 2:00 p. m.—Dental Lecture.
- 2:30 p. m.—Vagabond's Newsreel.
- 3:30 p. m.—Song Recital (except Tuesday).
- 4:30 p. m.—Warner Stone's Orch. (except Saturday).
- 5:30 p. m.—Baron Keyes' Air Castles (except Saturday)
- 5:45 p. m.—Old Timers.
- 10:00 p. m.—The Angelus.
- 10:30 p. m.—Jack and Jill Tavern Orchestra.
- 11:30 p. m.—Time, Weather, Police Reports.
- 11:40 p. m.—Midnight Revelers; Requests. (Thursday at 12:00.)
- 3:00 a. m.—Sign Off.

SUNDAY, AUGUST 3

- 8:00 a. m.—Concert recordings.
- 9:00 a. m.—Tillie the Toller.
- 9:30 a. m.—Concert recordings.
- 11:00 a. m.—Castle Organ concert.
- 1:00 p. m.—Neapolitan concert.
- 3:00 p. m.—Lyric Trio, NBS.\*
- 4:00 p. m.—Songs of Today, NBS.\*
- 5:00 p. m.—Concert recordings.
- 5:30 p. m.—Radio Gospel Hour.
- 6:00 p. m.—Hour on Broadway, NBS.\*
- 7:00 p. m.—Silent period.
- 8:00 p. m.—Imperial Grand Orchestra, NBS.\*
- 9:00 p. m.—Portland Community Chest program.
- 9:30 p. m.—Los Gauchos Argentines, NBS.\*
- 11:00 p. m.—Warner Stone's Dance Orchestra.
- 12:00 midnight—Castle Organ concert.

MONDAY, AUGUST 4

- 4:30 p. m.—Warner Stone's Orchestra; Arcweld Manufacturing Co.
- 5:00 p. m.—Male Quartet concert.

- 6:00 p. m.—Harpers Corners, NBS.\*
- 6:30 p. m.—Hometowners Orchestra, NBS.\*
- 7:00-8:00 p. m.—Silent period.
- 8:00 p. m.—Dance recordings.
- 8:15 p. m.—Farmers' Radio Service Club.
- 8:30 p. m.—Whirlwinds Orchestra, NBS.\*
- 9:00 p. m.—Neapolitans, NBS.\*

TUESDAY, AUGUST 5

- 5:00 p. m.—Negro Melodies.
- 6:00 p. m.—The Six O'Clock Steppers.
- 7:00-8:00 p. m.—Silent period.
- 8:00 p. m.—Dance concert.
- 8:15 p. m.—Farmers' Radio Service Club.
- 8:30 p. m.—Gold and Silver Ensemble, NBS.\*
- 9:00 p. m.—Musical Comedy Hour, NBS.\*

WEDNESDAY, AUGUST 6

- 5:00 p. m.—Band concert.
- 6:00 p. m.—Harpers Corners, NBS.\*
- 6:30 p. m.—Duhols Motor Corp.
- 7:00-8:00 p. m.—Silent period.
- 8:00 p. m.—Dance concert.
- 8:15 p. m.—Farmers' Radio Service Club.
- 8:30 p. m.—Harmony Aces, NBS.\*
- 9:00 p. m.—Damski's Neapolitans Orchestra, NBS.\*

THURSDAY, AUGUST 7

- 5:00 p. m.—Novelty recordings.
- 6:00 p. m.—Hometowners Orchestra, NBS.\*
- 7:00-8:00 p. m.—Silent period.
- 8:00 p. m.—Dance program.
- 8:15 p. m.—Farmers' Radio Service Club.
- 9:00 p. m.—Damski's Wood-Wind Ensemble, NBS.\*

FRIDAY, AUGUST 8

- 5:00 p. m.—Hawaiian concert.
- 5:30 p. m.—Baron Keyes' Air Castles; Union Oil Co.
- 5:45 p. m.—Old Timers; Keller Furniture Co.
- 6:00 p. m.—Harpers Corners, NBS.\*
- 6:30 p. m.—Vic Meyers' Recording Orchestra, NBS.\*
- 7:00-8:00 p. m.—Silent period.
- 8:00 p. m.—Dance program.
- 8:15 p. m.—Farmers' Radio Service Club.
- 9:00 p. m.—Damski's Neapolitans, NBS.\*

SATURDAY, AUGUST 9

- 4:30 p. m.—Afternoon Classic.
- 6:00 p. m.—Saturday Knights, NBS.\*
- 8:00 p. m.—Dance program.
- 8:15 p. m.—Farmers' Radio Service Club.
- 8:30 p. m.—Dance program.
- 8:45 p. m.—Boh and Monte, Renton program.
- 9:00 p. m.—Warner Stone's Orchestra.



# RCA Radiola

MADE BY THE MAKERS OF THE RADIOTRON

Call or telephone today one of the authorized dealers listed below for a demonstration

DOWNTOWN  
**EASTMAN KODAK  
 STORES, INC.**

RADIOLA MERCHANDISE  
 EASTMAN SERVICE

643 S. Hill St.

TRinity 0746

DOWNTOWN

**Richardson's Music Store**

730 W. Seventh St.

TRinity 0194



ALBERT GILLETTE

# KGW

## Portland, Oregon—620 Kc.

1000 WATTS—483.6 METERS  
THE MORNING OREGONIAN  
"Keep Growing Wiser"

Paul R. Heltmyer  
Manager

Albert Gillette  
Studio Director

Abe Bercovitz  
Director of Music

Vern Haybarker  
Chief Engineer

### DAILY EXCEPT SUNDAY

- 6:45 a. m.—Devotional Exercises.  
7:00 a. m.—Bagdad Theatre Organ.  
7:45 a. m.—Aunt Jemima, NBC.\*  
8:00 a. m.—Shell Happy Time, NBC\* (ex. Tuesday).  
9:00 a. m.—Columbia National Bank.  
9:06 a. m.—Town Crier.  
10:30 a. m.—Woman's Magazine of the Air, NBC\* (ex. Thursday and Saturday).  
12:00 noon.—Powers' Pled Piper.  
2:00 p. m.—Baby's Boudoir.  
2:15 p. m.—Among Ourselves (except Monday).  
7:30 p. m.—Amos 'n' Andy, NBC.\*

### SUNDAY, AUGUST 3

- 8:30 a. m.—Organ Recital.  
9:30 a. m.—American Legion program.  
10:00 a. m.—International Bible students.  
11:00 a. m. to 9:30 p. m.—NBC.\*  
9:30 p. m.—Lotus Isle broadcast.  
10:00 p. m.—Little Symphony hour.  
11:00 p. m.—Organ Recital.

### MONDAY, AUGUST 4

- 10:15 a. m.—Heinz Food talk, NBC.\*  
11:30 a. m.—Musical Masterworks.  
11:45 a. m.—The Canny Cook, NBC.\*  
12:30 p. m.—Pacific Vagabonds, NBC.\*  
1:15 p. m.—Blue Boys, NBC.\*  
1:45 p. m.—Julia Hayes.  
2:00 p. m.—Organ Recital.  
2:15 p. m.—Mormon Tabernacle, NBC.\*  
2:30 p. m.—Movie Club.  
3:00 p. m.—Masterworks.  
3:30 p. m.—Phil Cook, Quaker Man, NBC.  
3:45 p. m.—Roxo and his Gang, NBC.\*  
4:00 p. m.—Half Hour in Capital, NBC.\*  
4:30 p. m.—Palace Laundry Tea Timers.  
5:00 p. m.—The Maytag Orchestra, NBC.\*  
5:30 p. m.—General Motors, NBC.\*  
6:00 p. m.—Stromberg-Carlson, NBC.\*  
6:30 p. m.—Piano Capers, NBC.\*  
7:00 p. m.—S. S. Georgiana program.  
7:45 p. m.—John and Ned, NBC.\*  
8:00 p. m.—Shell Review, NBC.\*  
9:30 p. m.—House of Myths, NBC.\*  
10:00 p. m.—Ben Selling's Boys.  
11:00 p. m.—KGW Dance Band.

### TUESDAY, AUGUST 5

- 8:00 a. m.—Portland Breakfast Club.  
10:15 a. m.—Bass-Heuter program, NBC.\*  
11:30 a. m.—Julia Hayes.  
11:45 a. m.—The Canny Cook, NBC.\*  
12:30 p. m.—Pacific Vagabonds, NBC.\*  
1:00 p. m.—Sir Francis Drake Orchestra, NBC.\*  
2:45 p. m.—Hotel Paramount Orchestra, NBC.\*  
3:00 p. m.—Voters' Service, NBC.\*  
4:30 p. m.—Phil Cook, Quaker Man, NBC.\*  
3:45 p. m.—Musical Masterworks.  
4:00 p. m.—Hotel St. Francis Orchestra, NBC.\*  
4:30 p. m.—Palace Laundry features.  
5:00 p. m.—Eveready Hour, NBC.\*  
5:30 p. m.—Happy Wonder Bakers, NBC.\*  
6:00 p. m.—Westinghouse Salute, NBC.\*  
6:30 p. m.—Radio-Keith-Orpheum, NBC.\*  
7:00 p. m.—Carnation Melodists.  
7:45 p. m.—Sperry Flour Company, NBC.\*  
8:00 p. m.—Lotus Isle broadcast.  
8:30 p. m.—Pacific National Singers, NBC.\*  
9:15 p. m.—Fisher's Blend hour.  
10:15 p. m.—KGW Slumber Hour.  
11:15 p. m.—Organ.

### WEDNESDAY, AUGUST 6

- 10:15 a. m.—Mary Hale Martin, NBC.\*  
11:30 a. m.—Evening Stars, NBC.\*  
11:45 a. m.—Masterworks.  
12:30 p. m.—Bagdad Theater Organ.

- 1:15 p. m.—Breen and DeRose, NBC.\*  
1:30 p. m.—Julia Hayes.  
1:45 p. m.—Tea Timers, NBC.\*  
2:45 p. m.—Masterworks.  
3:30 p. m.—Phil Cook, Quaker Man, NBC.\*  
3:45 p. m.—Back of the News, NBC.\*  
4:00 p. m.—East of Cairo, NBC.\*  
4:30 p. m.—Palace Laundry features.  
5:00 p. m.—Halsey-Stuart, NBC.\*  
5:30 p. m.—Palmolive program, NBC.\*  
6:30 p. m.—Coca Cola program, NBC.\*  
7:00 p. m.—Franz Children's Hour.  
7:45 p. m.—Bradley Pie Man.  
8:00 p. m.—Let's Get Associated, NBC.\*  
9:15 p. m.—Montag Melodians.  
9:30 p. m.—Camel Pleasure Hour, NBC.\*  
10:30 p. m.—Lotus Isle broadcast.  
11:00 p. m.—Hotel St. Francis Orchestra, NBC.\*

### THURSDAY, AUGUST 7

- 11:00 a. m.—Organ Recital, NBC.\*  
11:45 a. m.—The Canny Cook, NBC.\*  
12:30 p. m.—Sir Francis Drake Orchestra.  
1:15 p. m.—Breen and DeRose, NBC.\*  
1:30 p. m.—Julia Hayes.  
2:45 p. m.—Phil Spitalny, NBC.\*  
3:00 p. m.—Matinee Time, NBC.\*  
3:30 p. m.—Phil Cook, Quaker Man, NBC.\*  
3:45 p. m.—Palace Tea Timers.  
4:00 p. m.—Fleischmann Sunshine Hour, NBC.\*  
5:00 p. m.—Palace Laundry features.  
5:30 p. m.—Maxwell House Melodies, NBC.\*  
6:00 p. m.—RCA Hour, NBC.\*  
7:00 p. m.—Carnation Melodists.  
7:45 p. m.—Standard Symphony Hour, NBC.\*  
8:45 p. m.—Mao and Al.  
9:00 p. m.—Memory Lane, NBC.\*  
9:30 p. m.—Tommy Luke's Flower Girls.  
9:45 p. m.—Boyer, the Society Perfumer.  
10:15 p. m.—Associated Dance Band.  
11:00 p. m.—Organ.

### FRIDAY, AUGUST 8

- 10:15 a. m.—Heinz Food Talk, NBC.\*  
11:30 a. m.—Masterworks.  
12:30 p. m.—Pacific Feature Hour, NBC.\*  
1:00 p. m.—Rembrandt Trio, NBC.\*  
1:30 p. m.—Air Transport Talk.  
1:45 p. m.—Hotel St. Francis Orchestra, NBC.\*  
2:45 p. m.—Masterworks.  
3:15 p. m.—Universal Safety Series, NBC.\*  
3:30 p. m.—Quaker Oats, NBC.\*  
3:45 p. m.—Palace Laundry features.  
4:00 p. m.—Cities Service, NBC.\*  
5:00 p. m.—Interwoven Pair, NBC.\*  
5:30 p. m.—Armour Hour, NBC.\*  
6:00 p. m.—Armstrong Quakers, NBC.\*  
6:30 p. m.—Raleigh Review, NBC.\*  
7:00 p. m.—Elgin Watch program, NBC.\*  
7:15 p. m.—"On to Oregon" program.  
7:45 p. m.—Studio, Violin Recital.  
8:00 p. m.—Ole and the Girls, NBC.\*  
8:15 p. m.—Piano Paintings, NBC.\*  
8:45 p. m.—Tone Pictures, NBC.\*  
9:15 p. m.—Kodak Week-end program, NBC.\*  
9:45 p. m.—John and Ned, NBC.\*  
10:15 p. m.—Oregon Ramblers.  
10:30 p. m.—Pacific Nomads, NBC.\*  
11:00 p. m.—Lotus Isle broadcast.

### SATURDAY, AUGUST 9

- 11:30 a. m.—Masterworks.  
11:45 a. m.—O. M. Plummer.  
12:30 p. m.—Novelty Five, NBC.\*  
1:00 p. m.—Tea Timers, NBC.\*  
1:45 p. m.—Captain Bill Royle, NBC.\*  
2:45 p. m.—Masterworks.  
3:15 p. m.—William Donn, NBC.\*  
3:30 p. m.—The Fuller Man, NBC.\*  
4:00 p. m.—New Business World, NBC.\*  
4:30 p. m.—Palace Laundry Tea Timers.  
5:00 p. m.—Baxdad Organ.  
5:30 p. m.—General Electric, NBC.\*  
6:00 p. m.—Lucky Strike Hour, NBC.\*  
7:00 p. m.—Voice of Pan, NBC.\*  
7:45 p. m.—Sperry Hot Cakes, NBC.\*  
8:00 p. m.—Gilmore Circus, NBC.\*  
8:30 p. m.—Hollywood Symphony.  
9:30 p. m.—Golden Legends, NBC.\*  
10:15 p. m.—Lotus Isle broadcast.  
11:00 p. m.—RKO Orpheum artists.

See Page 18 for NBC Program

The essential features of these programs are identical with those sent us by the stations



DICK RICKARD

# KOL Seattle, Washington—1270 Kc.

1000 WATTS—236.1 METERS  
 Operated by THE SEATTLE BROADCASTING CO., INC.  
 Northern Life Tower, Seattle. Phone MAIN 2312  
 Mr. E. M. Doernbecher, President and General Manager

Grayce Moeger  
 Traffic Manager  
 L. F. Van Schuck  
 Commercial Manager  
 Dick Rickard  
 Studio Director  
 Stephen Gaylord  
 Chief Announcer  
 Paul B. Gale  
 Engineer  
 Stan Spiegle  
 Public Relations

8:30 p. m.—Demi Tasse Revue.  
 9:00 p. m.—Mood Pictures.  
 9:30 p. m.—Top o' the World Night Club.  
 10:00 p. m.—Bill Darby's Playland Dance Band.  
 11:00 p. m.—Earl Burnett's Band.

**THURSDAY, AUGUST 7**

12:00 noon.—U. S. Navy Band, CBS.\*  
 1:00 p. m.—Dancing by the Sea, CBS.\*  
 3:00 p. m.—Studio program.  
 3:30 p. m.—KFRC Musical.  
 4:00 p. m.—Symphonic Interlude, CBS.\*  
 4:15 p. m.—Political Situation in Washington Tonight, CBS.\*

4:30 p. m.—Studio program.  
 5:00 p. m.—Service Period.  
 5:30 p. m.—Recordings.  
 6:00 p. m.—Romany Patteran, CBS.\*  
 6:30 p. m.—National Radio Forum, CBS.\*  
 7:00 p. m.—Washington Homemakers.  
 7:30 p. m.—Guy Lombardo's Royal Canadians, CBS.\*  
 8:00 p. m.—CBS.\*  
 8:30 p. m.—Nocturne, CBS.\*  
 9:00 p. m.—DLBS program.  
 10:00 p. m.—Bill Darby's Playland Dance Band.  
 11:00 p. m.—Anson Weeks.

**FRIDAY, AUGUST 8**

9:45 a. m.—Feminine Fancies.  
 10:00 a. m.—Recordings.  
 10:30 a. m.—Jo-Cur.  
 10:35 p. m.—Recordings.  
 12:00 noon.—Light Opera Gems, CBS.\*  
 12:30 p. m.—Chamber of Commerce Luncheon.  
 1:30 p. m.—Carl Rupp and his Captivators, CBS.\*  
 3:00-4:45 p. m.—CBS.\*  
 4:45 p. m.—Times News Flashes.  
 5:45 p. m.—Studio program.  
 6:00 p. m.—Colonel Charles Lindbergh, CBS.\*  
 6:30 p. m.—Gold Medal Fast Freight, CBS.\*  
 7:00 p. m.—Bert Lown and his Biltmore Orch., CBS.\*  
 7:15 p. m.—"Would You Believe It?"  
 7:30 p. m.—Will Osborne and his Orchestra, CBS.\*  
 8:00 p. m.—Veedol Vodril.  
 8:30 p. m.—KOIN program.  
 9:00 p. m.—Mission Isle of Golden Dreams.  
 9:30 p. m.—KOIN program.  
 10:00 p. m.—Bill Darby's Playland Dance Band.  
 10:00 p. m.—Val Valente's Dance Orchestra.

**SATURDAY, AUGUST 9**

8:00 a. m.—Adventures of Helen and Mary, CBS.\*  
 10:30 a. m.—Novelty program from KILJ.  
 11:00 a. m.—"Carnival Hour."  
 12:00 noon-1:45 p. m.—CBS.\*  
 1:45 p. m.—Recordings.  
 2:00-4:45 p. m.—CBS.\*  
 4:45 p. m.—Times News Flashes.  
 5:45 p. m.—Studio program.  
 6:00-9:00 p. m.—CBS.\*  
 9:00 p. m.—Auto Race Broadcast from Ascot Speedway.  
 10:00 p. m.—Bill Darby's Playland Dance Band.  
 11:00 p. m.—Earl Burnett's Band.

**DAILY EXCEPT SUNDAY**

6:45 a. m.—Bill Ross' Alarm Clock Hour.  
 7:45 a. m.—Recordings.  
 8:00 a. m.—Columbia Revue, CBS.\*  
 8:30 a. m.—Manhattan Towers Orchestra (ex. Wednesday and Saturday).  
 9:30 a. m.—Recordings.  
 10:00 a. m.—Studio program.  
 11:00 a. m.—Carnival Hour. (Wed. 11:15).  
 1:45 p. m.—Recordings.  
 2:00 p. m.—Happy-Go-Lucky Hour (except Saturday).  
 4:30 p. m.—Mr. Fixit and News Service (ex. Mon.).  
 5:00 p. m.—Recordings; Service Period (4:15 Mon.).  
 12:00 midnight-3:00 a. m.—KOL Birthday Party.

**SUNDAY, AUGUST 3**

4:59 p. m.—Time Signal.  
 5:00 p. m.—Majestic Theater of the Air, CBS.\*  
 6:00 p. m.—Mayhew Lake and his band, CBS.\*  
 10:00 p. m.—Val Valente's Music.  
 11:00 p. m.—Organ Recital.

**MONDAY, AUGUST 4**

12:00 noon.—The Merry-makers, CBS.\*  
 12:30 p. m.—The Aztecs, CBS.\*  
 1:00 p. m.—Dancing by the Sea from Atlantic City, CBS.\*  
 3:00 p. m.—Current Events, CBS.\*  
 3:30 p. m.—Studio program.  
 5:30 p. m.—Recordings.  
 5:45 p. m.—Studio program.  
 6:00-8:30 p. m.—CBS.\*  
 8:30 p. m.—Washington Homemakers.  
 9:00 p. m.—Blue Monday Jamboree.  
 10:01 p. m.—Anson Weeks' Mark Hopkins' Orchestra.  
 11:05 p. m.—Studio program.  
 11:07 p. m.—Earl Burnett's Biltmore Orchestra.

**TUESDAY, AUGUST 5**

10:30 a. m.—Jo-Cur.  
 12:00 noon.—U. S. Army Band, CBS.\*  
 12:30 p. m.—Klwanis Club Luncheon—remote.  
 1:30 p. m.—Dancing, CBS.\*  
 1:45 p. m.—Recordings.  
 3:00 p. m.—The Crockett Mountaineers, CBS.\*  
 3:15 p. m.—International Sidelights, CBS.\*  
 3:30 p. m.—Guy Lombardo's Royal Canadians, CBS.\*  
 4:00 p. m.—Studio program.  
 5:00 p. m.—Service Period.  
 5:30 p. m.—Recordings.  
 5:45 p. m.—Studio program.  
 6:00-9:00 p. m.—CBS.\*  
 9:00 p. m.—Studio program.  
 9:30 p. m.—Drama from KILJ.  
 10:00 p. m.—Studio program.  
 10:06 p. m.—Earl Burnett's Dance Orchestra.  
 11:01 p. m.—Val Valente's Dance Orchestra.

**WEDNESDAY, AUGUST 6**

11:00 a. m.—Red Cross Shoe program.  
 11:15 a. m.—"Carnival Hour."  
 12:15 p. m.—Musical Album, CBS.\*  
 12:30 p. m.—Rotary Club Luncheon.  
 1:30 p. m.—Footnotes, CBS.\*  
 1:45 p. m.—Recordings.  
 3:00 p. m.—The Crockett Mountaineers, CBS.\*  
 3:15 p. m.—Ann Leaf at the Organ, CBS.\*  
 3:30 p. m.—Studio program.  
 3:45 p. m.—The Aztecs, CBS.\*  
 4:00 p. m.—Manhattan Towers Orchestra, CBS.\*  
 4:30 p. m.—Studio program.  
 5:45 p. m.—Studio program.  
 6:00 p. m.—Dinner Hour Concert.  
 6:30 p. m.—Professor Lindsley—Play.  
 7:00 p. m.—Washington Homemakers.  
 7:30 p. m.—California Melodies.  
 8:00 p. m.—Studio program.

The Sylvania Tube Company of Emporium, Pa., is forging ahead by leaps and bounds, according to Mr. Wm. H. Cooke, 216 Laughlin Building, Long Beach, who is the California representative.

"The Sylvania engineers are putting forth every effort to attain the highest degree of quality obtainable. The factory is equipped with the latest type of machinery. The finest of materials go into the making of Sylvania tubes, so, all in all, we believe that we are producing one of the best and most durable tubes that is on the market," said Mr. Cooke.





GEORGE GODFREY

# KOMO

**Seattle, Wash.—920 Kc.**  
 FISHER'S BLEND STATION—1000 WATTS—325.9 METERS  
 METROPOLITAN CENTER, SEATTLE  
 Telephone Elliott 5809

DAILY EXCEPT SUNDAY

7:30 a. m.—Y. M. C. A. Health Exercises.  
 7:40 a. m.—Inspirational Services.  
 7:45 a. m.—Sunrise Sorenaders, NBC.  
 8:00 a. m.—Shell Happy Time.  
 10:30 a. m.—NBC, Woman's Magazine of the Air (except Thursday).  
 12:00 noon—U. S. Farm Talk (except Saturday).  
 12:15 p. m.—Totem Broadcasters and Prudence Penny.  
 12:30 p. m.—Orchestra and Soloists.  
 7:00 p. m.—Garden Patch Children's program (except Tues. and Sat., Fri. 7:15).  
 7:30 p. m.—Amos 'n' Andy.  
 12:00 midnight—Fox Fifth Avenue Theater program.

## SUNDAY, AUGUST 3

9:00 a. m.—Fox 5th Ave. Theatre Organ Recital.  
 10:00 a. m.—International Bible Students' Assn.  
 11:00 a. m.—Vocal Recital.  
 11:15 a. m.—Plymouth Congregational Church Service.  
 12:15-5:45 p. m.—NBC.\*  
 5:45 p. m.—P. S. Navigation Co., Artistic Ensemble.  
 6:15 p. m.—Studebaker Champions, NBC.\*  
 6:45 p. m.—Sunday at Seth Parker's, NBC.  
 7:15 p. m.—Garden Patch program.  
 7:45 p. m.—Artistic Ensemble.  
 8:00 p. m.—First Church of Christ, Scientist.  
 9:00-11:00 p. m.—NBC.\*

## MONDAY, AUGUST 4

9:00 a. m.—Banjo Duo.  
 9:15 a. m.—Julia Hayes Helpful Hints to Housewives.  
 9:30 a. m.—Fox 5th Ave. Theatre Organ Recital.  
 10:00 a. m.—Way to a Man's Heart.  
 10:15 a. m.—Josephine Gibson Food Talk, NBC.\*  
 1:00 p. m.—Concert Orchestra and vocalists.  
 1:30 p. m.—Blue Boys, NBC.\*  
 2:00 p. m.—Salt Lake Tabernacle Choir and Organ Recital, NBC.\*  
 2:30 p. m.—Popular Orchestra and vocalists.  
 3:00 p. m.—Old Time Orchestra.  
 3:30 p. m.—Phil Cook, the Quaker Man, NBC.\*  
 3:45 p. m.—Artistic Ensemble.  
 4:00 p. m.—NBC.\*  
 4:30 p. m.—Crime Prevention Hour, NBC.\*  
 4:45 p. m.—Stock Quotations.  
 5:00-8:30 p. m.—NBC.\*  
 6:30 p. m.—Artistic Ensemble and vocalists.  
 7:45 p. m.—Mixed Quartet.  
 8:00 p. m.—Shell Symphonists, NBC.\*  
 9:00 p. m.—Concert Orchestra and vocalists.  
 10:00 p. m.—Singing Strings.  
 10:45 p. m.—Totem Broadcasters, News Flashes.  
 11:00 p. m.—Tiny Burnett's Dance Orchestra.

## TUESDAY, AUGUST 5

9:00 a. m.—Gordon and Mary.  
 9:15 a. m.—Julia Hayes Helpful Hints to Housewives.  
 9:30 a. m.—William Don, NBC.\*  
 9:45 a. m.—Old Witch Company.  
 10:00 a. m.—Way to a Man's Heart.  
 10:15 a. m.—Bass-Hueter Paint Co., NBC.\*  
 11:30 a. m.—Associated Oil Co., Harmony Kings.  
 11:45 a. m.—The Canny Cook, NBC.\*  
 1:00 p. m.—Artistic Ensemble.  
 1:30 p. m.—Hotel St. Francis Orchestra, NBC.\*  
 2:30 p. m.—Orchestra and vocalists.  
 2:50 p. m.—Concert Orchestra.  
 3:15 p. m.—Laws that Safeguard Society, NBC.\*  
 3:30 p. m.—Phil Cook, the Quaker Man, NBC.  
 3:45 p. m.—Concert Orchestra.  
 4:45 p. m.—Totem Broadcasters, Stock Quotations.  
 5:00-7:00 p. m.—NBC.\*  
 7:00 p. m.—Artistic Ensemble.  
 7:45 p. m.—Sperry Sweethearts, NBC.  
 8:00 p. m.—Gold Shield Little Symphony Hour.  
 9:00 p. m.—Totem Broadcasters; News Flashes.  
 9:15 p. m.—Fisher's Blend Hour.  
 10:15 p. m.—Dance Orchestra and vocalists.  
 11:15 p. m.—Laughner-Harris St. Francis Hotel Dance Orchestra, NBC.

## WEDNESDAY, AUGUST 6

9:00 a. m.—Banjo Duo.  
 9:15 a. m.—Julia Hayes Helpful Hints to Housewives.  
 9:30 a. m.—Gold Medal Home Service Talk, NBC.\*  
 9:45 a. m.—Way to a Man's Heart.  
 10:00 a. m.—Harmony Kings.  
 10:15 a. m.—Mary Hale Martin Hour, NBC.\*  
 11:30 a. m.—Evening Star, NBC.\*

1:00 p. m.—Totem Broadcasters, Talk, NBC.\*  
 1:15 p. m.—Concert Orchestra and Vocal Trio.  
 1:30 p. m.—Tea Timers, NBC.  
 2:00 p. m.—Concert Orchestra.  
 2:30 p. m.—Popular Orchestra.  
 3:30 p. m.—Phil Cook, the Quaker Man, NBC.\*  
 3:45-4:45 p. m.—NBC.\*  
 4:45 p. m.—Totem Broadcasters, Stock Quotations.  
 5:00-7:00 p. m.—NBC.\*  
 7:45 p. m.—Sea Chanters.  
 8:00 p. m.—Let's Get Associated, NBC.  
 8:30 p. m.—Sargon Cycle of Song.  
 9:00 p. m.—Chrysler program.  
 9:15 p. m.—Violin and Piano Solos.  
 9:30 p. m.—Camel Pleasure Hour, NBC.\*  
 10:30 p. m.—Dance Orchestra.  
 11:30 p. m.—Totem Broadcasters, News Flashes.  
 11:45 p. m.—Laughner-Harris Dance Orchestra, NBC.

## THURSDAY, AUGUST 7

9:00 a. m.—Gordon and Mary.  
 9:15 a. m.—Julia Hayes Helpful Hints to Housewives.  
 9:30 a. m.—"Safeguarding Nation's Food and Drug Supply."  
 9:45 a. m.—Way to a Man's Heart.  
 10:00 a. m.—Woman's Magazine of the Air, NBC.\*  
 11:00 a. m.—Drama of Music.  
 11:45 a. m.—The Canny Cook, NBC.  
 2:00 p. m.—Out of a Clear Sky.  
 2:30 p. m.—Popular Orchestra.  
 3:00 p. m.—Concert Orchestra and vocalists.  
 3:30 p. m.—Phil Cook, the Quaker Man, NBC.  
 3:45 p. m.—Totem Broadcasters, Stock Quotations.  
 4:00-7:00 p. m.—NBC.\*  
 7:45 p. m.—Standard Symphony Hour, NBC.  
 8:45 p. m.—Mozart Concert Hour.  
 9:45 p. m.—Totem Broadcasters, News Flashes.  
 10:00 p. m.—Dance Hour.  
 11:00 p. m.—Laughner-Harris Orchestra, NBC.

## FRIDAY, AUGUST 8

9:00 a. m.—Blues Chasers.  
 9:15 a. m.—Julia Hayes Helpful Hints to Housewives.  
 9:30 a. m.—Gold Medal Talk, NBC.\*  
 9:45 a. m.—Way to a Man's Heart.  
 10:00 a. m.—Blues Chasers.  
 10:15 a. m.—Josephine Gibson Food Talk, NBC.\*  
 11:30 a. m.—Artistic Ensemble.  
 12:00 noon—Radio Visit to Pacific Northwest Dairymen and Poultrymen.  
 2:30 p. m.—Artistic Ensemble.  
 3:15 p. m.—Universal Safety Series, NBC.\*  
 3:30 p. m.—Phil Cook, the Quaker Man, NBC.  
 3:45 p. m.—Totem Broadcasters, Stock Quotations.  
 4:00-7:15 p. m.—NBC.\*  
 7:15 p. m.—Garden Patch program.  
 7:45 p. m.—Vocalists.  
 8:00 p. m.—News Reel Theatre of the Air.  
 8:30 p. m.—"Mac and Al."  
 8:45 p. m.—Tone Pictures, NBC.\*  
 9:15 p. m.—Kodak Week End program, NBC.  
 9:45 p. m.—Latin Nights.  
 10:45 p. m.—Totem Broadcasters, News Flashes.  
 11:00 p. m.—Tiny Burnett's Dance Orchestra.

## SATURDAY, AUGUST 9

9:00 a. m.—Gordon and Mary.  
 9:15 a. m.—Fox 5th Ave. Theatre, organ recital.  
 10:15 a. m.—Fisher Flouring Mills Co. vocal recital.  
 11:30 a. m.—Popular Orchestra and soloists.  
 1:30 p. m.—Tea Timers, NBC.\*  
 2:00 p. m.—Concert Orchestra and vocalists.  
 4:00 p. m.—Totem Broadcasters, Stock Quotations.  
 4:15 p. m.—Vocal Recital.  
 4:30-10:15 p. m.—NBC.\*  
 10:15 p. m.—Totem Broadcasters, News Flashes.  
 10:30 p. m.—Spotlight Revue, NBC.  
 11:30 p. m.—RKO Theatrical Frolic.

See Page 18 for NBC Program



EARL GLADE

# KSL

Salt Lake, Utah—1090 Kc.

5000 WATTS—275.1 METERS  
Pacific Standard Time Given  
Studios in the Vermont Building  
"The Voice of the Inter-Mountain Empire"

Earl J. Glade  
Managing Director

Shipley D. Burton  
Program Director

Douglas Nowell  
Richard Evans  
Ted Rogers  
Announcers

**DAILY EXCEPT SUNDAY**

- 5:30 a. m.—Sports Talk.
- 6:00 a. m.—"Top o' the Morning."
- 6:45 a. m.—"Start the Day Right."
- 7:00 a. m.—Utah Oil Refining.
- 7:30 a. m.—Z.C.M.I. Signal.
- 7:45 a. m.—NBC Sunrise Serenaders.
- 8:00 a. m.—NBC, "Dobbie" and Ship of Joy.
- 9:00 a. m.—Home Economics program.
- 9:30 a. m.—Program of Interest to Housewives.
- 10:00 a. m.—"A Visit with Mrs. Jennie Lee."
- 10:15 a. m.—Musical Varities.
- 11:00 a. m.—Mid-day Melange.
- 11:10 a. m.—Weather Forecast, Agricultural Economics.
- 11:30 a. m.—Sego Milk.
- 11:45 a. m.—NBC, Hour of Canny Cook.
- 12:00 noon.—Radio Broadcasters, Inc., Program.
- 1:00 p. m.—Out-of-Town Period.
- 2:00 p. m.—Radio Matinee.
- 3:00 p. m.—"The Royal Gang."
- 3:30 p. m.—Town Cryer.
- 7:30 p. m.—Amos 'n' Andy.
- 10:00 p. m.—Milt Taggart's Vagabonds.
- 11:00 p. m.—Vagabond of the Air.

**SUNDAY, AUGUST 3**

- 7:00 a. m.—Informal program.
- 9:00 a. m.—NBC, Southand Sketches.
- 9:30 a. m.—NBC, National Light Opera Company.
- 10:00 a. m.—NBC, Metropolitan Eboes.
- 10:30 a. m.—NBC, Concert.
- 11:00 a. m.—NBC, Friendly Hour.
- 1:00 p. m.—Services from the Tabernacle.
- 2:30 p. m.—Dramatized Headlines.
- 3:00 p. m.—Vocal and Instrumental Ensemble.
- 3:00 p. m.—NBC, William's Ollomatics.
- 4:00 p. m.—NBC, "Enna Jettiek Melodies."
- 4:30 p. m.—NBC, Goldman Band.
- 5:15 p. m.—NBC, Atwater Kent Hour.
- 5:45 p. m.—NBC, In Time of Roses.
- 7:30 p. m.—Organ Recital.
- 8:00 p. m.—L. D. S. Church services.
- 8:45 p. m.—"Television" Concert, Critterlon Quartte.
- 9:00 p. m.—NBC, Borden's Concert Hour.
- 10:30 p. m.—Vagabond of the Air.

**MONDAY, AUGUST 4**

- 10:30 a. m.—NBC, Helen Webster.
- 2:00 p. m.—NBC, Salt Lake Tabernacle Choir & Organ.
- 3:30 p. m.—"Ye Olde Towne Cryer."
- 5:00 p. m.—NBC, Maytag Orchestra.
- 5:30 p. m.—NBC, General Motors "Family Party."
- 7:00 p. m.—Program of diversified musical selections.
- 7:45 p. m.—"Jewel Box."
- 8:15 p. m.—NBC, Shell Symphony.
- 9:00 p. m.—Emerald Isle.

**TUESDAY, AUGUST 5**

- 11:10 a. m.—"Women's Magazine of the Air."
- 11:45 a. m.—NBC, Hour of Canny Cook.
- 5:00 p. m.—NBC, Eveready Hour.
- 5:30 p. m.—NBC, "Happy Wonder Bakers."
- 6:00 p. m.—NBC, Westinghouse Salute.
- 6:30 p. m.—NBC, Radio-Keith-Orpheum.
- 7:00 p. m.—NBC, Sperry Melodies.

**WEDNESDAY, AUGUST 6**

- 9:30 a. m.—"The Household Institute."
- 10:15 a. m.—NBC, "Favorite Recipes."
- 10:30 a. m.—Helen Webster.
- 4:30 p. m.—NBC, Moblloil concert.
- 5:00 p. m.—NBC, "The Old Counselor."
- 5:30 p. m.—NBC, Palmolive Hour.
- 8:00 p. m.—Blue Blaze Fireside Entertainers.
- 6:30 p. m.—NBC, Coca-Cola Sportscasts.
- 7:45 p. m.—Romance of Gems.
- 8:00 p. m.—Variety Ensemble, William Peterson.
- 9:00 p. m.—Musical.
- 9:15 p. m.—Slumber Time Tune.
- 9:30 p. m.—NBC, Camel Pleasure Hour.

- 10:30 p. m.—Milt Taggart's Vagabonds.
- THURSDAY, AUGUST 7**
- 10:00 a. m.—NBC, Capers with Bonnie and Amy.
  - 10:40 a. m.—Ann Holden's Talks.
  - 2:00 p. m.—Radio Broadcaster Reviews.
  - 4:00 p. m.—NBC, Fleischmann "Sunshine."
  - 5:30 p. m.—Maxwell House Coffee Co. program.
  - 6:00 p. m.—NBC, Victor Radio program.
  - 7:00 p. m.—NBC, Conoco Adventurers.
  - 8:00 p. m.—NBC, American Tobacco.
  - 9:00 p. m.—Organ Recital.
  - 10:00 p. m.—Informal Musical program.
  - 10:15 p. m.—Dance Melodies.

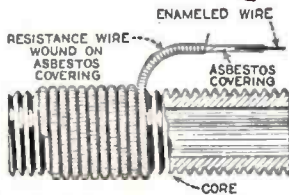
**FRIDAY, AUGUST 8**

- 10:00 a. m.—NBC, Richard Hudnut program.
- 10:50 a. m.—NBC, "M. J. R. Features."
- 11:45 a. m.—Newscasting.
- 4:00 p. m.—NBC, "Cities Service."
- 5:00 p. m.—NBC, "The Happiness Boys."
- 5:30 p. m.—NBC, Armour Ensembles.
- 6:00 p. m.—NBC, Armstrong Quakers.
- 6:30 p. m.—NBC, Raleigh Revue.
- 7:00 p. m.—NBC, "Elgin Hour."
- 7:15 p. m.—Keeley Ensemble.
- 8:00 p. m.—Utah Hour.
- 8:45 p. m.—Scovcroft Hour.
- 9:00 p. m.—Eastman Kodak.

**SATURDAY, AUGUST 9**

- 10:30 a. m.—A Visit with Mrs. Jennie Lee.
- 11:30 a. m.—Sego Milk.
- 2:30 p. m.—"The Royal Gaug."
- 4:00 p. m.—NBC, Musical Interludes.
- 4:30 p. m.—NBC, "The Fuller Man."
- 5:00 p. m.—Informal Music.
- 5:30 p. m.—General Electric Hour.
- 6:00 p. m.—Lucky Strike Orchestra.
- 7:00 p. m.—A Short Visit with Great Composers.
- 8:00 p. m.—Jack Frost program.
- 9:00 p. m.—NBC, Del Monte program.
- 10:00 p. m.—Dance Music.

## The Way It Is Wound Tells TRUVOLT Quality



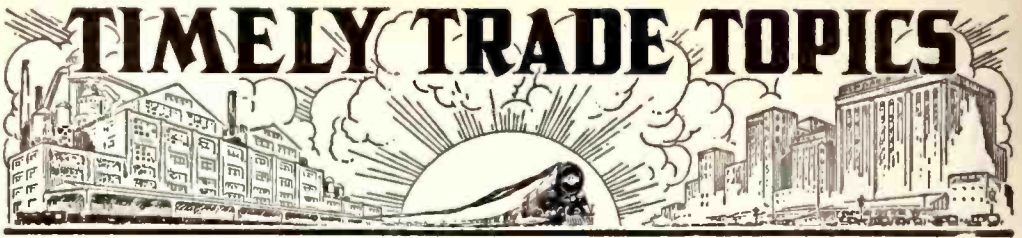
You don't have to guess the quality of TRUVOLT Resistors. Their stamina has been proved in thousands of hard places. Nichrome resistance wire wound over an asbestos-covered copper core—then wound in turn on a fire-ally base. Cooler operation, more stable values and longer life. The exclusive sliding clip provides accurate, quick adjustment. All usual sizes.

Variable TRUVOLTS have the same construction, plus knob control. Last longer because of endwise travel of contact. 22 stock sizes. List price \$2.50.

You can rely on Electrad Resistors for every radio and voltage control need.

Wire Dept. RD 82 for Data

175 Varick St., New York, N.Y.  
**ELECTRAD**  
INC.



George Lane, General Manager of the Collins-Lane Company, of 1414 West 7th Street, Southern California distributor of Bosch Radio, has gathered



George Lane

around him a group of wholesale salesmen who might be classed as real "old timers" in the game.

T. H. Churchill, R. E. Tarney, C. D. Tanner, Ray Farra and J. W. Duckworth have all been in the radio industry from five to fifteen years.

This group, headed by Mr. Lane, should certainly bring success to the new company.

Announcement has been made by the Amrad Corporation of Medford Hillside, Mass., of the appointment of C. E. Flynn as Pacific Coast representative for the Mershon Division. Flynn is very well known to the Coast trade, having for a long time represented the Magnavox Company. And when Flynn starts out representing anything he doesn't fool with it! Reminds us of the story of the colored gent who carefully peeled a banana and then rammed it into his mouth in its entirety and disposed of it in one bite. His friend, looking on in amazement, remarked, "Boy, yuh sho do like bananas!" "Well," replied the first darkie, "I doesn't fool wif 'em!"

Mershon electrolytic puncture-proof condensers are used in a great many of the best known receivers from the eastern factories. These condensers have many decided advantages over the tinfoil and paper condensers. They provide sufficient capacity to the circuit for effective filtration in far less space and at a reasonable cost. They will continue to operate without interruption over a period of years, withstanding the shock of recurrent voltage surges without damage. They are puncture-proof.

The Amrad Corporation has published an excellent booklet covering the principles and construction of electrolytic condensers and their application to high-voltage filter circuits in radio receiver power converters and radio transmitters. It is free to those who address the company at Medford Hillside, Mass., and request a copy.

## Radio Financing

ROBERT E. HOPKINS & CO.

417 South Hill St.

Los Angeles

MUtual 6282