

# RADIO DOINGS

RED BOOK OF RADIO

10¢  
WEEKLY

*The Radio Authority  
of the  
Pacific Coast*



Harold A. LaFount, Federal Radio Commissioner

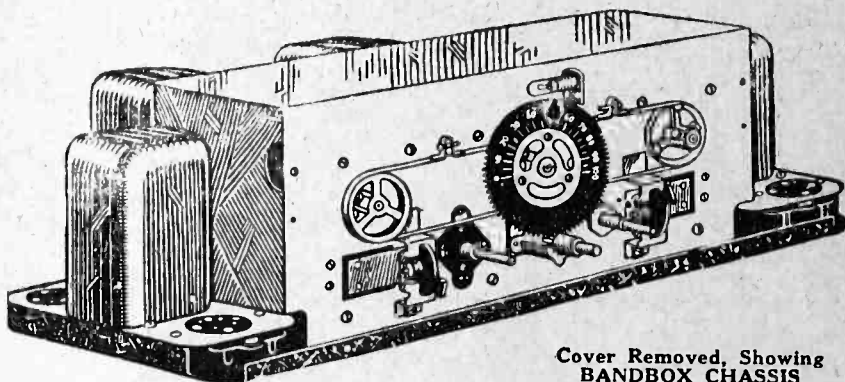
Wood, C. H.  
1271 Upton Place  
Eureka Rock Calif.  
2-20-28

Vol. XII

JANUARY 22-28, 1928

No. 4

~~CROSLEY RADIO~~  
 "You're there with a Crosley"



Cover Removed, Showing  
 BANDBOX CHASSIS

THE NEW CROSLEY  
**A. C. BANDBOX**  
 Now \$99

*The Most Outstanding Value  
 in America Today!*

Unmatched in Sensitivity, Selectivity, Tone Quality and Volume,  
 Same Model for Battery Operation, \$60.50  
 —both priced without accessories

*Wholesale Distributors*

CROSLEY :: MAJESTIC : CUNNINGHAM :: BURGESS :: PEERLESS

**KIERULFF & RAVENSCROFT**  
 RADIO EQUIPMENT

1630.32  
 South Los Angeles St.  
 LOS ANGELES



121.131 Ninth St.  
 SAN FRANCISCO

If You "Don't Believe It Can Be Done" at the Price,  
Then You Haven't Heard the

# CROSLEY

## BANDBOX RECEIVER

Here are just a few of the many Franchised Dealers who will  
gladly demonstrate the Crosley Bandbox for you:

### LOS ANGELES

#### South

Davis Radio Co.  
2817 S. Main St.  
WEstmore 6948

De Hoog Brothers  
6120 S. Broadway  
THornwall 0224

#### Downtown

Frank Radio Co.  
715½ S. Main St.  
TUcker 3347

Figueroa Radio Shop  
937 W. Seventh St.  
TUcker 7031

#### Hollywood

Doran's Electric Shop  
7515 Sunset Blvd.  
GRanite 6903

Also

8030 Santa Monica Blvd.  
GLadstone 4954

Glow Electric Co.  
5910 Hollywood Blvd.  
Hollywood 4610

H. D. Hatfield & Son  
1762 N. Vermont Ave.  
OLympia 5220

#### Southwest

Dean K. Barris  
Hdwe., Electric & Radio  
3100 S. Vermont Ave.  
BEacon 5384

L. A. Duncan  
2891 W. Pico St.  
EMpire 1141

Wesenberg Radio Music  
Co.  
3819 S. Western Ave.  
VERmont 7929

#### Westlake

Arcade Radio Studio  
743¼ S. Alvarado  
DRexel 6859

### GLENDALE

Budwig Radio Co.  
201 N. Brand Blvd.  
Glendale 1801

### LONG BEACH

John J. Sawyer  
543 E. Anaheim St.  
Long Beach 636-235

Reliable Radio Shop  
208 E. Fourth St.  
Long Beach 636-450

### MONTEREY PARK

Monterey Park Music  
Co.  
102 E. Garvey Ave.  
Alhambra 1182-M

### NORTH HOLLYWOOD

No. Hollywood Music Co.  
Langlands & Schade  
5317 Lankershim Blvd.  
Lankershim 174

### VENICE

Venice Electric Co.  
72 Market St.  
Santa Monica 62261

"You're *there* with a Crosley"

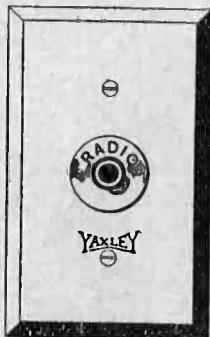
# YAXLEY

APPROVED RADIO PRODUCTS

## Radio Convenience Outlets

*Can Now Be Had In*

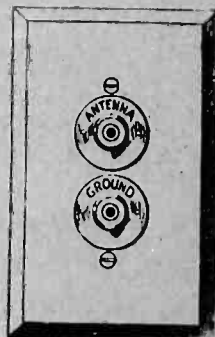
# BAKELITE!



No. 135 for Loud  
Speaker

**\$1.25**

AND THEY  
SURE ARE  
BEAUTIES



No. 136 for Aerial  
and Ground

**\$1.25**

No. 238 Combination Loud Speaker,  
Aerial and Ground, \$2.50

*At All Leading Jobbers*

A Complete Warehouse Stock Carried by  
Direct Representatives

## HENGER-SELTZER CO.

377 Brannan St., San Francisco

711 E. 14th St., Los Angeles

# Radio Doings

Trade Mark Reg. U. S. Pat. Off.

New York Office  
J. W. HASTIE  
155 East 42nd St.  
Vanderbilt 4661

407 E. Pico St., Los Angeles, Calif.  
Phone WEStmore 1401

San Francisco Office  
CONGER & MOODY  
927 Hearst Bldg.

**"The Red Book of Radio"**

CLOYD MARSHALL, JR.  
*Editor*

GEORGE W. MARSHALL  
*Business Manager*

K. G. ORMISTON  
*Technical Editor*

MAJ. LAWRENCE MOTT  
*Associate Editor*

H. C. CHARLES

*Special Representatives*  
J. S. MILLER

H. G. DAVIS

(Entered as second-class matter, Nov. 25, 1922, Los Angeles, Cal., Post Office, under Act of March 3, 1897.)  
Copyright, 1927, by Horwood Publishing Co.  
Issued Weekly. Ten Cents a Copy, Three Dollars a Year. Canada and Foreign Countries, \$3.50 per Year.

Vol. XII    Los Angeles    JANUARY 21, 1928    San Francisco    No. 4

## Contents

	PAGE		PAGE
Silver-Marshall Shielded Grid Six		Questions and Answers	26
Hints	14	Studio News	28
Radio Topics of the Day	17	Alphabetical Call List of Stations	29
Technical Manual—Three-Tube A.C.		Dynamic Speakers	32
Reflex	21	Time Tables	33-39
DX Club Correspondence	24	Detailed Programs	42-77
		Timely Trade Topics	78

### SPECIAL OFFER!

RADIO DOINGS still offers an attractive leatherette binder with each subscription sent in on the coupon printed below. This imprinted binder is ideal for safely keeping the technical manual series of popular circuits now running regularly in RADIO DOINGS each week. Send in your subscription NOW and take advantage of this exceptional and useful offer.

### THE PACIFIC COAST'S GREAT RADIO WEEKLY and a Specially Imprinted Leatherette Binder FOR ONLY \$3.00

RADIO DOINGS, 407 East Pico St.,  
Los Angeles, California.

Enclosed is \$3.00. Please mail RADIO DOINGS each week for one year to my address, and also send me one of the attractive Manual Binders at once.

Name.....

Address.....

# The RADIO SUPPLY CO.

"The Parts Warehouse of the West"

Is ready to fill your requirements for parts. Our stock is complete and adequate at all times.

Watch This List of Parts for Changes

- |                          |                          |                          |
|--------------------------|--------------------------|--------------------------|
| Alco Loops               | Dunham Loops             | National Co. Parts       |
| Acme Apparatus           | Eby Binding Posts        | Polymet Mfg. Co.         |
| Acme Wire                | Ekko Ground Clamps       | Condensers               |
| Advance Crystals         | Elkon Chargers           | Preston DX Ground        |
| Aero-Products            | Essenbee Ball Aerial     | QRS Tubes                |
| Aerovox Wireless         | Formica Insulation Co.   | Racon Horns              |
| Products                 | Franco B Batteries       | Radiall Co. Amperites    |
| Allen Mfg. Co. Parts     | Electrad Products        | Rauland Lyric            |
| All-American Products    | Frost Products           | Transformers             |
| Amertran Products        | General Radio Parts      | Raytheon Tubes           |
| Amperites                | Genwyn Coils             | REL Apparatus            |
| Amsco Condensers         | Goodrich Rubber Panels   | Remler Products          |
| Arco Coils               | Gosilco Wire             | Samson Transformers      |
| Baldwin Units            | HFL Transformers         | Sangamo Condensers       |
| Balkite Chargers, Etc.   | Hammarlund Products      | Scranton Hydrometers     |
| Balsa Wood Speakers      | Handy Chargers           | Selectone Transformers   |
| Benjamin Elec. Mfg.      | Harkness Kits            | Sensory Insulators       |
| Products                 | Hedgehog Transformers    | Silver Marshall Products |
| Bodine Loops & Coils     | H-K Sodderdip Lugs       | Sovereign AC Tubes       |
| Brandes Phones           | Hoosick Parts            | Spaulding Bakelite       |
| Bremer-Tully Products    | Infradyne Parts          | Steinite Eliminators     |
| Bretwood Leaks           | Jefferson Products       | Sterling Meters and      |
| Bruno Coils              | Jones Cables             | Testers                  |
| Camfield Coils           | Karas Products           | Stevens Tools            |
| Carborundum Products     | Kelbrackets              | Thordarson               |
| Cardwell Condensers      | Kellogg Parts            | Transformers             |
| Carter Products          | Kodel Products           | Tobe Condensers          |
| CeCo Tubes               | Kurz-Kasch Dials and     | Tom Mack Products        |
| Celeron Panels           | Knobs                    | Tower Speakers           |
| C R L Var High           | Kuprox Chargers          | Trimm Cone Speakers      |
| Resistance               | Lynch Leaks              | Tyman Parts              |
| Chicago Kester Solder    | Madison Moore Units      | Universal Battery Clips  |
| Clarostat                | Magnaformer Units        | Utah Units               |
| Corning Pyrex            | Marco Products           | Vesta Power Units        |
| Crescent Transformers    | Mignon S. L. F.          | Victoreen Parts          |
| Daven Radio Parts        | Condensers               | Ward Leonard Products    |
| DeJur Rheostats          | Mueller Universal Clips  | Weston Products          |
| DeLuxe Products          | Mountford Resistances    | Webco Power Units        |
| Dictogrand Speakers      | Naald Parts              | Willard Batteries        |
| Dubilier Condenser Corp. | National Soldering Irons | X. L. Variodensers       |
| Dudlo Mfg. Co. Wire      |                          | Yaxley Products          |

DEALERS: Park Next Door at Our Expense

## RADIO SUPPLY CO.

WHOLESALE

912-914 S. Broadway

VA. 6063

Los Angeles

New 1928 Catalogue Now Ready—Send for it

*Largest Radio Parts Jobber West of Chicago*

---

***Now In Stock—***

**The Tyrman "70" Kit**

—♦—  
**Hammarlund Hi-Q6  
Parts and Kits**

—♦—  
**Silver Marshall  
Shielded Grid Shielded  
Six Kits and S-M Parts**

—♦—  
***All Parts for Power Packs  
and Amplifiers***

—♦—  
**RADIO SUPPLY CO.**

**WHOLESALE**

**912-914 S. Broadway**

**VA. 6063**

**Los Angeles**

**NEW 1928 CATALOGUE NOW READY—MAILED ON REQUEST**

***Largest Radio Parts Jobber West of Chicago***

---

# **MAGNAVOX**

## **DYNAMIC**

### **Power Speakers**

Now available to our trade in 6 volt-110 volt field. Also for 210 amplifier. Single or push pull.

---

**NEW**

## **CALITRAN**

### **TRANSFORMERS**

### **600 VOLT**

With  $1\frac{1}{2}$ , 3 and  $7\frac{1}{2}$  Filament windings. This transformer especially designed for use with Magnavox Dynamic

Circuit blueprints. FREE.

*Wholesale Distributors*

## **C. C. LAWTON CO.**

1125 Wall St.

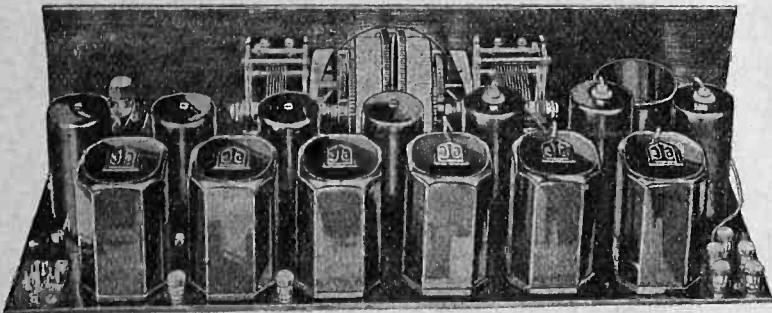
WEstmore 3960

Los Angeles



# *Tyrman* "70"

Shielded Grid Amplimax



## Going Strong

*The Most Revolutionary Advance in Radio  
for a Long Time*

Get Your Order in Now

**LET THE SET SPEAK FOR ITSELF**

*The Following Jobbers Can Supply You*

C. C. LAWTON CO.  
1125 Wall St., Los Angeles

YALE RADIO ELECTRIC CO.  
1111 Wall St., Los Angeles

RADIO SUPPLY CO.  
912-914 So. Broadway, Los Angeles

SUNSET ELECTRIC CO.  
1141 First St., San Diego

WILLIAMS AND KLENTZ  
Santa Ana

UNITED RADIO SUPPLY CO.  
1062 Howard St., San Francisco

COAST RADIO SUPPLY CO.  
648 Howard Street, San Francisco

COAST ELECTRIC CO.  
744 G St., San Diego

*Factory Representative*

## HENGER-SELTZER COMPANY

711 East 14th St.  
LOS ANGELES

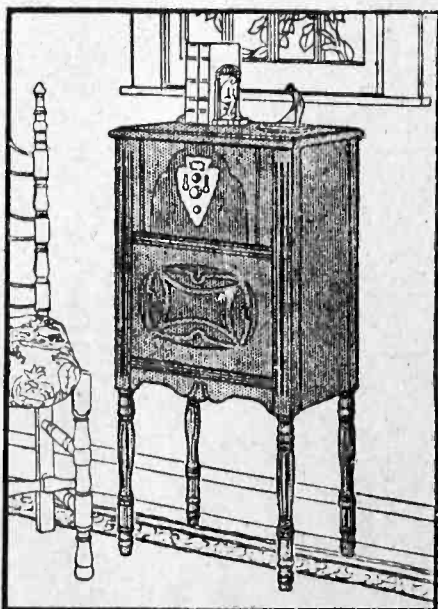
377 Brannan St.  
SAN FRANCISCO

# Mohawk

Electric  Radio

Originators and Pioneers of the One Dial Radio Set  
... and They Still Maintain Their Leadership.

*These Reputable Dealers Will*



**The Pawnee**  
**\$162.00**

*(Tubes Additional)*

An attractive, simply designed console. Ready to operate. Equipped with built-in Mohawk Pyramonic Speaker. Nothing more to buy except tubes.

## LOS ANGELES

**Schwabacher-Frey**  
736 South Broadway  
TRinity 1291

## LINCOLN HEIGHTS

**Brown's Radio Shop**  
2616½ N. Broadway  
CApitol 1349

## HOLLYWOOD

**Holly-Angeles Music Co.**  
6611 Hollywood Blvd.  
GRanite 4876

## PASADENA

**Ashton's Radioelectric**  
1762 E. Colorado St.  
Colorado 4042

## SANTA MONICA

**Remington & Rhodes**  
424 Broadway  
Phone 257-58

**BEAUTY -- PERFORMANCE**

# The Convenience of A-C Electric Radio

Combined with Mohawk Quality at Mohawk Prices  
Highest in Quality — Lowest in Price

*Demonstrate a Mohawk Electric for You*

## SAN PEDRO

Port Electric Co.

145 N. Pacific St.  
Phone 1990

## BAKERSFIELD

Urner & Janes

1604 19th St.

## RESEDA

Prior Radio Shoppe

"Home of Scout Antenna"  
6965 Reseda Ave.  
Owensmouth 59-J-11

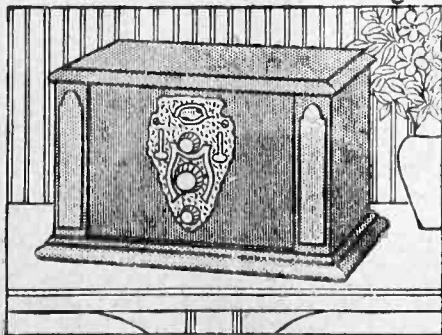
## RIALTO

J. O. Weller  
Hardware Co.

## VAN NUYS

Vanderlip Elect. Store

(In Andrew's Hardware)  
6267 Van Nuys Blvd.  
Phone 799



## The Navajo \$122.00

*(Tubes Additional)*

A real Electric receiver with A-C tubes. The greatest Electric Radio value on the market. Recommended for those who want electric reception at lowest cost.

Other Mohawk Electrics Up to  
\$339.50

*Battery Models \$72.50 to \$290*

# SIMPLICITY — ECONOMY

**SM**

# TOMORROW'S RADIO SET TODAY!

## *Silver-Marshall Shielded Grid Shielded*

Those listed below have been selected due to their expert knowledge and efficient workmanship. They are in a position to take care of all construction, assembling and servicing of

### *Authorized Silver-Marshall*

#### **LOS ANGELES**

Oldest Silver-Marshall Expert Service.

**American Radio Company**

108 East Eighth St.

TUcker 6028

**Radio Receiver Service**

407 East Pico St.

WEstmore 3989

#### **NORTH HOLLYWOOD**

**W. L. Bain**

5241 Lankershim Blvd.

Lankershim 767

#### **BURBANK**

**Glenoaks Radio Shop**

325 Glenoaks Blvd.

Phone 772

**TONE****CLARITY**

#### **The Radio Service Bureau**

4014 Moneta Ave.

AXridge 6622

#### **CALEXICO**

**City Electric Co.**

313 Second Street

Phone 384

#### **HOLLYWOOD**

**Shepherd Radio Service**

7562 Sunset Blvd.

GRanite 7482

#### **HUNTINGTON PARK**

**S. E. Cummins**

708 Mortimer Ave.

DElaware 7764

**W. T. McCaulley**

**Jackson's Radio Store**

5117 Hollywood Blvd.

OLympia 2555

**P. A. Dougherty**

158 South Pacific Blvd.

DElaware 4852

# "DISTANT RECEPTION"

# Silver-Marshall

**SELECTIVITY and TONE QUALITY SUPREME!**

**Six with the New Screen-Grid Tubes**

all S.-M. products, and will gladly give advice on any technical matter pertaining to this wonderful receiver.

**Hear this set at your nearest S-M Service Station**

## *Service Stations*

### **HERMOSA**

**Hermosa Radio Shop**  
1327 Hermosa Ave.  
Phone 4564

### **Independent Electrical Co.**

928 Seventh Street  
Franklin 5412

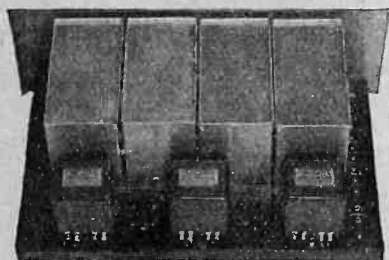
### **INGLEWOOD**

**Jay Peters**  
342 Stetney St.  
Phone 1759

### **North Park Radio Exchange**

3824 Thirtieth St.  
Phone Hillcrest 7857

**DISTANCE**



**SELECTIVITY**

### **OXNARD**

**Carl's Radio Den**  
207 Fifth St.  
Phone 136-R-1

### **SAN PEDRO**

**Johnson Radio Service**  
908 South Gaffey  
Phone 1979-W

### **SAN DIEGO**

**Bunker Radio Shop**  
2807 University Ave.  
Hillcrest 5829

### **TORRANCE**

**DeBra Radio Co.**  
Carson at Cravens  
Phone 73-J

### **Holcomb's Radio Service**

730 "F" Street  
Office: Franklin 5248  
Res.: Hillcrest 6762

### **VENTURA**

**Ventura Radio Sales & Serv.**  
909 Oak St.  
Phone 1470

**with LOCAL VOLUME"**

## S-M Shielded Grid Six Hints

By K. G. ORMISTON

In order to attain maximum selectivity with the Silver-Marshall Shielded Grid Six, it is essential that the three variable condensers which are ganged together with the link motion be exactly peaked, so that the three circuits which they tune will be in resonance. If this is not the case, the set will tune broadly and lack sensitivity.

The manufacturer's instructions should be followed very carefully in regard to the ganging. In brief, the procedure is as follows: In first installing the link motion, lock it into place with the three rotors all the way out and all against the stop rods. Then, with the shield cans in place and the set in operation, tune in a station near 300 meters. We would suggest KSL. Then loosen the set screw on the last condenser on the right, freeing the shaft from the link motion. Tune this last condenser separately by means of the dial. If maximum volume is had with a setting not more than a degree from the first setting, lock the set screw back on the shaft and the ganging is OK. If, however, there is a greater difference than a degree, it will be necessary to install two compensating condensers in the two middle stages. For this purpose use Silver-Marshall 340-A balancing condensers.

The little balancing condensers should be mounted with their lugs under terminal screw No. 6 on the coil sockets in the two middle compartments. The other terminals are connected by short pieces of wire to terminals No. 3 of the coil sockets. You will note that there are holes in the shield cans to permit adjusting these balancing condensers by means of a long wooden stick with one end sharpened to be used like a screwdriver.

To make the adjustment proceed as before, tuning in the same station with

the three condensers ganged together, so that they strike the stop rods simultaneously. Then loosen the third condenser as before and tune it separately for maximum volume. Make careful note of the reading of the right hand dial after this condenser has been tuned separately. Then turn it back to the previous ganging setting and lock the set screw on the shaft. Now set the dial where maximum signal was obtained on the individual setting of the third condenser. There will probably be no signal because of insufficient capacity in the two middle condensers. Insert the wooden screwdriver into the holes in the tops of the shield cans of these two stages and turn up the capacity of the two balancing condensers until the signal is at maximum. The set will then be adjusted for maximum selectivity and sensitivity in so far as the ganging is concerned.

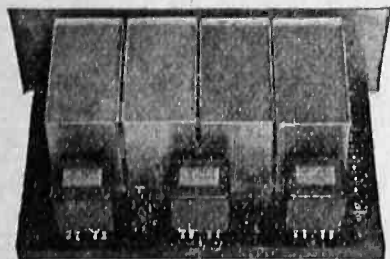
The three 119-A coils in the three right hand compartments, have three terminals to choose from to which to connect the plate lead coming from the preceding compartment. These are numbered 1, 4 and 2 on the manufacturer's blueprints. No. 2 will give the greatest selectivity, while No. 4 is an average condition which should be tried first. If the selectivity is not sufficient with the plate lead going to No. 4 in each case, change to No. 1.

Since the original diagram was published in Radio Doings the manufacturer has added a grid resistance in the grid lead of each of the shielded grid tubes. These resistors have a value of 3000 ohms and are mounted on the No. 3 terminal of the coil socket, stand straight up and carry a flexible lead from the upper end, which connects to the grid caps of the tubes by means of clips. These resistors serve to delay the point

(Continued on Page 76)


**SM**

## New Shielded Grid Six Brings in Australia!



During a pouring California rain-storm punctuated by deafening crashes of static and terrific interference from leaking power lines, Seymour Hastings, operating a Shielded Grid Six forty miles outside of Los Angeles, brought in 2BL, Sydney, Australia, on his loud speaker. There, operating under interference conditions that would drive the average listener from his set in despair, the Shielded Grid Six played right on, bringing in stations

in Canada, east to Chicago, south to Texas, and, finally, playing 2BL on the loudspeaker, not to mention bringing in what were late proved to be the carrier waves of a Japanese station.

Of course, such reception is unusual—the average man will probably never hear Australia or Japan, but just the same you can be sure that you can't get a better set than a Shielded Grid Six after what Hastings has proven a stock kit will do—you can be sure that with a Shielded Grid Six you have as fine tone, distance getting ability and selectivity as were ever combined in a single practical receiver—and what more can you ask for in a radio set simple enough to be operated by the entire family?

And remember—S-M unconditionally guarantees that you'll get more genuine satisfaction out of the Shielded Grid Sixes than out of any other set you can buy—whether you're a DX hound or a lover of fine tone. Fair enough, isn't it?

### WHAT ARE THE SHIELDED GRID SIXES?

The new Shielded Grid Six receivers, using three stages of tuned RF amplification with screen grid tubes, followed by a super sensitive detector and the famous S-M two stage audio amplifier, are just about the finest receivers you can build. They have consistently "trimmed" every receiver against which they have been tested, even new screen grid superheterodynes, yet they're so simple and easy to build, so sure and positive in their operation — with no tricky adjustments — that you'll simply fall in love with them after your first five minutes of tuning. And the Shielded Grid Sixes offer all the refinements of two and three hundred dollar factory sets, shielding, all-metal assembly, bronze front panel, dual control vernier dials and appearance that is a joy

to the eye of the connoisseur or the engineer alike—a beauty that creates instantaneously the desire to own the finest of sets—a Shielded Grid Six.

Two models of the Shielded Grid Six receivers using screen grid tubes are available, type 630-SC and 630-LSC.

The 630-SC receiver kit, designed for antenna operation with a 15 to 30-foot antenna, indoor or outdoor, including every nut, screw, and lug required down to the last part, is priced at \$97.00 with complete building instruction and blueprints.

The 630-LSC receiver is exactly the same as the 630-SC model except that it is intended for loop antenna operation only using any standard .00035 loop. The complete kit, including all parts, is priced at \$91.50.

## SILVER-MARSHALL, INC.

846 West Jackson Blvd. Chicago, Ill.

Los Angeles Representatives: Marshank Sales Co., 224 E. 16th

# SPARTON RADIO

THE PATHFINDER OF THE AIR



## MARVEL *at* SPARTON'S VOLUME



Music you *feel* as well as hear. Tones that are virile and vibrant . . . that electrify listeners as do the artists themselves. You critics who have been waiting for radio that is true to the ideals of musical art . . . here it is.

## PIONEERS



For two and one-half years Sparton has produced America's Successful All-Electric Radio Receiver.



When you hear Sparton you will never be satisfied with less.



# PACIFIC WHOLESALE INC.

WALTER M. FABAN  
PRESIDENT

433 E. 12th St., Cor. Wall, Los Angeles

WEStmore 4358



# Radio Topics of the Day

*A Weekly Review of Radio News, Thought and Opinion*

## LAFOUNT RETURNS TO WASHINGTON

Commissioner Harold A. Lafount has returned to Washington from an extended inspection trip to the far western zone. It is the first time anyone from the Commission has been to the Pacific coast since the death of Col. John F. Dillon. The late Chairman W. H. G. Bullard contemplated undertaking this trip, but did not live to do it.

Commissioner Lafount has been making personal observations and meeting broadcasters in Salt Lake City, Seattle, Portland, San Francisco, and Los Angeles.

## COMMISSION SEEKS TO GIVE GOOD PROGRAM TO EVERY HOME

Having made considerable progress clearing up the wave channels from 299.8 to 499.7 meters (1000 to 600 kilocycles), the immediate program of the Federal Radio Commission, with the idea of furnishing a variety of good programs to every home in America, is now to improve conditions in the wave lengths from 299.8 to 230.6 meters (1000 to 1300 kilocycles). Also to develop the 200-meter band by encouraging more stations to go down there by allowing them increased power. Likewise to investigate the chain-station situation following complaints that they are monopolizing too much of the dial. And finally to encourage experiments in the possible synchronization of regional stations having only a limited service range.

Heretofore this idea has been thought of in the listeners minds as of several

stations broadcasting the same program on the same wave, but attention is now being given to broadcasting different programs on identical frequencies, experiments tending to show the present distance between these stations may be reduced by a third of the present distance.

## COMBINING OF WIRE AND WIRELESS SUPERVISION RAISES DISCUSSION

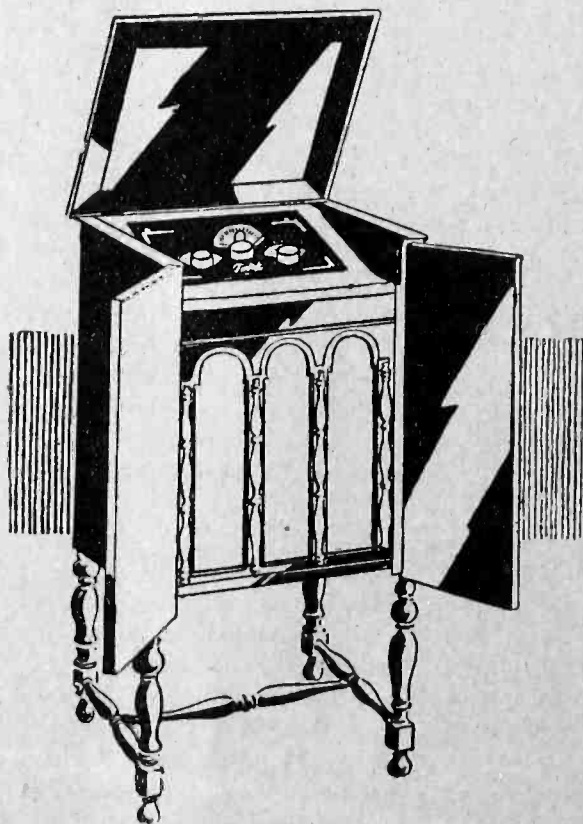
It is considered very likely if the bill introduced by Senator James Couzens (R) of Michigan is ultimately passed to enlarge the Radio Commission into a communications commission, having supervision of telephone and telegraph and cable as well, that it could hardly be expected to become a law during the present session.

Just what the attitude of Congress to this proposition will be remains to be seen, but the interests involved are so large that much time likely would be required for discussion.

As explained by Senator Couzens, the bill is designed to provide for the regulation of all interstate transmission of intelligence by wire or wireless-telegraphs, telephones and radio.

The bill creates a permanent Commission on Communications with five members, appointed as the Federal Radio Commission is now appointed. To this Commission is transferred all the power and duties now vested in the Radio Commission and also all the power and duties now vested in the Interstate Commerce Commission so far as that power extends to the telegraph and telephone companies.

# Why This Radio Is Preferred



**B**ECAUSE the Falck is the one *moderate-priced* receiving set that operates perfectly from the house lighting circuit, without batteries or chargers of any kind.

Because of the Falck's simplified single dial control and fool-proof construction. Impossible to burn out tubes.

Because of the Falck's tone qualities—unsurpassed by the highest-priced sets.

Because of the Falck's expensive-looking console cabinet enclosing all parts, including built-in cone speaker.

See and hear it!

**ADVANCE ELECTRIC  
COMPANY**

1260 West Second St.  
Los Angeles

**\$150**

**Complete**

At any authorized dealer

# The Falck

NO BATTERY RADIO

*Here Are Just a Few of*

# The Falck

**No-Battery Radio Dealers Who  
Will Gladly Demonstrate  
for You:**

## **LOS ANGELES**

### *Hollywood*

**H. D. Hatfield & Son**  
1762 N. Vermont Ave.  
OLympia 5220

### *South-Southwest*

**West States Electric Co.**  
4751 S. Broadway  
AXridge 2786

### *Southwest*

**Electric Radio Sales Co.**  
2761 W. Pico  
BEacon 0826

**Monarch Radio Co.**  
2189 W. Washington  
EMpire 3268

**A. W. Cooper**  
1315½ W. 39th  
at Normandie  
VERmont 0767

### *South Western Avenue District*

**Robinson Radio Shop**  
4528 S. Western  
VERmont 6683

### *West Adams District*

**H. H. Walker**  
1323 Venice Blvd.  
BEacon 1311

## **Popular Radio Approves**

A very official looking document has recently appeared on one of the walls of the Elec-tru-tone Corporation's office in Los Angeles. Gold seal, fancy lettering, all the little twists that make an ordinary piece of paper look dignified are on it, and it bears the signatures of two very distinguished radio engineers, namely: Lawrence W. Cockaday and Alfred G. Craig.

A short time ago the Popular Radio Laboratories wrote for an Elec-tru-tone phonograph pickup, that they might test it for quality of tonal reproduction, frequency, range, volume, volume control, etc. They tested it; and were so well pleased with the results of the tests that one of the engineers wrote an article for Popular Radio describing its use in connection with a power amplifier he had designed for those who do not own a radio set. The Popular Radio Certificate of Approval which now adorns the Elec-tru-tone Corporation offices was then sent to the local manufacturers, and they were permitted to use the approval stamp on their product, if they so desired.

## **Easy Conversion to A.C.**

There are many thousands of battery operated receivers in use whose owners will welcome the new Karas AC Former and Carter cable harness and adapters by means of which they may quickly and easily convert their sets to AC operation. The adapters provide for both the '26 and '27 types of AC tubes and the harness arrangement is designed to fit the various makes and types of standard popular factory-built receivers.

The AC Former supplies the three necessary AC voltages, and each secondary winding has an exact center tap brought out for grid return connections.

## DEALERS NOTE!

# GREEN SPECIALTY COMPANY

Carries All the Parts for Building the

## Three-Tube A-C Reflex Set

(Described in this issue of Radio Doings)

Including:

Airex Transformers	Green Tone Filters
Airex Chokes	Gresco Reflex Coils
Armo Var. Condns.	Greyhound Bell
Brach Fixed Crystals	Transformers
Buffalo Sockets	Pyratek Fixed Crystals
DeJur Rheostats	Wireless Radio Parts

And All Other Necessary Parts,

Including the Famous



## FLECHTHEIM CONDENSERS

For which we are Sole Distributors for Southern California. We carry a complete stock of 250, 450, 650 and 1250 working voltages.

For Use in the "Three-Tube A-C Reflex" Set and ANY SET we have found that



## ALLTRON TUBES OUT-PERFORM ANY OTHERS

Perfection in Reception is the Inevitable Result when Using this Super-Tube. Fully Guaranteed by the Allan Mfg Co., 1151 Broadway, Los Angeles, Calif.

Southern California Distributors:

## GREEN SPECIALTY COMPANY

Wholesale Exclusively

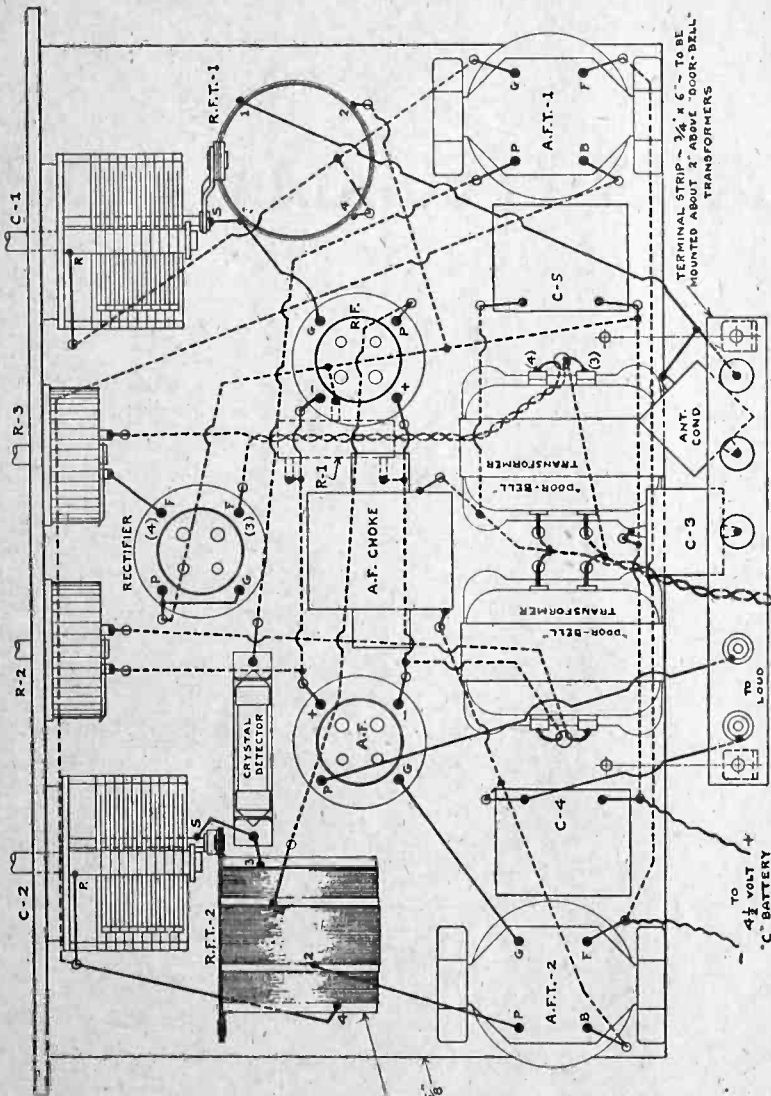
1315 West Jefferson St.

Los Angeles, Calif.

Phone BEacon 1264

Radio Doings  
TECHNICAL MANUAL

THREE-TUBE A.C. REFLEX SET (HARKNESS CIRCUIT)  
ASSEMBLY PLAN

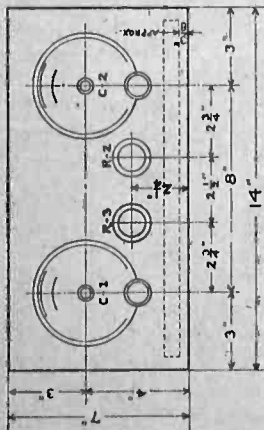


JANUARY  
- 21 -  
- 1928

RECEIVED - LOS ANGELES

COPYRIGHT 1928  
THE HARKNESS  
PUBL. CO.

PANEL LAY-OUT



COILS (R.F.T.s) SHOULD BE MOUNTED  
NEAR TOP OF PANEL

SIZE OF WOOD BASE-BOARD SHOWN = 8" x 13" x APPROX.  $\frac{3}{8}$ "  
7" PANEL STOCK & BRACKETS MAY BE USED IF DESIRED  
BY LEAVING 1" SPACE BETWEEN BASE & FRONT PANEL.  
IN EITHER CASE HOWEVER, IT IS ADVISED TO KEEP THE BASE  
AS LOW AS POSSIBLE, ALLOWING ONLY SPACE BENEATH  
(APPROX.  $\frac{3}{8}$ ") FOR WIRING & R-1

IF A POWER TRANSFORMER IS USED INSTEAD OF THE  
DOOR-BELL TYPES SHOWN, THEM HERE  
THE CASES MUST BE EASILY FIT INTO  
OPTIONAL WIRING IS NOT SHOWN THE ONLY CHANGE  
WOULD BE IN THE PLATE LEAD OF THE RECTIFIER  
SEE CIRCUIT DIAGRAM.

ALTHO IT IS NOT ALWAYS NECESSARY, IT IS VERY GOOD  
PRACTICE TO GROUND THE CASES OR CORES OF  
TRANSFORMERS, FILTER CONDENSERS (C-4 & 5) & CHOKES.

GROUND ANT. OR ANT. ONLY  
ANT. ONLY DO NOT ATTACH GROUND WIRE HERE.

TO 110 VOLT A.C. LINE -  
SWITCH MAY BE INSTALLED ON BACK OF CABINET

TERMINAL STRIP -  $\frac{3}{4}$ " x  $\frac{1}{2}$ " x  $\frac{1}{8}$ " C. - TO BE  
MOUNTED ABOUT 2" ABOVE "DOOR-BELL"  
TRANSFORMERS

TO SPEAKER  
TO ANT. COND.

TO 4 1/2 VOLT  
- C - BATTERY

## More About the Three-Tube A. C. Reflex Set

Since publishing the circuit diagram of the Batteryless A.C. Reflex Set two weeks ago, we have received many requests for a front panel layout and a subpanel layout, showing the location of the various parts. This week we are showing this layout and also the various connecting wires, and for those who have already built the set, some additional information.

Most of those who have built the set and have had trouble making the set work properly have found that by reversing the primary connections of one of the audio transformers their trouble disappeared. Others have reversed the radio frequency coil connections and this overcame their troubles.

In some cases the trouble was due to slight leaks in the filter condensers, and in others in the use of poor tubes. On one set in particular it was found that by replacing the -01A tube used as a rectifier with a half wave rectifier tube, the quality and performance of the set was vastly improved. We cannot overemphasize the use of good parts. Good parts usually mean a good set; cheap parts a poor set. This applies not only to this particular set, but to any other set the builder may make. Before making any changes in the parts or the hookup, remember that the circuit as published represents a great deal of effort on the part of the designer, and has been thoroughly worked out by him.

In some cases, placing a small condenser of between .00025 and .002 across the primary of the audio transformers immediately clears up the trouble. A great deal of trouble can be caused by a poor crystal, so examine the crystal and be sure this is not where the trouble lies.

As will be noticed by referring to the

diagram, full size blue prints of which can be obtained at your dealer, the radio frequency coils have been placed well away from the audio and power transformers, and the audio transformers separated from the power transformers. All connections should be well soldered to insure perfect connections.

For the experimenter who has completed this set and wishes to improve it, an additional stage of radio frequency may be incorporated ahead of the first tube, which will increase the distance and volume on the weaker stations. If there is a sufficient demand for this hookup, we will publish it at some future date.

We have had reports that this set has picked up as far as Denver, but it is to be remembered that this set is primarily for local stations.

### PARTS REQUIRED BATTERYLESS A. C. REFLEX SET

- 1—7x12 or 7x14 Hard rubber front panel.
- 1—7x12 or 7x14 Subpanel.
- 2—4" Wireless Radio Vernier Dials.
- 2—.00035 Armo Condensers (variable).
- 3—Buffalo UX Sockets.
- 1—Pair Gresco Reflex Coils.
- 2—Airex Transformers.
- 1—15 Ohm ReJur Rheostat.
- 1—30 Ohm DeJur Rheostat.
- 1—Brach or Pyratek Crystal.
- 2—Subpanel Brackets.
- 1—Green Tonefilter.
- 1—Jack.
- 1—Airex Choke.
- 1—2 Mfd. Flechtheim Bypass Condenser.
- 1—4 Mfd. Flechtheim Bypass Condenser.
- 2—Greyhound Bell Transformers.
- 1—Airex Step-up Transformer as an alternative instead of the two bell transformers.

*Here Are Some of the Dealers and Service Men  
Who Will Sell You the Parts for the*

## **THREE-TUBE A-C REFLEX KIT**

*Or Build the Set for You if You So Desire:*

**Acme Radio Co.**

709 South Main St.

TUcker 1728

**Radio "Doc"**

721 South Main St.

TUcker 1303

**Metropolitan Radio  
Supply Co.**

134 West Seventh St.

TUcker 6975

**Childs Laboratory**

2310 South Union Ave.

BEacon 7445

**Wilkins Radio Shop**

5311 South Broadway

AXridge 0827

**Standard Radio  
Apparatus Co.**

3104 South Vermont

BEacon 6582

**N. C. Downs Co.**

3926 South Vermont

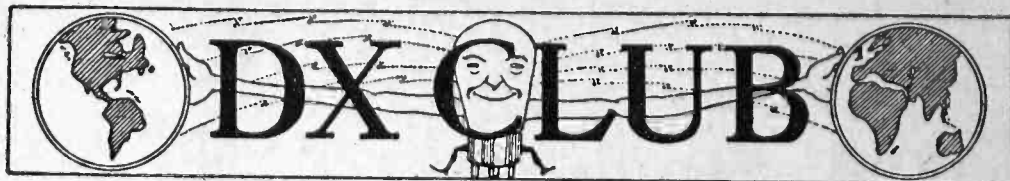
VERmont 5759

**Aladdin Radio Service**

4550 West Adams

EMpire 9607

*Parts for the Three-Tube A-C Reflex Kit are Wholesaled by  
Green Specialty Co., 1315 West Jefferson St., Los Angeles, Calif.  
Tel. BEacon 1264*



Through the courtesy of the CeCo Manufacturing Company of Providence, Rhode Island, Radio Doings offers as a prize for the best letter to the DX Club one of the famous CeCo type "H" Special detectors. This tube is especially suitable for DX work, as it is a highly sensitive "hard" detector without background noise. And remember, it is not always the big expensive set with the longest list of DX that wins the prize—everybody has a chance.

### FIRST PRIZE

#### DX Club:

My four-tube regenerative and I have been pulling in a little DX since Sept. 1st, and here are the results: Twenty-three locals, 16 California stations, KGW, KEX, KOIN, KFJR, KTBR, KFOA, KJR, KOMO, KXA, KHQ, CNRV, CKCX, KFEL, KLZ, KOA, KFXF, KFAD, KSL, KDYL, KMO, KWSC, KWKH, KPRC, KOB, KFAU, KFBU, KOIL, KMOX, KDKA, WLIB, WBAP, WSMB, WOW, KMA, WREN, KGRC, and on Monday, October 31, at 4:30 a. m., 2BL and on Tuesday, November 1, at 4:23 a. m., 5CL. I also "hooked" on to what I thought was JOAK, but I didn't hear the call (375 meters). All but the last three were played on the speaker. I use CeCo 199's, Cage aerial, and Golden Bear speaker.

Hoping this entitles me to membership in DX Club, I am,

ELLIS E. McCORMICK,  
10206 Grevillea, Inglewood, Calif.

#### DX Club:

What is the matter with all you Infradyne owners?

Have verifications from JOAK, JOCK, JOBK. These were from last winter, when I had little interference from power plant on Pico boulevard, which is about a block away.

3XN, WCCO, KLZ, KOB, KTW, PWX, CKWX, WHT, CFAC, WFAA, WBAP.

KFJR, WBBM, CNRV, KMOX, KOMO, KOIN, KSL were received with volume to spare on loud speaker with one stage of audio this winter.

My Infradyne unit is cut into an old Freed-Eisemann and is placed on a shelf below.

C. A. DEXTER,  
1195 West Blvd., Los Angeles.

#### DX Club:

I became interested in radio about a month ago. I have an eight-tube Victoreen Super Het., using a Silver-Marshall loop, no ground, Philco socket power.

During the last thirty days I have pulled in WOWO, WEVD, KFWI, KLZ, KFJR, WKY, CNRV, KMOX, KSL, WOAI, KOMO, KFAB, KYA, KDKA, KOIN, KOA, WJBB, KJR, KVOO, WWJ, CHNC, CKLC, WJJD, KHJ, WDAF, KGO, WBBL, WJBT, KMA, KOB, KWKH, PWX, WCCO, WPFT, KPO, KFBU, WLW, WFCN, WJR, KFOA, WQJ, WHAS, KGW, WFAA, KLX, WOO, WOW.

I had good reception on the loud speaker for the majority of these stations.

Yours for a bigger and better DX Club.

A. D. SHIPLEY,  
2868½ Edgehill Dr., Los Angeles, Calif.

#### DX Club:

I have not seen any report of DX reception by owners of Atwater Kent Model 20 Compact, so here is mine. While it is not so large a list as some readers report, it fully satisfies me.

I have received the following DX stations this month: KD, KA, KSL, KFAD, KPO, KFRC, KQW, KGW, KOIN, KYA, KGO, KOA, KTAB, KOMO, KFOA, KJR, WLIB, WBBM, WCCO, WBAP, KOB, WOC, KGRS, KTNT and KMA. The latter four I received this morning, between 4:15 and 5. This was my first try at early morning reception. As yet I have failed to received any of the foreign stations.

Last winter I received the following DX: PWX, WGY, KDKA, WHO, KMNJ, KYW, WOW, WOAI, WORD and KFKX.

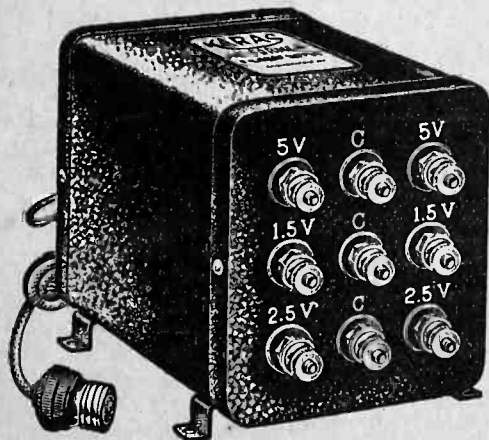
JACK D. DEWAR,  
P. O. Box 432, Coronado, Calif.

**BT Counterphase 8—World's Greatest Radio—Sold with a Distance Guarantee. H. A. Everest, 1032 North Ogden Dr. GRanite 9915.**



# Convert Your Battery Operated Receiver to A. C.

with



## TYPE 12

Supplies filament potential for 12 tubes, as follows: 8 1½-volt Type 226 or 326 tubes, 2 2½-volt Type 227 or 327 tubes, and 2 5-volt Type 171 tubes.

Price \$13.50

## TYPE 13

Supplies filament potential for 10 tubes, as follows: 8 2½-volt Type 227 or 327 tubes and 2 5-volt Type 171 tubes, or 2 Type 210 tubes.

Price \$13.50

# KARAS A. C. FORMER

and

## CARTER CONVERTING CABLE HARNESS NO HUM OR OVERHEATING

**EASY!** No rewiring. Convert your present battery-operated receiver to A.C. operation. This is possible with the new Karas A.C. Former and the new Carter Adapter Cable Harness. Just take out your present tubes, insert the adapters, attach other end of Cable Harness to the Karas A.C. Former, put in your A.C. Tubes and you have the new A.C. Receiver. (In some cases where a filament rheostat is used it must be replaced with volume control unit.) Not an electrified one but a genuine A.C. Set. Any ten-year-old boy can make the change.

Different harness arrangements for various receivers. Name your receiver—we have your harness when you use a Karas A.C. Former.

**DELIVERIES SOON** WATCH FOR FURTHER ANNOUNCEMENT

# KARAS ELECTRIC COMPANY

4040 N. Rockwell St.

Chicago, Illinois

## ? Questions and Answers ?

• A Weekly Department Conducted by K. G. Ormiston, I.R.E. •

**QUESTION.**—Can you tell me how to eliminate interference caused by a 32-volt Delco lighting plant? Is there any way of stepping up to 32 volts, so that it can be used for "B" supply?—J. B. Lydick, Riverside, Calif.

**ANSWER.**—Install a filter comprising chokes and condensers in the generator leads near the machine. Such devices are on the market, selling around \$15. A satisfactory unit is called the "Quietus." There is no method by which the 32 volts may be stepped up for supply B current.

**QUESTION.**—I have read a great deal about the shielded grid tubes and am writing to ask if they can be used in a Fada 5-tube neutrodyne. If I could use them in the two RF stages, would this not increase my range and selectivity.—Chas. A. Smith, 218 W. 91st St., Los Angeles.

**ANSWER.**—No, you could not satisfactorily use the shielded grid tubes in your set. This has been explained before, but we receive so many similar inquiries every week that we will go into the subject again. The shielded grid tube is only efficient, and only develops a greater amplification than the ordinary "A" tubes under certain conditions, and unfortunately those conditions are such that selectivity is sacrificed unless restored by other means. Substituting the new tubes in ordinary RF circuits, using the usual RF transformers, gives no appreciable gain over "A" tubes. To take advantage of their possibilities, you must use some type of interstage coupling which provides a high impedance in the plate circuit of the tube, and this inherently is broad. Straight impedance coupling, or RF transformers with a low primary to secondary turn ratio meets the requirements for high amplification, but at a sacrifice in selectivity. In a measure the lack of selectivity is compensated for by the great sensitivity because a very small antenna or other pick-up system may be used with the set.

Very complete shielding is also nec-

essary, both of the tubes and units to prevent any interstage coupling or feedback. We would suggest that changes to shielded grid tubes be made only in accordance with instructions which may appear from time to time in Radio Doings or other reliable magazines.

**QUESTION.**—I want to ask a question about something which has been bothering not only myself, but every other radio owner in Santa Barbara for some time. It is about night reception here from the Los Angeles stations KFI, KNX and KFWB. They come in good during the day, but after 6:30 or 7 p. m. they are really terrible. They are what is generally known as "mushy." I thought at first it was my set, but after talking with other radio owners I found that the same condition prevails all over Santa Barbara. What, in your judgment, is the cause of this, and can it be remedied?—Geo. L. Welsh, Santa Barbara, Calif.

**ANSWER.**—There are two causes for this, both being beyond your control. The first, and probably the least important, is the fact that at night the carrier waves of many stations on each channel are strong enough to mush up the ones you name, while in the daytime they do not get through to you. It is far more likely, however, that the trouble is due to the fact that you receive two waves from the Los Angeles stations, one direct and one by reflection from the Heaviside layer. The reflected wave arrives an instant later than the direct wave, having traveled farther, and the result is a mushy effect. This condition is often noticeable at distances sufficiently near for the energy contained in the direct wave to be strong enough to distort the reflected wave, which is the one that carries over any real distance. As an example of this, at Chula Vista, where they have very wonderful reception from all over the country, it is impossible to get decent reception from KFI. There is

(Continued on Page 76)

**CROSLEY SPECIALISTS**

REPAIRING — BALANCING — SERVICE  
CHILDS' LAB., 2310 S. Union Av., L. A.

## Tyrman "70" Growing in Popularity

The new Tyrman "70" is proving to be one of the most popular kit receivers yet developed. The ease with which the set is assembled and wired, together with the fact that there are no critical adjustments, and the simplicity of tuning are features which appeal to the layman not greatly experienced in "building his own."

It is an economical receiver to operate, due to the small current consumption. It will also function without batteries on socket power devices. Sterling units have been used with marked success—the bone-dry Tungar full wave "A" job and the standard "B-C" socket power, Raytheon equipped. Similar units of other makes will no doubt be equally as satisfactory.

The Tyrman audio frequency transformers were especially designed to

function with long air-column speakers, and we would therefore suggest the Golden Bear, Cathedral or Temple for the best possible tone quality.

## The Outboard Motor Race

Major Lawrence Mott, genial owner of KFWO and sponser of the outboard motor race around Catalina Island put on a characteristic Mott frolic Saturday night, January 14, the day preceding the big race.

Some of the well-known radio men who assisted him in this delightful program were Jim Fouch, owner of KMIC; Doc Power, radio editor of KHJ; Glenn Rice, radio editor of the Express; Eddie Albright, town crier of KNX; Walter Biddick, program arranger; Bert Butterworth, the veteran radio announcer; S. Hastings, formerly of KNRC, and last, but not least the silver-toned tenor, Joseph Diskay.

(Continued on Page 31)

# Tyrman "70"

Shielded Grid Amplimax

## Is the Latest in Radio Receiving Perfection

Its sensitivity surpasses anything yet offered

**BUT**—like any other highly efficient radio device, it must be correctly built and adjusted to give the wonderful results of which it is capable.

We have pioneered locally in research and experimentation with the shielded grid tube and are equipped with the special laboratory apparatus necessary to get you the maximum results from a receiver using these tubes.

## RADIO RECEIVER SERVICE

407 East Pico St.

Los Angeles

WEStmore 3989



# STUDIO NEWS

KOMO received a letter from a listener in Pensacola, Florida, stating that they had received and thoroughly enjoyed a group of cello solos by Senor Jose Barroso. The fan wrote in his letter that he had picked up the station by mere chance and was quite excited for he thought that he had picked up a Mexican station. In looking over his radio log he decided that it couldn't be a Mexican station on that wave length, but finally arrived at the conclusion that he had picked up 2MA, Havana, Cuba. As the announcement came over the air "KOMO, Seattle," he was really excited, as he realized for the first time he had picked up a Pacific Coast station.

The well-known and popular radio entertainer, Charles Hamp, will start a series of tri-weekly programs from KFRC beginning January 26. These programs will be on the air Tuesdays and Fridays from 7 to 7:30 and Thursday morning between 7:10 and 8:00.

The Cecilians, the dinner hour trio, heard nightly over KFRC, is virtually an all-star instrumental group. Herman Heinberg, 'cellist, Mary Pasmore, violinist, and Frank Moss, pianist, are all well-known soloists.

KHJ has retained Charlie Wellman, a veteran in the radio field, as an exclusive entertainer. Charlie has been announcing and giving programs for over five years, his first program being from WDAP. He has been an entertainer and announcer at KHJ, KNX, KFWB, KMTR and most of the other stations in Southern California. His

"Don't Go Away, Folks" is known to the radio fans throughout the Western part of the United States.

KFI's new policy of being on the air from 12 noon until 11 at night has been a great help to the radio industry and a great joy to the radio fans. One of the features of the daily program is the stock reports at noon.

Miss Olga Steeb, internationally noted pianist, gave a very delightful program Wednesday evening, January 18, from 8 to 9, over this station. Miss Steeb uses a Steinway piano exclusively, and is sponsored by the Birkel Music Company.

KPO's newest dance orchestra, which has won such unusual popularity with the radio fans, is now on the air Tuesdays, Thursdays and Fridays from 10 until midnight.

The program broadcast by KMTR, "Your Friend in Hollywood," last Thursday night, featuring "The Mysterious Soprano," is creating an exceptional amount of interest in the endeavor to place her identity. KMTR has received hundreds of responses favorable to this program, and will very shortly present another by this "Mysterious Soprano."

J. De Forest Cline, the "March King of the West," will present his fifty-piece Greeley Philharmonic Orchestra over KOA Wednesday evening, January 27. He will open his program at 8:15, mountain time, with his great march, "The Golden Trail."

# Alphabetical List of U. S. Broadcast Stations

(250 Watts and More)

REVISED TO JANUARY 21

Call	Meters	Kcys.	Location	Power	Call	Meters	Kcys.	Location	Power
KDKA	315.6	9.50	E. Pittsburgh	30000	KOMO	305.9	980	Seattle, Wash.	1000
KELW	228.9	1310	Burbank, Cal.	250	KOWW	299.8	1000	Walla Walla, Wn.	500
KEX	239.9	1250	Portland, Ore.	2500	KPLA	252	1190	Los Angeles	500
KFAB	319.6	940	Lincoln, Neb.	5000	KPO	422.3	710	San Francisco	1000
KFAD	272.6	1100	Phoenix, Ariz.	500	KPRC	293.9	1020	Houston, Tex.	500
KFAU	285.5	1050	Boise, Idaho	2000	KPSN	315.6	950	Pasadena, Cal.	1000
KFBW	483.3	620	Laramie, Wyo.	500	KQV	270.1	1110	Pittsburgh, Pa.	500
KFDM	483.3	620	Beaumont, Tex.	500	KQW	296.9	1010	San Jose, Cal.	500
KFDX	236.1	1270	Shreveport, La.	250	KRLD	461.3	650	Dallas, Tex.	500
KFDY	545.1	550	Brookings, S. D.	500	KRLO	215.7	1390	Los Angeles	250
KFEL	247.8	1210	Denver, Colo.	250	KSAC	333.1	900	Manhattan, Kan.	500
KFEQ	230.6	1300	St. Joseph, Mo.	1000	KSBA	267.7	1120	Shreveport, La.	1000
KFH	245.8	1220	Wichita, Kan.	500	KSCJ	243.8	1230	Sloux City, La.	500
KFI	468.5	640	Los Angeles	5000	KSD	545.1	550	St. Louis, Mo.	500
KFJF	272.6	1100	Oklahoma City	750	KSEI	333.1	900	Pocatello, Ida.	250
KFKB	241.8	1240	Milford, Kan.	1000	KSL	302.8	990	Salt Lake, Utah	1000
KFKU	254.1	1180	Lawrence, Kan.	500	KSO	227.1	1320	Clarinda, Ia.	500
KFKX	526	570	Chicago, Ill.	2500	KSOO	209.7	1430	Sioux Falls, S. D.	250
KFMX	236.1	1270	Northfield, Minn.	500	KTAB	280.2	1070	Oakland, Calif.	500
KFNF	461.3	650	Shenandoah, Ia.	2000	KTBI	288.3	1040	Los Angeles	500
KFOA	447.5	670	Seattle, Wash.	1000	KTCL	277.6	1080	Seattle, Wash.	500
KFON	241.8	1240	Long Beach, Cal.	500	KTHS	384.4	780	Hot Springs, Ark.	1000
KFOY	222.1	1350	St. Paul, Minn.	250	KTNT	256.3	1170	Muscantine, Ia.	3500
KFPR	232.4	1290	Los Angeles	250	KTSA	265.3	1130	San Antonio	2000
KFPY	245.8	1220	Spokane, Wash.	250	KTW	394.5	760	Seattle, Wash.	1000
KFQB	333.1	900	Ft. Worth, Tex.	1000	KUOA	296.9	1010	Fayetteville, Ark.	500
KFRG	454.3	660	San Francisco	1000	KUOM	461.3	650	Missoula, Mont.	500
KFRU	249.9	1200	Columbia, Mo.	500	KUSD	483.6	620	Vermillion, S.D.	250
KFSD	440.9	680	San Diego, Cal.	500	KUT	232.4	1290	Austin, Tex.	500
KFSG	275.1	1090	Los Angeles	500	KVOO	348.6	860	Bristow, Okla.	1000
KFUL	258.5	1160	Galveston, Tex.	500	KWCR	239.9	1250	Cedar Rapids, Ia.	250
KFUO	545.1	550	St. Louis, Mo.	500	KWKH	394.5	760	Shreveport, La.	1000
KFVD	208.2	1440	Venice, Cal.	250	KWSC	394.5	760	Pullman, Wash.	500
KFVE	234.2	1280	St. Louis, Mo.	1000	KWUC	243.8	1230	Lemars, Ia.	1500
KFVF	361.2	830	Los Angeles	500	KWWG	277.6	1080	Brownsville, Tex.	500
KFWF	214.2	1400	St. Louis, Mo.	250	KYA	309.1	970	San Francisco	500
KFWI	267.7	1120	San Francisco	500	KYW	526	570	Chicago, Ill.	2500
KFWM	236.1	1270	Oakland, Cal.	500	WAAD	230.6	1300	Cincinnati	250
KFWO	299.8	1000	Avalon, Cal.	250	WAAF	389.4	770	Chicago, Ill.	500
KFXF	282.8	1060	Denver, Colo.	500	WAAM	267.7	1120	Newark, N. J.	250
KFYR	249.9	1200	Bismark, N. D.	500	WAAT	245.8	1220	Jersey City	300
KGA	260.7	1150	Spokane, Wash.	2000	WAAW	440.9	670	Omaha, Neb.	500
KGBU	228.9	1310	Ketchikan, Alaska	500	WABC	309.1	970	Richmd Hill, N.Y.	2500
KGCH	293.9	1020	Wayne, Neb.	250	WABF	205.4	1460	Kingston, Pa.	250
KGDG	212.6	1410	Shreveport, La.	250	WABQ	260.7	1150	Philadelphia	500
KGEF	263	1140	Los Angeles	500	WADC	238.0	1260	Akron, Ohio	1000
KGFH	293.7	1340	La Crescenta, Cal.	250	WAIU	282.8	1060	Columbus, O.	5000
KGO	384.4	780	Oakland, Cal.	5000	WAMD	292.1	1350	Minneapolis	500
KGU	270.1	1110	Honolulu	600	WAPI	340.7	880	Auburn, Ala.	1000
KGW	491.5	610	Portland, Ore.	1000	WARS	227.1	1320	Brooklyn, N. Y.	500
KHJ	416.4	720	Los Angeles	500	WASH	256.3	1170	Grand Rapids	250
KHQ	370.2	810	Spokane, Wash.	1000	WRAA	272.6	1100	Lafayette, Ind.	500
KJR	348.6	860	Seattle, Wash.	2500	WRAC	299.8	1000	Harrisburg, Pa.	500
KLDS	270.1	1110	Seattle, Wn.	1500	WBAL	285.5	1050	Baltimore, Md.	5000
KLS	245.8	1220	Oakland, Cal.	250	WBAP	499.7	600	Ft. Worth, Tex.	1500
KLX	508.2	590	Oakland, Cal.	500	WBBO	227.1	1320	Brooklyn, N.Y.	500
KLZ	296.9	1010	Denver, Colo.	500	WBDM	389.4	770	Chicago, Ill.	1000
KMA	394.5	760	Shenandoah, Ia.	1000	WBDR	256.3	1170	Rossville, N. Y.	1000
KMIC	223.7	1340	Inglewood, Cal.	250	WBCN	288.3	1040	Chicago, Ill.	250
KMMJ	285.5	1050	Clay Center, Neb.	250	WBET	288.3	1040	Boston, Mass.	500
KMO	254.1	1180	Tacoma, Wash.	250	WBNY	236.1	1270	New York	500
KMOX	299.8	1000	St. Louis, Mo.	5000	WBOQ	309.1	970	Richmd Hill, N.Y.	500
KMTR	526	570	Hollywood	500	WBRC	241.8	1240	Birmingham, Ala.	250
KNRC	374.8	800	Santa Monica	500	WBRL	232.4	1290	Tilton, N. H.	500
KNX	336.9	890	Los Angeles	500	WBT	258.5	1160	Charlotte, N. C.	500
KOA	825.9	920	Denver, Colo.	5000	WBZ	333.1	900	East Springfield	15000
KOAC	270.1	1110	Corvallis, Ore.	500	WBZA	333.1	900	Boston, Mass.	500
KOB	394.5	760	State Coll., N. M.	500	WCAC	535.4	560	Mansfield, Conn.	500
KOCH	258.5	1160	Omaha, Neb.	250	WCAD	243.8	1230	Canton, N. Y.	500
KOCW	252	1190	Chickasha, Okla.	250	WCAE	461.3	650	Pittsburgh	500
KOIL	319	940	Coun. Bluffs, Ia.	500	WCAH	234.2	1280	Columbus, O.	250
KOIN	319	940	Portland, Ore.	1000	WCAJ	379.5	790	Lincoln, Neb.	500

Call	Meters	Keys.	Location	Power	Call	Meters	Keys.	Location	Power
WCAL	285.5	1050	Northfield, Minn.	500	WIP	348.6	860	Philadelphia	500
WCAM	223.7	1340	Camden, N. J.	500	WJAD	333.1	900	Waco, Tex.	500
WCAO	243.8	1230	Baltimore, Md.	250	WJAG	285.5	1050	Norfolk, Neb.	250
WCAU	260.7	1150	Philadelphia	500	WJAR	483.6	620	Providence, R. I.	500
WCBD	344.6	870	Zion, Ill.	5000	WJAS	270.1	1110	Pittsburgh, Pa.	500
WCBS	209.7	1430	Springfield, Ill.	250	WJAX	340.7	880	Jacksonville, Fla.	1000
WCCO	405.2	740	Minneapolis	5000	WJAY	227.1	1320	Cleveland, O.	500
WCDA	211.1	1420	Cliffside, N.J.	250	WJAZ	263	1140	Mt. Prospect, Ill.	5000
WCFL	483.6	620	Chicago, Ill.	1500	WJBB	238.0	1260	Tampa, Fla.	250
WCGU	218.8	1370	Coney Island	500	WJBL	212.6	1410	Decatur, Ill.	250
WCMA	260.7	1150	Culver, Ind.	500	WJBT	389.4	770	Chicago	500
WCOA	249.9	1200	Pensacola, Fla.	500	WJJD	365.6	820	Mooseheart, Ill.	1000
WCRW	223.7	1340	Chicago, Ill.	500	WJKS	232.4	1290	Gary, Ind.	500
WCSH	365.6	820	Portland, Me.	500	WJR	440.9	680	Pontiac, Mich.	5000
WCSSO	256.3	1170	Springfield, O.	500	WJZ	454.3	660	Bnd Brook, N.J.	30000
WCWK	214.2	1400	Fort Wayne, Ind.	250	WKAQ	322.4	930	San Juan, P. R.	500
WDAD	225.4	1330	Nashville, Tenn.	500	WKAR	277.6	1080	Lansing, Mich.	500
WDAE	267.7	1120	Tampa, Fla.	500	WKBF	252	1190	Indianapolis, Ind.	250
WDAF	370.2	810	Kansas City, Mo.	1000	WKBH	220.4	1360	La Crosse, Wis.	500
WDAG	263	1140	Amarillo, Tex.	250	WKBO	218.8	1370	Jersey City	500
WDAY	545.1	550	Fargo, N. D.	250	WKBQ	218.8	1370	New York	500
WDBJ	230.6	1300	Roanoke, Va.	250	WKBW	217.3	1380	Buffalo, N. Y.	500
WDBK	227.1	1320	Cleveland, O.	250	WKEN	204	1470	Kenmore, N. Y.	250
WDBO	288.3	1040	Orlando, Fla.	500	WKRC	245.8	1220	Cincinnati, O.	500
WDGY	285.5	1050	Minneapolis	500	WLB	245.8	1220	Minneapolis	500
WDOD	243.8	1230	Chattanooga	500	WLBI	238	1260	Wenona, Ill.	250
WDRS	282.8	1060	New Haven, Conn.	500	WLBL	333.1	900	Stevens Pt., Wis.	1000
WDWF	260.7	1150	Cranston, R. I.	250	WLBW	293.9	1020	Oil City, Pa.	500
WDWM	361.2	830	Asbury Park, N.J.	500	WLBX	204	1470	Long Island, N.Y.	250
WEAF	491.8	610	New York	5000	WLBZ	208.2	1440	Dover, Me.	250
WEAM	263.0	1140	N. Plainfield, N.J.	250	WLBI	416.4	720	Elgin, Ill.	500
WEAN	275.1	1090	Providence, R. I.	500	WLIT	405.2	740	Philadelphia	500
WEAO	282.8	1060	Columbus, O.	750	WLS	344.6	870	Chicago	5000
WEAR	399.8	750	Cleveland, O.	1000	WLTH	256.3	1170	Brooklyn, N. Y.	250
WEBC	241.8	1240	Superior, Wis.	250	WLW	428.3	700	Harrison, O.	5000
WEBH	365.6	820	Chicago	2000	WLWL	370.2	810	New York	1000
WEBJ	256.3	1170	New York	500	WMAZ	225.4	1330	Cazenavio, N. Y.	500
WEBW	258.5	1160	Beloit, Wis.	500	WMAF	428.3	700	Dartmouth, Mas.	500
WEDC	241.8	1240	Chicago	500	WMAK	545.1	550	Lockport, N. Y.	750
WEEL	508.2	590	Boston, Mass.	500	WMAQ	447.5	670	Chicago	1000
WEMC	483.6	620	Ber. Spg., Mich.	1000	WMAZ	270.1	1110	Macon, Ga.	500
WENR	288.3	1040	Chicago	500	WMBB	252	1190	Chicago	500
WEW	352.7	850	St. Louis, Mo.	1000	WMBD	205.4	1460	Peoria H'ghts, Ill.	250
WFAA	545.1	550	Dallas, Tex.	500	WMBF	384.4	780	Miami, Fla.	500
WFBE	245.8	1220	Cincinnati, O.	250	WMBI	263	1140	Chicago	500
WFBL	258.5	1160	Syracuse, N. Y.	750	WMBS	234.2	1280	Harrisburg, Pa.	250
WFBM	275.1	1090	Indianapolis, Ind.	1000	WMC	516.9	580	Memphis	500
WFI	405.2	740	Philadelphia	500	WMCA	370.2	810	Hoboken	500
WFIW	260.7	1150	Hopkinsville, Ky.	750	WMSG	236.1	1270	New York	500
WFKB	223.7	1340	Chicago	500	WNAC	461.3	650	Boston, Mass.	500
WFLA	516.9	580	Clear Water, Fla.	750	WNAD	239.9	1250	Norman, Okla.	500
WGBB	245.8	1220	Freeport, N. Y.	400	WNAL	258.5	1160	Omaha, Neb.	250
WGBF	236.1	1270	Evansville, In.	250	WNAT	288.3	1040	Philadelphia	1000
WGBI	230.6	1300	Scranton, Pa.	250	WNAX	277.6	1080	Yankton, S. D.	250
WGBS	348.6	860	Astoria, N. J.	500	WNBH	247.8	1210	New Bedford, Mass.	250
WGCP	267.7	1120	Newark, N. J.	250	WNJ	267.7	1120	Newark, N. J.	250
WGES	241.8	1240	Chicago	600	WNOX	265.3	1130	Knoxville, Tenn.	1000
WGHP	277.6	1080	Mt. Clem's, Mich.	750	WNRC	223.7	1340	Greensboro, N.C.	500
WGL	293.9	1020	New York	500	WNYC	526.0	570	New York	500
WGN	416.4	720	Chicago, Ill.	1500	WOAI	499.7	600	San Antonio	5000
WGR	302.8	990	Buffalo, N. Y.	750	WOAN	285.5	1050	Law'r, Tenn.	250
WGST	270.1	1110	Atlanta, Ga.	500	WOAX	239.9	1250	Trenton, N. J.	500
WGWB	218.8	1370	Milwaukee, Wis.	500	WOC	374.8	800	Davenport, Ia.	5000
WGY	379.5	790	Schenectady	30000	WODA	293.9	1020	Paterson, N. J.	1000
WHA	333.1	900	Madison, Wis.	750	WOI	265.3	1130	Ames, Ia.	2500
WHAD	270.1	1110	Milwaukee, Wis.	500	WOK	282	1190	Homewood	5000
WHAM	280.2	1070	Rochester, N. Y.	5000	WOKO	215.7	1390	Peekskill, N. Y.	250
WHAP	236.1	1270	New York	1000	WOKT	209.7	1430	Rochester, N. Y.	500
WHAR	272.6	1100	Atlantic City	1000	WOO	348.6	860	Philadelphia	300
WHAS	322.4	930	Louisville, Ky.	500	WOOD	260.7	1150	Grand Rapids	500
WHAZ	305.9	980	Troy, N. Y.	500	WOQ	336.9	890	Kansas City	250
WHB	336.9	890	Kansas City, Mo.	500	WOR	422.3	710	Newark, N. J.	500
WHBP	228.9	1310	Johnstown, Pa.	250	WORD	252.2	1190	Batavia, Ia.	5000
WHDI	245.8	1220	Minneapolis	500	WOS	361.2	830	Jefferson City	500
WHK	265.3	1130	Cleveland, O.	500	WOW	508.2	590	Omaha, Neb.	1000
WHN	394.5	760	New York	500	WOWO	228.9	1310	Ft. Wayne	1000
WHO	535.4	560	Des Moines	5000	WPCC	223.7	1340	Chicago	500
WHT	305.9	980	Chicago	5000	WPCH	325.9	920	Brooklyn	500
WIBO	305.9	980	Chicago	500	WPEP	215.7	1390	Waukegan, Ill.	250
WICC	265.3	1130	Bridgeport, Conn.	500	WPG	272.6	1100	Atlantic City	5000
WIL	258.5	1160	St. Louis, Mo.	250	WPSC	299.8	1000	State Col., Pa.	500
WIOD	247.8	1210	Miami, Fla.	1000	WQAA	215.7	1390	Parksburg, Pa.	500

Call	Meters	Keys.	Location	Power
WQAM	384.4	780	Miami, Fla.	750
WQAN	230.6	1300	Scranton, Pa.	250
WQAO	394.5	760	Cliffside, N. J.	500
WQJ	447.5	670	Chicago	500
WRAH	199.9	1500	Providence, R. I.	250
WRAX	212.6	1410	Philadelphia	250
WRBC	238	1260	Valparaiso, Ind.	250
WRC	468.5	640	Washington, D. C.	500
WRCO	217.3	1380	Raleigh, N. C.	250
WREN	254.1	1180	Lawrence, Kan.	750
WREO	230.6	1300	Lansing, Mich.	500
WRHM	260.7	1150	Fridley, Minn.	1000
WRM	272.6	1100	Urbana, Ill.	500
WRNY	309.1	970	Coytesville, N. J.	500
WRR	461.3	650	Dallas, Tex.	500
WRST	211.1	1420	Bay Shore, N. Y.	250
WRVA	254.1	1180	Richmond, Va.	1000
WSAI	361.2	830	Cincinnati	5000
WSAJ	223.7	1340	Grove City, Pa.	250
WSB	475.9	630	Atlanta, Ga.	1000
WSBC	232.4	1290	Chicago	500
WSBF	258.5	1160	St. Louis	250
WSBT	399.8	750	South Bend, Ind.	1000
WSDA	227.1	1320	New York	250
WSEA	263.0	1140	Va. Beach, Va.	500
WSKC	272.6	1100	Bay City, Mich.	250
WSM	336.9	890	Nashville, Mich.	5000
WSMB	296.9	1010	New Orleans	500
WSOE	270.1	1110	Milwaukee	500
WSOM	245.8	1220	New York	500
WSUI	422.3	710	Iowa City	500
WSYR	225.4	1330	Syracuse, N. Y.	500
WTAD	236.1	1270	Quincy, Ill.	250
WTAG	516.9	580	Worcester, Mass	500
WTAM	399.9	750	Cleveland, O.	3500
WTAQ	254.1	1180	Eau Claire, Wis.	500
WTAR	236.1	1270	Norfolk, Va.	500
WTAS	275.1	1090	Elgin, Ill.	3500
WTAW	483.6	620	College, Tex.	500
WTIC	535.4	560	Hartford, Conn.	500
WTMJ	293.9	1020	Brookfield, Wis.	1000
WWAE	232.4	1320	Chicago	500
WWJ	356.9	840	Detroit, Mich.	1000
WWNC	296.9	1010	Ashville, N. C.	1000

### MAJOR MOTT'S BOAT RACE

(Continued from Page 27)

The phone calls from the mainland were frequent and many of the artists complied with the requests received from the fans.

Major Lawrence Mott spent a great deal of time and money to make the outboard race a great success, but as one philosopher said, "the plans of mice and men go oft astray." Unfortunately the seas were running so high on Sunday that the small boats were unable to navigate on the windward side of the island so they changed the course and instead of going around the island they kept on the leeward side.

Kneelan Jenkins' "Sea Sled" won the race and Loretta Turnhill, owner of the "By Gum" won the trophy for the women.

Essential for All  
DX Reception

CeCo "H"  
Hard Detector

The Most Famous Detector  
Tube in the World

Non-Microphonic

Non-Critical

Absolutely Quiet  
Background

Perfect Stability

High Input Im-  
pedance

Sharp Tuning

High Mutual  
Conductance

Maximum Sensitivity

Price \$2.50

Pacific Coast Representatives

**B. KRUGER & CO.**

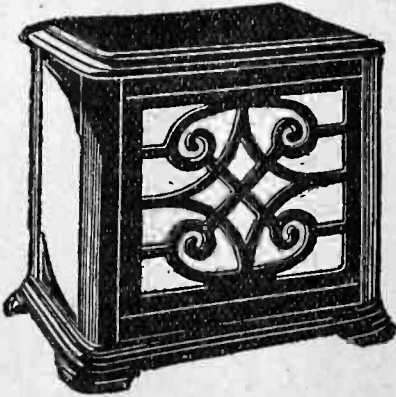
500 N. Huntley Drive, West Hollywood

Phone OX. 3897

Sherman P. O.

## Dynamic Speakers

The earliest successful type of loud speaker was of the "dynamic" type. The armature which in movement vibrated the diaphragm, floated in an electromagnetic field, the energizing current for which was supplied from the 6-volt "A" source. The original speakers required one ampere to energize the field, and this was not a detriment in the days when each vacuum tube required an "A" current of one ampere. However, this



The Jensen Dynamic Cone

type of speaker was gradually abandoned in favor of the types using permanent magnetic fields, without current consumption.

With the advent of power tubes and the necessity of power speakers, the dynamic type of speaker has come back into its own, due to the fact that it can handle tremendous volume without distortion. And the question of supplying the driving unit with the necessary energizing current is no longer a detriment, since this current may be obtained from the power supply apparatus which furnishes the power amplifier. Even if operating from an "A" battery, the current required has been reduced to the point where it is little more than that taken by one ordinary power tube.

The usual type of unit employs a strong steel permanent magnet, and the fluctuating current from the output of the set flows through a coil so placed

that its magnetic field will add to or detract from the permanent field. These variations in the field then cause the vibration of a pivoted armature, which in turn vibrates a cone or a metal diaphragm in the case of air column speakers.

In the dynamic system, the unit is constructed somewhat like a miniature electric motor. The coil carrying the output current of the set is mounted in the field of the electromagnets, the latter having windings being supplied by direct current from an external source, such as the "A" battery. The field set up around the coil acts upon the electromagnetic field in accordance with the laws of attraction and repulsion, and the coil tries to turn exactly like the armature of an electric motor. It is restricted from turning, but in its efforts to do so, it vibrates the cone in accordance with the variations in the output current. From a consideration of this construction it is seen that there is practically no limit to the amount of energy which can be handled or the volume delivered, since the electromagnetic field may be made strong enough to handle any output, and, of course, a point is never reached where the armature strikes against the poles of the magnet as in the non-dynamic types.

The Jensen Dynamic Cone is a fine example of this type of speaker. When operated with the output of a 171-power tube and on up to the 210 type, either singly or in push-pull, the Jensen renders a quality combined with volume that is unexcelled.

### VELVETONE REPAIRS

We have bought all the material necessary for repairing Velvetones. We also repair other makes of eliminators.

Write for Price List

Radio Mfg. and Repair Co.

1301 W. Jefferson

Los Angeles

BEacon 1264











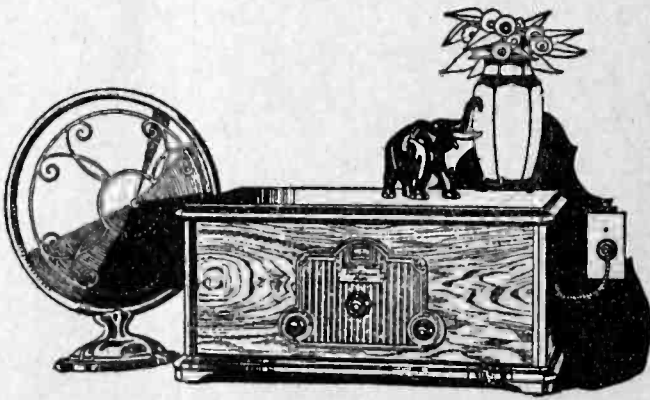






# FREE TRIAL In

*This offer holds good for a short time only  
in order to introduce the new Freed-Eisemann  
Batteryless Electric Radio*



**7 TUBE  
SET USING  
NEW  
A.C. TUBES  
NO  
ACIDS  
NO  
LIQUIDS  
NO  
BATTERIES**

## KNOW THIS!

1. That the new Electric Radio not only does away with all batteries, chargers, liquids, acids—
2. But it is actually **CHEAPER** than an equivalent battery set with its batteries and chargers.
3. That it costs less than 1c for three hours use.

*Here Are Just a Few of the Authorized Freed-Eisemann Dealers*

### LOS ANGELES

#### *Downtown*

**J. M. Andrews Co.**  
1818 South Grand Avenue  
WEstmore 9065

**Famous Department Store**  
530 South Main Street  
TRinity 8831

#### *Southeast*

**Tivoli Radio Shop**  
4204 South Central Avenue  
HUmolt 2449

#### *East*

**Henderson's Radio Store**  
3808 Whittier Blvd.  
ANgelus 8748

#### *Southwest*

**Robinson Radio Shop**  
4528 South Western Avenue  
VERmont 6683



# Your Own Home

## NEW Freed-Eisemann

Completely Self-Contained

### ALL ELECTRIC

Uses NEW A. C. TUBES

USE IT—let your family enjoy it. Get the big games—the opera stars and finest orchestras. Realize the thousand advantages and joys a radio will bring you. If you decide to keep this marvelous radio, you can buy it by paying less weekly than many spend for theater seats. No strings attached to this offer—you are the sole judge—and remember, it operates direct from your light socket, using the new A.C. tubes.

*Just Phone One of the Dealers Listed Below*

*A. J. Tobey Co.*  
INC.  
 RADIO ACCESSORY JOBBER

1145 Wall Street

Phone WE 4038

*Distributors for Southern California*

*Who Will Gladly Make This Free Demonstration in Your Own Home:*

#### *Hollywood*

**Walter F. Browne**  
**Radio Service Shop**  
 4508 Hollywood Blvd.  
 OLympia 4783

#### *Hollywood-Wilshire*

**Melrose Radio Co.**  
 5663 Melrose Avenue  
 GLadstone 3055

#### *LONG BEACH*

**Electricque Radio Co.**  
 1719 East Anaheim Road  
 Long Beach 323-208

#### *SAN PEDRO*

**Johnson Radio Service**  
 908 South Gaffey  
 San Pedro 1979-W



WILLIAM RAINEY  
Announcer

# National Broadcasting Co., Inc.

## PACIFIC COAST NETWORK

KFI - KPO - KGO - KGW - KOMO - KFOA - KHQ

DAILY—

9:00 p. m.—Time broadcast.

WEEK COMMENCING SUNDAY, JANUARY 22, 1928

### SUNDAY, JANUARY 22

- 1:00 to 2:00 p. m.—Golden Strand Group in a program of semi-classical and lighter numbers. Dorothy Talbot, coloratura soprano, and Myron Neisley, tenor, are the soloists.
- 3:00 to 4:00 p. m.—N. B. C. Orchestra, Arion Trio, Easton Kent, tenor, and Elsa Naess, pianist, compose this hour.
- 4:30 to 5:00 p. m.—"Great Moments in History," featuring Robert E. Lee.
- 6:30 to 7:30 p. m.—Standard Symphony Hour. Nathan Abas, celebrated violinist, director of Standard Symphony Orchestra. The program includes, among other well-known selections, the Andante and Finale movements from Beethoven's First Symphony, and Rossini's dramatic "William Tell" overture.

### MONDAY, JANUARY 23

- 8:00 to 9:00 p. m.—Rudy Seiger's Shell Symphonists. Opening selection is the "Intermezzo" from Mascagni's opera, "Cavalleria Rusticana." Feature of the hour will be two violin solos played by Rudy Seiger. These two numbers are Fritz Kreisler's immortal "Old Refrain" and "Liebesfreud."
- 10:00 to 11:00 p. m.—Los Caballeros Orchestra in a program of Spanish music, featuring James Burroughs, tenor, and Felipe Delgado, baritone.

### TUESDAY, JANUARY 24

- 8:00 to 8:30 p. m.—Eveready Salon Orchestra under direction of Max Dolin, in a program of German music. Among the outstanding numbers are the famous "Blue Danube" by Strauss, and Beethoven's "Moonlight Sonata" and Brahms' "Hungarian Dance No. 2."
- 8:30 to 9:00 p. m.—Weekly Bridge Lessons of U. S. Playing Card Co. of Cincinnati. This half hour brings to bridge fans the advice of the best-known bridge experts in the United States.
- 9:00 to 9:30 p. m.—Retold Tales. O. Henry's story, "A Night in New Arabia," has been chosen. The story deals with Jacob Spraggins, a self-made man, who has accumulated great wealth, and his democratic daughter who elopes with the grocer's delivery boy.
- 9:30 to 10:00 p. m.—Rounders Hour, featuring "Ole Yazoo" and the famous spir-

itual "Deep River." The Arion Trio will also be a feature of the program.

### WEDNESDAY, JANUARY 25

- 6:30 to 7:00 p. m.—Musical Fruit Cocktail, presented by Sunkist Melodists, in a distinctive group of orchestral and vocal selections.
- 9:00 to 10:00 p. m.—Vagabonds in a trip to Paris, including the usual sight-seeing trips to the Montmartre and the Latin Quarter. The program includes some grand opera music. The cast will have Harold Dana in his usual role of Tom, Dorothy Talbot as Margo and Gwynfi Jones as Bill.

### THURSDAY, JANUARY 26

- 8:00 to 9:00 p. m.—Calpet Hour presenting Calpet Orchestra. Tonight's program features excerpts from Gilbert and Sullivan's tabloid light opera, "The Yeoman of the Guard."
- 9:00 to 9:30 p. m.—Dodge Bros. program.
- 9:30 to 10:00 p. m.—Moon-Magic Hour of light classical music. Kajetan Attl and the Arion Trio make this hour one of unusual charm and beauty.

### FRIDAY, JANUARY 27

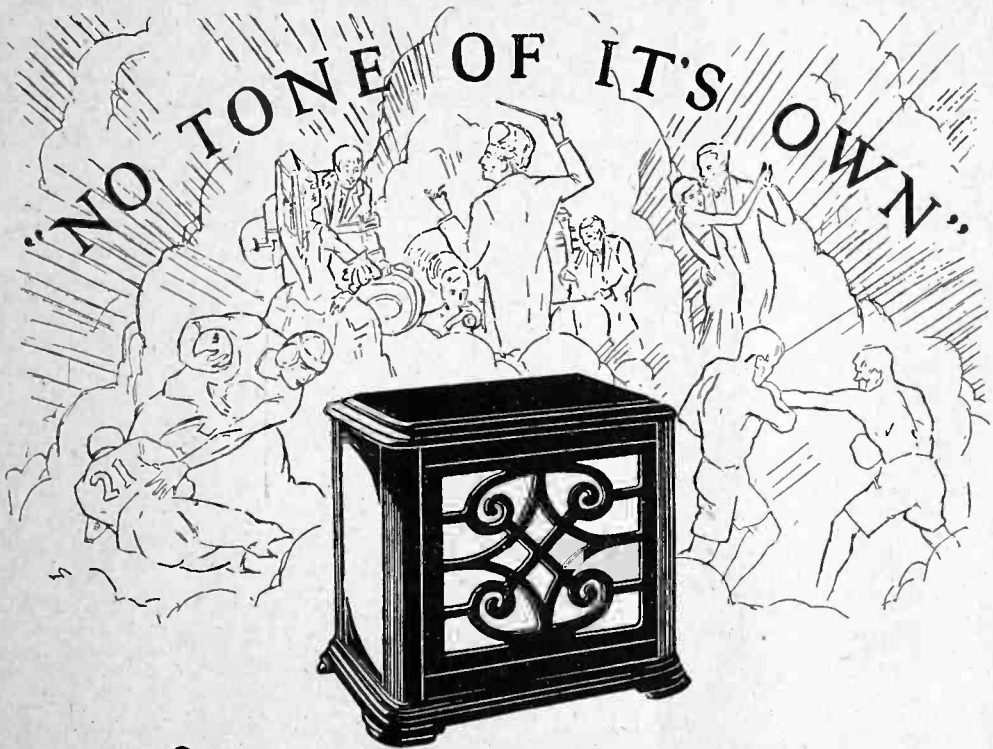
- 8:00 to 9:00 p. m.—Wrigley Review.
- 9:00 to 9:30 p. m.—White Rock program. Orchestra augmented by 11 saxophones will be heard in a variety of light classical and popular selections. Harold Dana, baritone, will sing two solos.
- 9:30 to 10:00 p. m.—Memory Lane Hour, bringing back the ice cream festival given by members of the Ladies' Aid Society. Many popular songs of other days will be revived by this small-town setting.

### SATURDAY, JANUARY 28

- 8:00 to 9:00 p. m.—R. C. A. Hour, featuring classic music. The program is divided into 15-minute quarters, the first, second and fourth devoting themselves to atmospheric music, while the third quarter features a 10-minute talk on Astronomy by Mr. Henry M. Hyde of the Astronomic Society of the Pacific.
- 9:00 to 10:00 p. m.—Philco Hour presents a program including Mendelssohn, Bizet and Toselli.
- 10:00 to 11:00 p. m.—The Trocaderans in a two-hour dance program of the newest dance music, including the well-known hits from the most popular musical comedies.

**Golden Bear** AIR COLUMN  
**SPEAKER**

Made in 12 Sizes — Phone  
WESTmore 2712



*The* **JENSEN DYNAMIC SPEAKER**

For the faithful reproduction of broadcast programs, nothing equals a Jensen Dynamic Speaker. It has no tone of its own, but reflects all of the high notes, low notes, and overtones that other speakers are unable to reproduce. Comparison is impossible. You must hear it yourself.

**Priced at \$65.00**  
and worth more

*Exclusive Wholesale Distributors*

**Yale Radio Electric Co.**

1111 Wall St.

Los Angeles

Westmore 3351

**ROBERT HURD**

## Los Angeles, California—640 Kc.

# KFI

5000 WATTS—468.5 METERS

Radio Central Super-Station of Earl C. Anthony, Inc.  
1000 S. Hope. Phone WE. 0331. After 5 P. M., WE. 0337  
ROBERT HURD, Program Manager

**DAILY EXCEPT SUNDAY—**

12:00 to 3:00 p. m.—Studio program and dance program.

6:40 to 7:00 p. m.—Musical program from Shrine Auditorium by remote control (except Tuesday, Wednesday and Thursday).

**WEEK COMMENCING SUNDAY, JANUARY 22, 1928****SUNDAY, JANUARY 22**

- 10:00 to 10:45 a. m.—Services direction of L. A. Church Federation.  
1:00 p. m.—N. B. C. program, Golden Strand Group, over the P. C. N.  
3:00 to 4:30 p. m.—N. B. C. musical program over the P. C. N.  
4:30 to 5:30 p. m.—Merle Davis Lucerne Orchestra.  
5:30 to 6:10 p. m.—Glenn Edmunds Kit Kat Club Orchestra.  
6:10 to 6:30 p. m.—Musical program by remote control from Shrine Auditorium.  
6:30 to 7:30 p. m.—N. B. C. Standard Symphony Hour over the P. C. N.  
7:30 to 7:35 p. m.—Father Ricard's Sunspot  
7:35 to 8:00 p. m.—Bob Buckner and his Sole Killers Orchestra.  
8:00 to 9:00 p. m.—Aeolian Organ Recital.  
9:00 to 10:00 p. m.—Lenore Killian, contralto.  
10:00 to 11:00 p. m.—Perrin and Altland's Packard Six Orchestra.

**MONDAY, JANUARY 23**

- 3:00 to 4:00 p. m.—Virginai McCoy, contra contralto.  
4:00 to 5:00 p. m.—L. A. Fire Dept. Orch.  
5:00 to 5:40 p. m.—Leon Rene and his Southern Syncopaters.  
5:40 to 6:40 p. m.—White King Soap Company program.  
7:00 to 8:00 p. m.—KFI Symphonette.  
8:00 to 9:00 p. m.—N. B. C. Shell program  
9:00 to 10:00 p. m.—Packard Concert Orch.  
10:00 to 11:00 p. m.—N. B. C. Spanish program over P. C. N. from L. A. studio.

**TUESDAY, JANUARY 24**

- 3:00 to 4:00 p. m.—Studio program.  
4:00 to 5:00 p. m.—Studio program.  
5:00 to 5:40 p. m.—The Dragon Hawaiians.  
5:40 to 6:45 p. m.—White King Soap Company program.  
6:45 to 7:00 p. m.—Talk from the Isaak Walton League of America.  
7:00 to 8:00 p. m.—KFI Symphonette.  
8:00 to 8:30 p. m.—N. B. C. Nat'l Carbon Co. over the P. C. N.  
8:30 to 9:00 p. m.—U. S. Playing Card Co. Eveready Hour over the P. C. N.  
9:00 to 9:30 p. m.—N. B. C. Retold Tales  
9:30 to 10:00 p. m.—N. B. C. The Rounders  
10:00 to 11:00 p. m.—Packard Concert Orch.

**WEDNESDAY, JANUARY 25**

- 3:00 to 3:30 p. m.—Shirley Mirkin, European concert pianist.  
3:30 to 4:45 p. m.—Studio program.  
4:00 to 4:45 p. m.—Studio program.  
4:45 to 5:00 p. m.—Lieut. Louis De Jean.  
5:30 to 6:30 p. m.—White King Soap Company program.  
6:30 to 7:00 p. m.—N. B. C. over P. C. N.

7:00 to 8:00 p. m.—Venetian Serenaders.

8:00 to 9:00 p. m.—Matinee Musical Club.

9:00 to 10:00 p. m.—N. B. C. The Vagabond Hour over the P. C. N.

10:00 to 10:30 p. m.—Winifred Hooke, concert pianist.

10:30 to 11:00 p. m.—Program of violin and piano classics.

3:00 to 3:30 p. m.—Shirley Mirkin, European concert pianist.

3:30 to 4:30 p. m.—Studio program.

4:30 to 5:00 p. m.—LeRoy Harron and Roy Hellrigel, violin duets.

5:00 to 5:30 p. m.—Studio program.

5:30 to 6:00 p. m.—Vernon Elkins Dixieland Orchestra.

6:00 to 7:00 p. m.—White King Soap Company program.

7:00 to 8:00 p. m.—KFI Symphonette.

8:00 to 8:15 p. m.—Audrey Anderson, soprano; Jean Sechrest, pianist.

8:15 to 10:00 p. m.—L. A. Philharmonic Orchestra from Philharmonic Auditorium.

10:00 to 11:00 p. m.—Program of Modern Classical Music.

**FRIDAY, JANUARY 27**

- 10:45 to 11:05 a. m.—Betty Crocker, Gold Medal Talk.  
3:00 to 4:00 p. m.—Dudley Wright, tenor.  
4:00 to 5:00 p. m.—L. A. Fire Dept. Orch.  
5:00 to 5:40 p. m.—Studio program.  
5:40 to 6:40 p. m.—White King Soap Company program.  
7:00 to 8:00 p. m.—Program by Paul Roberts and his orchestra.  
8:00 to 9:00 p. m.—N. B. C. Wrigley program over the P. C. N.  
9:00 to 10:00 p. m.—Packard Concert Orchestra, Pryor Moore, director.  
10:00 to 11:00 p. m.—KFI Symphonette.

**SATURDAY, JANUARY 28**

- 3:00 to 3:30 p. m.—Alice Frasier and Gene Norfolk, Half Hour of Ballads.  
3:30 to 4:00 p. m.—Studio program.  
4:30 to 5:40 p. m.—Studio program.  
5:40 to 6:40 p. m.—White King Soap Company program.  
7:00 to 7:30 p. m.—Nick Harris Detective Stories, with Richard Skinner, tenor.  
7:30 to 8:00 p. m.—Felipe Delgado, Ida Marston, pianist.  
8:00 to 9:00 p. m.—N. B. C. RCA program  
9:00 to 10:00 p. m.—N. B. C. Philadelphia Storage Battery Co. over the P. C. N.  
10:00 to 11:00 p. m.—Packard Orchestra.  
11:00 p. m. to 2:00 a. m.—K F I Midnight Frolic; L. A. Fire Dept. Orchestra.

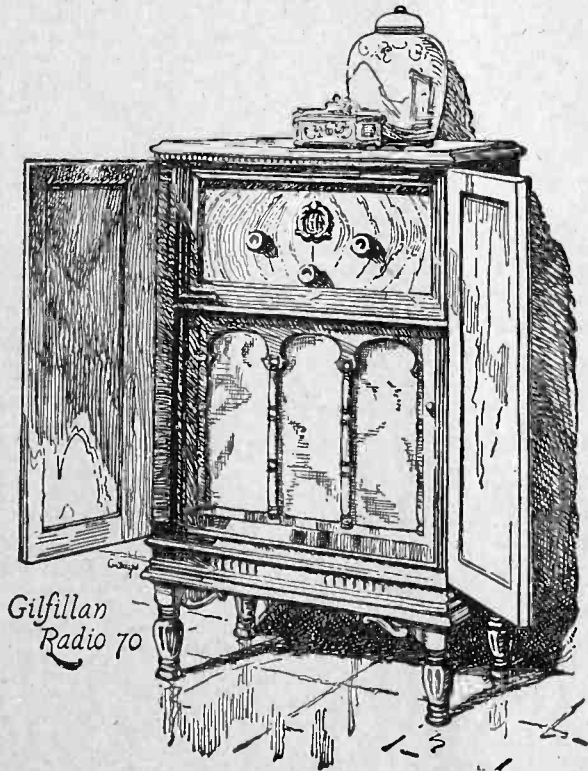
# GILFILLAN

SALES & SERVICE — HEMPSTEAD 5590  
137 N. Larchmont Open Evenings

The Gloriously Toned  
**GILFILLAN**  
 For Instant Enjoyment

This  
 Model  
**\$350**  
 complete

Other  
 Gilfillans  
 \$65.00 up



**GILFILLAN RADIO**  
 Operates direct from Light Socket

No Batteries. One dial to tune. Easiest thing in the world to get station you want. Both wave lengths and kilocycles are indicated. Just turn that dial and enjoy! These new Gilfillans are the sensations of the year. No batteries, solutions, acids or chargers. Chassis is aluminum-shielded—minimum interference by other stations! Rola loud-speaker is built into the consoles. Glorious tones. The hand-carved walnut cabinets are superb.

**See New Models at Gilfillan Dealers**

*Distributors:*

Southern California (except San Diego County)

GILFILLAN BROS., INC., Los Angeles

San Diego County—MOTOR HARDWARE & EQUIPMENT CO., San Diego

Arizona—NIELSEN RADIO & SPORTING GOODS CO., Phoenix



E. K. BARNES

## Los Angeles, California—720 Kc.

# KHJ

500 WATTS—416.4 METERS  
Times Bldg., First and Broadway, Los Angeles  
Owned and Operated by Don Lee  
California Distributor for Cadillac and LaSalle  
Phone MEt. 0700

E. K. BARNES, Day-time Director  
GLENN R. DOLBERG, Night-time Director  
PAUL RUBENSTEIN KEPNER, Musical Director  
ERNEST G. UNDERWOOD, Technical Director  
C. M. RAYMOND, Commercial Director

### DAILY EXCEPT SUNDAY—

7:30 to 8:30 p. m.—Sperry Flour Reveille Hour, except Saturday.  
12:30 to 1:30 p. m.—L. A. Times World Wide News.  
3:00 to 4:00 p. m.—Matinee Melody Masters.  
5:00 to 6:00 p. m.—Sunset Musicales.  
6:00 to 6:15 p. m.—Nightly Doings.  
6:15 to 6:45 p. m.—Fitzgerald's Orthophonic and Ampico Concert.  
6:45 to 7:00 p. m.—L. A. Times World Wide News

### WEEK COMMENCING SUNDAY, JANUARY 22, 1928

#### SUNDAY, JANUARY 22

9:30 to 10:30 a. m.—Sunday morning concert.  
10:30 a. m. to 12:30 p. m.—First Methodist Episcopal Church morning services.  
12:30 to 2:00 p. m.—Viennese Quintet and Mildred Marini, soprano.  
4:00 to 5:00 p. m.—Matinee Melody Masters.  
5:00 to 6:00 p. m.—Sunset Musical.  
6:00 to 6:15 p. m.—Nightly Doings.  
6:15 to 6:45 p. m.—Panatrophe and Knabe Ampico program.  
6:45 to 7:00 p. m.—World Wide News, courtesy L. A. Times.  
7:00 to 8:00 p. m.—First M. E. Church evening services.  
8:00 to 10:00 p. m.—KHJ Little Symphony with soloists.

#### MONDAY, JANUARY 23

1:30 to 2:30 p. m.—Elvia Allman's Surprise Package.  
4:00 to 4:15 p. m.—Talk by C. W. H. Smith of the Traffic Dept. of the Western Air Express.  
4:15 to 4:30 p. m.—M. B. Benesh, Public Relations Dept., L. A. County Sheriff.  
4:30 to 5:00 p. m.—Marye Shannon Harrington, lecturer.  
7:00 to 8:00 p. m.—KHJ Concert Orchestra and Earl Coatesworth, tenor.  
8:00 to 9:00 p. m.—Ray Canfield's Orchestra and June Parker, blues singer.  
9:00 to 10:00 p. m.—Operetta, "The Mascot."  
10:00 to 11:00 p. m.—Beverly Bearcats and Ray and Jim.

#### TUESDAY, JANUARY 24

4:00 to 4:15 p. m.—Talk on "Health" by Dr. Frank McCoy.  
4:30 to 5:00 p. m.—Inspirational address.  
7:00 to 7:30 p. m.—L. A. Police Dept. program featuring Police Quartet.  
7:30 to 8:00 p. m.—Variety program.  
8:00 to 9:00 p. m.—Maxwell House Coffee Orchestra with soloists.  
9:00 to 10:00 p. m.—Continuity program.  
10:00 to 11:00 p. m.—Troubadors and California Flower Girls.

#### WEDNESDAY, JANUARY 25

4:00 to 5:00 p. m.—Garden Talk.  
7:00 to 8:00 p. m.—Sierra Seven and KHJ Male Quartet.  
8:00 to 9:00 p. m.—KHJ Concert Orchestra and soloists.  
9:00 to 10:00 p. m.—Ray Canfield's Master Uke and his Singing Steel Ensemble.  
10:00 to 11:00 p. m.—Melody Minstrels and Ray and Jim.

#### THURSDAY, JANUARY 26

4:00 to 4:30 p. m.—Talk on "Care of the Body" by Dr. Philip M. Lovell.  
7:00 to 8:00 p. m.—Songs of Yesterday.  
8:00 to 9:00 p. m.—KHJ Concert Orchestra and soloists.  
9:00 to 10:00 p. m.—Beverly Bearcats with California Flower Girls.  
10:00 to 11:00 p. m.—Caledonians' Concert Orchestra and Earl Coatesworth, tenor.

#### FRIDAY, JANUARY 27

4:00 to 4:30 p. m.—"Stories of American History."  
4:30 to 5:00 p. m.—Council of International Relations.  
7:00 to 8:00 p. m.—Cadillac-La Salle Concert Eight.  
8:00 to 9:00 p. m.—Clarence Hill's Yellow Jackets and June Parker, blues singer.  
9:00 to 10:00 p. m.—Echoes of the Opera, and Earl Coatesworth, tenor.  
10:00 to 11:00 p. m.—Troubadors and Ray and Jim.

#### SATURDAY, JANUARY 28

4:00 to 4:30 p. m.—Talk on China.  
4:30 to 5:00 p. m.—L. A. Playground Educational Dept.  
5:00 to 6:00 p. m.—Sunset Musical.  
7:00 to 8:00 p. m.—KHJ Movie Club.  
8:00 to 9:00 p. m.—The Georgians, Southern Melodies.  
9:00 to 10:00 p. m.—Ray Canfield's Singing Steel Band.  
10:00 to 11:00 p. m.—Merry Makers Hour—"Let's go."

**BT Counterphase 8 — World's Greatest Radio — Sold with a Distance Guarantee. H. A. Everest, 1032 North Ogden Dr. Granite 9915.**

## CALL WESTMORE 9065 FOR YOUR PHILCO

# Faithful Reproduction at YOUR BIDDING



The exclusive features, developed by Stewart-Warner radio engineers, and incorporated in Stewart-Warner Matched Unit Radio, insure "true to life" tone, matchless selectivity, and surprising volume on both local and distant stations.

*By all means hear Stewart-Warner radio before buying any radio... regardless of price.*

**Ungar & Watson, Inc.**

*Wholesale Distributors Stewart-Warner Radio*

1366 S. Figueroa St. Phone WESTmore 2411



## PROTECTION

*for YOU and Your RADIO*

The one thing that stands between you and imitations of Preston's Permanent Radio Ground is the signature of C. H. Preston that appears on the carton of every genuine Preston Ground sold. This signature is also stamped into the metal on the top of every genuine Preston Ground. When buying the genuine you buy performance backed by a bona fide "money back if not satisfied" guarantee.

*Preston's Ground is worth every cent it costs. Get one from your radio dealer today.*

**UNGAR & WATSON, INC.**  
*Manufacturers*

1366 S. Figueroa St.

Phone WESTmore 2411



**HAROLD ISBELL**  
Announcer

Hollywood, Cal.—890 Kc.

**KNX**

500 WATTS—337 METERS  
LOS ANGELES EVENING EXPRESS

Paul G. Hoffman's Studebaker Bldg., 6116 Hollywood Blvd., Hollywood. Ph. HEMPSTEAD 4101  
NAYLOR ROGERS, Mgr. and Program Director  
GLEN RICE, Assistant Manager  
N. D. GARVER, Technical Engineer

"The Voice of Hollywood"



**NAYLOR ROGERS**  
Manager

**DAILY EXCEPT SUNDAY—**

- 6:45 to 8:00 a. m.—Gold Seal early bird exercises, courtesy of Sanitary Gold Seal Dairy.  
8:00 a. m.—Inspirational talk and morning prayer.  
8:55 a. m.—Time Signals from Washington, D. C., followed by Birthday Notices.  
9:00 a. m.—Radio Shopping News, conducted by Carrie Preston Rittmeister.  
10:00 a. m.—Town Crier of the Day's morning message.  
10:30 a. m.—Kate Brew Vaughn, director Household Economics Department, Evening Express, except Friday and Saturday.  
12:00 noon.—Musical program.  
12:30 p. m.—W. F. Alder Travelogue.  
1:30 p. m.—The Bookworm.  
2:00 p. m.—Musical program.  
3:00 p. m.—C. P. R.'s musical program.  
4:15 p. m.—Lost and Found announcements.  
4:25 p. m.—Market reports.  
5:00 p. m.—"Own Your Own Home," by Chet Mittendorf.  
5:45 p. m.—"Amusement Tips."  
6:00 p. m.—Biltmore Hotel Orchestra, broadcast from the Biltmore Dining Room.  
6:30 p. m.—Dinner hour concert, directed by Paul Finstein.  
11:00 p. m.—Earl Burnett's Biltmore Hotel Orchestra.

**DAILY EXCEPT SUNDAY AND TUESDAY—**

- 10:00 p. m.—Hotel Ambassador; Gus Arnheim's Coconut Grove Orchestra, except Friday.  
11:00 p. m.—Hotel Ambassador; Gus Arnheim's Coconut Grove Orchestra.

**WEEK COMMENCING SUNDAY, JANUARY 22, 1928**

- SUNDAY, JANUARY 22**  
10:00 a. m.—First Presbyterian Church of Hollywood.  
2:00 to 4:00 p. m.—City Park Board, musical program.  
6:30 p. m.—First Unitarian Church.  
7:00 p. m.—First Presbyterian Church of Hollywood.  
8:00 p. m.—Circle Theatre Concert Orch.  
9:00 p. m.—Calmon Luboviski, master violinist; Claire Mellonino, pianist.  
**MONDAY, JANUARY 23**  
11:00 a. m.—The Hallroom Boys.  
11:30 a. m.—French Lessons by Edgard Leon.  
2:30 p. m.—"Human Nature."  
4:15 p. m.—Talk on stocks and bonds.  
4:30 p. m.—Little Jean and the Town Crier.  
6:30 p. m.—Thrift Check Book Co.  
7:00 p. m.—Dan Parker, the tailor.  
7:30 p. m.—One-act play.  
8:00 p. m.—Calmon Luboviski, master violinist; Claire Mellonino, pianist.  
9:00 p. m.—Feature program.  
**TUESDAY, JANUARY 24**  
11:15 a. m.—Georgia O. George.  
12:45 p. m.—Advertising Club Luncheon from Biltmore Hotel.  
4:00 p. m.—Little Joyce Coad.  
7:00 p. m.—Grauman's Chinese Theatre.  
7:30 p. m.—Georgia O. George.  
9:00 p. m.—Hotel Ambassador, Gus Arnheim's Coconut Grove Orchestra.  
**WEDNESDAY, JANUARY 25**  
11:00 a. m.—Charles W. Hamp.  
4:00 p. m.—Garden Talk.  
6:30 p. m.—Thrift Check Book Co.  
7:00 p. m.—Playgoers Club.  
7:30 p. m.—Charles Hamp.  
8:00 p. m.—Feature program.  
**THURSDAY, JANUARY 26**  
11:00 a. m.—Georgia O. George.  
11:30 a. m.—French lessons.  
1:15 p. m.—Talk on Poultry Raising.  
4:00 p. m.—Louise Johnson giving Horoscopes.  
7:00 p. m.—Carthay Circle Theatre Organ Recital.  
8:00 p. m.—General Petroleum Corp. of Cal.  
9:00 p. m.—Zenith Carburetor Co.  
**FRIDAY, JANUARY 27**  
10:30 a. m.—Georgia O. George.  
2:00 p. m.—L. A. District Federation of Women's Clubs Musical Program.  
6:30 p. m.—Thrift Check Book Co.  
7:00 p. m.—Thirty Minutes of Sunshine by Charles W. Hamp.  
7:30 to 8:00 p. m.—Georgia O. George.  
8:00 p. m.—Royal Order of Optimistic Dots.  
9:00 p. m.—Hotel Ambassador, Gus Arnheim's Coconut Grove Orchestra.  
10:00 p. m.—Broadcasting Main Events from Hollywood Legion Stadium, courtesy of Dan Parker, the tailor.  
**SATURDAY, JANUARY 28**  
6:45 p. m.—Gene Leonard.  
7:00 p. m.—Playgoers Club.  
7:30 p. m.—Announcement of Sunday services of L. A. Churches.  
8:00 p. m.—Feature Program.  
8:30 p. m.—Mr. and Mrs. Radio Skit.  
12:00 p. m.—The Midnight Express.

**\$2.50** FIXES ANY SET  
CALL AND DELIVER

**\$1**

3104 S. VERMONT  
BEACON 6582



# ATWATER KENT RADIO

Now All in One



\$92<sup>00</sup>

## The NEW A. C. Set *Model 37*

The astonishing price of the new, six-tube, full-vision One Dial, self-contained A.C. set includes everything except tubes and a speaker. No power accessories required—no batteries, no charger. For use only with 110-115-volt, 60-cycle, Alternating Current. Uses 6 A.C. tubes and one rectifying tube.

*On Display at All Atwater Kent Dealers*

**RAY THOMAS INC.**  
*Atwater Kent Distributor*

1248 S. Hope St. WE 6334  
LOS ANGELES



**BILL RAY**  
Announcer

Hollywood, Calif.  
830 Kc.  
**K F W B**

500 WATTS—361.2 METERS  
WARNER BROS. MOTION PICTURE STUDIOS  
Warner Bros.' West Coast Studios,  
5842 Sunset Blvd.  
Gerald L. King, Mgr. Wm. Ray, Asst. Mgr.  
Florence Israel—Program Arranger  
Phone GL. 9461  
"Movie Land"



**GERALD L. KING**  
Manager

**DAILY EXCEPT SUNDAY—**

9:30 to 9:40 p. m.—Spanish program.  
9:40 to 10:30 p. m.—Classified.  
10:30 to 11:00 p. m.—Advance Electric Co.  
program.  
11:00 to 11:10 a. m.—Aunt Sammy Talks,  
except Saturday.

11:30 to 12:30 p. m.—Shopping Directory.  
12:30 to 1:30 p. m.—Who's Who.  
5:15 to 5:45 p. m.—Radio Review  
5:45 to 6:00 p. m.—Town Tattler  
6:00 to 7:00 p. m.—Dinner Hour Concert  
7:50 to 8:00 p. m.—Daily News, except  
Tues. and Sat.  
10:00 to 11:00 p. m.—Dance program.

**WEEK COMMENCING SUNDAY, JANUARY 22, 1928**

**SUNDAY, JANUARY 22**

12:00 to 1:00 p. m.—Musical program, cour-  
tesy of John Wright, the Right Tailor.  
7:30 to 7:50 p. m.—Musical program.  
7:50 to 8:00 p. m.—Daily News.  
8:00 to 9:00 p. m.—Light Opera program,  
courtesy of Overell Furniture Co., featur-  
ing Emma Kimmel, soprano; Ralph Reil-  
ly, tenor, and Jack Cronshaw's Orchestra.  
9:00 to 9:10 p. m.—Daily News.  
9:10 to 10:00 p. m.—Harry G. Keiper and  
his Movieland Orchestra.

**MONDAY, JANUARY 23**

11:15 to 11:30 a. m.—Talk by a Diet Spe-  
cialist.  
7:00 to 7:20 p. m.—Hugh Wellington-Mar-  
tyn, baritone; Don Warner, pianist.  
7:20 to 7:50 p. m.—Musical program.  
8:00 to 9:00 p. m.—Eunice Wynn, popular  
songs; Warner Bros. Dance Orchestra.  
9:00 to 10:00 p. m.—Chas. Beauchamp, ten-  
or; KFWB String Quartet.

**TUESDAY, JANUARY 24**

7:00 to 7:50 p. m.—Musical program.  
8:00 to 9:00 p. m.—David Percy; Warner  
Bros String Trio.  
9:00 to 10:00 p. m.—Ann Grey, blues songs;  
Nunes Trio.

**WEDNESDAY, JANUARY 18**

2:15 to 4:45 p. m.—Ed Landry's Orchestra.  
8:00 a. m.—Remote control from the Break-  
fast Club.  
7:00 to 7:50 p. m.—Musical program.  
8:00 to 9:00 p. m.—Emma Kimmel, sopra-  
no; Cyril Godwin's Concert Trio.

9:00 to 10:00 p. m.—Gene Johnston's Hour,  
featuring his trio: Mildred Proctor, blues  
songs; Bill Henry, popular songs; Hal  
Chasnoff's String Ensemble.

**THURSDAY, JANUARY 26**

11:10 to 11:30 a. m.—Musical program.  
1:30 to 2:00 p. m.—L. A. Police Quartet.  
7:00 to 7:20 p. m.—Ina Mitchell Butler, so-  
prano; Don Warner, pianist.  
7:20 to 7:50 p. m.—Program by courtesy of  
the Elec-Tru-Tone Corp.  
8:00 to 9:00 p. m.—Lilyan May Challenger,  
contralto. KFWB Stringed Quintet.  
9:00 to 10:00 p. m.—Eunice Wynn, popular  
songs; Warner Bros. Trio, popular songs.

**FRIDAY, JANUARY 27**

11:10 to 11:30 a. m.—Musical program.  
4:45 to 5:15 p. m.—A. T. Rainey, Psychic.  
7:00 to 7:30 p. m.—A one-act play by the  
Playshop Players.  
7:30 to 7:50 p. m.—Musical program.  
8:00 to 9:00 p. m.—Vernon Rickard, tenor.  
8:00 to 9:00 p. m.—KFWB String Quintet.  
9:00 to 10:00 p. m.—Ann Grey, blues songs;  
Warner Bros. Dance Orchestra.

**SATURDAY, JANUARY 28**

2:15 to 2:45 p. m.—Ed Landry's Orchestra  
from Cinderella Roof.  
5:00 to 5:15 p. m.—Musical program.  
7:00 to 7:30 p. m.—Musical program.  
7:30 to 8:00 p. m.—Program in honor of Il-  
lustrated Daily News.  
8:00 to 9:00 p. m.—Program by courtesy of  
8:00 to 9:00 p. m.—Mona Motor Oil Co.:  
David Percy, baritone.  
9:00 to 10:00 p. m.—Ed Landry's Orches-  
tra from Cinderella Roof Ballroom.

**Golden Bear**  **AIR COLUMN**  
**SPEAKER**

Made in 12 Sizes — Phone  
WEStmore 2712



# Electrify That Old Phonograph

**LOCAL DEALERS:**

**DOWNTOWN**

American Radio Co.  
108 East 8th St.  
Arcade Music Co.  
Arcade Bldg.  
Acme Radio Stores  
700 S. Main St.  
Metropolitan Radio Supply  
134 W. 7th St.

**SOUTH**

Davis Radio Co.  
2817 S. Main St.  
Fletcher Radio Music Co.  
4705 S. Vermont  
Radio Elec. Supply Co.  
2077 W. Jefferson Blvd.

**WEST**

So. Calif. Radio Co.  
2135 West Pico St.  
Vermont Music Co.  
826 S. Vermont  
Nesa Radio Sales Service  
2569 West Pico St.  
Hensel Electric Store  
214 S. Western Ave.  
Transcontinental Radio, Inc.  
2415 W. Washington  
Monarch Radio Co.  
2180 W. Washington  
Pan Am. Union Trading Co.  
8703 W. 3rd St.

**HOLLYWOOD**

H. D. Hatfield & Son  
1762 N. Vermont  
Hollywood Radio Store  
700 N. Western Ave.

**PASADENA**

Wilson Music Co.

**EAGLE ROCK**

Weaver and King

**WILMINGTON**

Wilmington Radio Electric

**LONG BEACH**

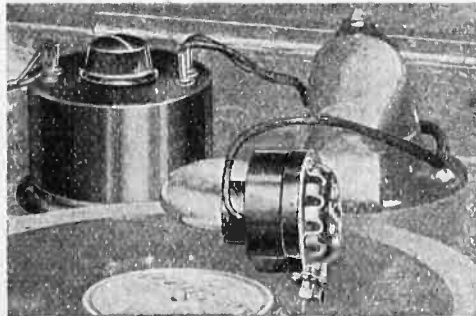
Inter-City Radio Stores Co.

**INGLEWOOD**

Aylesworth Electric Co.

**SANTA MONICA**

Santa Monica Radio Co.



This is the instrument that converts old phonographs into up-to-date electric machines, rivaling the most expensive on the market today.

If you have a radio and a good loud speaker, you can make your old phonograph "deliver the goods" in a way that will actually astound you. The bass will be full and vibrant; the volume can be as loud as the orchestra itself or may be turned down to a whisper; the old needle scratch will be almost gone; and you will be as proud of your phonograph as you were when it led the field. It takes just one minute to equip it with the

Ask Them for the  
**ELEC-TRU-TONE**

**ELEC-TRU-TONE**



G. ALLISON PHELPS  
Manager and Announcer

Hollywood, California,  
570 Kc.

# K M T R

500 WATTS—528 METERS  
KMTR RADIO STATION  
1028 N. Highland Ave. Phone HOLLY 3026  
FORBES VAN WHY, Chief Engineer  
TOM MITCHELL, Asst. Mgr.  
EVA BURKHARDT, Commercial Manager  
"Your Friend in Hollywood"  
"The Station that Tops the List"



TOM MITCHELL

## DAILY EXCEPT SUNDAY—

- 7:00 to 7:30 a. m.—Setting-up Exercises by Prof. Barclay L. Severns.  
7:30 to 8:30 a. m.—Louise Howatt's Happiness Hour.  
8:45 to 9:00 a. m.—Time Signals from Washington, D. C., and musical numbers  
12:00 to 12:30 p. m.—Weaver-Jackson Beauty Hints.  
1:30 to 2:30 p. m.—KMTR Press Agent Hour, featuring business announcements.  
4:30 to 5:00 p. m.—Brother Tom's Smiling Circle.  
5:00 to 6:00 p. m.—Certified Air Bulletin.  
6:30 to 7:30 p. m.—Dinner Hour Program, featuring KMTR Concert Orchestra.  
10:00 to 11:00 p. m.—Miller's Cafe Lafayette Dance Orchestra, Ray West, director.

## WEEK COMMENCING SUNDAY, JANUARY 22, 1928

- SUNDAY, JANUARY 22**  
6:30 to 7:00 p. m.—Burr McIntosh's Half Hour of Cheer.  
7:00 to 8:00 p. m.—Miller's Cafe Lafayette Concert Orchestra.  
8:00 to 10:00 p. m.—Loren Powell's Little Symphony and assisting artists.
- MONDAY, JANUARY 23**  
10:00 to 10:30 a. m.—Parke & Melford courtesy program.  
7:30 to 8:00 p. m.—Thirty Minutes of Sunshine by Charles Hamp.
- TUESDAY, JANUARY 24**  
9:00 to 10:00 a. m.—Sylvia, the Blind Cook.  
10:00 to 11:00 a. m.—"Hair-A-Gain" prog.  
3:30 to 4:00 p. m.—L. A. Police Quartet.  
7:30 to 8:00 p. m.—Game of "Ask Me Another."  
8:00 to 9:00 p. m.—Courtesy program.  
9:00 to 10:00 p. m.—Courtesy program.
- WEDNESDAY, JANUARY 25**  
9:30 to 10:00 a. m.—Travel Talk.  
1:00 to 1:30 p. m.—Hollywood Chamber of Commerce.  
7:30 to 8:00 p. m.—Overell Furniture Co. courtesy program featuring the Overell
- THURSDAY, JANUARY 26**  
8:00 to 10:00 p. m.—Courtesy program.  
9:00 to 10:00 a. m.—Sylvia, the Blind Cook.  
10:15 to 10:45 a. m.—Diet Question Box.  
2:30 to 3:30 p. m.—"Hair-A-Gain" prog.  
7:30 to 8:00 p. m.—Thirty Minutes of Sunshine with Charles Hamp.  
8:00 to 10:00 p. m.—Courtesy program.
- FRIDAY, JANUARY 27**  
8:00 to 10:00 a. m.—Hollywood Storage Co. program.  
10:00 to 11:00 a. m.—Charles Hamp.  
11:00 to 11:30 a. m.—Parke and Melford.  
1:15 to 1:30 p. m.—How to Make Children Behave.  
4:15 to 4:30 p. m.—Health Talk.  
7:30 to 9:00 p. m.—Courtesy program.  
8:00 to 10:00 p. m.—Courtesy program.  
10:00 to 12:00 p. m.—Miller's Cafe Lafayette Dance Orchestra.
- SATURDAY, JANUARY 28**  
9:00 to 10:00 a. m.—Sylvia, the Blind Cook.  
10:30 to 11:00 a. m.—Gordon Whitnall of the City Planning Commission.  
7:30 to 7:40 p. m.—Talk by M. D. Benesh of the Sheriff's Office.  
8:00 to 10:00 p. m.—Courtesy program.

## Official MAGNAFORMER LABORATORY

The Magnaformer, as per Factory Specifications, Wired and Tested, \$150.00

We will test, assemble and wire your kit for \$35.00

Our workmanship is in a class by itself.

## LABORATORY OF RADIO STANDARDS

E. K. HAYES

2408 West Vernon

VERmont 6543

Los Angeles, Calif.

# THOUSANDS

Will Tell You

# Majestic



**Dry "A"  
and "B"  
Units**

**ELECTRIFY  
ANY RADIO SET**

**AND GIVE**

## BETTER RADIO RECEPTION

**THAN ANY OTHER FORM OF  
ELECTRICAL RADIO POWER**

See your nearest dealer today — any good radio store. Try  
Majestics on your set and note the difference.

You plug Majestics in and forget them

---

**Grigsby-Grunow-Hinds Co.**

4540 Armitage Ave., Chicago

**W. J. SEROY, Pacific Coast Sales Manager,**

122 Broadway

Oakland, Calif.



BARON KEYES

# Los Angeles, California

500 WATTS—252 METERS

1190 Kc.

## K P L A

Commercial Exchange Building  
Eighth and Olive Streets  
BERTRAM O. HELLER, Business Manager  
BARON KEYES, Announcer  
LEIGH HARLINE, Program Manager  
ROLAND COLBERT, Engineer  
Romola Station  
Phone TRinity 3202

### DAILY EXCEPT SUNDAY—

- 11:00 to 12:00 a. m.—Baron Keyes Diversities.  
3:00 to 4:00 p. m.—Palais de Dance by remote control,  
4:00 to 4:03 p. m.—Bulletin—Health Commissioner.  
4:03 to 4:30 p. m.—Records, through courtesy of Barker Bros., except Saturday.  
4:30 to 5:00 p. m.—Air Castle.  
5:00 to 6:00 p. m.—Sundown Frolic, conducted by Baron Keyes.  
6:00 to 7:00 p. m.—Dinner Hour Program.  
10:00 to 11:00 p. m.—Palais de Dance by remote control,

### WEEK COMMENCING SUNDAY, JANUARY 22, 1928

#### SUNDAY, JANUARY 22

- 7:30 to 8:00 p. m.—Dr. David Edstrom, Art Lecture.  
8:00 to 10:00 p. m.—KPLA Orchestra and assisting artists.

#### MONDAY, JANUARY 23

- 10:30 to 11:00 a. m.—Prudence Penny, by arrangement with L. A. Examiner.  
11:00 to 12:00 a. m.—Baron Keyes Diversities.  
4:00 to 4:03 p. m.—Bulletin, Health Commissioner Dr. George Parrish.  
4:30 to 5:00 p. m.—The Air Castle.  
7:00 to 8:00 p. m.—Nunez Trio; LeRoy Kullberg.  
8:00 to 9:00 p. m.—Ida Schutz, soprano; Coral Atkins, pianist; May Gates, violin.  
9:00 to 10:00 p. m.—Hal Chasnoff String Ensemble and Red Wyatt.

#### TUESDAY, JANUARY 24

- 4:00 to 4:03 p. m.—Bulletin, Health Commissioner Dr. Geo. Parrish.  
4:30 to 5:00 p. m.—The Air Castle.  
7:00 to 8:00 p. m.—Angelus String Trio and Norma Byington, soprano.  
8:00 to 8:30 p. m.—Bob Harker and Tod Watterman in Banjo Duets.  
8:30 to 9:00 p. m.—Virginia McCoy and studio program.  
9:00 to 10:00 p. m.—Bert Farquahrson, Frankie Merlowe, Mildred Procter.

#### WEDNESDAY, JANUARY 24

- 10:30 to 11:00 a. m.—Prudence Penny, by arrangement with L. A. Examiner.  
11:00 to 12:00 a. m.—Baron Keyes Diversities.  
4:00 to 4:03 p. m.—Bulletin, Health Commissioner Dr. George Parrish.  
4:30 to 5:00 p. m.—The Air Castle.  
7:00 to 8:00 p. m.—Lou Emmell, Eva Burman, Dick Giblin.  
8:00 to 9:00 p. m.—Fay Sisters, Billy Barron, Wint Cotton.

- 9:00 to 10:00 p. m.—Frank Barry, tenor; Pat O'Neil, Irish concert baritone; Grady T. Sampson, pianist.

#### THURSDAY, JANUARY 26

- 4:00 to 4:03 p. m.—Bulletin, Health Commissioner Dr. George Parrish.  
4:30 to 5:00 p. m.—The Air Castle.  
7:00 to 7:30 p. m.—Glen Edmunds and his Collegians.  
7:30 to 8:00 p. m.—Alice Lee Wiley, piano recital.  
8:00 to 8:30 p. m.—Nunez Trio.  
8:30 to 9:00 p. m.—C. E. Roletti and Jas. Mulligan.  
9:00 to 10:00 p. m.—Coral Atkins Trio with Chas. Halford, tenor soloist.

#### FRIDAY, JANUARY 27

- 10:30 to 11:00 a. m.—Prudence Penny, by arrangement with L. A. Examiner.  
11:00 to 12:00 a. m.—Baron Keyes Diversities.  
2:30 to 3:00 p. m.—Bureau of Public Safety of L. A. Police Dept.  
4:00 to 4:03 p. m.—Bulletin, Health Commissioner Dr. George Parrish.  
4:30 to 5:00 p. m.—The Air Castle.  
7:00 to 8:00 p. m.—Harold E. Titus, basso; Helene Delzel, soprano; Marie Gomez, pianist.  
8:00 to 9:00 p. m.—Hulda Dietz and Neil Russell; Florentine String Trio.  
9:00 to 10:00 p. m.—Popular Request Program with KPLA Staff Artists.

#### SATURDAY, JANUARY 28

- 4:30 to 5:00 p. m.—The Air Castle.  
7:00 to 8:00 p. m.—Studio program.  
8:00 to 9:00 p. m.—Carfagne String Quartet; Emma Kimmell and Glen Pearce.  
9:00 to 10:00 p. m.—The Dare Sisters and Dick Giblin.  
11:00 p. m. to 1:00 a. m.—Don Meaney and his Radio Frolic.

Large Size Blue Prints of "Three Tube AC Reflex" Set, Circuit Diagram, Assembly and Panel Layout, 75 cents at Your Dealer's or from J. E. MEAD, 1715 W. 10th.

**Golden Bear** AIR COLUMN SPEAKER

Phone: WEStmore 2712  
Made in 12 Sizes



## The Newest! SONATRON - 225 A -

To replace the 225 A C!  
Rounds out  
Sonatronic's A C Line

THE newest tube in the World's Largest Tube Line—the 225 A! This 3 volt transformer, heater element tube replaces the 225 A C, and has the cathode connections on the sides of the base instead of the prongs on the top of the tube as in the old type. Use it in any set wired for the 225 A C. Price \$5.00.



Sonatronic's 227 A C—designed for Detector and Amplifier purposes, and the 226 A C—for radio and audio frequency amplification, are already well-known favorites in the Sonatronic line. Neither requires an "A" Battery. Both will give superior results in tone and volume.

Your Dealer Carries the Complete  
SONATRON Line

*"The World's Largest Radio Tube Line"*

# SONATRON

WHOLESALE DISTRIBUTORS  
LISTENWALTER & GOUGH, Inc.

325 Fifth Street, San Francisco  
819 E. First Street, Los Angeles



MARGARET M. SHONTZ

# K N R C

500 WATTS—375 METERS

Owned and Operated by  
**KIERULFF & RAVENSCROFT COMPANY**  
 Municipal Auditorium, Ocean Park, Santa Monica,  
 Calif. Phone Santa Monica 63-101.

R. L. RUST, Business Manager  
**MARGARET M. SHONTZ**, Program Director  
 C. B. JUNEAU, Transmission Engineer  
 R. W. OLBERT, Advertising



"RUST"

### DAILY EXCEPT SUNDAY—

- 1:00 to 1:30 p. m.—Shopping Notes.
- 1:30 to 2:30 p. m.—Kierulff and Ravenscroft Courtesy Program.
- 3:00 to 3:30 p. m.—Story Hour.
- 3:30 to 4:30 p. m.—Crosley Preview.
- 6:00 to 7:00 p. m.—Club Casa del Mar Organ Recital.
- 7:00 to 8:00 p. m.—Merchant's Preview.

### WEEK COMMENCING SUNDAY, JANUARY 22, 1928

#### SUNDAY, JANUARY 15

- 10:45 to 11:45 a. m.—Pilgrim Lutheran Ch. Services.
- 2:30 to 4:00 p. m.—Santa Monica Municipal Band Concert.
- 5:00 to 6:15 p. m.—Ocean Park Radio Co. courtesy program.
- 6:15 to 7:00 p. m.—Vesper Services, Pilgrim Lutheran Church.
- 7:00 to 8:00 p. m.—Club Casa del Mar Organ Recital featuring Frederick Landwehr.
- 8:00 to 9:00 p. m.—Santa Monica Municipal Band Concert.

#### MONDAY, JANUARY 16

- 2:30 to 3:00 p. m.—Joe Waugh, The Booster, Request program.
- 8:00 to 9:00 p. m.—Community Singing, Auspices Bay Cities Music Association.
- 9:00 to 10:00 p. m.—Rendezvous Ballroom Orchestra.

#### TUESDAY, JANUARY 17

- 8:00 to 9:00 p. m.—Joe Smith and his Sea Breeze Beach Club Orchestra.
- 9:00 to 10:00 p. m.—Rendezvous Ballroom Orchestra, direction Art Mace.

#### WEDNESDAY, JANUARY 18

- 8:00 to 8:30 p. m.—Talk by Eugene Bis-

- cailuz, Undersheriff of L. A. County.
- 8:30 to 9:30 p. m.—Rendezvous Ballroom Orchestra direction Art Mace.
- 9:30 to 10:30 p. m.—Fights blow by blow from Ocean Park Athletic Club.

#### THURSDAY, JANUARY 19

- 2:30 to 3:00 p. m.—International Bible Students Association.
- 8:00 to 9:00 p. m.—Main studio program featuring artists of the Bay Cities Music Assn.
- 9:00 to 10:00 p. m.—Rendezvous Ballroom Orchestra.

#### FRIDAY, JANUARY 20

- 8:00 to 9:00 p. m.—Main studio program, featuring the Vaughn Hawaiian Trio.
- 9:00 to 10:00 p. m.—Rendezvous Ballroom Orchestra.

#### SATURDAY, JANUARY 21

- 2:30 to 3:00 p. m.—International Bible Students Association.
- 8:00 to 9:00 p. m.—Santa Monica Municipal Band Concert.
- 9:00 to 10:00 p. m.—Rendezvous Ballroom Orchestra.

Major Lawrence Mott  
Announcer

## Avalon, California—1000 Kc.

# KFWO

AND 5656 KC.—53.07 METERS  
 THE CATALINA ISLAND STATION  
 (Non-Commercial)

Power 250 Watts—300 Meters  
**MAJOR LAWRENCE MOTT**, Owner-Operator  
**MISS FRANCES HEWITT**, Studio & Program Dir.  
 "The Isle with a Smile"

### DAILY EXCEPT MONDAY—

- 12:30 to 1:45 p. m.—Hotel St. Catherine Orchestra
- 6:30 to 8:00 p. m.—Hotel St. Catherine Orchestra.

### Rebroadcasting of Other Stations on All Evening Programs

#### SUNDAYS

- 5:00 to 6:00 p. m.—Miss Hewitt's Golden Hour.
- 6:00 to 6:30 p. m.—Riviera Theatre Organ.
- 8:15 to 9:15 p. m.—St. Catherine Lobby concert.

#### TUESDAYS

- 5:00 to 6:00 p. m.—Miss Hewitt's Golden Hour.
- 6:00 to 6:30 p. m.—Riviera Theatre Organ.

#### FRIDAYS

- 5:00 to 6:00 p. m.—Miss Hewitt's Golden Hour.
- 6:00 to 6:30 p. m.—Riviera Theatre Organ.



No  
Batteries

# Steinite

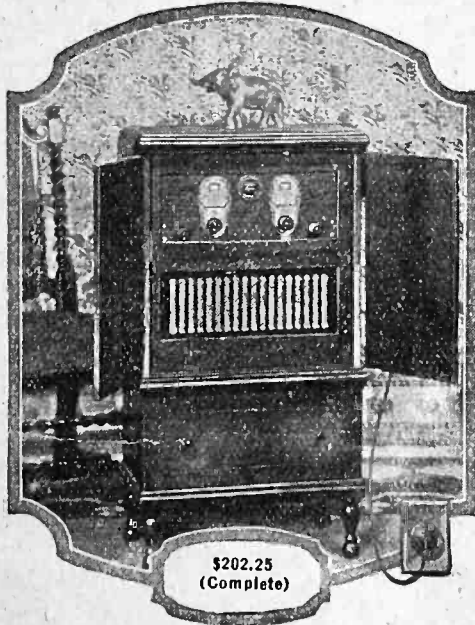
All  
Electric

(Licensed under RCA)

*America's Lowest Priced Most Popular Electric Radio*

Hi-boy console of beautiful solid mahogany, with built-in air column speaker having Nathaniel Baldwin unit. The doors swing back entirely out of the way when receiver is not in use.

Also table model at \$130.75 (with tubes). Compact model with built-in air column speaker with Baldwin unit, priced at \$169.25 (complete).



The steady, un-failing, limitless power supply of your electric light socket enables the STEINITE to bring in distant stations with plenty of volume.

The STEINITE receivers have six tubes, three stages of tuned radio frequency. Illuminated two-dial control. Genuine solid Philippine mahogany cabinets. Duco finish throughout.

All models come to you in one single unit  
**READY TO GO.**

STEINITE CONSOLE

*Exclusive Distributors*

## National Radio & Supply Co.

141 W. Washington St., Los Angeles

Westmore 2748

*Hear the STEINITE at One of These Dealers TODAY:*

### LOS ANGELES

Birkel Music Co.  
446 S. Broadway  
Phone VA. 1241

Potter Radio Sales Co.  
1817 W. 54th St.  
Phone VE. 1210

Frowein's Radio Shop  
5944 S. Main  
Phone AX. 6836

### GARDENA AND TORRANCE

Gardner Music Co.  
1601 Gramercy  
Phone 312-J

### HOLLYWOOD

Shepherd Radio Service  
7562 Sunset Bldg.  
Phone Gr. 7482

H. A. Everest  
1032 N. Ogden Dr.  
Phone GR. 9915  
Nightly Demonstrations

### HUNTINGTON BEACH

Warner Hardware  
112 Main St.  
Phone 3431

### LONG BEACH

Seaside Electric Co.  
1756 Atlantic  
63 S. Magnolia  
Phone 688-238

### POMONA

No Battery Radio Co.  
277 S. Garey Ave.  
Phone 1245

### SANTA ANA

Preston Radio Co.  
211 E. Fourth St.  
Phone 695-J

*"Let the Tone Test Tell You"*



**EDDIE BARNES**  
Announcer

# K M I C

## Inglewood, California

### 1340 Kc.

250 WATTS—224 METERS  
Owned and Operated by James R. Fouch  
O. B. MILLS, Engineer  
Chamber of Commerce Bldg., Inglewood, Calif.  
Phone Direct Wire, THornwall 1121  
Long Distance, Inglewood 1897



**JACK LEWIS**

"THE NEWSPAPERS OF THE AIR"—Bulletins on News, Sports, The Theaters, Stock Market and Automobiles

#### DAILY EXCEPT SUNDAY—

- 7:00 to 8:00 a. m.—Shopping List, with Records.
- 8:00 to 9:00 a. m.—New Idea Man's Breakfast Hour.
- 9:00 to 10:00 a. m.—Peggy Price and Frank Martin, Requests, except Saturdays.
- 11:00 to 12:00 a. m.—"The Hour of the Helper," with Dragon Recital.
- 12:00 to 2:00 p. m.—Orthophonic Concert.
- 5:00 to 6:00 p. m.—Studio organ recital, except Monday.
- 10:00 to 12:00 p. m.—Dance program.

News Bulletins Daily (except Sunday), every hour from 8 a. m. to 7 p. m.

#### WEEK COMMENCING SUNDAY, JANUARY 22, 1928

##### SUNDAY, JANUARY 22

- 11:00 a. m. to 12:15 p. m.—Centinel Baptist Church, by remote control.
- 8:00 to 9:15 p. m.—International Bible Students Association.

##### MONDAY, JANUARY 23

- 9:00 to 9:30 a. m.—Mildred Jean, Ballads.
- 9:30 to 10:00 a. m.—Little Eddie Barnes.
- 10:00 to 11:00 a. m.—Norma Lee, whistler, and Little Eddie, piano.
- 2:00 to 3:00 p. m.—June Mines, soprano; Kathryn Michelson Wood, pianist.
- 3:00 to 4:00 p. m.—Studio program.
- 4:00 to 5:00 p. m.—Graham & Isbell.
- 5:00 to 6:00 p. m.—Country Jane; Old Time Request Hour.
- 6:00 to 7:00 p. m.—Patland, saw artist, and Peggy Cowan, comedian.
- 7:00 to 8:00 p. m.—City of Inglewood program with Louise Moody Concert Trio.

##### TUESDAY, JANUARY 24

- 9:00 to 10:00 a. m.—Norma Lee, whistler; Little Eddie Barnes.
- 10:00 to 11:00 a. m.—Nellie Callender Mills, violinist; Eleanor Ross, pianist; Martha Schlatter, soprano.
- 2:00 to 3:00 p. m.—Bessie Louise Householder, soprano; Anita Wills Segrist, pianist; Lee Fenton, baritone.
- 3:00 to 4:00 p. m.—L. A. Sheriff's program.
- 4:00 p. m.—Studio program.
- 7:00 to 8:00 p. m.—Johnny Dull Melody Makers; Peggy Price, blues.

##### WEDNESDAY, JANUARY 25

- 9:00 to 10:00 a. m.—Little Eddie Barnes.
- 10:00 to 11:00 a. m.—Studio program.

##### SATURDAY, JANUARY 28

- 9:00 a. m.—Studio program.
- 2:00 to 5:00 p. m.—Little Eddie Barnes.
- 5:00 to 6:00 p. m.—Eva Mannix, whistler, and Inez Roach, piano.
- 6:00 to 7:00 p. m.—Joe Eckley's Moonlight Serenaders.
- 7:00 to 10:00 p. m.—The Lorona Family.

#### Originators of

Yale and Harvard Programs  
KMIC Wholesome Food Breakfast Club  
John Wright's Novelty Minstrels  
Chevrolet Motor Dealers Tours  
The Little Ant Man, etc., etc.



THE "NEW IDEA" MAN



**JAMES FOUCH**  
Manager

# KWTC

## Santa Ana, California—1350 Kc.

"The Garden of Eden Stations"  
"Kum West to California"

222.1 METERS—100 WATTS  
WESTERN ELECTRIC INSTALLATION

Owned and Operated by DR. JOHN WESLEY HANCOCK,  
Manager-Announcer

Studio at 1101 North Ross St., Santa Ana, California. Telephone 1896.  
EDITH C. HANCOCK, Program Manager.

**DAILY EXCEPT SUNDAY—**

5:30 to 7:00 p. m.—Dinner Hour Program, except Thursday and Friday.

**WEEK COMMENCING MONDAY, JANUARY 23, 1928**

**TUESDAY, JANUARY 24**

8:00 to 9:00 p. m.—Madame Anita Willy, Swiss Concert singer; Mr. Hans Willy, Zither; Miss Mildred Marchant, artistic whistler and pianist.

9:00 to 10:00 p. m.—Studio Program.

**THURSDAY, JANUARY 26**

5:30 to 6:30 p. m.—Dinner Hour Program; news items; weather reports.

6:30 to 7:00 p. m.—Murphy's Comedians. No. 2 of Orana.

7:00 to 8:00 p. m.—KWTC Classical Trio and assisting artists.

8:00 to 8:30 p. m.—Arthur J. Smith, tenor; Emmalena Richards, violin; Alliem Lair, pianist.

8:30 to 9:00 p. m.—Studio program.

9:00 to 10:00 p. m.—Conservatory of Music.

**FRIDAY, JANUARY 27**

5:30 to 6:30 p. m.—Dinner Hour Program; news items; weather reports.

6:30 to 7:30 p. m.—Orange County Farm Bureau Weekly Feature.

7:30 to 8:30 p. m.—"Rest Home for the Aged" program: Mr. F. R. Cline, manager.

**SATURDAY, JANUARY 28**

7:00 to 7:30 p. m.—Studio Program.

7:30 to 7:50 p. m.—Stamp Queen Hawaiian Trio.

7:50 to 8:30 p. m.—International Bible Students' Association.

8:30 to 9:00 p. m.—Program arranged by Madame Manuela Budrow.

# Western Electric

Speakers—Amplifiers

Childs' Lab., 2310 So. Union



**HARRY A. JAMES**  
Announcer

## KELW Burbank, California—1310 Kc

MAGNOLIA PARK

250 WATTS—228.9 METERS

"The White Spot of the San Fernando Valley"

EARL L. WHITE, Owner. Phone, Burbank 1192

GEORGE W. BUNTON, Gen. Mgr. HARRY A. JAMES, Program Mgr.  
STUART F. WAINWRIGHT, Technical Engineer

**DAILY EXCEPT SUNDAY—**

10:00 to 11:00 a. m.—Audrey Evans and Jack Brooks.

11:00 a. m. to 2:00 p. m.—World News and Panatropé.

6:00 to 7:00 p. m.—California String Quartet.

**WEEK COMMENCING MONDAY, JANUARY 23, 1928**

**MONDAY, JANUARY 23**

5:30 to 6:00 p. m.—Talk on Gardening by Opal M. Scarbrough.

7:00 to 8:00 p. m.—Walter Butterley, whistling baritone; Herbert Henning, pianist; Harold Drummond, Scotch baritone.

8:00 to 9:00 p. m.—Hubbell Brothers Trio.

9:00 to 10:00 p. m.—Instrumental Trio with Jean Chown, contralto soloist.

**TUESDAY, JANUARY 24**

7:00 to 8:00 p. m.—KELW Mixed Quartet.

8:00 to 9:00 p. m.—California String Quartet and soloist.

9:00 to 10:00 p. m.—Highlanders Dance Orchestra; H. W. Brown, Jr., soloist.

**WEDNESDAY, JANUARY 25**

9:00 to 10:00 p. m.—Variety program.

**THURSDAY, JANUARY 26**

7:00 to 8:00 p. m.—Magnolia Park Sales program.

8:00 to 9:00 p. m.—California Mixed Quartet.

9:00 to 10:00 p. m.—Mission Play Trio and soloists.

**FRIDAY, JANUARY 27**

7:00 to 8:00 p. m.—Burbank Tribune prog.

8:00 to 9:00 p. m.—Neapolitan Girls; Otto Ploetz, tenor.

9:00 to 10:00 p. m.—Hollywood Bungalow Orchestra; Harold Meyers, tenor; Isabelle Brinkerhoff, blues singer.

**SATURDAY, JANUARY 28**

7:00 to 8:00 p. m.—Myra Belle Vickers Trio; Albert Bryant, tenor.

8:00 to 9:00 p. m.—Beatrice Cavanah, mezzo contralto; Howard Cavanah, tenor; Mel Hunt, singing "songs that are different."

9:00 to 10:00 p. m.—California String Quartet; Jeanne Dunn, "Song Impressions"; Jack Jenkins, crooning baritone; Eva Jenkins, whistler.

**OFFICIAL MAGNAFORMER SERVICE STATION for HOLLYWOOD**  
H. A. Everest, 1032 North Ogden Dr. GRanite 9915.



Aimee Semple McPherson

## Los Angeles, California—1090 Kc.

# KFSG

500 WATTS—275.1 METERS  
 ANGELUS TEMPLE, ECHO PARK. Fitzroy 5121  
 AIMEE SEMPLE McPHERSON, Founder, President  
 RODERICK H. MORRISON, Manager  
 P. S. LUCAS, Technician in Charge  
 C. N. TUCKER, Announcer  
 "Four Square Gospel"

### DAILY EXCEPT SUNDAY AND MONDAY—

10:30 to 11:30 a. m.—Sunshine Hour.  
 11:30 a. m. to 12:30 p. m.—Noonday Musical.  
 2:30 to 3:30 p. m.—Crey Studio Program, except Wed. and Sat.  
 3:30 to 4:30 p. m.—Vesper Hour, except Wed. and Sat.  
 6:30 to 7:30 p. m.—Angelus Hour.

### WEEK COMMENCING SUNDAY, JANUARY 22, 1928

#### SUNDAY, JANUARY 22

10:30 a. m. to 12:30 p. m.—Sunday Morning  
 Worship, Aimee Semple McPherson.  
 2:30 to 4:40 p. m.—Sunday afternoon, Dis-  
 pensational, Aimee Semple McPherson.  
 6:30 to 9:30 p. m.—Revival Service, Aimee  
 Semple McPherson.  
 10:00 to 11:00 p. m.—Organ Recital, Esther  
 Fricke Greene.

#### TUESDAY, JANUARY 24

7:30 to 9:15 p. m.—Evangelistic Service,  
 Student Evangelists.

#### WEDNESDAY, JANUARY 25

2:30 to 4:30 p. m.—Divine Healing Service,  
 Aimee Semple McPherson.  
 7:30 to 9:30 p. m.—Regular Midweek Prayer  
 Service, Evangelist John Goben.

#### THURSDAY, JANUARY 26

7:30 to 9:15 p. m.—Water Baptismal Serv-  
 ice, Aimee Semple McPherson.  
 9:15 to 10:00 p. m.—Crey Studio Program.  
 10:00 to 11:00 p. m.—Organ Recital, Esther  
 Fricke Greene.

#### FRIDAY, JANUARY 27

7:30 to 9:30 p. m.—Crusader Rally, Aimee  
 Semple McPherson.

#### SATURDAY, JANUARY 28

2:30 to 3:30 p. m.—Children's Church, Rob-  
 erta Semple.  
 3:30 to 4:30 p. m.—Children's Happy Hour.  
 7:30 to 9:30 p. m.—Divine Healing Service,  
 Aimee Semple McPherson.

# NOW ..

# Pemco

*Automatic*

## "A" and "B" Power Unit

—JUST PLUG IT IN—INSTALLED FREE—EASY TERMS IF DESIRED

**\$7.50 Down \$6.00 Month**

*No More Bother—It's Automatic*

Electric  
 Light  
 Operation  
 for  
 Your  
 Radio

**KITS!** We Stock Parts for All Kits Shown in "Radio Doings" Technical Manual,  
 Including "3-TUBE AC REFLEX SET" Described in This Issue.

"Radio Supplies"

Opp. P. E.  
 Depot, 6th  
 and Main

# J. C. RENDLER

625 South Main Street  
 Los Angeles, Calif.

Open Eves.  
 Until 8:45  
 Sat. 10:00



TOM SEXTON

San Diego, California—680 Kc.

**KFSD**

500 WATTS—440.9 METERS  
 Grant Hotel, 326 Broadway, San Diego  
 Telephone Main 8661  
 WM. H. BLACK, President  
 TOM SEXTON, General Manager  
 "A Kiss from San Diego"

DAILY EXCEPT SUNDAY—

10:00 to 11:00 a. m.—Amy Lou Shopping Hour.  
 12:30 to 1:30 p. m.—Carr Bros. Plata Real Orchestra.  
 5:45 to 6:00 p. m.—Late news items, sporting events by San Diego Union and Tribune.  
 6:00 to 7:00 p. m.—Musical Review.

SUNDAY, JANUARY 22

11:15 a. m. to 12:15 p. m.—Services 1st Unitarian Church.  
 2:00 to 3:00 p. m.— Services International Bible Students.  
 3:00 to 4:00 p. m.— Services Theosophical Society.  
 8:15 to 10:00 p. m.—Concert program, featuring Hutton's Hotel Del Coronado Concert quartette and John Claire Monteith.

MONDAY, JANUARY 23

7:00 to 8:00 p. m.—All Star Five Orch.  
 8:00 to 9:00 p. m.—Studio program.  
 9:00 to 10:00 p. m.—San Diego Union and Evening Tribune musical program.

TUESDAY, JANUARY 24

7:00 to 8:00 p. m.—Musical program.  
 8:00 to 9:00 p. m.—Thearle's classical orthophonic.  
 9:00 to 10:00 p. m.—Studio artists' hour.

WEDNESDAY, JANUARY 25

7:00 to 7:30 p. m.—Theodore Warfield, Doris Ridgway.

7:30 to 8:30 p. m.—Concert program, Theosophical Society.  
 8:30 to 9:00 p. m.—Orthophonic pipe organ.  
 9:00 to 10:00 p. m.—Aeolian Quartette.  
 10:00 to 11:00 p. m.—Ratliff Dance Acad.  
**THURSDAY, JANUARY 26**  
 7:00 to 8:00 p. m.—San Diego Police Dept. program.  
 8:00 to 9:00 p. m.—Unitarian Church conct.  
 9:00 to 10:00 p. m.—Ratliff Academy of Dancing.

FRIDAY, JANUARY 27

7:00 to 8:00 p. m.—Fegan's San Diego Orch.  
 8:00 to 8:30 p. m.— Minor Twins, Stubbs Brothers.  
 8:30 to 10:00 p. m.— Hutton's Hotel Del Coronado Concert Quartette.

SATURDAY, JANUARY 28

7:00 to 8:00 p. m.—San Diego H. S. prog.  
 8:00 to 9:00 p. m.—Franco-American houh.  
 9:00 to 10:00 p. m.—Studio program.  
 10:00 to 11:00 p. m.—Ratliff Dance Acad.



E. C. HUCKABEE

**KGEF**

500 WATTS—263 METERS  
 TRINITY METHODIST CHURCH  
 BOB SHULER, Pastor  
 Phone Westmore 8837  
 C. C. HOOPER, Manager  
 M. J. HANKINS, Technician

DAILY EXCEPT SUNDAY—

6:00 to 7:00 p. m.—Uncle Tom Murray's Children's Hour.  
 WEEK COMMENCING SUNDAY, JANUARY 22, 1928

10:45 a. m. to 12:30 p. m.—Morning service with Rev. Bob Shuler preaching.  
 5:00 to :00 p. m.—Vesper Hour.  
 7:00 to 8:00 p. m.—Trinity Choir Musical  
 8:00 to 9:00 p. m.—Prelude Questions  
 9:00 to 10:00 p. m.—The Old Songs Quartet.  
 10:00 to 10:30 p. m.—Bob Shuler

**MONDAY, JANUARY 23**  
 7:00 to 7:30 p. m.—L. A. Braille Assn, with Blind Artists.  
 7:30 to 8:00 p. m.—The Lions Quartet.  
 8:00 to 9:00 p. m.—Bob Shuler's Question Hour.  
 9:00 to 9:30 p. m.—The Hired Man.  
 9:30 to 10:00 p. m.—Douglas McKenzie and Ruth Roland.

TUESDAY, JANUARY 24

7:00 to 7:30 p. m.— Orthophonic Victrola  
 7:30 to 8:00 p. m.—Margaret Hughes, Jay Allard and Ida Mae Goltz.  
 8:00 to 8:30 p. m.—Lewis L. Thomas  
 8:30 to 9:00 p. m.—Howard Martin and Marian C. Wells.  
 9:00 to 10:00 p. m.—Concert Orchestra.

WEDNESDAY, JANUARY 25

7:00 to 7:45 p. m.—Conrey S. S. Class.  
 7:45 to 8:30 p. m.—The Trinity Ensemble.

8:30 to 9:00 p. m.—Juvenile Delinquency.  
 9:00 to 9:30 p. m.—Bob Shuler.  
 9:30 to 10:00 p. m.—Bernice Morrison Brubaker, concert pianist.

THURSDAY, JANUARY 26

7:00 to 7:30 p. m.— Orthophonic Victrola  
 7:30 to 8:00 p. m.—Judge King.  
 8:00 to 9:00 p. m.—Concert Company.  
 9:00 to 9:30 p. m.— Gertrude Alter and Louis Carret.  
 9:30 to 10:00 p. m.—South Park Bereans.

FRIDAY, JANUARY 27

7:00 to 7:30 p. m.—Radio S. S. Lesson.  
 7:30 to 8:00 p. m.—Maude Reeves Barnard Vocal Studios.  
 8:00 to 9:00 p. m.—Bob Shuler's Civic Talk  
 9:00 to 9:30 p. m.— Southern California Holiness Association.  
 9:30 to 10:00 p. m.—Lucile McArthur, lone Conrey and Nernice Morrison Brubaker

TRADE IN YOUR OLD RADIO

On a Radiola, Kolster, Magnavox

STURGIS MUSIC CO.  
 4713 South Broadway  
 Phone AXridge 7106



"HAL" G. NICHOLS  
Manager

# K F - O N

Long Beach, California  
1240 Kc.

500 WATTS—242 METERS  
PIGGLY WIGGLY STATION

Owned and Operated by  
NICHOLS & WARINNER

Studio: 211 Jergins Trust Bldg. 617-19,614-60

Office: 212 Jergins Trust Bldg. 617-19, 614-60

"Where Your Ship Comes In"



CLARENCE CRARY  
Announcer

## DAILY EXCEPT SATURDAY AND SUNDAY—

9:30 to 10:00 a. m.—Organ Recital, Second Church of Christ, Scientist.

10:15 to 10:30 a. m.—Devotional period.

10:30 to 11:30 a. m.—Physiology of Beauty, Georgia O. George.

## DAILY EXCEPT SUNDAY—

11:30 a. m. to 12:00 noon—Press-Telegram Early News, by Frank Goss.

12:00 noon—Lost and Found Announcements.

4:00 to 4:30 p. m.—Press-Telegram Late News, by Frank Goss.

4:30 to 7:00 p. m.—Piggly Wiggly Concert Orchestra and Entertainers.

## DAILY EXCEPT MONDAY—

2:30 to 4:00 p. m.—Long Beach Municipal Band Concert.

8:00 to 9:00 p. m.—Press-Telegram, presenting Long Beach Municipal Band.

## SUNDAY, JANUARY 22

9:30 to 11:00 a. m.—Capitol Theater organ.

11:00 a. m. to 12:30 p. m.—Second Church of Christ, Scientist.

12:30 to 1:30 p. m.—Birkel Music Co.

1:30 to 2:30 p. m.—Pacific Coast Club Organ, Herbert Nixon.

4:00 to 4:30 p. m.—Studio program.

4:30 to 6:00 p. m.—Concert Orchestra.

6:00 to 7:00 p. m.—Pacific Coast Club Orchestra.

7:00 to 7:45 p. m.—Barkey's Mandolin Orchestra and "The Eskimo Twins."

7:45 to 9:00 p. m.—Services First Church of Christ, Scientist.

9:00 p. m. to 1:00 a. m.—"Piggly Wiggly All-Star Night."

## MONDAY, JANUARY 23

10:00 to 10:15 a. m.—"Shopping News."

12:00 to 12:30 p. m.—Moore's Apparel Shop.

12:30 to 1:00 p. m.—Eastman Furniture Co.

1:00 to 1:30 p. m.—Harris Fur Co.

1:30 to 2:00 p. m.—Capitol Theatre Organ.

2:00 to 2:30 p. m.—Musical Program.

2:30 to 3:00 p. m.—Capitol Theatre Organ.

3:00 to 4:00 p. m.—Women's Music Study.

7:00 to 8:00 p. m.—Suydam's Buttercream Schoolhouse.

8:00 to 9:30 p. m.—Truck Tire Service Co.

9:00 to 12:00 M.—Klwanis Frolic.

## TUESDAY, JANUARY 24

10:00 to 10:15 a. m.—Piano Recital.

12:00 to 12:30 p. m.—Hawaiian Program.

12:30 to 1:00 p. m.—Georgia O. George.

1:00 to 1:30 p. m.—Klwanis Club Luncheon.

1:30 to 2:00 p. m.—Harrison's Shoe Store.

2:00 to 2:30 p. m.—Capitol Theatre Organ.

6:45 to 7:00 p. m.—Talk on Health.

7:00 to 8:00 p. m.—Bear Cafe Jazz Band.

9:00 to 10:00 p. m.—"Ye Olde Song Album."

10:00 to 11:00 p. m.—Majestic Ballroom.

1:00 to 12:00 M.—Pacific Coast Club organ.

## WEDNESDAY, JANUARY 25

10:00 to 10:15 a. m.—"Shopping News."

12:00 to 12:30 p. m.—Moore's Apparel Shop.

12:30 to 1:00 p. m.—Eastman Furniture Co.

1:00 to 1:30 p. m.—Rotary Club Luncheon.

1:30 to 2:00 p. m.—Harris Fur Co.

2:00 to 2:30 p. m.—Musical Program.

7:00 to 7:30 p. m.—Church of Christ; Rev. Ernest Beam.

7:30 to 8:00 p. m.—Georgia O. George—Texas Cowboys.

9:00 to 10:00 p. m.—"Piggly Wiggly Snap-py Hour."

10:00 to 11:00 p. m.—Bible Institute of L. A.

11:00 to 12:00 p. m.—Pacific Coast Club.

## THURSDAY, JANUARY 26

10:00 to 10:15 a. m.—Piano Recital.

12:00 to 12:30 p. m.—Hawaiian Program, Central Garage.

12:30 to 1:00 p. m.—Georgia O. George.

1:00 to 1:30 p. m.—Studio Program.

1:30 to 2:00 p. m.—Harrison's Shoe Store.

2:00 to 2:30 p. m.—Health and Efficiency.

7:00 to 8:00 p. m.—Pacific Coast Club Orchestra.

9:00 to 10:00 p. m.—Masterpiece program.

10:00 to 11:00 p. m.—Majestic Ballroom Orchestra.

11:00 to 12:00 M.—Pacific Coast Club Organ.

## FRIDAY, JANUARY 27

10:00 to 10:15 a. m.—"Shopping News."

12:00 to 12:30 p. m.—Moore's Apparel Shop.

12:30 to 1:00 p. m.—Eastman Furniture Co.

10:00 to 1:30 p. m.—Masonic Club luncheon.

1:30 to 2:00 p. m.—Rich's Quality Bakery.

2:00 to 2:30 p. m.—Musical Program.

7:00 to 8:00 p. m.—Sunshine Farms Club.

9:00 to 10:00 p. m.—"Ye Olde Song Album."

10:00 to 11:00 p. m.—Capitol Theatre Organ.

11:00 to 12:00 M.—Pacific Coast Club Orch.

## SATURDAY, JANUARY 28

9:30 to 10:00 a. m.—Musical Program.

10:00 to 10:30 a. m.—Cloverleaf Chocolate Shop.

10:30 to 11:30 a. m.—Capitol Theatre Organ.

12:00 to 12:30 p. m.—Hawaiian Program.

12:30 to 1:00 p. m.—Georgia O. George.

1:00 to 1:30 p. m.—Harrison's Shoe Store.

1:30 to 2:30 p. m.—Imperial Trio.

7:00 to 8:00 p. m.—Piggly Wiggly Hawaiian Trio.

9:00 to 10:00 p. m.—Pacific Coast Club.

10:00 to 11:00 p. m.—Masterpiece program.

11:00 to 12:00 M.—Majestic Ballroom Orch.

**Golden Bear** AIR COLUMN SPEAKER

Made in 12 Sizes — Phone Westmore 2712

Radio  
for the  
New Year

Supreme  
Model  
\$ 69.75

complete  
6 Tubes



## PATTERSON RADIO

ALL ELECTRIC

**S**INGLE Dial Selector (*electrically lighted*) for ease of tuning and selectivity. Modulator Control brings in the stations with powerful volume or faint whisper at will. Built-in Golden Bear Air Column Speaker gives that clear, rich mellow tone which is truly a revelation. Built of the best standard parts. Raytheon equipped. Special A. C. Filament Tubes.



"Dinner Hour Music"

No Batteries or Chargers

FACTORY TO YOU

Patterson Radio Mfg. Co.

Factory  
Guarantee

Vandike 8139  
239 South Los Angeles St.



CURTIS PECK  
Announcer

## San Francisco, California—710 Kc.

# KPO

1000 WATTS—422 METERS  
HALE BROTHERS AND THE CHRONICLE  
J. W. LAUGHLIN, Managing Director  
MRS. FREDERICK CROWE, Program Director  
ALBERT J. HODGES, Technical Director  
Phone Kearney 5777  
"The Voice of San Francisco"

### DAILY EXCEPT SUNDAY—

- 6:45 to 9:00 a. m.—Health and Happiness Period.  
8:00 to 9:00 a. m.—Sperry Flour Happy Hour.  
10:30 to 10:45 a. m.—"Ye Towne Crier."  
11:30 to 1:00 p. m.—Kane's Hawaiians, except Friday.  
12:00 noon—Time Signals.  
1:15 p. m.—Stock and Fruit Reports, except Friday.  
1:00 to 2:00 p. m.—KPO Orchestra, except Friday.  
4:00 to 5:00 p. m.—KPO Orchestra,  
5:00 to 6:00 p. m.—Children's Hour.  
6:00 to 6:30 p. m.—"Ye Towne Crier."  
6:30 to 7:30 p. m.—Musical Program.  
7:30 to 8:00 p. m.—DX period, except Monday.

### WEEK COMMENCING SUNDAY, JANUARY 22, 1928

- SUNDAY, JANUARY 22**  
9:45 to 10:45 a. m.—Undenominational and non-sectarian church services.  
1:00 to 2:00 p. m.—N. B. C. Program.  
3:00 to 4:00 p. m.—N. B. C. Program.  
4:00 to 5:30 p. m.—Mixed quartet, under the direction of Uda Waldrop.  
5:30 to 6:30 p. m.—Moscow Art Orchestra  
6:30 to 7:30 p. m.—Standard Symphony Hour over the P. C. N.  
7:30 to 8:30 p. m.—Organ Recital  
8:30 to 10:00 p. m.—Rudy Seiger's Fairmont Hotel Concert Orchestra.  
**MONDAY, JANUARY 23**  
7:00 to 7:10 p. m.—Book Review by Harold Small of The Chronicle.  
8:00 to 9:00 p. m.—Program by N. B. C.,  
9:00 to 10:00 p. m.—Program of International Music.  
10:00 to 12:00 p. m.—KPO's Variety Program.  
**TUESDAY, JANUARY 24**  
10:00 to 10:30 a. m.—Activity conducted by Ann Warner, domestic economist.  
8:00 to 8:30 p. m.—N. B. C. Program.  
8:30 to 9:00 p. m.—Bridge Lesson No. 13 over P. C. N.  
9:00 to 10:00 p. m.—Program, featuring Gypsy and Marta, Neapolitan Quartet and Robert Nurok with KPO Dance Orchestra.  
10:00 to 12:00 p. m.—KPO Dance Orchestra.  
**WEDNESDAY, JANUARY 25**  
10:45 a. m.—Betty Crocker's Gold Medal Flour Home Service talk.  
8:00 to 9:00 p. m.—Program by the Atwater Kent Artists.  
9:00 to 10:00 p. m.—Abas String Quartet.  
10:00 to 12:00 p. m.—KPO Dance Orchestra.  
**THURSDAY, JANUARY 26**  
10:00 to 10:30 a. m.—Activity conducted by Ann Warner, domestic economist.  
7:00 to 7:15 p. m.—Poultry talk.  
7:15 to 7:30 p. m.—Sports-on-the-Air by Harry Smith of The Chronicle.  
8:00 to 9:00 p. m.—Program for California Petroleum Corp. over the P. C. N.  
9:00 to 10:00 p. m.—N. B. C. Program  
10:00 to 12:00 p. m.—KPO Dance Orchestra.  
**FRIDAY, JANUARY 27**  
10:45 a. m.—Betty Crocker's Gold Medal Flour Home Service talk.  
11:00 a. m.—Ninon, fashion critic  
11:15 to 11:30 a. m.—Art talk by Helen Gordon Barker.  
11:30 a. m. to 12:45 p. m.—Program by Kane's Hawaiians.  
12:45 p. m.—Commonwealth Club luncheon at Palace Hotel.  
1:30 to 2:00 p. m.—KPO Concert Orchestra.  
8:00 to 9:00 p. m.—N. B. C. Program  
9:00 to 10:00 p. m.—N. B. C. Program.  
10:00 to 12:00 p. m.—KPO Dance Orchestra.  
**SATURDAY, JANUARY 28**  
10:00 to 10:30 p. m.—Activity conducted by Ann Warner, domestic economist.  
8:00 to 12:00 p. m.—N. B. C. Programs

## CALL WESTMORE 9065 FOR YOUR PHILCO

TO JOBBERS AND MANUFACTURERS

Spaulding Fibre, Spaulding Bakelite, Hope Talking Tape, Irvington Spaghetti and Wire

Factory Stocks and Cutting Equipment—Ample Stocks in Los Angeles

Panels, Washers, Discs, Special Shapes

### CLAPP & LaMOREE

1325 San Julian Street  
LOS ANGELES

Westmore 8869  
SAN FRANCISCO

Los Angeles

PORTLAND





The Eveready Layerbilt Battery No. 486

Radio is better  
with *Battery Power*



The Eveready Heavy Duty "B"  
Battery No. 770

## In the Eveready Layerbilt *we have put the holes to work*

THE ordinary dry cell "B" battery is full of useless holes—waste spaces between the cylindrical cells. The wasted space may amount to more than 30 per cent of the total.

A number of years ago we set about correcting this state of affairs. Dry battery traditions were dropped. An entirely new kind of dry cell was developed. It was flat and square, like a book, instead of cylindrical. Such cells were pressed together into a solid battery block with no waste spaces. The new invention was patented, thus making it exclusively Eveready. The Eveready Layerbilt embodies the first radical improvements ever made in the dry cell.

But before this remarkable battery was ever sold, it was tested for several years in the laboratory. Then it was put on trial in home service in all parts of the country. Several remarkable things were discovered in this way. The most remarkable is this: In the Eveready Layerbilt from a given quantity of materials you get more current than

you would if the same amount of chemicals were put in a cylindrical cell battery. The Eveready Layerbilt construction makes the active materials produce more electricity.

That is why the Eveready Layerbilt "B" Battery No. 486 is the longest lasting of all Evereadys. It is a heavy-duty battery for use on all loud-speaker receivers. Hundreds of thousands of people have found it to be the most economical battery they ever used. For convenience, as well as economy, use the longer-lasting Eveready Layerbilt.

NATIONAL CARBON COMPANY, INC.

New York



San Francisco

Unit of Union Carbide and Carbon Corporation

# EVEREADY

## Radio Batteries

*—they last longer*

*The air is full of things you shouldn't miss*



HOWARD MILHOLLAND  
Announcer

## Oakland, California—780 Kc.

# KGO

5000 WATTS—384 METERS  
PACIFIC COAST STATION, GENERAL ELECTRIC CO.  
Phone Fruitvale 5980

### DAILY EXCEPT SUNDAY—

- 11:30 a. m. to 1:00 p. m.—Luncheon concert.  
12:30 and 7:00 p. m.—Stock and weather reports. Baseball scores, except Monday and Wednesday.  
6:00 to 6:55 p. m.—Dinner hour concert (except Wednesday).  
9:00 p. m.—Time Signals

### WEEK COMMENCING SUNDAY, JANUARY 22, 1928

#### SUNDAY, JANUARY 22

- 11:00 a. m.—First Methodist Episcopal Church service, Oakland.  
1:00 to 2:00 p. m.—Wickwire Spencer Steel Company program.  
3:00 to 4:00 p. m.—N. B. C. program.  
4:30 to 5:00 p. m.—"Great Moments of History," N. B. C.  
5:30 to 6:30 p. m.—Crosley Moscow Art Orchestra.  
6:30 to 7:30 p. m.—Standard Symphony Hr.  
7:30 p. m.—Weather report.  
7:35 to 9:00 p. m.—First Methodist Episcopal Church service.

#### MONDAY, JANUARY 23

- 3:30 to 4:00 p. m.—California Federation of Women's Clubs.  
4:00 to 5:00 p. m.—Frank Ellis and his Hotel St. Francis dance orch.; Walter Murray, "Home Decoration."

- 5:30 to 6:00 p. m.—Aunt Betty (Ruth Thompson) stories; KGO Kiddies' Klub.  
6:45 p. m.—"What's Happening in the World."  
8:00 to 9:00 p. m.—Sheyy Co. Program.  
9:00 to 10:00 p. m.—"The Pilgrims."  
10:00 to 11:00 p. m.—"Spotlight Hour," N. B. C.

#### TUESDAY, JANUARY 24

- 8:00 to 8:30 p. m.—Eveready Hour.  
8:30 to 9:00 p. m.—U. S. Bridge Lessons.  
9:00 to 9:30 p. m.—"Retold Tales," N. B. C.  
9:30 to 10:00 p. m.—"The Rounders," N. B. C.

#### WEDNESDAY, JANUARY 25

- 11:15 to 11:30 a. m.—French Bayley: "The Home."  
6:30 to 7:00 p. m.—Sunkist Dinner Concert.  
7:00 to 7:30 p. m.—Farm program.  
8:00 to 9:00 p. m.—Vaudeville.  
9:00 to 10:00 p. m.—"The Vagabonds," N. B. C.  
10:00 to 11:00 p. m.—Frank Ellis and his Hotel St. Francis Dance Orchestra.

#### THURSDAY, JANUARY 26

- 5:00 to 6:00 p. m.—George W. Ludlow, "Friend to Boys."  
8:00 to 9:00 p. m.—Calpet Hour.  
9:00 to 9:30 p. m.—Dodge Brothers program.  
9:30 to 10:00 p. m.—"Moon Magic," N. B. C.  
10:00 to 11:00 p. m.—Frank Ellis and his Hotel St. Francis Dance Orchestra, San Francisco.

#### FRIDAY, JANUARY 27

- 11:00 to 11:30 a. m.—Louise Landis, "As a Woman Thinketh."  
5:30 p. m.—Da-Ra-O, wise man from the Land-O-Heath.  
6:45 to 6:55 p. m.—"Weekly Financial Review," Fred Brandt.  
6:55 p. m.—News.  
7:05 p. m.—Weather.  
7:08 p. m.—San Francisco produce, grain, cotton.  
7:16 p. m.—San Francisco stocks, closing.  
7:23 p. m.—New York stocks, closing.  
8:0 to 9:00 p. m.—Wrigley Hour.  
9:00 to 10:00 p. m.—"An Hour in Memory Lane," N. B. C.  
10:00 to 11:00 p. m.—Girvin-Beale's Hotel Oakland Dance Orchestra.

#### SATURDAY, JANUARY 28

- 7:00 to 7:15 p. m.—"A Chat About New Books."  
7:15 to 7:30 p. m.—Weekly sport review, Al Santoro.  
8:00 to 9:00 p. m.—"RCA Hour."  
9:00 to 10:00 p. m.—"Philco Hour."  
10:00 to 11:00 p. m.—N. B. C. program.  
11:00 to 12:00 p. m.—Frank Ellis and his Hotel St. Francis Dance Orchestra.

# BRACH



## Controlit

Converts any Radio into a Power Set and places complete automatic control of "A" Battery, "B" Eliminator and Trickle Charger in one switch—the set switch itself.

Easy to install and NO extra wires.

All Good Dealers have them \$4.50  
West of Rockies \$4.75

L.S. BRACH MFG. CORP.  
NEWARK, N. J. TORONTO, CAN.

## The Marvelous New Model

# Philco AB Socket Power

Now Only

**\$39.50**

Reduced  
From \$59.50

## Electrifies Any Radio Set

Think of it! Only \$39.50 for the latest model Philco AB Socket Power! Reduced from \$59.50, making an actual saving of \$20. All other models reduced proportionately in price.

Furthermore, any Philco Dealer will connect the Philco to your radio set at no extra cost to you, and you get the Philco at this amazingly low price.

Electrify your set! It makes no difference what kind of a battery set you own or what kind you buy, Philco will run it directly from your light socket.

Now you can do away with the ordinary "A" storage battery and all dry-cell "A" and "B" batteries, and make your set an up-to-date electrified radio.

## Installation on Any Radio Set Free!

There is an authorized Philco Dealer right in your own neighborhood. He is ready NOW to deliver your Philco at this amazingly low price.

He will be glad to extend you Easy Payment Terms, and make the installation FREE.

Radio Dealers and Music Stores Everywhere  
Sell Philco Socket Powers

**PHILCO VARIETY HOUR** *Over Entire N.B.C. NETWORK*  
9 TO 10 P.M. Each Saturday



"MAC"

## San Francisco, California—660 Kc.

# KFRC

Owned and Operated by Don Lee  
California Distributor for Cadillac and LaSalle  
1000 WATTS—454.3 METERS  
HARRISON HOLLIWAY, Manager  
FRANK MOSS, Musical Director  
"Keep Forever Radiating Cheer"

### DAILY EXCEPT SUNDAY—

- 7:00 to 8:00 a. m.—Seal Rock program by Simpy Fitts.
- 8:00 to 9:00 a. m.—Musical program.
- 9:00 to 9:30 a. m.—Georgia O. George, except Saturday.
- 10:00 to 11:00 a. m.—Shopping Service.
- 11:30 to 12:00 noon—Amateur Tryouts, except Saturday.
- 12:00 to 1:00 p. m.—Sherman Clay Concert.
- 4:30 to 5:15 p. m.—Organ Recital by Theo. Strong, except Mon.
- 5:15 to 5:30 p. m.—San Francisco Call News Items, except Mon.
- 5:30 to 6:20 p. m.—Mac and his Gang, except Mon., Tues., Thurs.
- 6:20 to 6:30 p. m.—Stage, Screen, Police and Lost and Found.
- 6:30 to 7:00 p. m.—The Cecilians, except Monday and Thursday.
- 11:00 to 12:00 p. m.—KFRC Dance Orchestra, except Thursday.

### WEEK COMMENCING SUNDAY, JANUARY 22, 1928

#### SUNDAY, JANUARY 22

- 10:00 to 12:00 Noon—Home Sweet Home Concert.
- 12:00 to 1:00 p. m.—Services and Sermon from the Paulist Father's Old St. Mary's Church; Rev. Edward T. Mallon, pastor.
- 1:00 to 3:00 p. m.—Sussman & Wormser recital.
- 3:00 to 4:00 p. m.—KFRC Dance Orchestra.
- 4:00 to 5:00 p. m.—Studio Program.
- 5:00 to 6:00 p. m.—Organ recital.
- 6:00 to 6:30 p. m.—Inspirational talk.
- 6:30 7:30 p. m.—Hotel Mark Hopkins' Concert Orchestra.
- 7:30 to 8:30 p. m.—Cadillac-La Salle Concert Orchestra.
- 8:30 to 11:00 p. m.—Balconades Ballroom Orchestra.
- 11:00 to 12:00 p. m.—KFRC Dance Orch.

#### MONDAY, JANUARY 23

- 9:30 to 9:40 a. m.—Weinstock-Lubin & Co. Shopping Service.
- 11:00 to 11:30 a. m.—Household Hints, by Mary Lewis Haines of The Call.
- 5:00 to 5:15 p. m.—San Francisco "Call" News Items and Lost and Found.
- 5:15 to 5:45 p. m.—Mac and his Gang.
- 5:45 to 6:20 p. m.—Joe Mendel and his Pep Band from the Lido Cafe.
- 6:30 to 7:00 p. m.—Sports talk by "Bobs."
- 7:00 to 7:30 p. m.—The Hawaiians.
- 8:00 to 10:00 p. m.—Blue Monday Jamboree.

#### TUESDAY, JANUARY 24

- 11:00 to 11:30 a. m.—Studio program.
- 5:30 to 6:10 p. m.—Mac and his Gang.
- 6:10 to 6:25 p. m.—Fifteen Minutes with Stamp Collectors.
- 7:00 to 7:30 p. m.—The Cecilians.
- 8:00 to 9:00 p. m.—Haas Candy Stores Program.
- 9:00 to 10:00 p. m.—Studio Program.
- 10:00 to 11:00 p. m.—Hotel Mark Hopkins' Dance Orchestra.

#### WEDNESDAY, JANUARY 25

- 9:30 to 9:40 a. m.—Weinstock-Lubin & Co. Shopping Service.
- 11:00 to 11:30 a. m.—Household Hints by Mary Lewis Haines of The Call.

- 4:00 to 4:30 p. m.—California State Library Talk.
- 7:00 to 7:30 p. m.—The Cecilians.
- 8:00 to 9:00 p. m.—The Maxwell House Coffee Orchestra and soloists.
- 9:00 to 10:00 p. m.—Goodrich Silvertown Melody Hour.
- 10:00 to 11:00 p. m.—Pacific Goodrich Silvertown Cord Orchestra.

#### THURSDAY, JANUARY 26

- 9:30 to 10:00 a. m.—30 Minutes with Chas. Hamp.
- 11:00 to 11:30 a. m.—Studio Program.
- 5:30 to 6:10 p. m.—Mac and his Gang.
- 6:10 to 6:20 p. m.—Beauty talk by Madame Marie.
- 6:30 to 7:00 p. m.—Sports talk by "Bobs."
- 7:00 to 7:30 p. m.—Hawaiians, with Benny Lipston, tenor, and Leo Maloney, pianist.
- 8:00 to 9:00 p. m.—MonaMotor Merrymakers and soloists.
- 9:00 to 9:45 p. m.—KFRC Movie Club.
- 9:45 to 10:00 p. m.—Flying Lessons.
- 10:00 to 11:00 p. m.—KFRC Dance Orch.
- 11:00 to 12:00 p. m.—Balconades Ballroom Orchestra, Walter Krausgrill directing.

#### FRIDAY, JANUARY 27

- 9:30 to 9:40 a. m.—Weinstock-Lubin & Co. Shopping Service.
- 11:00 to 11:30 a. m.—Hints to Homemakers by Aunt Martha.
- 4:00 to 4:30 p. m.—Student's Hour by the "Observer."
- 7:00 to 7:30 p. m.—Charles Hamp.
- 8:00 to 9:00 p. m.—Sky-way Journeys.
- 9:00 to 10:00 p. m.—Weinstock-Lubin Concert Orchestra.
- 10:00 to 11:00 p. m.—Mark Hopkins' Dance Orchestra.

#### SATURDAY, JANUARY 28

- 11:00 to 11:45 a. m.—Amateur Auditions.
- 11:45 to a. m. to 12:00 Noon—Announcements of Sunday Church Sermons.
- 7:00 to 7:30 p. m.—The Cecilians.
- 8:00 to 9:00 p. m.—Studio Program.
- 9:00 to 10:00 p. m.—Walter Krausgrill's Dance Orch. of the Balconades Ballroom.
- 10:00 to 11:00 p. m.—KFRC Dance Orch.

**Golden Bear** AIR COLUMN **SPEAKER**

Made in 12 Sizes — Phone Westmore 2712

# IS YOUR RADIO ON THIS LIST?

## If so, you will be interested in the Sargent-Rayment Station Isolator

—  
**Radiola 16**  
—

—  
**Radiola 17**  
—

—  
**Apex**  
—

—  
**Atwater  
Kent No. 30**  
—

—  
**Atwater  
Kent No. 32**  
—

—  
**Atwater  
Kent No. 35**  
—

—  
**Crosley  
Band Box**  
—

—  
**Freshman  
Equaphase**  
—

—  
**Stromberg  
Carlson  
No. 734**  
—

—  
**Atwater  
Kent No. 20**  
—

—  
**Atwater  
Kent No. 33**  
—

—  
**Kolster**  
—

—  
**Kellogg**  
—

—  
**Grebe**  
—

—  
**Fada**  
—

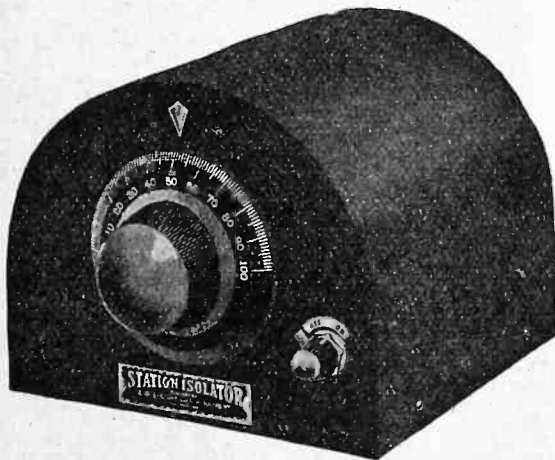
—  
**Magnavox**  
—

—  
**Freed  
Eismann**  
—

—  
**Gilfillan**  
—

—  
**Bosch**  
—

—  
**Splittorf**  
—



Sold on 5-Day, Money-back Trial

The Sargent-Rayment Station Isolator adds both power and selectivity to your radio. Used in a congested broadcasting district it will enable you to CUT RIGHT THROUGH THE LOCALS and get distant stations. It will at least double the selectivity of the receiver on locals. It will also give more volume on distance, more clarity of tone, and will make an all-around improvement in your set worth many times the price of the Isolator.

There are many sets besides the ones listed here on which it is successful. If your set is not listed, write us for information.

For the Above  
Sets Use Model A  
Station Isolator.

Price, \$10.00

May Be Seen on Display at  
San Francisco  
HALE BROS.  
WARNER BROS.  
Oakland  
JACKSON'S  
Los Angeles  
ELECTRIC LIGHTING  
SUPPLY CO.

For the Above  
Sets Use Model T  
Station Isolator.

Price, \$17.50

(Requires one CX-301A  
tube. \$1.50 extra.)

Order from Your Dealer or Use This Coupon

### ORDER BLANK

Radio Constructors Corporation,  
357 Twelfth St., Oakland, Calif.

Here is \$..... Ship me at once a "Station Isolator"  
for use on a.....receiver.  
(Model and Make)

Name.....  
Street and No.....  
City and State.....



STEPHEN I. GAYLORD  
Announcer

## Portland, Oregon—610 Kc.

# KGW

1000 WATTS—491.5 METERS  
THE MORNING OREGONIAN  
"Keep Growing Wiser"

### DAILY EXCEPT SUNDAY—

10:00 to 11:30 a. m.—Town Crier, weather reports, news items.  
6:00 to 7:00 p. m.—Dinner Concert, except Wed. and Thurs.

### WEEK COMMENCING SUNDAY, JANUARY 22, 1928

#### SUNDAY, JANUARY 22

- 8:30 to 9:15 a. m.—"Aunt Blossom" reading the Sunday comic strips; songs by Winnie Winkle.  
11:00 to 12:00 Noon—Morning services by wire telephony from the St. Stephen's Pro-Cathedral.  
3:00 to 5:00 p. m.—P. C. N. Program.  
5:00 to 5:30 p. m.—Concert, courtesy of Levin Furnace Co.  
5:30 to 6:30 p. m.—N. B. C., Crosley Moscow Art Orchestra.  
6:30 to 7:30 p. m.—Standard Oil program over P. C. N.  
7:30 to 8:00 p. m.—The Two Steinway Artists, presented by Sherman Clay Co.  
8:00 to 9:00 p. m.—Wm. A. Grout Chevrolet Concert.  
9:00 p. m.—Longine Time Signals from N. B. C.  
9:00 to 10:00 p. m.—Concert.  
10:00 to 11:00 p. m.—Concert of the Portland Electric Power Co. Little Symphony Orchestra, followed by weather report and special news items.

#### MONDAY, JANUARY 23

- 7:15 to 7:30 a. m.—Y. M. C. A. Health Exercises.  
7:00 to 7:30 p. m.—Edwards Dependable Coffee Demitasse program.  
7:30 to 7:45 p. m.—"Better Flowers" talk.  
7:45 to 8:00 p. m.—"Travel Talk."  
8:00 to 9:00 p. m.—P. C. N. Program.  
9:00 p. m.—Longine Watch Time Signals, N. B. C.  
9:00 to 10:00 p. m.—Concert by the Maxwell House Coffee Orchestra and soloists.  
10:00 to 11:00 p. m.—"Spotlight Hour" over P. C. N.

#### TUESDAY, JANUARY 24

- 7:00 to 7:30 p. m.—"Sealy Sam Program,"  
7:30 to 7:45 p. m.—Thrift Talk.  
7:45 to 8:00 p. m.—Book Chat.  
8:00 to 8:30 p. m.—"Eveready Hour." N. B. C.  
8:30 to 9:00 p. m.—Bridge Games, courtesy of U. S. Playing Card Co., over P. C. N.

- 9:00 p. m.—Longine Watch Time Signal.  
9:00 to 9:30 p. m.—N. B. C. Retold Tales.  
9:30 to 11:00 p. m.—The Venetian Hour.  
WEDNESDAY, JANUARY 25  
7:15 to 7:30 a. m.—Y. M. C. A. Health Exercises.  
6:00 to 6:30 p. m.—Concert Trio.  
6:30 to 7:00 p. m.—California Fruit Growers Exchange Program, N. B. C.  
7:30 to 7:45 p. m.—Utility Service.  
7:45 to 8:00 p. m.—Catholic Truth Society Lecture.  
8:00 to 9:00 p. m.—White King Orchestra.  
9:00 to 10:00 p. m.—P. C. N., "The Vagabonds."

#### THURSDAY, JANUARY 26

- 6:00 to 6:30 p. m.—Concert.  
6:30 to 7:00 p. m.—"Golden West Girl."  
7:30 to 7:40 p. m.—Educational talk.  
7:40 to 8:00 p. m.—Tommy Luke's Flower Girls.  
8:00 to 9:00 p. m.—Concert, presented by The Oregonian.  
9:00 to 9:30 p. m.—Dodge Bros.' program over P. C. N. program.  
9:30 to 10:00 p. m.—N. B. C. Concert.

#### FRIDAY, JANUARY 27

- 7:15 to 7:30 p. m.—Y. M. C. A. Health Exercises.  
7:00 to 8:00 p. m.—Concert Orchestra and soloist, presented by the Equitable Savings & Loan Association.  
8:00 to 9:00 p. m.—P. C. N., Wrigley Spear-men.  
9:00 to 10:00 p. m.—"Memory Lane" Program over P. C. N.  
10:00 to 10:30 p. m.—Motor Coach Entertainers, presented by Yamhill Stage Depot.  
10:30 to 12:00 p. m.—Frolie of the Keep Growing Wiser order of Hoot Owls.

#### SATURDAY, JANUARY 28

- 7:00 to 8:00 p. m.—Concert from KOMO Seattle.  
8:00 to 9:00 p. m.—N. B. C., R. C. A. program from San Francisco.  
9:00 to 10:00 p. m.—"Philco Hour"  
10:00 to 12:00 p. m.—N. B. C. Dance Orchestra program.

## CALL WESTMORE 9065 FOR YOUR PHILCO

### ATTENTION, OWNERS OF SILVER-MARSHALL 8-TUBE KIT SET!

Do you know that one stage of radio frequency placed ahead of your S-M Super will enable you to play Chicago and Eastern stations right through local interference? I honestly believe that this set will equal or out-perform any set on the market today. To be convinced, drop in any evening and tune 'em in for yourself!

Expert Service Also on Madison-Moore, Remler and Silver-Cockaday

JACK CHENEY (Radio Laboratory Service)

1759 W. 39th St., Los Angeles

OPEN EVENINGS

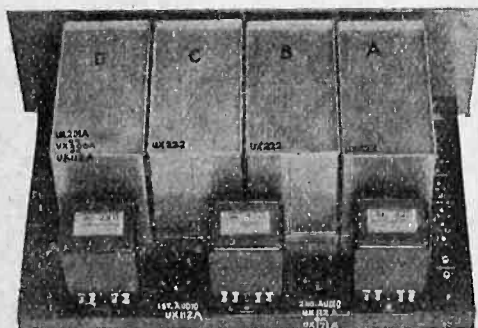
UNiversity 6088

**RADIO MANUFACTURERS  
SUPPLY CO.**

**1000 SOUTH BROADWAY COR 10<sup>TH</sup> ST.  
OPEN EVENINGS UNTIL 9PM. SATURDAY UNTIL 10PM.**

**SM**

**Even Better Than  
A Super-Het**



**The Shielded Grid  
Shielded Six**

**ON DEMONSTRATION  
IN OPERATION**

**RADIO MANUFACTURERS  
SUPPLY CO.**

**1000 SOUTH BROADWAY COR 10<sup>TH</sup> ST.  
OPEN EVENINGS UNTIL 9PM. SATURDAY UNTIL 10PM.**



ARTHUR W. LINDSAY  
Announcer

## Seattle, Washington—670 Kc.

# KFOA

447.5 Meters—1000 Watts

Owned and Operated by Rhodes Department Store  
Arcade Square Seattle, Washington  
Phone MAin 8000

P. B. GALE, Station Manager  
ARTHUR W. LINDSAY, Program Director and  
Announcer

### DAILY EXCEPT SUNDAY—

10:00 to 10:30 a. m.—Rhodes' Air News except Tues., Thurs., Sat.  
1:30 to 2:00 p. m.—Home-making Helps, by Margaret Knowles,  
except Thursday and Saturday.  
3:15 to 4:00 p. m.—Rhodes Organ Recital.  
4:30 to 5:00 p. m.—News items.  
5:00 to 6:00 p. m.—Children's Hour by Big Brother of KFOA, ex-  
cept Saturday.  
6:00 to 6:30 p. m.—Sperry Flour Sight-seeing Hour, except Sat,  
9:00 p. m.—Longine Time Signals.

### WEEK COMMENCING SUNDAY, JANUARY 22, 1928

#### SUNDAY, JANUARY 22

1:00 to 2:00 p. m.—Wickwire Spencer Steel  
Co. program over the P. C. N.  
3:00 to 5:00 p. m.—Aladdin's Lamp, from  
San Francisco over the P. C. N.  
6:30 to 7:30 p. m.—Standard Symphony  
Hour over the P. C. N.

#### MONDAY, JANUARY 23

6:30 to 7:15 p. m.—Studio program  
7:15 to 7:30 p. m.—Industrial News.  
7:30 to 7:45 p. m.—Better Flowers Talk.  
7:45 to 8:00 p. m.—Sports Review.  
8:00 to 9:00 p. m.—Shell Oil Co. program  
9:00 to 10:00 p. m.—Maxwell House Coffee  
Orchestra and soloists from KGW, Port-  
land.  
10:00 to 11:00 p. m.—Spotlight Hour from  
San Francisco over the P. C. N.

#### TUESDAY, JANUARY 24

12:30 to 1:30 p. m.—Seattle Kiwanis Club  
6:30 to 7:00 p. m.—Radio Movie Club.  
7:00 to 8:00 p. m.—Crescent Old Time Trio  
and the Old Settler.  
8:00 to 8:30 p. m.—Eveready Hour by National  
Carbon Co. from San Francisco  
over the P. C. N.  
8:30 to 9:00 p. m.—Bridge Game by U. S.  
Playing Card Co. over the P. C. N.  
9:00 to 9:30 p. m.—Retold Tales from San  
Francisco over the P. C. N.  
9:30 to 10:00 p. m.—Studio program fea-  
turing the Rounders from San Francisco  
over the P. C. N.

#### WEDNESDAY, JANUARY 25

12:30 to 1:30 p. m.—Seattle Rotary Club  
6:30 to 7:00 p. m.—"A Musical Fruit Cock-  
tail" from San Francisco over P. C. N.  
7:00 to 7:30 p. m.—Doc Proelss Optical De-  
partment.

7:30 to 7:45 p. m.—Poultry Talk to KGW.

7:45 to 8:00 p. m.—Book Chat by Helmer  
L. Webb.

8:00 to 9:00 p. m.—White King Concert Or-  
chestra and soloists.

9:00 to 10:00 p. m.—N. B. C. program.

#### THURSDAY, JANUARY 26

12:30 to 1:30 p. m.—Shrine Club Luncheon  
7:30 to 8:00 p. m.—Sunde & d'Evers, popu-  
lar vocal trio.  
8:00 to 9:00 p. m.—California Petroleum Co.  
9:00 to 9:30 p. m.—Dodge Bros. program  
9:30 to 10:00 p. m.—Moon Magic popular  
musical program from San Francisco over  
P. C. N.

#### FRIDAY, JANUARY 27

12:30 to 1:30 p. m.—Members Council Lunch-  
eon program from Chamber of Commerce.  
6:30 to 6:45 p. m.—Sports Review.  
6:45 to 7:00 p. m.—Touring Information  
8:00 to 9:00 p. m.—An Hour on the Magic  
Isle over the P. C. N.  
9:00 to 10:00 p. m.—An Hour in Memory  
Lane from San Francisco over P. C. N.  
10:00 to 10:30 p. m.—Henry and the Boss.  
10:30 to 12:00 p. m.—Hoot Owls from KGW,  
Portland.

#### SATURDAY, JANUARY 28

6:00 to 6:15 p. m.—Sports Review.  
7:00 to 7:30 p. m.—Boy Scout program.  
7:30 to 8:00 p. m.—Campfire Girls prog.  
8:00 to 9:00 p. m.—N. B. C. RCA Radio-  
tron Hour.  
9:00 to 10:00 p. m.—Philco Hour over the  
P. C. N.  
10:00 to 11:00 p. m.—Popular Dance Pro-  
gram over P. C. N.

## Standard Radio Co.

Telephone: Westmore 1560

417 West Pico Street

11 years in the Radio business in Los Angeles. Call on us or phone for  
free advice in regard to modernizing your Radio set.

Authorized Sales and Service

ATWATER KENT CROSLY FEDERAL FADA  
ROLA AND WESTERN ELECTRIC SPEAKERS



Seattle, Washington—860 Kc.



"DOC" GORDON  
Announcer

# KJR

604 HOME SAVINGS BUILDING  
1520 WESTLAKE AVE.  
348.6 METERS  
Phone ELLIOTT 6288  
W. C. GORDON, Manager  
ROSS W. SWIFT, Announcer

Mrs. S. Webster Hoover, Hostess and Staff Accompanist

**DAILY EXCEPT SUNDAY—**

- 9:00 to 9:45 a. m.—Mary Cooke, KJR Better Homes Girl.
- 9:45 to 10:00 a. m.—Devotional Service.
- 10:00 to 12:00 Noon—Shopping Service and Musical Program.
- 12:00 to 12:30 p. m.—Studio Program.
- 12:30 to 1:30 p. m.—Luncheon Program from New Washington Hotel.
- 1:30 to 4:45 p. m.—Varied Studio Program.
- 4:45 to 5:00 p. m.—Chats by Dr. Schilling.
- 5:00 to 5:30 p. m.—KJR Junior Hour.
- 5:30 to 5:45 p. m.—Studio Program.
- 5:45 to 6:00 p. m.—New York Closing Stock Quotations.
- 6:00 to 6:30 p. m.—Sports, News Items, Theater.
- 6:30 to 7:30 p. m.—Vic Meyer's Dinner Hour Concert.
- 7:30 to 10:00 p. m.—Varied Studio Program.
- 10:00 p. m.—Pacific Standard Time.
- 10:00 to 12:00 p. m.—Vit Meyers' Dance, Orchestra, except Monday.

**WEEK COMMENCING SUNDAY, JANUARY 22, 1928**

**SUNDAY, JANUARY 22**

- 10:00 to 11:00 a. m.—International Bible Students Association Program.
- 11:00 a. m. to 12:30 p. m.—Morning Service of First M. E. Church.
- 12:30 to 4:00 p. m.—Varied Studio Program.
- 4:00 to 5:00 p. m.—Elijah Voice Society.
- 5:00 to 6:15 p. m.—Musical Program.
- 6:15 to 7:15 p. m.—International Bible Students' Association Program.
- 7:15 to 7:30 p. m.—Organ Recital.
- 7:30 to 9:00 p. m.—Evening Service of First M. E. Church.
- 9:00 to 10:00 p. m.—Home Savings Building Trio.

**MONDAY, JANUARY 23**

- 7:30 to 8:30 p. m.—"The Four Brigands" Male Quartette.
- 8:30 to 9:30 p. m.—Seattle Pacific College Program.
- 9:30 to 10:00 p. m.—Pacific Standard Time Signals—Nick Carter and his Varsitonians.
- 10:30 to 12:30 p. m.—Helen Ardelle Goofy Bird Frolic.

**TUESDAY, JANUARY 24**

- 7:30 to 8:00 p. m.—Studio Program.
- 8:00 to 9:00 p. m.—Lundquist-Rilly Two-Pant Twins.
- 9:00 to 10:00 p. m.—Studio Program.
- 10:00 p. m.—Pacific Standard Time Signals.

**WEDNESDAY, JANUARY 25**

- 7:30 to 8:30 p. m.—Seattle Old-Time Dance Orchestra.
- 8:30 to 9:00 p. m.—Casey-Bowyer Knight-en-gales.
- 9:00 to 9:30 p. m.—Soprano solos by Violet McKay Ball.
- 9:30 to 10:00 p. m.—Studio Program.
- 10:00 p. m.—Pacific Standard Time Signals.

**THURSDAY, JANUARY 26**

- 7:30 to 8:30 p. m.—Sears, Roebuck & Company, "Fireside Hour."
- 8:30 to 10:00 p. m.—"ABC" Chain Broadcast KEX, Portland; KJR, Seattle, and KGA, Spokane, featuring Ashley-Fealy Two-Piano Group; Eva Atkinson, contralto, and David Campbell, accompanist.
- 10:00 p. m.—Pacific Standard Time Signals.

**FRIDAY, JANUARY 27**

- 7:30 to 8:00 p. m.—"Mozart Program," by Raymond David Holmes.
- 8:00 to 9:00 p. m.—Woodlawn Flower Shop Trio.
- 9:00 to 10:00 p. m.—Studio Program.
- 10:00 p. m.—Pacific Standard Time Signals.
- 10:00 to 12:00 p. m.—Vic Meyers' Dance Orchestra.

**SATURDAY, JANUARY 28**

- 7:30 to 10:00 p. m.—Studio Program.
- 10:00 p. m.—Pacific Standard Time Signals.

## RAY CAMPBELL

AC Sets, Transformers and Chokes.  
1217 Dwiggins St., L. A., GA. 7891

### An Ideal Combination!

Your Set and "Radio Doings." Get an attractive and useful technical series binder with a years subscription.

See Page 5

## S-M Shielded Six

(Continued from Page 14)

at which oscillation begins, and should be used.

And now a word of caution to those who build any kit receiver. Don't expect the wide, wide world the moment you finish the job and hook it up. This applies to ANY kit set assembled by other than a expert laboratorian. Any set must be balanced, its peculiarities studied and learned, and some patience exercised in mastering its tuning and adjustments before obtaining anything like the results which the receiver may be capable of producing.

## Q and A

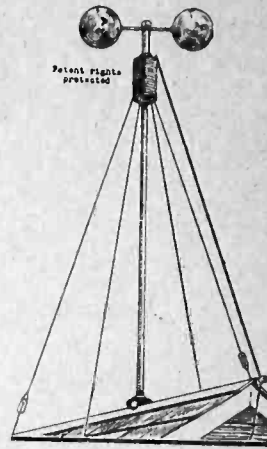
(Continued from Page 26)

enough energy in his direct wave which follows the earth's surface, and sufficient difference in time between it and the arrival of the reflected wave to spoil the reception by the production of false frequencies. At closer points, the interval of time difference is too slight to cause the "mush," and at greater distances the energy of the direct wave is too weak. There is a certain distance therefore from every station where reception is bad due to this conflict between the two waves. It is a condition that neither you nor the broadcasters can remedy. It's just Nature!

## WESTERN STATIONS FOR AIRPLANES

Efforts are being made this winter to establish radio communication stations on the Salt Lake-Pasco airway at Burley and Strevell, Idaho, and on the Transcontinental route at Blue Canyon, California, according to the Aeronautics Branch of the Department of Commerce. The station will have one operator, who will act as caretaker and weather observer.

The stations planned are intended to expedite the handling of weather information, which is not now available at these locations. One of the sites selected is about 40 miles from the nearest power communication line.



# The Evolution Antenna

FOR

Increased Distance  
Knifelike Selectivity  
Improved Static-Signal Ratio  
Non-Directional Reception  
Permanence of Installation  
Beauty of Appearance

### Specifications:

Four genuine "COSILCO" (gold over silver on copper) umbrella guy wires.

Guy wires made up complete with glazed porcelain strain insulators and galvanized extension wire. Ready to erect.

Collecting spheres, fabricated of spun aluminum, the material used for majority of precision condensers.

Insulating foot for base included.

Weather-proofed drum wound with proper amount of wire to lower natural fundamental frequency of ensemble to most efficient period.

All connections soldered.

*Distributors and Dealers Inquire:*

**The Evolution Antenna Co.**  
Manufacturers

4054 Georgia St., San Diego, Calif.



FREEMAN H. TALBOT  
Announcer

## Denver, Colorado—920 Kc.

# KOA

500 WATTS—326 METERS  
GENERAL ELECTRIC COMPANY  
Pacific Standard Time  
"Rocky Mountain Broadcasting Station"

### DAILY EXCEPT SUNDAY—

- 10:45 a. m.—Weather, Stock and Produce Reports.  
11:00 a. m.—Time Signals.  
11:05 to 12:05 p. m.—Organ Recital.  
5:00 p. m.—Stock and Market Reports (except Thursday and Saturday).  
5:30 to 6:30 p. m.—Dinner Concert, except Thursday and Saturday.

### WEEK COMMENCING SUNDAY, JANUARY 22, 1928

- 10:00 a. m.—Service of First Congregational Church, Denver; Sermon, "The Prayer of the Scientist."  
4:30 p. m.—Organ recital.  
6:45 p. m.—Service of First Congregational Church, Denver; Sermon, "The New Mission."  
7:00 to 7:15 p. m.—Instrumental program by Scheuerman's Colorado Orchestra.  
7:15 to 9:00 p. m.—KOA Mixed quartet.  
9:00 to 10:00 p. m.—Chief Gonzales and his Arabian Room Orchestra, broadcasting from the Cosmopolitan hotel, Denver.

### MONDAY, JANUARY 23

- 10:15 a. m.—Program by Reese School of Saxophone, Banjo and Piano.  
6:30 p. m.—Appreciation program.  
7:00 p. m.—Instrumental program by Scheuerman's Colorado Orchestra.  
7:15 to 8:15 p. m.—Steinway Club of Denver.  
8:15 to 9:00 p. m.—KOA orch. and assisting soloists.  
9:00 to 9:30 p. m.—Artists from Boulder, Colorado.

### TUESDAY, JANUARY 24

- 2:30 to 3:30 p. m.—Housewives matinee.  
3:30 to 3:45 p. m.—Shopping with Betty Dee of the Denver Dry Goods Co.  
6:30 p. m.—Farm question box.  
7:00 to 7:30 p. m.—Radio instruction in auction bridge.  
7:30 to 8:30 p. m.—Dance program, Dan's Musical Dons.

### WEDNESDAY, JANUARY 25

- 5:27 p. m.—National Farm Radio Council talk.  
6:30 p. m.—"Tell Me a Story" hour.

### THURSDAY, JANUARY 26

- 2:30 to 3:00 p. m.—Rural Schools.  
3:00 to 3:30 p. m.—Housewives matinee.  
3:30 to 3:45 p. m.—Shopping with Betty Dee, of the Denver Dry Goods Co., Denver.  
4:00 p. m.—Stock markets, livestock, produce and news bulletins.  
SILENT NIGHT.

### FRIDAY, JANUARY 27

- 2:30 to 3:30 p. m.—Housewives matinee.  
3:30 to 3:45 p. m.—Shopping with Betty Dee of the Denver Dry Goods Co., Denver.  
6:00 p. m.—"Aggie Kickoffs," Extension service, Colorado Agricultural college, Fort Collins, Colo.  
6:30 p. m.—Preview of International Sunday school lesson.  
7:00 to 9:00 p. m.—Part One: Symphony program; Part Two: KOA orchestra and assisting soloists.  
9:00 to 10:00 p. m.—Dance program, Dan's Musical Dons.

### SATURDAY, JANUARY 28

- 8:00 to 10:00 p. m.—Chief Gonzales and his Arabian Room orchestra.

## RADIOLA SPECIALISTS

If your Radiola 28 or your Radiola 20 is out of balance, its selectivity and distance is greatly impaired. We make them perform like they should.

The Harmonics on your Radiola 25 can be eliminated, too—Ask about it!

We Have R. C. A. UX222 Double Grid Tubes in Stock

## LABORATORY OF RADIO STANDARDS

E. K. HAYES

2408 West Vernon

VERmont 6543

Los Angeles, Calif.

## Timely Trade Topics

"Sunny Jim" Colford, like the Kodel Company he represents, is certainly a believer in up-to-date methods, and being convinced that "time is money," is saving many hours of weary traveling on trains by taking the air route to Cincinnati to attend the sales convention of the Kodel Radio Corporation, manufacturers of the famous Kuprox.

"Jim" left the Municipal Airport at Long Beach on Thursday last in the new five-passenger cabin plane that has recently been completed at the plant of the International Aircraft Company, and will fly to the eastern city by way of El Paso, Dallas, and Kansas City. The entire trip will only take twenty-one hours of flying, as against eighty hours on the train. On his return home in about two weeks Jim promises to have something of great interest to tell to the trade.

Walter Fagan, president of Pacific Wholesale, Inc., left for the East last Wednesday to visit the Sparks-Withington factory, where the Sparton radio receivers are manufactured. The purpose of Mr. Fagan's trip is to speed up deliveries in an effort to satisfy his clamoring dealers who have customers waiting for Sparton sets. The demand for this set has exceeded all expectations and kept Walter on the hop.

C. C. Lawton Company have been appointed distributors for the well-known Magnavox line of Dynamic speakers.

The Yale Radio Electric Company report that the new Bosch AC Receivers, which were released to the trade Friday of last week, have more than exceeded all expected sales and performance and that January sales on this popular line bid fair to outdistance those of December. Five new models have been added to the Bosch line using AC tubes and electrically operated throughout.

The Raytheon company are now marketing their new Type A cartridge rectifier unit. This unit was passed very rigid laboratory tests and has stood up over long periods of service at full load, and is now offered with the guarantee of the manufacturer, the only stipulation being that the rectifier be used in accordance with the instructions provided. This type of "A" rectifier occupies less space than any other type, is bone-dry, fool-proof and of long life.

During the convention of the Institute of Radio Engineers in New York during the week of January 9, one of the plants visited was that of Polymet Mfg. Corp., 599 Broadway.

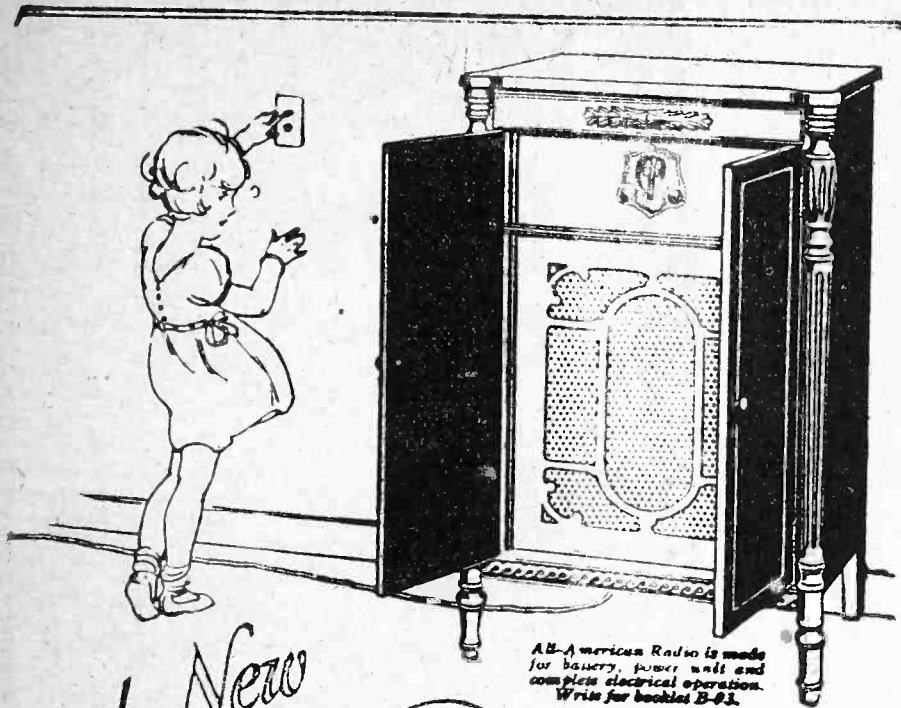
A folder entitled "Practical Points on the Manufacture and Use of Filter Condensers," by Mr. Paul Hetenyi, Chief Engineer of Polymet Mfg. Corp., was distributed to the visiting delegates.

The Polymet Mfg. Corp. will be glad to send a copy of this folder upon request to anyone interested in Filter Condensers.

Mr. Sidney Spector of the Spector Company, Pacific Coast representatives of the Acme Apparatus Corporation, has announced a new Acme ABC eliminator which will make it comparatively easy to convert a battery set into an AC set. The new Acme eliminator will be distributed by the leading distributors on the Pacific Coast.

### DO YOU NEED CASH?

As purchasing agent for a \$500,000 Corporation I can handle surplus sets, tubes, speakers, etc. Prices must be RIGHT! Write or wire full description. P. J. B. 818 Chester Williams Bldg., Los Angeles.



*the New*



**ALL-AMERICAN**  
 TRADE MARK  
**ELECTRIC**  
**RADIO**

*All-American Franchise Dealers*

**HOLLYWOOD**  
Hansen Radio  
7575 Sunset Blvd.

**Hollywood Electric**  
6656 Hollywood  
Blvd.

**SHERMAN**  
Janssen & Iverson  
8739 Melrose

**RIVERSIDE**  
H. R. Wilson  
846 Walnut

**LONG BEACH**  
Cobler Radio Shoppe  
216 Pine Ave.

**LYNWOOD**  
Wylde Electric Co.  
11425 Long Beach  
Blvd.

**SANTA MONICA**  
J. C. Suits  
825 Wilshire Blvd.

**LOS ANGELES**  
Anderson Radio  
9114 1/2 S. Vermont

**Motley Electric**  
7761 Santa Monica  
Blvd.

**WHITTIER**  
K. D. Miller  
248 S. Greenleaf Ave.

**OCEAN PARK**  
Pier Avenue Radio  
142 Pier Ave.

**PASADENA**  
Ries Radio Service  
975 E. Colorado

**SAN DIEGO**  
C. B. Shephard  
4655 Ohio Ave.



Southern California Distributor

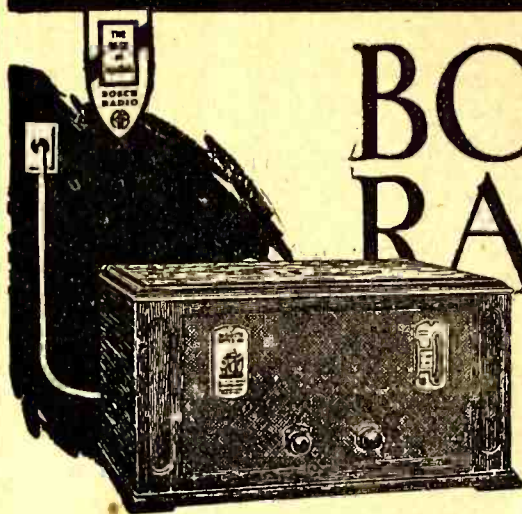
**HERBERT H. HORN**

1629 S. Hill St.

Los Angeles

WE. 6331





# BOSCH RADIO

OPERATES  
FROM THE  
LIGHT SOCKET.

MODEL 126  
\$119.00, Less Tubes

USES <sup>the NEW</sup>  
**AC**  
TUBES

Imagine this compact, self-contained ALL ELECTRIC Bosch Receiver in your home. A single wire to a floor socket furnishes the power—

We ask you to compare this outstanding radio value with any radio set on the market.

Bosch quality throughout.

Simple to operate, beautiful in appearance.

All Bosch Radio Receivers are electrically operated and do not require charger, storage battery or "B" batteries. Just what you want at the price you want to pay.

## Yale Radio Electric Co.

*Exclusive Wholesale Distributors*

1111 Wall Street

LOS ANGELES

WEStmore 3351