

RADIO DOINGS

RED BOOK OF RADIO

10¢
WEEKLY

*The Radio Authority
of the
Pacific Coast*



Eddie Peabody Returns to Metropolitan Theatre
On the Air—KNX, April 9th

Gelert, Edwin A
2201 W. 29th Place
1-50-28

Vol. X

APRIL 3-9, 1927

No. 14



ACME B-eliminator

--with Raytheon Tube is now
on sale at a new reduced
list price of only

\$35⁰⁰

Acme quality, Acme leadership, Acme efficiency is now yours at a figure that you are glad to pay. Model E-3, illustrated above, supplies voltages up to 180 for sets up to six tubes. The finish is in tan and its rugged construction promises a lifetime of service. Model E-1, for multi-tube sets, is priced at \$50.

Acme speakers, K-1 at \$25 and K-3 at \$18.50, offer the research and skill of the Acme Apparatus Company at prices which are surprisingly low, quality considered.

Distributed by

H. Earle Wright, Incorporated

123 Second Street
SAN FRANCISCO

415 East Eighth Street
LOS ANGELES

Would You Let \$1.25 Per Month

*Stand Between You and
Perfect Radio Reception*



For that amount (\$15.00 per year) we will agree to keep your storage batteries fully charged, and will call for and deliver same.

During the same period of one year we will also inspect your set regularly and make any repairs necessary to keep its performance at top notch. (This does not include, of course, new tubes, parts and accessories.)

Our Service Men are experienced and capable.

Drop in at one of our Los Angeles stores, call us on the telephone, or mail coupon below, and we will explain details.

RADIO SERVICE DEPARTMENT OF AMERICAN CHAIN STORES, Inc.

1228 W. Seventh St.—VAndike 6273
LOS ANGELES, CALIF.

4525 Western Ave.
VERmont 5109

5519 Hollywood Blvd.
GRanite 5741

OPEN EVENINGS TILL 9:30

AMERICAN CHAIN STORES, INC.
1228 W. 7th St., Los Angeles, Cal.
Gentlemen:

Please have representative call to explain your Radio Service Contract, without obligation on my part.

Signed _____

Street and No. _____

City _____

BREMER-TULLY

Counterphase - Eight



HERE are a few of the features of the Counterphase-Eight. Any one of them is enough to command your attention. Combined in one Receiver, they account for the performance which has caused so many users to write enthusiastic testimonials.

- | | |
|--|--|
| 1—REJECTOR STAGE, for Selectivity. | 5—COUNTERPHASE CIRCUIT. Covered by B-T patents. |
| 2—SIMPLICITY. One Selector. | 6—LONG RANGE. Recognizes no superior. |
| 3—VISUAL INDICATOR. Each set Calibrated. | 7—TONE. Equal to any reproducing instrument known. |
| 4—UNIQUE CABINET DESIGN. Controls concealed when not in use. | 8—SUPERIOR WORKMANSHIP. The B. T. standard. |

“A Demonstration Will Convince You”

SOLD BY FRANCHISED DEALERS ONLY

Factory Representatives

McCLELLAND-FELTHOUSE
CORPORATION

515-517 Eddy Street
San Francisco
Tel. Franklin 6226

1358-60 South Figueroa St.
Los Angeles
Tel. Westmore 5586 - 6519

New York Office
J. W. HASTIE
155 East 42nd Street
Vanderbilt 4661

Chicago Office
A. G. RUDOLPH
500 N. Dearborn St.

San Francisco Office
CONGER & MOODY
Sharon Building
Kearney 3483

Radio Doings

Trade Mark Reg. U. S. Pat. Off.

407 East Pico Street, Los Angeles, Calif.

"The Red Book of Radio"

H. C. CHARLES
Editor

Phone Westmore 1401

KENNETH G. ORMISTON
Technical Editor

J. S. MILLER
Associate Editor

MAJ. LAWRENCE MOTT
Associate Editor

(Entered as second-class matter, Nov. 25, 1922, Los Angeles, Cal., Post Office, under Act of March 3, 1897.)
Copyright, 1926, by Horwood Publishing Co.
Issued Weekly. Ten Cents a Copy, Three Dollars a Year. Canada and Foreign Countries, \$3.50 per Year.

Vol. X Los Angeles APRIL 2, 1927 San Francisco No. 14

IN THIS ISSUE

Radiograms	13
Topics of the Day	14
Cannibals Entertained by Radio	15
The Electrical Phonograph	19
Trouble Shooter	20
Picked Out of the Air	21
Woman's Page	22
Koo-Koo Kolyum	23
Radio KFXB	23
DX Club	24
Time Tables	26-36
Schedule of DX Stations	38
Detailed Programs	42-74
Trade Notes	77
Broadcasters' Digest	78

ONLY \$3.00 A YEAR

Have RADIO DOINGS mailed to your home every week. Fill out blank below. Either mail to us, or your dealer will be glad to take care of it for you. Please indicate whether NEW or RENEWAL.

HORWOOD PUBLISHING CO., 407 E. Pico St., Los Angeles.

CONGER & MOODY, Sharon Building, San Francisco, Calif.

Gentlemen: I enclose \$3.00, for which send me RADIO DOINGS for one year.
NEW—RENEWAL.

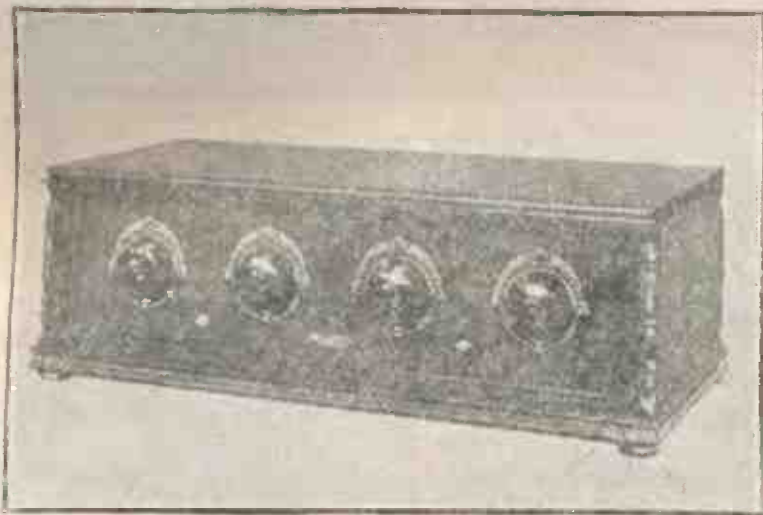
Name _____

Address _____

Walbert's Isofarad

Operates Direct
From Light Socket

N
O
B
A
T
T
E
R
I
E
S



N
O
T
R
I
C
K
L
E

47-P. T. \$400.00 Complete With Tubes

A
C
T
U
A
L
T
U
B
E
S

A four-dial seven tube receiver for radio skeptics—those who have been disappointed with the ordinary radio sets—those who don't believe the receiver is made that will do what they expect of it. Those who must have selectivity, distance and quality.

Electric Models, \$350.00 to \$470.00

Battery Models, \$75.00 to \$270.00

C
H
A
R
G
E
R

Home of Utah Speakers

C. W. SMITH CO.

1125 Wall St., Los Angeles

Westmore 3291



**DON'T DISCARD
YOUR OLD PHONOGRAPH**

Convert It Into a Marvelous New Type Electric
Reproducing Phonograph with the

ELEC-TRU-TONE

THE PHONOGRAPH MODERNIZER

By placing the energizing plug in the detector tube socket of your radio set, you obtain music from your records rivaling that of the new type phonographs costing from \$350 to \$1,000.

TONE so life-like it will thrill you. REPRODUCES EVERYTHING from the boom of the drums to the shrill notes of the piccolo. ANY VOLUME from a whisper to a brass band.

TWO MODELS

\$25.00

\$17.50

Sold by leading Radio Dealers

DEALERS ATTENTION

A survey by Radio Retailing shows that there are phonographs in 44% of the homes. Live dealers everywhere are modernizing them with the ELEC-TRU-TONE.

The following Western jobbers can supply you.

LOS ANGELES
Yale Radio Electric Co.
Electric Corporation

SAN FRANCISCO
Kierulff & Ravenscroft
Pacific Motor Supply Co.

OAKLAND
Electric Supply Co.

SAN DIEGO
Coast Electric Co.

SEATTLE
Fobes Supply Co.

SALT LAKE CITY
Intermountain Electric Co.

OGDEN, UTAH
Geo. E. Browning Co.

Manufactured by

THE ELEC-TRU-TONE CORPORATION

Phone MUtual 8153

Hibernian Bldg., 4th and Spring Sts.
Los Angeles

Distributed Nationally by

BAKER-SMITH CO., INC., CALL BUILDING, SAN FRANCISCO

CeCo "K"

Dial the Station You Want—
You'll Get It Every Time

new

MAP OF U.S. SHOWING
CROWDED CONDITION
OF BROADCASTING
STATIONS



LOS ANGELES CE-CO DEALERS

- J. C. Rendler
625 S. Main
- Philco Sales & Service
1514 South Hope
- Standard Radio
417 W. Pico
- Walkers Radio
5835 S. Vermont
- Glen H. Deamer
6507 S. Kansas
- Rogers Electric
1263 S. Norton
- H. H. Walker
1323 Venice Blvd.
- Sturgis Music
4713 S. Broadway
- Nilsson & Nelson
4320 Avalon
- Tivoll Radio Shop
4204 S. Central
- Wilkins Radio Mfg. Co.
5317 S. Central
- Phair Radio Co.
242 E. Florence
- Hines Radio
7322 S. Broadway
- McWhorters Radio
8625 S. Vermont
- Henderson Radio Store
3805 Whittier
- C. S. Young
3713 East First
- Johnson Auto Supply
765 Atlantic Blvd.
- Atwater Radio Shop
3208 Glendale Blvd.
- Holland Electric Shop
5632 Pasadena Ave.
- McNeil Music Co.
5711 Pasadena Ave.
- Briong & Bushard
1717 W. Adams

Radio Frequency Tubes

GREAT FOR DISTANCE

With the new CeCo "K" Radio Frequency Tubes, DX fans are finding less congestion on the air in radio broadcasting traffic. It is really surprising how greatly these tubes improve selectivity and tone quality. Use them exclusively on your radio and enjoy the mul-

titude of new benefits made possible by the CeCo tube family.

Your dealer will gladly demonstrate the difference.

"There's a CeCo tube for every Socket"

A. J. Tobey Co.

Radio Accessory Jobbers

15th and Hope Sts.

Westmore 4038

HOLLYWOOD

- Cutler Radio
930 N. Western
- Hollywood Radio
709 N. Western
- Hollywood Electric
6656 Hollywood Blvd.
- Mohawk Battery & Radio
2115 Sunset Blvd.
- Doran Electric Chop
7515 Sunset Blvd.
- Lovinger-Melrose Radio
4426 Melrose
- Melrose Radio
5663 Melrose
- Wesholly Radio
7406 Melrose
- Carmel Radio
8165 Santa Monica Blvd.
- Hetzel Radio
7915 Santa Monica Blvd.

OUT-OF-TOWN CE-CO DEALERS

- ALHAMBRA
Bajrd Radio Shop
226 W. Main St.
- MONTEREY PARK
Monterey Park Music Co.
102 E. Carey
- GARDEN GROVE
W. E. Ashley

PASADENA

- Thomas & Summerville
41 N. Broadway
Webster Electric Garage
100 E. Union

GLENDORA

- F. A. Selmers

LANKERSHIM

- Lankershim Music Co.
Lankershim Radio and
Service Shop
5241 Lankershim Blvd.

VAN NUYS

- Van Nuys Music Co.
Marsden Electric

CULVER CITY

- H. E. Blunt
6808 Putman

INGLEWOOD

- Inglewood Mercantile Co.
120 N. Commercial St.

AVALON

- Avalon Radio
607 Crescent

WILMINGTON

- Wilmington Variety
716 W. Anaheim

LONG BEACH

- Kelm Radio
Cor. 4th and Locust

HUNTINGTON PARK

- H. L. "Radio" King
116 E. Irvington

BELLFLOWER

- H. L. Peterson Shoppe
Pacific and Mayne

DOWNEY

- Darnell Electric Shop
1182 Crawford St.

POMONA

- Falls Tire & Battery Co.
201 E. 2nd St.

COLTON

- H. C. Bliss

TUSTIN

- Williams Super Service
Coast Highway

ELSINORE

- Elsinore Plumb. & Elec.

REDLAND

- Dale El Silger
State and Third St.

ANAHEIM

- Caverley Radio
217 W. Center

BREA

- Bennet's Radio
Murray Garage & Service
Station

CARLSBAD

- Carlsbad Pharmacy

EL CAJON

- El Cajon Electric

CORONADO

- W. C. Bechel Liberty
Garage & Batt. Serv.
718 Third St.

PACIFIC BEACH

- Sunset Super Service
Station

- 1002 Garnett

SAN DIEGO

- College Service
Park and El Cajon
Maryland Auto Supply
7th and F St.

- E. C. Grube
5th and Imperial

- Kinney Bros.
30th and A St.

To Have The Best Receiver

Buy the Parts and Build It Yourself

USE ANY OF THESE—THEY ARE ALL GOOD

BOULDERADIO EIGHT-IN-LINE UNIT, Two Tuning Condensers, Rheostat, Two Dials, Midget Condenser and Front Panel, are all that is necessary to complete one of the most selective supers. Beautiful tone and lots of volume. Only nine simple connections to make to unit. List Price of Eight-in-Line Unit—\$95.00.

MADISON MOORE "One Spot" Transformers are here. No more harmonics. Get a line on these—one of the biggest improvements of the year.

Look over the **630 Complete Kit of Parts** for the **SILVER SHIELDED SIX**. Kit includes all Specified Matched Parts for the Set. Completely Shielded—using the famous 220 Audio and 221 Output Transformers, \$95.00—A Set Good for Years.

The Kit of Parts for the **KARAS EQUIMATIC** lists at \$60.20, and will produce a Set mighty hard to beat. Karas' latest.

All Parts for the **IMPROVED INFRADYNE** as Specified by Inventors now here. Complete Data in the Official Manual—25c Send for it Now.

DEALERS: Park Next Door at Our Expense

Radio Supply Co.

WHOLESALE

920 S. Broadway

VA. 6063

Los Angeles

New 1927 Catalogue Now Ready—Send For It

Changes Are Made

Every day in Radio—and to keep your set abreast of the times—you will need new parts. The largest up-to-date stock of parts is at 920 South Broadway. Have your dealer pick up what you need.

Alco Loops	DuHiller Condenser Corp.	Naald Truphonic Units, Etc.
Accuratune Dials	Dudlo Mfg. Co. Wire	National Co. Parts
Acme Apparatus	Dunham Loops	Pacnet Products
Acme Trickle Chargers	Eby Binding Posts	Penetrola Kits
Advance Crystals	Eight-In-Line Super Unit	Polymet Mfg. Co. Condensers
Aero Products	Ekko Ground Clamps	Premier Parts
Aerovox Wireless Products	Electrad Products	Raco Aerial Wire
Alden Mfg. Co. Parts	Electrohot Soldering Irons	Radlall Co. Ampertics
All-American Products	Elkon Chargers	Rauland Lyric Transformers
Amertran Products	Formica Insulation Co.	Raytheon Tubes
Amperite	Franco B. Batteries	Remler Products
Amco Condensers	Front Products	Sanson Transformers
Artco Coils	General Radio Parts	Saugamo Condensers
Balkite Chargers, Etc.	Goodrich Rubber Panels	Sensory Insulators
Benjamin Elec. Mfg. Products	Hammerlund Products	Silite Trickle Chargers
Boulderadio Eight-In-Line Super Unit	Harkness Kits	Silver Marshall Products
Branston Coils	Hedgehog Transformers	Spaulding Bakelite
Bremer-Tully Products	H-K Solderdip Lugs	Stelrite Eliminators
Camfield Coils	Hoosick Parts	Sterling Meters and Testers
Carborundum Products	Jefferson Products	Stevens Tools
Cardwell Condensers	Karas Products	Tentrite Hydrometers
Carter Products	Kelbrackets	Thordarson Transformers
Ceco Tubes	Kellogg Parts	Thorola Coils
C R L Var High Resistances	Kodel Products	Tobe Condensers
Chicago Kester Solder	Kura-Kasch Dials and Knobs	Tom Mack Products
Claronstat	Leaf-Burkhard Cone Speakers	Tower Speakers
Continental Condensers	Lemco Transformers	Trimm Cone Speakers
Crescent Transformers	Madison Moore Units	Universal Battery Clips
Daven Radio Parts	Marco Products	Vesta Power Units
DeJur Rheostats	Mignon S. L. F. Condensers	Victoreen Parts
DeLuxe Products	Mueller Universal Clips	Weston Products
Dietogrand Speakers	Muter Lightning Arrestors	Willard Batteries
Dongan Products		X. L. Variodeusers
		Yaxley Products

**THORDARSON, ALL-AMERICAN AND MAGNAVOX
REPLACEMENT TRANSFORMERS IN STOCK**

VESTA 35 and 50 Amp. and HOBICO A Power Units

**ACME, GENERAL RADIO, ALL-AMERICAN, KODEL,
BALKITE, SILVER MARSHALL, STERLING and
WEBSTER ELMINATORS**

**ACME, STERLING, VESTA, BALKITE, TUNGAR and
SILITE TRICKLE CHARGERS**

DEALERS: Park Next Door at Our Expense

RADIO SUPPLY CO.

WHOLESALE

920 S. Broadway

VA. 6063

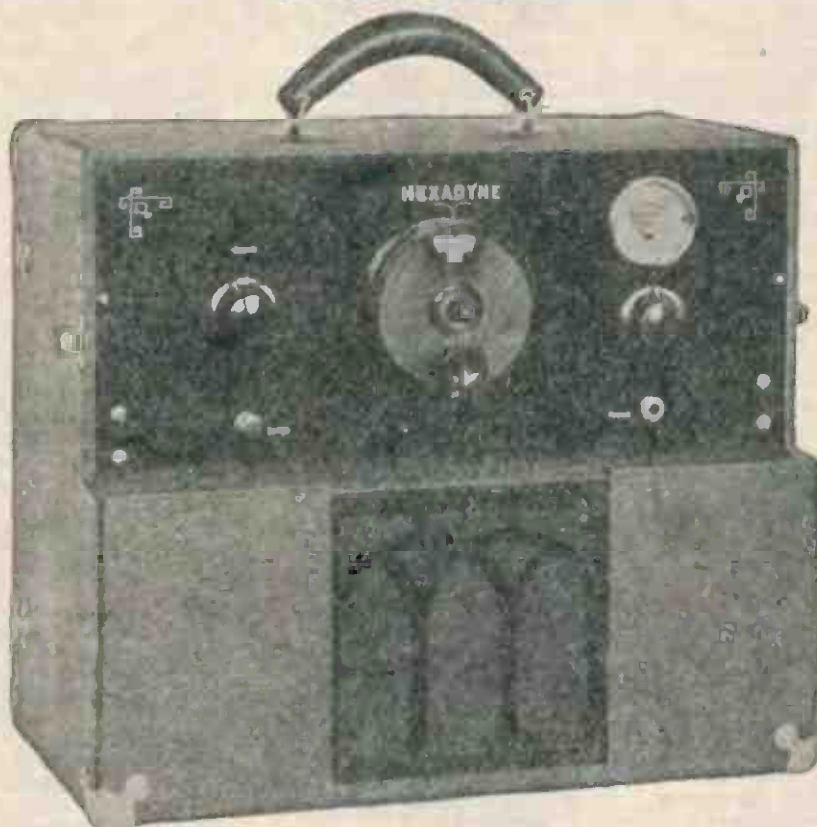
Los Angeles

New 1927 Catalogue Now Ready—Send For It

The New

Hexadyne 6-Tube

PORTABLE



**NEW IMPROVEMENTS WITH BEAUTY AND
SIMPLICITY**

**SINGLE DIAL CONTROL
OPERATES WITH A LOOP
EXCEPTIONAL DISTANCE**

The Hexadyne stands today not only as the leader in the portable field but the recognized standard of advanced radio engineering. No other portable radio on the market compares with the Hexadyne for beauty of tone and simplicity of operation.

List Price \$125.00 Complete with All Accessories
Including the New Power Tube

Dealers Write at Once for Attractive Proposition

Manufactured by W. D. Hunt Co., Inc., 4961 Sunset Blvd., Los Angeles
Telephone OL. 3104

WHOLESALE DISTRIBUTORS

C. W. Smith Co.
1125 Wall St., Los Angeles

Pacific Wholesale, Inc.
1320 S. San Pedro, Los Angeles

Radiograms

From

CLOYD MARSHALL, JR.

Our Chinese Policy

China is very old, but it certainly has active ideas about murder. American citizens are still being threatened, attacked and killed.

From the Chinese viewpoint this may be quite justifiable, but from the viewpoint of this nation, whose citizens should by right be offered security in any land, it is malicious and barbarous murder.

In some instances our nationals were saved from death through the fear of the Chinese from armed reprisal on the part of our military forces.

And still some of our national Senators are vociferously objecting to sending protection to endangered and helpless Americans in the stricken area.

It is deeply lamentable that some of these gentlemen in Washington were not pushed close to the business ends of Chinese machine guns during the past week. Undoubtedly they would have continued to launch eloquent speeches to each other condemning the American Government for sending ships and troops to save their hides;—YES!

Opportunity National Security

America is continuing to improve as the land of great opportunities. Rockefeller started as a clerk in a small country store; Carnegie a poor immigrant boy from Scotland; Charlie Schwab a miner; Henry Ford thirty years ago began as a mechanic working at the bench. Ford and Rockefeller have both made over a billion dollars; Schwab and Carnegie hundreds of millions.

Has the amassing of these great fortunes imposed a burden on the rank and file of American citizens? Let us see. From the beginning of the century American prosperity has steadily increased, living conditions have improved amazingly. Carnegie has endowed numerous libraries for the education and enjoyment of the people. Rockefeller has given many millions for the stamping out of disease. Charlie

Schwab has used his fortune for the advancement of the steel business, so that now America is pre-eminent in this industry. Henry Ford was the first one to start mass production, to pay high wages to his men and to shorten the hours of their working days, consequently bringing comfort, happiness and prosperity to everyone who has been associated with him.

Ford and other American automobile manufacturers stand behind our government as a direct threat to any nation aspiring to forcibly acquire American wealth or territory. Our automobile industry produces a little in excess of four million cars a year.

In a time of impending or actual war this automobile industry is admirably equipped to be converted into a tremendous producer of war implements, especially aeroplanes.

A nation looking behind our peacetime military forces at the overwhelming potential aerial power possible in the conversion of our industrial plants will hesitate in any contemplated act of aggression.

It has been conclusively proven that the aeroplane is the most terrible engine of destruction ever devised by mankind. Two planes with high explosive bombs can sink the largest battleship. A squadron of five equipped with gas bombs can attack a city of a million people and wipe out the entire population. One skillfully piloted aeroplane could rout, if not destroy, a whole regiment of well-armed soldiers.

Certainly this security is not a burden to our country. Great wealth, if used rightly, is a blessing to everyone. Are these rich men happy with their wealth? Yes, for they are masters of their immense interests, not slaves of their possessions.

This is a country of opportunities. So blessed is the child born in even the most humble home. He is free to aspire to the very pinnacle of human endeavor and his only obstacle is the self-imposed limitation of his own ability.

Radio Topics of the Day

A Weekly Review of Radio News, Thought and Opinion

NEW R. C. A. TUBES

The Radio Corporation of America has announced the development of a new tube which will presently be offered to the public. This is an alternating current tube. The cathode, or electron emitter, is heated to the necessary temperature by a special heater unit, the current for which is provided from the house lighting circuit through a suitable transformer.

This heater element is replaceable, and since the cathode can be constructed to give off electrons for a long period, a much greater tube-life is had with the new tubes. This tube is similar to the already successful McCullough A. C. tube in theory, and no doubt will eventually replace the present standard type with its A battery, rheostat, charger, etc.

COMMISSION LIKELY TO STABILIZE SITUATION

Leaders in the industry, regardless of political affiliations, appear to be pleased with the President's appointment on the radio commission, especially since he did not yield to the advice of political advisers and select lame ducks, as had been expected, but put men in who really know something about radio.

As a result, they apparently feel that authority lodged in the hands of such a group is apt to have a stabilizing effect on the radio business.

RADIO LICENSING BEGINS SOON

According to an announcement made public by H. A. Bellows, a member of the Federal Radio Commission, the plans so far formulated by the commission do not provide for any drastic cut in the number of stations on the air. Stations conducted solely for advertising purposes or operated by religious institutions will probably be limited in hours on the air, giving the preference to those stations which "perform the greatest public service."

It is reported that the Commission's plans do not provide for any increase in the wave band now assigned to broadcasting; the channels below 200 meters now used by the 17,000 amateurs and the channels above 600 meters assigned to commercial, ship and shore stations, will remain the same and will be fully protected by the Commission.

The present congestion on the 89 available channels will be solved by assigning the stations definite hours when they will be permitted to broadcast. It is expected that religious stations will be limited to Sunday only. The choice hours for operating and the best wave-lengths will be assigned to those stations which convince the Commission that they render the greatest service to the greater number of people.

The Commissioner was emphatic in the statement that the 400 small stations will receive the same consideration as the big fellows, and that "New York and Chicago will not dominate the rest of the country in the assignment of exclusive wave-lengths."

Cannibals to Be Entertained By Radio

Sailing on the yacht "Trojan," Capts. Thomas E. Burke, Jack Robertson, W. R. Biddle and a few other soldiers of fortune left Los Angeles late in March for Tiburon Island, where they hope to



Schooner Yacht "Trojan"

make motion pictures of the cannibals. They expect to bring back some very interesting films in case they are successful in remaining off the menu.

Captain Burke has equipped the yacht "Trojan" with a Model E-10 Federal Ortho-Sonic receiver, and expects to keep in touch with civilization by means of radio; also it is hoped that radio will prove such an attraction to the cannibals that they will forget their appetites for the time being.

"Not more than eighty members of the Serl tribe are now left on the island," said Mr. Biddle, who recently
(More on Page 75)

MORE DISTANCE

Greater Selectivity
Increased Volume
With the

"DX"

LONG DISTANCE GROUND



No matter what make of Radio you have, or where you are located, you cannot afford to be without this latest Radio Improvement.

PRICE

\$8.00 Complete
Postpaid
Anywhere

Shipment Made Same Day Order Is
Received

ORDER NOW

DEXTER SUPPLY CO.

487 Chamber of Commerce Bldg.
1151 South Broadway

WEstmore 9137 Los Angeles

Note: Snappy Service to Dealers



Major Mott tells the Whole Wide World About It!

The Preston "DX" Ground has literally swept the western states like a cyclone. Everywhere radio is discussed it is the chief topic of conversation.

Major Lawrence Mott, owner and operator of KFWO, one of the few non-commercial broadcasting stations in the United States, has made several talks to his listeners, telling them of the merits of this new and sensational radio development.

The Preston "DX" Radio Ground is a permanent and positive ground connection that increases both volume and selectivity on any make of receiving set... it is an efficient static eliminator... it cuts down harmonics on single dial receivers... it improves tone qualities to an amazing degree.

No matter what make radio set you own... no matter where you live... no matter how many broadcasting stations are nearby... you should get a "DX" Radio Ground and enjoy, at last, real radio reception. Order one from your dealer today.

NOTICE TO DEALERS

If you haven't yet investigated the "DX" Radio Ground you have delayed making inquiries about one of the greatest money makers in the radio field. Write for a dealer proposition TODAY.

UNGAR & WATSON, Inc.
National Distributors
1366 So. Figueroa St. Los Angeles

THE SEROY CO.

Distributors for No. Calif. Oregon & Washington
122 Broadway ~ Oakland, Calif

C.H. PRESTON'S

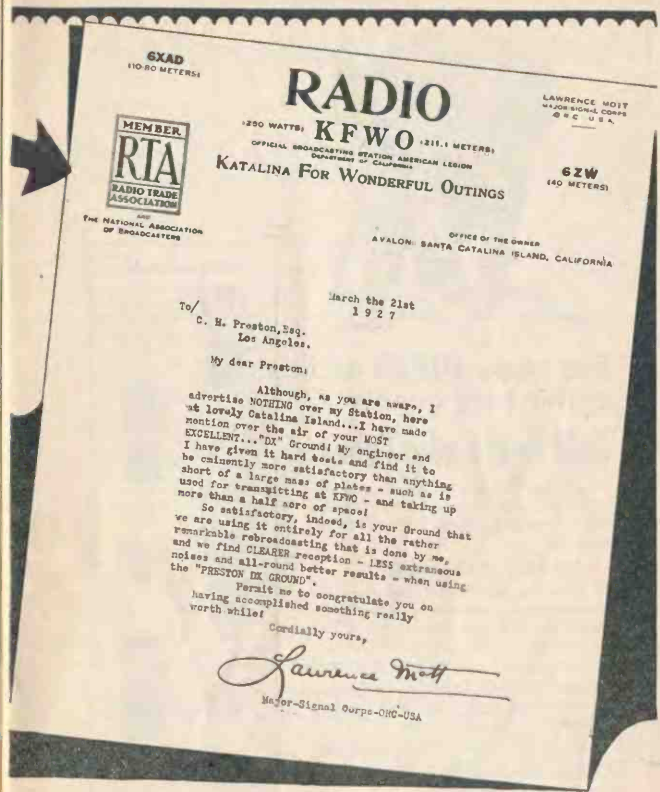


"DX"
Long Distance
Radio Ground

PATENT APPLIED FOR

\$ **8.00**

Price
— and worth every
cent of it —



6XAD
(10-20 METERS)



RADIO

(250 WATTS) **KFWO** (211.1 METERS)

OFFICIAL BROADCASTING STATION AMERICAN LEAGUE
DEPARTMENT OF CALIFORNIA
KATALINA FOR WONDERFUL OUTINGS

LAWRENCE MOTT
MEMBERSONAL CORPS
OF THE U.S.A.

6ZW
(40 METERS)

OFFICE OF THE OWNER
AVALON: SANTA CATALINA ISLAND, CALIFORNIA

March the 21st
1927

To/
C. H. Preston, Esq.
Los Angeles.

My dear Preston:

Although, as you are aware, I advertise NOTHING over my Station, here at lovely Catalina Island... I have made mention over the air of your MOST EXCELLENT... "DX" Ground! My engineer and he eminently more satisfactory than anything I have given it hard tests and find it to be short of a large mass of plates - such as is used for transmitting at KFWO - and taking up more than a half acre of space! So satisfactory, indeed, is your Ground that we are using it entirely for all the rather remarkable re-broadcasting that is done by me, and we find CLEARER reception - LESS extraneous noises and all-round better results - when using the "PRESTON DX GROUND".

Permit me to congratulate you on having accomplished something really worth while!

Cordially yours,

Lawrence Mott

Major-Signal Corps-ORG-USA

Major Mott's letter is just one of the hundreds of comments we are receiving from enthusiastic owners of the Preston "DX" Radio Ground. Major Mott's radio talks on the "DX" Ground have stressed its value as a static eliminator. His tests of it indicate that it will prove to be a valuable aid to radio reception during the warm summer months.



For more **POWER** and
better tone quality—
Gold Seal Radio Tubes

Most of the trouble with poor quality radio reception is caused by "pushing" ordinary tubes beyond their capacity.

ENJOY REAL RADIO

Put the proper Gold Seal special purpose radio tubes in your set and enjoy the improvement — you'll be delighted.

No trouble — you can make the change yourself in a few minutes. Just ask your local Gold Seal Dealer or write us for full details.

Better Do It Now—Mail Coupon Today
GOLD SEAL ELECTRICAL CO.
Incorporated
250 Park Ave., New York



All Standard Types



Type GSK 112
High power tubes for use in last stage of audio amplifier give increased volume.
List price \$4.50



Type GSK 104 and 105
The popular general purpose type for amplifier or detector. Long life and high efficiency.
List price \$3.75



Type GSK 126B
For use in battery operation to save battery alternating current — advantage in supplying the high current required by power tube equipped sets.
List price \$7.50



Type GSK 204
For use as detector only, giving superior strength on weak signals — so sensitive — desirable for distance.
List price \$4.00

—FILL OUT AND MAIL—

Gold Seal Electrical Co., Inc.
250 Park Ave., New York
Gentlemen:

Please send me full particulars of the Gold Seal Special purpose radio tubes.

Name.....

Address.....

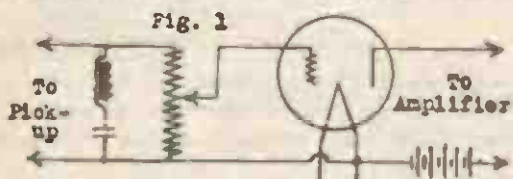
City.....

RD 4-3-37

The Electrical Phonograph

By E. K. HAYES and V. M. BITZ*

As a source of real entertainment the electrical phonograph is perhaps the outstanding development of radio science. The musical reproduction obtained from a properly designed electromagnetic system closely approximates



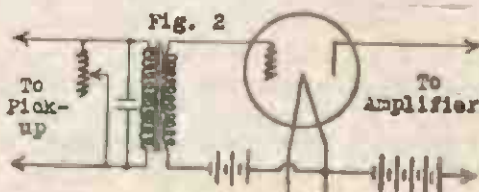
in quality the studio rendition. So that the experimenter may construct a phonograph giving good quality, the writers will describe a filter system which they have designed for this purpose. As we all know, a phonograph record has unwanted surface noises, and some pick-up units have undesirable characteristics, it is obviously important that we filter out as much of this noise as possible.

In Fig. 1 is the system employed on the Panatrope. While this system is fairly efficient when combined with certain apparatus, the circuit of Fig. 2 is a more effective filter. The leads from the pick up are connected to the primary of a good audio transformer which is shunted by a variable resistance of 5000 to 50,000 ohms, depending on the type of unit used. While this resistance is primarily a volume control, it plays an important part in the filter system. The primary is also shunted

by a fixed condenser ranging from .001 mf to, in some cases, .1 mf.

As most of the undesirable noises are of very high frequency, it will be seen that the greatest capacity we can use without affecting high frequency notes of the violin, etc., the better the quality. The secondary of the audio transformer is connected to a standard vacuum tube, the output of which is fed into a suitable power amplifier. As there has been considerable data published on power equipment, it will not be treated here.

The conclusion to be drawn is this,—that by selecting a good pick-up unit and a good audio transformer, it is pos-



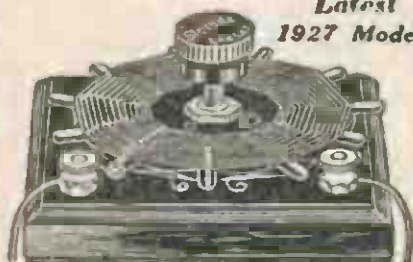
sible when using this filter system with the power circuit constants to obtain musical reproduction freer from surface noises and distortion than most commercial machines.

The Radio Commission is so poor at the present moment it does not even have printed letterheads, but uses plain paper, at the top of which is typed "Federal Radio Commission."

*Lab. of Radio Standards.

Steinite Interference Eliminator

Latest
1927 Model 600,000 Sold



Assembled complete; attach to aerial in 3 minutes. No tools. Doesn't disturb present log. No additional tubes or batteries.

\$1 Not for reception or your money back. Bank guarantee.

NOTICE: If your dealer cannot supply you, send Dollar Bill direct and we will ship prepaid.

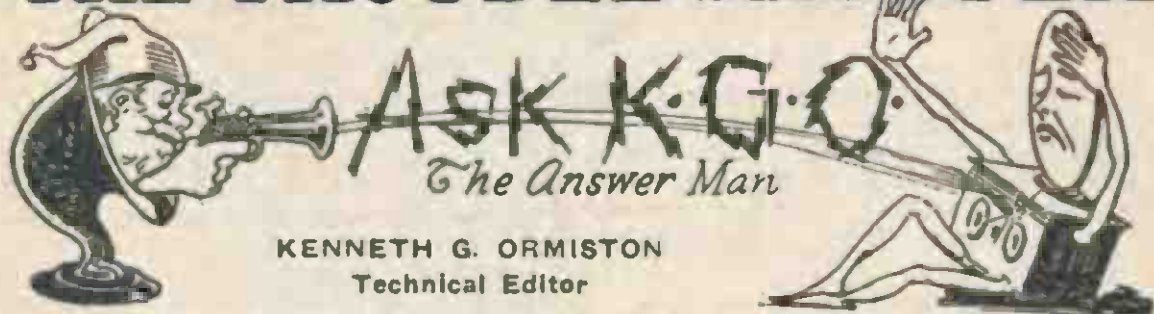
NO RADIO SET COMPLETE WITHOUT IT! Especially necessary for 1 and 2 dial controlled sets. Under present conditions the average set fails to bring in the desired stations properly.

Select Stations at Will. Cut out interference and undesired stations. Tune in loud and clear. Amazing results—Tube or Crystal, except where loop antenna used. Partially absorbs static—increases volume.

STEINITE LABORATORIES
814 So. Olive St. Los Angeles, Calif.
Phone TUCKER 4706

New Steinite Light Socket No-Battery Radio, \$110; with built-in Speaker, \$137.50; Console, built-in Speaker, \$165. Hear and see them at your dealer. Crystal Set, \$6; Aerial Eliminator, \$1; Noise Eliminator, \$1; Crystals, 50c each, 3 for \$1.

THE TROUBLE SHOOTER



KENNETH G. ORMISTON
Technical Editor

Inquiries from our readers of a technical nature are answered directly by mail. There is no fee for this service. Please explain your difficulty or question fully in order that we may better assist you by giving an intelligent and comprehensive answer.

Readers have requested information concerning the attachments which are designed to plug into the detector socket of a radio set to enable you to tune in the short wave transmitter of KDKA and the other short wave stations.

Such devices might rightly be termed "Short wave adapters," and consist essentially of a one-tube short-wave receiving set. The idea of plugging into the detector socket of the regular set is to make use of the audio amplifier and loud speaker of the set. It is also a very convenient method of connecting the A and B batteries to the short-wave unit.

Various circuits have been used in these units, probably the most successful being the Reinartz. The detector tube, which is removed from the big set and placed in the socket in the short-wave unit, must be one which will oscillate readily at the short waves and some adjustment of the B voltage is sometimes necessary. The antenna and ground are, of course, removed from the big set and attached to the short-wave unit. KDKA is usually tuned in without difficulty, and for anyone who is familiar with the code there is an unlimited field and a real kick.

Many inquiries have been received during the past week in regard to the AC tubes announced by the R. C. A.

No information is at hand except the brief announcement of the R. C. A. as printed elsewhere in this issue. There is no doubt but that the A. C. tube is entirely practical and has reached that stage in its development where it may be put on the market as a commercial product. In fact, the A. C. McCullough

tube, which has been with us for several years and which floundered through a period of defective design in its youth, is now perfected to the point where it is entirely satisfactory.

The Walbert Isosfarad sets using the AC tubes are performing remarkably well, and the tube can now unhesitatingly be pronounced a success.

As we understand it, the new RCA tube is based on the same general design with the added improvement of a replaceable heater unit.

We are informed that the new tube is so designed that it may be used in the present sets with little if any change.

Readers have asked why tuned R.F. sets seem to be more efficient at the shorter wave-length than the longer. That is, why stations of the same power and distance come in better around 300 meters than 500, etc.

There are three reasons for this. First, the so-called neutralized or balanced R.F. sets are adjusted to be just off the point of oscillation at the lower end of the wave-length scale, hence we have maximum efficiency at the lower wave-lengths, and as the condensers are advanced there is less feed-back or regeneration. Second, the coupling between the primary and secondary of the R.F. transformers is fixed, when for maximum efficiency over the whole scale the coupling should be gradually tightened as the wave-length is increased. Third, the vacuum tube functions on voltage, that is, it is the voltage impressed upon the grid from the preceding tuned circuit which causes the plate current variation. And since the voltage impressed upon the grid is

(Turn to Page 75)

Picked Out of the Air

By HEARL LA VERN CROWTHERS

Patience can never cease to be a virtue.

It is just as impossible to run away from yourself as it is from your own shadow.

The price of freedom sometimes seems enormous, but once gained would not be disposed of for twice what we paid.

Your neighbor's house is built of the same material as your own, but his attic may be different.

It's a great life if you don't weaken, and a lot of strife if you don't waken.

Selfishness and jealousy are bar sinisters, and should always be considered as such.

A street car must run on the track which man has made for it, and its power is limited. Man has no track, and his power is limitless.

Common sense tells us that we can not get water into a watermelon by planting the seeds in a spring. We must plant them in the spring.

True success is gratification. The basic elements are desire, anticipation, visualization, conviction and realization. But **KEEP AT IT.**

What is the difference between a knee or ankle length skirt and a hip length bathing suit, any way? Didn't Lincoln say that a pair of legs should be just long enough to reach the ground?

STROMBERG CARLSON



at

The Radio-Art Studio

*"A Perfect Setting for
A Perfect Set"*



Authorized Dealer

Stromberg-Carlson

3831 Wilshire Blvd.

Between Western and Manhattan

Phone WASHINGTON 4095

Open Evenings Until Nine



By CAREY PRESTON RITTMEISTER



"C. P. R."

Four and five years ago the happenings in a broadcast studio were interesting — even thrilling — sometimes amusing. Out of the thousands of letters which came in weekly were gleaned real gems of prose and poetry, while the inspiration gained from a letter written by a lone forest ranger in the Rockies, or a trapper in Quebec, made pleasure of hard work, and we found the long days too short for all we would do in them.

The recollection of Jane Novak's broadcast from KHJ would doubtless have been lost in the many similar occurrences had it not been for the subsequent visit of the Czechoslovakian woman. Then, a little over a year ago, at KNX, G. Allison Phelps asked me if I remembered the night of Jane Novak's program, and he told me, laughingly, how he had failed to find Miss Novak; how her director, Mr. Johnson, and his wife had searched for her and then hastened to KHJ, thinking that she might have gone ahead; how, on their entrance to the studio, Uncle John's unexpected greeting of "Here's Jane Novak!" had forced Mrs. Johnson to "carry on" for Miss Novak before the microphone; and when Allison finished, I told him about the Czechoslovakian woman, and we had a good laugh.

I wish I could find that woman and let her know that Jane Novak did not disown her country, and, of course, Mrs. Johnson, being a Scandinavian, loyally acknowledged it. So I am telling this now, hoping to set Miss Novak right

with her countrymen and women in Southern California.

New Hats for Old!

When one is out searching for unusual things it is surprising what you can find. For instance, the other day, I put it all over old Diogenes, and found an honest man. I have been broadcasting it ever since.

Another thing I discovered was a shop where the most charming felt hats are made out of old hats discarded by the man of the house. It is one of the cleverest ideas I have seen worked out in a long time, and as felt hats are to be worn all spring and summer, there's no reason why there shouldn't be a felt hat for wear with each street and sports outfit.

Memories From a Cook Book

Sometimes I pass a flower shop and a whiff of the scent of violets or some other fragrant flower sends me with the speed of radio half way around the world, and I see again an old-fashioned garden nestling in the Green Mountains.

Just now, from my file of recipes, I drew one which, with the same speed, took me back to a midwestern city and a very happy day, some ten years ago. The Minneapolis Symphony Orchestra was Sundaying in Kansas City, and my husband brought home some fifteen of his friends for dinner; I had ready a dinner for two. But I found one shop open where I could get all the round steak and sausage necessary. I cut the steak into strips two inches wide and four inches long. I mixed the sausage with equal parts of bread crumbs and spread it on the strips of beef, which I rolled and skewered, dipped in

(Turn to Page 75)

Koo-Koo KolyuM

By HAL DAVIS

The Croix de Guerre for Brilliant and Exceptional Dumbness this week goes to Melancthon Klingensmith of Paskeato, Cal., who wrote us that he had sent to KNX for some Applause Cards, and couldn't make as much noise with them as he could with his hands!

We have a friend who has a hobby of finding out the personal ambitions of people he chances to meet. The funniest case he ever ran into was a goof who wanted to be an ex-convict. This puzzled him a lot till he found out the poor guy had just been sentenced to life imprisonment.

We are tickled to report some letters of appreciation and some contributions from our "Dere Reedurs." Here's one from Miss Clara M. Barton of San Bernardino, Cal., clipped from a local paper: "The animal hospital is completely equipped . . . for treatment of all ailments and injuries to dogs, cats and other household PESTS"(1)

And here's a letter from Sam Holt, of Los Angeles, another DX enthusiast, who was refused admittance to that snobby "DX Club" of ours. Welcome, Sam! This kolyum of ours will ever be the refuge of them whose woid is doubted elsewhere:

*lossanjellis
march 15nd 1927.*

*raydeyo dewings
sity
dir edetur*

i got sidney australer with a cristel set nut vary long ago. i wuz living in sidney. pleez put me in the dx dept. wleh i injoy vary much.

i think the best way to do away with tewob un batery trubel iz tew use a cristel set. u can git distuns—short distuns.

haleev me i am

yrs vary treely

Sam Holt

p. s.—don't forgit.

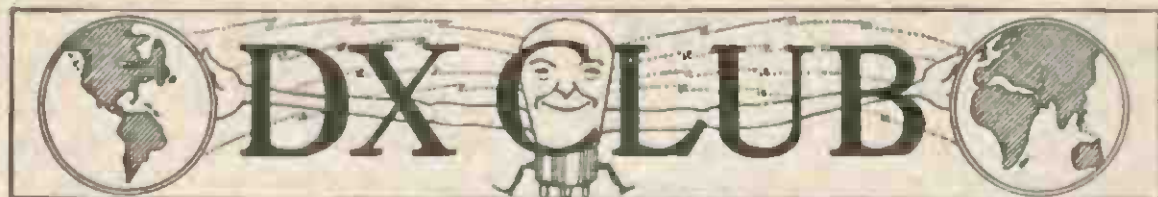
KFXB

Radio KFXB, the new downtown Los Angeles broadcasting station, located on the Commercial Exchange building at Eighth and Olive streets, is now operating on a limited schedule, according to announcement of Merle J. Grindle, manager. The station is on the air as a



licensed A. T. & T. unit, and plans to use 4000 watts of power on 352.7 meters. Pending the arrival of certain needed equipment however, the full power will not be used.

The station will be on the air daily from 2 to 4 p. m., and from 5:30 to 10 p. m., with studio programs. Five remote control stations will be installed as fast as Western Electric equipment may be secured by the telephone com-
(Turn to Page 75)



FORGOT TO SIGN NAME

DX Club:

Being one of the old subscribers to your splendid magazine I take this opportunity to answer Mr. Sadler of Point Loma, who requested Sonora owners to send in their DX lists.

I have received 140 stations of which three-fourths are verified. This includes practically all of the western stations and about 50 in the middle west. On the eastern coast have picked up KDKA, WGY, WJZ and WOR, KPRO, WBAP, WMC and WCOA comprise those I have heard in the south. Canadians include 3 in Calgary and 3 in Vancouver. Mexican, AMB and CYJ. Last, but not least, we have good old 2BL at Sydney and 5CL at Adelaide. I have had 2BL on two different occasions.

I am using 60 feet of wire, vertical, for antenna and blue vitrol ground, also power tube in last stage.

I am with Mr. Sadler. Let's hear from more Sonora owners.

806 N. Vista St.,
Hollywood, Cal.

CUTTING THRU "BLAH"

DX Club:

Have read the Radio Doings DX Club too long. Can't resist any longer.

So my 325 Stewart-Warner and myself being untamed wolves, it is our time to howl.

I just take a copy of Radio Doings and take the daily time table and go down the list and get the stations in their order on the page, excepting KFOR, KFBC, KFUS, KRJ and KMO.

And all this, cutting through station BLAH, owned and operated by the home folks.

Have some of the other fans try this stunt once.

Yours for doing the radio to a crisp nut brown, I am

LEAS M. EHLER,
1008 El Paso Drive,
Los Angeles, Calif.

SMALL DX RECORD?

DX Club:

After reading Friend Ormiston's letter on "DX," feel that while he is right in regards location, I feel this man Preston has some "ground." I installed one on March 1st, and between 5 and 6 p. m. I played KDKA, KFKX and KOA.

Have a small DX record myself, not so bad, considering I am two blocks from one local and five from another.

Have 21 stations outside the United States. From Moncton, N. B., and Portland, Me., to Florida; have 14 coast state stations, Pennsylvania 5, Tennessee 1, Louisiana 2, Chicago 14, Michigan 2, and 7 others east of the Mississippi river.

Between the Mississippi river and Salt Lake 48, and 59 on Pacific coast.

All stations verified except locals.

Am using two stages T. R. Freq., a detector and two of audio, with power tube in last stage.

My detector and T. R. F. tubes are 199's and 301-A, in audio UX-112, for power.

Have 14 feet cage aerial. Six wires, hung vertically.

Am sorry to say some of our DX writers are going too strong, as I investigated one last week and he could not bring in but two stations east of the Rockies.

Verifications, not simply "I got," are what counts.

Have been taking Radio Doings since the beginning and it's a great book.

C. H. HODGE,
335 W. Fifth St.,
Long Beach, Calif.

The DX Club continues to flourish in spite of the fact that "Sprig is cubbig" and King Static is commencing to grow a bit on the extreme DX. Perhaps in August we may put this page away with moth balls and a tear, but this is April! Come on, fans, let's go!



**We Believe it's the
Invention of the Year.**

NO matter what radio you own... no matter where you live... no matter how many broadcasting stations are near-by... the newly invented "DX" Radio Ground will positively do all these things for you...

- Better Distance Reception*
- Increase Volume Amazingly*
- Insure More Selectivity*
- Sharpen Your Tuning*
- Improve Tone Qualities*

This improved, positive ground connection is a recent invention... it is sweeping the western states like a cyclone. It will modernize any radio.

A Permanent Installation

The Preston "DX" Radio Ground will not wear out. The longer it remains in the ground near your radio set the better the performance it gives. As the good news spreads everyone will discard their obsolete water pipe grounds and, at last, enjoy real radio reception.

The Preston "DX" Radio Ground, ready for installation, sells for \$8.00 postpaid. FREE literature and copies of letters from enthusiastic owners will be mailed on request.

DON'T DELAY—WRITE TODAY.

Radio Test Laboratories
3036 Fifth Avenue
LOS ANGELES, CALIFORNIA



ELKON
NEW 3 AMPERE
HEAVY DUTY
CHARGER

All of the main features of the Elkon Trickle Charger, but—the new device charges at 3 ampere rate, tapering automatically as the battery becomes fully charged.

No acids, alkali, water, moving parts, tubes or interference.

**CONSTANT POWER
CONSTANTLY**

\$18⁵⁰

Complete

Wholesale Distributors

**YALE RADIO
ELECTRIC CO.**

LOS ANGELES

1111 Wall Street WEstmore 3351

SUNDAY TIME TABLE

ALL TIME TABLES ADJUSTED TO PACIFIC TIME
(X) Indicates Station is On the Air

10-12 A.M.		12-2 P.M.		2-4 P.M.		4-6 P.M.		STATIONS			6-8 P.M.		8-10 P.M.		10-12 P.M.																	
10 00-10 30	10 30-11 00	11 00-11 30	11 30-12 00	12 00-12 30	12 30-1 00	1 00-1 30	1 30-2 00	2 00-2 30	2 30-3 00	3 00-3 30	3 30-4 00	4 00-4 30	4 30-5 00	5 00-5 30	5 30-6 00	CALL	Ways Length Meters	Power in Watts	STATION	6 00-6 30	6 30-7 00	7 00-7 30	7 30-8 00	8 00-8 30	8 30-9 00	9 00-9 30	9 30-10 00	10 00-10 30	10 30-11 00	11 00-11 30	11 30-12 00	
SOUTHERN CALIFORNIA																																
					X	X	X	X								KELW	635	250	Burbank.													
	X	X											X	X		KGEF	617	1000	Los Angeles			X	X	X	X	X						
X	X	X	X						X	X						KFI	467	4000	Los Angeles	X	X	X	X	X	X	X	X	X	X	X		
			X	X												KFCR	413	50	Santa Barbara					X	X							
X	X	X	X	X												KHJ	405	500	Los Angeles			X	X	X	X	X	X					
	X	X														KMIC	327	500	Inglewood			X	X	X	X							
																KFBC	330	50	San Diego			X										
									X							KMTR	370	500	Hollywood	X	X	X	X	X	X	X						
X	X	X	X					X	X	X	X	X	X			KNX	337	750	Los Angeles			X	X	X	X	X						
	X	X														KPSN	316	1000	Pasadena	X	X											
X	X	X	X									X	X			KFWC	295	200	San Bernardino						X	X	X	X	X	X		
	X	X	X	X					X	X						KTBI	294	750	Los Angeles	X	X	X	X	X	X	X						
	X	X	X	X					X	X	X	X				KFSG	275	500	Los Angeles			X	X	X	X	X	X		X	X		
																KWTC	263	250	Santa Ana			X	X									
	X							X	X							KFWB	292	500	Hollywood						X	X	X	X	X	X		
								X	X							KFSD	246	1000	San Diego													
X	X	X					X					X	X			KNRC	238	1000	Santa Monica	X	X	X	X	X	X	X	X	X	X	X		
	X	X	X				X	X	X	X	X	X	X	X		KFON	233	750	Long Beach	X	X	X	X	X	X	X	X	X	X	X	X	
	X	X	X	X												KPPC	229	50	Pasadena			X	X	X	X							
																KFQZ	226	500	Hollywood					X	X	X	X	X	X			
				X	X							X	X			KFWO	211	250	Catalina	X	X	X	X	X	X	X	X	X	X	X		
	X															KFVD	205	500	Venice	X	X	X	X	X	X	X	X	X	X	X		
NORTHERN CALIFORNIA																																
X	X							X	X	X	X					KFO	428	1000	San Francisco	X	X	X	X	X	X	X	X	X	X	X		
	X	X		X	X											KYA	400	1000	San Francisco					X	X	X						
	X	X	X					X	X		X					KGO	361	4000	Oakland			X	X	X	X	X	X	X				
X	X	X	X	X												KQW	333	500	San Jose					X	X	X	X					
X	X	X	X	X												KTAB	303	1000	Oakland					X	X	X						
												X	X			KFRC	268	500	San Francisco	X	X	X	X	X								
	X	X														KFUS	256	50	Oakland					X	X	X						
X	X															KRE	256	100	Berkeley													
					X	X	X									KFWI	250	500	San Francisco			X	X	X	X	X	X	X	X	X		
NORTHERN AND WESTERN STATES																																
	X	X	X	X					X	X	X	X	X			KGW	491	1000	Portland					X	X	X	X	X				
									X	X	X	X	X	X		KEX	447	5000	Portland	X	X	X	X	X	X	X	X	X	X	X		
X	X	X														CFAC	435	2000	Calgary													
	X	X														KJR	394	20M	Seattle					X	X	X	X	X	X			
																KLZ	384	500	Denver			X	X	X	X							
X	X	X	X									X	X	X		KOA	322	5000	Denver	X	X	X										
																KOIN	319	1000	Portland	X	X			X	X	X	X	X				
X	X	X	X	X	X	X										KOMO	306	1000	Seattle	X	X	X	X	X	X	X	X					
X	X															KSL	300	1000	Salt Lake City			X	X	X	X							
	X	X	X													KMO	250	500	Tacoma	X	X											

Hours Shown as Submitted by These Stations. For DX Schedule See Page 38

COUNTERPHASE for DX: H. A. Everest, 1032 N. Ogden Dr. GR. 9915

WILL SACRIFICE a \$150 a month, well-appointed, two-room office suite in the I. N. Van Nuys Building, Seventh and Spring Streets, Los Angeles, for \$100 per month. Lease has one year to run.

Inquire at
RADIO DOINGS

407 East Pico St.

Westmore 1401

Los Angeles, Calif.

MONDAY TIME TABLE

ALL TIME TABLES ADJUSTED TO PACIFIC TIME

(X) Indicates Station is On the Air

10-12 A.M.		12-2 P.M.		2-4 P.M.		4-6 P.M.		STATIONS				6-8 P.M.		8-10 P.M.		10-12 P.M.															
10:00-10:30	10:30-11:00	11:00-11:30	11:30-12:00	12:00-12:30	12:30-1:00	1:00-1:30	1:30-2:00	2:00-2:30	2:30-3:00	3:00-3:30	3:30-4:00	4:00-4:30	4:30-5:00	5:00-5:30	5:30-6:00	CALL	Wave Length Meters	Power In Watts	STATION	6:00-6:30	6:30-7:00	7:00-7:30	7:30-8:00	8:00-8:30	8:30-9:00	9:00-9:30	9:30-10:00	10:00-10:30	10:30-11:00	11:00-11:30	11:30-12:00
SOUTHERN CALIFORNIA																															
																	KELW	535	250	Burbank	X	X	X	X	X	X	X	X			
X	X	X		X	X											X	KFI	467	4000	Los Angeles	X	X	X	X	X	X	X	X	X	X	
				X	X												KFCR	413	50	Santa Barbara				X	X						
																X	KMIC	389	500	Inglewood	X	X	X	X	X	X	X	X			
				X	X												KFBC	380	50	San Diego					X	X	X	X			
				X	X	X	X	X	X	X	X	X	X	X	X	X	KMYR	370	500	Hollywood	X	X	X	X	X	X	X	★	★	X	X
X	X			X	X	X	X	X	X	X	X	X	X	X	X	X	KNX	337	750	Los Angeles	X	X	X	X	X	X	X	X	X	X	X
				X	X												KGER	328	100	Long Beach	X	X	X	X							
				X													KPSN	318	1000	Pasadena	X	X			X	X	X				
				X	X	X	X	X	X	X	X	X	X	X	X		CYH	311	1000	Monterey, Mex.	X	X	X	X	X						
				X	X												AMB	301	100	Tia Juana, Mex.											
				X	X											X	KFWC	295	100	San Bernardino					X	X	X	X	X	X	X
								X	X								KTBI	294	750	Los Angeles				X	X	X	X				
																	KSMR	283	100	Santa Maria		X	X	X	X	X	X	X			
																	KWTC	263	250	Santa Ana		X	X								
				X	X											X	KFWB	252	500	Hollywood	X	X	X	X	X	X	X	X	X	X	X
																	KFSD	246	1000	San Diego	X	X	X	X	X	X	X	X	X	X	X
												X					KNRC	232	1000	Santa Monica	X	X	X	X	X	X	X	X	X	X	X
X	X	X	X	X	X							X	X	X	X	X	KFON	233	750	Long Beach	X	X	X	X	X	X	X	X	X	X	X
				X	X												KFQZ	226	500	Hollywood	X	X	X	X	X	X	X	X	X	X	X
																	KGFH	219	100	La Crescenta					X	X	X	X			
																X	KFYF	214	25	Oxnard, Cal.	X										
																X	KFVD	205	500	Venice	X	X	X	X	X	X	X	X	X	X	X
NORTHERN CALIFORNIA																															
																	KFBK	535	100	Sacramento	X	X	X	X	X	X	X	X			
				X													KLX	508	500	Oakland		X		X	X	X	X				
X			X		X	X						X	X	X	X	X	KPO	428	1000	San Francisco	X	X	X	X	X	X	X	X	X	X	
			X	X	X												KYA	400	1000	San Francisco		X	X		X	X	X	X	X	X	X
			X	X	X							X	X			X	KGO	361	4000	Oakland	X	X	X								
X																	KQW	333	500	San Jose	X	X	X	X	X	X					
												X	X			X	KTAB	303	1000	Oakland		X	X		X	X	X	X			
X	X	X	X	X	X	X	X					X	X	X	X	X	KFRC	288	500	San Francisco	X	X	X		X	X	X	X	X	X	X
																X	KRE	258	100	Berkeley					X	X	X	X			
																X	KFWI	250	500	San Francisco	X	X	X		X	X	X	X	X	X	X
																	KZM	240	100	Oakland		X									
NORTHERN AND WESTERN STATES																															
X	X	X															KBW	491	1000	Portland	X	X	X	X	X	X	X	X	X	X	
												X	X				KFOA	454	1000	Seattle		X	X	X	X	X	X	X			
																X	KEX	447	4000	Portland	X	X	X	X	X						
			X	X													CFAC	436	2000	Calgary					X	X					
																	KFXF	422	1000	Denver		X	X	X	X	X	X	X	X	X	X
																	KHQ	394	1000	Spokane	X	X			X	X					
X	X	X										X	X			X	KJR	384	20M	Seattle	X				X	X	X	X	X	X	
																X	KLZ	384	500	Denver		X	X	X					X	X	
			X	X	X	X						X	X	X	X	X	KOA	322	6000	Denver	X	X	X	X	X	X	X	X			
			X	X								X	X	X	X	X	KOIN	318	1000	Portland	X	X	X		X	X	X	X			
X	X	X	X	X	X	X	X	X	X	X	X	X	X	X	X	X	KOMO	308	1000	Seattle	X	X		X	X	X	X	X	X	X	X
												X	X			X	KSL	300	1000	Salt Lake City	X	X	X	X	X	X	X	X	X	X	X
																	KOWW	285	500	Walla Walla		X		X	X	X	X	X	X	X	X
																	KOAC	280	500	Corvallis, Ore.		X	X	X	X						
X	X															X	KMO	250	500	Tacoma			X	X	X	X					

Hours Shown as Submitted by These Stations. For DX Schedule See Page 38

COUNTERPHASE for DX: H. A. Everest, 1032 N. Ogden Dr. GR. 9915

TUESDAY TIME TABLE

ALL TIME TABLES ADJUSTED TO PACIFIC TIME
(X) Indicates Station Is On the Air

10-12 A.M.		12-2 P.M.		2-4 P.M.		4-6 P.M.		STATIONS				6-8 P.M.		8-10 P.M.		10-12 P.M.																				
10-10:30	10:30-11:00	11:00-11:30	11:30-12:00	12:00-12:30	12:30-1:00	1:00-1:30	1:30-2:00	2:00-2:30	2:30-3:00	3:00-3:30	3:30-4:00	4:00-4:30	4:30-5:00	5:00-5:30	5:30-6:00	CALL	Wave Length Meters	Power in Watts	STATION	6:00-6:30	6:30-7:00	7:00-7:30	7:30-8:00	8:00-8:30	8:30-9:00	9:00-9:30	9:30-10:00	10:00-10:30	10:30-11:00	11:00-11:30	11:30-12:00					
SOUTHERN CALIFORNIA																																				
																			KELW	535	250	Burbank	X	X	X	X	X	X	X	X						
																			X	KFI	467	4000	Los Angeles	X	X	X	X	X	X	X	X	X	X			
		X	X																	KFCR	413	50	Santa Barbara				X	X								
								X	X											KHJ	405	500	Los Angeles		X	X	X	X	X	X	X	X	X			
																				X	KMIC	387	500	Inglewood	X	X	X	X	X	X	X	X	X	X		
X	X	X	X	X	X	X	X	X	X	X	X	X	X	X	X	X	X	X	X	X	KMTR	370	500	Hollywood	X	X	X	X	X	X	X	X	X	X		
X	X																			X	KNX	337	750	Los Angeles	X	X	X	X	X	X	X	X	X	X		
			X	X																X	KGER	328	100	Long Beach	X	X			X	X	X	X				
			X																	X	KPSN	318	1000	Pasadena	X	X			X	X	X					
			X	X	X	X	X	X	X	X	X	X	X	X	X	X	X	X	X	A	MB	301	100	Tia Juana, Mex.			X	X	X	X	X	X				
	X	X	X										X	X						X	KFWC	295	100	San Bernardino						X	X	X	X	X	X	
								X	X											X	KTBI	294	750	Los Angeles			X	X	X	X						
	X	X	X	X						X	X	X	X							X	KFSG	275	500	Los Angeles		X	X	X	X	X	X					
																				X	KWTC	263	250	Santa Ana	X	X			X	X	X	X				
X	X				X	X							X	X	X	X	X	X	X	X	KFWB	252	500	Hollywood	X	X	X	X	X	X	X	X	X	X		
																				X	KFSD	246	1000	San Diego	X	X	X	X	X	X	X	X	X	X		
																				X	KFSD	246	1000	San Diego	X	X	X	X	X	X	X	X	X	X		
								X	X	X	X	X								X	KNRC	238	1000	Santa Monica	X	X	X	X	X	X	X	X	X	X	X	
X	X	X	X	X	X	X	X	X	X	X	X	X	X	X	X	X	X	X	X	X	KFON	233	750	Long Beach	X	X	X	X	X	X	X	X	X	X	X	
			X	X																X	KFQZ	228	500	Hollywood	X	X	X	X	X	X	X	X	X	X		
			X	X									X	X						X	KFWO	211	250	Catalina	X	X	X	X								
	X																			X	KFVD	205	500	Vanice	X	X	X	X	X	X	X	X	X	X		
NORTHERN CALIFORNIA																																				
																				X	KLX	508	500	Oakland			X									
X		X	X	X					X	X	X	X	X	X	X	X	X	X	X	X	KPO	428	1000	San Francisco	X	X	X	X	X	X	X	X	X	X		
X	X			X	X	X														X	KYA	400	1000	San Francisco	X	X		X	X	X	X	X	X	X		
		X	X	X	X					X	X									X	KGO	361	4000	Oakland	X	X	X	X	X	X	X	X	X	X	X	
X																				X	KQW	333	500	San Jose	X	X	X	X	X	X	X	X	X	X		
																				X	KTAB	303	1000	Oakland			X	X	X	X	X	X	X	X	X	
																				X	KSMR	283	100	Santa Maria	X	X	X	X	X	X	X	X	X	X	X	
X	X	X	X	X	X	X	X					X	X	X	X	X	X	X	X	X	KFRC	288	500	San Francisco	X	X	X	X	X	X	X	X	X	X	X	
	X																			X	KRE	256	100	Berkeley						X	X					
X	X	X	X					X	X											X	KFUS	256	500	Oakland												
																				X	KFWH	254	100	Eureka				X	X	X						
																				X	KFWI	250	500	San Francisco	X	X	X	X	X	X	X	X	X	X	X	
																				X	KZM	240	100	Oakland			X									
NORTHERN AND WESTERN STATES																																				
X	X	X			X	X	X	X												X	KGW	491	1000	Portland	X	X	X	X	X	X	X	X	X	X		
					X	X	X					X									X	KFOA	454	1000	Seattle		X	X	X	X	X	X	X	X	X	
																				X	KEX	447	4000	Portland	X	X	X	X	X	X	X	X	X	X	X	X
		X	X									X	X							X	CFAC	435	2000	Calgary												
																				X	KFXF	422	1000	Denver	X	X	X	X	X	X	X	X	X	X	X	X
								X	X											X	KHQ	354	1000	Spokane	X	X	X	X	X	X	X	X	X	X	X	X
X	X	X																		X	KJR	384	20M	Seattle	X					X	X	X				
	X	X	X	X				X	X	X	X	X	X	X	X	X	X	X	X	X	KLZ	384	500	Denver			X	X	X	X						
	X	X											X	X	X	X	X	X	X	X	KOA	322	5000	Denver		X		X	X							
X	X	X	X	X	X	X	X	X	X	X	X	X	X	X	X	X	X	X	X	X	KOIN	319	1000	Portland	X	X	X	X	X	X	X	X	X	X	X	X
																				X	KOMO	306	1000	Seattle	X	X	X	X	X	X	X	X	X	X	X	X
																				X	KSL	300	1000	Salt Lake City	X	X	X	X	X	X						
																				X	CNRV	291	5000	Vancouver			X			X	X					
																				X	KOWW	285	500	Walla Walla			X									
																				X	KFJR	283	50	Portland			X			X						
X	X																			X	KMO	250	500	Tacoma			X	X								
																				X	KFOX	233	1000	Seattle			X	X								

Hours Shown as Submitted by These Stations. For DX Schedule See Page 38

*The new Balkite
Combination—
with your
“A” battery*



*it supplies all radio power automatically
from the light socket*

Now you can operate your radio set from the light socket. Merely by adding the new Balkite Combination Radio Power Unit. Once connected to your “A” battery and set and plugged into the light socket, it supplies automatic power to both circuits. You need not even turn it off and on, for it is controlled by the filament switch already on your set and is entirely automatic in operation. It will give you a constant quality of reception that cannot be secured in any other way.

Balkite Combination can be installed in a few minutes, either near the set or in a remote location. Like all Balkite Radio Power

Units it has no tubes, nothing to replace or renew, is a permanent piece of equipment, and is built to conform with the standards of the Underwriters' Laboratories. It is noiseless in operation. It will serve any set now using either 4 or 6-volt “A” batteries and requiring up to 30 milliamperes at 135 volts of “B” current—any set of 8 tubes or less, including power tubes.

Add Balkite Combination to your radio set and know the pleasure and convenience of owning a receiver always ready to operate at full power. Price \$59.50 [\$83 in Canada.] Ask your dealer.

Manufactured by FANSTEEL PRODUCTS CO., Inc., North Chicago, Ill.

*District Sales Representatives—A. S. Lindstrom Company, San Francisco, 274
Brannan Street—Los Angeles, 324 North San Pedro Street—Portland, 146½
North 10th Street—Seattle, 95 Connecticut Street—Salt Lake City, 221 South
West Temple Street—Denver, Jack L. Hirsch Company, 1641 Stout Street.*

FANSTEEL
Balkite *Radio*
Power Units

WEDNESDAY TIME TABLE

ALL TIME TABLES ADJUSTED TO PACIFIC TIME
(X) Indicates Station Is On the Air

10-12 A.M.		12-2 P.M.		2-4 P.M.		4-6 P.M.		STATIONS				6-8 P.M.		8-10 P.M.		10-12 P.M.																										
10 00-10 30	10 30-11 00	11 00-11 30	11 30-12 00	12 00-12 30	12 30-1 00	1 00-1 30	1 30-2 00	2 00-2 30	2 30-3 00	3 00-3 30	3 30-4 00	4 00-4 30	4 30-5 00	5 00-5 30	5 30-6 00	CALL	Wave Length Meters	Power in Watts	STATION	6 00-6 30	6 30-7 00	7 00-7 30	7 30-8 00	8 00-8 30	8 30-9 00	9 00-9 30	9 30-10 00	10 00-10 30	10 30-11 00	11 00-11 30	11 30-12 00											
SOUTHERN CALIFORNIA																																										
																KELW	535	250	Burbank	X	X	X	X	X	X	X	X	X	X	X	X	X	X	X	X							
																KDEF	517	1000	Los Angeles	X	X	X	X	X	X	X	X	X	X	X	X	X	X	X	X	X						
X	X	X														XKFI	467	4000	Los Angeles	X	X	X	X	X	X	X	X	X	X	X	X	X	X	X	X	X						
			X	X												KFCR	413	50	Santa Barbara					X	X																	
								X	X							KHJ	485	500	Los Angeles			X	X	X	X	X	X	X	X	X	X	X	X	X	X	X	X					
																XKMIC	387	500	Inglewood	X	X	X	X	X	X	X	X	X	X	X	X	X	X	X	X	X	X					
			X	X												KFBC	380	50	San Diego			X		X	X	X	X	X	X	X	X	X	X	X	X	X	X					
X	X		X	X	X	X	X	X	X	X	X	X	X	X	X	XKMTR	370	500	Hollywood	X	X	X	X	X	X	X	X	X	X	X	X	X	X	X	X	X	X	X				
X	X		X	X	X	X	X	X	X	X	X	X	X	X	X	XKNX	337	750	Los Angeles	X	X	X	X	X	X	X	X	X	X	X	X	X	X	X	X	X	X	X				
			X	X						X	X					KGER	328	100	Long Beach	X	X																					
			X	X	X	X	X	X	X	X	X	X	X	X	X	KPSN	318	1000	Pasadena	X	X																					
		X	X	X	X	X	X	X	X	X	X	X	X	X	X	AMB	301	100	Tia Juana, Mex																							
		X	X	X								X	X	X	X	KFWC	295	100	San Bernardino								X	X	X	X	X	X	X	X	X	X	X	X				
							X	X								KTBI	294	750	Los Angeles			X	X	X	X																	
										X	X	X	X	X	X	KSMR	283	100	Santa Maria			X	X	X	X	X	X	X	X	X	X	X	X	X	X	X	X	X	X			
X	X	X	X						X	X	X	X	X	X	X	KFSG	275	500	Los Angeles			X	X	X	X	X	X	X	X	X	X	X	X	X	X	X	X	X	X			
																KWTC	263	250	Santa Ana			X	X																			
X			X	X								X	X	X	X	KFWB	252	500	Hollywood	X	X	X	X	X	X	X	X	X	X	X	X	X	X	X	X	X	X	X	X			
																KFSB	246	1000	San Diego	X	X	X	X	X	X	X	X	X	X	X	X	X	X	X	X	X	X	X	X			
							X	X	X							KMRC	238	1000	Santa Monica	X	X	X	X	X	X	X	X	X	X	X	X	X	X	X	X	X	X	X	X			
X	X	X	X	X	X	X	X	X	X	X	X	X	X	X	X	XKFN	233	750	Long Beach	X	X	X	X	X	X	X	X	X	X	X	X	X	X	X	X	X	X	X	X			
X	X	X	X													KPPC	229	50	Pasadena			X	X	X	X	X																
			X	X												KFQZ	228	500	Hollywood	X	X	X	X	X	X	X	X	X	X	X	X	X	X	X	X	X	X	X	X			
																KGFH	219	100	La Crescenta					X	X	X	X															
			X	X												KFWO	211	250	Catalina	X	X	X	X	X	X	X																
			X	X	X							X	X	X	X	KFVD	208	500	Venice	X	X	X	X	X	X	X	X	X	X	X	X	X	X	X	X	X	X	X	X			
NORTHERN CALIFORNIA																																										
																KLX	502	500	Oakland			X	X		X	X	X	X	X	X	X	X	X	X	X	X	X	X				
X			X	X	X				X	X	X	X	X	X	X	XKPO	428	1000	San Francisco	X	X	X	X	X	X	X	X	X	X	X	X	X	X	X	X	X	X	X	X	X		
			X	X	X											KYA	400	1000	San Francisco			X	X	X	X	X	X	X	X	X	X	X	X	X	X	X	X	X	X	X		
		X	X	X	X	X	X	X	X	X	X	X	X	X	X	XKGO	361	4000	Oakland	X	X	X	X	X	X	X	X	X	X	X	X	X	X	X	X	X	X	X	X	X		
X																KQW	333	500	San Jose	X	X	X	X	X	X	X	X	X	X	X	X	X	X	X	X	X	X	X	X	X		
												X	X	X	X	XKTAB	303	1000	Oakland			X	X		X	X	X	X	X	X	X	X	X	X	X	X	X	X	X	X		
X	X	X	X	X	X	X	X					X	X	X	X	XKFR	288	500	San Francisco	X	X	X		X	X	X	X	X	X	X	X	X	X	X	X	X	X	X	X	X	X	
X	X															KFUS	259	50	Oakland					X	X																	
		X												X		KRE	258	100	Berkeley																							
						X	X									KFWI	260	500	San Francisco	X	X	X		X	X	X	X	X	X	X	X	X	X	X	X	X	X	X	X	X		
																KZM	260	100	Oakland			X																				
NORTHERN AND WESTERN STATES																																										
X	X	X														KBW	491	1000	Portland	X	X	X	X	X	X	X	X	X	X	X	X	X	X	X	X	X	X	X	X			
				X	X	X							X			KFOA	454	1000	Seattle			X																				
																KEX	447	4000	Portland	X	X	X	X	X	X	X	X	X	X	X	X	X	X	X	X	X	X	X	X	X	X	
			X	X												CFAC	486	2000	Calgary			X	X	X																		
																KFXF	422	1000	Denver			X	X	X	X	X	X	X	X	X	X	X	X	X	X	X	X	X	X	X	X	
X	X	X							X	X						XKJR	384	20M	Seattle	X									X	X	X	X	X	X	X	X	X	X	X	X	X	
													X	X	X	KLZ	384	500	Denver	X	X	X	X																			
	X	X	X	X									X			KOA	322	5000	Denver			X	X	X	X	X	X	X	X	X	X	X	X	X	X	X	X	X	X	X	X	
			X	X						X	X					XKON	319	1000	Portland	X	X	X	X	X	X	X	X	X	X	X	X	X	X	X	X	X	X	X	X	X	X	
X	X	X	X	X	X	X	X	X	X	X	X	X	X	X	X	XKOMO	308	1000	Seattle	X	X	X	X	X	X	X	X	X	X	X	X	X	X	X	X	X	X	X	X	X	X	
																XKSL	300	1000	Salt Lake City	X	X	X	X	X	X	X	X	X	X	X	X	X	X	X	X	X	X	X	X	X	X	
																KOWW	286	500	Walla Walla			X								X	X	X	X	X	X	X	X	X	X	X	X	X
																KOAC	280	500	Corvallis, Ore.			X	X	X	X																	
X	X		X													KFWH	254	100	Eureka					X	X	X	X															
X	X															KMO	250	500	Tacoma					X	X																	

Hours Shown as Submitted by These Stations. For DX Schedule See Page 38

FEDERAL ortho - sonic RECEIVERS

“New Beauty In Radio”

Model D-10 Illustrated at Right. Five tube —wet or dry battery type. Centralized control. Very selective. Genuine mahogany cabinet, mahogany lined. Finished in a rich brown. Price, without accessories, \$100.00. Table extra.



One of These Dealers Will Gladly Demonstrate for You:

LOS ANGELES

Downtown

STANDARD RADIO Co.
417 E. Pico St.
WEstmore 1560

Hollywood

GLOW ELECTRIC Co.
5910 Hollywood Blvd.
Hollywood 4610

HETZEL COMPANY
7915 Santa Monica Blvd.
GRanite 5874

SHEPHERD RADIO SERVICE
7562 Sunset Blvd.
GRanite 7482

Highland Park

F. & H. RADIO SHOP
6011 York Blvd.
GARfield 8962

South

JENKINS RADIO
8450-52 S. Broadway
THornwall 4460

Southeast

MANCHESTER RADIO
ELECTRIC SHOP
1522 E. Manchester Ave.
DElaware 0460

Southwest

THE RADIO-ELECTRIC SHOP
1428 W. Sta. Barbara Blvd.
VERmont 7440

Echo Park

E. E. EAGLES
1704 Sunset Blvd.
WAshington 9588

GLENDALE

BROADWAY ELECTRIC
(Willard Hellman,
Radio Dept.)
202 E. Broadway
Glendale 3064

LONG BEACH

KELM RADIO Co.
147 E. 4th St., at Locust
Long Beach 618-329

RADIOLAND SERVICE Co.
734 E. Anaheim St.
Long Beach 666-239

LYNWOOD

LYNWOOD ELECTRIC Co.
203 N. Long Beach Blvd.
Compton 583

**OCEAN PARK
SANTA MONICA**

PIER AVENUE RADIO Co.
142 Pier Ave.
Santa Monica 61094

PASADENA

THOMAS & SOMMERVILLE
41 N. Broadway
Terrace 0815

“Tone Quality Only Rivalled by Reality”

THURSDAY TIME TABLE

ALL TIME TABLES ADJUSTED TO PACIFIC TIME
(X) Indicates Station Is On the Air

10-12 A.M.		12-2 P.M.		2-4 P.M.		4-6 P.M.		STATIONS				6-8 P.M.		8-10 P.M.		10-12 P.M.																											
10:00-10:30	10:30-11:00	11:00-11:30	11:30-12:00	12:00-12:30	12:30-1:00	1:00-1:30	1:30-2:00	2:00-2:30	2:30-3:00	3:00-3:30	3:30-4:00	4:00-4:30	4:30-5:00	5:00-5:30	5:30-6:00	CALL	Wave Length Meters	Power in Watts	STATION	6:00-6:30	6:30-7:00	7:00-7:30	7:30-8:00	8:00-8:30	8:30-9:00	9:00-9:30	9:30-10:00	10:00-10:30	10:30-11:00	11:00-11:30	11:30-12:00												
SOUTHERN CALIFORNIA																																											
																	KELW	535	250	Burbank	X	X	X	X	X	X	X	X	X														
																	KFI	487	4000	Los Angeles	X	X	X	X	X	X	X	X	X	X	X	X											
		X	X														KFCR	413	80	Santa Barbara																							
																	KHJ	405	500	Los Angeles		X	X	X	X	X	X	X	X	X	X	X	X	X	X	X	X	X	X				
																	KMIC	397	500	Inglewood	X	X	X	X	X	X	X	X	X	X	X	X	X	X	X	X	X	X	X				
		X	X														KFBC	380	80	San Diego						X	X	X	X	X	X	X	X	X	X	X	X	X	X				
X	X	X	X	X	X	X	X	X	X	X	X	X	X	X	X	X	KMTR	370	800	Hollywood	X	X	X	X	X	X	X	X	X	X	X	X	X	X	X	X	X	X	X				
X	X	X		X	X	X	X	X	X	X	X	X	X	X	X	X	KNX	337	750	Los Angeles	X	X	X	X	X	X	X	X	X	X	X	X	X	X	X	X	X	X	X				
		X	X					X	X								KGER	326	100	Long Beach	X	X																					
		X															KPSN	316	1000	Pasadena	X	X				X	X	X															
		X	X	X	X	X	X	X	X	X	X	X	X	X	X	X	AMB	301	100	Tia Juana, Mex.																							
		X	X									X	X	X	X	X	KFWC	296	100	San Bernardino								X	X	X	X	X	X	X	X	X	X	X	X	X			
							X	X									KTBI	294	750	Los Angeles			X	X	X	X																	
X	X	X	X					X	X	X	X						KFSG	275	500	Los Angeles		X	X	X	X	X	X	X	X	X	X	X	X	X	X	X	X	X	X	X	X		
																	KWTC	263	250	Santa Ana	X	X			X	X	X	X															
	X			X	X												KFWB	262	500	Hollywood	X	X	X	X	X	X	X	X	X	X	X	X	X	X	X	X	X	X	X	X			
																	KFSB	246	1000	San Diego	X	X	X	X	X	X	X	X	X	X	X	X	X	X	X	X	X	X	X	X			
								X	X	X	X	X	X	X	X	X	KNRC	238	1000	Santa Monica		X	X	X	X	X	X	X	X	X	X	X	X	X	X	X	X	X	X	X			
X	X	X	X					X	X	X	X	X	X	X	X	X	KFDN	233	750	Long Beach	X	X	X	X	X	X	X	X	X	X	X	X	X	X	X	X	X	X	X	X			
				X	X												KFOZ	226	500	Hollywood	X	X	X	X	X	X	X	X	X	X	X	X	X	X	X	X	X	X	X	X			
				X	X												KFWO	211	250	Catalina	X	X	X	X	X	X																	
	X												X	X	X	X	KFVD	206	500	Venice	X	X	X	X	X	X	X	X	X	X	X	X	X	X	X	X	X	X	X				
NORTHERN CALIFORNIA																																											
																	KFBK	535	100	Sacramento				X	X	X	X	X															
		X		X	X	X			X	X	X	X	X	X	X	X	KLX	509	500	Oakland			X																				
				X	X	X											KPO	428	1000	San Francisco	X	X	X	X	X	X	X	X	X	X	X	X	X	X	X	X	X	X	X	X			
			X	X	X	X											KYA	400	1000	San Francisco		X	X																				
		X	X	X	X	X						X	X	X	X	X	KGO	361	4000	Oakland	X	X	X		X	X	X	X	X	X	X	X	X	X	X	X	X	X	X	X	X		
X																	KQW	333	600	San Jose	X	X	X	X	X	X																	
												X	X	X	X	X	KTAB	303	1000	Oakland		X	X																				
																	KSMR	283	100	Santa Maria		X	X	X	X	X	X	X	X	X	X	X	X	X	X	X	X	X	X	X	X		
X	X	X	X	X	X	X	X					X	X	X	X	X	KFRC	268	500	San Francisco	X	X	X		X	X	X	X	X	X	X	X	X	X	X	X	X	X	X	X	X		
																	KRE	266	100	Berkeley					X	X	X	X															
X	X			X				X									KFWH	264	100	Eureka					X																		
						X	X										KFWI	250	500	San Francisco	X	X	X		X	X	X	X	X	X	X	X	X	X	X	X	X	X	X	X	X		
																	KZM	240	100	Oakland			X																				
																	KMJ	234	50	Fresno								X	X														
																	KFOU	231	250	Holy City, Calif						X	X																
NORTHERN AND WESTERN STATES																																											
X	X	X		X	X												KQW	491	1000	Portland	X	X	X	X	X	X	X	X	X	X	X	X	X	X	X	X	X	X	X	X			
X	X		X	X									X	X	X	X	WBAP	479	1500	Fort Worth	X			X	X	X	X	X	X	X	X	X	X	X	X	X	X	X	X	X			
			X	X	X							X					KFOA	454	1000	Seattle		X	X	X	X	X	X	X	X	X	X	X	X	X	X	X	X	X	X	X	X		
																	KEX	447	4000	Portland	X	X	X	X	X	X	X	X	X	X	X	X	X	X	X	X	X	X	X	X	X	X	
			X	X													CFAC	435	2000	Calgary	X	X			X	X	X																
								X	X								KHQ	394	1000	Spokane		X	X						X	X													
X	X	X															KJR	394	20M	Seattle	X							X	X	X	X	X	X	X	X	X	X	X	X	X	X		
			X	X								X	X	X	X	X	KOIN	319	1000	Portland	X	X	X		X	X	X	X	X	X	X	X	X	X	X	X	X	X	X	X	X		
X	X	X	X	X	X	X	X	X	X	X	X	X	X	X	X	X	KOMO	308	1000	Seattle	X	X		X	X	X	X	X	X	X	X	X	X	X	X	X	X	X	X	X	X	X	
X	X	X	X			X	X	X	X			X	X	X	X	X	KOA	322	8000	Denver																							
																	KSL	300	1000	Salt Lake City	X	X	X	X	X																		
X	X							X	X	X	X						KOWW	298	500	Walla Walla			X		X	X	X	X	X	X	X	X	X	X	X	X	X	X	X	X	X		
								X	X	X	X						KMO	250	500	Tacoma			X	X	X	X	X	X	X	X	X	X	X	X	X	X	X	X	X	X	X		

Hours Shown as Submitted by These Stations. For DX Schedule See Page 38

FOR RESULTS

USE AN



BETTER TONE QUALITY!

Reproduces all notes, high and low, with equal clarity

MORE DISTANCE!

Australia on the Loud Speaker

ABSOLUTE SELECTIVITY!

Locals do not interfere with DX

LESS STATIC!

By its very principle the Infradyne tends to cut down static.
Our men are experts in the construction and use of the Infradyne

E. M. SARGENT, INFRADYNE INVENTOR, RECOMMENDS

THE

ELECTRIC LIGHTING SUPPLY CO.

C. F. BAKER

216 W. THIRD ST., Between Spring and Broadway

Los Angeles

Open Saturday Evenings

TRinity 3781

FRIDAY TIME TABLE

ALL TIME TABLES ADJUSTED
TO PACIFIC TIME
(X) Indicates Station Is On the Air

10-12 A.M.		12-2 P.M.		2-4 P.M.		4-6 P.M.		STATIONS				6-8 P.M.		8-10 P.M.		10-12 P.M.															
10:00-10:30	10:30-11:00	11:00-11:30	11:30-12:00	12:00-12:30	12:30-1:00	1:00-1:30	1:30-2:00	2:00-2:30	2:30-3:00	3:00-3:30	3:30-4:00	4:00-4:30	4:30-5:00	5:00-5:30	5:30-6:00	CALL	Wave Length Meters	Power In Watts	STATION	6:00-6:30	6:30-7:00	7:00-7:30	7:30-8:00	8:00-8:30	8:30-9:00	9:00-9:30	9:30-10:00	10:00-10:30	10:30-11:00	11:00-11:30	11:30-12:00
SOUTHERN CALIFORNIA																															
																KELW	535	250	Burbank	X	X	X	X	X	X	X	X				
																KGEF	517	1000	Los Angeles	X	X	X	X	X	X	X					
X	X	X														XKFI	467	4000	Los Angeles	X	X	X	X	X	X	X	X	X	X		
			X	X												KFCR	413	50	Santa Barbara				X	X							
																KHJ	405	500	Los Angeles		X	X	X	X	X	X	X				
																XKMIC	387	500	Inglewood	X	X	X	X	X	X	X	X				
																KFBC	380	50	San Diego					X	X	X	X				
X	X		X	X	X	X	X	X	X	X	X	X	X	X	X	XKMT	370	500	Hollywood	X	X	X	X	X	X	X	X	X	X		
X	X		X	X	X	X	X	X	X	X	X	X	X	X	X	XKNX	337	750	Los Angeles	X	X	X	X	X	X	X	X	X	X	X	
			X													KPSN	318	1000	Pasadena	X	X			X	X	X					
			X	X	X	X	X	X	X	X	X	X	X	X	X	AMB	301	100	Tia Juana, Mex		X	X	X	X	X	X	X				
																KFWC	295	100	San Bernardino	X											
									X	X						KTBI	294	750	Los Angeles	X	X	X	X	X	X						
			X	X	X	X			X	X	X	X				KFSG	275	500	Los Angeles		X	X	X	X	X	X		X	X		
																KWTC	263	250	Santa Ana		X	X									
X			X	X												XKFWB	252	500	Hollywood	X	X	X	X	X	X	X	X	X	X		
																KFSD	246	1000	San Diego	X	X	X	X	X	X	X	X	X	X		
							X	X	X	X	X	X	X	X	X	KNRC	238	1000	Santa Monica	X	X	X	X	X	X	X	X	X	X		
X	X	X	X	X	X	X	X	X	X	X	X	X	X	X	X	KFON	233	750	Long Beach	X	X	X	X	X	X	X	X	X	X		
																KFQZ	225	500	Hollywood	X	X	X	X	X	X	X	X	X	X		
																KGFH	219	100	La Crescenta					X	X	X	X				
			X	X								X	X	X	X	XKFWO	211	250	Catalina	X	X	X	X								
X												X	X	X	X	KFVD	205	500	Venice	X	X	X	X	X	X	X	X	X	X		
NORTHERN CALIFORNIA																															
																KLX	508	500	Oakland			X	X	X	X	X	X				
X			X	X	X			X	X	X	X	X	X	X	X	XKPO	428	1000	San Francisco	X	X	X	X	X	X	X	X	X	X		
X	X		X	X	X											KYA	400	1000	San Francisco		X	X		X	X	X	X	X			
		X	X	X	X											KGO	381	4000	Oakland	X	X	X		X	X	X	X				
X																KQW	333	500	San Jose	X	X	X	X	X	X						
																XKTAB	303	1000	Oakland			X		X	X	X	X				
																KSMR	283	100	Santa Maria		X	X	X	X	X	X					
X	X	X	X	X	X	X	X		X	X	X	X	X	X	X	KFRC	258	500	San Francisco	X	X	X		X	X	X	X	X	X		
X	X		X													XKRE	258	100	Berkeley												
X	X		X				X									KFWH	254	100	Eureka					X	X	X	X				
			X	X												KFWI	250	500	San Francisco	X	X	X		X	X	X	X				
																KZM	240	100	Oakland		X										
																KMJ	234	50	Fresno					X	X	X	X				
NORTHERN AND WESTERN STATES																															
X	X	X		X	X	X	X									KGW	491	1000	Portland	X	X	X	X	X	X	X	X	X	X		
		X	X	X	X			X								KFOA	454	1000	Seattle		X	X	X	X	X	X	X	X	X		
																XKEX	447	4000	Portland	X	X	X	X	X	X						
																KFXF	422	1000	Denver		X	X	X	X	X	X	X	X	X		
																KHQ	394	1000	Spokane	X	X	X	X		X	X	X	X	X		
																KLZ	384	500	Denver	X	X										
X	X	X					X	X								XKJR	348	20M	Seattle	X					X	X	X				
X	X	X	X	X			X	X	X	X	X	X	X	X	X	KOA	322	5000	Denver	X	X	X	X	X	X						
		X	X				X	X								XKOIN	319	1000	Portland	X	X	X		X	X	X	X				
X	X	X	X	X	X	X	X	X	X	X	X	X	X	X	X	XKOMO	306	1000	Seattle	X	X		X	X	X	X	X	X	X		
							X	X	X	X						KSL	300	1000	Salt Lake City	X	X	X	X	X	X						
							X									CNRV	291	5000	Vancouver, B. C.		X	X	X	X	X	X	X	X			
																KOWW	285	500	Walla Walla		X		X	X	X	X	X	X	X		
																KOAC	280	500	Corvallis, Ore.		X	X	X	X							
X	X						X	X	X	X						KMO	250	500	Tacoma	X	X	X	X		X	X	X	X	X		
																KFOX	233	1000	Seattle					X	X	X	X	X	X		

Hours Shown as Submitted by These Stations. For DX Schedule See Page 38

Filter Flex Batteryless RADIO

No. "A" or "B" Batteries
Direct Lamp Socket Power

\$98⁵⁰

COMPLETE

Including Inclosed Loud Speaker and
Tubes. Nothing Extra to Buy. Either
Walnut or Mahogany Finish



The Console Complete

The Highboy
Complete

\$125⁰⁰

\$150⁰⁰

**TEST THE FILTER-FLEX
IN YOUR HOME**

Mail the Coupon for Free Demonstration

The Filter-Flex Radio Corporation
724 W. Vernon Ave. (Factory)
Tel. AXridge 2947 Los Angeles, Cal.

I would like to have a free demon-
stration of your Filter-Flex Radio made
in my home. No obligation.

Name _____

Address _____

Telephone _____

**CERTIFIED DEALERS
LOS ANGELES**

- Barnes Music Co.
332 South Broadway
- Martin Music Co.
734 South Hill
- Newberry Electric
726 South Olive
- C. & G. Electric Co.
1501 W. Santa Barbara
- Clark Radio Shop
9114 S. Vermont Ave.
- Crosby Electric Co.
8310 W. 6th St.
- L. A. Music Co.
4410 S. Broadway
- Nilsson & Nelson
4320 Avalon Blvd.
- Tivoli Radio
4204 Central Ave.
- West Coast Elect. Co.
4751 South Broadway
- Geo. L. Barnes
5707 Pasadena Ave.
- West Lake Elect. Co.
2025 W. 7th St.

- Hollywood, Hollywood Electric
6056 Hollywood Blvd.
- Culver City, Vlau & Childress
6802 Washington Blvd.
- El Segundo, Standard Furniture
206 Grand Ave.
- Glendale, Broadway Electric
202 E. Broadway
- Glendale, J. A. Newton
154 S. Brand Blvd.
- Hermosa Beach, C. Alexander
530 Camino Real
- Bell, Baker Ave. Electric
910 Baker Ave.
- Bellflower, Bellflower Electric
605 Somerset
- Burbank, Collins Radio Shop
223 E. San Fernando Blvd.
- Downey, Darnell Elect.
109 N. Crawford St.
- Terrence, De Bra Radio Co.
Carson and Craton
- Puente, L. T. Hamersly
Covina, L. T. Hamersly
- Santa Ana, Hawley Sporting
Goods, 305 N. Sycamore
- Lankershim, Lankershim Music
5317 Lankershim Blvd.
- Long Beach, R. M. Mattson
329 American Ave.
- San Fernando, Ray Bargain Store
Inglewood, Reliable Radio Sales
114 N. Marker St.
- Pasadena, The Model Radio
2330 E. Colorado
- Pasadena, D. I. Wadsworth
1081 E. Walnut
- Engle Rock, Weaver & King
5050 Eagle Rock Ave.
- Montebello, White Auto Elec. Co.
623-25 Whittier Blvd.
- Whittier, Whittier Hdwe. Co.
114 S. Greenleaf
- Azusa, C. M. Shingleton
214 E. Foothill Blvd.

RADIO

Filter-Flex

CORP.

AXridge 2947

Los Angeles

724 W. VERNON

SATURDAY TIME TABLE

ALL TIME TABLES ADJUSTED TO PACIFIC TIME
(X) Indicates Station Is On the Air

10-12 A.M.		12-2 P.M.		2-4 P.M.		4-6 P.M.		STATIONS				6-8 P.M.		8-10 P.M.		10-12 P.M.																																			
10-00-10:30	10-30-11:00	11-00-11:30	11-30-12:00	12-00-12:30	12-30-1:00	1:00-1:30	1:30-2:00	2:00-2:30	2:30-3:00	3:00-3:30	3:30-4:00	4:00-4:30	4:30-5:00	5:00-5:30	5:30-6:00	CALL	Wave Length Meters	Power in Watts	STATION	6-00-6:30	6-30-7:00	7-00-7:30	7-30-8:00	8-00-8:30	8-30-9:00	9-00-9:30	9-30-10:00	10-00-10:30	10-30-11:00	11-00-11:30	11-30-12:00																				
SOUTHERN CALIFORNIA																																																			
																	KELW	835	250	Burbank	X	X	X	X	X	X	X	X																							
																	X	KFI	467	4000	Los Angeles	X	X	X	X	X	X	X	X	X	X	X	X	X	X	X	X	X	X												
		X	X															KFCR	413	50	Santa Barbara				X	X																									
																		KHJ	405	500	Los Angeles		X	X		X	X	X	X																						
																		X	KMIC	367	500	Inglewood	X	X	X	X	X	X	X	X																					
		X	X																KFBC	280	50	San Diego					X	X	X	X	X	X	X	X	X	X	X	X	X	X	X										
X				X	X	X	X	X	X	X	X	X	X	X	X	X		X	KMTR	370	500	Hollywood	X	X	X	X	X	X	X	X	X	X	X	X	X	X	X	X	X	X	X										
X	X			X	X		X	X	X	X	X	X	X	X	X	X		X	KNX	257	750	Los Angeles	X	X	X	X	X	X	X	X	X	X	X	X	X	X	X	X	X	X	X	X									
						X												X	KPSN	318	1000	Pasadena	X	X			X	X	X																						
						X	X	X	X	X	X	X	X	X	X	X			A MB	301	100	Tia Juana, Mex.																													
																		X	KSMR	283	100	Santa Maria					X																								
	X	X	X	X						X	X	X	X					X	KFSG	275	500	Los Angeles		X	X	X	X	X	X																						
																		X	KWTC	263	250	Santa Ana	X	X			X	X	X	X												X	X								
						X	X											X	KFWB	252	500	Hollywood	X	X	X	X	X	X	X	X	X	X	X	X	X	X	X	X	X	X	X	X	X	X							
																		X	KFSD	246	1000	San Diego	X	X	X	X	X	X	X	X	X	X	X	X	X	X	X	X	X	X	X	X	X	X							
										X	X		X					X	KNRC	238	1000	Santa Monica	X	X	X	X	X	X	X	X	X	X	X	X	X	X	X	X	X	X	X	X	X	X							
	X	X	X	X				X	X	X	X	X	X	X	X	X		X	KFON	233	750	Long Beach	X	X	X	X	X	X	X	X	X	X	X	X	X	X	X	X	X	X	X	X	X	X							
						X	X											X	KFQZ	225	500	Hollywood	X	X	X	X	X	X	X	X	X	X	X	X	X	X	X	X	X	X	X	X	X	X							
																		X	KFYF	214	25	Oxnard, Calif.	X																												
						X	X			X	X	X						X	KFWO	211	250	Catalina	X	X	X	X																									
	X					X	X											X	KFVD	205	500	Venice	X	X	X	X	X	X	X	X	X	X	X	X	X	X	X	X	X	X	X	X	X	X							
NORTHERN CALIFORNIA																																																			
																		X	KFBK	535	100	Sacramento					X	X	X	X	X																				
																		X	KLX	508	500	Oakland					X																								
X				X		X				X	X	X	X					X	KPO	428	1000	San Francisco	X	X	X	X	X	X	X	X	X	X	X	X	X	X	X	X	X	X	X	X	X	X	X						
						X	X	X											X	KYA	400	1000	San Francisco	X	X			X	X	X	X	X	X	X	X	X	X	X	X	X	X	X	X	X	X	X					
		X	X	X															X	KGO	361	4000	Oakland					X	X	X	X	X	X	X	X	X	X	X	X	X	X	X	X	X	X	X					
X																		X	KQW	333	500	San Jose	X	X	X	X	X	X																							
																			X	KTAB	303	1000	Oakland				X																								
						X	X	X	X										X	KFRC	288	500	San Francisco	X	X	X			X	X	X	X	X	X	X	X	X	X	X	X	X	X	X	X	X	X	X				
		X																X	KRE	258	100	Berkeley																													
							X	X											X	KFUS	256	50	Oakland		X	X																									
																			X	KNWI	250	500	San Francisco																												
																			X	KZM	240	100	Oakland		X																										
																			X	KMJ	234	50	Fresno																												
																			X	KFQU	231	250	Holy City, Calif.					X	X																						
X	X					X												X	KFWH	225	100	Eureka																													
NORTHERN AND WESTERN STATES																																																			
X	X	X			X	X												X	KGW	451	1000	Portland	X	X	X	X	X	X	X	X	X	X	X	X	X	X	X	X	X	X	X	X	X	X	X	X					
									X				X						X	KFOA	454	1000	Seattle		X	X	X	X	X	X																					
																		X	KEX	447	4000	Portland	X	X	X	X	X	X	X	X	X	X	X	X	X	X	X	X	X	X	X	X	X	X	X	X	X	X			
																			X	KFXF	422	1000	Denver	X	X	X	X	X	X	X	X	X	X	X	X	X	X	X	X	X	X	X	X	X	X	X	X	X	X		
																			X	CKCD	410	2000	Vancouver, B. C.					X	X																						
X										X	X								X	KHQ	294	1000	Spokane	X	X																										
X	X	X																	X	KJR	354	20M	Seattle	X																X	X	X	X	X	X	X	X	X			
																			X	KLZ	384	500	Denver				X	X	X																						
X	X	X	X															X	KOA	322	5000	Denver																			X	X	X								
																			X	KOIN	318	1000	Portland	X	X	X	X	X	X	X	X	X	X	X	X	X	X	X	X	X	X	X	X	X	X	X	X	X			
X	X	X	X	X	X	X	X	X	X	X	X	X	X	X	X	X	X		X	KOMO	288	1000	Seattle	X	X			X	X	X	X	X	X	X	X	X	X	X	X	X	X	X	X	X	X	X	X	X	X		
																			X	KSL	300	1000	Salt Lake City	X	X	X	X	X	X	X	X	X	X	X	X	X	X	X	X	X	X	X	X	X	X	X	X	X			
																			X	KFJR	283	50	Portland																												
X	X																	X	KMO	280	500	Tacoma	X	X	X	X	X	X	X	X	X	X	X	X	X	X	X	X	X	X	X	X	X	X	X	X	X	X			

Hours Shown as Submitted by These Stations. For DX Schedule See Page 38

COUNTERPHASE for DX: H. A. Everest, 1032 N. Ogden Dr. GR. 9915

Simple

[To Own ~ ~]
[To Buy ~ ~]
[To Operate ~]

This is the *complete* set built for people who will not fuss with wires, batteries, speakers and the usual three or four controls of the usual radio set.

The HOLMES Rotofor Radio is self-contained with built-in cone speaker and the famous PHILCO Socket Power. All you have to do is attach it to an antenna and the electric light socket and turn it on.

A single dial sweeps the ether. A line of stations march by at one twist of your hand. Any station in range can be tuned in with one hand in a jiffy.

COMPLETE

When you purchase this set you need never purchase another. Nor will you be put to the trouble and expense of buying new batteries nor to the trouble of recharging.

\$245.00=
Everything!



Standard equipment includes 5 famous CeCo tubes, PHILCO Socket Power, built-in HOLMES Cone Speaker and the Model 41 Holmes Cabinet, all matched and tested by Tobey experts before delivery. The price is \$245, installed. Your dealer will arrange terms. Use the coupon for further details. Your dealer will demonstrate this set for you in your own home—or if he hasn't one on hand, call WEStmore 4038 for a factory expert. He will call any evening you say.

---TEAR OUT AND MAIL TO---

A. J. Tobey Co.

Fifteenth and Hope Streets, Los Angeles

Please send me further information and details regarding the HOLMES Combination.

My Address is

My Name.....

City..... Phone Number.....

Dealer's Name..... Address.....

Schedule of DX Stations

Call Letters	Location	W. Meters	L. Watts	Schedule of Concert and Dance Music						
				Sun.	Mon.	Tue.	Wed.	Thu.	Fri.	Sat.
WBBM...	Chicago	226	1500	6-10	S.	6-10	6-10	6-10	6-7	6-10
WIBO...	Chicago	226	1000		4-5				10-12	
WOWO...	Ft. Wayne, Ind.	227	1000		5-9		5-9	5-9		
WHT...	Chicago	238-400	3500		S.	8-10	8-10	8-10	8-10	8-10
WWAE...	Plainfield, Ill.	242	5000	S.	6-9	6-9	6-9	6-9	6-9	6-9
WOOD...	Grand Rapids, Mich.	242	1000						8-10	8-10
WBAL...	Baltimore, Md.	246	1000	5-6	5-9	5-9	S.	5-9	5-9	S.
WRVA...	Richmond, Va.	256	1000		6-8		6-8	6-8	6-8	
WKAF...	Milwaukee	261	5000		6-8		6-8	6-8	6-8	
WCAR...	San Antonio, Tex.	263	6000		8-9		8-9		8-10	
WENR...	Chicago	266	1000		6-8	6-8	6-8	6-8	6-8	6-8
WGHP...	Detroit	270	1500		S.	5-6	5-6	5-6	5-7	5-6
KGU...	Honolulu	270	500	4-6	5-7	5-7	5-7	6-9	6-9	S.
WHK...	Cleveland	273	1000	9-11	9-11	11-12		9-11	9-11	9-11
KFAL...	Boise, Idaho	280	750	5-7	S.	5-8	5-7	5-8	5-6	5-8
KMOX...	St. Louis	280	5000			7-9		7-9		
WSM...	Nashville, Tenn.	282	1000	4-11	4-11	4-11	4-11	S.	4-11	4-11
WMBF...	Miami, Fla.	284	5000		8-10		8-10			8-10
WPG...	Atlantic City	300	5000	5-10	5-9	5-9	5-10	5-9	S.	5-10
WGN...	Chicago	303	1000	6-8	5-9	5-9	S.	5-9	5-9	5-9
WLIB...	Chicago	303	4000	6-8	8-9	6-9	6-9	6-9	6-9	6-9
KOIL...	Council Bluffs	306	500			6-9	6-9	6-9	6-9	6-9
KDKA...	Pittsburg	309	1000		5-11	8-10	8-10	8-10	8-10	8-10
WABC...	New York	316	6000	S.	6-9	S.	6-9	S.	S.	9-11
WJAZ...	Chicago	330	1500	5-7		6-10	5-9	5-7	5-7	6-7
WBZ...	Springfield, Mass.	333	2000			6-9	6-9	6-9	6-9	6-10
KFAB...	Lincoln, Neb.	341	1000	4-7	5-8	5-9	5-9	5-9	5-9	5-9
WLS...	Chicago	345	5000			5-9		6-9		
WWJ...	Detroit	353	1000	6-9		6-9	6-9	6-9	6-9	6-9
WDAF...	Kansas City	366	1000	4-7	6-7	5-7	5-8	5-8	5-8	5-8
WJJD...	Mooseheart, Ill.	370	1000	S.	6-11	5-11	5-11	6-11	6-11	6-11
KFBU...	Laramie, Wyo.	375	500			6-11	6-11	6-11	6-11	6-11
KTHS...	Hot Springs, Ark.	375	1000		8-10		8-10		8-10	
WGNY...	Schenectady, N. Y.	380	5000	7-10	7-10	7-10	7-9	7-9	7-10	7-9
WEAR...	Cleveland	389	1000	6-7	S.	6-9	5-9	5-9	5-9	5-9
WTAM...	Cleveland	389	1000	5-9	5-6	5-9	6-10	5-9	5-9	6-10
WOAI...	San Antonio, Tex.	394	5000	5-7	S.	6-8	6-8	6-8	6-8	S.
PWX...	Havana, Cuba	400	1000	5-7	5-9	5-8	5-8	5-8	5-8	5-7
CYJ...	Mexico City	410	1000	5-7		5-8		5-8	5-8	
KFQB...	Ft. Worth, Tex.	412	2500		6-10	6-10		6-10	6-10	6-10
WCCO...	St. Paul, Minn.	416	5000		5-8	5-8	5-8	5-8		5-8
KFXF...	Denver	422	500	S.	5-11	5-11	5-11	S.	6-11	5-11
WLW...	Cincinnati	422	5000	4-6	4-7	4-7	4-9	4-10	S.	4-7
WSB...	Atlanta, Ga.	428	1000	4-6	5-9	5-9	5-9	5-9	5-9	5-9
WQJ...	Chicago	447	500	5-7	S.	7-11	7-11	7-11	7-11	7-12
WMAQ...	Chicago	448	1000	S.	4-5	4-8	4-8	4-8	4-9	4-9
WJZ...	New York, N. Y.	454	50000	4-8	5-9	5-9	5-9	5-9	5-9	5-9
WBAP...	Ft. Worth, Tex.	476	1500	7-9	7-10	7-9	S.	7-10	7-10	7-10
CYL...	Mexico City	480	1000		7-9	7-9	7-10	7-9	7-9	7-10
WOC...	Davenport, Iowa	484	5000	4-9	S.	5-9	5-9	5-9	5-9	5-8
WEAF...	New York City	491	5000		5-9	5-9	5-9	5-9	5-9	5-9
WJR...	Detroit	517	5000	7-8	S.	5-7	7-9	6-7	S.	8-9
WOW...	Omaha	526	1000	7-9	7-9	7-9	S.	7-9	7-9	7-9
WNYC...	New York City	526	1000		5-8	5-8	5-8	5-8	5-8	5-8
WHO...	Des Moines	526	5000	5-8	5-10	5-10	5-10	5-10	5-10	S.
KYW...	Chicago	536	3500	6-9	4-5	6-10	6-10	6-10	6-10	6-10
KSD...	St. Louis	545	500	5-7	6-8	5-7		5-7	5-8	5-8

Hours Shown as Submitted by These Stations Adjusted to Pacific Standard Time

CROSLY SPECIALISTS HAVE YOUR CROSLY BALANCED
CHILDS' LAB., 1187 W. 24th St., L. A.

THE Orthoformer



WHAT IT DOES!

A completely revolutionary method of producing perfect amplification without the use of power tube. Giving tone quality heretofore unknown.

Price \$17.50

(In Canada \$21)

Attach the **ORTHOFORMER**, which is a tone amplifier and a tone filter, and it will bring your old set up to the standard of the finest radio built.

This is a Broad Statement but it Costs You Nothing to Let Us Prove It

The **ORTHOFORMER** requires neither power tubes nor any method of power amplification and is adaptable to all standard sets.

Cut off the coupon and mail direct to us and we will instruct a dealer to attach the **ORTHOFORMER** to your set for your approval.

“The Orthoformer — Alone for Tone”

INTERNATIONAL DISTRIBUTORS CORP.
UNION INSURANCE BLDG.
SIXTH AND BEAUDRY STS.
LOS ANGELES, CALIFORNIA

Dear Sirs:

Please have dealer attach an **ORTHOFORMER** to my set without obligation to me.

Name.....

Street.....

City.....

Telephone.....

Make of Set.....

It takes an Efficient Radio to Separate the Southern California Stations!

With nearly twenty broadcasting stations in Los Angeles and nearby communities... each with power varying from a few hundred watts up into the thousands... air congestion has ceased to be a laughing matter. It takes an efficient receiver to merely separate the locals, without trying for distant reception.

The Model 325 Stewart-Warner five-tube receiver has made a splendid reputation for selectivity under the most trying of reception conditions. Its famous U. S. Navy receiving circuit insures 100% radio performance. It is a "distance getter," too.

Stewart-Warner dealers will gladly demonstrate this popular model on request. They will also show you the other models in the Stewart-Warner Matched Unit Radio line. Ask one of them TODAY to make a demonstration of either a five or six tube Stewart-Warner radio in your own home.

Los Angeles Dealers

ATWATER RADIO & ELEC. CO.
3308 Glendale Blvd.
DEAN K. BARRIS
3102 E. Vermont Ave.
BENSON HARDWARE COMPANY
510 South Broadway
BIRBE & BUSHARD
1317 W. Adams St.
CALIFORNIA RADIO SHOP
607 South Figueroa St.
CHAPMAN HOUSE SALES CO.
4214 S. Figueroa St.
CLIFF'S RADIO SERVICE
323 Dayton Ave.
DON FINKLE
3307 West Jefferson
A. W. COOPER
1215 W. 39th St.
HARRY SAVOY
829 W. Jefferson St.
HOLLAND ELECTRIC SHOP
2622 Pasadena Ave.
MIDLAND RADIO & BIKE HOUSE
817 South Main St.
HINES RADIO
1232 South Broadway
INTERPHONE ELECTRIC CO.
5510 Monte Vista St.
LESTER RADIO & ELEC. CO.
452 North Broadway
LOVINGER'S MELROSE RADIO
SHOP, 1826 Melrose Ave.
RAY LYON
1319 Compton Ave.
RAY LYON
140 E. Figueroa Ave.
MANHEIMER RADIO CO.
1022 E. Manchester Ave.
MOORE RADIO SALES CO.
92nd at Avalon Blvd.

MOHAWK BAT. & RAD. CO.

2115 Sunset Blvd.
NILSSON & NELSON
630 Avalon Blvd.
NOOTON & NOOTON
2911 N. Broadway
POTTER RADIO SALES CO.
1817 W. 54th St.
R. E. & R. ELECTRIC CO.
387 South Vermont Ave.
RADIO SUPER SERVICE CO.
2848 Venice Blvd.
RADIO SUPER SERVICE CO.
4618 Inwood Ave., at Vermont
CHAR. A. ROBINSON
4092 S. Normandie
RADIO FLEETING SHOP
723 S. Vermont Ave.
A. C. SINGER
4127 Pasadena Ave.
SOUTHWEST ELECTRIC &
RADIO CO., 807 W. Figueroa Ave.
CHAS. A. FOSTER
WEST STATES ELEC. CO.
4751 South Broadway

Hollywood Dealers

BARROWS & CONKWRIGHT
2145 Sunset Blvd.
DORAN'S ELECTRIC SHOP
1515 Sunset Blvd.
DORAN'S ELECTRIC SHOP
2610 Santa Monica Blvd.
GLOW ELECTRIC CO.
2016 Hollywood Blvd.
MELROSE RADIO SHOP
4043 Melrose Ave.
O. H. PHESTON & SON
1125 Ventura Blvd.
North Hollywood

Southern California Dealers

ALHAMBRA, Lefay G. Franklin
454 W. Main
ANAHEIM, Holland Electric Co.
177 W. Center St.
ARROYO GRANDE, J. D. Truitt
1700 Santa Gertrudis Plazuela and
Electric Shop
ARTESIA, Wm. R. Hayes
325 N. Main St.
BAKERSFIELD: Chilton-Grant
Radio Co.
1818 Powell St.
BARTOW, Bartow Radio Shop
BELLFLOWER, Standard Radio Shop
201 Nomanet St.
BREA, Bennett's Radio Shop
129 S. Pomona Ave.
CHINO, Woods Radio Company
413 Sixth St.
COLTON, H. C. Ellis
118 West 4th St.
COVINA, Harold R. Houser
1000 N. Colton St.
CULVER CITY, Culver City Radio &
Elec. Co.
612 Washington Blvd.
DOWNEY, H. M. Sparker
5th and Franklin
EAGLE ROCK, Weaver & Kilo
5112 Eagle Rock Blvd.
EL SEGUNDO, B. W. McAllister
110 Grand Ave.
EL MONTE, Weaver & Kilo
(El Monte Hyde Co.)
GARDENA, Don Spears
728 W. 16th St.
GLENDALE, Willard Hoffman
(Beverly Hills)
202 E. Broadway

GLENDORA, James W. Reed
HERMOSA BEACH, Rose Radio Shop
310 Camino Real
HUNTINGTON PARK, H. L. (Radio)
116 E. Irvington St.
HYNES, Van & Jenkins
INGLEWOOD, R. D. Aylesworth
111 N. Market St.
LANCASTER, E. A. Kneel
BISHOP, Griffin Bros.
LONG BEACH, Alday & Crandall
118 American Ave.
LONG BEACH, The Electric
Radio Co.
4710 E. Anaheim
LONG BEACH, W. L. Marrell
740 Pine St.
LYNWOOD, Lynwood Elec. Co.
204 N. Long Beach Blvd.
NEWALL, C. E. Graham
DOAN PARK, Crescent Tire and
Supply Co.
Ray and Main Sts.
ORANGE, Roy Des Larzes
143 N. Glassell St.
PALMS, Bristol Radio Elec. Co.
& Gurr
12024 Washington Blvd.



Stewart-Warner Model 325
5 Tube - 3 dial Control.

\$52.50 Without
Accessories

This One Will
do it!

PASADENA, Wyckoff & Vorland
1447 North 4th St.
PASADENA, Pevaner Radio
11 California St.
PASADENA, DeWilde Radio
Laboratory
2045 East Colorado Ave.
PICO, Pico Radio Shop
POMONA, George W. Hatt
125 E. Third St.
REDONDO, L. & L. Sales Co.
210 Diamond St.
REDLANDS, J. L. Youst
106 W. Citrus Ave.
RIVERSIDE, Frank W. Chaney
107 Market St.
SAN BERNARDINO, Gurr, Smith
& Gurr
459 Fourth St.

SAN FERNANDO, Willis Rowe
SAN GABRIEL, A. Burman
5500 E. Huntington Dr.
SAN LUIS OBISPO, Gline Elec. Co.
886 Monterey St.
SANTA ANA, Shaler's Music Store
415 N. Main St.
SANTA BARBARA, Val Folger
732 State St.
SANTA MARIA, Ford & Smart
111 E. Main St.
SANTA MONICA, J. S. Suits
625 Wilshire
SANTA PAULA, The Music Shop
104 W. Main St.
SATICUM, H. H. Wright
Sixth and D Sts.
TAFT, L. W. Bird
610 Center St.
TONOPAH, NEVADA
Tonopah Electric Company
UPLAND, Jay M. Ross
VENICE, Stewart-Warner Radio
Studio
1025 Washington Blvd.
WALNUT PARK, Terminal Electric
1000 Beville St.
WESTMINSTER, Martin Engel
WHITTIER, H. C. Oldham
725 E. Grand St.
WILMINGTON, G. F. Clouston
710 W. Anaheim St.

Remember - Stewart-Warner Radio Uses
the Famous U.S. Navy Receiving Circuit -
Stewart-Warner Products Service Station
{ Wholesale Distributors Stewart-Warner Radio }
366 South Figueroa Street - LOS ANGELES



LESLIE ADAMS
Announcer

Los Angeles, California—467 Meters

KFI

4000 WATTS—640 KILOCYCLES
Radio Central Super-Station of Earle C. Anthony, Inc.
1000 S. Hope, Phone WE. 0331. After 5 P.M., WE. 0337
Class "B" 5000-Watt W. E. Sta., Operating on 4000 Watts

ROBERT HURD, Program Manager

DAILY EXCEPT SUNDAY—
6:15 p. m.—Radiotorial.

MONDAY, WEDNESDAY AND FRIDAY—

KFI Woman's Interest Dept. Under the Direction of Agnes White.
10:20 to 10:40 a. m.—Furnishings for the home by Agnes White,
director of the Dept.

10:40 to 11:00 a. m.—Betty Crocker—Home Service Talks.

WEEK COMMENCING SUNDAY, APRIL 3, 1927

SUNDAY, APRIL 3

- 10:00 a. m.—Rev. Gooden, Rector of Harvard School, and a musical program by Robert Hurd and the Mary Christine Albin Trio.
11:00 a. m.—Third Church of Christ, Scientist, services.
6:00 p. m.—Program by Russian Academy of Musical Art Trio.
6:58 p. m.—Father Ricard's Sunspot Weather Forecast.
7:00 p. m.—Acolian Organ Recital, Alex Reilly at the console.
8:00 p. m.—Packard Classic Hour, program by Gretchen Garrett, with String Trio; Florence Du Vall, violin; Malcolm Davison, cello; Sue Haury, piano.
9:00 p. m.—Bob Bottger and his Venetians Dance Orchestra; Lois Whiteman and Winnie Parker, harmony duets.
10:00 p. m.—Packard Six Orchestra, Bill Hennessy, director.

MONDAY, APRIL 4

- 5:30 p. m.—Golden State Six.
6:30 p. m.—Gamut Male Quartet.
7:00 p. m.—Johnston & Farrell's Music Box Hour, direction of Gene Johnston, with Jim, Jack and Gene Trio, and soloists.
8:00 p. m.—Joint Recital by Virginia Flohrt and Robert Hurd, with Will Garroway, piano.
9:00 p. m.—Gattone String Quartet; James Burroughs, tenor, and Charles Myers, accompanist.
10:00 p. m.—Program by Melklejohn Bros.

TUESDAY, APRIL 5

- 5:30 p. m.—The Dragon Hawaiians.
6:30 p. m.—Bertha Miller English, pianist; Katherine Spangler and Elaine Ruth.
7:00 p. m.—Tarvin Sisters and the Los Angeles Fire Dept. Orchestra.
8:00 to 11:00 p. m.—Program by the National Broadcasting Co., on the Pacific Coast Network.

WEDNESDAY, APRIL 6

- 12:10 to 12:50 p. m.—Christian Science Lecture, from Philharmonic Auditorium, by Mr. Paul Stark Seeley, C.S.B., of Portland, Ore.
5:30 p. m.—Sebastian's Cotton Club Orchestra.
6:30 p. m.—Vest Pocket Period.

7:00 p. m.—Ray Fisher's Original Victorians Dance Orchestra.

- 7:30 p. m.—Nick Harris, Detective Stories.
8:00 p. m.—Calpet Male Quartet, on the California Petroleum Corp. program.
9:00 p. m.—Program by Selwyn Harris.
10:00 p. m.—Sunset Instrumental Quartet—Dorothy Ruth Miller, concert pianist; Virginia McCoy, contra-contralto.

THURSDAY, APRIL 7

- 5:30 p. m.—Legion Night Club Orchestra.
6:30 p. m.—Clarice Russell and Leslie Adams.
7:00 p. m.—Program by University of So. Calif.
8:00 p. m.—KFI Drama Hour.
8:30 p. m.—Lucille Whitson, pianist.
9:00 p. m.—Program arranged by Norma West, soprano.
10:00 p. m.—Program of Modern Classical Music, Louise Caselotti, with Guido Caselotti; Lorelle Fierstad, violinist.

FRIDAY, APRIL 8

- 8:30 p. m.—Eugene Biscailuz, Sheriff's office program.
6:30 p. m.—Vest Pocket Period.
7:00 p. m.—Emma Kimmel, soprano.
8:00 p. m.—Program by Paul Roberts and Leslie Adams.
9:00 p. m.—Program arranged by Alma Frances Gordon, contralto, and Lilyan Ariel, pianist.
10:00 p. m.—Packard Ballad Hour, Fred Wesley.

SATURDAY, APRIL 9

- 5:30 p. m.—Del Monte Orchestra.
6:30 p. m.—Collegiate Aeolians Dance Orchestra, Parks Sisters (Frances & June).
7:30 p. m.—Felipe Delgado, baritone, with Edna Clark Muir, pianist.
8:00 p. m.—Belle Levinson, soprano; John C. Abbott, violinist; Robert Young, concert pianist.
9:00 p. m.—Los Angeles Philharmonic Orchestra, Emil Oberhoffer, conductor, broadcast simultaneously by KFI, Los Angeles, and KPO, San Francisco, by the Standard Oil Company of California.
11:00 p. m.—KFI Midnight Frolic, with Mosby's Dixieland Blue Blowers, and soloists.

Gilfillan Radio



Attractive
territory
still open
to live
dealers

GILFILLAN Radio Model 20

Extreme ease of operation, with *Single Tuning Control*. Six tubes—one a "power" tube. The three radio stages separately shielded with metal compartments.

Voice or instrumental music reproduced with utmost fidelity. Rola cone speaker furnished in table. Lower compartment has space for all batteries. May be operated from light socket with battery eliminators. *Price without accessories \$175.*

Coast
Distributors—

Sherman, Clay & Co.

Victor Distributors

Los Angeles: 10th and Santee Sts.
San Francisco: 536 Mission St.
Oakland: 5175 Telegraph Ave.
Portland: 487 Gillson St. ■
Seattle: Republican St. and Terry Ave.
Spokane: 330 West Sprague Ave.

For information as to DEALER TERRITORY clip and mail this to nearest Sherman, Clay & Co. wholesale branch. (R. D.)

Name _____

Address _____



"Uncle John" Daggett
Announcer

Los Angeles, California—405.2 Meters

KHJ

500 WATTS—740 KILOCYCLES

Times Bldg., First and Broadway, Los Angeles
Owned and Operated by Los Angeles Times

JOHN S. DAGGETT, Manager and Program Announcer
Phone MEt. 0700

"Kindness, Happiness and Joy"

NIGHTLY EXCEPT SUNDAY AND MONDAY—

6:00 to 6:30 p. m.—KHJ Concert Trio and J. Walter Leopold.
7:30 p. m.—Scripture Reading.

WEEK COMMENCING SUNDAY, APRIL 3, 1927

SUNDAY, APRIL 3

- 10:00 a. m.—Sermon from the KHJ Studio by Dr. H. C. Culbertson, pastor of Plymouth Congregational Church.
10:30 a. m.—Morning service from the First Methodist Episcopal Church, Arthur Blakeley, organist.
7:00 to 8:00 p. m.—Evening services from First Methodist Episcopal Church.
8:00 to 10:00 p. m.—Studio program, presenting Frederick MacMurray, viola; Louise Miller, pianist; Grace Curry, harpist, and the Orpheus Four Male Quartet.

MONDAY, APRIL 4

Silent all day.

TUESDAY, APRIL 5

- 2:30 p. m.—Bridge game.
6:30 p. m.—Children's hour, with Queen Titania and her sandman, KHJ Junior Trio, Charles Leslie Hill, "Honey Boy;" Marguerite Bringham, "Nightingale;" Playground Department Harmonica Band.
8:00 to 9:15 p. m.—News items. Musical program.
7:40 p. m.—H. M. Robertson, "Dogs."
9:15 p. m.—Harold Roberts' Golden State Band.
10:00 to 11:00 p. m.—Los Angeles Railway Orchestra.

WEDNESDAY, APRIL 6

- 2:30 p. m.—Garden talk by Fred C. McNabb.
6:30 p. m.—Children's hour, presenting Dick Winslow, juvenile reporter; Lois Jane Campbell, "Brown Eyes;" Patricia Eccleston, "Little Daffodil;" Glenn Fitz, "Optimistic Mascot;" Vivian Marple, "Blue Bell of KHJ;" Viola Essen, "B.B.;"
7:40 p. m.—Dr. Mars Baumgradt.
8:00 to 10:00 p. m.—An evening in India. Program arranged by Lal Chand Mehra
10:00 to 11:00 p. m.—Jinnistan Vale Orchestra.

THURSDAY, APRIL 7

- 6:30 p. m.—Children's program, including Dickie Brandon, reader; June Brandon, contralto; Joyce Coad, "Little Red Riding Hood;" Jeanne De Bard, "Bonnie Jeanne;" Rosetta Lewin, "Curley Locks;"
7:40 p. m.—Dr. Philip M. Lovell.
8:00 to 10:00 p. m.—News items. Special program, with Zoellner Quartet, Leo H. Sanspar, Russian baritone; Louise Miller, pianist, and Arthur Edwin Wake, assistant pastor of Wilshire Presbyterian Church.
10:00 to 11:00 p. m.—Glenn Edmunds and His Varsity Four.

FRIDAY, APRIL 8

- 6:30 p. m.—Children's hour, with Roberta Bush, "Firefly of KHJ;" Henrietta Poland, "Little Forget-Me-Not;" Richard Headrick, "Little Minister;" Collins Twins, Katherine and Ellen, and David Durand, "Little Boy Blue."
7:40 p. m.—Thomas F. Ford, "Book Reviews."
8:00 to 10:00 p. m.—News items. Popular program from the studio.
9:00 p. m.—Talk on international relations.

SATURDAY, APRIL 9

- 6:30 p. m.—Children's program, presenting Nona Clapp, "Sunshine Fairy;" Dolly Wright, "Dolly of KHJ;" Arthur Stevens, King Arthur;" Marjorie G. Lowe, "June Bug;" Clark Paschal, 13-year-old saxophonist; Joy Sistehs, Elaine and Marguerite.
7:40 p. m.—Salvation Army Temple Band.
8:00 to 10:00 p. m.—News items. Old-time program, presenting Mr. and Mrs. Benjamin Sears, old-time fiddler; Mammy Lou of KHJ, E. A. Mulford, "Dixie Dan."
9:00 p. m.—Talk on "Educational Banking."

PALMER RADIO LABORATORY

Established 1923

Specializing in

SUPER-HETERODYNES AND INFRADYNES

Intermediate Transformers Made and Calibrated

Also all other types of receivers made to operate efficiently

Satisfaction Guaranteed or No Charge

Advice Free

Open Evenings Till 9 P. M.

Courtesy to All

4529 S. Vermont, Los Angeles. Phone VERmont 7883

The Catalina Island Swim

One of these sets accompanied Mrs. Margaret Hauser in her swim.
Several of the swimmers had this set on their pilot boat.



The Companionable Set

*Light weight—easily handled—can be taken any place.
Perfect reproduction, selectivity, volume; beautifully designed.
Will Fit in Any Setting.*

The Lowest Priced Set of Its Kind on the Market.

ON DISPLAY IN LOS ANGELES AT

The Ambassador Hotel The Biltmore Hotel
Subway Terminal Waiting Room (between 4th and 5th on Hill St.)
13 Mercantile Arcade

Distributed by

Johnson Radio Co., 688 Geary Street, San Francisco
The Radio Studios, 1207 Fourth Ave., Seattle

KEMPER RADIO LABORATORY

1236 Santee St.

LOS ANGELES

WEstmore 2504

Makers of Kemper Ampliphonic Console



HAROLD ISBELL
Announcer

KNX

Hollywood, California—337 Meters

750 WATTS—890 KILOCYCLES
LOS ANGELES EVENING EXPRESS
Paul G. Hoffman's Studebaker Bldg., 6118 Hollywood
Blvd., Hollywood. Phone HEMstead 4101
NAYLOR ROGERS, Manager and Program Director
GLEN RICE, Asst. Manager.
"The Voice of Hollywood"

DAILY EXCEPT SUNDAY—

- 6:45 to 8:00 a. m.—Exercises by Dr. P. M. Selzass; courtesy of Producers of Mission Orange Juice.
8:00 a. m.—Inspirational talk and morning prayer.
8:55 a. m.—Time signals from Washington, D. C.
9:00 a. m.—Radio Shopping News by Carey Preston Rittmelster.
10:00 a. m.—Town Crier of the Day's morning message.
10:30 a. m.—Kate Brew Vaughn Director Household Economics Dept., Evening Express, except Friday and Saturday.
12 noon—Magnavox Radio Orchestra, courtesy of Listenwalter & Gough.

- 12:30 p. m.—W. F. Alder Travelogue.
1:30 p. m.—Radio Trades Ass'n Program.
4:00 p. m.—Lost and Found Column.
4:55 p. m.—Market reports.
5:00 p. m.—Optimists Daily Messages, presenting the Optimist Male Quartet.
5:30 p. m.—Orthophonic Victrola.
6:00 p. m.—Biltmore Hotel Orchestra, broadcast from the Biltmore Dining Room.
8:30 p. m.—Dinner hour concert presenting the Yale Radio Battery Orchestra.

DAILY EXCEPT SUNDAY AND TUESDAY—

- 11:00 p. m.—Hotel Ambassador, Gus Arnheim's Coconut Grove Orchestra

WEEK COMMENCING SUNDAY, APRIL 3, 1927

SUNDAY, APRIL 3

- 10:00 a. m.—First Presbyterian Church of Hollywood, Rev. Stewart P. MacLennan.
2:00 to 4:00 p. m.—City Park Board musical program.
4:00 p. m.—Roberts Golden State Band.
5:15 p. m.—All Souls' Church.
6:30 p. m.—Hollywood Unitarian Church.
7:00 p. m.—First Presbyterian Church of Hollywood, Rev. Stewart P. MacLennan.
8:00 p. m.—Circle Theatre Concert Orchestra and organ recital.
9:00 p. m.—Feature program.

MONDAY, APRIL 4

- 12:45 p. m.—C. P. R.'s musical program.
3:00 p. m.—First Presbyterian Church of Hollywood.
7:00 p. m.—George J. Birkel Music Co. presenting the Orthophonic Victrola.
7:30 p. m.—Playlet, courtesy Overall Furniture Company.
8:00 p. m.—L. W. Stockwell Co. courtesy program, presenting Calmon Lubovlski, master violinist, and Claire Mellonino, concert pianist.
9:00 p. m.—B. F. Goodrich Rubber Co. of Akon, Ohio, Goodrich Silvertown Cord Orchestra.
10:00 p. m.—Biltmore Hotel Orchestra.

TUESDAY, APRIL 5

- 11:00 a. m.—Dr. R. H. Gerber, specialist, Eye Strain and Nervous Diseases.
3:00 p. m.—Los Angeles Police Department musical program.
4:00 p. m.—Radio Matinee with Loulae Howatt, contralto.
7:00 p. m.—Willshire Ionaco Company courtesy program presenting Charles Hamp.
7:30 p. m.—Fitzgerald Music So. presenting the Ampico Knabe Piano.
8:00 p. m.—Franklin Building & Loan Assn., courtesy program.
9:00 p. m.—Feature program.
10:00 p. m.—Hotel Ambassador; Gus Arnheim's Coconut Grove Orchestra.

WEDNESDAY, APRIL 6

- 12:45 p. m.—C. P. R.'s musical program.

- 3:00 p. m.—Paul Hugon.
3:30 p. m.—Don Warner, pianist.
4:00 p. m.—Garden talk by Dewey Kruckeberg.
7:00 p. m.—George J. Birkel Music Co. courtesy program.
8:00 to 10:00 p. m.—Security Trust & Savings Bank, courtesy program.

THURSDAY, APRIL 7

- 11:00 a. m.—Nature talk, courtesy Marvel Ant Gelatine Co.
7:00 p. m.—Carthay Circle Theatre organ recital, courtesy Overall Furniture Co.
8:00 p. m.—National Home Equipment Co. courtesy program.
9:00 to 10:00 p. m.—Tucker and Charleson.
10:00 p. m.—Feature program.

FRIDAY, APRIL 8

- 12:45 p. m.—Charles Weeks, talking on "Intensive Little Farms."
3:00 p. m.—L. A. District Federation of Women's Clubs musical program.
4:00 p. m.—Boy Scouts' musical program.
7:00 p. m.—Fitzgerald Music Co., presenting the Ampico Knabe Piano.
7:30 p. m.—Dearden's Furniture Company, courtesy program.
8:00 p. m.—Davis Perfection Bread Co., courtesy program, presenting the Royal Order of Optimistic Do-Nuts.
9:00 p. m.—Fada Radio Co., courtesy program.
10:00 p. m.—Main events from the American Legion Stadium.

SATURDAY, APRIL 9

- 12:45 p. m.—C. P. R.'s musical program.
3:00 p. m.—Town Crier of the Day and his Pals.
7:00 p. m.—Stories of insect life by Harry W. McSpadden.
7:15 p. m.—Announcement of Sunday services of the leading Los Angeles churches.
7:30 p. m. to 10:00 p. m.—Feature program.
10:00 p. m.—Earl Burnett's Biltmore Hotel Orchestra, through the courtesy of Mullen & Bluett.
12:00 m.—KNX Frolic from the Main Studio.

Program Published as Submitted by the Station.

ATWATER KENT RADIO

*Ideal for multiple speaker
installations*

The ever increasing demand for Radio Receivers powerful enough to operate many Speakers on one output circuit has found ready fulfillment in the Atwater Kent Model 32, seven-tube, one dial receiver.

Atwater Kent Radio is especially adapted for use in private homes, hospitals, apartments and hotels where extraordinary power is needed. And remember—this power is fully controlled for individual use—can be regulated at will from a whisper to full toned volume!



Model 32
Atwater Kent Receiver, with
One Dial, \$145.
(Less Accessories)

Model H
Atwater Kent Radio Speaker, \$22

OTHER MODELS
with One Dial,
\$75 and \$90
(Less Accessories)

RAY THOMAS INC.
Atwater Kent Distributor

1248 S. Hope St. WE 6334
LOS ANGELES



BILL RAY
Announcer

Hollywood, California—252 Meters

KFWB

500 WATTS—1190 KILOCYCLES
WARNER BROS. MOTION PICTURE STUDIOS
Warner Bros. West Coast Studio, 5842 Sunset Blvd.
GERALD L. KING, Mgr. WM. RAY, Asst. Mgr.
Phone GL, 9461
"Movie Land"

DAILY EXCEPT SUNDAY—

- 12:30 to 1:30 p. m.—Classified Hour.
5:40 to 6:00 p. m.—Beauty Talk.
6:00 to 7:00 p. m.—Pontiac Six Dinner Hour.
10:00 to 11:00 p. m.—Musical program from Mayfair Hotel.
Courtesy of Bundy & Albright.
11:00 to 12:00 p. m.—Dance music from El Patio Ballroom.
MONDAY, TUESDAY AND WEDNESDAY—
5:00 to 5:40 p. m.—Children's Hour.

WEEK COMMENCING SUNDAY, APRIL 3

SUNDAY, APRIL 3

- 2:00 to 3:00 p. m.—Organ recital on the world's mightiest organ, located in Roosevelt Memorial Park, Los Angeles; broadcast by 6XBR and rebroadcast by KFWB;
8:30 to 9:00 p. m.—Program by courtesy of the Southern California Music Co.
9:00 to 10:00 p. m.—Warner Bros. Frolic, introducing Frances St. George KFWB Jazzmania Girl; Frank Jocelyn, popular songs; Dan Gridley, tenor; Alma Brwn, soprano; Harry C. Keiper and his Vovteland Orchestra, and others.
- 7:00 to 7:30 p. m.—Thirty minutes of sunshine by Charles W. Hamp, director of radio activities for the Iona Company, presenting the Ionaco.
7:30 to 8:00 p. m.—Mabel Leonard and Howard Stevenson, piano duets.
8:00 to 9:00 p. m.—LeRoy Kullberg and his uke; Ruth Michelson, blues songs; Warner Bros. Orchestra.
9:00 to 10:00 p. m.—Julius Phillips, tenor; LeGrand's Little Symphony.

MONDAY, APRIL 4

- 12:00 to 12:30 p. m.—Pacific Electric Art.
7:00 to 8:00 p. m.—Program by courtesy of J. N. Pyles National Detective Service, introducing Ernest Burley, tenor; Abbey Van Vleet, soprano; Pyles National Detectives' Concert Orchestra; Mr. J. N. Pyles will give a brief talk.
8:00 to 9:00 p. m.—Ann Grey, blues songs; Kenneth Gillum, popular numbers; Owen Fallon's Californians.
9:00 to 10:00 p. m.—Vernon Rickard, tenor; Warner Bros. European Novelty Orchestra.

TUESDAY, APRIL 5

- 10:45 to 11:00 a. m.—Enid Garnett on "Feminine Fads and Fancies."
4:45 to 5:00 p. m.—Dr. L. P. Clarke on "Diet."
7:00 to 7:30 p. m.—Program by courtesy of the Consolidated Cleaners.
7:30 to 8:00 p. m.—Program sponsored by the Molo Laboratories, featuring Molo Melody Maids; John Canton, tenor.
8:00 to 8:40 p. m.—Program by courtesy of the Southern California Music Co.
8:40 to 9:00 p. m.—Jack, Jim and Jean Trio; Grant LaMont, popular songs.
9:00 to 10:00 p. m.—Frank Barry, baritone; Hollywood Orchestral Quartet; Ruth Chambers, soprano.

WEDNESDAY, APRIL 6

- 10:45 to 11:00 a. m.—Enid Garnett on "Feminine Fads and Fancies."

THURSDAY, APRIL 7

- 10:45 to 11:00 a. m.—Enid Garnett on "What the Well Groomed Woman of Today is Doing with Her 'Cowing Glory.'"
7:00 to 7:30 p. m.—Program by courtesy of the Southern California Music Co.
7:30 to 8:00 p. m.—Program sponsored by the Molo Laboratories, featuring Molo Melody Maids; King Collins, baritone.
8:00 to 9:00 p. m.—Dick Powers popular songs; Camilla McDonald, blues songs; Dan Santos, Hawaiian Trio.
9:00 to 10:00 p. m.—Franklyn Colson, tenor; Ray Bailey's String Orchestra.

FRIDAY, APRIL 8

- 7:00 to 8:00 p. m.—Warner Bros. Hawaiian Trio and entertainers.
8:00 to 9:00 p. m.—June Parker, blues songs; George O'Hara and his ukulele; Warner Bros. Orchestra.
9:00 to 10:00 p. m.—Melody Makers' Period with Studio Chatter at 9:30.

SATURDAY, APRIL 9

- 7:00 to 8:00 p. m.—Carl Dye and his Melody Makers; Laurel Lee, popular songs.
8:00 to 9:00 p. m.—Program by courtesy of the Mona Motor Oil Company, introducing Emma Kimmel, soprano; Mona Motor Oil Co. String Orchestra.
9:00 to 10:00 p. m.—Henry Halstead and his orchestra by remote control from the El Patio Ballroom.

Program Published as Submitted by the Station.

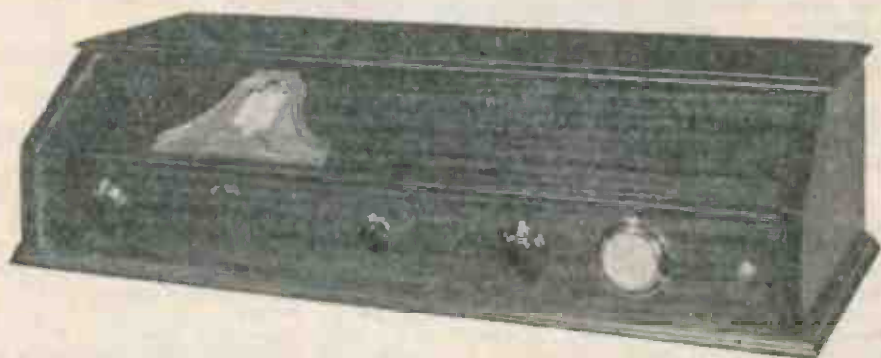
RADIOLA 20 OWNERS, ATTENTION!

You can make a simple change in your receiver so that nearby local stations will not interfere. Double your volume on distance. Anyone can make this change in a few minutes. No soldering or rewiring. It is not an attachment.

Results Unconditionally Guaranteed
Instruction and Material Sent Prepaid for \$1.50

G. HOFFMAN COMPANY, 306 East Fourth Street, Long Beach, California

Announcing —
THE
NEUTROWOUND
“ALLECTRIC”



NO BATTERIES
NO CHARGERS

NO ELIMINATORS
NO CHEMICALS

Simplicity!

Just Attach This Astonishing Receiver to Your Nearest Electric Light
Socket and Reception Is Accomplished.

THE ULTIMATE IN BROADCAST RECEIVERS NOW ON
DISPLAY

—◆—
Complete Line of Neutrowound Receivers Now Ready for Distribution

—◆—
*JOBBERS—Territory Now Being Allotted. See Us for Full
Particulars.*

J. W. FITZGERALD

Distributor

900 Allied Crafts Bldg.
(Cor. Pico and Maple)

LOS ANGELES



G. ALLISON PHELPS
Manager and Announcer

Hollywood, California—370.2 Meters

KMTR

500 WATTS

KMTR RADIO STATION

1025 N. Highland Avenue. Telephone HOLLY 3020
Owned and Operated by C. C. JULIAN
FORBES W. VAN WHY, Engineer-in-Charge

DAILY EXCEPT SUNDAY—

- 7:00 to 7:30 a. m.—Prof. Barclay L. Severn's Setting-Up Exercises
8:45 to 9:00 a. m.—Time signals from Washington, D. C., and musical selections.
12:00 to 12:30 p. m.—Leighton's Arcade Cafeteria Orchestra.
12:30 to 1:30 p. m.—Who's Who and What's Happening.
1:30 to 2:30 p. m.—Radio Press Agent Hour.
2:30 to 3:30 p. m.—KMTR Tea Dance Program.
4:00 to 4:15 p. m.—Vacation Days.
5:30 to 6:00 p. m.—White King Male Quartet and Mona Content, pianist, courtesy Los Angeles Soap Co.
6:00 to 6:15 p. m.—Nightly Doings.
6:15 to 6:45 p. m.—Rancho Vista Avocado courtesy program featuring the Margaret Le Grand Ensemble.
6:45 to 7:30 p. m.—Fitzgerald Music Company, courtesy program.
10:00 to 11:00 p. m.—Miller's Cafe Lafayette Dance Orchestra.

WEEK COMMENCING SUNDAY, APRIL 3, 1927

SUNDAY, APRIL 3

- 5:30 to 6:15 p. m.—White King Male Quartet and Mona Content, concert pianist, courtesy of Los Angeles Soap Company.
6:15 to 6:30 p. m.—Nightly Doings.
6:30 to 7:00 p. m.—Half hour of Cheer with Burr McIntosh.
7:00 to 8:00 p. m.—Miller's Cafe Lafayette Concert Orchestra.
8:00 to 9:30 p. m.—Walker's Fifth Street Store courtesy program.

MONDAY, APRIL 4

- 11:45 to 12:00 noon—Golf talk by S. E. Connelly of the Los Angeles Athletic Club.
12:30 to 1:30 p. m.—Who's Who and What's Happening in Pomona.
4:15 to 4:45 p. m.—Talk by J. P. Redding, representing the Iona Company.
7:30 to 8:00 p. m.—Ohrmund Bros., furnace manufacturers, courtesy program.
8:00 to 9:00 p. m.—Eureka Vacuum Cleaner Co., courtesy program.
9:00 to 10:00 p. m.—Precision Electric Mfg. Corp. courtesy program.

TUESDAY, APRIL 5

- 9:00 to 9:45 a. m.—Sylvia, the Blind Cook.
9:45 to 10:00 a. m.—Charles Hamp, representing the Iona Company.
10:00 to 11:00 a. m.—Georgia O. George, "The Psychology and Physiology of Beauty."
11:00 to 12:00 noon—Madame Alene's talk.
12:30 to 1:30 p. m.—Who's Who and What's Happening in Whittier.
4:15 to 5:15 p. m.—LeRoy Parry and his Elite Dance Orchestra.
5:15 to 5:30 p. m.—Talk on health by Dr. Robert T. Williams.
7:30 to 8:00 p. m.—Overell Furniture Co. courtesy program, featuring the Overell KMTR Players.
8:00 to 9:00 p. m.—Maxwell House Coffee Co. courtesy program, featuring Maxwell House Orchestra and Lenore Duncan.
9:00 to 10:00 p. m.—Paralta Studios courtesy program.

WEDNESDAY, APRIL 6

- 10:00 to 10:30 a. m.—Travel talk by Dr. S. J. Mathieson.
12:30 to 1:30 p. m.—Who's Who and What's Happening in Anaheim.
5:00 to 5:30 p. m.—Dr. Wesley M. Barrett, "Perfect Eyesight Without Glasses."

- 7:30 to 8:30 p. m.—Walker's Fifth Street Store courtesy program.

- 8:30 to 10:00 p. m.—Suburban Realty Company courtesy program.

THURSDAY, APRIL 7

- 9:00 to 10:00 a. m.—Sylvia, the Blind Cook.
10:00 to 10:15 a. m.—Charles Hamp, representing the Iona Company.
10:15 to 10:45 a. m.—Dr. Paul J. Dorosh, "Diet Question Box."
10:45 to 11:45 a. m.—Georgia O. George, "Psychology and Physiology of Beauty."
11:45 to 12:00 noon—Golf talk by S. E. Connelly of the Los Angeles Athletic Club.
12:30 to 1:30 p. m.—Who's Who and What's Happening in Glendale.
4:15 to 4:45 p. m.—Talk by J. P. Redding, representing the Iona Company.
7:30 to 8:00 p. m.—Winslow B. Felix, Chevrolet dealer, courtesy program.
8:00 to 10:00 p. m.—Hollywood Storage Co. courtesy program.

FRIDAY, APRIL 8

- 11:45 to 12:00 noon—Beauty talk by Irene Hobson.
12:30 to 1:30 p. m.—Who's Who and What's Happening in Santa Ana.
4:15 to 4:45 p. m.—Dr. Lowell C. Frost, "The Conservation of Boys."
5:00 to 5:30 p. m.—Dr. Wesley M. Barrett, "Perfect Eyesight Without Glasses."
7:30 to 8:00 p. m.—Thirty Minutes of Sunshine with Charles Hamp, representing the Iona Company.
8:00 to 9:00 p. m.—Walker's Fifth Street Store courtesy program.
9:00 to 10:00 p. m.—Hollywood Storage Co. courtesy program.

SATURDAY, APRIL 9

- 9:00 to 10:00 a. m.—Sylvia, the Blind Cook.
10:00 to 10:15 a. m.—Charles Hamp, representing the Iona Company.
11:30 to 12:00 noon—Gordon Whitnall of the City Planning Commission.
12:30 to 1:30 p. m.—Who's Who and What's Happening—special program.
4:15 p. m.—Radio talk to Radio Fans by Forbes Van Why, Chief Engineer KMTR.
7:30 to 7:40 p. m.—Talk by Mr. Benesh of the Sheriff's Office.
7:40 to 8:00 p. m.—KMTR Movie Club.
8:00 to 9:00 p. m.—Luna Park courtesy program; Loren Powell's Little Symphony.
9:00 to 10:00 p. m.—Los Angeles Police Department program.

Selling Like Hot Cakes

The Powell 'B' Eliminator

Uncondition-
ally
Guaranteed



\$12²⁵

Absolutely No Hum

Operates any set from light socket without the use of expensive and troublesome "B" batteries. A large surplus of power at 100 volts and at a cost of only a few cents a year.

MORE VOLUME - - MORE DISTANCE
GREATER SATISFACTION
BETTER QUALITY - - BETTER PRICE

No Tubes, No Acid and Nothing Else to Buy

A ten-day trial with absolute satisfaction or money back

GUARANTEE

This instrument is the result of months of experimenting and exhaustive tests. The best of materials and workmanship have been combined to insure its satisfaction with the user and it is guaranteed unconditionally for one year. If for any reason it fails to perform satisfactorily it should be returned to the seller, who is instructed to repair or replace, free of charge.

Call or Telephone VERmont 1619 for Information

Will deliver and install Eliminator in any part of the city free of charge

Powell Manufacturing Co.

4009 S. Western Ave.

Los Angeles, Calif.



M. E. CARRIER
Announcer

Los Angeles, California—294 Meters

KTBI

750 WATTS—1020 KILOCYCLES
BIBLE INSTITUTE OF LOS ANGELES
MR. M. E. CARRIER, Manager
PROF. H. G. TOVEY, Director of Programs
Phone ME. 6701

DAILY EXCEPT SUNDAY—

8:45 to 9:15 a. m.—Devotional Hour.
2:00 to 3:00 p. m.—Inspirational Hour.

DAILY EXCEPT FRIDAY AND SUNDAY—

7:15 to 8:00 p. m.—Aunt Martha's Children's Hour.

WEEK COMMENCING SUNDAY, APRIL 3, 1927

SUNDAY, APRIL 3

10:45 a. m. to 12:30 p. m.—Regular service of the Church of the Open Door.
3:00 to 4:00 p. m.—Jewish Radio Hour.
6:00 to 7:00 p. m.—Radio Vesper service.
7:15 to 9:30 p. m.—Regular evening service of the Church of the Open Door.

MONDAY, APRIL 4

8:00 to 9:00 p. m.—Bible exposition by Rev. Robert L. Evans.

TUESDAY, APRIL 5

8:00 to 9:00 p. m.—Bible exposition by Rev. Robert L. Evans.

WEDNESDAY, APRIL 6

8:00 to 9:00 p. m.—Bible exposition by Dr. John McNeill.

THURSDAY, APRIL 7

8:00 to 9:00 p. m.—Bible exposition by Rev. Ralph C. Isbell.

FRIDAY, APRIL 8

6:45 to 7:00 p. m.—Aunt Martha's Children's Hour.
7:00 to 8:00 p. m.—Exposition of International Sunday School lesson.
8:00 to 9:00 p. m.—Bible exposition by Dr. John McNeill.

Los Angeles, California—275.1 Meters

KFSG

ANGELUS TEMPLE, ECHO PARK. Fitzroy 5121
AIMEE SEMPLE McPHERSON, Founder, President
RODERICKE MORRISON, Program Manager
ESTHER FRICKE GREENE, Organist
GLADWYN N. NICHOLS, Musical Director & Announcer
P. S. LUCAS, Technician in Charge
"Four Square Gospel"

DAILY EXCEPT SUNDAY AND MONDAY—

10:30 to 11:30 a. m.—Sunshine Hour.
11:30 a. m. to 12:30 p. m.—Noonday Musical.
6:30 to 7:30 p. m.—Angelus Hour.

DAILY EXCEPT SUNDAY, MONDAY, WEDNESDAY, SATURDAY—

2:30 to 3:30 p. m.—Gray Studio Program.

WEEK COMMENCING SUNDAY, APRIL 3, 1927

SUNDAY, APRIL 3

10:30 a. m. to 12:30 p. m.—Sunday morning worship by Aimee Semple McPherson.
2:30 to 4:30 p. m.—Afternoon Service.
6:30 to 8:00 p. m.—Musical Hour. Angelus Temple Band and choir.
8:00 to 9:30 p. m.—Revival service by Aimee Semple McPherson.
10:00 to 11:00 p. m.—Organ Recital by Esther Fricke Greene.

TUESDAY, APRIL 5

3:30 to 4:30 p. m.—Vesper Hour. Organ Recital by B. Earnest Ballard.
6:30 to 7:30 p. m.—Angelus Hour. Program arranged by Rodericke H. Morrison.
7:30 to 9:30 p. m.—Evangelistic services by Student Evangelists.

WEDNESDAY, APRIL 6

2:30 to 5:30 p. m.—Divine Healing Service
8:30 to 7:30 p. m.—Angelus Hour. Program arranged by Rodericke H. Morrison.
7:30 to 9:30 p. m.—Regular mid-week prayer service by Aimee Semple McPherson.

THURSDAY, APRIL 7

3:30 to 4:30 p. m.—Vesper Hour. Organ recital by B. Earnest Ballard.
6:30 to 7:30 p. m.—Angelus Hour.
7:30 to 9:30 p. m.—Regular Water Baptismal Service. Aimee Semple McPherson.
9:15 to 10:00 p. m.—Gray Studio Program.
10:00 to 11:00 p. m.—Organ Recital by Esther Fricke Greene.

FRIDAY, APRIL 8

3:30 to 4:30 p. m.—Vesper Hour. Organ Recital by Esther Fricke Greene. Angelus Hour. Angelus Temple Band.
7:30 to 9:30 p. m.—Crusader Rally Sermon by Aimee Semple McPherson.
10:00 to 11:00 p. m.—Back Home Hour.

SATURDAY, APRIL 9

3:30 to 4:30 p. m.—The Children's Happy Hour.
6:30 to 7:30 p. m.—Angelus Hour.
7:30 to 9:30 p. m.—Divine Healing Service. Conducted by Aimee Semple McPherson.

Program Published as Submitted by the Station.



G. N. NICHOLS
Announcer

Sterling Two-Rate Automatic Chargers

Keep Your
Battery
Brim Full
of Life



Model R-104
Two-Rate
"A" Charger
(Less Tube)
\$14.00

Model R-103
Two-Rate
"A" Charger
Without
Automatic
Switch
(Less Tube)
\$10.00

Trickle or Booster Rate

A trickle charger with built-in automatic switch. Filament switch on your set controls everything. Adjustment for charging either 4 or 6-volt batteries. Charging rate of either $\frac{1}{2}$ or 2 amperes.

Sterling R-415 VOLTMETER

for Testing All
DC Circuits, "B" Eliminators, Also Wet and
Dry "B" Batteries—0-300 D.C. Volts

*A laboratory meter at the
remarkable low price of*

\$8.50

THE STERLING MFG. CO.

CLEVELAND, OHIO

Sales Representatives

DETSCH & COMPANY

LOS ANGELES
1939 East 16th St.

SAN FRANCISCO
555 Turk Street



Dave Ward

Hollywood, California—226 Meters

KFQZ

1641 North Argyle Ave., Hollywood, California
Gladstone 3197; Gladstone 3198
DAVE WARD, Program Director and Announcer
L. E. TAFT, Technical Engineer
"The Palace Bungalow Studio"

DAILY EXCEPT SUNDAY—

6:00 to 7:00 p. m.—Panatlope Dinner Hour.

MONDAY, TUESDAY, WEDNESDAY, THURSDAY—

12:00 to 1:00 p. m.—Hazel McCauley and the Office Boy.
3:30 p. m.—Thursday. Try-outs (not broadcast).

WEEK COMMENCING SUNDAY, APRIL 3, 1927

SUNDAY, APRIL 3

8:00 p. m.—Columbia Viva-Tonal Records.

9:00 p. m.—Aram Galantian's Orchestra.

MONDAY, APRIL 4

7:00 p. m.—Leslie E. Taft on Radio Technology.

7:30 p. m.—Lincoln High Triple Quartet.

8:00 p. m.—Barrows Motor Co., courtesy program.

9:00 p. m.—Semi-Classical Hour, presented by Myra Belle Vickers.

10:00 p. m.—Yellow Jackets, Wendell Smith and Virginia King.

TUESDAY, APRIL 5

7:00 p. m.—Marlon Boogar and Earl Lawrence. "The Novelty Duo;" Peterson, Overbeck and Sherry. The Campus Trio.

8:00 p. m.—Neapolitan 4, Kathrine Williamson and Einora Swali.

9:00 p. m.—Yellow Jackets, Bob Swan and Ned Miller.

WEDNESDAY, APRIL 6

7:00 p. m.—Clint Stevenson's Hawaiian Trio and Ed Pose.

8:00 p. m.—Henry Ziller's Harmony Boys, Art Goodstein, Lee Boltin.

9:00 p. m.—Yellow Jackets, Honeywell Twins, Jack Goode and Virginia King, accompanied by Mable King.

THURSDAY, APRIL 7

7:00 p. m.—Leslie E. Taft on Radio Technology.

7:30 p. m.—American Hawaiian Trio and William Sullivan.

8:00 p. m.—Barrows Motor Co., courtesy program.

9:00 p. m.—Los Angeles Railway Orchestra; Frankie and Eddie, Helen Simpson and Esther Ware.

FRIDAY, APRIL 8

12:00 p. m.—Greenwich Village Orchestra and Babette Barker.

7:00 p. m.—Joe Kallh's Hawaiian Trio, Hale Hooper, Margaret Kernon.

8:00 p. m.—Chuck Henry's Collegians, Dot Jordan and Glenda Boston.

9:00 p. m.—LeRoy Parry's Elite Orchestra, Helen McCall.

SATURDAY, APRIL 9

12:00 p. m.—Paris Inn Cafe Orchestra, Bert Roverre, soloist.

7:00 p. m.—Joey Starr's Orchestra and Dick Powers.

8:00 p. m.—California Melody Kings and E. Ruth Donigan.

9:00 p. m.—Yellow Jackets, Bud Rilay, Don Stevens and Royal Wallace.
Signing off nightly at 11:00 p. m.

Program Published as Submitted by the Station.



GEORGE FRENGER
Announcer

Pasadena, California — 315.6 Meters

KPSN

PASADENA STAR-NEWS
1000 WATTS—850 KILOCYCLES
GEORGE CECIL COWING, Managing Director
GEORGE FRENGER, Program Manager
HERSHEL SATTERFIELD, Engineer-in-Charge
PERCY C. PRYOR, Studio Office
Phone, Wakefield 3111

DAILY EXCEPT SUNDAY—

12:00 to 12:15 p. m.—News Bulletin.

6:00 to 7:00 p. m.—Dinner-time News Report.

WEEK COMMENCING SUNDAY, APRIL 3, 1927

SUNDAY, APRIL 3

10:30 a. m.—Family Altar Service by the United Church Brotherhoods.

11:00 a. m.—Services from the Pasadena Presbyterian Church.

6:00 to 7:00 p. m.—Star-News concert, with Adolf Tandler and the Ensemble.

MONDAY, APRIL 4

8:00 to 9:15 p. m.—Star-News concert, with Adolf Tandler and the Ensemble.

TUESDAY, APRIL 5

8:00 to 9:15 p. m.—Star-News concert, with Adolf Tandler and the Ensemble.

THURSDAY, APRIL 7

8:00 to 9:15 p. m.—Star-News concert, with Adolf Tandler and the Ensemble.

FRIDAY, APRIL 8

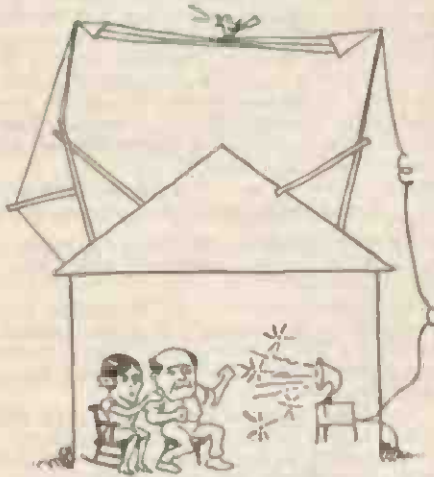
8:00 to 9:15 p. m.—Star-News concert, with Adolf Tandler and the Ensemble.

SATURDAY, APRIL 9

8:00 to 9:15 p. m.—Star-News concert, with Adolf Tandler and the Ensemble.

Program Published as Submitted by the Station.

Anten-A-Liminator



The result of months of experimenting and exhaustive tests. Many times the selectivity of an outside aerial. Will make it possible for you to separate the lower wave length stations.

Small—Compact. Can be put inside or outside of the cabinet. Quickly installed.

Will take the Chaos out of the Air.

Static, extraneous noises, many stations coming in at one time, unsightliness and a fire hazard are some of the disadvantages of an outside aerial.

Why get a jumble of noise from an instrument designed for pleasure?



\$8.50

See Absolute Guarantee with Every Instrument

Manufactured by:
Geo. E. Browning Co.
Ogden, Utah

If Your Dealer Can Not Supply You

Telephone VAndike 3297
Or Write

Scott Sales Co.

443 S. San Pedro St.
Los Angeles, Cal.



Inglewood, California—387 Meters

KMIC

500 WATTS—775 KILOCYCLES

Owned and Operated by JAMES R. FOUCH
Chamber of Commerce Building, Inglewood, Cal.

DAILY EXCEPT SUNDAY—

6:00 to 7:00 p. m.—Shopping news, with Victor Electrola Review.

WEEK COMMENCING SUNDAY, APRIL 3, 1927

SUNDAY, APRIL 3

11:00 a. m. to 12:15 p. m.—Centinella Baptist Church.

MONDAY, APRIL 4

7:00 to 8:00 p. m.—Lambert Sales Co. Courtesy Program with Eddie Hoffman and his Radio Boys—Geraldine Gordon

8:00 to 9:00 p. m.—City of Inglewood program with KMIC Concert Orchestra.

9:00 to 9:30 p. m.—Geo. M. Sutton courtesy program with Eddie Hoffman and his Radio Boys—Don Miner, tenor; Louise White, soprano.

9:30 to 10:00 p. m.—Studio program.

TUESDAY, APRIL 5

7:00 to 7:15 p. m.—Skinner Mfg. Co. courtesy program.

7:15 to 7:45 p. m.—Reliable Radio Sales & Service Co., courtesy program, with Milt Gardner and his Radio Boys—Larry and Verne Cannon, harmony—Doc Williams.

7:45 to 8:00 p. m.—The Little Ant Man.

8:00 to 8:30 p. m.—H. R. McCellen Duco Co., courtesy program, with Martin Wallace Orchestra—Abe Jacobson, Bill Henry, Geo. Thieroy, Harry Von Zell, Jimmy Collins, Neva Negis, warbler.

8:30 to 10:00 p. m.—Studio program.

WEDNESDAY, APRIL 6

7:00 to 7:30 p. m.—Studio program.

7:30 to 8:00 p. m.—Malloy-Clint, courtesy program, with Wes Woodford and his Bachelor Four.

8:00 to 8:30 p. m.—Lindburg Studio of Photography, courtesy program, with L. A. R. R. Orchestra or String Quartette.

8:30 to 10:00 p. m.—Studio program, with Wes Woodford and his Bachelor Four; Geraldine Gordon, baritone;

THURSDAY, APRIL 7

7:00 to 7:30 p. m.—Studio program.

7:30 to 8:00 p. m.—Ross O. Porter Tire Co. courtesy program, with the Six Syncopetts, Larry and Verne Cannon, harmony; Bill Henry and Helen McColl; Fred Wesley.

8:00 to 8:30 p. m.—Inglewood Furniture Co. courtesy program, with Waterbury's Syncopetts: Jimmie Collins, tenor; Doc Williams, the wandering minstrel of the air; Neva Negis, warbler.

8:30 to 10:00 p. m.—Studio program.

FRIDAY, APRIL 8

7:00 to 7:30 p. m.—Studio program.

7:30 to 8:00 p. m.—Skinner Mfg. Co., courtesy program.

8:00 to 8:30 p. m.—H. R. McCellen Duco Co. courtesy program, with Jack Lempke and his Radio Boys; Geo. and Harry, ukes and harmony; Fred Wesley, blues; Carol Agnew, pianist.

8:30 to 8:45 p. m.—The Little Ant Man.

8:45 to 10:00 p. m.—Studio program.

10:00 to 12:00 p. m.—Inglewood Post No. 188, American Legion Frolic,

SATURDAY, APRIL 9

7:00 to 8:00 p. m.—Studio program: Larry and Verne Cannon, buddies in harmony; Bud Riley, tenor guitar.

8:00 to 9:00 p. m.—Bill Livingston and his Radio Boys; Evie and Peggy, KMIC harmony girls; Neva Negis, warbler.

9:00 to 10:00 p. m.—Studio program: Bill Henry and Doc Williams.

Los Angeles, Calif.—517 Meters

KGEF

1000 WATTS—580 KILOCYCLES
TRINITY METHODIST CHURCH

BOB SCHULER, Pastor

Phone Westmore 9834

C. C. HOOPER, Manager

M. J. HANKINS, Technician

WEEK COMMENCING SUNDAY, APRIL 3, 1927

SUNDAY, APRIL 3

10:50 a. m. to 12:30 p. m.—Morning services.

5:00 to 6:00 p. m.—Vesper services.

7:00 to 8:00 p. m.—Musical program from the Church Auditorium.

8:00 to 9:00 p. m.—Sermon by Rev. Bob Schuler.

9:00 to 10:00 p. m.—Old Songs Hour.

10:00 to 10:30 p. m.—Family Altar services.

7:00 to 7:45 p. m.—O. D. Conroy, Bible class.

7:45 to 8:30 p. m.—Studio Musical Program.

8:30 to 9:30 p. m.—Bob Schuler's Question Hour.

9:30 to 10:00 p. m.—Studio Musical.

FRIDAY, APRIL 8

7:00 to 7:30 p. m.—Radio Bible Class.

7:30 to 8:00 p. m.—Studio Musical Program.

8:00 to 8:30 p. m.—Bob Schuler's Civic Talk.

8:30 to 9:30 p. m.—Musical Hour.

9:30 to 10:00 p. m.—Courtesy program, Fitzgerald Music Company.



R. C. Hooker
Announcer

TUESDAY, APRIL 5

7:00 to 7:30 p. m.—Dr. J. A. B. Fry, Bible lesson.

7:30 to 8:00 p. m.—Studio Musical.

8:00 to 8:30 p. m.—Church Federation of Los Angeles.

8:30 to 9:00 p. m.—Studio Musical.

9:00 to 9:30 p. m.—Bob Schuler's Doctrinal Talk.

9:30 to 10:00 p. m.—Musical Program.

WEDNESDAY, APRIL 6

6:00 to 7:00 p. m.—Dorothy Spencer's Children's Hour.

SERVICE DIRECTORY

There is a Service Man in Your Neighborhood. Call or see him.

SOUTHEAST	S E R V I C E	SOUTHWEST
6120 South Broadway TH. 0224 (Equipped to handle any job) DE HOOG BROS. RADIO COMPANY		Cor. Figueroa at Vernon AX. 8382 CHAPMAN-HOUSE SALES CO.
WILSHIRE		SOUTHWEST
214 South Western Ave. WA. 5413 HENSEL ELECTRIC STORE		4617 S. WESTERN UNiversity 3901 The Atwater-Kent and Zenith Sales & Service Co. Distance Guaranteed. J. N. PITTS CO.
HOLLYWOOD		LARCHMONT
7406 Melrose ORegon 4702 (Accurate Service On All Types of Sets) Wesholly Radio Service C. V. (Jack) Schiefer		218 North Larchmont GL. 7298 SMITH-SCOTT CO.
LONG BEACH		DOWNTOWN
430 American Ave. Phone 653-171 RIALTO RADIO CO.		221 West Second St. ME. 4832 LESTER Radio and Electric Store

Those listed on this page are competent and efficient Radio Technicians and are recommended to you for your patronage.



TOM MITCHELL
Announcer

Santa Monica, California—238 Meters

KNRC

1000 WATTS CAPACITY
Owned and Operated by KEIRULFF & RAVENS-
CROFT COMPANY
Municipal Auditorium, Ocean Park, Santa Monica,
Calif. Phone Santa Monica 63-101.
TOM MITCHELL, Studio Manager and Announcer.
C. B. JUNEAU, Transmission Engineer.
"The Station with a Smile"

DAILY EXCEPT SUNDAY—

4:00 to 4:45 p. m.—Smiling Circle with Tom.
2:00 to 2:30 p. m.—Shopping Tour.
2:30 to 4:00 p. m.—Santa Monica Municipal Band
6:00 to 7:00 p. m.—Club Casa Del Mar.
7:00 to 8:00 p. m.—Merchants Preview Hour.
10:00 to 11:00 p. m.—Club Casa Del Mar.
11:00 to 12:00 p. m.—La Monica Ballroom Orchestra.

DAILY EXCEPT MONDAY—

8:00 to 9:00 p. m.—Band Concert.
2:30 p. m.—Band Concert.

WEEK COMMENCING SUNDAY, APRIL 3, 1927

SUNDAY, APRIL 3

10:45 to 11:45 a. m.—Pilgrimage Lutheran
Church Services, remote control.
2:30 to 4:00 p. m.—Santa Monica Municipal
Band Concert.
5:15 to 8:15 p. m.—The Pirate Band.
6:15 to 7:00 p. m.—Pilgrimage Lutheran
Church Services, remote control.
7:00 to 8:00 p. m.—Club Casa Del Mar, re-
mote control.
8:00 to 9:00 p. m.—Santa Monica Municipal
Band Concert.
9:00 to 10:00 p. m.—Club Casa Del Mar,
remote control.
10:00 to 11:00 p. m.—La Monica Ballroom
Orchestra, remote control.

MONDAY, APRIL 4

8:00 to 10:00 p. m.—Main Studio program,
featuring the Black and Tan Orchestra.

TUESDAY, APRIL 5

3:00 to 3:15 p. m.—Bay Builders' Exchange
Booster program.
8:00 to 9:00 p. m.—Santa Monica Municipal
Band Concert.
9:00 to 10:00 p. m.—Main Studio program,
featuring the Southern Dons Orchestra,
Novety Duo, Marion Boogar and Earl
Lawrence.

WEDNESDAY, APRIL 6

3:00 to 3:15 p. m.—Bay Builders' Exchange
Booster program.
7:30 p. m.—Talk by Undersheriff Eugene
Biscailuz.
8:00 to 9:00 p. m.—Santa Monica Municipal
Band Concert.
9:00 to 9:30 p. m.—Club Casa Del Mar.
9:30 to 10:30 p. m.—Broadcasting of the
Fights from the Ocean Park Arena.

THURSDAY, APRIL 7

8:00 to 9:00 p. m.—Santa Monica Municipal
Band Concert.
9:00 to 10:00 p. m.—Main Studio program.

FRIDAY, APRIL 8

3:00 to 3:15 p. m.—Bay Builders' Exchange
Booster program.
8:00 to 9:00 p. m.—Santa Monica Municipal
Band Concert.
9:00 to 10:00 p. m.—Main Studio program.

SATURDAY, APRIL 9

3:00 to 3:15 p. m.—Bay Builders' Exchange
Booster program.
8:00 to 9:00 p. m.—Santa Monica Municipal
Band Concert.
9:00 to 10:00 p. m.—Main Studio program,
featuring Clyde Pearson, soprano; Kath-
leen Williamson, blues singer, accom-
panied by Eleanor Swall.



Major Lawrence Mott
Announcer

Avalon, California—211.1 Meters

KFWO

THE ISLAND STATION
Power 250 Watts—Western Electric Equipment
"Katalina for Wonderful Outings"
MAJOR LAWRENCE MOTT, Owner-Operator
MISS FRANCES HEWITT, Studio & Program Dir.
"The Isle With a Smile"

WINTER SCHEDULES AT KFWO

The Mott Station at Catalina Island, California
(In Effect Week of Sept. 20th)

DAILY EXCEPT MONDAY—

12:30 to 1:30—Hotel St. Catherine Orchestra.
6:30 to 8:00—St. Catherine Orchestra.

DAILY EXCEPT MONDAY, THURSDAY AND SUNDAY—

8:00 to 8:30—Studio.

MONDAYS

Silent.

TUESDAYS

5:30 to 6:00 p. m.—Miss Hewitt's Golden
Hour.
8:00 to 8:00 p. m.—Studio.

WEDNESDAYS

8:00 to 9:00 p. m.—Studio Program.
9:00 to 12:00 Midnight—Overseas.

THURSDAYS

8:00 to 9:00 p. m.—Studio Program.

FRIDAYS

5:00 to 6:00 p. m.—Miss Hewitt's Golden
Hour.
6:00 to 6:30 p. m.—Wrigley Chimes.

SATURDAYS

3:00 to 4:30 p. m.—Rebroadcast of KNX.
9:15 to 10:00 p. m.—Studio.

SUNDAYS

5:00 to 6:00 p. m.—Miss Hewitt's Golden
Hour.
6:00 to 6:30 p. m.—Wrigley Chimes.
8:00 to 9:15 p. m.—Lobby Concert.
Victor Electrola used during all programs.

“A” and “B” POWER

For Your Radio Set



WILLARD "A" POWER UNIT



WILLARD "B" POWER UNIT

Each of these units represents the best in engineering in the Power Unit field. Workmanship and materials are of the highest quality. No hum or distortion from them. They connect with the house lighting circuit.

Ask about our Time Payment Plan. Why not buy them now?

Willard Service Stations

OF SOUTHERN CALIFORNIA
OR
YOUR NEAREST RADIO DEALER

Venice, California—208 Meters

KFVD

1440 KILOCYCLES—500 WATTS

McWHINNIE ELECTRIC CO., VENICE BALLROOM
Venice, Cal. Phone 65959

MARY ELIZABETH CARTER, Mgr. and Announcer

DAILY EXCEPT SUNDAY—

9:00 to 11:00 a. m.—Music and shopping news.
11:00 to 11:30 a. m.—Mary Elizabeth Garden.
5:30 to 7:00 p. m.—Music and shopping guide.
10:00 to 12:00 p. m.—Cush Branch and orchestra Venice ballroom.

WEEK COMMENCING MONDAY, APRIL 4, 1927

MONDAY, APRIL 4

8:00 to 10:00 p. m.—The Doty Twins and Harl; Eddie Hoffman and His Knights of Syncapation; Roy T. Davis; Jimmy Collins; Fred Wesley; Elizabeth Blair Davis.
12:00 p. m. to 2:00 a. m. — Tommy Jacobs and His Shop Cafe Orchestra.

TUESDAY, APRIL 5

8:00 to 10:00 p. m.—Dale Fulton; Lallah Fulton; Geraldine Barnett; Edith Hancock; Scott McConnell; Theo. Schaeffer; Harry Dinnawitzer; Bud Russell.

WEDNESDAY, APRIL 6

12:15 to 1:15 p. m.—Lions Club of Venice. Children's Hour.
8:00 to 10:00 p. m. — Frankie Anderson's Orchestra; Dorothy Smith's Hawaiian Trio; Lyman Wood; Dorothy Maltby; Nina Fry.

THURSDAY, APRIL 7

8:00 to 10:00 p. m.—Hal Denny and His Harmony Hounds; Bob Davis; Sally; J. Shull; Marie Millar; Ansley; Bobby Sidman.

FRIDAY, APRIL 8

4:00 to 5:00 p. m.—Children's Hour.
8:00 to 10:00 p. m.—Marbelite Corporation of America, Courtesy program, featuring Tessie Weiss, Morris Lensky, Dr. Delevante, Barkeys Mandolin Band.

SATURDAY, APRIL 9

1:00 to 2:00 p. m.—Harry Judson, Walter Lyon, Addie Carson.
8:00 to 10:00 p. m.—Merchants of Venice Frolic.

SUNDAY, APRIL 10

6:00 to 12:00 p. m.—Cush Branch and His Orchestra.

Program Published as Submitted by the Station.

TO JOBBERS AND MANUFACTURERS

Spaulding Fibre, Spaulding Bakelite, Hope Talking Tape, Irvington Spaghetti and Wire

Factory Stocks and Cutting Equipment—Ample Stocks in Los Angeles

Panels, Washers, Discs, Special Shapes

CLAPP & LaMOREE

1325 San Julian Street, Los Angeles

LOS ANGELES

SAN FRANCISCO

PORTLAND

LIKE "WILLYS-OVERLAND"

"Willys Over-Air" Has Won Public Confidence

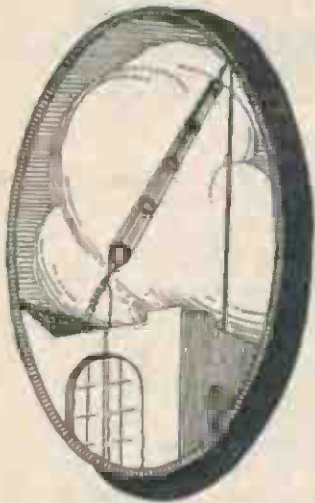
More and more radio lovers in New York are having their sets made by private laboratories, because it is the true means of obtaining true reproduction and high selectivity, with factors of location taken fully into account.

WILLYS OVER-AIR PRACTICAL RADIO LABORATORY

is following the example of their friends, Lacault and Fenway, of New York, in conducting a high-class private laboratory equipped to handle all classes of radio service. The location is:

2021 Temple St., Los Angeles, Calif.

Phone Fltzroy 1781



JUST AS SURE

as GOD made little green apples, so surely will a "WESCO" Low Loss Antenna improve your Radio reception by giving you greater volume on distant stations and clearer tone quality on local broadcasting stations. Comes complete with heavy duty insulators and a 19 stranded rubber-covered lead-in cable. Easily installed requiring but a single 20-foot pole.

If your dealer does not stock them he will be glad to get one for you, or you may order direct.

Price
\$7⁵⁰



LOW LOSS ANTENNA

WEST COAST RADIO CO.

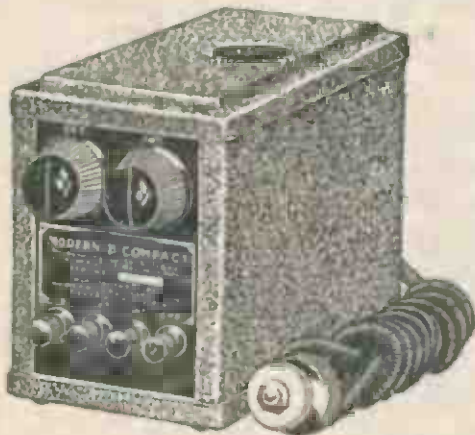
PHONE VERMADAY 1893

2407 WEST CLAYTON AVE

LOS ANGELES.

MODERN "B" COMPACT

Modern in Every Sense of the Word



Ample output to take care of any set using from one to seven tubes, including power tube. Hermetically sealed against moisture; small in size.

Built with Tobe special type heavy duty condensers throughout. Does not hum.

Price **\$35**

Complete with Raytheon Tube

Exclusive Wholesale Distributors

YALE RADIO ELECTRIC CO.

1111 Wall St.

LOS ANGELES

WEStmore 3351



"HAL" G. NICHOLS
Announcer

Long Beach, California—233 Meters

KFON

1290 KILOCYCLES—750 WATTS

NICHOLS & WARINNER, INC.

Studio 211 Jergins Trust Bldg. Phones 617-19; 614-60

Business Office, 212 Jergins Trust Bldg.

Phones: 617-19, 614-60

"Where Your Ship Comes In"

DAILY EXCEPT SUNDAY—

9:30 to 10:15 a. m.—Pacific Coast Club organ.

10:15 to 10:30 a. m.—"Devotion Period."

10:30 to 11:30 a. m.—Physiology of Beauty, Georgia O. George.

11:30 a. m. to 12:00 noon—Press-Telegram news.

12:00 noon—Lost and found announcements.

12:00 to 12:30 p. m.—Musical program.

2:30 to 4:00 p. m.—Long Beach Municipal Band.

4:00 to 4:30 p. m.—Press-Telegram Late News.

4:30 to 6:00 p. m.—KFON Concert Orchestra.

6:00 to 6:15 p. m.—Request Program by Clarence and Doris.

6:15 to 7:00 p. m.—KFON Concert Orchestra.

10:00 to 11:00 p. m.—San Pedro Merchants musical program.

11:00 to 12:00 p. m.—Majestic Ball Room Orchestra by remote control.

DAILY EXCEPT SUNDAY AND MONDAY—

8:00 to 9:00 p. m.—Press-Telegram presenting Long Beach Municipal Band.

WEEK COMMENCING SUNDAY, APRIL 3, 1927

SUNDAY, APRIL 3

1:00 to 1:30 p. m.—Musical program, sponsored by Birkel Music Co.

1:30 to 2:30 p. m.—Musical program presented by Wm. Conrad Mills.

2:30 to 4:00 p. m.—Long Beach Municipal Band, direction of Herbert L. Clarke.

4:00 to 5:00 p. m.—Vesper Hour.

5:00 to 6:00 p. m.—KFON Concert Orchestra, sponsored by Long Beach Business Men.

6:00 to 6:15 p. m.—Request period, by Clarence and Doris.

6:15 to 7:00 p. m.—KFON Concert Orchestra.

7:00 to 7:45 p. m.—Studio program.

7:45 to 9:00 p. m.—Services from the First Church of Christ, Scientist.

9:00 to 12:00 p. m.—"Everybody's Night."

MONDAY, APRIL 4

1:00 to 1:30 p. m.—Wilshire Ionaco Company program.

1:30 to 2:30 p. m.—San Pedro Merchants' musical program.

7:00 to 8:00 p. m.—Thrifty Sandy program, sponsored by Citizens State Bank.

8:00 to 8:15 p. m.—Lure of the Sky, by Dr. Lewis Thomas.

8:15 to 9:00 p. m.—"The Haymakers," featuring old-time dance music.

9:00 to 12:00 p. m.—"Kiwanis Frolic."

TUESDAY, APRIL 5

12:30 to 1:00 p. m.—Musical program.

1:00 to 1:30 p. m.—Kiwanis Club Luncheon.

1:30 to 2:30 p. m.—Woman's Music Study Club.

7:30 to 8:00 p. m.—"Chat for Booklovers."

9:00 to 10:00 p. m.—Piggly Wiggly Hour.

1:00 to 1:30 p. m.—Rotary Club Luncheon.

1:30 to 2:00 p. m.—Wilshire Ionaco Company program, featuring Clarence and Doris.

2:00 to 2:30 p. m.—Dept. of Numerology.

7:00 to 7:30 p. m.—Texas Cowboys in old-time dance music.

9:00 to 10:00 p. m.—Pacific Coast Club Orchestra, by remote control.

THURSDAY, APRIL 7

2:00 to 2:30 p. m.—Health and Efficiency, Dr. Elmer S. Clark.

7:00 to 8:00 p. m.—Piggly Wiggly Hour.

9:00 to 10:00 p. m.—Shell Oil Company's Orchestra.

FRIDAY, APRIL 8

1:00 to 1:30 p. m.—Wilshire Ionaco Company, featuring Clarence and Doris.

7:00 to 7:30 p. m.—Church of Christ, by Rev. Ernest Beam.

7:30 to 7:45 p. m.—"A Selina Sizer Program."

7:45 to 8:00 p. m.—"Lucky Jim" Investment Chat, by Seaboard Bond & Mortgage Co.

9:00 to 10:00 p. m.—Caskill Mfg. Co. and Missman Radio Co. program.

SATURDAY, APRIL 9

1:30 to 2:30 p. m.—Fountain Club Cafe Orchestra.

7:00 to 8:00 p. m.—Pacific Coast Club Orchestra.

9:00 to 10:00 p. m.—The Piggly Wiggly Minstrels.

\$1

Down

Will place a

MAJESTIC

—"B" SUPPLY—

—In Your Home

Then

\$1

A
Week

\$6 Brandes Navy Phones at \$3.95

ESTAB. 1904

625 So. Main
Opposite
P. E. Depot
OPEN EVENINGS

J. C. RENDLER

Radio Parts—Kits—Sets

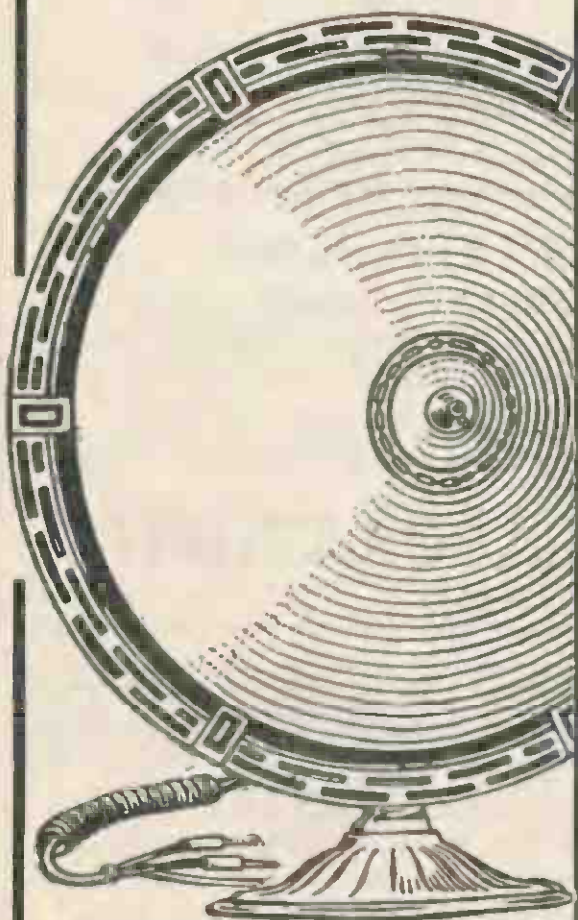
TRinity 4281
Los Angeles

MAIL ORDERS

Herald

\$13.75

A FREE-EDGED cone speaker, 18 inches high, with protecting metal frame. Compare this handsome new Herald for volume and tone with any higher priced speaker at your dealer's.

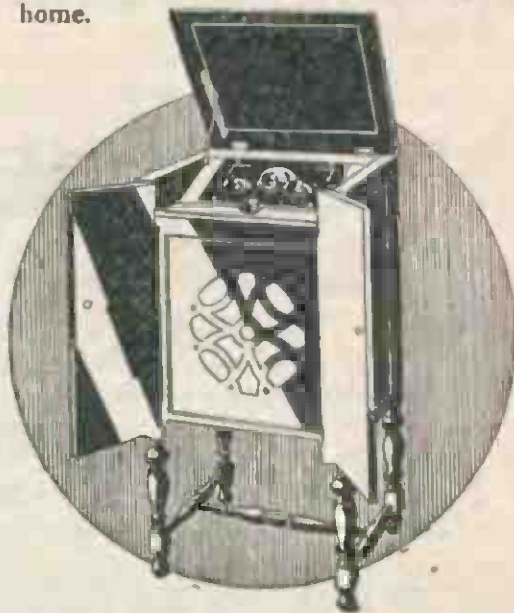


BAKER-SMITH CO., INC.
 Cal Bldg., San Francisco, Cal.
 Selling Representatives for Pacific Coast

Hear this no battery Falck Radio in your home

Once seen and heard, the Falck becomes the choice of the discriminating purchaser. For in this one radio are all the features found in the latest and most expensive sets: *No A, B, or C batteries . . . A Selective One-Dial Control . . . Built-in Speaker —(cone or horn) . . . all in a beautifully modeled solid mahogany cabinet.*

You may hear the Falck at any authorized dealer, or Phone MUTual 1724 for free demonstration in your home.



The Falck

Made in Los Angeles by the ADVANCE ELECTRIC CO.—\$150.00 complete.
 (Slight extra charge for cone.)





TOM SEXTON
Announcer

San Diego, California—245.8 Meters

KFSD

1000 WATTS—1220 KILOCYCLES
AIRFAN RADIO CORPORATION
U. S. Grant Hotel, 326 Broadway, San Diego. Main 8661
H. C. ROGERS, President and General Manager
TOM SEXTON, Announcer

"Kiss From San Diego"

DAILY EXCEPT SUNDAY—

6:00 to 7:00 p. m.—Nightly musical review.

10:00 to 11:00 p. m.—Harvey Ball and his U. S. Grant Hotel Orchestra

DAILY EXCEPT SUNDAY AND MONDAY—

9:00 to 10:00 p. m.—La Bohemian Dance Program.

WEEK COMMENCING SUNDAY, APRIL 3, 1927

SUNDAY, APRIL 3

3:00 to 4:00 p. m.—Temple service of the Theosophical University.

MONDAY, APRIL 4

7:00 to 8:00 p. m.—Studio hour.

8:00 to 9:00 p. m.—First Unitarian Church program, Howard B. Bard.

9:00 to 10:00 p. m.—Mixed musical program.

TUESDAY, APRIL 5

7:00 to 8:00 p. m.—Studio hour.

8:00 to 9:00 p. m.—Union Title Company "Classic Hour" program.

9:00 to 10:00 p. m.—Mixed musical program.

WEDNESDAY, APRIL 6

7:00 to 7:30 p. m.—Courtesy program by Wilschre's Ionaco Company.

7:30 to 8:30 p. m.—Concert program furnished by the Theosophical University.

8:30 to 9:30 p. m.—Request Program.

9:30 to 10:00 p. m.—Request Program.

THURSDAY, APRIL 7

7:00 to 8:00 p. m.—Police program, dance music and concert music.

8:00 to 9:00 p. m.—Mixed musical program.

FRIDAY, APRIL 8

7:00 to 8:00 p. m.—Studio hour.

8:00 to 9:00 p. m.—Studio program.

SATURDAY, APRIL 9

7:00 to 8:00 p. m.—San Diego Senior High School program.

8:00 to 9:00 p. m.—Mme. de Beauviere. "Franco-American hour."

Program Published as Submitted by the Station.

"SUPER-HET" FANS!

WE WILL SEND OUR COMPLETE 7-TUBE SET, including Transtrom Intermediate Transformers, Drilled Panels and Full Instructions for Assembling, for only \$85.00, prepaid to any address.

If you are not interested in Selectivity, Sensitivity and Distance, don't answer this ad!

SIERRA RADIO LABORATORIES

318 W. 8th St.

LOS ANGELES, CALIF.

VAndike 6464

SILVER THE KING

24 Kt. Gold
Pure Silver
Soft
Copper

Gosilco Super Aerial Wire Gold over Silver on Copper

DX Reception Assured—30% More Volume—Clearer Tone—20% Sharper Tuning—Permanently Efficient.

No. 14 Gauge, 100 ft. \$3.00—75 ft. \$2.50—50 ft. \$1.75.

Soft Round Bus, 10c, 2 ft. length. Flexible Bus and Loop, 5c ft.

Sold by Dealers or direct, prepaid or C. O. D. Checks Accepted.

Endorsed by Best, Cockaday, All-American, Radio Corp., KNX Lab.,

Radio News, Radio Broadcast, Popular Radio.

GOSILCO RADIO PRODUCTS CO.

Patent Applied for

320 Marbrin Ave., Huntington Park, Calif.

SATISFACTION GUARANTEED

YOUR NEIGHBORHOOD DEALER

ADVERTISING SERVICE

RADIOLA

Mr. RADIO DEALER!

Here Is Your
Space For Next
Week — Our New
1/6th Page, Designed
For Your Needs

For Rates Phone
Westmore 1401

S
A
L
E
S



S
E
R
V
I
C
E

SCHRADER-ROSS

3208 West Washington Blvd.
Open Evenings Empire 2866

SEE SPECIAL OFFER—PAGE 71

WEBSTER B and C Socket Power

Raytheon Equipped
5 Controls

Easily set to exact current value needed for every tube in receiver to get best tone, greatest distance and most volume. Gets amazing results out of H.F.L. 11 (8 standard, 2 No. 112 and 1 No. 171 tubes) and other high power sets.

Before buying an eliminator write for FREE booklet, "Improving Your Radio."

THE WEBSTER COMPANY
854 Blackhawk Street
Chicago, Ill.

SCOTT SALES CO.

443 South San Pedro St.
Los Angeles

"CHIEF CRYSTAL"

(Cat'n Whisker Included)



Tones Loud
and Clear

Plenty of
Volume

Long Life
Super-
Sensitive

Good
Reception

(Insist on This Label)

Absolute Satisfaction Guaranteed

AT YOUR DEALER

**CHIEF RADIO
CRYSTAL CO.**

608 E. Fifth St., Los Angeles, Calif.

JOBBER:

Cook-Nichols
411 S. San Pedro
Phone TU. 6657

Herbert H. Horne
1629 S. Hill St.
Phone WE. 1713



CURTIS PECK
Announcer

San Francisco, California—428.3 Meters

KPO

1000 WATTS—700 KILOCYCLES
HALE BROTHERS AND THE CHRONICLE
J. W. LAUGHLIN, Managing Director
MRS. FREDERICK CROWE, Program Director
ALBERT J. HODGES, Technical Director
Phone Kearney 5777

"The Voice of San Francisco"

DAILY EXCEPT SUNDAY—

- 6:45, 7:15 and 7:45 a.m.—Daily health drill by Hugh Barrett Dobbs.
- 10:30 a.m.—"Ye Towne Crier."
- 10:45 a.m.—Cooking Hints.
- 12:00 noon—Time signals and Scripture reading.
- 1:00 to 2:00 p.m.—Rudy Seiger's Fairmont Hotel Orchestra.
- 3:30 to 5:30 p.m.—Palace Hotel Concert Orchestra.
- 5:30 to 6:15 p.m.—Children's Hour.
- 6:15 to 6:30 p.m.—"Ye Towne Crier."
- 6:30 to 7:00 p.m.—States Restaurant Orchestra.
- 7:00 to 7:30 p.m.—Rudy Seiger's Fairmont Hotel Orchestra.
- 7:30 to 8:00 p.m.—Silent.
- 10:00 to 11:00 p.m.—Dance Program.

WEEK COMMENCING SUNDAY, APRIL 3, 1927

SUNDAY, APRIL 3

- 9:45 to 10:45 a.m.—Undenominational and non-sectarian church service. Uda Waldrop at the organ.
- 10:45 a.m.—"Ye Towne Crier," giving the United States weather forecast and general information.
- 2:30 to 4:30 p.m.—Baseball Game, Recreation Park.
- 6:00 to 6:30 p.m.—States Restaurant Orchestra, Waldemar Lind, director.
- 6:30 p.m.—"Ye Towne Crier," giving general information.
- 6:35 to 8:35 p.m.—Palace Hotel Concert Orchestra, Cyrus Trobbs, director.
- 8:35 to 10:00 p.m.—Rudy Seiger's Fairmont Hotel Concert Orchestra.
- 10:00 to 12:00 p.m.—John Wolohan and his Californians at the Triunon Ballroom.

MONDAY, APRIL 4

- 8:00 to 8:10 p.m.—Chamber of Commerce talk on "Industrial San Francisco," by Capen A. Fleming, director, Industrial Department.
- 8:10 to 8:25 p.m.—Book reviews by Harold A. Small of the Chronicle.

- 8:25 to 9:00 p.m.—Bridge Lesson No. 23.
- 9:00 to 10:00 p.m.—Studio program by Neapolitan Quartette.
- 11:00 to 12:00 p.m.—KPO's Variety Hour.

TUESDAY, APRIL 5

- 8:00 to 11:00 p.m.—Inaugural program, National Broadcasting Co., over Pacific Coast network.

WEDNESDAY, APRIL 6

- 8:00 to 9:00 p.m.—Program by the Atwater-Kent Artists, under the auspices of Ernest Ingold, Inc.
- 9:00 to 10:00 p.m.—Studio program.

THURSDAY, APRIL 7

- 8:00 to 10:00 p.m.—Studio program.

FRIDAY, APRIL 8

- 8:00 to 10:00 p.m.—Walter Krausgrill's Orchestra.

SATURDAY, APRIL 9

- 6:30 to 7:30 p.m.—States Restaurant Orchestra, Waldemar Lind, director.
- 8:00 to 9:00 p.m.—Simultaneous broadcast by KFI and KPO of a program presented by manufacturers of White King and Mission Bell Soap.

Program Published as Submitted by the Station.

DISTANCE-SELECTIVITY "DX FILTER" ACHIEVES BOTH CHILDS LAB., 1187 W. 24th ST., L. A.

The World's Best Receiver

The Super-Heterodyne is the circuit most used by leading Radio Engineers
For Tone Quality, Selectivity and Distance.

We specialize on Super's, so bring us your troubles. RESULTS GUARANTEED or no charges.

SNIDER'S RADIO SERVICE

*4682 Hollywood Blvd. (Just East of Vermont)

Open Evenings

Phone OLympia 4111

Remember we give you the same guaranteed Service on all Standard Circuits

**NOW THE SUPREME R-F 5 IS SOLD
FACTORY DIRECT TO YOU
5-Tube Console Complete**



\$59

Built-in speaker, large tubes, 100 A. H. Rubber Case Battery even the inside aerial is included—nothing else to buy.

Selectivity :: Quality :: Distance

New Modified S. L. F. condensers allow ample separation of low wave lengths and gives absolute selectivity on all stations. Using Kellogg's laboratory grade transformers assures you of tone perfection, and for distance the utmost in sensitivity has been achieved through proper design of condensers and inductance.

Made of Finest Parts Obtainable

The Supreme—Made of the finest of material such as Kellogg, Yaxley, Carter, C. R. L., Benjamin, Bakelite coils.

Order Your Set Today

and you'll say, like everyone else that hears the Supreme, "That's the best receiver I ever heard—it's wonderful." It's simply not equalled for purity of tone or fidelity of reproduction. Remember every part is guaranteed to you—you take no chances.

THE PATTERSON FACTORY TO YOU SALES PLAN

puts a guaranteed \$155 console, 5-tube receiver in your home for cash at about \$35 less than the actual wholesale price. Volume production is the answer.

Patterson Radio Manufacturing Co.

Established 1921

239 S. Los Angeles St.—VA. 8139

Los Angeles, Calif.



Howard I. Mitholland
Announcer

Oakland, California—361.2 Meters

KGO

4000 WATTS—830 KILOCYCLES
PACIFIC COAST STATION, GENERAL ELECTRIC CO.
Phone Fruitvale 5980

DAILY EXCEPT SUNDAY—

11:30 a. m. to 1:00 p. m.—Hotel Leamington concert.

DAILY EXCEPT SATURDAY AND SUNDAY—

1:30 and 6:00 p. m.—Stock and weather reports. Base ball scores.

6:00 to 6:55 p. m.—Bem's Little Symphony Orchestra.

6:55 to 7:30 p. m.—Weather and stock reports.

WEEK COMMENCING SUNDAY, APRIL 3, 1927

SUNDAY, APRIL 3

11:00 a. m.—First Methodist Episcopal Church service.

4:00 p. m.—Vesper service, Grace Cathedral, San Francisco.

6:30 to 7:30 p. m.—Concert by Bem's Little Symphony Orchestra.

7:30 p. m.—Weather Bureau report.

7:35 p. m.—First Methodist Episcopal Church service.

9:00 to 10:00 p. m.—Concert by Bem's Little Symphony Orchestra.

MONDAY, APRIL 4

4:00 to 5:00 p. m.—California Federation of Women's Clubs.

5:30 to 6:00 p. m.—KGO Kiddies' Klub.

TUESDAY, APRIL 5

5:00 p. m.—"Mental Measurements" lectures by Dr. Virgil E. Dickson.

8:00 to 11:00 p. m.—Inaugural program, National Broadcasting Co., over Pacific Coast network.

WEDNESDAY, APRIL 6

8:00 p. m.—S. F. Studio—Farm program, co-operating with U. S. Dept. of Agriculture, California State Dept. of Agriculture, California Farm Radio Council, and the California Dairy Council. Music by W. O. W. Male Trio.

9:20 p. m.—Dinner Dance Frolic, Aahmes Shrine Temple.

THURSDAY, APRIL 7

10:40 a. m.—Classroom instruction, Oakland Public Schools.

5:00 to 6:00 p. m.—George W. Ludlow, "Friend to Boys."

8:00 p. m.—"Patience," a comic opera in two acts by Gilbert & Sullivan, presented by the Paul Steindorff Radio Light Opera Company.

9:30 p. m. to 12:00 midnight—Dance music program by Jack Conkley's Band.

FRIDAY, APRIL 8

11:30 a. m. to 1:00 p. m.—Hotel Leamington concert.

6:30 p. m.—Ray-Ray-O, children's story teller from Land-O-Health.

8:00 p. m.—Western Artist Series concert by the Rembrandt Ensemble.

SATURDAY, APRIL 9

8:00 p. m.—"Weekly Sport Review," by Al Santoro.

8:15 to 9:15 p. m.—Program by Edna Fischer Hall, contralto; Philip Ashcraft, tenor, and the Arion Trio.

9:15 p. m. to 1:00 a. m.—Dance music, Wilt Gunzendorfer's Hotel Whitcomb Band, San Francisco.



Chas. E. Gabrielle, Jr.
Announcer

Oakland, California—508.2 Meters

KLX

500 WATTS—508.2 Meters
OAKLAND TRIBUNE RADIOPHONE
Phone, Lakeside 8015

"Oakland, Where Rail and Water Meet"

DAILY EXCEPT SUNDAY—

7:00 to 7:30 p. m.—News broadcast.

WEEK COMMENCING MONDAY, APRIL 4, 1927

MONDAY, APRIL 4

10:30 a. m.—Martha Lee.

5:30 to 6:30 p. m.—Children's hour.

8:00 to 9:00 p. m.—Piggly Wiggly Hawaiian program.

9:00 to 10:00 a. m.—Weekly meeting of

TUESDAY, APRIL 5

3:00 p. m.—Baseball.

5:30 to 6:30 p. m.—Brother Bob.

WEDNESDAY, APRIL 6

10:30 a. m.—Martha Lee.

3:00 p. m.—Baseball.

6:30 to 7:00 p. m.—Athens Athletic club dinner concert.

8:00 to 9:00 p. m.—Educational program.

9:00 to 10:00 p. m.—Special program.

THURSDAY, APRIL 7

3:00 p. m.—Baseball.

5:30 to 6:30 p. m.—Brother Bob,

Silent after 7:30 p. m.

FRIDAY, APRIL 8

10:30 p. m.—Martha Lee.

3:00 p. m.—Baseball.

5:30 to 6:30 p. m.—Brother Bob.

8:00 to 9:30 p. m.—Special program.

9:30 to 10:30 p. m.—Athens Athletic club orchestra.

SATURDAY, APRIL 9

3:00 p. m.—Baseball.

RADIOLA SPECIALISTS

We make any RCA SUPER HETERODYNE include in its tuning range the stations between 200 and 230 meters, at a nominal cost. Not an attachment but a fundamentally sound improvement in the circuit. We have also developed improvements for the Radiola 20 and the Radiola 28.

Our Electrical Phonograph

is creating a furor among the music lovers who demand the last word in quality reproduction. We build portable and console models, or this equipment can be installed in your old phonograph. Furthermore we guarantee as faithful reproduction as that given by any machine offered to the public.

MAKERS OF THE PROFESSIONAL MODEL RECEIVER

LABORATORY OF RADIO STANDARDS

2408 West Vernon — VERMONT 6543

E. K. HAYES

Los Angeles, Calif.

V. M. BITZ

demand
AEROVOX

FILTER CONDENSER BLOCKS

For Working Voltages of 200, 300,
400, 600 and 1000 Volts D. C.

Flexible leads for connections eliminate all possibilities of leakage from soldering.

AEROVOX WIRELESS CORPORATION
60-72 Washington Street
Brooklyn, N. Y.



Stock Carried in Los Angeles
Office

W. C. HITT CO.
324 N. San Pedro St.
Los Angeles, Calif.



"Cappy" Stan Cappel
Announcer

San Francisco, California--250 Meters

KFWI

500 WATTS—1200 KILOCYCLES

DAILY EXCEPT SATURDAY AND SUNDAY—

6:00 to 7:00 p. m.—Dinner Hour Program.

7:00 to 8:00 p. m.—Sports, Police and Weather Reports.

WEEK COMMENCING SUNDAY, APRIL 3, 1927

SUNDAY, APRIL 3

7:50 to 9:00 p. m.—Services from the Fourth Church of Christ, Scientist.

MONDAY, APRIL 4

8:00 to 8:20 p. m.—Violet William soprano; Clem Kennedy, pianist.

8:20 to 8:40 p. m.—Henry and Nathep Hamen.

9:40 to 9:00 p. m.—Aileen Coombs, contralto; Lucille Burton, pianist.

9:00 to 10:00 p. m.—Harry J. Waters, saxophone band.

10:00 to 12:00 p. m.—Paul Kelli's Trovatore Orchestra.

TUESDAY, APRIL 5

8:00 to 8:30 p. m.—Mabel Broz, soprano; Clem Kennedy, pianist.

8:30 9:00 p. m.—The Ionians

9:00 to 10:00 p. m.—May Coffey Miller, contralto; C. A. Valentine, violinist; Ray Fox, pianist.

WEDNESDAY, APRIL 6

8:00 to 8:20 p. m.—Stanley Pointer, baritone; Clem Kennedy, pianist.

8:20 to 8:30 p. m.—Becher Storage program.

8:30 to 9:00 p. m.—Nalda Nales, violinist.

9:00 to 10:00 p. m.—KFWI Hawaiian Hour

10:00 to 12:00 p. m.—Paul Kelli's Trovatore Orchestra.

THURSDAY, APRIL 7

8:00 to 8:20 p. m.—Henry and Esther Haman, tenor and banjo.

8:20 to 8:40 p. m.—Robert Smilley, baritone; Radis Siromaitnkoff, pianist.

8:40 to 9:00 p. m.—Florence Rowe, soprano; Charlotte Owens, pianist.

9:00 to 10:00 p. m.—Maxwell House Coffee program.

10:00 to 12:00 p. m.—Paul Kelli's Trovatore Orchestra.

FRIDAY, APRIL 8

8:00 to 8:30 p. m.—Gulseppe Garcione, dramatic tenor; Claire Harrington, pianist.

8:30 to 9:00 p. m.—Ray Fox, violinist; Charles Fry, pianist.

9:00 to 10:00 p. m.—Recital by Henry Bickford Pasmore and pupils.

SATURDAY, APRIL 9

8:00 to 9:00 p. m.—Paul Kelli's Trovatore Orchestra.

SHEPHERD RADIO SERVICE

Authorized Dealer for

Stromberg-Carlson, Federal Ortho-Sonic Receiving Sets

We specialize in correcting balky receivers. Super-Heterodynes, Infradynes, Roberts, etc., made to perform efficiently.

Transformers Matched, Coils Balanced

Phone Us Your Troubles. Our Service Will Please

Batteries Changed, Tubes Reactivated. Work Called for and Delivered

GRanite 7482

7562 Sunset Boulevard

Hollywood, California

MAKE YOUR RADIO REALLY SELECTIVE *THE SELECTATONE*

Will Eliminate These Interfering Stations and Enable You to Get Stations You Have Never Heard Before.

Connected to Antenna and Radio in One Minute.

SOLD ON A POSITIVE GUARANTEE

SEASIDE ELECTRIC CO.

63 S. Magnolia Ave.

Phone 668-238

Long Beach, Calif.

OUR EXCEPTIONAL OFFER

*Get Two Great Magazines For Almost
the Price of One!*

SAVE \$2.00

RADIO NEWS—The National Radio Monthly
with the largest circulation and following of
any Radio publication in the world—

or
SCIENCE AND INVENTION

or
AMAZING STORIES

Regular Price \$2.50

and

RADIO DOINGS—The Leading Pacific Coast
Radio Weekly — the Radio authority of the
Pacific Coast—

Regular Price \$3.00

These leaders in their respective fields—the great National
Monthly, Radio and Scientific Magazines and the great
Pacific Coast Weekly—

BOTH NOW FOR \$3.50

You Can't Afford to Pass This Offer By

Attach Money Order, Check or Currency to the Coupon and Mail to Us
Right Now

RADIO DOINGS,
407 E. Pico Street,
Los Angeles, Calif.

Or Conger & Moody,
Sharon Bldg., San Francisco, Calif.

Send me **RADIO DOINGS** and "**RADIO NEWS**," **SCIENCE & INVENTION** or **AMAZING STORIES** for one year. I enclose \$3.50.

Name.....

Address.....

City and State.....

(Specify NEW or RENEWAL)

R-1



STEPHEN I. GAYLORD
Announcer

Portland, Oregon—491.5 Meters

KGW

1000 WATTS—810 KILOCYCLES
THE MORNING OREGONIAN
"Keep Growing Wiser"

DAILY EXCEPT SUNDAY—

7:15 a. m.—Setting up exercises.
9:45 to 10:00 a. m.—Women's health exercises
10:00 to 11:30 a. m.—Town Crier, weather reports, news items
12:30 to 1:30 p. m.—Noon concert.
6:00 to 7:00 p. m.—Dinner Concert.
7:30 to 7:45 p. m.—Weather and market reports

WEEK COMMENCING SUNDAY, APRIL 3, 1927

SUNDAY, APRIL 3

10:55 to 12:30 noon—Morning services from the Church of Our Father.
1:00 to 2:00 p. m.—Mock Crest "Home and Fireside Hour" concert.
4:00 to 8:00 p. m.—KGW Salon Orchestra.
7:30 to 9:00 p. m.—Evening services from the First Presbyterian Church.
9:00 to 10:00 p. m.—Public Service Little Symphony Orchestra.

MONDAY, APRIL 4

7:00 to 7:30 p. m.—Childrens Program.
8:00 to 9:00 p. m.—Vaudeville entertainment.
9:00 to 10:00 p. m.—Venetian Hour.
10:00 to 12:00 midnight—Dance Music by Cole McElroy's Spanish Ballroom Dance Band.

TUESDAY, APRIL 5

2:00 to 3:00 p. m.—Women's Matinee.
8:00 to 11:00 p. m.—Inaugural Program of the Pacific Coast unit of the Red Net Work of the National Broadcasting Company from KGO.
10:00 to 12:00 midnight—Dance Music, feature Herman Kenin and his Orchestra.

WEDNESDAY, APRIL 6

7:00 to 7:15 p. m.—Utility Service.

8:00 to 9:00 p. m.—Concert by the Western Giant Cord Trio.
9:00 to 10:00 p. m.—Concert by Maxwell-House Coffee Orchestra, simultaneously with KFOA and KHQ.

THURSDAY, APRIL 7

7:00 to 7:15 p. m.—Old Hickory Smoked Salt Talk.
7:45 to 8:00 p. m.—Lecture, given under the auspices of the Catholic Truth Society of Oregon.
9:00 to 10:00 p. m.—Vaudeville program.

FRIDAY, APRIL 8

2:00 to 3:00 p. m.—Women's Matinee.
7:00 to 7:30 p. m.—Utility service.
8:00 to 9:00 p. m.—Concert by the Mission Bell Orchestra with Soloists, courtesy Los Angeles Soap Company from KGW thru KFOA and KHQ.
9:00 to 10:30 p. m.—Dance Music by Cole McElroy's Spanish Ballroom Dance Band.
10:30 to 12:00 midnight—Weekly Frolic of the Keep Growing Wiser Order of Hoot Owls.

SATURDAY, APRIL 9

10:00 to 12:00 midnight—Dance Music, featuring Herman Kenin and his Orchestra.

Program Published as Submitted by the Station.

Subscribe to Radio Doings
\$3.00 a Year

KEX

Portland, Oregon—447 Meters

4000 WATTS
THE WESTERN BROADCASTING COMPANY, PORTLAND

WEEK COMMENCING SUNDAY, APRIL 3, 1927

DAILY EXCEPT SUNDAY

5:30 to 6:00 p. m.—Radio code practice and daily radio chat by Clarence Clark, technical director of KEX.
6:00 to 6:30 p. m.—Children's hour by direct wire from Wremers Chateau.
6:30 to 8:00 p. m.—Congress Hotel dinner music; Jimmie Davis and his Pompelan Orchestra.
8:00 to 9:00 p. m.—Studio program.
9:00 p. m.—Western Union time signals.

TUESDAY, THURSDAY, SATURDAY

9:00 to 10:30 p. m.—Studio program.
10:30 to 12:00 p. m.—Dance Music, direct wire from Kremer's Chateau.
SUNDAY ONLY
3:00 to 5:00 p. m.—Concert orchestra.
5:00 to 6:00 p. m.—Church services.
6:00 to 8:00 p. m.—Congress Hotel dinner music.
8:00 to 9:00 p. m.—Studio program.
9:00 p. m.—Time signals, Western Union.
9:00 to 10:30 p. m.—Studio program.
10:20 to 12:00 p. m.—KEX Frolic.

Program Published as Submitted by the Station

KOMO

Seattle, Washington—305.9 Meters

1000 WATTS

HOME SAVINGS BLDG., SEATTLE, WASH.

DAILY EXCEPT SUNDAY

- | | |
|---|--------------------------------|
| 10:00 a. m.—Inspirational Service. | 12 noon—Farm Flashes. |
| 10:15 a. m.—Y. M. C. A. Health Exercises. | 5:15 p. m.—Children's Program. |
| 10:30 a. m.—Totem Cooking School. | 7:00 p. m.—Silent Period. |

WEEK COMMENCING SUNDAY, APRIL 3, 1927

SUNDAY, APRIL 3

- 10:00 a. m.—International Bible Student's Association, Studio Program.
- 11:00 a. m.—Plymouth Congregational Church, Morning Service.
- 12:10 p. m.—St. James Cathedral, Noon High Mass.
- 4:30 p. m.—Concert by Calpet Gasoline Orchestra, sponsored by California Petroleum Corporation of Washington.
- 7:50 p. m.—First Church of Christ, Scientist, Evening Service.
- 9:10 p. m.—International Bible Student's Association, Studio Program.

MONDAY, APRIL 4

- 12:15 p. m.—Varied Program—Radio Novelties.
- 1:00 p. m.—Organ Recital.
- 2:00 p. m.—Totem Soloist and Quartette.
- 2:30 p. m.—Totem Concert Orchestra and Soloists.
- 5:00 p. m.—Health Talk—"Hay Fever Prevention," by Public Health League of Washington.
- 5:05 p. m.—Totem Concert Orchestra and Soloists.
- 5:45 p. m.—E. A. Pierce & Co., Stock, Bond and Grain Quotations.
- 6:00 p. m.—Totem Concert Orchestra and Soloists.
- 7:45 p. m.—Varied Program.
- 8:00 p. m.—U. S. Dept. of Agriculture Farm School.
- 8:15 p. m.—"Iolanthe," by Totem Light Opera Company.
- 10:00 p. m.—Totem Dance Orchestra and Richardson Trio.

TUESDAY, APRIL 5

- 2:00 p. m.—Organ Recital.
- 3:00 p. m.—Totem Concert Orchestra and Soloists.
- 5:45 p. m.—E. A. Pierce & Co., Stock, Bond and Grain Quotations.
- 6:00 p. m.—Rose-Lani Duo, Hawaiian Music.
- 6:15 p. m.—Totem Concert Orchestra and Soloists.
- 7:30 p. m.—Radio Novelties.
- 7:45 p. m.—"Opening the Mail"
- 8:00 p. m.—Dedicatory program from new National Broadcasting Company's studios in San Francisco.
- 11:00 p. m.—Totem Dance Orchestra and Richardson Trio.

WEDNESDAY, APRIL 6

- 12:45 p. m.—Totem Chorus.
- 1:00 p. m.—Organ Recital.
- 2:00 p. m.—Totem Concert Orchestra and Soloists.
- 5:45 p. m.—E. A. Pierce & Co., Stock, Bond and Grain Quotations.
- 6:00 p. m.—Totem Concert Orchestra and Soloists.
- 7:45 p. m.—Totem Concert Orchestra.

- 8:00 p. m.—National Farm Radio Council Talk
- 8:15 p. m.—Opening the Mail.
- 8:30 p. m.—Totem Concert Orchestra.
- 11:00 p. m.—Totem Dance Orchestra and Richardson Trio.

THURSDAY, APRIL 7

- 10:45 a. m.—Varied Program.
- 12:15 p. m.—Totem Chorus and Quartette.
- 1:30 p. m.—Organ Recital.
- 2:30 p. m.—Totem Concert Orchestra and Soloists.
- 5:45 p. m.—E. A. Pierce & Co., Stock, Bond and Grain Quotations.
- 6:00 p. m.—Totem Concert Orchestra and Soloists.
- 7:45 p. m.—Totem Concert Orchestra and Soloists.
- 8:00 p. m.—U. S. Dept. of Agriculture Farm School—"Poultry."
- 8:15 p. m.—Talk: "Care and Breeding of Baby Chicks."
- 8:30 p. m.—Totem Concert Orchestra and Soloists.
- 10:30 p. m.—Totem Dance Orchestra and Richardson Trio.

FRIDAY, APRIL 8

- 11:00 a. m.—Organ Recital.
- 12:15 p. m.—Varied Program.
- 12:45 p. m.—Totem Concert Orchestra and Soloists.
- 5:45 p. m.—E. A. Pierce & Co., Stock, Bond and Grain Quotations.
- 6:00 p. m.—Totem Concert Orchestra and Quartette.
- 7:45 p. m.—Radio Novelties.
- 8:00 p. m.—U. S. Dept. of Agriculture Farm School—"Dairying"
- 8:15 p. m.—Opening the Mail.
- 8:30 p. m.—Totem Concert Orchestra.
- 9:00 p. m.—Superior Orchestra.
- 10:00 p. m.—Totem Dance Orchestra and Richardson Trio.

SATURDAY, APRIL 9

- 1:00 p. m.—Organ Recital.
- 2:00 p. m.—Varied Program.
- 3:30 p. m.—Totem Concert Orchestra and Soloists.
- 5:45 p. m.—E. A. Pierce & Co., Stock, Bond and Grain Quotations.
- 6:00 p. m.—Totem Concert Orchestra and Soloists.
- 7:45 p. m.—Totem Concert Orchestra and Soloists.
- 8:15 p. m.—Opening the Mail.
- 8:30 p. m.—Totem Concert Orchestra and Soloists.
- 10:00 p. m.—Totem Dance Orchestra and Richardson Trio.

KOMO's week-day programs are continuous from 10:00 a. m. to 12:30 a. m., of the ensuing morning, except for a 45-minute silent period from 7:00 to 7:45 p. m.



FREEMAN H. TALBOT
Announcer

Denver, Colorado—322.4 Meters

KOA

930 KILOCYCLES—5000 WATTS
GENERAL ELECTRIC COMPANY
Pacific Standard Time

"Rocky Mountain Broadcasting Station"

DAILY EXCEPT SATURDAY AND SUNDAY—

10:45 a. m.—Weather, Stock and Produce Reports
5:00 p. m.—Stock and Market Reports.
5:30 p. m.—Musical Program.

DAILY EXCEPT SUNDAY—

11:15 a. m.—Organ recital.

WEEK COMMENCING SUNDAY, APRIL 3, 1927

SUNDAY, APRIL 3

- 10:00 a. m.—Service of First Baptist Church, Denver. Sermon, "The Fact of God and How He Reveals Himself," Rev. A. H. C. Morse, D.D., Ph.D., pastor.
4:30 p. m.—Organ recital from First Baptist Church, Denver; Oliver W. Gushee, organist.
5:30 p. m.—Dinner concert, Brown Palace Orchestra, Howard Tillotson, director.
7:45 p. m.—Service of First Baptist Church, Denver. Sermon, "Weeds," Rev. A. H. C. Morse, D.D., Ph.D., pastor.

MONDAY, APRIL 4

- 6:30 p. m.—Children's hour, Denver Public Schools.
7:00 p. m.—Instrumental program by Scheuerman's Colorado Orchestra from Colorado Theater, Denver.
7:15 p. m.—Mountain States Telephone and Telegraph Co. program.

TUESDAY, APRIL 5

- 2:15 p. m.—Talk, "Native Colorado Evergreens," given by D. M. Andrews, Boulder, Colo.
2:30 p. m.—Housewives' matinee, presented by the Home Garden Club, Denver.
3:30 p. m.—Question box, given by Woman's department of Rocky Mountain News and Denver Evening News.
3:45 p. m.—Fashion review, given by the Gano-Downs Company, Denver.
6:30 p. m.—Farm question box, George C. Wheeler, editor Western Farm Life.
8:00 p. m.—Radio instruction in auction bridge, conducted by studio players.

WEDNESDAY, APRIL 6

- 6:30 p. m.—Wynken, Blynken and Nod time; by Daniels and Fisher. Story Lady.
7:00 p. m.—Instrumental program by Scheuerman's Colorado Orchestra from Colorado Theater, Denver.
7:15 p. m.—Light opera program: Part 1. The KOA Orchestra, Henry Trustman, di-

rector, with assisting artists, will present selections from some of America's best-loved light operas: High Jinks, Fire Fly, May Time, Blossom Time, and Rose Marie. Part 2. A microphone excursion to the famous rivers of the world, conducted by the KOA Orchestra.

THURSDAY, APRIL 7

- 2:15 p. m.—Talk, "Who's Who in Elms," given by John T. Roberts, Jr., Englewood, Colo.
2:30 p. m.—Housewives' matinee, presented by Chapter No. 59, Order of Eastern Star, Denver.
3:30 p. m.—Fashion review, given by the Gano-Downs Company, Denver.
4:00 p. m.—Stocks, markets, livestock, produce and news bulletins.
Silent Night.

FRIDAY, APRIL 8

- 2:15 p. m.—Talk, "Practical Points in Planting," given by Carlyle Ferguson, Denver.
2:30 p. m.—Housewives' matinee, presented by Colorado Woman's College, Denver.
3:30 p. m.—Culinary hints, Mrs. Helen Harrington Downing, Home Service Director, Rocky Mountain News and Denver Evening News.
3:45 p. m.—Fashion review, given by the Gano-Downs Company, Denver.
6:00 p. m.—"Aggie Kickoffs," Extension service, Colorado Agricultural College, Fort Collins, Colo.
6:30 p. m.—Preview of International Sunday School lesson, Rev. Wm. O. Rogers.
7:00 p. m.—Instrumental program, KOA Orchestra, Henry Trustman, director.
7:15 p. m.—Johnstown, Colo., Chamber of Commerce program, featuring Johnstown Orchestra and solos by Lucile Fowler.

SATURDAY, APRIL 9

- 9:15 p. m.—Dance program, Scheuerman's Colorado Orchestra, from the Cathedral ballroom, Albany Hotel, Denver.

STANDARD RADIO CO.

417 West Pico St., Los Angeles, Calif.

FADA, ATWATER KENT, FEDERAL AND WESTERN ELECTRIC DEALER

We Carry a Complete Line

Open Model Atwater Kent Wave Length Cut Down to 200 Meters.
We Are Also Making a Specialty of Sharpening Tuning in Any Radio Set.
Two-Tube Harkness Changed to 3-Tube, Guaranteed Perfect Tune-out on Local Stations

Telephone WESTmore 1560

Open Saturday Evenings Until 9 o'clock

STATION "E.P." BROADCASTING

Meaning Eddie Peabody, wizard of harmony, radio hound de luxe, who is returning to the Metropolitan Theatre next Thursday. Eddie, who has talked over radio stations from Vancouver to Cuba, says: "Hello, everybody! Mighty glad to get back to L. A. This is a 'scoop' for Radio Doings. It is given without static, or interference, and I hope it's got the right modulation—for no reason at all."

Cannibals

(Continued from Page 15)

returned from Tiburon. "They are sun-worshipers, wear almost no clothing, sleeping on the ground, and seldom using fire for any purpose. They believe that the hands and feet of man contain his highest intelligence, and for this reason they eat the raw flesh from the hands and feet of their victims, believing that all the physical and mental virtues of the foe is then incorporated into the body and personality of the eater."

Trouble Shooter

(Continued from Page 20)

dependent upon the number of turns in the secondary of the R.F. transformer, it follows that for maximum efficiency the higher waves should be tuned in by the addition of inductance (turns) rather than the addition of capacity in shunt with a fixed coil.

The ideal circuit would therefore be one wherein the tuning is done by inductance rather than capacity; where coupling is variable with the actual tuning, and where balancing is such that the degree of feed-back is constant regardless of tuning.

George Rothwell Brown, paragrapher—Secretary Hoover seems to be going ahead with his plans for controlling the radio just as though he thought the new \$50,000 commission wouldn't amount to much.

Woman's Page

(Continued from Page 22)

flour and fried a rich brown in olive oil. I removed the beef rolls to a large iron pot, fried onions and carrots in the oil until brown, poured the vegetables and oil over the meat, while with beef bouillon cubes I made sufficient bouillon to cover the meat, giving the sauce a most piquent flavor by adding two tablespoonfuls of tomato catsup. The pot was covered and allowed to cook slowly over the gas flame until the meat was done—about an hour. As these musicians were all from Germany and Holland, this dish, served with German potato dumplings, touched the spot that's said to win a man's heart. To make the dumplings, brown in melted butter in oven, one quart of grated bread crumbs. Boil potatoes, not quite done. Drain and let stand in the warming oven to dry. Put through collendar. Add grated onion, salt, pepper, half-pint flour, 3 eggs. Mix with hands. Add the bread crumbs; make into balls, dipping hands in flour. Drop into boiling salted water and boil 10 minutes.

KFXB

(Continued from Page 23)

pany, when the hour of broadcast will be extended to midnight. These remote stations will include the Albert Hay Melotte pipe organ studio in the Wurlitzer building, Lyman's Cafe Alabam', Ralph Markey and his orchestra, and the great organ at Roosevelt Memorial Park.

The station staff includes Eddie Barnes and Allan Fairchild as announcers; Baron Keys, well-known composer-musician, will cooperate with the sponsored program department; and Bert Heller, technician in charge. Mr. Heller, who has owned the KFXB license since it first went on the air at Big Bear about two years ago, built and installed the present station and is to be complimented on his engineering ability.

Mark Smith Joins Ray Thomas, Inc.



Mark Smith, well known expert in merchandising radio, is now Vice President and General Manager of Ray Thomas, Inc., Southern California distributors of Atwater Kent Radio, Cunningham Radio tubes, Eveready, USL Batteries and Majestic Eliminator.

MARK SMITH

Due to a greatly increased volume of business during recent months, it became absolutely imperative that additional assistance be given the Thomas management.

Of immediate benefit to Atwater Kent dealers in Southern California, will be the additional help that can now be given them by C. W. Griffin, Sales Manager, who plans to devote more of his personal time and attention to assisting dealers in giving the maximum of service to the Radio Public.

Smith is a Western man, having spent most of his life on the coast. He is thoroughly conversant with market conditions through years of close contact, and has earned an enviable reputation as a merchandiser in the radio trade. He came to Los Angeles direct from his position, held for several years, as sales manager of E. T. Cunningham, Inc., National manufacturers of Cunningham Radio Tubes.

His accurate knowledge of manufacturing and distribution methods will undoubtedly be of great assistance to Ray Thomas, Inc., and Atwater Kent dealers, while his previous experience has particularly fitted him for the new responsibilities he has assumed.

Our Eastern Representative

Introducing Mr. J. W. Hastie, Eastern representative of RADIO DOINGS, with headquarters in New York City. Mr. Hastie is married and has a happy little family of which he is very proud. He is very well known in the advertising fraternity, and has a large host of



J. W. HASTIE

friends. He is just as enthusiastic about the advertising value of Radio Doings as we are, and he reports that an ever-increasing number of national advertisers are coming to appreciate this value. He threatens to make another visit to the Pacific Coast at the first opportunity, and we hope he does, because he will see a tremendous growth since his last visit several years ago.

The Hu-chin, or two-stringed Chinese violin, was introduced to the radio audience of the United States for the first time in a broadcast from a Minneapolis station.

Timely Trade Topics

Mr. W. D. Scott, of the Scott Sales Company, Los Angeles, has through numerous demonstrations shown that to get the greatest distance, most volume and clearest tonal quality with any set, it is necessary to supply the tubes the exact C and B value needed for best performance, and that this can be done only through sources of current supply which may be accurately controlled for all the stages.

The socket power unit which accomplishes this most conveniently and efficiently is said to be the Webster Little Giant B-C power supply unit, which has positive variable controls for the detector, intermediate and power tube B supply and the intermediate and power C supply. These units are being supplied by the leading radio distributors.

Ira R. Seltzer of Henger & Seltzer Company, is making a business trip to the east, where he is visiting the factories his firm represents—Yaxley Mfg. Co., Aero Products Co., and American Electric Co., all of Chicago, and the Spartan Electric Co., New York. He will be away about three weeks.

The Dexter Supply Company reports that orders from individuals in thirty-eight states having already been received for the Preston DX ground. Retail and dealer orders for the unit are daily increasing in number and size and the shipping department of the Dexter Supply Company is kept busy, filling and shipping all orders the same day the orders are received.

George W. Stackman; who has been associated with the Bosch organization for a number of years, has been appointed branch manager for this company with headquarters in San Francisco.

Of interest to the trade, particularly those who are manufacturers and jobbers of B eliminators are the following Magnatron Tubes: DC 216B, half wave rectifier, will deliver from 80 to 100 milliamperes. DC 213, full wave rectifier, will deliver from 70 to 80 milliamperes. DC 210, power amplifier, will deliver 25 per cent greater power output. The factory guarantees these tubes for a life of 2000 hours. The Pacific Radio Laboratories of 256 S. Los Angeles St., Los Angeles, are California distributors for the Magnatron line.

The Velvetone Radio Corp., formerly of 2729 Avalon Blvd., Los Angeles, is now nicely located in their new factory at 237 South Figueroa street.

Their factory is of latest design, and gives them a floor space for manufacturing purposes of over 8500 square feet. Their telephone number is MUtual 9153.

W. D. Scott has returned from Ogden, Utah, where he spent several days with the "Browning boys" at their Antenaliminator factory, which is now running on a capacity of 500 per day. Scotty finds an increasing dealer demand, now that the device has been on the market long enough for the public to familiarize themselves with its merits.

The Filter-Flex Radio Corp. of 724 West Vernon, Los Angeles, is now displaying four beautiful models of their popular batteryless receiver. This receiver is undoubtedly meeting with great favor on the Pacific Coast and in the Western States, as is evidenced by the rapidly increasing orders being received at the Los Angeles factory.

Broadcasters' Digest

The opening program of the National Broadcasting Company, Inc., will be broadcast from the Colonial Ballroom of the Hotel St. Francis, beginning at 8 o'clock, April 5th. Extensive plans have been made to make the first program a success for the radio public. San Francisco and Los Angeles will be the gathering points for the talent. Telephone wires to KGO Oakland, KPO San Francisco, KFI Los Angeles, KGW Portland, KHQ Spokane, KOMO and KFOA of Seattle will make the program available to radio listeners throughout the Western States.

Henry N. Robinson, member of the advisory council and president of the First National Bank of Los Angeles, will make the opening address.

A number of artists, known to the musical public the world over, have been secured for the initial program. Alfred Hertz, leading the entire San Francisco Symphony, will be heard for the first hour. The vocal soloists to appear with the Symphony orchestra will be Jeanne Gordon, contralto, formerly of the Metropolitan Opera Company and now with the Chicago Civic Opera, and Lambert Murphy, concert and operatic tenor, also formerly with the Metropolitan. Wallace A. Sabin, organist of San Francisco, will play the pipe organ at the Bohemian Grove. This will be the first time that the organ will be heard on the air. Max Dolin, newly-appointed musical director for the Pacific Division of the National Broadcasting Company, Inc., will conduct a musical comedy presentation.

The Duncan Sisters and the Hollywood String quartet will appear before the microphone in songs so well known to their admirers. For the lovers of lighter entertainment, the program will include Los Caballeros, a newly-discovered Spanish orchestra, Mosby's Dixieland Blue Blowers and the Hotel St. Francis Dance Orchestra.

Mory Leaf, badtime story artist, left this week for Chicago, to be away for several weeks. He made a decided hit over KNX, the Evening Express. Before leaving Mory made six records for Columbia, two songs, two "Heestry Lessons" and two badtime stories. Other KNX artists also have made records, among them being Badger and Musseller, novelty team, and Earl Burnett's Biltmore orchestra.

We have received numerous inquiries about station KELW. This station is located at Magnolia Park, Burbank, and is owned by Earl L. White, broadcasting on 535 meters, 250 watts; George W. Bunton is general manager, Harry A. James, chief announcer and Stuart F. Wainwright, engineer in charge. They are on the air daily from 6 to 10 p. m. except Sunday, when they broadcast from 2 to 4 p. m.

The Merriken Drug Company of 4201 Park Boulevard, San Diego, California, recently started a radio letter contest among the children. Every child who would write a letter and turn it in would receive a pair of stilts. The interest which the children showed in radio and their knowledge of the subject was indeed surprising.

Radio is more and more coming to be a constant source of entertainment and education to both children and parents.

Burgess Batteries Cunningham Tubes

FIGUEROA RADIO SHOP RADIOTRICIANS

KOLSTER

Crosley Sets and Speakers

Expert Service on All Makes of Sets

TUcker 6763

747 S. Figueroa St.

DISTRIBUTORS
for
SOUTHERN CALIFORNIA
for the Complete Line of

YAXLEY
APPROVED RADIO PRODUCTS
PRODUCTS



—◆—
We Carry a Full Line of All
SILVER-MARSHALL
PRODUCTS

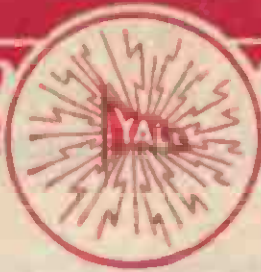
Including the New S. C. II
5-Tube Kits

SERVICE

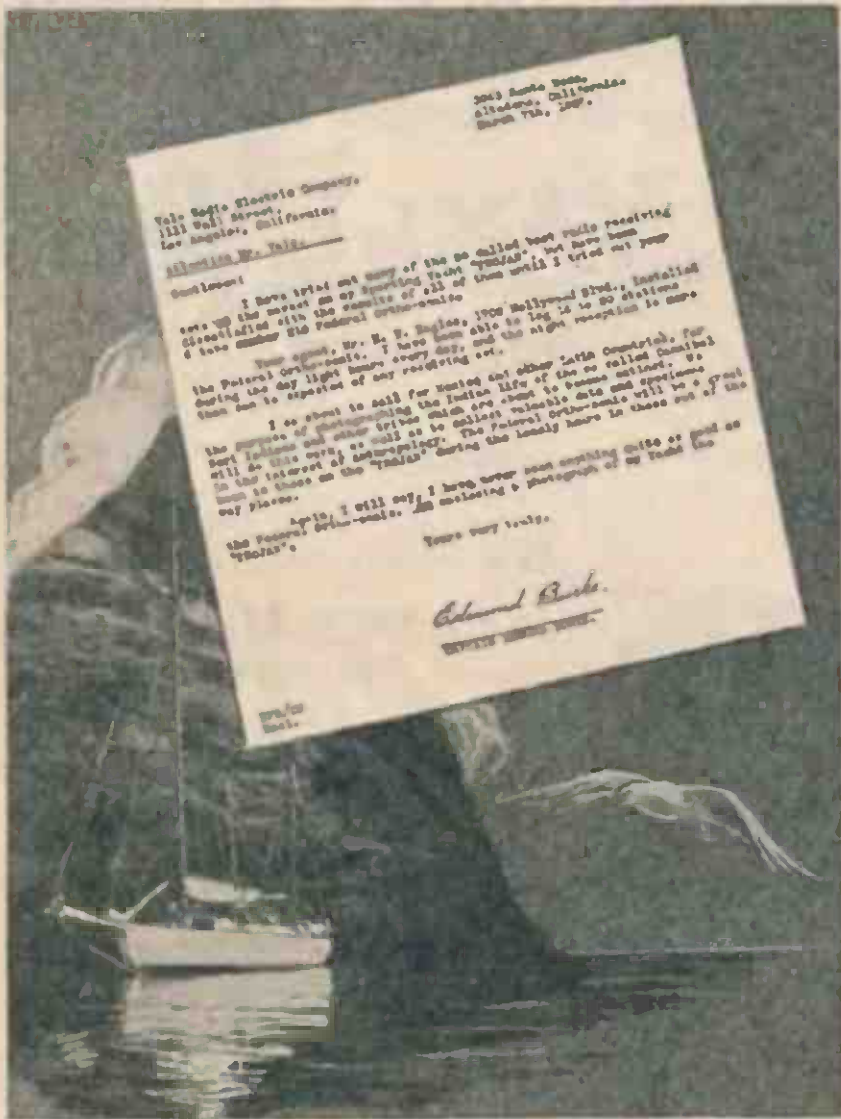
Prompt attention given Mail Orders. Deliveries
to all parts of city four times daily.
Two deliveries daily to all outside Southern
California points.

—◆—
HERBERT H. HORN

1629 South Hill Street. Phones: WEstmore 1713 and 1543
Los Angeles



Off to Cannibal-Land With Federal Ortho-Sonic



3043 Santa Rosa
Alhambra, California
March 7th, 1937.

Yale Radio Electric Company,
1111 Wall Street,
Los Angeles, California.

William W. Yale,
Dear Sir:

I have tried out many of the so called best radio receiving sets on the market as my Sparking Youth "YR-500" but have been disappointed with the results of all of them until I tried out your Federal Ortho-Sonic.

Your agent, Mr. E. F. Engles, 1700 Hollywood Blvd., installed the Federal Ortho-Sonic. I have been able to log in to 20 stations during the day light hours every day and the night reception is more than that to expect of any receiving set.

I am about to sail for Kaituma and other Latin Countries for the purpose of photographing the Indian life of the so called Cannibal Coast Indians and other tribes which are about to become extinct. It will do this work, as well as to collect valuable data and specimens in the interest of anthropology. The Federal Ortho-Sonic will be a great boon to those on the "Tribes" during the lonely hours in these out of the way places.

Again, I will say, I have never seen anything quite so good as the Federal Ortho-Sonic. Am enclosing a photograph of my kind log "YR-500".

Yours very truly,

Edmund Burke
DIRECTOR "TRIBES"

Yale Radio Electric Co.

LOS ANGELES

1111 Wall Street

WEstmore 3351

This file including all text and images are from scans of a private personal collection and have been scanned for archival and research purposes. This file may be freely distributed, but not sold on ebay or on any commercial sites, catalogs, booths or kiosks, either as reprints or by electronic methods. This file may be downloaded without charge from the Radio Researchers Group website at <http://www.otrr.org/>

Please help in the preservation of old time radio by supporting legitimate organizations who strive to preserve and restore the programs and related information.