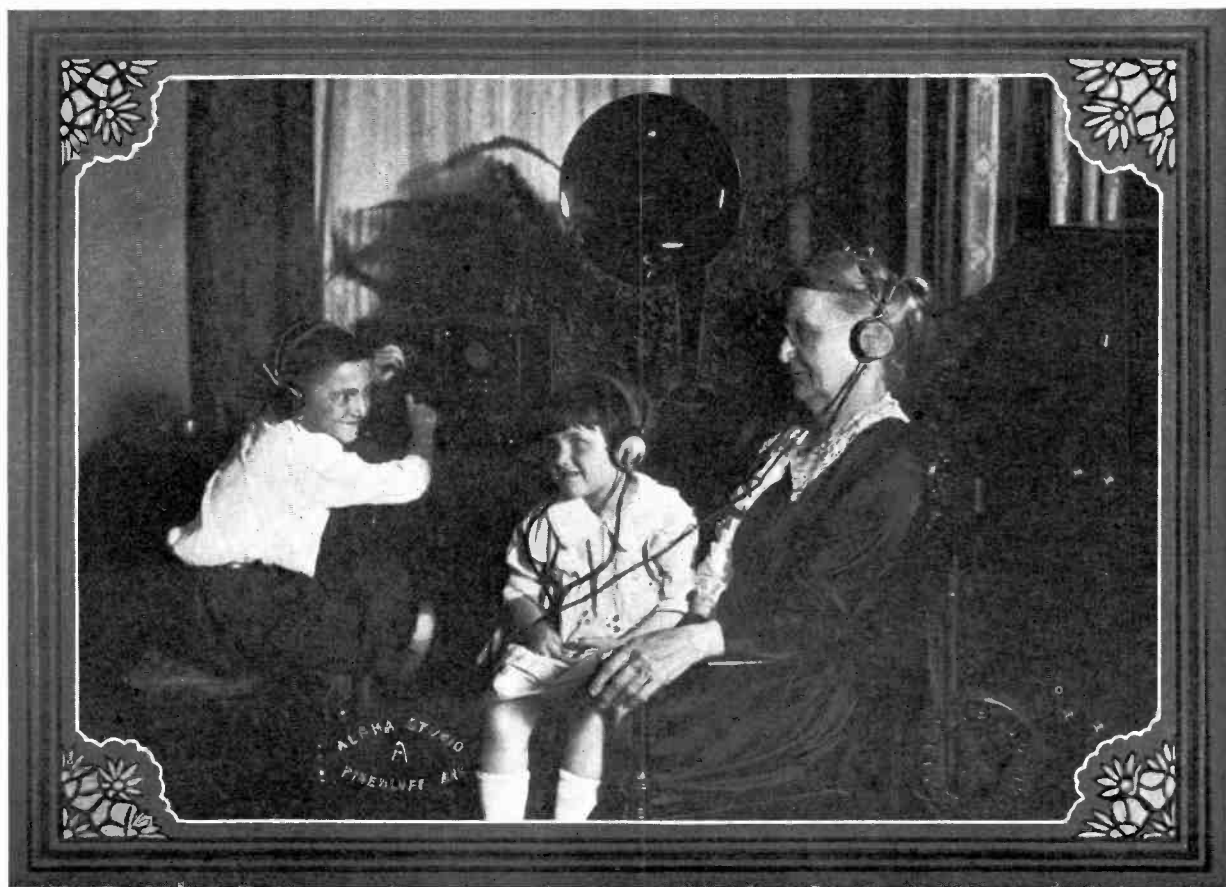


RADIO BROADCASTING NEWS

Vol. 2

JULY 15, 1922

No. 7



Radio Enthusiasts from Arkansas



The Willard All-Rubber Radio "A" Battery has a one-piece rubber case—Threaded Rubber Insulation—special Radio plates.

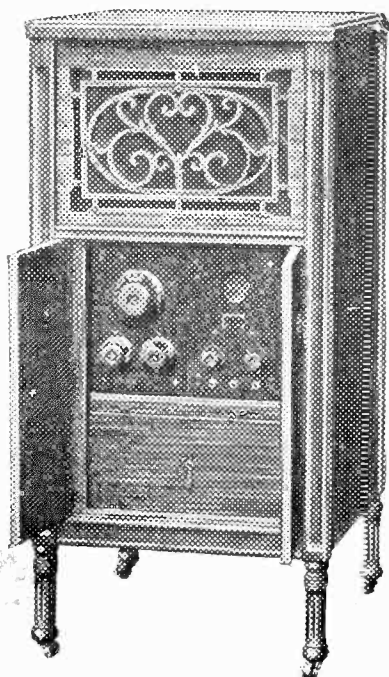
How to Figure Battery Cost

There's only one way. That's to divide *total* cost by *months of satisfactory service*. On that basis the Willard Radio "A" and "B" Batteries are by far the most economical you can buy.

The Willard Radio "B" Battery is a 24-Volt rechargeable battery. Glass jars—Threaded Rubber Insulation.

WILLARD STORAGE BATTERY COMPANY, CLEVELAND, OHIO

Willard THREADED RUBBER BATTERY.



Radio--Plus Appearance and Performance

Unusual appearance coupled with positive and satisfactory performance under normal conditions, characterizes Lyradion Models A, B, and C. Added to this complete and convenient housing of apparatus and batteries and a radio "voice" which has volume without harshness and you are offered the ideal home instrument for the reproduction of broadcasted programs. Cabinet will utilize your Westinghouse 2 stage set; or it will be fitted with Lyradion non-regenerative set. Horn is covered by basic patents governing construction which makes it the only horn which gives true tone of original voice.

Prices, catalogues, dealer and jobber proposition on request. Write Dept. A-3.

Lyradion Sales & Engineering Company
MISHAWAKA, INDIANA

RADIO BROADCASTING NEWS

Published Weekly to increase interest and enjoyment in Radio Broadcasting.

Address all communications to the

EDITOR, RADIO BROADCASTING NEWS, 1205 Keenan Building, Pittsburgh, Pa.

Subscription One Dollar per Year.

Five Cents per Copy.

Vol. 2

July 15, 1922

No. 7

Radio Broadcasting Is Shut-in's Friend

A lady seventy-seven years old recently wrote as follows to the Manager of station KDKA:

"I write to express my appreciation of your excellent concerts. Where all are so admirable, it would be difficult to discriminate, but they have given me more than pleasure, great as it was. They have given me benefit. I was fast drifting toward confirmed insomnia and melancholy. Which was cause, or which was effect, does not matter as both are fast disappearing under the influence of the radio concerts.

I am enclosing a few lines which will perhaps make my meaning clearer. If they cause a smile they will not be entirely worthless."

MY WIRELESS

What brings the sunshine to my room
Chasing far the shades of gloom
And makes the day pass all too soon
My Wireless!

I hear the news from far-off shore
Of busy mart—the base-ball score
And list to songs I sung of yore
By Wireless!

With song and story I'm beguiled
And go to sleep like a happy child
To dream an Angel passed and smiled
On Me and Wireless!

If the service given by radio broadcasting extended only to the aged and the shut-ins, such as the lady who wrote this letter, it would be a wonderful addition to those agencies which contribute to the comfort of those who are descending Life's hill.

One of the marks of our civilization is the way in which we care for our helpless ones. To those whose journey through life is almost ended, this wonder of radio broadcasting comes as a godsend, bringing to them that touch with the great active world to which their feeble steps can no longer take them. A great satisfaction must be derived from the thought that even though their active days are over, their minds may still be as keen as ever, and through the medium of this great innovation, they may still refresh themselves with music and entertainment by the world's great artists, and they may also keep in touch with the more serious things of life through the lectures included in the radio broadcasting programs.

Making life's pathway a little smoother, cheering the hours of gloom, bringing a few more rays of sunshine through the clouds have already placed radio broadcasting as one of the greatest benefactors to those whose physical activities have been curtailed by years or circumstances.

Programs for the Week

These programs are prepared some time in advance of the dates and are subject to change. Programs in detail are published daily in your favorite newspaper.

Pittsburgh District

WESTINGHOUSE RADIO STATION KDKA
360 Meters East Pittsburgh, Pa.

Eastern Standard Time

Sunday, July 16, 1922

- 10:00 A. M. Services of Calvary Episcopal Church, Shady Avenue, Pittsburgh, Pa. Rev. E. J. VanEtten, Rector. Harvey B. Gaul, organist and director.
- 1:45 P. M. Children's Bible Story. "Who Wants the Children?"
- 2:00 P. M. Radio Chapel at Westinghouse Station KDKA, conducted by Rev. F. Benton Shoemaker, Minister, The First Presbyterian Church, Jeannette, Pa.
- 7:00 P. M. Services of the Emory Methodist Episcopal Church, North Highland Avenue at Rippey Street, Pittsburgh. Rev. W. Wofford T. Duncan, Minister.

Monday, July 17, 1922

- 6:00 P. M. Weekly Survey of Business Conditions. National Industrial Conference Board. Letter from "Farm and Home." From Pittsburgh Post Studio.
- 7:00 P. M. "Some Contributions of Chemistry to Preventive Dentistry." Dr. C. C. Vogt, Industrial Fellow, Dental Chemical Research Department, Mellon Institute, University of Pittsburgh. From Pittsburgh Post Studio.
- 8:00 P. M. E. LaMarca, tenor; Albert D'Auberge, violinist; from Brosky Studios, and Mrs. Mabel Sheakley, pianist; from Brosky Studios, E. Loretta Zinsmeister, accompanist. Program:
Violin solo—"Preghiera," D'Auberge, Albert D'Auberge; "Manella Mia," Valente; "Who Knows?" D'Artri; "O Sole Mio!" Di Capua; (Requested) Nazereno E. La Marca; "Scotch Poem," Mac Dowell; "Minuett," Paderewski; Mrs. Mabel Sheakley; "Scherzo Tarantella," Wieniawski, Albert D'Auberge; "Ave Maria," Percy B. Kahn, Nazereno E. La Marca; Violin obligato by Mr. D'Auberge; "Elegie," Youfesoff, "Arabesque," Wrangell, Mrs. Mabel Sheakley; "Les Adieux," Sarasate, "Molly on the Shore," Grainger, Albert D'Auberge.

Tuesday, July 18, 1922

- 6:00 P. M. Weekly Dress Talk. From Pittsburgh Post Studio.
- 7:00 P. M. "Safety First—In Industry and Traffic." Dr. A. Goldstein, O.D., Pitt Optical Company, Pittsburgh, Pa. From Pittsburgh Post Studio.
- 8:00 P. M. Four Musical Maids Company (of the Pittsburgh Ladies' Quartet). A. D. Lelfeld, director. Miss Cecile Spargo, violinist; Miss Marie Gigliotte, pianist; Miss Bessie Hinebaugh, soprano, and Miss Eleanor Schultz, bassoon. Miss Mary E. Byron, reader. (Byron School of Expression, North Side, Pittsburgh). March—"Triumph of True Tone," Clay Smith, Quartet; Violin Solo—"Souvenir," Wieniawski, Miss Spargo; "Magnetic Song" Arditti, "Sorter Miss You," Clay Smith, Miss Bessie Hinebaugh; Reading—"Young Fellow, My Lad," Service, "Home," Guest, Miss Mary E. Byron; "Barca-

"Pittsburgh's Radio Shop"

offers a complete line of

Radio Outfits and Supplies

PITTSBURGH RADIO & APPLIANCE CO. Inc.

121 Diamond St.,

Pittsburgh, Pa.

WHOLESALE AND RETAIL



Viola Blanche Mitchell, pupil of Margaret Horne

role" from "The Tales of Hoffman," Offenbach, Quartet; Xylophone solo—"Canadian Capers," Chandler, Miss Catherine Boyd; "Kalua" Kern, Quartet.

Wednesday, July 19, 1922

- 6:00 P. M. Weekly Summary of "The Iron Age." "Careful Crossing Campaign" address. F. H. Babcock, Supervisor of Safety, P. & L. E. Railroad. Letter from "Farm and Home." From Pittsburgh Post Studio.
- 7:00 P. M. "More Leisure Hours for the Women in the Home." Miss Sigourney J. Frush, Special

(Program continued on page 5.)

Automobile Racing Drivers at Pittsburgh Post Studio Just before the Uniontown Races



Jerry Wunderlich, Frank D. Saupp (Salesman for Dodge Motor Car Co.), Harry Hartz, "Red" Fetterman, Tommy Milton at Microphone.

(KDKA Program continued from page 4.)

Representative, Merchandising Department, Westinghouse Electric & Manufacturing Company, East Pittsburgh, Pa. From Pittsburgh Post Studio.

8:00 P. M. Miss Helen Denny, soprano; Miss Mary I. Denny, accompanist; Elmer C. Hennig, violoncello; William F. Hennig, Jr., accompanist. "Le Reve," Goltermann, Elmer Hennig; "If Thou Lovest Me," Pergolesi, "O Thou Beloved," Gluck; "Who Wishes the Little Gypsy," Paisiello, Miss Helen Denny; "Melody," Rubinstein-Popper, "Swan," Saint-Saens, Elmer Hennig; "I Came With a Song," La Forge, "Hayfields and Butterflies," Del Reigo; "When I Bring to You Colored Toys," Carpenter, "Mah Lindy Lou," Strickland, Miss Helen Denny; "Romance," Clerbois, Elmer Hennig; "O Sleep, Why Dost Thou Leave Me," Handel, "Open Thy Blue Eyes," Massenet, Miss Helen Denny.
 Note—Miss Denny is a favored pupil of Herbert Witherspoon, (well known for his Phonograph records.) She has concertized in New York, Boston and the East.

Thursday, July 20, 1922

6:00 P. M. Weekly health-talk on "How to Keep Physically Fit Through Systematic Exercise" by Harry Greb, America's Champion Light Heavy-weight. From Pittsburgh Post Studio.
 7:00 P. M. "Home-Furnishing—Modern and Practical." Miss Harriett Webster of the Joseph Horne Company, Pittsburgh. From Pittsburgh Post Studio.

(KDKA Program continued on page 6)

Popular Radio Entertainers



Top—Paul R. Irvin, Manager Irvin's Pep Orchestra. Center—Jack Mullen, baritone; Reese R. Reese, baritone, Christ M. E. Church, Bottom—Ruth R. St. Clair, pianist.

RADIO DEALERS SERVICE

Authorized Distributors for the

Radio Corporation of America

RADIO SALES & SERVICE CO.

539 Wood Street,
 Pittsburgh, Penna.

Wholesale Only

We respectfully solicit your patronage

(KDKA Program continued from page 5)

7:15 P. M. "What the Disappearing Forests Mean to America." M. L. Davey, General Manager. The Davey Tree Expert Company, Inc., Kent, Ohio. (From Pittsburgh Post Studio.)

8:00 P. M. Concert by artists from the Pittsburgh Musical Institute. Miss Viola Karlson, soprano; Miss Marion Clark, pianist; Roy E. Shumaker, violinist; and Mrs. Roy E. Shumaker, accompanist. Miss Martha B. Stecker, reader.

"In the Hammock," MacDowell, "Dance Juba," Dett, Miss Marion Clark; "Invocation to Eros," Kursteiner, Miss Viola Karlson; "Larghetto," Weber-Kreisler, "Old Refrain," Kreisler, Mr. Roy E. Shumaker; Reading, Miss Martha B. Stecker; "Danny Boy," Wetherby, "Nightingale," Stephens, Miss Viola Karlson; "Adagio Pathetique," Godard, Mr. Shumaker; "Gavotte," Gluck-Brahms, "Forest Murmurs," Liszt, Miss Marion Clark.

Friday, July 21, 1922

6:00 P. M. Letter from "Farm and Home." From Pittsburgh Post Studio.

6:00 P. M. Weekly talk on "Swimming" by Ralph Shinton, Captain, Pittsburgh Post Life Guard, located at Oakmont, the center of Pittsburgh's Camp Colony. From Pittsburgh Post Studio.

7:00 P. M. "Seasonable Suggestions for the Home Garden." Harry R. Eby, County Agriculturist, Allegheny County Farm Bureau. From Pittsburgh Post Studio.

8:00 P. M. Versatile entertainment by Mr. Norman V. Tate, vocalist; James Bridges and Robert Reamy, tenor-banjoists and Miss Esther C. Koerner, reader.

"Toreador"—(From Carmen) Bizet, "Barcarolle" (Tales of Hoffman,) Offenbach, Mr. James Bridges; (Unaccompanied); Reading—"Mary Cary," Selected, "Castor Oil," Anonymous, Miss Esther C. Koerner; Vocal solos—"De Prodigigul Son" Anon, "A Similar Case" Anon, Miss Esther C. Koerner; "Medley of Popular Airs," James Bridges and Robert Reamy.

Saturday, July 22, 1922

2:00 P. M. Popular concert by the Harmony Six of Duquesne, Pa., Robert Hughes, Manager. From Pittsburgh Post Studio.

6:30 P. M. "Under the Evening Lamp," a department initiated and conducted by the Youth's Companion. From Pittsburgh Post Studio.

Program—"Boarders Repelled," how the admiral tested the Tallapoosa's crew; "The Bird in the Wheel," a poem by Edna Knapp; "A Box of Sardines," something every housewife should know; "Just Like a Pressey," Luella Pressey's prize absent-minded performance; "The King's Pyjamas," how a sea captain repaid King George's kindness.

7:00 P. M. Popular concert by Burley's Novelty (Girls) Orchestra. Miss Ernestine Burley, manager. From East Pittsburgh Studio.

8:00 P. M. Classical concert by Burley's Novelty (Girls) Orchestra, Miss Ernestine Burley, Manager G. M. Tidd, whistler.

"Minuet," Schubert, Orchestra; "Adoration," Borowski, Miss Burley; "Swedish Wedding March," Soderman, Orchestra; "On a Moonlight Night," Keduas, Trio; "Caressing Butterflies," Bartholomew, Miss Burley; "By the Sapphire Seas," Ted Snyder, Orchestra; "The Flirt," Lowell, Mr. Loesel; "Tell Her at Twilight," Donaldson, "Syncope," Flow, "Teasing," Carlton-Biese, Orchestra.

(KDKA Program continued on page 7.)

HOMCHARGE YOUR BATTERY for A Nickel



No muss, trouble, dirt
—no moving of batteries—loss of time—no effort on your part—no technical or professional knowledge needed.

THE HOMCHARGER

successfully meets all charging conditions, and is the only rectifier combining the following essential Homcharging features:

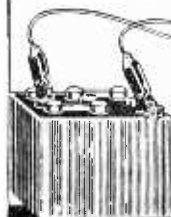
1. Self-polarizing. Connect battery either way and it will always charge. No danger of reverse charging, ruined battery or burnt-out rectifier.
2. No delicate bulbs to break or burn out. Only one moving and two wearing parts. These are replaceable as a unit, after thousands of hours use, at small cost. Cannot be injured by rough handling.
3. Operation stops and consumption of current ceases immediately upon disconnecting battery.
4. The only charger costing less than \$100.00 that will fully charge a battery over night. Gives battery a taper charge—exactly as recommended by battery manufacturers. Guaranteed not to harm your battery even though left connected indefinitely.
5. Highest efficiency of any three or six cell charger made.
6. No danger of fire. Approved by the Underwriters.

ATTENTION MOTORISTS

Will charge your auto battery as well as radio battery. Send for Bulletin No. 58 for further information.

**For sale by all radio, electrical and accessory dealers or shipped, express prepaid, for purchase price... \$18.50
\$20 West of the Rockies**

The Automatic Electrical Devices Co.
136 West Third St. CINCINNATI, OHIO
Branch Offices—New York, Chicago, Pittsburgh, Los Angeles, New Orleans, Detroit, Philadelphia, Baltimore, Dallas, St. Louis



*Largest Manufacturers
of Rectifiers in the World*

Prominent Musicians Broadcasted



Top Row (left to right): Mrs. David B. Jones, contralto; Mrs. Isaac James, soprano. Bottom Row: Fred MacGribble, violinist; Paul Rose, baritone; Louis Reese, tenor.

(KDKA Program continued from page 6.)

Sunday, July 23, 1922

- 10:00 A. M. Services of Calvary Episcopal Church, Shady Avenue, Pittsburgh, Pa., Rev. E. J. VanEtten, Rector; Harvey B. Gaul, organist and director.
- 1:45 P. M. Children's Bible Story—"The Man Whose Hair was Bobbed."
- 2:00 P. M. Radio Chapel at Westinghouse Station KDKA, conducted by Rev. E. A. Hibler, pastor, the First Christian Church of Crafton, Pa.
- 7:00 P. M. Services of Point Breeze Presbyterian Church, Fifth and Penn Avenues, Pittsburgh, Pa., Dr. P. H. Barker, Minister.

KDKA'S WEEKDAY SCHEDULE

- 9:00- 9:15 A. M. Music.
- 11:30-12:00 M. Music.
- 2:30 P. M. Results of all league baseball games by innings. On Saturday, those of the International and American Association will be included. Final scores each day will include all hits and errors.
On Saturday, baseball scores and a special popular concert beginning at 2:00 o'clock.
- 6:00 P. M. Baseball scores. News.
- 6:45 P. M. Government Market Reports, and a Summary of the New York Stock Exchange.
- 7:00 P. M. Baseball scores, Special Addresses by business men and women. Special Features. Nightly Talks, courtesy Pittsburgh Post; "Somebody's Birthday Today," by Elsie Allen; "An Editorial for Women," by Florence Davies.
- 7:30- 8:00 P.M. Bedtime and Uncle Wiggily Story for Kiddies.
- 8:00- 9:00 P. M. Musical Program. Baseball Scores.
- 9:55-10:00 P. M. Arlington Time Signals.

Time given is Eastern Standard Time.
For Daylight Saving Time add one hour.

All Baseball scores are transmitted from the Pittsburgh Post Studio of Westinghouse Station KDKA.

Steinway Duo-Art Reproducing Piano and Rolls—courtesy of C. C. Mellor Co., Pittsburgh, Pa.

Brunswick Phonograph procured from Gray & Martin, Pittsburgh, Pa.

Edison Phonograph and Records—courtesy of J. E. Bumbera, Swissvale P. O., Pittsburgh, Pa.

Victor Records—courtesy of S. Hamilton Co., Wilkinsburg, Pa.

Many Artists whose names are contained in these pages are available for both public and private entertainment.

**DOUBLEDAY-HILL ELECTRIC COMPANY
STATION KQV**

360 Meters

Pittsburgh, Pa.

Broadcasting Every Afternoon and 9:00 to 10:00 P. M.

Monday, Wednesday and Friday

Eastern Standard Time

Bellevue United Presbyterian Quartet



Top Row (left to right): Mrs. Wm. L. Stone, contralto; Mrs. Anna Wilson Felter, soprano. Bottom Row—Walter E. Close, tenor; George J. Macleod, baritone and director.

**New York and Eastern District
WESTINGHOUSE-RADIO CORPORATION
STATION WJZ**

360 Meters Newark, New Jersey
Eastern Standard Time

Sunday, July 16, 1922

- 2:00 P. M. Radio Chapel Services by Dr. Frank Mason North, former President of the Federal Council of Churches of Christ in America, and Corresponding Secretary of the Board of Foreign Missions of the Methodist Episcopal Church. Sermon on Foreign Missions.
- 5:30 P. M. Readings and records from "The Bubble Books that Sing" by Ralph Mayhew, courtesy Harper & Bros.
- 5:45 P. M. "Sandman Stories," told by Kasper Seidel, courtesy Harper & Bro.
- 6:00 P. M. Adventure stories for boys and girls. Navy yarns from "Sea Fighters" by Warren H. Miller, courtesy of the MacMillan Company.
- 6:45 P. M. "New Ideas in Home Building" by Gardner Teall, of "The Independent."
- 7:00 P. M. Musical program by W. Goble, tenor.
- 8:30 P. M. Concert by Mrs. Ralph P. Bird, soprano, who for the last three years has been singing at concerts and musicales.
- She is an active member of the Orange Musical Art Society and at present engaged in Y. M. C. A. Industrial Entertainments. Miss Elsie Perkins will accompany her at the piano.
- Program—"Merrily I Roam," Schliethar; "One Fine Day," from Mme. Butterfly, Puccini; piano solo, "Leaschitzky Mazurka," "Just Awearyin' for You," Carrie Jacobs Bond; "A Bowl of Roses," Clarke; "O Bocca Dolorosa," Sibella; "The Owl," John Barnes Wells; "The Americans Come," Fay Foster.

Monday, July 17, 1922

- 5:00 P. M. "Business and Industrial Conditions in the United States," as observed by the National Industrial Conference Board.
- 6:00 P. M. Stories from the St. Nicholas Magazine, courtesy the Century Co.
- 6:30 P. M. "Round the World Trips," by Edgar S. Forbes, courtesy Thos. Cook & Son.
- 7:00 P. M. Concert under the direction of Chas. D. Isaacson of the New York Evening Mail.
- 8:30 P. M. Musical program by the Van Olinda Sisters; Jean, pianist, and Edna, violinist, who are musicians of high standing, from Yonkers, N. Y. Since early childhood their lives have been associated with music until now they are teachers with a large following of pupils and concert artists of note in and around their home city and Long Island.
- Program—Violin solos, "Meditation from Thais," Massenet; "Lontre" Danse No. 1, Beethoven Zeis; "Liebesfreud," Kreisler; "Serenade," Schubert; "Ballet Music from Rosamunde," Schubert-Kreisler; "Broken Melody," von Biene; "On Wings of Song," Mendelssohn; "Hejre Kati," Hubay; piano solos, "Music Box," Hans Barth; "Prelude in G Minor," Rachmaninoff; "German Waltz," Beethoven; "Waltz in A Flat," Brahms.

(WJZ Program continued on page 9.)



Amateurs, Have a Station of Your Own

Here's your chance—a complete 20-watt vacuum tube radio telephone and radio telegraph Transmitter, using four 5-watt oscillating tubes, especially designed for the amateur.

All of the mechanism of the transmitter proper is contained within a highly polished mahogany cabinet. The top of the cabinet is hinged to facilitate insertion of tubes and adjustment of tuning.

Using an antenna 60 to 80 feet long and 25 to 50 feet high, the transmitter can be tuned to any wave length between 180 and 230 meters.

The plate voltage is furnished by a motor generator operated from a 110-volt, 60-cycle AC lighting circuit. The generator is arranged to furnish voltages of 350 or 500 volts.

Price complete, including tubes, phone, key, and motor generator unit, \$305.00.

If your dealer cannot supply you, send us his name and money order or check, and we will have a set delivered to you at once, through him.

LUDWIG HOMMEL & CO
530-534 FERNANDO ST. PITTSBURGH, PENNA

**BRACH VACUUM
Lightning Arrester**



Stands guard like a sentinel over radio and home, day and night.

Electrical Engineers pronounce it the highest development in lightning protective apparatus

Listed by Underwriters' Laboratories
Sold by Leading Dealers Everywhere

L. S. BRACH MFG. CO.
NEWARK, N. J.

For Wireless—

ROME MAGNET WIRE

Plain Enamel

Single Cotton Covered

Double Cotton Covered

ROME ANTENNA WIRE

Stranded or Solid

Ask Your Dealer

ROME WIRE COMPANY

ROME, N. Y.

BUFFALO, N. Y.

Shubert Artist at Newark Station WJZ



Hattie Darling, of "Joys and Gloom", to be broadcasted from WJZ by courtesy of the Shubert Vaudeville Circuit

Station WJZ takes pleasure in announcing that through the courtesy of the Shubert Vaudeville Circuit one evening a week has been set aside in which the headline acts playing for the Shubert Units will entertain.

The Shubert Vaudeville Circuit control theatres in over 35 of the principal cities in the United States and their regular 1922-23 season will be inaugurated on September 17th. All acts heard over WJZ can be seen in your home town, and date of their appearance will be published in the daily papers.

(WJZ Program continued from page 8)

Tuesday, July 18, 1922

- 9:00 A. M. "Society of Electrical Development," by Wm. L. Goodwin.
- 6:00 P. M. "Man in the Moon," stories (c) Newark Sunday Call.
- 6:30 P. M. "Art in Industry," by Richard L. Bach, Metropolitan Museum of Art.
- 7:00 P. M. Concert by Cecelia Louise Streif, lyric dramatic soprano, well known for her concerts in Rochester, N. Y., and through the state of Ohio.
Program—"Pace, pace, mio dio (La Forza del destino)" Verdi; "Havana," Kendis & Paley; "A Birthday," R. Huntington Woodman; "Bolero (I Vespri Siciliani)," Verdi; "Song of the Soul," Breil; "E'en as the Flower," Logan; "Take Me, Jamie Dear," Bischoff.

- 8:00 P. M. Musical program by Jane Grey, contralto who is a singer of splendid talent, and a great favorite. While over-seas in 1918-1919 she sang in England, France, Belgium, Holland and Germany, also in Y. M. C. A. entertainments. She was engaged two seasons with the Royal English Opera, and a season in Robin Hood as Alan Dale.

Program—"Alone and Yet Alive;" "The Hour of Gladness;" "The Mikado;" "When Frederic was a Little Lad," "Pirates of Penzance;" "For I'm Called Little Buttercup;" "Many Years Ago;" "Pina Pose;" "On the Day that I was Wedded;" "Gondolins;" "O, Promise Me;" "Robin Hood;" "Bliss Forever Past;" "Bohemian Girl."

Wednesday, July 19, 1922

- 5:00 P. M. "Review of the Iron and Steel Industries, and Their Relation to General Business Conditions," by the Iron Age.
- 6:00 P. M. "Animal Stories," by Florence Smith Vincent, New York Evening Telegram.
- 6:30 P. M. "Dany Crockett," by Captain Frank Winch.
- 7:00 P. M. Musical concert by J. C. Lyons, Brooklyn; violinist.
- 8:00 P. M. Musical concert by Frank Krummit, co-star with Julia Sanderson in "Tangerine," courtesy Columbia Grafophone Co.

Thursday, July 20, 1922

- 6:00 P. M. "Jack Rabbit Stories," by David Cory, New York Evening Mail.
- 6:45 P. M. Talk by Walter H. Eddy, Columbia University Teacher's College.
- 7:00 P. M. Musical program by Florence H. Prall, lyric soprano; Ellmer Collier, pianist and accompanist. Miss Prall has been a soloist in various New York Churches during the past three years and since the armistice has entertained wounded veterans one afternoon each week at the United States Marine Hospital. She has given many concerts in and around New York.

Program—"Norwegian Echo Song," Thrane; "Down in the Forest," Ronald; "Rain," Curran;

(WJZ Program continued on page 14.)



Herman Timberg, star of "Joys and Gloom"; George Jessel, of "Troubles of 1922"

**GENERAL ELECTRIC COMPANY, STATION WGY
360 Meters, Schenectady, N. Y.**

Eastern Standard Time

Monday, July 17, 1922

- 10:30 A. M. Early stock market quotations.
7:00 P. M. Produce and stock market quotations;
baseball results in National, American and
International Leagues; News Bulletins.

Tuesday, July 18, 1922

- 10:30 A. M. Early stock market quotations.
7:00 P. M. Produce and stock market quotations;
baseball results in National, American and
International Leagues; News Bulletins.

7:45 P. M. Musical program as follows:

Fox Trot—California, Conrad, Reed's Harmony
Orchestra: May Hofelich, piano; John H. Reed,
violin; J. Guarnieri, saxophone; August Jonas,
cornet; W. Albert Sivers, xylophone; Harold
Whittam, clarinet; James Walsh, drums. Baritone
solo—"Pal O'Mine," Phelps, Daniel O'Connell;
May Hofelich, accompanist. Violin solo—
"Berceuse," Renard, John H. Reed; May Hofelich,
accompanist. Fox Trot—"George," Donaldson,
Orchestra. Soprano solo—"Song of the Open,"
La Forge, Florita Lamoureux; Olivetta Lamoureux,
accompanist. Xylophone solo—"Waves of
the Ocean," Blake, W. Albert Sivers; John H.
Reed, violin; May Hofelich, piano. Reading—"Mr.
Brown Has His Hair Cut," Deems, Mrs. E. C.
Sanderson. Waltz—"Blonde Beauty," Wayne,
Orchestra. Baritone solo—"The Trumpeter," Dix,
Daniel O'Connell. Soprano solo with violin obligato
"Berceuse" from "Jocelyn," B. Godard.
Florita Lamoureux; Olivetta Lamoureux, piano;
John H. Reed, violin. Fox Trot—"Virginia
Blues," Peterson, Orchestra. Saxophone solo—
"Rustic Twilight," Rolfe, Joseph Guarnieri, as-
sisted by orchestra. Fox Trot—"Wabash Blues,"
Terrill, Harmony Orchestra.

Wednesday, July 19, 1922

- 10:30 A. M. Early stock market quotations.
7:00 P. M. Produce and stock market quotations;
baseball results in National, American and
International Leagues; News Bulletins.

Thursday, July 20, 1922

- 10:30 A. M. Early stock market quotations.
7:00 P. M. Produce and stock market quotations;
baseball results in National, American and
International Leagues; News Bulletins.

7:45 P. M. Musical program as follows:

Piano solo—"Valse, Opus 70," Chopin, Irene Cody.
Baritone solo—"Roll on Thou Dark Blue Ocean,"
Parto, Sherman De Forest. Cello solo—
"Gavotte," Popper, Lucile Orrell. Reading—
"Parody on Paul Revere's Ride," Sherman De-
Forest. Cello solo—"Traumeri," Schumann, Lu-
cile Orrell. Baritone solo—"Sneezing Song," Var-
ley, Sherman DeForest. Piano solo—"Valse
Romantique," DeBussy, Irene Cody. Reading—
"Imitation of Cal Stewart," Mr. DeFoster, Cello
solo—"Minuet" Valensin, Lucile Orrell. Baritone
solo—"Oue on the Deep," Lohr Sherman DeForest.
Piano solo—"Soaring," Schumann, Irene Cody.
Cello solo—"Madam Butterfly Fantasia," Puccini,
Lucile Orrell.

Friday, July 21, 1922

- 10:30 A. M. Early stock market quotations.
7:00 P. M. Produce and stock market quotations;
baseball results in National, American and
International Leagues; News Bulletins.

7:45 P. M. Musical program as follows:

Piano solo—"Arabesque," De Bussy, Carolyn Race.
Soprano solo—"Aria, Ah! Non Credea Mirati,"
Bellini, Iva Huff. Violin solo—"Silver Threads
Among the Gold," Danks, John Sparkfair, Tenor
solo—"To a Hilltop," Cox, Robert Smith. Soprano

(WGY Program continued on page 11)

We Specialize in

**Brass Rod and Tubing
Sheet Copper, Aerial Wire
and Binding Posts**

For Radio—Retail and Wholesale

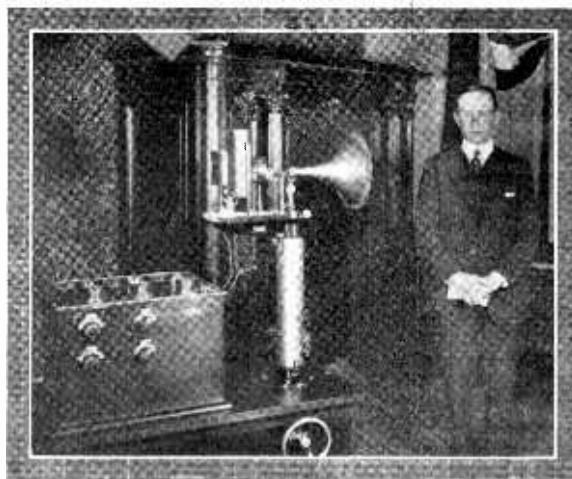
McKenna Brass and Mfg. Co.

First Ave. & Ross St.

Pittsburgh, Pa.

Phone, Court 37

**Radio Pioneer Speaks from Station;
WGY**



Marconi Speaking from Studio at Station WGY

Guglielmo Marconi, member of the Italian Senate and great pioneer in wireless telegraphy, was a guest of the General Electric Company at Schenectady, New York, Monday, June 26, when he delivered an address by radio telephone from Station WGY. This was the first time Senator Marconi had addressed the great radio audience, and his address was listened to with great interest by all who had receiving sets capable of hearing Station WGY.

Don't Experiment

with the "Good Enough" class of materials when your money will buy goods of known and lasting qualities. Quality and service are considered in everything we make.

C. G. HUSSEY & COMPANY

Pittsburgh Copper Rolling Mills

Pure Copper Aerial Wire, Sheets, Bars, Nails, Rivets,
Gutters, Conductors, etc.

2850 SECOND AVE., PITTSBURGH, PA.

(WGY Program continued from page 10)

and Tenor Duet—"O That We Two were Maying," Nevin, Iva Huff, Robert Smith. Piano solo—"Moonlight Sonata, First Movement," Beethoven, Carolyn Race. Soprano solo—"Without Thee," d'Hardelot, Miss Huff. Violin solo—"Loch Lomond," Old Scotch Melody, John Sparkfair. Tenor solo—"Celeste Aida," Verdi, Robert Smith. Soprano solo—"Love's a Merchant," Carew, Miss Huff. Piano solo—"Some Sunny Day," Berlin, Harry Akst, Duo-Art.

10:30 P. M. Musical program as follows:

Violin solo—"Love's Old Sweet Song," Molloy, John Sparkfair. Tenor solo—"The Americans Come," Foster, Robert Smith. Accordion solo—"St. Cecilia March," Rossini, Pietro Dellaratta. Soprano solo—"The Jasmine Door," Scott, Iva Huff. Accordion solo—"O Maria," Russo-di Capua, Pietro Dellaratta. Tenor solo—"Vale," Russell, Robert Smith. Violin solo—"Last Rose of Summer," Flotow, John Sparkfair. Tenor Duet—"The Garden of Your Heart," Dorel, Miss Huff, soprano; Mr. Smith, tenor. Accordion solo—"Mazurka," Derini, Pietro Dellaratta. Piano solo—Fox Trot—"California," Conrad, Frank Milne, Duo-Art.

Saturday, July 22, 1922

10:30 A. M. Early stock market quotations.

7:00 P. M. Produce and stock market quotations; baseball results in National, American and International League; News Bulletins.

WESTINGHOUSE STATION WBZ

360 Meters Springfield, Mass.

Eastern Standard Time

7:30 P. M. Uncle Wiggily Bedtime Story from the Springfield Union.

7:45 P. M. Prominent speaker, market and weather reports.

8:00 to

9:00 P. M. Program of music.

3:00 P. M. Sunday—Radio Chapel.

8:00 P. M. Sunday—Church Services.

AMERICAN RADIO AND RESEARCH CORPORATION STATION WGI

360 Meters Medford Hillside, Mass.

2:55 P. M. Music.

3:00 P. M. Current Events.

7:30 P. M. Baseball scores; late news.

7:45 P. M. Boston Police Reports.

8:00 P. M. Special Talks.

8:30 P. M. Program of Music.

(New York and Eastern District Programs continued on page 14)

Chicago and Mid-West District

WESTINGHOUSE RADIO STATION KYW

360 Meters

Chicago, Ill.

Central Standard Time

Sunday, July 16, 1922

2:30 P. M. Radio Chapel, conducted by The Rev. Hugh M. MacWhorter, rector of Saint Andrew's Episcopal Church, Downers Grove, Ill.

Monday, July 17, 1922

7:00 P. M. Musical Program, courtesy of Lyon & Healy Artist and Concert Department, Alice Bell Watts, soprano; Sylvia Bargman, accompanist. Jessie de Vore, violinist; Allen Benedict, accompanist. Millard Titus, tenor.

Program: "What's in the Air?" Eden; "Charity," McDermid; "Rose Kissed Me Today," Harling; Alice Bell Watts, soloist. "Loure," Bach; "Cradle Song," Reger; Jessie de Vore. Tenor solos, "Selected," Millard Titus. "Rhapsodie," Dohnanyi, recorded for the Duo Art by John Thompson. "Because," d'Hardelot; "Sing Joyous Bird," Phillips; Alice Bell Watts. "A Memory," Branscombe; "Hungarian Dance," Haesche, Jesse de Vore. Tenor Solos, "Selected," Millard Titus. "Danse Tzigane," Nachez; Jessie de Vore.

Tuesday, July 18, 1922

7:00 P. M. Musical program by Grace LaRocca, soprano; H. B. Bartholomew, accompanist. Clarence L. Elston, tenor; Mrs. Harriet Seyl, accompanist; Jaroslav Gons, cellist; Anna Cada, accompanist. Irma Glen Becklenberg, pianist and pianologist.

Program: "Lettre D'Adieu," Kriens; "The Cry of Rachel," Salter; Grace LaRocca. "Nocturno," Popper; "Harlequin's Serenade," Drigo; Jaroslav Gons. "Sacrament," MacDermid; "A Dream," Bartlett; Clarence L. Elston. "Prelude in C sharp Minor (Classic and Rag interpretations)," "The Unusual Way," Anon; Irma Glen Becklenberg. "If I Could Call The Years Back," North; "June," Beach; Grace LaRocca. "Melodie," Charpentier; "Minuetto," Becker; Jaroslav Gons. "Love Like The Dawn Came Stealing," Cadman; "By An' By," Burleigh; Clarence L. Elston. "Dwarf's March," Grieg; "Go Ask Your Ma," Anon; Irma Glen Becklenberg.

Wednesday, July 19, 1922

7:00 P. M. Musical program by Bernice Ozmun, soprano; Nina Shumway Knapp, accompanist; Ballard Smith, baritone; Helen Hadley, accompanist; Lila Groff, violinist; Frances Beeman, accompanist; Earling Wetteland, pianist.

Program: "Pale Moon," (Indian Love Song) Logan; "Kashmiri Song," Finden; Bernice Ozmun. "Les Myrtilles," Wachs; "Prelude in A Major," Chopin; Earling Wetteland. "Roadways," Densmore; "Sorter Miss You," Smith; Ballard Smith. "Rondino," Kreisler; "The Swan," Saint-Saens; Lila Groff. "The Last Hour," Kramer; "There is No Death," O'Hara; Bernice Ozmun. "Procession of Lanterns," Brounoff; "Prelude in C Minor," Chopin; Earling Wetteland. "Charity," Hagerman; "The Great Awakening," Kramer; Ballard Smith. "Cavatina," Raff; "Traumerie," Schuman, Lila Groff. "Popular Piano Selection," Duo-Art.

Thursday, July 20, 1922

7:00 P. M. Concert courtesy of Employes of Montgomery Ward Company, arranged by Lyon & Healy Concert and Artist Department.

(KYW Program continued on page 12)

A Chicago Favorite at KYW



Patricia Dougherty, "Our Princess Pat" of Chicago Evening American

(KYW Program continued from page 11)

John C. Minnema, conductor; Rosalee Cavanagh, accompanist. Emma Ewen, soprano; Emma Bickler, whistler. Doris Wall, reader. Daniel L. Johnson, baritone; Dorothy Nagel, soprano; Wm. H. McCaully, monologue; Rosalee Cavanagh, pianist.

Program: "Gypsy Love Song," Herbert; "The Bells of St. Mary's," Adams; by the chorus, "My Master Hath a Garden," Gwyther; "Love's a Merchant," Carew, Emma Ewen, "Whistling Solo," selected; Emma Bickler, "Drink to Me with Thine Eyes," Old English; "You and Love," Teschemacker; Daniel L. Johnson, "Mouth Organ Monologue," Medley; Wm. H. McCaully, "Narcissus," Nevin; "Largo," Handel; Rosalee Cavanagh, "Soprano Solos," selected; Dorothy Nagel, "The Soul of the Violin," Watts; Doris Wall, "On the Road to Mandalay," Speaks; by the chorus.

Friday, July 21, 1922

7:00 P. M. Music by Florence Trefry Gormen, soprano; F. C. Gormen, accompanist. M. H. McMillan, trombone; Sallie Menkes, accompanist. The Reliance Quartet—W. K. Mitchel, 1st tenor; H. C. Meyers, 2nd tenor; A. Foster, 1st bass; W. H. Childs, 2nd bass.

Program: "Mammy's Lil' Pigeon," Fearis; Reliance Quartet, "Romance," Bennett; "O Dry Those Tears," Del Riego; M. H. McMillan, "In The Garden of My Heart," Ball; W. K. Mitchell, "I Drink the Fragrance of the Rose," Leighter, "Kiss Me Sweetheart," Smith; Florence Trefry Gormen, "Comedy Sketch"—"When the Harvest Moon is Shining," Von Tilzer; Reliance Quartet, "Thy Sentinel Am I," Watson; M. H. McMillan, "Somewhere A Voice Is Calling," Tate; H. C. Meyers, "Comedy Sketch," Reliance Quartet, "My Laddie," Thayer; "The Hills O'Skye," Harris; Florence Trefry Gormen, "Kahki Lad," Aylward; A. Foster, "Harlem Goat," Foster, "Sketch," Reliance Quartet, "Mick and the Pick," W. H. Childs, "Sextette from Lucia," Donizetti; Reliance Quartet.

Saturday, July 22, 1922

7:00 P. M. Musical rendered by Mlle. Anna D'Argel, Operatic Contralto; Mrs. Gilbert Wilson, accompanist. George W. Marbach, tenor; Sallie Menkes, accompanist. Florence Berney, pianiste. Allan Smith, reader.

Program: "Have I Lost Thee?" Gluck; "Chanson Boheme," from "Carmen," Bizet; Mlle Anna D'Argel, Mrs. Swanson's Christmas Shopping, "Wenshinski at the Phone," Allan Smith, "The Barefoot Trail," Wiggers; "My Curly Headed Baby," Chitsam, George W. Marbach, "Concert Etude," MacDowell; Florence Berney, "Ombra mai fu (Largo)," Handel; "Tell Me, Why Are the Roses so Pale?" Tschaiakowsky; Mlle Anna D'Argel, "Swedish Dialogue," "Jewish Dialogue," Allan Smith, "Sunshine of Your Smile," Ray; "Smilin' Through," Penn, George W. Marbach; "Pattillon," Lavalee; "Shadow Dance," MacDowell; Florence Berney.

Sunday, July 23, 1922

2:30 P. M. Radio Chapel services conducted by Rev. E. J. Aiken, pastor of the Methodist Episcopal Church, of Riverside, Illinois. Subject of Sermon: "Making a Life." Musical Program by the church choir, Mrs. Edwin DeCamp, leader; Miss Della Keafter, soloist; and Miss Gladys Leland, pianist.

KYW'S WEEK-DAY SCHEDULE

- 8:25 A. M. Opening Market Quotations, Chicago Board of Trade.
- 9:00 A. M. Market Quotations, Chicago Board of Trade. Quotations every half hour thereafter until 12 M.
- 12:20 P. M. Closing market quotations. Chicago Board of Trade.
- 1:15 P. M. News and Market reports.
- 2:00 P. M. Baseball scores every half hour until end of games.
- 3:15 P. M. News; market and stock reports.
- 5:30 P. M. News; final market and financial reports; baseball scores.
- 6:15 P. M. Children's Bedtime Story; baseball reports.
- 7:00 P. M. Musical Program. (See Daily Program).

DETROIT NEWS STATION WWJ

360 Meters Detroit, Michigan
Eastern Standard Time

Daily except Sunday

- 10:15 A. M. Weather report on 485 Meter wave length.
- 11:55 A. M. U. S. Naval Observatory time signals relayed by telegraphs.
- 3:30 P. M. Market quotations on 485 Meter wave lengths.
- 4:05 P. M. Weather reports on 485 Meter wave lengths.
- 5:00 P. M. News Bulletin on sports and other events.
- 7:00 P. M. Bedtime Story; Latest news, bulletins, stock reports.
- 8:30 P. M. Program by selected artists.

RADIO CHAPEL

Radio Chapel Services at Station KDKA, July 16,, will be conducted by Rev. F. Benton Shoemaker, pastor of The First Presbyterian Church, Jeannette, Pa.

Rev. Shoemaker comes of Swiss parentage, and was born in Bedford County, Pa., his ancestors being among the first settlers of that County. He was graduated from Westminster College, New Wilmington, Pa., in 1900, with an A. B. degree, and from the Western Theological Seminary, N. S., Pittsburgh, in 1903. He has been pastor of the First Presbyterian Church of Jeannette since December, 1917.

Assisting Rev. Shoemaker with the Radio Chapel service will be a double male quartet consisting of Charles Kline, Ira Mull, Paul Black, George Apple, A. M. Graham, Norman Graham, W. R. Harbourt, and John Ludwig

Services at Chicago

Radio Chapel Services at Station KYW, Chicago, will be conducted July 16, by the Rev. Hugh M. MacWhorter, rector of Saint Andrews Episcopal Church, Downer's Grove, Ill.

The subject of this sermon will be "The Way, the Truth and the Life," in which he will discuss the theme that Christ himself is the center and the keystone of the entire Christian religion, and the deep significance of our Lord's words in Saint John's Gospel, "I am the way, the truth and the life; no one cometh unto the Father, but through me."

Rev. MacWhorter is the pastor of an active congregation in Downer's Grove, a beautiful suburb of Chicago. He is a graduate of Hobart College, Geneva, N. Y., and the Western Theological Seminary, Chicago.

The music for the service is under the direction of M. E. Coleman, choirmaster of the St. Andrew's Church Choir, Mrs. Geo. S. Bateman, organist. Two violin solos will be played by Zita Norpell, with Samuel Kenison, accompanist.

Miss Adele Hennig, who has appeared on KDKA's program as accompanist, died on July 4, following an operation. Miss Hennig was well known throughout Pittsburgh for her accompaniment work. Her father, Emil Hennig, is one of the most prominent cellists of Pittsburgh. Also her brother Elmer is a cellist. Miss Hennig was a graduate of Carnegie Institute of Technology.



Robert L. Wickline, who has addressed KDKA's radio audience on several occasions



WESTINGHOUSE

RADIO
BATTERIES

are practically unlimited as to life. Their voltage is steady and certain. Freedom from battery annoyance and economy of operation is decidedly in their favor.

"The best Westinghouse can build"

At your dealer's or any Westinghouse Battery Service Station

**Westinghouse Union Battery Co.,
Swissvale, Pa.**

New York and Eastern District

(WJZ Program continued from page 9)

"A Memory," Ganz; "Will o' the Wisp," Spross; "Aria de Puis le Jour, Louise," Chapantier; "To You," Rodenbeck; "Mah Lindy Lou," Strickland; "The Lilac," Garlan; "Robin, Robin, Sing Me a Song," Spross; "Ave-Maria," Bach-Gounod.

8:00 P. M. "Under the Evening Lamp," a department initiated and conducted by the Youth's Companion.

Program—"Where they Came From," an Englishman's surprise at American town names; "Thrill Year in One Church," a suggestion that may help a good many parishes, large and small; "A Remarkable Hit," clever work by the expert axe thrower.

Friday, July 21, 1922

6:00 P. M. "Bedtime Stories," by Thornton Burgess, noted author of Children's Book, whose stories appear in almost one hundred newspapers, courtesy New York Tribune.

6:30 P. M. "Message of Hope for the Cancer Stricken," by Annie Riley Hale, courtesy Physical Culture Magazine.

7:00 P. M. Literary evening conducted by the editorial staffs of the Outlook, Scientific American, and Harper & Bro.

8:15 P. M. Musical concert by Paul Denniker's Orchestra.

Saturday, July 22, 1922

6:00 P. M. "Uncle Wiggily Bedtime Stories," by Howard R. Garis, the author of the "Uncle Wiggily" stories, printed in many newspapers and frequently appearing on KDKA's and WBZ's programs.

6:30 P. M. "Egypt, the Land of Mystery and Adventure at the Tombs of the Kings," by Wirt W. Branitz, of the "Travel Magazine." Mr. Branitz is a member of the National Travel Club, and has traveled over a greater part of the world. In all his travel lectures, Mr. Brantiz relates many thrilling adventures, such as "The Spell of the Nile," "The Enchanted Valley," and others.

7:00 P. M. Concert by the Graham Society Orchestra, of the Palisades, N. J.

8:15 P. M. Musical program by Marguerite Ringo, soprano who has made her appearance in New York City many times, also in Pittsburgh; Worcester, Smith College, Buffalo, and Oakland, Calif. Also with the Los Angeles Phil-Harmonic Orchestra, San Francisco Orchestra, Goldman Concert Bands, and the New York Chamber of Music Society. Miss Olga Gullede, accompanist.

Program—(a) "Would God I Were a Tender Apple Blossom," (b) "Mighty Lak a Rose," Nevil, (c) "I Know Where I'm Goin'," Irish Tune; "Dawn," Curran; (b) "Rain," Curran; (c) "A Birthday," Woodman; (a) "A Memory," Ganz; (b) Mah Lindy Lou," Strickland; (c) "A Southern Song," Ronald; "One Fine Day," from Madam Butterfly, Puccini.

Sunday, July 23, 1922

2:00 P. M. Radio Chapel Services, by Rev. Paul Lindemann, St. Paul, Minn., Editor of the American Lutheran Magazine.

5:30 P. M. Readings and records from "The Bubble Books that Sing," by Ralph Mayhew, courtesy Harper & Bro.

5:45 P. M. "Sandman Stories," told by Kasper Seidel, courtesy Harper & Bro.

6:00 P. M. Adventure stories for Boys and Girls, "The White Dogs of Arran," from "The Pool of Stars," by Cornelia Meigs, courtesy of the Macmillan Company.

6:30 P. M. "Bauff and Lake Louise," by L. O. Armstrong, Canadian Pacific Railway.

7:15 P. M. Musical recital by Alexander de Brulle, violinist, courtesy Betty Tillotson Concert Bureau.

8:15 P. M. Musical program by Andrew Thomas Williams, basso-contante, who as a child was soprano soloist in the choir of St. Phillip's P. E. Church, New York City. After his voice developed into basso-contante, he appeared in concerts in various large cities throughout the country. He is at present director of Williams' Progressive School of Musical Art. Etta Weiner at the piano.

Program—"Caro Mio Ben," Giordani; "Ll Lacerato Spirito," Verdi; "Donna, Verrei Morir," Tosti; "Go Down Moses," "Nobody Knows the Trouble I've Seen," "Oh, Graveyard," "Deep River," "Just You," "Who is Sylvia?" Schubert; "Thou Art Risen my Beloved," S. Coleridge Taylor; "Love Lights the Way," Herbert Ralph Ward; "Vale," Kennedy Russell.

WJZ'S WEEK-DAY SCHEDULE

8:00 A. M. Agricultural Reports and Prices as released by the New York, New Jersey, Federal Agricultural Bureaus; Musical Program.

9:00 A. M. Musical Program, DUO-ART Recital.

10:00 A. M. Opening prices on active bonds and stocks under the authority of the New York Stock Exchange; Musical Program DUO-ART Recital.

11:00 A. M. Agricultural Reports and Prices released by the New York, New Jersey and Federal Agricultural Bureaus; Weather Forecast; Musical Program; DUO-ART Recital.

11:55 A. M. Standard Time Signals from Arlington.

12:00 M. Midday prices on active bonds and stocks under the authority of the New York Stock Exchange; Musical Program.

1:00 P. M. Shipping News (excepting Saturday) by the Marine Engineering and Shipping Age; Musical Program.

2:00 P. M. Musical Program.

3:00 P. M. Baseball Scores of the American, National and International league games; Women's Fashion News by the Women's Wear Daily Fashion Newspaper; Musical Program

4:00 P. M. Baseball Scores of the American, National and International League games; Musical Program.

5:00 P. M. Official Weather Forecast; Agricultural Reports and Prices as released by the New York, New Jersey and Federal Agricultural Bureaus; Shipping News (excepting Saturday) by the Marine Engineering and Shipping Age; Musical Program.

6:00 P. M. Final Baseball Scores; Children's Stories and Music (see detailed program).

(WJZ Weekday Schedule continued on page 15)

(WJZ Weekday Schedule continued from page 14)

- 7:00 P. M. Closing prices on active bonds and stocks under the authority of the New York Stock Exchange; Marine News by the Radio Corporation of America; (see detailed program).
- 9:15 P. M. (see detailed program)
- 9:52 P. M. Official Arlington Time Signals.
- 10:01 P. M. Official Weather Forecast.

NOTE:—W J Z Broadcasts on week-days for fifteen minutes on every hour from 8:00 A. M. to 5:00 P. M.; at noon from 11:00 A. M. to 11:30 A. M. The evening's program is continuous from 6:00 P. M. to 9:15 P. M. The Sunday's program is almost continuous from 2:00 P. M. to 9:15 P. M. (see detailed program.)

The time given is Eastern Standard Time. For Daylight Savings add one hour.

Chicago and Mid-West District

(Continued from page 12)

THE PALMER SCHOOL OF CHIROPRACTIC STATION WOC

360 Meters for Programs Davenport, Iowa.
485 Meters for Weather Reports
Central Standard Time

Week-day Schedule

- 12:00 Noon Chimes Concert.
- 12:15 P. M. Weather Report.
- 3:30 P. M. Educational Talk.
- 5:45 P. M. Chimes Concert.
- 7:00 P. M. Program of Music.

Sunday

- 9:00 A. M. Sacred Chimes Concert.
- 12:30 P. M. Concert.
- 6:00 P. M. Organ Concert.
- 7:00 P. M. Sacred Music.

HATFIELD ELECTRIC-INDIANAPOLIS STAR STATION WOH

360 Meters Indianapolis, Indiana
Central Standard Time

Week-day Schedule

- 10:00-11:00 A. M. Musical program with special features.
- 10:15 A. M. Financial, grain and live stock market reports.
- 10:30 A. M. Special items of interest to women, Monday, Wednesday and Saturday.
- 1:00-2:00 P. M. Musical program with special features.
- 1:20 P. M. Market reports.
- 4:00-5:00 P. M. Musical program with special features.
- 4:15 P. M. Police notices.
- 4:50 P. M. Baseball scores.

—Sunday—

- 10:00-11:00 A. M. Special recital.

—Evening Concerts—

- 8:30-10:00 o'clock, Monday, Wednesday and Saturday.

Southern District

ATLANTA JOURNAL STATION WSB

360 Meters Atlanta, Georgia
Central Standard Time

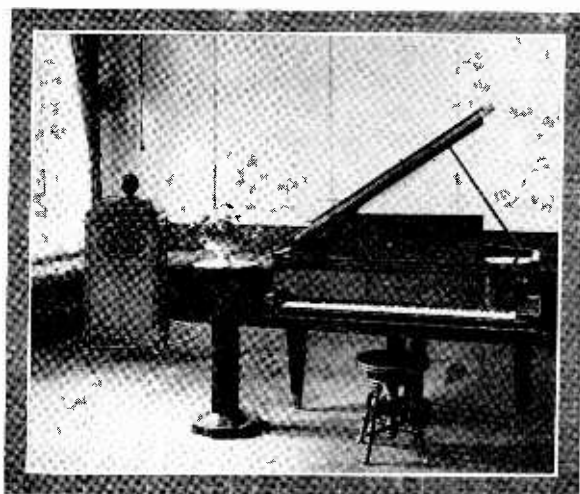
Week day Schedule

- 12:00 M. Weather report and summary and for cotton states.
- 2:30 P. M., Close on cotton and grain and spot quotations. Atlanta Commercial Exchange and United States bureau of markets. Concert of vocal and instrumental music.
- 4:00 P. M. Concert by Howard Theatre Orchestra.
- 5:00 to 6:00 P. M., Baseball scores, Southern, National and American Leagues: late news flashes, daily bedtime story, and musical selections.
- 7:00-8:00 P. M. Concert of vocal and instrumental music.
- 10:45-11:30 P. M. Special late concert.

Sunday Schedule

- 11:00 A. M. Service from the First Presbyterian Church.
- 5:00 P. M. Radio chapel at WSB, with sermon and sacred concert.

Favorite Broadcasting Station in the Southern District



WSB, the popular broadcasting station of the Atlanta Journal, has recently installed new equipment which places them among the important broadcasting stations in the country. Since the new equipment was installed, WSB has been heard in twenty-seven states, in Cuba, and in Canada. Our illustration shows the interior of this popular station.

The National Radio Club

Application has been made for a charter for the National Radio Club which is being organized with headquarters at Pittsburgh, Pa.

Some of the objects of this Club are to promote and finance the installation of radio equipment in hospitals, to use its influence to keep the broadcasting art on the present high plane, to enlarge musical and educational radio programs, to keep its members informed regarding improvements and developments, and to promote fraternity and good fellowship among its members. Interested persons should write to Francis G. Albertson, Secretary, 419 Fulton Building, Pittsburgh, Pa.

To Be Sung Murmured or Chanted

The following touching poem is contributed by Paul M. Wilson, of Jackson, Tenn.:

I stretched my aerial—soldered ground,

Radio, My Radio;

I ran the wires both up and down,

Radio, My Radio;

I took great care right from the start,

To hook up radio is an art,

I'd put it up, then take apart,

Radio, My Radio.

I bought condensers, tube and wire,

Radio, My Radio;

The cost was high and getting higher,

Radio, My Radio;

Tubing, Amplifier, Phones,

I junked them all and now alone

My Westinghouse sits on the Throne,

Radio, My Radio.

Each night I listened in with you,

Radio, My Radio;

Each time you bring in something new,

Radio, My Radio;

K. D. K. A. each night I hear,

Chicago, too, comes in quite clear,

Detroit News just suits my ear,

Radio, My Radio.

Anyone with nerve enough may whistle the above to the wavelength of Maryland, My Maryland.

RADIO BROADCASTING NEWS

Weekly Radio Programs

Important

RETURN POSTAGE GUARANTEED BY

RADIO BROADCASTING NEWS

1205 Keenan Building PITTSBURGH, PA.

W. S. BEDELL JR.

143 W. MITCHELL AVE.

CLAYTON PA.

1293

6-23

July 15, 1922