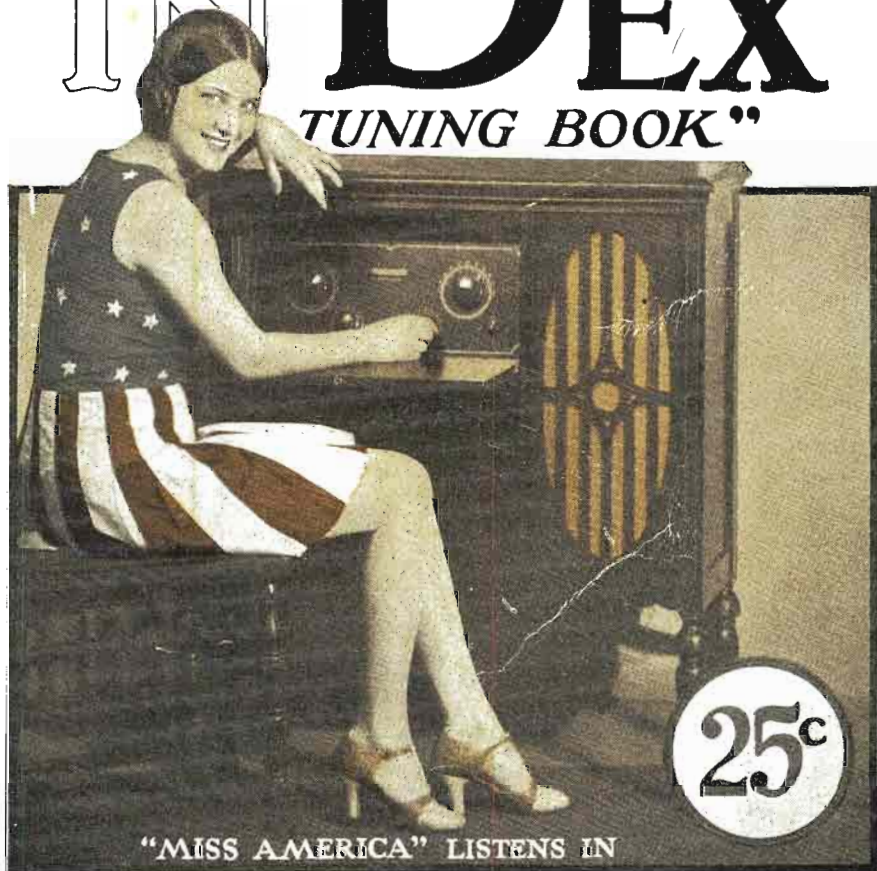


RADIO INDEX "TUNING BOOK"



"MISS AMERICA" LISTENS IN

GEO. S. HARDS CO.

Victrolas - Records - Radio - Maytag Washers
Hoover Sweepers - Electric Appliances and Supplies

Lehigh 1060

POTOMAC and GLENMORE
DORMONT, PITTSBURGH, PA.



RADIO IN INDEX



FRED C. BUTLER
Editor

FOURTH YEAR

Contents

NUMBER 20

	PAGE
What's on the Air Tonight?	2
Weekly Calendar of Leading Chain Features	
The New Short Wave Field is Opening.. ..	4
With List of Short Wave Stations	
The Inside Story of Chain Programs	5
How the Nation is Covered on the Second	
Conversion Tables.....	7 to 21
Turning Frequencies into Wave Lengths and Vice Versa	
A Complete Index by Frequencies.....	7 to 21
Cross-Indexed by Dial Numbers and Wave Lengths	
A Complete Index by Call Letters.....	22 to 34
A Log for 813 Stations	
A Complete Index by Cities and States.....	35 to 41
With Key to Location of Station on Broadcasting Map	
Quick Index to Favorite Stations.....	35
Your Old Stand-bys at Fingers Tips	
Using Your Radex.....	42
Getting New Pleasures out of Tuning	
Broadcasting Map of U. S. A.....	43
Table of Airline Distances.....	48

One Dollar the Year
Six Issues

THE RADEX PRESS

P. O. Box 143

Cleveland, Ohio

Copyright 1927 by F. C. Butler. Printed in the U. S. A.

Eastern Representative—Victor A. Hooke, 132 Nassau St., New York

WHAT'S ON THE AIR TONIGHT?

A Weekly Calendar

Leading Features of the Chain Programs

Time is given in Eastern Standard. For Central Time subtract one hour, for Mountain Time two hours and for Pacific Time three hours.

Sunday

P. M.

2:00-3:00	The Roxy Stroll		
WJZ	New York	WRC	Washington
KDKA	Pittsburgh	WOC	Davenport
KYW	Chicago	WJR	Detroit
WBZ	Springfield	WBZA	Boston
7:20-9:15	Major Bowes' Family from Capitol Theatre, New York		
WEAF	New York	WJAR	Providence
WEEI	Boston	WTAG	Worcester
WRC	Washington	WHAS	Louisville
WCAE	Pittsburgh	WSM	Nashville
WWJ	Detroit	WSB	Atlanta
KSD	St. Louis	WMC	Memphis
WBT	Charlotte	WTMJ	Milwaukee
8:15-9:15	Collier's Radio Hour		
WJZ	New York	WJR	Detroit
WBZ	Springfield	WCCO	Minneapolis
WBZA	Boston	WDAF	Kansas City
KDKA	Pittsburgh	KSD	St. Louis
KYW	Chicago	WLW	Cincinnati
9:15-9:45	Vibrant Melodies		
WJZ	New York	WHAM	Rochester
9:15-10:15	Atwater Kent Radio Hour		
WEAF	New York	WSAI	Cincinnati
WEEI	Boston	WGN	Chicago
WGR	Buffalo	KSD	St. Louis
WRC	Washington	WOC	Davenport
WCAE	Pittsburgh	WCCO	Minneapolis
WWJ	Detroit	WGY	Schenectady
WTAG	Worcester	WDAF	Kansas City
WJAR	Providence	WHAS	Louisville
WCSH	Portland	WSM	Nashville
WFI	Philadelphia	WSB	Atlanta
WTAM	Cleveland	WMC	Memphis

Monday

6:00-6:55	Waldorf-Astoria Dinner		
Music			
WEAF	New York	WRC	Washington
WEEI	Boston	WCAE	Pittsburgh
7:30-9:00	Roxy and His Gang		
WJZ	New York	WSM	Nashville
WBZ	Springfield	WBAL	Baltimore
WBZA	Boston	WJR	Detroit
KDKA	Pittsburgh	WOC	Davenport
KYW	Chicago	WCCO	Minneapolis
WRC	Washington	WHAM	Rochester
WHAS	Louisville	WTMJ	Milwaukee
WSB	Atlanta	WBT	Charlotte
8:30-9:30	A. and P. Gypsies		
WEAF	New York	WTAM	Cleveland
WLIT	Philadelphia	WWJ	Detroit
WRC	Washington	WSAI	Cincinnati
WCAE	Pittsburgh	WJAR	Providence
WCSH	Portland	WTMJ	Milwaukee
WEEI	Boston	WDAF	Kansas City
WTIC	Hartford	WOC	Davenport
WHO	Des Moines		
10:30-11:00	South Sea Islanders		
WEAF	New York	WRC	Washington
WCSH	Portland	WSAI	Cincinnati

Tuesday

6:00-6:55	Waldorf-Astoria Dinner		
Music			
WEAF	New York	WRC	Washington
WEEI	Boston	WCAE	Pittsburgh
8:00-9:00	Stromberg-Carlson Hour		
WJZ	New York	KYW	Chicago
WBZ	Springfield	WJR	Detroit
WBZA	Boston	WHAM	Rochester
KDKA	Pittsburgh	WBAL	Baltimore
8:00-8:30	Great Moments in History		
WEAF	New York	WWJ	Detroit
WFI	Philadelphia	KSD	St. Louis
WRC	Washington	WOC	Davenport
WTAM	Cleveland		
8:30-9:00	Sealy Air Weavers		
WEAF	New York	KSD	St. Louis
WFI	Philadelphia	WDAF	Kansas City
WGR	Buffalo	WGY	Schenectady
WRC	Washington	WFAA	Dallas
WTAM	Cleveland	KVOO	Bristow
WWJ	Detroit	WEBH	Chicago
WCAE	Pittsburgh		
9:00-10:00	The Continentals		
WJZ	New York	WJR	Detroit
KDKA	Pittsburgh	WBZ	Springfield
KYW	Chicago	WBZA	Boston
WBAL	Baltimore		
9:00-10:00	Eveready Hour		
WEAF	New York	WOC	Davenport
WEEI	Boston	WCCO	Minneapolis
WJAR	Providence	WGY	Schenectady
WGR	Buffalo	WHAS	Louisville
WFI	Philadelphia	WSM	Nashville
WRC	Washington	WSB	Atlanta
WCAE	Pittsburgh	WMC	Memphis
WTAM	Cleveland	WDAF	Kansas City
WWJ	Detroit	KSD	St. Louis
WSAI	Cincinnati		
WGN	Chicago		
10:00-11:00	The Cavalcade		
WEAF	New York	WGY	Schenectady
WGR	Buffalo	WSAI	Cincinnati
WFI	Philadelphia	WHAS	Louisville
WRC	Washington	WDAF	Kansas City
WCSH	Portland	WCAE	Pittsburgh
WTAM	Cleveland	WTMJ	Milwaukee
WWJ	Detroit	KSD	St. Louis
WTIC	Hartford		
11:00-12:00	Jansen's Hofbrau Orchestra		
WEAF	New York	WWJ	Detroit
WRC	Washington	WFI	Philadelphia

Wednesday

6:00-6:55 Waldorf-Astoria Dinner

WEAF	New York	WRC	Washington
WEEI	Boston	WCAE	Pittsburgh

7:30-8:30 National Light Opera Company

WEAF	New York	WRC	Washington
WJAR	Providence	WCAE	Pittsburgh
WLIT	Philadelphia	KSD	St. Louis

8:30-9:00 Sylvania Foresters

WJZ	New York	KDKA	Pittsburgh
WBZ	Springfield	KYW	Chicago
WBZA	Boston		

8:30-9:00 Aeolian Recitals

WEAF	New York	WCAE	Pittsburgh
WEEI	Boston	WTAM	Cleveland
WTIC	Hartford	WWJ	Detroit
WRC	Washington	WSAI	Cincinnati
WLIT	Philadelphia	KSD	St. Louis
WGY	Schenectady	WEBH	Chicago

9:00-10:00 Maxwell House Hour

WJZ	New York	WHAS	Louisville
WBZ	Springfield	WSB	Atlanta
WBZA	Boston	WSM	Nashville
KDKA	Pittsburgh	WMC	Memphis
KYW	Chicago	WJAX	Jacksonville
WBAL	Baltimore	WTMJ	Milwaukee
WJR	Detroit	WLW	Cincinnati
		WBT	Charlotte

9:00-9:30 Ipana Troubadors

WEAF	New York	WWJ	Detroit
WEEI	Boston	WLW	Chicago
WGR	Buffalo	KSD	St. Louis
WRC	Washington	WCCO	Minneapolis
WCAE	Pittsburgh	WGY	Schenectady

9:30-10:30 Goodrich Silvertown Cord Orchestra

WEAF	New York	WGN	Chicago
WEEI	Boston	KSD	St. Louis
WJAR	Providence	WOC	Davenport
WTAG	Worcester	WCCO	Minneapolis
WGR	Buffalo	WHAS	Louisville
WCSH	Portland	WSM	Nashville
WCAE	Pittsburgh	WMC	Memphis
WTAM	Cleveland	WLIT	Philadelphia
WWJ	Detroit	WDAF	Kansas City
WSAI	Cincinnati	WRC	Washington
WSB	Atlanta		

10:30-11:00 Campus Carollers

WEAF	New York	WSAI	Cincinnati
------	----------	------	------------

Thursday

7:00-7:15 Bill Whipple of Sweet Meadows

WJZ	New York	WBZA	Boston
WBZ	Springfield		

7:30-8:00 Coward Comfort Hours

WEAF	New York	WTAG	Worcester
WEEI	Boston	WCSH	Portland
WJAR	Providence	WTIC	Hartford

8:00-9:00 RCA Radiotrons

WJZ	New York	KDKA	Pittsburgh
WBZ	Springfield	WEBH	Chicago
WBZA	Boston	WHAM	Rochester
WBAL	Baltimore	WJR	Detroit

8:00-9:00 Clicquot Club Eskimos

WEAF	New York	WCAE	Pittsburgh
WEEI	Boston	WWJ	Detroit
WJAR	Providence	WGN	Chicago
WTAG	Worcester	WGY	Schenectady
WGR	Buffalo	WDAF	Kansas City
WFI	Philadelphia	WRC	Washington

8:30-9:00 Hoover Sentinels

WEAF	New York	WCCO	Minneapolis
WEEI	Boston	KSD	St. Louis
WGY	Schenectady	WDAF	Kansas City
WFI	Philadelphia	WHO	Des Moines
WRC	Washington	WHAS	Louisville
WTAM	Cleveland	WMC	Memphis
WWJ	Detroit	WSM	Nashville
WCAE	Pittsburgh	WSB	Atlanta
WSAI	Cincinnati	KVOO	Bristow
WGN	Chicago	WFAA	Dallas
WOC	Davenport		

9:30-10:00 Spotlight Hour

WJZ	New York	WHAM	Rochester
WJR	Detroit	KDKA	Pittsburgh
WTMJ	Milwaukee	KYW	Chicago

10:00-10:30 Smith Brothers

WEAF	New York	WSAI	Cincinnati
WEEI	Boston	WEBH	Chicago
WTAG	Worcester	KSD	St. Louis
WGR	Buffalo	WOC	Davenport
WCAE	Pittsburgh	WDAF	Kansas City
WCCO	Minneapolis	WRC	Washington
WWJ	Detroit		

Friday

7:00-8:00 Cities Service Concert Orchestra

WEAF	New York	WSAI	Cincinnati
WEEI	Boston	WLW	Chicago
WTIC	Hartford	KSD	St. Louis
WGR	Buffalo	WOC	Davenport
WLIT	Philadelphia	WCCO	Minneapolis
WRC	Washington	WDAF	Kansas City
WCAE	Pittsburgh	KVOO	Bristow, Okl.
WTAM	Cleveland	WFAA	Dallas
WWJ	Detroit		

8:00-8:30 Retold Tales

WJZ	New York	KYW	Chicago
KDKA	Pittsburgh	WJR	Detroit

8:30-9:00 Royal Stenographers

WJZ	New York	KYW	Chicago
WBZ	Springfield	WBAL	Baltimore
WBZA	Boston	WJR	Detroit
KDKA	Pittsburgh		

9:00-9:30 Musical Miniatures

WEAF	New York	KSD	St. Louis
WTAG	Worcester	WOC	Davenport
WLIT	Philadelphia	WTIC	Hartford
WRC	Washington	WMAQ	Chicago

9:00-10:00 The Mediterraneans

WJZ	New York	KDKA	Pittsburgh
WHAM	Rochester	KYW	Chicago

9:30-10:00 La France Orchestra

WEAF	New York	WWJ	Detroit
WGR	Buffalo	KSD	St. Louis
WLIT	Philadelphia	WOC	Davenport
WCAE	Pittsburgh	WDAF	Kansas City
WTAM	Cleveland	WEBH	Chicago

The New Short Wave Field is Opening

By CARL H. BUTMAN

Enterprising amateur receiving-set builders and some few who have purchased short-wave sets, are finding new fields for their other explorations. There is a lot of entertainment on the air that many of us have been missing. It is very much worth while, for the stations which transmit programs on the short waves, below the broadcast band, are unaffected by other programs not being interfered with as are the regular broadcasting stations in the congested band lying between 200 and 545 meters or 550 and 1,500 keys.

Most of these stations are offering the short-wave fans the same programs put out on their regular broadcast transmitters, a simultaneous broadcast being effected for relay purposes, but others are producing special programs for listeners here and abroad. The chief reason for such transmission is to experiment with new broadcast possibilities and to increase the range of the stations, it having been found that such transmission travels to far greater distances, yet is received quite as clearly and with less interference than the programs on the regular broadcast channels. If listeners can pick up our programs in England, France, Belgium, Germany, Africa, South America and even New Zealand and

Australia, it seems that most of us are neglecting our opportunities, when all that is required is a new receiver. Commercial built short-wave sets covering 10 to 200 meters are available in modern radio supply stores and so also are the parts for assembling receivers to cover the short waves which carry radiophone entertainment.

Unfortunately the specific channels used by each station for these broadcast programs are not known to the Department of Commerce for they are licensed to carry on radiophone experiments on one of several channels running from 26.3 to 109 meters. Most of the well-known stations are understood to be operating on the five relay broadcast bands as follows: 26.3 to 27.3 meters; 30 to 33.1 meters; 52.6 to 54.5 meters; 60 to 66.3 meters and 105 to 109 meters.

Thirty-six broadcasting stations known to be offering programs on the short-waves or high-frequencies are listed below. A new official list is now being prepared by the Department of Commerce Radio Section for early publication. These stations are listed as experimental stations, used chiefly for relay broadcasting on channels between 26.3 and 109 meters or 11,400 and 2750 keys.

(Continued on Page 6)

WEEKLY CALENDAR

10:00-10:30 Whittall Anglo-Persians

WEAF	New York	WCAE	Pittsburgh
WEEI	Boston	WCCO	Minneapolis
WJAR	Providence	WTAM	Cleveland
WTAG	Worcester	WWJ	Detroit
WOC	Davenport	WGN	Chicago
WGR	Buffalo	KSD	St. Louis
WLIT	Philadelphia	WDAF	Kansas City
WRC	Washington	WGY	Schenectady

9:00-10:00 Philco Hour

WJZ	New York	WDAF	Kansas City
KDKA	Pittsburgh	KVOO	Bristow
KYW	Chicago	WHAS	Louisville
WHAM	Rochester	WSM	Nashville
WJR	Detroit	WSB	Atlanta
WLW	Cincinnati	WMC	Memphis
KSD	St. Louis	WBT	Charlotte
WOC	Davenport	WJAX	Jacksonville
WHO	Des Moines	WTMJ	Milwaukee
WOW	Omaha	WBAP	Ft. Worth

Saturday

6:00-6:55 Waldorf-Astoria Dinner Music

WEAF	New York	WRC	Washington
WEEI	Boston	WCAE	Pittsburgh

8:30-10:00 "Old Gold on Broadway"

WEAF	New York	WGY	Schenectady
WGR	Buffalo	WTIC	Hartford
WEEI	Boston	WEBH	Chicago

The above program is of course subject to change from time to time. Frequently a station which regularly broadcasts a certain feature must drop it for a certain day in favor of some local event. Every effort will be made to keep the list up to the minute.

If the user will enter the dial numbers of the stations named above which he receives well, in the Quick Index to Favorite Stations, he can then turn immediately to the various stations on the "chain" program.

The "Red" chain or network is that headed by WEAF. The "Blue" chain or network is headed by WJZ.

The Inside Story of Chain Programs

By WILLIAM BURKE MILLER

As the Signal Corps and Air Service serve the United States Army as "eyes and ears," so does the Communication Circuit Corps of the National Broadcasting Company serve the Red, Blue and Pacific Networks which that company maintains.

Through this system every station on the three Networks is in constant communication with the key station of their respective chain. The transmission of every feature of a network program is checked through this means, both at the key station and the others broadcasting it.

Six circuits terminate in the Operations and Engineering Department of the National Broadcasting Company, on the fourth floor, at 195 Broadway, New York City.

One circuit cares for Philadelphia, Schenectady, Washington, and Buffalo. Two circuits, one Red and one Blue, check with all Western stations. Two more reach out to the New England stations and another handles communications to and from the Southern stations of the Networks.

Operators in this important branch of the Operations and Engineering Department are trained to receive both the Continental Morse and the Morse codes. But many abbreviations and call letters have been evolved in order to reduce traffic on these lines, therefore to an outsider, the messages received and sent out while a network program is on the air would be almost unintelligible.

If you will permit, let us "sit in" with the Communication Operators for an hour or two.

Six men are at the keys by 5:30 o'clock, New York Time, in the afternoon, although the first network "hook-up" is not scheduled to go until 8 P. M.

M. H. Grainger and G. O. Milne, Red Network Supervisors of the National Broadcasting Company, report the number of stations which will broadcast certain features, to F. W. Kenworth, Wire Supervisor for the National Broadcasting Company.

The keys begin to click:

"Hello KSD, WSM, etc., stand by for

tone frequency tests," in prearranged code, of course.

Frequency cycles of 100, 1,000 and 5,000 are sent out.

And back they come. If the reading is off, another tone test is sent out from WEAF and adjustments made. This process goes on for several hours. Some trouble may be detected in the circuit and accurate checks are made. Weather conditions must be taken into account. Storms may cause distortion. This must be cleared during the tone frequency tests. And if a storm should come up during the actual broadcast the operators become as busy as a train dispatcher. In fact, their work is not unlike his. While he must direct trains over the proper routing, a Communication Circuit operator must guide the program to the proper station and see that it arrives there as it is broadcast from WEAF. In this way the Network "warms up" for the night broadcasts.

But this is not all. A schedule shows that all features are not accepted by the same stations. The operator must watch himself and notify the proper stations. For instance, WRC, Washington, may take the Coca Cola Girl episode at 10 P. M., but may cut out to handle a program of their own, before the Cavalcade at 11 o'clock. Likewise, WHAS, Louisville, may not take the Coca Cola Girl, but must be notified in time to clear their local program for the Cavalcade broadcast.

There may be a slight delay and the program does not go out according to schedule. This would leave the Network stations silent, if it were not for Communication Circuit Corps.

WEAF's announcer will report to the Supervisor: "The Cavalcade will be at least four minutes late, about 11:04." This is flashed to the stations and they arrange their programs accordingly. Another station may flash that its program is going to run over, therefore, it will be unable to "cut in" on the Network until later.

Now the Network program is ready to go on the air.

WEAF's announcer will make his announcement through the New York sta-

tion then "stand by" for fifteen seconds. This interval gives the announcers at the Network stations time to make local announcements.

Then the program begins. This coordination has been perfected. The local announcers know they have just fifteen seconds and no more, therefore their announcement "just fits."

Now, let us assume the Communication Circuit Corps' position on a stormy night.

"Distortion," will flash from KVOO, Bristow; "noisy," clicks in from WSAI, Cincinnati "not clear," from WTAM, Cleveland. And so it goes.

As these reports flash into the National Broadcasting Company's headquarters, they are passed along. If the line cannot be cleared up, an emergency line picks up the program.

"Better," says KVOO; "Still off," flashes from WSAI; "O. K." from WTAM.

When things are going out clearly, the Network operators flash comments into the Communication Circuit Corps, which are carefully jotted down for future reference.

"Baritone is dandy," will click in from WFI, Philadelphia; "Who's the new soprano?" from WCCO, Minneapolis-St. Paul; "Orchestra is snappy," says WDAF, Kansas City; "Selection not so good," will flash in from WTIC, Hartford.

After the air is clear, the Communication Circuit operators check back and get readings on the entire program from the various members of the network.

To further demonstrate the necessity for this Corps, suppose a storm puts the entire Network out of commission. Months in advance the various stations have contracted for the program and in anticipation of it, have not arranged a local program.

The storm makes it impossible for the Network broadcast.

The Communication Circuit Corps goes into action in time to warn the Network members and give them an opportunity to arrange an emergency program.

A neat leatherette cover for **RADEX** will be sent you free for two subscriptions at \$1.00. Coupon on page 42.

NEW SHORT WAVE FIELD

(Continued from Page 4)

They are designated by the initial letter X and located as to districts by the figure which precedes the letters. Nine stations have portable transmitters which are used for picking up programs outside the stations and broadcasting for re-broadcasting on the main transmitters on their normal channels.

KDKA, 8 XK and 8 XP, Westinghouse Electric and Mfg. Co., Pittsburgh, Pa.

WGY, (eight calls) 2 XAC, D, E, F, G, H, K and W. General Elec. Co., Schenectady.

WBZ, 1 XAE, Westinghouse Co., Springfield.

WHAM, 8 XAC, Stromberg Carlsson Tel. Mfg. Co., Rochester, N. Y.

WABC, 2 XE, Atlantic Broadcasting Co., Richmond Hill, N. Y.

WEEI, 1 XAG and 1 XAF, Edison Electric Illuminating Co., Boston, Mass.

WJZ, Radio Corporation of America, Bound Brook, N. J.

WRAH, 1 XY, Booth Radio Labs., Tilton.

WRNY, 2 XAL, Experimenter Pub. Co., Coatesville, N. J.

WOR, 2 XAQ, Bamberger Co., Newark, N. J.

WRMU, 2 XA, Yacht "Mu 1", Grebe Co., of New York.

WAAM, 2 XBA, WAAM inc., Newark, N. J.
KJBS, 6 XAR, J. Brunton & Sons Co., San Francisco, Calif.

KFWB, 6 XBR, Warner Bros. Motion Picture Studios Portable, Los Angeles, Calif.

KNX, 6 XA, Los Angeles Express, Los Angeles, Calif.

KFSG, 6 XBA, Air Fan Radio Corp., Los Angeles, Calif.

KHJ, 6 XAU, Times-Mirror Co., Los Angeles.
KFWH, 6 XAK, F. W. Morse, Chico, Calif.

KFQZ, 6 XAL, L. E. Taft, Hollywood, Calif.
KFVD, 6 XBX, McWhinnie Elec. Co., Venice.

KNRC, 6 XAF, Clarence B. Juneau, Portable
KGGM, 6 XAI, Los Angeles Radio Club, Los Angeles, Calif.

KFQV, 6 XHB, W. E. Riker, Holy City, Calif.
WRAH, 1 XAA, Stanley N. Read, Portable, Providence, R. I.

KFBC, 6 XBE, W. K. Azbill, San Diego, Calif.
KRLO, 6 XAN, Freeman Lan, Los Angeles.

KJR, 7 XC, 7 XO, Northwest Radio Service, Seattle, Wash., Portable

KWJJ, 7 XAO, Wilbur Jerman, Inc., Portland.
KFPY, 7 XAB, Symons Investment Co., Spokane, Wash., Portable

WEAO, 8 XJ, Ohio State Univ., Columbus, O.
WLW, 8 XAL, Crosley Radio Corp., Harrison.

WHK, 8 XF, The Radio Air Service Corp., Cleveland, Ohio, Portable

WNAL, 9 XAB, R. J. Boswell, Omaha, Nebraska, Portable

KOIL, 9 XU, Mona Motor Oil Co., Council Bluffs, Iowa

3 XK is the experimental call of the C. Francis Jenkins radio laboratories at Washington, D. C.

3 XN is the Bell Telephone Laboratory call at Whippany, N. J.

INDEX BY FREQUENCIES AND DIAL NUMBERS

550 kilocycles 545.1 meters

CYY	100	Merida, Mex.
KFUO	500	St. Louis, Mo.
KSD	500	St. Louis, Mo.
WMAK	750	Lockport, N. Y.

--	--	--

Socialist Party
 Concordia Theological Seminary
 Pulitzer Publishing Co.
 Norton Laboratories, Inc.

560 kilocycles 535.4 meters

KFBC	100	San Diego, Calif.
KFBK	100	Sacramento, Calif.
WCAC	500	Mansfield, Conn.
WCAH	250	Columbus, Ohio
WHO	5000	Des Moines, Iowa
WTIC	500	Hartford, Conn.

--	--	--

Dr. Arthur W. Yale
 Kimball-Upson Co.
 Conn. Agricultural College
 C. A. Entreklin
 Bankers Life Co.
 Travelers Insurance Co.

570 kilocycles 526.0 meters

KFKX	2500	Chicago, Ill.
KMTR	500	Hollywood, Calif.
KYW	5000	Chicago, Ill.
WNYC	500	New York City

--	--	--

Westinghouse Elec. & Mfg. Co.
 KMTR Radio Corporation
 Westinghouse Elec. & Mfg. Co.
 Dept. of Plants and Structures

580 kilocycles 516.9 meters

CHCY	250	Edmonton, Alta.
CHMA	250	Edmonton, Alta.
CJCA	500	Edmonton, Alta.
CKUA	500	Edmonton, Alta.
CNRE	500	Edmonton, Alta.
WCAE	500	Pittsburgh, Pa.
WMC	500	Memphis, Tenn.
WTAG	500	Worcester, Mass.

--	--	--

International Bible Students
 Christian and Missionary Alliance
 The Edmonton Journal
 University of Alberta
 Canadian National Railways
 Kaufman & Baer Co.
 Memphis Commercial Appeal
 Telegram Publishing Co.

590 kilocycles 508.2 meters

KLX	500	Oakland, Calif.
WIP	500	Philadelphia, Pa.
WOO	500	Philadelphia, Pa.
WOW	1000	Omaha, Nebr.

--	--	--

Tribune Publishing Co.
 Gimbel Bros., Inc.
 John Wanamaker
 Woodmen of the World

600 kilocycles 499.7 meters

CFCH	250	Iroquois Falls, Ont.
KFUT	50	Salt Lake City, Utah
WBAP	1500	Fort Worth, Tex.
WBBY	75	Charleston, S. C.
WFAA	500	Dallas, Tex.

--	--	--

Abitibi Power & Paper Co.
 University of Utah
 Carter Publications, Inc.
 Washington Light Infantry
 Dallas Morning News

610 kilocycles 491.5 meters

KGW	1000	Portland, Ore.
WEAF	50000	New York City

--	--	--

Oregonian Publishing Co.
 National Broadcasting Co., Inc.

620 kilocycles 483.6 meters

KFDM	500	Beaumont, Tex.
KUSD	250	Vermillion, S. D.
WCFL	1500	Chicago, Ill.
WEMC	1000	Berrien Springs, Mich.
WJAR	500	Providence, R. I.
WLTS	100	Chicago, Ill.

--	--	--

Magnolia Petroleum Co.
 University of South Dakota
 Federation of Labor
 Emmanuel Missionary College
 The Outlet Company
 Lane Technical High School

630 kilocycles 475.9 meters

CJGX	500	Yorkton, Sask.
CYR	250	Mazatlan, Mex.
KICK	100	Atlantic, Iowa
KOW	250	Denver, Colo.
WLAS	100	Burlington, Iowa
WSB	1000	Atlanta, Ga.

--	--	--

Winnipeg Grain Exchange
 Castulo Llamas
 Atlantic Automobile Co.
 Olinger Corp. Broadcasting
 Home Electric Co.
 Atlanta Journal Co.

INDEX BY FREQUENCIES AND DIAL NUMBERS

640 kilocycles 468.5 meters

KFI 5000 Los Angeles, Calif.
 WOS 500 Jefferson City, Mo.
 WRC 500 Washington, D. C.

Earle C. Anthony, Inc.
 State Marketing Bureau
 Radio Corp. of America

650 kilocycles 461.3 meters

KFNF 2000 Shenandoah, Iowa
 KRLL 500 Dallas, Tex.
 WHAS 500 Louisville, Ky.

Henry Field Seed Co.
 KRLL, Inc.
 Courier-Journal and Times

660 kilocycles 454.3 meters

KFRC 1000 San Francisco, Calif.
 WJZ 30000 New York City

Don Lee, Inc.
 Radio Corp. of America, Inc.

670 kilocycles 447.5 meters

KFOA 1000 Seattle, Wash.
 WEEL 500 Boston, Mass.
 WJAD 500 Waco, Tex.
 WMAQ 1000 Chicago, Ill.
 WQJ 500 Chicago, Ill.

Rhodes Department Store
 Edison Elec. Illuminating Co.
 Frank P. Jackson
 Chicago Daily News, Inc.
 Calumet Broadcasting Co.

680 kilocycles 440.9 meters

KFJY 100 Fort Dodge, Iowa
 KFMR 100 Sioux City, Iowa
 KFSD 500 San Diego, Calif.
 WCX 5000 Detroit, Mich.
 WIBG 50 Elkins Park, Pa.
 WJR 5000 Detroit, Mich.
 WSBF 250 St. Louis, Mo.

C. S. Tunwall
 Morning Side College
 Airfan Radio Corp.
 Detroit Free Press
 St. Pauls P. E. Church
 WJR, Inc.
 Mississippi Valley Broadcasting Co.

690 kilocycles 434.5 meters

CFAC 500 Calgary, Alta.
 CFCN 1800 Calgary, Alta.
 CJCJ 250 Calgary, Alta.
 CKCO 100 Ottawa, Ont.
 CNRC 500 Calgary, Alta.
 CNRO 500 Ottawa, Ont.
 NAA 1000 Arlington, Va.

The Calgary Herald
 W. W. Grant, Ltd.
 Radio Service & Repair Shop
 Dr. G. M. Geldert
 Canadian National Railways
 Canadian National Railways
 U. S. Navy

700 kilocycles 428.3 meters

KFBU 500 Laramie, Wyo.
 WLW 5000 Cincinnati, Ohio
 WMAF 500 S. Dartmouth, Mass.

Bishop N. S. Thomas
 Crosley Radio Corp.
 Round Hills Radio Corp.

710 kilocycles 422.3 meters

CYO 100 Mexico City
 KPO 1000 San Francisco, Calif.
 WOR 500 Newark, N. J.
 WSUI 500 Iowa City, Iowa

M. Y. Zetina
 Hale Bros. & The Chronicle
 L. Bamberger & Co.
 State University of Iowa

720 kilocycles 416.4 meters

WHT 5000 Chicago, Ill.
 WIBO 500 Chicago, Ill.
 WPTF 500 Raleigh, N. C.

Radiophone Broadcasting Corp.
 WIBO Broadcasters, Inc.
 Durham Life Ins. Co.

730 kilocycles 410.7 meters

CFCF 1650 Montreal, Que.
 CFCQ 10 Vancouver, B. C.
 CFYC 500 Burnaby, B. C.
 CHPC 1000 Vancouver, B. C.
 CHYC 750 Montreal, Que.

Canadian Marconi Co.
 Spratt-Shaw Radio Co.
 International Bible Students
 Central Presbyterian Church
 Northern Electric Co.

INDEX BY FREQUENCIES AND DIAL NUMBERS

CKAC 1200 Montreal, Que.
CKGD 1000 Vancouver, B. C.
CKFC 50 Vancouver, B. C.
CKWX 10 Vancouver, B. C.
CNRM 1650 Montreal, Que.

La Presse Publishing Co.
Vancouver Daily Province
United Church of Canada
A. Holstead & Wm. Hanlon
Canadian National Railways

740 kilocycles 405.2 meters

KHJ 500 Los Angeles, Calif.
WCCO 500 Minneapolis, Minn.
WFI 500 Philadelphia, Pa.
WLIT 500 Philadelphia, Pa.

Times-Mirror Co.
Washburn-Crosby Co.
Strawbridge & Clothier
Lit Brothers

750 kilocycles 399.8 meters

CYJ 2000 Mexico City
CYL 500 Mexico City
KFKA 200 Greeley, Colo.
PWX 500 Havana, Cuba
WEAR 1000 Cleveland, Ohio
WTAM 3500 Cleveland, Ohio

R. Ascarraga
State Teachers College
Cuban Telephone Co.
Willard Storage Battery Co.
Willard Storage Battery Co.

760 kilocycles 394.5 meters

KFDY 500 Brookings, S. D.
KMA 1000 Shenandoah, Iowa
KOB 5000 State College, N. M.
KTW 1000 Seattle, Wash.
KWKH 1000 Shreveport, La.
KWSC 500 Pullman, Wash.
WHN 500 New York City
WPAP 500 Cliffside, N. J.
WQAO 500 Cliffside, N. J.

S. Dak. State College
May Seed & Nursery
College of Agriculture
First Presbyterian Church
W. K. Henderson
State College of Washington
George Schubel
Palisades Amusement Park
Calvary Baptist Church

770 kilocycles 389.4 meters

WAAF 500 Chicago, Ill.
WABI 100 Bangor, Me.
WBBM 5000 Chicago, Ill.
WJBT 500 Chicago, Ill.
WORD 5000 Batavia, Ill.
WWVA 100 Wheeling, W. Va.

Drovers Journal Pub. Co.
First Universalist Church
Atlas Investment Co.
J. S. Boyd, Inc.
Peoples Pulpit Assn.
John C. Stroebel, Jr.

780 kilocycles 384.4 meters

CKY 500 Winnipeg, Man.
CNRW 500 Winnipeg, Man.
KGO 5000 Oakland, Calif.
KTHS 1000 Hot Springs, Ark.
WBOS 100 Wellesley Hills, Mass.
WCAO 250 Baltimore, Md.
WCBM 100 Baltimore, Md.
WMBF 500 Miami Beach, Fla.
WSRO 100 Middletown, Ohio

Manitoba Telephone System
Canadian National Railways
General Electric Co.
Arlington Hotel Co.
Babson's Statistical Org'n
Monumental Radio, Inc.
Hotel Chateau
Fleetwood Hotel Corp.
Harry W. Fahrlander

790 kilocycles 379.5 meters

KMMJ 500 Clay Center, Nebr.
WCAJ 500 Lincoln, Nebr.
WGY 50000 Schenectady, N. Y.
WHAZ 500 Troy, N. Y.

The M. M. Johnson Co.
Nebraska Wesleyan University
General Electric Co.
Rensselaer Polytechnic Inst.

800 kilocycles 374.8 meters

CYH 100 Mexico City
KNRC 500 Santa Monica, Calif.
KUOM 500 Missoula, Mont.
WDWF 500 Cranston, R. I.
WDFW 100 Flint, Mich.
WLSI 500 Cranston, R. I.
WOC 5000 Davenport, Iowa
WSKC 250 Bay City, Mich.

C. de Tarnava
Clarence B. Juneau
State University of Mont.
Dutée W. Flint
Frank D. Fallain
The Lincoln Studios, Inc.
Palmer School of Chiropractic
World's Star Knitting Co.

INDEX BY FREQUENCIES AND DIAL NUMBERS

810 kilocycles 370.2 meters

KHO 1000 Spokane, Wash.
 WDAF 1000 Kansas City, Mo.
 WLWL 1000 New York City
 WMCA 500 New York City

--	--	--

Louis Wasmer, Inc.
 Kansas City Star Co.
 Missionary Society of St. Paul
 Greeley Square Hotel Co.

820 kilocycles 365.6 meters

KMJ 50 Fresno, Calif.
 WCAD 500 Canton, N. Y.
 WEBH 2000 Chicago, Ill.
 WFLA 500 Clearwater, Fla.
 WJJJ 1000 Mooseheart, Ill.

--	--	--

The Fresno Bee
 St. Lawrence University
 Edgewater Beach Hotel Co.
 Chamber of Commerce
 Loyal Order of Moose

830 kilocycles 361.2 meters

HHK 1000 Port au Prince, Haiti
 KFVB 500 Los Angeles, Calif.
 WCSH 500 Portland, Me.
 WDAY 250 Fargo, N. D.
 WDWL 500 Asbury Park, N. J.
 WSAI 500 Cincinnati, O.

--	--	--

Republic of Haiti
 Warner Bros. Broadcasting Corp.
 Congress Square Hotel Co.
 Radio Equipment Corp.
 Radio Industries Broadcast Co.
 U. S. Playing Card Co.

840 kilocycles 356.9 meters

CFGA 500 Toronto, Ont.
 CHIC 500 Toronto, Ont.
 CHNC 500 Toronto, Ont.
 CJBC 500 Toronto, Ont.
 CJSC 500 Toronto, Ont.
 CKCL 500 Toronto, Ont.
 CKLC 1000 Red Deer, Alta.
 CKNC 500 Toronto, Ont.
 CNRT 500 Toronto, Ont.

--	--	--

Star Publishing & Ptg. Co.
 Northern Electric Co.
 Radio Research Society
 Jarvis Street Baptist Church
 The Evening Telegram
 The Dominion Battery Co.
 Alberta Pacific Grain Co.

Canadian National Railways

850 kilocycles 352.7 meters

KWCR 250 Cedar Rapids, Iowa
 KWTC 5 Santa Ana, Calif.
 WEW 1000 St. Louis, Mo.
 WJAM 250 Cedar Rapids, Iowa
 WNAC 500 Boston, Mass.
 WRR 500 Dallas, Tex.
 WWJ 1000 Detroit, Mich.

--	--	--

H. E. Paar
 Dr. John Wesley Hancock
 St. Louis University
 D. M. Perham
 The Shepard Stores
 City of Dallas
 The Detroit News

860 kilocycles 348.6 meters

CZE 500 Mexico City
 KJR 2500 Seattle, Wash.
 KVOO 1000 Bristow, Okla.
 WAAM 500 Newark, N. J.
 WAAW 500 Omaha, Nebr.
 WGBS 500 New York City
 20K 100 Havana, Cuba
 7SR 500 Elia, Cuba

--	--	--

Department of Education
 Northwest Radio Service Co.
 Southwestern Sales Corp.
 WAAM, Inc.
 Omaha Grain Exchange
 Gimbel Bros., Inc.
 Merio G. Velez
 Salvador Rionda

870 kilocycles 344.6 meters

KFQD 100 Anchorage, Alaska
 KWG 50 Stockton, Calif.
 WCBJ 5000 Zion, Ill.
 WJBB 250 Tampa, Fla.
 WLS 5000 Chicago, Ill.

--	--	--

Anchorage Radio Club
 Portable Wireless Tel. Co.
 Wilbur Glenn Voliva
 Financial Journal, Inc.
 Sears, Roebuck & Co.

880 kilocycles 340.7 meters

CHCS 10 Hamilton, Ont.
 CHML 50 Hamilton, Ont.
 CHRC 5 Quebec, Que.
 CKCI 22.5 Quebec, Que.

--	--	--

The Hamilton Spectator
 Maple Leaf Radio Co.
 E. Fontaine
 Le Soleil

INDEX BY FREQUENCIES AND DIAL NUMBERS

CKCV 50 Quebec, Que.
 CKOC 50 Hamilton, Ont.
 CNRQ 50 Quebec, Que.
 WCAZ 50 Carthage, Ill.
 WKAQ 500 San Juan, P. R.
 WRAV 100 Yellow Springs, Ohio
 WSM 500 Nashville, Tenn.
 6 KW 100 Tuinucu, Cuba

G. A. Vandry
 Wentworth Radio Supply Co.
 Canadian National Railways
 Carthage College
 Radio Corp. of Porto Rico
 Antioch College
 Nat'l Life & Accident Ins. Co.
 Frank H. Jones

890 kilocycles 336.9 meters

CYC 50 Vera Cruz, Mex.
 KNX 500 Los Angeles, Calif.
 WCAU 500 Philadelphia, Pa.
 WHB 500 Kansas City, Mo.
 WJAX 1000 Jacksonville, Fla.
 WOQ 250 Kansas City, Mo.

M. A. Fernandez
 L. A. Express Pub. Co.
 Universal Broadcasting Co.
 Sweeney Automobile School
 City of Jacksonville
 Unity School of Christianity

900 kilocycles 333.1 meters

KFJM 100 Grand Forks, N. D.
 KSAC 500 Manhattan, Kans.
 KSEI 250 Pocatello, Idaho
 WBZ 15000 Springfield, Mass.
 WBZA 500 Boston, Mass.
 WBRC 500 Cincinnati, Ohio

University of North Dakota
 State Agricultural College
 KSEI Broadcasting Assn.
 Westinghouse Elec. & Mfg. Co.
 Westinghouse Elec. & Mfg. Co.
 Kodak Radio Corp.

910 kilocycles 329.5 meters

CFCT 500 Victoria, B. C.
 CFQC 500 Saskatoon, Sask.
 CHUC 500 Saskatoon, Sask.
 CJGC 500 London, Ont.
 CJWC 250 Saskatoon, Sask.
 CNRS 500 Saskatoon, Sask.

G. W. Deaville
 The Electric Shop
 International Bible Students
 Free Press Ptg. Co.
 Wheaton Electric Co.
 Canadian National Railways

920 kilocycles 325.9 meters

CYX 500 Mexico City
 KFQB 1000 Ft. Worth, Tex.
 KOA 5000 Denver, Colo.
 WABC 2500 Richmond Hill, N. Y.
 WBOQ 500 Richmond Hill, N. Y.

El Excelsior
 Lone Star Broadcast Co.
 General Electric Co.
 Atlantic Broadcasting Corp.
 Atlantic Broadcasting Corp.

930 kilocycles 322.4 meters

CYQ 100 Tampico, Mex.
 CHNS 100 Halifax, N. S.
 CNRA 500 Moncton, N. B.
 KFQA 50 St. Louis, Mo.
 WJBA 50 Joliet, Ill.
 WKBI 50 Chicago, Ill.
 WKDR 15 Kenosha, Wis.
 WLBK 15 Belvidere, Ill.
 WLBT 50 Crown Point, Ind.
 WOAM 750 Miami, Fla.
 WRHF 150 Washington, D. C.
 WRRS 50 Racine, Wis.
 WSMB 500 New Orleans, La.
 WTAX 50 Streator, Ill.

Cipriano Sagon S. en C.
 Northern Electric Co.
 Canadian National Railways
 The Principia
 D. H. Lentz, Jr.
 Fred L. Schoenwolf
 Edward A. Dato
 Alford Radio Co.
 Harold Wendell
 Electrical Equip. Co.
 Washington Radio Hosp. Fund
 Racine Broadcasting Corp.
 Saenger Theatres & Maison Blanche
 Williams Hdwe. Co.

940 kilocycles 319.0 meters

KOIN 1000 Portland, Ore.
 WAPI 1000 Auburn, Ala.
 WEAN 500 Providence, R. I.
 WGHF 750 Mt. Clemens, Mich.
 WHA 750 Madison, Wis.
 WLBL 1000 Stevens Pt., Wis.

Koin, Inc.
 Alabama Polytechnic Inst.
 The Shepard Co.
 Geo. Harrison Phelps, Inc.
 University of Wis.
 Wis. Dept. of Markets

950 kilocycles 315.6 meters

KDKA 50000 Pittsburgh, Pa.
 KPSN 1000 Pasadena, Calif.
 2 RK 20 Havana, Cuba

Westinghouse E. & M. Co.
 Pasadena Star-News
 Raoul Karman

INDEX BY FREQUENCIES AND DIAL NUMBERS

960 kilocycles 312.3 meters

CFCY	100	Charlottetown, P. E. I.
CHWC	15	Regina, Sask.
CJBR	500	Regina, Sask.
CKCK	500	Regina, Sask.
CKCW	5000	Bowmanville, Ont.
CKSH	50	St. Hyacinthe, Que.
CNRR	500	Regina, Sask.
CYU	100	Puebla, Mex.

--	--	--

The Island Radio Co.
R. H. Williams & Sons
Cooperative Wheat Producers
Leader Pub. Co.
Goderham & Worts
City of St. Hyacinthe
Canadian Nat'l Railways
A. del P. Zaonz

970 kilocycles 309.1 meters

CZF	250	Chihuahua, Mex.
KFAB	5000	Lincoln, Nebr.
KYA	500	San Francisco, Calif.
WPCB	500	Hoboken, N. J.
WRNY	500	New York City
WTAW	500	College Station, Tex.

--	--	--

State of Chihuahua
Nebr. Buick Auto Co.
Pacific Broadcasting Corp.
Concourse Radio Corp.
Experimenter Pub. Co.
Agrl. & Mech. College

980 kilocycles 305.9 meters

KOMO	1000	Seattle, Wash.
WGN	500	Chicago, Ill.
WLIB	15000	Chicago, Ill.

--	--	--

Fisher's Bend Station
Tribune Co.
Liberty Weekly, Inc.

990 kilocycles 302.8 meters

KSL	1000	Salt Lake City, Utah
WBIS	100	Boston, Mass.
WGR	750	Buffalo, N. Y.
WMAL	100	Washington, D. C.
WNAX	250	Yankton, S. D.
WOAI	5000	San Antonio, Texas

--	--	--

Radio Service Corp. of Utah
The Shepard Stores
Federal Radio Corp.
M. A. Leese Co.
Dakota Radio App. Co.
Southern Equipment Co.

1000 kilocycles 299.8 meters

CYA	500	Mexico City
KFWO	250	Avalon, Calif.
KGFW	10	Ravenna, Nebr.
KMOX	5000	St. Louis, Mo.
KOWW	500	Walla Walla, Wash.
WBAK	500	Harrisburg, Pa.
WPSC	500	State College, Pa.

--	--	--

E. R. Gomez
Lawrence Mott
Otto F. Sothman
Voice of St. Louis
Frank A. Moore, Inc.
Penna. State Police
Penna. State College

1010 kilocycles 296.9 meters

CFCG	50	Brantford, Ont.
CFLC	50	Prescott, Ont.
CJRM	500	Moose Jaw, Sask.
KQW	500	San Jose, Calif.
KUOA	500	Fayetteville, Ark.
WADC	500	Akron, Ohio
WBES	100	Takoma Park, Md.
WEPS	100	Gloucester, Mass.
WBHN	10	Gainesville, Fla.
WSMK	200	Dayton, Ohio
WWNC	1000	Asheville, N. C.

--	--	--

The Brant Radio Supply Co.
Radio Association
Jas. Richardson & Sons
First Baptist Church
University of Arkansas
Allen T. Simmons
Bliss Electrical School
Matheson Radio Co., Inc.
University of Florida
Stanley M. Krohn, Jr.
Chamber of Commerce

1020 kilocycles 293.9 meters

KGCH	250	Wayne, Nebr.
KPRC	500	Houston, Texas
WGL	500	New York City
WLBW	500	Oil City, Pa.
WODA	1000	Paterson, N. J.
WTMJ	1000	Milwaukee, Wis.

--	--	--

S. A. Lutgen, M. D.
Houston Printing Co.
International Broadcasting Corp.
Petroleum Telephone Co.
Richard E. O'Dea
Milwaukee Journal

INDEX BY FREQUENCIES AND DIAL NUMBERS

1030 kilocycles 291.1 meters

CFRB	1000	Twp. of King, Ont.
CJBC	500	Toronto, Ont.
CJOR	50	Sea Island, B. C.
CJYC	500	Scarboro Station, Ont.
CKCX	500	Scarboro Station, Ont.
CKSM	1000	Toronto, Ont.
CNRV	500	Vancouver, B. C.

--	--	--

Standard Radio Mfg. Corp.
Jarvis St. Baptist Church
G. C. Chandler
Universal Radio of Canada
International Bible Students
St. Michael's Cathedral
Canadian Nat'l Railways

1040 kilocycles 288.3 meters

KGBX	100	St. Joseph, Mo.
KTBI	500	Los Angeles, Calif.
WBCN	250	Chicago, Ill.
WBET	500	Boston, Mass.
WDBO	500	Orlando, Fla.
WIAD	100	Philadelphia, Pa.
WKY	150	Oklahoma City
WNAT	100	Philadelphia, Pa.
WSSH	100	Boston, Mass.
WTAS	1500	Elgin, Ill.

--	--	--

Foster-Hall Tire Co.
Bible Inst. of Los Angeles
Great Lakes Radio Bdstg. Corp.
Boston Transcript Co.
Rollins College, Inc.
Howard R. Miller
WKY Radiophone Co.
Lennig Bros. Co.
Tremont Temple Baptist Church
Illinois Brdcastg. Corp.

1050 kilocycles 285.5 meters

KFAU	2000	Boise, Idaho
KFOY	250	St. Paul, Minn.
KLCN	50	Blytheville, Ark.
WBAL	5000	Baltimore, Md.
WJAG	250	Norfolk, Nebr.
WKAR	500	Lansing, Mich.
WOAN	250	Lawrenceburg, Tenn.
2 MG	20	Havana, Cuba

--	--	--

Independent School Dist.
Maurice Gordon Goldberg
Daily Courier News
Cons. Gas Elect. & Power Co.
Norfolk Daily News
Mich. Agriculture College
Vaughan School of Music
M. y G. Salas

1060 kilocycles 282.8 meters

KFJR	100	Portland, Ore.
KTBR	50	Portland, Ore.
WAIU	5000	Columbus, Ohio
WDRG	500	New Haven, Conn.
WEAO	750	Columbus, Ohio
KFXF	500	Denver, Colo.
WRAK	50	Escanaba, Mich.

--	--	--

Ashley C. Dixon & Son
M. E. Brown
American Ins. Union
Doolittle Radio Corp.
State University
Pikes Peak Brdcastg. Co.
Economy Light Co.

1070 kilocycles 280.2 meters

KTAB	500	Oakland, Calif.
WFBG	100	Altoona, Pa.
WFIW	500	Hopkinsville, Ky.
WGCP	500	Newark, N. J.
WNJ	500	Newark, N. J.
WTAL	100	Toledo, Ohio

--	--	--

Associated Broadcasters
Wm. F. Gable Co.
The Acme Mills, Inc.
May Radio Broadcast Corp.
Herman Lubinsky
Toledo Broadcasting Co.

1080 kilocycles 277.6 meters

KOIL	2000	Council Bluffs, Iowa
KWVG	500	Brownsville, Texas
KXA	500	Seattle, Wash.
WDZ	100	Tuscola, Ill.
WGBC	15	Memphis, Tenn.
WHAM	5000	Rochester, N. Y.

--	--	--

Mona Motor Oil Co.
Chamber of Commerce
American Radio Tel. Co.
James L. Bush
First Baptist Church
Stromberg-Carlson Tel. Mfg. Co.

1090 kilocycles 275.1 meters

CYB	500	Mexico City
KFBB	50	Havre, Mont.
KFPL	15	Dublin, Texas
KFSG	500	Los Angeles, Calif.
WFBM	250	Indianapolis, Ind.
WKBF	250	Indianapolis, Ind.
WWL	100	New Orleans, La.
2 UF	10	Havana, Cuba

--	--	--

J. J. Reynosa
F. A. Buttrey Co.
C. C. Baxter
Echo Park Evan. Assn.
Indianapolis Power & Light Co.
Noble Butler Watson
Loyola University
Benito V. Ferro

INDEX BY FREQUENCIES AND DIAL NUMBERS

1100 kilocycles 272.6 meters

KFAD	500	Phoenix, Ariz.
KFJF	1000	Oklahoma City
KSMR	100	Santa Maria, Calif.
WBAA	500	Lafayette, Ind.
WFBJ	100	Collegeville, Minn.
WHAR	1000	Atlantic City, N. J.
WPG	5000	Atlantic City, N. J.
WRM	500	Urbana, Ill.

--	--	--

Electrical Equip. Co.
Nat'l Radio Mfg. Co.
Santa Maria Valley R. R. Co.
Purdue University
St. John's University
Cook's Sons, Inc.
Municipality of Atlantic City
University of Ill.

1110 kilocycles 270.1 meters

KFLX	100	Galveston, Tex.
KGU	600	Honolulu, Hawaii
KLDS	1500	Independence, Mo.
KOAC	500	Corvallis, Ore.
KOV	500	Pittsburgh, Pa.
WGST	500	Atlanta, Ga.
WHAD	500	Milwaukee, Wis.
WJAS	500	Pittsburgh, Pa.
WMAZ	500	Macon, Ga.
WSOE	500	Milwaukee, Wis.
WTHS	200	Atlanta, Ga.
2 TW	20.	Havana, Cuba

--	--	--

George Roy Clough
Marion A. Mulrony
Church of Latter Day Saints
State Agricultural College
Doubleday-Hill Elec. Co.
Georgia School of Technology
Marquette University
Pittsburgh Radio Supply House
Mercer University
School of Engineering
Technological High School
Roberto E. Ramirez

1120 kilocycles 267.7 meters

CFJC	15	Kamloops, B. C.
CFMC	20	Kingston, Ont.
CFRC	500	Kingston, Ont.
CHGS	25	Summerside, P. E. I.
CHSC	50	Unity, Sask.
CKCR	25	St. George, Ont.
CKPR	50	Midland, Ont.
KFIZ	100	Fond du Lac, Wis.
KFLV	100	Rockford, Ill.
KFWI	500	San Francisco, Calif.
KLZ	250	Denver, Colo.
KSBA	1000	Shreveport, La.
WAAD	25	Cincinnati, Ohio
WBAO	100	Decatur, Ill.
WBKN	100	Brooklyn, N. Y.
WBMS	100	Union City, N. J.
WDAE	500	Tampa, Fla.
WIBI	100	Flushing, N. Y.
WLAP	30	Louisville, Ky.
WOBU	50	Charleston, W. Va.
WWRL	100	Woodside, N. Y.

--	--	--

N. S. Dalgleish & Sons
Monarch Battery Co.
Queen's University
R. T. Holman, Ltd.
H. N. Stovin & Radio Sales
John Patterson
E. O. Swan
Commonwealth Reporter
Swedish Evan. Mission Church
Radio Entertainments, Inc.
Reynolds Radio Co. Inc.
W. G. Patterson
Ohio Mechanics Institute
James Millikin University
Arthur Faske
George J. Schowerer
Tampa Publishing Co.
Fred B. Zittell, Jr.
L. W. Benedict
Charleston Radio Bdstg. Co.
Wm. H. Reuman

1130 kilocycles 265.3 meters

CYF	100	Oaxaca, Mex.
KKP	15	Seattle, Wash.
KTSA	2000	San Antonio, Tex.
WDEL	100	Wilmington, Del.
WHK	506	Cleveland, Ohio
WNOX	1000	Knoxville, Tenn.
WOI	2500	Ames, Iowa

--	--	--

F. Zonillo
City of Seattle
Alamo Broadcast Co.
Wilmington Elec. Specialty Co.
Radio Air Service Corp.
Peoples Tel. & Tel. Co.
Iowa State College

1140 kilocycles 263.0 meters

KFPW	50	Cartersville, Mo.
KGEF	500	Los Angeles, Calif.
KGEK	10	Yuma, Colo.
WDAG	250	Amarillo, Tex.
WDGY	500	Minneapolis, Minn.
WJAZ	5000	Chicago, Ill.
WJBI	150	Red Bank, N. J.
WJBO	100	New Orleans, La.
WBMI	5000	Chicago, Ill.
WSEA	500	Virginia Beach, Va.
WTAR	500	Norfolk, Va.

--	--	--

Rev. Lannie W. Stewart
Trinity Methodist Church
Beehler Elec. Equip. Co.
J. Laurance Martin
Dr. Geo. W. Young
Zenith Radio Corp.
Robert S. Johnson
Valdemar Jensen
Moody Bible Institute
Virginia Beach Bdstg. Co.
Reliance Electric Co., Inc.

INDEX BY FREQUENCIES AND DIAL NUMBERS

1150 kilocycles 260.7 meters

KGA	2000	Spokane, Wash.
WABO	500	Philadelphia, Pa.
WHBA	10	Oil City, Pa.
WNBH	250	New Bedford, Mass.
WOOD	500	Grand Rapids, Mich.
WRHM	1000	Minneapolis, Minn.
6 BY	200	Cienfuegos, Cuba

--	--	--

Northwest Radio Service Co.
 Keystone Brdcastg. Co., Inc.
 C. C. Shaffer
 New Bedford Bdstg. Co.
 Walter B. Stiles, Inc.
 Rosedale Hospital Co., Inc.
 Jose Ganduxé

1160 kilocycles 258.5 meters

KDYL	100	Salt Lake City
KFOX	100	Omaha, Nebr.
KFUL	500	Galveston, Tex.
KOCH	250	Omaha, Nebr.
WBT	500	Charlotte, N. C.
WCMA	250	Culver, Ind.
WEBW	500	Beloit, Wis.
WFBL	750	Syracuse, N. Y.
WIL	250	St. Louis, Mo.
WNAL	250	Omaha, Nebr.

--	--	--

Intermountain Bdstg. Corp.
 Board of Education
 Thomas Goggan & Bros.
 Central High School
 C. C. Coddington
 Culver Military Academy
 Beloit College
 The Onondaga Co., Inc.
 Benson Radio Bdstg. Co.
 R. J. Rockwell

1170 kilocycles 256.3 meters

KFUS	50	Oakland, Calif.
KRE	100	Berkeley, Calif.
KTNT	3500	Muscatine, Iowa
WASH	250	Grand Rapids, Mich.
WBBR	1000	Rossville, N. Y.
WCOS	500	Springfield, Ohio
WEBJ	500	New York City
WLTH	250	Brooklyn, N. Y.
20 L	100	Havana, Cuba

--	--	--

Dr. L. L. Sherman
 First Congregational Church
 Norman Baker
 Baxter Laundries, Inc.
 Peoples Pulpit Assn.
 Wittenberg College
 Third Ave. Railway Co.
 The Voice of Brooklyn
 Oscar C. Orta

1180 kilocycles 254.1 meters

KFHA	50	Gunnison, Colo.
KFKU	500	Lawrence, Kans.
KGDA	15	Dell Rapids, S. D.
KGFX	200	Pierre, S. D.
KMO	250	Tacoma, Wash.
WABO	500	Rochester, N. Y.
WCAX	100	Burlington, Vt.
WHEC	500	Rochester, N. Y.
WREC	50	Memphis, Tenn.
WREN	750	Lawrence, Kans.
WRVA	1000	Richmond, Va.
WTAQ	500	Eau Claire, Wis.

--	--	--

Western College of Colorado
 University of Kansas
 Home Auto Co.
 Dana McNeil
 KMO, Inc.
 Lake Ave. Baptist Church
 University of Vermont
 Hickson Electric Co., Inc.
 WREC, Inc.
 Jenny Wren Co.
 Larus & Bro. Co., Inc.
 C. S. Van Gorden

1190 kilocycles 252.0 meters

KOCW	250	Chickasha, Okla.
KPLA	500	Los Angeles, Calif.
WFAM	10	St. Cloud, Minn.
WGAL	15	Lancaster, Pa.
WKBT	50	New Orleans, La.
WKJC	50	Lancaster, Pa.
WMBB	5000	Chicago, Ill.
WMBR	100	Tampa, Fla.
WOK	5000	Chicago, Ill.
WSAR	100	Portsmouth, R. I.

--	--	--

College for Women
 Pacific Development Radio Co.
 Times Publishing Co., Inc.
 Lancaster Elec. Supply Co.
 First Baptist Church
 Kirk Johnson & Co.
 American Bond & Mtg. Co.
 F. J. Reynolds
 Trianon, Inc.
 Doughty & Welch Elec. Co.

1200 kilocycles 249.9 meters

KFJI	15	Astoria, Ore.
KFJZ	50	Ft. Worth, Tex.
KFQU	100	Holy City, Calif.
KFRU	500	Columbia, Mo.
KMED	50	Medford, Ore.
WBAX	100	Wilkes-Barre, Pa.
WBRE	100	Wilkes-Barre, Pa.
WCOA	500	Pensacola, Fla.
WHBY	50	West De Pere, Wis.
WIBR	50	Steubenville, Ohio
2 BB	15	Havana, Cuba

--	--	--

E. E. Marsh
 W. E. Branch
 W. E. Riker
 Stephens College
 W. J. Virgin
 John H. Stenger, Jr.
 Louis G. Baltimore
 City of Pensacola
 St. Norbert's College
 Thurman A. Owings
 Bernardo Barrie

INDEX BY FREQUENCIES AND DIAL NUMBERS

1210 kilocycles 247.8 meters

CFNB	25	Fredericton, N. B.
CJCU	5	Mission City, B. C.
CFMC	5	Cobalt, Ont.
CKPC	7.5	Preston, Ont.
KFEL	250	Denver, Colo.
KFJB	100	Marshalltown, Ia.
KGCA	10	Decorah, Iowa
KWLC	50	Decorah, Iowa
WABW	50	Wooster, Ohio
WABY	50	Philadelphia, Pa.
WABZ	50	New Orleans, La.
WBAW	100	Nashville, Tenn.
WBBL	100	Richmond, Va.
WCAT	100	Rapid City, S. D.
WEBE	10	Cambridge, Ohio
WFBZ	50	Galesburg, Ill.
WFKD	50	Philadelphia, Pa.
WIOD	1000	Miami Beach, Fla.
WLCI	50	Ithaca, N. Y.
WMAY	100	St. Louis, Mo.
WRAM	50	Galesburg, Ill.

--	--	--

James S. Neill & Sons
 E. R. Streeter
 R. L. MacAdam
 Wallace Russ
 Eugene P. O'Fallon, Inc.
 Marshall Electric Co.
 Charles W. Greenley
 Luther College
 College of Wooster
 John Magaldi, Jr.
 Coliseum Place Baptist Church
 Waldrum Drug Co.
 Grace Covenant Pres. Church
 State School of Mines
 Roy W. Waller
 Knox College
 Foulkrod Radio Eng. Co.
Carl G. Fisher Co.
 Lutheran Assn. of Ithaca
 Kingshighway Presb. Church
 Lombard College

1220 kilocycles 245.8 meters

KFH	500	Wichita, Kans.
KFIO	100	Spokane, Wash.
KFPY	250	Spokane, Wash.
KLS	250	Oakland, Calif.
KZM	100	Oakland, Calif.
WAAT	300	Jersey City, N. J.
WDDO	500	Chattanooga, Tenn.
WEVD	500	Woodhaven, N. Y.
WFBE	250	Cincinnati, Ohio
WGBB	400	Freeport, N. Y.
WHDI	500	Minneapolis, Minn.
WLB	500	Minneapolis, Minn.

--	--	--

Hotel Lassen
 North Central High School
 Symons Investment Co.
 Warner Bros.
 Preston D. Allen
 Bremer Bdstg. Corp.
Chattanooga Radio Co., Inc.
 Eugene V. Debs Memorial Fund
 Garfield Place Hotel Co.
 Harry H. Carman
Wm. Hood Dunwoody Indus. Inst.
 University of Minnesota

1230 kilocycles 243.8 meters

KFCB	125	Phoenix, Ariz.
KGCX	10	Vida, Mont.
KGRS	150	Amarillo, Tex.
KGY	50	Lacey, Wash.
KSCJ	500	Sioux City, Iowa
KWUC	1500	Le Mars, Iowa
WAFD	100	Detroit, Mich.
WBRC	250	Birmingham, Ala.
WFBR	250	Baltimore, Md.
WMBG	100	Detroit, Mich.

--	--	--

Nielsen Radio Supply Co.
 First State Bank of Vida
 Gish Radio Service
 St. Martins College
Perkins Bros. Co.
Western Union College
 Albert B. Parfet Co.
 Birmingham Broadcasting Co.
 Baltimore Radio Shop
 Michigan Bdstg. Co., Inc.

1240 kilocycles 241.8 meters

KFKB	1500	Milford, Kans.
KFON	500	Long Beach, Calif.
WEBC	250	Superior, Wis.
WEBR	200	Buffalo, N. Y.
WEDC	500	Chicago, Ill.
WFCI	100	Pawtucket, R. I.
WGES	500	Chicago, Ill.
WNBX	10	Springfield, Vt.
WSAZ	100	Huntington, W. Va.

--	--	--

Dr. J. R. Brinkley
Nichols & Warinner, Inc.
 Head of Lakes Bdstg. Co.
 H. H. Howell
Emil Denemark
 Frank Crook, Inc.
Oak Leaves Bdstg. Corp.
 First Congregational Church
 McKellar Electric Co.

1250 kilocycles 239.9 meters

KEX	2500	Portland, Ore.
KFYR	250	Bismarck, N. D.
WBPP	100	Petoskey, Mich.
WEAM	250	N. Plainfield, N. J.
WIBA	100	Madison, Wis.
WNAD	500	Norman, Okla.
WOAX	500	Trenton, N. J.

--	--	--

Western Brcdstg. Co.
 Hoskins-Meyer
 Petoskey High School
 Borough of North Plainfield
 Capital Times-Strand Theater
University of Oklahoma
Franklyn J. Wolf

INDEX BY FREQUENCIES AND DIAL NUMBERS

1260 kilocycles 238.0 meters

--	--	--

KFVI 50 Houston, Texas
 WIBX 150 Utica, N. Y.
 WJBW 30 New Orleans, La.
 WLBI 250 Wenona, Ill.
 WRAW 100 Reading, Pa.
 WRBC 250 Valparaiso, Ind.
 WSBT 500 South Bend, Ind.

Hdq. Troop 56th Cavalry
 WIBX, Incorporated
 Charles C. Carlson, Jr.
 Wenona Legion Broadcasters, Inc.
 Avenue Radio & Elec. Shop
 Immanuel Lutheran Church
 South Bend Tribune

1270 kilocycles 236.1 meters

--	--	--

KFDX 250 Shreveport, La.
 KFMX 500 Northfield, Minn.
 KFUM 100 Colorado Springs, Colo.
 KFWM 500 Oakland, Calif.
 KHMC 100 Harlingen, Texas
 WBBW 50 Norfolk, Va.
 WBNY 500 New York, N. Y.
 WCAL 500 Northfield, Minn.
 WGBF 250 Evansville, Ind.
 WHAP 1000 New York City
 WHBC 10 Canton, Ohio
 WMSG 500 New York City
 WTAD 250 Quincy, Ill.

First Baptist Church
 Carleton College
 W. D. Corley
 Oakland Educational Society
 Harlingen Music Co.
 Ruffner Junior High School
 Baruchrome Corp.
 St. Olaf College
 Pinke Furniture Co.
 Defenders of Truth Society, Inc.
 St. John's Catholic Church
 Madison Sq. Garden Broadcast Corp.
 Ill. Stock Medicine Brdcastg. Corp.

1280 kilocycles 234.2 meters

--	--	--

KFVE 1000 St. Louis, Mo.
 KGAR 100 Tucson, Ariz.
 KVI 50 Tacoma, Wash.
 WDAH 100 El Paso, Texas
 WFBC 50 Knoxville, Tenn.
 WJAK 50 Kokomo, Ind.
 WJBY 50 Gadsden, Ala.
 WMAN 50 Columbus, Ohio
 WMBS 250 Harrisburg, Pa.
 WMPC 30 Lapeer, Mich.
 2 LR 50 Havana, Cuba

Greater St. Louis Brdcastg. Corp.
 Citizens Pubg. Co.
 Puget Sound Radio Bdstg. Co.
 Trinity Methodist Church
 First Baptist Church
 J. A. Kautz
 Electric Construction Co.
 W. E. Heskitt
 Mack's Battery Co.
 First Methodist Protestant Church
 Jose Lara

1290 kilocycles 232.4 meters

--	--	--

KFEY 10 Kellogg, Idaho
 KFPR 250 Los Angeles, Calif.
 KFQZ 100 Hollywood, Calif.
 KUT 500 Austin, Texas
 WBRL 500 Tilton, N. H.
 WHBQ 100 Memphis, Tenn.
 WJKS 500 Gary, Ind.
 WLBH 30 Farmingdale, N. Y.
 WMBJ 50 Monessen, Pa.
 WSBC 500 Chicago, Ill.

Union High School
 L. A. County Forestry Dept.
 Taft Radio & Brdcastg. Co.
 University of Texas
 Booth Radio Laboratories
 Brdcastg. Station WHBQ, Inc.
 Johnson Kennedy Radio Corp.
 Joseph J. Lombardi
 Star Theatre
 World Battery Co., Inc.

1300 kilocycles 230.6 meters

--	--	--

KDLR 15 Devils Lake, N. D.
 KFEO 1000 St. Joseph, Mo.
 KFPM 15 Greenville, Texas
 KGCL 50 Seattle, Wash.
 KPCC 50 Seattle, Wash.
 WCOC 250 Columbus, Miss.
 WDBJ 250 Roanoke, Va.
 WGBI 250 Scranton, Pa.
 WIBZ 15 Montgomery, Ala.
 WLBM 50 Cambridge, Mass.
 WQAN 250 Scranton, Pa.

Radio Electric Co.
 Scroggin & Co. Bank
 The New Furniture Co.
 Archie Taft & Louis Wasmer
 Pac. Coast Biscuit Co.
 Crystal Oil Co.
 Richardson-Wayland Elec. Corp.
 Scranton Broadcasters, Inc.
 Alexander D. Trum
 Browning-Drake Corp.
 Scranton Times

INDEX BY FREQUENCIES AND DIAL NUMBERS

1310 kilocycles 228.9 meters

KELW	500	Burbank, Calif.
KGBU	500	Ketchikan, Alaska
KPPC	50	Pasadena, Calif.
KTAP	20	San Antonio, Texas
KWJJ	50	Portland, Ore.
WHBP	250	Johnstown, Pa.
WKBE	100	Webster, Mass.
WMBL	50	Lakeland, Fla.
WNBR	20	Memphis, Tenn.
WOWO	2500	Ft. Wayne, Ind.

--	--	--

Earl L. White
Alaska Radio & Service Co.
Pasadena Pres. Church
Robert B. Bridge
Wilbur Jerman
Johnstown Automobile Co.
K. & B. Electric Co.
Benford's Radio Studios
John Ulrich
Main Auto Supply Co.

1320 kilocycles 227.1 meters

KFUP	100	Denver, Colo.
KGEU	50	Lower Lake, Cal.
KSO	500	Clarinda, Iowa
KXRO	50	Seattle, Wash.
WARS	500	Brooklyn, N. Y.
WBBC	500	Brooklyn, N. Y.
WCBE	5	New Orleans, La.
WCLO	100	Camp Lake, Wis.
WDBK	250	Akron, Ohio
WJAY	500	Cleveland, Ohio
WJBC	100	La Salle, Ill.
WJBR	100	Appleton, Wis.
WSDA	250	New York City
WWAE	500	Chicago, Ill.

--	--	--

Fitzsimmons General Hospital
L. W. Clement
Berry Seed Co.
KXRO, Inc.
Amateur Radio Specialty Co.
Brooklyn Broadcasting Corp.
Uhalt Radio
C. E. Whitmore
WDBK Bdstg. Station, Inc.
Cleveland Radio Bdstg. Corp.
Hummer Furniture Co.
Irving Zuelke Music Studio
The City Temple
Dr. George F. Courrier

1330 kilocycles 225.4 meters

KFTU	10	Juneau, Alaska
KFKZ	15	Kirksville, Mo.
KFUR	50	Ogden, Utah
KFVG	50	Independence, Kans.
KGEN	15	El Centro, Calif.
WAGM	50	Royal Oak, Mich.
WAMD	500	Minneapolis, Minn.
WCOT	50	Providence, R. I.
WDAD	1000	Nashville, Tenn.
WLAC	1000	Nashville, Tenn.
WMAC	500	Casnovia, N. Y.
WSYR	500	Syracuse, N. Y.

--	--	--

Alaska Elec. Lt. & Pwr. Co.
State Teachers College
Peery Building Co.
First M. E. Church
E. R. Irey & F. M. Bowles
Robert L. Miller
Radisson Radio Corp.
Jacob Conn
Dad's Auto Accessories, Inc.
Life & Casualty Insurance Co.
Clive B. Meredith
Clive B. Meredith

1340 kilocycles 223.7 meters

KFRL	50	Everett, Wash.
KFVS	50	Cape Girardeau, Mo.
KFXR	50	Oklahoma City
KGFB	10	Iowa City, Iowa
KGFB	250	La Crescenta, Calif.
KGFK	50	Hallock, Minn.
KMIC	250	Inglewood, Calif.
WCAM	500	Camden, N. J.
WCRW	500	Chicago, Ill.
WEBQ	15	Harrisburg, Ill.
WFKB	500	Chicago, Ill.
WKAU	50	Laconia, N. H.
WNRG	500	Greensboro, N. C.
WPLC	25	Jamestown, N. Y.
WPCG	500	Chicago, Ill.
WSAJ	250	Grove City, Pa.

--	--	--

Leese Bros.
Hirsch Battery & Radio Co.
Exchange Ave. Baptist Church
Albert C. Dunkel
Frederick Robinson
Kitson County Enterprise
James R. Fouch
City of Camden
Clinton R. White
Tate Radio Co.
Francis K. Bridgman, Inc.
Laconia Radio Club
Wayne M. Nelson
A. E. Newton
North Shore Cong. Church
Grove City College

1350 kilocycles 222.1 meters

KFWC	100	San Bernardino, Cal.
KGFL	50	Trinidad, Colo.
KWKC	100	Kansas City, Mo.
WCBA	100	Allentown, Pa.
WHBD	100	Bellefontaine, Ohio
WHBF	100	Rock Island, Ill.
WOMT	50	Manitowoc, Wisc.
WSAN	100	Allentown, Pa.

--	--	--

Lawrence E. Wall
N. L. Cotter
Wilson Duncan Bdstg. Co.
C. W. Heimbach & B. B. Musselman
Chamber of Commerce
Beardsley Specialty Co.
Mikadow Theatre
Allentown Call Pub. Co.

INDEX BY FREQUENCIES AND DIAL NUMBERS

1360 kilocycles 220.4 meters

KGFI	15	San Angelo, Tex.
KGCI	15	San Antonio, Tex.
KGRC	50	San Antonio, Tex.
KJBS	50	San Francisco, Cal.
KRAC	50	Shreveport, La.
KXL	50	Portland, Ore.
WHBW	210	Philadelphia, Pa.
WHBU	15	Anderson, Ind.
WJBK	15	Ypsilanti, Mich.
WKBH	500	La Crosse, Wis.
WMBG	15	Richmond, Va.
WMBO	100	Auburn, N. Y.
WTAZ	15	Richmond, Va.

--	--	--

Ragsdale Auto Supply Co.
 Liberto Radio Sales
 Gene Roth & Co.
 Julius Brunton & Sons Co.
 Caddo Radio Club
 KXL Broadcasters
 D. R. Kienzle
 Citizens Bank
 Ernest F. Goodwin
Callaway Music Co.
 Havens & Martin
 Radio Service Laboratories
 W. Reynolds Jr. & T. J. McGuire

1370 kilocycles 218.8 meters

KGEW	10	Fort Morgan, Colo.
WCGU	500	Coney Island, N. Y.
WGWB	500	Milwaukee, Wis.
WKBC	10	Birmingham, Ala.
WKBO	500	Jersey City, N. J.
WKBQ	500	New York City

--	--	--

City of Fort Morgan
Chas. G. Unger
Radiocast Corp. of Wisconsin
 H. I. Ansley
Camith Corp.
Starlight Amusement Park

1380 kilocycles 217.3 meters

KGDM	10	Stockton, Calif.
KFOR	100	Lincoln, Nebr.
KFQW	100	Seattle, Wash.
WIBU	20	Poynette, Wis.
WKBS	100	Galesburg, Ill.
WKBV	100	Brookville, Ind.
WKBW	500	Buffalo, N. Y.
WLBO	100	Galesburg, Ill.
WRES	50	Quincy, Mass.

--	--	--

E. F. Peffer
 Howard A. Shuman
 Carl F. Knierim
 Wisconsin State Journal Co.
 Permil N. Nelson
 Knox Battery & Elec. Co.
Churchill Evangelistic Assn.
 Fred A. Trebbe, Jr.
 Harry Leonard Sawyer

1390 kilocycles 215.7 meters

KFDZ	10	Minneapolis, Minn.
KFXJ	15	Edgewater, Colo.
KGCB	50	Oklahoma City
KGER	100	Long Beach, Calif.
KGFG	50	Oklahoma City
KRLO	250	Los Angeles, Calif.
WAGS	5	Lexington, Mass.
WCLS	150	Joliet, Ill.
WEHS	100	Evanston, Ill.
WHFC	200	Chicago, Ill.
WKBB	150	Joliet, Ill.
WOKO	250	Peekskill, N. Y.
WPEP	250	Waukegan, Ill.
WQAA	500	Parkesburg, Pa.

--	--	--

Harry O. Iverson
 R. G. Howell
 Wallace Radio Institute
 C. Merwin Dobyns
 Full Gospel Church
 Freeman Lang & A. B. Scott
 J. Smith Dodge
 The M. A. Felman Co.
 Victor C. Carlson
 Goodson & Wilson, Inc.
 Sanders Bros.
 Harold E. Smith
 Maurice Mayer
Horace A. Beale, Jr.

1400 kilocycles 214.2 meters

KFEC	50	Portland, Ore.
KFIT	50	Portland, Ore.
KFWF	250	St. Louis, Mo.
KPJM	15	Prescott, Ariz.
WAIT	10	Taunton, Mass.
WCWK	250	Ft. Wayne, Ind.
WCWS	100	Danbury, Conn.
WICC	500	Bridgeport, Conn.
WJBU	100	Lewisburg, Pa.
WKBN	50	Youngstown, Ohio
WLBG	100	Petersburg, Va.
WMBW	50	Youngstown, Ohio

--	--	--

Meier & Frank Co.
 Benson Polytechnic Institute
 St. Louis Truth Center, Inc.
 Frank Wilburn
 A. H. Waite & Co., Inc.
 Chester W. Keen
 Danbury Bdstg. Station
Bridgeport Bdstg. Station
 Bucknell University
 W. P. Williamson, Jr.
 Robert Allen Gamble
 Youngstown Bdstg. Co., Inc.

INDEX BY FREQUENCIES AND DIAL NUMBERS

1410 kilocycles 212.6 meters

KFHL	10	Oskaloosa, Iowa
KGBZ	100	York, Nebr.
KGDG	250	Shreveport, La.
KGFP	10	Mitchell, S. D.
KTUE	5	Houston, Texas
WJBL	250	Decatur, Ill.
WKBP	50	Battle Creek, Mich.
WRAX	250	Philadelphia, Pa.
WSIX	150	Springfield, Tenn.

Penn College Federal Live Stock Remedy Co. William E. Antony Mitchell Broadcast Co. Uhalt Electric Wm. Gushard Dry Goods Co. Enquirer-News Co. Berachah Church, Inc. 638 Tire & Vulcanizing Co.		

1420 kilocycles 211.1 meters

KFCR	50	Santa Barbara, Calif.
KFYO	15	Breckenridge, Tex.
KGFM	15	Yuba City, Calif.
KPNP	100	Muscatine, Iowa
KRSC	50	Seattle, Wash.
WBMH	100	Detroit, Mich.
WBRS	100	Brooklyn, N. Y.
WCDA	250	Cliffside, N. J.
WMES	100	Boston, Mass.
WNBO	15	Washington, Pa.
WRSC	100	Chelsea, Mass.
WRST	250	Bay Shore, N. Y.

Santa Barbara Brdcastg. Co. Kirksey Bros. Battery & Elec. George W. Johnson Central Radio Co. Radio Sales Corp. Braun's Music House No. American Brdcastg. Corp. Italian Educ. Brdcastg. Co. Massachusetts Educ. Society John Brownlee Spriggs William S. Pote Radiotel Mfg. Co., Inc.		

1430 kilocycles 209.7 meters

KFGQ	10	Boone, Iowa
KSOO	250	Sioux Falls, S. D.
KVOS	50	Seattle, Wash.
WCBS	250	Springfield, Ill.
WLBC	50	Muncie, Ind.
WLBK	50	Kansas City, Mo.
WLBY	50	Iron Mountain, Mich.
WMBM	10	Memphis, Tenn.
WOKT	500	Rochester, N. Y.
WPRC	100	Harrisburg, Pa.
WRCV	100	Norfolk, Va.
WTFI	250	Toccoa, Ga.

Boone Biblical College Sioux Falls Broadcast Assn. L. Kessler H. L. Dewing & Charles Messter Donald A. Burton Everett L. Dillard Aimone Electric Seventh Day Adventist Church Titus-Ets Corporation Wilson Printing & Radio Co. Radio Corp. of Va. Toccoa Falls Institute		

1440 kilocycles 208.2 meters

KFVD	250	Venice, Calif.
KGCN	50	Concordia, Kansas
KGCR	15	Brookings, S. D.
KGCU	100	Mandan, N. D.
KGFJ	100	Los Angeles, Calif.
WENR	500	Chicago, Ill.
WGM	50	Jeannette, Pa.
WJBZ	100	Chicago Heights, Ill.
WJPW	30	Ashtabula, O.
WLBZ	250	Dover-Foxcroft, Me.
WMBE	10	St. Paul, Minn.
WNBA	200	Forest Park, Ill.
WRAF	100	La Porte, Ind.
WRPI	100	Terre Haute, Ind.

W. J. & C. I. McWhinnie Concordia Brdcastg. Co. Cutler's Radio Brdcastg. Service Mandan Radio Assn. Ben S. McGlashan Great Lakes Radio Bdcstg. Co. Verne & Elton Spencer Roland G. Palmer & Antony Coppotelli J. P. Wilson Thompson L. Guernsey Dr. C. S. Stevens Michael T. Rafferty The Radio Club, Inc. Rose Polytechnic Inst. Brdcastg. Assn.		

1450 kilocycles 206.8 meters

KGDW	100	Humboldt, Nebr.
KGDY	15	Oldham, S. D.
KGGF	100	Picher, Okla.
KGTT	50	San Francisco, Calif.
KLIT	10	Portland, Ore.
WHPP	10	New York, N. Y.
WLBV	50	Mansfield, Ohio
WMRJ	10	Jamaica, N. Y.
WNBF	50	Endicott, N. Y.
WNBK	50	Knoxville, Tenn.
WTRL	15	Midland Park, N. J.

Frank J. Rist J. Albert Loesch Dr. D. L. Connoll Glad Tidings Temple Lewiss Irvine Thompson Bronx Brdcastg. Co. Mansfield Brdcastg. Assn. Peter J. Prinz Howitt-Wood Radio Co. Lonsdale Baptist Church Technical Radio Laboratory		

INDEX BY FREQUENCIES AND DIAL NUMBERS

1460 kilocycles 205.4 meters

--	--	--

KFX Y	25	Flagstaff, Ariz.
KGDE	50	Barrett, Minn.
KGEO	100	Grand Island, Nebr.
KGEZ	100	Kalispell, Mont.
KGFF	25	Alva, Okla.
KGGH	50	Cedar Grove, La.
WABF	250	Kingston, Pa.
WKBL	15	Monroe, Mich.
WMBD	250	Peoria Hts., Ill.
WOBT	15	Union City, Tenn.
WRK	100	Hamilton, Ohio
WSVS	50	Buffalo, N. Y.

Mary M. Costigan
 Jaren Drug Co.
 Hotel Yancey
 Flathead Brdcastg. Assn.
 Earl E. Hampshire
 Bates Radio & Electric Co.
 Markle Brdcastg. Corp.
 Monrona Radio Mfg. Co.
 Peoria Heights Radio Lab.
 Tittsworth's Radio & Music Shop
 S. W. Doron & John C. Slade
 Seneca Vocational School

1470 kilocycles 204.0 meters

--	--	--

KFXD	15	Jerome, Idaho
KGFO	100	Portable
WBBZ	100	Chicago, Ill.
WHBL	100	Chicago, Ill.
WIBS	150	Elizabeth, N. J.
WIBW	100	Chicago, Ill.
WKEN	250	Kenmore, N. Y.
WLBN	50	Chicago, Ill.
WLBX	250	L. I. City, N. Y.
WMB A	100	Newport, R. I.
WMBH	100	Joplin, Mo.
WMBQ	100	Brooklyn, N. Y.
WOBR	10	Portable
WSAX	100	Chicago, Ill.
WTFF	50	Mt. Vernon Hills, Va.

Service Radio Co.
 Brant Radio Power Co.
 C. L. Carrell
 C. L. Carrell
 Lt. Thos. F. Hunter
 C. L. Carrell
 Radio Station WKEN, Inc.
 William E. Hiler
 John N. Braby
 LeRoy Joseph Beebe
 Edwin Dudley Aber
 Paul J. Gollhofer
 Earl Smith
 Zenith Radio Corp.
 Independent Pub. Co.

1480 kilocycles 202.6 meters

--	--	--

KGBS	100	Seattle, Wash.
KGBY	50	Columbus, Nebr.
KGDJ	10	Cresco, Iowa
KGDR	15	San Antonio, Tex.
KGEQ	50	Minneapolis, Minn.
WLBQ	25	Atwood, Ill.
WNBQ	15	Rochester, N. Y.
WPSW	50	Philadelphia, Pa.

Arthur C. Dailey
 Thelen & Taddiken
 R. R. Rathert
 Joe B. McShane
 Fred W. Herrmann
 E. Dale Trout
 Gordon P. Brown
 School of Wireless Telegraphy

1490 kilocycles 201.2 meters

--	--	--

KGEH	50	Eugene, Ore.
KGEY	15	Denver, Colo.
WALK	50	Willow Grove, Pa.
WATT	100	Boston, Mass.
WCBR	100	Providence, R. I.
WG MU	100	New York City
WHBM	100	Chicago, Ill.
WIBJ	100	Chicago, Ill.
WIBM	100	Chicago, Ill.
WKBG	100	Chicago, Ill.
WRMU	100	Portable

Eugene Broadcast Station
 J. W. Dietz
 Albert A. Walker
 Edison Elec. Illuminating Co.
 Charles H. Messter
 Atlantic Broadcasting Corp.
 C. L. Carrell
 C. L. Carrell
 C. L. Carrell
 C. L. Carrell
 Atlantic Broadcasting Corp.

1500 kilocycles 199.9 meters

--	--	--

KGFN	15	Aneta, N. D.
KUJ	10	Seattle, Wash.
KWBS	15	Portland, Ore.
WKBJ	15	Ludington, Mich.
WNBL	15	Bloomington, Ill.
WRAH	250	Providence, R. I.

Henry Haraldson & Carl Thingstad
 Puget Sound Radio Bdcstg. Co.
 Schaeffer Radio Co.
 K. L. Ashbacher
 Harvey R. Storm
 Stanley N. Read

A COMPLETE INDEX BY CALL LETTERS

CFAC 690			CHYC 730		
Calgary, Alta.			Montreal, Que.		
CFCA 840			CJBC 840-1030		
Toronto, Ont.			Toronto, Ont.		
CFCF 730 x			CJBR 960		
Montreal, Que.			Regina, Sask.		
CFCH 600			CJCA 580		
Iroquois Fall, Ont.			Edmonton, Alta.		
CFCN 690			CJ CJ 690		
Calgary, Alta.			Calgary, Alta.		
CFCQ 730			CJCU 1210		
Vancouver, B. C.			Mission City, B. C.		
CFCT 910			CJGC 910		
Victoria, B. C.			London, Ont.		
CFCY 960			CJGX 630		
Charlottetown, P.E.I.			Yorkton, Sask.		
CFGC 1010			CJOR 1030		
Brantford, Ont.			Sea Island, B. C.		
CFJC 1120			CJRM 1010		
Kamloops, B. C.			Moose Jaw, Sask.		
CFLC 1010			CJSC 840		
Prescott, Ont.			Toronto, Ont.		
CFMC 1120			CJWC 910		
Kingston, Ont.			Saskatoon, Sask.		
CFNB 1210			CJYC 1030		
Fredericton, N. B.			Scarboro, Ont.		
CFQC 910			CKAC 730		
Saskatoon, Sask.			Montreal, Que. x		
CFRB 1030			CKCD 730		
Twp. of King, Ont.			Vancouver, B. C.		
CFRC 1120			CKCI 880		
Kingston, Ont.			Quebec, Que.		
CFYC 730			CKCK 960		
Burnaby, B. C.			Regina, Sask.		
CHCS 880			CKCL 840		
Hamilton, Ont.			Toronto, Ont.		
CHCY 580			CKCO 690		
Edmonton, Alta.			Ottawa, Ont.		
CHGS 1120			CKCR 1120		
Summerside, P. E. I.			St. George, Ont.		
CHIC 840			CKCV 880		
Toronto, Ont.			Quebec, Que.		
CHMA 580			CKCW 960		
Edmonton, Alta.			Bowmanville, Ont.		
CHML 880			CKCX 1030		
Hamilton, Ont.			Scarboro, Ont.		
CHNC 840			CKFC 730		
Toronto, Ont.			Vancouver, B. C.		
CHNS 930			CKLC 840		
Halifax, N. S.			Red Deer, Alta.		
CHPC 730			CKMC 1210		
Vancouver, B. C.			Cobalt, Ont.		
CHRC 880			CKNC 840		
Quebec, Que.			Toronto, Ont.		
CHSC 1120			CKOC 880		
Unity, Sask.			Hamilton, Ont.		
CHUC 910			CKPC 1210		
Saskatoon, Sask.			Preston, Ont.		
CHWC 960			CKPR 1120		
Regina, Sask.			Midland, Ont.		

A COMPLETE INDEX BY CALL LETTERS

KFIF 1400				KFPY 1220			
Portland, Ore.				Spokane, Wash.			
KFIO 1220				KFOA 930			
Spokane, Wash.				St. Louis, Mo.			
KFIU 1330				KFOB 920			
Juneau, Alas.				Ft. Worth, Tex.			
KFIZ 1120				KFQD 870			
Fond Du Lac, Wis.				Anchorage, Alas.			
KFJB 1210				KFQU 1200			
Marshalltown, Ia.				Holy City, Cal.			
KFJF 1100				KFQW 1380			
Okla. City, Okla.				Seattle, Wash.			
KFJI 1200				KFOZ 1290			
Astoria, Ore.				Hollywood, Cal.			
KFJM 900				KFRC 660			
Grand Forks, N. D.				San Francisco, Cal.			
KFJR 1060				KFRU 1200			
Portland, Ore.				Columbia, Mo.			
KFJY 680				KFSD 680			
Fort Dodge, Ia.				San Diego, Cal.			
KFJZ 1200				KFSG 1090			
Ft. Worth, Tex.				Los Angeles, Cal.			
KFKA 750				KFUL 1160			
Greeley, Colo.				Galveston, Tex.			
KFKB 1240				KFUM 1270			
Milford, Kan.				Colorado Spgs. Colo.			
KFKU 1180				KFUO 550			
Lawrence, Kan.				St. Louis, Mo.			
KFKX 570				KFUP 1320			
Chicago, Ill.	X	64	59.5	Denver, Colo.			
KFKZ 1330				KFUR 1330			
Kirksville, Mo.				Ogden, Utah			
KFLV 1120				KFUS 1170			
Rockford, Ill.				Oakland, Cal.			
KFLX 1110				KFUT 600			
Galveston, Tex.				Salt Lake City, Utah			
KFMR 680				KFVD 1440			
Sioux City, Ia.				Venice, Cal.			
KFMX 1270				KFVE 1280			
Northfield, Minn.				St. Louis, Mo.			
KFNF 650				KFVG 1330			
Shenandoah, Ia.				Independence, Kan.			
KFOA 670				KFVI 1260			
Seattle, Wash.				Houston, Tex.			
KFON 1240				KFVS 1340			
Long Beach, Cal.				Cape Girardeau, Mo.			
KFOR 1380				KFWB 830			
Lincoln, Nebr.				Los Angeles, Cal.			
KFOX 1160				KFWC 1350			
Omaha, Nebr.				San Bernardino, Cal.			
KFOY 1050				KFWF 1400			
St. Paul, Minn.				St. Louis, Mo.			
KFPL 1090				KFWI 1120			
Dublin, Tex.				San Francisco, Cal.			
KFPM 1300				KFWM 1270			
Greenville, Tex.				Oakland, Cal.			
KFPR 1290				KFWO 1000			
Los Angeles, Cal.				Avalon, Cal.			
KFPW 1140				KFXD 1470			
Cartersville, Mo.				Jerome, Idaho			

A COMPLETE INDEX BY CALL LETTERS

KFXF	1060				KGEF	1140			
Denver, Colo.					Los Angeles, Cal.				
KFXJ	1390				KGEH	1490			
Edgewater, Colo.					Eugene, Ore.				
KFXR	1340				KGEK	1140			
Okla. City, Okla.					Yuma, Colo.				
KFXY	1460				KGEN	1330			
Flagstaff, Ariz.					El Centro, Cal.				
KFYO	1420				KGEO	1460			
Breckenridge, Tex.					Grand Island, Nebr.				
KFYR	1250				KGEQ	1480			
Bismarck, N. D.					Minneapolis, Minn.				
KGA	1150				KGER	1390			
Spokane, Wash.					Long Beach, Cal.				
KGAR	1280				KGEU	1320			
Tucson, Ariz.					Lower Lake, Cal.				
KGBS	1480				KGEW	1370			
Seattle, Wash.					Ft. Morgan, Colo.				
KGBU	1310				KGEY	1490			
Ketchikan, Alas.					Denver, Colo.				
KGBX	1040				KGEZ	1460			
St. Joseph, Mo.					Kalispell, Mont.				
KGBY	1480				KGFB	1340			
Columbus, Nebr.					Iowa City, Ia.				
KGBZ	1410				KGFF	1460			
York, Nebr.					Alva, Okla.				
KGCA	1210				KGFG	1390			
Decorah, Iowa					Oklahoma City				
KGCB	1390				KGFH	1340			
Okla. City, Okla.					La Crescenta, Cal.				
KGCH	1020				KGFI	1360			
Wayne, Nebr.					San Angelo, Tex.				
KGCI	1360				KGFJ	1440			
San Antonio, Tex.					Los Angeles, Cal.				
KGCL	1300				KGFK	1340			
Seattle, Wash.					Hallock, Minn.				
KGCN	1440				KGFL	1350			
Concordia, Kan.					Trinidad, Colo.				
KGCR	1440				KGFM	1420			
Brookings, S. D.					Yuba City, Cal.				
KGCU	1440				KGFN	1500			
Mandan, N. D.					Aneta, N. D.				
KGCX	1230				KGFO	1470			
Vida, Mont.					Portable				
KGDA	1180				KGFP	1410			
Dell Rapids, S. D.					Mitchell, S. D.				
KGDE	1460				KGFW	1000			
Barrett, Minn.					Ravenna, Nebr.				
KGDJ	1480				KGFX	1180			
Cresco, Iowa					Pierre, S. D.				
KGDM	1380				KGGF	1450			
Stockton, Cal.					Picher, Okla.				
KGDR	1480				KGGH	1460			
San Antonio, Tex.					Cedar Grove, La.				
KGDW	1450				KGO	780			
Humboldt, Nebr.					Oakland, Cal.				
KGDX	1410				KGRC	1360			
Shreveport, La.					San Antonio, Tex.				
KGDY	1450				KGRS	1230			
Oldham, S. D.					Amarillo, Tex.				

A COMPLETE INDEX BY CALL LETTERS

KGTT 1450				KOCH 1160			
San Francisco, Cal.				Omaha, Neb.			
KGU 1110				KOCW 1190			
Honolulu, Hawaii				Chickasha, Okla.			
KGW 610				KOIL 1080			
Portland, Ore.				Council Bluffs, Ia.			
KGY 1230				KOIN 940			
Lacey, Wash.				Portland, Ore.			
KHJ 740				KOMO 980			
Los Angeles, Cal.				Seattle, Wash.			
KHMC 1270				KOW 630			
Harlingen, Tex.				Denver, Colo.			
KHQ 810				KOWW 1000			
Spokane, Wash.				Walla Walla, Wash.			
KICK 630				KPCB 1300			
Atlantic, Iowa				Seattle, Wash.			
KJBS 1360				KPJM 1400			
San Francisco, Cal.				Prescott, Ariz.			
KJR 860				KPLA 1190			
Seattle, Wash.				Los Angeles, Cal.			
KKP 1130				KPNP 1420			
Seattle, Wash.				Muscatine, Iowa	X		
KLCN 1050				KPO 710			
Blytheville, Ark.				San Francisco, Cal.			
KLDS 1110	X			KPPC 1310			
Independence, Mo.				Pasadena, Cal.			
KLIT 1450				KPRC 1020			
Portland, Ore.				Houston, Tex.			
KLS 1220				KPSN 950			
Oakland, Cal.				Pasadena, Cal.			
KLX 590				KQV 1110	X	0	15
Oakland, Cal.				Pittsburgh, Pa.			
KLZ 1120			X	KQW 1010			
Denver, Colo.				San Jose, Cal.			
KMA 760				KRAC 1360			
Shenandoah, Iowa				Shreveport, La.			
KMED 1200				KRE 1170			
Medford, Ore.				Berkeley, Cal.			
KMIC 1340				KRLD 650		43.5	45.5
Inglewood, Cal.				Dallas, Tex.			
KMJ 820				KRLO 1390			
Fresno, Cal.				Los Angeles, Cal.			
KMMJ 790				KRSC 1420			
Clay Center, Nebr.				Seattle, Wash.			
KMO 1180				KSAC 900			
Tacoma, Wash.				Manhattan, Kan.			
KMOX 1000				KSBA 1120			
St. Louis, Mo.	0	15		Shreveport, La.			
KMTR 570				KSCJ 1230			
Hollywood, Cal.				Sioux City, Iowa			
KNRC 800				KSD 550			
Santa Monica, Cal.				St. Louis, Mo.	X		
KNX 890				KSEI 900			
Los Angeles, Cal.				Pocatello, Ida.			
KOA 920			X	KSL 990			
Denver, Colo.				Salt Lake Cty, Utah			
KOAC 1110				KSMR 1100			
Corvallis, Ore.				Santa Maria, Cal.			
KOB 760				KSO 1320			
State College, N.Mex.				Clarinda, Iowa			

A COMPLETE INDEX BY CALL LETTERS

KSOO	1430			KXL	1360		
Sioux Falls, S. D.				Portland, Ore.			
KTAB	1070			KXRO	1320		
Oakland, Cal.				Seattle, Wash.			
KTAP	1310			KYA	970		
San Antonio, Tex.				San Francisco, Cal.			
KTBI	1040			KYW	570	X	65 82
Los Angeles, Cal.				Chicago, Ill.			
KTBR	1060			KZM	1220		
Portland, Ore.				Oakland, Cal.			
KTHS	780			HHK	830		
Hot Springs, Ark.				Port au Prince, Haiti			
KTNT	1170			NAA	690		
Muscatine, Iowa				Arlington, Va.			
KTSA	1130			PWX	750	X	
San Antonio, Tex.				Havana, Cuba			
KTUE	1410			WAAD	1120		
Houston, Tex.				Cincinnati, Ohio			
KTW	760			WAAF	770		
Seattle, Wash.				Chicago, Ill.			
KUJ	1500			WAAM	860		
Seattle, Wash.				Newark, N. J.			
KUOA	1010			WAAT	1220		
Fayetteville, Ark.				Jersey City, N. J.			
KUOM	800			WAAW	860		
Missoula, Mont.				Omaha, Nebr.			
KUSD	620			WABC	920		
Vermillion, S. D.				Richmond Hill, N. Y.			0 22
KUT	1290			WABF	1460		
Austin, Tex.				Kingston, Pa.			
KVI	1280			WABI	770		
Tacoma, Wash.				Bangor, Me.			
KVOO	860	16	30.5	WABO	1180		
Bristow, Okla.				Rochester, N. Y.			
KVOS	1430			WABQ	1150		
Seattle, Wash.				Philadelphia, Pa.			
KWBS	1500			WABW	1210		
Portland, Ore.				Wooster, Ohio			
KWCR	850			WABY	1210		
Cedar Rapids, Ia.				Philadelphia, Pa.			
KWG	870			WABZ	1210		
Stockton, Cal.				New Orleans, La.			
KWJJ	1310			WADC	1010	X	
Portland, Ore.				Akron, Ohio			
KWKC	1350			WAFD	1230		
Kansas City, Mo.				Detroit, Mich.			
KWKH	760	2.5	32	WAGM	1330		
Shreveport, La.				Royal Oak, Mich.			
KWLC	1210			WAGS	1390		
Decorah, Ia.				Lexington, Mass.			
KWSC	760			WAIT	1400		
Pullman, Wash.				Taunton, Mass.			
KWTC	850			WAIU	1060		
Santa Ana, Cal.				Columbus, Ohio			
KWUC	1230			WALK	1490		
Le Mars, Iowa				Willow Grove, Pa.			
KWWG	1080			WAMD	1330		
Brownsville, Tex.				Minneapolis, Minn.			
KXA	1080			WAPI	940		
Seattle, Wash.				Auburn, Ala.			

A COMPLETE INDEX BY CALL LETTERS

WARS 1320				WBRB 1420			
Brooklyn, N. Y.				Brooklyn, N. Y.			
WASH 1170				WBSO 780			
Grand Rapids, Mich.				Wellesley Hills, Mass.			
WATT 1490				WBT 1160			
Boston, Mass.				Charlotte, N. C.			
WBAA 1100				WBZ 900 X			
Lafayette, Ind.				Springfield, Mass.			
WBAK 1000				WBZA 900			
Harrisburg, Pa.				Boston, Mass.			
WBAL 1050				WCAC 560			
Baltimore, Md.				Mansfield, Conn.			
WBAO 1120				WCAD 820			
Decatur, Ill.				Canton, N. Y.			
WBAP 600 X	54	53.5		WCAE 580 X	57	32	
Ft. Worth, Tex.				Pittsburgh, Pa.			
WBAW 1210	4	8.5		WCAH 560			
Nashville, Tenn.				Columbus, Ohio			
WBAX 1200				WCAJ 790			
Wilkes-Barre, Pa.				Lincoln, Nebr.			
WBBC 1320				WCAL 1270 X			
Brooklyn, N. Y.				Northfield, Minn.			
WBBL 1210				WCAM 1340			
Richmond, Va.				Camden, N. J.			
WBBM 770 X	13	31		WCAO 780			
Chicago, Ill.				Baltimore, Md.			
WBBP 1250				WCAT 1210			
Petoskey, Mich.				Rapid City, S. D.			
WBBR 1170 X				WCAU 890 X	11	8	
Rossville, N. Y.				Philadelphia, Pa.			
WBBW 1270				WCAX 1180			
Norfolk, Va.				Burlington, Vt.			
WBBY 600				WCAY 880			
Charleston, S. C.				Carthage, Ill.			
WBBZ 1470				WCBA 1350			
Chicago, Ill.				Allentown, Pa.			
WBCN 1040				WCBD 870 X			
Chicago, Ill.				Zion, Ill.			
WBES 1010				WCBE 1320			
Takoma Park, Md.				New Orleans, La.			
WBET 1040				WCBM 780			
Boston, Mass.				Baltimore, Md.			
WBIS 990				WCBR 1490			
Boston, Mass.				Providence, R. I.			
WBKN 1120				WCBS 1430			
Brooklyn, N. Y.				Springfield, Ill.			
WBMH 1420				WCCO 740 X	26.5	33.5	
Detroit, Mich.				Minneapolis, Minn.			
WBMS 1120				WCDA 1420			
Union City, N. J.				Cliffside, N. J.			
WBNY 1270				WCFL 620			
New York, N. Y.				Chicago, Ill.			
WBOQ 920				WCGU 1370			
Richmond Hill, N.Y.				Coney Island, N. Y.			
WBRC 1230				WCLO 1320			
Birmingham, Ala.				Camp Lake, Wis.			
WBRE 1200				WCLS 1390			
Wilkes-Barre, Pa.				Joliet, Ill.			
WBRL 1290				WCMA 1160			
Tilton, N. H.				Culver, Ind.			

A COMPLETE INDEX BY CALL LETTERS

WCOA	1200				WEBC	1240			
Pensacola, Fla.					Superior, Wis.				
WCOC	1300				WEBE	1210			
Columbus, Miss.					Cambridge, Ohio				
WCOT	1330				WEBH	820	X	18	28
Providence, R. I.					Chicago, Ill.				
WCRW	1340				WEBJ	1170			
Chicago, Ill.					New York City				
WCSH	830				WEBQ	1340			
Portland, Me.					Harrisburg, Ill.				
WCSSO	1170				WEBR	1240			
Springfield, Ohio					Buffalo, N. Y.				
WCWK	1400				WEBW	1160			
Ft. Wayne, Ind.					Beloit, Wis.				
WCWS	1400				WEDC	1240			
Danbury, Conn.					Chicago, Ill.				
WCX	680	X			WEEI	670	X		
Detroit, Mich.					Boston, Mass.				
WDAD	1330				WEHS	1390			
Nashville, Tenn.					Evanston, Ill.				
WDAE	1120				WEMC	620			
Tampa, Fla.					Berrien Sprgs., Mich.				
WDAF	810	X			WENR	1440	X		
Kansas City, Mo.					Chicago, Ill.				
WDAG	1140				WEPS	1010			
Amarillo, Tex.					Gloucester, Mass.				
WDAH	1280				WEVD	1220			
El Paso, Tex.					Woodhaven, N. Y.				
WDAY	830				WEW	850			
Fargo, N. D.					St. Louis, Mo.				
WDBJ	1300				WFAA	600	X		
Roanoke, Va.					Dallas, Tex.				
WDBK	1320				WFAM	1190			
Akron, Ohio					St. Cloud, Minn.				
WDBO	1040				WFBC	1280			
Orlando, Fla.					Knoxville, Tenn.				
WDEL	1130				WFBE	1220			
Wilmington, Del.					Cincinnati, Ohio				
WDGY	1140				WFBG	1070	X		
Minneapolis, Minn.					Altoona, Pa.				
WDOD	1220				WFBJ	1100			
Chattanooga, Tenn.					Collegeville, Minn.				
WDRC	1060				WFBL	1160			
New Haven, Conn.					Syracuse, N. Y.				
WDWF	800				WFBM	1090			
Cranston, R. I.					Indianapolis, Ind.				
WDWM	830				WFBR	1230			
Asbury Park, N. J.					Baltimore, Md.				
WDZ	1080				WFBZ	1210			
Tuscola, Ill.					Galesburg, Ill.				
WEAF	610	X			WFCI	1240			
New York City		54	70		Pawtucket, R. I.				
WEAM	1250				WFDF	800			
N. Plainfield, N. J.					Flint, Mich.				
WEAN	940				WFI	740	X		
Providence, R. I.					Philadelphia, Pa.				
WEAO	1060	X			WFIW	1070	X		
Columbus, Ohio					Hopkinsville, Ky.				
WEAR	750	X			WFKB	1340			
Cleveland, Ohio					Chicago, Ill.				

A COMPLETE INDEX BY CALL LETTERS

WFKD 1210 Philadelphia, Pa.				WHBF 1350 Rock Island, Ill.			
WFLA 820 Clearwater, Fla.				WHBL 1470 Chicago, Ill.			
WGAL 1190 Lancaster, Pa.				WHBM 1490 Chicago, Ill.			
WGBB 1220 Freeport, N. Y.				WHBN 1010 Gainesville, Fla.			
WGBC 1080 Memphis, Tenn.				WHBP 1310 Johnstown, Pa.			
WGBF 1270 Evansville, Ind.				WHBQ 1290 Memphis, Tenn.			
WGBI 1300 Scranton, Pa.				WHBU 1360 Anderson, Ind.			
WGBS 860 New York City				WHBW 1360 Philadelphia, Pa.			
WGCP 1070 Newark, N. J.				WHBY 1200 West De. Pere, Wis.			
WGES 1240 X Chicago, Ill.				WHDI 1220 Minneapolis, Minn.			
WGHP 940 Mt. Clemens, Mich.				WHEC 1180 Rochester, N. Y.			
WGL 1020 New York City				WHFC 1390 Chicago, Ill.			
WGM 1440 X Jeannette, Pa.				WHK 1130 X Cleveland, Ohio	11	12.5	
WGMU 1490 New York City				WHN 760 X New York City			
WGN 980 X Chicago, Ill.	42.5	35		WHO 560 X Des Moines, Iowa	70	82	
WGR 990 X Buffalo, N. Y.				WHPP 1450 New York City			
WGST 1110 X Atlanta, Ga.				WHT 720 X Chicago, Ill.	8	16.5	
WGW B 1370 Milwaukee, Wis.				WIAD 1040 Philadelphia, Pa.			
WGY 790 X Schenectady, N. Y.	14	28.5		WIAS 630 Burlington, Iowa			
WHA 940 X Madison, Wis.				WIBA 1250 Madison, Wis.			
WHAD 1110 Milwaukee, Wis.				WIBG 680 Elkins Park, Pa.			
WHAM 1080 Rochester, N. Y.				WIBI 1120 Flushing, N. Y.			
WHAP 1270 New York City				WIBJ 1490 Chicago, Ill.			
WHAR 1100 Atlantic City, N. J.				WIBM 1490 Chicago, Ill.			
WHAS 650 X Louisville, Ky.				WIBO 720 Chicago, Ill.	24	35	
WHAZ 790 Troy, N. Y.				WIBR 1200 Steubenville, O.			
WHB 890 X Kansas City, Mo.				WIBS 1470 Elizabeth, N. J.			
WHBA 1150 Oil City, Pa.				WIBU 1380 Poynette, Wis.			
WHBC 1270 Canton, Ohio				WIBW 1470 Chicago, Ill.			
WHBD 1350 Bellefontaine, O.				WIBX 1260 Utica, N. Y.			

A COMPLETE INDEX BY CALL LETTERS

WIBZ 1300				WJR 680	32	41
Montgomery, Ala.				Detroit, Mich.		
WICC 1400				WJZ 660 X	45	43
Bridgeport, Conn.				New York City		
WIL 1160				WKAQ 880		
St. Louis, Mo.				San Juan, P. R.		
WIOD 1210	0	6.5		WKAR 1050		
Miami Beach, Fla.				East Lansing, Mich.		
WIP 590				WKAV 1340		
Philadelphia, Pa.				Laconia, N. H.		
WJAD 670 X				WKBB 1390		
Waco, Tex.				Joliet, Ill.		
WJAG 1050				WKBC 1370		
Norfolk, Nebr.				Birmingham, Ala.		
WJAK 1280				WKBE 1310		
Kokomo, Ind.				Webster, Mass.		
WJAM 850				WKBF 1190		
Cedar Rapids, Iowa				Indianapolis, Ind.		
WJAR 620 X				WKBG 1490		
Providence, R. I.				Chicago, Ill.		
WJAS 1110	0	13.5		WKBH 1360		
Pittsburgh, Pa.	X			La Crosse, Wis.		
WJAX 890 X	11	22.5		WKBI 930		
Jacksonville, Fla.				Chicago, Ill.		
WJAY 1320	0	5.5		WKBL 1460		
Cleveland, Ohio				Monroe, Mich.		
WJAZ 1140 X				WKBN 1400		
Chicago, Ill.				Youngstown, O.		
WJBA 930				WKBO 1370		
Joliet, Ill.				Jersey City, N. J.		
WJBB 870				WKBP 1410		
Tampa, Fla.				Battle Creek, Mich.		
WJBC 1320				WKBQ 1370		
La Salle, Ill.				New York City		
WJBI 1140				WKBS 1380		
Red Bank, N. J.				Galesburg, Ill.		
WJBK 1360				WKBT 1190		
Ypsilanti, Mich.				New Orleans, La.		
WJBL 1410 X				WKBV 1380		
Decatur, Ill.				Brookville, Ind.		
WJBO 1140				WKBW 1380		
New Orleans, La.				Buffalo, N. Y.		
WJBR 1320				WKBZ 1500		
Appleton, Wis.				Ludington, Mich.		
WJBT 770	23	30.5		WKDR 930		
Chicago, Ill.				Kenosha, Wis.		
WJBU 1400				WKEN 1470		
Lewisburg, Pa.				Kenmore, N. Y.		
WJBW 1260				WKJC 1190		
New Orleans, La.				Lancaster, Pa.		
WJBY 1280				WKRC 900		
Gadsden, Ala.				Cincinnati, O.		
WJBZ 1440				WKY 1040		
Chicago Heights, Ill.				Oklahoma City		
WJJD 820 X	18	27		WLAC 1330		
Mooseheart, Ill.				Nashville, Tenn.		
WJKS 1290				WLAP 1120		
Gary, Ind.				Louisville, Ky.		
WJPW 1440				WLB 1220		
Ashtabula, Ohio				Minneapolis, Minn.		

A COMPLETE INDEX BY CALL LETTERS

WLBC	1430				WMAN	1280			
Muncie, Ind.					Columbus, O.				
WLBFB	1430				WMAQ	670	52	42	
Kansas City, Mo.					Chicago, Ill.				
WLBG	1400				WMAY	1210			
Petersburg, Va.					St. Louis, Mo.				
WLBH	1290				WMAZ	1110			
Farmingdale, N. Y.					Macon, Ga.				
WLB I	1260				WMBA	1470			
Wenona, Ill.					Newport, R. I.				
WLBL	940				WMBB	1190			
Stevens Pt., Wis.					Chicago, Ill.				
WLB M	1300				WMBC	1230			
Cambridge, Mass.					Detroit, Mich.				
WLB N	1470				WMBD	1460			
Chicago, Ill.					Peoria Hts., Ill.				
WLBO	1380				WMBE	1440			
Galesburg, Ill.					St. Paul, Minn.				
WLBOQ	1480				WMBF	780			
Atwood, Ill.					Miami Beach, Fla. X				
WLB R	930				WMBG	1360			
Belvidere, Ill.					Richmond, Va.				
WLBT	930				WMBH	1470			
Crown Point, Ind.					Joplin, Mo.				
WLB V	1450				WMB I	1140			
Mansfield, O.					Chicago, Ill.				
WLB W	1020	0	14.5		WMB J	1290			
Oil City, Pa.					Monessen, Pa.				
WLB X	1470				WMB L	1310			
L. I. City, N. Y.					Lakeland, Fla.				
WLB Y	1430				WMB M	1430			
Iron Mountain, Mich.					Memphis, Tenn.				
WLB Z	1440				WMB O	1360			
Dover-Foxcroft, Me.					Auburn, N. Y.				
WL C I	1210				WMB Q	1470			
Ithaca, N. Y.					Brooklyn, N. Y.				
WLB	980	0	21.5		WMB R	1190			
Chicago, Ill. X					Tampa, Fla.				
WLIT	740				WMB S	1280			
Philadelphia, Pa.					Harrisburg, Pa.				
WLS	870	0	22.5		WMB U	1380			
Chicago, Ill. X					Pittsburgh, Pa.				
WLS I	800				WMB W	1400			
Cranston, R. I.					Youngstown, O.				
WLTH	1170				WMC	580			
Brooklyn, N. Y.					Memphis, Tenn.				
WLTS	620				WMCA	810			
Chicago, Ill.					New York City				
WLW	700	28	38.5		WMES	1420			
Cincinnati, O. X					Boston, Mass.				
WLWL	810				WMPC	1280			
New York City X					Lapeer, Mich.				
WMAC	1330				WMRJ	1450			
Casnovia, N. Y.					Jamaica, N. Y.				
WMAF	700				WMSG	1270			
S. Dartmouth, Mass.					New York City				
WMAK	550				WNAC	850			
Lockport, N. Y.					Boston, Mass.				
WMAL	990				WNAD	1250			
Washington, D. C.					Norman, Okla.				

A COMPLETE INDEX BY CALL LETTERS

WNAL 1160				WOO 590			
Omaha, Nebr.				Philadelphia, Pa.			
WNAT 1040				WOOD 1150			
Philadelphia, Pa.				Grand Rapids, Mich.			
WNAX 990				WOQ 890			
Yankton, S. D.				Kansas City, Mo.			
WNBA 1440				WOR 710	X	32.5	38
Forest Park, Ill.				Newark, N. J.			
WNBFB 1450				WORD 770	X		
Endicott, N. Y.				Batavia, Ill.			
WNBH 1150				WOS 640	X		
New Bedford, Mass.				Jefferson City, Mo.			
WNBK 1450				WOW 590			
Knoxville, Tenn.				Omaha, Nebr.			
WNBL 1500				WOWO 1310			
Bloomington, Ill.				Ft. Wayne, Ind.			
WNBO 1420				WPAP 760		26.5	32
Washington, Pa.				Cliffside, N. J.			
WNBQ 1480				WPCC 1340			
Rochester, N. Y.				Chicago, Ill.			
WNBK 1310				WPCH 970			
Memphis, Tenn.				Hoboken, N. J.			
WNBX 1240				WPEP 1390			
Springfield, Vt.				Waukegan, Ill.			
WNJ 1070				WPG 1100			
Newark, N. J.				Atlantic City, N. J.	X	0	14.5
WNOX 1130				WPRC 1430			
Knoxville, Tenn.				Harrisburg, Pa.			
WNRC 1340				WPSC 1000			
Greensboro, N. C.				State College, Pa.			
WNYC 570				WPSW 1480			
New York City	X			Philadelphia, Pa.			
WOAI 990				WPTF 720			
San Antonio, Tex.	X			Raleigh, N. C.			
WOAN 1050				WQAA 1390			
Lawrenceburg, Tenn.				Parkesburg, Pa.			
WOAX 1250				WQAM 930			
Trenton, N. J.				Miami, Fla.			
WOBR 1470				WQAN 1300			
Portable				Scranton, Pa.			
WOBT 1460				WQAO 760			
Union City, Tenn.				Cliffside, N. J.			
WOBU 1120				WQJ 670			
Charleston, W. Va.				Chicago, Ill.	X		
WOC 800				WRAF 1440			
Davenport, Iowa	X			La Porte, Ind.			
WOCL 1340				WRAH 1500			
Jamestown, N. Y.				Providence, R. I.			
WODA 1020				WRAC 1060			
Paterson, N. J.				Escanaba, Mich.			
WOI 1130				WRAM 1210			
Ames, Iowa		11	10.5	Galesburg, Ill.			
WOK 1190	X	0	10.5	WRAV 880			
Chicago, Ill.				Yellow Springs, O.			
WOKO 1390				WRAW 1260			
Peekskill, N. Y.				Reading, Pa.			
WOKT 1430				WRAX 1410			
Rochester, N. Y.				Philadelphia, Pa.			
WOMT 1350				WRBC 1260			
Manitowoc, Wis.				Valparaiso, Ind.			

A COMPLETE INDEX BY CALL LETTERS

WRC	640			WSKC	800		
Washington, D. C.	X			Bay City, Mich.			
WRCV	1430			WSM	880	X	0 21.5
Norfolk, Va.				Nashville, Tenn.			
WREC	1180			WSMB	930		
Memphis, Tenn.				New Orleans, La.	X		
WREN	1180			WSMK	1010		
Lawrence, Kan.				Dayton, O.			
WRES	1380			WSOE	1110		
Quincy, Mass.				Milwaukee, Wis.			
WRHF	930			WSRO	780		
Washington, D. C.				Middletown, O.			
WRHM	1150			WSSH	1040		
Minneapolis, Minn.				Boston, Mass.			
WRK	1460			WSUI	710		
Hamilton, O.				Iowa City, Iowa	X		
WRM	1100			WSVS	1460		
Urbana, Ill.				Buffalo, N. Y.			
WRMU	1490			WSYR	1330		
Portable				Syracuse, N. Y.			
WRNY	970			WTAD	1270		
New York City				Quincy, Ill.			
WRPI	1440			WTAG	580		
Terre Haute, Ind.				Worcester, Mass.			
WRR	850			WTAL	1070		
Dallas, Tex.				Toledo, O.			
WRRS	930			WTAM	750	X	20 43
Racine, Wis.				Cleveland, O.			
WRSC	1420			WTAQ	1180		
Chelsea, Mass.				Eau Claire, Wis.			
WRST	1420			WTAR	1140		
Bay Shore, N. Y.				Norfolk, Va.			
WRVA	1180	X		WTAS	1040		
Richmond, Va.				Elgin, Ill.			
WSAI	830	X	10 26	WTAW	970		
Cincinnati, O.				College Station, Tex.			
WSAJ	1340			WTAX	930		
Grove City, Pa.				Streator, Ill.			
WSAN	1350			WTAZ	1360		
Allentown, Pa.				Richmond, Va.			
WSAR	1190			WTFF	1470		
Portsmouth, R. I.				Mt. Vernon, Hills, Va.			
WSAX	1470			WTFI	1430		
Chicago, Ill.				Toccoa, Ga.			
WSAZ	1240			WTHS	1110		
Huntington, W. Va.				Atlanta, Ga.			
WSB	630	X	48 65	WTIC	560	X	
Atlanta, Ga.				Hartford, Conn.			
WSBC	1290			WTMJ	1020		
Chicago, Ill.				Milwaukee, Wis.			
WSBF	680			WTRL	1450		
St. Louis, Mo.				Midland Park, N. J.			
WSBT	1260			WWAE	1320		
South Bend, Ind.				Chicago, Ill.			
WSDA	1320			WWJ	850	X	15.5 31
New York City				Detroit, Mich.			
WSEA	1140			WWL	1090		
Virginia Beach, Va.				New Orleans, La.			
WSIX	1410			WWNC	1010		
Springfield, Tenn.				Asheville, N. C.			

INDEX BY LOCATIONS WITH MAP KEY

ALABAMA			COLORADO		
Auburn K-20-b	WAPI	940	Colorado Springs H-10	KFUM	1270
Birmingham K-19-a	WBRC	1230	Denver G-10-b	KFEL	1210
	WKBC	1370		KFUP	1320
Gadsden K-20-a	WJBY	1280		KFXF	1060
Montgomery K-19-b	WIBZ	1300		KGEY	1490
				KLZ	1120
ALASKA				KOA	920
Anchorage	KFOD	870	Edgewater G-10	KOW	630
Juneau	KFIU	1330	Fort Morgan G-11	KFXJ	1390
Ketchikan	KGBU	1310	Greeley F-10	KGEW	1370
ARIZONA			Gunnison H-9	KFKA	750
Flagstaff J-7	KFXY	1460	Mansfield E-27-1	KFHA	1180
Phoenix K-7	KFAD	1100	Trinidad H-11	KGFL	1350
	KFCB	1230	Yuma G-11	KGEK	1140
Prescott J-6	KPJM	1400	CONNECTICUT		
Tucson L-7	KGAR	1280	Bridgeport F-26	WICC	1400
ARKANSAS			Danbury F-26	WCWS	1400
Blytheville I-18	KLCN	1050	Hartford E-26-d	WTIC	560
Fayetteville I-16	KUOA	1010	Mansfield E-27-1	WCAC	560
Hot Springs J-16	KTHS	780	New Haven F-26-b	WDRG	1060
CALIFORNIA			DELAWARE		
Avalon K-3	KFWO	1000	Wilmington G-25	WDEL	1130
Berkeley H-1-a	KRE	1170	DISTRICT OF COLUMBIA		
Burbank J-4	KELW	1310	Washington G-24-c	WMAL	990
El Centro K-5	KGEM	1330		WRC	640
Fresno I-3	KMJ	820		WRHF	930
Holy City	KFOU	1200	FLORIDA		
Hollywood K-3	KFOZ	1290	Clearwater N-21	WFLA	820
	KMTR	570	Gainesville M-21	WBHN	1010
Inglewood K-4	KMIC	1340	Jacksonville M-22	WJAX	890
La Crescenta	KGPH	1340	Lakeland N-22	WMBL	1310
Long Beach K-4-a	KFON	1240	Miami O-23	WQAM	930
	KGER	1390	Miami Beach O-23	WIOD	1210
Los Angeles K-3-b	KFI	640		WMBF	780
	KFPR	1290	Orlando N-22	WDBO	1040
	KFSG	1090	Pensacola L-19	WCOA	1200
	KFWB	830	Tampa N-22-b	WDAE	1120
	KGEF	1140		WJBB	870
	KGfJ	1440		WMBR	1190
	KHJ	740	GEORGIA		
	KNX	890	Atlanta K-20-a	WGST	1110
	KPLA	1190		WSB	630
	KRLO	1390		WTHS	1110
	KTBI	1040	Macon K-21	WMAZ	1110
Lower Lake	KGEU	1320	Toccoa J-21	WTFI	1430
Oakland H-1-b	KFUS	1170	HAITI		
	KFWM	1270	Port au Prince	HHK	830
	KGO	780	HAWAII		
	KLS	1220	Honolulu	KGU	1110
	KLX	590	IDAHO		
	KTAB	1070	Boise D-4	KFAU	1050
	KZM	1220	Jerome E-5	KFXD	1470
Pasadena J-4	KPPC	1310	Kellogg B-5	KFEY	1290
	KPSN	950	Pocatello E-7	KSEI	900
Sacramento H-2-a	KFBK	560	ILLINOIS		
San Bernardino J-4	KFWC	1350	Atwood G-18	WLBO	1480
San Diego K-4-b	KFBC	560	Batavia F-18-c	WORD	770
	KFSD	680	Belvidere E-18	WLBR	930
San Francisco H-1-c	KFRC	660	Bloomington G-18	WNBL	1500
	KFWI	1120	Carthage F-17-e	WCAZ	880
	KGTT	1450	Chicago E-19-g	KFKX	570
	KJBS	1360		KYW	570
	KPO	710		WAAF	770
	KYA	970		WBBM	770
San Jose I-2	KOW	1010		WBBZ	1470
Santa Ana K-4	KWTC	850		WBCN	1040
Santa Barbara J-3	KFCR	1420		WCFL	620
Santa Maria J-2-b	KSMR	1100			
Santa Monica K-3	KSNR	800			
Stockton H-2-b	KGDM	1380			
	KWG	870			
Venice K-3	KFVD	1440			
Yuba City	KGFM	1420			

INDEX BY LOCATIONS WITH MAP KEY

Chicago E-19-g	WCRW 1340	IOWA	WOI 1130
	WEBH 820	Ames E-16-c	KICK 630
	WEDC 1240	Atlantic F-15	KFGO 1430
	WENR 1440	Boone E-16	WIAS 630
	WFKB 1340	Burlington F-17-d	KWCR 780
	WGES 1240	Cedar Rapids E-17-a	WJAM 850
	WGN 980		KSO 1320
	WHBL 1470	Clarinda F-15-c	KOIL 1080
	WHBM 1490	Council Bluffs F-15-b	KGDJ 1480
	WHFC 1390	Cresco D-16	WOC 800
	WHT 720	Davenport F-17-a	KGCA 1210
	WIBJ 1490	Decorah D-17	KWLC 1210
	WIBM 1490		WHO 560
	WIBO 720	Des Moines F-16-a	KFIJ 680
	WIBW 1470	Fort Dodge E-16-a	KGFB 1340
	WJAZ 1140	Iowa City E-17-b	WSUI 710
	WJBT 770		KWUC 1230
	WKBG 1490	Le Mars E-15	KFJB 1210
	WKBI 930	Marshalltown E-16-d	KPNP 1420
	WLBN 1470	Muscatine F-17-b	KTNT 1170
	WLIB 980		KFHL 1410
	WLS 870	Oskaloosa F-16-b	KFNF 650
	WLTS 620	Shenandeah F-15-c	KMA 760
	WMAQ 670		KFMR 680
	WMBB 1190	Sioux City E-15	KSCJ 1230
	WMBI 1140		
	WOK 1190	KANSAS	
	WPCC 1340	Concordia G-14	KGCN 1440
	WQJ 670	Independence H-15-b	KFVG 1330
	WSAX 1470	Lawrence G-15-a	KFKU 1180
	WSBC 1290		WREN 1180
	WVAE 1320	Manhattan G-14-a	KSAC 900
Chicago Heights	WJBZ 1440	Milford G-14	KFKB 1240
Decatur G-18	WBAO 1120	Wichita H-14-a	KFH 1220
	WJBL 1410		
Elgin E-18	WTAS 1040	KENTUCKY	
Evanston E-19	WEHS 1390	Hopkinsville I-19	WFIW 1070
Forest Park E-19	WNB 1440	Louisville H-20	WHAS 650
Galesburg F-18-a	WFBZ 1210		WLAP 1120
	WKBS 1380		
	WLBO 1380	LOUISIANA	
	WRAM 1210	Cedar Grove M-17	KGGH 1460
	WBO 1340	New Orleans M-17	WABZ 1210
	WCLS 1390		WCBE 1320
	WJBA 930		WJBO 1140
	WKBB 1390		WJBW 1260
La Salle F-18-d	WJBC 1320		WKBT 1190
Mooseheart E-18-e	WJJD 820		WSMB 930
Peoria Heights G-18	WMBD 1460		WWL 1090
Quincy G-17	WTAD 1270	Shreveport K-16	KFDX 1278
Rockford E-18-c	KFLV 1120		KGDJ 1410
Rock Island F-17-c	WHBF 1350		KRAC 1360
Springfield G-18	WCBS 1430		KSBA 1120
Streator F-18-e	WTAX 930		KWKH 760
Tuscola G-19-b	WDZ 1080		
Urbana G-19-a	WRM 1100		
Waukegan E-19	WPEP 1390	MAINE	
Wenona	WLB 1260	Bangor C-28-b	WABI 770
Zion E-19-c	WCBD 870	Dover-Foxcroft C-28	WLBZ 1440
		Portland D-28-b	WCSH 830
INDIANA		MARYLAND	
Anderson G-20-a	WHBU 1360	Baltimore G-24-a	WBAL 1050
Brookville G-20	WKBV 1380		WCAO 780
Crown Point F-19	WLBT 930		WCBM 780
Culver F-19-d	WGMA 1160		WFBR 1230
Evansville H-19	WGBF 1270		WBES 1010
Fort Wayne F-20-b	WCWK 1400		
	WOVO 1310	MASSACHUSETTS	
Gary F-19	WJKS 1290	Boston E-27-c	WATT 1490
Indianapolis G-19-c	WFBM 1090		WBET 1040
	WKBF 1090		WBIS 990
Kokomo F-19-g	WJAK 1280		WBZA 900
Lafayette F-19-f	WBAA 1100		WEI 670
La Porte F-19-c	WRAF 1440		WMES 1420
Muncie G-20	WLBC 1430		WNAC 850
South Bend F-20-a	WSBT 1260		WSSH 1040
Terre Haute G-19	WRPI 1440		WLBW 1300
Valparaiso F-19-b	WRBC 1260	Cambridge E-27-c	

INDEX BY LOCATIONS WITH MAP KEY

Chelsea E-27	WRSC	1420	St. Louis H-18-a	KMOX	1000
Gloucester E-27	WEPS	1010		KSD	550
Lexington E-27	WAGS	1390		WEW	850
New Bedford E-27-g	WNBH	1150		WIL	1160
Quincy E-27	WRSE	1380		WMAF	1210
South Dartmouth F-27	WMAF	700		WSBF	680
Springfield E-26-b	WBZ	900			
Taunton E-27-e	WAIT	1400	MONTANA		
Webster E-27-d	WKBE	1310	Havre A-8	KFBB	1090
Wellesley Hills E-27	WBSO	780	Kalispell A-5	KGEZ	1460
Worcester E-27-b	WTAG	580	Missoula B-6	KUOM	800
			Vida B-10	KGCC	1230
MICHIGAN					
Battle Creek E-20	WKBP	1410	NEBRASKA		
Bay City D-21	WSKC	800	Clay Center G-14	KMMJ	790
Berrien Springs E-19	WEBC	620	Columbus F-14	KGBY	1480
Detroit E-21-g	WAFD	1230	Grand Island F-13	KGEO	1460
	WBMH	1420	Humboldt G-15	KGDW	1450
	WCX	680	Lincoln F-14-b	KFAB	970
	WJR	680		KFOR	1380
	WMBC	1230		WCAJ	790
	WTHO	1370	Norfolk E-14-c	WJAG	1050
	WWJ	850	Omaha F-15-a	KFOX	1160
Escanaba C-19	WRAK	1060		KOCH	1160
Flint E-21-a	WDFD	800		WAAW	860
Grand Rapids E-20-a	WASH	1170		WNAL	1160
	WOOD	1150		WOW	590
	WLBY	1430	Ravenna F-13	KGFV	1000
Iron Mountain C-18	WKAR	1050	Wayne E-14	KGCH	1020
Lansing E-20-b	WMPC	1280	York F-13	KGBZ	1410
Lapeer E-21	WKBZ	1500			
Ludington D-19	WKBL	1460	NEW HAMPSHIRE		
Monroe E-21	WGHP	940	Laconia D-27	WKAU	1340
Mt. Clemens E-21-c	WBPP	1250	Tilton E-27	WBRL	1290
Petoskey C-20	WAGM	1330			
Royal Oak E-21-e	WJBK	1360			
Ypsilanti E-21-f					
MINNESOTA					
Barrett C-14	KGDE	1460			
Collegetown C-15	WFBJ	1100	Asbury Park G-26	WDWM	830
Hallock A-14	KGFK	1340	Atlantic City G-25	WHAR	1100
Minneapolis C-16-b	KFDZ	1390	Camden F-25-f	WPG	1100
	KGEQ	1480	Cliffside F-26	WCAM	1340
	WAMD	1330		WCDA	1420
	WCCO	740		WPAP	760
	WDGY	1140	Elizabeth F-26-h	WQAO	760
	WHDI	1220	Hoboken	WIBS	1470
	WLB	1220	Jersey City F-26-d	WPCH	970
	WRHM	1150		WAAT	1220
Northfield D-16	KFMX	1270	Midland Park F-26	WKBO	1370
St. Cloud C-16-a	WCAL	1270	Newark F-25-h	WTRL	1450
St. Paul C-16-c	WFAM	1190		WAAM	860
	KFOY	1050		WGCP	1070
	WMBE	1440		WNJ	1070
				WOR	710
MISSISSIPPI				WEAM	1250
Columbus K-18	WCOC	1300	North Plainfield F-25-1	WODA	1020
			Paterson F-26-c	WJBI	1140
			Red Bank G-26	WOAX	1250
			Trenton F-25	WBMS	1120
			Union City F-26		
MISSOURI					
Cape Girardeau H-18-c	KFVS	1340	NEW MEXICO		
Cartersville H-16-c	KFPW	1140	State College K-9	KOB	760
Columbia G-16-b	KFRU	1200			
Independence G-16-c	KLDS	1110			
Jefferson City H-16-a	WOS	640			
Joplin H-16	WMBH	1470	NEW YORK		
Kansas City G-15-b	KWKC	1350	Auburn E-24	WMBO	1360
	WDAF	810	Bay Shore F-26-h	WRST	1420
	WHB	890	Brooklyn F-26-f	WARS	1320
	WLB	1430		WBBC	1320
	WOO	890		WBKN	1120
	KFKZ	1330		WBRS	1420
Kirksville F-16-c	KFEQ	1300		WLTH	1170
St. Joseph G-15	KGEX	1040		WMBO	1470
	KFOA	930		WEBR	1240
St. Louis H-18-a	KFUC	550	Buffalo E-24-a	WGR	990
	KFWF	1400		WKBW	1380
				WSVS	1460

INDEX BY LOCATIONS WITH MAP KEY

Canton D-25 WCAD 820
 Cazenovia E-25-b WMAC 1330
 Coney Island F-26 WCGU 1370
 Endicott E-25 WNBF 1450
 Farmingdale F-26 WLBH 1296
 Flushing F-26-g WIBI 1120
 Freeport F-26-i WGBB 1220
 Ithaca E-24-d WLCI 1210
 Jamaica F-26-f WMRJ 1450
 Jamestown E-23-b WOCL 1340
 Kenmore E-24 WKEN 1470
 Lockport E-24-a WMAK 550
 Long Island City F-26 WL BX 1470
 New York City F-26 WB NY 1270
 WEAF 610
 WEBJ 1170
 WGBS 866
 WGL 1020
 WGMU 1490
 WHAP 1270
 WHN 760
 WHPP 1450
 WJZ 660
 WKBO 1370
 WLWL 810
 WMCA 810
 WM SG 1270
 WNYC 570
 WRNY 970
 WSDA 1320
 WOKO 1390
 WABC 920
 WBOO 920
 WABO 1180
 WHAM 1080
 WHEC 1180
 WNBO 1480
 WOKT 1430
 WB BR 1170
 WGY 790
 WFBL 1160
 WSYR 1330
 WHAZ 790
 WIBX 1260
 WEVD 1220
 WWRL 1120

Peekskill F-26-a
 Richmond Hill F-26-f

Rochester E-24-b

Rossville F-26
 Schenectady E-25-c
 Syracuse E-24-c

Troy E-21-a
 Utica E-25-a
 Woodhaven F-26
 Woodside F-26

NORTH CAROLINA

Asheville J-21 WWNC 1010
 Charlotte J-22 WBT 1160
 Greensboro I-22 WNRC 1340
 Raleigh I-23 WPTF 720

NORTH DAKOTA

Aneta A-14 KGFN 1500
 Bismarck B-12 KFYR 1250
 Devils Lake A-13 KD LR 1300
 Fargo B-14 WDAY 830
 Grand Forks A-14 KFJM 900
 Mandan B-12 KGCU 1440

OHIO

Akron F-22-b WADC 1010
 WDBK 1320
 WJPW 1440
 Ashtabula E-22 WHBD 1350
 Bellefontaine G-21-a WEBE 1210
 Cambridge F-22 WHBC 1270
 Canton F-22-d WAAD 1120
 Cincinnati G-20-e WFBE 1220
 WKRC 900
 WLW 700
 WSAI 830
 WEAR 750
 WHK 1130
 WJAY 1320
 WTAM 750

Columbus G-21-b WAIU 1060
 WCAH 560
 WEAO 1060
 WMAN 1280
 WSMK 1010
 WRK 1460
 WL BV 1450
 WSRO 780
 WCSO 1170
 WBR 1200
 WTAL 1070
 WABW 1210
 WRAB 880
 WKBN 1400
 WMBW 1400

OKLAHOMA

Alva I-13 KGFF 1460
 Bristow I-14-a KVOO 860
 Chickasha J-14-b KOCW 1190
 Norman J-14-a WNAD 1250
 Oklahoma City I-14-b KFJF 1100
 KF XR 1340
 KGCB 1390
 KGFG 1390
 WKY 1040
 KGGF 1450

Picher I-15

OREGON

Astoria C-1-a KFJL 1200
 Corvallis D-1 KOAC 1110
 Eugene D-1 KGEH 1490
 Medford E-1 KMED 1200
 Portland C-1-b KEX 1250
 KFEC 1400
 KFIF 1400
 KFJR 1060
 KGW 610
 KLIT 1450
 KOIN 940
 KTBR 1060
 KWBS 1500
 KWJJ 1310
 KXL 1360

PENNSYLVANIA

Allentown F-25-c WCBA 1350
 WSAN 1350
 WF BG 1070
 Altoona F-24-c WIBG 680
 Elkins Park G-25-c WSAJ 1340
 Grove City F-23-b WBAK 1000
 Harrisburg F-24-d WMBS 1280
 WPRC 1430
 WGM 1440
 Jeannette G-23 WHBP 1310
 Johnstown F-23-d WABF 1460
 Kingston F-24 WGAL 1190
 Lancaster G-25-a WKJC 1190
 Lewisburg F-24-b WJBU 1400
 Monessen G-23 WMBJ 1290
 Oil City F-23-a WHBA 1150
 WL BW 1020
 Parkersburg G-25-e WQAA 1390
 Philadelphia G-25-d WABQ 1150
 WABY 1210
 WCAU 890
 WFI 740
 WF KD 1210
 WHBW 1360
 WIAD 1040
 WIP 590
 WLIT 740
 WNAT 1040
 WOO 590
 WPSW 1480
 WRAX 1410

INDEX BY LOCATIONS WITH MAP KEY

Pittsburgh F-23-c	KDKA 950	Fort Worth L-14-a	KFJZ 1200
	KQV 1110		KFOB 920
	WCAE 580		WBAP 600
	WJAS 1110	Galveston M-15-b	KFLX 1110
Reading F-25-d	WRAW 1260		KFUL 1160
Scranton F-25-a	WGBI 1300	Greenville K-15	KFPM 1300
	WQAN 1300	Harlingen O-14	KHMC 1270
State College F-24-a	WPSC 1000	Houston M-15-a	KFVI 1260
Washington F-23	WNBO 1420		KPRC 1020
Wilkes-Barre F-25-b	WBAX 1200		KTUE 1410
	WBRE 1200	San Angelo M-12	KGFI 1360
Willow Grove	WALK 1490	San Antonio M-14-a	KGCI 1360
			KGDR 1480
			KGRC 1360
PORTO RICO			KTAP 1310
San Juan	WKAQ 880		KTSA 1130
			WOAI 990
RHODE ISLAND		Waco L-15-b	WJAD 670
Cranston F-27-a	WDWF 800		
	WLSI 800	UTAH	
Newport F-27	WMBA 1470	Ogden F-7-b	KFUR 1330
Pawtucket E-27	WFCl 1240	Salt Lake City F-7-c	KDYL 1160
Portsmouth	WSAR 1190		KFUT 600
Providence E-27-h	WCBR 1490		KSL 990
	WCOT 1330		
	WEAN 940	VERMONT	
	WJAR 620	Burlington D-26-a	WCAX 1180
	WRAH 1500	Springfield D-26-b	WNBX 1240
SOUTH CAROLINA		VIRGINIA	
Charleston K-23	WBBY 600	Arlington G-24-d	NAA 690
		Mt. Vernon Hills	WTFF 1470
SOUTH DAKOTA		Norfolk I-24	WBBW 1270
Brookings D-14	KFDY 760		WTCV 1430
	KGCR 1440	Petersburg I-24	WTAR 1440
Dell Rapids D-14	KGDA 1180	Richmond H-24	WLBG 1400
Mitchell D-14	KGFP 1410		WBBL 1210
Oldham D-14	KGDY 1450		WMBG 1360
Pierre D-12	KGFX 1180		WRVA 1180
Rapid City D-11	WCAT 1210	Roanoke H-23	WTAZ 1360
Sioux Falls D-14	KSOO 1430	Virginia Beach I-25	WDBJ 1300
Vermillion E-14-b	KUSD 620		WSEA 1140
Yankton E-14-a	WNAX 990		
		WASHINGTON	
TENNESSEE		Everett A-2	KFBL 1340
Chattanooga J-20	WDOD 1220	Lacey B-2-b	KGY 1230
Knoxville I-20	WFBC 1280	Pullman B-4	KWSC 760
	WNBj 1450	Seattle B-2-a	KFOA 670
	WNOX 1130		KFOW 1380
Lawrenceburg J-19	WOAN 1050		KGBS 1480
Memphis J-18-a	WGBC 1080		KGCL 1300
	WHBQ 1290		KJR 860
	WMBM 1430		KKP 1130
	WMC 580		KOMO 980
	WNBR 1310		KPCB 1300
	WREC 1180		KRSC 1420
Nashville I-19	WBAW 1210		KTCL 1080
	WDAD 1330		KTW 760
	WLAC 1330		KUJ 1500
	WSM 880		KVOS 1430
Springfield I-19	WSIX 1410	Spokane A-4	KXRO 1320
Union City I-18	WOBT 1460		KFIO 1220
			KFPY 1220
			KGA 1150
TEXAS			KHO 810
Amarillo J-12	KGRS 1230	Tacoma B-1-a	KMO 1180
	WDAG 1140		KVI 1280
	KUT 1290	Walla Walla C-4	KOWW 1000
Austin L-14-b	KFDM 620		
Beaumont M-16	KFYO 1420	WEST VIRGINIA	
Breckenridge K-13	KWWG 1080	Charleston H-22	WOBU 1120
Brownsville O-14-b	WTAW 970	Huntington G-22	WSAZ 1240
College Station M-13	KRLD 650	Wheeling G-22	WWVA 770
Dallas L-15-a	WFAA 600		
	WRR 850	WISCONSIN	
Dublin K-14	KFPL 1090	Appleton D-18	WJBR 1320
El Paso L-10	WDAH 1280	Beloit E-18-b	WEBW 1160
		Camp Lake E-19-b	WCLO 1320

INDEX BY LOCATIONS WITH MAP KEY

Eau Claire D-17	WTAO	1180	Ottawa	CKCO	690
Fond du Lac D-18-d	KFIZ	1120		CNRO	690
Kenosha E-19	WKDR	930	Prescott	CFLC	1010
La Crosse E-17	WKBH	1360	Preston	CKPC	1210
Madison E-18-a	WHA	940	Scarboro	CKCX	1030
	WIBA	1250		CJYC	1030
Manitowoc D-19	WOMT	1350	St. George	CKCR	1120
Milwaukee E-19-a	WGWB	1370	Toronto	CFCA	840
	WHAD	1020		CHIC	840
	WSOE	1110		CHNC	840
	WTMJ	1020		CJBC	1030
Poynette D-18-e	WIBU	1380		CJBC	840
Racine E-19	WRRS	930		CJSC	840
Stevens Point D-18-b	WLBL	940		CKCL	840
Superior B-17	WEBC	1240		CKNC	840
West De Pere D-19	WHBY	1200		CKSM	1030
				CNRT	840
WYOMING					
Laramie F-10	KFBU	700	PRINCE EDWARD ISLAND		
			Charlottetown	CFCY	960
			Summerside	CHGS	1120
UNITED STATES					
Portable	KGFO	1470	QUEBEC		
	WOBR	1470	Montreal	CFCF	730
	WRMU	1490		CHYC	730
CANADA					
ALBERTA					
Calgary	CFAC	690		CKAC	730
	CFCN	690		CNRM	730
	CJGJ	690	Quebec	CHRC	880
	CNRC	690		CKCI	880
Edmonton	CHCY	580		CKCV	880
	CHMA	580	St. Hyacinthe	CNRO	880
	CJCA	580		CKSH	960
	CKUA	580	SASKATCHEWAN		
	CNRE	580	Moose Jaw	CJRM	1010
Red Deer	CKLC	840	Regina	CHWC	960
				CJBR	960
BRITISH COLUMBIA					
Burnaby	CFYC	730		CKCK	960
Kamloops	CFJC	1120	Saskatoon	CNRR	960
Mission City	CJGU	1210		CFOC	910
Sea Island	CJOR	1030		CHUC	910
Vancouver	CFQO	730	Unity	CJWC	910
	CHPC	730	Yorkton	CNRS	910
	CKCD	730		CHSC	1120
	CKFC	730		CJGX	630
	CKWX	730	MEXICO		
	CNRV	1030	Chihuahua	CZF	970
Victoria	CFCT	910	Mazatlan	CYR	630
			Merida	CYY	550
MANITOBA					
Winnipeg	CNRW	780	Mexico City	CYA	1000
	CKY	780		CYB	1090
				CYH	800
NEW BRUNSWICK					
Fredericton	CFNB	1210		CYJ	750
Moncton	CNRA	930		CYL	750
				CYO	710
NOVA SCOTIA					
Halifax	CHNS	930		CYX	920
				CZE	860
ONTARIO					
Bowmanville	CKCW	960	Oaxaca	CYF	1130
Brantford	CFGC	1010	Puebla	CYU	960
Cobalt	CKMC	1210	Tampico	CYO	930
Hamilton	CHCS	880		CYZ	
	CHML	880	Vera Cruz	CYC	890
	CKOC	880	CUBA		
Iroquois Falls	CFCH	600	Cienfuegos	6BY	1150
King Twp.	CFRB	1030	Elia	7SR	860
Kingston	CFMC	1120	Havana	2BB	1200
	CFRC	1120		2LR	1280
London	CJGC	910		2MG	1050
Midland	CKPR	1120		2OK	860
				2OL	1170
				2RK	950
				2TW	1110
				2UF	1090
				PWX	750
			Santiago	8BY	1200
			Tuinucu	6KW	880

USING YOUR "RADEX"

The arrangement of RADEX is so simple that one who knows anything of radio will see its possibilities at a glance. Yet there are certain hints that will be helpful even to the skilled tuner.

Stations are grouped according to their frequency in kilocycles. These groups are an even ten kilocycles apart. Each station in any of these groups should come in at exactly the same points upon your dial. If they do not it is because they are off their correct frequency and in that case it is useless to log them. Rather they should be logged at their proper place for their particular frequency.

We are now ready to begin the use of our RADEX. Let us tune in some station and get their call letters. Say that we hear KDKA. Turn to KDKA in the "Index by Call Letters." There we find that this station has a frequency of 950 kcs. For our convenience when we want to turn to KDKA at some later time, we enter our dial numbers in the proper spaces in the "Index by Call Letters." Now we turn to the 950 group in the "Index by Frequencies" and we enter our dial numbers again in the space for this frequency. (Let us say that KDKA comes in at 42-40 on the dials.) Now we tune in another station and this time we hear WSMB at New Orleans. Following the same procedure we find this station has a frequency of 930 kcs.

and we enter our dial numbers (say 44-42) in both of the above indexes. We now see that 930 kcs. comes in at 44-42 on our dials and 950 at 42-40. If therefore we would like to hear WHA at Madison which has a frequency of 940 kcs. we can see at a glance that we must place our dials at 43-41 and if that station is on the air and in our range it will come in at that point and at no other.

We now continue with our tuning and entering our dial numbers and we find that we are gradually calibrating our set, that is ascertaining the relationship between our dial numbers and the broadcasting frequencies. Gradually we are able to so fill in our indexes as to be able to tell exactly where to set our dials for any station we want whether we have ever received it or not. So too we can identify those tantalizing stations which we hear but whose call letters we do not catch. We simply note our dial numbers and turn to where those dial numbers ought to be in our "Index by Frequencies and Dial Numbers" and there we find the frequency to which we are tuned and the stations that should come in on that wave. The power of the station (those having 500 watts or more are shown in black face type) and the distance from our set, will give us the identity of the station we are receiving.

If you desire to keep up-to-date in Radio, you may subscribe to RADEX by the year, six issues for \$1.00. Use the attached blank.

THE RADEX PRESS
P. O. Box 143
Cleveland, Ohio

Enclosed find \$1.00 for which enter my subscription to RADEX to begin with Number.....

NAME.....

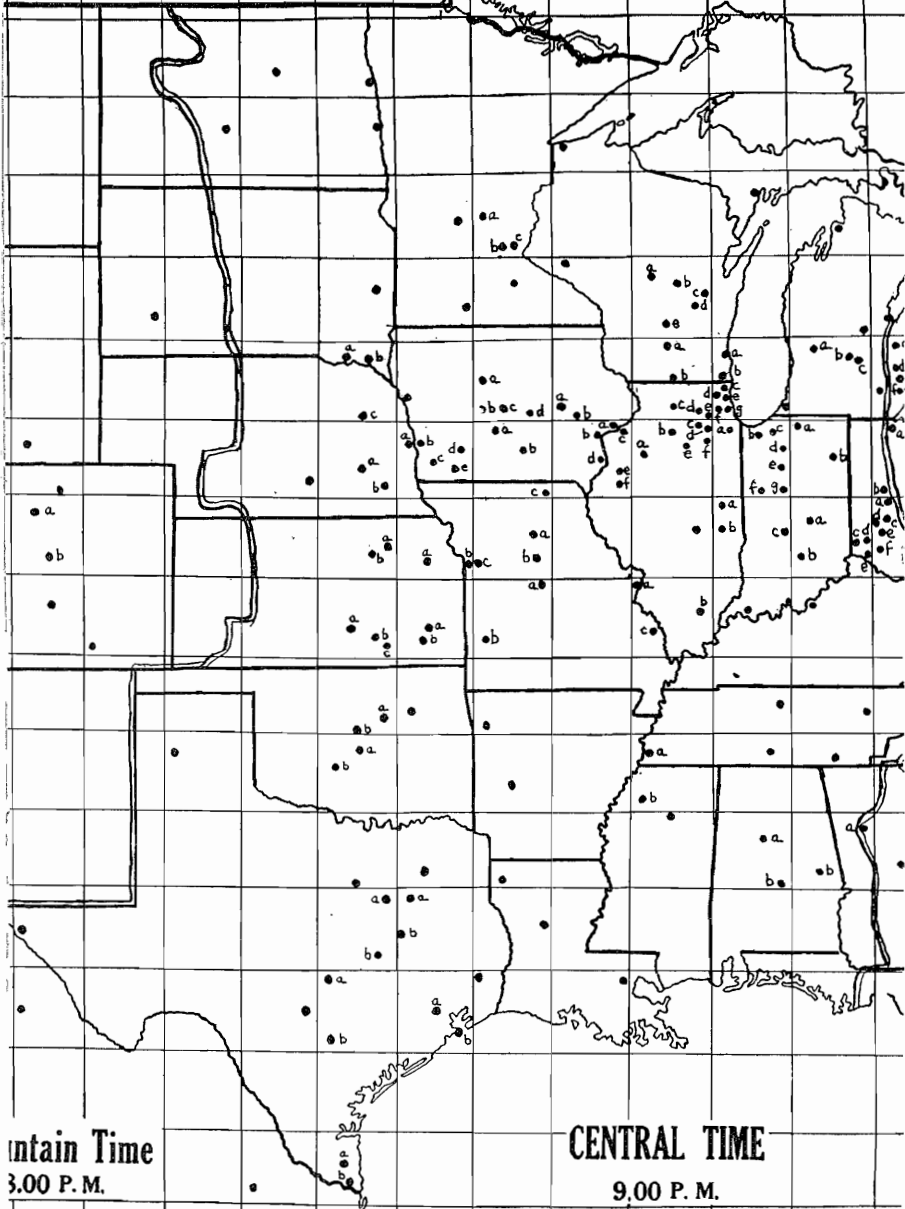
STREET AND NO.....

CITY AND STATE.....

Write very plainly

	Oklahoma, Okla.	Omaha, Nebr.	Philadelphia, Pa.	Phoenix, Ariz.	Pittsburgh, Pa.	Portland, Me.	Portland, Oreg.	Richmond, Va.	St. Louis, Mo.	Salt Lake City, Utah	San Francisco, Calif.	Schenectady, N. Y.	Seattle, Wash.	Shreveport, La.	Spokane, Wash.	Springfield, Mass.	Vermillion, S. Dak.	Washington, D.C.
6	518	718	1748	330	1498	2015	1107	1628	938	483	893	1823	1178	764	1028	1889	742	1648
7	753	815	663	1592	520	1022	2172	470	467	1580	2133	840	2180	546	1960	863	917	542
7	1173	1026	90	2002	194	446	2367	128	731	1858	2451	278	2341	1064	2110	882	1083	33
7	1138	1044	2113	733	1863	2282	349	2060	1389	292	516	2120	405	1433	290	2196	973	2045
7	1490	1280	268	2295	478	100	2553	471	1036	2099	2696	150	2508	1410	2279	79	1314	392
5	659	1061	1614	1023	1424	1961	1944	1428	975	1317	1675	1770	2015	510	1858	1805	1161	1493
5	1117	883	278	1904	178	438	2167	375	662	1701	2298	249	2130	1080	1900	325	916	290
5	689	432	664	1451	411	892	1765	618	259	1260	1855	702	1743	725	1514	774	479	594
4	755	620	501	1578	258	802	1987	399	308	1450	2037	605	1974	688	1746	659	694	403
9	946	738	343	1745	115	603	2063	353	490	1567	2163	408	2035	904	1804	473	785	303
2	503	485	1575	585	1320	1803	985	1488	793	372	946	1618	1020	799	827	1692	468	1490
3	469	122	972	1154	718	1197	1479	905	270	952	1547	1012	1470	624	1243	1085	187	895
2	905	666	444	1685	208	657	1975	445	452	1490	2087	487	1945	891	1715	540	705	397
5	578	875	1834	347	1592	2126	1286	1695	1033	689	993	1930	1373	752	1238	1990	920	1726
3	786	390	1186	1225	952	1313	1248	1180	658	865	1447	1157	1206	1002	976	1240	284	1141
5	188	590	1324	858	1097	1642	1612	1170	568	977	1454	1445	1658	209	1470	1495	689	1210
5	456	828	1335	1065	1140	1678	1885	1154	697	1249	1693	1487	1938	233	1753	1524	938	1214
5	357	135	1222	901	967	1454	1271	1142	455	708	1297	1367	1288	615	1061	1340	167	1139
5	260	490	1051	1094	825	1371	1733	897	325	1116	1648	1175	1599	142	1552	1824	605	936
5	926	547	827	1550	630	924	1638	870	591	1242	1833	776	1588	1043	1360	860	510	819
9	988	1098	756	1800	703	1113	2442	953	755	1840	2375	960	2450	733	2239	937	1203	647
9	293	165	1037	1045	784	1300	1397	937	238	922	1500	1107	1505	326	1286	1173	280	943
2	1182	1312	2388	357	2135	2631	825	2283	1585	577	345	2445	956	1420	939	2515	1291	2295
9	675	579	580	1512	345	892	1953	457	242	1400	1983	695	1945	598	1720	745	663	473
3	422	529	878	1264	660	1205	1852	722	242	1250	1800	1010	1867	279	1652	1055	642	763
2	1233	1402	1023	1998	1014	1357	2716	831	1067	2098	2603	1229	2740	950	2528	1210	1510	927
7	692	291	985	1279	745	1145	1435	968	464	988	1585	975	1403	859	1173	1056	238	936
5	1162	978	1997	932	1754	2133	430	1967	1331	435	762	1978	395	1457	170	2060	887	1940
5	602	604	683	1445	472	1015	1970	526	253	1390	1958	820	1973	470	1752	863	704	567
2	575	845	1090	1318	923	1445	2063	899	599	1433	1923	1259	2098	280	1898	1287	960	968
3	1324	1144	83	2142	313	277	2455	287	873	1972	2568	142	2419	1230	2190	120	1189	204
6	1186	1095	220	2027	316	565	2458	79	771	1925	2510	426	2440	1037	2211	411	1166	145
6	----	405	1256	843	1013	1550	1488	1152	456	862	1386	1354	1523	297	1324	1412	502	1120
5	405	----	1094	1032	837	1318	1373	1020	352	833	1425	1133	1372	617	1149	1205	115	1012
0	1256	1094	----	2079	254	360	2419	205	808	1923	2518	205	2388	1153	2159	801	1143	122
7	843	1032	2079	----	1829	2345	1007	1960	1270	504	652	2152	1112	1067	1020	2220	1043	1980
6	1013	837	254	1829	----	545	2174	242	561	1670	2264	350	2145	939	1918	400	891	188
5	1550	1318	360	2345	545	----	2563	565	1094	2127	2725	197	2513	1484	2285	159	1345	460
8	1488	1373	2419	1007	2174	2563	----	2381	1723	636	536	2405	143	1783	295	2488	1293	2360
9	1122	1020	205	1960	242	565	2381	----	699	1850	2436	406	2462	985	2133	407	1089	96
1	456	352	808	1270	561	1094	1731	699	----	1158	1738	898	1722	466	1500	958	450	710
5	862	833	1923	504	1670	2127	636	1850	1158	----	592	1950	697	1155	548	2027	785	1845
0	1386	1425	2518	652	2264	2725	536	2436	1738	592	----	2548	680	1655	730	2625	1983	2437
6	1354	1133	205	2152	350	197	2405	406	898	1950	2548	----	2363	1290	2139	86	1165	313
0	1523	1372	2388	1112	2145	2513	143	2362	1722	697	680	2363	----	1820	229	2445	1282	3335
7	297	617	1153	1067	939	1484	1783	985	466	1155	1655	1290	1820	----	1621	1333	726	1035
1	1324	1149	2159	1020	1918	2285	295	2133	1500	548	730	2139	229	1621	----	2216	1055	2105
1	1412	1205	201	2220	400	159	2488	407	958	2027	2625	86	2445	1333	2216	----	1262	321
6	502	115	1143	1043	891	1345	1293	1089	450	785	1383	1165	1282	726	1055	1242	----	1073
5	1150	1012	122	1980	188	480	2360	96	710	1845	2437	313	2335	1035	2105	321	1073	----

10 11 12 13 14 15 16 17 18 19 20 2



Mountain Time
3.00 P. M.

CENTRAL TIME
9.00 P. M.

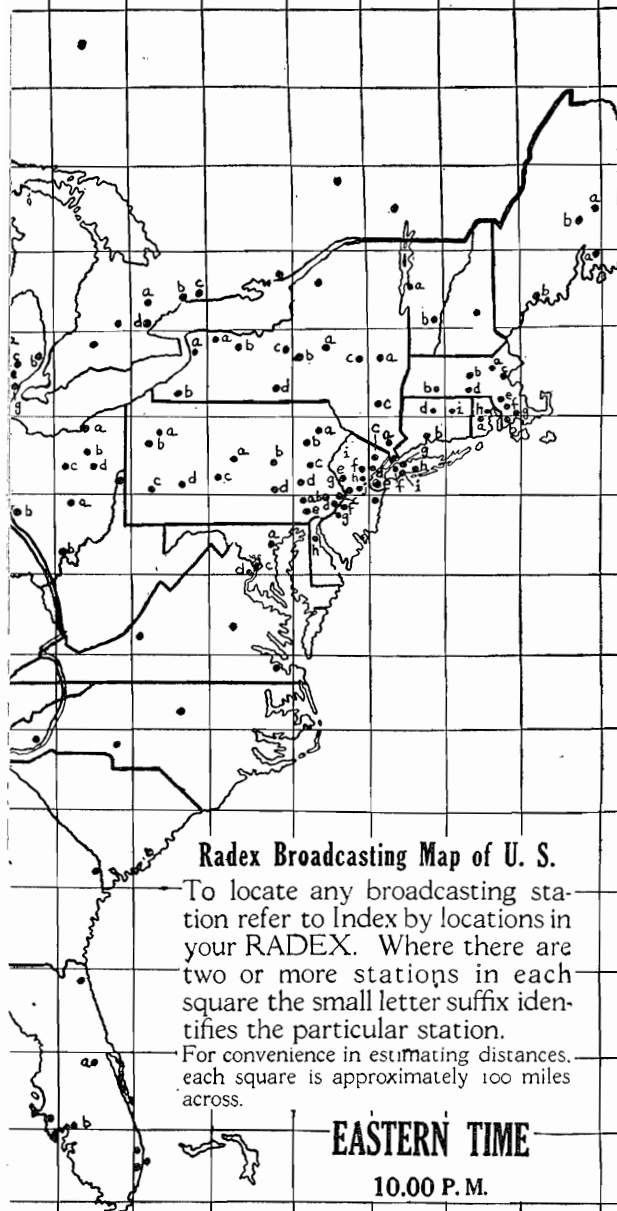
10 11 12 13 14 15 16 17 18 19 20 2

AIR-LINE DISTANCES IN STATUTE MILES

Detroit, Mich.	El Paso, Tex.	Fargo, N. Dak.	Fort Worth, Tex.	Galveston, Tex.	Hastings, Nebr.	Hot Springs, Ark.	Houghton, Mich.	Jacksonville, Fla.	Kansas City, Mo.	Los Angeles, Calif.	Louisville, Ky.	Memphis, Tenn.	Miami, Fla.	Minneapolis, Minn.	Missoula, Mont.	Nashville, Tenn.	New Orleans, La.	New York, N. Y.	Norfolk, Va.
1360	228	968	561	803	588	773	1252	1492	717	663	1174	938	1710	980	895	1117	1030	1810	169
595	1293	1112	750	688	901	498	947	286	675	1935	317	335	610	905	1790	518	427	747	50
398	1750	1143	1239	1245	1154	964	808	682	962	2313	498	792	958	948	1947	597	1001	170	16
1671	969	975	1263	1538	934	1384	1367	2098	1158	663	1623	1506	2368	1140	252	1631	1713	2153	213
613	2067	1304	1574	1598	1415	1302	922	1015	1250	2590	823	1133	1258	1129	2124	941	1359	188	46
1398	682	1445	471	287	1013	650	1543	1025	923	1370	1093	777	1100	1335	1706	952	536	1695	146
218	1690	923	1221	1289	1019	956	560	860	862	2195	483	802	1184	733	1740	626	1087	291	43
236	1249	571	820	954	566	585	367	861	413	1741	268	481	1190	356	1348	394	831	711	69
234	1333	818	839	897	742	569	589	628	541	1892	92	410	957	603	1578	239	708	568	47
94	1521	838	1046	1116	871	787	518	768	700	2044	309	627	1088	632	1640	456	922	404	42
1153	554	642	643	925	353	749	970	1468	555	828	1035	878	1732	699	670	1018	1079	1628	156
545	980	397	640	851	256	488	458	1024	180	1433	477	485	1338	235	1074	523	825	1023	98
----	1475	745	1018	1111	800	761	427	832	643	1976	315	621	1156	542	1552	468	938	483	52
1475	----	1161	543	723	577	802	1422	1481	836	702	1253	978	1662	1156	1115	1169	986	1902	175
745	1161	----	973	1218	440	875	393	1400	548	1426	818	862	1721	219	819	900	1221	1213	125
1018	543	973	----	283	544	273	1093	943	460	1212	751	448	1150	870	1312	643	470	1398	122
1111	723	1218	283	----	808	375	1277	799	677	1423	807	492	941	1087	1595	666	888	1415	119
800	757	440	544	808	----	513	666	1178	226	1177	693	591	1468	399	891	697	870	1275	121
761	802	875	273	375	513	----	901	728	326	1437	480	176	983	722	1385	370	358	1125	95
427	1422	393	1093	1277	666	901	----	1216	633	1787	636	830	1545	272	1208	760	1187	849	94
832	1481	1400	943	799	1178	728	1216	----	952	2153	595	591	328	1192	2070	502	511	838	54
643	836	548	460	677	226	326	633	952	----	1352	480	370	1247	413	1117	472	678	1097	100
1976	702	1426	1212	1423	1177	1437	1787	2153	1352	----	1825	1602	2355	1522	910	1777	1675	2446	235
315	1253	818	751	807	693	480	636	595	480	1825	----	319	923	605	1550	153	623	650	52
621	978	822	448	492	591	176	830	591	370	1602	319	----	878	700	1483	195	358	953	77
1156	1662	1721	1150	941	1468	983	1545	328	1247	2355	923	878	----	1516	2359	821	681	1095	80
542	1156	219	870	1087	399	722	272	1192	413	1522	605	700	1516	----	1010	695	1050	1019	104
1552	1115	819	1312	1595	891	1385	1208	2070	1117	910	1550	1483	2359	1010	----	1582	1733	2030	204
468	1169	900	643	666	697	370	760	502	472	1777	153	195	821	695	1582	----	470	758	58
938	986	1221	470	288	870	358	1187	511	678	1675	683	858	681	1050	1733	470	----	1173	93
483	1902	1213	1398	1415	1275	1125	849	838	1097	2446	650	953	1095	1019	2030	758	1173	----	29
522	1755	1258	1226	1195	1216	955	946	548	1009	2352	528	778	802	1047	2045	586	932	293	----
905	578	786	188	456	357	260	926	988	293	1182	675	422	1233	692	1162	602	575	1324	118
666	875	390	590	828	135	490	547	1098	165	1312	579	529	1402	291	978	604	845	1144	109
444	1834	1186	1394	1395	1222	1051	827	758	1037	2388	560	878	1023	985	1997	683	1090	83	22
1685	347	1225	858	1065	901	1094	1550	1800	1045	357	1512	1264	1998	1279	932	1445	1316	2142	202
208	1592	952	1097	1140	967	825	630	703	784	2135	345	660	1014	745	1754	472	123	313	31
657	2126	1313	1642	1678	1454	1371	924	1113	1300	2631	892	1209	1357	1145	2133	1015	945	277	56
1975	1286	1248	1612	1885	1271	1733	1638	2442	1397	825	1953	1852	2716	1435	430	1970	2063	2455	245
445	1695	1180	1170	1154	1142	897	870	953	937	2283	457	722	831	968	1967	526	699	287	7
452	1033	658	568	697	455	325	591	755	238	1585	242	242	1067	464	1331	253	599	873	77
1490	689	865	977	1249	708	1116	1242	1840	922	577	1400	1250	2098	988	435	1390	1433	1972	192
2087	993	1447	1454	1693	1297	1648	1833	2375	1500	345	1983	1800	2603	1585	762	1958	1923	2568	251
467	1930	1157	1445	1487	1267	1175	776	960	1107	2445	695	1010	1229	975	1978	820	1259	142	42
1945	1373	1206	1658	1938	1388	1759	1588	2450	1505	956	1945	1867	2740	1403	395	1973	2098	2419	244
891	752	1002	209	233	615	142	1043	733	326	1420	598	279	950	859	1577	470	280	1230	103
1715	1238	976	1470	1753	1061	1552	1360	2239	1286	939	1720	1652	2528	1173	170	1752	1898	2190	221
540	1990	1240	1495	1524	1340	1224	860	957	1173	2515	745	1055	1210	1056	2060	863	1287	120	41
705	920	284	689	938	167	605	510	1203	280	1291	663	642	1510	238	887	704	960	1189	116
397	1726	1141	1210	1214	1139	936	813	647	943	2295	473	763	927	936	1940	567	968	204	14

1 22 23 24 25 26 27 28

A
B
C
D
E
F
G
H
I
J
K
L
M
N
O



Radex Broadcasting Map of U. S.

→ To locate any broadcasting station refer to Index by locations in your RADEX. Where there are two or more stations in each square the small letter suffix identifies the particular station.

For convenience in estimating distances, each square is approximately 100 miles across.

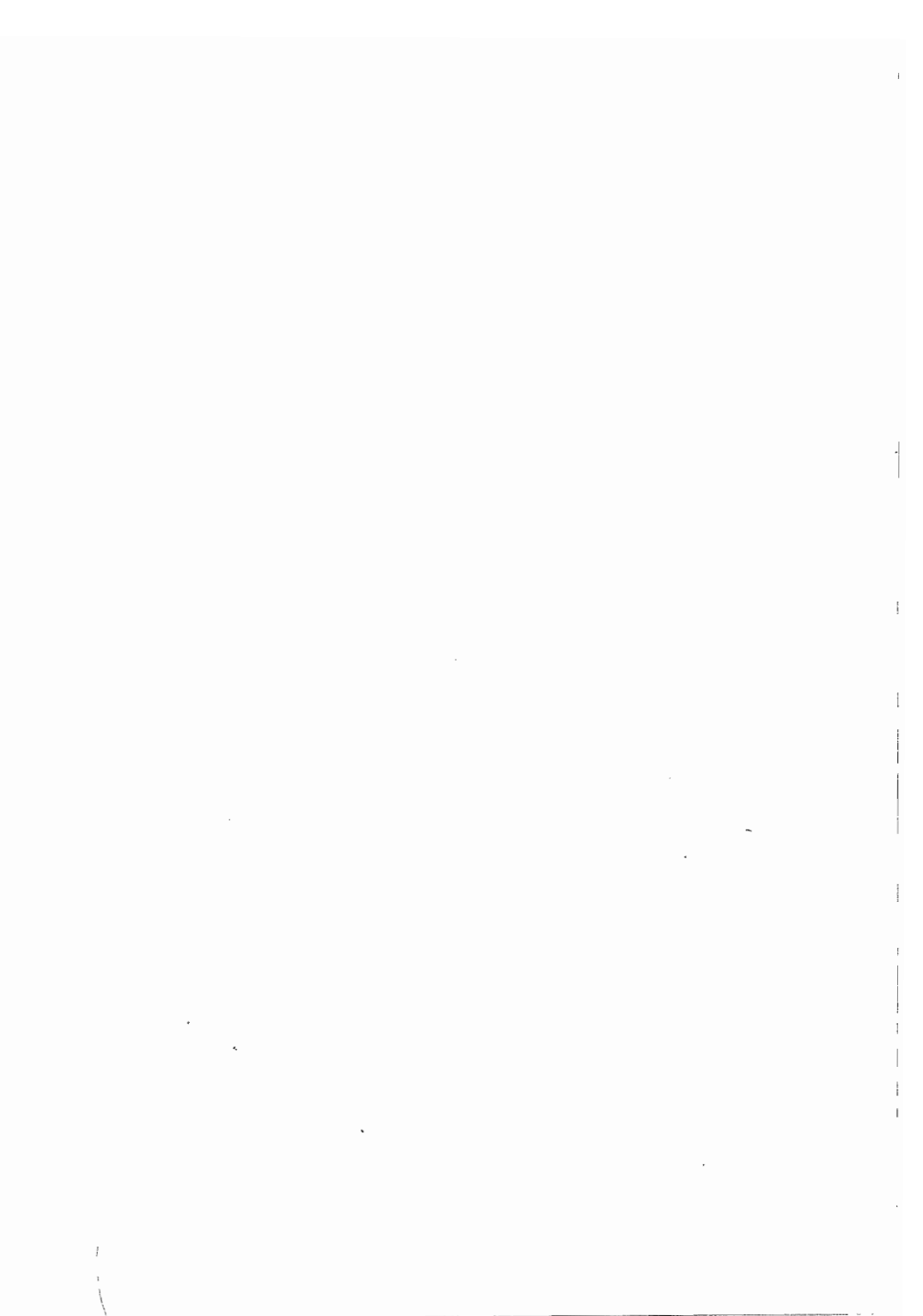
EASTERN TIME

10.00 P.M.

1 22 23 24 25 26 27 28

DEPARTMENT OF COMMERCE
BUREAU OF NAVIGATION
RADIO DIVISION

FROM/TO	Albuquerque, N. Mex.	Atlanta, Ga.	Baltimore, Md	Boise, Idaho	Boston, Mass.	Brownsville, Tex.	Buffalo, N. Y.	Chicago, Ill.	Cincinnati, Ohio	Cleveland, Ohio	Denver, Colo.	Des Moines, Iowa
Albuquerque, N. Mex.	----	1273	1670	774	1967	636	1577	1126	1248	1417	332	833
Atlanta, Ga.	1273	----	575	1830	933	960	695	583	368	550	1208	738
Baltimore, Md.	1670	575	----	2055	358	1525	273	603	423	305	1505	913
Boise, Idaho	774	1830	2055	----	2266	1610	1872	1453	1663	1754	637	1155
Boston, Mass.	1967	933	358	2266	----	1881	398	849	737	550	1766	1159
Brownsville, Tex.	838	960	1525	1610	1881	----	1575	1234	1184	1402	1047	1102
Buffalo, N. Y.	1577	695	273	1872	398	1575	----	454	392	175	1368	762
Chicago, Ill.	1126	583	603	1453	849	1234	454	----	249	307	918	310
Cincinnati, Ohio	1248	368	423	1663	737	1184	392	249	----	218	1090	509
Cleveland, Ohio	1417	550	305	1754	550	1402	175	307	218	----	1223	617
Denver, Colo.	332	1208	1505	637	1766	1047	1368	918	1090	1223	----	607
Des Moines, Iowa	833	738	913	1155	1159	1102	762	310	509	617	607	----
Detroit, Mich.	1360	595	398	1671	613	1398	218	236	234	94	1152	545
El Paso, Tex.	228	1293	1750	969	2067	682	1690	1249	1333	1521	554	980
Fargo, N. Dak.	968	1112	1143	975	1304	1445	923	571	818	838	642	397
Fort Worth, Tex.	561	750	1239	1263	1574	471	1221	820	839	1046	643	640
Galveston, Tex.	803	688	1245	1538	1598	287	1289	954	897	1116	925	851
Hastings, Nebr.	588	901	1154	934	1415	1013	1019	566	747	871	353	256
Hot Springs, Ark.	773	498	964	1384	1302	650	956	585	569	787	749	488
Houghton, Mich.	1252	947	808	1367	922	1543	560	367	589	518	970	458
Jacksonville, Fla.	1492	286	682	2098	1015	1025	880	861	628	768	1468	1024
Kansas City, Mo.	717	675	962	1158	1250	923	862	413	541	700	555	180
Los Angeles, Calif.	663	1935	2313	663	2590	1370	2195	1741	1892	2044	828	1433
Louisville, Ky.	1174	317	498	1623	823	1093	463	268	92	309	1035	477
Memphis, Tenn.	938	335	792	1806	1133	777	802	461	410	627	878	485
Miami, Fla.	1710	610	958	2368	1258	1100	1184	1190	957	1088	1732	1338
Minneapolis, Minn.	980	905	948	1140	1125	1335	733	356	603	632	699	235
Missoula, Mont.	895	1790	1947	252	2124	1706	1740	1348	1578	1640	670	1074
Nashville, Tenn.	1117	218	597	1631	941	952	626	394	239	456	1018	523
New Orleans, La.	1030	427	1001	1713	1359	536	1087	831	708	922	1079	825
New York, N. Y.	1810	747	170	2153	188	1695	291	711	568	404	1628	1023
Norfolk, Va.	1696	507	167	2137	467	1465	435	696	474	429	1562	983
Oklahoma, Okla.	518	753	1173	1138	1490	659	1117	689	755	946	503	469
Omaha, Nebr.	718	815	1026	1044	1280	1061	883	432	620	738	485	122
Philadelphia, Pa.	1748	663	90	2113	268	1614	278	664	501	343	575	972
Phoenix, Ariz.	330	1592	2002	733	2295	1023	1904	1451	1578	1745	585	1154
Pittsburgh, Pa.	1498	520	194	1863	478	1424	178	411	258	115	1320	718
Portland, Me.	2015	1022	446	2282	100	1961	438	892	802	603	1803	1197
Portland, Oreg.	1107	2172	2367	349	2553	1944	2167	1765	1987	2063	985	1479
Richmond, Va.	1628	470	128	2060	471	1428	375	618	399	353	1488	905
St. Louis, Mo.	938	467	731	1389	1036	975	662	259	308	490	793	270
Salt Lake City, Utah	483	1580	1858	292	2099	1317	1701	1260	1450	1567	372	952
San Francisco, Calif.	893	2133	2451	516	2696	1675	2298	1855	2037	2163	946	1547
Schenectady, N. Y.	1823	840	278	2120	150	1770	249	702	605	408	1618	1012
Seattle, Wash.	1178	2180	2341	405	2508	2015	2130	1743	1974	2035	1020	1470
Shreveport, La.	764	548	1064	1433	1410	510	1080	725	688	904	799	624
Spokane, Wash.	1028	1960	2110	290	2279	1852	1900	1514	1746	1804	827	1243
Springfield, Mass.	1889	863	282	2196	79	1805	325	774	659	473	1692	1083
Vermillion, S. Dak.	742	917	1083	973	1314	1161	916	479	694	785	468	187
Washington, D. C.	1648	542	33	2045	392	1493	290	594	403	303	1490	895



Enjoy the Radio Program

with

Home Made Candy

and

Real Ice Cream

Hot Sun-kissed Toasted Sandwiches

Phone Lehigh 7251 - 7255

We deliver



**3265
W. LIBERTY AVE.
DORMONT**