

# RADIO DIAL

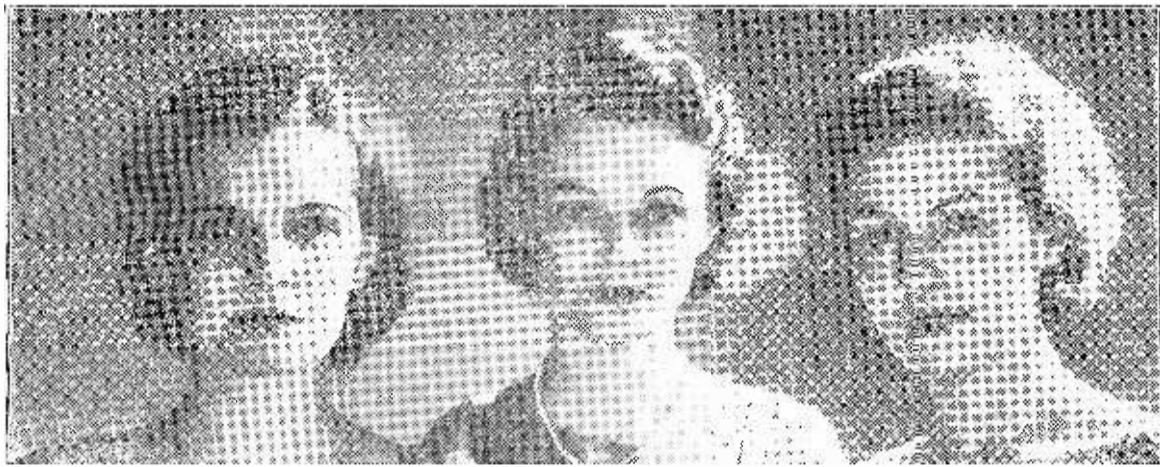
REGISTERED

Volume I, No. 47

WEEK ENDING APRIL 14, 1932

Price 5c

## Meet the Pickens Sisters of Macon



Left to right, Jane, Helen and Marla.

These Pickens Sisters of Macon, Ga., had never sung on the air when signed recently by NBC. Heard at 10:45 nightly except Sunday over NBC-WJZ. WCKY is local outlet on Thursdays.

## Gus Van Opens His Van Heusen Series on Friday

Gus Van, vaudeville star and for 21 years a member of the team of Van and Schenck, has been signed by Van Heusen for a series of broadcasts over WKRC (CBS) every Friday at 9:45 p. m., beginning (Friday) April 8. Known as "The Melody Man," the popular singer and dialectician will be heard with Nat Brusiloff's orchestra.

Possessor of probably one of the largest repertoires of popular and comedy songs, Van will offer on the inaugural Van Heusen program two of his favorites—"Sing a New Song" and "Mussolini."

## German Election Results Will Be Heard on Sunday

The run-off of Germany's presidential election Sunday (April 10) will be discussed that night on both chains.

At 6:30 p. m., William Hard, political commentator, will give the results over WSAI (NBC-WEAF).

At 7:15 p. m., Baron Richard von Kuehlmann, Germany's former foreign minister, will discuss the election results implications, over Columbia.

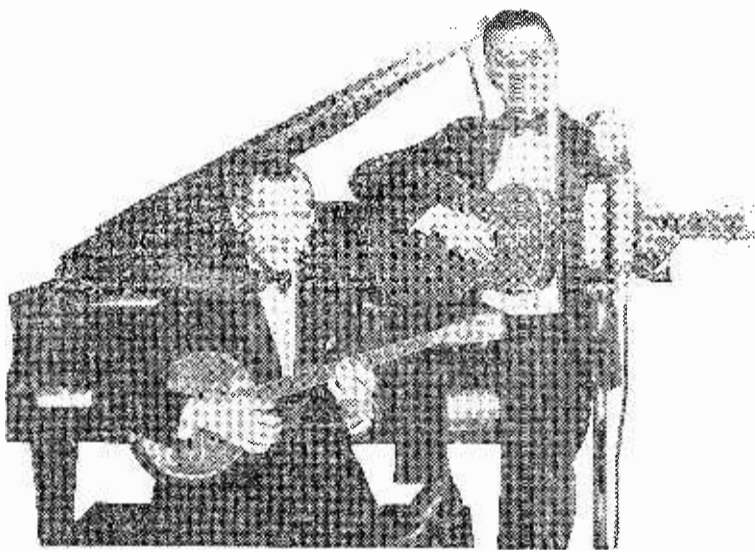
## REINER TO LEAD

Fritz Reiner, former conductor of the Cincinnati Symphony Orchestra and now conductor of the Philadelphia Orchestra and Grand Opera, will conduct the 110-piece student orchestra of the Curtis Institute of Music, Friday (April 8) at 4:45 p. m. over WABC and other Columbia stations.

## MILLS BOYS NEXT

The Four Mills Brothers, who need little or no room in which to pack their instruments, will open their Tuesday-Thursday 7:15 p. m. Crisco (Procter & Gamble) program over WKRC (CBS) on Tuesday (April 12). They simulate the sounds of all instruments except the guitar.

## Meet Hal and Huss of WLW



HAROLD BOHLAND (LEFT) AND ORVILLE HUSSELBEE

Hal & Huss, alias "Aces of Harmony," are shown here in deference to the insistent requests of many readers of The Dial—and to the quality of the team's goings-on the air. Back home in Danville, Ill., the folks will tell you the boys are really Harold Bohland and Orville Husselbee. Pantages, as well as Fanchon & Marco circuits on the west coast, Keith, RKO and Orpheum all knew this duo before the WLW booking a month back.

## "Bartered Bride" on Philharmonic for This Sunday

"The Walk to the Paradise Garden"—intermezzo from Frederick Delius' "A Village Romeo and Juliet"—and the overture to Smetana's "The Bartered Bride" are on the New York Philharmonic-Symphony Orchestra program, to be heard Sunday (April 10) from 3 until 5 p. m. over WKRC (CBS).

Sir Thomas Beecham will conduct. The program follows:  
Overture to "The Bartered Bride".....Smetana  
"The Garden of Fand".....Bax  
Serenade for Strings.....Tchaikovsky  
Intermission: Description of the music by Ohn Downes  
Concerto in E Minor.....Handel  
Intermezzo, "The Walk to the Paradise Garden," from "A Village Romeo and Juliet".....Delius  
Introduction and March from "Le Coq d'Or".....Rimsky-Korsakoff

## Herbert and Friml Operettas Will Be Heard This Sunday

Victor Herbert's "Sweethearts" and Rudolph Friml's "High Jinks" will be presented in miniature in the "Curtain Calls" broadcast over WLW Sunday (April 10) at 6:30 p. m.  
Artists include Helen Marie Anderson, Franklin Bens, Virginia Marucci.

## Louis John Johnen Will Open Schubert Series on Thursday

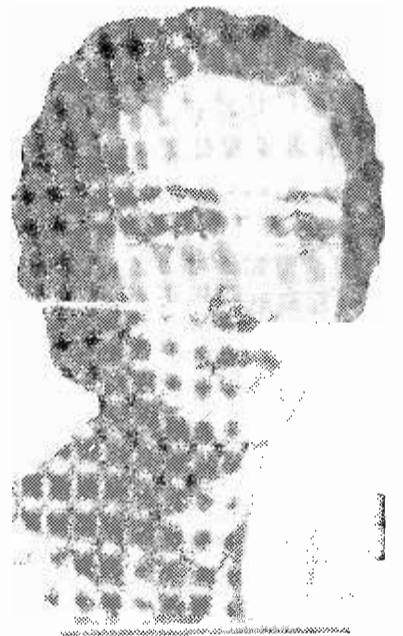
Louis John Johnen will continue his presentations of the German "leid" or "Art-song" over WLW in a new series of four Thursday 3:15 p. m. programs beginning April 14. The subject will be Schubert's "Songs of Wilhelm Mueller"—believed to be Schubert's autobiography of unrequited love.

## Jane Froman Stars in New Sunday Hour on WSAI

### Ben Bernie and Kate Smith to Play at Albee

Ben Bernie and Kate Smith, two of the world's outstanding radio stars, will play at the RKO Albee in Cincinnati soon. Ben Bernie is to open a week's stand at the Albee on Saturday, April 23. Kate Smith is to play there shortly thereafter.

### WLW's Former Artist to Open Feature



JANE FROMAN

Jane Froman, "find" of Powell Crosley, Jr., of WLW and now one of America's outstanding radio songsters, will star in a new Sunday 4 p. m. attraction, to be inaugurated April 10.

WSAI will be the local outlet for this NBC-WEAF feature.

Dramatic flashes from history—featuring widely known actors—will be twinned with Jane's songs. Roy Shields will make special arrangements of the music. Iodent Chemical Company is the sponsor.

Jane's rise to stardom is one of radio's favorite romances. When she came to Cincinnati in quest of a newspaper job after having attended the University of Missouri, Mr. Crosley gave her an audition and she entered radio via his station.

Jane can be heard on Mondays at 11:30 p. m. over WLW (NBC-WJZ).

## JEANS TO TALK

Sir James Jeans, world-famed British physicist, will speak from London on "The Present Position of Science" Sunday (April 10) at 12:30 noon over Columbia. Sir James taught applied math at Princeton and has been research associate at Mt. Wilson Observatory several years. He wrote "The Mysterious Universe," "The Universe Around Us" and "The Stars in Their Courses."

## Joe Palooka to Move Ring Humor to Radio Tuesday

Joe Palooka, that lovable boob of the prize ring and comic strip created by Ham Fisher, now comes to radio. Palooka, his fights and troubles and mixups, will be presented each Tuesday and Thursday at 6:45 p. m., beginning Tuesday (April 12) over WKRC (CBS). The series is sponsored by H. J. Heinz Co.  
The dumb, gentle but unbeatable boxing champ will be portrayed by Ted Bergman, 200-pound Columbia actor who looks like a prize-fighter, in the 15-minute sketches adapted by Georgia Backus. His bold and wise-cracking manager, Knobby Walsh, will be played by Frank Readick, 130-pound Thespian. Ted Husing will describe Joe's tremendous fight scenes and Harry von Zell will announce the program.

## Real Folks, Rural Sketch, Is Heard Again Over WLW

Real Folks, one of the earliest and most successful of radio's rural sketches, has returned to NBC for a regular Thursday program at 9:30 p. m. over WLW (NBC-WJZ). This Thompkins Corners feature is sponsored by General Foods Corporation, makers of Post Toasties. George Frame Brown is creator, director and star of the sketch.

## "ROMEO" ON AIR

Acts II and III from Charles Charles Gounod's opera, "Romeo and Juliet"—from Shakespeare's play of the same name—will be broadcast over WSAI (NBC-WEAF) Saturday (April 9) at 2:45 p. m., from the Metropolitan Opera House. Grace Moore will be Juliet and Beniamino Gigli will be Romeo. Others are Gladys Swarthout, Stephano; Henriette Wakefield, Gertrude; Angelo Bada, Tybalt; Max Atglass, Benvolio; Giuseppe De Luca, Mercutio; Millo Picco, Paris; Arnold Gabor, Gregorio; Clarence Whitehall, Capulet; Leon Rothier, Friar Laurence; and James Wolfe, Duke of Verona. Louis Hasselmann will conduct the orchestra.

# Weekly RADIO DIAL

Entered as second-class matter July 29, 1931, at the post office at Cincinnati, Ohio, under the Act of March 3, 1879.  
Published every Friday by the Radio Dial Publishing Co., 22 East 12th St., Cincinnati, Ohio. Contents copyrighted.  
Six Months for \$1. Single Copies 5 cents

Radio Dial brings you latest available programs and news of your favorite stations and artists. All programs listed are correct up to press-time, but are, of course, subject to later changes by networks and local stations.

VOL. I WEEK ENDING APRIL 14, 1932 No. 47

## A TAX ON RADIOS?

From the battle-scarred halls of Congress comes word that a tax on radios is being plotted as part of the plan to take the Federal budget out of the red.

Naturally, this prospect is not being hailed with uncontrollable joy by receiver manufacturers, jobbers, and dealers. They point out that there is no justifiable reason why radio should be called upon to bear a special burden. And with that view we agree heartily. If one industry must pay, all should, and equally.

But we cannot agree with the dire prediction, being made in certain quarters, that the threatened tax will have the effect of killing sales of new receivers.

As far as any fleeing pedestrian can observe, the gasoline tax—proportionally far higher than the proposed levy on radios—has not deterred people from driving their cars. The cigarette tax—also much higher than that contemplated on receivers—has not dispelled the smoke screen which envelops the land. And there is no reason to anticipate that radio will be an exception to the rule noted in these instances.

Even with the addition of Uncle Sam's 5%, first-class receivers can still be sold at prices which make them genuine bargains. It should require no super-salesmanship to convince a prospective buyer on that point.

If the contemplated tax were to take the form of an annual license fee, there might be some reasonable grounds for apprehension. Virtually every other country demands such a license of each receiver-owner, the charge ranging from \$2 to \$10 a year. But that is not being thought of at Washington; and, in our opinion at least, it is the only type of tax which offers any threat to sales worth considering.

As long as broadcasting continues to bring amusement, solace, pleasure and information into the home, radios are going to be sold just about as they have been, tax or no tax. That can be taken as a certainty, people and programs being what they are.

So, though some more equitable form of taxation would be preferable on the score of justice, we see no reason for the radio trade to indulge in any "viewing with alarm" over the news that is coming out of Washington.

# Around the Dial

By THE DIAL TWISTER

Those talks on Law For the Lay-Man, by Reuben Horchow (WLW, Friday at 7:30 p.m.), cast much-needed light into a dark corner. Also, Mr. Horchow succeeds in making an unpromising subject interesting without any taint of "talking down."

Jane Froman limbers up her voice every morning in the Chicago Zoo while she takes her four-mile walk



around the grounds. Which probably makes her a singing descendant of the rural spellbinders who used to practice their oratory on the cows.

That Lifetime Revue (NBC over WCKY, Sunday at 4:30 p.m.) is a snappy popular show of the better sort. The former favorites woven in bring back pleasant memories.

Columbia's Easter broadcast of the Everready Razor program from a speeding B. & O. train went over in fine style so far as the transmission was concerned. But the practical value of the expensive novelty is something else again. Most of us at the loudspeaker care considerably less about the where than we do about the what of a program.

That new series of Kipling stories under the G. Washington label (NBC over WSAI, Thursday at 9:30 p.m.) is an encouraging sign. It may mean that we're going to get



more radio dramatizations of good fiction, which would be mighty welcome. But airing Kipling seems a harder job than Sherlock Holmes presented. By the way, the "Old Beetle" is Charles Warburton, if our ears aren't deceiving us.

The hair-raising growls of "Rocco," the gorilla, in the recent Eno version of Edgar Wallace's, "The Hairy Arm" (CBS over WKRC), were supplied by Brad Barker. Brad specializes in imitating animal noises.

Phil Dewey, baritone of the Revelers Quartet, was born in Macy, Ind., one of 11 children, all of whom turned out to be musicians. And their father was a band leader. Why not a family orchestra or chorus?

At last, a piano quartet! It's in the new Willys Overland program (NBC over WCKY, Wednesday at 8:15 p.m.). We've been craving just that, this long time. Tom, Dick and Harry also do their usual smooth harmonizing.

As a boy in Grodno, Russia, Dave Rubinoff started sawing on a fiddle that cost \$1.75. Now he draws



sweet melodies from a violin that cost \$10,000. Write your own Horatio Alger moral.

Those Seth Parker programs from the Bowery (NBC over WSAI, Monday at 10:30 p.m.) are an interesting innovation. Maybe they're a shade too well done to be wholly spontaneous. But radio can do with more of "the other half."

Like NBC, Columbia is taking more of its programs from Chicago studios. During the last week of March, 69 acts went on the network from the Windy City, while only 12 were chained during the same week of 1931. Maybe the radio capital is edging westward.

Besides shifting to 9 p.m., the Wednesday Goodyear program (NBC over WSAI) has changed its makeup. Grace Moore's fine voice and David Mendoza's top-notch orchestra now supplement the Revelers. But we do miss Sousa.

Now it turns out that Paul White-man is writing a book on dieting, to be called "Forty But Not Fat." Our guess is that better health will

## Goodbye to Flo



FRED SHAWN

When the Ziegfeld Follies came to Cincinnati, Fred Shawn was their chief basso profundo. When they left, Fred was an announcer at WLW. In this glad surrender of a promising stage career, he realized an old ambition to get before the "mike." Fred was in the "Cheer Leaders" quartet in "Ballyhoo," "America's Sweetheart," "East Wind" and "The Follies." He is a native of Boise City, Idaho. The "Cheer Leaders" arose in his days at Pomona College, Claremont, Calif., and their early booking was on the Fanchon & Marco circuit, Pacific Coast.

## Don Becker Will Be Guest-Artist At WLW on Friday

Don Becker, one of America's foremost ukelele players, will be guest artist during the William Stoess' Flying Dutchmen broadcast, originating in the studios at WLW and carried over a coast-to-coast NBC network—Friday (April 8) at 12:15 midnight.

Becker was formerly a member of the WLW staff and has been featured as a soloist with such bands as Paul Whiteman, Vincent Lopez and many others. During this broadcast he will play one of his own compositions, a concerto, entitled "Ukelele in Blue." This number was the first serious composition ever written, featuring the ukelele as a solo instrument, with a full concert orchestra.

## JOE ENDS FLIGHT

When Joe Chambers takes to the air, it's often via WLW, WSAI and W8XAL—but it's quite frequently by plane. Joe, Technical Supervisor of the Crosley Radio Corporation, has more than 500 hours of solo flying to his credit. He recently returned from a 7,500-mile jaunt to the country's chief radio stations—done in 10 days through rain and snow.

not be the only recompense for his well-advertised reducing.

Moonshine and Honeysuckle (NBC over WCKY, Sunday at 2:30 p.m.) goes right on being an outstanding piece of radio drama. Real people are the answer. Perhaps in time it may show radio dramatists that characters are just as necessary as action.

T. Daniel Frawley (among other things, the "Old Scientist" in Danger Fighters) was a page boy in the U. S. Senate when President Garfield was shot. He managed stock companies for many years, and took them around the world no less than eight times.

Parker Fennelly (John Stebbins on the air) has twin daughters, named May and June. "Just so!" "Just so!"

Harry Sosnik, who batons the Pennzoil orchestra (CBS over WKRC, Monday at 8 p.m.) always wears blue ties.

That Halsey Stuart program (NBC over WSAI, Wednesday at 8:30 p.m.) has started its fifth year on the air. And it really does "more than entertain."

# "PROGRAM JOTTINGS"

Local and Out-of-Town Stations  
Choice of the Week's Programs on

### Friday, April 8

Nan Dorland will take you into the home of Sylvia Sidney at 11:15 a. m. over WKRC (CBS) in Nan's weekly visit to movie stars, as "Lane Hollywood Reporter."

Ward Wilson will imitate the New England diction of former President Coolidge, on the Royal Vagabonds program at 6:30 p. m. over WCKY (NBC-WJZ).

"Was That the Human Thing To Do?" and "Melodies" from Oscar Straus' operetta, "The Chocolate Soldier," will be featured by B. A. Rolfe and his orchestra on the Ivory program at 8:30 p. m. over WLW (NBC-WJZ).

Frank Luther, Pilar Arcos and the Walton Sisters will be vocalists assisting Leo Reisman on Pond's program over WSAI (NBC-WFAF) at 9:30 p. m.

### Saturday, April 9

Six of Columbia's leading performers will offer a feature program Saturday (April 9). WKRC will be local outlet for Ann Leaf, petite organist, at 4 p. m. Others to be heard over Columbia are Little Jack Little at 9 a. m., Artells Dickson, at 9:45 a. m., Connie Boswell at 5:45 p. m., Vaughn de Leath at 8:45 p. m. and Arthur Jarrett at 10:45 p. m.

Professor Harvey E. Drach of the University of Cincinnati, will speak on "Modern Modes in Fiction" at 6:45 p. m. over WLW in the fourth and last of his talks on the novel. This will touch on such moderns as Aldous Huxley, Virginia Wolf, Jacob Wassermann and James Branch Cabell.

"Nero and Why He Fiddled While Rome Burned" will be the WLW Crosley Follies vehicle at 9 p. m. James Krautters is author and the Crosley Theater cast will stage the comedy.

### Sunday, April 10

Arthur Chandler, Jr., WLW staff organist will play Shubert's "Moments Musical," Moskowski's "Gondoliera" and "Andantino" from Tschaikowski's Fourth Symphony in a recital over WLW at 10 a. m.

Jean ten Have of the Conservatory of Music faculty will present a violin recital at 12:45 noon over WLW, to consist of his own "Caprice," Svendsen's "Romance," and Tor Aulin's "Humoresque." Miriam Otto will be at the piano.

"Deep River," "Beautiful Ohio," "Chanson Bohemienne," "Slavonic Fantasy," and "Old Man River" will be heard in the Chase & Sanborn hour at 8 p. m. over WSAI (NBC-WFAF), with George Jessel, in dialogue with James Wallington, Rubinoff, and Frank Luther, tenor.

"Spring Fever" will get a two-piano treatment by Harry Sosnik and William Moss in the Pennzoil Parade at 9:30 p. m. over WKRC (CBS). Helen Mors, torch singer, will sing "Tired," and Original Jesters will present "Happy Feet" and "Everything Must Have An Ending."

"Moon River" vocalists will sing "I Passed By Your Window," "Thine Alone," "Sweetest Story

Ever Told" and "My Boat Is Waiting" in its slumber music broadcast over WLW at 11:30 p. m.

### Monday, April 11

The first plenary session of the American Red Cross will be broadcast over WSAI (NBC-WFAF) network at 10:30 a. m. Judge John Barton Payne, chairman of the Central Committee, will preside. The chief address will be delivered by James L. Feiser, vice-chairman in charge of domestic operations of the Red Cross.

"Put On Your Old Gray Bonnet," "Little Cotton Dolly," "Wait Till the Sun Shines, Nellie" and "Kentucky Babe" will feature the Maxwell House Cotton Queen hour with the popular minstrels, Hink and Dink, over WLW at 8:15 p. m.

### Tuesday, April 12

Southern Singers, popular negro ensemble, will present "Certainly Lord," and "Climbing Up the Mountains," two negro spirituals, in the "R. F. D." program over WLW at 8 p. m. Herschel Luecke, WLW organist, will play Muesnet's "Elegy" and "Home Song" by Kreisler.

William Bennett Munro, California Institute of Technology, will speak on "The Significance of the Coming National Elections" Tuesday (April 5) at 8 p. m. over WCKY (NBC-WJZ), in the new "You and Your Government Series," "You and Your Government Series."

Ben Bernie will sing "The Alpine Milkman," one of his British importations, at 9 p. m. in the Blue Ribbon Malt half-hour over WKRC (CBS).

### Wednesday, April 13

Lorado Taft, sculptor, will speak at 2:30 p. m. over WKRC (CBS) in a program arranged especially for upper-grade and high school students but also of interest to all art lovers. This is the Art Appreciation Period of the American School of the Air. Childe Hassam's painting, "The Church at Old Lyme," will be studied.

For the first time in more than a year, Mary Lewis will be heard on the radio at 8:30 p. m. in the Jack Frost Melody Moments, over WLW (NBC-WJZ). Mary left the Follies for stardom in Metropolitan Opera. She sails for Europe April 15.

## PILLSBURY MOVES

Beginning (April 11), the Street Singer in the Pillsbury Pageant will be heard Monday at 9:15 p. m. instead of Friday at 9 p. m. "My Heart Stood Still" from "The Connecticut Yankee," "Body and Soul" from "Three's A Crowd," "Love Comes Once in a Lifetime" and "Lady of Spain" will be heard (WKRC-CBS).

## ON MORNING SPOT

The original King's Jesters, who won fame with Paul Whiteman, are now heard each Tuesday-Thursday at 11:45 a. m. over WLW (NBC-WFAF) in a program sponsored by the O' Cedar Corporation of Chicago. They imitate almost every instrument.

# Here is the Key to the Out-of-Town Radio Stations

To simplify the tuning of chain stations, the following log of network stations is given with each chain headed by the New York station which broadcasts its programs: (Those marked \* take either NBC network.)

NATIONAL BROADCASTING COMPANY	
WJZ, New York.....	760 kc.
KDKA, Pittsburgh.....	980 kc.
KYW, Chicago.....	1020 kc.
*WCKY, Covington.....	1490 kc.
*WENR, Chicago.....	870 kc.
WGAR, Cleveland.....	1450 kc.
WJR, Detroit.....	750 kc.
WLW, Cincinnati.....	700 kc.
*WLS, Chicago.....	870 kc.
WMAQ, Chicago.....	670 kc.
*WEAF, New York.....	660 kc.
*WENR, Chicago.....	870 kc.
WGY, Schenectady.....	790 kc.
*WHAS, Louisville.....	820 kc.
WSAI, Cincinnati.....	1330 kc.
WTAM, Cleveland.....	1070 kc.
WWJ, Detroit.....	920 kc.
COLUMBIA BROADCASTING COMPANY	
*WABC, New York.....	860 kc.
KMOX, St. Louis.....	1090 kc.
WADC, Akron.....	1320 kc.
WBBM, Chicago.....	770 kc.
WCCO, Min'polis-St. Paul.	810 kc.
WFBM, Indianapolis.....	1230 kc.
WHK, Cleveland.....	1390 kc.
WKRC, Cincinnati.....	550 kc.
WLAP, Louisville.....	1290 kc.
WSPD, Toledo.....	1340 kc.



**Doodlesocker**

Sidney Teneyck

Spent the last week in the famous Blue Grass State, including stopovers at such towns as Pokeville, Hazard, Irvine, Louisa and Paintsville. And reader, what traveling. Hundreds of miles of luscious, romantic, sweet smelling, gravel roads garnished copiously every few miles with delectable land slides. One place we waited three hours to get through. Going from Hazard to Irvine we had to travel about 85 miles out of our way because a 15-mile stretch of road hadn't even been started yet. It could have been ridden by mule possibly.

And the toll bridges. Has anyone ever tolled you about them? One of them wanted the small sum of 45 cents just to ride over the bridge. I hadn't anything less than a 10-spot so the keeper tolled me he would have to let me by, free of toll. Others made up for it, however. . . . You might ask me how I knew the toll bridge keeper was short of change. Shh—I'll tell you. I stood in the church at midnight and the bells tolled.

We have a circuit bocker who staggers around under the ponderous title of Clyde Congrove. Well, brother Congrove is a six-footer, tough to handle and I'm a bit leary about yelping to him face to face regarding the long mileage jumps he inflicted on brother Roberts and myself this past week. Therefore and to wit:—Let it be known that—

I think Clyde Congrove is a big sissy and that he gets brain fever when he starts looking at a state map. I can whip him with one hand tied behind me, including all his relations. (I hope he doesn't see this.)

Now that the above is off my chest I shall breathe easier. There's nothing like telling a guy where to get off at. If he had been some little guy like Romantic Reginald, our accoustically accentuated and acrobatically accomplished accordion squeezer (Larry Greuter), things would have been different.

And has WLW's Old Man Sunshine (Ford Rush) got an enthusiastic Kentucky following! My portly carcass is usually eagerly confronting a well done steak in some restaurant when his familiar theme song comes over the ether waves. When he sings his prayer song, knives and forks are laid aside for the moment and faces from 9 to 90 prove that old adage that there's a little of the milk of human kindness in every human breast. WLW can be justly proud of its Old Man Sunshine.

And do I miss the Top O' The morning. Personal conversations with WLW listeners hundreds of miles from the station have proved what that program really means to them. And Blayne Richards is doing a swell job.

SIDNEY TENEYCK.

**QUEEN CITY RADIO SERVICE CO.**  
We specialize on R.C.A., PHILCO, MAJESTIC, VICTOR, BRUNSWICK and ATWATER KENT Service and parts on Brunswick, Bremer-Tully and General Motors  
626 Broadway CHerry 2440

**MONEY**  
Boys Sell RADIO DIAL  
A little of your time and effort will pay good profits. Here's an easy way to have an income of your own. Show them the kind of salesman you are.  
**J. Louis Motz News Co.**  
918 E. Court St., Cincinnati, Ohio  
Phone CHerry 3205

**Brad Leads**  
This "Kentucky Mountain Boy" with his "Houn' Dog Guitar" is credited with leading all other radio stars in amount of fan mail received from college professors and school teachers. Reason: his mastery of old mountain ballads and folk songs, in which there is much interest among educators. Bradley is one of WLW's stars.



BRADLEY KINCAID

**Watts Watt**  
By Hilda Cole

(Special to the Radio Dial)  
COLUMBIA STUDIOS, NEW YORK CITY.—Think I shall begin this week's news with a story on Yours Truly. I've been writing television scripts which are presented each Friday night at 9:45 with Hermina Costello (Toni to you) and Walter Ferrell taking the leading parts. I've been announcing, and whenever there is an extra small part to read, I tackle that. Last week it all became more involved than I could bear.

It happened to be a play written around the revolution. Toni played the staunch little colonist trying to waylay the British officer who had come to search her house (where her wounded brother was hidden) and Walter played the blustering Soldier-of-the-King. I was the announcer, one-half of the off-stage noises, Mrs. Baker, and John Baker, the spy. (If this seems incredible you should have seen us in action!)

In one scene I was wrapped in a blanket with my head on Toni's shoulder. A split second later I

**Your Prized Watch**  
Skillfully Repaired and Serviced  
By  
**LEONARD SCHMIDT**  
11 Years in Same Location  
607 Second Nat'l Bank, 9th and Main

crashed to the floor in a faint and Walter bellowed into the mike, "I thought so! It's John Baker, the spy. . . ." At this point I was supposed to rise rapidly from my prone position, scuttle around "right-stage" and appear as the hysterical mother, Mrs. Baker, screaming, "He is my son and you shan't touch him!"

You can well imagine the activity this involved. I rose from the floor looking like an apparition swathed in a blanket, discarded it pell-mell on the floor, and made for the back-drops behind which I intended to make my escape and enter on the other side.

However, in the darkness of the studio, I did not see the negro porter standing there. I tackled him in my haste and fell to the floor, causing undue noise and a few giggles (which, I was told from a reliable source later, were entirely audible over the mike). It was, of course, a great strain on Toni and Walter to carry on soberly with the other member of the cast becoming tangled up in the back-drops and altogether behaving in a slapstick fashion at the very peak of excitement.

In television, as in the theater, however—the show MUST go on!  
Mrs. Esberger may be interested to hear that Irene Beasley made her musical debut at the age of 3, riding on top a load of watermelons in a wheelbarrow on a plantation in Whitehaven, Tenn. She used to beg her father to let her go out in the fields with him, and en route she had an intent circle of "darkies" who listened to her sing her baby songs.

Singin' Sam (Harry Frankel) owes some of his mellowness and warm radio personality to the fact that he was recruited from minstrel

**WHEN YOUR RADIO IS NOT WORKING SATISFACTORILY**  
Call CHerry 9037 and one of our experts will call at your home and make a complete test of your radio and tubes for only  
**50c**  
**RELIABLE RADIO SERVICE**  
CHerry 9037  
All Work Guaranteed 90 Days

**WHERE WILL YOU BE AT MIDNIGHT**  
On Saturday, April 23rd?

As a wide-awake, up-to-the-minute Radio Fan, you know that time changes then—affecting ALL NETWORK PROGRAMS and affiliated local stations (WLW, WSAI, WKRC, WCKY).

**ALL PROGRAMS CHANGE TIME**  
But you need not lose a minute of your favorite program—if you have a copy of RADIO DIAL at your elbow.

RADIO DIAL will carry the complete changes in its April 28th issue. Be on time with radio—through THE DIAL.

RADIO DIAL  
22 E. 12TH STREET, CINCINNATI, OHIO CC 1  
YOU BET. I want to receive RADIO DIAL. Send it for six months; here's my dollar (check, currency or money order).  
 New Subscriber  Renewal  
Name \_\_\_\_\_  
Address \_\_\_\_\_  
City \_\_\_\_\_ State \_\_\_\_\_

shows. At a very early age he was a member of J. A. Cobourn's Greater Minstrels, where he was featured as the "boy basso." Blending the traditional theories of the stage (learned from old troupers) with the new, and as yet unbalanced theory of radio entertainment, he has become one of the most popular CBS stars. He has played in every state in the country, and widely throughout Canada. Sam made his radio debut on a Cincinnati station, whence he journeyed to Cleveland and then to New York.

He is typically a man of the outdoors and prefers the country to the city. . . . Is fond of all

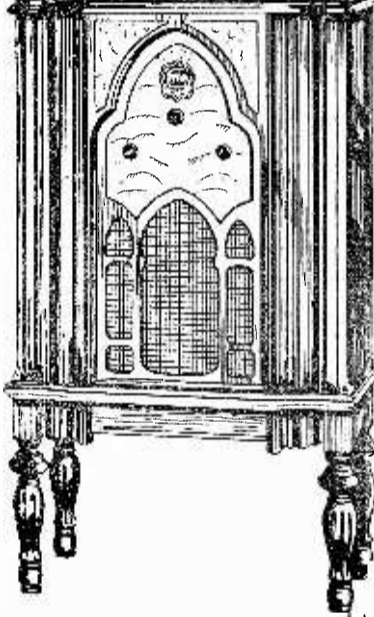
sports . . . Goes in for golf, hunting, fishing . . .  
The keynote of his program is informality, and he does not believe in too much rehearsal as he considers that it spoils the spontaneity . . . Furthermore, says Sam with regard to his radio success, "When in Rome, you have to shoot off the Roman candles . . ."

Will somebody break the news gently to T. M. that he is not the first gentleman of whom I have heard who objects to crooners? Or the first one who wanted news of Connie, Martha and Vet Boswell. More about those three next week.

**"MODEL" ROMANCES**  
Tune In  
**WKRC**  
12:15 NOON  
Every Week Day  
hear the  
**IMMORTAL MUSIC**  
and Love Songs of the World  
**MODEL LAUNDRY CO.**

"IF IT'S 'CLEVER DICK' IT'S THE BEST"  
  
Great Ghost Stories from the Past to the Present  
"Little Miss Clever Dick"  
TUNE IN to WCKY  
Daily at 9 a. m., Sundays at 3:30 p. m.  
This program is presented to you with the compliments of  
**CLEVER DICK PRODUCTS CO.**  
1448 Walnut St., Cincinnati  
Manufacturers of  
"The Cleaner that Cleans Everything"

Learn to Play  
POPULAR OR CLASSICS  
**GLADYS CATRON**  
(WKRC)  
Composer—Arranger and Teacher  
PIANO—VOICE AND ORGAN  
Woodburn 4384-W MAin 0172

**The Crosley CAROLER**  
EIGHT TUBE SUPERHETERODYNE PUSH-PULL PENTODE OUTPUT DYNAMIC SPEAKER TONE CONTROL  
**\$59.75**  
COMPLETE WITH TUBES  
Price subject to change. Any Federal or state taxes which may be levied must be added to this price.  
  
**TRY TO MATCH THIS FOR VALUE**  
Think of getting this eight tube Superheterodyne radio in a beautiful 40-inch console model cabinet for as little as \$59.75! Turn the dial and see how many stations you can tune in with it. Compare it side by side with other makes of radios selling anywhere nearly as low as \$59.75. Such tremendous value has made this radio one of the most popular on the market today. If you are looking for a low-priced console of exceptional performance, see and hear this remarkable receiver. Then you will be convinced that it is the radio for you.  
**THE CROSLY DISTRIBUTING CORPORATION**  
DISTRIBUTORS  
3401 COLERAIN AVE. CINCINNATI, O.  
YOU'RE THERE WITH A CROSLY  
**CROSLY RADIO**

**If We Had Our Own Radio Station**  
 BY JACK SNOW  
 ANNOUNCER:  
 Good evening, Ladies and Gentlemen, this is the annual banquet of the Aviatix Club of New York City. We are broadcasting direct from the Cloud and Ballroom where Bal Loon and his Loonatics open the program with the theme song, "Two Little Girls Who Flew."

**ON JOE'S "BEAT"**  
 "Peanut Pietro," new WLW feature, nightly at 8 except Sunday, is winning a following with his humor and pathos, as revealed in his talks with "Joe the Cop." Planters Nut & Chocolate Company is sponsor. Charles Egelston is Pietro and Wally Maher is Joe.  
**ANNIE ON WCKY**  
 "Little Orphan Annie," famous comic-strip character, is now heard daily over WCKY at 5:45 p. m.

**PIRATE CLUB NEWS**  
 Dago Red and Black Eye are now back from their secret mission. Nobody knows where they went—or what they were doing. The Chief will not tell—and neither will they. Dagger Bill cannot figure it all out.  
 The Chief wants to thank all his mates for feeding the birds. He says it makes him very happy to have his orders obeyed so well. He wants all the Cincinnati Pirates to keep up the good work.  
 There have been a lot of letters coming to the Chief—asking him how they may get their crew flags. Although the Chief tells about this in his letter to the crew captains he will tell it again. Any crew who sends in FIFTY wrappers from Puritan candy bars, will get a crew flag. Who will get the next one?  
 The Chief is glad to welcome crew No. 125 of Reading, Ohio. It is the largest crew he has. There are FORTY-THREE members. Ralph Dilibert, 1220 East Third Street, Reading, is the crew captain.  
 The Chief was plenty mad about the letter he received from the coward who did not sign his name. Anyone who says anything against girls gets in bad with the Chief. He thinks girls are fine.  
 One of the letters below tells of a new crew—made up entirely of girls. The Chief was so happy when he read THAT letter he sang the Pirate Song through three times, without stopping. He welcomes them with a yo-heave-ho—and you can lay to that.

**THE PIRATE LETTER BOX**  
 PIRATE CHIEF:  
 Well, that isn't a very nice greeting, but Pirates (or Pirates-to-be) must be rough.  
 I am writing to ask if you will send me six badges for a club in which I am Chief.  
 The names of the club members are: Peggy Bredemeier, Dorothy Bredemeier, Maxine Cutler, Sherley Walker, Betty Stoecken, Jane Lidner, Dora Santora, Betty Damm.  
 You may send them to 3113 Robertson Ave. That is my address. I will give them to the other girls, as you see it is a girls' club.  
 Please trust me,  
 Sincerely,  
 PEGGY BREDEMEIER,  
 3113 Robertson Ave.

I am writing for Roaring Red himself. We will pay you back for what you did to Roaring Red's ship.  
 Ha-Ha-Ha-Ha-Ha.  
 DONALD DE MORT,  
 First Mate of Roaring Red's Crew.  
 P. S.—You're a coward.  
 DEAR SIR:  
 I wish to join the Pirate Club. I have already got a crew of well, strong boys. The pirates in the back of us always come in the back yard and start a duel with sword. We always beat them. Will you please tell me how to get a flag?  
 Yours truly,  
 ROBERT HURST.

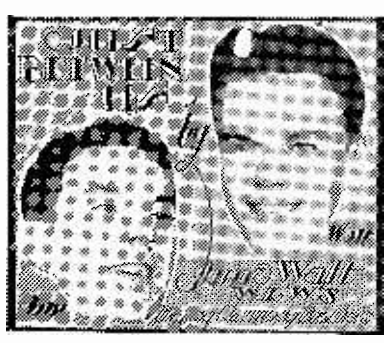
**FIRST MATE PROMOTIONS**  
 Carl Wulff, Jr., 19 E. 3rd St., Newport, Ky.  
 Wesley Downing, 3643 Linwood Rd., Edward Sobolewski, 236 Piedmont St. Glenn Hughey, 2842 Stanton Ave. Gordon Johnston, 3588 Saybrook Ave. Donald Hawley, 3435 Cornell Pl. Thomas Meister, 3122 Langland Ave. John Harouff, Jr., 6030 Montgomery Rd. Kathleen Kehoe, 345 Resor Ave. Richard Burkardt, 454 LaFayette Ave., Bellevue, Ky.  
 Charles Wolever, 1536 Ruth Ave. Ray Lane, 2625 Stanton Ave. Lovell Becker, 1544 Ruth Ave. Elmer Johnson, 2736 Wagner St. Charles Keating, 547 Evanswood Pl. Geo. Rosenthal, 991 Marion Ave. David Stritz, 40 Burton Wood Lane Harry Reuteman, 132 E. Clifton Ave.

DEAR CHIEF:  
 Girls ain't pirates so kick 'em out of the crew quick, because I said so, and I dare you to read this on the air.  
 A LOYAL PIRATE.  
 TO THE CHIEF:  
 I am one of Roaring Red's Pirates. We have our Pirate ship in Indiana. We all hate you. All our Indiana Pirates are going to "spy" on you Cincinnati pirates. We'll make plenty of trouble. Some of your Cincinnati Pirates are turning traitor to you and your crew now. You don't know who they are, and never shall. They are spying on your crew now.  
 I am Roaring Red's best first mate. I challenge any one of your first mates to fight us.  
 Tune in on the Pirate Club on WFBE every week day, 5:15 P. M.



Left to right: William Stoess, Borah Minnovich, Charles Stone. Edward Byron, seated.  
 These four gentlemen are trying the new melody, "Waltzing With You"—words by Byron, WLW production manager, music by Stoess, WLW music director. Minnovich showed here recently at the R-K-O Albee in "Minnovich and His Rascals." Stone is Albee Orchestra director.

**WSMK**  
 (1380 kilocycles)  
**HIGHLIGHTS**  
 BY J. B. MILLER



"Footlights and Big Time" carries listeners backstage with Dugan and La Marr, a couple of struggling vaudevillians. The parts are enacted by James Burton and Jane Bishir of the WSMK staff. The sketch follows the "continued story" human interest theme, and is heard every night except Saturday and Sunday at 7. This time was vacated last week by Andus N' Aimee who hereafter will hold forth with nonsense and chatter every Wednesday at 3 p. m.

Hello Folkses . . .  
 It's lovely spring weather we're having, wasn't it? Talking about the weather is taboo on the air what with WLW's nationwide audiences . . . listeners in Florida fanning themselves and Minnesota fans huddling around the family hearth. It's a small world!

The Skylarker Accordion contest, launched two weeks ago, is now keeping company with another new feature on the noontime program for 15 minutes (at 12:30), the Skylarkers "transfer" to the home of Effie Brown for a good old-fashioned hymn sing with an old-time organ.

We were listening to WBBM's "Round the Town" program the other night. They announced an orchestra playing from a Chinese Cafe and their opening number was "Japanese Sandman." Somebody should change that line in "Million Dollar Baby" to read: "I kept buying China until Japan got wise."

During the program of chamber music Sunday at 6:15 p. m., the Dayton String Quintette will play compositions by the director, Robert Taylor. Mr. Taylor presents a violin recital each Wednesday at 2 p. m.

We always liked those stories about cowboys and redskins. We ran across a goofy version the other day that went something like this: "And so four more redskins bit the dust and went to meet their maker. 'Hello, Maker,' said the redskins. 'Hello, boys,' said their Maker, 'how did you get your faces so dirty?' 'Oh, we've been biting some dust,' they said, rather sheepishly."

Jimmie Burton will feature songs of five years ago during his "songalogue" Monday at 5:00 p. m. . . . The music of Grieg will predominate in the quarter hour of Two Piano Classics played by Arcelia Hinton and Mabel Phillips Tuesday night at 10:30. . . . So popular was "The Flash" that another mystery serial is scheduled to start Monday, occupying the same three-a-week period, 6:30 p. m., Monday, Wednesday, Friday. . . . Helen Blue will be featured as soloist with Major and Minor, twin pianists, Friday night at 10, singing "So Blue" and "When the Rest of the Crowd Goes Home."

Friday night at ten-thirty we're going to introduce a cheerful little song entitled, "A Mausoleum Built for Two." Will you all listen? We're dedicating it to a brand new friend of ours who is a free-lance embalmer. We have quite a few undertakers among our fans, judging from the letters we receive every week from people who say they'd like to come up and "lay us out."

**Tune in on the**  
**Worthmore**  
**Twins**  
**"Soup" & "Chili"**  
 Hear the songs and piano selections of this popular duo, who bring you daily greetings from the Phil J. Hock & Co., makers of Cincinnati's largest selling brand of Turtle Soup and Chili—  
**WORTHMORE**  
**WKRC**  
 4:30 P. M. Daily.  
 Sunday, 12:45—1:00 P. M.  
**WCKY**  
 Wed. and Fri., 5:30 P. M.—6:00 P. M.  
 Sunday, 2:00 P. M.—2:30 P. M.

The Crosley studios are filling up with Indiana people. The latest recruits are Phil Davis and Ralph Lillard, two boys who used to be with Charlie Davis' orchestra . . . remember the Perfect Circle broadcasts they used to do 'way back when?  
 \* \* \*

No foolin', spring is here. We were awakened this morning by robins howling outside our windows. "Who's doing all that howling out there?" we cried. "Oh, it's just a bunch of us robins," they replied "Cheer up." So we did. Hoping you are the same . . .  
**JIM AND WALT.**

**M. & T. RADIO SHOP**  
 AL. THREM, Prop.  
**RADIOS TESTED IN YOUR HOME**  
 Reasonable Satisfaction Guaranteed  
 As Near As Your Telephone  
**1735 Elm (at Findlay Market)**  
 Parkway 4573

**Letter Box**  
 The photos in The Dial give us the real pleasure of seeing the stars whom we hear so often. These pictures, to my mind, are one of the finest things you do for your readers. And that gives me an idea for even greater service: Many Dial readers, as you know, clip and save these photos. Why not publish one large picture—say, about three columns wide—of a different radio star each week, for our scrapbooks?  
 R. E. A., Cincinnati.  
 \* \* \*

In behalf of The Dial and of the artists who will be pictured, many thanks to R. E. A. for this suggestion.  
 \* \* \*

Miss T. R. S., Zanesville, O.: Charlie Dameron is unmarried, 29, and 5 feet 9.  
 \* \* \*

A. G. K., Louisville: WLAP (Louisville) frequency is 1200. Are you certain that your set is properly adjusted?  
 \* \* \*

Radio Fan, Wheeling, W. Va.: Jim and Walt may be heard at night on WLW Mondays and Wednesdays at 10:30.  
 \* \* \*

P. J. L., Middletown, O.: Records show that there was a slight break Wednesday, March 2, at 12:37 noon in WLW broadcast from the Hotel Gibson. The "Hello, yeh," which you heard may have been a greeting and reply on the controls.  
 \* \* \*

N. A. K., Helena, Ark: Lost Legion has moved from 5:30 to 6 p. m. on WKRC (CBS).  
 \* \* \*

S. M. A., Brooksville, Ky.: Yes, WLW and WSAI are in the same building. A leading technical authority advises that a 100-watt high frequency broadcasting station in territory such as this can be expected to enjoy good reception—in good weather—over a radius of not more than 20 miles. In flat, level country, it might be increased to 100 miles. Sidney TenEyck is 27, Bob Burdette 31. Richard Pavey is married. Bromley House is now program manager at WKBF (Indianapolis). Yes, W8XAL and WLW programs are the same.  
 \* \* \*

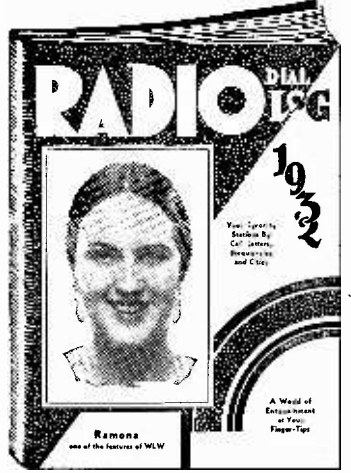
Editor The Dial: I like The Radio Dial so much that I am subscribing for another six months. I would not want to be without it a single week.—R. S., Cincinnati.

**On Radio Mission**



**DR. SAUL B. ARENSEN**  
 Entrusted with the task of conducting an investigation for the National Advisory Committee for Education by Radio, Dr. Saul B. Arenson is to sail April 16 from Victoria, British Columbia, for a trip that will take him to Japan, China, Siam, Java, Australia, New Zealand, Fiji Islands and Hawaii. Serious illness of his mother may delay his trip for a period. Dr. Arenson, associate professor of chemistry at the University of Cincinnati, opened the University of Cincinnati's popular talks over WLW with a series of fifteen in 1929, continuing in 1930 and 1932. He came to U. C. from his alma mater, University of Nebraska, in 1923.

**Know ALL the Stations with RADIO DIAL LOG BOOK . . . FREE!**



Dial and identify radio stations all over the world with this new LOG BOOK. For a limited time, you can have a copy free with a 6-months' subscription to RADIO DIAL. Here's an idea of what it contains:

1. U. S. and Canadian radio stations listed alphabetically. With space for filling in dial setting on your set.
2. U. S. and Canadian stations listed by frequencies.
3. All stations in U. S., listed by States.
4. Network stations associated with N. B. C. and C. B. S., listed three ways.
5. FOREIGN long-wave stations.
6. Short-wave stations all over the world.
7. Television stations all over the world.
8. Police broadcasting stations.

**Convenient—Accurate—Complete—Official**

RADIO DIAL  
 22 E. 12TH STREET, CINCINNATI, OHIO 2-LB  
 Send a copy of Radio Dial LOG BOOK Free, and enter my subscription to Radio Dial for 6 months (26 weeks), to start at once. Enclosed is \$1.00.  
 New Subscriber  Renewal  
 Name \_\_\_\_\_  
 Address \_\_\_\_\_  
 City \_\_\_\_\_ State \_\_\_\_\_

COMPLETE PROGRAMS FOR FRIDAY, APRIL 8, ON THIS PAGE

WSAI (225m.—1330 kc.)

8:00 A. M.—Gene and Glenn (NBC)
8:15—Talent Bureau Program
8:45—WSAI Morning Dance Concert
9:15—Talent Bureau Program
9:30—Popular Musicales
10:00—Mrs. Blake's Radio Column (NBC)
10:15—Breen and De Rose (NBC)
10:30—Fashions and Figures (NBC)
10:45—Betty Crocker (NBC)
11:00—Music Appreciation Hour (NBC)
Noon—G. E. Home Circle (NBC)
12:50 P. M.—Live Stock Reports
1:00—Sign Off
3:00—Afternoon Melodies
4:00—Betty Moore Decorating Tall (NBC)
4:15—Crosley Dealers Salute
4:30—Concert Program—Farm Flashes
5:15—Skippy (NBC)
5:30—Celebrated Compositions
5:45—The Listerine Program (NBC)
6:00—Memory Hour
6:30—Talk by Alice Richards
6:45—Musical Memories
7:00—Memory Hour
7:15—Campbell Orchestra (NBC)
7:30—Prince Albert Program (NBC)
7:45—Trials of the Goldbergs (NBC)
8:00—Cities Service Concert. with Jessica Dragonette and Cavaliers (NBC)
9:00—Chicquot Club Night Club (NBC)
9:30—Pond's Dance (NBC)
10:00—The Sampler Orchestra (NBC)
10:30—R.K.O. Theatre of the Air (NBC)
11:00—Gibson Orchestra: Henry Thies
11:30—Sign off

WFBE (250m.—1200 kc.)

7:00 A. M.—Break of Day
7:15—Musical Clock
8:15—Birthday Greetings
8:30—Morning Concert
9:00—Our Daily Thought
9:15—Hy C. Geis, organ
9:45—Gold Nuggets
10:05—Dor's School Children's Popularity Program
10:20—Beauty Notes
10:35—WFBE RKO Theatre Party
10:50—Mrs. Evans' Advice
11:00—Mary and John, sketch
11:15—Lyric Program, Musical Novelties
11:30—Beulah Davis, pianist
11:45—Studio
Noon—News in Cincinnati
12:30 P. M.—Little Black Joe, songs
12:45—Studio
1:00—Victor Salon Orchestra
1:15—Children's Hour, Robert Bentley
1:30—Slumber Songs
1:45—Mrs. Lloyd Hoshaw, readings
2:00—Charles Daunt, tenor
2:15—Afternoon Dance Melodies
2:45—Elinor Hurdle, character sketches
3:00—Forgetmenots, music
3:15—Adelaide Apfel, piano
3:30—Matinee Melodies
3:45—Marion Hemple, songs
4:00—Ben Frank, piano
4:15—Dance Tunes
4:30—Bertha Mathers, violinist, and Emma Baiser Scully, pianist
5:00—Variety—Bee Campbell
5:15—The Pirates' Club
5:30—Northside Musicales
5:45—Jules Sien
6:00—Music Masters
6:15—The Wandering Minstrel
6:30—Studio
6:45—Lost and Found
6:50—Max Fisher's Orchestra
7:15—Post Question Box
7:30—Sports Review, Harry Hartman
7:35—Training Camp Gossip (Original Ibold)
7:45—Elaine Ritter, soprano
7:55—Lost and Found
8:00—Your Garden
8:15—Kentucky Post Program—Marie Holly
8:30—La Vista Orchestra
8:45—Werner Burkhardt, baritone
9:00—The Lucky Boys, piano and banjo
9:15—In the Gloaming, Glenna Will Newland
9:30—Wrestling Matches
11:00—Max Fisher's Chatter Box Orch.

WKRC (545m.—550 kc.)

6:45 A. M.—God's Bible School—Sunrise Worship
7:45—Churngold—The Breakfast Club
7:59—Gruen Time Signal
8:00—Raysol—Old Time Singing
8:15—Gladys Catron, organist
8:30—Pyol Program
8:45—Cudahy Company, The Old Dutch Girl (CBS)
9:00—H. & S. Pogue, Jean West
9:15—Prosperity Specials
9:30—Consolidated Merchants Program
10:00—Prescott, The Grant Trio (CBS)
10:15—Weather: Time
10:18—Woman's Hour, Tremlette Tully
10:45—Martin Senour, Don and Betty (CBS)
11:00—F. W. Fitch, The Professor (CBS)
11:15—Lane Cedar Chest—The Lane Reporter (CBS)
11:30—Best Foods: Round the World Cooking School (CBS)
11:45—Jane Grey, "Kampf the Jeweler" Artists
Noon—Cincinnati Paint Club
12:15 P. M.—Model Laundry—Model Romances
12:30—Kre-Mel, the singing Chef (CBS)
12:45—Cincinnati Merchants' Program
1:00—Miracul Wax—Magic Piano Twins (CBS)
1:15—Cincinnati Merchants Program
1:30—Julia Hayes
2:00—Movie Projectionists' Union, Ruth Reeves
2:15—Burck-Bauer Organ Melodies
2:30—American School of the Air (CBS)
3:00—Queen City Rug Makers
3:15—U. S. Marine Band (CBS)
3:30—Main Street Business Men
3:45—Columbia Educational Feature (CBS)
4:00—Pyol
4:15—Raysol—Howard Hafford, tenor
4:30—Worthmore Turtle Soup and Chili
4:45—Crazy Crystals Program
5:00—Sulfox Health Program
5:15—Malted Products Program, Golden Age, organist
5:30—Pollyanna, "The Glad Girl" Children's Stories (CBS)
5:45—Studio
6:00—Sonada Sports Review; Wally Forste
6:15—Red Top Baseball Scores
6:20—Stocks, Studio
6:45—Wurzburg: The German and His Parrot: Lange Time (6:59)
7:00—Wrigley: Myrt and Marge (CBS)
7:15—Maxwell Coffee Program, Tune Blenders (CBS)
7:30—Lavoris—Easy Aces
7:45—Camel Quarter-Hour: Morton Downey (CBS)
8:00—Linit: The Bath Club (CBS)
8:15—Barbasol: Singin' Sam (CBS)
8:30—E. I. Dupont—Today and Yesterday (CBS)
9:00—Pillsbury Pageant: Street Singer, Sam Lanin's, orchestra (CBS)
9:30—Woodbury Co.: To the Ladies, Leon Belasco's Orchestra (CBS)
9:45—Van Heusen Program (CBS)
10:00—Allen "A"—Beau Bachelor (CBS)
10:15—Horlick Adventures in Health, Dr. Herman Bundesen (CBS)
10:30—Chesterfield: Alexander Gray, Nat Shilkret Orchestra (CBS)
10:45—Weather Forecast
10:46—Sonada Sports Review; Wally Forste
11:00—Time Signal; Studio
11:45—George Olsen Orchestra (CBS)
Midnight—Isham Jones' Orch. (CBS)
12:30—Paul Specht's Orchestra (CBS)

WCKY (202m.—1490kc.)

7:00 A. M.—Cumberland Fiddlers
7:30—Asher Sizemore and Little Jimmy
7:45—Kapua's Hawaiians
8:00—Eureka Weather Forecast
8:01—Jimmy Eldred at the Piano
8:15—Morning Devotions (NBC)
8:30—Cheerio (NBC)
9:00—Queer Corners with Clever Dick
9:15—Waltzes, Old and New
9:30—Dinty Moore
9:40—Band Music
10:15—Clara, Lu and Em (NBC)
10:30—Bill Dinkle and Eddie Baer
10:45—Community Chest
10:50—Classic Hour
11:00—Music Appreciation
Noon—Tunes in Blue
12:15 P. M.—Johnson Wax Program
12:20—Interlude
12:25—Live Stock Market Report
12:30—National Farm and Home (NBC)
1:30—Piano Novelties
1:45—Richard Porter, singing pianist
2:00—Popular Dance Tunes
2:15—Moods Indigo
2:30—Modern Furniture Program
2:45—Princess Oholensky Youth Matinee (NBC)
3:00—Just Bill and Audrey
3:15—Larry Topper at the piano
3:45—Kapua's Hawaiians
4:00—Stars of Today
4:30—Song Hits
4:45—Asher Sizemore and Jimmy
5:00—"Snow" Drifts, Jack Snow
5:15—Dr. Belber Musical
5:30—Worthmore Soup
5:45—Little Orphan Annie (NBC)
6:00—Tommie and Willie, Coca Cola Twins
6:30—Royal Vagabonds with Ward Wilson (NBC)
6:45—Late Dance Tunes
6:55—WCKY News Man
7:00—Amos 'n' Andy (NBC)
7:15—Debutantes
7:30—The Stebbins Boys (NBC)
7:45—Billy Jones and Ernie Hare (NBC)
8:00—Nestle Chocolateers (NBC)
8:30—Mabley & Carew Style Talk
8:35—It Pays to Advertise
8:45—Lookout House
8:59—Eureka Weather Forecast
9:00—On to Prosperity
10:00—Paul Whiteman's Pontiac Chieftains (NBC)
10:30—Waves of Melody (NBC)
10:45—Earl Marco's Vagabonds
11:00—Club Royal, Henry Spinler
11:15—Slumber Music (NBC)
11:30—Vincent Lopez Orchestra (NBC)

WLW (428m.—700 kc.)

6:30 A. M.—Top o' Morning
7:00—Morning Exercises
7:15—Threesome, vocal trio
7:30—Arthur Chandler, Jr., organist
7:45—Jolly Bill and Jane (NBC)
8:00—Morning Devotions
8:15—Phil Cook (NBC)
8:30—Layne's Mountaineer Fiddlers
8:45—The Early Burdettes
9:00—Rumford School of Cookery
9:15—Old Bill
9:30—Beautiful Thoughts (NBC)
9:45—Wilson Premium Man
10:00—Live Stock Reports
10:10—Piano Solos
10:15—A. & P. Dance Orchestra
10:30—"Our Daily Food"—Colonel Goodbody (NBC)
10:45—Elliot Brock, violinist
11:00—Music Appreciation Hour (NBC)
Noon—Tuxedo Fiddlers
12:15 P. M.—Pat Barnes in Person (NBC)
12:30—Spray Talk; River Reports
12:45—Market Reports; Live Stock Reports
1:00—National Farm and Home Period (NBC)
1:30—Horace Heidt's Orchestra
2:00—School of the Air
3:00—Josef Cherniavsky's Orchestra
3:30—Varsity Quartet
3:45—Three Graces, vocal trio
4:00—A. & P. Program
4:30—Organ Matinee
5:00—Southern Singers
5:15—Bird Talk, Dr. Glenn Adams
5:30—Kellogg: Singing Lady (NBC)
5:45—The Chatter
6:00—Old Man Sunshine
6:15—Boscul All-Star Orchestra (NBC)
6:30—Mail Pouch Sportsman—Bob Newhall
6:45—Lowell Thomas (NBC)
7:00—Amos 'n' Andy (NBC)
7:15—Quaker State Program
7:30—Earl Ferris Nuserymen
8:00—Peanut Pietro
8:15—San Felice Cigar Program
8:30—B. A. Rolfe's Ivory Soap Orch. (NBC)
8:45—Sisters of the Skillet (NBC)
9:00—Dayton Thoroughbreds
9:30—Armour Concert (NBC)
10:00—Vox Humana
10:30—Jim and Walt, Alaga Melodie
10:45—Headlines of Yesterday
11:00—"Without Warning"
11:30—Charles Dornberger Orchestra from Mt. Royal Hotel (NBC)
Midnight—Gibson Orch.: Henry Thies
12:15 A. M.—Wm. Stoess and His Flying Dutchmen (NBC)

Network Programs

6:00 P. M.—Freddie Martin's Hotel Bossert Orchestra. WABC wcah wad wlap wowo
—Waldorf-Astoria Orchestra. WEF wwa wenr (kyw on 6:15)
—Raising Junior, domestic skit. WJZ wgar
6:15—John Kelvin, Irish tenor, with Vincent Sorey's Orch. WABC wvva wad wowo wlap
—Boscul All-Star Orch. WJZ wlv kdka
—Skippy, children's program. (NBC) wenr kstp
6:30—Charles Boulanger's Orch. WABC wad wspd wowo
—Lone Wolf Tribe, an Indian story. (CBS) wbbm kmox wcco wlap
—Rex Cole Mountaineers: hill-billy music. WEF
—The Three Mustachios, male trio. (NBC) wenr
—The Royal Vagabonds, with Ward Wilson. WJZ wcky wgar wmaq kdka
6:40—Block-Aid Speaker. WABC
6:45—Bing Crosby, songs. WABC wcah wlap kmox wvva wad wfbm wbbm
—Larry Funk's Palais d' Or Orch. WEF wgy wvj
—Jowell Thomas: Literary Digest Topics in Brief. WJZ wlv kdka wmaq
—Little Orphan Annie: childhood playlet. (NBC) wenr wgn kstp
6:55—Emergency Unemployment Relief Committee Talk. WEF
7:00—Wrigley: Myrt and Marge. WABC wkrc wgd wkd wad wvva
—Henri Gendron's Orchestra. (CBS) wbbm wcco
—Salon Singers: mixed chorus. WEF wmaq
—Amos 'n' Andy. WJZ wlv wcky kdka wlv wgar
7:15—Maxwell House Tune Blenders, with Lanny Ross, tenor. WABC wkrc wgd wad
—String Sextette. (CBS) wbbm
—Campbell Orchestra, with Robert Simmons. WEF wsa wgy wvj wtm wmaq
—Esso Program: Elsie Janis, songs and stories. WJZ kdka
7:30—Lavoris: "Easy Aces." bridge comedy act. WABC wkrc kmox wfbm wgn whk wcco
—Prince Albert Quarter Hour: Alice Joy with Orchestra. WEF wsa wtm wgy kstp
—The Stebbins Boys, comedy sketch. WJZ kdka wenr kstp wcky wjr
7:45—Camel Quarter Hour: Morton Downey, Tony Wons, Jacques Renard's Orchestra. WABC wkrc wcco wfbm wspd kmox wvva wcah wad wlap whk
—The Goldbergs. WEF wsa wtm wgy wenr wvj
—Jones and Hare, songs and patter. WJZ whas wgar wmaq wcky kdka
8:00—Linit: The Bath Club, interview, male quartet, tenor, orchestra. WABC wkrc wgn wcco wfbm wspd kmox wad whk
—Cities Service Concert Orchestra, with Jessica Dragonette and Cavaliers. WEF wsa wtm kstp kyw wvj (wgy off 8:30)
—Nestle Program: Leonard Joy's Orchestra, guest artist. WJZ wcky kdka wlv wjr wgar
8:15—Singin' Sam, the Barbasol Man. WABC wkrc wgn wcco wfbm wspd kmox wad whk
8:30—"Today and Yesterday:" dramatic and musical highlights. WABC wkrc wgn wowo whk wspd kmox wad wcco
—Ivory Program: B. A. Rolfe's Orchestra. WJZ wlv kdka wlv
8:45—Sisters of the Skillet, comedy and songs. WJZ wlv kdka wlv wgar wjr
9:00—Pillsbury Pageant: The Street Singer; Sam Lanin's Orchestra. WABC wkrc wgn wowo wcco whk wspd kmox wad wfbm

NETWORK PROGRAMS

—Chicquot Club: Harry Reser's Eskimos, quartet. WEF wsa wgy wlv wwi
—Friendship Town: small town sketch. WJZ whas kdka wlv kyw kstp wgar
9:30—To the Ladies, Leon Belasco Orchestra; Tito Guizar, tenor. WABC wkrc wgn wowo wcco whk wspd kmox wad wfbm
—Pond's Dance: Leo Reisman Orchestra; WEF wsa wtm wgy wenr
—Armour Program: Irvin S. Cobb; Roy Shield's Orchestra; soprano, male quartet. WJZ wlv whas kdka kyw wjr wgar kstp
9:45—Van Heusen Program: tenor, orchestra. WABC wkrc wgn whk kmox wfbm wad wspd
10:00—Beau Bachelor. WABC wkrc wcco wad wspd whk wbbm kmox wowo wfbm
—The Sampler Program: Andy Sanello Orchestra; Fred Hufsmith, tenor. WEF wsa wtm wgy wvj wmaq
—Paul Whiteman's Pontiac Chieftains, with Mildred Bailey, Jack Fulton, Red McKenzie, King's Jesters and Romancers. WJZ wenr wjr wgar wcky kdka kstp whas
10:15—Adventures in Health: Dr. Herman N. Bundesen. WABC wkrc wbbm wcco whk wspd kmox wowo wfbm
10:30—Chesterfield: Alexander Gray, Norman Brokenshire, Nat Shilkret's Orchestra. WABC wkrc wowo wbbm wcco whk wspd kmox wcah wad wlap wfbm
—RKO Theater of the Air: stage, screen and radio stars; orchestra WEF wsa whas wtm wgy wenr wvj (kstp on 10:45)
—Waves of Melody: Victor Arden's Orchestra; Tom Brown, tenor. WJZ wcky kdka wlv wgar kyw
10:45—The Funnyboners, songs and comedy. WABC wad
—Wrigley: Myrt and Marge. (CBS) wbbm wcco wlap

NETWORK PROGRAMS

—Jane Froman and Her Orchestra. WJZ kdka wlv
11:00—Howard Barlow and Columbia Symphony Orchestra. WABC wgd wad wlap wcah wcco wfbm
—Vincent Lopez St. Regis Hotel Orchestra. WEF wvj
—Slumber Music, Ludwig Laurier's string ensemble. WJZ (wlv off 11:25) (wcky on 11:15)
—Amos 'n' Andy. (NBC) whas wenr wmaq kstp
11:15—Maxwell House Tune Blenders, with Lanny Ross, tenor. (CBS) wbbm wgn wowo kmox wcco wlap
—Vincent Lopez Orchestra. WEF wvj (wcky on 11:30)
—Prince Albert Quarter Hour: Alice Joy, with Orchestra. (NBC) whas wenr
11:30—George Olsen Orchestra. WABC (wkrc wgd wfbm wcah wad wlap wowo on 11:45)
—Camel Quarter Hour: Morton Downey, Tony Wons, Jacques Renard's Orchestra. (CBS) wgn wowo
—Studio Ensemble. WJZ wlv wenr
11:35—Charles Dornberger's Mount Royal Hotel Orchestra. WJZ wlv wenr wjr (kstp on 11:45)
Midnight—Isham Jones' Orch. WABC wkrc wgd wlv whk wcah (wbbm kmox wowo on 11:15)
—Ralph Kirbery, the Dream Singer. WEF wgy wenr wtm
—Cab Calloway Cotton Club Orch. WJZ wgar kdka
12:05 A. M.—Johnny Hamp's Hotel New Yorker Orchestra. WEF wenr wgy (kstp on 12:15)
12:15—William Stoess and His Flying Dutchmen. WJZ wlv (wgar off 12:30)
12:30—Paul Specht's Orchestra. WABC wkrc wowo whk wcco wspd wlap (wfbm on 12:45)
—Jack Denny's Waldorf-Astoria Hotel Orchestra. WEF
1:00—Claude Hopkins' Roseland Ballroom Orchestra. WABC
1:30—Gus Arnheim's Orchestra. WABC

Tune In on Those Baseball Broadcasts with RADIO DIAL With Spring's arrival, the big guns of sportdom limber up. You'll want to know when and over what stations you may hear them. The most certain way is through RADIO DIAL RADIO DIAL 22 E. 12TH STREET, CINCINNATI, OHIO. DD 1 Send me RADIO DIAL for six months (26 weeks). Enclosed is \$1.00 to cover. (Check, currency or money order). [ ] New Subscriber [ ] Renewal Name Address City State









COMPLETE PROGRAMS FOR TUESDAY, APRIL 12, ON THIS PAGE

WSAI (225m.—1330 kc.)

- 8:00 A. M.—Gene and Glenn (NBC)
8:15—Talent Bureau Program
8:45—WSAI Morning Dance Concert

WFBE (250m.—1200 kc.)

- 7:00 A. M.—Break of Day
7:15—Musical Clock
8:15—Birthday Party

WKRC (545m.—550 kc.)

- 6:45 A. M.—Sunrise Worship
7:45—Churngold—The Breakfast Club
8:00—Raysol—Old Time Singing

WCKY (202m.—1490kc.)

- 7:00 A. M.—Cumberland Fiddlers
7:30—Kentucky Mountaineer, Little Jimmy
7:45—Kapua's Hawaiians

WLW (428m.—700 kc.)

- 6:30 A. M.—Top o' the Morning
7:00—Exercise Period, with Bob Burdette
7:15—Hal and Huss, Aces of Harmony

Network Programs

- 6:00 P. M.—Waldorf-Astoria Orchestra. WFAF was wnr
—Arthur Jarrett, songs, with Freddie Rich Orchestra. WABC wlap wadc wcah wspd wowo wvva

Network Programs

- 6:00—Music Masters
6:15—Earl Harrison, tenor
6:30—Margaret Cones, pianist

Network Programs

- 6:45—H. J. Heinz Co. Program (CBS)
6:59—Lange Time
7:00—Wrigley—Myrt and Marge (CBS)

Network Programs

- 6:45—Mabley & Carew Style Ttalk
6:55—WCKY News Man
7:00—Amos 'n' Andy (NBC)

Network Programs

- 6:45—Lowell Thomas (NBC)
7:00—Amos 'n' Andy (NBC)
7:15—R. G. Dunn Program (WJR)



TONIGHT the "old maestro" and all the lads will broadcast at youse some light entertainment under the auspices of the alma malta, Blue Ribbon Malt, good old Blue Ribbon Malt... Just as the "maestro" hopes you like it, so the makers of Blue Ribbon Malt hope you try it.

Hear Ben Bernie Every Tuesday at 9 P. M. Eastern Standard Time WKRC and CBS Wherever you go, you find BLUE RIBBON MALT

NETWORK PROGRAMS 6:45—United Action for Unemployment. WABC wvva wadc wcah wspd wlap wbbm

NETWORK PROGRAMS WJZ wnr kstp was wcky kdka wjr
—Prince Albert Quarter Hour: Alice Joy, with orchestra. WFAF wsa

NETWORK PROGRAMS matic sketch. WFAF wsa wtm wgy kyw wvj
8:45—La Gerardine Program, with Ed Sullivan, guest artist and Jack Berger's Orchestra.

NETWORK PROGRAMS 10:45—Jefferson Day Dinner, WABC wadc
—Wrigley: Myrt and Marge. (CBS) wbbm wcco wlap

LESTER SINGER RADIO SERVICE CO. Cincinnati's Best Equipped Radio Service Station All Makes of Radios Serviced

Watch Repairing All Makes, including SWISS. Broken parts replaced at cost. Work Done by Experts. Watch Crystals 25c. American Jewelry Co. 3 E. Sixth St. MAin 3267

10:15—Sweetheart Program: John Fogarty, tenor; beauty talk by Ruth Jordan. WJZ kdka wgar wjr

12:05 A. M.—Johnny Hamp's Hotel New Yorker Orchestra. WFAF wvj wtm 12:30—Charlie Agnew's Edgewater Beach Hotel Orchestra. WJZ (kyw off 12:45)

**COMPLETE PROGRAMS FOR WEDNESDAY, APRIL 13, ON THIS PAGE**

**WSAI (225m.—1330 kc.)**

7:00 A. M.—Gene and Glenn (NBC)  
 7:15—Talent Bureau Program  
 7:45—WSAI Morning Dance Concert  
 8:15—Tom Brennie in the Laugh Club (NBC)  
 8:30—Popular Musicale  
 9:00—Mrs. Blake's Radio Column (NBC)  
 9:15—Jane Grant's Steer Column (NBC)  
 9:30—National Home Hour (NBC)  
 10:00—Keeping Up With Daughters (NBC)  
 10:15—Radio Household Institute (NBC)  
 10:30—Dance Selections  
 10:45 to 12:15—G. E. Home Circle (NBC)  
 12:30 P. M. to 1:00—Live Stock Reports  
 1:15—Afternoon Melodies  
 1:30—Mary Steele, contralto  
 1:45—Crosley Dealers' Salute  
 2:30—Ely Colbertson, bridge expert (NBC)  
 2:45—Concert Program: Farm Flashes  
 3:15—San Wilson, baritone  
 3:45—Skippy (NBC)  
 4:30—Wayne King's Orchestra (NBC)  
 4:45—Civil Service Talk  
 5:50—Memory Hour  
 6:30—Oldsmobile Melody Speedway  
 7:15—Memory Hour  
 6:30—Larry Greuter, accordion; Wilson Lang, tenor  
 6:45—Talk by Merle Thorpe (NBC)  
 7:00—Memory Hour  
 7:15—Campbell Soup Orchestra (NBC)  
 7:30—Prince Albert Program (NBC)  
 7:45—The Trials of the Goldbergs (NBC)  
 8:00—"Big Time," humorous sketch (NBC)  
 8:30—Halsey Stuart Program (NBC)  
 9:00—Goodyear Band and Revelers Quartet (NBC)  
 9:30—Mobiolil Concert (NBC)  
 10:00—Jefferson Day Program (NBC)  
**Night**—Sign off

**Network Programs**

6:00 P. M.—Waldorf-Astoria Orchestra. WEAJ has kym wjw wtam  
 —Connie Boswell, songs, with Freddie Berren's Orchestra. WABC wcha wadc wlap wowo wvwa wbbm  
 —Music Treasure Box: Pierre Key, narrator, guest speaker. WJZ weng  
 6:15—Rameses Program: William Wirger, Joe Kahn, piano duo; John Cah, guitarist; Curt Peterson, baritone. WJZ  
 —Skippy, children's program. (NBC) weng kstp  
 —Harold Stern St. Moritz Hotel Orchestra. WABC wvwa wlap wadc wowo wcha (wspd on 6:30)  
 6:30—Rex Cole Mountaineers: hill-billy music. WEAJ  
 —The Lone Wolf Tribe: Indian Story. (CBS) wbbm wcco wlap kmox  
 —The Royal Vagabonds, with Ward Wilson. WJZ wcky wmaq wgar kdka  
 6:40—Block-Aid Speaker. WABC  
 6:45—Lowell Thomas: Literary Digest Topics in Brief. WJZ kdka wlv wmaq  
 —Little Orphan Annie: Childhood playlet. (NBC) weng kstp wgn  
 —Address by Merle Thorpe. WEAJ wtam wjai wgy wjj  
 —Bing Crosby, songs, with Freddie Rich Orchestra. WABC wvwa wlap wadc wcha wfbm wbbm  
 7:00—Wrigley: Myrt and Marge. WABC wadc wkrc wspd kmox wvwa  
 —Henri Gendron's Orchestra. (CBS) wbbm wcco  
 —D'Avrey of Paris, songs. WEAJ  
 —Amos 'n' Andy. WJZ kdka wgar wjr wlv wcky  
 7:15—Esso Program: Elsie Janis, songs and stories; Harry Salter's Orchestra. WJZ kdka  
 —Maxwell House Tune Blenders, with Lanny Ross, tenor. WABC wkrc wadc wspd  
 —Paul Specht's Orchestra. (CBS) wbbm wcco  
 —Campbell Orchestra, with Robert Simmons. WEAJ wgy wtam wjai wmaq  
 7:30—Prince Albert Quarter Hour: Alice Joy, with Orchestra. WEAJ wgy wtam wjai wsei kstp  
 —Lorris: "Easy Aces," bridge comedy act. WABC wkrc kmox whk wfbm wgn wcco  
 —The Stebbins Boys: comedy sketch. WJZ weng kstp wgar wcky kdka wjr  
 7:45—Jones and Hart: songs and patter. WJZ wgar wmaq whas kdka wcky  
 —Camel Quarter Hour: Morton Downey, Tony Won, Jacques

**A Beautiful Nose in One Visit!**



by the Positive Method... for men and women. Permanent, beautiful results. No waxes, paraffin, mechanical devices, shapers used. No pain—no scars. Entire correction takes less than 20 minutes! Thousands of successful cases. Scars, acne pits, outstanding ears, facial blemishes of all types also quickly corrected by trained experts. Facial Lift takes off 10 to 20 years in a few minutes. Eyes made young looking and beautiful. Our methods are endorsed by famous stars of stage and screen. Come for FREE consultation and proof or write for Free book No. 603.

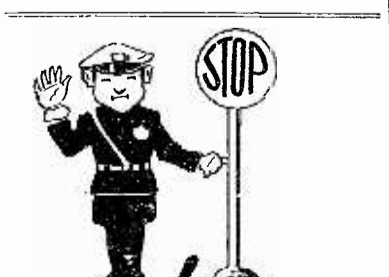
**CINCINNATI FACIAL STUDIO**  
 Devoted to facial rejuvenation and feature correction  
 Suite 704-06 Keith Bldg., 523 Walnut St.  
 Telephone CHerry 0436  
 Office Hours, Daily, 9 A. M. to 6 P. M.  
 Open Sunday, 10 A. M. to 12 Noon  
 Open Evenings Thursday and Friday Till 8

**WFBE (250m.—1200 kc.)**

7:00 A. M.—Break of Day  
 7:15—Musical Clock  
 8:15—Birthday Party  
 8:30—Morning Concert  
 9:00—Our Daily Thought  
 9:15—Hy C. Geis, organ recital  
 9:45—Gold Nuggets  
 10:05—Dot's School Children's Popularity Program  
 10:20—Beauty Notes  
 10:35—WFBE-RKO Theatre Party  
 10:45—Better Business Bureau  
 10:50—Mrs. Evans' Advice  
 11:00—Mary and John  
 11:15—Lyric Program, Musical Novelties  
 11:30—Housewives' Frolic  
 11:45—Lola Bruce Smith and Don Cheek  
**Noon**—News in Cincinnati  
 12:30 P. M.—Little Black Joe  
 12:45—Studio  
 1:00—Good Afternoon Melodies  
 1:15—Robert Bentley, Children's Hour  
 1:30—Slumber Songs  
 2:00—Chas. Daunt, tenor  
 2:15—Little Symphony  
 2:45—Reds vs. Cubs at Redland Field  
 4:45—Galvano and Cortez  
 5:00—Bee Campbell  
 5:15—The Pirates' Club  
 5:30—The Northside Musicale  
 5:35—Bee Campbell  
 5:45—Jules Sien  
 6:00—Music Masters  
 6:15—The Wandering Minstrel  
 6:30—Victor Arden and Phil Ohmen, recordings  
 6:45—Lost and Found  
 6:50—Max Fisher's Californians  
 7:15—Post Question Box  
 7:30—Sports Review, Harry Hartman  
 7:35—Training Camp Gossip (Original Iboard)  
 7:55—Lost and Found  
 8:00—Cliff Burns and His Orchestra—Green Mill  
 8:15—Larry Wood, piano and songs  
 8:30—La Vista Orchestra  
 9:00—Luckey Boys  
 9:15—In the Gloaming, Glenna Will Newland  
 9:30—Cliff Burns and His Orchestra  
 9:45—Port of Missing Men—Jeff Davis  
 10:00—Knight Klub Knights (La Vista)  
 10:30—Nocturne

**NETWORK PROGRAMS**

Renard's Orchestra. WABC wadc whk wkrc wcha wspd wlap wfbm wcco kmox wvwa  
 —The Goldbergs. WEAJ wgy wtam wjai wsei weng  
 8:00—Linit: The Bath Club, Allie Lowe Miles interviewing guest; Barbara Maurel, contralto; male quartet; Frank Ventree's Orchestra. WABC wcco wfbm kmox wadc wspd whk wkrc wgn  
 —Big Time: humorous sketch: Johnny Hart, baritone; Joseph Bonime Orchestra. WEAJ wjai wtam wgy wvj wlv  
 —American Taxpayers' League, WJZ whas  
 8:15—Willis-Overland: Silver Streaks: Tom, Dick and Harry, vocal trio; Retting and Platt, piano duo; Harold Stokes' Orchestra. WJZ wmaq wcky whas kstp kdka  
 —Singin' Sam, the Barbosol Man. WABC wadc whk wkrc wgn wspd wfbm kmox wcco  
 8:30—La Palina: Kate Smith, songs. WABC wgn wadc whk wkrc wcha wspd wlap wfbm wcco kmox  
 —Halsey Stuart Program. WEAJ wtam wvj wsei whas kyp kstp wgy  
 —Jack Frost Melody Moments: Joseph Pasternack's Orchestra; Oliver Smith, tenor. WJZ kdka wgar wjr wlv wlv  
 —Mentholatum Melody Lane: Karolyn Harris, contralto; male quartet; Harry Sosnick Orchestra. (NBC) wmaq  
 8:45—Col. Stoopnagle and Budd, the Gloom Chasers. WABC wkrc wcco whk wspd wadc wgn wowo kmox



**STOP! READ THE CLASSIFIED ADS**  
 Page 12

**WKRC (545m.—550 kc.)**

6:45 A. M.—Sunrise Worship  
 7:45—Churngold—The Breakfast Club  
 8:00—Raysol—Old Time Singing  
 8:15—Gladys Catron, organist  
 8:30—Pyol Program  
 8:45—The Old Dutch Girl (CBS)  
 9:00—Jean West, Voice of Pogue  
 9:15—Queen City Rug Makers  
 9:30—Consolidated Merchants Program  
 10:00—Grant Trio (CBS)  
 10:15—Julia Hayes  
 10:45—Eugene Question and Answer Box (CBS)  
 11:00—Time: Weather  
 11:03—Woman's Hour, Tremlette Tully  
 11:30—Round the World Cooking (CBS)  
 11:45—Jane Grey and "Kampf, the teveler Artists"  
**Noon**—Cincinnati Paint Club  
 12:15 P. M.—Model Laundry—Model Romances  
 12:30—Kre-Mel Program (CBS)  
 12:45—Cincinnati Merchants' Program  
 1:15—Fire Prevention Talk—Lieut. Rogers  
 1:20—Community Chest Talk  
 1:25—Farm Network Program (CBS)  
 2:00—Aunt Jemima Songs (CBS)  
 2:15—Burck-Bauer Organ Melodies  
 2:30—American School of the Air (CBS)  
 3:00—Sulfox Health Program  
 3:15—Charis—Ann Leai and Ben Alley (CBS)  
 3:30—Arthur Jarrett (CBS)  
 3:45—Four Eton Boys (CBS)  
 4:00—Pyol Program  
 4:15—Raysol—Howard Hafford, tenor  
 4:30—Worthmore Soup and Chili  
 4:45—Crazy Crystals Program  
 5:00—Main Street Business Men  
 5:15—Malted Products Program—Golden Age, organist  
 5:30—Cincinnati Trade School—Ruth Reeves  
 5:45—Studio  
 6:00—Sonada Sports Review; Wally Forste  
 6:15—Red Top Malt Baseball Scores  
 6:20—Stocks—Studio  
 6:45—Wutzburg: The German and His Parrot; Lange Time (6:59)  
 7:00—Wrigley—Myrt and Marge (CBS)  
 7:15—Maxwell Coffee—Lannie Ross and Don Voorhees (CBS)  
 7:30—"Easy Aces" (CBS)  
 7:45—Camel Quarter Hour: Morton Downey, Tony Wons (CBS)  
 8:00—Linit Bath Club (CBS)  
 8:15—Singin' Sam, Barbosol Man (CBS)  
 8:30—La Palina—Kate Smith (CBS)  
 8:45—Ivory Soap: Col. Stoopnagle and Budd (CBS)  
 9:00—Gold Medal Fast Freight (CBS)  
 9:30—Eno Crime Club (CBS)  
 10:00—Chesterfield: Ruth Etting (CBS)  
 10:15—Horlick's Milk: Adventures in Health, Dr. Herman Bundesen—(CBS)  
 10:30—Society Brand Clothes—Society's Playboy (CBS)  
 10:45—Weather Forecast  
 10:46—Sonada Sports Review; Wally Forste  
 11:00—Time Signal; Studio  
 11:45—Don Redman's Orchestra (CBS)  
**Midnight**—Eddie Duchin's Orch. (CBS)  
 12:30 A. M.—Art Krueger Orchestra (CBS)

**NETWORK PROGRAMS**

9:00—Adventures of Sherlock Holmes: Richard Gordon, Leigh Lovel, Joseph Bell; Graham Harris Orchestra. WJZ kdka wgar wjr wlv wmaq  
 —Goodyear Program: David Mendoza Orchestra; Grace Moore, soprano; Revelers Quartet: James Melton, Lewis James, tenors; Phil Dewey, baritone; Wilfred Glenn, bass. WEAJ wgy wtam wjai wsei kyp whas kstp  
 —Gold Medal Fast Freight, quartet and organ. WABC wadc wkrc wgn wowo wfbm wcco kmox wspd whk kdka wmaq  
 —Eno Crime Club: Edgar Wallace Mystery, concluding episode WABC wadc whk wkrc wgn wspd wowo kmox  
 —Mobiolil Concert: Gladys Rice, soprano; Lewis James, tenor; Nat Shilkret Orchestra. WEAJ wgy wtam wjai wsei weng  
 9:45—Bob Nolan's San Felicians. WJZ wmaq wgar wjr kdka  
 10:00—Chesterfield: Ruth Etting, Norman Brokenshire, Nat Shilkret Orchestra. WABC wkrc wbbm wowo wcco wfbm whk wspd kmox wcha wadc wlap  
 —Jefferson Day Program: Hon. James A. Reed; Hon. James M. Cox; Gov. Franklin D. Roosevelt; Ex-Gov. Alfred E. Smith; Gov. Albert C. Ritchie; Ex-Gov. Harry Byrd; Sen. J. Hamilton Lewis. WEAJ wgy wtam wjai wsei weng (whas off 10:30) kstp  
 —Scenes from Dickens. WJZ wcky wmaq wjr wgar kdka  
 10:15—Tune Detective: Sigmund Spaeth. WJZ kdka  
 —Adventures in Health: Dr. Herman N. Bundesen. WABC wkrc wbbm whk wowo kmox wspd wcco wadc

**UNITED RADIO, INC.**  
 1103 VINE STREET  
 "The House of a Million Parts"  
 We service and repair every make Radio.  
**CHerry 6531**

**WCKY (202m.—1490kc.)**

7:00 A. M.—Gene Rupee and Tennessee Ramblers  
 7:30—Asher Sizemore and Little Jimmy  
 7:45—Kapua's Hawaiians  
 8:00—Eureka Weather Forecast  
 8:01—Jimmy Eldred at the Piano  
 8:15—Morning Devotions (NBC)  
 8:30—Cheerio (NBC)  
 9:00—Queer Corners with Clever Dick  
 9:15—Band Concert  
 9:30—Dinty Moore  
 9:45—Earl Edwards, accordion  
 10:00—Beatrice Mabie (NBC)  
 10:15—Clara, Lu and Em (NBC)  
 10:30—Musical Fantasies  
 10:45—Classic Hour  
 11:00—Mrs. A. M. Goudiss (NBC)  
 11:15—Musical Novelties  
 11:30—Cumberland Fiddlers  
**Noon**—Tunes in Blue  
 12:15 P. M.—Johnson Wax Program  
 12:20—Musical Interlude  
 12:25—Live Stock Quotations  
 12:30—National Farm and Home (NBC)  
 1:30—Pietro Zervos, pianist  
 2:00—Popular Dance Tunes  
 2:15—Musical Discrimination Contest (NBC)  
 2:30—Music Masters  
 3:00—Siesta Musicale  
 3:15—Larry Topper at the piano  
 3:30—Kampus Kutups  
 3:45—Kapua's Hawaiians  
 4:00—The Interpreters  
 4:15—Stars of Today  
 4:30—Wurlitzer Music School of the Air, guitar  
 5:00—"Snow" Drifts. Jack Snow  
 5:15—Dr. Belber, musicale  
 5:30—Worthmore Soup  
 5:45—Little Orphan Annie (NBC)  
 6:00—Tommy and Willie, Coca Cola Twins  
 6:30—Royal Vagabonds with Ward Wilson (NBC)  
 6:45—Late Dance Tunes  
 6:55—WCKY News Man  
 7:00—Amos 'n' Andy (NBC)  
 7:15—Florence Taibot  
 7:30—The Stebbins Boys (NBC)  
 7:45—Jones and Hare (NBC)  
 8:00—Mabley & Carew Style Talk  
 8:10—Music Makers  
 8:15—Willis-Overland Silver Streaks (NBC)  
 8:30—"It Pays to Advertise"  
 9:00—WCKY's Crackers  
 9:30—Earle Marco's Vagabonds  
 9:45—Community Chest Talk  
 9:50—Lea La Mont, singing the blues  
 10:00—Scenes from Dickens (NBC)  
 10:15—Lookout House—Bob Rainier's Orchestra  
 10:30—Hollywood Nights (NBC)  
 10:45—Earle Marco's Vagabonds  
 11:00—Club Royal, Henry Spinler Orch.  
 11:15—Slumber Music (NBC)  
 11:30—Lookout House—Bob Rainier  
 11:45—Club Royal

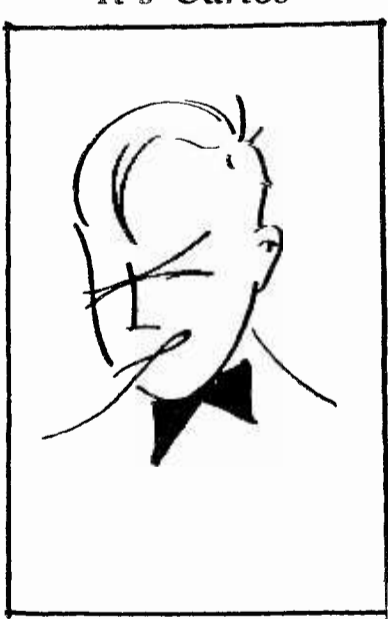
**NETWORK PROGRAMS**

10:30—Society's Playboy Hour: Welcome Lewis, contralto; Norman Brokenshire; Nat Brusiloff's Orchestra. WABC wadc whk wkrc wspd wlap wowo wfbm wbbm wcco kmox  
 —Hollywood Nights: Gene Rode-mich's Orchestra; Frank Luther, tenor. WJZ wcky kdka kyp wlv wgar  
 10:45—Street Singer. WABC wadc  
 —Wrigley: Myrt and Marge. (CBS) wbbm wcco wlap  
 —Pickens Sisters, vocal trio. WJZ kdka wgar wjr  
 11:00—Slumber Music: Ludwig Laurier's String Ensemble. WJZ (wjr off 11:15) (wcky on 11:15)  
 —Howard Barlow and Columbia Symphony Orchestra. WABC wadc wcha wspd wlap wfbm wcco  
 —Amos 'n' Andy. (NBC) weng kstp whas wmaq  
 11:15—Prince Albert Quarter Hour: Alice Joy, with Orchestra. (NBC) whas weng kstp  
 Maxwell House Tune Blenders, with Lanny Ross, tenor. (CBS) wlap wowo wgn wcco kmox  
 11:30—WMAQ Tenth Anniversary Program. WJZ wgar wmaq wlv  
 —Don Redman's Connie's Inn Orchestra. WABC (wkrc wadc wcha wspd wowo wlap wfbm on 11:45)  
 —Camel Quarter-Hour: Morton Downey, Tony Wons; Jacques Renard's Orchestra. (CBS) wgn wowo  
 —Vincent Lopez and Orchestra. WEAJ wgy wgy weng  
 11:45—Lew White, organ. WJZ wgar weng  
**Midnight**—Ralph Kirby, the Dream Singer. WEAJ wgy wtam weng  
 —Eddie Duchin Central Park Casino Orchestra. WABC wkrc wcco wlap wspd wcha wowo  
 —Cab Calloway's Cotton Club Orchestra. WJZ wgar kdka  
 12:05 A. M.—Buddy Rogers' Orchestra from Hotel Pennsylvania. WEAJ wgy wtam weng  
 12:30—Charlie Agnew's Edgewater Beach Hotel Orchestra. WEAJ kyp (wtam off 12:45)  
 —Benny Kyt's Book-Cadillac Hotel Orchestra. WJZ wgar wjr weng  
 —Art Krueger's Orchestra. WABC wcco wfbm wspd wlap wkrc wowo  
 1:00—Pancho and his Orchestra. WABC  
 1:30—Claude Hopkins' Roseland Ball-room Orchestra. WABC

**WLW (428m.—700 kc.)**

6:30 A. M.—Top of the Morning  
 7:00—Exercise Period, with Bob Burdette  
 7:15—Hal and Huss, Aces of Harmony  
 7:30—Organ, Arthur Chandler, Jr.  
 7:45—Jolly Bill and Jane (NBC)  
 8:00—Morning Devotions  
 8:15—Phil Cook, the Quaker Man (NBC)  
 8:30—Three Graces, vocal trio  
 8:45—The Early Burdettes  
 9:00—Child Care and Training. Dr. Ada Hart Arlitt  
 9:15—What's New  
 9:30—Beautiful Thoughts (NBC)  
 9:45—Andy Sanella's Orchestra with Macey and Smalley  
 10:00—Live Stock Reports  
 10:10—Piano Solos  
 10:15—A. & P. Orchestra  
 10:30—Colonel Goodbody, food talk (NBC)  
 10:45—Threesome, vocal trio  
 11:00—The Parody Man  
 11:15—A. & P. South Americans  
 11:30—Hind's Romance Exchange—Beauty Talk by Beatrice Fairfax (NBC)  
 11:45—River Reports  
 11:55—Time Signals  
**Noon**—Three Graces, vocal trio  
 12:15 P. M.—Pat Barnes in Person (NBC)  
 12:30—Spray Talks  
 12:35—Gibson Orchestra: Henry Thies  
 12:45—Markets Live Stock Reports  
 1:00—National Farm and Home (NBC)  
 1:30—Netherlands Orch.: Horace Heidt's  
 2:00—Ohio School of the Air: Botany—"Do Trees Tell Their Age;" 2:20—History Dramalog: "Washington Goes In;" 2:40—Art Appreciation "The Storeroom"  
 3:00—Pat Harrington, tenor  
 3:15—Sisters Three, vocal trio  
 3:30—Old Bill  
 3:45—Hal and Huss, Aces of Harmony  
 4:00—A & P. Orchestra  
 4:30—Organ Matinee  
 5:00—Marcella Uhl, songs  
 5:15—Varsity Quartet  
 5:30—The Singing Lady (NBC)  
 5:45—The Chatter  
 6:00—Old Man Sunshine  
 6:15—Netherlands Orchestra: Horace Heidt  
 6:30—Mail Pouch Sportsman—Bob Newhall  
 6:45—Lowell Thomas (NBC)  
 7:00—Amos 'n' Andy (NBC)  
 7:15—U. S. Rubber Program  
 7:30—Old Bill and Blue Flame Singers  
 8:00—Peanut Pietro  
 8:15—San Felice Cigar Program  
 8:30—Jack Frost Melody Moments (NBC)  
 9:00—Adventures of Sherlock Holmes (NBC)  
 9:30—Major Icequick and his Frigidairians (NBC)  
 9:45—Ugentine Entertainers  
 10:00—Curtain Calls, Light Opera  
 10:30—Alaga Melody—Jim and Walt  
 10:45—Headlines of Yesterday  
 11:00—Threesome, vocal trio  
 11:30—WMAQ Tenth Anniversary Program (NBC)  
**Midnight**—Horace Heidt's Orchestra  
 12:30 A. M.—Gibson Orch.: Henry Thies

**It's Carlos**



**CARLOS HARRISON**  
 This is a sketchy idea of what Carlos Harrison looks like. He has just moved into RKO offices in the Palace Theater Building, and into his duties as advertising and news director of Cincinnati's RKO Theaters. He comes from Paramount-Publix, New York City, succeeding Bill Danziger, who has accepted a Paramount-Publix offer there.

**TWICE A MONTH**

On the first and third Sundays of each month, from 11 a. m. until 12 noon, WLW brings a lecture under auspices of the First and Second Churches of Christ, Scientist, and broadcast from the First Church.

## COMPLETE PROGRAMS FOR THURSDAY, APRIL 14, ON THIS PAGE

### WSAI (225m.—1330 kc.)

- 8:00 A. M.—Gene and Glenn (NBC)
- 8:15—Talent Bureau Program
- 8:45—WSAI Morning Dance Concert
- 9:15—Knox Sparkling Music (NBC)
- 9:30—Popular Musicals
- 10:00—Mrs. Blake's Radio Column (NBC)
- 10:15—Tom Brennie in the Laugh Club (NBC)
- 10:30—Musical Forum
- 11:00—Popular Music
- 11:15—Radio Household Institute (NBC)
- 11:30—Pan-American Day Exercises from George Washington University (NBC)
- Noon to 12:15—G. E. Home Circle (NBC)
- 12:50 1:00 P. M.—Live Stock Reports
- 3:00—Afternoon Melodies
- 4:00—Mona Motor Organ Recital
- 4:30—Concert Program: Farm Flashes
- 5:00—Crosley Dealers Salute
- 5:15—Skippy (NBC)
- 5:30—Celebrated Compositions
- 5:45—The Listerine Program (NBC)
- 6:00—Vincent Lopez and His Vaivalleneers
- 6:15—Memory Hour
- 6:30—"The World Today," James G. McDonald (NBC)
- 6:45—Musical Memories
- 7:00—A Visit to Scotland (NBC)
- 7:15—Campbell Soup Program (NBC)
- 7:30—Prince Albert Program (NBC)
- 7:45—The Trials of the Goldbergs (NBC)
- 8:00—Fleischmann Hour: Rudy Vallee's Orchestra, Ray Perkins (NBC)
- 9:00—Chevrolet: Big Six of the Air (NBC)
- 9:30—Rudyard Kipling Stories (NBC)
- 10:00—Lucky Strike Dance with Walter Winchell (NBC)
- 11:00—Gibson Orchestra: Henry Thies

### Network Programs

- 6:00 P. M.—Waldorf-Astoria Orchestra. WEAJ wam wjw wnr kyw whas. WABC wadc wcah wowo wvva wspd wlap.
- Raising Junior: domestic skit. WJZ wgr wjr
- Current Events: H. V. Kaltenborn. WABC wadc wcah wowo
- 6:15—Reis and Dunn: comedy and songs, with Fred Berrens' Orchestra. WABC wowo wvva wadc wspd
- Skippy, children's program. (NBC) wnr kstp
- Veronica Wiggins, contralto. WJZ
- 6:25—John E. Kennedy, talk. WJZ
- 6:30—"The World Today," "The German Elections"—James G. McDonald. WEAJ wsa wmaq wvj
- Songs of Romance: Don Sutherland, tenor; Betty Crocker, Bertrand Hirsch's Orchestra. WABC
- Jack Miller's Orchestra. (CBS). wadc wcco wlap wowo wfbm wvva
- Old Songs of the Church: Paula Hemminghaus, contralto; Arthur Billings Hunt, baritone. WJZ
- 6:45—Lowell Thomas: Literary Digest Topics in Brief. WJZ kdka wlv wmaq
- June Pursell, ballads. WEAJ wgy
- June Pursell, ballads. WEAJ wvj
- United Action for Unemployment. WABC wkrc wvva wadc wcah wspd wlap wfbm wbbm
- Little Orphan Annie: childhood playlet. (NBC) wnr kstp wgn
- 6:50—Noble Sissle's Park Central Hotel Orchestra. WABC wvva wadc wkrc wcah wspd wlap wfbm wbbm
- 7:00—A Visit to Scotland: "The Cultural Value of the Celtic Language," Dr. John L. Gerig. WEAJ wgy wvj wsa wtm wmaq
- Amos n Andy. WJZ kdka wlv wcky wjr wgr
- Wrigley: Myrt and Marge. WABC wkrc wkrc wadc wspd wvva
- Henri Gendron's Orchestra. (CBS) wfbm wbbm
- 7:15—Hind's Romance Exchange: Ray Heatherton, vocalist, with orchestra. WJZ kdka whas wnr wlv
- Crisco: The Mills Brothers, "Four Boys and a Guitar." WABC wadc wkrc wspd wowo wfbm wbbm wkrc
- Campbell Orchestra, with Robert Simmons. WEAJ wgy wtm: wsa wvj wvj wmaq
- 7:30—Prince Albert Quarter Hour: Alice Joy with Orchestra. WEAJ wgy wtm wsa
- Richman Bros. Program: Sylvia Froos, songs; Louis Silvers' Orchestra. WABC wkrc wkh wbbm wkrc wadc wcco wspd wvva wlap wfbm wcah
- The Stebbins Boys: comedy sketch. WJZ wnr wgr whas kstp kdka wcky
- 7:45—Jones and Hare: songs and patter. WJZ wnr wgr whas kstp wcky kdka
- Camel Quarter Hour: Morton Downey, Tony Wons, Jacques Renard's Orchestra. WABC wkrc wadc wcah wcco wkrc wfbm wvva wvh wlap
- The Goldbergs. WEAJ wgy wtm wsa wnr
- 8:00—Fleischmann Hour: Rudy Vallee and his Connecticut Yankees; Ray Perkins, Master of Ceremonies. WEAJ wgy wtm wvj wsa wmaq whas kstp
- Linit: The Bath Club; Allie Lowe Miles interviewing guest; Barbara Maurel, contralto; male quartet; Frank Vertree's Orchestra. WABC wadc wfbm wcco wkrc wgn wkh wspd wkrc
- The Edgeworth Program: Dr. Traprock and Harriet Lee. WJZ kdka wlv wcky wgr
- 8:15—Rin Tin Tin Thriller, dramatic program. WJZ kdka wgr wlv wlv

### WFBE (250m.—1200 kc.)

- 7:00 A. M.—Break of Day
- 7:15—Musical Clock
- 8:15—Birthday Program
- 8:30—Morning Concert
- 9:00—Our Daily Thought
- 9:15—Morning Glories
- 9:30—Concert Hour
- 9:45—Studio
- 10:05—Dot's School Children's Popularity Program
- 10:20—Walter Wehmier Program
- 10:35—WFBE-RKO Theatre Party
- 10:50—Anita Auch, deitician
- 11:00—Pabst Musical
- 11:15—Harmonica Duo
- 11:30—Housewives' Frolic
- 11:45—Dulcy Markham's Songs
- Noon—News in Cincinnati
- 12:30 P. M.—Luncheon Melodies
- 12:45—Kitty Burke, songs
- 1:00—Studio
- 1:15—Robert Bentley, Children's Hour
- 1:30—Day Dreams
- 1:45—Frank Brandstetter
- 2:00—Ted Wallace and His Campus Boys
- 2:15—Muriel Northrup, soprano
- 2:30—Ralph Pinkston
- 2:45—Reds vs. Cubs at Redland Field
- 4:45—Hazel Storey Webber, and Ruth N. Webber
- 5:00—Variety
- 5:15—The Pirates Club
- 5:30—Musical Interlude
- 5:45—Murdoch Williams
- 6:00—Music Masters
- 6:15—Neapolitan Trio
- 6:30—Four Harmony Kings
- 6:45—Lost and Found
- 6:50—Max Fisher's Californians
- 7:15—Post Question Box
- 7:30—Sports Review, Harry Hartman
- 7:40—Lee Ora Rausch
- 7:55—Lost and Found
- 8:00—Walter Pluse, baritone
- 8:15—Covington and Hersh
- 8:30—La Vista Orchestra
- 8:45—Cliff Burns and His Orchestra
- 9:00—The Luckey Boys
- 9:15—Western Hills Program
- 9:30—Evening Concert
- 10:00—Max Fisher's Californians from Club Chatter Box
- 10:45—Knight Klub Knights (La Vista)

### NETWORK PROGRAMS

- Sterling Products: Abe Lyman's Orchestra. WABC wkrc wkh wgn wspd wkrc wadc wfbm
- 8:30—La Palina—Kate Smith, songs. WABC wadc wkrc wkh wcah wspd wlap wkrc wcco wfbm wgn
- Ivory Program: B. A. Rolfe and His Orchestra. WJZ kdka wlv
- 8:45—Sisters of the Skillet. WJZ kdka wgr wlv wlv
- Angelo Patri, "Your Child." WABC wadc wkh wkrc wgn wspd wowo wkrc wcco
- 9:00—Eugene International Revue: Sam Lanin's Orchestra and guest artist. WABC wadc wowo wkrc wgn wkrc wspd wkh wfbm
- Chevrolet: Big Six of the Air: Phil Olman, Victor Arden, piano duo; Lewis James, tenor; Welcome Lewis, contralto; male quartet; Frank Black Orchestra; James Wallington. WEAJ wsa wgy wtm wvj wmaq whas kstp
- Blackstone Plantation: Julia Sanderson, Frank Crumit, Jack Shilkret Orchestra. WJZ kdka wcky
- 9:15—Mennen: Ted Husing, Irene Beasley, Freddie Rich Orchestra. WABC wgn wcco wkrc wspd wadc wowo wkrc wlap wkh
- 9:30—Love Story Hour. WABC wadc wkh wkrc wgn wspd wowo wkrc —Don Bigelow's Orchestra. (CBS) wcco
- Rudyard Kipling Stories: dramatic sketch. WEAJ wgy wtm wvj wsa wnr
- "Thompkins' Corners." WJZ kdka wjr wlv kyw whas wgr kstp
- 10:00—Hart Schaffner & Marx Trumpeters; Edwin C. Hill. WABC wadc wkh wkrc wspd wcco wkrc wlap wowo wbbm wfbm
- Lucky Strike Dance Hour, with Walter Winchell. WEAJ wgy wtm wvj wsa wnr (whas off 10:45)
- A. & P. Dance Gypsies: Harry Horlick, director; Frank Parker, tenor. WJZ kdka wgr wlv wmaq wjr
- 10:30—Paris Night Life: Princess Ivanova Obolensky; Madelon de Gist, soprano; Pierre le Kreun, tenor; Bertrand Hirsch's Orchestra. WJZ kdka wgr kyw wcky wgr
- Chesterfield: Boswell Sisters, Norman Brokenshire, Nat Shilkret Or-

### WKRC (545m.—550 kc.)

- 6:45 A. M.—Sunrise Worship
- 7:45—Churngold—The Breakfast Club
- 8:00—Raysol—Old Time Singing
- 8:15—Gladys Catron, Organist
- 8:30—Pyol Program
- 8:45—Wm. Rogers and Son Program (CBS)
- 9:00—Jean West, Voice of Pogue's Beauty
- 9:15—Doris Hale—Advice on Love and Beauty
- 9:30—Consolidated Merchants Program
- 10:00—Dr. CopeLand—Health Talk (CBS)
- 10:15—Machine Age Housekeeping (CBS)
- 10:30—Bo-Peep Program
- 10:45—Barbara Gould Beauty Talk (CBS)
- 11:00—Queen City Rug Makers
- 11:15—Acme Sunshine Melodies
- 11:30—Weather; Lange Time
- 11:33—Woman's Hour: Tremlette Tully
- Noon—Isham Jones' Orchestra (CBS)
- 12:15 P. M.—Model Laundry—Model Romances
- 12:30—Linit Program (CBS)
- 12:45—Cincinnati Merchants' Program
- 1:15—Main Street Business Men
- 1:30—Julia Hayes Household Hints
- 2:00—Aunt Jemima Songs (CBS)
- 2:15—Studio
- 2:30—American School of the Air (CBS)
- 3:00—La Forge Berumen Musicals (CBS)
- 3:30—Musical Shopping Guide
- 3:45—Pyol Program
- 4:00—U. S. Army Band (CBS)
- 4:15—Raysol—Howard Hafford, tenor
- 4:30—Worthmore Soup and Chili
- 4:45—Sulfox Health Program
- 5:00—Miller Wall Paper—Harold Krell, organist
- 5:15—Malted Products Program—Golden Age, organist
- 5:30—Cincinnati Trade School—Ruth Reeves
- 5:45—Dandarine—Movie Stars Revue (CBS)
- 6:00—Sonada Sports Review; Wally Forste
- 6:15—Red Top Baseball Scores
- 6:24—Stocks—Studio
- 6:45—H. J. Heinz Program (CBS)
- 6:50—Noble Sissle's Orchestra (CBS)
- 6:59—Lange Time Signal
- 7:00—Wrigley—Myrt and Marge (CBS)
- 7:15—Crisco—The Mills Bros. (CBS)
- 7:30—Richman Bros. Program: Louis Silvers Orchestra (CBS)
- 7:45—Camel Quarter Hour: Morton Downey, Tony Wons (CBS)
- 8:00—Linit: The Bath Club (CBS)
- 8:15—Phillips: Abe Lyman's Orch. (CBS)
- 8:30—La Palina—Kate Smith (CBS)
- 8:45—Angelo Patri—"Your Child" (CBS)
- 9:00—Eugene International Revue (CBS)
- 9:15—Mennen: Ted Husing, Irene Beasley, Freddie Rich Orchestra (CBS)
- 9:30—Love Story Program (CBS)
- 10:00—Hart, Schaffner & Marx. with Edwin C. Hill (CBS)
- 10:30—Chesterfield: The Boswell Sisters (CBS)
- 10:45—Weather Forecast
- 10:46—Sonada Sports Review; Wally Forste
- 11:00—Time Signal; Studio
- 11:15—Horseshoe Gardens: Harry Willsey
- 11:30—Cotton Queen—Moory Brennan's Orchestra
- 11:45—Bing Crosby (CBS)
- Midnight—Guy Lombardo's Orchestra (CBS)

### NETWORK PROGRAMS

- chestra. WABC wkrc wbbm wowo wcco wspd wadc wcah wlap wkrc wkbm
- 10:45—Arthur Jarrett, songs, with Freddie Rich Orchestra. WABC wadc
- Wrigley: Myrt and Marge. (CBS) wbbm wcco wlap
- Pickens Sisters: vocal trio. WJZ wcky wjr kdka wgr
- 11:00—Slumber Music: Ludwig Laurier's String Ensemble. WJZ (wcky on 11:15)
- Howard Barlow and Columbia Symphony Orchestra. WABC wadc wcah wspd wlap wfbm wcco
- Jesse Crawford, organ. WEAJ wvj
- Amos 'n' Andy. (NBC) whas wnr kstp wmaq
- 11:15—Prince Albert Quarter-Hour: Alice Joy, with orchestra. (NBC) whas wnr kstp
- Lew Conrad's Statler Hotel Orch. WEAJ (wcky on 11:30)
- 11:30—Pancho and His Orchestra. WEAJ —Camel Quarter Hour: Morton Downey, Tony Wons, Jacques Renard's Orchestra. (CBS) wgv wowo

## THURSDAY

# CHEVROLET'S

## BIG SIX OF THE AIR

featuring

FRANK BLACK

LEWIS JAMES

WELCOME LEWIS

Station WSAI—9 P.M. E.S.T.

### WCKY (202m.—1490kc.)

- 7:00 A. M.—Cumberland Fiddlers
- 7:30—Asher Sizemore and Little Jimmy
- 7:45—Kapua's Hawaiians
- 8:00—Eureka Weather Forecast
- 8:01—Jimmy Eldred at the Piano
- 8:15—Morning Devotions (NBC)
- 8:30—Cheerio (NBC)
- 9:00—Queer Corners with Clever Dick
- 9:15—Waltzes, Old and New
- 9:30—Dinty Moore
- 9:45—Tunes in Blue
- 10:15—Clara, Lu and Em (NBC)
- 10:30—Classic Hour
- 11:00—Mrs. A. M. Goudiss (NBC)
- 11:15—Musical Novelties
- 11:30—Gene Rupee's Fiddlers
- Noon—Luncheon Concert
- 12:15 P. M.—Johnson Wax Program
- 12:20—Musical Interlude
- 12:25—Live Stock Quotations
- 12:30—National Farm and Home (NBC)
- 1:30—On to Prosperity
- 2:30—Music Masters
- 3:15—Matinee Melodies
- 3:45—Kapua's Hawaiians
- 4:00—Home Decorations (NBC)
- 4:15—Russell Henderly at the piano,
- 4:30—Wurlitzer Music School, Saxophone
- 5:00—"Snow" Drifts, Jack Snow
- 5:30—Messers Melody Moments
- 5:45—Little Orphan Annie (NBC)
- 6:00—Tommy and Willie, Coca Cola Twins
- 6:30—Late Dance Tunes
- 6:55—WCKY News Man
- 7:00—Amos 'n' Andy (NBC)
- 7:15—Mabley & Carew Style Talk
- 7:20—Showboat Boys
- 7:30—The Stebbins Boys (NBC)
- 7:45—Jones and Hare (NBC)
- 8:00—The Edgeworth Program (NBC)
- 8:15—Louise Ryder, contralto, Faye Tarvin, pianist
- 8:30—"It Pays to Advertise"
- 8:59—Eureka Weather Forecast
- 9:00—Blackstone Plantation (NBC)
- 9:30—Club Royal, Henry Spinler Orch.
- 9:45—Chico 'n' Peppina
- 10:00—Earl Arnold's Flotilla Boys
- 10:30—Paris Night Life (NBC)
- 10:45—Pickens Sisters (NBC)
- 11:00—Club Royal
- 11:15—Slumber Music (NBC)
- 11:30—Lew Conrad's Orch. (NBC)
- 11:45—Earl Marco's Vagabonds

### NETWORK PROGRAMS

- Through the Opera Glass; soprano, baritone, orchestra. WJZ wnr wgr wlv
- 11:45—Marion Harris, songs. WJZ wjr
- Cab Calloway's Cotton Club Orchestra. WEAJ wgy wvj wtm
- Bing Crosby, songs, with Freddie Rich Orchestra. WABC wkrc wadc wkh wcah wspd wowo wfbm wlap
- Midnight—Earl Hine's Grand Terrace Cafe Orchestra. WJZ wlv wgr (wjr on 12:15)
- Ralph Kirbery, the Dream Singer. WEAJ wtm wgy wnr
- Guy Lombardo Orchestra. WABC wkrc wcco wkh wlap wfbm wcah wspd wowo (wkrc on 12:15)
- 12:05 A. M.—Johnny Hamp's Hotel New Yorker Orchestra. WEAJ (kstp on 12:15) wgy wtm wnr
- 12:30—Larry Funk's Palais d'Or Orchestra. WJZ wnr
- Joe Reichman's Orchestra. WABC wlap wfbm wspd wcco wowo
- Charlie Agnew's Edgewater Beach Hotel Orchestra. WEAJ kyw (wtam off 12:45)
- 1:00—Paul Tremaine's Yoeng's Restaurant Orchestra. WABC
- 1:30—Claude Hopkins' Roseland Ballroom Orchestra. WABC

### HELEN MORGAN NEXT

Helen Morgan, star of such hits as "Show Boat," "Sweet Adeline" and the "Follies of 1931," will be a headliner in the second presentation of the "Ziegfeld Radio Show," WKRC (CBS) at 8 p.m. Sunday (April 10).

**SONADA MOVES**

Sonada Sports Review by Wally Forste on WKRC has moved to 10:45 nightly except Sunday and remains at 11:01 p.m. on Sunday. Sonada's program at 6:15 nightly except Sunday has moved to 6.

### WLW (428m.—700 kc.)

- 6:30 A. M.—Top o' the Morning
- 7:00—Exercise Period, with Bob Burdette
- 7:15—Hal and Huss, Aces of Harmony
- 7:30—Organ Program, Arthur Chandler
- 7:45—Jolly Bill and Jane (NBC)
- 8:00—Morning Devotions
- 8:15—Phil Cook, the Quaker Man (NBC)
- 8:30—Layne's Mountaineer Fiddlers
- 8:45—The Early Burdettes
- 9:00—Health Talk, Dr. Carl Wilzbach
- 9:15—Threesome, vocal trio
- 9:30—Beautiful Thoughts (NBC)
- 9:45—The Air Library
- 10:00—Live Stock Reports
- 10:10—Piano Solos
- 10:15—A. & P. Orchestra
- 10:30—Colonel Goodbody (NBC)
- 10:45—Davis Mystery Chef (NBC)
- 11:00—Alaga Melody—Jim and Walt
- 11:15—Piano Solos
- 11:30—Hind's Romance Exchange—Beauty Talk by Beatrice Fairfax (NBC)
- 11:20—River Reports
- 11:45—O' Cedar Melody Man (NBC)
- Noon—Three Graces, vocal trio
- 12:15 P. M.—Pat Barnes in Person (NBC)
- 12:30—Gibson Orchestra: Henry Thies
- 12:45—Markets; Live Stock Reports
- 1:00—National Farm and Home (NBC)
- 1:30—Horace Heidt's Orchestra
- 1:55—Bisquick Program
- 2:00—Ohio School of the Air: Geography "Canada"—"Australia: A Far Away Continent." W. R. McConnell; Stories—"A Wondrous Change," "Peter Pan," Bessie Gabbard
- 2:30—Pan-American Day Program (NBC)
- 3:00—Pat Harrington, tenor
- 3:15—Louis John Johnen, baritone
- 3:30—Happiness Kids, vocal duo
- 3:45—Threesome, vocal trio
- 4:00—A. & P. Orchestra
- 4:30—Organ Matinee. Herschel Luecke
- 5:00—Midweek Musicals (NBC)
- 5:30—The Singing Lady (NBC)
- 5:45—The Chatter
- 6:00—Old Man Sunshine
- 6:15—Foodtown Pops Review
- 6:30—Mail Pouch Sportsman—Bob Newhall
- 6:45—Lowell Thomas (NBC)
- 7:00—Amos 'n' Andy (NBC)
- 7:15—Hind's Romance Exchange (NBC)
- 7:30—Centerville Sketches
- 7:45—Tangee Musical Dreams
- 8:00—Peanut Pietro
- 8:15—Rin-Tin-Tin Thriller (NBC)
- 8:30—Phoenix Program
- 8:45—Sisters of the Skillet (NBC)
- 9:00—Ivanhoe Playhouse
- 9:30—"Thompkins' Corners" (NBC)
- 10:00—A. & P. Dance Gypsies (NBC)
- 10:30—Andy Sanella's Orchestra with Macey and Smalley
- 10:45—Headlines of Yesterday
- 11:00—Crosley Theater of the Air
- 11:30—Thru the Opera Glass (NBC)
- Midnight—Earl Hines and His Orch. (NBC)
- 12:30 A. M.—Henry Thies Orchestra

## Personal Appearances

### of WLW Artists

FRIDAY (April 8): Sidney TenEyck and Dave Roberts, Pocatontos Theater, Welsh, W. Va. Bradley Kincaid, Stone Theater, Stone, Ky.

FRIDAY AND SATURDAY (April 8-9): Seger Ellis, Temple Theater, Bryan, O.

SATURDAY (April 9): Bradley Kincaid, Cinderella Theater, Williamson, W. Va. Layne's Mountaineer Fiddlers, Marlow Theater, Ironton, O.

SUNDAY (April 10): Ford Rush, New Ruble Theater, Logan, O. Morin Sisters, La Roy Theater, Portsmouth, O. Bradley Kincaid, Jaeger Theater, Jaeger, West Virginia.

SUNDAY AND MONDAY (April 10-11): Hal and Huss "The Two Aces of Harmony," Washington Theater, Maysville, Kentucky. Sidney TenEyck and Dave Roberts, Grand Theater, Ashland, Ky. McCormick's Old Time Fiddlers, Hippodrome Theater, Marietta, O.

MONDAY (April 11): Bradley Kincaid, Princess Theater, Mt. Hope, W. Va.

TUESDAY (April 12): Seger Ellis, Virginia Theater, Wellston, O.

TUES. and WEDNESDAY (April 12-13): McCormick's Old Time Fiddlers, Colonial Theater, Cambridge, O.

THURSDAY AND FRIDAY (April 14-15): Sidney TenEyck and Dave Roberts, Cinderella Theater, Williamson, W. Va.

### TO FOLLOW REDS

WFBE will broadcast all Cincinnati Reds' games at home and abroad, except Saturday and Sunday home contests.

### SCORES BY RED TOP

Red Top Malt is now sponsoring broadcast of baseball scores over WKRC nightly at 6:19.

# Classified Advertisements

RADIO DIAL will forward mail addressed in its care when postage for that purpose is furnished.

Advertisements are restricted to proper classification, style and type. RADIO DIAL reserves the right to edit or reject any advertisement.

**Call PARKWAY 3880-3881**  
**An Ad Taker will gladly assist you.**

**Professional Services**

GENERAL MASSAGE—Licensed; 2361 Robs, Apt. 3. West 5075. Car 60 or 61.

GENERAL MASSAGE—119 E. Court St. Apt. 10. Hrs. 11 a. m. to 9 p. m. PA8246

PALMISTRY—Numerology. ROMAINÉ, 2385 Kemper Lane. WO 0510-J. Hours, 12 to 8 P. M.

**Business Services**

ANTS, all insects destroyed; furniture, rugs cleaned and mothproofed. Bode Fumigating and Rug Cleaning Co., Parkway 2000.

A-1 paper and paint cleaning by experienced white man. Paper cleaning, \$1 room; first-class work; guaranteed. reference. JE7452.

BLACK DIRT—Sodding, manure; lawns dressed; landscaping. BRamble 0643-W.

CARPENTER—Remodel, repair houses, garage, new bldgs., screens. ME 6351.

CARPENTER WORK—Jobbing, remodeling; reasonable; estimates given. AV 4029.

CARPENTRY—Painting, cement work or janitor service. AVon 5116-W.

CLEANING WALL PAPER—Expert; reasonable. Mr. Albin, Woodburn 6636-J.

EXPERT furriers, also dresses made to order. S. KABAKOFF, 3 W. McMicken. CH 9057.

GRADING, sodding, black soil, stone; lawns rebuilt. G. Embry, AVon 5639-M.

HARDWOOD FLOORS—Refinished. New ones laid; sanders rented. ME 3336.

HARDWOOD FLOORS Renewed. Average \$2 per room. JEFFERSON 1408.

MILK CANS—No matter how rusty, we make them look like new. 904 Central.

PAINTER & DECORATOR  
Also paint and paper cleaning; work guaranteed. WO 7062-M.

PAINTING and paper hanging; no delay; work done same day estimated; the best of work guaranteed. Call us. PA 2395.

PAPER HANGING—\$3 per room; work guaranteed. Woodburn 1168-W.

PAPER HANGING—\$2.50 rm. up; work guaranteed; samples; ref. Wilson. CH 3490.

PAPER HANGING—Guaranteed; samples; also cleaning. Prompt service. CH. 1525.

PAPERHANGING—\$3 room, first-class work, prompt service. Park 3653.

PAPERING Hanging and paper included, \$6.50. WA. 1566-W.

PLASTERING, patch work or stucco repaired, whitewashing, cellars, factories; reasonable prices. CHerry 3692. 11

WALL PAPER CLEANER—Good work guaranteed. CHerry 5278.

WALL PAPER CLEANING—Paint washing, \$2 per rm.; colored woman. PA 0044.

WATER-PROOFING CELLARS—Concrete work of all kinds. Guaranteed KIRby 0434.

**Building Contracting**

NEW, remodeling and shingling; estimates given; KIRby 2857.

**Rooms and Board**

AVONDALE—Cheerful rooms; single or double for men; good meals. AVon 4584-R.

COLLEGE HILL—Large room for 1 or 2 men; \$8; garage optional. JACkson 7219.

COLLEGE HILL—Unusual place. Excellent food and service. KIRby 3185.

ST. BERNARD—Nice front rm. for 1 or 2 men; priv. family; car; bus. UN 1876-J.

FT. THOMAS—33 Grandview. Lovely rm.; bath; good meals; gentleman; \$8 a week.

**HOWE'S FAMILY HOTEL**  
Can't we help cut down your living expenses? Phone WOODburn 1203.

HOME for soldiers and elderly people with care; reasonable rates. AV.7105.

**Wanted, Rooms, Board**

MANY CALLS DAILY—For desirable rooms and board; list your rooms at our office; let's get them filled.

THE R. & B. EXCHANGE  
612 Southern Ohio Bk. Bldg.  
519 Main St.

**Rent, Furnished Rooms**

AVONDALE—644 Rockdale; room in beautiful home; hot water heat; adjoining bath; large porch, yard; car, bus line. AVon 6866.

ADVANTAGEOUSLY located, modern, newly decorated bachelor apartments; a real home for discriminating gentlemen. Terms made very attractive.

No. 8 Lane Seminary Campus. WO 1168-M.

AVONDALE—3348 Burnet; single or double; all conveniences. AVon 4333-W.

CITY—2 or 3 rms., mod., adults; porches, yard, fruit, flowers; \$20 and \$25 monthly; also large rms., \$3.50 week. HEM 0533.

CLIFTON—3429 Ruther. Single, \$4; couple, \$5.50; near cars; buses. UN 0432-R.

FT. THOMAS—14 Rob Roy; lovely, mod. rm.; board opt.; private. HI 2117-R.

HYDE PARK—1, 2 or 3 housekeeping rooms; also sleeping; \$2.50 to \$6.50. East 2346.

HYDE PARK—Lovely rooms, single or double; private home; on car line. East 0699-J.

WALNUT HILLS—625 Crown St.; 1 or 2 housekeeping; free parking. WO 3492-W.

WALNUT HILLS—Room in pleasant home; porches; shade. WOODburn 6242-W.

**Furnished Apartments, Houses**

BELLEVUE, KY.—241 Berry; 3 mod. rms.; strictly private; adults. SO. 2674-W.

COVINGTON—Rent reduced, Wallace Ave. 2 and 3 mod. rms. Frigidaire, bath, heat, janitor, also unfurnished. HEM. 7078.

LATONIA—Mod. 5-rm. house, furnished complete; gar.; 2716 Roger. HE 0297.

WALNUT HILLS—3 rm., bath; everything furnished. 1824 Fairfax. WO 0706-M. 4

WALNUT HILLS, E.—3 rms., private bath; everything furnished; 3rd floor. WO 5986.

WALNUT HILLS—633 Lincoln ave.; living rm., bedroom, kitchenet, bath, heat, janitor service. \$50. Call EAST 3801.

**Apartments, Unfurnished**

BELLEVUE, KY.—126 Eden Ave.; 3 rms.; private bath; heat; 2nd floor; near car; \$25.

CITY—"Lorraine Apts." 411 E. 3rd St., 1, 2, 3, 4, 5 rms., heat, elev. See Jan.

WALNUT HILLS, E.—5 rms., solarium, tile bath; 2nd floor; garage. WO 5086.

**Miscellaneous, For Rent**

OFFICE or Showroom Space—Ground floor, 22 E. 12th St. Centrally located on several car lines, yet good parking facilities. Reasonable rental. Kelly Realty Co. Cherry 0711.

STORE for rent, 1119 Race St. Rent reasonable. Call Kelly, Cherry 0710.

**Wanted, to Rent**

THE most reasonable rental service in Greater Cinti. Investigate; no obligation! Realty Rental, 602 Flat'n Sq. Bldg. MA. 0731

**Houses For Sale**

NORWOOD—Forest Av.; 1 family, 6-rm. frame, \$5000; terms. Mr. Vogt, MA 0896-7.

**Farms—Country Homes**

FARM—For rent; on paved Cornell rd.; 120 acres; 18 miles from downtown Cincinnati; yearly rent \$500. KELLY, 22 East Twelfth st. CHerry 0710.

29 acres—in Kentucky—20 miles out... \$1,200  
20 acres—in Kentucky—25 miles out... 1,600  
11 acres—near Bethel, Ohio... 2,200  
40 acres—near Mt. Orab, Ohio... 2,500  
20 acres—near Rising Sun, Ind... 1,400  
80 acres—near Batesville, Ind... 2,800  
Rel C. Wayman.  
1115 Scott St. HEMlock 5107.

**Lots and Acreage**

PRICE HILL—New subdivision; restricted lots, 60x200; \$600-\$1250. WA. 2715.

**Sales—Miscellaneous**

BICYCLES—Reasonable. Scotty's Bicycle Shop, 113 6th Av., Dayton. SO 6922-J.

BLACK DIRT FOR SALE—KIRby 6550-J. 3363 Beckman St. We deliver.

TOP SOIL AND DIRT for filling; reasonable prices. AVon 2586.

**Household Goods**

PARTS for any sweeper at prices below manufacture cost. Don't trade it in we can make it look and work like new. We call and deliver; estimates free. Bags for any washer, 75c. Wringer rolls for any washer, \$5 installed.  
COMMUNITY SWEEPER SHOP  
438 Madison HEMlock 1624

**Radio, Musical Merchandise**

RADIOS—Electric; \$5.50, \$12.50. Oakley Radio, Robertson and Brownway. ME 3154.

**Business Opportunities**

BAKERY—And delicatessen; corner location; with 2 bakery routes. BRamble 2355.

**Pets, Poultry and Stock**

CANARY SINGER—\$5; female \$1; breeding cages \$1; with every pair a breeding cage free. 1719 Kinney, Walnut Hills.

CANARIES—Male and female. Also meat rabbits. 1835 Forbes; WESt 4292-J.

CHOW PUPS—Dark red; pedigree; good blood. 1731 Avonlea, Bond Hill. ME. 7348

FARM HORSES AND MULES—3 spotted show ponies; trial given. Wm. Fiamm, 3110 Spring Grove. WESt 3535.

SADDLE HORSES—Ponies—Jumpers—Selling out. Shanondale Farm. Seymour Ave., Cincinnati, O. VALley 1585.

## WLW Is Outlet for New World Forum By Radio

WLW is the local outlet of the International Radio Forum just formed by France and the United States to promote better understanding between the two hemispheres and headed by eminent citizens of both lands.

The first program from France will be heard over WLW (NBC-WJZ) Sunday (April 10) at 4 p. m. Ira Nelson Morris, of Chicago, former Minister to Sweden and chairman of the American and French committees for the Forum, will introduce M. Jusserand, who will talk on "The Americans and the French—Their Mutual Opinions."

## Famous Wedding Music To Be Heard In Vox Humana Hour

The WLW Vocal Octette and Eugene Perazzo, organist, under direction of Grace Clave Raine, will present a half-hour of the world's famous wedding music in the "Vox Humana" program Tuesday (April 12) at 9 a. m.

## WKRC ADDS FEATURE

Irene Righter, that popular, prize-winning crooner, heads a new Tuesday program over WKRC. On Tuesday (April 19) this 15-minute feature will be on at 10:15 p. m. it will move to 9:15 p. m. the following Tuesday. The supporting quartet consists of Howard Hafford, tenor; Fenton Pugh, second tenor; Milton Sachs, basso; Allen Frakes, baritone. Hafford is director. The program is sponsored by Adam Wuest, 514 E. Pearl Street, for the Sleeper Mattress.

## TOTAL 6,000

Five Jewish organizations with a total membership of 6,000 arrange the Jewish Community Hour, broadcast each Sunday at 1 p. m. over WFBE. They are Jewish Consumptive Relief, first Sunday; Hadassah, second; Council of Jewish Women, third; B'nai B'rith, fourth; Y. M.—Y. W. H. A., fifth. The period has been doubled to last a half-hour. *The American Israelite*, Cincinnati Jewish weekly, edits organizations news read each Sunday.

## ARRAY OF TIMBER

Six Democratic Presidential possibilities will speak Wednesday (April 13) at 10 a. m. over WSAI (NBC-WEAF) from the Jefferson Day dinner in Washington. D. C. Speakers are Governors Franklin D. Roosevelt, Albert C. Ritchie, Harry F. Byrd, Senator J. Hamilton Lewis, and former Senator James M. Reed, with former Governor James M. Cox, toastmaster for broadcasting. Columbia will come in at 10:45 p. m.

**STARTED CHICKS**—Of highest quality. All flocks are carefully culled for egg production, and standard qualities. We blood test, and use pedigreed males in most breeds. We can offer 2,000 two-and-three-week old chicks at bargain prices. This week only two-week-old chicks, \$10; three-week-old chicks, \$12 per 100. FAIRVIEW HGTS. HATCHERY, Blanchester Ohio. mh13-2tSu

**TWO CARLOADS** of farm horses, mares and mules. Also several teams. Sold under a guarantee. JOE KELLY, Lakewood Farm, North Bend rd. College Hill. Phone KIRby 3337.

**Fuel and Wood**

LOCUST POSTS, kindling and grate wood; creosoted long leaf pine posts; piling and logs for log cabin. KI. 3175.

PINE KINDLING, dried, sawed, split wood, \$2.50 per load. BEEchmont 7561-R.

**Wanted to Buy**

APPAREL—Men's old suits, clothing, shoes; will call; best prices paid. AVon 6393.

**CORRECT TIME WKRC TWICE DAILY COURTESY OF**  
**Lange JEWELER**  
435 VINE — CAREW TOWER.  
REMEMBER — YOUR GRANDMOTHER'S WEDDING KING CAME FROM LANGE'S.

ELECTRIC APPLIANCE SHOP  
NOTHING FINER NOTHING BETTER

The New Improved 1932 Model

# DAYTON

ELECTRIC REFRIGERATOR

4 Cubic Feet  
All 20 Gauge Steel Cabinet, Stainless Porcelain Interior

## 129.50

Easy Terms if Desired

10% Down  
18 Months to Pay Balance.

5 Cubic Ft. Dayton	\$159.50	6 Cubic Ft. Dayton	\$179.50	8 Cubic Ft. Dayton	\$209.50
--------------------	----------	--------------------	----------	--------------------	----------

You Are Under No Obligation  
Come in and Look Over the Dayton

**STORE OPEN EVENINGS**  
**ELECTRIC APPLIANCE SHOP**  
110 E. 8th BETWEEN WALNUT & MAIN Parkway 3778

Time Changes April 23rd—Find Them in *The Dial*

# AL LUCKEY

656 E. McMILLAN  
Woodburn 8307—8308

**BRAND NEW 1932 Plymouths**  
**BRAND NEW 1932 DeSoto 6's**  
**BRAND NEW 1932 Chrysler 6's**  
**BRAND NEW 1932 Chrysler 8**

## SAVE UP TO \$900

Also 200 Late Model Guaranteed, Reconditioned Automobiles

When You Think of Automobiles Think of

# AL LUCKEY

656 E. McMILLAN ST.

Hear the "LUCKEY" Boys  
WFBE 9, Every Night