

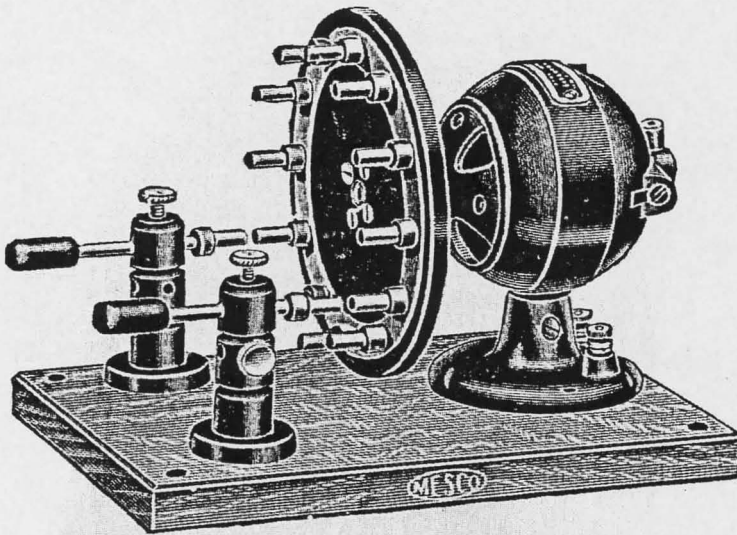


# CALL LETTER

VOLUME 16

JUNE 1990

NUMBER 6



### Rotary Spark Gap

Will increase the efficiency of any Transmitting Station 20 to 30 per cent. Has very high clear note. Can be used on spark coils or transformers up to 1 k.w. capacity.

**MANHATTAN  
ELECTRICAL  
SUPPLY CO.**

# CALL LETTER

*The Northwest Vintage Radio Society is a non-profit historical society incorporated in the State of Oregon. Since 1974 NWVRS has been dedicated to the preservation and restoration of Antique Radio & Wireless apparatus. The Northwest Vintage Radio Society meets at the Buena Vista Club House (Atkinson Park) 16th & Jackson Street, Oregon City, Oregon. (Note: take I-205 & Exit at Park Place, take first right onto Washington St. continue to 15th, left up 15th hill to Jackson, turn left to 16th).*

*Meetings are held at 10:00 AM on the second Saturday of each month except for summer vacation in July and August. The meetings are an opportunity to exchange information and advice.*

## Annual Dues:

Regular Membership	\$15--
Associate Membership	\$12--

Renewals are due on January First

## 1990 NWVRS OFFICERS & STAFF

PRESIDENT	Dick Karman	503-288-1285
VICE PRESIDENT	Art Redman	503-774-9913
TREASURER	Ed Charman	503-654-7387
SECRETARY	Greg Morse	503-626-9783
LIBRARIAN	Norris Jackson	503-642-5625

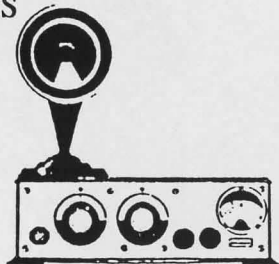
## NWVRS MAILING ADDRESSES

### Membership Applications & Renewals:

Northwest Vintage Radio Society  
P.O. Box 82379  
Portland, Oregon 97282-0379

### All Newsletter Business/Information:

Call Letter  
4041 NE Wistaria Drive  
Portland, Oregon 97212-2963



# Contents

<u>ITEM</u>	<u>PAGE</u>
Mesco Spark Gap .....	1
Introduction .....	2
Contents .....	3
P S A R A Meeting Minutes .....	4
P S A R A Coming Events .....	4
N W V R S Meeting Minutes .....	5
N W V R S Coming Events .....	5
Sparton Tubes (Sparks Withington Co.) .	5,6,7
Swap Shop .....	8,9
Hammarlund HiQ-31 "Chalet" .....	9
Atmospherica from Oct. '81 .....	10
Ole! .....	11
***** 1990 STAFF *****	
EDITOR IN CHIEF Edwin Buhite ..	503/288/9727
ASSOCIATE EDITOR Doug Bell ....	206/362/1453
Photographers: Ken Korhonen ..	206/932/9363
Ray Nelson ....	503/233/5063
Contributing Editors:	
Sonny Clutter .	503/254/9296
Dick Karman ...	503/288/1285
*****	
The CALL LETTER and The HORN OF PLENTY are published monthly as the official publication of the Northwest Vintage Radio Society and the Puget Sound Antique Radio Association.	
The Call Letter and the Horn Of Plenty are available only as part of the NWVRS/PSARA memberships. NWVRS/PSARA are not responsible for any buying / selling transactions incurred, or for any other use of the contents of this publication.	
*****	



# **PSARA Meeting Minutes**

---

Seattle, Washington Sunday May 20, 1990

The meeting of PSARA was called to order at 1:00 P.M. by President John Schneider.

We welcomed 8 guests to our meeting and voted in Grant Montegue as a new member. 25 Members present.

**OLD BUSINESS:** Discussion about the PSARA exhibit on June 2 & 3 for Northwest Pioneer Broadcasters at the Hilton Seatac Hotel. Tom Reed of N.P.B. will attend the June PSARA Meeting

and give a talk. Warren Green to give a talk on History of Amature radio at the July meeting. Doug Bell has volunteered to fill the position of Associate Editor.

## **FUTURE PROGRAMS:**

June 17 .... Northwest Pioneer Broadcasters by Tom Read

July 15 ..... Warren Green on Transmitters

August 19 Annual open Swap Meet

**NEW BUSINESS:** Name tags are here - if you have ordered a name tag contact Al Atworth. If any member has any changes for the roster such as change of address, phone number or any correction contact PSARA Secretary Frank Banks at 206/941/2965 or write to 28232 27th Ave S Federal Way WA 98003. Also, if you don't receive a copy of your newsletter let me know so I can check the address.

Jim Gianacos has donated the following Riders to the PSARA Museum Library: Index Vol. 1-9, Index Vol. 1-10, Index Vol. 16-18-19, Index Vol. 22, also "How It Works".

## **Notice To All Members !!!**

We are moving the Swap Meet to the back of the Museum instead of out front by the street. Reasons for this were discussed at the last meeting.

We concluded the May meeting with a very interesting and informative talk by Dave Dintenfass on Sound Recording for Motion Pictures.

Frank Banks, PSARA Secretary

## **NOTICE**

PSARA is currently accepting donations or loans of artifacts for display in the Shoreline Museum. All Members of PSARA or NWVRS are encouraged to participate in this project. For additional information call the Curator, Ken Korhonen at 206/932/9363.



# NWVRS Meeting Minutes

---

Oregon City, Oregon

Saturday May 12, 1990

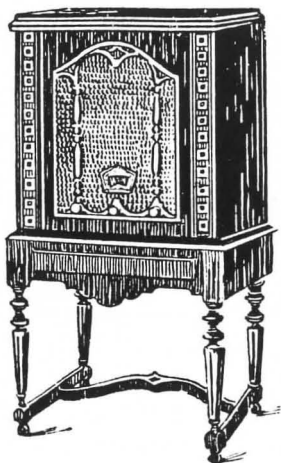
The May 12, 1990 meeting was called to order at 10:13 AM by President Dick Karman. Visitors were welcomed. There was no Good & Welfare. No Treasurer's report was given. The Radio/Phono display has been cancelled. Meeting adjourned at 10:14.

.....

Greg Morse, NWVRS Secretary

## 1990 NWVRS SCHEDULE

- June 9 ..... Display of Cathedrals
- July 15 ..... Display at Forest Grove
- July & ..... August No Meeting in Oregon City
- Sept 8 ..... Auction
- Oct 13 ..... Contest
- Nov 10 .... Swap Meet
- Dec 8 ..... Election / Party



## Sparton Tubes

The following pages contain the early listing of Sparton Tubes. You will find several types listed which are unique to Sparton. When working on early Spartons or testing early Sparton tubes Keep in mind, many Sparton tube designations are not normally found on standard documents. For example C-484 is almost a '27 & C-182 is almost a '71.



SPARKS WITHINGTON CO.

Characteristics of Sparton Tubes

Type	Base	Use	"A" Supply	Filament Voltage	Filament Current Amperes	Detector Plate Voltage	Detector Plate Current Milli-Amps	Amplifier Plate Voltage	Grid Voltage	Amplifier Plate Current Milli-amps	Plate Impedance Ohms	Mutual Conductance Micromhos	Amplification Factor
C-112-A	Standard 4 prong	Power Amplifier	Stor. 6 volt Transformer 5 volts	5.0	0.25	-----	-----	135 157.5 180	-9.0 -10.5 -13.5	7.0 9.5 7.8	5000 4700 4700	1600 1700 1700	8.0
C-181	Side Pin 4 prong	Power Amplifier	Transformer 3 Volts	3.0	1.3	-----	-----	200	-40	16	2850	1050	3.0
C-182	Standard 4 prong	Power Amplifier	Transformer 5 Volts	5.0	0.9	-----	-----	200	-45	18	2000	1500	3.0
C-182-A	Standard 4 prong	Direct Current Power Amplifier	Transformer 5 Volts	5.0	0.8	-----	-----	200	-45	18	2000	1500	3.0
C-182-B	Standard 4 prong	Power Amplifier	Transformer 5 Volts	5.0	1.25	-----	-----	200	-29	18	3330	1500	5.0
C-183	Standard 4 prong	Power Amplifier	Transformer 5 Volts	5.0	1.25	-----	-----	200	-45	20	2000	1500	3.0
C-210	Standard 4 prong	Power Amplifier	Transformer 7.5	7.5	1.25	-----	-----	350	-27	20	5500	1450	8.0
C-231	Standard 4 prong	Power Amplifier	6 dry cells Series Parallel	2.0	0.150	-----	-----	135	-22.5	8.0	4000	875	3.5
C-245	Standard 4 prong	Power Amplifier	Transformer 2.5	2.5	1.5	-----	-----	180 250	-33 -50	26 32	1460 2250	2400 1450	3.5
C-586	Standard 4 prong	Power Amplifier	Transformer 7.5	7.5	1.25	-----	-----	250 350 450	-45 -63 -84	28 45 55	2150 2000 1950	1575 1700 1750	3.4
C-201-A	Standard 4 prong	Detector Amplifier	Storage 6 volts	5.0	.25	45	1.5	90 135	-4.5 -9.0	2.5 3.0	11000 10000	725 800	8.0
C-230	Standard 4 prong	Detector Amplifier	6 dry cells Series Parallel	2.0	0.060	45	1.5	90	-4.5	2.0	12500	700	8.8
C-401	Side Pin 4 prong	Detector Amplifier	3 Volts	3.0	1.3	45	2	90 120	-3 -4	5.0 6.0	9500 7000	1000 1200	9.5 8.7
C-427	Standard 5 prong	Detector Amplifier	2.5 Volts	2.5	1.75	180	0.8	90	-3	5.0	10800 9300	1150	12.5
C-484	Standard 5 prong	Detector Amplifier	3 Volts	3.0	1.3	135	0.8	90 120	-3 -4	5.0 6.0	10800 9300	1150 1350	12.5
C-484-A	Standard 5 prong	Direct Current Detector Amplifier	3 volts D. C.	3.0	1.6	100	0.5	90 120	-3 -4	5.0 6.0	9300	1150 1350	12.5
C-226	Standard 4 prong	Amplifier	1.5 Volts	1.5	1.05	-----	-----	180	-13.5	6.0	7000	1170	8.2
C-686	Standard 5 prong	Amplifier	Storage 6 volts	3.0	.25	-----	-----	90	-3.0	3.0	28000	450	12.5
C-224	Standard 5 prong	Screen Grid Amplifier	Storage 6 Volt Transformer 2.5 Volt	2.5	1.75	Screen Grid Voltage Plus 90	-----	180	-3.0	4.0	400000	1000	400
C-232	Standard 4 prong	Screen Grid Amplifier	6 dry cells Series Parallel	2.0	0.060	Screen Grid Voltage Plus 67.5	-----	135	-3.0	1.5	800000	550	440
C-280	Standard 4 prong	Full Wave Rectifier	5.0 Volts	5.0	2.0	Max. A. C. Voltage per plate 350 Volts R. M. S. Max. Rectified Current 125 M. A.							
C-281	Standard 4 prong	Half Wave Rectifier	7.5 Volts	7.5	1.25	Max. A. C. Voltage per plate 700 R. M. S. Max. Rectified Current 85 M. A.							

# Swap Shop

---

## Wanted

DONATION for PSARA Library. Rider Vol. I, II, III, IV, V, XIV, XV, XVIII, XX, XXI, XXII, XXIII. RCA Red books. 4 drawer file cabinet. Ken Korhonen 206/932/9363

ZENITH plastic knobs for 8G005 Transoceanic. Robert Rettmer 9223 NE 192nd St. Bothell, WA 98011 206/483/5741

ZENITH pre-war: Escutcheon & button assemblies for late model round dial, knobs for shutter dial, factory literature. 1930 G.E. knobs, Speaker assembly for Dahlberg "pillow speaker" radio. Delco auto radios especially wonder bar, 1930-1940. Console & Chairside radios. Vince Creisler 13241 SE 261st St. Kent, WA 206/630/4735

TUBE Amplifiers. Grunow 801 radio. 5" or 5.5" speaker with 1,000 ohm field. service manual for Ampex 2100 Tape deck. Darrell Forsberg 12209 1st Ave NW Seattle WA 98177 206/363/0754

WAVEMAGNET for 1940 Zenith Console. Knobs for 1935 Zenith 975. Edwin Buhite 4041 NE Wistaria Dr Portland OR 97212 503/288/9727

PHILCO 60 Chassis & Speaker. Harold Evertson 2303 Miner Ct. Tumwater WA 98502 206/943/2508.

SPEAKER for Dahlberg radio. Remote unit for GM 160 Radio/phono. Frank Banks 28232 27th Ave S Federal Way WA 98003 206/941/2965

FOREIGN made pre WWII radios & parts. Max Kaplan 14902 84th Ave. Ct NW Gig Harbor WA 98335 206/851/4187

CHASSIS & speaker for RCA D-28, GE K-50, K-51 or K-52. Bosch 58 power transformer or chassis W/same. speaker for Radiola 24. Sonny Clutter 14407 NE Fremont St. Portland, OR 97230 503/254/9296

RADIOLA Loudspeaker UZ1325. Scott MacGregor 1115 SW 28th ST Troutdale OR 97060 503/661/1294

SAMS AR 4&5. Al Lemke 10004 206th Ave NE Redmond WA 98053 206/868/8165



BLUE O1A tubes, pre-1950 TV, Mirror in lid TV, GEM radio/clock/lamp, catalins etc. Ken Korhonen 4022 41st Ave SW Seattle WA 98116 206/932/9363

PHILCO Dial Glass for 42-360 or similar model (rectangle, 3 band). Jerry Cappoen 32904 13th Ave SW Auburn WA 98023 206/874/5490

## For Sale

VELVATONE Console battery set with internal Utah horn \$65.00 Art Redman 6401 SE 89th Ave Portland OR 97266 503/774/9913

ZENITH 10-S-690 radio/phono console \$100. OBO Jim Gianacos 9110 122nd Pl SE Renton WA 98056 206/228/9398

## Lead

RCA K80 Console \$40.00, Zenith console \$40.00, Stewart Warner porto-bar-radio etc. Ron Hayhurst 503/292/4805 or 248/6899.

# *Custom-Built Radio* by **HAMMARLUND**



### *The CHALET*

*One of ten specially selected consoles and phonograph combinations.*

**HAMMARLUND-  
ROBERTS, INC.**  
424-438 W. 33rd Street  
New York

**HiQ-31**







# ATMOSPHERICA

By J

De Lemmon

Crackle, crackle, noisy static ;  
On this set, it's automatic !  
Every night from far or near,  
Nothing comes in crystal clear !

Shall I smash this ancient Kolster---  
Take old Bess from out it's holster,  
Take a pot-shot at it's "wizzery",  
And end forever all it's misery ?

Better still I think I've got  
A much more humanistic plot :  
Since I can't be quite that rough,  
I'll give it to some antique buff !

He might fix it up, and then  
I might want it back again ;  
He might give it that old-time Zing---  
Hell, I'm gonna keep the thing !

\*\* \*\* \*

Mamma Goose # 14

Simple Simon found a Philco  
At a stall down at the fair-  
Said Simple Simon to the pitchman,  
"Please let me test your ware".  
Said the pitch to Simple Simon,  
"Have ya got the cash to take 'er?"  
Said Simple Simon to the man,  
"Go fly a kite, you faker!"

\*\* \*\* \*

"You can't make a Zenith Stratosphere out of  
a Roberts Reflex"

-old proverb.



# *Olé!* (acquisitions)

---

## Frank Banks

- 1938 Zenith 7-S-258 console
- 1935 Philco 511
- 1931 Philco Baby Grand

## Andy Bell

- 1941 Pacific Electronics 610-A  
(built in Spokane).

## Edwin Buhite

- 1930 Brunswick 22  
(console with doors)
- 1948 Garod 11FMP2 11  
tube console
- 1957 Motorola 66T1 6 transistor  
(Brass & Chrome art deco.)

## Fred Butsch

- 1948 RCA 8PCS41 Projection TV

## Vince Creisler

- 1930 GE 9 tube low boy
- 1934 Philco 45C table
- 1936 GE E-105 10 tube console
- 1942 Zenith 10-S-690 console
- 1942 Philco 42-380 console
- 1955 Dahlberg 430-D1  
pillow speaker Motel radio

## R.A.Dielschneider

- 1929 Atwater Kent 55C Kiel Table
- 1937 G.E. E-105 console
- 1937 Zenith 5-S-150 console
- 1937 Philco 37-630 console
- 1939 Philco 39-40 console
- 1956 Guild 484 spice chest radio

## Dave Dintenfass

- 1947 Scott 800B  
radio/phono console

## Max Kaplan

- 1933 Buckley Radio  
(built in Seattle)
- 1938 Philco 39-643
- 1938 Emerson CM 266
- 1953 Zenith K412W

## Walt Kiefner

- 1935 Philco 18 Chassis
- 1938 Zenith 9-S-263 Chassis &  
Speaker
- 1950 Zenith G500 Transoceanic
- 1956 Zenith Royal 500

## Ken Korhonen

- Bar Radio with mirrored clock

## Scott MacGregor

- 1937 Zenith 8-S-154 console
- 1937 Zenith 6-S-157 console
- 1937 Philco 37-610 table model
- 1936 Grunow 1191 all wave

## Ray Nelson

- JVC Videosphere

## Gordon Phillips

- 1929 Sparton 49 Battery Set
- 1930 Atwater Kent 70 Console
- 1935 Play Pal Novelty set

## John Schneider

- 1933 RCA R-28-P midget round  
top

## Rudy Zvarich

- 1934 RCA 84BT6 farm radio

