

Long Wave
Short Wave
News Spots
& Pictures

MICROPHONE



5
Cents
the Copy
\$1.50 Year

Volume III, No. 42

WEEK ENDING OCTOBER 26, 1934

Published Weekly

This and That

By Morris Hastings

DAZZLING as musical programs on the radio occasionally are and should be, it is essential that listeners preserve a sense of proportion.

Like all mechanical transmitters of music, radio is a second-best. At times it is a brilliant second-best, but a second-best nonetheless.

Radio does not pick up the many overtones of an orchestra that are heard by an audience assembled in a concert-hall.

It cannot convey to a scattered audience listening in on sets the intangible but very real electric "thrill" that passes from one member to another of a concert-hall audience when great music is finely played.

Grant that radio does an enormously fine thing in broadcasting concerts by the New York Philharmonic and Philadelphia Orchestras or by outstanding soloists, a broadcast performance does not equal the actual performance.

While several singers have been recruited from radio for the Metropolitan Opera and while at least one capable symphony orchestra has been formed exclusively for broadcasting purposes, radio has made no important original contribution to music.

There has been a tendency, even on the part of distinguished artists, to think of the radio au-

(Continued on Page 15)

Broadcasters, Battling New Deal, Offer to Cooperate With Educators

Two New Networks Forge Ahead

Competition Promised by 18 Outlets

By The MICROPHONE'S Special Washington Correspondent

Steady progress being made by two new networks in competition with the National and Columbia broadcasting systems is engaging the interest of official circles.

The Quality Group and American Broadcasting System were reported to be branching out in a way that promises more competition in the radio broadcasting business.

The Quality Group got under way this month with a hook-up of WLW, Cincinnati, a 500,000 watt station; WOR, Newark, a station of 5,000 watts soon to be increased to 50,000; WGN, 50,000 watt Chicago station, and WXYZ, 1,000 watts.

American Broadcasting System plans to operate with outlets in 14 cities. GEORGE STORER, of Detroit, and reputedly wealthy, is the kingpin in ABS.

WMCA, New York, is its feeder station. Reports were that before November 1 the American network will include WCBM, Baltimore; WIP, Philadelphia; WPRO, Providence; WOL,

(Continued on Page 7)

Day High School Goes In for Radio

Young Students Do Own Script Writing

Principal



—Photo by Bachrach

RUSSELL BURKHARDT, principal of the FRANK ASHLEY DAY high school in Newtonville, where radio is taken seriously.

RUSSELL BURKHARDT, principal of Newtonville's FRANK ASHLEY DAY junior high school, assumes his best studio attitude and addresses a microphone on his desk.

"Willie Brown, your mother just telephoned. She said for you to come straight home after school."

Some 30 loud speakers in various classrooms repeat the parental admonition.

Mr. BURKHARDT and ALDEN W. READ, a mathematics instructor at the school, have "gone" for radio in what usually is described as "a big way."

Mr. BURKHARDT first was attacked by the radio bug when a school principal in Springfield, Massachusetts. His Newton connections, however, have given him his first real opportunity to do something about it.

Going to the DAY school, he formed a broadcasting club, composed of pupils having the urge to give vent to their talent via the air waves.

The youthful broadcasters write their own script. They carry out

their own broadcasts, even down to the station announcement.

One central microphone, on a

(Continued on Page 7)

Opponents Of Charge Are Heard

By The MICROPHONE'S Special Washington Correspondent

Commercial radio broadcasters extended the olive branch of co-operation with educational and other non-profit organizations at hearings of the broadcast division of the Federal Communications Commission.

The broadcasting industry was adamant in its opposition to a sweeping "New Deal" in radio permits under which the non-profit groups would be given a fixed percentage of the wave channels.

Instead, the commercial interests said they welcomed the non-profiters to utilize more time on the commercial stations.

Spokesmen for the educational, fraternal and religious groups had protested they were given undesirable time on the commercial stations.

Among the opponents of proposals that Congress by statute allocate fixed percentages of broadcasting facilities—the FCC must report recommendations to Congress by February 1, 1935—were:

PHILIP G. LOUCKS, managing director of the National Association of Broadcasters; HENRY A. BELLOWS, of Minneapolis, chairman of the legislative committee of the National Association of Broadcasters and a former member of the old Federal Radio Commission; J. TRU-

(Continued on Page 15)

Contents

News Flashes Box	Page 1
Junior high school students make use of radio	Page 1
This and That	Page 1
by MORRIS HASTINGS	Page 1
HERB JONES, song writer, picks his favorite radio artists	Page 3
Station Directory	Page 4
Educational Box	Page 4
Radio Lane	Page 5
by JIMMY J. LEONARD	Page 5
Studiosity by LES TROY	Page 5
Editorials	Page 5
A singer of classical songs becomes a crooner	Page 7
Children's Page	Page 9
Weather Reports Box	Page 10
WEEI Page	Page 11
Short Wave Directory	Page 13
An operatic singer strikes a happy medium for the radio	Page 13
Reflections	Page 15
by DIANA HERBERT	Page 15
Nimblewis	Page 15
by EVERETT SMITH	Page 15
O. and also A.	Page 15
"The Shadow Confesses!"	Back Cover

Niagara Is Outroared

By The MICROPHONE'S Special Washington Correspondent

The human voice magnified one million times and audible seven miles away.

The Western Electric Company has made that achievement in a new loud speaker. Reports reaching here are that if such an amplification is not enough, the machine can be stepped up.

It was used by the United States Coast Guard during the recent America's Cup races to warn shipping to get off the course.

The loud speaker, which outroars Niagara Falls, will be used in addressing huge crowds or for the giving of order during conflagrations when there are roaring flames.

Belasco On Columbia
LEON BELASCO and his dance orchestra will broadcast over the CBS-WABC network on Sundays from 11.30 P. M. to midnight and on Wednesdays from 11 to 11.30 P. M., beginning Sunday, October 21.

News Flashes WEEKDAYS

A.M.
10.30 WFAF Network: WEEI WGY WSM WFLA WSB
WABC Network: WCAU WHAS WPG KMOX WBBM WCCO WJSV

10.45 WJZ Network: WEZ WHAM KDKA WLW WBAL

P.M.
6.30 WFAF Network: WEEI WGY WSM WFLA WSB
WABC Network: WCAU WHAS WPG KMOX WBBM WCCO WJSV

6.40 WJZ Network: WEZ WHAM KDKA WLW WBAL

SUNDAYS

A.M.
11.00 WFAF Network: WEEI WGY WSM WFLA WSB
WJZ Network: WBEZ WHAM KDKA WLW WBAL

P.M.
11.30 WFAF Network: WEEI WGY WSM WFLA WSB
WJZ Network: WBEZ WHAM KDKA WLW WBAL

12 M. WFAF Network: WEEI WGY WSM WFLA WSB

[Important news is given over these stations, generally on the hour and half hour.]

New WMEX Studio Opens

Station WMEX, with studios in the Hotel Manger in Boston, opened Thursday evening, October 18, with a number of outstanding programs.

WMEX is owned and operated by the Northern Corporation. Its staff includes WILLIAM POTE, general manager; AL POTE, engineer in charge and JOHN RILEY, chief announcer.

Among the speakers during the opening program was JAMES M. CURLEY, Democratic candidate for Governor of Massachusetts and formerly Mayor of Boston.

The MICROPHONE presented an hour's program of operetta music played by an instrumental ensemble under the direction of NORMAN CARROL.

WMEX has the most modern radio equipment.

It is the one station in Boston proper that has no network affiliations.

Pictures

JOHN McCORMACK, a drawing by WILLIAM WOOD	Front Cover
RUSSELL V. BURKHARDT	Page 1
GOGO DELYS, vocalist	Page 2
ALEXANDER WOOLLCOTT	Page 3
Commander STEPHEN KING	HALL of the British Broadcasting Corporation
GEORGE GERSHWIN, composer	Page 5
H. V. KALTENBORN, news commentator	Page 5
KATE SMITH, contralto	Page 6
DICK POWELL, tenor	Page 7
THE DEBUTANTES, vocalists	Page 7
ARTHUR HUGHES	Page 8
JOHN MARTIN, children's story teller	Page 9
GEORGE BURNS, comedian	Page 10
BOAKE CARTER, news commentator	Page 12
GLADYS SWARTHOUT, soprano, FRANK CHAPMAN, baritone, and BILL DALY, conductor	Page 13
JESSICA DRAGONETTE, soprano	Page 14
JASCHA HEIFETZ, violinist	Page 15
"The SHADOW"	Back Cover

Herb Jones, Song Writer, Names His Favorites In The Radio World

He Speaks A Word for the Tunemsmiths

By HERB JONES

In my writing experiences I've had some odd assignments, but my most recent one has men wondering if perhaps editors do stay up nights, as I've heard, thinking up tough situations for writers like myself.

Here I am, with a yen to do my bit as a columnist and I'm told to speak my piece in an imaginary interview with myself. Well, I've gotten stories from such radio names as Dream Singer KIRBFY, ARCHIE BLEYER, PICKENS SISTERS, FRANCES LANGFORD, GENE and GLENN, etc., so I shouldn't be so hard to tackle.

First, an introduction to myself: What shall I say? I'm a combination song writer, press agent, column gossipier, feature writer and even head a small music publishing firm.

In fact, I'm like a one-man band.

In a way, too, I may be likened to an orchestration. It takes one of these, containing about 12 parts, to put a single melody over via the dance orchestra method of exploitation.

I take this opportunity to give the names of a few of my favorites in the radio world.

My orchestra list is headed by ARCHIE BLEYER, the arranger, whose band is now being etherized over NBC and ABS networks, and continues with GLEN GRAY, HAL KEMP, WAYNE KING, EDDIE DUCHIN, HENRY KING, CLYDE LUCAS and PAUL WHITE-MAN.

Among the singers I would stay home to dial BING CROSBY, RALPH KIRBERY, IRENE BEASLEY, LARRY LAMONT or PAT KENNEDY any night. My favorite program is the Monday Jamboree from the Coast and RUBINOFF'S Sunday evening broadcast from New York.

I believe the arranger to be the most vital man in a band, and the least mentioned. Seldom does he receive the credit to which he is entitled. Each orchestra seeks to gain fame by its individuality. This is accomplished by the style in which it interprets the songs it plays; the work of the humble arranger.

And a word for the tunemsmiths: Have you ever realized how important a part music plays in radio? And especially popular styled songs? I will quote something I read (or maybe I wrote it myself!) a long time ago:

"Popular songs and dance music entertain the world, but the writers of these ditties generally create them while hungry."

This may be a bit far fetched, and probably is, because a good many writers receive some very nice royalty checks.

I believe that popular writers, composers and arrangers should receive, and are justly entitled to receive, a bit more recognition. Few, with the exception of professionals, could name the authors of their favorite selections.

When you next hear your favorite star presenting some beautiful ballad or lilting tune of the day, give a thought to the creator.

He writes the songs that bring in the requests and fan mail, but none is ever addressed to him.

The Delightful Mr. Woolcott Tells The World About Itself

In Spare Moments He Lives At Wits End

AS "TOWN CRIER" of the WABC-Columbia network, ALEXANDER WOOLLCOTT speaks his mind to a nationwide audience on Sundays at 9 P. M. For 20 years his chief business and pleasure has been to tell the world quite candidly what he thinks of people, plays, books, places, events—almost anything he finds interesting.

On January 19, 1934, WOOLLCOTT celebrated his 47th birthday anniversary. He told his radio audience all about it—how, nearly half a century ago, over in Phalanx, New Jersey, the village doctor reported to the neighbors: "Another boy over at the Woolcotts, darn it!"

After he got his Ph.B. from Hamilton College, at Clinton, N. Y., the young man looked around the world a bit, then decided to take some post-graduate work at Columbia University. Finishing this in 1913, he went to work for *The New York Times* as dramatic critic in 1914. He held this post for eight years. Then he did a stretch, also as dramatic critic, for *The New York Herald*, and followed that with three years in the same capacity for *The New York World*.

When he had, in the line of duty, been attending the theatre for about 15 years, he thought he'd take a vacation. So he enlisted in the A. E. F. He didn't see much of the war, however, for the Army decided he could be more useful in an editorial capacity than in the trenches.

As a personality, ALEXANDER WOOLLCOTT makes a colorful complex study. Some who know him only through his writings, in which there is often a strong element of caustic wit, think of him as lying in wait to pounce on human weakness and hold it up to ridicule. But his friends, even casual acquaintances, tell a different story.

"Alex is the soul of kind-



ALEXANDER WOOLLCOTT, the "Town Crier," who is heard over the WABC-Columbia network on Sunday evenings at 9 of the clock, accompanied by an orchestra.

liness," one of them said recently. "He's always doing things for people."

Among WOOLLCOTT'S intimates are most of the literary and artistic lights of two continents. His Sunday morning breakfasts are famous. He gives them, whenever he is in town, at Wits End, that storied, sun-filled apartment overlooking the East River.

There, almost any Sunday, one may run into BEATRICE LILLIE, NEYSA McMEIN, NOEL COWARD, HOPE WILLIAMS, ALICE DUER and HENRY WISE MILLER, ANNE PARRISH, THORNTON WILDER, DOROTHY PARKER, or others of that vast fraternity who cherish ALEX WOOLLCOTT for his gay and abundant wit and his spirit of deep and loyal friendship.

The immediate family at Wits End has lately been augmented. There used only to be the Master, his secretary, and "Junior," a Negro servant so-called because his father had served in his place before him. Now there is Pip, a French poodle with garnet eyes.

Soul of Kindliness Although Humor Is Caustic

At the end of the January 19 broadcast, as a special birthday treat to himself, WOOLLCOTT included a whistle and a word to Pip, listening before the radio at home. Pip owes his name to CHARLES DICKENS, whom the Crier regards as the most notable writer of fiction he has read.

Among present-day American writers, WOOLLCOTT is considered one of the few real stylists. It may be pertinent that he writes only when, and as, he wishes. Consider, for instance, that famous column, "Shouts and Murmurs." Thousands buy *The New Yorker*, in which it appears, and turn to the page where they may find their favorite.

But they can never be sure. For Mr. WOOLLCOTT, disliking contracts, usually shouts and murmurs when the spirit moves him—and only then. Consequently, when he does write for print he has something to say.

His radio talks, of course, he must give according to a schedule fixed some months in advance. But beyond the fixity of the hour, he is not limited.

His audience never has the slightest idea what he has in store for them. They are sure, only, that it will be entertaining.

The Crier is a man filled with the warm joy of living and he has the power of conveying his own inner fire to others but only when and as he pleases.

German DJD Is Best Short Wave Station

By GEORGE LILLEY

At Zeesen, in the suburbs of Berlin, are housed Germany's international ether envoys—truly among the world's best received and most popular short wave stations.

Five different transmissions each day emanate from the German hamlet, each intended for listeners in different parts of the world. On Sundays an additional broadcast is given particularly for fans who live in the Antipodes.

Asia, Africa, South America, the Far East, North America and the vast expanses of the Pacific—all are effectively covered by short wave radiations from the Fatherland at some time or other of each day.

A few years ago when short wave tuning was still in an infant stage it was the German DJD that brought unusual thrills to the experimental listeners.

Even then it had been written that on high frequency lanes one could hear overseas lands with the clarity and volume of local stations, but many who tried were disappointed. That is, until they ran into the German wave.

One or two afternoons each week DJD used to send out experimental transmissions for the scattered fans. Most other foreign stations of the time were none too powerful or modern, but Germany's were.

Now other nations, too, have erected modern short wave transmitters, but Germany still holds one of the highest rankings on the dial.

Twice daily they broadcast, via directional antennae, special programs for American listeners. The morning session opens on 19-meter DJB at 8 A. M., EST, and carries through until 11.30 A. M. Likely as not any morning you pick out the best signal on the 19-meter spectrum, it will be DJB.

(Continued on Page 15)

Gentleman, Be Seated!



GEORGE GERSHWIN is one of the least temperamental of all musicians. But he is very particular about his piano stool. He is so particular, in fact, that he carries his own piano bench around and refuses to let any one touch it but himself.

The Northern Corporation

Announces the opening of its

Radio Station

WMEX

Studios and Offices on the 18th floor of the Hotel Manger, Boston

Transmitting plant on the summit of Powderhorn Hill, in Chelsea

The broadcast period is from 9 A.M. to 12 Midnight, Daily

Station WMEX is both organized and eager to serve the listening public and commercial broadcasters

Sunday, October 20 - Albert Spalding Plays on NBC-WJZ 8 P.M.

Highlights

- A. M.**
- 10.00—Dr. S. Parkes Cadman, "Youth's Burden," NBC-WEAF
- P. M.**
- 2.30—"What Every Woman Knows," Helen Hayes, Kenneth McKenna, NBC-WJZ
- 3.00—New York Philharmonic, Otto Klemperer, conductor, CBS-WABC
- 4.00—Kansas City Philharmonic Orchestra, NBC-WEAF
- 7.00—Jack Benny, Mary Livingston, NBC-WJZ
- 7.30—Joe Penner, NBC-WJZ
- 8.00—Detroit Symphony Orchestra, Dalcis Franz, pianist, CBS-WABC
- Symphony Orchestra, Albert Spalding, Ernst Ansermet, conductor, NBC-WJZ
- 9.00—Alexander Woollcott, CBS-WABC
- 9.30—Headliners, Will Rogers, CBS-WABC
- 10.00—Lucrezia Bori, NBC-WEAF

(All programs are listed in Eastern Standard Time. Central Time is one hour earlier.)

- 10 A.M. EST. 9 CT
Dr. S. Parkes Cadman, "Youth's Burden," WEAF WGY WSM WFLA, 30 m.
Southern States Music Band, WJZ WBZ WBAL KDKA WBAL WLW WGAR, 30 m.
Church Services from Portland, Me., WEEI, 30 m.
Church of the Air, WABC WPG WHAS KMOX, 30 m.
Watch Tower Program, WCAU, 1 h.
10.30 A.M. EST. 9.30 CT
Mexican Tropic Orchestra, Hector De Lard, baritone, WEAF WEEI WGY WLW, 30 m.
Music and American Youth, Dr. Howard Hanson, WJZ WBZ WHAM KDKA WBAL WFLA WGAR, 30 m. (WSM, 45 m.)
Dr. Charles E. Burton, D.D., Congregation al (news at 10.55) WABC WCAU WPG WHAS KMOX, 30 m.
Sunday Morning Concert, WCAU, 1 h., 30 m.
10.45 A.M. EST. 9.45 CT
Church Service, WSM, 45 m.
Robert Place, poems, WPG
11 A.M. EST. 10 CT
News, The Vagabonds, WEAF
Old South Church Service, WEEI, 1 h., 15 m.
News, Church Service, WGY, 1 h.
News, Manning Ernest von Dohn, WJZ WBZ WFLA, 30 m.
Church Service, WHAM, 1 h., 30 m.
Church Service, KDKA, 1 h., 15 m.
The Star Choir, WJZ, 30 m.
Imperial Hawaiians, WABC WPG KMOX, 30 m.
Church Service, WHAS, 30 m.
Children's Hour, WCAU
11.15 A.M. EST. 10.15 CT
Devors Nadworny, songs, WEAF
11.30 A.M. EST. 10.30 CT
Capitol Family, Major Bowes, Nicholas Cosentino, tenor, Tom McLaughlin, baritone, WEAF WFLA, 1 h., WSM, 30 m.
Richard Maxwell, tenor, WJZ WGAR
Rabbi Nibbleson, Everett Smith, MICRO, HIOX, Columbia
Rabbi Tarshah, WLW, 30 m.
Salt Lake City Tabernacle, WBBM, 1 h.; WABC from 12
Christian Science Church, KMOX, 1 h.; Ensemble, WPG, 30 m.
11.45 A.M. EST. 10.45 CT
Phantom Strings, WJZ WBZ
Church Service, WSM, 1 h.
Gene La Valle, WGAR
12 N. EST. 11 A.M. CT
The Schoolmasks, WGY
"The Ailing House," WJZ
Southern Revere, WJZ
Church Service, WSM
Watchtower Program, WCAU
Church Service, WHAS, 30 m.
In Old Bohemia, WGAR, 30 m.
Sunday Worship, WGN, 1 h.
Worship, WOR, 1 h.
Lyric Strings, WHDH
12.15 P.M. EST. 11.15 A.M. CT
Morey Pearl's music, WEEI
Explorers' Club, WJZ
Sugar Cane, songs, WJZ WBAL KDKA
Time, Weather, Temperature, WBZ
Rosa Valdez, soprano, WMCA
Erling, Olso, WMCA WHDH
12.30 P.M. EST. 11.30 A.M. CT
University of Chicago Round Table, discussion, WEAF WEEI WGY, 30 m.
Radio City Music Hall Symphony, WJZ WBZ KDKA WLW WFLA, 1 h. (WSM WGAR at 1) (WHAM, 30 m.)
Master's Music Room, WGAR, 30 m.
Trio Guizari's Midday Serenade, WABC WCAU WPG WHAS KMOX
12.45 P.M. EST. 11.45 A.M. CT
"A Visitor Looks at America," Commander Stephen King Hill, British Broadcasting Company, WABC WCAU WPG WHAS KMOX
Rodney Entertainers, WMCA
Rosa Valdez, soprano, WHDH
1 P.M. EST. 12 N. CT
Dale Carnegie, "Little Known Facts About Well-Known People," Leonard Joy's Orchestra, WEAF WGY, 30 m.
First Presbyterian Church, WSM, 1 h.
Church of the Air, George T. Nelson, Christian Scientist, WABC WPG WHAS, 30 m.
"Old Bill," KMOX
Musical Program, WOR
Time, weather, WJZ
Midday Idylls, WHDH
Comics, WGN, 1 h.

- 1.15 P.M. EST. 12.15 CT
Russell Brown's Ensemble, KMOX
Ferdie String Quartet, WOR, 45 m.
Egon Putz, WHDH
1.30 P.M. EST. 12.30 CT
Mary Small, Frances Langford, Suzzette Trier, WEAF WEEI WGY, 30 m.
Bibb and Light, Dr. Frederick K. Stamm, WJZ WBZ WHAM KDKA
Tellers of Tales, WGAR, 30 m.
Church in the Hills, WLW, 30 m.
Variety, WFLA
Eton Boys, WABC WCAU WHAS KMOX
Did You Know That? WPG
1.45 P.M. EST. 12.45 CT
Melody's Garden, WFLA
Pat Kennedy, tenor, WABC WCAU WPG WHAS KMOX
Geraldine Gutierrez, pianist, WPG
2 P.M. EST. 1 CT
James Chest, Ralph Kirby, baritone, Thomas Meighan, Harold Levy's Orchestra, WEAF WEEI WGY WLW WFLA, 30 m.
Anthony Prome, poet prince, WJZ WBZ KDKA WHAM WFLA WGAR
Juring Ensemble, WSM
Lay Lay, the Minstrel Man, WABC WHAS WCAU KMOX, 30 m.
Ferdie Fitzsimmons, baritone, WPG
Dr. A. F. Payne, WJZ
Piano duo, WMCA
The Whistler and his Dog, WGN
2.15 P.M. EST. 1.15 CT
Bob Becker's Fireside Duo Chats, WJZ WBZ KDKA WFLA WGAR
Poptry and Song, WSM
The Wandering Poet, WPG
Marilyn Kay, WMCA
Palmer House Ensemble, WGN
2.30 P.M. EST. 1.30 CT
Gene Arnold's Commodores, WEAF WEEI WGY, 30 m.
Radio Theatre "What Every Woman Knows," Helen Hayes, Kenneth McKenna, WJZ WBZ WHAM WBAL KDKA WFLA WGAR, 30 m.
Fred Waller, tenor, WSM, 30 m.
Dramatizations, WGAR, 1 h.
Imperial Hawaiian Band, WABC WHAS WCAU KMOX, 30 m.
Mark Love, basso, WGN
2.45 P.M. EST. 1.45 CT
Trio Guizari, WABC WCAU WHAS Tenor, WGN
3 P.M. EST. 2 CT
Salt of the Talkies, WEAF WEEI WGY WSM, 30 m.
New York Philharmonic Symphony Orchestra, Otto Klemperer, conductor, Seda Cantorino, Chora Stravinsky's "Symphony of Pines" and "Fire Bird," Haydn's Symphony in E-Flat Major, 2 h. (WPG at 4.30)
Carmel Messiaer, WPG
Radio Theatre "How Wonderful Human," WOR
Rico Santoro, WMCA
Football Cincinnati vs. Chicago Bears, WGN, 2 h., 15 m.
3.15 P.M. EST. 2.15 CT
The Amateurs, WJZ, 2 h.
Concertos, WMCA, 30 m.
Ensemble, WGN
3.30 P.M. EST. 2.30 CT
Musical Romance, Don Mario Alvarez, Harry Jenkins' Orchestra, Ernest Fidler, WEAF WEEI WGY, 30 m.
National Tenors, Dr. Harry Emerson Fosdick, WJZ WGAR
Vespers, KDKA, 30 m.
3.45 P.M. EST. 2.45 CT
Senator Hastings, talk, WJZ
Children's Male Quartet, WMCA
4 P.M. EST. 3 CT
Kansas City Philharmonic Orchestra, WEAF WEEI WGY WSM, 30 m.
Temple of Song, Chicago A Capella Choir, Fred Lynn, soprano, WJZ WHAM WBAL KDKA WFLA WLW WGAR, 30 m. (WGBZ from 4.55)
Southern Revere, WBZ
Bloomington Symphony Orchestra, WOR, 1 h.
Municipal Symphony Orchestra, WMCA WIP, 1 h.
4.30 P.M. EST. 3.30 CT
John B. Kennedy, "Looking Over the Top," WEAF WEEI WGY
"The Land of Beginning Again," WJZ WBZ WHAM KDKA WBAL WFLA WLW
"House By the Side of the Road," WSM, 30 m.
Walberg Brown String Quartet, WGAR, 30 m.
4.45 P.M. EST. 3.45 CT
Dream Drama, Arthur Albin, Parker Fenwick, WEAF WEEI WGY
Pekin Ma's Orchestra, WJZ WBZ WHAM WFLA WGAR, 30 m.
5 P.M. EST. 4 CT
Sentinels Serenade, Irvin S. Cobb, Charles Seas, tenor, Mary Seaton, contralto, WEAF WEEI WGY WSM, 30 m.
"Roses and Dreams," President Under Fire," WJZ WBZ WHAM KDKA WLW WGAR, 30 m.
"Open House," Ann Heath, guest, WABC KMOX, 30 m.
Religious program, WPG
Young People's Church, WMCA, 1 h.
Generators, WHDH
5.15 P.M. EST. 4.15 CT
Hollywood Gossip, WOR
Elsa Clement, WHDH
Organ, WGN
5.30 P.M. EST. 4.30 CT
"The House By the Side of the Road," Tony Woods, Gina Vanna, soprano, Ulysses Marelli's Orchestra, WEAF WEEI WGY, 30 m.
Radio Explorers' Club, Dr. Clyde Fisher, WJZ WBZ WHAM KDKA WGAR, 30 m.
Smilin' Ed McConnell, WLW WSM, 30 m.
Promenade WFLA, 30 m.
Frank Crummit and Julia Sanderson, WABC WCAU WHAS KMOX, 30 m.
Nick Nickerson, songs, WPG
Piano and Organ Concert, WHDH
Baritone, WGN, 30 m.
5.45 P.M. EST. 4.45 CT
Albert Pavon Terhune, duo drama, WJZ WBZ WHAM KDKA WGAR
Coleman Jubilee Singers, WOR
Jimmy Allen's Adventurers, WOR
6 P.M. EST. 5 CT
Catholic Hour, Medallists Choir, WEAF WEEI WGY WSM WFLA, 30 m.
Heart Throbs of the Hills, WJZ WGAR
Concert, WGN, 30 m.
Those Three Girls, KDKA
Murray Hooton's Orchestra, WLW, 30 m.

A Britisher



COMMANDER STEPHEN KING-HALL of the British Broadcasting Corporation now is visiting America and reports his observations each Sunday over the GBS-WABC network.

- "Music by Gerbwin," WABC WHAS, KMOX, 30 m.
Beth Evans, soprano, WPG
Uncle Dan, WOR, 30 m.
Radio Party, WMCA, 30 m.
String Trio, WGN, 30 m.
6.15 P.M. EST. 5.15 CT
Triolinos, Jolly Coburn's music, WJZ WBZ
Around the 19th Hole, WPG
6.30 P.M. EST. 5.30 CT
Herbert Koch, organ, WHAS
Frank Simon's Band, Oola Kahs Choristes, WEAF WGY WLW, 30 m.
Edisonature, WEEI
Grand Hotel, Anne Seymour, "Boy Wanted," WHAM KDKA WBAL WGAR, 30 m.
Wrestling Club Chorus, WPG
Gabriel Heister, concert commentator, WOR
Theo Kartz, concert orchestra, WMCA WIP, 30 m.
Wrestling King's music, WGN
6.45 P.M. EST. 5.45 CT
The Fluctuators, WEEI
Rose Petter Orchestra, WSM
Voice of Experience, WABC WCAU WHAS KMOX
Lynette Grubler, WPG
Conrad and Tremont, WOR
Wrestling King's music, WGN, 30 m.
7 P.M. EST. 6 CT
Franklyn Bauer, tenor, WEAF
Andrew Jacobson's Orchestra, WEEI, 50 m.
Jack Benny, Frank Parker, Mary Livingston, WHAM KDKA WSM WFLA WGAR, 30 m.
Classical Melody, Raymond Paige's Orchestra, WABC WPG, KMOX, 30 m.
Comedy Stars of Hollywood, WCAU
Kendall's Symphony Orchestra, WJZ
Israel Among the Nations, WMCA WIP
Harry Ubbart, violinist, WHDH
Dance Orchestra, WOR
7.15 P.M. EST. 6.15 CT
Uncle Ezra, WEAF WGY
Current Jewish events, WMCA
Wayne King's Orchestra, WGN
7.30 P.M. EST. 6.30 CT
Queenie Marie, Graham McNamee, "Musette," WEAF WEEI WGY
Wendell Hall, WEAF WGY
7.45 P.M. EST. 6.45 CT
Baritone, WOR
Three Little Fusters, WMCA
Book Review, WGN
8 P.M. EST. 7 CT
Eddie Cantor, Rubinoff's Orchestra, Gay Di-vorcee melody, Pardon My Southern Accent, All I do is Dream of You, Can't you Hear Me Calling, Caroline? WEAF WGY WLW WSM WFLA, 1 h.
The Jenny Cantor, Ruby Newman, Del Castillo, WEEI, 1 h.
Symphony Orchestra, Albert Spalding, Ernst Ansermet, conductor, Liszt Concerto, Der Freischutz, Pomp and Circumstance, WJZ WBZ WHAM KDKA WGAR, 1 h.
Detroit Symphony Orchestra, Victor Kolar, conductor, Dalcis Franz, pianist, guest, WABC WHAS KMOX, 1 h.; WOR, 30 m.
Choir Invisible, WOR, 30 m.
Dismal Swamp, WMCA, 30 m.
Concert, WGN, 30 m.
8.30 P.M. EST. 7.30 CT
Chamber Music, WOR, 30 m.
Steidland Gillilan, WMCA
Bridge Talk, WGN, 30 m.
8.45 P.M. EST. 7.45 CT
Fur Trappers, WCAU
Pan American, WMCA, 30 m. (news at 9.10)
9 P.M. EST. 8 CT
Andy Sannella's music, WEAF WGY, 30 m.
Sunday Night Party, Roland Winters, Buddy Clark; Rakov's music, WEEI, 30 m.

- Charles Perwin's Orchestra, Olga Albani, WJZ WBZ WHAM KDKA WBAL WFLA WSM WFLA WGAR, 30 m.
Alexander Woolcott, the Town Crier, Robert Ambreuter's music, WABC WHAS, 30 m.
Palmer Clark's Orchestra, WGN, 30 m.
9.15 P.M. EST. 8.15 CT
Hal and Murray Kane, WPG
Voice of Friendship, WHAS
Rod Arkell, WOR
Bob Hart's Orchestra, WMCA, 45 m.
9.30 P.M. EST. 8.30 CT
American Album of Familiar Music, Frank Munn, Virginia Rea, Gustav Haenschen's Concert Orchestra, Bertrand Hirsch, violinist, WEAF WEEI WGY WSM WFLA, 30 m.
Walter Winchell, WJZ WBZ WHAM WBAL KDKA WFLA WGAR, 30 m.
Headliners, Will Rogers, Oscar Bradley's Orchestra, WABC WCAU WHAS KMOX, 30 m.
Hotel Traymore Orchestra, WPG, 30 m.
"Vignettes," WOR, 30 m.
Sunday Evening Club, WGN, 30 m.
9.45 P.M. EST. 8.45 CT
Drama, Tom Powers, Leona Hoegarth, WJZ WBZ WHAM KDKA WGAR
Unbroken Melody, WGN
10 P.M. EST. 9 CT
Hall of Fame, Lucrezia Bori, guest, WEAF WEEI WGY WLW WSM, 30 m.
Madame Ernestine Schumann-Heink, Harvey Hays, WJZ WBZ WHAM KDKA WFLA WGAR
Wayne King's Orchestra, WABC WCAU WHAS KMOX, 30 m.
Harold Stephens, tenor, WPG
Eddie Connors' "Clam Bake," WOR
Jully Rustans, WMCA WIP, 30 m.
News, WGN
10.15 P.M. EST. 9.15 CT
Armand Girard, baritone, WJZ WHAM WFLA
Parade Banders, WJZ
Y. M. C. A. Talk, KDKA
Moses Cleveland's Album, WGAR
Hawaiian Dreams, WPG
O'Brien and King, WOR
Kay Kyser's Orchestra, WGN
10.30 P.M. EST. 9.30 CT
Jano Freeman, Don McNeill, Modern Choli, Frank Black's Concert Dance Orchestra, WEAF WEEI WGY WSM WLW WFLA, 30 m.
An American Fireside, Hendrik Willgen Van Loon, "The World and the Average Man," WJZ WBZ KDKA WSM WFLA, 30 m.
Mel Emerson's Orchestra, WGAR, 30 m.
Dramatic Guild, WABC WCAU WPG WHAS, 30 m.; KMOX, 15 m.
Estelle Leising's Operatic Minstrels, WOR, 30 m.
The Wandering Poet, WPG
Arthur Warren's Orchestra, WMCA WIP, 30 m.
Bob Paellli's Orchestra, WGN
10.45 P.M. EST. 9.45 CT
Voice of Friendship, WHAS
Sports, KMOX
Dream Ship, WGN
11 P.M. EST. 10 CT
K-7 Spy Story, WEAF WEEI WGY, 30 m.
Rozanne Wallace, Al and Lee Renner, WJZ WHAM WFLA KDKA WSM
Weather Reports, Evident Singers, WBZ, 30 m.
News, Drama, WLW, 30 m.
Ted Roling's Orchestra, WJZ
Henry Basse's Orchestra, WABC WCAU WHAS, 30 m.; KMOX, 45 m.
Steel Pier Orchestra, WPG, 30 m.
Weather, Moonbeams, WFLA, 30 m.
Voice of Romance, WMCA
Ted Weems' Orchestra, WGN

Educational

- Wednesday, October 24
2.30 P.M.—American School of the Air. Subject: Geography. CBS-WABC
Thursday, October 25
1.45 P.M.—Piano lecture-recital by Isidor Philipp. Discussion of the works of Debussy, Ravel and Kullman. Josef Stopak, pianist, will assist M. Philipp. NBC-WJZ
Friday, October 26
11.00 A.M.—Music Appreciation Hour, Dr. Walter Damosroch conducting. NBC-WEAF-WJZ
11.15 P.M. EST. 10.15 CT
Jesse Crawford, organ, WJZ WHAM KDKA WSM WFLA
Benny Goodman's Orchestra, WGAR
Sports and Orchestra, KMOX, 30 m.
Dream Ship, WGN
Leon Friedma's Orchestra, WMCA
11.30 P.M. EST. 10.30 CT
News, Will Osborne's music, WEAF WEEI WGY WFLA WSB, 30 m.
News and Eddie Duchin's Orchestra, WJZ WBZ WHAM KDKA WFLA WGAR, 30 m.
Castle Farm Orchestra, WLW, 30 m.
Sunday Night Serenade, WSM
Leon Belasco's Orchestra, WABC WCAU WPG WHAS, 30 m. (KMOX from 11.45)
Florence Richardson's Orchestra, WOR, 30 m.
Blue Rhythm Band, WMCA, 30 m.
Wayne King's Orchestra, WGN
11.45 P.M. EST. 10.45 CT
Hawaiian Dreams, WPG
Jan Garber's Orchestra, WGN, 30 m.
12 M. EST. 11 P.M. CT
Byrd Expedition broadcast, WEAF WGY, 30 m.
Mills Blue Rhythm Band, WJZ WBZ WHAM KDKA, 30 m.
Paul Sabini's Orchestra, WABC WCAU, 30 m.
Johnny Roy's Orchestra, WHAS
Joe Stovel's Orchestra, KMOX
Julie Wintz's Orchestra, WOR
Day's End, WMCA, 30 m.
12.15 A.M. EST. 11.15 P.M. CT
Mike Child's Orchestra, KMOX
Ted Weems' Orchestra, WGN
12.30 A.M. EST. 11.30 P.M. CT
Henry King's Orchestra, WEAF WGY WSM WLW, 30 m.
Stan Arly's Orchestra, WJZ WBZ WHAM KDKA, 30 m.
Frank Dalley's Orchestra, WABC WCAU KMOX, 30 m. (WPG at 12.45)
Hugo Boss's Orchestra, WHAS
Benny Goodman's Orchestra, WMCA, 30 m.
Kay Kyser's Orchestra, WGN
1 A.M. EST. 12 M. CT
Coney Island Orchestra, WLW, 30 m.
Miller Weiler's Music, WHAS, 30 m.
Moonlight, WJZ
Willie Bryant's Orchestra, WMCA, 30 m.
Bob Paellli's Orchestra, WGN, 30 m.
1.30 A.M. EST. 12.30 CT
Teddy Mill's Orchestra, WMCA, 30 m.

Station Directory

Station	Chain	K.C. Watts	Location
CFRB	CRC & CBS	690	Toronto
CKAC	CRC & CBS	730	Montreal
KDKA	CBS	900	Pittsburgh, Penn.
KMOX	CBS	1090	St. Louis, Mo.
KSD	NBC	500	St. Louis, Mo.
KYWB	NBC	1020	Hughesville, Mo.
WAAB	CBS & YN	1410	Boston
WABC	CBS Key	860	New York
WBAL	NBC	1060	Baltimore
WBMM	CBS	770	Chillicothe, Ill.
WBZO	NBC	920	Needham
WBT	NBC	1080	Charlotte, N. C.
WBTV	NBC	500	Wilmington, N. C.
WCAU	CBS & DIX	1170	Philadelphia
WCCO	CBS	810	Minneapolis, Minn.
WVBC	CBS	990	Charleston, S. C.
WCBS	NBC & YN	940	Portland, Me.
WDRC	CBS & YN	1330	Hartford
WEAN	NBC Key	660	New York
WEEI	CBS & YN	980	Portland, Me.
WENR	NBC	900	Boston
WFLA	CBS & YN	870	Chicago, Ill.
WFLA	NBC	620	Miami, N. H.
WGAR	NBC	1490	Cleveland, Ohio
WGN	CBS	720	Chicago
WGST	NBC	890	Atlanta, Georgia
WGY	NBC	770	Schenectady, N. Y.
WILAM	CBS & DIX	1130	Rochester, N. Y.
WVAB	CBS & DIX	500	Andover, Ky.
WHDD	ABS	830	Boston
WHBB	CBS	1290	Boston
WHIC	CBS & YN	600	Bridgetown, Conn.
WHIS	ABS & NEN	610	Philadelphia
WJF	NBC	980	Providence, R. I.
WJTV	NBC	750	Detroit, Mich.
WJZ	CBS Key	1460	Washington, D. C.
WMBZ	CBS & YN	760	New York
WVBC	CBS & YN	620	Bangor, Maine
WVLE	NBC	870	100 Lexington, Mass.
WVLU	NBC & QG	700	500,000 Cincinnati
WVMAQ	NBC	670	Chicago, Ill.
WVMS	CBS & YN	1420	Springfield, Mass.
WVMA	ABS Key	370	New York
WVMA	CBS & YN	1230	New York
WNBH	YN	1310	250 New Bedford
WNBR	NBC	1260	250 Springfield, Vermont
WVFA	CBS	1190	New Orleans, La.
WVAM	NBC	1,000	Miami, Florida
WOR	QC	710	5,000 Newark, N. J.
WORC	CBS & YN	1280	Worcester
WSH	NBC	900	50,000 Atlanta, Georgia
WPG	CBS	1100	5,000 Atlantic City, N. J.
WSPN	NBC	650	50,000 Nashville, Tenn.
WSNB	NBC	1320	New Orleans
WTAG	NBC & NEN	580	500 Worcester, Mass.
WTAM	NBC	1070	50,000 Cleveland, Ohio
WTAR	NBC	500	Norfolk, Va.
WTIC	NBC & NEN	1040	50,000 Hartford, Conn.
WVNC	NBC	400	1,000 Asheville, N. C.
WVNS	ABS & QG	1240	1,000 Detroit, Mich.

CHAINS: NBC, National Broadcasting Company; CBS, Columbia Broadcasting System; YN, Yankee Network; DIX, Dixie Network; ABS, American Broadcasting Company; Canadian Radio; NEN, New England Network; QG, Quality Group.

Radio Lane

By Jimmy J. Leonard

HOME LIFE is on the upswing once again. At least so say some of the country's greatest minds.

They also point out the cause of this happy trend is the lack of what-makes-the-mare-go. Probably they are correct in this assumption; but personally, I think the newly-developed art of intelligently listening to the radio is a great factor in keeping the home ties tied.

Was a time when radio was a mere plaything, something to juggle with in off moments. Then we went through an age of hit or miss dialing.

Now all that belongs to the past. Folks listen to the radio with a program page before them. They take as much interest in their radio programs as they do in the selection of a play or good picnic spot.

One popular woman columnist will not answer her doorbell nor talk to her guests while a favorite program is broadcast.

"Why should I?" she asks. "Why isn't an interesting broadcast as important as a theatre performance?"

They say Major General SMEDLEY BUTLER made the air about the Florida radio station as blue as a Navy banner when he learned his speech was cut by the station for use of profanity.

The Major General gave a nice polite name to the microphone, thus advancing rhetoric. He termed the little black box "deodorizer." Better let him explain it.

JOE COOK, the man with the mad stories, is not JOE COOK at all. His true name is JOSEPH LOPEZ. And another JOE, PENNER by name, returned to the air with a new set of tuning gags such as "Oh Agony!" and "There'll come a day!"

PENNER has put on 10 extra pounds which he terms "vacation baggage."

DAVE MENDOZA, orchestra conductor, and ROXY have shaken hands and will begin together again. H. V. KALTENBORN and WILL ROGERS are the only two I know who do not submit script to the radio censors. They speak from notes.

The last time we heard JANE FROMAN warble we started at a supposed pistol shot. But we found after inquiries it was only her good luck ring which had banged against the microphone while she gestured.

BURNS and ALLEN, you may think, would be the last people in the world to admit mike fright. It's a fact that they have only recently been able to broadcast without a screen covering them from the studio audience.

CLAUDETTE COLBERT gets so panicky she must sit down while she broadcasts.

ARLINE SOHR, who sings with TED BLACK, is really Mrs. BLACK.

TRISTRAM COFFIN, WNAC announcer, we just learned, made promises to DOROTHY WHITCOMB before the Rev. DANIEL BLISS of the Old South Church.

XAVIER CUGAT returned to the States chuck full of stories from Spain. He's at the Waldorf-Astoria again.



H. V. KALTENBORN

MICROPHONE

VOLUME III Saturday, October 20, 1934 NUMBER 42

Publisher, JOHN K. GOWEN, Jr. Business Manager, PHILIP N. HOBSON Editor, G. CARLETON PEARL Managing Editor, MORRIS HASTINGS A weekly newspaper, THE MICROPHONE is published every Saturday at Boston, Massachusetts, by THE MICROPHONE, Inc.

Entered as second class matter August 11, 1933, at the post office at Boston, Massachusetts, under the Act of March 3, 1879.

The MICROPHONE will not be responsible for unsolicited manuscripts unless they are accompanied by return postage.

Subscription for six months, \$1; for one year, \$1.50, postpaid. Single copies, five cents each.

Advertising rates on application to the Business Manager. Offices, No. 34 Court Square, Boston, Massachusetts.

Telephones (connecting all departments) LAFayette 2860 and 2861.

'Our Mary' on the Air

SOME strange quirk in American psychology persists in insisting, against the evidence, that because a person achieves success in one activity the same person necessarily is successful in others. Because they have amassed a fortune in industry, millionaires become art connoisseurs over night.

Mary Pickford, on the silent screen, endeared herself to the movie-going public as "Our Mary." In talking pictures she was less successful, but nevertheless capable in a medium she understood.

But over the radio "Our Mary" becomes just a voice to the American public. Granted that the initial vehicle of her air appearance was badly chosen, it was annoying to many mature listeners to have "America's Sweetheart" greet them through the loud speaker by ranting like one of Corse Payton's ingenues.

If "Our Mary" must be with us over the air, let us at least have a gentle Mary, a restrained Mary, a Mary softly speaking lines that the American public has been led to expect from her lips, rather than a ranter wheezing in a pathetic attempt to imitate an emotional actress.

Radio Is Now Becoming Professional

By DICK TEMPLETON
New York Correspondent

RADIO has reached the semi-professional stage. In another four years, it may reach the professional class or the big leagues. But the line-up of shows for the Fall indicates that the amateur standing in radio is just about lost and that the semi-pro programs are here.

An ill-advised gent, EDDIE CANTOR, started the whole thing. CANTOR decided that professional touches could click on the radio and turned the trick. Ed WYNN wandered in with a fat-reaching backwood to the old hokum and has soprano-giggled his way to fame and fortune.

Today the lads like Ed LOWRY who said, "Now the next number—" are off the radio or working for coffee and cakes on small independent stations. A great soap maker is getting the very biggest names of stage and screen and giving them a whole hour to put on a great play. Another soap firm has come in with a pretentious effort in an hour's original radio musical comedy. A sponsor steps out with SIGMUND ROMBERG doing an hour show with a combination of original music and some of his older works, together with what he likes of the Viennese waltzes plus a personality in WILLIAM LYON PHELPS.

The dance band and the tenor has practically gone forever. MORTON DOWNEY

may come back with his own band, but then with DOWNEY it is always a question of whether he will accept an offer rather than whether he can find a job. There is only one DOWNEY. NED NASAL and SAMMY OFFPITCH'S Sereaders as the entire eight courses on a radio program menu are passing into the discard.

The men in advertising agencies who build programs have left the cloak of the amateur behind them, except in a few isolated cases. Where the Jads haven't the ability to build their own shows, they call in outside program building organizations to help. These outsiders are for the most part semi-pro. They have either smelled grease paint or have been critics in the past. And while critics do not always make good creators, they at least surpass the strangled efforts of the rank amateurs.

There is, however, plenty of room for the lads to turn into real professionals. The CANTORS and the WYNNs, taking the reins in their own hands at the outset, have sold them all on the idea. Today you even hear a criticism of an act.

"They sound all right—but they're not professional."

And that, in radio, is a healthy sign. The shows you hear in a year or two may be the equal of the shows you used to pay \$3 to see.

And, speaking of profes-

sions, little JEANIE LANG, who sings and acts with BUDDY ROGERS on the Family Theatre program, can always make a living modeling, should she ever decide to leave radio. For a New York dress manufacturer says JEANIE is a perfect collegiate type and will introduce a line of JEANIE LANG clothes for young collegians, provided, of course, that JEANIE will model the line.

JOE COOK'S Sleepless Hollow golf course got its first recognition when PAUL RUNYON called at the Monday night House Party to invite the comedian to expound the theory of his celebrated goofy links for the Professional Golfer's Association.

Now that Mr. COOK has broadcast while standing on top of a huge ball, he is going to attempt something else. This time he may broadcast on a tight rope and it will probably be the first time anyone has broadcast directly from an antenna.

Studiosity

By Les Troy

YOU ALL know the tune "The Man I Love." And you know that it was written by a gentleman named GERSHWIN. But you probably don't know about its struggle for existence. And thereby hangs a tale.

For a long time GEORGE GERSHWIN was the only one who loved "The Man I Love." He uses it now for his theme song in his Sunday night broadcasts, but there was a time when he



GEORGE GERSHWIN

couldn't keep it in a show for more than a week. He wrote it 11 years ago, and, after turning the verse into a chorus and throwing away the verse, he had ADELE ASTAIRE introduce it in "Lady Be Good." It lasted a week.

In 1927 it popped up again in "Strike Up the Band," and just as it showed signs of gaining popularity, the show fell apart in Atlantic City, and when it was put together again for New York, the song was discarded.

Then Lady MOUNTBATTEN heard it, liked it, and asked GERSHWIN if she could take the music to London for her favorite band, the Berkeley Square Orchestra, to play. GERSHWIN said yes. The British band played it.

Pretty soon Negro bands in Paris were dressing it up with fine old African rhythm, and before you could add an amendment to the Constitution, Americans were hurrying back to America and asking dance orchestras here to play it for them.

ABRAM CHASINS, CBS pianist of some note, tells this one:

He overheard a leading musician bid a rival performer goodbye at the start of his tour.

"What music are you taking along?" asked the one who wasn't leaving.

"None at all," replied the other. "I don't need any music with my good memory."

"But what if you want to do some composing?" was the other's parting thrust as he discreetly hurried away.

And GLUFFY reports this: A letter marked "Only the Beginning, New York," reached CAPTAIN HENRY of the Showboat a week ago. There was no other identification on the envelope.

Which reminds us of a letter LANNY ROSS got this week.

"My Sweetest Angle," said the letter. "I have penderdies and the doctor has to treat it for me and he cot me wrighting this letter and now he is teezing me about you."

To Subscribe to The Microphone

Fill out the blank and mail with cash, money order or check to The MICROPHONE, 34 Court Square, Boston, Mass.

(Please print)

Name.....

Street.....

City or Town.....

State.....

(Subscription: \$1 for six months, \$1.50 per year, postpaid)

Monday, October 22 - President Roosevelt, CBS, NBC, 10.30 P.M.

Highlights

- A. M.
- 11:00—United States Navy Band, NBC-WEAF
 - P. M.
 - 8:30—Glady's Swardthout, William Daly's Orchestra, NBC-WEAF
 - 9:00—Frank Parker, NBC-WEAF
 - M. H. Aylesworth, NBC President, NBC-WEAF
 - Rosa Ponselle, CBS-WABC
 - 9:30—Joe Cook, NBC-WEAF
 - "The Big Show," CBS-WABC
 - 10:00—Gene Arnold, NBC-WEAF
 - 10:30—President F. D. Roosevelt, NBC-CBS

(All programs are listed in Eastern Standard Time. Central Time is one hour earlier.)

- 8:45 A. M. EST: 7:45 CT Kindly Thoughts, WHAM Rhythm Band, WABC
- 9:00 A. M. EST: 8 CT Morning Glories, WEAF Breakfast Club, orchestra, Jack Owens, tenor, Annette McCullough, WGY
- 9:15 A. M. EST: 8:15 CT The Merry Maids, WJZ WBZ WBAL WGAR, 1 h. (KDKA, 30 m.) (WFLA, 30 m. from 9:15) (WHAM WSM from 9:30)
- Hymns, WLV
- Modern Minstrels, WABC WCAU WHAS, WSM
- Devotions, WSM, 30 m.
- What's On Today, WNBX
- 9:15 A. M. EST: 8:15 CT Don Hal Trio, WEAF WEEI WLW Devotions, WGM
- Leon Cole, organist, WSM
- Matinee Melodist, WNBX
- 9:30 A. M. EST: 8:30 CT Eva Taylor, vocalist, WEAF
- Shanty Service, WEEI
- Little Jack Little, WGY
- Styke, KDKA
- Mail Bag, WLW
- 9:45 A. M. EST: 8:45 CT Matluna, chorus, Carlton Martin, director, WLV
- News, musical turns, WEEI
- High Priests of Harmony, WGY
- Works-Day Thoughts, KDKA
- White Horse, WLV
- Moss and Jones, WFLA
- Daily Story, WNBX
- 10 A. M. EST: 9 CT
- U. S. Dept. of Rose, WEAF WLW Consumers' Guide, WEEI
- News, Southern, WGY
- Josephine Gibson, WJZ WBZ WBAL KDKA
- Wism WFLA, WFLA WGM
- News and Harmonies in Contrast, WABC WCAU
- U. S. Sanders Sisters, WHAS
- "Blue" singer, WLW
- Home Hour, WFG, 7 h.; News at 10:30 World Observer, WNBX
- 10:15 A. M. EST: 9:15 CT Clara, Lu n' Em, WEAF WEEI WLW WSM
- Holman Saters, piano duo, WJZ WBZ WHAM WGAR
- Samantha Fuller, KDKA
- Morning Topics, WFLA
- Bill and Ginger, WABC WCAU
- Dolly Dean, WHAS
- Clara, Lu n' Em, WGN
- Town Crier, WNBX
- 10:30 A. M. EST: 9:30 CT Lew White, organ, WEAF WEEI
- Market Basket, WGY
- Bride Talk, WFLA
- Live Stocks, news, WLW
- Today's Children, drama, WJZ WBZ
- Wism WFLA, WFLA WGM
- Radio Kitchen, WSM, 30 m.
- "All About You," Harold Sherman, WABC
- News, piano, WCAU WHAS
- Houshold Club, WNBX
- 10:45 A. M. EST: 9:45 CT Morning Parade, WEAF
- Jonny Marvin, WGY
- News, NBC Radio Kitchen, WJZ KDKA
- WFLA WGAR
- News, Musical, WBZ
- Household Hour, WHAM, 30 m.
- Violin, WLW
- Three Fish, WABC WCAU WHAS
- Poetry, WNBX
- 11 A. M. EST: 10 CT
- U. S. Navy Band, WEAF WGY WSM
- WFLA, 1 h. (WEEI, 30 m. from 11:15; News at 11:55)
- Edison Friendly Kitchen, WEEI
- The Wife Saver, WJZ WGAR
- Women's Club
- Uncle Tom and Betty, KDKA
- Rhythm Jesters, WLW
- Miss Annette W. Peck, "National Heating Service," WABC WCAU WPG WHAS
- Style Talk, WNBX
- 11:15 A. M. EST: 10:15 CT
- Tony Wons, WJZ WBZ WHAM WGAR
- Texas, WLW
- Beale Sheet Boys, WABC WCAU WPG WHAS
- Round Towners, WABC WCAU WPG WHAS
- Variety, WNBX
- 11:30 A. M. EST: 10:30 CT
- The Melody Mixers, WJZ WLW, 30 m.
- WFLA, 15 m.
- Stage Show, WBZ
- "Contract Bridge Made Easy," E. Hall
- Donnes, WABC WCAU WHAS
- Wandering Post, WPG
- Travel Talk, WNBX
- 11:45 A. M. EST: 10:45 CT
- MSC Home Forum, WBZ
- Gene La Valle, WFGAR
- The Cadets, WABC
- Bud Shlay, songs, WCAU
- Shades of Harmony, WHAS
- Notis Owl, WNBX, 30 m.

Heartiness



KABE SMITH, beary songstress, is featured on a CBS-WABC program each Monday at 8:30 P. M., and on Wednesdays at 3 P. M.

- 3:45 P. M. EST: 2:45 CT
- Contact Bridge talk, WHAM
- Business news, WLW
- Afternoon musicale, WGN, 2 h., 15 m.
- Wildcat Coc Camp, WGM
- Yankee, WGN
- Organ of Conshushers, WNBX
- 4 P. M. EST: 3 CT
- John Martin, stories, WEAF WSM WFLA
- Styke, WEEI
- Betty and Bob, WGY WJZ WBZ WHAM KDKA WGAR
- U. S. Dept. of Agriculture, WLW
- Visiting America's Little Home, WABC
- WHAS WBWM
- The Apple Knockers, WCAU
- Ice time topics, WFG, 30 m.
- Dr. H. I. Strandhagen, WOR
- Musical, WGN, 30 m.
- Wildcat Coc Camp, WNBX
- 4:15 P. M. EST: 3:15 CT
- Gypsy Trail, WEAF WGY WSM WFLA
- D. A. R., Clara Endicott Sears, WEEI
- Songs and Stories, Harry Swan, Charles
- Source, tenor, WJZ WBZ KDKA
- News, WHAM
- Jimmy Allen, baritone, WLW
- Dance Haller, WGAR
- Arden and London, WABC WPG WBWM
- Devotions, WHAS
- Variety, WOR
- 4:30 P. M. EST: 3:30 CT
- Roxanne Wallace, songs, WEAF WGY WSM
- Charles River Library, WEEI
- Stanleigh Malone, News Rhymer, WJZ
- ERA Orchestra, WBZ, 30 m.
- Market Reports, KDKA
- Regan, WHAM
- Relish Waters, WFLA
- Chicago Variety Program, WABC WHAS, 30 m. (WFG at 1:45)
- Stock quotations, WPG
- Klari La Rue's Orchestra, WGN, 30 m.
- Century of Progress music, WGN, 30 m.
- Organ, WNBX
- 4:45 P. M. EST: 3:45 CT
- Adventures on Mystery Island, WEAF WEEI
- Stocks, WGY
- Archie Bleyer's Orchestra, WJZ WHAM
- KDKA WBAL WFLA WGAR
- The Jackson comedy, WLW
- Radio Debut, WGAR
- "Science in Your Home," Dr. Kurt Haessler, WOR
- Clarence Jackson, WNBX
- 5 P. M. EST: 4 CT
- Mrs. Dwight Morrow, "The College Graduate," WEAF WEEI
- Joan Darling, WGM
- George Steer's Orchestra, WJZ WSM
- WFLA
- Monitor Views the News, WBZ
- Memories, KDKA
- Jolly Roger, WHAM
- Ethel Ponce, blues singer, WLW
- Uncle Clyde, WGAR
- "Oz, Son of Fire," WABC
- Federal Housing Campaign and Herbert
- Roch, WHAS
- Vocal Trio, WIND
- Healin Film movie critic, WBWM
- Sam, Gil and Louis, WHAS
- Weather, WOR
- Piano, WGN
- Harry Nolan, WNBX
- 5:15 P. M. EST: 4:15 CT
- Tom Mix's Straight Shooters, WEAF WEEI
- WGY WLW
- Jackie Heller, tenor, WJZ WHAM WSM
- Skinner Jim, WBZ
- KDKA Kiddie Klub, KDKA
- "Skipper," WABC WCAU
- Ozark, Mr. Boys, WGAR
- Kreiner's Orchestra, WBWM
- Capt. Tom and his Pirate Ship, WOR
- Popular Talks, WGN, 30 m.
- Federal Housing Campaign, WHAS
- 5:30 P. M. EST: 4:30 CT
- Rafter S. Rides, WEAF WSM
- Piano Lesson, WEEI
- Drama, WGM
- Monitor Views the News, WJZ WBZ WHAM KDKA
- WLV WGAR
- Gene Arnold, WFLA
- Jack Armstrong, WABC WCAU
- Christine Rides, WHAS
- Ed Wetzsch's Orchestra, WBWM
- The Story and Contact Club, WOR
- Weather, WGM
- 5:45 P. M. EST: 4:45 CT
- Capt. Tim Healy's Stamp Club, WEAF
- WEEI WGM
- WFLA WGAR
- Annice, WJZ WBZ KDKA
- News comments, WHAM
- Jack Armstrong, WLW

- Jack and his Buddies, WSM
- String Ensemble, WGM
- Gordon, Dave and Bunny, WABC WCAU
- Out of the Duck, WHAS
- Jack Webb, songs, WSM
- Tom Baker, tenor, WIND
- Barbara Burr, WBWM
- Jimmy Allen's adventures, WOR
- Baritone, WGN
- 6 P. M. EST: 5 CT
- Xavier Cugat's music, WEAF
- Evening Tattler, WEEI, 30 m.
- Old Man Sunshine, WGY
- U. S. Army Band, WJZ, 30 m. (KDKA
- WHAM WFLA at 6:15)
- Adventures of Jimmie Allen, WBZ
- Organ Recital, WHAM
- Dan and Sylvia, KDKA
- Music, WLW
- Marjorie Conroy, pianist, WSM
- Antonia Lopez, orchestra, WFLA
- Elvin Schmitt, WGAR
- Buck Rogers, WABC WCAU WHAS
- "Oz, Son of Fire," WBWM
- Uncle Dan, WOR, 30 m.
- Studio Orchestra, WGN
- Alex Botkin's Ensemble, WMCA
- 6:15 P. M. EST: 5:15 CT
- "Mysterious Island," drama, WEAF
- Jimmy Allen, WGM
- Republican Program, WBZ
- Joe Emerson, WLW
- Rambling Reviewer, WGAR
- Bobby Benson and Sunny Jim, WABC WCAU
- WHAS
- Shipp, WBWM
- Charley Eckel's Orchestra, WHHD (WMCA
- from 6:20, Investors' Service at 6:13)
- 6:30 P. M. EST: 5:30 CT
- News and Carol Deis, soprano, WEAF
- Rhyming Reporter, news, drama, WEEI
- News, WSM
- News and Three X Sisters, WJZ
- News, weather, WLW
- Bob Leach, baritone, WABC
- Freddie Rose, WSM
- News, melody's garden, WFLA
- George S. Kaufman, WGM
- "The Shadow," WABC WCAU, 30 m.
- (News at 6:55)
- Deed-Ido Club, WHAM
- Jack Armstrong, WBWM
- Gabriel Heatter, conductor, WOR
- Screen Review, WMCA
- News and Jack O'Connell's Orchestra, WHDH
- Singing Lady, WGN
- 6:45 P. M. EST: 5:45 CT
- Billy Batchelor, Raymond Knight, WEAF
- WEEI WGY WHAM
- Lowell Thomas, "Today's News," WJZ
- WBZ WHAM KDKA WLW WFLA
- WGM
- Littie Orphan Annie, WSM WGN
- Ed Wetzsch's Orchestra, WIND
- Woody and Willie, news, WIND WBWM
- "Cocktail Time" and George Shackley, WOR
- Sports, WJZ, 30 m.
- 7 P. M. EST: 6 CT
- Ray Perkins, comedy, WEAF
- Studio Chorus, WEEI
- Jules Lande, violinist, WJZ
- Amos n' Andy, WBEZ KDKA WBAL
- WLW WFLA WGAR
- Sports, WHAM
- Betty Klotz, WGM
- News and Myrt and Marge, WABC
- Ford Erick, sports, WOR
- Gloria Grainger, actress, WMCA
- Jimmy Allen, WGN
- News and The Crossroads, WHAS
- 7:15 P. M. EST: 6:15 CT
- Gene and Glenn, WJZ WGY WFLA
- Democratic State Committee, WBZ
- Plantation Echoes, Willard Robinson's music, WJZ WBZ KDKA WHAM
- Lum and Abner, WSM
- Asher and Little Jimmie, WSM
- Distinctive Drama, WGAR
- U. S. Navy Band, WFLA WGM
- Comedy Stars of Hollywood, WOR
- American Post, WMCA
- Studio orchestra, WGN
- 7:30 P. M. EST: 6:30 CT
- Minstrel Show, Al Bernard and Paul Du-
- mont, The Dixie Dandies, WEAF WGY
- After Dinner Review, WEEI
- Red Davis, sketch, WJZ WBZ KDKA WSM
- WFLA
- Reveries, WHAM
- Paul Pierson's Orchestra, WLW
- Virgil, WSM
- WFLA WGAR
- Paul Keast and Rollo Hudson's Orchestra, WABC WCAU
- Gene Becher's Orchestra, WGM, 30 m.
- Noy Gordin's Orchestra, WOR, 30 m.
- Blue Rhythm Band, WMCA, 30 m.
- Guests of the House, WGN
- 11:45 P. M. EST: 10:45 CT
- Herbie Kaye and his orchestra, WABC
- WCAU WPG WHAS
- Johnny Hamp's Orchestra, WGN
- 12 P. M. EST: 11 P. M. CT
- Buddy Roger's Orchestra, WEAF WEEI
- WGM, 30 m.
- Guy Lombardo's Music, WJZ WBZ WHAM
- KDKA WBAL WSM, 30 m.
- Hotel Gibson's Orchestra, WLW, 30 m.
- Dan Russo's Orchestra, WABC WCAU
- WPG WHAS, 30 m.
- Anthony Trini's music, WOR
- Day's End, WMCA, 30 m.
- Ted Weems's Orchestra, WGN
- 12:15 A. M. EST: 11:15 P. M. CT
- Ted Weems's Orchestra, WGN
- 12:30 A. M. EST: 11:30 P. M. CT
- Anson Weeks' Orchestra, WEAF WEEI
- WGM, 30 m.
- Anselmo Ferdinando's Orchestra, WJZ WBZ
- WHAM WSM, 30 m.
- Jimmy Gallagher's music, WSM, 30 m.
- Home Loan Talk and Gene Burchell's Or-
- chestra, WLW, 30 m.
- George Hall's Orchestra, WABC WHAS, 30 m.
- Archie Bleyer's music, WMCA
- Bob Paoli's Orchestra, WGN
- 12:45 A. M. EST: 11:45 P. M. CT
- Willie Bryant's Orchestra, WMCA
- 1 A. M. EST: 12 M. CT
- Moon River, WLW, 30 m.
- Gene Kardos's Orchestra, WABC
- 12:50 A. M. EST: 12:50 P. M. CT
- Timmy Lee's Orchestra, WHAS, 30 m.
- Midnight Flyers, WGN
- 1:30 A. M. EST: 12:30 CT
- Teddy Hill's Orchestra, WMCA, 30 m.

- The Cannon, WPG
- Sketch, WMCA
- Palmer House Ensemble, WGN
- 9 P. M. EST: 8 CT
- Gypsies, Frank Parker, tenor, Harry Hor-
- rich's music, WEAF WEEI WGY, 30 m.
- Minstrels, Gene Arnold, Joe Parsons, Bill
- Chids, male quartet, M. H. Aylesworth,
- WJZ WBZ WHAM WBAL WLW WFLA
- WGM, 30 m.
- Texas Christian University Program, WSM,
- 30 m.
- Rosa Ponselle, Andre Kostelanetz' music,
- WFLA, 30 m.
- "Ave Maria," by
- Verdi, WABC WCAU WPG WHAS,
- 30 m.
- 1/2 Hour in 3/4 Time, WOR, 30 m.
- Bob Laring presents, WMCA, 30 m.
- WGN Orchestra, WGN
- 9:15 P. M. EST: 8:15 CT
- Comedy Stars, WGN
- 9:30 P. M. EST: 8:30 CT
- House Party, Joe Cook, Donald Novis,
- Frances Langford, Don Voorhees' Or-
- chestra, WEAF WEEI WGY WLW WSM
- WFLA, 30 m.
- Drama, Douglas Hope, Joan Blaine, Jack
- WJZ WBZ WHAM WFLA, KDKA WHAM
- WBAL WGAR, 30 m.
- "The Big Show," Gertrude Niesen, Lud
- Gluskin's Orchestra, WABC WCAU
- WHAS, 30 m.
- Hotel Traymore Orchestra, WPG, 30 m.
- Lum and Abner, WOR WGN
- U. S. Coast Guard, WMCA, 30 m.
- News, WGN
- 10:15 P. M. EST: 9:15 CT
- Current Events, Harlan Eugene Read, WOR
- Benjamin Taylor, WGN
- 10:30 P. M. EST: 9:30 CT
- President Franklin D. Roosevelt, WEAF
- WEEI WGY WFLA WBZ WBAL WHAM
- WBAL WGAR WLW WSM WFLA
- WABC WCAU WPG WHAS KMOK
- WJZ WBZ, 30 m.
- "Spotlight," Review, WOR, 30 m.
- Sleepy Hill's Orchestra, WMCA, 30 m.
- Bob Paoli's Orchestra, WGN
- 10:45 P. M. EST: 9:45 CT
- Johnny Hamp's Orchestra, WGN
- 11 P. M. EST: 10 CT
- "The Grammys," WEAF WGY WFLA
- E. B. Ridoout, current events, WEEI
- WFLA, 30 m.
- Pennsylvania Hotel Orchestra, WJZ WHAM
- WGAR, 30 m. (WBZ at 11:15)
- Weather, Time, Sports Review, WJZ
- Club, KDKA
- Cincinnati Conservatory of Music, WLW
- Amos n' Andy, WSM
- 12 P. M. EST: 11 P. M. CT
- Myrt and Marge, WHAS
- Weather, Moon Beams, WOR, 30 m.
- U. S. Coast Guard, WMCA
- June Provinces, WGN
- 11:15 P. M. EST: 10:15 CT
- Jesse Crawford, organ, WEAF WEEI
- Solont, WGY
- Dance tunes, news, WHAM
- Gene and Glenn, WSM
- Leon Belasco's Orchestra, WABC WPG,
- 30 m. (WHAS at 11:30)
- Studio Program, WHAS
- Harry Rosenthal's Orchestra, WMCA WIP
- Dream Ship, WGN
- 11:30 P. M. EST: 10:30 CT
- Will Osborne's Orchestra, WEAF WEEI,
- 30 m.
- Charles Boulanger's Orchestra, WJZ WGM,
- 30 m.
- Jolly Goburn's music, WJZ WBZ WHAM
- 30 m.
- Orchestra, WLW, 30 m.
- Francis Craig's Orchestra, WSM, 30 m.
- Gene Becher's Orchestra, WGM, 30 m.
- Noy Gordin's Orchestra, WOR, 30 m.
- Blue Rhythm Band, WMCA, 30 m.
- Guests of the House, WGN
- 11:45 P. M. EST: 10:45 CT
- Herbie Kaye and his orchestra, WABC
- WCAU WPG WHAS
- Johnny Hamp's Orchestra, WGN
- 12 P. M. EST: 11 P. M. CT
- Buddy Roger's Orchestra, WEAF WEEI
- WGM, 30 m.
- Guy Lombardo's Music, WJZ WBZ WHAM
- KDKA WBAL WSM, 30 m.
- Hotel Gibson's Orchestra, WLW, 30 m.
- Dan Russo's Orchestra, WABC WCAU
- WPG WHAS, 30 m.
- Anthony Trini's music, WOR
- Day's End, WMCA, 30 m.
- Ted Weems's Orchestra, WGN
- 12:15 A. M. EST: 11:15 P. M. CT
- Ted Weems's Orchestra, WGN
- 12:30 A. M. EST: 11:30 P. M. CT
- Anson Weeks' Orchestra, WEAF WEEI
- WGM, 30 m.
- Anselmo Ferdinando's Orchestra, WJZ WBZ
- WHAM WSM, 30 m.
- Jimmy Gallagher's music, WSM, 30 m.
- Home Loan Talk and Gene Burchell's Or-
- chestra, WLW, 30 m.
- George Hall's Orchestra, WABC WHAS, 30 m.
- Archie Bleyer's music, WMCA
- Bob Paoli's Orchestra, WGN
- 12:45 A. M. EST: 11:45 P. M. CT
- Willie Bryant's Orchestra, WMCA
- 1 A. M. EST: 12 M. CT
- Moon River, WLW, 30 m.
- Gene Kardos's Orchestra, WABC
- 12:50 A. M. EST: 12:50 P. M. CT
- Timmy Lee's Orchestra, WHAS, 30 m.
- Midnight Flyers, WGN
- 1:30 A. M. EST: 12:30 CT
- Teddy Hill's Orchestra, WMCA, 30 m.

STATION
DIRECTOR
Page 4

Once A Classical Singer, Powell Becomes A Popular "Crooner"

First Shows Terrible, He Says Firmly

By HILDA COLE

Back in 1925 a young man, listed in the Louisville, Ky., papers as "RICHARD E. POWELL, tenor," sang classics and semi-classics over WHAK with a concert orchestra.

He changed his tune from "Pagliacci" to "I May Not Be an Angel" before he returned to the airwaves again, famous as a picture star, a nationally known crooner, and leading man of "Hollywood Hotel," the full hour show each Friday night over WABC-Columbia.

With him on this program are the Three Debutantes, FED FIO RITTO's Orchestra and guests.

Also, he changed from RICHARD E. POWELL, tenor, a red-headed and dauntless farm boy hailing from Little Rock, Ark., with more optimism than experience, to DICK POWELL, a level-headed and full-fledged trouper, witty, with talent tested and personality developed.

Dick the Trouper

It is quite a metamorphosis from a choir soloist with vestments and tasseled black cap to a wise-cracking, tap-dancing master-of-ceremonies in vaudeville.

But becoming Jack-of-all-trades in the theatre was part of DICK's struggle.

He played one night stands through Indiana as soloist with a travelling band.

He was featured in an Indianapolis dance hall as a novelty soft shoe and tap artist.

He trekked to Pittsburgh to become master-of-ceremonies in theatres there on a four-year grind.

Then came a screen test, a break in "Blessed Event," and subsequent stardom through his popularity in "42nd Street" and "Twenty Million Sweethearts."

For a year or so, DICK concentrated on Hollywood.

Then he began to think of radio. Characteristic of DICK, he did not assume that he would be a "wow" on the air.

In fact, he regarded his initial broadcasts on "Old Gold" and "California Melodies" as "pretty terrible."

Radio Goes to High School

(Continued from Page 1)

monksloth-draped stand," serves as a studio. Power to carry student voices to 30 outlets, each in a separate classroom, is supplied by converters which make the school's regular power adaptable for broadcasting.

The young broadcasters had an idea that interviews would be one good way to entertain classroom audiences, being both educational and entertaining. So they brought before their "mike" General DANIEL NEEDHAM and NEAL O'HARA.

Some may scoff at the practicality of "child broadcasting," may say it is merely a waste of time and money. For their benefit, the DAY broadcasters advance the information that they have been rather well received not only by their own classmates, but by national listening audiences.

The youngsters' voices have

A Trio of Comely and Lively Debutantes



THE DEBUTANTES who answer to the names of MARJORIE BRIGGS, DOTTIE HILL and BETTY NOYES. They sing with POWELL and FIO RITTO's Orchestra during the "Hollywood Hotel" programs.

Unlike his colleague BING CROSBY, DICK's early training had not fitted him for radio. Bing served his apprenticeship in melody as one of WHITEMAN's Rhythm Boys, with plenty of experience doing recordings.

DICK served his apprenticeship in vaudeville, straining his voice to be heard above the brassy pit bands.

This proved a definite handicap for DICK, because the habit of shouting and the unfamiliarity with microphone technique

seemed to stand in his way of making a hit on radio.

And furthermore, his first radio experience singing classics as "RICHARD E. POWELL, tenor" did him not one whit of good when it came to developing a radio style for popular tunes.

A solution to this problem offered itself during DICK's recent personal appearance tour between the shooting of "Flirtation Walk"

at West Point, and his return to the Coast to begin rehearsing for "Hollywood Hotel" broadcasts.

No More Shouting

Each theatre was equipped with an amplifying system, and DICK sang into a microphone.

For the first time in his life he was able to "hear himself sing," and he began to experiment with his voice, trying to develop certain vocal tricks, so invaluable to the singer of songs on the airwaves.

So he returned to the Coast, confident that he knew the answer for effective singing on the radio series.

"I find that I can do a great deal more with my voice by singing softer," DICK sums it up. "That sounds simple, even obvious, but I had never had the opportunity to prove it to myself before."

DICK is returning to a new home near Hollywood, Cal. It is a large, rambling, comfortable house on a generous acreage.

There are stables for his polo ponies, kennels for his dogs.

Music His Hobby

The car in which he drives to work is radio-equipped, and by pressing buttons on the dashboard the gates to his estate open for him, and close after him, the garage door swings open, and closes, etc.

DICK's greatest hobby is music, and his collection of instruments includes everything except bagpipes. He is also fond of flying, and

A Trouper



DICK POWELL, star of the "Hollywood Hotel" programs.

Movie Star, Air Singer and Flyer

hopes to own a plane some day. In the meantime, he is content to fly with Army friends.

He works hard—so hard that he had a hard time pulling out of double-pneumonia when it set in during a brief personal appearance tour last year.

DICK will never forget the irony of singing "I'm Young and Healthy" while running a temperature of 103.

DICK has none of the actor's temperament, outside of the genuine thrill he derives from amusing a theatre full of people.

He would just as soon wise-crack for his cook at breakfast (he claims she is his favorite critic) as for a table full of "big shots" at the Cocoanut Grove.

Furthermore, he has knocked around enough in the show business to take fame and fortune with a business man's equanimity. The has-beens receive as much respect from young DICK as those currently in the limelight.

He is unmarried. There was one marriage when he was very young, and he doesn't talk about that, since it culminated in a divorce.

DICK likes sensible girls with a sense of humor. He dislikes bleached hair, plucked eyebrows and scarlet fingernails.

Whenever he escorts a girl to the Cocoanut Grove it is usually MARY BRIAN of MARGARET LINDSAY.

New Networks Forge Ahead

(Continued from Page 1)

Washington; WAAB and WHDH, Boston alternates; WXYZ and WJBK, Detroit alternates; WKBW and WEBR, Buffalo alternates; WJJD and WIND, Chicago alternates; WFBE, Cincinnati; WIL, St. Louis; KQV, Pittsburgh; WWVA, Wheeling, W. Va., and WHBL, Rock Island, Ill.

For Southern Listeners

The programs of WEAF or WJZ may be heard over:
WFLA-WSUN Clearwater, Florida
WSB Atlanta, Georgia
WSMB New Orleans, La.
WOAI San Antonio, Tex.
WSM Nashville, Tenn.
The programs of WABC may be heard over:
WQAM Miami, Florida
WJTV Washington, D. C.
WBT Charlotte, N. C.
WTAR Norfolk, Va.
WBIG Greensboro, N. C.

Middle Western Listeners

The programs of WEAF may be heard over:
KSD St. Louis, Mo.
KYW Chicago, Ill.
WMAQ Chicago, Ill.
WTAM Cleveland, Ohio
The programs of WJZ may be heard over:
WENR-WLS Chicago, Ill.
WGAR Cleveland, Ohio
WJR Detroit, Mich.
The programs of WABC may be heard over:
WBBM Chicago, Ill.
WBK Cleveland, Ohio
WCOO Minneapolis, Minn.
KMOX St. Louis, Mo.
WHAS Louisville, Ky.

Note: Outstanding local programs of these stations are regularly listed in THE MICROPHONE.

Tuesday, October 23 - Howard Barlow on CBS-WABC, 6.30 P.M.

Highlights

A. M.

- 11.15-Tony Wons, NBC-WJZ P.M. 5.15-Skippy, CBS-WABC 6.30-Howard Barlow, CBS-WABC 7.00-Myrt and Marge, CBS-WABC 8.30-Lawrence Tibbett, NBC-WJZ 9.00-Ben Bernie's Orchestra, NBC-WEAF Bing Crosby, the Boswell Sisters, CBS-WABC 9.45-The Story Behind the Claim, NBC-WJZ 9.30-Ed Wynn, NBC-WEAF 10.00-Glen Gray's Orchestra, Annette Hanshaw, CBS-WABC Gladys Swarthout, NBC-WEAF

(All programs are listed in Eastern Standard Time. Central Time is one hour earlier.)

- 9.45 A.M. EST: 8.45 CT Wife Saver, Allen Prescott, WEAF News Wandering Minstrel, Musical Turns, WEAF High Priests of Harmony, WGY Afterglow, WJZ WJZ WJZ WJZ Daily Story, WNBX 10 A.M. EST: 9 CT News, Breen and de Rose, WEAF WEAF WGY Edna McLaugh, Gospel Singer, WJZ WBZ KDKA WSM WFLA Variety, WHAM Organ, WJZ WJZ WJZ WJZ News and Bluebirds, WABC WCAU WHAS News, Home Hour, WPG, 1 h. Devotions, WNBX 10.15 A.M. EST: 9.15 CT Clara, Lu' n' Em, WEAF WEAF WEAF WJZ WSM WGN Castles of Romance, Ray Heatherton, WJZ WBZ KDKA Bill and Ginger, WABC WCAU Sanders Sisters, WHAS Organ, WHAM Foot Locker, WJZ Hazel Slusser, Fred King, WFLA Clara, Lu' n' Em, WGN News, WNBX 10.30 A.M. EST: 9.30 CT Morning Parade, WEAF, 45 m. (WSM, 45 m.) Piano and Song, WEEI Johnny Marvin, WGY Today's Children, WJZ WBZ WHAM KDKA WFLA Loretta Young, WLW Madison Ensemble, WABC WCAU WHAS, 30 m. Morning Concert, WNBX 10.45 A.M. EST: 9.45 CT Good Morning Melodies, WEAF Johnny Marvin, WGY News and NBC Radio Kitchen, WJZ WHAM KDKA WSM WFLA News, musicale, WBZ Contralto, WLW Bob Aicher, WHAS Columbia Variety Hour, WABC WCAU WHAS, 1 h. (WPG, 15 m.) Blackstone Jolesters, WGN House Orchestra, WOR Theatre Review, WMCA WIP Gerald Prouty, WNBX 9.15 P.M. EST: 2.15 CT The Wise Man, WEAF Organ, WEAF WGY Playlets, WGY Rochester Civic Orchestra, WHAM, 30 m. Congress of Clubs, KDKA Buddy Ramon, songs, WLW Beauty talk, Neil Wick, WOR Heat Wave, WMCA Organ, WGN Gladys Grant, WNBX 9.30 P.M. EST: 2.30 CT Woman's Radio Review, Joseph Litan's Orchestra, WEAF WEAF WGY, 30 m. Eastern Kentucky States Teachers' College, WJZ Show Boat, WOR, 30 m. Sports Review, concert artist, WMCA, 2 h. Home Management, WGN Along the Volca, WABC WPG Federal Housing Campaign and Herbert Koch, WHAS, 30 m. Weather, Variety, WOR Musical, WGN, 1 h. Old Time Melodies, WNBX 11.45 A.M. EST: 10.45 CT Boy from Dixie, WEAF WEAF WGY news at 11.55 Melody Parade, WABC WCAU WHAS String Ensemble, WGN 12 N. EST: 11 A.M. CT Leon Salathiel, basso, WEAF WEAF Joan Dailing, WGY Weather, The Monitor Views the News, WJZ Market Reports, KDKA Radio Gang, WHAM Frantz Symphony, WLW Musical, WFLA The Voice of Experience, WABC WCAU WHAS Home Sweet Home, WPG Roy Arkell, WOR Bob Fallon's Orchestra, WMCA, 30 m. Leo Salathiel, WGN Ozric Wad, WNBX 12.15 P.M. EST: 11.15 A.M. CT Honeyboy and Saxxifras, WEAF Noonday Melodies, WEAF Martha and Hal, WGY Time, weather, temperature, WBZ News, WHAM Stocks, WLW Variety WFLA Comic Gales, songs, WABC WCAU WHAS WPG Doring Sisters, WGN "Common Sense," WOR Studio Pals, WNBX 12.30 P.M. EST: 11.30 A.M. CT Merry Madcaps, Norman L. Cloutier's dance orchestra, WEAF, 30 m. Stocks, produce, WEAF Farm Program, WGY, 30 m. National Farm and Home Hour, WJZ WBZ KDKA WHAM WLW WSM WFLA, 1 h.

- Al Kavelin's Orchestra, WABC WCAU 30 m.; WPG from 12.45 University of Louisville, WHAS Trudy Thomas, songs, WMCA Markets, organ, WSN Scott Fisher's Orchestra, WOR, 30 m. 12.45 P.M. EST: 11.45 A.M. CT Caroline Cabot, Del Castillo, WEAF, 30 m. Will Hollander's Orchestra, WHAS, 30 m. Good Health and training, WGN Farm Reports, WNBX 1 P.M. EST: 12 N. CT Markets, weather, WEAF Southerners, WGY George Hall's Band, WABC WCAU WPG Variety, WOR, 30 m. Just Plain Bill, WGN 1.15 P.M. EST: 12.15 CT Rex Battle Concert Ensemble, WEAF WEAF Georgia Wildcats, WHAS Vagabonds, WGY Mirror Reflections, WMCA Piano, WGN 1.30 P.M. EST: 12.30 CT Master Music Hour, Verdi-Respighi program, WEAF, 1 h. (WEEI at 1) (WGY, 30 m.) Health Review, WEAF Vic and Sade, WJZ WBZ WFLA William Penn Orchestra, KDKA Hotel Gibson Orchestra, WLW Esther Vetas Ensemble, WABC WCAU WPG Morton Potters Orchestra, WHAS Midday service, WGN, 30 m. Theatre Club of the Air, WOR Eddie Prior's music, WMCA, 30 m. 1.45 P.M. EST: 12.45 CT Musical Turns, WEAF Beulah Croft, songs, WJZ WSM WHAM New England Agriculture, WBZ William Penn Orchestra, KDKA Gene Burchell's Orchestra, WLW Art Kennedy, Art Kasel's Orchestra, WABC College of Agriculture, WHAS Kay Favre and Orchestra, WOR 2 P.M. EST: 1 CT Health Hunters, WGY Concerts from Los of Day, WJZ WSM WFLA KDKA, A. H. Texas Cowbois, WBZ, 30 m. Rochester Civic Orchestra, WHAM, 30 m. Ohio School of the Air, WLW, 1 h. Alton Boy Quartet, WABC WCAU WPG University of Kentucky, WHAS, 30 m. Dr. Arthur Frank Paten, WOR 2.15 P.M. EST: 1.15 CT Just Plain Bill, WGN Afternoon Concert, WNBX 2.15 P.M. EST: 1.15 CT Household Chat, WGY Oriole, WABC WCAU WPG WFLA KDKA, W. K. Memories," Fred Vetta and Alice Remsen, WOR Stephen Barry, songs, WMCA WIP 2.30 P.M. EST: 1.30 CT Kine's Guard, quartet, WEAF WEAF WSM WFLA Albany on Parade, WGY Home Sweet Home, WJZ Home Forum Cooking School, WBZ, 30 m. KDKA Home Forum, KDKA, 30 m. American School of the Air, WABC WPG WHAS, 30 m. Martha Desno, WOR, 30 m. House of Progress, WGN 2.45 P.M. EST: 1.45 CT Gus Van. songs, WEAF WEAF WGY Nellie Revelle, interview, Ralph Kirby, WJZ WHAM WSM WFLA Palmer House Ensemble, WGN 3 P.M. EST: 2 CT Ma Perkins, WEAF WEAF WGY WLW WSM Ithaca College Band, WJZ, 1 h. (WHAM ERA Civic Orchestra, WBZ, 30 m. Sammy Fuller, KDKA Columbia Variety Hour, WABC WCAU WHAS, 1 h. (WPG, 15 m.) Blackstone Jolesters, WGN House Orchestra, WOR Theatre Review, WMCA WIP Gerald Prouty, WNBX 3.15 P.M. EST: 2.15 CT The Wise Man, WEAF Organ, WEAF WGY Playlets, WGY Rochester Civic Orchestra, WHAM, 30 m. Congress of Clubs, KDKA Buddy Ramon, songs, WLW Beauty talk, Neil Wick, WOR Heat Wave, WMCA Organ, WGN Gladys Grant, WNBX 3.30 P.M. EST: 2.30 CT Woman's Radio Review, Joseph Litan's Orchestra, WEAF WEAF WGY, 30 m. Eastern Kentucky States Teachers' College, WJZ Show Boat, WOR, 30 m. Sports Review, concert artist, WMCA, 2 h. Home Management, WGN Along the Volca, WABC WPG Federal Housing Campaign and Herbert Koch, WHAS, 30 m. Weather, Variety, WOR Musical, WGN, 1 h. Old Time Melodies, WNBX

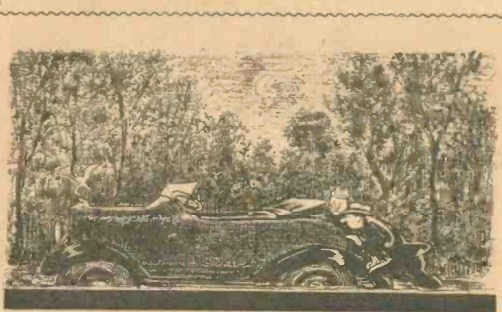
Philosopher



ARTHUR HUGHES, better known to the CBS-WABC radio audience as "Just Plain Bill," broadcasts a program of homely philosophy Mondays through Fridays at 7:15 P.M.

- 4 P.M. EST: 3 CT Chick Webb's Orchestra, WEAF WSM, 30 m. (WGY at 4.15) Stocks, WEAF Betty and Bob, drama, WGY WJZ WBZ WHAM Visiting America's Little House, WABC WFLA Life of Mary Sothorn, WLW Homemakers Club, WFLA, 30 m. Dr. H. I. Strandham, WOR Week-day Devotions, WHAS Organ, WGN Massachusetts Federation of Music Clubs, WEAF Boy Club, WCAU Nierman, WJZ-WBZ KDKA News, WHAM Jimmy Arlen, haritone, WLW Poetic Strings, WABC WPG Week-day Devotions, WHAS Organ, WGN Farm Flashes, WNBX 4.30 P.M. EST: 3.30 CT Homegroup, Dr. Wm. Hiram Foulkes, WEAF WEAF Talk, WGY Palmer Clark's Orchestra, WJZ WBZ WHAM WSM WFLA, 30 m. (KDKA at 4.45) Market Reports, KDKA Betty and Bob, WLW Science Service, Dr. Ross A. McFarland, "Psychological Research in Soviet Russia," WABC WHAS, 30 m. (WPG at 4.45) Carlton and Craig, WCAU Stocks, WPG Klara Le Rue's Orchestra, WOR Parent-Teachers Forum, WGN Katy-Did, WNBX 4.45 P.M. EST: 3.45 CT Adventures On Mystery Island, WEAF WEAF Stocks, WGY Jackson, WLW Dick Messner's Orchestra, WABC WPG WHAS Ship Ahoy, WCAU "Science in Your Home," Dr. Kurt Haesler, WOR Orchestra, WGN, 30 m. Marvls, WNBX 5 P.M. EST: 4 CT George Steney's Orchestra, WEAF WEAF WGY, 30 m. WLW, 15 m. Your Health, WJZ WHAM KDKA WSM The Monitor Views the News, WBZ Concerts, WFLA, 30 m. Along the Volca, WABC WPG Federal Housing Campaign and Herbert Koch, WHAS, 30 m. Weather, Variety, WOR Musical, WGN, 1 h. Requested Recordings, WNBX

Once Was Enough



IN MORE than 2,000 times on the air the only broadcast FIELDS and HALL, radio song and patter artists, ever missed was the one and only time their sponsor chose to visit the studios and witness the program. The boys were stalled in Westchester county mud.

- 5.15 P.M. EST: 4.15 CT These Schoolmarm, WGY Jackie Heller, WJZ WHAM WSM Farm market news, WBZ KDKA Kildare's Klub, KDKA Tim Healy, WABC "SKIPPY," WABC Nan, Mary and Camille, WPG Pete Lane, WOR Soprano, WGN 5.30 P.M. EST: 4.30 CT Radio Charades, WEAF WSM Little Women, WEAF Uncle Wiggly, WGY Singing Lady, WJZ WBZ WHAM KDKA WBAL WLW Jack Armstrong, "All-American Boy," WABC WCAU Protestant Episcopal Convention Summary, WPG Cocktail Hour, WOR Bob Fallon's Orchestra, WMCA, 30 m. Melodies, WGN 5.45 P.M. EST: 4.45 CT Nursery Rhymes, WEAF WSM Buddy and Blake, WEAF Musical program, WGY Orphan Annie, WJZ WBZ KDKA WFLA News, WHAM Jack Armstrong, WLW Robinson Crusoe, II, WABC Out of the Dusk, WHAS Juan del Mar, songs, WPG "Minatures," WCAU Uncle Wiggly, WOR Piano, WGN 6 P.M. EST: 5 CT Orchestra, WEAF The Evening Tattler, WEAF, 30 m. Old Man Sunshine, WGY Xavier Cugat's Orchestra, WJZ WHAM, 30 m. (WBZ, KDKA from 6.15) Admirers of Jimmie Allen, WBZ Dan and Sylvia, KDKA String Music, WLW Martole Cooney, pianist, WSM Musical Memory Contest, WFLA, 30 m. Buck Rogers, WABC WCAU Sam, Gil and Louie, WHAS Uncle Tom, WOR, 30 m. Charley Eckel's Orchestra, WMCA Studio Orchestra, WGN 6.15 P.M. EST: 5.15 CT Mid-Week, H. H. Wagon, WEAF Jimmy Allen, WGY Republican Campaign, WBZ Murray Horton's Orchestra, WLW Bobby Benson and Sunny Jim, WABC Skippy, WHAS Investor's Service, WMCA 6.30 P.M. EST: 5.30 CT News, Mary Small, songs, WEAF WSM Rhyming Register, news, Golden Moments, WEAF News, Beverities, WJZ News and Dorothy Page, WJZ News, weather, WBZ Bob Newhall, WLW Howard Bilson, WABC WHAS, 30 m. (news at 6.35) Ben Greenblatt, WCAU Boy's Club, WCAU Singing Lady, WGN Roundup, WMCA 6.45 P.M. EST: 5.45 CT Billy Batchelor, Raymond Knight, WEAF WEAF WGY Lowell Thomas, "Today's News," WJZ WBZ WHAM KDKA WLW Little Orchestra, WSM WGN Radio Special, WFLA Comedy Stars of Hollywood, WCAU Sports, WMCA 7 P.M. EST: 6 CT Gould and Sheffer, piano duo, WEAF Neil O'Hara, football, WEAF Variety, WJZ Gould and Sheffer, WSM Amos 'n' Andy, WJZ WBZ KDKA WLW Sports, WHAM "Myrt and Marge," WABC WCAU Fred Pink, sports, WJZ Paul Barry, songs, WMCA Jimmy Allan, WGN 7.15 P.M. EST: 6.15 CT Gene and Glenn, WEAF WEAF WGY WFLA Typo Type, WJZ WSM Joe and Betelee, WBZ Guest, Tom, Dick and Harry Hollywood Comedy Stars, WHAM WOR Just Plain Bill, WABC WCAU Crilston Greas, WMCA WPG Orchestra, WGN 7.30 P.M. EST: 6.30 CT "You and Your Government," WEAF WGY WSM WFLA (scores, WGY, 2 m.) After Dinner Revel, WEAF Edgar A. Guest, Tom, Dick and Harry Charles Sars, humor, WJZ WBZ WHAM KDKA, 30 m. Suburbanites, WJZ Whispering Jack Smith, Allan Leifer's Orchestra, WABC WCAU Buck Rogers, WHAS Marion Chase, songs, WOR Maximilian Berger's Ensemble, WMCA Sports Reporter, WGN 7.45 P.M. EST: 6.45 CT Frank Buck, WEAF WGY Big Freddie Miller, WEAF Unbroken Melodies, WLW String Ensemble, WFLA Comedy Capers, WFLA Boake Carter, WABC WCAU WHAS After Dinner Music, WOR Strickland Gilliland, news, WMCA Ensemble, WGN 8 P.M. EST: 7 CT Leo Reisman's Orchestra, Phil Ducey, baritone, WEAF WEAF WGY WFLA WSM, 30 m. Spencer Dean, Crime Clue drama, "The Fox Has Darn," WJZ WBZ KDKA WLW, 30 m. "Lagender and Old Lace," Frank Munn and Hazel Glenn, Home Town Singers, WABC WHAS, 30 m. Phil Emmertson's Orchestra, WCAU, 30 m. (WPG at 8.15) R.P. Zeeb, songs, WPG Judge Wm. L. Dill, candidate for Governor, WOR, 30 m. Fanfare, WMCA The Whittler and His Dog, WOR, 30 m. 8.15 P.M. EST: 7.15 CT Adventures of Jimmie Allen, WHAM Beauty that Endures, WFLA Via C. Paul, contralto, WPG 5-Star Final, WMCA WGN Orchestra, WGN 8.30 P.M. EST: 7.30 CT Wanda Kay's Orchestra, WEAF WEAF WGY WSM, 30 m. Lawrence Tibbett, baritone, John B. Kennedy, Wilfred Pelletier's Orchestra, WJZ WBZ KDKA WHAM WBAL, 45 m.

- Musical Variety, WLW, 30 m. Florida Matinee Academy, WFLA "Melodiana," with Abs Lyman's Orchestra, Vivienne Segal, Oliver Smith, tenor, WABC WCAU WHAS, 30 m.; WPG, 15 m. Bridge Talk, WPG Stage Show Review, WOR, 30 m. Harisonburg, WABC East Burnett's Orchestra, WGN 8.45 P.M. EST: 7.45 CT Beauty that Endures, WFLA "Doc," Savage, WPG Kay Thompson, songs, WMCA 9 P.M. EST: 8 CT Ben Bernie's Orchestra, WEAF WEAF WGY, 30 m. Melody Parade, WLW, 30 m. Revels, WSM Old Time Melodies, WFLA, 30 m. Bine Crosby, Buswell Sisters, WABC WCAU WHAS, 30 m. Helen Louise Jones, contralto, WPG Al and Lee Keller, WOR Pan Americans, WMCA, 30 m. Mardi Gras, WGN, 30 m. 9.15 P.M. EST: 8.15 CT Ray Goss, violin, WSM Tonya Behr, the Claim, WJZ WBZ KDKA WHAM Tenor, WPG 9.30 P.M. EST: 8.30 CT Ed Wynn, Graham McNamee, Eddie Duchin's Orchestra, WEAF WEAF WFLA WGY WLW, 30 m. Hands Across the Border, WJZ KDKA WSM, 1 h. (WHAM at 10.00) (WBZ, 30 m.) Merry Go Round, WHAM, 30 m. Mary Eastman, Evan Evans, Thon Joan, 1 h. (WBZ, KDKA WCAU WHAS, 30 m.) Atlantic Male Chorus, WPG, 30 m. Broadway Variety show, WMCA, 30 m. Lum and Abner, WGN 9.45 P.M. EST: 8.45 CT Lum and Abner, WOR Ted Wynn's Orchestra, WGN 10 P.M. EST: 9 CT Operetta, John Barclay, Frank McIntyre, Gladys Swarthout, WEAF WEAF WFLA WLW ERA Opera Clubs, WEAF Melody Parade, WLW, 30 m. Glen Gray's Orchestra, Annette Hanshaw, Walter O'Keefe, WABC WHAS WPG, 30 m. John Kelvin, tenor, WOR Jolly Russians, WMCA WFLA, 30 m. 10.15 P.M. EST: 9.15 CT Current Events, Harlan Eugene Reed, WOR Bridge Club of the Air, WGN 10.30 P.M. EST: 9.30 CT Tim and Irene's Sky Road Show, WJZ, WHAM, 30 m. Joe Rice's Orchestra, WBZ, 30 m. City Beautification Forum, KDKA George Grot, WABC WCAU WPG WHAS, 30 m. Dave Van, comedian, WOR, 30 m. Archie Bleyer's music, WMCA, 30 m. Chicago Theatre of the Air, WGN, 30 m. 11 P.M. EST: 10 CT Willard Robinson's Orchestra, WEAF WFLA Weather, news, WEAF Boarding House, WJZ Delaney's Orchestra, WJZ WHAM, 30 m. (WBZ at 11.15) Weather, Sports Review, WBZ William Penn Orchestra, KDKA, 30 m. Amos 'n' Andy, WJZ WBZ KDKA WLW Emile Coleman's Orchestra, WLW Hairy Sailer's Orchestra, WABC WPG, 30 m. Allan Scott, WCAU Myrt and Marge, WHAS Moonbeams, WJZ, 30 m. Voice of Romance, WMCA June Provines, WGN 11.15 P.M. EST: 10.15 CT Robert Joyce, tenor, WEAF WEAF WFLA Musical program, WGY Dance Tunes and News, WHAM Gene and Glenn, WSM Gladys Swarthout's Orchestra, WMCA Dream Ship, WGN 11.30 P.M. EST: 10.30 CT Carl Hoff's Orchestra, WEAF WEAF WFLA, 30 m. Chad Boulanger's Orchestra, WGY, 30 m. Dukey Brothers' Orchestra, WJZ WBZ WHAM WSM WFLA, 30 m. 40 Club, KDKA Dance Orchestra, WLW, 30 m. Henry Busse's Orchestra, WABC WCAU WPG WHAS Paul Whiteman's Orchestra, WOR, 30 m. Herbert Koch, organist, WHAS Blue Ahrhym Band, WMCA, 30 m. Wayne Dink's Orchestra, WGN 11.45 P.M. EST: 10.45 CT Henry Busse's Orchestra, WABC WCAU WHAS WPG Janey Simon's Orchestra, WGN, 30 m. 12 M. EST: 11 P.M. CT Henry King's Orchestra, WEAF WEAF WGY, 30 m. Emile Coleman's Music, WJZ WBZ KDKA WHAM WSM WFLA, 30 m. Herb Kaye's music, WABC WCAU WPG WHAS, 30 m. Dan Tunes, WLW, 30 m. The Wanderer Poet, WFLA The Wanderer Poet, WPG, 30 m. Gus Steek's Orchestra, WOR Day's End, WMCA, 30 m. 12.15 A.M. EST: 11.15 P.M. CT Ted Weems' Orchestra, WGN 12.30 A.M. EST: 11.30 P.M. CT Felix's Orchestra, WEAF WEAF WJZ WLW WFLA, 30 m. Seymour's Orchestra, WJZ WBZ WSM, 30 m. Enoch Light's music, WABC WHAM, 30 m. Dick Mansfield's music, WMCA Earl Burnett's Orchestra, WGN Johnny Hamp's Orchestra, WGN 12.45 A.M. EST: 11.45 P.M. CT Miami Beach Orchestra, WMCA 1 A.M. EST: 12 M. CT Buddy Welcome's Orchestra, WABC Moon River, WLW, 30 m. Willie Bryant's music, WMCA, 30 m.

STATION DIRECTORY Page 4

Tales Of Exploring, King Arthur, Tom Sawyer, On New Programs

Plays And Music For Children

An interesting series of programs under the title of the American School of the Air will come to the air beginning on Monday, October 22. The programs will be heard over the WABC network Monday through Friday at 2 P. M.

The best stories of the world today and yesterday, the travels of the world's greatest explorers and the music of every country will be broadcast.

The Monday broadcasts will tell the stories of exploration from JULIUS CAESAR'S advance into England to AMUNDSEN'S discovery of the South Pole.

For the first time, a radio drama based on a play by BERNARD SHAW will be broadcast as a part of the Tuesday dramatic programs which will present plays of the great dramatists of the world, from the Greek EURIPIDES to modern times.

The Wednesday broadcasts will enable listeners to follow the travels of a typical American family through the capital cities and industrial centers of the world.

Thursday's program will present dramas based on fiction classics for children such as "The Legend of KING ARTHUR," "TOM SAWYER" and "The Legend of Sleepy Hollow."

The music period will be under the direction of CHANNON COLLINGE, who will conduct a large orchestra.

John Martin, Story-Teller, Is Director of Children's Hour

He Answers Letters From His Fans In Rhyme

EVERY MONDAY afternoon at 4 o'clock, JOHN MARTIN, author of many children's stories, comes to the microphones of the National Broadcasting System to regale his young friends with legends, nonsense and tales of adventure. He tells these stories over the NBC-WEAF network.

JOHN MARTIN is not new to the fine art of story-telling. He numbers among his "children" and admires people who have since grown up. Mrs. CURTIS DALL, daughter of the President, is one of them. Her children, "SISTIE" and "BUZZIE," now are MARTIN'S firm friends.

Mrs. ROOSEVELT introduced JOHN MARTIN to the radio audience when he was appointed director of children's programs for the National Broadcasting Company last year.

The NBC story-teller gets many letters from his radio listening friends.

One boy who was crippled and had to stay home wrote to Mr. MARTIN and told him



JOHN MARTIN, NBC children's story-teller, assumes a fantastic pose as he tells a mysterious tale to his listening audience.

how much he enjoyed the programs, since radio listening was about the only thing he could do.

MARTIN generally answers his mail in rhyme, if he has the time, and this was his answer to the crippled boy:

*I'm much obliged
For what you wrote to me
And if you like my story time
I'm happy as can be.*

Mrs. Roosevelt Is Warm in Praise of His Work

*Oh, I am very sorry that
My dear boy cannot walk;
But I will bet a hundred bucks
That you can laugh and talk.*

*So keep on smiling, happy boy,
And let those smiles have part in
The making of all happiness....
Your loyal friend, JOHN MARTIN.*

Mrs. ROOSEVELT speaks high praise of JOHN MARTIN and his work.

"John Martin," she says, "has been for many children a familiar name for many years. I feel that we all have much to learn from anyone who can give children the amount of enjoyment that he has always been able to give. I hope you will grow to have the affection for John Martin which my children and we older members of the family always have had."

For many years JOHN MARTIN edited his own magazine for children and found time also to produce story books.

He came to the National Broadcasting System about a year ago as director of juvenile programs.

Adventures Of Spanish Main Aired

Pirates, swashbuckling adventurers, heroes and villains who once trod the quarterdeck, all have emerged from the mists of the sea to live again, but this time over the radio.

The program is heard every Monday, Wednesday and Friday evening at 5.15 over station WOR.

The program has a realistic background. Captain TOM, a famous old mariner, is the principal figure in many an adventure on the seven seas and commander of a vessel that once flew the ominous Skull and Cross Bones.

The very ship, *The Eugie*, is now docked in the Hudson River, a floating museum carrying thousands of exhibits of deep-sea epics.

On the program once more will hands be mustered to repel boarders; again the dreaded JOLLY ROGER will flutter aloft; shades of Captain KIDD and HENRY MORGAN appear in this materialization of the glamorous tradition of the Spanish Main.

Comic Trio Continues

GORDON, DAVE and BUNNY, comic trio, have renewed their CBS contract and will continue to broadcast over the Columbia network Mondays and Wednesdays from 5.45 to 6 P. M.

These Programs Are Proving Popular With Children Of All Ages

7.45 A.M. EST; 6.45 CT
Jolly Bill and Jane, WJZ (Monday through Saturday)

9 A.M. EST; 8 CT
Coast to Coast on a Bus, WJZ WBZ KDKA (Sunday only)

11 A.M. EST; 10 CT
NBC Music Appreciation Hour, WEAF WEEI WGY WJAR WESH WTIC WJZ WBZ (Friday only)
Variety Hour, WCAU (Sunday only)

12.45 P.M. EST; 11.45 A.M. CT
Kiddies' Cooking Class, WOR (Saturday only)

4 P.M. EST; 3 CT
John Martin's Story Program, WEAF WEEI WSM WELA WJAR WESH WTAG WTKG WGY (Monday only)

4.30 P.M. EST; 3.30 CT
Our Barn, WEAF WEEI WTIC WGY (Saturday only)

4.45 P.M. EST; 3.45 CT
Adventures of Mystery Island, WEAF WEEI WJAR WESH WTAG WTKG WGY (Monday through Thursday)

5 P.M. EST; 4 CT
Adventure Program, WABC WAAB WFEA (Monday through Friday)

5.15 P.M. EST; 4.15 CT
Skippy, WABC WAAB WEAN WICC WFEA WDRG WORC WMAS WLZ WFEA (Monday through Friday)

5.30 P.M. EST; 4.30 CT
Straight Shooters, Tom Mix, WEAF WEEI WGY WLW (Monday, Wednesday, Friday)
Alice in Orchestra, WEAF WEEI WSM (Wednesday only)

5.30 P.M. EST; 4.30 CT
(Wednesday only)
Jack Armstrong, WABC WCAU WAAB WEAN WDRG WMAS (Monday through Saturday)
Tales of Courage, WEAF (Thursday only)
The Singing Lady, WJZ WBZ WHAM KDKA WBAL WLW (Monday through Friday)

The Tattered Man, WEAF WJAR WESH WTAG (Tuesday only)

5.45 P.M. EST; 4.45 CT
Albert Payson Terhune Dog Drama, WJZ WBZ WHAM KDKA WFLA (Sunday only)

Captain Tim Healy's Stamp Club, WEAF WEEI WGY WSM WFLA WJAR WESH WTAG WTKG (Monday, Wednesday, and Friday)
Little Orphan Annie, WJZ WBZ WHAM KDKA WFLA (Monday through Saturday)
Nursery Rhymes, WEAF WSM WFLA (Tuesday only)
Robinson Crusoe, Jr., WABC WCAU WPG WEAN WICC WFEA WDRG WORC WMAS WLZ (Tuesday, Thursday, Friday and Saturday)

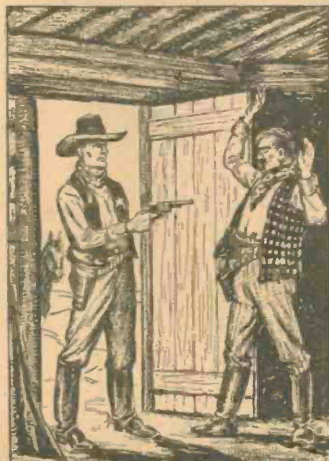
6 P. M. EST; 5 CT
Buck Rogers, WABC WCAU WHAS WAAB WDRG (Monday through Thursday)

6.15 P.M. EST; 5.15 CT
Bobby Benson and Sunny Jim, WABC WCAU WAAB WEAN WIC WFEA WORC (Monday through Friday)

Jules Verne's "Mysterious Island," WEAF WJAR (Monday, Wednesday, Friday)

6.45 P.M. EST; 5.45 CT
Billy Bachelor, WEAF WEEI WGY WJAR WESH WTAG WTKG WTAM (Monday through Friday)

Henry Harmony Hits High Spots Of The Colorful Career of Tom Mix



TOM MIX, whose adventures you hear on Mondays, Wednesdays and Fridays at 5.15 P. M., has led an eventful life that has taken him to the four corners of the world. The program tells of true incidents when Tom was a sheriff on the Western plains.

AFTER he had been a cow puncher and a United States Marshal in Texas, he became a soldier and fought for his country in the Spanish-American and Boer Wars. These adventures help make the radio series more thrilling.

AFTER the World War, he turned his ability to ride and his athletic prowess to making moving pictures. With his horse Tony he became a familiar figure in the screen world. Not until 1933 did he lend his name and experiences to a radio program.

TOM himself helped arrange and write the series of programs now known as "Tom Mix and his Straight Shooters." Although he does not talk over the radio himself, the programs depict true incidents in his life over the NBC-WEAF chain.

Wednesday, October 24 - James Warburg, NBC-WEAF, 7.30 P.M.

Highlights

- A. M.**
- 7.30—United States Army Band, NBC-WJZ
- P. M.**
- 7.30—James P. Warburg, NBC-WEAF
 - 7.15—Plantation Echoes, NBC-WJZ
 - 8.00—Mary Pickford, NBC-WEAF
 - 8.30—Lanny Ross and Orchestra, NBC-WJZ
 - Wayne King's Orchestra, NBC-WEAF
 - 9.00—Warden Lewis E. Lawes, NBC-WJZ
 - Fred Allen, NBC-WEAF
 - 9.30—John McCormack, NBC-WJZ
 - 10.00—Broadcast to Byrd, CBS-WABC

Charles Sears, tenor, WJZ KDKA WSM Weather, "Minute Mennet," WBZ Hill-Billy songs, WHAM Betty Barthell, WABC WCAU WHAS WPG "Common Sense," WOR Betty, Jean, Jim, WGN

12.30 P. M. EST; 11.30 A. M. CT
Merry Melodys, WEAF WLW, 30 m.
Socks, WEEL
Weather Man Program, WGY, 30 m.
National Farm and Home Hour, WJZ WRZ KDKA WHAM WFLA WSM, 1 h. (WLW from 8:20)

Jan Savaris's Orchestra, WABC WCAU (WPG at 12.45)
Scott Fisher's music, WOR, 30 m.
Here's Yours, WMCA University of Louisville, WHAS Dr. Fokell, WNBX

12.45 P. M. EST; 11.45 A. M. CT
This and That, WEEL, 25 m. (Friendly Kitchen, 10)

Will Hollander's Orchestra, WMCA WIP, 30 m.
Good Health and Training, WGN

1 P. M. EST; 12 P. M. CT
Markets, weather, WEAF
Southerners, WGY
George Hall's Orchestra, WABC WCAU 30 m.
Markets, WHAS
Just Plain Bill, WGN
Dance Tunes, WOR, 30 m.

"Fall Guy"



GEORGE BURNS takes it on the chin from GRACIE ALLEN each Wednesday night at 9:30 on the CBS WABC network during the "Adventures of Gracie" program.

1.15 P. M. EST; 12.15 CT
Prayer's Doctor, WEAF WEEL WGY
New Jersey Women's Club, WFG
Mirror Reflections, WMCA
Doring Sisters, WGN

1.30 P. M. EST; 12.30 CT
James P. Warburg, "Recovery," WEAF, 30 m.
N. E. Kitchen, WEEL, 30 m.
Vagabonds, WGY
Vid and Sade, WJZ WBZ WHAM WFLA WSM

Hotel Gibson Orchestra, WLW Markets, WJZ
Little Jack Little's music, WABC WCAU WPG WHAS
Midday Service, WGN, 30 m.
Eddie's Orchestra, WMCA
Theatre Club, Bid Dudley, WOR

1.45 P. M. EST; 12.45 CT
Words and Music, WJZ WHAM WSM Agricultural Markets, WBZ
New York Women's Club, WFG
Gene Burchell's music, WLW
William A. Burner, WSM
Bill Billy Kid, WFLA
Don Russo's Orchestra, WABC
Agricultural Program, WHAS
Verna Osborne, soprano, WOR
Ragamuffins, WJZ

2 P. M. EST; 1 CT
Ten Tents in the Canyon, Catal Dewi, 30 p.m. WEAF WEEL, 30 m. (WGY, 30 m.)
Weathering Minstrel, Meredith Wilson's Orchestra, WJZ WSM WFLA, 30 m.
Texas Cowboys, WBZ, 30 m.
Ohio School of the Air, WLW, 1 h.
The Bonany Trail, WABC WFG WCAU, 30 m.
University of Kentucky, WHAS
Clara Lu's "Em," WEAF WEEL WGY WSM WLW
Fiorella Tito, WJZ WBZ WHAM
Nancy Topas, WFLA
Bill and Ginger, WABC
Dolly Dean, WHAS
Tom Sawyer, WNBX

10.30 A. M. EST; 9.30 CT
Low White, organ, WEAF
Organ, WEEL
The Market Basket, WGY
The Children, WJZ WBZ WDAI KDKA WSM WLW
Live Stocks, news, WLW
"All About You," Harold Sherman, WABC
News and Fiddlers' Fancy, WCAU, 30 m.; WABC from 10.45
Ida Bailey Allen, WHAS

10.45 A. M. EST; 9.45 CT
Betty Crocker, WEAF WEEL WGY WLW WFLA
News, Radio Kitchen, WJZ WHAM KDKA

News, musicale, WBZ
Studio Program, WSM
The Magic Harmonic, WHAS
Bluebirds, WABC WHAS

11 A. M. EST; 10 CT
Juan Reyes, pianist, WEAF
Edison Friendly, Kibben, WEEL
Wine Server, WJZ WSM WFLA
"Fish Stories," WHAM
Betty Moore, WEAF
John Baker, news, WLW
"Cooking Closeups," WABC WCAU
Farm Talk, WPG
Felix Sitten, WHAS
Concert, WNBX

11.15 A. M. EST; 10.15 CT
Alke Remson, contralto, WEAF WEEL WGY
Tony Waco, WJZ WBZ WSM
Radio Gank, WHAM
Texans, WLW
Rambles in Rhythm, WABC
"The Best" Orchestra, WGN
Health Talk, WNBX

11.30 A. M. EST; 10.30 CT
"Homespun," WEAF WEEL
U. S. Army Band, WJZ WBZ WSM WFLA
WJZ
Betty Moore Triangle Club, WABC WPG
"HAS WCAU
Magnetic Theatre, WNBX

11.45 A. M. EST; 10.45 CT
Down the Song Trail, George Beuler, baritone, WEAF WEEL
Johnny Marvin, WGY
Organ, WHAM
Magic Recipes, WABC WHAS WCAU
Wandering Poet, WPG
Royal Serenade, WJZ

12 N. EST; 11 A. M. CT
Al and Lee Reiser, pianists, "Krazy Kat," WEAF WEEL
Banjoists, WGY
Frieda and Hal, WJZ WHAM WSM
Weather, The Monitor Views the News, WBZ

Market reports, KDKA
Ohio Farm Bureau, WLW, 30 m.
Variety, WFLA, 30 m.
The Voice of Experience, WABC WCAU
Dr. W. H. Knickerbocker, Health Talk, WOR
Piano, WGN
Doris Gibson, WNBX

4.15 P. M. EST; 3.15 CT
Constitution Day, KDKA
News, WHAM
Jimmy Arden, baritone, WLW
Curtis Synnopy Orchestra, WABC WCAU, 45 m.

Jack Berger's music, WPG
Devotion, WHAS
Banjo, Pianos, WOR
Tenor, WGN
Farm Fishes, WNBX

4.30 P. M. EST; 3.30 CT
Jesse's trio, WEAF WEEL WSM
Talk, WGY
Palmer Clark's Orchestra, WJZ
Health Message, WGN
Markets, KDKA
Betty and Bob, WLW
Ralph Waters, WFLA
Drama, Stocks, WCAU
Drinks WPG
Klar! La Rue's Orchestra, WOR
New York Women's Club, WFG, 30 m.
Variety Program, WNBX

4.45 P. M. EST; 3.45 CT
Adventures on Mystery Island, WEAF WEEL
Stocks, WGY
George Steiner's music, WJZ WBZ
The Jacksons, WLW
"Science in Your Home," Dr. Kurt Haegele, WOR, 30 m.

5 P. M. EST; 4 CT
Chick Webb's Orchestra, WEAF WEEL
WLW
Lang Sowers, WGY
Al Pearce and his Gang, WJZ WSM WFLA
The Monitor Views the News, WBZ
Afternoon Musical, WGN, 1 h., 13 m.
Albany on Parade, WABC WFLA
Ponce Sisters, WLW
"Og, Son of Fire," Campaign for Trappers, WCAU
Fedora Hostess, WGN and Herbert 30
Koch, WHAS
Loretta Adams, WPG
Weather, Variety, WOR
Popular Rhythm, WGN, 30 m.
Recordings, WNBX

5.15 P. M. EST; 4.15 CT
Tom Mix Straight Shooters, WEAF WEEL
WLW
Jackie Heller, tenor, WJZ WSM WFLA
Skipper Jim's ship of joy, WBZ
Kibbles' Klub, KDKA
"Skippy," WABC
Herbert Koch and Irish Minstrel, WHAS, 30 m.
Guitarist, WPG
"Captain Tom and his Pirate Ship," WOR

5.30 P. M. EST; 4.30 CT
Alce in Orchestralia, WEAF WEEL WSM
Drama, WGY
Singing Lady, WJZ WBZ WHAM KDKA

Gene Arnold, WFLA
Jack Armstrong, WABC WCAU
Quartet, WEAF WEEL WGY WLW WSM, 1 h.
The Story and Contest Club, WOR
Mark Love, basso, WGN
Sally's Party, WMCA, 30 m.

5.45 P. M. EST; 4.45 CT
Cape, Tim Healy's Stamp Club, WEAF
WEEL WGY WSM
Little Orphan Annie, WJZ WBZ KDKA
WFLA
News, WHAM
Jack Armstrong, WLW
Nap and De, WSM
WCAU
Harry Charles, tenor, scores, WPG
Out of the Dusk, WHAM
Adventures of Jimmie Allen, WOR
Melody Moments, WGN

6 P. M. EST; 5 CT
Genio Ferdinand's Orchestra, WEAF
Evening Tattler, WEEL, 30 m.
Did Man Sunshine, WGY
Education in the News, WJZ WFLA
Melody Moments, WGN
Adventures of Jimmie Allen, WBZ
Organ, WHAM
Maurice Conroy and Jack Shook, WSM
Dan and Sylvia, KDKA
String Trio, WLW
Antonio Lopez's Orchestra, WFLA
Ruck Rogers, WABC WCAU
Boy Scout Drama, WHAS
Uncle Don, WOR, 30 m.
Alex Bertoni, tenor, WMCA
Orchestra, WGN, 30 m.

6.15 P. M. EST; 5.15 CT
"Mysterious Island," drama, WEAF
Jimmy Allen, WJZ
Almy Kitchell, contralto, WJZ WHAM
WFLA
Republican Campaign, WBZ
WCAU
Markets, news, WSM
Bobby Benson and Sunny Jim, WABC WCAU
News, WHAM
Skippy, WHAS
Investor's Service, WMCA (orchestra at 6.25)

6.30 P. M. EST; 5.30 CT
News, Martha Means, contralto, WEAF
Rhyming Reporter, news, WEEL
News, evening bellies, WGY
News, Three X Story, songs, WJZ WHAM
News, weather, WHAM
Comedy Stars of Hollywood, KDKA
Bob Newhall, WLW
Freddie Rose, WSM
News, melody's garden, WFLA
"The Shadow," WABC, 25 m. (news, 6.55)
Billy Hays' Orchestra, WCAU
Club Program, WHAS
Singing Lady, WGN
Glorio Heatter's commentator, WOR
Screen revue, WMCA

6.45 P. M. EST; 5.45 CT
Billy Batchelor, Raymond Knight, WEAF
WEEL WGY WTAM
Lowell Thomas, "Today's News," WJZ
WJZ WHAM
Little Orphan Annie, WGN WSM
"Cocktail Time," and George Shackley, WOR
Sports, WMCA

7 P. M. EST; 6 CT
Franklin Bauer, tenor, WEAF WSM
Suzette, WEEL
Jules Lande, violinist, WJZ
Amos 'n' Andy, WJZ WBZ KDKA WLW
WFLA
Sports, WHAM
Myrt and Marie, WABC
Ford Beck, sports, WSM
Gloria Grafton, actress, WMCA
Jimmy Allan, WGN

7.15 P. M. EST; 6.15 CT
Gene and Glenn, WEAF WEEL WGY WFLA
Plantation Echoes, Weiland Robinson's music,
WJZ WHAM WFLA
Asher and Little Jimmie, WSM
Lum and Abner, WLW
Just Plain Bill, WABC WCAU
O'Brien and King, songs, WOR
Orchestra, WGN
Vagabond Singers, WMCA

7.30 P. M. EST; 6.30 CT
Little Eva
After Dinner Revue, WEEL, 30 m.
Musical Program, WGY
Red Davis' Sketch, WJZ WBZ WFLA
Pleasure Cruise, WABC WCAU
Paul Pierson's Orchestra, WLW
Paul Keast, Rollo Hudson's Orchestra,
WABC WCAU
Buck Rogers, WHAS
Orchestra, WOR
George Toulet's Orchestra, WMCA
Melody Master, WLW
Sports reporter, WGN

7.45 P. M. EST; 6.45 CT
Frank Buck, WEAF WGY
Dangerous Pastimes, WJZ WBZ
WHAM WLW WSM
Melody Man, WFLA
Boke Caper, WCAU WHAS
After Dinner Music, WOR
Strickland Gilliland, news, WMCA
Ensemble, WGN

8 P. M. EST; 7 CT
Mary Pickford's Stock Company, WEAF
WEEL WGY WSM WFLA, 30 m.
Spencer Dean Cline Clues Drama, "The Fog
On Mars," WJZ WBZ KDKA WLW,
30 m.
P. T. A. talk, WHAM
Judy Adams, WABC WHAS
Hanna Knight and his Orchestra, WCAU
WFLA
Three Little Funsters, WMCA
Bob Church, WNBX
The Lone Ranger, WOR WGN, 30 m.

8.15 P. M. EST; 7.15 CT
Jimmy Allen's Adventures, WHAM
Edna Gurney, WFLA
News, WABC WCAU WHAS
5-Star Final, WMCA

8.30 P. M. EST; 7.30 CT
Wayne King's Orchestra, WEAF WGY
30 m.
Buddy Clark, John Herrick, WEEL, 30 m.
Lanny Ross' Log Cabin Orchestra, WJZ
WHAM KDKA, 30 m.
Magic Strings, WBZ
Henry Thies' Peppers, WLW
Minstrel Show, WSM
Quartet, Broadway Varieties,
WABC WCAU WHAS, 30 m.
Jane and Jimmy Cullen, WPG
Kryer's Orchestra, WGN
Larry Taylor, WOR
Morton Bellin, WMCA

8.45 P. M. EST; 7.45 CT
Minstrels, WBZ
Smart Ed McConnell, WLW
Variety, WFLA
Northwestern University, WGN
Society, WHAM
Physical History, WOR

9 P. M. EST; 8 CT
Town Hall Tonight, Fred Allen, James Melton,
Lennie Hayton's Orchestra, Songmistri
Quartet, WEAF WEEL WGY WLW WSM,
1 h.
Warden Lewis E. Lawes, "20,000 Years in
Sing Sing," WJZ WBZ KDKA WHAM
WHAS, 30 m.
Antonio Lopez' music, WFLA
June Martin, Andie, Kootlant's Orchestra,
"No Me Be Diga," "O De! Mio Amato
Ben," "Ah, Moon of My Delight,"
WABC WCAU WPG WHAS, 30 m.
Foolish Echoes, WSM
American Opt's House, WMCA, 1 h.
Palmer Clark's Orchestra, WGN

9.15 P. M. EST; 8.15 CT
Housewives, WEEL
Lazzy Taylor, tenor, WOR

9.30 P. M. EST; 8.30 CT
John McCormack, tenor, "Under the Willow
Sho's Sleeping," "When Night Descends,"
12 m. WEAF WEEL WGY WLW WSM,
WFLA Players, WFLA, 30 m.
"The Adventures of Gracie," Burns and Al-
Bobby Dolin's Orchestra, WABC
WCAU, 30 m.
Variety, WHAS, 30 m.
Imperial Hawaiians, WPG, 30 m.
Lum and Abner, WOR WGN

9.45 P. M. EST; 8.45 CT
Fran Frey's Frolic, WOR, 30 m.
Jan Gray's Orchestra, WGN

10 P. M. EST; 9 CT
Lombardo-Land, Ed Barnes, WEAF WEEL
WGY WLW WFLA WSM, 30 m.
Dennis King, Louis Katzman's Orchestra,
Tonight Is Mine, "On Yonder Rock
Reclining," WJZ WBZ KDKA WHAM
Two-Way Byrd Antarctic Expedition Broad-
cast, WABC WCAU WHAS, 30 m.
Attention, WPG
Betty That Endures, WMCA
News, WGN

10.15 P. M. EST; 9.15 CT
Madame Sylvia, WJZ WBZ WHAM KDKA
Current Events, Harlan Eugene Read, WOB
Sledy Hall's music, WGN

Weather Reports

WEEKDAYS

A. M.

7.28 WTAM	9.45 KDKA
7.45 WBAL	WGY
8.00 WEAF	11.30 WLW
8.28 WLW	

Noon

WGY WBAL WFLA (KDKA Satur-
day only)

P. M.

12.15 WLW	5.40 WTAM
12.30 WJZ	6.14 WTAM
12.50 WTAM	6.30 WFLA
1.00 WEAF	6.55 WGY
2.45 WGY	7.15 WBAL
4.30 KDKA	11.00 WGY WPG
5.00 WGY	11.10 WTAM
5.14 WLW	11.30 WGN

SUNDAYS

A. M.

7.30 WTAM	10.45 KDKA
8.25 WLW	11.30 WLW
9.00 WBAL	

Noon

WGY KDKA

P. M.

12.15 WBAL	5.40 WTAM
WLW	6.14 WTAM
1.00 WPG	7.15 WBAL
1.45 WFLA	11.00 WPG
4.30 WGY	11.10 WTAM
5.14 WLW	11.30 WGN

10.30 P. M. EST; 9.30 CT
National Radio Forum, WEAF WGY WFLA,
30 m.
Floyd Gibbons, WEEL
Jack Dehny's Orchestra, Harry Richmond
and John B. Kennedy, WJZ WHAM, 30 m.
Sammy Lerner's Orchestra, 30 m.
Filler, WLW, 30 m.
Pittsburgh Varieties, KDKA
Helen Weston's music, WMCA
Melody Masterpieces, WABC WCAU WPG
WHAS, 30 m.
"The Banjo Express," Elaine Jordan, Ray
Gold, WOR, 30 m.
Arthur Warren's music, WMCA, 30 m.
Bob Paellari's Orchestra, WGN, 30 m.

10.45 P. M. EST; 9.45 CT
Hawaiians, WEEL, WSM, WMCA
Home Forum, KDKA

11 P. M. EST; 10 CT
Pennsylvania Hotel Orchestra, WEAF WGY
Weather, news, WEEL
Zigzag Clyde Ranch, WJZ
Sports Review, weather, WBZ
News, WHAM
William Pien's Orchestra, KDKA, 30 m.
Voice of Reason, WSM
Home Forum, KDKA

11.15 P. M. EST; 10.15 CT
Robert Royce, tenor, WEAF WFLA
Variety, WGY
George Steiner's Orchestra, WJZ
Joe Ruckers' music, WFLA
Gene and Glenn, WSM
Oscar Nelson's music, WABC WPG WCAU,
30 m.
Studio Program, WHAS
WHAS Concert Orchestra, WHAS
Leon Goodman's music, WMCA
Home Forum, KDKA

11.30 P. M. EST; 10.30 CT
Rockefeller Centre Rainbow Row Or-
chestra, WEAF WGY WFLA, 30 m. (WEEL,
15 m. (WSM at 11.45)
Charles Boulanger's Orchestra, WGY, 30 m.
George N. Peck, "Foreign Trade," WJZ
WHAM, 30 m.
"Dead Man Prey," WBZ, 30 m.
400 Club, KDKA, 30 m.
Castle Farm Orchestra, WLW, 30 m.
Marjorie Conroy, piano, WSM
Herbert Koch, organ, WJZ
Harry Saltier's Orchestra, WOR, 30 m.
Charlie Davis' Orchestra, WMCA, 30 m.
Wayne King's Orchestra, WGN

11.45 P. M. EST; 10.45 CT
Political program, WEEL
Leon Biscuso's music, WABC
Jan Gabriel's Orchestra, WGN, 30 m.
12 m. EST; 11 P. M. CT
George Olsen's music, WEAF WEEL, 30 m.
Charles Boulanger's Orchestra, WGY, 30 m.
Alice Blyler's Orchestra, WJZ WBZ KDKA
WHAM WSM, 30 m.
Jacques Renard's Orchestra, WABC WPG,
30 m.
Dance Orchestra, WLW, 30 m.
John W. King's Orchestra, WOR
Day's End, WMCA, 30 m.

12.15 A. M. EST; 11.15 P. M. CT
News, Hotel Gibson Orchestra, WLW
Jimmy Joy's Orchestra, WHAS
Morton Bellin, WLW, 30 m.
Ernie Rolfe's Orchestra, WMCA, 30 m.
Bob Paellari's Orchestra, WGN

1 A. M. EST; 12 M. CT
Gene Kardos' Orchestra, WABC
Jimmy Joy's Orchestra, WHAS
Morton Bellin, WLW, 30 m.
Ernie Rolfe's Orchestra, WMCA, 30 m.
Bob Paellari's Orchestra, WGN

1.30 A. M. EST; 12.30 CT
Teddy Hills' music, WMCA, 30 m.

Sustaining Service Broadcasts Emphasized At Edison Station

Review For Six Months Impressive

What is being done in the way of service broadcasting at WEEI? What with the rush of commercial radio business, people are perhaps prone to neglect in the full course of air events, consideration of the relative import of "service" broadcasting as indicated by the allocation of station time such broadcasts receive at the Edison station.

It has always been the policy of WEEI to offer its facilities for service broadcasting with day-by-day evidence herewith placed in better perspective by a six months review for the period ending July 1st of the present year. In the strictest interpretation of "service" broadcasting, only programs where there was no charge for time or any expense involved, are considered.

The list includes educational, civic and charitable organizations, Churches, religious bodies, public health services, labor organizations and farm organizations. Separately or together the review is impressive with the aggregate time commitments taking a generous portion of the station's business broadcasting day.

The six months recapitulation points first to the Boston Farmers Produce Market Report, week-days except Saturdays at 12:25 P. M. Then come such weekly fixtures as the WEEI "Reading Circle" for the Blind (thrice weekly); "What to Read"—Book Review; "Silver Lining Hour," a fifteen minute program in the interest of the Boston In-

"The WEEI Players" Dramatic Group



Left to right, top row, standing: EDWARD JARDON, FRANK GOW, ROBERT BURLIN, JANET DEL CASTILLO, RUSSELL DORR, EDWARD HERLIHY. Center row: DOROTHY DRAKE, TRYPHENA BURBANK, LLOYD DEL CASTILLO, CAROLINE CABOT, WILLIE MORRIS, ARTHUR EDES. Bottom row: JACK BEAUVAIS, WILLIAM (BUSTER) LYNCH, ELAINE DEL CASTILLO, PHYLIS DEL CASTILLO, MARGARET BURLIN, HELEN BARR.

dustrial Home; "Health Review," Dr. Luella Burbank of the Department of Adult Hygiene, State Department of Public Health; "Public Health," conducted by the Mass. Dept. of Public Health; Y. M. C. A. and Y. W. C. A., information on "Y" work with inspirational talks.

Add to the list—Boston Emergency Relief Fund Programs; Services from a Boston Church; Mass. Federation of Music Clubs; Professional Women's Club of Boston; "Red Cross";

"The Seaman's Library"; "American Legion Auxiliary"; "Salesman's Recovery—NRA"; "Emerson College of Oratory"; "Burroughs Newsboys Foundation"; "Press Women's Association"; "D. A. R."; "City Wide Recreation"; "Camp Fire Girls"; "Harvard Alumni"; "Eastern Teachers Association"; "National National Safety Council"; "Boston Musicians Protective Association"; "New England Wildflower Preservation Pro-

(Continued Below)

The WEEI Players consisting of singers as well as dramatic artists, appear with Caroline Cabot and del Castillo every Thursday at 12:45 P. M. They introduce a new type of entertainment known as "Matinee of the Air" on the "Bit of This and Bit of That" program, presenting authentic radio versions from Majestic and Chesterfield-Invincible motion pictures. "She Had To Choose" is the title of the drama on Thursday, October 25th.

New Feature On Monday Among Best

Caroline Cabot, director of the daytime feature, "A Bit of This and a Bit of That," is always alert to provide her audience with something different. Her newest feature on this always interesting program brings to the microphone some of the outstanding figures associated with Massachusetts charitable organizations, whose remarks are supplemented from week to week, with an excellent talent offering.

On October 22nd, Monday, Mrs. James A. Neal, president of the Mount Pleasant Home for Aged Men and Women, will be the speaker. The same portion of the program will bring to the microphone Jacques Hoffman, violinist, and Raymond Havens, pianist, both outstanding musicians and members of the faculty of the Music Department at Boston University.

The following week the program will be dedicated to the Massachusetts Memorial Hospitals, West Concord Street, Boston, with the talent listing as yet unannounced. To date this little Monday feature has ranked as one of the leaders among daytime programs, measured by mail response.

A recent broadcast in the same series, which brought to the microphone the famous Fay Templeton, then appearing in the musical comedy, "Roberta," at a local theatre, was one of the most unusual and entertaining offerings ever sent out on the WEEI wavelength.

BOYS and GIRLS

Join

"THE SECRET SIX"

Be a

Junior Detective

With

"BUDDY and BLAKE"

Tune in for all details and for new thrills—and adventures

TUESDAYS

and

THURSDAYS

at

5:15 P.M.

Over

Sta-WEEI-tion and the New England Network

The football season is in full swing and the armica is being freely used by the WEEI control room boys who are wont to gather at Farmer Jones pasture land in Medford in a sporting but futile attempt to resurrect the skill with the pigskin that once was theirs.



"Kay's Rhyming Reporter" strikes a characteristic pose before the WEEI microphone with several carats of diamond revealed to the studio audience. Norm Young has used up several kilometres of bandage and Earl Jones takes his sessions with the liniment bottle with the fortitude of a Crusader.

President Roosevelt again speaks to the nation over the networks Sunday evening, Oct. 21st at 10:30 P. M. A series of talks will be presented weekly on Mondays at 4:30 P. M. by speakers representing the Charles River Library Association. The talks will stress the benefits of library utilization and generally review the broad scope of library work in general.

NEWS WEEI BRIEFS

(Continued from Above)

gram"; "WEEI Educational Service"; "Lenten Services"; "WEEI Garden Club."

Others for the six months period are—"War Mothers Program"; "The Oxford Group"; "World Pictures"—series of educational broadcasts; "Arts and Crafts of India"; "Cape Cod Music Association"; "Morgan Memorial"; "Salvation Army" and a lengthy miscellany of charitable, civic and philanthropic organizations.

While no attempt has been made to figure the actual percentage of broadcasting time allotted to work of this nature, it is conservative to say that WEEI ranks high among stations throughout the nation in fostering and supporting all such worthy movements, both national and local.

The new sound effect equipment was a timely development what with the infinite variety of "noises" necessary on many of the newer programs—with the Caroline Cabot presentation of dramatized bits from the newer films a leader in keeping the production man on the jump with sirens, trains and bells.

Marjorie Mills has advanced her thrice weekly broadcast periods to 1:30 o'clock on Monday, Wednesday and Friday—Marj was very favorably impressed with the Show Boat program of Maxwell House, which program she visited with recently at Radio City. Mrs. Dwight Morrow will cover over the network to WEEI listeners on Monday afternoon at five o'clock. The Massachusetts Federation of Music Clubs and Professional Women's Club will take alternate weekly periods on WEEI Tuesdays at 4:15 P. M. beginning the 23rd. Thursday night at 11:25—Borah Minnevitich and those "Radio Rascals"—a treat



Phil Salkman's piano lessons, a chord at a time, are teaching thousands of willing listeners the intricacy or simplicity of jazz-piano. Due to congestion and the rush of commercial business at WEEI, clients are being urged to utilize, so far as possible, in the morning the available studio facilities for rehearsal and audition.

Tune In!

"NOONDAY MELODIES"

each Tuesday and Saturday

12:15 P.M.

and

GENE ARNOLD

and his

"COMMODORES"

Sundays

2:30 P.M.

All Three Features Over Station WEEI

All Three Presented by the producers of

Crazy Water Crystals

Thursday, October 25 - Isidor Philipp Plays, NBC-WJZ, 1.45 P.M.

Highlights

- A. M.
11.30—United States Navy Band, NBC-WJZ
P.M.
1.45—NBC Great Composers' Hour, Isidor Philipp, NBC-WJZ
7.15—Gems of Melody, NBC-WJZ
8.00—Rudy Vallee, NBC-WEAF
9.00—Annette Hanshaw, Glen Gray's music, CBS-WABC
Death Valley Days, NBC-WJZ
9.30—Fred Waring's Pennsylvanians, CBS-WABC
10.00—Paul Whiteman's Music Hall, NBC-WEAF

(All programs are listed in Eastern Standard Time. Central Time is one hour earlier.)

- 6.45 A.M. EST; 7.45 CT
Variety, WBZ
Bruno Beaton's program, WABC
Bob Archer, WHAS
9 A.M. EST; 8 CT
Herman and Banta, WEAF
Clifford Linstedt, WEEL
Forrest Williams, WJZ
Breakfast Club, Jack O'Connell, trainer, The Three Cs, WJZ WFLA, 1 h. (WHAM WSM at 9:15) (KDKA, 30 m.)
Joe Emerson, WLW
Organ, WSM
Sunday Side Up, WABC, 45 m.
What's on Today, WNBX
9.15 A.M. EST; 8.15 CT
Don Hall Trio, WEAF WEEL WGY
Matinee Melodias, WNBX
10.30 A.M. EST; 8.30 CT
Mildred Dilling, harpist, WEAF
Marjorie Mills, WEEL
Little Jack Little, WGY
Singles, KDKA
Mail Bag, WLW
Wildcats, WHAS
9.45 A.M. EST; 8.45 CT
Eva Taylor, Southernaires Quartet, WEAF
Hugh Freen of Flatwoods, WGY
Sews, Wandering Minstrel, WEEL
Sammy Fuller, KDKA
Walt Furness, organ, WLW
Rangers, WABC
Bob Archer, WHAS
Paul Traveller's Orchestra, WMCA
Daily Star, WNBX
10 A.M. EST; 9 CT
News and News and de Rose, WEAF WEEL Through the Hollywood Looking Glass, WJZ
Edward MacHugh, gospel singer, WJZ WBZ WSM WFLA
Radio Gang, WHAM
Organ, WHAM
News, WABC WCAU WHAS
News, Home Hour, WFG, 1 h.
Word Observed, WNBX
10.15 A.M. EST; 9.15 CT
Clara, Lu' n' Em, WEAF WEEL WGY WLW WSM
Castles of Romance, Ray Heatherton, baritone, WJZ WBZ KDKA
Through the Looking Glass, WHAM
Bill and Ginger, WABC WCAU WHAS
Town-Crier, WNBX
10.30 A.M. EST; 9.30 CT
Morning Parade, WEAF, 45 m. (WSM, 30 m.)
Piano and songs, WEEL
Shopping Bag, WGY
Cody's Children, WJZ WBZ KDKA WFLA
Stocks, news, WLW
Artist Recital, WABC WCAU WHAS
Astralian News, WNBX
10.45 A.M. EST; 9.45 CT
Good Morning Melodias, WEEL
Johnny Harro, WJZ
News and Radio Kitcher, WJZ KDKA WHAM WSM WFLA
News Musical, WBZ
Contra, WLW
Tenor, WGN
Ida Bailey Allen, WABC WCAU WHAS
Foot, WNBX
11 A.M. EST; 10 CT
Edison program, WEEL
Galaxy of Stars, WGY WGN WHAM WLW
Hazel Arth, contra, WJZ WHAM KDKA WFLA
Duke Dewey's Hickory Nut, WBZ
String Ensemble, WSM
Twining Alone, WABC
Mary Lee Taylor, WHAS
Variety, WNBX
11.15 A.M. EST; 10.15 CT
Francis Lee Barron, WEAF WEEL WGY WLW
Tony Wons, WJZ WBZ KDKA WHAM WSM WFLA
Academy of Medicine, WABC WPG
NRA Talk, WNBX
11.30 A.M. EST; 10.30 CT
Pedro Via's Orchestra, WEAF WEEL, 30 m.
Southern, WJZ
Walt's Band, WJZ WBZ WHAM WSM, 30 m. (KDKA WLW at 11:45) (WFLA, 15 m.)
Talk, KDKA
Poetic Strings, WABC WCAU WHAS WPG
30 m.
Sunshine and Shadows, WNBX
11.45 A.M. EST; 10.45 CT
Banjoliers, WGY
Farm Flashes, WFLA
News, WNBX
12 M. EST; 11 A.M. CT
Treasure Chest, Ralph Kibery, baritone, WEAF WEEL WGY WLW
Fields and Halle, WJZ WSM
Weather, Marjorie de la News, WBZ
Market Report, KDKA
Organ, WHAM
Musical, WFLA
The Voice of Experience, WABC WCAU WHAS
Home Sweet Home, WPG
Roy Aibel, WGR
Bob Fallon's Orchestra, WMCA, 30 m.

- Len Salvo, organist, WGN
Bob Neal, WNBX
12.15 P.M. EST; 11.15 A.M. CT
Morley and Sassafras, WEAF WEEL
Martha and Hal, weather, WGY
Merry Mel, WJZ WSM KDKA
News, weather, WHAM
Weather, WBZ
Livestock reports, WLW
Variety, WFLA
Mayfair Melodias, WABC WHAS WPG
"Common Sense," WOR
Dorling Sisters, WGN
12.30 P.M. EST; 11.30 A.M. CT
Merry Madcaps, Norman L. Cloutier's Orchestra, WEAF, 30 m.
Stocks, markets, WEEL
WGY Farm Program, WGY, 30 m.
Rigoletto, WMCA
National Farm and Home Hour, WJZ WBZ WHAM KDKA WLW WSM WFLA, 1 h.
"South," Ed McConnell, WABC WCAU WHAS
Fur Trappers, WCAU, 30 m.
Orchestra, WOR, 30 m.
Rigoletto, WMCA
National Farm and Home Hour, WJZ WBZ WHAM KDKA WLW WSM WFLA, 1 h.
"South," Ed McConnell, WABC WCAU WHAS
Fur Trappers, WCAU, 30 m.
Orchestra, WOR, 30 m.
Rigoletto, WMCA
Markets, organ, WGN
Glady and Bert, WNBX
12.45 P.M. EST; 11.45 A.M. CT
This and That, WEEL, 30 m.
Country Club Orchestra, WABC WCAU WPG WHAS, 30 m.
Good Health and Training, WGN
Dorling Sisters' Orchestra, WABC, 30 m.
1 P.M. EST; 12 M. CT
Markets, weather, WEAF
Southerners, WGY, 30 m.
Markets, WHAS
Hotel Morton Music, WPG, 30 m.
Health talk and music, WOR, 30 m.
Just Plain Bill, WGN
1.15 P.M. EST; 12.15 CT
Frank Daley's Orchestra, WABC, 30 m.
Johnny Vance's Orchestra, WHAS
Organ, WGN
All Club Luncheon, WMCA, 45 m.
1.30 P.M. EST; 1.30 CT
Dick Edgerly's Orchestra, WEAF, 30 m. (WGY at 1.45)
The Gingham Club, WEEL
Vocalists, WJZ
Vic and Sade, WJZ WBZ WFLA KDKA
Rochester School of the Air, WHAM
Hotel Gibson Orchestra, WLW
Markets, WSM
University of Kentucky, WHAS
Markets, Midday Service, WGN, 30 m.
Theatre Club of the Air, WOR
1.45 P.M. EST; 1.45 CT
NBC Great Composers' program, Isidor Philipp, French program, WJZ WFLA, 45 m.
N. E. Agriculture, WBZ, 30 m.
Dance Orchestra, WLW
Art Kassel's music, WABC
Edithel Nernin, WJZ
Lois Lewis, contra, WPG
Boos Valdes, WMCA
Verma Osborne, soprano, WGN
Palmer House Ensemble, WOR
2 P.M. EST; 1 CT
Stones of History, WEAF WEEL WSM, 30 m.
Paul Curtis, tenor, WGY
Texas Cowboy, WBZ, 30 m.
Ohio School of the Air, WLW, 1 h.
Ana Leaf, organist, WABC WCAU WPG, 30 m.
University of Kentucky, WHAS
Dr. A. F. Payne, WOR
Johnny Vance's Orchestra, WMCA
Ensemble, WGN
Coquit, WNBX
2.15 P.M. EST; 1.15 CT
Household Chorus, WJZ
Rochester School of the Air, WHAM
Memories, WOR
Jerry Baker, WMCA
Romance of Trent, WGN
2.30 P.M. EST; 1.30 CT
Trio Romantique, WEAF WEEL WLW WFLA
Albany on Parade, WJZ
Home Home, WJZ WHAM
Home Forum Cooking school, WBZ, 30 m.
KDKA Home Forum, KDKA, 30 m.
American School of the Air, WABC WPG WHAS, 30 m.
Concertos, WMCA, 30 m.
Century of Progress music, WGN
Texas, WNBX
2.45 P.M. EST; 1.45 CT
Gus Van, song, WEAF WGY WSM
Silver Lining, WEEL
Joy White, tenor, WJZ WHAM WSM
Chant, WFLA
Rube Appleberry, WGN
3 P.M. EST; 2 CT
Ma Perkins, WEAF WEEL WGY WLW WSM
Tommy Tucker's Orchestra, WJZ WBZ WHAM WFLA
Mansfield Parade, WABC WCAU WHAS, 30 m. (WGY, 30 m.)
Art Ensemble, WOR
Jongleurs, WGN
Knickerbocker Symphony, WMCA, 30 m.
3.15 P.M. EST; 2.15 CT
Dreams Come True, WEAF WEEL WGY WLW
Dedication of Dep't of Justice Building, WJZ WBZ WHAM WFLA, 45 m.
Vi Bradley, WOR
City of Progress, music, WGN
Smiths, WNBX
3.30 P.M. EST; 2.30 CT
Woman's Radio Review, WEAF WEEL, 30 m. (WGY at 3:45)
Drama, WGY
Dancers, WABC WPG WHAS, 30 m.
Bud Rainer, WOR
Sports Review, concert artists, WMCA, 2 h.
Home Management talk, WGN
Recording, WNBX
3.45 P.M. EST; 2.45 CT
Roy Shield's music, WJZ WBZ WHAM WFLA
State Federation Pennsylvania Women, KDKA
Business news, WLW
Tunes and Tempos, WOR
Musical, WGN, 30 m.
Poetry, WNBX
4 P.M. EST; 3 CT
Blue Room Echoes, WEAF, 30 m.
Stocks, Markets, WEEL
Bette and Bob, drama, WGY WJZ WBZ WHAM KDKA
The Life of Mary Sothor, WLW
Vilting America's Little House, WABC
Wendy Smith, WNBX
The Apple Knockers, WCAU
Dr. H. I. Strandhagen, WOR
Ludlow Program, WNBX
4.15 P.M. EST; 3.15 CT
Maine in Autumn, WEEL
Limy Bill, WGY
Dorothy Page, songs, WJZ KDKA
Edwin Otis, baritone, WDKA

News Hawk

BOAKE CARTER, formerly a newspaper man, now summarizes the news over the CBS-WABC network Mondays through Fridays at 7-45 P.M.

- Jimmy Allen, baritone, WLW
Sovietian Army Band, WABC
Devotions, WHAS
Orchestra, WOR
Organ, WGN
4.30 P.M. EST; 3.30 CT
Tommy Harris, tenor, WEAF WEEL
John Sheehan, tenor, WGY
Palmer Clark's Orchestra, WJZ WBZ
Business news, markets, KDKA
Betty and Bob, WLW
Orchestra, WGN, 30 m.
Klari La Rue's Orchestra, WOR
Stocks, WPG
Orchestra, WGN, 30 m.
Organ Reverses, WNBX
4.45 P.M. EST; 3.45 CT
Adventures on Mystery Island, WEAF WEEL
Saxas, WGY
Charlie Brewer's Orchestra, WJZ WBZ WSM
The Jacksons, WLW
"Science in Your Home," WOR
Clarence Jackson, WNBX
5 P.M. EST; 4 CT
National Congress of Parents and Teachers
Program, WEAF, 30 m.
Radio Chat, Sam Curtis, WEEL
Lang Sisters, WGY
Sauldigh Mileone, WJZ KDKA WFLA
The Mountain Views the News, WBZ
Jolly Roger, WHAM
Donald Ayer's Adventures, WLW
WFLA, 30 m.
Loisetta Lee, WABC WPG
Musical Moments, Weather, WOR
Popular Rhythms, WHAM, 30 m.
Farm Flash, WNBX
5.15 P.M. EST; 4.15 CT
Musical Turns, WEEL
Musical Program, WGY
Kidder's Klub, KDKA
Farm market news, WHAM
Uncle Wiggily, WBZ
Tim Healy, WLW
"Scapp," WABC
Ray Sears, songs, WPG
Pete Rice, WOR
5.30 P.M. EST; 4.30 CT
Eimendorf's Car, "Tales of Courage," WEAF
30 m.
"Little Women," WEEL
Uncle Wiggily, WGY
Singing Lady, WJZ WBZ WHAM KDKA
Jack Armstrong, All-American Boy, WABC
Out of the Dusk, WHAS
Church of the Adventurers, WPG
Donald Ayer, WOR
Sally's Party, WMCA, 30 m.
Virginia La Rae, soprano, WGN
6.45 P.M. EST; 4.45 CT
Buddy and Babe, WEEL
Little Orphan Annie, WJZ WBZ WHAM KDKA
Jack Armstrong, WLW
"Robbers' Cave, Jr.," WABC WCAU
Out of the Dusk, WHAS
Uncle Wiggily, WOR
Melody Moments, WGN
6 P.M. EST; 5 CT
Xavier Cugat's Orchestra, WEAF WSM, 30 m.
The Evening Tattler, WEEL, 30 m.
Jimmy Miller's Adventure, WJZ WBZ
William Lundell interview, WJZ
Sports, WHAM
Dan and Sylvia, KDKA
String Trio, WLW
Buck Rogers, WABC WCAU
Sanders Sisters, WHAS
Hoe Day, WOR, 30 m.
Dick Mansfield's Orchestra, WMCA
WGN Orchestra, WGN, 30 m.
6.15 P.M. EST; 5.15 CT
Col. Jim Healy, WGY
Tom Coslick's music, WJZ
Republican Program, WBZ
Comedy Stars, WHAM
Joe Emerson, WLW
Markets, news, WSM
Bobby Benson and Sunny Jim, WABC
Ted Saters, WCAU, 30 m.
"Slippy," WHAS
Investors Service, Charley Eckel's Orchestra, WMCA, 30 m.
6.30 P.M. EST; 5.30 CT
News, Mary Small, WEAF
Rhyming Reporter, news, Golden Moments, WEEL, WNBX
News, Brewster, WGY
News and Armand Gard, baritone, WJZ
Weather, WBZ
Eddie Donley, football reporter, WABC
WCAU
Pleasure Cruise, WHAM
Bob Newhall, WLW
Freddy Rose, organ, WSM
Firewise Revelries, WHAS
Round up, WMCA
Singshe Lady, WGN

- 6.45 P.M. EST; 5.45 CT
Billy Batchelor, Raymond Knight, WEAF WEEL WGY WHAM
Lowell Thomas, "Today's News," WJZ WBZ WHAM KDKA WFLA
Beauty Program, WABC (news, 6:55)
Little Orphan Annie, WSM WFLA
Comedy Stars, WCAU
Pauline Alpert, pianist, WOR
Sports, WMCA
Little Orphan Annie, WGN
7 P.M. EST; 6 CT
Jack and Loreta Clements, WEAF
Neal O'Hara, football, WJZ
Rangers, WGY
Andy's WJZ WBZ WHAM KDKA
WRAL WLW WFLA
"MYST and MARGE," WABC WCAU
Weather Report, the Cross Roads, WHAS
Paul Barry, WMCA
Jimmy Allan, WGN
7.15 P.M. EST; 6.15 CT
Gene and Glenn, WEAF WEEL WGY WFLA
Gene and Melody, WJZ WBZ WSM, 30 m.
Lois Miller and Reed Kennedy, KDKA, 30 m.
Just Plain Bill, WABC
Lum and Abner, WLW
Comedy Stars, WOR
Red Grange Football Forecasts, WHAS
Silver Voiced Lovers, WMCA
WGN Orchestra, WGN
7.30 P.M. EST; 6.30 CT
Minstrel Show, The Diale Dandies with Al Bernard, Paul Dumont, WEAF WGY
After Dinner Review, WEEL, 30 m.
Southwind, WLW
Whispering Jack Smith, WABC WCAU
Buck Rogers, WHAS
The O'Neils, WOR
Helen Stephens, WJZ
Sports Reporter, WGN
7.45 P.M. EST; 6.45 CT
Frank Buck, WEAF WGY WSM
Big Freddie Miller, WEEL
Shirley Howard, song, WJZ WFLA KDKA
Lois and Bateson, WJZ
On Wings of Song, WHAM, 30 m.
Unbroken melodies, WLW
Boake Carter, WABC WCAU WHAS
After Dinner Music, WOR
Strickland Gilliland, news commentator, WCAU
Ensemble, WGN
8 P.M. EST; 7 CT
Rudy Vallee, Connecticut Yankees, guest performers, WEAF WEEL WGY WLW WSM WFLA, 1 h.
O. Henry dramatization, WJZ KDKA, 30 m.
Rangers, WBZ
Easy Aces, WABC
The Tell-Tales, WPG
Billy Hays Orchestra, WCAU WPG WHAS
Kay Kayser's Orchestra, WGN
Talk, WOR
Jean, Judy and Judy, WMCA
8.15 P.M. EST; 7.15 CT
"Underneath Your Balcony," WBZ
Adventures of Jimmy Allen, WHAM
Col. Henry C. Breckinridge, WABC WPG
Hymn Sing, WHAS
Lila Stephenson's Orchestra, Philip James conducting, WOR
5-Star Final, WABC
Ensemble, WGN
8.30 P.M. EST; 7.30 CT
Charles Sears and Ruth Lyon, songs, WJZ WHAM, 30 m. (KDKA, 15 m.)
"Massachusetts Bay Colony," WBZ
The Forum of Liberty, WABC WCAU WHAS, 30 m.
The Voice of the State Police, WPG
Ired and Al, WCAU
Bridge talk, WGN
8.45 P.M. EST; 7.45 CT
Edmund Roucher, basso, WBZ
Al and Pete, KDKA
George Reid, WMCA
Nick Nickerson, songs, WPG
Kay Thompson, WMCA
Bob Paselli's Orchestra, WGN
9 P.M. EST; 8 CT
Captain Henry's Show Boat, Muriel Wilson, Conrad Thibault, drama, WEAF WEEL WGY WSM WFLA, 1 h.
Death Valley, day, WJZ, Tim Frawley, Joseph Bell, WJZ WBZ WHAM WLW, 30 m.
Glen Gray's Orchestra, Annette Hanshaw, Walter O'Keefe, WABC WCAU WHAS WLW, 30 m.
Larry Taylor, tenor, WOR
Mauro O'Connell, WMCA, 30 m.
Lawrence Salerno's music, WGN, 30 m.
9.30 P.M. EST; 8.30 CT
Musical Keys, WJZ WBZ KDKA WHAM
WBAL, 30 m.
Unsolved Mysteries, WLW, 30 m.
Fred Waring's Pennsylvanians, WABC WCAU
Lum and Abner, WOR
Penhouse Serenade, WMCA, 30 m.
Lum and Abner, WGN
9.45 P.M. EST; 8.45 CT
Al and Lee Reiser, WOR, 30 m.
Wayne King's music, WGN
10 P.M. EST; 9 CT
Paul Whiteman's Music Hall, WEAF WEEL WGY WLW WSM WFLA, 1 h.
Roads that Wind, WJZ KDKA, 30 m.
NBC Artists' Review, WBZ, 30 m.
Studio program, WSM
"Four-Five Minutes in Hollywood," WAM WCAU, 45 m.

Police Radio
Station Metres Location
WPVF 121.5 Pawtucket, R. I.
WPFM 121.5 Woonsocket, R. I.
WPRD 122.05 Rochester, N. Y.
WPEA 122.05 Syracuse, N. Y.
WPEF 122.4 Bronx, N. Y.
WPEE 122.4 Brooklyn, N. Y.
WPEG 122.4 New York City
WMJ 123.8 Buffalo, N. Y.
WPGG 124.37 Albany, N. Y.
WPGV 170.00 Boston, Mass.
WPED 175.23 Arlington, Mass.
WPEI 175.23 East Providence, R. I.
WPER 175.23 Newton, Mass.
WPGF 175.23 Providence, R. I.
WMP 190.66 Framingham, Mass.
WPEW 190.66 Northampton, Mass.
WPEU 190.66 Bridgewater, Mass.
WPGC 195.57 Albany, N. Y.
WEGY 650.00 Boston, Mass. (Fire)
Organ Recital, WFG, 30 m.
Studio Orchestra, WHAS, 30 m.
"Blood and Thunder," WMCA, 30 m. News, WGN
10.15 P.M. EST; 9.15 CT
Current Events, WOR
WGN Orchestra, WGN
10.30 P.M. EST; 9.30 CT
Economics in a Changing Social Order, WJZ
WBZ KDKA WHAM, 30 m.
Sage Hamilton, KDKA
Kevell, WSM, 30 m.
Louisville Program, WHAS
Wandering Post, WJZ
Vaughn de Leath, WOR, 30 m.
Gene Kardos's Orchestra, WMCA WJZ, 30 m.
10.45 P.M. EST; 9.45 CT
"Pats" Waller, WABC WPG
Billy Hays' Orchestra, WCAU
Dress Ship, WGN
11 P.M. EST; 10 CT
Jack Berger's music, WEAF
Ma Fraser's Bounding Boats, WJZ
Weather News, WEEL
Dee Dee's Orchestra, WJZ WHAM WBAL WFLA, 30 m.
Weather, sports review, WBZ
Vinny, WHAM
Lionel Richie's Orchestra, KDKA, 30 m.
News, Los Amigos, WLW, 30 m.
Amos 'n' Andy, WSM
Zero Van, WABC WPG WCAU
Mirt and Marge, WHAS
Weather, Mountebanks, WOR, 30 m.
Voice of Romance, WMCA
Jase, WGN
11.15 P.M. EST; 10.15 CT
Bouras Mineevitch's Harmonica Rascals, WEAF WEEL
Charles Boulanger's Orchestra, WJZ
Charles Boulanger's Orchestra, WMCA
Gene and Glenn, WSM
Joy Ripes' Orchestra, WBZ
Leslie Jack Little's Orchestra, WABC WPG, 45 m. (WHAS, 15 m.)
Jan Savin's Orchestra, WCAU
Leon Frantz's Orchestra, WMCA
Dream Ship, WGN
11.30 P.M. EST; 10.30 CT
Dorsey Brothers' Orchestra, WEAF WEEL
WGY WSM, 50 m.
John Goldberg's Orchestra, WJZ WBZ WHAM, 30 m.
Charlie Davis' Orchestra, WJZ WBZ WHAM, 30 m.
400 Club, KDKA
Castle Farm Orchestra, WLW, 30 m.
Organ, WHAS
Walt Osborne's Orchestra, WOR, 30 m.
Blue Rhythm Band, WMCA, 30 m.
Wayne King's Orchestra, WGN
11.45 P.M. EST; 10.45 CT
Anson Weeks' Orchestra, WGN, 30 m.
12 M. EST; 11 P.M. CT
Enrico Madriguer's Orchestra, WEAF WEEL WSM WGY, 30 m.
George Olsen's Orchestra, WJZ WBZ WHAM, 30 m.
Dance orchestra, WLW, 30 m.
Ray Nichols' Orchestra, WABC WCAU WFLA, 30 m.
Jimmy Joy's Orchestra, WHAS, 30 m.
Florence Richardson's Orchestra, WOR, 30 m.
Day's End, WMCA, 30 m.
Streets of Paris Music, WGN
12.15 A.M. EST; 11.15 P.M. CT
Ted Wrems' Orchestra, WGN
12.30 A.M. EST; 11.30 P.M. CT
Buddy Rogers' Orchestra, WEAF WEEL WGY, 30 m.
Dance in Twin Cities, WJZ WBZ WHAM KDKA WSM, 30 m.
Hollywood on the Air, WLW, 30 m.
Enoch Light's Orchestra, WABC WHAS, 30 m.
Dick Mantfield's music, WMCA, 30 m.
Earl Burnett's Orchestra, WGN, 30 m.
1.30 A.M. EST; 12.30 P.M. CT
Moon River, WLW, 30 m.
Buddy Welcomes Orchestra, WABC
Willie Bryson's music, WMCA, 30 m.
1.40 A.M. EST; 12.30 CT
Teddy Hill's Orchestra, WMCA, 30 m.

POWERS' Asthma Relief
has been a boon to the afflicted for over 50 years.
6 oz. 60c - 18 oz. \$1.20.
Buy at Your Local Druggist's or Write Direct
E. C. POWERS COMPANY
Box 62, Dorchester Center Station, Boston

Happy Medium Is Struck In Music Of The NBC Garden Concerts

Swarthout Is Star Of The Series

On the theory that "some like it hot, some like it cold but most like it in between"—and it's music that's under discussion—is the program of the Garden Concerts, heard Mondays over the WEAJ networks at 8.30 P. M., built.

There's La Belle SWARTHOUT, the vocal star, who has sung in church choirs and from the stage of the Met. And there's WILLIAM DALY, who has conducted everything from grand opera to Broadway musicals, with his symphonic string orchestra.

But from these and the assisting artists come neither the profundities of the musical classicists nor the tom tom rhythm of modern jazz. Instead they pour into the microphones the lilting melodies, past and present, that are characterized as "good" music. And apparently radio listeners want good music of this kind for the program is unquestionably popular.

"Good" Music

A glance over recent programs perhaps gives a better idea of what is meant by good music. We find listed: "Gianina Mia," from FRIML'S "Firefly"; "Allah's Holiday," from "Katinka"; "Beautiful Isle of Somewhere," "The Japanese Sandman," "I'll Take You Home Again, Kathleen," "Last Rose of Summer" but that gives an adequate conception of what those back of the program are trying to give in the way of musical entertainment.

At present in the musical cast besides Miss SWARTHOUT and Mr. DALY are FRANK CHAPMAN, operatic baritone, who is also the husband of the leading lady; FRED HUFFSMITH, tenor, and MARGARET SPEAKS, soprano.

In consequence of this sparkling array of talent, the studio of the National Broadcasting Company, where the program is presented, is always filled to overflowing every Monday night at 8.30 when the announcer pushes the button that connects with the WEAJ network.

If you have any preconceived ideas about operatic mezzo-sopranos; if you think that a singer in order to make a success at the Metropolitan must be both fat and not any too good looking, then you have a surprise due. Because the star of the program, who has sung both for the Chicago Opera Company and the Metropolitan, is not only slim but attractive as well.

The Leading Lady

If necessary she could grace the chorus of a musical comedy both figuratively and vocally. No producer would ever put her in the back row.

In fact, Miss SWARTHOUT has most decided ideas about keeping in condition.

"Show me a singer who is fat," she says, "and I will show you a sacrifice to self indulgence. I believe fat is a sign of laziness."

Furthermore, she practices what she preaches. For although she is naturally slender, she trains continually with a rowing ma-

A Prominent Musical Family



GLADYS SWARTHOUT, mezzo-soprano of the Metropolitan Opera Company, poses with her husband, FRANK CHAPMAN, an operatic singer.

chine, walks and takes other exercise and dines well but also wisely.

The story of her rise to musical fame is an oft-repeated tale. Talent and a voice coupled with determination, no fear of hard work and the refusal to become discouraged have taken her far along the road she has chosen to travel.

Her Rise to Fame

GLADYS SWARTHOUT was born in a little town in Missouri. Early her voice began to mature — so much so that when she was only 13, she applied for the position of soloist in a Kansas City church and got it.

Gershwin Did It



FRANK DALY, formerly editor of *Everybody's Magazine*, now leader of his own orchestra for several radio shows, as his friend GEORGE GERSHWIN sees him.

With the concentration of a real artist, she studied and practiced. Finally came her first important musical engagement. She became soloist with the Minneapolis Symphony Orchestra.

She had given little deep thought and listened passively when her friends urged her to consider the idea. Finally these same friends took matters into their own hands and arranged an audition with the heads of the Chicago Civic Opera Company.

She sang an operatic aria she had learned for her concert repertory. Several days later she was amazed with a contract for the following season. Working like a slave, she learned 23 roles in a few months and then made her debut. She was an immediate success and four seasons ago the Metropolitan opened its doors to her.

The Maestro

As spectacular in a different way is the career of WILLIAM DALY, who conducts the orchestra on the program. Shortly after he was graduated from Harvard, he became editor of the old *Everybody's Magazine*.

Before entering the university, however, he had studied music for years. This did not prevent him from becoming a good managing editor. In an adjoining office was a chap named SINGLAIR LEWIS, who was editing another magazine, *Adventure*.

DALY insists that he "discovered" such writers as PETER B. KYNE and EDNA FERBER. Five years of editorial work passed and then friends induced him to return to the world of music.

He was offered the position of

Conductor Used To Be An Editor

Company but the war intervened and he returned to New York as a composer.

The conductor of a Broadway show died and Daly was offered the position. For more than 12 years he conducted for such producers as DILLINGHAM, ERLANGER, COHAN and GEORGE WHITE.

He became GEORGE GERSHWIN'S favorite with the baton.

Radio came into being and DALY turned to the new medium. Through his friend, Dr. WALTER DAMROSCH, he became connected with the National Broadcasting Company, and in that capacity has accompanied such noted figures as JOHN McCORMACK, RICHARD CROOKS and LAWRENCE TIBBETT.

Jagel Sings With CBS Orchestra

FREDERICK JAGEL, tenor of the Metropolitan Opera Company, will be guest soloist with JOSEF PASTERNAK'S Orchestra Monday, October 22, from 8.30 to 9 P. M., on the CBS-WABC network.

JAGEL'S program includes the great tenor aria from "Pagliacci," "The Touch of Your Hand," from JEROME KERN'S "ROBERTA," and a song from ROMBERG'S "New Moon."

The orchestral portion of the program includes a dance from "The Bartered Bride," by SMETANA, and POLLACK'S "Two Cigarettes in the Dark."

Short Wave Directory

Station	Metres	Location	Time (E.S.T.)
GSH	15.97	Daventry, England	6-8.30 A. M.
FYA	19.68	Pontoise, France	7.30 to 11.00 A. M.
DJB	19.73	Zeesen, Germany	8 to 11.30 A. M.
GSF	19.82	Daventry, England	8.45 to 11 A. M.
HVJ	19.84	Vatican City, Rome	9.45 to 11 A. M. (Sat.)
RNE	25.00	Moscow, U. S. S. R.	6-7, 10-11 A. M. (Sun.)
FYA	25.20	Pontoise, France	11.15 A. M. to 6 P. M.
GSE	25.28	Daventry, England	9 A. M.-12.45 P. M.
DJD	25.51	Zeesen, Germany	5.30 to 10.45 P. M.
GSD	25.53	Daventry, England	1 to 5.30; 6 to 7 P. M.
FYA	25.63	Pontoise, France	6.15 to 9 P. M.; 10 P. M. to 12 Midnight
LSX	28.98	Buenos Aires, Byrd relays	8-10 P. M., Tues., Wed.
EAQ	30.40	Madrid, Spain	5.15-7 P. M. (Sat. 12-2)
CTIAA	31.23	Lisbon, Portugal	3.50-6 P. M., Tues., Fri.
HBL	31.27	Geneva, Switzerland	5.50-6.15 P. M., Sat.
VK2ME	31.29	Sydney, Australia	12 Noon to 10 A. M., Sun.
VK2LR	31.30	Melbourne, Australia	9 to 8 A. M.
DJA	31.38	Zeesen, Germany	5.15 to 9.15 P. M.
VK3ME	31.55	Melbourne, Australia	5 to 6.30 A. M., Sat.; 5 to 7 A. M., Wed.
GSB	31.55	Daventry, England	1-5.30 P. M.
OA44C	38.36	Lima, Peru	9 to 11 P.M.
HBP	38.47	Geneva, Switzerland	5.30 to 6.15 P. M., Sat.
HJ1ABD	40.53	Bogota, Colombia	6.30 to 11 P. M.
HC2RL	45.00	Guayaquil, Ecuador	5.3 to 8 P. M., Sun.; 9.15 to 11.45 P. M., Tues.
PRADO	45.31	Riobamba, Ecuador	9 to 11.40 P. M., Thurs.
HJ1ABB	46.51	Barranquilla, Colombia	7-10 P. M.
YV3RC	48.78	Caracas, Venezuela Army Aircraft	4.30 to 9.30 P. M. Evening—irregularly
YV2RC	49.08	Caracas, Venezuela	5.15 to 10 P. M.
YV5RMO	49.39	Maracaibo, Venezuela	6.30-10 P. M.
CP5	49.34	La Paz, Bolivia	6.30-10 P. M., irreg.
HIX	49.50	Santo Domingo	8.10-10.10, Tues., Fri.
DJC	49.83	Zeesen, Germany	5.30 to 10.45 P. M.
GSA	49.59	Daventry, England	7 to 8 P. M.
HJ1ABG	49.75	Barranquilla, Colombia	6.15 to 10 P. M.
XBT	49.87	Mexico City	6 P. M. to 1 A. M.
COC	49.90	Havana, Cuba	5 to 7 P. M.
RV59	50.00	Moscow, U. S. S. R.	2-6 P. M.
HJ4ABA	51.49	Colombia, S. A.	1-2 P. M.
HC3B	73.00	Quito, Ecuador	7.30-9.45 P. M.
	67.87 to 73.17	All Ships	Heard irregularly
KFZ	45.34, 31.57, 25.36; 23.19, 25, 17, 14 and 33	Byrd Expedition at Little America	

Note: All times given are week-day schedules, unless indicated otherwise. The stations listed are regular broadcasters at the times indicated. Other stations which you may hear or which are used for international telephone have been purposely omitted.

Reflections

By Diana Herbert

The MICROPHONE'S Fashion Observer

THE DECORATION of a room is closely allied in the feminine mind with personal adornment, and is almost as absorbing a subject. Although we cannot (and would not if we could) change our rooms as frequently as we do our wardrobes, nevertheless it is interesting and helpful with each new season to take stock of the incoming fashions in interior decorating.

Of course, no reasonable person would attempt to follow all! But a knowledge of styles and trends will enable her to avoid that horror of horrors, a truly dowdy room. And a judicious application of new ideas will add LIFE, without which the most perfectly decorated room is a failure.

"MODERN" furniture and decoration are increasingly popular. Not always (as in their beginning) isolated, but often combined with other periods with which they harmonize. Directoire and Modern; Regency and Modern; Chinese Chippendale and Modern; to mention only a few of the successful combinations.

LESS usual is the juxtaposition of early Spanish and Modern. JESSICA DRAGONETTE has discovered the underlying affinity of these two periods; their preference for plain wall spaces, large areas, beautiful woods and sturdy furniture. The result is distinctive, comfortable and charming.

QUILTED CHINTZ, plain or patterned, is very much in vogue. It is a pleasant change as a chair covering and is also used for curtains, bed-spreads, dressing-table skirts, et cetera.

WHITE is still important. JOY LYNN chooses a white leather high-backed chair to match the Venetian blinds of her brown-walled sitting-room.

DARK BROWN AND YELLOW are chic in a new wall-paper with a deep yellow background and small brown sail-boats. Another recent paper is a divine shade of red, printed with silver shields and swords. This design also exists in other colors with gold or silver.

There is almost as much metal on the new walls as on our Winter dresses!

This and That

(Continued from Page 1)

dience as distinct from a concert-hall audience.

Thus an excellent violinist such as ALBERT SPALDING devoted his series of programs to mediocre music.

Or the able mezzo-soprano, GLADYS SWARTHOUT, chooses to sing the Czardas from "Der Fledermaus" differently from the way it is written, letting the orchestra play alone in the middle of the song when the score calls for brilliant singing.

On the concert stage, Miss SWARTHOUT would not for a moment consider doing such a thing. On the radio, yes.

Second-best though it be, the radio musical program is of great value. First, for the obvious reason that it brings to thousands of music-lovers who are shut-ins or far away from concert-halls, music they could not otherwise hear.

Secondly, it makes available fine music to a greater extent than ever has been possible before. Through the medium of radio thousands of persons are becoming acquainted for the first time with great musical expression.

That is a notable achievement.

Virtuosity



JASCHA HEIFETZ, brilliant violinist, was heard last Sunday as soloist with the Detroit Orchestra over the CBS network and soon will appear in the same capacity with the NBC Orchestra on one of the Sunday concerts at 8 P. M. on the WJZ chain.

Q. and also A.

Q. Does EDWIN C. HILL employ ghost writers for his many writing ventures?

L. M. G., Portland, Me. A. EDWIN C. HILL has a staff of employees, but everything that is written under his name, including his radio script, is written by him.

Q. Will you please tell me what has become of the Socony programs?

R. N. A., Sauntertown, R. I. A. The Soconyland Sketches are on WNAC at 7 o'clock every Saturday evening.

Q. Will you please settle a controversy by telling me how long GUY LOMBARDO has had an orchestra, and which is his youngest brother?

P. W. D., Youngstown, Pa. A. His orchestra has been organized for the past 10 years. LOMBARDO'S youngest brother is LEBERT, saxophonist.

WLLH In Air Debut At Lowell

The first of two new radio stations to appear in New England this Fall made its debut on the air at 6 P. M. on Wednesday, October 10.

The new station, WLLH, affiliated with Yankee Network, is located at Rex Center, the community amusement center of Lowell, Massachusetts.

The station is owned by A. F. MOFFATT, who also owns WMAS in Springfield, and is managed by ROBERT F. DONAHUE, former publicity director for the Yankee Network.

For the opening night, programs of music and speech in the form of a salute to the Yankee Network were broadcast. The musical highlight was a concert by the Lowell Philharmonic Orchestra.

Numerous political notables congratulated the management of the new station. EDITH NOURSE ROGERS, Massachusetts Congresswoman, was the first speaker as well as being the first woman to talk over the microphones of WLLH. She was followed by the Mayor of Lowell, Lawrence and Haverhill, the most important cities that the new station is to serve.

The studios of WLLH are modernistically decorated in blue and silver. An outstanding feature of the studios is the high power lights which are automatically turned on when the microphone is switched to "hot."

German Short Wave Stations Cover World

(Continued from Page 3)

Then at 5.30 each evening, the Germans put on their second schedule for trans-Atlantic fans, radiated by 25-meter DJD and 49-

meter DJC, the latter generally proving the best station after nightfall. The evening transmission closes at 10.45 P. M.—4.45 A. M. next day along the Rhine.

The stations open their evening session with announcements in German, English and Spanish. There follows a German folk song and then a review of the night's broadcasting activities in the same languages.

Probably most interesting to the American set-owners are the nightly news bulletins given in English at 8.15 P. M., EST. News in German is given at 5.45 and 9 P.M.

A Memory Course

PLEASE REMIND ME WHEN I'M THROUGH

HER MEMORY IS SO POOR SHE EVEN FORGETS TO CASH HER SALARY



THE first time BESS K. JOHNSON, of "Today's Children," was given a part in a dramatic radio production she memorized the entire script as she had during her years on the stage. So accustomed was she to learning parts, it took only a few hours time. Today, after four years on the air, she can't even memorize a poem, she says.

Nimblewits

By Everett Smith

"Wit Teasers" on Sunday at 11.30 A. M. from WBZ

NO. 1. (No time limit) This cryptic message comes from *The Cryptogram*, official publication of the American Cryptogram Association, and gives a hint of "The Bright Side":

YXCDHE XMXGK YOPFT
FOV WH BCXGX DA P
ADOMXG ODEDEN; PORPKA
OVVT UVG DB RCXE XMXG
KVVW PGX YOWX.

Educators Are Pledged More Time

(Continued from Page 1)

MAN WARD, president of the National Association of Broadcasters.

H. K. CARPENTER, general manager of Station WHK, Cleveland, and LEO J. FITZPATRICK, vice president and general manager of Station WJR.

Prof. WALDO ABBOT, director of the broadcasting service of the University of Michigan, said success had been achieved in the extension course broadcasts and paid tribute to the co-operation of station WJR.

LOUCKS said:

"We will show that any change, however slight, in the present system is undesirable from the standpoint of the public and disastrous from the standpoint of broadcasters and the vast majority of all religious, educational, charitable, civic and similar organizations."

BELLOWS said:

"Answering specifically the charges of witnesses who appeared for certain educational groups that a minimum of such programs are broadcast over commercial stations and that they are relegated to undesirable hours, the record shows that 16.7 per cent of the broadcasting hours of the stations surveyed are devoted to such programs.

"Of the total evening hours of these stations the analysis shows that 13.3 per cent were devoted to such programs."

WARD testified that at the next meeting of the association's board of directors in November he will recommend appointment of a committee of broadcasters to endeavor to work out a solution mutually satisfactory to all groups.



EVERETT SMITH

NO. 2. (1 minute) October was the eighth month of the Roman year. The Greek prefix "Octo," meaning eight, forms the beginning of a number of words. How many can you think of in one minute, each of which begins with the letters Octo—?

NO. 3. (2 minutes) The top of a castle, from the ground, is 45 yards high, and surrounded with a ditch 60 yards broad; what length must a ladder be to reach from the outside of the ditch to the top of the castle?

NO. 4. (3 minutes) Have you, while playing cards, ever wished that your JACK was a KING? Changing only one letter at a time, and forming a proper word each time, change JACK to KING in five moves.

NO. 5. (2 minutes) Another Rebus from *The Enigma*, publication of the National Puzzlers' League. The letters represent a 10-letter word. The lines below give you a clue:

G G G
Frowning glances
Are excellent chances.

Answers to Last Week's Nimblewits

NO. 1. Don't be content with doing only your duty; do more than your duty. It's the horse who finishes a neck ahead who wins the race.

NO. 2. Cadet, Carat, Carat, Carat, Cheat, Chest, Cheat, Cleft, Coast, Court, Craft, etc.

NO. 3. Add 5, 5 and 5/5. These added together equal 6 1/2.

NO. 4. Walk, Talk, Tale, Tare, Tart, Tort, Toot, Trot.

NO. 5. Extra CT—Extract.

Mary Eastman Is Guest

MARY EASTMAN, soprano, and EVAN EVANS, tenor, are to be guests with ISHAM JONES' Orchestra on the CBS-WABC program Tuesday, October 23, from 9.30 to 10 P. M.

STATION DIRECTORY

Page 4

After the Theatre
Barbecued Chicken

In a quiet nook at

SLADES BARBECUE

958 Tremont St.—967 Tremont St.

435 Columbus Ave.

BOSTON, MASS.

Open All Night

"The Shadow" Confesses

By June Aulick

"PREDESTINATION," began Frank Readick as he folded a long black cape over his shoulders, "is the inevitable penalty of transgression—Nemesis." The dark-haired, keen-eyed young man, who as "The Shadow" in the radio program of the same name has become the exponent of chilling, hair-raising adventures, adjusted his mask and posed for the photographer. Soon he would be enacting the nerve-straining role which he calmly discussed while the camera clicked.

"That definition from the Encyclopedia Britannica serves nicely to express the theme behind 'The Shadow' dramatizations we give over the WABC-Columbia network Monday and Wednesday at 6.30 P. M.," he said.

"My role as the mysterious, omniscient Shadow really has little to do with the progress of the plots. But the part is important in creating atmosphere, and in emphasizing the underlying theory that justice is eventually meted out in some form or another—that criminals never really escape their punishment.

"The symbol of a shadow was chosen for the personification of Fate or Destiny—or whatever you want to call it—because criminals are endlessly haunted by the shadows of their own misdeeds.

"The ominous line: 'The Shadow Knows,' which I repeat during the sketches, is intended merely to heighten the effect of the inescapable destiny awaiting culprits. Yet the words don't destroy the drama's suspense. It's the manner in which the inevitable chain of circumstances is linked together to bring the final reckoning, that holds our listeners.

"I try to make 'The Shadow's' sinister laugh at the opening of the program suggestive of the furtive actions about to be dramatized. That sets the keynote and the play is then ready to go on."

Many hours are spent by Bill Sweets and Clark Andrews in going over the scripts, casting and producing "The Shadow." After the script is selected they sit up until far into the night, writing the lines to be spoken by Readick. These must be appropriate to the situation so that the entire show will not seem fantastic and incredible. An effort is made to lend as much realism to each drama

as possible. So "The Shadow's" voice must intensify, rather than retard the story, and yet add the fascinating element of the supernatural.

The cast is chosen from a list of prominent Broadway actors. Frequently it takes two or three days to find the proper person to fill a role. In one of the recent shows there was a character known as "Red." Everett Sloane, who has appeared in many stage productions, and who has red hair, was chosen for the part. Since this is one of the broadcasts which visitors are not permitted to attend,

such minute details as the color of a person's hair are not considered important. But from the point of view of voice and acting ability, the applicant must qualify perfectly.

The trapping of major criminals, murderers, kidnapers and high-powered thieves, usually forms the basis for the episodes. These are given in their entirety, complete on each of these 25-minute programs, and not in the form of a continued story. The aim is to offer as much variety as possible, hence every type of character and locale is employed. The destiny of those involved is symbolized by the voice of Readick.

Throughout the ages people have held various conceptions of predestination. A powerful influence in Scandinavian religion was exercised by the belief in Normir, or Fates, usually thought of as three sisters. In Brahmic thought, Karma personified the consequences of action. Readick's view of destiny comes close to the one quoted from the Encyclopedia:

"I believe each one creates his own destiny. We get exactly what we deserve, what we go after and work for. Punishment eventually comes to the criminal in one form or another, perhaps not always through the law. Suffering for cruel deeds may come from the criminal's own conscience, functioning belatedly, but surely. Sleepless nights may prove as torturing as a third degree."

From a review of Readick's life, it would appear that the background of his parents, as well as his own choice, had much to do with shaping his career. If Frank's father and mother had not been theatrical folk, Frank might never have seen the bright lights of Broadway,



THE MAN behind the mask is FRANK READICK, whose deep accents may have given you the jitters as you listened to him. He is "The Shadow" and is heard on the programs of that name broadcast over the WABC-Columbia network Monday and Wednesday at 6.30 P. M.



MICROPHONE

THE ORIGINAL U.S. RADIO NEWS PAPER'S

Programs For Week Ending October 26

5¢
Radio Weekly



John McCormack, Irish Tenor