

Long Wave
Short Wave
News Spots
& Pictures

MICROPHONE

THE ORIGINAL U.S. RADIO NEWSPAPER

5
Cents
the Copy
\$1.50 Year

Volume III, No. 22

WEEK BEGINNING JUNE 2, 1934

Published Weekly

This and That

By Morris Hastings

GIVEN intelligent material and intelligent, experienced players, drama on the radio can be decidedly attractive. Endow it with something less and it's... well, just too bad.

A few Wednesdays ago an enlightened sponsor offered a dramatization of KIPLING'S "Without Benefit of Clergy," with LESLIE HOWARD and DOROTHY BURGESS playing the principal roles.

The result was a fine, sensitive performance, a high-water mark in the broadcasting of dramas. One scarcely missed the visible setting the theatre can provide and the intangible intimacy experienced by actually seeing the actors before him.

It was more like hearing a story read aloud by people with cultivated voices and considerable powers of expression. And that, it seems to me, is an excellent quality for dramas on the radio.

Never mind the frantic action and sometimes horrid sound effects. Leave those to the stage and movies. They order those things better. Radio must develop a technique of its own.

The Crime Clues drama I listened to the same evening would have been more effective, I really believe, if one person had read the story, rather than having a slew of actors taking part in it.

The story itself was a good mystery drama; but so many actors—and some of them obvious-

(Continued on Page 7)

NBC Operates 37 Short Wave Stations Not Heard Generally by the Public

Press Scores Radio Fire Report

Broadcasting from Chicago Is Ridiculed

The newspaper press renews its attack upon radio news broadcasting. The subject for the latest outburst is the reporting by radio of the recent Chicago fire.

The *Chicago Daily News*, summarizing the radio report of the fire under the title of "Radio Rumors," said in part:

"It would be ungenerous, perhaps, to disparage the valiant efforts of the radio announcers who tried to tell the world about the Chicago fire. They told the world a lot of things that weren't so, and succeeded in getting many people vastly excited.

"There were thrills enough in Saturday night's big fire if one stuck to the bare facts. But radio has its own methods. The radio boys, untrained in news gathering, undisciplined in the value of accuracy, were doing their best to live up to the young tradition of their craft.

"If radio, on such occasions, is to be more than a useful transmitter of official messages, is to assume the function of broadcasting

(Continued on Page 7)

Supervises NBC Short Waves



O. B. HANSON, chief engineer for the National Broadcasting Company, discusses the use of short wave stations in the accompanying article.

Are Used for Experiments In Programs

By O. B. HANSON
Chief Engineer of NBC

While the general public probably is much more "short-wave conscious" at the present time than ever before, there is still a vast activity going on outside the broadcast band with which very few persons not connected with radio are familiar.

The National Broadcasting Company operates 37 different short-wave transmitters in addition to its regular broadcasting stations, and these short-waves are never heard by the general listening public.

The stations below the broadcast band are used for various purposes, some of a program nature and others which are at the present time entirely experimental.

The call letters W3XAL, Bound Brook, N. J., and W9XF, Chicago, mean nothing to listeners in the United States but they are famous around the world.

They are powerful short-wave transmitters used to send NBC programs to foreign countries, and as a result of them, fan mail comes to Radio City from South America, South Africa, Australia and other distant points.

Then the NBC operates four "broadcast pick-up transmitters"

(Continued on Page 15)

Contents

| | |
|---|---------|
| News Flashes Box | Page 1 |
| O. B. HANSON, chief engineer for NBC, discusses the use made of short wave stations | Page 1 |
| <i>This and That</i> | |
| by MORRIS HASTINGS | Page 1 |
| CLARA, LU 'N' EM, as they are in private life | Page 3 |
| Drama, as produced by "radio's WALT DISNEY" | Page 3 |
| Station Directory | Page 4 |
| Educational Box | Page 4 |
| Radio Lane | |
| by JIMMY J. LIONARD | Page 5 |
| Studiosity by LES TROY | Page 5 |
| Editorials | Page 5 |
| Dr. WALTER DAMROSCH and his radio programs | Page 7 |
| WEE! Page | Page 11 |
| Police Radio Box | Page 12 |
| Short Wave Directory | Page 13 |
| A Mad Trio | Page 13 |
| Reflections | |
| by DIANA HERBERT | Page 15 |
| Nimblebits | |
| by EVERETT SMITH | Page 15 |
| Q. and also A. | Page 15 |

'Red Poppy' Broadcast

ALEXANDER TROYANOVSKY, ambassador to the United States from Soviet Russia, will address the radio audience of the NBC-WJZ network Tuesday, June 12, during a program which starts at 10 P. M.

The occasion for the speech is the broadcast of the second half of GIHERE'S ballet-music, "The Red Poppy."

It will be performed by the N B C Symphony Orchestra, FRANK BLACK directing.

The first half of the work will be given its American premiere by the same orchestra and conductor next Tuesday evening from 10 to 11.

The music has been enormously successful in Russia. FRANK BLACK obtained the rights of performance in this country from GIHERE himself to whom he sent an emissary last Summer.

Performance has been delayed as only a piano score was accessible until a month ago, when the full orchestral score was received.

News Flashes

A.M.
7.15 WNAC
8.00 WAAB WEAN WORC WMAS
8.15 WFA WNBH
10.45 WBEZ
10.50 WFAF Network (Tues., Thurs. 10.45)
10.45 WJZ Network
P.M.
12.01 WBEZ
12.20 WNAC
1.30 WEAN WICC WFFA WORC
WBEZ WNBH WMAS
2.45 WAAB
6.00 WNAC WICC WFFA WORC
WMAS WBEZ
6.50 WEAN WNBH WTAG
7.00 WAAB WLBZ
9.45 WAAB
11.00 WNAC WFAN WICC WFFA
WORC WMAS WLBZ WNBH
WTAG
11.00 WBEZ
11.15 WFAF Network: WABC Network
WJZ Network (Wed. 11.45, Sat. 11.30)

SUNDAYS

A.M.
8.45 WNAC WFAN WICC WFFA
WMAS WLBZ WNBH
11.00 WBEZ WFAF-WJZ Network
P.M.
6.00 WNAC WEAN WICC WFFA
WLBZ WMAS WORC WNBH
6.45 WAAB
9.45 WAAB
10.45 WBEZ
11.15 WNAC WICC WFFA WORC
WMAS WLBZ WNBH WTAG

Epsom Derby Is Described

The annual running of England's most famous turf classic, the Epsom Derby, will be described over the CBS-WABC network on Wednesday, June 6, from 9:15 to 10:15 A.M., EDT.

The program will be relayed to America by short wave through facilities of the British Broadcasting Corporation.

The favorite this year is Colombo, an English thoroughbred owned by Lord GLANLILY. Next favorite in the early betting is Windsor Lad.

The race is over a course of one and a half miles.

The Epsom Derby was originally run in 1780 and was sponsored by the Earl of Derby, head of the House of STANLEY.

In the century and a half since its establishment, the House of STANLEY has won the race only three times.

Likewise only three American horse breeders have had successful entries.

Pictures

| | |
|--|-------------|
| PEGGY DAVIS, NBC actress | Front Cover |
| O. B. HANSON, chief engineer for the NBC | Page 1 |
| ELIZABETH DAY, star of "Roses and Dreams" sketches | Page 3 |
| CLARA, LU 'N' EM | Page 3 |
| ELSH FERGUSON, noted actress | Page 4 |
| MARY SMALL, young vocalist | Page 5 |
| JAMES MELTON, tenor | Page 5 |
| "UNCLE BOB" SHERWOOD, noted circus personality | Page 6 |
| Dr. WALTER DAMROSCH, conductor | Page 7 |
| CAROL DUIS, soprano | Page 7 |
| CONNIE GATLS, soprano and pianist | Page 8 |
| IRVING KAUFMAN, CBS "Am-strel Man" | Page 10 |
| EDDIE DUGHIN, orchestra leader | Page 12 |
| The Oxol Trio | Page 13 |
| ALICE FROST, NBC actress | Page 14 |
| HELENI CLAIRE | Page 15 |
| DAVID ROSS, CBS announcer | Back Cover |

Saturday, June 2 - Goldman Directs Band on WEA F at 5.30 P.M.

Highlights

- A.M.**
11.45—Dr. Raymond Diumars, CBS-WABC
P.M.
5.30—Goldman directs massed bands, NBC-WEAF
8.30—Floyd Gibbons, NBC-WEAF
9.00—House Party, NBC-WEAF
Grete Stueckgold, C B S-WABC
10.00—Byrd Expedition, CBS-WABC
Lennie Hayton's Orchestra, NBC-WEAF
10.30—Norman Thomas, NBC-WEAF

(All programs are listed in Eastern Daylight Saving Time. Eastern Standard Time is one hour earlier; Central Time is two hours earlier.)

- 6.45 A.M. EDT: 5.45 EST: 4.45 CT
Tower Health Exercises, WEA F WEEI WGY, 1 h.
7 A.M. EDT; 6 EST; 5 CT
Musical Clock, WBZ WTIC, 1 h.
7.30 A.M. EDT: 6.30 EST: 5.30 CT
Yonchi Hiroaka, xylophone, WJZ M. Cormick Fiddlers, WLW, 30 m.
Organ Revue, WABC, 30 m.
7.45 A.M. EDT: 6.45 EST: 5.45 CT
Pollock and Lownhurst, WEA F WGY Jolly Bill and Jane, WJZ WBAL
8 A.M. EDT, 7 EST, 6 CT
Radio City Organ, WEA F, 30 m. (WEEI from 8:15)
L. B. Rideout, weather and Current Events, WJZ
Collin Driggs, organist, WTIC, 30 m.
Salon Musicals, WABC, 45 m.
Elder Michaux and his Congregation, WCAU, 30 m.
8.15 A.M. EDT: 7.15 EST: 6.15 CT
Don Hall Trio, WJZ WBZ WHAM
8.30 A.M. EDT, 7.30 EST; 6.30 CT
Cheero, WEA F WEEI WTIC WGY WLW, 30 m.
L. B. White at the organ, WJZ WBZ WHAM KDKA, 30 m.
Wake Up and Smile, WCAU
8.45 A.M. EDT: 7.45 EST: 6.45 CT
The Ambassadors, WABC
9 A.M. EDT: 8 EST: 7 CT
Morning Glories, WEA F WGY WLW Breakfast Club, 1 h. (WBZ from 9:15)
WHAM from 9:15, KDKA, 30 m.
Virginia Reade, talk, WBZ
Luxemburg Gardens, ABC, 45 m.; WCAU, 15 m.
9.15 A.M. EDT: 8.15 EST: 7.15 CT
Londt Trio and White, WEA F WEEI WGY WLW
Minute Moments, WCAU
9.30 A.M. EDT: 8.30 EST: 7.30 CT
North Woods on Broadway, WEA F WEEI WTIC WGY
Hymns, WLW
9.45 A.M. EDT: 8.45 EST: 7.45 CT
Basslines, WEA F WEEI WTIC WGY WLW
News, WEEI KDKA
Magic Hour, WBZ
The Musicasters, WABC WCAU
10 A.M. EDT: 9 EST: 8 CT
Skip, Step and Happiana, WEA F WEEI WTIC WGY
Edward MacHugh, WJZ WHAM KDKA
Cooking School, WBZ, 30 m.
Mail Bag, WLW
Jan. Savitt's Orchestra, WABC WCAU, 30 m.
10.15 A.M. EDT: 9.15 EST: 8.15 CT
Morning Parade, News at 10.30; WEA F WEEI WTIC WGY, 45 m.
Singing Strings, WJZ WBAL, 30 m.; WBZ KDKA from 10.30
10.30 A.M. EDT: 9.30 EST: 8.30 CT
Rhythm Jesters, WLW
News and Children's Program, WABC WCAU, 30 m.
10.45 A.M. EDT: 9.45 EST: 8.45 CT
News and Originalities, WJZ WBAL
News and Personalities, WJZ WBAL
News and Piano, WBZ
Antonette West, songs, WLW
11 A.M. EDT: 10 EST: 9 CT
9.15 CT
Alma Schirmer, pianist, WEA F Food Hour, WEEI WTIC, 30 m.
Galaxy of Stars, WGY WLW
Honeymooners, WJZ KDKA WHAM
Cheer Up, WABC WCAU, 30 m.
11.15 A.M. EDT: 10.15 EST: 9.15 CT
The Vast Family, seven harmony children, WEA F WGY
Spanish Idyll, WJZ WBZ WHAM, 30 m.
Kiddies Club, KDKA, 45 m.
Market Reports, WLW
11.30 A.M. EDT: 10.30 EST: 9.30 CT
Gloria La Vey, soprano, piano duo, WEA F WEEI WTIC, 30 m.
Children's Theatre, WGY, 30 m.

- Heine's Grenadiers, WJZ WBZ WHAM, 30 m.
Piano 4 Stars, WLW
Asbury College Glee Club, WABC WCAU
11.45 A.M. EDT: 10.45 EST: 9.45 CT
Painted Dreams, WGN, WLW
Dr. Raymond Diumars of the Bronx Zoo, WABC
12 N. EDT, 11 A.M. EST: 10 CT
Pietro Von, organist, WEA F WEEI WTIC
Dink Teala, Gwyneth Neal, songs, WJZ KDKA
Monitor Vitas the News, WBZ
King Jack and Jester, WLW
Jack and Jane Carlton, WABC WCAU
Poetry and Bird Calls, WOR
12.15 P.M. EDT: 11.15 A.M. EST: 10.15 CT
Cantata for soprano, WJZ WHAM
Weather, WBZ
New Varietal, WLW
Pete Woodley's Canadians, WABC
Orchestra, WOR
12.30 P.M. EDT: 11.30 EST: 10.30 CT
Maurice Lee's Ensemble, WFA F, 30 m.
Jack, Del and Ray, WJZ, 30 m.
Lupcheon Dance Orchestra, WTIC, 30 m.
Vic and Sid, WJZ WBZ KDKA WHAM
Organ, WLW WABC WCAU, 30 m.
Al Kavelin's Orchestra, WABC WCAU, 30 m.
Huger Elliot, WOR
12.45 P.M. EDT: 11.45 EST: 10.45 CT
The Songfellows, WJZ WBZ WBAL
WHAM
Huntley's Orchestra, KDKA
The Texans, WLW
Stamp Club, WOR
1 P.M. EDT: 12 M. EST: 11 A.M. CT
Hartford Inter High School Choir, WEA F, 30 m.; WEEI from 1:10
cooks, WEEI
Rural Review, WTIC
Words and Music, WJZ KDKA, 30 m.
Ferry News, WJZ
Madison Ensemble, WABC WCAU, 30 m.
Clairice Sawyer, Lt. Governor of Ohio, Health Talk, WOR
1.15 P.M. EDT: 12.15 EST: 11.15 CT
411 Club, WBZ
Madison Ensemble, WABC WCAU, 30 m.; WHAS, 15 m.
John Muldowney, WLW
Myrtle Boland, songs, WOR
1.30 P.M. EDT: 12.30 EST: 11.30 CT
Harold Stern's Ensemble, WFA F WEEI National 411 Club, WJZ WBZ WHAM KDKA WLW, 1 h.
Harold Knight's Orchestra, WABC WCAU, Books Rosalind Genet, WOR
1.45 P.M. EDT: 12.45 EST: 11.45 CT
Harold Stern's Ensemble, WEA F WEEI WTIC WGY WLW, 30 m.
KDKA WLW, 1 h.
Harold Knight's Orchestra, WABC WCAU, 30 m.
Waltz program, WOR
1.50 P.M. EDT: 1 EST: 12 N. CT
Xavier Cugat's Orchestra, WEA F WEEI WGY WTIC, 30 m.
Saturday Synopators, WABC WCAU
2.15 P.M. EDT: 1.15 EST: 12.15 CT
Arnie Reizal, WABC WCAU
Piano Duo, WOR
2.30 P.M. EDT: 1.30 EST: 12.30 CT
The Confidence Man, WEA F WEEI WTIC WGY, 30 m.
Songleaders, WJZ WBZ WHAM KDKA
Round Tonnars, WABC WCAU, 30 m.
The Homemaker, WOR
2.45 P.M. EDT: 1.45 EST: 12.45 CT
Concert Favorites, WJZ WBZ WHAM KDKA
The Low Down, WLW
WCAU
3 P.M. EDT: 2 EST: 1 CT
Green Brothers' Orchestra, WEA F WEEI WTIC WGY WLW, 30 m.
Dan Russo's Orchestra, WJZ KDKA
Smith College Program, WBZ, 30 m.
Columbia Salon Orchestra, WABC WCAU, 30 m.
"Star Stories," Allan Broms, WOR

Mimics Filmsters



ELIZABETH DAY, of the stage, impersonates film heroines on the "Forty-five Minutes in Hollywood" programs broadcast over the CBS-WABC chain Sundays at 10.30 P.M.

- 3.15 P.M. EDT: 2.15 EST: 1.15 CT
Dan Russo's Orchestra, WJZ
Springtime Concert, Orchestra, Frank Black directing, WIA F WJZ WTIC WGY WLW, 1 h.
Your Lover, WOR
3.30 P.M. EDT: 2.30 EST: 1.30 CT
Saturday Songsters, WJZ WBZ WHAM KDKA, 30 m.
Principals' Echoes, WABC
Pinto Pete, WCAU, 30 m.
Afternoon Musicals, WOR, 1 h.
3.45 P.M. EDT: 2.45 EST: 1.45 CT
Baseball, Detroit vs. Chicago, WGN, 1 h., 45 m.
4 P.M. EDT: 3 EST; 2 CT
Miniature Theatre, WJZ WBZ KDKA, 30 m.
Ann Leaf, organ, WABC, 30 m.
The Pickard Family, WCAU, 30 m.
4.20 P.M. EDT: 3.20 EST: 2.20 CT
Late Next Door, WEA F WEEI WTIC WGY, 30 m.
Don Carlos Orchestra, WJZ WBZ WHAM KDKA, 30 m. (WLW from 4:45)
Rhythm Jesters, WLW
George Scherban's Orchestra, WABC, 30 m.
Sweet Sixteen Review, WCAU, 30 m.
Gus Steek's Chanticleers, WOR
5 P.M. EDT: 4 EST; 4 CT
Don Bigelow's Orchestra, WEA F WEEI WTIC WGY WLW, 30 m.
Palmer Clark's Orchestra, WABC WCAU, Velasco's Orchestra, WABC WCAU, 30 m.
5.15 P.M. EDT: 4.15 EST: 3.15 CT
The Vagabonds, WGY
Bernard Gabriel, piano, WOR
5.30 P.M. EDT: 4.30 EST: 3.30 CT
National Band Concert, Edwin Franko
Goldman, WEA F WEEI, 30 m.
Sunset Hour, WTIC
Martha and Hal, WGY
Platt and Niernan, WJZ WBZ
John Barker, baritone, WLW
Jack Armstrong, All-American Boy, WABC WCAU
"Just Dogs," Steve Stern, WOR
5.45 P.M. EDT: 4.45 EST: 3.45 CT
Orphan Annie, WJZ WBZ WHAM KDKA
WLW WGN, 30 m.
St. Bonaventure College Glee Club, WCAU, 30 m.
French Class, WOR

- 6 P.M. EDT: 5 EST; 4 CT
Al Pearce's Gang, WEA F WLW, 30 m.
The Evening Tattler, WEEI, 30 m.
Wrightville Clation, WTIC
Peter Van Steedan's Orchestra, WJZ WBAL
Wings, George Mason, WHZ
Unk Don, WOR, 30 m.
Jack Armstrong, WLW
6.15 P.M. EDT: 5.15 EST: 4.15 CT
Bully Hay, Orchestra, WABC WCAU
m. (WGY WLW WLW from 6:45)
6.30 P.M. EDT: 5.30 EST: 4.30 CT
Tom Cookley's Orchestra, WFA F WTIC, 30 m. (WGY WEEI from 6:45)
Baseball scores and Current Events, WEEI
Stamp Club, WJZ WHAM KDKA
Sports, weather, WBZ
Jack Armstrong, WLW
Charles Carlie, WABC
Harold Knight's Orchestra, WCAU
Mama Tina, WOR
6.45 P.M. EDT: 5.45 EST: 4.45 CT
John Herrick, WJZ WBAL KDKA WHAM
Concert, Edward MacHugh, baritone, WBZ
Frederick William Wagon, WABC WCAU
"River Hobbies," WLW
Pauline Albert, pianist, WOR
7 P.M. EDT: 6 EST; 5 CT
Baseball Resume, WEA F
The Three Scamps, WEEI WTIC WGY
Captain Al Williams, WJZ KDKA, 30 m.
World News Review, WBZ
Margaret Carlie, songs, WLW
Leon Belasco's Orchestra, WABC WCAU
Ford Frack, sports, WOR
7.15 P.M. EDT: 6.15 EST: 5.15 CT
Religion in the News, WEA F WGY
Ethel Genier, WEEI
Sports, WTIC
Pickets Sisters, WJZ
Joe Rines' Orchestra, WBZ
German Band, WLW
Harry Hersfield, WOR
7.30 P.M. EDT: 6.30 EST: 5.30 CT
Fddie Peabody, banjo, Richard Himber's Orchestra, WEA F, 30 m.
After Dinner Revue, WEEI
Johnny Johnson's Orchestra, WGY, 30 m.
Don Bestor's Orchestra, WJZ WBZ KDKA
Bob Newhall, WLW
Betty Bartlett, WABC WCAU
American Legion Band, WOR, 30 m.
7.45 P.M. EDT: 6.45 EST: 5.45 CT
Harmonizers, WTIC
Pickets Sisters, WJZ WBZ
20th Century Homes, "A. K. Laing, WLW
Roy Helton, "Looking at Life," WABC
8 P.M. EDT: 7 EST: 6 CT
Teddy Bergman, Betty Queen, Harold Stern's Orchestra, WEA F, 30 m.
If. 5 Marine Band, WEEI, 30 m.
Folk Song Program, WTIC, 30 m.
General Electric Program, WGY
R. F. D. Hour, WLW, 30 m.
Fate Waller, organ, WABC
Philadelphia High School Music Festival, WCAU, 1 h.
Dinner Concert, WHAS, 30 m.
City Government Talk, WOR
8.15 P.M. EDT: 7.15 EST: 6.15 CT
Advertisers Federation, WBZ
Armenian National Music Program, WABC
All Star Trio, WOR
8.30 P.M. EDT: 7.30 EST: 6.30 CT
Floyd Gibbons, WEA F WEEI WTIC WGY WLW, 30 m.
Orchestra, KDKA, 30 m.
Hotel Gibson Orchestra, WLW
Hinds Across the Border, WJZ WBZ WBAL
WHAM KDKA
Morton Downey's Studio Party, WABC, 30 m.
Atlantic City High School Glee Club, WPG, 30 m.
Arthur Warren's Orchestra, WOR
Seymour Simon's Orchestra, WGN, 30 m.
8.45 P.M. EDT: 7.45 EST: 6.45 CT
Tessie, the Typist, WABZ
9 P.M. EDT: 8 EST: 7 CT
House Party, Joe Cook, Frances Langford, Voorhees' Orchestra, WEA F WEEI WLW WGY, 30 m.
Famous Favorites, WTIC, 30 m.
Jambooree, WJZ KDKA WHAM, 30 m.
New England Community Singing Clubs, WBZ
Grete Stueckgold, Andre Kostelanetz' Orchestra, WABC WCAU, 30 m.
Newark Symphony Orchestra, WOR, 1 h., 15 m.
9.15 P.M. EDT: 8.15 EST: 7.15 CT
The Monitor Views the News, WBZ
9.30 P.M. EDT: 8.30 EST: 7.30 CT
Beatrice Fairfax, WEA F WEEI WGY WLW, Melodiers, WTIC, 30 m.
Eddie Duchin's Orchestra, WJZ WBZ KDKA
WHAM, 30 m.
Champions, Richard Himbers' Orchestra, WABC WCAU, 30 m.
Aldrich's Hawaiians, WPG, 30 m.
Anson Week's Orchestra, WGN
9.45 P.M. EDT: 8.45 EST: 7.45 CT
Jan Garber's Orchestra, WGN
10 P.M. EDT: 9 P.M. EST: 8 CT
Hayton's Orchestra, Saxon Sisters, WEA F WEEI WGY WLW, 30 m.
Merry Madcaps, WTIC, 1 h.
Tim Ryan's Place, WJZ WHAM
The Blue Note (Weather at 10:15)
Manhattan Serenades, WABC WCAU, 30 m.
Behind the Law, KDKA
Chicago Fair, WABC
"Romance in Song," WOR, 30 m.
Auditorium Dance Orchestra, WPG
10.30 P.M. EDT: 9.30 EST: 8.30 CT
Norman Thomas, National Socialist Convention, WEA F WEEI WTIC WGY, 40 m.
WLS Barn Dance, WJZ WBZ WHAM KDKA WLW, 1 h.
Elder Michaux and his Congregation, WABC WCAU, 30 m.

- Steel Pier Orchestra, WPG, 30 m.
Organ Recital, WOR, 30 m.
Greater Louisville 11 member, WHAS, 30 m.
11 P.M. EDT: 10 EST: 9 CT
Innie Madrigrera's Orchestra, WEA F WTIC, 30 m.
News at 11.15, WEEI from 11.15)
E. B. Rideout, Baseball scores and Current Events, WTIC
Doc Peston's Orchestra, WGY, 30 m.
Honeymooners, Grace and Eddie, WJZ
Sylvia Froos songs, WABC WCAU
Bud Fisher's Orchestra, WOR
11.15 P.M. EDT: 10.15 EST: 9.15 CT
News and Reggie Childs' Orchestra, WABC WCAU
11.30 P.M. EDT: 10.30 EST: 9.30 CT
One Man's Family, WEA F WEEI WGY, 30 m.
News and Brito's Orchestra, WJZ WBZ WHAM, 30 m.
News and Huntley's Orchestra, KDKA, 30 m.
Hotel Gibson Orchestra, WLW, 30 m.
Anthony Luni's Orchestra, WGN, 30 m.
Ipsmore Gille Orchestra, WPG
Anson Week's, Jan Garber, Earl Burton's Orchestra, WGN, 5 h.
11.45 P.M. EDT: 10.45 EST: 9.45 CT
Johnnie Johnson's Orchestra, WABC WCAU
12 M. EDT: 11 P.M. EST: 10 CT
Dan Russo's Orchestra, WEA F WLW, 30 m.
L. B. Deany's Orchestra, WJZ WBZ, 30 m.
Doc Peyton's Orchestra, WGY
Messages to Far North, KDKA
Casa Loma Orchestra, WABC WCAU, 30 m.
Harold Stern's Orchestra, WOR, 30 m.
12.30 A.M. EDT: 11.30 EST: 10.30 CT
Care Free Carnival, WEA F WEEI WGY WLW
Lopez' Orchestra, WJZ WBZ, 30 m.
Mary Gregor's Orchestra, KDKA
Carol Lohner's Orchestra, WABC WCAU, 30 m.

Rotary Club Meeting To Be Broadcast

Leaders of Rotary International, including JOHN NELSON, president, will report on the WABC-Columbia network from Chicago Tuesday, June 12, at 1.30 to 1 P.M. Fourteen officers, speaking briefly on "Rotary—Reporting on World Recovery," will address their remarks wherever possible to thousands of fellow Rotarians meeting simultaneously in this country and abroad.

More than 80 stations of the Columbia Broadcasting System and their short-wave complements, W2XE, New York, and W3XAU, Philadelphia, will carry the special program from the Sherman Hotel at a meeting of the Rotary Club of Chicago, largest in the world. The international officers will be there en route to the organization's convention in Detroit, June 25 to 29.

Speakers will include Rotary officials of 11 foreign countries, drawn from the various fields of law, engineering, advertising, civic legislation, public utilities, banking and insurance. They will discuss economic conditions in their homelands. The United States will be represented by two Chicago leaders.

The list of distinguished speakers follows:
JOHN NELSON, Montreal, Canada, president of Rotary International, an insurance executive.

CLINTON P. ANDERSON, Albuquerque, New Mexico, immediate past president, now state treasurer of New Mexico.

CHESLEY R. PERRY, secretary.
HERBERT SCHOFIELD, third vice-president, an English educator and scientist.

MAURICE DUPERREY, second vice-president, Duper manufacturer.
OTTO FISCHER, director, German banker.

PAUL T. THORWALL, director-German banker.

Children Cry For It



PHIL DUEY, NBC baritone, is not so popular in his own home. Mrs. Duey insists that PHIL confine his vocal outbursts to such moments as will not disturb the children. As a result, PHIL rehearses almost solely in the NBC studios.

A Comic Strip Comes To Life Thanks To Radio's Walt Disney

New Radio Show Is on 'The Road'

How to put a newspaper comic strip on the air without destroying the illusion created by the artist in a fast-moving series of drawings? This was the problem to be faced and handled by a young man named HIRSH BROWN, producer of radio shows.

The comic strip is about DICK TRACY, that fearless detective, whose square jaw romps through hair-raising experiences in the drawings of CHESTER GOULD, the artist.

Like a Broadway show this new radio experiment had to be tried out "on the road." So to station WBZ in Boston came Mr. BROWN with some script and a lot of ideas. To get his actors he had to pick a cast from local talent. And this is an uncertainty in any kind of show business.

"To my surprise and delight," says Brown, "I found many actors and actresses who are comparable to the seasoned New York players I have come to know so well."

A comic strip like DICK TRACY has a lot of action, gun shots, speeding automobiles, crowd noise, police alarms, sirens and all sorts of noises. And this has all to be worked into a very fast dialogue.

So BROWN went into a huddle with the engineers and production men of WBZ and, after much rehearsal finally achieved a realistic DICK TRACY.

Now DICK TRACY lives in the person of BOB BURLIN, a production man for WEEI another local station. TRACY's pal, PAT PATTON, is CRAIG VAD, singer of Irish ballads, and the rest of the cast is similarly occupied when they are not getting in and out of scrapes with DICK TRACY.

This new radio show is dedicated to breaking up the idea that gangsters are heroes. Never is the gangster given a "break." He is always the gunman, the thief who lurks in the dark and preys on unsuspecting persons.

The program, which may presently move to the networks, is now heard every Monday, Wednesday and Friday over station WBZ at 7.15 P. M.

CBS Presents the Detroit Orchestra

Concerts by the Detroit Symphony Orchestra, playing in the Ford Gardens at the 1934 Century of Progress Exposition in Chicago, will be broadcast four times a week by the Columbia network, beginning Saturday, June 16.

Subsequently, the concerts will be heard on Saturdays from 9.30 to 10.30 P. M., on Sundays from 3 to 4 P. M., and on Tuesdays and Thursdays from 1 to 5 P. M.

Adventures of A Habitant
The "tall" adventures of JOE FLICHTAS PINAID, habitant of the Canadian North Woods, will be dramatized in a new series of sketches to be broadcast over an NBC network on Saturdays and Thursdays at 9.30 A. M. The programs originate at station WGY in Schenectady.

Clara, Lu 'n' Em Are Happiest Of Homebodies In Private Life



CLARA (LOUISE STARKEY), LU (ISOBEL CAROTHERS) and EM (HELEN KING). They broadcast over an NBC-WEAF network at 10.15 A. M.

Became Acquainted As Students In University

CLARA, LU 'n' EM are, in private life, the unpretentious homebodies who would expect them to be from the characters they portray over the NBC-WEAF network.

To be sure, they like new frocks, new hats, new shoes and gloves as well as the next young woman.

But they find their chief joy, so their informative agent discloses, in keeping homes for their husbands—each one of whom, his ad-

ing wife claims, is about the "duckiest" imaginable.

Off the air, CLARA answers to the name of LOUISE STARKEY, or Mrs. PAUL MEAD. LU is ISOBEL CAROTHERS, or Mrs. BEROLZHEIMER; while EM is Mrs. JOHN MITCHELL, nee HELEN KING.

The three girls met several years ago as students of the School of Speech at Northwestern University.

The characters of CLARA, LU 'n' EM were born at a "spread" in celebration of HELEN KING's birthday. They met with so much success, and the girls had so much fun, that they decided

to make up new adventures for the trio.

It wasn't long after leaving college that they got a job with a radio station in Chicago where they still live and where they broadcast from even though they have made the networks.

Now that Summer is coming along all the girls will be going swimming. EM likes to go boating in a sailboat CLARA will be going in for bridge with renewed zest.

They write their own copy, driving to a secluded spot in Evanston to rehearse after each early morning broadcast.

Lost Soprano

THE Cities Service Quartet was grouped around the NBC microphone at a rehearsal recently. Three of them are six-footers. Rosario Bourdon, musical director of the program, rapped for attention and looked about the studio. "Where's Miss Dragonette?" he said. "Someone go and find her." "Here I am," piped a small voice, and Jessica stood on tip-toes behind the quartet. She is just five feet tall.

Eddie Peabody Is First A Rancher, Then A Radio Star

EDDIE PEABODY, who is heard every Saturday at 7.30 P. M. over the NBC-WEAF network, doesn't regard himself as an entertainer. He'd rather stay on his ranch at Riverside, California, raise dogs and plant orange trees.

Although EDDIE plays the banjo well, not to mention a dozen or so other queer-looking instruments, he claims he is a farmer. His boast is that he and Mrs. PEABODY are not town farmers—no, sir, they're real honest-to-goodness dirt farmers who climb into overalls, ride the tractors and

do everything that some folks would expect a hired man to do.

EDDIE was born in Reading, Massachusetts. Just how he happened to get to California he does not say.

"People talk about thrills," said Eddies, "It may be on the stage, a plane ride, or what not. Yes, these are thrills, but they are not the kind of thrills that last. I get a heap bigger thrill from the things I do for the four boys we are raising than I do when 10,000 people applaud my efforts.

"We all like to be cheered for the good things we do on the stage, or in other ways before the public, but give me the simple life on my ranch."

EDDIE's instruments, which he plays on his NBC programs, are valuable and numerous. But he'd rather talk about the ranch and how many trees he set out the past season.

Makes Radio Appeal

Dr. ISRAEL GOLDSTEIN, President of the Jewish National Fund will speak on behalf of Palestine Flower Day over the WABC Columbia network on Sunday, June 3, at 5 P. M. A chorus of 60 voices will sing.

Financial Note

WHAT ABOUT THE STATUTE OF LIMITATIONS?



RICHARD HIMBER, NBC orchestra leader, received a note last week asking if he were the director, who, seven years ago, accompanied SOPHIE TUCKER on tour. HIMBER was thrilled to be remembered that long. And then he saw the rest of the note: "If you are, this is to remind you that your drummer still owes us for a week's board and room."

Dr. Ditmars Introduces Two Guests

Dr. RAYMOND L. DITMARS, curator of reptiles and mammals at the New York Zoological Park will introduce a rattlesnake and a puff adder for the first time on the radio during a program broadcast over CBS-WABC chain this Saturday from 11.45 A. M. to 12 Noon.

Dr. DITMARS will be interviewed by PAUL DOUGLAS, CBS announcer, and will talk about reptiles.

The guests of honor, the rattlesnake and puff adder, will address the audience in their native language.

It is Dr. DITMARS' fond boast that he once slept in a Pullman berth with a poisonous snake as companion.

He is a Fellow of the New York Zoological Society and a corresponding member of the Zoological Society of London.

Dr. DITMARS is the author of a number of books. Among them are: "Strange Animals I Have Known" and "Reptiles of the World."

He was once court reporter for the New York Times.

Young Painters Are Interviewed

Five child painters who will exhibit canvases at the Grand Central Galleries in New York will be interviewed over the WABC-Columbia network on Monday, June 4, at 4.15 P. M. They will be questioned by FRANCIS C. HEALY, art critic.

The five young artists are: "PAT" THOMPSON, 6; JOHNNIE GORDON, 10; PATTY KERIIG, 11; JOHN DELORENZI, 12, and HELEN TAUBERT, 11.

Nelson Broadcasts En Route

OZZIE NELSON'S Orchestra, which is now on a tour of 10 states, will play over the WABC network in a special dance program Tuesday, June 5, at midnight. The music will originate from the EDDIE PEYTON Club at Crafton, Pa.

For Southern Listeners

The programs of WEAF or WJZ may be heard over:

| | |
|-----------|---------------------|
| WFLA-WSUN | Clearwater, Florida |
| WSB | Atlanta, Georgia |
| WSMB | New Orleans, La. |
| WOAI | San Antonio, Tex. |
| WSM | Nashville, Tenn. |

The programs of WABC may be heard over:

| | |
|------|-------------------|
| WQAM | Miami, Florida |
| WJW | Washington, D. C. |
| WBT | Charlotte, N. C. |
| WTAR | Norfolk, Va. |
| WBG | Greensboro, N. C. |

Middle Western Listeners

The programs of WEAF may be heard over:

| | |
|------|-----------------|
| KSD | St. Louis, Mo. |
| KYW | Chicago, Ill. |
| WMAQ | Chicago, Ill. |
| WTAM | Cleveland, Ohio |

The programs of WJZ may be heard over:

| | |
|----------|-----------------|
| WFNR-WLS | Chicago, Ill. |
| WGAR | Cleveland, Ohio |
| WJR | Detroit, Mich. |

The programs of WABC may be heard over:

| | |
|------|--------------------|
| WBHM | Chicago, Ill. |
| WHK | Cleveland, Ohio |
| WGO | Minneapolis, Minn. |
| KMOY | St. Louis, Mo. |
| WHAS | Louisville, Ky. |

NOTE: Outstanding local programs of the stations are regularly listed in THE MICROPHONE.

Sunday, June 3 - Helen Hayes Is Guest on WEAF at 10.30 P.M.

Highlights

- A.M. 9.30—Tennis lesson by Filtworth Vines, Jr. NBC-WEAF. P.M. 3.00—Columbia Symphony, CBS-WABC. 6.20—Egon Petri and string quartet, NBC-WJZ. 8.00—Jenny Concert, WEEI "Voice of Columbia," with George Jesse, CBS-WABC. 9.00—Elsie Ferguson, CBS-WABC. 9.30—Album of Familiar Music, NBC-WEAF. 10.00—Mme. Schumann Heink, NBC-WJZ. 10.30—Helen Hayes, NBC-WFAF. 12 M.—Gov. Albert Ritchie of Maryland, NBC-WEAF.

(All programs are listed in Eastern Daylight Saving Time. Eastern Standard Time is one hour earlier; Central Time is two hours earlier.)

- 8 A.M. EDT: 7 EST; 6 CT Melody Hour, WFAF WGY, 1 h. Tone Pictures, WJZ WBAL, 30 m. On the air today and organ recital, WFAF. 8.30 A.M. EDT, 7.30 IST; 6.30 CT Lew White, organ, WJZ WBAL 30 m. Spiritual Singers, WBZ. Aunt Reata, WABC. 8.45 A.M. EDT, 7.45 IST, 6.45 CT Safety Crusaders, WBZ Radio Spotlight, WABC. 9 A.M. EDT, 8.15 EST, 7 CT Bullades, WFAF WGY Children's Hour, WJZ WBZ KDKA WHAM, WLV, 1 h. Sunday Morning at Aunt Susan's, WABC WCAU WFGS, 1 h. 9.15 A.M. EDT, 8.15 EST, 7.15 CT Cluster Bells, WFAF WGY 9.30 A.M. EDT, 8.30 EST; 7.30 CT Ellsworth Vines, Jr., "Correct Footwork," WFAF WEEI WTCG WGY. 9.45 A.M. EDT, 8.45 IST; 7.45 CT Alden Edkins, baritone, WFAF WTCG WGY 10 A.M. EDT; 9 EST; 8 CT Sabbath Reverses, Dr. C. L. Goodell, WFAF WTCG WGY, 30 m. Southerners, WJZ WBZ WHAM WBAL, 30 m. Columbia's Church of the Air, WBAU WCAU Watch Tower, WPG. 10.30 A.M. EDT, 9.30 EST; 8.30 CT Mexican Orchestra, WFAF WEEI WTCG WLV, 30 m. Samovar Serenade, WJZ WBAL WHAM Melody Parade, WABC WCAU WHAM. 10.45 A.M. EDT, 9.45 EST; 8.45 CT Ben Alley with music, WABC. Alexander Scamler, pianist, WCAU WPG. 11 A.M. EDT; 10 EST; 9 CT News and Vagabonds, WFAF WTCG, 30 m. Service from Old South Church, WEEI 30 m. Union College Chapel Service, WGY, 1 h. News and Morning Musicals, WJZ WBZ WBAU WBAL WLW. 11.15 A.M. EDT, 10.15 EST; 9.15 CT Hall and Gruen, WFAF WTCG Morning Musicals, WJZ WHAM Safety Crusaders, WBZ. 11.30 A.M. EDT; 10.30 EST; 9.30 CT Major Howles Capitol Family, WFAF WTCG WGY, 1 h. Poet Prince, WJZ WHAM WLW Radio Numbers, conducted by Everett Smith, MICROPHONE columnist, WBZ Lake Avenue Baptist Church, WHAM, 1 h. Salt Lake City Tabernacle Choir, 1 h. WABC WCAU from 12.15. 11.45 A.M. EDT; 10.45 EST; 9.45 CT Phantom Strings, talk by Col. Bates of Grand Army, WJZ WHAM WBAL WLW, 30 m. Organ, WJZ, 30 m. 12.15 P.M. EDT, 11.15 A.M. EST; 10.15 CT Weather, schoolmids, WGY Gould and Sheffer, WJZ WBAL WHAM WLW Time, Weather, Temperature, WBZ Variety, WMAA. 12.30 P.M. EDT; 11.30 EST; 10.30 CT University of Chicago Round Table, WFAF WEEI WTCG WLV, 30 m. Radio City Concert, WJZ WBZ WHAM WLW, 1 h. Madison Ensemble, WABC WCAU WHAM WLV, 30 m. Memorial Services, Jewish War Veterans of America, Samuel Untermyer, James W. Gerard, Royal S. Copeland, WMCA, 30 m.

- 12.45 P.M. EDT; 11.45 EST; 10.45 CT H. V. Kaltenborn, WABC WCAU WPG. 1 P.M. EDT, 12 N. EST; 11 A.M. CT The Road to Romany, WFAF WTCG WLV, 30 m. Church of the Air, Father E. A. Duff, Chaplain, U. S. Navy, WABC WPG, 30 m. Church of the Air, WCAU Petrole String Quartet, WOR, 1 h. Piano Duo WMCA. 1.15 P.M. EDT; 12.15 EST; 11.15 CT The Music Weaver, WGY Six Accordions, WMCA. 1.30 P.M. EDT, 12.30 IST; 11.30 CT Surprise Party, Mary Small, WFAF WEEI Church in the Hills, WLW, 30 m. WGY Concert Classics, WTCG, 1 h. Compinsky Trio, WABC WCAU Rhythm, WPG Sunday Forum, Dr. Ralph W. Sochman, WJZ WBAL WHAM News, WMCA. 1.45 P.M. EDT; 12.45 IST; 11.45 CT Mildred Dilling, harpist, WFAF WEEI WGY Jewish Music Center WPG Dr. Paul V. Winslow, WMCA. 2 P.M. EDT, 1 P.M. CT Gene Arnold's Orchestra, WFAF WEEI WGY WLW, 30 m. South Sea Islanders, WJZ WBZ WBAL Faith Murray, songs, WABC WCAU Hotel Memorial Ensemble, WPG, 45 m. Instrumental Trio, WMCA, 30 m. 2.15 P.M. EDT; 1.15 EST; 12.15 CT Abram Chasins piano, WABC WCAU Ben Cecceblatt, WCAU. 2.30 P.M. EDT, 1.30 IST, 12.30 CT Grace Hayes, WFAF WEEI WTCG WGY Concert Artists, WJZ WBZ WBAL WLW, 30 m. Lazy Dan Minstrel, WABC WCAU Memories, Alice Remen, WOR, 30 m. Three Little Tenors, WMCA, 30 m. 2.45 P.M. EDT, 1.45 EST; 12.45 CT Landt Trio and White, WFAF WEEI WTCG Raymond Jacquemet, baritone, WPG WLW WGY. 3 P.M. EDT; 2 EST; 1 CT Talkie Picture Time, June Meredith, WFAF WEEI WGY, 30 m. Jacob Tawash, WLV. CCC Quartette, WJZ WBZ KDKA, Bar, 30 m. Symphonic Hour, WABC WCAU, 1 h. Rev. Thomas E. Little, WOR, 30 m. Dr. Jacob Tarshish, WLW, 30 m. Gospel Serenade, WPG Songs, music, WMCA, 30 m. 3.30 P.M. EDT; 2.30 EST; 1.30 CT Dancing Shadows, Dolin's Orchestra, William, WFAF WEEI WTCG WLV, 30 m. Dion Kennedy, organist, WJZ WBZ KDKA Gospel Serenade, WPG Pauline Albert, piano, WOR Oratorio from Calvary Baptist Church, J. T. Thurston, solo, organist, 6-voice choir, WMCA, 1 h., 30 m. 4 P.M. EDT; 3 EST; 2 CT Dramatic Sketch, WFAF WEEI WTCG WGY Texans, trio, WABC WCAU Sousa's Band, WJZ WBZ WHAM KDKA, 30 m. Buffalo Variety Workshop, WABC WCAU Musical, WLV, 30 m. The Texans, WLW. 4.30 P.M. EDT; 3.30 IST; 2.30 CT Pedro Viaz, Orchestra, WFAF WEEI WTCG WLW, 30 m. Drama, WJZ WBZ WHAM KDKA, 30 m. Oregon on Parade, WABC WCAU WPG, 30 m. Lee Conrad, Marjorie Tremont, piano, WOR. 5 P.M. EDT; 4 EST; 4 CT John B. Kennedy, WFAF WEEI WTCG WGY National Veterans, Dr. F. H. Knobel, WJZ WBZ KDKA WHAM WCAU WPG, 30 m. Erva Giles, soprano, WOR Family Prayer Period, WLW Young People's Church of the Air, WMCA, 1 h. 5.15 P.M. EDT; 4.15 EST; 3.15 CT Sylvan Trio, George Sebel, guest, WFAF WEEI WTCG Modernaires, WTCG Tony Wynn, WABC WCAU WPG "Current Legal Topics," WOR Afternoon Musicals, WGN. 5.30 P.M. EDT; 4.30 EST; 3.30 CT Hoover Sentinals, Edward Davies, baritone, Chicago Capella Choir, WFAF WEEI WTCG WLW, 30 m. Blue Room Lounge, WTCG Igor Gorn, WJZ WBZ WHAM KDKA, 30 m. Frank Crumit and Julia Sanderson, WABC President Hotel Ensemble, WPG WCAU, 30 m. Robert Reid, WOR, 30 m. 6 P.M. EDT; 5 EST; 4 CT Catholic Hour, WFAF WEEI WTCG WLV, 30 m. Heart Throbs of the Hills, WJZ WHAM KDKA WBAL "Romances of Science," WLW Roses and Drums, "Pistols at Dawn," WBAU Around the Console, WCAU, 30 m. "Around the 19th Hole," WPG "Uncle Don," WOR, 30 m. Sally's Party, WMCA, 30 m. Allan Grant, piano, WGN.

"Our Elsie"
Elsie Ferguson, noted actress, is starred each Sunday at 9 P.M. on the Family Theatre program, broadcast on the CBS-WABC chain.
6.15 P.M. EDT, 5.15 EST, 4.15 CT Egon Petri, pianist, WJZ WHAM KDKA WBAL, 45 m. Bill Williams, sports, WJZ Ponce Sisters, WLW William Salsman, baritone, WPG Louise Brabant, soprano, WGN. 6.30 P.M. EDT, 5.30 EST, 4.30 CT Our American Songs, WFAF WTCG WGY, 30 m. Musical Tunes, WTCG Live Weather, WJZ Ann Week's Orchestra, WGN Smiling Ed McConnell, WABC WCAU Harold Stern's Orchestra, WOR, 30 m. Voices and Organ, WLW, 30 m. The Abner WPG "Criminal Court," drama, WMCA, 30 m. 6.45 P.M. EDT; 5.45 EST; 4.45 CT Stars of Hollywood, WEEI Jayson Suters, WBZ "Poet's Gold," David Ross, WABC WCAU CCC Quartette, WJZ WBZ WHAM WLW KDKA, 30 m. "KJ," Drama, WFAF WTCG WGY, 30 m. Merry Go-Round, WEEI Chas. Previn's Orchestra, Mme. Gitta Gracia, pianist, WJZ WBZ WHAM WLW KDKA, 30 m. Nick Lucas, songs, WABC WPG Comedy Stars of Hollywood, WCAU Milban String Trio, WOR Five O'Clock Melodies, WHAS, 30 m. Heroes of Israel, "Maharan," WMCA. 7.15 P.M. EDT; 6.15 EST; 5.15 CT Carle and London, Warwick Sisters, WABC WCAU WPG Current Jewish Events, WMCA. 7.30 P.M. EDT; 6.30 EST; 5.30 CT Marion McAfee, soprano, WFAF WGY Garden talk, WFL, 30 m. Joe Penner, Harriet Hilliard and Ozzie Nelson's Orchestra, WJZ WBZ WHAM KDKA WLW, 30 m. Chicago Knights WABC WCAU, 30 m. Stevens Hotel Ensemble, WCAU Hotel Morton Orchestra, WPG, 30 m. The Bible Camera, WOR Ted Black's Orchestra, WMCA. 7.45 P.M. EDT; 6.45 EST; 5.45 CT Wendall Hall, songs, WFAF WTCG WGY Baseball scores, WEEI Piano Duo, WOR Leon Friedman's Orchestra, WMCA Palmer House ensemble, WGN. 8 P.M. EDT; 7 EST; 6 CT Jimmy Durante and Rubinoff's Orchestra, WFAF WTCG WLW, 30 m. The Jenny Concert, WEEI, 1 h. "Goin' to Town," Ed Lomy, WJZ WHAM, 1 h. Spink, KDKA Book talks, WGN Voice of Columbia, George Jesse, and Voice, WABC WCAU "Melodiscopie," WOR, 1 h. Three Little Funsters, WMCA. 8.15 P.M. EDT; 7.15 EST; 6.15 CT Debut Night, KDKA, 45 m. Concert Hour, WGN, 45 m. Natalie Norman, songs, WMCA. 8.30 P.M. EDT, 7.30 IST; 6.30 CT Golden's Orchestra, WMCA. 8.45 P.M. EDT; 7.45 EST; 6.45 CT Main St. Songster, WMCA. 9 P.M. EDT; 8 EST; 7 CT Merry-Go-Round, Tamara, WFAF WTCG WGY, 30 m. The Jenny Concert, WEEI, 1 h. Gulf Headliners with Irving Berlin, WJZ WHAM KDKA WBAL WLW, 30 m. Seymour Simon's Orchestra, WGN, 30 m. Family Theatre, Elsie Ferguson, WABC WCAU, 30 m. Songs, music, WMCA, 30 m. Nos Artistes Montrealais, KCAC, 30 m.

9.30 P.M. EDT, 8.30 EST; 7.30 CT Album of Familiar Music, Frank Munn, Virginia Rest, WFAF WEEI WTCG WLV, 30 m. "Unique Program," WTCG, 30 m. Purcell's Orchestra, WLW Ralph Kerbert, baritone, WJZ WBZ WHAM WBAL KDKA WLW Warning's Pennsylvania, WABC WCAU WPG, 30 m. Palmer Clark's Orchestra, WGN "Success," Harry Balkin, WOR Bob Fallou's Orchestra, WMCA, 30 m. 9.45 P.M. EDT; 8.45 EST; 7.45 CT Adventures in Health, WJZ WBZ WHAM KDKA Unbroken Melodies, WLW Los Chicos, WOR Paulist Corsters, WGN, 45 m. 10 P.M. EDT; 9 P.M. IST; 8 CT Victor Young's Orchestra, WFAF WEEI WTCG WLV, 30 m. Madame Schumann-Heink, WJZ WBZ WHAM In a Garden, KDKA, 30 m. Wayne King's Orchestra, WABC WCAU, 30 m. Variety, WGN "Chansonette," WOR, 30 m. Marie Kaufman, soprano, WPG Mauro Cottone at the organ, WMCA, 30 m. 10.15 P.M. EDT, 9.15 IST, 8.15 CT Mrs. Montaner's Millions, drama, WJZ WHAM KDKA Joe and Batece, WBZ Da Milfran Trio, WPG. 10.30 P.M. EDT; 9.30 EST; 8.30 CT Hall of Fame, Helen Hayes, WFAF WEEI WTCG WLW, WGY, 30 m. L'Heure Exquise, WJZ WBZ WBAL WHAM, 30 m. 45 Minutes in Hollywood, Preview of "Of Human Bondage," WABC WCAU, 45 m. Dance music, WGN, 30 m. Ruzanne Wallace, WJZ WHAM Charles Leland, WOR, 30 m. The Wandering Poet, WPG Florence Richardson's Orchestra, WMCA Russian Cathedral Choir, KCAC, 30 m. 10.45 P.M. EDT, 9.45 IST; 8.45 CT Steel Pier Orchestra, WPG, 30 m. Ben Pollack's Orchestra, WMCA. 11 P.M. EDT; 10 IST; 9 CT Baseball Scores, WFAF Canadian Capers, WEEI WTCG WLV, 30 m. WFAF from 11.15 Ruzanne Wallace, WJZ WHAM Live weather, sport review, WBZ Zero Hour, WLW, 30 m. Sports, KDKA, 30 m. Simon's Orchestra, WGN "Moonbeams," WOR, 30 m. Zero Hour, WLW. 11.15 P.M. EDT; 10.15 EST; 9.15 CT Ennio Belgolini, cellist, WJZ Leventide Sangers, WNC Missionary Broadcast, KDKA, 45 m. Henry Busch's Orchestra, WABC WPG, 30 m. WCAU from 30. Ted Weems's Orchestra, WGN News, WCAU Udo's Tango Orchestra, WMCA. 11.30 P.M. EDT; 10.30 EST; 9.30 CT Don Bigelow's Orchestra, WFAF WEEI WTCG WLV, 30 m.

Educational Sunday, June 3 5 P.M. Talk by Dr. Israel Goldstein, president of the Jewish National Fund, CBS-WABC. Monday, June 4 10.45 P.M. "What a President Roosevelt Has done for Farm Prices," talk by Representative Magnus Johnson of Minnesota, CBS-WABC. Tuesday, June 5 10.30 P.M. "The Coming International Labour Conference," talk by S. Mack Eastman, of the International Labour Office in Geneva, NBC-WJZ. Orchestra Gems, WTCG, 30 m. News and Ben Pollack's Orchestra, WJZ WBZ WHAM, 10 m. Tea Leaves and Jade, WLW, 30 m. Chas. Barrett's Orchestra, WMCA, 30 m. Weck's, Garber's and Weck's Orchestra, WGN, 1 h., 15 m. Jimmy Lunceford's Orchestra, WMCA, 30 m. 11.45 P.M. EDT; 10.45 IST; 9.45 CT Johnny Johnson's Orchestra, WABC WCAU WPG. 12 M. EDT; 11 P.M. EST; 10 CT Anniversary Program, FRB, Gov. Albert C. Ritchie of Maryland, Baltimore Music Club, WFAF WGY, 1 h. Jimmy Lunceford's Orchestra, WJZ WBZ WHAM WBAL KDKA, 30 m. News Purcell's Orchestra, WLW Red Nichols's Orchestra, WABC WCAU WPG. Ambrose Trini's Orchestra, WOR Bob Fallou's Orchestra, WMCA, 30 m. 12.30 A.M. EDT, 11.30 EST; 10.30 CT Clyde Lucas's Orchestra, WJZ WBZ WHAM, Sammy Kaye's Orchestra, WLW Earl Hines' Orchestra, WABC WCAU WLV, 1 h. Teddy Hill's Orchestra, WMCA, 30 m. Final Broadcast Of War Series "Pistols At Dawn," dramatic climax of the current "Roses and Drums" dramatic series of the Civil War, will be broadcast over the WABC-Columbia network on Sunday, June 3, at 6 P. M. After this program the series will be discontinued for the Summer.

Station Directory table with columns: Station, Chain, K.C., Watts, Location. Lists various radio stations and their frequencies and power outputs across different locations.

Radio Lane

By Jimmy J. Leonard

SINCE YOU have read in The MICROPHONE some weeks ago that station WOR was planning to broadcast experimental facsimile line drawings of their various performers, many readers have been led to believe that they will be forced to purchase entirely new radios for picking up this revolutionary experiment. Designers of the receiving apparatus inform us that it will cost but \$10 to add the reception

box to their present radio. At present the whole affair is but an experiment which will take place quite late at night or early in the morning during the Autumn. If these broadcasts should prove a success, they will be run throughout regular programs.

That boy JIMMY MELTON, even though he is temperamental, is showing himself right ahead. MELTON is playing his songs on The Family



JAMES MELTON

Theatre spot as well as on that program which is making a great name for itself, the NBC operettas. When LANNY ROSS hits it for Follywood, JIMMY MELTON will step into his shoes on the Junc Showboat brigade. LANNY ROSS is going to do a college singie.

Some great mind devised a scheme which will give the NBC radio heads some ideas on the public's attitude toward their presentations. While the studio audience is awaiting the opening of a program, pages race through the studios with questionnaires. The questions have to deal with the types of programs, types of people, what is liked and what is not. Also the audience is asked whether they listen during the Summer and whether they own an automobile radio. As the majority of the studio listeners hail from the country, their suggestions may serve as the stimulant to better programs.

The DICK TRACY skit originating at W/BZ rapidly is gaining in popularity. So much so that they are planning to take it to New York. That is, if the sponsor holding the New York time is really serious about allowing Baby ROSE MARIE to cease her squalling. I knew the old adage, children should be seen and not heard, would win out.

GRETE STUCKGOLD will be heard for some time on that cigarette program. She has had her contract renewed. And so has HARRY HORLICK. So, too, has FRANK PARKER, who sings with HORLICK. UKE LEW CHALUF of WHDH has written a beginners' book on the ukelele. UKE LEW has been playing the uke so long he feels that anyone who cannot play this instrument is losing one of life's prime joys. With his little ukelele under his elbow, LEW has invaded all bigtime vaudeville as well as the sanctity of motion picture studios.

EDWIN FRANKO GOLDMAN is returning to the air on June 20 over the NBC. He plans to do two concerts a week. LEON BELASCO has arrived back from Paris, chock full of tunes. ALBERT SPALDING ends his series of concerts about the latter part of July.

THE ORIGINAL U.S. RADIO NEWSPAPER MICROPHONE

VOLUME III Saturday, June 2, 1934 NUMBER 22

Publisher, JOHN K. GOWEN, Jr. Business Manager, PHILIP N. HOBSON Editor, G. CARLETON PEARL Managing Editor, MORRIS HASTINGS A weekly newspaper, THE MICROPHONE is published every Saturday at Boston, Massachusetts, by The MICROPHONE, Inc.

Entered as second class matter August 11, 1933, at the post office at Boston, Massachusetts, under the Act of March 3, 1879.

The MICROPHONE will not be responsible for unsolicited manuscripts unless they are accompanied by return postage.

Subscription for one year, \$1.50 postpaid. Single copies, five cents each. Advertising rates on application to the Business Manager.

Offices, No. 34 Court Square, Boston, Massachusetts. Telephones (connecting all departments) LAfayette 2860 and 2861.

Out With The Bunk!

DE-BUNKING of radio proceeds with pleasurable rapidity. Comedians who are not funny go by the board; smug announcers who need a new hat each week to care for the growth of their cranium no longer enjoy even fancied popularity.

Radio is out of its swaddling clothes. No longer an infant industry, the public expects it to do something more than merely furnish sounds over the air.

Critical standards rule the air. Advertising agencies, in the opinion of the listening public, have failed to establish themselves as the final arbiters of what the public should hear.

Poisonous plugs are shorter, less obnoxious, more bearable. Arthur Brisbane, Hearst editorial writer, is fond of saying that in the long run the public gets what it deserves.

The public deserves better radio. It is getting better radio.

If it does not get the kind of radio it expects, in the long run, the public will take over the radio, as was done in England, and run it for its own interests. Then no one will make a profit from it.

And perhaps more persons will be better satisfied.

Mature Mental Age

THE MICROPHONE, original United States Radio Newspaper, has no competitors. It is the only national radio newspaper in this country. There are several regional weeklies, several "fan" publications. There is at least one other radio weekly that fancies itself to be predominant in the field, that is predicated, like certain "movie fan" publications, on the erroneous impression that the general public has the mind of a 12-year-old child. The MICROPHONE is intended to appeal, and does appeal, to citizens of mature mental age. They are in the majority.

Experimental Program Laboratory Launched

STATION WBT, Charlotte, N.C., 50,000 watt Southern key of Columbia, has plans for five experimental program laboratory periods a week bringing into use the cream of the auditioned talent. The programs will be billed as "The WBT Experimental Program Laboratory."

The idea originated with W. A. SCHUDT, Jr., General Manager of WBT. The station each week gives auditions to considerable talent. Much of this is good but never goes on the air because the demands of commercial radio are not equal to the available supply of talent.

The new experimental periods will attempt to uncover new and interesting radio attractions in the Carolinas. Audiences will be asked to pass on the ability of the performers. Favorable letters will be considered as a proper demand for an encore and he performer will be given another spot.

Auditions are necessary before an act can be considered for the laboratory programs. The series will be given each

Wednesday from 2 to 4.40 P.M. J. HOLDIS SMITH, Production Manager, will supervise the laboratory programs and he and Program Director LEI EVERETT will pass on all talent before it becomes a part of the laboratory period.

Mr. SMITH will write continuity to blend the acts into a running show. Those taking part in these periods will have their names, addresses and business connections broadcast. A brief history of training and entertainment careers also will be given to listeners.

When the demand appears, outstanding amateur performers will receive the calls for commercial shows.

Plans call for one period each week of experimental drama with the Charlotte Little Theatre invited to present short dramas, including sketches patterned after the EUGENE O'NEILL type of play, with the asides adapted for radio presentation.

The laboratory will present a constantly changing daily program.

In discussing the new pro-

grams, Mr. SCHUDT said:

"I believe that this is the broadest movement ever made to encourage amateur talent in the Carolinas. Anyone with genius or genuine ability will have their chance to display it before the microphone, with the audience as judge."

Another type of program which is being experimented with is a one-minute drama. Included in this miniature play is an exciting action story and the history of a colorful personality. FRANK BUCK, wild animal hunter.

Studiosity

By Les Troy

MARY ISN'T "small" any more. For little Miss MARY SMALL, whom you are liable to hear on Sunday afternoons, has grown more than five inches taller in the last eight months, since she started her career as a radio singer. MARY is inclined to the "Topsy" theory of growth. I think maybe reaching for the microphone had something to do with it. What's more, MARY was 12 years old just a short while ago.



MARY SMALL

HELEN CLAIRE, who recently became the "Betty Gram" of the "Roses and Drums" sketches, is one person who doesn't have to worry about getting the wrong number, providing she phones her family.

Her parents live in a quiet little town known as Union Springs, Alabama. Everybody knows everybody else. She recently called

and got the telephone operator of Union Springs.

Said the operator:

"Nobody's home just now, Miss Helen, but you'll wait a minute and ah'll see if ah can find yo' father fo' you."

"There was a pause of a few minutes. Then the operator spoke again:

"Ah'm sorry, Miss Helen, ah can't find him. Ah can see from mah window that he ain't down by the hotel nor the post-office. He must be up at one o' his friend's house havin' an egg nog. Ah'll tell him yo' called."

And now I hear from my own personal New York correspondent, ALOYSIUS GLUFFY. He reports that ROSA PONSIELE is continuing her daily bicycle rides around the terrace of her penthouse to keep in good physical condition for her broadcasts. Come Spring, GLUFFY always does the roof tops.

Here's another note from GLUFFY, told in his own inimitable style. I quote:

"Six men and two young women in a semi-circle in a Radio City studio. They are reading the script of a radio drama. One of them, temporarily out of the picture, is buried in a newspaper. The others read their lines in low voices.

"Occasionally the director says 'boom, boom,' in a conversational tone and, in an off-hand way, makes a suggestion to one or another of the readers. The studio is cool and quiet, and the low monotone of the voices creates an atmosphere of peace and drowsiness."

(Stop it ALOYSIUS, I'm going to sleep.)

"Guess what the show is? It's the Bar X Days and Nights, one of the most raucous Western thrillers ever to fill a carrier wave."

To Subscribe to The Microphone

Fill out the blank and mail with cash, money order or check to The MICROPHONE, 34 Court Square, Boston, Mass.

(Please print)

Name.....

Street.....

City or Town.....

State.....

(Subscription \$1.50 per year, postpaid)

Monday, June 4 - Owen D. Young on NBC-WJZ at 12.30 P.M.

Highlights

- P.M.
- 12.30—Owen D. Young, NBC-WJZ
- 3.40—Finnish National Orchestra from London, NBC-WJZ
- 4.15—Child Painters discuss art, CBS-WABC
- 7.45—"Taxi," Max Baer, NBC-WJZ
- 8.00—Soconyland Sketch, NBC-WJZ
- 8.30—Bing Crosby and Mills Brothers, CBS-WABC
- 9.00—Rosa Poncellie, CBS-WABC
- 9.30—The Big Show, Helen Menken, CBS-WABC
- 10.00—Symphony Orchestra, Dr. Walter Damrosch, conductor, NBC-WJZ

(All programs are listed in Eastern Daylight Saving Time. Eastern Standard Time is one hour earlier; Central Time is two hours earlier.)

- 6.45 A.M. EDT, 5.45 EST, 4.45 CT
- Tower Health Exercises, WEAF WEEI WGY, 1 h
- 7 A.M. EDT, 6 EST, 5 CT
- Prayer, WLW
- Rise and Shine, WBZ 30 m.
- Musical Clock, WJZ
- 7.30 A.M. EDT, 6.30 EST, 5.30 CT
- Top of the Morning, WLW
- Yochi Hirauka, xylophone, WJZ
- Musical Clock, WJZ, 30 m.
- Organ Reville, WABC
- 7.45 A.M. EDT, 6.45 EST, 5.45 CT
- Pollock and Lavinhurst, WEAF WGY
- Morning Musicals, WJZ
- Jolly Bill and Jane, WJZ WBAL
- 8 A.M. EDT, 7 EST, 6 CT
- Organ Rhapsody, WJZ WJZ WJZ WJZ
- Musical Clock, WGY
- Prayer, WLW
- Morning Devotions, WJZ
- Morning Devotions, WJZ
- S. B. Ridenour and current events, WEEI
- Program review and Salon Musicale, WABC, 30 m.
- 8.15 A.M. EDT, 7.15 EST, 6.15 CT
- Devotions, WLW
- Don't Talk Trio, WJZ WBZ WHAM WBAL At the Console (WJMS from 8.30)
- 8.30 A.M. EDT, 7.30 EST, 6.30 CT
- Chorus, WEAF WEEI WJZ WJZ WLW, 30 m.
- Low White at the dual organ, WJZ WHAM WBAL, 30 m.
- Weather, WBZ
- Sunny Melodies, WABC, 30 m.
- 8.45 A.M. EDT, 7.45 EST, 6.45 CT
- Strolling Tom, WBZ
- 9 A.M. EDT, 8 EST, 7 CT
- Morning Clouds, WJZ WLW
- Bradley Kincaid, songs, WGY
- Breakfast Club, orchestra, WJZ WBAL, 1 h.
- WHAM (WBZ from 9.30)
- The Naturalists, WABC
- 9.15 A.M. EDT, 8.15 EST, 7.15 CT
- Landi Trio and White, WEAF WEEI WGY WLW
- Madison Ensemble, WABC
- 9.30 A.M. EDT, 8.30 EST, 7.30 CT
- Nancy Nolan, songs, WJZ WLW
- Little Jack Little, Orchestra, WGY
- Hymns of All Church, WLW
- Metropolitan Parade, WABC, 15 m.
- 9.45 A.M. EDT, 8.45 EST, 7.45 CT
- Florentia Trio, WJZ WJZ WLW
- Devotions, WGY
- News, KDKA
- 10 A.M. EDT, 9 EST, 8 CT
- Breen & de Rose, WJZ WJZ WJZ WJZ
- String Trio, WLW
- Harvest of Song, WJZ WBZ WBAL KDKA
- 10.15 A.M. EDT, 9.15 EST, 8.15 CT
- Clara, 10 m, WLW WJZ WLW
- Holman Sisters, WJZ WHAM
- Duke Dewey's Orchestra, WBZ
- Hill and Ganger, WABC WCAU
- Bob White, WJZ
- 10.30 A.M. EDT, 9.30 EST, 8.30 CT
- News and Morning Parade, WEAF WEEI WLW
- Market Basket, WGY
- Bridge talk, WEEI
- News, WLW
- Today's Children, drama, WJZ WBZ WHAM WBAL KDKA
- News and The Merry-makers, WABC WCAU
- Mixing Bowl, WJZ
- 10.45 A.M. EDT, 9.45 EST, 8.45 CT
- Skip, Step and Happana, WGY
- Jack and Loretta Clemons, WJZ
- News, WBZ
- Jester's, WLW
- Sammy Fuller, KDKA
- Quarter Hour of Waltzes, WABC WCAU
- 11 A.M. EDT, 10 EST, 9 CT
- S. N. Navy Band, WEAF WGY WJZ
- Radiation, 1 h
- High School of Cookery, WEEI
- Violinist, WLW
- The Wife Saver, WJZ
- The Harmonizers, Grace and Eddie Albert, WBZ WHAM
- WBZ WHAM
- Cooking Clouspeus, WABC WCAU

Circus Days



"UNCLE BOB" SHERWOOD, famous ring master, Barker and story teller who presides over the Dixie Circus programs carried by the CBS-WABC chain on Mondays at 6.45 P. M.

- 11.15 A.M. EDT, 10.15 EST, 9.15 CT
- Platt and Nierman, piano duo, WJZ WBZ WHAM KDKA
- News and Investments, WLW
- Pedro de Cordoba and Osborne's Orchestra, WABC WCAU
- 11.30 A.M. EDT, 10.30 EST, 9.30 CT
- Charioters, WLW
- Rhythm Ramblers, WJZ KDKA WBAL, 30 m. (WBZ WHAM from 11.15)
- Metropolitan Stage Show, WBZ
- Luny Wom, WABC
- 11.45 A.M. EDT, 10.45 EST, 9.45 CT
- Painted Dreams, WGN, WLW
- Peggy Keenan and Sandra Phillips, pianists, WABC
- 12 N. EDT, 11 A.M. EST, 10 CT
- Gene Arnold's Commodore, WEAF WEEI WGY
- Silver Strains, WJZ
- Oklahton, Bob Albrecht, WLW
- Morton Bone, tenor, WJZ WHAM
- The Monitor Views the News, WCAU
- One of Experience, WABC WCAU
- Handicraft Club, WOR
- Lyric Strings, trio, WJZ
- 12.15 P.M. EDT, 11.15 A.M. EST, 10.15 CT
- Rea Bartle, Ensemble, WEAF WEEI WJZ
- Martha Hal, WGY
- Morin Sisters, WJZ WHAM
- Weather, WJZ Farm Forum, WBZ
- Quartet, WLW
- Betty Barnhill, WABC WCAU
- "Home" Redecorating, WOR
- Cluck Richards, songs, WJZ
- 12.30 P.M. EDT, 11.30 EST, 10.30 CT
- Weather, Markets, WEAF WEEI KDKA
- U. of Nebraska Commencement Address by Owen D. Young, Jr., WJZ WBZ WHAM
- Bond of Friendship, WLW
- Microphone Gossip, WJZ
- Don Kennedy, organ, WOR, 30 m.
- (Jouster's) Orchestra, WJZ, 40 m.
- Stocks, WJZ, 30 m.
- 12.45 P.M. EDT, 11.45 EST, 10.45 CT
- Prominent Women in Washington, WEAF WJZ
- Caban and Del Castillo, WLW, 30 m.
- Radio, WBZ
- Texans, trio, WLW
- Micha Raginsky's Ensemble, WABC WCAU
- 1 P.M. EDT, 12 N. EST, 11 A.M. CT
- Waldorf-Astoria Orchestra, WEAF WEEI WJZ
- Vandenberg, WGY
- Ohio Farm Bureau talk, WLW
- MSC Farm Forum, WBZ, 30 m.
- Velasco's Orchestra, WABC, 30 m.
- 1.15 P.M. EDT, 12.15 EST, 11.15 CT
- River, market, live stock reports, WLW
- The Honorable Archie, WJZ
- N. J. League of Women Voters, WOR
- News, WJZ
- 1.30 P.M. EDT, 12.30 EST, 11.30 CT
- Personality and Health, WJZ
- New England News, WEEI, 30 m.
- WGY farm program, WGY, 30 m.
- National Farm and Home Hour, WJZ WBZ WHAM WBAL WLW
- 1 h
- Michea Raginsky, WABC WCAU, 30 m.
- Theatre Club of the Air, WOR
- 1.45 P.M. EDT, 12.45 EST, 11.45 CT
- String Ensemble, WOR
- 2 P.M. EDT, 1 EST, 12 N. CT
- Revolution Stage, WLW WJZ WJZ, 45 m.
- Lauren Bell, baritone, WGY
- Am. Art, organist, WABC WCAU, 15 m.
- Dr. Arthur Frank Payne, WOR
- "Dogs," WJZ
- 2.15 P.M. EDT, 1.15 EST, 12.15 CT
- N. E. Kitchen, WEEI
- Household Chat, WGY
- Romance of Helen Trent, WABC WCAU
- Sports talk, WJZ
- Virginians, male quartet, WOR
- 2.30 P.M. EDT, 1.30 EST, 12.30 CT
- Pendavros' Dance Orchestra, WLW
- Smackout, comedy, WJZ
- Low Bell, pianist, WJZ
- Home Forum, KDKA
- School of the Air's service, WHAM
- Norfolk Plaza Orchestra, WLW
- Lutery Deursch's Orchestra, WABC, 30 m.
- McGill Players, WJZ, 30 m.
- Marilla Deane, WOR, 30 m.
- 2.45 P.M. EDT, 1.45 EST, 12.45 CT
- Ma Perkins, WEAF WEEI WGY WLW
- Richard Maxwell, tenor, WJZ WBZ WHAM
- Talk, Morgan Memorial, WJZ
- 3 P.M. EDT, 2 EST, 1 CT
- B. H. Whiffles, WLW WJZ WLW
- Albany on Parade, WGY
- The Fortune Hunter, WJZ
- Smith, WJZ KDKA WBAL WHAM 1 h.
- Ye Old Tea Shoppe, WBZ
- Camay Minstrel, WLW
- Oulu Serenades, WABC
- "Women and Money," WJZ
- 3.15 P.M. EDT, 2.15 EST, 1.15 CT
- The Way Man, WEAF WEEI WJZ WJZ WJZ WJZ
- Health (Humor), WLW
- Low Down, WLW
- Sandy Macfarlane, WBZ
- One of Experience, WABC
- Boys, "You Love," WOR
- Patologie, WJZ
- 3.30 P.M. EDT, 2.30 EST, 1.30 CT
- Women's Radio Review, WJZ WEEI WGY
- Sputter and Whine, WLW
- Home Forum Cooking School, WBZ, 30 m.
- Poetic Strains, WABC, 30 m.
- Stocks, WJZ
- Spring Flower show, WOR
- 3.45 P.M. EDT, 2.45 EST, 1.45 CT
- Finnish National Orchestra, broadcast from London, WEAF WEEI WGY WJZ
- King, lady, tenor, WLW
- Bass, (Chicago) vs. Boston, WGN
- Mandelors, WJZ
- Anderson Musical, WOR, 45 m.
- 4 P.M. EDT, 3 EST, 2 CT
- Gypsy Orchestra, WEAF WGY
- Stock market quotations, WJZ
- Betty and Bob, WJZ WBZ WHAM
- Walker Dawley, organist, WJZ, 10 m.
- Bill Huggins, songs, WABC WCAU
- Songs, music, WJZ, 30 m.
- 4.15 P.M. EDT, 3.15 EST, 2.15 CT
- Story program, WEAF
- Musical Clubs Program, WJZ
- Gate Page, songs, WJZ WHAM
- WBZ WHAM
- Matinee Highlights, WLW, 30 m.
- Child Painters, Class of Van Perrine, WABC
- 4.30 P.M. EDT, 3.30 EST, 2.30 CT
- Tea Dancers, WEAF WEEI
- Vegetables, WGY
- Orlando Compositors, WJZ WBZ WHAM
- Chicago Variety, WABC WLW, 30 m.
- Varety, WJZ, 10 m.
- Marmba Orchestra, WOR, 30 m.
- Instrumental Trio, WJZ
- 4.45 P.M. EDT, 3.45 EST, 2.45 CT
- The Lady Next Door, WJZ WEEI
- Stock, WGY
- Morgan Memorial, WLW
- Health Hint, Dr. Morris Fishbein, WJZ
- WBZ WHAM
- The Mystery Girl, WJZ
- 5 P.M. EDT, 4 EST, 3 CT
- Don Bigelow's Orchestra, WJZ WJZ WJZ
- WJZ, 30 m. from 5.15
- Phil Saitman, pianist, WEEI
- Palmer Clark's Orchestra, WJZ WHAM
- KDKA, 30 m.
- Agriculture Markets, WBZ
- The Dictators, WABC
- Sally's Party, WJZ, 30 m.
- 5.15 P.M. EDT, 4.15 EST, 3.15 CT
- Mass. Highway Accident Survey, WLW
- The Monitor Views the News, WBZ
- Skippy, WABC WCAU
- "Story Teller's Hour," WOR
- 5.30 P.M. EDT, 4.30 EST, 3.30 CT
- Frank Merrill's, Adventures, WJZ WEEI
- WGY WLW
- The Singing Lady, WJZ WBZ WHAM
- WJZ WGN
- Jack Armstrong, "All-American Boy," WABC WCAU
- Main St. Song Witter, WJZ
- 5.45 P.M. EDT, 4.45 EST, 3.45 CT
- Bunkhouse Songs, WLW
- Berry Mink, baritone, WLW
- Wrightsville 4 Larron, WJZ, 30 m.
- Camera Club, Luis Marden, WBZ
- Buck Rogers, WABC WCAU
- Orchestra, WGN, 30 m.
- Uncle Don, WOR, 30 m.
- 6 P.M. EDT, 5 EST, 4 CT
- Peter Van Steden's Orchestra, WEAF
- WLW, 30 m.
- Evening Tattler, WJZ
- Irene Beasley, WLW WJZ WBZ WBAL
- Wrightsville 4 Larron, WJZ, 30 m.
- Camera Club, Luis Marden, WBZ
- Buck Rogers, WABC WCAU
- Orchestra, WGN, 30 m.
- Uncle Don, WOR, 30 m.
- 2nd Black's Orchestra, WJZ, 30 m.

- 6.15 P.M. EDT, 5.15 EST, 4.15 CT
- Joe and Eddie, WGY
- U. S. Navy Band, WJZ WHAM, 30 m.
- Bill Williams, WBZ
- Sperry, teacher, KDKA
- Bobby Benson and Sunny Jim, WABC WCAU
- 6.30 P.M. EDT, 5.30 EST, 4.30 CT
- Grandmother's Trunk Narration, WEAF WJZ
- Scores, Current Events, WLW
- Helen Mae, soprano, WGY, 30 m.
- Jack Armstrong, WLW
- Three X Sisters, WJZ KDKA
- Time, sports, weather, WBZ
- Charles Barnett's Orchestra, WABC
- Jack Arthur, baritone, WOR
- Children's Club, WHAM, 30 m.
- Heat Waves, trio, WJZ
- 6.45 P.M. EDT, 5.45 EST, 4.45 CT
- Horse Sense Philosopher, WJZ
- Funny program, WEEI WJZ
- Lowell Thomas, WJZ WBZ WLW
- "The Dixie Circus," Uncle Bob Sherwood, WABC WCAU, 30 m.
- Ray Perkins, Fun Maker, WOR
- Weldon and Fain Forum (M S C), WBZ
- Dave Circus, WJZ WHAM, 30 m.
- Albany on Parade, WJZ
- Dr. H. I. Standhagen, WOR
- Five Star Final, WJZ
- 7 P.M. EDT, 6 EST, 5 CT
- Baschall Resume, WJZ
- Hollywood Comedy Show, WLW
- House Sense Philosopher, WGY
- Amos n' Andy, WJZ WBZ KDKA WLW
- Sperry, teacher, WHAS, 30 m.
- Ford Frick, sports, WOR
- Dick Mansfield's Orchestra, WJZ
- 7.15 P.M. EDT, 6.15 EST, 5.15 CT
- Gene and Glenn, WEAF WEEI WJZ
- Sperry, teacher, WJZ
- Baby Rose Marie, WJZ WHAM KDKA
- Dick Tracy, Detective, WBZ
- Joe Emerson's Orchestra, WJZ
- Just Plain Bill, WABC WCAU
- Dance Music, WOR
- Vagabond Singers, WJZ
- 7.30 P.M. EDT, 6.30 EST, 5.30 CT
- Shirley Howard and the Jesters, WJZ
- London, WEAF WEEI WGY WJZ
- After Dinner Revue, WJZ
- Pre-Race Program, Indianapolis Speedway, WJZ
- Radio Nature League, WBZ
- Bob Newhall, WLW
- "Music on the Air," WABC WCAU
- "Maverick Jim," drama, WOR, 30 m.
- Voice of Jerusalem, WJZ
- 7.45 P.M. EDT, 6.45 EST, 5.45 CT
- The Goldbergs, WEAF WEEI WGY WHAM
- Smooth Rhythms, WJZ
- Max and Pete, WLW
- Max Baer, "Taxi," WJZ WBZ WBAL KDKA WHAM
- Beate Carter, news, WABC WCAU
- Beauty Guild, WJZ WHAM
- Arthur Lewis, orchestra, WJZ
- 8 P.M. EDT, 7 EST, 6 CT
- Soconyland Sketches, William Griffith, Ed-Soconyland Sketches, "Twenty Pounds Reg- N. J.," WEAF WEEI WJZ WJZ, 30 m.
- Jan Gauber's Orchestra, WJZ WBZ WHAM
- Mary Estman, WABC, 30 m.
- Irish Melodies, WPG
- Dinner Concert, WHAS, 30 m.
- Three Little Sisters, WJZ
- 8.15 P.M. EDT, 7.15 EST, 6.15 CT
- Edwin C. Hill, WABC WCAU
- Bridge Talk, WPG
- Songs, WJZ
- 8.30 P.M. EDT, 7.30 EST, 6.30 CT
- William Daly's Orchestra, WJZ WEEI
- WJZ WGY WLW, 30 m.
- Music City Four, WJZ WBZ WBAL KDKA WHAM
- Bing Crosby, Jimmy Grier's Orchestra and the Mills Brothers, WABC WCAU, 30 m.
- "Sinfonietta," WOR, 30 m.
- The Cameos, WJZ
- Lone Ranger, WGN, 30 m.
- Crazy Range Ramblers, WJZ
- 8.45 P.M. EDT, 7.45 EST, 6.45 CT
- Babe Ruth, baseball comment, WJZ WBZ
- WHAM WBAL KDKA
- Radio Rod and Gun Club, WOR
- Moire Han Ness, WJZ
- 9 P.M. EDT, 8 EST, 7 CT
- A. & P. Gypsies, Frank Parker, WEAF WEEI WJZ WJZ, 30 m.
- Minstrel, Gene Arnold, Joe Parsons, male quartet, WJZ WBZ WHAM WBAL KDKA WLW, 30 m.
- Rosa Poncellie, Audie Kotelanski's Orchestra, WABC WCAU, 30 m.
- "The Champions," WOR, 30 m.
- Songs, music, WJZ, 30 m.
- 9.30 P.M. EDT, 8.30 EST, 7.30 CT
- Ship of Joy, Tommy Harris, tenor, WLW
- WJZ, 30 m.
- Travelers Hour, WJZ, 30 m.
- Melody Moments, Pasternak's Orchestra, Theodore Katic, tenor, WJZ KDKA WHAM WBAL WLW, 30 m.
- Twentieth Century, WJZ
- The Big Show, Helen Menken, Gertrude Neesen and Erno Raape's Orchestra, WABC WCAU, 30 m.
- Harry H. Balkin, "Success," WOR
- "12 Hour of cheer," WJZ, 30 m.
- Hotel Fraymore Orchestra, WPG, 30 m.
- 9.45 P.M. EDT, 8.45 EST, 7.45 CT
- Sammy Limer's Orchestra, WBZ
- 10 P.M. EDT, 9 P.M. EST, 8 CT
- Gene Arnold, Lullaby Lady, male quartet, Edna May's Orchestra, Richard Bonelli, guest, WEAF WEEI WJZ WJZ WLW, 30 m.
- Symphony Orchestra, Gladys Rice, Dan Grady, WJZ WBZ KDKA WHAM, 30 m.
- Wayne King's Orchestra, WABC WCAU, 30 m.

- Fabien Sevitzky's Orchestra, WOR
- "Continental Cafe," WJZ
- Young's Quartet, WPG
- Letty and Lucky, WOR
- 10.15 P.M. EDT, 9.15 EST, 8.15 CT
- Ranny Weeks' Orchestra, WEEI
- Three Tone, WJZ
- Harlan I. Reed, current events, WOR
- Starlight Hour, WJZ
- 10.30 P.M. EDT, 9.30 EST, 8.30 CT
- Gothic Echoes, Anonymous Singers, WEAF
- "Beauty that Endures," WLW
- WT Rhythmic Playhouse, WLW, 30 m.
- Music, WGY, 30 m.
- Lillian Roth, Edward Neil, Jr., WABC
- Musical Album, WABC WHAS
- Alfred Chigo, orchestra, WJZ
- Dick Henry Peppers, WLW, 30 m.
- Dick Mansfield's Orchestra, WJZ, 30 m.
- (Organ, WJZ)
- 10.45 P.M. EDT, 9.45 EST, 8.45 CT
- Pan American Concert, WJZ WEEI WJZ WJZ
- WTIC WGY Johnson, WJZ President Roosevelt Has Done for Farm Prices," WABC
- Variety, WJZ
- Manfred Caliste, WLW
- Thrice Buccaners, WOR
- 11 P.M. EDT, 10 EST, 9 CT
- News and Harold Stern's Orchestra, WEAF
- WTIC WGY Johnson, WJZ President Roosevelt Has Done for Farm Prices," WABC
- Variety, WJZ
- Manfred Caliste, WLW
- Thrice Buccaners, WOR
- Hillbills, WEAF
- Post Prince, WJZ
- Joe Rose's Orchestra, WBZ
- News and Orchestra, KDKA
- News and Reggie Childs Orchestra, WABC
- WLBZ, 30 m.
- Florence Richardson's Orchestra, WJZ
- 11.30 P.M. EDT, 10.30 EST, 9.30 CT
- Clyde Lewis' Orchestra, WEAF WEEI WJZ
- Carl Hoffman's Orchestra, WABC
- News and Tennessee Valley Development," talk, WJZ
- Lloyd Huntley's Orchestra, KDKA, 30 m.
- Follies, WJZ
- Jimmy Lunceford's Orchestra, WJZ, 30 m.
- Letty and Lucky, WOR
- Alfredo Brito's Orchestra, WGN, 30 m.
- 11.45 P.M. EDT, 10.45 EST, 9.45 CT
- "Public Housing in Action," talk by Mayor of Milwaukee, WEAF
- Carl Hoffman's Orchestra, WABC
- Reggie Childs' Orchestra, WJZ
- 12.30 A.M. EDT, 11.30 P.M. EST, 10.30 CT
- Julie Stern's Orchestra, WEAF, 30 m.
- Gene Arnold's Orchestra, WABC, 30 m.
- Roger Wolfe Kahn's Orchestra, WJZ WBZ, 30 m.

Two Doctors On Columbia Chain

Lectures by several noted doctors made during the annual convention of the American Medical Association in Cleveland will be broadcast over the CBS-WABC network on Tuesday, June 12, and Thursday, June 14.

Dr. N. B. VAN ETTEN, of New York, will speak Tuesday from 10.45 to 11 A. M.

His subject is "The Family Doctor."

On Thursday, from 4 to 4.15 P. M., Dr. MORRIS FISHBEIN will speak.

Dr. VAN ETTEN, vice-speaker of the Association's House of Delegates, is medical director of the Morrisania Hospital in New York and a trustee of the New York State Medical Society.

Dr. FISHBEIN, whose home is Chicago, is the editor of *Hygeia*, journal of the American Medical Association.

He is also the author of a number of medical books and the editor of a nationally syndicated newspaper column devoted to medical topics.

Tune In WABC
FINANCIAL TALK
 Every Monday, 7.30 P. M.
 MR. E. E. NAZZARO

Damrosch Brings the "Classics" to Farm Houses and Apartments

Conductor Still Sees Far Ahead

To describe the variety of audiences that Dr. WALTER DAMROSCH used to reach when he first took his symphony orchestra on tour many years ago, somebody wrote that he brought MOZART to mining camps and WAGNER to the wilderness.

Now, every Monday night over an NBC-WJZ network, he not only gets the ear of the American worker with classics but "produces" ROMBERG in the ranch-house and GERSHWIN in the gameroom of the suburban home.

It is friendly familiar music that is heard Monday at 10.00 P.M., E.D.T., in the "Packard Presents Dr. WALTER DAMROSCH" program, which is the only symphonic series with commercial sponsorship heard this Summer over an NBC network.

Each week the NBC musical counsel selects also a number by a contemporary composer living in America and identified with the task of writing our musical history.

And this kind of number Dr. DAMROSCH presents in such a way that it may remain popular with music lovers for many years to come.

Such contemporaries as FRIML of CHARLES MARTIN LOEFFLER, who wrote the "La Vilanelle du Diable" which recently was given by Dr. DAMROSCH, have their day in court with the American radio audience as jury, along with BEETHOVEN and MENDELSSOHN.

A Pioneer

Thus we find Dr. DAMROSCH pioneering in American music every Monday night, reaching new groups of music lovers with new compositions, just as he did years ago in a much more limited field when he gave New York its first taste of the symphonic work of BRAHMS, TSCHAIKOVSKY and ELGAR.

Dr. DAMROSCH brings to the Packard program on Monday nights the enthusiasm that made an international success of the NBC Music Appreciation Hour, which recently finished its sixth consecutive season for the school-children of America.

With hardly a pause, he went from the task of guiding and stimulating the musical tastes and appetites of millions of boys and girls to the equally congenial work of bringing fine music on regular broadcasts through the Summer to the American home.

Dr. DAMROSCH's is now the largest orchestra on the air which is organized exclusively for broadcasting. There are 75 members of his symphony.

Dr. DAMROSCH does not confine the activities of this group of artists to the symphonic field. He selects at will numbers from classification.

He also calls in soloists for his scholarly popular programs

CAROL DEIS, soprano, frequently is heard on these programs.

He also has the co-operation of several choral groups. One of these is the chorus of the Metropolitan Opera House. Another will be the chorus of the Art of Musical Russia, the opera company which gave performances in

A Benevolent Maestro At Home



DR. WALTER DAMROSCH, veteran conductor, whose pioneer work on the radio has won him affection and admiration.

New York last Winter.

Other Orchestras

As another indication of the network—not the technical one of wires—which Dr. DAMROSCH uses in his Spring programs, we find him bringing in other famous orchestras to add to the interest.

The Detroit Symphony, rated as one of the greatest organizations of its kind in this country, came to the radio audience as an NBC-WJZ broadcast a short time ago with Dr. DAMROSCH in charge.

OSISP GABRILOWITZSK, distinguished leader of the Detroit orchestra, had invited Dr. DAMROSCH to his city to conduct in his place. The program brought in the Orpheus Club of Detroit as a choral group and GABRILOWITZSK as conductor of one number.

"The Firefly," by FRIML and the "Pomp and Circumstance" of ELGAR illustrate the range of the musical bill-of-fare.

As ERNEST LA PRADE, closely associated with Dr. DAMROSCH in the Spring concert program, has commented, there is plenty of good food for the musically inclined, and he might have added that the public appetite for good music has been stimulated to a degree unthought of a few years ago before the NBC musical counsel took up his baton in behalf of better music for bigger radio audiences.

His selections for the "Packard Presents Dr. WALTER DAMROSCH" broadcasts appeal not only to the studious type of music-lovers who have followed him in his career throughout half a century, but also to a vastly larger group which listens "intensely"—in his own phrase—to the best that the world offers in symphonic and other instrumental music.

This immense audience, larger even than the group of music-lovers and students of school-age, finds itself listening to such varied fare as WAGNER'S "Das Rheingold" and the Allegretto from BRAHMS'S Symphony No. 2, with JEROME KERN'S "Old Man River" in between.

To the horror of the super-

esthete the classic as well as the modern may be heard not only in the drawing room but in any lunch wagon or ice-cream soda stand whose proprietor wants to tune in.

Always Vital

Speaking of those whose esthetic glands function a little too rapidly—and these people are always on the pessimistic side when it comes to a discussion of the future of American music—it may be said in parentheses that Dr. DAMROSCH, the optimist, faces his symphony orchestra every Monday night in his Radio City studio in just as about the same frame of mind he did a half-century ago when he began conducting.

He is as alive as then to the immense opportunities of bringing good music to the people. As in his radio discussions of music, for the NBC Music Appreciation Hour, which will be continued next Fall.

Dr. DAMROSCH this Summer takes the democratic approach to

aristocratic music of the classical sort and the appreciative approach to the newer meritorious American compositions.

At the age of 72 he is so far from being a conservative that he points out what radio does for the development of the good singer rather than spend time lecturing on what radio ought to do, fails to do, etc. A recent observation regarding radio musicians of all kinds, from the youngest beginner with popular melodies to the world-famed operatic star, is that the technical requirements are so strict that the performer must do his best at all times if he is to get across successfully to his vast audiences.

He Sees Ahead

Only good diction can succeed on the air, he points out. This leaves the pessimists somewhat in the rear of the procession. And he points out in addition that opera over the air gives encouragement to a much handicapped group, the creators and producers of American works. Hardly a program of Dr. DAMROSCH's but brings home the truth of one or the other of these acute observations.

To those who have been making themselves mournfully vocal by singing the swan-song of American music, Dr. DAMROSCH says cheerily, and means every word of it:

"I'd like to live to be a hundred so as to see what America is going to do to our music."

He could see ahead, when he became a director half a century ago. He can still see ahead.

Seibel and Sylvan Trio

GEORGE SEIBEL, literary and dramatic critic of the Pittsburgh Sun-Telegraph, will make his second guest appearance with the Sylvan Trio during the program broadcast over the NBC-WJZ network, Sunday, June 3, from 5.15 to 5.30 P. M.

She Assists



CAROL DEIS, soprano, frequently appears as soloist with DR. DAMROSCH in his Packard concerts.

Press Hits Chicago Fire Radio News

(Continued from Page 1)

news on its own initiative and under its own direction, it must learn to discipline itself." Editor & Publisher, organ of the press, commented on the situation editorially.

"This is a sample of what independent radio schemers have in mind to inflict upon the people of this country. They are not prepared to do the news jobs, their medium is physically incapable of supplying more than headline material at best.

"Radio news, if the independents are not restrained, will become a public question, to be decided by the Administration at Washington. It is not conceivable that a medium which is physically incapable of functioning in the public interest will be allowed to interfere with the established system of news reporting in a democracy."

John A. Holman is Guest at Luncheon

At a luncheon in Hotel Bradford, Boston, on Monday, May 28, JOHN A. HOLMAN, new manager of station WBZ, Boston branch of the National Broadcasting Company, was introduced to the radio editors of Boston newspapers.

WALTER E. MYERS, manager of WBZ since 1932, promoted to national sales representative of the NBC in Boston, introduced Mr. HOLMAN. Arrangements for the luncheon were made by GEORGE A. HARDER, publicity representative for the NBC in Boston.

This and That

(Continued from Page 1)

ly not experienced—lead to great confusion. I wasn't quite sure at the end who had committed the crime or who had been killed.

"Taxi," the series of dramas starring that movie actor MAX BAER, is quite inferior material. It reminds you, in fact, of the less violent heart-throb draymas of the early screen days.

But it is done so engagingly, with BAER himself having such a good time acting it, that you listen despite your better judgment.

On the whole, there is more room for improvement in radio dramas than in any other form.

The solution does not lie necessarily in getting "big names" to act on the air.

It does lie in getting a high standard of material, with fewer and more carefully trained actors to present it.

STATION DIRECTORY
Page 4

Tuesday, June 5 - "Conflict", Stribling drama, WABC, 10.30 P.M.

Highlights

P.M.

8.30—Wayne King, NBC-WEAF
"Acordiana," Vivienne Segal, CBS-WABC

9.30—L. Wynn, NBC-WEAF.

10.00—Stoopnagle and Budd, CBS-WABC.

"The Red Poppy," Frank Black directing, NBC-WJZ

10.30—"Conflict," drama by T. S. Stribling, CBS-WABC

(All programs are listed in Eastern Daylight Saving Time. Eastern Standard Time is one hour earlier; Central Time is two hours earlier.)

7.30 A.M. EDT, 6.30 EST, 5.30 CT

Top of the Morn'g, WJW 30 m.
Yoshi Hirakawa telephone, WJZ
Musical Clock, WJZ, 30 m.
McGarrick Fiddlers, W.L.W., 30 m.
Organ Recital, WABC

7.45 A.M. EDT, 6.45 EST, 5.45 CT

Pollock and Lawhurst, WEAF WGY
Morning Musicals, WEEI

8 A.M. EDT, 7 EST, 6 CT

Radio City Organ, WEAF
E. B. Rickett, News, WEEI
Prayer, WJW
Morning Devotions, WJZ WBZ
Collin Duggs, organist, WTIC, 30 m.
Resume and Salon Musicale, WABC, 45 m.

8.15 A.M. EDT, 7.15 EST, 6.15 CT

Devotions, WJW
Don Hall Trio, WJZ WBZ WHAM

8.30 A.M. EDT, 7.30 EST, 6.30 CT

Chester, WEAF WJW WTIC WGY W.L.W., 30 m.
Lex White at the Organ, WJZ WBZ WHAM, 30 m.

8.45 A.M. EDT, 7.45 EST, 6.45 CT

Caroline Gray, pianist, WABC

9 A.M. EDT, 8 EST, 7 CT

Sam Herman and Frank Banta, WJW WGY WJW
Clothes Institute, WEEI
Breakfast Club, WJZ, 1 h. (WHAM, 15 m. from 9.15. WBZ from 9.01) KDKA
Round Towners' Quartet, WABC

9.15 A.M. EDT, 8.15 EST, 7.15 CT

Landi Trio and White, WEAF WEEI WGY WJW
In the Luxembourg Gardens, WABC, 30 m.

9.30 A.M. EDT, 8.30 EST, 7.30 CT

Mary Phillips, songs WEAF WTIC WGY
Hymns of All Churches, WJW
N. Y. Breakfast Club Orchestra, WBZ

9.45 A.M. EDT, 8.45 EST, 7.45 CT

News and the Wife Saver, WJW WJZ
WTIC WGY W.L.W.
Mystery Chef, WABC

10 A.M. EDT, 9 EST, 8 CT

Breen and O'Rourke, WJW WTIC WGY, 15 m.
Edward MacHugh, Gospel singer WJZ
Bill and Ginger, WABC

10.15 A.M. EDT, 9.15 EST

Clara, Lu 'n' Em, WJW WEEI WGY WJW
Castles in the Air, WJZ
Duke Dewey's Orchestra, WBZ
"Current Questions Before Congress," At her
Capper of Kansas, WABC
Bob White, WTIC

10.30 A.M. EDT, 9.30 EST, 8.30 CT

Treasure Chest, Howard Phillips, baritone,
Don Allen's Orchestra, Martha Lee Cole,
interior decorator, WEAF WEEI WGY
WTIC W.L.W.
The Homemaker, WJZ WBZ WHAM
WBAL KDKA
News and Treasures, WABC

10.45 A.M. EDT, 9.45 EST, 8.45 CT

News and Morning Parade, WEAF WTIC
Rhythmic Jesters, W.L.W.
Musical Turns, WJW
News and Radio Kitchen, WJZ
News, WBZ

11 A.M. EDT, 10 EST, 9 CT

Edison Friendly Kitchen Program, WJW
Galaxy of Stars, WGY WTAN WJW
The Honeycombers, WJZ KDKA
M. L. T. Graduation Exercises, Dean Wil-
lard L. Sperry of Harvard Divinity School,
Howard W. Blackledge, science editor
Associated Press, and President Karl T.
Compton,
U. S. Navy Band, WABC

11.15 A.M. EDT, 10.15 EST, 9.15 CT

Your Child, WEAF WEEI WTIC WGY
Piano, WJZ WHAM
News, Treasures, W.L.W.
Piano, WBZ
Charm Secrets, WCAU

11.30 A.M. EDT, 10.30 EST, 9.30 CT

Three Shades of Blue, WEAF WEEI WGY
Spirituels, W.L.W.
U. S. Marine Band, WJZ KDKA, 1 h.;
WJZ WHAM WGY from 12.00
Melody Parade, WABC

11.45 A.M. EDT, 10.45 EST, 9.45 CT

Al Bernard, minst. el. WEAF WEEI WTIC
Skip, Step and Happiana, WGY

Painted Dreams WGN WLW
Ben Alley, minst. WABC

12 N. EDT, 11 A.M. EST, 10 CT

Gene Arnold's Commodores, WEAF WEEI
WGY
Montout Views the News, WBZ
The Voice of Experience, WABC WCAU
Studio Program, WTIC
Michael Treen, tenor, WOR
Lured Trio, WTIC

12.15 P.M. EDT, 11.15 A.M. EST;
10.15 CT

Johnny Martin, WEAF WEEI, WTIC from
12.20
First Bruden, accordionist, WTIC
Martha and Hal, WGY
Agriculture talk, WBZ
Connie Gates songs, WABC WCAU
Girls Club Service League, WOR
Songs, WACA

12.30 P.M. EDT, 11.30 EST;
10.30 CT

Merry Madcap, WEAF WEEI WTIC WGY
Vic and Sade, WJZ WBZ WBAL WHAM
KDKA
Dance of Friends, W.L.W.
Microphone Gossip, WABC
Stocks, WACA

12.45 P.M. EDT, 11.45 EST;
10.45 CT

Organ, WNBX
Markets, weather, WTAF
Caroline Cabot, Del Castillo, WEEI
Merry Mad, WJZ WBZ WBAL WHAM
Ernie Holt's Orchestra, KDKA
The Texans, WLW

1 P.M. EDT, 12 N. EST, 11 A.M. CT

Markets, weather, WEAF
WTIC, 30 m.
Words and Music, WJZ
Weather and Agricultural reports, WBZ
Vagabonds, WGY
Ohio Farm Bureau, WLW
Lully Tate's Orchestra, WABC WCAU
Dr. H. L. Stranglagon, WOR, 30 m.
Singing Trio, WACA

1.15 P.M. EDT, 12.15 EST;
11.15 CT

Maurice Lee's Ensemble, WJW WJZ
Peeping Tom and George, WGY
The Hosiery Arche, WJZ WBZ KDKA
Rieser's weather reports, W.L.W.
Joan Narrows' music, WABC
Ariel Ensemble, WOR
News, WACA

1.30 P.M. EDT, 12.30 EST;
11.30 CT

Emerson Hall's Orchestra, WEAF, 30 m.
Well Reading Circle, WEEI, 30 m.
"Promote the Children of the American
Revolution," WTIC
WGY farm program, WGY, 30 m.
National Farm and Home Hour, WJZ WBZ
KDKA W.L.W., 1 h.
Jack Russell's Orchestra, WABC WCAU,
30 m.
Theater Club of the Air, WOR

1.45 P.M. EDT, 12.45 EST;
11.45 CT

Bradley Kincaid, songs, WGY
Studio Program, WJW, 30 m.
Oris Holley, soprano, WOR

2 P.M. EDT, 1 P.M. EST, 12 N. CT

Dign Kennedy, organist, WEAF, 30 m.
Hedley Rasmussen, baritone, WGY,
15 m.
Ann Leaf at the organ, WABC WCAU
The Theatre, WACA
Dr. Atuluri Frank Payne, WOR

2.15 P.M. EDT, 1.15 EST;
12.15 CT

Pure Food Institute, WTIC WTIC, 30 m.
Household Chat, WGY
Helen Trent's Romance, WABC
Nell Vinick, beauty talk, WOR
Sports, WACA

2.30 P.M. EDT, 1.30 EST, 12.30 CT

Robert Crawford baritone, WEAF WGY
Columbia University Commencement Luncheon,
Dr. Nicholas Murray Butler, WJZ
WBAL
Rhyne and Cadence, WBZ
Rochester School of the Air, Science,
WHAM
Hotel Clifton Orchestra, W.L.W.
Art's Recital, WABC, 30 m.
"The Homemaker," WOR, 30 m.
Play, WACA, 30 m.

2.45 P.M. EDT, 1.45 EST, 12.45 CT

Ma Perk's WEAF WEEI WGY WLW
Singing Cowboy, WTIC



CONNIE GATES, pianist and vocal-
ist, presents a number of pro-
grams each week over the CBS-
WABC network. In them she
sings while she plays her own ac-
companiment.

3 P.M. EDT, 2 EST, 1 CT

Blue Room Echoes, WJW WTIC WGY
Del Castillo, organist, WJW, 30 m.
Albany on Parade, WGY
Pioneers, WLW
Melrose, Jean Parade, WABC
Sally and Sue, WOR
Song Team, WACA

3.15 P.M. EDT, 2.15 EST, 1.15 CT

Song Portraits, Beulah Croft, WEAF WTIC
Voices of the Past, WGY
Rochester School of the Air, WHAM
Low Down, WLW
WGY
Newark Museum Program, WOR
Piapo Duo, WACA

3.30 P.M. EDT, 2.30 EST, 1.30 CT

Woman's Radio Review, WEAF WJW
WGY, 30 m.
Music Magic, WJZ KDKA, 30 m.
Spouter and Whine, WJZ
Gypsy Music Makers, WABC
Afternoon Musicals, WOR, 1 h.
Stocks, WACA

3.45 P.M. EDT, 2.45 EST, 1.45 CT

King Jack and Jester, WLW
Arno B. Camerer, Your National Parks
in 1934, WABC
Bridge talk, WACA

4 P.M. EDT, 3 EST, 2 CT

Your Lover, songs, WEAF WGY
Stocks, WEEI
Betty and Bob, drama, WJZ WBZ WHAM
KDKA W.L.W.
Seventh Regiment Band, WABC
Songs, organ, WACA

4.15 P.M. EDT, 3.15 EST, 2.15 CT

Don Braelson's Orchestra, WEAF WGY
The Singing Stranger, WJZ WBZ WHAM
KDKA
Matinee Highlights, WLW

4.30 P.M. EDT, 3.30 EST, 2.30 CT

Art Latern pianist, WEAF WEEI WGY
Health Club, WBZ
Jerry Cooper, baritone, WABC
Two Piano Recital, WOR
Alice Joy, WJZ WHAM
Gypsy Trio, WACA

4.45 P.M. EDT, 3.45 EST, 2.45 CT

Lady Next Door, WEAF WEEI
Women's Clubs, WJZ WBZ WHAM

Stocks, WGY

Four Showmen, WABC WCAU
The Easy Chair, WOR
Catie's Club, WACA

5 P.M. EDT, 4 EST, 4 CT

Chuck Webb's Orchestra, WEAF WEEI
WTIC W.L.W., 30 m.
Three Schoolmasks, WGY
Palmer Clark's Orchestra, WJZ 30 m.
Agriculture markets, WBZ
The Dancers, WABC WGAN
Variety, WOR
Vasabonds, WGY
Sally's Party, WACA

5.15 P.M. EDT, 4.15 EST, 3.15 CT

The Monitor Views the News, WBZ
Skippy, WABC WCAU

5.30 P.M. EDT, 4.30 EST, 3.30 CT

The Tattered Man, WJW WEEI WTIC
Wigwam Club, WGY
Singing Lady, WJZ WBZ WHAM WBAL
W.L.W.
Singing Lady, WJZ WBZ WHAM WBAL
Jack Armstrong, "All-American Boy," WABC
WCAU
The Tattered Man, WEAF WEEI WTIC
"Once Upon a Time," WOR
Singing Lady, WJZ WBZ WHAM WLW
Paul Ruysseldt, WOR
Violin, WACA

5.45 P.M. EDT, 4.45 EST, 3.45 CT

Nursery Rhymes, WEAF WEEI WTIC
Billy Rose, tenor, WGY
Orphan Annie, WJZ WBZ WHAM KDKA
WLW
Gordon, Dave and Bunny, WABC WCAU
Tex Fletcher, songs, WOR

6 P.M. EDT, 5 EST, 4 CT

Mme. Frances Alda, WEAF WLW, 30 m.
The Evening Tattler, WEEI, 30 m.
Jack Armstrong, WJZ WBZ WHAM
Dorothy Page, songs, WJZ WBZ WHAM
KDKA
Buck Rogers, WABC WCAU
Wrightville Clarion, WTIC

6.15 P.M. EDT, 5.15 EST, 4.15 CT

Pano, WGY
Angeli, Ferdinando's Orchestra, WJZ
WHAM
Bill Williams, WBZ
Bobby Benson and Sunny Jim, WABC
WCAU

6.30 P.M. EDT, 5.30 EST, 4.30 CT

Mid Week Hymn Sing, WEAF WTIC WGY
Stamp Club, WJZ WHAM
Mitche Ragninsky's Ensemble, WABC
Jack Armstrong, WJZ WBZ WHAM WLW
Harry Hersfield, WOR

6.45 P.M. EDT, 5.45 EST, 4.45 CT

Mary Small, WEAF WGY WTIC
Edson Kaine, WLW
Lowell Thomas, WJZ WBZ WHAM KDKA
WLW
Beale Street Boys, WABC WCAU
Phil Cook, WOR

7 P.M. EDT, 6 EST, 5 CT

Goodrich Baseball Review, WEAF
Book Review, WEEI
Annette McCullough, songs, WGY
Amos 'n' Andy, WJZ WBZ WHAM WLW
KDKA
Morton Downey, WABC WCAU
Ford Erick, sports, WOR

7.15 P.M. EDT, 6.15 EST, 5.15 CT

Gene and Glenn, WEAF WEEI WGY
The Schools in Local Revival, George F.
Zook, United States Commissioner of
Education, C. R. Mann, director, Ameri-
can Council on Education, Government
talk, WJZ WBZ WHAM, W.L.W., 30 m.
Pittsburgh Varieties, KDKA
Gene Purcell's Orchestra, WJW
Sports, WTIC

7.30 P.M. EDT, 6.30 EST, 5.30 CT

Byrnes and Hewelton, WEAF WGY
Leda Hays, soprano, WJZ
Paul Keast and Hudson's Orchestra, WABC
KDKA
Footlight Echoes, WOR, 30 m.
Bob Newhall, WLW

7.45 P.M. EDT, 6.45 EST, 5.45 CT

The Goldbugs, WEAF WEEI WGY WTAN
Leda Hays, soprano, WJZ
Dunbar Quartet, WBZ
Sea Stories, KDKA
Boake Carter, W.L.W.
Melody Masters, W.L.W.
Tony Grande, WJW

8 P.M. EDT, 7 EST, 6 CT

Leo Reiman's Orchestra and Phil Duer,
WEAF WTIC WTIC, WGY, 30 m.
Mystery Drama, WJZ WBZ KDKA WLW,
30 m.
The Troopers, WABC
Dinner Concert, WHAS, 30 m.
"Radio Varieties," Frank Parker, tenor,
WOR, 30 m.

8.15 P.M. EDT, 7.15 EST, 6.15 CT

"The Voice of Experience," WABC WCAU
Vera C. Park, contralto, WPG

8.30 P.M. EDT, 7.30 EST, 6.30 CT

Wayne King and Orchestra, WEAF WEEI
WTIC WGY, 30 m.
Conrad Thibault and Lois Bennett, WJZ
WBZ WHAM WBAL KDKA WLW, 30 m.
"Acordiana," with Abe Lyman's Orchestra,
Vivienne Segal, WABC WCAU, 30 m.
Borrah Mineevitch and his Harmonica
Rascals, WOR, 30 m.
Serial, WPG
Dinner Concert, WHAS, 30 m.

9 P.M. EDT, 8 EST, 7 CT

Ben Bernie and Orchestra, WEAF WEEI
WTIC WGY WLW, 30 m.
Household Musical Memories, WJZ WBZ
WHAM KDKA, 30 m.
Freddy Martin's Orchestra, Maury H. B.
Paul, guest artist, WABC WCAU, 30 m.
Back Stage with Boris Morros, WOR
Paul Haas, tenor, WPG
Burrnett's Orchestra, WGN, 30 m.

9.15 P.M. EDT, 8.15 EST, 7.15 CT

Angela di Marco, soprano, WPG

9.30 P.M. EDT, 8.30 EST, 7.30 CT

Ray Perkins, Gale Pape, soprano, Betty
Brown comedian, WEAF WEEI WGY
WLW, 30 m.
Eddie Duchin's Orchestra, WJZ WBZ
WHAM KDKA, 30 m.
Richard Himber's Orchestra, WABC
WCAU, 30 m.
Harry H. Balkin on "Success," WOR, 30 m.
Lawrence Salerno's Orchestra, WGN, 30 m.
Troyano Concert Orchestra, WPG

9.45 P.M. EDT, 8.45 EST, 7.45 CT

"Mountain Monuments," WOR

10 P.M. EDT, 9 P.M. EST, 8 CT

Glads Swarthout, John Barclay, Frank Mc-
Inyre, WEAF WEEI WGY WLW, 1 h.
American Premier Russian Ballet "Red
Ambassador" Trotsky will speak WJZ
WBZ WHAM KDKA, 1 h.
Stoopnagle and Budd, Connie Powell, Casa
Loma Orchestra, WABC WCAU, 30 m.
Ledy Brown, violinist, orchestra, WOR

10.30 P.M. EDT, 9.30 EST, 8.30 CT

Broadcast from Geneva, S. Mack Fastman,
"The Coming Labor Conference," WJZ
WBZ
"Conflict," WABC, 30 m.; WCAU, 15 m.
Red and Black Revue, WOR, 30 m.
Concert, WTIC
Romance of Dan and Sylvia, KDKA

10.45 P.M. EDT, 9.45 EST, 8.45 CT

Harlem Serenade, WABC 30 m.
Nancy Martin, KDKA

11 P.M. EDT, 10 EST, 9 CT

Emil Coleman's Orchestra, WEAF WTIC
WEEI, baseball scores and current events,
WBZ
Johnny Johnson's Orchestra, WGY, 30 m.
Jack Berger's Orchestra, WJZ KDKA
Three Blue Notes, WBZ
Moonbeams, WOR, 30 m.
Curtain Queen Minstrels, WLW, 30 m.

11.15 P.M. EDT, 10.15 EST,
9.15 CT

News, WJW
The Pier Prince, WJZ WBZ WHAM
KDKA
News and Baines' Orchestra, WABC

11.30 P.M. EDT, 10.30 EST,
9.30 CT

National Radio Forum, WEAF WEEI WGY,
30 m.
News and Bruno's Orchestra, WJZ WBZ
Sammy Kay's Orchestra
Reggie Child's Orchestra, WABC
W.L.W., 30 m.
Arthur Warren's Orchestra, WOR, 30 m.

11.45 P.M. EDT, 10.45 EST,
9.45 CT

Ben Pollack's Orchestra, WABC

12 M. EDT, 11 P.M. EST, 10 CT

News and Charlie Davis Orchestra, WEAF
WGY WLW
Musical Turns, WTIC
Julia Senn's Orchestra, WJZ WBZ, 30 m.
Cordell Continental, WLW, 30 m.
Ortiz Nelson's Orchestra, WABC, 1 h.
Anthony Trimm's Orchestra, WOR

12.30 A.M. EDT, 11.30 EST

Jack Denny's Orchestra, WEAF WEEI WGY
Pete Smyth's Orchestra, WJZ WBZ WHAM
Mel Snyder's Orchestra, WLW, 30 m.

Crandall Directs Concert of Birds

LEE S. CRANDALL, curator of birds at the New York Zoological Park, will direct a concert of wild birds over the WABC network Saturday, June 9, from 11.45 A.M. to 12 Noon.

The broadcast will originate in the bird house of the Bronx Zoo.

Among the birds to be heard are the penguin, the bugle-calling troupial, the myna, the birds of paradise and the bell birds, whose song is compared to the sound a blacksmith makes when beating his anvil.

CRANDALL has been curator of the zoological park since 1920.

King of Sweden Speaks
King GUSTAV of Sweden will be heard in the United States over the NBC-WJZ network on Wednesday, June 6, at 11.15 P.M. The broadcast will be in connection with the ceremonies of the Swedish flag day.

Ray For Summer



LEAH RAY, singer with PHIL HARRIS' Orchestra, set the first style note for the coming Summer when she appeared in the NBC studios clad in brown slacks and a sweater. She also has a coat of tan, acquired in Norfolk, Virginia.

NE
CP

CARVER - NEW ENGLAND
PRESS

Printing - Designing - Binding - Mailing
610 Atlantic Avenue, Boston
Telephone LIBerty 9673

NOW

The Magazine That Has Something To Say - And Says It

*Offers In Its June Issue, Now On Sale
At All The News Stands:*

Hitler Explained

-----The Lowdown On The Lowbrow

By Gerald Chittenden

Q.—Does Mr. Chittenden claim that Herr Hitler is a Lowbrow? A.—One way to find out is to read June NOW.

Q.—Anything else in June NOW that might attract attention? A.—Several articles are quite controversial in nature. For stark, staring color in writing, read the "Black Dance Of Hunger" by Wallace Patch. Mr. Patch is new to NOW.

Q.—Has Henry Harmony any caricatures in June NOW? A.—Certainly. His front cover, "Mugwump", is little short of a satirical masterpiece. And in his double page spread he visits Dr. F. D. R.

Q.—Dr. F. D. R.? A.—The same, posing as a dentist for the purpose of Mr. Harmony's humorous drawing.

Q.—Fifteen cents the copy?

A.—Right; at all the news stands. It costs less by the year. Subscription blank at the left.

**Circulation Manager,
NOW,**

**No. 34 Court Square,
Boston, Massachusetts.**

**I'd like the next twelve issues of NOW.
I am inclosing \$1.50 (Cash, check or
money order.)**

Name _____

Street _____

City or Town _____

State _____

The MICROPHONE, Inc.

Wednesday, June 6 - Epsom Derby on WABC-WEAF, 9.45 A.M.

Highlights

- A.M.
- 9.15—Epsom Derby from England, CBS-WABC
 - 8.30—Everett Marshall, CBS-WABC
 - 9.00—Nino Martini, CBS-WABC
 - 9.30—Burns and Allen, CBS-WABC
 - 10.30—Albert Spalding, violinist, CBS-WABC
 - 11.00—"The Drunkard," CBS-WABC

(All programs are listed in Eastern Daylight Saving Time. Eastern Standard Time is one hour earlier; Central Time is two hours earlier.)

- 6.45 A.M. EDT, 5.45 EST, 4.45 CT Health Exercises, WEAF WLIW WGY, 1 h 15 m.
- 7 A.M. EDT, 6.15 EST, 5.15 CT Musical Clock, WBZ; Musical Clock, WTIC; Exercise Class, WMCA, 30 m.
- 7.30 A.M. EDT, 6.30 EST, 5.30 CT Yaichi Hirakawa, xylophonist, WJZ WBAL; Musical Clock, WBZ, 30 m; McCormick's Fiddlers, WLW; Organ Reville, WABC, 30 m.
- 7.45 A.M. EDT, 6.45 EST, 5.45 CT Pullack and Izenhursht, WIAF WGY; Alarm Clock, WJZ; Jolly Bill and Jane, WJZ WBAL
- 8 A.M. EDT, 7.15 EST, 6.15 CT Organ Ripatody, WEAF WTIC, 30 m; Musical Clubs, WGY; Morning Devotions, WJZ WBZ; E. B. Rideout, WJZ; Resume and Salon Musicals, WABC, 30 m.
- 8.15 A.M. EDT, 7.15 EST, 6.15 CT Don Tall Trio, WJZ WBZ WHAM WBAL
- 8.30 A.M. EDT, 7.30 EST, 6.30 CT Cheer, WEAF WLIW WGY WLW, 30 m; Lew Wlutz, organist, WJZ WBZ WHAM WBAL, 30 m; Sunny Melodies, WABC, 30 m; Scissors and Paste, WGY
- 9 A.M. EDT, 8 EST, 7 CT Herman and Bantz, WEAF WLIW; Scissors and Paste, WGY; Mystery Chef, WJZ WBZ WBAL KDKA; Eton Boys, quartet, WABC
- 9.15 A.M. EDT, 8.15 EST, 7.15 CT Lindy Trio and White, WEAF WLIW WGY WLW; Breakfast Club Dance, WJZ WBZ WBAL, 45 m; WHAM, 30 m; Madison Ensemble, WABC
- 9.30 A.M. EDT, 8.30 EST, 7.30 CT Bradley K'nead, WEAF WTIC WGY; Hymns, WLW; "The Song Book," WEAF WTIC; Metropolitan Parade, WABC, 15 m.
- 9.45 A.M. EDT, 8.45 EST, 7.45 CT Epsom Derby, from England, WEAF WLIW WTIC WLW WABC, 30 m; Morning Devotions, WJZ; Adrian O'Brien, WBZ
- 10 A.M. EDT, 9 EST, 8 CT Breen and De Rose, WEAF WLIW WTIC WGY; Harvest of Song, WJZ WBZ WHAM KDKA; Mrs. Tuttleford, WLW
- 10.15 A.M. EDT, 9.15 EST, 8.15 CT Clara Lu' n' Em, WEAF WLIW WGY WLW; Young Artists Trio, WJZ WHAM; Duke Dewey's Orchestra, WBZ; Bill and Ginger, WABC; Bob White, WTIC
- 10.30 A.M. EDT, 9.30 EST, 8.30 CT News and Three Samps, WIAF; The Market Basket, WGY; Musical Tans, WEAF; Today's Children, WJZ WBZ WBAL, 30 m; News and Gypsy Music Makers, WABC; Jack Berch, WLW; Memorial Day Program from Arlington, WABC
- 10.45 A.M. EDT, 9.45 EST, 8.45 CT Betty Crocker, WEAF WLIW WGY WLW; Jack and Loreta Clemens, WJZ WBAL
- 11 A.M. EDT, 10 EST, 9 CT Juan Reyes, pianist, WEAF; Edison Friendly Kitchen, WEAF; Skip, Step and Happiana, WGY; The Wife Saver, WJZ; The Honey-moovers, WBZ; News, WLW; Cooking Close ups, WABC
- 11.15 A.M. EDT, 10.15 EST, 9.15 CT Sweetheart Melodies, DeMarco Sisters and Jack Arthur, baritone, WEAF WLIW WGY WLW; Swedish Hae Day, King Gustav speaking from Stockholm, WJZ WHAM WBAL, 45 m; Wamp's Club News, WBZ; Pedro Cordoba, Will Osborne's Orchestra, WABC; Song Day, WTIC, 30 m.

- 11.30 A.M. EDT, 10.30 EST, 9.30 CT Betty Moore, WEAF WLIW WGY WLW; Tony Wons, WABC
- 11.45 A.M. EDT, 10.45 EST, 9.45 CT Ericks and Hall, WEAF WLIW WTIC WGY; Painted Dreams, WLW; Magic Recipes, WABC
- 12 N. EDT, 11 A.M. EST, 10 CT Gene Arnold and Commodores, WEAF WLIW; Layin' Loose, WJZ; Blue Room (chorus), WJZ; The Minor Views the News, WBZ; Plastic Symphony, WLW, 30 m; "The Voice of Experience," WABC, WCAU; Travel Talk, WOR; Songs, WMCA
- 12.15 P.M. EDT, 11.15 A.M. EST, 10.15 CT Johnny Marvin, tenor, WEAF WLIW WTIC; Martha and Hal, WGY; Wendell Hall, song, ukulele, WJZ WBAL; Time, weather, temperature, WBZ; Betty Barnhill, melodists quartet, WABC; Variety, WOR; Songs, WMCA
- 12.30 P.M. EDT, 11.30 EST, 10.30 CT Alma M'lested, soprano, WIAF WGY, 15 m; WIAM, 30 m; New England Kitchen, WTIC, 30 m; Vic and Jade, WJZ WBZ, 30 m; KDKA; WHAM from 1:30; Bond of Friendship, WLW; Smiling Ed McConnell, WABC; WCAU; Alexander Hays, ensemble, WOR, 30 m; Dance Music, WTIC, 45 m.
- 12.45 P.M. EDT, 11.45 EST, 10.45 CT Market and Weather Reports, WEAF; Radio Gang, WGY; Merry Maids, WJZ WHAM; Humley's Orchestra, KDKA; The Lextan WJZ; Mischa Ragnisky's Ensemble, WABC; WCAU
- 1 P.M. EDT, 12 N. EST, 11 A.M. CT Markets, weather, WEAF; Vagabonds, WGY; Words and music, WJZ; Weaver, agriculture, WBZ, 30 m; Dr. H. I. Strandhagen, WOR; Ohio Farm Bureau, WLW; String Trio, WMCA
- 1.15 P.M. EDT, 12.15 EST, 11.15 CT Advertising Club Luncheon, WLIW; Don Pedraza, orchestra, WEAF; The Honorable Archie, WJZ; Crane Cider, bass, WABC; Aisel Ensemble, WOR; Mirror Reflections, WMCA; Albany on Parade, WGY; Tom and George, WGY; Weather, WLW
- 1.30 P.M. EDT, 12.30 EST, 11.30 CT Maurice Lee's Orchestra, 30 m; Fair Program, WGY, 30 m; National Farm and Home Hour, WJZ WBZ WHAM, 1 h; Harold Knabst's Orchestra, WABC, 30 m; Beauty Guild, WMCA, 30 m; Rosalind Jewet, books, WOR
- 1.45 P.M. EDT, 12.45 EST, 11.45 CT The Play Boys, WABC; String Trio, WOR
- 2 P.M. EDT, 1 P.M. EST, 12 N. CT Two Seats in the Balcony, WEAF WLIW WGY, 45 m; Concert Miniatures, WABC, WCAU, 15 m; Dr. Arthur Frank Payne, WOR; Day Talk, WOR
- 2.15 P.M. EDT, 1.15 EST, 12.15 CT Romance of Helen Trent, WABC; WCAU; Organists, male quartet, WOR; Sports, WMCA
- 2.30 P.M. EDT, 1.30 EST, 12.30 CT Smackout, WJZ; Hotel Bristol Orchestra, WLW; School of the Air, Science, WHAM, 30 m; Ann Leaf, organ, WABC; "The Homecoming," WOR, 30 m; Orchestras, WMCA, 30 m.
- 2.45 P.M. EDT, 1.45 EST, 12.45 CT Ma Perkins, WLAF WLIW WGY WCHS; Clifford Wood, WTAG; Colette Carley, WJZ WBZ; Memorial Day Services from Arlington, WABC; KDKA; WHAM; Singing Cowboys, WTIC
- 3 P.M. EDT, 2 EST, 1 CT Marion McAfee, songs, WEAF WLIW WTIC; Albany on Parade, WGY; Joe White, tenor, WJZ; Memorial Day Program from Arlington, KDKA; WHAM

"Minstrel Man"



IRVING KAUFMAN, CBS entertainer, known as "Lazy Dan," the "Minstrel Man" on Sundays at 2.30 P.M. He is featured with Everett Marshall on Wednesdays at 8.30 P.M.

- Musicals, WBZ; Cammy Minstrel, WLW; The Wagoner, WEAF; Slow Boat Boy, WOR; Musical raconteur, WMCA
- 3.15 P.M. EDT, 2.15 EST, 1.15 CT "Wise Man," WEAF WLIW WTIC WGY; Happy Days in Dixie, WJZ 30 m; WHAM; W.A.L. A.D.K.A. from 3:30; Pantomime, WMCA; Risy, "Your Lover," WOR; Luv Down, WLW
- 3.30 P.M. EDT, 2.30 EST, 1.30 CT Woman's Radio Revue, WIAF WEEI WGY, 30 m; Home Forum Cooking School, WBZ, 30 m; Modernistic Melodies, WABC; Spatter and Whime, WJZ; Woman's Radio Revue, WTIC, 30 m.
- 3.45 P.M. EDT, 2.45 EST, 1.45 CT Jackie Heller, tenor, WJZ WBZ WHAM; Spiritual Singers, WLW; Columbia Salon Orchestra, WABC; Songs, WMCA
- 4 P.M. EDT, 3 EST, 2 CT Pop Concert, WEAF WLIW WTIC WGY, 30 m; Betty and Bob, WJZ WBZ WHAM KDKA; Manhattan Moods, WABC; Variety, WMCA, 30 m.
- 4.15 P.M. EDT, 3.15 EST, 2.15 CT Alice Joy, dream girl, WJZ WBZ WBAL; Matinee Highlights, WLW; Manhattan Moods, WABC
- 4.30 P.M. EDT, 3.30 EST, 2.30 CT Art Tatum, pianist, WEAF WEEI WTIC; Variety, WGY; H. H. Bennett, Director of the Sol Erison Service, U. S. Dept. of the Interior; Day Talk, WOR
- Markets, KDKA; Marmosa Orchestra, WOR; Trio, WMCA
- 4.45 P.M. EDT, 3.45 EST, 2.45 CT The Lady Next Door, WEAF WEEI WTIC; Songs and Music, WJZ WBZ KDKA; Organ Melodies, WTIC, 30 m; Emery Deutsch's Orchestra, WABC, 30 m; Beauty Talk, WOR; Adagio, WMCA
- 5 P.M. EDT, 4 EST, 4 CT "Education in the News," Dr. William D. Boutwell, WEAF WLIW WLW; Lang Sisters, WGY; Palmer Clark's Orchestra, WJZ WHAM; N. I. Agriculture, WBZ; Eddie Copeland's Orchestra, WABC; Day, WOR; Sally's Party, WMCA, 30 m.
- 5.15 P.M. EDT, 4.15 EST, 3.15 CT Ted Blyck's Orchestra, WEAF WTIC WGY WLW

- Sybil Jane Morse, pianist, WEEI; The Monitor Views the News, WBZ; Skippy, WABC; WCAU; Amateur Astronomers' Assn., talk, WOR
- 5.30 P.M. EDT, 4.30 EST, 3.30 CT Frank Merrill's; Adventures, WEAF; WHI WTIC WGY; Singing Lady, WJZ WBZ WHAM KDKA; W.L.W.; Jack Armstrong; WABC; Town Talk, Robert Red, WOR
- 5.45 P.M. EDT, 4.45 EST, 3.45 CT Armchair Quartet, WEAF; Bradley Kincaid, WGY; Little Orphan Annie, WJZ WBZ WHAM; KDKA; Gordon, Dare, Bunny, WABC
- 6 P.M. EDT, 5 EST, 4 CT Xavier Cugat's Orchestra, WIAF WLW; 30 m (WJAR from 6:15); Evening Tattler, WLIW, 30 m; Wrightville Clarion, WHI, 35 m; Variety, WGY; Dan Bigelow's Orchestra, WJZ, 30 m; Over the Heather, WBZ; Buck Rogers, WABC; WCAU; Leslie Dun, WOR, 30 m; Ted Black's Orchestra, WMCA, 30 m.
- 6.15 P.M. EDT, 5.15 EST, 4.15 CT Joe and Eddy, WGY; Saly Sam, WJZ; Bill Williams, WBZ; Bobby Benson and Sunny Jim, WABC; WCAU
- 6.30 P.M. EDT, 5.30 EST, 4.30 CT Yascha Davidoff, basso, WTAF; Current Events and baseball scores, WEEI; Musical Appetizers, WHI; Ma Fraser's Boarding House, WGY; Three X Sisters, WJZ WBZ WHAM; Time, weather, WBZ; Jack Armstrong, WLW; Charlie Davis' Orchestra, WABC; WCAU; Harold Stern's Orchestra, WOR, 30 m; Screen review, WMCA, 30 m.
- 6.45 P.M. EDT, 5.45 EST, 4.45 CT Martha Mears, contralto, WEAF WTIC; Studio Chorus, WEEI; Lowell Thomas, news, WJZ WBZ WHAM; WLW; KDKA; Peale Street Boys, WABC; WCAU; Five Star Final, WABC
- 7 P.M. EDT, 6 EST, 5 CT Baseball Resume, WEAF; Comedy Stars of Hollywood, WJZ; Thru the Hollywood Looking Glass, WGY; WHAM; Amos 'n' Andy, WJZ WBZ WHAM WLW; KDKA; Vera Van, WABC; WCAU; Ford Erik, sports, WORC; Melody Boys, WMCA; Five O'Clock Melodies, WHAS, 50 m.
- 7.15 P.M. EDT, 6.15 EST, 5.15 CT Gene and Glenn, WEAF, WGY; Dick Tracy, detective, WEEI; Sports, WABC; Literary Digest Poll, Graham McNamee, WJZ; WBZ; Emerson's Orchestra, WLW; Just Plain Bill, WABC; WCAU; Dance Tunes, WOR; Melody Ambassadors, WMCA; Radio School, WNBK
- 7.30 P.M. EDT, 6.30 EST, 5.30 CT Lillian Burckam, WEAF WTIC WGY; After Dinner Review, WEEI; Irene Rich, WJZ WBZ WHAM KDKA; Bob Newhall, WLW; Music on the Air, WABC; WCAU; Cowboy Songs, WOR
- 7.45 P.M. EDT, 6.45 EST, 5.45 CT The Goldbergs, WEAF WLIW WGY; Dance Orchestra, WTIC; "Taxi," Max Baer, WJZ WBZ KDKA; WHAM; Melody Masters, WLW; Boake Calkins, news, WABC; WCAU; True Stories of the Sea, WOR; Fallou's Orchestra, WMCA
- 8 P.M. EDT, 7.15 EST, 6 CT The Baron, WIAF WEEI WTIC WGY, 30 m; Cimp; Clues, Spencer Dean, WJZ WBZ; WLW; KDKA, 30 m; Cypsy Violins, WABC; Attilio Bagnore, WABC; Three Funsters, WMCA; Dinner Concert, WHAS, 30 m; "The Champnuts," WOR, 30 m.
- 8.15 P.M. EDT, 7.15 EST, 6.15 CT Easy Aces, WABC, WCAU; Rochester School of the Air-Physics, WHAM; Harry Hershfeld, humorist, WOR; Gravelle's Orchestra, WMCA

- Wayne King's Orchestra, WLAF WTIC; WGY; Uncensored Musicians Concert, direction of Will Dodge, WEEI, 30 m; Maple City Tour, WJZ WBZ WHAM; KDKA
- Unbroken Melodies, WLW; Everett Marshall's Broadway Varieties, WABC; WCAU, 30 m; "The Lone Ranger," WOR; Ramblers, WMCA
- 8.45 P.M. EDT, 7.45 EST, 6.45 CT Babe Ruth, baseball comment, WJZ WBZ; Radio Court, WLW; Maple Leaf Sextette, WPG; "More Than News," WMCA
- 9 P.M. EDT, 8 EST, 7 CT Hour of Siles, Fred Allen, Theodore Webb, Marshall Bartholomew, singers, Lenne Hayton's Orchestra, WEAF WLIW WTIC; WGY, 1 h.
- Raymond Knight and His Cuckoos, WJZ WBZ WHAM WBAL KDKA, 30 m; "The Mad Scientist," Andre Kusnetzky, WABC; WCAU, 30 m; Orchestra, WOR, 30 m; Baritone, tenor, WMCA, 30 m.
- 9.15 P.M. EDT, 8.15 EST, 7.15 CT Concert, WHAS, 30 m.
- 9.30 P.M. EDT, 8.30 EST, 7.30 CT Love Story, Paul Lukas, WJZ WBZ WHAM; KDKA, 30 m; WGY; 30 m; Guy Lombardo's Orchestra with Burns and Allen, WABC; WCAU, 30 m; Harry H. Balkin, WOR; Naumberg Concert, WMCA, 1 h.
- 9.45 P.M. EDT, 8.45 EST, 7.45 News, WFEA; "That's Life," News drama, WOR, 30 m.
- 10 P.M. EDT, 9 P.M. EST, 8 CT Corn Cob Pipe Club, WEAF WEEI WTIC; WGY; WLW; Musical Circus, WJZ WBZ WHAM KDKA, 30 m; Broadcast to and from Byrd Expedition, WABC; WCAU; Margaret Powell Evans, WPG
- 10.30 P.M. EDT, 9.30 EST, 8.30 CT "The Other Americans," Edward Tomlinson; WHAF WGY, 30 m; Travelers Hour, WTIC; Ranny Weeks' Orchestra, WJZ; Jack Denver's Orchestra, Harry Richman and Sammy Lerner's Orchestra, WBZ; Henry Tracy's Orchestra, WLW; Roman 18 Dan and Sylvia, KDKA; Albert Spalding's Orchestra, Conrad Thibault; Joan Field, WABC; WCAU, 30 m; Willard Robinson's Orchestra, WOR, 30 m; The Andrews, WPG; Richardson's Orchestra, WMCA
- 10.45 P.M. EDT, 9.45 EST, 8.45 CT Ivan Petrov's Russians, WLW; Nancy Martin, KDKA; Pollack's Orchestra, WMCA
- 11 P.M. EDT, 10 EST, 9 CT Angelo Ferdinand's Orchestra, WLAF WGY; WTIC
- E. B. Rideout, news and baseball scores; Puckens Sisters, WJZ WBZ; Weather, sports, WBZ; "The Drunkard," temperance play of 1840, WABC; "Moonbeams," WOR, 30 m; Sports, KDKA; Tom Devoud's Orchestra, WMCA
- 11.15 P.M. EDT, 10.15 EST, 9.15 CT Enric Madrigrera's Orchestra, WLAF WTIC; WTIC; WGY, 30 m; Will Osborne's Orchestra, WABC; News, William Scott's Orchestra, WEEI; John Fogarty, WJZ WHAM; News and Reggie Child's Orchestra, WABC; Joe Rines' Orchestra, WBZ; WCAU; WHAS Concert Orchestra, WHAS; Orchestras, WMCA, 3 hrs. 45 m.
- 11.30 P.M. EDT, 10.30 EST, 9.30 CT Reggie Child's Orchestra, WTAF; WEEI; Guy Lombardo's Orchestra, WJZ; (Armer Sisters, WBZ; Raymond Knight's Cuckoos, WLW; Orchestras, WGN, 3 h.
- 11.45 P.M. EDT, 10.45 EST, 9.45 CT News and Ben Pollack's Orchestra, WJZ WBZ WHAM KDKA; Carnegie drama, WLW, 30 m; Frank Dailey's Orchestra, WABC; WCAU

Guy Lombardo Heard on NBC Chains Twice Weekly

GUY LOMBARDO and his famous dance orchestra will be heard this Summer three times a week from the Waldorf-Astoria in New York City. Beginning June 7 they will be heard at 11 P.M. on Saturdays over the NBC-WEAF chain and on Mondays at 11.30 P.M. over the same chain and on Thursdays at 11.30 over the WJZ chain.

With his brothers CARMEN, LIEBHART and VIKTOR, GUY LOMBARDO organized his orchestra at the age of 12. The four brothers still occupy key positions in the band.

LOMBARDO has been playing on the Pacific coast for the past season and now moves to the Starlight Roof of the Waldorf, where he will play for New York's smartest set.

Um-m-m Yum-m-m !!

After the Theatre

Barbecued Chicken

Golden Rod Beer

In a quiet nook at

SLADES BARBECUE

958 TREMONT STREET, BOSTON

Open All Night

Tune in on WHDH Tuesday and Thursday at 5.20 P.M.

Introducing

IF YOU know WEEI's "Old Painter" you know Eddie Gisburne who supplies the fodder for this week's grist via the thumbnail sketch route. Forty years ago (and he looks a lot younger), Eddie first saw the light of day in Providence, R. I. and for that many years has been knocking old man "adversity" all over the ring.



Ed Gisburne

The grim reaper called his paternal parent when Eddie was a babe in the arms of his mother, who also passed away when he had seen but nine summers. He was educated in the schools of Quincy, Mass., caught some baseball games for "alma high school" and was developing a fine yen for basketball until he subbed for a player on the then famous St. Mary's of W. Quincy against Co. G cadets of Gloucester. No more basketreering.

The wanderlust gripping him at 17 years, he hied to Gotham and thence to Liverpool as a deckhand on the *Adriatic*. He avers sleeping in the parks in Liverpool was not so good until he got a short-lived job tending charcoal fires for a coppersmith.

After four days the journeymen struck and the shop closed forcing him to hide on the New York bound *Devonian*. The cook uncovered him and supplied him with first cabin rations for carrying potatoes from the after storeroom of the good old cattle boat which he nonchalantly left hours after the customs boys had made their rounds.

Evidently enjoying the sea breezes via the galley, he signed for a hitch in Uncle Sam's navy and at the age of 21 was awarded the Congressional Medal of Honor for gallantry at Vera Cruz where he lost a leg. This didn't stop Eddie from helping the navy take 'em over, etc. during the big muss, all the while he was developing his knowledge of radio which he put to use with and for a New York firm of radio engineers for a period of four years after the World War.

He came to WEEI in 1927 as an announcer and has since graduated to production. He is a resident of East Milton and you can bet Mrs. Gisburne, John and Junior are regular listeners to his twice weekly rural character skit. Incidentally one of the boys is alleged to have a bright future on the cinder track having already turned in a 57 second quarter mile at Milton High. And, believe it or not, Eddie, Sr. flirts with the low 80's on any man's golf course.

So there you are.

WEEI'S Caroline Cabot Among Radio Pioneers

Two Daily Features Have Tremendous Following

WEEI lays claim to New England's long-distance woman radio talker in the person of Caroline Cabot, well-known microphone shopping reporter and director of the Shopping Service at the Edison Station.

Better known to her family and host of friends and admirers as Genevieve Sherlock, of the Belmont Sherlocks, Caroline Cabot has to date piled up 780 microphone hours. Based on an eight hour day, she has gabbed exactly ninety-nine days in the eight years behind the mike, or to be more statistical, for thirty-three days continuously, figuring twenty-four hours to the day. This is something of a record, according to WEEI sound sanctum bosses, and they challenge even your wife to out-talk their champion.

Continuing along a statistical vein, our analysis proves that these 780 mike hours consumed 6,240,000 words poured into the microphone in eight years. Every word had also to be dictated to her secretary, which means 12,480,000 words, or 1,560,000 per year, averaging 6,000 words per day.

Dorothy Franklin, secretary to Caroline Cabot, whose voice is heard occasionally in Caroline's absence, writes on an average of 3,000 words daily in preparation for this service, and over the period of eight years has written



Caroline Cabot

more than six million words on her ink piano for broadcasting alone, not counting fan and business mail answered.

Following is a brief history of Caroline Cabot's activity over the past eight years at WEEI, giving the highlights of this busy service.

Two days before Thanksgiving, in 1926, Genevieve Sherlock was selling store fixtures; one day later, she had taken a new name and a new position as Caroline Cabot at WEEI. She started with fifteen minutes daily to talk about merchandise in the various city shops and stores.

Jordan Marsh Company was her first client and has been continuously on her Service three times each week since that day eight years ago. On January 1,

1927, the Service has grown so popular that thirty minutes were necessary to tell the story of Boston stores. On February 8, 1927, because of the development of this service, Dorothy Franklin was taken from the stenographic department of the Edison Company as Caroline's assistant, a position she still holds.

In 1928, a year later, Will Dodge was engaged to furnish thirty minutes of music to sustain the half hour talk program, and this schedule was maintained for a little less than two years. In addition to this, a Children's Program was inaugurated on Saturday evening and continued about a year. Then time was taken earlier in the morning, at nine o'clock, and the music dropped.

Credit for keeping this service filled up and financially a success as a money-getter for the Edison Station belongs to Dorothy Drake, formerly Dorothy Dean of WNAC, and Nan Howard, who are busy selling the Caroline Cabot Service.

Last September still earlier time was selected—8.15 to 8.30. This was found to be the best ever, for the Service grew by leaps and bounds and is still filled up daily.

"A Bit Of This And A Bit Of That" program was originated about this time, assisted by Del Castillo at the organ, daily except Saturday and Sunday, from 12.45 to 1.15 P. M., and includes well-known guest artists. Each Thursday afternoon is called Matinee Day.

THE FINALS ON TODAY'S BALL GAMES

11:05 P. M. Each Weekday
11:01 A. M. Every Sunday

Courtesy

REAGAN-KIPP CO.
162 TREMONT ST.

Government Authorized Dealers In The Buying Of Old Gold And Silver.

over

STATION
WEEI

The Friendly Station

NEWS WEEI BRIEFS

"Shoot The Works" is the title of Ben Bernie's new motion picture, the filming of which is now practically completed . . . Roger Wheeler, WEEI current events scrivener, affiliated with Emerson College staff, teaching radio writing . . . One may well imagine what the upkeep of Carleton Dickerman's extensive garden does to the water bill . . . Ray Girardin is warming up the old trumpet he put down in favor of announcing several years ago, having discovered in a single year two can't live as cheaply as one and hopes to crash a few side jobs with the "Teddy Bears" orchestra . . . They'll deny it but Arthur Edes and Fran McLaughlin in the WEEI program office have a set of signals more complicated but much less obvious than come out of a football huddle . . . When better roses are possible to grow, the Miller Rose Company will have them—the bouquets furnished for the WEEI reception room are the last word; always . . . Cool air-conditioned studio floor at WEEI great aid to good humor with the advent of hot weather . . . Still unsolved—where pe-



titite Ruth Chilton gets the power for her rich, deep-throated contraltoing . . . Nominated among better inspirational bits—the WEEI Silver Lining Hour with Anna MacDonald, soprano, Wilbur Burleigh, organist and Oliver C. Elliot, head man at the Boston Industrial Home . . . Weekly puzzle suggested by Helen DeVoe, Publicity Department; three seconds to identify prominent network artists caricatured herewith . . . Frank Sherry

Run 'em off Gus . . .



a studio visitor last week . . . Scott's Unique Program, Fridays a 9.30, has all the class that makes Scott's unique . . . One of the strangest wagers on record to the effect that a certain staff member could tell the three teams an announcer had in the baseball pool by listening to his broadcast of the scores . . . Sure thing guy who overheard it wanted to bet how the market was riding after listening to Paine, Webber & Co. stock exchange quotations . . . Plenty of New England dialers staying up for Jack Denny's late dance mu-

sic interludes . . . Study being made to find out who has been taking the Tower Health exercises the longest around the station—two studio door handles have been wrecked in the past ten days . . . Jack Beauvais is applying his full energies these days to the study of voice culture; two sessions weekly with a local maestro utilize, says he, most of his spare time from WEEI duties, and all of his spare shekels . . . "Emo Movie Man" broadcast on Thursday Caroline Cabot period of "A Bit of This and A Bit of That" among more popular daylight features with requests for famous motion picture stars cluttering up the weekly mail in grand manner . . . Russell Door goes vacation fishing off the Florida Keys; something different for a guy with a reputation for staying on keys . . . What has happened to that annual swan-boat sail?—WBEZ gang is non-committal . . . WEEI announcers who dramatize the fizz of Alka Selzer tablet to introduce each program invariably hoist the glass immediately after the program get underway . . . Four fish haired in on Burton-Whitman-Baldwin-Gisburne expedition.



derway . . . Four fish haired in on Burton-Whitman-Baldwin-Gisburne expedition.

"You come back here Willie!"

Charlie and Willie and a host of other timely-tuneful Tattler features.

On the

Evening Tattler

Over

Station **WEEI**

Each Weekday

at

6:00 P.M.

Thursday, June 7 - Guy Lombardo's Orchestra on WJZ, 11.34 P.M.

Highlights

- P.M.**
- 3.15—Wilhelm Bachaus, pianist, from Berlin, NBC-WJZ
 - 8.00—Rudy Vallee, NBC-WJZ
 - 9.00—Captain Henry's Show Boat, NBC-WTAT
 - Mark Warnow's Orchestra, CBS-WABC
 - 9.30—Waring's Pennsylvanians, CBS-WABC
 - 10.00—Connie Boswell, Stoopnagle and Budd, CBS-WABC
 - 10.40—Josef Hevienne, NBC-WJZ

(All programs are listed in Eastern Daylight Saving Time. Eastern Standard Time is one hour earlier; Central Time is two hours earlier.)

- 6.45 A.M. EDT, 5.45 EST, 4.45 CT
- Toner Health Exercises, WJAF WEEI WGY, 1 h., 15 m.
- 7 A.M. EDT, 6 EST, 5 CT
- Musical Clock, WJZ WJZ, 1 h.
- 7.30 A.M. EDT, 6.30 EST, 5.30 CT
- Yochi Hirakawa, xylophonist, WJZ NBC-Orchestra, WJZ
- Organ Recital, WABC, 30 m.
- 7.45 A.M. EDT, 6.45 EST, 5.45 CT
- Pollo i and Lavinthust, WJAF WGY Alarna (clock, WJZ)
- Jolly Bill and Jane, WJZ
- 8 A.M. EDT, 7 IST, 6 CT
- Radio City Organ, WJZ
- J. B. Rudeout, weather, WEEI
- Collin Dreyer, organist, WJZ 30 m.
- Morning Devotions, WJZ KDKA
- Mus of Clock, WGY
- Resure and Salon Musicale, WABC 45 m.
- 8.15 A.M. EDT, 7.15 EST, 6.15 CT
- Don Hall Trio, WJZ WB WHAM
- 8.30 A.M. EDT, 7.30 EST, 6.30 CT
- Cheerio, WJAF WEEI WJZ WGY WLV, 30 m.
- Low White, organist, WJZ WB WHAM WJZ WJZ, 30 m.
- 8.45 A.M. EDT, 7.45 EST, 6.45 CT
- Caroline Gray, pianist, WABC
- 8 A.M. EDT, 7 EST, 7 CT
- Herman and Banta, WJAF WEEI WLV Willis McCulloch, songs, WGY
- Breakfast Club, WJZ KDKA WHAM, 1 h.
- Virginia Reade, talk, WBZ
- Eton Boys, quartet, WABC
- 9.15 A.M. EDT, 8.15 EST, 7.15 CT
- Land, Trio and White, WJAF WEEI WGY WLV
- In the Luxembourg Gardens, WABC
- 9.30 A.M. EDT, 8.30 EST, 7.30 CT
- Bradley Kincaid, WJAF WEEI WJZ
- Leticia J. Little's music, WGY
- Hymns, WLV
- 9.45 A.M. EDT, 8.45 EST, 7.45 CT
- The Sylvan Trio, WJAF WEEI WJZ
- Sylvan Trio, WLV
- Skip, Step and Happiana, WGY
- Mystery Chef, WABC
- Jean Gravelle's Orchestra, WMCA
- 10 A.M. EDT, 9 EST, 8 CT
- Breen and de Rose, WJAF 30 m.
- Del Castillo, organist, WJZ, 30 m.
- Armistice Salute, WJZ KDKA WHAM, 1 h.
- Morgan Bowls, WJZ, 30 m.
- Edward MacLough, gospel singer, WJZ WBZ KDKA
- Health Talk, WLV
- Bill and Ginger, WABC
- Pure Food Hour, WOR, 1 h.
- 10.15 A.M. EDT, 9.15 EST, 8.15 CT
- Clara, Tu 'n' Em, WJAF WGY WLV
- WEEI WJZ WGY WLV
- Bob White, WJZ
- Castles of Romance, WJZ WBZ KDKA
- Duke Dewey's Orchestra, WBZ
- Ida Bailey Allen, WABC WCAU
- 10.30 A.M. EDT, 9.30 EST, 8.30 CT
- Treasure Chest, Howard Phillips, WJAF WJZ WLV
- Today's Children, WJZ WBZ KDKA
- News and Arts, WABC
- 10.45 A.M. EDT, 9.45 EST, 8.45 CT
- News and Morning Parade, WJAF WJZ, 30 m.
- Musical Program, WEEI
- Pop Concert, WJZ, 30 m.
- Shopping Bag, WGY
- News and Radio Kitchen, WJZ WBZ
- Organ, WLV
- Academy of Medicine, Dr. W. C. Spain, "Hay Fever," WABC
- 11 A.M. EDT, 10 EST, 9 CT
- Galaxy of Stars, WGY, WLV
- U. S. Marine Band, WJZ WBZ WHAM
- Sunny Side Up, WABC
- 11.15 A.M. EDT, 10.15 EST, 9.15 CT
- Frances Lee Burton, WJAF WJZ WGY WEEI
- 11.30 A.M. EDT, 10.30 EST, 9.30 CT
- Jules Lande, violinist, WJAF WEEI WJZ, 30 m.
- Climax Carnival, WGY, 30 m.
- Jack Arthur, baritone, WJZ WBZ WBAL

- KDKA
- Market Reports, WLV
- Madison I-ensemble, WABC 30 m.
- 11.45 A.M. EDT, 10.45 EST, 9.45 CT
- Al and Lee Reiser, WJZ WBZ WHAM
- Painted Dreams, WGN WLV
- 12 N. EDT, 11 A.M. EST, 10 CT
- Gene Arnold's Comedians, WJAF WEEI WLV
- Mary Phillips, songs, WJZ
- Prairie Symphony, WLV, 30 m.
- "Voice of Experience," WABC WCAU
- "Around the Wheel of Events," WOR
- Horns and Reed, songs and patter, WMCA
- 12.15 P.M. EDT, 11.15 A.M. EST, 10.15 CT
- Johany Marvin, tenor, WJAF WEEI
- Accordion, WJZ
- Martha and Hal, WGY
- Kendall Hall, songs, WJZ
- Connie Gates, songs, WJAF
- Variety, WOR
- Chuck Richards, songs, WMCA
- 12.30 P.M. EDT, 11.30 EST, 10.30 CT
- Rex Battle's Ensemble, WJAF WGY, 40 m.
- Dance Music, WJZ, 30 m.
- W. C. Handy, WJZ
- Band of Friendship, WLV
- Microphone Concert, WABC
- Scherzo, WCAU, WCAU, 30 m.; (WABC from 12.45)
- Stocks, WMCA, 30 m.
- 12.45 P.M. EDT, 11.45 EST, 10.45 CT
- Markets, weather, WJAF, 30 m.
- Bradley Kincaid, WGY
- Brady, Max, WJZ
- The Texas, WLV
- 1 P.M. EDT, 12 N. EST, 11 A.M. CT, 11.15 CT
- Markets, weather, WJAF
- Vagabonds, WGY, 30 m.
- Words and Music, WJZ
- Ohio Farm Bureau, WLV
- Sports Flash and Do, Re, Mi, Trio, WABC
- Dr. H. J. Vrandagh, n. WOR
- Lyric Strings, WMCA
- 1.15 P.M. EDT, 12.15 EST, 11.15 CT
- Pedro Vial's Orchestra, WJAF
- The Honorable Archie, WJZ
- River and Boat, WLV
- Jean Marros's Music, WABC
- Atel Ensemble, WOR
- 1.30 P.M. EDT, 12.30 EST, 11.30 CT
- Orlando's Orchestra, WJAF WJZ, 30 m.
- WJZ Reading Circle, WJZ, 30 m.
- WGY Farm Program, WGY, 30 m.
- National Farm and Home Hour, WJZ
- WBZ WHAM WLV, 1 h.
- "Homeless Blues," WABC
- Beauty Guild, WABC WCAU, 30 m.
- Theatre Club of the Air, WOR
- 1.45 P.M. EDT, 12.45 EST, 11.45 CT
- Tony Wool, WABC WCAU
- Otis Holley, soprano, WOR
- 2 P.M. EDT, 1 EST, 12 N. CT
- Stones of History, WJAF, 30 m.
- Silver Lining, WJZ
- Rhythm Masters, WJZ
- Paul Curtis, tenor, WGY
- Ann I. Hark, WABC WCAU
- Dr. Arthur Frank Payne, WOR
- Theatre Notes, WMCA
- 2.15 P.M. EDT, 1.15 EST, 12.15 CT
- NFN Pure Food Institute, WEEI WJZ, 30 m.
- Musical Program, WEEI
- Women's Club program, WJZ WBAL
- WHAM KDKA, 30 m.
- N. E. Agriculture, WBZ
- Margaret Castle, socialist, WLV
- Revue and George Hall's Orchestra, WABC
- Sage Relief Fund Talk, WOR
- Sally's Party, WMCA, 30 m.
- 5.15 P.M. EDT, 4.15 EST, 3.15 CT
- The Monitor News the News, WBZ
- Thru the Looking Glass, WLV
- Slippy, WABC WLV
- "Once Upon a Time, WOR
- 5.30 P.M. EDT, 4.30 EST, 3.30 CT
- Winnie the Pooh, WJAF WEEI WJZ WLV
- Singing Lady, WJZ WBZ WHAM KDKA WLV
- Jack Armstrong, All-American Boy, WABC WCAU
- Karl Freund, talk, WOR
- Marvin Thomas, baritone, WMCA
- 5.45 P.M. EDT, 4.45 EST, 3.45 CT
- Flores of Linn, WJAF WJZ
- Sam Curtis, radio chat, WEEI
- Vagabonds, WGY
- Little Orphan Annie, WJZ WBZ WHAM WLV KDKA
- U. S. Open Golf Championship, WABC
- "Sophisticates," trio, WOR
- Armanda Randolph, songs, WMCA
- 6 P.M. EDT, 5 EST, 4 CT
- Xavier Cugat's Orchestra, WJAF WLV
- The Evening Tattler, WEEI, 30 m.
- Wrightsville Clarion, WJZ, 30 m.
- Variety, WGY
- U. S. Navy Band, WJZ WHAM WBAL, 30 m.
- Joe and Bessie, WBZ
- Dinner Concert, WHAS
- Buck Rogers, WABC WCAU
- Uncle Don, WOR, 30 m.
- Ted Black's Orchestra, WMCA, 1 om.
- 6.15 P.M. EDT, 5.15 EST, 4.15 CT
- Sports Parade, WGY
- Bill Williams, WBZ
- Bobby Benson and Sunny Jim, WABC WCAU
- 6.30 P.M. EDT, 5.30 EST, 4.30 CT
- John B. Kennedy, WJAF WGY
- Baseball scores, current events, WEEI
- String Music, WJZ
- Time, weather, WBZ
- Stamp Club, WJZ WHAM
- Time, weather, WBZ
- Jack Armstrong, WLV
- Rod Towers, quartet, WABC WCAU

Alert



Eddie Duchin, NBC maestro, who gives several disc programs a week on the air with the aid of his skilled orchestra.

- The Ambassadors, WABC
- George Spaulding, songs, WMCA
- 4 P.M. EDT, 3 IST, 2 CT
- Chuck Webb's Orchestra, WJAF WJZ, 30 m.
- Storks, Markets, WEEI
- Betty and Bob, drama, WJZ WBZ WHAM
- KDKA WLV
- Memory's Garden, WABC, 30 m.
- Contraalto, organ, WMCA, 30 m.
- 4.15 P.M. EDT, 3.15 EST, 2 CT
- Hal Gould, baritone, WEEI
- Willie Hill, WGY
- Riviera Review, WJZ WBZ WHAM
- Nature Highlights, WLV, 30 m.
- 4.30 P.M. EDT, 3.30 EST, 2.30 CT
- Hazel Glenn, WJAF WJZ
- John Sheehan, tenor, WGY
- Markets, KDKA
- Musical Keys, WJZ WBZ WHAM, 30 m.
- Jerry Cooper, tenor, WABC
- The Public Speaks, WOR, 30 m.
- Instrumental Group, WMCA
- 4.45 P.M. EDT, 3.45 EST, 2.45 CT
- The Lady Next Door, WJAF
- Dan McDonnell, basso, WJZ
- Stocks, WGY
- Columbia Salon Orchestra, WABC
- Carrie's Club, WMCA
- 5 P.M. EDT, 4 P.M. EST, 3 CT
- Meredith Willson's Orchestra, WJAF WEEI WJZ, 30 m.
- Women's Club program, WJZ WBAL WHAM KDKA, 30 m.
- N. E. Agriculture, WBZ
- Margaret Castle, socialist, WLV
- Revue and George Hall's Orchestra, WABC
- Sage Relief Fund Talk, WOR
- Sally's Party, WMCA, 30 m.
- 5.15 P.M. EDT, 4.15 EST, 3.15 CT
- The Monitor News the News, WBZ
- Thru the Looking Glass, WLV
- Slippy, WABC WLV
- "Once Upon a Time, WOR
- 5.30 P.M. EDT, 4.30 EST, 3.30 CT
- Winnie the Pooh, WJAF WEEI WJZ WLV
- Singing Lady, WJZ WBZ WHAM KDKA WLV
- Jack Armstrong, All-American Boy, WABC WCAU
- Karl Freund, talk, WOR
- Marvin Thomas, baritone, WMCA
- 5.45 P.M. EDT, 4.45 EST, 3.45 CT
- Flores of Linn, WJAF WJZ
- Sam Curtis, radio chat, WEEI
- Vagabonds, WGY
- Little Orphan Annie, WJZ WBZ WHAM WLV KDKA
- U. S. Open Golf Championship, WABC
- "Sophisticates," trio, WOR
- Armanda Randolph, songs, WMCA
- 6 P.M. EDT, 5 EST, 4 CT
- Xavier Cugat's Orchestra, WJAF WLV
- The Evening Tattler, WEEI, 30 m.
- Wrightsville Clarion, WJZ, 30 m.
- Variety, WGY
- U. S. Navy Band, WJZ WHAM WBAL, 30 m.
- Joe and Bessie, WBZ
- Dinner Concert, WHAS
- Buck Rogers, WABC WCAU
- Uncle Don, WOR, 30 m.
- Ted Black's Orchestra, WMCA, 1 om.
- 6.15 P.M. EDT, 5.15 EST, 4.15 CT
- Sports Parade, WGY
- Bill Williams, WBZ
- Bobby Benson and Sunny Jim, WABC WCAU
- 6.30 P.M. EDT, 5.30 EST, 4.30 CT
- John B. Kennedy, WJAF WGY
- Baseball scores, current events, WEEI
- String Music, WJZ
- Time, weather, WBZ
- Stamp Club, WJZ WHAM
- Time, weather, WBZ
- Jack Armstrong, WLV
- Rod Towers, quartet, WABC WCAU

- Pauline Albert, pianist, WOR
- Dream Saccharine, WMCA
- Trumpeters, WHED
- 6.45 P.M. EDT, 5.45 EST, 4.45 CT
- Mary Small, songs, WJAF WJZ WGY
- Louisa Salute, WJZ
- Lowell Hubbard, news, WJZ WBZ WHAM
- KDKA WLV
- Household Music Box, WABC
- Mischa Ragnisky, WCAU
- Phil Cook, WOR
- Live Star Inal, WMCA
- 7 P.M. EDT, 6 IST, 5 CT
- Baseball Resume, WJAF
- Male quartet, WEEI
- Headline Highlights, WGY
- Amos 'n' Andy, WJZ WBZ WHAM KDKA WLV
- Sylvia Fross, WABC WCAU
- Ford Frick, songs, WOR
- Florence Richardson's Orchestra, WMCA
- 7.15 P.M. EDT, 6.15 EST, 5.15 CT
- Gene and Glenn, WJAF WEEI WGY
- Sports, WHED
- Ed Lowry, WJZ WHAM
- Boston Fire Department, WBZ
- Emerson's Orchestra, WLV
- Just Plain Bill, WABC WCAU
- Jack Fischer's Orchestra, WABC WJZ
- Baseball Scores, WJZ
- String Ensemble, WJZ
- Silver-suited Lovers, WMCA
- 7.30 P.M. EDT, 6.30 EST, 5.30 CT
- Shirley Howard, the Jesters, WJAF WJZ WLV
- Teddy Bergman, WJZ
- Richard Himber's Orchestra, WJZ WBZ
- WBAL WHAM KDKA, 30 m.
- Bob Newhall, WLV
- Paul Keast and Rollo Hudson's Orchestra, WABC WCAU
- Ray Perkins' Orchestra, WOR
- Folk Singer, WMCA
- 7.45 P.M. EDT, 6.45 EST, 5.45 CT
- The Goldbergs, WJAF WEEI WGY
- Talk, Governor Wilbur L. Cross, WJZ
- Boake Carter, WABC WCAU
- Melody Masters, WLV
- Leon Friedman's Orchestra, WMCA
- 8 P.M. EDT, 7 IST, 6 CT
- Rudy Vallee and guest artists, WJAF WEEI WLV WGY WLV, 1 h.
- Curtis and Gray, mountain sketch, WJZ WBZ KDKA, 30 m.
- Imery Deutsch's Orchestra, WABC
- Curtis School Bands, WJZ, 30 m.
- Dinner Concert, WHAS
- Ford Frick, WOR
- Three Little Funsters, WMCA
- 8.15 P.M. EDT, 7.15 EST, 6.15 CT
- Easy Acc., WABC WCAU
- Jean Gravelle's Orchestra, WMCA
- 8.30 P.M. EDT, 7.30 EST, 6.30 CT
- Grace Hayes, songs, WJZ KDKA
- School, WBZ
- Gleason T. Archer, Dean, Suffolk Law School, WBZ
- Rattles, amateur crackman, WABC WCAU, 30 m.
- Dinner Concert, WHAS, 30 m.
- Crazy Range Ramblers, WMCA
- 8.45 P.M. EDT, 7.45 EST, 6.45 CT
- Robert Simmons, tenor, WJZ
- Sammy Laner's Orchestra, WBZ
- Fleeting Travelers, KDKA
- "More Than News," WMCA
- 9 P.M. EDT, 8 EST, 7 CT
- Captain Henry's Show Boat, WJAF WEEI WLV, 1 h. (WLV from 9.30)
- Musical program, WJZ, 1 h.
- Death of a Salesman, WJZ WBZ
- WHAM KDKA WLV, 30 m.
- Mark Warnow, WABC WCAU, 30 m.
- Arlino Bagnone's Orchestra, WGN, 30 m.
- God and Gun Club, WOR
- Bob Haring's Orchestra, WMCA, 30 m.
- 9.15 P.M. EDT, 8.15 EST, 7.15 CT
- "Romance in Song," WOR
- 9.30 P.M. EDT, 8.30 EST, 7.30 CT
- Eddie Duchin's Orchestra, WJZ WBZ WHAM KDKA, 30 m.
- Waring's Pennsylvanians, WABC WCAU
- Harris Ballin, WOR
- Irnie Golden's Orchestra, WMCA
- 9.45 P.M. EDT, 8.45 EST, 7.45 CT
- "The Witches Tale," WOR, 30 m.
- Trudy Thomas, songs, WMCA
- 10 P.M. EDT, 9 P.M. EST, 8 CT
- Paul Whiteman, Deems Taylor and Lee WJAF, Reading, Penn. Masonic Choir, WJAF WEEI WJZ WLV, 1 h.
- Variety, WJZ, 1 h.
- Parade of the Provinces, Canadian program, WJZ WBAL, 30 m. (WHAM from 15.15)
- Prison Drama, WJZ
- Stoopnagle and Budd, Connie Boswell, Casa Loma Orchestra, WABC WCAU, 30 m.
- Rochester Evening School of the Air, Clemmistry, WHAS
- Mahattan Songs, WMCA
- 10.15 P.M. EDT, 9.15 EST, 8.15 CT
- Current Events, WOR
- "Romance of the Violin," WMCA
- 10.30 P.M. EDT, 9.30 EST, 8.30 CT
- Josef Hevienne, Frank Black, conducting, WHAM WBAL, 30 m.
- NBC Symphony Orchestra, WJZ WBZ
- Romance of Dan and Sylvia, KDKA
- Doris Lorraine, Cadets, WABC
- "Rambling Round," WOR, 30 m.
- Organ, WLV
- Melody Boys, WMCA

Police Radio

| Station | Meters | Location |
|---------|--------|------------------------|
| WJZ | 121.5 | Pawtucket, R. I. |
| WPEN | 121.5 | Woonsocket, R. I. |
| WPDR | 122.05 | Rochester, N. Y. |
| WPFA | 122.05 | Syracuse, N. Y. |
| WPFF | 122.4 | Bronx, N. Y. |
| WPFE | 122.4 | Brooklyn, N. Y. |
| WPFG | 122.4 | New York City |
| WMI | 123.8 | Buffalo, N. Y. |
| WPQG | 124.37 | Albany, N. Y. |
| WPED | 175.23 | Arlington, Mass. |
| WPEI | 175.23 | East Providence, R. I. |
| WPFA | 175.23 | Newtown, Mass. |
| WPFG | 175.23 | Providence, R. I. |
| WMP | 190.66 | Framingham, Mass. |
| WPEW | 190.66 | Northampton, Mass. |
| WPEL | 190.66 | Bridgewater, Mass. |
| WPQC | 195.57 | Albany, N. Y. |
| WEY | 650.00 | Boston, Mass. (Fire) |

- 10.45 P.M. EDT, 9.45 EST, 8.45 CT
- Nancy Martin, KDKA
- Plaza, WABC WCAU
- Three Blue Notes, WBZ
- Ben Pollack's Orchestra, WMCA
- 11 P.M. EDT, 10 EST, 9 CT
- Siberian Singers, WJAF WJZ
- L. B. Rudeout, WEEI
- Johnny Johnson's Orchestra, WJZ, 30 m.
- The Cavaliers, WJZ WBAL
- Weather, temperature, sports, WBZ
- Sports, KDKA
- Champions Orchestra, WLV, 30 m.
- Verz Van, soprano, WABC
- "Moonbeams," WOR, 30 m.
- Tom Devacher's Orchestra, WMCA
- 11.15 P.M. EDT, 10.15 EST, 9.15 CT
- Kathryn Newman, soprano, WJAF WJZ WLV
- The Goldbergs, WJAF WEEI WGY
- News, Musical Talent, WJZ
- Port Prince, WJZ WBZ WLV
- News, Barnett's Orchestra, WABC
- Art Faria's Orchestra, KDKA
- Polly Andrews' Orchestra, WMCA
- 11.30 P.M. EDT, 10.30 EST, 9.30 CT
- News and Ghost Story, WJAF WJZ WLV WGY, 30 m.
- News and Guy Lombardo's Orchestra, WJZ
- WJZ WHAM KDKA, 30 m.
- Crowley Ruzamos, WLV, 30 m.
- Brio's Orchestra, WOR, 30 m.
- Henry Bagin's Orchestra, WHAS, 30 m.
- Orchestra, WGN, 3 hrs.
- Orchestra, WMCA, 2 hrs., 30 m.
- 11.45 P.M. EDT, 10.45 EST, 9.45 CT
- Musical Talent, WEEI
- Henry Busse's Orchestra, WABC WCAU
- 12 M. EDT, 11 P.M. EST, 10 CT
- Dream Singer and Jimmy Lunceford's Orchestra, WEEI WEEI WGY, 30 m.
- Don Bestor's Orchestra, WJZ WBZ WHAM 30 m.
- Lon Amigos, WLV, 30 m.
- Jack Berger's Orchestra, WOR, 30 m.
- Reggie Child's Orchestra, WABC WCAU, 30 m.
- 12.30 A.M. EDT, 11.30 EST:
- Harold Sterns Orchestra, WJAF WGY
- Twin City Dancing, WJZ WBZ WHAM KDKA, 30 m.
- Casle Farm Orchestra, WLV, 30 m.
- Charlie Davis' Orchestra, WABC WCAU, 30 m.

Bachaus As Soloist In Piano Concerto

WILHELM BACHAUS, eminent pianist, will be heard as soloist in a concert to be broadcast from Berlin over an NBC-WJZ network on Thursday, June 7, at 3.15 P. M. BACHAUS will play the noble "Emperor" Concerto by BEETHOVEN, one of the greatest concertos for piano in musical literature. He will be accompanied by the Berlin Radio Orchestra, under the direction of OTTO FRICKHOFFER.

EVERY subscriber to or other purchaser of THE MICROPHONE is entitled to share its benefits with a friend. Write to Circulation Manager, THE MICROPHONE, No. 34 Court Square, Boston, Massachusetts, giving the names and addresses of those you'd like to become familiar with THE MICROPHONE. A sample copy will be sent promptly to each name given, without obligation.

DIRECTORY
Page 4

An Interview In Which One Of A Mad Trio Won't Talk, Or Can't

Points On Good Air Technique

By JUNE AULICK

They used to be known as "The Funnyboners," and lately we discovered another reason why that appellation was just right for GORDON, DAVE and BUNNY, or if you must be formal, Messrs. GRAHAM, GRANT and COUGHLIN.

These madcaps of the air, now known as the "Oxol Trio," never can find time for anything as serious as an interview, so the distracted reporter slipped some questions under the studio door while the boys were rehearsing for their program broadcast over a WABC-Columbia network on Mondays, Tuesday, Wednesdays and Fridays from 5.45 to 6.00 P. M.

After chasing them via secretaries, secret emissaries and spies disguised as FULLER Brush men, we finally received their written answers, jotted down on the backs of old laundry bills. GORDON just turned in a blank page. When questioned, GORDON responded in sign language that he "refused to talk."

Questions and Answers

Here are the questions with replies as written in DAVE GRANT'S fine old Italian hand, and BUNNY COUGHLIN'S quaint scribble:

Question: How do you build the program, get in a huddle before coming to the studio, or do it all there?

DAVE: "We've always wanted to get in a huddle, but we can't find one big enough for us all to get into, so we usually sit around in a blue funk with red trimming, and rehearse there."

BUNNY: "First we consult an architect who has a reputation for building programs. It's all done with blue prints."

Question: Why do you specialize in novelty songs?

DAVE: "To keep the wolf from the door."

Bet DAVE sat up nights to think of that one.

BUNNY: "To avoid repeating 'The Last Round Up.'"

Question: What are the names of your accompanists?

DAVE: "We don't like to be alone, so I accompany the trio when we sing. Carl Kress is responsible for the excellent guitar playing behind me, and Joe Green and Andy Sanella do their bit at times."

Now we're getting somewhere. Question: Have you any imitators?

DAVE: "We had one but it died; it wouldn't eat fish."

Maybe they should have tried spinach.

BUNNY: "No, there is no one to whom we can point and say, 'You're anaemic.' *Anaemic—one who imitates us."

Question: Do you ad lib for the mike, or do all your work from scripts?

DAVE: "Why should we ad lib for the mike; it never did anything for us. (Not much.)"

Favorite Songs

Question: What are your favorite songs and why?

DAVE: "The St. Louis Blues, 'Raggin' the Scale' and 'Columbia the Gem of the Ocean.' Because I wrote them." Yeah?

BUNNY: "Novelty songs. Because they are not hackneyed."

Question: Are they the same

'Sno Use Talking About This Photo



GORDON, DAVE and BUNNY, alias GRAHAM, GRANT and COUGHLIN, appear gamboling in the schnee. The gentleman on the right has been picked the winner. When they are not doing something like this they are heard on the WABC network at 5.45 P. M. Monday, Tuesday, Wednesday and Friday.

which your fans prefer?

DAVE: "They better be."

BUNNY: "Most fans prefer ballads which we include in all programs."

Question: What were the outstanding events that took place while you were in Boston?

DAVE: "My birth, marriage and my orchestra's engagement to play the big ball at the Dartmouth Winter Carnival."

About Dave

We happen to know a little about that one. DAVE was born in Newton, Mass., on the 24th of August, 1902, and has been wondering ever since whether his musical talent was inherited from his grandmother or from an uncle who ran a medicine show in the Middle West.

After spending three years at the Massachusetts Institute of Technology and finding it only important to him as far as musical clubs were concerned, DAVE left and went to the New England Conservatory of Music. He spent one year there attempting, with little success, to learn how to read music.

While at M. I. T. DAVE organized an orchestra in order to pay his way through school. The enterprise proved successful in and around Boston at college and country club dances, and DAVE continued with it until 1929 when it broke up after a vaudeville tour of the country.

A vocal trio, which included BUNNY COUGHLIN, had been the sole survivor after the wreck of DAVE's band and it wasn't long before DAVE's idle hours were spent before the microphone in a Boston station with COUGHLIN and a variable third. Then came GORDON GRAHAM to bring per-

manency to the trio.

BUNNY recalls at the outstanding events of his Boston days:

"The Harvard-Army game, Armistice Day, Boston Tea Party (We were the three on the left), Boston Braves winning the pennant in 1914."

Plays Five Instruments

BUNNY (ALFRED A.) COUGHLIN, like his fellow "Funnyboners," also hails from the Bay State, claiming Boston as his birthplace, and May 29, 1904, as his birth date. The only unusual facts about his family, he asserts, are that his sister is a chemist and that he plays the violin, saxophone, clarinet, banjo and radio.

When through school, BUNNY dodged work for a while by studying in the school of the Boston Elevated Company and remaining there as a student as long as he could. At last a job caught up with him in the offices of the company, but only for a short time. He was fired for singing in the office.

To his belated delight, however, the same firm engaged the GRANT, GRAHAM and COUGHLIN trio a few years later to sing for them on a radio program.

Office work behind him, BUNNY toured Europe as soloist and saxophonist with an American dance orchestra and got as far as Sweden with it. There he stayed, giving saxophone and crooning lessons to eager Scandinavians.

BUNNY's next venture, upon his return from abroad, was opening a sales agency for a curtain invention. Business was good for one month—after that his money melted away and he gave up that career when his stenographer fired him. Shortly after, he met DAVE GRANT, joined the orchestra, which organized the trio,

which became "The Funny-

boners," which became the "Oxol

A Colorful History Of Their Lives

Trio"—and there you are!

Hates Parlor Games

BUNNY is married and hates parlor games or any other games. Whenever he needs new program ideas, BUNNY takes a night railroad trip—his best ideas come to him when he is trying to, but can't, sleep.

GORDON GRAHAM, youngest of the three mad melodeers, was born March 16, 1908, in Cambridge, Mass., but was moved to Springfield when he was only three weeks old. There he grew up until he reached the height of six feet, four inches, and it was time to go to Dartmouth College.

At Dartmouth, GORDON was a soloist with the Glee Club and in his senior year was leader of the Club when it won the United States championship title. After graduation, he landed a job in a show, "The Dagger and the Rose." Both show and job lasted six weeks, five of rehearsal and one of performances in Atlantic City, but GORDON found it good fun and learned how to live on \$5 a week.

Like DAVE GRANT, GORDON came back to Boston. He wanted to become a newspaperman, but landed the work of a singing master of ceremonies in a night club, while waiting for the job to materialize.

His hobby is book collecting but, he says, he can't afford it, so it's just a hobby. Prefers horseback riding to other sports, and D. H. LAWRENCE to other authors.

Short Wave Directory

| Station | Metres | Location | Time (E.D.T.) |
|--|----------------|-----------------------------------|--|
| GSH | 13.97 | Daventry, England | 8-9.30 A. M. |
| FYA | 19.68 | Pontoise, France | 8 A. M.-2 P. M. |
| DJB | 19.75 | Zeesen, Germany | 8-10.45 A. M. |
| GSP | 19.82 | Daventry, England | 10-12 A. M. |
| HVJ | 19.84 | Vaticine City, Rome | 6 and 11 A. M. |
| CNR | 23.38 | Rabat, Morocco | 8.30-10 A. M. (Sun.) |
| RNE | 25.00 | Moscow, U. S. S. R. | 7-8; 11-12 A. M. (Sun.) |
| FYA | 25.20 | Pontoise, France | 3-6 P. M. |
| GSR | 25.28 | Daventry, England | 10 A. M.-1 P. M. |
| ZRO | 25.40 | Rome, Italy | 1.45-5.30 P. M. |
| DJD | 25.51 | Zeesen, Germany | 2-9 P. M. |
| GSD | 25.53 | Daventry, England | 8.30-10.30, Mon., Wed., Fri., Sat., Sun. |
| PHI | 25.57 | Huizen, Holland | 6.15-8 P. M., 2-4 P. M. Sats. |
| EAQ | 30.44 | Madrid, Spain | 5.30-8 P. M., Tues., Fri. |
| CT1AA | 31.25 | Lisbon, Portugal | 6.30-7.15 P. M., Sat., Sun. |
| HLB | 31.27 | Geneva, Switzerland | 1-11 A. M., Sun. |
| VK2ME | 31.28 | Sydney, Australia | 6-8.30 P. M. |
| DJA | 31.38 | Zeesen, Germany | 6-8 A. M., Sat. |
| VK3ME | 31.55 | Melbourne, Australia | 2-6.30 P. M. |
| GSB | 31.55 | Daventry, England | 3-6 P. M., Sun. |
| CNR | 37.33 | Rabat, Morocco | 9-10 P. M., Tues., Fri. |
| HKE | 41.55 | Bogora, Colombia | 12 M-7 P. M. |
| LCL | 42.92 | Jeloy, Norway | 4-6.30 P. M. |
| HAS | 43.86 | Budapest, Hungary | 10-12 P. M., Thurs. |
| PRADO | 45.31 | Riobamba, Ecuador | 2-7 P. M. |
| REN | 45.38 | Moscow, U. S. S. R. | 7-11 P. M. |
| HJ1ABB | 46.51 | Barranquilla, Colombia | Daily |
| ZGE | 48.00 | Army Aircraft | 8-10 A. M., Tues., Fri. |
| HZE | 48.92 | Kuala Lumpur, Malay States | 6.30 A. M. |
| PK1WFK | 49.02 | Bandoeng, Java | 7.30-9., 10-12.30 P. M. |
| VUC | 49.10 | Calcutta, India | 10.30-1 P. M., Sat. |
| CP5 | 49.30 | La Paz, Bolivia | 7.30-9., 10-12.30 P. M. |
| HIX | 49.50 | Santo Domingo | 10-12.30 P. M. |
| VQ7LO | 49.50 | Nairobi, Africa | 10-12.30 P. M. |
| DJC | 49.83 | Zeesen, Germany | 5-6 P. M. |
| RV59 | 50.00 | Moscow, U. S. S. R. | 3-3.15 P. M.; A. M., Sun. |
| HVJ | 50.26 | Vatican City, Rome | 3-6 A. M., Sun. |
| TGX | 50.50 | Guatemala City, S. A. | 2.3, 8.30-11 P. M. |
| HJ4ABA | 51.49 | Colombia, S. A. | 9-12 P. M. |
| HCK | 75.00 | Quito, Ecuador | Heard Irregularly |
| | 67.87 to 73.17 | All Ships | 2-10 A. M. |
| RV15 | 70.65 | Khabarovsk, U. S. S. R. | 8.30-10.45 P. M. |
| HCBJ | 52.65 | Quito, Ecuador | |
| 45.34, 31.57, 25.36, 23, 19, 64, 17 and 14 | | Byrd Expedition at Little America | |

Note: All times given are week-day schedules, unless indicated otherwise. The stations listed are regular broadcasters at the times indicated. Other stations which you may hear or which are used for international telephone have been purposely omitted.

Friday, June 8 - Cities Service Concert on NBC-WEAF at 8 P.M.

Highlights

- P.M. 3:00—Lanny Ross, Conrad Thibault, Mary Lou, NBC-WEAF 5:00—Colonel Dean Ivan Lamb, NBC-WJZ 8:00—Cities Service Concert, NBC-WEAF Chocolateers, NBC-WJZ 9:00—Leah Ray, NBC-WBZ 9:30—Jack Whiting, CBS-WABC 10:00—Stories That Should Be Told, NBC-WJZ Program of the Week, CBS-WABC 10:30—Jack Benny, NBC-WEAF

(All programs are listed in Eastern Daylight Saving Time. Eastern Standard Time is one hour earlier; Central Time is two hours earlier.)

- 6:45 A.M. EDT; 5:45 EST; 4:45 CT Tower Health Exercises, WEAF WEEI WGY, 1 h. 7 A.M. EDT; 6 EST; 5 CT Musical Clock, WTIC 7:30 A.M. EDT; 6:30 EST; 5:30 CT Youchi Hirakawa, xylophone, WJZ WBAL McCormick's Fiddlers, WLW, 30 m. Organ Reville, WABC, 30 m. 7:45 A.M. EDT; 6:45 EST; 5:45 CT Pollock and Lavenhurst, WEAF WGY Jolly Bull and Jane, WJZ WBAL 8 A.M. EDT; 7 EST; 6 CT Organ Rhapsody, WEAF WTIC E. B. Riboud, WEEI Morning Devotions, WJZ KDKA Resume, Ambassadors, WABC 8:15 A.M. EDT; 7:15 EST; 6:15 CT Don Hall Trio, WJZ WBZ WBAL WHAM Sunny Melodies, WABC, 30 m. 8:30 A.M. EDT; 7:30 EST; 6:30 CT Cheerio, WEAF WEEI WTIC WGY WLW, 30 m. Sunny Melodies, WABC, 45 m. Lew White at Dual organ, WJZ KDKA, 30 m., WBZ, 15 m. (WHAM from 8:45) 8:45 A.M. EDT; 7:45 EST; 6:45 CT Junior High School Program, WBZ Caroline Gray, piano, WABC 9 A.M. EDT; 8 EST; 7 CT Sam Herman, xylophonist, WEAF Paul Levy, a Orchestra, WGY Mystery Circle, WJZ WBZ WBAL WLW Lo Re Mi, female trio, WABC 9:15 A.M. EDT; 8:15 EST; 7:15 CT Landi Trio and White, WEAF WEEI WGY WLW The Breakfast Club, news (11:30) WJZ WHAM & DAL, 45 m., KDKA, 15 m. (WBZ from 9:30) Metropolitan Parade, WABC 9:30 A.M. EDT; 8:30 EST; 7:30 CT "We Shine 'Em": Bonnets, WEAF WTIC Billy Rose, tenor, WGY Breakfast Club, WJZ WHAM Hymns, WLW Helen Barr, Edward Jordan, WEEI 9:45 A.M. EDT; 8:45 EST; 7:45 CT News and Cyril Tobin, violin, WEAF WEEI WTIC WLW Skip, step and Huppans, WGY 10 A.M. EDT; 9 EST; 8 CT Breen and De Rose, WEAF WEEI WTIC Mr. and Mrs. WGY Edward MacIlugh, baritone, WJZ WBZ KDKA Mrs. Littleford, WLW Madson Singers, WABC WCAU Emily Post, speaker, Sydney Nesbitt, baritone, Muriel Pollack, Salada Strings, WOR, 30 m. 10:15 A.M. EDT; 9:15 EST; Clara, Lu 'n' Em, WEAF WEEI WGY WLW Hazel Arth, contralto, WJZ WHAM Duke Dewey, WJZ WCAU Bill and Gungy, WABC WCAU Bob White, WTIC 10:30 A.M. EDT; 9:30 EST; 8:30 CT Ralph Kirby, songs, WEAF Don Castillo, organ, WEEI Today's Children, sketch, WJZ WBZ WBAL KDKA Jack Berch, WLW News and Round Toppers Quartet, WABC 10:45 A.M. EDT; 9:45 EST; 8:45 CT Betty Crocker, cooking talk, WEAF WEEI WGY WLW Jack and Loreta Clement, WJZ News, time, weather, WBZ Carolyn Gray, WABC 11 A.M. EDT; 10 EST; 9 CT Morning Parade, WEAF WEEI WTIC WLW, 45 m. Jules Allen, cowboy songs, WJZ KDKA Spiritual singers, WLW Cooking Close Ups, WABC 11:15 A.M. EDT; 10:15 EST; Will Osborne's Orchestra, WABC Alice Joy, WJZ KDKA News, WLW 11:30 A.M. EDT; 10:30 EST; 9:30 CT Rhythm Ramblers, WJZ WBZ KDKA, 30 m. Sandra Roberts, songs, WLW Tony Wons, WABC

- 11:45 A.M. EDT; 10:45 EST; 9:45 CT Marsha and Hal, WGY Painted Dreams, WGN, WLW Ben Alley, music, WABC 12 N. EDT; 11 A.M. EST; 10 CT Gene Arnold, the Commodores, WEAF WEEI WGY Silver Strains, WTIC Solow, WJZ Monday News the News, WBZ Bob Albright, WLW Voice of Experience, WABC WCAU Girl's Trio, WOR 12:15 P.M. EDT; 11:15 A.M. EST; 10:15 CT Johnny Marvin, songs, WEAF WEEI WTIC Marsha and Hal, WGY Wendell Hall, ukulele, WJZ WHAM Time, weather, temperature, WBZ Alice Michot, soprano, WLW Betty Barthel, songs, WABC WCAU Gil Gilbert, baritone, WMCFA Varieties, WOR 12:30 P.M. EDT; 11:30 EST; 10:30 CT Rex Battle's Ensemble, WEAF, 30 m., WGY, 15 m. Stocks, Market, WEEI Luncheon Music, WTIC, 40 m. Vic and Sae, WJZ WBZ WHAM KDKA George Scherban's Orchestra, WABC, 30 m. Bonus of Friendship, WLW Organ, WOR, 30 m. Two pianos, tenor, WMCFA, 45 m. 12:45 P.M. EDT; 11:45 EST; 10:45 CT Cabot and Castillo, WEFL, 30 m. Radio Gang, WGY Songfellows, WJZ WBZ WHAM The Texans, WLW 1 P.M. EDT; 12 N. EST; 11 A.M. CT Markets, weather, WEAF Vagabonds, WGY Words and Music, WJZ Weather and N. E. Agricultural Report, WBZ Ohio Farm Bureau, WLW Sun's Flash, WEEI The Instrumentals, WABC WCAU Dance Marathon, WAAB Farm Flashes, WFEA Dr. H. I. Standhagen, WOR 1:15 P.M. EDT; 12:15 EST; Emerson Gili's Orchestra, WEAF Health Review, WGY Farm Program, WJZ The Honorable Arch C. WJZ Markets, WLW Art Recital, WABC WCAU Ariel Ensemble, WOR News, WMCFA 1:30 P.M. EDT; 12:30 EST; 11:30 CT Airbreaks, WEAF WTIC, 30 m. N. E. Kitchen, WEEI Farm Program, WJZ National Park and Home Hour, WJZ WBZ WHAM KDKA, WLW, 1 h. George Hall's Orchestra, WABC WCAU, 30 m. Beauty Guild, WMCFA Bobby Burns, baritone, WOR String Trio, WOR 2 P.M. EDT; 1 EST; 12 N. CT Magic of Speech, WEAF WTIC, 30 m.; WEEI, 15 m. Antoinette Isabella, WGY Bill Higgins, songs, WABC WCAU Dr. Arthur Farn, piano, WOR Music Talk, WMCFA 2:15 P.M. EDT; 1:15 EST; 12:15 CT N. E. Radio Kitchen, WEEI School of the Air-art appreciation, WHAM Romance of Helen Trent, WABC WBAL Virginnans, male quartet, WOR Sports spotlight, WCA 2:30 P.M. EDT; 1:30 EST; 12:30 CT Song Trail, WEAF WTIC Albany on Parade, WGY Smackout concert, WJZ Paul Pandaris Orchestra, WLW Books and Authors, WJZ Buckley and Wynne, WOR Ann Leaf, organ, WABC "The Homemaker," WOR, 30 m. Dinner Club, WMCFA 2:45 P.M. EDT; 1:45 EST; 12:45 CT Ma Perkins, WEAF WGY WLW WGY WLW, 1 h. Singing Cowboy, WTIC Alden Edkins, baritone, WJZ WBZ Bob Stanley, tenor, WMCFA 3 P.M. EDT; 2 EST; 1 CT Maria's Matinee, Lanny Ross, Mary Lou, Conrad Thibault, WEAF WEEI WTIC WGY, 1 h. Margaret Santy interviews, WJZ WBZ WHAM KDKA Hurdy Gurdy Man, WABC Show Boat Boys, WOR "Women and Money," WMCFA 3:15 P.M. EDT; 2:15 EST; 1:15 CT Don Carlos' Orchestra, WJZ KDKA Adrian O'Brien, WBZ WHAM KDKA Henry and Edward Peterson, WOR Mona Lowe, contralto, WMCFA 3:30 P.M. EDT; 2:30 EST; 1:30 CT Temple of Song, WJZ WHAM, 30 m. Home Forum Cooking School, WBZ, 30 m. The Crab Bag, WABC Stock Quotations, WMCFA Garden Club, WOR 3:45 P.M. EDT; 2:45 EST; 1:45 CT Afternoon Musicale, WOR, 45 m. Natalie Page, mezzo soprano, WMCFA 4 P.M. EDT; 3 EST; 2 CT Orlando's Cosmopolitans, WJAF WTIC, 30 m.; WGY, 15 m. Betty and Bob, sketch, WJZ WBZ WHAM KDKA Dick and Bob, WABC Dictators, WABC Soprano, tenor, organ, WMCFA, 30 m.



ALICE FROST, actress and impersonator, who plays the heroine in the "Taxi" dramas starring MAX BAER, broadcast Mondays, Wednesdays and Fridays at 7:45 P.M. over an NBC-WJZ network.

- 4:15 P.M. EDT; 3:15 EST; 2:15 CT Nellie Revel at Large, WEAF WEEI WTIC "Books" Levere Fuller, WGY Singing Stranger, WJZ WBZ WHAM KDKA Matinee Highlights, WLW 4:30 P.M. EDT; 3:30 EST; 2:30 CT Norman Cloutier's Orchestra, WEAF WEEI WTIC, 30 m. Vagabonds, WGY Jack's Heller, tenor, WJZ WBZ, 30 m. U. S. Army Band, WABC, 30 m. Marimba Orchestra, WOR, 30 m. Street Forum, WMCFA 4:45 P.M. EDT; 3:45 EST; 2:45 CT Stocks, WGY William Lundell's Interviews, WJZ William Hargrave, baritone, WOR Mystery Girl, advice, WMCFA 5 P.M. EDT; 4 EST; 4 CT Madame Sylvia, WEAF WEEI WTIC WGY, 15 m. Richard Lee William, baritone, WTIC Palmer Clark's Orchestra, WJZ, 30 m. Agricultural Markets, WBZ Three Star Vocal, WLW, 30 m. Reunite and Frank Dudley's Orchestra, WABC "Dogs," WOR Silly's Party, WMCFA, 30 m. 5:15 P.M. EDT; 4:15 EST; 3:15 CT Oswald Mazurci, cellist, WEAF WEEI Modernists, WTIC The Monitor Views the News, WJZ Stippy, WABC WCAU "Cocktail Talk," WOR 5:30 P.M. EDT; 4:30 EST; 3:30 CT Frank Merrivell, WEAF WEEI WTIC WGY Singing Lady, WJZ WBZ WHAM WLW KDKA One Night Stand, All-American Boy, WABC WCAU Robert Rand, WOR Piano, WMCFA 5:45 P.M. EDT; 4:45 EST; 3:45 CT "Alice in Orchestralia," WEAF WEEI Melodies of Romance, WTIC Bradley Kinmaid, WGY Little Orphan Anne, WJZ WBZ WHAM WLW Gordon, Dave and Bunny, WABC WCAU Bob White's Concert, WJZ WBZ WBAL Baseball talk, WMCFA 6 P.M. EDT; 5 EST; 4 CT Xavier Cugat's Orchestra, WEAF WLW, 30 m. Evening Tattler, WEEI, 30 m. Wightville Clarion, WTIC, 30 m. Evening Brevities, WGY Angelo Ferdinand's Orchestra, WJZ WHAM, 40 m. O'Leary's Irish Minstrels, WBZ H. V. Kallenborn, news, WABC (Uncle Don, WOR, 30 m. Ted Black's Orchestra, WMCFA, 30 m. 6:15 P.M. EDT; 5:15 EST; 4:15 CT Joe and Eddie, WGY Hill Williams, WBZ Bobby Benson and Sunny Jim, WABC WCAU 6:30 P.M. EDT; 5:30 EST; 4:30 CT Musical Mosaic, WEAF Scores, current events, WJZ Musical Appetizers, WTIC Frolics, WGY, 30 m. O'Leary's Irish Minstrels, WJZ WHAM Temperature, weather, WBZ Jack Armstrong, WLW Tony Frickler, WGY Boys Club, WOR Heat Wave Trio, WMCFA 6:45 P.M. EDT; 5:45 EST; 4:45 CT William Hain, tenor, WEAF WTIC Studio Chorus, WEEI Lowell Thomas, news, WJZ WBZ WHAM KDKA WLW Beale Street Boys, WABC WCAU Ray Perkins, WOR Five Star Final, WMCFA

- 7 P.M. EDT; 6 EST; 5 CT Baseball Resume, WEAF Comedy Stars, WJZ Dai Gaki, 30 m. WGY Amos 'n' Andy, WJZ WBZ WHAM Nick Lucas, WABC WCAU Food Fests, sports, WJZ Dinner Concert, WHAM, 30 m. Florence Richardson's Orchestra, WMCFA 7:15 P.M. EDT; 6:15 EST; 5:15 CT Gene and Glenn, WEAF WEEI WGY Dick Tracy, detective, WBZ "The Approach of the Unit" States World Affairs Ogden Mills, WJZ WBZ WHAM Sports, WTIC Joe Emerson, songs, WLW Just Plain Bill, WABC WNAAC WCAU Front Page Drama, WOR 7:30 P.M. EDT; 6:30 EST; 5:30 CT Fur Trappers, WEAF WGY After Dinner Revue, WEEI Little Symphony, WTIC Little Club Singers, WJZ Bob Newhall, WLW Buscaneers Quartet, WBZ Music on the Air, Jimmy Kemper, WABC WCAU Jack Arthur, baritone, WOR Cowboy Songs, WOR Fishermen's Guild, WMCFA 7:45 P.M. EDT; 6:45 EST; 5:45 CT The Goldbergs, WEAF WEEI WGY Smooth Rhythms, WTIC Max Baer, "Taxi," WJZ WBZ KDKA WHAM Melody Masters, WLW Boke Carter, WABC Sea Stories, WOR Fallon's Orchestra, WMCFA 8 P.M. EDT; 7 EST; 6 CT Cities Service Concert, Orla Albani, 30 m. piano, quartet, Benja and Renteberg piano duo, WEAF WEEI WTIC, 1 h., WGY, 30 m. Eric Shutta, Walter O'Keefe, Duljan's Orchestra, WJZ WBZ WHAM WBAL KDKA, 30 m. Modern Treaties Hunt, WLW Fray and Braggott, WABC Chalfonte-Haddon Hall Trio, WPG, 1 h. Billy Jones, Selwyn's Orchestra, WOR, 30 m. Dinner Concert, WHAS Funists, WMCFA 8:15 P.M. EDT; 7:15 EST; 6:15 CT Prairie Symphony, WLW Easy Aces, WABC 8:30 P.M. EDT; 7:30 EST; 6:30 CT Farm Forum, WGY, 30 m. Maple City Four, WJZ WBZ KDKA Unbroken Melodies, S-C-W True Story Court, WABC WCAU, 45 m. Varieties of 1934, WOR, 30 m. Dinner Concert, WHAS, 30 m. Rambler, WABC 8:45 P.M. EDT; 7:45 EST; 6:45 CT Babe Ruth, baseball comment, WJZ WBZ WHAM WLW KDKA Radio Court, WLW "More than News," WMCFA 9 P.M. EDT; 8 EST; 7 CT Waltz Time, Frank Munn and Vivienne Seegal, Art Lyman's Orchestra, WEAF WEEI WGY, 30 m. Phil Harris Orchestra, Leah Ray, WJZ WBZ WHAM WBAL KDKA Will Osborne's Orchestra, WOR WLW, 30 m. Stars on Parade, WGN Songs, music, WMCFA, 30 m. 9:15 P.M. EDT; 8:15 EST; 7:15 CT Little Jack Little's Orchestra, WABC WCAU Melody Moments, WTIC Movie Broadcast, WPG 9:30 P.M. EDT; 8:30 EST; 7:30 CT One Night Stand, Pak and Pat, Blackface comedians, WEAF WEEI WGY Scott's Variety, WEEI Harry Natanson, Irene Beasley, WJZ WBZ WHAM KDKA, 30 m. Ethel Baker, WJZ WBZ WHAM KDKA, 30 m. Jones and Hare, WLW Jack Benny's Orchestra, Jeannie Lang and Johnny Green, WAB, 30 m. Hotel Traymore Orchestra, WPG, 30 m. "The Champions" WOR, 30 m. Jack Douglas' variety, WMCFA, 30 m. 9:45 P.M. EDT; 8:45 EST; 7:45 CT Armand Program, WLW 10 P.M. EDT; 9 P.M. EST; 8 CT The First Nighter, June Meredith, WEAF WEEI WTIC WGY, 30 m. "Stories That Should Be Told," Fulton Courier, WJZ WBZ KDKA WLW "The Program of the Week," WABC WCAU, 30 m. Natalie Alt, Arthur Wright, Orchestra, WGN, 30 m. 10:15 P.M. EDT; 9:15 EST; 8:15 CT Joe Rines' Orchestra, WBZ 10:15 P.M. EDT; 9:15 EST; 8:15 CT The Three Stamps, WJZ Time, weather, sports, WBZ "Unsolved Mysteries," WLW, 30 m. "The Republican Reaction," Representative Chester C. Bolton of Ohio, WABC Jack Miles' Orchestra, WGY "Moonbeams," WOR U. of Louisville Musicale, WHAS Devotions' Orchestra, WMCFA 11:15 P.M. EDT; 10:15 EST; 9:15 CT Clyde Lucas' Orchestra, WEAF WEEI Voice at Eventide, Robert Simmons, WJZ WBZ News and Orchestra, KDKA News and Charlie Davis' Orchestra, WABC The Gau Fraternity Chorus, WJZ 11:30 P.M. EDT; 10:30 EST; 9:30 CT News and Vincent Lopez' Orchestra, WEAF WEEI WTIC WGY, 30 m. News, WJZ Milton Ebbans, Ambassadors, WBZ Joseph Nisano's Hawaiians, WLW, 30 m. Bud Fisher's Orchestra, WOR, 30 m. Orchestra, WGN, 3 h. Lloyd Huntley's Orchestra, KDKA Orchestra, WGN, 3 hrs., 30 m. 11:45 P.M. EDT; 10:45 EST; 9:45 CT Leon Belasco's Orchestra, WEAF WEEI WTIC WGY, 30 m. Crosby Choir, WLW 12 M. EDT; 11 P.M. EST; 10 CT Harold Stern's Orchestra, WEAF WEEI WJAF WTIC WGY, 30 m. Tom Gentry's Orchestra, WJZ, 30 m. Jack Berger's Orchestra, WOR 12:30 A.M. EDT; 11:30 EST; Seymour Simon's Orchestra, WEAF WEEI WTIC WLW, 30 m. Sam Robbins' Orchestra, WABC WCAU "The First Nighter," WABC WCAU Ted Black's Orchestra, WJZ WBZ KDKA Seymour Simon's Orchestra, WGY WLW, 30 m. Centennial Program, WHAM, 30 m.

- Dance Orchestra, WPG "5a hr in 1/2 time," WOR Liano, WMCFA 10:15 P.M. EDT; 9:15 EST; 8:15 CT Maria Cox, baritone, WJZ Lily Lovell Orchestra, WJZ Lecky They and Hepicis, WLW Otman, WMCFA 10:30 P.M. EDT; 9:30 EST; 8:30 CT Jack Benny, Mary Livingston and Don Bestor's Orchestra, WEAF WEEI WTIC WGY WLW, 30 m. String Symphony, Frank Black, director, WJZ WHAM, 30 m. Dan and Sylvia, KDKA Lili Evater's Orchestra, WABC WCAU Inchanter's Violin, WOR Friday Frolics, WJZ, 30 m. Nicely Bryn, WMCFA 10:45 P.M. EDT; 9:45 EST; 8:45 CT George R. Holmes, International News Service, WEAF WTIC E. B. Riboud, WEEI Do. Preston's Orchestra, WGY, 30 m. The Three Stamps, WJZ Time, weather, sports, WBZ "Unsolved Mysteries," WLW, 30 m. "The Republican Reaction," Representative Chester C. Bolton of Ohio, WABC Jack Miles' Orchestra, WGY "Moonbeams," WOR U. of Louisville Musicale, WHAS Devotions' Orchestra, WMCFA 11:15 P.M. EDT; 10:15 EST; 9:15 CT Clyde Lucas' Orchestra, WEAF WEEI Voice at Eventide, Robert Simmons, WJZ WBZ News and Orchestra, KDKA News and Charlie Davis' Orchestra, WABC The Gau Fraternity Chorus, WJZ 11:30 P.M. EDT; 10:30 EST; 9:30 CT News and Vincent Lopez' Orchestra, WEAF WEEI WTIC WGY, 30 m. News, WJZ Milton Ebbans, Ambassadors, WBZ Joseph Nisano's Hawaiians, WLW, 30 m. Bud Fisher's Orchestra, WOR, 30 m. Orchestra, WGN, 3 h. Lloyd Huntley's Orchestra, KDKA Orchestra, WGN, 3 hrs., 30 m. 11:45 P.M. EDT; 10:45 EST; 9:45 CT Leon Belasco's Orchestra, WEAF WEEI WTIC WGY, 30 m. Crosby Choir, WLW 12 M. EDT; 11 P.M. EST; 10 CT Harold Stern's Orchestra, WEAF WEEI WJAF WTIC WGY, 30 m. Tom Gentry's Orchestra, WJZ, 30 m. Jack Berger's Orchestra, WOR 12:30 A.M. EDT; 11:30 EST; Seymour Simon's Orchestra, WEAF WEEI WTIC WLW, 30 m. Sam Robbins' Orchestra, WABC WCAU "The First Nighter," WABC WCAU Ted Black's Orchestra, WJZ WBZ KDKA Seymour Simon's Orchestra, WGY WLW, 30 m. Centennial Program, WHAM, 30 m.

Fraternity Chorus On WEAF June 9

The 24th annual Interfraternity Sing of the University of Chicago will be broadcast over the NBC-WEAF network Saturday, June 9, from 10:30 to 11 P.M. Members of the Greek letter societies of the university will take part.

HENRY HORNER, Governor of Illinois, and Dr. ROBERT M. HUTCHINS, president of the university, will open the program with brief addresses.

POWERS' Asthma Relief

has been a boon to the afflicted for over 50 years. 6 oz. 60c - 18 oz. \$1.20.



Buy at Your Local Druggist's or Write Direct E. C. POWERS COMPANY

Box 62, Dorchester Center Station, Boston

Reflections

By Diana Herbert

The MICROPHONE'S Fashion Observer

BIG HATS are becoming more firmly established as the season advances. In other years they have had their triumphs at garden parties, weddings and fashionable race-tracks, but not for several decades have they been of such importance in the mode.

Our present, day-time silhouette is actually dependent on them! Could not exist without them!

FOR WE have discarded the square shoulders, the leg of mutton sleeves, the epanlets, which contributed to the T silhouette of last year. But we have not abandoned the straight, slim skirt nor the desire to appear as slender as possible. The T silhouette is still with us, only it is the hat instead of the shoulders, that gives the necessary line.

A LOVELY FASHION—these large hats which are almost universally becoming. They are shallow-crowned, straight-brimmed, or with a slight forward dip, and sparingly trimmed. They are smartest in black, navy or white, or the natural yellow of old-fashioned leghorn. The smooth straws are best: leghorn (which is very chic, especially when worn with black) baku, panama and horsehair. Taffeta, dull-finished crepe de chine, the new synthetic alpaca, with all make becoming and comfortable hats to be worn right through the Summer. While the same large shapes are being ordered in felt by forward-looking females, who are doubtless planning to wear them with their first Fall tweeds.

THAT PERENNIALY flattering trick of lining the brim with white or some pale shade has been revived. However, on the whole the feeling is against tricks and in favor of restraint (that is as regards everything but size!) When flowers are used for trimming they are apt to be few and discreet. Small, shaggy, velvet chrysanthemums are sewn flat near the front of crown and brim. A long, lacquered feather is placed strategically to add width or height or balance, but never just stuck on for no definite reason.

LORETTA LEE wears a shallow, square-crowned capeline, such as PATOU sponsors, unadorned except for a feather on the top of the crown. This demand for height as well as breadth, manifests itself in different ways under the guidance of different designers. MOLYNEUX puts shallow, pointed crown on his enormous coolie hats. Others place a feather or a knot of ribbon in the center of the crown. Still others turn their huge brims back off the face in an upward movement.

Igor Gorin Sings Two NBC Recitals

IGOR GORIN, young Russian baritone recently featured on a RUDY VALLEE program, is now heard in two broadcasts a week over the NBC-WJZ network.

He is featured on a program of his own Thursdays at 8.45 P. M. Beginning Sunday, June 3, he will be soloist on the International Tidbits broadcasts at 5.30 P. M.

GORIN began his vocal studies in Vienna at the age of 18. He came to America only six months ago.

Program of Anthems

Familiar anthems and oratorio chorals will be presented in a series of weekly programs by soloists, chorus and orchestra over the NBC-WEAF network, beginning Monday, June 4, at 10.30 P. M. The program is to be called "Gothic Echoes" and the artists participating will remain anonymous.

A Confederate



HELEN CLAIRE, who has recently assumed the leading role in the "Roses and Drums" programs broadcast over the CBS-WABC network on Sundays at 6 P. M.

Q. and also A.

Q. How much of the \$6000 does ED WYNN receive after he has paid DON VOORHEES and orchestra, GRAHAM McNAMEE and others?
S. R. M., Quincy, Mass.

A. The sponsors make a pecuniary settlement with each performer. ED WYNN keeps his \$6000 intact for himself. So they say.

Q. I am going to New York and would like to attend a few radio concerts while I am there. What is the procedure for acquiring tickets?
T. V., Baltimore, Md.

A. If the concert you desire to see is commercialized, write to the sponsors for tickets. If it is not sponsored, write to the radio station. Be sure to specify the date you wish to attend.

NBC Engineer Talks About Short Wave

(Continued from Page 1)

ranging in power from 7½ to 150 watts. These are portable and are used to relay programs to the networks for rebroadcast, from points where wire lines are not available.

Another class operated by NBC are the three experimental television transmitters, W2XBS at Bellmore, Long Island; W2XF on the top of the Empire State Building in New York, and W9XAP in Chicago. The first two operate on 5000 watts, the last on 2500.

At the present time the NBC also has transmitters at sea, those now aboard PHILLIPS LORD'S schooner, the "Seth Parker" in the Caribbean, en route on a cruise around the world.

Under the call letters KNRA, these include the standard ship transmitter, and also a short-wave broadcast transmitter operating on 1000 watts, which sends programs from the schooner to the NBC networks.

The ship also carries a 55-watt voice transmitter, W10XG.

Then finally there are a number of low power portable transmitters, ranging from half a watt to 150 watts, which operate on frequencies ranging from approximately 17,000 to approximately 400,000 kilocycles.

These are used in sending to the networks such widely varying programs as those from stratosphere balloons, from parades on Fifth Avenue, from planes in flight, etc.

The air is full of activity below the broadcast band which is not even suspected by the average listener, but which results in bringing unusual programs to the NBC networks, sending them speeding around the world to foreign countries, and, in the case of the experimental transmitters, adding to the world's knowledge of radio.

New Religious Programs Are On the NBC Schedule

A number of new programs of religious will be broadcast over the National Broadcasting Company's networks this Summer.

On Sunday, June 3, at 6 P. M., the Reverend DANIEL A. LORD, S. J., will inaugurate a series on the WEAF chain; at 5 on the WJZ chain the first of Sunday Vespers series will be given, with Dr. FREDERICK H. KNUBEL and Dr. PAUL SCHERER officiating.

Dr. WILLIAM HIRAM FOULKES, pastor of the Old First Presbyterian Church of Newark, New

Jersey, will replace Dr. STANLEY HIGH Saturdays at 7.15 P. M., on the WEAF chain, beginning June 2. The new program is called "Homespun."

Among the regular weekly religious programs already started are the Sunday Forum (WJZ at 1.30 P. M.) presented by Dr. RALPH W. SOCKMAN, and the Sabbath Reveries (WEAF at 10 A. M.) with Dr. CHARLES L. GOODELL.

Later in the Summer the Reverend PETER J. BERGEN, C. S. P., will replace Father LORD; and Dr. FREDERICK K. STAMM will present Highlights of the Bible in place of Dr. SOCKMAN'S Sunday Forum.

Belmont Race Is Broadcast

The sixty-sixth running of the Belmont Stake, richest horse race in the world, will be described over the WABC-Columbia network on Saturday, June 9 at 4 P. M.

The race will be reported by THOMAS GEORGE, CBS turf expert. The classic event will be run over a mile and a half and will pay the winner approximately \$45,000.

Nimblewits

By Everett Smith

"Wit Teasers" on Sunday at 11.30 A. M. from WBZ

NO. 1. (no time limit) The continuing interest in Cryptograms leads to the publication of another from a recent issue of "The Cryptogram":

ZJV DJLCKAVN UAF NJKMCV DUAF MJQ PLBKZ IFBXMP JYVCJK, TFJAZP, "OBX TIV'L DJLCK LUC NJKMCV DUCV AL KJAVP. OBX NCL JFF DCL."

Old Time Music Hall Play on Air

A condensed version of "The Drunkard," a temperance play first produced in 1843 by P. T. BARNUM and revived on Broadway this year by HARRY BANNISTER, will be broadcast over the CBS-WABC network, June 6, at 11 P. M.

The play will be acted by the same cast that is currently performing in the stage production at the American Music Hall in New York.

"The Drunkard" at the moment is one of New York's most popular diversions. The American Music Hall has been decorated to recapture the atmosphere of the old "Music Hall" of BARNUM'S era. The audience is seated at tables, enabling its members to sip beer and eat pretzels during the performance.

A program note requests "men and women" to refrain from cracking peanuts.

"Ladies and Gentlemen," the note concludes, "do not need to be thus cautioned."

Military Ceremony On Air

The annual ceremonies of "Massing The Colors," conducted by the Military Order of the World War, will be broadcast over the NBC-WJZ network on Sunday, May 27, at 5.30 P. M. Among the speakers will be Admiral WILLIAM H. STANDLEY, Chief of Naval Operations.

No. 2 (one minute) Try arranging the five digits 1, 2, 3, 4, and 5, in such an order that the first two digits, when multiplied by the middle figure, will give a number composed of the last two digits.

No. 3. (3 minutes) The letters in each of the words below can be arranged to spell two other words. Can you find them?

SATIN ROOST LATTER
No. 4. (3 minutes) Let's travel the alphabet! Try naming a city, state, or country for each letter of the alphabet in three minutes.

No. 5. (3 minutes) And speaking of traveling, try rearranging the letters in each group below to form the name of some city, state, or country.

I SPAR OR YAWN DOST CLAN LLOST US OLD FAIR.

Answers to Last Week's Nimblewits

No. 1. If you wish to interpret code messages during wartime, you should try to solve crypts.

No. 2. Fish, Dish, Disk, Risk, Rick, Rock, Hock, Hook.

No. 3. Tarpon, Perch, Bass, Trout, Shad, Pickerel, Salmon, Mackerel, etc.

No. 4. 8 pounds.

No. 5. Sever, Several, Eve, Ever, Era, Rally, Ally, All.

Telephone Talk From Chinatown

While Mrs. CHING LEE orders a pound of rice for dinner from the corner delicatessen, or Mrs. SING HI invites her cousin SING LO over for a game of Mah Jong in San Francisco's Chinatown on Friday, June 15, the nation will be listening in.

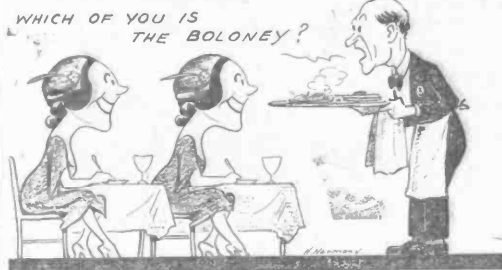
On that date microphones will be set up in the Chinatown telephone exchange between 10.45 and 11 P. M. and pick up the details of Chinese-American life. The broadcast will be heard over the WABC network.

One of the interesting features of this telephone exchange is that the calls are made by name instead of number.

Goldman Special Concert

EDWIN FRANKO GOLDMAN, American band leader, will conduct a special concert by massed bands numbering more than 5000 musicians over the NBC-WEAF network on Saturday, June 2, at 5.30 P. M.

Ready For Television



HELEN BROWN, impersonator on the "Forty-Five Minutes To Hollywood" program, not only has a perfectly natural SYLVIA SIDNEY voice, but her resemblance to the movie star is so striking that she frequently is taken for Miss SIDNEY.

STATION DIRECTORY Page 4

The Poetic Age

By Rosellen Callahan

THE AGE of poetry is returning. David Ross, whose program, "Poet's Gold," is heard over the Columbia Broadcasting System, is proving that poetry is still capable of working its ancient magic.

He believes that poetry is the shortest route to the heart. "There is a certain universality of appeal in the poetry that deals with man's longing and his relationship to things about him," he says.

And the truth of this is evidenced by the fact that the program is deeply appreciated by people in all of the United States. "Poet's Gold" has drawn responses from public officials, professors, housewives, clerks and cab drivers.

In planning a program of poetry reading Ross is careful not to select poems of too great subtlety.

"I have learned," he says, "that the medium of radio demands each poem shall create an instantaneous emotional reaction. There is no going back once the word is spoken.

"A poem, should therefore, be chosen for its simplicity and for its intimacy. It must contain an experience that is familiar to most mortals, so that it may be readily appreciated by them.

"The subtle poem, one that requires meditation, belongs to the reading room. But the poem that is read must arouse an immediate response. The printed poem is as inanimate as a scored sheet of music. It only begins to live when the voice stirs it to life."

Ross is endeavoring to eliminate the stigma that has become attached to reading aloud. Poetry has been generally disliked because of the outrageous manner in which it usually is presented.

Most people lapse into a kindergarten sing-song, or work themselves up into a maniacal frenzy which is distressing to the listener.

Poetry has been mistaught in schools, Ross believes, and people have grown up disliking it because of the unpleasant memory of their school days. But as they have matured, and experienced through the course of life, sorrow, love, hunger, ambition, happiness, they begin to find in a poem a certain personal fulfillment and expression of their own desires and experiences.

To quote the poet-announcer: "Poems are written by

tanic snortings."

It is the natural manner he employs, as if he were talking to himself or a friend next to him, that is most admired by his listening audience.

Mr. Ross does not select poems because they are the best examples of form and metre. He does not read a sonnet because it scans perfectly or because the authorities have cited it as a faultless example of metrical com-

position. He rather prefers to read poems that are "intimate, yet slightly remote; friendly, yet a trifle inaccessible, and always warm and intelligent."

"Poetry is the distillation of all that man has dreamed" says Mr. Ross. "Ever since he became articulate man has expressed himself in moments of great emotional crisis through the medium of song and poetry."

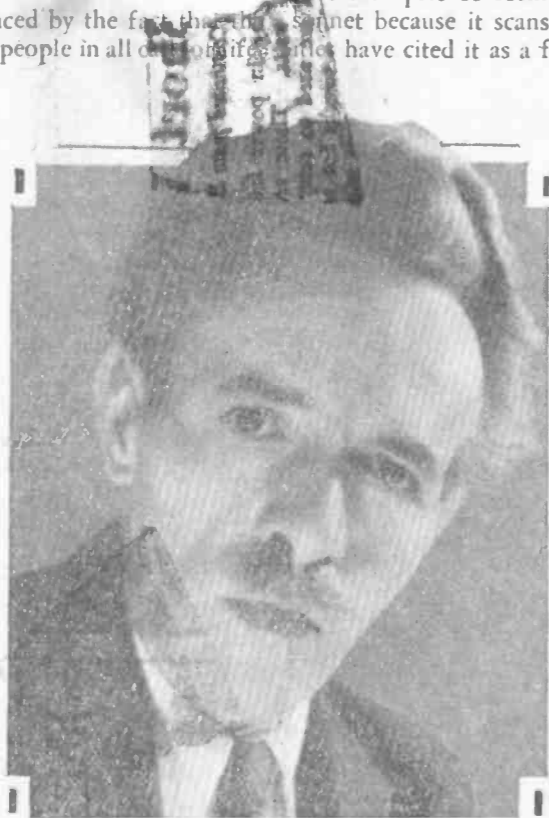
Mr. Ross has found that in reading verse over the air a greater emotional response can best be elicited if there is an unobtrusive musical background, and so Emery Deutsch's orchestra softly accompanies his readings with haunting, stirring strains.

Most of the verses read on his program were selected because they are particularly adapted to reading aloud. They have recently been compiled in his new anthology called "Poet's Gold," published by Macaulay.

Not only has he drawn comment for his readings, but because he has made it a special task to give routine announcements something of dignity, human warmth and a friendly glamour, David Ross was voted the best studio announcer by radio editors all over the country in the World-Telegram radio editors poll for the last two years.

In 1932 his work on radio was judged the best example of diction, pronunciation and vocal perfection, and he received the gold medal of the American Academy of Arts and Letters, as symbol of the award.

This talented young man is himself a poet of no little ability. He is rather reticent when it comes to discussing his own talents, but admitted to having contributed verse to various periodicals.



DAVID ROSS, CBS announcer, whose program called "Poet's Gold" is remarkably popular.



MICROPHONE

THE ORIGINAL U.S. RADIO NEWSPAPER'S

Programs For Week Beginning June 2



Peggy Davis, NBC Actress

5¢
Radio Weekly