

VOLUME 15

SEPTEMBER, 1927

NUMBER 9

PROCEEDINGS  
*of*  
**The Institute of Radio  
Engineers**



PUBLISHED MONTHLY BY

**THE INSTITUTE OF RADIO ENGINEERS**

Publication Office 21 Center St., Middletown, N. Y.

Editorial and Advertising Departments  
37 West 39th Street, New York, N. Y.

Subscription \$10.00 per Annum in the United States  
\$11.00 in all other Countries

General Information and Subscription Rates on Page 743

Entered as second-class matter, at the Post-Office, at Middletown, N. Y.,  
under the Act of March 3, 1879.

Acceptance for mailing at special rate of postage provided for in Section 1103,  
Act of October 3, 1917, authorized October 7, 1918.

# Cunningham RADIO TUBES

the choice of  
Radio Engineers

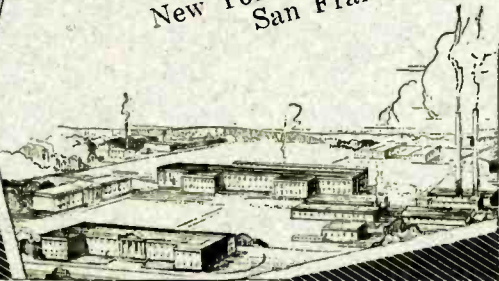
To neglect quality in even one of your tubes—the nerve center of your receiver—is to endanger the over-all performance of your set.

Equip throughout with Cunningham Radio Tubes and enjoy the utmost in radio reception that your set is capable of rendering.

Twenty types—all in the Orange and Blue cartons



E. T. Cunningham, Inc.  
New York Chicago  
San Francisco



# “What condensers do they specify?”

Experts in the radio field know from experience that Faradon Capacitors can be counted on to give long and satisfactory service.

Manufacturers particularly, recognize the value of specifying Faradon Capacitors. They know that a reputation for quality equipment warrants the inclusion of only the highest grade condensers.

There is a Faradon designed for each particular purpose, and constructed from high-quality materials with the experience of twenty years specialization on fine condensers.



**WIRELESS SPECIALTY APPARATUS CO.**

Established 1907

JAMAICA PLAIN, BOSTON, MASS., U. S. A.

## *Faradon*

---

**ELECTRIC CONDENSERS  
FOR ALL PURPOSES**

It will be of mutual benefit to mention Proceedings in writing to advertisers

# ROLLER-SMITH Announces A NEW OHMMETER TYPE COM



Portable, direct reading, small, compact, light, rugged, accurate, entirely self-contained.  
Measures resistance values from .5 ohm to 50,000 ohms. List price \$70.00, subject to discount. Send for new Supplement No. 1 to Bulletin No. K-300.

*"Over thirty years' experience is back of  
ROLLER-SMITH*

**ROLLER-SMITH COMPANY**  
Electrical Measuring and Protective Apparatus



MAIN OFFICE  
2134 Woolworth Bldg., New York

WORKS  
Bethlehem, Penna.

*Offices in principal cities in U. S. A. and Canada.  
Representatives in Australia, Cuba and Japan.*

It will be of mutual benefit to mention Proceedings in writing to advertisers

## New Transformers for A. C. Power Supply

**T**YPE PF-281, AmerTran Power Transformer (\$25.00), becomes virtually an A-B-C eliminator when used with AC tubes and the proper filter circuit for DC voltages of from 425 to 650 volts, plate current 110 Ma. This unit is designed for use with the new UX-281 rectifying tube, and has a 750 volt plate winding which enables it to be used with a UX-281 or 216-B rectifying tube. In addition, there are filament heating windings for the new AC tubes. Used with types 709 and 854 AmerChokes in the filter circuit, a receiver may be constructed to operate entirely from the house lighting circuit.

### Other AMERTRAN Products

- AmerTran Audio Transformers.
- AmerTran DeLuxe
- AmerTrans Types AF-6 and AF-7.
- AmerTran Power Transformers.
- Types PF-64, PF-52, PF-280, PF-281.
- AmerTran Heater Transformer, Type H-67.
- AmerChokes Types 418, 854, and 709.
- AmerTran Resistor, Type 400.
- Input and Output Transformers for broadcasting.

Type H-67 Heater Transformer is a new unit recommended for use with the RCA UX-226 raw AC amplifier tubes and the UY-227 detector tube. It also has a third filament winding capable of handling two UX-171 tubes. In connection with the new AC tubes, type H-67 becomes the power source for the filament and is therefore a real "A" battery eliminator. This transformer sells for \$12.00.

*Correspondence with our Engineering Department is cordially invited.*

## American Transformer Co.

178 EMMET STREET

NEWARK, N. J

"Transformer Builders for Over 26 Years"



Pattern  
No. 171  
Direct  
Current  
Portable



## Jewell "MASTER" Instruments

For the Radio Engineer who desires the utmost in instrument performance we recommend the new Jewell portable A. C. and D. C. instruments recently offered to the electrical industry. They are known as Jewell "Master" instruments, for they are masterpieces of design and construction.

The cases are of bakelite,  $5\frac{3}{8}$  inches wide,  $5\frac{3}{4}$  inches high and  $3\frac{3}{8}$  inches deep and have a red band,—a sealing gasket which also serves as their identification. The scale opening is extremely large and is closed by non-shatterable glass used for the first time in a portable instrument with obvious advantages. The scales are hand drawn,  $4\frac{7}{16}$  inches long, 17% longer than supplied in any instrument of these overall dimensions. The accuracy guarantee is  $\frac{1}{2}$  of 1%.

As supplied for direct current, the movement used is sufficiently sensitive to allow us to manufacture microammeters and extremely high resistance voltmeters where desired.

Write for a copy of descriptive Bulletin No. 1111, which gives a detailed description of these Master instruments.

*Jewell Electrical Instrument Co.*

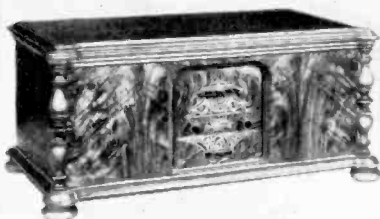
1650 Walnut St. - Chicago

"27 Years Making Good Instruments"

It will be of mutual benefit to mention Proceedings in writing to advertisers



Grebe  
Natural Speaker  
\$35



Grebe  
Synchrophase  
Seven \$135

## A Great Set— a Wonderful Speaker

What is good reception?

Hear this Grebe combination! In no other way can you gain adequate conception of what radio should be—full, true, absolutely natural in tone, without discordant note.

Space does not permit explanation of the new Grebe developments which make possible such remarkable performance.

*Booklet 1 gives all details. Send for it before you decide on any set.*

A. H. Grebe & Co., Inc.  
109 West 57th Street, New York City  
Factory: Richmond Hill, N. Y.

Western Branch: 443 So. San Pedro St., Los Angeles, Cal.  
*The oldest exclusive radio manufacturer*

The  
**GREBE**  
SYNCHROPHASE  
RADIO

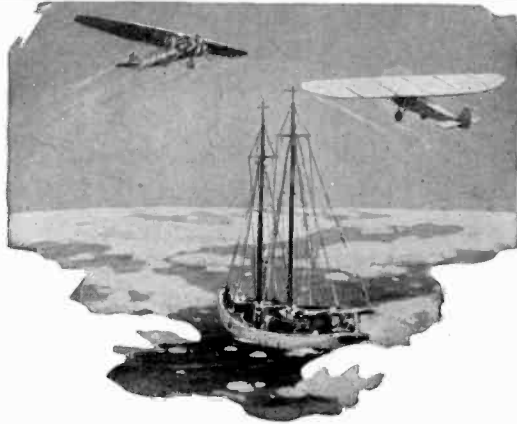


"The gods cannot help one who loses opportunities."  
—Mencius

If you do not at once hear the Synchrophase Seven your loss cannot be estimated.

*A. H. Grebe*

It will be of mutual benefit to mention Proceedings in writing to advertisers



## The Crowning Adventure of Burgess Radio Batteries

*They flew over the North Pole with Byrd*

**O**N MAY 9, 1926, history was made. . . . .  
 American history. . . . . World history  
 . . . . . undying history.

Lieut. Commander Byrd in his fearless 1500-mile flight across the top of the world, adds another thrilling triumph to the long, proud list of American achievements.

Radio went along, for radio has become vital to the lives and success of explorers and adventurers. Burgess Batteries went along, sharing the fate—sharing the hardships and the glory of Commander Byrd, the Detroit Arctic Expedition, and Capt. Donald MacMillan.

It is eminently significant that in these glorious triumphs of American courage and American equipment where the test of men and their tools was the test of the survival of the fittest, that the standard products of the Burgess Battery Company were selected, used and "carried on" under extreme and unprecedented conditions.

**BURGESS BATTERY COMPANY**

General Sales Office: Chicago

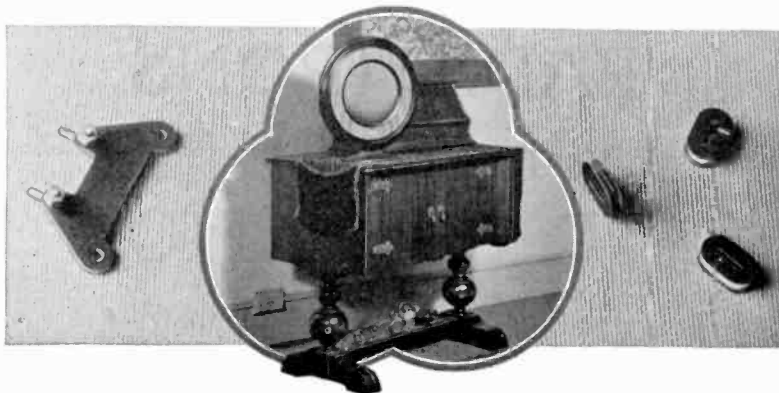
*Canadian Factories and Offices: Niagara Falls and Winnipeg*



# BURGESS RADIO BATTERIES

It will be of mutual benefit to mention Proceedings in writing to advertisers





*Bakelite Molded bobbins and Bakelite Laminated end plate used in Rola Speaker, made by The Rola Company, Oakland, Cal.*

## Bakelite Materials reduced production cost more than 50 percent

**T**HESE little bobbins of the Rola Speaker were formerly made of brass, and their finishing required several operations. Through forming them of Bakelite Molded four operations were eliminated, production speeded, discards practically ceased, design improved and cost reduced 50 percent.

Even greater economies were effected through using Bakelite Laminated instead of brass for the end plate shown, as seven operations were eliminated,

bringing about a reduction in cost of 60 percent. The uniformity of dimension secured was an additional advantage.

The advantages and economies of Bakelite materials for all classes of radio equipment are bringing about their adoption for a steadily increasing variety of radio parts. We invite you to enlist the services of our engineers and research laboratories in adapting Bakelite Materials to your individual needs.

Write for Booklet 33.

### BAKELITE CORPORATION

247 Park Ave., New York, N. Y.  
BAKELITE CORP. OF CANADA, LTD.,

Chicago Office: 635 W. 22nd St.  
163 Dufferin St., Toronto, Ont.

# BAKELITE

THE MATERIAL OF  A THOUSAND USES

\*The registered Trade Mark and Symbol above used by and only on products made from materials manufactured by Bakelite Corporation. Under the symbol "B" is the assurance sign for reliability in unlimited quantity. It reproduces the letters number of patent and covers name of Bakelite Corporation in product.

It will be of mutual benefit to mention Proceedings in writing to advertisers

# RADIOTRONS

## for modern

# A. C. OPERATION

### POWER AMPLIFIER RADIOTRON UX-171

*Filament—5 Volts—5 Amperes*

Plate Voltage . . . . .	90	135	180	Volts
Negative Grid Bias . . . . .	16½	27	40½	Volts
Plate Current . . . . .	10	16	20	Milliamperes
Plate Resistance (A.C.) . . . . .	2500	2200	2000	Ohms
Mutual Conductance . . . . .	1200	1360	1500	Micromhos
Voltage Amplification Factor . . . . .	3.0	3.0	3.0	
Max. Undistorted Output . . . . .	130	330	700	Milliwatts

### R. F. & A. F. AMPLIFIER RADIOTRON UX-226

*Filament (A. C.) 1.5 Volts—1.05 Amperes*

Plate Voltage . . . . .	90	135	135	180	Volts
Negative Grid Bias . . . . .	6	12	9	13½	Volts
Plate Current . . . . .	3.7	3	6	7.5	Milliamperes
Plate Resistance (A.C.) . . . . .	9400	10,000	7400	7000	Ohms
Mutual Conductance . . . . .	875	820	1100	1170	Micromhos
Voltage Amplification Factor . . . . .	8.2	8.2	8.2	8.2	
Max. Undistorted Output . . . . .	20	60	70	120	Milliwatts

### DETECTOR RADIOTRON UY-227

*Heater (A. C.) 2.5 Volts—1.75 Amperes*

Plate Voltage . . . . .			45	90	Volts
Grid Leak . . . . .			2-9	¼-1	Megohms
Plate Current . . . . .			2	7	Milliamperes
Plate Resistance (A.C.) . . . . .			10,000	8000	Ohms
Mutual Conductance . . . . .			800	1000	Micromhos
Voltage Amplification Factor . . . . .			8	8	

### FULL WAVE RECTIFIER RADIOTRON UX-280

A.C. Filament Voltage . . . . .	5.0	Volts
A.C. Filament Current . . . . .	2.0	Amperes
A.C. Plate Voltage (Max. per plate) . . . . .	300	Volts
D.C. Output Current (Maximum) . . . . .	125	Milliamperes
Effective D.C. Output Voltage of typical Rectifier Circuit at full output current as applied to Filter	260	Volts

### HALF WAVE RECTIFIER RADIOTRON UX-281

A.C. Filament Voltage . . . . .	7.5	Volts
A.C. Filament Current . . . . .	1.25	Amperes
A.C. Plate Voltage (Max. per plate) . . . . .	750	Volts
D.C. Output Current (Maximum) . . . . .	110	Milliamperes
Effective D.C. Output Voltage of typical Rectifier Circuit at full output current as applied to Filter	620	Volts

RADIO CORPORATION OF AMERICA  
New York Chicago San Francisco

# RCA Radiotron

MADE BY THE MAKERS OF THE RADIOLA

It will be of mutual benefit to mention Proceedings In writing to advertisers

PROCEEDINGS OF  
**The Institute of Radio Engineers**

Volume 15

SEPTEMBER, 1927

Number 9

**CONTENTS**

	Page
Officers and Board of Direction	744
Committees	744
Institute Sections	746
Greenleaf W. Pickard, "The Correlation of Radio Reception with Solar Activity and Terrestrial Magnetism. II"	749
H. Diamond and J. S. Webb, "The Testing of Audio-Frequency Transformer-Coupled Amplifiers"	769
W. van B. Roberts, "Note on Detection by Grid Condenser and Leak"	795
Ross Gunn, "The Torusolenoid"	799
S. S. Kirby, Book Review, "Robison's Manual of Radio Telegraphy and Telephony", by Commander S. S. Robison	811
J. B. Brady, Digest of U. S. Radio Patents	813
Geographical Location of Members Elected August 4, 1927	815

**GENERAL INFORMATION**

The Proceedings of the Institute are published monthly and contain the papers and the discussions thereon as presented at meetings.

Payment of the annual dues by a member entitles him to one copy of each number of the Proceedings issued during the period of his membership.

Subscriptions to the Proceedings are received from non-members at the rate of \$1.00 per copy or \$10.00 per year. To foreign countries the rates are \$1.60 per copy or \$11.00 per year. A discount of 25 per cent is allowed to libraries and booksellers.

The right to reprint limited portions or abstracts of the articles, discussions, or editorial notes in the Proceedings is granted on the express conditions that specific reference shall be made to the source of such material. Diagrams and photographs in the Proceedings may not be reproduced without securing permission to do so from the Institute through the Secretary.

It is understood that the statements and opinions given in the Proceedings are the views of the individual members to whom they are credited, and are not binding on the membership of the Institute as a whole.

---

Copyright, 1927, by  
**THE INSTITUTE OF RADIO ENGINEERS, Inc.**  
Publication Office 21 Center Street, Middletown, N. Y.  
Editorial and Advertising Departments, 37 West 39th St., New York, N. Y.

# OFFICERS AND BOARD OF DIRECTION, 1927

(Terms expire January 1, 1928, except as otherwise noted)

## PRESIDENT

RALPH BOWN

## VICE-PRESIDENT

FRANK CONRAD

## TREASURER

WARREN F. HUBLEY

## SECRETARY AND EDITOR

ALFRED N. GOLDSMITH

## MANAGERS

MELVILLE EASTHAM

R. H. MANSON

L. E. WHITEMORE

(Serving until Jan. 1, 1929)

L. A. HAZELTINE

A. E. REOCH

J. F. DILLON

(Serving until Jan. 1, 1930)

J. V. L. HOGAN

R. H. MARRIOTT

R. A. HEISING

(Serving until Jan. 1, 1929) (Serving until Jan. 1, 1930)

---

## JUNIOR PAST PRESIDENTS

J. H. DELLINGER

DONALD McNICOL

---

## ASSISTANT SECRETARY

JOHN M. CLAYTON

## ASSOCIATE EDITOR

GEORGE R. METCALFE

---

## COMMITTEES OF THE INSTITUTE OF RADIO ENGINEERS, 1927

---

### COMMITTEE ON MEETINGS AND PAPERS

R. H. MARRIOTT, Chairman

STUART BALLANTINE

R. R. BATCHER

CARL DREHER

W. G. H. FINCH

ERICH HAUSMANN

S. S. KIRBY

G. W. PICKARD

PAUL WEEKS

W. WILSON

### COMMITTEE ON ADMISSIONS

F. CONRAD, Chairman

ARTHUR BATCHELER

HARRY F. DART

C. P. EDWARDS

A. H. GREBE

L. A. HAZELTINE

R. A. HEISING

L. M. HULL

F. H. KROGER

A. G. LEE

F. K. VREELAND

COMMITTEES OF THE INSTITUTE—(Continued)

COMMITTEE ON REVISION OF  
THE CONSTITUTION

J. H. DELLINGER, Chairman  
J. V. L. HOGAN  
DONALD McNICOL

COMMITTEE ON PUBLICITY

W. G. H. FINCH, Chairman  
DAVID CASEM  
ORRIN E. DUNLAP  
F. EHLERT  
L. W. HATRY  
E. H. HANSEN  
LLOYD JACQUET  
J. F. J. MAHER  
J. G. UZMANN  
WILLIS K. WING  
R. F. YATES

COMMITTEE ON MEMBERSHIP

HARRY F. DART, Chairman  
M. C. BATSEL  
M. BERGER  
GEORGE BURGHARD  
E. M. DELORAINE  
COL. J. F. DILLON  
DR. L. J. DUNN  
C. P. EDWARDS  
W. G. H. FINCH  
C. M. JANSKY, JR.  
ROBERT S. KRUSE  
WILLIAM J. LEE  
PENDLETON E. LEHDE  
C. L. RICHARDSON  
F. H. SCHNELL  
E. R. SHUTE  
G. S. TURNER  
E. H. ULRICH

COMMITTEE ON INSTITUTE  
SECTIONS

DAVID H. GAGE, Chairman  
M. BERGER  
L. F. FULLER  
D. HEPBURN  
L. G. PACENT  
M. C. RYPINSKI  
E. R. SHUTE

COMMITTEE ON  
STANDARDIZATION

L. E. WHITTEMORE, Chairman  
M. C. BATSEL  
EDWARD BENNETT  
A. J. CARTER  
E. L. CHAFFEE  
J. H. DELLINGER  
MELVILLE EASTHAM  
C. P. EDWARDS  
GENERAL FERRIE  
A. N. GOLDSMITH  
L. A. HAZELTINE  
J. V. L. HOGAN  
L. M. HULL  
F. A. KOLSTER  
MAJOR J. O. MAUBORGNE  
R. H. MANSON  
DONALD McNICOL  
E. L. NELSON  
H. S. OSBORNE  
LT. COMDR. W. J. RUBLE  
E. H. SHAUGHNESSY  
H. M. TURNER  
C. A. WRIGHT  
HIDETSUGU YAGI  
J. ZENNECK  
W. E. HOLLAND

ALL SECTION SECRETARIES EX-OFFICIO



---

## **OBITUARY**

The Institute learns with regret of the death on August 16th, 1927 of

### **Charles V. Logwood**

Mr. Logwood, who was born in California in 1882, has long been identified with the development of continuous wave radio reception and the vacuum tube. He was an active worker in the art, and the grantee of a number of radio patents. The sudden curtailment of his efforts is a distinct loss to the radio art and industry.

---





# THE CORRELATION OF RADIO RECEPTION WITH SOLAR ACTIVITY AND TERRESTRIAL MAGNETISM. II.\*

BY  
GREENLEAF W. PICKARD

(Consulting Engineer, the Wireless Specialty Apparatus  
Company, Boston, Massachusetts.)

(Communication from the International Union of  
Scientific Radio Telegraphy.)

This paper is a continuation of an earlier one<sup>1</sup> on the same subject, in which day reception at 15.25 kilocycles, night reception at 1330 kilocycles and night reception at 8-9 megacycles were compared with sunspot numbers and magnetic measures. Although in the former paper definite relations were shown, there were also discrepancies, particularly in the relation of sunspots to reception and magnetism. When the three elements were compared over any considerable period, the maxima and minima swung alternately in and out of step in an irregular seeming manner, although preserving in a general way a 27-day period.

It must be confessed at the outset that the relation between individual sunspots, reception and magnetism is still far from definite. In general it appears that the terrestrial elements are most disturbed when the sunspots are large and numerous, and particularly when they face most nearly earthward. But often large spots cross the meridian without either accompanying magnetic disturbances or changes in reception, and it is well-known that severe magnetic storms sometimes occur when the only sunspots visible are near the sun's limbs.

Undoubtedly both magnetism and reception are subject to disturbances which are not of solar origin, or which at

\*Presented before the American Geophysical Union, Section of Terrestrial Magnetism and Electricity, Washington, D. C., April 28, 1927.  
Received by the Institute April 20, 1927.

<sup>1</sup>The Correlation of Radio Reception with Solar Activity and Terrestrial Magnetism, Proceedings of the Institute of Radio Engineers, Vol. 15, No. 2, February, 1927.

least do not follow either solar rotation periods or the longer swing of the sunspot cycle. Thus, diurnal periods are found in both reception and magnetism, and seasonal changes are also well known. A solar eclipse distinctly affects radio reception<sup>2</sup> and less definitely disturbs terrestrial magnetism. There also appear to be relations between certain meteorological elements and reception which are not paralleled by magnetic disturbances, probably

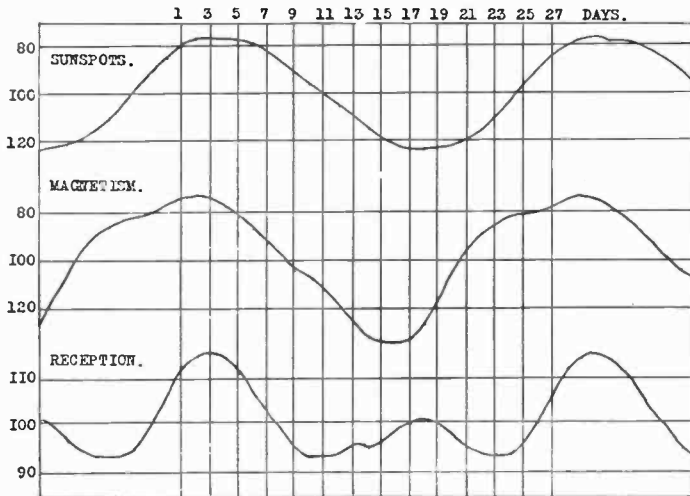


Fig. 1.—Mean of 12 Solar Rotations, October 25, 1908 to September 17, 1909. Sunspots, Magnetic Character of Day and Maximum Night Ranges of "DF" Working.

because reception and weather are rather local matters, while terrestrial magnetism is quite literally a world-wide affair.

While reception disturbances of non-solar periods are important and fertile fields for investigation, the present paper must largely confine itself to magnetic and reception changes associated with the solar rotation period, and so these other effects must be eliminated rather than analyzed. This is readily done by taking a sufficiently long series of observations, dividing this series into 27.3 day periods, and finding the daily means. This operation averages out anything which does not recur in each rotation, and gives a

<sup>2</sup>The Effect of the Solar Eclipse of January 24, 1925, on Radio Reception. Proceedings of the Institute of Radio Engineers, Vol. 13, No. 5, October, 1925.

clearer picture of the interrelation than that presented in the former paper.

It is not necessarily true that the solar centers responsible for terrestrial disturbances are the sunspots themselves, although the evidence is now strong that these centers are at least closely associated with sunspots or sunspot groups. If it be assumed that these centers, like

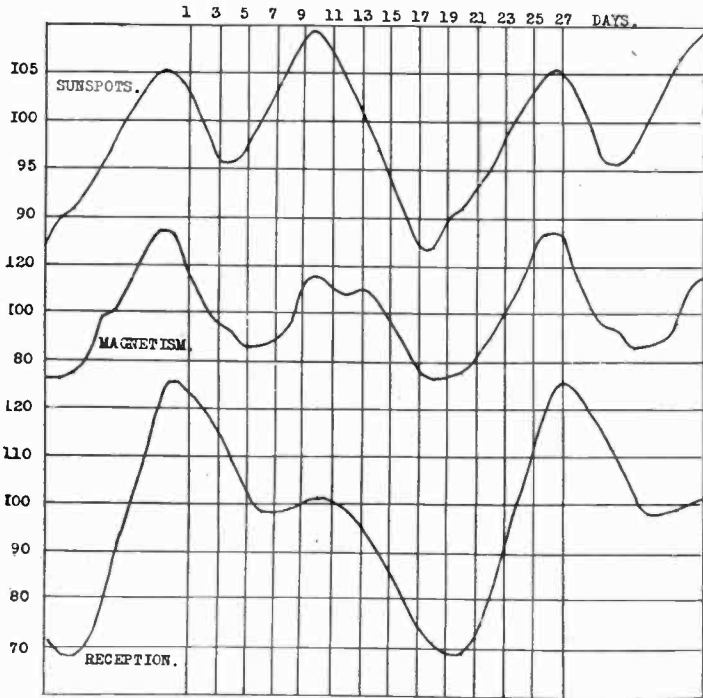


Fig. 2—Mean of 5 Solar Rotations, January 14 to May 30, 1917. Sunspots, Magnetic Character of Day and Washington Day Reception of POZ.

the accompanying sunspots, are confined within definite though rather wide zones for long periods, but shift about within these areas from month to month, some of the discrepancies found can be quite simply explained. And even if, as at present appears, the wanderings of the active centers are entirely at random, the mean of a number of solar rotations should show definite disturbance maxima corresponding with the meridian crossing of the centers of the active zones, instead of the somewhat irregularly spaced

disturbances accompanying the transit of the individual centers.

Before periodic means of sunspot numbers, magnetic measures, or reception observations are made, it is usually necessary to reduce the numerical values to such a basis that periods of high absolute values will not dominate the means of a long series. This is easily done by converting the daily values into ratios with a moving mean of the

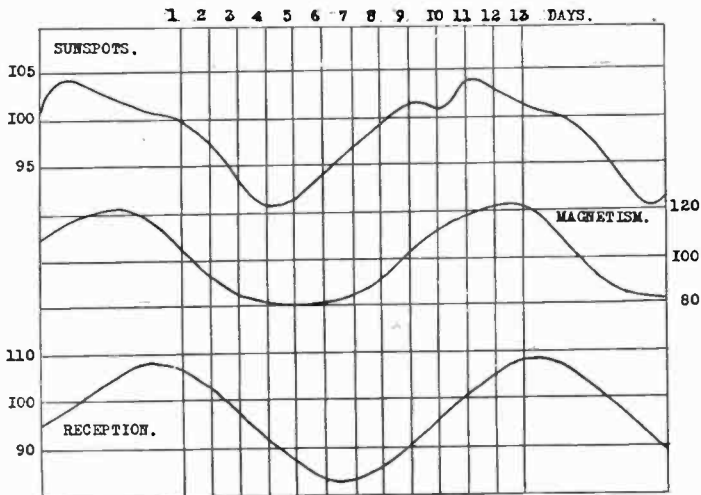


Fig. 3—Mean Within 5 Solar Rotations of Ten 13.64 Day Periods, January 14 to May 30, 1917. Sunspots, Magnetic Character of Day and Washington Day Reception of POZ.

period under investigation, thus obtaining a measure of interperiod activity. By taking a sufficient number of periods, even rough measurements of reception can be made to show definite relations to sunspots and terrestrial magnetism.

In Fig. 1 the reception values are the maximum nightly ranges of two-way working between station DF at Manhattan Beach, New York, and various ships at sea<sup>3</sup>, which are compared with the Wolfer Final Sunspot Numbers and van Dijk's Magnetic Character of Day Numbers. The interval taken is from October 25, 1908 to September 17, 1909, corresponding to 12 solar rotations of 27.3 days. It will be seen that the sunspot curve is nearly sinusoidal, indicat-

<sup>3</sup>Short Period Variations in Radio Reception. Proceedings of the Institute of Radio Engineers, Vol. 12, No. 2, April, 1924, pages 119-158.

ing that in the sunspot numbers the only frequency of appreciable amplitude is that of the solar rotation, but both magnetic and reception curves show the presence of shorter periods. Owing to the roughness of the reception data, no attempt has been made to investigate the harmonics of the solar period, although this has been done for some of the later and more accurate reception measurements. The

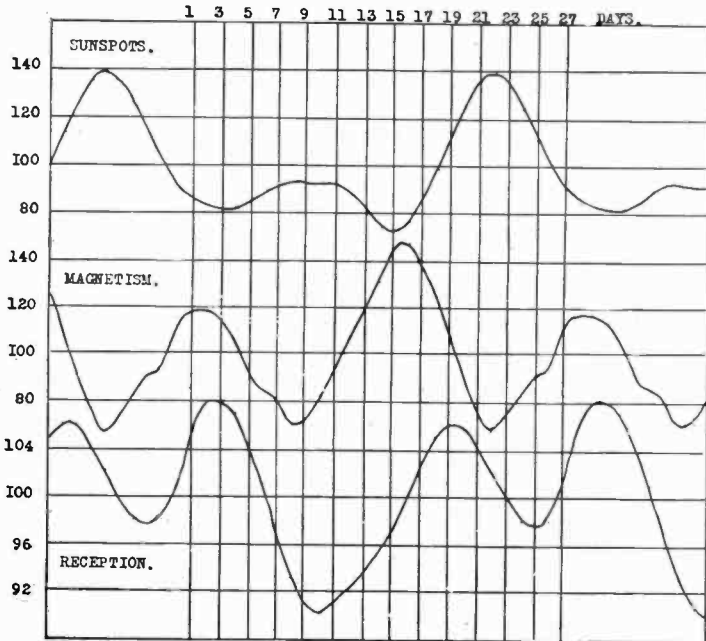


Fig. 4—Mean of 9 Solar Rotations, March 14 to November 15, 1922. Sunspots, Magnetic Character of Day and Washington Day Reception from POZ and LY.

relation of reception to the other elements is inverse, which appears characteristic of night reception save at ultra high frequencies. It is of interest to note that this transmission was all at frequencies within the present broadcasting band, so that the results may be compared with recent measurements, allowance being made for the fact that in 1908-1909 spark transmitters of relatively high decrement were used.

During 1917, a sunspot maximum year, the U. S. Naval Radiotelegraphic Laboratory made audibility meter measurements at Washington of day reception from station POZ at Nauen, Germany. Owing to war conditions, Dr.

Austin considers these the least accurate of his long series of measurements of this station; nevertheless Fig. 2 clearly shows relation between this reception, sunspots and

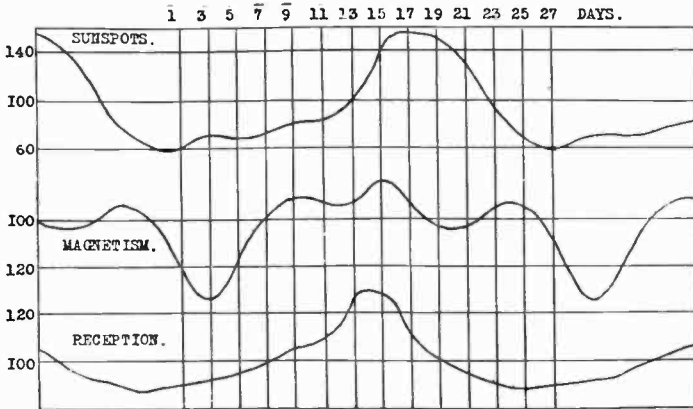


Fig. 5—Mean of 7 Solar Rotations, May 14 to November 21, 1923. Sunspots, Magnetic Character of Day and Washington Day Reception of POZ.

magnetism. All three curves show shorter periods of considerable amplitude, and despite the roughness of the reception measurements, an analysis has been attempted for the second harmonic of the solar rotation period, or 13.6 days. While in Fig. 1 the relation of night reception to sunspots

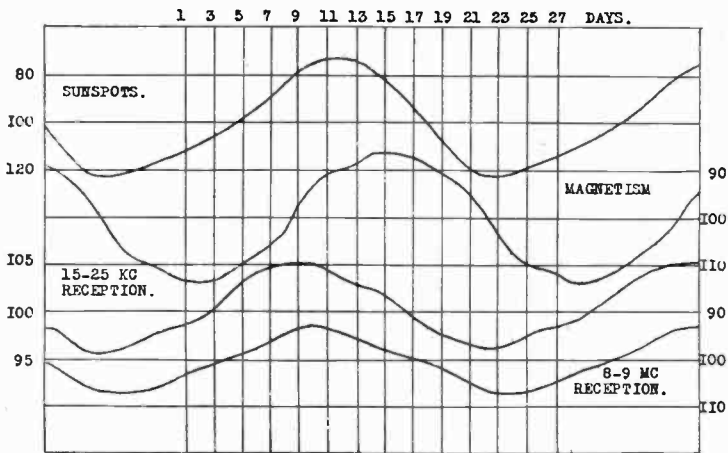


Fig. 6—Mean of 8 Solar Rotations, January 25 to August 31, 1926. Sunspots, Diurnal Range of H at Cheltenham, 15—25 Kilocycle Day Reception at Washington and 8—9 Megacycle Night Reception at Washington.

and magnetism is inverse, in Fig. 2 reception is found to be directly correlated with the other elements; this seems to be the normal relation of day reception at low frequency.

In Fig. 3 means of 1917 day reception, sunspots and magnetism are taken for periods of 13.6 days, or the second harmonic of the solar rotation period. Considering the roughness of the reception data, the curves are in excellent agreement, and their nearly sinusoidal form indicates that there are no important shorter periods present. The low

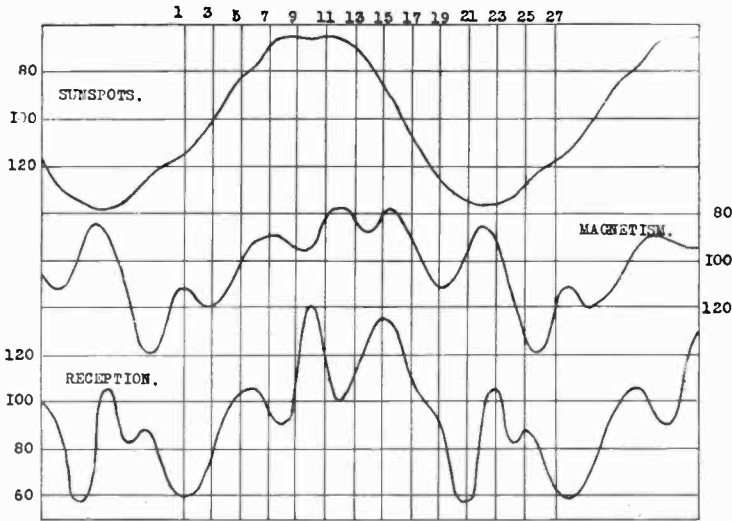


Fig. 7.—Mean of 8 Solar Rotations, January 25 to August 31, 1926. Sunspots, Diurnal Range of H at Cheltenham and Night Reception at Newton Center from WBBM at Chicago. No Smoothing.

amplitude of the sunspot curve is due to the nature of the Wolfer numbers, which are taken over the entire visible solar disk, or over nearly 180 deg. in longitude. This process leaves very little of the shorter periods, although it will be later shown that these are prominent in sunspot numbers taken in restricted zones instead of over nearly a hemisphere.

Figs. 4 and 5 are of Washington day reception for the years 1922 and 1923, the latter year being a sunspot minimum. Again the relation of day reception to solar activity and magnetism is found to be direct, and the presence of shorter and probably harmonic periods is strongly indicated. The irregularity of the 1923 sunspot curve is in part

due to the fact that 47 per cent of the days taken had a sunspot number of zero.

In Fig. 6 a comparison is made between sunspots, diurnal range of  $H$  at Cheltenham, 15-25 kilocycle day reception for a group of 9 stations, and 8-9 megacycle night reception for a group of 7 stations. A close agreement between the two reception curves is evident, but the sunspot and

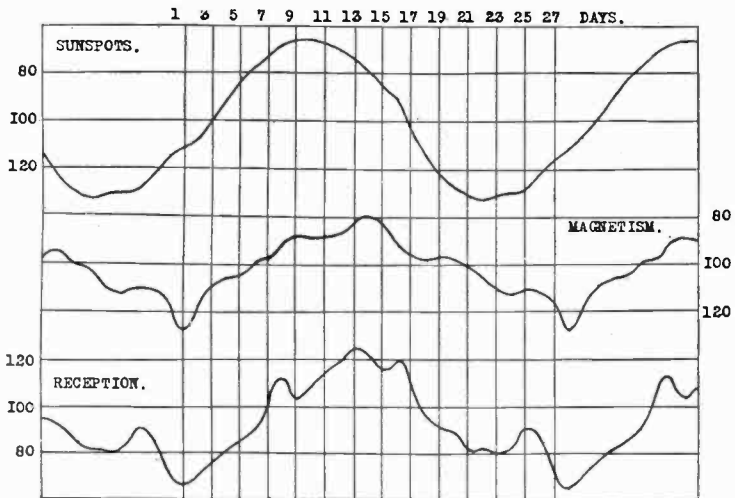


Fig. 8—Mean of 8 Solar Rotations, January 25 to August 31, 1926. Sunspots, Diurnal Range of  $H$  at Cheltenham and Night Reception at Newton Centre from WBBM at Chicago. Smoothed by Moving 7-Day Mean.

magnetic curves lag 4 and 6 days, respectively, behind reception. The relation between sunspots, magnetism and 8-9 megacycle night reception is direct, but is inverted for 15-25 kilocycle day reception. This does not agree with the findings for other years, and apparently 1926 is an exception to a general rule. But the data have been taken from a single station in the preceding years, instead of the group used for 1926, so the apparent inversion may be subject to revision after further study of the data.

As set forth in the previous paper, it appears that reception in the frequency band of 500 to 1500 kilocycles shows higher correlation with solar activity and terrestrial magnetism than does any other investigated portion of the radio spectrum, and for that reason the author's measurements have been largely confined to night broadcast re-



ception. In Fig. 7 are given the means within a 27.3 day period of the Wolfer Provisional Sunspot Numbers, the diurnal range of the earth's horizontal magnetic field as taken by Cheltenham Observatory and mean night field at Newton Centre, Mass., from station WBBM at Chicago, operating at 1330 kilocycles. The sunspot curve is nearly sinusoidal, indicating the absence in the Wolfer numbers of any large amplitude periods shorter than the fundamen-

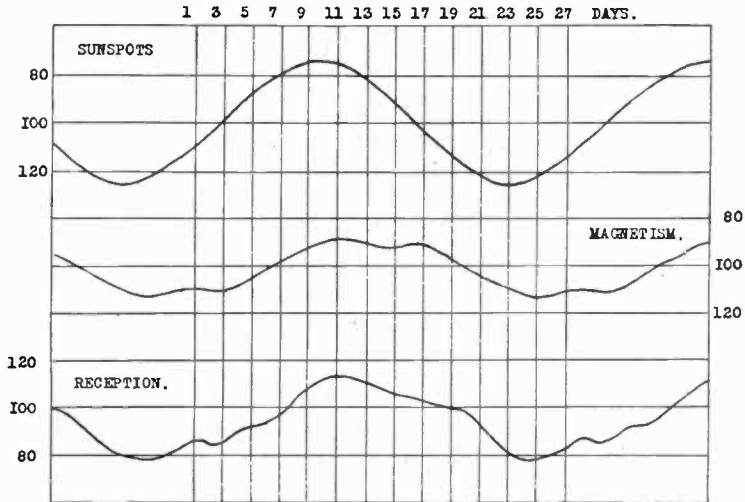


Fig. 9—Mean of 8 Solar Rotations, January 25 to August 31, 1926. Sunspots, Diurnal Range of H at Cheltenham and Night Reception at Newton Centre from WBBM at Chicago. Smoothed by 13-day Moving Mean.

tal, but the magnetic and reception curves evidently contain appreciable shorter period components. The fundamental 27.3 day period is best shown by eliminating the shorter periods, which is partially done in Fig. 8 by smoothing with a moving 7-day mean, and more completely in Fig. 9 by a moving 13-day mean, which leaves little but the fundamental.

In Fig. 10 periodic daily means are taken within the second harmonic of the solar rotation period, or 13.6 days. This greatly reduces the amplitude of the sunspot curve, but the reception and magnetic curves still show the presence of shorter periods. In Fig. 11 the third harmonic of 9.1 days is taken, which still further reduces the amplitude of the sunspot curve, leaves the magnetic curve nearly sinusoidal, but

the reception curve still shows a shorter period component. Finally in Fig. 12 a 6.8 or fourth harmonic period is used, which reduces the sunspot curve to very small amplitude, while the magnetic and reception curves now become quite similar, with little indication of any shorter period component.

As indicated above, the Wolfer sunspot numbers cannot be effectively used in the investigation of the shorter

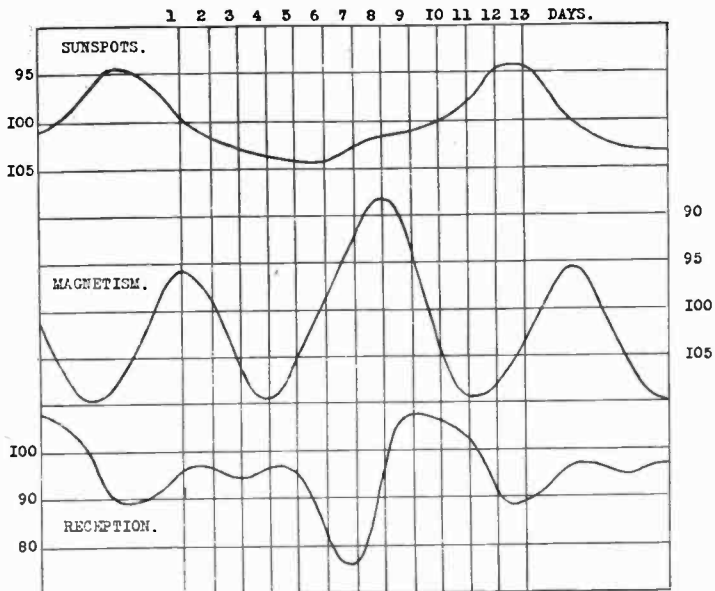


Fig. 10—Mean Within 8 Solar Rotations of Sixteen 13.64 Day Periods, January 25 to August 31, 1926. Sunspots, Diurnal Range of H at Cheltenham and Night Reception at Newton Centre of WBBM.

solar periods. Through the kindness of the U. S. Naval Observatory a list has been given of the times of meridian passage of the larger sunspots and sunspot groups of 1926, and a comparison of this with reception measures shows very clearly that night reception depressions are in general coincident with the meridian transit of the spots, while the appearance of large spots and groups near the sun's limbs had little or no correlation with reception. Through the courtesy of Dr. H. H. Clayton, who has taken daily sunspot observations for the past several years, sunspot numbers for a zone ten degrees on each side of the central solar meridian have been furnished for each day of 1926. Using these

sunspot numbers and night reception from WBBM, the relations within the fundamental 27.3 day period, and its second, third, and fourth harmonics are given in Figs. 13 and 14. The correlation between the sunspot numbers for the central twenty degree zone and reception is now found to be very high, and the amplitude of the sunspot curve for even the fourth harmonic of 6.8 days is quite large. Not only are

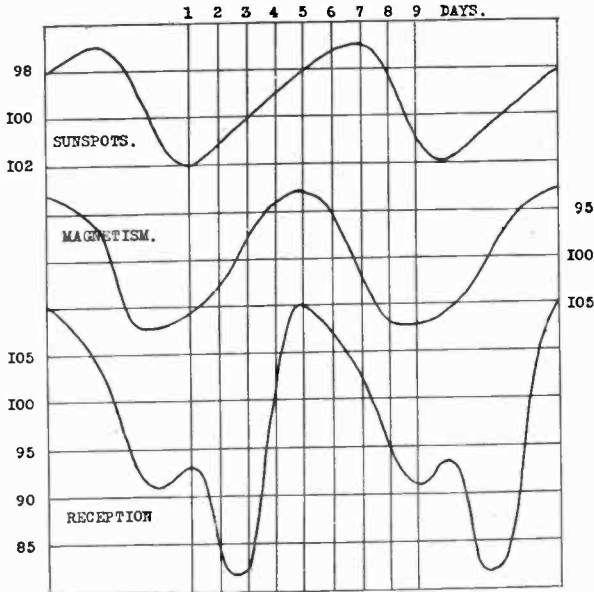


Fig. 11—Mean Within 8 Solar Rotations of Twenty-Four 9.1 Day Periods, January 25 to August 31, 1926. Sunspots, Diurnal Range of H at Cheltenham and Night Reception of WBBM.

the curves closely alike in form, but the maxima and minima agree to the nearest day, which confirms the conclusion reached from the study of the U. S. Naval Observatory data, that reception disturbances generally coincide with the earthward presentation of the sunspots.

Measurements of night static were also taken at 1330 kilocycles, and periodic means made over 14 solar rotations, or from January 25, 1926 to February 11, 1927. The result, as compared with sunspots, is shown in Fig. 15. Unlike the night signal at the same frequency, the relation is direct. An investigation of day static in the 15-25 kilocycle band shows an inverse relation to sunspots, although the agree-

ment is not so good as that shown in Fig. 15. At present there is no satisfactory explanation for this relation, either

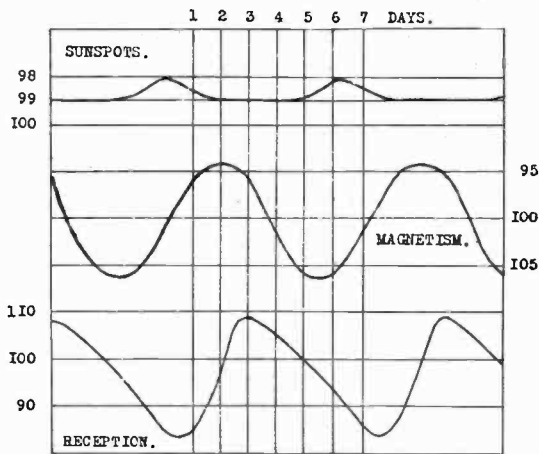


Fig. 12—Mean Within 8 Solar Rotations of Thirty-Two 6.8 Day Periods, January 25 to August 31, 1926. Sunspots, Diurnal Range of H at Cheltenham and Night Reception from WBBM.

on a basis of static wave transmission, or the assumption of electric or other storm areas as static sources. Both in

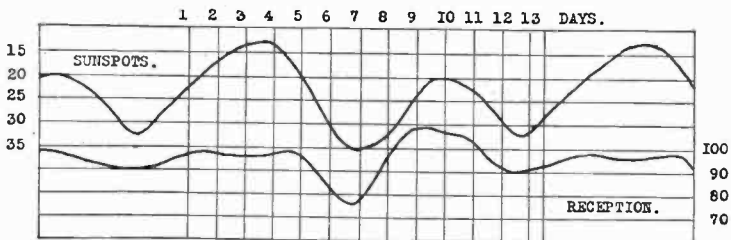
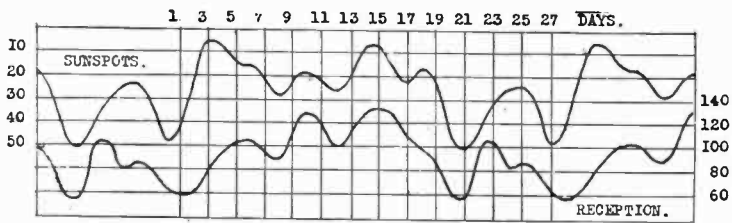


Fig. 13—Mean of 8 Solar Rotations, January 25 to August 31, 1926. Sunspots Within Ten Degrees of Solar Meridian and Night Reception of WBBM. Fundamental and Second Harmonic of Solar Reception.

day reception at low frequencies, and in night reception in the broadcast band, the static is inversely related to signal, so it is difficult to frame an hypothesis based on transmission, while if the relation depends upon variability of static sources it must be assumed that the activity of static centers at night is inversely related to that of the day, and at the same time both are linked with solar activity.

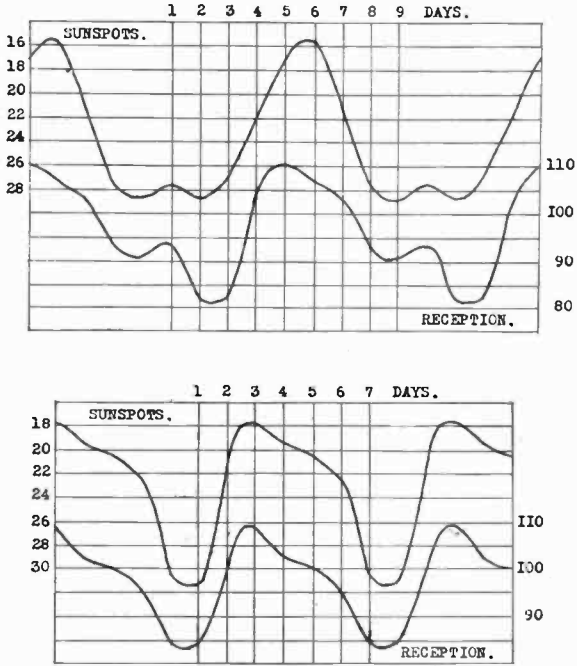


Fig. 14—Mean of 8 Solar Rotations, January 25 to August 31, 1926. Sunspots Within Ten Degrees of Solar Meridian and Night Reception of WBBM. Third and Fourth Harmonics of Solar Rotation.

In conclusion, the existence of a pronounced annual double periodicity reception component, paralleling that already recognized in terrestrial magnetism, is shown in Fig. 16. Here periodic monthly means are made over an interval of 8 years, from 1916 to 1924, and well-defined maxima show at or near the vernal and autumnal equinoxes. The relation between magnetism and reception is direct, for the reception is by day; if such a graph could be made for night reception it would probably show minima at the equinoxes. While it will be several years before really ade-

quate data are accumulated for night reception in the broadcast band, it may be of interest to note that a summation of night spark reception in 1908-1909, scattered observations

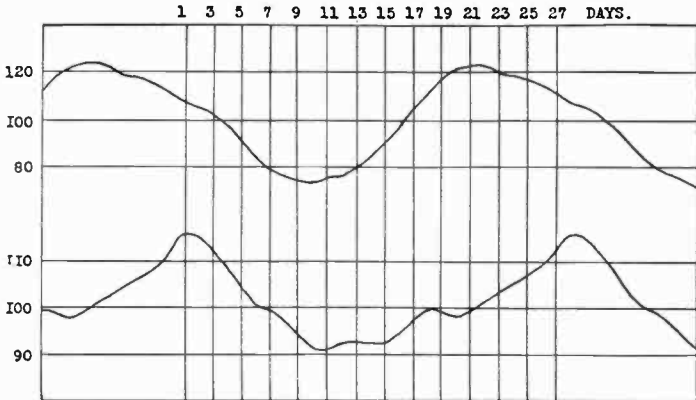


Fig. 15—Mean of 14 Solar Rotations, January 25, 1926 to February 11, 1927. Sunspots and Night Static at 1330 kilocycles.

in 1923-1924 and the WBBM measurements of 1926-1927 shows distinct minima in the spring and fall.

For the convenience of other workers, Dr. Clayton's 1926 sunspot numbers for 20 deg. and 40 deg. central zones are appended. And supplementing the table in the former

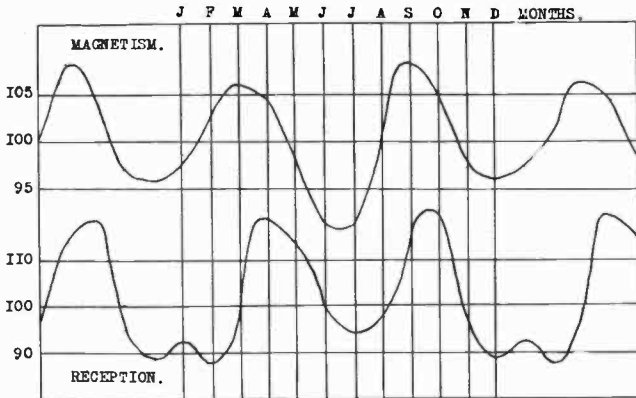


Fig. 16—Mean of 8 years, 1916 to 1924. Monthly Averages of Magnetic Character of Day and Washington Day Reception from POZ.

paper, nightly values of WBBM's field are given from December 15, 1926 to March 31, 1927.

Dr. Clayton has recently found an interesting relation

NUMBER OF SPOTS (UMBRAE) WITHIN 20 DEG. OF CENTRAL MERIDIAN OF THE SUN. ZONE 40 DEG. WIDE.  
1926

Day	Jan.	Feb.	Mar.	Apr.	May	June	July	Aug.	Sept.	Oct.	Nov.	Dec.
1	1	18	(15)	(0)	0	(8)	19	3	2	1	2	(14)
2	(5)	(10)	40	(0)	7	12	(5)	2	3	(1)	(3)	(12)
3	1	(3)	20	(1)	10	16	7	8	(5)	6	3	10
4	(12)	(0)	27	1	16	9	2	9	3	4	2	5
5	(14)	0	14	1	22	(3)	5	9	(5)	0	0	(7)
6	(14)	(0)	8	1	24	(2)	(7)	4	(10)	(0)	2	4
7	3	(0)	(12)	(0)	6	(4)	(4)	15	10	4	11	5
8	1	0	18	(0)	1	12	(0)	19	2	14	10	0
9	(0)	0	13	0	2	36	(0)	16	0	21	(5)	5
10	7	(0)	13	0	12	(17)	(0)	0	0	(25)	6	(17)
11	16	0	2	2	10	9	0	3	0	17	9	(12)
12	(22)	7	(12)	1	20	3	0	3	3	16	0	12
13	9	(17)	14	2	19	0	0	(1)	5	12	1	1
14	(9)	(22)	7	7	(19)	0	(0)	1	2	11	(3)	16
15	4	14	8	5	0	(7)	(0)	7	3	13	7	(29)
16	5	8	7	8	(0)	14	(0)	(7)	4	10	7	27
17	(4)	9	(8)	8	0	9	0	7	(7)	(11)	8	8
18	(1)	(10)	11	7	0	1	0	2	21	(1)	3	1
19	2	(4)	8	(5)	5	4	0	4	22	(0)	4	1
20	(9)	9	(4)	0	20	10	2	5	24	(0)	(0)	(0)
21	(22)	12	1	0	16	11	0	1	8	(2)	0	0
22	32	(8)	1	0	11	(11)	2	0	1	2	14	12
23	30	0	(1)	0	(0)	(7)	11	0	(3)	3	14	16
24	39	0	1	0	0	1	(15)	3	(9)	(4)	15	23
25	(26)	0	4	0	0	1	20	(8)	4	(7)	2	11
26	(6)	0	(1)	0	(0)	1	1	(8)	(0)	7	(3)	(0)
27	0	(0)	0	0	0	5	5	6	(3)	3	6	0
28	(0)	(0)	3	0	3	8	18	4	(6)	(3)	12	(0)
29	3	0	6	0	0	25	(29)	1	4	4	(10)	0
30	3	0	10	(0)	(2)	25	(29)	3	2	9	(9)	2
31	(12)	(7)	(7)	(0)	(4)	(16)	(16)	2	1	(7)	9	9

Figures in brackets taken from the days preceding or following, allowing for the rotation of the sun.

NUMBER OF SPOTS (UMBRAE) WITHIN 10 DEG. OF THE CENTRAL MERIDIAN OF THE SUN. ZONE 20 DEG. WIDE.

1926

Day	Jan.	Feb.	Mar.	Apr.	May	June	July	Aug.	Sept.	Oct.	Nov.	Dec.
1	(1)	12	(10)	(0)	0	(2)	4	1	2	1	1	(5)
2	(2)	(0)	7	(0)	0	8	(1)	0	0	(1)	(1)	10
3	1	(0)	17	(0)	8	12	0	3	(0)	0	1	0
4	(0)	(0)	15	1	4	1	0	8	3	4	2	(0)
5	(17)	0	4	0	15	(0)	4	0	(2)	0	0	(7)
6	(5)	(0)	(0)	0	12	(0)	(2)	0	(7)	(0)	1	5
7	0	(0)	1	(0)	2	(1)	(3)	2	8	0	10	0
8	0	0	6	(0)	1	2	(0)	19	0	11	3	(1)
9	0	0	13	0	0	26	(0)	4	0	4	(0)	7
10	0	(0)	6	0	0	(19)	0	0	0	7	6	(5)
11	7	0	0	1	18	2	0	2	0	14	0	(11)
12	(11)	0	(1)	1	3	2	0	2	0	0	0	5
13	6	(8)	13	0	17	0	(0)	0	4	12	0	(0)
14	(2)	(17)	2	1	3	0	(0)	4	1	4	1	0
15	2	8	5	5	0	(0)	(0)	(7)	2	0	6	(28)
16	3	4	6	2	0	8	(0)	3	4	10	7	15
17	1	8	(3)	3	0	6	0	0	(0)	(3)	6	0
18	(0)	(1)	6	5	0	1	0	0	7	(1)	3	1
19	0	(1)	4	(0)	0	4	0	4	21	(0)	0	0
20	(2)	5	(1)	0	18	0	0	0	10	(0)	(0)	(0)
21	(16)	11	0	0	15	9	(2)	0	0	(0)	0	(0)(2)
22	21	(3)	1	0	0	(13)	0	0	1	2	3	2
23	12	0	(1)	0	0	(0)	6	0	(1)	0	14	13
24	32	0	0	0(3)	0	(0)	(11)	0	(4)	(0)	12	20
25	(3)	(0)	4	0	0	2	0	(2)	1	(4)	0	0
26	(0)	0	(0)	0	0	0	1	(8)	(0)	3	(4)	(0)
27	0	(0)	0	0	0	0	4	0	(0)	(0)	2	0
28	(0)	0	0	0	1	0	0	1	(0)	0	4	(0)
29	2	0	3	0	0(3)	18	(13)	0	1	1	(9)	0
30	3	0	7	0	0	15	(16)	0	1	5	(3)	0
31	(0)	0	(0)	0	(0)	0	0	0	1	0	(0)	5

(1) No observation; number is from preceding or following day for spots which would have been within the central meridian zone on that date.  
 0 (3) Means that 3 spots developed on that meridian one day later.



Mean field in microvolts per meter at Newton  
Centre, Mass., from WBBM, Chicago, 9-10  
P. M., December 15, 1926, to March  
31, 1927.

Day	Dec.	Jan.	Feb.	Mar.
1	...	2.0	1.0	0.1
2	...	3.2	2.4	1.0e
3	...	2.0e	5.2	0.3
4	...	1.5	7.3	3.0
5	...	0.7	5.3	1.5
6	...	8.0	8.0	0.7
7	...	1.3	1.0e	4.0e
8	...	2.2	10.0	5.8
9	...	4.0e	0.3	1.9
10	...	2.0e	0.8	3.3
11	...	4.0e	1.2	1.3
12	...	8.0e	2.6	7.8
13	...	3.0	0.3	4.2
14	...	2.9	5.0m	4.0e
15	3.6	7.9	9.6	2.9
16	2.0	3.3	2.1	0.1
17	3.5	4.0e	3.2	0.1
18	1.5	9.7	1.7	0.7
19	1.4	3.7	1.7	0.1
20	1.0e	10.0	1.6	0.7
21	10.6	10.8	16.0e	0.8
22	12.5	14.7	12.8	0.8
23	0.3	12.3	10.5	3.0
24	2.0	4.0e	0.8	2.0
25	1.9	1.7	1.9	16.0
26	8.2	1.6	6.2	0.5
27	1.0e	4.1	10.7	2.9
28	1.9	4.0e	5.8m	3.2m
29	0.7	5.5		3.5
30	2.7	7.6		0.4
31	6.5	4.0e		0.5
Means	6.0	5.0	4.8	2.5

between night reception of WBBM and the number of sunspots in a central zone of 13.3 deg. (the width of a day's travel in solar rotation). When the number of spots in this zone was under 12, the relation between sunspot number and reception was inverse; when the spot number was over 12, a direct relation was found. The predominant inverse relation which has heretofore been found for night reception is in accord with this, for in two-thirds of the cases examined for 1926, the sunspot number for the zone was under 12. The relation between sunspot number in a central zone, day reception and magnetic measures is now under investigation, and will form the subject matter of another paper.

## SUMMARY

The solar, magnetic and reception data from the author's recent paper on this subject are now compared by periodic means, and clearer pictures of their interrelations are given. The solar rotation period and its second, third, and fourth harmonics (27.3, 13.6, 9.1 and 6.8 days) are found for all three elements, the general relation being that sunspots on the solar meridian coincide with disturbances of terrestrial magnetism, lowered night reception and higher day reception. Night static at 1330 kilocycles is found inversely related to night signal reception at the same frequency and therefore directly correlated with sunspots. Day static at 15-25 kilocycles is also, although less definitely, inversely related to the day signal at the same frequency, and therefore in general inversely correlated with sunspots. Periodic means of eight years of day reception show a marked double frequency annual component, with maxima near the vernal and autumnal equinoxes, closely paralleling the well-known annual variation in terrestrial magnetism. Tables of daily sunspot numbers for 20 deg. and 40 deg. central zones are given for 1926, and night reception values for WBBM are continued from the former paper to March 31, 1927.

# THE TESTING OF AUDIO-FREQUENCY TRANSFORMER-COUPLED AMPLIFIERS

BY

H. DIAMOND<sup>1</sup> and J. S. WEBB<sup>2</sup>

## INTRODUCTION

Any stage of audio-frequency amplification may properly be considered satisfactory if a speech signal impressed upon its input circuit is exactly reproduced, on a larger scale, in its output circuit. For the particular case of transformer coupling, deviation from a faithful reproduction of the applied signal is generally due to one or more of the following four effects:

1. The component frequencies constituting the signal are non-uniformly amplified, causing what may be termed as amplitude distortion.

2. The component frequencies are each shifted in phase while passing through the amplifier, the magnitude of the phase shift angle varying with the frequency of the component considered. The relative phase relationship between the various frequencies making up the reproduced signal is consequently not the same as that between the corresponding components in the original speech signal. This may be considered as causing phase distortion.

3. Harmonics are introduced in the output signal due to the tube characteristics as well as the magnetization characteristics of the iron circuit of the transformer.

4. "Howling" may occur due to the self-generation of audio-frequency oscillations because of circuit instability.

Strictly speaking, the exact performance of a transformer-coupled amplifier is accurately known only when all four of the above effects have been experimentally investigated. For the purpose of the comparison of coupling transformers, however, it is usually sufficient to determine

<sup>1</sup>Department of Electrical Engineering, Lehigh University, Bethlehem, Pa.

<sup>2</sup>Department of Physics, Lehigh University, Bethlehem, Pa.

quantitatively the degree of amplitude and phase distortion present, making certain qualitatively that the other two effects do not occur in sufficient magnitude to destroy the usefulness of the amplifier. The performance of a given transformer in association with a given tube may therefore be represented graphically by a curve of the type shown in Fig. 1', which indicates the variation of amplitude with frequency and, in addition, the dependence of the phase shift

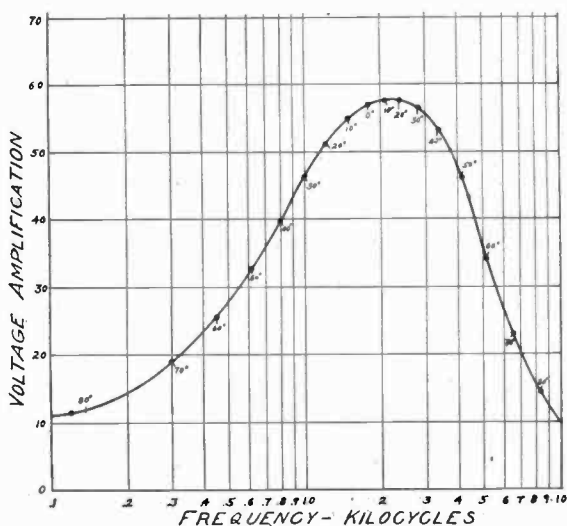


Figure 1—Typical Amplifier Performance Characteristic

angle upon the frequency. Omitting the phase shift angles gives the usual amplitude-frequency characteristic.

The curve of Fig. 1 is of little value, however, unless the conditions of operation under which the amplifier is tested are specified. The dependence of the amplifier performance upon the conditions of its use may be readily understood from a consideration of Figs. 2, 3, and 4. In Fig. 2, an alternating voltage  $E_{g1}$  of fixed frequency is applied to the grid of tube *A* resulting in a fictitious e.m.f.  $\mu E_{g1}$  in its plate circuit. Of this voltage  $\mu E_{g1}$ , a fraction  $r_p I_p$  is consumed in the internal plate resistance of the tube and the vector remainder  $E_{A-B}$  applied to the transformer primary. This is then amplified very approximately in the ratio of turns giving the

<sup>1</sup>See bibliography.

voltage  $E_{E2}$  applied to the grid of tube *B*. The stage amplification may be defined simply as the vector ratio  $E_{E2}/E_{E1}$ .

Fig. 3<sup>2</sup> is the approximately equivalent circuit of Fig. 2:  $r_p$  represents the internal plate resistance of tube *A*;  $R_1$  and  $X_L$ , the d.-c. primary resistance and the total leakage reactance, respectively;  $M$  the mutual impedance between the transformer windings exclusive of capacity; and  $C$  the

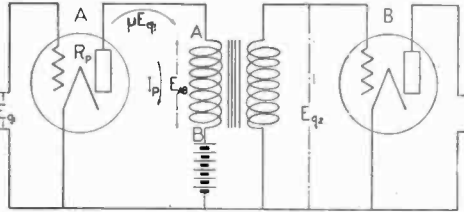


Figure 2—Circuit Diagram for a Transformer-Coupled Amplifier

combined capacitive reactance including the secondary distributed capacity, capacity between windings, etc.; all referred to the primary circuit. The impedance-frequency characteristic of the circuit of Fig. 3, to the right of points *A-B*, is shown in Fig. 4. This curve was obtained by actual bridge measurements on one of the transformers tested. The

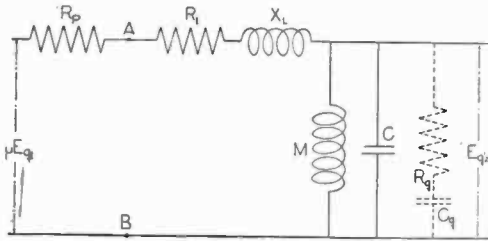


Figure 3—Equivalent Circuit for a Transformer-Coupled Amplifier

impedance  $Z_{AB}$  is seen to pass through two resonance points, the first when  $M$  and  $C$  are in parallel resonance, and the second when  $X_L$  is in series resonance with the circuit  $MC$ . The ratio  $E_{E2}/E_{E1}$  will therefore pass through a maximum value at the first resonance frequency, since  $Z_{AB}$  is then very large as compared with  $r_p$ ; while it may or may not have a second maximum value at the second resonance frequency, depending on whether or not the rise in voltage across  $C$  due to

<sup>2</sup>See bibliography.

series resonance is sufficient to compensate for the reduction of the impedance  $Z_{AB}$  relative to  $r_p$ .

In the above we have neglected the effect of the input impedance of tube  $B$ . In everyday use, the tube  $B$  will have in its plate circuit a complex impedance, such as another transformer, telephones, loudspeaker, etc. The reaction effect due to this load in the plate circuit may be represented by an input impedance connected between the grid and fila-

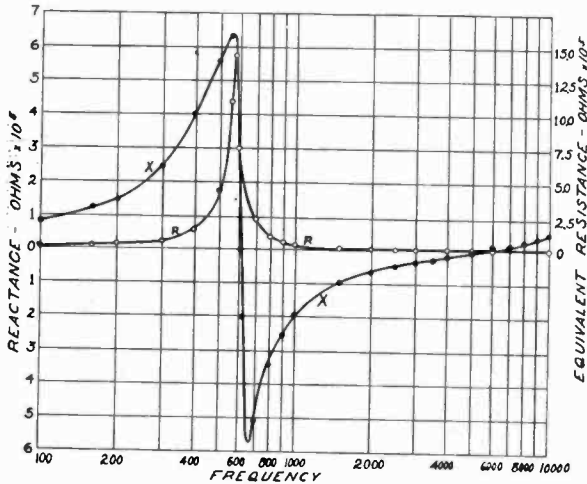


Figure 4—Transformer Impedance-Frequency Characteristic

ment of  $B$  and consisting of a resistance  $R_g$  and a capacity  $C_g$  in series.<sup>3</sup> The sign of this resistance is positive when the load in the plate circuit is resistive or capacitive and negative when the load is inductive. Under normal conditions of use, therefore, there will be a load across the secondary of the test transformer which varies with the frequency. The transformer performance will therefore be altered;  $C_g$  causing both resonance points to occur at lower frequencies, and  $R_g$  decreasing or increasing the overall amplification depending on its sign.

Since both the internal plate resistance of Tube  $A$  and the input impedance of tube  $B$  are seen to affect the amplifier performance, the importance of testing under normal operating conditions need hardly be stressed. In the first section of this paper it is proposed to describe several meth-

<sup>3</sup>See bibliography.

ods of test whereby the performance of a given transformer and tube is obtained under actual conditions of use, no matter how varied. Results will be given showing the effect of such variation. In the second section an oscillographic method of test will be described enabling a much more rapid and visual determination of the same results. Being essentially a voltmeter method, however, the degree of phase shift cannot be measured by its means.

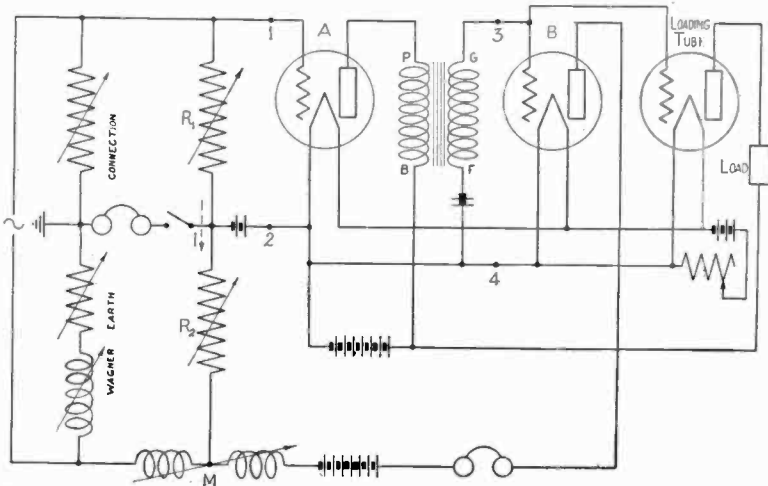


Figure 5—Circuit Arrangement for Measuring Amplification and Phase Shift.

### SECTION 1.—THE MEASUREMENT OF EFFECTIVE STAGE AMPLIFICATION AND PHASE SHIFT ANGLE

Two alternative circuit arrangements for measuring the stage amplification and angle of phase shift are shown in Figs. 5 and 6. Both are essentially bridge circuits in which the amplifier output e.m.f. is balanced against an auxiliary voltage, the magnitude and phase relationship of which (relative to the amplifier input voltage) is known. In Fig. 5, this balance is effected in the plate circuit of the auxiliary tube *B*, while in Fig. 6 the balancing takes place in its grid circuit. The operation of these circuits may best be explained by means of their vector diagrams. Three such diagrams are given in Fig. 7 illustrating the operation of the circuit of Fig. 5; (a) corresponding to a frequency below the first resonance point, (b) to a frequency between the

first and second resonance points, and (c) to a frequency above the second resonance point. Fig. 8 shows a similar set of vector diagrams for the circuit of Fig. 6.

Referring to Fig. 7 (a),  $E_{g1} = IR_1$  is the voltage impressed upon the grid circuit of the amplifier tube A,  $\mu_A IR_1$  the fictitious e.m.f. in the plate circuit of A and  $I_p$  the resultant plate current lagging  $\mu_A IR_1$  since the equivalent impedance of the coupling transformer (referred to the

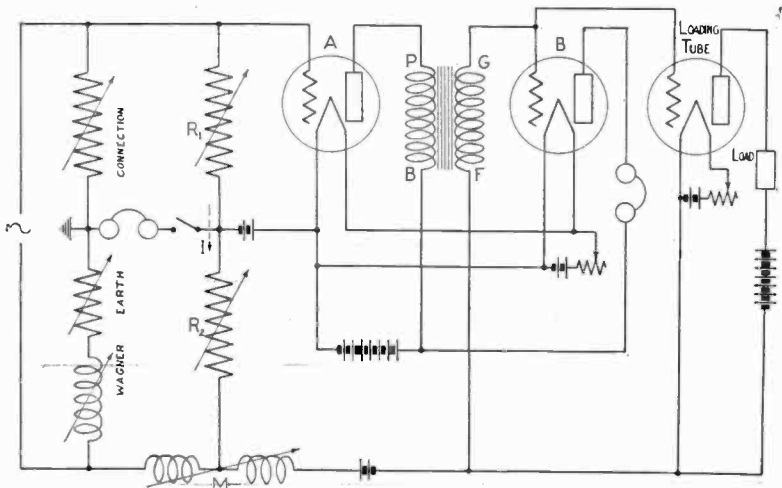


Figure 6—Alternative Method of Test

primary side) is inductive at the frequency considered. The current  $I_p$  flowing through the impedance  $MC$  results in the voltage drop  $E_{g2}^1$ , which when referred to the secondary side becomes  $E_{g2} = nE_{g2}^1$  where  $n$  is the transformer ratio of turns. This voltage  $E_{g2}$  is now impressed between the grid and filament of tube B producing the e.m.f.  $\mu_B E_{g2}$  in its plate circuit. Against this e.m.f. is balanced the voltage  $E_2$  made up of  $IR_2$  and  $IwM$ . By adjusting  $R_2$  and  $M$  a condition of balance may be obtained in the phones, indicating that  $E_2$  is equal and in exact opposition to  $\mu_B E_{g2}$ . The amplification per stage is then given by the expression

$$K = \frac{\sqrt{(R_2)^2 + (wM)^2}}{\mu_B R_1} \tag{1}$$

and the angle of phase shift by the expression

$$a_o = \tan^{-1} \frac{wM}{R_2} \tag{2}$$



The amplification factor  $\mu_B$  may readily be determined by disconnecting the apparatus between leads 1-2 and 3-4, and connecting 1 to 3 and 2 to 4, respectively. The circuit is then Miller's dynamic method for measuring amplification constants.

The vector diagram of Fig. 8 (a) differs from that of 7 (a) only in that the voltage  $E_2$  is balanced against  $E_{g2}$  rather than  $\mu_B E_{g2}$ . The expression for the stage amplification is therefore

$$K = \frac{\sqrt{R_2^2 + (wM)^2}}{R_1} \tag{3}$$

the phase shift angle being as before, defined by equation (2).

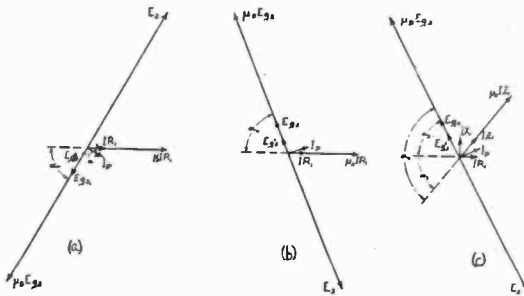


Figure 7—Vector Diagrams for Circuit of Figure 5

For a value of frequency lying between the two resonance points, the vector diagrams must be modified to those of Figs. 7 (b) and 8 (b). The equivalent transformer impedance is now capacitive; the plate current  $I_p$  therefore leads the fictitious e.m.f.  $\mu_A IR_1$  and the voltage drop  $E_{g2}^2$  leads  $I_p$ .

As the frequency is raised above the second resonance point, it will be found impossible to effect a balance with the circuits as shown in Figs. 5 and 6, due to the fact that the phase shift angle becomes greater than 90 deg. A slight modification of these circuits, however, consisting of inserting an inductance  $L_1$  in series with  $R_1$  overcomes this difficulty, as may be seen from the vector diagrams of Figs. 7 (c) and 8 (c). This change in the circuit arrangements results in a corresponding change in the expressions for stage amplification and phase shift. For the circuit of Fig. 5

$$K = \frac{\sqrt{R_2^2 + (wM)^2}}{\mu_B \sqrt{R_1^2 + (wL_1)^2}} \tag{4}$$

$$\alpha_0 = \tan^{-1} \frac{wL_1}{R_1} + \tan^{-1} \frac{wM}{R_2} \tag{5}$$

while for the circuit of Fig. 6

$$K = \frac{\sqrt{R_2^2 + (wM)^2}}{\sqrt{R_1^2 + (wL_1)^2}} \tag{6}$$

the phase shift angle being given by equation (5).

A consideration of the vector diagrams given above indicates a possible modification of the circuits of Figs. 5 and 6 which may prove quite desirable. For all frequencies above the first resonance point, a variable capacitance standard

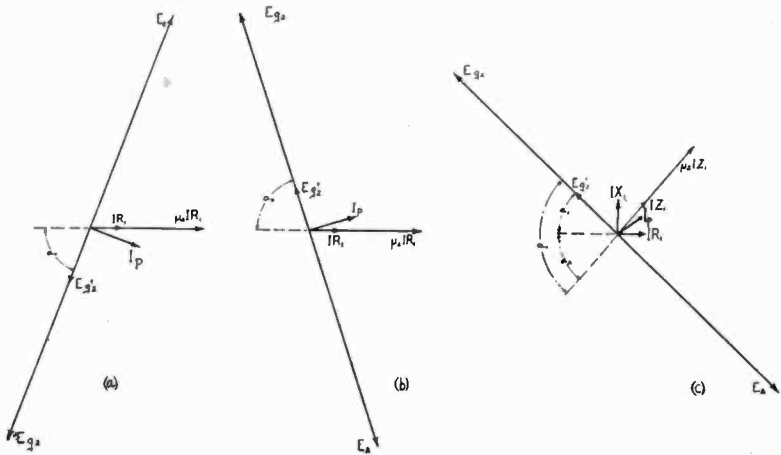


Figure 8—Vector Diagrams for Circuit of Figure 6.

connected in series with  $R_2$  may be used to replace the mutual inductor shown. This is of particular advantage at the higher audio frequencies where errors are possible in the calibration of the mutual inductor due to its distributed capacity between turns, mutual capacity between windings, etc. Where the variable capacitance is used, a modification of the Wagner earth connection is necessary, the inductance shown being replaced by a variable condenser.

The use of the Wagner earth connection<sup>4</sup> is essential if any degree of accuracy is to be expected. This connection insures that the currents in the two arms  $R_1L_1$  and  $R_2M$  do not differ from each other because of stray capacity to earth effects, an assumption upon which the expressions derived

<sup>4</sup>See bibliography.

above were based. Even with the Wagner earth, however, considerable care must be taken to prevent direct capacity effects between component parts of the circuit, particularly between the two sets of batteries in the circuit of Fig. 6.

In either of the above two methods, the load on the transformer secondary due to the auxiliary tube *B* is negligible, since at the point of balance no current exists in the plate circuit of this tube. The actual loading is in each case accomplished by connecting the input circuit of a second amplifier across the transformer secondary, as shown, the

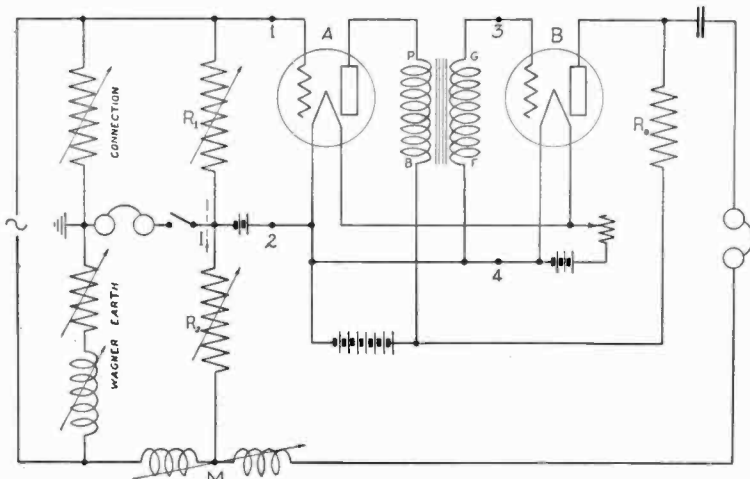


Figure 9—Simplified Test Method When Plate Impedance of Loading Tube Is Resistive.

reaction due to the impedance in the plate circuit of this second amplifier constituting the load. By varying the magnitude and character of this impedance, the effect of varying the reaction upon the amplifier performance may be observed.

For the particular case, where the effect of reaction due to a pure resistance load in the plate circuit of the tube following the transformer is desired, the circuit of Fig. 9 has been found very convenient. This method may be extended to include the reaction effect due to any impedance, whatever, but becomes somewhat involved. In its operation, it is essentially similar to the methods already described. The voltage  $E_2$ , due to  $IR_2$  and  $I\omega M$  is here balanced against that part of the driving voltage in the plate circuit of tube

$B$  which is necessary to send the current  $I_{PB}$  through the coupling resistance  $R_o$ . The expression for the stage amplification and phase shift angle of the test amplifier is respectively

$$K = \frac{\sqrt{R_2^2 + (wM)^2}}{R_1 \left\{ \mu_B \left( \frac{R_o}{R_o + r_{PB}} \right) \right\}} \quad (7)$$

$$\alpha_o = \tan^{-1} \frac{wM}{R_2} \quad (8)$$

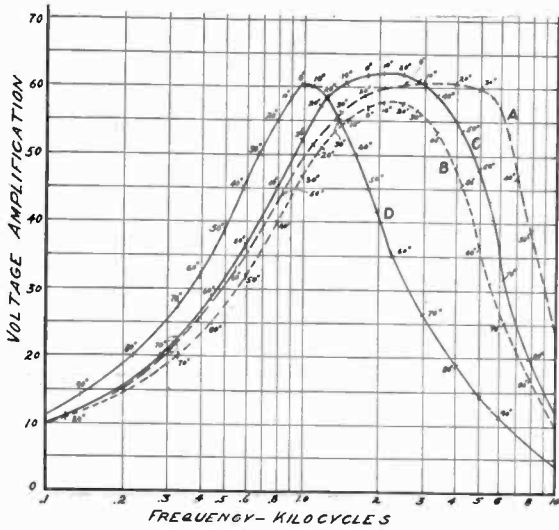


Figure 10—Effect of Load on Amplifier Performance

The value of  $\mu_B \frac{R_o}{R_o + r_{PB}}$  does not vary as long as the coupling resistance and plate battery voltage remain unchanged, and may be determined simply by disconnecting the apparatus between leads 1-2 and 3-4, connecting 1 to 3 and 2 to 4, respectively, and with  $M$  at zero value adjusting  $R_2$  for a balance in the phones.<sup>5</sup> This quantity is then equal to the ratio of  $R_2/R_1$  when the condition of balance obtains. In all other particulars, the method of Fig. 9 is exactly similar to those already described.

### Results

In Fig. 10 are shown the characteristics, under various conditions of load, of a stage of transformer coupling com-

<sup>5</sup>See bibliography.

prising a UX-201A tube and a transformer of rather indifferent design. Curve A is for the transformer unloaded, and curve B for a reaction load on the transformer secondary produced by a 50,000-ohm resistance connected in the plate circuit of the tube following the transformer. The input capacity  $C_g$  of the loading tube, corresponding to 50,000 ohms in its plate circuit, was measured by a resonance method and found to have a value of 85 micro-micro-farads.

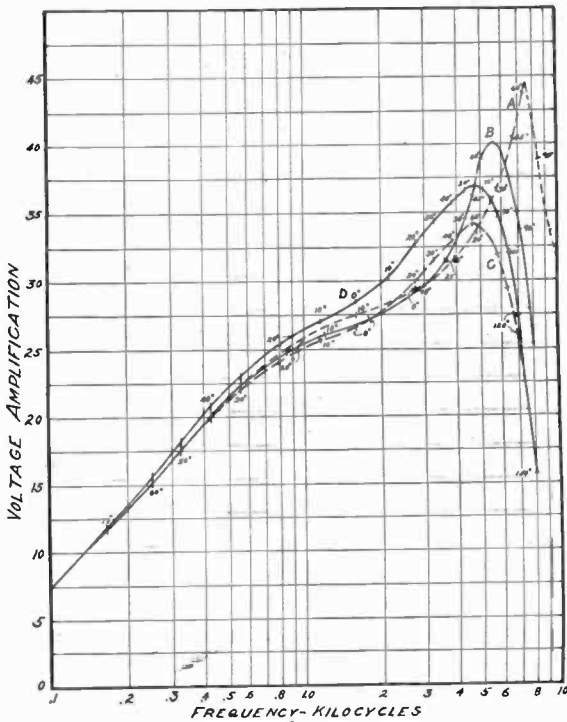


Figure 11—Effect of Load on Amplifier Performance

(This value includes capacities between connecting leads, socket terminals etc., as well as the effect of reaction). Curve C was then obtained for an artificial load of 85  $\mu\mu.f.$  across the transformer secondary. A good degree of accordance between curves B and C will be observed. The lower values of amplification obtained in B are no doubt due to the dielectric losses in the tube capacities rather than to the input resistance  $R_g$  due to reaction, which is too small to

have this effect. Curve *D* corresponds to an artificial load of 250 u.u.f. across the transformer secondary.

Similar curves are shown in Fig. 11 for a transformer of somewhat different design. Maximum amplification is here seen to occur at the second resonance point. Curve *A* is for no load on the transformer, and curve *B* for reaction load due to 50,000 ohms in the plate circuit of the loading tube. For curve *C* the same resistance was inserted in the plate circuit of the loading tube and in addition a capacity of 8 m.m.f. connected between the grid and plate of this

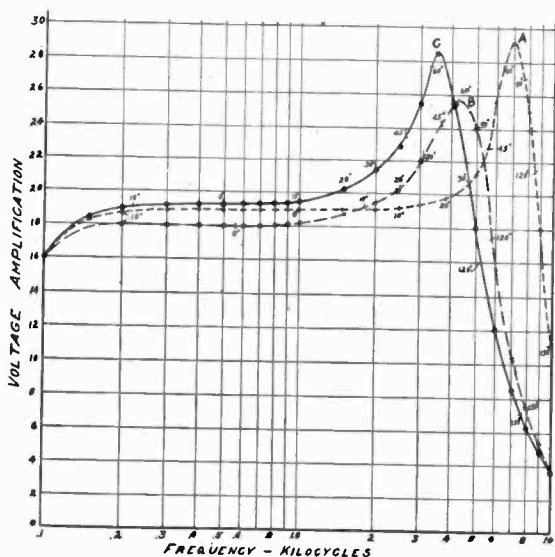


Figure 12—Effect of Load on Amplifier Performance

tube. The input capacity  $C_E$  corresponding to this condition was found to be 135  $\mu\text{.}\mu\text{.f.}$  Curve *D* is for an artificial load of 135  $\mu\text{.}\mu\text{.f.}$  across the transformer secondary.

An additional set of characteristics for an amplifier using one of the better types of transformers is given in Fig. 12. Curve *A* is the no-load characteristic. To obtain curve *B*, a resistance of 50,000 ohms was connected in the plate circuit of the loading tube; while for curve *C* this resistance was replaced by the transformer of Fig. 10 (with its secondary unloaded).

Referring now to Fig. 4, the impedance-frequency characteristic shown was obtained for the transformer of Fig.

12 with an artificial load of  $85 \mu\text{.}\mu\text{.f.}$  across its secondary. The resonance points should therefore occur at the same values of frequency as in curve *B* of Fig. 12. This is seen to be the case.

The results given above are thought sufficient to illustrate the dependence of the performance of a transformer-coupled amplifier upon the nature of the plate impedance in the tube following the transformer. In general, the no-load characteristic appears to be optimistic, particularly from the point of view of phase distortion. Furthermore, it would

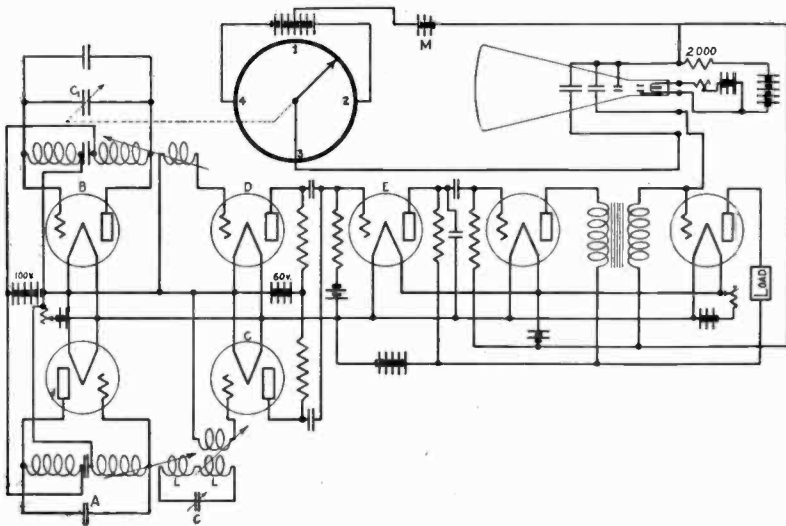


Figure 13—Schematic of Oscillographic Method of Test

seem impossible to predict from this characteristic what the performance under definite loading conditions will be. An accurate specification of the performance of a given coupling transformer in a given circuit can therefore be shown only by its actual operating characteristic as obtained above.

It is realized that there are numerous circuit conditions under which a transformer may be used and that a determination of its performance under all conditions therefore becomes impracticable. This has been used as an argument in favor of testing the amplifier with no load on the transformer secondary. As shown above, however, the no-load characteristic appears of little value.

Merely as a suggestion, the writers point out that the

characteristic corresponding to 50,000 ohms resistance in the plate circuit of the tube following the transformer is fairly representative. Moreover, the circuit of Fig. 9 which may be used for obtaining this characteristic is very convenient and quite simple. We therefore prefer this characteristic rather than the no-load characteristic as a standard.

### SECTION 2.—OSCILLOGRAPHIC METHOD OF TEST

For a much more rapid determination of the amplitude-frequency characteristic, the circuit of Fig. 13 was devised:—

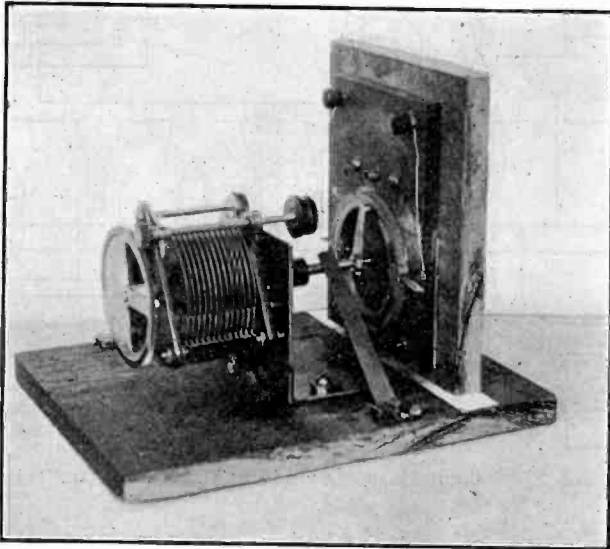


Figure 14—Illustration of Sweep Voltage Arrangement

A heterodyne oscillator is used as the source of a signal note of constant amplitude, but of a frequency varying over the important range of audio-frequencies. This signal is applied to the input circuit of the amplifier under investigation, the output voltage of this amplifier being connected across a pair of deflecting plates of a cathode-ray oscillograph. The electron beam is thus made to vibrate vertically, the amplitude of vibration being a measure of the amplitude of the output signal. Since the input to the amplifier is constant over the complete range of frequencies, the amplitude



of vibration will vary with the frequency depending upon the amplifier characteristics.

To the other deflecting plates of the oscillograph is connected a sweep voltage arrangement whereby the electron beam is deflected horizontally, the sweep voltage being so adjusted that the spot is at the extreme left whenever the signal frequency is a minimum and at the extreme right whenever the signal frequency has a maximum value. The pattern appearing on the screen is then the desired amplitude-frequency characteristic and may be photographed or studied visually.

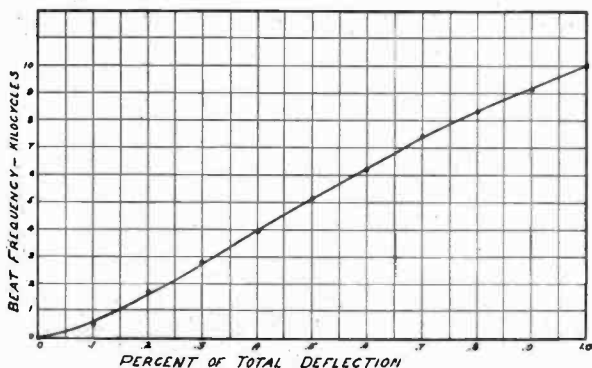


Figure 15—Frequency Calibration Curve for Heterodyne Oscillator

Just as in the test circuits of Section 1, the effect of loading the transformer secondary due to reaction may be obtained by means of an auxiliary amplifier having in its plate circuit any desired impedance.

A detailed description of the circuit of Fig. 13 is given below.

*The Heterodyne Oscillator*<sup>1</sup>. The two Hartley oscillators *A* and *B*, their associated amplifiers *C* and *D*, and the detector tube *E* together make up the heterodyne oscillator which is used as the variable frequency source. Oscillator *A* is adjusted to 100,000 cycles and is coupled to its amplifier *C* by means of the tuned circuit *LCL*. Oscillator *B* has a fixed coil and fixed condenser of such values, that by varying the 500  $\mu\mu\text{f.}$  condenser  $C_1$  from its minimum to its maximum setting, the oscillator frequency is

<sup>1</sup>See bibliography.

<sup>2</sup>See bibliography.

reduced from 100,000 to 90,000 cycles. *B* is inductively coupled to its amplifier *D*.

The output of each of the amplifiers *C* and *D* is impressed between the grid and filament of the detector tube *E* by means of resistance-capacity coupling. The frequency of the resultant signal in the detector output circuit is, of course, the "beat" frequency of the two oscillators and should vary from 0 to 10,000 cycles as the dial of the variable condenser *C*<sub>1</sub> is tuned through an angle of 180 degrees.

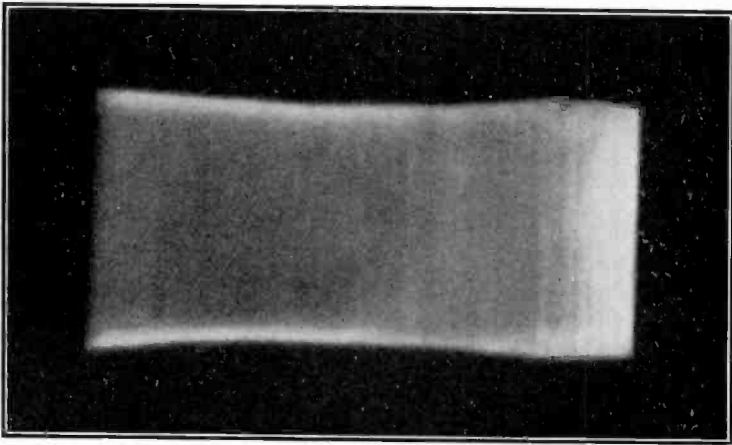


Figure 16—Amplitude-Frequency Characteristic of Heterodyne Oscillator

It is this signal of variable frequency which is impressed upon the amplifier input circuit as shown.

Actually, there is a tendency for the two oscillators to pull into step at the lower frequencies. The function of the amplifiers *C* and *D* and of the tuned circuit *LCL* is to prevent this action, a lower limit of 50 cycles per second being easily obtained.

The tuned circuit has, also, two additional advantages. Kirke has shown that in the case of two carrier waves impressed upon a non-linear detector, if the two waves are of unequal amplitude the stronger wave alone being sufficient to swing over the non-linear portion of the characteristic and reach considerably along the linear portion, the resultant detector current is proportional to the weaker wave, being unaffected by a change in amplitude of the stronger wave. By making the double coupling through the tuned cir-

cuit quite loose and applying this loose coupling to the fixed oscillator *A*, we may make the amplitude of the fixed oscillator weaker than the weakest amplitude of the variable oscillator. A constant output is thus assured which is independent of the frequency.

Kirke has also shown that if one r.f. oscillator contains no harmonics, none will appear in the audio-frequency output except as introduced by the detector tube itself. The tuned circuit here serves to eliminate all harmonics from the fixed oscillator. The harmonics due to the detector itself

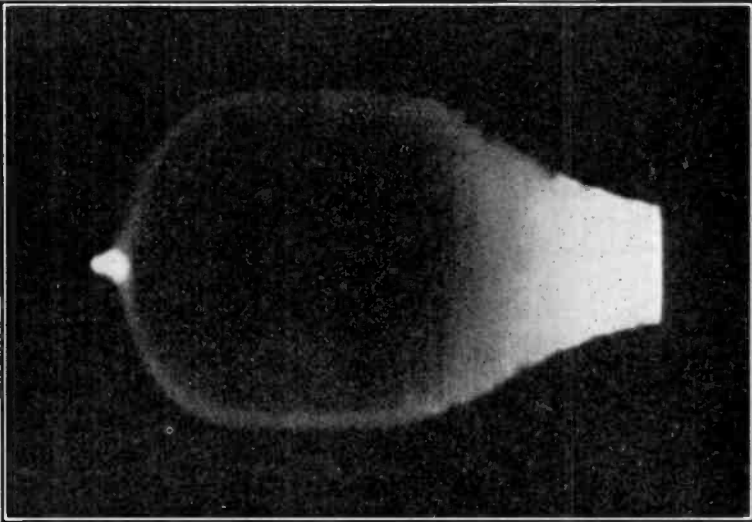


Figure 17—Oscillogram Corresponding to Curve A (Figure 10)

are minimized by using plate rather than grid rectification.

*The Sweep Voltage Arrangement.* As noted above, the function of the sweep voltage is to deflect the electron beam uniformly from left to right as the frequency is increased from 50 to 10,000 cycles and back to the left as the frequency is decreased to its minimum value. Furthermore it is necessary that both the change in frequency and the rate of deflection of the beam are exactly equal in order that the figure be plotted to a linear scale of abscissas, which, as may be seen from Fig. 15, is also approximately a linear scale of frequencies. Again, the spot must be in exactly the same position for a definite frequency whether the heterodyne oscillator frequency is increasing or decreasing at the instant

considered. This is necessary in order that the pattern may exactly retrace itself.

To comply with the above conditions, the arrangement shown in Figs. 13 and 14 was devised. Mounted on the same shaft as the variable condenser  $C_1$ , but insulated from it by means of a hard-rubber insulating joint, is a movable contactor arm  $A$  making a rubbing contact with a circular carbon annulus of rectangular cross-section. This carbon annulus was constructed by placing end-to-end and joining together two circular half-rings each having a resistance between end surfaces of approximately 10,000 ohms. A 70-

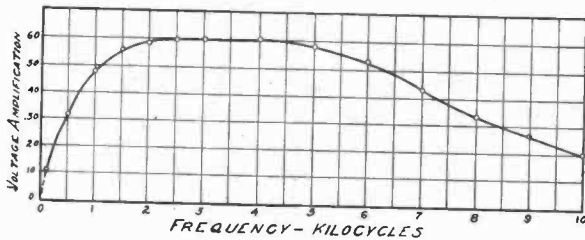


Figure 17a—Curve A Replotted.

volt battery is connected to diametrically opposite points on the circular annulus (to the joints for convenience) and two leads, one from the center in this battery and the other from the movable contactor arm, are brought out to the deflecting plates of the oscillograph. This constitutes the sweep voltage.

With the movable contactor arm at point 1, the voltage across the deflecting plates is zero. The beam should then be in the exact center of the screen, and may be so adjusted, by means of the auxiliary battery  $M$ . With the contactor arm at 2 the deflecting voltage is +35 volts, at 3 zero, and at 4 —35 volts. The electron stream is thus moved continuously from side to side, simply by revolving the contactor arm at a uniform rate.

The position of the condenser on the shaft is now so adjusted that its minimum setting occurs with the contactor at point 4 and consequently its maximum setting with the contactor at 2. The oscillator frequency thus varies from a minimum to 10,000 cycles and back as the spot travels from left to right and back.

For an exact retracing of the figure, the capacity of the variable condenser should vary linearly over its entire range. Moreover the variable condenser should have as small a zero reading as possible. The condenser used was a General Radio Type 247-H of the geared vernier type, a groove being cut in the vernier knob which served as a driving pulley for the condenser and also the movable contactor arm. A reduction in speed was thus obtained permitting the use of a normal speed d-c. or a-c. motor.

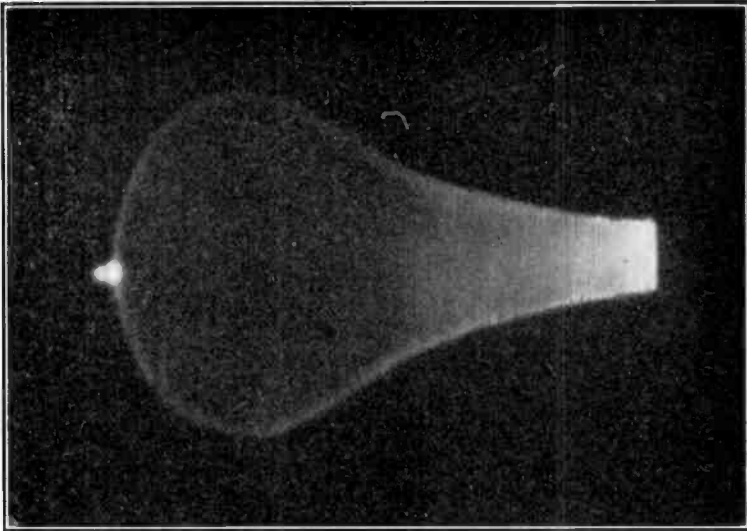


Figure 18—Oscillogram Corresponding to Curve B (Figure 10)

*Oscillator Characteristics.* Even though an exact retracing of the pattern on the screen is obtainable, does not imply, however, that the curve obtained is plotted to a linear scale of frequencies. The extent of deviation from a linear scale is of course of considerable importance in the analysis of any curve obtained by this method. The calibration curve of Fig. 15 plotting the beat frequency against horizontal deflection on the screen indicates however that the departure from a linear scale is fairly small.

In Fig. 16 is shown an oscillogram of the variation of output amplitude vs. frequency for the heterodyne oscillator. The amplitude is seen to be remarkably constant for the entire frequency range.

### Results

The oscillograms chosen for reproduction here are for the transformer of Fig. 10. Figs. 17, 18, and 19, correspond to curves A, B, and D, respectively. For the purpose of comparison these curves are replotted here to the same scale as their corresponding oscillograms. A very good agreement is observed.

### APPENDIX

As we have already pointed out, the amplitude-frequency characteristics as obtained by the oscillographic method of test are plotted to an approximately linear scale of frequen-

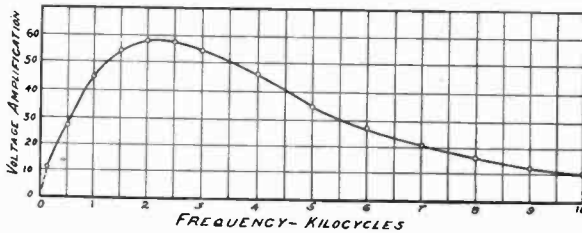


Figure 18a—Curve B Replotted

cies. A slight modification of the sweep voltage arrangement, however, will enable the determination of these curves to a logarithmic scale of frequencies. This modification consists simply of varying one dimension of the circular carbon annulus.

A consideration of the operation of the sweep voltage device indicates that one half-ring is in operation during the time that the electron beam is being swept from left to right, the other half-ring being in use on the return sweep. We may therefore consider each half-ring alone. (see Fig. 20).

Let  $w$  be the width of the ring

$t$  its thickness

$l$  its length along a mean radius

and  $x$  the distance along its mean radius from the left end to the position of the contactor arm.

On the assumption of a linear characteristic for the variable condenser  $C_1$  and a constant speed of rotation, the following equations may be set down.

$$C_x = 500 \cdot \frac{x}{l} \tag{9}$$

Where  $C_x$  is the capacity of the variable condenser when the contactor arm is at the point  $x$ .

$$D_x = K_2 R_x \tag{10}$$

$D_x$  being the deflection of the electron beam as measured from its extreme left position,  
 $R_x$  the resistance of the half-ring from its left end to the point  $x$  and

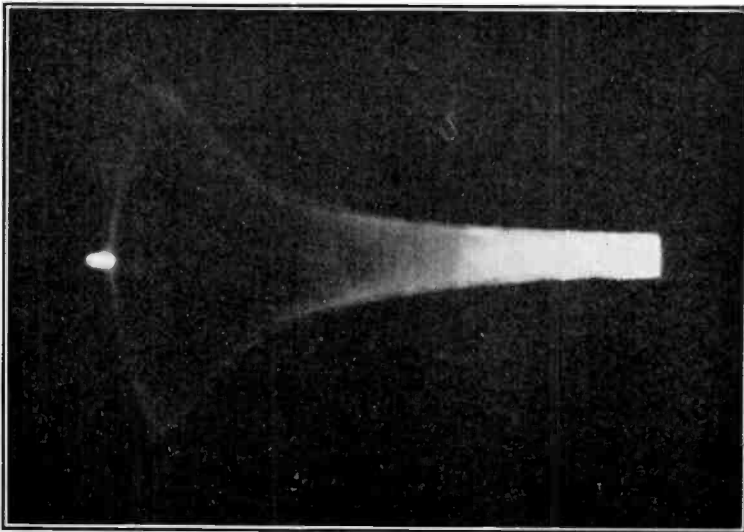


Figure 19—Oscillogram Corresponding to Curve D (Figure 10)

$K_2$  an arbitrary constant.

$$dR_x = \frac{e \cdot dx}{w \cdot t(x)} \tag{11}$$

where  $dR_x$  is an element of resistance at point  $x$ .

Note that the thickness of the ring is here taken as a function of  $x$ . It is this dimension of the ring which is to be varied in order to obtain a logarithmic scale of frequencies.

$$f_x = 100,000 - \frac{1}{2\pi \sqrt{K_1 L \left( 2500 + 500 \frac{x}{l} \right)}} \tag{12}$$

Here  $f_x$  is the value of the heterodyne frequency when the contactor is at the point  $x$ .

In order that a logarithmic scale of frequencies may obtain, the deflection of the beam must vary as the logarithm of the frequency; that is,

$$D_x = K_3 \log f_x \tag{13}$$

Where  $K_3$  is an additional constant.

Substituting equation (10) and (12) in (13) and differentiating, we obtain,

$$\frac{dR_x}{dx} = \frac{K}{l} \times \frac{1}{\left(2500 + 500 \cdot \frac{x}{l}\right) \left(1 - 2\pi \cdot 10^5 \sqrt{K_1 L} \sqrt{2500 + 500 \cdot \frac{x}{l}}\right)} \tag{14}$$

Where  $dR_x$  is defined by expression (11). After due substitution, equation (15) is obtained.

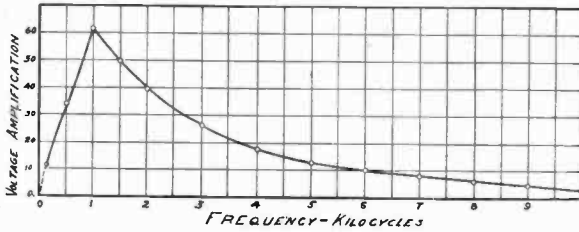


Figure 19a—Curve D Replotted

$$t(x) = \frac{e l}{w K} \left\{ \left(2500 + 500 \cdot \frac{x}{l}\right) \left(1 - 2\pi \cdot 10^5 \sqrt{K_1 L} \sqrt{2500 + 500 \cdot \frac{x}{l}}\right) \right\} \tag{15}$$

This is the necessary relation for the thickness of the carbon half-ring as a function of the distance  $x$  measured along a mean radius from the left end.

The constants of equation (15) may be evaluated by substituting for terminal conditions.

When  $x = 0$

$$f_x = 100,000$$

and consequently

$$\sqrt{K_1 L} = \frac{10^{-1}}{\pi}$$



When  $x = l$

$$t(l) = \frac{el}{wK} \left\{ -(3000) \left( 1 - \frac{\sqrt{3000}}{50} \right) \right\} = -288$$

$$\frac{el}{wK} = -288 K_4$$

therefore

$$K_4 = -\frac{t(l)}{288}$$

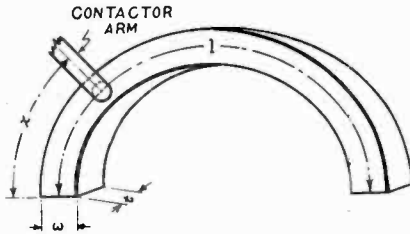


Figure 20—Carbon Half-Ring

Equation (15) may therefore be written

$$\frac{t(x)}{t(l)} = -\frac{1}{288} \times \left\{ \left( 2500 + 500 \cdot \frac{x}{l} \right) \left( 1 - .02 \sqrt{2500 + 500 \cdot \frac{x}{l}} \right) \right\} \quad (16)$$

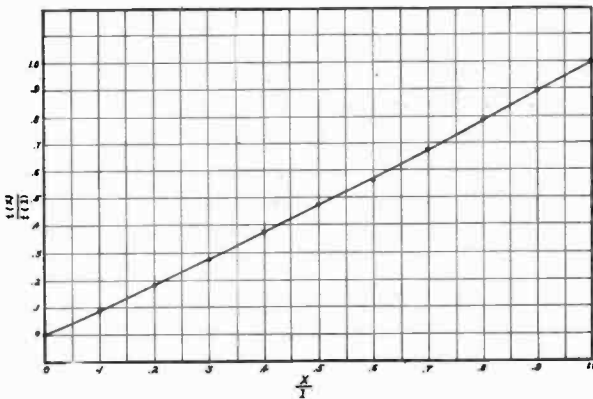


Figure 21—Computed Variation of  $t(x)$  to obtain Logarithmic Scale of Abscissas.

This equation is plotted in Fig. 21 and is seen to be linear to a fair degree of approximation. To the same degree of approximation, therefore, we may expect to obtain a logarithmic scale of frequency merely by tapering the thickness of the annular half-ring from zero at its left end to its normal value at the right end. This obviously applies equally as well to the other half-ring.

### SUMMARY

The performance of an audio-frequency transformer-coupled amplifier is considerably affected by the reaction load across the coupling-transformer secondary due to the impedance in the plate circuit of the tube following the transformer. The effect of such reaction is discussed in this paper, and several methods of test described whereby the actual performance of a given amplifier under any condition of loading (due to reaction) may be measured.

The first two methods of test are essentially bridge circuits in which the amplifier output e.m.f. is balanced against an auxiliary voltage, the magnitude and phase relationship of which (relative to the amplifier input voltage) is determinable. To effect this balance an auxiliary tube with phones in its plate circuit is used; the balancing taking place in the plate circuit of this tube in the first method; and in its grid circuit in the second method. The reaction load across the coupling transformer is in each case obtained by connecting across its terminals the input circuit of a second amplifier, having in its plate circuit any desired impedance.

In the third method of test, the second amplifier tube serves both for loading and for balancing, the auxiliary balancing tube being omitted. This circuit is applicable to the particular case where the effect of reaction due to a pure resistance load in the plate circuit of the tube following the transformer is desired and for this case is very convenient and simple.

The fourth test method is oscillographic. A heterodyne oscillator is used as the source of a signal note of constant amplitude, but of a frequency varying over the important range of audio-frequencies. This signal is applied to the input circuit of the amplifier under investigation, the output voltage of this amplifier being connected across a pair of

deflecting plates of a cathode-ray oscillograph. The electron beam is thus made to vibrate vertically. To the other deflecting plates of the oscillograph is connected a sweep voltage arrangement whereby the electron beam is deflected horizontally, the sweep voltage being so adjusted that the spot is at the extreme left whenever the signal frequency is a minimum, and at the extreme right when the signal frequency has a maximum value. The pattern appearing on the screen is then the desired amplitude-frequency characteristic. With a slight modification of the sweep-voltage device, this characteristic may be obtained to a logarithmic scale of frequencies. The loading is obtained in the same manner as in the methods already described.

#### BIBLIOGRAPHY

1. "Low-Frequency Intervalve Transformers," P. W. Willans, *Journal I. E. E.*, 1926, Vol. 64, p. 1065.
2. "Telephone Transformers," W. L. Casper, *Journal A. I. E. E.* 1924, Vol. 43, p. 196.
3. "Dependence of the Input Impedance of a Three-electrode Vacuum Tube upon the Load in the Plate Circuit," J. M. Miller, Bureau of Standards, Scientific Paper No. 351, Nov. 1919.
4. "The Measurement of Dielectric Losses by Means of the Wheatstone Bridge," K. W. Wagner, *The Electrician* 1911, Vol. 68, p. 483.
5. "Notes on the Input Impedance of Vacuum Tubes at Radio Frequency," J. Weinberger, *I. R. E.* 1920, Vol. 8, p. 334.
6. "The Frequency Characteristics of Telephone Systems and Audio-Frequency Apparatus," B. S. Cohen, A. J. Aldridge, and W. West, *Journal I. E. E.* 1926, Vol. 64, p. 1023.
7. "Design of a Low-Frequency Generator," H. L. Kirke, *Experimental Wireless & Wireless Engineer*, Feb. 1927, Vol. 4, No. 41.



# NOTE ON DETECTION BY GRID CONDENSER AND LEAK

BY  
W. VAN B. ROBERTS

(Technical and Test Department, Radio Corporation of America)

## INTRODUCTION

When grid condenser and leak are used for detector the grid is usually kept somewhat positive. This may make the grid-to-filament a.-c. resistance low compared with the external leak resistance. As the two resistances are effectively in parallel, both must be taken into account. A formula is derived showing the variation of detected current with frequency of modulation.

Fig. 1 shows connections commonly used for rectification by means of a grid condenser and leak. The plate circuit

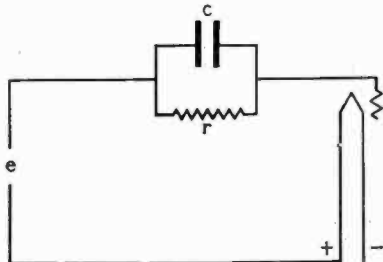


Figure 1

is not shown, as it should be so adjusted that it merely repeats the audio-frequency variation of grid potential.

Fig. 2 shows the circuit in a more general form, a battery being included to indicate that the grid return may be connected to a point of any desired potential. The impedance  $Z$  may be of any nature in the following analysis, which presupposes weak signals.

\*The method used is essentially that of Carson, (Proc. of the Institute of Radio Engineers, Vol. 7, No. 2) in a paper entitled "A Theoretical Study of the Three Element Vacuum Tube."

Let the applied voltage consist of two components, a voltage  $e_0 \cos \omega_0 t$  due to the carrier, and  $e_1 \cos \omega_1 t$  due to some typical side frequency. The resulting current through  $Z$  will have a number of components, but the only one that interests us is the component whose frequency is the difference between the two applied frequencies. The calculation\* of this component is somewhat complicated, and for the present purpose it is sufficient to state that the magnitude of the difference frequency current varies inversely as

$\left(1 + \frac{Z_0}{R}\right) \left(1 + \frac{Z_1}{R}\right) \left(1 + \frac{Z_{1-0}}{R}\right)$  where  $R$  is the a.-c. resistance between grid and filament,  $Z_0$  is the impedance of  $Z$  at carrier frequency,  $Z_1$  is its impedance at the typical side frequency, and  $Z_{1-0}$  is its impedance at the difference frequency.

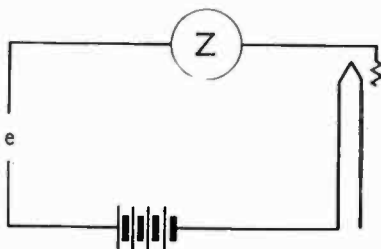


Figure 2

The voltage drop across  $Z$  due to this difference frequency current will then vary directly as  $\left(\frac{R}{R + Z_0}\right) \left(\frac{R}{R + Z_1}\right) \left(\frac{RZ_{1-0}}{R + Z_{1-0}}\right)$ . Now the thing we are trying to find out is how this voltage drop varies with frequency. If it is independent of frequency over the audio range then no frequency distortion results from this method of detection. Let us consider each factor separately. The first factor does not change at all, as the carrier frequency is the same no matter what the audio modulation frequency may be. The second factor is not independent of the beat frequency, but is practically so because the whole audio range may be covered by varying  $\omega_1$  about one per cent or less at broadcast frequencies. Hence unless  $Z$  contains some element sharply tuned to radio

frequency the first two factors are practically constant whatever difference frequency is chosen. Any frequency distortion must then be due to the third factor varying with frequency. An idea that immediately suggests itself is to use for  $Z$  some network that has substantially the same impedance to all frequencies in the audio range, and low impedance to radio frequencies. However, before considering this idea further let us find out how much distortion is likely to be introduced by the third factor when  $Z$  is composed of the ordinary size grid condenser and leak, as in Fig. 1. From the form of the third factor it is obvious that it represents the impedance of  $R$  connected in parallel with  $Z$ , and hence of  $R$ ,  $r$ , and  $C$  all in parallel. The impedance of this combination varies inversely as

$$\sqrt{1 + \left( \frac{rR}{r+R} C \omega_{1-\infty} \right)^2}$$

As an example let us choose  $C = 0.00025$  mfd. and  $r = 5$  megohms, and calculate how great  $\omega_{1-\infty}$  may be without the impedance falling below 90 per cent of the value it has at very low frequencies. If a 201A tube is used with the connections of Fig. 1 and a 5-megohm leak the value of  $R$  is about 65,000 ohms. A simple calculation shows that a frequency of about 4,500 cycles must be exceeded before the frequency distortion due to this type of detection exceeds 10 per cent. Hence such distortion is likely to be negligible in comparison with that occasioned by the use of sharply selective radio-frequency circuits. This statement has been verified by experiment, comparing the action of grid condenser and leak detection with that of  $C$  battery detection.

It is often stated that the time constant  $Cr$  should be smaller than the time of one cycle of the highest audio frequency that is to be received. If that were the case, then the combination assumed above (5 megohms and 0.00025 mfd.) would not allow satisfactory reception of audio frequencies above 800 cycles, which is contrary to experience. However the expression derived above suggests that the time constant of the condenser in parallel with the effective resistance  $\frac{rR}{r+R}$  is the proper time constant to consider.

Using this value and applying the time constant criterion we predict fairly good detection as high as some 60,000 cycles. This seems very high, but superheterodynes are

often built, with similar values of grid condenser and leak for the frequency changing tube, which give a satisfactory output at intermediate frequencies of this order of magnitude.

In the foregoing it has been assumed in all the illustrative examples that the grid was kept positive. If kept negative,  $R$  is no longer low compared to  $r$ , and the proper time constant to use would be more nearly  $Cr$ . It has also been assumed that the source of applied voltage is not affected by tube losses. Actually, if the grid is kept positive, the resonance curve of the tuned circuit which supplies the input voltage will be broadened, so that less frequency distortion is produced by the tuned circuit than if  $C$  battery detection were used.

#### SUMMARY

It has been said that detection by the ordinary grid-condenser and leak gives poor quality (i. e. low audio frequencies favored at the expense of the higher ones) unless an undesirably small condenser or undesirably low leak resistance is used. This paper attempts to show, as simply as possible, that actually, good quality can be obtained even when using as large a grid condenser as desirable, because the resistance which determines the relative loss of high frequencies is not the resistance of the grid leak alone, but the resistance of the grid leak and grid-filament resistance of the tube in parallel. Under usual operating conditions the latter is so low that loss of quality is very slight. The resistance of the grid leak is important chiefly in determining the grid-filament resistance of the tube, and need not be low itself.



**THE TORUSOLENOID**  
AN IMPROVED TYPE OF FIELDLESS COIL COMBINING THE  
BEST FEATURES OF THE SINGLE LAYER SOLENOID  
AND THE TOROID

BY  
ROSS GUNN, B. S. E. E., M. S., PH.D.

(In Charge High Frequency Laboratory, Physics Department, Yale University. Formerly Radio Research Engineer for United States Air Service.)

During the last two or three years much good work has been done on the matter of coil design and the prediction of coil performance. This information has to do with the proper design of coil types already existing and to date there appears to have been no fundamental change in the method of winding coils for high frequency. The two general types of coils now available are the solenoids and the toroids, each type offering certain advantages and each having certain inherent disadvantages. The writer has done considerable work with coils and has devised a coil which combines all the good points of each type without incorporating any of the bad features. It is for this reason that the new coils have been called torusolenoids. Because of the novel features of the coils it is believed that information as to the construction and electrical characteristics would be of general interest to those interested in the art.

Before proceeding to the description of the coil it will be found convenient to introduce a factor which the writer has used as a direct measure of coil performance. This factor has been called the "gain" and is, in fact, simply the reciprocal of the power factor of the oscillating circuit or  $\frac{2\pi fL}{R}$  where  $f$  is the frequency of the oscillations,  $L$  is the inductance and  $R$  is the equivalent series resistance. Most modern radio circuits are worked in conjunction with vacuum tubes and since vacuum tubes are controlled by potential solely, one is in general interested in the potential applied to the grid of the associated tube in terms of the e.m.f. applied to the circuit. It can easily be shown\* that

Received by the Editor, June 27, 1927.

the "gain" is simply the ratio of the generated potential (i. e. the potential appearing across the coil, hence the potential applied to the grid) to the applied e.m.f. These potentials are obviously 90 deg. out of phase and their ratio as given above is always greater than unity and corresponds roughly to a circuit potential amplifying factor. Thus if a circuit has a high gain it may be considered very good whereas a low gain corresponds to a poor circuit. This idea may be easily extended to a coil if by the gain of a coil we mean the gain of a circuit made up of the coil and a condenser of negligible resistance. This factor, the gain, as defined above is also equal to the circuit selectivity or sharpness of resonance and it is therefore obvious that for broadcast reception the gain should not be excessive, not over 250 perhaps for the ordinary ear.

It is readily shown that

$$\text{Selectivity}=\text{Gain}=\frac{f_r}{f_2-f_1}$$

where  $f_r$  is the natural frequency of the oscillating circuit when in resonance with the applied frequency,  $f_2$  is the natural frequency of the circuit *above* resonance such that the oscillating current is 70.7 per cent of the current *at* resonance and  $f_1$  is the natural frequency of the tuned circuit at a point *below* resonance such that the oscillating current is 70.7 per cent of the current *at* resonance. Choosing therefore a mean broadcast frequency of 750 kc. and making the assumption that  $G=250$ ; one finds that the width of the resonance curve between points where the oscillating current (and hence the generated potential) falls to 70.7 per cent of its maximum at resonance is 3,000 cycles. With  $G=250$  modulation frequencies of 1500 cycles will then be amplified in potential but 70.7 per cent that of low modulation frequencies. This difference in amplification would be noticeable to a good ear but there is little doubt that the audio amplifier will partially make up this loss due to audio frequency regeneration which will accentuate the high frequencies and the arbitrary selection of 250 for the maximum value of  $G$  seems satisfactory for present day needs at least.

Returning now to the consideration of the coil, let us write down the essentials of the supreme coil. Perhaps not

\*Some Facts About Coil Design, R. Gunn, Radio Broadcast, May, 1927.

all of these can be obtained immediately but the coil to be described seems to fulfill the requirements to a surprising degree. The essentials of the ideal coil are somewhat as follows:

(1) The gain factor and hence the selectivity of the circuit as defined in the preceding paragraphs should be a maximum but should not exceed a mean value of 250 if the coil is to be used for broadcast reception and faithful reproduction desired.

(2) The external field of the coil should be zero or certainly nearly so in order to reduce to a minimum stray energy exchanges within the radio set.

(3) The distributed capacity of the coil should be very low in order that the tuning range should be a maximum and in order that the dielectric losses within the coil may be a minimum. A nearly uniform potential gradient should exist throughout the coil and the terminals should be well separated so that connecting wires will not introduce excessive capacity.

(4) The physical structure of the coils should not be excessively large taking into account the fact that a small coil necessarily means a low value for the gain under similar types of construction.

(5) Mechanically it should be strong and capable of withstanding a certain amount of abuse.

The first essential contains much implied meaning, since for the gain and the selectivity to be large, great care must be exercised in the selection of materials and so placing them as to produce no unnecessary losses. It would appear that essentials (2) and (3) are entirely incompatible and it is on this point that the great advantage of the new coils depends for it has been found possible to satisfy both conditions simultaneously by a special method of winding the coils.

The single layer solenoid which is the coil in general use today has a relatively large value for the gain when properly constructed. It has a sufficiently low distributed capacity and satisfies all requirements well enough except that relating to its external magnetic field. On this point the simple solenoid is very poor for it is well known that if a solenoid is not carefully placed at some distance from other parts of the radio set its exterior field will play havoc by causing

undesired interaction. The external field is a double disadvantage in that the coil will easily affect other parts of the circuit and conversely other parts of the circuit easily affect it. In addition to this difficulty the field will set up eddy currents in any metal parts and dielectric losses in any insulator which will react unfavorably on the gain factor.

The toroid on the other hand has a very small exterior field but the selectivity and gain are very low. The distributed capacity is relatively large so that on the whole one is worse off by using a toroid in place of the single layer solenoid.

The points in favor and against each type of coil may be summarized as follows. The good features have been marked *plus* and the bad features *minus*.

Single Layer Solenoid.

- + (a) High value for the gain and selectivity.
- (b) Large exterior field.
- + (c) Moderate values for the distributed capacity.

Simple Toroid.

- (a) Very low to moderate values for the gain and selectivity.
- + (b) Very small exterior field.
- (c) Large distributed capacity.

The points not mentioned are on the whole satisfactory for both types. It will be observed that one type of coil has one set of advantages and the other coil has the complementary ones, so if one could combine the advantages of each into one coil the resultant coil should be most satisfactory. The new Torusolenoids do just this; whence the name.

During the preliminary work on this subject the author saw that there was little chance of modifying the solenoid so that its exterior field would be small but there did seem to be lots of room for improvement in the toroid! The toroid was chosen as the coil that offered the best all around possibilities and much work was done in an attempt to improve it in its simple form but with scant success.

#### METHOD OF CONSTRUCTION

The author's coil in external appearance is not unlike the usual toroid except it will be observed that the terminals of the new coil are on opposite ends of a diameter while

in the conventional type the coil ends are adjacent. By the use of the new method the potential gradient is made nearly uniform along the coil and the high and low potential ends are well separated. This fact helps explain how the distributed capacities are kept to low values. It will be observed on closer examination that the coil is wound in two sections, the sections are wound in opposite directions, that is to say one half of the coil is a right hand spiral and

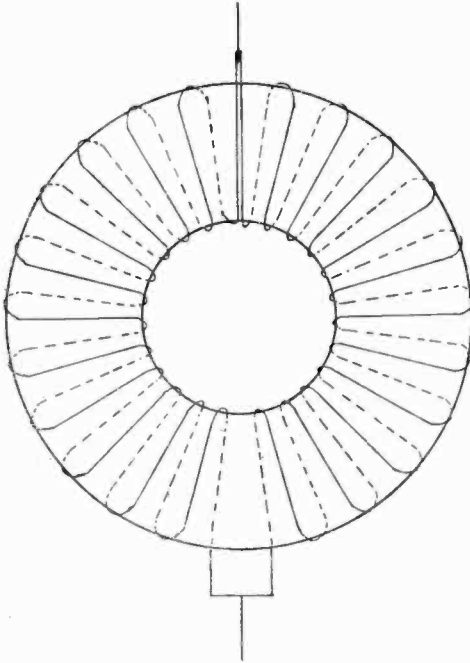


Fig. 1—Torusolenoid—The fieldless low-capacity high-gain coil.

the other half is a left hand spiral. This arrangement means that the two wires leading to either terminal *start* around the coil in the *same* direction. This particular method of winding secures a uniform magnetic field intensity within the coil so that there is no tendency whatever for the magnetic flux to stray out of the coil and cause interference with other parts of the set. The diagram of Fig. 1 shows the general method of winding much better than it is possible to describe it in words. It will be observed that each section

or half is in itself a complete coil and the purpose of its associated coil is simply to provide a return path for the magnetic flux of the first coil. Thus each coil is mutually dependent on its mate for its efficiency. Now since the two coils are connected in parallel it is obvious that the inductance of each half must be twice the resultant inductance so that in the calculation of the number of turns necessary for a given inductance a factor of four must be introduced into the usual equation. This brings us to a third fundamental difference between the new coils and the old type. The high value of inductance for each *half* of the coil allows the use of a large number of turns of

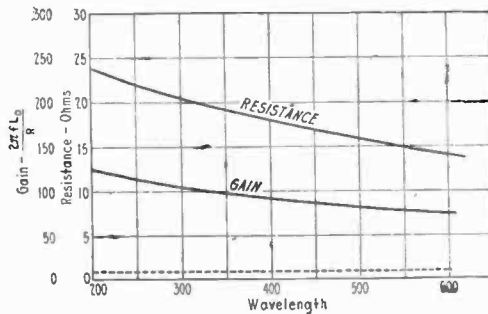


Fig. 2—Commercial "low loss" toroid  
110 Turns, No. 20 B. & S.  
 $L_0 = 330 \mu\text{h}$ . —  $\lambda_0 = 93.4\text{m}$ . —  $C_0 = 7.5 \mu\mu\text{f}$ .

relatively small wire. This is of considerable value in increasing the gain when taking into account other factors such as the fact that there are effectively two coils in parallel, for it is well known that at high frequencies the smaller wires use the copper more effectively. The use of small wire aids greatly in cutting down eddy current losses and the distributed capacity of the coil. One other feature should be mentioned and that is to point out that while the simple toroid has an exterior field corresponding to a single turn of wire whose mean area is that of the coil, the new torusolenoid has practically no field since the fields in each half tend to cancel each other outside the coil proper.

Some of the new coils have been mounted on pyrex rings and others on hard rubber forms upon which the coil and binding posts could be mounted. This method reduces to

a minimum all losses since the coils are almost self supporting and the individual turns are properly spaced. The size of the coils have been limited to  $4\frac{1}{4}$  inches since it was recognized that coils much larger than this would be unsuitable for ordinary use. By increasing the size of the coil the gain may be made much larger than the coils described in this paper and conversely if a coil is made smaller, assuming the same general type of construction the gain factor will necessarily be decreased.

The inductance may be computed for this type of coil by aid of the following relation which is similar to the usual equation save for a factor of four.

$$L_o = 0.00316 N^2 [ R - \sqrt{R^2 - A^2} ]$$

where  $L_o$  is the inductance in microhenrys,  $R$  the distance from the axis of symmetry to the center of cross section of the winding,  $A$  is the radius of the turns of the winding and  $N$  is the total number of turns of the winding. All dimensions are to be inserted in centimeters. There is no known way of computing the other constants of the coil and these must be determined by experiment.

## RESULTS

Turning our attention to the actual results of tests on the improved coils we shall discuss in order the important characteristics of the coils as follows:

- (a) The gain and selectivity.
- (b) The exterior field.
- (c) The distributed capacity.

As a basis of comparison the writer purchased a so-called low loss toroid and obtained all necessary data to rate the coil properly. It was wound with 110 turns of No. 20 B.S. wire, was self supported and had no dielectric whatever except the cotton insulation. Its direct current resistance was but 0.9. ohm while its high frequency resistance at 300 meters was 20.5. ohms. The curves of Fig. 2 show the resistance and gain for wavelengths within the broadcast band. The fundamental wavelength of the coil was 93.4 meters and its distributed capacity was 7.5 micro-microfarads.

## GAIN

It will be remembered that the gain is a function of the circuit constants only and is equal to

$$G = \frac{2\pi f L_o}{R} \quad \text{or} \quad G = \frac{1}{R} \sqrt{\frac{L}{C}}$$

where the symbols have the usual meaning. This factor may be determined directly by means of a vacuum-tube voltmeter or it may be computed from known data on the coil. The value of the gain will obviously depend on the coil and its numerical value will range from perhaps 60 for a poor coil to 300 for a high-class coil. A value much over 250 is undesirable for broadcast reception since the quality of reproduction would be impaired due to the suppression

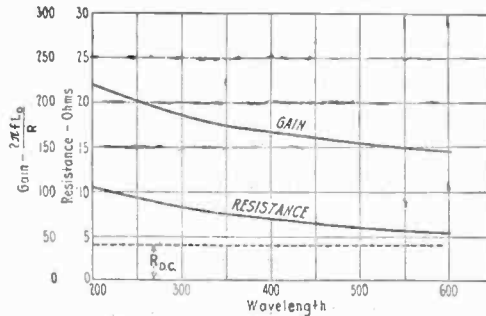


Fig. 3—Torusolenoid

480 Turns, No. 30 D. S. C.

$L_o = 242 \mu\text{h.}$

$\lambda_o = 63\text{m.}$

$C_o = 4.6 \mu\mu\text{f.}$

of the side bands. The new torusolenoids have values for the gain from 135 to 250 for solid wire-wound coils and as high as 300 for litzendraht coils of moderate size. The curves of Fig. 3 show how the gain and effective series resistance of a typical solid wire-wound torusolenoid changes with wavelength. It is interesting to note that the average high frequency resistance of the torusolenoids is only about twice its direct current resistance whereas the sample of the simple toroid has a high frequency resistance about 18 times the d.-c. resistance. The data for a litzendraht coil which is typical of the class are shown in Fig. 4 and are plotted in solid lines. It will be seen that the gain over the broadcast



band averages well over 200 and rises to well over 250 at 550 meters. The dotted curves of Fig. 4 show plainly the effect of enclosing the coil in a metal can and is remarkable in that the gain is decreased by only about 18 per cent and rather definitely showing that the exterior magnetic field is zero.

An examination of the curves, which have all been plotted to the same scale, shows that the solid wire-wound torusolenoids have the highest gain at the short wavelengths and decrease as the wavelength is increased. On the other hand the litzendraht coils show a relatively lower value at the short wavelengths and increase uniformly with increasing wavelength. This type of characteristic seems to offer

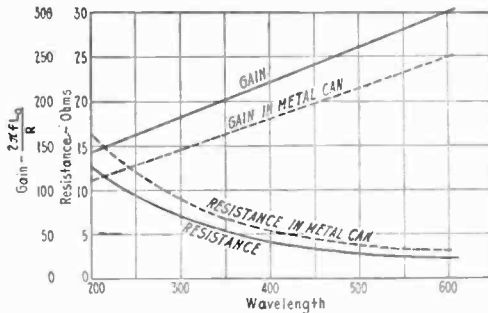


Fig. 4—Torusolenoid  
300 Turns — "Litz."  
In Air  $L_o = 194 \mu\text{h}$ .  
Solid }  $\lambda_o = 52\text{m}$ .  
Curves }  $C_o = 4 \mu\mu\text{f}$ .  
In Metal Can  $L_o = 194 \mu\text{h}$ .  
Dotted }  $\lambda_o = 81.3\text{m}$ .  
Curves }  $C_o = 9.6$ .

certain advantages since in general the energy transferred to a coil is greater at high frequencies with the usual methods of coupling, so a lower value for the gain can be tolerated. By proper design it would appear that uniform amplification could be obtained over the entire broadcast range since the gain seems to be nearly a linear function of the wavelength and the induced e.m.f. a linear function of the frequency. More work is being done on this matter in order to verify this prediction since a straightforward electrical solution of this problem is more desirable than mechanical means of varying the coupling.

The peculiar characteristic just described together with gain factors at least equal to the simple solenoid seems to indicate that the new coils are at least on the par with any other type when considering their gain.

#### EXTERNAL FIELD

The external field of the new coil is even less than that of the ordinary toroid since the ordinary toroid has a field associated with it which is equivalent to a single turn whose area is equal to the mean area of the coil. In the torusolenoid the current divides and the external field of each half tends to neutralize the other.

In order to test experimentally whether the torusolenoid had an external field, a test coil was properly connected to a small fixed condenser and a sensitive thermogalvanometer. This combination was tuned to resonance with a powerful oscillator. The coil was then placed directly in the field of an oscillator plate coil which was carrying 10 amperes of a frequency corresponding to the tuned circuit of the coil. The coil under test was oriented in all directions but no current could be detected in the coil circuit. This test appears to show that the external field of the torusolenoid may be said to be effectively zero and hence stray energy exchanges due to magnetic effects are nonexistent.

#### DISTRIBUTED CAPACITY

It has been recognized for a long time that one of the essentials of a good coil, regardless of its type, was a low distributed capacity. A low distributed capacity guarantees that the electric gradient within the coil has been kept small and the size and distribution of the wire used in winding has been well chosen. A low distributed capacity is particularly valuable these days when many broadcast stations are at the extremes of the band and the band none too narrow. The torusolenoids have shown an exceptionally low value for the distributed capacity, so low in fact that the usual method of plotting  $\lambda^2$  against the capacity and extrapolating could not be used. The procedure used was to determine the fundamental wavelength of the coil by a simple means and then compute the distributed capacity from the relation

$$C_d = \frac{\lambda_0^2}{3.55 L}$$

where  $C_d$  is the distributed capacity in micro-micro-farads,  $\lambda_0$  is the fundamental wavelength of the coil and  $L$  is the inductance in microhenrys.

The average torusolenoid will show distributed capacities of from 4 to 5 micro-micro-farads when properly constructed. The data on the commercial coil are included in Fig. 2 for comparison.

There are many variations which may make use of the new type winding. One method which has been found fairly good is to make use of two slender solenoids which were wound in opposite directions and connected in parallel. This type of mounting yields a coil whose characteristics are

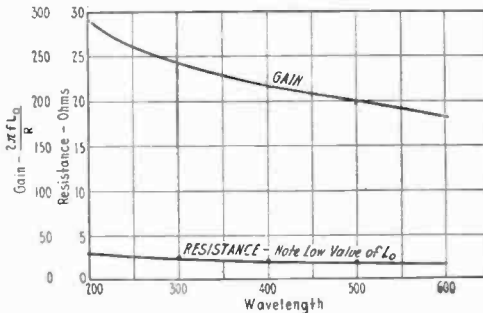


Fig. 5—Binocular—New Type Winding  
No. 26 D.C.C. on 2 inch form—4 inches long.  
 $L_0 = 93 \mu\text{h}$ .

shown in Fig. 5. It will be observed that the gain may be made quite high but here again there is an appreciable exterior field and a choice made as to what characteristics are most desirable.

Consideration of all the factors involved in these coils and their properties show that the torusolenoid fulfills to a remarkable degree the requirements of the ideal coil. The features possessed by the torusolenoids may be summarized as follows:

- (a) They have a high value for the gain and selectivity.
- (b) Their external magnetic field is vanishingly small.
- (c) The distributed capacity is remarkably low.
- (d) They are moderate in size taking into account item (a).
- (e) They are mechanically strong enough to withstand a reasonable amount of abuse.

## SUMMARY

An improved high frequency inductance of radical design is described which represents the successful attempt to combine into one inductance all the desirable features of both the toroid and the single layer solenoid.

The new inductance which has been called the "Torusolenoid" has been found to incorporate the following features:

1. It has substantially zero external magnetic field.
2. It has a high value for the "gain".
3. It has very low distributed capacity.
4. It has no major disadvantages when used as an inductance.

The term "gain" is defined and shown to be a measure of coil performance. Supporting data on representative inductances incorporated in the paper show that the new inductances offer many advantages, and for all-around performance are unsurpassed.

## BOOK REVIEW

### Robison's Manual of Radio Telegraphy and Telephony

BY

COMMANDER (now REAR ADMIRAL) S. S. ROBISON,  
U. S. Navy.

Revised by COMMANDER S. C. HOOPER, U. S. Navy and  
LIEUTENANT COMMANDER T. A. M. CRAVEN, U. S. Navy.

Seventh Revised Edition; 737 pp.; 424 fig.; The United States Naval Institute, Annapolis, Md.; Price \$5.50.

This book is divided into four sections headed in order, (1) theory of radio communication, 462 pp.; (2) application, 125 pp.; (3) radio measurements and precision instruments, 92 pp.; (4) useful information, 46 pp.

Section 1 dealing with the theory of radio communication includes the elementary theory of electricity, alternating current theory, application of alternating current theory to radio circuits, theory of damped oscillations, theory of vacuum tubes, theory of wave propagation, and radio accessories such as inductance coils, condensers and quartz crystals. A chapter on quartz crystals and one on the Taylor-Hulburt theory of transmission appear as additions in this revision. This section presents the principles underlying radio communication in a clear and concise manner.

Section II, presenting the applications, includes radio transmission, radio reception, and radio compass. This section deals with descriptions of apparatus for transmis-

sion, reception, and radio compass. The work on spark and arc transmitters is abbreviated in this edition. The work on receivers is largely rewritten.

Section III on radio measurements and precision instruments consists of twenty-six experiments of practical and precise measurements. These are suitable for teachers in need of such material as well as for laboratory workers. This section is almost identical with the corresponding work in the 6th edition.

Section IV, useful information, includes tables and formulas which are needed by the radio student. In this edition this section has been shortened by the omission of the work on elementary mathematics, and on laws and regulations.

Taking the book as a whole it is very readable. The explanations are remarkably clear and concise. Figures are good, well placed, and used to advantage in connection with the text. The many worked examples are helpful. Mathematics is not avoided but is used in such a way that the inexperienced reader can understand it easily. Important statements are emphasized by bold-faced type. The binding is sturdy. The Manual may be highly recommended not only to the elementary student to whom it is addressed chiefly, but also to the more mature worker and teacher.

The following errors in the statements of formulas and mathematical work should be noted:— p. 35  $R = lSP$

should be  $R = \frac{lP}{S}$  ; p. 36  $g = \frac{\gamma}{lS}$ —should be  $g = \frac{\gamma S}{l}$ , and

$g = \frac{1}{lSP}$  should be  $g = \frac{S}{lP}$  ; p. 93  $blB_g \cos \omega (t + dt)$

$= blB_g \cos \omega t \sin \omega dt - \sin \omega t \cos \omega dt$  should be  $blB_g \cos \omega (t + dt) = blB_g ( \cos \omega t \cos \omega dt - \sin \omega t \sin \omega dt )$  ;

p. 167 line beginning “and substituting”,  $10^2$  should be  $10^4$

p. 176  $I = .701 I_0$  should be  $I = .707 I_0$ ; p. 225  $\frac{R}{2L} < \frac{1}{LC}$

should be  $\frac{R}{2L} < \frac{1}{\sqrt{LC}}$  ; p. 642  $\lambda_1 = 1885 \sqrt{(L_1 - L) C}$   
should be  $\lambda_1 = 1885 \sqrt{(L_1 + L) C}$ ; and  $\lambda_2 = 1885$   
 $\sqrt{(L_2 - L) C}$  should be  $\lambda_2 = 1885 \sqrt{(L_2 + L) C}$ .

S. S. Kirby.

# DIGEST OF UNITED STATES PATENTS RELATING TO RADIO TELEGRAPHY AND TELEPHONY

Issued August 2, 1927—August 23, 1927

By  
**JOHN B. BRADY**

(Patent Lawyer, Ouray Building, Washington, D. C.)

- 1,637,445—A. W. FRANKLIN, New York, N. Y. VARIABLE MICA CONDENSER. Filed Oct. 11, 1923, issued Aug. 2, 1927. Assigned to Chas. Freshman Co., Inc.
- 1,637,613—F. A. KOLSTER, Palo Alto, Calif. RADIO COMPASS. Filed Nov. 22, 1920, issued Aug. 2, 1927. Assigned to Federal Telegraph Co.
- 1,637,646—H. KIMURA, Los Angeles, Calif. Filed Jan. 7, 1925, issued Aug. 2, 1927.
- 1,637,864—F. A. KOLSTER, Palo Alto, Calif. ELECTRON TUBE APPARATUS. Filed May 25, 1926, issued Aug. 2, 1927. Assigned to Federal Telegraph Co.
- 1,637,615—F. A. KOLSTER, Palo Alto, Calif. RADIO COMPASS. Filed Nov. 22, 1920, issued Aug. 2, 1927. Assigned to Federal Telegraph Co.
- 1,638,158—ELECTRIC APPARATUS. P. C. HEWITT, Ringwood Manor, N. J. Filed July 30, 1920, issued Aug. 9, 1927. Assigned to Cooper Hewitt Electric Co.
- 1,638,278—CONTACT RECTIFYING DEVICE. W. O. SNELLING, Allentown, Pa. Filed Feb. 8, 1923, issued Aug. 9, 1927.
- 1,638,417—SHIP'S SIGNALING OR BROADCASTING DEVICE. E. A. SPERRY, Brooklyn, N. Y. Filed Nov. 6, 1923, issued Aug. 9, 1927. Assigned to Sperry Gyroscope Company.
- 1,638,608—WAVE FILTER RECEIVING CIRCUIT. PETER WELCH and AUDLEY MURPHY, of Olean, N. Y. Filed Feb. 6, 1925, issued Aug. 9, 1927.
- 1,638,320—SOUND REPRODUCING APPARATUS. CYRIL A. BRIGHAM, of East Orange, N. J. Filed Nov. 2, 1926, issued Aug. 9, 1927. Assigned to Brandes Laboratories, Inc.
- 1,638,499—ELECTRON DISCHARGE DEVICE. A. MAVROGENIS, Milwaukee, Wis. Filed Jan. 2, 1926, issued Aug. 9, 1927.
- 1,638,699—A. L. MOBURG, Palms, Calif. UNDERGROUND ANTENNA. Filed Mar. 30, 1926, issued Aug. 9, 1927.
- 1,638,551—ELECTRON DISCHARGE DEVICE. V. L. RONCI, Brooklyn, N. Y. Filed July 30, 1924, issued Aug. 9, 1927. Assigned to Western Electric Co. Inc.
- 1,638,925—HIGH FREQUENCY SIGNALING SYSTEM. L. ESPENSCHIED, Hollis, N. Y. Filed Aug. 16, 1922, issued Aug. 16, 1927. Assigned to American Telephone and Telegraph Co.
- 1,638,930—VOLTAGE REGULATOR FOR VACUUM TUBES. J. HEBMAN, New York City. Filed Nov. 26, 1923, issued Aug. 16, 1927. Assigned to American Telephone and Telegraph Co.
- 1,639,414—RADIO RECEIVING SYSTEM. J. M. MILLER, Philadelphia, Pa. Filed June 23, 1926, issued Aug. 16, 1927. Assigned to Atwater Kent Mfg. Co.
- 1,639,597—CONDENSER. WILLIAM DUBILIER, New York, N. Y. Filed May 23, 1922, issued Aug. 16, 1927. Assigned to Dubilier Condenser Corp.



- 1,639,650—HIGH POTENTIAL CONDENSER. WILLIAM DUBILIER, of New York, N. Y. Filed March 7, 1919, issued Aug. 23, 1927. Assigned to Dubilier Condenser Corp.
- 1,639,667—METHOD FOR RADIO POSITION FINDING. R. H. RANGER, of Brooklyn, N. Y. Filed March 8, 1924, issued Aug. 23, 1927. Assigned to Radio Corp. of America.
- 1,639,686—WIRELESS TELEGRAPH STATION. H. J. J. M. DeBELLESCIZE, of Toulon, France. Filed August 29, 1921, issued Aug. 23, 1927.
- 1,639,695—ARRANGEMENT FOR THE REGULATION OF THE FREQUENCY IN FREQUENCY CHANGERS. K. HEGNER, of Berlin, Germany. Filed Oct. 23, 1925, issued Aug. 23, 1927. Assigned to Gesellschaft Fur Drahtlose Telegraphie M. B. H.
- 1,639,696—MEANS FOR CHANGING WAVELENGTHS. G. HILL, of Brooklyn, N. Y. and GEORGE H. CLARK, of Washington, D. C. Filed May 3, 1915, issued Aug. 23, 1927. Assigned to Radio Corporation of America.
- 1,639,698—ELECTRON EMITTING CATHODE AND PROCESS OF PREPARING SAME. F. HOLBORN, of Hoboken, N. J. Filed Jan. 14, 1926, issued Aug. 23, 1927. Assigned to Hazeltine Corporation.
- 1,639,727—AERIAL. M. E. FRASER and LOUIS SCHULTZ, of Detroit, Mich. Filed Feb. 23, 1926, issued Aug. 23, 1927.
- 1,639,773—TWO-WAY TELEPHONE TRANSMISSION. H. S. HAMILTON, of New York, N. Y. Filed Nov. 24, 1926, issued Aug. 23, 1927. Assigned to American Telephone and Telegraph Co.
- 1,639,805—RADIO APPARATUS. F. S. McCULLOUGH, of Cleveland, Ohio. Filed Jan. 9, 1920, issued Aug. 23, 1927. Assigned to Glenn L. Martin.
- 1,639,816—RADIO SIGNALING CIRCUIT. A. H. TAYLOR and LEO C. YOUNG, of Washington, D. C. Filed Jan. 7, 1925, issued Aug. 23, 1927. Assigned to Wired Radio, Inc.
- 1,639,817—PIEZO ELECTRIC CRYSTAL SYSTEM. A. H. TAYLOR, of Washington, D. C. Filed July 29, 1925, issued Aug. 23, 1927. Assigned to Wired Radio, Inc.
- 1,639,913—ANTISTATIC AERIAL. R. A. WEAGANT, of New York, N. Y. Filed Oct. 6, 1920, issued Aug. 23, 1927. Assigned to Radio Corporation of America.
- 1,640,200—MOUNTING MEANS FOR RADIO RECEIVING SETS. F. L. LORD, of Newark, N. J. Filed Aug. 28, 1925, issued Aug. 23, 1927. Assigned to The Lord Laboratories, Inc.
- 1,640,234—ANTENNA FOR USE WITH RADIO SETS. M. M. CONYERS, of Custer, South Dakota. Filed June 14, 1926, issued Aug. 23, 1927.

## GEOGRAPHICAL LOCATION OF MEMBERS ELECTED AUGUST 4, 1927

### Associates Elected

Alabama,	Montgomery, 217 Catoma St.....	Trum, A. D.
California,	Bishop, Box M .....	Parcher, F. M.
	Bradenton, 1315 21st St. ....	Whitaker, A. K.
	Catalina Island, Avalon, Station	
	KFWO .....	Paggi, M. M.
	Long Beach, 4300 East 5th St. ....	Randall, A. G.
	Los Angeles, 5356 5th Ave. ....	Kuchenbaur, Edw.
	Los Angeles, 621 So. Hope St. ....	Nolan, A. B.
	Manhattan Beach, Box 74-R1 .....	Tischer, Frank A.
	Oxnard, P. O. Box 523 .....	Newcomb, C. A.
	Piedmont, 1661 Grand Ave. ....	Myers, W. M.
	Sacramento, 1340 33rd St. ....	Koch, Wm. F.
	Sacramento, 2181 Weller Way S. ....	Semoni, A. J.
	San Francisco, 1925 Leavenworth St. .	Re Qua, F. L.
	San Francisco, Care U. S. Engineer	
	Dept. Dist. 1. ....	Senior, David B.
Connecticut,	Danbury, 10 Elmwood Place .....	Gillotti, A. C.
Dist. Columbia,	Washington, 3401 16th St., N. W. ....	Israel, J. O.
	Washington, Navy Dept., Rm 2624 ..	McCandlish, B. V.
Florida,	Brandon, Box 44 .....	Fisher, Theo.
	Tampa, P. O. Box 162 E .....	Johnson, C. B.
Illinois,	Chicago, 3600 Waveland Ave. ....	Wallander, E. Jr.
	Chicago, 846 West 54 Place .....	Weber, R. B.
	Crete, Box 89 .....	Anderson, W. T.
Indiana,	Fort Wayne, 1010 W. Wayne St. ....	Cook, Edw. H.
	Indianapolis, 1863 Dexter St. ....	Chrisney, R. G.
	South Bend, 607 East Howard St. ....	Kennedy, J. P.
Iowa,	Des Moines, 3127 4th St. ....	Haigh, M. C.
Kansas,	Independence, Room E, P. O. Box 460	Elliott, R. W.
Massachusetts,	Boston, 528 Beacon St. ....	Edgar, J. C.
	Boston, 528 Beacon St. ....	Olmstead, N. C.
	Cambridge, M. I. T. Dormitory, 93-115	Barnes, J. L.
	Cambridge, 26 Locke St. ....	Cormier, E. J.
	Melrose, 219 W. Wyoming Ave. ....	Cutting, B. F.
	Watertown, 201 Maplewood St. ....	Campbell, W. H.
Michigan,	Detroit, 3733 Baldwin Ave. ....	Luccier, A. H.
	Grand Rapids, 326 Sweet St., N. E. .	Curtice, W. M.
Nebraska,	Omaha, 2043 Farnam St. ....	Rimerman, C. O.
New Jersey,	Jersey City, 53 Griffith St. ....	Winchern, Leonard
	Newark, 46 Broad St. ....	Valentine, R. D.
New York,	Brooklyn, 211 Gates Ave. ....	Meyer, Herman
	Buffalo, 149 Bedford Ave. ....	Baker, N. M.
	Buffalo, 83 West Hazeltine Ave. ....	Horton, C. J.
	Buffalo, Rano & Crowley Sts. King	
	Mfg. Co. ....	Lanmon, M. C.
	Buffalo, 20 Ullman St. ....	Mahler, G. P.
	Buffalo, 138 Highland Ave. ....	Noel, L. S.
	Buffalo, 136 Parkdale Ave. ....	Patey, H. W.
	Buffalo, 9 Huetter Ave. ....	Schwedt, M. C.
	Buffalo, 113 High St. ....	Simpson, B. T.
	Floral Park, L. I., 28 Floral Blvd. .	Goldsmith, L. T.
	Flushing, L. I., 95 Elm Ave. ....	Harvey, C. C.
	Geneva, 48 Brook St. ....	Biles, F. V.
	Jamaica, L. I., 162-12 85th Ave. ....	Behr, J. A.
	Kenmore, 218 Hoover Ave. ....	Wullenweber, M. O.
	Middletown, 374½ North St. ....	Callender, E. R.
	New York, ss Tracy, M & J Tracy,	
	1 Broadway .....	Halfpapf, B. A.
	New York, uss Raleigh, Care	
	Postmaster .....	Hollingsworth, R. L.
	New York, 103 Park Ave. ....	Jenkins, M. A.
	New York, 2714 University Ave. ....	Nisley, P. H.
	New York, uss Arkansas, Care	
	Postmaster, Box 14 .....	Proffer, J. W.

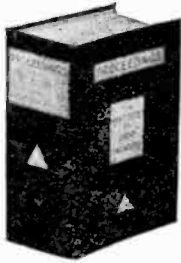
816 Geographical Location of Members Elected August 4, 1927

New York	New York, 463 West St. ....	Smith, J. W.
	North Tonowanda, 537 Falls Blvd. ....	Wesselman, E.
	Richmond Hill, L. I., 132-10 106th St.	Heins, H. F.
Ohio,	Rochester, Sagamore Hotel	Chamberlain, A. B.
	Cleveland, 8903 Carnegie Ave. ....	Ackerman, E. K.
Pennsylvania,	Allentown, 522 Hamilton St. ....	Clauss, F. W.
	Allentown, 1123 Hamilton St. ....	Woodling, C. E.
	Altoona, GFC Radio Labs., Commerce Bldg. ....	Cornet, G. F.
	Boyertown	Venzke, H. F.
	Carbondale, 68 Laurel St. ....	Hiller, N. H. Jr.
	Charleroi, 437 Shady Ave. ....	Kelso, H. F.
	Connellsville, 302 S. Pgh. St. ....	Angle, B. C.
	Edgewood, 837 E. Hutchinson Ave. ....	Burnside, C. J.
	Erie, 246 West Fifth St. ....	Clark, E. L.
	Lancaster, 118 Reservoir St. ....	Feagley, C. W. Jr.
	Lehighton, 129 Lentz Ave. ....	Butler, H. F.
	Philadelphia, 2039 N. Park Ave. ....	Babcock, L. C. Jr.
	Philadelphia, 5316 Columbia Ave. ....	Burgess, E. R.
	Philadelphia, 2115 Stenton Ave. ....	Frigar, John, 3rd
	Philadelphia, Mt. Airy, 81 E. Phila.—Elina St.	Keast, P. M.
	Philadelphia, 1246 W. Lehigh Ave. ....	Keller, P. A.
	Philadelphia, 6154 Haverford Ave. ....	Mayers, H. F.
	Philadelphia, Mt. Airy, 41 Carpenter Lane	McDowell, A. P. Jr.
	Philadelphia, 726 North 49th St. ....	Merkel, H. F.
	Philadelphia, 210 Tree St. ....	Seaman, J. C. M.
	Philadelphia, Oak Lane P. O. 1808 Beech Ave.	Sirms, W. J.
	Philadelphia, 273 S. Felton St. ....	Wilson, A. T.
	Pittsburgh, 1107 Island Ave. ....	Cruikshank, O. T.
	Pittsburgh, 817 Chianti St. ....	Joller, C. R.
	Pittsburgh, Dormont, 2922 Mattern Ave.	Thompson, M. F.
	Pittsburgh, Edgewood, 111 Maple Ave.	Wensley, R. J.
	Pittsburgh, 5306 Westminister Place	Westervelt, F. B.
	Pottstown, 524 Charlotte St. ....	Lessig, L. G.
	Ridgway, 416 N. Broad St. ....	Anderson, T. C.
	Springdale, 358 North Ave. ....	Stanier, D. M.
	State College, Dept. of Chemistry ..	Goode, K. H.
	Wilkinsburg, 1506 Wood St. ....	Barnes, T. D.
Texas,	Brownsville, 711 Elizabeth St. ....	De Bardeleben, J.F.
	Dallas, 103 East 6th St. ....	Sheffield, H. M.
	Denton, Box 534	Fain, E. A.
	El Paso, 4001 Oxford St. ....	Kitchens, W. F.
	Greenville, Box 599	Tull, M. G.
	Kings Mill, Box 56, Texas Co. ....	Coss, L. D.
	Lubbock, 2213 Tenth St. ....	Andrew, W. M.
	Fort Arthur, Port Arthur College, ....	Daniel, R. G.
	Ranger	Stone, C. D.
	San Antonio, 101 Bayler St. ....	Cunningham, E. H.
Wisconsin,	Kenosha, Demos Radio Shop	Karras, G. S.
	La Crosse, 233 S. 9th St. ....	Trumble, L. A.
	Milwaukee, 490 10th Ave. ....	Kuene, K. R.
	Milwaukee, 428 Van Buren St. ....	Lawton, H. B.
	Racine, 1624 Franklin St. ....	Host, R. H.
Canada,	B. C., Vancouver, 4139 Knight Road	Giffin, L. D.
	B. C., Vancouver, Nanaimo, 804 Wentworth St.	Lapham, J. B.
	Quebec, Drummondville, Marconi Station	Matheson, N. J.
	Saskatchewan, Moose Jaw, 960 Montgomery St. ....	Paine, H. L.
England,	London, W. 12, 56 Emlyn Road	Hardy, Harold
	London, W 5, The Grove, Ealing, 3 Ashfield Ct.	Jacobs, E. V.
	Portsmouth, 14 Silchester Road ...	Newnham, L. E.
Hawaii,	Honolulu, P. O. Box 758	Kaneko, G. T.
Japan,	Tokio, Dept. Comms., Komukyoku, Radio Sec.	Inanami, Suco
Mexico,	Mexico City, Apartado 1146	Ritzau, K.
Panama,	Canal Zone, Gatun, 4th F. A., Headquarters Battery	Karr, H. P.
Philippine Islands,	Manila, Radio Corp. of Philippines ..	Grupe, E.
South America,	Colombia, Cartagena, Apartado 130 ..	Shire, L. E.

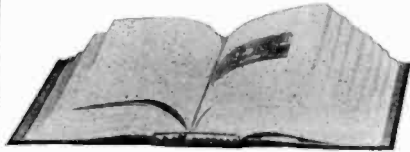
## Juniors Elected

California,	Olympia, "Oak Glen" .....	Kaufman, A. W.
Illinois,	Evanston, 512 Lee St. ....	Cline, R. A.
Missouri,	St. Louis, 4525 Westminster Place ..	Settle, H. B.
New York,	Long Island City, Astoria, 911 2nd Ave. ....	Greene, G. J.
	Brooklyn, 278 Troy St. ....	Boskowitz, B. D.
	New York, 688 8th Ave. ....	Kennedy, W. A.
	New York, 195 Broadway, Room 409 ..	Sigety, Louis
	New York, 301 West 45th St. ....	Thomas, S. G.
Pennsylvania,	Harrisburg, 307 Lewis St. ....	Mummert, R. E.
	Millvale, 425 Evergreen Ave. ....	Ballantine, F. T.
	New Kensington, 1039 Victoria Ave. ..	Clowes, R. T.
	Overbrook, 1616 N. 60th St. ....	Closson, H. B. Jr.
	Philadelphia, 6154 Haverford Ave. ....	Mayers, H. F.
	Philadelphia, 1717 E. Brill St. ....	Remmlein, C. D.
	Pittsburgh, 5437 Aylesboro Ave. ....	Prager, J. W.
	Pittsburgh, 1368 Herman St. ....	Wiesmann, B. T.
	Warren, 412 Conewango Ave. ....	Gruninger, J. E.
Texas,	Albany, Box 126 .....	Codington, J. H.
	Albany, Box 535 .....	Jones, F. B.
	Electra, Box 1293 .....	Taylor, R. L.
	Palm .....	Machotka, Miroslav
	Pampa, Gray County State Bank ....	Thurmond, V. H.
	So. San Antonio .....	Doehne, E. C.
	Rowena, Victor St. ....	Machotka, Slavomir
Wyoming,	Torrington, P. O. Box 266 .....	O'Reilly, G. A.
Canada,	B. C., Victoria, 645 Yates St. ....	West, H. E.
	Ontario, Preston, 609 Laurel St. ....	Holm, H. R.
	Ontario, Alvinston .....	Welch, Clifford
Germany,	Berlin s 59, Hasenhaide 61 .....	Von Ardenne, Manfred





## Binders for Your Proceedings



Haven't you often wished for a practical and good-looking binder for your PROCEEDINGS? The binder pictured above is both.

Made of handsome Spanish Grain Fabrikoid—in blue and gold—it is constructed to hold a complete volume (12 issues). No matter where the pages are opened they lie flat and wire straps permit easy transfers if not used as a permanent binder. Space is provided on the back for marking of volume number or your name.

**PRICE \$1.50 EACH**  
*or \$2.00 each with name stamped in gold*

∞

## PINS and WATCH CHARMS



Pin has safety catch and is finished on one side.

Price, \$3.00 each, any grade

Both 14K gold and enameled in white, maroon, blue or gold.



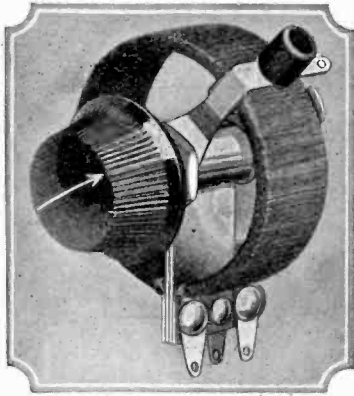
Watch charm has swivel suspension ring and is finished on both sides

Price \$5.00 each, any grade

∞

*To obtain Binders, Pins or Watch Charms address the Institute office and enclose cash or check with order.*

It will be of mutual benefit to mention Proceedings in writing to advertisers



*Greater Efficiency  
and Economy*

*in*

**“B” Eliminator  
Resistances**

**T**HE new Centralab 4th Terminal Potentiometers have two variable contact arms on each unit. Two of these units in series will provide complete voltage regulation for any “B” power supply without additional fixed resistors or variables. One additional unit will provide two “C” bias taps when desired. The economy is apparent in that there are fewer units to buy, and less assembly time to mount them on the panel.

Centralab 4th Terminal Potentiometers are wire wound on a frame of metal and asbestos. They will safely dissipate in excess of 30 watts without break down. This high current carrying capacity makes possible a low total resistance across the “B” supply, giving much better voltage regulation than the high resistances normally used, and sufficient current load on open circuit to substantially lessen the danger of condenser break down.

Fourth Terminal Potentiometers are wire wound in resistance values up to 6000 ohms. The diameter is 2”, depth  $\frac{3}{4}$ ”. They are recommended as the best and most economical of available “B” power voltage controls.

Where smaller units must be used because of small panel space, there are other Centralab wire wound potentiometers with diameters of  $1\frac{5}{8}$ ” and  $1\frac{3}{8}$ ” respectively that can be furnished in resistances up to 20,000 ohms, and variable high resistances up to 500,000 ohms.

*Complete information and circuit data  
will be gladly mailed to those interested.*

**Central Radio Laboratories**

16 Keefe Avenue

Milwaukee, Wisconsin

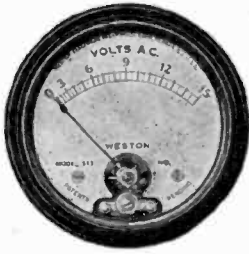
---

**Centralab**

---

It will be of mutual benefit to mention Proceedings in writing to advertisers

# Are these the small A. C. Instruments YOU have wanted?



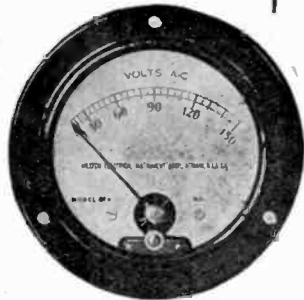
It has taken many years to develop these small A. C. Panel Instruments to meet the high standards of quality and performance always expected of Weston. And now, much existing equipment—radio, and a host of similar applications—as well as developments yet to come, will benefit by this achievement. Is YOUR product one of these?

Check your requirements against the following specifications—unequaled by other instruments.

1. 2" and 3¼" diameter models for small panels.
2. The same degree of accuracy and reliability, the same high standards of quality and workmanship as in the larger Weston models.
3. Made as Voltmeters, Ammeters and Milliammeters with flush style cases.
4. Accurate on any commercial frequency.
5. Voltmeters have an exceptionally high series resistance, giving full scale deflection with an extremely small current consumption.
6. Resistance self-contained up to 300 volts. Remarkably small temperature coefficient, working error, and frequency errors.
7. Uniform and open scales, almost to zero position, provide wide range accuracy of reading.
8. Responsive and very well damped.

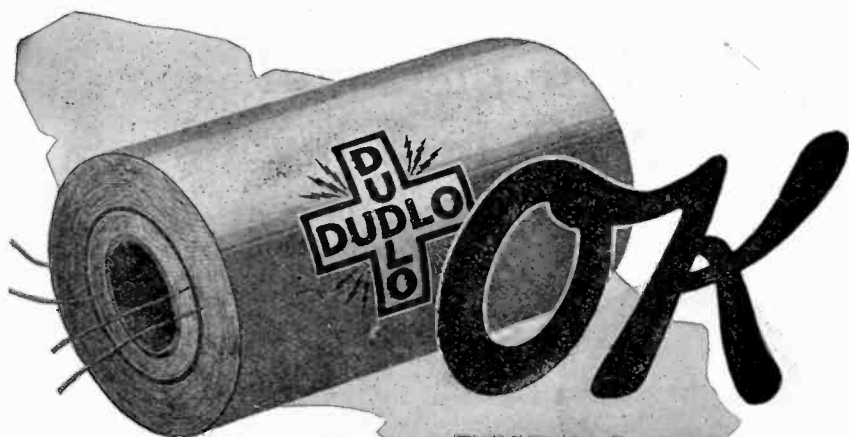
You will be interested in the novel and modern design of these meters and we invite your investigation when your needs arise for small A. C. panel instruments.

WESTON ELECTRICAL INSTRUMENT CORPORATION  
73 Weston Avenue. Newark, N. J.



It will be of mutual benefit to mention Proceedings In writing to advertisers





**Every DUDLO Coil  
must be O.K. in every respect**

— *number of turns*

— *no short circuits*

Complete satisfaction is assured to Dudlo customers because each individual coil is thoroughly tested and accurately checked in every way possible.

Dudlo coils must be up to specifications. There is no passing mark short of perfection.

Here in the world's coil headquarters has been developed the most complete testing apparatus in the industry. Special methods and equipment have been developed that would be impossible with any but the largest volume.

Unlimited volume, deliveries on schedule and exact adherence to specifications make Dudlo the logical source of supply for magnet wire and windings.

— *dimensions*

— *resistance*

— *output*

# DUDLO

**DUDLO MANUFACTURING CORPORATION**

**FORT WAYNE, IND.**

56 Earl Street, Newark, N. J.

160 North La Salle St., Chicago, Ill.

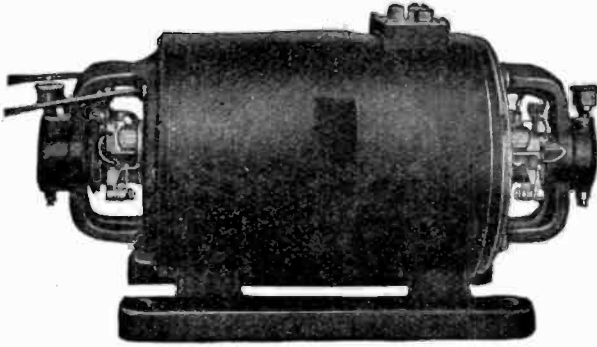
274 Brannan St., San Francisco, Calif.

4153 Bingham Ave., St. Louis, Mo.

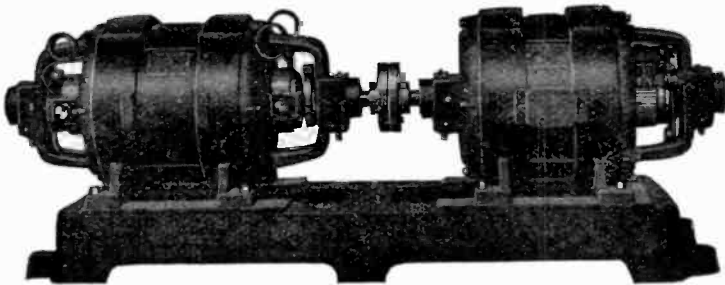
It will be of mutual benefit to mention Proceedings in writing to advertisers

*Always specify—*

**“ESCO” Maximum miles per watt  
Power supplies for transmission.**



“ESCO” has developed a line of over 100 standard 2-bearing Motor-generators for plate or filament. These include D.C., A.C., single phase and polyphase motors.



“ESCO” two and three unit sets have become the accepted standards for transmission. The “ESCO” line consists of over 200 combinations. These are covered by Bulletin 237C.

Our engineers are always willing to cooperate in the development of special sets.

“ESCO” is the pioneer in designing, developing and producing Generators, Motor-Generators, Dynamotors and Rotary Converters for all Radio purposes.



HOW CAN “ESCO” SERVE YOU?  
**ELECTRIC SPECIALTY COMPANY**

TRADE “ESCO” MARK



300 South Street

Stamford, Conn.

It will be of mutual benefit to mention Proceedings in writing to advertisers

# PROFESSIONAL ENGINEERING DIRECTORY

For Consultants in Radio and Allied Engineering Fields

## The J. G. White Engineering Corporation

Engineers—Constructors  
Builders of New York Radio Central  
Industrial, Steam Power and  
Gas Plants, Steam and Elec-  
tric Railroads, Transmission  
Systems.

43 Exchange Place New York

## Electrical Testing Laboratories

Electrical, Photometrical,  
Chemical and Mechanical  
Laboratories

**RADIO DEPARTMENT**  
80th St., and East End Ave.,  
New York, N. Y.

## Q R V RADIO SERVICE, Inc.

JOHN S. DUNHAM  
J. F. B. MEACHAM

**DEVOTED TO SERVICING  
BROADCAST RECEIVERS  
EXCLUSIVELY**

1400 BROADWAY, NEW YORK  
WISCONSIN 9780

## J. E. JENKINS & S. E. ADAIR ENGINEERS

Broadcasting Equipment  
General Radio Telephone  
Engineering

1500 N. DEARBORN PARKWAY  
CHICAGO, ILLINOIS

## Free Radio Employment Service

Employers in any line of the  
Radio industry (or in allied in-  
dustries) should call on our Free  
Radio Employment Service when  
additional employees are needed.  
Thoroughly trained, experienced  
men supplied anywhere in the U. S.  
or Canada on 48 hours notice. No  
charge for service. Send post card  
today for our free monthly bulletin.  
Address National Radio Institute,  
Dept. I. R. E., Washington, D. C.

## Radio Fundamental Co. Hearst Square Chicago

Specializing in radio and allied  
problems—both mathematical and  
practical. Analysis. Criticisms.  
Economical production. Expert de-  
signing. Radio power supply. Small  
and large tube design. Also plant  
construction. Photo electric prob-  
lems. Set design. Translations.  
Patent problems. Cost systems, etc.  
Write us in confidence.

John Minton I. G. Maloff  
JOHN MINTON, Ph. D.  
CONSULTING ENGINEER

for  
Developing — Designing —  
Manufacturing  
of

Radio Receivers, Amplifiers,  
Transformers, Rectifiers, Sound  
Recording and Reproducing ap-  
paratus.

Radio and Electro-Acoustical  
Laboratory

8 CHURCH ST. WHITE PLAINS, N. Y.

## POSITION VACANT

RADIO RESEARCH ENGIN-  
EER, with electrical engineering  
or equivalent degree, who has  
specialized in theoretical and ex-  
perimental receiver circuit re-  
search. In reply, give references  
to publications, education, ex-  
perience and salary required.

Radio Corporation of America  
70 Van Cortland Park, South,  
Bronx, New York City  
Attention of Mr. J. Weinberger.

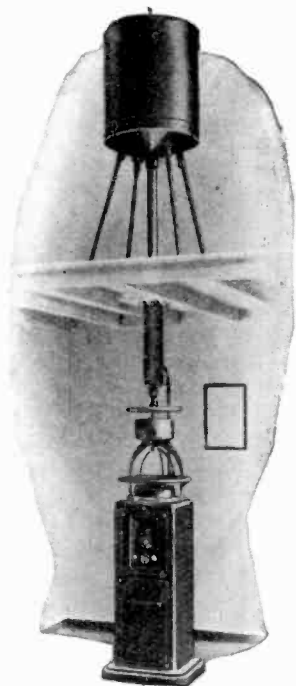
It will be of mutual benefit to mention Proceedings in writing to advertisers

---

---

# The new Kolster Radio Compass provides

*Greater Safety—  
Visual Bearings—  
Simple, Positive Operation*



From its aluminum pedestal to the new enclosed loop, the new Kolster Radio Compass [Type AM-4490] embodies every improvement radio science has to offer. The insulated cylindrical housing of the loop affords complete protection against wind, ice, snow, and spray. A tiny lamp flashes the signals of nearby stations. While for long-distance bearings, a Kolster eight-tube receiver with a new circuit especially designed for radio compass work provides the maximum of selectivity and sensitiveness.

No knowledge of radio is necessary to operate the Kolster Radio Compass. It is built for the navigator. The positive unidirectional indicator gives instantaneous readings without guesswork or computation. A new and improved Kolster automatic compensator corrects all natural errors, and makes *direct* readings absolutely accurate.

*Kolster Radio is also setting new standards of performance in broadcast receiving sets made by*

**FEDERAL-BRANDES, INC.**

200 Mt. Pleasant Avenue

Newark, N. J.

---

---

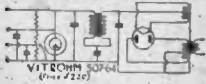
It will be of mutual benefit to mention Proceedings in writing to advertisers

# VITROHM RESISTORS

—in power supply units

**SILVER-MARSHALL**  
652 RESERVOIR B SUPPLY

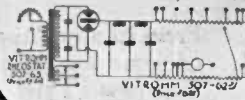
Uses Vitrohm Resistor 507-64



## RAYTHEON A-B-C

350 m.a. CURRENT SUPPLY UNIT

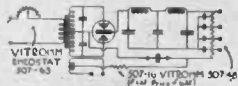
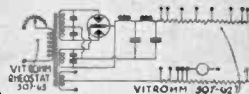
Uses Vitrohm Resistor 507-62  
and Vitrohm Rheostat 507-63



## QRS A-B-C

400 m.a. CURRENT SUPPLY UNIT

Uses Vitrohm Resistor 507-62  
and Vitrohm Rheostat 507-63



## QRS and RAYTHEON

85 m.a. CURRENT SUPPLY UNIT

Uses Vitrohm Resistors  
507-16 and 507-48

35 years of research and experience in the manufacture of resistors is incorporated in Vitrohms for radio.

There are available Vitrohms to give you noiseless, dependable service wherever resistance is indicated in a current or power supply circuit.

Vitrohms do not age or change in resistance value after use. Ten, twenty or thirty years of constant use under all conditions are every-day records of Vitrohms.

**Vitrohms** are "pre-aged" wire wound on porcelain tubes and protected by fused-on vitreous enamel for the permanent protection of resistance wire and terminals.

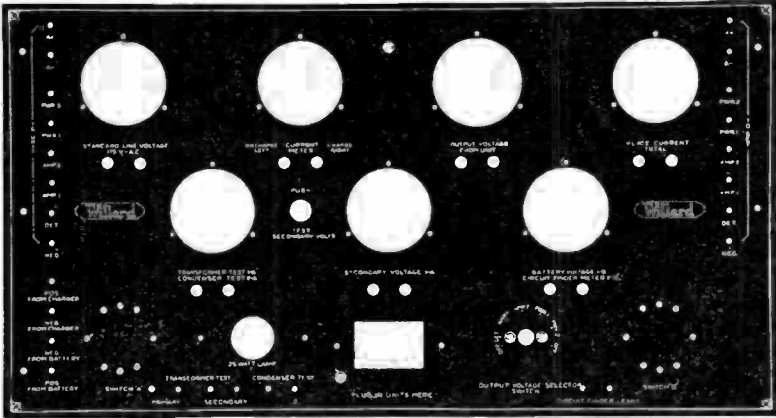
Per square inch of surface, Vitrohms have greater watt dissipation than any other resistor.

Send 15c for "How To Use Resistance in Radio." It contains many circuits of interest to all experimenters. Bulletin 507 describing Vitrohms for radio is sent without charge upon request.

\* Approved by the Raytheon and QRS Laboratories.

**Ward Leonard Electric Company**  
3741 South Street Mount Vernon, N.Y.

It will be of mutual benefit to mention Proceedings in writing to advertisers



## Finished Insulating Parts With Veri Chrome Designations

Terminal strips and panels to which a large number of wires are attached may be completely machined and perforated in the Formica plant and printed with designations in gold or silver by the Veri Chrome and several other processes.

The result is handsome in appearance and finish and moderate in cost. It adds both to the salability and the efficiency of apparatus.

Formica has ample equipment for all the necessary operations and can turn the material out promptly in quantity.

Send your blueprints for quotations.

### The Formica Insulation Company

4646 Spring Grove Avenue

Cincinnati, Ohio

Hear the FORMICA Orchestra  
Tuesday 9 to 10  
over WLW

**FORMICA**  
Made from Anhydrous Bakelite Resins  
**SHEETS TUBES RODS**

Formica has a Complete Service on Insulating Parts for Radio Manufacturers

It will be of mutual benefit to mention Proceedings in writing to advertisers

# PERMANENCE

(The Quality of Durability and Fixity)

One of the most important requirements in insulating materials for radio work is the permanency of the insulating properties.

PYREX\* insulators have constant electrical and physical characteristics because they are products of a melting process, and therefore homogeneous throughout their structure.

The super-smooth surface is part of the body and not a "glaze," and it cannot craze or check. The surface does not hold dust, is not affected by smoke or fumes, and washes clean in a rain storm.

PYREX\* insulators are light in weight and available in sizes for various power equipments.

PYREX\* insulator products comprise:

Antenna, lead-in, stand-off and bus-bar insulators, moulded shapes for inductances, bushings, rods and cylinders.

A booklet detailing the chemical, physical and electrical characteristics of PYREX\* Glass Products and describing some of the unique industrial applications of the materials sold under the PYREX trade mark is now available. Write for a copy.

## Corning Glass Works

*Industrial Div. Dept. S*

**Corning, New York**

\*T. M. Reg. U. S. Pat. Off.

---

---

◀ LET SCOVILL BE YOUR FACTORY ▶

---

---



Without additional buildings or equipment, you can increase the production of your factory by bringing your problems to Scovill. Scovill, with its great capacity for volume output of parts or finished articles of metal, has facilities in laboratories, metallurgists, machinery and man power to take over the manufacturing division of your business to the complete satisfaction of your cost sheets. For your convenience, Scovill maintains service organizations at strategic points from coast to coast. To get full information about how Scovill can serve you, call the nearest Scovill office today.

---

---

## A SCOVILL SERVICE

---

---

### THESE ARE SCOVILL PRODUCTS

*Made to Order:* Condensers—Variable and Variable Vernier and parts for same, Metal Stampings, Screw Machine Products, Switches, Decorated Metal Radio Panels, Parts from Brass, Steel and Aluminum. *Carried in Stock:* Butts and Hinges, Continuous Hinges, Machine Screws. *Brass Mill Products:* Sheet, rod, wire, tubing.

**SCOVILL MANUFACTURING COMPANY**  
Waterbury Connecticut

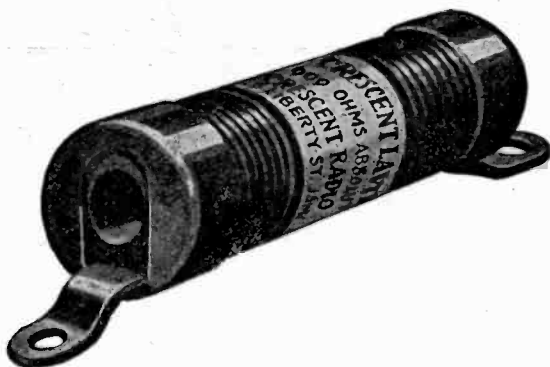
New York, Boston, Chicago, Providence, Philadelphia, Cleveland,  
San Francisco, Los Angeles, Atlanta, Cincinnati, Detroit

*Member, Copper and Brass Research Association*



It will be of mutual benefit to mention Proceedings in writing to advertisers





Here is a resistance you can use in a transmitter or receiver on voltages up to 2000.

Absolutely moisture proof, will not change with voltage applied. Each unit will dissipate 10 watts for a short period or 4 watts continuously. When the limited surface is taken into account this is a marvelous performance.

Obtainable in any resistance from 3000 ohms to ten megohms.

*Write for catalogue*

## **Cresradio Corporation**

166-32 Jamaica Ave. Jamaica, N. Y.

**CRESCENT  
LAYITE  
RESISTANCES**

It will be of mutual benefit to mention Proceedings in writing to advertisers

# TOBE

TRADE MARK REG'D U. S. PAT. OFFICE

## B BLOCKS



Are condenser banks of various combinations of values and for different working voltages, for use in the filter-circuits of plate-power supplies for radio-receivers and amplifiers. They are made of TOBE Condensers and the name B-BLOCK is copyrighted.

TOBE B-BLOCKS are standard for home construction of most of the popular B-Power Supplies and Power-Packs. They are furnished on special order to meet any specifications and will be found in leading factory made units. Quotations will be promptly furnished.

### Tobe Deutschmann Co.

Cambridge - - Mass.

*Condensers for all usual working voltages*

*Tiny Tobe Condensers*

*Veritas 2, 5, and 10 watt non-inductive high current Resistors*

**Write us for pamphlet 0-9**

It will be of mutual benefit to mention Proceedings in writing to advertisers

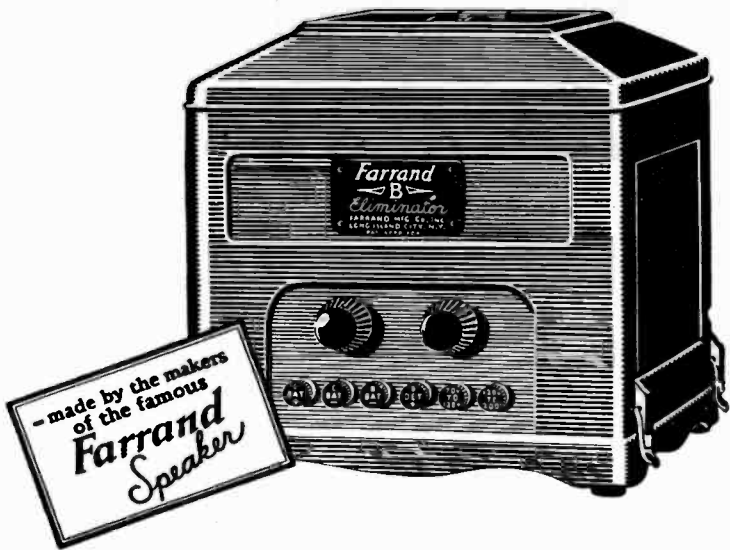
# *Farrand*

---

# B

---

## ELIMINATOR



## KNOWN QUALITY

It will be of mutual benefit to mention Proceedings in writing to advertisers

## Alphabetical Index to Advertisements

<b>A</b>		
American Transformer Company	-	III
<b>B</b>		
Bakelite Corporation	-	VII
Burgess Battery	-	VI
<b>C</b>		
Central Radio Laboratories	-	X
Cresradio Corp.	-	XX
Cunningham	-	Inside Front Cover
Corning Glass	-	XVIII
<b>D</b>		
Deutschmann, Co. Tobe	-	XXI
Dudlo Manufacturing Corporation	-	XII
<b>E</b>		
Electric Specialty Company	-	XIII
Electrical Testing Laboratories	-	XIV
<b>F</b>		
Farrand Manufacturing Company	-	XXII
Federal-Brandes	-	XV
Formica	-	XVII
<b>G</b>		
General Radio Company	-	Back Cover
Grebe, A. H. & Company	-	V
<b>I</b>		
Iliffe & Sons	-	XXIV
<b>J</b>		
Jewell Electrical	-	IV
J. E. Jenkins & S. E. Adair, Engineers	-	XIV
<b>M</b>		
Minton, John	-	XIV
<b>Q</b>		
Q. R. V. Radio Service	-	XIV
<b>R</b>		
Radio Corporation of America	-	VIII
Roller-Smith Company	-	II
<b>S</b>		
Scovill Manufacturing Company	-	XIX
<b>T</b>		
Thordarson	-	Inside Cover
<b>W</b>		
Ward-Leonard	-	XVI
Wireless Specialty Apparatus Company	-	I
White, J. G., Engineering Corporation	-	XIV
Weston Electrical Instrument Co.	-	X

When writing the advertisers please mention The Proceedings of The Institute of Radio Engineers.

# “No American

deeply interested in radio science can afford to be without ‘EXPERIMENTAL WIRELESS’.... This paper is without a peer as an organ for serious engineers and experimenters.”

—Extract from “Radio Broadcast”

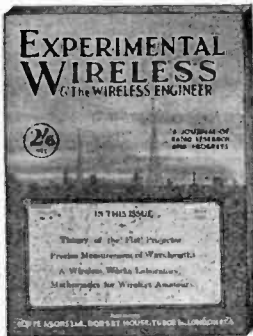
This opinion from an American source is indicative of the unique position enjoyed by “Experimental Wireless.” It is a monthly publication devoted to the interests of all keen radio enthusiasts, advanced workers and experimenters, and professional wireless engineers. It contains technical and scientific information relating to every aspect of wireless experiment and research.

Its articles are contributed by men who have made special studies in the science of wireless communication and are recognized leaders in the experimental field.

## EXPERIMENTAL WIRELESS & The WIRELESS ENGINEER

*The Journal of Radio Research and Progress*

Technical Editor: Prof. G. W. O. Howe      Editor: Hugh S. Pockock



MONTHLY 2s., 6d. net.

SUBSCRIPTION:  
32s. per annum, post free.

### A Free Copy

of “Experimental Wireless” will be sent to any interested reader upon request to the Publishers:

ILIFFE & SONS Ltd.,  
Dorset House, Tudor St.,  
London, E. C. 4.,  
ENGLAND.

It will be of mutual benefit to mention Proceedings in writing to advertisers



Here are some of the manufacturers who use Thordarson Transformers as standard equipment on their quality power supply units.

Advance Auto Accessories Corp.  
Federal Telephone Mfg. Co.  
Ferguson Radio Mfg. Co.  
Freed Eisemann Radio Corp.  
Howard Radio Co.  
Colin B. Kennedy Corp.  
Prestolite Storage Battery Co.  
Philadelphia Storage Battery Co.  
Sparks Withington Co.  
Willard Storage Battery Co.

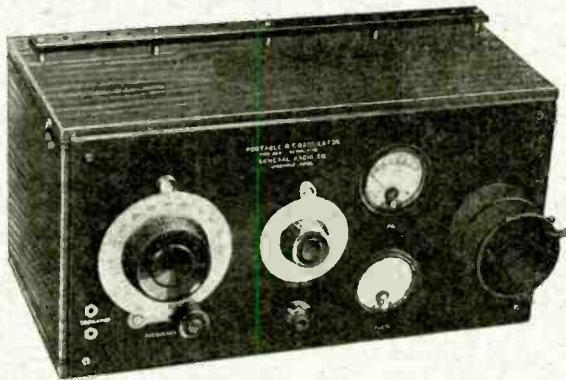
May we not figure on your requirements also?

# THORDARSON RADIO

*Supreme in Musical Performance*  
**TRANSFORMERS**

# Portable R. F. Oscillator

with range of 15 to 30,000 meters



TYPE 384 R. F. OSCILLATOR

The Type 384 oscillator has a wide range of utility in the radio laboratory. It may be used as a source in high frequency measurements of coils and condensers, or for checking radio receivers. It is particularly useful for checking over-all receiver characteristics when combined with the General Radio Type 413 Beat-Frequency Oscillator. By using the Type 384 R. F. Oscillator and Type 413 Beat Frequency Oscillator radio frequency and audio frequency tests may be made simultaneously.

The Type 384 R. F. oscillator covers the range from 15 to 30,000 meters by means of nine plug-in coils.

A single UX-199 tube is used which permits an entirely self-contained instrument. A plate milliammeter is provided to indicate oscillation.

Type 384 R. F. Oscillator, without Coils . . . \$80.00

Type 384-D Figure 8 Coil (200-600 meters) \$4.00

Prices on coils covering other ranges on request.

Type 413 B. F. Oscillator . . . . . \$210.00

Licensed under Patent No. 1113149 for experimental laboratory use only where no commercial features are involved.

*Write for Bulletin 6150-1*

General Radio Co., Cambridge, Mass.

# GENERAL RADIO

## LABORATORY EQUIPMENT