

Price \$7.00 year y Single issue \$1.00

THE NEWSPAPER FOR  
THE HOBBYIST OF VINTAGE  
ELECTRONICS AND SOUND

# THE HORN SPEAKER



From a photograph made for POPULAR RADIO

THIS HOME-MADE SET COSTS FROM \$15.00 to \$22.00 FOR MATERIALS  
Fastening the secondary coil to the sliding support. This sliding coil makes it possible to tune out interference on this set.

## How to Make and Operate a Two-Circuit Receiving Set

Further evidence of the purpose of the Government authorities to encourage radio amateurs is furnished by these specifications, which have been carefully worked out by the Bureau of Standards, and issued as a sequel to the specifications of the crystal receiving set which were published in the May issue of this magazine.

By WATSON DAVIS

UNCLE SAM is telling the radio fan how to make his own receiving equipment that will enable him to snatch his share of the music, lectures, code and other wireless activity in the ether. The Bureau of Standards, Department of Commerce, cooperating with the Bureau of Markets, Department of Agriculture, has compiled these simple instructions for the amateur.

At a total cost of from about \$15 to about \$22, depending upon the quality of the telephone receivers and the condenser purchased, he can make an efficient radio receiver right at home that can distinguish between messages from different trans-

mitting stations sent on wavelengths nearly the same. The outfit will enable anyone to hear radio code messages or music and voice sent from medium-power transmitting stations within an area about the size of a large city, and from high-power stations within fifty miles, provided the waves used by the sending stations have wave frequencies between 500 and 1500 kilocycles a second—that is, wavelengths between 600 and 200 meters. This equipment will not receive undamped (continuous) waves.

This set is superior to a single-circuit outfit as it is more selective, that is, it can be tuned sharper. Those who have con-

structed the Bureau of Standards single-circuit \$11 radio receiver according to instructions published in the May issue of this magazine can utilize all the parts of that set in making the better outfit described here.

The instructions tell how to make all the parts of a receiving station except the antenna, lightning switch and necessary ground connections. How to make and erect an antenna and make necessary connections to the receiving set was explained in the previous article.

### Parts of the Set

The two-circuit receiving set consists essentially of a coupler, a variable condenser, a crystal detector, and accessories.

The assembled receiving set is shown in Figure 1, and Figure 2 shows how to wire the set.

The coupler, shown in left half of Figure 1, is composed of a fixed section made up of the coil tube P, the upright J, the contact panel K, and the base B, and a movable section composed of coil tube S, the supporting contact panel M and the base L.

### The Movable or Secondary Coil

The coil tube S, (Figure 1), is a piece of cardboard tubing  $3\frac{3}{8}$  inches in diameter and 4 inches long. A round cardboard table-salt box which can be obtained at a grocery store is about  $3\frac{3}{8}$  inches in diameter and can be used for this purpose. One of the cardboard ends or caps should be securely glued to the box. This tube is wound with No. 24 (or No. 26) double cotton covered copper wire.

To wind the wire punch two holes in the tube  $\frac{3}{8}$  inch from the open end, as shown at R, Figure 2. Weave the end of the wire through these holes so that it is firmly anchored and has one end extending about 10 inches inside the tube. Punch a hole F about  $\frac{3}{8}$  inch from the other end (which has the cardboard cover secured to it) in line with the holes punched at R. Draw the free end of the wire through the inside of the tube and thread it out through the hole at F. Now wind on 10 turns of wire and take off a 6-inch twisted tap made by twisting a 6-inch loop of wire together at such a place that it will be slightly staggered from the first connection. Hold the turns tight and punch a hole B directly underneath this tap. Insert the end of the tap in the hole and pull it through the inside of the tube so that the turns are held in place. The hole for this tap should be slightly staggered from the first two holes which were punched. Punch another hole L  $\frac{3}{8}$  inch from the other end of the tube and in line with the hole B. Thread the twisted tap out through this hole and pull it tight. Wind on 10 more turns and bring out another twisted tap, then 10 more turns and another tap; 15 turns and another tap; 15 more turns and an-

# letters

Jim:

....Antique radios and such are scarce in this area, but I have managed to get a 1925 Splitdorph, a couple of 1924 and 1925 Atwater Kent and 1 1923 Home made 3 tube set. Also have a cylinder phono and 50 cylinders for it-- but I am still looking for more.

Good luck,  
C. D. Ray  
417 Cedar Drive  
Hampton, VA 23669

Dear Jim:

....This past year has been good to me although I have not found too many old radios. In fact only one that I am going to keep. It is a Crosley "The Pal" with a model 53 chassis. I am hoping some of your readers can help me with some information about this set. The speaker that came with it is a RCA 100A and the case is broken. This speaker looks real nice on top of the cabinet.

Any help from anyone would be greatly appreciated.

Happy hunting,  
Frank L. Pratt  
730 Revere Ave.  
Ft. Walton Beach,  
Florida 32548

Dear Jim,

I wonder if any of your readers have any information on a Hallock and Watson "Hallowat" 8-tube battery portable superhet? I need a schematic and the company wasn't too prominent so literature is scarce. Also, if any one has helpful hints on how to get into an RCA catacomb for service I'm interested in suggestions.

Sincerely,  
Ron Kramer  
103 High St.  
Ashland, OR 97520

Do you have a schematic diagram for the 8 tubes plus rectifier Skyrover? If so how much? Thank you.

Noble Hale  
8842 Red Oak  
Crestwood, MO 63126

EDITOR...No, but several of our advertisers sell schematics.

## FIND

Stood under a hot summer sun last year for three hours waiting for two radios to come up for bid at an auction. I was thinking that radios weren't too common an item and most of the bidders wouldn't know a Grebe CR-9, and another home made set of similar vintage, from a hair dryer. Unfortunately, there was one other bidder (who was probably a dealer) who did and snapped up both items at a price that was above a going collector's prices. I was pretty disappointed and angry after standing around for so long but consoled myself in the knowledge that the fellow paid dearly for the two. Then another item I hadn't seen before came up to bid. It was a small box containing a Kennedy 521 in really nice condition. I already had one but thought I'd bid anyway and figured the other fellow would take that too. But apparently he had had enough and didn't bid so it was mine for \$10.00. When I got the box to the car and closely inspected it, however, I found that in addition to a small ac/dc radio of the 30's the entire bottom of the box was filled with brass base tipped tubes. All 01A's except for one WD-11. And all good. So my morning was well spent. I was pretty happy with my FIND.

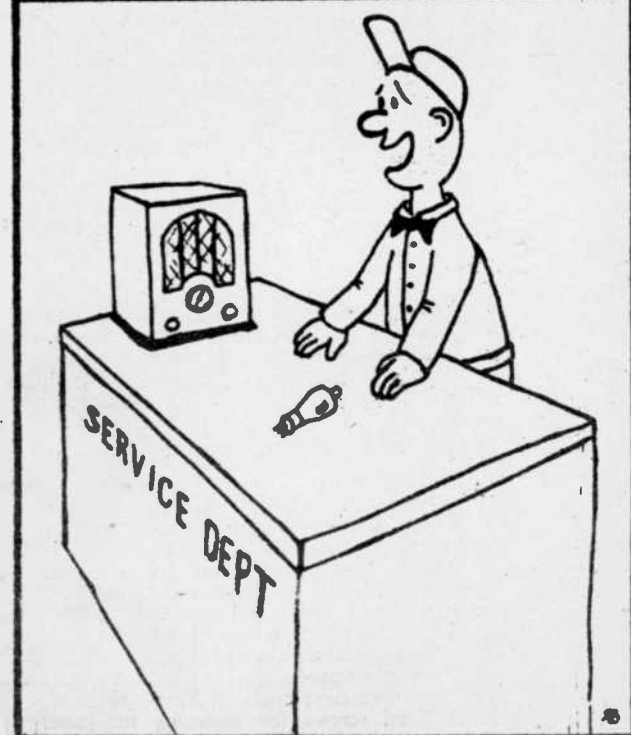
Hope other collectors are equally happy with their finds lately.

Ron Kramer  
Ashland, Oregon

Recent additions here include a Federal 61 and a Grebe CR-8 and some early tubes. Collecting here is a little slow now, but still fun.

Barney Wooters  
Denver, Colorado

## SHOP TALK



### ANOTHER WAY

by Ron Boucher

A while back I sent in an article about how to listen to your tapes of old radio programs over your antique radio. In that article I described how you could "broadcast" your tapes to the radio by means of a signal generator. This involves some work but once its all set up and left intact, all you have to do is switch on the generator when you want to use it. You also have the added realism of using all the controls on the radio to tune in your program.

There is another way of listening to your programs over, and if you are looking for a method that is inexpensive and very easy to set up, the following is for you.

(Continued on page 8)

POSTAL IDENTIFICATION STATEMENT  
The Horn Speaker (USPS 956120) is published monthly, except July and August by Jim Cranshaw, 9820 Silver Meadow Dr., Dallas, Texas 75217. Subscription rates are \$7.00 per

year, \$12.00 two years. Second-class postage paid at Dallas, Texas. POSTMASTER: Send address changes to The Horn Speaker, P.O. Box 53012, Dallas TX 75253. Subscribers, advertisers, photo-

graphers and writers, please use the following address;  
THE HORN SPEAKER  
P.O. BOX 53012  
DALLAS TX 75253



other tap. Finally, wind on 20 more turns and bring out the free end of the wire in the same manner as the taps were brought out. The tube now has 80 turns of wire wound on it and there are 5 twisted taps and two single wires projecting through the row of holes at the closed end of the tube. The position of the wires inside the coil tube is shown by the dotted lines.

*The Base and Support for Coil*

The contact panel M, Figure 1, which supports the coil tube is a piece of dry wood or Bakelite 5½ inches high, 4 inches wide and ½ inch thick. The end of the switch arm should be wide enough so that it will not drop between the contact points, but not so wide that it cannot be set to touch only a single contact. Having located the hole for the switch-arm bolt, the switch arm should be placed in position and the knob rotated in such a manner that the end of the contact arm will describe an arc upon which the contact points are to be placed. The holes for the contacts should next be drilled, the spacing depending upon the kind of contacts which are to be used.

The movable base L is a square piece of dry wood 4 inches long, 4 inches wide and about ¾ inch thick. Care should be taken to have the edges of this block cut square with respect to the sides.

Now screw panel M to the movable base L, as shown in Figure 1. Care should be taken to have the edges of the blocks M and L evenly lined up so that the two edges of the block L, Figure 1, which slide along the inside edges of the strips H and I will be smooth continuous surfaces.

*The Parts Needed and the Approximate Cost*

You will have to buy these parts of the set, or find them around the house:

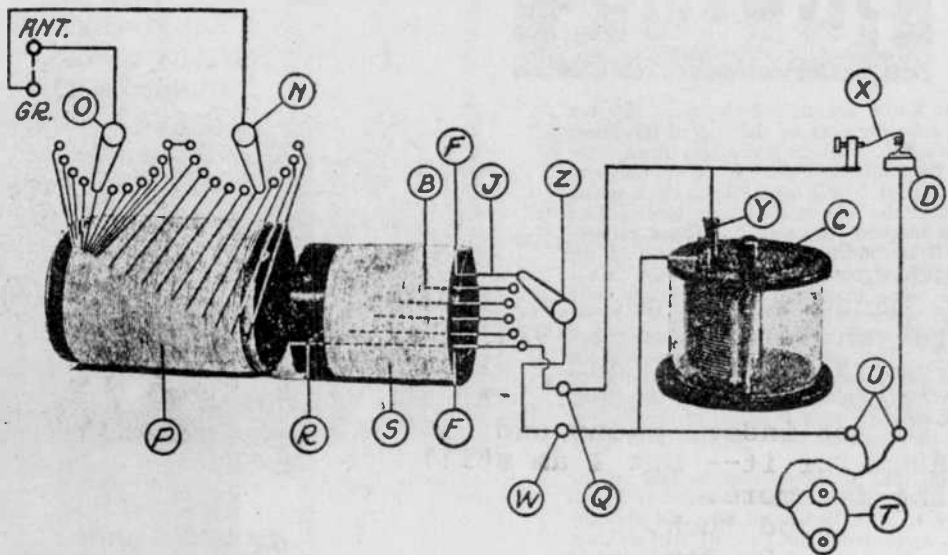
6 ounces No. 24 double cotton covered copper wire .....	\$ .80
2 round cardboard boxes .....	
3 switch knobs and blades, complete .....	1.50
24 switch contacts and nuts .....	1.00
3 binding posts; set-screw type .....	.45
4 binding posts; any type .....	.60
1 crystal; tested .....	.25
3 wood screws; brass, ¼ inch long .....	.03
2 wood screws for fastening the panel to the base .....	.02
Wood for panels (from a packing box)	
2 pounds paraffine .....	.30
Lamp cord; 2 to 3 cents a foot .....	
Telephone Receivers .....	4.00 to 8.00
1 battery clip for crystal .....	.10
Miscellaneous Screws .....	.30
1 variable condenser; 0.0004 to 0.0005 microfarads (400 to 500 micromicrofarads) .....	3.00 to 6.00

*The Fixed or Primary Coil*

The cardboard tubing or coil tube P is 4½ inches in diameter by 4 inches long. About 2 ounces of No. 24 (or No. 26) double cotton-covered copper wire is used for winding the coil. Punch two holes in the tube about ½ inch from one end. Weave the wire through these holes in such a way that the end of the wire will be firmly anchored, leaving about 12 inches of the wire free for connecting. Start with the remainder of the wire to wind turns in a single layer about the tube, tight and close together. After one complete turn has been wound on the tube hold it tight and take off a tap. This tap is made by twisting a 6-inch loop of the wire together at such a place that it will be slightly staggered from the first connection. Proceed in this manner until 10 twisted taps have been taken off, one at every turn. After these first 10 turns have been wound on the tube, take off a 6-inch twisted tap for every succeeding 10 turns until 10 taps are taken off or 100 additional turns have been wound on the tube. After winding the last turn of wire anchor the end by weaving it through two holes punched in the tube as at the start, leaving about 12 inches of wire free for connecting. It is to be understood that each of the 21 taps is slightly staggered to the right from the one just above, so that the taps will not be bunched along one line on the cardboard tube. (See Figure 2.) It might be advisable, after winding the tuning coil, to dip the tuner in hot paraffine. Glue a cardboard cover to the end of the tube where the single turn taps are taken off.

*The Panel*

Panel K should be made from a board 7½ inches long by 4½ inches wide and about ½ inch thick. The position of the contacts can best be determined by inserting the switch arms in their respective holes and turning the knobs so that the ends of the switch arms will describe arcs. The position of the several holes for the binding posts, switch arms and switch



From a design made for POPULAR RADIO

FIGURE 1

What the electrical parts of the receiving set are, combined with a diagram that illustrates the system of wiring.

contacts may first be laid out and drilled. The "antenna" and "ground" binding posts may be ordinary 8/32 brass bolts about 1½ inches long with three nuts and two washers. The first nut binds the bolt to the panel, the second nut holds one of the short pieces of stiff wire, while the third nut holds the antenna or ground wire as the case may be. The switch arm with knob may be purchased in the assembled form or it may be constructed from a ¾-inch slice cut from a broom handle and a bolt of sufficient length equipped with four nuts and two washers, together with a strip of thin brass. The end of the switch arm should be wide enough so that it will not drop between the contact points, but not so wide that it cannot be set to touch only a single contact. The switch contacts may be of the regular type furnished for this purpose or they may be 6/32 brass bolts with one nut and one washer each.

The fixed base B is a piece of dry wood 5½ inches wide, 19 inches long and between ¼ and ⅜ inch thick. The support J for the fixed coil tube is 5½ inches wide (the width of the base), 6 inches long and about ½ inch thick. This board should be screwed to one end of the base so that it is held securely in a vertical position. It will then project about 5 inches above the base B.

A strip of wood I, 11 inches long, 5/16 inch wide and about ¼ inch thick is now fastened to the base by cigar-box nails or small brads so that it is even with the rear edge, as shown in Figure 1. The upright panel M having been fastened to the movable base L, as previously explained, is placed in position as shown. The next step is to locate the strip H in such a position that the block L will slide easily back and forth the entire length of the fixed base B. Having found this position this strip is secured in the same manner as the strip I. It is, of course, understood that neither the movable coil tube S nor the switch contacts and binding posts have, up to the present time, been mounted on the upright panel M. The wooden parts for the loose-coupler are now finished and should be covered with paraffine.

It might be advisable after winding the coil tubes P and S to dip them in hot paraffine. This will help to exclude moisture. Have the paraffine-heated until it just begins to smoke so that when the coils are removed they will have only a very thin coating of paraffine.

*The Variable Condenser*

The variable air condenser C should have a maximum capacity of between 0.0004 and 0.0005 microfarads (400 to 500 micromicrofarads.) The type pictured in Figure 1 is included in a round glass case, but the "unmounted" type may also be used. The variable condenser is mounted on the base B, Figure 1. After the holes for the detector binding post, and also the holes for the telephone binding posts U have been drilled, the board should be coated with paraffine.

*The Crystal Detector*

The galena crystal D may be mounted as pictured in Figures 1 and 2. The holder for the crystal is a metallic pinch-clip such as the ordinary battery test clip or paper clip. This clip should be bent into a convenient shape so that it may be fastened to the base.

The wire X which makes contact with the crystal is a piece of fine wire (about No. 30) which is wound into the form of a spring and attached to a heavy piece of copper wire (about No. 14). This heavy wire is bent twice at right angles, passes through the binding post, and has a wood knob or cork fixed to its end as shown. It is desirable to have the fine wire of springy material such as German silver, but copper wire may be used if necessary.

The importance of securing a tested galena crystal can not be emphasized too strongly, and it should be understood that good results can not be obtained by using an insensitive crystal.

*Assembling the Coupler*

The movable portion of the coupler should be assembled first. As shown in Figure 1, the fittings making up this part of the set are the movable base L, the coil tube support M and the coil tube S. Insert in M the 6 switch contacts (machine screws), the switch arm, and the binding posts, in the proper holes which have been drilled. Adjust the switch arm until it presses firmly on the contact points (bolt heads) and fasten the bare end of a No. 24 copper wire between the nuts on the end of the switch-arm bolt 2, Figure 2, which projects through the panel M. Wind this wire into the form of a spiral of two or three turns like a clock-spring, leaving a few inches of the wire for connection. Insert two small screws V, Figure 1, in the panel M so that the switch arms will not drop off the row of contact points when the knob is turned too far.

The coil tube S is now ready to be fastened in position on the panel M. Cut a 1-inch hole in the cardboard end of the coil tube and place it with the closed end next to the panel M in such a position that it will be just below the row of nuts and washers (switch contacts) and in the center of the panel M with respect to the sides. Fasten it to the panel with short wood screws. The switch-arm bolt with the spiral wire connected to it should project through the hole cut in the end of the coil tube. Thread the end of this wire through a hole punched near the end of the coil tube next to the panel and connect this wire to the back of the binding post, W, Figures 1 and 2. The wire F, Figure 2, is now connected to the back of the binding post Q. There now remain 5 twisted taps and 1 wire to be connected to the 6 switch contacts. The taps should be cut off about 1½ inches from the coil tube and the insulation removed from the pairs of wires thus formed. Each pair of wires should be twisted together, as shown at J, Figure 2. The connections are now made by clamping the 5 taps and also the end of the single wire between the nuts and washers on the contact bolts. The connections are clearly shown in the diagram.

We are now ready to assemble and wire the fixed portion of the coupler, composed of the Base B, coil support J, panel K and coil tube P.

Screw the panel to the base and to the support J and insert the binding posts, switch arms and bolts, and contact bolts in the proper holes. The switch arms should now be adjusted so that they make firm contact on the heads of the bolts. Now insert 4 small screws, E, Figure 1, in the front of the panel so that the switch arms will not drop off the row of contact points

when the knobs are turned too far. Insert a wire between the nuts on the end of the lower switch-arm bolt N where it projects through the back of the panel K, Figure 1. Wind the wire into a spiral of 1 or 2 turns like a clock-spring and connect the end to the upper binding post which is marked "Antenna." These connections will be understood by referring to the upper left-hand corner of Figure 2.

In the same manner connect another wire from the upper switch-arm bolt to the lower binding post which is marked "Ground." See Figure 2. The connecting wires should be insulated except where a connection is needed and should not touch each other. Two short pieces of wire are now fastened to the binding posts in the front of the panel, as previously explained.

The coil tube P should now be laid on the base in about the same position as it is shown in Figure 1. The 19 twisted taps and also the 2 single wires from the ends of the winding are now to be connected to the back of the 22 contacts on the panel K. Scrape the cotton insulation from the loop ends of the nineteen twisted taps as well as from the ends of the two single wire taps coming from the first and last turns. Fasten the bare ends of these wires to the proper switch contacts. Be careful not to cut or break any of the looped taps. The connecting wires may be fastened to the switch contacts by binding them between the washer and the nut. The order of connecting the taps may be understood by referring to Figure 2.

Carefully raise the coil tube P against the support J to such a position that when the coil tube S of the movable section of the tuner is pushed in the coil tube P, the space between the two tubes will be equal all around. Mark this position of the coil tube P on J, and fasten it to J with short wood screws.

*Wiring the Condenser and Crystal Detector*

The mounting of the condenser C and the crystal detector D on the base R is clearly shown in Figure 1. A wire is run from the binding post Y on the variable condenser C, through a small hole in the base R, and is then connected to the under side of the detector binding post. Another wire is now run from the clip which holds the galena crystal, through a small hole in the base, and is then connected to the under side of the right-hand binding post U. The left-hand binding post T is next connected to the binding post on the variable condenser which has no wire attached to it, by running a wire under the base and up through a small hole. The wiring will be understood by referring to the right-hand portion of Figure 2. The wires may be the same size as were used for winding the coil tubes and should be insulated. Two pieces of wire should now be connected from the binding posts W and Q, Figures 1 and 2, to binding posts on the variable condenser. The telephone receivers T are now connected to the binding posts U and the receiving set is complete except for connecting to the antenna and ground.

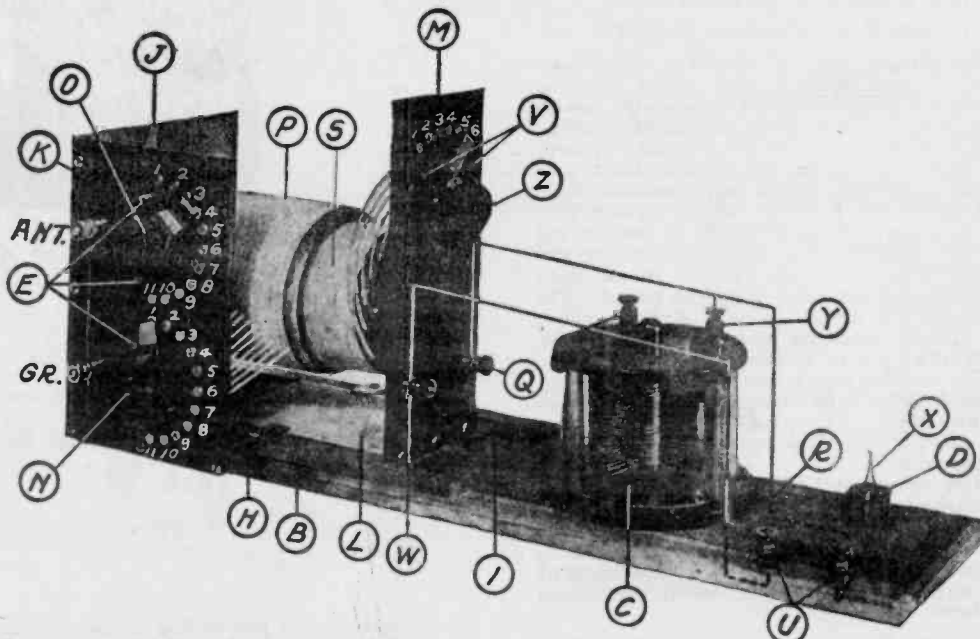
Connect the antenna lead and ground wire to the binding post marked "Antenna" and "Ground."

*Directions for Operating*

Push the coil tube S (secondary) about half way into the coil tube P (primary) and set the switch Z on contact point 4. The primary switch O may be left in any position. The wire which rests on the crystal detector must be placed lightly at different points on the crystal until the transmitting station is heard when the set is adjusted as described below. During this operation the primary switch N should be set on contact point 5.

Having adjusted the crystal detector to a sensitive point, the next thing is to adjust the switches on the coil tube P (primary), the switch on the coil tube S (secondary) and also the variable condenser C, so that the apparatus will be in "resonance" with the transmitting station. Set the primary switch N on contact point 1, and while keeping it in this position move the other primary switch O over all of its contacts stopping a moment at each one. Care should be taken to see that the ends of the switch arms are not allowed to rest so that they will touch more than one contact point at a time. If no signals are heard, set the switch arm N on contact point 2 and again move the switch arm O over all of its contacts. Proceed in this manner until the transmitting

POPULAR RADIO



From a photograph made for POPULAR RADIO

FIGURE 2

How the parts of the set are assembled. This set will receive satisfactorily within an area of any large city, from medium-power stations and from high-power stations within 50 miles.

station is heard. This is called "tuning" the primary circuit.

The tuning of the secondary circuit is the next operation. Set the secondary switch Z on contact point 1 and turn the knob of the variable condenser C so that the pointer moves over the entire scale. If now signals are heard, set the switch on contact point 2 and again turn the knob of the variable condenser so that the pointer moves over the entire scale. Proceed in this manner until the signals are loudest, being careful to see that the ends of the switch arms touch only one contact point at a time. Next slide the coil tube S (secondary) in and out of the coil tube P (primary) until the signals are made as loud as possible. This operation is called changing the "coupling." When the coupling which gives the loudest signal has been secured, it may be necessary to readjust slightly the position of the switch arm O, the position of the movable coil tube S and the "setting" of the variable condenser C.

The receiving set is now in resonance with the transmitting station. It is possible to

change the position of one or more of the switch arms, the position of the movable coil tube and the setting of the variable condenser in such a manner that the set will still be in resonance with the same transmitting station. In other words, there are different combinations of adjustments which will tune the set so that it will respond to signals from the same transmitting station. The best adjustment is that which reduces the signals from undesired stations to a minimum and still permits the desired transmitting station to be heard. This is accomplished by decreasing the coupling (drawing coil tube S farther out of coil tube P) and again tuning with the switch arm O and the variable condenser C. This may also weaken the signals from the desired transmitting station, but it will weaken the signals from the undesired stations to a greater extent, provided that the transmitting station which it is desired to hear has a wave frequency which is not exactly the same as that of the other stations. This feature of the radio receiver is called "selectivity."



RADIO NEWS,  
September 1922

Have You Noticed That it is Always When You Want to Show Your Set to Some Friends That the Darn Thing Does Not Work?





# PUETT ELECTRONICS

PUBLISHERS OF

P.O. BOX 28572 DALLAS TEXAS 75228

ANTIQUÉ RADIO TOPICS &

CATALOG N/19

THE CLASSIC RADIO NEWSLETTER

**GET THIS  
WORLD'S  
GREATEST  
ANTIQUÉ RADIO  
CATALOG**

## THE ANTIQUÉ RADIO CATALOG

CATALOG No. 19 - \$1.00 POSTPAID

**Just Released**

CATALOG No. 19 IS THE LARGEST CATALOG WE HAVE PUBLISHED. EVERYTHING WHICH WE ARE ABLE TO STOCK IN QUANTITY IS LISTED!  
ALL OTHER CATALOGS AND PRICE LISTS ARE OBSOLETE - PLEASE ORDER YOUR NEW CATALOG No. 19 OR FREE LIST No. 19 BEFORE PLACING AN ORDER.

### SPECTACULAR! SAVE NOW

BOOKS, BOOKLETS & LITERATURE A COMPLETE DESCRIPTION OF ALL LITERATURE IS CONTAINED IN OUR CATALOG.



ANTIQUÉ RADIO BOOKLETS: \$2. each; 3 for \$5.; 4 for \$6.; all 5 for \$7.

- (1) The Acquisition of Antique Radios by J.W.F. Puett
- (2) The Complete Restoration of Battery Powered Antique Radios by J.W.F.P.
- (3) The Complete Restoration of AC Powered Antique Radios by J.W.F.P.
- (4) When Was That Old Tube Made? by James R. Wilkins
- (5) Antique Radio Tube Substitution by J.W.F. Puett

THE ENCYCLOPEDIA OF ANTIQUÉ RADIO by J.W.F. Puett  
Photos and data on wireless, crystal, battery, & AC sets and much more!  
Volumes 1, 2 & 3 - \$5.95 each with current price guides.

THE APPRAISAL OF ANTIQUÉ RADIOS by J.W.F. Puett - \$4.95  
Current values plus factors which contribute to antique radio value.

THE PUETT ELECTRONICS SUPER ANTENNA - GROUND SYSTEM PLANS \$2.00

ATWATER KENT BREADBOARD NO. 8 -- RAREST OF ALL AK BREADBOARDS - PHOTOS AND DESCRIPTION FROM ORIGINAL CATALOG A.R.T. V10/N5 - \$1.00 postpaid!

THE DIRECTORY OF ANTIQUÉ RADIO SERVICES - \$3.00  
Hundreds of sources throughout the U.S.A. and in other countries!

SILVER GHOSTS by J.W.F. Puett - \$7.95  
Photos & schematics of nearly every set manufactured by E.H. Scott!

THE CLASSIC RADIO COLLECTORS HANDBOOK - \$6.95  
A fantastic compilation of data on The E.H. Scott Radio Laboratories and McMurdo Silver, Inc. Identification of sets, consoles, etc.

THE SCOTT NEWS - April 1936 - photo offset reprint - \$2.00  
Details and photo of the world's largest radio - 48 tubes!  
Three known to have been manufactured at \$5,000.00 each.

CROSS REFERENCE LIST OF MILITARY-TYPE TUBES VS. COMMERCIAL TYPES - \$1.

THANK YOU FOR MAKING 1980 THE VERY BEST! WE ENTER OUR 9 TH. YEAR IN 1981. WE ARE PLEASED TO EXTEND THE FOLLOWING OFFER:

20% OFF ON BOOKS, LITERATURE, SCHEMATICS, TUBES, OR ANYTHING LISTED IN OUR CURRENT LIST No. 19!

THIS DISCOUNT APPLIES TO THE PRICES LISTED IN CATALOG No. 19 OR LIST No. 19 ONLY. ALL OTHER CATALOGS AND LISTS ARE OBSOLETE.

IF YOU WISH TO TAKE ADVANTAGE OF THESE SAVINGS, YOUR ORDER MUST BE POSTMARKED BEFORE 28 FEBRUARY 1981.

**FREE!**

YOU CAN GET YOUR COPY OF CATALOG No. 19 FREE IF YOUR ORDER AMOUNTS OT \$10.00 OR MORE!

A PUETT ELECTRONICS "BUCK" WILL BE ENCLOSED IN YOUR CATALOG WHICH WILL ENTITLE YOU TO AN ADDITIONAL ONE DOLLAR SAVING ON YOUR NEXT ORDER!



ORDERING INSTRUCTIONS ARE PRINTED ON LIST No. 19 AND A HANDY ORDER BLANK IS PROVIDED ON THE BACK OF THAT LIST. SEE LIST ELSEWHERE IN THIS PUBLICATION OR ENCLOSED HEREIN.



This offer extended through March 1981

# RADIO AMERICANA

Dealers in Early Radio Items

**ELECTRIC RADIOS FOR SALE  
DATED 2/1/81**

**BATTERY RADIOS FOR SALE  
DATED 2/1/81  
SPECIAL CLEARANCE**

1. PHILCO MODEL 51 CLOCK RADIO. FANCY TOP. BOTH CLOCK AND RADIO WORK. VARNISH AND VENEER IS A LITTLE ROUGH ON THE BOTTOM OF THE SIDES. FRONT IS NICE. AT/WATER KENT DESK RADIO. WOOD GRILL IS MISSING BUT THE ORIGINAL GRILL CLOTH IS STILL THERE IN GOOD SHAPE. THE RADIO IS A MODEL 55. CABINET IS EXCELLENT. PICK UP OR PAY CRATING AND SHIPPING. \$ 75.00
2. MAJESTIC MODEL 21 GRANDFATHER CLOCK RADIO. CABINET IS NICE. RADIO NEEDS LOTS OF WORK BUT IS CLEAN WITH NO RUST. THE CONTROLS ARE ALL FREE TURNING AND COMES COMPLETE WITH THE ORIGINAL SERVICE LITERATURE AS PROVIDED BY MAJESTIC. PICK UP OR PAY CRATING AND SHIP. 175.00
3. AT/WATER KENT MODEL 40. EXCELLENT. 35.00
4. AT/WATER KENT MODEL 55. EXCELLENT. WOODGRAINED W/SPKR. 50.00
5. AT/WATER KENT MODEL 55. EXCELLENT. BLACK AND GREEN WITH SPEAKER. 50.00
6. AT/WATER KENT MODEL 44. EXCELLENT. 50.00
7. RCA RADIOLA 17. VERY GOOD. 30.00
8. RCA RADIOLA 18. VERY GOOD. 30.00
9. APEX. METAL BOX RADIO. FAIRLY GOOD. 25.00
10. STEWART WARNER. MODEL 0201C. WOODEN CABINET. P. 20.00
11. RCA VICTOR PLASTIC SET. (EARLY) 10.00
12. STEWART WARNER. METAL BOX SET. NICE SHAPE. 35.00
13. PHILCO MODEL 42-355. ART DECO. EARLY '40'S. WORKS. 35.00
14. EMERSON. MODEL DP332. GOOD. 20.00
15. PILOT MODEL T301. NICE. 35.00
16. PHILCO MODEL 604. DIAL ON THE TOP. TWO SPEAKERS ON THE SIDES. UNUSUAL. NICE CONDITION. 45.00
17. STEWART WARNER. MODEL 01CC. GOOD. 10.00
18. RCA MODEL 0772. VARNISH ON TOP IS WARRED. 15.00
19. PHILCO TRANSITONE. GOOD. 15.00
20. CAROL. LOOKS LIKE BATTERY SET. NO POWER SUPPLY. VG. 25.00
21. INTERNATIONAL UNIVERSAL RADIO IN ORIGINAL BOX. SET IS NOT NEW AND DOESN'T WORK. I THINK THAT THIS WAS THE FIRST AC-DC SET MANUFACTURED. NICE CONDITION. 25.00
22. PHILCO MODEL 511 WITH MATCHING SPEAKER. EXCELLENT. 50.00
23. G.E. SLANT FRONT. VERTICAL DIALS EITHER SIDE OF PANEL. PUSH BUTTONS IN CENTER. DIFFERENT. GOOD CONDITION. 20.00
24. PHILCO 41-221. LEATHERETTE AC-DC TWO BAND SET. HAS A HANDLE ON THE TOP SO IT MUST BE A PORTABLE. THE LEATHERETTE IS A LITTLE ROUGH BUT CAN BE REPAIRED TO LOOK FAIRLY GOOD. 10.00
25. PHILCO 39-C. SMALL WOODEN RADIO. VERY GOOD. 20.00
26. HOWARD BROADCAST SET. WOODEN CABINET. VERY GOOD. 25.00
27. SONORA MODEL RCU 206. SMALL WOODEN RADIO WITH NICELY SHAPED CABINET. VERY GOOD CONDITION. 30.00
28. MAJESTIC BROADCAST SET. METAL GREY CABINET. LOOKS LIKE A MILITARY VERSION FOR TROOP RECREATIONAL USE. GOOD. 30.00
29. STEWART WARNER PORTABLE AC1P3. BROWN PAPER COVERED CASE. NICE NEAT CONDITION. 15.00

**CATHEDRAL, FLAT-TOP AND TORBSTONE TYPE SETS.**

- 24C. DETROLA. EARLY TRF. NICE APPEARANCE. RICH LOOKING. 65.00
- 25A. AIRAD FLAT-TOP. NICE LITTLE SUPERNET. VERY GOOD. 40.00
25. SILVERTONE FLATTOP. GOOD SHAPE. 35.00
27. WAKE ELECTRIC. TYPE 31. ROUND TOP WITH SPINDLES ON EITHER CORNER. GOOD. TRF. TUBES LIGHT BUT NOT WORKING. 75.00
28. AT/WATER KENT MODEL 34. EXCELLENT. 145.00
29. U.S. GLORITONE. LARGE CATHEDRAL RADIO. VERY GOOD. 75.00
30. PHILCO MODEL 84. WORKS. EXCELLENT. 75.00
33. PHILCO MODEL 38. BATTERY OPERATED. EXCELLENT. 60.00
35. PHILCO MODEL 71. LARGE CATHEDRAL. WORKS. EXCELLENT. 125.00
36. PHILCO MODEL 70. LARGE CATHEDRAL. EXCELLENT. 125.00

ELECTRIC RADIOS ARE SOLD COMPLETE WITH TUBES. SETS DO NOT WORK UNLESS SPECIFICALLY MARKED AS WORKING.

**RADIO SPEAKER LIST  
DATED 2/1/81**

1. ANSONIA MODEL 911 REPRODUCER. NEEDS REFINISHING WORKS. IS CATHEDRAL SHAPED. \$ 15.00
2. WIRE CONE SPEAKER. PHILADELPHIA. NICE ROUND ALL METAL BRONZE COLOR. EXCELLENT. 25.00
3. WLS SILVERTONE. ALL METAL. CRINKLED GOLD. ROUND SHAPE. EXCELLENT. 25.00
4. RADIOLA TYPE 102. ROUND METAL SPEAKER. EXCELLENT. 25.00
5. AT/WATER KENT TYPE E. LARGE ROUND SPEAKER. EXCELLENT. 30.00
6. NICE WOODEN CABINET SPEAKER. FLAT TOP WITH SLANT CORNER DESIGN. VERY NICE. 20.00
7. TELEPHONE. BEAUTIFUL ROUND WOODEN SPEAKER. NICE LIGHT CASE BEAUTIFULLY MADE. GRILL CLOTH IS EXCELLENT. 15.00
8. PEERLESS REPRODUCER. CATHEDRAL STYLE. EXCELLENT. 25.00
9. AT/WATER KENT E3 SPEAKER. SMALLEST OF THE E SERIES. EXC. 20.00
10. CROSLEY TYPE D MUSIC CONE. VERY GOOD. 25.00
11. AT/WATER KENT E2 SPEAKER. MIDDLE SIZED OF E SERIES. EXC. 25.00
12. RADIOLA 100A EXCELLENT. 20.00
13. GOOD. 15.00
14. FAIR. 10.00
- 15A. AMPLIPHONE. TYPE A. BY DOOLITTLE CO. HARTFORD, CONN. WORKS. HAS METAL BOX CASE. NO RUST BUT NEEDS REPAINTING. 20.00
- 16A. SMALL ROUND SPEAKER. LOOKS LIKE A SMALL RADIOLA 100. THIS IS A VERY NICE ITEM. WORKS. 25.00
- 17A. RADIOLA 103. EXCELLENT. WORKS 45.00

1. AK MODEL 20 COMPACT. VERY GOOD. \$ 50.00
2. AK MODEL 20 STANDARD. VERY GOOD. 50.00
3. AK MODEL 35. EXCELLENT. 45.00
4. AK MODEL 10 BREADBOARD. VERY GOOD. ~~35.00~~
5. AK MODEL 33. REFINISHED CABINET. SOME TOUCH UP DONE ON THE FRONT PANEL. BEAUTIFULL. TUNING OK. 50.00
- 5A. AK MODEL 30. VERY GOOD. 50.00
6. AERODYNE SPECIAL. NIFTY SMALL 5 TUBE SET WITH THREE TUNING CONDENSERS. VERY GOOD. 50.00
7. ARBORPHONE MODEL 27. UNUSUAL SET WITH BROADLY ROUNDED CORNERS AND WAFER COILS. THREE CONDENSERS DRIVEN BY TWO FRONT PANEL CONTROLS. TWO CONDENSERS ARE CONCURRENT IN A VERY UNUSUAL ARRANGEMENT. EXCELLENT. 60.00
- 7A. ADOLF BRAUER. TWO PIECE GERMAN SET DATED JUNE 1924. THIS IS A SURE CONTEST WINNER. EXCELLENT CONDITION. LOOKS LIKE THE CONSOLE OF AN AIRLINER AS IS OVER-ENGINEERED LIKE MOST GERMAN ELECTRONIC PRODUCTS OF THAT ERA. SMALL, COMPACT AND BEAUTIFUL SET. 400.00
8. AIRLINE ROMBER. FIVE TUBE SET WITH INTERNAL HORN SPEAKER AND FANCY GRILL. TWO CONTROLS DRIVE 2 COND. BLUE RIBBON. SLANT FRONT. FIVE TUBES AND 3 KNOBS. 60.00
9. BROWNING DRAKE MODEL 5R. EXCELLENT. 50.00
10. CLAPP EASTMAN BROADCAST RADIO. ONE OF THE FEW MADE. FINE OLD NAME. SET IS IN EXCELLENT CONDITION. 75.00
- 10B. CROSLEY MODEL 51. VERY GOOD. 50.00
11. CROSLEY MODEL 5-50. NICE. ~~65.00~~
12. CROSLEY TRYRDYN 3R3. GOOD BUT NEEDS CLEANING AND A REPLACEMENT BATTERY SWITCH. 45.00
13. CROSLEY SPECIAL TRYRDYN. THIS IS AN UNUSUAL MODEL OF CROSLEY. I HAVE NEVER SEEN ONE LIKE IT. LARGE SET LOOKS BRAND NEW IN ORIGINAL CARTON. 70.00
14. CROSLEY MODEL 52. EXCELLENT 75.00
- 14A. CROSLEY MODEL XJ. EXCELLENT 75.00
15. CHELSEA SUPER FIVE. SLANT FRONT 5 TUBER. THREE KNOBS AND IN VERY NICE CONDITION. 50.00
16. DEFOREST 012. IN LEATHERETTE CABINET. VG. WITH LOOP. 250.00
17. DEFOREST 012. MAHOGNEY. NICE BUT NO LOOP. 150.00
18. DEFOREST 010. WITH LOOP AND EXTRA COILS. BEAUTIFUL. 300.00
19. ERLA MODEL 511. CHASSIS ONLY. EXCELLENT WITH BALLOON COILS BUT NO AUDIOS. 10.00
20. ERLA SUPERFLEX. 3 TUBER WITH 2 CONDENSERS. CASE MAY BE HOME BUILT FROM KIT. VERY NICE LITTLE SET. 40.00
21. FADA. NEUTRALETTE MODEL 192A. VERY GOOD. 50.00
22. FADA. NEUTRODYNE. MODEL 175A. VERY GOOD. 50.00
- 23A. FRESHMAN MASTERPIECE. 3 KNOBBER. NICE. 50.00
- 23B. FRESHMAN MASTERPIECE. METAL HANDLES AND WINDOW DIALS. 40.00
- 23C. FREED-EISHAN NR 45. IN REPRODUCTION CABINET. GOOD. 60.00
- 23D. FREED-EISHAN NR 7. EXCELLENT 60.00
24. GLADIATOR G-60. THREE KNOBS DRIVE 3 CONDENSERS. 45.00
25. GREBE MUI SYNCHROPHASE. EXCELLENT. 100.00
26. GREBE CR9. ORIGINAL AND EXCELLENT. 225.00
27. GILFILLAN NEUTRODYNE. MODEL GHS. VERY NICE. 50.00
28. KELSO. SLANT FRONT. ONE FOOT IS MISSING BUT IS EASY TO DUPLICATE. INCLUDES A LETTER DATED 198 FROM THE KELSO COMPANY TO THE SET OWNER EXPLAINING TO MAKE THE SET WORK BETTER! VERY NICE. 50.00
29. KOLSTER MODEL 6D. NICE. 35.00
32. KODEL RADIO RECEIVER. NOT MARKED EXCEPT ON TRANSFORMER BUT DEFINITELY IS A KODEL. ONE TUBE DETECTOR WITH OHM STAGE OF AUDIO. SMALL CABINET COVERED IN PAPER FABRIC. TOP LID IS LOOSE BUT NOT TORN. CAN BE EASILY REGLUED. HAS COMPRESSION TYPE TUNING. IN EXCELLENT ORIG. COND. 70.00
- 32A. OREOLE RECEIVER BY WK ELECTRIC IN CHICAGO. BEAUTIFUL CONDITION. 75.00
33. OZARKA. FOUR KNOBS AND WAFER COILS. BATTERY STORAGE IN BASE. NEEDS COAT OF VARNISH OR OIL FINISH. STAIN IS STILL GOOD. THIS IS A NICE LARGE SET. 50.00
34. POLLE ROYAL. 5 TUBER WITH WAFER COILS. EXCELLENT. 50.00
35. PILOT 3" TV WITH SERVICE DATA INCLUDED. DOES NOT WORK BUT IS VERY GOOD CONDITION PHYSICALLY. 95.00
36. RADIOLA III MOUNTED IS A LARGE CABINET WITH A LOCKING TOP AND BATTERY CASE BUILT IN. 30.00
- 36A. RADIOLA IIIA. GOOD. 50.00
37. RADIOLA 25 WITH LOOP. EXCELLENT. 100.00
39. RADIOLA VIII. EXCELLENT. 75.00
- 39A. RADIOLA 28 WITH LOOP AND STAND. VERY GOOD. 75.00
40. RCA-GE AMPLIFIER-DETECTOR. VERY EARLY. GOOD. 100.00
41. RELY-O-DYNE. 5 TUBER AND 3 KNOBS. COMPACT SET WITH VERY COMPACT CHASSIS. EXCELLENT. 50.00
42. SILVERTONE NEUTRODYNE. LARGE, LONG 6 TUBER. ONE TUNING KNOB AND INDICATOR DIAL DRIVE 3 CONDENSERS THROUGH A RACK AND GEAR DRIVE. INTERESTING AND EXCELNT. 60.00
43. STEWART WARNER MODEL 300. EXCELLENT. 50.00
44. STANDARDYNE. FIVE TUBER AND 3 KNOBS. VERY GOOD. 50.00
45. STANDARDYNE. AS ABOVE BUT NO LID. 40.00
- 45A. STANDARDYNE. SLANT FRONT. BRONZE COLOR. EXCELLENT. 55.00
46. TRANS AMERICA. THREE DIALS DRIVE 3 CONDENSERS. THIS 5 TUBER IS ATTRACTIVE AND IN EXCELLENT CONDITION. 60.00
47. WORLD RECEIVER. LARGE 5 TUBER ABOUT SIZE OF AN AK STANDARD. THREE KNOBS. BEAUTIFUL CONDITION. 60.00
48. WESTERN ELECTRIC 7A AMPLIFIER. EXCELLENT. 75.00
49. WESTERN ELECTRIC 25B AUDIO AMPLIFIER. 50.00
- 49B. WESTINGHOUSE AERIOLA SR. EXCELLENT. 100.00
5. WESTINGHOUSE TYPE RF. NEW IN ORIGINAL CARTON. INCLUDES WD 11 BRASS BASE TIPPED TUBE ALSO NEW. 225.00
51. WESTINGHOUSE RADA. EXCELLENT WITH SOME REPLACEMENT FIXED CAPS. 100.00
52. SHOWERS CONSOLA. FLOOR MODEL, BUT A REAL BEAUTY. I HAVE NEVER SEEN A MORE ATTRACTIVE PANEL. LOTS OF FANCY GOLD GILD SCROLL WORK. EXCELLENT CONDITION. 75.00

53.	CROSLY FLOOR MODEL. MODEL 5-75. EXCELLENT WITH INTERNAL SPEAKER. ORIGINAL EMBROIDERED GRILL CLOTH.	50.00
54.	CROSLY PUP. FAIRLY GOOD. HAS DENTS THAT YOU MIGHT EXPECT ON A SET OF THIS AGE. PAINT LOOKS GOOD BUT HAS BEEN TOUCHED UP NICELY. ONE KNOB IS BROKEN. WITH TUBE.	175.00
55.	DAY FAN MODEL 5. NICE SHAPE.	40.00
56.	CRYSTAL SET. LOOKS LIKE KODEL, BUT I CAN'T PROVE IT. IT IS IN EXCELLENT SHAPE.	50.00
58.	CROSLY SUPER TRYRDYN REGULAR. VERY PRETTY SET.	60.00
59.	RADIOLA 20. VERY GOOD SHAPE. NO TUBES.	65.00

RADIO RELATED ODDS AND ENDS  
DATED 2/1/81

TELEGRAPH

1.	J.H. BUNNELL. STRAIGHT KEY.	\$ 20.00
2.	J.E. SOUNDER. TWO COILS. PAT. 3/6/17. WOODEN BASE IS ORIGINAL. NICE CONDITION.	25.00
3.	J.H. BUNNELL WESTERN UNION TEL. CO. SOUNDER. 1-B-400 OHMS. WOODEN BASE. VERY NICE.	45.00
4.	J.H. BUNNELL. 20 OHM SOUNDER AND KEY. PATENTED 2/16/91 ORIGINAL WOODEN BASE. GOOD SHAPE.	50.00
5.	WESTERN UNION MAIN LINE SOUNDER 15B. 120 OHM. GOOD	40.00
6.	J.E. 7A SOUNDER. 1000 OHMS. GOOD.	40.00
7.	J.H. BUNNELL SOUNDER. THERE IS A CHIP IN THE COIL COVER.	30.00
8.	WESTERN UNION SIGNAL RELAY 3D. GOOD.	35.00
9.	J.E. STRAIGHT KEY MARKED AT AND T CO. VERY GOOD.	25.00
10.	25 OHM COIL. INDUCTOR #20. PAT. NOV 29, 1952. PROPERTY OF AMERICAN BELL TELEPHONE. COIL ONLY.	20.00
11.	ALL BRASS FLAMEPROOF KEY. J7A DATED 1921.	20.00
12.	AS ABOVE EXCEPT IS IN ORIGINAL BOX.	25.00
13.	SPIES ELECTRIC WORKS. POLECHANGER KEY. TYPE 1 B W.U. TEL. CO.	40.00
14.	TELEGRAPH PARTS. PART OF REPEATER? PART OF WOODEN CASE. LARGE MULTI-WINDING COIL. BRASS TERMINALS AND ONE HEAVY BRASS CONTACT ARM.	20.00
15.	J.H. BUNNELL. KEY AND SOUNDER SET. SOUNDER AS CAST IRON FRAME WITH GOLD SCROLLING. KEY IS MASSIVE AND PAINTED GOLD IN COLOR. (LOOKS LIKE ORIGINAL PAINT.)	75.00
16.	SIGNAL SOUNDER. LIKE NEW.	50.00
16A.	INSTRUCTOGRAPH TELEGRAPH CODE PRACTICE MACHINE. MADE BY RAILROAD TECHNICAL TRAINING ASSOC.. CRANK IS MISSING AND JUZZER COVER IS MISSING, BUT SPRING IN THE CLOCKWORKS IS GOOD AND TAPE MOVES. INCLUDES ONE PAPER TAPE. THIS UNIT IS BLACK PAPER COVERED BOX. VERY GOOD.	50.00
16B.	W.U. SOUNDER 1B-40. VERY GOOD.	30.00
17.	MESCO SOUNDER. WOOD BASE MOUNTED ON CAST IRON FRAME. EXC.	40.00
18.	STRAIGHT KEY. KEY ARM IS RUSTY. FRAME IS CAST IRON.	15.00
19.	J.H. BUNNELL. 2-11 500 OHM SOUNDER. THIS IS A BEAUTY.	50.00
20.	VIBROPLEX BLUE RACER SEMI AUTOMATIC BUG. STANDARD MODEL.	35.00
22.	J.H. BUNNELL. SOUNDER. RESTORED TO BEAUTIFUL.	40.00
23.	NICE STRAIGHT KEY ON A ROUND WOODEN BASE MADE OF TIGER MAPLE. BALL BEARING PIVOTS. CHROME LEVER.	22.00
24.	WOODEN BASE FOR SMALL SOUNDER. ORIGINAL BUT NOT MARKED.	5.00
25.	STRAIGHT KEY TYPE J38. BOTH KNOBS MISSING, OTHERWISE IS COMPLETE. NEEDS CLEANING.	5.00
26.	TYPE 2-7 BUNNELL RELAY (SOUNDER?) SPRING MISSING, OTHERWISE EXCELLENT.	20.00
27.	SIGNAL. MASSIVE BRASS KEY. EXCELLENT.	25.00
28.	WESTERN ELECTRIC. AT AND T BRASS KEY. GOOD.	20.00

HORN SPEAKERS

15.	ATWATER KENT MODEL L HORN. NO DRIVER. V.G. APPEARANCE.	35.00
16.	MURDOCK HORN ONLY. NO BASE. DENT IN RIM. BLACK PAINT IS BADLY CHIPPED.	20.00
17.	HAGNAVOX R3. VERY GOOD.	75.00
19.	ATWATER KENT TYPE H. NO DRIVER.	35.00
20.	SAAL SYMPHONY GRAND. NO DRIVER. EXCELLENT APPEARANCE	35.00
21.	RADIOLA UZ 1320. PART OF BASE IS MISSING AND DRIVER DOESN'T WORK. VERY NICE APPEARANCE.	40.00
22.	ATWATER KENT HORN. ALL THERE BUT DOESN'T WORK. NEEDS CLEANING AND REPAINTING.	40.00
23.	THOMPSON. FIBRE HORN. NICE SHAPE. WORKS.	50.00
24.	FANCY PAPER MACHE HORN. SILVER COLOR. WORKS	50.00
25.	STROMBURG CARLSON TELEPHONE CO. HORN SPEAKER. THIS UNIT WORKS AND IS SILVER IN COLOR.	50.00
26.	WESTERN ELECTRIC SUPER HORN. VERY GOOD.	95.00
27.	WESTERN ELECTRIC SUPER HORN. BASE HAS BEEN GUTTED AND A MODERN PM SPEAKER INSTALLED. HORN IS ROUGH WHEN YOU LOOK AT IT CLOSELY.	40.00
28.	TOWER HEISTERSINGER. NO DRIVER. METAL HORN. NICE.	35.00
29.	BRANDES TABLE TALKER. EXCELLENT ORIGINAL. WORKS.	50.00
30.	SAAL. "S" TYPE METAL HORN SPEAKER. EXCELLENT. WORKS, BUT DOES NOT HAVE THE ORIGINAL DRIVER.	45.00
31.	ALL METAL BLACK "S" TYPE HORN. WORKS. HAS FIRTH DRIVER.	45.00

VINTAGE HAM GEAR

1.	NATIONAL MC 98 RCVR. WORKING AND EXCELLENT W/MANUAL.	60.00
2.	HALLICRAFTERS S94. 30-50 MC FM. EXCELLENT APPEARANCE.	12.00
3.	GONSET GC 105 2 HTR COMMUNICATOR. WORKS AND IS VG	20.00
4.	HARVEY WELLS TBS-50D TRANSMITTER. GOOD.	40.00
5.	COLLINS 75A RCVR. EXCELLENT.	200.00
6.	COLLINS 32V2 TRANSMITTER. EXCELLENT.	200.00
7.	COLLINS 310B EXCITER. EXCELLENT WITH MANUAL.	100.00
8.	HALLICRAFTERS SX 25. VERY GOOD. WORKS.	65.00
9.	ECHOPHONE EC1A RCVR. VERY GOOD AND WORKS.	35.00
10.	HALLICRAFTERS SW 500. A LITTLE ROUGH BUT WORKS.	10.00
11.	NATIONAL VELVET B SUPPLY #3580. WORKS.	20.00
12.	RCA ACR 136 RCVR. CIRCA 1936. NEEDS REPAIR BUT IS COMPLETE AND LOOKS GOOD.	35.00
13.	HEATH HG10B VFO W/PS. EXCELLENT.	15.00
14.	SWAN MODEL 175-75 METER SSB TRANSCEIVER. NO PS.	95.00
15.	ARC 5 W/ 2 BANDER TRANSMITTER. ORIGINAL AND UNMODIFIED.	20.00
16.	CLEGG ZEUS. 6 AND 2 METER CW AND AM TRANSMITTER. RUNS 180 WATTS. EXCELLENT W/MANUAL.	75.00
17.	LAYFAYETTE HE 10 VFO FOR TEN METERS. EXCELLENT.	10.00

NOTE: ALL HAM GEAR COMPLETE WITH TUBES.

ALL SETS \$75 OR UNDER ARE LESS TUBES. BUYER PAYS SHIPPING. UPS IS THE BEST WAY FOR SETS WEIGHING UNDER 50 LBS PACKED. PACKING CHARGE IS \$5 PER LARGE RADIO. THIS INSURES EXCELLENT PACKING AND GIVES YOUR SET AN EXCELLENT CHANCE OF ARRIVING AT YOUR HOME UNDAIMAGED.

CALL 914 679 2723 FOR MORE INFORMATION OR TO ORDER SETS. PLEASE CALL AFTER 6:00 PM EST. MAIL ADDRESS IS AS FOLLOWS:

RADIO AMERICANA BOX 161 WEST HURLEY, N. Y. 12491  
OR FOR UPS--- 45 ALLEN DR. WOODSTOCK, N.Y. 12420

ALL MERCHANDISE SOLD 'AS IS' WITH NO CLAIMS AS TO WORKING CONDITION EXCEPT WHERE STATED OTHERWISE.

VINTAGE TUBES

1.	CAN FOR DEFOREST DV3A AUDIO. GOOD SHAPE.	15.00
2.	UX 199. GF.	7.00
3.	CUNNINGHAM C11. GF	22.00
4.	WESTERN ELECTRIC TYPE 2A IN ORIG. CAN.	15.00
5.	DEFOREST TUBULAR AUDIOTRON IN NICE BRASS DISPLAY STAND. LABEL IS EXCELLENT.	75.00
6.	BLUE ARTURUS 124.	10.00
7.	BLUE ARTURUS AC AMP. 28. TIPPED.	15.00
22.	RCA-CUNNINGHAM WD12. CLEAR TIPPED BRASS BASE.	27.00
23.	SODION. COMM TEL AND ELEC.	35.00
24.	KELLOGG 401.	18.00
25.	SILVERTONE VR TYPE 31.	5.00
26.	RCA WD12. BAKELITE BASE.	18.00
27.	WESTINGHOUSE WD11 AERIOTRON FOR AERIOLA SR. BRASS BASED, TIPPED, CLEAR IN ORIGINAL CARTONS. CARTONS ARE EXCELLENT--TUBES ARE NOT. HAVE OPEN FILAMENTS. WILL MAKE GREAT SOCKET FILLERS, THOUGH.	30.00
28.	MOORHEAD SE 1444. S F CAL. BRASS BASED TIPPED SHAW BASE.	30.00
29.	DEFOREST DV5. CERAMIC BASE.	25.00
30.	WESTERN ELECTRIC 211A.	25.00
31.	WESTERN ELECTRIC 205D DOORKNOB.	17.00
32.	WD11. GF	22.00
33.	201A. GOOD EMISSION. GOOD FILAMENT (GF)	8.00
		5.00
34.	CLEARTRON CT 201A.	10.00
35.	RADIOTRON UV 201. BRASS BASE, CLEAR, TIPPED.	18.00
36.	CUNNINGHAM CX 310.	12.00
37.	WESTERN ELECTRIC 239 IN ORIG. BOX.	15.00
38.	U.S. ARMY VT2 BY WESTERN ELECTRIC. IN ORIG. BOX.	25.00
39.	WESTERN ELECTRIC 264B IN BOX.	18.00
40.	W.E 216A DOORKNOB IN BOX.	18.00
41.	W.E. 3A IN BOX.	15.00

EVERYTHING IS SOLD AS IS BUT WILL BE GLAD TO PERFORM SIMPLE TEST IF YOU GIVE ME INSTRUCTIONS ON WHAT TO DO. IF PRICE IS TOO HIGH, MAKE AN OFFER. SEND SAGE IF YOU WANT A REPLY. FOR TUBES ONLY----- 10% DISCOUNT ON ORDERS OVER \$100 25% ON ORDERS OVER \$250.

MICROPHONES.

1.	RING MIKE. SMALL 5" RING. VOLUME CONTROL IN BASE. CHROME OK. NEEDS PAINT ON BASE.	40.00
1A.	COMPANION AUDIO AMPLIFIER BY PAUL. (SAMIPSON ELECTRIC)	15.00
2.	CARBON HAND MIKE. BAKELITE.	4.00
3.	CARBON HAND MIKE. ALUMINUM (T 17)	4.00
4.	LITTLE WONDER MIKE. IN ORIGINAL BOX.	10.00
5.	SMALL CARBON HAND MIKE. COILED CORD. RS 38A.	3.00
6.	RING MIKE. SPRING HELD. 14" HIGH. BLACK. NO CORD.	25.00
7.	LARGE RING MIKE. STAND IS 2 FEET HIGH. NEEDS PAINT. ELEMENT IS IMPRESSIVE. ABOUT 5 INCHES ACROSS. NO NAME BUT DATED JUNE 2, 1927.	40.00
8.	PHILMORE JR. MIKE IN ORIGINAL BOX. NEW WITH INSTRUCTIONS.	15.00

VARIABLE CAPACITORS

1.	RPM. PLASTIC ENCLOSED. ABOUT 200 PF.	10.00
2.	ANSCO. CONCURRENT CAPS. ONE ABOUT 150 PF AND THE OTHER ABOUT 15 PF. WITH VERNIER DIALS. NEW. 2 AVAILABLE.	10.00
3.	EZ TOON. VARIABLE WITH MICRO VERNIER. ABOUT 250 PF.	8.00
4.	ENCLOSED IN CAN-LAB QUALITY. GENERAL RADIO AIR CAPS. TYPE 182. NICE DATA LABEL ON THE BOTTOM OF CAN.	30.00
5.	AS ABOVE EXCEPT TYPE 182A.	30.00
6.	ENCLOSED IN HARD RUBBER CONTAINER. AIR CAP BY MANHATTAN ELECTRIC SUPPLY.	25.00

INSTRUMENTS

1.	WESTON VOLT-AMMETER. IN LEATHER CASE. MIRROR BACK.	20.00
2.	HICKOK. MILLIAMETER. MIRROR BACK. 0-500.	15.00
3.	GENERAL RADIO #102E DECADE RESISTANCE BOX. VG	20.00
4.	READRITE MULTI TESTER. BLACK METAL OVAL SHAPED BOX. VG	20.00
5.	GENERAL RADIO WAVEMETER. #223. EXCELLENT.	50.00
6.	GENERAL RADIO DECADE RESISTANCE BOX. #602L. EXCELLENT.	25.00
7.	READRITE #700 TESTER. PAPER COVERED CASE WITH INSTRUCT.	20.00
8.	READRITE #550 SERVICE OSCILLATOR. GOOD.	15.00
9.	OLD STORE TUBE TESTER. JEWELL ELECTRICAL INSTRUMENTS. HUGE METER. NICE SLOPING PANEL. 2' HIGH AND 30" LONG. NICE ITEM FOR RADIO ROOM.	40.00
10.	PRETTY MIRROR BACK WESTON DC VOLTMETER. MODEL 2. GOOD.	30.00

VARIOMETERS AND VARIOCOUPERS

1.	FEDERAL. GREEN. SELF-SUPPORTING WIRE. TWO AVAILABLE.	20.00 EA
2.	NO NAME. BAKELITE FORM. GOOD.	12.00
3.	PEARLCO. BROWN BAKELITE. GOOD.	12.00
4.	AMRAD BASKETBALL STYLE. 1921.	30.00
5.	REHLER. EXCELLENT. BLACK BAKELITE. TWO AVAILABLE.	25.00 EA

MISCELLANEOUS

1.	WESTERN ELECTRIC FIELD TELEPHONE. SQUARE WOODEN CASE WITH RINGER. GOOD.	12.00
2.	SHORTWAVE AND TELEVISION LABS CONVERTER. MATCHES AK MODEL 40 CABINET STYLE.	15.00
3.	INTERESTING "WHATZIT". ALL HAND MADE BRASS PARTS PLUS TWO MODEL "A" SPARK COILS. ALL PUT TOGETHER IN NEAT FASHION IN A NICE WOODEN PORTABLE CASE. I THINK THAT IT WAS INTENDED TO BE A SPARK TRANSMITTER. GREAT CONVERSATION PIECE.	35.00
4.	OMNIGRAPH. NO KEY BUT WORKS AND HAS PLENTY OF CODE PLATES. EXCELLENT.	95.00
5.	KNIFE SWITCHES. OLD AND UNUSED.	



# club news

This method applies to AC radios having first audio tubes of the grid cap type such as 6Q7, 6B7, 6F5, 55, 75.

Get yourself a patch cord that has a phono plug on one end and alligator clips on the other end. The phono plug goes into the earphone jack of your tape player or the headphone jack of your record player (if its stereo, don't push the plug all the way in, just far enough until you get something from the radio.) Remove the grid cap from the first audio tube and connect the red alligator clip to the grid cap on the tube. Connect the slack (ground) alligator clip to the radio chassis. If the alligator clips are too small for the grid cap, get a grid cap connector from an old junk radio.

The volume is controlled by the volume control on the player and obviously the tuning knob on the radio has no effect. On most sets you can still use the tone control.

There you have my idea about it. And as you have probably already thought, the sound quality is much better than with the signal generator because it is a direct connection.

ANTIQUÉ RADIO CLUB OF AMERICA  
Melvin Comer of Ardmore Pennsylvania sent in the good news about ARCA.

From all the advanced reservations so far it appears that the Antique Radio Club of America will be having the largest attendance ever at the coming meet at Louisville, Kentucky June 4-5-6th at the Holiday Inn-Rivermont there.

Those attending will have the opportunity to see one of the most extensive and outstanding collections of antique radios compiled by Mr. John Caperton over a period of many years. The displays there cover a wide area of beautifully restored equipment in many different categories. There may also be the possibility-- weather permitting-- of viewing the Caperton Collection of antique cars as well.

Several tours have been arranged to enjoy the high lights of famous Louisville antiquity in the surrounding area-- including a trip on a steam paddle-wheeler down the river.

All in all-- it seems to be the event of the year both at the Holiday with numerous displays, old gear contests, large flea market, talk and show and tell sessions with reasonable convention rates available.

Cheerio.. Mel-

## IHRS REGIONAL SPRING MEET

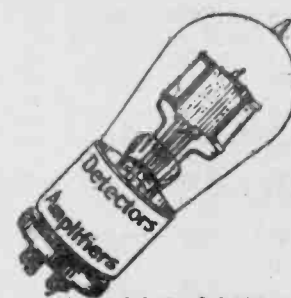
Ross Smith of Elkhart Indiana sent some interesting information about a very active day and evening planned for Saturday, May 9, 1981 at Auburn Indiana. Actually the meet starts at 6.00 p.m. at the Starlite Motel, Friday, May 8, 1981.

There is also morning registration at the Museum Swap Meet, south parking lot at 9.00 a.m. Collectors will be able to enter their sets under seven contest classifications.

The Indiana Historical Radio Society supports a museum fund and the members work hard toward its goal. There will be a sale of donated items for the



OLDE TYME RADIO COMPANY  
2445 LYTTONSVILLE ROAD  
SILVER SPRING, MARYLAND 20910



OLDE TYME RADIO COMPANY  
2445 Lyttonsville Road  
Silver Spring, Maryland 20910  
(301) 585-8776

### FOR SALE

- \* AK STYLE BATTERY CABLE
  - 5 CONDUCTOR ..... .75/FT.
  - 6 CONDUCTOR ..... 1.00/FT.
- \* BROWN SILK TYPE-POWER CORD ..... .30/FT.
- \* OLDE TYME AC PLUGS - NEW ..... 1.10 EACH
- \* RF, ANT, OSC COILS, IF TRANSFORMERS MOST FREQUENCIES ..... 2.50 EACH
- \* TUBES, 1920 TO 1960, NEW OR USED, STATE YOUR PREFERENCE ..... WRITE FOR A QUOTE
- \* EXACT REPLACEMENT HANDLES FOR RADIOLA II AND VIII ..... 4.50
- \* VIBRATORS, NEW OR USED
  - 6V - 4 PRONG OR 12V - 4 PRONG
  - 6V - 3 PRONG OR 12V - 3 PRONG
    - 6V OR 12V NEW ..... 5.50
    - 6V OR 12V USED ..... 2.50
- \* BALLAST TUBES - NEW UNITS - GOOD SELECTION. LET US KNOW THE TYPE YOU REQUIRE ..... 3.75

- \* NEW POWER XFMRs 300-0-300V 90MA
  - 5V@3.0A, 6.3V@3.5A ... 15.00 EA
- \* ANTIQUE HEADPHONES -- MANY DIFFERENT MAKES --- USED / TESTED ..... 5.00 EACH
- \* ANTIQUE HEADPHONES, NEW - 1 PR LEFT . 10.00
- \* REPLACEMENT TYPE AUDIO TRANSFORMERS - 3:1 RATIO. SINGLE PLATE TO PUSH PULL GRIDS. SMALL SIZE. NEW ..... 7.00 EACH
- \* OUTPUT TRANSFORMERS
  - REPLACEMENT TYPE ..... 4.50 EACH
  - PHILCO OUTPUTS ..... 4.50 EACH
- \* RESISTOR LINE CORD REPLACEMENT KIT 5-TUBE SETS ((2) 6.3V TUBES PLUS (2) 25 V TUBES) AT .3A. MODEL RLC-1 ..... 3.50 EACH
- \* RESISTOR LINE CORD REPLACEMENT KIT 6-TUBE SETS ((3) 6.3V TUBES PLUS (2) 25V TUBES) AT .3A. MODEL RLC-2 ..... 4.50 EACH
- \* ESCUTCHEON AND NAME PLATE SCREWS
 

BRASS - ROUND HEAD			
GUAGE	LENGTH		
0	1/4" .....	10	FOR .50
2	3/8" .....	10	FOR .50
1	1/4" .....	10	FOR .50
- \* PLEASE INCLUDE SUFFICIENT FUNDS FOR SHIPPING.



ake of the museum cause. In fact the auction of personal items carries its ten percent fee as a donation to the IHRS museum.

IHRS wants everyone to make their own reservations: L & K Hotel (800) 447-4470 or the Marlite (219) 925-0500. Both are on SR 8 W, Auburn, IN 46706

MID-AMERICA AUCTION Bob Lane sent us the following information about MARC. The Mid-America Antique Radio Club will have their fifth annual auction on Sunday afternoon, April 12, 1981 at 1:00 p.m. This year the auction will be at the Solar Tool and Die Company, 720 N. Agnes, Kansas City, Missouri. There is no charge for buying or selling anything at the auction, but you must be a member-- having paid our \$5.00 a year dues. We expect members to come over 500 miles to this auction, as we had last year. This one should be even bigger than last and everyone is welcome. Write to Bob Lane, 4031 W. 97th Ter, Overland Park, KS 66207, for directions or call (913) 648-5296 evenings.

TBM HOSTS VRPS AUCTION An auction for collectors will be held at the Texas Broadcast Museum on March 21, 1981, activities starting at 2:30 p.m. The auctioning of sets and parts starts at 6:00 p.m. The museum is located in the West End Historical District, 1701 N. Market Street, Dallas, Texas.

# CLASSIFIED

Classified ad rate: 6¢ per word  
Photo ads: \$2.00 extra  
Deadline: 20th of the preceding month.

**PHOTO ADS ONLY**  
**\$2.00 EXTRA**

List ads - 35¢ per line  
AD SPACE:  
full page.....\$50.00  
half page.....\$25.00  
quarter page..\$12.50  
multiple runs.....  
20% discount



## MISCELLANEOUS

\*\*\*\*\*  
"VINTAGE RADIOS RESTORED RIGHT.. the first time. 21 years experience. Fast, warranted service. Maury Zivitz, Ph.D; 11503 Atwell Dr.; Houston, Tx 77035; (713) 723-4254, after 6."  
\*\*\*\*\*

SINCE 1975 "RADIO AGE" MAGAZINE has featured articles on the history of early radio, restoration hints, biographical sketches of radio pioneers along with lots of photographs and classified ads. "Radio Age" is published monthly except July and August. Subscriptions are \$10.50 for 1st class mailing and \$8.50 for 2nd class mailing. Send check or money order to Radio Age, 636 Cambridge Road, Augusta, GA 30909. Sample \$1.00.  
\*\*\*\*\*

"JERRY'S MUSICAL NEWS" (OVER 500 subscribers) phonographs, radios etc. ads. Subscription \$6. year. Sample 50 cents. 4624 Woodland, Edina, MN 55424.  
\*\*\*\*\*

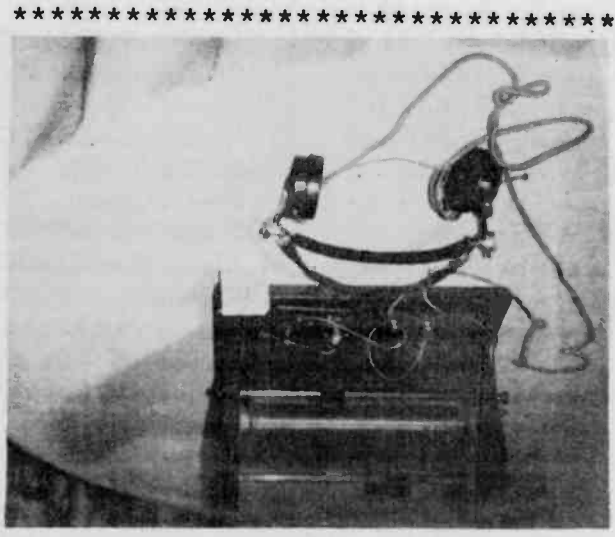
## FOR SALE OR TRADE

\*\*\*\*\*  
VARIOUS TUBE ADAPTORS AS 199-01-A etc. Also a few new old tubes in boxes from 1- volt- 117 volts no WD11's. Radiola 18 with tubes clean in cabinet works OK \$75.00 Looking for AK B-Bs' or parts especially 3-4 tube cluster. Bill Key, 625 Whitman St., RFD Hanson, MA 02341. Tel. (617) 447 2311.  
\*\*\*\*\*

\*\*\*\*\*  
FOR SALE: RIDERS MANUALS, OLD CAR RADIO MANUALS, LOW PRICES. All new list of tubes for sale - 75 cents each. Radios, parts, etc. SASE for lists. Bruce Harbeck, 1316 - 38th, Sioux City, Iowa 51104. (712) 258-6855.  
\*\*\*\*\*

\*\*\*\*\*  
MAJESTIC MODEL 196 CATHEDRAL - \$65; CABINET FOR ZENITH 6D-628 (EXCELLENT) \$8 ; TEMPLE DYNAMIC SPEAKER (NEEDS STRIP OF VENEER) \$8 ; "RADIO PHYSIC'S" BY GHIRARDI \$5.50 ; "MODERN RADIO SERVICING" BY GHIRARDI \$5 ; VINTAGE RADIO SERVICING (RON BOUCHER), 376 CILLEY ROAD, MANCHESTER, NH 03103. (603) 669-1698. WANTED: INSTRUCTIONS FOR READRITE MODEL 710 ANALYSER.  
\*\*\*\*\*

## FOR SALE OR TRADE



\*\*\*\*\*  
WANTED: CATHEDRALS, BREAD-BOARDS, "The Radio Collectors Guide."  
SALE OR TRADE FOR ABOVE: 1918 circa crystal set (pictured), AK 20 refinished, AK 60 refinished, Radiola 18 with 100 speaker, Philco 45. Gary Hill, 1507 Ridge Ave., New Castle, PA 16101. (412) 654-9335.  
\*\*\*\*\*

- RADIOLA III (GOOD - XFMR OK) \$50.00
- RCA 125 SEMI-CATHEDRAL (GOOD COMPLETE - SHORTWAVE 1735) -- \$55.00
- EMERSON B5 SQUARE TOP (GOOD COMPLETE 1932) \$35.00
- ONE TUBE HOMEBREW IN CABINET (VERY GOOD) \$25.00
- AMERICAN BOSCH 5A (EXCELLENT COMPLETE 1933?) \$45.00
- RCA 102 (VERY GOOD 1933? VERY SMALL) \$30.00
- AMERICAN BOSCH 501 (GOOD WORKING) \$30.00
- STROMBERG CARLSON AWP-8 "TRANSOCEANIC" TYPE PORTABLE (EXCELLENT - WORKING - 1956 - 8 BANDS) \$35.00
- U. S. NAVY WW II BROADCAST RECEIVER (STROMBERG CARLSON MADE 1943 - WORKING) \$40.00
- A. K. 33 (GOOD) \$40.00
- PHILCO 89 SQUARE TOP (VERY GOOD COMPLETE SHORT WAVE) \$40.00
- PHILCO 116B SQUARE TOP (VERY GOOD - COMPLETE - 5 BANDS) \$65.00
- 1950'S RADIO MADE IN SHAPE OF BROADCAST MIKE (EXCELLENT WORKING) \$25.00
- RON BOUCHER, 376 CILLEY ROAD, MANCHESTER, NH 03103. (603) 669-1698.

**FOR SALE OR TRADE**

\*\*\*\*\*

FOR SALE: 1921 FLAME PROOF KEY MIB \$25. 1" BLACK KNOBS WITH WHITE ARROWS 1.50. 2" INDICATOR KNOBS MIB \$2.00. ALL AMERICAN AMPLIFYING TRANSFORMER MIB \$4. RADIOTRON UV877 PROTECTIVE TUBE MIB \$4.00. NICKOLS ADD-A SPEAKER \$7.00. TUNGAR TRICKLE CHARGER WITH EXTRA BOXED TUBE \$7.00. BURNELL 150 OHM RELAY \$25. ZENITH WAVE MAGNET ANTENNA \$8. AMPLIFLEX ANTENNA NO BASE \$35.00. SLEEPER SERENADER INSTRUCTION BOOK \$10. CROSLY MODEL 96 CAR RADIO BOOK \$8. MOHAWK PHAMPHLET - SHOWS 8 RADIOS \$5. RCA RT 34/APS 13 \$35. RCA RA TUNER NO BOX \$80. MAGNAVOX TRF5 \$65. CLAPP EASTHAM H-2-165. RADIOLA 18 - \$45. 3 KNIFE SWITCHES - \$7. WEECO GEM CRYSTAL SET - \$65. CROSLY ADVERTISING CLOCK GREAT - \$165. HEADPHONES, INSULATORS & TUBES CASERTA, 47 VISTA LA., LEVITOWN, NY 11756. (516) 731-7175 EVES.

\*\*\*\*\*

TUSKA RADIO RECEIVING SET PATENT October 6, 1914 "Licensed for amateur and experimental use only." Type 301 Serial 21945. Philco farm radio model 623 2 volt storage "A" battery. Code 121 - Write G. J. Sandt, RD1, Box 280, Sligo, PA 16255.

\*\*\*\*\*

1 MANHATTEN ELECTRIC WIRELESS SPARK BOX NICE OAK WORKS 125  
2 W E 7A AMP/W 3 205Ds NICE 135  
3 SCR 95 WAVEMETER 1918 WORKS 50  
4 LARGE PORCELAIN BASE INDUSTRIAL SPARK GAP 30 ALL ITEMS POSTPAID STEVE 201-462-7987 RD 1 MARLBORO NJ 07746

\*\*\*\*\*

A GOOD INVESTMENT. Approximately 2,000 radio tubes from the 20's to the 50's. Most all new in boxes. Write for details. Also 35 small plastic and wood table radios, the lot \$350.00. Also 5 Electrical Experimenter magazines in excellent condition \$50.00 the lot. Burt Noyes, 4 Pinewood Dr., Stratham NH 03885.

\*\*\*\*\*

BRITISH SCIENCE MUSEUM BOOK, "Thomas Edison, Professional Inventor," \$4.35 postpaid. J. Denny, 2929 N. Westmoreland, Arlington, Virginia 22213.

\*\*\*\*\*

AK PARTS, AK SETS, OLD RADIOS, TUBES, TEST EQUIPMENT, RIDERS, RCA, ZENITH, PHILCO SERVICE DATA PLUS MORE. MAGAZINES, LIST 3-81 SEND 50 CENTS PLUS LARGE SASE WITH 50 CENTS IN STAMPS. KRANTZ, 100 OSAGE AVE., SOMERDALE, NJ 08083.

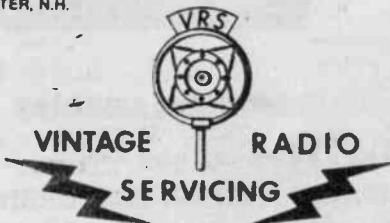
\*\*\*\*\*

**FOR SALE OR TRADE**

\*\*\*\*\*

378 CILLEY RD.  
MANCHESTER, N.H.  
03103

RESTORATION  
REPAIR



(603)  
869-1698

-BUY-  
SELL - TRADE

\*\*\*\*\*  
ATWATER KENT BREADBOARDS. TWO TUBE. 3 TUBE. 5 TUBE. TEN CATHEDRALS. TUMBSTONES. EARLY BATTERY SETS. RADIO HORNS. PICTORIAL LIST \$1.00. CHARLES, BOX 259 MERLIN, OR 97532. (503) 476-1078

\*\*\*\*\*  
TRADE OLD RADIOS-CATALOGS-LITERATURE-PARTS-TUBES FOR OLD STRINGED MUSICAL INSTRUMENTS-FIDDLES-GUITARS-MANDOLINS-BANJOS-ETC. REGARDLESS OF CONDITION. PLEASE DESCRIBE. CECIL BOUNDS, PINE SPRINGS RTE., CARLSBAD, NM 88220.

\*\*\*\*\*  
HI-FI, TAPE, AUDIO, and radio retail magazines and brochures: 1930-1935; Regency FM; early 1950's transistor sets. Have trade items. H. Layer, AV-SFSU, 1600 Holloway, San Francisco, CA 94132. . .

\*\*\*\*\*  
OLD TUBES - 20'S, 30'S, 40'S. Lots of 100 or more, \$1 per tube Unused, original boxes, John Greeley, 1201 S. Fifth, La Crosse, WI 54601 (608) 784-24535.

\*\*\*\*\*  
RADIO & HOBBY MAGAZINES FROM good to rough no covers. "Radio News" 200 copies 1922 to 1967, "QST" 250 copies 1923 to 1973, "Radio Craft / Radio Electronics" 180 copies 1932 to 1965, "Popular Electronics" 120 copies 1954 to 1970, "Wireless Age" 23 copies 1914 to 1924, "Electrical Experimenter" 13 copies, "Citizens Callbook" 12 copies, "Popular Radio" 12 copies, "Modelmaker" 45 copies 1934 to 1940, "Minerologist" 1951 to 1963 all, some copies of 12 other old radio and electrical magazines. Send your want list with SASE for quote. No lists available. Collector, 141 Homan Avenue, Elkhart, IN 46516.

\*\*\*\*\*  
23 PHONOGRAPHS RANGING FROM NICE to junk. Edison OPERA conversion. Fireside. Standard. Home. Zonophone. 5 Victors incomplete. Columbia front mount. Pathe. Busy Bee. "Ect" take all for \$2750 including freight. (503) 476-1078.

\*\*\*\*\*

**FOR SALE OR TRADE**

\*\*\*\*\*

RADIOS TUBES  
CATHEDRALS:  
AK 708 - \$250. MAJESTIC 2 \$139. AK 84 \$250. PHILCO \$170. PHILCO 20 - \$160.

OTHERS:  
AK 37 W/SPKR \$130. PHILCO PORTABLE \$120.

SPKRS:  
RCA 1325 - \$40. WE 518-W- \$ MAGNAVOK M-1 \$35. - R-2 \$90.

TUBES:  
45-\$5, 35-\$4, 80-\$3, 26-\$5, \$4, 47-\$6, 01A-\$5, 46-\$4, 30-36-\$4..

MANY OTHERS. SEND LARGE SASE TO D. S. DEXTER, 151 HUDSON, NY, 10013. (212) 226-4885.

\*\*\* VICTOR \*\* COLUMBIA DISK PHONOGRAPHS \*\*\*

\*\*\*\*\*  
RADIO & HOBBY MAGAZINES FROM good to rough no covers. "Radio News" 200 copies 1922 to 1967, "QST" 250 copies 1923 to 1973, "Radio Craft / Radio Electronics" 180 copies 1932 to 1965, "Popular Electronics" 120 copies 1954 to 1970, "Wireless Age" 23 copies 1914 to 1924, "Electrical Experimenter" 13 copies, "Citizens Callbook" 12 copies, "Popular Radio" 12 copies, "Modelmaker" 45 copies 1934 to 1940, "Minerologist" 1951 to 1963 all, some copies of 12 other old radio and electrical magazines. Send your want list with SASE for quote. No lists available. Collector, 141 Homan Avenue, Elkhart, IN 46516.

\*\*\*\*\*  
FOR SALE. TABLE MODEL SILVERTON phonograph with internal speaker \$75.00 plus shipping. Hugh Kuhn, Rt. 3, Lime Springs, IA 52155.

\*\*\*\*\*  
BOOKS. RIDERS RADIO #I. \$200 RCA VICTOR SERVICE #I #II 1923 TO 1947. \$50.00 EACH. CRTS 5TP4 \$50.00. TP400A \$50.00. 7JP4 \$50.00. NEW 3KP4 OFFER. RADIO TUBES. WRITE WANTS. SEI 925 STARLITE, GRANTS PASS, 97526. (503) 476-1078.

\*\*\*\*\*  
DAHLBERG MODEL 4130-D1 COIN OPERATED RADIOS circa 1950. They operate on dimes and have pilot speakers. \$25.00 each. Include all shipping charges. Ken Bosomworth, Box 863, Albert Lea, MN 56007.

\*\*\*\*\*  
FOR SALE: NOW AVAILABLE -- COMPLETE PLANS FOR BUILDING YOUR OWN RCS-728 "A", "B", & "C" POWER SUPPLY. \$4.50 TO GARY SCHNEIDER, 6848 COMMONWEALTH BLVD, PARMA HGTS., OH 44130.

\*\*\*\*\*



**FOR SALE OR TRADE**

**WANTED**

**WANTED**

\*\*\*\*\*  
 OLD TUBES - 20'S, 30'S, 40'S.  
 Lots of 100 or more, \$1 per tube  
 Unused, original boxes, John  
 Greeley, 1201 S. Fifth, La  
 Crosse, WI 54601 (608)  
 784-24535.

\*\*\*\*\*  
 FOR SALE: CATHEDRAL, BATTERY  
 and AC RADIOS from 1920's and  
 1930's. Please send self address  
 stamped envelope. J. Albert War-  
 ren, Box 279, Church St., Waverly,  
 PA 18471.

\*\*\*\*\*  
 COMPLETE LINE OF DIAMOND NEEDLES  
 for juke boxes; AMI, Rock-ola,  
 Seeburg, Wurlitzer. Please  
 write for listing and prices.  
 KEITH ELECTRONICS, Lock Haven,  
 PA 17745. Phone (717) 748-7163

\*\*\*\*\*  
 ADAMS MORGAN (PARAGON) 1922 cat-  
 alog reprint. VT control, cry-  
 stal, radios, transmitter,, etc.  
 16 pages illustrated, \$2.95 ea.  
 plus .50 handling mailing. Cecil  
 Bounds, Pine Springs Rte. Carls-  
 bad, NM 88220.

\*\*\*\*\*  
 FOR SALE: AUTHENTIC REPLICAS:  
 FRONT PLATES FOR AK VARIO COUPL-  
 ERS, VARIOMETERS, TYPE 11 TUNER,  
 DIALS, KNOBS, POINTERS, BINDING.  
 POST NUTS, PUSH BUTTONS, BELT  
 DRIVE PULLEYS FOR AK AND MUCH  
 MORE. SASE FOR LISTINGS. K. PAR-  
 RY, 17557 Horace, Granada Hills,  
 CA 91344.

\*\*\*\*\*  
 FOR SALE OR TRADE: OLD RADIO  
 BOOKS, next 5 sales lists for a  
 \$1.00. RADIOGRAPHICS BOOKS, Box  
 18492, Cleveland Heights, OH....  
 44118.

\*\*\*\*\*  
 COMPLETE LINE OF DIAMOND NEEDLES  
 for for juke boxes, AMI, ROCK-  
 OLA, SEEBURG, WURLITZER, Please  
 write for listing and prices.  
 KEITH ELECTRONICS, 209 Bellefon-  
 te Ave., lock haven, PA 17745.  
 Phone (717) 748-7163

\*\*\*\*\*  
 FOR SALE: RCS-728 power supply  
 now in 9th year of manufacture.  
 Do you have yours yet? Send SASE  
 for spec sheet to: Gary Schneid-  
 er, 6848 Commonwealth, Parma  
 Hgts., Ohio 44130

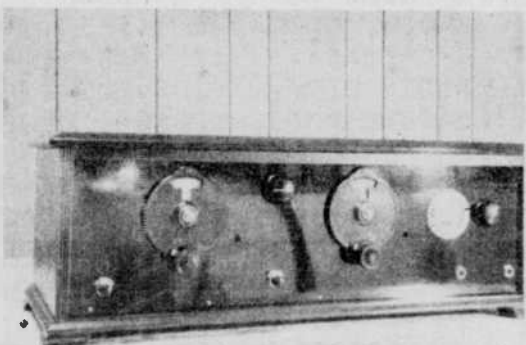
\*\*\*\*\*  
 FOR SALE OR TRADE: Edison T-  
 shirts and tote bags! Send for  
 descriptive flyer. Phonograph  
 postcards, send stamp for sample  
 New Amberola, 37 Caledonia, St.  
 Johnsbury VT 05819

\*\*\*\*\*  
 HAPPY COLLECTING  
 \*\*\*\*\*

-----  
 WANTED: BREADBOARDS -- 4 TUBES  
 or less. Anything pre 1922. What  
 have you got?? Postage refunded.  
 Ray Garner, Rt. 10, Box 645M-1,  
 Ft. Worth, TX 76135.

-----  
 WANTED: GENERAL ELECTRIC NE-18  
 2 watt bulbs. Also scanning  
 discs. 3 - stage resistance  
 coupled amplifiers. Darcy  
 Brownrigg, Chelsea, Quebec, J0X  
 1N0, Canada.

-----  
 CASH FOR DECEMBER 1915 TO DECEM-  
 BER 1921 QST's for personal col-  
 lection. Ken Miller, K6IR; 16904  
 George Washington, Rockville,  
 Maryland, 20853. (301) 774-7709



-----  
 WANTED: SCHEMATIC WITH ANY  
 service data for Bremer-Tulley  
 "Counterphase 6" (kit). Cabin-  
 et I have has a label "Signal  
 Electric manufacturing, Menomi-  
 nee, Michigan. Does anyone have  
 this set? Photo may help for  
 true identity. Darcy Brownrigg,  
 Chelsea, Quebec, J0X 1N0 Canada

-----  
 WANTED: WIRE RECORDERS; ARMOUR,  
 Brush, unusual types only. Also;  
 VLF Signal Simulator, c. 1968,  
 pre 1940 TV literature. H. Lay-  
 er, AV-SFSU, 1600 Holloway, San  
 Francisco, CA 94132.

-----  
 HELP. UTAH OR SIMILAR MAGNETIC  
 speaker unit, with 5/8 inch  
 (outside diameter) throat, work-  
 ing and distortion free. Also  
 need clean and readable Radiola  
 18 dial scale. Replies acknow-  
 ledged and postage refunded.  
 George Eklund, 6518 Gunpowder  
 Lane, Prospect, KY 40059.

-----  
 OLD STYLE RADIO GRILLE CLOTH.  
 ALSO ANY MAGAZINE ADS SHOWING  
 GRANDFATHER CLOCK RADIOS. WILL  
 PURCHASE ANY MAGAZINE CONTAIN-  
 ING SUCH AN AD. W. PETERS, 163  
 S. BROADWAY, LINDENHURST, NY  
 11757.

-----  
 RADIOS OF THE '30S AND EARLY  
 '40S (working) especially Scott,  
 Arvin, A.K., Crosley and Majestic.  
 One or more or entire col-  
 lection. Particulars to Arthur  
 Axelman, 20627 Clark St., Wood-  
 land Hills, CA 91367 "

-----  
 WANTED -- COCKADAY 4 CIRCUIT  
 tuner radio. This is a kit ra-  
 dio. J. Albert Warren, Box 279,  
 Waverly, PA 18471.

-----  
 WANTED: SCOTT 30 TUBE PHILHAR-  
 MONIC. Must be in original cab-  
 inet and in mint to good restor-  
 able condition. Will travel  
 anywhere to purchase. Dave Pier-  
 son, 635 E. Buchtel Ave., Akron,  
 OH 44304. (216) 384-8898.

-----  
 AUDIO TRANSFORMER FOR KENNEDY VI  
 -- Thorardson same as for V, XV,  
 XXXX. Kennedy 311 portable for  
 swap or sale. Bob Lane, 4031  
 W 97 Ten. O.K., KS 66207.

-----  
 AUTOMOTIVE RADIO ITEMS: VIBRAT-  
 ors, original radios, cable  
 heads, power tuner types, misc.  
 cash paid. trade 1927 QST's.  
 Marvin Roth, 14500 LaBelle, Oak  
 Park, MI 48237.



-----  
 PLEASE HELP. I love mirrored  
 glass radios. If you have one,  
 or know where there is one,  
 please let me know. I'm also  
 interested in any "wild looking"  
 radios from the 1930's like col-  
 ored celluloid radios (Fada,  
 Emerson, etc.) and chrome rad-  
 ios. Barbara Gorton, Box 1252,  
 Dayton, OH 45401. (513) 253-5073.

-----  
 WANTED: 1928-1940 THEATER Horns  
 and Drivers, particularly W-E  
 and RCA. Shearer Two-Way Theat-  
 er Speaker. Cinaudagraph PE-27  
 and others. W-E 26A Multi-cell.  
 Raleigh Disc. Rola Horn Speak-  
 er. Rola "Pedestal" Cone Speak-  
 er. W-E 713-A H.F. Driver. Call  
 (501) 777-6751. Jim Hunter, %  
 Klipsch and Assoc., P. O. Box  
 688, Hope, AR 71801.

-----  
 WANTED FOR DISPLAY: Scanning  
 disc television, Patsy Hicken,  
 WCSC Broadcast Museum, 80 Alex-  
 ander Street, Charleston, S.C.  
 29402. (803) 723-8371.

-----  
 RAYTHEON TELEVISOR LAMP FOR JEN-  
 KINS Scanning Disc TV. Top price  
 paid for scanners. Bill Russell,  
 6463 1/2 Fulton Ave. Van Nuys,  
 CA 91401 (213) 989-4086.



# PUETT ELECTRONICS

PUBLISHERS OF **ANTIQUE RADIO TOPICS** & **THE CLASSIC RADIO NEWSLETTER**

P.O. BOX 28572 DALLAS TEXAS 75228

LIST N/19

**HOW TO ORDER** - (1) MAKE ALL CHECKS OR MONEY ORDERS PAYABLE TO PUETT ELECTRONICS. ALL PAYMENTS MUST BE IN U.S. FUNDS AND NEGOTIABLE WITHOUT PAYMENT OF A BANK COLLECTION FEE. MONEY ORDERS ISSUED BY POST OFFICES IN CERTAIN COUNTRIES (CANADA FOR EXAMPLE) ARE ACCEPTABLE IF THEY CAN BE CASHED IN A U.S. POST OFFICE.

(2) ALL ORDERS ARE POSTPAID AND INSURED. THE PRICE OF ALL ITEMS INCLUDES POSTAGE AND INSURANCE CHARGES. SEE ORDER BLANK ON OTHER SIDE.

(3) TEXAS RESIDENTS ADD 8% STATE SALES TAX. --- (4) YOU CAN USE YOUR MASTER CARD OR VISA TO CHARGE YOUR PURCHASES. VISA CUSTOMERS SEND YOUR ACCOUNT NUMBER AND EXPIRATION DATE. MASTER CARD CUSTOMERS SEND YOUR ACCOUNT NUMBER, INTER BANK NUMBER AND EXPIRATION DATE.

YOU MAY CALL J.W.F. PUETT AT HIS RESIDENCE BETWEEN THE HOURS OF 9:00 AM and 10:00 PM CENTRAL STANDARD DAYLIGHT TIME FOR FREE TECHNICAL CONSULTATION - (214) 327-3771 or 321-0917.

**ANTIQUE RADIO TUBES** ALL TUBES ARE GUARANTEED - SEE TERMS OF GUARANTEE STATED IN OUR CATALOG.

0A2	53	1H4	56	2A4	58	6A5	56	6B6	56	6J8	56	6SR7	55	7B5	56	12AH7	55	12SN7	54	25A6	56	56	58	59	59	1201	56		
0A2	53	1H5	56	2A5	57	6A6	55	6B7	57	6K5	55	6SR7	55	7B6	56	12AT6	54	12SQ7	55	25A7	56	37	56	70A7	57	1203	56		
0A4	53	1H6	56	2A6	57	6A7	59	6B8	57	6R6	55	6S17	55	707	57	12AX7	54	12SP7	55	25A7	56	38	56	70L7	58	1204	56		
0B5	54	1J5	56	2A7	56	6A8	57	6B9	57	6S66	53	6K7	56	6S07	57	7B8	56	12AU6	53	12SN7	55	25B6	56	39	56	71A	59	1205	58
0C3	54	1J6	56	2B7	56	6B4	54	6B5	54	6K1	56	6S07	55	7C5	55	12AU7	53	12V6	54	25C6	56	40	59	75	58	1206	56		
0D3	54	1L4	56	2E5	57	6B5	52	6B36	54	6L5	56	6S27	55	7C6	58	12AV6	54	12Z3	54	25L6	56	40Z5	55	76	55	1207	56		
0V4	54	1L6	57	2M3	54	6A7	56	6C4	54	6L6	54	6T7	56	7C7	56	12AX7	54	14A4	56	25S	56	41	56	77	57	1208	56		
0Z4	55	1L4A	57	2M4	55	6A5	54	6C5	54	6L7	56	6T8	53	7E6	56	12AV7	54	14A5	56	25Z	56	42	56	78	58	1209	56		
1A3	56	1L8A	56	3A4	55	6A7	56	6C6	57	6H5	57	6U5	57	7E7	56	12B7	56	14A7	56	25Z6	56	43	57	79	58	1210	56		
1A4	56	1L8A	57	3A5	55	6A5	57	6C7	57	6H6	56	6U6	54	7F7	57	12B8	56	14AF7	56	26	57	44	56	80	55	1211	59		
1A5	55	1L8C	56	3A6	55	6A6	59	6C8	56	6H7	56	6U7	57	7F8	59	12BA6	54	14B5	56	26A6	56	45	57	81	59	1212	56		
1A6	55	1L8C	56	3B5	55	6A7	56	6C86	53	6P5	55	6V6	53	7G7	57	12BE6	54	14B6	56	26A7	56	45Z3	55	82	57	1213	56		
1A7	54	1L8D	56	3B7	55	6A8	55	6D4	55	6P7	56	6V7	55	7H7	56	12C5	55	14B1	56	27	57	45Z5	54	83	57	1214	57		
1B4	56	1L8E	56	3C6	56	6A86	56	6D6	57	6Q7	56	6V8	54	7J7	57	12C8	56	14C5	55	28D7	54	46	56	83V	57	1215	57		
1B5	56	1L8F	56	3L4A	56	6A87	56	6D7	57	6R7	56	6V9	54	7K7	58	12F5	55	14C7	56	30	57	47	59	84	56	1216	55		
1B7	56	1L8G	56	3L4B	55	6A85	56	6D8	57	6S4	55	6X5	54	7L7	57	12H6	56	14E6	56	31	56	48	58	85	56	1217	55		
1C5	54	1M4	56	3Q5	55	6A86	59	6E5	57	6S7	56	6Y6	55	7M7	57	12J3	56	14E7	56	32	56	49	58	89	56	1218	55		
1C6	55	1M5	56	3S4	54	6A85	54	6E6	55	6S8	57	6Z4	54	7O7	56	12J7	55	14F7	57	32L6	54	59	59	117L7	59	1219	56		
1C7	56	1M5	56	3M4	55	6A87	55	6E7	57	6S87	55	6Z5	56	7B7	56	12K7	56	14F8	57	32L7	54	59	59	117M7	59	1220	56		
1D5	56	1M6	56	3M4	54	6A85	53	6E8	57	6S87	56	6Z7	56	7S7	57	12K8	56	14H7	56	33	56	50S5	54	117N7	58	1221	54		
1D7	56	1M5	55	3M4	55	6A87	55	6E5	56	6S87	56	6Z8	56	7U7	56	12L6	54	14J7	57	34	56	50C5	53	117P7	58	1222	54		
1D8	56	1Q5	55	3T4	55	6A85	53	6E6	56	6S07	55	7A4	56	7H7	56	12O7	56	14H7	56	35	57	50C6	57	117Q7	58	1223	54		
1E4	55	1R4	56	3U4	54	6A15	54	6E7	57	6S07	55	7A5	55	7X6	57	12SA7	55	14J7	56	35A5	56	50L4	55	117R7	56	1224	54		
1E5	56	1R5	53	3U4	55	6A17	59	6E8	55	6S07	55	7A6	56	7K7	57	12SB7	54	14K7	56	35B5	55	50M6	56	117S7	56	1225	54		
1E7	56	1S4	54	3U4	55	6A15	54	6E5	57	6S07	55	7A7	56	7Y4	56	12SC7	56	14K7	56	35C5	54	50V6	56	485	57	1226	54		
1F4	56	1S4	54	3U4	55	6A17	55	6E6	55	6S07	56	7A8	56	7Z4	56	12SF5	55	14K7	57	35L6	55	50V7	56	717A	59	1227	54		
1F5	56	1T4	55	3V3	54	6A76	54	6E7	55	6S07	56	7A9	56	7O7	56	12SF7	55	15	59	35W4	55	51	57	879	55	1228	54		
1F6	56	1T5	55	3V4	55	6A78	53	6E6	53	6S27	55	7A97	56	7P7	58	12SG7	56	19	59	35Y4	54	51	57	884	58	1229	54		
1G4	56	1U4	55	3Z3	55	6A16	53	6E5	55	6S27	55	7A97	56	7Q6	56	12SH7	55	19T8	53	35Z3	56	55	58	950	58	1230	54		
1G4	56	1U5	55	3Z4	55	6A16	54	6E5	55	6S27	55	7A97	56	7Q6	56	12SH7	55	19T8	53	35Z3	56	55	58	950	58	1231	54		
1G5	56	1V	56	3A3	56	6A4	56	6E6	53	6S27	55	7A97	56	7Q6	56	12SK7	55	19	58	35Z5	55	57	57	955	57	1232	54		
1G6	56	2A3	57	3A3	57	6A5	57	6E7	55	6S27	55	7B4	56	12AL7	56	12SL7	55	24A	57	35Z6	56	58	58	958	57	1233	54		

**BOOKS, BOOKLETS & LITERATURE** A COMPLETE DESCRIPTION OF ALL LITERATURE IS CONTAINED IN OUR CATALOG.

**ANTIQUE RADIO BOOKLETS:** \$1. each; 3 for \$5.; 4 for \$6.; all 5 for \$7.

- (1) The Acquisition of Antique Radios by J.W.F. Puett
- (2) The Complete Restoration of Battery Powered Antique Radios by J.W.F. Puett
- (3) The Complete Restoration of AC Powered Antique Radios by J.W.F. Puett
- (4) When Was That Old Tube Made? by James R. Wilkins
- (5) Antique Radio Tube Substitution by J.W.F. Puett

**THE ENCYCLOPEDIA OF ANTIQUE RADIO** by J.W.F. Puett  
Photos and data on wireless, crystal, battery, AC sets and much more!  
Volumes 1, 2 & 3 - \$5.95 each with current price guides.

**THE APPRAISAL OF ANTIQUE RADIOS** by J.W.F. Puett - \$4.95  
Current values plus factors which contribute to antique radio value.

**THE PUETT ELECTRONICS SUPER ANTENNA - GROUND SYSTEM PLANS** \$2.00

**ATWATER KENT BREADBOARD NO. 8** - RAREST OF ALL AK BREADBOARDS - PHOTOS AND DESCRIPTION FROM ORIGINAL CATALOG A.R.T. V10/M5 - \$1.00 postpaid!

**WE CAN FURNISH A SCHEMATIC FOR NEARLY ANY RADIO RECEIVER!** Send name of manufacturer and model number (not serial number) - \$1.50 postpaid. Without the name of the mfg. or model number, we will search our files for a \$5.00 fee (refund if we can not locate the desired schematic). To search, we must have a sketch of the top of the chassis showing type numbers and location of all tubes and the location of the front panel controls and dial.

**APPRAISAL** WE OFFER THOROUGHLY DOCUMENTED APPRAISALS FOR INSURANCE PURPOSES. Send one first class postage stamp for details.

**OLD TIME RADIO PROGRAMS ON CASSETTES** - AMOS & ANDY - FIBBER MCGEE & MOLLY - SUSPENSE --- Our complete list of hundreds of radio shows is contained in Catalog No. 19, or you can obtain a complete list for one first class postage stamp. Each cassette contains two half-hour programs on one hour long program. Cassettes are \$2.15 each postpaid. Purchase ten and get one free! YOU CAN PURCHASE OUR SPECIAL PRE-RECORDED PACKAGE OF SIX CASSETTES (regularly \$13.50) for only \$12.00 postpaid. This package contains Amos & Andy, Fibber McGee & Molly, Charlie McCarthy, Suspense, Inner Sanctum, I Love A Mystery - Highlights from Temple of The Vampires - these programs are specially selected by J.W.F. Puett.

**ANTIQUE RADIO TOPICS & THE CLASSIC RADIO NEWSLETTER**

THREE PERIODICALS IN ONE! --- Antique Radio Topics, The Classic Radio Newsletter and The Antique Radio New Acquisitions List.

Send four first class mail stamps for a sample issue. ART is published ten times per year. The subscription rate is \$10.00. Since all subscribers renew in January of each year, if you initiate your subscription after January, please let us know if you wish to receive the back issues or if you wish to only receive the remaining issues for the year. We will refund any excess subscription fee. Classified ads are free! When PUETT ELECTRONICS has rare tubes to sell (60-11, 99, 01A, etc.), our subscribers have the first opportunity to purchase these through The Antique Radio New Acquisitions List which is sent to subscribers one week before it is made available to other customers. Antique Radio Topics covers subjects of general interest within the hobby. The Classic Radio Newsletter covers classic receivers manufactured by the E.H. Scott Radio Laboratories and McMurdo Silver, Inc. Other manufacturers of the world's finest radios are also included.

**DON'T MISS A SINGLE ISSUE!**  
**SUBSCRIBE TODAY!**

**PUETT ELECTRONICS**  
ANTIQUE RADIO TOPICS

**CATALOG NO. 19** IS THE LARGEST CATALOG WE HAVE PUBLISHED! ONLY \$1.00 postpaid

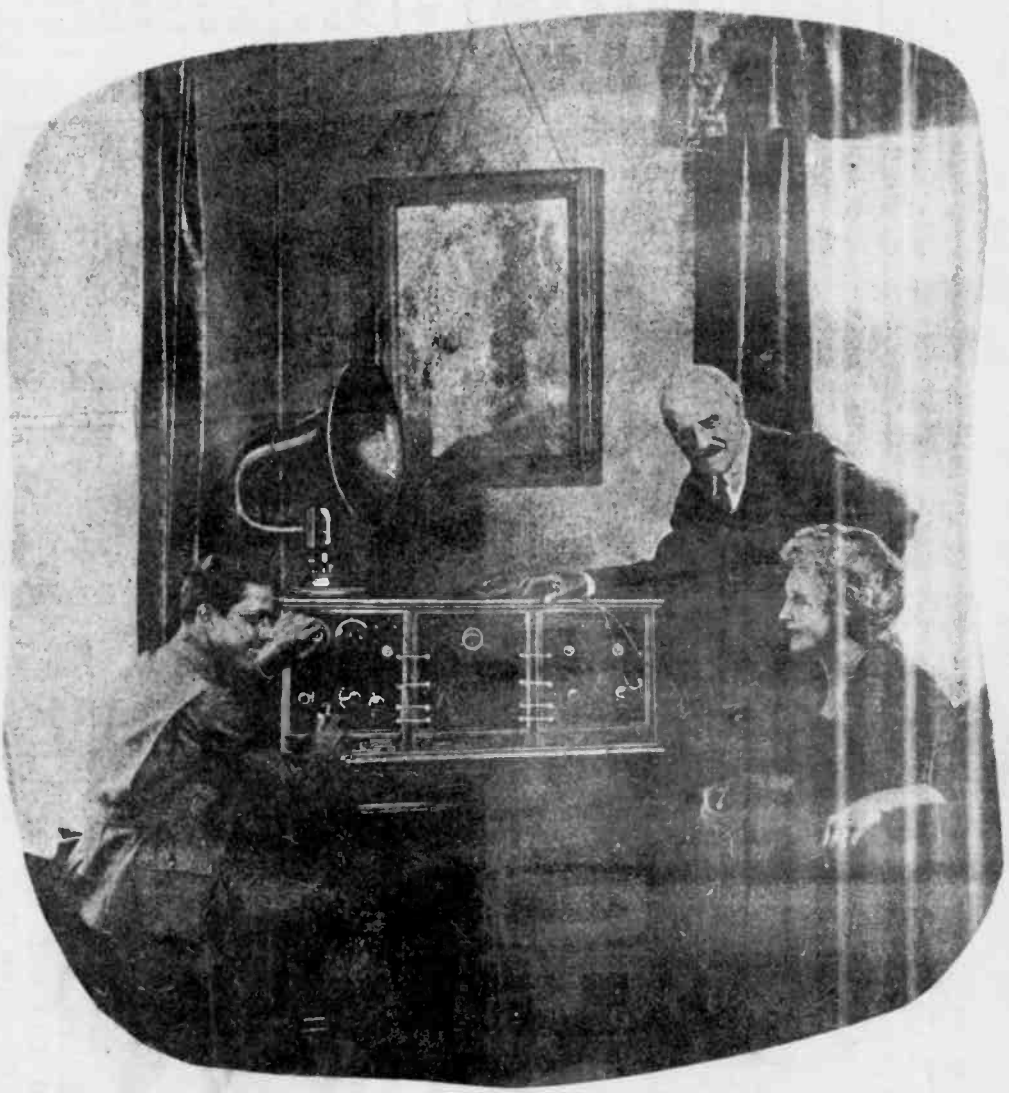
COMPLETE DETAILS ON EVERYTHING WE OFFER PLUS COMPONENTS FOR RESTORATION

Capacitors, resistors, interstage transformers, dial lamps, and much more!

MARCH

# THE HORN SPEAKER

1981



S

BEAVER FALLS PA 15010  
 3733 37TH ST EXT  
 R O HILL  
 #353824724