



AND TELEVISION

Price 25 Cents

June 1948

★ ★ Edited by Milton B. Sleeper ★ ★



CUSTOM-BUILT INSTALLATION

8th Year of Service to Management and Engineering



STARTLING FM PERFORMANCE!

RANGE 82 TO 115 MC.—LIMITS ON 1 MICROVOLT—6V6 PUSH PULL OUTPUT—FLAT FROM 10 TO 40,000 CYCLES—DOUBLE SUPERHETERODYNE—250 K.C. BAND WIDTH

NETWORK RELAY RECEPTION

The Har-Cam model 193-R FM receiver is designed to meet the stringent requirements of relay service as to sensitivity, stability, noise reduction, and audio fidelity.

CUSTOM-BUILT INSTALLATIONS

The 193-R is now recognized as the logical choice for custom-built installations requiring superlative performance on FM reception and phonograph reproduction.

BROADCAST MONITORING

Experience has proved the 193-R an ideal design for monitoring purposes. Also, it is admirably suited to making a variety of performance tests and measurements.

STANDARD OF FM PERFORMANCE

Manufacturers and development laboratories are using the 193-R as a standard of FM performance for checking the design and characteristics of new FM receivers.

FOR CIRCUIT & PERFORMANCE DATA AND PRICES, ADDRESS DEPT. C

HARVEY RADIO LABORATORIES, INC.

447 CONCORD AVENUE



CAMBRIDGE 38, MASS.



**THEY KNEW
WHAT THEY WANTED**

And, like many other radio engineers, they also knew where to bring their plans for successful completion.

Among recent Blaw-Knox installations is this rugged 500 ft. Special Heavy Duty H 40 Tower for the Crosley Broadcasting Corporation's Station WLWT, supporting a 5-section RCA Television Antenna.

Tower-building experience dating back to the days of "wireless" is at your disposal when you enlist the services of Blaw-Knox engineers.

**BLAW-KNOX DIVISION
OF BLAW-KNOX COMPANY**

2046 FARMERS BANK BUILDING • PITTSBURGH 22, PA.

BLAW-KNOX ANTENNA TOWERS

AM · FM · TV RAYTHEON SPEECH EQUIPMENT

For the last word in complete, up-to-the-minute facilities . . . or simple, low-cost equipment to suit your limited requirements . . .

Look to RAYTHEON for All Your Needs



RC-11 STUDIO CONSOLE

NOW WITH CUE POTS FOR TWO TURNTABLES

Provides complete high-fidelity speech input facilities with all control, amplifying and monitoring equipment in one cabinet. Seven built-in pre-amplifiers, nine mixer positions, cue attenuators for two turntables. Simple, positive controls reduce operational errors. Frequency response—2 DB from 30 to 15,000 cycles; Distortion—less than 1% from 50 to 10,000 cycles; Noise Level—minus 65 DB's or better. Meets all FCC requirements for FM.



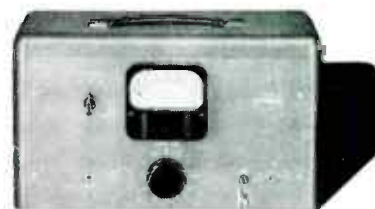
RPC-40 PORTABLE CONSOLETTA

Ideal for remote pickups yet complete enough to serve as a studio console. Four input channels for microphones or turntables, high level mixing, two output lines. Two RPC-40's interconnected provide 8-channel mixing—a feature of special interest to new TV stations planning future expansion.



**RR-10 REMOTE AMPLIFIER
SINGLE CHANNEL**

A complete, self-contained unit with built-in power supply. An excellent low-cost amplifier for remote pickups requiring only one high-fidelity channel.

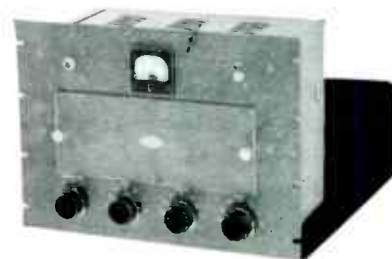


RR-30 REMOTE AMPLIFIER 3 CHANNEL

A lightweight, easy-to-carry combination of amplifier and power supply—simple and quick to set up. Provides three high-fidelity channels, excellent frequency response, high over-all gain.

RL-10 VOLUME LIMITER

Engineered for high-fidelity AM, FM or TV speech input. Increases average percentage modulation without distortion.



RP-10 PROGRAM AMPLIFIER

High gain, low distortion, excellent frequency characteristics. For rack or cabinet mounting.

RAYTHEON MANUFACTURING COMPANY WALTHAM 54, MASSACHUSETTS

Industrial and Commercial Electronic Equipment, FM, AM and TV
Broadcast Equipment, Tubes and Accessories

**BOSTON
CHATTANOOGA**

**CHICAGO
DALLAS**

**LOS ANGELES
NEW YORK**

**SEATTLE
WASHINGTON**

EXPORT SALES AND SERVICE IN FOREIGN COUNTRIES

Raytheon Manufacturing Company, 50 Broadway, New York 4, N. Y., WH. 3-4980



FM AND TELEVISION

★ ★ Edited by Milton B. Sleeper ★ ★

Formerly, FM MAGAZINE and FM RADIO-ELECTRONICS

VOL. 8 JUNE, 1948 NO. 6

COPYRIGHT 1948, by Milton B. Sleeper

CONTENTS

WHAT'S NEW THIS MONTH

Set Production — Marine FM — Limited Common Carriers 1

FCC VIEWS THE FUTURE OF FM & TV
Hon. Wayne Coy 15

CUSTOM-BUILT INSTALLATIONS
Milton B. Sleeper 16

RELAY PICKUP EQUIPMENT
Frederick T. Budelman 20

GETTING WPX ON THE AIR
F. M. Flynn 26

AF CIRCUIT EQUALIZER
I. Allen Mitchell 28

TV ANTENNAS
Gardiner Greene 31

S-T LINK FOR 920-960 MC.
D. J. Nigg 32

SPECIAL DEPARTMENTS

Telenotes 6

Products & Literature 7

Special Services Directory 8

Professional Directory 12

Spot News Notes 22

News Pictures 23

THE COVER DESIGN AND CONTENTS OF FM AND TELEVISION MAGAZINE ARE FULLY PROTECTED BY U. S. COPYRIGHTS, AND MUST NOT BE REPRODUCED IN ANY MANNER OR IN ANY FORM WITHOUT WRITTEN PERMISSION

MILTON B. SLEEPER, *Editor and Publisher*

CHARLES FOWLER, *Business Manager* RICHARD H. LEE, *Advertising Manager*
STELLA DUGGAN, *Production Manager* LILLIAN BENDROSS, *Circulation Manager*

Published by: FM COMPANY

Publication Office: 264 Main St., Great Barrington, Mass. Tel. Great Barrington 500
Advertising Department: 511 Fifth Avenue, New York 17, Tel. VA 6-2483

FM Magazine is issued on the 20th of each month.

Single copies 25¢ — Yearly subscription in the U. S. A. \$3.00; foreign \$4.00. Subscriptions should be sent to FM Company, Great Barrington, Mass., or 511 Fifth Avenue, New York 17, N. Y.

Contributions will be neither acknowledged nor returned unless accompanied by adequate postage, packing, and directions, nor will FM Magazine be responsible for their safe handling in its office or in transit. Payments are made upon acceptance of final manuscripts.



THIS MONTH'S COVER

Somehow, the idea has seeped into the radio industry that the public is more concerned with the price of receivers than what comes out of the speakers. Because promotion was concentrated on cheap table models, 12,000,000 were bought in 1947.

As a result, it is difficult for people to find sets capable of furnishing real musical entertainment. So difficult, in fact, they have to be built to order. But the demand is increasing, and custom set-building is growing to substantial volume. This month's cover shows a particularly fine installation in the home of A. H. Sherin, Summit, N. J. The loudspeaker is shown on page 16.

Entered as second-class matter, August 22, 1945, at the Post Office, Great Barrington, Mass., under the Act of March 3, 1879. Additional entry at the Post Office, Concord, N. H. Printed in the U. S. A.

FM ASSOCIATION

• • •

Second Annual Convention

SEPTEMBER 27-28-29

Hotel Sheraton

CHICAGO, ILL.

• • •

OPEN TO ALL

Interested in Radio's Rapidly-Growing Art

The FMA Convention, following the mandate of the organization's By-Laws, will cover the "general problems incident to FM operations." No other Trade Association meeting this year is designed to embrace the entire FM field, plus Facsimile.

Programming an FM Station in all its phases — duplication, special events, community interest, etc. . . . Promotion . . . Dealer Cooperation . . . Selling FM time . . . Engineering . . . Talent . . . The Business Office . . . ALL will be covered.

REGISTRATION FEE

\$20 per person before Aug. 15

\$25 per person after Aug. 15

Register Early

Write

FMA HEADQUARTERS,
101 Munsey Bldg. Washington 4, D. C.

Crystals for the Critical

CRYSTALS

BUILT TO YOUR SPECIFICATIONS

Crystal users appreciate the complete service James Knights Co. offers.

If you have a special crystal problem, James Knights is equipped to build crystals to your exact specifications—no matter what they may be. Because of a special production line for short runs, the price is right—whether you need one, ten or several thousand crystals!

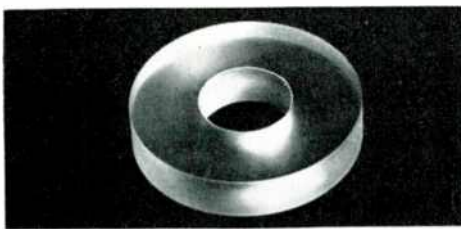
In addition, James Knights fabricates a complete line of crystals to meet every ordinary need—precision built by the most modern methods and equipment.

Fast service is yours, too! Two company planes save hours when speed is important.

Your inquiries—and crystal problems—are invited.

Send For New James Knights Catalog

JK 1 1/2" Doughnut Quartz Crystal



The JAMES KNIGHTS Co.

SANDWICH, ILLINOIS



WHAT'S NEW THIS MONTH

1. RADIO SET PRODUCTION
2. MOBILE COMMUNICATIONS
3. LIMITED COMMON CARRIERS

1. The Production Barometer shows a dip in all three home set categories during the month of April. The reason is not entirely clear, although it can be accounted for in part by the fact that the figures, compiled by RMA, covered 5 weeks in March and only 4 weeks in April.

Totals for the first four months of this year compare with the same 1947 period as follows:

	1947	1948
TV	26,205	164,366
FM	284,432	528,464
AM	<u>5,771,000</u>	<u>4,888,350</u>
Total	6,081,637	5,581,180

All the loss is due to AM, with production 15% below 1947, and on a

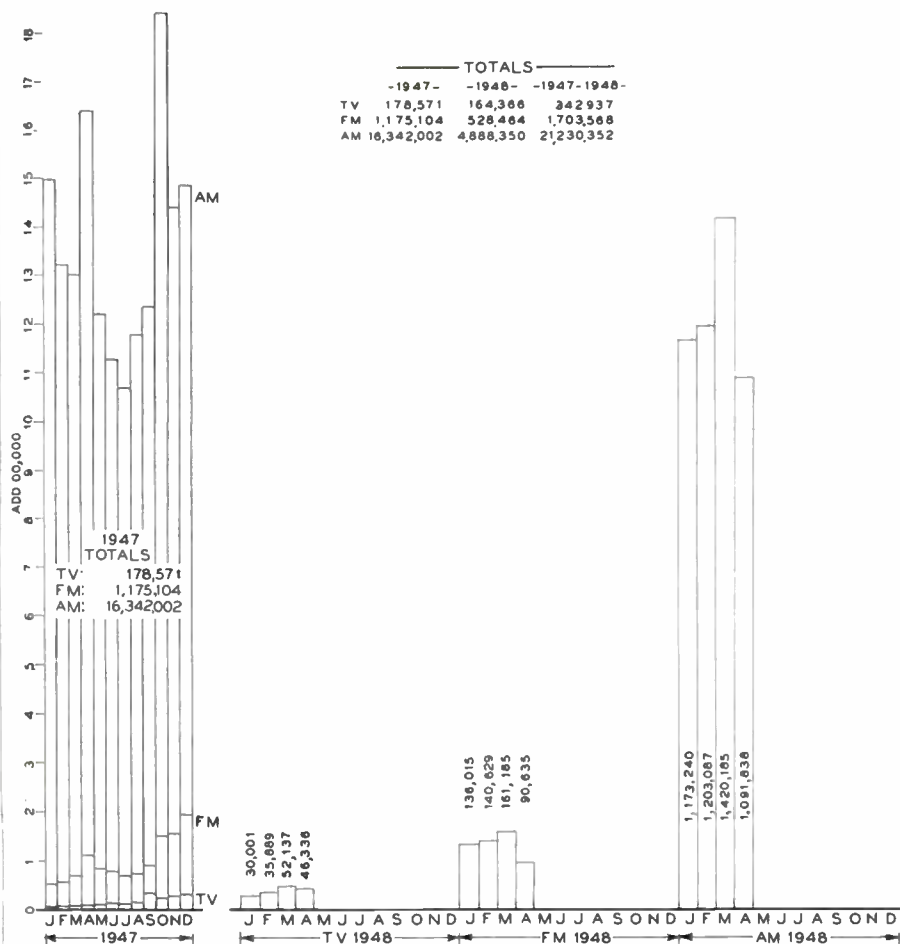
steady decline. Last year, April was the next-to-top month for AM sets. This year, it is almost down to the poorest month of 1947.

The steady AM loss and the continued gains registered by FM and TV are emphasized by the following table, showing the percentage of TV, FM, and AM sets produced in the first four months of '47 and '48.

	1947	1948
TV	.004%	.029%
FM	.047	.094
AM	.949	.877

In spite of the lower number of units manufactured, the total dollar volume is up, with well over 50% represented in FM and TV sales. Without giving actual figures, RMA reports high-level production of auto and portable sets, indicating the heaviest falling off of table models ever experienced. To broadcasters, the trend away from AM is now so marked as to show a definite pattern for the change in public interest.

2. The assignment of 44 to 50 mc. mobile communications, in the face of opposition from FM and TV interests, is significant because of growing conviction on the part of the
(Continued on Page 8)



FM-AM-TV Set Production Barometer, based on monthly figures released by the RMA

BROWNING SCORES AGAIN!

NOW THE FAMOUS RJ-12
HAS NEW ENGINEERING
REFINEMENTS—PLUS A
NEW, LOWER PRICE

SINCE 1946, the performance of the BROWNING RJ-12 FM-AM tuner has been winning friends and influencing more people to buy them in preference to any other type.

But because BROWNING equipment is "engineered for engineers", we have never stopped our search for ways to raise the standards set by the RJ-12.

Now, we're ready with the new model: the RJ-12A. Dealers, custom set-builders, and engineers who have heard the RJ-12A are unanimous in calling it a "hot set". They say frankly that they've never heard any FM-AM tuner that can equal it.

FM sensitivity is remarkable, noise-elimination is extremely effective, and there's no drift after warm-up. In short, it is the Armstrong FM circuit at its very best.

AM performance is equally outstanding. High-gain RF tuning, triple-tuned IF's, a 1N34 crystal detector, and new miniature tubes all contribute to enjoyable reception that runs rings around ordinary AM models.

Added features for custom set-builders are small size, separate power supply, a Phono position on the band switch, and one volume control for FM, AM, and the phonograph.

Write for details, performance curves, and prices:

BROWNING LABORATORIES, INC.

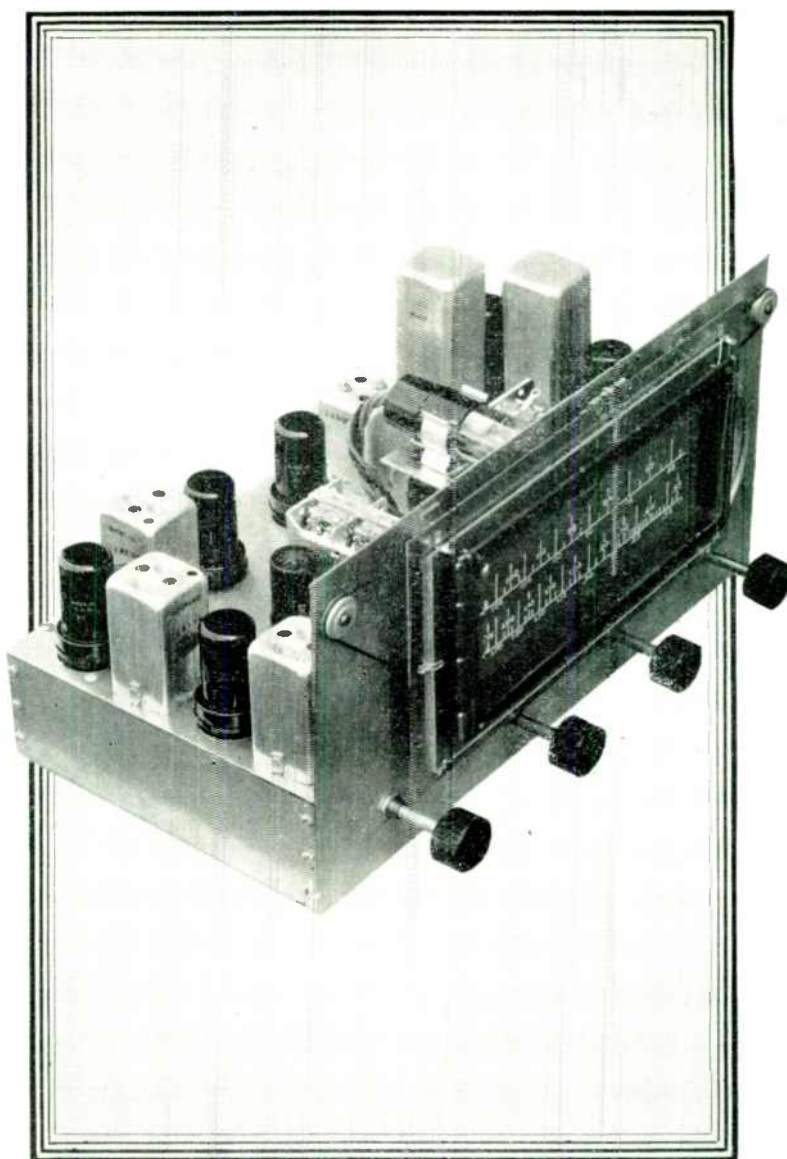
Engineers and Manufacturers

WINCHESTER • MASSACHUSETTS

Canadian Representatives

Measurements Engineering, Ltd. • Armprior, Ontario

June 1948 — formerly FM, and FM RADIO-ELECTRONICS



UNIVERSAL TUNER, MODEL RJ-12A, AS ILLUSTRATED
POWER SUPPLY UNIT, MODEL PF-12, FOR ABOVE
RACK PANEL TUNER, MODEL RJ-14A, WITH POWER SUPPLY

INFORMATION ON THE RJ-12A TUNER

The RJ-12A tuner covers 88 to 108 mc. and 530 to 1,650 kc. It can be used with any high-fidelity amplifier and speaker. Operating voltages for the tuner can be taken from the amplifier, or furnished from a BROWNING PF-12 power supply.

Provisions are made for using the RJ-12A in combination with a phonograph and dynamic noise suppressor.

On FM, less than 10 microvolts signal produces a 30 db noise reduction. Audio response is flat within $\pm 1\frac{1}{2}$ db from 20 to 15,000 cycles.

On AM, sensitivity is 5 microvolts; triple-tuned IF's give a flat-topped characteristic extending the audio range to response flat within ± 3 db from 20 to 6,600 cycles.

Separate RF and IF systems for FM and AM eliminate coil switching. FM antenna serves for AM also.

Tubes: three 6AU6, one 7F8, one 6SK7, one 6SG7, two 6SJ7, one 6H6, one 6SA7, one 6E5 or 6U5, one 1N34 crystal detector.

Model RJ-14A includes a 19-in. rack panel and the power supply.

TELENOTES

Simple New *Solderless* Couplings Maintain Constant 51.5 Ohm Impedance



ANDREW *Flanged* COAXIAL TRANSMISSION LINE FOR FM-TV

Offering the dual advantage of easy, solderless assembly and a constant impedance of 51.5 ohms, this new ANDREW FM-TV line is available in four diameters. Each line fully meets official RMA standards. It also is recommended for AM installations of 5 Kw or over.

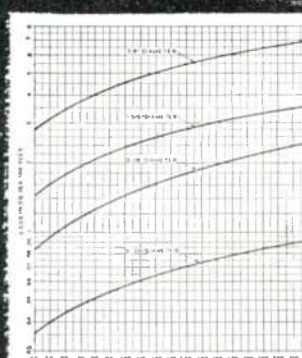
Fabricated in twenty foot lengths with brass connector flanges silver brazed to the ends, sections are easily bolted together. A circular synthetic rubber "O" gasket effectively seals the line. Flux corrosion and pressure leaks are avoided. A bullet-shaped device positively connects inner conductors.

Close tolerances are maintained on characteristic impedance in both line and fittings, assuring an essentially "flat" transmission line system.

Mechanically and electrically better than previous types, this new line has steatite insulators of exceptionally low loss factor. Both inner and outer conductors of all four sizes are of copper having very high conductivity.

Flanged 45 and 90 degree elbow sections, and a complete line of accessories and fittings available.

Better be safe, than sorry. Avoid costly post-installation line changes. Get complete technical data, and engineering advice, from ANDREW now.



PRODUCTS & LITERATURE

HIGH VOLTAGE INDICATOR: Inexpensive Neon indicator for 1,600 to 15,000 volts A.C. for television power supplies and other high voltage circuits. Bulletin 500. Industrial Devices, Inc., Edgewater, N. J.

TUBE CHECKER: Design for testing all types of receiving tubes with 4, 5, 6, 7, and 8 pin standard, 5 pin small, 7 and 9 pin miniature and lockin tubes. Type YTW-1. Bulletin CT. General Electric Co., Electronics Department, Syracuse, N. Y.

SHRINK-FIT TUBING: Insulated tubing in various sizes and colors can be expanded by dipping in a solution. After drying, it shrinks to a tight fit on the wire. Bulletin OCS. Walter L. Schott Co., 9306 Santa Monica Blvd., Beverly Hills, Calif.

VHF POWER AMPLIFIER TUBE: Beam pentode of instant-heating design for portable and mobile transmitters. As Class "C" amplifier, delivers 1.25 watts at 100 mc. Type 3B4. Bulletin HR-133. Hytron Radio & Electronics Corp., 76 Lafayette St., Salem, Mass.

MATCHING TRANSFORMER: Broad-band transformer for matching Measurements Model 80 Standard Signal Generator designed for use in conjunction with Measurements Model 80 Standard. Can be used also for matching receivers having an input impedance of 300 ohms to a coaxial line of 72 ohms. Type M 286. Bulletin CM6. Measurements Corp., Boonton, N. J.

MICROWAVE UNITS: Slotted section and probe combinations for a standard size of waveguides and coaxial lines, for bands between 1,000 and 40,000 mc. Type PRD. Bulletin RH. Polytechnic Research & Development Co., 66 Court St., Brooklyn 2, N. Y.

LIGHTNING ARRESTERS, TERMINAL: 16-page catalog of lightning arresters for radio and telephone entrance lines, molded terminal strips, and neon voltage indicators. Bulletin 200-A. L. S. Brach Mfg. Corp., Central Avenue, Newark, N. J.

BIBLIOGRAPHY: "Electric Engineering Master Index," 320 pages, compiled from radio and electronics publications covering 15,000 listings under 250 special heads, edited by Frank A. Petraglia. Publication 254 — Price \$17.50. Electronics Research Publishing Co., 2 West 46th St., New York 19, New York.

CIRCUIT TESTER: Pocket-size meter provides 31 AC-DC range to 6,000 volts, 600 milliamperes, 70 db, and 5 megohms. Series 40. Bulletin NE-6. Precision Apparatus Co., Inc., 92 27 Horace Harding Blvd., Elmhurst, L. I.

TV ANTENNA: Adjustable to any channel and designed for a stack array. Trade name "Telebeam." Bulletin 11. Cole-Worner Corp., Dayton, Ohio.

A New TELEVISION RECEIVING SYSTEM

Custom-Designed for Your Area

If you want the finest television reception in a particular area—Boston, New York, Philadelphia, Cleveland, or wherever—you need a Workshop Television Receiving System.

The so-called "broad band" antennas cannot be relied upon to bring in a strong enough signal. The Workshop has been working on this problem for several years, using the finest test equipment and the most modern techniques. At the present stage of the art it appears to be practically impossible to produce a truly high-gain television antenna with consistent performance over the entire television band.

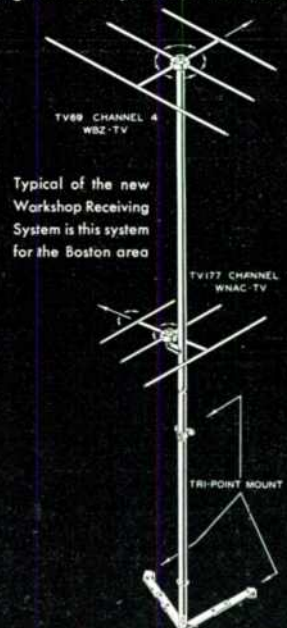
Rather than "compromise," the Workshop has designed a special "receiving system" for each television area, employing a separate high-gain, 3-element antenna for each channel. This means we have a receiving system for Boston, New York, Chicago, etc., engineered specifically to receive the maximum signal from all the stations in the particular area.

FEATURES

- Separate antenna arrays all mounted on one mast. Universal mounting brackets supplied.
- Each array can be individually oriented to provide maximum signal strength and minimum ghosting.
- Each array is fed with a separate RG-59/U transmission line — reduces noise pickup.
- Each array is a well-matched, 3-element, high-gain antenna.
- New coaxial switch changes from one array to the other.

Please specify the channels in your area.

Price on request



COAXIAL SWITCH FOR TELEVISION

This new coaxial switch for RG-59/U coaxial transmission line is designed to be used with the Workshop Television Receiving System. It provides for conveniently switching any one of four antennas to a receiver. In addition, it solves the television sales demonstration problem. By using additional switches, any number of television sets can be demonstrated from one convenient location. RG-59/U connectors available.

Model No. R-4 Four-position switch List Price \$15.00

THE WORKSHOP ASSOCIATES, INC.

Specialists in High-frequency Antennas

65 Needham Street, Newton Highlands 61, Mass.

TUNED-RIBBON REPRODUCER: Designed for Garrard record changer. Described as linear from 50 to 10,000 cycles. Jewel-stylus with 24 gram point-pressure. Output about -30 db. Type 79-G. Bulletin 16-II. Audak Co., 500 Fifth Avenue, New York 18, N. Y.

MINIATURE TUBE GUARD: Cadmium-plated post, mounted on chassis, carries spring to keep miniature tube firmly in its socket. Bulletin 251. Staver Mfg. Co., 254 Atlantic Ave., Brooklyn 2, N. Y.

FM TUNER: Three-gang FM Vane Condenser is designed to mount on the shaft of an AM tuning condenser. Bulletin ES. Modulation Products Co., 509 23rd St., Union City, N. J.

TELEVISION EXPLAINED: Title of a how-it-works book of 200 pages, 8½ by 11 ins.,

profusely illustrated. Publication N61. John F. Rider, Publisher, Inc., 404 4th Ave., New York 16, N. Y.

AUDIO OSCILLATOR: Battery operated oscillator, 2 cycles to 20 kc. in 4 decade ranges. Rated as flat within ±1 db, with stability between ±3% throughout the range. Output is 5 volts into a 10,000 ohm load. Model 204A. Bulletin ANP. Hewlett-Packard Co., 395 Page Mill Rd., Palo Alto, Calif.

VACUUM TUBE VOLTMETER: Range .001 volts at 2 cycles to 20 kc. Useful range extends to 50 kc. Accuracy ±3% to 20 kc., = 7% from 20 kc. to 50 kc. Calibration reads rms value of a sine wave. A db scale reads -12 to +2. Model 404A. Bulletin M14. Hewlett-Packard Co., 395 Page Mill Rd., Palo Alto, Calif.

Special Services Directory

METHODS ENGINEERS

Materials & Methods engineers in America's leading manufacturing plants use Topflight's Printed Cellophane, Self - Adhesive Tape to meet A-N specs. - assembly line - follow through - instruction labels. Easy to Apply.
TOPFLIGHT TAPE CO. YORK PA.

THE WORKSHOP ASSOCIATES

INCORPORATED

Specialists in
High-Frequency Antennas

66 Needham St., Newton Highlands, Mass.
Bigelow 3330

Custom-Built

SPEECH INPUT EQUIPMENT
U. S. Recording Co.

1121 Vermont Avenue
 Washington 5, D. C.
District 1640



"Guardian"

TOWER LIGHTS
 OBSTRUCTION LIGHTS
 CODE FLASHERS

HUGHEY & PHILLIPS
 326 North La Cienega Blvd.
 Los Angeles 36, Calif.

HIGH QUALITY REPRODUCTION

by **Brociner**

ENGINEERING and PRODUCTION
 The KLIPSCH SPEAKER SYSTEM
 Standard and Custom Built Types for Private
 Homes, Auditoriums, Hotels, Theatres

BROCINER ELECTRONICS LABORATORY
REgent 7-6794
 1546-F SECOND AVENUE, NEW YORK 28

ELECTRONIC ENGINEERING MASTER INDEX

CONTAINS the most complete bibliography available on Frequency Modulation, Television, UHF, Broadcasting, Radar, and over 100 other topics.

1925-1945 edition \$17.50
 1935-1945 edition \$ 6.00

Descriptive literature on request

ELECTRONICS RESEARCH PUBLISHING CO.
 Dept. A 2 West 46th St., N. Y. 19

WHAT'S NEW THIS MONTH

(Continued from Page 4)

FCC that 2-way FM has become an essential service to "public interest, convenience, and necessity".

This attitude on the part of the Commission is further emphasized in the following comment received from Jeremiah Courtney, former FCC Assistant General Counsel, and now of Courtney, Krieger & Jorgensen, 1707 H Street, N.W., Washington, D.C.:

Striking testimonial to the increasing attention now being paid by the Federal Communications Commission to non-broadcast radio problems is to be found in analysis of the novel conditions under which the new maritime mobile radio service to serve private operational and business needs of ships was recently authorized by the FCC.

To appreciate the significance of the FCC's extraordinary action in the marine field, it is necessary to contrast the labor pains that generally characterize the birth of a new radio service against the practically painless birth of the maritime mobile radio service.

The normal new radio service must first strive to obtain the use of certain of the frequencies assigned for all general experimental purposes. Successful in that quest, the applicant receives an authorization in terms cancellable "at any time without advance notice or hearing if, in the opinion of the Commission, such action is necessary." This is no surprise, of course, because before his experimental application would even be considered by the Commission, the applicant has to file a statement that he would not construe its grant to mean "that, in the event the experimentation proves successful, either the particular frequencies authorized or any others will be allocated to the service developed for use on a permanent or commercial basis." (Section 5.20, FCC Experimental Rules)

However, the applicant is then in position to use radio and to construct his land station and install his mobile units, provided he is willing to risk the equipment investment. The financial risk cannot be written off because it is always possible that the FCC might later decide that the applicant's particular experimental use of radio was not in the public interest; and the applicant's experimental authorization would then be withdrawn. This is the uneasy transition that has marked the passage of police, railroad, bus, and taxicab use of radio from experimental to regular services, to mention just a few prominent examples.

It is well established that the ever-present danger of loss of equipment investment has retarded the prompt development of all services that have been required to pass this experimental stage without assurance of ultimate regularization. On the other hand, for the FCC to decide in advance of any experimentation that a new service will click, and justify the assignment of frequencies on a regular basis, requires no little assurance. Yet that is precisely what the Commission did in establishing the maritime mobile service. The public announcement of its decision to establish the service expressly stated:

"The Commission today announced that it had decided to establish on a regular basis at the earliest opportunity a VHF (very high frequency) radiotelephone maritime mobile service to serve the operational and business needs of ships. The Commission also announced that in connection with this decision it had granted applications for certain land radiotelephone stations and a number of associated radiotelephone stations aboard tugboats.

.....

"The grants here concerned are designated as class 2 experimental. However, the Commission emphasized that these grants are not for the purpose of determining whether a proposed service should be established on a regular basis, but rather are to be construed as being of an interim character to permit operation in order that the Commission may thereby be furnished with information needed for the formulation of rules to govern the service on a regular basis."

The Commission's extraordinary departure from long-established policy in this case is only emphasized by the fact that the first marine applications filed some twenty months earlier by non-common carrier organizations (Foss Launch & Tug Co. of Seattle, Washington; Meseck Towing Lines, Inc. and Moran Towing & Transportation Co. of New York, N.Y.) for experimental authorizations had been designated for public hearing. Not without reason, therefore, did the Commission's own announcement describe the action taken as "exceptional in the marine field."

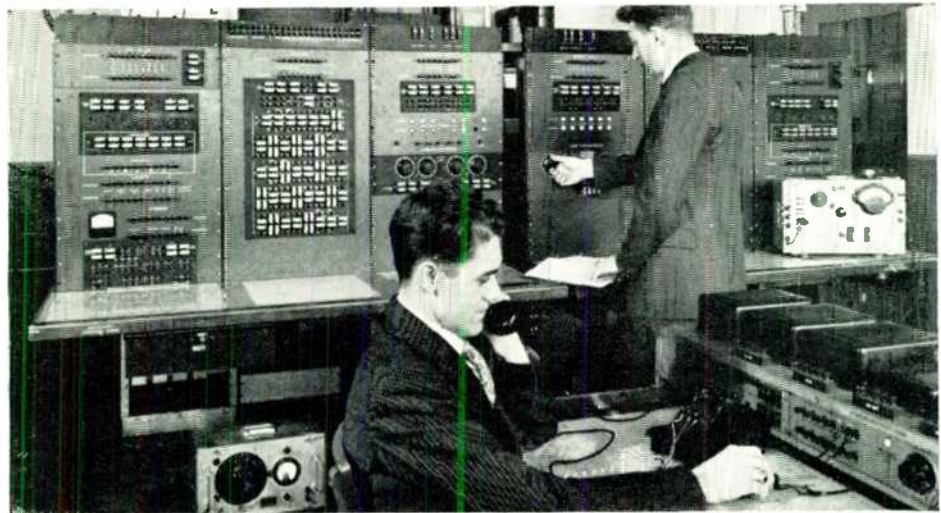
Why was this *exceptional* action taken? Certainly not because the problems that attend regularization of the maritime mobile service were any less acute than those attending the establishment of the police, railroad, bus, or taxi radio services, all of which were required to pass through an entirely experimental stage. If anything, the marine pro-

(Continued on Page 12)



These "sound jurors" record their preferences as they listen over test circuits.

Trial by "Sound Jury"



The engineer in the foreground talks over the test circuits which the other engineer sets up on a "circuit simulator."

AFTER Bell Laboratories engineers have designed a new talking circuit, they measure its characteristics by oscilloscopes and meters.

But a talker and a listener are part of every telephone call, and to satisfy them is the primary Bell System aim.

So, before the circuit is put into

operation, a "sound jury" listens in. An actual performance test is set up with the trained ears of the jurors to supplement the meters.

As syllables, words, and sentences come in over the telephones, pencils are busy over score sheets, recording the judgment of the listeners on

behalf of you and millions of other telephone users.

Targets of the transmission engineer are: your easy understanding of the talker, the naturalness of his voice, and your all-around satisfaction. To score high is one of the feats of Bell System engineering.

BELL TELEPHONE LABORATORIES PIONEERS IN THE RESEARCH

OF FM RADIO AND TELEVISION, AND ACTIVE IN DEVELOPING IMPROVEMENTS IN BOTH FIELDS TODAY.



June 1948 — formerly *FM*, and *FM* RADIO-ELECTRONICS

9



FEDERAL BROADCAST EQUIPMENT

**... An Outstanding Line Offering
Finest Performance and Real Economy**

In standard AM and FM transmitters...TV transmitters for low or high band operation...Square Loop Antenna...special new developments including Studio-to-Transmitter Links...Dummy Antenna...TV Monitors... High Power Transmitting and Rectifier Tubes.

You can count on Federal Broadcast Equipment—from a complete system to an individual installation. Federal Broadcast Equipment brings you the latest in engineering technique and practice... high quality of materials... precision craftsmanship of the highest order. There is real economy in both initial cost and operation. And you are assured of the finest performance, because Federal sees every job through. This Federal policy upholds a reputation established by more than 38 years of continuous achievement in the radio transmission field.



FEDERAL'S FM 10 KW Transmitter, officially approved by the FCC, has the exclusive "Frequematic" FM Modulator. It reduces distortion and noise well below RMA specifications, and stabilizes mean carrier frequency within 0.001 per cent of assigned value. This transmitter combines outstanding fidelity with economy, accessibility and highly dependable performance.



FEDERAL'S Transmitting Tubes provide long service. They stand up under severe operating conditions, and maintain original characteristics for life.



FEDERAL'S TV Monitor meets all FCC requirements. Designed for long service life, it accurately measures video carrier frequency, and monitors sound carrier and modulation.



FEDERAL'S Field Intensity Meter accurately measures signal intensity of AM broadcasting stations whether in the standard band of 530-1600 Kc—200 to 400 Kc—1600 to 3600 Kc—or 3600 to 7000 Kc. This 29-lb. unit is portable.

HIGHEST GAIN IN THE FIELD WITH FEDERAL'S SQUARE LOOP ANTENNA. In many installations from coast to coast, this design is producing an effective radiated power of as much as twelve times the Kilowatt rating of the FM transmitter. This means new power and new range for better and wider service. Federal's Square Loop Antenna also brings you simplicity of mechanical and electrical design... greater accessibility for maintenance... no operational tuning... maximum lightning protection... immediate delivery and ease of installation.

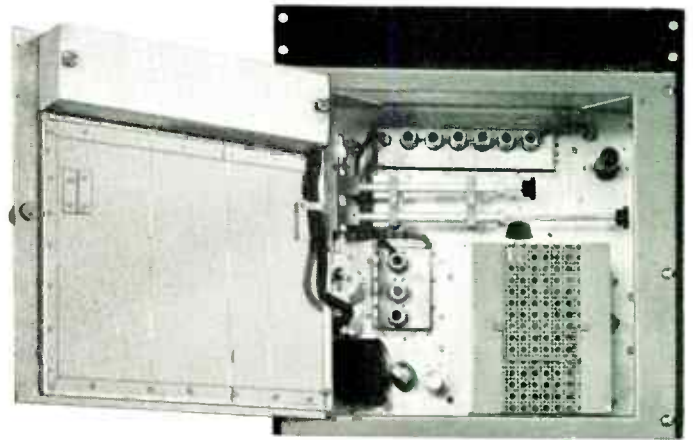
Federal's Studio-to-Transmitter Link for High Fidelity Program Transmission

Here's the new Federal microwave system to eliminate S-T wire and cable circuits. Combining outstanding fidelity—distortion less than 1% over 50-15,000 cycles—low noise level, 65 db below 100% modulation—and a 35-mile "line of sight" range—this system complies with all applicable FCC regulations for good engineering practice. Link consists of a transmitter, receiver and two standard 6-foot parabolic reflectors (4- or 8-foot reflectors supplied on request).

ONE OF MANY NEW DEVELOPMENTS BY
FEDERAL TELECOMMUNICATION LABORATORIES



TRANSMITTER employs advanced-design direct frequency modulation and crystal-controlled klystron power oscillator. Complete monitoring facilities include frequency and power measurements, aural monitoring, and vacuum tube metering. Designed for mounting on standard 19" relay rack, it is only 35" high and 13" deep.



RECEIVER is a single superheterodyne which utilizes reflex-klystron local oscillator. It features pre-selection to reduce possibility of spurious interference. Relative stability is maintained within 0.01 per cent with automatic frequency control. Metering is provided for all vacuum tube circuits, carrier level, and crystal current. Same mounting and size as transmitter.



FEDERAL'S De Luxe Studio Console combines control of all facilities of an FM transmitter into one unit—a "nerve center"—convenient, foolproof, and handsome in appearance.



FEDERAL'S All-Metal Dummy Antenna meets the need of the Broadcasting Industry for testing of high power, VHF and microwave (FM and TV) transmitters. No conventional resistors and insulators. Compact, light, water-cooled—determines RF power accurately.



FEDERAL'S Standard 5KW AM Broadcast Transmitter assures high fidelity performance and maximum operating efficiency. Nominal output of 5KW can be transferred instantaneously to 1 KW. Every component is conservatively operated. Every circuit is engineered for maximum life of its elements. A new simplified power supply reduces maintenance to a minimum. Standard operating band.

FTR
An IT&T Associate

Federal Telephone and Radio Corporation

100 KINGSLAND ROAD, CLIFTON, NEW JERSEY

KEEPING FEDERAL YEARS AHEAD... is IT&T's world-wide research and engineering organization, of which the Federal Telecommunication Laboratories, Nutley, N. J., is a unit.

In Canada: Federal Electric Manufacturing Company, Ltd., Montreal, P. Q.
Export Distributors: International Standard Electric Corp. 67 Broad St., N. Y.

Professional Directory

Jansky & Bailey

AN ORGANIZATION OF
Qualified Radio Engineers
DEDICATED TO THE
SERVICE OF BROADCASTING

National Press Bldg., Washington, D. C.



Andrew Corporation

Consulting Radio Engineers
363 EAST 75th STREET, CHICAGO 19
Triangle 4400

• TELEPHONE BRIDGEPORT 5-2055 •

GARO W. RAY

Consulting Radio Engineers

991 Broad Street, Suite 9-11
Bridgeport 3, Conn.

LABORATORY: Hilltop Drive
Stratford, Conn. — Phone 7-2465
Instruments and Measurements

RATES FOR PROFESSIONAL CARDS IN THIS DIRECTORY

\$10 Per Month for This Standard
Space. Orders Are Accepted
for 12 Insertions Only

DALE POLLACK

FREQUENCY MODULATION

development and research
transmitters, receivers
communications systems

352 Pequot Avenue New London, Conn.
New London, 2-4824

AMY, ACEVES & KING, INC.

Specialists in the
Design and Installation of

HIGH-GAIN
AM, FM, and TELEVISION
ANTENNA SYSTEMS

LONGacre 5-6622
11 West 42nd Street, New York 18, N. Y.

WHAT'S NEW THIS MONTH

(Continued from Page 8)

blems were the more acute because, as indicated, communications common carriers had previously been solely authorized in this field. Nevertheless, in the marine field, before the first construction permit was issued, the FCC forthrightly announced there was to be no experimental threat to the equipment investment of those who pioneered this field.

The FCC's unprecedented action can be explained only in terms of its increasing interest in and understanding of the problems of the non-broadcast radio services. Unless well-informed and assured in its knowledge, no agency would so break with precedent as to take the forthright action undertaken in assuring the marine interests of radio use on a regular basis.

That this increasing interest on the part of the Commission in the non-broadcast sphere of its regulatory activities is well-merited, none can deny. In the month of March 1948 alone, 9,774 applications were filed with the FCC for new safety and miscellaneous radio service authorizations including police, fire, forestry, highway maintenance, utility, petroleum, lumber, ship, coastal, marine relay, railroad, transit bus, truck, taxicab, citizens, and others. This monthly figure of nearly 10,000 new applications is to be compared with the total number of all authorized broadcast stations: AM, 1,976; FM, 1,020; TV, 94 (FCC report March 31, 1948).

Activity of the foregoing scope in the mobile safety and industrial field justifies and is receiving an ever-increasing amount of Commission attention. The emphasis placed on mobile activities in FCC budget presentations is one indication of the Commission's awareness of the needs of the mobile services. The FCC's order converting television channel No. 1 (44-50 mc.) to fixed and mobile service use furnishes additional recognition of the importance of the mobile services in the eyes of the Commission. The establishment of the maritime mobile radio service on a regular basis, without passing the repressive stage of an entirely experimental service, is thus simply another most encouraging and heartening example of the Commission's awakened and solicitous interest in the non-entertainment uses of radio for meritorious public purposes.

3 It isn't very long ago that the sight of an antenna on an automobile aroused such remarks as: "Well,
(Concluded on Page 13)

Professional Directory

RAYMOND M. WILMOTTE Inc.

Paul A. deMars
Associate

Consulting Engineers
Radio & Electronics

1469 Church St., N. W. Decatur 1234
Washington 5, D. C.

RUSSELL P. MAY

CONSULTING RADIO ENGINEERS

★ ★ ★

1422 F Street, N. W. Wash. 4, D. C.
Kellogg Building Republic 3984

LYNNE C. SMEBY

Consulting
Radio Engineers

820 13th St., N.W. EX 8073
WASHINGTON 5, D. C.

CONSULTING
RADIO ENGINEERS

DIXIE B. MCKEY
&
ASSOCIATES

1820 JEFFERSON PLACE, N.W. REpublic 7236
WASHINGTON 6, D. C. REpublic 8296

FREQUENCY MEASURING SERVICE

Exact Measurements - of any time



RCA COMMUNICATIONS, INC.
64 Broad Street, New York 4, N. Y.

NATHAN WILLIAMS AM FM TV

Allocations and Field Engineering
Oshkosh, Wis. Phone Blackhawk 22
and affiliates:

DIXIE ENGINEERING CO.
Columbio 1, S. C. Phone 2-2742

Professional Directory

**FRANK H.
McINTOSH**

Consulting Radio Engineers
710 14th St. N.W., Wash. 5, D. C.
MEtropolitan 4477

WELDON & CARR
CONSULTING RADIO ENGINEERS

Washington, D. C.
1605 Connecticut Ave. MI. 4151
Dallas, Texas
1728 Wood St. Riverside 3611

Preliminary surveys, management and operational consulting service based on practical experience with AM, FM and Facsimile.



Phone: EXecutive 3929

RADIO CONSULTANTS, Inc.
1010 VERMONT AVE., WASHINGTON 5, D. C.

RATES FOR
PROFESSIONAL CARDS
IN THIS DIRECTORY

\$10 Per Month for This Standard
Space. Orders Are Accepted
for 12 Insertions Only



Radio Engineering Consultants,
Frequency Monitoring

Commercial Radio Equip. Co.

International Building • Washington, D. C.
603 Porter Building • Kansas City, Mo.

WINFIELD SCOTT McCACHREN
AND ASSOCIATES

Consulting Radio Engineers
TELEVISION SPECIALISTS

PHILADELPHIA: 410 BOND BUILDING
809B Windemere Ave. Washington, D. C.
Drexel Hill, Pa. District 6923
Sunset 2537-W

WHAT'S NEW THIS MONTH (Continued from Page 12)

well! What are they going to think up next?" Now, production of automobile broadcast receivers runs into hundreds of thousands a year.

Much more useful, however, is two-way radio communications on private cars. And it's very likely that, in another year or so, automobiles will be factory-equipped with roof-top antenna mountings and coax leads running to the baggage compartments.

For example: Red Kendall, representing Motorola in the New York area, stopped to have dinner with us at Great Barrington on a recent Saturday evening. Starting for home at eleven o'clock, he knew his gas tank was getting empty, but instead of stopping at the first pump, he pushed on, hoping to find the particular brand that he prefers. The result was that, about 1:30, somewhere on the Eastern States Parkway opposite Ossining, his car stopped. By that time it was raining. As near as Red could figure, he was five or six miles from the nearest gas station.

Did he try to stop a passing car? Or set out on foot? No, he picked up his radio handset, and asked the ether for Plaza 8-2000. When the operator at Telephone Exchange, Inc. responded, he told her: "This is 504. Will you call the State Police and have them get a garage at Pleasantville to send me some gas?" Then he gave the operator his approximate position.

In less than thirty minutes, Red's tank was filled, and he was on his way again. For the radio service, he pays Telephone Exchange \$17.50 per month. That charge includes one hundred incoming or outgoing messages. Now, if you should want to call Red Kendall, you would find his number listed in New York City as Plaza 8-2000. When you call that number, the operator will ask for your name and number. Then she will call "504" until Red answers. She will tell him: "Mr. So-and-So wants you to call him at Such-and-Such number." He will drive up to the nearest telephone, and in a few minutes you will have him on the line.

The equivalent of this system is being extended rapidly in many parts of the USA. It is known officially as limited common carrier service. It does not give direct connection to the person called or calling, as the AT&T system does. However, it does perform an extremely valuable service for both business and emergency use - so valuable, in fact, that thousands of new mobile FM installations are now being made in private cars every month.

Professional Directory

McNARY & WRATHALL
CONSULTING RADIO ENGINEERS

★ ★ ★
983 National Press Bldg. DI. 1205
Washington, D. C.

KEAR & KENNEDY

Consulting Radio Engineers
1703 K St. N.W. STerling 7932
Washington, D. C.

GEORGE P. ADAIR

Consulting Engineers
Radio, Communications, Electronics
1833 M St., N.W., Washington 6, D.C.
EXecutive 1230

GEORGE C. DAVIS

Consulting Radio Engineers
501-514 Munsey Bldg. — District 8456
Washington 4, D. C.

WATKINS 9-9117-8-9

S. A. Barone Co.
Consulting Engineers

MECHANICAL—RADIO—ELECTRONIC
PRODUCT DEVELOPMENT & RESEARCH
Development Specialists in Circuits, Part
Lists, Models, Manufacturing Drawings.

143-145 W. 22ND STREET, NEW YORK 11

REFERENCE DATA

Bound volumes of FM and TELEVISION contain a wealth of engineering and patent material. Each volume contains 6 issues, starting with January or July. They are available back to July 1941. Price \$5.50. By mail, 25c extra.



Western Electric 54A Clover-Leaf Antennas Springing up all over!

BECAUSE . . .

The 54A is mechanically sturdy.

The welded steel tower has ample safety factor to withstand high wind velocities.

It's easily erected.

That's the result of its simplified construction! Each lightweight, 10-foot section is a complete welded unit—and the sections are quickly and easily fastened together with steel drive-bolts.

It's highly efficient.

To provide maximum radiation for the assigned frequency, each antenna is tailor-made by the erection crew—merely by following simple instructions for spacing of radiating loops.

For complete information on the Western Electric 54A Clover-Leaf, call your local Graybar Broadcast Representative—or write Graybar Electric Company, 420 Lexington Avenue, New York 17, N. Y.

—QUALITY COUNTS—



DISTRIBUTORS: IN THE U. S. A.—Graybar Electric Company. IN CANADA AND NEWFOUNDLAND—Northern Electric Company, Ltd.

FCC VIEWS THE FUTURE OF FM & TV

FORECASTING IMPROVED LISTENER SERVICE AS BROADCASTING SHIFTS TO FM, AND THE NEED FOR PIONEERING UPPER-BAND TV DEVELOPMENT—By HON. WAYNE COY *

IT is now about five months since I dropped out of sight. Sometimes it seems more like five years ago that I disappeared from the ranks of the broadcasting profession. I hope that some of you still remember me. I was one of those who always sat at a back table at affairs of this kind so if the speeches got too boring I could get up and walk out.

Mostly I have been too busy to get homesick. But occasionally I admit that my mind has wandered sentimentally back to the good old days when we used to sit around and gripe about the Commission. I suppose it would be presumptuous of me to think those days are over.

During the past months, scores of you have been kind enough to ask me to come out to your city to address your groups, or to dedicate new radio stations. Or, in some cases, just to come. I wish I could have accepted all of them, particularly those who invited me "just to come". I think it would be fine if the members of the FCC could meet with your district NAB gatherings and discuss our mutual problems in an informal manner, and I hope that in another year we shall be able to do so.

However, the mountain of work at the Commission never shows any signs of letting up. We are on a tyrannical treadmill of en banc meetings, executive sessions, oral arguments and hearings — interspersed with trips up to Capitol Hill. And apparently there are more trips to the Hill to be added to our treadmill.

For the benefit of those of you who do not operate in Washington, I might explain that the phrase "trip to the Hill" is a euphemism for "trip to the woodshed".

Even without more opportunity to get together, it looks as if FCC-industry relations now have a chance of reaching an all-time high. They certainly will if you adopt that portion of your proposed code that deals with law enforcement. I assume it includes the Commission because I see no exceptions noted in the draft. Anyway, it says that broadcasters should avoid the following:

"Disrespectful portrayal of law enforcement; and characterization of the officers of the law as stupid or ridiculous."

I hope it passes unanimously and without amendment providing for exceptions.

Of course, if the industry starts being as nice as all that, the Commission will have to reciprocate. I suppose the least we

could do would be to abide by another paragraph in the same section of your code. In our official dealings with broadcasters henceforth, we could avoid:

"brutal killings, torture or physical agony, horror, the use of supernatural or climactic incidents likely to terrify or excite unduly."

You see, I still remember the references we used to make about "the lifted eyebrow technique" and "the twisted arm methods" employed. It is obvious that I now think such references inappropriate.

I don't know if all those provisions are still in the code. The draft changes so often — almost as often as the draft of an FCC decision.

These conventions have some of the earmarks of the old-time revival camp meeting — the inspirational messages, the exhortation to lead a better life, the soul-searching and the confessing of sins. According to the ritual always faithfully observed, the NAB President comes forth and confesses the sins of the FCC; and the Chairman of the FCC as freely confesses the sins of the NAB.

I want to talk with you today as freely as I can about the present status of broadcasting and raise some questions which, I think, must be answered as we consider the future. I say "as freely as I can" because, of course, it is inappropriate to discuss matters such as Facsimile Standards, the Mayflower decision, the Port Huron decision and the clear channel case, now in a pending status before the Commission.

At present we have so many major policy matters pending that you might think that this rule would reduce a Chairman's remarks to almost complete silence. But to assume that would be to underestimate the verbosity of an experienced bureaucrat.

Never before has any nation been so intensively equipped as is ours with the means of mass communication. Never before has a nation been able to reach all its citizens with information, education, culture and entertainment so completely and so swiftly.

That this should come to us in our time is a challenging and sobering responsibility for our generation.

In considering how we as broadcasters and as government officials can estimate our responsibility in realizing the maximum good from this powerful instrumentality, let us start with this fact:

These radio frequencies are among the most valuable resources that the American people own today. They constitute a most important portion of the real wealth of the nation.

All about you in this modern world, these radio waves are made to perform all sorts of work. They produce tangible wealth just as do the streams, the publicly-owned grazing lands, forests, and mines. These channels, in varied ways, have become our newer highways of commerce.

The competition for these channels between the different types of services and between the different users within the services is intense. The police, the fire department, shipping, forestry, aviation, the overseas radio-telephone and radio-telegraph systems, taxicab companies, diathermy makers are all clamoring for channels.

Since these channels are public property, the deciding factor in determining how many channels a certain type of service shall have, and who shall be entrusted with a channel within a type of service, must be the public interest.

For the broadcasters, especially in recent years, this plan of lending these publicly-owned frequencies for private use has been profitable.

As for the citizens who own these channels, broadcasting has achieved such a place in American life that today 93% of all our homes are equipped with radio. One-fourth of all our autos have radios. In fact, the listeners have invested in their sets more than four times as much as the broadcasters have invested in their equipment.

They spent 50% more per year for new sets, tubes, and repairs than the whopping sum of \$400,000,000 spent by the advertisers on the sponsorship of their programs.

In recent years there has been increasing discussion of the quality of service that broadcasters are giving the people in return for the use of their frequencies.

It is jointly to the people in this room, to the broadcasters and to us of the government regulatory body, that the people look for continuing improvement of the quality of radio service and for long range plans for an expanded and finer broadcasting service in the future.

We must always remember as we come to one fundamental policy problem after another that we have a responsibility beyond the present. We have a responsibility to our children and their children.

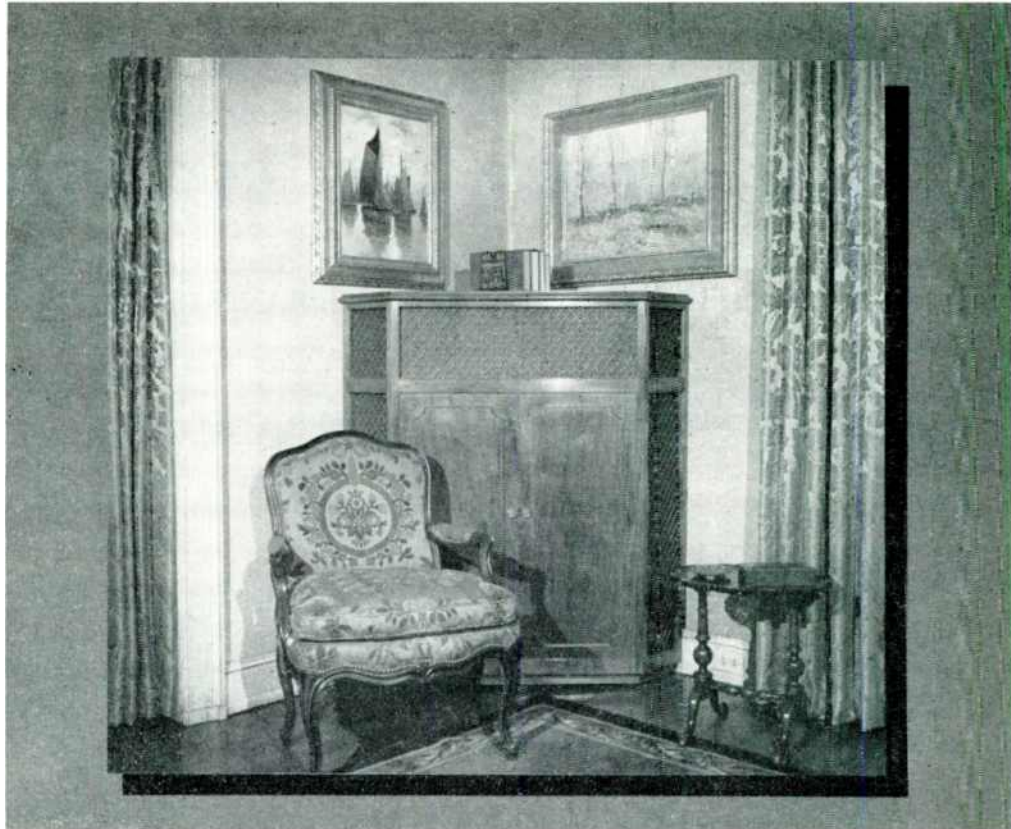
The scope and the speed of the present expansion increase our responsibility proportionately.

I think I might be useful here today in providing some background for the discussion that I understand is to follow this

(Continued on page 36)

* Chairman, Federal Communications Commission, Washington, D. C. An address delivered before the National Association of Broadcasters, Hotel Biltmore, Los Angeles, May 18.

FIG. 1. In the home of Mr. A. H. Sherin, Summit, N. J., this Scerbo cabinet completely disguises the Broeiner-Klipsch speaker system within. It is operated by the radio-phonograph installation shown on the front cover of this issue. The FM-AM tuner is a Collins Audio design



DESIGNS FOR MUSICAL ENJOYMENT

FM HAS CREATED A DEMAND FOR AUDIO QUALITY. NOISE-SUPPRESSOR HAS REMOVED NEEDLE-SCRATCH. RESULT: SOME HOMES HAVE FINE MUSIC—By MILTON B. SLEEPER

THERE is a world of sound, common sense thinking for radio dealers and manufacturers in the words of George Nelson, the very successful designer, who likes to let off steam once in a while in such a manner as this:

"When the new Studebaker came out, it aroused considerable interest because it was the only postwar car that showed any freshness of design. I had occasion to mention this to a General Motors vice-president shortly afterward, and was told that General Motors has no interest in radical design changes. If we assume that the competence of the designers working for General Motors and for Studebaker is roughly the same, then we are pushed to the conclusion that the basic instrument in the redesign was neither talent nor engineering, but company policy."

This situation does not prevail in the automobile industry alone. Mr. Nelson continues: "Take the table radio as a case in point. Over 12,000,000 of these units were produced in 1947, and the vast majority differ from each other only superficially. The standard solution is a decorative plastic case with certain limited variations in dials, knobs, and grilles, and the design level is several notches below mediocrity."

The "standard solution" has also been decidedly limited as to price. Right here we come to a very significant situation that is not yet recognized by radio manufacturers. Let's get at it in this way:

The \$89.50 mantle radio of 1930, which became the current \$24.95 AM table model, was responsible for putting radio reception in something like 95% of the American homes. Today, in metropolitan areas, these sets are adequate for bringing in news reports, and on music they satisfy those people who, in public places, put nickels in juke boxes. Outside the very limited primary service areas of AM stations, interference due to crowding of the frequency band has rendered these models almost worthless in the evening.

However, attendance records at the concerts show that there is a greater demand for musical entertainment than ever before. That demand is not being met by cheap AM sets because they simply are not musical instruments.

Suppose all the piano manufacturers put national advertising campaigns behind designs priced at \$175, and offered them as giving "concert-hall tone from this miniature piano", or "music of the immortals from a piano a little girl can lift." How, then, could they sell real pianos at \$1,550 up?

Well, that's exactly what radio set manufacturers are doing today. Here are quotations from recent advertisements in *Life* and *The Saturday Evening Post* by leading radio manufacturers:

"In beauty, performance and value, here's another record-breaking triumph from the — laboratories." (\$29.95 table model)

"New materials, better engineering, finer reception and greater value." (\$19.95 table model)

"There is constant testing and re-testing — proving and improving — to assure the Reception — Perfection — the *Studio Tone in Your Home* — for which — has become so widely celebrated." (miniature plastic model)

"Here's the rounded, resonant tone of a fine console *plus* the compact convenience of a table radio!" (plastic and wooden table models)

"The greatest improvement in record playing since the invention of the phonograph . . . bringing a new high in record listening pleasure." (\$99.95 console radio-phonograph)

These statements are not only bad advertising because they imply that the best in radio sets can be bought for \$19.95 to \$99.95, but because, by the most charitable judgment, they are utter baloney. Measured against the facts, they are downright lies.

Other Side of the Picture:

Fortunately for people who want truthful reproduction of what good music there is on the air, and of the good recorded music, a few manufacturers — all too few — are producing high quality FM-AM-phonograph combinations. Unfortunately for them, their distribution is largely concentrated in metropolitan areas, and their sales have been hurt by television to the

extent that their dealers feature what people *ask* for.

Now, let's go back to another significant remark by George Nelson. He puts it this way: "In a market where manufacturers compete by imitating each other's designs, the safest policy, in a business sense, is often a radical one."

Until the advent of Frequency Modulation, there was no source from which perfect reproduction could be obtained. With FM as a source of fine music, there was a reason to develop high-fidelity amplifiers and speakers. But because there was, and still is a limited amount of good music available on the air, records were needed, too. Since records have their audio limitations, particularly in the matter of needle-scratch, improved audio systems only emphasized their short-comings. That paved the way for Hermon Scott's dynamic noise suppressor. Then came the 15,000-cycle FM network operations, and the duplication of AM network programs on FM. The latter, in most cases, are still limited by 5,000-cycle lines, but it is amazing to hear the improvement, outside the areas of primary AM coverage, when even 5,000-cycle programs are heard with FM's background of silence.

So, while the set manufacturers, still plodding along behind their \$24.95 banners, are busy imitating one another, the custom set-builders are selling musical entertainment. What's more, they are giving their customers the postwar improvements that the big companies promised but have not delivered.

Good Installations Are Expensive:

The very best in FM reception and record playing costs a lot of money. How much? Well, almost as much as an average piano. But a piano is silent except when someone chooses to play on it, and frequently the people who have to listen like the piano better when it isn't being used. The supply of artists is so limited in most homes!

The somewhat-less-expensive FM receiver, with a phonograph and noise suppressor, and a good audio system, make the music of the great artists available at the turn of a switch.

No one questions the worth of a piano at \$1,550 to \$3,000. Now the custom set-builders are discovering that they can give a far greater value of enjoyment at \$750 to \$2,000!

To the \$19.95-minded radio industry, this is, indeed, a radical idea, but it's proving highly profitable to those who are promoting it.

Solution of the Furniture Problem:

The only advantage offered by the table model is the ease with which it can be kept out of sight. The large cabinets required for the over-size dimensions of high-quality equipment are always a problem. Even if a room is big enough to

take the cabinet, there is sure to be something wrong with the appearance of any standard design.

This poses no problem to the custom set-builder. He has three cuts. He can 1) build a special cabinet, or two cabinets if the speaker is to be housed separately, 2) rework an existing piece of furniture to take the equipment, or 3) put the equipment in some permanent, functional piece, such as a wall closet, bookcase, or window seat.

Examples of Custom Installations:

The accompanying photographs show typical examples of the custom set-builders' art. The front cover shows one very interesting FM-AM-phonograph installation, operated in conjunction with a separate speaker, Fig. 1. This is in the home of A. H. Sherin, at Summit, New Jersey. In every last detail, it was planned to meet the owner's specifications of "nothing less than the best."

The following equipment is used in this installation:

FM-AM Tuner: Collins Audio Products
Amplifier & Noise Suppressor: H. H. Scott
Expander: Fisher Radio
Speaker: Brociner-Klipsch
Record Changer: Garrard
Tone Arm: Pickering diamond-point
Cabinets: Scerbo Mfg. Company

The speaker, manufactured by Bro-

ciner, is a particularly interesting example of construction, because it completely hides the Klipsch-type baffle.

Fig. 2 shows a different type of installation, this one in the home of Dr. Barry Bigelow of Cohasset and Boston. A highly-prized antique breakfront was carefully altered to take the equipment. The speaker, located at the opposite end of the room, is an Altec-Lansing type 604, in a type 605 cabinet.

Dr. Barry's installation is made up of the following units:

FM-AM Tuner: Browning Laboratories
Amplifier & Noise Suppressor: H. H. Scott
Record Changer: Garrard
Speaker: Altec Lansing

Elliot Bicknell, of Waban, Mass., is a particularly ardent FM listener. His installation is shown in Fig. 3. He reports reception of 36 stations, including reasonably consistent signals from Alpine, at a distance of 190 miles.

The cabinet at the right carries the compass rose and control buttons for a 3-element rotary antenna, an AM tuner, a 2-band FM tuner, and a power amplifier. The phonograph turntable, speaker, and record files are built into the window seat. Mr. Bicknell lists the units as follows:
Antenna: Workshop Associates
AM Tuner: McMurdo Silver VI
FM Tuner: Radio Engineering Labs.
Amplifier: Brook Electronics

FIG. 2. Dr. Barry Bigelow's installation, Cohasset, Mass., has an Altec Lansing speaker



Tone Arms: Pickering for transcriptions
G.E. for shellac records

Equalizer: Pickering

Speaker: Altec Lausung

Because of the heat generated by the receiving and amplifying tubes in the cabinet, a fan is mounted at the bottom, directing a flow of air upward.

Harvey Radio Laboratories manufacture the chassis in Fig. 4. It is a straight FM tuner and amplifier, designed primarily for commercial use, although many are going into home installations. Extreme sensitivity gives limiting action on 1 microvolt, so that it is equally adapted to FM relay work or long-distance reception. A custom-built cabinet, containing an Altec Lausung speaker, the FM tuner

FIG. 3. right: Mr. Elliot Bicknell's equipment includes an REL tuner, rotary antenna

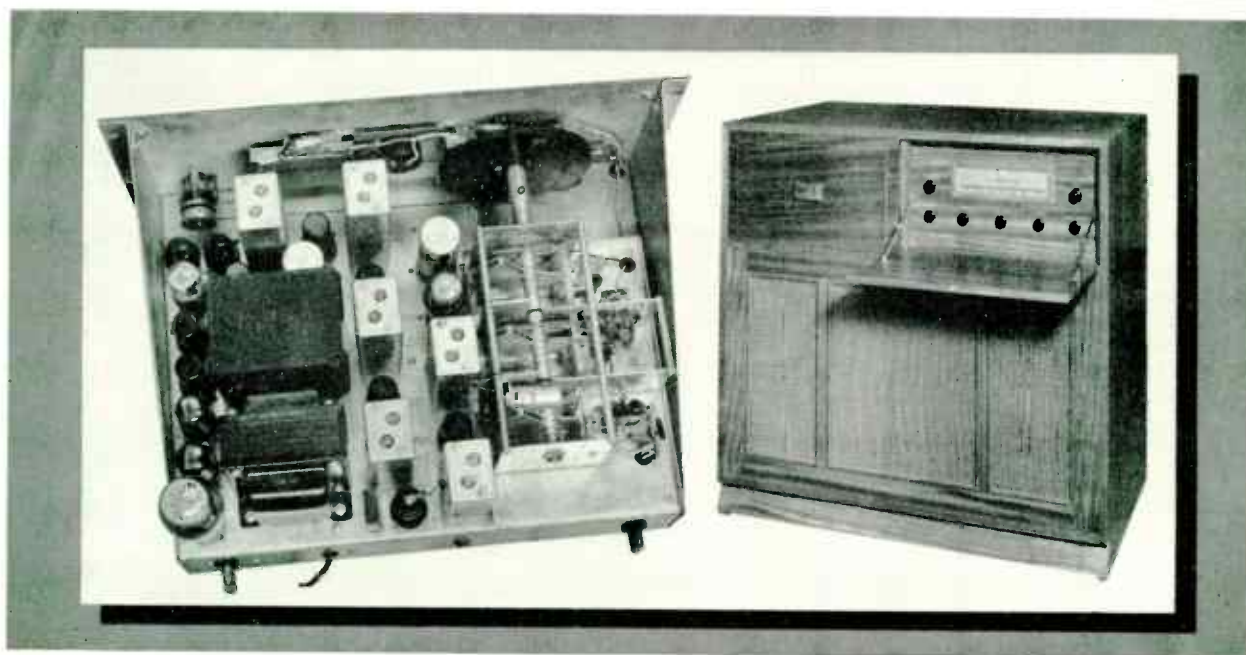


FIG. 4. above: Harvey Radio FM tuner and amplifier for commercial or home use
FIG. 5. left: Seeburg phonograph plays 14 hours, has Browning FM-AM radio tuner

and amplifier, and a record-changer, is illustrated at the right in Fig. 4.

The new Seeburg radio-phonograph opens up new possibilities for custom installations in business establishments as well as in private homes. Up to 100 records can be played on either or both sides, providing a total of 14 hours of continuous music. In addition, a Browning tuner furnishes FM and AM radio reception. A microphone can be connected to the amplifier for public address use. The model shown is in a metal cabinet, designed for use with one or more separate speakers.

A very attractive conventional arrangement is illustrated in Fig. 6. This was installed by Fisher Radio. The loudspeakers are built into a wall cabinet,

FM AND TELEVISION





mounted flush with the wall above a bookcase, as shown at the upper left of Fig. 5. Thus, without leaving his desk, he can pick up his own WABD transmitter, or any of the other New York stations.

Finally, a second Fisher installation is shown in Fig. 8. The cabinet space below the bookshelves has a roll-out drawer for the record-changer, with storage space for records below. A very unique feature is the mounting of the speakers. They are on a baffle set into the wood-burning fireplace. Thus the chimney behind the baffle serves as a perfect air column.

In the early days of talking pictures, the producers said: "Very fine, but we're not interested. Sound was tried before, and the public doesn't want it." But they changed their minds. Maybe the radio set manufacturers will change theirs about realistic audio quality. Could happen. Time will tell.

FIG. 6, above: This Fisher Radio installation has radio-phonograph at left, speaker behind door on the right

FIG. 7, right: Dr. Allen DuMont has wall-mounted TV tube and speaker in his office, with the tuning controls conveniently located right in his desk drawer

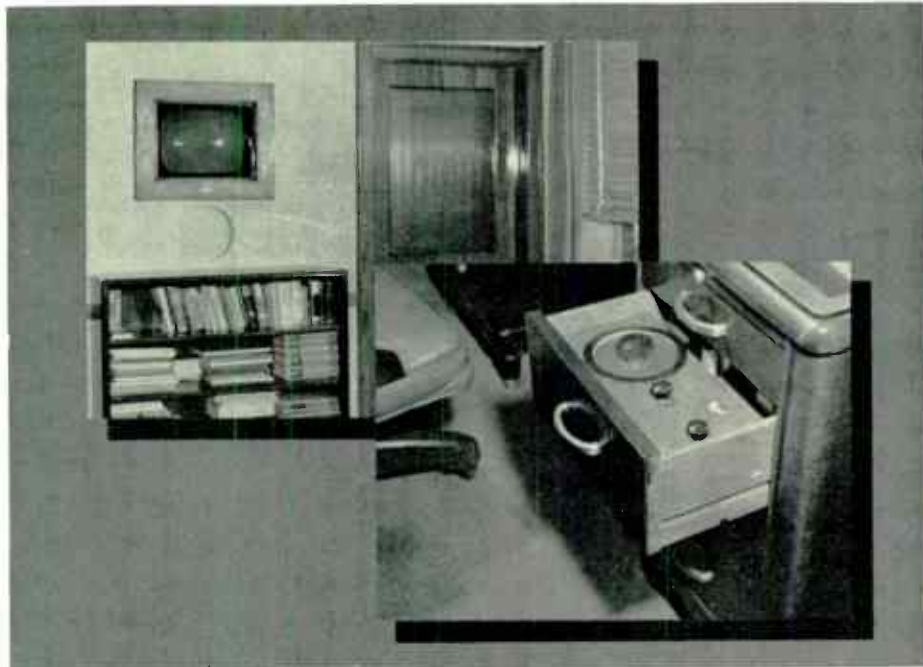
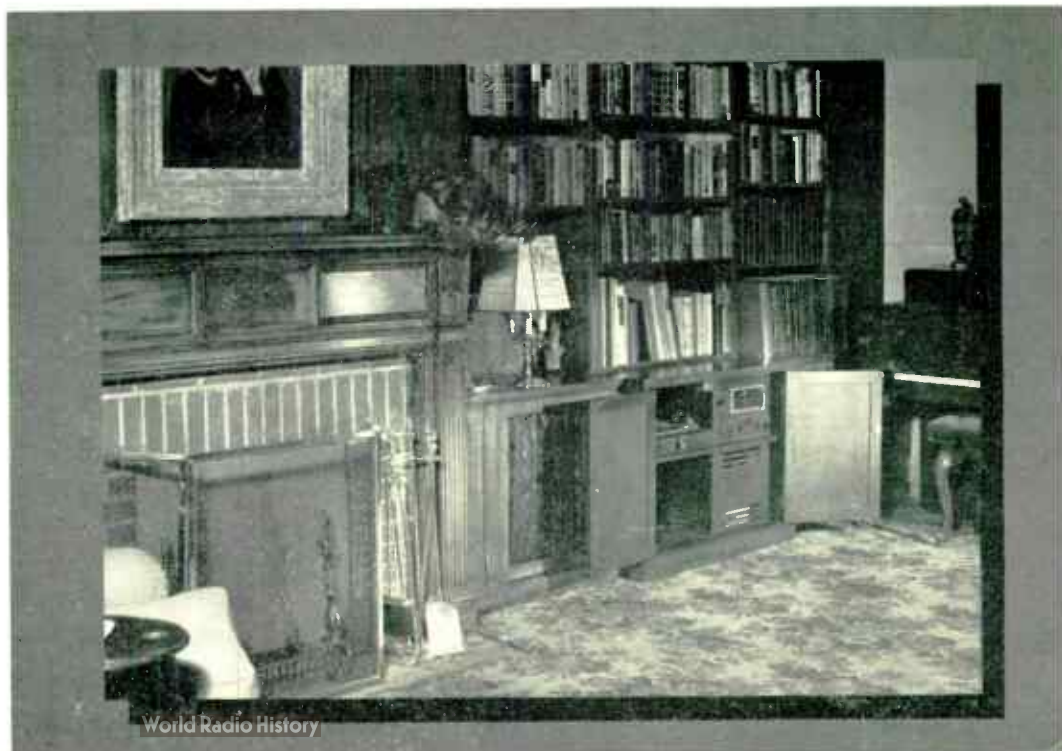


FIG. 8, below: In this New York apartment, Fisher Radio closed the fireplace with a speaker baffle, using the chimney as an air column. Radio-phonograph is installed behind doors below the bookshelves

where they are hidden behind a door when not in use. At the far end of the couch there is a cabinet designed to give access to the FM-AM radio and the record changer. In this case, a Fisher version of the H. H. Scott noise suppressor is used.

Television is coming in for its share of custom design, too. It presents a whole new series of problems, and we can expect to see some very clever ideas in homes where, for one reason or another, standard cabinets cannot be used to best advantage.

A purely functional design, and one which offers much in convenience, is shown in Fig. 7. This is in Dr. Allen DuMont's office at DuMont Laboratories, Passaic, New Jersey. In the lower right-hand picture can be seen a tuning control, fitted into a drawer in Dr. DuMont's desk. The picture tube and speaker are





REMOTE PICKUP RELAYS

ON-THE-SPOT COVERAGE OF DISASTERS AND EMERGENCIES IS MADE POSSIBLE BY FM ON 152-162 MC—By FREDERICK T. BUDELMAN *

ONE of the most important public-service features of radio broadcasting has been built around what program directors call "special events". This very broad term covers all spontaneous situations which range from rear-platform speeches by Government officials to news of fires, floods, and

other emergencies when minutes may mean saving lives and property.

By their nature, these events seldom occur where wire lines are available for studio connections. Therefore, mobile units must be employed. This calls for equipment and frequency channels capable of giving solid service from the scene of action, wherever it takes place.

Background of Present Setup:

The final frequency allocations plan for the non-governmental radio services¹ released by the FCC on May 17, 1945, provided for new channels between 152 and 162 mc. for remote pickup relay services. This cancelled the previous assignment of 16 channels (12 non-shared and 4 shared) in the band from 30 to 40 mc. for relay broadcasting, but provided twelve 60-mc. channels between 152 and 162 mc. to be shared with the motion-picture, geophysical, and forestry-conservation categories; also, twenty-four 25-ke. channels between 25 and 28 mc., to be shared with the geophysical service.

Accordingly, after the new channels were assigned in the 152- to 162-mc. band, Link Radio undertook the development of FM equipment for this purpose, in order to provide a higher degree of audio quality and a lower level of noise than had been available previously.

The first wide-scale tests and demonstrations of land-mobile equipment operating on 152 to 162 mc. were conducted by Link engineers² in February, 1946, under the extremely adverse conditions prevailing in the mid-Manhattan area of New York City. The highly satisfactory results, with solid coverage even when the mobile transmitter was between high steel-framed buildings and in highway

underpasses, indicated that the new frequency range would be ideal for remote pickup operations. Later, several of the large networks and a number of independent companies conducted further tests. Their results were superior to those obtained with any previous equipment on 25 to 28 mc. or 30 to 40 mc.

Pickup Equipment for 152-162 Mc.:

It should be pointed out that the development of the units now in use was based on previous experience with both civilian and military FM equipment.

The basic unit is a 50-watt mobile FM transmitter for 152 to 162 mc., operated by a self-contained, 12-volt dynamotor. The 12-volt primary power source was chosen in preference to 6 volts because of the relatively large power consumption during the long periods of operation encountered in broadcast work. Frequency response is uniform from 70 to 7,000 cycles, with distortion and noise levels appropriately low. A companion power supply operating from 110 volts, 60 cycles can be substituted in a few seconds.

The accompanying illustrations show the use of quarter-wave roof-top antennas, as in Figs. 2 and 4, or coaxial antennas and collapsible directional arrays, as in Fig. 1, for long hauls.

The program receiver is a rack-mounted, crystal-controlled FM unit, capable of operating on signals as low as 1 microvolt. Various types of directional or non-directional receiving antennas are used. Most common is the vertically-polarized beacon antenna, with a power gain of 4, and a non-directional pattern. At WTCN, Minneapolis, for example, the relay receiver antenna is mounted on top of the FM antenna illustrated here.

FCC Proposes Deletion of Channels:

Now, searching for more channels for the various communications services, the FCC seeks in its proposal of May 5, 1948, to cancel the remote pickup channels in the 152- to 162-mc. band, and to shift the present assignments to new frequencies between 450 and 460 mc.

The immediate effect of this proposal was to interrupt all plans for adding mobile pickup relay units at stations which were getting ready to install this equipment. Even though the FCC allows those already licensed in the 152- to 162-mc. band to continue for several years, no

new installations will be made on that band since they cannot be used for a time sufficient to amortize the cost.

And it is doubtful if manufacturers will undertake the development and field-testing of new designs for 450 to 460 mc., since they have hardly had time to charge off the development and tool costs of the 152- to 162-mc. units.

That, from the public-service angle, is a bad situation, since the most valuable use of pickup remote equipment is under conditions of emergency when lives and property are at stake.

Problems on 450 to 460 Mc.:

There is a certainty that equivalent service cannot be rendered on 450 to 460 mc. Some work has been done with these frequencies on point-to-point communication, but these installations operate under ideal conditions. Tests made with mobile equipment on 450 to 460 mc. have demonstrated that great difficulty will be encountered in obtaining coverage beyond optical paths.

What the Broadcasters Need:

Under circumstances that permit the use of fixed remote pickup transmitters, operation over reasonable distances should be possible on 450 to 460 mc. Where any congestion exists on the lower frequencies now in use, some advantage might be gained by such a shift.

However, the importance of emergency services now being rendered on 152 to 162 mc. by pickup relays is such that public interest, convenience, and necessity call for encouraging the expansion of this service among stations not already equipped.

It is possible that something entirely new and useful may come from opening up channels on 450 to 460 mc.

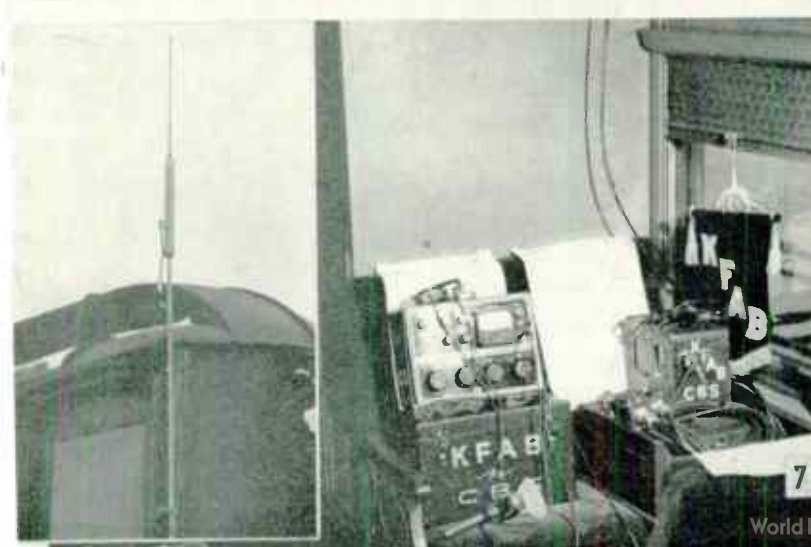
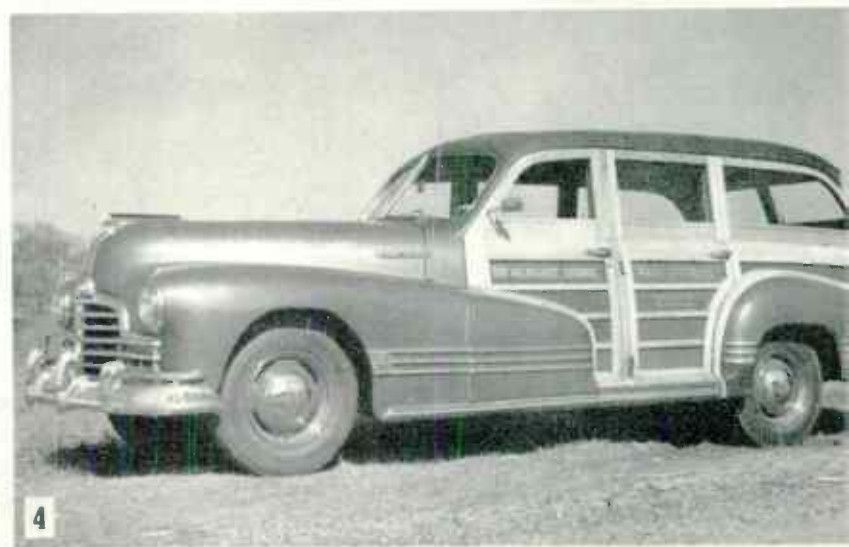
But it is imperative, in the interest of the public, that the 152- to 162-mc. channels be continued for pickup relaying. Only in this way can more stations be encouraged to operate mobile transmitters for on-the-spot coverage of emergencies, and with the assurance of getting dependable signals at the studio. When minutes count, there is no time to wrestle with propagation problems on 450 to 460 mc.

Right: Link remote relays operated by: 1) KFAB Omaha, 2) WTCN Minneapolis, 3) KOIL Omaha, 4) WTMJ Milwaukee, 5) KTHH Houston, 6) WQAM Miami, 7) KFAB's Friendship Train installation, 8) WJAR Detroit

* Vice President and Chief Engineer, Link Radio Corporation, 125 W. 17th Street, New York 11.

¹ See *FM AND TELEVISION*, May, 1945, for complete table of frequency allocations.

² Reported in "Selective Calling in New York on 157 Mc.," by Milton B. Sleeper, *FM AND TELEVISION*, February, 1946.



SPOT NEWS NOTES

ITEMS AND COMMENTS, PERSONAL AND OTHERWISE, ABOUT MANUFACTURING, BROADCASTING, COMMUNICATIONS, AND TELEVISION ACTIVITIES

Miss Frieda B. Hennock:

New York City Lawyer and active member of the Democratic party is the first woman to be nominated to the FCC. She is to fill the vacancy created by the expiration of Commissioner Durr's term on June 30.

Facsimile over WGHF:

Capt. Finch's New York City station has been authorized by the FCC to transmit commercial facsimile. There will be four 15-minute periods between 7:00 p.m. and midnight. Finch announcement says that production has been started on the initial run of 5,000 home recorders.

William B. Lodge:

CBS director of engineering since 1944 and a member of the technical staff since 1931, has been named vice president in charge of general engineering.

Coming, Coming, Here:

Full-page newspaper announcement from Quincy, Ill., carries the headline: WTAD-FM was 4,000 watts . . . was 16,000 watts . . . is NOW 53,000 watts effective radiation.

Source of Distortion:

Frank Lyman, president of Harvey Radio Laboratories, suggests that one source of audio distortion contributed by FM tuning circuits lies in the modulation of the oscillator by poor regulation of the plate-voltage supply. It appears that FM receiver designs should be checked with great care for possible trouble from that source.

Upper-Band TV Station:

RCA expects to start experimental operation of an upper-band TV transmitter at Washington, D. C., some time in September. Initial plan is to operate on 504 to 510 mc. This probably means temporary use of standard equipment for purposes of checking propagation. Transmitter will deliver effective radiation up to 25 kw. Later, no doubt, channel will be widened to increase number of lines per inch, since the upper band will allow increased definition.

FM Automobile Sets:

B. A. Schwarz, chief engineer of G.M.'s Delco Radio Division, commenting on the reference to FM automobile sets in our April issue: "Recent tests in the Chicago area, principally, indicates many serious problems to be solved before a satisfactory FM automobile broadcast receiver and satisfactory reception of FM broadcast programs in an automobile are arrived at." This seems surprising because, back in

1941, Paul deMars was getting FM reception in his car, far superior to anything we have ever heard on AM, from a rebuilt General Electric tuner and an ordinary whip antenna mounted on the rear bumper.

10-KW. FM Transmitters:

According to an announcement from Western Electric, this company has delivered forty-five 10-kw. FM transmitters, of which more than twenty-three were on the air the first of May.

Police and Fire Systems:

Baltimore is setting up coordinated police and fire communications systems which will comprise 215 mobile units with two 250-watt fixed transmitters. Mobile units will be installed on police cars, fire apparatus, fire boats, and harbor patrol boats. System will operate over 300 square miles. Federal Telephone and Radio Corporation is supplying the equipment. The installation is being made under the supervision of Captain William Taylor of the Baltimore police, with the cooperation of Kann-Elbert Electronics Co.

Price Reductions:

Westinghouse has announced price reductions on five FM-AM receiver models, ranging from \$20 to \$125. Maximum reduction applies to the \$625, phonograph combination which now lists at \$499.95.

FCC Chairman Coy:

Addressing the NAB at Los Angeles, May 18: "The full, free, rapid exchange of information and opinions, as between the Government and the citizens, and as between the citizens themselves, is not essential in a totalitarian state. — But it is an imperative to the functioning of a democracy. — I know of no responsible person in the Government, including members and staff of the FCC, who favors government operations of broadcasting."

FM-TV Station Score:

Status of FM-TV broadcasting on June 1 shows the following saves:

	TV	FM
Operating	24	537
Authorized	72	499
Pending	250	81
TOTAL	346	1117

There are also 20 educational FM stations on the air.

FM Reception on Mt. Washington:

Paul Gerhard, reporting from Yankee Network's station: "We can tune in 26

high-band stations on a prewar Hallicrafter S-27." Surprisingly, he adds: "Not one of these stations carries NBC programs."

Five Years Ago:

Here's an echo from the dim but not-so-distant past: James Lawrence Fly, then FCC Chairman, addressing the 1943 RMA Convention: "The sad experience of prior years resulted in more careful planning in the FM and television bands." Nevertheless, Paul Porter overhauled them in 1945!

Old Fashioned:

Dr. Charles B. Jolliffe, testifying before the House Interstate Committee on Interstate and Foreign Commerce, March 31: "The significance of this [RCA] pioneering work [on frequencies above 30 mc.] can best be understood when it is realized that two of the principal advantages of high frequency or FM broadcasting, viz., high fidelity and freedom from natural static, are derived from the use of these higher radio frequencies, and not from the type of modulation employed." This view seems a little old fashioned. One company, with the same idea, spent some \$3/4 million in a postwar effort to develop AM railroad radio equipment, only to shift to FM in order to eliminate static interference. As for high-fidelity broadcasting, that can be enjoyed only if static is eliminated.

Largest LCC System:

U-Dryvit Auto Rental Company, Cambridge, Mass., has been authorized by FCC to install limited common carrier systems in 21 cities throughout New England and New York State. Project calls for 1915 mobile units in rented and in privately-owned cars and trucks. Philco equipment will be used throughout. U-Dryvit is already operating an extensive LCC service in Boston.

Continental Network:

Will report the Republican and Democratic conventions over 25 stations in a population area of more than 10 million. Program will start each day when the meetings open, and will continue until last gavel falls at night. Commentators will include Joseph McCaffrey, John Corcoran, and Paul Green.

KOAD Omaha:

Now claims to be most powerful Missouri Valley FM station. With a new 10-kw. G.E. transmitter on an 8-bay Federal antenna, effective radiated power is 70 kw. Full authorized power of 380 kw. will be used as soon as final amplifier is delivered.

NEWS PICTURES

Left top: New York City TV station WPIX is being pushed along with the same energy and drive that has given its owner, *The Daily News*, the largest newspaper circulation. Although the management is confronted with the special problems of non-network operation, opinion has it that a completely fresh point of view toward programming, unshackled by old time broadcasting precedents, will put WPIX in the forefront of TV operation.

Left center: New president of the largest communications system in the world, the American Telephone & Telegraph Company, is Leroy A. Wilson. While AT & T has made great use of radio for long-distance telephony, Mr. Wilson's administration will see the greatest advances in radio applied to relay systems and mobile communications. These involve new engineering and policy problems of lines vs. relays, and of extending land telephone service to private cars and commercial vehicles.

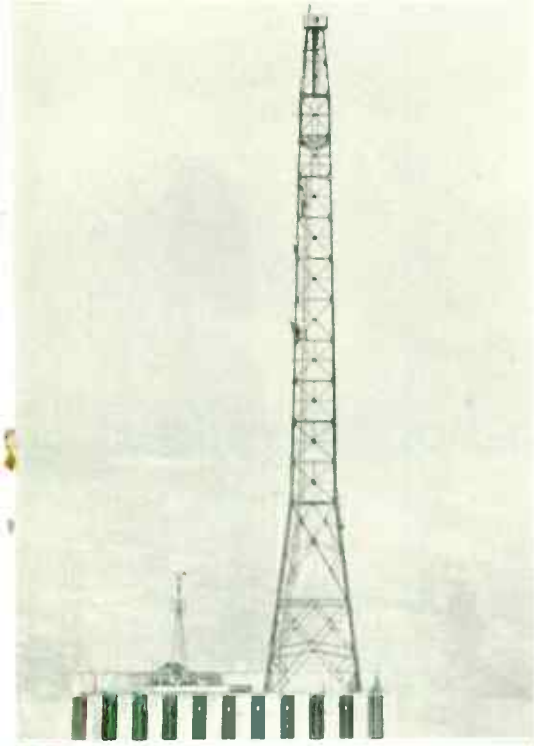
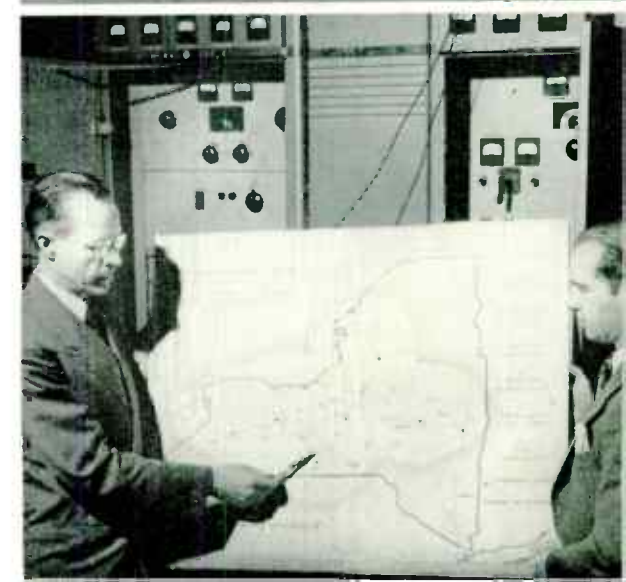
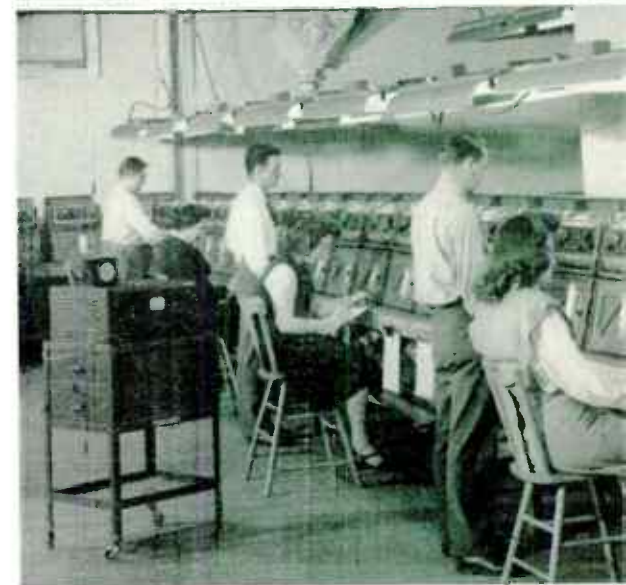
Left bottom: Belvedere Broadcasting Company's station WMCP-FM, Baltimore, has pioneered an innovation of interest to acoustic engineers. To eliminate the use of blowers for air heating, and the resultant noise picked up by FM microphones, WMCP-FM has a radiant heating system.

Right top: When the streets of New Orleans looked like this, during the 1947 hurricane that struck the City, we heard that all communications were cut off by power failure except for station W5XDK, operated by the Checker Cab Company. This FM system maintained contact with vital points, enabling police to keep a very serious situation under control. Now it comes out that a 1 kw. Fairbanks-Morse emergency generator had been installed to meet such a situation.

Right: DuMont continues to step up production of television receivers. Here is a view of one assembly line now in operation. Present production, reported at 3,000 sets per month, is to be tripled soon by the acquisition of the south building of the former Wright Aeronautical plant, East Patterson. Building is 836 ft. long, contains 1/2 million square feet.

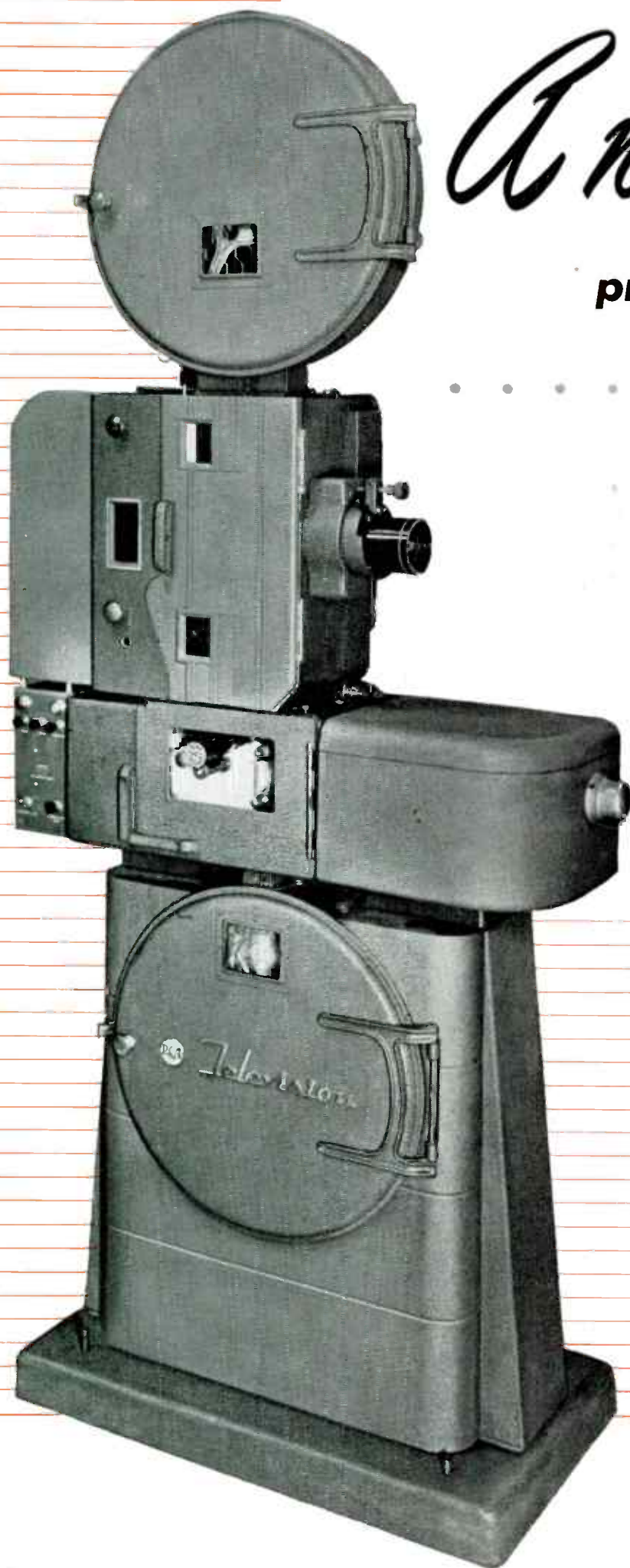
Right: Setup in Lear factory for testing wire recorders with the Furst wovometer. This instrument, shown in the foreground, shows any change in sound reproduction due to variation of wire speed. Details of the wovometer and its use were presented in our May, 1948 issue.

Right bottom: W. R. David and W. G. Broughton display a map of the 6-station Rural Radio Network, an FM system being set up by Dr. Miller McClintock to serve farmers in upper New York State. G.E. equipment is being installed now.



A new 35mm

precision-built Brenkert



As Used with the RCA TK-20A Film Camera — film camera converts motion pictures into video signals. When only one projector is used, pictures are projected directly through the aperture of the film camera onto the camera pickup tube. The video signals produced are fed via control equipment to the transmitter.

television projector by RCA

mechanism assures smooth, quiet operation

A PERFECT FILM PROGRAM every time . . . high-definition, flickerless pictures . . . continuous, on-the-air dependability—with this new sound-film projector that's designed specifically to meet the exacting needs of television stations.

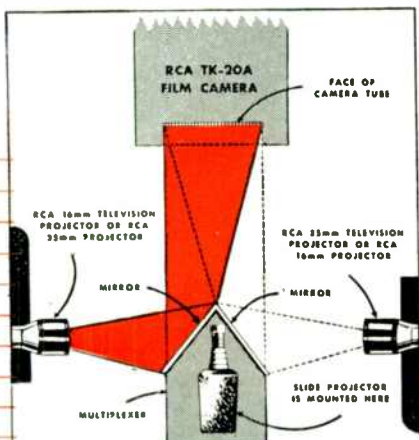
The film-drive mechanism and other mechanical features are precision-built in the RCA Brenkert plant . . . home of the famous projectors used by leading theatres around the world. The sound-head is the well-known RCA high-quality unit used in these projectors—modified to include a special, salient-pole synchronous motor.

Here is the film projector that produces higher light output with negligible heating of the film gate or the film . . . enables you to project single frames as stills.

Here is a film projector with great mechanical simplification—and with fewer moving parts for quieter, easier operation. It's easy to operate. It's simple to maintain . . . even oils itself!

Auxiliary equipment for the projector includes: (1) a control rack—with its pulsed light power supply, remote panels, and 10-inch picture monitor; (2) a film camera multiplexer employing two mirrors to reflect projected images from two film projectors *into a single television film camera*.

To get the most from *your* newsreels, shorts, and feature films, overlook none of the advantages of this new 35-mm projector. Let your RCA Broadcast Sales Engineer give you the technical details and prices. Or write Dept. 38-F.



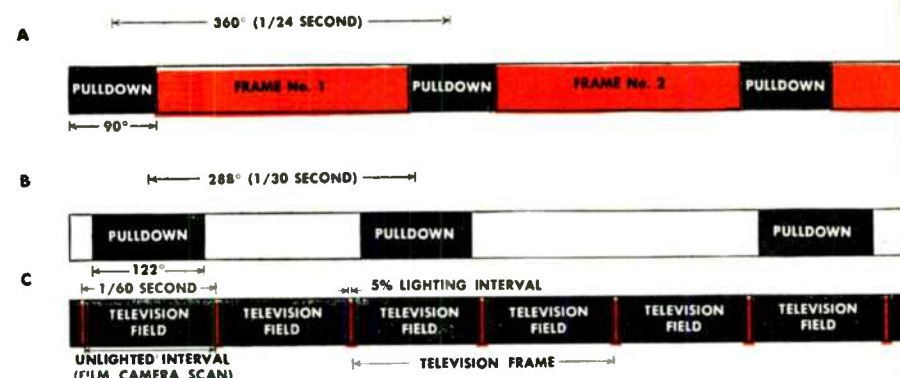
RCA Multiplexer—for uninterrupted projection of multireel films where two projectors are needed. This ingenious RCA device eliminates the need for an additional film camera. It consists of a V-shaped mirror for reflecting images from either projector to film camera and a slide film projector for inserting station breaks, commercials, and special effects.

How it works—Line A shows the pull-down timing of a standard 35-mm film projector (no lighting during 90° pull-down). Line B shows pull-down timing of the RCA 35-mm television projector—and the duration and repetition rate of the short intervals during which light passes through the film.

Line C shows the projector lighting interval of the RCA 35-mm television projector. The "light-on" intervals are produced by a pulse-controlled camera

lamp that produces an 800-microsecond flash every 1/60th second. The picture images are projected onto the film camera pick-up tube during the retrace (blanking) interval of its scanning beam. The "storage" property of the tube permits scanning during the unlighted interval between flashes.

Scanning releases the picture charge—converts it into a video signal. A synchronizing generator keeps the projector and film camera in phase.



TELEVISION BROADCAST EQUIPMENT
RADIO CORPORATION of AMERICA
ENGINEERING PRODUCTS DEPARTMENT, CAMDEN, N.J.

In Canada: RCA VICTOR Company Limited, Montreal

PUTTING WPIX ON THE AIR

PRESENTING FIRST-HAND FACTS AND FIGURES, DRAWN FROM THE EXPERIENCE OF
BREAKING INTO TELEVISION BROADCASTING IN NEW YORK CITY — *By* F. M. FLYNN *

WITH regret, keen disappointment, and with some feeling of having been wronged, we have concluded that we must bear up under an adverse ruling of the Federal Communications Commission on our FM application. *The News* will not appeal the decision. We are making an announcement to that effect today. I won't bore you with that announcement, but you may be assured that it makes clear our position regarding the decision.

Now we are free, somewhat against our wish, to concentrate our efforts entirely on television.

Seriously, I think television has now — not tomorrow, but now — all of the essentials necessary to become one of the most potent forces in American life. Properly developed, I believe it will revitalize Americanism in this Country and it will provide the added stimulant we so badly need to push forward this expanding economy we hear so much about.

The responsibility for developing television is terrific. You may discount about 90% of the enthusiastic talk or hokum that is being tossed about regarding television, and it still adds up to the newest and greatest force for public service in our generation.

If it is kept free of propagandists and mealy-mouthed word-twisters who seek to control the channels of mass communication in the world, television will become a new and respected messenger of truth, welcomed in thousands of American homes.

I don't hold with those who believe television will immediately make serious inroads on other forms of communication. True, it will be a rival for public acceptance, and competition for the advertising dollar will be keener with television on the scene; but I have a fundamental belief that the American public has a great capacity for absorbing new things and will fit television into its scheme along with radio and other media.

My impression, to date, is that television is or has been a great thing for everybody except the station operator. The equipment manufacturers are doing a booming business. Set manufacturers, distributors, retailers must be making a fortune. New jobs are created right and left for publicity men. Additional work is becoming available for actors, actresses, all sorts of talent. Even vaudeville is being revived. The film companies are

offsetting some of their losses by selling the old junk they have had in the files for years and years, at high prices, and everybody is looking for cheap programming. Somebody estimated that television will become a \$500 million industry. Even the newspapers are profiting, I hope, from advertising of television sets. But I doubt that there is a station on the air today that will do any bragging about its figures on operating television. It's been a great thing for everybody but the station owner.

Now, getting down to WPIX specifically, I have one of the worst sinking feelings that you could possibly imagine every time I look at our figures. We have no network, no plans for a network, no definite offers; but I sure think a lot, quite fondly, of how nice it would be to get in on a push-button network operation. We have no manufacturing division. We are not selling any sets. We haven't had any division to absorb the losses, such as all the other big operators. And the newspaper business today isn't so hot that it can take heavy losses and cause us to thrill over operating WPIX.

It's no use to talk to the other New York station owners about costs; they're on the hook and they can't get off. But, during the recent American Newspaper Publishers Association meetings, I talked with several newspaper publishers who are either under way in television or plan soon to get under way. I confess I had to laugh like hell when I heard them talk about the estimated costs. I don't know who's telling these people about costs in television but, since there are no secrets in this business, apparently, I see no reason why I shouldn't tell you about a few costs, and you can get some idea of what we and others are doing to try to get television developed.

First, we recognize that all costs have gone up sharply in recent years, but still the difference between our estimated costs and our actual costs are staggering.

When we prepared our application for presentation to the Federal Communications Commission, we estimated our equipment would cost \$420,000. The other day I said, "Let's total this up." What is it? Well, it's just a little over \$600,000. That's about a 50% increase.

We thought, originally, that we could put our transmitter and some studios within the parapet walls atop The News Building, and we thought we could install a couple of announce studios some place else in the building. That we estimated as \$150,000; not bad. Well, we got to actually laying out plans. The parapet wall wouldn't work, there wasn't enough

room. So we have to do the transmitter job on top of the office building, and we have taken over the top of the plant building for studios, work-rooms and other facilities.

We are going to have what I call a two by four studio. We have a film-projection studio, a little announce studio, a lot of dressing rooms, prop rooms, et cetera — all very small. It's really not enough to operate with at all, we're just doing half the job, and the estimated construction (we're getting down, now, pretty close to final bids) is \$525,000. That's against \$150,000. Then, if we go on with the second part of the job, it's another \$350,000 and we haven't bought any props, scenery, costumes, or anything. That's just the walls with air-conditioning.

We think we will be on the air pretty soon. I am told we will have on our payroll from 150 to 160 employees and the payroll will run at an annual rate of \$750,000. We will not have established an elaborate programming department. Our original estimate for all personnel, including an extensive programming department, was about half that amount — \$380,000.

In the beginning, I was told we could operate television and handle quite a bit of the work in *News* departments. We were going to have the sales handled by our advertising salesmen on *The News* on some kind of a part-time arrangement. The auditing work would be done in the Auditing Department, and the promotion and publicity in our Promotion and Publicity Department. Now, we have a publicity manager (I think he has an assistant, also) and, even with that, we have a hell of a time getting Ben Gross to give us as much space as he gives NBC. It is obvious that we can't get our auditing done in our regular department. WPIX must have an auditor and he'll probably need an assistant and a secretary. I'm sure, when we wind up, we'll have all these departments up there.

In our presentation to the FCC, which I was looking over recently, we had listed one item of operating costs as "Special Wire Facilities". Opposite this, on the tabulation of our operating costs were no figures, just the words: Not Known. We should have put "Not Known" opposite all the rest of them.

So it is easy for me to understand now why some of those who have construction permits for television or who have applications pending are doing what they call (this is something I have learned recently) dragging their feet. Possibly these fellows

*President and General Manager, *The News*, 220 East 42nd Street, New York City. From an address before the American Television Society, Hotel Astor, New York, April 28, 1948.

are smarter in dragging their feet than to rush in and to be in our position where, at least as far as I'm concerned, I'm holding my head.

Television, as you folks know better than I, is going to be programming. That has been repeated, you have heard it, it's been drummed in. But I think it must be constantly drummed in. Television will be just as good as its programming, and it will rise or fall with the program structure.

I'm not too critical, I hope, on some of these things, but I feel that it is rather a sad situation when you find that the old Major Bowes' Amateur Hour we heard years ago has been revived on television and has the highest Hooper rating, as far as I know, of any show on the air. Then, ranging right behind, the Howdy-Doody for the children. These facts should make you stop and think about programming; that's what we need.

To put a little more criticism into the picture, I think the public service programs on the air today are horribly neglected — what I think of as public service programs; and anything that would smack of religion seems to be getting silent treatment on all stations. That is not our idea of a well-balanced program at all.

Now, I'll hedge a bit. Maybe after we've been on the air a while I'll talk differently, but at least until it is proven that we can't do this, I say we'll do it.

One of our friendly competitors has expressed the opinion to me that the television audience looks on television as a show-business. I think that is largely true. But there are still many serious programs that can be made extremely interesting and informative if properly presented. The agency people working on programming, I believe, should give some attention to that part of the television program structure. I think the rich and poor alike laugh and cry over the same things. The young and the old like the circus.

You have probably observed that recently. From what I hear, most everyone, some time or other, reads the Bible. All the **great stories** in history and fiction are read by persons in all walks of life. Even *The Daily News* has a lot of readers on Park Avenue as well as in Flatbush. So I think somehow, some way, what may be termed a well-balanced program structure — a fare that will be suitable for New York — will be developed by WPIX. Many improvements will have to be made, but we are going to do our part to be in on those improvements.

Being in the position of the only non-network station in New York City presents some intriguing problems for WPIX. Network television undoubtedly will be a major factor in the development of TV, and there is going to be keen competition, particularly as these networks develop. We recognize that our lone position gives us not an easy row to hoe.

With NBC, CBS, DuMont, ABC and Mutual forming networks, where does it leave us? I say, out in the cold, because there aren't enough cities with a sixth television license to permit another national network.

Also, from what I have heard of the rates on the proposed coaxial cable, or for construction and maintenance of radio relay links, I think it is going to take awfully good programming and a well-heeled sponsor to pay the freight on top of time and program costs.

So one thing we have planned on WPIX is to concentrate on the development of something new and outstanding in a television news-reel. We plan to offer this program, with other programs developed by the station, for some sort of syndication. We are greatly interested in film syndication, and believe this type of program-handling will play a most important part in television for several years at least.

This importance of film, which will be emphasized more and more, I believe, for

all types of programming makes more and more desirable the development of a basis for working in cooperation with the motion picture industry. Our recent purchase of the rights to twenty-four feature films produced by Korda may be a step in the right direction. Fortunately, Korda is in England and England needs dollars, which may have had some influence on the situation.

It is obvious to us on *The News* that television is no peanut-peddling business. Some operators will be able to deliver programs of interest to the public at sustained losses over a period of years, perhaps; but there are many who will not be able to afford to develop programs without heavy support from commercial sponsors.

Now there are two or three things I'd like to put on the table of the American Television Society.

First, and first in importance I believe, is the rapid development of some sort of Audit Bureau of Television.

The second item deals with the growing need for a centralized training school for personnel for television work.

The third item deals with program material. With the audience limited as it is today, the matter of bidding up the prices of program material can become extremely serious.

When WPIX has solved some of its own problems and has cooperated in a solution of all these other problems, we will probably find we have had a pretty busy 1948 with a lot of work ahead.

The most interesting part of it is that its problems are challenging. They need youth, new thinking; they need new development. You can't apply the old schemes, the old programs; this is something new. And our objective is to do the best we can to make television a medium of communication of which we can all be proud, and to develop a service on which we may obtain the approbation of the American public.

TV SET AT \$99.50

Latest TV set design, and lowest in price, is the Candid T-V receiver just announced by Pilot Radio Corporation, 37-06 36th Street, Long Island City, N. Y.

Immediate reaction to the retail price of \$99.50 is that a sight-and-sound set can't be built at that price, or that it can't be good. Fact is, however, that the performance is excellent and that Pilot's use of a 3-in. picture tube opens up new possibilities for low-cost television entertainment. Dimensions of the set are 14 ins. wide, 9½ ins. high, 13½ ins. deep; weight, 15 lbs. Continuous tuning covers all 12 television bands. Circuits employ 17 radio tubes, plus 3 rectifiers and the picture tube. As an added convenience, a carrying case is provided at a small cost.



AF CIRCUITS EQUALIZER

UTC USES RESONANT CIRCUITS FOR INDEPENDENT HIGH-AND LOW-END BOOSTS—By I. ALLEN MITCHELL*

THE earliest common form of equalizer was the "tone control" employed in radio receivers to cut off the high frequencies. These controls were frequently decried by engineers, on the basis of the fact that the fidelity of the equipment was being reduced through the loss of high frequency performance.

Need for Equalization:

Present engineering knowledge justifies the use of more modern types of equalizers, as it has been found from listener-preference tests that a balance between low- and high-frequency response is highly desirable. It can be stated that, for good audio performance, the product of the lower and higher frequency limits of the equipment should equal approximately 500,000. This condition of balanced or equalized response is indicated in Fig. 1. In other words, neither end of the response should be over-extended. A set that is good to only 200 cycles at the low frequency end gives the most agreeable performance when the high-frequency response is adjusted to cut off at about 2500 cycles.

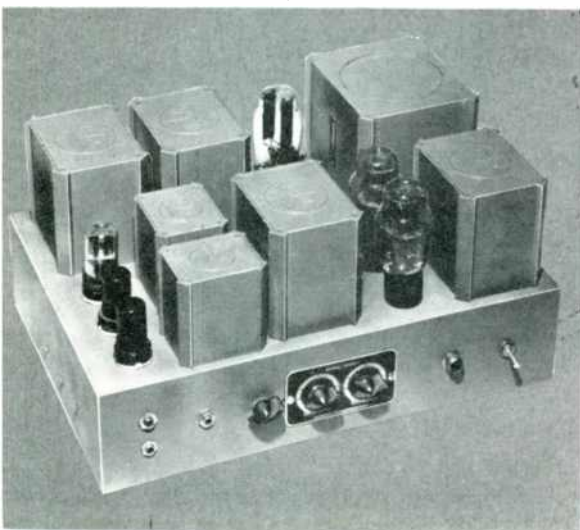
CGE-1 Equalizer:

Considerable research and development work at United Transformer Corporation recently evolved a simple equalizer, Fig. 2, which weighs but 2 lbs. and is carried on a panel $2\frac{3}{8}$ by 4 ins. The difficulty in the development of an inexpensive equalizer lay in the fact that it was necessary to use resonant circuits for both high-end and low-end boosts. Fig. 3 shows the effects of boost and droop at both ends.

Simpler construction could be effected by using R-C networks, but the resultant curve of correction they produce is a gradual slope. This does not accomplish what is required. For example, if the unit to be equalized is down 15 db at 5,000 cycles, an R-C equalizer which brings

* Director of Research, United Transformer Corporation, 150 Varick Street, New York 13, N. Y.

FIG. 14. Complete amplifier with equalizer



back this 15 db also boosts 6 db at 1,000 cycles. That would be undesirable. Similarly, an equalizer which would effect 15 db correction at 100 cycles and boost 1,000 cycles by 6 db would be undesirable. Figs. 4 through 13 show several different applications where equalization has been successfully employed, using this inexpensive equalizer to boost highs or lows or to drop highs or lows as required.

Examples of Equalization:

It is interesting to note the results of correction as shown in the accompanying curves. The need for bass boost is generally realized, for the normal drop off of aural response at bass frequencies with reduction in volume level is quite substantial and rapid. By using the 50-cycle boost of the equalizer as shown in Fig. 4, this low frequency loss is completely compensated.

The falling off of low frequencies in home recordings is intentional. If the low frequencies were not attenuated, the amplitude of recording needle travel would exceed that of the record groove. As a consequence, an equalizer is used during the recording process to cut the low frequencies rapidly, so that, below the cut-off point, the full width of the groove is used, but no more. Fig. 5 illustrates the use of the equalizer at the 12 db, 100-cycle boost point to correct this condition.

Lateral transcriptions, as contrasted to home recordings, cut the low frequencies for the reason mentioned above, and also augment the high frequencies, so that these can be attenuated during playback, with a corresponding reduction in noise level. In other words, the signal-to-noise ratio is considerably greater in the high frequency portion of the recording. To correct for this condition, the equalizer is set at maximum position 50-cycle boost and 10 db high-frequency droop, as illustrated in Fig. 6.

The standard vertical transcription is similar to lateral transcriptions, but with a lower crossover frequency, as illustrated in Fig. 7. The same equalizer settings correct this type of recording admirably.

Loudspeakers, due to electrical and mechanical limitations, fall off at both high and low frequency ends. The curve in Fig. 8 illustrates this condition, though it does not show all the small peaks and dips that characterize loudspeaker response curves. Using 12 db, 50-cycle low-boost position and 12 db, 8,000-cycle high-boost position, the speaker curve shown is substantially equalized. It must

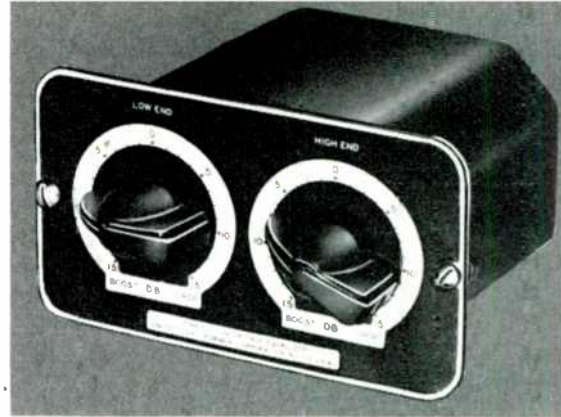


FIG. 2. UTC resonant-circuit equalizer

be remembered, of course, that the low-frequency power-handling capacity of the speaker is not increased through equalization, so that, fully equalized, the maximum level from the speaker without distortion will be reduced.

In addition to loudspeaker frequency-discrimination, RF circuits and other elements in a radio receiver contribute to the drop-off of low and high frequencies. A typical over-all curve of a medium priced receiver is shown in Fig. 9, where the 10 db, 100-cycle boost and 13 db, 5,000-cycle boost positions flatten the curve considerably.

High fidelity receivers rarely approach ideal response curves due, in many instances, to acoustic conditions in the cabinet, loudspeaker response, and other factors. Fig. 10 shows the 50-cycle boost and 8,000-cycle boost equalizer positions at maximum setting to correct the response of such a receiver.

Sound-on-film recording has a sharp drop-off at the high end. This is unavoidable, and is a function of the optical slit. Fig. 11 illustrates a typical curve of this type, which is almost perfectly corrected by using the 8,000-cycle, maximum-boost position of the equalizer.

Telephone lines have both low- and high-end droop. This is a function of the class of line and length. A typical line is illustrated in Fig. 12, with simple correction using 10 db, 100-cycle boost and 12 db, 8,000-cycle boost.

Wire recordings and tape recordings have substantial fall-off at the low end, as a basic characteristic of this type of equipment. The actual curve of both high- and low-end droop is a function not only of the recording head and equipment, but also of the size and type of wire or tape. One curve of this type is shown in Fig. 13, with almost full correction obtained through the use of 15 db, 100-cycle boost and 7 db, 8,000-cycle boost.

In addition to the curves shown above and the equalizations which can be effected for such applications, there are many others where equalization is of value. For example, dialogue equalization (low-frequency droop) improves speech intelligibility, and permits higher power levels from speakers used in PA equipment.

Circuit Information:

All equalizers cause insertion loss in a

FM AND TELEVISION

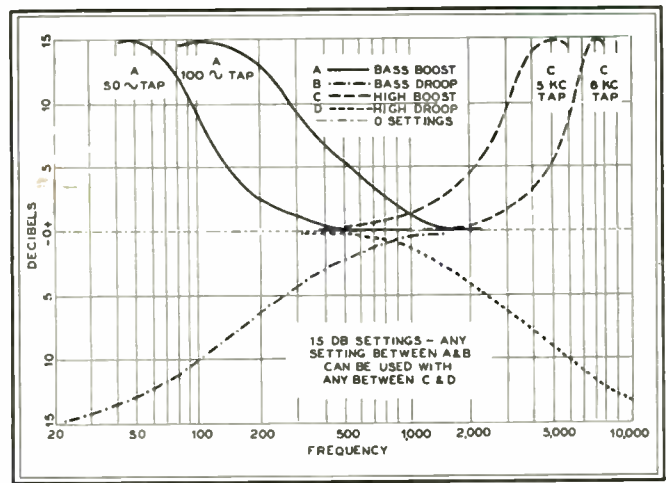
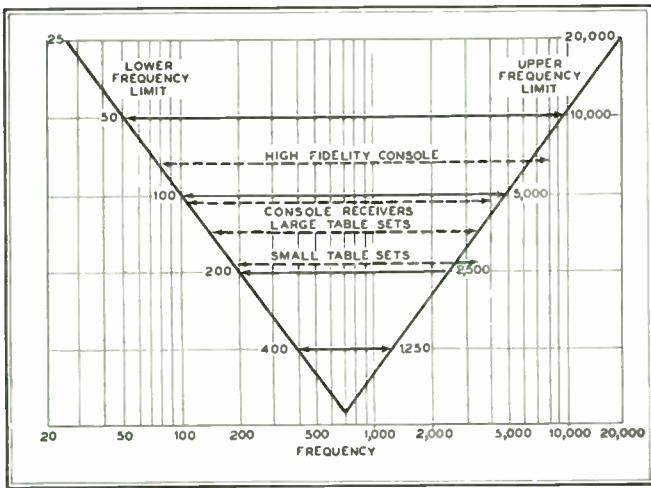


FIG. 1. Illustrating proper balance between high and low response on various radio sets. FIG. 3. Effects of equalizer controls

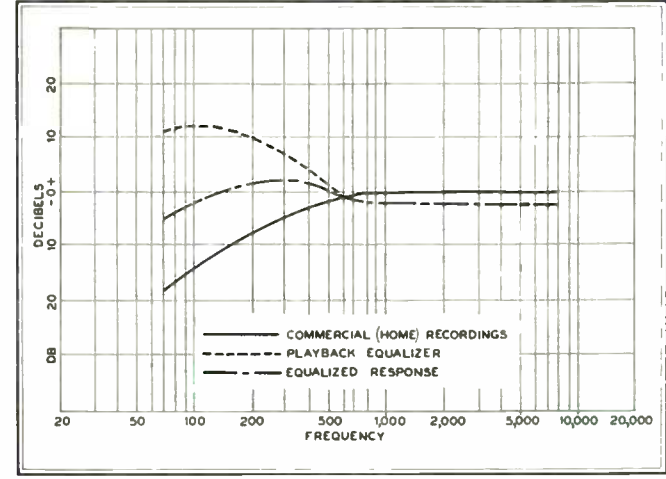
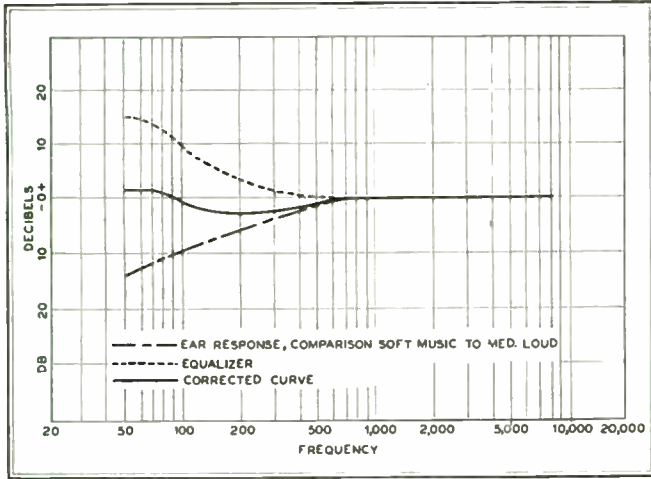


FIG. 4. Response of the ear falls at low volume. Equalizer corrects for this. FIG. 5. Low-frequency correction for home recorder

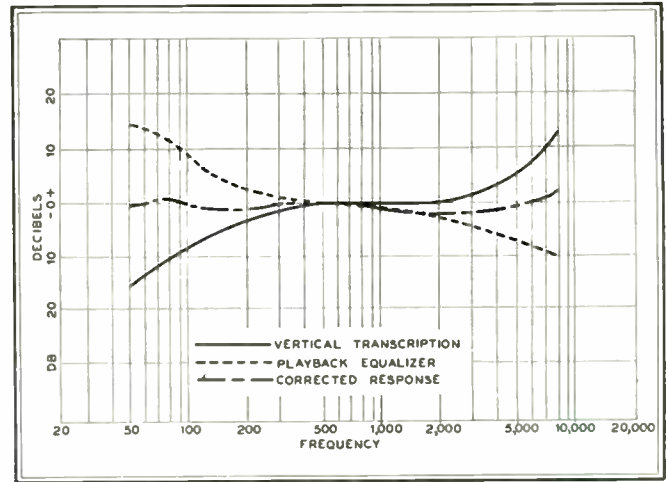
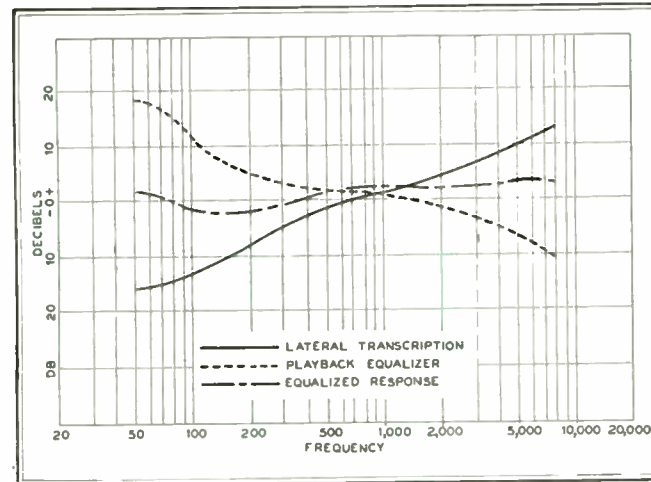


FIG. 6. Lateral transcription takes low-end boost, high-end droop. FIG. 7. Similar correction improves vertical transcription

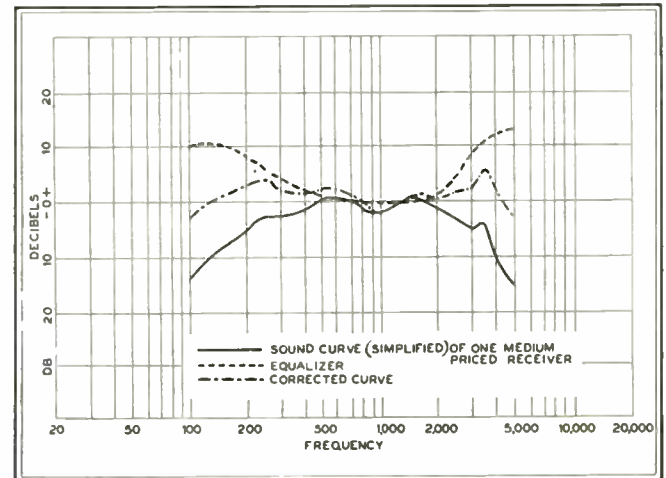
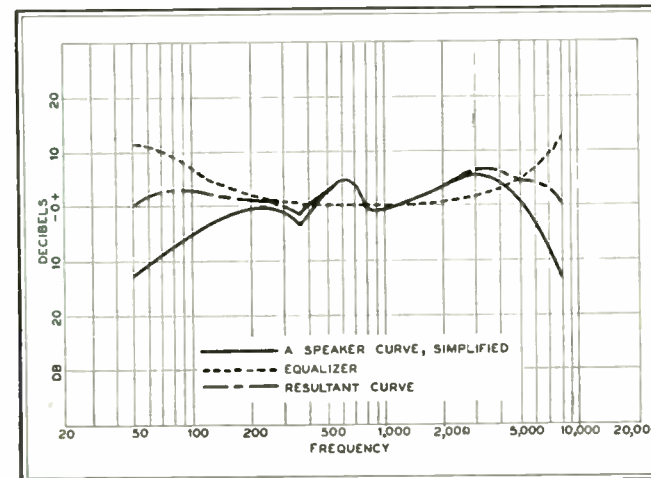


FIG. 8. Boost at low and high ends helps speaker performance. FIG. 9. Similarly, radio set response is smoothed out greatly

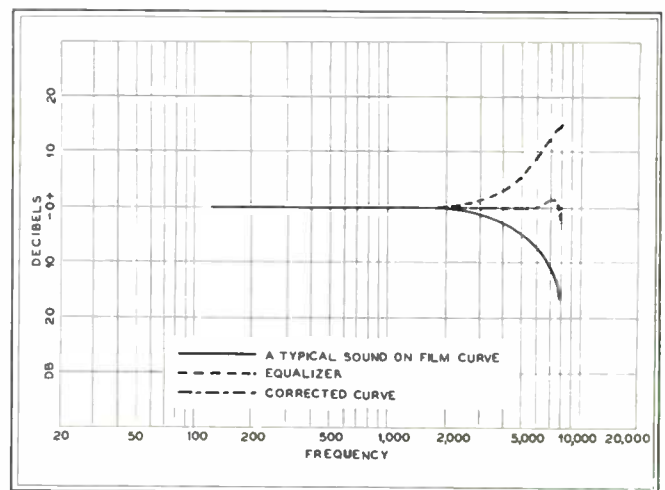
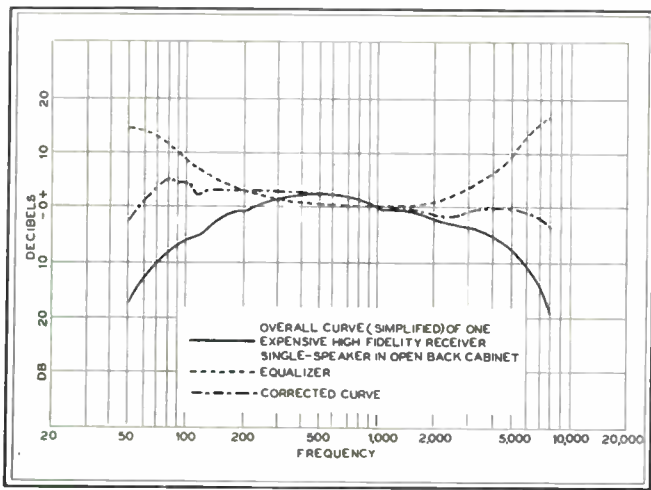


FIG. 10. Another example of improved radio set performance. FIG. 11. Here is almost perfect correction for sound on film

proportion related to the amount of equalization required. To effect maximum simplicity, the simple type CGE-1 equalizer referred to was developed to work between a triode plate and a subsequent grid, Fig. 15, so that in those few cases where sufficient extra gain is not available, an addi-

at the center calibration position, both boost and droop conditions can be effected using one-half of the control range for each characteristic. In this way, a calibrated control panel employing only two knobs can produce bass boost or droop and high boost or droop.

volts fixed bias to deliver 15 watts power output with negligible distortion. The use of high-fidelity audio components throughout indicates a frequency response characteristic with the equalizer controls at inoperative position flat within 1 db from 25 to 15,000 cycles. Inputs are pro-

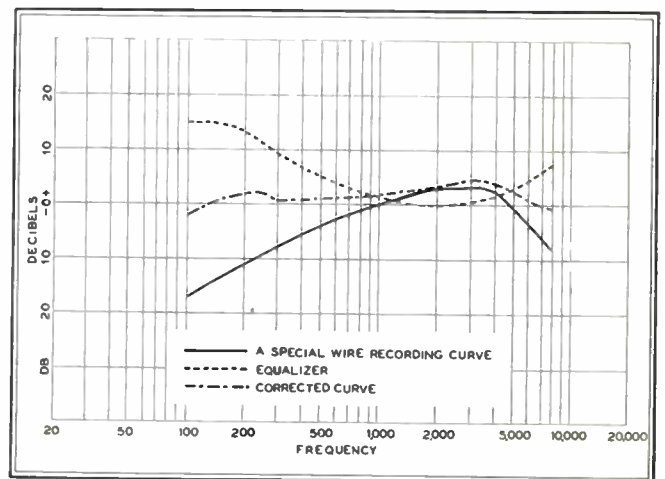
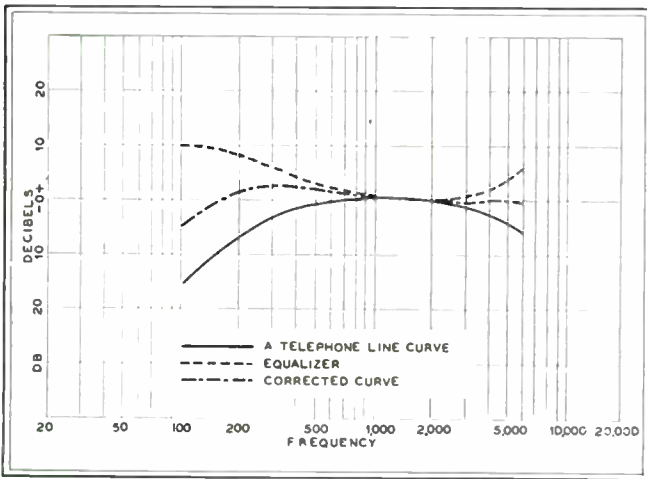


FIG. 12. Equalizer levels off response of a telephone line. FIG. 13. High- and low-end boost flattens wire recorder curve

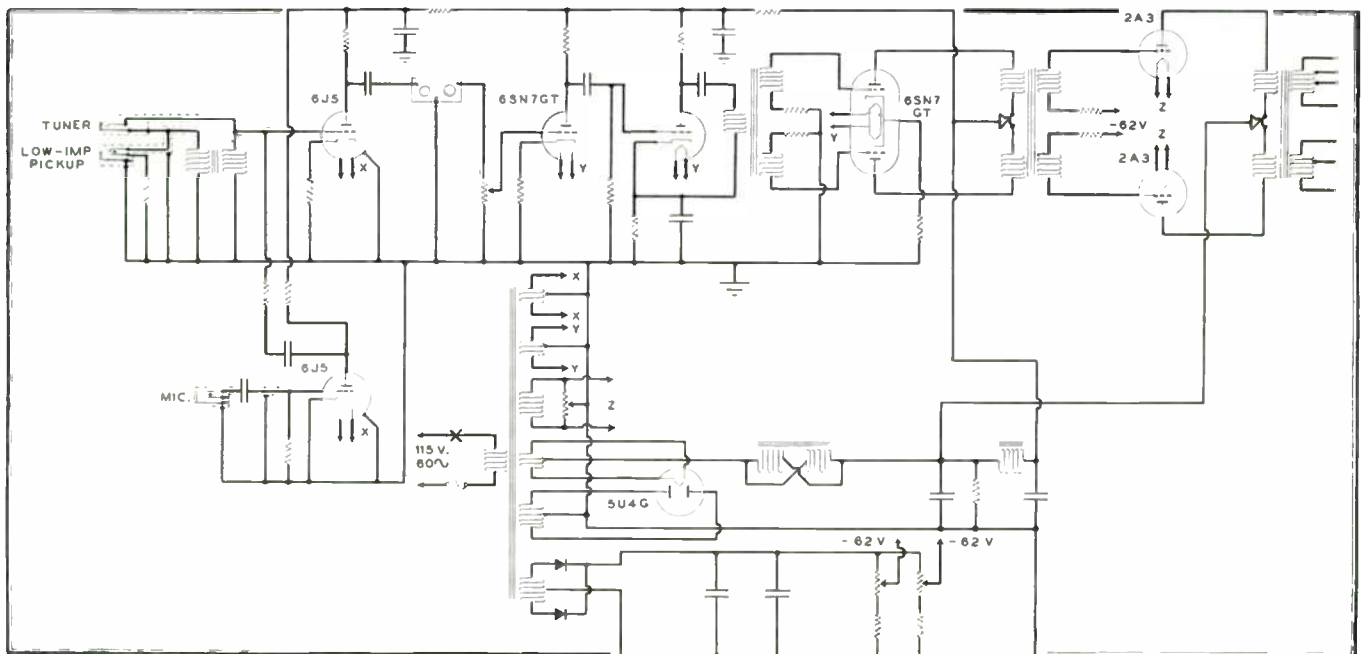
tional stage of audio amplification would correct for the loss effected by the equalizer when at maximum setting. In such cases, since the filament and plate drain of one tube is small, it can normally be taken from the power supply.

By using a special control with a switch

Realizing that many people would be interested in a complete high-fidelity amplifier incorporating this equalizer, such a circuit has been developed, as illustrated in Figs. 14 and 15. This amplifier employs a pair of 2A3's in the output stage, working with 315 volts on the plate and 62

vided in the circuit for FM and AM tuners, variable reluctance or crystal pickups, and a high-quality, low-level microphone or other source. The circuit is straightforward and employs no feedback. The 2A3 output tubes have an excellently low plate resistance.

FIG. 15. Circuit of the UTC 15-watt universal amplifier designed specifically for operation with the equalizer control



ALL-CHANNEL TV

HOW TO GET PERFECT RECEPTION FROM EACH STATION—By GARDINER GREENE*

IT would be very convenient if television receivers would operate from such simple antennas as built-in loops, or just pieces of wire on the floor. But they won't, in most cases.

And it would simplify TV antenna installations if all the stations were in a straight line from the point of reception. But it seldom happens that way.

Finally, you could use a fairly inexpensive type of antenna if you'd be satisfied to receive just one station. Only you wouldn't be if there are two or more within range of your set.

So, since TV reception involves very choosy frequencies, directional effects, and annoying reflections, you must make up your mind to play ball with the television waves and all their vagaries, if you want good reception. If you get arbitrary, and insist on trying to pick up signals on something less than an adequate antenna system, you are liable to get results ranging from a blank raster to snow storms in your cooking demonstrations, and watered-silk effects in your Keystone cops.

Of course, there are a few people located in spots where a piece of wire is adequate to give strong, static-free reception from all the local TV transmitters. If you are so fortunate, buy the house or get a long lease.

Most TV set owners, sad to relate, must contend with 1) reception from stations in different directions and on different frequencies, 2) the need for efficient signal pickup, 3) man-made static interference, and 4) ghosts.

Usually, an antenna comprised of a director, dipole, and reflector gives ample signal strength on one or two frequencies, if they are adjacent and from stations in the same direction. If the antenna is high enough, signals over-ride most static, so the images aren't cut up every time a car goes by. If you do have that trouble, use coaxial cable RG-59/U instead of the flat line for your lead-in. If the trouble persists, or if it just started since the leaves came out on the trees, put your antenna up still higher.

Maybe you can get more than one station perfectly, but the chances are that you will get strong, ghost-free signals from one, and all kinds of troubles on the others. Then your solution lies in the type of construction shown in the drawings opposite.

At Workshop Associates, we have been working on TV antennas for a long time. The best, and the only answer to multiple station reception we have found lies in the use of multiple antennas. This arrangement provides an individual antenna for each station, with separate leads running to the receiver. Thus, each antenna can be made of exactly the right length for the frequency it is to receive, and it can be oriented for maximum pickup, with minimum ghosts and interference.

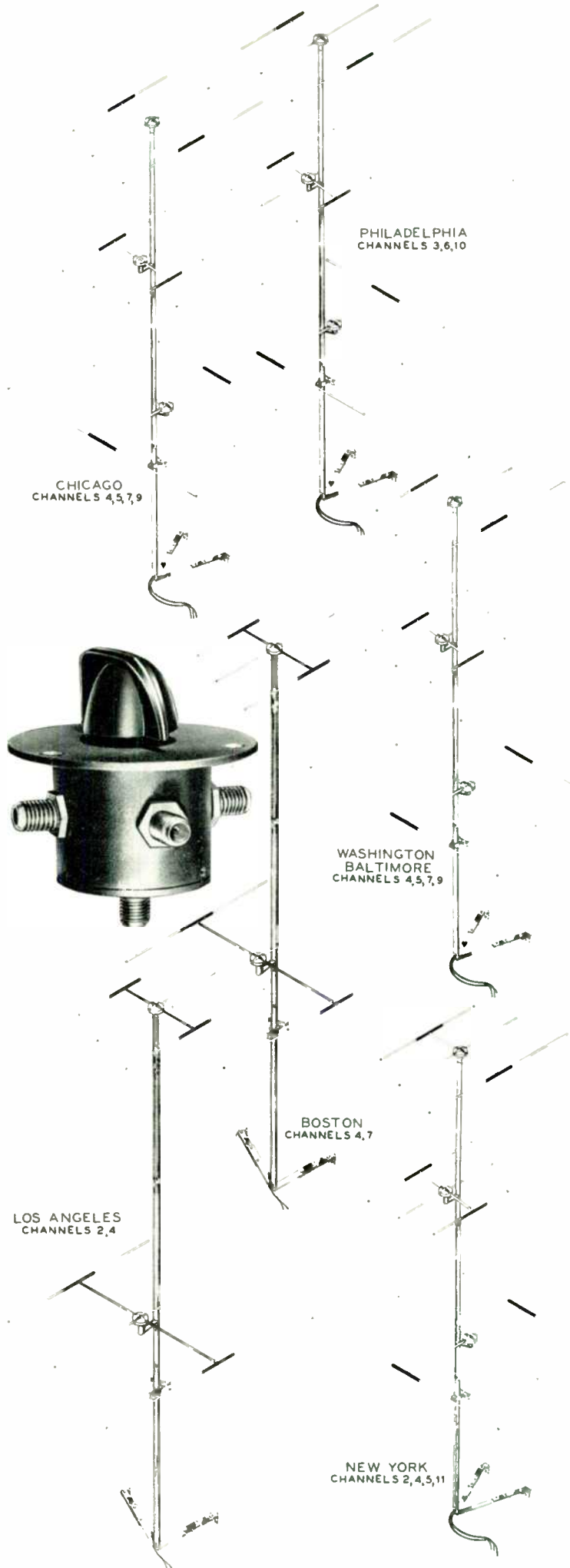
One other thing is needed. Since it is too much trouble to disconnect one lead from the set and connect another every time you want to tune in a different station, we designed a simple coaxial switch that takes up to four separate antenna leads. This makes antenna switching just a matter of turning a knob.

We did one thing more. Because RG 59/U cable is not easy to solder, we devised some silver-plated, solderless connectors to join the antenna leads to their respective switch terminals. When tightened, they clamp the inner conductor and shield firmly.

With this combination of separate antennas and the selector switch, you can be sure of getting the very finest performance possible from your set, on each station. Such an antenna is not cheap to install. If some simple rig gives you perfect results that's all you need. But if you aren't satisfied with what you have now, the multiple antenna will probably end your troubles, and at much less expense than more elaborate types that may give you no improvement at all.

* President, Workshop Associates, 66 Needham St., Newton Highlands, Mass.

Right: Six examples of multiple antenna arrangements for different areas, and a view of the coaxial antenna selector switch



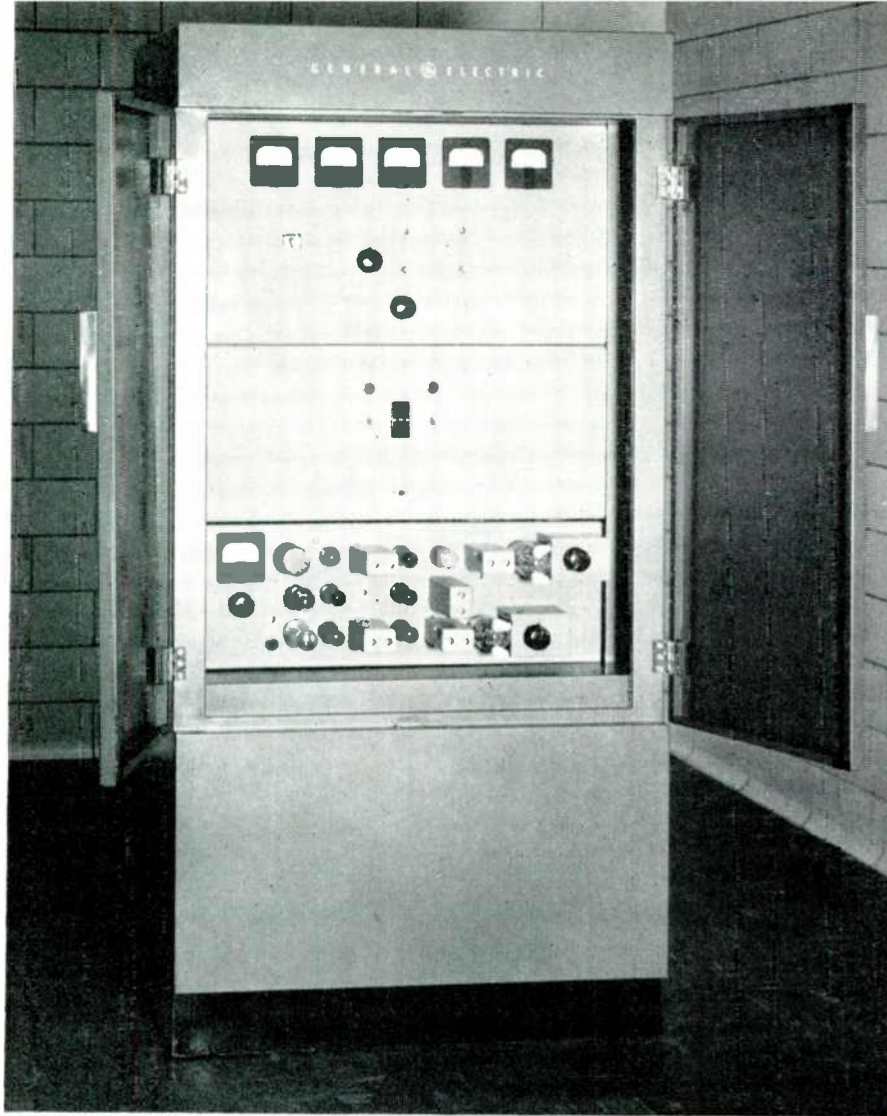


FIG. 1. Transmitter has 10 watts output on 920 to 960 mc. from a final $\frac{1}{2}$ N150A tetrode

G.E. S-T LINK EQUIPMENT

CONVENTIONAL FM CIRCUITS ARE USED WITH HIGH-GAIN ANTENNAS AND LOW-LOSS LINES — By D. J. NIGG*

THE best FM station location in a given service area is frequently the most inaccessible. A studio-to-transmitter radio link is often the only practical solution to the problem of getting high-fidelity audio signals to the transmitter, and is justifiable from an economic standpoint alone in many instances. The use of a radio link is optional as far as the FCC is concerned, there being no restrictions placed on its use even though other facilities are available.

The General Electric type BL-2-A studio-to-transmitter broadcast equipment is an FM system designed specifically for relaying high-fidelity programs. This system has a carrier frequency range of 920 to 960 mc., a portion of which has been permanently assigned by the FCC for "ST broadcast stations." It fully meets the FCC specifications of carrier

frequency, frequency stability, audio-frequency response, low noise level, low distortion, and other requirements for FM broadcast service. The complete system consists of a transmitter, receiver, two high-gain antennas, and an external, rack-mounted pre-emphasis unit.

Overall Performance:

The overall system performance is based on a conservative figure of 105 db maximum attenuation between transmitter output terminals and receiver input terminals¹:

POWER OUTPUT: 10 watts

FREQUENCY STABILITY: 0.005%

DEVIATION: ± 75 kc. for 100% modulation

¹The figure of 105 db does not include effective antenna gains, or transmission line losses. To compute the maximum permissible propagation attenuation, the sum of the antenna gains over isotropic radiators (see text) should be added to the 105-db figure, and the transmission line losses subtracted from this total.

*Transmitter Division, General Electric Company, Electronics Park, Syracuse, N.Y.

NOISE LEVEL: 65 db below 100% modulation measured through standard 75-microsecond de-emphasis

HARMONIC DISTORTION: 1% maximum from 50 to 15,000 cycles

AUDIO OUTPUT LEVEL: +18 dbm at 100% modulation

AUDIO OUTPUT IMPEDANCE: 600, 150 ohms

ANTENNA GAIN (each): Minimum of 17.5 db over an isotropic radiator

Measured data on one development equipment, Figs. 8 and 9, show a 7-db safety factor on noise or a 12-db safety factor on attenuation as compared to the specification values. The measured distortion averages less than one half of the specification maximum.

Transmitter & Receiver Units:

Fig. 1 shows the complete transmitter. Overall dimensions are 30 by 18 by 60 ins., and the weight is about 450 lbs. Approximately 750 volt-amperes of power input are required at 105 to 125 volts, 50 to 60 cycles. To permit installation of the transmitter in a normally unheated room, circuits and components have been designed to operate in the ambient temperature range of 0°C. to 45°C.

All tuning controls and power switches are available on the front panel. The rear door is interlocked for high-voltage protection. There are key locks on the front and rear doors, since the unit may be installed at an unattended location.

Provisions are made for remote control over a single-pair telephone line and ground. Since pre-emphasis should be introduced ahead of a limiting amplifier or line amplifier, the pre-emphasis unit is supplied external to the transmitter on a blank panel for rack mounting.

Fig. 2 shows the complete receiver. The front panel of the first converter unit is open. The receiver consists of three rack-mounted units: power supply, first converter, and IF. All three mount in a standard 19-inch rack, taking up 28 inches of rack space. The total weight is about 70 lbs. Input power required is 150 volt-amperes at 105 to 125 volts, 50 to 60 cycles.

The standard antennas furnished are 40-in. parabolic reflectors with dipole feed. Mounting brackets and clamps for pole or structural-member mounting are furnished. The transmitting and receiving antennas are identical.

Transmitter Circuits:

The transmitter block diagram, Fig. 3, outlines the essential functions in the transmitter. Direct frequency modulation of the 5.4-mc. oscillator is accomplished by a conventional reactance-tube modulator. To minimize the filament hum problem, DC filament voltage is supplied to these two stages. Plate voltage for the modulator panel is supplied from a regulated DC power source. A feedback cir-

FM AND TELEVISION

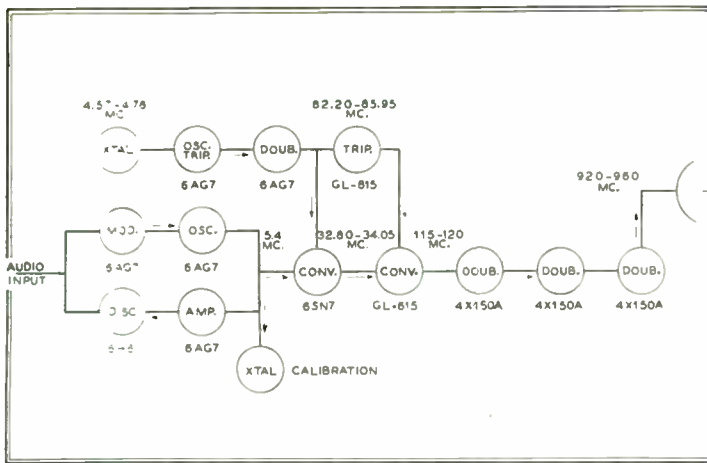


FIG. 3. The transmitter employs direct frequency modulation.

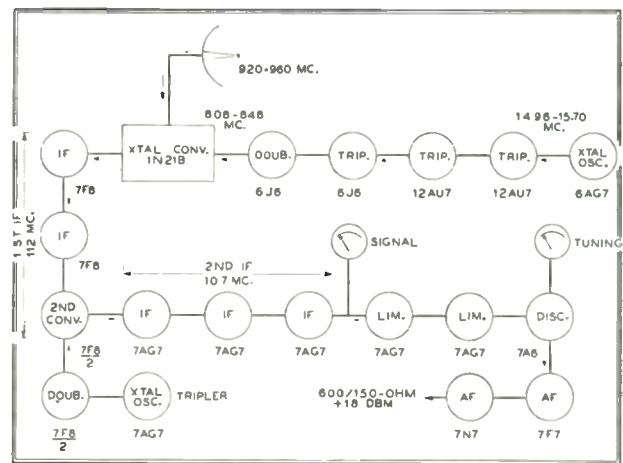


FIG. 4. Receiving circuit is of the double-conversion type

cuit, consisting of an RF amplifier and FM discriminator, is connected around the modulator and oscillator. This feedback circuit performs the normal functions of reducing the distortion and noise in the modulator and oscillator circuits. In addition, the discriminator is used to stabilize the oscillator frequency by supplying a DC error voltage to the reactance tube. Both the oscillator and discriminator have temperature-compensating components.

The calibration crystal shown on the block diagram consists of a conventional quartz crystal used as a high-Q wavemeter. This crystal wavemeter is loosely coupled to the oscillator. The voltage built up across the crystal, when excited at a resonance, is rectified by a germanium diode, and indicated on the tuning meter. By this means, it is possible to tune the oscillator frequency to the calibration-crystal frequency with about 50-cycle accuracy. A manual cut-out on the feedback circuit permits adjusting the oscillator to the calibration-crystal frequency without feedback. The feedback discriminator secondary tuning control can then be adjusted to bring the oscillator frequency back to the calibration-crystal frequency with the feedback stabilization applied. The oscillator is now set to the reference-crystal calibrator frequency, and stabilized there by the temperature-compensated discriminator.

A unique and very useful additional feature of the calibration crystal arises from its extreme sharpness of resonance. It is possible to apply tone modulation to the transmitter and select the oscillator center-frequency component while rejecting the side-band frequencies. This makes it possible to establish the 100% modulation level by means of the carrier null method, without resorting to external measuring equipment. As the tone modulation level is increased, the center frequency nulls of the oscillator can be counted directly from the calibration-crystal meter dips. With a 440-cycle tone as an example, 100% modulation ($\pm 9,375$ ke. at the oscillator frequency, which corresponds to ± 75 ke. at the output

carrier frequency) occurs at the 7th null.

It is important to note that this oscillator has only a relatively small influence on the final frequency stability. Reference to the block diagram, Fig. 3, will show that the 5.4-mc. output of the modulator is multiplied only 8 times as it appears in the output frequency, the remainder of

the output frequency being contributed by the stable quartz-crystal oscillator. Since the modulated-oscillator frequency is 5.4 mc., only 43.2 mc. of the output is actually contributed by the modulated oscillator. This 43.2-mc. value is less than 5% of the output carrier frequency in the 920- to 960-mc. range. Thus, it may be said that the output carrier is 95% directly crystal-controlled and 5% crystal-referenced, the modulator frequency having been adjusted by using the calibration crystal wavemeter.

The 4.57- to 4.78-mc. crystal oscillator uses a temperature-controlled G.E. Thermocell crystal. As a comparison of stabilities required of the two frequency-generating sources, i.e., the crystal oscillator and the stabilized oscillator, it will be noted that the crystal oscillator frequency is multiplied 192 times while the stabilized oscillator is only multiplied 8 times. The quotient of these two figures is 24, which indicates that a stability of only 1/24th that of the crystal oscillator is required of the stabilized oscillator to have equal effects on the output carrier frequency. A figure considerably better than this is achieved in practice.

The double conversion scheme, used to heterodyne the output of the frequency multipliers with the modulator output, achieves a very high rejection of 5.4-mc. sidebands in subsequent stages. Balanced converters are used in both cases to further reduce spurious frequencies. The first converter mixes the 5.4-mc. modulator output with 28.65 mc., a frequency ratio of only 5.3 times. If single conversion were used, and the multiplication factor of 8 after mixing were to be maintained, it would be necessary to mix the 5.4-mc. modulator output with 114.6 mc. This would require mixing frequencies with a ratio of 21 to 1. Such a situation would make reduction of the 5.4-mc. sidebands extremely difficult.

The last three doublers shown on the block diagram, Fig. 3, are mounted on a shelf behind the top panel, Figs. 1, 5, and 6. All three stages employ forced-air-cooled 4X150A tetrodes. As a result of the compact construction of these high-

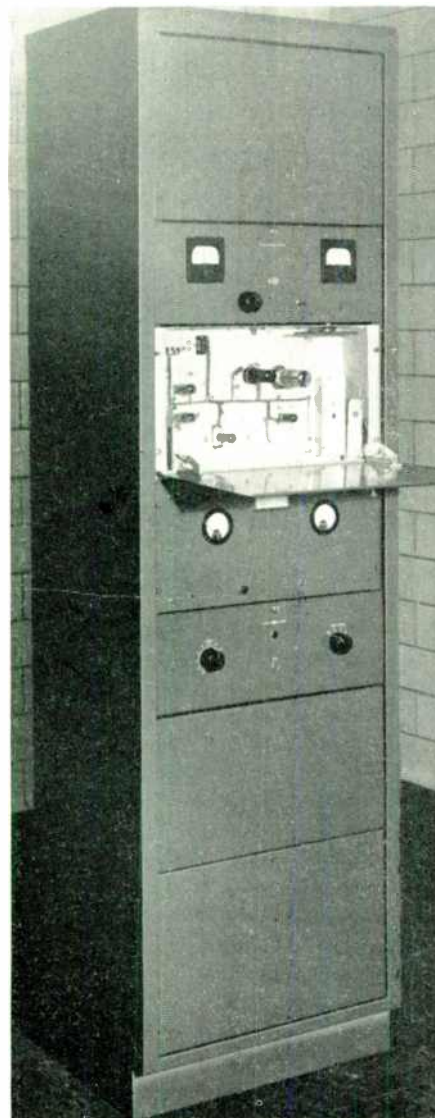


FIG. 2. Complete receiver, with the door open on the first converter section

frequency tubes, it is necessary to resort to only one cavity circuit. The plate circuit of the final doubler consists of a radial cavity about 6 ins. in diameter. This cavity operates on the *fundamental* mode at the output frequency. Fig. 7 shows this cavity with the tube in place. The cavity itself operates at DC ground potential, with the plate voltage applied through a radial blocking capacitor, as shown. Note that the tube can be changed by the simple procedure of lifting it out. No dis-assembly is necessary. Cooling air is furnished to all three stages through the duct at the rear of the shelf. In the case of the final-doubler cavity, Fig. 6 shows the air-duct connected directly to the grounded cavity. Several holes are drilled in the periphery of the cavity to permit entrance of the cooling air which exhausts through the anode-cooling fins and openings around the socket. The grid circuit of the final doubler is a half-wave, open-line

circuit tuned by a variable capacitor. It is similar in construction to the other two open-line circuits visible in Fig. 6. These circuits are, from left to right, plate circuit of the first doubler, and grid circuit of the second doubler. Cooling air is supplied to these two stages through special air chambers connected to the main duct. A modification in the final design permits removal of these tubes without moving an air duct. Their accessibility will be the same as shown for the final doubler. A jet of cooling air is directed against the tube seals at all three sockets.

Output coupling from the final circuit is accomplished by a fixed loop in the cavity, for loading into a 51.5-ohm impedance. A single-stub tuner and a crystal diode RF probe (not shown) are connected between the cavity output connector and the type N fitting in the top of the transmitter cabinet. A tuning stub

permits sufficient adjustment of the loading, and the RF probe gives a relative indication of the voltage on the output transmission line. Rated power output of the transmitter is 10 watts, but this power can be reduced to any lower value. Separate front panel screen-voltage controls are provided on the last two stages to provide a means of reducing power to any desired level. An extension of tube life can be expected at lower power.

The transmitter can be adjusted for operation at any frequency in the 920- to 960-mc. range without the use of any external test equipment. The lower panel in Fig. 1 carries all the stages indicated on the block diagram except the last three doublers. The meter shown on this panel can be switched to each circuit for tuning. In addition, this meter has a switch position for the RF output crystal probe, used for tuning and loading the output stage. The meters on the top panel indicate plate voltage, individual plate currents, and individual grid currents for the three 4X150A stages.

The illustrations of the center panel, Figs. 1 and 5, show the magnetic circuit-breaker power switch and other control equipment. A local-remote switch in the transmitter selects the method of control. When remotely controlled, the plate voltage is automatically applied after a 30-second filament warm-up period. After this delay, a pilot light at the remote control point indicates that the plate voltage has been applied. Should an overload trip the plate voltage off, the pilot light at the remote control point is extinguished. The plate voltage can be immediately re-applied from the remote point *without* the 30-second time delay. Automatic power-failure reclosure is provided in the transmitter to re-apply all power automatically after momentary interruptions not exceeding 2 seconds duration. Following power interruptions of longer duration, all power is automatically re-applied after a 30-second delay.

The transmitter is equipped with 3B25 xenon-filled high-voltage rectifier tubes, to permit operation at low ambient temperatures. If the transmitter is always operated in a heated room, type GL-866-A rectifiers can be used as replacements.

Receiver Circuits:

The block diagram in Fig. 4 outlines the essential functions in the receiver. At 1,000 mc., crystal mixers have a noise figure several db better than vacuum tube mixers. This is also the approximate point in the spectrum where present-day RF amplifiers become so noisy that only a very marginal improvement in signal-to-noise ratio can be obtained.^{2, 3} Amplification at this frequency would require

²D.A. Quarles, "Radar Systems Consideration," *Electrical Engineering*, Volume 65, page 213; April 1946.

³I.W. Morrison, Jr., "The Radar Receiver," *Bell Systems Technical Journal*, Volume 26, page 710, Fig. 5.

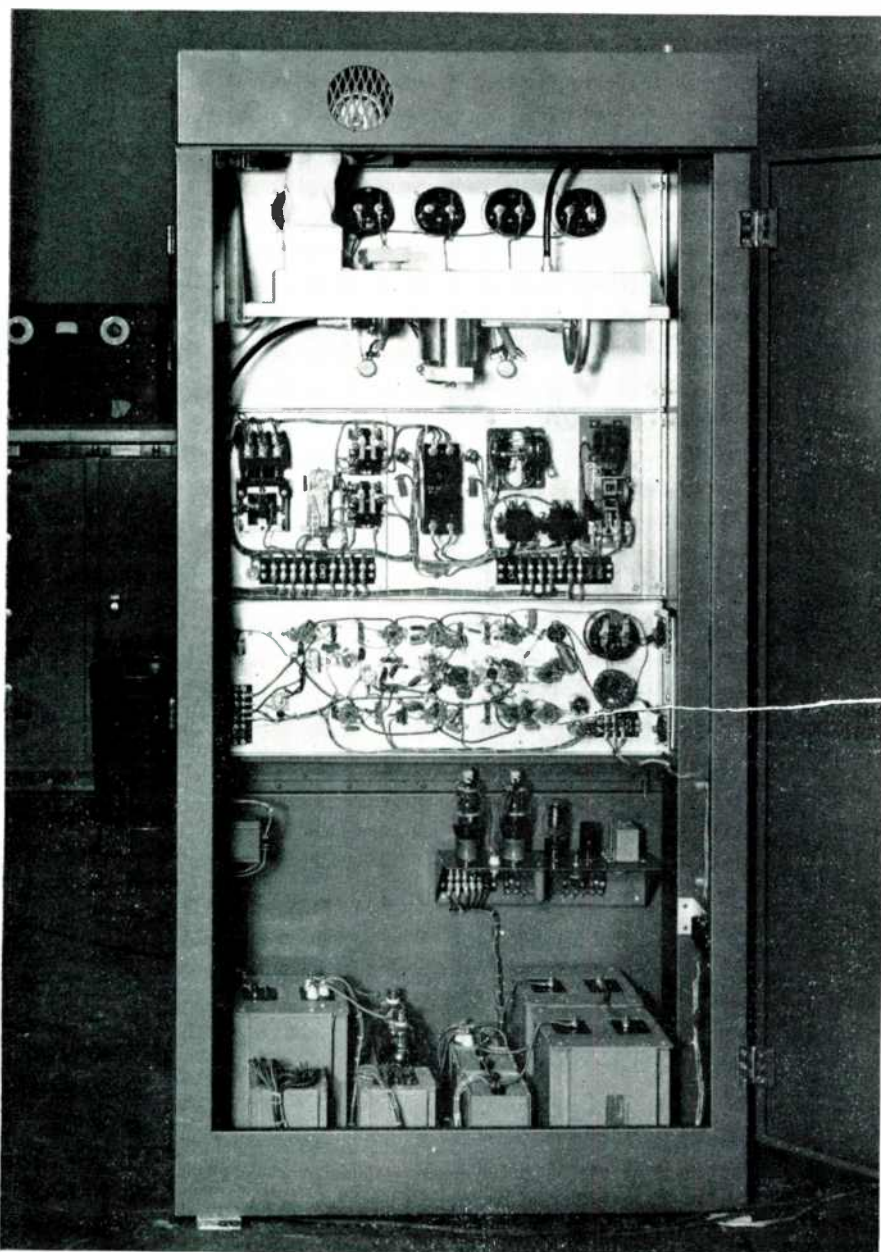


FIG. 5. This S-T link transmitter is designed for operation in an unheated building

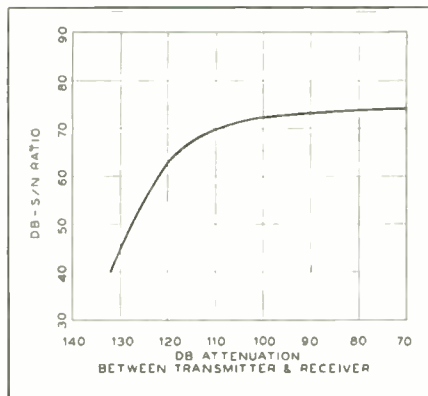
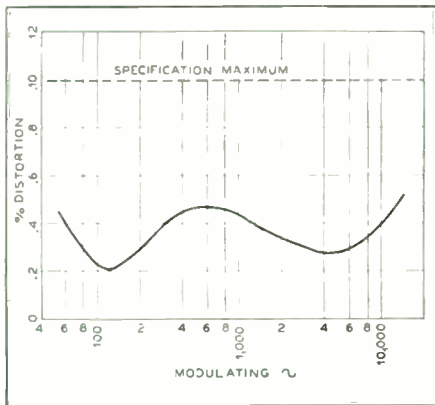


FIG. 8. Measured harmonic distortion of the system. FIG. 9. The signal-to-noise ratio

the use of special disc-seal or coaxial type tubes in cavity or coaxial circuits. It was felt that the additional complexity and tube cost involved was not warranted by any improvement that could be expected reasonably. From an overall system viewpoint, a far more economical and trouble-free source of improvement lies in the use of higher antenna gain and lower transmission line loss.

Based on this reasoning, it was decided to keep the receiver as simple as possible to insure trouble-free operation. Tests on a developmental model indicate exceptionally good sensitivity. Fig. 10 shows measured sensitivity, for a 65-db signal-to-noise ratio, of 117 db below the 10-watt transmitter power output. The curve shown is an average of results using several different mixer crystals. Expressed in the usual manner of rating receivers, this would be 107 db below 1 watt, or about 33 microvolts at 51.5 ohms. A very conservative rating of 95 db below 1 watt has been placed on the receiver to take care of misadjustment and sub-standard crystals. This figure would be a conservative one to use in comparing system sensitivity with propagation attenuation.^{4,5} The specification point is marked on Fig. 9.

All filament, DC supply, and meter wiring are on the front side of the panel, shown in Fig. 2, with ceramic feed-

through bypass capacitors providing connections to the circuit elements on the rear side of the chassis. Fig. 7 shows a rear view of the same unit with shield cover removed. An exceptionally clean layout of

glas shield covers all exposed voltages on the front, with holes through this shield providing access to the screwdriver tuning adjustments. All tuning adjustments and tube replacements are made from the front of the unit.

The crystal mixer circuit is the rectangular box at the right side of the converter unit, Fig. 2. This box consists of a half-wave resonant coaxial transmission-line circuit with the ends shorted, thereby having a voltage maximum at the center. The antenna input is connected to the center conductor a short distance from one end, and the mixer crystal a short distance from the other. The lower half of the mixer circuit cover plate is removed to change the mixer crystal. The tuning slug shown on the top half of the cover plate tunes the mixer circuit to the carrier frequency. Local oscillator injection is accomplished by capacity coupling to the

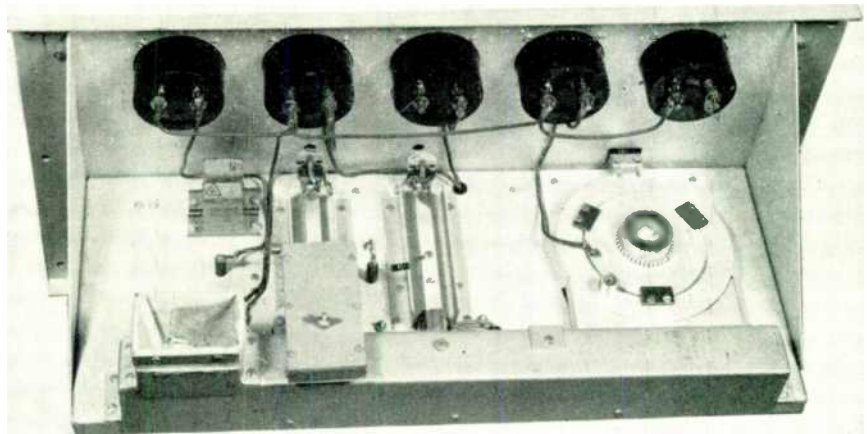


FIG. 6. The final 4X150A doubler stages are carried in this section of the transmitter

RF circuit elements results from this feed-through system of wiring. A plexi-

⁴D.E. Kerr, "Propagation of Very Short Waves," Part I, *Electronics*, January, 1948; Part II, February, 1948.

⁵A.L. Durkee, "Results of Microwave Propagation Tests on a 40-Mile Overland Path," *Proceedings of the IRE*, Volume 36, February, 1948.

maximum voltage point at the center of the mixer circuit. The small hole in the cover plate provides screwdriver access to an adjustable probe which extends through a clearance hole in the chassis, and provides capacity coupling to the local oscillator circuit.

The local oscillator voltage source is a crystal oscillator, operating at about 15 mc. and multiplied 54 times to a frequency 112 mc. below the incoming carrier frequency. The tube types and multiplication factors are shown in Fig. 4. Only standard receiver-type tubes are used.

The actual circuits are shown in Fig. 7, the crystal oscillator stage being located slightly above the center of the chassis, with the succeeding multiplier stages in a clockwise arrangement. Lumped circuits are used through the 140-mc. stage, quarter-wave transmission-line circuits are used in the 400-mc. stage, and a combination circuit in the 800-mc. final-multiplier plate circuit. The three triplers are conventional push-pull multipliers with loosely coupled high-C tank circuits. The 12AU7 is a relatively new tube, consisting of a double triode in a miniature

(Continued on page 46)

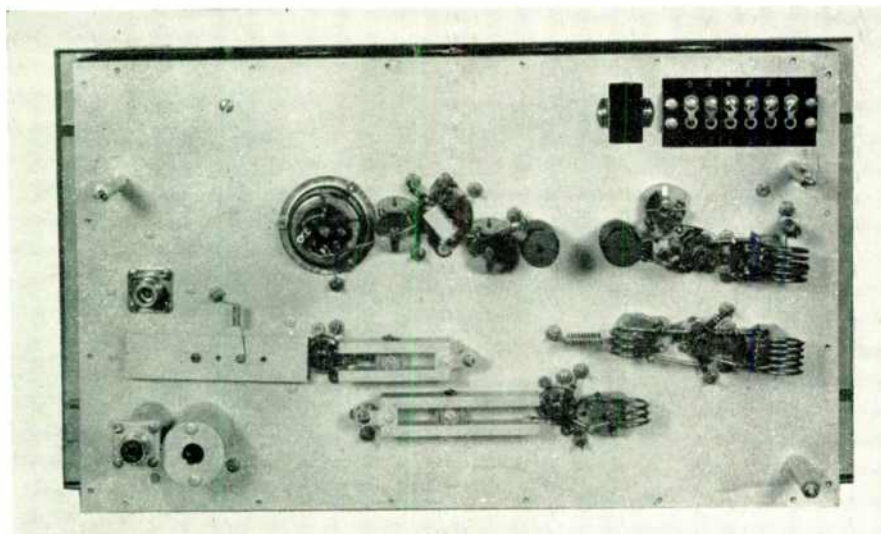


FIG. 7. Rear view of the first converter unit of the receiver, with the shield cover removed

FUTURE OF FM AND TV

(Continued from page 15)

luncheon. It seems to me appropriate that we should take stock of where we are and where we are going.

It is my opinion that no broadcaster in America can be satisfied with the status quo — that he must always be looking to the horizons beyond — and that it is his responsibility to participate to the fullest extent of his capabilities in planning for the radio services of the next generation.

I can assure you that the present membership of the Federal Communications Commission sees its job as one of participation in such planning.

And as all of you know by actions of the last few weeks, the Commission believes its responsibilities encompass that of initiating the planning.

Perhaps the most important decision facing all of us as we think about the future aural broadcasting service is that involving the relationship of FM and AM.

Some broadcasters apparently think of FM as a new and improved method of transmitting programs; others think of FM as a way to get a second station in their community and plan a separate broadcast service over the medium. The interest of others is wholly that of the "insurance" approach to FM — they just don't want to be left out if there is anything to this "new fangled gadget"; and others, so far as I can tell, just haven't thought about it.

The networks are making it perfectly clear that they look to FM as an improved medium for the transmission of programs. They apparently think of their networks as providing a single program service either through AM or FM or both of them. But network affiliates, the individual broadcasters, have not accepted that point of view.

Some of them do not like the network policy of duplicating programs as is evident by the inquiries that we receive at the Commission.

I do not propose to go into that subject now. My only purpose at this time is to point out that the relation between AM and FM is one that requires some hard thinking and planning if we are to fix our goals for a sound aural-broadcasting service for the future.

The broadcasters who do not have AM licenses but who have FM licenses only do not face the problem of planning that the AM broadcaster does or that the AM-FM broadcaster does. He knows what his plans are for the future. He accepts FM as the static-free, fade-free, and interference-free service that we all know it is. He has elected to stake his future in the development of this service rather than put his money into a daytime AM station or an AM station with a highly directionalized pattern.

The interference free service area that he can serve by FM has attracted him to

this newest development in the aural broadcast field.

Of course, the FM enthusiast believes that FM is destined to replace AM in all but the sparsely settled areas of the nation. He likewise believes, when he considers the fact that only a little over a million FM sets were produced last year, that everyone is conniving against the realization of his hopes. He is a plucky fellow, a pioneer who is fighting for what he believes, who thinks that every day is the day on which FM should be accepted by all American broadcasters as the future aural broadcasting service for this country.

And there are a lot of good sound reasons that support his point of view. One of them I have already referred to: FM is static-free, fade-free, and interference-free. The advantage of freedom from interference is becoming increasingly important to broadcasters as more and more standard broadcast stations come on the air.

Also, FM has high fidelity capabilities. Many who have FM stations are exploiting the full fidelity potential of this service.

The Continental Network, regional FM networks throughout the country and a few independent FM broadcasters have a program service that will demonstrate the full fidelity capabilities of FM. It is not possible to demonstrate the fidelity capabilities of FM by duplicating network AM programs on FM stations over 5,000-cycle lines. FM will really have its chance when 15,000-cycle lines are available for networking or when microwave relays can be constructed for the purpose of networking or when there is a sufficient number of FM stations on the air to provide for network operations by re-broadcasting.

I am hopeful — and I expect — that the time is not too far off when the major networks as well as the more youthful FM networks will provide facilities that will permit the demonstration of the high fidelity capabilities of FM.

The FM allocation plan set forth in the rules of the Commission provides for the use of the 88-108 mc. band on a planned basis. The plan reflects the geographic availability of the FM channels on an engineering basis. This is in contrast to the "topsy-like" growth of AM broadcasting in this country. I am sure that with what we know today about the social and economic impact of broadcasting and with the engineering knowledge resulting from the experiences of more than a quarter of a century of operation we could build a wonderful service in the standard broadcasting band. Hindsight is wonderful — except that it is difficult to use it. We can — and we have — taken advantage of our experience gained in past years to provide a more orderly growth for the aural broadcasting service of the future.

The FM allocation plan provides for uniformity of power within given areas of the country. This is not an unimportant fact. This fact eliminates the present competitive inequality that exists between AM stations. It paves the way for competition between stations on the basis of quality of programming, initiative, enterprise, imagination in serving the public interest.

We can have more FM stations than we can ever have in the standard broadcast band. This means that more communities can be served and that there will be more free competition.

I suppose it is inevitable that some broadcasters continue to hold back in thinking about FM as the aural broadcast medium of the future. There are always those who are satisfied with the status quo.

It is not surprising that some broadcasters are willing to let the other fellow carry the cost of developing this improved service with the expectation that they will get in on it when it can become profitable. Those broadcasters will have lost the thrill of pioneering, of developing a new service that will more adequately serve the people of their community — of having participated in the planning for the future aural broadcast service.

In my opinion it will be a red letter day in the history of American broadcasting when you broadcasters make up your mind that you can provide a superior aural broadcast service through the use of Frequency Modulation and when you direct your efforts to planning for that conversion.

I know it is difficult in a field as dynamic as broadcasting to predict what the situation will be in the future but to me, in the light of what we know today, it seems almost inevitable that FM will, within a generation, largely replace AM.

In some of its elements, television presents problems similar to those we face in the aural broadcasting field. The major problem we face in planning for the future is how to get television service to all the people of the country and, more than that, how we can provide a nationwide competitive system to furnish this service.

We at the Commission are determined that there will be enough channels available in this country to provide for a truly nation-wide competitive system and one that will serve all of the people of this country and not just those fortunate enough to live in metropolitan areas.

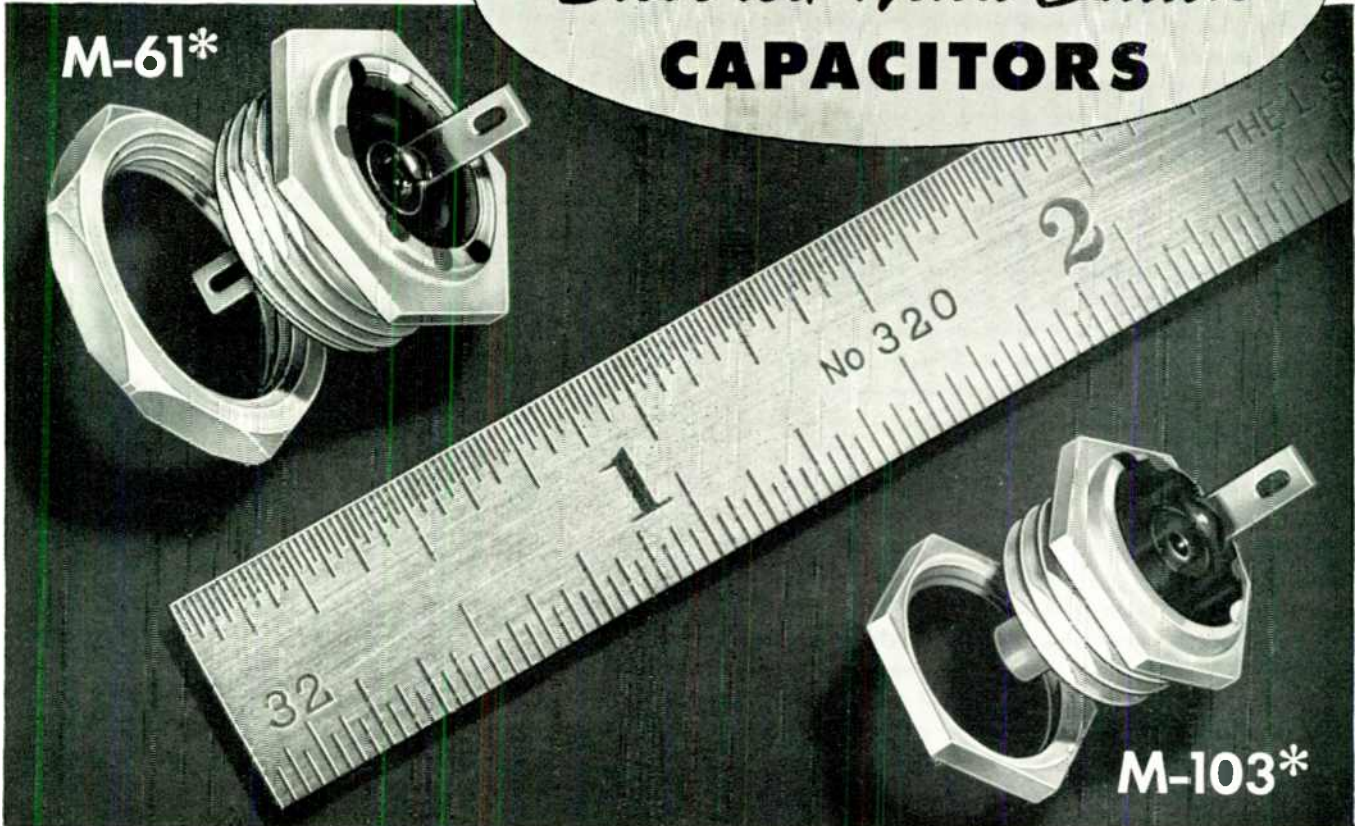
We at the Commission likewise feel that opportunities to get in the television field should be afforded to as many people as possible and 12 channels provide opportunities for only a limited number of people to get in the television business.

It does not take much of a prophet to state now that it is a question of only a few months until all television channels available in major metropolitan areas are

(Continued on page 41)

NEW...

SANGAMO
Silvered Mica Button
CAPACITORS



Greater Stability... New Mounting Facility

These new, compact silvered button capacitors are especially useful in high frequency by-pass applications because of their low inherent inductance. They are silver plated for high conductivity, completely sealed

against humidity, and have a low temperature coefficient.

Space problems are often solved by using these exceptionally small buttons. The new "feed-through" design affords speed and ease of mounting.

*M-61... Available from 500 to 1500mmf—500 V DC working.

*M-103... Available from 10 to 600mmf—500 V DC working.



PAPER • MICA • SILVER • CAPACITORS

SANGAMO
ELECTRIC COMPANY
SPRINGFIELD • ILLINOIS

Sangamo Silvered Mica Button Capacitors are available in a wide variety of sizes and styles. Write for our descriptive catalog.

SC 486

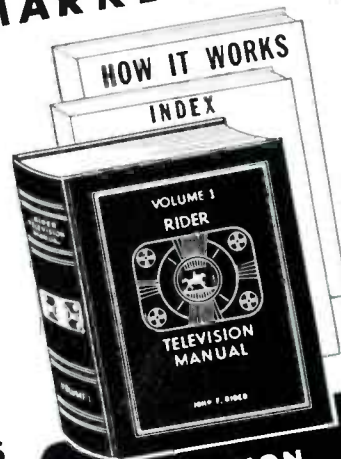
**ANOTHER
RIDER
"FIRST"**

**OPENING UP PROFITS FROM THE
TELEVISION SERVICING MARKET...**

VOLUME 1 **RIDER**
Television
MANUAL

**Over 1400 Pages—PLUS 2 Separate Books
"HOW IT WORKS" and Index, Complete \$15⁰⁰**

- Here is an important companion volume to the other famous Rider Manuals. Here is everything that must be known about the 1946-47 television receivers (both complete and kit) produced by the industry's leading manufacturers. No expense has been spared in publishing this material. The same rugged type of loose-leaf binder is used as on all Rider Manuals.
- Diagrams have been reproduced in good size; in many cases requiring the use of Double Spreads and GIANT PAGES which unfold to the equivalent of six ordinary pages. Here is complete information. Authentic factory information. Here is a volume you will want right now. Circuit Descriptions—Schematics—Patterns—Alignment—Voltage and Resistance Tables—Chassis Views—Parts Lists. Everything you need.
- Separate "HOW IT WORKS" BOOK (about 200 pages). Explanation of the underlying theories of Antennas—Channel Frequencies—R.F. Sections—Sound and Video Channels—Sync and Sweep Circuits—Waveforms in Circuits—Power Supplies—Alignment and Servicing.
- Complete, Accurate, Separate INDEX.



**TELEVISION
"HOW IT WORKS"**
Available Separately

Even if television is not yet in your area, it will be in the near future. Start learning now what is in television receivers, and how each part works. This book covers the essential underlying theory you should be familiar with. **\$2.70**

**"CERTAINLY WE HAVE ALL 17 RIDER MANUALS,
and have ordered the Television Manual!"**

"Certainly we have all 17 Rider Manuals and have ordered the Television Manual. I can't imagine any high class, efficient radio service laboratory operating satisfactorily without them. I'll have Volume 18 on the shelf, too, as soon as it's published,"

Says **R. B. GRAF**
SERVICE MGR.

Ward Radio & Appliances, Silver Spring, Md.

JOHN F. RIDER, PUBLISHER, Inc., 404 Fourth Avenue, N. Y. 16
Export Agent: Rocke International Corp., 13 E. 40th St., N.Y.C. Cable ARLAB

A conspicuous characteristic of Rider Manual owners is their unwavering loyalty to "The World's Greatest Compilation of Radio Servicing Data." This is a steady patronage born of the benefits provided by Rider Manuals during eighteen years of continuing service to the servicing industry. Copies of Vol. 1, published 18 years ago, are still paying profits to their owners. Give your shop the sign of Successful Servicing—a complete set of Rider Manuals.



You **NEED ALL 17**

Volume XVII.....	\$15.00
Volume XVI.....	8.40
Volume XV.....	18.00
Volumes XIV to VII (ea. vol.).....	15.00
Volume VI.....	11.00
Abridged Manuals I to V (one vol.).....	17.50
Record Changers and Recorders.....	9.00
Master Index, covering Manuals, Vols. I to XV.....	1.50

RIDER MANUALS *Mean* **SUCCESSFUL
SERVICING**

NOTE: The Mollory Radio Service Encyclopedia, 6th Edition, makes reference to only one source of Radio Receiver Schematics—Rider Manuals.



NO GUY WIRES
Self-Supporting Steel
TOWERS
 for **TV** and **FM**

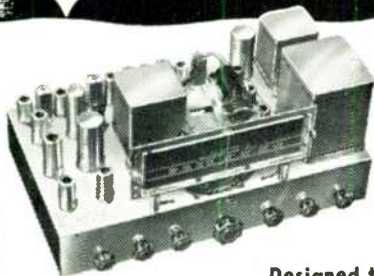
- Galvanized Steel—Will Last A Lifetime!
- SAFE—Ladder to Top
- Four-Post Construction for Strength
- Easy to Assemble and Erect
- Withstands Heaviest Winds

ATTRACTIVE LOW PRICES!

Designed for easy shipment and simple erection. Assembled with a wrench in a few hours. Eight stock sizes, from 22 ft. to 67 ft. (Spread at base equal to 1/5 height) Net prices \$63 to \$210 FOB Kansas City, Mo. Shipping weights, 340 lbs. to 1230 lbs. Shipped 4th class freight.

Sold Direct Only. No Jobbers.
Write for Complete Free Information!
The VESTO Co., Parkville, Mo.

NOW **COLLINS** introduces...
THE "Super 20" TUBE
FM RECEIVER



Unexcelled in
PERFORMANCE
 •
Remarkably
LOW IN COST

Designed to satisfy the most critical professional or amateur, the Collins "Super 20" offers unsurpassed value in an FM RECEIVER. The advanced 20-Tube circuit features: Armstrong FM, built-in stabilized power supply and audio amplifier capable of 10-watt output; new 6AL7GT tuning eye, connections for 2 types of phono pick-up, output impedances to match 4 to 20 ohm voice coils and 500 ohm line, and variable bass and treble tone controls with attenuation and boost for upper and lower registers.

Write Today for Complete Details

COLLINS Audio Products Co., Inc.
 P. O. BOX 368 • WESTFIELD, N. J. • WE-2-4390



...AS DISTINCTIVE
AS YOUR
Fingerprint!



Surprenant's improved SPIRALON is just that! SPIRALON is a thinwall plastics insulated wire with one, two or even *three* spirally inlaid solid color stripes. These, in turn, provide a total of up to four colors per wire... or a maximum of 1120 distinctively coded combinations to make wire identification easy—even in the most complex installations.

Non-inflammable, non-corrosive, flexible and tough, SPIRALON is obtainable with or without a thin jacket of transparent Dupont nylon to further preserve every electrical property and resist oils, dilute acids, alkalis, abrasion and tungus attack. SPIRALON is approved under specification JAN-C-76 type WL... it will not fray, crack or rot—and offers a higher rupture point than braid or lacquers. These superior features are available at no extra cost in all standard wire types and sizes—or to your most exacting specifications. Write today for samples and technical data.

SPIRALON "O"
 (with nylon jacket)

SPIRALON
 (without nylon jacket)



Write
 DEPT. D

199 Washington St. • Boston 7, Mass.

© 1947 S. MFG. CO.



EQUALLY MATCHED

Split the reed assembly of a Mallory vibrator down the middle and the two halves will match each other so accurately that no scale made will register a significant difference. This precise distribution of weight is a major factor in assuring accurate output, reliable operation and long life.

Mallory Vibrators Make

the Best Replacements

Such careful manufacturing makes Mallory vibrators free of bounce and chatter and dependable in starting. More of them are used in original equipment than all other makes combined. That's convincing proof

they are the best replacement vibrators for you to stock.

In addition to assured quality, Mallory offers the most complete line in the business. Mallory standardization permits 12 basic vibrators to meet 90% of your replacement requirements. But a complete line of 52 vibrators is available to meet virtually every vibrator need.



The Mallory Replacement Vibrator Guide is free. The Vibrator Data Book is \$1.00—from your distributor or by mail.

Mallory "2448" Vibrator Deal

This deal gives you a handsome storage and display cabinet for your stock of vibrators, together with a selection of vibrators and buffer capacitors that will answer 75% of your requirements.



You pay only the service man's net price of \$21.18 for the six vibrators and twelve buffer capacitors. There is no charge for the attractive, convenient cabinet. Your Mallory distributor has them in stock for immediate delivery.

MORE MALLORY VIBRATORS ARE IN USE THAN ALL OTHER MAKES COMBINED

P. R. MALLORY & CO. Inc.
MALLORY

CAPACITORS . . . CONTROLS . . . VIBRATORS . . .
SWITCHES . . . RESISTORS . . . RECTIFIERS . . .
VIBRAPACK* POWER SUPPLIES . . . FILTERS

*Reg. U. S. Pat. Off.

APPROVED PRECISION PRODUCTS

P. R. MALLORY & CO., Inc., INDIANAPOLIS 6, INDIANA

FUTURE OF FM AND TV

(Continued from page 36)

assigned. A casual look at the newly proposed expanded television plan discloses that while geographically speaking the country will be fairly well served, yet, in areas of high population density, the same insufficiency of channels will still exist. One has only to take a look at the allocation plan to discover that New Jersey, New England, Pennsylvania, Ohio and other important places will be very inadequately served.

Planning for the television service for the future is the thought back of the Commission's order for the hearing on television now set for Monday, September 20th, of this year. The Commission approaches that hearing without any prior determination of the issues involved.

I can assure all of you that the Commission and the Commission's staff are fully aware of the great strides in the development of television since the allocation of May, 1945.

That allocation was made so that television could have an opportunity to develop in that portion of the spectrum where prewar experimentation had taken place. The May 1945 report sought to encourage the development of frequencies above 480 mc. for high definition, black and white television, and color systems of television. At that time the Commission thought there would be adequate time for the development of those frequencies and that the industry would promptly engage in the experimental work and thus be able to recommend standards to the Commission with respect to the use of those frequencies.

It seems obvious that we can no longer delay the beginning of our planning for adequate television channel availabilities. The Commission's hearing on September 20th seeks to get from the industry all of the information available. The Commission hopes that its order will serve to increase the quantity and quality of research in the field. The Commission expects differences of opinion as to the issues involved in the hearing. And the Commission also expects that out of the hearing will come sufficient information and knowledge to enable the Commission to fix standards for the utilization of the 47.5- to 890-mc. band in whole or in part.

The Commission's order of early this month abolished the previous arrangement of sharing television channels with other services. In order to accomplish this, it was necessary to delete Channel No. 1, 44 to 50 mc., and to assign it to the fixed and mobile services. Even this was inadequate spectrum space for these services. I now know, and you may as well know, that the Commission will be looking for more space for these important services very shortly.

In this connection, I urge that you not

(Continued on page 42)

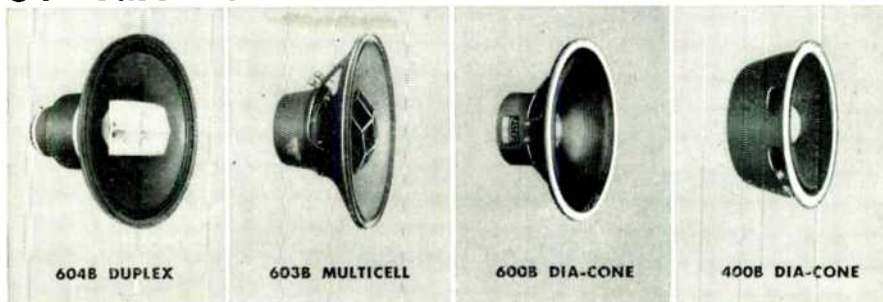
ONE STANDARD
OF QUALITY
ONLY...THE
HIGHEST

ALTEC
LANSING
News

DEDICATED TO
THE CONSTANT
BETTERMENT
OF SOUND

1161 N. VINE ST., HOLLYWOOD 38 • 250 W. 57th ST., NEW YORK 19

INDUSTRY WELCOMES HIGH QUALITY OF IMPROVED ALTEC LANSING LINE



Altec Lansing scientists who developed the revolutionary new improvements in speaker design presented in the new Altec Lansing line of speakers are overwhelmed by the response of quality-conscious engineers throughout industry to the remarkable improvement in efficiency, smoothness of frequency response, and performance of the new speakers. Al-

though the consensus of industry opinion placed the previous Altec Lansing speakers in the front rank of high quality speakers, the new line of Altec Lansing speakers, basically re-engineered and fundamentally improved, has immeasurably widened the gap between Altec Lansing performance and the performance of even remotely comparable speakers.

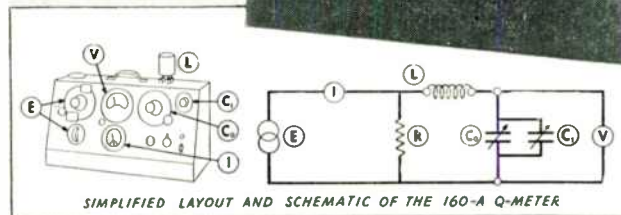
SEND FOR BROCHURE

An illustrated brochure describes the new line of Altec Lansing speakers in detail, shows exact, dependable, scientifically accurate frequency response curves. Use address nearest you: Altec Lansing Corporation, 250 West 57th St., New York 19, or 1161 North Vine St., Hollywood 38. Write Dept. 64.

MANY FEATURES IN ONE INSTRUMENT



The **Q-METER**
TYPE 160-A



THE BASIC METHOD OF MEASUREMENT EMPLOYED IN THE 160-A Q-METER
An R.F. oscillator (E) supplies a heavy current (I) to a low resistance load (R), which is accurately known. The calibrated voltage across the load resistance (R) is coupled to a series circuit consisting of the inductance under test (L) and a calibrated variable air capacitor (C₀) having a vernier section (C₁). When this series circuit is tuned to resonance by means of capacitor (C₀+C₁), the "Q" of (L) is indicated directly by the V.T. Voltmeter (V). Variations of this method are used to measure inductance, capacitance and resistance.
Oscillator Frequency Range: 50 kc. to 75 mc. in 8 ranges. **Oscillator Frequency Accuracy:** ± 1%, 50 kc.—50 mc. **Q-Measurement Range:** Directly calibrated in Q, 20-250. **Multiplier extends Q range to 625.** **Capacitance Range:** Main section (C₀) 30-450 mmf. **Vernier section (C₁)** +3 mmf, zero, -3 mmf.

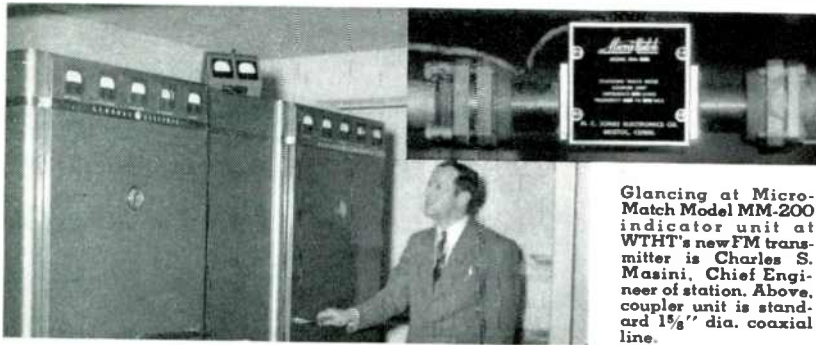
DESIGNERS AND
MANUFACTURERS OF
THE Q-METER
QX CHECKER
FREQUENCY
MODULATED
SIGNAL GENERATOR
BEAT FREQUENCY
GENERATOR
AND OTHER
DIRECT READING
TEST INSTRUMENTS

BOONTON RADIO
Corporation

BOONTON · N · J · U · S · A ·



KNOW ACTUAL RF POWER FED TO FM ANTENNA—WITH *MicroMatch*



Glancing at Micro-Match Model MM-200 indicator unit at WHTT's new FM transmitter is Charles S. Masini, Chief Engineer of station. Above, coupler unit is standard 1 5/8" dia. coaxial line.

Micro-Match gives you direct, continuous accurate reading in kilowatts. Also gives precise, continuous reading of SWR of antenna system. Thus at a glance you are assured of the proper functioning of the complete RF portion of your transmitter and of your antenna system and transmission line.

MICRO-MATCH models available for operation at 500 KC to 250 MCS, and power levels of 2 to 50,000 watts.

Write for complete descriptive literature

M. C. JONES ELECTRONICS COMPANY

96 North Main Street

Bristol, Connecticut

Distributed outside continental U.S.A. by RCA International Division Radio Corporation of America

500' LEHIGH STRUCTURAL STEEL COMPANY TOWER

One of our customers has a 500' heavy duty FM or TV self-supporting galvanized structural steel tower available for sale. This tower is brand new, never erected and available for immediate shipment. It is designed for "inside the city" location according to RMA standards.

Also available, 6 1/8" Andrew Coaxial Transmission Line with fittings.

**JOHN A. COSTELOW
COMPANY, INC.**

125 Kansas Avenue Topeka, Kansas

Investigate *Alden Facsimile*

FM Stations use the Alden Facsimile system as a promotional means to increase their listening audience and call attention to their FM stations.

They choose Alden because:

1. The Alden Recorders produce the most beautiful pictures not only in black and white but in the pleasantly toned Alfax sepia papers.
2. The Alden system assures attention-getting programs by combining sound and the operation of bulletin-size recorders in semi-public places, enlarging the same program that is sent to the home and other points.
3. The Alden system with its low frequency requirements simplifies the operation over ordinary telephone lines and with existing communication sets, making it capable of universal adoption.
4. The Alden system is designed and priced for the mass market; is not restricted as to particular FM sets and thus has the promotional interest of all set dealers in your area.
5. The Alden equipment has basic simplicity, minimizes service through interchangeable spare parts and is thoroughly suitable for use by non-technical people.
6. The Alden system has every factor, including program possibilities, that insure the largest saturation of recorders per area, operation in marginal signal areas, and thus the greatest possible coverage for your station.

Investigate Alden Facsimile
and Alfax Paper now

ALDEN PRODUCTS CO.
Brockton 64F, Massachusetts

FUTURE OF FM AND TV

(Continued from page 41)

be misled by irresponsible reports (printed and oral rumors, in fact) that the Commission now knows where such additional frequencies can be found. I stand on an earlier statement made today that the Commission approaches the September 20th television hearing without any prior determination of the issues involved.

There are other problems about television that I would like very much to discuss with you. I could have spent the entire luncheon talking about the proposed television allocation plan. At least the questions that I have already been asked about it at this meeting indicate that it is very much on your mind, but I have tried my best to keep my mind on the subject of the afternoon meeting.

Your responsibility for planning the future broadcasting services of this country — both aural and video — is no less than mine.

Unless we accept this responsibility of planning for the future and do it before it is too late, we are derelict in our duty as broadcasters and as public servants. We dare not risk failure in this respect even though it may seem so comfortable to be left alone with the status quo and not face our responsibilities.

In concluding my remarks here today I would like to stress again the paramount importance of planning for the future to make our radio broadcasting systems — aural and video — as responsive to the needs of our democratic society as it is within our power to do.

An encouraging augury for the future is the probing of radio's weaknesses by those of its leaders who understand the full implications of their responsibilities as trustees for the public.

They are the leaders who realize that an enterprise invested with such vast public interest should not be, and cannot be, permitted to be exploited exclusively for private profit.

I applaud those who appreciate that they must operate their stations as public service institutions for the community and the nation.

This question of how we can all work together to make our radio system a more effective force in our democracy is particularly urgent at this time.

The full, free, rapid exchange of information and opinions, as between the government and the citizens, and as between the citizens themselves is not essential in a totalitarian state. In fact, it does not fit into the scheme of a totalitarian state. But it is an imperative to the functioning of a democracy. Everything we can do to facilitate this exchange of ideas strengthens our democracy.

Such exchange on a worldwide basis is also a goal that we must keep before us if we are to achieve enduring friendship

(Continued on page 44)

F.M. AND TELEVISION



2-way radio permits drivers to notify central office of completion of trip.

**Link FM Sets . . .
Sylvania Lock-In Tubes . . .
handle emergency calls rapidly and
smoothly for Morro Limousine**

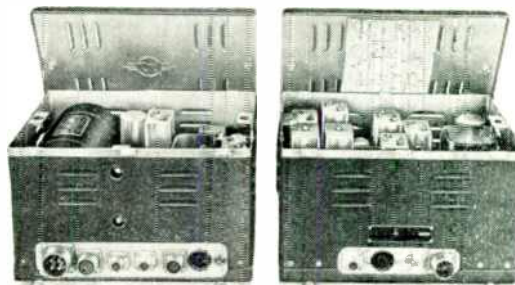


Office can immediately advise driver of other calls in the same neighborhood.



WITH 10 of its 14 limousines equipped with 2-way Link FM, Morro Limousine Service is always ready—24 hours a day—to respond promptly to emergency calls for home-to-hospital transportation—anywhere in the entire Borough of Brooklyn. Cars are strategically located throughout the borough, to reach any point in the shortest possible time.

Since quick, *unfailing* service is the essence of Morro Limousine's business, Link Radio Corporation turns to Sylvania Lock-In Tubes to prevent communications interruptions. These tubes stay firmly in place in their sockets . . . have no soldered joints, few welded ones. Elements can't warp or weave. Connections are short and direct . . . getter located on top. Loss and leakage are reduced. See Sylvania Distributors or write Radio Tube Division, Emporium, Pa.



Transmitting and Receiving Units used by Morro Limousine Service, manufactured by Link Radio Corporation, New York.

* * *
The famous Lock-In Tube's superiority makes it the ideal choice for equipment on the road, in the air, on the rails, marine radar, FM and television.



SYLVANIA ELECTRIC

MAKERS OF RADIO TUBES; CATHODE RAY TUBES; ELECTRONIC DEVICES; FLUORESCENT LAMPS, FIXTURES, WIRING DEVICES; ELECTRIC LIGHT BULBS

June 1948 — formerly FM, and FM RADIO-ELECTRONICS

WASH—FM— WASHington, D. C.

ORIGINATING STATION
FOR THE

Continental Network

WASH—FM now broadcasts all WASHINGTON SENATORS
Weekday Baseball Games
and features a host of other outstanding live talent shows for
GOOD LISTENING ON FM!

Since 1945

"Featuring the Finest in Musical Entertainment"

EVERETT L. DILLARD, *General Manager*

WMRC-FM GREENVILLE, S. C.

STILL WIDER COVERAGE: 62% more power on
the permanent frequency of 94.9 mc. now gives
WMRC-FM listeners still finer entertainment service

With 79,000 watts of effective radiation on 94.9 mc., WMRC-FM has taken the lead in providing fine programs with powerful signals over the western and central Carolinas and east to Rocky Mount, Goldsboro, Fayetteville, Myrtle Beach, and Charleston, and extending to Bristol and Danville, Virginia, Knoxville and Johnson City, Tennessee, and Atlanta and Athens, Georgia. Daily schedule, noon to 10:00 p.m.

Textile Broadcasting Co.
WMRC and WMRC-FM

FUTURE OF FM AND TV

(Continued from page 42)

and understanding among the nations of the world.

While we are striving towards this goal through our diplomatic activities, let us consider what we can do here at home.

Like many other Americans, I have often pondered on the mystery of how totalitarian regimes could find any acceptance among their masses of people. Such philosophies of government seem so anachronistic, so brutal, so cynical, and so completely contrary to all American traditions of freedom and respect for the individual that I have found it difficult to comprehend any tolerance of them even in extremities of desperation. And yet we have seen the growth of this evil in far too many places around the globe. We have seen the pattern repeated too often. Even today after all the blood and treasure poured into World War II, the spirit of dictatorship is ascendant in many parts of the world.

In today's turbulence, America stands as a bulwark of democracy. We must do everything we can to keep it that way. We must hold on to the democratic gains we have made through the years.

We must strengthen and perfect our society as much as possible to meet the dangers of today and the threats of the future. By now we Americans have had enough examples to see beyond the per-adventure of a doubt that the way for us to meet the future is not to think of restricting our democratic process but to expand it to the fullest measure and to take every precaution to see that it functions vigorously on behalf of all the people.

In our effort to make this nation a more complete democracy by bringing the groups of people closer to each other and by bringing the people and their government closer together, no instrumentality can play a more powerful role than our broadcasting industry. With the vastly augmented facilities which are available, you broadcasters can dwarf your former great achievements in this field.

We are fortunate in having this new era of broadcasting just at a time when the complexities of our community, national and international problems demand a greater degree of intelligent consideration and participation of our citizens than ever before.

Before I close, I would like to emphasize one fact:

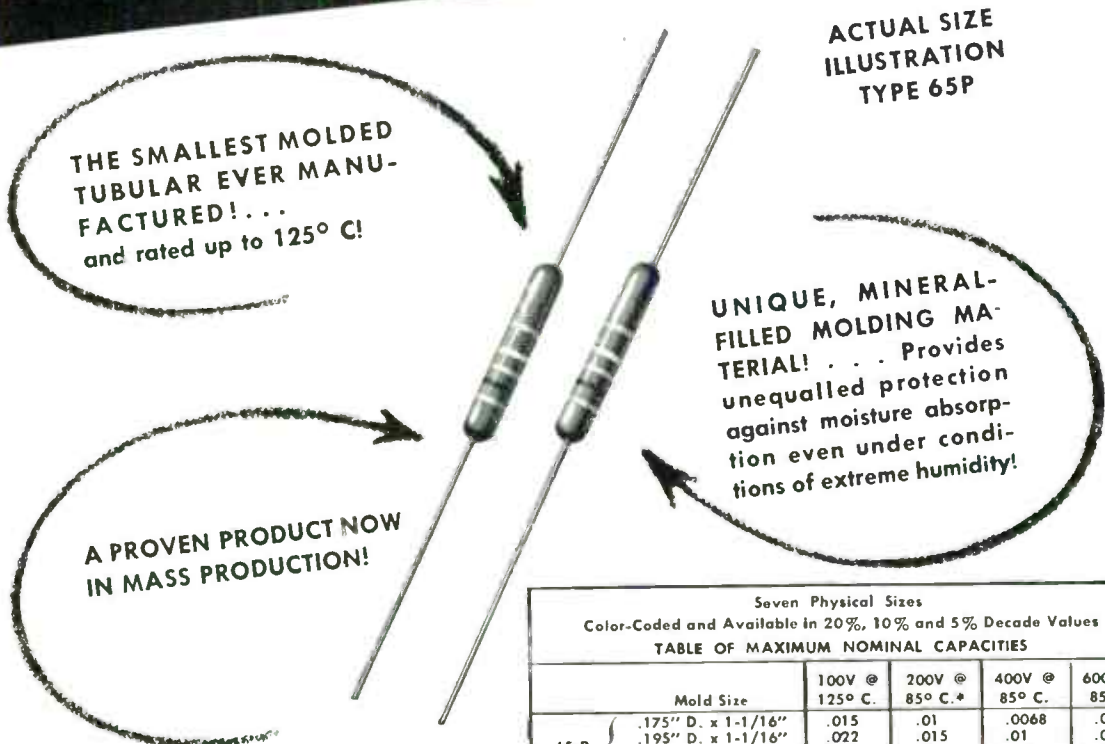
I know of no responsible person in the government, including members and staff of the Federal Communications Commission, who favors government operation of broadcasting.

I am sure that the one unanimous decision that the members of the FCC could reach is that, generally speaking, broadcasting in the United States operates in the public interest.

(Concluded on page 46)

FM AND TELEVISION

A QUIET REVOLUTION IN CAPACITOR DESIGN



THE SMALLEST MOLDED TUBULAR EVER MANUFACTURED! . . . and rated up to 125° C!

A PROVEN PRODUCT NOW IN MASS PRODUCTION!

ACTUAL SIZE ILLUSTRATION TYPE 65P

UNIQUE, MINERAL-FILLED MOLDING MATERIAL! . . . Provides unequalled protection against moisture absorption even under conditions of extreme humidity!

Seven Physical Sizes
Color-Coded and Available in 20%, 10% and 5% Decade Values

TABLE OF MAXIMUM NOMINAL CAPACITIES

Mold Size		100V @ 125° C.	200V @ 85° C.*	400V @ 85° C.	600V @ 85° C.
65 P	.175" D. x 1-1/16"	.015	.01	.0068	.0022
	.195" D. x 1-1/16"	.022	.015	.01	.0033
	.250" D. x 1-1/16"	.047	.033	.022	.0068
	.375" D. x 1-1/16"	.15	.1	.068	—
75 P	.175" D. x 3/4"	.0068	.0047	.0033	.001
	.200" D. x 3/4"	.01	.0068	.0047	.0015
	.250" D. x 3/4"	.022	.015	.01	.0033

* alternate rating 150V @ 125° C.

NEW SPRAGUE MOLDED PROKARS*

. . . dependable capacitors for sub-miniature assemblies



SUB-MINIATURE PAPER CAPACITORS IN METAL CANS WITH HERMETIC, GLASS-TO-METAL SEAL

for the most severe applications

Yes, this little can houses a high quality hermetically sealed Paper Capacitor! Rated at 100 volts, D.C. Working, this .5 mfd. unit measures .4" x 1 1/8". Presently being manufactured in quantity, variations of this sub-miniature type can be made to your specifications. Write for complete information about this and even smaller hermetically sealed units now in production as shown below.

These new molded Prokars were designed specifically to satisfy stringent military requirements. Types 65P & 75P are now in mass production and are available in a wide range of capacities—from .00047 mfd. to .15 mfd! Though higher in price than standard units, they easily justify the term "premium" in performance. Rated for —50° C to 125° C operation, these small but rugged units are ideally suited for any electrical or electronic application in which size, temperature, humidity and physical stress are dominant considerations.

Write for Engineering Bulletin No. 205 A

*T. M. Reg. U. S. Pat. Off.

SPRAGUE

SPRAGUE ELECTRIC COMPANY,
NORTH ADAMS, MASS.

P I O N E E R S O F E L E C T R I C A N D E L E C T R O N I C P R O G R E S S

Exactingly engineered response curves . . .



GRAY #601 EQUALIZER for GE CARTRIDGE

for RADIO STATIONS Four control positions (flat, NAB, etc., etc.) complement current record and transcription frequency characteristics. Adopted by radio networks mentioned below. Matches pickup to microphone channel. Complete, \$42.52.

DIAMOND STYLUS GE CARTRIDGES

We are now supplying GE cartridges selected for uniform characteristics with finest quality diamond styli mounted and wired in the Gray Transcription Arm at \$29.63 additional. The long life of a diamond stylus makes this an exceptionally economical investment.

Reduce Intermodulation Distortion



with the GRAY TRANSCRIPTION ARM

Reduction of the distortion content of "lows" results from minimum vertical inertia and maximum stiffness. Other characteristics include frictionless motion, adjustable stylus pressure, self-leveling base and features resulting in the finest lateral reproduction. Accommodates all modern cartridges—GE, etc.—and has been adopted for all transcription tables by national radio networks—Columbia Broadcasting System, American Broadcasting Company—and numerous independent stations. Arm, less cartridge, \$35.00.

GRAY RESEARCH & DEVELOPMENT COMPANY, Inc.

Factory: Hartford, Conn.

Sales: 565 FIFTH AVENUE, NEW YORK 17

For Finest Custom Installations



Type 210-A Laboratory Amplifier

No modern installation is complete without the H. H. Scott *Dynamic Noise Suppressor. Leading authorities have proclaimed it the greatest advance in phonograph reproduction since the invention of electrical recording. The attempts at imitation are the sincerest form of flat-

tery. Those who want the best insist upon the H. H. Scott Type 210-A Laboratory Amplifier with *Dynamic Noise Suppressor developed and manufactured by the inventor.

Wide range, distortionless, practically free of noise, it provides unparalleled realism from your records. Compact, and superbly engineered, the Type 210-A is as precisely made as a fine camera. It will be a source of pride and pleasure for years to come. This finest of all amplifiers costs only a little more than ordinary designs.

Now available from leading dealers and distributors throughout the world, or direct from the laboratory on famed "Research Row" in Cambridge, Mass. Price: \$460.00 list; \$276.00 net, tax included. Manufacturers' representatives in leading cities. *Inquiries invited.*

* Licensed under American and Foreign patents pending and issued

Write today for complete information

**HERMON
HOSMER SCOTT, INC.**
"PACKAGED ENGINEERING"

Dept. FM 6 385 PUTNAM AVE. • CAMBRIDGE 39, MASS.

FUTURE OF FM AND TV

(Continued from page 45)

The future of American radio must be planned and fashioned within the present formula of operation by private enterprise.

I am confident that the broadcasting industry, which has achieved so many triumphs in the past, will make and execute bold plans for the future to insure the swift and orderly progress of this great force in our civilization. In that effort you will have the unremitting support of the Federal Communications Commission.

G.E. S-T LINK EQUIPMENT

(Continued from page 35)

envelope with a 9-pin base. Each section of this tube is the equivalent of the well-known 6C4. Excellent output is obtained with the 12AU7 push-pull tripler at output frequencies up to about 200 mc. The 6J6 is used in the higher-frequency stages because of its lower internal inductances, and the common cathode.

Of special interest is the 6J6 stage which doubles from approximately 415 to 830 mc. This circuit uses a push-push connection, i.e., grids in push-pull and plates in parallel. The 6J6 is specially well suited for this type of circuit because of its common cathode cylinder. Such construction reduces the cathode-to-cathode inductance to a very low value. This inductance is a source of considerable degeneration in high-frequency multiplier circuits. The plate circuit of this push-push doubler can be seen clearly at the lower left corner of Fig. 7. It consists of a flat bar spaced about 1/4 in. from the chassis. Under this bar, a short distance from the tube, is a tuning slug extending through the chassis. This slug forms a variable tuning capacitor which effectively series-tunes the 6J6 plate circuit to ground. The continuation of the bar beyond this point forms a transmission line coupled to the output of the 6J6. This bar extends over that part of the chassis which is under the mixer circuit. The injection screw on the center conductor of the mixer circuit extends through the chassis and provides capacity coupling to the transmission line carrying the local oscillator voltage. The type X chassis connector above the end of this bar is the antenna input connection to the mixer. The two cylindrical structures below the bar are the mixer-crystal IF output network and the jack for connection to the IF unit.

The unit above the converter, Fig. 2, is the power supply. The right hand meter is permanently connected in the mixer crystal DC circuit, while the left hand meter can be switched to the various converter circuits for tuning or monitoring. No additional test equipment is required

(Concluded on page 47)

*R.H. Brown, "Harmonic-Amplifier Design", *Proceedings of the IRE*, Volume 35, August, 1947.

G.E. S-T LINK EQUIPMENT

(Continued from page 46)

to tune the receiver to any frequency in the 920- to 960-mc. range.

The IF unit is shown below the converter. Referring to the block diagram, the two 112-mc. first IF stages are of the cathode-coupled, double-triode type. These two stages provide sufficient second IF image rejection and a good noise figure for the IF unit. The second converter is crystal controlled from an overtone (triplex) crystal operating at about 20 mc. This frequency is tripled in the plate circuit of the oscillator and doubled in a buffer before injection into the second converter. Three stages of 10.7-mc. second IF provide enough gain to give limiting on input circuit noise.

Adjacent-channel selectivity of better than 80 db has been measured. Two cascade limiters precede the discriminator. The signal strength meter shown on the left side of the unit indicates first limiter grid current. Separate screwdriver controls provide gain adjustment of both first and second IF sections.

The signal strength meter provides a means of aiming the directive antenna and tuning the first converter crystal mixer circuit for maximum signal. The zero-center tuning meter on the right side of the unit is connected to the balanced discriminator, and provides a means of setting the trimmer on the first converter Thermocell crystal. A change of center frequency in either the transmitter or receiver will be indicated by this meter. Two stages of low-distortion audio provide the rated output of +18 dbm for ± 75 -kc. deviation. The measured overall harmonic distortion of the transmitter and receiver together is shown in Fig. 8. This curve shows a considerable safety factor between the maximum value in the specification and the results measured on the developmental system.

Acknowledgment:

It must be recognized that many individuals contributed to the design of this equipment. Acknowledgment should be given particularly to the work of H. P. Thomas on the electrical design of the transmitter and overall system, and to R. A. Lash and W. R. Fraser for the mechanical designs. These engineers are all members of the G.E. transmitter division.

FMA CONVENTION

Big plans are being made by broadcasters and set manufacturers for the FM Association's national convention in Chicago, September 27 to 29. Meetings that concern FM have always been exceptionally well attended. This should be no exception, for there will be over 700 FM stations on the air in September. Program and the exhibits will be extremely interesting.

ADVERTISERS INDEX

Adair, George P.	3, 17
Alden Products Company	42
Altec Lansing Corp.	41
Amy, Aceves & King, Inc.	16
Andrew Corporation	6, 12
Barone, S. A., Company	13
Bell Telephone Labs.	9, 14
Blaw-Knox	1
Boonton Radio Corp.	11
Brociner Elect. Lab.	8
Browning Laboratories, Inc.	5
Collins Audio Products	39
Commercial Radio Equip. Co.	13
Costelow, John A., Co., Inc.	12
Davis, George C.	13
DeMars, Paul A.	12
Eitel-McCullough, Inc.	48
Electronics Research Pub. Co.	8
Federal Tel. & Radio Corp.	10, 11
Garrard Sales Corp.	17
Gray Research & Develop. Co.	16
Graybar Electric Co.	9, 14
Harvey Radio Labs., Inc. <i>Inside Front Cover</i>	
Hugley & Phillips Company	8
Jansky & Bailey	12
Jones Electronics Co.	42
Karp Metal Products Co. <i>Cover III</i>	
Kear and Kennedy	13
Knights Co., The James	4
Mallory & Co., Inc., P. R.	40
May, Russell P.	12
McCahren, Winfield Scott	13
McIntosh, Frank H.	13
McKey, Dixie B. & Assoc.	12
McNary and Wrathall	13
Pollaek, Dale	12
Radio Consultants, Inc.	13
Radio Corp. of America	21, 25
Radio Engineering Labs, Inc. <i>Back Cover</i>	
Ray, Garo W.	12
Raytheon Mfg. Co.	2
Rider, John F.	38
Sangamo Electric Co.	37
Scott, Inc., H. H.	46
Smely, Lynne C.	12
Sprague Electric Co.	45
Surprenant Mfg. Co.	39
Sylvania Electric	13
Toplight Tape Co.	8
U. S. Recording Co.	18
Vesto Co., The	39
WASH-FM	44
Weldon & Carr	13
Western Electric Co.	9, 14
Williams, Nathan	12
Willette, Raymond M.	12
WMRC-FM	44
Workshop Associates, The	7, 8



GARRARD

world's finest automatic
RECORD CHANGER

Easily recognized — distinctive in appearance . . . its presence in a radio phonograph indicates the superlative quality of the entire instrument.

Available in two models

RC65 — FOR HIGHER-PRICED SETS

A radically improved Mixer-Changer with many exclusive features. Trouble-free motor with speed-regulator, governor-controlled. Positive automatic stop. Reject lever. True-tangent pick-up with ball-bearing, jewelled mount and pivot. Patented non-slip spindle. Specially designed "floating springs" for mounting changer.

RC70 — FOR MODERATE-PRICED SETS

Simplicity combined with usual Garrard high engineering standards. New-type pusher platform guarantees gentle handling of records. Plays ten 10"-12" records. Turntable weighted for fly-wheel action, driven by drum on inside. Start, Stop and Reject lever combined. Removable center spindle. New parallel lift tone arm guarantees true tangent tracking.

Write for descriptive literature to

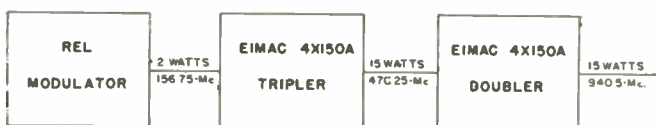
Dept. F — Garrard Sales Corp.
315 Broadway, New York 7, N. Y.

15 WATTS AT 940.5-Mc. with the EIMAC 4X150A TETRODES

K S B R
STL Transmitter

FREQUENCY UP 6X, (156.75-Mc. to 940.5-Mc.)
POWER UP 7X (2 watts to 15 watts)

Here's a STL transmitter that's in operation on the new 950-Mc. band, fulfilling all the FCC requirements and powered by Eimac 4X150A tetrodes. It's a part of the studio-transmitter-link between the San Bruno studios and the 250 Kw FM transmitter of station KSBP high atop 3849-foot Mt. Diablo some 33 miles away.

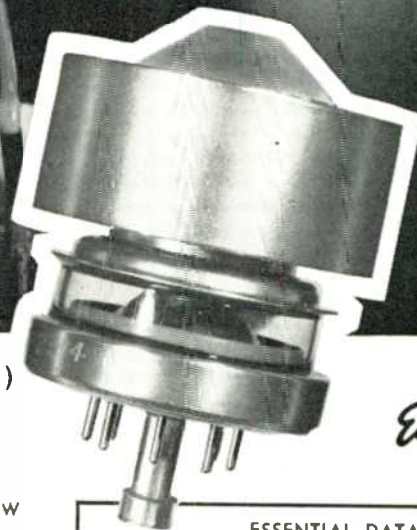


The R-F amplifier was specifically designed for the KSBP application by Eimac engineers. It is driven by an REL modulator delivering 2 watts output at 156.7-Mc. to one Eimac 4X150A in a tripler stage, which in turn drives a single 4X150A in a doubler stage, providing 15 watts useful output at 940.5-Mc.

The Eimac 4X150A is ideally suited for this application because of its high power gain at relatively low plate voltages, ability as a frequency multiplier without loss of amplification, low grid drive requirements, and a high ratio of transconductance to capacitance. It also has the advantage of being physically small and functionally designed for simple installation.

Complete data on the Eimac 4X150A for STL and other UHF applications is available by writing direct.

EITEL-McCULLOUGH, INC.
197 San Mateo Avenue, San Bruno, California
EXPORT AGENTS: Frazer & Hansen—301 Clay St.—San Francisco, Calif.



Eimac
4X150A

ESSENTIAL DATA KSBP STL TRANSMITTER

REL MODULATOR, MODEL 694
EIMAC 4X150A, R-F AMPLIFIER

Useful Output Power - - - - -	15 watts
Frequency - - - - -	940.5 Mc.
Frequency Stability - - - - -	.002%
Audio Frequency Response.	
Substantially flat - - - - -	50 to 15,000 cycles
Distortion - - - - -	.5% Max.
Noise Level - 70 db below 100% modulation	
- - - - -	± 100 Kc. deviation

Eimac 4X150A

General Characteristics

Heater voltage - - - - -	6.0 volts
Heater current - - - - -	2.8 amps.
Minimum heating time - - - - -	30 secs.
Grid Screen amplification factor - - - - -	4.5
Direct interelectrode capacitance (Average)	
Grid-Plate - - - - -	0.02 μf
Input - - - - -	14.1 μf
Output - - - - -	4.7 μf

Maximum Ratings

D-C Plate voltage - - - - -	1000 volts
D-C Plate current - - - - -	250 ma.
Plate dissipation - - - - -	150 watts
D-C Screen voltage - - - - -	300 volts

Follow the Leaders to

Eimac
TUBES
The Power for R-F



We've got our eye on **your** assembly line

... to help you
speed production

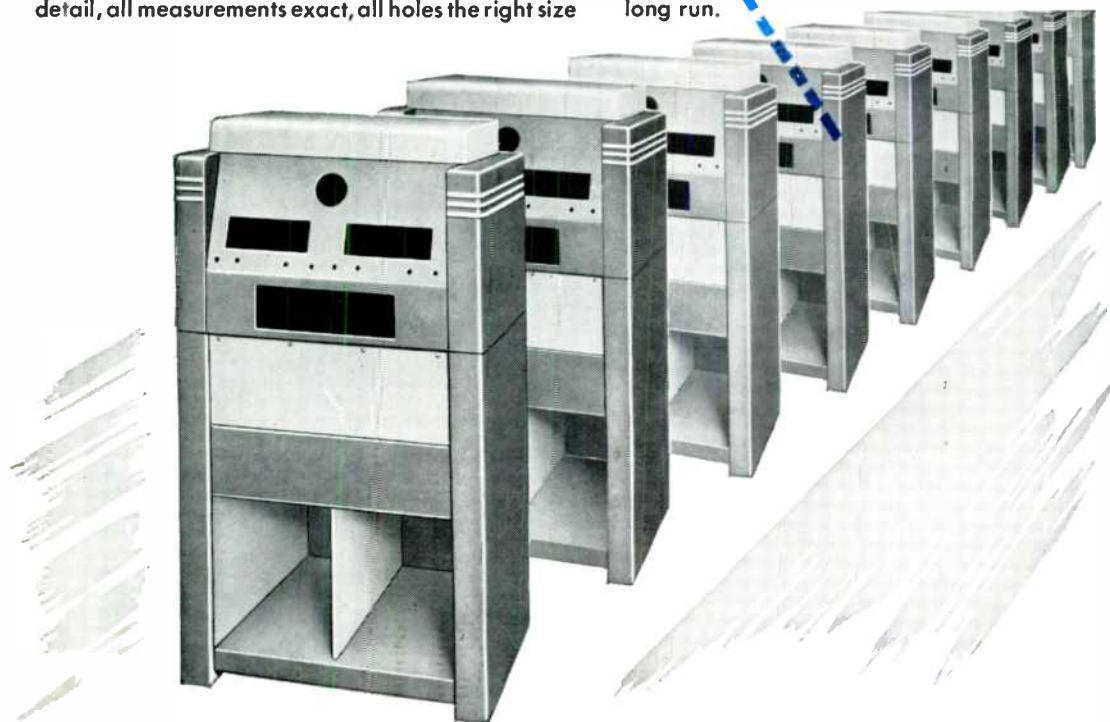
When we build cabinets, housings or enclosures for you, we plan and work with the objective of saving you time, labor and extra operations on your production line.

Karp-constructed units are handsome and streamlined, but their beauty is more than skin deep. The extra value our work affords is a degree of quality, accuracy and precision that will speed up your assembling operations.

You will find all units completely uniform in every detail, all measurements exact, all holes the right size

and cleanly drilled, all openings precisely spaced, all welding skillfully done with finest equipment.

As a result, in your assembling, all functional parts, instruments and controls will fit correctly and easily into place. Installation operations will be smooth and speedy. You will encounter no delays for any completion details. This saving of time and labor will cut your costs. Your completed assemblies will have added market value, too. In short, Karp custom craftsmanship will prove less expensive in the long run.



KARP METAL PRODUCTS CO., INC.

126 30th STREET, BROOKLYN 32, NEW YORK

Custom Craftsmen in Sheet Metal

REL MODEL 694

● As might be expected from REL's leadership in the development of the FM art and in particular in the advancement of FM broadcasting, REL again leads the field by presenting its most recent achievement to the industry.

● This development is the result of many months of research. It is presented in answer to increasing demands for equipment to link studio and transmitter with very great fidelity and without the use of wire lines. The success of this development is measured in terms of equipment which will in no way contribute to the noise, distortion, or audio limitations of the overall system.

STUDIO-TRANSMITTER FM LINK EQUIPMENT



TRANSMITTER SECTION OF THE MODEL 694



RECEIVER SECTION OF THE MODEL 694

FREQUENCY: 940 to 960 megacycles.

RANGE: To be employed between positive line of sight points and, in no case, over a path in excess of thirty miles.

EQUIPMENT INCLUDES: Transmitter, 10db gain Transmitting antenno, Receiver, One set of operating tubes and crystals.

ADDITIONAL EQUIPMENT OPTIONAL: 40 foot supporting structures for transmitting and receiving antenno; Higher gain transmitting and receiving antenno; Transmission lines and fittings.

ELECTRICAL PERFORMANCE

AUDIO RESPONSE: 0.3 DB FROM 50 TO 15,000 CYCLES

SIGNAL TO NOISE RATIO: 75 DB BELOW 100% MODULATION. (TRANSMITTER INPUT TO RECEIVER OUTPUT. DOES NOT INCLUDE SPACE ATTENUATION.)

DISTORTION: NO GREATER THAN 0.3% AT 100% MODULATION THROUGHOUT THE AUDIO RANGE FROM 50 TO 15,000 CYCLES.

TRANSMITTER POWER OUTPUT: 15 WATTS.



RADIO ENGINEERING LABS. INC., LONG ISLAND CITY 1, N. Y.