

THE NEW WORLD OF RADIO ENTERTAINMENT



In This Issue

**HOW TO GET
OVERSEAS STATIONS**



**30 MOST POPULAR
FOREIGN STATIONS**



**INTERESTING FACTS
ABOUT WORLD-WIDE
STATIONS**

Simplified
**WORLD-WIDE
RADIO LOG**

5¢

How these eminent people keep in touch with the NEW WORLD of EVENTS, POLITICS and MUSIC

“The new Stewart-Warner Magic Dial Radio brings me, from every corner of the earth, not only the cultural advantages of good music and intelligent entertainment — but vitally important information on the trend of international politics and world events. With the new Stewart-Warner All-Wave Radio, you can actually have a ‘ringside seat’ at any one of the greatest battles in world history — for a price that any modern home can and should afford.”

Says

**WALTER
B. PITKIN**

*Noted Professor
and Author of
“Life Begins at
Forty” and
Other Books*



M. GEORGES BUROSSE

*Commandant of the Great French Lines
(On board his flagship, “Ile de France”)*

“As master of a great ocean liner, I have a wide range of interests. I must be up-to-date on current events. So it is natural that I am intensely enthusiastic about the new Stewart-Warner Radio with the Magic Dial. At a simple touch of the hand, my Stewart-Warner brings me the best programs. With it I keep in intimate touch with the world at both ends of my voyage — Europe and America.”

ERNO RAPEE

*Director of Music
Radio City Music Hall — New York*

“I have made it an essential part of my daily program to tune in Paris, London, Rome, Madrid, Prague, Vienna and the South American capitals of culture. I listen as often as I can to broadcasts from abroad in order to keep our productions at the Music Hall up-to-the-minute in modernity and authentic in color. A turn of the Magic Dial on the new Stewart-Warner All-Wave Radio, and the music of the world floods my study — affording me priceless entertainment and fresh ideas for my work.”



The Fascinating NEW WORLD of RADIO ENTERTAINMENT

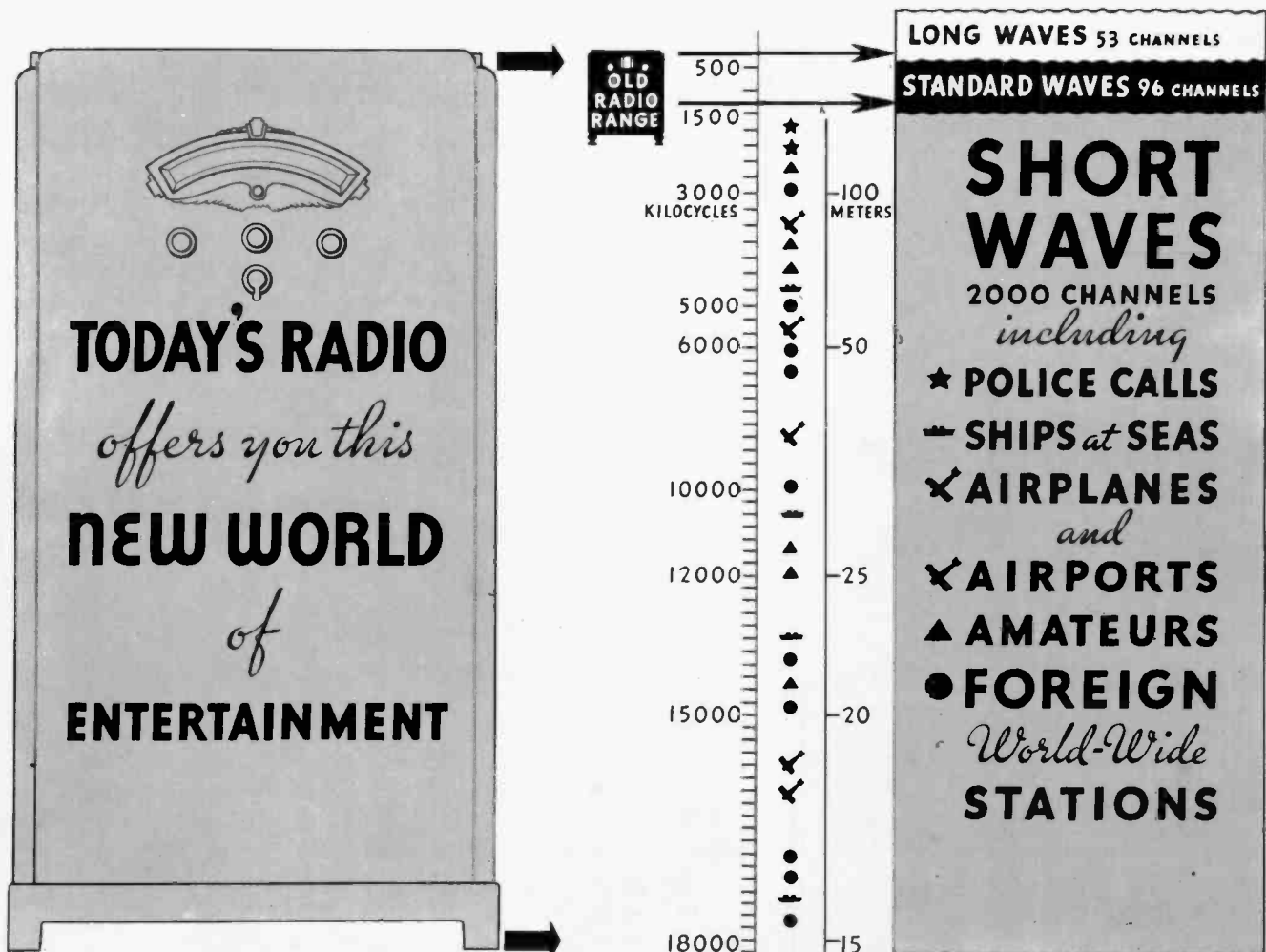
Mystery, Romance, Adventure and Thrills Aplenty to Be Found in New Greater Field Opened Up by Short Wave Radio

Today, radio broadcasting is done over three types of waves, commonly referred to as Long Waves, Standard Waves, and Short Waves. The relative breadth of these wave bands is clearly illustrated in the chart below. The so-called Long Wave Band is restricted to governmental and commercial transmission — almost entirely in code — and is of no interest to the average listener. The Standard Wave Band makes available the broadcasts with which everyone is familiar. Until now, the reception of the average radio set was *confined* to this band.

But, now, radio developments have opened up a new and greater field of entertainment — the Short Wave Band, heretofore *below* the range of an

ordinary radio set. This band — twenty times larger than the Standard Wave Band — makes available radio's latest, greatest thrill. Short Waves bring you Police Calls from cities throughout the country, conversations between Airplanes and Airports, programs from ships at sea, and the supreme thrill of direct broadcasts from over 200 Foreign Stations located throughout the world.

The radio of yesterday made available broadcasts in the Standard Wave Band only. The radio of today brings you this marvelous entertainment, from far greater distances and with far better tone, PLUS the fascinating NEW WORLD of RADIO ENTERTAINMENT to be found in the Short Wave Band.



HOW TO GET OVERSEAS STATIONS

Ever Hear a Broadcast Direct from Europe? Here's What It Takes . . . and Why It Is Possible

Today, hearing direct broadcasts from Foreign Stations throughout the world is no longer a myth. It's an everyday occurrence — made possible by two things:

First, the perfection of simplified world-wide radio sets making it possible for the average listener to tune-in on the short waves over which Foreign Stations broadcast their programs.

Second, the development of better overseas stations, far more powerful and with new directional aerials especially designed to broadcast entertaining programs to the United States and Canada, and to far flung colonial possessions.

Today, the whole world is at your command for merely the price of a good All-Wave radio set, which receives short wave as well as standard wave broadcasts. Now, practically all leading radio manufacturers offer such sets, so you have plenty to choose from. But, select your Round-the-World Radio carefully. Favor the manufacturer with the most experience. Then, have installed in your home a good short wave aerial, one especially suited to your individual location.

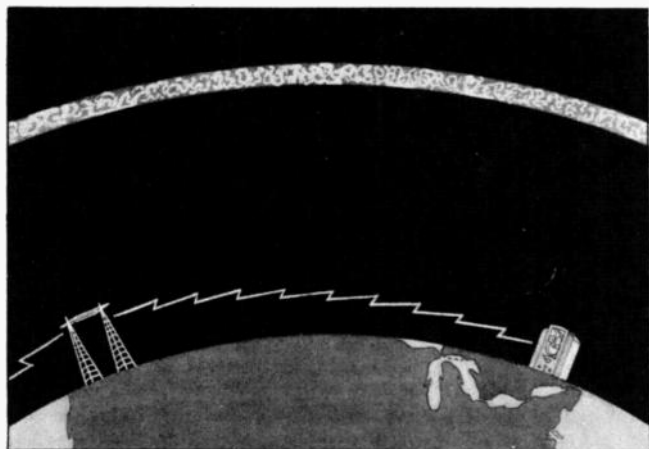
In this magazine you will find a listing of the most frequently heard overseas stations, and the hours each is on the air. Supplement this information with that to be found in the leading short wave radio magazines, because changes in Foreign Sta-

tion broadcasts may occur frequently. Especially recommended is the magazine published monthly by the International Short Wave Club, of East Liverpool, Ohio. Subscription only \$1.00 per year. Keeping constantly posted on short wave broadcasts will lead to a greater enjoyment of your Round-the-World Radio.

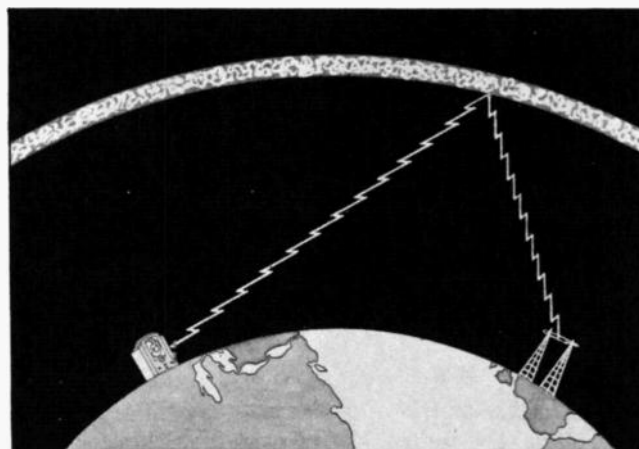


WHY YOU CAN HEAR FOREIGN STATIONS

Programs from overseas stations are broadcast on short waves, because short waves travel such great distances. The reason for this is clearly shown in the following charts, illustrating the difference between the travel of standard wave broadcasts with which you are familiar, as compared to broadcasts sent out over short waves.



Standard wave broadcasts follow the curvature of the earth and travel direct from the sending station to the radio in your home. The earth continuously absorbs these waves until, after they have reached a certain point, their strength is entirely dissipated.



Short wave broadcasts sweep upward until they strike an atmospheric layer, about 150 miles high, and are then deflected toward the earth. Thus avoiding the earth's weakening influences, short waves retain their initial strength and travel great distances.

GSD LONDON ENGLAND

11.75 Megacycles - - 25.53 Meters

HEARD THE WORLD OVER

Programs from this popular station, broadcast to the far flung units of Britain's mighty empire, emanate from the studios of the British Broadcasting Corporation, London. The type of music and the variety of program are comparable to that you might hear over an American chain station.

Eight transmitters are used — GSA, GSB, GSC, GSD, GSE, GSF, GSG and GSH — two of them being employed simultaneously on each broadcast to insure the best possible reception. If you cannot receive the program so well on one of the wave lengths, you can generally tune it in on the other.

Broadcasts from this chain of stations are directed daily to the five Empire zones — Australian, Indian, African, West African and Canadian. Listening to these broadcasts, one can capture much of the very atmosphere of London such as, for instance, hearing the striking of Big Ben and the Westminster Chimes as clearly as though he were walking down the Strand or crossing the famous Waterloo Bridge.

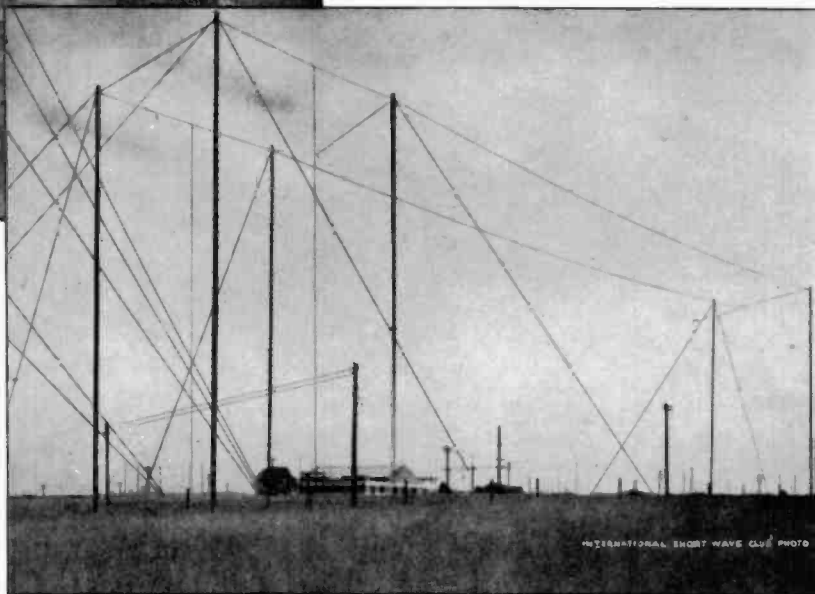


Big Ben, the chimes from which close the programs broadcast from England, is one of the historical landmarks of London. Built in 1858, it is still reputed to be the most powerful striking clock in the world. The bell weighs 13½ tons, the hammer 400 pounds. Its hour hand measures 9 feet long, and its minute hand 14 feet.



Above: The Control Room of the stations at Daventry, England, operated by the British Broadcasting Corporation.

At Right: Studios are in London, but the transmitting plant of these stations is located in Daventry. Here, eighteen immense aerials, including five groups of directional aerials, direct the London broadcasts to the vast British Empire.



PARIS and FRANCE

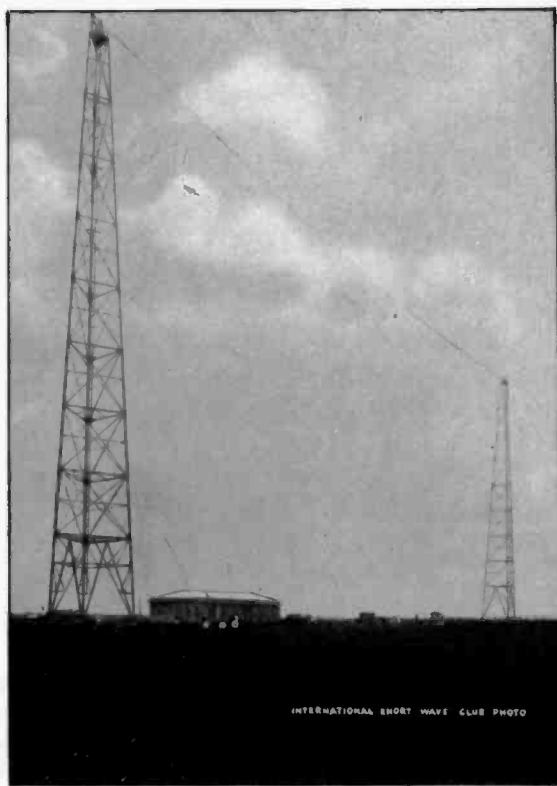
will probably be among the first objectives of your world tours via radio. Here is pictured the Arc de Triomphe in Paris, the city famed for its festivity and entertainment.



FYA PARIS FRANCE

15.24 Megacycles - - 19.68 Meters

"Hallo, hallo, ici c'est Radio Coloniale," says the announcer and you know you are listening to FYA, the most familiar French station, located in Pontoise. Its daily broadcasts offer a variety of entertaining music, interspersed with news announcements generally given in English.



INTERNATIONAL SHORT WAVE CLUB PHOTO

I2RO ROME ITALY

11.81 Megacycles - - 25.40 Meters

A popular, mellow-voiced signora announces this station as "Radio Roma-Napoli." Most of the programs emanate from the studios in Rome, but some are also picked up from Naples and other cities throughout Italy.

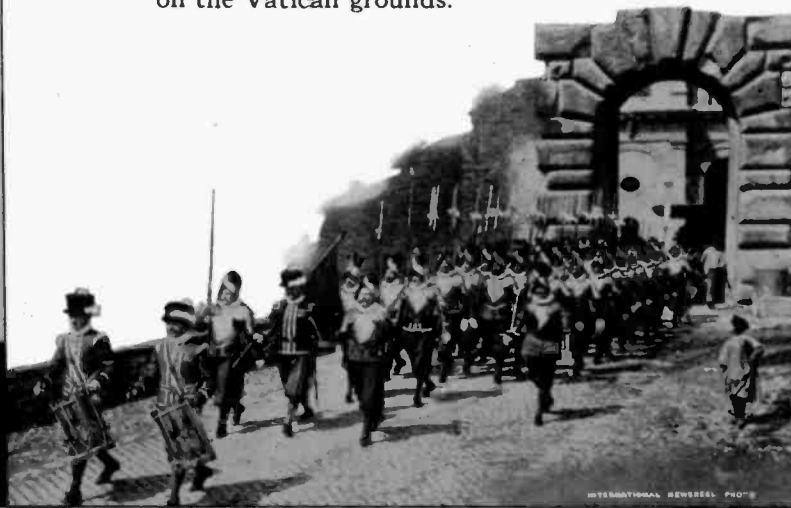
HVJ VATICAN CITY

15.11 Megacycles - - 19.84 Meters

When touring Italy via radio you can also tune in the special programs broadcast daily from Station HVJ, located in Vatican City.

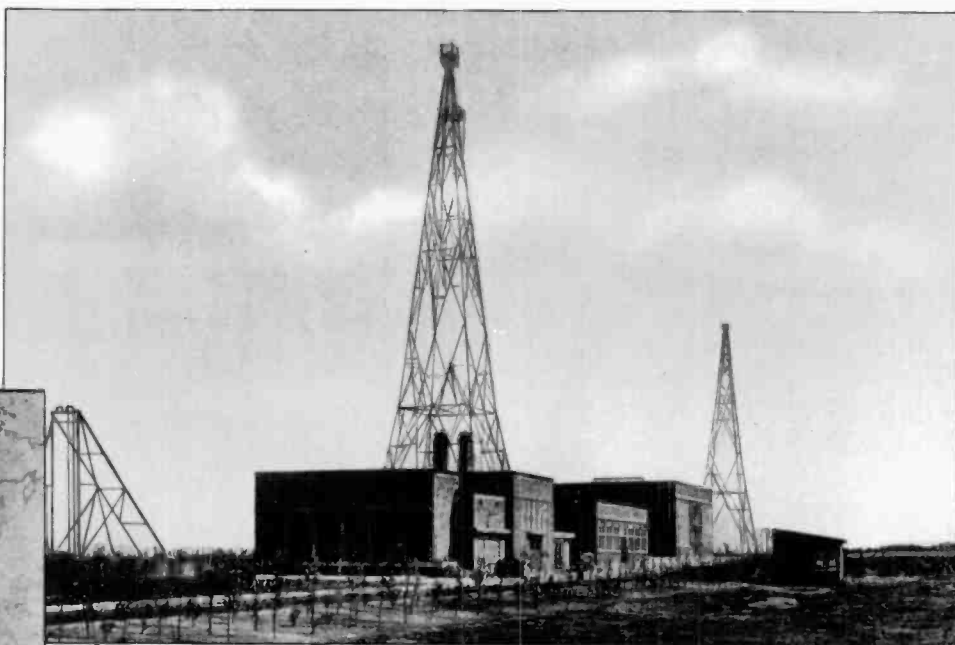
Left: The transmitting station and immense aerials for Station I2RO are located just outside Rome.

Below: With uniforms and equipment of centuries past, the Swiss Guard presents an interesting spectacle, as it passes beneath one of the ancient portals on the Vatican grounds.



INTERNATIONAL NEWSREEL PHOTO

Below: Edward Startz, the famous and accomplished announcer, identifies Station PHI for local and world listeners. To make certain his call letters are clearly understood, this silver-tongued linguist repeats announcements in seven different languages — Dutch, Malay, English, French, German and Portuguese.



Programs from Station PHI are broadcast to the world from this transmitting plant, located in Huizen, Holland. Studios are maintained in Hilversum. This station is on the air Monday, Thursday and Friday from 7:30 to 9:30 A.M. and on Saturdays and Sundays from 7:30 to 11:00 A.M. (E.S.T.).

DJB BERLIN GERMANY

15.20 Megacycles - - 19.73 Meters

"GERMAN ROUND THE WORLD SENDER"

is the name given to this station by its operators the German Broadcasting Company. Opened with a cheery "Hello, America, we hope you have good reception tonight," programs from this station bring to U. S. radio listeners gems of classical music and song. Broadcasting is done from early morning until late at night, two transmitters being used on each program to insure best possible reception. Announcements are made in three languages — first German, then English, then Spanish. Call letters used are DJA, DJB, DJC, DJD. Studios are in Berlin, the transmitting plant being located in Zeesen, Germany.

EAQ MADRID SPAIN

9.86 Megacycles - - 30.40 Meters

The daily broadcasts from this station are colorful and entertaining, and your enjoyment of them will be further increased by the fact that announcements are made in English as well as Spanish.

The programs, broadcast from approximately 5 to 7 P.M. (E.S.T.), offer music, literature and news. The Saturday broadcasts, noon to 2 P.M., are intended primarily for Europe, Canary Islands and other Spanish possessions. On stated evenings each week, one hour of the broadcast is devoted to the International Broadcast Club of London, an organization established for creating good will and a closer relationship among the radio listeners of the world.

PHI HUIZEN HOLLAND

11.73 Megacycles - - 25.57 Meters

The land of dikes and windmills and famous old cities is an interesting one to visit via radio. PHI is not only an outstanding station in Holland, but the world over. Through this station, Holland keeps in touch with her colonial possessions in Dutch East and West Indies. During the summer months, PHI leaves its regular wave band of 11.73 megacycles and broadcasts over 17.77 megacycles.



Station J1AA, Kemikawa-Cho, Kiba-Chen, Japan

sends listeners a program verification card on the front of which is a picture of the station. Broadcasts from Japan are received daily in the U. S. from approximately 5:00 to 7:00 A.M. (E.S.T.).

Below: The front of the card which YV3BC sends to listeners, upon request, to verify receipt of programs. When writing this station, address YV3BC, Radiodifusora Venezuela, Caracas.



Above: This orchestra is typical of those which play the tantalizing tangos and rhumbas broadcast from South American Stations and heard so regularly in the United States.

YV3BC Caracas VENEZUELA

6.15 Megacycles - - 48.78 Meters

This station, located in the capital of the Republic of Venezuela — the most northerly country in South America — is heard consistently by Round-the-World radio listeners in the United States. Its entertaining programs offer a variety of typically South American tangos, rhumbas, songs, etc.

YV3BC broadcasts daily from 10:30 A.M. to 1:00 P.M., and from 4:30 to 9:30 P.M. (E.S.T.). Like several of the other South American stations, announcements are not made in English, but this station can be readily identified by a distinctive chimes signal.

"LA VOZ DE BARRANQUILLA"
P. O. Box 719
BARRANQUILLA -- COLOMBIA -- S. A.

WE VERIFY YOUR RECEPTION OF OUR STATION ON

HJ-1-ABB

(FORMELY H K D)

<p>ON THE AIR DAILY 8 TO 10 PM E S T THURSDAY SPECIAL 15 WC PROGRAM 10 TO 10 30 PM</p> <p>Daily: 11 1/2 am - 1 pm. and 5 to 10 pm</p>	<p>PLEASE REPORT AGAIN 'THANKS'</p> <p>OWNER E. J. PELLET</p> <p>OPERATOR</p>
---	--

POWER 150

"Ha-Ya-Une-Ah-Bay-Bay," says the station announcer in his best South American English, and you know you are listening to HJ1ABB, Barranquilla, Colombia. And, if you want your reception verified, this station upon request will mail you one of the above verification cards.

VK2ME SYDNEY AUSTRALIA

9.59 Megacycles - - 31.28 Meters

"The Voice of Australia" is a welcome visitor each Sunday in many U. S. homes, with its diversified program of music, including an interesting and instructive talk on some section of Australia. The time of day is also broadcast, together with the chimes from the clock located on the Sydney Post Office.

Each program is opened and closed with the famous laughing call of the Kookabura bird. VK2ME broadcasts Sundays only, from 1:00 to 3:00, 5:00 to 9:00 A.M., and from 11:30 A.M. to 1:30 P.M. (E.S.T.).

HBL Geneva SWITZERLAND

9.59 Megacycles - - 31.27 Meters

This station, together with HBP, is maintained by the League of Nations for a dual purpose. First: to broadcast discussions of the various problems placed before this tribunal and, second, to create good will and a better understanding among the nations of the world.

The program is Saturday — 5:30 to 6:15 P.M. (E.S.T.) — consists of three fifteen minute talks — given first in English, then French, then Spanish. Listeners who wish to communicate with this station will receive prompt, courteous acknowledgment of their letters. Answers to any questions will be cheerfully given. Address: Information Section, League of Nations, Geneva, Switzerland.

TIME TABLE and LOG of the MOST FREQUENTLY HEARD FOREIGN STATIONS

Since there are over 200 Foreign Stations on the air — regularly or irregularly — the Round-the-World radio listener has plenty of opportunity for exploring among the short waves. Presented here is a carefully selected list of Overseas Stations, chosen on the basis of quality of program broadcast, consistency of reception and volume. These stations offer the greatest entertainment and are the ones most frequently heard. Their broadcasts provide an enjoyable variety of concert and symphony orchestras, typical native songs and music, and a goodly fund of information on current daily topics. See next page for additional Short Wave stations.

Megacycles	Meters	Call	Location	Time of Broadcasts (Eastern Standard Time)
21.47	13.97	GSH	London, ENGLAND	6 A.M. to 8:30 A.M., daily
17.78	16.86	GSG		6 A.M. to 8:30 A.M.
15.14	19.82	GSF		8:40 A.M. to 12:45 Noon
11.86	25.28	GSE		8:45 A.M. to 12:45 Noon
11.75	25.53	GSD		11:30 P.M. to 1:30 A.M., 1:00-8:00 P.M.
9.58	31.30	GSC		6 P.M. to 8 P.M., daily
6.05	49.59	GSA		12:30 to 1:30 A.M.
15.24	19.68	FYA	Paris, FRANCE	7 to 10 A.M., Daily
11.88	25.20	FYA		10 A.M. to 5 P.M., Daily
11.70	25.63	FYA		2 to 11 P.M., Daily
15.20	19.73	DJB	Berlin, GERMANY	1 to 2 A.M. — 6:30 to 10 A.M., Daily
11.76	25.51	DJD		1 to 4:30 P.M. — 7 to 11 P.M., Daily
9.56	31.38	DJA		6:30 to 10 A.M. — 5 to 8 P.M., Daily
6.02	49.83	DJC		1 to 4:30 P.M. — 9 to 11 P.M., Daily
11.81	25.40	I2RO	Rome, ITALY	11:30 to 12:30 A.M. — 1.15 to 6 P.M., Daily
15.11	19.84	HVJ	Vatican City, ITALY	5:00 to 5:30 A.M., Daily
5.96	50.26	HVJ		5 to 6 A.M. Sunday — 2:00 to 2:15 P.M., Daily
17.77	16.88	PHI	Huizen, HOLLAND	7:30 to 11:00 A.M., Daily
11.73	25.57	PHI		7:30 to 10:00 A.M., Irreg.
9.86	30.40	EAQ	Madrid, SPAIN	5 to 7 P.M., Daily
9.60	31.25	CT1AA	Lisbon, PORTUGAL	Tues., Fri., 5 to 7 P.M.
9.59	31.27	HBL	Geneva, SWITZERLAND	5:30 to 6:15 P.M., Saturday
7.79	38.47	HBP		5:30 to 6:15 P.M., Saturday
9.59	31.28	VK2ME	Sydney, AUSTRALIA	Sunday 1 to 3 A.M. — 5 to 9 A.M. 11:30 A.M. to 1:30 P.M.
9.58	31.31	VK3LR	Melbourne, AUSTRALIA	3 to 7:30 A.M., Daily
9.51	31.55	VK3ME		5 to 7 A.M. Wed., Sat.
7.88	38.07	J1AA	Kemikawa — Cho Kiba-Chen — JAPAN	5 to 7 A.M., Daily
6.66	45.00	HC2RL	Guayaquil, ECUADOR	6 to 8 P.M., Sunday
6.62	45.31	PRADO	Rio Bomba, ECUADOR	9 to 11 P.M., Thursday
6.44	46.50	HJ1ABB	Barranquilla, COLOMBIA	7 to 10 P.M., Daily
6.25	48.00	HJ3ABF	Bogota, COLOMBIA	7 to 11 P.M., Daily
6.15	48.78	YV3BC	Caracas, VENEZUELA	10:30 A.M. to 1 P.M. — 4:30 to 9:30 P.M., Week days
6.11	49.08	YV1BC		5 to 10 P.M., Daily
6.06	49.50	HIX	Santo Domingo, DOMINICAN REPUBLIC	9 to 11 A.M. — 3 to 5 P.M. — 9 to 10 P.M., Irreg.
6.02	49.80	XEBT	Mexico City, MEXICO	6 to 12 P.M., Irreg.
6.00	50.00	COC	Havana, CUBA	4 to 6 P.M., Daily
6.00	50.00	RV59	Moscow, U.S.S.R.	2 to 6 P.M., Daily
5.93	50.59	HJ4ABE	Medellin, COLOMBIA	6 to 11 P.M., Daily
4.27	70.20	RV15	Khabarovsh, SIBERIA	3 to 9 A.M., Daily
4.11	73.00	HCJB	Quito, ECUADOR	7 to 10 P.M., Daily

A Partial LOG OF OTHER FOREIGN STATIONS

Megacycles	Meters	Call	LOCATION	Megacycles	Meters	Call	LOCATION
21.08	14.23	PSA	Rio de Janerio, Brazil Calls WKK, WLK daytime	6.13	48.92	LCL	Jeloy, Norway Relays Oslo 11 A.M. to 6 P.M.
21.03	14.27	LSN	Buenos Aires, Argentine 8 A.M. to 4 P.M. WKK and WLK	6.12	49.00		Johannesburg, Africa 4 to 6 A.M., 8 to 10:30 A.M., 11 A.M. to 3:40 P.M.
20.02	14.99	DHO	Nauen, Germany Calls PPU and LSM mornings	6.12	49.00	PK1WK	Bandoeng, Java, 5 to 6:30 A.M.
19.35	15.50	FTM	St. Assise, France Calls LSG 10:00 A.M.—2:00 P.M.	6.11	49.08	VE9HX	Halifax, N. S. 8:30 to 11:30 A.M., 5 to 10 P.M.
18.04	16.63	GAA	Rugby, England Calls Argentine 10:00 A.M. to 2:00 P.M.	6.11	49.08	VUC	Calcutta, India, 9:30 A.M. to noon, Saturdays 11:45 P.M. to 3 A.M.
17.75	16.92	HSP	Bangkok, Siam Calls Germany 4:30 A.M. to 6:30 A.M.	6.10	49.20	HJ1ABD	Cartegena, Colombia 11:30 A.M. to 12:30 P.M., 7 to 9 P.M.
16.04	18.71	KKP	Kauhuku, Hawaii Calls KWU 1:00 to 7:00 P.M.	6.09	49.29	VE9GW	Bowmanville, Ontario Mon., Tues., Wed., 1 to 10 P.M. Thurs., 2 to 11 P.M. Fri., Sat., 6 A.M. to 11 P.M. Sun., 10 A.M. to 7 P.M.
15.81	19.02	LSL	Buenos Aires, Argentine Calls GAA 8 A.M. to 1 and FTM 1 to 2 P.M.	6.09	49.22	VE9BJ	St. John's, N.E., Canada Near 5 and 11 P.M.
14.53	20.65	LSN	Buenos Aires, Argentine Phones New York, daytimes	6.07	49.39	YV5BMO	Maracaibo, Venezuela Irregularly 5:30 to 11 P.M.
14.46	20.75	GBW	Rugby, England Phones MNC 6 A.M. to 6 P.M.	6.07	49.39	OKY	Shamelback, Denmark 2 to 6:30 P.M., irregular
11.72	25.60	CJRX	Winnipeg, Canada 6 to 10:30 P.M., Sun. 9 to 10 P.M.	6.07	49.39	VE9CS	Vancouver, B. C. Fri. 12:30 to 1:45 A.M. Sun. Noon to Midnight
10.67	28.12	CEC	Santiago, Chili Calls HJY, evenings, irregularly	6.06	49.50	HIX	Santo Domingo, R.D. Tues., Fri., 8:10 to 10:10 P.M. Sun., 8:40 to 10:40 A.M. and 2:40 to 4:40 P.M.
10.35	28.98	LSX	Buenos Aires, Argentine Thurs. and Fri. 8 P.M., Sat. 10 P.M.	6.06	49.50	VO7LO	Nairobi, Kenya Colony 11 A.M. to 2 P.M. daily
9.60	31.25	XETE	Mexico City 8 to 10 P.M., irregular	6.05	49.60	HJ3ABI	Bogota, Colombia 8 to 10 P.M., irregular
9.37	32.02	HJ5ABH	Palmira, Colombia 11 to 12 A.M. and 7:30 to 9:30 P.M.	6.02	49.83	CQN	Macao, China Mon., Fri., 7 to 9 A.M.
9.28	32.33	GCB	Rugby, England Calls CGA and SUV afternoons	6.01	49.96	VE9DN	Drummondville, Canada Sat., after 10:30 P.M.
9.12	32.89	CP5	La Paz, Bolivia 7:30 to 10:30 P.M., irregularly	6.01	49.96	COC	Havana, Cuba, Daily 4 to 6 P.M., Also irregular 8 to 10 P.M.
8.05	37.33	CNR	Rabat, Morocco, Africa Sunday 2:30 to 5 P.M.	5.99	50.08	YV4BSG	Caracas, Venezuela 4:30 to 10:30 P.M.
7.52	39.89	KKH	Kauhuku, Hawaii Calls KWO California evenings	5.97	50.25	HJ2ABC	Cucuta, Colombia 11 A.M. to Noon, 6 to 9 P.M.
7.40	40.55	HJ3ABD	Bogota, Colombia 7:30 to 11 P.M.	5.95	50.42	HJ4ABE	Medellin, Colombia, Mon., 7 to 11 P.M. Tues., Thurs., Sat., 6:15 to 8 P.M. Wed., Fri., 7:30 to 10:30 P.M.
7.22	41.55	HKE	Bogota, Colombia Mon. 6 to 7 P.M. Tues., Fri., 8 to 9 P.M.	5.95	50.42	TGX	Guatemala City, Sun., 2 to 5 A.M. And also near Midnight
7.00	42.86	HJ1ABE	Cartagena, Colombia Mon. 10, Wed. 8 P.M.	5.88	51.49	HJ2ABA	Tunja, Colombia 1 to 2 and 7:30 to 10 P.M.
6.67	44.96	HC2RL	Guayaquil, Ecuador Sun. 5:45 to 8, Tues. 9:15 to 11:45 P.M.	5.77	52.00	XDA and XAM	Mexico, Evenings near 7 P.M.
6.61	45.35	REN	Moscow, U.S.S.R., 1 to 6 P.M.	5.70	52.65	HCK	Quito, Ecuador Generally 8 to 11 P.M.
6.48	46.30	HJ5ABD	Cali, Colombia, 7 to 10 P.M.	5.60	53.57	HJ3ABC	Cali, Colombia, 8 to 10 P.M.
6.45	46.51	HJ1ABB	Barranquilla, Colombia 7:30 to 10 P.M. daily	4.32	69.44	GDB- G6RX	Rugby, England Evenings 7 to 10 P.M.
6.32	47.50	HIZ	Santo Domingo, R.D. Daily 4:40 to 5:40; Sat. 11 to 12:40 P.M.	4.25	70.65	RV15	Khabarovsk, U.S.S.R., 1 to 9 A.M.
6.23	47.80	HI1A	Dominican Republic 12:10 to 1:40 and 7:40 to 9:40 P.M. daily. Sun. 1:40 to 4:40 P.M. and 7:40 to 9:40 P.M.				
6.13	48.92	ZGE	Kuala Lumpur, Malaya States Sun., Tues., Fri. 6:40 to 8:40 A.M.				

LEADING U. S. SHORT-WAVE RADIO STATIONS

Megacycles	Meters	Call	LOCATION	Megacycles	Meters	Call	LOCATION
21.54	13.92	W8XK	Pittsburgh, Pa., 6 A.M. to 1 P.M., Relays for KDKA	9.59	31.27	W3XAU	Philadelphia, Pa. 11 A.M. to 5 P.M., irregular
21.41	14.01	WKK	Lawrenceville, N. J., 8 A.M. till 4 P.M. Phones PSA, Brazil	9.57	31.36	WIXAZ	Boston, Mass., 6 A.M. to Midnight
17.78	16.87	W3XAL	Bound Brook, N. J., 9 A.M. to 3 P.M.	9.53	31.49	W2XAF	Schenectady, N. Y. 6:45 P.M. to 10 P.M.
15.35	19.54	KWU	Dixon, Calif. 2 till 7 P.M. Phones to Hawaii	9.49	31.60	WEF	Rocky Point, N. Y. Heard in the evening
15.34	19.56	W2XAD	Schenectady, N. Y. Mon., Wed., Fri. 1:30 to 2:30 P.M. Sun. 1 to 3 P.M.	6.43	46.69	W3XAL	Bound Brook, N. J. Relays Chain Programs
15.27	19.64	W2XE	Wayne, N. J., 10 A.M. to 12 Noon Relays for WABC	6.14	48.86	W8XK	Pittsburgh, Pa., 3:30 P.M. to 1 A.M. Relays for KDKA
15.21	19.72	W8XK	Pittsburgh, Pa., 9 A.M. to 3:15 P.M. Relays for KDKA	6.12	49.00	W2XE	Wayne, N. J. 5 P.M. to 10 P.M. Relays for WABC
13.90	21.58	WQP	Rocky Point, N. Y. Calls RNE at intervals A.M.	6.10	49.18	W3XAL	Bound Brook, N. J., 4 P.M. to Midnight, Mon., Wed., Sat.
11.97	25.11	KKQ	Bolinas, Calif. Heard irregularly evenings	6.10	49.18	W9XF	Chicago, Ill. 3:30 to 7 P.M., 8:30 to 1 A.M.
11.87	25.27	W8XK	Pittsburgh, Pa. 3:30 to 9 P.M., Relays KDKA	6.08	49.34	W9XAA	Chicago, Ill. 1 P.M. to about 6 P.M. Sun.
11.83	25.36	W2XE	Wayne, N. J. Relays WABC 2 to 4 P.M.	6.06	49.50	W3XAU	Philadelphia, Pa., 7 P.M. to Midnight
11.79	25.42	WIXAL	Boston, Mass. Relays NBC Programs	6.06	49.50	W8XAL	Cincinnati, Ohio, 6:30 A.M. to 7 P.M., 10 P.M. to 2 A.M.
				6.04	49.67	WIXAL	Boston, Mass. Daily 6 to 7 P.M.

GET THE NEWS
BEFORE IT IS
PUBLISHED



POLICE CALLS

With a short wave radio, you can listen-in on the incessant alarms broadcast to cruising squad cars — you can thrill to the pulse quickening dramas of city life in which radio plays such an important part.

Police stations come on the air, broadcast their message, and immediately go off the air. When a Police Call is tuned in, you can listen to several others by simply keeping your dial at the same location, because there are a number of police stations on each wavelength.

120.48 Meters 2,490 Kilos
WFPF Clarksburg, W. Va.
WPDZ Fort Wayne, Ind.
WPFJ Hammond, Ind.
WPGO Huntington, N. Y.
WPDT Kokomo, Ind.
KGZU Lincoln, Nebr.
KGHJ Long Beach, Calif.
WPGS Mincola, N. Y.
KGHX Santa Ana, Calif.
KGZD San Diego, Calif.
KGHD Seattle, Wash.
KGHE Snoqualmie, Wash.
WPGN South Bend, Ind.

121.26 Meters 2,474 Kilos
WFFO Knoxville, Tenn.
KGHG Las Vegas, Nev.
WPDZ Philadelphia, Pa.
KGHM Reno, Nev.
WPFQ Swarthmore, Pa.
WRDQ Toledo, Ohio

121.65 Meters 2,466 Kilos
WPGA Bay City, Mich.
KGOZ Cedar Rapids, Iowa
WPGK Cranston, R. I.
KGNP Davenport, Iowa
KGZG Des Moines, Iowa
WPDF Flint, Mich.
WPEC Memphis, Tenn.
KGPI Omaha, Nebr.
WPFV Pawtucket, R. I.
WPGH Port Huron, Mich.
KGPB Sioux City, Iowa
WPEM Woonsocket, R. I.

122.05 Meters 2,458 Kilos
WPDO Akron, Ohio
WPDV Charlotte, N. C.
WRBW Cleveland, Ohio
KGZW Lubbock, Texas

WPGD Rockford, Ill.
WPDG Youngstown, Ohio
KGZI Wichita Falls, Texas

122.40 Meters 2,450 Kilos
WPEF Bronx, N. Y.
WPBE Brooklyn, N. Y.
KGZF Chanute, Kans.
KGZP Coffeyville, Kans.
KGPO Honolulu, Hawaii
WPDK Milwaukee, Wis.
WPEG New York, N. Y.
KGPB Oklahoma City, Okla.
KGPO Tulsa, Okla.
KGPZ Wichita, Kans.

122.85 Meters 2,442 Kilos
WPLG Binghamton, N. Y.
KGPX Denver, Colo.
WPEB Grand Rapids, Mich.
WMDZ Indianapolis, Ind.
WPFQ Jacksonville, Fla.
WFFT Lakeland, Fla.
WDDL Lansing, Mich.
WPDF Louisville, Ky.
WPFZ Miami, Fla.

122.85 Meters 2,442 Kilos
WPEC Muskegon, Mich.
WPFX Palm Beach, Fla.
KGPB Portland, Ore.
WFFE Reading, Pa.
WPDH Richmond, Ind.
WPEB Saginaw, Mich.
KCZR Salem, Ore.

123.45 Meters 2,430 Kilos
WPMI Columbus, Ohio
WPDH Dayton, Ohio
WPFK Hackensack, N. J.
KGPB Minneapolis, Minn.
WPEB New Orleans, La.
KGZJ Phoenix, Ariz.

WPGI Portsmouth, Ohio
WDDS St. Paul, Minn.
WPEE Shreveport, La.

123.80 Meters 2,422 Kilos
WMJ Buffalo, N. Y.
KGPE Kansas City, Mo.
WPFU Portland, Maine
KGZC Topeka, Kans.
KGPB Vallejo, Calif.
WPDW Washington, D. C.

124.37 Meters 2,414 Kilos
KGZV Aberdeen, Wash.
WPGH Albany, N. Y.
KGZX Albuquerque, N. M.
WPDY Atlanta, Ga.
KGPS Bakersfield, Calif.
WPFH Baltimore, Md.
WPFJ Columbus, Ga.
WCK-WPDX Detroit, Mich.
KGZM El Paso, Texas
KGZA Fresno, Calif.
WRDR Grosse Pointe, Mich.
WMO Highland Park, Mich.
WPGM Lagrange, Ga.
KGZO Santa Barbara, Calif.
KGPB Santa Fe, N. M.
KGPB Seattle, Wash.
KGHS Spokane, Wash.
KGZN Tacoma, Wash.
WPGA Tulare, Calif.
WPGJ Utica, N. Y.

124.69 Meters 2,406 Kilos
KGBZ Little Rock, Ark.
KGPW Salt Lake City, Utah

175.23 Meters 1,712 Kilos
WPEB Arlington, Mass.
KGPJ Beaumont, Texas
WPDJ-C-D Chicago, Ill.

KVP Dallas, Texas
WPEI E. Providence, R. I.
KGPL Los Angeles, Calif.
WPFN New Bedford, Mass.
WFFA Newton, Mass.
KGJX Pasadena, Calif.
WPDU Pittsburgh, Pa.
WPGF Providence, R. I.
KGZY San Bernardino, Calif.
WPEH Somerville, Mass.
KGZQ Waco, Texas

175.85 Meters 1,706 Kilos
WKDU Cincinnati, Ohio
WPET Lexington, Ky.
KGPC St. Louis, Mo.

178.36 Meters 1,682 Kilos
KGHO Des Moines, Iowa
WPGF Findlay, Ohio

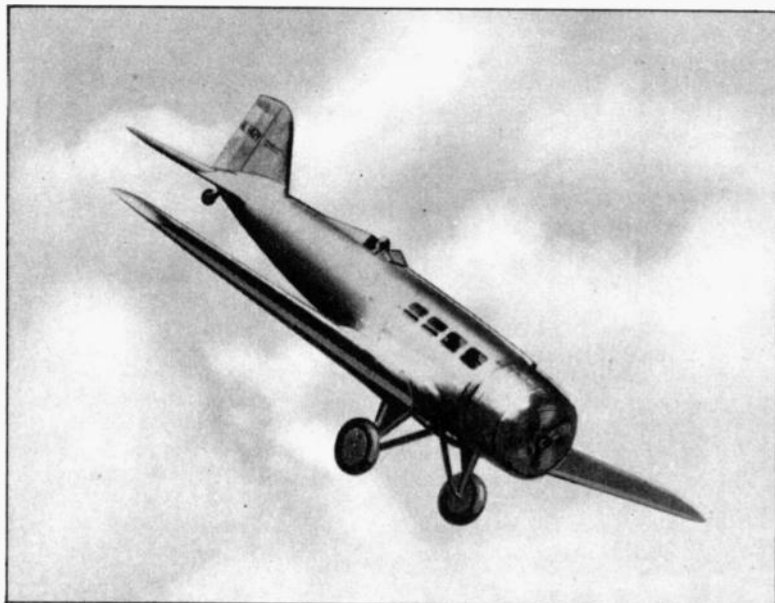
179.21 Meters 1,674 Kilos
KGHK Palo Alto, Calif.
KGPB San Francisco, Calif.
KGPB San Jose, Calif.
KGZT Santa Cruz, Calif.

180.07 Meters 1,666 Kilos
WRDS East Lansing, Mich.
WMP Framingham, Mass.
WPEW Northampton, Mass.
WPEL Bridgewater, Mass.

180.88 Meters 1,658 Kilos
KSW Berkeley, Calif.
WPGC S. Schenectady, N. Y.
KGZE San Antonio, Texas

184.05 Meters 1,630 Kilos
WEY Boston, Mass.
WKDT Detroit, Mich.
KGPB San Francisco, Calif.
KIDA Seattle, Wash.

Short Waves Carry the Conversations between AIRPLANES and AIRPORTS



Skilled pilots, winging their way across the continent in mail and passenger planes, keep in constant touch with their ground crews via short wave radio.

With a Round-the-World radio set, you can eavesdrop on these epics of the air — hear warnings sent aloft of blinding fogs and hazardous storms — then, on the same wave length, listen to the voices of the pilots themselves, punctuated by the steady drone of the mighty motors.

Today, there are 138 Airplane Stations in the United States. They are assigned to no specific wave length sector — are interspersed throughout the entire short wave band — but are most concentrated between 3000-3500 kilocycles, and 52-59 meters (5.0 - 5.5 megacycles).



Short Waves Also Bring Broadcasts from SHIPS at SEA . . .

These stations relay telephone conversations from shore to ships, and vice versa. Also, they are frequently rented to broadcast special programs direct from the big ocean liners at sea. Ship Stations broadcast on four bands:

16.85 — 18.27 Meters (17.80 — 16.42 Megacycles)
 22.50 — 24.30 Meters (13.34 — 12.35 Megacycles)
 33.93 — 36.58 Meters (8.84 — 8.20 Megacycles)
 67.87 — 73.17 Meters (4.42 — 4.10 Megacycles)

Phone calls from shore to ships are most frequently broadcast from Station WOO, Ocean Gate, N. J., on 17.12 megacycles (17.52 meters), and 9.53 megacycles (35.02 meters). This station phones ships, England and South America.

Calls of Prominent Passenger Liners:

GLRZ	Aquitania	DAAC	Europa
GMJQ	Belgianland	DXJC	Hamburg
GBZW	Berengeria	FNSM	Ile de France
DDAS	Bremen	GFVW	Majestic
GFJX	Caledonia	VQJM	Monarch of Bermuda
DOBX	Columbus	DHRL	New York
DDDT	Deutschland	GLSQ	Olympic
GMBJ	Empress of Britain	VQJP	Queen of Bermuda

AMATEUR PHONE STATIONS

You can listen to the "Radio Engineers of Tomorrow" chat through thousands of miles of space with friends they never see. These stations are licensed by the Federal Radio Commission the same as any commercial broadcast station. But, these so-called "Amateur" stations are not assigned to any definite wave lengths, they can broadcast anywhere within the "amateur bands" established by governmental regulations. You can listen to Amateur Phone conversations at approximately 21 meters (14 megacycles), 75 meters (4.0 megacycles), 135-160 meters (1750-2000 kilocycles). The amateur band between 40-42 meters is reserved for broadcasts in code.



UNITED STATES BROADCAST STATIONS

Call	Kilocycles	Location	Call	Kilocycles	Location	Call	Kilocycles	Location	Call	Kilocycles	Location
KABC	1420	San Antonio, Tex.	KGCA	1270	Decorah, Iowa	KMO	1330	Tacoma, Wash.	KVOR	1270	Colorado Springs, Colo.
KALE	1300	Portland, Ore.	KGCR	1210	Watertown, S. D.	KMOX	1090	St. Louis, Mo.	KVOS	1200	Bellingham, Wash.
KARK	890	Little Rock, Ar.	KGCU	1240	Manda, N. D.	KMPK	710	Beverly Hills, Cal.	KWCR	1430	Cedar Rapids, Ia.
KASA	1210	Elk City, Okla.	KGCS	1310	Wolf Point, Mont.	KMTR	570	Hollywood, Cal.	KWEA	1210	Shreveport, La.
KBPS	1420	Portland, Ore.	KGDE	1200	Fergus Falls, Minn.	KNOW	1500	Austin, Tex.	KWFV	1210	Hilo, Hawaii
KBTM	1200	Jonesboro, Ark.	KGDM	1100	Stockton, Cal.	KNX	1050	Hollywood, Cal.	KWG	1200	Stockton, Cal.
KCMC	1420	Texarkana, Ark.	KGDY	1340	Huron, S. D.	KOA	830	Denver, Colo.	KWJJ	1040	Portland, Ore.
KCRC	1370	Enid, Okla.	KGEX	1200	Yuma, Colo.	KOAC	550	Corvallis, Ore.	KWK	1350	St. Louis, Mo.
KCRJ	1310	Jerome, Ariz.	KGER	1360	Long Beach, Cal.	KOB	1180	Albuquerque, N. M.	KWKC	1370	Kansas City, Mo.
KDB	1500	Santa Barbara, Cal.	KGEZ	1310	Kalispell, Mont.	KOH	1380	Reno, Nev.	KWKH	850	Shreveport, La.
KDFN	1440	Casper, Wyo.	KGFF	1420	Shawnee, Okla.	KOIL	1260	Council Bluffs, Ia.	KWLK	1270	Decorah, Iowa
KDKA	980	Pittsburgh, Pa.	KGFG	1370	Oklahoma, Okla.	KOIN	940	Portland, Ore.	KWSC	1220	Pullman, Wash.
KDLR	1210	Devils Lake, N. D.	KGFI	1500	Corpus Christi, Tex.	KOL	1270	Seattle, Wash.	KWTO	560	Springfield, Mo.
KDYL	1290	Salt Lake City, U.	KGfJ	1200	Los Angeles, Cal.	KOMA	1480	Oklahoma City, Okla.	KWWG	1260	Brownsville, Tex.
KECA	1430	Los Angeles, Cal.	KGfK	1500	Moorehead, Minn.	KOMO	920	Seattle, Wash.	KWYO	1370	Sheridan, Wyo.
KELW	780	Burbank, Cal.	KGfL	1370	Rosewell, N. M.	KONO	1370	San Antonio, Tex.	KXA	760	Seattle, Wash.
KERN	1370	Bakersfield, Cal.	KGfW	1310	Kearney, Nebr.	KOOS	1370	Marshfield, Ore.	KXL	1420	Portland, Ore.
KEX	1180	Portland, Ore.	KGfX	630	Pierre, S. D.	KORE	1420	Eugene, Ore.	KXO	1500	El Centro, Cal.
KFAB	770	Lincoln, Nebr.	KGgC	1420	San Francisco, Cal.	KOTN	1500	Pine Bluff, Ark.	KXRO	1310	Aberdeen, Wash.
KFAC	1300	Los Angeles, Cal.	KGgF	1010	Coffeyville, Kan.	KOY	1390	Phoenix, Ariz.	KXYZ	1440	Houston, Tex.
KFBB	1280	Great Falls, Mont.	KGgM	1230	Albuquerque, N. M.	KPCB	650	Seattle, Wash.	KYA	1230	San Francisco, Cal.
KFBI	1050	Abilene, Kan.	KGhF	1320	Pueblo, Colo.	KPJM	1500	Prescott, Ariz.	KYW	1020	Chicago, Ill.
KFBK	1310	Sacramento, Cal.	KGhI	1200	Little Rock, Ark.	KPO	680	San Francisco, Cal.	WAAB	1410	Boston, Mass.
KFBL	1370	Everett, Wash.	KGhL	950	Billings, Mont.	KPOF	880	Denver, Colo.	WAAF	920	Chicago, Ill.
KFDM	560	Beaumont, Tex.	KGIR	1340	Butte, Mont.	KPPC	1210	Pasadena, Cal.	WAAT	940	Jersey City, N. J.
KFDY	780	Brookings, S. D.	KGiW	1420	Alamosa, Colo.	KPQ	1500	Wenatchee, Wash.	WAAW	660	Omaha, Nebr.
KFEL	920	Denver, Colo.	KGIX	1420	Las Vegas, Nev.	KPRC	920	Houston, Tex.	WABC	860	New York, N. Y.
KFEQ	680	St. Joseph, Mo.	KGKB	1500	Tyler, Tex.	KQV	1380	Pittsburgh, Pa.	WABI	1200	Bangor, Me.
KFGQ	1310	Boone, Iowa	KGKL	1370	San Angelo, Tex.	KQW	1010	San Jose, Cal.	WACO	1420	Waco, Tex.
KFH	1300	Wichita, Kan.	KGKO	570	Wichita Falls, Tex.	KRE	1370	Berkeley, Cal.	WADC	1320	Akron, Ohio
KFI	640	Los Angeles, Cal.	KGKY	1500	Scottsbluff, Nebr.	KREG	1500	Santa Ana, Cal.	WAGM	1420	Presque Isle, Me.
KFIO	1120	Spokane, Wash.	KGMB	1320	Honolulu, Hawaii	KRGV	1260	Harlingen, Tex.	WAIU	640	Columbus, Ohio
KFIZ	1420	Fond du Lac, Wis.	KGnF	1430	North Platte, Nebr.	KRKD	1120	Los Angeles, Cal.	WALA	1410	Mobile, Ala.
KFJB	1200	Marshalltown, Iowa	KGNO	1340	Dodge City, Kan.	KRLD	1040	Dallas, Tex.	WALR	1210	Zanesville, Ohio
KFJI	1210	Klamath Falls, Ore.	KG0	790	San Francisco, Cal.	KRMD	1310	Shreveport, La.	WAMC	1420	Anniston, Ala.
KFJM	1370	Grand Forks, N. D.	KGRS	1410	Amarillo, Tex.	KROW	930	Oakland, Cal.	WAML	1310	Laurel, Miss.
KFJR	1300	Portland, Ore.	KGU	750	Honolulu, Hawaii	KRSK	1120	Seattle, Wash.	WAPI	1140	Birmingham, Ala.
KFJZ	1370	Fort Worth, Tex.	KGVO	1200	Missoula, Mont.	KSAC	580	Manhattan, Kan.	WARD	1400	Brooklyn, N. Y.
KFKA	880	Fort Greeley, Colo.	KGW	620	Portland, Ore.	KSCJ	1330	Sioux City, Iowa	WASH	1270	Grand Rapids, Mich.
KFKU	1220	Lawrence, Kan.	KGy	1210	Olympia, Wash.	KSD	550	St. Louis, Mo.	WATR	1190	Waterbury, Conn.
KFNF	890	Shenandoah, Iowa	KHJ	900	Los Angeles, Cal.	KSEI	890	Pocatello, Idaho	WAVE	940	Louisville, Ky.
KFOR	1210	Lincoln, Nebr.	KICA	1370	Clovis, N. M.	KSL	1130	Salt Lake City, U.	WAWZ	1350	Zarephath, N. J.
KFOX	1250	Long Beach, Cal.	KICK	1420	Carter Lake, Iowa	KSO	1320	Des Moines, Iowa	WAZL	1420	Hazelton, Pa.
KFPL	1310	Dublin, Tex.	KID	1320	Idaho Falls, Idaho	KSOO	1110	Sioux Falls, S. D.	WBAA	1400	Lafayette, Ind.
KFPM	1310	Greenville, Tex.	KIDO	1350	Boise, Idaho	KSTP	1460	St. Paul, Minn.	WBAL	1060	Baltimore, Md.
KFPW	1210	Fort Smith, Ark.	KIDW	1420	Lamar, Colo.	KSUN	1200	Lowell, Ariz.	WBAP	800	Fort Worth, Tex.
KFPY	890	Spokane, Wash.	KIEM	1210	Eureka, Cal.	KTAB	560	San Francisco, Cal.	WBAX	1210	Wilkes-Barre, Pa.
KFQD	600	Anchorage, Alaska	KIEV	850	Glendale, Cal.	KTAR	620	Phoenix, Ariz.	WBBC	1400	Brooklyn, N. Y.
KFRC	610	San Francisco, Cal.	KIFH	1310	Juneau, Alaska	KTAT	1240	Fort Worth, Tex.	WBBL	1210	Richmond, Va.
KFRU	630	Columbia, Mo.	KIFS	1518	Fort Klamath, Ore.	KTBS	1450	Shreveport, La.	WBBM	770	Chicago, Ill.
KFSO	600	San Diego, Cal.	KIT	1310	Yakima, Wash.	KTFI	1240	West Twin Falls, Ida.	WBBR	1300	Brooklyn, N. Y.
KFSG	1120	Los Angeles, Cal.	KJBS	1070	San Francisco, Cal.	KTHS	1060	Hot Springs National Park, Ark.	WBBZ	1200	Ponca City, Okla.
KFUO	550	St. Louis, Mo.	KJR	970	Seattle, Wash.	KTM	780	Los Angeles, Cal.	WBCM	1410	Bay City, Mich.
KFVD	1000	Los Angeles, Cal.	KLCN	1290	Blytheville, Ark.	KTRB	740	Modesto, Cal.	WBEN	900	Buffalo, N. Y.
KFVS	1210	Cape Girardeau, Mo.	KLO	1400	Ogden, Utah	KTRH	630	Houston, Tex.	WBEO	1310	Marquette, Mich.
KFWB	950	Hollywood, Cal.	KLPM	1240	Minot, N. D.	KTSA	1290	San Antonio, Tex.	WBHS	1200	Huntsville, Ala.
KFXD	1200	Nampa, Idaho	KLRA	1390	Little Rock, Ark.	KTSM	1310	El Paso, Tex.	WBIG	1440	Greensboro, N. C.
KFXF	920	Denver, Colo.	KLS	1440	Oakland, Cal.	KTUL	1400	Tulsa, Okla.	WBNO	1200	New Orleans, La.
KFXJ	1200	Grand Junction, Colo.	KLUF	1370	Galveston, Tex.	KTW	1220	Seattle, Wash.	WBNS	1430	Columbus, Ohio
KFXM	1210	San Bernardino, Cal.	KLX	880	Oakland, Cal.	KUJ	1370	Walla Walla, Wash.	WBNX	1350	New York, N. Y.
KFXR	1310	Oklahoma, Okla.	KLZ	560	Denver, Colo.	KUMA	1420	Yuma, Ariz.	WBOQ	860	New York, N. Y.
KFYO	1310	Lubbock, Tex.	KMA	930	Shenandoah, Iowa	KUOA	1260	Fayetteville, Ark.	WBOW	1310	Terre Haute, Ind.
KFYR	550	Bismarck, N. D.	KMAC	1370	San Antonio, Tex.	KUSD	890	Vermillion, S. D.	WBRC	930	Birmingham, Ala.
KGFA	1470	Spokane, Wash.	KMBC	950	Kansas City, Mo.	KVI	570	Tacoma, Wash.	WBRE	1310	Wilkes-Barre, Pa.
KGAR	1370	Tucson, Ariz.	KMED	1310	Medford, Ore.	KVL	1370	Seattle, Wash.	WBSE	920	Babson Park, Mass.
KGB	1330	San Diego, Cal.	KMJ	580	Fresno, Cal.	KVOA	1260	Tucson, Ariz.	WBT	1080	Charlotte, N. C.
KGBU	900	Ketchikan, Alaska	KMLB	1200	Monroe, La.	KVOO	1140	Tulsa, Okla.	WBTM	1370	Danville, Va.
KGBX	1310	Springfield, Mo.	KMMJ	740	Clay Center, Nebr.						
KGBZ	930	York, Nebr.									

(Continued on next page)

UNITED STATES BROADCAST STATIONS

Call Kilocycles Location

(Continued from preceding page)

WBZ 990 Boston, Mass.
 WBZA 990 Springfield, Mass.
 WCAC 600 Storrs, Conn.
 WCAD 1220 Canton, N. Y.
 WCAE 1220 Pittsburgh, Pa.
 WCAL 1250 Northfield, Minn.
 WCAM 1280 Camden, N. J.
 WCAO 600 Baltimore, Md.
 WCAP 1280 Asbury Park, N. J.
 WCAT 1200 Rapid City, S. D.
 WCAU 1170 Philadelphia, Pa.
 WCAX 1200 Burlington, Vt.
 WCAZ 1070 Carthage, Ill.
 WCBA 1440 Allentown, Pa.
 WCB D 1080 Zion, Ill.
 WCBM 1370 Baltimore, Md.
 WCBS 1210 Springfield, Ill.
 WCCO 810 Minneapolis, Minn.
 WCFL 970 Chicago, Ill.
 WCHS 580 Charleston, W. Va.
 WCKY 1490 Covington, Ky.
 WCLO 1200 Janesville, Wis.
 WCLS 1310 Joliet, Ill.
 WCNW 1500 Brooklyn, N. Y.
 WCOA 1340 Pensacola, Fla.
 WCOC 880 Meridan, Miss.
 WCRW 1210 Chicago, Ill.
 WCSC 1360 Charleston, S. C.
 WCSH 940 Portland, Me.
 WDAE 1220 Tampa, Fla.
 WDAF 610 Kansas City, Mo.
 WDAG 1410 Amarillo, Tex.
 WDAH 1310 El Paso, Tex.
 WDAS 1370 Philadelphia, Pa.
 WDAY 940 Fargo, N. D.
 WDBJ 930 Roaroke, Va.
 WDBO 580 Orlando, Fla.
 WDEL 1120 Wilmington, Del.
 WDEV 550 Waterbury, Vt.
 WDG Y 1180 Minneapolis, Minn.
 WDNC 1500 Durham, N. C.
 WDOD 1280 Chattanooga, Tenn.
 WDRC 1330 Hartford, Conn.
 WDSU 1250 New Orleans, La.
 WDZ 1070 Tuscola, Ill.
 WFAF 660 New York, N. Y.
 WEAN 780 Providence, R. I.
 WEBC 1290 Superior, Wis.
 WEBQ 1210 Harrisburg, Ill.
 WEBR 1310 Buffalo, N. Y.
 WEDC 1210 Chicago, Ill.
 WEED 1420 Greenville, N. C.
 WEEI 590 Boston, Mass.
 WEEU 830 Reading, Pa.
 WEHC 1350 Charlottesville, Va.
 WEHS 1420 Cicero, Ill.
 WELL 1420 Battle Creek, Mich.
 WENC 1420 Albany, Ga.
 WENR 870 Chicago, Ill.
 WESG 680 Elmira, N. Y.
 WEVD 1300 New York, N. Y.
 WEW 760 St. Louis, Mo.
 WEXL 1310 Royal Oak, Mich.
 WFAA 800 Dallas, Tex.
 WFAB 1300 New York, N. Y.
 WFAM 1200 South Bend, Ind.
 WFAS 1210 White Plains, N. Y.
 WFBC 1200 Greenville, S. C.

Call Kilocycles Location

WFBE 1200 Cincinnati, Ohio
 WFBG 1310 Altoona, Pa.
 WFBL 1360 Syracuse, N. Y.
 WFBM 1230 Indianapolis, Ind.
 WFBR 1270 Baltimore, Md.
 WFD F 1310 Flint, Mich.
 WFEA 1430 Manchester, N. H.
 WFI 560 Philadelphia, Pa.
 WFLA 620 Clearwater, Fla.
 WGAL 1500 Lancaster, Pa.
 WGAR 1450 Cleveland, Ohio
 WGBB 1210 Freeport, N. Y.
 WGBF 630 Evansville, Ind.
 WGBI 880 Scranton, Pa.
 WGCM 1210 Mississippi City, Miss.
 WGCP 1250 Newark, N. J.
 WGES 1360 Chicago, Ill.
 WGH 1310 Newport News, Va.
 WGL 1370 Fort Wayne, Ind.
 WGLC 1370 Hudson Falls, N. Y.
 WGN 720 Chicago, Ill.
 WGN Y 1210 Chester Twp., N. Y.
 WGR 550 Buffalo, N. Y.
 WGST 890 Atlanta, Ga.
 WGY 790 Schenectady, N. Y.
 WHA 940 Madison, Wis.
 WHAD 1120 Milwaukee, Wis.
 WHAM 1150 Rochester, N. Y.
 WHAS 820 Louisville, Ky.
 WHAT 1310 Philadelphia, Pa.
 WHAZ 1300 Troy, N. Y.
 WHB 860 Kansas City, Mo.
 WHBC 1200 Canton, Ohio
 WHBD 1370 Mt. Orab, Ohio
 WHBF 1210 Rock Island, Ill.
 WHBL 1410 Sheboygan, Wis.
 WHBQ 1370 Memphis, Tenn.
 WHBU 1210 Anderson, Ind.
 WHBY 1200 Green Bay, Wis.
 WHDF 1370 Calumet, Mich.
 WHDH 830 Boston, Mass.
 WHDL 1420 Tupper Lake, N. Y.
 WHEB 740 Portsmouth, N. H.
 WHEC 1430 Rochester, N. Y.
 WHEF 1500 Kosciusko, Miss.
 WHET 1370 Dothan, Ala.
 WHFC 1420 Cicero, Ill.
 WHIS 1410 Bluefield, W. Va.
 WHK 1390 Cleveland, Ohio
 WHN 1010 New York, N. Y.
 WHO 1000 Des Moines, Ia.
 WHOM 1450 Jersey City, N. J.
 WHP 1430 Harrisburg, Pa.
 WIBA 1280 Madison, Wis.
 WIBG 970 Glenside, Pa.
 WIBM 1370 Jackson, Mich.
 WIBU 1210 Poynette, Wis.
 WIBW 580 Topeka, Kan.
 WIBX 1200 Utica, N. Y.
 WICC 600 Bridgeport, Conn.
 WIL 1200 St. Louis, Mo.
 WILL 890 Urbana, Ill.
 WILM 1420 Wilmington, Del.
 WIND 560 Gary, Ind.
 WINS 1180 New York, N. Y.
 WIOD 1300 Miami, Fla.
 WIP 610 Philadelphia, Pa.
 WIS 1010 Columbia, S. C.

Call Kilocycles Location

WISN 1120 Milwaukee, Wis.
 WJAC 1310 Johnstown, Pa.
 WJAG 1060 Norfolk, Nebr.
 WJAR 890 Providence, R. I.
 WJAS 1290 Pittsburgh, Pa.
 WJAX 900 Jacksonville, Fla.
 WJAY 610 Cleveland, Ohio
 WJBC 1200 La Salle, Ill.
 WJBI 1210 Red Bank, N. J.
 WJBK 1500 Detroit, Mich.
 WJBL 1200 Decatur, Ill.
 WJBO 1420 Baton Rouge, La.
 WJBW 1200 New Orleans, La.
 WJBY 1210 Gadsden, Ala.
 WJDX 1270 Jackson, Miss.
 WJEJ 1210 Hagerstown, Md.
 WJEM 990 Tupelo, Miss.
 WJIM 1210 Lansing, Mich.
 WJJD 1130 Chicago, Ill.
 WJMS 1420 Ironwood, Mich.
 WJR 750 Detroit, Mich.
 WJSV 1460 Washington, D. C.
 WJTL 1370 Atlanta, Ga.
 WJW 1210 Akron, Ohio
 WJZ 760 New York, N. Y.
 WKAQ 1240 San Juan, Puerto Rico
 WKAR 1040 East Lansing, Mich.
 WKBB 1500 East Dubuque, Ill.
 WKBF 1400 Indianapolis, Ind.
 WKBH 1380 La Crosse, Wis.
 WKBI 1420 Cicero, Ill.
 WKBN 570 Youngstown, Ohio
 WKBO 1200 Harrisburg, Pa.
 WKBV 1500 Richmond, Ind.
 WKBW 1480 Buffalo, N. Y.
 WKBU 1500 Ludington, Mich.
 WKEV 1500 Lagrange, Ga.
 WKFI 1210 Greenwood, Miss.
 WKJC 1200 Lancaster, Pa.
 WKOK 1210 Sunbury, Pa.
 WKRC 550 Cincinnati, Ohio
 WKY 900 Oklahoma, Okla.
 WKZO 590 Kalamazoo, Mich.
 WLAC 1470 Nashville, Tenn.
 WLAP 1420 Lexington, Ky.
 WLB 1250 Minneapolis, Minn.
 WLBC 1310 Muncie, Ind.
 WLB F 1420 Kansas City, Kan.
 WLBL 900 Stevens Point, Wis.
 WLBW 1260 Erie, Pa.
 WLBZ 620 Bangor, Me.
 WLEU 1420 Erie, Pa.
 WLEY 1370 Lexington, Mass.
 WLIT 560 Philadelphia, Pa.
 WLNH 1310 Laconia, N. H.
 WLS 870 Chicago, Ill.
 WLTH 1400 Brooklyn, N. Y.
 WLVA 1370 Lynchburg, Va.
 WLW 700 Cincinnati, Ohio
 WLWL 1100 New York, N. Y.
 WMAL 630 Washington, D. C.
 WMAQ 670 Chicago, Ill.
 WMAS 1420 Springfield, Mass.
 WMAZ 1180 Macon, Ga.
 WMBC 1420 Detroit, Mich.
 WMBD 1440 Peoria, Ill.
 WMBF 1300 Miami Beach, Fla.
 WMBG 1210 Richmond, Va.
 WMBH 1420 Joplin, Mo.

Call Kilocycles Location

WMBI 1080 Chicago, Ill.
 WMBO 1310 Auburn, N. Y.
 WMBQ 1500 Brooklyn N. Y.
 WMBR 1370 Jacksonville, Fla.
 WMC 780 Memphis, Tenn.
 WMCA 570 New York, N. Y.
 WMEX 1500 Chelsea, Mass.
 WMMN 890 Fairmont, W. Va.
 WMPC 1200 Lapeer, Mich.
 WMT 600 Waterloo, Iowa
 WNNAC 1230 Boston, Mass.
 WNAD 1010 Norman, Okla.
 WNAX 570 Yankton, S. D.
 WNB F 1500 Binghamton, N. Y.
 WNBH 1310 New Bedford, Mass.
 WNBO 1200 Silverhaven, Pa.
 WNBR 1430 Memphis, Tenn.
 WNBW 1200 Carbondale, Pa.
 WNBX 1260 Springfield, Vt.
 WNBZ 1290 Saranac Lake, N. Y.
 WNEL 1290 San Juan, Puerto Rico
 WNEW 1250 Newark, N. J.
 WNOX 560 Knoxville, Tenn.
 WNRA 1420 Muscle Shoals City, Ala.
 WNYC 810 New York, N. Y.
 WOA I 1190 San Antonio, Tex.
 WOCL 1210 Jamestown, N. Y.
 WOI 640 Ames, Iowa
 WOKO 1430 Albany, N. Y.
 WOL 1310 Washington, D. C.
 WOMT 1210 Manitowoc, Wis.
 WOOD 1270 Grand Rapids, Mich.
 WOPI 1500 Bristol, Tenn.
 WOQ 1300 Kansas City, Mo.
 WOR 710 Newark, N. J.
 WORC 1280 Worcester, Mass.
 WORK 1000 York, Pa.
 WOS 630 Jefferson City, Mo.
 WOSU 570 Columbus, Ohio
 WOV 1130 New York, N. Y.
 WOW 590 Omaha, Nebr.
 WOWO 1160 Fort Wayne, Ind.
 WPAD 1420 Paducah, Ky.
 WPEN 1500 Philadelphia, Pa.
 WPF B 1370 Hattiesburg, Miss.
 WPG 1100 Atlantic City, N. J.
 WPHR 1200 Petersburg, Va.
 WPRO 1210 Providence, R. I.
 WPTF 680 Raleigh, N. C.
 WQAM 560 Miami, Fla.
 WQAN 880 Scranton, Pa.
 WQBC 1360 Vicksburg, Miss.
 WQDM 1370 St. Albans, Vt.
 WQDX 1210 Thomasville, Ga.
 WRAC 1370 Williamsport, Pa.
 WRAW 1310 Reading, Pa.
 WRAX 1020 Philadelphia, Pa.
 WRBL 1200 Columbus, Ga.
 WRBX 1410 Roanoke, Va.
 WRC 950 Washington, D. C.
 WRDO 1370 Augusta, Me.
 WRDW 1500 Augusta, Ga.
 WREC 600 Memphis, Tenn.
 WREN 1220 Lawrence, Kan.
 WRGA 1500 Rome, Ga.
 WRHM 1250 Minneapolis, Minn.
 WRJN 1370 Racine, Wis.

(Continued on next page)

UNITED STATES BROADCAST STATIONS

Call Kilocycles Location

(Continued from preceding page)

WROK 1410 Rockford, Ill.
 WROL 1310 Knoxville, Tenn.
 WRR 1280 Dallas, Tex.
 WRUF 830 Gainesville, Fla.
 WRVA 1110 Richmond, Va.
 WSAI 1330 Cincinnati, Ohio
 WSAJ 1310 Grove City, Pa.
 WSAN 1440 Allentown, Pa.
 WSAR 1450 Fall River, Mass.
 WSAZ 1190 Huntington, W. Va.
 WSB 740 Atlanta, Ga.
 WSBC 1210 Chicago, Ill.
 WSBT 1230 South Bend, Ind.

Call Kilocycles Location

WSEN 1210 Columbus, Ohio
 WSFA 1410 Montgomery, Ala.
 WSGN 1310 Birmingham, Ala.
 WSIX 1210 Springfield, Tenn.
 WSJS 1310 Winston-Salem, N.C.
 WSM 650 Nashville, Tenn.
 WSMB 1320 New Orleans, La.
 WSMK 1380 Dayton, Ohio
 WSOC 1210 Charlotte, N.C.
 WSPA 1420 Spartanburg, S.C.
 WSPD 1340 Toledo, Ohio
 WSUI 880 Iowa City, Iowa
 WSUN 620 St. Petersburg, Fla.
 WSVS 1370 Buffalo, N.Y.

Call Kilocycles Location

WSYB 1500 Rutland, Vt.
 WSYR 570 Syracuse, N.Y.
 WTAD 1440 Quincy, Ill.
 WTAG 580 Worcester, Mass.
 WTAM 1070 Cleveland, Ohio
 WTAQ 1330 Eau Claire, Wis.
 WTAR 780 Norfolk, Va.
 WTAW 1120 College St'n, Tex.
 WTAX 1210 Springfield, Ill.
 WTBO 1420 Cumberland, Md.
 WTEL 1310 Philadelphia, Pa.
 WTFI 1450 Athens, Ga.
 WTIC 1040 Hartford, Conn.

Call Kilocycles Location

WTJS 1310 Jackson, Tenn.
 WTMJ 620 Milwaukee, Wis.
 WTNJ 1280 Trenton, N.J.
 WTOG 1260 Savannah, Ga.
 WTRC 1310 Elkhart, Ind.
 WVFW 1400 Brooklyn, N.Y.
 WWAE 1200 Hammond, Ind.
 WWJ 920 Detroit, Mich.
 WWL 850 New Orleans, La.
 WWNC 570 Asheville, N.C.
 WWRL 1500 Woodside, N.Y.
 WWSW 1500 Pittsburgh, Pa.
 WWVA 1160 Wheeling, W. Va.
 WXYZ 1240 Detroit, Mich.

CANADIAN BROADCAST STATIONS

Call Kilocycles Location

CFAC 930 Calgary, Alta.
 CFBO 1210 St. John, N.B.
 CFCF 600 Montreal, Que.
 CFCH 930 North Bay, Ont.
 CFCN 1030 Calgary, Alta.
 CFCO 600 Chatham, Ont.
 CFCT 1450 Victoria, B.C.
 CFCY 630 Charlottetown, P.E.I.
 CFJC 1310 Kamloops, B.C.
 CFLC 930 Prescott, Ont.
 CFNB 1030 Fredericton, N.B.
 CFPL 730 London, Ont.
 CFQC 1230 Saskatoon, Sask.
 CFRB 690 Toronto, Ont.
 CFRG 1510 Kingston, Ont.
 CFTP 1260 Edmonton, Alta.
 CHAB 1200 Moose Jaw, Sask.

Call Kilocycles Location

CHCK 1310 Charlottetown, P.E.I.
 CHGS 1120 Summerside, P.E.I.
 CHLP 1120 Montreal, Que.
 CHML 1010 Hamilton, Ont.
 CHNC 1210 New Carlisle, Que.
 CHNS 1050 Halifax, N.S.
 CHPR 1370 St. John, N.B.
 CHRC 580 Quebec, Que.
 CHSJ 1370 St. John, N.B.
 CHWC 1010 Regina, Sask.
 CHWK 780 Chilliwack, B.C.
 CJAT 1200 Trail, B.C.
 CJCA 730 Edmonton, Alta.
 CJCB 880 Sydney, N.S.
 CJCJ 690 Calgary, Alta.
 CJCS 780 Sudbury, Ont.
 CJGX 630 Yorkton, Sask.

Call Kilocycles Location

CJKL 1310 Kirkland Lk., Ont.
 CJLS 1310 Yarmouth, N.S.
 CJOC 840 Lethbridge, Alta.
 CJOR 600 Vancouver, B.C.
 CJRC 1390 Winnipeg, Man.
 CJRM 540 Moose Jaw, Sask.
 CKAC 730 Montreal, Que.
 CKBI 1210 Prince Albert, Sask.
 CKCD 1010 Vancouver, B.C.
 CKCH 1210 Hull, Que.
 CKCK 1010 Regina, Sask.
 CKCL 580 Toronto, Ont.
 CKCO 1010 Ottawa, Ont.
 CKCR 1510 Waterloo, Ont.
 CKCV 1310 Quebec, Que.
 CKFC 1410 Vancouver, B.C.
 CKGB 1420 Timmins, Ont.
 CKIC 1010 Wolfville, N.S.

Call Kilocycles Location

CKLW 840 Windsor, Ont.
 CKMC 1210 Cobalt, Ont.
 CKMO 1410 Vancouver, B.C.
 CKNC 1030 Toronto, Ont.
 CKOC 1120 Hamilton, Ont.
 CKOV 1210 Kelowna, B.C.
 CKPC 930 Preston, Ont.
 CKPR 930 Fort William, Ont.
 CKTB 1200 St. Catharines, Ont.
 CKUA 580 Edmonton, Alta.
 CKWX 1010 Vancouver, B.C.
 CKX 1450 Brandon, Man.
 CKY 780 Winnipeg, Man.
 CRCM 910 Montreal, Que.
 CRCO 880 Ottawa, Ont.
 CRCS 1500 Chicoutimi, Que.
 CRCT 960 Toronto, Ont.
 CRCV 1100 Vancouver, B.C.

MEXICAN BROADCAST STATIONS

Call Kilocycles Location

XEA 1200 Guadalajara, Jal.
 XEAB 1210 Nuevo Laredo, Tams.
 XEAC 1295 San Luis Potosi, S.L.P.
 XEAE 980 Tijuana, L.C.
 XEAF 1080 Nogales, Son.
 XEAI 1420 Mexico City, D.F.
 XEAL 660 Mexico City, D.F.
 XEAO 660 Mexicali, L.C.
 XEAW 950 Reynosa, Tams.
 XEAZ 1420 Leon, Guan.
 XEB 1010 Mexico City, D.F.
 XEBC 1280 Agua Caliente, L.C.
 XEC 1200 Toluca, D.F.
 XECW 1310 Mexico City, D.F.
 XED 1160 Guadalajara, Jal.
 XEE 1210 Durango, Dgo.

Call Kilocycles Location

XEFA 1180 Mexico City, D.F.
 XEFB 1420 Monterrey, N.L.
 XEFC 1310 Merida, Yuc.
 XEFE 1370 Laredo, Tams.
 XEFG 1040 Mexico City, D.F.
 XEFI 720 Chihuahua, Chih.
 XEFJ 1210 Monterrey, N.L.
 XEFO 940 Mexico City, D.F.
 XEFV 1210 Juarez, Chih.
 XEFW 1310 Tampico, Tams.
 XEFZ 1370 Mexico City, D.F.
 XEH 1130 Monterrey, N.L.
 XEI 1310 Morelia, Mch.
 XEJ 1020 Juarez, Chih.
 XEK 1120 Mexico City, D.F.
 XEL 1370 Saltillo, Coah.
 XEMA 1200 Tampico, Tams.

Call Kilocycles Location

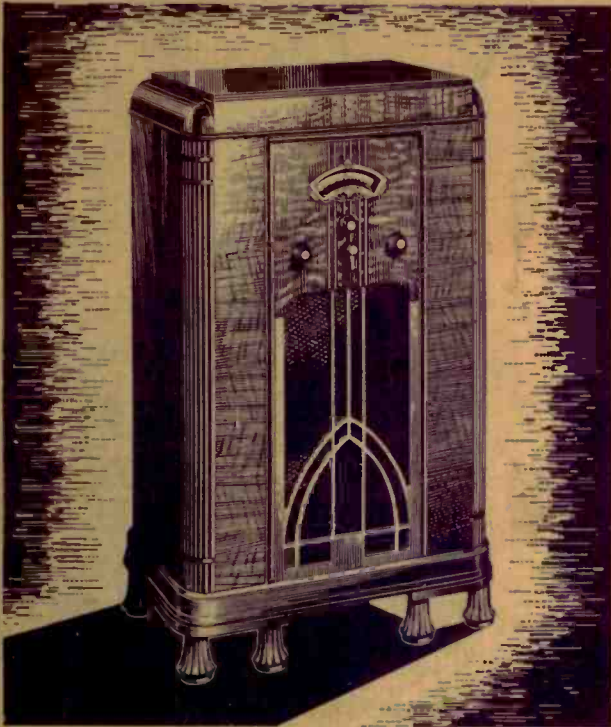
XEMC 750 Merida, Yuc.
 XEMO 860 Tijuana, L.C.
 XEMZ 1210 Tijuana, L.C.
 XEN 710 Mexico City, D.F.
 XENT 1340 Nuevo Laredo, Tams.
 XEOK 920 Tijuana, B.C.
 XEOX 640 Saltillo, Coah.
 XEP 970 Mexico City, D.F.
 XEPN 590 Piedras Negras, Coah.
 XEPR 740 Mexico City, D.F.
 XES 970 Tampico, Tams.
 XET 690 Monterrey, N.L.
 XETB 1310 Turreon, Coah.
 XETH 1210 Puebla, Pue.
 XETU 890 Pachuca, Hdgo.
 XETW 820 Mexico City, D.F.

Call Kilocycles Location

XETZ 850 Mexico City
 XEU 1200 Vera Cruz, Ver.
 XEW 890 Mexico City, D.F.
 XEWZ 1200 Mexico City, D.F.
 XEX 1310 Mexico City, D.F.
 XEY 1200 Merida, Yuc.
 XEYZ 780 Mexico City, D.F.
 XEZ 630 Merida, Yuc.
 XEZZ 1370 San Luis Potosi
 XFA 1310 Agua Caliente
 XFB 1290 Jalapa, Ver.
 XFC 810 Agua Caliente, Aga.
 XFD 1240 Orizaba, Ver.
 XFG 688.3 Mexico City, D.F.
 XFO 940 Mexico City, D.F.
 XFX 610 Mexico City, D.F.

Only

STEWART-WARNER RADIO



The Round-the-World Radio of Proved Performance

An exclusive Stewart-Warner feature, The "Magic Dial" really gives you 4 radios in one. By a simple adjustment you click into place the dial you want to use—one for standard American broadcasts; one for amateur, airplane and police calls; one for ships at sea and South America; one for all other foreign stations. "Geared tuning" makes short-wave selection as easy as local!

There is a Stewart-Warner Round-the-World Radio to fit any purse and to enhance the beauty of any decorative scheme—from smart, compact table models to consoles which are beautiful pieces of furniture as well as a source of endless entertainment, culture, useful information. Compare Stewart-Warner quality and prices with all others—and judge for yourself.



Gives You the Amazing



*Easiest to Tune World Wide Dial on
the Market. Really 4 Radios in One*

● Why gamble when buying a Round-the-World Radio? Stewart-Warner, the pioneers in simplified all-wave radio, offer you in today's "Magic Dial," these benefits of their extra years of experience: (1) Simplicity of clear, accurate tuning—even for the most distant foreign stations—never before possible at *any* price! (2) Remarkably low prices. Stewart-Warner has had time to bring all-wave radio to simplified, economical efficiency.

Foreign Reception Guaranteed

Why limit your pleasure to only American programs, when now you can have entertainment from all over the world—so easily and for so little? But don't expect "Magic Dial" results from anything but the new Stewart-Warner Radio. And don't let the new low prices prejudice you. The best foreign reception possible in your locality is positively guaranteed by Stewart-Warner.

