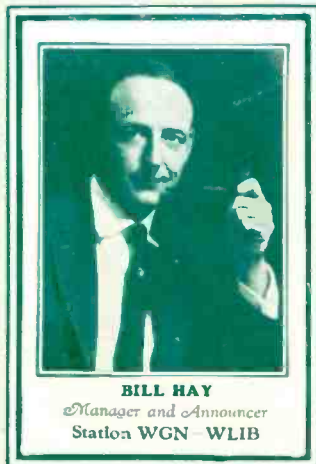
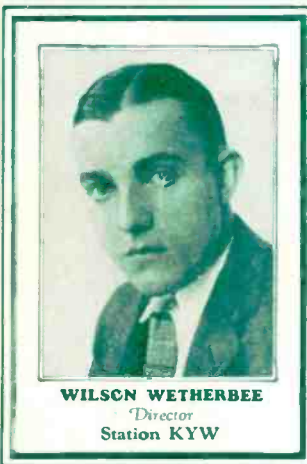


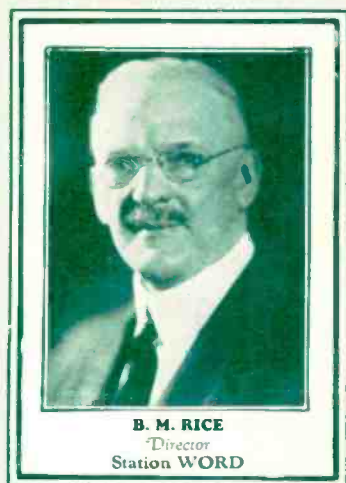
# CHICAGO RADIO

**Vol. 1 — No. 1**

**Price 15 Cents**



# P R O G R A M



**Weekly Program in Detail**  
**Monday, Sept. 19-25, 1927**

**Special Offer to Holders of the Chicago Radio Program:-**

\$2.00 Cunningham No. 301-A-Tubes \$1.39

\$12.00 A Batteries \$8.45, 2 years guarantee

A & B Battery Testers 69c, value \$1.00, and many other bargains



*"The Red Front Store"*

# **Economical Tire Repair Co.**

Tires—Radios—Accessories

Wholesale and Retail

Expert Vulcanizing our Specialty

Batteries for Autos and Radios

We Repair, Recharge and Rent all makes of Batteries

Everything for the Auto and Radio

Our Motto—Quality: First—Price: Lowest—Service: Always

Telephone West 4530

1800 Ogden Avenue, Corner Wood Street

CHICAGO, ILLINOIS

---

*"Original as the Babbling Brook—  
Tempo produced like Nobody Can!"*



# **The Original Timekeepers**

P. T. MITCHELL, Manager

*Dance Music De Luxe*

for that Prom, Social, Party, Tea-Dance, or What Have You

*Our Music does away with the Wall-Flower Evil*

Telephone  
or Write for Details

Telephone West 4530

1800 Ogden Avenue

CHICAGO, ILLINOIS



## Program for Monday, September 19, 1927

**NOTE**—The programs contained herein are based on Chicago Daylight Saving time, which is: one hour faster than Central Standard time; two hours faster than Rocky Mountain time; three hours faster than Pacific Standard time; one hour slower than Eastern Daylight Saving time; and same as Eastern Standard time. Programs subject to last-minute changes. . . Figures in brackets following the call letters represent the kilocycles; those following, the wave length. . . .

(MONDAY IS SILENT NIGHT IN CHICAGO)

### KYW [570]—526

Westinghouse Electric & Mfg. Co. Studios in the Congress Hotel, Edison Bldg. and Hearst Bldg., Chicago. Edwin R. Borroff, Announcer; John Clark, Chief Announcer; Wilson J. Wetherbee, Director.

10:55 A. M.—Time Signals and Weather Report.

2:00 P. M.—Health Talk by Dr. John H. Dodson of the American Medical Association.

5:30 P. M.—Baseball Scores.

5:45 P. M.—Markets.

6:00 P. M.—The Bedtime Story told by Walter Wilson who is known to the children as "Uncle Bob."

6:28 P. M. Weather Report.

6:30 P. M.—"Roxy and His Gang" from WJZ, New York City.

### WBBM [770]—389.4

WBBM Air Theatre. Studio in the Kimball Hall, 308 S. Wabash Ave., Chicago. Phone Wabash 1940. Charles Garland, Director and Announcer.

12:45 to 1:50 P. M.—Luncheon Dance Program. Edward's Terrace Garden Orchestra. Floyd Falch.

4 to 5 P. M.—Blue Monday Club with Kay Ronayne and Connie Webster.

6 to 7 P. M.—Instrumental Melange with WBBM String Trio.

### WCBD [870]—344.6

Owned and operated by Wilbur Glenn Voliva, Administration Bldg., Zion, Ill. J. H. DeFew, Manager and Chief Announcer; John Stuebaker, Asst. Announcer.

Silent on Monday

### WCFL [620]—483.6

"The Voice of Labor" Owned and operated by the Chicago Federation of Labor. Studio at 623 S. Wabash Ave., Chicago. Phone Harrison 1182. Roy Wetzel, Announcer; F. C. E. Lundquist, Business Manager.

10 A. M.—Municipal.

12 Noon—Organ Request Concert. Helen Rauh.

1:30 P. M.—Womens' Aid Hour.

4 P. M.—"Own Your Own Home" Hour.

5 P. M.—"Shoppers' Guide" Hour.

### WCRW [1340]—223.7

Owned and operated by Clinton R. White. Studio in the Embassy Hotel, 2756 Pine Grove Ave., Chicago. Tel. Diversey 4440. Charles Parnell Hughes, Director and Announcer.

11:30 A. M. to 1 P. M.—Josephine popular program.

### WEBH—WJJD [820]—365.6

Owned and operated by Edgewater Beach Hotel, Palmer House and Loyal Order of Moose. Directed by Chicago Herald and Examiner. Homer Hogan, Gen. Mgr. WEBH studio, Edgewater Beach Hotel; B. D. Bonfel, Director and Announcer. WJJD studio, Palmer House; Gene Rouse, Director and Announcer.

WEBH

10:00 to 10:30 A. M.—"The Newspaperman."

10:30 to 11:30 A. M.—McVickers Theatre Organ Concert—Raymond Turner.

11:00 to 12 Noon—Woman's Hour—Prudence Penny.

3:00 to 3:30 P. M.—String Trio; Mildred Evans, Songs.

3:30 to 4:00 P. M.—Tivoli Theatre Piano Reverie—Dean Remick.

5:00 to 5:45 P. M.—Alchane Children's Club, Harry "Dream Daddy" Davis and Zola Haynes in Songs and Stories.

WJJD

12:00 to 1:00 P. M.—Palmer House Petite Symphony; Soloist.

1:00 to 1:15 P. M.—Illinois Agricultural Association Program.

1:15 to 2:00 P. M.—Palmer House Petite Symphony; Soloist.

2:00 to 3:00 P. M.—Children's Program at Mooseheart.

4:00 to 5:00 P. M.—Children's Program at Mooseheart.

5:45 to 6:00 P. M.—Piano Twins, Violette Bradley and Ruth Johnstone.

6:00 to 7:00 P. M.—Palmer House Petite Symphony; Victrolan Orchestra.

6:15 to 6:25 P. M.—"Distinguished Guest," Speaker.

### WGES—WEDC [1240]—241.8

The Chicago Evening Post Station, at Guyon's Paradise Ballroom, 124 N. Crawford Ave., Chicago. Tel. Van Buren 8588. WEDC, owned by Emil Denmark Cadillac Co. Operated by the Chicago Evening Post. Geo. P. Gubbins, Director and Announcer; Bobby Brown and Pat Ryan, Asst. Announcers.

Silent on Monday

Front Cover Photos

Miss J. C. Waller, Harris & Ewing photo, Washington, D. C.

B. M. Rice, The Allitto Studios photo, Chicago

A subscription blank on page 1 for your convenience. Fill in and mail NOW.

### WENR—WBCN [1040]—288.3

Owned and operated by the Great Lakes Radio Broadcasting Co. Studio in the Straus Bldg., 306 S. Michigan Ave., Chicago. Tel. Harrison 1000. Morgan L. Eastman, Manager. WENR Announcers: Arthur Wellington, classical; Everett Mitchell, popular. WBCN Announcer: Oscar Heather.

WBCN—11 A. M.—Home Service Feature, Anna J. Peterson.

WENR—11:30 A. M.—Home Service Feature, Anna J. Peterson.

WENR—12 Noon—Noon Hour Concert; Lewis Meehan, Charlotte Cowan, Arthur Wellington, Jack Baus and Sallie Menkes.

WBCN—1 P. M.—Charlotte Cowan, Lewis Meehan, Oscar Heather, Irma Glen and Sallie Menkes.

WENR—2 P. M.—Popular Request Program. Orchestra, Everett Mitchell, Marie Tulley, Mike and Herman, Ford and Wallace, Vivian Lawrence, Cornelius Maffie, organist; Frank Westphal and Edison Derby.

WBCN—5 P. M.—Jack Baus, Oscar Heather and Irma Glen.

WENR—6 P. M.—Dinner Concert. Organ and Tip Top Orchestra.

### WGN [980]—305.9

Owned and operated by The Chicago Tribune. Studio in the Drake Hotel, 140 E. Walton Place. Phone Superior 2200. Bill Hay, Director and Announcer.

9:00 to 10:00 A. M.—Summary of Day's News; Discussion of Events.

10:00 to 10:30 A. M.—Home Management Period.

11:00 to 11:30 A. M.—Mac Sattley's Half Hour.

12:40 to 2:20 P. M.—Luncheon Concert by Drake Concert Ensemble and Blackstone String Quintet.

2:20 to 2:55 P. M.—Lyon and Healy Artist Recital.

2:55 P. M.—Baseball: Cubs vs. Boston.

5:00 to 5:30 P. M.—Organ Recital by Ambrose Larsen.

6:00 to 6:10 P. M.—Closing Stock and Bond Quotations.

6:10 to 6:35 P. M.—Uncle Quin's Punch and Judy.

6:35 to 7:00 P. M.—Dinner Concert by Drake Concert Ensemble and Blackstone String Quintet.

## *A Word of Thanks*

**I**N this, our first issue, we wish to thank the radio stations for their kind and ready co-operation. We hope that their co-operation will continue, for we feel that without it, we cannot go on.

We also wish to thank and certainly shall be grateful to the newsboys and bookstores, who are to be the medium of distribution for our publication. We hope that in the near future we will be able to allow them more profit than what they are receiving at present.

And to the radio public, we ask you to be patient and go along with us, if you will. We trust that this little book will be of some service to you in the selection of your entertainment. To be able to inform you of what's to be on the air days in advance, is the object of the

*Chicago Radio Program*

# Program for Monday, September 19, 1927—Cont'd

## WHFC [1390]—215.7

Goodson & Wilson Station. Studio in the Flanders Hotel, 4125 Broadway, Chicago. Phone Bittersweet 2020. Lester Mather, Director; John Stamford, Announcer.

Silent on Monday

## WHT [720]—416.4

Owned and operated by the Radiophone Broadcasting Corp., 410 N. Michigan Ave., Chicago. Phone Superior 1776. P. H. Barnes, Director and Announcer.

10:00 A. M.—Woman's Home Hour

Iola Juhl, Soprano  
Doris Wittich, Pianist  
Nutrition Talk—Jean Rich  
Health Talk—Dr. Meyer Solomon

Turner Brothers talk  
12:00 Noon—Complimentary Organ Recital—Al Carney  
12:45 P. M.—Farm Reports  
12:50 P. M.—Salicon Weather Report

1:00 P. M.—Luncheon Program  
Graylings String Trio  
Angie Montgomerie—Contralto

2:00 P. M.—Collyer's Eye—News, Sports  
2:15 P. M.—Signing off

## WIBO [720]—416.4

Owned and operated by Nelson Bros. Bond & Mortgage Co., 6312 Broadway, Chicago. Phone Shekdrake 6000. Walter J. Preston, Director; E. G. Ople, Announcer.

2:30 to 3 P. M.—Organ recital, Sheridan Theatre, Eddie Fitch.  
3 to 4:30 P. M.—Shutin's Program. Stage Show, Sheridan Theatre. Orchestra and Stage Stars.

5:30 to 6 P. M.—Organ recital, Sheridan Theatre, Nellie Williams.

6 to 6:30 P. M.—Joint recital. Buelah Bowman, soprano; R. G. Ball, baritone.

6:30 to 7 P. M.—Hotel Davis Orchestra. Kenneth Sterling, baritone.

## WJAZ [1140]—263

Owned and operated by the Zenith Radio Corporation. Studios in the Shoreland Hotel, 55th St. and the Lake and Chez Pierre Club, 247 Ontario St., Chicago. Geo. G. Smith, Manager.

Silent on Monday

## WJBT [770]—389.4

Owned and operated by J. Boyd, 1554 Howard St., Chicago. Phone Shekdrake 9500.

10:30 to 11:15 A. M.—Shoppers service.

5 to 5:15 P. M.—Weather report. Business directory.

5:15 to 6 P. M.—Organ.

## WLIB [980]—305.9

Owned and operated by the Liberty Weekly Magazine. Studio in the Drake Hotel, 140 E. Walton Place, Chicago. Phone Superior 2200. Bill Hay, Director and Announcer.

10:30 to 11:00 A. M.—Entertainment for Shut-ins.  
11:30 to 11:50 A. M.—Readings by John Reed Tyson.

11:50 to 11:57 A. M.—Stories by Mrs. Webb L. Gibbs.  
11:57 to 12:01 P. M.—Time Signals by the Elgin National Watch Company.

12:01 to 12:40 P. M.—Children's Story Hour.

## WLS [870]—344.6

Owned and operated by the Sears-Roebuck Agricultural Foundation, Chicago. Studio in the Hotel Sherman. Phone Franklin 3968. Edgar L. Bill, Director and Announcer.

9 A. M.—Receipts of Livestock at Principal Markets. Chicago Hog Mar. Flash, News Summary.

9:10 A. M.—Home Question Box, Ellen Rose Dickey, Home Adviser, Sears-Roebuck Agricultural Foundation.

9:30 A. M.—Opening Board of Trade.

9:35 A. M.—Early Livestock Market from Chicago Livestock Exchange.

9:45 A. M.—Home Question Box, Ellen Rose Dickey.

10 A. M.—Board of Trade.

10:03 A. M.—Weather Forecast. Early Price on Butter and Eggs. Live Poultry Quotations.

10:30 A. M.—Board of Trade.

11 A. M.—Board of Trade.

11:03 A. M.—Butter, Egg and Dressed Veal Quotations. Live and Dressed Poultry Quotations. Squab Market, Millfeed Market.

11:15 A. M.—Alain Masin, pianist.

11:30 A. M.—Board of Trade Market.

11:33 A. M.—Chicago Fruit and Vegetable Market.

12 (Noon)—Board of Trade.

12:05 P. M.—Chicago Livestock Mar. from Chicago Livestock Ex.

12:30 P. M.—Board of Trade.

12:55 P. M.—Western Union Time Signals.

1 P. M.—Board of Trade. R. F. D. Dinnerbell Program.

Weather Forecast. Buffalo, Pitts-

burgh, Indianapolis wires. Guy and Katherine Pulley, mandolin.

1:15 P. M.—Closing Livestock Mar. from Chicago Livestock Ex.

1:25 P. M.—Board of Trade.

1:35 P. M.—Butter and Egg Summary.

3:30 P. M.—Homemakers Hour.

Talk by Nancy Wells of the Woman's Home Companion. Talk, Mrs. W. E. Fribley, Pres. of Household League. Hollingsworth and Altamore, Hawaiian music.

4:30 and 5:30 P. M.—Chicago Daily Journal, WLS, Sports Service.

5:40 P. M.—Organ, Al Melgard.

5:55 P. M.—Western Union Time Signals.

6 P. M.—Board of Trade Summary. Closing Livestock Summary.

6:15 P. M.—Pied Piper's Time.

6:30 P. M.—Chicago Daily Journal, WLS, Sports Club.

6:40 to 7 P. M.—Maurie Sherman's Orchestra.

## WMAQ—WQJ

### [670]—447.5

WMAQ—Owned by The Chicago Daily News. WQJ—Owned by The Calumet Baking Powder Co. Both under the exclusive management of The Chicago Daily News. Studio in the Hotel LaSalle. Tel. Franklin 0700. Miss Judith C. Waller, Director; "Happy Harry" Geise, Announcer.

6:30 A. M.—Y. M. C. A. setting-up exercises.

7:30 A. M.—Morning worship, Rev. Melvin E. Beck.

9:05 A. M.—Public school program.

9:30 A. M.—The Davis Radio Service.

9:45 A. M.—Overture hour.

11 A. M.—Calumet home economics hour.

12 M.—Noontime melody.

1 P. M.—Oddz-N-Endz.

1:15 P. M.—Prairie Farmer daily farm talks.

1:30 P. M.—Musical potpourri.

2:30 P. M.—The Davis Radio Service.

2:50 P. M.—Baseball, Cubs vs. Boston.

5:15 P. M.—Topsy Turvy Time.

6 P. M.—Chicago theater organ recital.

6:30 P. M.—Jack Chapman's Orchestra.

6:40 P. M.—Baseball returns.

## WOK [1190]—252

Neutrowound Radio Mfg. Co., 1800 Hyde Park Blvd., Chicago. Phone Hyde Park 2066. Preston Graves, Manager; U. Aspinwall, Announcer.

Silent on Monday

## WORD [1090]—275.1

"The Watchtower Radio" Owned and operated by The Peoples Pulpit Assn. Studio in the Webster Hotel, 2150 Lincoln Park West, Phone Diversey 6800. B. M. Rice, Director.

Silent on Monday

# Program for Monday, September 19, 1927—Cont'd

## STATIONS OUTSIDE OF ILLINOIS

### CKNC [840]—356.9

Eveready Battery Station. Owned and operated by Canadian National Carbon Co., Ltd. 805 Davenport Rd., Toronto, Ontario, Ewart Greig, Director.

8 P. M.—Eveready Instrumental Quintet, directed by Charles E. Bodley and assisting artists.

### KDKA [950]—315.6

Westinghouse Electric & Mfg. Co., East Pittsburgh, Pa. Louis L. Kaufman, Chief Announcer.

6:30 P. M.—Roxy's Gang from WJZ, New York.

8 P. M.—Shannon Quartet with Instrumentalists, from WJZ, New York.

9 P. M.—Longine time from WJZ, New York.

10 P. M.—Weather forecast and baseball scores.

### KFWB [830]—361.2

Owned and operated by Warner Bros. Motion Picture Studios, Inc., Sunset Boul., Hollywood, Cal. Gerald L. King, Director; Bill Ray, Announcer.

8 to 8:15 P. M.—Vacation Days.

8:15 to 8:45 P. M.—Radio Review with Speed Webb and his ten Colored Melody Lads; Tom Breneman, announcing.

8:45 to 9 P. M.—Town Tattler.

9 to 10 P. M.—Dinner Hour Concert.

10 to 10:50 P. M.—Eunice Wynn, popular songs; Warner Bros. Hawaiian Trio.

10:50 to 11 P. M.—Daily News. 11 to 12 Mid.—Hermia and Kay Brown, harmony numbers; Warner Bros. Dance Orchestra.

12 to 1 A. M.—Charles Beauchamp, tenor; LeGrand Concert Trio.

1 to 2 A. M.—By remote control from the Cinderella Roof Ballroom.

### KJR [860]—348.6

Owned and operated by Northwest Radio Service Co., Terminal Sales Bldg., Seattle, Wash. Vincent I. Kraft, Manager.

8:40 to 9 P. M.—Stock quotations.

9 P. M.—Pacific Standard Time Signals.

9 to 9:30 P. M.—Sport News. Box Office Summary, Incidental News Items.

9:30 to 10 P. M.—KJR Junior Hour, with Doug Richardson.

10 to 1 A. M.—Studio program. 1 A. M.—Time Signals.

### KOIL [1080]—277.6

Owned and operated by MonoMotor Oil Co., Council Bluffs, Iowa. Bob Hall, Chief Announcer.

7:00 to 8:00 P. M.—KOIL Feature Program.

8:00 to 9:00 P. M.—Shepard Laboratories' Barnyard Twins and Uncle Josh.

9:00 to 10:00 P. M.—Crosley Radio Corporation Hour—Mose and Charley; Zeta Trio.

10:00 to 11:00 P. M.—Gillette Rubber Hour.

### KOA [920]—325.9

Owned and operated by General Electric Co., 1370 Krameria St., Denver, Colo. F. H. Talbot, Announcer.

10:15 P. M.—Street Corners in New York City—

Italian District  
Italian music played by the

KOA Orchestra with incidental music by accordionist. Tenor solos from Italian Operas by Ralph Freese

Italian Dialect Readings and Stories interpreted by Eugene Reed, dramatic reader.

Harlem District  
Southern Medley played by the

KOA Orchestra  
Negro Spirituals by the Plan-

tation Singers  
Negro Dialect Readings by

Iris Ruth Gilmore  
Chinese District

Orchestra from a Chop Suey House will be furnished by

the KOA Orchestra.  
Bowery District

The Side Walks of New York will be sung by Marjorie

Mellow Auger, soprano and Ralph Freese, tenor

Broadway  
Rehearsals of Musical Comedy

numbers will be heard  
The KOA Orchestra assisted by

soloists  
Patriotic Numbers

Played by the KOA Orchestra concluding with My Country

Tis of Thee.

### KTAB [1070]—280.2

Associated Broadcasters, 1410 Tenth Ave., Oakland, Cal. Effie J. Rinehart, Program Director.

8 to 9 P. M.—Uncle Charley and Aunt Belle.

9 to 9:45 P. M.—Twilight Hour.

9:45 to 10:30 P. M.—Shopping Hour.

11 to 11:15 P. M.—"Fifteen Minutes with Stamp Collectors," by Mr. Norman Shepard.

11:15 to 11:45 P. M.—Program through the courtesy of the Mantle Lamp Company of America.

11:45 P. M. to 1 A. M.—Ruth Hall Crandall, contralto; Philip

Ashcraft, tenor; Ursula Faucit, dramatic reader; Esta Marvin

Pomeroy, organist, and Mr. J. E. Armstrong, speaker.

Organ Solos—Esta Marvin Pomeroy  
In Paradisum.....Dubois  
Danny Boy.....Wetherly

Carmela.....Gertrude Ross  
Contralto Solos—Ruth Hall Crandall  
Calm as the Night.....Bohm

Since You Went Away.....Johnson  
Dramatic presentation of "King Robert of Sicily," given with incidental music

by Ursula Faucit, Dramatic Reader.  
Contralto and Tenor Duets—Ruth Hall

Crandall and Philip Ashcraft  
The Voyagers.....Sanderson  
The Little Old Garden.....Howitt

Tenor Solos—Philip Ashcraft  
When Fancy's Running High.....Hilton  
Passing By.....Purcell

Educational Talk—Mr. J. E. Armstrong of the Armstrong Secretarial School

Organ Solos—Esta Marvin Pomeroy  
Knowest Thou the Land, from.....Mignon  
Gavotte.....Thomas

Contralto Solos—Ruth Hall Crandall  
Tenor and Contralto Duets—Ruth Hall

Crandall and Philip Ashcraft  
The Wanderer's Song.....Rubenstein  
Lassie O' Mine.....Wait

Tenor Solos—Philip Ashcraft  
Organ Solos—Esta Marvin Pomeroy  
Because.....D'Hartelot  
Song of the Wanderer.....Moret

### WBZ—WBZA

#### [900]—333.1

Westinghouse Electric & Mfg. Co. WBZ studio in the Hotel Kimball, Springfield, Mass. WBZA studio in the Hotel Statler, Boston, Mass.

7 P. M.—Baseball. Boston.

7:02 P. M.—Bert Lowe and his Hotel Statler Orchestra, Boston.

7:30 P. M.—Roxy and His Gang. N. B. C. Feature.

9 P. M.—Aleppo Drum Corps or Shriners' Band. Boston.

9:30 P. M.—Musical program. Boston.

10 P. M.—Jerry Falvey and his orchestra. Springfield.

10:30 P. M.—Weather reports; missing persons; baseball. Springfield.

### WCAE [580]—516.9

The Pittsburgh Press and Kaufmann & Baer Station, Pittsburgh, Pa. Burt McMurtrie, Director; Al Byerson and C. A. Wakeman, Announcers.

6:45 P. M.—Studio Recital Featuring Celia Little, Soprano; William Brennan, Tenor and Ellmer Zoller, Pianist.

7:30 P. M.—Howard Correct Time.

7:30 P. M.—Atlantic and Pacific Tea Co.'s Gypsies, with John Barnes Wells, Tenor.

8:30 P. M.—Grand Opera Presentation.

### WDOD [1220]—245.8

Owned and operated by the Chattanooga Radio Co., Inc., 615 Market St., Chattanooga, Tenn. F. S. Lane, Director and Announcer.

8 P. M.—Concert by Signal Mountain Hotel Orchestra.

9 P. M.—Baseball returns.

9:05 P. M.—Harvey's Hawaiian Trio.

9:30 P. M.—Classical Program. 11 P. M.—Arrowhead Hosiery Hour.

### WEAF [610]—491.5

Owned and operated by National Broadcasting Co., Inc., 195 Broadway, New York City. Leslie Joy, R. C. Wentworth and Arnold Morgan, Announcers.

7 P. M.—Poets Pantheon. To Red Network.

7:30 P. M.—Howard correct time. To WEAF, WEEL, WJAR, WRC, WLIT, WCAE, WTAM, WWJ, WSAI.

7:30 P. M.—A. and P. Gypsies. To WEAF, WEEL, WJAR, WLIT, WRC, WCSH, WCAE, WTAM, WSAI, WDAF, WTMJ, WTIC, WOC, WWJ.

8:30 P. M.—Mascagni's Opera "L'Amico Fritz" by the National Grand Opera Company, direct from Crystal Studio Radio Worlds Fair, Madison Square Garden, New York. To WEAF, WJAR, WTIC, WRC, WCSH, WTAM, WCAE, WDAF, WWJ.

9:30 P. M.—South Sea Islanders. 10 to 11 P. M.—Rolf's Palais D'Or Orchestra. To WEAF, WRC, WTIC.

# Program for Monday, September 19, 1927—Cont'd

## WGBF [1270]—236.1

Owned and operated by The Finks Furniture Co., 7th near Main St., Evansville, Ind. Harold Finks, Director and Announcer.

- 8 P. M.—Courier, Melody Way Piano Lessons.
- 8:30 P. M.—Gospel Hour, featuring Gospel Quartette.
- 9:30 P. M.—Baseball Scores.
- 9:35 P. M.—Rosanna McGinness, Classical Piano.
- 9:50 P. M.—E. A. (Big Rich) Richardson, entertainer.
- 10 P. M.—The Crescent City Jubilee Singers.
- 10:15 P. M.—William H. Wagner, Harmonica.
- 11 P. M.—Miss Ruth Royster, Piano, and Mr. Jewell Ashby. Vocal.

## WGHP [940]—319

Owned and operated by George Harrison Phelps, Inc., 1408 Macabees Bldg., Detroit, Mich. Corley W. Kirby, Director.

- 6:50 to 7:45 P. M.—Gerald Mark's Hotel. Tuller Orchestra.
- 7:45 to 8 P. M.—Children's Chat.
- 8 to 10 P. M.—Columbia Chain program from New York.

## WJZ [660]—454.2

Owned by Radio Corporation of America, 33 W. 42nd St., New York City. Operated by the National Broadcasting Co., Inc. J. Lewis Reid, Announcer.

- 6:30 P. M.—Rox̄y and His Gang, to WJZ, WBZ-WBZA, KDKA, KYW, WRC, WHAS, WSB, WSM, WBAL, WJR, WOC, WCCO, WHAM, WTMJ, WBT.
- 8 P. M.—Spotlight Hour to WJZ, KDKA.
- 9 P. M.—Longines correct time to WJZ, WBZ, WBZA, KDKA, Program to be announced.
- 9:30 to 10:30 P. M.—Al. Friedman's Orchestra from Yoengs Restaurant.

## WLW [700]—428.3

Owned and operated by The Crosley Radio Corporation, 3401 Colerian Ave., Cincinnati, Ohio. Fred Smith, Director and Announcer.

- 7 P. M.—Hotel Gibson Trio.
- 7:30 P. M.—Wood Utilization Talk.
- 7:40 P. M.—Theatrical Review, Hotel Gibson program continued.
- 8 P. M.—Marjory Garrigus Smith, pianist. Vocal solos.
- 8:30 P. M.—R. F. Johnston Paint Co. program.
- 9 P. M.—Special Studio feature.
- 10 P. M.—Land O'Dance Music. (The Baldwin Piano.)

## WMAK [550]—545.1

WMAK Studios, Inc., Liberty Bank Bldg., Buffalo, New York. William Fay, Director and Announcer.

- 7:30 P. M.—Dinner Dance Music.
- 8:15 P. M.—Daily news. Baseball scores. Racing results.
- 8:30 P. M.—Salicon weather man.
- 8:30 P. M.—Popular program.
- 9:30 P. M.—Program of classics.
- 10 to 12 P. M.—Joint Broadcast; Columbia Broadcasting Network.

## WOI [1130]—265.3

Owned and operated by Iowa State College, Ames, Iowa. W. I. Griffith, Director; A. G. Woolfries, Announcer.

- 9:00 P. M.—Entertainment Program.

## WMC [580]—516.9

Owned and operated by the Memphis Commercial Appeal, Inc., 30 N. 2nd St., Memphis, Tenn. Francis S. Chamberlin, Director and Announcer.

- 7:00 P. M.—Baseball Scores.
- 9:00 P. M.—Farm Talk by Jerry MacNicol.
- 9:30 P. M.—Canova Concert Orchestra.
- 10:30 P. M.—Weather Forecast and Bulletins.
- 10:35 P. M.—Sign Off.

## WOW [590]—508.2

Owned and operated by Sovereign Camp, Woodmen of the World, W. O. W. Bldg., Omaha, Neb. Eugene Konecky, Director; Lester Palmer, Chief Announcer.

- 7:00 P. M.—George Johnson, Organist Riviera Theatre.
- 7:40 P. M.—Baseball Scores.
- 7:50 P. M.—Courtesy Yousem Battery and Tire Company.
- 9:30 P. M.—Orchestra.

## WOWO [1310]—228.9

Owned and operated by The Main Auto Supply Co., Fort Wayne, Ind. J. A. Becker, Director.

- 8 to 9 P. M.—Orchestration, presented by popular and favorite leading musicians of Fort Wayne.
- 9 to 11 P. M.—Columbia chain program.
- 11 to 1 A. M.—Diversified entertainment; feature numbers.



CHARLES GARLAND at the studio piano of WBBM Air Theatre, Chicago. Charlie is also director and announcer of that station.

## STATION KGW

Station KGW, Portland, Ore. of The Morning Oregonian on a gon, is operated as a subsidiary wavelength of 491.5 meters and a power output of 1000 watts. Offices and a suite of studios are maintained on the eighth floor of The Oregonian Building from whose tower is projected the radiating system fed by a late model Western Electric transmitting system. Remote control equipment feeding telephonic connections with ten studio points foreign to the main transmission center is available for special programs.

Since April, 1922, KGW has been on the air consistently supplying northwest auditors with original entertainment on a schedule ranging from two hours

per week at the inception of the station to a present average of ten hours per day. This entertainment is supplied by a regular staff of 20 exclusive musicians under the direction of Liborius Hauptmann, piano virtuoso and conductor of note, and four dance orchestras whose music is broadcast through remote control extensions. The station is one of the few in the country that has been consistently in service for a term of five years.

Upon the inception of the National Broadcasting company's Pacific coast division, KGW was chosen to represent the Oregon territory. It has been regularly included in all network presentations and has broadcast one feature program originating in its own studios to feed the entire coastal system.



# Program for Monday, September 19, 1927—Cont'd

## WOW'S STUDIOS UNIQUE

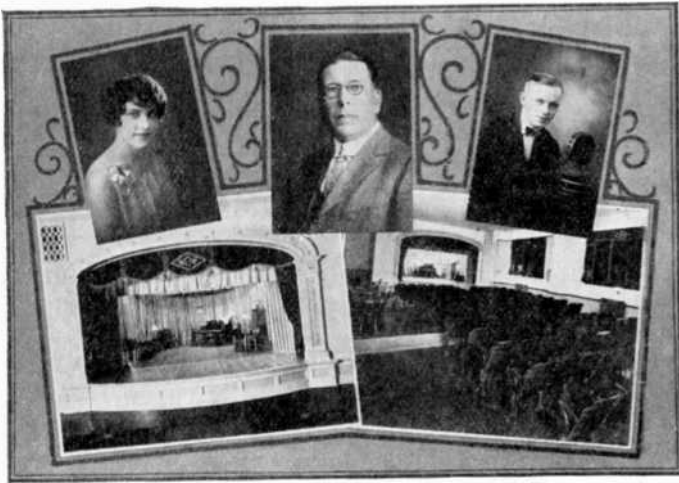
Radio Station WOW was originally constructed in February, 1923, and officially inaugurated April 2, 1923. WOW is the pioneer major broadcaster in the middle west. Among its pioneering endeavors are: The establishment of the longest permanent remote control system, special wires sixty-five miles in length being connected between Omaha and Shenandoah, Iowa for remote control broadcasting. This line was maintained until the Shenandoah studio was rebuilt into a permanent independent radio station.

The organization of WOW's Radio Chapel Services, directed by Rev. R. R. Brown, with almost a quarter of a million members, the largest religious radio organization in the world.

WOW was the first radio station to establish reception of a radio program by an aeroplane in flight, this feat being accomplished in 1924. when a WOW program was picked up by an aeroplane in flight over the City of Buffalo, New York.

In November, 1924, keeping progress with the development of greater power output in radiocasting, WOW rebuilt and doubled the power of its original 500 watt transmitter.

Early in 1927, in order to maintain the reputation of WOW for advancement, entirely new equipment was purchased for the Woodmen of the World Radio Station. Interest was centered upon special equipment which would solve the problem of "blanketing" an effect of increased power output. As one of the major pioneer broadcasters in the middle west, WOW is not desirous of monopolizing the field of entertainment at the expense of contemporary broadcasters within immediate range or to the destruction of distant reception for local listeners merely to gratify a desire for the most powerful equipment obtainable. Rather, modern equipment was selected which would give the most perfect modulation as well as the maximum power without blanketing or interfering with receiving sets in middle western territory.



Upper Left: Miss Marie Kleny, Hostess; Center, W. A. Fraser, "Father of WOW"; Upper Right: Lester Palmer, Chief Announcer; Lower Left: Crystal Stage Studio; Lower Right: Auditorium.  
(Bihler photo—Omaha)

It is of further interest to radio listeners that WOW, which has pioneered legitimate fields of radio endeavor, again leads the way in the phase of studio construction. No expense was spared in order to make the studios as accessible, attractive and comfortable as possible.

This studio is probably one of the most unique and attractive arrangements in radio construction. Elaborate plans were drawn for a crystal stage effect. The entire studio arrangement is built on the plan of a stage supplemented with a large and comfortable auditorium where visitors may accommodate themselves and see directly into our main studio through a crystal glass. The stage has a three foot elevation directly in line with the angle of vision of the spectators from every portion of the auditorium. Footlights create the genuine atmosphere of the stage, enhanced by interior lighting effects from a central crystal chandelier and side lights. A beautiful color scheme either in gold and blue, of latest impressionistic effect, adds to the

(Continued on Page 26)

## MEMO FOR MONDAY

Station \_\_\_\_\_ Time \_\_\_\_\_

\_\_\_\_\_

\_\_\_\_\_

\_\_\_\_\_

\_\_\_\_\_

\_\_\_\_\_

\_\_\_\_\_

\_\_\_\_\_

\_\_\_\_\_

\_\_\_\_\_

\_\_\_\_\_

## WQAM [930]—322.4

Owned and operated by Electrical Equipment Co., 43 N. W. Fourth St., Miami, Florida.

- 7 P. M.—Organ.
- 7:15 P. M.—Dance Orchestra.
- 7:45 P. M.—Associated Press bulletins.
- 7:50 P. M. Studio numbers.
- 8 P. M.—Time, weather, temperatures.
- 8:05 P. M.—Olympia Symphony Orchestra.
- 8:12 P. M.—Baseball results.

## WRVA [1180]—254.1

Owned and operated by Larus & Bro. Co., Richmond, Va. Elmer G. Hoelke, Director; J. Robert Beadles, Chief Announcer.

- 7 P. M.—Bedouins Orchestra.
- 8 P. M.—Richmond Radio Show.
- 9 P. M.—"News Leader History of Old Virginia," Dr. Douglas S. Freeman.
- 9:10 P. M.—Musical under direction of Mrs. C. Ralph Ludwig.
- 10:15 P. M.—Richmond Radio Show.
- 11 P. M.—Hotel Richmond Orchestra.
- 12 P. M.—Carry Me Back to Old Virginia.

## WSM [880]—340.7

Owned and operated by The National Life & Accident Insurance Co., Nashville, Tenn. George D. Hay, "The Solemn Old Judge," Director; Jack Keefe, Announcer.

- 6:30 to 8:00 P. M.—Roxy and His Gang—NBC Feature.
- 8:00 to 8:15 P. M.—Announcements and Bedtime Story.
- 8:15 to 9:00 P. M.—Dinner Concert by Andrew Jackson Hotel Orchestra.
- 9:00 to 10:00 P. M.—Miss Lillian Watt, Soprano, Mrs. A. E. Meyer, Pianist, Luke Burns, Tenor.
- 10:00 to 11:00 P. M.—Studio Program.
- 11:00 to 11:30 P. M.—Bob Earle, Baritone.

## Program for Tuesday, September 20, 1927

### KYW [570]-526

10:55 A. M.—Time Signals and Weather Report.

5:30 P. M.—Baseball Scores.

5:45 P. M.—Markets.

6:00 P. M.—The Bedtime Story told by Walter Wilson who is known to the children as "Uncle Bob."

6:30 P. M.—Weather Report.

7:00 to 9:00 P. M.—KYW as part of the Blue Network will broadcast a program from WJZ, New York City as follows:

7:00 P. M.—George Olsen's Stromberg-Carlson Orchestra.

8:00 P. M.—The Continentals.  
9:00 to 10:30 P. M.—A Musical Program from the Congress Hotel Studio.

10:30 P. M.—Weather Report.

10:32 to 10:55 P. M.—Congress Hotel Orchestra Music.

10:55 P. M.—Time Signals and Weather Report.

### WBBM [770]-389.4

12:45 to 1:50 P. M.—Luncheon Dance Program. Gus C. Edward's Terrace Garden Orchestra. Charlie Garland at the Studio Piano. Kay Ronayne.

7 to 8:15 P. M.—After Dinner Concert, instrumental. Edward's Terrace Garden Orchestra. Charley Straight's Brunswick Recording Orchestra. WBBM String Trio, Opera Echoes.

8:15 to 9:30 P. M.—Artist Recital. Charley Straight's Orchestra and Gus C. Edward's Orchestra. Peter Grosso, tenor; Albert Habestro, basso-cantante.  
9:30 to 10 P. M.—Popular Program—Kay Ronayne and Connie Webster.

10 to 11 P. M.—Minstrel Show. Charlie Garland, interlocutor, Dick Mallory, Charlie Schultz. Gus C. Edward's Orchestra and Charley Straight's Orchestra.

### WCFL [620]-483.6

10 A. M.—Municipal.

12 Noon—Organ Request Concert, Helen Rauh.

1:30 P. M.—Womens' Aid Hour.

4 P. M.—"Own Your Own Home" Hour.

5 P. M.—"Shoppers' Guide" Hour.

6 P. M.—Chicago Federation of Labor Hour. Sport Talk. Labor News Flashes. Restoro Health Institute. League Night.

7 P. M.—Bulletin Board.

7:15 P. M.—Label.

7:30 P. M.—Educational Talk.

7:45 P. M.—Educational Talk by Retail Clerks Local No. 195, Mr. Harry Lee, speaker.

8 to 10 P. M.—Red Peppers, Ford and Wallace, Joe Warner. Billy Allen Huff.

10:15 P. M.—Granada Theatre Stage Show.

11 to 12 P. M.—Angie Montgomery, Joe Warner and Earl Hoffman's Chez Pierre Orchestra.

### WCBD [870]-344.6

9 P. M.—Cornet Quartet and Mixed Quartet and assisted by the following persons: Mr. P. B. Newcomer, cornet; Mr. Daniel Mason, Trombone; Vocal Trio; Miss Sweeney and Mrs. Pihl, duets; Miss Esther Wiedman, soprano; Glendine and Glenora Sparrow (twins), songs.

### WCRW [1340]-223.7

11:30 to 1 P. M.—Josephine popular program.

6:30 to 7:30 P. M.—Popular program.

9:30 to 10:30 P. M.—Popular program.

### WEBH-WJJD [820]-365.6

WEBH

10:00 to 10:30 A. M.—"The Newspaperman."

10:30 to 11:00 A. M.—McVickers Theatre Organ Recital—Raymond Turner.

11:00 to 12 Noon—Woman's Hour—Prudence Penny.

1:15 to 2:00 P. M.—Uptown Theatre Organ Recital—Arsene Selgel.

3:00 to 3:30 P. M.—String Trio; James Weber Linn; Margaret Pisano and Tess Kinney; Baseball Scores.

3:30 to 4:00 P. M.—Tivoli Theatre Piano Reverie—Dean Remick.

5:00 to 5:45 P. M.—Aichanee Children's Club, Harry "Dream Daddy" Davis and Zola Haynes in Songs and Stories.

7:00 to 7:30 P. M.—Edgewater Beach Hotel Orchestra; Metropolitan Brass Quintet.

7:30 to 8:00 P. M.—Songs of the City Male Quartet.

9:00 to 11:00 P. M.—Uptown Theatre Studio and Stage Presentations.

10:00 to 10:15 P. M.—Herald and Examiner News Flashes, Weather Report and Correct Time.

WJJD

12:00 to 1:00 P. M.—Palmer House Petite Symphony; Soloist.

1:00 to 1:15 P. M.—Illinois Agricultural Association Program.

2:00 to 3:00 P. M.—Children's nellus Maffie, Everett Mitchell, gram. Louise Vernet, Lillian Program at Mooseheart.

4:00 to 5:00 P. M.—Children's Program at Mooseheart.

5:45 to 6:00 P. M.—Piano Twins, Violette Bradley and Ruth Johnstone.

6:00 to 7:00 P. M.—Palmer House Petite Symphony; Victorian Orchestra.

6:15 to 6:25 P. M.—"Distinguished Guest," Speaker.

8:00 to 8:30 P. M.—Tivoli Theatre Stage and Studio Presentations.

8:30 to 9:00 P. M.—Children's Program at Mooseheart.

11:00 to 1:00 A. M.—Palmer House String Trio; Marcella, Songs; Harold Hinchliffe, Tenor.

### WENR-WBCN [1040]-288.3

WBCN—11 A. M.—Home Service Feature, Anna J. Peterson.

WENR—11:30 P. M.—Home Service Feature, Anna J. Peterson.

WENR—12 P. M.—Noon Hour Concert. Thora Martens, Peter Grosso, Jack Baus, Sterra Feigen, Sallie Menkes and Arthur Wellington.

WBCN—1 P. M.—Florence Hallberg, Edward Davies, Oscar Heather, Irma Glen and Sallie Menkes.

WENR—2 P. M.—Popular Request Program. Orchestra, Cornelius Maffie, Everett Mitchell, Marie Tulley, Mike and Herman, Harry Lawrence and Edison Derby.

WBCN—5 P. M.—Sterra Feigen, Oscar Heather and Irma Glen.

WENR—6 P. M.—Dinner Concert. Tip Top Orchestra and Organ.

WBCN—7 P. M.—Orchestra, Oscar Heather, Marie Tulley and Frank Westphal.

WENR—8 P. M.—Classical Program. Louise Vernet Lillian Knowles, Lewis Meehan, Edward Davies, Jack Baus, Sterra Feigen, Sallie Menkes and Arthur Wellington.

WENR—9:30 P. M.—Popular Request Program. Orchestra, Cornelius Maffie, Everett Mitchell, Marie Tulley, Frank Westphal, Ford and Wallace Hollingsworth and Altamore.

### WGES-WEDC [1240]-241.8

12:00 Noon—Angelus; Edgar Guest Poem; World News Service; Scratches from Local Race-tracks; Weather Reports; Beach Temperatures; Musical Program.

12:30 P. M.—The Shopper Family; Bungalow Program.

1:00 P. M.—World News Service; Stock Reports; Scratches from Local Racetracks; Eunice Hoefler—Senate Theatre Organ.

2:00 P. M.—World News Service; Daily Health Talk.

2:30 P. M.—Marg Van—Tiffin Theatre Organ.

3:00 P. M.—World News Service; Closing Markets; Baseball Scores; Race Results.

4:00 P. M.—World News Service; Race Results.

5:00 P. M.—World News Service; The Book Worm.

6:00 P. M.—Angelus; World News Service; Complete Baseball Scores; Race Results; Mrs. Preston Sellers—Senate Theatre Organ.

6:30 P. M.—Voice Lesson—Sallie Horan Henry, Former Supervisor of Music, Dubuque, Iowa.

6:45 P. M.—Marbo Theatre Organ—Jean Anthony.

## Program for Tuesday, September 20, 1927—Cont'd

### WGES—WEDC—Cont'd

7:00 P. M.—Drama and the Art World, C. J. Bulliet, Dramatic Critic and Art Editor, Chicago Evening Post.

7:15 P. M.—Golden Pumpkin Orchestra.

7:30 P. M.—Rev. A. M. Griffin, O. S. M., Hillside, Illinois.

7:45 P. M.—Piano Patches—Don Lavery

8:00 P. M.—Echoes from Grand Opera.

9:00 P. M.—Maggie and Jiggs; WGES String Trio.

9:30 P. M.—Educational Talk—"The Insurance Man."

10:00 P. M.—Marbro Theatre Stage Show.

11:00 P. M. Studio Program.

11:30 P. M. Golden Pumpkin Orchestra.

12:00 P. M.—Welch Rarebit Hour from Tiffin Theatre.

### WGN [980]—305.9

9:00 to 10:00 A. M.—Summary of Day's News; Discussion of Events.

10:00 to 10:30 A. M.—Home Management Period—"The Question Box."

11:00 to 11:30 A. M.—Organ Recital by Dean Fossler from Chicago Theatre.

12:40 to 2:20 P. M.—Luncheon Concert by Drake Concert Ensemble and Blackstone String Quintet.

2:20 to 2:55 P. M.—Lyon and Healy Artist Recital.

2:55 P. M.—Baseball: Cubs vs. Boston.

5:00 to 5:30 P. M.—Organ Recital by Ambrose Larsen.

5:56 to 6:01 P. M.—Time Signals by the Elgin National Watch Company.

6:01 to 6:10 P. M.—Closing Stock and Bond Quotations.

6:10 to 6:35 P. M.—Uncle Quin's Punch and Judy.

6:35 to 6:50 P. M.—Drake Concert Ensemble.

6:50 to 7:00 P. M.—The Old Fashioned Almanack.

8:00 to 9:00 P. M.—Eveready Hour.

9:00 to 9:15 P. M.—"A Radio Announcer's Rambles."

9:15 to 9:30 P. M.—WGN Ensemble.

9:30 to 10:00 P. M.—Recital by Flavio Plasencia, Baritone.

10:00 to 10:10 P. M.—"Tomorrow's Tribune."

10:10 to 10:20 P. M.—Sam 'n' Henry.

10:20 to 10:30 P. M.—The Music Box.

10:30 to 10:40 P. M.—Vocal Music.

10:40 to 11:00 P. M.—The Salernos.

### WHFC [1390]—215.7

8:00 P. M.—Program of the Chicago Broadcasting Chain—"Echoes from Grand Opera"—a WGES Feature.

9:00 P. M.—Artist Recital, presented under the auspices of the North Shore Conservatory of Music.

10:00 P. M.—Popular Program—John Stamford, tenor (announcer)

Geneva May Lewis, soprano

Muriel Olson, "Blues"

Lester Mather, pianist

Harry Nathan's Orchestra

### WHT [720]—416.4

10:00 A. M.—Woman's Home Hour

Mabel Doolittle—Contralto

Doris Wittich—Pianist

10:30 A. M.—Cranberry Talk—Martha Lynn

11:10 A. M.—Grace Viell Gray, Speaker for First District of Illinois Federation of Women's Clubs

12:00 Noon — Complimentary Organ Recital—Al Carney

12:50 P. M.—Farm Reports, Poultry Markets, Weather Report

1:00 P. M.—Luncheon Program Graylings String Trio

1:15 P. M.—Turner Brothers Glass Cloth Talk

Clarence Russell, Tenor

2:00 P. M.—Collyer's Eye—News, Sports

2:15 P. M.—Signing off

7:00 P. M.—Collyer's Eye—News Scratches

7:15 P. M.—Diversified Program

Marie Moncure Parker—Reader

Graylings Trio

Eric Russell-Cooke—Bari-tone

Doris Wittich—Concert Pian-ist

8:30 P. M.—Axel Christensen—Pianist and Monologues

8:55 P. M.—Collyer's Eye News

9:00 P. M.—Your Hour League—Al and Pat

10:00 P. M.—Signing off

11:00 P. M.—Popular Program Orville Shelton

Serge Ransanova

Eddie Sawyer

11:30 P. M.—Salicon Weather Report

12:00 P. M.—Review of Your Hour—Al and Pat

A subscription blank on page 1 for your convenience. Fill in and mail NOW.

### WIBO [720]—416.4

2:30 to 3 P. M.—Organ recital, Sheridan Theatre, Eddie Fitch.

3 to 4:30 P. M.—Sheridan Theatre Orch. SHUT IN'S Program. Buddy Langdon, Frank and Jean. Kay Davidson, Everett Opie.

5:30 to 6 P. M.—Organ recital, Sheridan Theatre, Nellie Williams.

6 to 6:30 P. M.—Uptown Conservatory of Music Faculty recital. Samuel Dolnik, violinist; Frieda Dolnik, pianist; Dwight Cook, tenor.

6:30 to 7 P. M.—Hotel Davis Orchestra. Charlotte Edwards, contralto.

10 to 11 P. M.—Hotel Davis Orchestra. Pauline Sachs, soprano. THE RADI-OWENS, Harmony Duo.

### WJAZ [1140]—263

7 to 8 P. M.—Chez Pierre Orchestra.

9 to 11 P. M.—Studio Program. Chez Pierre Orchestra.

### WJBT [770]—389.4

10:30 to 11:15 A. M.—Shoppers service.

5 to 5:15 P. M.—Weather report. Shoppers service. Market report.

5:15 to 6 P. M.—Organ.

6 to 6:30 P. M.—Beulah Rosine, cellist.

6:30 to 6:40 P. M.—Studio classics. Gus. Edwards' Orchestra.

11 to 12 M.—Popular. Charley Straight's and Gus. C. Edwards' Orchestras. Shoppers service.

### WLIB [980]—305.9

10:30 to 11:00 A. M.—Entertainment for shut-ins.

11:30 to 11:50 A. M.—Readings by John Reed Tyson.

11:50 to 11:57 A. M.—Good health and training period.

11:57 to 12:01 P. M.—Time signals by the Elgin National Watch Co.

12:01 to 12:40 P. M.—Children's story period.

7:00 to 8:00 P. M.—Dinner concert by the Drake Concert Ensemble and the Blackstone String Quintet.

11:00 to 11:10 P. M.—Waltz Time.

11:10 to 11:20 P. M.—Vocal music.

11:20 to 11:30 P. M.—Doc Davis and his Drake Hotel dance orchestra.

11:30 to 12:00 M.—Ruth Farley's Wurlitzer organ recital.

12:00 to 12:15 A. M.—Doc Davis and his Drake Hotel dance orchestra.



## WMBI TO BUILD NEW STATION

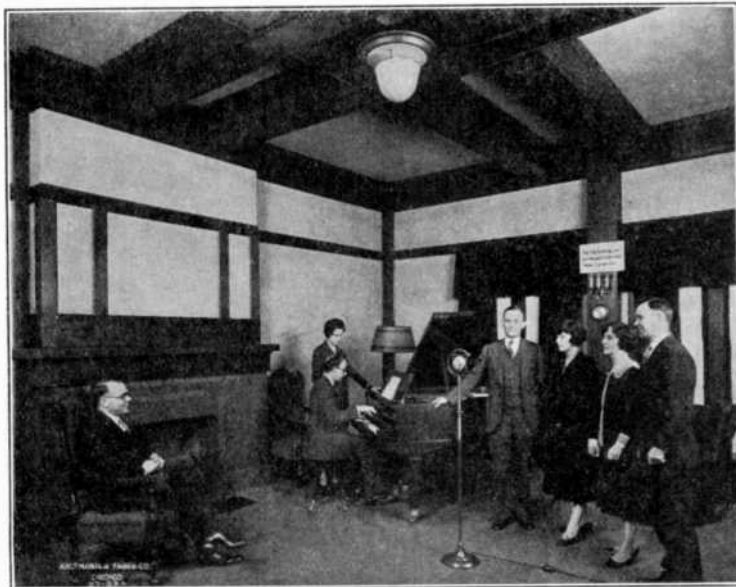
Following the issuance of a government construction permit by the federal radio commission to move its radio station, WMBI, to the vicinity of Addison, Illinois, Moody Bible Institute officials announced that the building of the new station will begin immediately.

Long desirous of extending the radius of their broadcasts, officials of Moody Institute are confident that the new station will enable WMBI programs to reach all sections of the United States and most of Canada and Mexico. Prior to building of the new station, which will be located at

many to be the finest of such character on the air.

"WMBI hopes to increase its schedule beyond the old broadcast of 32 hours each week. Special sacred concerts and choir renditions will be features of the coming programs, as will constructive, practical talks on the various important phases of everyday religious life. WMBI and the Moody Bible Institute are looking forward to their banner year on the air."

It has not been definitely announced nor have the details been revealed as to when the actual broadcasting will begin



The Moody Bible Institute Radio Broadcasting Studio, 152 Institute Place. From left to right: W. E. King, assistant director; A. Holzworth at the piano, Mrs. T. Bittikofer, standing, W. P. Loveless, Myrtle Raedeke, Gladys M. Talbot and Talmage J. Bittikofer.

Addison, twenty miles west of Chicago, WMBI will be operated from the Institute buildings on the North Side.

Where the old station had but 500 watts, the new WMBI will use 5,000 watts, which will more than treble the range. The fact that the station will be located in the country, gives ample assurance that WMBI programs soon will be on the air to listeners-in in furthest California, Maine, Florida and other distant points. In the past the range of WMBI was about 500 miles, although special broadcasts, when other stations had signed off, such as late in the evening, were clearly received at distances of several thousand miles.

"We are planning to broaden our scope," H. Coleman Crowell, director of the station, declared, "and it was with this thought in mind that we are establishing our new station. During the coming year many nationally prominent theologians and laymen will participate in the WMBI religious and sacred programs, which are conceded by

from the new, powerful WMBI, although officials are planning to begin operations within a short time. The broadcasting, as at present, will be done from the Moody Bible Institute buildings at North La Salle street and Chicago avenue. The station will continue to divide time with station WJAZ of the Zenith Radio Corp., on a wave-length of 1140 kilocycles, 263 meters.

The Moody Bible Institute of Chicago puts on the air a Scandinavian Service every Saturday evening for the benefit of over three hundred thousand Scandinavians in this city and vicinity.

This service of Sacred Music and a Sermon or Bible Talk, will be furnished by special talent from the different Danish, Swedish or Norwegian local churches, and will commence at 8 o'clock.

Each service will be conducted by the Reverend Gustav Edwards, D. D., President of the Swedish Evangelical Free Church School and Director of the Swedish-English Course at the Moody Bible Institute.

"Better  
Stationery"

E. R. Ennes  
Engraving Co.

**Steel and Copper  
Plate Engraving**

538 S. Dearborn St., Chicago

Business and Calling Cards  
Social Announcements  
Wedding Invitations  
Letter Heads  
Envelopes  
Etc.

☞

A Telephone Call Brings Our  
Representative To You

Wabash 7353

**Afternoon and Evening  
Programs to Inaugurate  
New Broadcast Chain**

Brand new ideas will be introduced into the art of broadcasting by WMAQ and affiliated stations with the opening of the Columbia Broadcasting System, the second great chain of radio stations to be formed in the United States.

"It is the aim of The Daily News station and the other stations making up the new chain to furnish a type of genuine entertainment from the pick of the world's entertainers," said Miss Judith C. Waller, director of WMAQ.

The inaugural program of the chain from WMAQ was given on Sunday afternoon (Sept. 18). The evening program will occupy the two hours between 8 and 10.

A subscription blank on page 1 for your convenience. Fill in and mail NOW.

## Program for Wednesday, September 21, 1927

### KYW [570]—526

10:55 A. M.—Time Signals and Weather Report.  
 5:30 P. M.—Baseball Scores.  
 5:45 P. M.—Markets.  
 6:00 P. M.—The Bedtime Story told by Walter Wilson who is known to the children as "Uncle Bob."  
 6:30 P. M.—Weather Report.  
 6:32 to 7:00 P. M.—Congress Hotel Dinner Concert.  
 7:00 to 7:30 P. M.—Retold Tales.  
 7:30 to 8:00 P. M.—Program from KYW's Congress Hotel Studio.  
 8:00 to 9:00 P. M.—Maxwell Coffee Concert.  
 9:00 to 10:30 P. M.—Musical Program, KYW's Congress Hotel Studio.  
 10:30 P. M.—Weather Report.  
 10:32 to 10:55 P. M.—Orchestra Music from the Congress Hotel.  
 10:55 P. M.—Time Signals and Weather Report.

### WBBM [770]—389.4

12:45 to 1:50 P. M.—Luncheon Dance Program. Gus C. Edward's Orchestra, Charlie Garland.  
 7 to 8 P. M.—After Dinner Concert. Gus C. Edward's Orchestra. WBBM String Trio: Beulah Rosine, cello; Ethel Schweitzer, violin; string trio.  
 8 to 9:30—Artist Recital. National Male Quartet. Charlie Straight's Orchestra. Frank Hathaway, baritone.  
 9:30 to 10:30 P. M.—Harding Theatre Stage Presentation.  
 10:30 to 11:30 P. M.—Jazz Pot Pourri. Charlie Garland, piano.

### WCBD [870]—344.6

Silent on Wednesday

### WCFL [620]—483.6

10 A. M.—Municipal.  
 12 Noon—Organ Request Concert, Helen Rauh.  
 1:30 P. M.—Womens' Aid Hour.  
 4 P. M.—"Own Your Home" Hour.  
 5 P. M.—"Shoppers Guide" Hour.  
 6 P. M.—Chicago Federation of Labor Hour. Sport Talk. Labor News Flashes. Dr. P. L. Clark.  
 7 P. M.—Bulletin Board. R. L. Redcliffe. Educational Talk.  
 8 to 12 P. M.—Oscar Ellinger, Harold O'Halloran, Joe Warner, Helen Rauh, Charlie White, Earl Hoffman's Chez Pierre Orchestra, Peter Grosso, Red Peppers.

### WCRW [1340]—223.7

11:30 to 1 P. M.—Josephine popular program.  
 6:30 to 7:30 P. M.—Popular program.  
 9:30 to 10:30 P. M.—Popular program.

### WEBH—WJJD [820]—365.6

WEBH  
 10:00 to 10:30 A. M.—"The Newspaperman."  
 10:30 to 11:00 A. M.—McVickers Theatre Organ Concert—Raymond Turner.  
 11:00 to 12 Noon—Woman's Hour—Prudence Penny.

WJJD  
 12:00 to 1:00 P. M.—Palmer House Petite Symphony; Viola Repp. Contralto.

1:00 to 1:15 P. M.—Illinois Agricultural Association Program.

WEBH  
 1:15 to 2:00 P. M.—Uptown Theatre Organ Recital—Arsene Seigel.

WJJD  
 2:00 to 3:00 P. M.—Children's Program at Mooseheart.

WEBH  
 3:00 to 3:30 P. M.—String Trio; Dr. Bundesen; Baseball Scores.  
 3:30 to 4:00 P. M.—Tivoli Theatre Piano Reverie—Dean Remick.

WJJD  
 4:00 to 5:00 P. M.—Children's Program at Mooseheart.

WEBH  
 5:00 to 5:45 P. M.—Aichanee Children's Club, Harry "Dream Daddy" Davis and Zola Haynes in Songs and Stories.

WJJD  
 5:45 to 6:00 P. M.—Piano Twins, Violette Bradley and Ruth Johnstone.

6:00 to 7:00 P. M.—Palmer House Petite Symphony; Victorian Orchestra.

6:15 to 6:25 P. M.—"Distinguished Guest," Speaker.

WEBH  
 7:00 to 7:30 P. M.—Dixie Travelers.

7:30 to 8:00 P. M.—Edgewater Beach Hotel Orchestra; WEBH Trio.

WJJD  
 8:00 to 8:30 P. M.—Children's Program at Mooseheart.

8:30 to 9:00 P. M.—Tivoli Theatre Stage and Studio Presentation.

WEBH  
 9:00 to 9:30 P. M.—Cello Recital.

9:30 to 10:00 P. M.—Edgewater Beach Hotel Orchestra; Nubs Allen, Songs.

10:00 to 10:15 P. M.—Herald and Examiner News Flashes, Weather Report and Correct Time.

WJJD  
 11:00 to 12:00 M.—Palmer House String Trio; Piano Twins, Violette Bradley and Ruth Johnstone; Georges Glorch, Tenor.

WEBH  
 12:00 to 1:00 A. M.—Informal Revue—Edgewater Beach Hotel Orchestra.

A subscription blank on page 1 for your convenience. Fill in and mail NOW.

### WENR—WBCN [1040]—288.3

WBCN—11 A. M.—Home Service Feature, Anna J. Peterson.

WENR—11:30 A. M.—Home Service Feature, Anna J. Peterson.

WENR—12 P. M.—Noon Hour Concert. Charlotte Cowan, Edward Davies, Jack Baus, Sterra Feigen, Sallie Menkes, Peter Grosso and Arthur Wellington.

WBCN—1 P. M.—Charlotte Cowan, Edward Davies, Oscar Heather, Irma Glen and Sallie Menkes.

WENR—2 P. M.—Popular Request Program. Orchestra, Everett Mitchell, Marie Tulley, Mike and Herman, Ford and Wallace, Vivian Lawrence, organ; Frank Westphal and Edison Derby.

WBCN—5 P. M.—Irma Glen, Jack Baus, Oscar Heather and Sallie Menkes.

WENR—6 P. M.—Dinner Concert. Organ and Tip Top Orchestra.

WBCN—7 P. M.—Orchestra, Marie Tulley, Oscar Heather and Frank Westphal.

WENR—8 P. M.—Classical Program. Charlotte Cowan, Florence Hallberg, Cantor Kittay, Jack Baus, Sterra Feigen, Sallie Menkes and Arthur Wellington.

WENR—9:30 P. M.—Popular Request Program. Cornelius Maffie, Everett Mitchell, Marie Tulley, Orchestra, Frank Westphal and Dennis Sisters.

### WGES—WEDC [1240]—241.8

12:00 Noon—Angelus; Edgar Guest Poem; World News Service; Scratches from Local Race-tracks; Weather Reports; Beach Temperatures; Musical Program.

12:30 P. M.—The Shopper Family; Bungalow Program.

1:00 P. M.—World News Service; Stock Reports; Scratches from Local Racetracks; Eunice Hoefler—Senate Theatre Organ.

2:00 P. M.—World News Service; Daily Health Talk.

2:30 P. M.—Marg Van—Tiffin Theatre Organ.

3:00 P. M.—World News Service; Closing Markets; Baseball Scores; Race Results.

4:00 P. M.—World News Service; Race Results.

5:00 P. M.—World News Service; The Book Worm.

6:00 P. M.—Angelus; World News Service; Complete Baseball Scores; Race Results; Mrs. Preston Sellers—Senate Theatre Organ.

6:30 P. M.—Jewish Hour.  
 7:30 P. M.—Senate Theatre Stage Show.

8:00 P. M.—4th Annual Radio Industries Banquet.

9:00 P. M.—Maggie and Jiggs.  
 9:10 P. M.—Program from Columbia Chain.

11:00 P. M.—Bungalow Program.

11:30 P. M. Golden Pumpkin Orchestra.

12:00 P. M.—Preston Sellers—Senate Theatre Organ.

# Program for Wednesday, September 21, 1927—Cont'd

## WGN [980]—305.9

9:00 to 10:00 A. M.—Summary of Day's News; Discussion of Events.

10:00 to 10:30 A. M.—Home Management Period—"General Household Hints."

11:00 to 11:30 A. M.—Organ Recital by Dean Fossler from Chicago Theatre.

12:40 to 2:20 P. M.—Luncheon Concert by Drake Concert Ensemble and Blackstone String Quintet.

2:20 to 3:00 P. M.—Lyon and Healy Recital.

3:00 to 4:00 P. M.—Marshall Field Tea-Room Orchestra and Studio Program.

4:00 to 5:00 P. M.—Mac Sattley's Hour.

5:00 to 5:30 P. M.—Ambrose Larsen's Organ Recital.

5:30 to 5:50 P. M.—"Where Are You Going?" "Siam, Java and Singapore."

5:56 to 6:01 P. M.—Time Signals by the Elgin National Watch Company.

6:01 to 6:10 P. M.—Closing Stock and Bond Quotations.

6:10 to 6:35 P. M.—Uncle Quin's Punch and Judy.

6:35 to 6:50 P. M.—Drake Concert Ensemble.

6:50 to 7:00 P. M.—The Old Fashioned Almanack.

8:00 to 12:00 M.—Broadcast of the Fourth Annual Radio Industries Banquet.

## WHFC [1390]—215.7

8:00 P. M.—Miscellaneous Program—Two hours of classic, semi-classic, popular music and miscellaneous entertainment—

Col. Edwin House, basso and entertainer

Alice Loveless, soprano  
John Stamford, tenor, songs and readings

Lester Mather, pianist  
Harry Nathan's Orchestra

10:00 P. M.—"Radio Symphony Hour"—Program of the Chicago Broadcasting Chain, given by their Little Symphony Orchestra, with soloists.

11:00 P. M.—Dance Music Period—Featuring dance music by Harry Nathan's Orchestra.

## WHT [720]—416.4

10:00 A. M.—Women's Home Hour

Masters of the piano music—Schubert, given by Doris Wittich, Concert Pianist

10:30 A. M.—Martha Lynn in readings

Leota Miller—Soprano  
11:20 A. M.—Turner Brothers Talk

11:30 A. M.—Captain Conley's Travel Talks

12:00 Noon—Complimentary Organ Recital—Al Carney

12:50 P. M.—Farm Reports, Poultry Markets, Weather Report

1:00 P. M.—Luncheon Program Graylings String Trio  
Evelyn Vierk—Soprano

2:00 P. M.—Collyer's Eye—News Scratches, Sports



**JOHN D. THOMAS**, program director, station WGBD and dean of the Department of Music of Zion Educational Institutions.

## WHT—Cont'd

2:15 P. M.—Signing off

7:00 P. M.—Collyer's Eye News

7:10 P. M.—Evening Organ Recital—Al Carney

7:50 P. M.—Graylings String Trio

8:00 P. M.—Ruth Byron—Soprano

Doris Wittich—Pianist

8:30 P. M.—Salicon Weather Report

8:35 P. M.—Mathew Sisters—Gay and Lu

8:50 P. M.—Collyer's Eye News

9:00 P. M.—Your Hour League—Al and Pat

10:00 P. M.—Signing off

## WIBO [720]—416.4

2:30 to 3 P. M.—Organ recital, Sheridan Theatre, Eddie Fitch.

3 to 4:30 P. M.—Sheridan Theatre Orch. SHUT IN'S Program. The Francis Sisters and Peter, Frank and Jean. Myrtle Talley, soprano. Raymond Eberhart, tenor.

5:30 to 6 P. M.—Organ recital, Sheridan Theatre, Nellie Williams.

6 to 6:15 P. M.—Howard Neumiller, concert pianist.

6:15 to 6:30 P. M.—Clem F. Wade, talk. "The Constitution of the U. S."

6:30 to 7 P. M.—Hotel Davis Orchestra. Aunt Bernie, children's program.

10 to 11 P. M.—Stage Show, Sheridan Theatre. Sheridan Theatre Orchestra and stars.

11 to 1 A. M.—The Lombards, comedy skit. "My Old Home Town." Frank and Jean, I. H. Hechtman, Premier Trio. Hotel Davis Orchestra.

## WJAZ [1140]—263

7 to 8 P. M.—Chez Pierre Orchestra.

9 to 11 P. M.—Studio Program. Chez Pierre Orchestra.

## WJBT [770]—389.4

10 30 to 11:15 A. M.—Shoppers service.

5 to 6 P. M.—Classics.

6 to 7 P. M.—Organ recital. Cello recital. Gus. C. Edwards' Terrace Garden Orchestra.

11 to 12 M.—Orchestra. Charley Straight's Brunswick Recording Orchestra.

## WLBI [980]—305.9

10:30 to 11:00 A. M.—Entertainment for shut-ins.

11:30 to 11:50 A. M.—Readings by John Reed Tyson.

11:50 to 11:57 A. M.—Good health and training period.

11:57 to 12:01 P. M.—Time signals by the Elgin National Watch Co.

12:01 to 12:40 P. M.—Children's story period.

7:00 to 8:00 P. M.—Dinner concert by the Drake Concert Ensemble and the Blackstone String Quintet.

## STATION KGW—(Continued from Page 6)

The director of KGW is Richard V. Haller, whose "Million Dollar Voice" and keen perception of modern broadcasting are of national recognition. He is assisted by a corps of four announcers, a technical staff comprising one engineer—Vern Haybarker—and three operators, an office staff of five employees and a musical staff of 20 artists of sectional prominence. Announcers are Hugh Walton, also program director, Stephen Gaylord, also commercial representative, Velta D. Weller and Bernice Alstock. With the exception of Mrs. Weller, who is the director of women's activities, one of the important phases of the station's activities, the remainder of the announcing staff are vocalists of high capabilities. They are featured in studio presentations on a consistent basis.

Feature productions heard regularly from KGW are the weekly frolic of the Keep Growing Wiser order of Hoot Owls, Sunday night symphonic concerts by the Public Service Little Symphony under the baton of Conductor Hauptmann, Pacific coast and National Broadcasting company presentations of network distribution, and dance frolics by Herman Kenin's Multnomah hotel dance orchestra, exclusive Victor recording artists and Cole McElroy's Spanish Ballroom dance orchestra, exclusive Columbia recording artists.





### WGN to Broadcast Dempsey-Tunney Fight from Chicago

Chicago, Sept. 19—Listeners will hear the heavyweight championship battle between Gene Tunney and Jack Dempsey from WGN, the Chicago Tribune Station on the Drake Hotel. George Getz and Tex Rickard, promoters of the fist event of the century, have both given WGN permission to stage an individual broadcast of the scrap direct from Soldier's Field stadium on the night of September 22.

WGN announcers will cover the event, and their words will be transmitted to the station's control room on the Drake Hotel and sent from there to Elgin where they will be broadcast. The station expects to go on the air sometime before the first preliminary fight of the evening's program and continue until the championship has been decided. After the fight a special studio musical program will be broadcast, which will be interspersed with summaries of various angles of the fight.

With its wide experience in broadcasting important sports events, WGN promises listeners a thrilling story of the scrap. Two WGN announcers, Quin Ryan and Bill Hay, will be at the microphone during the broadcast. Before the main event starts, listeners will hear a vivid description of the stadium as it fills with humanity for the fight, and as the preliminary fighters engage in the contests previous to the finale of the evening.

When the championship battle gets under way, Ryan will be heard in a blow by blow, round by round, story of it, while between rounds Hay will insert brief comments on the reactions of the crowd to the fight, a summary of the blows struck, and the mid-round conditions of each man. He will assist in keeping track of the points scored by the fighters in each frame.

During the time remaining before the fight, WGN is presenting many interesting novelties built around the September 22 battle. Each Saturday night, Don Maxwell, a Chicago sports writer, in making his radio sports summary of the week, is dealing with some phase of the coming battle, such as his later recently from Dempsey's Lincoln Fields training camp in which he reviewed the work of the champion.

Chief Engineer Carl Meyers of WGN, assisted by George Leverett and Walter Hotz of the station's engineering staff, is preparing for a perfect mechanical handling of the great fight, and the Elgin transmitter is being tuned and made ready for the broadcast. Members of the engineering staff will be stationed at various points to see that nothing goes wrong on the night of the fight.

### Hal Totten and Major White to Broadcast Fight

When champion Gene Tunney and Jack Dempsey climb through the ropes of Soldier Field arena on the night of September 22, before what is expected to be the largest crowd that ever viewed a boxing contest, WMAQ will carry a blow by blow description of the battle to hundreds of thousands of fans throughout the middle west.

Hal Totten, WMAQ's sport announcer, already known to a vast audience by virtue of his major league baseball broadcasts, will be at the microphone as will also Major J. Andrew White, vice-president of the Columbia Broadcasting System.

In order to officiate at the fight Major White plans to make the trip from New York City by airplane. The night before this sporting extravaganza he will be serving as master of ceremonies at the annual radio industries banquet in New York which is scheduled to carry on until late in the evening.

To complete the broadcast at the Hotel Astor on the twenty-first and make connections with the pilot and plane which have been engaged to transport him to Chicago, there will not even be time for Major White to change from evening clothes.

WMAQ will serve as the key station of the Columbia chain in making the broadcast accessible to the other fifteen stations of the Columbia chain.

### Famous "Hired Hand" will Officiate at WLS Mike

Harold Hough, famous "Hired Hand" of radio station WBAP, Fort Worth, Texas, will be master of ceremonies at the National Barn Dance at WLS, the Sears Roebuck station, Saturday night, September 24. He will come to Chicago as the special guest of WLS and will officiate at the microphone with his well known cowbells and characteristic style of announcing.

Mr. Hough has been popularly known as the "Hired Hand" by listeners for more than four years. His novel announcements and the clever stunts which he "pulled" on the air won for him wide favor when he first took charge at the Fort Worth Star-Telegram station and his popularity has been growing rapidly ever since.

The "Hired Hand" will have all the needed "atmosphere" when he takes charge at the WLS barn dance on the night of September 24. The jangle of the cowbells which he always used and his breezy personality will have full sway in the night's activities.

### Joe Foley to Give Blow by Blow Story of the Dempsey-Tunney Fight

The blow by blow story of the Dempsey-Tunney championship fight to be staged at Soldiers Field, Chicago, Sept. 22, will be broadcast by WLS, the Sears-Roebuck station, direct from the ringside of the big battle. Joe Foley, sports editor of the Chicago Daily Journal, will be at the microphone of WLS right at the scene of the big scrap. Mr. Foley knows the fight game from every angle and has been closely watching both Jack Dempsey and Gene Tunney during their periods of preparation for the championship go. So fight fans throughout the country who tune in on WLS the night of Sept. 22 are assured of a graphic and detailed account of the clash between the champion and the challenger. Rocky Wolfe of the Chicago Daily Journal sports staff, and known to the radio audience as chairman of the Daily Journal WLS Sports Club, will also be at the ringside to assist in the broadcast of the proceedings.

### Radio Saves Famous Symphony for Chicago

That the Chicago Symphony Orchestra, with Frederick Stock conducting, is saved for music lovers of the nation is due to radio in general and to WMAQ in particular.

WMAQ and The Chicago Daily News, in nine days, raised \$30,000 the sum needed to end the deadlock, over increased pay, between the Orchestra Association and the Chicago Federation of Musicians. The deadlock, which had existed for weeks, threatened the dissolution of the symphony.

Contributions of \$5,000 (five thousand dollars), each were made by The Daily News, Mrs. Edith Rockefeller McCormick, daughter of John D. Rockefeller, and Louis Ecksteln, famous producer of summer opera at Ravinia. The other fifteen thousand were received in amounts varying from one dollar to three thousand, from people in many states who were opposed to the idea of disbanding one of the foremost orchestral organizations in the world.

"I firmly believe that the thirty-seventh year of orchestra, which is ahead, will surpass all others in brilliancy," predicted Frederick Stock, when informed that the entire \$30,000 had been raised.

**Program for Thursday, September 22, 1927**

**KYW [570]—526**

10:55 A. M.—Time Signals and Weather Report.  
 5:30 P. M.—Baseball Scores.  
 5:45 P. M.—Markets.  
 6:00 P. M.—The Bedtime Story told by Walter Wilson who is known to the children as "Uncle Bob."  
 6:30 P. M.—Weather Report.  
 7:00 to 8:00 P. M.—Program from KYW's Congress Hotel Studio.  
 8:00 to 9:30 P. M.—KYW, as part of the Blue Network, will broadcast a program from WJZ, New York City. **Dempsey-Tunney fight.**  
 9:30 to 10:30 P. M.—Musical Program from KYW's Congress Hotel Studio.  
 10:30 P. M.—Weather Report.  
 10:32 to 10:55 P. M.—Congress Hotel Orchestra Music.  
 10:55 P. M.—Time Signals and Weather Report.

**WBBM [770]—389.4**

12:45 to 1:50 P. M.—Luncheon Dance Program. Gus C. Edward" Terrace Garden Orchestra.  
 7 to 8 P. M.—String Concert. Gus C. Edward's Orchestra. WBBM String Trio.  
 8 to 9:30 P. M.—Artist Recital. William Miller, tenor. WBBM String Trio.  
 9:30 to 10:15 P. M.—Studio Program. Marcella Blues. Charlie Garland. Charlie Schultz, eighty-pound tenor. Floyd Falch.  
 10:15 to 11 P. M.—Dance Period with Gus C. Edward's Orchestra and Charley Straight's Orchestra.

**WCBD [870]—344.6**

NOTE—At the request of Station WLS with whom Station WCBD shares the 345 meter wave length, WCBD has yielded to them their regular night of Thursday, Sept. 22nd and will broadcast on Friday evening, Sept. 23rd, for this night and date only.

**WCFL [620]—483.6**

10 A. M.—Municipal.  
 12 Noon—Organ Request Concert. Helen Rauh.  
 1:30 P. M.—Womens' Aid Hour.  
 4 P. M.—"Own Your Own Home" Hour.  
 5 P. M.—"Shoppers' Guide" Hour.  
 6 P. M.—Chicago Federation of Labor Hour. Sport Talk. Labor News Flashes. R. L. Fitch, Tool and Die Maker.  
 7 P. M.—Bulletin Board, Chas. Wills, Educational Talk.  
 8 to 12 P. M.—Ann Post, Maurice Cherst, Joe Warner. Helen Rauh, Eddie Hansen Organ Recital, Earl Hoffman's Chez Pierre Orchestra, Red Peppers.

**WCRW [1340]—223.7**

11:30 to 1 P. M.—Josephine popular program.  
 6:30 to 7:30 P. M.—Popular program.  
 9:30 to 10:30 P. M.—Popular program.

**WEBH—WJJD [820]—365.6**

WEBH  
 10:00 to 10:30 A. M.—"The Newspaperman."  
 10:30 to 11:00 A. M.—McVickers Theatre Organ Concert—Raymond Turner.  
 11:00 to 12 Noon—Woman's Hour—Prudence Penny.  
 1:15 to 2:00 P. M.—Uptown Theatre Organ Recital—Arsene Seigel.  
 3:00 to 3:30 P. M.—String Trio; Chicago Concert Company (Directed by Frank Bennett).  
 3:30 to 4:00 P. M.—Tivoli Theatre Piano Reverie—Dean Remick.  
 5:00 to 5:45 P. M.—Aichanee Children's Club, Harry "Dream Daddy" Davis and Zola Haynes in Songs and Stories.  
 7:00 to 8:00 P. M.—R. C. A. Radiotrons.  
 8:00 to 11:00 P. M.—World's Championship Fight between Jack Dempsey and Gene Tunney.  
 11:00 to 12:00 M.—Herald and Examiner News Flashes, Weather Report, Correct Time; Palmer House String Trio; Harold Hinchliffe, Tenor; Madge Tarbell, Songs; Bud Valentine, "Whispering Baritone."

WJJD

12:00 to 1:00 P. M.—Palmer House Petite Symphony; Louise Mueller, Vocalist.  
 1:00 to 1:15 P. M.—Illinois Agricultural Association Program.  
 2:00 to 3:00 P. M.—Children's Program at Mooseheart.  
 4:00 to 5:00 P. M.—Children's Program at Mooseheart.  
 5:45 to 6:00 P. M.—Piano Twins, Violette Bradley and Ruth Johnstone.  
 6:00 to 7:00 P. M.—Palmer House Petite Symphony, Victorian Orchestra.  
 6:15 to 6:25 P. M.—"Distinguished Guest," Speaker.  
 8:00 to 9:00 P. M.—Mooseheart Hour.

**WENR—WBCN [1040]—288.3**

WBCN—11 A. M.—Home Service Feature, Anna J. Peterson.  
 WENR—11:30 A. M.—Home Service, Anna J. Peterson.  
 WENR—12 P. M.—Noon Hour Concert. Lewis Meehan, Louise Vernet, Jack Baus, Sterra Feigen, Sallie Menkes and Arthur Wellington.  
 WBCN—1 P. M.—Irma Glen, Florence Hallberg, Lewis Meehan, Oscar Heather and Sallie Menkes.  
 WENR—2 P. M.—Popular Request Program. Cornelius Maffie, Orchestra, Everett Mitchell, Marie Tulley, Mike and Herman, Harry Lawrence and Edison Derby.  
 WBCN—5 P. M.—Irma Glen, Oscar Heather, Sterra Feigen and Sallie Menkes.  
 WENR—6 P. M.—Dinner Concert. Organ and Tip Top Orchestra.  
 WBCN—7 P. M.—Orchestra, Oscar Heather, Marie Tulley and Frank Westphal.

**WENR—WBCN—Cont'd**

WENR—8 P. M.—Classical Program. Special Feature Program: Louise Vernet Thora Martens, Lewis Meehan, Jack Baus, Edward Davies, Sterra Feigen, Sallie Menkes and Arthur Wellington.  
 WENR—9:30 P. M.—Popular Request Program. Organ, Orchestra, Cornelius Maffie, Everett Mitchell, Marie Tulley, Ford and Wallace, Frank Westphal Hollingsworth and Altamore.

**WGES—WEDC [1240]—241.8**

12:00 Noon—Angelus; Edgar Guest Poem; World News Service; Scratches from Local Race-tracks; Weather Reports; Beach Temperatures; Musical Program.  
 12:30 P. M.—The Shopper Family; Bungalow Program.  
 1:00 P. M.—World News Service; Stock Reports; Scratches from Local Racetracks; Eunice Hoeffler—Senate Theatre Organ.  
 2:00 P. M.—World News Service; Daily Health Talk.  
 2:30 P. M.—Marg Van—Tiffin Theatre Organ.  
 3:00 P. M.—World News Service; Closing Markets; Baseball Scores; Race Results.  
 4:00 P. M.—World News Service; Race Results.  
 5:00 P. M.—World News Service; The Book Worm.  
 6:00 P. M.—Angelus; World News Service; Complete Baseball Scores; Race Results; Mrs. Preston Sellers—Senate Theatre Organ.  
 6:30 P. M.—Jean Anthony—Marbro Theatre Organ.  
 7:30 P. M.—Book Review—Llewellyn Jones, Literary Editor—Chicago Evening Post.  
 8:00 P. M. Christian Family Hour.  
 9:00 P. M.—Maggie and Jiggs; WGES String Trio.  
 9:30 P. M.—United Broadcasting Studios Program; Also WHFC and WSBC.  
 10:00 P. M.—Charles Rothermel.  
 11:00 P. M.—Guyon's Paradise Orchestra.  
 11:30 P. M. Golden Pumpkin Orchestra.  
 12:00 P. M.—Schoebel Shower Hour.

**WGN [980]—305.9**

9:00 to 10:00 A. M.—Summary of Day's News; Discussion of Events.  
 10:00 to 10:30 A. M.—Home Management Period.  
 11:00 to 11:30 A. M.—Organ Recital by Dean Fossler of Chicago Theatre.  
 12:40 to 2:20 P. M.—Luncheon Concert by Drake Concert Ensemble and Blackstone String Quintet.  
 2:20 to 2:55 P. M.—Lyon and Healy Artist Recital.  
 2:55 P. M.—Baseball: Cubs vs. Philadelphia.

(Continued on Next Page)

**Program for Thursday, September 22, 1927—Cont'd**

**WGN—Cont'd.**

5:00 to 5:30 P. M.—Ambrose Larsen's Organ Recital.  
 5:56 to 6:01 P. M.—Time Signals by the Elgin National Watch Company.  
 6:01 to 6:10 P. M.—Closing Stock and Bond Quotations.  
 6:10 to 6:35 P. M.—Uncle Quin's Punch and Judy.  
 6:35 to 6:50 P. M.—Drake Concert Ensemble.  
 6:50 to 7:00 P. M.—The Old Fashioned Almanack.  
 8:00 to 11:00 P. M.—Broadcast of the Tunney-Dempsey Fight. Direct from Soldiers' Field in Chicago.

**WHFC [1390]—215.7**

8:00 P. M.—Artist Recital—Evelyn Vitto Levin, violinist Lester Mather, concert pianist.  
 9:00 P. M.—1-Act Play by the WHFC Players—"Come Out of the Kitchen."  
 9:30 P. M.—Program of the Chicago Broadcasting Chain.  
 10:00 P. M.—Popular Program. The Day Sisters, harmony team  
 Aloha Boys, Hawaiian guitar team  
 John Stamford, tenor  
 Harry Nathan's Orchestra and others.

**WHT [720]—416.4**

10:00 A. M.—Women's Home Hour  
 Gertrude Bright—Soprano  
 Doris Wittich—Pianist  
 Victor Kephart—Guitar  
 Elberta Roy—Crepe Paper Novelties  
 12:00 Noon — Complimentary Organ Recital—Al Carney  
 12:50 P. M.—Farm Reports, Poultry Markets, Weather Report  
 1:00—Luncheon Program  
 Graylings String Trio  
 Alma Flick—Contralto  
 1:30 P. M.—Turner Brothers Talk  
 2:00 P. M.—Collyer's Eye News  
 2:15 P. M.—Signing off  
 7:00 P. M.—Collyer's Eye  
 7:10 P. M.—Graylings String Trio  
 Musical Program—Dorothea Drake  
 8:10 P. M.—City Hall Sepaker  
 8:20 P. M.—Artist Recital—Doris Wittich; the program will be as follows:  
 Sonata Pathitigue..Beethoven  
 Berceuse .....Chopin  
 Valse brillante.....Chopin  
 Rigoletto Fantasie.....Liszt  
 8:50 P. M.—Collyer's Eye  
 9:10 P. M.—Your Hour League —Al and Pat  
 10:00 P. M.—Signing off  
 11:00 P. M.—Popular Program  
 11:30 P. M.—Salicon Weather Report  
 12:00 P. M.—Review of Your Hour  
 1:00 A. M.—Signing off

**WIBO [720]—416.4**

2:30 to 3 P. M.—Organ recital, Sheridan Theatre, Eddie Fitch.  
 3 to 4:30 P. M.—Sheridan Theatre Orchestra. Shutin's Program. Gail Randell, Frank and Jean, Bud Valentine, Kay Davidsson, Everett Opie.  
 5:30 to 6 P. M.—Organ recital, Sheridan Theatre, Nellie Williams.  
 6 to 6:15 P. M.—Howard Neumiller, concert pianist. "Rachminoff Recital."  
 6:15 to 6:30 P. M.—Lenore Friedman, soprano, song recital.  
 6:30 to 6:45 P. M.—Hotel Davis Orchestra.  
 6:45 to 7 P. M.—Cantor Jacob H. Sonenklar, lyric tenor of Anshe. Emes Temple, Hebrew recital.  
 10 to 11 P. M.—Hotel Davis Orchestra. Owen Brothers, Francis Sisters.

**WJAZ [1140]—263**

9 to 11 P. M. Studio Program and Chez Pierre Orchestra.  
 11 P. M.—Program to Capt. Donald B. MacMillan.

**WJBT [770]—389.4**

10:30 to 11:15 A. M.—Shoppers service.  
 5 to 6 P. M.—Markets. Weather report. Shoppers service. Organ.  
 6 to 6:30 P. M.—Cello recital.  
 6:30 to 7 P. M.—Gus. G. Edwards' Terrace Garden Orchestra.  
 12 to 1 A. M.—Popular story program.

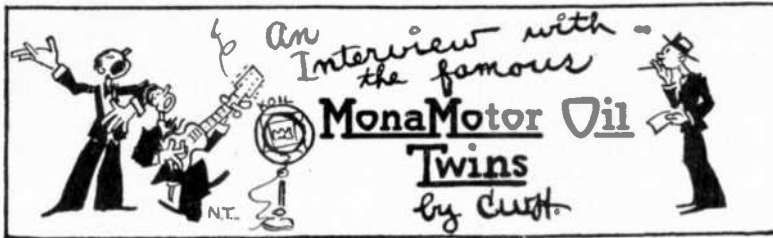
**WLIB [980]—305.9**

10:30 to 11:00 A. M.—Entertainment for shut-ins.  
 11:30 to 11:50 A. M.—Readings by John Reed Tyson.  
 11:45 to 11:57 A. M.—Piano selections by Fern Scull.  
 11:57 to 12:01 P. M.—Time signals by the Elgin National Watch Co.  
 12:01 to 12:40 P. M.—Children's story period.  
 7:00 to 8:00 P. M.—Dinner concert by the Drake Concert Ensemble and the Blackstone String Quintet.  
 11:00 to 11:10 P. M.—Waltz Time.  
 11:10 to 11:20 P. M.—Vocal Music.  
 11:20 to 11:30 P. M.—Doc Davis and his Drake Hotel dance orchestra.  
 11:30 to 12:00 M.—Ambrose Larsen's Wurlitzer organ recital.  
 12:00 to 12:15 A. M.—Doc Davis and his Drake Hotel dance orchestra.

**WLS [870]—344.6**

9 A. M.—Receipts of Livestock at Principal Markets. Chicago Hog Market Flash. News Summary.  
 9:10 A. M.—Home Question Box, Ellen Rose Dickey, Home Adviser, Sears-Roebuck Agricultural Foundation.  
 9:30 A. M.—Opening Board of Trade.  
 9:35 A. M.—Early Livestock Market from Chicago Livestock Exchange.  
 9:45 A. M.—Home Question Box, Ellen Rose Dickey.  
 10 A. M.—Board of Trade.  
 10:03—Weather Forecast. Early Price on Butter and Eggs. Live Poultry Quotations.  
 10:30 A. M.—Board of Trade.  
 11 A. M.—Board of Trade.  
 11:03 A. M.—Butter, Egg and Dressed Veal Quotations. Live and Dressed Poultry Quotations. Squab Market. Millfeed Market. Buffalo, Pittsburgh, Indianapolis, Cleveland, Cincinnati and Peoria Livestock wires. New Summary.  
 11:15 A. M.—Alain Masin, pianist.  
 11:30 A. M.—Board of Trade Market.  
 11:33 A. M.—Chicago Fruit and Vegetable Market.  
 12 (Noon)—Board of Trade.  
 12:05 P. M.—Chicago Livestock Market from Chicago Livestock Exchange.  
 12:30 P. M.—Board of Trade.  
 12:55 P. M.—Western Union Time Signals.  
 1 P. M.—Board of Trade. R. F. D. Dinnerbell Program. Weather Forecast. Buffalo, Indianapolis and Pittsburgh wires.  
 1:15 P. M.—Closing Livestock Market from Chicago Livestock Exchange.  
 1:25 P. M.—Board of Trade. Talk, E. B. Heaton, U. S. Egg Society, "Factors in Egg Marketing." Talk, J. F. Thomas, Farm Adviser, Waukesha, Wis.  
 1:35 P. M.—Butter and Egg Summary.  
 4:30 P. M.—Chicago Daily Journal, WLS, Sports Service.  
 5:30 P. M.—Chicago Daily Journal, WLS, Sports Service.  
 5:40 P. M.—Organ, Al Melgard.  
 5:55 P. M.—Western Union Time Signals.  
 6 P. M.—Board of Trade Summary. Closing Livestock Summary.  
 6:15 P. M.—Pied Piper's Time.  
 6:30 P. M.—Chicago Daily Journal, WLS Sports Club.  
 6:40 P. M.—Maurie Sherman's Orchestra.  
 7 P. M.—Al Melgard, organ.  
 7:10 P. M.—Maurie Sherman's Orchestra.  
 7:30 P. M.—Old Town Duo.  
 7:45 P. M.—WLS Players.  
 8 P. M.—Tony's Scrap Book.  
 8:10 to 8:30 P. M.—Verse and Music Program with WLS Players.  
 8:35 P. M.—Dempsey-Tunney Fight, Chicago Daily Journal, WLS, Sports Service.





At last! John and Ned, the long-heralded "MonaMotor Oil Twins."

After chasing them all over the United States and Canada with my radio, I had the opportunity of meeting them the other day as they were broadcasting from my home town radio station.

Undoubtedly, this team is one of the most widely known and versatile in the country, and it was a surprise to find them stopping at such a small town.

I was not alone in my curiosity, for I found quite a crowd gathered at the station watching them through the Pullman window prior to alighting.

work, but don't you get tired of traveling about the country?"

"Naturally we do get tired of traveling," said John, "and it is not altogether pleasant to be away from home all the time."

"But after all," they agreed, "it is very enjoyable work and we get a big kick out of it. We receive excellent treatment wherever we go. It seems that most studios are just like home. There is usually a hostess to welcome and entertain visitors, but all in charge seem to make a special effort to entertain visiting artists."

"How do stations co-operate with you in your publicity

vertising and that by meritorious programs they create good will toward MonaMotor Oil company products among their invisible audience. They said also that listeners were thus better acquainted with the trade name "MonaMotor."

"Do you feel that your programs create a demand for the oil?" I asked.

"Well, yes," Ned replied, "people hear us sing, they seem to like our entertainment and become friendly to MonaMotor Oil. Naturally, if it is offered to them they take it."

"How long have you been doing this entertaining?" I queried.



MonaMotor Oil Twins from Station KOIL—John Wolfe, with Banjo, and Ned Tollinger, before "mike"

Then I saw our announcer greeting the boys, and I knew that a way had been opened for me to meet them. I found both John Wolfe and Ned Tollinger very cordial. When I told them how I had enjoyed their programs, John blushed like a young girl and Ned began embarrassedly to finger his cravat.

#### Two Shrinking Violets

I felt that it was going to be no easy task to get the boys to talk about themselves. My first question was one that they, no doubt, had heard many times:

"You must greatly enjoy your

work?" I inquired.

"We receive excellent cooperation," said Ned. "Of course our work is of an advertising nature. However, we are always careful not to make our programs offensive with too much advertising. As a rule the microphone is turned over to us and we handle our entire program alone."

This made me curious as to how the MonaMotor Oil Company benefited from such advertising.

#### Develop Radio Clientele

The Twins explained that their work is known as good will ad-

They explained that they had been wandering from station to station since January, 1926. However, when I inferred that they were entertainers before entering the radio field they laughed and seemed to enjoy telling me how Ned had been a commercial artist and John a traffic manager, and that neither had had any musical training.

"You see, it was this way," began Ned, "John had a Ford. One night we were riding around after a show, and I started to

(Continued on Page 31)

## Program for Friday, September 23, 1927

### KYW [570]-526

10:55 A. M.—Time Signals and Weather Report.  
 4:00 P. M.—"Woman's Hour from KYW's Congress Hotel Studio.  
 5:30 P. M.—Baseball Scores.  
 5:45 P. M.—Markets.  
 6:00 P. M.—The Bedtime Story told by Walter Wilson who is known to the children as "Uncle Bob."  
 6:30 P. M.—Weather Report.  
 6:32 to 7:00 P. M.—Congress Hotel Dinner Concert.  
 7:00 to 9:00 P. M.—KYW will broadcast a Blue Chain Program from WJZ, New York, as follows:  
 7:00 to 7:30 P. M.—Yesterday's thoughts.  
 7:30 to 8:00 P. M.—Royal Stenographers.  
 8:00 to 9:00 P. M.—Philco Hour.  
 9:00 to 10:30 P. M.—Congress Hotel Studio Program.  
 10:30 P. M.—Weather Report.  
 10:32 to 10:55 P. M.—Congress Hotel Orchestra Music.  
 10:55 P. M.—Time Signals and Weather Report.

### WBBM [770]-389.4

12:45 to 1:50 P. M.—Luncheon Dance Program. Gus C. Edward's Orchestra. Charlie Garland.  
 7 to 8 P. M.—After Dinner Concert. Orchestral Overture by Gus C. Edward's Orchestra and Charley Straight's Orchestra.  
 8 to 8:35 P. M.—Know Your World Period.  
 8:35 to 9:30 P. M.—Artist Recital. Myrtle Talley, contralto. WBBM String Trio.  
 9:30 to 10:15 P. M.—Popular Program with Kay Ronayne.  
 10:15 to 11 P. M.—Dance Period. Gus C. Edward's Orchestra and Charley Straight's Orchestra.  
 12 to 1:30 A. M.—Organ Club. Eddie Meikels, organist. Floyd Falch.

### WCBD [870]-344.6

9 P. M.—Treble Clef Chorus and Celestial Bells and will be assisted by the following persons: Mr. Alexander DePew, flute; Mr. George Beem, marimba; Miss Mary Sweeney, soprano; Miss Dorothy and Mr. Ralph Bull, duets; Mrs. A. E. McKelvie and Mrs. L. J. Reed, duets; Miss Louise Miller, violin; Esther Harwood, songs.

### WCRW [1340]-223.7

11:30 to 1 P. M.—Josephine popular program.  
 6:30 to 7:30 P. M.—Popular program.  
 9:30 to 10:30 P. M.—Popular program.

### WCFL [620]-483.6

10 A. M.—Municipal.  
 12 Noon—Organ Request Concert, Helen Rauh.  
 1:30 P. M.—Womens' Aid Hour.  
 4 P. M.—"Own Your Own Home" Hour.

### WCFL—Cont'd

5 P. M.—"Shoppers' Guide" Hour.  
 6 P. M.—Chicago Federation of Labor Hour. Sport Talk, sponsored by Federation News. Labor News Flashes.  
 7:15 P. M.—Restoro Health Institute.  
 7 P. M.—Bulletin Board. Educational Talk. Harry Winnick, Vice-Pres. Retail Clerks.  
 8 P. M.—Harold O'Halloran, Haynes and Ferris.  
 10:15 P. M.—Granada Theatre Stage Show.  
 11 to 12 P. M.—Earl Hoffman's Chez Pierre Orchestra, Red Peppers, Joe Warner, Helen Rauh, Peter Grosso.

### WEBH—WJJD [820]-365.6

WEBH  
 10:00 to 10:30 A. M.—"The Newspaperman."  
 10:30 to 11:00 A. M.—McVickers Theatre Organ Concert—Raymond Turner.  
 11:00 to 12 Noon—Woman's Hour—Prudence Penny.  
 1:15 to 2:00 P. M.—Uptown Theatre Organ Recital—Arsene Seigel.  
 3:00 to 3:30 P. M.—String Trio; Margaret Pisano and Tess Kinney; Aviation Talk by Captain H. M. Berry.  
 3:30 to 4:00 P. M.—Tivoli Piano Reverie—Dean Remick.  
 5:00 to 5:45 P. M.—Aichanee Children's Club, Harry "Dream Daddy" Davis and Zola Haynes in Songs and Stories.  
 7:00 to 8:00 P. M.—Edgewater Beach Hotel Orchestra; WEBH Saxophone Trio.  
 8:30 to 9:00 P. M.—LaFrance Manufacturing Company Orchestra.  
 9:00 to 9:30 P. M.—Moon Magic.  
 9:30 to 10:00 P. M.—Edgewater Beach Hotel Orchestra.  
 10:00 to 10:15 P. M.—Herald and Examiner News Flashes, Weather Report and Correct Time.  
 10:15 to 11:00 P. M.—Edgewater Beach Hotel Orchestra; Sam Coslow, Songs.

### WJJD

12:00 to 1:00 P. M.—Palmer House Petite Symphony; Soloist.  
 1:00 to 1:15 P. M.—Illinois Agricultural Association Program.  
 2:00 to 3:00 P. M.—Children's Program at Mooseheart.  
 4:00 to 5:00 P. M.—Children's Program at Mooseheart.  
 5:45 to 6:00 P. M.—Piano Twins, Violette Bradley and Ruth Johnstone.  
 6:00 to 7:00 P. M.—Palmer House Petite Symphony; Victrola Orchestra.  
 6:15 to 6:25 P. M.—"Distinguished Guest." Speaker.  
 8:00 to 8:30 P. M.—Children's Program at Mooseheart.  
 11:00 to 1:00 A. M.—Palmer House String Trio; Piano Twins, Violette Bradley and Ruth Johnstone; Marcella, Songs; Georges Glorch, Songs.

### WENR—WBCN [1040]-288.3

WBCN—11 A. M.—Home Service Feature, Anna J. Peterson.  
 WENR—11:30 A. M.—Home Service Feature, Anna J. Peterson.  
 WENR—12 P. M.—Noon Hour Concert. Thora Martens, Peter Grosso, Edward Davies, Oscar Heather, Sallie Menkes and Arthur Wellington.  
 WBCN—1 P. M.—Irma Glen, Charlotte Cowan, Edward Davies, Oscar Heather and Sallie Menkes.  
 WENR—2 P. M.—Popular Request Program. Organ, Orchestra, Cornelius Maffie, Everett Mitchell, Marie Tulley, Mike and Herman, Ford and Wallace, Vivian Lawrence, Frank Westphal and Edison Derby.  
 WBCN—5 P. M.—Irma Glen, Oscar Heather, Jack Baus and Sallie Menkes.  
 WENR—6 P. M.—Dinner Concert. Organ and Tip Top Orchestra.  
 WBCN—7 P. M.—Orchestra, Oscar Heather, Marie Tulley and Frank Westphal.  
 WENR—8 P. M.—Recital; Louis Meehan, tenor; Charlotte Cowan.  
 WENR—8:30 P. M.—Classical Program. Louise Vernet, Lillian Knowles, Lewis Meehan, Sallie Menkes, Arthur Wellington and Stella Feigen.  
 WENR—9:30 P. M.—Popular Request Program. Organ, Everett Mitchell, Marie Tulley, Frank Westphal, Dennis Sisters, Cornelius Maffie and Orchestra.

### WGES—WEDC [1240]-241.8

12:00 Noon—Angelus; Edgar Guest Poem; World News Service; Scratches from Local Race-tracks; Weather Reports; Beach Temperatures; Musical Program.  
 12:30 P. M.—The Shopper Family; Bungalow Program.  
 1:00 P. M.—World News Service; Stock Reports; Scratches from Local Racetracks; Eunice Hoeffler—Senate Theatre Organ.  
 2:00 P. M.—World News Service; Daily Health Talk.  
 2:30 P. M.—Marg Van—Tiffin Theatre Organ.  
 3:00 P. M.—World News Service; Closing Markets; Baseball Scores; Race Results.  
 4:00 P. M.—World News Service; Race Results.  
 5:00 P. M.—World News Service; The Book Worm.  
 6:00 P. M.—Angelus; World News Service; Complete Baseball Scores; Race Results; Mrs. Preston Sellers—Senate Theatre Organ.  
 6:30 P. M.—Bohemian Hour.  
 7:30 P. M.—Sport Talk—Howard Mann, Sporting Editor—Chicago Evening Post.  
 8:00 P. M.—Friday Concert.  
 9:00 P. M.—Maggie and Jiggs; WGES String Trio.  
 9:30 P. M.—United Broadcasting Studios Program; Also WHFC and WSBC.  
 10:00 P. M.—West Town News  
 11:30 P. M.—Ozone Club from Senate Theatre, Van Buren 1301.

## Program for Friday, September 23, 1927—Cont'd

### WGN [980]—305.9

9:00 to 10:00 A. M.—Summary of Day's News; Discussion of Events.

10:00 to 10:30 A. M.—Home Management Period — "Cheese Dishes."

11:00 to 11:30 A. M.—Organ Recital by Dean Fossler of Chicago Theatre.

12:40 to 2:20 P. M.—Luncheon Concert by the Drake Concert Ensemble and Blackstone String Quintet.

2:20 to 2:55 P. M.—Lyon and Healy Artist Recital.

2:55 P. M.—Baseball: Cubs vs. Philadelphia.

5:00 to 5:30 P. M.—Organ Recital by Ambrose Larsen.

5:56 to 6:01 P. M.—Time Signals by the Elgin National Watch Company.

6:01 to 6:10 P. M.—Closing Stock and Bond Quotations.

6:10 to 6:35 P. M.—Uncle Quin's Punch and Judy.

6:35 to 6:50 P. M.—Drake Concert Ensemble.

6:50 to 7:00 P. M.—The Old Fashioned Almanack.

8:00 to 8:30 P. M.—Musical Program.

8:30 to 9:00 P. M.—Paul Ash and His Merry-Mad, Musical Gang.

9:00 to 9:30 P. M.—Whittall's Anglo-Persians.

9:30 to 10:00 P. M.—The Phantom Violin.

10:00 to 10:10 P. M.—"Tomorrow's Tribune."

10:10 to 10:20 P. M.—Sam 'n' Henry.

10:20 to 10:30 P. M.—The Music Box.

10:30 to 12:15 A. M.—The Pepper Party.

### WHFC [1390]—215.7

8:00 P. M.—Classical Hour—A program of famous compositions by the great "Old Master" composers, presented under the direction of Lester Mather.

9:00 P. M.—"Heart Songs"—A short program of the old favorites.

9:30 P. M.—Program of the Chicago Broadcasting Chain.

10:00 P. M.—Popular Program—

Alice Loveless, soprano

John Stamford, tenor

Muriel Olson, "Blues"

Harry Nathan's Orchestra and others.

### WHT [720]—416.4

10:00 A. M.—Women's Home Hour

10:30 A. M.—Cranberry Talk—McMullen

Dorris Wittich—Pianist

11:20—Elizabeth Gary—Home Talks

11:40 A. M.—Turner Brothers Talk

11:50 A. M.—Mme. Margé—Fashion Talks

12:00 Noon — Complimentary Organ Recital—Al Carney

12:40 P. M.—Standard Talk

### WHT—Cont'd

12:50 P. M.—Farm Reports, Poultry Markets, Weather Report

1:00 P. M.—Luncheon Program Graylings Trio

Mary Moncure Parker

2:00 P. M.—Collyer's Eye

2:15 P. M.—Signing off

7:00 P. M.—Collyer's Eye

7:10 P. M.—Turner Brothers Concert Hour

8:10 P. M.—Angie Montgomerie

8:20 P. M.—Clarence Russell

8:30 P. M.—Salicon Weather Report

8:35 P. M.—Miss Mitzl

9:00 P. M.—Collyer's Eye

9:10 P. M.—Your Hour League —Al and Pat

10:00 P. M.—Signing off

### WIBO [720]—416.4

2:30 to 3 P. M.—Organ recital, Sheridan Theatre, Eddie Fitch.

3 to 4:30 P. M.—Shutin's Program. Sheridan Theatre Orchestra. Francis Sisters and Peter.

Frank and Jean, Bud Valentine.

5:30 to 6 P. M.—Organ recital, Sheridan Theatre, Nellie Williams.

6 to 6:15 P. M.—Howard Neumiller, concert pianist.

6:15 to 6:30 P. M.—Dwight Edrus, The Golden Voiced Tenor.

recital.

6:30 to 6:45 P. M.—Hotel Davis Orchestra.

6:45 to 7 P. M.—Carl A. Carlson, tenor.

10 to 1 P. M.—Hotel Davis Orchestra. The Aloha Hawaiians.

Hawaiian guitars. Christensen Brothers, Frank and Jean, Art Neuman. H. Lucille Long.

### WJAZ [1140]—263

7 to 8 P. M.—Chez Pierre Orchestra.

9 to 11 P. M.—Studio Program and Chez Pierre Orchestra.

### WJBT [770]—389.4

10:30 to 11:15 A. M.—Shoppers service.

5 to 6 P. M.—Weather report. Shoppers service. Organ.

6 to 6:30 P. M.—Beulah Rosine, cellist.

6:30 to 7 P. M.—Gus. C. Edwards and his orchestra.

11 to 12 M.—Shoppers service.

### WLIB [980]—305.9

10:30 to 11:00 A. M.—Entertainment for shut-ins.

11:30 to 11:45 A. M.—Readings by John Reed Tyson.

11:45 to 11:57 A. M.—Piano selections by Fern Scull.

11:57 to 12:01 P. M.—Time signals by the Elgin National Watch Co.

12:01 to 12:40 P. M.—Children's story period.

7:00 to 8:00 P. M.—Cities Service program from New York.

### WLS [870]—344.6

9 A. M.—Receipts of Livestock at Principal Markets. Chicago Hog Market Flash. News Summary.

9:10 A. M.—Home Question Box, Ellen Rose Dickey, Home Adviser, Sears-Roebuck Agricultural Foundation.

9:30 A. M.—Opening Board of Trade.

9:35 A. M.—Early Livestock Market from Chicago Livestock Exchange.

9:45 A. M.—Home Question Box, Ellen Rose Dickey.

10 A. M.—Board of Trade.

10:03 A. M.—Weather Forecast. Early Price on Butter and Eggs. Live Poultry Quotations.

10:30 A. M.—Board of Trade.

11 A. M.—Board of Trade.

11:03 A. M.—Butter, Egg and Dressed Veal Quotations. Live and Dressed Poultry Quotations.

11:15 A. M.—Alain Masin, pianist.

11:30 A. M.—Board of Trade Market.

11:33 A. M.—Chicago Fruit and Vegetable Market.

12 (Noon)—Board of Trade.

12:05 P. M.—Chicago Livestock Market from Chicago Livestock Exchange.

12:30 P. M.—Board of Trade.

12:40 P. M.—Farm Question Box.

12:55 P. M.—Western Union Time Signals.

1 P. M.—Board of Trade.

R. F. D. Dinnerbell Program. Hoffingsworth and Altamore, Hawaiian music. Weather Forecast. Buffalo, Indianapolis and Pittsburgh wires.

1:15 P. M.—Closing Livestock Market from Chicago Livestock Exchange.

1:25 P. M.—Board of Trade.

1:35 P. M.—Butter and Egg Summary.

1:45 P. M.—Talk, American Farm Bureau Federation. Talk, Aunt Minnie Stearns, poultry expert.

3:30 P. M.—Homemakers' Hour, Mrs. Webb L. Gibbs, Short Story.

W. L. S. Home Theatre presents Radio Play. Memory Waltz Time, W. L. S. Home Trio, Direction

Koby Sirinsky.

4:30 P. M.—Chicago Daily Journal, WLS, Sports Service.

5:30 P. M.—Chicago Daily Journal, WLS, Sports Service.

5:40 P. M.—Organ, Al Melgard.

5:55 P. M.—Western Union Time Signals.

6 P. M.—Board of Trade Summary. Closing Livestock Summary.

6:15 P. M.—Pied Piper's Time.

6:30 P. M.—Chicago Daily Journal, WLS Sports Club.

6:40 P. M.—Maurie Sherman's Orchestra.

7 P. M.—Al Melgard, organ.

7:10 P. M.—Maurie Sherman's Orchestra.

7:30 P. M.—Old Town Duo.

8 P. M.—Tony's Scrap Book.

8:10 P. M.—Silverstone Hour, Oriental Male Quartet.

Program for Friday, September 23, 1927—Cont'd

WMAQ—WQJ [670]—447.5

6:30 A. M.—Y. M. C. A. setting-up exercises.
7:30 A. M.—Morning worship, auspices Chicago Church federation, Rev. Melvin E. Beck.
9:05 A. M.—Public school program. C. P. Grant, Activities of Field Museum."
9:30 A. M.—The Davis Radio Service.
9:45 A. M.—Overture hour.
11 A. M.—Calumet home economics hour.
12 M.—Noontime melodies.
12:10 P. M.—Prairie Farmer daily farm talks.
1 P. M.—Executives' club luncheon.
1:45 P. M.—Musical potpourri.
2:30 P. M.—The Davis Radio Service.
2:45 P. M.—Baseball, Cubs vs. Philadelphia.
5:15 P. M.—Topsy Turvy Time.
6 P. M.—Vesper chimes, University of Chicago.
6:15 P. M.—Wide-Awake club, directed by Mrs. Frances M. Ford.
6:40 P. M.—Baseball returns.
7 P. M.—Ritchie Bond and Mortgage company program.
8 to 10 P. M.—Columbia chain program from New York.
10 to 12 P. M.—Stevens hotel orchestra from WQJ.
12 to 2 A. M.—Popular program.

WMBB [1190]—252

6 to 7 P. M.—Trianon Ensemble and Dinner Concert.
7 to 8:30 P. M.—Trianon Ensemble; Trianon Mixed Quartet; Ruth Lyon, Doris Mason Moran; Montie Blunn, in semi-classical program.
8:30 to 10:30 P. M.—Trianon Orchestra, Dell Lampe; Trianon Ensemble; Mildred Evans; Hugh Aspinwall; in popular program.

WMBI [1140]—263

7 to 7:40 A. M.—Morning Worship, conducted by the Family Altar League in co-operation with the Moody Bible Institute. "Back Yard Talks" and messages to the "Early Birds" included. Mr. John L. Meredith ("Uncle John") in charge.
10:30 to 11:30 A. M.—"Radio School of the Bible" Class, "Studies in the Gospels" taught by Mrs. H. L. McCord.
12:30 to 1:30 P. M.—Organ Program and Scripture Reading.
3:30 to 4:30 P. M.—"Home Hour," devoted to mothers and children, conducted by Mrs. H. L. McCord, including sacred music.
8 to 9 P. M.—Exposition of the International Sunday School lesson by Rev. P. B. Fitzwater, D. D., Dean of the Moody Bible Institute. Yiddish service conducted by Rev. Solomon Birnbaum, director of the Jewish Missions Course.



Recently the radio editor of the Buffalo Evening News recorded Bill Fay's experience one hot day at the Bison Stadium. He said, "The vocation of radio announcing may soon be listed among the "hazardous" occupations. Bill Fay's job at the Bison Stadium the other afternoon surely proved hazardous and almost disastrous for him. He came within a very few inches of being "beaned" by a foul ball which sizzled up into the press box where Bill does his description work. Bill showed heroism for his first thought was for the beloved "mike" and when he saw the ball approaching at express-train speed, he grabbed the instrument and saved the day for the folks listening to the ball game through WMAK. In fact, the incident made such a stir that his friend, Fayette E. Wright, the cartoonist, contributed the splendid likeness shown above.

Mr. Fay was associated with the studio activities of the General Electric Station, WGY, in Schenectady, N. Y., for a period of three years, before he was appointed Studio Director of the WMAK Studios, Inc., at Buffalo. Mr. Fay's vivid description of the ball games played by the International League teams in Buffalo, his three-hour description of the Lindbergh festivities during Col. Lindbergh's visit to Buffalo, and his word picture of the ceremonies in connection with the opening of the new Peace Bridge between Canada and the United States, where he introduced to the audiences of the Niagara Frontier Broadcasting System stations, the Prince of Wales, Secretary Kellogg, Premier Baldwin and other notables, have made him one of the most popular announcers in the East.

WOK [1190]—252

11 to 12:30 P. M.—Trianon Orchestra, Dell Lampe; Mildred Evans; Bob Hendry; Hugh Aspinwall; in popular program.

WNBA [1440]—208.2

6 to 8:30 P. M.—Popular songs, featuring Eddie Loftus.
8:30 to 11 P. M.—George Robinson and his Triangle Cafe Orchestra and Vocal Artists in popular program; Trixie Rose, Ray Reynolds, Dan and Bob Ahholt.

WORD [1090]—275.1

7 P. M.—Musical program and talk on Agriculture, Crane Junior College.
7:45 P. M.—Digest of World News from the Golden Age Magazine.
8 P. M.—Musical program at the station studio. Artists from Aurora, Batavia, Geneva.

WSBC [1290]—232.4

1 to 3:30 P. M.—Varied program.
5 to 7 P. M.—Motorists' Studio, Senate Theatre Organ. Others announced.
9 to 11 P. M.—Hugh Swifts' Serenaders. Otto Kaspers' Ensemble, Laurice Lynum, Lew Butler.
12 to 1 A. M.—Varied.

MEMO FOR FRIDAY Station Time

Table with 2 columns: Station, Time. Multiple blank rows for entry.





# JOSEPH ALITTO

*Photographer*

— Operating —

## **The Alitto Studios**

Webster Hotel, Mezzanine  
2150 Lincoln Park West  
Phone Diversey 6800

424 Fullerton Parkway  
at Clark Street  
Phone Diversey 9265

CHICAGO, ILLINOIS

---

SPECIAL PRICES TO PROFESSIONAL AND RADIO ARTISTS

## Program for Saturday, September 24, 1927

### KYW [570]—526

10:55 A. M.—Time Signals and Weather Report.  
 5:30 P. M.—Baseball Scores.  
 5:45 P. M.—Markets.  
 6:00 P. M.—The Bedtime Story told by Walter Wilson who is known to the children as "Uncle Bob."  
 6:30 P. M.—Weather Report.  
 6:32 P. M.—Congress Hotel Dinner Concert.  
 7:00 to 10:30 P. M.—Program will be announced by radio.  
 10:30 to 10:55 P. M.—Congress Hotel Orchestra Music.  
 10:55 P. M.—Time Signals and Weather Report.

### WBBM [770]—389.4

12:45 to 1:50 P. M.—Luncheon Dance Program. Gus C. Edward's Terrace Garden Orchestra.  
 7 to 8 P. M.—After Dinner Music. Gus C. Edward's Orchestra and Charley Straight's Orchestra. WBBM String Trio, Mlle. Modiste Selections.  
 8 to 10:15 P. M.—Artist Recital. WBBM String Trio. Leonard Nelson, tenor; Beulah Rosine, cello.  
 10:15 to 11 P. M.—Dance Period with Gus C. Edward's Orchestra and Charley Straight's Orchestra.  
 12 to 2 A. M.—Jambouree of Syncopation with Charlie Garland, Connie Webster and Charlie Schultz.

### WCBD [880]—344.6

Silent on Saturday

### WCFL [620]—483.6

10 A. M.—Municipal.  
 12 Noon—Organ Request Concert, Helen Rauh.  
 1:30 P. M.—Womens' Aid Hour.  
 4 P. M.—"Own Your Own Home" Hour.  
 5 P. M.—"Shoppers' Guide" Hour.  
 6 P. M.—Chicago Federation of Labor Hour. Sport Talk. Labor News Flashes.  
 7 P. M.—Bulletin Board. Educational Talk. Public Ownership League.  
 8 to 10 P. M.—Ann Boehm, Mildred Herr. Art Rose, Joe Warner, Helen Rauh, Billy Allen Huff.  
 11 to 12 P. M.—Eddie Hansen. Organ Recital. Earl Hoffman's Chez Pierre Orchestra.

### WCRW [1340]—223.7

11:30 to 1 P. M.—Josephine popular program.  
 6:30 to 7:30 P. M.—Popular program.  
 9:30 to 10:30 P. M.—Popular program.

### WEBH—WJJD [820]—365.6

WEBH

10:00 to 10:30 A. M.—"The Newspaperman."  
 10:30 to 11:00 A. M.—McVickers Theatre Organ Concert—Raymond Turner.  
 11:00 to 12:00 Noon—Woman's Hour—Prudence Penny.  
 1:00 to 2:00 P. M.—"Moss Covered Melody Hour," Nick Smith and the Palmer House Petite Symphony.  
 3:00 to 3:30 P. M.—Marcella; String Trio.  
 3:30 to 4:00 P. M.—Tivoli Theatre Piano Reverie—Dean Remick.  
 5:00 to 5:45 P. M.—Aichanee Children's Club, Harry "Dream Daddy" Davis and Zola Haynes in Songs and Stories.  
 7:00 to 7:45 P. M.—Edgewater Beach Hotel Orchestra; Dr. Herbert Whiting Virgin in the Radio Sunday School Lesson; Florence Behrend, Songs.  
 7:45 to 9:00 P. M.—One-Act form a Current New York Musical Comedy.  
 11:00 to 12:00 P. M.—Edgewater Beach Hotel Orchestra; Florence Behrend; Nubs Allen, Songs; Alberto S. Gutierrez, Songs.

WJJD

12:00 to 1:00 P. M.—Palmer House Petite Symphony; Soloist.  
 2:00 to 3:00 P. M.—Palmer House Studio Program.  
 4:00 to 5:00 P. M.—Harry Rowley, Songs.  
 5:45 to 6:00 P. M.—Piano Twins, Violette Bradley and Ruth Johnstone.  
 6:00 to 7:00 P. M.—Palmer House Petite Symphony; Victorian Orchestra.  
 9:00 to 10:00 P. M.—Piano Twins, Violette Bradley and Ruth Johnstone; Mildred Evans, Soprano; Madge Tarbell, "Girl Baritone."  
 10:00 to 11:00 P. M.—Piano Twins, Violette Bradley and Ruth Johnstone; Madge Tarbell, Songs; Mildred Evans, Songs.  
 12:00 to 2:00 A. M.—"The Opera Guyed"; Haskell Novelty Trio; Harold Hinchliffe, Tenor; Carl Hoffman, Basso; Carl Stefes, Pianologist."

### WENR—WBCN [1040]—288.3

WBCN—11 A. M.—Home Service Feature, Anna J. Peterson.  
 WENR—11:30 A. M.—Home Service Feature, Anna J. Peterson.  
 WENR—12 P. M.—Noon Hour Concert. Louise Vernet, Thomas B. Stephenson, Edward Davies, Jack Baus, Sterra Feigan and Sallie Menkes.  
 WBCN—1 P. M.—Louis Meehan, Sterra Feigan, Oscar Heather, Irma Glen and Sallie Menkes.  
 WENR—2 P. M.—Popular Request Program. Organ, Orchestra, Cornelius Maffie, Everett Mitchell, Marie Tulley, Mike and Herman, Harry Lawrence, Frank Westphal and Edison Derby.

### WENR—WBCN—Cont'd

WBCN—5 P. M.—Irma Glen, Oscar Heather, Sterra Feigan and Sallie Menkes.  
 WENR—5 P. M.—Dinner Concert. Organ and Tip Top Orchestra.  
 WBCN—7 P. M.—Orchestra, Oscar Heather, Marie Tulley and Frank Westphal.  
 WENR—8 P. M.—Classical Program. Charlotte Cowan, Florence Hallberg, Cantor Theodore Kittay, Peter Grosso, Jack Baus, Sterra Feigan, Sallie Menkes and Arthur Wellington.  
 WENR—9:30 P. M.—Popular Request Program. Organ, Orchestra, Cornelius Maffie, Everett Mitchell, Marie Tulley, Ford and Wallace, Frank Westphal and Dennis Sisters.

### WGES—WEDC [1240]—241.8

12:00 Noon—Angelus; Edgar Guest Poem; World News Service; Scratches from Local Race-tracks; Weather Reports; Beach Temperatures; Musical Program.  
 12:30 P. M.—The Shopper Family; Bungalow Program.  
 1:00 P. M.—World News Service; Stock Reports; Scratches from Local Racetracks; Eunice Hoeffler—Senate Theatre Organ.  
 2:00 P. M.—World News Service; Daily Health Talk.  
 2:30 P. M.—Marg Van—Tiffin Theatre Organ.  
 3:00 P. M.—World News Service; Closing Markets; Baseball Scores; Race Results.  
 4:00 P. M.—World News Service; Race Results.  
 5:00 P. M.—World News Service; The Book Worm.  
 6:00 P. M.—Angelus; Senate Theatre Organ.  
 6:30 P. M.—Marbro Theatre Organ.  
 7:00 P. M.—Golden Pumpkin Orchestra; Milt Teller.  
 7:30 P. M.—Erwin Kummer.  
 8:00 P. M.—Guyon's Paradise Orchestra.  
 9:00 P. M.—Maggie and Jiggs; WGES String Trio.  
 9:30 P. M.—United Broadcasting Studios Program; Also WHFC and WSBC.  
 10:00 P. M.—Golden Pumpkin Orchestra.  
 11:00 P. M. Bungalow Program.  
 11:30 P. M.—Guyon's Paradise Orchestra.

### WGN [980]—305.9

9:00 to 10:00 A. M.—Summary of day's news; discussion of events.  
 10:00 to 10:30 A. M.—Home Management period.  
 11:00 to 11:30 A. M.—Organ Recital by Dean Fossier of Chicago Theatre.  
 12:40 to 2:20 P. M.—Luncheon Concert by Drake Concert Ensemble and Blackstone String Quintet.  
 2:20 to 2:55 P. M.—Lyon & Healy Artist Recital.  
 2:55 to 5:00 P. M.—Baseball: Cubs vs. Philadelphia.

(Continued on Next Page)

# Program for Saturday, September 24, 1927—Cont'd

## WGN—Cont'd

5:56 to 6:01 P. M.—Time Signals by the Elgin National Watch Co.

6:01 to 6:10 P. M.—Closing stock and bond quotations.

6:10 to 6:35 P. M.—Uncle Quin's Punch and Judy.

6:35 to 6:50 P. M.—Drake Concert Ensemble.

6:50 to 7:00 P. M.—The Old Fashioned Almanack.

8:00 to 8:30 P. M.—Musical Program.

8:30 to 9:00 P. M.—Recital by Flavio Plasencia, Baritone.

9:00 to 9:15 P. M.—WGN Studio Ensemble.

9:15 to 9:30 P. M.—Sports Summary.

9:30 to 10:00 P. M.—"Over the Hills and Far Away to Sweden."

10:00 to 10:10 P. M.—"Tomorrow's Tribune."

10:10 to 10:20 P. M.—Sam 'n' Henry.

10:20 to 10:30 P. M.—The Music Box.

10:30 to 10:40 P. M.—Vocal Music.

10:40 to 11:00 P. M.—Lyon and Healy Melody Time.

## WHFC [1390]—215.7

8:00 P. M.—Miscellaneous Program—Staff artists and Harry Nathan's Orchestra.

8:30 P. M.—"The Influence of Popular Music on Classic Art"—a short piano program consisting of compositions in popular form (fox trots, etc.) by modern classic masters of the highest standing—presented by Lester Mather.

9:30 P. M.—Program of the Chicago Broadcasting Chain.

10:15 P. M.—Request Program.

## WHT [720]—416.4

10:00 A. M.—Women's Home Hour

Talks

Music—Doris Wittich

11:00 A. M.—Children's Hour  
Mother Goose

12:00 Noon — Complimentary Organ Recital—Al Carney

12:50 P. M.—Farm Reports, Poultry Markets, Weather Report

1:00 P. M.—Luncheon Program  
Graylings String Trio  
Wolfgang Wittich, Tenor

2:00 P. M.—Collyer's Eye

2:15 P. M.—Signing off

7:00 P. M.—Collyer's Eye

7:10 P. M.—Evening Organ Recital—Al Carney

7:50 P. M.—Graylings String Trio

8:00 P. M.—Musical Program—  
with Sam Galbraith, John Norton  
and others

8:30 P. M.—Salicon Weather Report

9:00 P. M.—Collyer's Eye

9:10 P. M.—Your Hour—Al and Pat

10:00 P. M.—Signing off

## WIBO [720]—416.4

2:30 to 3 P. M.—Organ recital,  
Sheridan Theatre, Eddie Fitch.

3 to 4:30 P. M.—SHUT IN'S  
Program. Sheridan Theatre Or-  
chestra. Dave Alswang, Clarence  
Theders. Elizabeth O'Donnell,  
Everett Opie.

5:30 to 6 P. M.—Organ recital,  
Sheridan Theatre. Nellie Wil-  
liams.

6 to 6:15 P. M.—Howard Neu-  
miller, concert pianist.

6:15 to 6:30 P. M.—Ada Jose-  
phine McGregor, "Japanese  
Songs."

6:30 to 6:45—Hotel Davis Or-  
chestra.

6:45 to 7 P. M.—Edgar Scott,  
tenor.

10 to 1 P. M.—Hotel Davis Or-  
chestra. Myrtle Talley, Houston  
Prima Donna. Raymond Eber-  
hart, Sheppard Levine.

## WJAZ [1140]—263

7 to 8 P. M.—Chez Pierre Or-  
chestra.

9 to 11 P. M.—Studio Program  
and Chez Pierre Orchestra.

## WJBT [770]—389.4

10:30 to 11:15 A. M.—Shoppers  
service.

5 to 6 P. M.—Weather report.  
Shoppers service. Organ.

6 to 6:30 P. M.—Cello recital.

6:30 to 7 P. M.—Orchestra. Gus  
C. Edwards' Orchestra. Studio  
Classics.

11 to 12 M.—Popular. Chas.  
Straight's Orchestra.

## WLS [870]—344.6

9 A. M.—Receipts of Livestock  
at Principal Markets. Chicago  
Hog Market Flash. News Sum-  
mary.

9:10 A. M.—Home Question Box,  
Ellen Rose Dickey. Home Ad-  
viser. Sears-Roebuck Agricultural  
Foundation.

9:30 M. M.—Opening Board of  
Trade.

9:35 A. M.—Early Livestock  
Market from Chicago Livestock  
Exchange.

9:45 A. M.—Home Question Box,  
Ellen Rose Dickey.

10 A. M.—Board of Trade.

10:03 A. M.—Weather Forecast.  
Early Price on Butter and Eggs.  
Live Poultry Quotations.

10:30 A. M.—Board of Trade.

11 A. M.—Board of Trade.

11:03 A. M.—Butter, Egg and  
Dressed Veal Quotations. Live  
and Dressed Poultry Quotations.  
Squab Market. Millfeed Market.  
Buffalo, Pittsburgh, Indianapolis,  
Cleveland, Cincinnati and Peoria  
Livestock wires. News Summary.

11:15 A. M.—Alain Masin,  
pianist.

11:30 A. M.—Board of Trade  
Market.

11:33 A. M.—Chicago Fruit and  
Vegetable Market.

12 (Noon)—Board of Trade.

12:05 P. M.—Chicago Livestock  
Market from Chicago Livestock  
Exchange.

## WLS—Cont'd

11:55 P. M.—Western Union  
Time Signals.

1 P. M.—R. F. D. Dinnerbell  
Program. Weather Forecast. Buf-  
falo, Pittsburgh, Indianapolis  
wires. Closing Livestock Sum-  
mary.

1:15 P. M.—Closing Livestock  
Market from Chicago Livestock  
Exchange.

1:25 P. M.—Board of Trade.

1:35 to 2 P. M.—A. D. Edwards,  
Seed Crop Condition. Owen Bros.,  
Harmony Boys. Tom Dandurand,  
fiddler.

4:30 P. M.—Chicago Daily Jour-  
nal—WLS—Sports Service.

5:30 P. M.—Chicago Daily Jour-  
nal—WLS—Sports Service.

5:40 P. M.—Organ, Al Melgard.

5:55 P. M.—Western Union  
Time Signals.

6:00 P. M.—Board of Trade  
Summary. Closing Livestock  
Summary.

6:15 P. M.—Pied Piper's Time.

6:30 P. M.—Chicago Daily Jour-  
nal—WLS Sports Club.

6:40 P. M.—Maurie Sherman's  
Orchestra.

7:00 P. M.—Tony's Scrap Book.

7:10 P. M. to 12:00 P. M.—Na-  
tional Barn Dance, R. L. Tronson  
and Ed. Goodreau; Barn Dance,  
Tommy Dandurand, Claudia  
Parker and Jess Doolittle; Doc  
Cook and his "14 Doctors of  
Syncopation"—White City. Al  
Lehman's Waltz Kings—White  
City. Chubby Parker, Banjo. Al  
Melgard, organ. Walter Peterson,  
harmonica and guitar. Cecil and  
Esther Ward, Hawaiian Music.  
Maurie Sherman's orchestra.  
Grace Wilson, contralto.

## WLIB [980]—305.9

10:30 to 11:00 A. M.—Enter-  
tainment for shut-ins.

11:30 to 11:45 A. M.—Readings  
by John Reed Tyson.

11:45 to 11:57 A. M.—Recital  
by Fern Scull and Mark Love.

11:57 to 12:01 P. M.—Time sig-  
nals by the Elgin National  
Watch Co.

12:01 to 12:40 P. M.—Children's  
story period.

11:00 to 11:10 P. M.—Waltz  
Time.

11:10 to 11:20 P. M.—Vocal  
Music.

11:20 to 11:30 P. M.—Doc Da-  
vis and his Drake Hotel dance  
orchestra.

11:30 to 12:00 M.—Ambrose  
Larsen's Wuriltzer organ recital.

12:00 to 12:15 A. M.—Doc Da-  
vis and his Drake Hotel dance  
orchestra.

## WMBB [1190]—252

6 to 7 P. M.—Dinner Concert.

7 to 8:30 P. M.—Trianon En-  
semble; Herbert Levis; Hilda  
Hinrichs; Harold Thorpe in semi-  
classical program.

8:30 to 10:30 P. M.—Trianon Or-  
chestra, Dell Lampe; Trianon  
Ensemble; Vin Lindhe; Borden  
Bros.; Voris Worthley in popular  
program.

**Program for Saturday, September 24, 1927—Cont'd**

**WMAQ—WQJ  
[670]—447.5**

7:30 P. M.—Morning worship, auspices Chicago Church federation, Rev. Melvin E. Beck.

9:30 A. M.—The Davis Radio Service.

9:45 A. M.—Overture hour.

12 Noon—Noontime melodies.

1 P. M.—Oddz-N-Endz.

1:15 P. M.—Musical potpourri.

2:30 P. M.—The Davis Radio Service.

2:45 P. M.—Baseball, Cubs vs. Philadelphia.

5:15 P. M.—Topsy Turvy Time.

6 P. M.—Chicago theater organ recital.

6:30 P. M.—“On with the Dance.”

6:50 P. M.—Baseball returns.

7 P. M.—“On with the Dance.”

8 P. M.—Radio photologue: Nevada, Gov. Fred Balzar.

8:30 P. M.—Popular song cycle. Pratt and Sherman.

9:15 to 1 A. M.—Stevens hotel orchestra from WQJ.

1 to 2 A. M.—Popular program.

**WMBI [1140]—263**

7 to 7:40 A. M.—Morning Worship, conducted by the Family Altar League in co-operation with the Moody Bible Institute. “Back Yard Talks” and messages to the “Early Birds” included. Mr. John L. Meredith (“Uncle John”) in charge.

10:30 to 11:30 A. M.—Bible talks and sacred music. “Little Trips to Holy Lands.”

12:30 to 1:30 P. M.—“Pages from an Old Hymn Book.” Organ Program and Scripture Reading.

3:30 to 4:30 P. M.—“Young People's Hour,” Mr. Loveless giving “Plain Talks on Scripture Truths.” “The Music Lesson,” a five-minute feature, when a gospel song is taught the radio audience.

8 to 9 P. M.—Scandinavian service of Sacred Music and talk by Special Talent from Local Churches, conducted by the Rev. Gustav Edwards, D. D., director of the Institute Swedish-Missions Course.

**WNBA [1440]—208.2**

6 to 8:30 P. M.—Popular songs, featuring Eddie Loftus.

8:30 to 11 P. M.—George Robinson and his Triangle Cafe Orchestra and Vocal Artists in popular program; Trixie Rose, Ray Reynolds, Dan and Bob Ahholt.

**WOK [1190]—252**

11 to 12:30 P. M.—Trianon Orchestra, Dell Lampe; Vin Lindhe; Voris Worthley; Borden Bros., in popular program.

**WORD [1090]—275.1**

7 P. M.—Musical program.

8 P. M.—Orchestra program.

8:30 P. M.—Bible discussion.

9 P. M.—Chicago Motor Club Talk and music.

**WSBC [1290]—232.4**

1 to 3:30 P. M.—Varied program to be announced.

5 to 7 P. M.—From Motorists Studio. Melody Girls, John Dole, Tiffin Theatre Organ.

9 to 11 P. M.—Otto Kasper Ensemble. Hugh Swift's Serenaders.

**MENO FOR SATURDAY**

Station Time

Station	Time

**STATION WLS**

With such famous organizations as the Little Symphony Orchestra of Chicago, the Chicago Madrigal club, the Metropolitan choir, Shavers Jubilee Singers and the University of Chicago Choir heading the list of exclusive musical features the coming winter season at WLS, the Sears Roebuck station, promises to be a noteworthy one. Bachman and His Million Dollar Band, Al Sweet and His Band, the Oriental Quartet and other well known organizations, beside many of the country's best known soloists, will also be heard from WLS, insuring that the programs of this station will be kept on a par with the best in radio entertainment.

The regular features, so popular with WLS listeners such as the Showboat, National Barn Dance, Allstate Hour, Orchestral Hodge Podge and White City shows, are being overhauled and given new life to be presented to the radio audience with many new and novel features.

The farm service programs of WLS will be greatly extended during the winter months. The Radio Farmers Democracy Dinnerbell program, market reports and farm news summaries, Homemakers Hour, home advisors and question box periods, and the sports news service will be continued and greatly enlarged, with many new worthwhile features added from time to time.

The Little Symphony Orchestra of Chicago, George Dasch conducting, returns for its fourth season at WLS. The programs by the Little Symphony, an exclusive WLS feature, will be given on Friday nights at 8 o'clock.

*(Continued on Next Page)*

**WOW'S STUDIOS UNIQUE—(Continued from Page 7)**

studio's beauty. Side supports and a cyclorama background completes the stage effect. Amplifying speaker horns are concealed in the upper front of the studio, permitting visitors to hear the program they are seeing. The auditorium seats three hundred visitors.

Another closed studio adjoins the main, visible studio. This second studio is adapted for artists who are temperamentally inclined to avoid visible audiences. The announcer's control booth is located directly between the two studios so that the entire operation is visible to him, and it also facilitates immediate switches from one studio to another. The double studio construction is also designed to add to the station efficiency, eliminating loss of time caused by the usual changes of artist groups of different types, such as orchestras and soloists, as well as permitting greater freedom of movement to artists in entering and leaving the studios. Other features include a large, comfortable and beautifully furnished reception room for artists and guests, and a cloak room for the safekeeping of wraps and a smoking room.

Four bridge tables stand along the east aisle, distributed at such distances as to enable the audience to watch the progress of the bridge games at the same time they are being radiocast. The tables are also used by artists who are awaiting their turn on the program and by visitors and guests who desire to pass the time away while listening to the entertainment.

## COMMUNICATION CIRCUIT OF NBC "EYES AND EARS" OF NETWORK BROADCASTS

By WILLIAM BURKE MILLER

As the Signal Corps and Air Service serve the United States Army as "eyes and ears," so does the Communication Circuit Corps of the National Broadcasting Company serve the Red, Blue and Pacific Networks which that company maintains.

Through this system every station on the three Networks is in constant communication with the key station of their respective chain. The transmission of every feature of a network program is checked through this means, both at the key station and the others broadcasting it.

Six circuits terminate in the Operations and Engineering Department of the National Broadcasting Company, on the fourth floor, at 195 Broadway, New York City.

One circuit cares for Philadelphia, Schenectady, Washington, and Buffalo. Two circuits, one Red and one Blue, check with all Western stations. Two more reach out to the New England stations and another handles communications to and from the Southern stations of the Networks.

Operators in this important branch of the Operations and Engineering Department are trained to receive both the Continental Morse and the Morse codes. But many abbreviations and call letters have been evolved in order to reduce traffic on these lines, therefore to an outsider, the messages received and sent out while a network program is on the air, would be almost unintelligible.

If you will permit, let us "sit in" with the Communication Operators for an hour or two.

Six men are at the keys by 5:30 o'clock, New York Time, in the afternoon, although the first network "hook-up" is not scheduled to go until 8 P. M.

M. H. Grainger and G. O. Milne, Red Network Supervisors of the National Broadcasting Company, report the number of stations which will broadcast certain features, to F. W. Kenworth, Wire Supervisor for the National Broadcasting Company.

The keys begin to click:

"Hello KSD, WSM, etc., stand by for tone frequency tests," in prearranged code, of course.

Frequency cycles of 100, 1,000 and 5,0 0 are sent out.

And back they come. If the reading is off, another tone test is sent out from WEAf and adjustments made. This process goes on for several hours. Some trouble may be detected in the circuit and accurate checks are

made. Weather conditions must be taken into account. Storms may cause distortion. This must be cleared during the tone frequency tests. And if a storm should come up during the actual broadcast the operators become as busy as a train dispatcher. In fact, their work is not unlike his. While he must direct trains over the proper routing, a Communication Circuit operator must guide the program to the proper station and see that it arrives there as it is broadcast from WEAf. In this way the Network "warms up" for the night broadcasts.

But this is not all. A schedule shows that all features are not accepted by the same stations. The operator must watch himself and notify the proper stations. For instance, WRC, Washington, may take the Coca Cola Girl episode at 10 P. M., but may cut out to handle a program of their own, before the Cavalcade at 11 o'clock. Likewise, WHAS, Louisville, may not take the Coca Cola Girl, but must be notified in time to clear their local program for the Cavalcade broadcast.

There may be a slight delay and the program does not go out according to schedule. This would leave the Network stations silent, if it were not for Communication Circuit Corps.

WEAf's announcer will report to the Supervisor: "The Cavalcade will be at least four minutes late, about 11:04." This is flashed to the stations and they arrange their program accordingly. Another station may flash that its program is going to run over, therefore, it will be unable to "cut in" on the Network until later.

Now the Network program is ready to go on the air.

WEAf's announcer will make his announcement through the New York station then "stand by" for fifteen seconds. This interval gives the announcers at the Network stations time to make local announcements.

Then the program begins. This co-ordination has been perfected. The local announcers know they have just fifteen seconds and no more, therefore their announcement "just fits."

Now, let us assume the Communication Circuit Corps' position on a stormy night.

"Distortion," will flash from KVOO, Bristol; "noisy," clicks in from WSAI, Cincinnati; "not clear," from WTAM, Cleveland. And so it goes.

As these reports flash into the

STATION WLS—(Continued from Page 26)

starting in October. Mr. Dasch, Karl Schulte, manager of the organization, and the members have made a special study of radio programs and in their concerts present a wide variety of music especially adapted to radio.

The Chicago Madrigal club, now in its 28th season, is one of the oldest and best known organizations of its kind in America. Founded and Directed by D. A. Clippinger, this group of 60 mixed voices sings the old madrigals and part songs of the 16th and 17th centuries. This is a very beautiful and different type of music, not often heard. The Madrigal club will give a series of monthly programs on the last Wednesday night of each month at 9 o'clock. This is the club's third season with WLS and it has never broadcast from any other radio station.

The Metropolitan choir, an organization of 150 voices, will be heard from WLS the second Friday of each month beginning in October. Their Friday evening programs will be given at 9 o'clock. The choir, one of the foremost colored choirs in America, is directed by Prof. J. Wesley Jones, and has a repertoire of more than 300 negro spirituals and as many of the other types of music. The new series of programs by this group will be the fourth exclusive season at WLS.

The University of Chicago Choir will open their series of programs in November and will be heard the first and third Wednesdays of each month at 9 o'clock in the evening. This mixed choir of 30 voices is directed by Mack Evans and specializes in church music, particularly the a capella style. The choir is very highly trained and features Russian, Italian and English music.

Shavers Jubilee Singers, a double quartet, will be heard in old plantation melodies and songs of the south on alternating Friday evenings with the Metropolitan choir at 9 o'clock.

Choral Music Hour at WLS at 9 o'clock on Wednesday nights will also bring others of the best known choral societies to the radio audience.

### STATION WLS

The story of Franz Schubert's life as reflected in his music will be Don Malin's theme in "Personalities in Music," his Tuesday evening piano talk at WLS, the Sears-Roebuck station, at 8:10 o'clock, Sept. 20.

Schubert was an impulsive soul with a keen sense of the poetry of life. He could write a song about the lark soaring in the skies, about the little forest

(Continued on Page 31)

(Continued on Page 29)

## Program for Sunday, September 25, 1927

### KYW [570]—256

10:55 A. M.—Time Signals and Weather Report.

11:00 A. M.—Central Church, Orchestral Hall—Dr. F. F. Shannon, Pastor, Non-Sectarian Service.

1:00 to 2:00 P. M.—Roxy and His Gang from WJZ, New York City.

5:30 P. M.—“Twenty Minutes of Good Reading” by Rev. C. J. Pernin, S. J., Head of Department of English, Loyola University, Chicago.

6:30 P. M.—Weather Report.

7:15 to 8:15 P. M.—National Weekly Revue from WJZ, New York City.

8:15 P. M.—Weather Report.

10:55 P. M.—Time Signals and Weather Report.

### WBBM [770]—389.4

4 to 4:50 P. M.—Relaxation Program. Charlie Garland, piano. Kay Ronayne. Dick Mallory, uke and song. Charlie Schultz.

4:50 to 6 P. M.—Harding Theatre Stage Show.

7 to 8 P. M.—After Dinner Concert. WBBM String Trio. Gus C. Edward's Orchestra and Charley Straight's Orchestra.

8 to 9 P. M.—Artist Recital. William Miller, tenor. WBBM String Trio. Albert Habestro, basso cantante.

9 to 10:15 P. M.—Popular Program with Kay Ronayne.

10:15 to 11 P. M.—Dance Period with Gus C. Edward's Orchestra and Charley Straight's Orchestra.

12 to 2 A. M.—Nutty Club with Charlie Garland.

### WCBD [870]—344.6

9 P. M.—Mixed Quartet, Vocal and Instrumental Duets, and assisted by the following persons: Mr. M. P. Barton and Mr. J. D. Thomas, tenor and barytone; Mrs. J. D. Thomas, soprano; Mrs. P. M. LaRose, contralto; Messrs. Erwin and Arthur Rendall, flute and clarinet; Mrs. Isabel Nelson and Mrs. L. J. Reed, soprano and contralto duets; Mr. P. B. Newcomer and Mr. Paul Stewart, cornet duets.

### WCFL [620]—483.6

11 A. M.—Grace M. E. Church, C. Copeland Smith.

2:30 P. M.—Organ Request Concert, Helen Rauh.

5 P. M.—Question Box. Grace M. E. Church, C. Copeland Smith.

7:45 P. M.—Belden Avenue Baptist Church

### WCRW [1340]—223.7

6:30 to 7:30 P. M.—Popular program.

10 to 11 P. M.—Popular program.

### WEBH—WJJD [820]—365.6

WEBH

10:30 to 12:00 Noon—Church Services from Seventh Church of Christ Scientist, Chicago.

4:00 to 6:00 P. M.—Norshore Stage and Studio Presentation.

6:00 to 7:00 P. M.—Uptown Theatre Organ Recital—Arsene Seigel.

7:00 to 9:00 P. M.—Edgewater Beach Hotel Orchestra; Artist Program.

WJJD

7:30 to 10:30 A. M.—Catholic and Protestant Services.

1:30 to 2:00 P. M.—Herald and Examiner Funnies.

2:00 to 4:00 P. M.—Children's Religious Program at Mooseheart.

9:00 to 10:00 P. M.—Palmer House Studio Program.

10:00 P. M.—Herald and Examiner News Flashes, Weather Report and Correct Time.

### WENR—WBCN [1040]—288.3

WENR—2 to 4 P. M.—Skeeles-Biddle Co. Hour of Better Music.

WBCN—5 to 6 P. M.—Lain & Son Chapel service.

WENR—7:30 to 9:30 P. M.—Thoburn M. E. Church.

WENR—9:30 to 11 P. M.—Sunday Evening Classical Program, Artists and Organ.

### WGES—WEDC [1240]—241.8

10:30 A. M.—Services from Austin M. E. Church—Dr. James L. Gardiner.

11:30 A. M.—High Mass from Our Lady of Sorrows Catholic Church—Servite Fathers.

2:30 P. M.—Senate Theatre Stage Show.

6:00 P. M.—Angelus; Senate Theatre Organ.

6:30 P. M.—Marbro Theatre Organ.

7:00 P. M.—Golden Pumpkin Orchestra; Milt Teller.

7:30 P. M.—Musical Program, 8:00 P. M. Memory Hour.

9:00 P. M.—Maggie and Jiggs; WGES String Trio.

9:30 P. M.—United Broadcasting Studios Program; Also WHFC and WSBC.

10:00 P. M.—Golden Pumpkin Orchestra.

11:00 P. M.—Guyon's Paradise Orchestra.

11:30 P. M.—Bungalow Program.

12:00 P. M.—W. Remington Welch.

A subscription blank on page 1 for your convenience. Fill in and mail NOW.

### WGN [980]—305.9

12:00 Noon to 1:00 P. M.—Uncle Quin reads the Tribune Comics to the Children.

1:00 to 2:00 P. M.—Recital by Ambrose Larsen at Wurlitzer Organ.

2:00 to 2:55 P. M.—Lyon & Healy Artist Recital.

2:55 to 5:00 P. M.—Baseball: Cubs. vs. Pittsburgh.

6:10 to 6:45 P. M.—Uncle Quin's Punch and Judy.

6:45 to 7:00 P. M.—Blackstone String Quintet and Solo Artists.

7:00 to 7:20 P. M.—“The Million Sing.”

7:20 to 7:30 P. M.—“The Old Fashioned Almanack.”

7:30 to 7:50 P. M.—Songs by Correll and Gosden.

7:50 to 8:00 P. M.—Blackstone String Quintet.

8:00 to 8:15 P. M.—“Auld Sandy.”

8:15 to 8:45 P. M.—Atwater Kent Musical Program.

8:45 to 8:55 P. M.—Bible Reading.

8:55 to 9:00 P. M.—Blackstone String Quintet.

9:00 to 10:00 P. M.—“Our Music Room.”

10:00 to 10:10 P. M.—“Tomorrow's Tribune.”

10:10 to 10:20 P. M.—Sam 'n' Henry.

10:20 to 10:40 P. M.—The Sallernos.

10:40 to 11:10 P. M.—Organ Recital by Albert Meuer.

### WHFC [1390]—215.7

8:00 P. M.—Sunday Evening Concert—WHFC Piano and String Trio—

Col. Edwin House, basso  
Evelyn Vitto Levin, violinist  
Lester Mather, pianist  
Hazel McBroom, contralto.

9:30 P. M.—Program of the Chicago Broadcasting Chain.

10:00 P. M.—Popular Program—John Stamford, tenor (announcer)

Aloha Boys, Hawaiian guitar team

Day Sisters, harmony team  
Harry Nathan's Orchestra and others.

### WHT [720]—416.4

10:00 A. M.—Paul Rader and Musical Staff, Band and Choir

11:30 A. M.—Organ Recital

12:30 P. M.—Teen Age Boys and Girls—Music

1:30 P. M.—Sunshine Hour

2:30 P. M.—Announcements and Signing off

7:00 P. M.—Staff Band

7:30 P. M.—Choir

8:00 P. M.—Paul Rader—Sermon

9:00 P. M.—Back Home Hour

10:00 P. M.—Announcements and Signing off

Program for Sunday, September 25, 1927—Cont'd

WIBO [720]—416.4

8:45 to 10 P. M.—Swedish Services, Olof Nelson, Director. Quartette and Choir.

2:30 to 3:30 P. M.—German program. German announcements. German Singing Society. Instrumental Trio. Max Bratt, Internationally known tenor.

3:30 to 5:30 P. M.—"Music That Never Grows Old." From the Tavern by the Road. Bel Canto Quartette. String Ensemble.

5:30 to 6 P. M.—Verne Buck and his Sheridan Theatre Orchestra.

6 to 6:30 P. M.—"Gems of Music." Fantasy program. Chester Newman, baritone; Samuel Dolnik, violinist; Howard Neumiller, pianist.

6:30 to 7 P. M.—Hotel Davis Orchestra. Mae Williams, soprano.

10 to 1 P. M.—Hotel Davis Orchestra. Robert Wessling, baritone. Aloha Hawaiians, I. H. Hechtman, Walter Barnitz, Frank and Jean, Dave Alswang, Walter Preston.

WJAZ [1140]—263

7 to 9 P. M.—Sunday Program.

WJBT [770]—389.4

6 P. M.—Studio Classics.

6:30 P. M.—Organ, cello.

11 to 12 P. M.—Gus. C. Edwards and his Terrace Garden Orchestra. Charley Straight's Brunswick Recording Orchestra.

WLIB [980]—305.9

5:00 to 5:15 P. M.—WLIB Trio.

5:15 to 5:25 P. M.—Vocal Music.

5:25 to 5:30 P. M.—Cello selections by Leon Lichtenfeld.

5:30 to 5:40 P. M.—Piano selections by Herbert Johnson.

5:40 to 5:50 P. M.—WLIB Trio.

5:50 to 6:00 P. M.—Vocal music.

6:00 to 6:10 P. M.—Blackstone String Quintet.

WLS [870]—344.6

12:15 P. M.—Organ Concert, Al Melgard.

1 to 1:30 P. M.—Estimated Receipts of Livestock in Chicago for Monday.

1:30 to 2:30 P. M.—Chapel Service, auspices Chicago Church Federation Young Peoples Commission.

7 to 8:55 P. M.—WLS Little Brown Church in the Vale. WLS Players. Sermon, Anthony Wons. Little Brown Church Quartet—Lucille Magill, soprano; Bernice Ozun, contralto; William O'Connor, tenor; Eugene Leonardson, baritone.

WMAQ—WQJ [670]—447.5

10:45 A. M.—Services from University Church of the Disciples of Christ, Dr. Edward Scribner Ames, pastor.

2 P. M.—Columbia chain program from New York.

2:45 P. M.—Baseball, Cubs vs. Pittsburgh.

6:40 P. M.—Baseball returns.

7 P. M.—Reverie hour, Whitney trio.

8 to 10 P. M.—Columbia chain program from New York.

WMBB [1190]—252

3 to 6 P. M.—Trianon Orchestra, Dell Lampe; Mildred Evans; Hugh Aspinwall; Bob Bennett; in popular concert program.

7:40 to 9 P. M.—Services of Fifth Church of Christ Scientist.

8 to 10:30 P. M.—Trianon Orchestra, Dell Lampe; Trianon Ensemble; Jean and Joan; Vin Lindhe; in popular program.

WMBI [1140]—223

3:30 to 5 P. M.—Bible Exposition, with prayer and praise, conducted by Rev. James M. Gray, D. D., President of the Institute. Auditorium choir of sixty-five voices under direction of Talmage J. Bittikofer of the Music Faculty, furnishes special selections.

5 to 7 P. M.—Regular musical program. Weekly meeting of the boys' and girls' K. Y. B. Club, with Bible stories by Miss Edna Gray Johnson.

WNBA [1440]—208.2

6 to 8:30 P. M.—Popular songs, featuring Eddie Loftus.

8:30 to 11 P. M.—George Robinson and his Triangle Cafe Orchestra and Vocal Artists in popular program; Trixie Rose, Ray Reynolds, Dan and Bob Ahholt.

WOK [1190]—252

11 to 12:30—Trianon Orchestra, Dell Lampe; Jean and Joan; Hugh Aspinwall; Bob Bennett, and others.

WORD [1090]—275.1

10 A. M.—I. B. S. A. Service and Bible lecture. Choral singers, solos, duets.

2:30 P. M.—Musical program.

3:30 P. M.—Bible lecture.

4 P. M.—Musical program and bible lecture in foreign language.

7 P. M.—Watchtower Orchestra program.

7:30 P. M.—Bible Lecture.

8 P. M.—Choral singers, solos, duets, instrumental music.

9 P. M.—Bible lecture.

WSBC [1290]—232.4

1 to 3:30 P. M.—Varied program.

5 to 7 P. M.—Motorists' Studio, Senate Theatre Organ. Others announced.

9 to 11 P. M.—Hugh Swifts' Serenaders. Otto Kaspers' Ensemble, Laurice Lynum, Lew Butler.

12 to 1 A. M.—Varied.

MEMO FOR SUNDAY

Station Time

Table with 2 columns: Station, Time. Multiple horizontal lines for entries.

STATION WLS—Continued from Page 27)

flower, about the peasant girl or the prince. His experiences in life were the subject matter for his songs and other music, and he made his melodies fit their subjects.

Mr. Ma'in will show how Schubert's personality is expressed in such melodies as the themes of the "Unfinished Symphony," the "Impromptus," and the songs, such as the "Erl King," and "Hark, Hark, the Lark."

A subscription blank on page 1 for your convenience. Fill in and mail NOW.

### WENR—WBCN—[Twin Sister Stations]

Some time ago, an under-press-agented show discovered that in the cast there were three sets of sisters. Did it make a good story? Well it was so good that about every show that went on the road had twins, sisters, and a few brothers in the cast. Now comes the radio stations, our newest form of entertainment and, of course education. We have twin stations, or did, but since the new allocations by the radio commission, and a little while before, we began to have sister stations.

One of the best sets of sister stations is that owned by the Great Lakes Broadcasting Company, WENR and WBCN, under the direction of Morgan L. Eastman, with about the finest, best regulated staff of assistants, and a trained group of musicians and vocalists that any broadcasting outfit can boast of. Mr. Eastman's past experience in conducting programs and directing them from a Chicago station qualifies him as an expert. He has charmed his audiences for several years, and his reputation as a musician and a conductor is an established fact.

These two stations present programs that run the entire length of the musical field, from the formal program of old and new masters, both in vocal and instrumental music, then graduating in easy stages towards the jazz, dance, popular song type of program. Each presented by an announcer who is a veteran in the radio field, and a vocalist as well.

Mr. Eastman needs no introduction. He has presented programs from another local station for some time. He organized and conducts the Edison Symphony Orchestra, who are heard regularly on the Sunday night programs throughout the winter months. He is a musician and an artist. He senses that there is an opportunity of presenting to the public programs varied but so well arranged that one is led from one mood to another by such easy stages, that to listen to these twin stations for the entire twelve hours is not at all difficult.

The studios of the stations are located in the Straus Building, on the 23rd floor. Here one finds two studios, one of which has a specially constructed organ, designed to fill the requirements of radio, which are exacting, when reproducing tones. From these two studios the programs are put on without interruption.

On the staff of the station are such well known vocalists, who also announce, as Arthur Wellington, bass baritone, who announces the programs calling for better music. He is also heard now and then in vocal selections on this and other programs, and his voice is easily distinguished

during some of the very funny dialogues that come on at stated periods; then his dignity seems to leave him. Still another voice is that of Everett Mitchell, who sings baritone; his is the program that has for its principle attraction, no formality. At this time there is always a vein of understandable fun going on, and requests are filled at this time. Oscar Heather, tenor, has a program that divides itself in several parts, some dance music, some organ music, vocal music that ranges from ballads to well-known selections from better known composers, and of course, instrumental numbers.

Others on the staff are Sallie Menkes, concert pianist and accompanist, who has been with Mr. Eastman from the beginning of the Edison Company's broadcast. Edward Davies, baritone, who charmed theatre audiences in Chicago and elsewhere in a well known musical comedy. He is a Welshman, who has the national musical ability. Lewis Meehan, tenor, has a melting Irish tenor that makes us think of quaint tunes, colleens, and, of course, blarney. Lucille Long, contralto, has a rich, full voice, and has done a great amount of concert work. Louise Vernet, coloratura soprano, is a musician and artist who is known for her work of the masters of opera. Still others are Peter Grosso, tenor; Charlotte Cowan, soprano; Florence Halberg, contralto; Elva Gamble, soprano; Marthin Provensen, bass baritone; Cantor Kit-tay, Thomas B. Stephenson, tenors; Audrey Call, violinist; Lillian Rehberg, cellist; Jack Baus, violinist; Sterra Feigen, cellist. Two organists, and a twelve piece-dance orchestra, directed by Frank Westphal and others go to make up this big entertaining family of artists.

Program numbers are all given to the announcers, timed and rehearsed. The entire twelve hours move with the clock. This is so well arranged that one can set his watch safely. The engineering staff of the two stations are masters in their line, and programs are perfectly modulated before going on the air, with the use of panels located at the studios. Business offices and a large reception room for visitors complete the suite.

Even if your radio set fails to pick up a number of stations, you would have as great a variety as you would wish if you set your dials at 288.3 and remained with the radio sisters WENR and WBCN. The programs please every type of mind, and are understandable, as those who announce as well as the director of the station realize the value of clean well spoken words, and a rather complete knowledge of music, composers and artistic results. Some of the hours are in the lighter vein, when one feels frivolous, and then the orderly rather sedate, but without stiffness, program attracts. It is followed by less formality, just a chummy kind of an hour or more, and we wonder perhaps who has conceived such a delightful idea. It's the spirit of service that makes them all worth while.

### WGN Plans Extensive Fall Programs

CHICAGO, Sept. 19.—Maintenance of its position as one of the most popular stations in the country will be the aim of WGN, the prominent local station during the coming fall. The most interesting educational and entertainment program ever attempted will mark the station's fourth broadcasting season, with the inclusion of a host of new novelties in a program already famous for the high quality of its many features.

Football broadcasts and orchestral music have been a pair of WGN headliners during the fall, and in 1927 they will again occupy first place. Henry Selinger, program director of the station, says that the orchestral music to be provided by WGN this fall will set a new standard for regular radio entertainment. With the assistance of Alfred G. Wathall, the station's arranger and composing genius, he is planning a 'miscellany of musical programs that will be hard to equal.

Mark Love, basso and director of the station's vocal group, has returned to America after two months of study with Sir Henry Wood, the director of the London symphony orchestra, and an authority on oratorio singing, and Mr. Love is at present engaged in planning the extensive vocal programs to which fans will listen during the early fall and winter. Daytime and afternoon listeners are not being overlooked in the fall readjustment of programs, and many unique bits of entertainment are being planned for those fans who do their listening in the daylight hours.

WGN is considering another extensive football program for the fall, with games of interest to midwest listeners scheduled from extremely distant points. The more important midwest games which will bring together members of the Big Ten conference are to be presented aerially. Coach K. K. Rockne of Notre Dame has already given WGN permission to broadcast the game between Southern California and Rockne's squad, which will be played at Soldier's field in Chicago in late November.

Professional football is coming to the front in America as the sport itself waxes in popularity, and WGN will make efforts during the fall to keep the pro fans entertained on Sunday afternoons. Games played by the Chicago Bears and the Chicago Cardinals, professional teams, will be broadcast throughout the football season, and these contests will bring to further radio fame such collegiate stars as Red Grange, Ernie Nevers, Benny Friedman and Moon Baker.



An Interview with the MonaMotor Oil Twins—(Continued from Page 19)

hum a tune. To my surprise John joined with a tenor. He had always sung base in the old high school glee club.

Try Out Before Mike

"We did notice that our voices blended pretty well, but never



dreamed that we would ever make a public appearance. One night in the early fall we happened to be together at KOIL, and for no good reason at all sang over the radio—"

"And boy! were we scared?" interrupted John. "It wasn't stage fright. I guess you would call it 'mike fright. Anyhow, it was terrible."

"Don Searle, manager of KOIL, heard us," continued Ned. "And after giving us a bit of encouragement, invited us to come back, which we did. Later we conceived the idea of handling the microphone ourselves, that is, doing our own announcing and conducting our programs in an informal way."

John, who had been stumming his beautiful guitar, joined in: "You know, I think its the imperfection of radio that people like. We just try to be ourselves, singing, joking and laughing."

"Remember, Ned, about a year ago when we challenged Henry Ford's champion fiddler to a musical bout of popular music versus old time tunes?"

"The informal program," explained Ned, "seems to bring us closer to our listeners, it averages an hour and a half a day."

"Then you must have a lot of spare time?"

Call on Dealers

"Well, not as much as one would think," they agreed. "We spend considerable time during the day in calling on dealers—there is always something to do."

"You mean you act as salesmen?" I asked.

The Twins explained that their visits to dealers were just friendly calls and that their firm did not expect them to sell.

"—And, of course," said Ned,

"considerable time is required to work up new material for our programs. We have also taken up golf. This occupies much of our spare time."

Not having heard the boys on the air for some time I inquired as to where they came from.

They had just completed an engagement at KMOX, St. Louis, where they were invited to take part in the reception for Col. Charles Lindbergh. This was quite an honor for the twins and certainly was a nice bit of publicity for the MonaMotor Oil Company, as they appeared on the same program with Colonel Lindbergh, the governor of Missouri, the mayor of St. Louis and other notables.

During our conversation the boys told me of many amusing and interesting experiences.

Down in rural Missouri a farmer became so enthused over their singing that he bestowed the greatest honor in his power on them—he named his work team "John and Ned."

Cars Furnished Twins

In California the Don Lee company furnished a Cadillac for their use in San Francisco. The Willys-Overland company likewise furnished cars at Portland and Seattle.

On one occasion, during a prize drawing, Ned gave away his watch. A girl won the prize. For some reason Ned became interested in the young lady and sent along his photo with a letter. The girl's reply also contained a photograph. But it was that of a little miss of eight years.



I learned that they recently made a successful test for the Columbia Phonograph company and will go east to make records. The boys also told me of several songs they had composed.

"Time to go on the air," said Ned, looking at his watch.

At that we shook hands and parted. I was convinced that I had met two fine fellows.



(H. A. Atwell photo—Chicago)

ROCKY WOLFE of the sports staff of the Chicago Daily Journal, is conductor of the WLS Sports Club every day at 4:30, 5:30 and 6:30 P. M. And Rocky has a partner in his broadcasting—Smoky the Duck.

"Eyes and Ears" of Network Broadcasts—(Continued from Page 27)

National Broadcasting Company's headquarters, they are passed along. If the line cannot be cleared up, an emergency line picks up the program.

"Better," says KVOO; "Still off," flashes from WSAI; "O. K." from WTAM.

When things are going out clearly, the Network operators flash comments into the Communication Circuit Corps, which are carefully jotted down for future reference.

"Bartone is dandy," will click in from WFI, Philadelphia; "Who's the new soprano?" from WCCO, Minneapolis - St. Paul; "Orchestra is snappy," says WDAF, Kansas City; "Selection not so good," will flash in from WTIC, Hartford.

After the air is clear, the Communication Circuit operators check back and get readings on the entire program from the various members of the network.

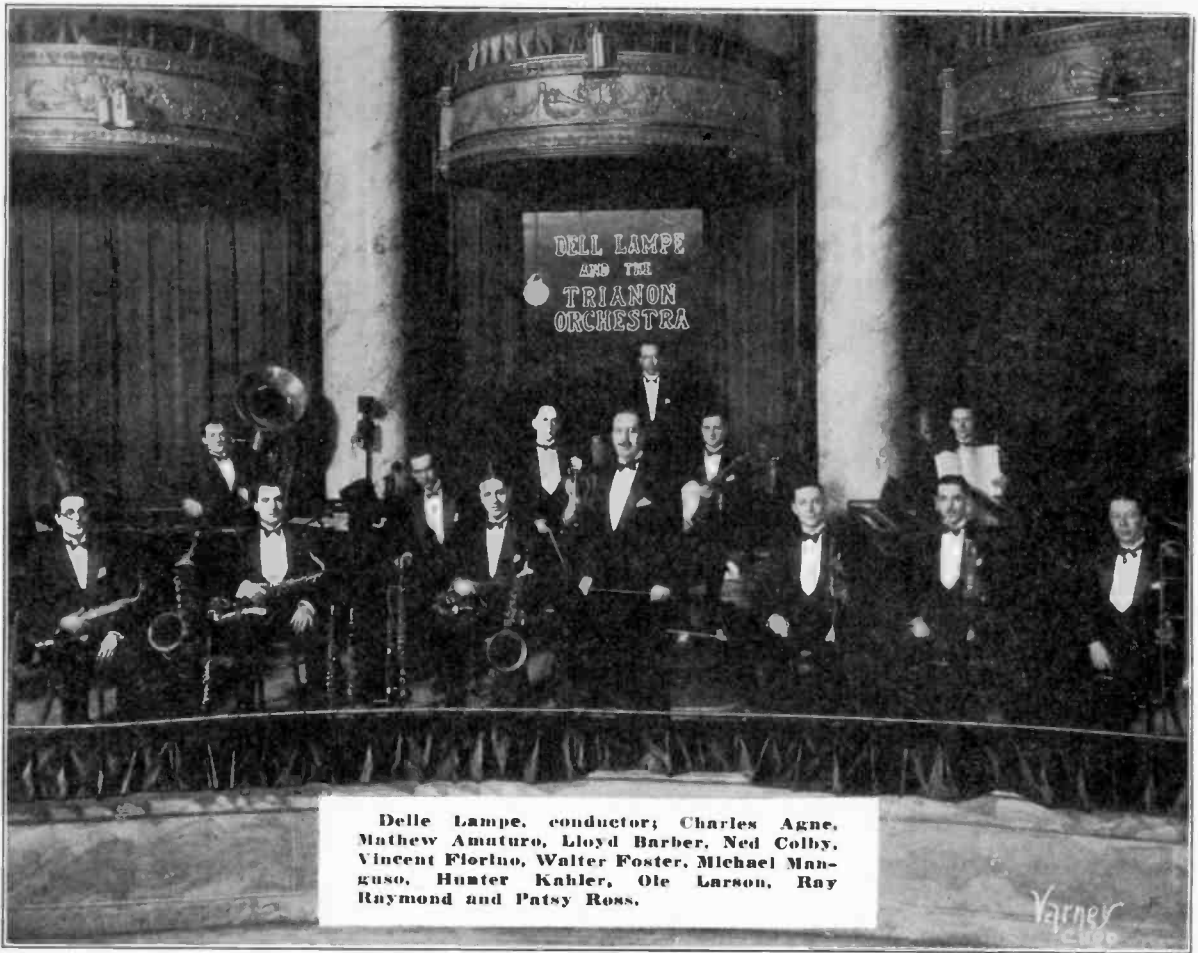
To further demonstrate the necessity for this Corps, suppose a storm puts the entire Network out of commission. Months in advance the various stations have contracted for the program and in anticipation of it, have not arranged a local program.

The storm makes it impossible for the Network broadcast.

The Communication Circuit Corps goes into action in time to warn the Network members and give them an opportunity to arrange an emergency program.

A subscription blank on page 1 for your convenience. Fill in and mail NOW.





Delle Lampe, conductor; Charles Agne, Mathew Amuturo, Lloyd Barber, Ned Colby, Vincent Florino, Walter Foster, Michael Manguso, Hunter Kahler, Ole Larson, Ray Raymond and Patsy Ross.

**SPECIALS FOR THE WEEK [Outside Stations]**

**TUESDAY**

KJR—1 to 3 A. M.—Vic Meyers Dance Orchestra of Butler Hotel Rose Room; Pasquin and Harris, Harmony Boys, during intermissions.

WEAF—10 to 11 P. M.—Janssen's Hofbrau Orchestra. To WRC, WWJ and WFL.

WLW—8:45 P. M.—Bud Kahn and Ray Lombardi, Accordion and Baritone.

WMAK—11 P. M.—Irish Folk Songs; Mathew Mahoney, Tenor. Old Favorite Melodies; Lawrence Williams, Dance Program. Organ Recital; Alex Taylor.

A subscription blank on page 1 for your convenience. Fill in and mail NOW.

**WEDNESDAY**

WEAF—8 to 9 P. M.—Radio Industries Banquet from Grand Ball Room of Hotel Astor. To WEAF and the Red and Blue Networks.

**WKAQ [880]—342**

Owned and operated by Radio Corporation of Porto Rico. P. O. Box 358, San Juan, Porto Rico. J. Agusty, Manager and Announcer.

WKAQ—8 to 10 P. M.—Municipal Band of San Juan, conducted by Prof. Manolo Tizol.

**THURSDAY**

WOW—7 to 10 P. M.—Courtesy Omaha Musicians' Association. Local No. 70.

**FRIDAY**

KFWB—12 P. M. to 1 A. M.—Leon Ardoff, dramatic basso cantante; Jose Prehes, concert pianist; Russian Instrumental Quartette.

KJR—11 to 12—Kola Levienne, Mischa Levienne, John Hopper trio playing cello, violin and piano, sponsored by Woodlawn Flower Shop.

**SATURDAY**

WSM—9:00 to 12:00 P. M.—Regular Barn Dance Program.

KDKA—8:30 P. M.—Concert.

KFWB—11 to 12—Program by courtesy of the MonoMotor Oil Company, presenting Lilyan May Challenger, contralto, and the MonoMotor Oil Company dance orchestra.

WBZ-WBZA—8 P. M.—N. B. C. Feature. Ponce Sisters and Xylophone.

WEAF—10:00 to 11:00 P. M.—Rolf's Palais D'Or Orchestra.

WJZ—9:30 to 10:30 P. M.—Irwin Abrams Hotel Manager Orchestra.

WMAK—9:30 P. M.—Beek Sisters. Popular program.

**SUNDAY**

WEAF—9:00 to 9:30 P. M.—Cathedral Echoes—Recital from Wette Studios; to WEAF, WRC.

WOW—7 P. M.—Courtesy Utah Radio Products Company. Organ and solos. Transmitted from Scottish Rite Cathedral.

PRINTERS OF THE CHICAGO RADIO PROGRAM

A. E. RIDDLE, *President*  
H. O. WUNDERLE, *Vice-Pres.*  
R. P. MARSHALL, *Sec'y-Treasurer*

*Members:*  
Chicago Real Estate Board  
Cook County Real Estate Board  
Chicago Association of Commerce

1904



1927

# Riddle & Wunderle Co.

## Printers - Stationers

*Office and Store:*

62 West Washington Street

*Factory:*

530 South Dearborn Street

Telephones Central 2568-2569-2570

CHICAGO, ILLINOIS

“IF IT IS USED IN AN OFFICE—WE HAVE IT”

# Q·R·S

## Gaseous Rectifier Tubes for Your “B” Battery Eliminator

85 Mill. Type

**\$4.50**

Will stand a maximum load of  
200 volts at 85 milliamperes output

60 Mill. Type

**\$4.50**

Will stand a maximum load of  
150 volts at 60 milliamperes output



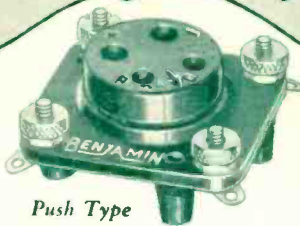
When your “B” Eliminator needs a  
new tube, replace it with a  
QRS Rectifier Tube and note the  
smooth, distortionless reception  
and increase in volume

Ask any good Radio Dealer

**THE Q·R·S MUSIC COMPANY, Manufacturers**  
306 South Wabash Avenue : : : : **CHICAGO, ILLINOIS**

# Buy by the Name

*Success in Set Building  
Begins at the Dealer's Counter*



Push Type  
**Cle-Ra-Tone Sockets**

*Spring-Supported, Shock-Absorbing Sockets*

Stop Tube Noises. Greatest aid to non-noisy operation. Contacts always clean. 75 cents each.

**ALL BENJAMIN RADIO PRODUCTS ARE OF THE SAME HIGH STANDARD AS THE FAR-FAMED CLE-RA-TONE SOCKETS**

WHEN you buy your radio parts, buy them right. Everything else being equal, when a name has stood for nearly half a century's striving toward technical perfection it is practically as safe as a formula as a guide to right buying. When your dealer sells you Benjamin radio products for your set you've already leaped a big hurdle on the way to success.

## "Lekeless" Transformers



Single Transformers, \$2.50

For all types of tuned radio frequency circuits. Gives clear cut selectivity, clearer tone quality, increased tone volume. Can be mounted in any desired position without appreciable interaction, warranting ease in set construction and economy in space.

## Tuned Radio Frequency Transformers

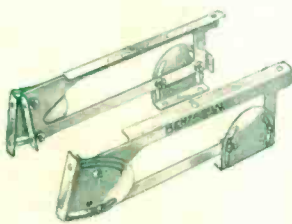
Proved through exhaustive and comparative tests to be the most efficient coil for modern radio sets. Better in all important features and characteristics. Loose basket weave, space wound, with the highest practical air dielectric. Gives clear cut selectivity, clearer tone qualities, increased tone volume.



**2 1/4" Diameter Transformers**  
Compact. Especially desirable for crowded assembly. Eliminates interfering "pickup."

Set of three, \$5.75    Single Transformer, \$2.10

## Brackets



Plain, 75c per pair.

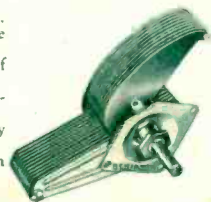
Adjustable, \$1.25 per pair.

An aid to simplification in set construction. Supports sub-panel, with room underneath for accessories and wiring. Plain and adjustable.

## Straight Line Frequency Condensers

A condenser with a real straight line frequency curve. Tends to spread the broadcast frequencies over entire range of the dial and at the same time improve selectivity. Other features are:

1. Extremely small and compact design.
2. Choice of either single hole or three hole mounting.
3. Smooth even movement because of ball bearing rotor shaft.
4. Low loss—only a small amount of insulation used in construction.
5. Hand and body capacity eliminated by protecting shield.
6. Capacity not effected by pressure on shaft.



All plates are brass—bright dipped.

Made in three sizes: .00025 Mfd., \$3.50;  
.00035 Mfd., \$3.75; .0005 Mfd., \$4.00

## Battery Switch



Quick, positive, clean-cut make and break. When it is "in" it's "off" eliminating danger of wasteful use of battery. 30c each.

If your dealer cannot furnish you with Benjamin Radio Products send amount direct to our nearest sales office with his name and we will see that you are promptly supplied.

## Benjamin Electric Mfg. Co.

New York City:  
247 W. 17th St.

120-128 S. Sangamon Street  
Chicago, Illinois

San Francisco:  
448 Bryant St.

*Manufactured in Canada by the Benjamin Electric Mfg. Co. of Canada, Ltd., Toronto, Ontario*

# BENJAMIN

TRADE MARK