

WILLIAM DUBILIER  
339 GARDEN ROAD  
PALM BEACH, FLORIDA 33480



CATALOG No. 161  
1938 - 39

## RADIO CAPACITORS

INTERNATIONALLY ACCEPTED STANDARDS SINCE 1910

**CORNELL-DUBILIER ELECTRIC CORPORATION**

# GROWTH OF AN INDUSTRY



## *... the story of CORNELL-DUBILIER world's largest manufacturer of capacitors*

Twenty-eight years ago was founded an organization which has devoted its efforts and energies to the perfection and production of what have been recognized as the World's Finest Capacitors. Starting with a new development—the mica transmitting capacitor—the company has steadily grown in size and importance until today, it is regarded as the leader in its field.

Dominant leadership has been made possible only for the reason that the ideals of the management have been of the highest. To make capacitors that find widespread use in the radio and electrical fields, wherein dependable operation must be obtained under severe operating conditions has been one of the problems which have been met by the Cornell-Dubilier Electric Corporation engineers. To develop new types, styles and designs of capacitors to meet the wide range of requirements of these two of the world's most important industries, the Cornell-Dubilier Electric Corporation has equipped large, modern research and experimental laboratories, well-staffed with technicians, engineers, research chemists and physicists who have brought forth many marvelous capacitors which have made possible better broadcasting, radio receivers, aircraft communication, train control, X-Ray apparatus, Power Factor correction and other important industrial equipment.

Today, in a well-organized plant covering 33 acres, employing several thousand experienced and skilled, trained workers, the Cornell-Dubilier Electric Corporation makes every kind of fixed capacitor required. The accumulated experience of twenty-eight years of intensive research and applied, concentrated knowledge is an asset of this organization which competition has not been able to meet with its low price appeal or cheaply made imitations. The C-D emblem, on every capacitor which we make, is your guarantee of a superior unit. It embodies the perfection which knowledge and skill alone can afford. You'll do well to specify and use them at all times.

## QUALITY CAPACITORS

**W**E are proud to present our new lines of capacitors for 1938. Herein you will find illustrated and listed the finest quality capacitors that we have ever produced. Capacitors that can be used with the assurance not only that they will do the work intended for them with absolute dependability, but at the most economical prices which we have ever offered for quality merchandise. The electrical characteristics of all C-D capacitors are the best it is possible to achieve. Capacity Tolerance, Leakage, Equivalent D.C. Series Resistance, Power Factor, Voltage Breakdown, Capacity Change with Humidity and Temperature, Q, Drift, Retrace, Longevity—all have been calculated to proper levels to assure utmost constancy and satisfactory performance.

For the broadcast station, the engineer, the serviceman, the amateur, the experimenter or for the manufacturer: we offer C-D Capacitors for your every need.

### CATALOG NO. 161 INDEX

DRY ELECTROLYTICS: METAL CASED TUBULARS	TYPE BR	4-5
DRY ELECTROLYTICS: CARDBOARD RECTANGULAR BOX	TYPES JR, RHM, HM	6-7
DRY ELECTROLYTICS: METAL CAN	TYPE KR	8-9
DRY ELECTROLYTICS: CARDBOARD RECTANGULAR BOX	TYPES EH, EE	10-11
DRY ELECTROLYTICS: CARDBOARD CASED TUBULARS	TYPE EDJ	12-13
DRY ELECTROLYTICS: METAL CAN	TYPES EB, EP, EA	14-15
WET ELECTROLYTICS: METAL CAN	TYPES EY, EX	16-17
PAPER: TUBULARS	TYPE DT	18-19
DYKANOL: TRANSMITTING FILTER CAPACITORS	TYPE TJU	20-21
DYKANOL: CYLINDRICAL CAN FILTER UNITS	TYPE TLA	22-23
MICA: AMATEUR TRANSMITTING CAPACITORS	TYPE 86	24-25
MICA: RECEIVING-TRANSMITTING MOULDED UNITS	TYPES 4, 9	26-27
MICA: MOULDED BAKELITE RECEIVING UNITS	TYPES 1W, 3L, 5W	28-29
PAPER: REPLACEMENT FILTER CAPACITORS	TYPES PE-CH, PE-B, PE-A	30-31
PAPER: METAL CASED BYPASS AND FILTER UNITS	TYPES DA, DB, DC, DD	32-33
PAPER: UNCASED CAPACITOR SECTIONS	TYPE RM	34-35
PAPER: AUTO GENERATOR AND VIBRATOR CAPACITORS	TYPES IC, FC, VUL, VC, HC, DT	36-37
RADIO INTERFERENCE FILTERS	TYPES IF, AF	38-39

Engineers requiring information and data on broadcast station capacitors, industrial types and special applications may obtain a copy of our General Industrial and Transmitting Capacitor Catalog No. 160, on written request.

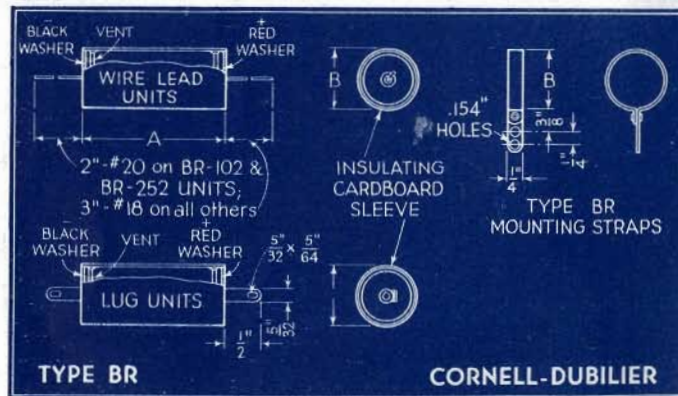
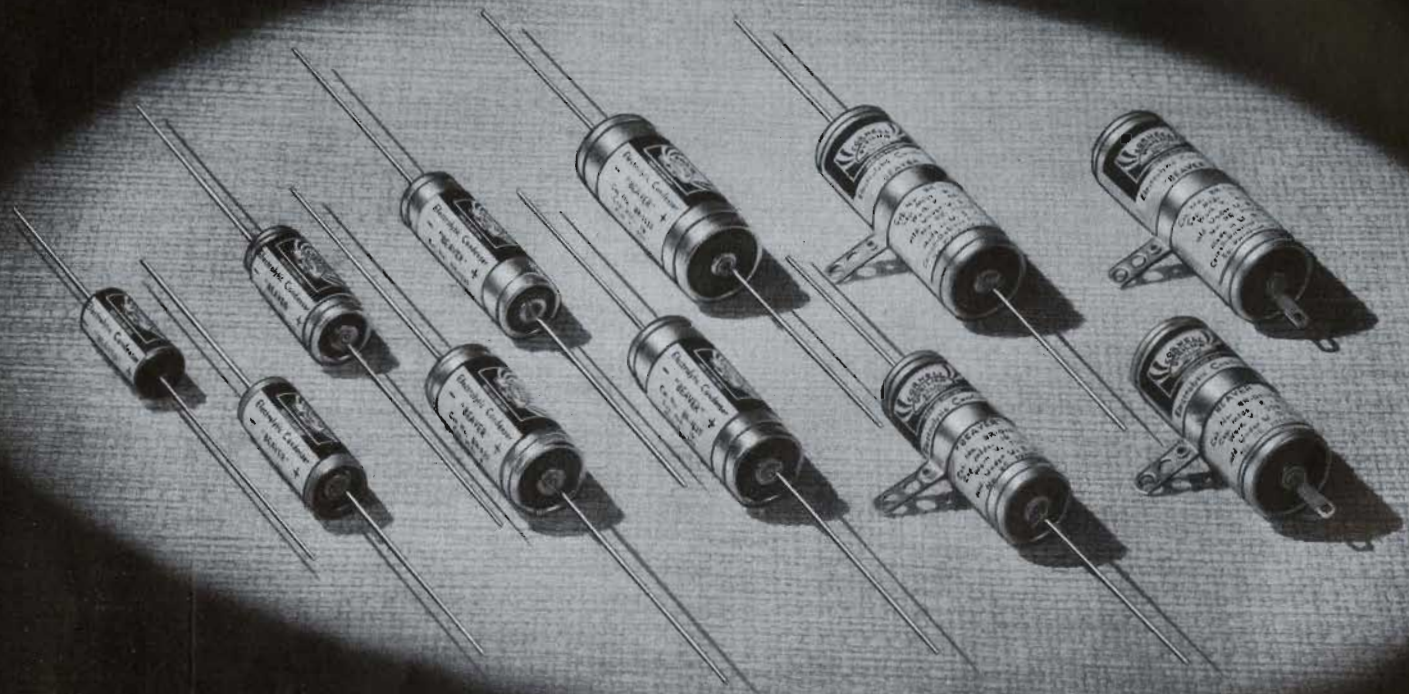
## CORNELL - DUBILIER ELECTRIC CORPORATION

1000 Hamilton Boulevard

South Plainfield, N. J., U. S. A.

Cable Address : **CORDU**

# CORNELL DUBILIER



A NEW C-D DEVELOPMENT destined to outsell all previous types of dry electrolytics, Type BR units, so extremely small, so handy to use, and completely eliminating exact duplicate replacement capacitors, are illustrated herewith. Polarity is clearly indicated on a protective varnished cardboard sleeve fitted over a pure aluminum cartridge. A step forward in dry electrolytic capacitor design and a welcome addition for the small, midget radio receivers. Hermetically sealed, vented and very practical to employ in radio receiver circuits. Eliminate drilling of chassis, use of pal nuts, washers and minimize assembly operations as well as save space and afford quick wiring. You'll like and get good results with the NEW BLUE BEAVERS.

# DRY ELECTROLYTIC CAPACITORS

## FEATURES OF TYPE BR

- 1—EXCLUSIVE ELECTRO-CHEMICAL ETCHING—ELIMINATES CORROSION
- 2—HI-FORMATION PROCESS—AFFORDS HIGHER VOLTAGE BREAKDOWN
- 3—HI-PRESSURE CENTRIFUGE—BETTER IMPREGNATION; LOWER POWER FACTOR
- 4—HI-PURITY ALUMINUM FOIL—BETTER DIRECT CURRENT LEAKAGE RECOVERY
- 5—SPECIAL C-D SUPER-PURITY CELLULOSE SEPARATOR—EXTRA LONG LIFE
- 6—RIGID CHEMICAL PURITY CONTROL—UNIFORM PERFORMANCE
- 7—DOUBLE AGEING—STABLE CHARACTERISTICS
- 8—ALL ALUMINUM TUBE & ACCESSORIES—UNIFORM RESULTS IN ALL WEATHER
- 9—SPECIAL VENT—SAFETY UNDER ALL OPERATING CONDITIONS
- 10—TUBULAR, COMPACT CONSTRUCTION—ALLOWS EASE OF WIRING INTO CIRCUIT

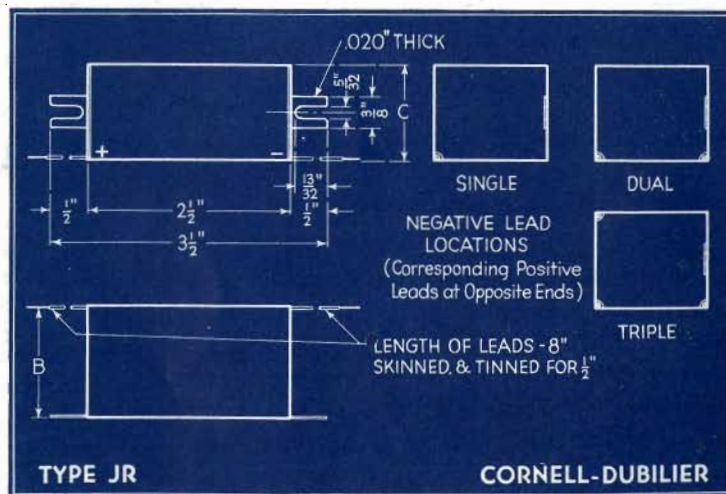
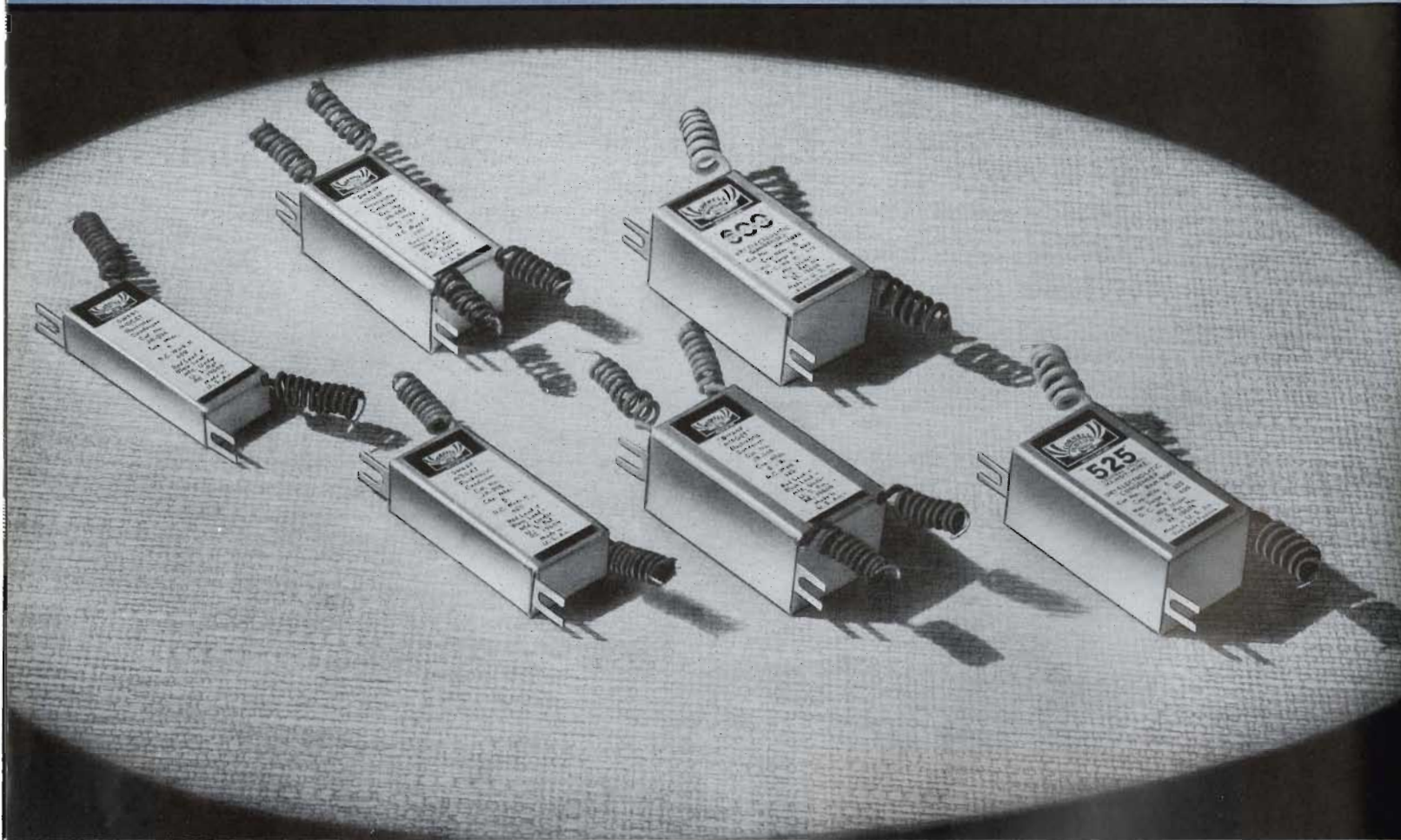
Cat. No.	Capacity Mfd.	Code Word	Size		Weight per 100	List Price
			A	B		
<b>450 V. D. C.</b>						
BR-445	4	BYVAA	$1\frac{3}{16}$	$\times \frac{5}{8}$	4½ lb.	\$.55
BR-845	8	BYVEB	$2\frac{1}{8}$	$\times \frac{3}{4}$	7 "	.60
<b>350 V. D. C.</b>						
BR-435	4	BYVIC	$1\frac{9}{16}$	$\times \frac{5}{8}$	2¾ "	.50
BR-835	8	BYVOD	$1\frac{11}{16}$	$\times \frac{3}{4}$	4 "	.55
BR-1235	12	BYVUE	$2\frac{1}{8}$	$\times \frac{3}{4}$	5¼ "	.70
BR-1635	16	BYVYF	$2\frac{1}{8}$	$\times \frac{7}{8}$	6½ "	.80
<b>250 V. D. C.</b>						
BR-425	4	BYWUK	$1\frac{3}{16}$	$\times \frac{5}{8}$	2½ "	.45
BR-825	8	BYWYL	$1\frac{9}{16}$	$\times \frac{5}{8}$	2¾ "	.50
BR-1225	12	BYXAM	$2\frac{1}{8}$	$\times \frac{5}{8}$	4 "	.65
BR-1625	16	BYXEN	$2\frac{1}{8}$	$\times \frac{3}{4}$	5 "	.75
BR-2025	20	BYZAS	$2\frac{1}{8}$	$\times \frac{7}{8}$	6 "	.80
BR-4025	40	BYZET	$2\frac{5}{8}$	$\times \frac{7}{8}$	9 "	.95
<b>150 V. D. C.</b>						
BR-415	4	BYZIU	$1\frac{3}{16}$	$\times \frac{5}{8}$	1¾ "	.40
BR-815	8	BYZOV	$1\frac{9}{16}$	$\times \frac{5}{8}$	2¼ "	.45
BR-1215	12	BYZUW	$1\frac{9}{16}$	$\times \frac{5}{8}$	2½ "	.50
BR-1615	16	BYZYX	$1\frac{9}{16}$	$\times \frac{5}{8}$	2¾ "	.55
BR-2015	20	BYUZA	$1\frac{11}{16}$	$\times \frac{5}{8}$	3 "	.60
BR-4015	40	BYUYB	$2\frac{1}{8}$	$\times \frac{3}{4}$	4¾ "	.65
<b>25 V. D. C.</b>						
BR-102	10	BYUXC	$1\frac{1}{2}$	$\times \frac{1}{2}$	1 "	.40
BR-252	25	BYUWD	$1\frac{7}{8}$	$\times \frac{9}{16}$	1¾ "	.50

**NOTES:** Dimensions do not include added thickness and length of spun-over varnished cardboard tube sleeve. Added length is about  $\frac{1}{4}$ "; added diameter about  $\frac{1}{16}$ ". BR units are supplied with three-inch bare wire leads. If mounting strap is desired, add 5c. to list price; if lug terminals (supplied only in large quantities to manufacturers) are desired, designate Type BR-G. Dual units are also available, standard practice being: two insulated positive leads (or lugs), with mounting-grounding strap provided. No cardboard sleeve is required for dual units. (Dimensions of BR-102 and BR-252 are over-all, as listed).

# CORNELL



# DUBILIER



THE FAMOUS C-D HANDI-MIKES are shown here. These excellent units, in their silvered cartons and with their inherent fine electrical characteristics have been used quite extensively and with the complete approbation of tens of thousands of servicemen. Fitted with convenient mounting feet, equipped with color-coded wire leads, these compact units have a specially treated inner liner carton into which is potted with pure moisture-proof wax, the carefully assembled capacitor winding, thus affording fine protection and seal against temperature and humidity changes. Types RHM and HM employ plain foil; Type JR, uses exclusive C-D etched foil.

# DRY ELECTROLYTIC CAPACITORS

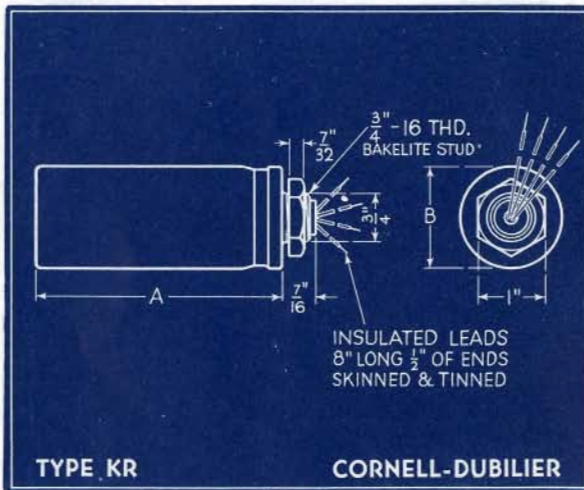
## FEATURES OF TYPE JR

- 1—EXCLUSIVE ELECTRO-CHEMICAL ETCHING—ELIMINATES CORROSION
- 2—HI-FORMATION PROCESS—AFFORDS HIGHER VOLTAGE BREAKDOWN
- 3—HI-PRESSURE CENTRIFUGE—BETTER IMPREGNATION; LOWER POWER FACTOR
- 4—HI-PURITY ALUMINUM FOIL—BETTER DIRECT CURRENT LEAKAGE RECOVERY
- 5—SPECIAL C-D SUPER-PURITY CELLULOSE SEPARATOR—EXTRA LONG LIFE
- 6—RIGID CHEMICAL PURITY CONTROL—UNIFORM PERFORMANCE
- 7—DOUBLE AGEING—STABLE CHARACTERISTICS
- 8—TRIPLE POTTING—BETTER WEATHER-PROOFING
- 9—DOUBLE CARTON CONTAINERS—BETTER RESISTANCY TO HUMIDITY
- 10—OUTER CARTON WAX-DIPPED—ADDED PROTECTION

Cat. No.	Capacity Mfd.	Code Word	A	Size B C	Weight per 100	List Price
<b>200 V. D. C.</b>						
JR-204	4	JARZA	2½	x ¾	x ½	3½ lb. \$ .65
JR-208	8	JARYE	2½	x 1	x ⅞	5½ " .80
JR-210	10	JARXI	2½	x 1	x ⅞	6¾ " .90
JR-212	12	JARWO	2½	x 1½	x ⅞	7½ " .95
JR-216	16	JARVU	2½	x 1½	x ⅞	8¾ " 1.05
JR-244	4-4	JARTZ	2½	x 1½	x ⅞	8¾ " .90
JR-288	8-8	JARRX	2½	x 1½	x 1	10¾ " 1.25
JR-2816	8-16	JARQH	2½	x 1¼	x 1½	12 " 1.45
JR-2888	8-8-8	JARMN	2½	x 1¾	x 1½	13 " 1.90
<b>450 V. D. C.</b>						
JR-502	2	JERAZ	2½	x ¾	x ½	5¾ " .65
JR-504	4	JEREY	2½	x 1	x ⅞	7½ " .75
JR-508	8	JERIX	2½	x 1½	x ⅞	10 " .95
JR-512	12	JERUV	2½	x 1½	x 1	12¼ " 1.30
JR-516	16	JERYH	2½	x 1¾	x 1½	15¾ " 1.45
JR-544	4-4	JERBY	2½	x 1½	x ⅞	12¼ " 1.20
JR-588	8-8	JERGM	2½	x 1¾	x 1½	17¾ " 1.50
JR-5816	8-16	JERHK	2½	x 2	x 1½	24½ " 1.90
JR-5888	8-8-8	JERKE	2½	x 2	x 1½	25 " 2.20
<b>TYPE RHM 450 V. D. C.</b>						
RHM-9040	4	ROBOX	2½	x 1½	x ¾	10¾ " .75
RHM-9080	8	ROBOY	2½	x 1¾	x 1½	15¾ " .95
<b>TYPE HM 475 V. D. C.</b>						
HM-11080	8	TILLY	2½	x 1¾	x 1½	15¾ " 1.35

**NOTES:** Types RHM and HM are made of highest purity plain foil and hence are slightly larger in size than Type JR. All wire leads are 8" long, plainly color-coded and firmly anchored to flap of inner carton, thus relieving strain on the connecting tab and avoiding open-circuit and corrosion at the terminal connection. The dual and triple units have separate sections, the corresponding positive and negative leads being opposite each other. These units are excellent for use in restricted space in crowded chasses. Also will eliminate the need of exact duplicate replacements to a large extent.

# CORNELL DUBILIER



**EXTREMELY COMPACT TYPE KR** etched foil dry electrolytic capacitors have superior electrical characteristics and long life. Constructed to withstand severe mechanical stress, these screw-mounted aluminum can units are available in single, dual and triple sections, all leads being clearly color-coded. Approximately similar in size to the metal radio tubes, Type KR is made in two popular voltage ratings: 250 V.D.C. for use in A.C.-D.C. or voltage-doubler midgerts and 450 V.D.C. to serve a purposeful function in A.C. operated sets.



# DRY ELECTROLYTIC CAPACITORS

## FEATURES OF TYPE KR

- 1—EXCLUSIVE ELECTRO-CHEMICAL ETCHING— ELIMINATES CORROSION
- 2—HI-FORMATION PROCESS— AFFORDS HIGHER VOLTAGE BREAKDOWN
- 3—HI-PRESSURE CENTRIFUGE— BETTER IMPREGNATION; LOWER POWER FACTOR
- 4—HI-PURITY ALUMINUM FOIL— BETTER DIRECT CURRENT LEAKAGE RECOVERY
- 5—SPECIAL C-D SUPER-PURITY CELLULOSE SEPARATOR— EXTRA LONG LIFE
- 6—RIGID CHEMICAL PURITY CONTROL— UNIFORM PERFORMANCE
- 7—DOUBLE AGEING— STABLE CHARACTERISTICS
- 8—ALL ALUMINUM CAN & ACCESSORIES— UNIFORM RESULTS IN ALL HUMIDITIES
- 9—ANCHORED LEADS— ELIMINATES OPEN AND SHORT-CIRCUITS
- 10—UNIVERSAL MOUNTING— UNIT MOUNTS IN ANY POSITION ON OR UNDER SUB-PANEL

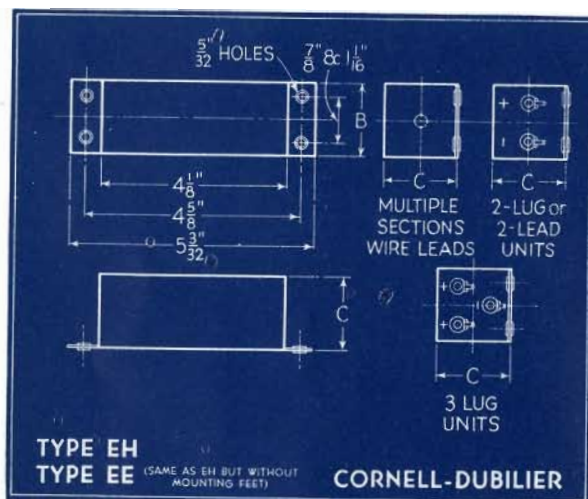
Cat. No.	Capacity Mfd.	Code Word	Size		Weight Per 100	List Price
			A	B		
<b>250 V. D. C.</b>						
KR-204	4	KYRIE	$2\frac{9}{16}$	x 1	13 $\frac{3}{4}$ lb.	\$.75
KR-208	8	KYROW	$2\frac{9}{16}$	x 1	14 $\frac{1}{2}$ "	.95
KR-216	16	KAYAY	$3\frac{7}{16}$	x 1	17 $\frac{1}{4}$ "	1.35
KR-288	8-8	KYRET	$2\frac{11}{16}$	x 1 $\frac{3}{8}$	23 $\frac{1}{2}$ "	1.45
<b>450 V. D. C.</b>						
KR-504	4	KEERA	$2\frac{11}{16}$	x 1	15 "	.85
KR-508	8	KEARI	$2\frac{3}{4}$	x 1	15 $\frac{1}{2}$ "	1.05
KR-512	12	KEORE	$3\frac{7}{16}$	x 1	18 "	1.40
KR-516	16	KAZAZ	$3\frac{7}{16}$	x 1 $\frac{3}{8}$	27 $\frac{1}{2}$ "	1.55
KR-548	4-8	KEIRU	$3\frac{7}{16}$	x 1 $\frac{3}{8}$	24 $\frac{1}{2}$ "	1.45
KR-588	8-8	KEURO	$3\frac{7}{16}$	x 1 $\frac{3}{8}$	26 "	1.60
KR-5816	8-16	KEYRY	$4\frac{7}{16}$	x 1 $\frac{3}{8}$	31 $\frac{1}{4}$ "	2.25
KR-5888	8-8-8	KEORL	$4\frac{3}{8}$	x 1 $\frac{1}{2}$	41 $\frac{3}{4}$ "	2.30

**NOTES:** The substantial reduction in size of these capacitors allows their use in compact and portable amplifiers and receivers. Equipped with palnut. Comparison of the internal construction of these units with competitive makes will disclose the many reasons for the superiority of C-D. Fully wax-potted sections, carefully and completely insulated from one another as well as from the metal container; well-built by skilled operators as is readily apparent upon close inspection—these are the reasons for our claim to highest quality!

# CORNELL



# DUBILIER



C-D "HI-MIKES" ARE STANDBY UNITS for every radio set's filter circuit! Real "heavy-duty" capacitors that have won widespread acclaim and use because of their sturdy construction and excellent performance. Extensively used wherever an extra-dependable filter capacitor is needed. Wax-dipped cardboard cased units that have no equal in electrical characteristics or mechanical assembly, Type EH have mounting flanges (which may be easily cut off if necessary while Type EE employs a simple little mounting strap.) Service men who have jobs that will accommodate a larger capacitor insist on Type EH units which "stay put."

# DRY ELECTROLYTIC CAPACITORS

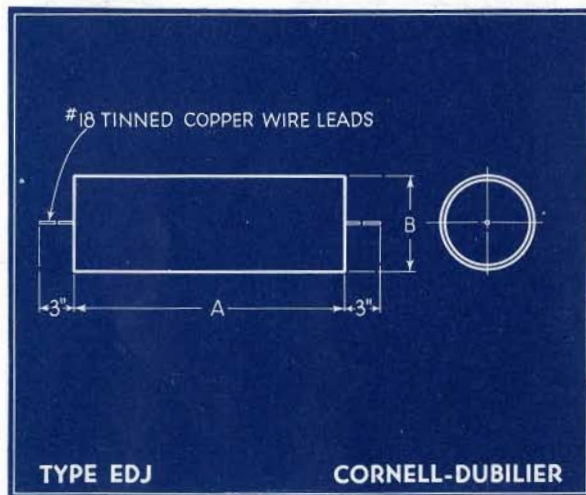
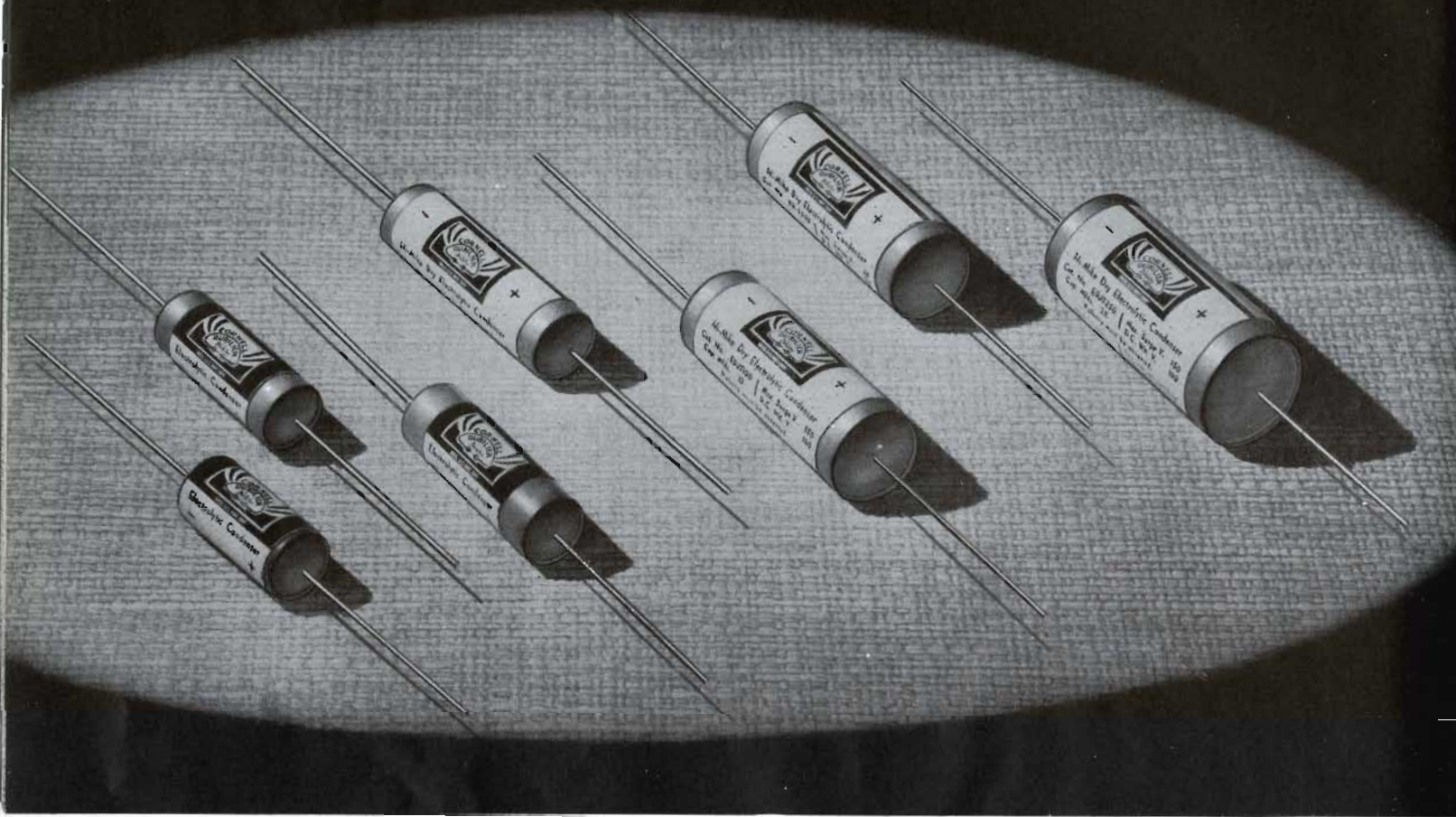
## FEATURES OF TYPE EH

- 1—HI-FORMATION PROCESS—AFFORDS HIGHER VOLTAGE BREAKDOWN
- 2—HI-PRESSURE CENTRIFUGE—BETTER IMPREGNATION; LOWER POWER FACTOR
- 3—HI-PURITY ALUMINUM FOIL—BETTER DIRECT CURRENT LEAKAGE RECOVERY
- 4—SPECIAL C-D SUPER-PURITY CELLULOSE SEPARATOR—EXTRA LONG LIFE
- 5—RIGID CHEMICAL PURITY CONTROL—UNIFORM PERFORMANCE
- 6—DOUBLE AGEING—STABLE CHARACTERISTICS
- 7—COMPLETE WAX POTTING—BETTER WEATHER-PROOFING
- 8—WAXED OUTER CONTAINER—ADDED PROTECTION
- 9—LEAD OR LUG TERMINALS—CONVENIENT CHOICE AT NO EXTRA COST
- 10—MOUNTING FLANGE PROVIDED—SIMPLE AND EASY TO INSTALL

Cat. No.	Capacity Mfd.	Code Word	Size			Weight Per 100	List Price
			A	B	C		
<b>450 V. D. C.</b>							
EH-9400	4	BLINK	4 $\frac{1}{8}$ x 1 $\frac{3}{8}$ x $\frac{3}{4}$			12 $\frac{3}{4}$ lb.	\$.75
EH-9400L	4	BLOME	4 $\frac{1}{8}$ x 1 $\frac{3}{8}$ x $\frac{3}{4}$			12 $\frac{3}{4}$ "	.75
EH-9800	8	BLISS	4 $\frac{1}{8}$ x 1 $\frac{3}{8}$ x 1			22 $\frac{1}{2}$ "	.95
EH-9800L	8	BLOPP	4 $\frac{1}{8}$ x 1 $\frac{3}{8}$ x 1			22 $\frac{1}{2}$ "	.95
EH-9160	16	BLUQU	4 $\frac{1}{8}$ x 1 $\frac{9}{16}$ x 1 $\frac{5}{16}$			38 "	1.45
EH-9404	4-4	ANGLE	4 $\frac{1}{8}$ x 1 $\frac{9}{16}$ x 1 $\frac{3}{16}$			28 "	1.20
EH-9404SL	4-4	ZOWIE	4 $\frac{1}{8}$ x 1 $\frac{9}{16}$ x 1 $\frac{3}{16}$			31 "	1.20
EH-9408	4-8	ANGOR	4 $\frac{1}{8}$ x 1 $\frac{9}{16}$ x 1 $\frac{3}{16}$			30 "	1.35
EH-9408SL	4-8	ZIPZA	4 $\frac{1}{8}$ x 1 $\frac{9}{16}$ x 1 $\frac{3}{16}$			33 "	1.35
EH-9808	8-8	ANJOU	4 $\frac{1}{8}$ x 1 $\frac{9}{16}$ x 1 $\frac{1}{2}$			38 "	1.50
EH-9808SL	8-8	ZANJE	4 $\frac{1}{8}$ x 1 $\frac{9}{16}$ x 1 $\frac{1}{2}$			40 "	1.50
EH-9444L	4-4-4	BLAND	4 $\frac{1}{8}$ x 1 $\frac{9}{16}$ x 1 $\frac{3}{16}$			33 "	1.80
EH-9888L	8-8-8	BLAST	4 $\frac{1}{8}$ x 2 x 2			56 "	2.20
<b>TYPE EE</b>							
<b>450 V. D. C.</b>							
EE-9080	8	ALPIA	4 $\frac{1}{8}$ x 1 $\frac{3}{8}$ x $\frac{1}{16}$			22 "	.95
EE-9080L	8	ALPOT	4 $\frac{1}{8}$ x 1 $\frac{3}{8}$ x $\frac{1}{16}$			22 "	.95

**NOTES.** (Type EE has all above features excepting mounting flange). The Type EH dual units are available in separate section construction, having four color-coded wire leads; also in common negative three lug-terminal assembly, with two positive and one negative terminals. The triple section units have four leads, three of which are positive and the fourth, common negative. No deviations are made from the above practice for reason that most circuit combinations can be successfully met by the use of one or more of the capacitors listed. Remember—C-D stands for "Consistent Dependability"! (L denotes wire leads; SL—separate leads).

# CORNELL DUBILIER



ANOTHER NEW C-D DEVELOPMENT, TYPE EDJ tubular etched foil dry electrolytics are fast finding favor with both manufacturers and servicemen alike for reason of their handy size, ease of wiring into circuit and fine characteristics. These units are slightly longer than Type BR because the ends of the tubes are generously potted with high melting-point wax helping to firmly embed the wire leads and keep the capacitor impervious to moisture. The polarity of the leads is clearly defined by a large "plus" and "minus" sign at the respective ends of the tube.

# DRY ELECTROLYTIC CAPACITORS

## FEATURES OF TYPE EDJ

- 1—EXCLUSIVE ELECTRO-CHEMICAL ETCHING—ELIMINATES CORROSION
- 2—HI-FORMATION PROCESS—AFFORDS HIGHER VOLTAGE BREAKDOWN
- 3—HI-PRESSURE CENTRIFUGE—BETTER IMPREGNATION; LOWER POWER FACTOR
- 4—HI-PURITY ALUMINUM FOIL—BETTER DIRECT CURRENT LEAKAGE RECOVERY
- 5—SPECIAL C-D SUPER-PURITY CELLULOSE SEPARATOR—EXTRA LONG LIFE
- 6—RIGID CHEMICAL PURITY CONTROL—UNIFORM PERFORMANCE
- 7—DOUBLE AGEING—STABLE CHARACTERISTICS
- 8—SPECIALLY-TREATED CARDBOARD TUBE—PROTECTION AGAINST HUMIDITY
- 9—SPECIAL-WAX POURED ENDS—ADDED MECHANICAL STRENGTH FOR LEADS
- 10—TUBULAR, COMPACT CONSTRUCTION — ALLOWS EASE OF WIRING INTO CIRCUIT

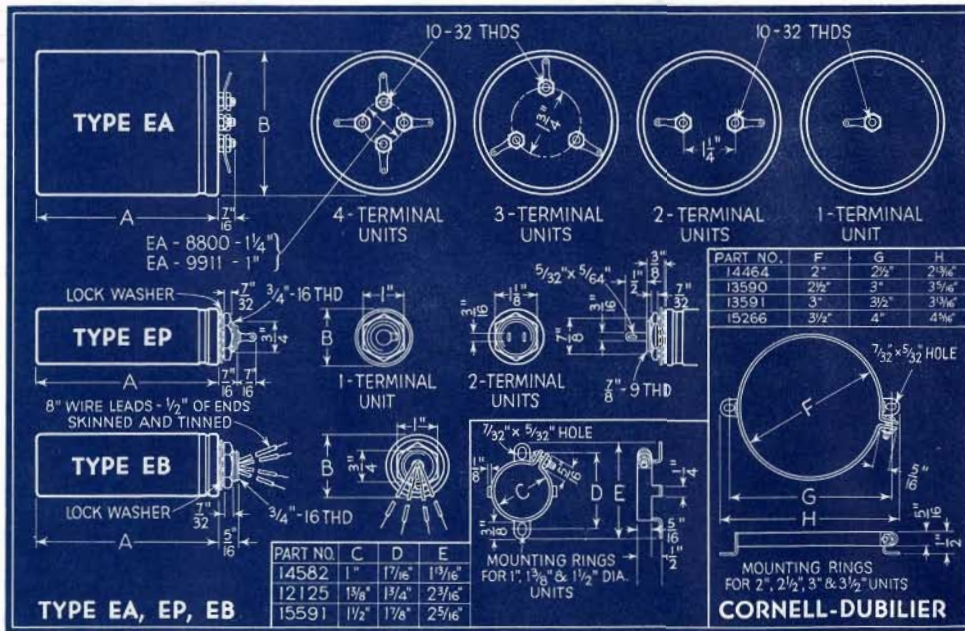
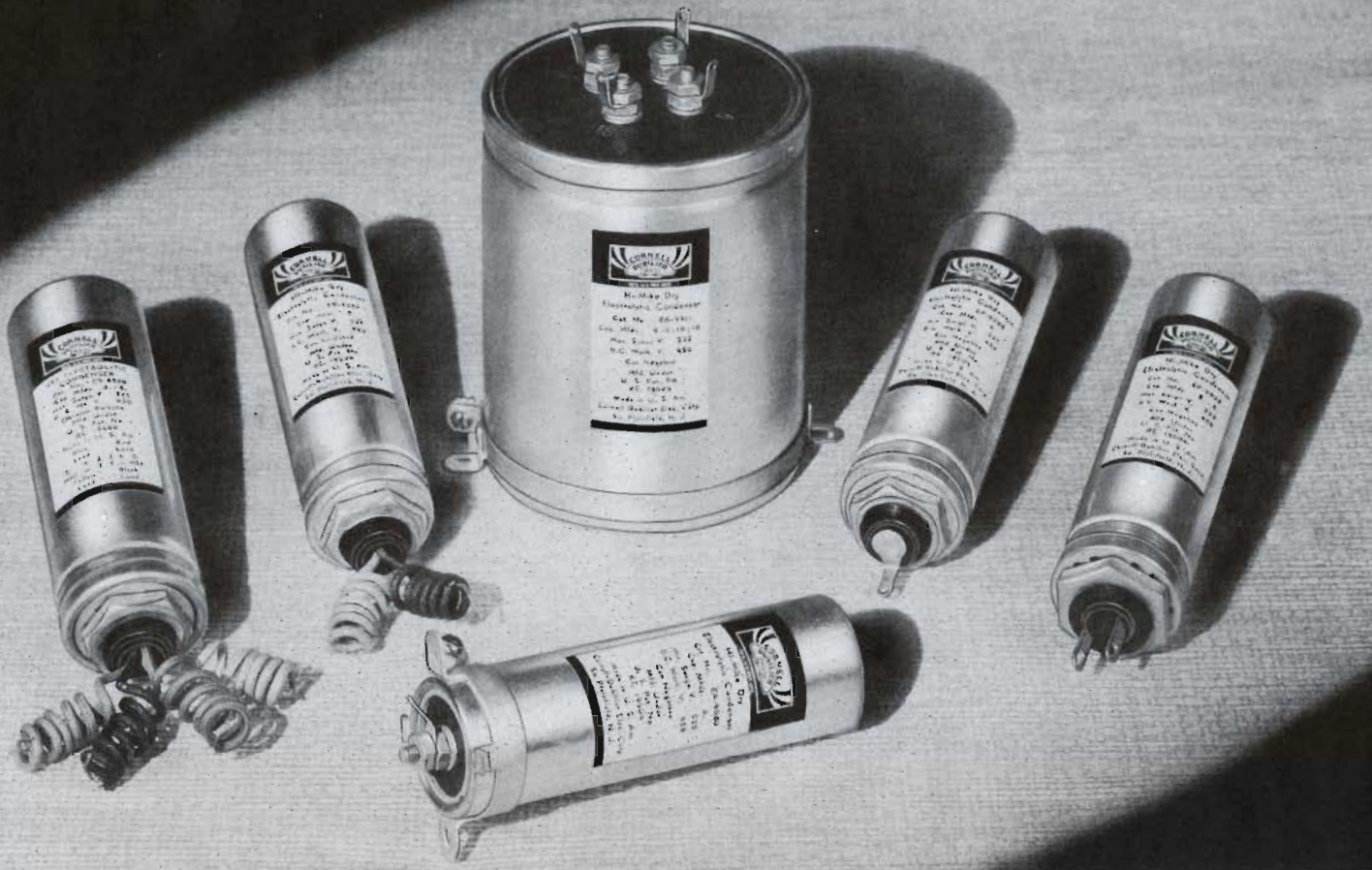
Cat. No.	Capacity Mfd.	Code Word	Size		Weight Per 100	List Price
			A	B		
<b>450 V. D. C.</b>						
EDJ-9010	1	EDJAB	1½	x 5/8	2½ lb.	\$.55
EDJ-9020	2	EDJEC	1⅞	x 11/16	3¼ "	.65
EDJ-9040	4	EDJID	2⅛	x ¾	4¼ "	.75
EDJ-9080	8	EDJOE	2½	x 7/8	7½ "	.95
<b>200 V. D. C.</b>						
EDJ-7080	8	EDJUF	1⅞	x 5/8	3 "	.80
<b>100 V. D. C.</b>						
EDJ-5050	5	EDAJA	1½	x 9/16	2 "	.55
EDJ-5100	10	EDEJE	1⅞	x 9/16	2½ "	.70
EDJ-5250	25	EDIJI	2⅞	x 5/8	3 "	.95
<b>50 V. D. C.</b>						
EDJ-3050	5	EDOJO	1½	x 1/2	1¾ "	.50
EDJ-3100	10	EDUJU	1½	x 9/16	2 "	.65
EDJ-3250	25	EDYJY	1⅞	x 5/8	3 "	.80
EDJ-3500	50	EDBYZ	2½	x ¾	5½ "	1.20
EDJ-31000	100	EDCUY	3	x 7/8	8 "	1.95
<b>25 V. D. C.</b>						
EDJ-2100	10	EDDOX	1½	x 1/2	1¾ "	.50
EDJ-2200	20	EDEIW	1⅞	x 9/16	2½ "	.60
EDJ-2250	25	EDFEV	1⅞	x 9/16	2½ "	.65
EDJ-2500	50	EDGAU	2⅞	x 5/8	3¼ "	.95
EDJ-2055	5-5	EDHYT	1⅞	x 11/16	3¾ "	.75
EDJ-2101	10-10	EDIOQ	1⅞	x 11/16	4 "	.75

NOTES: Compare a C-D tubular electrolytic capacitor with any other electrolytic. See for yourself the outstanding points of superiority. Over sixty different processes are involved in what appears to be a simple unit! Most of these processes must be closely controlled in order to obtain best results. Chemical solutions must be kept to rigid specifications; forming voltages must be of certain potentials; temperatures, humidity control and every phase of making these little tubulars is most carefully watched. It will pay to keep your ABCD's in mind—Always Buy Cornell-Dubilier's!

# CORNELL



# DUBILIER



**THE C-D STANDARD "HI-MIKES" TYPES EB, EP and EA** are depicted above and represent the finest achievement in plain foil, dry electrolytic capacitors. Type EB is equipped with insulated, color-coded wire leads; in the single section units, the red lead is positive, the black, negative. In the dual units, this combination hold for the one section, while a blue lead and its complementary yellow lead makes up the other section.

In the EP and EA units, the central insulated terminal is the positive, while the metal container is the negative. In the multiple section units, Types EP and EA, the positive terminals are insulated and the container is common negative, most generally grounded to the chassis.

# DRY ELECTROLYTIC CAPACITORS

## FEATURES OF TYPES EB, EP, and EA

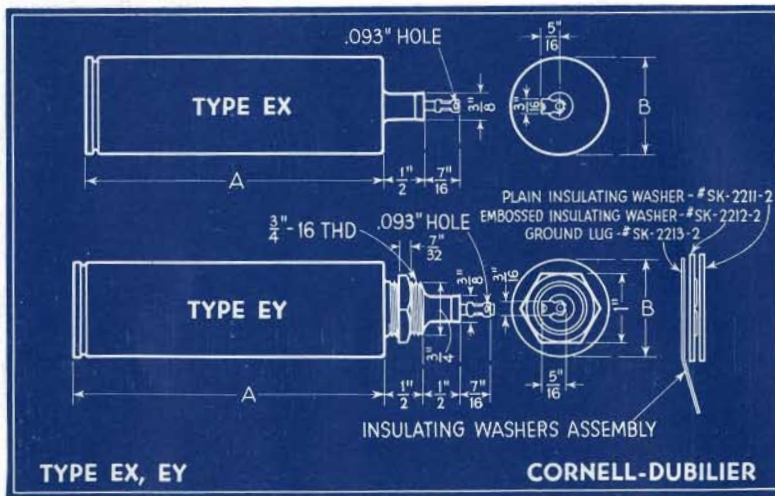
- 1—HI-FORMATION PROCESS—AFFORDS HIGHER VOLTAGE BREAKDOWN
- 2—HI-PRESSURE CENTRIFUGE—BETTER IMPREGNATION; LOWER POWER FACTOR
- 3—HI-PURITY ALUMINUM FOIL—BETTER DIRECT CURRENT LEAKAGE RECOVERY
- 4—SPECIAL C-D SUPER-CELLULOSE SEPARATOR—EXTRA LONG LIFE
- 5—RIGID CHEMICAL PURITY CONTROL—UNIFORM PERFORMANCE
- 6—DOUBLE AGEING—STABLE CHARACTERISTICS
- 7—COMPLETE WAX POTTING—BETTER WEATHER-PROOFING
- 8—ALL ALUMINUM CAN AND ACCESSORIES—UNIFORM RESULTS IN ALL HUMIDITIES
- 9—ANCHORED LEADS—ELIMINATES OPEN AND SHORT-CIRCUITS
- 10—UNIVERSAL MOUNTING—UNITS MOUNT IN ANY POSITION ON OR UNDER SUB-PANEL

Cat. No.	Capacity Mfd.	CodeWord	Size		Weight Per. 100	List Price
			A	B		
<b>TYPE EB</b>						
<b>450 V. D. C.</b>						
EB-9040	4	EAGLE	2½	1¾	18½ lb.	\$ .85
EB-9080	8	EJECT	4¾	1¾	32 "	1.05
EB-9100	10	ELBOW	4¾	1¾	30 "	1.25
EB-9120	12	ELECT	4¾	1½	40 "	1.40
EB-9160	16	ELECY	4¾	1½	38 "	1.55
EB-9180	18	EBATA	4¾	1½	40 "	1.65
EB-4400	4-4	AURAL	4¾	1¾	32½ "	1.30
EB-4800	4-8	AVAIL	4¾	1½	35 "	1.45
EB-8800	8-8	YANNE	4¾	1½	39 "	1.60
<b>475 V. D. C.</b>						
EB-11080	8	EBHIT	4¾	1¾	36 "	1.50
<b>TYPE EP</b>						
<b>450 V. D. C.</b>						
EP-9080	8	ELATE	4 <sup>7</sup> / <sub>16</sub>	1¾	28½ "	1.05
EP-9081	8	ELITE	4 <sup>7</sup> / <sub>16</sub>	1	22 "	1.05
EP-9808	8-8	TOONU	4 <sup>7</sup> / <sub>16</sub>	1¾	35½ "	1.60
<b>TYPE EA</b>						
<b>450 V. D. C.</b>						
EA-9080	8	APORT	4¾	1¾	27 "	1.05
EA-5150	5-15	EYRIE	4¾	2½	88 "	2.30
EA-8800*	8-8	AUGUR	4¾	2½	71 "	1.80
EA-8801	8-8	AULBE	4¾	2½	70 "	1.80
EA-8160	8-16	BAIRN	4¾	2½	86 "	2.35
EA-8880	8-8-8	BAJRA	4¾	3	92 "	2.70
EA-9918	9-9-18	FERRY	4¾	3	110 "	3.75
EA-9911	9-9-18-18	FILLY	4¾	3½	150 "	5.25

(\*)—Cat. No. EA-8800 is a dual, separate-section 4-terminal capacitor.

**NOTES:** Types EB and EP are supplied with lock washer and hexagon nut. Type EA is provided with a mounting ring. Of the many millions of dry electrolytic capacitors in use it is safe to say that a predominance of Types EB and EA will be found still in service! It is well to remember that an electrolytic capacitor will last a long time if it is operated at or slightly under its rating. It is also well to keep in mind that a loss of capacity results from momentarily reversing polarity, with permanent damage resulting in total breakdown after 4 or 5 minutes of this.

# CORNELL DUBILIER



C-D "HI-MIKE" WET ELECTROLYTICS are mechanically and electrically perfected to a high degree. Vented, to allow generated gas to escape harmlessly, these self-healing units have remarkably long life and fine filtering efficiency. Possessing a certain amount of "self-regulation" properties, special designs are available to meet definite regulation characteristics. Types EX and EY, with high scintillation point, are the result of years of constant research and experimentation. Economical to use, they assure permanent satisfactory performance.



# WET ELECTROLYTIC CAPACITORS

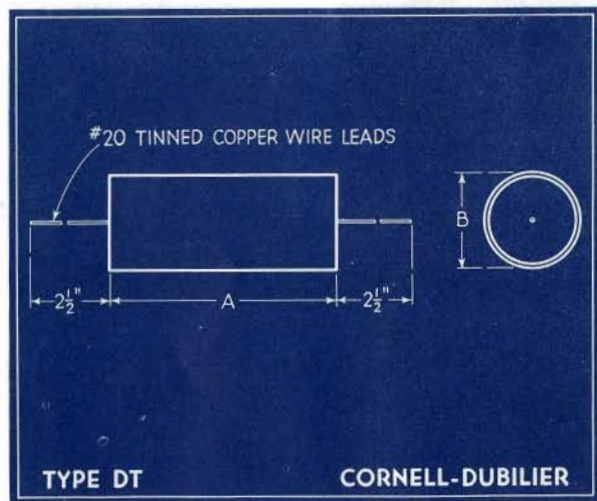
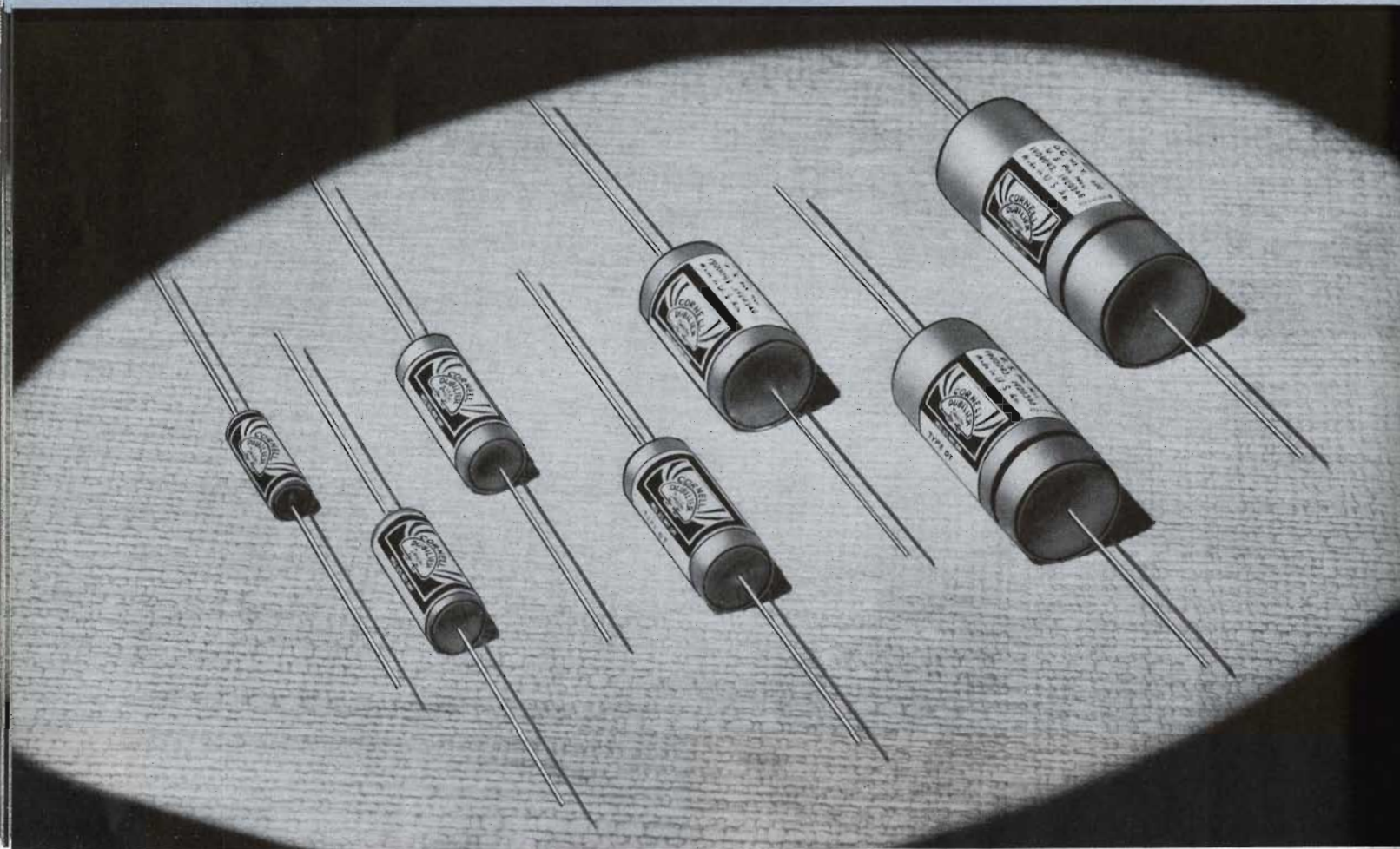
## FEATURES OF TYPES EY and EX

- 1—EXCLUSIVE ELECTRO-CHEMICAL ETCHING—ELIMINATES CORROSION
- 2—HI-FORMATION PROCESS—AFFORDS HIGHER SCINTILLATING VOLTAGES
- 3—HI-PURITY ALUMINUM FOIL—BETTER DIRECT CURRENT LEAKAGE RECOVERY
- 4—SPECIAL CLEANING PROCESS—ASSURES LONGER LIFE AT HIGH AMBIENT HEAT
- 5—HI-PURITY ELECTROLYTE—LONGER IDLE AND ACTIVE LIFE
- 6—POSITIVE VENT CONSTRUCTION—ALWAYS WORKS; PREVENTS ACCIDENT
- 7—INVERTED & VERTICAL MOUNTING—SIMPLE TO INSTALL; MECHANICALLY STRONG

Cat. No.	Capacity Mfd.	Code Word	Size		Weight Per 100	List Price
			A	B		
<b>TYPE EY</b>						
<b>600 Peak Volts</b>						
EY-11080	8	WUHOO	4½	x 1⅜	29 lb.	\$1.40
EY-11081	8	WUHUM	4½	x 1½	32 "	1.50
EY-11600	16	WUHYP	4½	x 1½	32 "	2.00
<b>500 Peak Volts</b>						
EY-9080	8	WENAN	4½	x 1⅜	29 "	1.00
EY-9081	8	WERAR	4½	x 1½	32 "	1.00
EY-9082	8	WAKEE	4½	x 1	17 "	.95
EY-9083	8	WAKOO	3½	x 1	15 "	.95
EY-9084	8	WAKUU	3½	x 1⅜	22 "	1.00
EY-9100	10	WETAT	4½	x 1½	32 "	1.10
EY-9120	12	WEXAX	4½	x 1½	32 "	1.20
EY-9160	16	WAKII	4½	x 1½	32 "	1.40
EY-9180	18	WAKAA	4½	x 1½	32 "	1.45
EY-9200	20	WILZA	4½	x 1½	33 "	1.50
EY-9300	30	WILYE	4½	x 1½	33 "	2.00
<b>475 Peak Volts</b>						
EY-8400	40	WILXI	4½	x 1½	33 "	2.10
<b>350 Peak Volts</b>						
EY-7240	24	WILWO	4½	x 1⅜	30 "	1.50
EY-7300	30	WILVY	4½	x 1½	33 "	1.75
EY-7350	35	WILUH	4½	x 1½	33 "	2.00
<b>300 Peak Volts</b>						
EY-6160	16	WOMUT	3⅞	x 1	14 "	1.15
<b>200 Peak Volts</b>						
EY-5200	20	WONTU	3½	x 1	15 "	1.20
EY-5400	40	WOOPE	3½	x 1⅜	22 "	1.80
<b>TYPE EX</b>						
<b>600 Peak Volts</b>						
EX-11080	8	WUHBO	4½	x 1⅜	27 "	1.40
<b>500 Peak Volts</b>						
EX-9080	8	WADAD	4½	x 1⅜	27 "	1.00
Note: Pair of insulating washers and one large connecting lug .....						.10

**NOTES:** TYPE EY is provided with a palnut; Type EX is equipped with a mounting ring. Insulating washers and large ground lug are optional, at slight extra cost, and are used to insulate the metal container, which is the negative terminal, from the chassis when required.

# CORNELL DUBILIER



Radio receivers employ from 5 to 15 or more paper tubular capacitors, the most usual function being to bypass radio frequency currents. If these units are improperly constructed—as are so many “cheap” makes to be found on the market,—endless trouble ensues. The manufacturer and serviceman who skimps on these important little tubulars for reason of price or quantity is making a grave mistake. Type DT is a real quality capacitor at the lowest price ever made available. Use them every time for all your requirements.

**C-D FAMOUS “DWARF-TIGER” TUBULARS** need no superlatives to describe their inherent fine qualities and super-fine characteristics. These non-inductively wound, specially sealed and impregnated paper tubular capacitors are small, have a high safety factor, are uniform in electrical properties and have well-soldered rigidly anchored wire leads. A specially-treated cardboard tube keeps out moisture. High melting point wax ends add strength and give extra protection to the unit. C-D has produced many hundreds of millions of these tubulars, more than any other Company in the world! Use them for their Consistently Dependable service!

# PAPER TUBULAR CAPACITORS

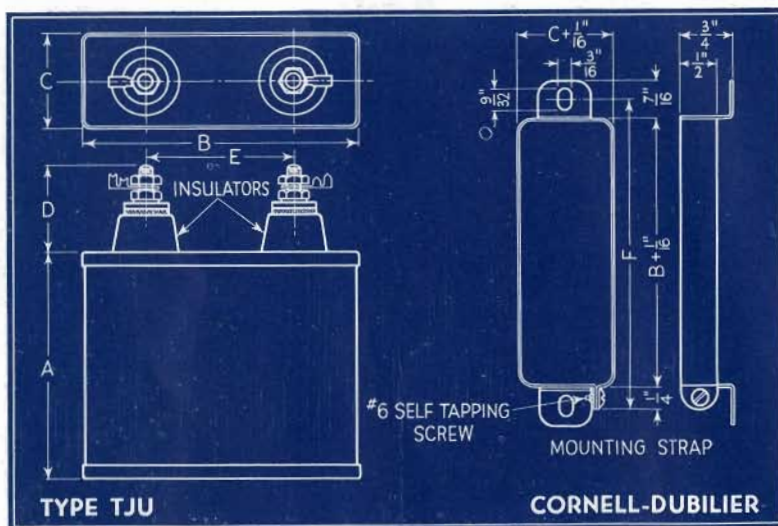
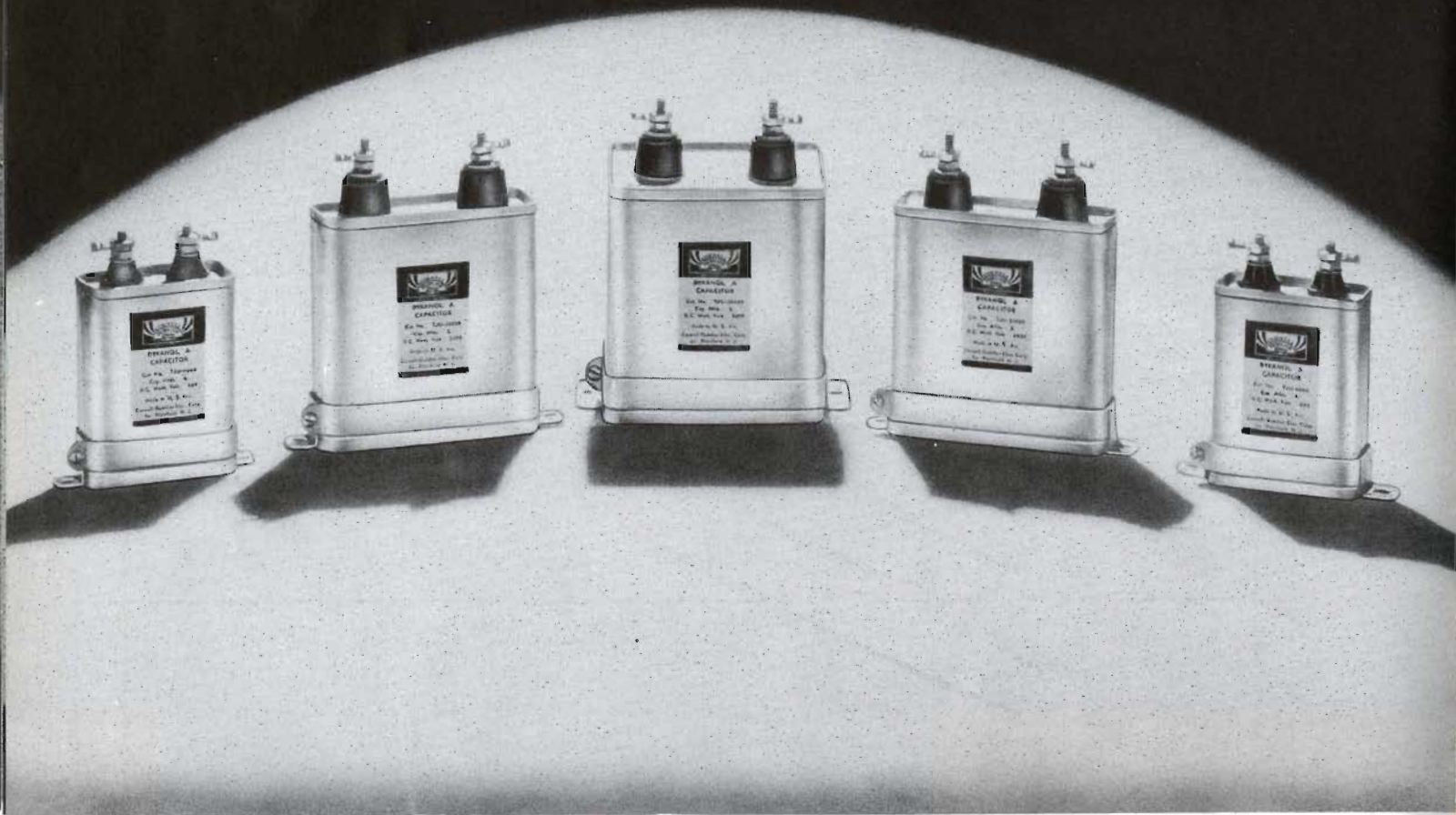
## FEATURES OF TYPE DT

- 1—HALOWAX IMPREGNATED — DECREASED PHYSICAL SIZE
- 2—HI-PURITY ALUMINUM FOIL—LOWER R.F. RESISTANCE; LIGHT WEIGHT
- 3—HI-PURITY MULTI-LAMINATED KRAFT TISSUE—HIGHER VOLTAGE BREAKDOWN; MINIMUM LEAKAGE
- 4—VACUUM DRIED & IMPREGNATED—LOWER EQUIVALENT SERIES RESISTANCE; LONGER LIFE
- 5—OIL-COOLED—HIGHER VOLTAGE BREAKDOWN
- 6—RIGIDLY TESTED—UNIFORM PRODUCT
- 7—SELF-SUPPORTING LEADS—NO CONTACT RESISTANCE; ADDED STRENGTH
- 8—SPECIAL WAX-IMPREGNATED TUBE—ADDED PROTECTION AGAINST MOISTURE
- 9—SMALL SIZE, NON-INDUCTIVE—"SHORT-PATH" R.F. BYPASS
- 10—SPECIAL WAX-POTTED ENDS—BETTER HUMIDITY AND TEMPERATURE SEAL
- 11—CONSERVATIVE D.C. RATING—TRIPLE-TESTING ASSURES DEPENDABLE SERVICE

Cat. No.	Capacity Mid.	Code Word	Size		Weight Per 100	List Price
			A	B		
<b>400 V. D. C.</b>						
DT-4S1	.01	GUSTE	1 $\frac{1}{4}$	x 3 $\frac{3}{8}$	1 $\frac{1}{2}$ lb.	\$.15
DT-4S15	.015	GRUSO	1 $\frac{1}{4}$	x 3 $\frac{3}{8}$	1 $\frac{1}{2}$ "	.15
DT-4S2	.02	BROIL	1 $\frac{3}{8}$	x 3 $\frac{3}{8}$	1 $\frac{1}{2}$ "	.15
DT-4S25	.025	BRUAP	1 $\frac{3}{8}$	x 1 $\frac{7}{8}$	1 $\frac{1}{2}$ "	.15
DT-4S3	.03	BRONX	1 $\frac{3}{8}$	x 1 $\frac{7}{8}$	1 $\frac{3}{4}$ "	.15
DT-4S4	.04	BRIMZ	1 $\frac{5}{8}$	x 1 $\frac{7}{8}$	1 $\frac{3}{4}$ "	.15
DT-4S5	.05	BROKE	1 $\frac{5}{8}$	x 1 $\frac{7}{8}$	2 "	.15
DT-4S6	.06	BRIPA	1 $\frac{5}{8}$	x 1 $\frac{7}{8}$	2 "	.20
DT-4P1	.1	BROOK	1 $\frac{5}{8}$	x 1 $\frac{3}{8}$	2 $\frac{1}{4}$ "	.20
DT-4P2	.2	BRUUT	2	x 1 $\frac{1}{8}$	4 $\frac{1}{2}$ "	.25
DT-4P25	.25	BROTH	2	x 3 $\frac{1}{4}$	4 $\frac{1}{2}$ "	.25
DT-4P5	.5	BROWN	2 $\frac{1}{8}$	x 7 $\frac{7}{8}$	7 $\frac{1}{4}$ "	.35
DT-4W1	1	AFORE	2 $\frac{5}{8}$	x 1	11 $\frac{3}{4}$ "	.50
<b>600 V. D. C.</b>						
DT-6T1	.0001	GYPSY	1 $\frac{3}{8}$	x 3 $\frac{3}{8}$	1 "	.15
DT-6T25	.00025	GYRAL	1 $\frac{3}{8}$	x 3 $\frac{3}{8}$	1 "	.15
DT-6T5	.0005	GYRUS	1 $\frac{3}{8}$	x 3 $\frac{3}{8}$	1 "	.15
DT-6D1	.001	BUGLE	1 $\frac{1}{4}$	x 3 $\frac{3}{8}$	1 "	.15
DT-6D2	.002	BUILD	1 $\frac{1}{4}$	x 3 $\frac{3}{8}$	1 "	.15
DT-6D3	.003	BUILT	1 $\frac{1}{4}$	x 3 $\frac{3}{8}$	1 "	.15
DT-6D4	.004	BULGE	1 $\frac{1}{4}$	x 3 $\frac{3}{8}$	1 "	.15
DT-6D5	.005	BULLY	1 $\frac{1}{4}$	x 3 $\frac{3}{8}$	1 "	.15
DT-6D6	.006	BUNCH	1 $\frac{1}{4}$	x 3 $\frac{3}{8}$	1 "	.15
DT-6S1	.01	BRUIN	1 $\frac{3}{8}$	x 1 $\frac{7}{8}$	1 $\frac{1}{2}$ "	.15
DT-6S15	.015	BRUOX	1 $\frac{3}{8}$	x 3 $\frac{3}{8}$	1 $\frac{1}{2}$ "	.15
DT-6S2	.02	BRUIT	1 $\frac{5}{8}$	x 1 $\frac{7}{8}$	1 $\frac{3}{4}$ "	.15
DT-6S25	.025	BRUYK	1 $\frac{5}{8}$	x 1 $\frac{1}{2}$	2 "	.20
DT-6S3	.03	BRUMP	1 $\frac{5}{8}$	x 1 $\frac{1}{2}$	2 $\frac{1}{4}$ "	.20
DT-6S4	.04	BRUZZ	1 $\frac{5}{8}$	x 5 $\frac{5}{8}$	2 $\frac{1}{2}$ "	.20
DT-6S5	.05	BRUNT	1 $\frac{5}{8}$	x 5 $\frac{5}{8}$	2 $\frac{1}{2}$ "	.20
DT-6S6	.06	BRUKS	1 $\frac{5}{8}$	x 5 $\frac{5}{8}$	2 $\frac{1}{2}$ "	.25
DT-6P1	.1	BRUTE	1 $\frac{7}{8}$	x 1 $\frac{1}{8}$	4 $\frac{1}{4}$ "	.25
DT-6P2	.2	BRULL	2 $\frac{1}{8}$	x 1 $\frac{3}{8}$	4 $\frac{1}{4}$ "	.35
DT-6P25	.25	BUDGE	2 $\frac{1}{8}$	x 1 $\frac{5}{8}$	8 "	.35
DT-6P3	.3	BUDIT	2 $\frac{1}{8}$	x 1 $\frac{3}{8}$	9 $\frac{1}{2}$ "	.45
DT-6P5	.5	BUGGY	2 $\frac{5}{8}$	x 1	9 $\frac{1}{2}$ "	.50
<b>1000 V. D. C.</b>						
DT-10D1	.001	DATAA	1 $\frac{1}{4}$	x 3 $\frac{3}{8}$	1 "	.20
DT-10D2	.002	DATEE	1 $\frac{1}{4}$	x 3 $\frac{3}{8}$	1 "	.20
DT-10D3	.003	DATII	1 $\frac{1}{4}$	x 3 $\frac{3}{8}$	1 $\frac{1}{4}$ "	.20
DT-10D4	.004	DATOO	1 $\frac{1}{4}$	x 3 $\frac{3}{8}$	1 $\frac{1}{4}$ "	.20
DT-10D5	.005	DATUU	1 $\frac{1}{4}$	x 1 $\frac{7}{8}$	1 $\frac{1}{4}$ "	.20
DT-10D6	.006	DATYP	1 $\frac{1}{4}$	x 1 $\frac{7}{8}$	1 $\frac{1}{4}$ "	.20
DT-10D7	.007	DETBA	1 $\frac{1}{4}$	x 1 $\frac{7}{8}$	1 $\frac{1}{4}$ "	.20
DT-10D8	.008	DETCE	1 $\frac{1}{4}$	x 1 $\frac{7}{8}$	1 $\frac{1}{4}$ "	.20
DT-10S1	.01	DETDI	1 $\frac{1}{4}$	x 1 $\frac{1}{2}$	1 $\frac{1}{2}$ "	.30
DT-10S15	.015	DETEO	1 $\frac{5}{8}$	x 1 $\frac{1}{2}$	1 $\frac{1}{2}$ "	.30
DT-10S2	.02	DETFU	1 $\frac{5}{8}$	x 1 $\frac{1}{2}$	1 $\frac{3}{4}$ "	.30
DT-10S3	.03	DETFY	1 $\frac{5}{8}$	x 1 $\frac{1}{8}$	2 $\frac{1}{4}$ "	.35
DT-10S4	.04	DITHA	2	x 1 $\frac{1}{8}$	2 $\frac{3}{4}$ "	.35
DT-10S5	.05	DITIB	2	x 1 $\frac{1}{8}$	3 "	.35
DT-10S6	.06	DITAC	2	x 5 $\frac{5}{8}$	3 $\frac{1}{4}$ "	.35
DT-10S75	.075	DITED	2	x 1 $\frac{1}{8}$	4 $\frac{1}{4}$ "	.40
DT-10P1	.1	DITOE	2	x 3 $\frac{3}{4}$	8 "	.40

NOTE: See Page 37—for tubular units rated at 1600 V.D.C. (2000 V. Peak) suitable for automobile radio use.

# CORNELL DUBILIER



C-D DYKANOL TRANSMITTING FILTER CAPACITORS TYPE TJU are without doubt the most dependable units offered to the radio trade—amateur, broadcast and commercial. Beautifully designed, compact, light-weight, safety-rated, furnished with universal mounting clamp, well-insulated terminals, fire-proof and attractively priced. Type TJU units are the culmination of the experience of 28 years of building capacitors exclusively. Fully guaranteed dependable for operation under any climatic conditions.

These are the capacitors which practically every broadcast and government station in the world uses with such marked success. **STANDARD EQUIPMENT WITH TENS OF THOUSANDS OF AMATEURS WHO WILL BUY NOTHING ELSE BUT C-D DYKANOL UNITS!**

Note the new low prices making it possible for the first time to obtain in a C-D Dykanol unit a combination of the most highly engineered transmitting filter capacitor at the lowest prices. (Note: Dykanol is a stable chemical compound and will not give off free chlorine regardless of voltage stress or temperature). For higher voltage units (6000 to 25,000 V.D.C.), see Catalog No. 160, which is available to accredited engineering, educational, broadcasting and manufacturing institutions on written request.

REGISTERED  
RADIO PATENTS CORP.



WILLIAM DUBILIER  
339 GARDEN ROAD  
PALM BEACH, FLORIDA 33480

1939

CATALOG No. 162 A



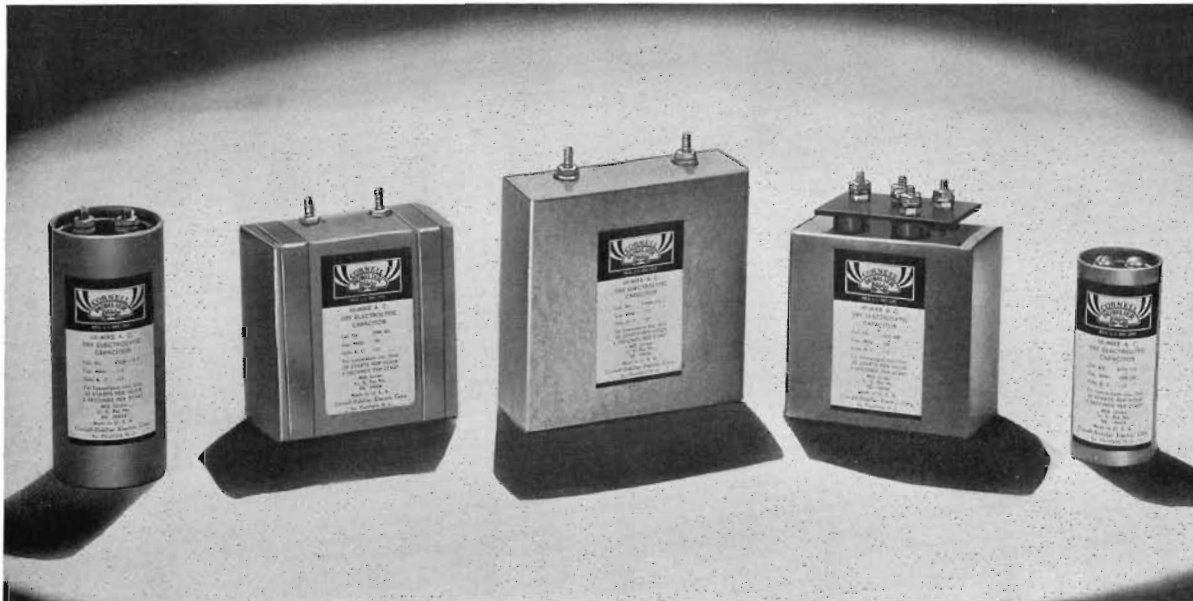
**ELECTROLYTIC CAPACITORS**  
*For Motor Starting*



**CORNELL - DUBILIER ELECTRIC CORP.**  
South Plainfield, N. J., U. S. A.      Cable Address: CORDU

# CORNELL-DUBILIER Exact Duplicate CAPACITORS

For use with Motor Driven Equipment such as in Refrigerators, etc.  
 Electrolytic Capacitors, Rated for operation on 110 v. (to 250 v.) 60  
 cycle A.C. For intermittent use only—20, 3-second starts per hour.



CLB	JPW	LMW	JDS	ETN		
Mfg. Part No.	Manufacturer	C. D. Catalog No.	Cap. MFD	A. C. Voltage	Dimensions L. W. H. or D. H.	List Price
88021	Apex Elec. Mfg Co.	JDS 115	115	110	3 1/2 x 3 1/2 x 2	\$4.65
42480	"	CLB 115-7	115	110	2 x 4 1/8	4.65
88026	"	ETN 130	124-138	110	1 3/8 x 3 1/4	3.85
4749	Harry Alters	CLB 100-1	100	110	2 1/2 x 4 1/8	4.25
6487	"	ETN 80-1	75-84	110	1 3/8 x 2 3/4	2.75
	Baldor Elec. Co.	LMW 150-1	150	110	4 1/2 x 4 1/2 x 1 1/2	5.50
	"	LMW 115	115	110	4 1/2 x 4 1/2 x 1 1/4	4.65
	"	ETN 115	108-120	110	1 3/8 x 3 1/4	3.50
	"	ETN 130	124-138	110	1 3/8 x 3 1/4	3.85
	"	ETN 80	75-84	110	1 3/8 x 3 1/4	2.75
	"	LMO 10	10-12	220	4 1/4 x 4 1/4 x 1 1/2	3.40
	"	LMO 20	20-24	220	4 1/4 x 4 1/4 x 1 1/2	3.80
	"	LMO 25	26-30	220	4 1/4 x 4 1/4 x 1 1/2	4.75
	"	LMO 30	32-36	220	4 1/4 x 4 1/4 x 1 1/2	4.85
	"	LMO 50	53-60	220	4 1/4 x 4 1/4 x 1 1/2	8.60
	"	LML 200-1	200	110	4 1/4 x 4 1/4 x 1 1/2	7.00
04270	Black & Decker	CLB 75	75	110	2 1/2 x 4 1/8	3.60
	"	CLB 150-1	150	110	2 1/2 x 4 1/8	5.50
	"	ETN 80	75-84	110	1 3/8 x 3 1/4	2.75
	Bodine	CLB 70	70	110	2 x 4 1/8	3.50
	"	ETN 400CB	378-420	110	2 x 4 1/8	8.50
	Brown & Brockmeyer	ETN 130	124-138	110	1 3/8 x 3 1/4	3.85
	Canatsay Elec.	ETN 175	161-180	110	1 3/8 x 4 1/8	4.50
	Century Elec.	LMW 80	80	110	4 1/2 x 4 1/2 x 1 1/4	3.75
	"	LMW 115	115	110	4 1/2 x 4 1/2 x 1 1/4	4.65
	"	LMW 150-1	150	110	4 1/2 x 4 1/2 x 1 1/2	5.50
	"	CLB 80	80	110	2 x 4 1/8	3.75
	"	CLB 115-7	115	110	2 x 4 1/8	4.65
	"	CLB 100	100	110	2 x 4 1/8	4.25
	"	CLB 50-3	50	110	2 x 4 1/8	3.00
	"	ETN 70-1	64-72	110	1 3/8 x 3 1/4	2.50
	"	ETN 45-1	43-48	110	1 3/8 x 3 1/4	2.00
	"	CLB 150-1	150	110	2 1/2 x 4 1/8	5.50
	"	ETN 80	75-84	110	1 3/8 x 3 1/4	2.75
	"	ETN 90	86-96	110	1 3/8 x 3 1/4	3.00
	"	ETN 115	108-120	110	1 3/8 x 3 1/4	3.50
	"	ETN 130	124-138	110	1 3/8 x 3 1/4	3.85
	"	ETN 155	145-162	110	1 3/8 x 4 1/8	4.25
	"	ETN 175	161-180	110	1 3/8 x 4 1/8	4.50
	"	ETN 225-3	216-240	110	2 x 4 1/8	5.50
	"	ETN 340	320-360	110	2 x 4 1/8	7.50
	"	ETN 400	378-420	110	2 x 4 1/8	8.50
	"	CLB 40-1	40	110	1 3/8 x 4 1/8	2.75
1061445	Delco Prod. Corp.	CLB 115-2	115	110	2 1/2 x 4 1/8	4.65
1062558	"	CLB 80-1	80	110	2 1/2 x 4 1/8	3.75
1062880	"	CLO 30	29	220	2 1/2 x 4 1/8	4.85
1062882	"	CLB 80-1	80	110	2 1/2 x 4 1/8	3.75
1062883	"	CLB 115-2	115	110	2 1/2 x 4 1/8	4.65
1062888	"	CLB 95	95	110	2 1/2 x 4 1/8	4.00
1063865	"	JDS 115	115	110	3 1/2 x 3 1/2 x 2	4.65
1063866	"	JDO 30	29	220	3 1/2 x 3 1/2 x 2	4.85
1063990	"	JDS 115	115	110	3 1/2 x 3 1/2 x 2	4.65
1063991	"	JDO 30	29	220	3 1/2 x 3 1/2 x 2	4.85
1063993	"	JDS 100	100	110	3 1/2 x 3 1/2 x 2	4.25
1063868	"	JDS 100	100	110	3 1/2 x 3 1/2 x 2	4.25
1066301	"	JDS 90	90	110	3 1/2 x 3 1/2 x 2	4.00
1066308	"	JDS 100	100	110	3 1/2 x 3 1/2 x 2	4.25
1066307	"	JDS 115	115	110	3 1/2 x 3 1/2 x 2	4.65
1062383	"	CLB 115-2	115	110	2 1/2 x 4 1/8	4.65

## CORNELL-DUBILIER *Exact Duplicate* CAPACITORS

Mfg. Part No.	Manufacturer	C. D. Catalog No.	Cap. MFD.	A. C. Voltage	Dimensions L.W.H. or D.H.	List Price
	Elec. Prod.	LMW 115	115	110	4 1/2 x 4 1/2 x 1 1/4	4.65
	Elec. Specialty	JDP 80	80	150	3 1/2 x 3 1/2 x 2	5.00
	"	ETN 45CB	43-48	110	1 3/8 x 2 1/2	2.00
	"	ETN 70-1CB	64-72	110	1 3/8 x 3 1/4	2.50
	"	ETO 35CB	32-36	220	1 1/2 x 4 1/4	5.00
	"	ETO 45-1CB	43-48	220	1 1/2 x 4 1/4	6.00
	"	ETO 80CB	75-84	220	2 x 4 1/4	9.00
20PE100	Emerson Elec.	LQW 100	100	110	4 1/2 x 4 1/2 x 1 1/4	4.25
25PE100	"	CLB 100-1	100	110	2 1/2 x 4 1/8	4.25
34PE11	"	CTM 115	115	110	2 x 4 7/8	4.65
42PE	"	ETN 285-2	260-300	110	2 x 4 7/8	6.50
42E02X	"	CLB 20-1	20	110	2 x 4 7/8	2.25
42E03X	"	CLB 30-1	30	110	2 x 4 7/8	2.50
42P10X	"	CLB 100-2	100	110	2 x 4 7/8	4.25
42P115	"	CLB 115-10	115	110	2 x 4 7/8	4.65
43P35X	"	CLB 350	350	110	3 1/2 x 4 7/8	11.50
43P25X	"	CLB 225	225	110	3 1/2 x 4 7/8	7.75
43P300	"	CLB 300	300	110	3 1/2 x 4 7/8	10.00
55P040	"	CLB 40-2	40	110	1 1/2 x 3 1/4	2.75
51P10X	"	CLB 100	100	110	2 x 4 7/8	4.25
51P80	"	CLB 80	80	110	2 x 4 7/8	3.75
52PE11E	"	ETN 130-1	124-138	110	1 1/2 x 3 1/4	3.85
34P10X	"	CTM 100	100	110	2 x 4 7/8	4.25
45PBTU	"	ETN 340	315-360	110	2 x 4 7/8	7.50
60PE13E	"	ETN 155-2	145-162	110	1 3/4 x 3 3/8	4.25
60PE065	"	ETN 75-1	70-78	110	1 3/4 x 3 3/8	2.65
71P065	"	CLB 65-1	65	110	2 x 2 21/32	3.40
76PMGM	"	CLB 200-1	200	110	2 1/2 x 4 3/4	7.00
1128291	Frigidaire General Motors	ETN 110	107-129	110	1 3/8 x 3 1/4	3.50
	General Electric	CLB 60	60	110	2 x 4 1/8	3.25
	"	ETN 75	70-78	110	1 3/8 x 3 1/4	2.65
K5081178AA-4	"	ETN 80	75-84	110	1 3/8 x 3 1/4	2.75
	"	CLB 70	70	110	2 x 4 1/8	3.50
K5081178AA-5	"	ETN 90	86-96	110	1 3/8 x 3 1/4	3.00
	"	CLB 80-1	86-96	110	2 1/2 x 4 1/8	3.75
	"	CLB 100-1	100	110	2 1/2 x 4 1/8	4.25
	"	CLB 100	100	110	2 x 4 1/8	4.25
K5081178AA-3	"	ETN 115	108-120	110	1 3/8 x 3 1/4	3.50
K5081178AB-1	"	CLB 115-2	115	110	2 1/2 x 4 1/8	4.65
H4206674G-5	"	CLB 115-7	115	110	2 x 4 7/8	4.65
5029710	"	ETN 130	124-138	110	1 3/8 x 3 1/4	3.85
K5081178AA-2	"	CLB 150-1	150	110	2 1/2 x 4 1/8	5.50
46-2157	"	ETN 175-2	161-180	110	2 x 3 1/4	4.50
K5029710AD-2	"	CLB 200-2	200	110	3 x 5 1/8	7.00
	"	ETN 225-4	216-240	110	2 x 3 1/4	5.50
K5029710AD-1	"	CLB 300-1	300	110	2 1/2 x 5 1/4	10.00
	"	ETN 400-1	378-420	110	2 x 5 3/8	8.50
H4206674GR7	"	CLB 135-1	135	110	2 1/2 x 4 1/8	5.15
5929-1	General Household	JPW 80	80	110	3 1/2 x 3 1/2 x 2	3.75
6487	"	JPW 80	80	110	3 1/2 x 3 1/2 x 2	3.75
22846	Grigsby Grunow (Majestic)	CLB 115-3	115	110	3 x 4 1/8	4.65
23907	"	CLB 115-2	115	110	2 1/2 x 4 1/8	4.65
I01535	Holtzer Cabot	ETN 175	161-180	110	1 3/8 x 4 1/8	4.50
I02356	"	ETN 55-1	53-60	110	1 1/2 x 2 3/4	2.25
115EP	Howell Elec.	ETN 130	124-138	110	1 3/8 x 3 1/4	3.85
135EP	"	ETN 155-1	145-162	110	1 1/2 x 3 1/4	4.25
150EP	"	ETN 175-2	161-180	110	2 x 3 1/4	4.50
175EP	"	ETN 200-3	189-210	110	2 x 3 1/4	5.00
	"	ETN 225-3	216-240	110	2 x 4 1/8	5.50
250EP	"	ETN 285-3	270-300	110	2 x 4 1/8	6.50
300EP	"	ETN 340	324-360	110	2 x 4 1/8	7.50
	Hobart	CLB 115-10	115	110	2 x 4 7/8	4.65
284-22	Janette Mfg Co.	ETN 10017	54-66	250	2 1/2 x 4 1/8	14.00
284-23	"	ETN 10018	76-84	250	3 x 4 1/8	18.00
	Kingston Conley	CLB 115-7	115	110	2 x 4 1/8	4.65
	"	ETN 130	124-138	110	1 3/8 x 3 1/4	3.85
	"	CLB 135-1	135	110	2 1/2 x 4 1/8	5.15
	"	CLB 150-1	150	110	2 1/2 x 4 1/8	5.50
	"	CLO 30	30	220	2 1/2 x 4 1/8	5.40
	"	CLO 40	40	220	2 1/2 x 4 1/8	6.30
1172-2	Leland Elec. Co.	LMW 150-1	150	110	4 1/2 x 4 1/2 x 1 1/2	5.50
1172-1	"	LMW 115	115	110	4 1/2 x 4 1/2 x 1 1/4	4.65
1172-5	"	LMO 30-1	29	220	4 1/2 x 4 1/2 x 1 1/4	5.40
1173-2	"	CLB 50-2	50	110	2 x 5 1/4	3.00
1173-3	"	CLB 80-2	80	110	2 1/2 x 5 1/4	3.75
1173-5	"	CLB 100-3	100	110	2 1/2 x 5 1/4	4.25
1173-6	"	CLB 150-2	150	110	2 1/2 x 5 1/4	5.50
1173-1	"	CLB 115-11	115	110	2 1/2 x 5 1/4	4.65
1173-9	"	CLO 25	25	220	2 1/2 x 5 1/4	4.75
1173-9	"	CLO 20	20	220	2 1/2 x 5 1/4	3.80
1173-11	"	CLO 20	20	220	2 1/2 x 5 1/4	4.25
1173-7	"	CLB 100-3	100	110	2 1/2 x 5 1/4	7.00
1173-10	"	CLB 200-4	200	110	2 1/2 x 5 1/4	4.25
1448-1	"	CLB 100-3	100	110	2 1/2 x 5 1/4	4.25
29009-7	"	ETS 115	108-120	125	1 3/8 x 4 1/8	3.50
1589-27	"	ETS 80	75-84	125	1 3/8 x 3 1/4	2.75
1589-6	"	ETN 55-2	53-60	110	1 3/8 x 2 3/4	2.25
1589-9	"	ETN 80	75-84	110	1 3/8 x 3 1/4	2.75
1499-1	"	CLB 80	80	110	2 x 4 7/8	3.75
1589-10	"	ETN 90	86-96	110	1 3/8 x 3 1/4	3.00
1589-11	"	ETN 100	97-107	110	1 3/8 x 3 1/4	3.25
1589-12	"	ETN 115	108-120	110	1 3/8 x 3 1/4	3.50
1589-14	"	ETN 155	145-162	110	1 3/8 x 4 1/8	4.25
1589-17	"	ETN 205	194-216	110	1 3/4 x 4 1/8	5.00
1499-6	"	CLO 25-1	25	220	2 1/2 x 4 1/8	4.75
1589-22	"	CLB 25	25	110	1 3/8 x 4 1/8	2.40
1589-13	"	ETN 130	124-138	110	1 3/8 x 3 1/4	3.85
1589-18	"	ETN 225	216-240	110	1 3/4 x 4 1/8	5.50
LC29009-11	Leland Ltd.	ETN 90-1	86-96	110	1 3/8 x 4 1/8	3.00
LC29009-3	"	ETN 115-1	108-120	110	1 3/8 x 4 1/8	3.50
LC29009-7	"	ETS 115	108-120	125	1 3/8 x 4 1/8	3.50
LC29009-5	"	ETN 225	216-240	110	1 3/4 x 4 1/8	5.50
LC29009-8	"	ETN 175	161-180	110	1 3/8 x 4 1/8	4.50

For a complete line of capacitors for capacitor motors and other continuous duty A. C. operated devices, ask your jobber for Catalog No. 162B describing a complete line of Dykanol Units in both cylindrical and rectangular containers, listing capacitors rated from 1 MFD. to 60 MFD. and from 110 V. A. C. to 660 V.

## CORNELL-DUBILIER *Exact Duplicate* CAPACITORS

Mfg. Part No.	Manufacturer	C. D. Catalog No.	Cap. MFD	A. C. Voltage	Dimensions L. W. H. or D. H.	List Price	
2754	Marathon	ETO 35	23-30	220	1 3/8 x 4 1/8	5.00	
2912		ETN 285-3	270-300	110	2 x 4 1/8	6.50	
		ETN 10035	400-450	110	2 x 4 1/8	9.50	
2277		LMW 150-1	150	110	4 1/2 x 4 1/2 x 1 1/2	5.50	
		LMW 175	175	110	4 1/2 x 4 1/2 x 2	6.65	
		LMW 115	115	110	4 1/2 x 4 1/2 x 1 1/4	4.65	
		ETN 115	108-120	110	1 3/8 x 3 1/4	3.50	
52193	Master	ETN 115	108-120	110	1 3/8 x 3 1/4	3.50	
52378		ETN 130	124-138	110	1 3/8 x 3 1/4	3.85	
52445		ETN 175-3	161-180	110	1 3/4 x 3 1/4	4.50	
	Piqua Elec.	ETN 380CB	341-412	110	2 x 4 1/8	8.50	
4457-L	Ohio Elec.	ETN 115	108-120	110	1 3/8 x 3 1/4	3.50	
		CLB 100-1	100	110	2 1/2 x 4 1/8	4.25	
		CLB 115-2	115	110	2 1/2 x 4 1/8	4.65	
		ETN 130	124-138	110	1 3/8 x 3 1/4	3.85	
		ETN 155	145-162	110	1 3/8 x 4 1/8	4.25	
		CLO 25-1	25	220	2 1/2 x 4 1/8	4.75	
20250-5	Robbins & Myers	ETN 130	124-138	110	1 3/8 x 3 1/4	3.85	
		ETN 115	108-120	110	1 3/8 x 3 1/4	3.50	
		ETN 155	145-162	110	1 3/8 x 4 1/8	4.25	
		CLB 115-7	115	110	2 x 4 1/8	4.65	
		CLB 80	80	110	2 x 4 1/8	3.75	
		LMW 75	75	110	4 1/2 x 4 1/2 x 1 1/4	3.60	
		LMW 115	115	110	4 1/2 x 4 1/2 x 1 1/4	4.65	
		ETN 90	86-96	110	1 3/8 x 3 1/4	3.00	
17177	Sunlight	CLB 115-3	115	110	3 x 4 1/8	4.65	
5201729		CLB 115-7	115	110	2 x 4 1/8	4.65	
5201040		CLB 100-1	100	110	2 1/2 x 4 1/8	4.25	
5201042		CLB 115-2	115	110	2 1/2 x 4 1/8	4.65	
5201044		CLB 80-1	80	110	2 1/2 x 4 1/8	3.75	
5201731		CLB 80	80	110	2 x 4 1/8	3.75	
5201733		CLB 100	100	110	2 x 4 1/8	4.25	
5201734		CLB 135-1	135	110	2 1/2 x 4 1/8	5.15	
5203421		CLO 65	65	110	2 x 4 1/8	3.40	
5204001		CLO 20-1	20	220	2 x 4 1/8	3.80	
5204009		CLO 15	15	220	2 x 4 1/8	3.60	
5204004		CLO 35	35	220	2 1/2 x 4 1/8	5.60	
5205231		ETN 75-2	70-78	110	1 3/8 x 2 3/4	2.65	
5205256		ETN 130	124-138	110	1 3/8 x 3 1/4	3.85	
5205232		ETN 65-1	64-72	110	1 3/8 x 3 1/4	2.50	
5205257		ETN 115	108-120	110	1 3/8 x 3 1/4	3.50	
5205258		ETN 90	86-96	110	1 3/8 x 3 1/4	3.00	
5205072		ETN 155-3	145-162	110	2 x 3 1/4	4.25	
5203291		CLB 135-1	135	110	2 1/2 x 4 1/8	5.15	
5203457		ETN 115	108-120	110	1 3/8 x 3 1/4	3.50	
5205028		JPZ 130	124-138	110	3 1/8 x 4 7/8 x 1 1/4	3.85	
5205030		JPZ 155	145-162	110	3 1/8 x 4 7/8 x 1 1/4	4.25	
HD5223-1		Wagner	JDS 100	100	110	3 1/2 x 3 1/2 x 2	4.25
HD5236-A1			JPW 100	100	110	3 1/2 x 3 1/2 x 2	4.25
HD4500-D2	JDS 115		115	110	3 1/2 x 3 1/2 x 2	4.65	
	JPW 115		115	110	3 1/2 x 3 1/2 x 2	4.65	
HD4500-D3	JDO 25		25	220	3 1/2 x 3 1/2 x 2	4.75	
HD4500-1	JDS 100		100	110	3 1/2 x 3 1/2 x 2	4.25	
HC7482	ETN 115		108-120	110	1 3/8 x 3 1/4	3.50	
HD5400	JDS 115		115	110	3 1/2 x 3 1/2 x 2	4.65	
HC7684	ETN 175-2		161-180	110	2 x 3 1/4	4.50	
HC7753	ETN 145-2		130-157	110	2 x 3 1/4	4.25	
HC7950	ETN 340-1		320-360	110	2 1/2 x 2 5/8	7.50	
S841011	Westinghouse		JPW 100	100	110	3 1/2 x 3 1/2 x 2	4.25
987252			CLB 115-7	115	110	2 x 4 1/8	4.65
987163			JPW 115	115	110	3 1/2 x 3 1/2 x 2	4.65
1030825			ETN 130-2	124-138	110	2 x 3 1/4	3.85
SH32291		CLB 115-11	115	110	2 1/2 x 5 1/4	4.65	
1030669		ETN 255-1	243-270	110	2 x 4 1/8	6.00	
1030543		ETN 225-3	216-240	110	2 x 4 1/8	5.50	
1030670		ETN 400	378-420	110	2 x 4 1/8	8.50	
1030710		ETN 175-2	161-180	110	2 x 3 1/4	4.50	
1030813		ETN 130	124-138	110	1 3/8 x 3 1/4	3.85	

All units are supplied with external insulating case or sleeve.

Extra Insulating Sleeve or Case .10  
Terminal Cap .10  
Mounting Bracket .10



**MICA • PAPER • DYKANOL • WET and DRY ELECTROLYTICS**  
For Every Radio and Electrical Requirement Internationally Accepted Standards Since 1910

A few of the applications for which C-D capacitors are available:

RADIO RECEIVING	RECORDING	AMPLIFIERS	MOTOR STARTING	METERS
TRANSMITTING	INSTRUMENTS	INTERFERENCE	POWER-FACTOR	LIGHTNING SURGE
TELEPHONE	PHOTO ELECTRIC	ELIMINATION	IMPROVEMENT	CAPACITORS
TELEVISION	CELL APPLICATIONS	X-RAY, THERAPEUTIC	HIGH TENSION LINES	CARRIER CURRENT
TELEGRAPH	CONTACT SPARK	AND DIATHERMY	EXPERIMENTAL AND	WORK, ETC.
	ELIMINATION	APPLICATIONS	RESEARCH WORK	

ELECTRONIC APPLICATIONS      ULTRA HIGH VOLTAGE      WELDING  
ULTRA HIGH FREQUENCY AND HEAVY CURRENT APPLICATIONS

**DISTRIBUTED BY:**



# DYKANOL TRANSMITTING CAPACITORS

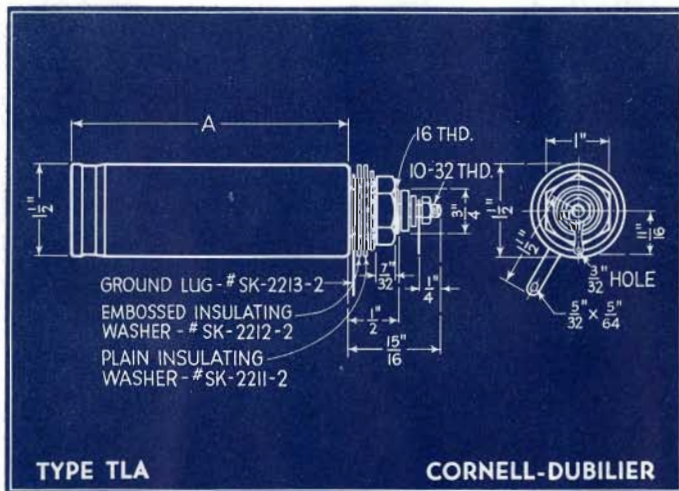
## FEATURES OF TYPE TJU

- 1—DYKANOL (CHLORINATED DIPHENYL)\* IMPREGNATED AND FILLED—LONG LIFE; SMALL SIZE; LOWER POWER FACTOR; NON-INFLAMMABLE
- 2—HI-PURITY ALUMINUM FOIL—LOWER R. F. RESISTANCE; LIGHT WEIGHT
- 3—HI-PURITY MULTI-LAMINATED KRAFT TISSUE—HIGHER VOLTAGE BREAKDOWN; MINIMUM LEAKAGE; HIGH I. R.
- 4—VACUUM DRIED & IMPREGNATED—LOWER EQUIVALENT SERIES RESISTANCE; LONGER LIFE
- 5—HERMETICALLY SEALED—NOT AFFECTED BY MOISTURE, TIME OR TEMPERATURE UP TO 200° F.
- 6—ADEQUATE TERMINAL INSULATORS—GLAZED PORCELAIN OR BAKELITE ACCORDING TO RATING
- 7—STURDY STEEL CONTAINER, ALUMINUM PAINTED—NON-CORROSIVE, STRONG
- 8—UNIVERSAL, STEEL MOUNTING STRAP—ALLOWS MOUNTING UNIT IN ANY POSITION
- 9—RIGIDLY TESTED—UNIFORM PRODUCT
- 10—CONSERVATIVE D. C. RATING—TRIPLE TESTING ASSURES DEPENDABLE SERVICE
- 11—APPROVED BY FIRE UNDERWRITERS—ABSOLUTELY SAFE UNDER ALL CONDITIONS; \*FIRE-PROOF; EXTRA HIGH DIELECTRIC STRENGTH

Cat. No.	Capacity Mfd.	Code Word	Size			Weight Per 100	List Price
			A	B	C		
<b>600 V. D. C.—440 rms Rect. A.C.</b>							
TJU-6005	.5	TAJAZU	2 $\frac{1}{8}$ x1 $\frac{1}{8}$ x1 $\frac{1}{8}$	$\frac{7}{8}$ x1 $\frac{1}{8}$ x2 $\frac{1}{4}$		31 $\frac{1}{2}$ lb.	\$2.05
TJU-6010	1	TAJEYU	2 $\frac{1}{8}$ x1 $\frac{1}{8}$ x1 $\frac{1}{8}$	$\frac{7}{8}$ x1 $\frac{1}{8}$ x2 $\frac{1}{4}$		33 $\frac{3}{4}$ "	2.75
TJU-6020	2	TAJIXU	2 $\frac{7}{8}$ x1 $\frac{1}{8}$ x1 $\frac{1}{8}$	$\frac{7}{8}$ x1 $\frac{1}{8}$ x2 $\frac{1}{4}$		43 $\frac{3}{4}$ "	3.50
TJU-6040	4	TAJOWU	3 $\frac{1}{8}$ x2 $\frac{1}{2}$ x1 $\frac{3}{8}$	$\frac{7}{8}$ x1 $\frac{1}{8}$ x3		70 $\frac{1}{2}$ "	4.50
<b>1000 V. D. C.—660 rms Rect. A.C.</b>							
TJU-10005	.5	TEJABU	2 $\frac{1}{8}$ x1 $\frac{1}{8}$ x1 $\frac{1}{8}$	$\frac{7}{8}$ x1 $\frac{1}{8}$ x2 $\frac{1}{4}$		32 $\frac{1}{2}$ "	2.15
TJU-10010	1	TEJECU	2 $\frac{1}{8}$ x1 $\frac{1}{8}$ x1 $\frac{1}{8}$	$\frac{7}{8}$ x1 $\frac{1}{8}$ x2 $\frac{1}{4}$		33 $\frac{3}{4}$ "	3.00
TJU-10020	2	TEJIDU	4 x1 $\frac{1}{8}$ x1 $\frac{1}{8}$	$\frac{7}{8}$ x1 $\frac{1}{8}$ x2 $\frac{1}{4}$		54 $\frac{1}{2}$ "	4.00
TJU-10040	4	TEJOFU	4 $\frac{1}{8}$ x2 $\frac{1}{2}$ x1 $\frac{3}{8}$	$\frac{7}{8}$ x1 $\frac{1}{8}$ x3		125 "	5.00
TJU-10100	10	TEJYKU	4 $\frac{1}{8}$ x3 $\frac{3}{4}$ x1 $\frac{3}{4}$	$\frac{7}{8}$ x2 x4 $\frac{3}{8}$		262 $\frac{1}{2}$ "	9.00
TJU-10150	15	TEJHLU	4 $\frac{1}{8}$ x3 $\frac{3}{4}$ x2 $\frac{1}{2}$	$\frac{7}{8}$ x2 x4 $\frac{3}{8}$		331 $\frac{1}{4}$ "	12.00
<b>1500 V. D. C.—1000 rms Rect. A.C.</b>							
TJU-15010	1	TIJBAU	4 x1 $\frac{1}{8}$ x1 $\frac{1}{8}$	$\frac{7}{8}$ x1 $\frac{1}{8}$ x2 $\frac{1}{4}$		56 $\frac{1}{4}$ "	3.50
TJU-15020	2	TIJDEU	4 $\frac{5}{8}$ x2 $\frac{1}{2}$ x1 $\frac{3}{8}$	$\frac{7}{8}$ x1 $\frac{1}{8}$ x3		88 $\frac{1}{4}$ "	5.00
TJU-15040	4	TIJGIU	4 $\frac{1}{8}$ x3 $\frac{3}{4}$ x1 $\frac{1}{4}$	$\frac{7}{8}$ x2 x4 $\frac{3}{8}$		184 $\frac{1}{2}$ "	7.00
TJU-15100	10	TIJKYU	4 $\frac{1}{8}$ x3 $\frac{3}{4}$ x3 $\frac{3}{8}$	$\frac{7}{8}$ x2 x4 $\frac{3}{8}$		442 $\frac{1}{4}$ "	15.00
<b>2000 V. D. C.—1500 rms Rect. A. C.</b>							
TJU-20010	1	TOJNOU	3 $\frac{7}{8}$ x2 $\frac{1}{2}$ x1 $\frac{3}{8}$ x1 $\frac{1}{4}$ x1 $\frac{1}{8}$ x3			77 $\frac{1}{2}$ "	4.50
TJU-20020	2	TOJOPU	4 $\frac{1}{8}$ x3 $\frac{3}{4}$ x1 $\frac{1}{4}$ x1 $\frac{1}{4}$ x2 x4 $\frac{3}{8}$			159 $\frac{1}{2}$ "	5.50
TJU-20040	4	TOJRIU	4 $\frac{1}{8}$ x3 $\frac{3}{4}$ x2 $\frac{1}{4}$ x1 $\frac{1}{4}$ x2 x4 $\frac{3}{8}$			253 $\frac{1}{4}$ "	9.00
TJU-20100	10	TOJWAU	4 $\frac{1}{8}$ x3 $\frac{3}{4}$ x4 $\frac{3}{8}$ x1 $\frac{1}{4}$ x2 x4 $\frac{3}{8}$			568 $\frac{3}{4}$ "	18.50
<b>2500 V. D. C.—1800 rms Rect. A. C.</b>							
TJU-25010	1	TUJAAU	3 $\frac{5}{8}$ x3 $\frac{3}{4}$ x1 $\frac{3}{4}$ x1 $\frac{1}{4}$ x2 x4 $\frac{3}{8}$			181 $\frac{1}{4}$ "	8.00
TJU-25020	2	TUJEEU	4 $\frac{1}{8}$ x3 $\frac{3}{4}$ x1 $\frac{3}{4}$ x1 $\frac{1}{4}$ x2 x4 $\frac{3}{8}$			259 $\frac{1}{2}$ "	13.00
TJU-25040	4	TUJIIU	4 $\frac{1}{8}$ x3 $\frac{3}{4}$ x4 $\frac{3}{8}$ x1 $\frac{1}{4}$ x2 x4 $\frac{3}{8}$			506 $\frac{1}{4}$ "	18.00
TJU-25100	10	TUJUUU	9 $\frac{1}{8}$ x3 $\frac{3}{4}$ x4 $\frac{3}{8}$ x1 $\frac{1}{4}$ x2 x5 $\frac{7}{8}$			1025 "	45.00
<b>3000 V. D. C.—2200 rms. Rect. A.C.</b>							
TJU-30010	1	TAKJAU	4 $\frac{1}{8}$ x3 $\frac{3}{4}$ x2 $\frac{1}{4}$ x1 $\frac{1}{4}$ x2 x4 $\frac{3}{8}$			254 $\frac{3}{4}$ "	12.00
TJU-30020	2	TAIKEU	4 $\frac{5}{8}$ x3 $\frac{3}{4}$ x3 $\frac{3}{8}$ x1 $\frac{1}{4}$ x2 x4 $\frac{3}{8}$			350 "	15.00
TJU-30040	4	TAMIOU	4 $\frac{1}{8}$ x3 $\frac{3}{4}$ x4 $\frac{3}{8}$ x1 $\frac{1}{4}$ x2 x4 $\frac{3}{8}$			543 $\frac{3}{4}$ "	22.00
<b>5000 V. D. C.—3300 rms Rect. A.C.</b>							
TJU-50010	1	TEKEYU	4 $\frac{5}{8}$ x3 $\frac{3}{4}$ x4 $\frac{3}{8}$ x2 x2 x4 $\frac{3}{8}$			534 $\frac{1}{2}$ "	25.00
TJU-50020	2	TEKOPU	6 $\frac{1}{8}$ x3 $\frac{3}{4}$ x4 $\frac{3}{8}$ x2 x2 x4 $\frac{3}{8}$			693 $\frac{3}{4}$ "	32.00

**NOTES:** A notable record of performance is attested by the fact that Dykanol Capacitors rarely fail in service when operated even at 10% higher voltage than rating. Beware of imitations that look like TJU units! Don't buy "funny-name OIL" capacitors because of exaggerated claims made for them! Signal Corps, U. S. Army and Navy specifications call for these reliable filter units.

# CORNELL DUBILIER



TYPE TLA, DYKANOL FILTER UNITS IN CYLINDRICAL aluminum containers, are not only classical in appearance but also in performance. Solving at once the need for a compact high voltage filter capacitor to use with high fidelity public address amplifiers, power supplies for short wave portable transmitters and transceivers, these well-built units are ideal in every respect. One terminal is well insulated, the other being the metal can itself. Substantially made, Type TLA will withstand transient voltages as well as high peak voltage surges and is designed to operate for continuous, full load duty.

# DYKANOL FILTER CAPACITORS

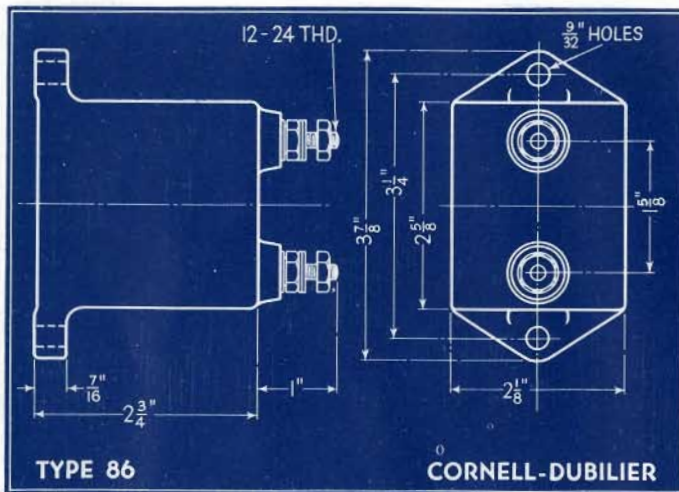
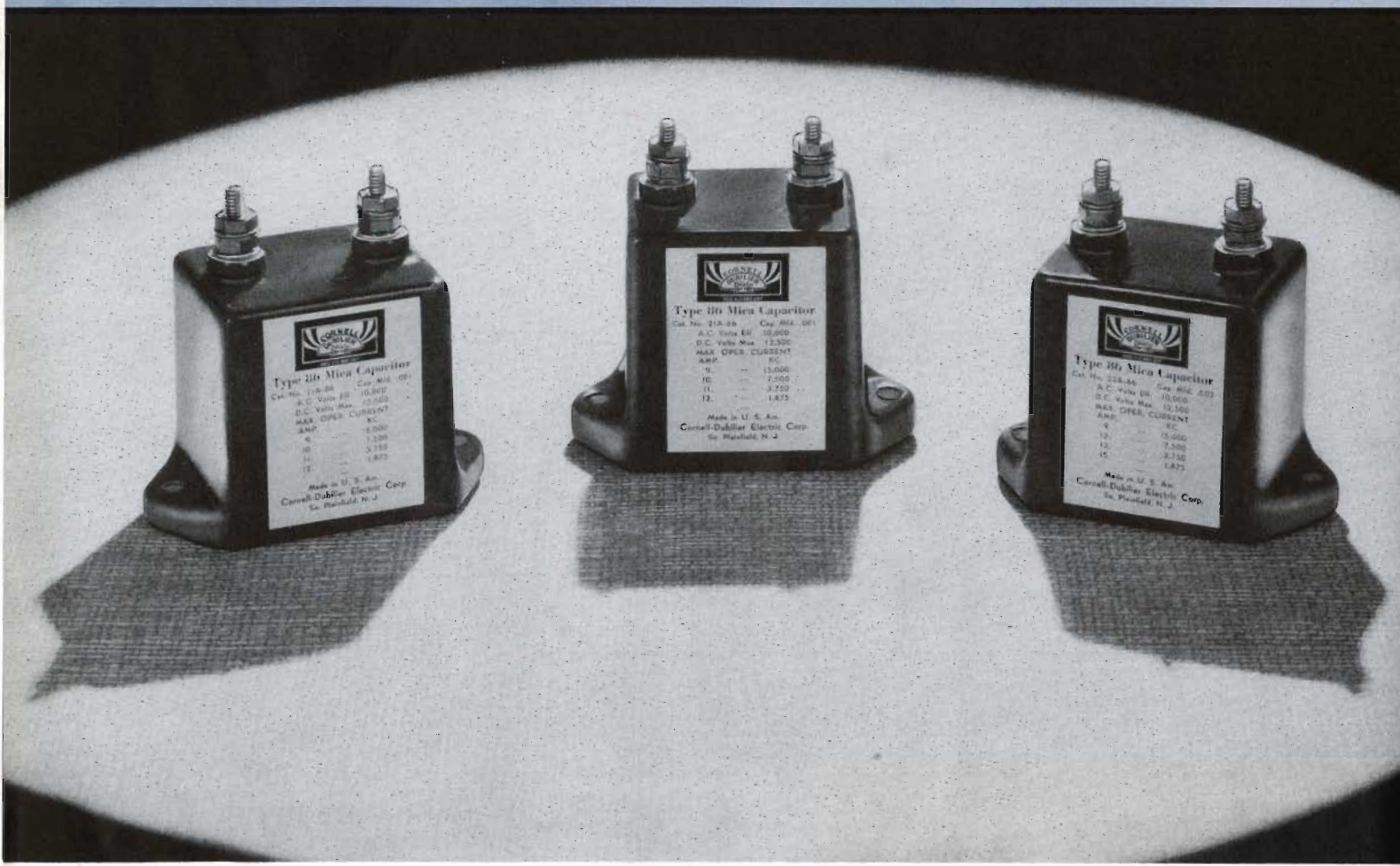
## FEATURES OF TYPE TLA

- 1—DYKANOL (CHLORINATED DIPHENYL)\* IMPREGNATED AND FILLED—LONG LIFE; SMALL SIZE; NON-INFLAMMABLE; LOWER POWER FACTOR
- 2—HI-PURITY ALUMINUM FOIL—LOWER R.F. RESISTANCE; LIGHT WEIGHT
- 3—HI-PURITY MULTI-LAMINATED KRAFT TISSUE—HIGHER VOLTAGE BREAKDOWN; MINIMUM LEAKAGE; HIGH I. R.
- 4—VACUUM DRIED & IMPREGNATED — LOWER EQUIVALENT SERIES RESISTANCE; LONGER LIFE
- 5—HERMETICALLY SEALED—NOT AFFECTED BY MOISTURE, TIME OR TEMPERATURE UP TO 200° F.
- 6—ADEQUATE TERMINAL INSULATOR—NO LEAKAGE OF CURRENT OR DYKANOL
- 7—STURDY ALUMINUM CONTAINER—STRONG; NON-CORROSIVE
- 8—INVERTED & VERTICAL MOUNTING—SIMPLE TO INSTALL—MECHANICALLY STRONG
- 9—RIGIDLY TESTED—UNIFORM PRODUCT
- 10—CONSERVATIVE D.C. RATING—TRIPLE TESTING ASSURES DEPENDABLE SERVICE
- 11—APPROVED BY FIRE UNDERWRITERS—ABSOLUTELY SAFE UNDER ALL CONDITIONS; \*FIRE-PROOF; EXTRA HIGH DIELECTRIC STRENGTH

Cat. No.	Capacity Mfd.	Code Word	Size		Weight Per 100	List Price
			A	B		
<b>600 V. D. C.</b>						
TLA-6020	2	TALAA	2 $\frac{7}{8}$	x 1 $\frac{1}{2}$	36 lb.	\$2.25
TLA-6030	3	TELEA	4 $\frac{1}{2}$	x 1 $\frac{1}{2}$	43 "	2.75
TLA-6040	4	TILIA	4 $\frac{1}{2}$	x 1 $\frac{1}{2}$	46 "	3.00
<b>1000 V. D. C.</b>						
TLA-10010	1	TALUE	2 $\frac{7}{8}$	x 1 $\frac{1}{2}$	28 "	2.25
TLA-10020	2	TALOI	4 $\frac{1}{2}$	x 1 $\frac{1}{2}$	44 "	2.75
<b>1500 V. D. C.</b>						
TLA-15005	.5	TULAM	2 $\frac{7}{8}$	x 1 $\frac{1}{2}$	28 "	2.75
TLA-15010	1	TULEN	4 $\frac{1}{2}$	x 1 $\frac{1}{2}$	40 "	3.00

NOTES: Insulating washers as well as a large spade lug are provided so that the metal container may be insulated from the chassis. Dykanol has a dielectric constant of 4.8, a power factor of .3%, and makes possible the fabrication of capacitors having a direct current resistance of 10,000 megohms per microfarad. No other type of capacitor has small size and such high insulation resistance. It also has an appreciably lower space factor which accounts for the substantial reduction in physical size for a given capacity and voltage rating. Providing safe, dependable performance, these capacitors truly exemplify: "More For Your Money in C-D's."

# CORNELL DUBILIER



THE MICA DIELECTRIC CAPACITOR owes its origin to the inventive genius of William Dubilier. It was back in 1910, in the early days of wireless that the first practical mica units were made, tested and approved. Type 86 has been designed for amateur radio communication, 'fone, CW and ICW, for plate blocking, grid, buffer, tank, and antenna coupling purposes. Widely imitated, copied, but NEVER duplicated, these patented-construction units are serving in thousands of "ham" rigs with wonderful efficiency and amazingly superb results. You'll surely like 'em for your x-mitter.

# AMATEUR MICA TRANSMITTING CAPACITORS

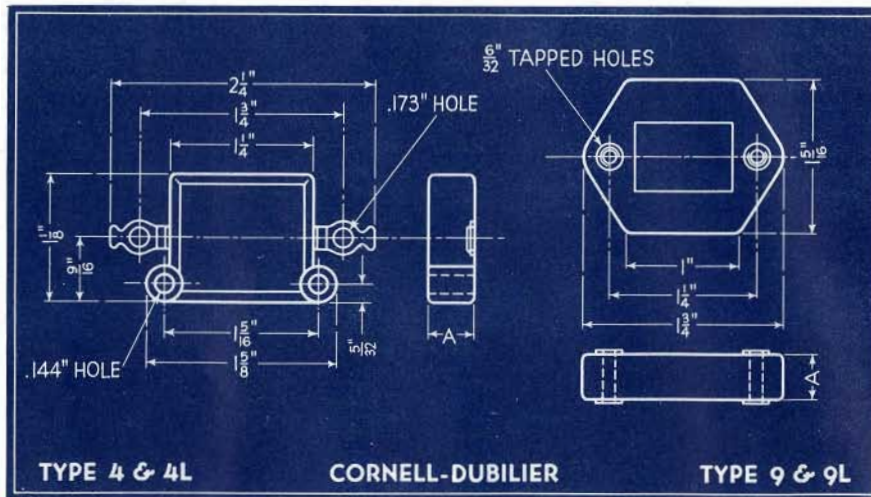
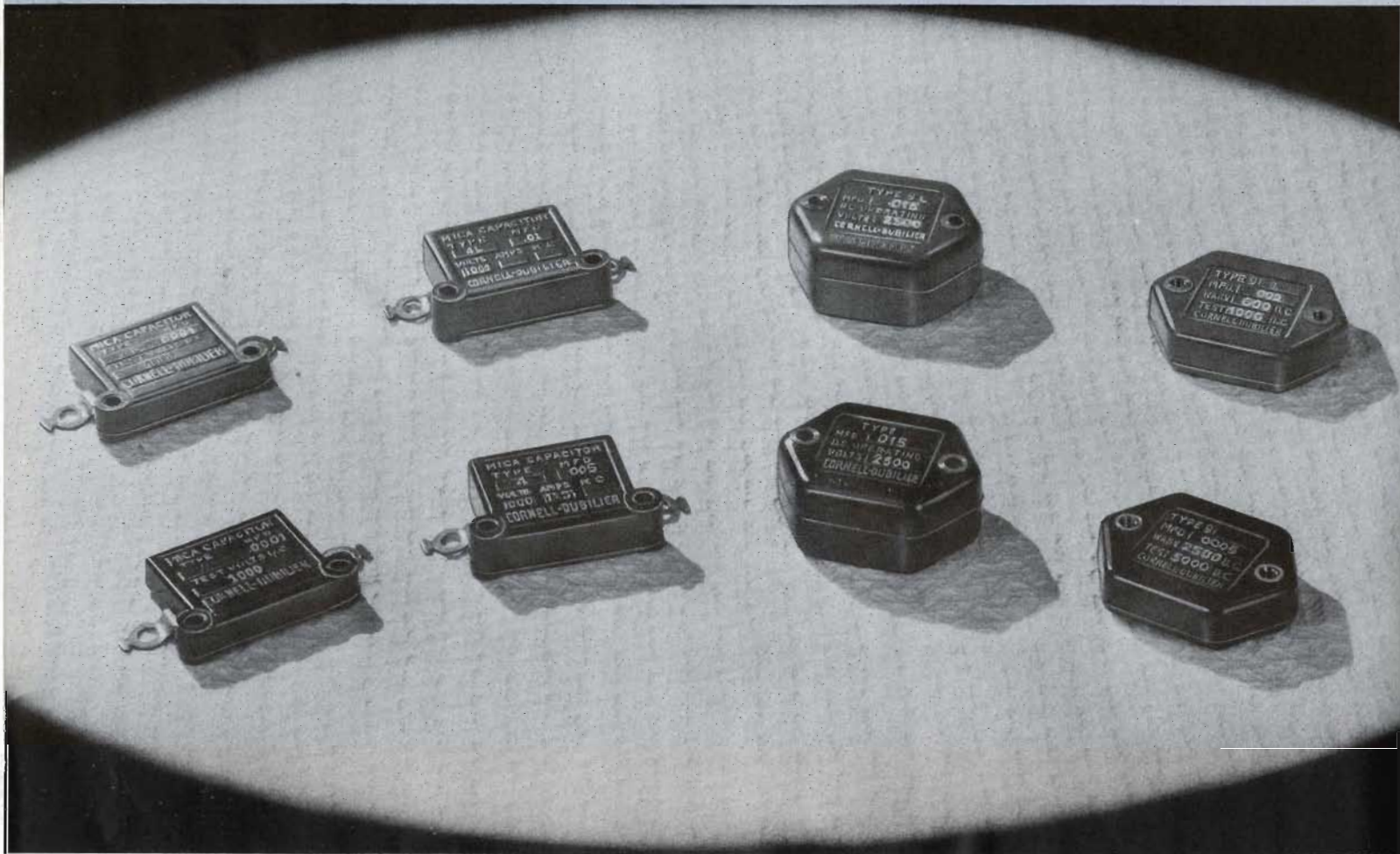
## FEATURES OF TYPE 86

- 1—PATENTED SERIES MICA STACK—ELIMINATES CORONA LOSSES
- 2—HORIZONTAL STACK CONSTRUCTION—WIDE SEPARATION OF LEADS; MAXIMUM INSULATION
- 3—SOLDERED FOILS—AFFORDS HIGH CURRENT RATING
- 4—MICA SEPARATORS—EACH SECTION CAREFULLY INSULATED
- 5—INDIA RUBY MICA DIELECTRIC—LOW POWER FACTOR; HIGH Q
- 6—VACUUM IMPREGNATED ASSEMBLY—LOW LOSS; HIGH INSULATION; NO AIR VOIDS
- 7—SPECIAL LOW LOSS FILLER—REDUCES STRAY LOSSES
- 8—SHORT HEAVY BRASS STUD TERMINALS—LOW RESISTANCE CONNECTION
- 9—INSULATED CLAMP HOLDER—NO INTERNAL VOLTAGE ARC-OVER
- 10—BLACK GLAZED PORCELAIN DEHYDRATED CASE—LOW R.F. LOSSES

Cat. No.	Capacity Mfd.	Max. D.C. Voltage	Code Word	Max. Current in Amps.					Weight Per 100	List Price
				30mc 10M	15000kc 20M	7500kc 40M	3750kc 80M	1875kc 160M		
45A-86	.00005	12,500	SABER	3.5	3	2.5	1.5	1	125 lb.	\$3.75
31A-86	.0001	12,500	SABLE	5	5	4	3	2	125 "	3.75
325A-86	.00025	12,500	SANER	5	7	8	6	4	125 "	3.75
35A-86	.0005	12,500	SALVO	5	8	9	8	7	125 "	4.25
35C-86	.0005	7,000	SAPPO	5	7	8	6	4	125 "	3.75
21A-86	.001	12,500	SAVER	5	9	10	11	12	125 "	5.00
21C-86	.001	7,000	SAFER	5	8	9	10	8	125 "	4.25
21D-86	.001	3,500	SALVE	5	8	9	8	5	125 "	3.75
215A-86	.0015	12,500	SIEVE	6	9	10	11	12	125 "	5.50
22A-86	.002	12,500	SOWER	6	9	12	13	15	125 "	6.50
22C-86	.002	7,000	SORRY	6	8	9	10	10	125 "	5.25
22D-86	.002	3,500	SOFTY	6	8	8	9	7	125 "	4.25
25B-86	.005	10,000	SOUTH	7	10	13	14	15	130 "	9.50
11C-86	.01	7,000	SINUS	7	10	13	15	15	125 "	9.50
11D-86	.01	3,500	SATIN	7	10	13	14	14	125 "	7.00
12D-86	.02	3,500	SONNY	7	10	14	16	17	125 "	8.75
1E-86	.1	2,000	SULKY	7	10	14	17	18	130 "	11.00

**NOTES:** By selecting the very best grade of india ruby mica, Type 86 capacitors have very low radio frequency resistance and power factor, but extremely high direct current resistance and negligible power losses. The patented design has successfully eliminated corona and reduces internal heating, so that the Q or quality characteristic, so important to amateur communication on high frequencies, is exceptionally high. Dielectric loss in these units is remarkably low, thereby permitting long periods of heavy duty operation without an appreciable change in electrical constants. You'll find it pays to insist on C-D'S!

# CORNELL DUBILIER



THE EVOLUTION OF THE ORIGINAL SMALL "MICADON" capacitor has resulted in the perfection of Types 4 and 9 mica units. Effectively used for radio frequency bypass, high voltage D.C. blocking, low power tank capacitors, padders, coupling functions, audio and video purposes. Using the finest quality india ruby mica, select foil and the exclusive C-D stack assembly, these units, obtainable in safe, dependable voltage ratings, are hermetically encased in rich brown bakelite, beautifully moulded.

On special order, low-loss bakelite units may be obtained at 25c. list price extra.

**NOTES:** The terminal studs in Type 9 are moulded into the case; Type 4 uses short solder-lug terminals and has insulated mounting holes for panel mounting. Types furnished from stock have reasonably close tolerance limits. For 5% tolerance add 10% to list price; for 2% tolerance, add 20% to list price. The letter "L" must be used to denote special low-loss bakelite, viz: 4L-6S1; 9L-25D2. Because of their superior design and construction these units are widely used in aircraft, marine, portable and short-wave transmitters. Standard with broadcast engineers, amateurs and manufacturers of transmitting equipment.

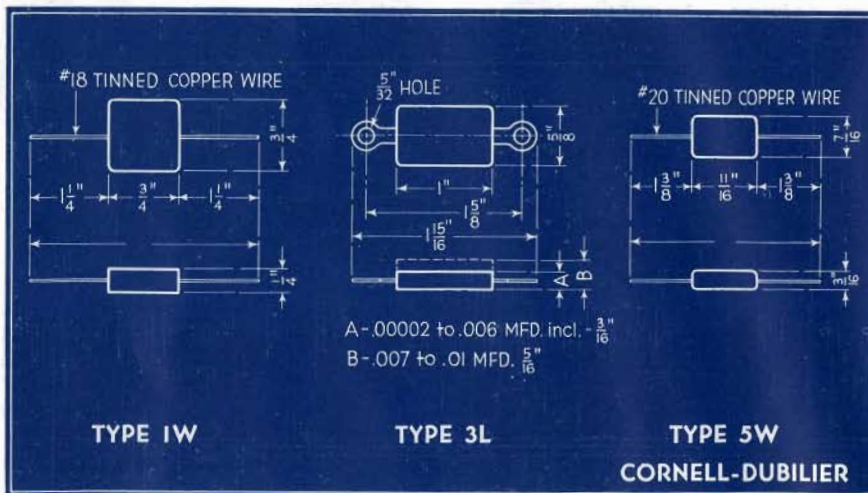
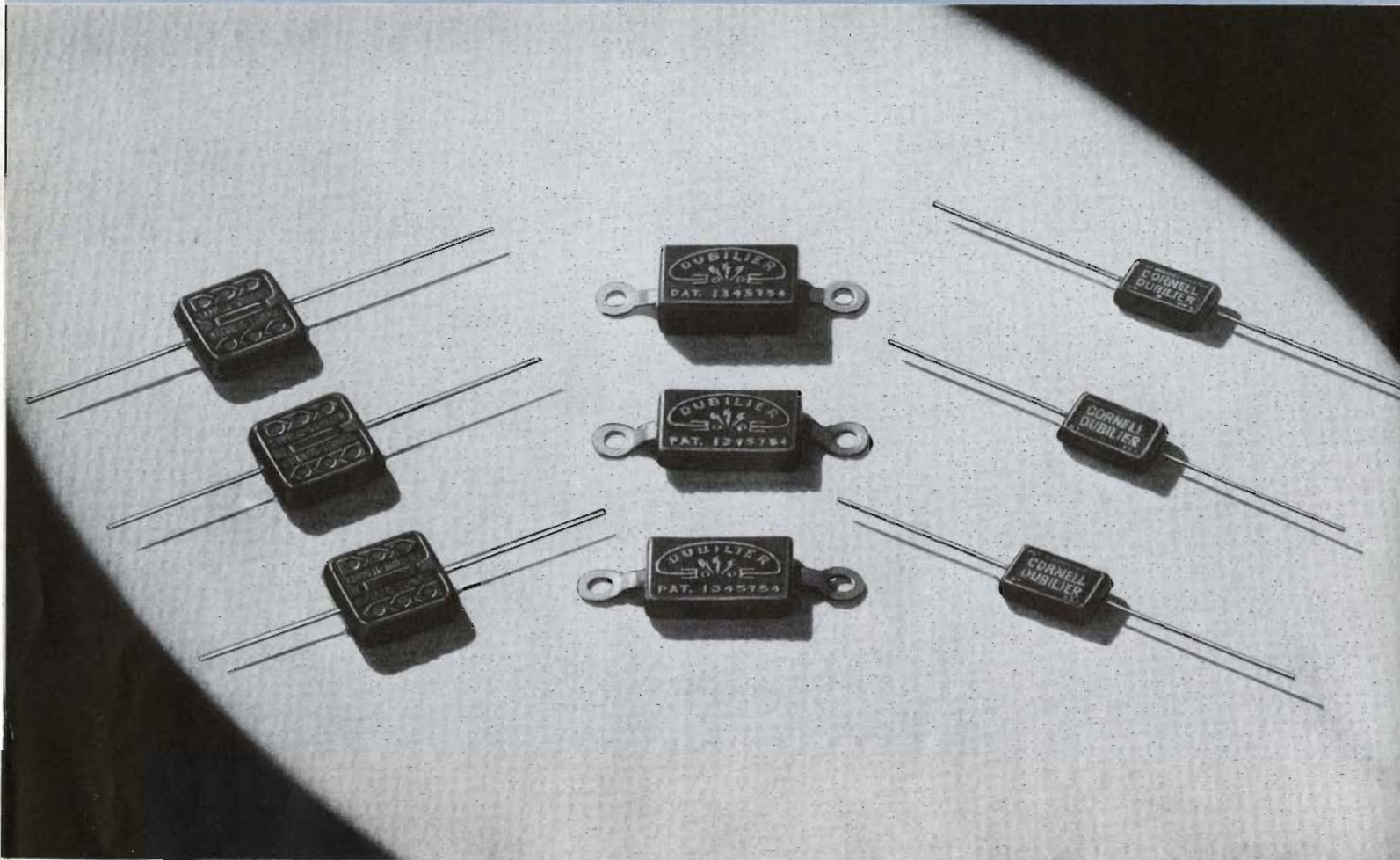
# MICA RECEIVING-TRANSMITTING CAPACITORS

## FEATURES OF TYPES 4 and 9

- 1—INDIA RUBY MICA DIELECTRIC—LOW POWER FACTOR; HIGH Q; LONG LIFE
- 2—MICA OF STEPPED UNIFORM THICKNESS—PROVIDES HIGH FACTOR OF SAFETY
- 3—SPECIALLY-TREATED STACK ASSEMBLY—AFFORDS HIGHER VOLTAGE BREAKDOWN
- 4—VACUUM DRIED STACK TREATMENT—LOW LOSS; HIGH INSULATION RESISTANCE
- 5—NO MAGNETIC MATERIAL USED—REDUCES LOSSES AT ALL FREQUENCIES
- 6—MOULDED IN BAKELITE—STRONG; MINIMUM LEAKAGE; EXCELLENT APPEARANCE; MOISTURE-PROOF
- 7—SHORT HEAVY TERMINALS—INSURES GOOD ANCHORAGE; MOUNTING ACCURACY
- 8—EXCELLENT TEMPERATURE COEFFICIENT—PRACTICALLY CONSTANT CAPACITY OVER WIDE RANGE OF TEMPERATURE

Cat. No.	Cap. Mfd.	Code Word	Wt. lbs.			Cat. No.	Cap. Mfd.	Code Word	Wt. lbs.		
			"A"	Per 100	List Price				"A"	Per 100	List Price
<b>TYPE 4</b>						<b>TYPE 9</b>					
1000 V.D.C. Test; Working Voltage 600 V.D.C.						1000 V.D.C. Test; Working Voltage 600 V.D.C.					
4-6Q3	.00003	HAQUE	11/32"	3	\$.35	9-6Q5	.00005	HORDE	7/16"	5 1/2	\$.40
4-6Q4	.00004	HAKNY	"	3	.35	9-6T1	.0001	HORNE	"	5 1/2	.40
4-6Q5	.00005	HABIT	"	3	.35	9-6T15	.00015	HORPO	"	5 1/2	.40
4-6T1	.0001	HADES	"	3	.35	9-6T2	.0002	HORSE	"	5 1/2	.40
4-6T15	.00015	HADOK	"	3	.35	9-6T25	.00025	HOTEL	"	5 1/2	.40
4-6T2	.0002	HAIRY	"	3	.35	9-6T5	.0005	HOUSE	"	5 1/2	.40
4-6T25	.00025	HALVE	"	3	.35	9-6D1	.001	HOVEL	"	5 1/2	.50
4-6T3	.0003	HALVA	"	3	.35	9-6D15	.0015	HOVER	"	5 1/2	.50
4-6T4	.0004	HALUP	"	3	.35	9-6D2	.002	HUMAN	"	5 1/2	.50
4-6T5	.0005	HANDY	"	3	.35	9-6D25	.0025	HUNIP	"	5 1/2	.60
4-6D1	.001	HAPLY	"	3	.40	9-6D3	.003	HUMID	"	6 1/4	.60
4-6D15	.0015	HAPPY	"	3	.45	9-6D4	.004	HUMOR	"	6 1/4	.60
4-6D2	.002	HARDY	"	3	.45	9-6D5	.005	HUNCH	"	6 1/4	.70
4-6D25	.0025	HARZE	"	3	.50	9-6D6	.006	HUNKS	"	6 1/4	.85
4-6D3	.003	HAREM	"	3	.55	9-6D7	.007	HUNLU	"	6 1/4	.95
4-6D4	.004	HARPY	"	3	.55	9-6D8	.008	HURRY	"	6 1/4	1.00
4-6D5	.005	HARRY	"	3	.55	9-6S1	.01	HUSSY	"	6 1/4	1.15
4-6D6	.006	HARSH	"	3	.65	9-6S15	.015	HUTCH	"	6 1/4	1.25
4-6D7	.007	HARAH	"	3	.70	9-6S2	.02	HUZZA	"	7	1.85
4-6D8	.008	HASTE	"	3	.75	9-6S25	.025	HYENA	"	7	2.30
4-6S1	.01	HASTY	"	3	.80	9-6S3	.03	HYSON	"	12 1/2	2.50
4-6S15	.015	HATCH	7/16"	5	1.10	9-6S4	.04	ICHOR	3/4"	12 1/2	3.25
4-6S2	.02	HAUNT	"	5	1.20	9-6S5	.05	IDEAL	"	12 1/2	3.85
4-6S25	.025	HAVEN	"	5	1.45	9-6S6	.06	IDAHO	"	12 1/2	4.50
4-6S3	.03	HAYAY	"	5	1.70	2500 V.D.C. Test; Working Voltage 1200 V.D.C.					
2500 V.D.C. Test; Working Voltage 1200 V.D.C.						9-12Q5	.00005	IDIOT	7/16"	5 1/2	.70
4-12Q5	.00005	HAVOC	11/32"	3	.60	9-12T1	.0001	ILEUM	"	5 1/2	.70
4-12T1	.0001	HAZEL	"	3	.60	9-12T2	.0002	IMAGE	"	5 1/2	.70
4-12T2	.0002	HEADY	"	3	.60	9-12T25	.00025	IMAGO	"	5 1/2	.70
4-12T25	.00025	HEART	"	3	.60	9-12T5	.0005	IMBED	"	5 1/2	.70
4-12T3	.0003	HEASU	"	3	.60	9-12D1	.001	IMBUE	"	5 1/2	.90
4-12T5	.0005	HEATH	"	3	.60	9-12D15	.0015	IMPEL	"	5 1/2	1.15
4-12D1	.001	HEAVE	"	3	.75	9-12D2	.002	IMPLY	"	5 1/2	1.35
4-12D15	.0015	HEDGE	"	3	.85	9-12D25	.0025	IMPOX	"	5 1/2	1.45
4-12D2	.002	HELIX	"	3	.95	9-12D3	.003	INANE	"	6 1/4	1.55
4-12D25	.0025	HELUY	"	3	1.10	9-12D4	.004	INAPT	"	6 1/4	1.55
4-12D3	.003	HELLO	"	3	1.20	9-12D5	.005	INCUR	"	6 1/4	1.75
4-12D4	.004	HELOT	"	3	1.50	9-12D6	.006	INCUS	"	6 1/4	1.75
4-12D5	.005	HELVE	7/16"	5	1.50	9-12D8	.008	INDEX	"	6 1/4	2.25
4-12D6	.006	HENCE	"	5	1.70	9-12S1	.01	INDIA	"	6 1/4	2.80
4-12D8	.008	HENNA	"	5	2.00	9-12S15	.015	INDIC	"	6 1/4	3.35
4-12S1	.01	HERON	"	5	2.35	9-12S2	.02	INDUC	3/4"	12 1/2	3.95
5000 V.D.C. Test; Working Voltage 2500 V.D.C.						9-12S25	.025	INEPT	"	12 1/2	4.40
4-25Q5	.00005	HINNY	11/32"	3	.70	9-12S3	.03	INERT	"	12 1/2	4.60
4-25T1	.0001	HITCH	"	3	.70	5000 V.D.C. Test; Working Voltage 2500 V.D.C.					
4-25T2	.0002	HIVES	"	3	.90	9-25Q5	.00005	INFER	7/16"	5 1/2	.90
4-25T25	.00025	HOARY	"	3	.90	9-25T1	.0001	INGLE	"	5 1/2	.90
4-25T3	.0003	HOAUH	"	3	1.10	9-25T2	.0002	INGOT	"	5 1/2	1.05
4-25T5	.0005	HOBBY	"	3	1.25	9-25T25	.00025	INLAW	"	5 1/2	1.05
4-25D1	.001	HOIST	"	3	1.50	9-25T5	.0005	INLAY	"	5 1/2	1.25
4-25D15	.0015	HOLLA	"	3	1.95	9-25D1	.001	INLET	"	5 1/2	1.50
4-25D2	.002	HOLLY	7/16"	5	2.25	9-25D15	.0015	INNER	"	5 1/2	1.95
4-25D25	.0025	HOLPE	"	5	2.50	9-25D2	.002	INURE	"	5 1/2	2.25
4-25D3	.003	HONEY	"	5	2.75	9-25D25	.0025	INUSH	"	5 1/2	2.50
4-25D4	.004	HONOR	"	5	3.15	9-25D3	.003	INURN	"	6 1/4	2.75
4-25D5	.005	HONIK	"	5	3.50	9-25D4	.004	IONIC	"	6 1/4	3.15
NOTE: Low Loss units are 20% heavier.						9-25D5	.005	IRONY	"	6 1/4	3.40
						9-25D6	.006	ISLET	"	6 1/4	3.50
						9-25D8	.008	ISSUE	3/4"	12 1/2	3.80
						9-25S1	.01	IVIED	"	12 1/2	4.10
						9-25S15	.015	IVORY	"	12 1/2	4.50

# CORNELL DUBILIER



MOULDED BAKELITE RECEIVING CAPACITORS TYPES 1W, 3L and 5W serve many important functions in receivers and hence their design and construction is such that they contribute to the successful performance of the various circuits in which they are employed. Tested at 1000 volts D.C., (on capacities up to .003 mfd.; 600 V test on higher capacities), checked for accuracy of capacity by an electrical testing and sorting machine, these tiny units are characteristic of the quality which C-D builds into its every product, regardless of size or price. The efficiency of these small capacitors is better than 99.94%!



# MICA RECEIVING CAPACITORS

## FEATURES OF TYPES 1W, 3L and 5W

- 1—INDIA RUBY MICA DIELECTRIC— LOW POWER FACTOR; HIGH Q; LONG LIFE
- 2—RIGIDLY TESTED MICA— UNIFORM PRODUCT; HIGH FACTOR OF SAFETY
- 3—SPECIAL WAX-TREATED STACK— AFFORDS HIGHER VOLTAGE BREAKDOWN
- 4—VACUUM DRIED STACK TREATMENT— LOW LOSS; HIGH INSULATION RESISTANCE
- 5—NO MAGNETIC MATERIAL USED— NO WAVE FORM DISTORTION; REDUCES LOSSES
- 6—ENCASED IN BROWN BAKELITE— STRONG; MINIMUM LEAKAGE; EXCELLENT APPEARANCE; MOISTURE-PROOF
- 7—POSITIVE TERMINAL CONNECTIONS— INSURES GOOD ANCHORAGE; NO EXTRA CONTACT RESISTANCE

Cap. Mfd.	Cat. No.	Code Word	Cat. No.	Code Word	Cat. No.	Code Word	List Price
<b>TYPE 1W</b>			<b>TYPE 3L</b>		<b>TYPE 5W</b>		
.000005					5W-5V5	TYNEA	\$.20
.0000075					5W-5V75	TYNEE	.20
.00001					5W-5Q1	TYNAU	.20
.00002					5W-5Q2	TYNTE	.20
.000025					5W-5Q25	TYNIA	.20
.00003					5W-5Q3	TYNIO	.20
.00004					5W-5Q4	TYNOE	.15
.00005					5W-5Q5	TYNAP	.15
.00007					5W-5Q7	TYNEX	.15
.0001			3L-5T1	GRIFE	5W-5T1	TYNOL	.15
.00015			3L-5T15	GRIKK	5W-5T15	TYNTO	.15
.0002			3L-5T2	TRAKU	5W-5T2	TYNEK	.15
.00025			3L-5T25	GROYN	5W-5T25	TYNUM	.20
.0003			3L-5T3	TRALP	5W-5T3	TYNOR	.20
.0004			3L-5T4	TRAMP	5W-5T4	TYNKU	.20
.0005			3L-5T5	GROAN	5W-5T5	TYNUZ	.20
.0006	1W-5T6	UNSUP	3L-5T6	GROBY			.20
.0007	1W-5T7	UNSET	3L-5T7	TREPT			.20
.0008	1W-5T8	UNSYK	3L-5T8	TREED			.20
.0009	1W-5T9	UNSOB	3L-5T9	TREOH			.20
.001	1W-5D1	UNDIT	3L-5D1	GROAT			.25
.0015	1W-5D15	UNDIX	3L-5D15	TRELM			.25
.002	1W-5D2	UNDOT	3L-5D2	GROID			.30
.0025	1W-5D25	UNPUT	3L-5D25	TREHN			.35
.003	1W-5D3	UNPIN	3L-5D3	GROOM			.40
.004	1W-5D4	UNLIT	3L-5D4	GROSS			.45
.005	1W-5D5	UNLOX	3L-5D5	GROUP			.50
.006	1W-5D6	UNLAG	3L-5D6	GROUT			.60
.007			3L-5D7	GREPX			.65
.0075			3L-5D75	GRITN			.65
.008			3L-5D8	GRUKT			.65
.01			3L-5S1	GRUZZ			.75

**Weight Per 100**

Cap. to .0009, inclusive  
1 lb.

Cap. to .003, inclusive  
1¼ lbs.

Cap. to .006, inclusive  
1½ lbs.

**Weight Per 100**

Cap. to .005, inclusive  
1½ lbs.

Cap. to .01, inclusive  
1¾ lbs.

**Weight Per 100**

½ lb.

**NOTE: Low Loss units are 20% heavier.**

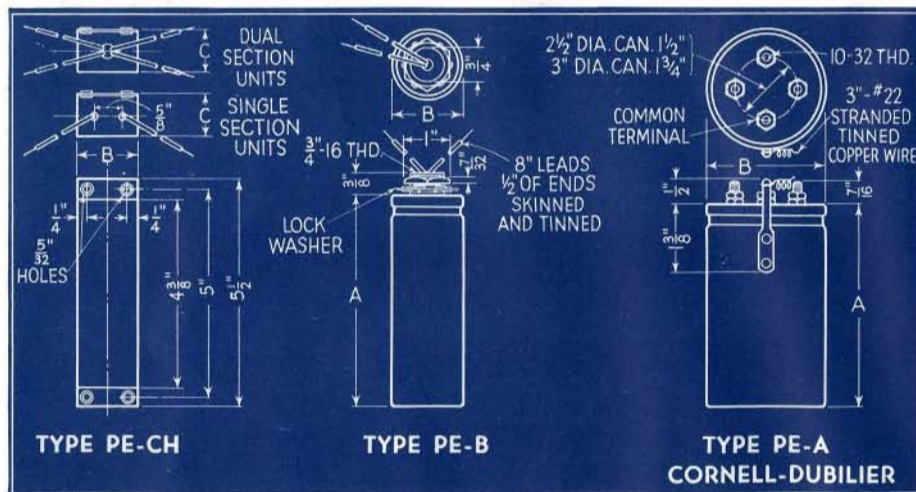
### NOTES:

Stock units are 10% tolerance. If special low-loss bakelite is required, add 25c to list price. (When ordering low loss units add "L" to Cat. No. viz: 5WL-5T1; 3LL-5S1). When 5% tolerance is needed, add 10% to list price; for 3% tolerance, add 20% to list price. As an example of the excellence of these units, a .0001 mfd. capacitor has a leakage resistance of 100,000,000,000 ohms! On a sensitive galvanometer, the needle deflection cannot be detected, so insignificant is the D.C. current flow.

# CORNELL



# DUBILIER



PAPER REPLACEMENT CAPACITORS THAT SIMULATE electrolytics in appearance, Types PE-A, PE-B and PE-CH are fulfilling a real service need. The actual capacity of these units is from 1/3 to 1/2 of the usual value employed when using electrolytics, and this capacity is limited solely by the size of the container. In most instances it is practical to replace electrolytics and get satisfactory operation. Another important asset inherent in these units is their high voltage breakdown which an electrolytic does not afford. There is no polarity to observe when using these capacitors.

# PAPER DIELECTRIC FILTER CAPACITORS

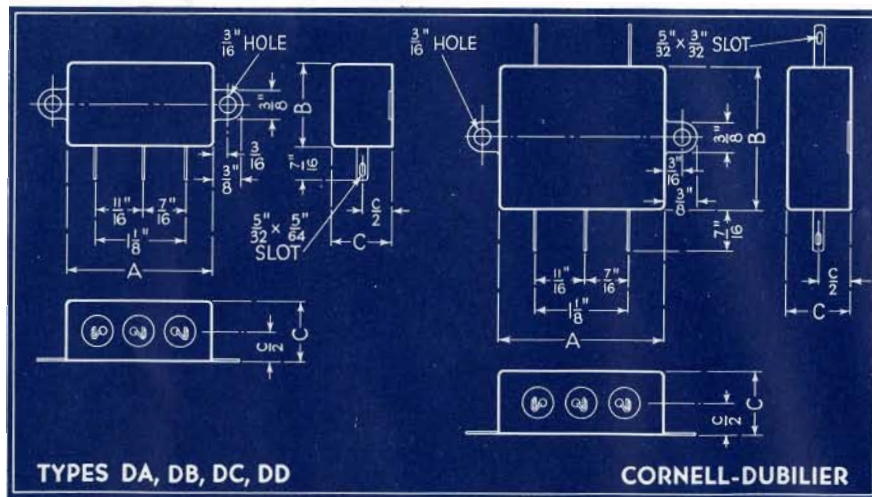
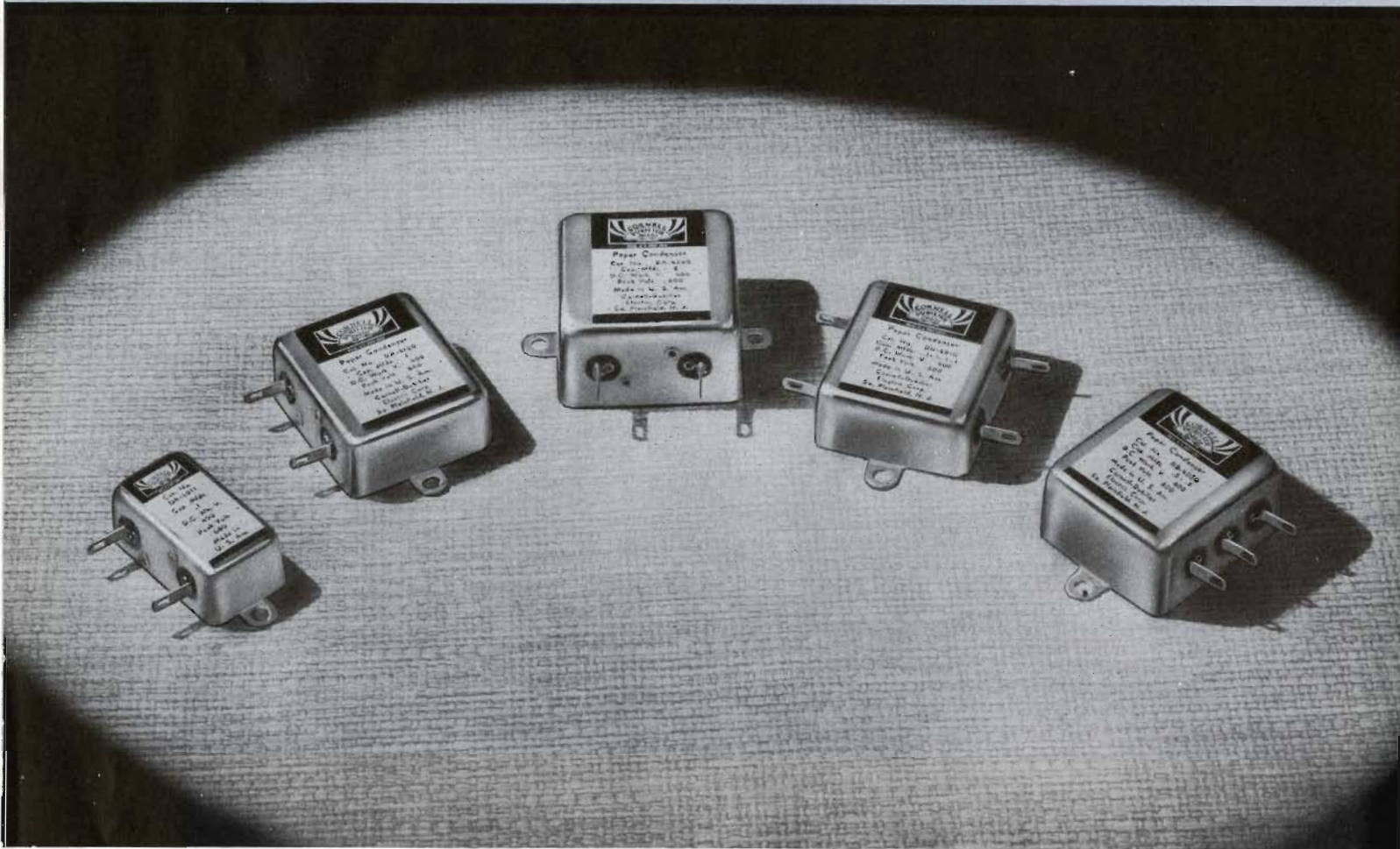
## FEATURES OF TYPES PE-A, PE-B and PE-CH

- 1—HALOWAX IMPREGNATED—DECREASED PHYSICAL SIZE
- 2—HI-PURITY ALUMINUM FOIL—LOWER R.F. RESISTANCE; LIGHT WEIGHT
- 3—HI-PURITY MULTI-LAMINATED KRAFT TISSUE—HIGHER VOLTAGE BREAKDOWN; MINIMUM LEAKAGE
- 4—OIL-COOLED—HIGHER VOLTAGE BREAKDOWN
- 5—VACUUM DRIED & IMPREGNATED—LOWER EQUIVALENT SERIES RESISTANCE; LONGER LIFE
- 6—RIGIDLY TESTED—UNIFORM PRODUCT
- 7—SECURE LEADS AND TERMINALS—POSITIVE CONNECTIONS UNDER ALL CONDITIONS
- 8—CONTAINERS, CARDBOARD & ALUMINUM—LIKE ELECTROLYTICS IN APPEARANCE
- 9—CONSERVATIVE D.C. RATING—TRIPLE TESTING ASSURES DEPENDABLE SERVICE
- 10—SPECIAL, COMPLETE POTTING—ADDED PROTECTION AGAINST HUMIDITY

Cat. No.	"Replacement" For Electrolytic Capacity Mfd.	Actual Mfd. Capacity	Code Word	A	B	C	Wt. lbs. Per 100	List Price
<b>TYPE PE-CH</b>								
<b>1000 V.D.C. Test; 600 V.D.C. Peak; 450 V.D.C. Working</b>								
PE-CH-4004	4	2	PECPA	4 $\frac{3}{8}$ x 1 $\frac{3}{8}$ x $\frac{11}{16}$			22	\$ .90
PE-CH-4008	8	3 $\frac{1}{2}$	PECRY	4 $\frac{3}{8}$ x 1 $\frac{3}{8}$ x $\frac{11}{16}$			31	1.15
PE-CH-4808	8-8	2 $\frac{3}{4}$ -2 $\frac{3}{4}$	PECSI	4 $\frac{3}{8}$ x 1 $\frac{5}{8}$ x 1 $\frac{1}{2}$			70	1.90
<b>1200 V.D.C. Test; 800 V.D.C. Peak; 600 V.D.C. Working</b>								
PE-CH-6004	4	2	PECTO	4 $\frac{3}{8}$ x 1 $\frac{3}{8}$ x $\frac{15}{16}$			27	1.20
PE-CH-6008	8	3	PECXA	4 $\frac{3}{8}$ x 1 $\frac{5}{8}$ x 1 $\frac{1}{8}$			42	1.60
PE-CH-6808	8-8	2 $\frac{3}{4}$ -2 $\frac{3}{4}$	PECYN	4 $\frac{3}{8}$ x 2 x 1 $\frac{1}{2}$			75	2.65
<b>TYPE PE-B</b>								
<b>1200 V.D.C. Test; 800 V.D.C. Peak; 600 V.D.C. Working</b>								
PE-B-6004	4	1 $\frac{3}{4}$	PEBAZ	4 $\frac{3}{8}$ x 1 $\frac{3}{8}$			30	1.35
PE-B-6008	8	2 $\frac{3}{4}$	PEBEY	4 $\frac{3}{8}$ x 1 $\frac{3}{8}$			37	1.75
PE-B-6808	8-8	1 $\frac{3}{4}$ -1 $\frac{3}{4}$	PEBOW	4 $\frac{3}{8}$ x 1 $\frac{1}{2}$			44	2.80
<b>TYPE PE-A</b>								
<b>1200 V.D.C. Test; 800 V.D.C. Peak; 600 V.D.C. Working</b>								
PE-A-6444	4-4-4	1 $\frac{1}{2}$ -1 $\frac{1}{2}$ -1 $\frac{1}{2}$	PEADE	4 $\frac{3}{8}$ x 2 $\frac{1}{2}$			113	3.50
PE-A-6888	8-8-8	2 $\frac{3}{4}$ -2 $\frac{3}{4}$ -2 $\frac{3}{4}$	PEAFO	4 $\frac{3}{8}$ x 3			150	4.90
PE-A-6918	9-9-18	3-3-6	PEAGU	4 $\frac{3}{8}$ x 3			154	6.50

**NOTES:** In Types PE-B and PE-CH, the dual section units have separate leads, a set of two leads of one color identify the terminals for each capacity. In Type PE-A triple section units, the common terminal stud is insulated, with provision made to ground same by means of a small wire lead soldered to the grounding lug on the metal container. For most circuits, it is recommended that a 600-volt rated unit be used at least across the output of the rectifier tube. If all traces of hum are not eliminated, an additional "filter" capacitor is suggested.

# CORNELL DUBILIER



C-D "BATHTUB" METAL SHELL TYPE DA to DD capacitors are non-inductively wound, are well protected against climatic conditions and are available in a large variety of ratings, making them quite popular and useful not only for radio frequency bypass but also for audio frequency coupling and bypass functions. Lug terminals are amply insulated. Integral with casing, the mounting feet allow ease of assembly. These units are wax-potted, but it must be remembered, that for extra severe humidity applications, as in tropical climates, a substitute is recommended in our Type DY (Cat. No. 160).

# CASED PAPER DIELECTRIC CAPACITORS

## FEATURES OF TYPES DA, DB, DC, and DD

- 1—HALOWAX IMPREGNATED—DECREASED PHYSICAL SIZE
- 2—HI-PURITY ALUMINUM FOIL—LOWER R.F. RESISTANCE; LIGHT WEIGHT
- 3—HI-PURITY MULTI-LAMINATED KRAFT TISSUE—HIGHER VOLTAGE BREAKDOWN; MINIMUM LEAKAGE
- 4—VACUUM DRIED & IMPREGNATED—LOWER EQUIVALENT SERIES RESISTANCE; LONGER LIFE
- 5—OIL-COOLED—HIGHER VOLTAGE BREAKDOWN
- 6—RIGIDLY TESTED—UNIFORM PRODUCT
- 7—WELL INSULATED LUG TERMINALS—NO LEAKAGE TO CONTAINER; STRONG
- 8—CONTAINERS—SMALL DRAWN METAL SHELL; CONVENIENT MOUNTING
- 9—CONSERVATIVE D.C. RATING—TRIPLE TESTING ASSURES DEPENDABLE SERVICE
- 10—SPECIAL, COMPLETE POTTING—ADDED PROTECTION AGAINST HUMIDITY

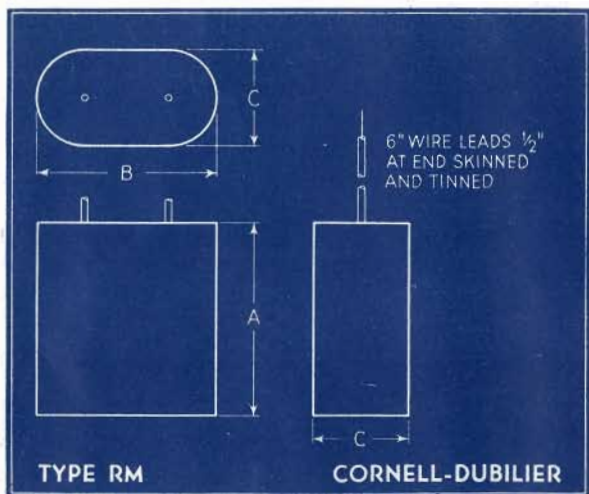
Cat. No.	Capacity Mfd.	Code Word	A	Size B	C	Weight Per 100	List Price
<b>TYPE DA</b>							
<b>400 V. D. C.</b>							
DA-4011	.1	ACERA	1 $\frac{3}{8}$	x 1	x $\frac{3}{4}$	6 $\frac{1}{4}$ lb.	\$.50
DA-4025	.25	ACHAR	1 $\frac{3}{8}$	x 1	x $\frac{3}{4}$	7 $\frac{1}{2}$ "	.60
DA-4050	.5	ACHIA	1 $\frac{3}{8}$	x 1	x $\frac{7}{8}$	8 "	.75
DA-4100	1	ACHOR	2	x 1 $\frac{3}{4}$	x $\frac{1}{8}$	15 $\frac{3}{4}$ "	1.00
DA-4200	2	ACTUS	2	x 2	x 1 $\frac{1}{8}$	25 "	1.55
<b>600 V. D. C.</b>							
DA-6011	.1	ACORN	1 $\frac{3}{8}$	x 1	x $\frac{3}{4}$	7 $\frac{1}{4}$ "	.60
DA-6025	.25	ACRIS	1 $\frac{3}{8}$	x 1 $\frac{1}{4}$	x $\frac{3}{4}$	10 "	.70
DA-6050	.5	ACRYL	2	x 1 $\frac{3}{4}$	x $\frac{1}{8}$	14 $\frac{3}{4}$ "	.95
DA-6100	1	ACTON	2	x 2	x 1 $\frac{1}{8}$	26 "	1.50
<b>TYPE DB-DC-DD</b>							
<b>400 V. D. C.</b>							
DB-4010	.1-1	ADACT	1 $\frac{3}{8}$	x 1	x $\frac{3}{4}$	7 $\frac{1}{2}$ "	.65
DB-4025	.25-.25	ADAGA	2	x 1 $\frac{1}{4}$	x $\frac{3}{4}$	10 $\frac{1}{2}$ "	.80
DB-4050	.5-.5	ADAGE	2	x 1 $\frac{3}{4}$	x 1	17 $\frac{3}{4}$ "	1.00
DC-4010	.1-1-1	ADAGY	1 $\frac{3}{8}$	x 1	x $\frac{3}{4}$	8 $\frac{1}{4}$ "	.85
DD-4010	.1-1-1-1	ADATI	2	x 1 $\frac{3}{4}$	x $\frac{1}{8}$	15 "	1.10

**NOTES:** In the single and dual section capacitor units, the terminals are insulated from the container. The duals have three terminals, the common lug being on the left. In the triple and quadruple section capacitors, the common terminal connection is grounded to the metal case. When you buy a C-D capacitor you buy not only the concentrated knowledge and experience of 28 years of exclusive capacitor manufacturing behind it, but you are certain of getting the same inbuilt quality in a single unit as in 1,000,000! This is true because of the extra inspection made economically possible with vast productivity. Try them and see for yourself!

# CORNELL



# DUBILIER



**TYPE RM UNCASSED FILTER CAPACITORS** have been made available to repair paper dielectric "filter blocks" which were used in the early models of A.C. operated radio sets. Small, compact and carefully sealed to withstand the ravages of humidity and temperature, they serve to repair these old time receivers to which their owner may have developed a sort of sentimental attachment. Also useful in the elimination of electrical interference caused by push-buttons, bells, buzzers and the like. Individually wrapped in cellophane.

# UNCASED PAPER DIELECTRIC CAPACITORS

## FEATURES OF TYPE RM

- 1—HALOWAX IMPREGNATED— DECREASED PHYSICAL SIZE
- 2—HI-PURITY ALUMINUM FOIL— LOWER R.F. RESISTANCE; LIGHT WEIGHT
- 3—HI-PURITY MULTI-LAMINATED KRAFT TISSUE— HIGHER VOLTAGE BREAKDOWN; MINIMUM LEAKAGE
- 4—VACUUM DRIED & IMPREGNATED— LOWER EQUIVALENT SERIES RESISTANCE;
- 5—OIL-COOLED— HIGHER VOLTAGE BREAKDOWN
- 6—RIGIDLY TESTED— UNIFORM PRODUCT
- 7—FLEXIBLE LEADS SECURELY SOLDERED TO FOIL TABS— MINIMIZES OPEN CIRCUITS
- 8—MOISTURE-PROOF HIGH TEMPERATURE WAX SEALED— BEST POSSIBLE PROTECTION
- 9—CONSERVATIVE D.C. RATING— TRIPLE TESTING ASSURES DEPENDABLE SERVICE
- 10—SPECIAL HEAVY PROTECTIVE WRAPPER— EXTRA PROTECTION, ELECTRICALLY & PHYSICALLY
- 11—CELLOPHANE ENVELOPE— KEEPS UNIT FRESH FOR FUTURE USE

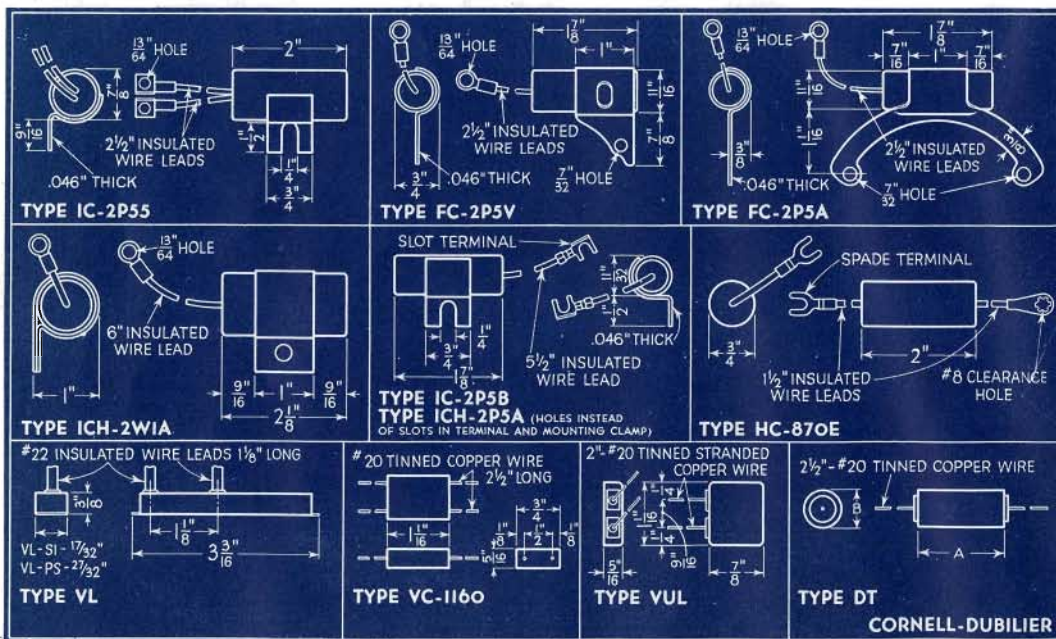
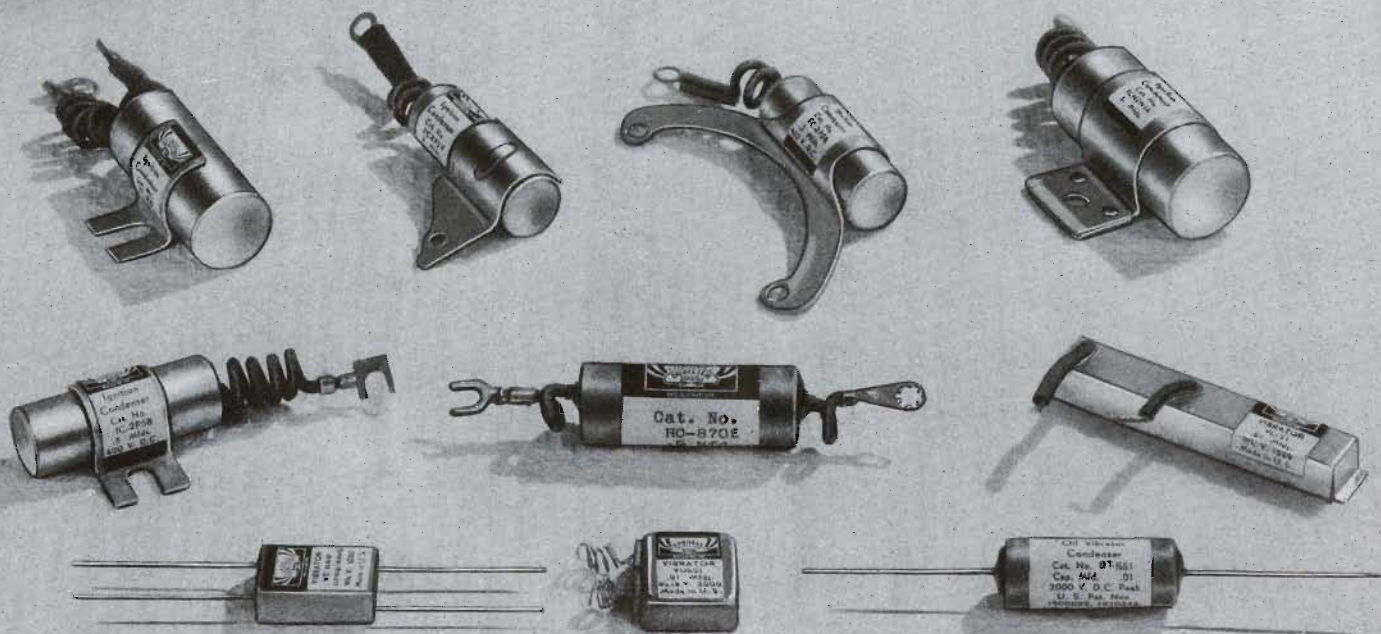
Cat. No.	Capacity Mfd.	Code Word	A	B	C	Weight Per 100	List Price
<b>TYPE RM</b>							
<b>400 V. D. C.</b>							
RM-4050	.5	JENNY	2	x 1	x 1/2	4 1/4 lb.	\$.50
RM-4100	1	JERRY	2	x 1 3/8	x 1 1/8	8 3/4 "	.75
RM-4200	2	JETTY	2	x 1 7/8	x 1	30 1/2 "	1.15
RM-4400	4	JOINT	3 3/8	x 1 7/8	x 1 1/8	36 3/4 "	2.00
<b>600 V. D. C.</b>							
RM-6010	.1	JOKER	2	x 1	x 3/8	2 3/4 "	.40
RM-6025	.25	JOLLY	2	x 1	x 3/8	3 1/2 "	.50
RM-6050	.5	JOULE	2	x 1 3/8	x 1/2	7 1/4 "	.60
RM-6100	1	JUDGE	2	x 1 7/8	x 3/4	14 "	.90
RM-6200	2	JUICE	3 3/8	x 1 7/8	x 7/8	29 3/4 "	1.35
RM-6400	4	JUMBO	4 1/4	x 1 7/8	x 1 3/8	53 "	2.70
<b>1000 V. D. C.</b>							
RM-10100	1	KIOSK	4 1/4	x 1 7/8	x 7/8	36 "	1.50
RM-10200	2	KNACK	4 1/4	x 1 7/8	x 1 3/4	50 "	2.50

**NOTES:** The above listed variety of Type RM units will be found to serve practically every replacement need. Special capacitor "blocks" can be made up and potted into suitable containers by Servicemen to fulfill any requirements. Servicemen, especially those confronted with high voltage power pack problems, with power transformers having poor voltage regulation and contending with circuits wherein exceptionally high peak voltage surges develop welcome these dependable filter capacitors. Long wire leads facilitate ease of hook-up.

# CORNELL



# DUBILIER



Automobile radio during the last five years, has taken tremendous strides. Reception of music and speech with an automobile radio receiver, operating from the car's storage battery is clear, quiet and of excellent quality, simulating a home radio receiver's performance. To make this possible, the above photograph illustrates some of the various types of capacitors which have been brought out to meet the problems of vibrator "B" supply filters, generator commutator and switch noise suppression for automobiles.

The mechanical design of these capacitors insures against damage by the high temperatures and excessive vibration existing under the hood of an auto. Special units such as these are designated for certain particular installations. Thus, for instance, the Ford generator condensers have special mounting brackets. The vibrator capacitors are oil-treated to withstand high peak and surge voltages, up to 3000 V.



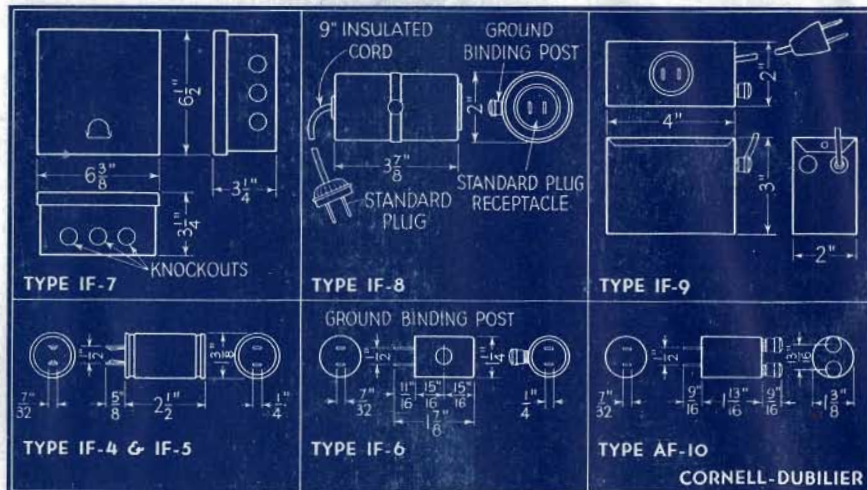
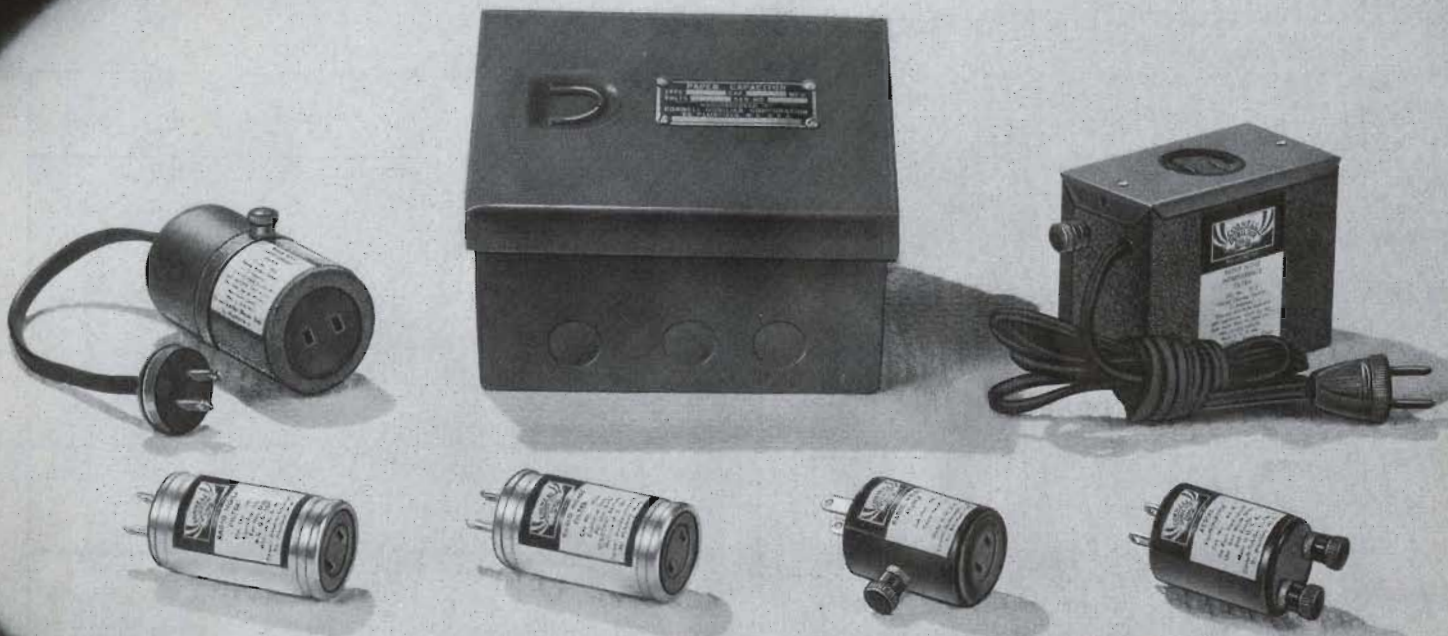
# AUTO GENERATOR AND VIBRATOR CAPACITORS

## C-D AUTO RADIO FILTER UNITS

Thorough impregnation and sealing keep these little capacitors impervious to weather conditions. All leads are firmly anchored, all seams of metal units carefully soldered. Substantially made, these will outlast the associated equipment for which they are intended.

Cat. No.	Capacity Mfd.	Code Word	A	Size B	C	Weight Per 100	List Price
<b>GENERATOR UNITS</b>							
IC-2P5B	.5	ICGEN	1 $\frac{15}{16}$	x $\frac{11}{16}$		7 $\frac{3}{4}$ lb.	\$.50
ICH-2P5A	.5	ICHIN	1 $\frac{15}{16}$	x $\frac{11}{16}$		7 $\frac{3}{4}$ "	.50
FC-2P5A	.5	FORDE	1 $\frac{15}{16}$	x $\frac{11}{16}$		9 $\frac{1}{2}$ "	.50
FC-2P5V	.5	FORDU	1 $\frac{15}{16}$	x $\frac{11}{16}$		9 "	.50
IC-2P55	.5-.5	ICDUO	2	x $\frac{7}{8}$		16 "	.75
ICH-2W1A	1	ICHOW	2 $\frac{3}{16}$	x 1		17 $\frac{1}{4}$ "	.70
<b>AMMETER UNIT</b>							
HC-870E	.5	HIAMP	2	x $\frac{3}{4}$		5 "	.45
<b>VIBRATOR UNITS</b>							
Metal "postage stamp" capacitors, with two insulated leads (oil filled, 2000 V. Peak)							
VUL-D7	.007	VULAZ	1	x $1\frac{1}{8}$	x $\frac{9}{32}$	8 "	.45
VUL-D8	.008	VULEY	1	x $1\frac{1}{8}$	x $\frac{9}{32}$	8 "	.45
VUL-S1	.01	VULIX	1	x $1\frac{1}{8}$	x $\frac{9}{32}$	8 "	.45
VUL-S2	.02	VULOW	1	x $1\frac{1}{8}$	x $\frac{9}{32}$	8 "	.45
Metal shell units for old style vibrator "B" supply units							
VL-S1	.01 (1500V)	VELKO	3 $\frac{3}{16}$	x $17/32$	x $\frac{3}{8}$	3 $\frac{3}{4}$ "	.60
VL-P5	.5 (200V)	VELOP	3 $\frac{3}{16}$	x $27/32$	x $\frac{3}{8}$	8 "	.65
Special dual .0008 rectangular unit with four leads							
VC-1160	.0008-.0008	VICMO	1 $\frac{1}{16}$	x $\frac{3}{4}$	x $\frac{5}{16}$	4 "	.50
Oil-impregnated and processed paper tubular capacitor's (2000 V. Peak)							
DT-16T8	.0008	DEHMO	1 $\frac{1}{4}$	x $\frac{7}{16}$		1 "	.35
DT-16D25	.0025	DEHNU	1 $\frac{1}{4}$	x $\frac{1}{2}$		1 $\frac{1}{4}$ "	.35
DT-16D5	.005	DEHPA	1 $\frac{5}{8}$	x $\frac{1}{2}$		1 $\frac{1}{2}$ "	.35
DT-16D7	.007	DEHKE	1 $\frac{5}{8}$	x $\frac{1}{2}$		1 $\frac{3}{4}$ "	.35
DT-16D75	.0075	DEHLY	1 $\frac{5}{8}$	x $\frac{1}{2}$		1 $\frac{3}{4}$ "	.35
DT-16S1	.01	DEHBI	1 $\frac{5}{8}$	x $\frac{1}{2}$		2 "	.35
DT-16S2	.02	DEYCH	1 $\frac{5}{8}$	x $\frac{11}{16}$		3 "	.35
DT-16S3	.03	DEYDD	2	x $\frac{11}{16}$		4 "	.35
DT-16S4	.04	DEYEE	2	x $\frac{13}{16}$		5 "	.40
DT-16S5	.05	DEYFF	2	x $\frac{13}{16}$		5 $\frac{1}{2}$ "	.45
DT-16P1	.1	DEYGG	2 $\frac{1}{2}$	x $\frac{7}{8}$		8 $\frac{1}{4}$ "	.60

During the past 28 years, Cornell-Dubilier has produced and sold over a billion capacitors of all sizes, shapes and voltage ratings from 10 V.D.C. to 1,000,000 V.D.C. Frequently an average production of more than 500,000 units a day has been required to meet the demands of the trade. Such a remarkable record is gratifying proof of the international acceptance of C-D capacitors!



The elimination of electrical noises, commonly known as radio interference has been met with success by the judicious use and application of properly designed filter devices of both the capacitor type and combination capacitor and inductor type.

Whenever practical and possible, interference which makes radio reception difficult

and prevents full program enjoyment should be eliminated at its source. Sometimes this is not easy to accomplish. Line noises are most easily eliminated by using the correct filter at the radio receiver. Electrical noises picked up by the antenna are not so readily remedied or minimized. The source of interference must be located and a special study made of the problem. The most usual difficulties arise from the use of home electrical appliances for which the items shown herewith have been designed.

# RADIO INTERFERENCE FILTER CAPACITORS

## C-D "QUIETONE" FILTER UNITS \*

Designed to enhance the pleasure of quiet radio reproduction, the IF series of Quietone filters are efficient, inexpensive and easy to install. Intended for use in conjunction with any type of A.C. or D.C. operated radio set, both broadcast and short wave bands can be cleared of annoying interference by the use of the proper unit.

<p>TYPE IF-4 Quietone: For use with A.C.-D.C. Midget sets. Simple to Plug in. Shipping weight <math>\frac{1}{2}</math> lb.</p> <p>LIST PRICE \$1.00</p>	<p>TYPE IF-8 Quietone: An all-wave filter unit that can be successfully employed between the radio receiver and power line, to prevent line noises entering the set. Metal case effectively shields unit which is equipped with binding post for ground connection. For use on 110 V. A.C. or D.C., 5 Amps. maximum capacity. Shipping Weight 2 lbs.</p> <p>LIST PRICE \$4.95</p>
<p>TYPE IF-5 Quietone: For use with electric razors eliminating this source of bothersome noise. Shipping Weight <math>\frac{1}{2}</math> lb.</p> <p>LIST PRICE \$1.00</p>	<p>TYPE IF-9 Quietone: Capacitive - inductive unit for use with practically all household appliances. For use on 110 V. A.C. or D.C., will operate with any device rated up to 660 watts. Shipping Weight <math>1\frac{1}{4}</math> lbs.</p> <p>LIST PRICE \$5.50</p>
<p>TYPE IF-6 Quietone: For use with dozens of household appliances using motors of <math>\frac{1}{4}</math> H.P. or less. Provided with ground binding post. Bakelite case. Shipping Weight <math>\frac{1}{2}</math> lb.</p> <p>LIST PRICE \$2.25</p>	<p>TYPE AF-10 Quietone: Antenna Eliminator for ALL classes of radio receivers. Small bakelite case, plugs into wall outlet and does away with outdoor noisier types of aerials. Shipping Weight <math>\frac{1}{4}</math> lb.</p> <p>LIST PRICE \$1.00</p>
<p>TYPE IF-7 Quietone: Heavy Duty home appliances such as washing machines, oil burners or refrigerators which cause plenty of racket can be effectively equipped with this cut-out box type to eliminate electrical interference. Designed particularly for oil burners, and rated at 5 Amperes at 110 V.A.C. Shipping Weight 6 lbs.</p> <p>LIST PRICE \$7.50</p>	

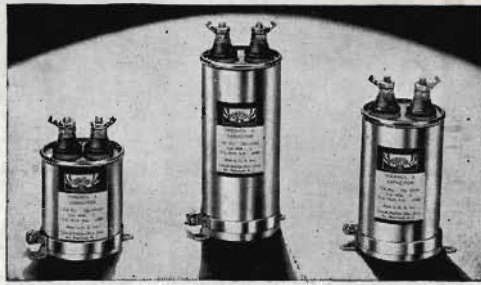
C-D Quietone Interference Filters can be successfully used with: Radio Receivers; Adding and Calculating Machines; Air Purifiers; Battery Chargers; Billing and Bookkeeping Machines; Compressors, Converters, Cream Separators and Counting Machines; Dental Drills, Diathermy Apparatus, Dishwashing Machines, Drills and Drink Mixers; Egg Beaters, Elevator Motors and Controls; Fans, Flashers, Food Mixers; Generators; Hair Dryers, Heating Pads; Kitchen Appliances; Motor-generators, Motors, of all types and description; Oil burners; Razors, Refrigerators; Sign Flashers, Soda Fountain Equipment; Thermostatic Controls and Traffic Signals; Vacuum Cleaners, Violet Ray Apparatus and Washing Machines. For interference elimination on Neon Signs and X-Ray equipment, we will gladly offer our engineering experience on your exact problem.

\*U. S. Pat. Office Registered.

# NEW

## TYPE TQ DYKANOL TRANSMITTING CAPACITORS

### UNIVERSAL MOUNTING, CYLINDRICAL CASE UNITS



See page 23  
For Features  
of  
Dykanol  
Capacitors

Cat. No.	Cap. Mfd.	Code Word	Size	List Price
		600 V. DC		
TQ-6020	2	TYQAB	2 1/8 x 2"	\$2.25
TQ-6040	4	TYQEC	2 3/4 x 2"	3.00
		1000 V. DC		
TQ-10010	1	TYQID	1 7/8 x 2"	2.25
TQ-10020	2	TYQOE	2 1/2 x 2"	2.75
TQ-10040	4	TYQUF	3 7/8 x 2"	3.75
		1500 V. DC		
TQ-15010	1	TYQGA	2 3/8 x 2"	3.00
TQ-15020	2	TYQNE	3 5/8 x 2"	3.75
		2000 V. DC		
TQ-20010	1	TYQJI	3 1/8 x 2"	3.75
TQ-20020	2	TYQKO	4 7/8 x 2"	4.25

Type TQ are genuine Dykanol, Fire-proof Transmitting Filter Capacitors that can be mounted vertically or inverted by means of the mounting ring supplied. Equipped with neat porcelain terminals. Real Values—never before offered to the trade.

# CORNELL DUBILIER

CORNELL-DUBILIER CAPACITORS ARE MANUFACTURED UNDER ONE OR MORE OF THE FOLLOWING U. S. PATENTS.

Re. 15,689	1,572,604	1,658,768	1,713,867	1,740,131	1,759,230	1,821,055	1,842,797	1,870,949	1,940,847
Re. 19,370	1,575,044	1,661,351	1,714,662	1,740,159	1,763,554	1,823,492	1,843,541	1,870,950	1,945,108
Re. 19,604	1,575,045	1,662,548	1,715,319	1,740,177	1,767,206	1,823,502	1,845,130	1,870,961	1,959,780
1,391,672	1,579,168	1,671,519	1,715,560	1,742,759	1,768,416	1,824,569	1,845,138	1,871,048	1,962,611
1,391,673	1,587,942	1,666,044	1,717,701	1,743,727	1,768,430	1,824,805	1,845,173	1,874,111	1,970,776
1,396,030	1,603,939	1,676,797	1,718,185	1,744,301	1,768,439	1,824,806	1,845,174	1,874,936	1,990,819
1,429,227	1,610,122	1,681,884	1,718,278	1,744,454	1,768,440	1,824,819	1,848,215	1,891,080	2,001,282
1,455,781	1,619,201	1,684,461	1,722,325	1,744,616	1,768,441	1,824,834	1,850,271	1,899,155	2,012,359
1,468,653	1,619,223	1,688,478	1,722,326	1,747,915	1,768,442	1,829,891	1,856,392	1,900,093	2,031,128
1,480,604	1,627,493	1,688,960	1,724,884	1,750,374	1,768,449	1,830,907	1,861,006	1,907,758	2,043,532
1,497,095	1,628,627	1,688,961	1,726,343	1,750,393	1,785,479	1,833,392	1,861,024	1,907,859	2,048,922
1,526,664	1,639,597	1,691,901	1,731,652	1,754,265	1,789,263	1,833,867	1,862,275	1,907,860	2,070,435
1,537,660	1,639,650	1,691,911	1,731,653	1,754,268	1,808,031	1,836,707	1,862,302	1,908,962	2,075,891
1,541,630	1,641,513	1,699,141	1,732,224	1,756,409	1,814,533	1,840,298	1,865,640	1,920,346	2,078,772
1,543,326	1,646,236	1,705,242	1,735,532	1,756,512	1,816,640	1,840,776	1,867,249	1,926,842	2,088,693
1,565,799	1,650,983	1,707,959	1,737,752	1,757,657	1,816,641	1,841,095	1,870,797	1,934,192	2,091,920
1,571,501	1,652,158	1,710,412	1,738,175	1,757,659	1,817,657	1,842,374	1,870,803	1,937,010	
1,571,512	1,656,431	1,712,097	1,738,195	1,757,692	1,818,010	1,842,376	1,870,948	1,938,464	

### Authorized Franchised Distributor: