



ATWATER
KENT
RADIO

NEW PRICES ON WATER KENT RADIOS

Effective November 4, 1929

The following prices supersede those shown elsewhere in this catalog.

Receivers

	(Page 21)	NEW PRICES
Panel Model 55-C		\$64.00
Table Model 55		68.00
Panel Model 55-FC		64.00
Table Model 55-F		68.00
(Page 23)		
Panel Model 60-C		76.00
Table Model 60		80.00
(Page 25)		
Panel Model 61-C		76.00
Table Model 61		80.00
(Page 26)		
Panel Model 67-C		58.00
Table Model 67		62.00

Table Model

Electro-Dynamic Speakers

	(Page 28)
Model F-2-A—Speaker	\$27.00
Model F-4-A—Speaker	27.00
Model F-6-A—Speaker	27.00
Model F-7-A—Speaker	27.00
Model F-2 —Speaker	27.00
Model F-4 —Speaker	27.00
Model F-6 —Speaker	27.00
Model F-7 —Speaker	27.00

Chassis Type

Electro-Dynamic Speakers

	(Page 29)
Model F-2-C—Speaker	\$20.00
Model F-4-C—Speaker	20.00
Model F-6-C—Speaker	20.00
Model F-7-C—Speaker	20.00

Prices slightly higher west of the Rockies.



TWENTY years before the first radio broadcasting station was opened, the Atwater Kent name-plate on an electrical precision instrument was accepted as a mark of quality.

Today, on Radio, the Atwater Kent name-plate is our assurance of your complete satisfaction, for it is the mark of a reputation earned by strict adherence to rigid standards of quality. It is the symbol of our pledge—that these standards have not been lowered.

Atwater Kent Tuned Radio Frequency Receivers are licensed only for Radio Amateur, Experimental and Broadcast Reception.

ATWATER KENT MFG COMPANY
4700 Wissahickon Avenue
Philadelphia

COPYRIGHT, 1929, BY ATWATER KENT MANUFACTURING CO.



A. ATWATER KENT

PRESIDENT AND FOUNDER OF THE

ATWATER KENT MFG COMPANY

Philadelphia

EVER since I have been interested in Radio this idea has been uppermost in my mind—Compactness, Simplicity and Tonal Perfection.

Our ability to make powerful radio sets in compact cabinets is now a well-established fact. Millions of satisfied owners testify to that.

With the introduction of our Screen-Grid Radio, I feel that we are very near our ideal. Our present Models are more powerful, more sensitive, more selective, and have better tone qualities than any Receiving Sets we have ever made.

It has always been our policy to avoid novelties and to give the public only those things in Radio that will stand the test of time. The Receiving Sets and Radio Speakers listed in this catalog are in complete accord with this policy.

I am told that we are too conservative in the claims we make in our advertising. That is a pleasing compliment. I feel sure that our friends, both old and new, will continue to find that our radio instruments will do more than we say they will.

A. Chester Kuhl

Design

THE DESIGN of all Atwater Kent Radio is carried out by a staff of expert Radio Engineers who have at their command the facilities of a completely equipped and up-to-date Radio Laboratory.

Here is devised the very latest in modern radio apparatus. But each new development, every new piece of mechanism, must pass through a series of exhaustive tests—often covering many months' time—before it is turned over to the Production Department to be made up in quantities and put on public sale.

This rigorous “laboratory appraisal,” before any apparatus is offered to the public, is the basis on which the success of all Atwater Kent products has been built.

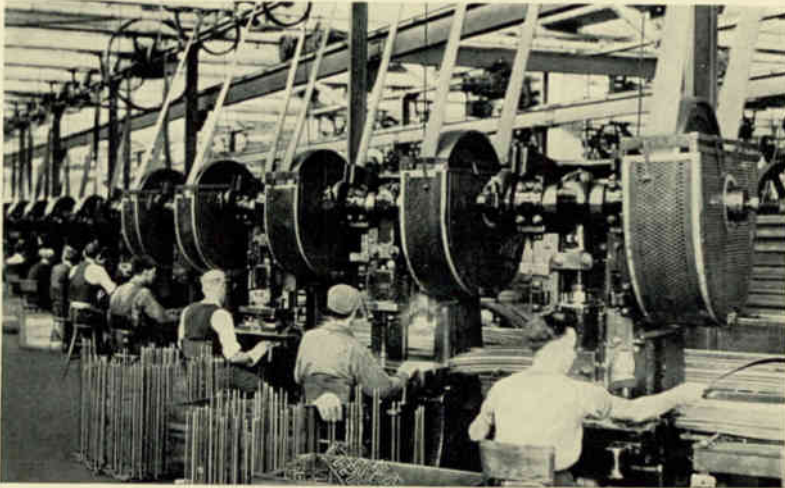


A section of the commodious Radio Laboratory which forms such an important part of the Atwater Kent manufacturing plant.

Manufacture

THE MANUFACTURE of Atwater Kent Radio is carried on in the largest and finest factory in the world devoted exclusively to the making of radio apparatus. Built especially for this purpose, this plant is the last word in manufacturing efficiency — a veritable embodiment of speed and accuracy.

Here automatic machines, with almost human intelligence, turn long brass tubes and bars into countless small screws, nuts, binding posts and the like; tons of powdered Bakelite are moulded, under tremendous heat and pressure, into gleaming knobs, sockets and other parts; hundreds of thousands of miles of fine copper wire is wound on solid and hollow cores to form magnets and transformers; sheet metal is stamped and pressed and spun to various shapes and



Looking down this aisle gives some idea of the multitude of machines that cover the vast floor space in the Atwater Kent plant.

forms; while the sturdy steel chassis bases, table model cabinets and table model speaker housings are formed in huge presses. All steel parts are either cadmium and nickel plated or they are enameled and baked in immense automatic ovens.

Steel, copper, brass, bronze, zinc, tin, lead, nickel, aluminum, cadmium and gold are the metals used in making Atwater Kent Radio apparatus, while from the vegetable kingdom are required silk, cotton, paper and rubber.

While these are but a few of the materials used, and this is but the barest glance at the multitude of delicate and complicated operations necessary in making Atwater Kent Radio, it will suffice, perhaps, to give you some idea of the hum of activity that covers the thirty-two acres of floor space in the Atwater Kent factories.



A few of the thousands of highly trained operatives that are required to make Atwater Kent Radio.

But the most noteworthy feature having to do with the manufacture of Atwater Kent Radio, is the time and attention devoted to inspections and tests—not merely to the finished apparatus, but to each of the various parts as they progress through the plant to the final assembly benches.

When you are told that one out of every ten employees in the Atwater Kent plant is an inspector or tester, and that a typical receiving set is subjected to a total of 752 inspections and electrical tests before it is allowed to leave the factory, you will appreciate the care that is taken to insure perfection in the finished product.

It is this extreme care *in the factory* that makes Atwater Kent Radio so dependable in action — so perfect in the home.



The final test—after which the set is packed for shipment.

Tone

THE most significant word in Radio today is "tone." By "tone" in Radio is meant the truthfulness with which a Receiving Set and Radio Speaker re-create the voices and music that enter the microphone.

Every voice, every musical instrument—in fact every sound—has its own particular tone, and the slightest deviation from the original is just that much loss to the Radio listener.

That so many people regard the tone of Atwater Kent Receiving Sets and Atwater Kent Radio Speakers as their outstanding feature is not surprising to those who witness the amount of care and attention bestowed on this phase of Atwater Kent Radio.



Volume

VOLUME in a Radio Receiving Set means the power with which it is capable of transforming the broadcasting it receives from near and far into audible sound.

All Atwater Kent Radio Receivers are *powerful* and will operate an Electro-Dynamic Radio Speaker with surprising volume and depth of tone. Not only is unusual volume attainable with Atwater Kent Radio Equipment, but the quality of the human voice and the distinguishing tones of all musical instruments are reproduced with unerring fidelity. Thus a single person or a whole room full of people can listen to a talk or a concert with equal enjoyment.

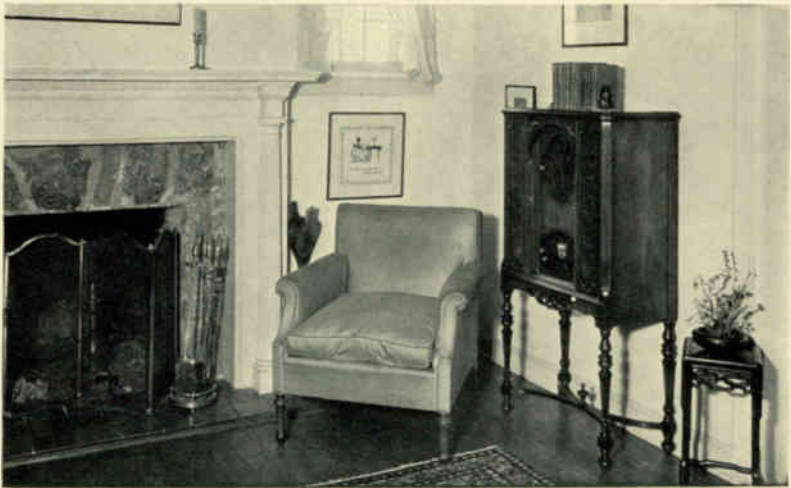


Selectivity

MANY types of radio receiving sets deliver a sufficient "volume" of sound from distant broadcasting stations, but they are not selective—that is, they cannot separate two stations, both broadcasting at the same time on waves of nearly the same length.

The remarkable "selectivity" of all Atwater Kent Receiving Sets is due, not only to the extreme care devoted to their design, but even more to the accuracy of their manufacture.

Particularly is this true of these new Atwater Kent SCREEN-GRID Receivers. Their speed, accuracy and clearness of bringing in desired stations, enable the merest beginner to select stations with the greatest ease, speed and certainty.



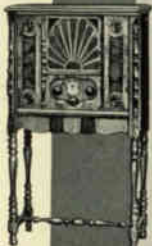
Range

JUST as the better type of automobile manufacturer of today does not enter his cars in speed contests, so the makers of the better grade of radio apparatus do not stress the records their equipment has made in the way of reception from far distant points, for both automobile and radio manufacturers realize that *dependability* and low maintenance cost are of much more interest to the public than claims of records of speed or distance, which are usually the results of most careful planning and particularly advantageous conditions.

While standard Receiving Sets taken from our regular stocks have repeatedly enabled their users to span the continent, and even the oceans, we discourage all attempts to sell our equipment based on any such claims. We prefer to have stressed the fact that Atwater Kent Receivers present a unique combination of Tone, Volume, Selectivity and Range.

If you were to ask two million* Atwater Kent Radio owners what features they admired most in their Atwater Kent Radio, the sum of their replies would spell *DEPENDABILITY*, and if you will accept our word for it and buy now—*today*—an Atwater Kent outfit, you not only will be saved considerable trouble and expense, but *you will be able to start right in and entertain your family and friends with the best that Radio has to offer.*

*More than 2,000,000 Atwater Kent Receiving Sets have been sold to date.



THE best of American cabinet makers — famous for sound design and sincere workmanship — are co-operating to meet the demand for Atwater Kent Screen-Grid Radio in fine cabinets. You have the choice among the creations of not just one or two cabinet specialists, but of many.

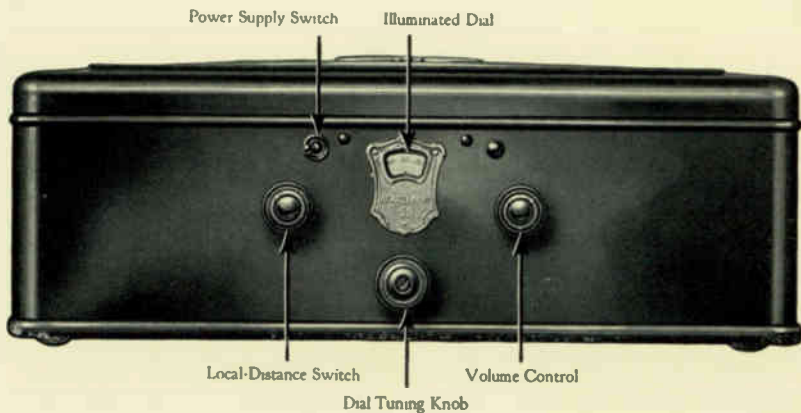
The price depends upon the cabinet you choose. Whatever you pay, you



may be sure you are getting the biggest value for your dollar that you can find in the whole world of radio.

On the front of every Atwater Kent Receiver in a furniture cabinet you will find a name-plate showing that the radio was made by Atwater Kent. On the back you will find a name-plate showing that the cabinet was made by a famous furniture manufacturer expressly for Atwater Kent Screen-Grid Radio.



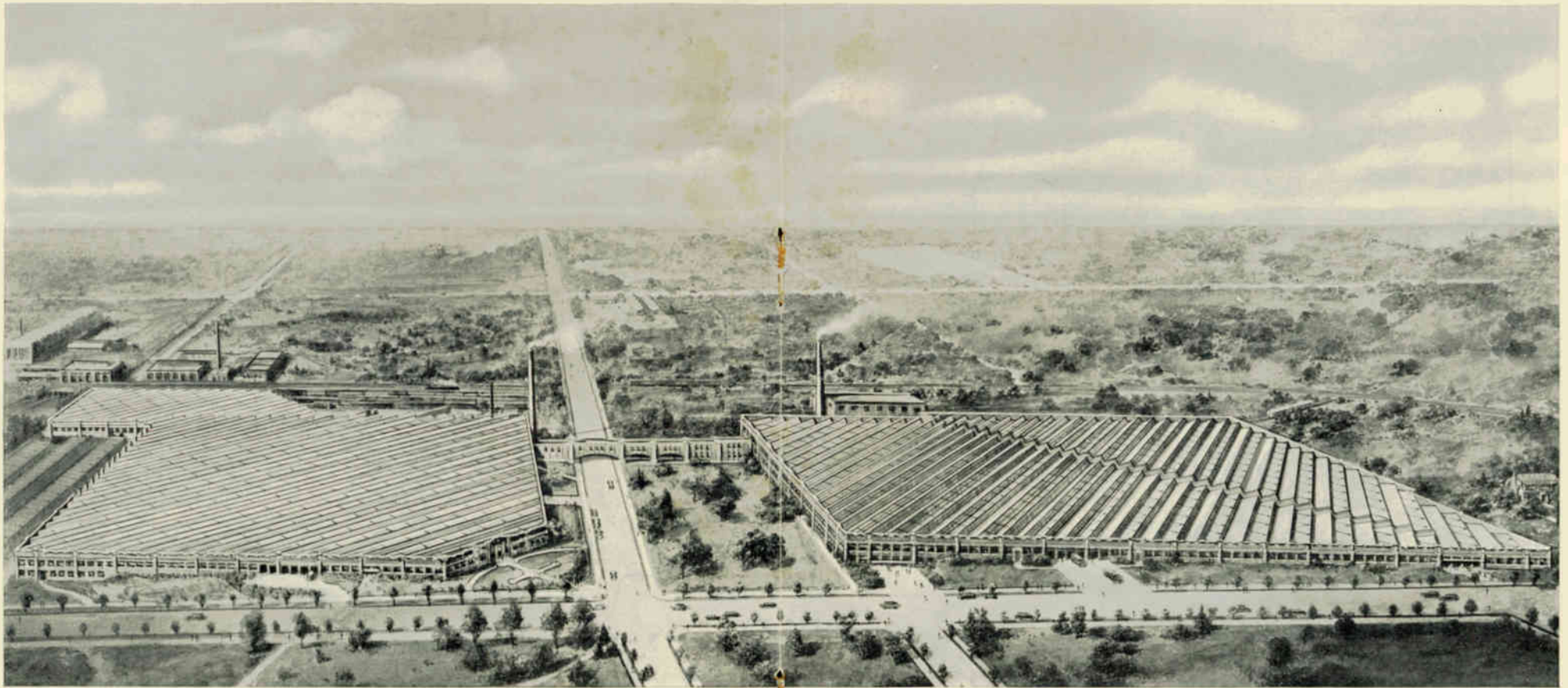


Atwater Kent Screen-Grid Receivers

ALWAYS FIRST with proved improvements, Atwater Kent now introduces Screen-Grid Radio. It means the clearest flow of pure tone quality that you ever heard from a radio set. It means new power to reach far-away stations—new sensitivity—new needlepoint selectivity to separate the stations and pick out the one you want. New velvety depths and new heights of tonal perfection!

Through the magic of this Atwater Kent Screen-Grid Radio, the voice of radio in all its beauty comes to you clearer, finer, farther than ever before—with mighty volume, if you like, or with the intimacy of a softly played guitar.

The operation of all Atwater Kent Receiving Sets is of the utmost simplicity. The use of the Volume Control is only necessary in order to reduce or increase



The Factory Behind the Product

The building shown on the left was the largest Radio Factory in the world. Now, with the addition of the building on the right, it is doubly the largest—its total floor space covering 32 acres. This is a greater area than would be covered by 28 football fields.

ATWATER KENT MFG COMPANY
4700 Wissahickon Avenue
Philadelphia



the volume of music or voices. The complete operation of the set is stopped or started by the Power Supply Switch without touching either of the other controls.

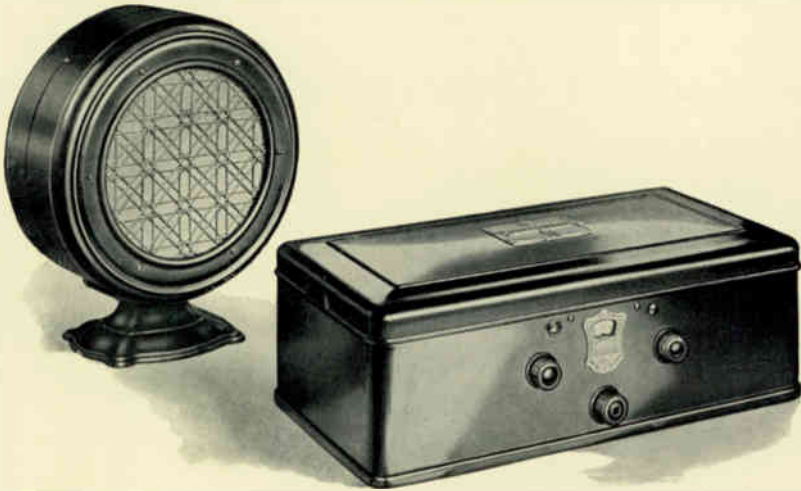
It is seldom necessary to touch the "local-distance" switch; its function is to cut down the immense power of these new Screen-Grid sets for local stations or to make the operator use the full power of the set for distant stations.

Before offering this new set, we made sure that it would be in every way a better radio. It has been tested for thousands of hours in the Atwater Kent Laboratory by our engineers. It is—ininitely better. Every test—all over the United States—proves it. Every moment you spend with it will prove it again.



The dial setting of any station can be "logged" and by moving the dial to this reading the same station can be readily returned to.

One hand is all that is needed to operate an Atwater Kent Receiver, and it is not even necessary to look at the dial when changing from one station to another. What could be simpler?



Model 55 AC Receiver

A powerful, selective and compact Screen-Grid, Electro-Dynamic Receiving Set which takes its power directly from the AC house circuit by simply inserting the attachment plug into any convenient electric light socket.

One Dial Tuning Knob, a Volume Control Knob, and a small Snap Switch are the only moving parts required to operate the Model 55. The efficient Volume Control permits a variation from elfin softness to full volume.

The interior presents a marvelously compact and ingenious electrical assembly, every part of which has

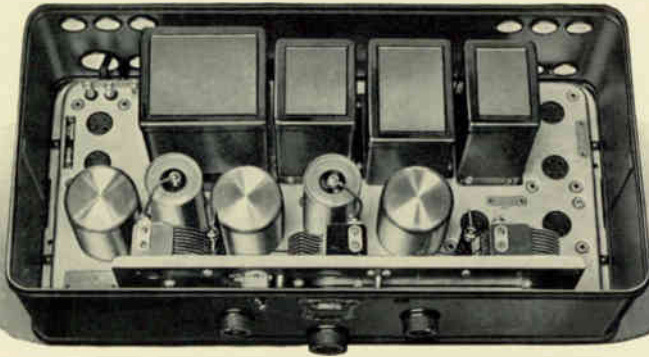
been tested for accuracy—many to a fraction of a thousandth part of an inch, with all working parts scientifically matched.

All types of Atwater Kent Screen-Grid Receivers are constructed so that the electrical assembly is completely shielded. This careful shielding insures the smooth, mellow, life-like *tone* for which all Atwater Kent Receivers are justly celebrated.

Every part of the Model 55 is fully guaranteed against defective material or workmanship.

Notwithstanding its unusually low price, it contains only the finest craftsmanship and materials; mass production, with its resultant economies, brings this receiver within the reach of all.

The Model 55 comprises Two Stages of Tuned Radio Frequency Amplification, using Two Screen-Grid Tubes, a Detector and Two Stages of Special Audio Amplification, the second audio stage employing Two Power Tubes in a “double audio” arrangement. The set is designed for use with 110-120 volt, 60 cycle Alternating Current.



INTERIOR VIEW OF MODEL 55

Be sure to look inside of an Atwater Kent
Receiver and see the workmanship

FOR USE WITH 110-120 VOLT 60 CYCLE AC CURRENT

Panel Model 55C. Part No. 14800. Dimensions: Length, 20 $\frac{3}{4}$ in.; Depth, 10 $\frac{1}{4}$ in.; Height, 6 $\frac{3}{4}$ in. Complete with 10 $\frac{1}{2}$ feet of Flexible Attachment Cord and Two-piece Attachment Plug, but without Tubes, \$84.

Table Model 55. Part No. 14900. Dimensions: Length, 21 $\frac{1}{4}$ in.; Depth, 10 $\frac{3}{4}$ in.; Height, 7 $\frac{3}{4}$ in. Complete with 10 $\frac{1}{2}$ feet of Flexible Attachment Cord and Two-piece Attachment Plug, but without Tubes, \$88.

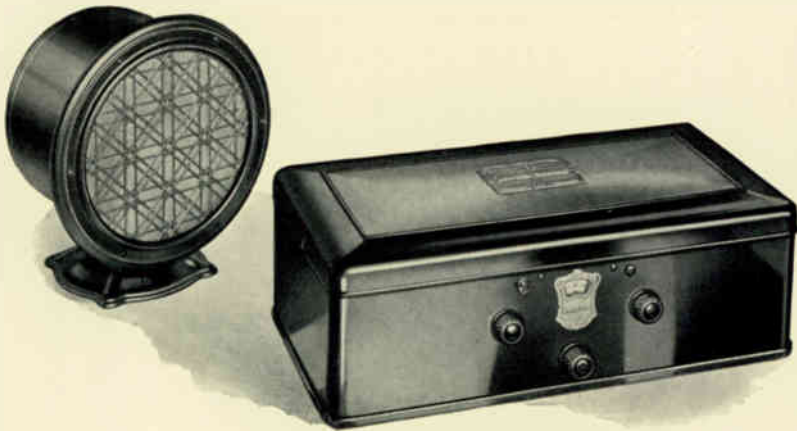
FOR USE WITH 110-120 VOLT 25 CYCLE AC CURRENT

Panel Model 55FC. Part No. 15700. Dimensions: Length, 20 $\frac{3}{4}$ in.; Depth, 10 $\frac{1}{4}$ in.; Height, 6 $\frac{3}{4}$ in. Complete with 10 $\frac{1}{2}$ feet of Flexible Attachment Cord and Two-piece Attachment Plug, but without Tubes, \$84.

Table Model 55F. Part No. 15600. Dimensions: Length, 21 $\frac{1}{4}$ in.; Depth, 10 $\frac{3}{4}$ in.; Height, 7 $\frac{3}{4}$ in. Complete with 10 $\frac{1}{2}$ feet of Flexible Attachment Cord and Two-piece Attachment Plug, but without Tubes, \$88.

NOTE: For details of additional necessary equipment see page 30.





Model 60 AC Receiver

IN appearance, the Model 60 is the same as Model 55, but it has certain additions to the electrical assembly inside which add very considerably to the range and selectivity of this set, making it of particular value for use where distance getting is essential, where an inside antenna only is possible, or in congested broadcasting districts.

The Model 60 comprises Three Stages of Tuned Radio Frequency Amplification, using Three Screen-Grid Tubes, a Detector, and Two Stages of Special Audio Amplification, the second audio stage employing Two Power Tubes in a "double audio" arrangement. The set is designed for use with 110-120 volt, 60 cycle Alternating Current.

Panel Model 60C. Part No. 15100. Dimensions: Length, 20 $\frac{3}{4}$ in.; Depth, 10 $\frac{1}{4}$ in.; Height, 6 $\frac{3}{4}$ in. Complete with 10 $\frac{1}{2}$ feet of Flexible Attachment Cord and Two-piece Attachment Plug, but without Tubes, \$96.

Table Model 60. Part No. 15000. Dimensions: Length, 21 $\frac{1}{4}$ in.; Depth, 10 $\frac{3}{4}$ in.; Height, 7 $\frac{3}{4}$ in. Complete with 10 $\frac{1}{2}$ feet of Flexible Attachment Cord and Two-piece Attachment Plug, but without Tubes, \$100.

NOTE: For details of additional necessary equipment see page 30.





Model 61 DC Receiver

IN selectivity, sensitivity, range and tone the Model 61 is the twin of the Model 60 described on page 23. It has the same beautiful exterior and interior finish, the same ease and certainty of operation; the only notable difference is that its electrical assembly is designed for the use of Direct Current.

The Model 61 comprises Three Stages of Tuned Radio Frequency Amplification, using Three Screen-Grid Tubes, a Detector, and Two Stages of Special Audio Amplification, the second audio stage employing Two Power Tubes in a "double audio" arrangement. The set is designed for use with 110-120 volt Direct Current.

Panel Model 61C. Part No. 15400. Dimensions: Length, 20 $\frac{3}{4}$ in.; Depth, 10 $\frac{1}{4}$ in.; Height, 6 $\frac{3}{4}$ in. Complete with 10 $\frac{1}{2}$ feet of Flexible Attachment Cord and Two-piece Attachment Plug but without Tubes, \$96.

Table Model 61. Part No. 15300. Dimensions: Length, 21 $\frac{1}{4}$ in.; Depth, 10 $\frac{3}{4}$ in.; Height, 7 $\frac{3}{4}$ in. Complete with 10 $\frac{1}{2}$ feet of Flexible Attachment Cord and Two-piece Attachment Plug, but without Tubes, \$100.

NOTE: For details of additional necessary equipment see page 30.



Model 67 Battery Receiver

SCREEN-GRID, Electro-Dynamic, Illuminated Dial. Unusually powerful and with true Electro-Dynamic tone.

The Model 67 comprises Three Stages of Tuned Radio Frequency Amplification, using Three Screen-Grid Tubes, a Detector, and Two Stages of Special Audio Amplification, the second audio stage employing Two Power Tubes in a "double audio" arrangement. The set is designed for use with a Storage "A" Battery and a set of "B" and "C" Batteries.

Panel Model 67C. Part No. 15200. Dimensions: Length 20 $\frac{3}{4}$ in.; Depth, 10 $\frac{1}{4}$ in.; Height, 6 $\frac{3}{4}$ in. Complete with 8 feet of Power Supply Cable, but without Tubes, \$73.

Table Model 67. Part No. 15500. Dimensions: Length, 21 $\frac{1}{4}$ in.; Depth, 10 $\frac{3}{4}$ in.; Height, 7 $\frac{3}{4}$ in. Complete with 8 feet of Power Supply Cable, but without Tubes, \$77.

NOTE : For details of additional necessary equipment see page 30.

Radio Speakers

THE apparatus which transforms the electrical impulses picked up and amplified by the Receiving Set, into audible sound, is called a Radio Speaker.

This wonderful piece of mechanism is a most important part of the radio installation, for it must be capable of *re-creating* the music, voices and other sounds *exactly* as they are broadcast, otherwise false notes, distorted voices and noisy vibrations will be the result.

For this reason we particularly recommend Atwater Kent Electro-Dynamic Speakers to owners of Atwater Kent Electro-Dynamic Receivers.

Only after very extensive scientific research and almost endless tests and experiments were Atwater Kent Electro-Dynamic Speakers offered to the public. As a result, their ability to re-create voices, music and other sounds is truly marvelous.

Atwater Kent Radio Speakers are made complete in the Atwater Kent Factory and each Radio Speaker is thoroughly tested and adjusted to give best results before being packed for shipment.

Atwater Kent Table Model Electro-Dynamic Speakers



MODEL F-4-A

MODEL F2-A SPEAKER

An Electro-Dynamic type for use with an AC Receiver supplying DC field current, such as the Atwater Kent Model 55-F (25 cycle).

Dimensions: Height, 15 $\frac{5}{8}$ in.; Diameter, 13 $\frac{1}{4}$ in.

Part No. 14760. Model F2-A Electro-Dynamic Speaker with 7 $\frac{1}{2}$ feet of Flexible Cord, \$34.

MODEL F4-A SPEAKER

An Electro-Dynamic type for use with an AC Receiver supplying DC field current, such as the Atwater Kent Model 55 or 60.

Dimensions: Height, 15 $\frac{5}{8}$ in.; Diameter, 13 $\frac{1}{4}$ in.

Part No. 14770. Model F4-A Electro-Dynamic Speaker with 7 $\frac{1}{2}$ feet of Flexible Cord, \$34.

MODEL F6-A SPEAKER

An Electro-Dynamic type for use with an AC Receiver and also 110-120 volt Direct Current, such as the Atwater Kent Model 61. Dimensions: Height, 15 $\frac{5}{8}$ in.; Diameter, 13 $\frac{1}{4}$ in.

Part No. 14780. Model F6-A Electro-Dynamic Speaker with 7 $\frac{1}{2}$ feet of Flexible Cord, \$34.

MODEL F7-A SPEAKER

An Electro-Dynamic type for use with a storage battery type of Receiver supplying DC field current, such as the Atwater Kent Model 67.

Dimensions: Height, 15 $\frac{5}{8}$ in.; Diameter, 13 $\frac{1}{4}$ in.

Part No. 14790. Model F7-A Electro-Dynamic Speaker with 7 $\frac{1}{2}$ feet of Flexible Cord, \$34.

MODEL F2 SPEAKER

An Electro-Dynamic type for use with an AC Receiver supplying DC field current, such as the Atwater Kent Model 55F (25 cycle). Dimensions: Height, 13 $\frac{3}{8}$ in.; Diameter, 11 $\frac{5}{8}$ in.

Part No. 14200. Model F2 Electro-Dynamic Speaker with 7 $\frac{1}{2}$ feet of Flexible Cord, \$34.

MODEL F4 SPEAKER

An Electro-Dynamic type for use with an AC Receiver supplying DC field current, such as the Atwater Kent Model 55 or 60.

Dimensions: Height, 13 $\frac{3}{8}$ in.; Diameter, 11 $\frac{5}{8}$ in.

Part No. 14380. Model F4 Electro-Dynamic Speaker with 7 $\frac{1}{2}$ feet of Flexible Cord, \$34.

MODEL F6 SPEAKER

An Electro-Dynamic type for use with an AC Receiver, also 110-120 volt DC, such as the Atwater Kent Model 61. Dimensions: Height, 13 $\frac{3}{8}$ in.; Diameter, 11 $\frac{5}{8}$ in.

Part No. 14480. Model F6 Electro-Dynamic Speaker with 7 $\frac{1}{2}$ feet of Flexible Cord, \$34.

MODEL F7 SPEAKER

An Electro-Dynamic type for use with a storage battery type of Receiver supplying DC field current, such as the Atwater Kent Model 67. Dimensions: Height, 13 $\frac{3}{8}$ in.; Diameter, 11 $\frac{5}{8}$ in.

Part No. 14510. Model F7 Electro-Dynamic Speaker with 7 $\frac{1}{2}$ feet of Flexible Cord, \$34.



MODEL F-4

Atwater Kent Chassis Electro-Dynamic Speakers

MODEL F2-C SPEAKER

An Electro-Dynamic type for use with an AC Receiver supplying DC field current, such as the Atwater Kent Model 55FC (25 cycle).

Dimensions: Height, 12 in.; Depth, $7\frac{1}{4}$ in.

*Part No. 14300. Model F2-C Electro-Dynamic Speaker
with $7\frac{1}{2}$ feet of Flexible Cord, \$27.*

MODEL F4-C SPEAKER

An Electro-Dynamic type for use with an AC Receiver supplying DC field current, such as the Atwater Kent Model 55C or 60C.

Dimensions: Height, 12 in.; Depth, $7\frac{1}{4}$ in.

*Part No. 14410. Model F4-C Electro-Dynamic Speaker
with $7\frac{1}{2}$ feet of Flexible Cord, \$27.*

MODEL F6-C SPEAKER

An Electro-Dynamic type for use with an AC Receiver supplying DC field current, and also with a 110-120 volt Direct Current Receiver, such as the Atwater Kent Model 61.

Dimensions: Height, 12 in.; Depth, $7\frac{1}{4}$ in.

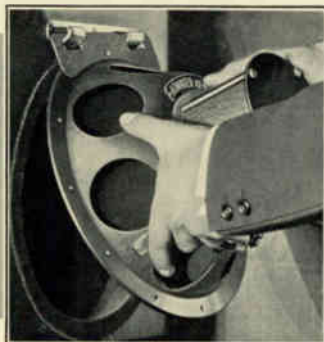
*Part No. 14490. Model F6-C Electro-Dynamic Speaker
with $7\frac{1}{2}$ feet of Flexible Cord, \$27.*

MODEL F7-C SPEAKER

An Electro-Dynamic type for use with a Storage Battery type of Receiver supplying DC field current, such as the Atwater Kent Model 67.

Dimensions: Height, 12 in.; Depth, $7\frac{1}{4}$ in.

*Part No. 14520. Model F7-C Electro-Dynamic Speaker
with $7\frac{1}{2}$ feet of Flexible Cord, \$27.*



Necessary Equipment

Models 55 and 55C

- Two (2) Type UY-224 or C-324 Tubes.
- Two (2) Type UY-227 or C-327 Tubes.
- Two (2) Type UX-245 or CX-345 Tubes.
- One (1) Type UX-280 or CX-380 Tube.

Models 55F and 55FC (25 Cycle)

- Two (2) Type UY-224 or C-324 Tubes.
- Two (2) Type UY-227 or C-327 Tubes.
- Two (2) Type UX-171A or CX-371A Tubes.
- One (1) Type UX-280 or CX-380 Tube.

Models 60 and 60C

- Three (3) Type UY-224 or C-324 Tubes.
- Two (2) Type UY-227 or C-327 Tubes.
- Two (2) Type UX-245 or CX-345 Tubes.
- One (1) Type UX-280 or CX-380 Tube.

Models 61 and 61C (Direct Current)

- Three (3) Type UX-222 or CX-322 Tubes.
- Two (2) Type UX-112A or CX-112A Tubes.
- Two (2) Type UX-171A or CX-371A Tubes.

Equipment for Models 67 and 67C (Battery Operated)

- Three (3) Type UX-222 or CX-322 Tubes.
- Two (2) Type UX-112A or CX-112A Tubes.
- Two (2) Type UX-171A or CX-371A Tubes.

BATTERY EQUIPMENT

- One (1) 6 volt Storage Battery (100-120 Ampere Hrs.)
- Four (4) 45 volt "heavy duty" Dry "B" Batteries.
- Two (2) 22½ volt Dry "C" Batteries.

Warranty

All Atwater Kent Receiving Sets and Radio Speakers are warranted to be perfect when they leave our plant. A printed warrant and guarantee covering the terms on which we will replace or repair defective equipment accompanies each piece of Atwater Kent Apparatus.

Prices of all Atwater Kent Radio Equipment subject to change without notice.

Prices slightly higher from the Rockies west

