



DX NEWS

The magazine of the
National Radio Club

SINCE 1933

Volume 57, No. 28 - July 30, 1990 (ISSN 0737-1659)

Inside ...

- 2 .. AM Switch
- 3 .. 12-625
- 4 .. DDXD-E
- 7 .. DDXD-W
- 8 .. IDX

- 9 .. Freq. Deviations
- 11 .. In the Beginning
- 12 .. HQ-180 AGC Mod
- 13 .. Target DX
- 14 .. Sports Nets
- 15 .. Formats
- 17 .. CPC Report

- 18 .. Musings
- 22 .. Order an NRC Log
- 22 .. Pittsburgh!

Volume 57 Publishing Schedule

Issue #	Deadline	Publ.
29	Aug. 18	Aug. 27
30	Sept. 15	Sept. 24

WLUX-1550 - P.O. BOX 2550, Baton Rouge, LA 70821-2550 will present a Special DX Test on October 13, 1990 beginning at 0630 ELT. The test will contain Morse Code ID's. Address reports to Mr. Ted Sauceman, General Manager, WLUX-1550. Arranged for the NRC by the Colorado CPC Machine.

From the Editor ... Good grief, is Wayne trying to push me off the front page already, hi!? See the CPC report on page 17.

We welcome Jim Renfrew to the editorship of IDX, and thanks to all who sent letters of application for the position. Of course, his appointment to this position leaves the "Target DX" editorship vacant, and so once again we'll accept letters of application so we can fill this post.

Thanks to Dave Schmidt's tip on the discontinued Radio Shack AM Stereo auto rx, I was able to pick up the last one in Topeka (I happened to be looking for one, and would you believe that no one else in town sells an AM Stereo radio? Yeah, I believe it, too.) I'll report on it in a future issue.

They joined ... Ron Czarnik KOOKU, St. Louis, MO; Richard Gallant, Newmarket, NH; Tim Clampitt, Brooklyn, MI; Huson Wilken, Oswego, NY; and Gary Penley, Rochester, WA.

DXChange ... David Wilson - 22 Willow Park - Wellesley Hills, MA 02181 (617) 235-0986 is offering Sams' *Shortwave Radio Listening with the Experts*, by Gerry Dexter (1988) like new for \$7.00 plus postage ... Bill Prather, Jr - (803) 457-4556 has available airchecks from most major markets, overseas, pirates, etc. For example, \$5 gets you a High Bias 60 or 90 filled with whatever you want. Call and specify ... The new edition of the IRCA Almanac (5th edition) is due in September. The 240-page reference will supplement the NRC AM Log (see page 22 for more info on the Log). It includes many network lists, FM listings, a TIS list, an AM stereo list, features on int'l DX, etc. NRC members may order the Almanac (\$12.95 U.

S., \$13.95 Canada/Surface mail overseas, \$16.50 airmail overseas) from the IRCA Goodie Factory - c/o Ralph Sanserino - 11300 Magnolia Ave, #43 - Riverside, CA 92505. Specify that you are an NRC member to receive the above prices.

Publication Schedule, Volume 58

Issue #	Deadline	Publication Date
1	Sept. 29	Oct. 8
2	Oct. 6	Oct. 15
3	Oct. 13	Oct. 22
4	Oct. 20	Oct. 29
5	Oct. 27	Nov. 5
6	Nov. 3	Nov. 12
7	Nov. 10	Nov. 19
8	Nov. 17	Nov. 27
9	Nov. 24	Dec. 3
10	Dec. 1	Dec. 10
11	Dec. 8	Dec. 17
12	Dec. 22	Dec. 31
13	Dec. 29	Jan. 7, 1990
14	Jan. 5	Jan. 14
15	Jan. 12	Jan. 21
16	Jan. 19	Jan. 28
17	Jan. 26	Feb. 4
18	Feb. 2	Feb. 11
19	Feb. 9	Feb. 18
20	Feb. 16	Feb. 25
21	Feb. 23	Mar. 4
22	Mar. 9	Mar. 18
12	Mar. 23	Apr. 1
24	Apr. 6	Apr. 15
25	Apr. 27	May 6
26	May 25	June 3
27	June 22	July 1
28	July 20	July 29
29	Aug. 17	Aug. 26
30	Sept. 14	Sept. 23

Note that this schedule allows for a one-week break the week before Christmas, two-week intervals in March and April, and four-week intervals from May through September.

THE WORLD'S OLDEST AND LARGEST ALL MEDIUM-WAVE DX CLUB

AM Switch

Jerry Starr
c/o WHOT Radio
4040 Simon Road
Youngstown, OH 44514 1320
Status changes in AM stations, supplied by the FCC and NRC members

CALL LETTER CHANGES

Old call:	New call:	Old call:	New call:
540 KUEZ CA	Bakerfield KCWR	1290 KIIM AZ	Tucson KCUB
790 CKED ON	Sudbury CIGM	1300 WXDX AL	Winfield WKXM
800 WGLL FL	Palatka WPLX	1420 KIXT AR	Hot Springs KXOW
990 WCFR OH	Gallopola WDEH	1450 KOWA CA	Escondido KSPA
1060 WGLH NC	Nehalem WCRB	1480 WAPG FL	Arcadia WOKD
1080 WNCR NC	St. Pauls WPEE	1520 KINF LA	Lafayette KACY
1150 WXLN DC	Rock Hill WYEC	1550 WBLE VA	Richmond WRBN
1200 WOPA IL	Chicago WNET	1580 FBQC IA	Davenport KFQC
1260 KCYX OR	McMinnville FJZY		

CALL NOTES: KEYW 1420 Omaha, NE change listed had come to ELAO has been set aside, station remains KEYW

APPLICATIONS FOR NEW STATIONS

840 FL Golden Gate: 250/250 U4 (reapplication)
1240 MS Flowood: 1000/1000 U4 (reapplication)

GRANTS FOR NEW STATIONS

840 SK Estevan: 10000/2500 U4 (Canadian allocation)

APPLICATIONS FROM EXISTING FACILITIES

580 KSAZ AZ Tucson: reduce night power to 750 watts, city of license to Marana, AZ
640 WBMX MI Zeeland: day power to 2500 watts
960 WORR PR Quebradillas: powers to 5000/5000
1390 KBEZ TX Waxahachie: reduce powers to 480/260
1500 WNZQ FL St. Cloud: to 830 kHz with 400/250 U2 (reapplication)

GRANTS TO EXISTING FACILITIES

830 KARN AK Long Island: to 840 kHz
840 KSPD AK Sand Point: to 830 kHz (Facilitated Frequency swap)
900 KGRB CA West Covina: power to 5000 watts
940 CJGX SK Yorkton: day power to 50000 watts
950 CJBB ON Barrie: night power to 10000 watts
960 CIAM ON Cambridge: powers to 5000/10000 U3
1010 WTGC PA Lewisburg: reduce power to 1000 watts (odd in that we find their power listed everywhere as already being 1000 watts?)
1040 CHR8 PQ St. Jean: extend hours of daytime antenna/power, station will now change pattern/power at Des Moines, IA sunset
1200 WCHB MI Inkster: relocate XR
1240 KNSS KS Wichita: reduce power (new power not specified)
1430 CJXX AB Grande Prairie: to 840 kHz with 25000/10000 U4
1550 WIRV KY Irvine: relocate XR
1600 KOHI OR St. Helens: relocate XR

OTHERNESS

560 WYOR TN Brentwood: silent station is back ON THE AIR
730 C--- NF Gander: DOT allocation for new station DELETED
890 *App CA San Marcos: application for new station DISMISSED
980 WAZS SC Summerville: silent station is back ON THE AIR
1150 KVIL TX Highland Park: silent station (due to flooding) ON THE AIR
1190 KJLA MO Kansas City: station is SILENT
1240 WAVN MS Southaven: new station is ON THE AIR



1260 KVSF NM Santa Fe: silent station is being sold to owner of KMIK-810 in Santa Fe who has been searching for a new XR site for his station. We might expect to see KMIK abandon 810 and move 1260 kHz if this sale is approved. Despite the KVSF facility being silent, it is still active as the site of the KLOB-770 synchronous XR which is diplexed into one of the KVSF towers

1290 KLVS OR Lake Oswego: silent station is back ON THE AIR
1410 KQIV MN Litchfield: station is SILENT
1440 WIRE IL Normal: station is SILENT
1530 KGTV TX Creedmore: Last issue we reported a call change for this station to KWVB as reported by the FCC. Now a very reliable monitor in TX reports this silent station is back ON THE AIR but using the calls KGGW. More on this later.

1550 WORL TN Oak Hill: station is SILENT again
1570 WRJQ WI Appleton: station is SILENT
1580 WMRE TN Knoxville: silent station is back ON THE AIR
1660 KA2XXB MD Beltsville: NAB has confirmed that the anti-skywave antenna tests from this XR have begun, most operations are with 400 watts and are on the air between 9:00 PM to 3:00 AM EDT. The signals are being monitored in Plainville, NJ and also in Pittsburgh, PA. The signal consists of unmodulated carrier and SOME MODULATED MATERIAL including station identifications with the call letters and some test announcements! We wonder who will be the first to log this station with an ID. Several monitors have already reported hearing a carrier here.

THANKS to the following for their contributions: BILL HALE, WAYNE HEINEN and M Street Journal.

73 and Good DX, *Jerry & BKF* Jerry Starr & Buffalo K. Foonman

How About a "Super 12-655"? ...by Ray Cole

It was with great interest that I read Paul Swearingen's, and then César Objio's, careful and thorough reports on the Realistic 12-625. It would seem as if we have three entirely different radios since no two of us entirely correlate on any one thing other than that it is just another radio on the low end of the AM band.

This certainly speaks poorly of quality control.

A receiver that is good on one end ought to be capable of improvement on the other end. And another with the same circuit ought to be improvable equal to the first.

I planned eventually to tweak mine to see if I could improve the low end, but now I am wary of doing it since I might lose a hot high end. And the high end seems to be the best among the three that we have.

If someone with some tweaking expertise can come up with a foolproof system step by step to improve the whole band, I will happily try to make more of the 12-625 that I have. Or maybe he could set up a part time tweaking business! I will volunteer to be his first customer.

I would think that Radio Shack's sales on a "Super 12-655" with a decent logging dial, a meter, and some factory tweaking - and perhaps an added really good FM section - would justify even a hundred dollar price range. Unfortunately I am not their marketing executive! I would just be one of their first buyers.

The Broadcaster's Guide to DX

A tri-fold guide for use with reception reports explaining DX'ing, how the NRC was formed, and the importance of QSL's to DX'ers. Versions also available in Spanish and French. US\$1.50 for 20. Available from the Pub Center.

Domestic DX Digest - East

DX Catches in the Eastern U. S. and Canada, with 24-hr. ELT

William Hale

734 Burleson
San Marcos, TX 78666

MEDIUM WAVE rAmBlings

- Our final reports of the anti-skywave station come from the Logbooks of **Hank Holbrook and Chuck Reh**. See SPECIAL, below.
- The **New Antonio Knobtwisters** are meeting on the second Sunday of every month at **Wyal's Cafeteria** located at 8511 Tesoro Drive in SA. The meetings will take place in the "West Room" from 2 to 4 PM. Come early and show down before the informal get-together gets down to business. The next meeting, then, will be on August 14th.
- Don't forget to send in what you consider your **ONE** best Medium Wave catch of all time by October 1990. It doesn't matter if it's a record holder or not, or what anyone else thinks, just that you consider it to be your greatest DX achievement. Consider frequency, local conditions, and so on when making your decision. This is a world-wide catch. I'm waiting to hear from you.
- Welcome aboard to **Jeff Lewis** of Kansas City, who called before reporting, hi. Not necessary, you know.
- It's pretty well evident that the summer Medium Wave DX hotspots are here. The QDXD-E deadline for Issue #1 is **August 11th (not a Wednesday!)** Issue 30's deadline will be **September 8th**. Just to see you were a "wonderlin".

SPECIAL

- 640 CHDG ON RICHMOND HILL - 1st noted with them (I'm on 7/17/01, but I believe call/format change took place on 7/10), this long-time country station now plays rock hits (mostly current) with a harder edge than CFGR-680; gives you IDs as "Old 120 The Hog" followed by the sound of a grunting pig, etc. confirmed by a phone call to the stn; address remains as in NRC Log; permission to relocate studios & change city of license to Toronto was denied by the CRTC (MS-QN) [Also noted by **Neil Whitefish-Ed.**]
- 940 KSWM MO AURORA - station is OFF as of at least 6/5, perhaps moving to Republic as per CP? (JL-AR)
- 1190 WHUM PA HUGHESVILLE - 7/8 1710-1800 very good w/WANN near 1800; drops boring C&W mx (hopefully forever) for OLD, simulcasting FM WKHO 95.5; slogan is "Kool 95.5"; ID @ 1800 mentioned WJUN as CLs; the only station as far as I know to have WHUM and WBUG as calls...can WBAH be far off? (CW PA)
- 1460 KKPR NE KEARNEY 6/29 0635 fair with "KKPR" & "Power 910" IDs, oldies mx] KKPR 98.9; ex:KKOA; NE #3? (SA MB)
- 1470 KHND ND HARVEY - 5/22 0659 poor with sign on, giving info as "500 watts until local sunrise, 100 watts during daylight hours & 151 watts after local sunset; new powers & now ABC Nc (SA-MB)
- 1530 KWWB TX CREEDMORE - now using these CLs after using XGSW for about 3 weeks; AMS was right!...as usual-hi (Ed.-TX)
- 1660 KA2XXB MD BELTSVILLE - 6/20 2010-2032 skywave suppression station testing with frequent IDs/carrier on and off; good here, but I'm only 25 air miles from Beltsville! (MH-MD)
- KA2XXB MD BELTSVILLE - 6/25 0136 testing with ID: "KA2XXB Beltsville Maryland, 1660 kHz. The experimental skywave-suppression station operated by the National Association of Broadcasters"; IDs began @ 43 second intervals with 30 seconds of OC between; very good signal with occasional black-outs lasting a few seconds; unsure if these were pattern switches or power cuts (probably the latter); still going strong @ 0630, well after my (and their) LSR (REH-QN)

UNIDS AND UNID HELP

- 990 UNID ?? - 6/13 0520 poor with REL preacher; taken out by CBW OC @ 0523; looped E/W (SA-MB)
- 1060 UNIDS ?? - by **Mike Hawk** were probably Ord, NE or Longmont, CO, both of which would have been on day power with **Royals BB** (JL-AR)

MIDNIGHT TO 0800 HOURS ELT

- 730 KKDA TX GRAND PRAIRIE - 7/8 0027 with ID "Rhythm and blues, gospel and news, Soul 73, KKDA, Grand Prairie, Fort Worth, Dallas" (MH-NE)
- 1070 KNX CA LOS ANGELES - 7/6 0758 fair with "KNX Newstime..." over mushy QRM; a regular visitor (JL-AR)
- 1130 KWKH LA SHREVEPORT - 6/3 0030 with nx headlines, ID @ 0034: "If you need to know, you need KWKH News" and into C&W mx (Ponder)
- 1190 KLIF TX DALLAS - 7/5 Midnight with Talknet- NBC Nc (MH-NE)
- 1340 KWOR WY WORLAND - 6/17 0600 Fair with "KWOR Worland" ID; still not using new call KKLX as of this date (SA-MB)
- 1360 KHAK IA Cedar Rapids - 6/11 0451 poor with a contest for "98.1 FM + 1360 AM" (SA-MB)
- 1370 KDTH IA DUBUQUE - 6/12 0409 Fair with "Your weather station 24 hours a day, KDTH"; no longer 0600-0309 per Log (SA-MB)
- CFLV PQ VALLEY FIELD - 6/13 0455 poor with male talking in FF; lite ROK mx (SA-MB)
- 1380 WSYB VT RUTLAND - 6/6 0004-0007 with OLD, nx, "You are listening to WNYU"; poor under CKPC (DI-QN)
- 1450 KSEL NM PORTALES - 6/17 0620 poor with "93.5 FM and 1450 KSEL" ID in a mess; possible oldies; NM #11 (SA-MB)
- WDSG TN DYERSBURG - 7/4 0015-0041 ID: "WDSG Dyersburg" under unID with Pirates BB and another with **Larry King**; poor (DI-QN)
- 1460 WBRN MI BIG RAPIDS - 7/4 0100-0110 with nx, ad for **Union Chevrolet** on Northland Drive in Big Rapids; C&W mx; poor under CJQY (DI-QN)
- 1480 WTOY VA SALEM - 6/25 0532 tune-in, just in time to hear tail-end of probable sign-on: "...with studios and offices at 709 Bowman Avenue, Salem Virginia. Just ahead, immediate news and information on the new WTOY"; quickly lost to WHBC and CKAN; should have been on 20 watt nite power at this time, but I doubt it; new (REH-QN)
- 1490 WXIT WU CHARLESTON - 7/4 0150-0152 breakthrough with long ad for **Mattress City** in South Charleston and Lynfield; under 2 other unIDs (DI-QN)
- 1590 KYOK TX HOUSTON - 6/6 0115 with **James Brown** song "I Feel Good", ID @ 0119: "1590 KYOK Houston" and a jazz instrumental (Ponder)

0800 TO 1600 HOURS ELT

Once again this Issue, a Zero-Report period!!

1600 TO 2400 HOURS ELT

- 590 UOCH NF ST. JOHN'S - 6/17 & 6/18 1855-1915 (2025-2045 Newfoundland time), but much weaker than the strong relay on 560 (CHCM or CHCQ?); 1st UD call I've ever heard...too bad it wasn't from home (KGS-NS)
- 940 KTWN TX TEXARKANA - 7/6 1945 with OLD, non-legal IDs, nice sound but never caught any legal IDs in several :55-:05 attempts this or subsequent days; fair signal around LSS consistent (JL-AR)
- 970 WDAY ND FARGO - 7/8 2220 with Talknet- ad for a Fargo-based company, then other local ads, but no CLs heard (MH-NE)
- 1180 UDA FL MARATHON KEY - 6/4 1748 with ID: "Su frecuencia...1180 kilohertz... Radio Marti" and another @ 1800: "Buenas tardes Cuba!, Radio Marti" (Ponder)
- 1230 WCUZ MI GRAND RAPIDS - 6/7 2222-2230 & 2300-2400 with **Tigers vs Indians** BB, "Star of Game Show" sponsored by **Sherwin-Williams**; poor (DI-QN)
- 1240 WJPD MI ISHPeming - 6/21 2045-2113 with BB, **Indians vs ???** at the Fairgrounds; NBC Nc, "11:09 here at WJPD", mx; poor under CJNH/WJTN (DI-QN)
- CJNH ON BANCROFT - 6/20 2145-2208 with CHR & request from Belleville, nx mentioning Belleville, Quinte Air Show REL; CJBQ over/under W6WA & WJTN; poor (DI-QN)
- 1270 KENM MD ST. JOSEPH - 7/4 2054 with ID, REL pgm, USA Radio News (MH-NE)
- 1310 KDLS IA PERRY - 7/4 2010 with ID, info on a severe thunderstorm watch (MH-NE)
- 1320 WFHR WI WISCONSIN RAPIDS - 7/32153 with Wisconsin Rapids ad- **Brewers** vs A's BB (MH-NE)
- 1360 KSPG KS EL DORADO - 7/7 2243 with **Royals** BB; ID "Thank you for joining KSPG during Royals baseball" (MH-NE)
- 1370 KFON TX ROLLINGWOOD - 7/6 2233 ID "KFON, 1370"; **Rangers vs Red Sox** BB; strong (MH-NE)
- 1400 WMAN OH MANSFIELD - 6/24 2136-2310 with CHR, NBC Nc, "Time 10:10, WMAN Mansfield, Ohio"; over/under W6NY; poor (DI-QN)
- 1430 WRDN WI DURAND - 7/5 2202 weak ID in the middle of **Brewers vs Angels** BB (MH-NE)

KOMQ
1940-1990

1450 KOBE NM LAS CRUCES - 7/4 2300 with 1D above KYNT and KWBE, among others, then quickly faded (MH-NE)
 WISA UT BRAITLEDRO - 6/11 2300-2304 with Red Sox vs Indians BB, "This is WISA", under 2 unIDs; verie reu'd July 5th (DT-ON)
 1490 WJNL PA JOHNSTOWN - 6/25 2232-2400 with Larry King show; 2300 "You're 24 hour station, WJNL, Johnstown"; poor, over/under 2 other unIDs (DT-ON)
 WMGW PA MEADVILLE - 6/19 2130-2154 with Phillies vs Pirates BB; poor, under/over unID with Sally Jesse Raphael (DT-ON)
 1540 KSGB TX FT. WORTH - 7/3 2239 ID "Power 1540, KSGB, Dallas-Ft. Worth" (MH-NE)
 1550 KQWB ND WEST FARGO - 7/5 2148 with West Fargo vs Fargo Junior Legion BB (MH-NE)
 1580 KFDF AR VAN BUREN - 7/3 2222 ID "KFDF, 1580, Van Buren-Ft. Smith" (MH-NE)
 WITN WI WATERTOWN - 7/4 2212 with Brewers BB (MH-NE)

REPORTERS

PONDER STEPHEN PONDER//vacationing in Cancun, Mexico//Toshiba RP-F11 AM/FM/SW portable
 MH-MD HANK HOLBROOK//Dunkirk, MD//SP-600 + 50' LW
 KGS-NS GRAY SCRIMEGOUR//east of Sydney, NS on holiday//car radio
 MS-ON MORRIS SORESEN//Toronto, ON//ICF-2010
 SA-MB SHAWN AXELROD//Winnipeg, MB//R-70 + 3' loop or 100' LW + Mini-Tun-3
 DI-ON DON TRELFOED//Scarborough, ON//DX-440 + LW
 JL-AR JEFF LEWIS//Kansas City, MO DXing in Fayetteville, AR//Grundig Satellit 400 + Selectantenna/Shotgun
 REH-ON CHUCK REH//Leamington, ON//R-390A + Sanserino loop + Realistic TR-3000 open reel tape deck [has reported every issue this Volume. Will he make #s 29 & 30?-Ed.]
 MH-NE MIKE HAWK//Omaha, NE//ATS-803 + 2' coax loop
 GV-PA GEORGE VANISH//Trucksville, PA//caradio in garage

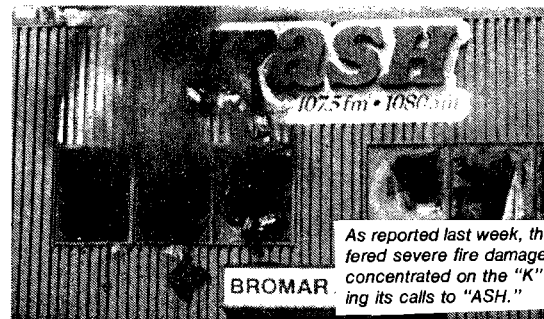
GYDXA UPDATE

1450:	GYDXA	GYDXA	GYDXA	GYDXA
KOBE	NM	Las Cruces	Mike Hawk	Omaha, NE 861
And a correction to the 1450 list...				
First in the "Pre-1960" list, no tie is involved, just:				
WREL	VA	Lexington	Don Trelford	Scarborough, ON 416
Then in the "Post-1960" list, we have:				
WREL	VA	Lexington	Niel Wolfish	Toronto, ON 416

Thanks to Niel for calling this to my attention, and my apologies to both Niel and Don for the confusion!

ABBREVIATIONS AND SPECIAL SYMBOLS USED IN DDXD-E

||parallel with or to -> or into :00: on the hour AC:Adult contemporary AP:Associated Press BBB:big band BRN:Business radio net CM:country & western CHR:contemporary hit radio CID:code ID ContChr:contemporary Christian EZL:easy listening EE:English
 FF:French GOS:gospel IRN:Interstate Radio Net jx:jingle LSR:local sunrise LSS:local sunset mx:music nx:news NPR:National Public Radio DC:open carrier POL:political PSRA:pre-sunrise authority PSSA:post-sunset authority GRM:interference QTH:location REL:religious ROK:rock 'n' roll RS:regular schedule *stereo SID:singing ID SRS:sunrise skip SS:Spanish SSB:Star Spangled Banner SSS:sunset skip TC:time check TT:test tones UC:urban contemporary UPI:United Press International wx:weather



As reported last week, the KASH-AM & FM/Anchorage studios suffered severe fire damage Sunday (6/3). Some of the damage was concentrated on the "K" in the station's marquee, ironically reducing its calls to "ASH."

Fire Turns KASH To Ash

Domestic DX Digest - West

Wayne Heinen

4131 S. Andes Way
 Aurora, CO 80013
 FIDO NET 104/108
 (303) 699-6335 (prepaid only)

DX Catches in the Western U. S. and Canada, with 24-hr. ELT

SPECIAL

980 KMIN NM Grants
 6/17 0550 Fair/Good w/KFWB/XEKE w/C&W Mx, ID's "You're listening to the fresh new sound of AM 9-80, KMIN" This ex 1400 w/24 hour sked. NM #41. (TH-CA2)
 990 KTVN CA Santa Barbara
 7/9/90 0600 Silent station returned this date w/Show tunes. Ran a tape loop 0600-1900 on 7/9. (MR-CA)
 1240 KJAA AZ Globe
 6/16 2257 Fair u/KSON w/C&W and legal ID. (ex-KYOR) (TH-CA2)
 1460 KULA HI Kailua
 7/4 0455 Noted on RS w/light rock in C-QUAM // FM 96.3. 1st day of RS was 7/3 ID's as "KRTR-FM Kailua-Honolulu and KULA Maunawili; Krater 96 fm and the new Kula (rhymes w/Moolah) 14-60 AM. No more 1450-1476 here! (New station on RS) (DP-HI)

Midnight to MIDDAY

630 KSLR TX San Antonio
 6/17 0612 Fair w/KHOW/KOH w/REL "San Antonio's Christian Radio, Sunlight 63" (TH-CA2)
 810 (KGO) CA San Francisco
 6/17 0308 Noted Off again. Presumed KCMO w/ZNS3 and HJCY. Would be nice if this becomes a regular SM SP. (TH-CA2)
 1040 WHBO FL Pinellas Park
 6/17 0634 Weak w/PS prgm about FL u/WHO. Called station to confirm details. Rare (TH-CA2)
 1300 KAZN CA Pasadena
 7/7 0650 JJ BB Siebu Lions Pacific League. // KOHO-1170, no lcl ID @ 0700. Poor to fair (DP-HI)

1310 CHLWt AB St. Paul
 6/22 0642 AC Mx, Male w/Sx..items about Canada..temp 15 degrees. o/u KDIA (DP-HI)
 1350 KSRO CA Santa Rosa
 7/7 0345 Neil Myers w/TALKNET, Net ads Poor w/ possible 1ZC under them. (DP-HI)
 1360 KUIKt OR Hillsboro
 6/27 0322 American Radio Net "Sports Final Plus" prgm missed ID @ 0330. fair o/u presumed KPOP w/STD Mx. (DP-HI)
 1450 KVEN CA Ventura
 6/19 0147 Dodger's post game show w/Vince Scully. Net ads Poor w/KSSK-590 & KAIM-870 mix on 1460! (DP-HI)
 1600 KMNY CA Pomona
 6/18 0658 Net spots, dead air w/no lcl ID @ 0700, UPI Nx and more "MONEY Radio" business prgms. Fair o/u KGST. (DP-HI)
 1610 WXX790 AZ Phoenix
 6/17 0322 Poor w/tape loop about parking (male voice). (TH-CA2)

Midday to Midnight

1230 KATO AZ Safford
 6/16 2259 Poor w/Supergold OLD format and legal ID. (TH-CA2)
 1280 KHEP AZ Phoenix
 6/16 2230 Good w/job listings and REL prgms. Almost thought it was KFRN. (TH-CA2)
 1280 KREL NV Las Vegas
 6/16 2227 Good o/KHEP w/SS. Spots for "Restaurante Guadalajara" So if you hear Guadalajara on 1280 don't assume MEXICO. (TH-CA2)
 1400 KTRC NM Santa Fe
 6-28 1847 Clear ID o/KFTM & KRLN (MH-CO)
 1420 KULY KS Ulysses
 6/26 1907 KC Royals BB w/lcl spots. (MH-CO)
 1610 KOP737 AZ Grand Canyon Nat'l Park
 6/16 2300 Typical female tape loop w/Teddy Roosevelt quote. 2349 msg w/male voice totally different. Either msg was changed or both East and West entrance (KOP737 & KOP738) are on. (TH-CA2)

UNID's

530 UnID CA
 6/16 2240 "This is test message #2, Highway Advisory Radio AM 5-30" by female. New HAR in LA area? (TH-CA2)
 920 UnID CA
 Daily a SS o/u KUEC all day...ideas? (MR-CA)

Format Info:

KGW-620 adds Larry King KXL-750 drops Larry King
 WDAY-970 adds Larry King KFGO-790 drops Larry King
 All from (DP-HI)

CONTRIBUTORS

(DP-HI) Dale Park - Honolulu, HI - Sgean AT-803A
 (MH-NE) Mike Hawk - Vac. in Evergreen, CO - AT-803 w/150' LW
 (MR-CA) Mike Riordan - Goleta, CA - GE Super Radio II
 (TH-CA2) Tim Hall - San Diego, CA - ICF-2010, 1000' LW, 1400' LW



International DX Digest

Foreign DX Catches. Times are UTC; for ELT, subtract 5 hours

Jim Renfrew
61 Wilcox Street
Rochester, NY 14606-3832

Tiri is a new stn relaying R. Hauriaki, which left 1476 for FM, but Tiri will be on for just three months. Very poor.

1557 AUSTRALIA-2RE Taree, 6-27 1037. CCR, Jude Cole, woman DJ talk, man with brief ad, woman with promo "...on 2-RE"; ad; jingle "...the magic on 2RE", into UK pop mx. Fair to very poor, o/u presumed 2ZH from 1045.

1557 NEW ZEALAND-2ZH Hawera (t), 6-28 1048. Ad that had the line "...how do you tell the Tories (?) from the Real McCoys?" Back to man with teletalk. Poor to very poor; o/u 2RE.

Contributor:

Dale Park - Honolulu HI, Sangean ATS-803A, Select-A-Tenna



ANOTHER "FIRST" FROM RJR !!!

THE BEST OF BOTH WORLDS...

Great programming, great cricket - all at the same time!

You get the best of both worlds on RJR - The Supreme Sound.

From the first to the last ball bowled, RJR brings you dedicated, uninterrupted cricket coverage complemented by expert commentaries, discussions, and analyses, plus "on-the-spot" reports of other matches being played elsewhere.

Great news for serious cricket lovers!

RJR will be transmitting continuous uninterrupted cricket coverage on the following FM frequencies:

RJR-FM FREQUENCIES

104.5 MHz from Kingston
94.5 MHz from Cooper's Hill
101.3 MHz from Oracabessa
90.5 MHz from Spur Tree
104.5 MHz from Hanover
92.9 MHz from Montego Bay

Plus! RJR - The Supreme Sound will simultaneously broadcast normal programming on these AM frequencies only:

RJR-AM FREQUENCIES

720 KHz from Kingston
580 KHz from Galina
770 KHz from Spur Tree
550 KHz from Montego Bay

No more switching from station to station! Keep pace with RJR - The Sporting Leader...Dedicated cricket coverage for the nineties!

* Please note, RJR-FM is not FAME-FM. FAME-FM will continue normal programming.



Frequency Deviations

Raymond F. Cole
Rt. 3, Box 304
Cape Girardeau, MO 63701-9543

Observations of measured frequency deviations and associated activities

Copyright © 1990 by Mike Knitter for the National Radio Club, Inc.

June 26, 1990

The three and a half year investigation into apparent tuning frequency deviations here continues. The 8 1/2 x 11 log sheets taped side to side now total between 55 and 60 feet, with three quarters of an inch containing one day's readings on 14 AM stations. Since the last report there have been some interesting developments.

Careful and repeated study shows that 80% of tremors and quakes westward from this longitude to Vancouver Island fall within an established pressure wave travel time, at a surface speed of 12.51 m.p.h. (corrected from 12.36 earlier), plus not more than two days triggering time - usually one day or less.

There is absolutely no evidence whatever of traveling pressure waves approaching here from eastward - and only three coincidental tremors within the established travel time eastward as far as the Azores, in the one and a half year period studied. These studies are made using detailed reports of every detected tremor around the globe, from Golden, CO.

This I was very reluctant to accept, because it obviously means that the pressure waves are generated right here in the New Madrid Seismic Zone. And that is quite a shock when you live here!

Among quite a few articles sent to me by interested persons, one pretty well fits observations here. It concerns the findings of a seismographic study by Johnston and Kanter in the March Scientific American.

They find that this is a much thinned portion of the crust here, undergoing "extension" (stretching) and allowing the magma beneath to work upward, and their drawing shows some extrusions upward from the magma through the crust.

Samples of this extruded material is abundant in at least one place here. One sent to a laboratory for analysis was returned with the comment that someone had "put it through a furnace". A two hour field trip would net them their own extruded "furnace" samples.

Hawaii is moving toward Japan at the rate of over eight centimeters a year. And it is proven that the West Coast is pushing westward against the adjoining tectonic plate - resulting in an oblique slide against it toward the northwest.

The "extension" here then indicates that the western two-thirds of the U.S. is moving westward along with the West Coast, thus thinning and stretching the crust here in this seismic zone and allowing the magma to well upward nearer the surface.

Apparent tuning frequency deviations toward a higher frequency have been found to indicate a pressure buildup here in or under the crust. Often, as it subsides, deviations the swing to the low frequency side - as they began to do ten days before the Santa Cruz quake (very pronounced seven days in advance).

Which seems to agree with the fact that the natural frequency of a quartz crystal increases under pressure and decreases under tension. In this case the tension would be created when the western portion of the U.S. moved westward - perhaps only a millimeter or two, but a huge mass in motion.

St. Louis University has an extensive network of automated sensors in this seismic zone. An average of 200 tremors a year - 50 per quarter - are recorded, only a handful strong enough to be felt by humans. During the first quarter of 1990 my copy of their report lists 81 instead of the usual 50 - quite an increase in activity above average.

Another recent discovery here is that no directional readings on the "spikes" mentioned in previous reports can be found by any of us on either directional dipole or tuned loop antennas on any radio. A mystery in itself.

Tidal forces vary a great deal from time to time. At times I have mentally noted that they seemed to have a pronounced effect on deviations, but most of the time no correlation can be found. Therefor, until very recently, I have ignored them. Perhaps my mistake. However, in areas such as the San Andreas Fault where pressures are constantly existing in varying degrees at varying points, tidal forces can be a very effective trigger for tremors.

This is well illustrated by the four out of five success rate of Jim Berkland in San Jose who predicts seven day "windows" of likely quake activity in his immediate area, based mostly on tidal forces. For example, his warning of a "world series quake" (Santa Cruz) which resulted in a very short lived job suspension for "creating a public panic". He now puts out a fast growing monthly newsletter on his "windows"!

I believe a pressure wave could trigger a tremor before his predicted time and relieve pressure on a fault so that none occur "on-schedule" and thus reduce his accuracy rating from what otherwise might be 95%.

And, by now, Iben Brownings projection of the probability of the same Santa Cruz quake four years in advance (missed his peak danger point by 11 hours) is well known. His projections are based on tidal pull - lunar, solar and earth alignments. I spoke with him briefly on a local radio program and again briefly afterward, both times by phone.

His projection for the New Madrid Seismic Zone is a 179 year cyclical repeat of the great New Madrid quakes of 1811-12 that knocked down scaffolding in Washington, D.C., and rang church bells in Philadelphia. His peak danger point for this is very early on December 3, 1990.

He has made at least three other very successful projections on severe quakes and on the Mt. St. Helen's eruption, so he must be taken seriously.

And, as in 1811-12, about one lunar cycle (28 days) we may get an equal or greater quake. Back then it was 8.2 on the first, then 8.4, followed several months later by something like 7.4. In the first two months after the initial quake, 1874 tremors were recorded. I wonder if the first could occur one lunar cycle in advance of December 3rd. Catch us by surprise.

Tidal forces are known to raise the center of this continent normally from three to eight inches. December 3rd should be about 36 inches. This does promise to be a very interesting period for the continuing study of apparent frequency deviations.

I recently submitted a grant proposal to the Geological Survey - denied - mainly for the purpose of establishing thirty volunteer monitoring points scattered across this seismic zone. This would have given me much more pertinent data than one point alone at the extreme northern end of the zone.

The reply termed my proposal interesting and suggested that I look for ionospheric disturbances and doppler shifts - already overly investigated by many with much more knowledge and sophisticated equipment - with virtually zero results.

Perhaps I should have accepted my invitation from the Moscow Academy of Sciences for that expense paid trip to participate in that international seismological study. It seems they have more open-mindedness about new and unexpected findings. But my interest is in this seismic zone. And maybe Berkland and Browning will force open a crack in closed minds.

The "Establishment" reminds me of a professor peering through a microscope at microbes, when a person comes in and says that it is raining outside. His reply, "It is not raining under my microscope. Bring me scientific and mathematical proof and I will perhaps consider that idea."

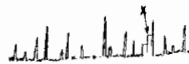
I am thankful that there have been some outstanding exceptions who have been extremely helpful - even one at some risk to his career. Many others are helpful in many small ways - which all add up to a lot of help. I plan to continue on through the projected possibilities, assuming I survive, though a few that I know are planning to be elsewhere at that time.

Gregory McIntire, Belle Fourche, SD, in april, sent me a "spectrum display device of his own making. It is an AM receiver which scans about half the AM band thirty times per second and feeds an oscilloscope for a visual check of all the signals. Quite a neat little unit.

Since then I have been trying unsuccessfully to find an oscilloscope

to borrow, rent, or buy cheaply. I could not find one not tied into a repair shop's test bench. Finally, it took three weeks for a local radio engineer to find time to come out here with one and spend two interesting hours - taking care of four stations keeps him busy.

The only existing deviation at this time on my 12-655 was a weak one at 1170 Khz. Deviation had been 5.01 on that frequency 36 hours earlier and had been dropping, along with others. The deviation-causing "spike" (D-X News 3-27-89) adjacent to that signal appeared steadily on the scope trace like this:



My VFO and frequency counter were then turned on and the VFO signal was put right at "X", and the reading was 1171.42. An hour earlier the 12-655 showed a reading of 1171.67. (This happened to be KVOO, Tulsa). Occasionally the same pattern would momentarily show up, one at a time, on a few other signals, and vanish before we could zero in on it.

I described this to another radio engineer whose opinion was that this did not appear to him to be typical hetrodnying, and, if so, and if caused by "atmospherics", then why not also on a lot more frequencies across the scan?

A by-product of the two hour session was finding that the centimeter scale with vernier on my 12-655 (D-X News 7-24-89) and my loggings made with a VFO were within 1% of accuracy to the second decimal at the one-tenth millimeter readings - even better than I had thought.

Incidentally, "4.2" in that article should be "4.1" - my error.

The Topeka
Capital
Journal
-via
Paul
Swearingen

Quake forecast rattles locals

By the Associated Press

A scientist's prediction that a quake might strike Missouri and neighboring states Dec. 2 appears to have shaken loose the seismic fears of people in the country's heartland.

The prediction by climatologist Iben Browning, who says he forecast the Oct. 17 Bay-area quake but whose theories are disputed by most seismologists, has not created a panic.

But along the New Madrid fault, the example of the Northern California quake, coupled with Browning's forecast, has raised awareness of earthquakes and earthquake safety.

Insurance sales are up, a school district has tentatively canceled classes, and two states' National Guards have scheduled drills that week.

The fault, which roughly follows the Mississippi River from Mississippi to Illinois, may not be as well known as the San Andreas fault in California, but it commands respect among earthquake experts.

The last sizable quake on the fault was in 1885, but that's not the one people talk about. The Big One - actually, the Big Three or Four - occurred in 1811 and

1812, when a series of quakes centered in New Madrid, Mo., rocked much of the eastern half of the country.

The quakes rang church bells in Washington, D.C., and are said to have made the Mississippi River run backward. They have been estimated at 8 on the Richter scale.

The thing that has people talking up and down the New Madrid fault is a projection by Browning, a scientist from Tijeras, N.M., that there could be a big quake in the region Dec. 2 or 3.

Browning, 72, an inventor and climate consultant, bases his projection on a convergence of tidal forces, which he thinks can put stress on earthquake faults. But he stresses it's a possibility, not a certainty, that such a quake will happen.

Still, he says he predicted last October's California quake using the same method; he says he warned a group of executives in San Francisco seven days before the quake.

Seismologists have mixed feelings about Browning's forecast. It's not that they don't believe there will be a quake; they just don't think it can be forecast as specifically as Browning suggests.

IN THE BEGINNING

BY JOHN D. BOWKER

THIS IS THE COMPLETE LIST OF U. S. BROADCAST STATIONS ON THE INDICATED FREQUENCY AS PUBLISHED BY THE FEDERAL RADIO COMMISSION IN 1934. "S" MEANS SHARED; "SH" MEANS SPECIFIED HOURS; "T" INDICATES TRANSMITTER LOCATION; "D" MEANS DAYTIME OPERATION ONLY; "U" MEANS UNLIMITED TIME.

Frequency (kc)	Call letters	Main studio and transmitter location	Power	Time designation
620, regional	WLBZ	Bangor, Maine-----	500 w-----	U.
	WFLA- WSUN	Clearwater, Fla-----	250 w-----	U.
	WTMJ		500 w LS-----	
	KTAR	Phoenix, Ariz-----	1 kw-----	U.
			T—Waukesha.	
KGW	Portland, Oreg-----	500 w-----	U.	
		T—Faloma.		1 kw LS-----

Sports Networks

Barry S. Finkel

10314 S. Oakley
Chicago, IL 60643

Network listings for stations programming team sports

Walter Nissen, Jr. reports an error in my baseball flagship listing. WWV in Cleveland is on 1100, not 1110. Herb Score and Tom Hamilton do the radio broadcasts.

Minor league baseball (from "Newsday" via Bob Galerstein) I doubt that there are any networks here, just single stations.

- | | |
|---------------------------------------|--|
| 850 WYDE-AL Birmingham Barons | 1400 WKWE-NC Greensboro Hornets |
| 1450 WFIX-AL Huntsville Stars | 920 WBBB-NC Burlington Indians |
| 620 KTAR-AZ Phoenix Firebirds | 1460 WBNS-OH Columbus Clippers |
| 990 KTKT-AZ Tucson Toros | 95.9 WNTR-OH Toledo Mud Hens |
| 1160 KEQZ-AR Arkansas Travellers | 95.9 WNPQ-OH Canton-Akron Indians |
| 1350 KCKC-CA San Bernardino Spirit | 1340 KXY -OK Oklahoma City 89ers |
| 1500 KHIT-CA San Jose Giants | 1300 KAKC-OK Tulsa Drillers |
| 105.1 KXKL-CO Denver Zephyrs | 1410 KBNP-OR Portland Beavers |
| 1530 KCMN-CO Colorado Springs Sky Sox | 1110 KBND-OR Bend Oregon Bucks |
| 1150 WCNX-CN New Britain Red Sox | 880 KMFR-OR Southern Oregon Athletics, Medford |
| 102.1 WTAZ-IL Peoria Chiefs | 1400 WICK-PA Scranton/Wilkes-Barre Red Barons |
| 1440 WROK-IL Rockford Expos | 580 WHP -PA Harrisburg Senators |
| 101.9 WVEM-IL Springfield Cardinals | 1240 WAGO-PA Reading Phillies |
| 100.9 WBCI-IN Indianapolis Indians | 1450 WKRI-RI Pawtucket Red Sox |
| 1390 KJJY-IA Des Moines Cubs | 1330 WFBD-SC Greenville Braves |
| 1490 KBUR-IA Burlington Braves | 1230 WODE-SC Columbia Mets |
| 1340 KROS-IA Clinton Giants | 1240 WRLT-TN Nashville Sounds |
| 1170 KSTT-IA Quad-City Angels | 1370 WDEF-TN Chattanooga Lookouts |
| 1410 KQAM-KS Wichita Pilots | 600 WREC-TN Memphis Chicks |
| 970 WAVG-KY Louisville Redbirds | 980 WFHG-TN Bristol Tigers |
| 710 KEEL-LA Shreveport Captains | 690 KHEY-TX Texas Diablos, El Paso |
| 1240 WJEU-MD Hagerstown Suns | 1160 KFHM-TX San Antonio Missions |
| 820 WQSI-MD Frederick Keys | 570 KSNL-UT Salt Lake City Trappers |
| 620 WJDX-MS Jackson Mets | 910 WRNL-VA Richmond Braves |
| 970 KCTR-MT Billings Mustangs | 1310 WGH -VA Tidewater Tides |
| 1180 KTAR-NE Omaha Royals | 1390 WWOOD-VA Lynchburg Red Sox |
| 1230 KLAV-NV Las Vegas Stars | 1310 WDCI-VA Prince William Cannons |
| 1340 KRCZ-NV Reno Silver Sox | 1240 WROV-WA Salem Buccaneers |
| 770 KOB -NM Albuquerque Dukes | 850 KTAC-WA Tacoma Tigers |
| 550 WGR -NY Buffalo Bisons | 1230 KMYZ-WA Everett Giants |
| 950 WBBF-NY Rochester Red Wings | 590 KAAQ-WA Spokane Indians |
| 90.1 WGMG-NY ditto | 580 WCHS-WV Charleston Wheelers |
| 1260 WNOR-NY Syracuse Chiefs | 1380 WBEL-WI Beloit Brewers |
| 1490 WGNV-NY Albany-Colonie Yankees | 103.1 CKO -AB Calgary Cannons |
| 1590 WEHH-NY Elmira Pioneers | 1070*COLD-AB Edmonton Trappers |
| 930 WSOC-NC Charlotte Knights | 1130 CKWX-BC Vancouver Canadians |
| 620 WDNC-NC Durham Bulls | 610 CKTB-ON Saint Catherine Blue Jays |
| 960 WFTC-NC Kingston Indians | 1270 CHAT-AB Medicine Hat Blue Jays |
| 570 WANC-NC Asheville Tourists | |

Kansas City Royals Denny Matthews, Fred White

- | | | | | | |
|---------------|--------------|--------------|---------------|---------------|----------------|
| 560 KWTO-MO | KWKY-IA | KGNO-KS | 1460 KGOY-KS | KRTN-MO | KBRU-CO |
| 580 WITW-KS * | 1200 KOMC-MO | KIKS-KS | 1470 KERE-KS | 92.7 KHAL-MO | 102.9 KMMO-MO |
| 620 KMNS-IA | 1230 KTCN-NE | 1390 KJAM-SD | 1480 KZSN-KS | KIDA-IA | KBRX-NE |
| 680 KFQO-MO | 1240 KIUL-KS | KNCK-KS | 1490 KDMO-MO | 93.5 KZED-KS | 103.1 KN DY-KS |
| 690 KGGF-KS | KNEM-MO | 1400 KTMG-OK | KXLQ-IA | KLRC-KS | KJAM-SD |
| 730 KLOE-KS | KFOR-NE | KFTM-CO | KDRO-MO | 94.3 KZMO-MO | 103.7 KIRK-MO |
| 790 KXIX-KS | 1270 KSCB-KS | KAYS-KS | 1510 KANS-KS | 94.5 KEZU-KS | 103.9 KRFS-NE |
| 880 KRYN-NE | 1280 KQZS-FL | KRFP-MO | KRFP-MO | 95.3 KRDQ-MO | KNLV-NE |
| 910 KGLC-OK | KSOR-KS | KVOE-KS | 1530 KHAM-MO | KCKS-KS | KWZA-KS |
| 930 KRQE-WY | 1290 KOIL-NE | 1420 KBTN-MO | 1540 KNGL-KS | KNIM-MO | KCHI-MO |
| 940 KSWM-MO | KLEH-IA | KULY-KS | KLKC-KS | 95.9 KCAY-KS | KOMB-KS |
| 960 KMA -IA | KWLS-KS | KZMO-MO | 1550 KVEW-KS | KAAAN-MO | 104.9 KRKG-MO |
| KNEB-NE | 1300 KMNO-MO | KJCK-KS | 1580 KTRG-MO | 96.7 KANS-KS | 105.5 KEIL-IA |
| 980 KMBZ-MO | 1310 KQMT-NE | 1430 KRGI-NE | KESM-MO | KBBE-KS | KAUB |
| 990 KRSL-KS | 1330 KURU-MO | KRQZ-MO | KRIM-MO | 97.7 KRCY-NE | KQSM-KS |
| WCAZ-IL | KTOD-AR | 1440 KCOG-IA | 1590 KVGB-KS | KAYO-MO | 106.1 KKSU-KS |
| KRMO-MO | 1340 KSEK-KS | KCHE-IA | 1600 KNKY-NE | KLAL-IA | 106.3 KYOO-MO |
| WHOO-FL | KTOW-OK | 1450 KWBE-NE | KCRG-IA | 99.3 KUTT-NE | 106.5 KMCC-NE |
| 1010 KCHI-MO | KHUB-KS | KWBW-KS | KRFS-NE | KAPH-KS | 106.7 KHUQ-KS |
| 1060 KILMO-CO | KGFV-NE | WMBH-MO | KRTN-MO | KIKS-KS | 107.1 KMBV-MO |
| KNLV-NE | KMAN-KS | KOKO-MO | 100.3 KQ15-KS | | |
| 1130 KYOO-MO | 1350 KGHF-CO | KYNT-SD | 92.1 KM0E-MO | 100.9 KCLY-KS | |
| 1150 KSAL-KS | 1360 KSPG-KS | KLWX-NM | KCHE-IA | 101.1 KFNF-KS | |
| KRMS-MO | 1370 KAWL-NE | KBF3-SD | WCAZ-IL | 101.7 K1ND-KS | |

(K.C. Star 4/8/90 via J. E. Lewis)

KKGZ
KKDD RADIO
P.O. BOX 707
1515 MILL STREET
BRUSH, COLORADO 80723

Formats

Tony Fitzherbert

356 Jackman Avenue
Fairfield, CT 06430

Changes in programming status; reported by NRC members and others

The station that originated Al Hamm's Music of Your Life format (along with WMAS-1450, Springfield), WDJZ-1530, Bridgeport, CT, abruptly terminated its on air staff on 6/15, giving them one hour's notice and "generous severance", according to the Bridgeport Post. Included was General Manager Russ Knight, veteran of many stations, including Gordon McLendon's KLIF, in Dallas. Too bad, too. WDJZ's Bridgeport based talk (with Russ Knight's caustic humor) and combination of AC and nostalgia music was a delight to listen to. The station was not a cash cow, so its owners went with a combination Spanish and Portuguese format, satellite fed from Springfield. The intent is to compete with highly successful (#8 in the market Arbitrons) WUCUM-1450, a full service Spanish outlet, heard in every Hispanic business, and on thousands of boom boxes in Bridgeport's Seaside Park, the local Coney Island.

Also, while driving up the QEW from Niagara Falls, while listening to CFGM-640's succession of "Commercial Free Hours" (meaning that they cannot sell time), the GM came on the air to announce that as of 5:00PM, Friday, 6/29, the station that has played country music since its 1957 air date was dropping the format, and that listeners could hear their favorite country music on CHAM, CHOO, CHOW, and three other area stations. He said that earnings had dropped, forcing the station to change formats. He did not announce the new format, but if I bought the station, it would be either paid religion or urban, neither of which are heard on the Toronto AM dial. CFGM has invested in a huge 8 tower array in Beamville, ON, 60 miles from the Richmond Hill studio, and paying for that, along with operating costs requires the sale of time, which was not happening on CFGM.

Dave Schmidt and Al Holtz both wrote that WEAZ-AM's sale to Salem Communications has fallen through, and that the station would continue to simulcast WEAZ-FM, 101.1. And first time contributor Larry West of Salem NH, wrote that WADN-1120 now leaves the air nightly at 2200 hours. I hope that this good little station is not in trouble!!

Along with Larry, this column is sponsored by Geov Parrish who writes a similar column for IRCA's DX Monitor, Dave Schmidt, and your editor, back from a railroad trip to Canada. Here we go...

- | | |
|----------------------------|--|
| 530 CJFJ ON Fort Erie | - Adult standards // 'ed on CJRN-710 all night. (TF). |
| 550 WCBI MS Columbus | - Silent (GP). |
| 560 WQAM FL Miami | - SMN Kool oldies, Sports (GP). |
| 580 KCMX OR Ashland | - ABC Talk (GP). |
| 590 CKEY ON Toronto | - "Classic Key 590 - Rock oldies", huge new 8 tower array is on the shore of Lake Ontario in Grimsby, replacing 5 tower landmark in the lake off the Toronto Islands (TF). |
| 600 WLHG AL Enterprise | - Classic rock //FM(GP). |
| 600 KCLS AZ Flagstaff | - Silent (GP). |
| 610 KYJZ OR Medford | - Silent (GP). |
| 620 WHEN NY Syracuse | - AC (TF). |
| 630 WMAL DC Washington | - Talk, except for the overnight adult standards (GP). |
| 630 WBMQ GA Savannah | - News/talk (GP). |
| 700 KSUR CA Soledad | - Now jazz//KKG0-540 (GP). |
| 710 CJRM ON Niagara Falls | - AC, CHR, Talk, Sports, and //CJFT overnights (TF). |
| 730 KUCL ID Boise | - Silent (GP). |
| 750 CKGB ON Timmons | - CWM (GP). |
| 770 WAIS OH Buchtel | - Rock oldies (GP). |
| 790 CIAO ON Brampton | - Ethnic (TF). |
| 810 WLEC NC Rocky Mount | - Silent (GP). |
| 850 WKIX NC Raleigh | - Satellite adult standards (GP). |
| 900 WDDT MS Greenville | - Silent (GP). |
| 930 WKY OK Oklahoma City | - EZL, info (GP). |
| 970 KWCR CA Bakersfield | - Traditional CWM (GP). |
| 970 WRCS NC Aoshkie | - Black gospel (GP). |
| 980 WAZS SC Summerfield | - Silent (GP). |
| 1000 WKVG KY Jenkins | - Southern gospel (GP). |
| 1010 CPBL ON Toronto | - Talk (TF). |
| 1020 WIBG NJ Ocean City | - To move here from 1520 with tourist information (GP). |
| 1050 WSEN NY Baldwinsville | - "Solid Gold Music" (TF). |
| 1060 KKWV NV Las Vegas | - New station, Christian talk (GP). |
| 1080 WNCR NC St Pauls | - AC (GP). |



930 AM
Good Time
Rock-N-Roll

SERVING SAN ANTONIO AND TERRELL HILLS

- 1110 WNNW NH Salem - Satellite motivational talk during AM drive, Spanish the rest of the time, (Larry West) for the Hispanic population of Lawrence, deep in the null of this station. (TF).
- 1110 KBND OR Bend - Back to News/talk (GP).
- 1130 WEOO PA Waynesboro - Adult standards (GP).
- 1150 KLRG AR North Little Rock - Gospel (GP).
- 1150 KVIL TX Dallas - Silent for a time, as the Trinity River flooded the transmitter site. (GP).
- 1220 WGAR OH Cleveland - CWM//FM, will be satellite CWM for a month or two, then satellite news/talk, then by fall will be local news/talk (GP).
- 1230 WKCE TN Harriman - Silent (GP).
- 1250 CHWO ON Oakville - Big bands, adult standards (TF).
- 1270 WMLC MS Monticello - Silent (GP).
- 1270 WHLD NY Niagara Falls - Interesting combination of oldies, religion, and ethnic programs "The Sound of the Falls" (TF).
- 1270 KTRT OK Claremore - Talk (GP).
- 1280 WWTC MN Minneapolis - The station that brought you all weather, and dozens of other formats is now dropping rock oldies for pre-teen radio (Radio Ahs". (TF from GP).
- 1280 KLGX TX Longview - Traditional CWM (GP).
- 1290 WTNX TN Lynchville - Silent (GP).
- 1290 KCUB AZ Tucson - Traditional CWM (GP).
- 1290 WCOW WI Sparta - Adult standards (GP).
- 1320 CJMR ON Missasagua - A consistent blend of CHR/Religion/Ethnic (TF).
- 1320 WKAP PA Allentown - "For women only", EZL. POP, drops MYL (Dave Schmidt).
- 1340 KPND TX Pampa - Silent (GP).
- 1350 KBAD CA Bakersfield - Silent (GP).
- 1360 WHNR FL Cypress Gardens - Full service adult standards (GP).
- 1360 WMOV WV Ravenswood - Religion (GP).
- 1380 KIPO HI Pearl City - Variety //FM (GP).
- 1400 WFTL FL Fort Lauderdale - Adult standards(GP).
- 1400 KURP TX Stamford - Silent (GP).
- 1420 WACT AL Tuscaloosa - Gospel (GP).
- 1430 WNJR NJ Newark - Adds gospel and jazz to Black oldies (GP).
- 1440 KKIP AR Lowell - Religion (GP).
- 1440 WJUL NY Niagara Falls - AC, Full service, sports, "Niagara's Energy" (TF).
- 1450 KOWA CA Escondido - Adult standards (GP)
- 1450 KONE NV Reno - CWM (GP).
- 1460 WBKC OH Painesville - AC/oldies (GP).
- 1470 KXOA CA Sacramento - 50's and 60's oldies (GP).
- 1470 WOHO OH Toledo - AC//WWWM (GP).
- 1490 KWXT AR Dardanelle - Southern gospel (GP).
- 1490 WAQZ NY Syracuse - Silent (TF).
- 1490 WGMF NY Watkins Glen - Oldies (GP).
- 1540 CHIN ON Toronto - Primarily Italian, according to station engr at Toronto Islands XR site. Signal is 50,000/30,000 U-4 from 5 tower site. (TF).
- 1540 WRBN VA Richmond - Ex-WKIE, urban and rap, now BRN Business news, in an effort to please its devoted listening audience (TF from GP).
- 1570 WFLR NY Dundee - Satellite CWM (GP).
- 1590 WMIM PA Mt Carmel - Rock oldies (GP).
- 1590 WCAM SC Camden - Satellite CWM (GP).

And that's it for another column. Thanks to all, especially Geov Parrish, for updating us all. Get your formats in.....73's..

Logsheets - By Frequency

110 sheets, 25 entries possible per sheet with space available to add your own columns. Punched for three-ring binders, full-size 8.5 x 11 inches, on heavy paper. US\$5.00 (25 sheets for US\$1.25). Order from the Pub Center.



CPC Report

Courtesy Programs Committee activities

Wayne Heinen

Jeff Tynan

4131 S. Andes Way
Aurora, CO 80013

The 1989-90 CPC Season was perhaps one of the best in my 25 years with the NRC. The statistics are as follows: 27 Tests were scheduled, of those 2 "No Shows" (WKMT & WIVV). Of those test two where "Self Scheduled" WKEN by NRC'er Dave Schmidt and WHDH by fellow traveler Jim Mulvey. Two tests were arranged thru the graces of Engineer Michael Kline (WADN & WILD), who was referred to the NRC by Peter George of the NRC.

The remaining 21 tests were the result of 195 letters that were generated by the Colorado CPC Machine. These letters were financed by the following NRC'ers:

Hank Holbrook	Dale Park
Charles C. Harrison	Frank Merrill
Howard G. Kemp	Stan Moss
Kurt A. Nelson	Norman Wittschen III
Robert Tiara	Ed Janusz
Bob Harrison	Ray Arruda
Tim Hall	Karl Jeter
Ron Musco	Rick Dau
Jeff Tynan	Todd Brandenburg
Charles Reh	Wayne Heinen

We feel that it is not so much the amount that was donated, but that the donation was made. The grand total donated was \$122.50 of which one \$5.00 contribution was late and will be used for 1990-91, leaving \$117.50 in donations used this year. For those that would be inclined to look at the figures, 195 at \$5.00 is \$97.50. Where did the other \$10.00 go? Those stamps were involved in the follow-up replies to the stations that responded (whether they eventually tested or not). For each test that is arranged a minimum of two letters is involved, the original request and the confirmation.

The Machine's contribution is of course time, but other incidentals from this year's CPC program included approximately \$50.00 in phone calls to re-schedule tests that were agreed upon so late that the date had to be changed in order for us to get the information in DX News. For those that didn't make it into DX News, the blame lies with Wayne, and he will be making some adjustments to keep that from happening in the 1990-91 season.

Another name that needs to be mentioned is AM SWITCH editor Jerry Starr. Most of the stations that tested did

agree to use Morse Code ID's, which, in many cases, were essential for a positive ID. The stations that didn't have someone available to make the ID tapes were supplied these by Jerry (N8IRL). In the case of WBIU, the entire DX TEST was recorded by Jerry and played back for our DX'ing enjoyment.

This coming season the Machine hopes at least to duplicate what was done last year. For that we, once again, need the support of the membership. In addition to money or stamps, we would really appreciate some target lists from the membership. Last year everyone really got a chance to listen for the stations that WE wanted to hear. So, if you want to hear something other than what WE want to hear, get us your lists! Even if you're shy on cash, we would appreciate targets.

The largest portion of the work involved with CPC is the targeting process. We require a suggested Morning (i. e. Sunday thru Saturday) and a suggested time along with the station call and frequency. We'd like to suggest that no AN stations be submitted and that you look towards early morning. We've had great success getting stations to come on just before their normal sign-ons. Another good time is just after a stations normal sign-off. This way station personnel don't have to go way out of their way to accommodate us.

To help send us TARGETS and STAMPS so we can get this season off to a GREAT start. Thanks for all of your support!

Jeff Tynan, Wayne Heinen and the Apple]e.

THIS IS NOT A CONVENTION... JUST A GATHERING OF DXERS!'

SWL, Utes, BCB, FMers, Scanner, SATS, whatever you're into!

When: September 7, 8, and 9, 1990

Where: Motel 6

If you can't attend the NRC Labor Day Weekend or haven't had your fill of talking DX, then why not join a bunch of us in Milwaukee for a little Get-Together....VERY INFORMAL, nothing planned, no station tours. No registration fee. About 40 places to eat!! Starts around 6pm Central Local Time, Friday and goes through Sunday Evening. Meet around the Motel 6 lobby area. 5037 S. Howell Avenue, Milwaukee. Across the street from the (MKE) Billy Mitchell Milwaukee International Airport. If you were at the NRC Milwaukee Convention or the Milwaukee ANARC '85 convention we are just down the street (same street). Reservations 414-482-4414 (around \$29 single, \$37 double, etc.) Reserve early as its a busy weekend in the Milwaukee area and these rooms won't be there very long. No special rates for us, since we have no idea who is coming!! See you there.

Musings

of the Members

Thoughts from NRC members ... the opinions expressed in this column are those of the individual writer and do not necessarily reflect those of the editors, publishers, or the National Radio Club, Inc.

Dave Schmidt

P. O. Box 11502

Wilmington, DE 19850

Times are local per Muse.

PETE KEMP, KZ1Z - P O BOX 73 - BETHEL, CT. 06801

Greetings all, summer has arrived! WQBK's talk/sportscaster John Graney has added sports directorship of WRGB-TV to his dailey schedule. Casey Kasem and his wife Jean became parents of a baby girl on May 31st. Axed WABC talkshow host Lynne Sammuels has landed a once a week talk gig on WBAI-FM. Two FL AM stations have been fined by the FCC for their failure to meet equal opportunity guidelines, WAPG & WOJW will pay fines of \$18,000 and \$15,000 respectively. The US Dept. of Justice is urging their repeal of the financial interest and syndication rules. FINSYN, as it is known in the industry, has "Hollywood" commercial interests going tooth and nail against Washington's latest urging. The BBC is scheduled to layoff 15% of their workforce over the next 3 years in an effort to cut costs (ah, I've heard THAT before!). Gostelradio, in the Soviet Union, has signed an agreement with Franck Entertainment in Hollywood to produce 48 one hour segments of "Hollywood Nights". The World Cup Soccer Matches in Italy have scored well on radio & TV. RAI, which according to some is not in the greatest financial shape, should benefit greatly from the 'provider' status. Tiny Caribou, ME mornings won't be the same as Wayne Knight & Jerry Gagnon have been replaced on WFST by syndicated satellite fed music. Here's an interesting one for you, Buddy Dean is on the air in Baltimore again, this time on WYST-1010 doing his oldies thing on Sunday afternoons. Buddy tapes his voice tracks at a small radio station in Pine Bluffs, AR and sends them to WYST where the music is inserted. Buddy used to host a rock and roll dance show on WJZ-TV from 1957-64. It was this TV show that was the model used in the movie Hairspray. Larry Johnson (The Legend) has been axed by WISN after a four year stint. The latest deal to sell WFIL has fallen through, in the meantime, 560 will continue to simulcast WEAZ-FM. KHNH in Kansas City has gone from CW to all news, Jerry Fogel will be the new morning news anchor. C. Miles Smith will replace Tom Houck as a talkshow host on WGST in Sept. C. Miles will be known as Ralph from Ben Hill on the air. Fellow NRC'ers who are interested in the history of radio may want to check out "When Radio Was Boss" by Bill Earl. It contains a lot of PR info on the big West Coast rock stations of the 50's & 60's. If you were raised on KHJ, XERF, KRLA, KYA, KMEN, then this book will bring a glow to your eyeballs. For more info., contact Bill Earl at Research Associates, 633 N. Taylor Ave., No. 18, Montebello, CA 90640, phone 213-728-1946. By the way, do any fellow NRC'ers know if the "Chickenman" series is still playing anywhere around the country? It was a quite popular production put out by Dick Orkin in Chicago in the mid/late 60's. Very funny and made people tune in daily due to it's episodic nature. International types should pay notice to the fact that the VOA is being hassled by the Society for the Prevention of Nature in Israel. The claim environmental damage to the Negev Desert if the new transmitter facilities are completed, saying towers will be located in an internal bird pathway and that damage to desert plants will occur. I'll readily admit that I don't know a heck of a lot about deserts, but it sure sounds foolish to me. So much for now.

CARL W. LABELSTIEN - 9404 SANTE FE LANE - OVERLAND PARK, KS

It has been quite a long time since I last Mused. I first want to thank those who attended the '89 Convention in Topeka. It was especially nice to meet some old acquaintances, particularly visiting with John Tudenham, Karl Jeter & Wayne Heinen. The convention actually spurred some DX interest this past season enabling me to add 20-25 new stations to my logbook and an equal amount of veries to my collection which totals 2,326. Had chances recently to visit with several fellow NRC members, Paul Swearingen and Todd Brandenburg at the ARRL convnetion here, and Rick Dau who was in town last week for a rock concert. One thing accomplished during the past several months was to put together a couple of cassette tapes, one containing 100 or so frequency checks (what were they?) from the 1960-80 period, and the other a scan of the mid-day BCB dial in the metro KC area. If anyone would like a copy of either, just send me a C-60 cassette. Whether I will attend the convention this year is still in question. As some of you know, I am a public utility regulatory consultant and travel considerably in my job. I am spending most of this summer in Manhattan working on a project for NY Telephone Co. I have already made 3 trips to the Big Apple and 2 to Albany (when are you on the air Laura?) since the first of May. By Labor Day, I'll probably be a little burnt out on travelling to want to make Pittsburgh. Nevertheless, I haven't ruled it out. One last item, I have a complete collection of DX NEWS' from '55 to present, can anyone guess what the market value of these would be? 73's, have a nice, safe summer!

BILL PRATHER, KC4KMG - P O BOX 62 - TRYON, NC 28782

Hello again from the Western NC mountains. Not a great deal of DXing with the hot weather and high static level here. Many unusual changes on the local scene. WORD-910 Spartanburg should be back on with a simulcast of WFBC-1330 Greenville by late summer/early fall. They are both part of the same ARB market so this is quite different! Also, owners of WHKP-1450 Hendersonville have purchased silents WTYN-1160 Tryon and WPNF-1240 Brevard, with plans to simulcast WHKP. Problems with the terrain around here may cause problems with the links, so rumor has it in may be via satellite uplink! I had the pleasure of serving as PD at WTYN about 9 years ago, so this is unusual. Also, locally, WHYZ-1070 Greenville supposedly has their 2.5 kw nighttime service on the air but has been having trouble with the 50 kw. Listeners down south after 2100 should be able to hear them with their tight S/SE pattern. That's it from the Blue Ridge Mountains, 73's, Good DX!

JERRY STARR - WHOT RADIO - 4040 SIMON ROAD - YOUNGSTOWN, OH 44512

Greetings! Time for the semi-annual Musing. As usual, DX here is almost non-existent as most of the time allotted to BCB DX is taken up with AM switch. One verie back, from WILD-1090, a letter which mentioned my tape and report to WADN-1120 but no reply from that station has arrived yet. Several comments on Paul Mount's Muse in the last issue, yes, from the FCC database, it appears that WWRV-1330 has indeed moved in with WWDJ-970 as their XR coordinates are the same. Evidently, the lack of available land in the area has dictated this action, making three cases of stations in the NYC area sharing antenna systems. And, yes, it may be confusing for people outside western PA to hear "WPIAL" and confuse it for a call. Tis the Western PA Interscholastic Athletic League, which governs all high school sports in Western PA, its a term very frequently on sportscasts. It is much like the confusion of hearing "WRTA" on a Youngstown station as the Western Reserve Transportation Authority runs our local mass transit system, even has a singing jingle that says "WRTA" many times in their ad! We'll be hitting the road over the summer for such diverse venues as N. Wilkesboro, NC; Bristol, TN; Richmond, VA; Loudon, NH; Charlotte, NC and several locations in FL. These trips will be "working" vacations, so to speak, but we'll attempt to check out the BCB situation in these areas and will report anything unusual. Sorry, Dave, but our schedule makes it necessary to skip the Dover, DE race this year so see you in '91. (It'll still rain EVEN if you don't come-hi!-DWS). Our move to 1390 at WHOT-AM is still progress as the land where the present 1390 site is has been sold and will become a mall. Since the timetable didn't work out quite right, we are moving to a temporary XR site on the NW side of Youngstown where we are in the process of erecting a single antenna, will run 1000 watts non-DA until a new permanent site can be constructed just south of the old location. By the time this reaches you, we will be operating from the temporary site and would really be interested in reports. Hey Dave, remember those 6-400 foot self supporting towers you lived next to when you were here in Youngstown? (Who could forget that!-DWS) The plan is to dynamite them, should be quite a show! Sorry to see a historic old XR site become a mall but I guess that's progress. Put in your list of stations with unusual studios, WOKG-1570. Following their fire this winter, they have been broadcasting from a trailer next to the burned out building. Make that a PIZZA TRAILER! That's right, the kind you see at fairs. A listener donated the trailer, ovens and all! I'm not sure if they're selling pizza but they might make more that way-hi! The last time I heard them, they were still begging listeners to send in money to build a new station even though this is a commercial operation. Final otherness: I finally got around to upgrading my ham license to extra class and have to admit that this hobby is cutting into my BCB DX time a bit. And GOOD LUCK to old friend Chuck Hutton as he heads for Spain, let's set up a sked-hi! 73's, Good DX, and see you at the convention. PS: Dave, welcome back to the Fellowship of NRC Editors.

GARY MITCHELL - BOX 1003 - SAMP MORTAR, CT 06430

Doing my paperwork so might as well send in a Muse. Just returned from a trip to E ME. Quite enjoyable listening to the AM band with literally no local stations. The band is full at night but what surprised me was the strength of the NS stations during the day, like locals. Of interest, I noted GE SUPERADIO II's being sold in a hardware store in Machias, ME. I asked about such and they seemed to note they sold alot of them and could get them as they wished, under \$50 if I remember correctly. The last review on the Radio Shack 12-625 is what I found out long ago, seemed very poor low end and otherwise not acceptable. Don't know of any good portable radios on the market except the Panasonic RF559. Have not tried the Sony ICF-760. Have had good luck with the Radio Shack AM Stereo/FM Stereo

car receiver, been in car 3 years and still working (recently discontinued and going for \$89.95 where available-DWS). Finally, now is the time to DX 1700 khz area.

TONY FITZHERBERT - 356 JACKMAN AVENUE - FAIRFIELD, CT 06432

Hi! First, it's great to see that Dave Schmidt has come out of retirement to edit "Musings". A few years ago, Dave did a great job on DDXD. Welcome back, Dave! (Thanks, Tony. But I still can't figure out why the light shows up on the wall when I shine the flash light in my left ear-hi! It's been like that for a while!-DWS) Sadly, I will not be at the Pittsburgh convention over Labor Day. I'm president of one school PTA, Vice President of the Fairfield High School PTA, and VP of PTA Council, so will be very busy with teachers lucheons, open houses, back-to-school nights and getting committees started. The same activities have kept from the dial. Only verie in the past 3 months was a form from CFGM-640. The irony of which follows. In early July, son Kevin and I went on the annual railroad trip to Buffalo (which has a new Metro), Toronto and Montreal. In Toronto, we rented a car to journey to Niagara Falls and Buffalo. I did get by some Toronto radio transmitter sights. Toronto is perhaps the directionl array capital of Canada, with its proximity to New York, Montreal, Detroit and other population areas. While visiting the beautiful Toronto Islands, we discovered the 5 tower array for CHIN-1540, on the grounds of a sanitary disposal treatment plant. The engineer there told me that the station has a primarily Italian format. The studios on College Street are in the heart of Toronto's Italian community and CHIN throws a picnic for almost 200,000 people! The station protects WPTR & KXEL and the 50000/30000 watt signal gets many reports from Scandinavia and the Balkans. Behind CHIN is found 'the new 6 tower array for CJCL-1430, which has replaced 5 tiny towers in a bird sanctuary on the island. In Missasagua, a suburb of 422,000 people is found, on Credit Line Road, the 13 towers of CJMR-1320. This array formerly belonged to CFGM and the CJMR format is a combination of rock, paid religion and ethnic programs, odd combination! In Oakville, just down the QEW, RT401, is found the 5 towers of CFRB-1010, a rather interesting talk station. Two 500 plus foot towers handle the day pattern and 3 shorter towers carry the night pattern. In back of an asbestos plant on Lake Shore Ave., and photographed from the lawn of Barney's Motel & Bar, is found the 6 tower rectangle of CHUM-1050, Toronto's former answer to WABC. Down past Hamilton, just outside Grinish, is found on the back of Lake Ontario, 8-600 plus foot towers for CKEY-590. They have replaced the 5 tower system in the lake off Toronto Island, no trace of the old array is visible except the remains of the cement platforms which have been pushed ashore and are used as rip-rap to avoid erosion. The last stop is off Merit Rd. in Beamville to see the new 8 tower array for CFGM-640, more than 60 miles away from the Richmond Hill studio! This more than 1/4 mile of towers must have cost a fortune. Being a CW fan, I listened to many "commercial free" hours on 640. While listeners appreciate it, they don't pay the operating costs let alone the cost of the huge transmitter sight. So I was not surprised to hear the GM come on the air Wed. 6/27 to announce that they were dropping the CW format, which it has carried since '57. He did not say what the new format would be although my guess would be urban contemporary (not noted on any other station) or paid religion. The GM advised the station was earning no money and the CW music could be heard on CHAM-820, CHOO-1390, CHOW-1470, CKPC-1380 and a couple of FM stations. Locally, my favorite station WDJZ-1530 sacked GM Russ Knight (ex of KLIF) and it's on air staff with one hour's notice on 6/29, signed off at 1800 and came back as an all Spanish and Portuguese station, satellite fed from Springfield, MA. That leaves WICC-600 as the only English, full service station in Bridgeport. WUCM-1450 is a Spanish full service station in the market. A trip to Detroit and some Ontario profiles awaits in a month. 73's.

RICK DAU - RR 2, BOX 64 - OAKLAND, IA 51560

Greetings again from IA. First of all, I'd like to welcome Dave Schmidt back into the NRC's editorial fold. I trust you will do a good job with the Musings, Dave. I tried for the WKEN test back on 1/15 but it was a no show. Only usual obnoxious pest KATZ and sidekick KCRG were heard. It would have been a new state for me if heard. Did manage to hear KABI's test the same morning, however. On to the present. Very little DX has been heard here lately. My last new catch was a surprise, though, the 5/14 frequency check of WSWV-1570. Was nice to log such a distant station after the end of the season, and it was my 4th VA logging. So far, June has brought the return of two GY'ers, KBIX-OK and WLOK-TN. Just received my first tape from the DX Audio Service, a very well produced effort! Hopefully, it will be a long relationship. On 5/21, I heard north and to KDSN-1530 Denison, and given a nice tour of the AM/FM station by the secretary. Since Jan.1, the AM has been live CW, the FM live AdCon.

Prior to that, it was reverse. They also gave me some bumper stickers and even ice scrapers. After the visit, I journeyed farther north to Ida Grove, known as medieval Iowa because the south edge of town features structures (including an airplane hanger) made up as castles, including a pirate ship on a nearby lake. While there, noted signals from KFGO-790 & KFVR-550, both over 300 miles further north. Of course, many stations from southern MN were in quite well. July highlights from 2 years ago brought KLDD-570 and WCAZ-990, one year ago the best catches of the month were WNN0-900, KDAL-610, WSP0-1010, CISS-1140, and KVSU-1190. I had to skip this years ARRL convention in Kansas City because of work but I will definitely be in Pittsburgh on Labor Day weekend and Knoxville on Columbus Day weekend. I may be making a 4 day visit to MN during the first part of August as well. 73's and so long from the farm!

JOHN MALICKY - 995 SHADYCREST RD - PITTSBURGH, PA 15216-3023

Hello again. First, congrats & good luck to Dave Schmidt for taking over the Musings. While this is my first Muse in a long time, I've been busy over the winter/spring months having trained and completed my 2nd Pittsburgh Marathon (3:53:49). Last few weeks, I've been concentrating on Pittsburgh. My mistake as I had wrong info and sent the convention info a week late to Paulu, so no appearance in June's issue. The convention committee is trying a few things differently but fairly same as conventions in the past plus we've been offered outside help from NRC'ers. It looks very good we'll have a tour of the KDKA transmitter per a friendly conversation with CE Jack Layton. The bus tour will be on Saturday, tentatively between 11A-4P. Not everyone may want to go so I will leave it up to anyone going with a small fee, looking at \$5. I thought with getting around Pittsburgh (you can get lost!), a bus would take some of the driving duties off people. On Sunday, an optional cruise of the Pittsburgh's River on the Gateway Clipper will be made available (tantatively) with departure at 1:30 P and back at port, 4P. Hope many of you can come, see you in Pittsburgh! 73's.

CESAR OBJIO - CALLE ENRIQUE HENRIQUEZ 69 - SANTO DOMINGO, DR

Hi, friends, I think it has been some time since my last Musing. Here, I wish to give you a brief report of our last presidential election held on May 16th. After a very long election campaign, at last everything came to quietness on May 14, last day for propaganda. On the 15th, nothing. On the 16th, there started the usual "Voz de la Junta Central Electoral" at 5 AM. All radio and TV stations had to relay this headed by Clasica Radio on 97.5 mhz. Why this in place of the government station on 620? Perhaps due to the ownership of the 97.5 station. Most of the stations did not join the network, they stayed silent. There are about 70 stations in Santo Domingo, about 12 were on the AM band, about 7 on FM, and, surprising, all cable TV was blocked off. All voting went quietly, no incidents or accidents happened. Now to another thing, in order to find out what had happened with Radio Sutatenza, I had a very good talk with the cultural atache in the Columbian Embassy. He told me their main problem was economical and they had to leave the air and that all the equipment has been sold. So they are likely off the air for good. Sorry not able to make the convention. 73's.

DAVE SCHMIDT - P O BOX 11502 - WILMINGTON, DE 19850

That's everything through 7/17 and it'll go out about 5 PM from the GMF at Wilmington. We've been pretty busy of late again with the radio work and getting ready to do a big up-grade on WCBI-FM Easton, MD (3000 watts to 25000 watts), hopefully that will be on this fall. In a recent trip to Lancaster, in passing the Strasburg Railroad main depo, a sign was noted for a TIS station on 1530, giving parking info for the Strasburg area. I suspect this is one operated by the railroad and not the park service as the ones operating on 1610. In a recent trip thru Harpers Ferry, WV, the 1610 TIS station there has not been noted, as well as the TIS station on 1610 at Valley Forge, PA (which had an amazing coverage area of about 20 miles when it was on!) Plans are being set up for us to be at the convention even though it will be right at the start of the football broadcast season in this area. We should have that out of the way by then. Thanks to all for the kind words in taking on the editorship of the column and again, we ask, that your reports should be DX related/club related/etc. We will be looking over each submitted report and editing as needed to keep it in the guidelines. And after 15 years or so, I've gone "back on the air" at WAMS-1380 Wilmington, DE, doing fill in work for the regular gang on vacations, off days, etc. WAMS features an oldies format, which is still pulling some numbers in the Top 10 stations in the market. The next deadline is the wekk before the pub. session deadline in Topeka. 73's



**NRC
AM RADIO
LOG**

NEW
**\$ Only
16.95**



Canada \$17.95

U.S. and Canadian NRC Subscribers *only*
\$19.95 U.S., Non-NRC Subscriber
\$20.95 Canada, Non-NRC Subscriber
Log will be mailed September 10!

1991 Edition

What's new with this year's edition?

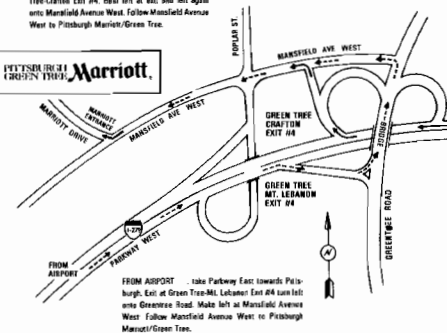
For starters, it's 30% thicker and over 300 pages!!

With two cross-reference sections - contains more station information than ever before - new station data entered right up to press time.

Coming to the NRC Pittsburgh Convention?

Krazy Ken (NRC Publications fame) will sell you the log for only \$15.50 plus personally and it to you at the Convention (This offer good only if you purchase your logbook at the Coinvention.) Mail or Call your order in TODAY! Do not send cash in the mail!! Specify your mailing address and number of Logs ordered. Make out check or money order to: NRC. Mail to: NRC Publications - Box 164 - Mannsville, NY 13661 or use your credit card (VISA/MC) and call (608) 423-4159

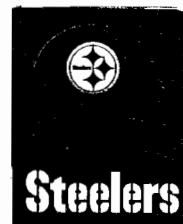
FROM PITTSBURGH... take Parkway West to Green Tree Center Exit #4. Turn left at exit and left again onto Mansfield Avenue West. Follow Mansfield Avenue West to Pittsburgh Marriott/Green Tree.



Convention-goers...if interested, please write "bus tour" after your name on the registration form below and send \$5 in a separate check or money order from the registration fee for a bus tour of Pittsburgh, tentative station tour, and KDKA XR tour (bus departs Marriott at 11 am Saturday and returns at 4 pm). You may obtain your ticket when you arrive at the hotel. Refunds only if tour is cancelled; no refunds if you cancel while at convention. Send your \$5 check made payable to "NRC".

NATIONAL RADIO CLUB 1990 CONVENTION REGISTRATION FORM
(please print)

NAME _____
 ADDRESS _____
 CITY _____ STATE/PROVINCE _____
 ZIP/POSTAL CODE _____ PHONE _____
 ARRIVAL DATE/TIME _____ DEPART DATE/TIME _____
 MODE OF TRANSPORTATION _____



Pittsburgh!

NATIONAL RADIO CLUB 1990 CONVENTION
Friday August 31 Monday September 3



Rated in 1985 as America's "Most Livable City" (#1 in 1989), the "Steel City", for the first time ever in club history, is proud to host the National Radio Club's 1990 Convention! Being home to the "Pioneer Broadcast Station of the World KDKA", here are some of the many places our city has to offer: the spectacular view of the city from Mt. Washington, riding the Monongahela & Duquesne Inclines, shopping/browsing in Station Square, the Buhl Science Center, Heinz Hall for the Performing Arts, the Carnegie Museum, Pittsburgh Zoo, our 3 major universities: Carnegie-Mellon, Duquesne, and Pittsburgh(PLU), the Pittsburgh Playhouse, Point State Park, Pitt Stadium(PLU vs. Ohio U. Saturday), 3 Rivers Stadium (Steelers vs. Eagles 8 PM Saturday/ Pirates vs. Phillies 1:35 PM Monday)...

Our convention will be held at the 4 star Greentree Marriott just outside the city off I-279 (Parkway West). The Marriott features 2 night clubs (Cahoots, with oolies! & the relaxing Chats), plus 2 swimming pools, tennis courts, weight room, and whirlpool! Greater Pitt services major airlines while the Marriott offers free transportation to and from the airport (courtesy phones in the baggage area). Also, arrangements will be made for anyone coming by bus or train. Those coming from the eastern U.S. by auto please note that rush hour traffic begins to get heavy by 2-3 PM to 7 PM on I-376(through the city) on weekdays(Friday). An alternate route is the Turnpike, I-70 west, to I-79 north, then I-279 north Pittsburgh exit -or- the Turnpike to U.S. 19 south Perry Hwy exit, to I-79 south, bypass/do not exit onto the I-279 south Pittsburgh exit, but again exit at I-279 north Pittsburgh.

All reservations(\$110.00 single room/ \$55.00 doubles plus 9% tax) must be made directly with the Greentree Marriott no later than August 10th, 1990. You may use the motel's toll free number: 1-800-525-5902. Mention the "National Radio Club" for this special rate. After August 10th, reservations will be accepted only if rooms are available. Check in time is 3 PM Friday and checkout is 1 PM Monday. Please note that any roommate pairings are up to the individuals. Reservations will be held until 5 PM Friday, then to guarantee a reservation for arrival after 6, a one night deposit or major credit card will be required. Also, the Marriott will have 4 handicapped rooms available.

The registration fee is \$30.00 U.S. and must also be sent by August 10, 1990. To pre-register, send a check payable to the "National Radio Club" to John R. Malicky, 995 Shadycrest Road, Pittsburgh, PA 15216-3023 and please mark "NRC '90 Convention". Also, for Visa/Mastercard users, you may use the NRC Credit Card Service either by phone at 608-423-4159 7-11 PM Eastern Local Time(no collect calls) or by mail to NRC, P.O. Box 24, Cambridge, WI 53523-0024. Please remember to state card type(Visa/Mastercard), card number, expiration date, name as it appears on the card, and evening phone #(in case of a question or two). Do not call the NRC Credit Card Service for hotel reservations, only registrations.

The registration will include the Saturday night Banquet, Sunday morning Brunch, snacks, pop, beer, morning donuts and coffee, and a special "Pittsburgh" spread of sandwiches on Friday! Tentatively, the convention will also include a slide show, a speaker, trivia quiz, displays, tech talks, free "goodies", a bumper sticker contest, the business meeting, and the ever famous NRC Auction! At present, we are hoping to line up a station and bus tour of the city with a small fee charged. More details when they become available. Any auction items and general items(radios, etc.), UPS or US mail, may be sent to 995 Shadycrest Road, Pittsburgh, PA 15216-3023, please mark on box if for auction, "NRC Auction Items".

SEE YOU IN PITTSBURGH!!!



Pitt

**"Most Livable City"-Rand McNally