



DX NEWS

*the magazine of the
National Radio Club*

SINCE 1933

VOLUME 50 NUMBER 1

OCTOBER 11, 1982

HAPPY BIRTHDAY !!!

THE FOLLOWING WAS RECEIVED HERE VIA ERC. (ERC HOPE YOU DONT MIND US PRINTING IT AS WAS TYPED BY YOU.):

September 27, 1982

Hi, Mike & Sue:

I wish I didn't have to write this, but write it I must. I just got a phone call this saturday from JOSEPH COOPER, son of DICK COOPER, and he has the bad news that Dick had a fatal heart attack at work in his print shop on Friday, September 24th and died virtually immediately. He was buried today, Sept. 27th. I believe he was 73 years old. He was currently working on the NRC's 50th anniversary booklet, and Joe says he will search around for what Dick had written/compiled and send it to NRC. Dick was an NRC'er way back in the 30's, and was the NRC Publisher on two different occasions. He was a great person, with a marvelous personality and sense of humor, and well loved by everyone who ever met him at the Conventions over the years. He spoke at some length at the 1981 NRC New Jersey Convention on some of the great moments in DX past. He really enjoyed himself at that Convention, and it is too bad he decided not to come to this year's, for he would have had another wonderful time there. Dick hasn't been DXing lately, but he will certainly be missed. And so NRC loses another one of its pillars. May he Rest in Peace.

Ernie

ONTO THE OTHERSIDE OF THE RAINBOW OF LIFE: FROM MY CRYSTAL BALL COMES IMAGES THAT IN OUR LITTLE PAGES AND IN OUR CLUB ARE SOME OF THE ORIGINAL MEMBERS OF NRC: FRED L. VAN VOORNEES - ROBERT WEAVER - J. WARREN REUTZAHN NOW THAT'S WHAT I CALL STARTING THE 50TH VOLUME OUT RIGHT!!!

CONTEST WINNER- SEE THE LITTLE ADDITION ABOVE (IT WILL ONLY RUN FOR THIS VOLUME AND NOT FOREVER) WINNER IS- HE WISHES TO REMAIN PART OF THE SILENT PORTION OF OUR MEMBERSHIP AND SAYS HE DOESNT WANT ANY REPRINTS SO... OH WELL. (HOW WAS THAT JOHN RIEGER, I DIDNT MENTION YOUR NAME). THANKS ARE IN ORDER TO THE OTHER MEN THAT REALLY GAVE SOME FINE PIECES OF ARTWORK (FOUND ELSEWHERE IN THIS ISSUE), HOWEVER THE RULES WERE TO ADD SOMETHING TO THE HEADER WHICH I THINK JOHN DID QUITE NICELY.

FROM THE MAILBAG - VIA JOHN RIEGER, KROQ-1500 BURBANK, CA HAS BEEN ORDERED TO GO DARK ON NOVEMBER 3RD BY ORDER OF A JUDGE VIA THE FCC.

THIS ISSUE AS YOU CAN TELL IS ANOTHER LARGE ONE. NO YOUR NEW EDITOR ISNT TRYING TO WIN VOTES COME THE NOV 2 ELECTIONS, WE HERE JUST HAD ALOT OF ITEMS TO GET OUT BEFORE IT GETS TOO COLD. WE COULD USE SOME ARTICLES, WITH THE SEASON UPON US WE COULD ALSO USE SOME CPC LETTER WRITERS! GIVE NEIL ZANK A HAND WITH THE COURTESY PROGRAMS COMMITTEE, THIS IS YOUR CLUB TOO, YA KNOW! WE NOW HAVE A FINE LIST OF VOLUNTEER TYPISTS STANDING BY TO HELP ME OUT. NOW THAT WE ARE WEEKLY. SO IF YOU WRITE AN ARTICLE, TECHNICAL OR WHATEVER, AND YOU DONT KNOW HOW TO TYPE, SEND IT OUR WAY AND WE WILL BE MORE THAN HAPPY TO GET IT COPY READY. SO...LETS GET ON OUR THINKING CAPS AND PUT YOUR IDEAS TO PAPER AND SEND THEM MY WAY!

LET'S CONTINUE THIS ON PAGE 5.....

LOOK INSIDE:

AM SWITCH.....	2	RENEWALS.....	14
DXSD.....	3	SPORTS NEWTORKS.....	15
IDXD.....	6	R-39DA PTO ALIGN.....	18
NEW MEMBERS.....	11	DXING PHONES.....	20
IDXA.....	12	FRENCH/ENG FORM.....	21
GDXA.....	13	CONVENTION REPORT.....	24
FCC NEWS.....	14	MY COUNTRY, MY.....	26

QSL OF THE YEAR.....	26
DXING JAN MAYEN PART 2.....	27
FRONT PAGE CONTEST.....	30
AMERICAN COUNTRY COUNTDOWN.....	31
CHAPLIN RAY PRISON LIST.....	32
YOUR MUSE.....	33
YOUR NAME.....	44

THE WORLD'S OLDEST AND LARGEST ALL MEDIUM-WAVE DX CLUB

AM SWITCH

JERRY STARR
c/o WSRD RADIO
401 N. BLAINE AVENUE
YOUNGSTOWN, OHIO 44505

Greetings. Gotta short one this time as we head into the weekly issues. Bonnie and I are getting ready to head out on vacation so there will be a skip for AMS in the next two issues, than back with a new AMS every week during the rest of the season.

CALL LETTER APPLICATIONS

Present call:	Seeks:
*New Yucca Valley, CA 1420	KYUC
WCCO Athens, GA 1470	WXAG
WEAT West Palm Beach, FL 850	WSFN
*New Winamac, IN 1280	WA0B
KLDY Liberty, MO 1140	KKCI
WSEW Selinsgrove, PA 1240	WQBQ
WIZX Orangeburg, SC 1150	WDIX
WTJT Franklin, TN 950	WAKM
KBKW Aberdeen, WA 1450	KAYO

CALL LETTER GRANTS

Old call:	New call:
910 WKXZ North Charleston, SC	WKCN
930 WAFL Milford, DE	WYUS
970 WUPY Ishpeming, MI	WMVN
1060 WJLJ Tupelo, MS	WXOQ
1230 *New Harriman, TN	WKCE
1520 *New Spindale, NC	WGMA

APPLICATIONS FOR NEW FACILITIES:

1520 Sequim, WA seeks 5000/5000

APPLICATIONS FROM EXISTING FACILITIES:

990 KTLK Tooele, UT seeks move to 1010 with 50000 (2500 CH)
 1150 WCNX Middletown, CT power to 2500
 1390 WAPR Avon Park, FL power to 5000
 1430 WFKH Pell City, AL power to 5000
 1520 WKJR Muskegon Heights, MI night power to 1000

GRANTS FOR NEW FACILITIES:

1390 Milan, TN 5000/500 U4
 1420 Yucca Valley, CA 1000 D1
 1460 Casa Grande, AZ 2500/1000 U4
 1490 Ruidoso Downs, NM 1000/250 U1

GRANTS TO EXISTING FACILITIES:

910 KIXI Seattle, WA moves XR to Mercer Island, WA, to 880 kHz 50000/1000 U4
 1050 WWIC Scottsboro, AL power to 1000 D1
 1150 KDEF Albuquerque, NM move to new XR site
 1440 KKXL Grand Fork, ND install taller tower
 1460 KWIP Dallas, OR moves to 880 kHz 5000/1000 U1!!! A CPC Test maybe???
 1470 KSIR Estes Park, CO moves XR

....and that's all for this issue. Remember our plea from last issue, send me a COPY of your two most unusual or prized veries for possible inclusion in the QSL section of the NRC 50th Anniversary Book.

73 and Good DX.

Jerry Starr & BKf

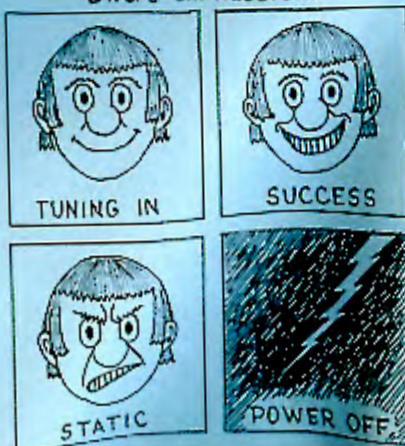
Jerry Starr & Buffalo K. Foonman
Close personal friends of the GVC

King remembers

"Hitting bottom was easier in many ways than weeping about hitting bottom," says Mutual Radio Network's well-known all-night talk-show host Larry King in the opening pages of his autobiography, to be published Oct. 4 by Simon & Schuster. King, whose highly successful career in broadcasting was interrupted for about four years after he was indicted for grand larceny, and later declared bankrupt in the early 1970's, has chronicled in a last moving, 207-page journal his rise to prominence as a talk show host and newspaper columnist in Miami in the late 1960's, his downfall through reckless spending and irresponsible business relationships and his late return to broadcasting, at first through Miami radio and later at Mutual.

STAN MORSS

DX'er's EXPRESSIONS



DOMESTIC DX DIGEST

DAVE SCHMIDT
42 CHELSEY RD.
CASTLE HILLS
NEW CASTLE, DE 19720

Here is the official NRC column which is about as exciting as listening to Talknet and the station listing for Larry King. When sending your items in, please type or neatly write, skip a line between items, ELT, etc. Here goes:

SPECIAL:

930 WYUS DE MILFORD - 9/19 1650 noted ending Phillies Baseball into MYL type format, Ex-WAPL (stays on FM only). (DS-DE)
 1010 KKIK TX WAGO - Noted w/Gospel programming, ex-KBBN. (CG-TX)
 1470 WSAJ PA ALLENTOWN - 9/11 noted w/MYL type format, "Unforgettable WSAJ". (TF-PA)
 1520 WYRU NC RED SPRINGS - 9/24 1930 s/off noted w/mention of 5000 watts, no SSB. (DS-DE)
 1550 WYNX GA SMYRNA - Per friendly v/l, now on w/50000/500 U-4. (TF-PA)

WSWV - AM/FM 1570/105.5

MIDDAY - MIDNITE:

620 WHJB PA GREENSBURG - 9/12 1519 fair w/weather, mention of Westmorland, Jets football. (WPT-VA)
 850 WKIX NC HALEIGH - 9/23 1440 noted w/promo, ID, into CW music, gone at early pattern change leaving just WREU. (DS-DE)
 920 WMEL FL MELBOURNE - 9/23 1946 atop null'd WTTM w/ads, weather, ID, rock music. Rarely heard at sunset. (DS-DE)
 1000 WIQT NY HORSEHEADS - 9/21 1910 quick s/off, mentioned power as 2500 and 5000 watts, no SSB. (DS-DE)
 1130 WBSO PA WAYNESBORO - 9/12 1526 fair w/stock car race, mention of Chambersburg in spot break. (WPT-VA) Station doesn't exist! w/ID, local ads then football. (HJH-PA)
 1250 WARE MA WARE - 9/12 1932 showing up u/deadband aurora conditions later to kill reception. (HJH-PA) Call Kojak!
 1270 WLBR PA LEBANON - 9/12 1925 audible weakly on night pattern on skipless channel, WSPR mysteriously showed up a few minutes later to kill reception. (HJH-PA) Call Kojak!
 1300 WWXC PA W. HAZELTON - 9/21 1916 CW music, s/off w/mention of "K-C Country" w/ID, no SSB, w/WAVE/WPBR. (WIZ-CT) WKCY ID's as "Cassidy" and plays CW music, so watch this one. WWXC is the AM of WQBC-FM in Freehold, PA (DS)
 1320 WCOG NC GREENSBORO - 9/22 2003-2015 mostly atop w/Top 40 music w/Don Martin, "13-WCOG" ID's. (DS-DE)
 1330 WTRE IN GREENSBURG - 8/30 2029 fair w/tentative s/off w/mention of WEST-FM Columbus. (WPT-DC)
 1340 WCVI PA CONNELSVILLE - 9/21 1949 briefly atop w/rock music, ID, weather check. (DS-DE)
 1450 WTSA VT BRATTLEBORO - 9/18 2013 in for about 30 seconds, time enuf for 2 ID's. (HJH-PA)
 1480 WCNS PA LATROBE - 9/15 1929 fair to poor w/s/off, mention of 500 watt non-directional power. (WPT-DC)
 WSAR MA FALL RIVER - 9/17 2106-2140 local news, talk show, and calls w/complaints on pigeon droppings at local library, lost to WJIT. Wait til they see that report! (TF-PA) Colorful!
 WRDW GA AUGUSTA - 9/22 2017 atop w/Augusta Civic Center promo, ID's as "R D W", B/Sol music, audio distorted. (DS-DE)
 1500 WDEN GA MACON - 9/21 1945 fair w/WZOP off w/tail end of Johnny Mathis record (he's my hero-WPT) then s/off. (WPT-DC) I thought Jim Nabors was your speed-hi! (DS)
 1540 WHDO MD WHEATON - 9/18 1915 s/off by sophisticated sounding lady in English, followed by male w/spanish s/off. (TF-PA) That was Boxcar Willie's wife! (DS)
 1580 WAJE PA EBENSBURG - 9/16-9/17 audible both evenings at s/off, 1920-1930, oldies rock, w/some new. Not noted 9/18. Slogan is "Waga." (HJH-PA)

KMFM 96

MIDNITE - MIDDAY:

680 WPTF NC RALIEGH - 9/20 0205-0215 in/od w/KNBR and UNID TT, pop music and announcement music from xmtr sight due to STL problems from studio. (WZ-NE) 9/20 0117 distorted ET w/pop music, ID mentioned interruption in program from Ralieg, music from transmitter. Noted giving mentions of "audio now with 18, 20 ka, boost" so musta been fooling w/an equalizer. (DS-DE)
 1070 CHOK ON SUDBURY - 9/20 0021 atop w/CW music, ID, took place of WIBC this year evidently. Another affective Canadian DA! (DS-DE)

THE DIAPER - The worlds FIRST true unisex clothing!

- 1110 WTBQ NY WARWICK - 9/18 0630 vocal SSB, detailed s/on, local news then gone to WUHN. (TP-PA)
- WUHN MA PITTSFIELD - 9/18 0636 local news, weather then music, lost to WYAR s/on at 0645. (TP-PA)
- 1320 KWHN AR FT. SMITH - 9/16 0045 noted w/"super country weather", jingle/ID, CW music, s/off 0100 w/mention of KNAG (FM). Ann'r was Cottonweyed Joel O/a KXYZ, some KAAM splash. (CG)
- 1470 WBIG NC GREENSBORO - 9/20 0008 s/off noted w/vocal SSB, BT noted! 2 weeks back so evidently is off XM's now, change log!(DS)
- WJAM ME LEMISTON - 9/20 0042-0115 fadey but atop at times w/PSA/Talk show blocks then Top 40 music, ads (Lewiston Pawn Shop, TP's hang out), ID's. W/CKO, very weak WGAN. (DS-DE)
- 1550 WXVA WV CHARLESTOWN - 9/19 0345-0410 w/TT/OC, fair to good w/UNID TT, sounded like a good old Pop, even w/ID's! (NZ-NE)
- WRHC FL CORAL GABLES - 9/23 0130 popped on w/Spanish music, ID in English by Female anc'r, long Spanish ID then music, carrier on/off. Likely they w/TT earlier (0045). (DS-DE)
- 1600 WKWF FL KEY WEST - 9/22 0244 noted w/MYL type music, PSA's, female anc'r. (DS-DE)

TRAVELLING THRU THE N-W (Notes from Bill Hardy):

- 630 KZUN WA OPPORTUNITY - 7/26 1000 this one gets the Evasive ID Award, "63 Solid Gold Radio is KZUN, Opportunity for Spokane." Rock oldies back to the 50's. (BH-WA)
- 730 KTRQ WA 7/25 1830-2030 loud and overmodulated classical music, NBC news on hour, CBS "Radioradio" news on 2 hour, ID mentions weekday AM religion, afternoon oldtime, Sunday classical plus evenings from KTRW-FM, many mentions of "Read Broadcasting", (BH-WA) Format: Hodge-Podge! (DS)
- 920 KWYS MT W. YELLOWSTONE - 7/27 gets AFR and Montana news at :50 from co-ownedKXKL. Tower next to Yellowstone park but drops off within 20 miles of station. (BH-MT/WY)
- 970 KREM WA SPOKANE - 7/25 2030-2130 now using "Hit Parade" format, MoR, oldies, nothing hard, slogan is "Hit Parade" and "The A-M Kream." (BH-WA)
- 1070 KERR MT POLSON - 8/5 1430-1515 good between Missoula/Idaho line on 190, sometimes only AM signal available! "Hit Country Kerr", CW music w/Ag net. news. NRC log lists city as "Poison", is there a message in there? (BH-MT) Musco Humor!
- 1090 KING WA SEATTLE - 7/3 2100 noted w/NBC news, formerly on KAYO-1150, drops RKO network. (BH-WA)
- 1150 KSPL WA SEATTLE - 8/11 0400 w/ID into MYL type format, 50's-60's MoR oldies, ex-KAYO, drops NBC net and CW format. (BH-WA)
- KNOI WA FULLMAN - 8/6 1350-1410 pop music, dropping CW, K-Q ID's. Automated w/KQQQ-FM audio, CBS news on hour. Gets out 100+ miles on groundwave for 1kw, but never logged at home. (BH)
- 1310 KARY WA PROSSER - 8/6 various times 1300-1700, average to good thru Eastern WA w/CW music, stronger than past years so maybe on w/new 5kw CP? (BH-WA)
- 1340 KSGT WY JACKSON - 8/2 2229 ending weather, ID then off for 55 sec. evidently for power change! Returned w/ID then rock music, ID's as Jackson or Jackson Hole (town is known as both). AM on til 0200 but not 24 hours per item on competing FM. CW by days, rock by night. (BH-WY)
- 1380 KOKO WA SPOKANE - Still daytime, ID's as Spokane, REL format. (BH)
- 1400 KRSC WA OTHELLO - 7/25 2000 EE ID and s/off after spanish show, later than time listed in log for Sunday s/off. Weekday format is pop music. (BH-WA)
- 1490 KNCW WA GRAND COULEE - 8/6 1455-1507 pop music, may be on Satellite Music Net, no longer Ac net. (BH-WA)
- 1560 KFWY WA SUMNER - Station is off the air, not noted 7/4, 7/5, 7/25, 8/16 while driving thru Sumner. (BH-WA)
- 1610 TIS WY/MT YELLOWSTONE PARK - About half of the TIS outlets were noted in operation, some completely off, others w/OC only. (BH)

ADD ONE MORE TO THE CJSS CLUB:

MATT STUTTERHEIM from Roosevelt Island, NY noted then 8/19 2230 w/loud signal and ET announcements.



krgo W/MG
ROCKY MOUNTAIN COUNTRY 550
1300 on your AM dial

wfia AM - 900 kc FM - 102.9 mc

1110 WYNH
KRLD

RANDUMS:

Deadlines for the column is Saturday, type up on Sunday evening/Monday mornings (except during DX time-hi!). Last minute items can be called to 302-322-6586 til 10 PM EDT. Our mail service has been pretty good lately, not going off on a wondering journey-hi!

And my work hours have changed again, Mon., Tues., 3-11PM, Wed., Thurs., Fri., 11p-7a. We may be switching the WCHE f/c to the 4th MX for a bit, we'll keep you posted in this very column.....instead on LISTENING, I'll CREATE some DX!

BEATING THE HUTTON SYNDROME THIS WEEK:

- WPT-DC Bill Townsend, Washington, DC
- WPT-VA Above at Timberlake, Oakton, VA
- NZ-NE Neil Zank, Lincoln, NE
- HJH-PA Harry Hayes, Wilkes-Barre, PA
- CG-TX Charles George, Dallas, TX
- WIZ-CT The Wizard of Poquonock
- TF-PA Herbert Fitzstony, Chalfont, PA
- BH-WA Bill Hardy, Aberdeen, WA (Vacation trip)
- DS-DE Joe Jones, Wilmington, DE

wanl
IOF-S&W
"The Friendly Giant"
RP2600, HQ180A
Zenith T-O, Superadio, etc.
RP2600, 30 foot EM
HQ145, Loop-de-loop
Superadio
TRF
WDEL Array, Xtal Radio

And so ends another ~~day~~ fun sized column, don't take any wooden radios!



73's - Good DX!



OH FROM CIVILS

ABOUT LAST ISSUE....BOY DID I MESS THAT UP, HUH FOLKS! OH WELL, EVEN PERFECT EDITORS EVEN MAKE SOME MISTAKES...SORRY TO CHUCK FOR THE ADDRESS ERROR, SUE PULLED THE WRONG HEADER FROM THE WRONG FOLDER. I WASNT HERE FOR MOST OF THAT ISSUE. I WAS FINISHING UP ALL THE LOOSE ENDS I HAD FROM MY OTHER HOBBIES AND ACTIVITIES PRIOR TO TAKING OVER AS YOUR EDITOR,....SO NOW I CAN SAY THAT MY ENTIRE ATTENTION SPAN (WHICH IS ABOUT THIS LONG) IS WITH THE NRC!!! THAT'S WHY THIS ISSUE IS NOW PERFECT!. HI.

Mike Lee

More mail hitting the highway

WASHINGTON (AP) - Airplanes may be the fastest way to travel, but Postal Service officials say they are improving service and saving money by moving more mail on the nation's highways.

On trips of less than 500 miles, trucks can often move the mail just as fast as airplanes, said James E. Orlando, director of the Postal Service's Office of Transportation Services.

As a result, postal officials are revisiting all inter-city routes of 500 miles or less to determine where switches from airplanes to trucks might be made.

Routes of over 500 miles will remain airborne.

The move to trucks was spurred last summer, when the air traffic controller's strike disrupted air transport and sent Orlando looking for other ways to move the mail.

"What we found," he explained, "was that we were able to put the mail on highway transportation...and actually improve service."

"The mail originates at a downtown post office and has to be processed at that post office, put on a truck, taken out to the air mail facility at the airport, unloaded, reprocessed, given to the air carrier, handled by the air carrier, put on an airplane, and then the same thing is reverse," Orlando explained.

With trucks, he said, mail can be hauled directly from one downtown post office to another, avoiding several steps and saving time.

"What we found in places like Chicago-Milwaukee, Chicago-Cleveland, is that

if you put the mail on the highway trip it will actually get to the destination, which is the downtown post office on the receiving end, faster," he said.

And, he added, "in that process, since highway transportation costs us less than air transportation, we not only improve the service but we save money."

WGN
Continental
Broadcasting
Company
2501 Bradley Place
Chicago, Illinois 60606

KSD/KSD-FM
1055 CORPORATE CENTER - PO BOX 12430
ST. LOUIS, MISSOURI 63102 - 314.997.5244

VIA ERG

Broadcasters aim for Cuba

WASHINGTON - Fed up with the stalemate over Radio Marti - the Reagan Administration's attempt to broadcast to Cuba - and convinced the private sector can do a better job anyway, two American broadcasters have begun building their own station to beam news, music and chitchat to Castro's island. William J. Kitchen and James E. Slaughter, owners of the Quality Media Corp. of Columbus, Ga., are building three radio stations on South Calicoe Island in the Caribbean Sen. about 300 miles from Cuba. (AP)

VIA *Harold Kemp*

WHB AM 71
106 WEST 14th STREET
KANSAS CITY, MISSOURI 64105

1550 AM WMAZ
Madison's Newest Radio Station

wmt stations
post office box 2147
cedar rapids, Iowa 52406

INTERNATIONAL
DX DIGEST

CHUCK HUTTON
1035 LATHAM RD.
DECATUR, GA 30033
404-633-1198
BEFORE 2300 ELT

Times are GMT. For ELT subtract 4 hours. Deadlines are usually Monday.

CHUCK- THE P.O. IS AT IT AGAIN! THIS SHOULD HAVE BEEN IN THE LAST ISSUE BUT...WE GOT IT HERE LAST THURSDAY 4 DAYS PAST DEADLINE- HQ ALSO SORRY FOR THE ADDRESS MESS UP -HQ (LAST ISSUE'S HELPER WAS TAKEN OUT AND HUNG)

NOTICE!

Do not use the box number anymore....It has been closed out and the address on the top of the column changed. Gremlins put in an appearance last issue and the address reverted to the box unintentionally.

And on to more interesting things, like dx. I guess Argentina is still the big thing. As I mentioned last issue, after receiving reports from Objio, Hakiel and Cooper I decided to check things out. Got 'em logged within half an hour of turning the radio on, for one of the most unbelievable things to happen here. WVL is no pushover here. They were in almost nightly for weeks, always heard on the hour with 5 short and one long pipe. 7/17 was the best with ID's and a jingle taped. August was very poor for them-Cuba started running all night and I heard them a couple of times early in the month weakly. Not a peep since but I haven't tried more than a few times. Maybe they had some sort of power increase as the war ended and during the aftermath.

- 164 FRANCE Allouis 0246 8/28 FF talk by man and woman. My best LW station, very consistent, fair sig. (Hakiel)
- 185 WEST GERMANY Searlouis 0253 8/28 FF talk by man, mx, poor sig. (Hakiel)
- 540 VENEZUELA Rosario YVOV 0315 8/25 SS mx, talk, R. Perije ID, fair sig. (Hakiel)
- 555 ST. KITTS Basseterre-ZIZ 0152 8/16 nice soft island mx, vocals, fair signal. (Hakiel) 0325 7/15 EK female anncr, clypsco mx, fair-good signal. (Hakiel)
- 560 JAMAICA JBC Kingston 0205-0215 9/7 good w/reggae, EE male ID and chatter. (Krueger)
- 567 NEW ZEALAND Wellington, pop mx //756 1139 7/5. (Portzer)
- 570 CUBA Santa Clara 0350 8/13 sporting event, probably soccer, then LA talk. Xint sig, WMA null. (Hakiel)
- 576 AUSTRALIA Sydney man/woman in SS alternating w/man in Aussie EE 1141 7/15. ABC mx 1200-1215. (Portzer)
- 600 COLOMBIA R. Libertad HJHJ Barranquilla 0215-0220 ID and TC xint briefly o/Cuban 9/7. (Krueger)
- 620 CUBA Moa 0119 8/14 SS talk, hysterical sports anncr broadcasting sports, R. Rebelde ID. Local WVNJ null. completely, good signal. (Hakiel)
- 630 CUBA unknown, 0104 8/15 R. Rebelde ID, sports broadcast; good signal. (Hakiel)
- 640 GUADELUPE Arnouville 0930 8/30 sign-on w/FF NA, fair sig. (Hakiel)
- 640 VENEZUELA Puerto La Cruz YVRO 0358 8/25 s/off w/NA, fair sig. (Hakiel)
- 648 AMERICAN SAMOA Pago Pago WVUV likely the one w/rr mx 1153 7/5. Faded across the hour then back w/man w/ad for store at the airport, then woman w/nx in American ZE. Faded 1207 but back 1210 w/same woman in S. pacific verbaecular. Good-mil signal w/heavy QRM from 2nu and KORL. Tentative report sent. (Portzer)
- 648 AUSTRALIA Tamworth 2NU AUC mx //657 et al o/u the above 1205 7/5. (Portzer)
- 650 ALASKA Anchorage KYAK 0730-0800 7/11 good steady signal w/ Larry King, local spot 0759, KYAK ID, Mutual mx. (Tomer)
- 655 EL SALVADOR San Salvador YSS 0415 8/31 SS talk, ID. This stn is tough because of WNBC but was heard very well with no QRM. Good signal. (Hakiel)
- 657 AUSTRALIA Byrock 2BY monster signal w/nx and wx 1213, tone and TC 1215, into light classics. (Portzer)
- 660 CUBA Santa Clara? R. Progreso in with very strong signals wiping out XEPRM. Stronger than //790, 880 and 900 with usual programs. First time I've noticed this stn. He must be extremely strong to wipe out XEPRM. Slight net heard. (George)
- 670 CUBA Arroyo Arones 0153 8/14 SS talk, woman anncr, another strong stn-like a local w/ID. (Hakiel)
- 684 AUSTRALIA Kompsoy 2KP light cl mx //657 1216 7/5. (Portzer)

- 675 AUSTRALIA Albury w/mx //657 1218 7/5 fair in KBO1 splatter. (Portzer)
- 682.9 CUBA Habana 0300 ID as "Radio Reloj, La Voz de la Revolucion", chimes. Now stn? Poor-fair sig. (Hakiel) No info here, ID seems rather odd-CH
- 684 SPAIN Sevilla 0335 8/7 SS talk, mx, poor sig. (Hakiel)
- 690 CUBA Santa Clara 0412 8/13 and heard nightly with local-like volume. (Hakiel)
- 700 COLOMBIA Cali HJCX 0300 7/18 LA mx, R. Sutatenza ID, no WLV, another LA noted under. Good signal. (Hakiel) 0242 8/2 old time pop mx, ID. Good signal in WLV null. (Hakiel)
- 700 JAMAICA Montegi Bay 0447 8/13 ID, American disco mx, radio requests taken on phone. WLV null. good signal. (Hakiel)
- 702 AUSTRALIA Sydney 2BL fair 0045 7/25 with choral singing: // to 6090 KHz. (Portzer)
- 720 COLOMBIA HJAN Emisoras Unidas, Barranquilla fair o/u WGR w/ lively SS vocal, TC, call and slogan ID 0430-0435 8/15. No trace of the Cuban. (DeLorenzo)
- 710 VENEZUELA Caracas YVXY 0106 7/13-SS talk, music, ID. Just a little bit of WGR thru null. (Hakiel)
- 720 HAWAII Eleale KUAL 0720 7/19 good on Superradio with Hawaiian DJ playing requests, pop and Hawaiian songs. (Tomer)
- 725 SURINAM Paramaribo PZX26 8/24/82 Nat King Cole, DD talk, this stn is dominant on Long Island, very similar to cx on Cape Cod. (Hakiel) 0255 8/2 US rock mx, very good signal, heard almost every night, a regular. (Hakiel)
- 735 ECUADOR Quito HJGB1 0249 8/31 H. Melodia ID, SS vocal, poor signal. (Hakiel)
- 735 ECUADOR Quito 0510 8/8 LA upbeat mx, ID, poor sig. (Hakiel)
- 738 TAHITI Papeete 0650 7/11 fair with native DJ, FF pop mx. 0045 7/25 good with native mx, KES off. (Tomer)
- 740 VENEZUELA YVIC R. Maracaibo fair w/ID between 2 lively SS vocals 0633 8/23; alone on channel. (DeLorenzo) 0515 8/7 LA pop mx, shouted ID's. Good strong signal. (Hakiel)
- 750 VENEZUELA Caracas YVKS 0640 8/5 LA rock mx, ID, good sig. (Hakiel) 0102 8/25 SS pop mx, and ID, xint sig. (Hakiel) Fair o/WMA w/ EE rock, ID 0502-0509 8/15. (DeLorenzo)
- 765 SENEGAL Dakar 0030 8/30 AA chants, mx, talk, fair. (Hakiel)
- 780 CUBA Moa 0233 8/14 SS vocals, men and woman anncrs, very good signal. (Hakiel)
- 780 VENEZUELA San Cristobal YVOD 0330 7/18 SS talk, ID, good signal. (Hakiel) 0158 9/7 seemed to have broadcast a pgm from "La Voz de los Estados Unidos de America" then ID. (Waterman)
- 790 CUBA Guanabacoa 0230 8/14 SS vocal mx, another Cuban "local" nightly heard with tremendous signals. (Hakiel)
- 800 NETHERLANDS ARVILLES Bonaire PJB 0216 8/3 ID, US rock mx. This stn is in every night and I mean every night like a local. (Hakiel)
- 810 BAHAMAS Freeport 9/8 0040-0100 EE hip DJ w/dedications, ads, jingles, Willie Nelson, island tunes. ID at 0100. (Fardus)
- 810 COLOMBIA Bogota HJCY 0342-0400 7/18 SS talk, ID, very good signal with WGY null. by euros, s/off at 0400 w/NA. (Hakiel) 0323 8/29 fast talking SS men over WGY. Very good signal. (Hakiel) 0335 8/5 very good signal, completely dominant over WGY. News broadcast heard. (Hakiel)
- 819 NEW ZEALAND Rotorua 1YE 1210 8/5 good signal w/nx, MoR vocals. (Tomer)
- 825 ST. KITTS Basseterre R. Paradise 8/31 0105 religious pgm, xint signal. (Hakiel) 0211 8/10 as usual, religious pgm with xint sig, ID. (Hakiel) 9/8 0110 presumed the one here with EE recorded religious pgm. (Fardus)
- 830 HAWAII KILA Honolulu 0730 7/13 fair on Superradio with rock mx. (Tomer)
- 830 VENEZUELA San Antonio de las Vegas YVLT 0645 8/7 LA mx, big sig. (Hakiel)
- 830 URUGUAY w/cl mx, hrd HJC mentioned so possibly a transcription. I checked BBC LA Service and not similar 0240 8/19. No trace of WCGO. (George)
- 834 BELIZE R. Belize 0110 8/31 mx in EE, good signal. (Hakiel) 0305 8/6 news in EE (BBC mx), ID, good signal. (Hakiel)
- 840 CUBA Santa Clara CMHW 0400 7/14 female blues singer, SS talk, very good signal. (Hakiel)
- 840 PANAMA Panama City HOLS0 0615 7/30 Latin disco mx, ID as "Radio Nacional de Panama" over another LA stn, fair-good signal. (Hakiel)
- 846 NEW ZEALAND Masterton 22D 1250 8/6 weak u/noise with pop mx // to 225 1035. (Tomer)

446 KIRIBATI Tarawa noted on Superradio 0520 7/12; native talk, good signal. (Tomer)

650 MEXICO XEZR Zaragoza men with ranchero mx and mariachi mx, many ads for businesses in Coahuila, frequent ID's with jingles, no trace of KOA 0210 8/19. (George)

860 BRAZIL Rio De Janeiro 0805 8/7 PP talk, mx over R. Relej, Cuba. Fair signal. (Hakiel) Suddenly dominant 0800 7/26 w/massive signal, almost a local, samba type disco mx, PP talk, "Mutdial" ID's. This stn comes in at 0800 like gangbusters swamping R. Relej. Sunrise skip? (Hakiel)

860 COLOMBIA unid 0200-0208 accordion mx, SS male and mentions of Colombia often but no ID caught on fadeup o/Cuba. (Krueger)

860 PANAMA Chitre -412 7/19 lively accordion mx, ID. Looking for my mystery stn and this popped up. (Hakiel)

860 VIND 0430-0500 7/18 SS talk, mx, id as "servicio Esmeraldas, LV de Caliguata" s/off at 0500 w/strange anthem, Ecuador? R. Metropolitana, Cuba surfaced after unid s/off plus R. Relej, Cuba under. No Brazil tonight. 7/21. (Hakiel)

870 ARGENTINA Buenos Aires LRA1 0650-0700 7/18 cl mx, 6 pips on the hour, poor-fair signal. (Hakiel) 0600 7/26 as usual nice gaucho mx, hrd almost every night since 7/4 with varying degrees of strength, volume increases the later it gets. Seldom hrd before 0400. (Hakiel) 0700 8/8 LA talk, 6 pips on the hour with 5 short and one longer. This station's signal seems to be declining; was very good in July-now down to poor signal. (Hakiel) 0730 8/16 SS talk by man and woman, 3(three) pips on the half hour, last one longer than the first two. Heard three pips again at 0830, poor-fair signal. (Hakiel)

873 AUSTRALIA Sydney 2GB 1230 8/5 fair with telephone talk, bothered by strong slop form KAIN, Hawaii. (Tomer)

882 AUSTRALIA Brisbane 4BH good signal 1210 8/5, quiet mx. (Tomer)

890 COLOMBIA Bogota HJCE 0512 7/18 SS talk, ID, three note chime, fair-good signal. (Hakiel) 0018 9/1 SS pop mx w/male vocals, ID, another SS stn under. Good signal. (Hakiel)

891 ALGERIA Algiers 0322 8/31 week w/AA chanting. Hrd here almost every night. (Waterman)

891 AUSTRALIA SAN Adelaide 1255 8/6 good with jazz. (Tomer)

891 FIJI Lautoka good signal 0840 7/25; Hindi mx. (Tomer)

891 NEW ZEALAND Wellington 2XW 1252 8/6 assumed source of rock mx, DU accented DJ o/UA RR. (Tomer)

900 HAWAII Kahaui KXUI fr mx heard and local PSA w/local CJVI 0631 7/5. (Portzer)

915 ECUADOR Machala HCROJ 0435 8/8 LA talk, mx, poor-fair. (Hakiel)

918 NEW ZEALAND Kumara 3YZ fair w/pop mx 7/8/19 1227 7/5. (Portzer)

940 CUBA Colon GMDI 0430 8/8 R. Relej ID, typical Relej stn with pips, very good signal. (Hakiel) 0250 7/19 SS talk, ID, 250 watts listed. (Hakiel) Loud o/unk LA w/all mx in SS 0517 8/16. (DeLorenzo)

960 COLOMBIA Magangué HJHN 0300 7/31 u/WELL with ID. (Hakiel)

980 MEXICO Metepec XEO w/ID, into cl mx with mushy arrangements. XEJ dominant 0600 7/22. (George)

990 GRENADA 0028 9/1 w/ID "Radio Free Grenada, the Voice of the Revolution" then broadcast hours and frequencies. Fair signal. (Mielcarek) 0150 9/7 local-like signal followed by time check and Lou Rawls song. (Waterman) 0400 8/8 calypso mx, EE so-called unner, s/off at 0405, very strong. (Hakiel) 9/7 0025-0031 with a couple of EE ID's, steel band mx, gave ID and SW freqs then abruptly off. (Portzer) Noted all night with calypso show MM 8/9 while DX'ing with car radio modified for indoor use, storage battery and three foot wire antenna from beach at "Hampton's Bays, L.I. Strong signal but is still a couple of hundred hertz off channel. (High side-CH) I am very interested in knowing if any AU cx were noted in the NE between 8/8 and 8/12-as I was getting good low angle reception from such as Melodia-730, Relej-1100, VOA-1180, many Cubans including Minuteman-1270, but also lots of Canadians and later in the night XEY, XEQ, XEOY, XERN and I think the SS on 1260 was XEL. I had thought they were all in EE. A change? (Foxworth)

990 VENEZUELA Barquisimeto YVTA 0406 8/8 LA mx, ID after Grenada s/off. Fair signal. (Hakiel)

1000 COLOMBIA Cartagena HJAJ 0057 8/11 SS talk, ID, RCN ID, fair signal. (Hakiel)

1000 VENEZUELA YVNN 0016 7/21 SS talk, mx, good signal. First time heard here. (Hakiel) 0410 8/5 lively SS mx, vocals, talk about a lottery. Big, big signal. (Hakiel) 0730 8/23 pop SS mx, ID, good signal. (Hakiel)

WELL. CHUCK. YOUR COLUMN GOT HERE ON TIME THIS WEEK. HJ)

ALSO DUE TO 'MURPHY'S TRICKS' THAT EFFECTED EVEN US HERE AT HQ. WE SHALL RERUN THE FIRST ITEM FROM THE LAST ISSUE, SO THAT ALL OF US WILL KNOW THE FREQUENCY. SORRY ABOUT THE MISTAKE FOLKS - HJ.

1008 NEW ZEALAND TAURANGA 1ZD GOOD SIGNAL W/POP MX // 1035 1245 8/5 (TOMER)

Now onto the column that is suppose to be here:

549 ALGERIA Oran 0401 9/2 man in AA at low modulation level on powerhouse carrier. (Connolly)

558 FIJI Suva 5, FIJI briefly above the splatter with quiet mx // to 031 0650 8/11. (Tomer)

580 PUERTO RICO San Juan WZAQ 0429 7/2 mx in SS, station letter ID's and H. Relej SID, xint signal. (Hakiel)

640 COLOMBIA Santa Marta HJBJ 0300 9/6 Colombian mx, SS talk, RCN ID over two other LA's, fair-good. (Hakiel)

648t AMERICAN SAMOA good loud hat against K0RL 650, DU loop direction 0630 8/25. (Tomer)

650 VENEZUELA Maracay 0218 8/22 YVLA fair o/others w/Venezuela mentions, Maracay ads. (Connolly)

655 EL SALVADOR San Salvador YSS 0345 9/6 SS talk, mx, ID, only 5 KHz from super local WNBC. Good signal. (Hakiel) Super local is like WSB a mile away, you can't even see WNBC's tower from where you are! OH

660 ALASKA Fairbanks KFAR good signal 0950 8/21 with pop mx; s/off unnet at 1000 with choir mx following unnet; offset 1002. (Tomer)

684 SPAIN Seville 0502 9/2 SS talk then mx, poor-fair signal. (Hakiel)

690 HAWAII KKUA Honolulu on top 1005 8/21 with ID's and ID for FM simulcast on KQHQ "Stereo Q", soul mx similar to XEIRA. (Tomer)

700 COLOMBIA Cali 0300 8/22 HJCK loud (no W/L audible); Sutatenza ID, accordion mx, festive goings-on. (Connolly)

720t JAMAICA 0422 8/22 8/22 reggae mx, accented EE talk in mess o/ u YVRE and others. (Connolly)

725 SURINAM Paramaribo 0220 8/22 good w/Commodores records. (Connolly) They have just about everything for those computers these days, hi....OH

750 VENEZUELA Caracas 0223 8/22 YVKS dominant w/SS talk then "Sueveto" by Kalo. (Connolly)

740t VENEZUELA 0332 9/7 Rumbos-type doorbell chimes, slogan or ad mentioning Calido (or maybe Caribe). (Connolly)

765 SENEGAL Dakar 0443 9/2 AA onsets, string mx, talk, fair to good signal. (Hakiel)

774 SPAIN synchronos 0508 9/2 SS talk, very little WABC slop, fair signal. (Hakiel) 0400 9/2 EE pop female vocal, SS talk. (Connolly)

783 PORTUGAL Porto Miramar CEB9 9/2 0520 PP talk, disco mx, then sultry vocal by female. Fair signal. (Hakiel)

800 NETHERLANDS ANTILLES Bonaire 0334 9/7 EE religious pgs alone at local level during highly awared cx--PJB was probably the loudest skip station at the time. (Connolly)

825 ST. KITTS Basseterre 0225 8/22 like a unnet w/EE preaching. (Connolly)

828 JAPAN Osaka JOEB good signal 1035 8/21 with man and woman in EE/JJ. (Tomer)

830 COLOMBIA HJDM Medellin 0506 9/10 loud and dominant w/unk mx-many R. Vision ID's and xint signal. (Hakiel)

830 VENEZUELA San Antonio de los Altos 0226 8/22 LA mx, ID, loud and rolling o/WXG. (Connolly)

850 COLUMBIA HJKC 0516 9/10 SS talk over the mess of many other stations' news broadcasts. (Hakiel)

855 SPAIN Murcia 0524 9/2 SS talk, fadeout-poor signal. (Hakiel)

870 ARGENTINA Buenos Aires LRA1 0600 9/14 back again. Haven't heard this station for almost a month but back with a bang! Lots of SS talk with clear ID's of LRA1 R. Nacional and 6 pips on the hour. Fair-good signal. (Hakiel)

870 CUBA Sancti Spiritus 0545 9/6 lots of SS talk-WWL strangely absent-no trace at all. A other LA stn noted under-fair signal. (Hakiel)

- 091 ALGERIA Algiers 0230 8/22 AA violins, fair. 0358 9/2 male AA talk then female AA vocal, xint, killing WLS. (Connolly) 2329 9/4 typical AA mx with flutes, drums, moaning and groaning, fair signal. (Hakiel)
- 1020 VENEZUELA La Asuncion YVHS 0603 9/10 SS pop mx, "Rundial Margarita" ID, good signal. (Hakiel)
- 1035 SULLYMAN ISLANDS Honiara 0411 loud at 0420 8/11, women talking in Fidjia. (Tomer)
- 1035 NEW ZEALAND Wellington 225 great signal 0938 8/17 women in phone conversation with DJ, pop mx. (Tomer)
- 1040 COLUMBIA HJAI Barranquilla 0330 9/6 lively Colombian mx, vocals, ID, good over other LA station. (Hakiel)
- 1044 NEW ZEALAND Dunedin 0428 same as 1035, not as strong 0939 8/17. (Tomer)
- 1094t MARSHALL ISLANDS Polynesian sounding talk followed by EE pop song 0923 8/17; DU loop direction. Faded w/XPMK slop 0935. KPAK 1100 off the air. (Tomer)
- 1100 COLUMBIA Barranquilla 0425 9/6 HJAT heard w/x. Reloj ID. (Connolly)
- 1160 COLUMBIA Barranquilla HJBL 0321 9/15 dog fight between Cuba and HJBL. ID heard, fair signal. (Hakiel)
- 1161 FRANCE Strasbourg 0311 8/22 classical mx, good. (Connolly)
- 1200 CUBA Santiago de Cuba CMJL 0257 9/14 pop mx, ID, xint sig, another SS under. (Hakiel)
- 1220 COLUMBIA Barranquilla 0410 9/6 HJVF loud w/LV de Colombia ID then LA mx. (Connolly)
- 1220 CUBA Espana Republicana CMOM 0134 9/14 LA mx, vocals, xint signal. (Hakiel)
- 1224t SPAIN 0452 9/13 apparent SS talk, poor, mixed up in jumble of other 1224 carriers. (Connolly)
- 1270 CUBA 0401 9/6 R. Reloj fair w/usual SS rx and time pga after WTSN s/air. (Connolly) 0140 9/13 SS talk, mx, ID, beeps. (Hakiel)
- 1310 VENEZUELA Puerto la Cruz 0358 9/6 ID thru Venezuelan SA at s/off. (Connolly)
- 1314t SUAIN 0454 9/13 possible SS talk on net in slop. (Connolly)
- 1360 VENEZUELA 0359 9/7 Marscibo probable w/two Corveza Zulia ads, sd for Banco Venezolano, eventually lost to QRM. (Connolly)
- 1370 COLUMBIA Bogota HJXX 0524 9/6 lively accordion mx w/male singer, ID, good signal for 1 kw, first time hrd. (Hakiel)
- 1370 COLUMBIA Barranquilla 0355 9/12 HJDU with 3 or 4 SS stns battling it out, this one rose up out of the mess for an ID of R. Piloto, 1 kw. (Hakiel)
- 1377 FRANCE Lille 0456 9/13 men and women in FF to fair peaks. (Connolly)
- 1390 COLUMBIA El Espinal HJFY 0251 9/10 Colombian mx, accordians, ID, fair signal. (Hakiel)
- 1404 GUINEA Conakry 0030 9/6 FF talk, drums, strong carrier but poor signal. (Hakiel)
- 1413 YUGOSLAVIA Pristina 0331 8/22 classical piano mx, then Slavic sounding vocal. (Connolly)
- 1420 CUBA Habana 0501 9/6 mx in SS, ID as R. Progresso, over US stations, fair signal. (Hakiel)
- 1424.5 UNID carrier 0119 9/13 loud net, stronger than heard before. Uruguay listed on this freq, maybe with better ex I'll be able to log this one. (Hakiel)
- 1430 CUBA Moron CMIN 0130 9/8 LA mx, ID, very good signal. (Hakiel)
- 1458 ALBANIA 0338 8/22 rapid fire talk possibly Slavic, poor to fair in bad CXHE/WCMB slop. (Connolly)
- 1460 CUBA Nuevitas CMND 0200 9/10 LA mx, ID, fair signal for only 250 watts. (Hakiel)

1460 TURKS AND CAICOS ISLANDS Governor's Beach 0644-0100 9/8-almost missed this one because I was looking for SS stns but the EE accented voices stopped me. Man and woman interviewing an Indian man, then "Radio Turks and Caicos" ID at 0100. Good sig. At 0000 9/9 had VOA Caribbean News Report for the next half hour. At 0000 9/10 woman announcer with TC (8:30 PM) then EE skit by men and woman. At 0100 9/10 "Night Train Show" with "music played by your favorite artists" then disco mx followed. Very good signal but at 0130 the Cuban took over. I called the station and the above was verified by Bill Grant who was very cooperative. He said he would send a verie. He also said he was very interested in DX and would like literature from our club. (Hakiel) Nice catch and good luck with the verie. When Schatz, Merriman, Robie and myself heard them in '76 or so they never varied even after repeated followups. Merriman finally got a verie after several labors of Hercules-CH

- 1467 MOJACO Monte Carlo 0337 8/23 test tones and open carrier prior to normal s/on--strong signal. (Connolly)
- 1470 COLUMBIA Medellin HJIR 9/6 LA mx, ID as R. Musical, I really had to work for this one without a loop-FET amp sent out for repair. Had to work the sidebands to dig this out of the mess. (Hakiel)
- 1476 AUSTRIA Wien 0340 8/22 pop hits and oldies including Senny and Cher. 0328 8/23 GG talk, US/UE adult contemporary hits-louder than 1593; smashing signal! (Connolly)
- 1476 NEW ZEALAND Auckland 1XA assumed source of rock mx with DU loop direction. 0910 8/18. (Tomer)
- 1476 USSR Vladivostok PS good signal 1035 8/21, Korean-sounding talk. USSR interval signal mx noted at 1100. (Tomer)
- 1500 COLUMBIA Cali HJLJ 0018 9/8 Colombian mx, clear ID with WFOU under-fair signal. (Hakiel)
- 1520 COLUMBIA Barranquilla HJLQ 0415 9/6 accordion mx, ID, WKSW attenuated by aurora. (Hakiel)
- 1520t PUERTO RICO San Juan WBA1 2333 9/6 SS speaker, lots of talking. Santurce and Puerto Rico mentioned. All alone at first then many LA's came in and covered him up. Good signal while it lasted. (Hakiel)
- 1521 SAUDI ARABIA Daba 0300 8/23 AA mx fair to good through WABM slop. (Connolly)
- 1530 CUBA Moron CMIN 9/14 000h really strong and dominant, ID and a cock crowing. (Hakiel)
- 1539 WEST GERMANY Mairfingen DLF 0213 9/7 GG talk, poor-fair. (Hakiel)
- 1540 BARBADOS Nassau 0415 9/6 black gospel mx pga, promo announcer mentioning Nassau-easily topping weakened WFTK during robust auroral ex. (Connolly)
- 1557t KAZAKH Cyclops 0505 9/14 men talking, not Fr or GG-Turkish? Poor signal. (Hakiel)
- 1566 TUNISIA Sfax 0404 8/23 local-like carrier-male AA moaning at low audio level. 0426 9/13 female AA vocal at very low audio level on big carrier. (Connolly)
- 1575 ITALY Genoa 0517 9/14 vocal mx, 11 talk, women announcer, poor-fair signal. (Hakiel)
- 1575t SPAIN 0505-0508 9/13 Steve Miller Band mx, then SS talk. (Con)
- 1580 COLUMBIA Barranquilla 0417 9/7 female SS vocal, SS talk, ID, strength only fair but completely dominant thanks to heavy aurora. (Connolly)
- 1584 SPAIN 0421 9/13 SS talk, fair to good. (Connolly)
- 1584 SPAIN 0525 9/14 SS talk, mx, poor-fair sig. (Hakiel)
- 1593 WEST GERMANY Langenberg 0322 8/22 female show tune style vocal, fair in WQSW slop. (Connolly)

All this the work of only three people-----

Mark Connolly-Billerica, Ma. H390A, TRF, Hq180A, Sm2, 3b m. LH
 George Hakiel-W. Islip, NY H7, Superradio, LH's, Sm2, Sanseringo loop
 Randy Tomer-Arcata, Ga. hot-rodded THR (filters, counter, etc.)

Another nice column... Congratulations to George Hakiel on his 1460 logging. I see that the 1240 Venezuelan megawatt was reported from Europe. The time was either 0300 or 0400, I forget. no trace of it here. The new religious thing from Turks and Caicos that was supposed to be on the air 6/1 is now scheduled to be on the air "this fall" on 1430 and 1570. I feel sure this one will show at some point or another. Keep checking.

WELCOME:

- JAMES W. WATSON 3024 CONROW DR. MANHATTAN,KS 66502
- H.W."HANK" WARD, 753 KINGSTON ROAD. LEXINGTON,KY 40505
- ROBERT D. YOUNG, JR. 4 RAILROAD COURT. MILLBURY,MA 01527
- VINCENT J. PINTO, 2 FARVIEW TERRACE SUFFERN,NY 10901

THANKS FOR JOINING THE WORLDS GREATEST CLUB! MUSE AND SUPPORT THE COLUMNS!!

Kon Rychalsky	Bridgeport CT	3	2	4	3	2	3	17
Neil Kazaross	Pawtucket RI	2	3	4	0	2	2	13
Sharon Waterman	Southwick MA	*	*	*	*	5	8	13
Richard Waterman	Southwick MA	*	*	*	*	8	*	8
Steven Miller	Boston MA	1	3	*	1	3	*	8

* indicates no total submitted

For the interested here are Norm Maguire and Gene Allen's totals:
 Norm Maguire E.Hartford CT/ 146 169 174 168 192 157 1006
 Albuquerque NM
 Gene Allen Vallejo CA 76 98 116 117 130 102 639

FCC NEWS RELEASE

FCC BEGINS RULEMAKING INQUIRY ON RELAXING MULTI-CITY IDENTIFICATION RULES

The FCC has issued a request for ideas concerning possible changes in their rules on how stations identify themselves. In particular, the Commission is considering letting stations add the names of other cities in their primary listening area to their normal hourly ID.

A number of stations already do this, of course. It is not uncommon to hear two cities mentioned by a station in its legal ID at the top of the hour. Getting the FCC to approve such has involved a complicated application procedure, time delays of a month or two, etc. Now the FCC is asking the public and the broadcasting industry if that procedure should be modified so that changes in the city-of-identity part of the ID can be made with a minimum of fuss.

Generally speaking, according to the FCC, stations seek dual city identification to enhance their attractiveness to national advertisers by recognition of the fact that their principal-city service contour encompasses a larger community than the one they are licensed to cover. Currently, the Commission handles about 100 applications for dual-city IDs annually.

The FCC is now considering a proposal that would permit a station to certify to the Commission that it completely encompasses the other community or communities within its principal-city contour ("city-grade contour"), and that it will begin multi-city identification on a certain date. It would not have to file an application for permission; this would save the FCC's processing staff a lot of time and would obviously eliminate the waiting time by the station.

As an alternative, the Commission has also asked for comment on the elimination of the city-grade-signal-strength requirement for multi-city IDs. That is, if a station can't quite provide a strong enough signal over all of an adjacent city, should that mean they can't mention that city in the ID?

Comments to the FCC are due by September 17, 1982, with any reply comments due by October 15. Between then and the end of the year the FCC staff will be reviewing everyone's views and, maybe, will come out with new ID rules within a few months. If so, you'll read about them here in DX News.

Does this mean, perhaps, that we'll shortly be hearing such station breaks as "WSSJ, Camden-Philadelphia"...or "WKZE, Orleans-Boston"?

John O Bowker

RENEWALS:

TOM WALSH, IAN HARRIS, OSCAR CLARK, PAT HARTLAGE, KEN CHATTERTON, JOHN BRANDEL, JOHN MALICKY, PAUL CROWDER, NEIL KAZAROSS, H. JOHN CLEMENTS, CHARLES R. SMILEY, JR., DAVID SPRAKER, GEORGE HAKIEL, JOSEPH MACHALA, KEN LYON, ROBERT KARCHEVSKI, PETER CLARIUS, KURT NELSON, E.H. GROSSMAN, BILL GRANT, CHUCK HUTTON, ALLEN NISSEN, BRETT HANAVAN, EDWARD LAWLER, JOE FELA, JR., ARTIE BIGLEY, ROBERT GALERSTEIN, ROBERT HASKINS, ERIC LOY.

THANKS TO ONE AND ALL- NOW PUT YOUR DX INTO WORDS. SUPPORT THE COLUMNS!!!

SPORTS NETWORKS

DAVE YOCIS
186 McDONEL
EAST LANSING, MI
48825

Please note the minor address change above. I've been able to track down some more networks and have a few early NFL nets, which may or may not be useful, depending on how soon the strike is resolved. I haven't been getting all the sports info out as fast as I'd like to, but the constant changing of addresses and school make things tough - I hope things get a bit better in the near future after I'm done here.

1982 Major League Baseball - UPDATE
 A big NRC hand for Craig Garrett who got most of the following information for us:

<u>Atlanta Braves</u>			
580 WCAC-GA	1240 WLCO-FL	1340 WWFL-FL	1410 WDAX-GA*
710 WKRG-AL	WBHB-GA	WBST-GA	WLAQ-GA
750 WSB--GA	WDUN-GA	WTIF-GA	1420 WRCS-GA
800 WJAT-GA**	WLAG-GA	WOKE-SC	1450 WDLK-AL
860 WDMG-GA	WBNS-GA	WBAC-TN	WGPC-GA*
930 WJAX-FL	1270 WYST-FL	WKNB-TN	WBHP-GA
WMGR-GA	1280 WPCF-FX	1350 WCAD-AL	WKBU-GA
WSOC-NC	WSAT-NC	1360 WKAT-FL	WMVG-GA
940 WMAZ-GA	1290 WNSA-GA	1370 WDFP-TN	WYLD-GA
970 WFLA-FL	WATO-TN	1380 WTOB-NC	WLAR-TN
1130 WMOA-GA	1300 WMAK-TN	1390 WDMA-AL	1470 WBIG-NC
1150 WDIK-SC	1310 WTIK-NC	1400 WSGC-GA+	1480 WARI-AL
1170 WCOV-AL	1320 WAGF-AL	WCOH-GA+	1490 WMOG-GA
1230 WAUD-AL		WCOS-GA	WNRB-SC
WSBB-FL		WKDY-SC	1590 WVNA-AL*
WSLJ-GA			(plus 11 FM)
WPAI-NC			

<u>Boston Red Sox</u>			
550 WDEV-VT	1230 WBNE-ME	1290 WKNE-NH	1400 WTSL-NH
580 WTAG-MA	WQDY-ME+	1300 WFNH-NH**	cont WLEN-NH
610 WIOD-FL	WMMB-MA	1340 WNOU-ME+	1420 WWSR-VT*
WGIR-NH	WMOU-NH+	WNBH-MA	1450 WLKN-ME+
790 WRUM-ME**	WERI-RI	WSTJ-VT	WKRI-RI
850 WEAT-FL	NJOY-VT	1350 WINY-CT*	WVSA-VT
860 WSBS-MA*	1240 WSKR-ME+	1370 WDEA-ME	1460 WBET-MA
900 WKXA-ME**	WHAI-MA*	1380 WKRT-ME*	1490 WSIR-FL
910 WABI-ME	WOCB-MA	WBSX-NH	WTVL-ME+
920 WHJJ-RI	WPTN-NH	WSYB-VT	WHAV-MA*
930 WNNH-NH	WVON-RI	1390 WCAT-MA*	WEMJ-NH
950 WKEX-ME	1250 WARE-MA	NFLM-MA+	WFDV-VT
970 WYBZ-ME	1270 WSPR-MA	1400 WIDE-ME+	WIKI-VT
980 WCAP-MA	1280 WABK-ME	WMCB-ME	1510 WKLC-CT
1080 WTIC-CT	WEIN-MA	WHMP-MA	WITS-MA
1110 WUHN-MA**			(plus 4 FM)

<u>Chicago White Sox</u> Joe McConnell, Gus Wynns			
570 WMAQ-IL	1230 WQAL-IN	1420 WIMS-IN	1460 WKAM-IN
1150 WKWY-IA	1260 WNCB-IN	1440 WRBA-IL	1480 WFKW-IL
1220 WQSA-FL*	1340 WTMN-MI	WGEM-IL	1500 WBNL-IN*

<u>Cincinnati Reds</u>			
560 WJLS-WV	1150 WLOC-KY*	1310 WIFE-IN	1450 WLKS-KY
580 WCHS-WV	WIMA-OH	1330 WKOV-OH**	WPAR-WV
630 WLAF-KY	1230 WJNO-FL	1340 WBIW-IN+	1490 WKBY-IN+
680 WCTT-KY	WHIR-KY	WLSB-IN	WPKY-KY
700 WJIN--OH	WANO-KY	WMOB-IN	WKAY-KY*
910 WFFB-OH	WIRO-OH	WXSE-TN	WBEX-OH+
920 WNNI-OH	1240 WBSU-IN	1390 WMPG-OH**	WMOA-OH
WLVN-TN**	WFTM-KY+	1400 WCYN-KY+	WOPJ-TN
930 WQNT-WV	WSPC-KY+	WPAY-OH+	1520 WSVL-IN
970 WAVG-KY	WHIZ-OH	WKPJ-TN	1540 WGRK-KY*
990 WJER-OH**	1250 WGL--IN	WBTE-WV	WNRB-OH**
1010 WMEV-VA*	WCHO-OH**	1410 WLBK-KY	1550 WCVL-IN
1050 WSHO-FL*	1290 WOMP-OH*	1440 WPGW-IN*	1570 WKKS-KY*
WNES-KY**	WHIO-OH	WHIS-WV	WPTW-OH**
1110 WZBR-KY*	WYOW-WV+		(plus 35 FM)

Symbols:
 * - Daytimer + - FM Simulcast Flagships are underlined
 Additional FM stations do not include simulcasts.

Houston Astros (Believe it or not!)

560 KLVI-TX	1010 KKIK-TX*	1280 WGSO-LA	1390 KULP-TX**
630 KMAC-TX	1070 KEMR-TX	1290 KIVY-TX*	1410 KJCH-TX
710 KURV-TX	1150 WJBO-LA	1310 KAMM-TX	KUAL-TX
790 KOSY-AR*	WTAW-TX*	1330 KVEE-AR*	1440 KELG-TX
980 KFRD-TX**	1230 KSIX-TX	1350 KTXJ-TX*	1450 KCTI-TX
990 KNIN-TX*	1270 KIOX-TX	1380 KBUJ-TX**	1490 WIKC-LA

(plus 10 FM)

Los Angeles Dodgers

Marz Strickert reports they are on KMPC-1560(CA), which was not on our "official" net list we received back in March.

New York Mets

Still haven't figured out what their problem is, but they are audible at my parents' home in Conn on:

570 WMCA-NY	990 WNTY-CT*	1240 WGBB-NY	1370 WALK-NY**
-------------	--------------	--------------	----------------

New York Yankees

LOCAL regional net is not available. It has been heard by myself on:

610 WSNB-CT	770 WABC-NY	1410 WPOP-CT	1470 WMMW-CT&
690 WADS-CT*	1320 WATR-CT	1420 WBEZ-MA	

There is also a NATIONWIDE net. The following is a complete list:

570 WFLP-FL	680 WPTF-NC	1200 WQAT-TX	1440 WSWF-FL
680 KBRW-AK	850 WEAT-FL	1420 KDEL-LA	1450 WWIN-LA

This latter net probably does not carry all games. I'd think that KDEL might only carry Ron Guidry's games (he halls from Lafayette, La.); I can't see KBRW paying the phone bills 162 times a year, hi.

Oakland A's ENGLISH: Bill King, Lon Simmons

560 KSPD-CA	630 KOH-NV	1270 KEBC-CA	1400 KQMS-CA
580 KMJ--CA	970 KBEE-CA	1340 KORY-CA	1490 KBLP-CA
620 KWSB-CA	980 KIMS-CA	1380 KIMS-CA	(no FM)

IN SPANISH: Amaury Pi-Gonzalez, Julio Gonzalez; On local FM and the following:

580 KEMS-MX	710 XEBL-MX	1340 XECW-MX	1450 KEYZ-MX
620 XECK-MX	920 XEBH-MX	1350 XEPL-MX	XESB-MX
630 XETK-MX	1010 XELO-MX	1350 XEPT-MX	1460 XEHX-MX
680 XEORO-MX	1240 XEBQ-MX	1420 XEFA-MX	

The following networks are still at large: Montreal, New York Mets, New York Yankees, St. Louis, Seattle, Toronto. The Cardinals' ad agency wrote to say that their net is "privileged information," and, you guessed it, we're not privileged. The rest I'd like to have, if any of you have access to them.

NATIONAL FOOTBALL LEAGUE

Thanks to Ken Onyschuk whose flagship list appeared in the last **DX News**.

CBS plans coverage of all playoff games and all non-Sunday afternoon regular season games. #1 announcing team is Jack Buck and Hank Stram; other announcers include Lindsey Nelson, Jim Kelly, Roman Gabriel, Dick Stockton has the pregame show; Brent Musburger the half-time activities.

MBS has a 4 p.m. Sunday "game of the week." Unlike CBS, many MBS stations do not carry the game; it is not audible in Conn. The game often appears on non-Mutual stations as well.

Baltimore Colts Chuck Thompson, Vince Bagli (net not known)

Buffalo Bills Van Miller, Stan Barron, a guest celebrity

590 CREY-OH	950 WBBP-NY	1310 WTEB-NY	1450 WOLI-NY
790 WLSV-NY*	1240 WERR-NY	1360 WMSB-NY*	1590 WGGG-NY*
930 WBBN-NY	WJTN-NY	(no FM)	

Cleveland Browns Gib Shanley, Jim Mueller

570 WRBH-OH	1130 WYNO-OH*	1400 WMAN-OH	1480 WHBC-OH
900 WPRO-OH**	1240 WHIZ-OH	1420 WHK--OH	1490 WERN-OH
910 WBRJ-OH	1320 WCLU-KY*	1450 WJER-OH	1510 WLKR-OH**
930 WCOL-OH	1340 WNCO-OH	WLEC-OH	1540 WBOO-OH*
940 WGRP-PA**	WSTV-OH	WEYZ-PA	1590 WAKR-OH
970 WFUN-OH	1370 WSPV-OH	1460 WTVL-OH	1600 WTPP-OH**

(plus 11 FM)

Houston Oilers Ron Franklin, Jerry Trupiano (MBS net not known)

Los Angeles Raiders Bill King, Rich Marotta

The latest CBS/KNX news release, dated Aug. 9, makes no mention of a network. Bill Hardy indicates that there is a network; I'll try to have this cleared up by next issue. My personal feeling is that they'll follow the lead of sister station WCBS in New York, who handles the Jets games without a network; and likewise for WBBM and the Bears.

Los Angeles Rams Bob Starr, Ron Fairly, Steve Bailey

710 KMPC-CA	1230 KNBC-CA	1340 KFRB-AZ	1450 KYOR-CA
970 KROU-NV*	KXO--CA	KDOL-CA+	KOWN-CA
1010 KCHJ-CA	KPRL-CA	KATY-CA	KTIP-CA
KCMJ-CA	1240 KSMA-CA	1400 KTUC-AZ	KVEN-CA
(plus 1 FM)		1440 KPRO-CA	1490 KDB--CA

Minnesota Vikings Ray Scott, Stu Voigt

570 WMAX-SD	1230 KSHS-MN	1310 KNOX-ND	1360 KEYZ-ND
710 WDSM-WI	KTRF-MN	1320 KOZY-MN	1380 KQND-SD
830 WCCO-MN	1250 KBRP-MN	1340 KVRB-MN	1400 WHLB-MN
920 KWAD-MN	1260 KROX-MN	KDLM-MN	1450 WELY-MN
950 KWAT-SD	1270 KPRM-MN*	KPOK-ND	1490 KNDC-ND
970 WDAY-ND	KBOM-ND	(plus 6 FM)	
1060 KGFY-SD			

New England Patriots John Carlson, Jon Morris

560 WHYN-MA	1010 WCNH-NH*	1340 WDME-ME	1450 WRKD-ME
590 WEEI-MA	1240 WCOO-CT	1350 WINY-CT*	WKXL-NH
610 WIOD-FL	WHAI-MA	1380 WBBX-NH	1490 WTVL-ME
790 WEAN-RI	WTON-RI	1400 WDEB-ME	WEMJ-NH
930 WNNH-NH	1250 WARE-ME	WBRL-NH	WLTN-NH
960 WFGL-MA	WKBR-NH	1420 WLIS-CT*	WPAD-VT
970 WYUZ-MA	1310 WORC-MA	1430 WTTT-MA*	1590 WSMN-NH

(plus 4 FM)

San Francisco '49ers Don Klein, Don Heinrich

580 KMJ--CA	970 KBEE-CA	1230 KDAC-CA	1490 KBLF-CA
620 KNSD-CA	980 KINS-CA	1270 KBLC-CA	KSYC-CA
630 KOH-NV	990 KHVH-HI	1400 KQMS-CA	1530 KFBK-CA
740 KCBS-CA	1060 KPAY-CA	(plus 1 FM)	1600 KUBA-CA

NCAA FOOTBALL

MBS covers nine nationwide games over the course of the season and also sponsors a nationwide Notre Dame network.

NRC does not attempt to make any complete survey of major college football; however, we will print any college football networks we get. Please contact your local schools about their coverage and send it along.

SAN JOSE STATE SPARTANS Hal Ramsey, Dave Ellis

740 KCBS-CA only.

SOUTH CAROLINA GAMECOCKS Bob Fulton, Tommy Suggs, Don Williams

560 WIS--SC	1240 WKDK-SC	1430 WJMR-SC*	1460 WBCU-SC
860 WLBG-SC*	WDXV-SC	WATP-SC**	1480 WAME-NC
910 WORD-SC	1250 WCKM-SC*	1440 WKHJ-SC*	1490 WGGD-SC
970 WJMX-SC	1270 WCGC-NC	1450 WCCA-SC	1550 WBSC-SC
1150 WIZX-SC	1300 WPEM-SC**	WHSO-SC	1560 WCCP-SC*
WSNY-SC**	1340 WRHI-SC	WQOK-SC	
WYIC-SC*	1400 WGTN-SC*	WQQT-GA	
1190 WJES-SC*	1410 WPCB-SC*		(plus 21 FM)

UCLA BRUINS Fred Hessler, Bob Steinbrink

710 KMPC-CA	1230 KNBC-CA	1270 KOUY-CA*	1440 KPRO-CA
720 KDNB-NV	KXO--CA	KCOX-CA	1450 KOWN-CA
760 KPMB-CA	KPRL-CA	1340 KATY-CA	KVEN-CA
1010 KCHJ-CA	1240 KSMA-CA	1400 KDB--CA	(no FM)

USC TROJANS Tom Kelly, Jim Perry

1070 KNX--CA; net?

Assorted observations of college football:

Memphis State: WMC-790; WTRJ-740*, WAKI-1230, WMAK-1300, WTJS-1390+ (all TN)
 Connecticut: WSCR-1220*, WDRG-1360, WLIS-1420*, WDJZ-1530* (all CT)
 Army: WRIV-1390*-NY

credits

BASEBALL - Teams/flagships and Craig Garrett, Barry Finkel, Karl Zuk, Mark Strickert, Albert Lobdell, Dan Arvin.

FOOTBALL (NFL) - Teams/flagships and Ken Onyschuk, Bob Karchevski.

FOOTBALL (NCAA) - Teams/flagships and Mike Cooper, Bob Londlo.

HARTFORD '83

JUST GOT OVER THE '82 CONVENTION??? WELL, START NOW OR PLANNING TO ATTEND THE '83 CONVENTION IN HARTFORD. SAVE YOUR NICKELS, DIMES, AND WHATEVERS. PLAN ON ATTENDING THE 50TH ANNIVERSARY OF THE NRC AT THE HARTFORD CONVENTION!!!!!!!!!!!!

R-390A/URH PTO ALIGNMENT

Dallas Lanford
(c) August 1982

The purpose of these notes is to describe an alignment procedure to achieve almost exact end point alignment of the R-390A KILOCYCLE CHANGE (PTO tuning). This procedure is similar to the method described in NAVSHIPS 0967-063-2010, the navy maintenance manual published April 15, 1970, but is simpler because it avoids dropping the front panel. Thanks to Dick Truax for the crucial simplification, and for his general comments about PTO alignment which I have incorporated into the method below.

(1) Removal Of PTO (VFO) Subchassis **WARNING:** Handle the PTO subchassis carefully to prevent damage or misalignment. To prevent misalignment, do not turn the PTO subchassis shaft or the KILOCYCLE CHANGE shaft (either outside or inside the front panel). To remove the PTO the R-390A is placed upside down. If the bottom dust cover is present, remove it. The PTO subchassis is in the center of the bottom three compartments. Locate the Oldham coupler and remove the anti-backlash spring, see Fig. 1 below. The

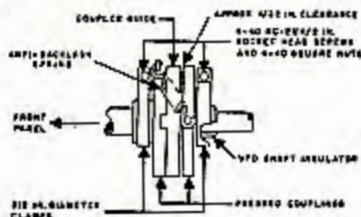


FIGURE 1

a doctor or nurse, they will probably give you one or two free.) Put the spring in a safe place and do not lose it. Next rotate the kilocycle change knob until the Oldham coupler guide (the central disc) is in the position shown in Fig. 1 (when viewed from above). At this point, if you are the careless type, you should lock the KILOCYCLE CHANGE shaft with the front panel DIAL LOCK. Disconnect the blue plug P-109. (The metal cylindrical plug cover/lock mechanism rotates to unlock, and then the blue plug can be pulled out. If you cannot unplug P-109, examine the plug closely and make sure you have unlocked it.) Trace the white wire through the hole in the PTO compartment to the top side of the R-390A, unplug it from the RF subchassis (J 217), and pass it through the hole in the PTO compartment. Loosen the three green Phillips head screws completely, and carefully lift out the PTO subchassis. Because of the positioning of the Oldham coupler, and because you have locked the kilocycle change shaft, you must lift straight up. The coupler guide will probably fall free, but in any case remove the coupler guide and put it with the anti-backlash spring for safe keeping. PTO removal can also be accomplished with the R-390A on its side, but it is not as easy to replace the coupler guide in that position.

(2) PTO End Point Adjustment Cover Removal The location of the slotted hex nut which covers the end point adjustment control is shown in Fig. 2 below. Older PTO's may not look exactly like Fig. 2 (some do not have the same shaped cut-out holes which give access to the slotted hex nut through the front bracket of the PTO), but the position of the hex nut is the same in all models. With the appropriate size screw driver, remove the slotted hex nut, and place it with the anti-backlash spring and Oldham coupler guide.

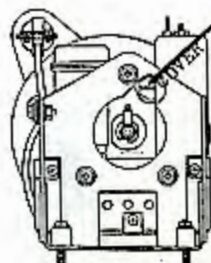


FIGURE 2

(3) PTO Subchassis Replacement Reverse the removal steps in step (1) above. Here if your PTO is a tight fit it may help to loosen (but do not remove) the two Phillips head screws that secure the triangular bracket towards the rear of the PTO compartment. But to tighten these two screws firmly after replacement of the PTO requires either a flexible shaft Phillips screw driver or an offset Phillips screw driver with appropriate head size. These two screws can be gotten reasonably tight with a straight blade Phillips screw driver angled past the flange of the triangular bracket, but do not use much pressure or you may strip the heads of the Phillips screws. Be careful when replacing the anti-backlash spring. A little grease on the Oldham coupler guide may help hold it in place during replacement of the PTO subchassis. Again, a hemostat is very helpful for spring replacement. Make sure the spring ends seat properly in the grooves of the spring posts in the Oldham coupler. A close inspection with a flash light is probably a good idea.

NOTE: If the above preliminary steps seem complicated, they are! PTO end point adjustment is not for the impatient or careless.

(4) Warm Up Turn on the R-390A and let it warm up for at least an hour. I do not normally use my crystal ovens, but if you do, remember to turn them on with the switch on the rear panel. In some cases, an hour may not be enough warm up time for an R-390A to stabilize. One of my R-390A's seems to require 2 - 3 hours for stabilization. If in doubt, wait longer than the recommended one hour minimum.

(5) 100 KHZ Calibrator Alignment Tune in WWV on one of its frequencies. Turn on BFO and adjust BFO PITCH to zero beat with WWV. Turn FUNCTION switch to CAL. A het with your 100 khz calibrator should be heard. With a small screw driver or metal blade alignment tool, adjust C 310 through the access hole in the rear panel for zero beat. Do not change BFO PITCH setting from the above setting.

(6) End Point Adjustment With FUNCTION switch set to CAL and BFO on (and at the same BFO PITCH position as in step (5)), set KILOCYCLE dial to +000 (a het of the BFO with the 100 khz calibrator should be heard), tighten the ZERO ADJ. knob, zero beat by turning the KILOCYCLE CHANGE knob, and release the ZERO ADJ. knob. Set the KILOCYCLE dial to 000 (the low end of the 1000 khz range). Again a het of the BFO with calibrator should be heard. Now comes the tricky part. Cut a plastic handled metal blade tipped alignment tool (Radio Shack 64-2223 or equivalent) to 3 3/16 inches long, see Fig. 3 below. The maintenance manual recommends using a non-metallic alignment tool, but I experienced no problems with my plastic handled metal tipped home-brewed tool. Slip the alignment tool through the holes in the RF subchassis front plate and PTO front bracket, and engage the end point adjustment control (slug). Good lighting is essential at first until you learn the

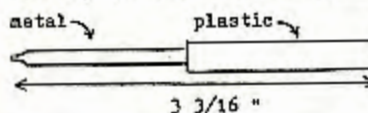


FIGURE 3

"feel" of proper engagement. I used a flash light to visually verify that my alignment tool properly engages the end point adjustment slug. You should also be sure that your tool does not damage the threads which accept the end point cover nut. Some end point slugs can be turned by hand, but mine was stiff, so I used needle nose pliers to rotate my alignment tool. About 3/4 inches of the plastic handle protruded past the front plate of the RF subchassis near the ten turn KILOCYCLE shaft stops for a good grip with the needle nose pliers. In any case, turn the alignment tool (either clockwise or anti-clockwise) until zero beat is obtained. My PTO was about 2 khz off at the end points, and this initial adjustment required about 1/2 turn. Next tune back to +000 (the other end of the 1000 khz range). Again, a het should be heard. Zero beat as before, using the ZERO ADJ. knob and KILOCYCLE CHANGE knobs. Tune back to 000 and zero beat with the end point slug again. Alternately repeat the +000 and 000 adjustments until no improvement is obtained. After 5 or 6 passes, you should be within 50 Hz or less. **WARNING:** Do not reverse the +000 and 000 steps during this procedure.

(7) PTO End Point Adjustment Cover Replacement Remove PTO subchassis as in step (1). Replace slotted hex head nut (refer to step (2)).

(8) PTO Subchassis Replacement Refer to step (3). **NOTE:** Before replacing the PTO subchassis for the final time, inspect the Oldham coupler, and clean and re-lubricate if necessary. I often use 3-in-1 oil, but you may want to use a heavier lubricant. I have also used a good quality bicycle bearing grease before with excellent results.

REMARKS: My first (and, until now, only) PTO alignment was done on a unit which was about 2 khz off (1000 khz actual = 1002 dial reading). End point calibration was achieved with about 1/2 rotation of the end point slug after 5 or 6 alternations of the +000 and 000 adjustments. Neither of the two PTO's I have experience with (one aligned by Dick Truax, and the other by me) are exactly linear throughout the 1000 khz range even though the two end points in both cases are almost exactly 1000 khz apart. After a thorough warm up, the R-390A I bought from Dick is as much as 200 Hz off at 100 khz calibration points between the end points, while my other R-390A is as much as 400 Hz off. Such departures from linearity are common, and the maintenance manuals specify that linearity should be better than 300 Hz when calibrated at the nearest 100 khz calibration point. In both of my R-390A's, linearity is probably within 50 Hz when calibrated at the nearest 100 khz point. In the PTO that I aligned, zero beat at 000 was obtained by rotating the end point adjustment slug clockwise (when viewed from the front). I would like to express my appreciation to Dick Truax for his patient explanations and discussions of PTO alignment. Without his advice and discussions, these notes would not have been possible.

Permission is granted to the National Radio Club to copy and/or otherwise use all or parts of this article.

ADDENDUM: Check the PTO tube before alignment, and replace, if necessary, before alignment. I learned this lesson the hard way by replacing the tube and tube shield after end point alignment, and then learned to my dismay that the change brought the PTO about 700 Hz out of alignment.

DXING THE CORDLESS 'PHONES

I've been having a ball during these summer doldrums eavesdropping on my near (and not so near) neighbors. Not up on some telephone pole with slip leads and headphones, but safe and hidden away with the radio. These new cordless telephones that are getting very popular put out a pretty strong signal. It's on the frequencies between the top of the AM BCN and the lower edge of the 160 meter Ham band. I've heard them around 1670, 1700, 1730 and 1750 kHz so far.

The modulation on these reveals is FM. It can be heard on the average radio by tuning one side or the other of center frequency. This is called slope detection. Much better results can be obtained with a true FM detector. I take the I.F. output from my R-390A and put it into a 455 kHz I.F. strip salvaged from an old FM SCA receiver. This particular unit incorporates a limiter stage and discriminator detector. The audio output is clipped before the speaker amplifier. This is done with a couple of diodes connected in parallel with the polarities reversed. A 250-2500 Hz audio filter is also used. This is pretty elaborate, but after 15 or so years in radio, my junk-box is full of these odd but handy bits and pieces. Good results can be had with lots less complication. Another thing: sharp selectivity does not work well. I use either the 8ke or 16ke bandwidth positions on the R-390A depending on signal strength. The 4ke and less positions just don't work.

Some changes in DXing habits are necessary. Sunset skip becomes after dinner DX. Instead of Monday morning sessions, Sunday afternoon and evening is prime time. Another bonus is no more bleary-eyed Mondays from staying up all night! An eye to the TV is handy as many a quick call is made during the commercials. "Log Book" is now "Phone Book". Verifications? Save your stamps. Not only is it illegal to disclose what you have heard to anyone or to make use of it, but you don't want them to know anyhow! They'd stop using the cordless and that would ruin the fun. Anonymity is much better here.

These cordless telephones are advertised as having a range anywhere from 50 to 750 feet. The receiver supplied in the handset can't be too great, so some of these things radiate a pretty fair signal. I have tentatively IDed a couple of these at a range of better than two miles and were very understandable.

A couple of last random thoughts on this: If you or a close friend/relative have one of these- watch what you say on it. Remember that you're on the radio. If you live in an area with a lot of radio hobbyists in it, the 'phone call you make may have a bigger audience than some small radio stations! (or: "Hey! That's me in the Arbitron!") Another point is why the heck the manufacturers put the base unit transmitter in that part of the radio spectrum. Either in the 1750 meter band, 160-190 kHz, or up somewhere in UHF would be better. The handsets all use 49.8 to 49.7 MHz, which seems to be a good choice. The handsets can be heard on most police scanners, by the way. The only drawback to this whole thing is that you may find out what the neighbors really think of you. Enjoy!

Craig Healy



by: ANDY RUGG

(A) INTRODUCTION:

The following glossary and report form can be used for reporting to stations in Québec, France and the rest of the francophone world.

Recent feedback from NRCers indicates that some Québec stations ignore English language reception reports. Conversely, over the past two decades the writer had had a 100% response rate from Québec by writing in French to French-speaking stations.

If you use this package, it should bolster your rate of response.

(B) GLOSSARY:

(1) DAYS AND MONTHS:

January	janvier	Sunday	dimanche
February	février	Monday	lundi
March	mars	Tuesday	mardi
April	avril	Wednesday	mercredi
May	mai	Thursday	jeudi
June	juin	Friday	vendredi
July	juillet	Saturday	samedi
August	août		
September	septembre	E.S.T.	H.N.E.
October	octobre	E.D.T.	H.A.E.
November	novembre		
December	décembre	A.M.	du matin
		P.M.	du soir
		hours	heures

(Note: Names of days and months always begin with a small letter, e.g. Friday, August 20, 1982 vendredi, le 20 août 1982)

In French numerical form it would be 32-08-20)

(2) QUALITY OF RECEPTION/INTERFERENCE:

Overall rating:	excellent	Compréhension:	puissant
	very good		très bonne
	good		bonne
	fair		passable
	poor		faible
	barely audible		à peine entendue
Interference:	nil	Interférence:	aucune
	slight		très peu
	moderate		un peu
	severe		beaucoup
	from station...		du poste...

Static noise Bruits parasites

Fading Fading
Underneath Au-dessous de
On top of Supérieur à

(3) PROGRAM DETAILS-GENERAL:

News	Nouvelles
Weather	Météo
Sports news	Nouvelles sportifs
Hockey game (between...and...)	Parti de hockey (entre...et...)
Baseball game	Parti de baseball
Discussion	Causerie
Telephone discussion	Causerie téléphonique
A man sang/spoke/mentioned	Un homme a chanté/parlé/mentionné
A woman sang/spoke/mentioned	Une femme a chanté/parlé/mentionné
Music	Musique
Instrumental music	Musique instrumentale
Rock'n'roll music	Musique du rock'n'roll
Golden oldies record (by...)	Ancien disque d'or (par...)
Country & Western music	Musique western
Mass	Messe
Hymn	Hymne
The title is (English/French)	Le titre est (anglais/français)
Election results	Résultats du scrutin

Call sign	Indicatif d'appel
Station identification	Identification de poste
Network	Réseau
Contest	Concours
Sign-off (with National Anthem)	Fin des émissions (avec hymne national)

(4) PROGRAM DETAILS - ADVERTISEMENTS & NEWS:

Commercial (for...)	Publicité (pour...)
bank	banque / caisse populaire
beer	bière
car dealer	concessionnaire d'automobile
clothing store	magasin de vêtements
cocktail lounge	bar-salon
corner store	dépanneur
dry-cleaner	nettoyeur
furniture dealer	détaillant de meubles
garage	garage
hardware store	quincaillerie
restaurant	restaurant
shopping centre	centre d'achats
store	magasin
supermarket	super marché
theatre	cinéma
travel agent	agence voyages

Newscast mentioned:

- House of Commons, Ottawa
- National Assembly, Quebec
- The Prime Minister
- The Minister of Finance
- The Leader of the opposition
- City Hall
- Post Office
- President of the U.S.
- England
- Germany
- Japan
- South America
- government
- economy
- stock market
- unemployment
- strike

Les nouvelles ont mentionné:

- Chambre des Communs, Ottawa
- l'Assemblée Nationale, Québec
- le Premier Ministre
- le Ministre des Finances
- le Chef de l'Opposition
- l'Hôtel de Ville
- le Bureau de Poste
- le Président des Etats-Unis
- l'Angleterre
- l'Allemagne
- le Japon
- l'Amérique du Sud
- le gouvernement
- l'économie
- la bourse
- le chômage
- la grève

(5) SUNDRY PHRASES:

Attention: Chief Engineer	Aux soins de l'ingénieur en chef
Attention: General Manager	Aux soins du Directeur Général
Second request	Deuxième demande
Third request	Troisième demande
There are only a few program details because I don't understand oral French very well.	Il n'y a que le moindre détails de programme parce que je ne comprend pas très bien le français oral.
Enclosed is a prepared QSL card; please sign it and return to me.	Veillez trouver ci-joint une carte de QSL déjà préparé; S.V.P. signez-la et retourner à moi.
Also, please send me a coverage map, if you have any.	Aussi, S.V.P. m'envoyez une carte de rayonnement, si vous en avez.

(D) ACKNOWLEDGEMENTS etc.

I am particularly grateful to:

- ERNIE COOPER, who suggested this article
- (MRS.) HELEN LEFORT, who "word-processed" it all.

I'd appreciate any suggestions to expand the glossary or otherwise enhance this package. If there are enough changes NRC can reissue an "improved version" at a later date.

Andy Rugg
 Andy Rugg,
 Montréal, Québec
 August 3, 1982

(C) COMPARATIVE REPORT FORMS

ENGLISH

Radio station CXXX

Dear Sir:

It was a pleasure to tune in CXXX today, _____ 198____, between _____ and _____ A.M./P.M. E.S.T./E.D.T., on _____ kHz. Reception was _____ with _____ interference (from station _____).

Program details: _____
 Receiver/antenna: _____

I am very interested in receiving distant AM radio stations and collecting verifications of reception. If the above details are correct, I would greatly appreciate receiving a card or letter confirming that I heard CXXX-_____ kHz.

I enclose stamps/a return envelope to facilitate your reply.
 Hoping to hear from you soon, I am,

Yours truly,
 Member: National Radio Club

FRENCH

Poste de Radio CXXX

Cher Monsieur:

C'est avec plaisir que j'ai capté CXXX aujourd'hui, le _____ 198____, entre _____ et _____ heures du matin/soir H.N.E./H.A.E., dans _____ kHz. La réception était _____ avec _____ d'interférence (du poste _____).

Détails de programme: _____
 Récepteur/Antenne: _____

Je m'intéresse beaucoup à capter les postes lointains de radio AM et collectionner des vérifications de réception. Si les détails ci-hauts sont exacts, je voudrais beaucoup recevoir une carte ou lettre pour confirmer que j'ai capté CXXX-khz.

Veillez trouver ci-joint des timbres/une enveloppe de retour pour expédier votre réponse.
 Veuillez agréer, Monsieur, l'assurance de mes sentiments les plus distingués,

Members National Radio Club

LOUISVILLE CONVENTION REPORT, Part II
OR NOW, THE REST OF THE STORY.....

There are some great unanswered questions still in my mind from the 1982 NRC Convention here in Louisville. Chief among them are:

---Why don't we make some extra money selling scanners?

---How long can a "Double Country" sticker last in Kentucky weather with winter coming on?

---What DO motels do to make chicken and rice come out so bad? (A partial answer may be had by writing Rich Segalas in care of a local hospital!)

---Why does someone ALWAYS seem to lock a set of keys in his car on the last day of Louisville conventions?

---What REALLY became of the air in a certain tire?

---Will Ernie Cooper really send club letters out on that wonderful church camp stationery he bought at the action auction?

---Will anyone ever wear a KPAT T-shirt or are they too expensive for everyday clothing?

---Why DID WHAS go off the air during the NRC tour?

---Will waves from the WAVG transmitter make the chief engineer (who lives next door!) sterile in time? Will anyone care?

---Did anyone remember to leave a tip at Rocky's? Can anyone recall Don Erickson's dinner bill from the last time he was there (HINT: it was in 1980.)

---Why didn't a certain Washington, D.C. DXer ever arrive? And is he really lost in a taxi somewhere near Shelbyville?

---Were John Clemmer and Gary Siegel really planning to waste time by going to the World's Fair?

---Did Ken Chatterton's car hold together until he got back home? If so, how?

---Why did everyone volunteer Ken McHarg for everything?

---Is Dr. Richard Wood REALLY in the Middle East or did he just drop out of sight because he forgot to pay his SLIDEX dues?

---Did anyone really fall all the way asleep during the business meeting this year?

---Are there REALLY still three DXers in the motel dining room waiting for their Labor Day breakfasts to arrive?

---Will Chuck Raider really end up paying \$27.50 for a window?

---Will Rich Segalas and Rich Levin offer automobile repair

service again next year in Hartford?

---Are the publisher and his wife REALLY so hard up for TV entertainment in Wisconsin that they've watched the auction tape 11 times this week?

---Will anyone really buy a copy of the group photo we took? And if so, will the CIA be interested?

---How did Carleton Lord's wife get over being the mother and guardian for over 60 people? Is it true she's started a kindergarten because she misses all of us?

All of these exciting questions and a lot more are left over from the 1982 NRC Convention. We hope you had a good time if you were here and if you weren't, we hope we've raised enough curiosity that the thought of missing next year's convention is unbearable.

On behalf of the Louisville Committee, it was a lot of fun and I hope we'll get to do it again. On my own personal behalf, remember IRCA Louisville in 1984 and Paul Mount, get your elevator riding suit ready!

P.S. why do LOUISVILLE conventions always seem to feature a fire alarm system that doesn't work right?

Jed F(who?-ha)





AFFILIATES:

- KCBO-1170 SAN DIEGO, CA
- KCKC-1350 SAN BERNARDINO, CA
- KBRQ-1280 DENVER, CO
- WAMS-1380 WILMINGTON, DE
- WDOO-990 ORLANDO, FL
- WBRO-1420 BRADENTON, FL
- WPLO-590 ATLANTA, GA
- WTHI-1480 TERRE HAUTE, IN
- KKLB-1490 CHUBBOCK, ID
- KXEL-1540 WATERLOO, IA
- KCDR-1450 CEDAR RAPIDS, IA
- KFDI-1070 WICHITA, KA
- WSJP-1130 MURRAY, KY
- WVLC-590 LEXINGTON, KY
- KWKH-1130 SHREVEPORT, LA
- WIBR-1300 BATON ROUGE, LA
- WABK-1280 GARDINER, ME
- KTTS-1400 SPRINGFIELD, MO
- KEIN-1310 GREAT FALLS, MT
- KERR-1070 POLSON, MT

- KXXL-1450 BOZEMAN, MT
- KLYO-1240 HAMILTON, MT
- KYNN-1490 OMAHA, NE
- KKBK-1340 AZTEC, NM
- KPSA-1230 ALAMOGORDO, NM
- KUIX-1480 HOBBS, NM
- WOKO-1460 ALBANY, NY
- WENE-1430 ENDICOTT, NY
- WNYR-990 ROCHESTER, NY
- WLAS-910 JACKSONVILLE, NC
- KFGD-790 FARGO, ND
- WOBL-1320 OBERLIN, OH
- WSAJ-1360 CINCINNATI, OH
- WOLS-1230 FLORENCE, SC
- WSM-650 NASHVILLE, TN
- WKIN-1320 KINGSFORD, TN
- WOOD-1310 CHATTANOOGA, TN
- WGAP-1400 MARYVILLE, TN
- WMPG-680 MEMPHIS, TN
- WSAC-1340 CLEVELAND, TN
- KEES-1430 GLADEWATER, TX
- KFYD-790 LUBBOCK, TX
- KVET-1300 AUSTIN, TX
- KVOZ-1490 LAREDO, TX
- KWKC-1340 ABILENE, TX
- WVOD-1390 LYNCHBURG, VA
- KAYD-1150 SEATTLE, WA
- WTCR-1420 KENOVA, WV
- WTMJ-620 MILWAUKEE, WI
- WTSO-1070 MADISON, WI
- KUUY-1530 CHEYENNE, WY
- KIML-1270 GILLETTE, WY

plus 24 FR Stations
List compliments of USM Radio via
Tom Connalson (Typed at HQ)

IN THE AUGUST ISSUE OF DXN WE HAD PART ONE OF GEIR STOKKELAND'S DX'ING FROM JAN MAYEN ISLAND. HERE NOW IS PART TWO, WITH THE LAST 3 PARAGRAPHS FROM THAT AUGUST ISSUE. HERE NOW IS PART TWO:

DX'ING FROM JAN MAYEN 1981-BZ

Next, propagation over the North Pole area. The difference in AM reception between the west and east coast of Jan Mayen was very surprising. Remember the map distance is only 3 - three - kilometres (air route) from Kvalrossbukta to Helenesanden. I need more data to establish a good theory, but my current idea is that East Coast NA signals is received from southwest through the Denmark Strait to west coast Jan Mayen - thus the mid-island mountain range block those signals from getting further. Alaska and west coast NA signals never got out to Kvalross, so they must propagate along a different route across the Polar basin, further east. How pirate signals propagate is an open issue to me, but I do not believe that a glance at an azimuthal map centered on the North Pole or Jan Mayen itself to find the shortest path for propagation, gives a satisfying answer.

Last, 2 words on the 1981-82 condx variations. Svein Jakob Hollerud, located on the coast of central Norway, described "his" AM season towards North America in an article in DXLC's "DX-News" this spring. The noted condition peaks he noted last winter were very often the same as on Jan Mayen. My theory thus is that our two locations provide very similar Trans-Atlantic/-Polar AM DX. Only further observations will judge.

This is written as a new DX season is getting under way. I presently have commenced my new job at Bjornoya Radio/LJB - here on the north slope of Bear Island. My FRG-7000 and -7700 receivers are here to ensure another DX season - together with a good aerial along the cliffs.

Promised in a 1982 -83 Bjornoya DX round-up in one year from now. Good DX!

Bjornoya, July 25th 1982

Round-up of mediumwave stations heard on Jan Mayen 1981-82

North America:		t = Tentative (only when likely) first dates of reception included	
570	GRF Godthab (Nuk)	Sep 5	dates Apr - Dec: 1981
580	CKY Winnipeg NB	Jan 23	dates Jan - Apr: 1982
600	CFQC Saskatoon SA	Jan 8	
630	CHED Edmonton AB	Nov 21	
650	GRF Godhavn(Qeqortarsup)	Sep 5	Underlined stations were heard during 4 or more months of the season(regulars)
660	KFAR Fairbanks, AK	Jan 25	
670	WNAQ Chicago, IL	Feb 22	1050 WHN New York, NY Sep 5
680	KFRW Barrow, AK	Nov 20	1060 CFCN Calgary AB Nov 21
700	GRF Simiutaq	Sep 25	1070 CKRT St. Albert, AB Jan 28
710t	KIRO Seattle, WA	Jan 8	1080 CKSA Lloydminster, AB Nov 21
720	KOTZ Kotzebue, AK	Jan 8	KANC Anchorage, AK Nov 21
740t	CBX Edmonton, AB	Jan 8	1090 KING Seattle WA Nov 21
750	GRF Umanak (Umanaq)	Sep 5	1100 GRF Angnajsalik Sep 5
	KFQD Anchorage, AK	Nov 21	WHNE Cleveland OH Sep 5
770	WABC New York, NY	Sep 6	1110 CHQT Edmonton, AB Nov 20
780	WBBN Chicago, IL	Jan 29	LHBT Charlotte, NC Feb 13
790	CFEN Canoro, AB	Nov 20	1120 KMOX St. Louis, MO Sep 6
840	WHAS Louisville, KY	Feb 22	1130 CKWV Vancouver, BC Dec 4
850	WHDH Boston, MA	Sep 5	WCXI Detroit, MI Sep 6
860t	CHAK Inuvik, NWT	Jan 28	NRGY Minneapolis, MN Nov 21
880	WCBS New York, NY	Sep 5	WISN Milwaukee, WI Sep 6
890	WLS Chicago, IL	Jan 23	WNEW New York, NY Jan 28
900	CJER Rinoski, PQ	Sep 11	1140t CBI Sydney, NS Sep 6
920	CJCH Halifax, NS	Jan 30	CKXL Calgary, AB NOV 20
930	CJCA Edmonton, AB	Nov 20	ESOU Sioux Falls, SD Dec 1
	CJYQ St. John's NF	Oct 22	1150 CKOC Hamilton, ON Jan 4
	LKTKN Ketchikan, AK	Jan 4	CKX Brandon, MB Jan 10
940t	CJCY Yorkton, SA	Nov 20	WYNE Kimberly WI Feb 12
950	CKNB Campbellton, NB	Jan 28	1160 KSL Salt Lake City UT Nov 20
960	CFAC Calgary, AB	Nov 18	1170 KJMF North Pole AK Nov 1
	CHNS Halifax, NS	Sep 5	WVVA Wheeling, WV Jan 29
970	KIAK Fairbanks, AK	Jan 28	1180 WRAH Rochester, NY Nov 30
980	CKRM Regina, SA	Jan 8	1190 CFSL Weyburn, SA Feb 12
1000	CFLP Rinoski, PQ	Sep 11	KEX Portland, OR Jan 28
	KOHQ Seattle, WA	Nov 21	WOMO Fort Wayne, IN Sep 6
1010t	CBR Calgary, AB	Jan 8	1200 WQAI San Antonio TX Jan 8
	CFRE Toronto, ON	Jan 18	1210 WCAV Philadelphia, PA Feb 13
1020	KDKA Pittsburgh, PA	Feb 12	1220 C3OC Lethbridge, AB Feb 23
1030	WBE Boston, MA	Sep 6	CKCW Moncton, NB Sep 10
1040	WBO Des Moines, IA	Nov 21	CKDA Victoria, BC Feb 28
1050	CPGP Grande Prairie, AB	Nov 20	WGAR Cleveland, OH Sep 6
	CEUM Toronto, ON	Jan 29	1230 CHFC Churchill, MB Feb 14
			tC3OK Fort McMurray, AB Feb 24

QSL OF THE YEAR

ALL INDIA RADIO
EXTERNAL SERVICES DIVISION
Post Box 500, NEW DELHI (INDIA)

Dear Sir/Madam,
We gratefully acknowledge your
Reception Report and confirm your
listening to our service on 11.34 AM
on 11.34 AM KJHZ
at 12.12.82 12.12.82 Hrs./GMT.

Yours faithfully,
AC
Audience Research Officer
for Director of External Services



B. Vernon,
QTH. Elsa, Yukon Terr.

1250	CHSH Steintach NB	Sep 5
	CKGM Saskatoon, SA	Dec 4
1260	CFRN Edmonton, AB	Nov 1
1270	CJCB Sydney, NS	Jan 30
1280	CHRD High River, AB	Feb 23
	CJSL Estavan, SA	Feb 12
	tCKGV Quebec, PQ	Jan 23
	WHFC Minneapolis, MN	Jan 28
1290	CFRW Winnipeg, MB	Nov 20
	CHRH Matano, PQ	Jan 30
1300	CJNE Regina, SA	Nov 20
	WERE Cleveland, OH	Nov 30
1310t	CIOK St. Paul AB	Nov 21
	CKOY Ottawa, ON	Sep 6
1320	CFGM Richmond Hill, ON	Sep 6
	CHQM Vancouver, BC	Jan 28
1330	CKKR Roseton, SA	Nov 21
1340	CKBR Brooks, AB	Feb 24
	tCFYX Yellowknife, NWT	Feb 24
1350	CFYQ Gander, NF	Sep 6
1360	KMO Tacoma, WA	Jan 28
	WGEE Green Bay, WI	Jan 23
1370	CJWH Westlock, AB	Feb 18
	GFJH Saskatoon, SA	Sep 5
1375	tFR-3 St. Pierre & Miquelon	Jan 28
1380	CKLC Kingston, ON	Feb 12
	XRKO Everett, WA	Nov 21
1390	CHOO Ajax, ON	Feb 12
1400	CFLD Burns Lake, BC	Feb 24
	CHOA Stettler, AB	Feb 23
1410	CFUN Vancouver, BC	Nov 20
	CIGO Port Hawkesbury, NS	Jan 30
	WIZM La Crosse, WI	Feb 12
1420	AFRS Sondre Stronfjord*	(Kangerdlugssuaq) Jan 29
	CJVR Holfort, SA	Sep 5
	KTOX Mankato, MN	Feb 12
	WDC Davenport, IA	Feb 17
1430	AFRS Thule	Nov 1
	CJXX Grand Prairie, AB	Nov 18
	KEZW Aurora, CO	Sep 5
1440	CFGO Ottawa, ON	Sep 5
1460	KLTC Dickinson, ND	Nov 21
	KSO Des Moines, IA	Sep 6
1470	CJVB Vancouver, BC	Jan 28
	KWSL Sioux City, IA	Nov 20
	WNBD Peoria, IL	Jan 23
1480	CKER Edmonton, AB	Nov 20
	KAUS Austin, MN	Feb 12
	WCIN Cincinnati, OH	Feb 12
	WLEE Richmond, VA	Feb 18
1490	CJMC Ste.-Anne-des-Monts	PQ Jan 28
1500	KSTP St. Paul-Minn., MN	Jan 9
	WLQV Detroit, MI	Sep 6
	WTOP Washington, DC	Sep 6
1510	KGA Spokane, WA	Jan 28
	WLAC Nashville, TN	Sep 5
1520	KONA Oklahoma City, OK	Sep 5
	NKEN Buffalo, NY	Sep 6
1530	CISV Winkler-Morden	MB Feb 18
	KFEK Sacramento, CA	Nov 21
1540	KXEL Waterloo, IA	Sep 5
	WPTK Albany, NY	Sep 5
1550	KVAN Vancouver, WA	Nov 21
1560	KKAA Aberdeen SD	Nov 20
	WQXR New York, NY	Jan 29
1570	CHUB Nanaimo, BC	Jan 28
	CKLM Montreal PQ	Sep 6
	CKEQ Brandon, MB	Sep 5
	CKTA Faber, AB	Feb 23
1590	WAKR Akron, OH	Sep 5
1600	KCRC Cedar Rapids, IA	Feb 12

* Ref. Greenland; some danish names have been added in Inuit.

EUROPE:

531	Sunshine Radio, Portsmouth	Nov 2
666	RVV Hofn	Aug 18
711	FR-3 Radio Pays de Loire, Rennes	Nov 1
	RVV Akureyri	Jan 8
738	BBC Radio Leeds	Nov 13
774	VOA Kavala	Jan 6
792	BBC Radio Ulster, Londonderry	Nov 13
	Radio Sevilla	Jan 29
828	NDR2, Hannover	Dec 16
	Sudwestfunk, Freiburg	Feb 10
	Bulgarian Radio, Sofia/Christo Botev	Jan 6
	Chiltern Radio, Dunstable	Feb 5
837	FR-3 Lorraine Champagne Ardennes	Feb 10
	LBBC Radio Leicester	Dec 18
846	Radio Nova, Dublin	Nov 4
855	BBU Radio Norfolk	Nov 13
954	Radio Espana de Madrid	Sep 9
	DevonAir Radio, Torbay	Oct 3
963	Radio Na Gaeltachta, Ansgry	Nov 18
990	Radio Bilbao	Jan 6
	BBC Radio Scotland, Aberdeen	Nov 13
	{Feb 26 as BBC Radio Aberdeen}	
1026	Downtown Radio, Belfast	Sep 5
1035	North Sound, Aberdeen	Oct 3
	West Sound, Ayr	Oct 31
1107	Woray Firth Radio, Inverness	Feb 23
	{Feb 14 as Radio Inverness}	
1116	RAI2 Bari	Jan 4
	BBC Radio Derby	Nov 3
1125	Radio Carousel, Dundalk	Jan 7
	RTBF Hainaut	Feb 9
1134	Radio Zagreb, Tovarnik	Feb 12
	ARD Radio, Dublin	Jul 15
1152	Radio Clyde, Glasgow	Sep 5
	Metro Radio, Newcastle	Nov 1
1161	Radio Tay, Dundee	Nov 1
1170	Radio Koper Capodistria	Oct 31
	Radio Victory, Portsmouth	Aug 4
	Swansea Sound	Aug 4
	Radio Tees, Stockton-on-Tees	Oct 31
	Radio Orwell, Ipswich	Nov 3
1188	Radio Dublin	Dec 29
1197	Telstar Radio, Dundalk	Oct 30
1206	FR-3 Aquitaine Radio, Bordeaux	Feb 9
1235	KELO Radio 244, Swords	Nov 1
1260	VOA, Rhodes	Nov 2
	Radio Valencia	Dec 25
	Radio San Sebastian	Dec 25
	Radio West, Bristol	Jan 7
	Centro Radio, Leicester	Dec 27
1269	Radio Novi Sad	Dec 29
1278	Pennine Radio, Bradford	Dec 29
1305	Marche, Belgium	Nov 4
	Bovneside Radio, Drogheda	Jul 15
	{Community Radio Drogheda-Nov 7}	
	{Radio Drogheda - Jan 8}	
1314	Radio Centro, Madrid	Nov 5
	Sonic Independent Radio, Dublin	Jul 2
	NRK Kvitsøy {Televerket tests} Feb 17	
1323	Bovneside Radio, Drogheda	Jul 15
1332	Horward Radio, Peterborough	Jul 30
1359	Mercia Sound, Coventry	Nov 17
	Cardiff BC	Aug 4
	Essex Radio, Chelmsford	Jan 3
1368	RAI, Venezia etc.	Jan 6
	BBC Radio Lincolnshire	Dec 14
	Manx Radio Douglas	Sep 10
1385	Radio Carousel, Drogheda	Feb 9
1401	Radio Tirana	Feb 22
1431	Emissora das Beiras, Caramulo	Jan 4
	Essex Radio, Southend-on-Sea	Oct 23
1449	Sender Freies Berlin	Feb 9
1458	BBC Radio Newcastle	Jan 8
	BBC Radio London	Oct 31
	BBC Radio Carlisle, Whitshaven	Nov 2

1458	BBC Radio Manchester	Nov 4
1484	RVV Raufarhofn etc.	Aug 18
1485	AFRS Kefavik	Oct 23
	NRK Longyearbyan	Nov 21
	BBC Radio Humberston, Hull	Oct 31
	BBC Radio Merseyside, Liverpool	Nov 3
1494	FR-3 Rhone-Alpes-Auvergne, C1.-Ferrand	Jan 8
	Baltuy/Xonrat (Lucaforul), Moldavia	Jan 8
1503	BBC Radio Stoke-on-Trent	Nov 2
1510	RVV Siglufjardur etc.	Aug 18
1515	Radio Tirana	Feb 22
1521	tRadio Pontevedra	Jan 25
	BBC Radio Nottingham	Nov 1
1548	tBBC Radio Cleveland	Jan 4
	Radio Forth, Edinburgh	Aug 6
1562	RDPT, Covilha	Feb 16
1584	Radio Zenora	Jan 25
	Radio Tay, Perth	Nov 1
	BBC Radio Bristol, Taunton	Feb 5
1593	M. Ciuc/ Romania	Nov 17
1602	BBC Radio Norfolk, King's Lynn	Nov 1
1611	Vatican Radio, Vatican City	State
	State	Sep 30
x1143	AFN Bremerhaven	Jan 14
x1350	Cosvaine, Latvian SSR	Nov 25

ASIA:

1251	China, P.R.	Jan 29
1287	tGalei Zahal, Tel Aviv	Nov 20
1296	Baku, Azerbaijan SSR	Dec 29
1305	Galei Zahal, Haifa	Dec 19
1332	China, P.R.	Nov 21
1321	Radio Kuwait	Oct 23
	{also heard in Sept.}	
1413	BBC World Service, Masirah, I. Oman	Oct 30
1422	China, P.R.	Nov 21
1521	Urumqi, XJ, China, P.R.	Nov 3
1575	China, P.R.	Nov 21

AFRICA:

1215	Radio Atlantico, Las Palmas	Jan 11
------	-----------------------------	--------

SOUTH & CENTRAL AMERICA:

950	Radio Vision 950, Caracas	Jan 30
1220	Radio Globo, Rio de Janeiro	Jul 15
1300	tRadio Iracema, Fortaleza	Jul 30
1555	Radio Cayman, George Town	Jan 29
1580	tVOA, Antigua	Sep 6
1610	Caribbean Beacon, Anguilla	Sep 5

end



Country Coast-To-Coast affiliates:

KKIC-950, Boise, ID
KXII-1490, Muskogee, OK
KXNO-570, Alturas, CA
KXNS-1290, El Dorado, AR
KDON-1460, Salinas, CA
KXAA-1560, Aberdeen, SD
KORD-910, Tri Cities, WA
KSRV-1380, Ontario, OR
WAGF-1320, Dothan, AL
WANC-1350, Aberdeen, NC
WDIV-590, Pocomoke City, MD
WBYC-1270, Charleston, IL
WFFA-1400, Fort Payne, AL
WBRT-860, Hartselle, AL
WIPI-1000, Jenkins, KY
WIZY-1560, Gordon/Macon, GA
WJAC-850, Johnstown, PA
WKED-1130, Frankfort, KY
WELM-980, Wilmington, NC
WEMC-1370, Roaring Springs, PA
WKKL-1450, Campbellville, KY
WLAR-1450, Athens, TN
WYIM-900, Canton, OH
WYEC-1900, Columbus, MS
WYAD-1560, Paducah, KY
WYCR-1220, Hamden, CT
WYUZ-800, Palatka, FL
WYBU-1450, Thurmont, MD
WYND-920, Orangeburg, SC
WYNN-1380, Hallington, TN
WYNN-1550, Vienna, GA
WYNG-1540, Yankeeville, NC
WYAX-1240, Walkes-Barre, PA
WYTM-920, Trenton, NJ
WYDE-890, Birmingham, AL

Also includes 16 FM affiliates!

Total: 175 stations.

STARPOST affiliates:

WSTB-1060, Natick, MA
KXII-910, Seattle, WA
KENR-1070, Houston, TX
WAFB-690, Jacksonville, FL
WACK-1420, Newark, NJ

Includes 1 FM affiliate

STAR STATION affiliates:

KAMM-1310, Dallas, TX
KRCW-780, Reno, NV
WAAM-1600, Ann Arbor, MI
KAAB-1130, Batesville, AR
KBAS-1490, Bullhead City, AZ
KLLA-1570, Leesville, LA
KNCW-1490, Grand Coulee, WA
KTOW-1340, Sand Springs, OK
WCBY-1130, Eden, NC
WCND-1290, Cumberland, MD
WCOU-1240, Lewiston, ME
WELM-1410, Elmira, NY
WESA-1330, Scottsboro, AL
WXYO-1240, Bluefield, WV
WIST-1240, Charlotte, NC
WYOH-1450, Hamilton, OH
WYPA-1240, Aberdeen, MS
WPKL-1010, Dora, AL
WYIQ-1590, Chester, PA
WYGC-1010, Lewisburg, PA
WZYU-1350, Coosa, FL
WYCE-1450, Myrtle Beach, SC
WELL-1260, Albion, MI {with WELL-FM}

Listing compliments of Broadcasting, August 23rd issue.

Typed by Dr. Pepper

FRONT PAGE CONTEST --- ALL TIED FOR SECOND PLACE

AS YOU CAN SEE BELOW, NONE OF THE IDEAS RECEIVED WERE SHABBY, THEY WERE ALL GREAT IDEAS! BUT AS STATED WHEN I MENTIONED THIS HERE PROJECT, I WANTED A LITTLE SOMETHING ADDED TO THE FRONT PAGE, SOME OF YOU REALLY SPENT ALOT OF TIME AND ENERGY TO PRODUCE YOUR IDEAS. AND ONE EVEN MADE A CARTOON FOR US TO SEE. LET'S GIVE THESE GENTS ALL A BIG HAND!!!!

THANKS FOR ENTERING THIS LITTLE CONTEST OF MINE, STILL GOES TO SHOW YA THAT PEOPLE OUT THERE REALLY DO PARTICIPATE IN CLUB FUNCTIONS AND EVENTS.

AGAIN THANKS FOR ALL YOUR HARD WORK, MEN. Mike



Must Be Registered for Right to Use Logo. Copyright 1983

American Country Countdown Affiliates:

- WMTF-990
- WBHP-1230
- WMFC-1360
- WKAX-1500
- WJRD-1150
- KYAK-650
- KINY-800
- KVOK-560
- KOTZ-720
- KOKY-1150
- KNOT-1450
- KCUB-1290
- KBTA-1340
- KVCE-1330
- KDMS-1290
- KNEA-970
- KXLR-1150
- KTLO-1240
- KOSE-860
- KAMO-1390
- KKAL-1280
- KIBS-1230
- KHSL-1290
- KHJ-930
- KTRB-860
- KNEW-910
- KTOM-1380
- KDIG-1240
- KCBQ-1170
- KPLS-1150
- KSYC-1490
- KSSS-740
- KLAK-1600
- KIIX-600
- KGJC-1490
- KSLV-1240
- KION-1350
- WEZY-1350
- WSRF-1580
- WCAI-1350
- WDVH-980
- WQDI-1430
- WAPE-690
- WCNH-1230
- WJAZ-960
- WPNX-1460
- WCEH-610
- WRGA-1470
- WGAF-910
- KDEO-940
- KKON-790
- KVIK-1240
- WMAQ-670
- WTAY-1570
- WDHK-1380
- WTHI-1480
- KHAK-1360
- KSIB-1520
- KSO-1460
- KINA-910
- KFH-1330
- WTCR-1420
- WAXU-1580
- WSJP-1130
- WDOC-1310
- WYNK-1380
- KLPL-1050
- KLLA-1570
- KLIC-1230
- KNIR-1360
- WNOC-1060
- KPAL-1110
- KRMD-1340
- KTIB-630
- KNEK-1190
- KMAR-1570
- WKTJ-1380
- FAYETTE, ALA
- HUNTSVILLE, AL
- MONROEVILLE, AL
- RUSSELLVILLE, AL
- TUSCALOOSA, AL
- ANCHORAGE, AK
- JUNEAU, AK
- KODIAK, AK
- KOTZEBUE, AK
- COOLIDGE, AZ
- PRESCOTT, AZ
- TUSCON, AZ
- BATESVILLE, AR
- CONWAY, AR
- EL DORADO, AR
- JONESBORO, AR
- LITTLE ROCK, AR
- MOUNTAIN HOME, AR
- OSCEOLA, AR
- ROBERS, AR
- ARROYO GRANDE, CA
- BISHOP, CA
- CHICO, CA
- LOS ANGELES, CA
- MODESTO, CA
- SAN FRANCISCO
- SALINAS, CA
- SAN BERNARDINO
- SAN DIEGO
- SANTA ROSA, CA
- YREKA, CA
- FT. COLLINS
- GUNNISON, CO
- MONTE VISTA, CO
- PUEBLO, CO
- COCOA, FL
- MIAMI, FL
- FT. MYERS, FL
- GAINESVILLE, FL
- HOMESTEAD, FL
- JACKSONVILLE, FL
- QUINCY, FL
- ALBANY, GA
- COLUMBUS, GA
- HAWKINSVILLE, GA
- ROME, GA
- VALDOSTA, GA
- HONOLULU
- KEALAKEKUA, HI
- POCATELLO, ID
- CHICAGO
- ROBINSON, IL
- FT. WAYNE, IN
- TERRE HAUTE, IN
- CEDAR RAPIDS, IA
- CRESTON, IA
- DES MOINES, IA
- SALINA, KS
- WICHITA, KS
- ASHLAND, KY
- GEORGETOWN, KY
- MURRAY, KY
- PRESTONBURG, KY
- BATON ROUGE, LA
- LAKE PROVIDENCE
- LEESVILLE, LA
- MONROE, LA
- NEW IBERIA, LA
- NEW ORLEANS, LA
- PINEVILLE, LA
- SHREVEPORT, LA
- THIBODAUX, LA
- WASHINGTON, LA
- WINNABORO, LA
- FARMINGTON, ME
- WMSG-1050
- WDMV-540
- WJMS-590
- WJPD-1240
- KBUN-1450
- KDMA-1460
- KWOA-730
- WGMH-1260
- WGUF-1130
- WJOS-1400
- WPMP-1580
- WRPM-1530
- KZYM-1220
- KCRV-1370
- KJEL-1080
- KWDC-930
- KYRO-1280
- KWTO-560
- KSD-550
- KTUI-1560
- KANA-580
- KGHL-790
- KXXL-1450
- KEIN-1310
- KRGI-1430
- KUVR-1380
- KEYR-690
- KVSH-940
- KELK-1240
- KVEG-1410
- WLTN-1400
- KPSA-1230
- KRZY-1450
- KGAK-1330
- KUUX-1480
- WKOP-1360
- WUNC-570
- WFNC-940
- WBBO-780
- WFMC-730
- WSML-1190
- WIRC-630
- WKTE-1090
- WRZR-1550
- WNGP-1050
- WKSJ-580
- KHOL-1410
- KXJB-600
- KMAV-1520
- WSLR-1350
- WATH-970
- WSAI-1360
- WPMI-920
- WFMJ-1390
- KMHW-1450
- KRNS-1230
- KFLS-1450
- KBBR-1340
- KYTE-970
- KRNR-1490
- KGAY-1430
- WHYL-960
- WLKK-1260
- WQIN-1290
- WOYL-1340
- WCEP-1070
- WHUM-1240
- WKMC-1370
- WBAX-1240
- WHIM-1110
- WAIM-1230
- WBSC-1550
- WCCG-1130
- WKXZ-910
- WTND-920
- KXRB-1000
- WCLE-1570
- OAKLAND, MD
- ROCKMORCK CITY, MD
- IRONWOOD, MI
- ISHPEMING, MI
- BEMIDJI, MN
- MONTEVIDEO, MN
- WORTHINGTON, MN
- GREENVILLE, MS
- GULFPORT, MS
- JACKSON, MS
- PASCAGOULA, MS
- POPLARVILLE, MS
- CAPE GIRARDEAU, MO
- CARTHERSVILLE, MO
- LEBANON, MO
- POPLAR BLUFF, MO
- POTOSI, MO
- SPRINGFIELD, MO
- KSD-550
- ST. LOUIS, MO
- SULLIVAN, MO
- ANACONDA, MT
- BILLINGS, MT
- BOZEMAN, MT
- GREAT FALLS, MT
- GRAND ISLAND, NE
- HOLDREGE, NE
- SCOTTSBLUFF, NE
- VALENTINE, NE
- ELKO, NV
- LAS VEGAS
- LITTLETON, NH
- ALAMOGORDO, NM
- ALBUQUERQUE, NM
- GALLUP, NM
- HOBBS, NM
- BINGHAMPTON, NY
- ASHEVILLE, NC
- FAYETTEVILLE, NC
- FOREST CITY, NC
- GOLDSBORO, NC
- GRAHAM, NC
- HICKORY, NC
- KING, NC
- RALEIGH, NC
- SANFORD, NC
- WEST JEFFERSON, NC
- BEULAH, ND
- JAMESTOWN, ND
- MAYVILLE, ND
- AKRON, OH
- ATHENS, OH
- CINCINNATI
- COLUMBUS, OH
- YOUNGSTOWN, OH
- ALTUS, OK
- BURNS, OK
- KLAMATH FALLS, OR
- NORTH BEND, OR
- PORTLAND, OR
- ROSEBURG, OR
- SALEM, OR
- CARLISLE, PA
- ERIC, PA
- LYKENS, PA
- OIL CITY, PA
- PITTSBURGH, PA
- READING, PA
- ROARING SPRINGS, PA
- WILKES-BARRE, PA
- EAST PROVIDENCE, RI
- ANDERSON, SC
- BENNETTSVILLE, SC
- CAMDEN, SC
- NORTH CHARLESTON, SC
- ORANGEBURG, SC
- ST LOUX FALLS, SD
- CLEVELAND, TN

American Country Countdown Affiliates (list continued)

WMTS-810	MURFREESBORO, TN	WRON-1400	RONGEVERTE, WV
WJRB-1430	NASHVILLE, TN	WYNE-1150	APPLETON, WI
WECO-940	WARTBURG, TN	WJJK-1400	Eau Claire, WI
KEAH-1280	ABILENE, TN	WCJL-1300	MARINETTE, WI
KTON-940	BELTON, TX	WMEG-1460	RACINE, WI
KBAN-1410	BOWIE, TX	KEVA-1240	EVANSTON, WI
KIKR-900	CONROE, TX	KOJO-1490	LARAMIE, WY
KIKK-650	HOUSTON, TX	CJOC-1220	LETHBRIDGE, ALBERTA
KKYR-1410	MARSHALL, TX	CJVR-1420	MELFORT, SASK.
KLSR-1130	MEMPHIS, TX	CKCC-1320	New GLASGOW, NOVA SCOTIA
KCCW-930	SAN ANTONIO, TX	CKRM-980	REGINA, SASK.
KWTX-1230	WACO, TX	CJMW-1370	SASKATOON, SASK.
KNEU-1250	ROOSEVELT, UT		
KSOP-1370	SALT LAKE CITY, UT		
WCVR-1320	RANDOLPH, VT		
WKDE-7000	ALTA VISTA, VA		
WDDY-1190	BLUEFIELD, VA		
WRAA-1330	LURAY, VA		
WBLB-1510	PULASKI, VA		
WPVA-1290	RICHMOND, VA		
WKDW-900	STAUNTON, VA		
WNNT-690	WARSAW, VA		
KBFV-930	BELLINGHAM, WA		
KMAS-1280	SHELTON, WA		
WJLS-560	BECKLEY, WV		
WEPN-1340	MARTINSBURG, WV		
WAJR-1440	MORGANTOWN, WV		
WMDV-1360	RAVENSWOOD, WV		

This list was brought to you by: The Watermark Company who has sole rights to this forementioned list. Thanks goes to Tom Connors who got ahold of this list and sent it our way. (list typed here at HQ.)

Captain Ray Peison Broadcasts Affiliates:

KHEP-1280	PHOENIX, AZ	KCRO-660	OMAHA, NE
KWRM-1370	CORONA, CA	WQOJ-970	HACKENSACK, NJ
KBIF-900	FRESNO, CA	KKIM-1000	ALBUQUERQUE, NM
KCVR-1570	LODI, CA	WQOJ-970	NEW YORK, NY
KGER-1390	LONG BEACH, CA	WTHE-1520	NEW YORK
KLOC-920	MODESTO, CA	WVWG-1460	ROCHESTER, NY
KEWQ-930	PARADISE, CA	WEZG-1220	SYRACUSE, NY
KLIT-1220	POHONA, CA	WHVN-1310	CHARLOTTE, NC
KMAY-1570	RIVERSIDE, CA	WPJL-1240	RALEIGH, NC
KEIA-710	SACRAMENTO, CA	WYAL-1280	SCOTLAND NECK, NC
KFAX-1100	SAN FRANCISCO	WJYM-730	BOWLING GREEN, OH
KWSO-1180	WASCO, CA	WTSJ-1050	CINCINNATI, OH
KPIK-1580	COLO. SPRNGS, CO	WSUM-1000	CLEVELAND
KBRN-800	DENVER, CO	WPIT-730	PITTSBURGH, PA
WFAX-1220	FALLS CHURCH, VA	WJYM-730	TOLEDO, OH
WMPJ-1450	DAYTONA BEACH, FL	KBYE-890	OKLA. CITY, OK
WLIZ-1380	LAKE WORTH, FL	KAKC-970	TULSA, OK
WTLN-1520	ORLANDO, FL	KPDD-800	PORTLAND, OR
WCBF-1010	TAMPA, FL	WVCH-740	PHILADELPHIA, PA
WAEC-860	ATLANTA, GA	WPLW-1590	PITTSBURGH, PA
KBGN-1060	CALDWELL, ID	WGCB-1440	RED LION, PA
KXEN-1010	E. ST. LOUIS, IL	WDXL-1470	COLUMBIA, SC
WPCO-1020	PEORIA, IL	KCTA-1030	CORPUS CHRISTI, TX
WFCV-1090	FT. WAYNE, ID	KSKY-660	DALLAS
WBRI-1500	INDIANAPOLIS, ID	KPBC-1040	DALLAS
KCNW-1380	SHAWNEE MISSION, KS	KHYM-1060	GILMER, TX
KFLD-1300	SHREVEPORT, LA	KDRY-1100	SAN ANTONIO, TX
KJOE-1480	SHREVEPORT, LA	WPMH-1010	PORTSMOUTH, VA
WDCI-1580	PORTLAND, ME	WTVR-1380	RICHMOND, VA
WROL-950	BOSTON, MA	KARI-550	BLAINE, WA
WEXL-1340	DETROIT, MI	KBLE-1050	SEATTLE, WA
WFLR-1570	GRAND RAPIDS, MI	KEBO-1390	YAKIMA, WA
WYFC-1520	YPSILANTI, MI	WYLO-540	MILWAUKEE, WI
KUXL-1570	MINNEAPOLIS		
KCNW-1380	KANSAS CITY, MO		
KXEN-1010	ST. LOUIS, MO		
KGLE-590	GLENDALE, MT		

Compliments of: We don't know, you never sent your name with the list. Please stand up and be recognized! (list typed at HQ)

MUSINGS

ERNEST R. COOPER
5 ANTHONY STREET
PROVINCETOWN, MA 02657

The opinions expressed in this column are those of the individual members, and do not necessarily reflect those of the editors, publishers or NRC.

THESE FIRST 6 ARE CARRIED OVER FROM THE LAST ISSUE AND INSERTED BY ME- HQ

TONY TAKES THE BOSTON & MAINE ROUTE

TONY FITZHERBERT - 116 Devon Road - Chelmont, PA - 19914 9/1/82
+++++ Hi; time to Kuse again. Big news is that we have an acceptable offer on the house, so we are actively looking again at real estate in Connecticut. CX are vastly improved, 1310, due to loss of WSSJ, and good openings to S & W. All catches to DAVE SCHMIDT. Veries are back from WEEL-1310, WICH-1310, & WBFD-1310. The annual trip to Boston and Maine, to visit relatives resulted in the following discoveries: WFIF-1500 Milford, after format searching for years is now REL/GOS, IDs as "The New Life in Southern Connecticut". I heard a wonderful song on WKND-1480, entitled "Gastric Distress" - culture vultures! WGTB, now WSTD, 1960, for "Stardust Radio", is satellite-fed, sounds like the New York Sound in suburban Mettick, hi! WSPD-1470 is now full time. I visited three area stations, & found WGTB alumni at all of them! WLYN-1360 - a real grab bag - all NX from s/on to Sam, all ETH foreign language programming to 5pm, and then simulcast w/WLYN-FM to 5M s/off, w/r, DIS. The station visits will be covered in station profiles - for one wealthy big city REL station, a very professional suburban GY station, a struggling suburban station, & a small remote station struggling to make ends meet - four in all. On up to Maine - WPER-1440 is, of course, all NX, WLOB-1310 & WDCI-1590 are REL/GOS, but WDCI also features "The Fine Arts in Greater Portland" w/ol mx. WLOB stops praying for two hours daily for a teletalk show on cooking. Up in Augusta, WRDQ IDs as "Stereo 92 - AM 1400" w/CWN, their competition w/HX stuff is "Unforgettable WFAU", 1960. Over in Rumford, one can hear "WHXR-96.3 and WRUM-795" w/OLD/ROK, very automated, with "Hits from the 50's, 60's, & 70's." At my parents', WCDU-1240 is now satellite-fed, sounds automated; WLAK-1470 is still T-40, w/loads of commercials, and the third station in town will be covered in a station profile. Bath WJTO-730 is "Music You Remember" or MYL, and in Brunswick, WKXA-900 is "Information Radio", with teletalk all day. WDCI now has FM, licensed to Scarborough, ME. Locally, WKAP-1320 is now MYL, ex-1440, and WIEG-1300 has been sold, will go Black/Soul. All for now!

NEWS FROM HERE AND THERE

PETE KEPP - 5 Greenwood Avenue - Bethel, CT - 06801 KAIKD
+++++ Greetings all. After an absence from these highly regarded pages for a long period I have decided I had better get out the typewriter and answer the call. BCB DXing has taken a back seat to my amateur radio activities although there is quite a bit of overlap. Quite often, while in QSO with another station, I'll ask a question about a local radio station or personality. After the initial shock a good AM-related discussion ensues. People really do like to talk about their communities, and listening to the local radio scene is an activity enjoyed by everyone, either actively or passively. As a mini-reintroduction, I am coordinator of industrial arts at the local middle school, teaching courses in woodworking, drafting and electronics, in addition to a non-graded mini-course in broadcast communications. Since all students have an AM radio, I start off with BCB DXing, of course. In addition to my full-time job, I am Connecticut Section Communications Manager for the American Radio Relay League, a position that requires a lot of amateur radio activity. So despite my lack of AM activity my heart is at least in the right place. Now for a little scuttlebutt. WNBC-AM is now broadcasting stereo. The FCC has approved for use both the Kahn & Harris Stereo AM Systems. WAYS, the rocker of two decades, is switching format Sept. 6 to talk/news. The Atlanta Hawks have switched from WSB to WCNN (ex-WRNG-AM). In Orlando WDBD is now with the CBS net and WKIS will drop its CBS affiliated status on Nov. 1. WENP goes to Ac net 8/30. Larry King is now on KRSI. KLTN-AM is now simulcasting in SS, with pix from KOB-TV on the 6:00 news. California Agri-Net now is in operation with 20 stations. So much for now; I miss bothball memories. ?? Only new veries here are WMLI, Bangor, ME & KFB-759-1610, Acadia National Park, Box 177, Bar Harbor, ME - 04609.

WKAI-1510 IS SELDOM REPORTED

RAY NEMEC - 1424 Heatherton Drive - Naperville, IL - 60540 Aug. 23, 1982
+++++ It has been a while since I wrote a Musing. I just had to write & tell you I think I found my Heaven. It is a little city in Illinois, Macomb. My son & daughter-in-law live there. It is great to get away from the big city stations (Chicago) into a city that has no night AM coverage. The interesting part is the daytimer there, WKAI-1510, is one of the least-mentioned stations in DX NEWS. The reason is simple - WKAI s/off at 4:45pm local time year-round. I understand they do not s/on earlier than 6:45am CLT. The 4:45 s/off time

means they s/off only in December at their maximum s/off time. All other months they are off before 535. As you know a daytimer needs to operate only 2/3 of the time between 6am & 6pm (k nothing after 6pm) so WKAI is well within its required hours of operation. Traveling N from Wincomb, I heard WKAI on the car radio to I-74 & Ill.81, just a little N. With a good radio, I am sure the station could be heard in the Quad Cities. I was getting a lot of slop from WGEN-1500 the last ten miles. Here in Naperville, there is almost no chance to pick up WKAI with WJRC not too far away and in the same general direction.

HARRY'S RETURNED TO THE DIALS

HARRY J. HAYES 19 Henry Street - Wilkes-Barre, PA - 18702 EDT
+++++ After a Summer of relative inactivity on AK it's time for the first Muse of the new season. This Summer can be summed up as one when all my plans have gone haywire. My workplace has a habit of assigning plant closing weeks, two weeks ahead of time, leaving no time for making plans. Last minute changes in GLEN JACOBS' and my own plans made attendance at the WTPDA convention inconvenient. A wisdom tooth operation at the beginning of August put me in severe pain and somewhat of a sickly and w/c condition for a week & a half. Swelling from this operation has impaired my hearing in one ear and so far it is not back to full hearing capacity. In otherness I should be at Louisville next week. (He wasl -ERC) I did some listening the last two weeks. 8/18- 9:48pm, CJSB-540 Ottawa OH, new 1.40 station w/superior signal here. Good-bye 540. 8/19 535- Winter-like CX to W. 1:04pm, WARD-500 Canonsburg, PA, fair. 8:15 WLSV-790 Wollsville, NY good w/s/off. WRPD-890 OH, Killing WCRS, 8:59, WMJ-950 Detroit, weak. 8/21- 7:58, WDJZ-1530 CT w/WJDM. 8/27- 8:23pm, CINI-1260 NB weak, not heard in a while. Verles back from WFTL w/v/c & WEEU who sent lots of b/s, Phillies sked & mucho other junk, best of all they returned postage. Reports now out to WALK, no answer as of three weeks. Also WENR-1260 & CINI-1260. The FCC's forcing KINK-580 off the air after something done eight years ago is, I think, another typically stupid FCC action. Reagan should do some budget cutting at this agency. I found Geir Stokkaland's DXing adventures in the Arctic really interesting. I'd love to have a shack up there. Locally, rumors that WARK-590 was going all-NX were wrong. The station has added a little more information to the mx. How they have some Mutual features & trumped up SX & public service. WNAK-730 daytimer is doing extremely well with its "Adult Easy Listening" and NBC SX services. WARD-1540 is doing pretty well also with its talk format. Main talk feature is a problem-solving program with the owner of the station as host! The station also featured four hours of Christmas mx one Sunday afternoon last month. It could only happen here in the Wyoming Valley, folks! The end.

BILL RUNS DOWN TO FLORIDA, RUNS DOWN THE DIAL

BILL PRATHER - Box 62 - Eryon, NC - 28782 8/30/82
+++++ I just returned from Florida after spending four days in the Tampa area, from 8/23-26. We were actually staying on Redington Beach between St. Pete & Clearwater. I did not do a complete bandscan, but did listen around a lot. 540-WGTO, 550-WAYR, 560-WQAM, 570-WFLP, 580-WDWB, 590-WDLF, 600-WQWV, 610-WIDD, 620-WGUN, 680-WMLP, 690-WAFB/WTIX, 719-WGEB, 730-XXE, 740-WKIS, 780-WNNS, 790-WLBE, 800-WSUZ, 850-WRUP, 860-WAZE, 870-WML, 900-WKOP, 910-WFLA, 920-WTRS, 930-WKXX, 940-WHOH/WIHZ, 950-WLOP, 970-WFLA, 980-WDVE, 990-WHOQ, 1010-WCBF, 1050-WHOB, 1070-WAMN, 1110-WTIS, 1130-WPUL, 1150-WTWP, 1220-WQSA, 1230-WONN/WGGO, 1250-WDAE, 1270-WORL, 1280-WWZZ, 1290-WTMC, 1300-WTMY, 1330-WWAB, 1340-WTAN, 1350-WDFP, 1360-WZMG, 1370-WWKE, 1380-WNSI, 1410-WZST, 1420-WBRD, 1430-WQPD, 1440-WAAL, 1450-WSEB, 1460-WBAR, 1470-WWQT, 1490-WTFL, 1500-WGUL, 1520-WGNB, 1550-WYOL, 1560-WYSE, 1580-WHTZ, 1590-WRWB, 1600-WOBS. I was using only my Panasonic RP-2900 with no antenna, so I was surprised to get all of these. More than anything, I was very disappointed in Florida's West Coast AM. There was almost no contemporary or T-40 on AK. The late legend, WLSY, now WNSI, is all NX/TLK. WFLA is Adult Contemporary with talk shows at night. I was very impressed with WQUN and their country format which sounded very professional, not hayseed like so many. The action seems to be on FM where Q-105 has all the numbers. 98-Hook and 95-XNF were too progressive for me, but Magic-96 sounded good; something like WNEC in NY. If you're like me and like fast-fire high energy T-40 you'll like Q-105 and the legendary Scott Shannon. If anyone would like Air Checks from this area or any area please let me know. I have some good old WQXI, KNJ, WLS, WABC, KLIP A/Cs plus many more if you like that kind of stuff. Happy DXing.

HERE'S SOME MORE BAND SCANNING

BRAD CHAPPELL - 49 West Avenue South - Hamilton, ON - L8N 2S2 519-529-8751
+++++ August was a month of travel. I drove to Windsor ON during the weekend of July 30-Aug. 1. As promised I have two bandscans from that trip and three more from another trip. This first daytime bandscan is from Igersoll, ON, 20 miles E of London. I also have marked down their meter strengths on my RF-2200. The first numbers indicate how far I had to turn the RF gain control (0-10) to reach 10 on the RF meter. The -(negative) numbers couldn't reach 10 on the meter so they are actual measurements at maximum sensitivity. In order of strength: 3.5: CKDK, 4: CBL, CJBC, CPPL, 4.5: CFBF, 5: CPDQ, WJR, CFBF, 5.5: CHHL CKMX, 6: WGR CXYR, 6/5: CHK, 7: CBEP, CKKW, CKJZ, CKOC, CJCS, CJBK, CKOT, 7.5: CXYX, CPGH, 10: WJW, CHWD, CHAN, CKPC, -9: CKLN, WDEM, CPJL, CHUM, WWBE, CJMR, WGAR, WLKK, CKSL, CKNR, -8: WWH, WFUN, WOXI, -7.5:

CKWW, -6: CKEY CHSC, CJCL, CHOW, CHLO, -5: WLPO, WJET, CBS, -4: WHLD, WXRL, CHIN, 3.5: WSCH, KDKA, WHAK, -3: WKBN, CKTB, CKKW, WGRF, WABQ, -2: CPDS, WSOX, CRLY, WFDQ, WBZY, SXAN, WHP, -1.5: WTVN, WWA, WKDW, -1.25: WRFD, -1: WKW WKX WAKR, -5: WMLP WFIT WOSU WBSM WBKC. No DX, but CJSP has been testing with schedule beginning Sept. 1. (Who's this, Brad?? -ERC) A bandscan from the Windsor area next issue.

NOW, INTO THIS WEEKS ISSUE OF MUSINGS -HO

ABOUT THE CBS RADIO NETWORKS

BOB POWWORTH - G.P.O. - Box A-866 - New York, NY - 10116
..... (Can'd from last issue) To the DXer several issues back who mentioned "satellite distribution of CBS Radio-radio", this is not true. Radio-radio radio is fed every hour at :50 with a two-minute Xcast, plus four "in-tough" features throughout the day. These go out on the regular CoS "full net" just as do all other CBS radio programs. R-R affiliates act the same net as do all other affiliates, they just can't use material they can't contact for. CBS Radio has three major feeds, East, Central/Mountain, & Pacific. There is also a New England feed (which WCRS-890 gets) which exists solely for commercial "spots". The C/M & Pacific are satellite-fed to the stations taking Los Angeles distribution points and are then landlined to the stations taking each part of the feed. Satellite returns exist for program feeds back to NY and as a check on quality, but are really just "internal" feeds. The three legs of the net exist of course, because of time-zone considerations. There is NO digital audio feed, this may exist in a year or two for all radio networks, but not now. No, all CoS and radiomusic affiliates now get their feed via A T & T landline. The satellite is RCA. All feeds leave New York CBS Radio Broadcast Center, where I now work. I enjoyed HOW SCHATZ' comments about the way broadcasting magazine treated his comments. They did the same to me when I wrote letters about the 9 kHz spacing matter, severely editing. When I filed a formal pleading in that matter, when it was still known as AX-3712 (before it became a full Notice of Inquiry) - set forth about ten reasons - thought it was a bad idea for broadcasters. The magazine ignored what I had to say. About a year later, the MAB "discovered" these same reasons, when it appeared that 9 kHz spacing was a realistic possibility. The NIA, advocates of the change, totally ignored the bulk of my remarks & pounced on me for one "tongue-in-cheek" suggestion I made - adopt 9 kHz spacing here and stagger the channels halfway between the Europeans, to avoid low-pitched bet interference (and let us keep DXing, by the way). I suppose KO' can look forward to similar treatment of his ideas at the hands of the bureaucrats. And yes, my comments are likewise in the public file at the FCC & can be purchased by anyone who wants them - from downtown C.C. - tried to enlist DXers in helping me refute the outrageous, erroneous claims of the NIA re hot interference across the oceans (inter-regional) & got no help whatever so I am just thankful 9 kHz did not pass in this hemisphere & now it is over for me. The FCC heretofore has seemed totally unwilling to concede that any private individual can give meaningful input on technical aspects of broadcasting. Will they treat us differently on the Cuba matter? 73.

SOME RELATED SUGGESTIONS AND ANSWERS

KONSTANTIN RYCHALSKY - Box 87 - Beacon Falls, CT - 06403-0087
..... Because the new member of the Club has taken all my time in the past year or so, I recently had to take a crash course in DX NEWS reading back to Feb. '82. Here's some related comments. (#18) I'm in favor of a three-ring binder format for the log. This would enable several typers to complete it in less time rather than dumping the job onto one poor soul. Reduction costs can be eliminated due to larger paper. ERC: Your horse rode station at Race Point on 232 kHz, heard on 1160, was actually their fourth harmonic and not fifth as reported. The number harmonic is always one less than the multiple, thus 464 kHz would be the first harmonic, yet 2x the frequency. (#19) To TERRY KLASER: Don't be sorry - I'm Christian too! Anyone else step forward? I once made a suggestion in this Club not too long ago and was crucified for it. And yet it was only a suggestion. (#20) J. MOODS: Small sleeping compartment, earphones, & violent (hi) wife are some set-up here, better yet I keep a cassette recorder tucked under the bed & hooked up to the clock radio. The wife thinks I'm asleep but if I doze off I continue copying the signal on tape, by all means, never suggest "one" sleeping on a couch, hi. (#21) I don't drink beer & feel it has nothing to do with DXing. I wish to read DX NEWS concerning DX - not what someone drinks. Weren't poems once omitted for good for somewhat the same reason? (#24) The April Fuel's crack shots at Jerry Shnell were in very bad taste. It wasn't funny and let's stick to DXing. (#28) HQ: On Page 20, again for KCRQ-660 times 2 equals 1320 and is the first harmonic. 73s.

WE'RE ON OUR WEEKLY SKED NOW, GANG! THAT MEANS WE NEED YOUR CONTRIBUTIONS TO MUSINGS AND TO THE OTHER SECTIONS OF DX NEWS TO KEEP THESE PAGES CHECK FULL OF DX. DEADLINES IN PROVINGTOWN FOR MUSINGS ARE EVERY MONDAY. PLEASE DOUBLE SPACE, AND STICK TO 90 LINES OR LESS. LIST YOUR DX CATCHES BY DATE-TIME-FREQ.

JUMPING AROUND THE RADIO SCENE

PETE KEMP - 5 Greenwood Avenue - Bethel, CT - 06801
 Greetings. Wook local daytimers, WABC & WJME, have submitted the paperwork to the FCC requesting a change of frequency and fulltime status in accordance with a notice of proposed rulemaking. The FCC is also currently considering a move to allow daytimers to remain on the air after dark with reduced power. This move would affect 2,300 stations and would enhance their advertising revenue coffers, especially during the Christmas ad season. WGN in Omaha has switched from Ac to modern c/w mx on July 30th. WJL-AM now is broadcasting in stereo. In a poll conducted by Pittsburgh magazine KDLA came out on top as the Steel City's favorite AM station. The Cincinnati Bengals will continue with WLV after the projected move to WABC was aborted. WYSL in Buffalo is moving away from its mellow mx format to progressive rr. As a result of the Falklands crisis, the government of the UK is about to lay down guidelines for dealing with war correspondents, hoping to counter the charges of "lost" dispatches, outright censorship and bureaucratic bungling. It sure seems strange to listen to WABC now with its talk format. The memories of "Cousin Bruce", Bob Lewis, Sports Muni, Bob Dayton, Charlie Greer, Dan Ingram, "The Morning Mayor of New York" Herb Oscar Anderson, Chuck Leonard, Ron Lundy and others profill alive in the minds of many NYC area listeners. Of course, I still miss Don McNeill's breakfast Club, an old staple of the ABC net, from the Clouds Room of the Hotel Allerton in Chicago's magnificent side. Who could ever forget the opening "first call to breakfast" routine? KOOL has switched from c/w to MoR. WRXI in Atlanta is on the air in stereo, using the Harris system. The Kahn system of stereo AM is being used at KTSB, who is planning a promotion to distribute 10,000 "Walkman-type" AM stereo units produced by Mura Corp. - recently picked up a DX-160 RX at a ham flea market, so - hope to be back at the dials this winter. 73.

HANK FINISHES HIS VACATION GRAVEYARD DX

HANK HOLBROOK - 7211 Chestnut Street - Chevy Chase, MD - 20815 (con'd.)
 On 1380 kc/s. WJED-NJ rules the roost especially during the day, but can be nulled and WJCB, my DC local was reported. When this 'reluctant verifier' answers I'll send ERNIE the v/st (They've already verified for me Hank, hi! -ERC) WZPM WV noted 8/9 from 5:39-5:50am atop channel. And on 8/8 WHPA-VA had a nice signal w/GES programs & fairly easy copy 9:27-9:40am. On 1490 a rough channel with WMIN-MD here. Only other station noted this August that could be IDed was WONG-NJ which can be heard as I can null WMIN sufficient-ly! On 1450, WIIN-NJ is king. But WJLM-DE is pretty easy days. WOL-DC is all but impossible to hear and WREL-VA was caught on an ID @ 5:59am and into MX on 8/11. The Jack Pot Frequency is 1490 kc/s. In Chevy Chase that is a rough channel as WTOP-1570's XR is only a couple of miles (in MD), my post. Here at Fair Haven WUGS-NJ (Atlantic City stations roll in here!) is dominant. But I did manage to add five new ones and all reported: WJPA-PA 8/8 2:58-4:43pm with Phillies-Cubs game. I caught one ID and hope some of the ads heard were from their station. I did hear them on s/on the next AM (must be off KMs) but I can't remember the time. WJPA's call is often heard w/WUSS but mixed in with a jumble of unID stations most days way in background. Also logged on 8/8 during the same time period was WJCB-PA which also appeared to be carrying the Phil-lies. - got two IDs from them and hope some of the ads will match their local. On the morning of 8/5 I got good copy on WJLC-NY 6:48-7:20am - "WJLC where you hear the best of the old" music. And I also got WJCH-CT that AM peaking above WJLC around 7:05 & 7:22am and got local MX items and an ad for a fairly decent report. WUSS was no problem! Unusual! I also added WJEX-VA on 8/2, rough copy from 5:56 to 5:46am with enough material for GGL. They play c/w & refer to it as GOOD music - ha! I'll take Bach, Beethoven, Handel & Co. any day! They use the slogan X-15. Nice vacation. I got a lot of good DX and now await the veries! Till next time (some time this Fall) - 73.

STEVE ALSO DOES WELL ON THE GRAVEYARDS

STEVE FRANCIS - 1620 Lodge Street - Alcoa, TN - 37701
 Picking up from last week: SN 6/13 - WJOG-1230 WV good & Jan w/ L. King & Mutual MX. 6/19 - One of my closest unheards hit thelogbook: WGBV-1340 TN, mixing w/WBAC (first time here in ten years!) 6:45-7:30am, local WJGN was off for unknown reasons. 7/13 - With another Knoxpatch WJSP silent for some lovely reason (WNOX-990) WJVC-PA was in the clear at its 6am s/on, no SSB. 7/27-4am, WJNR-1230 VA fair w/ID plus "Sig O-R" & "All Music-12-30" plugs. 7/29 - WITH-1230 ND atop 3am w/ID. 7/31 - I clean forgot the TEST from un WBTX-1470. 8/6 - The 1230 frolic continued w/long-sought WJHR-RY, readable 1:10am w/sponsor billboard, ID, & local spots. They were on late w/a Reds WC game. 8/10 - 9:30 pm, the new WJEX-1090 AL good at s/off w/legal ID & nothing else. 8/28 - I wasn't even DXing, just tuning up the dial for some mx when I paused at local WREL-1240. They were beginning Leon Russell's "Tightrope", which has a second of dead air toward the start. In that second, I heard a clear "...1240, WEKR,..." Will wonders never cease? WEKR, Fayetteville, TN, had a TEST a decade ago which I wasn't able to hear, so this freak reception was doubly sweet. Time on this saga was 6:19am, by the way. The new WJDX-1030 TN heard fair/good 7:08am o/u KCTA after WJZ fadeout w/intermittent list of area sick folk at the Dickson Hospital, c/w format. I trust any future "broken-down clear" catches I bag will

(Steve Francis, con'd.) be more exotic than this one, hi. 8/29 - The new WJEX-1010 AL readable 8:30am w/WFGH/WGUN w/c/off-SSB; they could've stayed on 30 minutes more, per zap. I had a good time in Derbytown, thanks DLG, GARY, TED, PAT, RICH, & BOB! A huge AU Labor Day week left eight newies at this shack. Details in 7. Do you realize that 1990 has King, Kingsport, Kingstree and KING? B C N U.

IT'S HOLIDAY TIME IN ABERDEEN

BILL HARDY - 2301 Pacific Avenue - Aberdeen, WA - 98520 Aug. 17, 1982
 Well, nothing beats a vacation when the DX stinks at home, hi. So on Sun. 7/25 we headed towards Yellowstone Park. DX notes along the way: 7/25 - We drove right past KFWX-1560's towers in Sumner and not a peep out of them; they're dark. No tuned to relatively new KSCR-1421 Renton, still needed at home (nulls SW towards KITI), pop mx, APE MX, "South County Radio". We saw an interesting billboard near Maple Valley WA on Highway 13: "The switch is on to KAYO-1150 Newstalk Radio". KAYO went country last year and is now old MoR, a call change to KSPF is pending! Evidently an old billboard! Tis on 1610 at North Bend, WA, promoted on highway sign but not on the air; evidently used for mountain pass info in the winter. On 1-90 in Eastern Washington came across a number of old friends and a few new ones! KTRQ-730 ex-KULE Ephrata had the most distorted, overmodulated audio I've heard on a U.S. station, running of all things, cl mx; methinks even GLENN HAUSER would be offended by the audio. Until 9:30pm ELT they had cl, NBC MX on the hour, CBS "Radioactive" MX on half hour, frequent mentions of "Read Broadcasting" (Thomas W. Read is the owner), also mentioned religion weekday mornings, old-time mx afternoons, and sister station KTRM-fm in nearby Stanchee. Their loud signal carried nearly to Spokane. I also caught 85 mx on 1600 until 8am, then SE s/off for KRSC, Oth-allo (one hour later than in WRC Log). SS show is each Sunday but - wasn't sure if they meant all day or just afternoons. We spent the night in Spokane & noted Dick Clark's National Radio Survey on both KJRB-790 & KVIN-1600. KXKL-1440 had MXL. KREM-970 had the new "Hitparade" format, pop mx of the 1950's-70's, no heavy rock, but some "chicken rock" like See Gees, Streisand, etc. It was like the "oldies" an MoR station would play. They also used "The AM Kream" slogan. KCKO-1360 is not fulltime yet and still IDs as Spokane. KSPD-1230 has both APR & Mutual nets, and ran "Satellite Live" from Hollywood Sunday night. 10pm-midnight. Next time: On to Idaho and Montana! 73 & good DX.

ROD'S BEEN UP IN ALASKA

ROD O'CONNOR - USCGC Mallow (WLB-396) - P.O. San Francisco, CA 96672 9/15/82
 (Homeport Honolulu) Aloha! I have had a good summer here in Hawaii. I even went back up to Alaska for two weeks during July & August. Al-aska bits of info. KASW-1150 should have shifted down to 930 and up to 10KW by the time you read this. The change is sked to take effect in September at the time of their third anniversary. I visited their studios, located just a- bout in the middle of nowhere, but with an excellent XR antenna site in a swamp. I stayed overnight in Seward where I hoped to get some DX, especially since I was in an electrically quiet hotel. Unfortunately KRZA-950's XR was just 1,000' down the street, & they were broadcasting a steady carrier all evening & night long - not a single ID either, & it pretty well wiped out the entire AM band with harmonics. I don't know if they do this regularly, but perhaps any of your unexplained carriers on 950 could be due to this. A visit to AFRTS studio at Eielson AFB near Fairbanks netted this info: The AFRTS-1490 Eielson outlet is only 25w, the Clear AFB outlet, also on 1470, is 60w. We are getting under way next week (9/20) on Mallow, this time S to American Samoa. I will try to check out the CBC down there. I have had the pleasure of meeting & DXing with fellow WRCer BOB BLIVAK. It's good to know that we have such friendly members in WRC; especially when one is new to an area.

CARL'S ALSO GOING TO ALASKA

CARL L. LABELSTEIN - 3279 West 7th Street - Overland Park, KS - 66204
 DX activities here during the Summer was rare & primarily limited to sending out f/aps to holdouts from last season & to some of my long-er outstanding reports from prior years. Veries since last I use have been from KUKA-1250, WJEG-1540, KYCS-1140, WJPS-650, KEMO-1290, KJEL-1080, KLFJ-1410, WJLS-640, KZKZ-690, KRSS-1520, KJHN-1470, WHND-560, KGTQ-1050, CPYN-1050, KTXC-1250 & KKCS-1530. V/op/c from KWBZ-1150, WJEP-1080, KDJQ-1510, WRMS-790, KEMO-1070, WJEE-1430, WJUL-1220, KJEN-1470, KEMI-1550, WJPT-1280, KCCL-1460, KMYZ-1570 & WJLR-1550. Others were v/r from KLSM-1060 & WDDI-900, v/a from KROW-780 & v/q from WJLN-740. Total veries is now at 2,149. I had a chance to visit three or four of the Phoenix stations back in June while there for a couple weeks on business. Sorry not to have been able to attend the Convention in Louisville but the work sked & the kid's school start dates did not permit the time to do so. I am eagerly awaiting the end of Summer static & arrival of Fall DX season. Any significant amount of DXing will have to wait till I return from a business trip to Fairbanks, Alaska on 7/12-10/2. I'll be there doing some regulatory consulting for the municipal utilities system. Till next time 73's & good DX.

ARE YOU PLANNING ON ATTENDING N.R.C.'S 50TH ANNIVERSARY CONVENTION IN HARTFORD?

JOHN ENJOYED THE CONVENTION

JOHN R. MALICKY - 995 Shadycrest Road - Pittsburgh, PA - 15216 9/6/82
..... (continued from the Convention), about some of the members I met in the "flesh" & not just names on pages. ERNIE COOPER, a man who on Saturday had yellow shorts, a yellow shirt, & knee-high green socks, had 12 ducklings following him all day. (Newborn; they thought he was their mother). (You guess me up, John! -ERC) He is a very friendly person. I had the opportunity to look at his letter binders in the meeting room. He takes time to write each DX letter with a personal touch like he was talking to a friend. Incredible results! These QEs respond (well, most do), except W4WC-790, which responded after SIX letters, & think you may recall reading his QSLing earlier. This man has much knowledge in QSL DXing plus he's a talkative & lively person. Ernie should be enshrined in the DX Hall of Fame (if there is one). I will only try to be as friendly in my DX letters as he is & look for good results. Thank you for sharing your letters & yourself with us, ERNEST. (Blush, blush, bow bow, hi! -ERC) (This was a maid political announcement, hi! -ERC) Just briefly, here are some other (fine) members I met: TOK KONIATSER, "WBCO", TERRY "TRADER" KLASEK, PAUL "B/S" (no, not be but bumper sticker) MOUNT; KEN CHAT-TELTON; JOHN CALLERMAN (who also had outstanding letter book collections); DR. RICHARD WOOD (a still also great book collections); good fortune to you in Saudi Arabia! GEORGE SHERMAN, DAN BARTER, GEORGE GREENE, GEORGE HITCHCOCK, WARREN GREENBERG, RICH JEGALAS, GLENN COOPER, ERNIE WESOLOWSKI, BETTY FORD (who is not a member, but I enjoyed her company Saturday afternoon at Rocky's eating pizza), KARL JETER, BRIAN BURISACK, NEIL ZANK, BOB MUSCO, JERRY STARR, FRANK KERRILL of "WIND-560 fame", & KEN MacFARLAN at W4VW-1450 for being kind to let me watch him in action. To any of you whom I met but did not mention, forgive me. Those of you whom I did not meet at all, maybe next year. Now for the activities in a nutshell. I arrived at midnight Friday & met some members. Saturday was tours of W4KY or "Wacky-790"/W4VEZ fm & W4II-1080/W4JJ fm. Both stations were very friendly and interesting. I did get a longer time at W4JJ to watch Dave McCann on the air with the carts, the control board, & his XINT timing on a very good rock station. Later to W4VG-970 ER & lunch at Rocky's (the pizza). Later Mr. Crin Tower spoke (formerly engineering director for WHAS) folo by an outrageous auction with purchases totalling \$625!! Two expert members at purchasing picked up a packet of blank letters for \$20 & a T-shirt for \$5!! More and the last, next issue.

RICH ALSO ENJOYED THE CONVENTION

RICH EDDIE - 152 West Rose - St. Louis, MO - 63119 314-962-7215 prepaid!
..... I finally recovered from the NRC Convention & decided to muse about it. It was good seeing ERNIE COOPER, ERNIE WESOLOWSKI & all the others who made it to the Convention. I hope to make it to Hartford CT for the NRC 50th Anniversary Convention. I hope our host BOB MUSCO keeps us informed as to the progress of his plans for the Convention. Now to the NRC Convention just completed in LOUISVILLE. I enjoyed the tours of WHAS' XR site, W4KY-790 & their FM station, W4II-1080 & their FM station & the W4VG-970 XR site. It was good to see what the new publisher looks like. Good luck to him and may he last at least as long as Louisville did. Congrats to Louisville on a job well done as publishers and as Convention hosts. I will be trying for the DX TESTs as much as possible. Only local news is that St. Louis has a new TV station KMLC-24 on from 10:30am to midnight local time. Not on the air Saturday. Hopefully, AM DX next time. Good DX & 73's from RZE.

DAVID HAS A NEW SUPERADIO

DAVID HOLTEN - E. 4106 Fairview - Spokane, WA - 99207 Sept. 9, 1982
..... it's now time again for a briefer reintro. I am 21 years old & a recent college grad. Ha! This will be my third DX season in the NRC. Last Spring my old Knight RX came down with an acute case of burn out, and now I have since retired it and got a Superadio, nondigital unfortunately, hi. With the Superadio I have logged 12 new stations in July & the following seven in August. 8/5 CBU-690. 8/9 KSTP-1500, CKSP-1450, KNCW-1490, CKOO-1240 & its relay CK01-1490. 8/22 KOTY-1740. Here is a hot flesh for you. As I type this Musing listening to KZUW-630 (now a 50's-60's oldie station) I hear the DJ give a call of KQGR! A quick call to the station revealed the new call to be real and started today! Good DX to all in the '82-'83 season.

GLENN SAYS, "DON'T FENCE ME IN!"

GLENN HAUSER - Box 6287 - Knoxville, TN - 37914 20 August 1982
..... (con'd from last issue) I did some more ad-hoc de-facto barbed wire fence beverage bescanshoning on this trip, but it was hard to find a spot devoid of a few strong locals to image up the works - and with that kind of input, the ICP-5900W does not hesitate to produce 910 kHz IP images all over the lower part of the dial. Midway between Clovis and Roswell, SW of Kanna NM, I found an appropriate roadside fence, but the only observation of any note was a readable signal from WMLS-640 on it (Norman, OK, ex-WIAD), DU should be ashamed of itself for missing a golden opportunity to provide public radio; daytime, lkw, about 400 miles. In several other checks of the station while nearer, I never heard anything "Indian" as per NRC Log, just c/w as I recall, a

(Glenn Hauser, con'd.) format I mentally tune out. In El Paso I concentrated on taping all the Juaraz FMs & could tell you all about them here, but you'll have to wait two or three months for WFDRA W4F-UHF Digest to come out. (The more I think about it the more I like the idea of NRC and/or IRCA expanding to include FM - it's all domestic radio, friends, and who else draws such a hardline distinction between them - besides Bruce Ziving?) KROD-690 El Paso has a British-accented DJ in the afternoons. I saw a movie ad in the newspaper asserting that the Rocket Drive-In, 10400 Dyer, El Paso, has "Radio sound." I couldn't check for it there but called them later at 821-8027 and they said it's on 530, and that the theater operates all winter. A supreme DX target no doubt, & a phone call could confirm it by paralleling the audio. After midnight a station on 1090, presumably KXSB had pop mx w/JJ in ES but it was undermodulated & distorted; I believe it was "AT-40". I also discovered that W0AI-1200 is still carrying carry along but on TWO HOUR delay. So those in the East or Central who tune in late & wish they hadn't, and who can't get a West Coast delay station, can catch the start on W0AL. Driving through Socorro, NM, I couldn't help but notice that K5BC-1290 was absent. A call to the station revealed they were temporarily off since the FCC had cited them for second harmonic radiation (that would have been 2580 kHz - I don't think I ever DXed it, pity), which the new owners didn't know about when they bought the station. Problem was in the antenna coupler, & unfortunately their engineer was called out of town on personal business. (continued next issue -ERC)

GLASS'S GOP HIL DOWN

ERIC BUNNEMAN - 836 Lamplight Lane - Hazelwood, MO - 63042 314-895-1436 9/12
..... AN reception rarely goes up in smoke in my area. That's possible by using a loop antenna made for UHF-TV. With that, I receive a wide variety of stations, day & night. Last night was no exception. Received last night were: KSD-550, WHTB-590, KXOK-630, YVCO-640, WMAQ-670, WGN-720, WBEA-780, PJB/TWR-800, WXL-870, WGNV-920, LRJ-950 "R. Belgrade", W4AY-970, CMBL-1060, KXOK-1120, W4VW-1260, KWE-1380, HIL-1430, Deutschlandfunk-1539, & KATZ-1600. Even though there was only one Cuban received last night, the Cuban interference issue continues to madden me. 550 & 1380 are local channels, so no Cuban interference on those frequencies. A letter from Harold Prodra, ASWLC EW editor dated 9/1 said that activity was on 550, 570, 650, 1040, 1160 & 1380 kHz. That was the subject of a conversation between a DJ & the CE at WMAQ, Chicago, on the night of 9/5 at around 9:40pm local time. I believe the Cuban interference is illegal, and must be stopped. A good idea to "punish" Cuba is to limit the maximum power for Cuban stations to 5kw by the I.T.U., even though the I.T.U. has nothing to do with it. Another "punishment" is for Cuban stations within 250 miles of the U.S. to report their powers to the FCC. It makes me angry to hear Communist propaganda instead of Doc Hoines on 1040, MX & SX from KSL-1160, WXL from W4JJ, also on 1160, or various programming from stations on 550, 570 & 1380 kHz. Everybody in the U.S. hates the Communists, and U.S. citizens of the SWL community continue to monitor Red channels. So, monitor them and compare their sides with ours. I have over 30 verifications from AM stations, most of them U.S. stations. Yesterday I got my verie from WCCO-830 Minneapolis. I have more coming, including a few Canadians, several Mexicans, one Panamanian. So, what's a high school sophomore to do if he doesn't have any homework?

TWO-TON TERRY WENT TO LOUISVILLE

TERRY A. KLASEK - 9720 Vickie Place - St. Louis, MO - 63136 (314-869-7274)
..... Zzzzzz...yawn! Hello there to all DXers in (No collecta! NRC. Hey I made it to our Convention in Louisville, & I am still trying to recover. I finally met ERNIE COOPER, DICK TRUAX, & all those who I have had correspondence with in the last four years. I also met many members whose Musings I had read for a great while too. Best of all I traded promo Junque like a madman! I traded T-shirts & SCs with FRANK KERRILL, & stickers with JERRY BOND, PAUL MOUNT, GEORGE GREENE & TOK KONIATSER. The result was I have over 400 new stickers to sort out, & put in my collection of binders. This won't be an easy task! St. Louis was well represented by six DXers attending over Labor Day weekend which is not too shabby! I brought along about 1/2 to 3/4 of my veries for a display including the KJMP Alaska verie. Yes, many DXers asked me if I had brought that Alaska verie to Louisville so they were not disappointed, & that settles the matter! Since this Muse appears in the first issue of Volume 50, Happy 50th Anniversary, NRC! I hope as many members as possible will Muse or support DX NEWS as much as possible during our 50th birthday year. Let's all pitch in and make this the best volume of DX NEWS EVER! I will try to have a Muse plus other crazy stuff in each issue. I know that I've said that before, but one day I'll make it for each issue. The worst part of the Convention was that sleep was somewhat of a minimum! I still have a huge box full of stickers and assorted promo goodies for trade so if you want to trade promo items then send me a big (or small) package of stickers etc. and I'll return to you an equal number of mine in return. If you are the non-trusting type then write me proposing to trade promo items. MARK STRICKERT & KONSTANTINE BYCHALSKI will receive goodie packages soon, I hope they arrived safely. TANARA TAYLOR, where are you? Why were you not at the Convention so close to Nashville? Please Muse soon! I have been doing plenty of Summer DX. Plenty of regionals semi-locals and some new GYs were heard. Thus far 49 more veries since 8/1! (con'd next issue)

NEIL'S POINTING TOWARDS WFOCA

NEIL HAZAROSS - 518 East Grand Avenue - El Segundo, CA - 90245
..... I hope everyone who went to Louisville had a great time! Hopefully, I'll be able to attend the Hartford Convention next year as I'm presently starting to look for a job back East. There's very little about the prospect of living in L.A. that I like - except the weather! I'm sick of the traffic, smog, crowds, taxes, & ridiculous housing prices & conditions here. I don't want to live in L.A. or any other big city for that matter. As far as DX is concerned here, things should be better as WFOCA BOHAC is making an NRC Loop for me. Now maybe I'll be able to DX on some of the half-dozen or so semi-clear, KC frequencies that are almost completely destroyed by local slop like 657, 660, 700, 1040, 1570 & a few more. I seriously thought about getting an RPA, but for the time being, I'll save my money, and stick with the R-390A which I will have STEVE re-align & "tweak up" for me in the future. I'd also like to obtain an ER-150 or 180A & have mechanical filters installed per DALLAS LANKFORD's Super-187 article. With an NRC Loop & two great RKes in perfect working order, I'll really be set to pull the best possible DX out of the mess here in L.A. or wherever I end up. 73s & good DX.

GARY ENJOYED HIS RETURN TO LOUISVILLE

GARY ATKINS - 1737 Graham Road - #1-5 - Macon, GA - 31211 912-745-7394
..... Many thanks to the LOUISVILLE gang for a great Convention. It sure seemed strange attending a Convention in my home town of 41 years as a visitor! As usual it was great making new friends and renewing old acquaintances. After getting a chance to meet our new publishers, it is safe to say that LPC has passed the reins into most capable hands. The NRC lives on! The Convention did much to revive my interest in DXing. I promptly came back to Macon and erected a LW antenna and started DXing the SW bands. Maybe if I attend a Shortwave Convention it will get me back on the air band. I'm quite confident that once we got out of this 900 WX down here I'll start a new log & see how long it will take to match the 1500 or so stations I managed to hear from Louisville. While on vacation for the Convention I managed to visit my sister, who is a nun, in Paris, KY. The radio station there is now right next door to the convent and she arranged for me to visit WLP-1440 & WNCB-fm. In talking to the announcers I found that the G. of the station is interested in DXing. Upon my return to Georgia I sent a packet of some old DX NEWSs and other NRC info to him and also hinted for a CPC TEST. I would suggest sending any reception reports to WLP to Howard Keelin, GK, 1035 Main Street, Paris KY 40361. Incidentally, WLP stands for I Love Paris. I will ease again after I compile a nighttime band scan. 73 from a Macon Believer.

ERIC LOY IS FILLED WITH JOY

ERIC LOY - 604 East Locust - Mahomet, IL - 61853
..... As some of you folks know by now, I was able to attend the Louisville Convention, where I had a great time. The station tours were very interesting in that the people in the stations really talked, rather than just showing off the equipment. Overall, I'd say that the LADS put up an excellent Convention. The beverage site was frequented by me, as I was fascinated by the fact that I could hear many of my local stations from the Champaign area in Louisville. WVLN-740, just 250m from Olney, it was audible in the afternoon over a KY station on the same frequency. And, of course, the early-morning reception seemed to have put me in the mood for DXing again, and verifying. It was great to see everyone, meet the people in the Club, and make some new friends. ERC: Send a copy of your WCCB-1580 report, and I'll try and get a veris for you. Getting back to the beverage for a moment, there is a possibility that there will be a Mahomet-area 3200' or so beverage strung up at almost the same degree of the Louisville antenna. Thanks to all, and here's hoping for a productive DX season.

LET'S WELCOME BOB TO THE NRC AND KUSINGS!

BOB HARRISON - 166 Benner Avenue - Union, NJ - 07093 East. 14, 1982
..... As a new member, I figured I ought to meet & introduce myself. I've just returned to the DXing habit after about a 14-year absence. As a teenager in the mid-60's I logged about 300 MW stations on a Heilercrafters S-120 over a three-year period, but when I went off to college I stopped DXing altogether. It was just this past Spring that I dusted off the old radio, turned it on, & was immediately bitten by the bug. Finding the NRC however was no easy task! I knew there had to be an NRC DXing club somewhere, but the people at the local electronics stores were unable to help me, & the local newstands don't carry "Communications World" any more. I combed numerous bookstores; finally at one I stumbled across a copy of the '82 WRTM (it was in the "music" section, alongside Loretta Lynn's autobiography) and from there I got the NRC address. It's good to be aboard! I'm really impressed by the quality & accuracy of the NRC publications (especially the Domestic Log), & I hope to become a regular contributor to the "Verification Game", DDXD, and perhaps even DDXA. Good DX.
WILL WE SEE A KUSING FROM YOU SOON IN THESE PAGES? SEVEN HUNDRED HOPP SO!

PAUL'S POINTING THE TIP TRADERS LIST

PAUL MOUNT - 471 Emerson Avenue - Teaneck, NJ - 77666 201-836-1137 8277-15
..... Lots of travel this Summer, to South Jersey, KY/TN, & Baltimore plus seeing some Club members so let's get to it after this note. EB nets: The New York Nets had no net listing in their program; the Yankees did. I saw JOE PELA at a Yankee game on 8/27; he got me the tickets. Sat. 8/21, longtime member GEO. GE GREENE & I went to Seaside Heights to hit the Waterslide and boardwalk. Then we visited also longtime member JOE PELA at his house in South Plainfield. Joe had some new "toys" to demonstrate - Coleco video games and his new RX, a McIntosh XM-7B. On it we heard, on FM, as far as WVOX-100.5 from Rochester, NY (w/s local on 100.3). The next weekend I returned to S.P. as DDXD Editor DAVID SCHMIDT was up for a rare visit. Tues. 8/31 started the last big vacation of 1982. I flew U.S. Air from Newark to Louisville via Pittsburgh & Cincinnati (missed flight by two minutes), then got a rent-a-car. I stopped in Manchester KY to visit member Wheeler Conover for a few hours. I then drove to Morris Hotel on US25 in Knoxville. Notes on the drive down: WNEB-1150 Frankfort "Capital Country" was T-60 last time through. (1130, not 1100) WKVY-1380 "Your friends at 1370 in Winchester", pop mx. WKVY-1340 information-oriented in PM drive. WZGO-1330 Corbin KY carries AT-40, KY net, "Why-Go". WPTG-1400 London KY T-40, goes from mx into spot & back to mx without talking in afternoon, runs AP MX. I enjoyed two days of visiting the World's Fair in Knoxville, TN. I won a WJVK hat by being at McDonald's at the right time. DX while tower chasing late evenings 9/1, 2: WML3-660 will carry Woodrow Wilson HS FB - oh boy! WCRS-530 Reds BB. WJNC-570, AdCon, ABC NY. WSAI-1360 "Music Country Net", very good. WMAQ Sox BB w/60's stars Ken Harrelson & Don Drysdale at the mic. WYJS-1420 Owensboro KY good w/T-40, 33K. (these all 7-11:30am over two days), WJNG-1410 OK rx. WCSR-1390 SC w/"CSC" slogan, T-60. In upcoming listings I'll discuss Knoxville TN radio (sorry TOM COMPTONER), the NRC Convention, and more radio station notes made while on the road. Also the Tip Traders List will be compiled for the 1982-83 DX Season. If you would like to be tipped off on a non-regular station coming in at SSS, SK, or KW, or notified of a very late-breaking CPC, or station noted on testing, etc. get on the list. Send me your name, phone number, and tell which of SSS, KK & SK you can get calls. I started the list in Louisville, so get your info in now (even if you were on the list last year - renew. 73.

AURORA SCORES HARRY

HARRY J. HAYES - 9 Henry Street - Wilkes-Barre, PA - 18702 EDT
..... I had a great time at Louisville but was glad also to get home after 20 hours of changing onto five (count 'em!) buses to Wilkes-Barre. PETE CLARIUS also took a bus from Staten Island so I had someone to complain to about the situation, hi. I carried my Superadio down with me in my suitcase. I made sure to remove one of the six batteries to make sure the thing would not turn on on its own in the suitcase on the bus. I didn't find too much time to sample local conditions but was amazed at the signal from WVLK-590 Lexington which sounded like a local station. When I finally reached Wilkes-Barre at 7:30pm Monday I thought I'd try the radio as I waited for my relaxing cup of coffee to get done. I found a watery type of distortion all across the band. The ol' mx on WQXR sounded strangely psychedelic. Every other station on skip was affected as well. I was pretty sure that this distortion usually precedes an Aurora. Sure enough, the next night the band was as dead as two door nails. Worse yet this CX didn't let up until the following Monday without a trace of anything coming through. During the period I did note a reception of WUHL-1410 AL early in the fiasco and Cubs-1270 late in this period of CX. Also WSPR-1270 MA and CBCs (690, 740, 940) showed up mysteriously one night. This AU mess has lifted but CX still aren't good for any quality SSS DX. Skip is strong to the E at sunset but Westward, I can't seem to make it past PA's Western border. Not even WVKO-1580 Columbus shows up. Here is some of the stuff that did roll down the pipe at season's beginning. 8/29- 7:52pm WZBB-1360 MD Dial Soap offer. 9:15, WSTX-1470 VA s/off. 9/5-12, severe AU. 9/11- CRJG-1270 weak and alone @ 11pm. 9/12- 12:25am unID-940 foreign language. 1am, Canadians on 690, 740 & 940 in. 7:25pm, WLER-1270 Lebanon, PA extremely weak on night pattern with skipless CX. I don't believe I ever heard this one before at night. 7:32, WARE-1250 Wore MA mysteriously showing up w/IDs & PB game, all others out. 9/16- 7:11pm WJVE-1580 Ebensburg PA, ex-WEND, fair w/oldies rx & some T-40, calls self "wage". 9/18- 7:39pm, WJIN-1450 NJ ex-WPPG. 8:13pm, WTSX-1450 VT up for 30 seconds w/IDs. More when & if it happens.

- *WE'RE LOOKING FOR SOMEONE TO TAKE OVER THIS SECTION, GANG! HOW ABOUT GIVING*
- *IT SOME LONG, HARD CONSIDERATION? WE NEED SOMEBODY WHO IS DEVOTED TO THE*
- *N.R.C., AND TO DX, AND WHO TYPES, AND WHO HAS ABOUT A DOZEN HOURS AN ISSUE*
- *BE CAN SPARE TO TURN OUT THE KUSINGS OF THE MEMBERS SECTION. YOUR EDITOR'D*
- *LIKE TO SEE THIS SECTION CONTINUE TO BE A FONT OF DX INFORMATION, NO JUST A*
- *PLACE TO TALK ABOUT TRIPS, ANTENNAS, POHATS, ETC. THE N.R.C. NEEDS Y-O-U-I*

The 50th Anniversary Convention will be a dilly! Maybe even a hum-dinger! You'd better plan to be there! HARTFORD CONNECTICUT is the place - next Labor Day weekend! Much is being planned to make it a memorable occasion!

HIS NEW NRC LOOP PULLS IN ALASKA

BOB HLIVAK - Box 938 - Kaneohe, HI - 96744 Sept. 24, 1982
(Rec'd 9/27: same time it takes a letter from N.Y.C.I.-ERC)Aloha.
I don't think I've Mused since moving to Hawaii, so a re-intro is in order.
I'm almost 30, happily married to an electrical engineer, and live on the wind-
ward, or NE, side of Oahu. I work for the UH Institute for Astronomy building
electronic instrumentation. Occasionally I travel to the big island of Hawaii
where I assist observers on top of Mauna Kea at 14,000'. DX listening atop
Mauna Kea is wiped out by the hash put out by the generators that run the tel-
escopes. I hope all who were able to convene in Louisville over Labor Day had
fun. Saturday of the same weekend here was a BIG day for DX. Joyce & I fin-
ished reassembling my 35' NRC altaz loop with FET preamp about midnight. Right
away we were able to null local KIOE-1080 enough to hear el ax underneath. Im-
patient, I moved to 760 and peaked the loop on local pest KGU. Then I re-peaked
for 750, swung the loop N & got armchair copy on KFQD-750, Anchorage. Joyce &
I were flabbergasted! A short call to the station blew away the DJ too, whom
he found out our location. What is really amazing is that KFQD hasn't been in
since. I think someone upstairs sent me a reward for finally finishing the
loop, hi. I have been less successful in trying to arrange a GTG of NRCers on
Oahu, due to everyone's busy skeds. We have had a lot of fun, though, meeting
individually with ROD O'CONNOR, AL MARIANI, & LEI HERMANN (who now lives in
Kailua). Island visitors should feel free to call me during the day at work at
235-6287. With enough advance planning, maybe even some DXing can be arranged.
By the way, AL & I are already trying to plan to attend next year's Convention.
Thank you JERRY STARR for the excellent NRC T-shirt; what a classy job! What
little time spent at the dials since Labor Day has yielded PJB-800 and a 500-
watter from CA, KUDE-1320. Most DXing here seems to be done on Sat. nights. 73s

STAN GETS SOME MORE HOLDOUT VERIES

STAN MORSS - Route 3 - Bradford, MA - 01830
Verie from WCRB: no verie on two F/ups from WDEY & three to WAMJ -
I'll keep trying. No convention this year - a tough year - collections slow,
more rubber checks than ever before, but great news - WSR0 AN - and more - WXXK
was granted full time, no doubt AN-7 when cn. I heard TT on 1590 MM 9/13 82.
I didn't wait for ID. WSIG-790 testing & report to CJSB on PM reception. Also
veries from WMMN-TEST, & WHVE with an invitation to come in and get the "grand
tour", very friendly. A phone call from MARTY BRAUNER says she can't see to
write, so has to call folks. No sign of R. Marti but lots of SSeas last night
on such channels as 1070, 1130, 1170, etc. That foreign section was tough to
read & I really had to work to get all the good info involved.

TED ENJOYED THE CONVENTION

TED (FLYWHEEL) FLEISCHAKER - 3023 Fremont Drive - Louisville, KY - 40205
Hello, friends and welcome back once again to the
mad house I call my Muses! It was great to have one and all here for the 1982
NRC Convention and also to see all of the old friends I do not get to visit
with as often as I'd like. Tis great in this area to have RICH LEVIN and some
of the other "new" DXers I met at the Convention. It will put some fun back
into the hobby having someone to talk with and DX on the phone with - those
long distance calls (even via MCI) to Macon & Gary were really getting to me,
hi. Speaking of Conventions I for one feel the location is too far in one cor-
ner of the Country, and the hotel price seems a bit overdone. Isn't there a
cheaper priced motel in that town, what about the Renade Inn or a Howard John-
son? Why hasn't anybody checked this out? Better keep this short & let someone
else have their 2¢ worth. More before another decade passes and thanks to all
for the great turnout in Louisville. See you all in 1983. 73s from Flywheel!

THERE'S BEEN A GREAT AURORA

ERNEST COOPER - 5 Anthony Street - Provincetown, MA - 02657 617-487-9337
No veries, either AM or FM in this SILENT PERIOD:9pm-1am!
fortnight. There's been some great Aurora these past few days: I hope you all
got some goodies during it! 9/14- WHUE-1150 on OC this AM, also the PM; GHSJ
loud thru that carrier. 9/15- WQIQ-1590 noted running till 2am w/REL, not a
nough yet for a log due to the AU CX. 9/16- MEAN-790 has dropped Larry King;
they're now on NBC's Night Talk; no improvement there! Sat. 9/18- UNID ANor on
the c/w satellite network, WNOX or WNYR? WBSM-1420 is now carrying Sally Dull
Rafael's AN Show. SM 9/19- WKVA-1550 Eting & asking for phone calls; I obliged.
R. Carupano-1110 was on till 3:01 a/off today, WBT off. MM 9/20- WGY-810 off
this morning & WJR on OC. UNID TT w/WHUE-1150 @ 2:14am. WRRL-1600 is now NSP
again, isn't that nice, NYC-area people? Unn WDCI-1590 is AN including WMs
REL mx mostly. 9/22- AU very strong today, my VOA-1450 was in again! WSTD-
1060, ex-WCTR, is silent daily, 1-5am, s/off w/no SSB. Fri. 9/24- WAJL-1440 in
u/WFTQ today; a phone call to them drew their correct address which is Box
17,777, Orlando, FL 32860. Sat. 9/25- WAJL even better today! A long plea for
money, 1:30-2am, by preacher Jim Baker. WMOG-1490-CA was on top of 1,90 @ 1:27
w/delayed Braves HD; I had already heard the final score when I picked them up
still in the 8th inning! MH9/27- Nothing exciting; PJB-800 joins the AN ranks.
WJAS/WVOJ vying for 1320 @ 2:30; UNID SS-1310, & VOA-1450 once again. Anybody
who'd like a cassette of my "Forward March" show on WOMA-91.9, please send me
the cassette to be used and a 37¢ stamp & you'll get it! I'm also on the 10-11
hour now Saturday AMs with mostly classical band music. Weekly now - C U N 7!

ARTIE AND THE REST OF THE MEMBERSHIP- WE HERE AT HQ CANNOT DO THE TYPING ON
MUSINGS. THAT ERC'S JOB. WE HAVE MADE ONE EXCEPTION TO THIS RULE, BEING THAT
THIS IS AN INTERESTING STORY. BUT PLEASE SEND YOUR MUSES TO ERC-THANKS.

A NIGHT OF CUBAN JAMMING

Artie Bigley - 3000 Murworth #110 - Houston, TX - 77025
..... When I was driving on August 30, 1982, at about 9:45 EDST,
I decided to try for the new WDBX 1030 KHz in white bluff, TN. Well you
guessed it, instead I caught the good old Voice of Cuba on 1040KHz, while
tuning around 1030KHz on the car radio. They were very strong at about
this time and well over WHO. I noticed that they were broadcasting in
English, with the regular programing that has appeared on 600 KHz and 1160
in the past. Namely, English Propaganda and selections of Cuban Music.
At about 9:50PM, the Voice of Cuba started to fade out somewhat. What then
really caught my attention from about 9:50pm to 10:10pm, was that over
half of the listeners who called in to WHO, which was programing a talk
show at the time, were complaining of interference and poor reception,
which they had not noticed in the past. Even callers who claimed to be 40
or 50 miles from the station complained of poor reception. All except one
man who said he was 5 miles from the WHO radio transmitter and reception
at this time was as clear as it has always been. Well at about 10:10pm I
decided to call the station in order to put an end to the speculation of
the callers and host as to the course of the interference and poor reception.
I went to the pay phone and called WHO collect. The lady who answered the
phone gave me to the producer who in turn, gave me to one of the newsmen.
I told the newsmen that I was calling from Houston and wanted to help
explain the interference that some of the listeners have complained about
during the last 30 minutes or so. I told him that cuba had put a very strong
transmitter on 1040, apprx. 100 KW and was broadcasting towards the US in
english. He (the WHO newsmen) then said that he had just received a call
AP News Wire, asking him if Cuba was over WHO about 80% of the time. I then
went on to tell him that Cuba was over WHO about 80% of the time. I then
went on to explain what I had read on the thing. As you know, the US Govt.
has been planning to put Radio Marti on 1040KHz, to broadcast to Cuba. Well
in order to keep this from happening, the Cuban Govt. had threatened to put a
500KW transmitter on 1040. I then went on to say that if he wanted any
more info, he should contact Mr. GLEN HAUSER, I finished talking to him
around 10:40pm. At 10:45pm they had a woman caller on the air who claimed
to be in louisiana, near Shreveport and the Texas-Louisiana Border. She then
went on to say that she had picked up a station on 1040 in English, ID'ing
as V. of Cuba. This helped to explain to the listeners as to the source of
the interference, as one lady said she thought the poor reception was caused
by the straight alignment of the planets!!! At 11pm the Cuban Stn had signed
off (as if they were told about how such interference they were causing) on
1040 and also 1160 which I had monitored of simulcasting the same programing
On WHO's 12:05 newscast, a news report did indeed verify that the FCC
Monitoring stn in Fort Lauderdale had indeed received a cuban broadcast on
600, 1040, and 1160. The next day, I aniously went off to the newspaper
rack to pick up the Houston Chronicle, wondering if this was a important
news story. Sure, enough, there was a story on the Cuban Story and on the
Front Page!!! This was an A.P. Story, which made reference to the same
newsmen that I had talked to at WHO. They even used some of the info that
I gave the WHO Newsmen. The biggest surprise of the day is when all the TV
Networks ran stories on the Cuban Jamming on the Evening News, with WHO in
the spotlight. The reason for this is that President Reagan at one time
worked for WHO and that Radio Marti was planned for 1040. Needless to say,
in a HAUSER term, 'DXers can get a front row seat to interesting news
happenings, as they are happening.

U.S. radio waves jammed by Cuban music, propaganda

Associated Press
The Cuban government has begun jamming at least five AM radio frequencies in the United States, overriding U.S. stations with a mixture of music and propaganda, federal officials reported today.
The five frequencies and possibly a sixth were jammed Monday night by a Spanish-language broadcast from Cuba, said Majure Whitney, a Federal Communications Commission watch officer, stationed at the FCC's monitoring station in Fort Lauderdale, Fla.
Whitney would not say whether the interference appeared to be in retaliation for the Reagan administration's proposal to set up Radio Marti. The House-approved radio station would beam pro-Western news and information from Florida to Cuba.

However, the Des Moines, Iowa, Register reported today that another FCC watch officer said "the Cubans specifically stated they were broadcasting to the U.S. because they wanted to play tit-for-tat."
Dave Bragg, a newsmen and staff announcer for Des Moines radio station WHO, which broadcasts throughout the Midwest all 1040 kilohertz, said callers reported the station's program was interrupted between 8:30 p.m. and 10 p.m. in Texas, Missouri, Tennessee and Iowa.
He said callers reported "they could not pick us up very clearly. Seventy or 80 percent of the time we would be drowned out by the Voice of Cuba, talking in Spanish, playing Spanish and Cuban music. Between the music they were broadcasting pro-Castro propaganda."
Bragg said callers reported hearing the Cuban programing at the 800 frequency as well.
Officials at WHO, where President Reagan once worked as an announcer, have lobbied against the Radio Marti proposal, predicting that Cuban leader Fidel Castro would retaliate by jamming U.S. commercial radio stations.
Whitney said the Cuban stations have been on the air for some time, but Monday night was the first time the Cuban signal was noticed to be so strong.