



# DX NEWS

*the magazine of the  
National Radio Club*

— SINCE 1933 —

Volume 47, Number 25

Monday, May 26, 1980.

## STATIC FROM HQ

Spring fever must have hit IDXD contributors especially hard! Only 6 of you sent in your catches for last issue and only one for this issue. In fact, Chuck just decided to hold the few items he got until next time. So, how about making IDXD next issue one of the largest in recent times? I'll even try to spin through the dials.... The schedule for the rest of the volume year follows: June 16, 30, July 14, August 11, 25, September 8, 22..... A phone call from Dave Schmidt advised that WZZD-990 (ex-WIBG) in Philadelphia has changed it's format to all religion, 24 hours. This effective May 11. They've asked the FCC for new call letters--WWBJ.....

## CPC TESTS

*Pat*

Since we have a small issue and since May 26 is a postal holiday, we'll try to get this into the mail early. Maybe some of you will get it in time for the first test listed.

5/26 KTRC-1400 Santa Fe, NM 0200-0230 ELT with 1000 watts the first 15 Mon. minutes, 250 watts the last 15 minutes. Reports to: KTRC, Box 2227, Santa Fe, NM 87501. Arranged by Rob Harrington, IRCA.

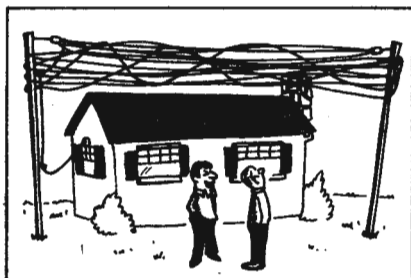
6/22 WMLB-1550 West Hartford, CT 0100-0330 ELT with 1000 watts. Will include Sun. jazz, heavy rock, punk rock, etc., many voice IDs, talk on DX & clubs, maybe tones, John Kennedy speeches, and may also use 2.5 watt PSA at times. Pre-paid calls to (203) 521-1550. Reports to: John Ramsey, CE, WMLB Radio, 630 Oakwood Avenue, West Hartford, CT 06110. Arr: Saul Chernos, IRCA.

On the subject of CPC, NOW is the time to start working for next season's CPC tests. Write to Neil Zank, CPC Chairman, P.O. Box 5563, Lincoln, NE 68505.

## LOOK INSIDE

AM Switch.....	2
Domestic DX Digest.....	4
Musings of the Members.....	6, 17
NRC Reprints List.....	8
International DX Digest.....	MIA

The last time we ran the reprints it got grossly out of sequence at the printer. Hope this effort is more useful!



"It's over two miles long!"

Elementary Electronics, May-June, 1980.

# AM SWITCH

JOHN D. BOWKER  
14 CANOE BROOK DRIVE  
PRINCETON JUNCTION, NJ 08550

I want to thank each of you this month who wrote to me about one of my finer entries in AM SWITCH I believe in the 16 months I've been its editor! There were 11 cards and letters and then I found a couple more that my wife had kept from me since she knew it was getting me down... the bottom line is that I have qualified as the monthly column editor with the greatest response from the Membership. Now, for the 750 of you who didn't write to me about listing the street address of KRLA instead of its frequency, you're my friends. You really all thought I'd moved KRLA to 1440?? I don't believe it. Wait 'til you see where I put WHAS next April Fools Day!

Let's see what we can do to delight you all this month:

## STATION CHANGES NOW IN EFFECT:

### Changes in Call Sign of existing stations:

740 - WBCI - Williamsburg, VA was WMBG	1420 - K000 - Omaha, NE was KESY
1240 - KAKZ - Wichita, KS was KAKE	1480 - KLAY - Lakewood, WA was KQLA
1240 - WHEL - Knoxville, TN was WBIR	1490 - WITA - Knoxville, TN was WKVQ
1260 - KQSA - San Angelo, TX was KIXY	1520 - WCSP - Port Gibson, MS was WPGR
1320 - KKCC - Clinton, OK was KWOE	1560 - WJBT - Brockport, NY was WWBK
1390 - KQDS - Duluth, MN was KAOH	1600 - WRBN - Warner Robins, GA was WQCK
1400 - WPQZ - Clarksburg WV was WBBN	

### New Stations now on the air (May have been for a month or even more):

1130 - WSJP - Murray, KY	1470 - KOLI - Coalinga, CA
1290 - KLEH - Anamosa, IA	1490 - KLYC - Laurel, MT
1360 - KKBJ - Bemidji, MN	1520 - WZBR - Amory, MS
1450 - KTXJ - Whitefish, MT	1540 - WYNC - Yanceyville, NC
1460 - KKAQ - Thief River Falls, MN	1550 - WWVN - Vienna, GA

### STATIONS AUTHORIZED TO CHANGE FACILITIES (May take months to accomplish):

860 - WAZE - Clearwater, FL will go fulltime with 500 Watts (DA-2)  
1320 - WOIC - Columbia, SC will increase from 5000/1000 w. to 5000/2500 w. (DA-N)  
1550 - KOQT - Bellingham, WA will go fulltime with 10,000 w. and identify as broadcasting from Ferndale, Washington.

### STATIONS REQUESTING A CHANGE IN FACILITIES (FCC approval will probably take months):

540 - WARO - Canonsburg, PA wants to remain daytimer, increasing to 1000 w. (DA)  
860 - KIFN - Phoenix, AZ want to go fulltime with 1000 w. (DA-N)  
920 - KVEL - Vernal, UT wants to go fulltime with 5000/1000 w. (DA-N)  
980 - WILK - Wilkes-Barre, PA wants to change from 5000/1000 w. to 5000/5000 w. (DA-N)  
1000 - WSPF - Hickory, NC wants to increase from 5000/1000 CH to 5000/2500 CH.  
1090 - KEXS - Excelsior Springs, MO wants to remain daytimer, increasing to 1000 w. (DA)  
1140 - KSXS - Conroe, TX wants to remain daytimer, increasing to 1000 w.  
1150 - KCCT - Corpus Christie, TX wants to go fulltime with 1000/500 w. (DA-2)  
1320 - WACY - Forest City, NC wants to go fulltime with 1000/500 w. (DA-N)  
1350 - KTXJ - Jasper, TX will remain daytimer, increasing to 5000 w.  
1360 - KMD - Tacoma, WA wants to move to 660 kHz with 50,000/50,000 w. (and you thought I was nuts for moving KRLA to 1440!)  
1380 - WLRV - Lebanon, VA will remain daytimer, increasing to 1000 w.  
1390 - KFML - Denver, CO wants to go fulltime with 5000/1000 w. (DA-2)  
1410 - WELM - Elmira, NY wants to increase day power to 2500 w.; stays 500 w. nites.  
1430 - WNEE - Memphis, TN wants to go fulltime with 2500 w. (DA-N)  
1430 - WKDH - Ashland, VA will remain daytimer, increasing to 5000 w. (DA)  
1510 - KEAM - Nederland, TX will remain daytimer, hopes to use 10,000 w.

### STATIONS REQUESTING CHANGE IN CALL SIGN (or, Get 'em while you can!):

740 - WMBL - Morehead City, NC wants WFTH  
790 - WWNY - Watertown, NY wants WTNY  
920 - WTRS - Dunnellon, FL wants WGAM  
1000 - WCFL - Chicago, IL wants WWTN ... now don't send me letters on this one!

### CONSTRUCTION PERMIT GRANTED FOR NEW STATION:

1190 - New - Dunlap, TN -- it will be a 500 Watt daytimer.

AM SWITCH -- Continued

CALL LETTERS ASSIGNED FOR NEW STATIONS (Not on the air yet!):

540 - KNMX - Las Vegas, New Mexico	1200 - WGDJ - Lares, Puerto Rico
1110 - KTEK - Alvin, TX	1310 - KXAK - Corrales, NM
1190 - WBDY - Bluefield, VA	1450 - WDLK - Dadeville, Ala.

APPLICATIONS FOR NEW STATIONS (Takes many many months for FCC review):

620 - New - Homer, Ark wants fulltime operation with 5000 w. (non-D)
1090 - New - Albertville, Ala wants 1000 w. daytimer. (non-D)
1110 - New - Kellogg, Idaho wants a 5000 w. daytimer (non-D)
1190 - New - Springfield, TN wants a 250 w. daytimer (non-D)
1250 - New - Willits, CA wants a 2500 w. daytimer with DA.
1290 - New - Lynchburg, TN wants a 1000 w. daytimer with DA.
1490 - New - Bullhead City, Ariz wants a fulltimer with 1000/250 w. (non-D)
1580 - New - Centreville, Miss wants a 250 Watt daytimer (non-D).

So the FCC has done a lot of work since the last AM SWITCH column. I was very glad to hear from RAY BARNO with his clipping about the bad fire at WVAM -- glad they're back on, Ray! KHUSH HART tells me he's just joining NRC -- be sure to Muse, Khush by sending a letter to Ernie Cooper in Provincetown! JACK PARKS sent in a lot of information... Jack, some of the antenna designations you used are non-standard -- I've seen them before but, since they're not FCC standards, I don't use them...too much chance for confusion. Thanks for the other information, though. And MORT MEEHAN literally ran to his radio in Twenty-Nine Palms to hear KRLA at 1440 -- too bad you missed them there, Mort...it would have been a rare QSL Card for you! Of course, they're back at 1110 kHz now, even though they did get sold last month. I get the feeling you all feel I'm trying to cover for another of my mistakes. Ridiculous!

*John*

## A FEW ADDITIONAL REMARKS ON THE SONY ICF-D11W

Jerry H. Neves

As you will recall I had a review on the Sony ICF-D11 W receiver in the December 17, 1979 issue of DX News. I would like to add a couple of remarks to more or less complete the original review.

First of all, at the bottom of the original review I mention that the HANDLE on this receiver is removable. THIS IS NOT SO. IT IS ADJUSTABLE. I don't know how this came about!

The other item was the MW frequency display--it was off by 2 kHz throughout the MW spectrum. After about three months of letters to SONY, they finally agreed to let me test another unit, which to my delight was right on frequency throughout the MW band.

The second unit I got from SONY has a lower serial number, but I don't think that had much to do with the set calibration problem. Sony took my old set back and I got to keep the other set as a replacement. I really enjoy it now.

Another item I forgot to mention in the original review was the ability of this set to display the hours on a 24 hour mode or AM/PM mode at the flick of a switch in the battery compartment.

My advice, if you buy the ICF-D11 W, is to arrange to have it exchanged within a couple of days if the frequency display is not right. For what you pay for the set, it should be right on the nose!

Jerry H. Neves, 3951 Colby Way, San Bruno, CA 94066...

LOS ANGELES -  
LABOR DAY WEEKEND

# DOMESTIC DX DIGEST

DAVE SCHMIDT  
42 CHELWYNNE ROAD  
CASTLE HILLS  
NEW CASTLE, DE 19720

This is our summer vacation column, as it looks like everyone took off already! When sending in your items, please keep them to one side of the paper, ELT, type or neatly print, etc.

## DX TESTS

- 730 KWOA Not heard by DS-DE, JS-OH, RA-MA.
- 940 KVSH Not heard by DS-DE, RA-MA.

## FREQ. CHECKS

- 1st MON....WELI-960 w/TT, ID's. (AQ-NY)
- 1st THU....WCPM-1280 w/TT. (DS-DE)
- 1st FRI....WHBG-1360 w/TT. (DS-DE)
- WRTA-1240 w/TT (new time 0015-0030). (DS-DE)
- WRWA-1340 w/TT. (DS-DE)
- KPIR-960 w/TT. (DS-DE)(noted 0101-0103 only!)
- WPMH-1010 not heard again this month. (RA-MA)
- 1st SAT....WDDY-1420 w/TT (0530-0540, not on list!). (DS-DE)
- 2nd MON....WHHO-1320 w/TT (now a 1 minute special!). (EB-PA)

# WDCR

Delaware County Community College  
Media, Pa. 19063

# WNRI 1380

## SPECIAL

- 530 WRD948 GA ATLANTA - the city of Atlanta now is operating 2 TIS stations on this frequency, one announcing the calls of WRD948, the other using no calls. WRD948 gets out very well and is heard 15 miles away at home on the TRF. The other is very weak, fades within a mile of the transmitter. (CH-GA)  
Reports to the GA TIS station may be sent to: Bill Owen, Freeway Engineer, Dept. of Transportation, 2 Capitol Sq., Atlanta, 30334. (Nice goin', Chuck!-DS)
- 580 WHP PA HARRISBURG - Has a regular SM SP, 0100-0500, 24 hours otherwise, EZL mx w/WHP-FM ID's AN. (EB-PA)
- 990 WNYR NY ROCHESTER - 5/5 0230-0240+ first time noted on new frequency w/CW mx, very weak signal w/deep fades. (RA-MA)
- 1000 WSUM OH PARMA - Mailing address (per v/l, CM) is Mortenson Broadcasting, WSUM, 619 Ameritrust Bldg, Canton, OH 44702. Change your logs! (RA-MA)
- 1302 WSYD NC MT. AIRY - noted off frequency 4/6 1930 w/nx & ID. Called station, spoke w/engineer who knew of some problems but not aware station was off freq. My 3rd wondering domestic. (CH-GA)
- 1340 KKIT NM TAOS - 4/23 0230-0246, per v/l from station, says engineer missed usual 3rd WED check, so it was run a week later. NM GY #3, TT was actually loud at times. (JS-OH)
- 1610 UNID A TIS station has been noted twice here, calls seem to be WIC235 or WYZ235 or somesuch. It's definitely at an international airport and I think the tape says "Miami", message repeated over and over, running 38 seconds. Can a Miami area member confirm this? (CH-GA)

## MIDDAY-MIDNIGHT

- 960 WEAV NY PLATTSBURGH - 4/25 1859 T40 mx then talk by male w/mention of Plattsburgh, good signal, #13 on 960. (WPT-DC)
- 1080 WQRO PA HUNTINGTON - 5/2 2014 ID noted just before s/off, fair, #10 on 1080. (WPT-DC)
- 1330 WCVC FL TALLAHASSEE - 4/29 1958 w/local program then s/off. (EM-FL)
- 1510 WITS MA BOSTON - 4/24 1832 fair w/New England telephone ad. (AQ-NY)
- 1520 WCHE PA WEST CHESTER - 4/24 1830 s/off noted briefly w/no SSB.(AQ)
- 1540 WARD PA PITTSSTON - 4/24 1945 in WPTR null (really!) w/ad for Pittston hardware store, o/u CHIN. (AQ-NY)
- UNID 4/25 1945 noted in WPTR null w/pop mx, calling self "Super 15-4" & "The new 15-4" then s/off, who? (AQ-NY)
- 1550 WSAO MS SANTOBIA - 5/2 2100 w/full s/off, local signal. (EM-FL)
- 1570 WONA MS WINONA - 4/27 2052 w/weak ID then ad. (EM-FL)
- CHLO ON ST. THOMAS - 4/29 2218 poked thru CFOR/CKLM w/"CHLO, your station for mid-day baseball." (AQ-NY)
- 1580 CBJ PQ CHICOUTIMI - 4/28 2245 w/unusual FF mx pgm.(AQ)
- WEYY AL TALLEDEGA - 4/28 2015 w/s/off, "even the sun goes down when WEYY signs-off." (EM-FL)

- 1590 WGGO NY SALAMANCA - 4/14 1900 caught s/off, "Your Recreation Station," very good signal. (EB-PA)
- 1600 WUNR MA BROOKLINE - 4/29 2143 noted w/Spanish programming w/ID and SS talk. (AQ-NY)

## MIDNIGHT MADNESS!

- 590 WPLO GA ATLANTA - 4/28 0044-0120 w/CW mx, ID, etc. 1st time heard here, nulls toward south. (EM-FL)
- 710 WOR NY NEW YORK - 5/5 taking a SP this AM, noted in passing around 0130. (RA-MA) Ditto. (DS-DE)
- 730 CJNR ON BLIND RIVER - 5/5 0058 o/u CKAC w/ad for surplus store then ID. (AQ-NY) 5/5 0101-0120 this u/CKAC while trying for the KWOA test, w/pop mx, many ID's, mentions of Elliot Lake, very weak. (RA-MA)
- 740 KRMG OK TULSA - 0212-0218+ loud on ET/ID/mx. (RA-MA)
- 900 CHML ON HAMILTON - 5/1 0205 noted off this AM, left just a SS station. (DS-DE)
- 1020 KDKA PA PITTSBURGH - 5/5 0220 noted w/tele-talk, 1st time heard, formerly my closest unheard. (JS-OH)
- 1070 WKOK PA SUNBURY - 5/5 0017 noted w/CW mx, ID. (AQ-NY) Hey, AL.... this might be CHOK-Sarnia, they're AN w/CW mx, WKOK runs POP mx, daytime regular here. (DS)
- UNID 5/5 0013 who runs SSB w/s/off at this time on MM? (AQ-NY)
- 1130 WASP PA BROWNSVILLE - 5/3 0605 way atop WNEW w/nx/wx. (DS-DE)
- 1240 KCRT CO TRINIDAD - 5/5 0600 very loud w/WBBW audio. (JS-OH)
- 1330 KWWL IA WATERLOO - 5/6 0200 s/off clear w/looped WHOT. (JS-OH)
- 1340 WHAP VA HOPEWELL - 3/30 0402 got 2 good ID's then POP mx. (EB-PA)
- WCVI PA CONNELLSVILLE - 3/30 0435 0435 noted w/oldies, many ID's(EB)
- UNID 3/30 noted w/Top 40 mx, ID. No listing for this, have I missed something? (EB-PA) Yes, the boat! WKRZ is the OLD call for WOYL-Oil City, PA. (DS)
- 1350 WSLR OH AKRON - 3/30 0400 noted w/CW mx w/WZLX off (finally!)(EB)
- 1360 WKAT FL MIAMI BEACH - 5/5 0115 u/WDRG w/phone #, "463-WKAT." (AQ)
- 1400 WKWK WV WHEELING - 4/30 0115 noted briefly atop w/14-WK ID's, female announc'r, Top 40 mx. (DS-DE)
- WGBG NC GREENSBORO - 5/1 0103 briefly way atop ending Ai nx, state & local nx, then rr, 14-GBG ID's. (DS-DE)
- 1430 WKKS MA MEDFORD - 4/30 0120 noted ET in progress w/Big Band mx, very strong. (DS-DE)
- 1450 WMYB SC MYRTLE BEACH - 4/1 0105 w/WCMB off, many mentions of Myrtle Beach, local nx. (EB-PA)
- WFOG VA SUFFOLK - 4/1 0135 "Sound of Country" w/many PSA's for Suffolk County. (EB-PA) Badly needed here. (DS)
- 1460 WWWG NY ROCHESTER - 4/1 0022 "Best in Christian B'casting" w/s/off, good signal. (EB-PA)
- WPNX AL PHOENIX CITY - 4/1 0025 wx then CW mx, fair. (EB-PA)
- WPRW VA MANASSAS - 5/4 noted w/TT/ID during new WOKO SP (0300-0600 Sunday AM). (AQ-NY)
- UNID 5/1 & 5/2 strong OC noted right after 0030, no ID's noted past 0215 both AM's. (DS-DE)
- 1470 CHOW ON WELLAND - 4/1 0028 noted w/spot for CW magazine. (EB-PA)
- 1490 WIGM WI MEDFORD - 5/6 0317 noted w/long list of community events, then into mx w/ID as "Radio 15 & Stereo 99," change log, log sez 2300 s/off. (JS-OH)
- WJNL PA JOHNSTOWN - 5/6 0408 surfaced briefly w/ID, and like WIGM, calls self "Radio 15", very original. They used to be known as "Radio Mil!!" (JS-OH)
- UNID 5/6 dial tone noted on at exactly 0330, off at 0345 w/no breaks for ID's anytime, no readable ID at start or finish, who? (JS-OH) You had a bee in your headphones! (DS)
- 1580 WSRF FL FT. LAUDERDALE - 5/1 0223 noted w/automated sounding CW mx, very loud and D-F fits. (DS-DE)
- 1590 WETT MD OCEAN CITY - 5/5 0200 briefly atop w/ID then nx. (AQ-NY)
- 1610 WXT613 OH CINCINNATI - 5/1 0201 way atop w/traffic/parking info w/male/female voice, then quickly faded into rumble. (DS-DE)

## OUR SPONSERS THIS WEEK:

- |        |                                 |                             |
|--------|---------------------------------|-----------------------------|
| RA-MA  | Ray Arruda, Acushnet, MA        | SX-122, 12 oz. beverage     |
| JS-OH  | Jerrys Tarr, Hubbard, NJ        | HQ-180, etc.                |
| WPT-DC | William P. Townshend, Wash., DC | TRF                         |
| AQ-NY  | Al Quaglieri, Albany, NY        | SP600JX, Loop, TRF          |
| EM-FL  | Ed Mitkus, Tampa, FL            | SONY ICF-5900W, SM2         |
| EB-PA  | Eric Breon, Middletown, PA      | TRF, BCR 101, LW            |
| CH-GA  | Chuck Hutton, Decatur, GA       | R390A, Vertical LW          |
| DS-DE  | Me!                             | HQ180, SM2, TRF, Earpick IV |

Don't give up over the summer, there are still things to be heard in the early AM! When you hear it, send it in! 73's & Good DX!



## MUSINGS

ERNEST R. COOPER  
5 ANTHONY STREET  
PROVINCETOWN, MASS. 02657

The opinions expressed in this column are those of the individual members, and do not necessarily reflect those of the editors, publishers or NRC.

QRM IS ZRRR!

MICHAEL JEZIORSKI - 3908 Circle Drive - Brookfield, Illinois - 60513 4/9/80 EST  
\*\*\*\*\* Here's what's happening in April: 4/1- 5:53am WVA-1350 mention of f/c during test which ended @ 5:53; carrier stayed on. I will check this out to see if it is a f/c. WYDE-850 6:19am suddenly in w/pattern change, then ID. 7:55pm, XPCR-1530 w/WCKY. 4/2- 6:50am, WTHM-1530 w/Mich, fam reports. 4/4- 12:59am KQFC-1390 all alone w/milled WYON w/s/off. 1:40- WQCK-1600 f/c finally pulled in. 3:12pm, KJLT all alone w/s/off on 970. 4/5- 9:19pm, KQXI-1550 caught on first try. 4/6- 12:06am WVEA-860 f/c heard just barely. 1:30am, WTTL-1310 heard on RS, of all places, hi. 7:45, KLMF-1390 in w/s/off. 4/8- 7:46, KJFW-1390 s/s/off. 8pm, KAEL-1310 w/Tri-State WX & ID, into A1 NX. Two from North Platte already this month, so I dare go after 12:01. Now some intelligent views on burning issues (get out the snow, ai). I have seen comparing my TRF and my (gasp) non-DXing sister's Superadio whenever she lets me get my paws on it. I noticed that the GE has the edge in stopping splatter. For instance, I can hear WKKK rather regularly daytime on the GE on 1150 with WJJD on 1160, but with the TRF, WJJD is just too strong. This depends on which station I am trying to null and whether I touch the terminals or not. The TRF has a hairline edge in sensitivity, again, it varies. What does not vary is the receiver's behavior on the same frequency as a strong local, i.e., 1390. With the TRF I just touch the two terminals (this is instant by now), tilt about 20° (lift the end nearer the transmitter) & null WYON completely. I have decided to be a smart aleck and try SSS this way; results above. The GE can't even get past WYON; this was checked simultaneously. If given a choice now, I would grab the GE for its vastly superior sound and its Flatband. However, the AM band is a toss-up between the two. The GE sure looks nice, but a lot more is known about modifying the TRF. KFC: I agree with you partially on the deletion of terms such as 73, QRM, etc. I feel that these were meant to be ham terms, and a ham would want to get a license. However, the major reason that clubs use these terms is that they need a short form for interference, etc. and one already exists. So why not make up our own code which is exclusive to ECB DXers? Instead of 73, now about 94? And our version of the Q codes could also be more descriptive. Like ZRRR instead of QRM, or SHHH instead of QRM (or when next to a disco station, #999!!)? We could devise codes a little less ridiculous than these, but they could serve the same purpose: brevity. How about it, gang? \* & good DX.

ON HIS WAY BACK TO CANADA

ARNIM LITTEK - Rosenhagen Str 56 - 3009 Hamburg, 5c, Germany 2+/4/80  
\*\*\*\*\* Second last day here, and things are unbelievably hectic here - no time for nothing no more. Sadly, no more time for overnight visits to Measuring Station Wittmoor to play with the Rohde & Schwarz receivers. It's looking a little tough with respect to scraping together enough ducks to make it to the Convention. I sure would like to go, though. Nothing 100% yet, but after my school term in Waterloo is finished in August, my next work term (Sept. to Aug.) looks like Germany again, but not Norddeutscher Rundfunk. But, details will follow if and when things work out. Again, moolah is a big question. I've snipped home gobs of information, way too much for me to carry name myself. Some of this stuff will eventually find its way into DX NEWS, because there's no question that it fits. Stuff like EBU Reviews, ERC Research Reports, CCIR documents, stuff on propagation, transmitters, receivers and .... Best part of it is that about 30% of this stuff is already in EE. Marvy, simply marvy. Some results of bedside DX, just before drifting off, i.e. us to luck: 1296- BRC ES, runs VOA program 2100-2300 GMT. I'm not sure how regular but I've heard this several times now. And my local graveyard channel is producing. Now that Germany is on summer time, (since April 6th) I have to wait till 0100 local time (1100 GMT) for the big Russky on 1170 to go to sleep. But 0104 of 19/4, Swansea Sound with their kww drifted up for a while, IBA pop stuff. A couple of days later, 00/6, I was once again somewhat aware of my surroundings at a later hour, than time 0116 local time. This time 1170 produced R. Victory, from Portsmouth (with Canadian Jon Mitchell providing the mx) throwing out a tremendous 20w. Again, IBA pop stuff. One of my better catches, on a TRF with no external antenna. Time to call it for this episode. I can't afford the time, hi. But things will be a little more relaxed when school starts next week. I'll have to send my address in then too, as I don't know yet what my residence number is, & I'm moving in four days. Hey! One last note, if anybody tunes onto 1593 & hears an NDR ID, don't roll over & die of shock. WDR-1533; NDR-972, 828 & 702 all share the same program, & split up the duties. NDR does half the day, WDR the other half. NX time IDs generally have both NDR/WDR IDs. But nights, between 0000 & 0600 local time (for the summer, 2200-0300 GMT, normally 2300-0500 GMT) both NDR & WDR carry the ARD night program, so you could get an ID like Bayerischer Rundfunk. WDR-720 carries a different program altogether, & does not carry the ARD night stuff. They just go to sleep. Sensible people. I think that is to let Radio Free Europe have a free channel to spread its propaganda. Like I said before, it's time to run. Till next time, 73's.

APRIL BRINGS SHOWERS OF NEW ONES

SIDNEY E. MARSHALL - 7224 Pam Drive - Millington, Tennessee - 38053  
\*\*\*\*\* Here it is the end of April and in spite of some Summer-like CX, and only limited time at the dials, I've managed to add a few new ones to bring my station total up to 757 heard. Before getting into my latest DX catches I'd like to welcome ROBERT M. BOMER into the NRC and hope to see an introduction Muse from him in this section soon. It's always good to see another member from West Tennessee in the Club! As I sent my last Muse to DAVE YOCIS early in April, here are my new catches for the rest of April: WYWF-990, Ala. on 4/13 @ 7am w/s/on heard before semi-local KWAD came on the air. At SSS on 4/13 @ 7:30pm WAMY-1580, Miss. w/s/off & SSB heard. Next new one at mid-day on 4/18 with WJSJ-1130, Ky. in @ 12:35pm with several spots, West Ky. NX & ID; WNEB-1340 Ky. in at 1:30pm with ID & Chorus of Christ program. Both were in with a very strong signal for the middle of the day! Then on 4/20 @ 12:35am I finally heard KARY-610, Ark., since they moved from 1490 kHz. At SSS on 4/20 KIKR-900 Tex. in 1st excellent signal @ 7:45pm w/mx & s/off. On 4/21 @ 7:50pm KENY-1480, Neb. in with station promo, local WX, & mx. Early morning at the dials on 4/23 landed the following new ones: KCJJ-1550 Iowa, w/ID & mx at 4:18am; WDXK-1460 La., @ 5:08am & KINO-1080 Mo., @ 8:03am. SSS on 4/23 reaped these two: KEMO-1290, Minn. @ 7:47pm and WATO-1290, Tenn. @ 8:07pm. SRS on 4/25 added these to my log: WJMW-730, Ala. @ 6:33am very strong for several minutes, WKNQ-1060, Ga. @ 6:56am with excellent signal, and KHYN-1060, Tex. boomed in @ 7:01am with s/on heard. Shortly after this a local T-storm took over! All for now, so good DXing to all.

PHILADELPHIA'S BACK ON THE MUSINGS MAP!

RICHARD ECKMAN - 2328 Griffith Street - Philadelphia, Pennsylvania - 19152 4/30/80  
\*\*\*\*\* It seems like I always let a few years pass between musings. I'm going to try to muse more often in the future. To start with maybe a re-Intro is in order: I'm 21, hopefully about to graduate from the U. of Penna. with a BA in Physics, and have been DXing on MW since about 1973. In the last few seasons I've had very little opportunity to DX mainly due to school work out so try to listen for TA's whenever I get a chance. The period from 3/12 thru 3/15 was a real surprise for me (and I guess many others) in that TA CX were really exceptional - something which shouldn't happen too often in a year supposedly characterized by high solar activity. Best receptions during that period for me included Kaliningrad-1143, Jeddah-1512, and Cairo-1107. The sheer number of stations audible during the period was surprising - almost reminiscent of the good ole days of the '76-'77 season! It looks as if many other DXers had the good luck of stumbling onto this fine opening. It's very pleasing to see West Coast receptions of TA's these days. It seems that after seven years of actively pursuing TA's on the East Coast I may not be here much longer. I've decided to go on to graduate school at the University of Colorado at Boulder beginning this coming Fall. I'll probably be doing something related to the field of ionospheric physics. I guess I'll finally have a chance at getting some long-sought-after TP's and DU's! In the meantime I'll be going after all the TA's I can get because it looks like I won't be getting too many of them out in Colorado. I'm sure I'll be musing again soon - until then, 73.

SCHOOL'S OUT - AND SO IS GREG!

GREG WILSON - 1329 Humphrey's Crescent - Burlington, Ontario - L7P 1K8  
\*\*\*\*\* Hello to all once again in Musings-land - I'm sorry that I have not been around but I just finished school and now I am free till September! Also, while in the apologies mood, I am also sorry that I did not double space my first Musing - sorry, ERC. (O.K., Greg! -WRC) Well, on to better things. Right now DX is not one of them. However I have not listened for a long time. Now that I have time, maybe I will get around to hearing something new, eh? No DX with the college ham station, VE3MCH, as I at least have packed it up until September. I have just discovered something new. I have been listening to the traffic reports on AM stations coming from the VHF band. After hearing the CHML reports from Hamilton, I wrote Ed Victor, the GE, and asked him about it. Sure enough, they are on 153.29 MHz (at least for CHML) anyway... this is a very interesting and different way to hear traffic reports. Of course, there is two way communications between the helicopter and the studio... but it is very interesting to listen to. In the station field, I still have not heard WNYR on 990 but they tell me that I should be able to! Oh well, not all of us are DX hounds - especially me - that's for sure. Until next time, hopefully not so long again, 73's from four miles South of Kilbride, Ontario.

ERNE'S GOT HIS TIX FOR THE CONVENTION

ERNE J. WESOLOWSKI - 1416 Pasadena Ave - Omaha, Nebraska - 68107 4/29/80  
\*\*\*\*\* I've already bought my airline ticket for LAX and I'm leaving on Wednesday 8/27 at 4:30pm, and will return on Monday a week following the Convention. My plans are still open on what I will be doing out there for a week. As far as DX goes, only a few catches have been added to my log since my last letter. WANE-1580 for a pleasant surprise at s/on @ 6:29 EST, on 3/24. Then on the 31st, WPIC-790 came through on their TEST. Another much-needed one, again on 1580, WCNE, in Cornersville, Ind. was heard at their s/on @ 5:59am w/WKST in Knoxville. I only need about 12 more on 1580. It really seems much less than that. Gotta check my records again some time. Then I finally heard the r/c from KPFO-1340 in Grafton, N.D. on 4/21 @ 2:45-2:53 off. Finally WHOK-1320 in Lancaster, O. was logged for the first time on 4/27 at 6am EDT s/on w/SSB.  
DO YOU WANT TO MEET A LOT OF NEW PEOPLE AT AN NRC CONVENTION THIS YEAR? THEN MAKE YOUR PLANS NOW TO BE AT LOS ANGELES FOR THE BIG SHENNANIGANS AUGUST 29-30-31 & SEPTEMBER 1!

# NRC REPRINT LIST

## PAST ARTICLES FROM DX NEWS

DECEMBER, 1979 - SUPERCEDES ALL PREVIOUS LISTS AND ORDER FORMS WHICH SHOULD NOT BE USED.

### ANTENNAS

- A1 HIGH PRECISION DIRECTION FINDING ON THE BCB, PARTS I & II. G. P. Nelson. Part I uses Maxwell's equations to derive the equations describing MW direction finding with a loop. Part II is a non-technical discussion of how a loop antenna operates and how to get the most out of a loop.
- A2 A ZERO SHARPENING DEVICE FOR A BCB LOOP. T. Holmes. If you're having trouble obtaining sharp nulls with a standard loop, this simple device may help. The 1965 forerunner of the Pattern Controlled Loop.
- A3 A VERSATILE LONGWIRE ANTENNA COUPLER, R. Foxworth. How to get the maximum amount of signal from your longwire.
- A4 ROLL YOUR OWN (LOOP THAT IS...), D. Fischer. Loop won't tune the entire band? This article describes what's wrong and how to cure it.
- A5 LOOP DISTORTION: WHY GET SKEWED? G.P. Nelson. Discusses origin on distorted loop patterns. Unique technical material not available elsewhere; a must for those interested in designing MW loop antennas.
- A6 PATTERN CONTROLLED LOOPS, PARTS I & II. G.P. Nelson. Introduction to the theory and practise of pattern controlled and cardioid loops for the MW DXer.
- A7 THE FLORIDA BEVERAGE, J. Conrad. Jerry describes the fantastic results with a Beverage antenna and compares it with others he has used.
- A8 THE CARE AND FEEDING OF A WAVE ANTENNA, J. Starr. Practical construction hints for a Beverage antenna.
- A9 DOWN TO EARTH GROUNDS, G.P. Nelson. Hints on making low resistance ground connections for terminating a Beverage antenna.
- A10 A CALIFORNIA BEVERAGE, Fr. Jack Pejza. Another article describing the spectacular results obtained with a Beverage.
- A11 THE SUPER SIGNAL SNATCHER, D. Fischer. Article describes the theory of the Beverage antenna. Includes equations, tables, many diagrams.
- A12 THE VERTICAL PICKUP PATTERN OF THE MW LOOP ANTENNA, G.P. Nelson. Helpful information for those doing horizon blockage experiments with a loop antenna.
- A13 USING TWO ANTENNAS TO GENERATE ASYMMETRICAL RECEIVING PATTERN. M. Levintow. Shows and describes a simple way to skew your loop's pattern to effect a null that will permit reception of a station impossible to receive on a figure 8 loop antenna by itself. Reading of reprints A5 and A6 are a requirement for understanding this technique.
- A14 A NEW MEDICAL BREAKTHROUGH FOR LONGWAVE TA'S, C. Clayton. Instructions on how to build an inexpensive loop antenna for LW.
- A15 REVIEW OF THE DYMEK DA-3 ANTENNA, Pete Taylor, with notes by R. J. Edmunds. Evaluates this recent development in MW antennas and its application to MW DXing.
- A16 MORE ON BEVERAGE ANTENNAS, Wes Boyd. An update on Beverage antenna theory and application.
- A17 AN FET LOOP PREAMPLIFIER WITH COAXIAL OUTPUT, James Hagan. This article describes a highly effective balancing amplifier for the air core loop, useable with unbalanced receiver inputs, and featuring power tapped from the receiver and switchable attenuation controls to prevent overloading.
- A18 A WHIP ANTENNA COUPLER FOR USE WITH PORTABLE RECEIVERS, J. Hagan. A simple construction project to inductively couple a whip antenna to the internal ferrite rod in many portable multiband receivers.
- A19 NEBE: THE NEBRASKA BEVERAGE, D. Fischer, C. Dabelstein, R. Mitchell. A discussion of the Nebraska Beverage and the results of its use.
- A20 THE LSCA-1. Ron Schatz. Complete construction plans for building the Loop Sense Cardioid Array. NOT A PROJECT FOR BEGINNERS! This antenna system is complex to build and operate. Should yield a unidirectional receiving pattern if operated properly.
- A21 A GOOD LOOP IS EASY (AND CHEAP) TO MAKE, J. Tull. Construction plans with photographs for a simple loop amplifier system.
- A22 THE WEDGE ANTENNA. C. Wolff. Plans for construction of a revolutionary alternative to the 4-ft. box loop for those with limited space.
- A23 A STURDY AND EFFECTIVE FLOOR STAND MOUNTING ARRANGEMENT FOR LOOP ANTENNAS. M. Maloney. Article on mounting air core loop antennas.
- A24 A LARGE APERTURE FERRITE CORE LOOP ANTENNA FOR LONG AND MW RECEPTION, J. Hagan. Details and theory for the construction of this new type of DX antenna.
- A25 A NOVEL APPROACH TO BUILDING YOUR OWN BCB LOOP, M. Maloney. New ideas for improvements in ease of operation and sturdiness of loop antennas.
- A26 AN AC POWER SUPPLY FOR THE FET LOOP AMPLIFIER, J. Hagan, R. Edmunds. Tired of the high expense and short lifespan of batteries for your amplified loop? Here is a simple plan, complete with schematic, to adapt your loop amp to wall current.
- A27 SOME THOUGHTS/MORE THOUGHTS ON BEVERAGE ANTENNAS. J. Clements and C. Hutton. Originally two articles, this report gives some valuable additional thoughts on construction and use of the Beverage antenna. Goes well with A7, A10, A11 and A16.
- A28 ANALYSIS OF THE BEVERAGE ANTENNA. C. Hutton. This lengthy article is divided into two parts; the first giving basic theory of the Beverage antenna and the second dealing with two wire phased antennas. Filled with calculations and features 35 illustrations.
- A29 HARLEY LOOP ANTENNA, Harley Steward. This 18-turn spiral loop is very directional. A detailed drawing and construction hints are given.
- A30 REMOTELY TUNED DIRECTIONAL LOOP ANTENNA, E. L. Cummins. This article shows how limitations of a very poor "shack", in this case a mobile home, can be overcome by use of an outdoor, remotely controlled, loop antenna. Mr. Cummins gives many practical points for others wishing to experiment with remote antenna installations.
- A31 SIMPLE CHEAP AND EFFECTIVE PRESELECTOR-LONGWIRE TUNER-AMP, B. Sherwood. This construction project will result in a device which not only will tune your longwire, but will amplify the signal as well. Schematic and brief instructions are given.
- A32 RADIO WEST LOOP VS. THE SM-2, Mark Connelly. Two commercially available ferrite loop antennas are tested side-by-side for sensitivity, frequency range, nulling, tuning sharpness/selectivity of preamplifier and ease of operation.
- A33 ANTENNAS FOR AM BROADCASTING, Steve Kennedy. This article gives a brief history of early station antenna systems and explains what types are in use today.
- A34 DX'ING WITH THE DX FLIERS, G. Thomas and C. Barfield. Describes the results of experiments using kite supported antennas for MW reception.

10

RECEIVING EQUIPMENT AND TECHNIQUES

- R1 SPURIOUS SIGNALS AND SPURIOUS SIGNALS REVISTED, R.J. Edmunds and G.P. Nelson. Many DXers hear stations on frequencies where they don't belong. Article describes causes and cures of spurious MW signals. Especially valuable if you have powerful locals nearby.
- R2 SINGLE SIDEBAND RECEPTION ON THE BCB WITH MECHANICAL FILTERS, G. P. Nelson. Few commercial receivers covering the MW band have adequate selectivity to cope with MW interference--particularly in the presence of powerful local stations. Explains how to fit mechanical filters to an existing receiver for the ultimate in adjacent channel rejection.. This technique is widely used by many top MW DXers.
- R3 SUBAUDIBLE HETERODYNES ON THE MW BCB, G.P. Nelson. Details on a technique which permits the MW DXer to detect and characterize signals too weak to hear at the time; also allows the DXer to count the number of stations on a channel; even if no programming is audible and permits direction finding on channels with several stations present.
- R4 MODIFYING THE TRF. A compilation of five articles for improving this fine portable receiver. Included are "Modifying the Realistic TRF to 10 kHz Readout" and "Additional Tips for 10 kHz Readout" by Charles Barfield and Gerry Thomas. "A Real External Antenna Jack for the TRF" by C. Bobbitt and "Modifying the TRF for SM-1 Use" by B. Sherwood are included as is "Tilting T-Bar Antenna Tuner for the TRF".
- R5 THE TRACKING PROBLEM AND HOW TO CURE IT, G.P. Nelson and T. Holmes. Many excellent receivers are poorly designed for MW DX operation; this article describes one of the most common design faults and how to cure it. Very useful if you have strong locals.
- R6 ELECTRONIC VERNIER TUNING, R. Moore. Detailed instructions on how to fit a varactor to a MW receiver to provide fine bandspread.
- R7 MECHANICAL FILTERS FOR THE HQ-180, J. Starr. Complete details on the conversion of the popular Hammarlund HQ-180A receiver to mechanical filter operation. Order with R2.
- R8 REDOING OLDER RECEIVERS, C. Hutton. The author explains how he took a \$50 HQ-129X receiver and "re-juvenated" it to compare favorably with a Collins R-390 or R-388. An electronics background is helpful in implementing this article.
- R9 RECEIVER/ACCESSORY INTERFACES MADE SIMPLE AND CHEAP, R.J. Edmunds. A discussion of methods of interconnecting DX equipment.
- R10 UP THE CARRIER, W. Bailey. Dig the weak DX out of the mud with this form of exalted carrier reception.
- R11 PRECISION FREQUENCY MEASUREMENT, R. Schatz. How to use the frequency counter, an instrument now within the budget of the average serious DXer.
- R12 THE FMS-3 FREQUENCY MARKER STANDARD, R. Foxworth. A review of operation, how to make the proper connection to the receiver, and some modifications incorporated by the author to permit full use of the unit's capabilities.
- R13 SINGLE SIDEBAND RECEIVING ADAPTERS, T. Sundstrom. How to sharpen your receiver's IF bandpass using a B&W #370 receiving adaptor.
- R14 REVIEW OF THE AUTEK Q-BOX, T. Sundstrom. Describes the uses of this new noise filtering device and its applications in MW DX.
- R15 REVIEW OF THE HEATH SB-620 SPECTRUM ANALYZER, R. Foxworth. A comprehensive and detailed analysis of the unit's operation and uses as related to MW DXing.
- R16 THE WORCESTER LONG DISTANCE AM RECEIVER, J. Worcester. A stage by stage description of the construction, theory and circuitry of a new type of AM DX receiver.

- 11
- R17 BUILD YOUR OWN AUDIO FILTERS, P. Sullivan. A somewhat technical theory and construction article on inexpensive homebrew audio filters for the DXer.
- R18 THE RUSTRAK R-88 RECORDER, R. Schatz. Explains operation and use of this versatile chart recording marker and its applications to the study of propagation in MW DXing, and gaining insights into potential loggings.
- R19 A BRIEF REVIEW OF THE AUTEK QF-1 AUDIO FILTER, C. Hutton. A non-technical review of this new noise and interference filter.
- R20 A FREQUENCY COUNTER FOR RECEIVER TUNING, R. Foxworth. A very thorough paper on digital readouts and what to look for in various models. Discusses technical theory and provides circuitry to enable the experimenter to build a counter for use as a "digital dial". Very thorough.
- R21 FURTHER RECEIVER HOT RODDING HINTS, C. Hutton. Tells what you can do to further improve the performance of even the best commercial receivers, and some problems with the older receivers being used.
- R22 THE LYONODYNE CRYSTAL WIRELESS RECEIVER, R.W. Tuggle. The concepts of vintage crystal radio are incorporated in these detailed construction plans for a simple receiver, offered as a "sporting" alternative to modern receivers; yet it has the potential for real DX.
- R23 DIVERSITY RECEPTION, C. Hutton. Using more than one antenna and receiver in an effort to reduce fading and interference of one frequency. This article deals briefly yet concisely with the basics of "DR" and how it can be applied to Medium Wave DX.
- R24 TIPS ON REMOTE TAPING, R.J. Edmunds. Are you going away during that rare DX test? This article explains several methods you can use to turn your receiver and recorder on while you are otherwise occupied. Useful with R9 and A26.

DOMESTIC DX

- D1 1570-1580 STATION LOCATION MAPS. Two maps pinpointing the location of all domestic stations operating on these two superb sunrise/sunset skip channels. A valuable aid to the sunrise/sunset DXer.
- D2 IT TAKES TWO TO VERIFY, PLUS HELPFUL HINTS, J. Murley and R. Schiller, respectively. If you are unhappy with your domestic QSL returns, read this article on the station's attitude toward reception reports. Also, veteran DXer Ron Schiller gives tips on increasing your returns.
- D3 CANADA'S WILDERNESS RADIO; THE LPRT, P. Taylor. In depth study of those 20 and 40 watt Canadian stations that you hear, but don't understand. A must for the domestic DXer.
- D4 WHAT IS A PRE-SUNRISE AUTHORIZATION? R.J. Edmunds. Some U.S. stations are authorized to operate with powers such as 14.3 watts during certain hours; this article explains why.
- D5 LONG DISTANCE RECEPTION OF DX TESTS, F. Dailey. Are you thinking about asking a station to do a DX test? Here are some proven techniques, that if used by the station, could make it easier for DXers to hear the test. A must for novice CPC members.
- D9 THE NSP SITUATION, J. Starr. A look at this problem from the broadcasters' side of the fence.
- D10 DX FROM THE TWILIGHT ZONE, P. Sullivan. For various reasons some stations are audible at sunrise and sunset only. This article tells the reasons.
- D11 GRAVEYARD DX, R. Foxworth, with addition by M. Levintow. This article tells you how to DX those cluttered local channels and get results.

- D12 CANADIAN FAMILY LIFE...IT'S TWINS. Explains why many station "families" exist in Canada. List of station groupings as of November 1, 1978, including LPRT's and other stations of better DX potential.
- D13 THE CANADIAN AUDIO NETWORKS, Brian Vernon. Explains origin of Canadian audio networks and tips on identifying stations belonging to them.
- D14 GRAVEYARD STATIONS MAPS, B. Hale. Useful maps for those who like the challenge of "dead" frequency DX. Includes station listings for each graveyard frequency.
- D15 SOME TIPS ON IDENTIFYING UNID'S, R. J. Edmunds. Offers practical tips on how to ID stations using reference materials and deductive logic.
- D16 SUNRISE SKIP DX, R. Kramer. Practical explanation of how to add stations to your log through understanding pre-sunrise authorities, station allocations on clear channels and auroral effects.

#### STATION LISTS

- L1 FREQUENCY CHECK LIST, Joe Fela. Many U.S. stations run equipment tests at regular intervals and times. This list is a valuable aid to new loggings. Updated yearly.
- L2 THE BANANA LIST, R.F. Schatz. A breakdown of stations in the San Pedro Sula and Tegucigalpa, Honduras areas as of January, 1978.
- L3 CUBAN STATION LIST, C. Hutton. This up-to-date listing is a handy resource for the International DXer. Updated yearly.
- L4 NON-DIRECTIONAL AERONAUTICAL BEACONS, D. Davis. An explanation of the types of beacons found in and near the MW band, plus updated listing of aeronautical beacons.
- L6 A SURVEY OF LA SPLITS, C. Hutton. A list of all Latin American stations presently operating on split frequencies. Updated yearly.

#### FOREIGN DX

- F1 ITU FREQUENCY PLAN - EUROPE, AFRICA, ASIA. D. Monferini & A. Merriman. Allocations assigned effective November, 1978.
- F2 ASIA AND PACIFIC DRAFT FREQUENCY PLAN, N.Z. DX Times. List includes Australia, New Zealand, Japan and east Asia.
- F3 PORTUGUESE FOR DX'ERS, R. Schatz. Describes the important and unusual features of this language; a must if you DX Brazil.
- F5 HUNTING THE LATINS BY MUSIC, R. Schatz. Describes types of LA music indigenous to various countries and tells how to ID LA's using this information.
- F11 ITU FREQUENCY ALLOCATIONS AND THEIR IMPACT ON TA DX'ING. M. Connelly. Trying for TA's on their new frequencies? What are your chances of logging a specific station? All region 1 MW frequencies are listed and what should be heard under good conditions. Goes with F1.
- F12 COMMON SENSE T.A. DX STRATEGY, M. Connelly. Practical hints are given for newer DXers to hear Trans-Atlantic stations.

#### MISCELLANEOUS ARTICLES

- M1 LOCAL SIDEBAND SPLASH: HOW MUCH IS TOO MUCH? G.P. Nelson. Many DXers complain about certain local stations overmodulating and producing large amounts of interference. Article describes FCC regulations on sideband radiation on the MW band and types of station originated spurious radiation.
- M2 MODULATION ARCING, J. Starr. Describes a frequent but rarely discussed cause of MW interference originating at the station that can wreak havoc on the MW band.
- M3 SUNRISE-SUNSET TABLES, G.P. Nelson. These charts permit the DXer to determine accurate time of sunset and sunrise at any point in the world on any particular day. Very useful for international DXers.

- M4 QUASIMONTHLY PATTERNS IN ATYPICAL MW DX RECEPTION, G.P. Nelson. A large body of data on TA reception gathered by R. Wood in England. Information is analyzed in an attempt to disprove the Lunar Phase Theory.
- M5 UNRESTRICTED RADIATION, G.P. Nelson. Discussion of carrier current stations and how to hear them.
- M6 RF POLLUTION, G. Hauser. General discussion of the radio interference problem and steps necessary to control it.
- M7 PATTERNS, PARTS I, IIa AND IIb. P. Hart. An understanding of the directional patterns used by North American MW stations is vital for the active domestic DXer. This series of articles explains in authoritative detail what patterns mean and how the DXer can fatten his log by understanding them.
- M8 PRECISION FREQUENCY ANALYSIS, R. Schatz with notes by R. J. Edmunds. A discussion of the technique of analysing the characteristics of a station's frequency over the long term as an aid to the identification or elimination of stations as possible DX catches at any given time.
- M9 MORE ON HOW DIRECTIONAL ANTENNA PATTERNS ARE PRODUCED, Wes Boyd. Supplementary information to the articles contained in the current edition of the NRC Night Pattern Book.
- M10 SUPERMODULATION AND EFFECTS ON DX'ING, Steve Kennedy. Discusses why there is overmodulation and how this problem will affect the DXing hobby for some time to come.
- M12 NOISE LEVELS AND USEABLE RECEIVER SENSITIVITY, Chuck Hutton. Discussion, in technical terms, of the affect of noise on receiver sensitivity.
- M13 GREAT CIRCLE CALCULATIONS REVISITED, Mike Tuggle. If you like to do calculations, this is the article for you. Mike explains how to figure distance and direction of stations mathematically.

#### PROPAGATION

- P1 MEDIUM WAVE SIGNAL PATHS, PARTS I, II, III AND IV, G.P. Nelson. Discusses Great Circle Paths, seasonal absorption pattern, auroral effects and the Midwinter Anomaly.
- P2 SOLAR CONTROL OF DAWN E BLANKETING ON THE MW BCB, G.P. Nelson. Explains how the position of the sun controls the fadeout time of transatlantic and transpacific stations.
- P3 EAST-WEST SYMMETRY AND THE FADE-IN PROBLEM, G.P. Nelson. Explains how the sun controls the fade-in times for MW stations.
- P4 SUMMER RECEPTION ON THE BROADCAST BAND, G.P. Nelson. First article describing the seasonal patterns in solar terminator location which makes summer MW reception from deep South America and Africa possible.
- P5 METEOROLOGICAL EFFECTS ON MW GROUNDWAVE RECEPTION, R.J. Edmunds. Short term variations in groundwave propagation at MW frequencies and their relationship to weather conditions is discussed.
- P6 AURORAL EFFECTS AND THE 1969 TRANSATLANTIC LISTENING TEST, G.P. Nelson. Brief simple description of how the geomagnetic and auroral phenomena control TA reception from various stations. Best general introduction to MW auroral effects.
- P7 THE AURORA OF NOVEMBER 6-9, 1970, G.P. Nelson. Traces a classic MW auroral attack from its origins on the sun to its effects on MW reception.
- P8 COMPARATIVE MEASUREMENTS OF GEOMAGNETIC INDICES, R.J. Edmunds. The author compares on a daily basis for three months the various A-index measurements as reported by several major observatories. He tells how the indices are related to each other.
- P9 SKYWAVE OR GROUNDWAVE RECEPTION? G.P. Nelson. How to tell whether the signal from a station you are listening to is arriving via groundwave or skywave or both.

- P10 A BEGINNER'S GUIDE TO THE IONOSPHERE, Fr. J. Pejza. Radio wave propagation is influenced greatly by the conditions in the ionosphere. This article explains the processes which change the ionosphere and the effects of these changes on radio waves.
- P11 THE LIMITS OF MIDDAY MW DX. G.P. Nelson. Comprehensive article describing the factors which influence radio wave propagation and reception during the late morning and early afternoon hours.
- P12 LIMITATIONS IN THE USE OF THE A-INDEX, G.P. Nelson. While the A-index is a valuable tool for MW DXers, it is easily misinterpreted. This article shows why.
- P13 BCB RECEPTION DURING PERIODS OF HIGH AURORAL ACTIVITY, G.P. Nelson. Describes the author's research into the effects of the aurora on MW propagation.
- P14 SKYLINE BLOCKAGE, Fr. J. Pejza. Mathematical derivation of the formulas needed to calculate the effect which terrain has on signals.
- P15 SKYLINE BLOCKAGE, SOURCES OF UNCERTAINTY, G.P. Nelson. Takes into account the possibility of signal propagation by some less common modes which are subject to blocking by the horizon.
- P16 HORIZON BLOCKAGE: CAN FRESNEL DIFFRACTION BE IGNORED? G.P. Nelson. No, it can't!! This article shows how signals that should be blocked by the horizon can sometimes be heard.
- P17 TRANSPOLAR DX RECEPTION, R.J. Edmunds. Are you looking for Asian DX more exotic than Urumchi-1525? This technical article relates to the transpolar reception of central and eastern Asiatic stations at sunset in North America.
- P18 OBSERVATIONS OF TRANSATLANTIC MEDIUM WAVE RADIO SIGNALS, C.W. Bailey. The results of a lengthy survey to TA receptions made over a one year period.
- P19 PROPAGATION AT MEDIUM WAVE FREQUENCIES, P. Sullivan. Discusses some aspects of the factors which control signal reception on the MW.
- P20 FACTORS OF MEDIUM WAVE PROPAGATION, F. Dinning. Further discussion of the nature of MW propagation.
- P21 DOMESTIC PROPAGATION-ANSWERS TO FREQUENTLY ASKED QUESTIONS, R.J. Edmunds. A brief discussion on some of the propagational factors that affect domestic reception.
- P22 REVIEW OF SOLAR ACTIVITY FOR THE MEDIUM WAVE DX'ER, R. J. Edmunds. A concise explanation of the Fredericksburg A-index as well as its use in the hobby is given in this article. Goes with P1, P6, P7, P10, P12, P13, P19 and P20.
- P23 MEDIUM WAVE IONOSPHERIC PROPAGATION, R. Schatz. This article takes a different approach to propagation and presents new terms and theory. It is designed as an introduction to P24.
- P24 TERMINATOR TRANSIT MECHANIX, R. Schatz. Parts I and II of a series which the author states features practical techniques to hear new stations; techniques never before available.

#### RECEIVER REVIEWS

- RR1 RECEIVER COMPARISONS-WHAT DO THEY MEAN? R.J. Edmunds. Certain problems arise when comparing product summaries and receiver reviews. The author explores these comparisons with an emphasis on MW DX.
- RR2 QUALITATIVE REVIEW OF THE YAESU FRG-7 RECEIVER, G. Hauser. A detailed non-technical review of this popular communications receiver.
- RR3 A REVIEW OF THE SONY ICF-5900W, Dan K. Phillips. A review and comparison with other portable receivers. Also deals with SW and FM sections of the unit.
- RR4 HEATH GR-78. R. Schatz.
- RR5 BARLOW-WADLEY XCR-30. M. Hardester.

- RR6 A REVIEW OF THE PANASONIC RF-2200, Michael Sapp. A non-technical comparison of the RF-2200 with the Sony ICF-5900 and Realistic TRF.
- RR7 A NON-TECHNICAL REVIEW OF THE WORCESTER LONG DISTANCE RECEIVER, Jerry Starr. A user's critical commentary of this revolutionary receiver. Note: This receiver is not readily available to the average DXer as it was built in limited quantities.
- RR8 MCKAY-DYMEK DR-22, J. Clements. A detailed, non-technical pre-product review of one of the "new breed" of receivers; mentions features, performance and how it measures up to receivers now in use.
- RR9 PANASONIC RF-4800 REVIEW, Grant Manning. Article evaluates the overall performance of this multiband receiver. Includes schematic and the technical specifications provided by Panasonic.
- RR10 HQ-180 SERIES RECEIVERS, Dallas Lankford. Reviews technical details and includes personal comments on the popular Hammarlund HQ-180 receivers. An ideal supplement to the NRC Receiver Manual.
- RR11 SONY TR-6500 VS. THE TRF, Charles Barfield and Gerry Thomas. Thinking of buying either of these popular inexpensive receivers? This reprint compares them side-by-side and gives impressions.
- RR12 GENERAL ELECTRIC'S SUPERADIO, Gerry Thomas and Charles Barfield. A detailed review of this new portable AM/FM receiver, compared side-by-side with the Radio Shack Realistic TRF.
- RR13 RADIO SHACK DX-300--A SHORT REVIEW, W. Heinen. Very brief review, non-technical, from the MW DXer's viewpoint.
- RR14 REVIEW OF THE DRAKE R7, Chuck Hutton. A comprehensive summary of the features of this new (July, 1979) communications receiver, plus in-use evaluation of performance.

#### PRODUCT SUMMARY

PS1 DRAKE SSR-1 RECEIVER, R. Foxworth.

#### UPDATERS TO THE NRC LOG AND PATTERN BOOK

UDL A year's set of updaters to the NRC Domestic Log is available to members for a flat fee of \$1; to non-members \$2.\*

UPB A year's set of updaters to the NRC Night Pattern Book, available to members for \$1; to non-members \$2.\*

\*Inquiries as to availability are advised.

#### SUNRISE/SUNSET MAPS

SSM A set of 12 maps (8½ x 11) with instruction sheet showing the monthly average sunrise/sunset times for the United States. An invaluable aid to the sunrise or sunset DXer. \$2 to all.

#### BROADCASTERS GUIDE TO DX

GUIDE A tri-folded guide for use with reception reports explaining DXing, how the NRC was formed and the importance of QSLs to DXers. 25 for \$1.

SSGUIDE Spanish version of the same guide. 25 for \$1.

#### STATIONARY/REPORT FORM MASTERS

FORMS A set of 3 masters for use in photo-offset printing to permit members to prepare their own NRC stationary, report forms--both Spanish and English. For members only. 50¢ per set.



# REPRINTS/PUBLICATIONS ORDER FORM

Available from NATIONAL RADIO CLUB PUBLICATIONS CENTER, P.O. BOX 401, GALES FERRY, CT 06335. Payment in U.S. funds only.

REPRINTS Rates are 10¢ per page for members; others 12¢. Overseas surface mail rates are 12¢ per page. Number of pages indicated by ( ).

A1 (12)	A25 (4)	R15 (32)	L1 (4)	M13 (2)	P23 (9)
A2 (1)	A26 (1)	R16 (25)	L2 (1)		P24 (18)
A3 (3)	A27 (4)	R17 (8)	L3 (3)	P1 (29)	RR1 (2)
A4 (3)	A28 (26)	R18 (4)	L4 (6)	P2 (2)	RR2 (3)
A5 (4)	A29 (1)	R19 (2)	L6 (3)	P3 (2)	RR3 (2)
A6 (9)	A30 (11)	R20 (13)		P4 (3)	RR4 (2)
A7 (3)	A31 (4)	R21 (4)	F1 (8)	P5 (7)	RR5 (2)
A8 (3)	A32 (2)	R22 (4)	F2 (6)	P6 (5)	RR6 (3)
A9 (3)	A33 (4)	R23 (1)	F3 (2)	P7 (3)	RR7 (4)
A10 (2)		R24 (2)	F5 (5)	P8 (3)	RR8 (3)
A11 (14)	R1 (10)		F11 (5)	P9 (3)	RR9 (3)
A12 (4)	R2 (22)	D1 (2)	F12 (2)	P10 (10)	RR10 (4)
A13 (3)	R3 (6)	D2 (4)		P11 (16)	RR11 (3)
A14 (1)	R4 (9)	D3 (4)	M1 (1)	P12 (3)	RR12 (3)
A15 (4)	R5 (4)	D4 (3)	M2 (1)	P13 (8)	RR13 (2)
A16 (2)	R6 (4)	D5 (1)	M3 (9)	P14 (10)	RR14 (3)
A17 (4)	R7 (6)	D9 (2)	M4 (4)	P15 (9)	
A18 (5)	R8 (3)	D10 (4)	M5 (3)	P16 (10)	PS1 (1)
A19 (7)	R9 (6)	D11 (15)	M6 (2)	P17 (27)	
A20 (10)	R10 (1)	D12 (3)	M7 (35)	P18 (3)	
A21 (3)	R11 (3)	D13 (3)	M8 (5)	P19 (6)	CIRCLE SELECTIONS
A22 (6)	R12 (8)	D14 (13)	M9 (1)	P20 (5)	
A23 (2)	R13 (2)	D15 (2)	M10 (3)	P21 (1)	
A24 (14)	R14 (3)	D16 (4)	M12 (5)	P22 (2)	

TOTAL PAGES \_\_\_\_\_ at \_\_\_\_\_ ¢/page = \$ \_\_\_\_\_

- UDL - Updaters to the Domestic Log; \$1 to NRC members; \$2 to non-members \_\_\_\_\_
- UPB - Updaters to the Night Pattern Book\* \$1 to NRC members; \$2 to non-members \_\_\_\_\_
- SSM - Sunrise/Sunset Maps \$2 to all \_\_\_\_\_
- GUIDE - Broadcasters Guide to DX \$1 for 25 \_\_\_\_\_
- SSGUIDE - Spanish version of Broadcasters Guide \$1 for 25 \_\_\_\_\_
- FORMS - Stationary/Report Form Masters 50¢ per set of 3 (members only) \_\_\_\_\_

TOTAL OF ABOVE \$ \_\_\_\_\_

PUBLICATIONS		Quantity	
Domestic Log			
\$6.50 to NRC members x	_____	=	\$ _____
\$7.50 to non-members x	_____	=	_____
Night Antenna Pattern Book*			
\$6.50 to NRC members x	_____	=	_____
\$7.50 to non-members x	_____	=	_____
Antenna Reference Manual			
\$2.50 to all x	_____	=	+ _____
Receiver Reference Manual			
\$2.50 to all x	_____	=	_____
Getting Started in MW DXing			
\$1.25 to non-members x	_____	=	_____
FREE to new members			

TOTAL OF PUBLICATIONS \$ \_\_\_\_\_

NAME \_\_\_\_\_ TOTAL ORDER  
 ADDRESS \_\_\_\_\_ U.S. FUNDS

12/79

\*Night Pattern Book temporarily out of stock. New, revised edition expected, mid-1980.

## DICK'S GOT TWO R-390-A's!

DICK TRUAK - 3003 Gleason Lane - Jeffersontown, Kentucky - 40299  
 \*\*\*\*\* Once again it's time for a Muse from Derbytown, where the first filly to win the Derby in 65 years has made history. On to things related to DX: Gosh, it's been a while since I've Mused! 2/18- KURL-730 Mont. noted w/TT @ 2:13pm along w/R. Trinidad w/ad for Big H Hardware, both positive as Pat varied both & my tape matched his. 4/5- WSYD-1302 N.C. off frequency per GARY ATKINS' tip w/SID @ 9:45pm. 4/20- KNIM-1580 Mo. w/ID @ 7:38pm just when I thought I'd never log another newie on 1580. 4/21- New KELC-1530 Ark. s/off @ 7:45pm w/post WKEY milled a bit. In other news, I managed to make it to the Dayton Ham-fest 4/26 and spent most of the day in the flea market. I found a NEW R-390A with only a few hours' usage, so I bargained and took it home. So I'm the proud owner (and broke) of two R-390A's. The new unit is actually ten years older than my earlier unit (1967 vs. 1967) but in virtually new condition - I couldn't pass it up. So I guess I'll have to sell the 1967 model which is itself almost in mint shape. Look for my ad in the next DXchange if interested. CX are getting mediocre so my activity will slacken for the Summer months. More if and when it happens.

## \*NEWS ABOUT BASEBALL NETWORKS\*

STEVEN PARADES - 18 Cornwall Avenue - Millville, New Jersey - 08332 4/23/80  
 \*\*\*\*\* Greetings! DX has been so-so around here for the last week but here is a small run-down. 4/7- WFTQ-1440 Wm, ID @ 1:58am, ZQV-1410 @ 2:08, CHOK-1070 & WIBC-1070 fighting it out @ 2:15. Also noted were CJKB-1290, WGR-550, WHDH-850 for the first time, WUST-1120 very weak, & WHAM-1180 awfully early @ 5:48pm, this bird is not usually heard until after SSS. On 4/14 I finally heard the R. Moscow relay from Cuba. I could only take a little of that Soviet propaganda, hi! About the BB networks mentioned above, the Phillies is right but add Tim McCarver to the announcer line-up. (That's right, y'all, they have FIVE announcers, three who work for the local TV station and two who work for the Phils.) Also, according to a spot heard on WQIQ-1590, they will be carrying the N.Y. Yankees' broadcasts. Why, I don't know, they're right in the middle of Phillies Country. Well being I'm a bit short on things to write (and I want DAVE YOCIS to work for me money, hi!) I'll start part one of my daytime band scan. 540-WDMW, 560-WFLL, 570-WMCA and something else very weak, 580-WHP, 590-WARM, 600-WCAO once in a while, 610-WIP, 630-WMAL, 660-WNBC, 680-WCEM, 690-WYIS, 710-WOR, 730-WPIK weak but omnipresent, 740-WVGH, 750-WEMD, 770-WABC, 780-WABS weak and once in a while, 790-WTAR once in a while, 800-WTDR, 810-WYRE, 830-WNYC weak and once in a while, 850-WTEU, 860-WTEL, 870-WHCU weak during SSS, 880-WCBS, 900-WJWL, never any sign of WFLN, 910-WSEA, 920-WTTM, 930-WTDD, 940-something is there, but it's u/-950-WPEN, I think it's WVLV, 960-WBOC, 970-WAMD, 980-WRC but always under the disco pest WZD-990. They (WZD) do an awful lot of splashing onto other frequencies. Enough blabbing from me, C U N-14 and, as the great DX philosopher once said, "May you hear the station you most want and a local go off the air." (For a couple of hours anyway, hi!) 73's.

## RAY HAD A VERY GOOD SEASON

RAY ARRUDA - 47 Burt Street - Acushnet, Massachusetts - 02743  
 \*\*\*\*\* This musing should wrap this season up. It was a good season with 85 stations reported and 84 veries received dating back to 9/1/79. Totals are at 1236/770 heard/verified with a "lifetime" 82% on verie returns. Thanks, BILL BERGADANO, for your help on my unID on 1360. I recently received a Radio West Catalog #4 and after browsing through it, I am quite impressed. They have an excellent line of equipment and services. Here are some of the high points and low points of the last month's DX: WPMH-1010 first Fri. r/c tried in April & May but no luck, WINS too strong. Mx 4/7: WDEM-1500 on ET simulcasting FM w/c/w mx, IDs, UPI NX, 2:57-3:07. Sat. AM 4/12: WYFA-1300 noted @ 1:10-2 & on w/RT/pop mx, mention of 10,000w and taking phone requests, very loud n ND pattern. Mx 4/14: Um WECO-940-TEST made it with fair signal 1:50-1:56 w/c/w mx, ID @ 1:52. Nothing noted on Mx 4/21 but back to 4/26, Sat. AM: WUTQ-1550 noted fair at s/on 5:15-5:35 w/Art Stewart Show, c/w mx, Ae NX @ 5:30. Mx 4/28: WCBG-1590 noted on r/c 12:05-12:19 for still another try at a verie. Over to 1450 to try for WILM but only bits of TT between 1:03 & 1:19, nothing positive. Was that you, DAVE SCHMIDT, at the XR? Mx 5/5: DX TESTs from KWCA-730 & KVSH-940 both tried and not heard. The rest of the activity is on the low end of the band and can be found in DDXD. I'll give someone else some space to muse. Have a happy and safe Summer so we can all be back in the pages of DX NEWS next season. 73.

## WNVR-1380 WANTS REPORTS

JOHN J. KOSINSKI Jr. - WNVR-1380 - Mallans Lane - Naugatuck, Connecticut - 06770 4/22/80  
 \*\*\*\*\* We're still going strong AN-6! For your information, we do not have the female DJ in the overnight time slot anymore. She has been promoted to full-time 8pm to 1am, Mon-Sat. Right now, we're in the ARB. It's the only ARB in Waterbury proper. We're rated in the Hartford-New Haven ADI twice a year. We're running the "Name Game" contest. The listener has to know the current "name" of the hour to win. If the listener correctly names the "name" then that listener's name becomes the new "name". Wait a minute.. what's MY name? It sounds easier than what I am trying to communicate here. Please let us know if you receive 14-NVR. We sure battle it out with lots of other people on 1380. I remember looking at the original nighttime service application filed with the FCC. That was back in 1965, or, two owners ago. Believe it or not, there was a major section on protecting WTVR! Doesn't anybody protect little ole 500-watt US? (Yes, John - KSRV, in Oregon, hi - ERC)

THE NEXT ISSUE IS IN THREE WEEKS - MUSINGS DEADLINE IS MONDAY, JUNE 2, IN PROVINCETOWN.

BILL CANCELS HIS ANTARCTICA TRIP.

BILL TOWNSHEND - 4500 Connecticut Avenue N.W. #901 - Washington, D.C. - 20008 202-966-8046 \*\*\*\*\* It's high time for my re-intro. By the time this appears, I'll be 49, am happily single and living with my stepmother who is 77 (Sunset Strip, hi). I've been DXing off & on for the last 40 years using such rigs as the RCA-Victor five tube table model set, the Zenith Royal 500, Radio Shack DX-160 & TRF & various other rigs, including my uncle's old Zenith split-second console rig and my late brother's Atwater-Kent, both of which were in vogue around 1936-9. (I'm giving my age away if I remember such rigs, hi). I have heard 945 stations in all from D.C. including 110 foreigners. I work as a computer programmer in the National Weather Service (don't blame me for 804 \$\$\$ WX, hi) in a DX-buster (FM is not affected, though, since I heard WHYY-FM Hanover, Pa. during an unsked WMOB-FM (now WMTQ) SP in 12/73). I called the World Weather Building in Marlow Heights, Md. The building does have 40 foundation pillars holding it up, 24 of which are exterior & serve as antennas (what I said in my last Musings about not using external aerials was wrong, hi), which enabled me to log & verie midday (high noon) receptions of several Midwest stations including three in the Flatlander (Central) Time Zone. I got a call from MARK STRICKERT last night who was passing through en route from Miami to Boston (he was on 15-minute rest stop) & had a pleasant chat for several minutes. When a DXer calls an out-of-town station (more than 50 miles and usually much further), he is actually complimenting the station, albeit left-handedly, hi. This means an ordinary listener wanting to hear his/her favorite program on such a station can pretty well count on hearing it. I cancelled out of the Antarctic trip aboard the Lindblad Explorer sked for Jan/Feb. '81 because of more immediate commitments. I'm spreading out the bread that we paid to Lindblad (refund will come any ig) over several smaller trips, including one to Scandinavia next month from 6/12-26. DX will be minimal because of midnight twilight & very short nights. I'll take in Antarctica as a side trip from Zedder country in 11/84 (Big Brother's Time, hi) in connection with a total solar eclipse expedition (the eclipse path will be NE of N.Z.) possibly run by Dave Thomas, who ran the 1976 eclipse trip DU. I did enjoy seeing JEFF LOCKWOOD down in Tampa, though. The temperature hit 89° this afternoon for a touch of Summer. It hasn't been below 50°F./10°C in the last 2 1/2 weeks, while the Midwest WX has been oxnighly erratic (it pays to live here in the Historic East, hi). I couldn't catch a rather DX TEST sked for this AM (KWOA was blocked by NSP pest CKAC-730 & KVSH couldn't make it past the LA station on 940 with CSM off. Enough for now. 7.2 plus 4.6 which totals 73 de WPT. (If you say so -ERC)

NORTH-EASTERN PENNSYLVANIA BAND SCAN.

TONY FITZHERBERT - 115 Devon Road - Chalfont, Pennsylvania - 18914 5/3/80 \*\*\*\*\* Hi, everyone! Since there is an interest indicated in this column in band scans, here is one for the Northern suburbs of Philly, compiled in Jan.-Feb. 1980. All are regular, except as noted. 540-WNJV hamonic, 560-WFIL, 570-WMCA, 580-WHP, 590-WARM, 600-WCAO, 610-WIP, 620-WVNJ, 630-WEJL, 630-WNBC, 680-WCEM, 690-WYIS, 710-WOR, 730-WNAK (weak), 740-WVGH (say Hallelujah!), 750-WBMD (weak), 770-WAEC, 790-WAEB, 800-WTMR (say Hallelujah, again!) 810-WGY, 830-WNYC, 840-WVPO (weak), 850-WREU, 860-WTEL, 880-WCEB, 900-WFLN, 910-WSPA, 920-WTTM, 930-WPAT, 940-WVLV, 950-WPEN, 960-WHYL, 970-WVDJ (one again, Hallelujah!), 990-WZZD (still disco, but expected to become a real pillar of fire shortly), 1010-WINS, 1020-KDKA (weak), 1050-WHN, 1060-KYW, 1070-WROK (in KYW null), 1080-WTIC, 1090-WBAL, 1100-WGAU, 1110-WNAR "Suburban Radio", 1130-WNEW, 1170-WBWB, 1190-WANN/WLBB, 1210-WCAU, 1230-WEEK, 1240-WHUM, 1250-WMTR (weak), 1260-WBUD "Kix Radio", 1270-WLBB, 1280-WADO, 1290-WJBR, 1300-WIMG, 1310-WCAM, 1320-WKAP, 1330-WEVD, 1340-WHAT, 1350-WHWH/WZIX, 1360-WWBZ/WPPA, 1370-WPAZ, 1380-WAMS (weak), 1390-WLAN, 1400-WEST, 1410-WLSH (weak), 1420-WOOL, 1440-WNYP (local), 1460-WJUZ/WCMB, 1470-WSAN, 1480-WDAS, 1490-WBCB/WAZL, 1500-WTOP, 1510-WAHT/WJIC/WBAN (weak), 1520-WCHE, 1530-WBET, 1540-WBCP, 1550 to 1590, WBUX - the XR is just four miles away, and there is nothing between out hill and their Slov, four tower array, and we are in the primary lobe. 1600-WHOL. And that is normal Spring daytime reception in Chalfont! Next Muse will look at some positively delightful catches in April "As the Day Patterns Turn" between 5 & 6am... and will dedicate the next effort to JIM GUTERIE, who suggested I get up at the unholy hour of 5am for this early morning DXing. In retribution for the sleep lost, I'm trying to get him to renew his NRC membership. I will say that most of the early AM catches verified quickly. Best regards to dl.

NOW, HERE'S OUR OTHER EDITOR!

DAVE YOCIS - 502 West McDonel - MSU - East Lansing, Michigan - 48825 517-353-1503 5/5/80 \*\*\*\*\* Well, our carrier current station WMGD has been floating back and forth from 640 (nominal frequency) to 620 for some odd reason. I told them about it this morning and they say they cleared it up, but they're back on 620 once again. So much for the whirled of Big Time Radio, hi. To DX: Absolutely none of late, CKOY-1310 a surprise for only new catch this week to bring us to 377. No veries, either. The combined two-location count now is closing in on 1,000, maybe ERC will have cause to get worried, hi! Well with little else to say, I'll just mention that the U.S.P.O. delayed Musings from NEIL KAZAROSS and STEVE PARADIES, both of which took eight days to get here, and they should both appear somewhere in this section. 'sall. (Nice work, David! -ERC)

THE NEXT MUSINGS DEADLINE IS THIS COMING MONDAY, JUNE SECOND. THE FEATURED THEME WILL BE MUSINGS FROM MEMBERS IN NON-COASTAL STATES, PROVINCES, AND COUNTRIES - BUT ANYBODY'S MUSING IS WELCOME FOR ANY ISSUE. LET'S HEAR FROM YOU LAND-LOCKED DXERS, Y'HEAR? YOU MUST GET RIGHT TO IT SO THAT IT WILL REACH PROVINCETOWN BY MONDAY, 6/2! THEN THE NEXT DEADLINE IS TWO WEEKS FROM THEN, MONDAY, JUNE 16th - FEATURED WILL BE MUSINGS FROM ALL WHOSE NAME BEGINS WITH A, B, OR C - FIRST, OR LAST! THERE ARE A LOT OF YOU - WHAT SAY?

SENSATIONAL SUNRISE SIGMA!

STEVE FRANCIS - 1520 Lodge Street - Alcoa, Tennessee - 37701 \*\*\*\*\* Mx 3/17 - No sign of the KANS-620-TEST, even though local WRJZ was milled down to near-oblivion at times. Ann WMLP-1330-TEST heard fair w/WLJY w/TM & IDs after 3, no sign of 'em earlier. With Cuba already on DST, the R. Sancti Spiritus relay from Placetas on 1200 was in readily w/CKKC at its 4:30 s/on w/choral NA, //1190 & 1210. 1210 is the one that used to be on 1180. You follerin' all this? 3/20 - WSMA-1590 Mich. fair @ 6 s/on w/ Ernie Ford-sounding vocal SSB. Mx 3/24 - Ann KHYM-1060-TEST heard w/difficulty w/WNOE, gospel tunes & IDs in voice & code. SM 3/30 - WBRT-1320 Ky. fair @ 5 s/on-SSB. Mx 3/31 - WPIC-790 TEST rough w/WAKY/WATR, but a couple of VIDs barely made it, CIDs were easy. No luck w/KWHD-860 or KCEE-790 TESTS. 4/3 - The April pre-oxm SES season got off to a promising start @ 5:30am with the day rig s/on of WNWG-1430 N.Y. o/u WPR's SSB; mentioned Christian format & "SWG". 4/5 - The new WYNC-1640 N.C. fair @ 5:45 s/on w/vocal SSB, sung by the Statler Bros., I believe. FBTR-1330 Va. fighting it out on day rig w/WFBC @ 5:22am. 4/8 - W1XZ-1360 Pa. fair on lay rig @ 5:55am o/u WSAI. Both have F D's playing c/w, which made things hard to follow at times. SM 4/16 - Local WNOX was discovered off @ 6:03am (I think they popped off the air @ 6 when trying to change pattern & had some trouble getting back on) and yet another 990 voice was bagged in the person of WNVV Va., alone out early in the daylight w/RR. The mouth of the South finally made it oack @ 6:14, just in time to rob me of the next cycle of s/ons. Mx 4/14 - The TEST from semi-local WBCO-940 noticed in passing @ 1:17, not at all strong. It seems like all seems more than 20 or so miles away will do poorly on nighttime ETs. 4/16 - WBOB-1350 Va. weak but readable @ 6:59pm /end of taped religious message, into WX & quick s/off w/o music. Semi WELC was atop as usual, out WBO's new. SW did the trick. 4/23 - Same time, channel & CX, WKMI Mich. weak w/end of net NX & clear "WKMI...Kalamazoo!" in unmistakable "Top 40" voice; they were on ND day rig, of course. Mx 5/5 - Mary a trace of KWOA-730 or KVSH-940 TESTS. 5/3 - WVFC (Very Fine Catca) -1530 Pa. noted on ET 12:38-1:05 s/off w/org'n instrumentals & enthusiastic, detailed IDs; on since midnight per s/off. WCKY wasn't the usual pest since they were running the Roy Masters Show, which is only a cut or two above an OC, hi. Per DAVE SCHMIDT's DDND tip, WUTQ-1550 N.Y. in surprisingly well 5:43am w/c/w; inexperienced-sounding F DJ & "WTQ Country" promos, 'twas often topping TOKY/DEF. Been fun but I gotta run.

ED'S ENJOYED HIS FIRST YEAR IN N.R.C.

ED NITKUS - 3001 Landmark Circle - Tampa, Florida - 33615 5/6/80 \*\*\*\*\* Hello all! Even though it is early May, the DX around here is cooling. Sunset gets rough, though. I've switched to sunrise, & I find that even 150 or 200 watts gets out very nicely. So I've now logged 150 stations since last June. I've been a member of the NRC since June, 1979 - time for renewal. Thanks to all who have helped beginners like myself. I really appreciate tips and new methods, hi. ERC, what's the lowest power F8A you've ever heard? Well, I need to run. Good Summer DX to all. (W0GO-1550, now WCCZ, w/84 watts, but on a DX TEST - I don't DX sunrise! -ERC)

WTR-1590 IS A REAL FRIEND TO DXERS

FRANK WHEELER - 6589 Wattsburg Road - Erie, Pennsylvania - 16509 5/5/80 \*\*\*\*\* I'd just like to comment on a station that is a real DXer's friend. That is WTR, which used to be WQTC. I reported to them on their s/off at 7:30pm EST on 4/24. I received a letter verie from them on May 1. It was a personal letter. The last paragraph read as follows: "In closing I would like to thank you for a very nice letter. The staff is always pleased to hear from all you DXers out there. I'll enclose some additional information about our operation here also." They sent bumper stickers, programming for both WTR-1590 and WQTC-FM (separate program cards). Hats off and thanks to WTR, Two Rivers, Wis., 1590 kc/s., a truly DXer's friend. Another station like that was KHYM that was on for the NRC. They sent a nice verie, bumper sticker and coverage map. I received ten new stations this far this year: WTOW-1570, WXVI-1500 Ala., WIRD-1580 N.Y. (??-ERC) CKLQ-1570 Man., KDHL-930 Minn., The Voice of Cuba-300, CKL-1570 Que., CMJY-860 Cuba, WTR-1590 Wis. & KWOA-730 Minn. Log now 2,880 received with 1,712 veries. I've enclosed some verie signers. 73e.

ARE THERE DIRECTIONAL FM STATIONS?

DAVE AROGAST - 3961 Porter Road - Rootstown, Ohio - 44272 \*\*\*\*\* Hello from Edinburg's only DX center! Not much doing. I want to WXTL "the most powerful high school station in the U.S.", 15kw - anyone beat it? Also, they are phased! There is a college station in Pittsburgh on 90.7 which they have to protect. First I've heard about phasing FMsers. Anyone else know of any other FMsers which are directional? DX: WESP-1080 in fair w/3PE slopping something awful. That was on 4/16, 3:07pm. Veries: WVL-370, verifying on 4/15 for reception on 2/3, CM with it. WJZ-350, tape verie, Ais & Fm CM with it, heard on 4/7, 1:33am. WQOD, WBEW-1200's Emer, verified for reception on 4/2, CM with thaten, too. Query for Ernie and/or any others who care to comment: When you get a verie back and it doesn't have the date and time on it - is it acceptable to type in the date and time yourself in case something happens to the log you keep? (I do, as a footnote, & I initial it - ERC) Thanks. Methinks me heard one of WMOO's infamous MA ETs Mx 4/7, ID on tape which was very low & not pronounced just just right, sounds like WOO. As per NRC Log, WOO isn't exist. Nearest is WOOZ, which is on 1540, but I was on 1550, as I have a frequency counter. WTR & KXEL on 1540, to further prove my point. Formats don't match; I heard GOS, WOOZ is T-40. So, no tape sent. Darn. Well, next Mx, hi! Nice letter from IRCAer Mike Saltmarsh. GEORGE GREENE called me at school yesterday. I have my own office there with a phone. If you want to call me there, feel free to do so between 12 & 12:30 EDT at 216-664-5841, ask for Ext. 40. I'm running outa room, so later de DGA.

CHAPTER CXLII - THE WSB STORY

-by PETE KEMP

It all began when a young man named Walter Tison, a former ship's wireless operator, came to Atlanta from his home town in Celartown, Ga., and suggested to Major John S. Cohen, then editor and publisher of the Atlanta Journal, that a radio broadcasting station would be a good thing to sponsor. Major Cohen listened intently as this young man described how a human voice could be carried over the air. On March 15, 1922, the Journal went on the air with the first broadcasting station in the South and the second newspaper-owned station in America. The transmitter was located on the fifth floor of 7 Forsyth Street. It should be known that this same transmitter is now located in the Smithsonian Institution in Washington as an example of pioneering engineering technology. WSB was faced with a bit of a problem. Although they had a transmitter, not many people had receivers. The solution was publishing receiver plans in the Journal and employing mobile demonstrators who would traverse the town stopping wherever people would congregate. In addition, George Iler, WSB's first chief engineer, and his associates would conduct regular classes in radio construction. WSB ventured into all areas of programming broadcasting many firsts. When Esaueman's clothing store burned down on Whitcomb Street, broadcast it as a current news event. They transmitted the first radio wedding, the first to schedule regular church services and even issued membership cards to hearlows, their loyal listeners around the country. In addition, a slogan "The Voice of the South", their musical IS was the first three notes to "Over There," a forerunner to the NBC Chimes I'll bet, and yes, even a station theme song, "The Journal Covers Dixie like the Dew," written by Dick Finch and Adly Britt. Power increases were constant in 1925 - 1,000 watts, in 1929 an increase to 5,000 watts, and in 1933 to the top, 50,000 watts, were authorized. In the meantime the facilities were moved to the Penthouse of the Atlanta Biltmore Hotel in 1927 and they became affiliated with NBC as charter members. In December 1939 the Journal and WSB were purchased by former Governor James N. Cox of Ohio. After 30 years at the Biltmore WSB radio and television moved in together under one roof in 1964.

NEXT ISSUE - EXPLORING THE THIRTIES, with MORT MEEHAN (part one). WE'D LIKE SOME MORE FOOTBALL MEMORIES FROM SOME OF YOU OUT THERE WHO HAVE LOTS TO RECALL FOR US BUT WHO HAVEN'T DONE SO! IT DOESN'T HAVE TO BE ANCIENT HISTORY - TELL US ABOUT YOUR RECOLLECTION OF YOUR EARLIEST DAYS AT THE DX DIAL. PLEASE DOUBLE SPACE.

TONES IN HIS PHONES

ERNEST R. COOPER - 5 Anthony Street - Provincetown, Massachusetts - 02857 617-487-9337 \*\*\*\*\* Veries: WPKX-1280, WTNI-1270 (a real toughie finally capitulated!), WFUN-970, & another toughie, WNIS-1350, plus a renewed verie from WOKG-1450, originally verified in 1933; thanks, AL QUAGLIEMI! Great column, DAVE YOCIS! DX: 4/14- Unn VHD-1320 on ET w/ AM & FM ID @ 12:37am. Unid Tter on 570 @ 1:19, & another on 980 @ 1:51-1:55 off w/no ID. With WOKG-1450 in, I sent 'em their first DX report in a year, 3:03-3:47am. 4/15- WMOO-1550 "a day late" with his MM ET, hi, 1:53am noted. And a new report taken for WNIS-1350 today on RS-L.King. 4/19- Eternal tester WYFA-1580 was doing his thing again @ 1:23. A Tter on 1570 @ 1:23, and 1310 @ 2:27 w/TT, later MoR. SM 4/20- First time this season for unn KFAB-1110, @ 1:59, naught else noted of interest. MM 4/21- Another nothing morning. Unn CFNW-790 was strong today, & that 1400 c/w-NBC station on the coast was there too so they must be MSP, but I still ain't got no ID, hi. 4/22- Odily, WPKX-1380 (ex-WROC) w/L.King was pushing through WADO/CJMS/CKCV & I got some of their local stuff on newscasts for a report. 4/23- Unn CKCH-970 in w/CSH's mull; CHM-1290, FPC, AN, atop @ 2:30. 4/25- KVI-570 & WOAI-1200 join with King Larry; WLOB-1310 was dropped him, out match, he doesn't mention this latter event. Unid Tters between 1 & Jam on 1370 & 1390. MM 4/28- Noisy, & pouring down the rain - for the first time, unn WNYR was noted on 990 ANing w/c/w, in mall of WNOX/WZZD. 4/29- Unn WFTB-1450 r/c-TT good 1-1:15 & a second report was sent. An oldie friend, WJDM-1530, was Tting 1:06-1:32, when they broke, IDed, & s/off, about even w/WCKY which now has a talkie till 1:30am. Oyez, thanks to these phoners: DAN BARTX - TONY LAGATTUTA - KEN ROMSTADT - BILL WURTZEL - ROLLAND LINDBLADE - DAVE ARBOGAST - RAY ABRUDA - AL QUAGLIEMI - BILL COLEMAN - CRAIG HEALY. 4/29, conf'd., unid Tter on 1350 @ 1:43, & the Venezuelan NA was noted w/WKWB-1520 @ 2:13; this must be somebody new. Unn XEUM-860 w/Oratorio mx @ 2:42, strong, only interference is from the Cuban Minita Man. And another unid Tter on 1260 this time, 3:05-3:11. 4/30- TTs on 1450 @ 1:52, & 1310 @ 2:05. Format change; WQW-1590 to "Music of Your Life". (I must be sinking fast). Toronto members: Is that eternal AN OC on 750 that of your CEL? Has to be either they or CRNM. May Day 5/1- Is it still agin the law to say "MAY DAY" on the radio? If so, there must have been about 3,000 violators of that rule today, due to the French "M'Aidez" ("Help Me - the international voice distress call). Unid Tter-1370 looping the same as WSPD & with the same volume w/WFEA 2am on, also one on 1300 3:29-3:03 when this one switched to banjo music, of all things. We'll pick up from here next time - bye bye- CUN-2.

VERIES ARE POURING IN.

PETER McLURE - Box 268 - Neegawa, Manitoba - R0J 1E0 5/3/80 \*\*\*\*\* Hello! Musing #2 should make the headline for non-street address Musings & before there is a P.O. strike u here, hi! Some interesting DX lately. I have heard KEMR-1130, KDXL-1230, KDAK-1500 & KFNW-1170; that makes 27 N.D. stations heard, out only 11 verified so far. Other catches lately: KRNK-1460, KDEN-1340, KXRB-1000, KRRR-1070, KOGA-930, KSKN-1310, WBZ-1030 (w/KTWO off), CKAC-730, KCRO-860 & WMPG-1240. Oh, I found some more hears: KTHG-1430, CEAR-590, WJOV-1240, WCAU-1210 (w/KYNN off), KSEI-1230, KBQQ-1020, KXLY-920, KOMO-1000, KUGA-1300, WHBL-1330, WISU-1240, WJBC-1530, CFJC-560, KLO-1430, KHM-1070. Totals heard: 211, 30 states, six provinces. Over 40 veries in since last Musing so I won't even try to list them all. Total veries now 79/22/5. Last couple of weeks the WX has been so nice I've been doing a lot of yard work & swimming, but I was too tired to do much DXing. Good news today, it was snowing & temperature was down to 32° F., so I had time to catch up on some paperwork and write this Musing. The snow today, although only barely measurable, ends almost 40 days without measurable precipitation. Maybe if we could get a little moisture into the ground, the groundwave DX might improve. It's almost 10pm and time to go to work, isn't shirtwork wonderful, hi! One quick note - CFYR-320 Portage la Prairie is 24 hours with SP SM 2am-7p. That's all for now - C U N ? .

SEVEN NEW ONES AT ONE SITTING

PAUL MOUNT - c/o WLGW - Box 429 - Logan, Ohio - 43138 (conf'd. from last issue) 2/11/80 \*\*\*\*\* 2/7- I spoke to PETE NOLAN. AU CX noted lying in bed 3:55-4:20 (so that's where they went! -ERC) including new Cuban Miniteman (his wife will be happy with even that long, hi) on 920 4:13-4:20; WERC-960 local-like, T-40, new, loud SS on 1050, weak on 1220, loud 1570. 2/9- In bed CKGM-980 s/T-40, 4am. All these late hours makes me tired at school but I can hardly help staying up late. 2/10- Using both the TEF & GE, WJVA-1580 s/off, KCRG-1500 good, WHHM Tenn. on 1580 5:18pm w/102.9-FM promo at s/off (thanks to GEORGE E. WALTON of Pa. for ID in DX NEWS). KSTP good 6:26. WNTS-1590 w/REL 5:52-7 ID in Beech Grove c/WAKR etc. MM 2/11 had seven veries: WQOK-1440 S.C. "Greenville's best Music 100K" @ 1:14. WNOX-990 off & CBC Winnipeg in @ 3, two SS there also. While listening to unn KTSB-550 Tex., ID from KSD, St. Louis, Mo. heard @ 2:12, an ET I guess. Some circumstances on WZZD-990 ID @ 3:35. On 850k looking for KGOE TEST I heard WYDE, WKIX, KOA. XET-990 3:37 w/ID as "T Grande de Monterey". WDXB-1490 Tenn. very good @ 3:42 w/country for station #500, very interesting as BILL BERGADANO of N.Y. also heard WDXB as his station #500! I called station & spoke to James Hudson, a DXer himself w/HQ-150. HIJN-1530 Santiago, D.R. w/"R. Accion 24 horas" slogan 3:45-3:49 when WCKY's OC came on. WBBQ-560 finally @ 3:56, this heard in Akron & Wyoming (near Cincy) in previous Ohio visits. So now were WQOK, KSD, WZZD, XET, WDXB, HIJN, WBBQ. Totals: 502/371/3/10. I'm still working various hours at WLGW. The Proof should be in May; I hope I get advance notice for you or check with Flash Alert. 73.

A HAWAIIAN BANDSCAN

ALBERT EDWARDS - Box 583 - Kalaheo, Hawaii - 96741 4/10/80 \*\*\*\*\* Following is a breakdown by frequency of what is heard here. It is fairly extensive but I hope you can make use of some of it. Incidentally, I have never heard an Alaskan station here. Omitted channels are those covered by local stations or have stations too weak to be copied. All reception is during hours of darkness (0500-1500 GMT). 610- KFRG, Cal. fair w/net (4QR, Australia, 612). 630- KIDD Monterey, fair; 2KZ, N.Z. fair, after KIDD s/off. 640- KFI, like a local. 670- KBOI, Boise, fair. 680- KNER, S.F. fair but usually covered by splatter from KXIA-690. 702- 2BL, Australia, fair. 710- KMPC, L.A. fair after KUAL-720 signs off (Skw, five miles away, 50kHz wide). 730- CKLG Vancouver, good, some splatter as above; reported, but never verified. 737- North Korea. 740- KCBS, S.F. fair, same splatter as 710. 773- North Korea. 780- KCRK Reno, good, reported but not verified. 790- KABC L.A. fair after KRON, Kona, signs off. 810- KB, N.Z. good, when KGO is off. 818- 2GL, Australia, fair. 820- WBPB fair w/splatter from KIKI-830. 845- Gilbert Is., R. Tarawa usually good, reported but not verified. Maybe I should re-submit to R. Kiribati, Tarawa! 850- KOA fair, after KHLO s/off. 860- CFRP Prince Rupert, fair after XEBO s/off. 870- WWL good, after KAIM signs. 872- North Korea. 900- CJVI, Victoria, fair after KNUJ signs. 910- KNER Oakland fair, w/unID under. 930- KHJ L.A. poor. 950- XEGM, T.J. poor w/EJR (?) under. 960- KABL Oakland constant w/net from 964, USSR! 980- CKNW New Westminster, fair w/KFWB L.A. under. 1000- KOHO, poor. 1020- KGBS (KTN?) L.A. like a local, (no able al Espanol). 1030- KTWC Casper good after KPOI signs; verified. (We'll finish this next issue - ERC)

TOD YOUNG FOR YOUNGSTOWN!

DAVE ARBOGAST - 3851 Porter Road - Rootstown, Ohio - 44272 \*\*\*\*\* Hello, I really don't have anything to say, so I'll try to make this brief. I would re-introduce myself, only thing is, just my age has changed from my first intro. I'm now 15 and yes, still out of work. Now, I really do have something to say - DAVE YOCIS, I pity your fingers after typing this column. Seriously, I will not be able to make the YAD thing in Y-town this Memorial Day. Trouble is - I'm only 15 & the folks think I should wait another year before I go to Youngstown by myself. Hopefully by this time next year I'll be able to drive, and so...things will generally be better for next year. A few people might be able to come over to the place and see my snack. If you want to, be sure to contact me ahead of time. So, JERRY STARR, GEORGE GREENE, ERNIE COOPER & others who thought I was going to be there, sorry. Well, enough. Good DX to all. DGA. WHAT'S THE ONLY THING THAT GROWS SHORTER? TIME! IT'S GETTING CLOSE TO CONVENTION TIME!

JOHN A. CALLARMAN - c/o WMIX - Box 1238 - Mount Vernon, Illinois - 62864  
 \*\*\*\*\* Having missed the Illinois, the ten-year members, & the two-name town Musings, here I am for the issue for those whose zip codes end in "4"...or is it the Post Office box address issue? ('Tis verily the latter -ERC) I had wanted to raise in the old members' issue, being 44 & a member of the Club since March of '56, with some sporadic thoughts. Like, for example, does anyone have a collection of bulletins dating farther back than RICK EVANS'? Rick's goes back to 1943, thanks to his being first when SID STEINLE gave away some old bulletins. Back in 1961, I obtained former member Herb Campbell's DX NEWS file from 1940 on, but in 1968, gave them to Gordon Nelson when the BPC was born. That set burned in the Nelson fire. I'm happy to see Musings and other activity from KERMIT GEARY. A reception report to WKHR in 1947 led me to believe that Kermit is the sharpest of us, with superb sense of satire, as well as excellent DX-ability. Another long-time member I'd like to hear from is CARLETON LORD. His "Leaves from a DXer's Scrapbook" in the NNRC bulletin, circa 1955, was the very best "Special Features" column I've ever read in a Club bulletin, and of course, a few of our members remember his excellent work in the old BADEK magazine in the 30's. LEN KRUSE, now a silent member, used to Muse every issue with some great domestic catches, dating back to those 1940 bulletins. STAN MORSS and ERNIE COOPER were Musers then, though the "Musings" section was then called LPO Reports...[Listening Post Operators? (Observers, no? -ERC) I remember the issues when the late RAY EDGE drove to Erie, Pa. to pick up the Club supplies and equipment in 1940 after the bulletin had failed to appear for several months, typed every page, and mimeographed every bulletin for six years. In 1946, ERNIE COOPER became Musings editor, but...except for a couple of short terms, Pop Edge published the bulletin until 1964. When the NRC log is done, I'd like to do a history of the Club, particularly if, Geary, Lord, Kruse, & Cooper will help out. I'd like for member TOM HOLMES to summarize the 1968 switch from mimeo to offset. I've never publicly expressed my gratitude to Tom, PHIL SULLIVAN, RAY MOORE, and others who picked up the pieces after my marriage and related problems nearly destroyed the Club. We have a bunch of 40-year members, 20-year members, in addition to the ten-year members - and it'd be fun to hear from them all through MUSINGS. (Well said, John! -ERC)

#### STEVE'S TAKING A SUMMER HIATUS

STEVEN MILLER - Boston, Massachusetts Vol. 4 No. 2  
 \*\*\*\*\* Hello! Everyone, how's DX? Well here it is my 33rd consecutive Musing, without my 28th domestic DX log report. Due to the fact that this Muse is fairly long, it may have to be continued in the next issue. In the news this week, just ten days ago I sent away for my brand new "Brother" elite-type electric typewriter. I expect the receipt of it the day after the next issue comes out, which happens to be my birthday. In other news, I've joined the WFTDA last month. I sent for a pair of Yaesu Y-55 headphones, a copy of the 1980 Broadcasting Yearbook, a book on how to become a (popular-famous) DJ. Also the 112-page FM Atlas are all in my ownership. Sad note: Due to the fact that my work sixed and the typing of my "new" log pages, I won't be in any issues with the exception of the 9/22/80 #32 issue. That issue will contain much more information and updated information on my through-the-Summer accomplishments. Last issue was great! And I was glad to see a nice membership turnout for DAVE YOCIS' Musings column. I even made it for that issue. (Editor's note: This was received in Provincetown THIRTEEN (13) DAYS BEFORE that issue appeared!) Recently I've submitted a bid to QWDXA "head honcho" PETE NOLAN, to start a new column entitled: Clippings-n-Reviews. More about that column later. And now a reply to a question asked by member NIEL WOLFISH from the 4/21/80 issue---yes, Niel, e.g., Vol. 3 No. 8 does signify the number of Musings I've sent in. I've written Club secretary PAT HARTLAGE recently to see if I can fill in as Editor of the Graveyard DX Achievements column. If I'm appointed as Ed, I will be handling your graveyard DX Achievements contributions. Also a project that will be completed in time for publication in the Vol. 4 No. 1 issue, is the appearance sked for DX NEWS, DX Monitor, and the QWDXA bulletin. I will prepare them starting with DX NEWS. 25 days ago I went on a trip to "The Big Apple" with my school, we couldn't bring the TRF though, but had a splendid time taking pictures of the tall buildings & visited the UN & purchased several of the published-in-New York-publications. (They let you in an ADULT bookstore? -ERC) Well before I close this "strange in contents" Muse I'd like to bid all a happy Summer. My next Muse will be typed & more concise. Until the last issue of this volume year, 73's and the best of DX to you. Produced by Steven D. Miller.

#### WOKQ-1480 NOW HAS A SUNDAY SP.

AL QUAGLIERI - Box 687 - Albany, New York - 12201 518-465-9504  
 \*\*\*\*\* I guess it's time for me to Muse again, so here goes. My SP-600, which blew a filter choke and a few choice other components last September, was finally repaired & recalibrated in February, and now it probably rivals most available sets in sensitivity and stability. Too bad I haven't had much time to use it! I live in downtown Albany, one gigantic TVI generator, and the set remains at my parents' house, uptown. I did, however, have a chance to hear and log most of the Costa Rican splits, along with lots of other Central Americans, in a relatively short period of time. Also heard here were KFYR N.D., WMUS Mich., & WELX, O. I reported to IDKD a few weeks back, but the sheet was lost (!) by CHUCK HUTTON. He's already apologized, & I know it doesn't happen very often. Anyway, there was an UNID on it, heard in February, on approximately 935-6 kHz, at 2am EST, looped NE/SW, long deep fades, & a gent speaking a non-Arabic, non-Oriental, non-Latin language, Chuck speculated Germany or even USSR. Anyone else heard anything here lately? In other news, local WPTR is doing a talk format at nights until midnight, which really should reduce their spurs quite a bit in that period. WOKQ (where I'm employed) now has SP from 3-6am EDT on Saturday night-Sunday morning (or should I just say early Sunday morning?) we remain on the air M's now. WQBE-AM is planning nighttime operation, out to do so they must add three more towers to their existing three, a move that may take some time. That's it from here - good DX to all, and good luck, because here comes the static!

#### BEVERAGES IN RHODE ISLAND - AND IN YOUNGSTOWN TOO!

NEIL KAZAROSS - Union College - Box 1024 - Schenectady, New York - 12308 518-370-6835  
 \*\*\*\*\* Unfortunately the super TA CX of March seem to be gone now. I hope I can again experience having 88 TA carriers in, about half with audio in one night, as happened on 3/23. Easter afternoon DOUG ALLEN & I put up a 2,000' beverage to the West at his friend, Tom Palmer's house in Amsterdam, N.Y. Mid-Western regionals dominate many channels. We were both very pleased to hear KFJE in N.D. w/WMT with Twins EB. Another nice catch was 500W KWNT at s/off on 1580 in Iowa. Early April was semi-AU so hopefully we can hear stations further W when CX improve. This Summer I plan to put up 4,000' of Beverage antenna at about 2490. I'll terminate this antenna in a salt marsh next to a salt water river in Narragansett, R.I. (So THAT'S what they use to brew Narragansett Beer! -ERC) Along this bearing is most wanted 20kW Taniti on 738k at about 6,400 miles. Also along this bearing is New Zealand with several possibilities. Can TP's make it to New England? I can't say but if I can't hear any TP's with that antenna, I'll never hear them with anything. I urge any DXer with over 1,000' of room to put up a Beverage antenna as they add an amazing new dimension to DXing: because of their excellent gain & directivity. Does anyone from the rough vicinity of the Capital District of N.Y. state want to go to YAD in Youngstown? I'll be driving to YAD & would like to take others to what is going to be a wild gathering of DXers, beer, and other creachers of the night. 73s & good Summer DX. C U N Youngstown. (Forwarded by Dave Yocis, as were several other musings too late for his 4/28 deadline -ERC)

#### THOUGHTS ON RECEIVERS

STEVE KENNEDY - Box 231 - Immokalee, Florida - 33934  
 \*\*\*\*\* Howdy y'all from the Bar of the Glades. News here is I have a new TRF portable. Due to the economy I have to put the FRG-7 on the back burner again. However, I have picked up an AX-190 converted to an SX-190 with 90 thru 13 meter bands to play with for the time being. I have now an RF-2800, the TRF, the old SW-4A, and SX-190. I looked in my junk box and found a ECB converter I had made for the R-4B which up-verts the ECB to 7.0-7.5 band. It used a double balanced mixer, and a small crystal oscillator with 6.0 and 3.6 MHz crystals. Since it has no tuned input, I have to use the MW-1 loop. I waited too late to get a 12-855 model TRF...so I wound up with a 12-656. It is fairly sensitive, but with the loop...Wow! As soon as I got it home, I opened it up and spent over two hours carefully aligning it up for peak sensitivity. I also had to rewire the antenna jack. The 'hot' wire from the jack (tip) goes to a 25 turn coil wound on the small 7" ferrite antenna. The 'cold' end of the coil goes to ground. The grounded side of the jack goes to ground. This way I can use a longwire, or the loop. Since I added a small pot to the loop's output, I can control the RF going into the TRF. When I can spare \$5, I will get a pair of transformers to soup up the selectivity. (Top band bunching really shows up without them). I can't complain for what I got. \$30 is a good buy. In fact, I have even thought of buying another one, and refit it into another cabinet, add dial lamps, RF gain control, antenna-mixer trimmer controls, S-meter, & calibrate the dial, a better filter. Another project is to sometime find an old tube type RX as a backup...dirt cheap! (I'm not cheap when it comes to DX gear...I wish I had a couple of R-390-A's, and an SP-600, but when you have few \$\$ to play with...well, the "gold-plated" RXes are on the back burner until my snip comes in.) It is sad to note that Radio Shack is dropping the DX-160. For the price, it really wasn't a bad set to work with. Many have bought the 160 over the years, & this also means the end of RXes in affordable prices. Drop the DX-300, but keep the dependable DX-150/150. Someday this set will be a collector item because of the impact it has had on the hobby. Those who have a limited budget as MW & SW DXers are being done a great disservice with all the expensive equipment RXes flooding the market. There is nothing wrong with a set costing less than \$200. Many of us can't afford \$350-up receivers. Why not digress & bring back the old HE-30's, A-2535, and the other fine receivers in the mid-50's which were affordable? 73.

#### PENNANTS, ANYONE?

BRANDON JORDAN - Box 62 - Adamsville, Tennessee - 38310  
 \*\*\*\*\* Hello everyone! I've just rejoined NRC after almost a year of absence. I'm also a member of NASWA and the Middle Tennessee DX Association. In this club I'm the PCB DX Editor. Also I'm President of "Pennant Collectors' International". I don't do too much domestic DX but concentrate on Latins. Latest QSLs: Belize-834, TGX-850, R. Ciros, Guatemala. Besides QSLs I really like to collect pennants from radio stations, especially Latins. I have about 115 different pennants. Anyone who has extra pennants they would like to trade or sell just drop me a line! I'm cying an SM-2 for \$20 from RON SCHILLER. Ron has also sold me his pennants. If any of you know any DXers or ex-DXers who have pennants they might like to sell, let me know! Receiver here is a DX-150, Panasonic RF-2800, and TRF. Anybody who would like info on my club, Pennant Collectors International, just drop me a line. Well, 73's till next time.

#### UP-COMING MUSINGS THEMES

DX NEWS MASTHEAD DATE	PROVINCETOWN DEADLINE DATE
JUNE 16	Members in states/provinces/countries with no seacoast. JUNE 8
JUNE 30	Members whose names begin with A, B, or C - first or last! JUNE 16
JULY 14	Members who have NEVER EVER Mused - new members or otherwise. JUNE 30
AUGUST 11	NOSTALGIC MUSINGS ISSUE - We're hoping for lots of Musings telling about our first or early encounters with the DX Bug! It can be 40 years ago, or 40 months ago, or 4 weeks ago! JULY 28