

DX News

PUBLISHED BY THE

NATIONAL RADIO CLUB

HEADQUARTERS: 325 SHIRLEY AVE., BUFFALO 15, N. Y.

ISSUED WEEKLY DURING DX SEASON - \$3.00 PER YEAR - 34 ISSUES



RAY B. EDGE, PRESIDENT
EDITOR "DX DOWN THE DIAL"
325 SHIRLEY AVE.
BUFFALO 15, N. Y.

HAROLD F. WAGNER,
EXECUTIVE SECRETARY
R. D. 1,
NORTH GIRARD, PA.

ERNEST R. COOPER, EDITOR
"MUSINGS OF THE MEMBERS"
438 EAST 21ST ST.
BROOKLYN 26, N. Y.

FRED VAN VOORHEES, EDITOR
"FOREIGN DX DIGEST"
BOX 132
LEMOYNE, PA.

HENRY WARD, TV EDITOR
404 NORTH 14TH ST.
PONCA CITY, OKLA.

Volume 21 - Number 34 Concluding our Twenty-First Year August 14, 1954

A NEW WAY TO KEEP HIS FIGURE

"That column of Fred's is the finest thing that ever got into a DX publication. I'd rather read it than eat, and you can quote me because I mean it. May you live long, stay healthy and continue to print it, amen."

- Hank Tyndall, Burlington, Vermont.

ONLY A FEW DAYS AWAY!

That's right, DXer - it won't be long now until our big three-day fiesta in the home of Joe and Marty Brauner up in Williamsville. If you are still undecided about coming, then let these last few reminders convince you that a terrific time awaits you at the Convention, where you can talk DX until you are blue in the face, and where you will meet some of the nicest people you have ever run across anywhere. Again, the cost for attendance is \$3.75, which is merely to cover the cost of the food and refreshments served there. If you want the Brauners to make reservations for you at a hotel or a motel, then merely ask them to do so, tell them what nights you'll want it for, and they will very gladly accommodate you thusly. What more could they do - they offer their home and yard to our club's members, and their friends and relatives - they put in a lot of hard work to prepare the food and to clean up after it's all over - and they'll even take care of making your reservations for you! To those who have never met Joe and Martha Brauner, this must make you realize that they must be really good people. Well, when you do meet them, you'll say that this has been the understatement of the year, for they are that and a great deal more! So, let's see you, on hand at the big Convention this year. Let's have fun, relax, swap stories, and talk DX, and eat, drink, and be merry. And it will be just that much merrier if you come, too! You don't have to have been a member since Columbus discovered America, either - even if you just joined today, you'll be as welcome as a west coast 250-watter in the summertime! It'll be fun to meet you - and you'll have just as much, meeting us, so why not come? Williamsville is just outside Buffalo, N.Y., and easy to reach. But please get those reservations in to Mrs. Martha Brauner, 23 Howard Avenue, Williamsville 21, New York, by August 27 - a Friday, so they will know how much to get, of what. Thank you, and here's hoping for a real panorama of DXers to be at hand over the Labor Day weekend.

SEPTEMBER ISSUES

The issue dates for the two bulletins you'll receive in September will be September 4, the Convention-dedicated issue, and September 18, when you'll read all about the Convention, from the factual and the humorous side, both. So, all editors, please note these dates. Those wishing their "DX News" to be delivered by Hal Wagner to you in Williamsville, drop him a card at R. D. 1, North Girard, Pennsylvania, and we are sure he'll do that for you as he has done in the past. Brooklyn deadlines for these two pre-season "DX Newses" will be Tuesdays, August 31 and September 14. Then beginning October 2, it's weekly again, and deadline in Brooklyn back to Wednesdays.

EXIT VOLUME 21

We never thought it possible to eclipse the 1952-1953 "DX Newses" of Volume 20, but we have done it, with the help of our vigorous, enthusiastic members, to which so many you have attested in writing! Can we still top this in the coming season, in Volume 22? We sort of think so - but it'll take your help - reports - reports!

ND K- NEWS

590	K T B C	Ben Hearn, CE	B	1280	W L I K	(Ray Shirley, CE	C
	W O W -	W. J. Kotera, DoE	G			(Ira B. Crisp, M	K
600	K T q B B	R. A. Wileman, CE	I		C F G T	Lionel Morin, M	C
630	K X O K	A. F. Reckart, CE	E		W X Y Z	Charles Kocher, CE	E
660	K S K Y	A. L. Chilton	I	1290	W H q G R	Garnett Sparks, CE, VP	H
690	K G P H	Chas. Hoffman, AcCE L(c&AF	1300	W T L S	Ned N. Butler, CE, SM		C
790	W Q X I	Elton B. Chick, CE	D		K R q O P	William Williams	L
860	K W R F	Norman Jones, CE	B	1310	K TuY L	Ben Smith, CE	J
	W T E L	E. Douglas Hibbs	F		K T K R	Ken Aitken, M	G
910	W P q F B	J. H. Bechurth, CE	B	1340	K q R UuX	G. W. Boos, CE	B
920	K GuA L	Geo. Lichtenthaler, OromM J	J		W T W N	(James E. Edgerton, TAdv	E
	K RuA M	Fred Young, CE	J			(James MacDonald, CE	K
960	W H Y L	Phil Potter, A	D		K AuT Y	Maynard Marquardt, M	J
	K N E B	Les Proctor, CE	I	1360	W LuY N	Richard E. Drapeau, CE	J
970	W E R H	Charles Tucker, CE	B		K C L S	Charles J. Saunders, O, M L	L
	W W I T	John H. Welch, CE	C	1380	K W K -	N. J. Zehr, CE	G
	K S Y L	Nancy Walker	G	1400	K T X C	Albert G. Martel	G
980	W F H G	John Hughlett, CE	D		K SrP A	S. Elder, PD	G
990	K SuV P	Bryce R. Howard, CE	EJ		K C H S	Richard Bonner, CE	GH
1000	X EcO Y	Mario Ivan Martinez	B		K R P L	Herbert Everitt, GM	G
1010	C F q R B	Harry Sedgwick, P	B		K C L F	Paul Robin Weiman, CE	G
	K C H I	Donald O'Brian, CE	D		K K p H L	Gordon Hakeman, CE	G
1070	W D I A	Don Kern, Prod, Prom.	G	1420	K P O C	Jack Wilson, CE	B
1100	W T A M	S. E. Leonard, CEIC	E		O K O M	G. D. Tunnicliffe, AM	G
1110	K F A B	Al Bates, StuSu	I	1440	K PuR O	Dale R. Peterson, SM	B
1120	K O O X	Harry Harvey, DoE	D		K W q I K	J. Dean McCurdy, CE	H
1140	K LuP R	Jay Davis, CE	B	1450	K R I C	Jesse Trail, E	B
1150	W T A W	Richard L. Webb, M	I		W L C K	J. B. Crawley, CE	F
	C K X -	E. H. Davies, CE	D		K C S R	Robert W. Fouse, M	G
1220	W L S D	A. R. McMaster, CE	D		K C T I	Frank Wilson Jr., CE	I
1230	K OpA L	Jack Richards, M	G		W L c A R	J. W. Turner, CE	L
	K S U N	Albert J. Bailey, E	G	1460	W A C O	Jesse H. Dove, CE	I
	K R I Z	William E. Bailey, CE	G	1470	K X O A	Ewald W. Berger, TD	G
	KuR ErW	John P. Berg, CE	J	1480	W C B R	William Jones, CE	B
1240	W LuN K	J. A. Radcliffe, E	B	1490	K C I D	Richard E. Lewis, CE	G
	K V B C	M. Bowles, E	G		K X R A	Kenneth L. Olson, CE	G
	K AcK E	Gene Courtney, CE	G	1560	K W C O	Jack L. Pink, O	G
	K L T Z	Charles L. SchofieldCE	J	1570	X E R F	Ramon D. Bosquez, M	L
1250	W H N Y	Robert L. Sandes, CE	C	1580	W P A C	Richard Hodgins, PD	C
	W C A E	James H. Greenwood, CE	G	1590	K V V C	William Williams, M	G
	W K c B L	Ken Sparks, GM	IJ	1600	W K N K	John L. Hunter, CE	G
	W C q A N	W. A. Wesley, CE	L		K ApS H	Norville Packard, CE	G
1270	KuC OqK	David Roach ACE	B		K B O R	(W. A. Wilson, CE	I
						(Minor J. Wilson, M	K

C R E D I T S

- A - Bill Moser
- B - Scooter Segraves
- C - Pat Reilly
- D - Pete Jacobson
- E - Ev. Johnson
- F - Hal Williams
- G - Francis Nittler
- H - Erick Johnson
- I - Don Kaskey
- J - Jim Critchett
- K - Len Kruse
- L - Carl Pendergrass

H E A R D S I N C E L A S T I S S U E

740	W O R Z	Now 5,000/1,000 U-4	1290	W E G R	Houghton Lake, Michigan
850	W R A P	Ex-WCAV	1320	W G M A	Ex-WHVD.
910	K L X -	Now 5,000 U-2	1370	W T A B	Tabor City, North Carolina
	W E P G	South Pittsburg, Tennessee	1380	W P K O	Waverly, Ohio
970	K C H V	Coachella, California	1420	W I N I	Murphysboro, Illinois
1050	K A N V	Shreveport, Louisiana		W W K O	Ashland, Kentucky
	W C M S	Ex-WRAP	1450	K A Y E	Ex-KPUY
1150	K H F S	Vancouver, Washington	1460	K B S F	Springhill, Louisiana
	X E C S	Ex-1400 kc/s.	1480	K L E E	Ottumwa, Iowa
1230	W S T R	Ex-1460 kc/s.	1580	W P A C	Now 1,000 D-1.
1250	W K B L	Covington, Tennessee			Lefty Cooper - Brooklyn, N.Y.
1280	C K D A	Ex-1340 kc/s.			Veries, WKXY, KEBC and WDOT. New loggings
other than these, KLEE, KFDA. You'll meet "my secret and I" at the Convention!					

Mailings of the MembersPat Reilly - 11 Irvine Place - Jamestown, New York

New veries - WTLB WLIK CFCF. Guess the help at the stations are vacationing, few veries back. 6/15 - WOIC, 1470, third ET at 1:37 for new one. 6/23 - CFCF, 1270, test at 2:40 for new one. 6/26 - WINGO, 1320, test at 2:07. KBUN, 1450, f/c at 2:45 - 3:00. 6/29 - WLCK, 1450, f/c 2:28 to 2:37. 6/29 - Several Maryland stations on with ER. 6/30 - Several North Dakota stations with ER. KCJB 910 was a new one for me. KMOD, 1360, gave WKEAT a ride at 2:30. KSTN, 1420, also good at 2:17. 7/2 - WHEPG, 910, ET at 1:47 for a new one. CFCF, Alma, Que. 112 Rue St. Joseph. 7/4 - WWIT, 970, ET at 2:30 for new one. 7/7 - Several Oklahoma stations on with ER. KGLC, 910, KLOO, 1280 for new one. KNEY, 1280, f/c 2:00 to 2:15. Hope they verify third report. 7/8 - KLIR, 990, f/c at 2:17 for new one. WHAP, 1340, ET at 2:50, also hope they verify for me this time. 7/10 - GBJ, 1580, test at 1:42 with WPAQ also on, new transmitter test. Very little DXing but quite a few new ones heard in spite of heat and noise. Will see all of you in Williamsville over Labor Day.

Booster Segraves - Camp Dixie for Boys - Wiley, Georgia

Hi again from the Deep South, north Georgia to be exact. Yep, I'm down hyah enjoyin' the sun and the water, suh. Mother's been forwarding my veries and the total is up to 330. Since the last report they have come from KTAC-dx WESH* WCMB* KPVS KPBK* WIOU KEWA* KALT KSEL KGBT WNOE WNGH KEVD WROL ZQJ-Radio Jamaica WRGX WTLB KFRB WPEB* XEOY WDRH KRIG KTBG KPOC YVKS* WGBR KPRO KLEP CFRB* WINK KRUX* KOOK*. * is QSL; nothing means a letter. KEWA had letter and QSL; XEOY typed card showing scene in Mexico, also carbon of program sked, 6 to 1:10, Mexico TX. KGBT was a form about the same as KSOX/KCBS. Have sent quite a few f/ups, namely KOOK (1/17/54) KPRO (1/17/54* WYET (1/30/54) WINK (3/16/54) KATM (1/30/54* WJJJ (12/16/53) WREK (2/13/54) KRUX (3/8/54) KLEP (12/12/53) KOCA (1/17/54) KGBC (2/13/54), with the dates being the reception date. I've used a cabin mate's Trans-Oceanic to log a few semi-locals. (Up here, nothing's a local, with the possible exception of WLET and WSNW). On June 17, I was in Warren and visited KWRF, who had a real nice set-up. To those of you who have reported KWAK without getting a verie, you can get one with a f/up. I'm now answering DX reports. Speaking of f/ups - those of you who have yet to receive your KOSE-dx verie, a f/up is the answer. Frank made a mistake on the veries, but he will be glad to verify. Welcome to NRC, Maurice Nittler. Glad to see report from Ernie Matherly. 73s.

John Hoogerheide - 4729 North Larkin Street - Milwaukee 11, Wisconsin

Well I suppose it's nearly time for another DX report. Have been doing quite a bit of DXing this summer with surprizingly good results even though the veries are sure slow. Highlights of the summer so far include June 20: Reports sent out to WKBZ and WHEF, the latter my fourth report to them. Nice letter back saying they always answer all DX reports as soon as they are received. H'mm. June 24 had a report taken on WONY in Ottawa, Ill. and reply back in four days. June 20 had the ER for the state of North Dakota heard that day till 12:30 when I went to bed were: KFYR KBLI KOTA KILQ KGCX (Sidney, Mont. but studios in Williston N.D.) and KOVC. The latter was new for me but KGCX was more welcome as I haven't heard them in years. However since that time they have been noted almost nightly after midnight till their s/off usually about 12:15. Verie back today from KOVC. July 6 had WKNK testing at 1:12 a.m. using tone. Will try again to see if I can't get a verie on my third report. July 7 had KQDC in Hettinger N.D. off at 1:15 after a baseball game for a new one. That day was also Oklahoma ER and heard were KPUL and KSWO. They were the only two noted however. Also heard on 1420 or 1410 an ABC station with 5,000/1,000 watts s/off at 1:00 using call letters KCLB. There is a similar call like that on 1410 in Texas but is it a daytime station or what? Any help? July 8 had a new one in KLIR Denver testing at 2:20. July 10 had GBJ testing most of the morning with an English call every minute. July 11 had the Night Owl show over KIMS, a regular Sunday late show. Also KPIG testing at 2:00. Another station that refuses to answer me. Four reports have gone unanswered. That evening had WGAC Augusta on top of 580 at 9:30 p.m. Midnight s/off of WJMS Ironwood Mich. also noted. New one on July 12 in KRIB Mason City, Ia. testing at 1:10. All I need now to complete Iowa is KCEL whom I see is DXing for us in November and KCOM who is on yearly with flood reports but had always eluded me to due to proximity of WIMJ. Even in Madison WIMJ is a semi-local. 7/12 had beautiful signals with powerful QSA5 heard from KOHL OBY CFCF CFCF and other NY stations. Veries lately: WJAM WJEL WJEA WJEB KOVC WJEF WJCA WJEB CBE WJNY WJGH KBRS WJEL WJTO WJJD WJRV WJDR WJEG WJFM and WJOT. All for now till next report.

A/30 Don Kaskey - AF 17392525 - Ho. Sq. Section - Bryan Air Force Base, Tex., Box 38
 About time I let you all know I'm still around. They have me back down in Texas again, after a three month delay in Cheyenne, Wyo. Not much DX since I joined the Air Force. I logged 160 out at Cheyenne during my tour there. Nothing terrific but quite a few I hadn't heard from back home. As soon as my radio gets here I'm going to see what I can get down here. Should be interesting as there are dozens around here I haven't logged from back in the midwest. Any DXers out here in the Lone Star State? I guess I'll have to get down and see you in Houston, Mike Ferguson. Maybe a good old DX talk will boost my ambition up to try and DX a bit more. The only explanation I can give for being back in Texas is Uncle Sam must have realized that the only way I could pick up all the Texas stations was to go to Texas. Well gang, I hope by next time I wrote I'll have something to write about. I hope Len, Sid, Ken Murphy, and the rest of the fellows I used to write to will excuse the absence of my letters. Will try and do better from now on. 73s.

Francis Nittler - 1335 Grant Street - Apt. 23 - Denver 3, Colorado

This is my first letter to the NRC after joining the NRC last month. I have been DXing since 1951 when I moved to Denver from Geneva, Nebraska. To date I have logged 991 stations but I have just started verifying and so far have 30 veries. I did all my DXing with a table radio and my car radio until about two months ago when I aquired a Zenith Trans-Oceanic (used). Of course DXing hasn't been too good here but there have been two or three halfway decent nights during July. Heard during July were eight new ones. They are CBJ-Chicoutimi heard on TT from 2:30-4:00 EST on 7/11. Also heard on 7/11 were KEEP at s/off at 3:07. On 7/12 new ones were KCSR Chadron at 2:15 with TT and KPRK Livingston on f/c with music at 3:35. The best reception of the month was on 7/24 when four new ones were logged. They are KENE, Toppenish on f/c with music from 3:00-3:15, KBUN Bemidji on f/c at 2:55, WCAE Pittsburgh on RS with music at 4:50 and ~~WCAE~~ KDPH Dubuque at s/on at 5:30. I was especially glad to log CBJ as it is the first one logged in Quebec. Other stations logged during July are as follows: 7/10 KTXC on f/c from 2:00-2:15, and KBRH on ET from 2:00-2:15. On 7/11 KOAL on f/c from 3:00-3:15, KGFL on f/c from 4:00-4:15. On 7/12 KMHL f/c 2:00-2:15. KAKE heard with ball game from 2:00-2:20. KTKR on r/c with music at 2:30. KVFD on f/c at 12:37. KKRA f/c 2:30-2:45. KASH with music and s/off at 3:00. KPAS f/c with music at 3:10. KIGO TT at 3:20, KELY f/c with music at 3:30-3:45, KSUN TT from 3:45-4:00, KGLF f/c from 4:00-4:15 and KUBA with ball game at 2:20. DXing was the best for the month on 7/24 when I heard KDIM on f/c from 3:00-3:15, KVBC-TT at 3:35, WTIC on RS with news and music at 4:15, WAKR on RS at 4:50 and KFXJ TT at 4:25. I tried for ER on 7/25 from Texas but there was a great deal of static and interference and I was unable to log any new ones. Among these heard were WACO KHUZ KVON KSTB KROD KRBC KPJZ KIOX KPAC and KPHE. It was only the second time I have heard KIOX. Veries received since I started sending for them in the middle of June are OKOM WDLA KSYL KSPA KCID KCHS KHPL KRIZ KWK WZWK KTXC KODA CBJ KOAL KMHL KCSR KAKE KTKR KVFD KKRA KASH KPRK KSUN KGLF KVCO KGHL WOW KVVC KVBC and WCAE. Locally KOA has ceased programming all night and now s/off at midnight MST. That leaves only KMYR on all night and I sure hope they quite before the regular DX season rolls around. KPFA Greeley is now on 24 hours. Latest here is the new station to start in Aurora on 1430 will get on about Sept. 15. That is all for this month. 73. (Welcome to the club, Francis, and we'll welcome your reports here regularly! -Ed.)

Jim Critchett - 1119 West Arbor Drive - San Diego 3, California

Have a good vacation! Best if you can, but enjoy it too. Even less DXing since July 5. Most distant catch was CBJ 1580 with TT at 3:38 to 3:40 at least, Sunday, 7/11 (No XSDL). 1300 WERE identified same morning at 4:30 before "Proudly We Hail" program. Most of Montana stations heard with ER Wednesday, 7/21. 1280 XEAM identified at 3:34 same AM. Sunday 7/25 on 1420 KPHE was the only new Texas heard with ER. But our newest nearby Californian, 970 KCHV, Coachella was testing, 2:48 to after 3:32. Not on RS yet. On 540 KEMB started RS last week, s/on at 7:40 this morning on 7/26; off soon after 2 EST. Only report out in three weeks to 1010 HAIQ on f/c. Veries are from 920 KGAL, 920 KRAM, 990 KLIR and KSVP; 1230 KREW, who wrote "affirmed" on my report and returned it. All were results of f/ups. 1240 KLTZ said mine was the first DX report they received. 1310 KTYL 1340 KATY and 1360 WLYN were from f/ups. 1400 KCHS is last. Don't forget those ERs for new stations. And there are always brand new ones, and changes in frequency, making the old ones easier, or harder, and more challenging, to catch. Best wishes to all.

Hal Williams - 50 Third Avenue - Seymour, Connecticut

Hi fellow NRCers. It's Sunday August 1 and in order to make the Brooklyn deadline of Aug. 4 I must get a few lines in the mail. Aside from the swell jobs done by our CPC and our hard-working editors in their respective sections, the f/c list prepared by Alan Arnold and the Condition of Frequencies lists and Construction permits lists prepared by Len Kruse have been a real boon to my DX here the past few seasons. I only wish I could reciprocate in some way, but knowing Len as I do (and I believe Alan feels the same way) the fact that they have been instrumental in helping fellow members add to their verifications probably is a source of real satisfaction to these sterling NRCers. As the new DX season is only a month away I want to thank sincerely all who by their untiring work have kept the "DX News" on top. At the present writing I don't know whether or not I can go to Williamsville, as I am scheduled to work the whole Labor Day weekend, but I haven't given up trying to arrange some way to get off without putting my job in jeopardy. If I can't make it, I surely wish all of you who attend good weather for the good time I know all will have who attend. And if I can make it it will indeed be a pleasure ~~to~~ to meet again our hosts, Joe and Marty Brumer, and the swell NRCers who will be there. My DXing for July shows four new stations logged and one for a second report since July 1951. 7/11 - CKOM (1420) Saskatoon, Sask, heard on ES 1:48-2:10 s/off. Announced they s/on at 6 a.m. (NST of course), fine signal. WLCK (1450) Campbellville, Ky. request records 2:15-2:30, Gospel music by a church choir 2:30-2:45 all on a Sunday AM, fine clear signal. They never answered f/c report 7/23/51 so a second try. CBJ (1580) Chicoutimi, P.Q. testing with TT 3:00-3:15, station breaks every minute but not needed here. 7/13 - CHLO (680) St. Thomas, Ont. evidently all night, heard between 2:00 and 4:30 a.m. several AMs but not needed here. 7/24 - WWKO (1420) Ashland, Ky. TT 1:40-2:23, good signal first ten minutes, then QRM'd by CKOM, clear after CKOM s/off at 2:08. WWKO also heard 7/27 and 7/28 with transcribed music. 7/27 - WKBL (1250) Covington, Tenn. ETing 1:05 after WCAN s/off heard until 2 only S4 but 100% readable. 8/28 - KPOW 1260 f/c-TT 2:33-2:40 s/off through WWDG for a real surprise. Veries? Show - 7/20 KGFH (690) 3 1/2 inch mimeographed slip of paper for 1/3/54, no f/up, and WTEL & WLCK.

John Pohl - 469 N.E. 51 Street - Miami, Florida

Hi everybody. Not much news but enough that I thought it would be worth while to let you all know about. WHVD is no longer the call for the Hollywood station on 1320. They are now using WQMA. My guess is that this stands for Greater Miami Area. I don't know whether there was a change of ownership or not. WWPB-1450 is back on a 24-hour schedule. Their silent period is Sunday from 1:00 to 7:00. I see that Kissimmee is to get a new station. I had heard hints of this last year. If the rumors I heard are true, the new station is owned by owners of WKKO-860. In the last two weeks I had rolled 3,000 miles on my car and another 900 on my uncle's Dodge. Had to take Dad up to Ohio. Went by route of Gainesville, Atlanta, Knoxville and Lexington. While in the north I took a trip to Chicago and through Waukegan, Kenosha, Indianapolis and Cincinnati. I realize that I passed right by a great many NRCers, but was so pinched for time that it was absurd even to think of stopping. I wish the trip had been a month later, I would have gone to Williamsville instead of Chicago so that I could have really seen some of you fellows. WAHR-1490 is still not on the air, but they are listed in the telephone directory. After Sept. 12, my address will be Route 4, Box 242, Gainesville, Fla. as it was before. Best of DX to all. Happy Convention!

Everett Johnson - 504 16th Street - Mendota, Illinois

Hi fellows. No DXing being done since last issue. Just too warm or too much static. Have reached my 700 veries in 31 months. KSVP-990 was 700 and on the 30th of July, 701 in WXYZ-1270 so am on my way to the 1,000 mark which I hope to attain come Sept. 1, 1955. Only new one heard here is WKRM-1050 Mayfield, Ky. s/on 6:30; Only five veries in since last issue. They are KXOK-630, WTVN-dx WTAM-1100, KSVP-990 and WXYZ 1270, all letters. Sorry I cannot make the big convention. Hope there is a big crowd there and will be thinking of you. 25 unanswered reports out since Oct. 1, 1953. Thanks to all the boys who have congratulated me on the contest. I'm ready for another come Oct. 1, nothing else. Have a swell time at the Convention and best DXing. Will be back at the dials come Sept. 1. 73s.

PLEASE DOUBLE SPACE YOUR LINES. PLEASE DO NOT REMEMBER IN YOUR "USINGS" REPORTS EXCEED 30 LINES OF "DX NEWS" PRINT. PLEASE LIST FREQUENCIES OF STATIONS YOU MENTION. THANK YOU.

Roy H. Millar - Route 2 - Box 6704 - Issaquah, Washington

Hi gang! Just back from our vacation which covered ten of the Western states, missed only California! Saw Norm Maguire for a few brief minutes in Albuquerque, and logged about 30 stations that were new to me, though of course I won't add any to my "Heard from Seattle" log! Perhaps of interest were: KFSG-1220 Denver, Col. on the air with BS, KTFN-Denver on 1280; KGMC Englewood, Col. on 1150; KOVE-Lander, Wyo. on 1830 (ex-1230). Also noted still on 1240, KFBC-Cheyenne, Wyo. and still on 1400, KIFI-Idaho Falls, Idaho. Among the interesting transmitter sites noted was that of KVNC "The Voice of the Navajo Country" in Winslow, Ariz. Remember their swell DX of 2/15/53 on 1010? Went through America's newest and largest "Ghost Town", Jerome, Ariz. Same brings back memories of old KCRJ "Radio Jerome", first heard along about 1940. It was also interesting to listen to the Navajo and Zuni language broadcasts from KGAK-1230 Gallup, N.M. Another surprise was the coverage that KFGB-730, Goodland, Kana. had; they were heard on the car radio from North Central New Mexico right on up through central Colorado. They carried MBS' "Game of the Day" as did many stations we heard. In fact, at Grand Canyon, Ariz. the only two decent signals were KCLS-1380 Flagstaff and KVNC-1010 Winslow; and both carried the "Game of the Day." For some reason, the other Flagstaff station, KGPH-690 was not good at this location. A few of the calls that were entirely new to me included: KMUR-1230 Murray, Utah; KDEF 1280 Albuquerque, N.M., KRSM-1490 Los Alamos, N.M., KCRU-1240 Trinidad, Col., KLMO-1050 Longmont, Col., KRAL-1240 Rawlins, Wyo., KWHL-1450 Riverton, Wyo., KBOW-1490 Butte, Mont. and others previously noted. A quick run of the NC123 dial here reveals CKDA-Victoria, B.C. now on 1280, badly QRM'd by KIT Yakima, Wash. In fact, SKDA not as clear as previously when on 1340! As to 1340, KFNW Wenatchee, Wash. now is on top with CKDA gone, but I've heard that a request for a CP for an Everett, Wash. station on 1340 is on file with the FCC, so don't suppose KFNW will be on top too long. No sign of other new northwest stations on the dial. Nice letter of verification in from CHEW-1270 Chilliwack, B.C. along with letter from Ev Johnson and the July "DX News" arrived while we were gone. Now, Lefty - YOU have a nice vacation! I won't ask the foolish question about "it." Q3s.

Pat Reilly - 11 Irvine Place - Jamestown, New York

New veries are WHNY WPAC WWIT. Not many new ones to get in a month. Guess CEs are on vacations. 7/13 - Tone atop WWDC, 1260, all AM. KLMO, 1240, very clear on f/c at 2:30. 7/14 - CJOC, 1220, very clear at 2:00. WFTW, 1260, atop WWDC with ET at 2:08. KLEE, 1480, ET at 2:30 for two new ones to write to. 7/16 - WGWR, 1260, test at 1:48. WONE, 1360, atop WKAT at 2:31. 7/17 - WKMT, 1220, test at 3:07 for a new one. 7/18 - WAYZ, 1380, test at 2:27. 7/19 - WGEZ-1490, at 1:55 with KDMO on f/c. 7/22 - WINI, 1420, for new one at 1:55. WKVK, 1600, test at 2:50. 7/23 - KONO, 1370 ball game at 2:01. WFWA, 1590, test at 2:41. 1490 had an unknown at 2:28 with tone, call sounded like KPOC. 7/24 - Californians quite good today, KTSN girl announcer, KPRO also. WWKO, 1420, test at 2:18 and WKBL, 1250 on ET at 1:36 for two new ones. HJCN report returned today all marked up in Spanish "not claimed" - "no address" etc. Used Weyrich's log for address but returned. 7/25 - KTRF, 1420, ET at 2:31 for a new one. WPAC said, "usually DX mail is not so friendly and warm-hearted as yours was." 7/27 - KFUN, 1230, f/c at 3:08. WLED, 1220, test at 3:12. WWKO, 1420, ET again at 1:32. 7/28 - WOZK, 900, ET at 1:47. WQXY, 1540, ET at 2:04. This is only the second time I've heard them on the air. WTUP-1380, f/c at 2:26. KPOW, 1260, atop WWDC on f/c at 2:36. 7/29 - WMO, 860, ET at 3:13 for new one, also had WAIL behind them on a test. 7/30 - KLEE, 1480, had a trial run at 1:27, to go on air Aug. 1. KEAR, 1550 at 1:55, atop XEXO. Had a swell visit from Roger Anderson. His European and Australian veries made my mouth water and makes me believe I need my ears dug out or something. See you boys and girls in Williamsville come Labor Day.

Ralph Johanna - 72 East Genesee Street - Buffalo 3, New York

Received a v/l from CKVD (1230) and the CE says looking after CKVD CKRN CHAD and CKLS ("Radio La Sarre") keeps him busy. Sorry to miss seeing you, Bob Spencer, have been transferred to new Chevy-Forge-Foundry and am on day shift. The Aviation plant is being put in moth balls. WGR (550) (radio) has studio and offices at the Lafayette Hotel and transmitter on top, while the new Ch.2 TV is at 184 Barton Street. A new 4¢ airmail stamp will be out Sept. 3 and a regular 1¢ stamp, George Washington on Aug. 26, while the 2¢ Thomas Jefferson will appear on Sept. 15. Bill Stone wrote me about CKDA (1280 kc/s., 5 kw.) and mentions Bruce Kennedy's 1821 South Main St., Los Angeles, 15, Cal. address. Well here's hoping to meet many strangers at the ABC Convention.

Don Roller - Route #1 - Dupont Road - Fort Wayne, Indiana

Not too much activity to report this time since I have been putting the emphasis on TV DX lately. You wouldn't know that I was an SWL either - I haven't turned the SW set on for a month or better! Getting back to BCN, here's what was new to me lately: 7/12 - KOFE (1150) f/c on sked - s/off at 3:40 and WIBX (960) RS at 4:17. 7/13 - Heard the new WKX (1190) with s/off at 1:58 (I just love to log new stations on 1190 just to show WOWO up, hi). Following that, better than a week without a new station (alas! -hi). 7/23 - WWKO (1420) ET at 1:05 and heard again the following night. 7/25 - Was given a nice boost by the big Texas Primary Election - it brought in KPRO (1370) and KTEM (1380) on ER at 2:00 and 3:30, respectively. Also heard for the first time here was WKBL (1250) on that same night, at 2:15 on an ET. Only one ver- is to report - nice letter from EBNY. I imagine many of you might have heard about the near disastrous wind storm that hit Fort Wayne and Allen County just recently. It killed one person and injured 38. This was the worst storm many of us around here have ever been in. Trees, poles, and red-hot wires down everywhere. It bent WANE's radio tower, stop the Fort Wayne National Bank Building, like a pretzel. This was the first time that I know of that all four Fort Wayne radio stations were knock- ed off the air. WOWO and WKJG made it back on in about an hour or so, and went on an emergency basis the rest of the evening. WKJG-TV was off nearly all night. That wraps it up for now - 73s to all.

Carl Pendergrass - 1510 Lexington Road - Chattanooga 5, Tennessee

Hi gang. Well, still not much in DX here, too much QRM. The only new one is WEPG (910) in South Pittsburg, Tenn. They s/on 6:00 and s/off 8:00 EST. I wrote them once before they came on the air, and sent one reception report, and still no answer. I am going to try to go over there and see why they no answer. If they have any other reports, I am going to see if they will let me answer them. I have gotten a few veries - v/ls came from KROP WGAN KGPI CFRN and KOLS. KOLS also sent me a six inch steel rule - also v/cs from KGHF KHJ CHML and WLAR. I don't think I am going to get to see Scooter after all. He may not come through Chattanooga and if he does the day he leaves I leave for Ft. McClellan, Ala. I almost forgot. We might get a new member from Tennessee, a fellow in the National Guard, from Lebanon. Says he's interested and might want to join. Well, guess that's all from here. Hope the Con- vention is a success. Sure wish I could be there - maybe next year. 73s. (I may see you the week of Aug. 9-13, Carl - I'm taking a trip to Knoxville -Ed.)

A/3C Don Kaskey - AF-17322525 - Hq Sq., Sec. WG - FO Box # 38 - Bryan AFB, Bryan Tex.
Well, time for another DX report. How do you like this - two in a row! Getting back in the groove now. Surely would like to attend the Convention this year but doubt if I'll make it. Just took a leave in June so probably can't get off again this soon. Still have hopes though. Hot as heck here, man. Been above 100° almost every day since I've been here. Nothing here but a hot sun and scorched ground. A good thing they've got girls down here or I'd probably go batty. A guess both reports will be in the August bulletin as I missed the last deadline. I'm getting so that when I look at the "DX News" and see all those stations listed I have to scratch my head in despair. I used to know all the stations just by glancing at the calls, but I've been away so long and so many new ones have come on that I'm completely lost. Have to get me a good log somewhere I guess. At midnight on July 15 I started my DX log from here at Bryan and at present have run up a total of 189 stations, 80 of wh which are from Texas. In fact with such poor DX reception these hot, and I do mean hot days, I very seldom get out of the south. I've heard WBZ WCBS KDKA WLW WRO, a bunch from Chicago and 12 from California, except for these most are from the south. I guess I've got quite a way to go to reach the 1700 odd stations I logged from back in Iowa. Some of my best catches here, from the standpoint I seldom or never heard them from back home are: KNEB KYOK KULP WTAW KILW KALB KLBS KGBS KCOH KEDX KGLW KWIX KTLW KTEM KREL KCTI KRRV KOLE KPJZ KWD KARK WJBO KBOR KTHS KIXL WSNB WKRG KHBR WKBL KILW KGBT KEYS KTRW KKKI KSEA WBHC KDEF KOTS KABC KAND KJIM. Veries so far are in from ten. QSLs from KTEB WKBL, letters from KNEB-960, KFAB-1110, WACO-1460, KCTI-1450, KTEB-1400, WTAW-1150, KSKY-660, KBOR-1600. Some of my most distant catches are WORZ WFLA WBZ KXLF KGH. Also was surprised to hear KOTS-1230, Deming, N.M. of f/c, fourth onday, 2:30-2:45 EST. Heard them July 26. Well, time to quit, I guess I've got a bunch of reports to send out. There's a chance I may get to the Conven- tion but it's still uncertain. 73s.

LET'S GET THAT \$3.75 TO MARTHA BRAUNER, 23 Howard Avenue, WILLIAMSVILLE 21, NEW YORK.

Peter Leon Jacobsen - 5217 South Portland Avenue - Minneapolis 17, Minn.
Hi gals and fellows. Here are some more veries of letters. WJUU, 1260 kc/s., network none, 1,000 watts. "As we explained on our program, WJUU is owned and operated by Bob Jones University, a Christian liberal arts school that endeavors to combine the warmth of the old time evangelistic faith with an emphasis on culture, refinement and high scholastic standards." WJUU sent quite a bit of informations, pamphlets etc. Will elaborate on this when I am able to get all the veries reported. WJUU, Bob Jones University, Greenville, S.C. KKKX, 5/6/52. KKKX. "In your answer to your question on KKKX we are a daytime station with s/on at sun up and s/off sundown. We broadcast on 790 kc/s. non-directional with a Collins 21A transmitter. On f/cs we do not go on the air especially for f/cs as we are checked during the broadcast day from Kansas City. KKKX is affiliated with the following stations - KMMJ Grand Island Neb. Both are ranch and farm radio. KKKX has a very nice QSL card. Just address KKKX, Colby, Kansas. KIEM, 1/3/52. KIEM address, Redwood Broadcasting Company, Inc. Eureka, Cal. KIEM, 1480 kc/s., network MBS, 5,000 watts. "We do not have a regularly schedule f/c period as we have our own frequency standard and check montly during maintenance periods. Too, we now operate weekdays Monday through Saturday till midnight EST and until 11 o'clock on Sundays. Our equipment is a 5 kw. Western Electric Doherty transmitter, feeding a directional array beamed up and down the Pacific Coast. I believe your report of reception is the most easterly we have received since changing to the directional array. Reports from the north as far as Alaska are quite consistant, and even have reports from parts of Washington during daylight hours. We have quite a bit of interference in the southerly direction by another station in Indesto on the same frequency." KIEM, serving Northern California and Southern Oregon since 1933. How about some of you fellows in the east getting this one? I know my friend out in Eureka would be only too happy to hear from you and I am sure he will verify all reports which are correct. KFGO, 790 kc/s., ABC, 5,000 watts. KFGO address, Northwestern States Broadcasting Company, Fargo, N.D. KFGO 5/6/52 3:28 a.m. KHRI, address Webster Street and Burks Road, Farmington, Mo., telephone 710. KHRI, 4/25/52, 1350 kc/s., network none, 1,000 watts, Collins equipment. "We operate sunrise to sunset, at this time 6:30a.m.-6:30 p.m. f/c third Friday.

Len Kruse - 816 Euclid Street - Dubuque, Iowa

An even half-dozen stations were added to my DX Log since my report in last month's "DX News," three of these were brand new stations on ETs. On 7/15 KLEK, Ottumwa, Iowa (1480) 500 watt daytimer was heard on ETs 2:19-2:45 a.m., followed on 7/24 with an ET at 2:24 a.m. from WKBL (1250) Covington, Tenn. ERs from the Texas Primaries added station KBOR (1600) Brownsville, Texas, till 2:30 a.m. on 7/25. The new 5000-watt daytimer, WWKO (1420) Ashland, Ky. came in very well on 7/29 from 2:18-2:54 a.m. with ETs. Also on this date of 7/29 I logged KIMN (950) Denver, Col. with their BS late programs 2:30-3 a.m., when they s/off daily now. KIMN was "on top" of all-night WWJ on this occasion. The first station to log in August was WHGR (1290) Houghton Lake, Mich. on 8/1 from 6-7 a.m. with their first hour of BS for the day; their signal came in exceptionally well. Five verifications were added since my last report, bringing my total to 2,484. Letters came from WERT WLIK WTVN-dx KBOR, and a card from WKBL. Two more all-nighters have been added in recent weeks, namely WLCK (1450) Campbellville, Ky. and KREL (1360) Baytown, Texas.

Charley Conley - 358 Market Street - Lemoyne, Pennsylvania

First report since May 5 was sent to WWKO testing on 1420 kc/s. at 1:15 July 27. Imagine most of you caught him as he was placing a strong signal here, and asked for reports from DXers. Listened to him a short while the morning of the 28th when several reporters' names were read, including Walter Goldy, the only NEC member I recognized. Since our Genial Editor is readying for vacation, and the temperature is too high to work up the energy necessary to do much of anything, this will be it for this month. Have a fine time, Lefty - go easy on the onions with a dash of hamburger and hard-boiled eggs - at least save room for a couple of the Old Eagle Tavern in Williamsville next month. (Is the name correct?) (How would I know, hi! -Ed.) Hope to see a lot of you then!

Jack Hathaway - 44 Garden Manor - Rantoul, Illinois

One more new one logged today, WILD, 1570, sent report. Sent report to WKID, 1580. Heard WGAR, 1220 s/df 12:05 a.m., EST. Sent report to WTIM, 1410, s/off at 6 p.m. EST (Sunday) after ten hours of broadcasting to return at 7 the next morning. S/off with "Onward Christian Soldiers." Heard WGL-1250, veries in from WTAQ-1300 & WTIM, 73.

Miss Ferguson - 3837 Prospect Street - Houston 4, Texas

Very short report this time. The only item DX-wide is an ordinary ABC card verifying 4AT-690 for reception of 4/19. Do they still operate with the power listed in the log - 500 watts? If so, 4AT would become my second best miles-per-watt catch, with WGBY still way ahead. Certainly envy these people who can put up with the noise and log stations throughout the summer. I'm a little too lazy to buck such noise, myself. Best regards to everybody and I hope the Convention is a real big success, as per usual. Some day when I can afford it I'll get in on one of those meetings, 73s.

Bill Moser - 217 Connallyville Street - Uniontown, Pennsylvania

No ECB DXing here at all during the summer. One verification received in past two months. It came from KGFH-690. Hours are now 7:00-2:00 EST. I am very sorry to say I will be unable to attend the Convention. My sister will be home from Rochester, Minn. School starts on 9/7 and my dad's vacation will fall during the Convention. However I wish all of you a wonderful, fun-filled time. Those who have never attended an NEC Convention don't know how much they are missing. Come September, I'll dust off the dials and be at it again.

CHANGES IN STATION DATA - F.C.C.

NEW STATIONS

570	Oaxaca, Oax.	5,000/250	U-1
650	Oaxaca, Oax.	1,000	D-1
760	Cortez, Colorado(740)	250	D-1
1220	Longview, Washington	1,000	D-1
1250	Ticonderoga, New York	500	D-1
1260	Christiansburg, Va.	1,000	D-1
1290	Colonial Heights, Va.	1,000	D-1
1350	Warner Robins, Ga.	1,000	D-1
	Oaxaca, Oax.	1,000	D-1
1370	Marksville, Louisiana	1,000	D-1
1390	Rogers, Arkansas	500	D-1
1410	Le Mars, Iowa	1,000	D-1
1470	Malden, Missouri	1,000	D-1
1480	Lumberton, N. C.	1,000	U-4
1570	Towson, Maryland	1,000	D-1
1580	Tulancingo, Hid.	5,000-500	U-1
1600	Saint Louis, Missouri	1,000	D-1

NEW CALLS

950	W B K H	Hattiesburg, Mississippi
960	W D V H	Gainesville, Florida
1110	C K G R	Galt, Ontario
1220	W R W B	Kissimmee, Florida
1270	W C G C	Belmont, North Carolina
	W N O G	Naples, Florida
1290	W D U V	Jacksonville, Florida
1360	K R T V	Hillsboro, Oregon
	K T L D	Tallulah, Louisiana
1370	K A W L	York, Nebraska
1390	W W X Y	Winchester, Kentucky
1390	K L G N	Logan, Utah
1400	W F T G	London, Kentucky
1420	W P L Y	Plymouth, Wisconsin
1450	W E L Y	Ely, Minnesota
	W S T U	Stuart, Florida
1490	W K O A	Hopkinsville, Kentucky
1580	W T Y N	Tryon, North Carolina
1600	W A R U	Peru, Indiana

CALL CHANGES

850	W R A P	Norfolk, Va. from WCAV
1050	W G M S	Norfolk, Va. from WRAP
1320	W G M A	Hollywood, Fla. fr. WHPD
1420	X E O W	Azatlan, Sin. fr. XEDS
1450	K A Y E	Puyallup, Wash., KPYU

DELETED

1380	K G R O	Malvern, Arkansas
1450	K S C Y	Searcy, Arkansas
1490	X E G S	Guasave, Sinaloa

FACILITIES

740	K G U -	Honolulu, Hawaii, 2,500 U-1, from 760 kc/s., 2,500 L-1-WJR.
	W V C H	Chester, Pennsylvania, to 1,000 D-1, from 250 D-1, same channel.
860	X E H J	Tanala, Jalisco, from Zapotlanejo, Jalisco, same channel. 1,000 D-1.
930	W B G R	Bainbridge, Georgia, 5,000 D-1, from 1490 kc/s., 250 U-1.
950	X E G M	Tijuana, Baja California to 3,800/2,500 U-1, same channel.
	W X L W	Indianapolis, Indiana, to 5,000 D-3, from 1590 kc/s., 1,000 D-1 dio.
	K D S X	To Denison-Sherman, Texas, from Denison. Addition of second main stu-
990	K E C C	Pittsburg, California. Cancel change in nighttime directional array/.
1050	W A C R	Columbus, Mississippi, to 1,000 D-1, from 250 D-1, same channel.
1080	X E T A	Zitacuaro, Michoacan, to 500/150 U-1, same channel.
1150	X E X Z	Cacatecas, Zacatecas, to 1,000/200 U-1, same channel.
1220	W K M T	Kings Mountain, North Carolina, to 1,000 D-1, from 500 D-1, same ch.
	K L P W	Union, Missouri, from Washington, Missouri. 250 D-1.
1300	W T A Q	La Grange, Illinois, to 500 U-2 from 500 D-1, same channel.
1320	X E - -	Montemorelos, Nuevo Leon, to 250/100 U-1, same channel.
1380	W C K M	To Roaring Spring, Pennsylvania, from Martinsburg, Pennsylvania, same ch
1460	W K A M	To Goshen, Indiana, 500 L-1, from 1220 kc/s., 250 D-1, Warsaw, Ind.
1570	K R W C	Forest Grove, Oregon, to 1,000 D-1, from 250 D-1, same channel.
1150*	X E G S	Mazatlan, Colima, 250 U-1, from 1400 kc/s., 250 U-1.

Send all items in E.S.T. to Ray B. Edge-325 Shirley Ave-Buffalo 15, N.Y.

570 WMCA New York City now 24 hrs, silent period unknown (Lefty)
 710 WOR New York City resumed 24 hrs, silent period unknown (Lefty)
 770 WABC New York City-24 hrs-7 days a week, not silent MON AMs(Lefty)
 790 KGHL Billings Mont almost in clear daily 0130-0200 S/off (Lefty)
 900 CKBI Prince Albert, Sask clear SUN AMs 0130 till after 0200(Lefty)
 KREH Oakdale, La F/C-M-3rd SUN AM 0200-0215 (Lefty)
 910 WEPG Pittsburg, Tenn now on air with reg sked(Pendergrass-Tenn)
 940 WINZ Hollywood Fla seems to break down once in a while, 4 wks ago
 they used their old 1 kw xmtr to 6 towers. (Pohl-Fla)
 950 WPEN Philadelphia Penn 24 hrs, silent period unknown (Lefty)
 1000 KEOY Mexico City, D F sked is 0700-0210 (Seagraves-Ark)
 1075 YSEB San Salvador, El Salvador being heard here at ~~2200~~ 015-0057
 S/off. All Spanish but slogans and call easy. La Voz de
 Latino America. S-5 here (Williams-Conn) / (Seagraves)
 1270 KCOK Tulare, Calif S/off MON thru SAT AMs 0300; SUN S/off 0430;
 1340 WTTN St Johnsbury, Vt F/C 1st MON 0530-0545 (E Johnson-Ill)
 1410 WING Dayton, Ohio now 24 hrs, silent period unknown (Lefty)
 1430 WLAK Lakeland, Fla is installing a 5 Kw Transmitter (Pohl)
 1440 KPRO Riverside Calif S/off MON thru THURS 0500; FRI-SAT 0700.
 1450 WWPB Miami Fla-24 hrs-Silent MON AMs 0100-0630 (Pohl) / (Seagraves)
 1580 WPAC Patchogue L.I. S/on wkdays 0500 during DST period (Lefty)
 S/ons At 0600 are 1330 WRRR; WEEK & KXGI; At 0630 are 1050-WKTM on
 1490 WDBQ on 1490 WDAN and on 1590 WALB; At 0700 on 1280 is WNAM.

 LAST MINUTE CONVENTION DATD

Sunday, Aug 8th Joe and Marty Brauner stopped in for a short visit. This infor they wish to convey to you regarding the convention.

Remember the DEADLINE for RESERVATIONS is AUGUST 27 1954. They are to be sent DIRECT to Joe and Marty Brauner 23 Howard Ave in Williamsville (Buffalo) 21, N.Y. NOT TO CLUB HEADQUARTERS.

These reservations cover the days as listed in Joe Brauners report in the July 17th issue of DX News on page 6. Sept 4th and 5th, (Saturday and Sunday) So those of you who are planning to attend, please have your reservations in by that time as listed above.

 B C B LOG by Carroll Weyrich.

Again this year Carroll Weyrich of 2800 Alden Road, Parkville, (Baltimore) 14, Maryland is publishing a bcb-F-M and T-v log, the price will be the same, \$1.25 per copy.

Everyone wishing this log is asked to remit at once direct to the above address, otherwise it will be too late. As you know items such as mimeograph paper, ink etc are high and that is why Carroll cannot make up a lot of extra issues for those who fail to order now.

This log is made up on 8-1/2 by 11 inch white paper and is mimeographed, a swell job and covers all the bcb stations in the US-Canada-West Indies-Central and South America. T-V consists of all stations in the US-Canada-Cuba and Mexico. Well worth the \$1.25 you can be sure. Its something that every active DXer should have. Supplements are also issued 3 times later and is included in the original price. So if you want this log, sit down right now and send that \$1.25 to the address listed above, you will be very well satisfied.

 Next DX News Sept 4th containing only BCB-Foreign. / (sue.)
 Hal Wagner says the entire election results will appear in a later is-

INTERNATIONAL DX DIGEST

Edited by Fred L. VanVoorhees, Box 132, Lemoyne, Pennsylvania, U. S. A.

Supremacy Ratings

DXer	Location	Countries	Total Vrs.	Total For.	Best Verie
Ken Mackey,	New Zealand	81	1341	----	Cyprus
2. Roger Anderson,	Virginia	67	1243	249	Dersa
3. Kermit Geary,	Pennsylvania	65	3080	456	Rhodes
4. Hank Holbrook,	Maryland	60	1392	248	Kovno
5. Steve Mann,	New York	60	NR	NR	ZFY
6. C. M. Stanbury,	Ontario	59	546	210	Pietersaari
7. Laurie Boyer,	New Zealand	53	556	---	Cape Town
8. Steve Johnson,	Maryland	52	854	125	Sofia I
9. Lars Ryden,	Sweden	49	105	---	WNAF
10. Harold E. Schrock,	Ill.	47	1984	95	Joh'burg
11. Roy Patrick,	England.	45	84	---	YVMP
12. John Alexander,	N. Y.	44	101	94	Sofia I
13. Harold Wagner,	Pennsylvania	42	277	98	HC2AJ
14. Carroll Seth,	New York	42	174	50	Falun
15. W. Don Reed,	New Zealand	39	526	---	KDMA
16. Fred VanVoorhees,	Penna.	34	1222	120	HOF32
17. Pat Reilley,	New York	33	2520	232	NR
18. Charlie Conley,	Penna.	19	1159	50	WGBY
19. Roy Millar,	England	17	250	---	7NT
20. Ted Saling,	Oregon	16	636	47	PRF3
21. Gene Cameron,	Washington	16	463	37	HOF32
22. Harold Williams,	Conn.	15	1232	58	YVQJ
23. Ralph Sperry,	Conn.	14	1004	46	PRE3

There it is. No DXer is listed who has not reported his totals since March 1, 1954. If your name has been dropped, please send me your revised totals including total countries, total veries, total foreign (outside US-Canada), and your totals for each continent. Send also your best verie for each continent. The above selection of best verie is mine, not that of the DXers listed. Some of you may disagree with my selection, just as you will find those who disagree with your own choice. I list HOF32 as my best, but I have friends who insist that 7NT or even KHBC is a better catch. Well, each to his own choice. This listing will appear in the second bulletin in September, with the first being reserved for contest information.

Now let's look at the DX reports for the month, such as they are:

NORTH AMERICA

CUBA--*CMHR (1570) Sagua la Grande, has sent an interesting verie by Fidel Naranjo, Adm. Sincere attempt in broken English, claims that he will try and answer all reports. (HT who adds that he has sent 9 reports to Cuba in last three years, all now answered.) HT also reports an airmail verie by Amable Martinez Pardo, Pres., for CMDL (1150) Holguin. CMS reports logging CMAB (760) Pinar del Rio, on 7/16 at 2330.

NICARAGUA--*YNW (935) heard 2200-2300 on 7/27 (Time is EDST) with strong signal, playing popular US tunes. (JA)

MEXICO--*XEFR (1180) has sent a verie signed by Octavio Calleja, gerente. (HT) XEQR (1030) has also verified, signed by Rafael S. Lopez, gerente. HT notes that 21 reports in last 3 years to Mexico have brought veries from all but 4.

JAMAICA--*ZQI (670) logged on 5/24 with "Stop the Music". QSL back on 6/3. Fair green one. (SS)

GUATEMALA--*TGUX (1025) Guatemala City, tentatively logged on 7/12 at 2315 and TGTO (820), Guatemala City, tentatively logged on 7/15 at 2315. During the revolution all stations that were on the air except the rebel radio, relayed TGW programs. (CMS) who wonders if the rebel radio operated on the BCB, and if anyone heard it.

VENEZUELA--*YVKS (750) logged at 2000 on 6/17, with ball game, crushing WSB. Received nice QSL card postmarked 6/27, signed by director, but as with others, unreadable. (SS) YVLR (1503) "Radio Central de Maracay", heard around 2230 EDST on 7/27, with fair signal, 2FM from local WIPS (1010). (JA) YVWX (1030) Maracaibo, "Radio Calentario", verified by registered airmail signed by Luis A. Gonzalez, Sub-Director. (HT) VYQO (1020) Puerto La Cruz, VS Rafael Bellerin M. (HT)

BRAZIL--*"Radio Industrial de Juiz de Fora, Ltda" operates ZYT9 on 1090 Kcs. with 1 Kw. power. Also ZYV32 (4925) with 1 Kw. (SW)

COLOMBIA--*HJDC (1090) Medellin, verio signer Hernando Arenas B., adm. (HT)

ARGENTINA--*"Radio El Mundo" Buenos Aires, owned and operated by Editorial Haynes, Ltd., used LK1 on 1070 Kcs. with 50 Kw. (SW) KB laments the lack of up-to-date Argentine information and asks if anyone has any late lists. We have been very unsuccessful here in getting any new lists from Argentina.

ECUADOR--*Emisoras Gran Colombia, Quito, operates HCLMJ, 500 watts on 1410 Kcs. schedule 0530-1000 and 1130-0100. (SW)

PERU--*OAX4A (854) heard 2350-2400 EDST on 7/27, good at times, but with QRM from Costa Rican on 855 Kcs. (JA)

EUROPE

SWITZERLAND--*The following is official information from Switzerland. German programs over Beromunster (529) 150 Kw., and relayed by Chur, Sool, and Basle, synchronized on 1367 Kcs., each with 500 watts. Also uses St. Antoine (FM) 26.9 Mc. with 3 Kw., and low power relays on 274 Kcs. and 175 Kcs. French programs come over Sottens (764) with 150 Kw., and relayed by Sevisse (1367) with 500 watts. Also a low power relay on 208 Kcs. Italian programs are via Monte Generi (557) with 50 Kw., and relayed by a station on 307 Kcs. Also a station on 241 Kcs. which relays programs from Germany and Austria. (KB)

GERMANY--*Norden-Osterloog (1295) heard 2200-2245 EDST on 7/27 with excellent signal, stronger than ever before heard in W. Va. VOA Frankfurt (1106) noted about 2230 EDST on 7/27, sounded like it was being jammed. (JA) Berlin I is now on 881 Kcs., QR'ing BBC Washford Gross station. (KB)

FINLAND--*Pietersaari (1434) verio with large envelope with fine card, over a dozen snap-shots, mess of cancelled stamps, schedules, etc. (HT)

ITALY--*Rome II (845) heard 2200-2300 EDST on 7/27 with fair signal. (JA)

SWEDEN--*Following is the latest official list from Sweden including long waves:

182 Kcs.	Lalca	10000	1394	Uppsala	500
191	Motala	150000		Varberg	200
420	Ostersund	10000		Visby	500
593	Sundsvall	150000	1448	Gavle	500
773	Malmberget	2000		Hudiksvall	1000
	Stockholm	55000		Ornskoldsvik	1500
980	Goteberg	150000	1529	Porjus	75
178	Horby	100000		Soderhamn	60
223	Falun	100000		Umea	1000
394	Eskilstuna	500	1562	Boras	2000
	Halsingborg	1500		Halmstad	2000
	Jonkopping	200		Kalmar	2000
	Karlskrona	1500		Karlstad	250
	Kiruna	500		Malmo	2000
	Kristinehamn	200		Norrkoping	1500
	Saffle	400		Uddevalla	500
	Trollhattan	250		Orebro	500

NEXT ISSUE SEPT 4th;c DEADLINE FOR THIS COLUMN WILL BE AUGUST 31st.

SAAR--"Radio Saarbruecken" will establish the biggest transmitter station in Europe. The 20 Kw. transmitter on 1421 Kcs. will be replaced by a 120 Kw. Transmitter. A commercial station of 400 Kw. will operate on long-waves, and short wave service is also promised. (SW)

CZECHOSLOVAKIA--"Banska Bystrica (761), Brno (953), and Bratislava (1097) three picture cards all received in the same mail. (HT)

U. S. S. R.--Kaunas (1385) reply received from Petrov in Moscow. Does not specify location or frequency, but vaguely verifies similar to some of BBC replies. Moscow (629* fine specific verio by Petrov from Moscow. (HT)

AFRICA

ALGERIA--Algiers III (1421) "Kabyli" good verio card, but unsigned. (HT)

EGYPT--Cairo is not using 557 Kcs. for the English and French services as well as the short wave outlet. (RP) FBS Fayid is not using 1439 Kcs. according to Fred Pilkington, a friend of RP.

LIBYA--BF Benghazi is now on 863 Kcs., not 881 Kcs. and BF Tripoli is on 1434 Kcs. Schedule is 0530-0715 and 1000-2200 GMT. (RP)

ASIA

CYPRUS--BF station is no longer on 606 Kcs., but operating on 1090 Kcs. (RP) Cyprus BC Service heard well on 692 Kcs. with English program at 1600 GMT. (RP)

CHINA--Radio Peking (640) sent fine verio card with picture of library, also letter signed by Cheng Chang-feng. (HT) SW also notes that Radio Peking is using 700 Kcs. regularly.

GENERAL--The New Zealand Club has again opened its column called "The Small Hours Clan", which is one of our best sources of Asiatic information. We are reproducing here their results without using times, since they would be of little use to you. First a general comment on Siberian Russians which the NZ says are on 548, 566, 611, 827, 890, and 935 Kcs. All use Kromlin bells for identification.

550 Bombay, new AIR freq. Seems to 895 Teheran here, also USSR on replace 850 Kc. Also a Chinese here

580	DZBB with dance show.	910	JOGB fair to sign-off.
590	JOAK with 1st net and KGB.	920	VOA-Manila all night.
600	Wuhan, China, relaying Peking.	950	JOGR Tokyo.
610	KUAM, Agana, Guam.	960	Rangpur (?) Pakistan, new station only fair.
630	Signapore, and KPOA	1000	Calcutta Strong.
640	Peking good through night.	1010	JONO fair, on late.
660	Ponang, Chinese-Malayan prog.	1020	BSD9 Taipei, covers Lucknow.
670	Taipeh, Formosa.	1040	Yunan, relaying Peking.
680	DZAS in English.	1086	Lahore, Pakistan.
690	KULA after GWF goes off.	1090	NHK, possibly JOGB, formerly on 990 Kcs.
700	Peking good with news.		
710	DZFM Manila, fair.	1150	JOGR with strong signal.
770	Trichinopoly, AIR program.	1140	VOA-Manila, English.
780	Gauhati, AIR programs.	1150	Rawalpindi, good English.
790	Signapore, Indonesian-Malay programs till late.	1180	VOA-Okinawa strong all night.
800	BZPI mixed with Shanghai.	1190	JO?? English dance music.
810	FEN Tokyo good.	1200	Chungking when 5KA goes off.
820	Ponang with English news.	1210	JOGR good.
825	Karachi, net noticed on Pakistan relay. May now be on 960.	1220	AFRS-Clark Field, fair.
860	KIKI now all night.	1230	Japanese.
875	Kuala Lumpur, only fair.	1231	Bombay.
886	AIR Delhi, strong.	1260	VOA-Courier in English some.
		1270	FEN-Nagoya.
		1280	JO-R New commercial (?)
		1360	Saigon, very weak at present.
		1370	Signapore Chinese and JOGB.

1390 KHON on all night.
 1399 FEN-Osaka relaying Nagoya.
 1410 JOHN mixed with 2KO.
 1420 JODR fair.
 1440 WKLG on-airly sign-on.
 1450 FEN-Sendai, fair with AFKN Rambler also.
 1500 Kathmandu, Nepal.
 1550 FEN-Japan, good signal.

And that is what is being heard by New Zealand DXers who stay up all night.

OCEANIA

AUSTRALIA--Current Australian all-nighters are 3UZ (930), 3DB (1030), 2UW (1110), 4BC (1120), 5KA (1200), 2DU (1250), 2KO (1410), and 3XY (1420). (NZ) HT reports veric from 3NW (1600) Wangaratta, Victoria. Card veric was using 1 Kw. at 9:00 PM local time. Says most distant report and first from USA. Began operation 3/27 and signer is J. Griffiths, C. E. HT also reports 4SB (1060) King-arcy as his 30th Australian veric. Also 7QT (720) Queenstown, Tasmania, fine letter from Herbert N. Ebrall. Using 300 watts then, now using 500. 3rd Tasmanian. (HT) CMS has veric cards in from 4AT and 3LO.

GENERAL

HT has grouped some information at the bottom of his report which should have been listed under several different continents, but I did not notice it until too late to group it. Here it is:

CANARY ISLANDS--EAJ-50 (1314) Las Palmas, verified by letter signed by Pedro Pastor Segura, Dir. Also handful of used stamps.

FORMOSA--BED-6 (750) Taipei, letter veric.

GUAM--KUAM (610) Agana, air mail veric by Donald C. Brown.

PHILIPPINES--VOA (1140) Camp John Hay, Baguio City, air mail veric by William P. Harmon, QRA for mail is International Broadcasting Service, APO 74, C/o Postmaster, San Francisco, California.

RYUKU ISLANDS--VOA (1180) Okinawa, regular card signed by Roger Legge.

Sorry, Hank, for not getting these into their proper places, and I might also add my congratulations for the above five stations represent 5 "Dream catches" that anyone in the East would certainly give a lot to have. I refer to EAJ50, BED6, KUAM, VOA-Baguio City, and VOA-Okinawa.

MYSTERY

CMS asks about two mystery stations heard simultaneously at 2300. One was a Latin and the other one was toasting. Frequency was 845 Kcs.

REPORTERS

SS-Scooter Segraves, P. O. Box 680, Stuttgart, Arkansas.

SJ-Stove Johnson, Box 145, Havre de Grace, Maryland.

CMS-C. M. Stanbury II, Box 218, Crystal Beach, Ontario, Canada.

HT-Henry T. Tyndall, Jr., 285 North Street, Burlington, Vermont.

NZ-New Zealand DX Times of the New Zealand Radio DX League.

SW-Sweden Calling DXers, organ of "Radio Sweden", Stockholm, Sweden.

RP-Roy Patrick, 90 Greengate Street, Oldham, Lancs, England.

JA-John Alexander, 120 Chelsea Street, Hawthorne, New York

KB-Ken Brownless, 7 The Avenue, Clifton, York, England.

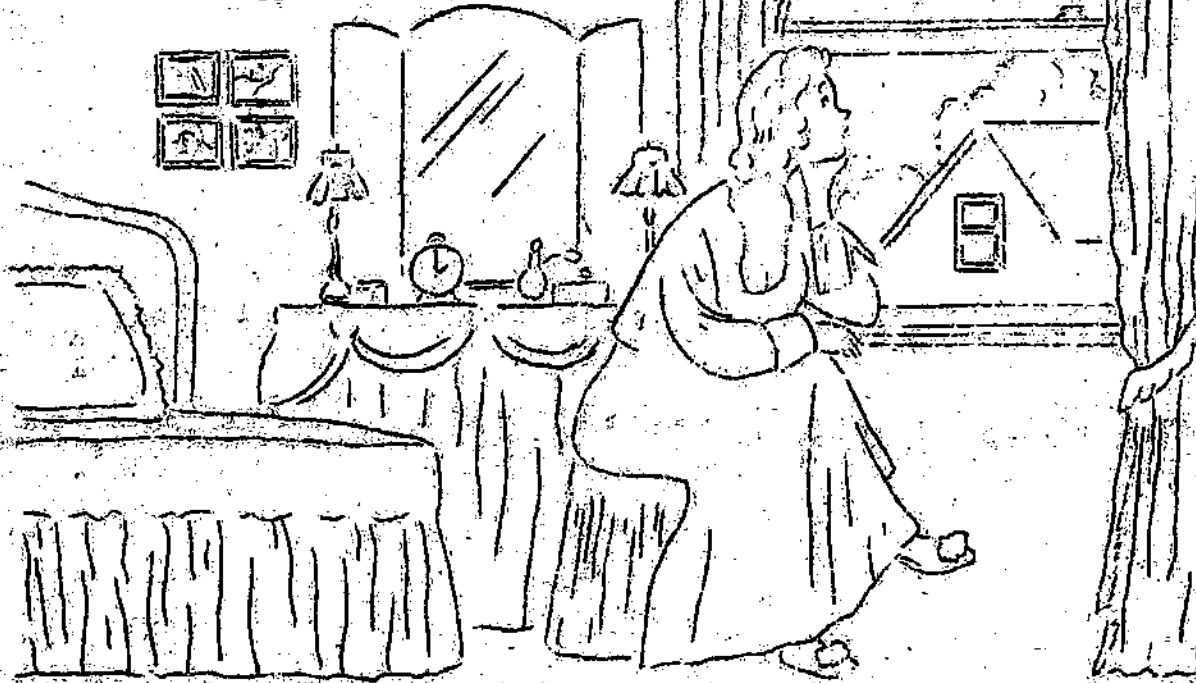
Thanks to all of you who have kept the INTERNATIONAL pages going throughout the summer months. Two issues in September, so we will be needing more reports. We hope to have a contest ready by the first of October, and we are looking forward to a really good year, just like last year. I am planning tentatively on attending at least a part of the NRC convention this year, and I will look forward to meeting some of you for the first time. Format of this DIGEST will continue as it now is, as most of you seem to like it that way. Watch other parts of the bulletin for deadline dates for the two DX NEWS' in September. This section will try to conform as closely as possible to the deadline listed for MUSINGS by our editor.

YVQT-630 kcs Carupano, Venezuela; v/s & QRA Sr. Agustin Rafael Millan "Radio Carupano" Avenida 2a Carabobo, Box No 590 Carupano, Venezuela

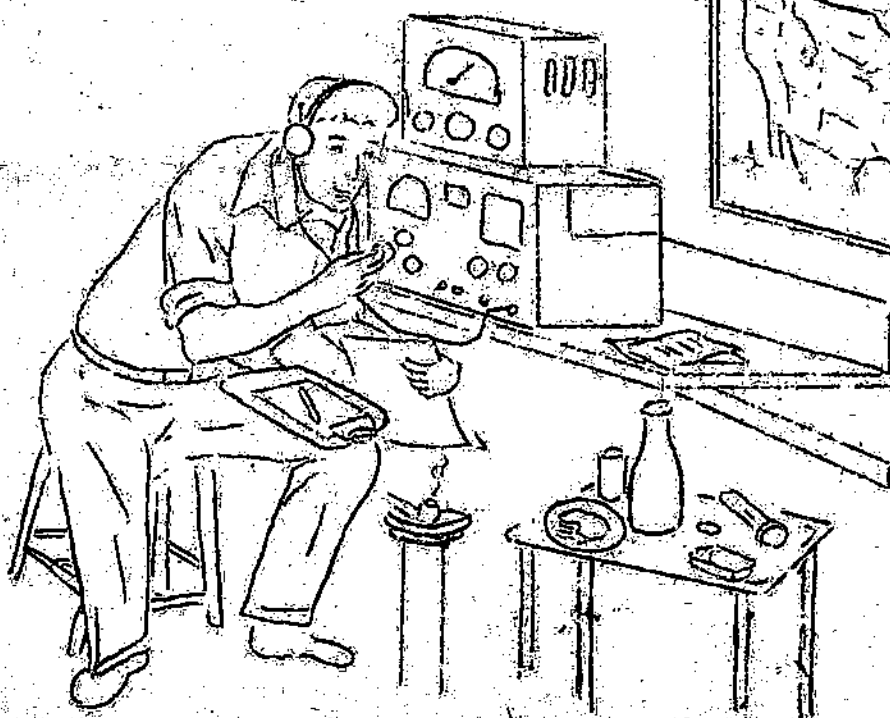
This will be our last listing of the stations which have been reported as delinquent for at least one member. If you have a verie from this station within the past two years, send us the verie signer and/or the correct address:

<u>CZECHOSLOVAKIA</u>	<u>AUSTRIA</u>	<u>YUGOSLAVIA</u>	<u>ALBANIA</u>
Ljubljana (917) 2	Linz (773) 1	Zagreb (1137) 1	Tirana (1358)
<u>AUSTRALIA</u>	Graz I (728) 1	Belgrade I (683) 1	<u>LIBYA</u>
2KY (1020) 1	<u>KOREA</u>	<u>ICELAND</u>	BF Tripoli 148
4SB (1060) 1	<u>HOKA I</u>	Eidar (611) 1	<u>AZORES</u>
<u>ESTONIA</u>	<u>LITHUANIA</u>	<u>JAPAN</u>	USAF (1500) 1
Kovno (1385) 1	Tallinn (1034) 1	<u>JOJR</u>	<u>RYUKU IS.</u>
<u>TANGIER</u>	<u>BULGARIA</u>	<u>WVTR</u>	VOA-Okinawa
935 Ke. Stn 1	Stara Zagora (1223)	<u>ITALY</u>	<u>CANAL ZONE</u>
<u>BR HONDURAS</u>	<u>CHILE</u>	RAI 1115 1	ACA (790) 2
ZIK2 (1235) JA	CEL14 (1140) 1	<u>PORTUGAL</u>	<u>SWEDEN</u>
<u>LUXEMBOURG</u>	<u>TUNISIA</u>	CSB3 (1286) 1	SBV-1223 1
Radio Luxembourg 1	Tunis (962) 1	Parodo (1034) 1	1562 1
<u>ROMANIA</u>	Sfax (1421) 1	<u>GUYANA</u>	<u>ENGLAND</u>
Timisoara II (755)	<u>PHILIPPINES</u>	FGW 1	BBC: 647, 692,
<u>BERMUDA</u>	VOA Manila 1140	FGAQ (1267) 2	908, 1151,
ZBWI (1235) 4	<u>PERU</u>	FGUX (1020) 1	1214, 1457,
<u>EL SALVADOR</u>	OAXKA (854) 4	<u>COLOMBIA</u>	1546
YSDF (1330) 11	OAX4X (782) 1	NJEM (1425) 1	<u>PUERTO RICO</u>
YSEB (1075) 6	<u>GERMANY</u>	HJCN (1095) 3	WORA (1150) 2
YSC (1015) 4	Berlin I (782) 2	HJ CZ (710) 2	WWWW (1520) 6
YSS 1	Berlin III (1043)	HJBJ (1136) 3	WNEL (935) 3
YSEX (705) 2	SWF (1538) 1	HJDK (770) 1	WIAC 2
YSAX (800) 1	Mahlacker (575)	HJCI (890) 3	WABA 1
<u>MEXICO</u>	Schwerin (728) 1	HJCG (1060) 3	WKVM (810) 1
XEPR (1180) 4	<u>SPAIN</u>	HJKC (830) 1	WAPA (680) 1
XEMX (1380) 1	ELJB (1025) 1	HJKA (675) 2	WJFR (1240) 1
XENK (620) 1	HAJ28 (1133) 1	HJEE (900) 1	WPRP 1
XEAO (910) 4	Rous (1412) 1	EJDL (1090) 1	WAEL (1400) 1
XEBZ (660) 2	Madrid (917) 1	HJKM 1	<u>URUGUAY</u>
XEDA (1290) 4	Seville (635) 1	HJCL 1	OX28 (1090) 1
XEQR (1030) 5	<u>VENEZUELA</u>	HJKO 1	<u>DOMINICAN REP</u>
XEWA (540) 3	YVIF (1120) 1	<u>HAWAII</u>	H13A (1415) 2
XEOY (1000) 2	YWKC (740) 2	KOMB 1	<u>CURACAO</u>
XEQB (1110) 1	YVNW (1050) 3	KHBC 1	PJ02 4
XEQK (1350) 2	YVLR (1012) 4	<u>HAITI</u>	<u>FR MOROCCO</u>
XEBG (1350) 2	YVQJ 1	AVIN 1	Foz (701) 1
XEMC (1590) 1	YVCO (1020) 1	<u>ALGERIA</u>	WNAF (1484) 1
XELO (800) 1	YVLX (1030) 1	Algiers (1421) 1	<u>ARGENTINA</u>
XEJ (970) 2	YVEH (1250) 1	Oran (1302) 1	LWI 1
XEPH (590) 2	YVKY (710) 1	<u>PANAMA</u>	LR3 1
XECL (990) 1	YVHO (1155) 1	KOMP (990) 1	<u>ALASKA</u>
XEYC (1460) 3	YVNR (1475) 1	HOQ (1254) 4	KABI (580) 1
XEXO 1	YVLC (770) 1	IP5C (730) 2	<u>BR GUIANA</u>
XED 1	YVKS (750) 1	HOX (940) 1	ZFY 1
XEEJ 1	<u>NICARAGUA</u>	HOV (1025) 1	<u>MONACO</u>
XELG 1	YNW (935) 5	<u>COSTA RICA</u>	ZAM2 (1466) 1
XEB 1	<u>ANDORRA</u>	TIRS (913) 4	<u>CUBA</u>
XES 1	Andorra (823) 4	TILX (1155) 6	CMJK (1160) 2
XEDS 1	<u>BRAZIL</u>	TIGS (855) 3	CMCQ (1420) 1
XEP 1	PRE7 (1410) 2	TIFC (625) 1	CMCA (560) 1
XELN 1	PR19 1	TIEB (1195) 3	CMCF (910) 2
XEBW 1	PRG9 2	TIDCR (625) 1	CMCU (660) 3
XEQ-1	PRB9 1	TINB (685) 2	CMCD (740) 3
XEMC-1	PRM4 (1300) 2	TIHH-TIWW-TICV-	CMCK-CMBY-
XEPW-XEX-XEDM	PRR1-PRD2-PRF4	TIRA-TIEP-TIAC	CMBZ-CMEQ.

Poor little DX widow! How grievous it is to have a lovely home and a man who uses it as a place to DX. How extra-grievous, if this happens to be some special day like her wedding anniversary, and it has escaped the memory of Mr. DXer. But come, let us have a happy ending. . .



When Mr. DXer shuts off his set, he will be so happy about receiving KUAM that, going upstairs, he will kiss wife with special ardor; that will remind her what a wonderful guy he is in the main, and in peace and affection they will sit and observe the moon together.

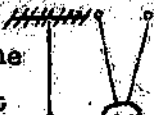


In case you think Mr. DXer should be punished SOME for wife neglect, don't worry. . . wait till his verification from KUAM doesn't come in!

H. WARD

(Apologies to the Saturday Evening Post for this adaptation of a recent cover.)

Edited by:
Hank Ward
404 North 14th
Ponca City, Oklahoma

The  DXer
August 1954

For Information, Contact:
National Radio Club
Box 38 Kensington Sta.
Buffalo 15, New York

NEW MEMBERS

A royal N.R.C. WELCOME to the following TV DXers who recently joined the N.R.C.:

- Kenneth L. Stoll, 421 East Street, Buffalo 7, N. Y.
- Thomas Halicki, 85 Helen Street, Cheektowaga 25, N. Y.
- Joseph Harlacher, 146 Madison Avenue, Blasdell 19, N. Y.
- Kingdon P. Schafer, 360 Zimmerman Boulevard, Kenmore 17, N. Y.
- Donald Voegele, 5572 Broadway, Lancaster, N. Y.

F C C INFORMATION

Construction Permits:

WFTJ-TV	Ch. 2	Daytona Beach, Fla.	1.26	KW
KVOO-TV	" 2	Tulsa, Oklahoma	100.	KW
-	" 4	Big Springs, Texas		
-	" 4	Columbus, Miss.	10.7	KW
- *	" 11	Tulsa, Oklahoma	75.9	KW
-	" 12	Portland, Oregon	316.	KW
- *	" 56	Detroit, Michigan	214.	KW

Networks:

KDNL-TV	Ch. 3	new ABC
CFCA-TV	" 4	new CBS
WSPA-TV	" 7	new CBS
WTHI-TV	" 10	new Dumont
KHSL-TV	" 12	new ABC
WVAM-TV	" 42	new ABC

Deleted:

KSPR-TV	Ch. 2	Casper, Wyoming
WHE-TV	" 9	Kansas City, Missouri
WTAC-TV	" 16	Flint, Michigan
WTEV	" 28	New Bedford, Mass.
WBOS	" 50	Boston, Massachusetts

Suspended Operation:

WCOC-TV	Ch. 30	Meridian, Miss.
WFTV	" 38	Duluth, Minnesota
WKAB-TV	" 48	Mobile, Alabama
WCHA-TV	" 46	Chambersburg, Penna.
WFRY-TV	" 52	Princeton, Indiana
KBID	" 53	Fresno, California

Channel Change:

WDXI-TV	Ch. 7	Jackson, Tennessee (from Ch. 9)
---------	-------	------------------------------------

On The Air:

KWK-TV	Ch. 4	St. Louis, Mo.
KXJB	" 4	Valley City, N. D.
KGEO-TV	" 5	Enid, Oklahoma
KDRO-TV	" 6	Sedalia, Missouri
WFRN-TV	" 7	Traverse City, Mich.
WCHS-TV	" 8	Charleston, W. Va.
WKBT	" 8	La Crosse, Wisconsin
KGVO-TV	" 13	Missoula, Montana
WGTH-TV	" 18	Hartford, Conn.
WMSL-TV	" 23	Decatur, Alabama
WCET*	" 48	Cincinnati, Ohio

* Denotes Educational Facility.

Call Letters:

KLRJ	Ch. 2	Henderson, Nevada
WSAU-TV	" 7	Wausau, Wisconsin
WTVY	" 9	Dothan, Alabama
KEYD-TV	" 9	Minneapolis, Minn.
KVAR	" 12	Mesa, Arizona (from KTYL-TV)
WTVW	" 12	Milwaukee, Wisconsin
KRCG	" 13	Jefferson City, Mo.
WTVG	" 36	Mansfield, Ohio
WTVX	" 48	Gastonia, N. C. (from WNSC)
WTVS*	" 56	Detroit, Michigan

SPECIAL EDITOR'S NOTE!

I would like to thank each and every one of you for the vote of confidence in selecting me to serve on the NRC Board of Directors. As the TV DXer has continued to grow in format, thanks to experimentation; and in quality of material, thanks to you fellows out there who keep these reports coming, so it will continue and in this way the N.R.C. will continue to grow and lead the field. I'll also be looking forward eagerly to seeing you all at the Convention. Brauner please note, may wind up paying my reservation in person, hi!

KFTV ANTENNA

Work is rapidly progressing on the 1500 plus foot antenna of Oklahoma City's Channel 9 KFTV, and is nearing the 1,000 foot level. Of unusual interest, in addition to being higher than the Empire State Building, is that an electric elevator will operate within the structure of the antenna to the 1300 foot level! --Hank Ward

SEEN AND HEARD

Tom Carberry, Jr., 56 Fries Road, Tonawanda, New York:

TV DX seems to be on the downgrade with long distance DX almost extinct. High bands acting up now and then which is some help. WGR-TV, Buffalo has been testing on 2 and with local WBEN-TV on 4, they both help to wreck Ch. 3. WHAM-TV, Rochester, N.Y. is now operating with 100 KW on Channel 5 and in the near future St. Catharines, Ontario will start on 6 so you can see how much DX we'll get out of the low bands next year. Since last issue reports have been sent to WSYR-TV, KMLD, WBRC-TV, WAGA-TV, KRLD-TV, WBTW, WHAM-TV, WCPO-TV, WLW-T, WGN-TV, WKAQ-TV, CMQ-TV, WICA-TV, WHEW-TV and WSPD-TV. Veries in from WEAR-TV, Pensacola; WSEE, Erie; WJAC-TV, Johnstown; W GAL-TV, Lancaster; WHIO-TV, Dayton; WLW-C, Columbus; WCAU-TV, Philadelphia; KFDX-TV, Wichita Falls; WSB-TV, Atlanta; WDSU-TV, New Orleans; WPMY-TV, Greensboro; WSYR-TV, Syracuse; WHAM-TV, Rochester; WCPO-TV & WLW-T, Cincinnati; WGN-TV, Chicago; CMQ-TV, Havana and WKAQ-TV, San Juan, Puerto Rico. Have been trying hard for some DX on UHF but so far no luck other than the three already logged. Veries since April 30 have now reached 45.

Robert Seybold, Bennett Road, Dunkirk, New York:

Skip conditions are lagging here now, but only after a big month in July as skip and tropospheric bending conditions raised my station total to 131 as of 8-2-54. So here is the rundown. 7/1 - Logged KFEQ; KPRC; KFEL; KOA; WDAF; KYTV; KGNB; KFBC; WKZO; WLW-C; WWJ; WICA-15. 7/2 - Logged KPRC; WLBT. 7/3 - Logged WLW-D; WWJ; 7/4 - Logged WLW-D; WCBS; KPRC; WLW-C; WWJ; WBAP; KGNB; WLBT; WKZO; WICA. 7/5 - Seen KPRC KMTV. 7/6 - Seen WSB WPMY WEAR KYTV WTVJ WMOE WBOB WDSU WMBR. 7/7 - Seen WTVJ WDAY CHEF CMEK. 7/8 - Logged KPRC WEAR WTVJ WLBT WBAP. 7/9 - Logged KPRC WLBT KGNB WBAP. 7/10 - Seen KFEQ WTVJ KCMO TVE-3 KGRV KGBT KCMC WBOB. 7/11 - Seen KPRC CHEF WTVJ WEAR WLBT WERC. 7/12 - Logged KFEQ KYTV. Big Tropospheric day on 7/13 brought me 46 stations including WBBM WLW-D WCLM WKZO WBBF WBBQ WLW-C WBBM WBBK WHIO WTCN WREX WICA WISH WSBT WGN and KFEL on skip. 7/14 much the same as 7/13 with 49 stations logged, such as WSAZ WSWA WUJ WLW-T WHIO WSLB WCPO WENS WHAS WKRC WQED WGN and many others plus KPRC WTVJ WEAR on skip. 7/15 - WMT WBBK WWJ seen. 7/17 brought WLW-D WLW-C WWJ WHIO. 7/18 seen WLW-D WLW-C WLW-T WCPO WKRC WFIL-6. 7/19 - A big day with 48 seen, such as WBBM WKZO WAVE WBBF WLW-T WBBQ WFSM WBBK WHIO WISH WCPO WENS WTVJ WHAS WKRC WICA. 7/20 saw WBBK WHIO WLW-D WWJ WKRC WCPO WLW-C KPRC DAL WEAR WLBT KSTP WSB WOC. 7/21 - Logged CIA WKAQ WSB KPRC TVN-3 TVN-4 WTVJ CMQ-5 CMQ-6 WKY WLBT. 7/23 - WTVJ and WEAR seen. 7/26 - Great UHF day as WICA WPAQ WPMY WBBK WGNX and WPMY seen. WKNX-57 and WICA-15 seen again on 7/30. WEAR finally veries for me. Veries also from WKAQ WREL CHEF WPMY WCSC and many others lately. WGR-2 is now on here and has really closed up Channels 2 and 3. Can't budge them a bit.

Ernie Katherly, 2630 Jefferson Avenue, Cincinnati 19, Ohio:

I thought you might be interested in knowing that beginning Monday July 26th, Cincinnati's educational TV station WCET Ch. 48 will go on the air from 4 to 5 pm with broadcasting, from 5 to 6 pm with a test pattern and from 6 to 8 pm with a continuation of broadcasting, this is daily. It will show four hours of film and 11 hours of live programming a week. Although I am not a TV DXer I do read your column now and then and I sincerely hope that the above can be of some use to you or someone else. (Thanks for the tip on WCET Ernie, maybe some of the fellows will be reporting this one shortly. Maybe the TV bug will bite you one of these days, but nice to know you enjoy the column occasionally. Hank.)

Alfred E. Bruce, 6906 Chew Avenue, Philadelphia 19, Pennsylvania:

Received 2 veries from WTOP-TV Washington, D.C. and WJHC-TV New London, Conn. Both came in very well. This is my first attempt. (Fine Al, and trust you'll be getting more openings and veries and that you'll keep us posted on your activity. Have your phone number noted down and if my sweep through Philly gets me near a phone, will call; if not, maybe we'll see you at the Convention! Hank.)

John D. Hathaway, 44 Garden Manor, Bancoul, Illinois:

7/11 Had WGN-TV Ch. 9 and WBKB Ch. 7. WGN signed off 12 midnite EST (Sun.).
7/12 Had for the 1st time WMT-TV Ch. 2 still with the indoor helix antenna. Sent report. Signed off Midnite EST (Mon.) to return at 11:00 EST (Tues.). This gave me state #5. Now I got my 2nd Iowa station, WHO-TV Ch. 13! Sent report. Signed off 0120 EST. 7/13 I just heard my 1st Channel 12 and Ohio station for State #8, WKRC Cincinnati. Just heard my 1st Channel 10 station, WGEM Quincy, Ill. Sent reports to both. Heard WCPO-TV Ch. 9 Cincinnati, Ohio and sent report. By using fine-tuning also got WGN-TV Ch. 9 Chicago. Several on Ch. 8 only I could identify was WOOD Grand Rapids, Mich. Heard KHQA Ch. 7 Hannibal, Mo. for 1st Mo. station and state #9. Sent report. Ch. 6 faded out before could identify. Ch. 5 blank. Ch. 4 a mass of interference, no sound. Another new one is WKZO Ch. 3 Kalamazoo, Mich. who signed off 12:15 AM EST, (Wed.). Heard WFBM Ch. 6, Indianapolis but already verified. 7/14 - Heard WTCN-TV Ch. 11 in Minneapolis for state #6. They signed off at 1:20 AM EST (Tues.), power 316 KW to return at 7 AM. KMTV Ch. 3 Omaha, Nebraska heard for State #7. WTTV Ch. 4 heard at sign off. Also WBKZ Ch. 2 for another new one. Sent report. Ch. 2 WBBM-TV Chicago. Ch. 7 WBKB Chicago signed off 0120 EST. Heard WISN Ch. 8 and sent report. Signed off 0015 EST. WBKB is 110 miles. 7/15 - Guess it's all over. Band dead as a door nail. Received verie from WEO Des Moines, Iowa, Ch. 13, 250 miles. They verified by letter saying "As yet WHO-TV does not have an official verification card." 7/17 - Just heard my 1st UHF station, WDAF Ch. 34 Danville, Ill, 34 miles away with same old UHF Indoor Helix. They faded out on me and the picture was poor. Also heard WGN-TV Chicago Ch. 9, 110 miles. 73's. (Fine Jack, hope I got all your cards here!H.)

Frank Holbrook, 4710 Edgemoor Lane #105, Bethesda 14, Maryland:

Very few new stations logged in July as sporadic E DX seems to be on the way out and tropospheric DX evidently will not arrive in full force until August. Stations logged and reported in July are as follows- 7/4 KYTV 3 seen from time to time between 3:00 and 4:00 PM. Ch. 3 was really hot that afternoon as KYTV suffered QRM in varying amounts from TV Nacional, WEAR, WLBT, and WVA. Got enough for report and have received a card verie. July 10 WQAL 8, 7:15 to 7:55 AM with fair signal but much slop over from WTOP on 9. What 7 came on with test pattern at 7:55 and goodbye to WQAL. 7/12 WPIX 11 through WBAL between 10:15 and 10:33 PM. Very good on audio and video. Verification by letter. WATV 13 11:19 to 11:24 PM with very poor picture and fairly good voice. Verified by letter. 7/13 WDEL 12 12:00 to 12:17 AM sign off. No sound and weak picture. QSL'd with very friendly letter. 7/22 WEAR 3 3:40 to 4:35 PM received well at times but often suffered heavy QRM from TV Nacional. Ch. 3 should be about drained as WEAR was #10 on this channel. Also broke down and wrote the local stations, WBNW 4, WTTG 5, WQAL 7 and WTOP 9. Decided that since they were messing up much TV reception, I might as well make some use of them and add them to the verie totals. June stations verified (those not covered in last report) included letters from WFIL, TV Nacional, KFDX, WMBT, WVAR, and WTVJ. Cards received from KGLO, WKY, and KFEL (a beauty). 34 stations logged and 27 verified. Still waiting for answers from the locals. Hi. Good DX-ing and 73s.

Maurice W. Mittler, Box 94, Geneva, Nebraska:

Have absolutely nothing to report in the way of DX having observed only one opening since last month and that bringing in only WVAR-2 and WPTZ-3, both regulans for DX. However, I would like to report that KOLN-TV in Lincoln has changed its channel from 12 to 10 with maximum power of 316 KW from its 1 KW plus tower. Transmitter is located about 40 miles northeast of here, so now get perfect reception. KOLN began regular schedules on Ch. 10 the 1st of Aug. Veries received are: WOOD-8, WTCN-11, WCCO-4, XSTP-5, KFEL-2, with reports still out to WBKZ-2, KHQA-7, KMTL-7, WEAR-3, KHOD-4, WTTG-5, WMIN-11 making a total of 38 verified out of 45 reported. So long for this month.

William C. "Bill" Moser, 217 Connellsville Street, Uniontown, Pennsylvania:

7/7 had WTJV WISB WEAR-TV WDSU-TV WABR-TV and XPRC-TV. The next day I saw KGNC-TV and WOAI-TV. 7/9 was very good day here. A new stations in 3 new states. Reported were KSTP-TV WCCO-TV WBAY-TV and WBBF-TV. Also seen were WMT-TV WOI-TV KMTV KFEQ-TV WDAF-TV KGNC-TV KRLL-TV WEAF-TV and "old faithful," KPRC-TV. 7/11 KPRC-TV and WOAI-TV were again seen. 7/14, reports sent to WXYZ-TV and WSPD-TV. Also WLSL-TV WAVE-TV WEAS-TV WATE KSD-TV WTUV WBBF-TV and KPRC-TV seen. 7/18 KPRC-TV; the next day WKY-TV and a little, but not enough to report, of KOTV seen. 7/20 had TVNA and KMTV. 7/21 I saw KPRC-TV and WOAI-TV. 7/22 KPRC-TV WTUV TVNS and 4 WABR-TV WMT-TV and KMTV were viewed. The following day KFEQ-TV and KPRC-TV were seen. 7/26 had WKY-TV KPRC-TV KRLL-TV KRLL-TV KGNC-TV WOAI-TV KGBS-TV WBAP-TV KGEN and KMID. The last 2 were reported, KMID for the second time. Verifications are listed in contest standings and verie signers. No reply as yet from tentative report to KOMO-TV. 73s and remember, DX isn't over yet!

A/3C Don Kaskey, AF-17392525, Hq Sq Sec. Tg, P. O. Box 38, Bryan AFB, Bryan, Texas:

Thought I'd drop a line to your swell column (It belongs to YOU all out there, Don. E.) in the DX News. I really enjoy reading about all the TV DX going on and some of you fellows are really doing great DX on the sets. We just had a TV set installed in the barracks today and I'm going to sneak a look every chance I get. The antenna is directed NW by SSE to pick up Temple and Houston. When I have been at home in Galva, Iowa during the past several years I always played around with the set. I've seen 31 stations and I'll list them as follows: WABR-TV 4, WOI-TV 5, WHO-TV 13, KPTV 9, KGLO-TV 3, WBBK-TV 2, WMT-TV 4, KMMP 6, WCCO-TV 4, WTCN-TV 11, KRCC-TV 10, WJON-TV 7, KSTP-TV 5, WDAF-TV 4, KFEQ-TV 2, KOLA-TV 12, KFOR-TV 10, KMTV 3, WOF-TV 6, WGBS-TV 2, WPMY-TV 2, WKY-TV 4, WDPV 2, KELO-TV 11, KGNC-TV 4, KRLL-TV 4, KGBS-TV 5, KPRC-TV 2, WOAI-TV 4, KGEN-TV 6, and KRGV-TV 5. Some pretty good catches considering we have an antenna directed SW by NE to catch Omaha. Come to think of it they have one pointed west also to catch Sioux City. I was home last from 14-28 June and got some of my better catches. Got a kick out of seeing KMTV and WOF-TV get shoved all over numerous times. One afternoon KGEN-TV knocked WOF out for several hours. Everytime I got an opening on 2 or 4 I saw a new station it seemed. Saw KRGV sign on at about 3:00 in the afternoon one day and then KGBS-TV came rolling in. Well maybe I'll have more next time. 73's. (Fine, Don. Say, you guys at Bryan got those cute chicks serving up your chow yet? Hi! Hank)

Frank Wheeler, Box 176 R. D. 5, Erie, Pennsylvania:

Here is the result of my DXing since last writing: June 23 WDTV 2 50% 114 miles. Good-night something coming in on all channels. July 3 and 4 WSYR 3 20% 214 miles, knocked out of the air by WBBK. July 7, Florida night: 6:00 PM WEAR 3 912 miles 60%, held for half hour; 6:40-7:00 PM WABR Ch. 4-60% 930 miles, blanketed at 7:09 PM by WBBK and WTUV-1-1098 miles 75%, my best night for TV DXing thus far. July 13, WHIO 7 35% 272 miles, 7:35-7:49 PM and WOOD 8 40% 291 miles, 9:30-10:01 PM. July 19-WFSM 6 30% 359 miles, 11:28-11:40 PM. July 20-WBKB 7 15% 405 miles, 12:05-12:13 AM. All time EDT. A good night for mid-westerns, signs of them on about every channel especially 6-9 channels. New veries since last reporting are: WSPD WSYR WTUV CPFL WHIO WDTV and WOOD. Very nice verifications. I'm finding out that TV Veries are a lot nicer than most of the ECG veries. 73's.

J. B. "Pat" Reilley, 11 Irvine Place, Jamestown, New York:

CPFL-TV Channel 10, London, Ontario, Canada, video power 117 KW-audio 59.6 KW. Verie signed by Murray E. Brown, Station Manager. Affiliated with CBC Television Network. Havana on 3 this PM at 4:00 (7/20). (Attention Convention bound NRCers! Pat and I are herewith serving notice that we are voting ourselves in as the gruesome twosome at Buffalo and Williamsville, eh, Pat? Hi, Hank.)

AND IF YOU ARE DRIVING TO THE CONVENTION. . . TAKE IT EASY. ARRIVE SAFELY.
WE MAY NEED YOU TO OPEN BEER CANS!

Milton C. Bay, Route #1, Brooksville, Kentucky:

I have been very busy this Spring so my DXing has been very slim up to about the 10th of July. With several of the nearby stations increasing their power to maximum I didn't think DX was so hot this year as nothing showed up whenever I tried. I logged WISH 8 Indianapolis, Ind. on July 3. Then on the 14th my hopes were really built up again as I logged 14 stations on that day. 10 of them new ones for me. They were as follows: KSD-TV 5, WPMJ 4, WJBK 2, WXYZ 7, WBKB 7, NEWS 5, WBEN-TV 4, WABK 3, WBRF-TV 12, WJAC-TV 6, WDFV 2, WSTV-TV 9, WSL5 10 and WTRF 7. On the 22nd I received WTWJ 4. On the 23rd I saw KFEL-TV S/off at 12:40 AM EST. At 7:30 PM saw KFEL-TV again along with KOA-TV 4. July 28 I saw WJBK 2 again. My log now stands at 37 from 15 states and Cuba. All are verified except WSTV-TV 9 and WTRF-TV 7. WCET 48 Cincinnati, Ohio went on the air July 26th on a 5 hr. a day, 5 days a week schedule 4 to 9 pm EST. Have not seen them as I am not equipped for UHF.

Don Roller, Route #1, Dupont Road, Fort Wayne, Indiana:

On Saturday, July 24, we put up a new Radiart Model LEX all-channel VHF antenna (double stacked) and this really brought 'em in! But, in its dying days, our built-in VHF antenna put on quite a show. For that matter, our built-in UHF antenna (which we still use, incidentally) did too! It all started AFTER I had already sent in my first report to this column. At first, the new ones added were just "locals". These were WBNS-TV 10, 135 miles and WTTV 4, 153 miles plus two tentatives which moved to the definite list--WEAS-TV and WSPD-TV. Then it happened! On the day of 7/11/54 I discovered a mysterious station on ch. 4 taking out WTTV. It turned out to be WJBR-TV in Jacksonville! I don't think that 745-mile haul was bad for a built-in job! But this wasn't all-not near. The very next day, and the one following, the UHF band went mad. In came WGAN-TV ch. 25 Milwaukee, 189 miles; WEA-TV ch. 23 Madison, Wisc., 246 miles; and tentatively WTVH, Peoria and WOKY-TV, Milwaukee, both ch. 19. Added also was WJTV Elkhart ch. 52, 53 miles. On 7/13 in came KROC-TV ch. 10 Rochester, Minn., 409 miles; WKEL Ch. 8 Cleveland, 175 miles; WKRC-TV ch. 12 Cincinnati, 138 miles; and WLV-C ch. 4 a former tentative. In the next few days these were added: VHF - WJIM-TV ch. 6 Lansing, Mich., 110 miles; and WXYZ-TV ch. 7 Detroit, 130 miles. UHF - WLOK-TV ch. 73 Lima, Ohio, 61 miles. Nothing more new was added until we installed the antenna. At first it didn't seem to work right and on the 26th I found a loose connection and repaired it. Immediately a flock of new ones came in! Before the loose connection was found I did manage to pick up WTKI-TV ch. 10 Terre Haute, Ind., 163 miles. But right after it was repaired I saw for the first time the following: WZO-TV ch. 3 Kalamazoo, Mich., only 78 miles; WJBK-TV ch. 2 Detroit; WABK Ch. 3 Cleveland; WAVE-TV ch. 3 Louisville; WJF-TV ch. 2 Detroit; WLV-D ch. 2 Dayton; and WTKI-TV ch. 4 Milwaukee. 7/27 in came WGBA Ch. 3 Champaign, Ill., 171 miles; and WBBM-TV ch. 2 Chicago. The very next day I witnessed my first big skip opening since I've become a TV DXer. They really broke loose! First in around 1:00 pm EST was "Television Nacional" ch. 4 Havana, Cuba, 1237 miles, followed by WOAI-TV ch. 4 San Antonio, Texas, 1053 miles at 1:45; 2:00--KPRC-TV ch. 2 Houston, 922 miles; 2:03 KGEN-TV ch. 6 Temple, Texas, 924 miles; 2:15 - KGES-TV ch. 5 San Antonio; 3:15 - KFID-TV ch. 3 Wichita Falls, Texas, 801 miles; 4:20 - KFTT-TV ch. 6 Wichita Falls; and 4:29 KKID-TV ch. 2 Midland, Texas, 1079 miles. Several tentatives were also seen, KOB-TV ch. 4; KGNL-TV ch. 4 and two or three that I have no idea of what they could have been. Also seen that day was WSAZ-TV ch. 3 Huntington, W. Va., 234 miles. Quite a haul for one day I'd say! All for now, so long and 73's.

Bank Ward, 404 North 14th, Ponca City, Oklahoma:

Two veries in! WOSC-TV Charleston, S. C. and WAFD-TV Wilmington, N. C. No word as yet from KTEH and KOAL-TV reports, now long overdue. Prepared veries for TVT Never! Hi. KGEQ-TV Enid on 5 is latest "local" here. Wish I had the background on their call. Seem to recall the KGEQ as General Electric's outlet on the West Coast. Must be in use somewhere, else why tack the "TV" on it? Certainly no AM or FM call in Enid. Isn't KGEQ GE's SW call on west coast? That's it here. Sadi

Ronn de Neuf, 516 Parkway, Ithaca, New York:

Sorry I missed the last issue. Now that the skip season is almost all over the tropospheric season will start. Already this year on 7/16/54 and 7/21 I have seen tropospheric bending of great distances. I logged among others, WFBI-6 Indianapolis, a distance of 520 mi. Other exceptional DX of tropospheric nature are WMT-5 Cincinnati, 480 mi.; WTRF-7 Wheeling 310 mi.; WLCW-4 Columbus and others. A freak occurrence is my reception of WLD-2 Dayton, Ohio, 455 mi. by both tropospheric and skip. New stations received by skip in the past two months are CBWT-4 Winnipeg; KGLO-3 Mason City; KDAL-3 Duluth; KFYR-5 Bismarck; KFEC-5 Cheyenne; WRBL-4 Columbus, Ga; KMID-2 Midland; WBOC-6 Orlando; KWA-4 St. Louis (received on the first day of transmission); WABQ-5 Chicago and KXNC-4 Amarillo. My best DX is still PRF-3-TV but I am sorry to say the Indian head test pattern of channel 2 was not WKAQ in San Juan. Does anybody know who it can be? Here's wishing everybody the best of DX. (Don't know who you have on 2 Romn, but KGEO-TV 5 in Enid uses an Indian head test pattern with no call or other identifying printing on it. They identify by voice ever so often and use tone in between. So, guess we have a bit of a curve being thrown at us in the matter of test patterns. Hank.)

Fred Van Voorhees, Box 132, Lemoyne, Pennsylvania:

The month of July was pretty well lost for TV DX with only WLB on 7/8. Veries were received to bring my total to 19. They are: Ch. 2 - KFEC-TV, WLB, Ch. 3 - WPEZ, KITY; ch. 4 - WNEW, WMBT; ch. 5 -; ch. 6 - WJAC-TV; ch. 7 - WJAL-TV, WTRF-TV, WABC-TV; ch. 8 -; ch. 9 - WTOP-TV, WOR-TV; ch. 10 - WBSG-TV; ch. 11 - WJAL-TV; ch. 12-; ch. 13 - WJAL; ch. 43 - WBSA-TV; ch. 46 - WCHA-TV; ch. 55 - WHP-TV and ch. 71 - WPPA. Overdue are WJAL-TV 8, WTTG 5, WDEL-TV 12, WLR-TV 15, WJOW-TV 49 and WJWA-TV 61. Then on July 29 we installed a single-bag Taco Trapper antenna. On the 30th I immediately found that WDTV Pittsburgh, Pa. was coming thru on ch. 2 for the first time. Score one for the Trapper. On the 31st, WDTV was again noted along with WGS-TV New York on 2; WTVR Richmond, Va. on 6 and WJAR-TV Norfolk, Va. on 4. August 1st WDTV wasn't good, but WTVR was. August 2, nothing new but WDTV and WTVR are now apparently regulars. WDTV is 165 miles and WTVR about 175 miles. Reception of all Baltimore stations has been improved by 50% and Washington by 25%. I watched a ballgame via WJAR 2 on Sunday for the first time. WTTG 5 can now be seen at all tries. Baltimore is 85 miles, Washington, 105. All Philadelphia stations are visible, 95 miles, but erratic. Here today, gone tomorrow. Today the TV man put up a second bay of the Trapper, but I haven't been home yet to try it out. Have now seen 32 stations. WCHA-TV, ch. 46, Chambersburg, Pa. has suspended for 3 months for survey and study. No support from either viewers or sponsors according to my verie which was probably their last verie before closing. WGSB-TV 27 Harrisburg is in final phase of construction and are promising test pattern on August 23. All for now.

Bob Cooper, 1016 Sunnybrook Drive, Lafayette, California:

July was a poor month from the standpoint of number of stations logged but from the standpoint of number of days the band was open, it was very good. The big news from this reporter is the logging of PR-3-TV from Rio de Janeiro, Brazil. This was logged on channel 2 at a distance of 8,550 miles on July 22nd just before noon PDT. The signal at its best was crystal clear. KMID from Midland, Texas at 1,150 miles was seen on the following dates: July 1, 2, 3, 4, 5, 6, 8, 11, 12, 14, 14, 15, 18, 19, 21, 23. Other loggings were KOOK on July 3, 8 and August 4. KFDX was seen on July 1, KFEL on July 4, 8, 11, KFEC on July 8, WMTV on July 8, WCLA at 1,950 miles on July 7, CBWT on July 15 and 28, KXLY on July 16. Ground wave conditions were quite good with channel 3 from Santa Barbara at 285 miles seen every day over some very rough terrain. Los Angeles was also seen from time to time at 330 miles. My total number of stations is now 92 logged in 5 countries and 28 states. That's it for this month. OMA verified my report for June 28 so now I have a station that has verified over 2,500 miles. 73's to all and to all good night!!

Kenneth C. Bush, 60 Grace Street, Buffalo 7, New York:

I believe those of us in the East will agree unanimously that early July was as prolific as any mid-season has ever been. Personally I logged some E-Skip on every date from July first to fifteenth with exceptions of 3rd and 12th. Log now stands at 71 stations, 49 verics and 18 reports out. July 6th was a terrific opening. Logged for the first time WBTW, Charlotte; CMKU-TV, Santiago, Cuba; WPMY-TV, Greensboro; WERC-TV, Birmingham, Alabama with strong appearances by WSB-TV Atlanta, WEAR-TV Pensacola, Television Nacional, Santa Clara Cuba on channel 3 and WDBO-TV in Orlando, Florida. The skip came in two distinct periods - from 1:45-4 PM EDT and from 5:30-7:30 PM. On the 7th the south once again showed top strength with WEAR-TV, WDBO-TV, WDSU-TV, and WSB-TV all in. Logged KSD-TV, St. Louis, Mo. on the eighth; WJCT Memphis on the 9th; KRLL-TV Dallas, Texas on the 10th; WOOD-TV WHIO-TV and WCPO-TV on the 13th which was an opening strong in 300-500 mile signals. Must note that on the 9th eight "regulars" came in, those being: KFTQ-TV KPRC-TV WJBT KSD-TV WJCT KYTV WEAR-TV and KMTV. The closing dates have brought very little besides heat, humidity and heat! Did see for the first time WJLL-TV Lansing, Mich. and WJBR-TV in Jacksonville, Florida on the 25th. Am quite anxious to see how the fellas in other sections of the country fared from the 23rd through end of the month during the heat wave. More next month should lady luck share her favors in this section... '73'rs to all.

Jim Critchett, 1119 West Arbor Drive, San Diego 3, California:

We still have no television receiver, so no DX, except for the audios of KFTB-TV, KFSD-TV and XEFTV on my FM band. No word of any activity by KUSH, the UHF permit here.

OVERSEAS REPORT

Roy Patrick, 90, Greengate Street, Oldham, Lancs., England:

EIRE - A report appears in the "Irish Press." Technicians working on top of the hill of Howth Summit are building the first TV station in the Twenty six countries. It is being erected by Pye Ltd. for the experimental work. Its range will cover Dublin with a 20 mile radius. They hope to relay BBC and Continental programs to Dublin from time to time. The whole project will be operated by Pye Radio Ltd. CHANNEL ISLANDS - A piped television service provided by Rediffusion Services Ltd. in Jersey was officially begun on June 25. Both the BBC and Paris TV programs are relayed to subscribers. Reception from Paris 200 miles away was not so good but it will shortly be improved by new aerials. By catching reflected H F Waves Rediffusion engineers conquered the difficulty and first rate reception is normal. Best '73. (Thanks Roy, hope we'll be hearing from you often, as well as some of you other NRCers scattered around "down under" and in Scandinavia. Hank.)

TV DX PREDICTION

Bob Cooper, Lafayette, California

Hi gang. After a tremendous year with Sporadic E skip, many of you are wondering just what to look for this year along the line of Tropospheric bending. So far, almost all reporters have seen many stations during the last few months by extended Ground Wave Conditions from as far away as 500 miles. Many report high band stations up to distances of 600 miles, and in one instance, up to 1050 miles. The period from July 12-18 was especially good in the midwest and in the northeast. One of the better days was the 14th when two observers that I know of logged 49 stations piece. So it looks as if this year is going to run way better along the tropospheric line than many years previous. The best times of day will vary as the season moves on. From the time this reaches you until around the first of September, the best time of day will be definitely the early morning period. Watch the entire TV spectrum as the high band and UHF band will also be very productive. The best time will be around 7 am EST in the East and in the midwest, and around 8 am in the south. You fellows along the Great Lakes should have a field day just about every morning.

and reception up to 500 miles will not be uncommon at all. One thing to remember however, if you are to take advantage of this type of DX, then you must have a rotating antenna, and preferably one that has quite high gain. For the period of September 1-20, the early morning period and the late evening period, 10 pm-1 am local time, will be equally productive. The signal strengths will run stronger in the late evening, however. The two weeks of September 21 - October 5 will be the best of the whole year for extended ground wave conditions. There will probably be a period of 2-3 days when you will get almost constant reception from stations 400 and more miles away with local program quality. The early evening and late evening periods will be definitely the best during this period. The best tip off in the world is when a fringe area station begins to lose its snow, then begin to look around for other stations. This will apply both on UHF and VHF. But don't depend on VHF to tell you if UHF is hot. The only way to know is to keep constant tabs on both, as it is very seldom that both are affected simultaneously. As a final note, may I remind you that the high band (Channels 7-13) are quite often the best during this period, so don't let your Sporadic E habits keep you pinned down to the low band. This will be the last prediction until the November TV DXer, as there is little point in carrying on when there is nothing to predict. Hi. Best DX to all until November!

CONTEST STANDINGS

1st Place: Robert Seybold, Dunkirk, N. Y.		
5 points	- WWJ-TV, WQED	
8 points	- WOOD-TV, WPMY-TV	
12 points	- WABA-TV, KGLO-TV, KCMO-TV, KSD-TV, WSB-TV, WDBO-TV, KARK-TV, WDAY-TV, WCSC-TV	
16 points	- KCEB, WKY-TV, KGPS-TV, KFEL-TV, KPHO-TV, KFYR-TV, WOAI-TV, CMA-TV, KOA-TV, KGBT-TV, KRGV-TV, KGNC-TV, KCSJ-TV.	Previous: 206 points Added: 342 TOTAL: 548 points.
2nd Place: Romm de Neuf, Ithaca, N. Y.		
5 points	- WJAR-TV, WDTV, WMBK	
8 points	- WLN-TV, WLN-D	
12 points	- KFBC-TV, KGLO-TV, WMT-TV, WPTV, KSD-TV, KCMO-TV, WDAF-TV	Previous: 189 points Added: 195 TOTAL: 384 points.
16 points	- WJAR-TV, KFEL-TV, CMA-TV, KGNC-TV, KMTV.	
3rd Place: Tom Carberry, Buffalo, N. Y.		
1 point	- WSEE	
5 points	- WJAC-TV, WJAL-TV, WXYZ-TV, WCAU-TV	
8 points	- WGN-TV, WLN-TV, WCPO-TV, WHIO-TV, WLN-C, WPMY-TV	Previous: 184 points Added: 157 TOTAL: 341 points.
12 points	- WJAR-TV, WSB-TV	
16 points	- WJAC-TV, CMQ-TV, KFDX-TV, WDSU-TV	
4th Place: Robert Cooper, Lafayette, Calif.		
1 point	- KRON, KPIX, KGO-TV, KSAN-TV, KTVU, KCCC, KQED, KSBW-TV, KZBY	
3 points	- KHSL-TV, KMJ-TV, KJEO, KBID	
5 points	- KERO-TV, KBAK-TV, KVVU, KEY-TV	
8 points	- KIX-TV, KIMH	
12 points	- KOMO-TV, KKLY-TV, KOOK-TV, KBOI-TV, KFEL, CBU-TV, KID-TV	
16 points	- WMT-TV, WBAY-TV, KPRC-TV, KMID, KFBC-TV, KMTV, KXW-TV	Previous: 0 points Added: 333 TOTAL: 333 points.
20 points	- WSB-TV, WLN-D, WJBK-TV, WPMY-TV.	
5th Place: Bill Moser, Uniontown, Penna.		
1 point	- WTRF-TV	Previous: 181 points Added: 74 TOTAL: 255 points.
5 points	- WLN-TV, WHIO-TV, WXYZ-TV, WSLB-TV, WSPD-TV	
12 points	- WLST, WJAR-TV, WBSF-TV, WCCO-TV.	

6th Place: Hank Holbrook, Bethesda, Md.

1 point - WMAR-TV
 3 points - WFLL-TV, WDEL-TV
 5 points - WNEB, WATV, WPEX
 12 points - KYTV, KGLO-TV, WTVJ
 16 points - TVNS, WGY-TV, KFEL, KFDX-TV.

Previous: 88 points
 Added: 122
 TOTAL: 210 points.

7th Place: Bob Brown, Goshen, Ind.

Previous: 120 points
 Added: 0
 TOTAL: 120 points.

8th Place: Frank Woceler, Erie, Penna.

1 point - CHCH-TV, CFPL-TV
 3 points - WDTV, WJAC-TV
 5 points - WSPD-TV, WSYR-TV, WHIO-TV, WOOD-TV.
 8 points - WPKB
 12 points - WMBR-TV
 16 points - WTVJ.

Previous: 40 points
 Added: 64
 TOTAL: 104 points.

9th Place: Fred Van Voorhees, Lemoyne, Penna.

1 point - WAAM, WSEA-TV, WHP-TV
 3 points - WNEV
 5 points - WNEB, WOB-TV, WTRF-TV.

Previous: 11 points
 Added: 21
 TOTAL: 32 points.

No entries: Bruce Cleveland, Charles Conley and Bob Gorsuch.

Contestants are reminded that verifications for reports of reception after 11:59 PM EST, August 31, are not eligible for the contest.

SPECIAL EVENTS

Sunday, August 1st, several TV DXers from the Buffalo area drove to Dunkirk, N. Y. for a bull session with Bob Seybold. Among those taking part were Ken Bush, Art Collins, Ken Stoll and his son Ronnie, King Shaffer, Ray Edge (who let him in with the TV'ers?), Bob Seybold, Paul Nagy and Tom Carberry. Of chief interest were Bob's many veries and the fact that he has seen and heard over 130 TV stations which on the basis of some 390 U.S. stations on the air is a pretty good record. Antenna's also came infor a bit of discussion as Bob has tried a good many of them. He now has a couple of Taco "Toppers" stacked on one mast and a newer Winogard "Interceptor" on another mast. The only difficulty experienced during our gab fest was keeping Stoll away from the some 40 odd cows on the Seybold farm. He thought the milking machine was some new type TV antenna the way it was pulling things in. We understand Bob will have to DX from out in the barn or silo next year because the Erie, Penna. spur of the N.Y. State Thruway is going to pass right through his living room. With all the cars going through the house he figures he won't be able to concentrate too well. The gang hopes to meet many other TV DXers as well as BCX'ers come convention time in September. --Tom Carberry.

VERIE SIGNERS

2 KFEL	Gene O'Fallon, Jr.	S	2 WMAR-TV	E.K. Jett, V.P.	H
2 WSB-TV	R.A. Holbrook, Asst. CE	C	3 KEY-TV	Lloyd Jones, CE	C
2 KOOK-TV	Rita Toggart, Traffic Mgr.	C	3 WMAR-TV	Jerry L. Williams, P.D.	M
2 KBOI-TV	Earl Glade, Jr.	C	3 WLBTV	Fred L. Beard, Mgr.	M
2 WIT-TV	George P. Hixenbaugh, CE	C	3 WSYR-TV	A.J. Eicholzer, CE	W
2 WLW-D	R.B. Wehrman, Asst. CE	C	3 KYTV	E. Dennis White, CE	H
2 WBBK-TV	Kenneth Boehmer, Pub. Ser. Dir.	C	3 KFDX-TV	Mott M. Johnson, Natl. Sales Mgr.	H
2 KPRC-TV	Jack Harris, V.P.	C			
2 KNX-TV	Tom Jackson, Public Service	C	3 Television Nacional		
2 XEW-TV	Josef de la Horran V., CE	C		Address: San y Mazon, La Habana,	
2 KMID	Bill Richie	C		Cuba. By Angel Barranco, Director	
2 KID-TV	A. J. Shadely, Pres.	C		Technico.	H
2 WDEL	R. J. Rodgers, C.E.	W	4 WTVJ	John A. Shay, VP. Gen. Op.	H

4 WTVJ	Lee Juwich, Ex. VP & Gen. Mgr.	H	8 WOOD-TV	Louis Bergenroth, CE	SV
	(See also Page 9 listing)		8 WISB-TV	Robert B. McConnell, V.P.	B
4 WNST	A.B. Jackson, Mgr. Tech. Op.	H	10 WSLB-TV	George W. Chernault, P.D.	BM
4 WCCO-TV	John M. Sherman, Dir. Eng.	M	10 WFPL-TV	Murray T. Brown, Sta. Mgr.	WR
4 WBBF-TV	Robert J. Sinnott, CE	M	11 WPIX	Charles Voso, Asst. CE	H
4 KELY-TV	Dave Green, CE	O	12 WDBL-TV	Barton K. Ferce, Sta. Mgr.	H
4 KOA-TV	Barbara F. Bedinger, Pro. Dep.	SB	12 WBSF-TV	L. H. Stantz, CE	B
4 KRLD-TV	B.B. Honeycutt, CE	S	13 WSPD-TV	William M. Stringfellow, CE	WM
4 WWJ-TV	E.J. Love	S	13 WFO-TV	Reed E. Snyder, CE	J
4 WTVJ	Barbara Reway, Op. Dept.	B	13 WQED	Edward C. Horstman, CE	S
	(See additional listings)		13 WATV	Dorothy Sommerkamp, Sec'y to	
4 WFTV	G.E. Dyer	B		Frank V. Bremer, VP Eng.	H
5 WAGA-TV	C.E. Trainer	S			
5 KSD-TV	J.E. Risk	BS	Verified by QSL card or unsigned verie:		
5 WLF-TV	J.M. McDonald, Asst. Dir. Eng.	M	3 KGLO-TV	-	H
6 WDBO-TV	Walter E. Sickles, Dir. of TV	S	4 WKY-TV	-	H
6 KCBN	T.O. Crusinberry, CE	S	4 WBBN-TV	- (QSL card)	B
6 WELI-TV	Dorothy Gay, Eng. Sec.	H	Credits: B - Milton Bay; H - Hank Hol-		
7 WHIO-TV	Ernest L. Adams, CE	MW	brook; J - Jack Hathaway; M - Bill		
7 WXP-TV	Robert J. Ferguson, V.P.	M	Moser; R - Pat Reilley; S - Bob Sey-		
9 WSKS	H.P. Kusack, CE	B	bold; W - Frank Wheeler and C - Bob		
			Cooper.		

30!

Well, gang, that's 30 for this month. And from the quantity and quality of material sent in by you fellows out there, TV DX during the summer months is certainly taking hold with a lot of you. I personally think it's great and that it reflects a healthy interest on the part of you NRCar's to sink your teeth into the challenge offered by the elusive TV DX and come up with startling and interesting results. We have a number of exclusive TV DXers in the Club. and I certainly hope they will take to Broadcast Band DX this fall with just as startling results as some of you dyed-in-the-wool-to-heck-with-this-TV-DX-stuff boys have taken an interest in and taken hold of TV DX. Be real great.

The deadline in Ponca City next month is a bit cagey. I'll be on vacation from August 27th until September 12th and I'm going to try like mad to make the September 18th issue, providing that IS the printing date. Hi. It's a leadpipe cinch the September 4th issue won't be made. Hi! So, unless Pop changes the deadline, it will be SATURDAY, SEPTEMBER 11th in PONCA CITY. . .and. . .Hope I'll be seeing a LOT OF YOU at the Convention! Hank. (Yep Hank your deadline is OK. The 2nd SEPT issue will not be before the 18th. Final date info will be in the 9/4th issue.

Well with Hank leaving a little space I would like to include here a great big THANKS to all the Editors of DX News. All of them have been very cooperative with Ole Pop in sending their stencils here for mimeographing. It certainly has been appreciated and due to this cooperation you members were sure of a Saturday mailing of your DX News.

I am also aware that without our members reports the Editors would have had no section to edit, so to the members another big THANKS for your continued support. I believe these different reports have helped many members log and verify stations they otherwise would have known little about. I know they have helped me a great deal.

And lastly a big THANKS to Sid Rosenbaum and the CPC Staff who produced the many outstanding DX Programs from the many stations and especially from those stations that would have not been heard otherwise. A swell job by all of you and to me the outstanding CPC year of the NRC.

So I hope to see a good many of you at the annual convention. Try to be on hand. You can be sure of a grand time, especially letting out that DX Talk that you just want to let out.

Pop E. G.

Resume of 1953-54 Board Activities

The year which will end with the coming of another Labor Day Convention in Williamsville, N.Y. has been a very good one for the National Radio Club. The membership has been growing steadily with many new names added to the roll during the year. Even with increasing costs of materials, and the retention of our low yearly dues the balance sheet shows that the club is being operated efficiently and economically by our officers.

Our weekly DX NEWS has become an excellent publication, containing all the DX news our members could wish for. The Editors of each section are to be complimented and the members who have so faithfully directed their letters to the editors are the ones who deserve the deep appreciation of the Board. Without these members reports our editors can do little to present us with a DX News each week.

Our Courtesy Programs Committee has again this year done a commendable job - the kind of job that keeps NRC on top as a DX Club.

This year ending has been a very harmonious one. There have been no issues of a controversial nature raised by any of our members. Board actions have been of a routine nature. They are as follows. (U means unanimous except as noted)

1. Acceptance of Domestic DX Contest Rules as conducted last winter. (U)
2. Acceptance of Foreign DX Contest Rules as conducted last Winter. (U)
3. Acceptance of TV DX Contest Rules as now being conducted (U)
4. Acceptance of Hank Ward as Editor of TV DX Column (U)
5. Acceptance of a Club sponsored "stamp-window whereby members can buy Cuban and Mexican stamps at cost. (Details will appear in DX NEWS in the near future) (U except for Wagner)
6. Acceptance of a proposal whereby NRC will cooperate with the Voice of America in providing the VOA with information concerning our DX Specials to be broadcast around the world by VOA.
Note- At the suggestion of NRCers in New Zealand this proposal was brought to a vote. Each week the VOA has a program called LISTEN TO THE WORLD - and it is on this program that it was felt our DX tips would be of value to foreign DXers as well as the Club. DO ANY OF YOU KNOW WHO OR WHERE TO CONTACT IN AN EFFORT TO ARRANGE FOR THIS EXCHANGE OF INFORMATION? YOUR HELP IS NEEDED AS I AM AT A LOSS AS TO WHAT TO DO NOW THAT THE BOARD HAS TAKEN ACTION. PLEASE HELP. (U)
7. Acceptance of the new revised By-Laws. (U)
8. Rejection of a proposal that the NRC switch to a larger type for the DX NEWS. (U)

A couple of other minor issues have been raised which are being held for discussion by your Board at the annual meeting.

If any of you have any matters you wish discussed by your Board at its Labor Day meeting, please send them to me at your earliest convenience. We are your Board elected by you to serve you and your hobby. It has been a pleasure for this Board to work for you this past year, and we request your continued cooperation.

Signed

Respectfully submitted
Bob Gorsuch - Chairman 1953-54
2509 "D" Ave., N.E.,
Cedar Rapids, Iowa.

August 14, 1954

"DX NEWS"

1954 Election Results

The Club members elected by the membership to the office of Board of Directors is as follows:

Joseph Brauner	49 votes	Len Kruse	79 votes
Charles Conley	40	Joseph Reilley	39
Ernest Cooper	78	Fred VanVoorhees	72
Ray Edge	91	Henry Ward	42
Robert Gorsuch	55	Harold Williams	75

It is interesting to note that only 67.54% of our members availed themselves of their right to vote this year. A downward trend from last year when 73.07% voted. We would like to see it 100% tho for how else can we have a democratic board that is representative of the members. So those of you who didn't vote---why--- tell us why you didn't and if we can do anything more to make voting easier or perhaps correct something that is wrong. If you don't tell the Board they cannot make any changes to suit your wishes.

Officers of the Board

Chairman-- Robert Gorsuch, 2509 "D" Ave. NE, Cedar Rapids, Iowa
Vice Chairman, Len Kruse, 816 Euclid St., Dubuque, Iowa.

Any member desiring to bring a matter before the Board should send it to Bob Gorsuch in the manner as prescribed in the by-laws.

Officers of the Club.

President: Ray Edge, 325 Shirley Ave., Buffalo 15, New York
Vice President; Charles Conley, 358 Market St., Lemoyne, Penna.

The above is the elected officers of the Club for the 1954-1955 season. Below is a complete list of all officials, elected and appointed.

President; Ray Edge, 325 Shirley Ave., Buffalo 15, New York
V. President; Charles Conley, 358 Market Street, Lemoyne, Penna.
Editor "Musings": Ernest R. Cooper, 438 E. 21st St., Brooklyn 26, N.Y.
Editor "International" Fred VanVoorhees, P O Box 132, Lemoyne, Penna.
Editor "TV" Henry Ward, 404 North 14th, Ponca City, Oklahoma.
Editor "DX Tips" Harold Wagner, R D 1, North Girard, Erie Co., Penna.

Board members

Chairman: Robert Gorsuch, 2509 "D" Ave. NE, Cedar Rapids, Iowa
V. Chairman: Len Kruse, 816 Euclid St., Dubuque, Iowa
Joseph Brauner: 23 Howard Ave., Williamsville 21, New York
Charles Conley: 358 Market St., Lemoyne, Penna.
Ernest Cooper; 438 East 21st St., Brooklyn 26, New York
Ray Edge; 325 Shirley Ave., Buffalo 15, New York
Joseph Reilley: 11 Irvine Place, Jamestown, New York
Fred VanVoorhees: P O Box 132, Lemoyne, Penna.
Henry Ward: 404 North 14th, Ponca City, Oklahoma.
Harold Williams: 50 Third Avenue, Seymour, Connecticut
Harold Wagner: R D 1, North Girard, Erie County, Penna.

Alternate member

Steve Mann: 192 Staab Lane, Westbury, Long Island, New York.

Anyone desiring to know the votes cast for any particular member may have same by writing me or asking at the Convention. Limit Sept. 30th
Harold Wagner, Exec. Sec'y.