

FRIENDS

The SHORT WAVE BROADCAST Journal - Since 1962

NORTH AMERICAN SHORTWAVE ASSOCIATION

VOL XIII NO. 3

MARCH 1974

COOK NOT HEARD

VOA: DXERS FRIEND

When word was received here that the VOA was using 11760 kHz during the time that the test broadcast from Radio Cook Islands was to be broadcast, a letter was sent from NASWA headquarters to the VOA, asking if it would be possible for them to vacate the frequency during the time of the test. By telephone Mr. George Jacobs, of the VOA, informed us that, indeed, the Voice of America would vacate 11760 kHz for the test.

We believe a courtesy like this calls for a flood of "thank you's" from DXers in the mailbox of the Voice of America. We urge EVERY NA DXER, in this club, and in others, to write the VOA expressing appreciation. Do it now! While you still think about it!

Many DXers wrote Radio Habana Cuba requesting the same courtesy, after RBC returned to 11760 kHz. (The Cook Islands test was set up when RBC had terminated use of 11760.) At least one cable was sent to Havana, with the same request.....As of this date, we know of only one reply, and that was not direct. The reply was the presence of the Radio Habana Cuba signal still on 11760 kHz during the time slot for the Cook Islands test broadcast

COOK ISLANDS NOT HEARD

We have had word from DXers in all parts of North America concerning the test best. It has been consistently negative. The only signal heard was a weak Havana, pretty well buried in the noise, with programming, and an open carrier in the 1050-1100 slot, then resuming the programming. There was one tentative reception, but the details available, upon later examination, seem to confirm the station heard as Havana, also.

THANK YOU, RADIO COOK ISLANDS

While writing thank you notes for your valentines, include one to Radio Cook Islands for their cooperation in making the test broadcast, one to Hank Michalenka for his work in arranging the test, and as noted above, one to Mr. Jacobs, at the VOA, for their cooperation with DXers.

And now don't forget the March 12, 1974, 10th anniversary test from Radio Maldives, when they will be presenting a NASWA Courtesy Program tape at 1100 and 1215 GMT, on 4740 kHz, using 30 kw. Send detailed reception reports, include return postage and a note of thanks. Sending a note of thanks even if you don't hear the station's test is a good policy, too.

LOUDENBOOMER REPORT

In their never-ending quest for better receiver selectivity, DXers, it seems, have discovered the audio filter.

Discovered? Hal! Unbeknownst to the latter-day audio-filter-philees, these devices have been around for years, and I, C. Loudenboomer ought to know!

For those without the Loudenboomer expertise, an audio filter may seem like a magical device. Unlike other types of selectivity devices which work in the i.f. section of your receiver, audio filters treat the signal at the end of the line, when the signal leaves the receiver.

The "beauty part" for non-technically-inclined is the ease of installation. You just plug the audio filter into the receiver's whachamacallit...you know, where the headphone gizmo usually goes. No delving into the innards of the receiver, no wiring changes, no problems with reading the schismatic. This is a great device for the fellow who doesn't know a resistor from a variable capacitor. (I hope I haven't lost you with all those technical terms, friends, but it is tough for an electronics whiz like myself to make himself understood by those less gifted.)

Basically, what an audio filter does is to attenuate audio frequencies above and below a certain center frequency, while passing those near that wavelength. Unfortunately, most audio filters are designed for CW reception and their center frequencies are normally higher than the fundamental frequencies of human speech. For a long time I'd tried in vain to design an audio filter specifically for voice audio frequencies, say one that would pass frequencies centered on about 200Hz, rather than 800Hz or higher.

Last week, however, I finally stumbled on the answer. I had attended a local musical event, a concert by the Pottstown Philharmonic in the high school gymnasium. During the intermission, I glanced about the hall and noted heavy drapes hanging on the wall. After the performance I asked the conductor the reason for the drapes.

Acoustics, he explained. The drape material absorbs the sounds and prevents all those nasty reverberations from the hard wall surfaces. The resulting sound, he noted, was more pleasant to the ear.

Well, that set me thinking. If cloth material has the property of absorbing audio frequencies, why could I not design an audio filter using the same principle?

I began experimenting. Needing some loosely woven material, I yanked the curtains from my living room windows. I must admit it puzzled my Aunt Emma when I asked to borrow her curtain stretcher and a box of starch, but I had no time to explain.

I quickly mixed up a batch of starch in the laundry tub and dipped one of my front room curtains into the thick solution. Then I fastened the curtain taughtly across the stretcher frame.

Next I hooked up my PA system, pointed the speaker toward the curtain, cranked up the amplifier's volume and began talking non-stop into the mike. The high volume of sound from the speaker caused visible vibrations in the stretched curtain as the starch dried. After an hour or so of exposure to the amplified Loudenboomer voice, the curtain had dried.

I took the stiff cloth from the rack and repaired to my basement lab for an examination under a microscope. Sure enough, my theory had proven correct. Under the lens I could see that the tiny threads that made up the warp and woof of the curtain had been bent and distorted by the bombardment of audio and had dried in that manner.

A few tests with an oscilloscope and an audio generator confirmed things; the curtain "filter" absorbed all audio frequencies except those in a rather narrow band, the fundamental between 100 and 300 Hz.

My new audio filter now hangs on a curtain rod in front of my speaker. Yes, the voices reaching the Loudenboomer ear sound a bit telephonic in quality, but the signals have come up out of the mud, heterodynes are a thing of the past, and RTTY QRM is unheard of any more.

Ah yes, my friends, Loudenboomer has done it again!



SHORTWAVE CENTER



Edward C. Shaw
NASWA - WDX4EDV
621 Burleigh Avenue
Norfolk, Va. 23506 USA

The story which follows was originated by Dr. Richard E. Wood. Updating information received from the Qatar Broadcasting Service indicates no substantial changes since the article was first prepared, and the article is published here with minor updates.

SPOTLIGHT ON QATAR

by Dr. Richard E. Wood

In the turbulence and revolt of Middle Eastern politics, one factor has been constant...the steady erosion of western, and especially British influence in the area. First Egypt, then Iraq, then - at least partly - Jordan, have expelled British influence, political advisors, etc. The greatest blow in recent years, without a doubt, was the hasty withdrawal from Aden and the dissolution of the fledgeling South Arabian Federation, established, too late, out of a group of anarchistic desert tribes, militant Aden dock-workers, brigands, bandits and Beduin.

A last-ditch stand was made. Modelled upon the success story of Kuwait, where a formerly absolutist monarch, the Sheikh, has succeeded in creating a modern nation by the wise application of oil revenues, a new federation is being established in the Gulf coast areas, welding together the same disparate factors as caused the eventual collapse of the South Arabian Federation. The main problem is that some of the petty states have oil deposits, while others have none. The absolutists rulers of the oil-rich states do not wish to finance their poorer neighbors. British advisors have tried to convince the rich Sheikhs that, if they do not extend aid to their penniless neighbors, the entire area will be racked by revolution and all alike will be swept away.



The radio voice which is trying to unite these tribes, and to convince the leaders of the desert states that unity is strength, and to counter-balance the hours of daily programming directed by Radio Cairo to the Gulf area, is the Qatar Broadcasting Service. It is staffed with moderate Arab announcers trained in the BBC Arabic service, the world's oldest Arabic speaking radio station.. having begun Arabic services before it introduced programs in French, Spanish, or German, and its Arabic service is still the most important language service. The QBS broadcasts from Doha, capital of the state of Qatar, known in Arabic as al-Dauha. Identification is "Idhaat ul-Qatar min al-Dauha."

Three frequencies are used: 674 at 50 KW and 995 at 10 KW, both on medium wave - and soon to be augmented by a 750 KW medium wave unit; and also on shortwave on 9,570 kHz in the 31 meter band, powered at a full hundred kilowatts. Future plans call for two 250 kilowatt transmitters to be installed. The short wave antenna is omni-directional, and basically intended to cover a radius of about 2000 kilometers from al-Dauha. The short wave schedule is: 0230-0600, 0930-2030, except on Fridays when the first broadcast may stay on till 0800 and the second broadcast is interrupted for an hour from 1200 to 1300. All short wave programming is in Arabic, with news, features, many Qu-ran readings and religious talks, request programs, and a large selection of Arab music. The station has a sophisticated, big-station sound, and speaks an attractive form of modern Arabic, the type of language for which the BBC Arabic service is renowned.

Best time for North American listeners is at the initial opening time just prior to 0230 GMT...say 0227. Occasionally, when Roumania has given its last identification and is silent a few minutes before beginning again at 0230, the 23-note guitar interval signal of Qatar may be heard followed by ID. Following this advice, a few North American DXers have added Qatar to their varied lists. It remains one of the rarest stations heard.

Verification is by QSL card, signed by the Director of Information, M. Shahid. Your reports should be addressed to Qatar Broadcasting Service, P.O. Box 1414, Doha, Qatar, Arabian Gulf (not Persian Gulf). QSL policy is known to be scrupulously observed, and adequate reports must include adequate details to qualify for verification.

WHICH WAY TO AFPE? INEXPENSIVE GLOBE IS GREAT AID TO ERRECTING DIPOLE ANTENNA

The very nature of dipoles using directional often causes us problems in erecting to best advantage. What areas are we most interested in for DXing? Africa? Or, Asia? which direction do we orient the antenna? An old trick used by amateurs for many years is to acquire an old globe, or an inexpensive new one ^{NEW} ^{NET}. First step is to locate your hometown and carefully note the longitude. Then we find the exact opposite point on the globe. For instance if you live at 35°55'N then the opposite latitude would be at 35°55'S. Then, if your longitude was at 105°30'W, you'd find the opposite by subtracting that from 180°... giving 74°30'E. Note that the direction is always opposite in both longitude and latitude. Now, by punching some holes in our hometown location and at the opposite point we found, we can remove the globe from its mount and reinstall it using the holes we punched. The result enables us to see at a glance the direction from our home to any point on the globe, and thus the direction to orient the broadside of our dipole.



WHAT WE NEED IS SOME PUBLICITY

It occurs to me that there could be many more people in our hobby, and therefore many more to share DX information, if only more of use would concentrate on publicizing our hobby a bit more.

One idea I intend to pursue with warmer weather is to approach managers of shopping malls and centers with the prospect of obtaining their permission to set up a couple of card tables against a wall in a busy thoroughfare of the mall. On these tables I would set up my shortwave receiver, speaker, digital clock, and all the other gear. A short antenna sufficient to pull in the powerhouse countries is all that is needed. A couple of poster paper signs made with various colored magic-markers could announce in blaring letters.... "Hear Moscow; ask operator," or, "Czechoslovakia in English at such & such hour." The posters could be decorated a bit around the borders with spare QSLs and pennants, etc.

I can imagine that some amateur radio operators may smile a bit, and even come by to help or heckle (depending on his maturity).

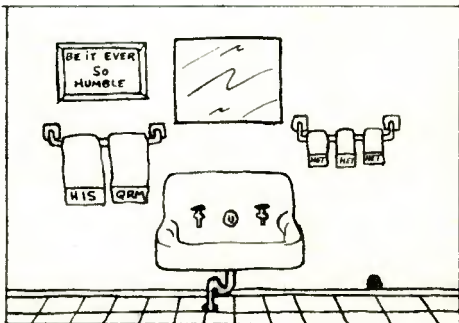
Before too long, I'd say that this set-up would be rather popular. This would be a ball for two or three DXers living in the same area. If any of you decide to try this gimmick, let Headquarters in on it. We might be able to help out out.

VERIFIED ALL CONTINENTS - QRP

FRIENDX has in the past called for members to send in VAC-QRP figures. The idea is to try getting the resultant wattage factor at it's lowest possible point. For instance:

CONTINENT	STATION	WATTS
N. AM.	CKWX Vancouver BC	6,080 10
S. AM.	Ecos Pto Martinez, Colomb.	90
Europe	Schulungssender, Austria	1,000
Africa	RC de Melange, Angola	500
Asia	RRI Jayapura, Irian INDON.	500
Oceania	Radio Fiji	500
		QRP 2,600

The lowest figure is arrived at by picking your best catch with the lowest wattage from each of the continents. It took me eight or so years to get this far, and I intend to get the European figure even lower. How about you? Send your entries today - never mind if it seems quite large. We all were that way once. Let's have them. Ed.



ALL-WAVE ANAGRAM

This isn't supposed to be difficult, just fun. Try rearranging the jumbled letters to come up with a familiar word appropriate in our hobby. Then, when you have those answers, unscramble the circled letters to give you the key to the answer.

- C-A-I-R-B-U-I-T (C) (A) (I) (R) (B) (U) (I) (T)
- S-L-Y-C-A-R-R-T (S) (L) (Y) (C) (A) (R) (R) (T)
- T-A-C-L-O-V-E (T) (A) (C) (L) (O) (V) (E)
- B-H-Y-E-N-A-T (B) (H) (Y) (E) (N) (A) (T)
- S-N-O-G-R-U-P-E (S) (N) (O) (G) (R) (U) (P) (E)
- P-E-L-S-I-O-D (P) (E) (L) (S) (I) (O) (D)

WHO SAID COLUMBIA WAS THE GEM OF THE OCEAN?
 MOST DXERS AGREE THAT THIS IS THE ONE.

WV PROPAGATION FORECASTS - A Layman's Understanding
by Al Miller & Ed Shaw

It really isn't that hard. Everyone has heard WV at 14 and 18 minutes past the hour, but what does all that gobble-de-gook mean? A few questions in an intelligent letter to the Office of Telecommunication Sciences for the Department of Commerce brought a reply from Mr. Kent D. Boggs, Ionospheric Forecaster. His agency is responsible for all those figures we hear on WV. Basically, the WV announcements have to do with the qualities of radio communication across the Atlantic Ocean paths. However, they may be applied to other high latitude circuits by allowing for local time differences.

At the 14th minute of each hour, WV announces a spoken code. This is the 6-hour forecast and is repeated each hour. Updated changes are made at 0100, 0700, 1300, and 1900 U.T. The spoken code may be one of three letters; N, U, or W - followed by a number from 1 to 9. N means quiet conditions, U means unsettled, and W means disturbed conditions. The numbers start at 1 for useless quality up to 9 which is excellent.

At 18 minutes past the hour, the voice gives a value of solar flux and another for the A-index.

Solar flux measurements are taken at an observatory in Ottawa three times a day. This measurement provides us knowledge of the amount of activity on the sun's surface. It has a close relationship with the number of sunspots and other activities.

A-index is a daily evaluation applied to the variations in the Earth's magnetic field caused by emissions from the sun. The value is given in a range from zero to 400, in which zero is absolutely quiet, and 400 is very severely disturbed. These readings are obtained from a special observatory in Fredericksburg, Virginia south of Washington, D.C.

Let's examine solar activity which can affect radio communications. In general, the higher level of solar flux, the higher the usable frequency for a given transmitter-to-target path. Solar flux rises and falls in an eleven-year cycle. At maximum, the average monthly value may be higher than 200 - at which time much higher frequencies could be used effectively than would ordinarily be possible during the part of the cycle when solar activity was at lowest ebb. Solar flux plays an important role in determining the day-to-day density of the Earth's ionosphere and its ability to reflect shortwaves. Short wave broadcasting depends upon the ionosphere reflecting a signal so it will bounce down over the horizon to a faraway target. A ground wave will go only to the horizon. (Fig A)

Another type of solar activity is the solar flare - a huge explosion event - flaring out unimaginably immense amounts of energy in all directions. This energy travels at the speed of light, enters our ionosphere, and causes certain layers there to absorb many radio frequencies. These flares explain the cause of Sudden Ionospheric Disturbances, called SID's. The duration may last from a few minutes to several hours. Lowest frequencies will fail first, then higher ones. As normal begins to return, the higher frequencies fade back first, soon followed by the lower frequencies. Only the sunlit portion of the globe is so effected.

THE SUN'S RAYS DIRECTLY AFFECT THE DENSITY OF EARTH'S IONOSPHERE - AND SOMETIMES CAUSE MAGNETIC STORMS - TO CHANGE THE QUALITY OF SHORTWAVE RECEPTION.

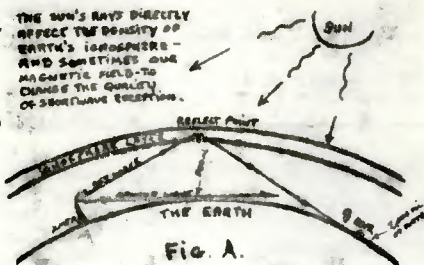


Fig. A.

A secondary effect of flares is that a slower wave of moving particles follows in the wake of the initial flare, and this produces disturbances in the Earth's magnetic field, changes in the A-index. These secondary changes begin to take effect from 18 to 72 hours after the initial solar flare, and may last up to 36 hours - however, the secondary effect does not always follow every solar flare.

Still another type of disturbance of the Earth's geomagnetic field comes from some little known type of surface activity on the sun which is recurrent over a cycle of 27 days - the period of the sun's revolution on its axis. This recurrent disturbance builds up and decreases gradually, rather than suddenly as in the case of solar flares.

In general, it might be expected that for quiet to mildly unsettled geomagnetic conditions, an A-index rating would be about 0-15; and moderately disturbed conditions would merit - say 50. A value of 100 or more indicates a severely disturbed condition during which time communications above the tropic line would be almost impossible. There is reliable evidence that this same geomagnetic disturbance may cause enhanced reception conditions between a tropical broadcaster and listener in higher latitudes. Several of NASWA's more prominent DXers and those of other clubs have made a greater in-depth study of this phenomenon. One memorable occurrence was during late July of 1972 during just such a wipe-out condition. The bands were dead - except for low frequencies into the tropic zones. Many DXers were amazed to hear, in broad daylight on 3,300 kHz, a call from Africa at 1900....."Ici, Bujumbura", the Voice of the Revolution in Burundi.

Edward Insinger, Summit, New Jersey. Ed uses a Drake 3M-4A receiver and a center-fed dipole 100' long. He began DXing in 1968 with a Heathkit GR-64. His HCJB QSL was the first one received. Ed has recently turned more to serious DXing. The hobby has presented him some worthwhile moments, including the QSL letter he received from Trans-World Radio confirming his report as the most detailed and accurate they had ever received. Ed believes that this hobby is downright amazing and has widened his horizons and outlook on world affairs.



David C. Hunt, 611 West Columbia Street, Chippewa Falls, Wisconsin, 54729, is a relatively new member of NASWA. His receivers include a Hallicrafters SX-110 and an Air-castle 8-band portable. Dave has erected two 75-foot longwires and two folded dipoles for 31 and 25 meters. At 16, he has been DXing for about two years and has 41 countries verified out of 54 logged. He has a total of 162 QSL's. Welcome to NASWA, Dave. The set-up you have seems ideal for DXing and it's very attractive.



HOW'S THAT, AGAIN?

Thumbing through the WRTM and other recent log reports, we come across some pretty scary looking names; it taxes our senses to spill them, much less pronounce them. But, it is worth the effort to learn how to say what you're talking about, and the following familiar looking words can be used as a practice lesson. Try to learn a few each month.

- | | | | |
|--------------|---------------------------------|------------|--------------------------------|
| NIGER | - Nee-ZHER (as in Sonny & Zher) | ZAHZE | - Zah-EEZ |
| NEW HEBRIDES | - New HEB-rid-ees | LOURENCO | - Lo-REN-so-MARK-ush |
| PETROZOVODSK | - P'TRAHZ-ab-VAHDSK | MARQUES | (say it quickly like one word) |
| JUTICALPA | - Hooty-CAL-pah | JAYAPURA | - YAH-yah-POOR-ah |
| BARQUISIMETO | - Bar-BY-see-MET-oh | MAURITIUS | - Mawr-RISH-us |
| OUAGADOUGOU | - WAH-ga-DOO-goo | LUBUMBASHI | - LOO-bum-BOSH-ee |

Brazil Radio Station Gets World Fame

BY DAVID ADAL

From Hanoi to Hamburg, a new airwave is competing with Radio Havana, Radio Peking, Radio Moscow, and the Voice of America. That seems unlikely company for the ten kilowatt-strong Radio Nacional de Brasilia. But, we've gotten letters from the most unimaginable places according to Jose Mauricio de Carvalho, head of the government station's international division. Brazil's new international short wave voice has just completed its first anniversary. It is pounding out samba and news in six different languages and the results have surprised even its organizers. English, French, German, Italian, Spanish, and Portuguese may soon be joined by Japanese as a result. A survey by an American short wave listeners association, recently released here, even said the fledgling station had bypassed Radio Moscow and Radio Peking in world listener popularity. "We don't have official programming and the idea is to show the world the new and real image of Brazil, in a way so as not to confuse information with propaganda", Carvalho says. Because of its reduced transmitting capacity - the BBC by comparison has over 500 kilowatts of power - "the world" has meant Europe for Radio Nacional. "We discovered that the Germans go to bed early, so that was the first language starting our program. With the equipment we have now we get more results in Europe, but we do have letters from the United States and Canada, showing that it gets there, too. We've even gotten letters from Japan - in Portuguese. Vietnam, the Falkland Islands, Iceland, Central Africa, and New Zealand have been some of the unlikely places which have also responded. This promises to expand when next year new transmitters are installed. Radio Nacional has just signed a \$15 million contract to import 12 transmitters from a Swiss firm (Brown-Boveri, ed.). This includes a 500 KW giant which will make Brazil more competitive in the international "war" for short wave listening audiences. A typical program has popular Brazilian music, news, and a "people and Places" look at Brazil. "We cannot offer listeners gold pens or trips to Brazil in promotional drawings as some stations do. Our promotional system is to reply to each and every one of the 500 letters which reach us every month." Submitted by Bill Coleman, Rocky Mount, NC

ANOTHER
FRENCH
SPECIAL
REPORT

NATIONAL'S HRO-500 RECEIVER - Consumer's Report

EXCLUSIVE

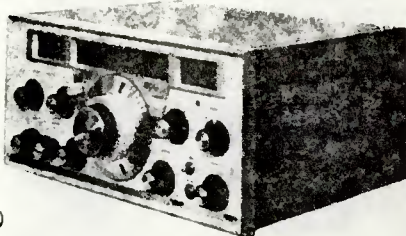
by A. A. MILLER, Jr.

EVALUATION

When Ed Shaw asked me to write a consumer's evaluation of my HRO-500, he asked that it encompass more than just the manufacturer's specification claims, and so I present here my personal opinions, techniques, and tips as well.

The HRO-500 is a solid state communications receiver incorporating 37 transistors and 12 diodes. It covers a frequency range of 5 kHz to 30 mhz in sixty 500 kHz bands with no breaks in the entire spectrum. For the Low Frequency (LF) range of 5-500 kHz (in which I have no interest at present) the manufacturer recommends a matching LF-10 preselector to improve sensitivity and dynamic range. Maybe someday I'll buy one, but the price is a little steep for such limited usage.

Tuning is very simple. The band switch selects five ranges; then I choose the mhz band desired and adjust the Synthesizer Tuner to the lowest .5 mhz nearest the desired frequency. For example, to get 9,770 kHz set the band switch (2nd on bottom, left) to the 4.0 to 10.0 mhz range, and the Synthesizer knob (1st knob, top left) to 9.5 mhz. Then, turn the main tuning dial (center) to 270 kHz. Adding 270 to 9.5 mhz gives 9,770 kHz. Next, I adjust the preselector dial (2nd knob top left) to correspond to the tuned frequency. This controls the peak of 3 separate RF circuits. Selectivity can be chosen from four bandwidths of .5, 2.5, 5.0, and 8.0 kHz. I do practically all my listening with the 2.5 kHz. I find fidelity is adequate while using this bandwidth which is sufficient to sharply attenuate side QRM from adjacent stations. However, if I want to listen to "Happy Station" from Bonaire, I will open the bandwidth to 5.0 for better fidelity. To help even more in selectivity, there is a Rejection notch filter (1st knob top, right) which is quite handy in separating interfering stations that are just a few kHz apart.



Operation modes are AM, SSB, both Upper and Lower. Every so often it is interesting to see what the Hams are saying, or to ungarble utility test tapes. The HRO-500 uses a true Passband Tuning method (2nd knob, top right) to flatten out either LSB or USB to make the signal intelligible.

The main tuning dial may be adjusted for exact calibration every 50 kHz of the 500 kHz band. I find that changes in humidity do have a small effect on the dial setting (1 or 2 kHz), so it is quite convenient to be able to calibrate the dial, and enable me to argue fractional frequencies with other SML's through pages of the Log Report. Hi.

The HRO-500 has three antenna connections or inputs - 50 ohms, unspecified high impedance, (probably 300 ohms, ed), and one for the LF. I use a longwire antenna with unknown impedance, though most longwires are usually 50-100 ohms. It is handy to be able to shift the selection switch for best results when digging for the weak ones.

The receiver is capable of exalted carrier reception. This is done by using the SSB function to receive one sideband of the signal and then removing the carrier with the Rejection control. I try this approach where interference is severe. (Fine technique, Al - it's plain you are a discriminating DXer. ed.) There are two other controls; AGC and RF Gain. Without knowing exactly why, I do use them in various difficult situations to see if they will improve reception. Strangely enough, quite often they do by knocking off the top of bad static or dampening background noises. I'm no expert on circuitry and have never gone inside my HRO-500 with a soldering gun or wire cutters, but I can replace the burned out bulbs. I've had the receiver since November 1970 and have logged 144 countries, verifying 121 thus far. (Welcome to the DXCC, Al)

Shortly after I bought the receiver, trouble developed with the phase lock which governs the stability of the receiver crystal synthesizer. The culprit was a malfunctioning transistor which was replaced without realigning being necessary. Perry Ferrel of GILVER seemed concerned as to whether any cross-modulation (phantom signals) was being generated within my receiver, but I could detect none that were so generated. At one time, WNTW was operating on parallel frequencies only 90 kHz apart and I found a third WNTW nearby another 90 kHz away, but I attribute this to the station's transmitter problem.

(Go to next page, HRO-500 Consumer's Evaluation)

HRO-500 CONSUMER'S EVALUATION - (Continued)

To arrive at my decision to invest in the HRO-500, I checked many receivers; all the Drake, Galaxy R-530, Hammarlund, Hallicrafters, and so on. They were all good, and many had fine features. My mind was made up when I read Bob LaRose's summary in the 1969/70 How To Listen to the World. He had an article, "Trends in Receiver Development in America" in which he wrote, "The HRO-500 is probably the finest receiver in availability today for the listener." Although it is relatively expensive, its price is still within the reach of many listeners. It is also probably the most versatile receiver available. Its complete coverage of frequencies, modes and signal control make it a truly 'dream' receiver. A.A. Miller, Jr.

Many thanks, Al, for this enlightening report - the first I've seen anywhere. The retail price for this receiver hovers around the \$1600.00 mark, although some dealers have been known to give exceptionally good deals, especially if you have something worthwhile to trade it. On the other hand, your editor recently observed a used HRO-500 in mint condition according to the owner, for sale for \$500 in the Norfolk area. Sigh!...we just don't have it at present.



YOUNGEST MEMBERS

NASMA would like to recognize the young DXers in our midst. Without a continuing influx of new and young DXers, our hobby would soon become laden with all old people. As a special feature from time-to-time, as photos sent in allows we would like to feature these student age members. All members still in school are requested to send in pictures of themselves. We need light, clear, black and white photos of you at the receiver. Color student pix can't help us.

Jim Davis, age 13, lives at Travis Air Force Base, California, uses a Grundig 700U radio and a Panasonic tape recorder. We'd like to know what this VCVS filter is you describe, Jim. His antenna is a 50 foot longwire and has logged 27 countries, verifying 25 since he began DXing two years ago at age 11. Jim read about NASMA in the W7TH.

QUITO CALLS ON CORKY WEBB - A Pleasant Surprise

by Corky Webb

On Monday night, October 15th, I had just entered my shack and fired up the SFR-4 and was all set to rack up 2-3 more countries to my totals when the telephone rang. I answered, and the pleasant voice asked if I were Cornelius Webb. Trying to remember the names of past old flames while picturing who this could be, I answered in the affirmative. "This is Margaret Gowen from HCJB in Quito, Ecuador". I played it cool.....as though I got calls from radio personalities every day....., and asked if she was here in Dallas. (I didn't really think she was calling me from Quito). She replied, yes, and that she and husband Travis were spending three months in the states traveling to various cities and were conducting services in each place. They had been to Miami, to Memphis, and also Tulsa. They were going to have a service the next evening and wanted to meet me. I assured her that I'd make every effort, and then gave her a couple of other telephone numbers she needed.

It happens that NASMA member, Amy Froelich also lives in my neck of the woods, and I called on her to visit with the Gowens at the Friendship Baptist Church. We were both delighted to meet them, and I asked if we could make a tape recording and take some pictures, which we did. (Unfortunately, Corky's and Amy's picture with the Gowens was too dark to use with this story).

Travis remarked on the station's progress, read a few letters from listeners, and mentioned some of the station's plans. These included increasing HCJB's power to to a full M-E-G-A-W-A-T-T, as well as to replace their existing curtain array antenna with another using a diesel-powered switching system. The remainder of the service showed how effective the Gowen's were - Travis is a wonderful colored chalk artist, illustrating typical Quito street scenery; and Margaret sang, played piano and described life in Ecuador. We were on immediate first name bases with the Gowen's, and this meeting only proves again that there are no strangers in the SWL hobby, and that some personal rewards are available to many who correspond regularly with HCJB. We enjoyed ourselves.

A DUMB LITTLE ANTENNA THAT REALLY WORKS - Ed Shaw

**A 60 Meter
SOOPER
SNOOPER**

This little antenna is a project in pleasure. In the construction of this jim-dandy portable unit, the results of how RF coils work are learned. The theory is simplicity itself. The antenna is adjusted to a length which is an exact fraction of a wave length you want to use it with. However, the antenna length may also be some fractional length of other wave lengths you do NOT desire to hear. That is where the coil comes in. The number of turns in the coil, together with the size of the coil, determines which one of the aforementioned wave lengths it will let through to the variable capacitor. Since a specific size coil will be good for only one exact frequency, the variable capacitor lets us vary the value of the coil just ever-so-much, which enables us to use this antenna with equal effectiveness over the entire 60 meter band width..... and then some.

I acquired the plan for this little gem from an antiquated issue of a radio hobby magazine from the 1930's - borrowed from Don Jensen when the two of us were visiting in Charleston, West Virginia two years ago with several other DXers. I fell in love with the design immediately as I am a sucker for nifty and gee-whis DX items.

The original plans called for a piece of brass tubing of 1/4" dia. but trying to find that article was a near impossibility for me. I finally did locate a suitable piece, but the cost of it overcame my love of the antenna, and I settled for a replacement, collapsible antenna from Radio Shack (and, later found out that these antenna replacements are made of brass, chrome plated). The substitute proved to be a better bargain, both in price and practicality since I can vary the length very easily.

The coil of 90 turns, as it proves out, is really useful from about 3.5 to about 6.3 MHz, and encompasses the 75, 60, and 49 meter bands. I seldom use it for anything other than 60 meters, though.

But, you want to know the odd thing about this antenna? It works! Frankly, I was not really amazed...surprised is more the word. I actually had expected the unit to work like a 3-foot piece of wire, which is the length of the antenna when pulled out.

According to the original instructions, you can lessen the number of turns in the coil to 83, shorten the antenna to 22 inches, and use it for up to 6.5 MHz. I find I can do that anyway. Also, you can add turns to total 120, and use the full 3-feet of antenna and it becomes resonant down to 90 meters.

I mounted the three components on and in a plastic box, but it takes little ingenuity to figure out how.

One neat use for this antenna I discovered was to make a portable SW radio I owned more efficient. I simply wrapped a turn or two of the wire coming off the capacitor around the ferrite core antenna, and caused the 75/60/49 meter section of the portable's SW dial to come alive.

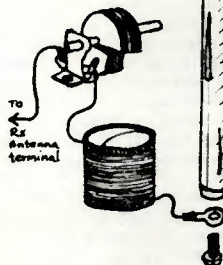
While this small performer will not run rings around your outdoor antenna, I do believe it is as good as a random 25 foot length of wire strung adjacent to your house at ten feet off the ground (and, that is what many are confined to). You can expect to find it gives a good signal-to-noise ratio, though. I expect that is because the antenna element is so very small and is restricted only to coherent frequencies governed by the physics of the coil.

Try it! It takes about two hours if you have the parts. You may find it a favorite plaything.

Ed Shaw

PARTS LIST

- 1 - Collapsible antenna
- 1 - .000365 mfd variable capacitor
- 1 - Coil, 1-1/4" outside diam. 90 turns of #22 enameled copper wire.



Instructions:

Adjust antenna to 36" length exactly. Attach to receiver antenna terminal. Tune capacitor to peak.



CLANDESTINE BULLETIN

Larry Magne, 1315 Pine Street, Philadelphia PA 19107 USA, Tel. 215-KI5-7699

WILL THE REAL RADIO EUZKADI PLEASE STAND UP!

Part II

by Don Jensen

Eventually evidence was unearthed indicating Professor Galindez had been kidnapped by Trujillo agents, drugged and smuggled unconscious aboard a chartered plane. He was flown to the Dominican Republic and, presumably, tortured and slain!

When the hired American pilot, who thought his passenger was only an invalid, began asking too many questions, he was pushed into the shark-infested sea behind a Ciudad Trujillo slaughterhouse. It is worth noting, too, that Trujillo himself was assassinated a few years later, during a coup d'etat (according to a reliable Washington news source, the coup was staged by the U.S. as a result of a direct order from then-President Lyndon Johnson -- Ed.).

The grisly story bears on the Radio Euzkadi probe because of newspaper articles published shortly after Galindez disappeared. They told of reports the professor had filed, as a foreign agent, with the U.S. Department of Justice. The reports showed he'd collected \$1,023,004 during the previous seven years. The newspapers said only half this amount had found its way into the exiled government's coffers.

Subsequently, President Aguirre denied this, explaining the rest went directly to the Basque underground in Spain and to various exile groups around the world.

"Every cent was accounted for", he insisted.

But, as Time magazine put it, how could "an obscure exile...pass the hat for a non-recognized government of a nonexistent country -- and take in a cool million?"

Trujillo's ambassador tried to link the money to the communists, but, in fact, it came, and it continues to come, from the contributions of Basques living outside Spain, most of them in the western hemisphere. Each year these emigrants pay a head tax to the Basque government to maintain their dual citizenships in the shadowy nation. A note in the January-February issue of the Newspaper, Euzko Deya, reminded overseas Basques to renew their "citizenship card" by sending in their contributions.

Apparently -- judging from the return address and postal meter number -- one place tied in with this overseas operation is JFN Associates, Incorporated, 77 Water Street, New York NY 10005. An investigator checked them out after some SWLs began receiving the Basque newspaper, Gudari, from JFN. What he found was not a public relations outfit or propaganda agency, but an interior decorating outfit. From the manager on down everybody claimed no knowledge of or connection with the Basques...but a check in the mailroom revealed the Pitney Bowles meter number to be exactly that found on the envelopes!

A background check of the JFN hierarchy revealed none that are known agents of the CIA.

Radio Euzkadi's programs apparently are taped in Caracas, but news items for its daily, "Noticias de Espana y El Mundo", are culled from newspapers at the Paris headquarters. One whole room is stacked with old papers clipped by the press officer. News scripts are airmailed to a blind postal drop in Venezuela. Other material comes from Basque communities around the world.

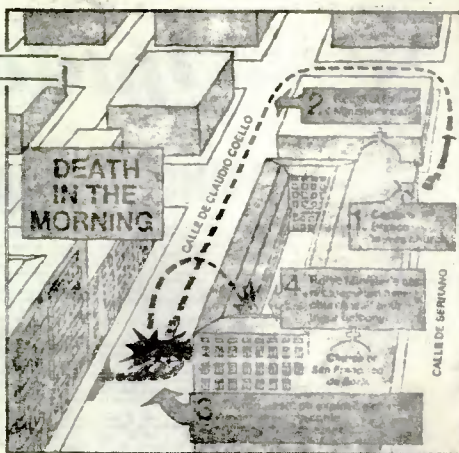
One pre-Blanco assassination program began with a reply to a Spanish television program, followed by a sad folk song about a faithful burro who carried his master's body to the grave. After another Spanish language commentary, the program switched to Euzkera and a talk about anti-Franco posters which mysteriously appeared on walls in Bilbao. The ten-minute newscast wrapped up the half-hour program.

Now, however, the commentaries and news have a more serious tone.

According to the QSI card, transmitter powers are 80 kilowatts, and Basque sources



After the blast: 'A diabolically precise job'



The Day of the Jackal

...

Last December ETA agents assassinated Spanish Premier Luis Carrero Blanco (above and left). It was considered the sharpest anti-Franco violence since the end of the Spanish Civil War 34 years earlier.

ETA operates clandestine "Radio Euzkadi" from a site in Caracas, Venezuela.

(Courtesy of Newsweek)

...

swear this is so. Some SWL's doubt the stations are this powerful, though.

The Spanish reaction to Radio Euzkadi? Jamming! Several multi-beepers are used against the two outlets.

The technique is to spot a beeper, sometimes a bracketing pair, a few



Assassins meet the press: For 'freedom, independence, reunion, socialism'

...

kiloHertz from Euzkadi's signal. The constant beeping, and an annoying heterodyne, are supposed to make the programs unlistenable. But because of the station's evasive tactics and sloppy jammer operation, it isn't too successful.

Confirmation comes from a Basque student living in Madrid. Luis E. -- he cannot be identified for his own safety -- wrote, "I was on vacation in the Basque country at Christmas. I heard nearly every day Radio Euzkadi. It was coming through fine, though there was sometimes jamming. In Madrid, though, Radio Euzkadi is jammed at all times. Strong noise is heard and no signals."

From that and other reports we now know the Spanish jammers used against Radio Euzkadi and Radio Independent Spain are located in the Madrid region, although a firsthand visit confirmed that the jammers are not located at the Radio Nacional de Espana transmitter site at Arganda, near Madrid.

In North America Radio Euzkadi is audible nearly every day, and with careful tuning jamming is not a major problem. Listeners reports are appreciated and are often verified by QSL card. Sr. Priscilliano Garcia keeps a careful file of DXers letters. He's particularly proud of those which represent really long-haul reception, such as one from a B.H. Withers of Christchurch, New Zealand. Radio Euzkadi's mailing address is B.P. 59, Poste Centrale.

VOICE OF LIBERTY ("A Voz da Liberdade"), after going through a brief name change (Voice of the Revolution), folded up its tent on December 30, 1973, according to the EBC MS. The station, which opposed both the Portuguese government and Portuguese Communist Party (which, in turn, broadcasts clandestinely "Radio Free Portugal"), utilized the facilities of RTV Antenne. It was jammed, but only on its medium-wave channels.

RADIO LIBERATION ("Radio Libertação"), very much alive via its own transmitters on 6240, 9585 and 15275, but seemingly no longer transmitted via Radio Conakry between 2300-2330 Mon/Wed/Fri/Sun. The fate of Radio Liberation via Radio Senegal and Radio Mauritania is as yet not known.

REINCARNATIONS AND OTHER NEWS

Clandestines have a zombielike way of arising from their tombs, as we see with the following:

VOICE OF THE LIBERATION ARMY ("Chiehfang Chun Chih Sheng"), off since June, 1972, is now (since December, 1973) noted in Japan by Isao Ugusa as having been reactivated on at least one of its former channels, 9660 kHz, from 1000-1010v and 1030-1040v. The ID is as before, but the s/on and s/off anthem is now the "Internationale" rather than the more nationalistic "March of the Volunteers". The station, one of the most widely-heard of the Chinese-language Soviet-based black clandestines during the Cultural Revolution, was pro-Liu Shao Chi and anti-Mao Tse-tung. It was and is heavily jammed, but intelligible reception is often possible.

The former schedule, which could be more or less implemented in the near future, was: 0930 on 9660; 1000 on 9660, 11793; 1030 on 9660, 11793; 1100 on 9660; 1115 on 15050; 1200 on 9660; 1230 on 7290; 1245 on 11793; 1300 on 9600, 9660; 1315 on 7290, 15050; 1400 on 9660, 11793; 1500 on 7290; and 1600 on 7290.

VOICE OF THE PATRIOTIC MILITIAMEN'S FRONT ("Tieng Noi Cua Mat Tran Dan Ai Quoc"), off in June, 1973, has made an unexpected comeback, according to Sri Lankan Victor Goonetilleke. It has been noted since December with roughly the following schedule: 0400-0500, 0900-0950, 1400-1500 on 7216 kHz; the outlet on 9430v is still inactive.

The station continues to broadcast black propaganda to the Vietnamese peasantry. It is located in northern South Vietnam and presumably run by the South Vietnamese Government with the assistance of U.S. counterintelligence.

MOTHER OF VIETNAM ("Me a Vietnam"), formerly the Voice of Freedom, has for nearly two years broadcast on various frequencies soft, pleasant, pro-Western programming on a semi-clandestine basis. However, only recently were the details of its operation brought out by Lars Ryden and others in Japan.

It broadcasts from, it appears, Hue on MW, but from a different site on shortwave. This is the usual case when, as with the Mother of Vietnam, different channels are broadcast in parallel, but out-of-phase. The site of the shortwave transmitters is not yet established.

The schedule appears to be nearly 24 hours per day on 655, 677, 7085 and 9810. Verifications are very likely not forthcoming.

UNITED LAO RACES ("Stani Withayu Flo Kung Hang"), off since early 1972 (one report says early 1971), but back on since late 1973, according to Victor Goonetilleke, at least on one of its two former channels. The pro-Western station, broadcasting in Laotian, Vietnamese, and 4 other languages, was once scheduled 1015a-1600 on 4500, 7500/7600. So far, only the 5 kw 4500v transmitter has been traced, reportedly varying down to 4494.

RADIO REVOLUTIONARY PARTY FOR THE KOREAN REUNIFICATION ("Chosen Tougl Hangwyindang Pang Song") is reportedly a new black clandestine operated by the South Korean CIA, noted since December. It is strong, clear, but jammed with an A-2 CW signal. Programs consist of North Korean weather forecasts and dictation-speed readings of Kim Il Sung's speeches by a female announcer. The aim of the station is apparently to counter the North Korean "Voice of the Revolutionary Party for Reunification". The schedule, as traced so far, is 1130v-1140v on 4695 kHz. It signs on with march music, then the ID.

LIBERATION RADIO/RADIO LIBERATE THE SOUTHERN PART ("Dai Phat Thanh Giai-Phong"), seemingly a new Vietcong operation, but possibly a black Saigon/US operation, is a facsimile of the BS of the regular "Liberation Radio". Buried under Peking, it is noted on 6320 from 1300-1320, 1330-1350, and 1400-1420.

VOICE OF THE REVOLUTIONARY PARTY FOR REUNIFICATION, reported on in detail in the December, 1973, issue of FRENDEX, has added a powerful new transmitter to its operation and is now widely heard mornings throughout North America. The new transmitter, varying around 4121, is located at Haiju, along with the other 2 transmitters, according to the EBC MS. The new schedule is 2100-2300 in Korean on 1135v, 4561v; 1000-1400 in Korean on 1135v, 4121v, 4561v; and 1400-1430 in English on 1135v, 4121v, 4561v.

RADIO CLAMOR ("Radio Khorush"), audible in North America, has been active since December 22, 1973, according to the EBC MS. It is scheduled 0230-0330 & 1930-2030 in Farsi on 7099 kHz.

LOG REPORT

MASWA LOG REPORT
M. R. LEONHARDT
P.O. BOX 1132
RICHMOND, INDIANA 47374
Deadline: 12th of month

When reporting, write on only one side of the paper, list items in order by frequency. It helps the editors greatly if you use the format used in LR. Please avoid non-standard abbreviations. Leave space between each item, so the editors will have some room to work. Identify each item by your last name (or initial & last name). Mail direct to the LR address, in time to reach Mac by the 12th of the month. Thank you - HDQ.

- 2300 N.KOREA Pyong. HS in KK most morns 1335 t/i to 1415 f/o (B.Davis)
2340 CHINA Poochow CC, mx 1340 t/i to 1430 f/o (B.Davis)
2350 INDON. Yogyakarta EE lang. less. 1130-45 // 5047 where also hrd. 1/19 2M from UNID Indon. on 2360 (Padula)
2360 GUAT. R.Maya 0139-0230 SS tx, rel px (Gollmer, Rippel)
2428 PAP/N.G. R.New Ireland 1100 on 2/7 nat'l choral mx, YL ann. chimes ID, sket now says 1230* (Sparks)
2446 REUNION St.Denis OM in FF w/converts. at 1452, mx past the hr to 1503 // 4807 (Sparks)
2510 S.KOREA Taegu HXK50 mx px 1330 fades by 1415 (B.Davis)
3015 N.KOREA Pyong. fair to gud in JJ 1340 t/i - 1350 t/o (B.Davis)
3148 UNID 0710 in GG w/#'s by YL 1/14 (Eichenhorn)
3180 Spen. #'s sta. YL ann. 1/20 (Jones)
3198 CHINA Fukien fair CC, mx pgm 1340-1415-30 f/o (B.Davis)
3200 CHINA Fukien 1009-1100 maw tx // 3400, 3535, 3900 (Estes, Zilmer)
3204 NIGERIA NBC Ibadan 2215, EE, UTE QEM (Rippel)
3213 VENEZ. R.Valera ID 1111, signal off 1113 (Schnabel)
3220 ECUADOR LV de la Penn. 0620 ID by YL (Schnabel)
3220 CHINA RP 1540 2/7 CC HS // 3290 (Bowlby)
3223 INDON. PRI-Mataram, "the boxer" at 1027, seemed like lcl mx at 1030 w/OM in Indo. (Young)
3225 VENEZ. R.Occidente 1105 SS tx, mx (Zilmer)
3227 LIBERIA KLWA 0615-0722 tx in lang (DAB, Eichenhorn)
3230 TAIWAN Taipei (presumed) at 1000 nx in CC w/ several fef. to Taipei 1/19 (Treibel)
3235 INDIA AIR-Gauhati 1457 2/2 Asian mx to 1530, AIR ID then EE nx (Bowlby)
3240 PERU R.America 0200, best lvl evr, 1/12 (Dexter) 1115 SS, Peruvian style mx (Zilmer)
3245 VENEZ. R.Libertador 0045-0400, 1100, SS tx, mx, ads, ID (Duba, Mayer, Rippel, Paachke, Zilmer) also noted 1/17 in AA 0045-0100 w/chants in prog (Tuchscherer)
3245 PAP/N.G. R.Kerema 0930 1/27 c&w mx, chimes ID, TC, wiped out by Libertador 1000 (Sparks)
3250 S.AFRICA SABO 2220-0210 EE, mx, ads, some Afrikk. (many)
3250 INDON. PRI-Bandjarmasin 1445-1455 Indo mx, relay Jakarta at 1500 (Sparks, Bowlby)
3255t INDIA AIR-Delhi 1455 2/2 OM in lang (Bowlby)
3255 VENEZ. LV del Tigre 0130-0200, 1050, SS, LA mx (Yamron, Zilmer)
3260 CHINA RP 1450 2/2 CC, list Kweiyang (Bowlby)
3270 ECUADOR R.Cosmopolita 0329 w/ID, Andean mx, US tunes, UTE (Dexter)
3262.5 GG #'s sta. 0530 IS, 5 digit # groups by YL 1/22 (Behr)
3275 VENEZ. R.Mara 0305-0350 2/9 SS, LA & pop mx, 0358* (Tuch'er, Sparks)
3280 ECUADOR LV del Napo 0300-0325* SS, LA & rel mx (Tuch'er, Zilmer)
3290 GUYANA Action R. 0810 musical IS to *0845 in EE7, OM tx. 0945-1010 EE, nx, mx (Sellers, Falkenhan)
3290 CHINA RP 1448 CC // 1320 (Bowlby) 1345 t/i - 1430 f/o (B.Davis)
3293 ZAMBIA ZBS Lusaka 0350-0410, ID, vern, Afr mx 1/15 (Schwartz)
3295 VENEZ. R.Trujillo 0215, 1055, SS, LA mx (Duba, Zilmer)
3295 INDIA AIR-Delhi? IS at 1427 to 1430, ann by OM in lang., Indian mx 1429 (Young)
3300 BURUNDI Bujumbura 0405 nx in Afr. lang into FF nx 0416, Swahili at 0433 (Duba)
3300 NORTWARD ISLES 0053 1/23 EE, ID (Jones)
3300 GUAT. R.Cultural 0735-1130 SS, tx, mx (Eich'horn, Jones, Zilmer)
3305 INDIA AIR-Banahi 1445 2/2 Asain mx, tx by YL (Bowlby)
3306 RHODESIA RB 0330-0433 EE/Afrikk. lcl mx, BBC nx 0400 (Mayer, Corson, Tuchscherer)
3315 INDIA AIR-Bhopal 1440 2/2 OM in Asian lang. (Bowlby)

- 3320 CHINA XI pgn 1330 t/1- 1400 t/o (B.Davis)
 3320 N.KOREA Pyong. 1330 lang tx, mx 1/26 (Zilmer)
 3323 INDON. UNID outlet to 1300* on 1/10 (Dexter)
 3325 ECUADOR Ondas Quevedenas 0510-0602* Ecuad. mx (Tuchscherer,DAB)
 3325 GUAT. R.Maya 09-5,1200-30 SS, mx (Eichenhorn,Corson)
 3325 VENEZ. R.Monagas 0145-0402, 1015-32, SS, LA mx, "popular y roman-
 tica"-mx (Tuchscherer,Jones,Duba)
 3336 UNID poss. General 0015-0130* FF, bell carillon IS, resumed
 xmission 0137 FF (Schwartz)
 3339 ZANZIBAR 0330-0352 Swa., chants, OM tx (Corson,Yamron)
 3340 UNID FF sta. 0045 1/26 Afr/FF mx (Schnabel)
 3340 HAITI 4VE 0002-30, 1115-32, EE, rel px (Tuchscherer,Jones)
 3340t ECUADOR R.El Mar 1115 SS, tx, mx, audio distorted (Zilmer)
 3343 UNID presumed Russian fishing fleet, hrd very loud as I live
 right on the Jersey coast, 1300-20, 1400-20, all RR inter ship
 communications 2/22 (Straus)
 3345t ANGOLA R.31 do Huambo 2250 PP 1/15 (Schwartz)
 3345 PHILIPPINES FEBC rel pgn in EE 1450, ID and 1500* (Sparks)
 3346 ZAMBIA 0320-0415 EE/vern, EE ID 0350 (Dexter,Corson)
 3355 VENEZ. R.Valencia 0130 SS,LA mx, ID (Duba)
 3360 GUAT. LV de Nahuala 0150-0330, 1100-1200, SS,LA mx, anns (10 rpters
 3360 PAP/N.G. R.Milne Bay 1225 EE tx, closing anns. 1230*, w/GSTQ
 (Yamron)
 3365 DOM.REP. R.Exitos 0100 lively mx, tx (Yamron)
 3366 GHANA Accra 2235-45 ID,EE,OM rel pgn 1/20 (Schwartz)
 3375 INDON. RRI-Jember EE pops 0945, lcl ID 1000, 5pm lcl time in Sing-
 apore where Jember observed as strongest RRI outlet on 90 in
 late aft. 1/19 (Padula)
 3375 ANGOLA EM.Off. 2318-0001*, 0200* PP, inst. mx, YL ann. s/off
 w/AP & Angola e Nossa (Lineback)
 3378 ECUADOR R.Iris 1120-33 SS, LA mx, 1120-ID, Andean mx (Jones,
 Schnabel)
 3380 AZAD KASHMIR 1450 1/25 Pakis. type mx, Urdu tx, ID, drifting
 down to close to 3378 at times (Sparks)
 3380 GUAT. R.Chortis 0145, 1105-23 SS, LA mx (Schnabel,Zilmer,Hard'ster
 3380 BOLIVIA R.Reyes 0005 ID, SS 1/21 (Schwartz)
 3385 PAP/N.G. R.Rabaul 0927 1/31 lang. steel-drum mx (Eichenhorn)
 3385 FR.GUYANA ORTF Cayenne 0055-0140, *0930, *0901, FF, TG, Guitar
 mx to *0901, FF & US pops, seems to relay Paris 0930 (Jones,
 Eichenhorn,Bowlsby,Schwartz,Lineback)
 3385 VENEZ. R.Barcelona 0130-0310,1015, SS, LA mx, many ID's, ads,
 (Yamron,Mayer,Zilmer)
 3390 ECUADOR R.Zaracay 0150-AN, SS, march mx, LA & Ecuad. mx,anns.
 (Zilmer,Duba,Sellers,DAB,Mayer)
 3396 RHODESIA RBC *0350-0410 EE nx, rel pgn (Corson,Duba)
 3396t NIGERIA NBC Kaduna poor w/Afr chorals 0535 (DAB)
 3400 CHINA CC mx, 1340 t/1- 1415 f/o(B.Davis) 1044 (Schnabel)
 3420 INDON. RRI-Medan strong lvl in AM's around 2350 also noted in afts
 around 0930 (Padula)
 3425 NEPAL RN on nf. 1430 1/28 nepali mx, YL ann, in EE very hard to
 understand 1450 EE nx by OM w/British acc. complete weather fore-
 cast for Katmandu,Nepal,Bhutan (Sparks) nice!
 3450 CHINA Peking CC, mx, better than 3400 1445 f/o (B.Davis)
 3520 GALAPAGOS LV de 0250,0340, 1/12, 1/29 SS tx, rel. group vocals
 (Dexter,Mayer)
 3560 N.KOREA Pyong. EE at 1330 t/1 EE ends 1355, FF at 1400 fades
 before 1455 (B.Davis)
 3568 TIMOR R.Dili 1100 OM in PP 1/24 (Field) 1440-1459* PP lite vocal
 and inst mx, ID and s/off w/AP (Lohe-W.Germ.)
 3885 CAPE VERDE ISLES R. Ci do 2300-2305* PP, 1/21 (Corson)
 3905t PAP/N.G. R.Lorengau 0905 2/1 seems OM tx in Fid. weak, perhaps
 RRI-Palang (Bowlsby)
 3915 MALAYSIA BBC-Tebrau 1405 1/16 Burmese to 1415 then VV as per sked
 (Boelsby)
 3918t S.KOREA 1150,1550 KK tx (Smith, Bowlsby)
 3925 PAP/N.G. VLK3 1100 IS, pips, under Japan (Smith)
 3930 CAPE VERDE ISLES R.Barlavento mx pgn fr. 0805 YL ann. (Field)
 3935 INDON. RRI-Semarang 1045 1/13 Indo sgs, Jakarta relay 1100 (Sparks)
 3952 ENGLAND BBC to Asia 0130 FF?, OM nx, ARO RM (Keating)
 3960 IRAQ R.Baghdad 0355 w/AA chants //7225 1/15 (Mayer)
 3965 S.AFRICA SABC 0420 EE (Abraham)
 3975 INDON. RRI-Surabaya 1040 1/13 Indo mx, lcl ID (Sparks)
 3975 ENGLAND BBC 0330-50 Swahili pgn 0345 EE ID into AA (Sellers,Mayer)
 3985 SWITZ. SBC 0640-0730 EE, ID, Swiss mx (Austin,Cox)

- 3985 ECUADOR R. Pop. 0340, 1130, SS, mx, tx, 1130-nx (Field), Mayer, Cox)
 3985t CHINA RP 0850 t/1 77 martial mx, YL tx (Bowlsby)
 3995t SOLOMON ISLANDS SIBS 0845 1/25 UTE RM, OM in Pid. (Bowlsby)
 3995 UNID Soviet 1130-nx, RE 1/17 seemed to s/on 1130, 6 pips (Barto)
 3995 ECUADOR Voz del Rio Tarqui listed in RTH, no ID hrd, from 1114
 w/mx pgm, faded by 1130 (field)
 3997 S.AFRICA SABC EE/Afrikk. 0300-0500 tx, ads, (Miller, Sellers, Hauser
 Zilmer, Abraham)
 4020 CHINA RP 1130 SS, mx, YL ann. (T.Smith) 1410 t/1- 1430 f/o UTE
 RM (B.Davis)
 4035 CHINA Peking 77, mx, 1400 t/1- 1500 t/o (B.Davis)
 4040 USSR Magadan 1200 RR, mx pgm, IS on hr. (T.Smith)
 4110 CHINA Urumchi 1200 SS, YL tx, mx (T.Smith)
 4120t S.KOREA Seoul 1155 KK/EE, 1355*, *1400-30* in EE (T.Smith)
 4552.5 USA VOA presumed in USB w/Asian lang pgm, Asian mx, 1140 1/26
 (magne)
 4620 PERU R.Nor Peruana ID 1102, mx 1103, fading 1110, anns before 1100
 in Quecha, after 1100 in SS (Schnabel)
 4675 ZIAND. (Hanoi) tent. Vot NUFK 1135 in Asian lang. seemed // other
 VNUFK channels, feeble 1/26 (Magne)
 4679v ECUADOR R.Nac Espejo 0217, 0600, SS, ID, radio drama (Guarducci)
 4690 UNID 1435 OM in lang (Bowlsby)
 4690 UNID 0445 SS, 2 CM tx, off 0448 no ID (Eichenhorn)
 4700 SS #'s 0200 YL (Keating)
 4719 INDON. RRI-Padang 1225 OM tx, mx (Abraham) 1340 t/1- 1515* all
 Indo., mx (B.Davis) // 5054 Indo. tx, 1203-1235 f/o, RRI- ID 1230
 not as good as 5054 2/9 (Yamron)
 4725 BURMA BBS 1301-1331 t/o lang. 1/16 presumed nx (Tuchscherer)
 4734 PAKISTAN (listed as Islamabad in DSWCI sked) 1500, 1/22 news in
 lang. and ID (Sparks)
 4740 MALDIVES Male 1705-1732* soft jazz mx, ID in EE and s/off w/NA
 (Lohe-W.Germ) (Pankov-Bulgaria)
 4754 UNID 1425 1/16 oriental sgs to 1430 then UTE wipe out (Bowlsby)
 4755 BRAZIL R.Dif. do Maranhao 0245 1/8 PP, mx, nx, ID (UMDX)
 4755 COLOMBIA Em. Nuevo Mundo 0520, 1100 SS, tx, mx, ID (Zilmer, Day)
 4764v INDON. RRI-Medan // 3420 1115 1/19 (Padula) 1215-1330 US mx,
 Indo. tx by YL, chimes 1225, ID 1230 (Yamron, Corson, T.Smith)
 4765 ECUADOR CRE 0200-0402*, 1115-45 SS, ID, mx, ads, off w/NA (Jones,
 Lineback, Duba, Zilmer)
 4765 CONGO RTVC 2120-2245 FF tx, Afr, mx, ID (Schwartz, Burlew, Zilmer)
 4783 MALI Bamako vern. tx 2125-2205 w/folk mx, vy few anns. // 5995
 (Woottem)
 (above out of place)
 4770 LIBERIA ELWA 2130-2245 EE rel pgm, nx (Zilmer, Schwartz, Burlew)
 4770 VENEZ. R.Bolivar 0038-0358*, 1100, SS, mx, tx, ID, ads, (Schwartz,
 Hermann, Zilmer, Tuchscherer, Day)
 4772 ECUADOR R. Cenit 0410-0428* SS, 2/5 LA mx, anns. Klose w/ Stardust
 (Tuchscherer)
 4775 INDIA AIR-Gauhati a poss. hrd several AM's lately 2/5 Indian mx
 1310, not rptd lately (Abraham)
 4775 AFGANISTAN 1315-1430 EE ID 1408, EE pgm to 1428, then con't
 w/MS (Bowlsby, Tuchscherer, T.Smith)
 4777 GABON Libreville 2145-2316*, 0635 FF, mx, tx, ID (many)
 4780 AFARS & ISALS 1940-2005*, 0615-35, native mx, lang, s/off w/flute
 & drum IS & Marseillaise (Lohe, Earhart)
 4780 ECUADOR R.Atahuapa 2355, 0410-30 SS, tx, LA mx (Sparks, Zilmer)
 4780 TOND. R.Juticalpa 1117-ID (Schnabel)
 4785 DOM. REP. 0350, 0947, SS, LA mx, ID, TC (Zilmer, UMDX, Jones)
 4785 USSR R.Baku class. mx 2200* (Collier)
 4787.5 PERU R.Atlantida 0415-45 SS, also PP ID noted (Earhart) 1030,
 1120 (Jones, Zilmer)
 4788 TURK & CAICOS ISLD 7S18 2133 2/3 lcl & AFRTS nx, ID abrupt off
 21 3 (Austin)
 4790 S.AFRICA SABC EE/Afrikk. AN svc (12 reporters) 2130-0500
 4790 ECUADOR Em. Atalaya 2321 SS, US & LA mx, OM tx (Austin)
 4794 ANGOLA R. Comm. 1847-2103 PP nx, ID, ads, mx (Lohe)
 4795 ECUADOR EV de los Caras 0208-0415 BBC nx in SS 0300, SS mx, tx
 (Yamron, Field, Austin, Tuchscherer, Day)
 4797a BOLIVIA R.Nueva America 0406-0440 SS, 1/23 OM tx, LA mx (Tuch'er)
 4800 ECUADOR R. Pop 0430-0545* SS, LA mx, ID (DAB, Tuch'er, Graves, Day,
 Earhart)
 4800 INDIA AIR-Hyderabad 1313 t/1 drum w/OM or YL sgg, poss. ID 1320
 sitar like mx from 1329 UTE 1/9 (Dexter)
 4800 VENEZ. R. Lara 2300-0359* 1/20 SS, pop mx, ID's (Sellers, Schwartz
 Cox, Zilmer)

- 4805 BRAZIL R. Por um Mundo Melhor 0034-0115, US pops, ID, PP, Amazonas RM (Schnabel, Dexter)
- 4806v BRAZIL R. dif. do Amazonas 0230-0402*, 1015-1230, PP mx, tx, (DAB, Cox, Zilmer, UMDX, Guarducci, Daba, Treibel)
- 4807 REUNION St. Denis 1635-1700 FF w/EE & FF mx, 1700 TC for 22 hr. & ID (Lohe)
- 4807 INDON. Jakarta strong lvl eves 1130 1/19 (Padula)
- 4807a ECUADOR R. Indep. 1038 SS, Sach-calas. mx (Zilmer)
- 4810 S.AFRICA SABC Springbok R. 2100-2200 OM, YL host pops, 2200 SABC mx (Keating)
- 4810 VENEZ. R. Popular 2330-0354*, 1150, SS, LA mx, TC, ads (Day, Buxton Zilmer, Jones, Schnabel)
- 4815a CHINA RP 1245-55* 33 2/7 tx w/ 1cl mx (Tuchscherer)
- 4815 PERU R. Samarín 0210-0455* SS, mx-0210, LA mx, ID (UMDX, Field, DAB)
- 4815t UPPER VOLTA 0715-30 1/20 FF, chants (Schwartz)
- 4820 GAMBIA Banjul 2150-2255 vern. 2255 BBC wrld mx, EEm harp IS (Zilmer Schwartz, Corson, Abraham)
- 4820 HOND. HRVC 0300-0328, 1215 SS/EE rel pgn, HRYC off 0328 1/10 then the R. Catolico ID aft 2 min. o/c (Dexter, Zilmer, Jones)
- 4820 UNID R. Catorce? 1100 SS, ads, "Cafe Oro", cackoo calls & mx, also at 0500, hrd since Aug. 73, any info (Behr)
- 4820,3 ECUADOR R. Paz y Bien 0924-45 2/2 class. mx, opening ID, pop mx (Sparks, Berto)
- 4821 VENEZ. R. Tricolor to 0400*, SS, mx, ID, Ann. 5050 (Dexter, Behr)
- 4825 USSR Ashkabad 2059-2230, 1300, RR-2100, 2230-CC, IS-2230 (Barto, Abraham, T. Smith)
- 4825 ECUADOR R. Luz y Vida 0005, 0324-0529, 1000*, SS, LA mx, Andean mx, (Schnabel, Collier, T. Smith)
- 4825 PERU LV de la Selva 0400 lite mx, SS ID & NA to 0500* 1/26, varies to 0620* no ads (Behr)
- 4830 S.AFRICA RSA 2100-2302, 0409-0441 EE/Afrikk. anns, ads, mx (Barto, Wootten, Hermann, Burlew)
- 4830 DOM. REP. R. Mil 1200 SS, mx, ads (Guarducci)
- 4830 VENEZ. R. Tachira 0535-1115 SS, ads, mx, TC "La hora de Bailar" (Day, Field)
- 4831 THAILAND NBS Bangkok Thai tx 1030 1/20 (padula)
- 4832 COSTA RICA R. Capital 0255-0600 SS, LA mx, ID, TC (Schwarz, Falkenhan, UMDX)
- 4839 PERU R. Andahuaylas to 0405*, SS, ID, mx, NA at s/off 1/21 (Behr)
- 4839 BRAZIL R. dif. Roraima 0230-0300* PP, ann. ID (Behr)
- 4840 CHINA Fukien 1245 lang tx 1/21 (Zilmer)
- 4841-5 INDON. RRI-Ambon 1045, 1245-1400* Indo. ID 1257, mx, tx (Treibel, Bowlsby, Tuchscherer)
- 4845 MALAYSIA Kuala Lumpur 0315 (Padula) 1325-1400 Indian lang, mx (Tuchscherer)
- 4845 MAURETANIA 2030-2230, 0755 mx, ID, AA 2030, 2000, inst mx (Petrov, Estes, Burlew, Rippl)
- 4845 BOTSWANA *0400-0430, 2200 EE/vern, cow bell IS & NA at s/on, Afr. mx (UMDX, COX, Zilmer, Corson, Field)
- 4845 COLOMBIA R. Bucaramanga 0200-0225, 1005-1135 SS, LA mx, tx (Pashke Ricchezza, Daba, Zilmer)
- 4850 CHINA RP 1230 lang tx 1/21 (Zilmer)
- 4855 MOZAMBIQUE 2105-2215*, 0404-0420 PP, US soldier, off w/ AP (Lohe, Corson, Dexter)
- 4855 INDON. RRI-Palembang 1500-1600* Indo. (Bowlsby)
- 4855 BRAZIL R. Taubate 0020-0100 PP, mx (Tuchscherer, Field)
- 4855 COLOMBIA R. Neiva 0130-0320, 1100 SS, IB, LA mx (many)
- 4860nf USSR Asian 4TH unk. 0130-1500 all RR, Mayak pgn (B. Davis)
- 4860 VENEZ. R. Maracaibo 0204 1/21 SS, LA mx, ads (Jones)
- 4860v PERU R. Chinchaycocha after Maracaibo, 1/21 Indo. mx to 1620* w/3 ID's ex-4856 (Behr, Dexter) likely your unid-Marlin.
- 4865 AZORES Em. Reg. 2050-2300 PP, lt mx, class. mx, CM tx (Schwartz Mayer, Collier, Austin, Burlew)
- 4865 COLOMBIA LV de Cinaruca 0400-0500 SS, mx-0500 (Mayer, Field)
- 4865 BRUNEI noted in FM's w/ Malay arnd 0900 1/21 (Padula)
- 4865 BRAZIL R. do Para 0010-25, 0845 PP mx, tx (Barhart, Zilmer)
- 4870 DAHOMEY Cotonou 2155-2245 FF tx, Afr mx (Yamron, Mayer)
- 4870 ECUADOR R. Rio Amazonas 1140 SS tx 1/12 (Zilmer)
- 4871-2 W. IRIAN RRI-Sorong 1145-1404* Indo. tx, US pops (Tuch'er, Mayer)
- 4875 S.AFRICA SABC 2100-0500 usual EE/Afrikk. px (many)
- 4875 BRAZIL R. Journal 0500, 1030 PP mx, tx (Graves, Zilmer)
- 4875 BOLIVIA Cruz del Sur 0225 SS, US/LA mx (Austin)
- 4877 S. VIETNAM VTVN 1210 (Padula) 1600 (Buxton) 1700 (many)
- 4880 VENEZ. R. Universo 2330-0530, 1130 SS, LA mx (Day, Falkenhan, Zilmer Schwartz)

- 4882v CHINA RP varies to 4885, KK-1400-55, 1500-RR, usually jammed (S.Davis, Sparks)
- 4882 DOM. REP. R. Comm. 2200-2700 SS, LA mx, ads (Falkenhan, Schwartz, Dubs, Sparks)
- 4885v COLOMBIA Ondas del Meta 0240, 1141 SS, LA mx, ads (Duba, Zilmer)
- 4885w INDON. RRI-Bukittinggi 0940, 1250, 1410 Indic. mx, relay Jakarta 1200 (Sadula, Dexter, Bowsby)
- 4886v BRAZIL R. Pionera de Teresina 0855, 1245 PP tx, mx 0302* (sparks Zilmer)
- 4890 MOZAMBIQUE Beira 1830 vern tx, mx ID on w hr. in FF (Lohe)
- 4890c GUINEA R. Conakry app. drifting fr/ nom. 4910, mix Senegal and others, a mess, seemed // other RC freqs, 4910, 4897 vacant, Conakry last noted on 4897 & drifting down, likely is somewhere else by now, 2100-2300 (Magne)
- 4890 PAP/N.S. 0530-1315 SS, class. mx, nx, ID as Nat'l Radio (many)
- 4890 SENEGAL Dakar 2145-2037 tx, mx, 2145 // 1195 w/FF entry (Yemron, Tuchscherer, Lineback, Mayer)
- 4890 VENEZ. R. dif. 2253-0403 SS, LA mx, US pops (Austin, Hardester, Day)
- 4895 PERU R. Chanchamayo 2307-0502* also past 0530 1/20 SS, mx, ID (Tuchscherer, Alpeel, Behr, Schnabel)
- 4895 USSR European, presume Tyumen OM & YL in RR 0340 1/24 (Dexter)

I must apologize for the lack of a lower% last month but, unfortunately I was hospitalized at the time I needed to type up the logs. New address effectively immediately (For me only) Elliot R. Straus 60 Madison Ave. Long Branch, N.J. 7740 calls- 02-0500 (201) 776-6774 73's &*

- 4905 CHINA (PR) RP; 2150-2200 MAM CC tik, mar mx, ID (Burlew) 2245 lang talks (Zilmer) 2250 CC tik, mix Relogio (Heutte) 2259 CC tik, local CC mx (Mayer)
- 4906 Kmer REP Phnom Penh; 1030 Kmers tik (Padula-Gs) 1545-1600* lol mx, off w/NA at local sunset (Lohe-Eu) Nice to see you again, Ernie, FH
- 4910 VENEZUELA R. Caracas; 2330 SS, usual LA stuff, bad hot (Reeves) Inactive a while FH
- 4915 KENYA Vok; 0330 lang, poor (Schnabel) 0345-0400 lol mx, nx to 0410, fair (Mayer) 0400 Swahili mx, 0420 Af mx to 0453 fade (Behr)
- 4920 USSR Kiev, listed; 2159* GG, ID, not in BBC HS skeds, carrier off 2201* (Magne) This program has been carried for at least three years now; wonder why not in BBC MS
- 4920 INDONESIA RRI-Palangkaraya; 1200 & 0000 relay Jakarta mx (Padula-Gs) This is a new one; can't find QTH in atlas or MAMA surveys. FH
- 4930 ARMENIAN SSR Yerevan; 0409 church svc, choral mx (Reeves) Church services? FH
- 4935 BOLIVIA R. Monte; 0243-0333 SS, LA mx, many smts, 2 IDs, once only (Tuchscherer)
- 4935 BRAZIL R. Peti; 2245-2300 PP, mx, smts, wiped out by UTE after 2259 ID (Tuchscherer)
- 4935 PERU R. Tropical; 0250-0358* LA mx, IDs, SS, mx 0300, close w/NA (Tuchscherer) 0315 pops, ID (Sparks) 0328 tans, guitars, vocal groups, fair (Dexter)
- 4937 ANGOLA RC do Lobito; 2300* after mx, ID, Abidjan GRM (Field) 2245-2300* PP pops, ID by M. AP, almost daily (Mayer)
- 4938 ECUADOR R. Mac.; 0220 tik by M. Yacay GRM (Duba)
- 4955 SUMATRA RRI-Banda Aceh; 1225-1245, ute GRM (Dexter) 1249 lol ID, relay Jakarta econ mx 1300 (Padula-Gs)
- 4960 ECUADOR R. Federacion Sucre; 0135 big sig, N+S by M (Dexter) 0238 instr mx, SS tik by M, ID, NA, s/off (Austin) 1125 SS tik, lol mx (Zilmer)
- 4960 VENEZUELA R. Sucre; 0158 Old 1940s jazz, IDs, unreadable w/out Q-Box (Schnabel)
- 4967 ANGOLA R. Cl. Malange; N+S, ID, 2300*; GRM R. Santa Fe, poor (Mayer)
- 4972c PERU (R. Cultural probably) 0435-0511* sports, comedy, off suddenly; very good in spite of hot & Yaounde, all SS (Reeves 2/17) See next. FH
- 4972d ECUADOR R. Nacional -- istica, Rdif Carta (?), using both IDs, definitely new sta, Andean pops 0230, long nat. mx 0300-0330, ment. Quito, Sante Domingo de los Colorados, etc., many ads, echoing IDs, exo sig & mod; seems to mention CRE (vis 4765), easier to split from the UTE on 4974 than R. Bambos (Heutte)
- 4975 PERU R. Del Pacifico; 0415 LA mx, RITTY GRM, FP (Mayer)
- 4985 ANGOLA R. Ecclesia; 0511 unreadable, talks, mx, Zil (Lineback)
- 4990 HONGKONG MBC-Sheung; 2135 concert mx, EE tik, distorted, YV fading in (Burlew)
- 4985 Malaysia RM-Kuala Lumpur; 0045-0120 f/o, mx, EE ads, 0100 Malay ID, EE world mx, 0015 lol mx in EE (Lohe-Eu) Sorry, out of order. FH
- 4995 BRAZIL R. Brasil Central; 0220-0300 PP, rock mx (J. Davis) 0810-0830 PP tik, IDs, LA mx, 444 (Falkenhan)
- 4996 PERU R. Andina; 0330 SS, Andes & LA pops, ID, TC, fair (UMDK) 1101 good, fading by 1111, also 0940 (Schnabel) 0435 Andean mx, tik by M, ID, SS (Austin) 1120 SS lol & dance mx (Zilmer) 1130-1140 SS mx, poor (Lineback)
- 5000 NEPAL Kathmandu; 1151 flute mx under WWV (Kelley)

- 5005 PERU R.Jaen; 0108 ID, huanaa mx, vy wk, clear ID 0110, mx(Schnabel) ± 0950-0400 unid vy wk, SS ballads, amts by M, no ID 0400*(Burton)
- 5010 SINGAPORE RS; 0105 EE dual 5052, also *1030(Padula-Oc)
- 5015 ANGOLA R.Cl. Mocamedes; 0600 PP ID, songs to0615 fade(Behr)/2130 PP tlk by W; gone by 2150(Yamron)
- 5016t RHODESIA Gwelo list; *0500 N:R by M to 0504, tlk(Rippel)
- 5020t NIGER ORTH-Nissey; list 2150 FF, M.amor, mx, long amts(Rippel)
- 5021 BOLIVIA R.Universo; 1035-1045 SS tlk by M, La mx, ID(Tuchsherer)
- 5024 PAKISTAN RP-Karachi; 0200 mx in lang, ID(Sparks)
- 5026 UGANDA RU; 2115* on a Sat, close w/EE ID, extreme GRM(Beutte) to0400 N:R by M, 0415 mx, fade 0430(Rippel) ± 2010 carrier, f/1 2050 Af mx, tlk in EE, NA 2105*, very poor(Burlew)
- 5033 ANGOLA RC Cabinda; *0500 drum & flute IS, AP, ID went both Benguela & Cabinda, fgs repeated twice; Af & PP mx, several IDs during pr only for Clube Cabinda(Sparks 2/3) *0458drum IS, AP 0501, short amt, mx, mostly guitars & vocal groups, utas begin to pile on after 0530(Dexter, Beutte) For the moment it looks like Cabinda is carrying the Benguela studio. FH 0600 pops, ID(DAB) 2040-2257* PP light mx, amts, tlk, off w/AP(Lobs-Eu) 2300* various evenings after mx pr, ID(Field)
- 5039 SUDAN Omdurman; 0407 mx, tlk by man in AA(Austin)
- 5041 UNID; 1605 in RR, GRM(Bowlsby)
- 5045 BRAZIL R.Quitandinha; 0330-0335 PP ads, IDs, TC by MAM(Burton) see next item...
- 5045 BOLIVIA LV del Altiplano; 0800 LA mx(Treibel) Can anyone confirm which one is here...Altiplano has been recently active here. FH...Could be both - depends on the lang. PP is not Altiplano & SS is not R.Quit. (DF)
- 5052 SINGAPORE RS; 1100 EE well hrd all over SEA(Padula)1530-1600 EE ID, amts, easy listening mx(Burton)
- 5055 UNID; 0336 SS spkr, in the mad ID: Radio ... at 0359*, off but then OC(Dexter)
- 5060 ANGOLA RC do Nambo; 0500 PP ID, mx, 0510 under RTTY(Behr) Light PP mx, ID, AF, 2301*, RTTY GRM, poor(Mayer)
- 5061v ECUADOR R.Progreso; 0300 Andean mx, ID(Sparks) 0321*, fgs, poss ID(Day) Many nights with La mx, IDs, latest the station has been heard is 0430(Tuchsherer)
- 5061v ECUADOR R Progreso (continued) 0310-0331* Andean mx, ID (Dexter 1-8) 0400 and 1130 several days, IDs, all Andean mx, SS (Mayer) Is this definitely in Loja? FH
- 5064 Unid 1615 in RR? 242 (Bowlsby 1-13)
- 5110t CLANDESTINE V of Burmese People, Yunnan Prov., PR China, #1200 several-note musical IS, program inaudible, but everything matches; first RA reception (Magus 1-26)
- 5070 Unid 0306-0323 SS, is this Ecuador?, instrumental SA, La mx, hrd Sunday (Barbo 1-20)
- 5072v Unid African 0400 rel pgs, hymn and talks in Swahili or similar, to 0445 fade-out, since 2-2, very strong but always distorted (Behr)
- 5145 PR CHINA RP 1500-1555 RR pgs, quite strong bnt usually jammed (B.Davis)
- 5320 PR CHINA RP 1500-1730w CC HS-1, dual 7504 8965 8980 11290, G (B.Davis)
- 5804 YEMEN Sana 0320-0350 AA, mx, chants, talks, just snatches under ut GRM, 211 (Lineback 1-16) 1620 AA, talks, chants to 1700, then mx, 252 (Bowlsby 1-13) 1600-1630 V of Palestine in AA (Pankov-Ba)
- 5845 SUMATRA RRI-Pakanbaru 0915-0930 EE By Radio transcription on a Thursday, also 0050 with pops (Padula-Oc 1-23) 1331-1400 fade nice level (Dexter 1-10)
- 5878 PR CHINA RP 2300 CC HS with W, P (Estes) ± 1713 CC talks by M:W, martial mx (Bowlsby 1-10)
- 5950 PR CHINA RP 0950 CC, 444 (Bowlsby 1-10)
- 5954 COSTA RICA R Casino 0545-0600 weak but ID OK, SS, LA mx, PP (Falkenhan)
- 5960 BOTSWANA RE 1914 Af mx, 222 (Austin) Does anyone have a definite ID for this one? FH
- 5960t GREECE KIRT-Athens 1920 Greek, bouzouki mx, talks by M, no ID noted (UMX 1-15)
- 5965 MALAYSIA Kuala Lumpur 1630-1700 ID, amts in Malay, local mx, E (Burton 1-21) 2280-1000 Malay svs heard throughout the day (Padula-Oc)
- 5980 PERU R Panamericana 1107 ID, mx pgs, crowned soon by El Salvador (Field 2-2)
- 5985 ARGENTINA R Splendid 0920 La mx, exuberant SS amts, frequent TCS (Friebel 1-25) 0944 mx, talks, mentioned BCB outlet LR4, 232 (Jones 1-30) 0955 SS ID, talks, mx, 343 (Zilmer 1-26)
- 5995 Unid AFRIS sta 1630 EE AFRIS pgs, past 1730, fair, QTH? (Behr 1-16)
- 6000 CHINA RP 0915 CC, Hangechow list, LA GRM, talks by W, mx, 433 (Bowlsby 1-10) See next.
- 6000 SINGAPORE RS 2300-0100 CC svs well heard during daytime (Padula-Oc 1-19)
- 6010 MALAYSIA BCB-Febru 2200 JJ, 2215 CC, dual 7180, G (Behr)
- 6010 PERU R America 1110-1130 mx pgs (Field)
- 6012 THAILAND Thai TV-Bangkok 0030 also heard during day (Padula-Oc 1-22) 6024 local mx, chants, Western mx, Thai talks, 7108 not found; daily in January, G (Reeves)1230-1330
- 6020t VENEZUELA LV de Anaco 1055 SS mx, talks, mentions Barcelona, 433 (Zilmer 2-1)
- R Anacoagu (seeming ID) 1030-1130 several mornings, R Relo; Continente mx (Field)
- 6025 NIGERIA BCB-Rougu 2200 N:R 433 (Zilmer 1-18) 2306* s/off amts preceded by N:R by W; RE splatter, 232 (Rippel 1-30)
- 6030 PIRATE-USA 'R King Kong Worldwide', 'WHIX', Feb 3 only, 2000-2120s, hard rock mx, Nixon tape cuts, obscenities, mx, over 3-9 but cycling fade, doubt real skip though; not hrd next Sunday; per Henderson tip (Reeves) The Purple Pumpkin/Victor Radio Lives!
- 6035 CLANDESTINE VO Thai People *2300 Thai to 2345-2355w (Behr) 0020 Thai talks (Padula)
- 6050 MALAYSIA? BCB-Febru probably, #1610 IS, 1615 South Asian lang to 1645* (Behr)
- 6050 MOZAMBIQUE RCM-Lourenco Marques 0410-0440 pop mx, EE ID, ads, G (Behr) 0400 N:R, ads, BJ patter, six-month old US pops, R; inactive a while (Beutte)

- 6050 Unid 0850 in seeming JJ, W, choral mx, 343 (Rowlsby 1-10)
- 6055 RWANDA RR-Kigali 0410 Af mx, 0500 clear after UNR QRM (Behr) 0416 W in FF, Af mx, 0430 ID by M, VOA s/on (Abraham) 0430-0510 FF-vernac, mx, nx, VOA-Ovl QRM (Corson)
- 6070 THAILAND NBS-Bangkok 0005 Thai talks (Padula-Oc 1-25)
- 6080 SAUDI ARABIA Riyadh 1800 AA nx, talks, 1830 VOA QRM (Behr)
- 6080 USA KOWA-1520z, stronger than QRRB at same time; first time heard on harmonic, rock mx (Hauser) You think you got trouble, Glenn? They're always cutting up WKW here!
- 6090 MEXICO XECMT-Ciudad Mante, Tams, now reactivated as the manager promised me a year ago; first noted with barely detectable SS 1813 1-19, while visiting elsewhere in Oklahoma 2-3 with an Astronaut-6 portable rcvr, noted well with ID 1523: XECMT. Manda internacional jingles alternating with those of MW outlet; nt daily (Hauser)
- 6095 SOMALIA R Mogadishu 0315 Somali-AA, native mx, singing, talk by M, definite ID, P (Eichenhorst)
- 6105 BRAZIL Ceara R Clube 0250-0340 PP, LA rock, pop mx, strong (Tuchscherer 1-20)
- 6106v COSTA RICA R Universidad de Costa Rica, 0120-0135 SS talk, ID, frege, piano mx, drifts badly, 352 (Magne 1-26) 0200 SS ID, N:S, classical mx (Heutte 2-11) 0345 classical mx, final ID 0400* (Sparks 1-20) 1230-1430 plus, unid, no ID (Reeves)
- 6115 PERU R Union 1107 Andean mx, 433 (Schnabel 1020)
- 6120 PHILIPPINES FBBC *1635 S Asian, 1700 RR, 1715 OG rel pgms, 1730* (Behr)
- 6123 COLOMBIA R Continental 0135-0150 SS, ID R de Colombia, many het, 453 (Magne 1-26)
- 6130t SAUDI ARABIA Riyadh 2253-2345 chants, long talk, unable to catch ID (Plum)
- 6135 BRAZIL RTV Gaucha 2300 PP talks, also 1000, 433 (Zilmer 1-29) 0340 PP Brazilian mx, ads, ID, TC, 434 (UMDX 2-1) 0930 talks by M, PP, mx, TCs, rel pgm later, 343 (Paschke)
- 6135 CHILE R Las Fuerzas Armadas vocal group with guitar 0237, ID, more mx, fair but hard copy (Dexter 1-8) R Las Fuerzas Armadas y Carabineros de Chile 1030 pop mx, noticias (Sparks 1-19) 1025 LV de Chile, R Concepcion, both IDs heard, march mx, men's chorus, 443 (Zilmer 1-21) 0315 SS, LA mx, buried in hets. I'm the only one without ID! (Heutte)
- 6151 COLOMBIA LV de Huila, Apartado 150, Neiva; extremely strong with hets, apparently on NSP sked, Super Network, many IDs, TCs, mx, heard variously 2130-1330, often relaying La Noche Super pgm, asks for reports, recently new (Behr, Dexter, Field, Guarducci, Heutte, Reeves, Sparks, Treibel, Tuchscherer, UMDX, Zilmer...hew!)
- 6140 CHINA RP 2320 CC mx, 2325*, G (Treibel) I can't type or put things in order either...
- 6155 SINGAPORE RS 0810 Malay svc well heard (Padula-Oc 1-18) And I ran over the end line!
- 6155 SWAZILAND Swazi Music Radio, 0400 EE ID, pop mx, ads, 0445 fade; very strong, maybe new 100-kW xmtr (Behr 1-29)
- 6155 URUGUAY R Carve 0930 SS talks, mx, many local cities mentioned, 443 (Zilmer 1-30)
- 6156 HAITI R Citadelle 1140 M&W in FF, rel mx, one ID, P (Abraham)
- 6165 S VIETNAM Saigon 0645 VV (2:15 p.m. local) (Padula-Oc 1-24)
- 6170 COLOMBIA LV de la Selva, HURV, Florencia, 0130 mx, many SS IDs to 0455* with NA, strong over YVVO (Behr 1-19) LV de Combeima 1000 SS mx, talks, jingles, 331 (Zilmer 1-28) 6173 Acos del Combeima 1030 SS M with clear IDs, TCs, SS mx. (Paschke 1-26) Again, which ID is correct? FH
- 6175 MALAYSIA Kuala Lumpur 0630 N:EE Overseas Svc (Padula-Oc 1-24)
- 6179 VENEZUELA R Turisimo 0200 LA mx, hets (Duba) 0130 mx, many SS IDs to 0202*, varies to 0345* (Behr)
- 6180 KAZAKH SSR R Alma Ata 0215 Kazakh-RR talks, ID, 0225 mx, G (Behr 1-24) (Padula-Oc)
- 6190 SUMATRA RRI-Padang 0630 local nx, relay Jakarta nx 0700, rarely heard at home
- 6195 CLANDESTINE V of Reason 0240 FF, end FF 0244, EE ID: This is the V of Reason, broadcasting to the EE-speaking countries in the 25, 31, and 49 MBs; EE anti-communist talks, LA-type mx, SS 0300, VP (UMDX-Roberts 1-28)
- 6195 CHILE R Mac de Chile, Santiago, 0600 pop songs, chimes & gong, ID, nx (Sparks 2-2) 1030 EE local nx, 433 (Zilmer 1+22)
- 6205nf ISRAEL, IBA, IS @ 2255 into GG px w/YL ancr. 334 (Rippel 1/28)
- 6206-10v INT'L WATERS, RNI, 0040-0051. EE pops, ID, RNI nx, wx for Europe. (333 Paschke 1/18, Schwarz)
- 6218 DOM, REP. La Voz de la Libertad, 2055-2400 plus. Noted back on again 1/25 seems very irregular operation. SS ID as above, but other variations noted. 13431 (Magne)
- 6230 UNID, 1715 E, Eur or ME lang, 1736 mx. Fair. Who? (Behr 1/7)
- 6240 CLANDESTINE, R. Libertacao. 0635 PP talks. F. (Cox); 2300 Afr drum mx, talks in lang. 433 (Zilmer 1/24)
- 6250 FERNANDO POO (Eq. Guinea), R. Santa Isabel. 2115-2215 SS rev. talk, mx. (333 Zilmer 1/17, Cox, Champagne 2/2, Graves 1/7)
- 6250 AZAD KASHMIR, 1400 s/off, mx, ancrts in Urdu and Kashmiri (Pankov-Eu)
- 6255 AUSTRIA, Oesterr. Versuchssender des Bundesheeres OEY21. 1230-1300 GG tik, London Phil. in "Konzert am Mittwoch. E-G (Lohe-Eu); GG talks, mx, Mon-Fri 1400* QSL in 3 days (Pankov-Eu)
- 6280 CHINA, Urumchi (Listed). 1130 CC ID unintelligible but definately Chicom operation 22422 (Magne 1/26).
- 6325 TURKEY, Istanbul Police Radiosu, New Station. 0900-1000* & 1400-1500* TT talk, mx. (Pankov-Eu) (Pankov-Eu)
- 6340 TURKEY, Ankara Police. 0600-1100; 1200-1600; 1730-1900. Mx and TT talks

- 6500 CHINA, R. Peking. 2030 FF px. Fair. //6320 weaker. (Behr 1/9)
 6576 N. KOREA, R. Pyongyang. 1600 in RR //11535. (Pankov-Eu)
 6645 CHINA, R. Peking. 2030 H px //6540, both fair. (Behr 1/9)
 6660 ALBANIA, R. Kuksi. 1230 mx, Alb. talks. ID as "Ju flet Kuksi" (Pankov-Eu)
 6850 POLAND, Polish Pathfinders. 1330-1500 mx, tiks in Polish (Pankov-Eu)
 6870 KAZAKHSTAN, R. Alma Ata. 1313 tiks in Kazakh//10530 (Pankov-Eu)
 6933 CHINA, R. Peking. 2000 PP px. Fair //6430 RTT QRM (Behr 1/9)
 7065 ALBANIA, R. Tirana. 0007-0030 EE nx cmntry on US energy crisis. Good (Cress 1/25); 0505 FF tik on Israel (Cox); *0630 SS w/mx (Guarducci); 2245 FF px CW QRM (Brown 1/16)
 7075nf CHINA, R. Peking Tibetan HS (QTH Peking). In Tibetan to 1150* On new freq. Not in recent BBC MS skeds, talks, "Internationale" CC ID 35523 (Magne 1/25)
 7082, 5nf PAKISTAN, R. Pakistan. 1950-2050 EE ID 2000. Ex 7095v apparently to avoid Israel. 23422 (Magne 1/25)
 7095 CHINA, R. Peking. 1120 CC singing, YL ancr. Fair. (Estes)
 7095 ISRAEL, IBA. 2000-2045* EE tiks, nx, cmntry (Estes, Falkenhan, Zilmer); 2245 AA(?) nx px after EE ID 434(UMDX 1/7); *0500-0515* ID. EE nx, cmntry. (Schrartz, Keating, Eichenhorn, Cress)
 7095 PAKISTAN. Tentative Peshawar. 1300 EE nx. Has since moved to 7082(Dexter)
 7095, 4 PAKISTAN, RP, Karachi. (List WRTH). 1250 EE nx, pips on the hour. F. (Smith)
 7099nf CLANDESTINE. What BBC MS now reports as a new anti-Iranian clandestine, R. Clamor, was noted as an unid, it appears 2015-2030* in lang. QTH unknown but could be Iraq. 23522 QRM Israel on 7095 (Magne 1/25)
 7100 USSR, R. Moscow. 2309 EE nx review. 434 (Austin)
 7102 N. VIETNAM, VoV. 1045-1200. VVtalks by OM & YL, occasional vocal and string mx, and apparent nx by OM (Earhart, Cox, Cress); Home svc heard all day, as at around 0355 (Padula-Austl. 1/9)
 7105 ENGLAND, BBC. 0452 EE nx. Also noted 0525 in FF (Cox)
 7108 THAILAND, Thai TV. Noted w/mx and drama px every morning about 1100(Word)
 7110 MALAYSIA, RM, Kuala Lumpur. 0355 HS in CC during daytime (Padula-Austl 1/19)
 7115 THAILAND, NBS, Bangkok. Noted here during day w/Thai px's, apparently MW relay, though unlisted WRTH-74 this time period. (Padula-Austl 1/24)
 7120 ALBANIA, R. Peking relay. 0330 YL in EE, cmntry 444 (Eichenhorn 1/14)
 7135 USSR, RM(Site?) *1030 w/IS into lang. V weak. (Estes)
 7135 SARAWAK, RMS, Kuching. Special EE px for children 0200, then special svc for teachers 0230-0245 on weekdays. Unlisted freq. Malay svc noted 7145 throughout same time period. (Padula-Austl 1/25)
 7139, 2 INDONESIA, Moluccas, Ambon. TC @ 0900 into Ici Indo nx to 0909 then Ici IS, full ID "Radio Republic Indonesia" by OM (Young)
 7145 SARAWAY, RMS, Kuching. Malay svc noted here throughout the day, Ici nx 0330, and relay nx from Kuala Lumpur 0600 (Padula-Austl 1/19)
 7150 USSR, R. Moscow. 2330-0000 EE contest details, nx (544 Austin, 544 Eichenhorn)
 7155 JORDAN, R. Amman. 0330-0400 AA nx by OM 433 (Falkenhan)
 7160 USSR, R. Moscow. 2324 EE nx, cmntry 544 (Austin)
 7160 SARAWAK, RMS, Kuching. EE requests 0605 into CC 0930. EE noted often past 0500-0530 when on extended sked. (Padula-Austl 1/24)
 7165 ETHIOPIA, ETLF. 0325. Drum IS, EE ID into Swahili 232(Day 1/25)
 7165 RYUKYU ISL. VoA, Okinawa. 1127 EE nx, mx. (Cox)
 7170 GREECE, VoA, Kalava. Unusual reception 0200 w/EE nx. Signals greater than Ici Singapore outlet on same freq. Heard from Kuala Lumpur(Padula-Austl 1/25)
 7175 S. VIETNAM, VTVN, Saigon. 2200-0800. Heard throughout the day in VV(Padula)
 7178, 5 IRAQ, R. Baghdad. 1915 RR px and mx to 1953* w/anthem. Fair (Behr 1/7)
 7180 W. GERMANY, R. Lib. 2045-2115 GG px NO JAMMING! Positive ID(Falkenhan)
 7195nf SAUDI ARABIA, Riyadh. 2005 AA px to 2302*//7110 weaker (Behr)
 7195 Cf. Jan, LR-Uganda at 1415 seems impossible, must be Asian (Behr)
 7195 UNID. European station. 2000 GG px in QRM. Who? (Behr 1/26)
 7195 ROMANIA, R. Bucharest. *2130 IS, nx QRM. (Estes)
 7200 USSR, R. Moscow. 2311 EE ID, reports, mx. (Austin)
 7200 MALAYSIA, RM, Kuala Lumpur. National px noted on this freq. Unlisted WRTH: Malay nx 0605, 0800 (Padula-Austl 1/18 & 1/19)
 7200 ENGLAND, VoA, Woofferton. 0200 EE nx over Kuala Lumpur, same freq(Padula)
 7204, 5 ZAIRE, R. Lubumbashi. 0400 Afr mx, FF ancmts. Very Strong (Behr 1/6)
 7205 USSR, R. Moscow. 0455 YL w/EE talk. Fair. (Cox)
 7205 USSR, R. Kiev. 2200 IS, Ukr ID and nx 444 (UMDX 1/9)

- 7215 BRUNEI, R. Brunei. Noted daytimes, 0320(10:50AM lcl) w/EE pops, as heard from Kuala Lumpur 1/24. Also evenings in CC 0800 plus (Padula-Austl 1/16); OM & YL talk into light mx 1220 EE ID 1228. ARO/Cw QRM (Yamron)
- 7215 IVORY COAST, RTVL, 0712 FF, Afr mx, cmntry on Israel, Poor. (Cox)
- 7220 CENT. AFR. REP., RNC, 0135-0207 t/o. Continuous orch mx, OM's talking during same. Conversation in Sango(assumed), then FF 433(Earhart 1/30)
- 7225 PHILIPPINES, FEBC, 1145-1230 ID in EE into EE rel px followed by nx. (Cox, Smith, Cress)
- 7230 JAPAN, NHK, 1225 JJ OM talk, ARO QRM, Fair. (Smith 1/29)
- 7235 AUSTRALIA, RA, 1300 Indonesian px 333(Zilmer 1/13); 1540 EE (Guarducci)
- 7240 USSR, R. Moscow, 2319 EE cmntry 222 (Austin)
- 7245 S. VIETNAM, VTVN, HS noted daytime, VV 0610 (Padula-Austl 1/19)
- 7245 USSR, R. Moscow, 0010 EE nx and mx. (Cox)
- 7250 SINGAPORE, R. Singapore, Malay svc, well heard throughout day and night at all places visited 2230-1000 plus (Padula-Austl)
- 7250 VATICAN, Vatican Radio, *0630 II px to Eur. (Guarducci)
- 7265 W. GERMANY, Sudwestfunk, 0400 GG nx 222(Graves 1/16)
- 7270 S. AFRICA, RSA, 0455 FF, pop mx, IS(WRTH sez PP, but was FF)(Eichenhorn)
- 7270 SARAWAK, RMS, Kuching. Now here, ex listed 7230 w/Malay svc, EE pops 1000. On checking back home in Melbourne, no sign of it, only Jakarta, latter inaudible in Penang (Padula-Austl) Date was 1/20.
- 7295 GREECE, EIRT, 1958 flute IS, 2000 into mx, Fair. (Yamron)
- 7300 TADZIKISTAN, R. Dushanbe, 1400-1500 in Farsi. New time (Pankov-Eur)
- 7300 ALBANIA, R. Tirna, 0100-0115 IS, OM&YL in SS w/ID and cmntry. (Fino, Eichenhorn); *0130-0156* EE px to NA. Good (Kutach 1/14)
- 7310 USSR, Irkautsk, Soviet HS *2300-0600* all RR Mayak (no lcl ID). Usually weak Best 0400-0600 (Bill Davis)
- 7325 SOVIET ASIA, Location unknown but believed west of Irkautsk from fade characters. *2300-1600. All RR, Carries Mayak px, so no lcl ID's. Weak. (Bill Davis)
- 7345 CZECHOSLOVAKIA, R. Prague, *2230-2300 CS px w/folk mx; *2330-2400* SS ID into px. PP at 0000. Heavy QRM (Fino 1/18);*0100-0155* EE px P-F (Kutach, Guarducci)
- 7350 CHINA, R. Peking, *2300 w/EIR & YL anc. Good. (Estes) Lang?-MRL
- 7350 USSR, R. Moscow, 0235 EE cmntry 434 (Austin)
- 7370 CHINA, RP, Asian lang to 1229*Not listed BBC MS sked 33423(Magne 1/25)
- 7410 N. VIETNAM, VoV, HS VV talks 0550 (Padula-Austl 1/19)
- 7440 CHINA, RP, 2 RR px's noted daily 1500-1555, 1600-1655 usually jammed(Davis)
- 7440 SOVIET ASIA, Location unknown, *0000 heard till 1500 when Peking comes on and wipes out. Carries "B" version of HS px #1(Per WRTH). (Bill Davis)
- 7500 AUSTRALIA, VNG Time Station, 1235 time pips 353(Zilmer1/13);1600 Poor. (Guarducci)
- 7864m THAILAND, Thai Meterological Station. Tentative w/brief segments of mx, OM&YL ancrs at 1138 t/i, weak but gaining. Later complete songs including old US pops and some Asian sounding things. No ID on the lang 1220 t/o(Dexter)
- 7868 THAILAND, Thia Meterological Station, Noted 1110-1127 onl/22 w/short wx ancmts behind each day, Fri mentioned. Also string mx, Thai mx, Fair. (Thanks V. G.!). . . . Also noted 1220-1250 w/EE and Thai ID, freq, GMT given in sked, concerto mx. (Barto 1/28)
- 9009 ISRAEL, IBA, 0513 EE nx, 2340 Hebrew w/ID at 2345. F-G (Cox); 2237 AA type mx, 333 (Hewitt 1/20)
- 9020 CHINA, R. Peking, 1240 CC singing & YL anc. 131 (Rippel 2/9)
- 9022v IRAN, R. Iran, 2250 Farsi, chanting and lcl mx 233(Rippel 1/28);2315 AA chanting, mx432(Zilmer 1/21); 0127 Farsi, Fair. (Cox)
- 9040 IRAN, R. Iran, 1245 YL in lang, light mx, not//9022 233(Rippel 2/9); *1928 IS into FF px till 1957, 2000 EE nx, mx. (Plum)
- 9320 CHINA, R. Peking, 2355 CC "Internationale" at 2400* Fair (Cox)
- 9360 SPAIN, RNE, 2200 SS talks 433 (Zilmer 2/2)
- 9450nf ISRAEL, IBA, 1645 Persian, 1715 Georgian //9495 P-F (Behr)
- 9455 N. KOREA, R. Pyongyang, 1805-1820 EE nx 222 (Nebron 1/14)
- 9457a UNID, 0815-0905. Talk by OM then YL in lang, no mx noted, gave ID at 0900 but could not catch. 232 (Earhart 1/20)
- 9475 ESPIONAGE, Numbers Station, 0907 SS numbers 444 (Eichenhorn 1/13)
- 9480 ALBANIA, R. Tirana, 2200 EE nx, cmntry, mx, 443 (Zilmer 2/2)
- 9500 N. VIETNAM, VoV, 0300-0315 CC or KK nx Heavy QRM (J. Davis)

- 9500 EUROPEAN SSR, R. Anadyr as listed Jan. FRENDX. Fine t/i at 0455 t/i, but Tirana s/on 0500 ruins opportunity to hear "sometime" Ici ID at 0515(Dexter)
- 9505 PHILIPPINES, FEBA. *0815 magnificent signal w/FF(3:45PM Ici in Kuala Lumpur). (Padule-Austl 1/24)
- 9505 JAPAN, NHK. 1900 EE nx and cmntry 454 (UMDX 1/9)
- 9505 SUDAN, R. Omdurman. 1920-2002 OM talking in Vernaculars, choir mx, ID, more talk and orch mx. Signal off abrupt 1947, then on till 2002, tx problems? 433 (Earhart 1/30)
- 9505 PERU, R. America. 1107 t/i w/nx and SS ID's. Heavy het. (Word 1/25)
- 9505 DOM. REP., RTVD. 2240 easy listening mx w/OM in SS 333(Rippel 2/8) 0135 EE nx by YL 323(UMDX 1/31);0016-0030 f/o SS, mx, ID, nx 433(Lineback2/3); *2210 Piano IS, ID, mx 323(Brown); 0245 LA mx 344 (Custodio 2/8)
- 9510 ASCENSION ISL., BBC relay. 2300-0415 EE nx, cmntry(Creamer, Cox, J. Davis)
- 9510 VENEZUELA, R. Barquisemeto. 2215 SS talk, nx. Clear freq this hour(Duba); 2245 SS nx px, many ID's 333(Rippel 1/28);1240-1305 US pop mx, many ID's 353 (Earhart 1/12);2230 LA mx, ID's 433(Brown 1/10);2210 TC, ID 434(Custodio)
- 9510 CHILE, R. Corporacion. 0010 w/LA mx under BBC. Even Q-box had trouble digging it out. Only readable word "Chile" (Schnabel 1/26)
- 9510 TAIWAN, VOFC. Tentative 1720 CC mx and talks by YL 333(UMDX 1/22);1800-1840 t/o EE talk on popular poll of world leaders, ID. F-G (Buxton 1/21)
- 9515 MALAYSIA, RM., Kuala Lumpur. 0400 Malay nx. (Padula-Austl 1/19)
- 9515 TURKEY, TRT. 1715-1730 TT, mx 343(Earhart 1/24);2135 AA chants, mx(Estes)
- 9520 PERU, R. Cronica ID @ 0031, comm'l for Inca Cola(Tastes like bubble gum, is sticky and pink in color). (Schnabel 1/26); 0355 OM anc w/futbol (DAB)
- 9520 PORTUGAL, R. Liberty. 2235 RR talk, jammed. Poor. (Estes)
- 9525 INDIA, AIR. 2120 EE "Mailbag" px, Ici mx, nx. 433 (UMDX 2/4)
- 9525 CUBA, RH. 0740 EE px (Cox);0659 EE OM & YL w/ID 555(Eichenhorn 1/18)
- 9525nf HUNGARY, R. Budapest. *0830-0840 EE YL w/DX px, pop mx 353(Gunter 1/16)
- 9530 INDIA, AIR. 2220 EE nx, mxto 2230* 343 (Bowsby 2/7)
- 9530 SPAIN, RNE. 0320 SS mx and features. 444 (Brown 1/22)
- 9530 UNID. Possibly Venezuela, R. Calendario? 0205. No ID for half hour, LA pop mx. 433 (Schnabel 2/2)
- 9530 LIBERIA, VoA, Monrovia. 2000-2200 IS, ID into CS; Hungarian 2100; Polish 2130. Good. (Fino 1/19) /433 (Brown 1/31)
- 9530 ECUADOR, HCJB. 0400 OM in Rumanian 332 (Eichenhorn);02DR, rel px
- 9535 SARAWAK, RMS, Kuching. Malay svc w/western pops 0510//7145(Padula-Austl)
- 9535 SWITZERLAND, SBC. 0130-0159 EE to NA w/nx, cmntry, DX px VG(J. Davis)
- 9540t Cf. Jan. LR is not Zaire, but VoA in a transmission from NAfr (Tuchscherer)
- 9540 AUSTRALIA, RA, Shepparton. 0745 EE faint under TWR (Cox);2000 EE nx 333 (Zilmer 1/17);2020-2030* EE px notes, TC, mx. (Duba)
- 9540 NEW ZEALAND, RNZ. 0630 EE px to Pac Isls. (Cox);1115 EE mx from the concert hall 353 (Zilmer 1/24)
- 9540 NETH. ANTILLES, TWR. 0745 SS rel px. Excellent (Cox)
- 9542a USSR, R. Moscow. 0205 CC px //9610, 11710. 343 (Bowsby 1/8)
- 9545 BRAZIL, R. Universo. 0135 w/futbol(Home team, Curitiba doing well) (Schnabel)
- 9545 GHANA, R. Ghana. 2100-2215* EE px, nx, cmntry(444 Zilmer, 343Bowsby 2/7)
- 9545 W. GERMANY, DW, Wertachtal. 2205-2220 PP to Brazil. F-G (Fino 1/19)
- 9550 CUBA, R. Havana. 1024 harangue in Quechua. Seems to be blocked by interference... interesting 322 (Schnabel) /Zilmer 123, 343 Earhart 1/24)
- 9550 AUSTRALIA, RA. *1330-1345 Thai to Asia w/pop mx, EE ID at 1330 322
- 9555 LIBERIA, ELWA. 1940 FF talk, FF ID then IS till 1946* (UMDX 1/8)
- 9560 JAPAN, NHK. 1700-1715 EE world nx, economic talk (Tuchscherer 2/8)
- 9560 ECUADOR, HCJB. 0305-0435 EE rel px. (Cox, Eichenhorn)
- 9560 UNID. 2130 Afr drums and chants. Poor. (Estes)
- 9562 PERU, R. Nacional. 1120 px in Quechua. Talk on farm cooperatives (Ayllu?), noticias 1204. 332 (Schnabel 1/12 & 1/15)
- 9565 SARAWAK, RMS, Kuching. 0545 CC px when on extended sked Sats(Padula 1/19)
- 9568 NIGERIA, RTV Kaduna. 2352 OM in Hausa. 0000 EE ID, 3 min EE nx into Hausa again to 0015* w/NA. (Abraham)
- 9570 NIGERIA, RTV, Kaduna. 2130 Vern. w/extended interview w/YL (Wootten-Mor.)
- 9570 CHILE, R. Diego Portales. 0846 SS, OM talks, ID, mx 233(Paschke 1/11);1115 SS mx, talks, ads 444(Zilmer 1/23);0015 serial and songs(Plum);0045-0310 much SS mx 444(Earhart 1/27); 0240 SS, LA mx, listener's letters 353(UMDX 1/17); 0326 SS nice mx. (Webb 1/21)

- 9575 GREENLAND, GR. 1950-2005 f/o US pops, old and new, Dansk? Good (Tuchscherer 2/4); Tentative 2140 OM & YL alternating nx items. Bad het by 2200 242 (Bowlsby 2/7)
- 9575 ITALY, RAI. 0005 II, classical mx//9710, 9630 but best on 9575 444(Earhart 1/25);0947-0115 EE nx by YL, mx 434(Lineback 2/3)
- 9580 PHILIPPINES, VoP. 1700* w/NA, then s/on much weaker w/regional svc. - all EE (Buxton 1/21)
- 9580 NICARAGUA, R. Mar. 1330 "Lemandan los Portenos de Reception", LA & US pops, YL ancr. Two selections played, then ancmnt. Test tx's? 1400 QRM Moscow. 1411 finally read ID "Transmite Radio Mar". (Schnabel 1/27; 1325-1340 LA & US pops, TC, freq ID's w/freq 333 (Jones 1/27);1300 SS mx 342 (Zilmer 1/19);1303 OM & YL in SS talks, ID's 343 (Paschke 1/19)
- 9580 AUSTRALIA, RA. 1130 EE review, mx, ID 555(Brown 1/25) /23532(Magne 2/3)
- 9584.2 CLANDESTINE (Romania), Our Radio. *1910 in TT, LS, ID's by OM, then mx
- 9585 CLANDESTINE, R. Libertacao. 2145 Afr talk, 2200 RSA carrier//6240 (Behr)
- 9585 SAUDI ARABIA, Riyadh. 1534-1600 AA px, chants noted most mornings, off usually about 1604. Missed ID, if any. (Young) / (Abraham)
- 9585 UNID. 1540 AA mx. Gone @ 1600 when I returned, s/off? Good signal. Syria?
- 9585 SOUTH AFRICA, RSA. 2240 w/EE talk. Good. (Estes)/ID's 343 (Zilmer 1/20)
- 9590 CHILE, R. Pres. Balamaceda. 1047 w/ID's 444 (Schnabel 1/12);1145 SS pop mx,
- 9590 ROMANIA, R. Bucharest. 1500 EE nx to Asia 422 (Zilmer 1/21)
- 9590 PHILIPPINES, VoP. 0755 EE talks on Philippines (3:25PM lcl). (Padula-Austi)
- 9595 PORTUGAL, RFE. 2245 Polish talk F-G (Estes)
- 9595 INDIA, AIR. 1400 Indian chants. G. (Wilson 1/20);1332-1334 EE nx 443(Zilmer)
- 9600 UZBEK SSR, R. Tashkent. 1405 EE talk about Solzhentsyn 433 (UMDX 1/30)
- 9600 ASCENSION ISL., BBC relay. 0715 EE nx about Britain. (Cox)
- 9605f SAUDI ARABIA, BSKSA. 1930 AA talks, AA mx 454 (UMDX 1/9)
- 9605nf SAUDI ARABIA, BSKSA. *1900 Koran to 1915, YL w/ AA ID. F-G (Estes)
- 9605 SARAWAK, RMS, Kuching. CC ID 0400, relay Kuala Lumpur CC mx 0430; EE requests, letters when on extended sked Sats 0530-0600 w/EE nx 0500//7160 (Padula-Austi 1/24)
- 9610 AUSTRALIA, ABC VLW9 Perth. 1250 horse races, sports. 444(Creamer);1018 EE sports 343 (Jones 1/30);1300 Nat'l nx 555(Cress);1340-1435 pop and semi-classical mx, audience participation game 444 (Earhart 1/24)
- 9610 USSR, R. Moscow. 0150 CC px//9542a, 11710 242(Bowlsby 1/8)
- 9610 CANADA, RCI. 1800-2130 EE/FF nx, variety, cmntry DW QRM 2130(Fino)
- 9620 S. VIETNAM, VTVN, Saigon. Throughout the day 2200-1000 VV(Padula-Austi)
- 9620 YUGOSLAVIA, R. Belgrade. 2203-2223 OM & YL in FF, EE mx 433(Hewitt)
- 9620 FRANCE, ORTF. 2100 FF, continuous mx 544 (Zilmer 1/12)
- 9625 CANADA, CBC No. Svc. 1230 EE, folk mx. 555(Wilson 1/20);1407 EE, folk mx. 555(Cox);2200 EE"Northern Messenger" px 555 (Brown 1/21)
- 9625 PERU, R. Atlantida. 1018 morning px of Andean nx for the Indios. (A grand concession). Blocked by het 1019. 222 (Schnabel 1/31)
- 9630 SPAIN, RNE 2155-0045. SS, px ancmnts, nx ID's(Guarducci, Graves, Fino, Cox)
- 9635 COLOMBIA, R. Nacional. 1200-1234 SS, mx, talks 454 (Zilmer 2/2, F-GMiller); 0230 SS, LA mx, ID 323(UMDX 2/2);1305-1430 f/o classical mx, rel svc(Peters)
- 9635 BRAZIL, R. Aparecida. 1015 w/noticias. 333 (Schnabel 1/31)
- 9635 SINGAPORE, RS. 0300 CC svc well heard during day from Penang(Padula-Austi)
- 9640 USA, VoA, Greenville. 0130-0200* EE to LA w/"Press Conference" (Fino 1/20)
- 9645 VATICAN, Vatican Radio. 0750-0805 Sun mass in Latin. 343 (Earhart 1/20)
- 9645 BRAZIL, R. Bandeirantes. 0045 PP talks, sports//6185 433 (Zilmer 1/24); 0205 (Schnabel 1/31); 0245 PP sports w/hysterical ancr. Good. (Estes)
- 9650 GUINEA, Rdiff Nationale. 0320 Afr mx, OM talk 333 (Austin); 0230 FF political talks by OM 353(UMDX 1/17);Tentative 0557 chanting to mx, time tones(Hewitt)
- 9655 SYRIA, R. Damascus. 2040 very weak AA mx. Heard 1 day only in many months
- 9655 UNID. Station in FF. Much repeat of word "Israeli". 2004 ID / (Estes) thought to be "Bizim Radio". Ought to be Damascus? (Schnabel 1/26)
- 9655 CANADA, RCI. 0553-0555* EE ID 433 (Hewitt 1/26)
- 9660 VENEZUELA, R. Rumbos. 0210 SS, nx. LA mx ID's 444 (Brown 1/23) / (Behr)
- 9664nf ZAIRE, La Voix du Zaire. 2100 Afr mx, FF talk past 2300//9770/11865.15245.
- 9665 UNID. 1917 AA mx, YL talk in AA to 1922. Poor. (Estes) /433(Zilmer)
- 9665 BRAZIL, R. Nac de Brasilia. 0200 futbol(Schnabel 1/31); 0300 PP talks, mx
- 9665 MALAYSIA, RM., Kuala Lumpur. 0420 EE svc. (Padula-Austi 1/23)
- 9670 JAPAN, NHK. 1630 EE nx, cmntry, answers to listener's questions. P. (Herbold)

- 9675 PERU, R. Del Pacifico. 1145 comm'ls for products of Industria Peruana and mx selections, many ID's, then into rel px. 443 (Schnabel 1/12); 1247 SS hymns and talk. Fair. (Miller 2/2) 1150-1215 ID, SS talk, organ mx 343 (Earhart 2/1); 1145 SS, lcl mx 444 (Zilmer 2/4)
- 9680 USSR, R. Moscow. 2330-2400 EE px w/cmtrys, etc. 544 (Falkenhan)
- 9680 AUSTRALIA, ABC VLH9, Melbourne. 1245-1300 piano mx, organ mx (Earhart)
- 9685 BRAZIL, R. Gazeta. 0255 PP sports P-F (Estes)
- 9685 ALGERIA, RTVA. 1930 w/AA mx//11810, 11965. Excellent (Estes); 2010 AA mx, ID's in AA and FF. Good (Duba)
- 9690 ARGENTINA, RAE. 0600-0657* EE px, nx, talks (453 Herbold 1/15, 353 Jones 555 Guarducci); 0415-0500 SS ID's talk tangos. Fair (Cress); 0210-0340 EE nx, ID's, talks (343 UMDX 2/2, 333 Austin, Cox); 0045-0133 SS, nx vocals
- 9690 USA, WYFR. 2000 EE nx. Weak. (Duba) // (Webb, Fino 1/15, Brown 1/16)
- 9695 BRAZIL, R. Rio Mar. 2330 PP, nx, martial mx. Lost to RSA 2337 (Tuchscherer); 0100-0130 PP, OM DJ w/lot LA mx 444 (Falkenhan)
- 9695 SOUTH AFRICA, RSA. 2330-0155 EE "M. ilbag" px. Letter from Ken Earhart mentioned. (353 Earhart, 444 Brown) 2300-0035 EE talk, mx, nx (Rogacki)
- 9700 BULGARIA, R. Sofia. 1945 EE talks about Bulgarian economy 434 (UMDX 1/15); *2130-2200* EE nx and talks to Eur. (Plum); 0000-0025 EE nx, mx 232 (Earhart); *0100-0130 EE nx, mx 423 (Falkenhan)
- 9700 USSR, R. Moscow. 0131 EE px 343 (Jones 1/22)
- 9705 ETHIOPIA, ETLF. 1305 EE rel px to SoAfr. VPool (Wootten-Morocco) /1/31)
- 9705 BRAZIL, R. Maua. 0150 Futbol on top of VoA. First time heard. 333 (Schabel 0055, PP sports under XERMX 422 (Zilmer 1/31)
- 9705 FRANCE, ORTF. 0147 SS px. (Brown 1/17)
- 9710 ITALY, RAI. 1940-1955* EE w/pops to UK (Tuchscherer 1/14); 2135-2220 II talks, sports, piano mx. Very Good. (Fino)
- 9710 UNID. 2120 YL in CC? (not Penang), perhaps R. Moscow. 352 (Bowlsby 2/7)
- 9710 MALAYSIA, RM, Penang. 0420 Malay svc. Special regional nx svcs are presented from Penang (and Ipoh/Johore on MW) between 0940-1100, and include lcl messages of sympathy, requests and lcl ancmts (Padula-Austi 1/19)
- 9715 CONGO, RTVC. 2115-2145 FF talks, Afr mx//15190 (Bowlsby 2/7, 433 Zilmer)
- 9715 NETH. ANTILLES, RN. 0530-0555 EE "DX Juke Box" 555 Hewitt 1/26, Cox)
- 9715 MALAGASY REP., RN. 1830 IS s/on into AA px (Duba)
- 9720 PERU, R. Victoria. 0010 Per. mx, SS ID's 0021* (Behr 1/31); 0300 SS nx, talks, mx 433 (Zilmer 1/26) // (Padula-Austi 1/23)
- 9725 BURMA, BBS, Rangoon. Excellent daytime signal. EE nx 0700 (2:30 PM lcl)
- 9730 USA, VoA, Greenville. 2020 FF, Afr mx, US tunes, EE ID (Cox)
- 9735nf NETH. ANTILLES, TRW. 0030 EE px, heavy QRM DW. Ex 11815 (Behr 1/31)
- 9740 CANADA, BBC Sackville relay. 2340-0025 PP to LA. Good. (Fino 1/6)
- 9740 MALAYSIA, BBC relay. 1720-1745 EE pop mx (Tuchscherer 2/8)
- 9745 IRAQ, R. Baghdad. 1800-1830 t/o AA talks OM & YL, mx (Tuchscherer, 323 UMDX 1/31); 1930 EE nx 232 (Ricchezza 1/18) (Padula-Austi 1/24)
- 9750 INDIA, AIR, Madras. HS 0900 Indian songs from Kuala Lumpur QTH
- 9750 CHILE, R. Minera. 1027 Book review. Comm'ls for a Santiago bookstore. How about that! Highbrow! 555! (Schnabel 1/31); 1058 SS IDed as "R. Minera", also as "R. Soc. Nat'l Minera", ads mx 433 (Zilmer 1/24); 0100-0130 t/o ID, nx, SS ancmts, comm'ls 444 (Buxton 2/5); 0245 great signal w/mx, ads, nx many mentions of Santiago. (Estes) 322 (Bowlsby 1/8); 0245 SS nx (Custodio)
- 9755nf CANADA, RCI. 0130-0140 EE sports talk. (Estes, Brown)
- 9755 S. VIETNAM, VTVN, Saigon. 0415 CC px, EE 0430, FF 0500-0530* Well heard in day, rarely this time period from Melbourne. (Padula-Austi 1/19)
- 9755 USSR, RP&P. *0130 SS, nx, propaganda. 333 (Brown 1/16)
- 9755 USA, WYFR. 1943 EE rel mx, ID and address. P-F (Miller 1/27)
- 9760 Cf. Jan. LR - TGWA at 0638 in EE? Is this correct, Joe Helm? (Behr)
- 9765 USSR, R. Moscow. 1402 EE ID, OM & YL talk. Poor. (Cox)
- 9765 INDIA, AIR. 1357 EE, SEA mx, TC. Fair (Cox)
- 9765 Cf. Jan. LR - BBC at 0145 in SS is via Ascension, not England. (Behr)
- 9765 ASCENSION, BBC relay. 0120 SS nx, cmntry 444 (Brown); 0235 EE/SS (Earhart)
- 9770 HAITI, 4VEH. 1100-1215 EE rel px//11835 (Rogacki); 1301-1425 EE vocal rel mx, talks on evils of alcohol (333 Peters 2/3, Cox, 353 Earhart 1/12); 1545-1710 EE ID's, classical mx, area nx, wx. (Cress)
- 9770 AUSTRIA, ORF. 0140-0146 OM w/interview. Fair. (Slaughter 1/12) Lang? - MRL
- 9780 ALBANIA, R. Tirana. 2305-2355 SS/Albanian w/ID, ancmts, folk mx F-G (Fino)

- 9785 ISRAEL, IBA, 2040 EE nx summary 322 (Zilmer 1/24); 2100 IS into RR px(Word); 2300 Hebrew HS //9009, 7095, Fair. (Estes)
- 9805 A. R. of EGYPT, R. Cairo. 2225 EE ID by OM & YL, classical mx(UMDX 1/9)
- 9825 ENGLAND, BBC, 2115-2130 EE special px to Caribbean re Grenada independence (Tuchschner 2/7)
- 9940 CHINA, R. Peking, 0035-0055* EE ID's, cmntry, CC mx, piano concerto. (Cress); 0119 CC lang px, EE nx, Good. (Wilson)
- 9971 CHINA, R. Peking, 2320-2330* CC px, "Internationale" (Brown) /544 (Hewitt 1/11)
- 9976 ESPIONAGE, Numbers Station. 0507-0513 SS w/5-digit numbers. Fri. GMT
- 10009.5 CLANDESTINE, Liberation Radio. 1230-1330 Heard possibly some EE words at times, unable to make out complete sentences. This probably same station I reported as unid in Nov. and reported by Jones in Jan LR, and Burlew as Liberation Radio in Dec. FRENEX. Poor. (Earhart 1/21)
- 10040 N. VIETNAM, VoV, 1320-1330 EE nx. 332 (Corson 1/20)
- 10060.5 N. VIETNAM, VoV, 1235-1300 VV type mx, possibly VV lang 252 (Earhart 1/21)
- 10110 CLANDESTINE, R. Independent Spain, 2200 SS talk and mx, Well jammed(Estes)
- 10173 CHINA, R. Peking, 1715 Red anthem and CC YL. Good. (Treibel 1/6)
- 10248 ISRAEL, IBA, 2255* IS noted. Poor. (Estes)
- 11350at N. KOREA, R. Pyongyang, 0250-0300 OM in lang, mx, TC. (Hewitt 1/21)
- 10530 KADZAH SSR, R. Alma Ata, 0205 RR, YL&OM talks. Rapid fade 222(Rippel 2/6)
- 11672 PAKISTAN, R. Pakistan, 1300-1315 Area nx in EE, ID, IC! mx(Cress, Zilmer)
- 11685 CHINA, R. Peking, 0000-0100 EE to NA w/nx, cmntry, Very Good. (J. Davis)
- 11695 BULGARIA, Radio Courier of Iran. 1650-1715. Azerbaijani lang px w/piano and orchestra mx, talk by OM, gong. Verified as the preceding by phone call to Larry Mange. See Sept. FRENEX, CB-3, 454 (Earhart 1/13)
- o o o (M. R. Leonhardt 2/20/74)
- 11760 VATICAN VR 1620 EE, rept from the Vatican, 433 (Zilmer 1-24)
- 11705 SWEDEN RS 1400 EE, nx, 322 (Zilmer 2-1)
- 11710 ARGENTINA RAE *2300 EE, nx, features, 253 (Ricchezza 1-28)
- 11720 SWITZERLAND SBC 2100 EE, dateline, 433 (Zilmer 1-14)
- 11720 CANADA CBC 2215 EE, program on animals, 333 (Jones 1-20)
- 11725 JAPAN NHK *2345-0015 EE, ID, IS, nx, mx, F-G (Falkenhan, Webb 1-3, Wilson 1-5)
- 11725 SRI LANKA RC 1700-1730 EE, rel px, ID 1730 into local mx, F (Mayer 2-2)
- 11730 NETH ANT RN *0200-0325* EE, nx, his & her, 444 (Higham 1-30)
- 11730* HOLLAND RN Lopik 1830 EE, nx, 423 (Zilmer 1-23)
- 11735 BRAZIL R C de Goiânia 2130 t/i, severe QRM de VoA 11740, (Dexter)
- 11735c MOROCCO RTVM 1640 AA, AA mx w/few annts, 333 (UMDX 1-22)
- 11740 MALAGASY REP RN 1815 DD, nx, cmntry, F (Duba)
- 11740 ECUADOR HCJB 1230 EE, rel px, 333 (Creamer)
- 11745* ECUADOR HCJB 0045-0130 EE, px to NA, rel px w/mx, 455 (Falkenhan)
- 11760 CUBA RHC 0440 EE, VoV px, E (Cox)
- 11765 AUSTRALIA RA 0720, 0845-0900 EE, mx, nx, 444-343 (Earhart 2-3, Eichenhorn 1-31)
- 11765 BRAZIL R Tupi 0000, 0215 PP, tlks, sports, //6095, 443 (Estes, Zilmer 1-25)
- 11765 GERMANY DW 1700 EE, nx, cmntry, 322 (Zilmer 1-20)
- 11770 MEXICO R Mex 1429-1606 f/o SS/EE, SS mx, some EE ID, F-G (Herbold 1-26, Cress 1-21, Ricchezza 1-25)
- 11770 USA VoA Dixon 2150 SEA lang, 2200* w/no sta. ID, 554 (Bowlsby)
- 11770 SPAIN R Liberty 2020 RR, tik by M, F-G (Estes)
- 11780 N ZEALAND RNZ 0636-0700 EE, nx, Maori mx, 353 (Herbold 1-13)
- 11785 NETH ANT TWR 2215-2230 SS, ID, annts, noisy, F (Fino 1-24)
- 11785 BRAZIL R Quatiba 1015-1037 PP, nx, mx, F (Earhart 2-3); 2200, 0015, PP nx, tlks, P-443 (Estes, Zilmer 1-25); R Mauá 2118-2129 PP sports nx, lost carrier, SW test? not heard since F (Lohe 1-16). Did you mean 11885, or was Mauá using this freq?
- 11790 AUSTRALIA RA *2130 IS, EE ID, into VV, //9535, (Estes)
- 11790 SWEDEN RS 1600 EE, nx, 433 (Zilmer 1-23)
- 11795 GERMANY (FR) DW 0435-0500 EE, tlks, mx, nx, M&W ann, strong, (Force)
- 11800NF UNID VoA 1645-1700* lang?, 343 (Earhart 2-1). Dixon?-not in freq sched.
- 11800 SRI LANKA SLBC 1530 Hindi/EE, OM w/ID in EE, Hindi mx, 343 (Eichenhorn 1-27); 0155 Hindi OM, popular local mx, rapidly clobbered by splash and fades after 0200, 332, (Day 1-15)
- 11805 BRAZIL R Globo 0-05-0920, 2115-2130, 2200 PP, tik, pop mx, one odd high pitched instrumental, some EE mx, 333-443 (Earhart 1-30, 2-3; Zilmer 1-24)
- 11810 ALGERIA RTVA several DXers report that JORDAN appearing in Jan and Feb LR is Algeria, 1800-2400*. Jordan is also sched to 2300 w/AA HS, but only 5 kw. Those rept Algeria with AA tlks and mx, //6145, 11965, 9685, F-G (Behr, Zilmer 1-16, Estes, Mayer). Jordan rept 2012-2032 AA, AA mx, F (Eichenhorn 1-13, Cox).
- 11810 ETHIOPIA ETLF 1815 Fulfulde into Hausa rel px, 1928* AA/EE ID, 432 (Graves 1-15), G-E (Woottem-Morocco)
- 11810 INDIA AIR *1130-1447 EE GOS, nx, cmntry, Indian mx, P-G (Falkenhan, Earhart 2-1, Ricchezza 1-18, 1-26, Cress 1-6)

- 11815 NEIH ANT TWR 1210 EE, DX special, 443, (Zilmer 2-2); 0102-0155 EE, rel px, nx, F (Fino)
- 11815 BRAZIL R Brasil Central 2135, 0030 PP, sports, rapid ID, F (Behr 1-31, Estes)
- 11820 ASCENSION IS BBC EE African Service, 444 (Eichenhorn). Time?
- 11825 TAHITI RT *1600, *1700, FF, Marseilles followed by flute and drum ID in Tahitian, pop mx, 0345, 0446 FF, Tahitian mx, F-G (Cox, Mayer 2-2, Herbold 1-21, Champagne)
- 11830NF NEIH ANT TWR *2205 FF px, ID, IS, (Estes). List on 11840-ed.
- 11833 URUGUAY R El Espectador 2306 SS, ads, freqs, IDs, E (Cox)
- 11835 HAITI 4VEH 1200, 1300 EE, nx, cmntry, rel px, E (Wilson 2-3), 443 (Zilmer 2-2)
- 11835 SUDAN R Omdurman 0700-1100 AA, mx, tlc, (Pankov-Bulgaria)
- 11845 FRANCE ORTF *1700 AA, poor with heavy unid QRM, (Word 2-4)
- 11845 ALBANIA RT 1800 Lang tlks, 422 (Zilmer 1-20)
- 11850 AUSTRALIA RA 2145 EE, US rock and C&W mx, E (Estes)
- 11855 SAUDI ARABIA BSKSA 2005 FF, tlc, FF songs, P (Earhart 1-26)
- 11855NF BELGIUM RTB 2255-2315 EE, Belgium speaking, mx, 342 (Zilmer 2-3)
- 11860 UNID Afro? FF ID as R. TV. . . . 0005, good signal, hrd several times, (Abraham). Belgium?-ed.
- 11860NF AUSTRALIA RA 0905 EE, nx, 222 (Creamer)
- 11860 CANADA CBC 2215 EE, //11720, 444 (Jones 1-20)
- 11865-67v ZAIRE R Lubumbashi 1847-2145 FF, drum beat IDs, speeches, afro mx, G-E (many)
- 11865NF SAUDI ARABIA BSKSA 1840 Lang tlc, 221 (Eichenhorn 1-13)
- 11870 SWITZERLAND SBC 1845 GG, tlc, 423 (Zilmer 1-14)
- 11875 BRAZIL R Soc da Bahia 0050 PP tlks, 342 (Zilmer 1-17)
- 11875 PORTUGAL R Nac 1813-1905 FF, ID, px for Africa, Nx in EE at 1900. The suggestion is made that cf. Jan LR stn at 1845 is Lisbon in FF, not Bahia, (Behr, Tuchscherer, Schwartz). 1400 w/USB programming for fisherman, HS relay, 454 (Magne 1-25).
- 11880 TURKEY VoT TT, OM w/nx, 333 (Eichenhorn). Time please.
- 11885 BRAZIL R Mauá 0952-1012 PP, vocals, squeaky instrument again, 343 (Earhart 2-3)
- 11890 SEYCHELLES FEBA 1740-1747 Urdu into EE, mx, tlc, (Tuchscherer); 1800 EE into AA class mx, ID, 444 (UMDX 1-9)
- 11890NF SRI LANKA VoA Colombo 1600-1630 EE, local ID at 1600, nx in sp EE, cmntry, sched as 11835 but that freq had 4VEH at time, F-P (Cress 2-3)
- 11890 ETHIOPIA ETLF 1850-1901*lang rel tlc, organ mx, EE ID at s/off, P (Cress 1-22)
- 11895 SENEGAL R D du Senegal 1730-0002* FF, FF/Afro mx, tlks, class mx, nx, some local lang 2000-2200, also rept as *1800, F-G (Champagne 2-2, B. Davis, Austin, Zilmer)
- 11895 USSR Asian, HS, not daily from 0000 to latest 0305, weak, sometimes good after 0000 Senegal s/off, (B. Davis)
- 11900 USSR RP&P 1330-1350 EE, pro-Soviet cmntry, mx, F-G (Earhart, Cress)
- 11900 S AFRICA RSA 2015, 2215 FF, 2230-2240 EE, ID, nx, F-G (Word, Fino 1-9)
- 11905 USSR Irkautsk RR HS 0100-0240, weak and not daily, not like they were a couple of years ago, (B. Davis)
- 11910t HUNGARY no ID but believe Budapest, 1356 w/man in unid lang through 1400, if they, is listed as Jaszago, new site (Dexter)
- 11915 ECUADOR HCJB 0100-0330, 0400-0449 EE, rel px, letters, DX party line, F-E (Cox, Kutach, Champagne)
- 11920 IVORY COAST RIVI 1830-2100 FF/Vern/EE, EE rept. 1830, 1900, 1930, Afro mx, G (many)
- 11925 BRAZIL R Bandeirantes 2145-0245 PP, Brazil/US pops, ID, sports, speech, F-G (many)
- 11925 USSR Uzbekh SSR R Tashkent 1210 EE, mx, cmntry, E (Wilson 2-3)
- 11925 CYPRUS BBC 1730 EE press review, 433 (Zilmer 2-1)
- 11930 CUBA RHC *0056-0442* EE, s/on w/NA, nx, P-G (Kutach 1-22); *0855 gongs, EE ID, mx, 444 (Creamer)
- 11940 ROMANIA RB 1300-1329* EE, nx, cmntry, mx, 242-433 (Earhart 1-25, Zilmer 2-4)
- 11940 LIBERIA ELWA 2013, 1900 EE rel px, 1815-1835 EE/Hausa rel px, F-P (Ricchezza 1-25, Word, Schwartz 1-27, Zilmer 1-24)
- 11940 KUWAIT RK 1349 AA ID, endless AA vocals, F but clear (Cress 1-23)
- 11940 SINGAPORE RS 1553 EE, OM tlc, ID as R Singapore, 221 (Eichenhorn 1-27)
- 11945 CHINA RP 0010-0055* EE, ID, YW, px sched and freq, OM cmntry, VG (Fino 1-31)
- 11950 BRAZIL R Min do Educaçao 2315-0108 PP, class mx, tlc, P-G (Austin 2-3, Plum, Miller 1-16, Zilmer 1-28)
- 11960 ETHIOPIA ETLF-1930-2005 EE, nx, rel px, 2015*, 433 (Corson, Duba)
- 11960t MALI R Mali 1730-1806* FF sports on sunday, varies to 1758*, (Behr)
- 11965 RWANDA DW Kigali 1521 FF, tlc, lt mx, 2030 GG, IS, F-P (Cox, Miller 2-2)
- 11965 BRAZIL R Record 0920-0935 PP, vocals and instrumentals, ads, ID, 343 (Earhart 2-3)
- 11965 ALGERIA RTVA 1945 AA tlc, //9685, 11910, F-G (Eates)
- 11970 S AFRICA RSA 1925 EE, tlc on S African blacks, F (Cox)
- 11970 CUBA RHC 2150-2215 SS, ID, tlks, QRM de DW and RSA, F-G (Fino 1-26)
- 11990 CZECH/SLOVAKIA RP 1730-1825 EE, Afro/Asian svc (Keating)
- 12060h USA AFRTS 0000 EE, strange here, turned out to be 2x6030, 343 (Magne 1-20)
- 12080 GLAND (Venez) R Buzkadi *2030-2058* EE ID then tlc in Basque, 444 (Falkenhan)
- 12080 CHINA RP 2330 CC, OM tlc, mx, E (Cox)
- 15000 USA Hawaii WVVH 1830 F (Kelley). Someone also rept a popping type UTE on 15000 at 1255, did not include name-ed.
- 15071 ENGLAND BBC 1545 EE drama, 444 (Creamer)
- 15084 IRAN R Teheran 1245, 1445 Farsi, ID, mx, //9040, 343-444 (Schwartz 1-26, Rippel 2-4)

- 15100 ISRAEL IBA 1358 IS, *1400 then jammed, 343 (Zilmer 1-13); 1505 Yiddish, disc. of world opinion, appeal for support 221 (Schwartz 1-27)
- 15105 JAPAN NHK R Japan 0000-0015, 2203, 2300 EE, nx, cmntry, F-G (Zilmer 1-26, Jones 2-3, Cress 2-2, Lineback 2-9)
- 15105 WINDWARD IS R Grenada 1945-2100 EE, nx, request mx, ads, 433 (Zilmer 1-15, Keating)
- 15110 N ZEALAND RNZ 2245 EE nx, ID, 333 (Creamer)
- 15110 CZECHOSLOVAKIA RP 1530 EE, nx, cmntry, features, 433 (Zilmer 1-17)
- 15110 MALAGASY REP RN *2000-2120* FF, FF/EE mx to W Afr., 433 (Zilmer 1-17, Plum)
- 15117 ECUADOR HCJB 1240 EE, 2 kHz off, het ORTF, 534 (Magne 1-25)
- 15123 MEXICO R Mex 2300-2330 SS, Mexican mx, tlk, ID, TC, 343 (Estes, Paschke 1-25)
- 15130 USA WYFR 1830 EE, "Hour of Decision", 2204 EE ID, rel px, P-G (Wootten, Keating)
- 15140 CUBA RHC 2000-2010 FF, 2010-2040 EE, listeners questions, nx, mx, 2114 EE VoV px, G-E (Fino 1-15, Wilson 1-20, Earhart 1-12, Jones 1-20)
- 15145 BRAZIL R Jornal do Comercio 2130 PP sports, 423 (Zilmer 1-27)
- 15145 SPAIN RNE 1955-2020 SS, IS, ID, program sched, mx, nx, G (Fino)
- 15150 CHILE R Nac 2100-0141 SS, also px in RR (2314), GG, II, FF (2200) AA (2255), EE (2215, 0030, 2305), IDs, mx, pro-govt cmntry, 7 langs hrd in 24 min, F-G (many)
- 15155 S AFRICA RSA *1800 GG, EE ID, 1915 EE, P-F (Ricchezza 1-21, Word)
- 15155 BRAZIL R Tupi 2145, 0315-0345, PP, fast tlk, dance mx, F-G (Earhart 1-26, Webb 1-20)
- 15155 FRANCE ORTF 1536-1540 EE sports report 433 (Zilmer 2-1)
- 15160 MEXICO LV de la Americana Latina 0100-0130 SS, tlk on OAS, G (Cress 1-29)
- 15165 DENMARK RD *1730 EE ID into Danish to Greenland 444 (UMDX 1-7)
- 15170 TAHITI RT 1745 EE nx, sports, *1600-1645 FF, mx, nx, F-G (Creamer, Zilmer, Herbold, UMDX, Corson)
- 15175 USA KGEI 1810, 2100-2145* SS, rel px, mx, IDs, 354 (Earhart 1-12, Ricchezza 1-21)
- 15175 NORWAY RN 1605 EE, tlk by M&W, 233 (Eichenhorn 1-13)
- 15175 S AFRICA RSA 1900 EE, world nx, mx, E (Wilson 1-13)
- 15185 FINLAND RF *1400-1430* EE, into Finnish, nx, cmntry on Finland, F-G (Earhart 2-1, Higham 1-29)
- 15185 GERMANY (FR) DW *1400 GG, G (Kelley)
- 15185 CLAND R España Indep *2005-2025 SS, weekdays (Pankov-Bulgaria)
- 15190 CONGO RTVC LV de la Rev 1530-45, 1800-2115 FF, IDs, Afro mx, nx, tlks, //9715, F-E (Schwartz 1-25, Champagne 2-2, Bowlsby 2-7, Graves 1-7)
- 15195 AFGHANISTAN R Kabul *1130 EE, 1200 Dari, (Pankov-Bulgaria)
- 15200 USSR RP&P 1330 EE nx, cmntry, 433 (Zilmer 1-17)
- 15205NF SAUDI ARABIA BSKSA 1500 AA, nx, tlk, strong over VoA, (Behr 2-4)
- 15215 PORTUGAL RFE 1600-1615 SS, ID, 444 (Schwartz)
- 15215 USA WYFR 0055-0115* SS, rel px, mx, ID, 353 (Earhart 1-11)
- 15220 S AFRICA RSA 1400 EE, interview, 433 (Zilmer 1-11)
- 15220 NETH ANT RN *2128-2145 DD, IS, armts, nx, G (Fino 1-15)
- 15220 HOLLAND RN Lopik *1830 in FF, G (Kelley)
- 15245 ZAIRE L V du Zaire 1600-2100 FF/local langs, nx, cmntry, Afro mx, F-G (many)
- 15250 ROMANIA RB 1300 EE, nx, cmntry, 443 (Zilmer 2-1)
- 15255 PORTUGAL RFE 1820 Czech rx, P (Estes)
- 15255 GERMANY (FR) RFE 1510 EE into Czech, modern mx, hrd in Wiesbaden 1-3, no jammer, (Wootten)
- 15260NF HOLLAND RN 1430 EE, Happy Station //15425, 342 (Zilmer 2-3)
- 15260 ENGLAND BBC 2040-2115 EE, concert mx, anmts, WS, ID, E (Fino 1-15)
- 15265NF ENGLAND BBC 0715 EE, discussion of energy crisis, E (Wilson 1-6)
- 15275 NETH ANT TWR 2205-2215* NN, ID, 454 (Earhart 1-12)
- 15280 USA KGEI 2150-2210 SS, tlk, mx, 343 (Earhart 1-12)
- 15285 CUBA RHC 2050 EE, rehash of Bay of Pigs, 444 (Jones 1-20)
- 15290 PHILIPPINES VoA Tinang 2320 EE, Breakfast show, F (Guarducci)
- 15295 FRANCE ORTF 1535-40 EE, cmntry, 433 (Zilmer 2-2)
- 15305 SWITZERLAND SBC 1620-1630 GG, ID, disc of ecology, 444 (Schwartz)
- 15320 NETH ANT TWR 2140 lang, mx, tx, //15275, 443 (Zilmer 2-1)
- 15320 AUSTRALIA RA 0238-0300 EE, NA svc, nx, tlk, 353 (Herbold 1-22)
- 15345 ARGENTINA R Nac 1700-1815*, 0305-0320 SS, nx, ID, tlks, 252-333, (B. Davis, UMDX 1-29, Herbold 1-22)
- 15355 AUSTRALIA RA 2000 EE nx, 353 (Zilmer 2-2)
- 15360 MOROCCO RTM 1635, 1800, AA, tlks, chants, mx, P-F (Miller 2-2, Zilmer 1-23)
- 15380 RWANDA DW 2205-2230, 2030 GG, tlk, varied mx, F-E (Fino 1-15, Graves)
- 15385 USSR RM 1600-1630 EE, to SEA 544, (Wootten-Morocco)
- 15415 BRAZIL R C de Ribeirão Preto 2155, 0345-0402* PP, vocals, tlk, YW ann, 433, 353 (Zilmer 1-17, Earhart 1-26)
- 15420NF ECUADOR HCJB 1740 EE, 1745 NN, 1800 Swedish, rel px, //15305 F-P (Treibel 1-27, Ricchezza 1-31)
- 15425 HOLLAND RN Lopik 1430 EE, Happy Station //15260, 343 (Zilmer 2-3)
- 15425 CUBA RHC 2050 EE, //15285, 444 (Jones 1-20)
- 15435 TANZANIA R Tanzania 1750-1831 Swahili/EE, nx, Afro mx, 332-333 (Earhart 1-21)
- 15435 ENGLAND BBC 1332-1345* Polish, special Sunday px to Poland, EE/FF pops, 353 (Earhart 1-13)
- 15440 PHILIPPINES FEBC 2330-2400 EE, nx, info on QSL card, 353 (Abraham)
- 15445 JAPAN NHK R Japan 2340-2350 f/o, EE, nx, mx, 242 (Earhart 1-26)
- 15445 BRAZIL R Nac Brasilia 1250-1305, 2115-2314, PP/SS/EE 353 to f/o, (Earhart 1-25, 2-2)

- 15445 LIBERIA VoA 1824 EE, t1k, 222 (Eichenhorn 1-13)
 15455 USSR Simferpol, Ukraine, 1315-1340 RR, class mx, t1k by W, musical ID, F (Earhart)
 15460NF ISRAEL IBA 1530 RR, 1615 Yiddish to 1640*, /12000, jammed, (Behr)
 15475 EGYPT RC 1455 AA, variety px, sched 0600-1655 to ME, Voice of the Arabs, (Wootten)
 15504.5 USSR Sverdlovsk? 1300 R. Stan. Atlantic. px, IS repeated twice on hr, 434 (Rippel)
 15505 CLAND R España Indep 1455-1530 SS, usual px, rept varying about 15507, (Wootten)
 15520 CHINA RP 1315 CC, sing-song chants by YW, 212 (Rippel)
 15630 N KOREA R P'yohngyang 2315-2358* EE, mx, cmntry, IDs 232 (Abraham, Corson 1-21)
 17670 EGYPT RC 1405-1420 AA, AA t1k, mx, HS, 353 (Earhart 1-19)
 17695 ENGLAND BBC 1500 EE, nx, 343 (Zilmer 2-1)
 17710 SWEDEN RS 1400 EE nx, 443, (Zilmer 2-1); 1500 FF, ID, 333 (Schwartz 1-3)
 17720 ECUADOR HCJB 2100 Lang, rel px, 222 (Creamer)
 17720 FRANCE ORTF 1530 EE cmntry, //15155, 15295, 433 (Zilmer 1-28)
 17725 JAPAN NHK R Japan 0035 EE, features, 252 (Ricchezza 1-23)
 17730 FRANCE ORTF 1422-1440 FF, t1k, mx, faint QRM de Jammer on Cuba 17735 with audio freq about that of MWV tone, 242-343 (Earhart 1-19)
 17730 MALAGASY REP RTV Malagache 1510 EE px, ID "from R Madagascar", mix w/ORTF, F-P (DAB 1-25)
 17735 CUBA RHC 2055-2115 AA to ME, IS, ID, tlks, //17855, F (Fino 2-2)
 17765 PORTUGAL DN Sines (listed) 1240-1255 EE/Hausa, Afro Svc, 343 (Earhart 1-28)
 17765 FRANCE ORTF 1830-1840 FF, pops, // 15245, F-P (Earhart 1-12)
 17770 AUSTRIA ORF 1830-1855 EE, listeners questions, F (Cress)
 17780 S AFRICA RSA 1650 EE, 1809-1915 GG/FF, mx, IS, ID, nx, F-G (Schwartz, Miller, Fino)
 17790 ALGERIA RTVA 1700 AA, ID, chants, nx, F-P (Miller 2-3, Cress 1-23)
 17795 LIBERIA VoA 1720-1800* Swahili, varied mx, annts, F-G (Fino 1-18)
 17800 NORWAY RN 1410 EE, nx, folk songs, F (Wilson 1-20); 1400 NN tlks, EE mx, 433 (Zilmer 1-24)
 17805 SPAIN RNE *1300 SS, IS, 444 (Jones 1-20)
 17810 HOLLAND RN Lopik 1628 DD, church service, E (Miller 2-3)
 17810 NETH ANT RN 1915-2010 FF/DD, piano mx, annts, G (Fino 1-16)
 17820 CANADA RCI 1600-1630* Polish/Czech, to Eu, G (Fino 1-9)
 17840 CZECHOSLOVAKIA RP 1730 EE, nx, cmntry, features, 242, (Zilmer 1-14)
 17855 CUBA RHC 2040-2055 AA, to ME, ID, tlks, IS, some fading, F-G (Fino 1-31)
 17865 USA WMB 1713 EE, rel mx, t1k, F (Miller 2-3); 1905 mx, Jewish px, 555 (Creamer)
 17880 ECUADOR HCJB 1520-1540 EE, rel t1k, mx, F (Fino 1-31)
 17920 EGYPT RC 1415 EE, question & answers, 453 (Zilmer 1-17)
 21485 USA VoA Bethany 1800 EE, t1k in sp EE, 555 (Creamer)
 21525 USA WYFR 1730-1746, 1810 EE, rel px, ID, 555 (Barto, Creamer)
 21535 S AFRICA RSA 1400-1420 EE, pops, orchestra ms, ID, 353 (Earhart 1-30)
 21595 CANADA RCI 1745 GG, t1k, 222 (Creamer)
 21670 USA VoA Greenville 1800 EE, cmntry, 333 (Creamer)
 26040 USA VoA Greenville 1600-1609 f/o, to Africa, ID, EE px, (Keating)

That's all for this month. Thanks for supporting Log Report. Every month there are some new contributors and we welcome them. We hope all of you keep sending in those reports. So, until next month,

73 from

Jerry A. Lineback



THE GOWANS OF HCJB
 ON THE LEFT WITH
 AMY FROELICH AND
 CORKY WEBB ON THE
 RIGHT, DURING VISIT
 TO DALLAS. SEE SWC
 ARTICLE ELSEWHERE
 IN THIS FRIENDX.

Gulness "World Book of Records" take note.... Possible new world record for most reporters to a single log report in a single month.... 75 reporters as follows!!!!

Larry ABRAHAM, Bridgeport, MI(HQ180A)... Marty AUSTIN, Wethersfield, CT.... Sam BARTO, Morris, CT(BC-794)... Ernie BEHR, Ottawa, Ont., Canada (R4B/XCR30) Mark J. BROWN, Minister, OH(DX150B)... Jeff BOWLSBY, Vancouver, B. C., Canada (SP600)... Doug BURLEW, York, PA(SX190)... Darrell R. BUXTON, Widbey, Isl, WA Marc CHAMPAGNE, Montreal, Que., Canada (Globetraveler V-016)... Mike COLLIER, Williamsville, NY(HQ129X)... Kent C. CORSON, Dubuque, IA(HQ200/A20)... Kurt COX, Kalamazoo, MI(SX190)... John W. CREAMER, Denver, CO... Hadley D. CRESS, Harrisburg, VA(SX190)... DAB - DXers Anonymous of Buffalo (Frank Orcutt, Mike Collier, Chuch Hamm. R4B/HQ129X)... Lary CUSTODIO, Brooklyn, NY(S20R)... Bill DAVIS, Laguna Niguel, CA(Homebrew)... Jim DAVIS, Travis AFB, CA(Grundig 700) Edward DAY, Auburn, CA... Gerry DEXTER, Lake Geneva, WI(HQ180/R4B)... Mark A. DUBA, Burlington, VT(RB4/SX190)... Kenneth A. EARHART, Allentown, PA(SX190)... Sandy EICHENHORN, Troy, MI(SX190/SPR4)... Steve ESTES, Newport Nx, VA(SX190) Eric FALKENHAN, Baltimore, MD (DX150A)... Martin A. FIELD, Benton Harbor, MI (SX100)... Henry E. FINO, Rochester, NY(1936 RCA Victor console)... Tom FORCE, Farmingdale, NY(Globe Patrol)... Lee GRAVES, Hardin, MT (R4B)... Ciro GUARDUCCI, Cassiar, B. C., Canada(Lafayette HA600A)... J. P. GUNTER, Durham, NC... Mike HARDESTER, USN, Lemore NAS, CA(XCR30)... Glenn HAUSER, Stillwater, OK(HQ160) Agnes Mar HERBOLD, Lynwood, CA(SX190)... Frank J. HERMANN, Montreal, Que, Can (Hallicrafters S-125)... Elton HEWITT, Pocatello, ID(DX150B/A20)... William HIGHAM, Youngstown, OH(Magna vox 1R1214)... Jack R. JONES, Jackson, MS... Rick KEATING, Allendale, NJ(Midland 11-520)... Greg KELLEY, Staunton, VA(Zenith Transoceanic 7000Y)... Tim KUTACH, Hobson, TX(Carnegie 6 band portable)... Mac R. LEONHARDT, Richmond, IN(SB-310)... Jerry A. LINEBACK, St. Joseph, IL(SPR4/XCR30) Ernst G. LOHE, Hamburg, W. Germany(RB4)... Lawrence E. MAGNE, Philadelphia, PA (R4B)... Alan MAYER, Park Forest, IL(SB-310/DX150B/NC173/A20/BC221AH)... Albert A. MILLER, Youngstown, OH(HRO-500)... Larry NEBRON, Daly City, CA(SX190) Bob PADULA, Surry Hills, Victoria, Australia(Marconi CR100)... Rumen PANKOV, Sofia, Bulgaria... Bill PASCHKE, Beloit, WI, (SX190)... Carroll R. PATTERSON, Decatur, GA(SX99)... Wallace N. PETERS, Stewart Manor, NY(SB-310/Grundy 6001)... William J. PLUM, Irvington, NJ(Hallicrafter WR-600)... Ed RICCHEZZA, Phil delphia PA(SW4A)... Chuck RIPPEL, Virginia Beach, VA(SP600/Super SX190)... Stan ROGACKI, Waldwick, NJ(HQ160)... George SCHNABEL, Rochester, NY(SW4/Q-Box)... Richard A. SCHWARTZ, Dover, DE(SX190/S-108/BC221A K)... Karl SCHWARZ, Ft. Wayne, IN... Harold SELLERS, North Bay, Ont., Canada(Trio 9R-59D)... James SLAUGHTER, Tappahannock, VA(DX150B)... Thomas D. SMITH, Liberty Hills, TX (BC779B/NC200D)... Bill SPARKS, San Francisco, CA(RB4/HQ180A)... Wallace C. TREBEL, Seattle, WA (HQ180)... John TUCHSCHERER, Neenah, WI(HQ100A)... UMDX-University of Manitoba DX SWL Club, Winnipeg, Man., Canada (C. Henteleff, F. Renger, J. Roberts, G. Sapoznikov, C. Rodger, R. Willoughby SX190)... James W. YOUNG, Wrightwood, CA(HQ100C/HQ180A)... Corky WEBB, Dallas, TX(SPR4/R4B/A20) Solomon WILSON, Philadelphia, PA(SX190)... Charles A. WOOTEN, USN, Morocco (Zenith Transoceanic/SRR-13/R-390)... Jerry WORD, Atlanta, GA(DX150A)... Larry YAMRON, Pittsburgh, PA(HQ180/SX190)... Robert ZILMER, Milwaukee, WI(SPR4).

Note to reporters Brown, Custodio, Hewitt, Nebron, Peters, Rogacki, and Slaughter. The only items of your reports that will be used this month will be those falling within the frequencies for the "C" section. This is because your reports arrived after the 12th deadline and the items for the other three sections had been cut and dispatched.

DX LIMERICKS

The Honorable Richard M. Nixon,
Settled to do some serious DXin'
Soon he turned and said to Pat,
"Hey! How about that!,
I've just now logged VoA, Dixon!
(Mac Leonhardt-IN)

A DXer I knew named Brock,
Thought lightening arrestors a crock,
But when a storm came around,
He very suddenly found,
His rig made an excellent door stop.
(Neal Perdue-TN)

Two brothers named Thurman and Sherman,
Were regular listeners of Radio Ondurman,
They were jolted one day,
When they heard some one say,
"All our programs will soon be in German"
(Jack Jones-MS)

An aged DXer by the name of Clyde,
Fell in a cesspool and died,
He got tangled in some wires,
As he looked for his pliers,
And his SWR fell at his side.
(Bill Wetterau-NY)

o o o M. R. Leonhardt 2/21/74

Section 2 - The Americas

- 4900 VENEZUELA R Juventud 2200-0400*, 1015-1155, SS (18 reports)
 4910 VENEZUELA R Carora 0200*, 1103-1115 (3 reports)
 4915 COLOMBIA R Guatapuri 0150-0500*, 1140, SS (6 reports)
 4920 HONDURAS R Progreso, 2300-0450, SS (7 reports)
 4923 ECUADOR R Quito 2330-0415, 1105, SS (5 reports)
 4930 DOMINICAN REP R Mil 0500, 1130, SS (3 reports)
 4940 VENEZUELA R Yaracuy 0030-0400* (3 reports)
 4945 COLOMBIA R Colosal 0505-1130, SS (4 reports)
 4958 COLOMBIA R Mac 2200-0400, 1115-1130, SS (6 reports)
 4965 COLOMBIA R Santa Fe 0100-0730, SS (4 reports)
 4970 VENEZUELA R Rumbos 2230-0345, 1115, SS (3 reports)
 4980 VENEZUELA R Ecos del Forbes 0000-0400, 1100 (7 reports)
 4990 VENEZUELA R Barquisimeto 2230-0300, SS (3 reports)
 5010 PERU R Eco 0100-0500*, SS (11 reports)
 5015 ORINABA RG 2100-0000*, EE (7 reports)
 5018 ECUADOR R Centinela del Sur 0000-0330 (7 reports)
 5025 PERU R Quillabamba 0100-0300*, *1000-1130 (6 reports)
 5030 VENEZUELA R Continente 0100-0445, 0940-0955, SS (3 reports)
 5035 COLOMBIA LV de Caqueta 1045-1100, SS (2 reports)
 5040 PERU R Libertad de Junin 1110, SS (1 report)
 5050 VENEZUELA R Mundial 0000-0330, *0900-1000, SS (5 reports)
 5075 COLOMBIA R Sutatensa 0000-0330, *1000, SS (6 reports)
 5095 COLOMBIA R Sutatensa 0100-0300, SS (3 reports)
 5875 HONDURAS LV de Honduras 0030-0400, SS (6 reports)
 5951 COLOMBIA R Super de Medellin 0100-1030, SS (7 reports)
 5955 GUATEMALA TONA 0100-0300 SS, 0300 EE, 1145 SS (4 reports)
 5960 CANADA RCI Northern Svc 0135-0150, Eskimo-EE (1 report)
 5965 BRAZIL R Guiba 0030-0300*, 0945-1000, PP (3 reports)
 5965 CANADIAN RCI 2205 EE (1 report)
 5987 DOMINICAN REP RTVD 2315-2345, SS (1 report)
 5980 EL SALVADOR INS 2210-0400, 1100-1300 (7 reports) out of order, sorry
 5970 PERU R El Sol 0500-0630, 0955, SS (3 reports)
 5995 USA VOA 0310-0340, EE (1 report)
 6000 BRAZIL R Inconfidencia 0040-0210, PP (4 reports)
 6005 CANADA CMCI 1710, EE (1 report)
 6006 COSTA RICA R Reloj 0000-0400, 0900-1100, SS (8 reports)
 6015 COLOMBIA R Mira 1130, SS (1 report)
 6015 BRAZIL R Clube de Pernambuco 0930, PP (1 report)
 6020 PERU R Victoria 1045-1115, SS (3 reports)
 6025 BRAZIL R Piratininga 0930, PP (1 report)
 6030 COLOMBIA R Mac 1230, 2340, SS (3 reports)
 6035 BRAZIL R Globo 2300, PP (1 report)
 6040 COLOMBIA LV del Tolima 0000-0400*, 1100-1330, SS (6 reports)
 6045 BRAZIL R Clube Paranaense 0930, PP (1 report)
 6045 PERU R Santa Rosa 0910-0341*, 1100, SS (3 reports)
 6055 BRAZIL R Panamericana 2300-0200, PP (3 reports)
 6065 COLOMBIA R Super 0540-0945, SS (3 reports)
 6070 CANADA CPRI 1130-1900, EE (4 reports)
 6070 VENEZUELA R San Sebastian 0200, 1000-1200, SS (3 reports)
 6075 COLOMBIA R Sutatensa 0130, 1155, SS (3 reports)
 6080 ECUADOR HCJB 0135, SS (1 report)
 6085 BRAZIL R Jornal do Comercio 0045, PP (1 report)
 6095 BRAZIL R Tupi, 2300-0215, PP (2 reports)
 6095 COLOMBIA LV del Centro 1045, SS (1 report)
- 6105 MEXICO XEOM 1200-0100, SS (5 reports)
 6115 COLOMBIA LV del Lelno 0415-0730, 1145, SS (4 reports)
 6120 PERU R El Mundo 0530, SS (1 report) Make that ARGENTINA
 6120 HAITI 4VER 1145, EE (3 reports)
 6120 VENEZUELA R Angostura 0930-1000, SS (3 reports)
 6125 HONDURAS R Suyapa 2330-0130, *1000-1300, SS (5 reports)
 6145 CANADA RCI to Bu 2010-2030 PP, 2058-2158 EE, dual 9610 11860 (2 reports)
 6145 USA VOA-Dixon 1315-1330 CC (1 report)
 6150 COSTA RICA R Atenas 1050-1105, SS (1 report)
 6160 CANADA CKEU 1600, EE (1 report)
 6160 COLOMBIA R Nueva Granada 0230, 1050, SS (2 reports)
 6165 NETHERLANDS ANTILLES RNB 0500, EE (1 report)
 6170 VENEZUELA R Mac *1000, SS (1 report)
 6175 NETHERLANDS ANTILLES RNB 0515-0545, EE (1 report)
 6175 BRAZIL R Guarani 0030-0300, PP (3 reports)
 6175 COSTA RICA 0900, SS (1 report)
 6175 CANADA RCI 2300, EE (1 report)
 6180 GUATEMALA BV de Guatemala 0330, SS (3 reports)
 6185 BRAZIL R Guarani 0045, PP (1 report)

Section 3 - Asia & Oceania

4890 PAPUA NEW GUINEA VLK 0900, EE (1 report)
 4913 MANCHUKUA Harbin 1145-1430, CC (4 reports)
 4920 AUSTRALIA VLK 0810-1343, EE (3 reports)
 4932 JAVA RTY-Surakarta 1310, II (1 report)
 4950 SARAWAK RMC-Kuching 1100-1600, EE (3 reports) ←
 4960 PR CHINA RP 1150-1300 (3 reports)
 5030 SARAWAK RMC-Kuching 1130, EE (1 report) ←
 5040 BURMA 1140-1400, EE (5 reports)
 5047 JAVA Yogyakarta 1140-1500, II (3 reports)
 5054 SULAWESI RRI-Ujung Pandang 0950-1300, II (3 reports)
 5987 SULAWESI RRI-Menado 0930, II (1 report)
 5990 JAPAN NKK +1030 EE, +2200 EE (2 reports)
 5995 AUSTRALIA RA 0930-0945, EE (1 report)
 6025 UZBEK SER R Tashkent 1345-1405, EE (1 report)
 6025 MALAYSIA Kuala Lumpur 0830, CC-Malay (1 report)
 6035 ASIATIC RSPR Vladivostok 1220, EE (1 report)
 6045 JAVA RRI-Jakarta 1450, II (3 reports)
 6070 WEST INDIAN RRI-Jayapura 0830-0945, II (3 reports)
 6090 AUSTRALIA VLI6 1000, EE (1 report)
 6095 IRAQ Baghdad 2200-2245, AA (1 report)
 6155 JAPAN FWH 1100-1800, EE (3 reports)
 6160 AUSTRALIA RA 1630, EE (1 report)

Section 4 - Africa

4830 SOUTH AFRICA R South Africa 0430, EE (1 report)
 4875 SOUTH AFRICA R South Africa 0405, Afrikaans (1 report)
 4905 CHAD Ft Lamy 2100-2130/2300, 0455, FF (9 reports)
 4925 GHANA RG 0540-0700, 2150-2305, EE-vernace (5 reports)
 4940 IVORY COAST Abidjan 0700, 2100-2200, FF (5 reports)
 4972 CAMEROUN Yaounde +0500, 2100-2215, FF (5 reports)
 4980 GHANA RG 0640, 2145-2245, EE (4 reports)
 5010 CAMEROUN Garoua 2100-2240 (4 reports)
 5067 TOGO Lome +0530-0600, 2100-2300, FF (8 reports)
 5980 SOUTH AFRICA R South Africa 2015, EE (1 report)
 5995 MALI Bamako 2115-2230, FF (3 reports)
 6125 CONGO Brazzaville 0600, FF (1 report)
 6130 GHANA RG 2200, EE (1 report)
 6145 ALGERIA RTVA 2300-0000, AA (3 reports)
 6170 MOROCCO RTW 2200, AA (1 report)
 6190 MOROCCO RTW 0830, AA (1 report)
 6195 NIGERIA NEC-Sokoto 0530, 2215, EE (2 reports)

Section 5 - Europe

5930 CZECHOSLOVAKIA R Prague 0100-0145, EE (3 reports)
 5975 ENGLAND BBC 0000-0300, EE (3 reports)
 5980 SWITZERLAND SBC 0515-0530, GG (2 reports)
 5980 USSR R Peace & Progress 1430-1445, EE (2 reports)
 5990 ROMANIA R Bucharest 0145, EE (1 report)
 6000 USSR R Kiev 0045-0100, EE (1 report)
 6005 ALBANIA R Tirana 1730 Hungarian, 1800 GG (1 report)
 6005 ENGLAND BBC 0400-0430, EE (1 report)
 6010 ITALY RAI 0915-0930, II (3 reports)
 6010 E GERMANY RRI 42230 (1 report)
 6020 W GERMANY DW 0515-0530, EE (1 report)
 6025 PORTUGAL RF 0200-0215, EE (3 reports)
 6025 UZBEK SER R Tashkent 1415, EE (1 report) *Surting error-should be in Section 3. FN*
 6035 SWEDEN RS 0200, EE (1 report)
 6050 CYPRUS BBC 2105-2130, EE (1 report)
 6055 USSR RM EE 0000, RR (1 report)
 6060 W GERMANY DW 0120, EE (1 report)
 6060 ITALY-SICILY RAI 0000-0100, II (4 reports)
 6065 SPAIN RNE 0100-0130, EE (3 reports)
 6065 SWEDEN RS 2330, Swedish (1 report)
 6075 ITALY RAI 0415-0430, II (1 report)
 6085 CANADA DW 0338, GG (1 report)
 6090 LUXEMBOURG 0030 EE, 0740 GG (2 reports)
 6095 GREECE VOA-Kavala 2200, EE (1 report)
 6120 SWITZERLAND SBC 0145-0215, EE (1 report)
 6140 GREECE VOA-Kavala 2145-2200, EE (1 report)
 6150 ENGLAND VOA-Weefarten 0200-0300, EE (1 report)

NOTE: These separate listings were used this month in an attempt to alleviate the space crunch LR always faces. But, in order to maintain the value of LR as a reference source, we will solve the problem another way in the future.

MARCH - 1974

Freq: KCR(KRZ)

Tia: GUT

AL KIBLACK, Mitor, 420 Shelby Street., Vincennes, Ind., 47591 **REARLINES: 10th & 20th Month**

ANGHAIKISHAN QSL card received from V/S A.S. Davineh in 8 months, via airmail...Patience, patience!! (M Inaugur, N.J.)
ANGOLA (FLASH) 4885 A Vos do Zaire, new station in Sao Salvador, *0530 PP anthem, ID and music; S/en varies to *0540. (Ernie Behr, CANADA)...5815 R. Clube de Moçambicos, 0600 PP ID, year amount and songs, till 0615 fade out. (Ernie Behr)...4957 Radio Clube de Lebits logged 2220-2259 in PP S/off, poor to fair lvl. (Bill Whiteacre, Mich.)
ARGENTINA 9690 RAR, 0635, in EE, news, music, good lvl. (Harold Sellers, CANADA)
AUSTRALIA was pleased to log Australia on 11850, 2000-2200, sent report. Received the following reply from Mr. P.W.R. Koufray, Director of Ocean Svcs; "You have picked up our transmission to Papua/NG, this svcs commenced from Australia in December, to coincide with New Guinea's Independence. In approximately 5 months this svcs will boast in Pidgin English, as the majority of the indigenous people do not speak English". (Sara Stillman, N.Y.)...61825 RA, Shepperton, S/en 0900, into ABC news, fair lvl. (August Balbi, Calif.)...4920 Regional Brisbane, 0830, news and comments in EE. (Joe Kalm, Ind.)...6149 Regional Perth, 1000, in EE news events. (Joe Kalm)
BOLIVIA 4875 La Cruz del Sur, at 1015, with SS talk and religious music. (Bob Zilmer, Wisc.)
BRAZIL 4915 R. Cultura logged 2/16, from 2327 tune, with US pops, much QM, but a clear ID in PP, at 2330. (John Teascherer, Wisc.)...R. Cultura da Bahia booming in here on 9595, from 2330, strong sig, though some QM. Much PP talk and many IDs. (Bob Zilmer)
BURMA 4812 HBS noted on possibly a new fgy in parallel with 5039, at 1243 in language. In EE with ID at 1454, followed by news in EE. (Bob Hill, Calif.) (This item signals the return of Amateur Op and Expert Bob Hill, to reporting; Bob is a long time friend of your Mitor, and will produce some startling low band DX. Look for his reports, Mitor)...5038 HBS moved from 5045, UN talk at 1500, EE ID 1515 and 1530, as, "HBS Bangalore", fair signal 2/14. (August Balbi)...5040 (TEXT) HBS with native music and singing at 0600. (Joe Kalm)
CHAD 4904 This one noted 2154-2300 S/off in PP on Sat., fair lvl sigs. (Bill Whiteacre)
CHILE "Voice of Chile" in EE news daily from 0002 to 0014, then into SS, on 15150, nice. QM is: P.O. Box 2447, Santiago. Requests letters and comments. Amos 19, 25, 31, and 49 meter bands. (M Inaugur)...Booming in here last Sunday, no doubt in my mind that power has been upped on 15150 outlet, is being used for international broadcasting. (Al Kiblack)...6135 (See a previous report) My tentative R. Universidad de Concepcion, according to Ernie Behr, is just that. (Bob Zilmer)
COLOMBIA 4775.5 Baisara Kennedy, Bogota, 0200 SS ID and music, 0350 EE talk, 0357WY, 2/13...6150.6 La Voz del Huila, Neiva, 0130 past 0700 music, and many SS IDs, strong sigs...6170 La Voz de la Selva, Florencia, now runs to 0455*, with full ID and anthem, well over 1W0. (Credit all to Ernie Behr)...6170 La Voz de la Selva is located at Florencia, heard every "morning" here, though QM...4855 R. Neiva logged on 4855 at 1115 with SS talk but poorly heard. (Both to Bob Zilmer)
COOK IS 11760 NASWA Special not heard on freq; high noise lvl, R. Habana was co-channel; I tried to phone HEC the previous day to request silence, but could not get through. Had been on a split fgy might have been a success, as 844-Tarawa was in wall that morning. (Glen Hauser, Okla.) (No kotahua here in Indiana, Mitor)
DOMINICAN REP 4882 R. Commercial, 0615, SS, native music, an ID. (Harold Sellers)...4882 This one, R. Commercial observed at 1100 with SS talk. (Bob Zilmer)
ECUADOR 4749 R. El Mundo, 0315 SS ads, ID and tropical music, good lvl. (Ernie Behr)
ENGLAND 15125 (TEXT) Voice of the British and Foreign Bible Society, with an ID at 1512, heavily QM'd by Canada, which completely covered it at 1517, EE religious programming.
FIJI 21322; I believe this is a vry new station, seems to resemble WJPR programming. (Rick Keating, N.J.) (Rick, fine on the suggestion, however, to me it suggests that its a re-recorded program, giving that QM, and aired by a conventional outlet; needs more checking, Mitor)
FR GUAYANA 3395 Cayenne noted with music, FF, to 0423*, extended stkd **SUNDS GET**. (Ernie Behr)
GHANA 9561.5 R. Ghana, 2000 AA, 2044 EE to 2214*; next day on 2245. (Ernie Behr)...4915 R. Ghana, 2255, in EE, EL doing the talking. (Harold Sellers)
GUINEA REP 15310 Voice of the Revolution QSL'd in 5 months with folder type card (Bill Whiteacre)
GUAM (FLASH) TWR, Bonaire, on EE Special Prgm aimed that they have been authorized / aware) ed to build two 250KW transmitters on GUAM by the USA, for booming to Asia. Construction to start in the near future. (Bob Zilmer)...(FLASH) (Repeated from HH FS because of importance) According to TWR, Nemaco, last night, TWR plans to build a 500KW station on GUAM as soon as their project is completed in Swaziland. (Harold Peters, Texas)
IRAQI See Feb. FS; correct fgy is 9450, not 9540, for IBA, noted 1645 in Persiam, 1715 Georgian, //9495. (Ernie Behr) (I probably made a transposition, looking same, Mitor)
IVORY COAST 4940 R. Abidjan, 2255, FF, Afro music, amos. (Harold Sellers)
KOREA(N) 9445 R. Pyoungang, EE news and commentary, 0900, fair lvl. (August Balbi)
KUWAIT 11735 R. Kuwait in native music, news, man in AA. (Joe Kalm)
MADAGASCAR 17730 Tamnarive noted 1510-1600 S/off, FF and EE, Western music, QM (Bill Whiteacre)
MALAYSIA (TEXT) 4845 Kuala Lumpur, instrumental music 1230. (Joe Kalm) / acre)
NEPAL (TEXT) (Repeated because of value) (See previous FS) Rg news in QSL for 7225, signed by Amar Zahir. Said my report was totally correct. Nice letter, stamps, and postcards. (M Inaugur, Va.) (I stand corrected in re my remarks that this AIR Nepali svcs, here-by apologize, Mitor)

ITALY (RHW) Ocean sources report **HE** here, 3426. This one noted here 2/18, with weak to fair lvl at 4017 **EM** of several medical instruments; 0020 **pgms** of Indian music, 0058 singing of a prayer, **gms** by 0135. No definite ID. (Jim Hagan, Va.) (FLASH ITHB, Editor)
NEW ZEALAND 15110 **HEZ** with new S/off time 0615, //17770. S/on at 0630 on 11760 (best), //9540, with **HBC** news, followed by national news. (August Balbi)

PAKISTAN 11673 **HF** heard here most evenings 1300-1320, when I think to tune, as they have news in **HE** followed by comments, music, vry good signal. (Grady Ferguson)

PAPUA/NG Port Moresby, 9520, **HE** news 0600, ads, heard irregularly, 0730 S/off. (August Balbi)
PHILIPPINES 7226 1150-1202, **FREC** noted with religious **pgms**, man and woman / Balbi answers, come through very well. Will give a longer listen next time! (Grady Ferguson)

PERU 4825 La Voz de Salva, Iquitos, 0400 music, clear **SS** IDs and anthems to 0500*, varying 0620*. Is a cultural station, **pg** ads, the former R. San Jose. (Ernie Behr)...4860.5 R. Chimbayococha, Junin, 0430, all Andean music, **IBs**, 0648*; cm-4856. (Ernie Behr)...

47864 R. Atlantida at 1104 with **SS** talk, vry clear **ID**, must drift. (Bob Zilmer)...5010 At 0429, R. The **ID**, striking mostly sung 0429, chinese, **HST** TC. (Glenn Hauser)

RUSSIA 6060 Regional heard 2246-2339 fade out, fair lvl at tuning. (Bill Whitacre)

SINGAPORE 5010 **IN** // with 5052 (best), talk in **HE** at 1545. (August Balbi)

S. AFRICA 4790 SABC, Springbok, best lvl ever, **pgs** at 0055. (Joe Hahn)

SWITZERLAND 6155 Swiss Radio, 0400 **HE** **ID**, **pgs** and ads to 0445 fade out. Amazing signal since 1/29, wipes out all **QRM**, possibly new **100WV** transmitter. Heard 5 days (Ernie Behr)

The following is the sked for **HE** effective March 3; To **ICMA** 0000-0230, 6000; to **FR** 1230-1330, 15105; to S. Asia 1400-1530, 15240; to Africa 1730-1930, 15240; and to Australia, New Zealand 0515-0615, 11940. (Bob Zilmer)

SWK ID **VEIS** again logged on 4788, from 2130 to 2155. Quite a pity here. Can you really hear a 750 wattor admit this **QRM**?, all ye super **Hkrs**?? Write me at 24 Madison Ave., Summit, N.J. 07901. If so, be glad to hear from you! (Ed Insinger)

USA KGHZ, San Francisco, 9520, **HE** news at 1400, vry strong sig, S/off at 1700. (August Balbi)
FREN 12095 Radio Peace and Progress with talk on Rhodesia and So. Africa, 1300- / Balbi) 1350*, with **IS**, a solid **ID**. (R.A. MacLeod, Pa.)

VERMONT 3245 R. Liberator, **YVXP**, at 0225, with **SS** talk and music. (Bob Zilmer)...4960 R. Swore logged 1030, in **SS** and native music, fair lvl signals. (Bob Zilmer)

WINDWARD ISLANDS 5015 R. Granada noted at 2307 with the **HBC** World News. (Harold Sellers)

WAVE HARMONICS COLOMBIA 2140 Misora Atlantico, 0710, at Barranquilla, presumed, with tropical music, fundamental has been reported 4 **khs** low, but this does not appear to be 1 **khs** low... (Glenn Hauser)...**EL SALVADOR** 2310 At 0503, presumed **YSGP**, **IDed** here before, the one with music at 0503, 2/17, from 1155 **khs**...2200 **GUATEMALA** This one still unlisted

in **WAVE** 1974, R. Superior is again heard, mixing with the **Hicragua** early evenings, but in the clear later, 2/13. **TCs**, slogan **ID** several times with **verbr**, and, "Viva la senal R. Superior". 0500:30 off abruptly during **marimba** music. Believed to be **TGRS**, in **Esquinia**...**GUATEMALA** 2400 **TGRE**, R. Rosa, Chiquimilla, again on 2 x 1470, 0345, with instrumental music, 0355 **smet**, 0402 off...**MEXICO** 2920 0329 R. Ysela is now using a

"Radio Vaxiodades", slogan, noted 2 x 1460, with **CBT** **TC**, 0405 slogan **ID**, news from **Im-Semex**. (Credit all to Glenn Hauser)

GUATEMALA R. Libertad at 2130 in **FF**, in usual judging format. (Bill Whitacre) (6240)

GUATEMALA (See my previous report) The Greek Broadcaster in International Waters, 2165 **khs**, has not been heard since initial report, rechecked. Was hoping for a reappearance on Sunday (Monday **GMT**). (Glenn Hauser)...5072V **VY** strong African, 0400 Swahili or similar, **hms** to 0445 fade out, seems all religious judging. Heard often since 2/2, some distortion and noise, **WHO?** (Ernie Behr) (Ernie, I have heard this one for at least 2 years at my **QTH**, but still remains unknown, Editor)...6035 1900 Noted 2/17, and an hour following, a detected carrier, with another on 6055. Wonder if King Kong or ilk active now and then? (Glenn Hauser) (See Larry Yanson's last minute item, below, Editor)

...See Mid-Jan **FS** 17750, re discussion about R. Svoboda, this is of course, R. Liberty, not R. Free Europe. The **ID** has been listed in **WAVE** for 15 years, so what's the big problem? (Ernie Behr)

LAST MINUTE ITEMS AT TYPING DEADLINE: (FLASH) **HONG KONG** 6030 R. King Kong, 2030-2120, **pgs**, **GM** **amcr**, **ID**, "This is King Kong, bearing 20 miles off the Atlantic Coast", but seems from signal strength to be somewhere in this tri-state area. (Editor Larry Yanson, Pa.)

...**JIM BRITAIN (PAPUA/NG)** 2340 R. West New Britain logged 1215-1250* with **GSTQ**, **GM** in Pidgin, **US** **pgs** and S. Sea music. If I am not wrong, think this is first state-side logging. (Larry Abraham, Mich.) (Comments, but seems to me **WENA** **Hear** has **QSLed** this one, Editor)

JANUARY 1974. SCHEDULED GOVT AS PUBLISHED BY THE BUNICK OBSERVATORY. 2-5-74: 1-18, 2-15, 3-13, 4-12, 5-8, 6-0, 7-0, 8-29, 9-36, 10-44, 11-49, 12-60, 19045, 14-74, 15-77, 16-64, 17-65, 18-53, 19-58, 20-49, 21-37, 22-36, 23-28, 24-16, 25-0, 26-8, 27-0, 28-8, 29-7, 30-0, 31-0 **MEMO-29-3 **PRECEDENT:** FEB-25 MAR-25 APR-22 MAY-21 JUN-19 JUL-18 (Grady Ferguson)**

WAVE (reported from **MM** **FS**) Conky Webb from the great state of Texas advises that a letter of Feb. 9, 1974, from **Hallcrafters** station: (quote) "The Hallcrafters Co. does have plans to develop a new general coverage receiver...I cannot give you any definite information at this time, but check with your local dealer". Signed by J.C. Mathews, Jr., Manager, Marketing for the Hallcrafters Co. (This is great news, Editor)

ACKNOWLEDGMENT Thanks to all for keeping the material flowing. Please observe the new conditions...all material that was received here as we were completing this current **FS** will be edited into the up-coming **FS**, in two weeks. Monthly **FS** efforts roll around nightly regularly. Good **HKING**, Happy Hunting, last minute **FLASH** items may be phoned to 612-802-3976, BEFORE 2000 **GMT**. With **Vy** 73, and as always,

LISTENER'S



SURVEY RESULTS SPOTLIGHT, PART VI

Dan Jamison
310 Roanoke Street
Apartment 21
Richmond, Virginia
23225

Credits to the Spotlight go to "Numero Uno, SWBC - Weekly", FRENEX, and observations by other DXers and ye ed.

Deadline: 15th

used are 15530 and 11650. Also you might check out 15455 during this time slot. 15530 is probably a move from 15520 which was covered by a strong ute station, in Virginia at least, and also Radio Peking has been noted on this freq during many periods. Bengali on 9580 at 2015 has been noted on ECNA additionally.

BANGLADESH Broadcasts from Radio Bangladesh seem to have been received at a fair to excellent level in all portions of North America in recent months. The BBCMS noted the latest change in their schedule to be in the broadcast in English to Europe, India, and North Africa from 1230-1300. The freq's now

RHODESIA BROADCASTING CORPORATION The RBC transmits shortwave programs in Gwelo, located in central Rhodesia. The freq of 3396 handles the General and Commercial Service which features pop music and commercials. Sign on time is 0355. A church bell interval signal, similar to the Vatican Radio's bell IS, is aired five minutes prior to sign on on 3396. Also this freq, 3396, offers good to excellent reception on the East Coast and also in the Midwest during periods of favorable African reception. RBC is also loggable on WCNA during super reception conditions from Africa. The African Service on 3306 is slated to sign on at 0328 - per WRTH. A different IS is used for the African Service tho. English, by the way, is also aired in the African-Svc at times. 3306 has been logged in the Midwest at a fair to good level around 0345 or so.

YUGOSLAVIA Shortwave broadcasts from the only Communist Bloc country allied to the U.S. - Yugoslavia - are aired over Radio Belgrade. RB has been heard on 6100 at 2200-2215 with news in English. French was noted from 2215-2230, also on 6100. In addition to 6100, WRTH lists 7240 and 9620 in //. Further English programs are listed at 1530, 1830, and 2000 on these three freq's. The programs are a half hour in duration. A French broadcast has been noted signing off at 1530 on 15240 additionally.

RADIO NEDERLAND - TALATA The Radio Nederland Indian Ocean relay site located off the east coast of Mozambique in the island nation of the Malagasy Republic is often heard well in most parts of North America. RN-M has been reported broadcasting in English at 1400 on the frequency of 11740. At 1530 RN-M has scheduled a Dutch transmission on 21730 til 1650 sign off. English is once again aired at 1830 to 1915 on 9555. There is an Arabic news around 1940, or so, also on 9555. An additional Arabic broadcast may be heard at 1830 on 9715 // 17830. The freq of 15110 carries French programming from 1830 to 1950 and also from 2000 to 2120. By the way, 15220 is in //.

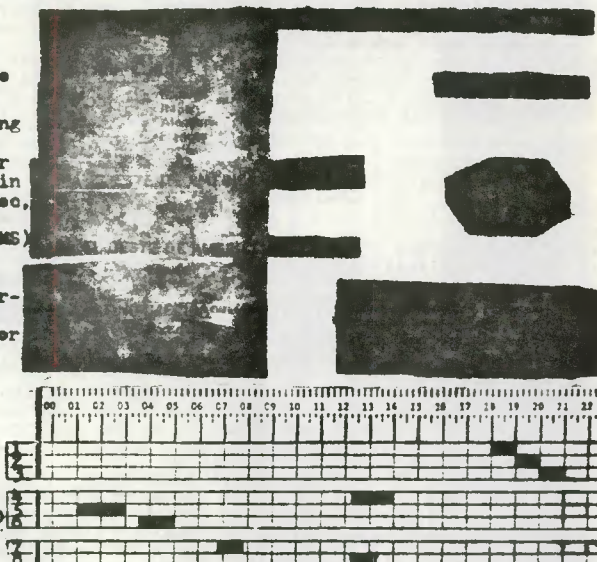
AFGHANISTAN

1030-1100 RR }
1100-1130 GG } 15195
1130-1200 EE } Europe
(by permission, BBCMS)

GERMANY, WEST "According to the W. German news agency, DPA, R Free Eur is closing its bureau in Berlin at the end of Dec, but the office in Bonn will be retained." (BBCMS)

ARGENTINA Many thanks to Charley Wootten, Norocco, Steve Estes, VA, and Ed Ricchezza, PA for supplying us with the information from RAE.

AUSTRALIA RE Gen Svc
1-Pac Isl 15355, 11840,
9580, 9540
2-Eur & P.I. " " 7290
3-Far E. & P.I. "
15160, 9730
4-S&SEA&PE 11825, 11810,
11790, 9650, 9570,
5-NA 21740, 17795, 15320
6-AFRICA 21680, 17820
7-UK, EUR, PAC 11765 9510
8-NA 11710, 9580



(by permission, BBCMS)

BELGIUM Please correct the freq for BRT to NA rpt'ed last month as "6035" to 6055. It is in use fm 2215-0100 daily, EE fm 2255-2315 and 0040-0100. 11815 to SA is in parallel. (many thanks Richard, ... Dr. R. Wood, LA)

CANADA "Beginning on Sat., Mar. 2, The R Canada SW Club pgm will be starting a new series which should be of interest to DXers everywhere, and one which will go a long way towards helping DXers to solve that problem of 'what lang am I hearing'. This series will feature spoken examples of over 50 different foreign lang's, the ones you're most likely to hear on the international SW b/c bands. We'll also be telling you the names of the various countries where these lang's are spoken. This will be an especially valuable series for those who are able to tape record it and keep it for future reference."

RCI b/c's to ECNA/Caribbean fm 0100 on 11945, 9755, 6085		
Midwest	0400	9655, 6135 (direct fm)
WCNA	0500	9655, 6135 (RCSWC)
ECNA/Caribbean	1200	15315, 11825, 5970

CHILE R Nacional de Chile, Santiago, ID'ing as LV de Chile now has an International svc. They are scheduled from 2045-2109 in RF 2223-2240 in EE freq's anced are 15150 & 6190, 2110-2134 GG 2241-2301 SS but only 15150 has been noted 2135-2156 Italian 2303-2324 AA 2200-2222 FF the entire format is repeated until 0450, s/off @ 0500 The sta address is Box 2446, Santiago, Chile. (Dr. Richard Wood, LA; George Schnabel, NY; by permission, BBCMS)

CHILE As earlier rpt'ed elsewhere, R Portales has indeed reverted to its earlier name of Emisoras Diego Portales. Noted so ID'ing on 9570 at reg s/off 0403. Xntr seems in excess of listed 10 KW. (Dr. Richard Wood, LA)

CHINA - POOCHOW

All b/c's are in Std CC except fm 1500-1530 when in A moy. All b/c's on 5040, 4975, 2340 (by permission, BBCMS)

CLANDESTINE The pro-communist cland. V of the Revolutionary-Party for Reunification, b/c's to South Korea (1) in Korean on 4563 (2) in Korean on 4563 & 4120 (3) in ENG on 4563 & 4120 (by permission, BBCMS)

07	08	09	10	11	12	13	14	15	16	17	18	19	20	21	22	23	24

COLOMBIA LV del Huila, 6150, is a new station operating 24 hrs a day. It ID's as one of the "emisoras super radio" and has countless slogans and sta promos at every record break. It's address is Apartado Postal Numero 150, Huila, Colombia, and it promises to send a souvenir to all who send in a reception report. (very interesting Jeremy...J.A.F. Valdes, Nova Scotia)

CONGO, REP R TV Congolaise, Brazzaville, noted at s/on 1700 w/IS to very abrupt, unannounced s/off at 2200 on 15190. All in FF. (Dr. Richard Wood, LA)

ENGLAND The BBC World Radio Club reported, "... next month no more will be hrd fm Tatsfield because the station is moving. The aerial arrays, the dozens of receivers, freq measuring equipment, and a staff of 45 will be joining forces w/s monitoring svc at Caversham..." (via George Schnabel, NY)

GHANA The External Svc of the Ghana B/c Corp b/c's to NA/Caribbean fm 2000-2100 on 11850. (welcome aboard Mark...Mark Brown, OH)

GREENLAND

Many thanks to Victor Jaar, Quebec, for sharing the sked fm Greenland w/us.

00	01	02	03	04	05	10	11	12	13	14	15	16	17	18	19	20	21	22	23	24	

GUINEA, REP Conakry again active in its all night svc on 11965 // 9650; noted fm 0600-0600. No EE noted recently, only FF and vernaculars. (Dr R Wood)

ISRAEL By the end of the year, there ought to be in the area of 3 to 4 300 KW xntr's beamed to NA, hopefully with the new svc in prime time. Comments on the proposed new EE Svc to NA fm abt 2300-0500 are welcome. You may address your correspondence to IEA, Box 1082, Jerusalem, Israel. (L Magne)

MONGOLIA The latest schedule for R Ulan Bator lists

Standard CC fm 1030-1100 (M,Th) to China on 11855, 7260, 5053	
Russian 1030-1100 (Tu) USSR 11855, 7260, 5053	
Russian 1040-1100 (Fri) USSR 11855, 7260, 5053	
English 1220-1250 (not Sun) SEA & FE 17785, 15445, 8890	
Standard CC 1300-1330 (not M) China 5960, 4950	

MONGOLIA - continued fm page LN-2

Standard CC fm 1330-1400 (not M) on 5960, 4950
 Mongolian 1400-1430 (not M) 5960, 4950
 ENGLISH 2200-2230 (not Su) 11810, 9545 (by permission, BBCMS)

MALDIVIVE ISLANDS Be sure to tune

for the special NASWA courtesy

pgm to be aired on Mar 12, at

1100 and 1215 on 4740 fm

R Maldives, Happy 10th

anniversary R Maldives

and thanks for airing the

NASWA courtesy pgm! Also

tx to Hank Michalenka for ur work in arranging this spec'l b/c.

(sked via Ed Shaw, VA; Charlie Wootten, Morocco)

(1)7225(2)6150(3)9552(4)3331(5)4740

MEXICO La Hora Exacta has been reactivated after a long silence. Observed on 9553 at 1600-1800 w/very poor modulation and intense hum drowning the audio. Time checks and advertisements only. (DX'er Richard Wood, LA)

MOZAMBIQUE "The Lisbon-based cmcl sta 'RC Portugues' is rpted to be negotiating the take over of the privately owned Mozambican Catholic b/c'ing sta 'Radio Pax' of Beira, w/the intention of turning it into a cmcl sta operating as its branch in Mozambique." (by permission, BBCMS)

NIGERIA English broadcasts from the Voice of Nigeria are scheduled from 0530-0735 on 15185, 11900, 7255 b/c'ing to Europe/West Africa
 1530-1700 15185, 15120, 7275 Africa/Middle East
 1800-1930 15120, 11770, 7275 Europe/West Africa
 (many thanks Charley...Charley Wootten, Morocco)

PAKISTAN Radio Pakistan has a World Service transmission to the Persian - Gulf and Middle East at 1430 s/on on 15520 and 11672. (by permission, BBCMS)

PORTUGAL R Portugal's "Listener's Magazine" began reprinting a DX Technical-Vocabulary in the No. 1 issue for 1974. Apparently it will be quite extensive. It will run through issue No. 3 and the vocabulary is in five languages. (thanks Jimmy...Jimmy Jones, TN)

SAUDIA ARABIA

Tnks to Dr Henry-

Borska, PA, for

the sked fm Riyadh.

1) 9625, 9605

2) 15120

3) 9585, 21510

4) 15205

5) 6080

6) 11885

7) 7110, 7195

8) 15250

9) 15200

SWAZILAND Regarding the Swaziland TWR station, first hand word from the site itself says "...construction is progressing but it will be well into this year before anything goes on the air. In fact I suspect that it might be next year before it goes on. I have not seen any PERT charts for the Swaziland station but they are having some unusual problems. Parts acquisition is one and the weather is another. We saw pictures of the guys trying to work in mud up to their knees. Swaziland is having its rainy season right now. You can imagine the difficulties that causes."

(very interesting indeed Steve. Keep us posted on the developments there won't you. ANARC Publicity Director, Steve d'Adolf, MD)

URUGUAY Although this notation is not shortwave in nature, it is still interesting nevertheless. Radio Colonia, 550 KHz; "I hrd a news bulletin on C.R.E., Guayaquil, Ecuador, that Radio Colonia was warned it might loose its license if it continues to meddle in internal politics. This might affect other stations in the area too." (very interesting Jeremy. Have you hrd of any Latin American stations closing down early or modifying their operating schedules due to the energy shortage? ed. ... J.A.F. Valdes, Nova Scotia)

USSR - LENINGRAD "The pgm for Soviet Fishermen on Friday's has been retimed fm 2330-0030; now fm 2230-2330 on 6155. (by permission, BBCMS)

GERMANY - WEST The Sender Freies Berlin - Radio Bremen Capar; NASWA's Ernst Lohe of West Germany called directly to the transmitter site in Bremen in order to remedy the confusion. Ernst writes, "R Bremen operates the xtr 24 hrs a day, airing its own pgs fm 2100-2300; Sender Freies Berlin is joined all other times. The 10 KW xtr feeds a rhombic antenna bringing the ERP to 50 KW which is beamed into SSE (south south east...southern Eur-ed.). R Bremen considers to obtain some b/c time in the afternoon for its pgs called 'Hansawelle'. I was told the sta was received in Florida. The SW outlet gives a good signal in Hamburg during the day time only, 100 mile NE of Bremen. In the afternoon, Sundays all day long, Vatican Radio is taking over that freq, which is assigned to 6190 too. I have logged R Bremen signing off at 2100 w/news, under QRM. But all stations closer than 400-500 miles fade out during the darkness, their propagation seems to change drastically." (for more info on these two stations, refer to LN-1, November, 1973) (many thanks for your fine research and work Ernst - ed.)

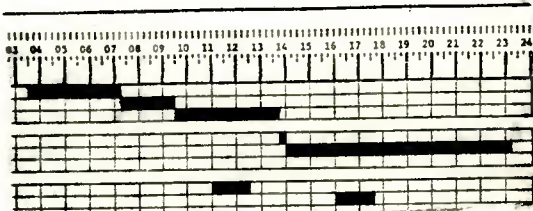
USSR - UPDATE; FAR EAST SOVIET HOME SVC Bill Davis, Calif., notes some changes in Soviet broadcasting operations:

- 4825 - Sov HS fm 0755 - f/in; wiped out at 1400 by another Soviet station in the Chinese svc.
- 4860 - Sov HS (Mayak Pgm) - times hrd range fm 0600-1500 - QRM'ed
- 5900 - Sov HS is back here, but not nearly as strong as when last hrd here. Times are fm 1330-1600. The Sov CC svc on this freq is much stronger.

last minute info

JORDAN The Home Svc fm Amman in Arabic on
 (A) 11810, 7155 (B) 11810
 (C) 11810, 9530
 In English on
 (D) 7155 (E) 9650

(by permission, BBCMS)



LAOS The Voice of Peaceful Laos on 7385 operates in Laotian from 2300-0200 & 0500 Vietnamese 1430-1500 (by permission, BBCMS) (how does this one sound Victor G., Bob Padula, Gregg Calkin?)

NORTH VIETNAM The TAY BAC regional svc broadcasting from Tay Bac Prov. is now scheduled from
 0155 - 0400 on 9495v, 6335v
 0928 - 1115 9495v, 6335v, 4770v (by permission, BBCMS)
 1155 - 1430 9495v, 6335v, 4770v
 all pgs are in Vietnamese and minority lang's.

The VIET BAC regional svc is scheduled from
 0225 - 0430 on 8635v, 6750v
 1125 - 1400 6780v, 3995v
 (by permission, BBCMS)

And that is about it for another LISTENER'S NOTEBOOK. A hardy word of thanks is extended to all of our contributors for their valuable contributions of LN. We are looking forward to receive some material from YOU! Schedules, observations, tid-bits, and general information are always welcome. If you desire the return of your sked, please enclose a SASE.

NEXT MONTH: A list of DX Programs

73 and Happy Listening,

SOUTH AFRICA Radio RSA's "DX-Corner" programme on 27th January stated that SABC's plans to close-down all its medium-wave transmitters by the end of 1974 are well advanced. So far transmitters at Kimberley, East London and Pietermaritzburg (three at each site) have been dismantled and nine channels freed - 1241, 1061, 962, 885, 791, 764, 683, 665 and 602 kHz - which carried the English, Afrikaans and "Springbok" services.

A considerable VHF network has been built up over the past ten years.

(by permission, BBCMS)

(Note: The SABC also uses short-wave transmitters for its home service and it is not known whether they are to remain in service when the medium-wave transmitters close-down.)

QSL REPORT



EDITOR

Larry Yaron
P.O. Box 5103
Pittsburgh, PA.
U.S.A. 15206

DEADLINE: 12th of month.
TEL: (412) 361-6832

SCOREBOARD

This month the SCOREBOARD spotlight falls on EUROPE; forthcoming issues will feature OCEANIA and S. AMERICA. HIC/VIC are Countries Heard and Verified, HIS/VIS are Stations Heard and Verified.

Reporter/Location	HIC VIC		HIS VIS		EUROPE		Best QSL/Freq.
	HIC	VIC	HIS	VIS	HIC	VIC	
1. Don Jensen, Wisconsin.	216	211	---	---	37	34	Polish Pathfinders
2. James Young, California.	211	180	687	216	37	34	Radio Andorra, 5972
3. Gerry Dexter, Wisconsin.	211	207	970	766	38	37	
4. Samuel Barto, Connecticut.	207	190	1104	578	---	---	R. Renaissance, 6154
5. Bob Padula, Australia.	203	198	---	---	35	35	Sender Freis Berlin
6. Edward Shaw, Virginia.	202	183	504	255	36	34	Austrian Army, 6255
7. Dan Henderson, Maryland.	202	188	---	---	---	---	
8. John Campbell, Switzerland.	202	171	---	---	39	38	Iceland, 12175
9. Ernie Behr, Ontario.	200	152	928	253	37	36	AFN Frankfurt, 5470
10. William S. Sparks, California.	198	192	---	567	36	35	Esti Radio, 6085
11. Marlin Field, Michigan.	196	190	755	605	---	---	
12. Bill Flynn, California.	191	173	682	449	35	35	Tallin, 6085
13. Alan Roth, New York.	191	171	559	425	37	36	Reykjavik, 11780
14. Jim Hagen, Virginia.	182	160	---	---	36	15	Iceland
15. Alan Mayer, Illinois.	180	123	---	---	35	28	HMHI Greece, 15435
16. Larry Yaron, Pennsylvania.	159	110	295	148	33	31	Trysno Norway, 7240
17. Steve d'Adolph, North Dakota.	159	128	194	154	31	30	Voice of Iceland
18. Don Johnson, California.	159	101	290	160	32	28	R. Luxembourg, 6090
19. Tom Gavaras, Minnesota.	157	101	270	183	33	29	R. Luxembourg, 6090
20. Albert A. Miller Jr. Ohio.	145	121	337	139	31	30	ERT Greece, 15425
21. John Sgrulleta, New York.	141	134	---	---	33	33	Estonia S.S.R., 6085
22. Larry Abraham, Michigan.	140	97	---	---	30	29	Iceland, 12175
23. Charles Wootten, Morocco.	137	104	287	222	36	35	Sudwestfunk, 7265
24. Al Reynolds, Tennessee.	136	107	247	134	31	30	Austrian Army, 6255
25. Mark A. Duba, Vermont.	133	104	---	---	33	30	IGRC Red Cross, 7210
26. Tom Cwikla, Connecticut.	133	114	257	182	34	31	Radio Riga, 5935
27. Elliot Straus, New Jersey.	132	59	---	---	31	---	R. Luxembourg, 6090
28. Larry Marshall, California.	131	111	190	165	30	29	R. Luxembourg, 6090
29. Doug Burlew, Pennsylvania.	131	48	291	60	29	10	Radio Sweden, 6175
30. K.L. Greer, North Carolina.	129	77	---	---	30	29	
31. Greg Kelley, Virginia.	128	96	151	122	31	23	R. Luxembourg, 6090
32. Steve Wallace, Pennsylvania.	127	53	---	---	30	18	Sudwestfunk, 7265
33. Neal E. Kolb, Florida.	124	72	273	---	30	26	R. Luxembourg, 6090
34. David Simon, New York.	121	77	271	146	30	29	HMHI Greece
35. Steve Estes, Virginia.	118	53	205	59	28	21	IERA, 9670
36. Marty Austin, Connecticut.	118	84	211	123	30	28	
37. Denny Driscoll, North Carolina.	116	102	---	---	32	30	Iceland, 12175
38. Jerry Llineback, Illinois.	113	37	225	46	24	9	Radio Finland, 15185
39. C.R. Patterson, Georgia.	113	101	308	156	29	28	Radio Portugal
40. Bill Paschke, Wisconsin.	112	68	207	83	29	28	Radio Vilnius, 11790
41. M.R. Leonhardt, Indiana.	107	65	---	---	28	26	Trans World Radio
42. Woody Seymour Jr., N. Carolina.	104	89	155	120	30	29	HMHI Greece, 15345
43. William Zuk, New York.	97	55	---	---	31	25	R. Luxembourg, 6090
44. Mildred Marshall, N. Dakota.	94	85	133	117	30	30	Radio Vilnius, 11850
45. Larry Nebron, California.	93	60	125	80	25	20	
46. David Ball, Ontario.	92	78	142	103	28	28	R. Nordsee Int., 6205
47. Jerry Word, Georgia.	89	75	---	---	29	25	R. Luxembourg, 6090
48. Corky Webb, Texas.	88	73	144	102	30	28	R. Luxembourg, 6090
49. William J. Plum, New Jersey.	84	70	169	127	30	30	R. Nordsee Int., 9935
50. Donald King, Pennsylvania.	70	59	102	78	27	26	Radio Free Europe
51. Henry Pino, New York.	70	49	86	54	31	24	Radio Sweden, 15295
52. David Coursey, Texas.	68	---	100	---	26	17	
53. John Walenter, Illinois.	67	62	73	68	24	24	Radio Poland, 11890
54. Ciro Guarducci, B.C.	65	49	123	68	23	20	Greece, 9760
55. Norman Starr, Ohio.	60	22	---	---	22	15	Radio Denmark, 9520
56. Mark Brown, Ohio.	58	48	82	67	24	23	Radio Poland, 11815
57. J. Cole, Colorado.	51	30	61	31	20	15	RAI Italy

QSLs RECEIVED MARCH 1974

For those of you claiming verifications for tentative reception reports. I thought the following excerpt from Al Siser's article 'An Honest Look At QSLs' (SWC-April 72) would be of interest. Note: This is only an opinion. All comments invited..ed.

"In most cases, not all, a Dxer is really off his rocker if he is counting on a reply from the station proving to him, the listener, that which he had not been sure of--- whether or not he had actually heard the station. I must say that this is the most serious of my propositions and one that never ceases to astound me. I've seen numerous cases where it appears that Dxers have heard no IDs, and are not sure of what they've heard, and then--suddenly--they are counting it on the basis of a verification. I believe that this is very risky. I indicated that I feel that there are indeed exceptions. If there is evidence that the station actually checked out the program content you reported, and providing you gave them enough material to check out--or if you sent a tape and are reasonably sure that it was played at the station--then you are justified in claiming such a logging."

INDIA: All India Radio now sends out an acknowledgement card for all reports, then later on a specific, newly designed QSL card with all details. (Via Bob Padula-Australia)

A Booklet titled International Postage Rates and Fees, publication 51. This publication is free of charge at your post office. It contains information in condensed form about International mail.

Much QSLs!! You nuts really must of been busy! Ace Dxers Don Jensen and Ed Shaw have received veries from Radio Maldives. Another very interesting QSL from Don Jensen is the rare Indonesian, Rikhusus Inforwasi Peritanian on 4698 khz. Nice catch Don! Other interesting QSLs this month are: ORTF Reunion, La Voz de Tigre, La Voz del Napo, Radio New Ireland, Radio New Britian, and many intersting Latins, Indonesians, and Africans.

AFARS & ISSAS: 4780, ORTF, Djibouti, folder card w/date and time in 25 days for FF report and 3 IRCs. (Koret) Fine catch Rich!..ed.

AFGHANISTAN: R. Afghan., 4775, map card w/freq. and time for 1 IRC, 3 months. (Vasylik) card w/date and freq. in 2 months for 4 IRCs. (Young) 15265, map card in 4 months for EE rpt. and 3 IRCs. (Handler) 15265, map card w/all data in 4 months for 2 IRCs. (Abraham)

ANGOLA: R. Clube do Lobito, 4937, card in 5 weeks for mint stamps. (Sparks)

R. Cl de Mocamedes, 5015, personal letter from V/S. Carlos A. de Sousa Santos. 1 month for 2 IRCs. (Abraham)

ARGENTINA: RAE, card w/full data in 88 days. (Werner) 9690, 'Globe' card in 14 weeks for 1 IRC. (Goldman) 11710/9690, card w/freq. and time only. 80 days sea mail for no return postage. (Johnson)

ASIATIC S.S.R.: R. Moscow, 6000, card in 1 month. (Cwikla) R. Moscow via Omsk, 7355, card w/site and all details in 37 days. (Simon) R. Moscow, Nikolayevsk-on-Amur, 15240, card in 1 month. (Field) R. Moscow, 12050, via Khabarovsk, card air in 20 days. (Marshall)

AUSTRALIA: R. Australia, 11740, card in 67 days, no IRCs. (Machen) 17795, 'Dx'ers Calling card in 2 months sea. (Meehan) full data card sea in 16 weeks, no return postage. (Jones) ABC-Brisbane, 4920, blue ABC card w/all data in 106 days for 2 IRCs. (Simon) ABC-Melbourne, 6150, blue ABC card in 1 year seamaill. (Cwikla)

AUSTRIA: ORF. 9770, full data card 'Attersee' in 70 days air for 2 IRCs. (Johnson)

AZERBAIJAN S.S.R.: R. Baku, 9840, bronze card direct with friendly Farsi message and veri statement in 58 days for Farsi report. (Campbell)

BALTIMORE: Ponta Delgada, card w/all data in 3 weeks for 3 IRCs. (Young)

BANGLADESH: R. Bangladesh, card w/all data in 19 days air for tape report and 3 IRCs. (Serralletta) 17690, card air in 2 weeks for 2 IRCs. (Padula)

BRIGIUM: ORU, 6055, map card w/all data in 25 days air, also mailbag script. (Plum)

BOTSWANA: R. Botswana, 4845, 'Lilies' card w/freq. only in 3 months for mint stamps. (Wallace)

BRAZIL: R. Clube de Malilia, 3255, personal letter from Daisy Almeida Lignelli in 5 months after 7th try! SASM used. (Field)



BRAZIL: R. Ministerio da Educacao e Cultura, 11950, BR letter w/veri statement from V/S. Armando Troia, Dir. in 1 month for PP report and mint stamps. (Plum)

BULGARIA: R. Sofia, full data card. aked, in 210 days sea, no return postage. (Johnson)

BURMA: BBS, 5040, plain card w/full data from Rangoon in 90 days sea, no return postage. (Johnson) card w/full data from V/S. Kyan Myein after 3rd f/up w/tape report, 4 IRCs. 3 months. (Young)

BURUNDI: La Voix de la Revolution, 3300, folder card in 11 months w/apologies for delay. 23 days after 2nd f/up registered. (Campbell) folder card w/all data in 20 days air for tape report and mint stamps. (Sgrulletta)

BYELORUSSIA S.S.R.: M. Moscow via Orsha, 7105, card w/site in 1 month. (Cwikla)

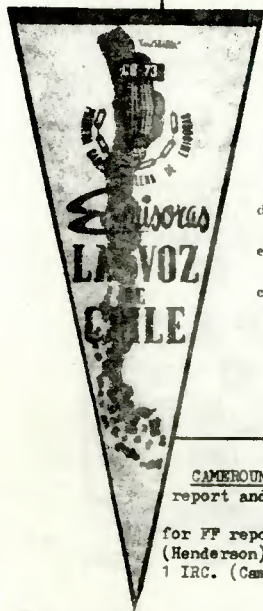
COMPANIA CHILENA DE COMUNICACIONES, S. A.
CADENA RADIAL "LA VOZ DE CHILE"

GERENCIA GENERAL VALPARAISO CHILE - CASILLA 37-V

TARJETA DE VERIFICACION

Confirmamos su recepción de fecha 15 Octubre 1973
de nuestra Emisora "COOPERATIVA" de Santiago
en la frecuencia de 9639 Kc/s, la que está
correcta y conforme a la programación de ese día.

Atmos. amigos.
[Signature]
CIA. CHILENA DE COMUNICACIONES, S. A.



CAMEROON: R. Yaounde, 4972.5, green/yellow map card in 41 days for BR report and 2 IRCs. (Schwartz)
R. Buea, 3970, yellow/blue map card w/all data in 17 weeks for PP report and 3 IRCs. Report sent to Yaounde but received from Buea! (Henderson) 3970, standard map card direct in 20 days for PP report and 1 IRC. (Campbell)
R. Garoua, 5010, map card w/full data in 3 weeks for 1 IRC. (Cwikla)

CANADA: R. Canada Int. 5970, Blue/gold announcer card in 37 days surface, no IRCs. (Paschke) 11835, 'Map' card in 8 days, no return postage. (Machen) 6085, 'Speaking To The World' card in 3 weeks. (Nebron)
BBC Sackville, 9740, usual BBC card w/site in 3 weeks for 1 IRC. (Lineback) 9740, personal letter from BBC and card w/site, also request for tape of reception of this relay as monitored in Melbourne. (Padula)
CFRX, 6070, abstract card w/all data in 5 days. (Schwarz) 'Skyline' card in 11 days, no IRCs. (Machen)
CHXU, 6130, plain card w/all data in 9 days from V/S. J.M. Connor. (Paschke)
CHU Time Station, 14670, card and bulletin in 15 days, no IRCs. (Mc Ardle)
CKZU, 6160, card w/full data in 16 days. (Werner)

CHILE: R. Minerie, 9750, SS/BR letter and pennant in 2 weeks on 2nd try. (Field) letter in 5 weeks for SS report and 1 IRC, V/S. Manuel Vergara Llanca, Gerente. (Barto)
R. Santiago, 3405, personal letter and card in 4 month after 4 f/ups, sent SASE used. (Field)

CHINA P.R.: R. Peking, 11945, full data card w/aked, calendar in 20 days for aerogram report. (Mayer) 11685, card w/all data in 24 days. Later received magazines and calendar. (Schwarz) 'Landscape' card and pennant in 20 days. (Nebron)

CLANDESTINE: Radio City, 6240, typed card w/full data plus power (20w) and antenna data (dipole) from V/S. Steve Martin, Engineer. Address: Box PR, S.I.R.A., 91 Park St., Hershaw, Sussex, England. Also sent letter and data sheet on station for mint stamps. (Calkin)
Radio Dublin, 6627.5, card, prepared card and letter in 26 days. Irish pirate with 15 watts; sez on this strange freq. because no other crystals available. (Campbell)
R. Buskadi, 13250, map card in 33 weeks for 10 IRC donation. (Wallace) card in 4 yrs!!!! no f/ups! (Field) I'm speechless.ed.

Peace Radio, 6235, child and windmill photograph card in 30 days for 1 IRC. Dutch station, Signed as "Company for saving Israel" (Campbell)

- CHANDOTIAME:** Valleri Radio, 6275, prepared card and letter in 22 days for 1 IRC. 100 watt station operates from Dublin, Ireland. (Campbell)
 Thames Radio Int., 6225, card and letter, 29 days for mint stamp. (Campbell)
 Radio Femina, 6317, prepared card and letter in 43 days for mint stamp.
 MW station relayed over transmitter of Radio City.
- COLOMBIA:** Brieas del Citars, 5032, SS letter in 61 days from V/S. Javier Betancourt G. for SS report and mint stamps. Report sent to Quibdo but answered from Medellin. (Simon)
 R. Colesal, 4945, letter and large blue pennant in 2 months for EE report and mint stamps. (Ovikla) form letter and pennant in 3 months for mint stamps. (Abraham) form letter w/date and freq. in 10 weeks for SS report and mint stamps. (Koret)
 R. Continental, 6125, SS letter w/veri. statement only, V/S. Antonio Pardo Garcia, 17 days for SS report and mint stamps. (Simon)
 R. Nacional, 4955, no data card and nice pennant in 40 days for SS report and mint stamps (used). (Yaron) 4955/9635, card and pennant in 3 weeks for SS report and mint stamps. (Guarducci)
 R. Neiva, 4855, personal SS letter from V/S. Josefina Sanchez Valderrama, 44 days for SS report and mint stamps. (Simon)
 Ondas Del Meta, 4885, letter for SS report and mint stamps. (Guarducci)
 R. Santa Fe, 4965, card w/verie staement and pennant in 1 month for mint stamps. (Abraham)
- COSTA RICA:** R. Capital, 4832, short veri letter w/veri statement in 17 months, 14 months after f/up w/mint stamps. (Calkin) SS letter in 3 month after 7 f/ups. (Field) SS letter in 13 months air after many f/ups, 2 IRCs and SS report. (Ball)
 Faro Del Caribe TIPC, 9645, card in 4 weeks for SS report and mint stamp. (Guarducci)
 R. Beloj, 6006, letter after 3 f/ups in 2 years, 6 IRCs. (Guarducci) letter in 34 days w/veri statement, 1 IRC. (Goldman)
- CUBA:** R. Havana, 11910, card in 3 months, no return postage. (Machen) 9535, 11930, 15425, full data cards and letter in 13 weeks for 1 IRC. (Earhart)
- CZECHOSLOVAKIA:** R. Prague, 7345/5930, full data card, letter, long play record of Czech music (won in quiz), sea in 40 days; no return postage. (Johnson) 5930, card in 3 weeks, no return postage. (Guarducci) cards w/full data in 3 1/2 weeks for 2 IRCs. (Pino) 11990, 'Anniversary' card in 16 days, no IRCs. (Machen)
- DOMINICAN REP:** R. Hin, 4910, card and tourist info., sked, sea/ill in 5 months after f/up, 9 months total. (Padula)
 R. Mil, QSL from V/S. Gisela A. Castro Francis, for SS report and 1 IRC. (Barto)
 RTVV, 9505, veri letter in 14 days from R.A. Font Bernard. (Goldman) 9505, SS verie letter and postcards in 2 weeks for MASWA SS report and mint stamps. (Brown)
- ECUADOR:** La Voz del Napo, 3280, letter and postcards in 4 weeks air from V/S. P. Luis Tirado. Director. (Dexter) letter and postcards of local Indians, 3 weeks for Air letter and mint stamps. (Shaw)
 R. Centinela del Sur, 5018, personal SS letter from V/S. Herman Coronel V., date and freq. only, 19 days for SS report and mint stamps. (Simon) 4 months after f/up. (Sparks)
 R. Federacion, 4960, SS letter w/date and time, pennant, sked, from V/S. Patricio Leon A., 30 days for SS report and mint stamps. (Simon)
 R. Nacional Espejo, El Puyo, 5041, crude SS letter from V/S. Julio Hernandez Jr. Sea: Happy that I can hear the station in U.S. and would like announcing job in U.S. (Dexter) R. Rio Amazonas, 4870, EE letter air in 3 months after f/up, total 7 months. Originally reported in SS, f/up in EE. (Padula)
 RCJB, 11915, 'Oil Station' card w/all data in 6 weeks for 2 IRCs. (Earhart) 11745, 'Albatross' card in 7 days for 2 IRCs. (Machen) card in 3 months for no IRCs. (Abraham) 'Bananas' card w/all data in 65 days for 2 IRCs. (Paschke)
- EGYPT U.A.R:** card w/all details, sea in 8 weeks, 4 IRCs. (Young) 9475, full data card in 2 1/2 months air. (Wallace) 17920, card in 1 month w/many books and pamphlets. (Ovikla) full data card in 65 days. (Wermer)
- ESTONIAN S.S.R:** R. Tallin, card w/all data in EE in 147 days sea for tape report of Swedish program. (Sgralietta)
- ETHIOPIA:** KLTJ, 11960, blue card in 26 days for 1 IRC. (Goldman) 15365, card and sked air in 5 weeks for 1 IRC. (Padula) card air in 4 weeks for 1 IRC. (Padula)
- EUROPEAN S.S.R:** R. Moscow via Armavir, 15385, full data card from S. Asian Svc. in 40 days no return postage. (Simon)
- FINLAND:** R. Finland, 15185, 'Seasons' card w/all data in 1 1/2 months for 1 IRC. (Stuart) full data card in 17 days air, no IRCs. (Jones) 'Winter in Finland' card w/all data in 9 weeks, no IRCs. (Earhart) card w/all data in 9 days, 2 IRCs. (Paschke)
- FRANCE:** 15120, ORTF, no data card in 18 days, no return postage. (Earhart)



GERMANY G.P.R.: Sudwestfunk, 7265, card w/all data except time, list power as 20kw. Thought 100 kw? (Wallace) map card in 2½ months, 2 IRCs. (Hagen)
Deutsche Welle, card, pennant, sticker, and tourist info., 3 months no IRCs. (Guarducci)

GAMBIA: R. Gambia, 4820, form letter in 15 weeks, 3 IRCs. (Wallace) sorry out of order. ed

GHANA: R. Ghana, 9545, Tema, card in 1 month w/all data. (Owikla) Accra, 3366, letter w/all data in 1 month. (Owikla) 4915, card w/full data. (Brown) 11850, card in 18 weeks. (Goldman) card w/all data, 12 weeks for 1 IRC. (Schwarz) card in 53 days. (Creamer)

GREAT BRITAIN: BBC, card and program sked, in 37 days, no IRCs. (McArdle) full data card!! for EE report on Greek and Romanian transmission. Next day received letter from Engineer Dept. 5 weeks, no IRCs. (Pino) no data 'Thames' card in 35 days air. (Mayer)
CBC, Daventry, 11935, 'Speaking To The World' card in 3 weeks w/site.

(Owikla)

GREENLAND: R. Greenland, 11745, folder card in 9 months for 1 IRC. (Barto)

GREECE: HMBI, Athens, 11925/17745, separate cards air in 10 weeks, plus sked and letter from Engineer's Dept. (Padula)
VOA Kavala, 9620, 'Anniversay' card from D.C. (Abraham) 11960, card w/freq. and date only, 7 days. (Werner)
VOA, Thessaloniki, 9760, card in 5 weeks. (Guarducci)

GUATEMALA: TGMA, 3300, 'Quetzal' card in 1

month for mint stamps. (Abraham)

GUINEA REP: Voix de la Revolution, 9650, letter in FF w/all data, sked, form letter thanking for comments of reception. FF report and 3 IRCs sent. (Padula) 4910, format QSL w/sked, 5 months air, 2 IRCs. (Schwartz) 7125, full data form letter, sked, 299 days for EE report, 1 IRC. (Mayer) 9650, full data form letter in 51 days for FF report and 2 IRCs. (Hardester)

GUYANA: GBS, 3290, form letter w/all data in 4 weeks, 2 IRCs. (Lineback)

HAITI: R. AVEH, 9770, card w/all data in 3 month, 3 IRCs. (Wallace)

HAWAII: WVVH, Brown folder card w/all data, 17 days. (Stuart)

HOLLAND: R. Nederland, Lopik, 15305/15420, card air for special test transmission to Far East, air in 2 weeks. (Padula) 9590, card w/all data air in 3 weeks, 1 IRC. (Pino) For R. Nederland Bonaire, see N. Antilles. ed

HONDURAS: R. Progreso, 4920, SS form letter in 3 weeks for mint stamps. (Hagen)

ICELAND: Gufunes, 12175, color card depicting many scenes of Iceland. Full data, 2 weeks for 1 IRC. (Abraham)

INDIA: AIR, 11810, 'Sculpture' card w/all data in 23 days for 1 IRC. (Wilson) 11810, full data 'Amber Fort' card, 120 days air, 2 IRCs and EE report. (Johnson) 11810, card w/all data in 1½ month for 1 IRC. (Stuart) 11620, card in 8 months. Refuses to verify or even mention earlier reports which they haven't verified. (Field) 9912, card w/all data in 2 months for 2 IRCs. (Plum) 11810, card in 4 months. (Owikla) 11620, full data card sea mail in 4½ month for 3 IRCs. (Handler)
AIR, Assam, 4775, full data letter w/freq., date, via registered mail in 8 weeks. for EE report and mint stamps. V/S. H.O. Srivastava, Asst. Station Engineer. My 6th Indian regional! (Henderson) Nice catch Dan! ed.

INDONESIA: Celebes- RRI Gorontalo, 4900, Indo, letter in 18 weeks. V/S. Usman Abdullah. Posted airmail but apparently went sea. (Padula)

RRI Ujung Padang, 4719, EE letter and photo card w/all data in 4 weeks via registered Airmail for II report and 4 IRCs. (Lineback) 4720, full data card and EE letter for \$1.00 and postcard. (Miller)

Bali/Lesser Sunda Is. RRI Mataram, 3223, EE letter from Alek Tumbouw, Chief Engineer, 3 months for f/up report, 3 IRCs. (Jensen) EE letter in 4 weeks air for II report. Also QSL'd a earlier report. Also sent station info. and sked. (Padula)

Java: RRI Khusus Informasi Pertanian, 4698, II letter, card, sked, 2 months for II report, 3 IRCs. (Jensen)
RRI Muidun, 3286, II letter in 3 weeks from V/S. N. Sostardi. (Padula)
RRI Surakarta, 4932, II letter in 6 weeks. V/S. S. Tjitrokastru. (Padula)
Voice of Indonesia, 11715, full data letter from V/S. Mrs. Lies. 90 days air for EE report and 2 IRCs. (Johnson) card in 3 months. (Owikla)

Sumatra: RRI Jambi, letter air in 5½ weeks from Azil Aswar. (Dexter)

RRI Padang, 3960, long II letter from W/S. A. Hamid, also sent local sked of all RRI stations in region, 4 weeks air. (Padula)



NETHERLANDS ANT: R. Nederland, Bonaire, 11730, '25th Anniversary' card w/all data in 3 weeks, no IRCs. (Machen) 9715, card in 3 weeks, no IRCs. (Machen) 6165, card in 2 weeks. (Nebron)

NEW BRITIAN: R. West New Britian, 2340, letter in 5 weeks from V/S. M.P. Tonata, Asst. Station Mgr. address: P.O. Box 412, Kimbe, West New Britian District. (Sparks) muy buena!

NEW CALEDONIA: ORTP, map card in 3 months for FF report, 3 IRCs. (Handler)

NEW IRELAND: R. New Ireland, 2428, no data letter, sez they don't have QSLs yet. 11 weeks for 3 IRCs. V/S. Joseph Gohan, Station manager. (Sparks) EE letter from above V/S., air in 4 months for mint stamps. HIC 198! (Padula) excellent!! ed.

NIGER: ORTN, 5020, multi colored card in 38 days for 2 IRCs. (Kelley)

NIGERIA: Voice of Nigeria, EE letter w/full data card, 3 months for 3 IRCs. (Handler) 4990, card in 1 week for 1 IRC. (Abraham)

NBC, Enugu, 6025, full data card from Lagos, 17 days, no IRCs. (Simon)

NBC, Sogunule, card w/all data, sked, 12 days, no IRCs. (Simon)

NORWAY: R. Norway, 15175, photo card w/all data, 24 days for 1 IRC. (Wilson) 17800, card w/incorrect date, 8 weeks sea, no return postage. (Jones)

PAKISTAN: R. Pakistan, 6005/9775, letter QSL w/details typed in, air in 5 months, request -s reports. (Padula)

PAPUA/NEW GUINEA: R. Northern District, 2468, folder card in 21 days, IRCs. (Sparks)
R. Chimbu, 2376, folder card in 2 weeks. (Sparks)
R. Milne Bay, 3360, data sheet in 2 months. (Cvikla)

PERU: R. Andahuwayas, 4840, letter in 5½ months after f/up w/mint stamps. V/S. Daniel Andreu Casafranca, Director Gerente. (Sparks)
R. Atlantida, 4790, long veris letter in 1 week for mint stamps. (Abraham)
R. Nacional Tacna, 9533, SS letter in 2 weeks after 2nd f/up w/SASE, used. (Field)
R. Tavantinsuyo, 6175, letter and card in 6 months after 3 f/ups. (Field)
R. Quillabamba, 5025, SS letter w/veri statement only, 27 days for mint stamps. (Simon)

PHILIPPINES: VOP, 9580, card w/date and freq. from Ernesto Madrid, Station Manager. 4 months total, 6 weeks after f/up w/3 IRCs. (Yamron) card in 82 days air for 3 IRCs. (Webb)
FEBC, 6030, full data card in 2½ months air for 3 IRCs. Power is 2kw!! (Henderson)

PORTUGAL: R. Free Europe, 15355/9595, 'Liberty' card in 3 weeks w/site. (Cvikla)
Voice of Hope, 9670, map card w/all data in 56 days air for 1 IRC. Sent to France but mailed from Portugal. (Mayer)

REUNION IS: ORTP, 4807, standard form letter for 2 IRCs and registered report, 14 months total, 68 days after 3rd f/up. (Campbell)

RHODESIA: RBC, 3396, full data 'Gazelle' card in 1 month for EE report, no return postage. (Yamron) 3306, card in 1 month for mint stamps. (Hagen)

ROMANIA: R. Bucharest, card of station w/all data in 9 weeks for 2 IRCs. (Walenter)

R.S.F.S.R.: R. Moscow, via Voronezh, card in 1 month from African Svc. (Cvikla)

R. Moscow via Zhigulevsk, 7260, card w/site and map of USSR in 1 month. (Cvikla) 15210, card in 1 month air. (Field)

RWANDA: DW, Kigali, 17780/21450, separate cards air in 3 weeks and 8 months. (Padula)

SAUDI ARABIA: 5965, crossed swords card w/all data. 2 weeks registered for 2 IRCs. (Abraham) 9605, card w/all data for test transmission, 3 months. (Padula)

SENEGAL: R. Senegal, 'Banjo' card w/all data. 3 months sea for 3 IRCs. (Wallace)

SICILY: RAI, Calanissetta, 6060, card in 4 months for 2 IRCs. (Schwartz) card in 1 month after f/up. Previous note said this freq. was Rome. (Field)

SINERA LEONE: SLES, letter w/all data for tape report. (Sgrulletta)

SINGAPORE: R. Singapura, card w/all data in 3 months sea for 3 IRCs. (Young)

SOLOMON ISLANDS: SIRS, 3995, map card w/all data in 2 months for 2 IRCs. (Wasyluk)

S. AFRICA: RSA, 9695, card and sked in 29 days, 1 IRC. (Mc Ardle) 'Tree' card and pennant in 3 weeks. (Meehan) card in 23 days. (M. Marshall) full data card in 19 days air. (Wilson) 4790, Internal Svc. 'Industries' card in 4 weeks for 2 IRCs. (Lineback)

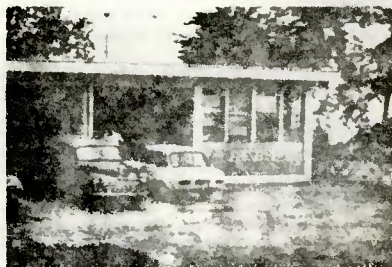
SPAIN: R. Liberty, 15370, antenna card in 2 weeks w/site. (Cvikla) should be 'Mike' card. RNE, 15145, card in 2 weeks for 2 IRCs. (Wallace)

SWEDEN: R. Sweden, 6035, full data card in 19 days air, also sent pennant, 1 IRC. (Mayer)

SWITZERLAND: SBC, 5980, black and white card w/all data in 3 weeks. (Guarducci)

TANZANIA: R. Tanzania, 15435, full data card in 2½ month for 2 IRCs. (Handler)

TAHITI: R. Tahiti, ORTP, 'Thumbs Up' card w/all data in 6 months, 1 IRC. (Cvikla) card in 4 months for FF report and 3 IRCs. (Handler) card in 9 months for EE report and 1 IRC. (Stuart) 11825, full data card after 7 reports in 3 years! (Walenter) 11825, card in 6 month for EE report. (Trigile) card in 21 days, 2 IRCs. (Werner)



-YEBBA Seychelles-

THAILAND: Thai TV, 7108, letter in 2 weeks from Mr. Poonlarp Anamarn, case registered air, no IRCs. (Cwikla) EE verie letter from above V/S. 17 days registered air for 2 IRCs. (Austin) 7108, EE letter in 19 days for 2 IRCs. Still insist frq. is 7105!! (Word)

TOGO: R. Togo, map card w/date, time, 63 days for FF report and 2 IRCs. (Simon)

TUNISIA: KPTV, 11970, full data card in 2 months for EE report, 2 IRCs. (Handler)

TURKEY: Voice Of Turkey, 11890, full data card in 100 days for 2 IRCs. (Johnson) card w/all data in 3 months seasmall, 3 IRCs. (Young)

TURKS & CAICOS IS: R. VS18, 4788, full data letter for tape report, 3 months after registered f/up w/3 IRCs. (Yamron) letter w/verie staement in 13 days surface mail for 2 IRCs. (Mayer) letter in 1 month for EE report and 1 IRC. (Barto)

UNITED ARAB EMIRATES: Abu Dhabi, 9620, EE letter in 3 months after f/up and 1 IRC. (Field)

UNITED STATES: KGEI, 5280, blue card in 10 weeks. (Wallace)

WV, 5000, full data card. (Wilson)

WYPR, 15125, 'Mike' card w/all data in 8 days for 1 1/2 stamp. (Earhart)

card w/all data in 18 days. (Schwarz) 17845, 'Mike' card in 1 month for mint stamps. Address: 290 Hegenberger Rd, Oakland, Calif., 94621. (Calkin)

VOA, Greenville, card in 6 days. (Machen) Bethany, 'Antenna' card in 2

weeks. (Brown)

UZEK S.S.R.: R. Taskent, 11925, 'Chimes Tower' card w/all data, sked., 120 days air, no return postage. (Johnson)

VATICAN: R. Vatican, 7250, card, sked, in 25 days for EE report, no return postage. (Guarducci) 11845, card w/all data in 51 days sea for 1 IRC. (Creamer)

VENEZUELA: Boas del Torbes, 4980, no data veri letter

and pennant in 3 months for SS report and 2 IRCs. (Yamron)

La Voz de El Tigre, 3255, personal letter from V/S. Carmen Aquino, 2 months for SS report and mint stamps. Also sent nice pennant. (Abraham) letter w/large pennant in 5 months for mint stamps. (Cwikla)

R. Juventud, 4900, network card w/freq and date in 1 month for SS report, mint stamps. (Koret) network card w/date and freq. in 26 days for SS report and mint stamps. (Simon) card in 3 weeks for SS report. (Plum)

VIETNAM N: VOV, 15012, full data paper QSL, sked, stamps. 3 months for 2 IRCs. (Jones) 7105, card in 13 weeks for EE report. (Barto)

YUGOSLAVIA: R. Beograde, 9620, black/white folder card w/all data after mant f/ups, 20 days. (Abraham) 9620, folder card in 3 months w/all data, no return postgae. (Handler)



SPECIAL THANKS TO THE FOLLOWING MEMBERS FOR THEIR SUPPORT:

Larry Abraham, Michigan.	Dan Henderson, Maryland.	Richard Schwartz, Maryland.
Marty Austin, Connecticut.	Don Jensen, Wisconsin.	Karl Schwarz, Indiana.
Samuel Barto, Connecticut.	Gregg Kelley, Virginia.	John Sgrulletta, New York.
Mark Brown, Ohio.	Rich Koret, New York.	Ed Shaw, Virginia.
John Campbell, SWITZERLAND	Jimmy Jones, Tennessee.	David Simon, New York.
John Creamer, Colorado.	Don Johnson, California.	Bill Sparks, California.
Tom Cwikla, Connecticut.	Jerry Lineback, Illinois.	Jerry Stuart, Oklahoma.
Gerry Dexter, Wisconsin.	Dave Machen, Wisconsin.	Daniel Tragilo, Texas.
David Ball, ONTARIO	Alan Mayer, Illinois.	John Walenter, Illinois.
Ken Earhart, Pennsylvania.	R.A. Mac Leod, Pennsylvania.	Steve Wallace, Pennsylvania.
Marlin Field, Michigan.	M. Marshall, N. Dakota.	Barry Wasylik, CANADA.
Henry Fino, New York.	Al Miller Jr., Ohio.	Corky Webb, Texas.
Tom Force, New York.	Scott Mc Ardle, CANADA	Louis Werner, ?
Gregg Calkin, PAKISTAN	Larry Nebron, California.	Solomon Wilson, Pennsylvania.
Boy Goldman, ?	Jim Meehan, California.	Jerry Word, Georgia.
Ciro Guarducci, BR. COLOMBIA	Bob Padula, AUSTRALIA	Charles Wootten, MOROCCO.
Jim Hagen, Virginia.	Bill Paschke, Wisconsin.	Jim Young, California.
Steve Handler, Illinois.	W.J. Plum, New Jersey	Larry Yamron, Pennsylvania.

NOTES: When reporting to QSL REPORT print your last name at the end of each item and please double space all items. This will greatly reduce editing time. Thanks.

WANTED: Illustrations for use in this column. Interesting QSL cards, letters, station logos, etc. Send either original or clear photocopy. Original will be returned if return postage is enclosed.

Illustrations courtesy of: Don Johnson, Kevin Axelson and Ed Shaw.

Until April Good Dx and 73's. LARRY YAMRON

NASWA CONVENTION

Plans are going forward for the NASWA CONVENTION to be held July 19-21, 1974, in Columbus, Ohio. All DX-ers are invited, whether NASWA members or not.

Preliminary data is that the meeting will be at the NEIL HOUSE, across from the state capitol. Room rates are:

Single	\$16.00 per night
Double	\$22.00 per night

A rollaway bed can be put in a double room for an additional \$8.00.

At this early date further details are not available. However, we can tell you that it will be a meeting you won't want to miss, whether you are a serious DXer or a casual listener. We will be providing additional details as they are available. However, in order to go forward with preparations it is necessary to get some preliminary indication of the attendance at the meeting. We therefore request that you forward the coupon below to

Randy V. Minnehan
975 Chestershire Road
Columbus, Ohio 43204

as soon as possible.

We anticipate a registration fee of about \$10-\$12.

Name _____

Address _____

I will definitely be at the meeting _____

I plan to be there, but cannot be definite _____

Convention host is Bill Matthews.

73 from

NASWA

BOX 8452

So. Charleston, W. Va. 25303

Address Correction Requested

NOTE: Copy Feb. LR-A & B sections
available from HDQ for long SASE with 20¢
postage. Deadline March 22, 1974

FIRST CLASS MAIL

NASWA membership dues, per annum, are US\$10. Membership in NASWA entitles one to receive each issue of FRENEX issued during the membership year. Members also receive discount prices on many special items offered, including many items available for a self addressed stamped envelope. Watch the pages of FRENEX for these offers. Additional fees for airmailing of FRENEX, per annum, are: In North America, US\$1; in Europe, the Caribbean, Central America, South America, US\$2. In Africa, Asia, Oceania, US\$5. Checks and money orders payable to "NASWA".

Material for the various sections of FRENEX should be sent to the various section editors: For Shortwave Center, Edward C. Shaw, 621 Burreigh Ave., Norfolk, VA 23505. For QSL Report, Larry Yasron, P.O. Box 5103, Pittsburgh, PA 15206. For Log Report, M. R. Leonhardt, P.O. Box 1132, Richmond, Ind., 47374. For Flashheet, Al Niblack, 420 Shelby St., Vincennes, Ind. 47591. For Clandestine Bulletin, Larry Magnus, 1315 Pine Street, Philadelphia, PA 19107. For Listener's Notebook, Dan Jamison, 310 Roanoke Street, Apartment 21, Richmond, Virginia 23225.

Dues and all orders for reprints and special items should be sent to the NASWA headquarters address.

