

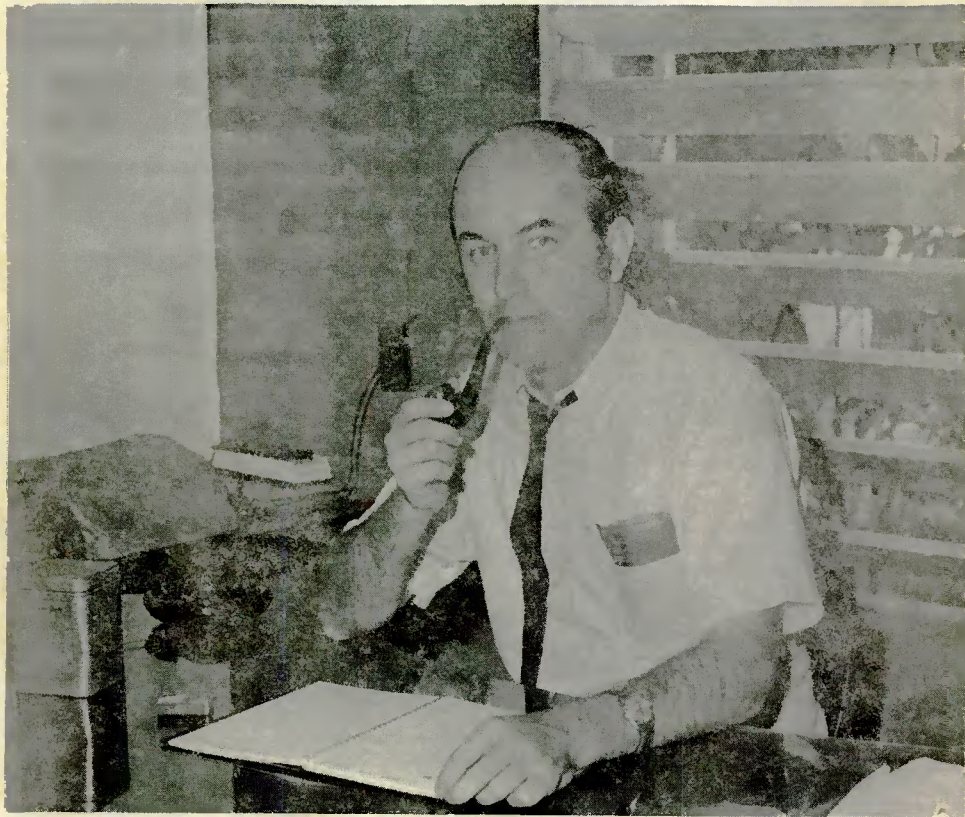
F R E N D X

The SHORT WAVE BROADCAST Journal - Since 1962

NORTH AMERICAN SHORTWAVE ASSOCIATION

Vol. XII No. 8

August 1973



JERRY E. TOLLE, MANAGING DIRECTOR, RADIO PROGRESO, HONDURAS

The Loudenboomer Report

I'd planned it to the Nth degree. It couldn't fail! After all, I was a veteran of the militant social protest era. I'd marched all the marches, sat in all the sit-ins, trashed with the best of 'em. I'd organized every local protest of any import. I'd chaired countless ad hoc committees.

Hereabouts, I must admit with a trace of immodesty, Loudenboomer is known as the "revolutionary's revolutionary." And so, the overthrow of Gideon P. Trafalgar was ducksoup!

Trafalgar and his cronies had for some years run the show as far as the International DX League was concerned. Without so much as a yea or nay, his group took over the club, lock, stock and barrel at the IDL convention at Cleveland. Of course, they always maintained their assumption of power was to save the club from disaster. They also repeatedly alleged that they would turn it over to any other group willing to run the club and publish its 52-times-a-year bulletin. I, of course, saw through their ploy. I knew GRP for the power-hungry person he was.

Trafalgar ran the club as his own private fiefdom. He ignored the generous advice and guidance offered by his "betters" including yours truly.

Worse yet, Trafalgar considered himself a technical expert and regularly foisted upon the hobby his farout theories, while ignoring or "correcting" the truly scholarly papers submitted for publication in the club bulletin by qualified experts such as myself.

My plan to oust GPT, naturally, should not be taken as a personal vendetta. Far from it. I only wanted what was best for the hobby and IDL!

So with this high motivation, I began my campaign. I began sewing the seeds of discontent. A massive letter writing campaign began. I contacted members and subeditors alike, badmouthing the Trafalgar regime. I was understandably cautious at first, but then bolder and bolder I grew.

My attack met with favorable response. But in some cases person whom I thought would join the movement, potential "friendlies," turned on me. These ingrates even ratted to Trafalgar's headquarters about my efforts. (I have a little list, by the way, containing the names of these members and they will be delt with in due course).

As the plan developed, I began collecting tidbits of gossip to be used against Trafalgar when the moment was right.

Blackmail? Nonsense! But considering GPT's transgressions, who can fault me for using such weapons as come to hand?

Everything was set to accomplish the overthrow. We were prepared for a struggle from the Trafalgar crew and were supremely confident we could accomplish our noble purpose. But, then, surprisingly, without a fight, the headquarters group quietly announced its resignation.

I was, of course, elated with the result. No more Trafalgar; IDL was free of his insidious tyranny.

It was then that I began to receive disquieting communications from my co-conspirators. The common theme was "When are you going to take over the operations of IDL, Charlie?"

Take over IDL? Spend all those hours editing and publishing a bulletin 52 times a year? They have to be out of their minds! Don't they realize that I'm a revolutionary, not a worker!

No some kid in Fargo is trying to turn out the IDL bulletins with a hectograph. I must admit that the usefulness of the bulletin has decreased a tad recently. But he's trying hard and he keeps writing me for advice which I'm always happy to offer.

For the life of me, though, I can't understand why the rest of the club is so mad at me. After all, I gave my all, I fought the good fight, I overthrew the Trafalgar regime.

What do they want of me, the ingrates?

Shortwave Center



EDITOR
Alvin V. Sizer
22 Country Way,
North Haven, Ct. 06473
Deadline 15th of Month

NASWA Visits

KGEI—The Voice Of Friendship

By LARRY M. NEBRON

Located out in the San Francisco Bay marsh area is a "Friendship Station". The station, KGEI, formerly owned by K-General Electric International, is now operated by the Far East Broadcasting Corporation with studios and transmitters located in Redwood City.

Recently I visited KGEI and was guided through by Richard Perry of the station staff. I was welcomed in and shown the 50 kw transmitter, located right in the lobby. Taken to the studios of KGEI next (they have three: a large and two minis) I met the chief announcer Mario Baralona who is also news director. Mr. Baralona was formerly connected with broadcasting in Chile where he also worked for *El Mercurio*.

KGEI got its start way back in 1939 at the New York World's Fair. During World War II KGEI was used by the government as a Freedom Station transmitting to the Pacific. The people of the Philippines first heard Gen. Douglas MacArthur's famous statement, "I shall return", on KGEI. In 1960 the Far East Broadcasting Corp. purchased the station from General Electric.

An important objective of the station is to meet listeners' needs. So every listener who writes receives a questionnaire to fill out and then return for a gift. The information is then put on IBM punch cards and stored so the station can get in idea of the profile of its listeners. The station has vast quantities of punch cards indexed by countries; each time a listener writes, the date is stamped on the back of the card.

Speaking of correspondence, the station issues a full color QSL and one of the best pennants to be had, all for return postage in the U.S. or two IRCs overseas.

La Voz de la Amistad at present has two transmitters, one of 50 kw, the other, presently off the air, of 250 kw. The 50 kw is hooked to a curtain antenna pointed to Latin America with a gain of 25 db. The 250 kw transmitter is hooked to a special horizontal quad with a gain of over 100 db. The Bay area is a perfect location for the station since beam of the antenna can be set to cover all of Central and South America with one beam.

The Voice of Friendship is a religious station more or less but has a different form of programming from HCJB or Trans World Radio. Only about 30% of the programming is of religious nature, the majority is news and music. The most popular single program is "Ingles by Radio". According to Mr. Perry, the Latin audience has a great desire to hear news, so KGEI has two newscasts an hour. On the hour, 5 minutes...

(Please Turn to Next Page)





...of news of the world and on the half hour news of Latin America from the UPI Spanish teletype and their three reporters who cover South America.

The station estimates its audience at between 2 and 3 million nightly. The average listener is young--73% under 30--or professional--41%. Most of the mail of about 1000 letters a month comes from Mexico,

Chile, Argentina and Colombia. They broadcast nightly in three languages, Spanish, Portuguese and English, from 2230 to 0500 GMT.

The Voice of Friendship operates on a shoe-string budget. The station has a full time staff of 18 and a \$600 a month electric bill. The total operating budget of KGEI is only \$120,000. Most SW broadcasters spend more than that on public relations.

In this International Friendship Year, KGEI--The Voice of Friendship as usual will be a sponsor of the annual "International World Friendship Week in Paraguay". KGEI wants through its policy of friendship among peoples of the Americas to become--and has become--more of a local station and less and less of an international broadcaster.

Next time your friends ask you, "What good is shortwave broadcasting?" tell them about KGEI's 10.5 hours of phone calls from Nicaraguans located in the U.S.A., Canada and even Panama which KGEI broadcast to families during the earthquake of Dec. 23, 1972. There was no other way those people could contact their families; and these one-way calls were in many cases life-savers.

KGEI has been a victim of the U.S.-F.C.C. freeze on licenses. At present it is asking the F.C.C. for permission to operate its transmitters in parallel. Right now the Voice of Friendship is limited to operating one transmitter. Mr. Perry expressed confidence that sooner or later KGEI would be operating its two transmitters in parallel.

The station welcomes visitors but it asks that you call before you come. This is very wise because though not hard to find, it can be confusing so listen carefully to the directions you will be given. When you call have your pen and/or tape recorder ready. If you've never visited a shortwave station before, you have a treat coming. Visitors planning on coming to San Francisco might want to plan on taking this in since it's only about 45 minutes drive from downtown.



NEWS DIRECTOR MARIO BARALONA

Count Your Blessings

By JOHN GENDRON

I'm sure many of us can remember our first few weeks of what was then strictly SWling (before any of us had any idea what DXing meant). We were all so excitedly eager to try it out we had no idea of the capabilities. We all screamed and yelled at the sounds of Radio Canada and HCJB and were quite skeptical at the possibility of hearing Radio Moscow.

But now we take it all for granted; we yawn at Deutsche Welle, sleep through the BBC and even snore at VOA, Greenville. Now the only thing that'll wake us up are the Falkland Islands or Maldives. How soon we forget the fact that most of these stations, no matter how well heard, are thousands of miles away and we choose to scoff at stations like RSA. Just think of all those underprivileged people who would be thrilled at even the slightest sound from Radio Canada.

Shame on you!

AMEN, JOHN! AND DON'T FORGET WE NEED SUPPORT TO CONTINUE SWC--Editor

On To The Top



How Can I Hear Those Rare Stations Reported By The Experienced DXers In The Club?

Editor's Note: In this, the third in a series of articles exploring the subject of SWBC DXing at the serious level, Don Jensen continues to probe a question posed above and in the last article--How Can I Hear Those Rare Stations Reported by the Experienced DXers in the Club? This series of six articles is intended for the listener with some experience who wishes to push on in serious DXing.

By DON JENSEN

As suggested last month, knowledge is the key to success. DXers should concentrate on learning all they can about the major DX bands below about 7 MHz, starting with the best of the batch, 60 meters. Concentrate on learning patterns of propagation; ideally the theoretical hows and whys, but, minimally, observe and learn by actual on-the-bands observation.

This leads to the next point of concentration.

Concentrate on certain stations. One reason experienced listeners manage to hear the really rare ones is because having logged so many stations, they can concentrate efforts on a relatively few wanted targets. The less experienced, needing more stations, often take a scattergun, nit-or-miss approach.

For example, when a good opening occurs for Indonesian reception, the less experienced DXer might spend his time taking a log on RRI, Ambon, 4839 kHz. He "needs" it and is pleased to receive a new one. But the veteran, already having logged and verified Ambon, concentrates on trying for the rarer Indonesians, say the local government station, Radio Pemerintah Daerah Kabuptan Poso!

Ambon may be a good catch, a new logging for you. But wouldn't you be happier receiving Poso? It takes self discipline to pass up a sure Ambon for a chancier Poso, but the odds are that you'll next hear Ambon--and get a reportable logging--far sooner than another crack at Poso!

The choice--and naturally you won't always opt for the chance of hearing the ultra rare one over the sure bet logging-- is tough for the less experienced listener. It means gambling on the possibility of a rare one and, for that day at least, passing by a medium-hard station already at hand. The veteran DXer who has already QSLed the easier station doesn't have to think twice before chasing the really rare outfits when top notch openings occur.

A word of caution here! Don't let the higher stakes--giving up temporarily a sure catch for a gamble--color your judgment. Apply the same identification standards you always do. The weak muddle down in the mud may be Poso...or it may not. Your gamble may not pay off. But if it does...

The decision as to when to play it safe and take the needed logging at hand, and when to gamble on the possible really rare one, is easier if you have a "want" list.

Rare is the experienced DXer who doesn't have his own list of most wanted stations. Check on what others are hearing, particularly the DXers you regard as "pros". Draw up a list of about 10 such stations that you really want to log. In any situation where you're faced with the decision to play it safe or gamble on the rare catch, let your want list establish the priority. (CONTINUED ON NEXT PAGE)

Summertime—When The DXing's Not Easy



When the summer doldrums come to DXing and interest lags a bit, it may be time to ask whether slavish addiction to the custom of counting new station outlets and countries isn't depriving yourself of some of the pleasure to be derived from short wave listening. Sure it's great to log a new country, or even a new station, but it isn't always possible and grows ever more difficult as you go up the ladder. So why not try something else? Below are some suggestions:

1. If you've concentrated on getting one QSL from each new country you log, why not try to get a second from every country that has more than one station or transmitter site?

2. Zero in on a single country or station and try to get as many QSLs as possible from that outlet. At a recent ANARC convention Chris Lobdell drew signs of admiration with a display of beautiful QSL cards issued by Radio Norway.

3. When a station like HCJB announces a new series of QSLs, try to be persistent enough to get them all.

4. Take a single wave band and see how many stations you can log there. Last summer we set out to log every station in the 13 meter band. Didn't make it but had a lot of fun trying.

5. Try frequency logging. For instance, start with the 13 meter band and try to log one station, at least, every 5 kHz. (We did this although 21465 eluded us nearly a year until Radio Cairo moved there recently). This particular game can be expanded to other wave bands; try to log at least one station every 5 kHz in all regular SW bands.

6. Try to log the lowest powered station you can for every country you now have. If your lowest is 10kw, seek a 5 kw, etc.

7. How many DX programs can you log?

8. How many different languages can you log--and identify?

9. Now's the time to pick up QSLs from some of the more easily heard stations you haven't bothered to report in the DX season.

10. Put the tape recorder to work and make yourself a collection of:

A. Interval Signals.

B. Station Identifications.

C. National Anthems.

D. Samples of various languages.

E. Music of various nations.

ON TO THE TOP---(Cont.) ...Concentrate on these stations when conditions to a certain area of the world are most favorable. If you have no luck, then go after secondary targets. When you knock one off, replace it on the list with one you badly want to hear.

Compile a "book" on each station on your want list. Minimum information, of course, is frequency and the time when it is being received in your area. Comb the bulletin for more tips; schedule, language used, etc. Is there an especially favorable time "window"? Perhaps the normally strong utility on the frequency is off Sundays. Can it be heard only on occasions after a powerful nearby station signs off? What type of programming would you expect to find? Country and western music? Outdated U.S. pops? A French newscast?

In short, get all the background data you can. It'll help if and when you actually do hear the station.

Finally, tune as often as possible for your most wanted stations. Trying for it seven times a week is better than six, six a week is better than four. Make the odds work in your favor!

NEXT: Identifying the rare stations.

Great Quotes In DX History

By ED SHAW and AL SIZER

If some of the great characters in history had been DX enthusiasts, what memorable quotations would they have left for us? How about the following for a starter?

Q: What did General Pershing say when he went to the store to buy his first shortwave receiver?

A: "Lafayette, we are here!"

Q: What did Columbus say to Queen Isabella upon reporting back his findings on Dominican Republic in the New World?

A: "The rum's great but their QSL policy is lousy."

Q: What did Casanova say to the shapely young girl?

A: "Be Realistic.Come up to my Radio Shack and see my QSLs!"

Q: What did Stanley say to Livingston upon finding the old man hunched over a SW receiver deep in the jungle?

A: "DX-pedition, I presume?"

Q: What was Charles Dickens' comment when he traded in his portable transistor on a second hand Hammarlund 180-A?

A: "It is a far, far better thing I do than I have ever done."

Q: What did Sir Edmund Hillary say to his Sherpa guide as they topped Mount Everest?

A: "If I can't DX Nepal from this height I'm turning in my receiver."

Q: Poet John Donne made what comment on interval signals?

A: "Never send to know for whom the bell tolls; it tolls for the BBC."

Q: Why did President Nixon put a noise blanker on his set?

A: "I just want to make one thing perfectly clear."

Q: How did Shakespeare describe to Ben Jonson summer conditions in the 90 Meter Band?

A: "Full of sound and fury, signifying nothing."

Q: What did Julius Caesar say when Brutus showed him a QSL from rare Raratonga?

A: "You, too, Brutus?"

Q: What did Vice President Agnew call those who down-grade QSLs?

A: "Nattering nabobs of negativism".

Q: What did John Paul Jones say when the captain of HMS Serapis asked if he could hear the VOA this far at sea?

A: "I have not yet begun to tune."

A: "I have not yet begun to tune."

Q: What did Robert Browning write in "Home Thoughts from Abroad"?

A: "Oh, to be in England now the DX season's here!" (Cont.)



THOU SHALT NOT COVET
THY NEIGHBOR'S QSL!
KLEPA U HANDS OFF!

Mose

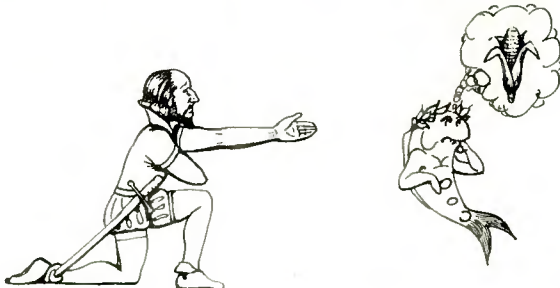
"Cook Islands by any other name would

sound as

sweet!"

Shakespeare

DX QUOTES---
(Continued,
Unfortunately)



Q: What was Gen. MacArthur's reaction when Equatorial Guinea turned down his 17th request for a QSL?

A: "I shall return."

Q: What was George Washington's answer when his father asked what station he had just heard?

A: "I cannot tell a lie, Father. It was not Maldives."

Q: What did John Keats comment when he logged his first sub-audible harmonic?

A: "Heard melodies are sweet, but those unheard are sweeter."

(Editor's note: Thanks to Diane Levesque for getting into the spirit of the occasion and for Ed Shaw for cooperating despite his own quote: "It seems to bring out the worst in anybody.")

DX Tips

When a DXer receives the World Radio TV Handbook, he wonders how he can use all the information. A simple way of displaying station schedules is to graph them on graph paper, letting each "block" represent the hour. For instance, if you wish to DX at 0300 GMT, just run your finger down the 0300 column until you see a line indicating that the station is on that hour. Then on your left, you can insert the station to which the schedule is referred to. Updating can be accomplished by graphing FRENDX Log Report. For WRTH reference graph, all you have to do is to look up the frequency....Sent in by Gary Hafer.

Orchid From Bulgaria

* "It was very interesting
* for me...to read a very as-
* tounding April FRENDX. My
* friends and I have the op-
* ionion that FRENDX is a top
* quality and high level bul-
* letin. How we regret that
* monies cannot be delivered
* out of (our) country! I es-
* pecially like the profess-
* ionalism of the editors."

RUMEN PANKOV
Sofia, Bulgaria

+++ +++ +++ +++ +++

I have discovered how television may be useful for DXing, especially in the summertime. Many TV stations now have their own weather radar from which they televise live pictures several times daily. Most other stations telecast pictures from recent U.S. Weather Bureau warnings. These radar pictures can warn the DXer of approaching thunderstorms hours before they reach his immediate area. One local station scans an area up to 300 miles in diameter. The DXer should note these regularly scheduled radar telecasts which increase in frequency when severe weather is in the offing. By noting severity, location and rate and direction of travel of thunderstorms the DXer can get a good idea of reception conditions.....Sent in by Jimmy C. Jones.

The Name Game

... Or What's It All About NBS?

By MARK S. LUCAS

What's in a name? We've all asked that once in our lives. Now we can ask this question of the National Bureau of Standards (or known by those in the small WWV Radio Fan Club as NBS). What is in a name, fellows?

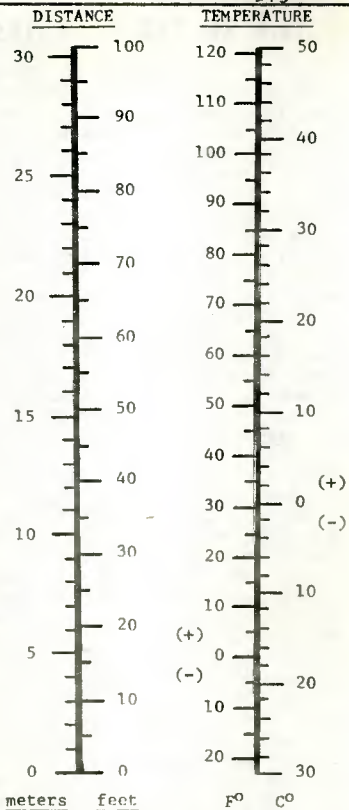
For those who haven't heard yet, on Jan.1, 1974 (their clocks may be accurate but their calendars sure are fast!) they will officially (sniff!) drop the announcing of time by the old standard or Greenwich Mean Time (GMT) in favor of using a more accurate (?), more technical term of (now brace yourself, you old timers!)--"Coordinated Universal Time", or abbreviated simply "UTC".

The NBS claims that the addition of double ticks to the minutes to announce the deviation of earth time to that of atomic time makes this name change necessary. I don't know about the mass of you fellow DXers, but as long as I have been a DXer I really have grown quite attached to GMT. I really can't believe we must get used to an announcement by Mr. "At The Tone" Don Elliott announcing "at the tone, zero hours, zero minutes Coordinated Universal Time!" It really just doesn't flow and besides, it takes too darn long to say it!

And another point to ponder...will this name change necessitate the change of the name of the Royal Greenwich Observatory to Royal Coordinated Universal Observatory? And will that mean the change of the Prime Greenwich Meridian to the Prime Coordinated Universal Meridian? One can readily see that this name game is getting completely out of hand. Perhaps we should change meters to "Cushens" to honor the great DXer Arthur Cushen. So we would have 31 Cushens and 25 Cushens for meter bands.

So as one can see there are names and then there are names! I'll catch you soon on the 50 Cushen band at 1200 Coordinated Universal Time when we will hear Radio Maldives together!

 Lack of literary talent keeping you from contributing to SWC? It's the content that counts! We can always "pretty it up" but we can't "make it up" without your help.....AVS.



Two Basic Conversions

By FRANK ALEXANDER JR.

As it stands now, when you want to convert feet to meters or the temperature from degrees Fahrenheit to Centigrade, you have to get out the paper and pencils and put some formulas to work. Using the information found in several of my school textbooks, I was able to construct the two above charts which may cut down on the time and give your brain a rest.

The need of conversion from feet to meters is obvious when dealing with antenna heights and lengths. And you may wish to quote temperature to a friend or station which do not understand Fahrenheit.

The SB 313 A NASWA Review

By RAYMOND M. THOMPSON

Heathkit's latest addition to the SWL receiver market is the all-solid-state SB-313. It is a receiver that combines ease of construction (and since all Heath products are available only as kits, this is important!) with the quality you would expect to find in much more expensive equipment. Priced at \$339.95 for the standard kit, it should take the average builder about two weeks to go from crate to turn-on. "All-solid-state" means exactly that. Tubes have given away to transistors, diodes have replaced other tubes, PC boards have blossomed in place of point to point wiring (with each major component circuit on its own board); in short, the SB-313 is nearly as close as you can get to state-of-the-art without breaking the thousand dollar barrier.

The kit is pre-programmed, in the sense that successive steps in construction are related to specific areas of the packing box. There are six sub-elements in the box; each of these is matched to the manual, and packed in order of use. That is, the parts you will use first are packed in the top of the box.

Going along with this, the first thing you will find after you open the box is the manual. It breaks construction down into six major steps, corresponding to the six sub-elements of the package. In turn, these are: the antenna tuning circuit, rf amplifier, heterodyne oscillator and crystal switch board in Pack One; mixer board in Pack 2; IF/audio circuit board in Pack 3; power supply and BFO boards in Pack 4; plug board in Pack 5; and at the bottom, Pack 6, comprising all the chassis parts and the front and rear panels with all the attendant knobs, switches, parts and such.

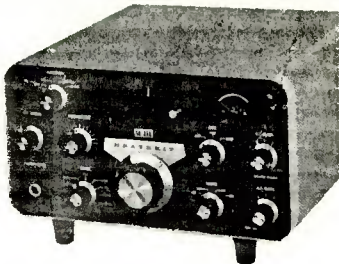
Construction begins by mounting components on each of the 8 PC panels, all of which are set aside upon completion for later use. Once all the panels are finished, mechanical construction of the chassis, involving power supply transformer, panel controls, rear panel sockets, wiring harness, etc., is done; and all necessary inter-circuit wiring is completed. Circuit boards are then mounted and inter-connected with coaxial cabling. The plugboard is installed (by which power is connected to six of the boards) and front and rear panels are joined to the main chassis. Finally, the two main switch shafts (mode and band switches which must operate wafers on all panels) are inserted. This completes preliminary construction and you are ready for adjustment and alignment procedure.

Before discussing that, however, let's stress a few points you should take care with if you intend to build this kit.

First: pay close attention to the kit manual and follow it exactly. The SB-313, for all its ease of construction, is a highly complex piece of equipment and while it is possible for anyone with the normal amount of manual dexterity to make a success of it, it must be said that second-guessing the designers of the kit will only be wasted time.

Second: pay very close attention to the mounting of some of the components. Diodes in particular--of which there are at least a dozen--are marked for polarity only by the narrowest of black bands at one end. Care must be taken to be certain you've got the band at the right end of the circuit. The two final audio amplifier transistors should get special attention as well. They work in push-pull configuration and since one is a PNP and the other is a NPN, they are not interchangeable! Unfortunately, Motorola, which markets them, has been a little skimpy with the markings; only one type number on each and that one (a three-digit one).....

PLEASE TURN TO NEXT PAGE



THE SB-313 REVIEWED---(Cont)... in the faintest of inks. So be very sure you get them in the right places or when you turn on the receiver for the first time you will destroy at least one resistor in the final amplifier.

Alignment then: this can be done with only the help of a high resistance voltmeter or TVOM and an antenna. The alignment signal used is provided by the calibration oscillator built into the receiver. In alignment be most careful to use only the minimum gain necessary. Most of the adjustments are quite critical and excessive gain will make it hard to determine where the peaking point is. And, of course, it goes without saying that the voltages called for must be attained as closely as possible. Since they are quite critical, even tiny deviations from the directed settings will seriously and adversely affect the operation (particularly the sensitivity) of the finished product.

Having completed alignment--which goes almost as rapidly as telling about it--all that remains to do is to plug in the antenna into the RCA jack on the back panel, plug in an 8-ohm speaker to another RCA jack and plug in the 3-wire power cord to its receptacle. (Power requirements are 120 or 240 volts, depending on how the power transformer primaries are connected together.)

On the front panel is a completely professional layout permitting complete control over the incoming signal all the way from antenna to speaker. A calibration tone is provided at 25 and 100 kc intervals and is selected from a four-position switch that also carries the operate-standby functions. There is also RF gain and attenuation, AF gain, AGC and preselection and, of course, band and mode switching.

A word about mode. This switch operates in conjunction with three crystal filters; one gives 2.5 kc selectivity for upper or lower sidebands during SSB operation; the second gives .5 kc selectivity for CW reception; and the third gives 5 kc selectivity for AM operation. Of these only one filter--the 5 kc--is provided with the kit; the other two are optional and quite expensive as filters go. But if you intend to do much DXing on the ham bands, or if you want to listen to much CW, you will want to have them. Heath will ship them with the standard kit if they are ordered at the same time.

The main tuning dial is a curious affair but quite accurate. It consists, actually, of two dials. The top is numbered from one to five, corresponding to the 500 kc coverage of each band selected by the bandswitch. The pointer of this short dial is connected to and driven by the rotation of a large circular dial. This larger dial is numbered from 1 to 100, corresponding to one of the five segments of the smaller dial. Thus, it takes 5 complete revolutions of the larger dial to move the pointer of the small dial across its face. To read a frequency you merely note which band you're on--say 11.5--and add the reading of the small dial to it--say it's a little past 3--the move to the larger dial and note the reading--say it's 18--and add that to the reading of the small dial. Your frequency is 11818 kHz. It's much easier to do than to describe.

One small gripe about the dial mechanism. The tuning knob is connected to the dial only by a flanged wheel on the back of the tuning shaft which rides on the inside surface of the dial disc. The only drive mechanism is the pressure of the flanges against the sides of the dial disc. I would rather see a gear system, even at a higher cost.

Band availability is choice. The receiver covers the 80,40,20 and 15 meter ham bands and the 49,31,25,19 and 13 meter DX bands. These bands are generated by crystals soldered to a separate circuit board behind the RF amplifier board. Presumably, it you could find a way to mount them so they could be easily changed, you could get the rx to cover other bands (at expense of a programmed band, of course).

How well does it work? Extremely well, I might say. Putting it mildly I was quite amazed at its performance under quite horrible condx. All things considered, the overall impression is of extremely high quality. It should make the most discerning SWLer happy for years.

Radio Portales

... The Talk Is Different Now

By RICHARD LEGGETT

(EDITOR'S NOTE: The eyes of the world have been on political changes in Chile where a Marxist regime is in power. British DXer Richard Leggett reports on changes in Radio Portales' programming).

My attention was drawn recently to Radio Portales' new style of programming: Nationalist pronouncements interspersed with pops and "smooch" music. It seems to me a novel way of sweetening the pill--- if that is the aim, since the format is a curious mixture of capitalistic music and highly uncapitalistic exhortations. I wonder how wide an acceptance such a contradictory style can have?

Two announcements aired quite often and preceded by jingle-jangle music are these:

SPANISH

"Lo que importa es lo que ocurre hoy en Chile. Hemos superado la tecnología yanqui cambiando su estructura, aumentando simultáneamente la producción, y eliminando nuestra dependencia del imperialismo internacional."

ENGLISH

"What matters is what is happening today in Chile. We have overcome American technology, by changing its structure, simultaneously increasing production and eliminating our dependence on international imperialism."

Note the unusual word order of the first sentence above.

SPANISH

"Los trabajadores textiles lo saben, y es bueno que Ud. también lo sepa; las grandes empresas textiles no son de un patron. Son del area de propiedad asociado. Pertenecen a Ud., a todos los trabajadores, es decir, a todos los chilenos. Los trabajadores textiles, vanguardia del proceso de liberación social-económico, trabajan por Chile."

ENGLISH

"The textile workers know it and it is right that you too should know; the great textile enterprises do not belong to one owner. They belong to the 'associate sphere of ownership! They belong to you, to all workers, that is, to all Chileans. The textile workers, vanguard of the course of social-economic liberation, are working for Chile."

Some of the announcements of this type appeared to be on tape or record, suggesting their frequent airing. Similar references were made to the copper mining industry. They were noted on a tape kindly sent to me by George Schnabel, a NASWA member from Rochester, N.Y. who evidently enjoys good strong reception of Radio Portales.

This article is in no way intended to denigrate the country in reference; your scribe has no political affiliations. I felt the above worth remarking on as it shows a political direction out of the ordinary and it will be interesting to see the future course of the country as mirrored by Portales.

POSTSCRIPT ON SB-313: Member Neal A. Perdue is into alignment and calibration of his kit and will report later on a side-by-side test with SX-190 and SW-4A. He advises that "9 Evening Kit" too optimistic. Total hours will be about 60 (and he's a 10-kit Heathkit veteran). "About 60 ft of solder is required--that's a lot of soldering!" "Final layout is a neat and clean 7-circuit construction with extender boards for easy troubleshooting". "I expect this to be a FB hot rig, but be ready for a lot of work."

If others have comments on the SB-313 (or any equipment we review, we would be happy to receive them at SWC headquarters.

North American Short Wave Association

IS THERE REALLY A NASWA HEADQUARTERS? Well, yes, but it is inundated with paper, as a few DXers who recently saw my basement can testify. But HDQ has not disappeared. The past three months have been somewhat hectic, as I've been working two jobs. That will end in late August, as my resignation from the faculty position at the college is effective with the end of summer school... At that time we should be able to get back on a more regular schedule, and handle correspondence more easily and quickly. My apologies for some recent delays in communications from this QTH.

Dan Ferguson

REPRINT MANAGER Effective immediately, all reprint items should be ordered from our new reprint manager, ED SHAW, 621 BURLEIGH AVE., NORFOLK, VA 23505. Checks or money orders should be made out to NASWA, and sent direct to Ed. The following items are currently available....

THE ART OF VERIFICATION, by Gregg Calkin	50¢
AFTER THE SUN GOES DOWN, by Ed Shaw (sunrise/sunset charts & how to use)	50¢
NIBLACK REPRINT BOOKLET, by Al Niblack (reprints of articles on receivers & antennas, etc.)	50¢ (½ price sale - get your copy now!)
90 METER SURVEY (last year's edition)	50¢ (1/3 original price!)
BROADCASTING IN PERU, by Richard Wood	10¢ (another reduction!)
THE BC-221 FREQUENCY METER, by Al Niblack	10¢
MARCONI DID NOT INVENT RADIO, by Don Jensen	SASE (limited supply)
LONG DELAYED ECHOES, by Cal Cornils	SASE (limited supply)
THE BEST OF LOUDENBOOMER, by ☹ (typewriter jammed!)	2.50
TIME CONVERSION CHART for North America	SASE

Many additional items will soon be added. Watch the pages of FRENDX for announcements. Occasionally items which are only temporarily available may be issued from HDQ, but all stock items will be available from Ed Shaw.

MAIL CALL In connection with Ed Shaw assuming duties as Reprint Manager, there will also be a change in the Mail Call. Ed will no longer be handling the Mail Call. Instead, it will be handled by Dan Ferguson, at NASWA HDQ. This will not mean a deletion of the Mail Call, just a transfer.

HELPING HAND

SPEEDX Executive Secretary Oliver Ellsworth will be confined to a hospital for several weeks to come and could certainly use a friendly letter or card from fellow SWLs to help shorten the long hours in the hospital. Address Oliver Ellsworth, c/o Don Johnson, P.O. Box E, Elsinore CA 92330 or c/o SPEEDX, P.O. Box 321, Santa Ana, CA 92702. *

HELPING HAND Individual computer printouts of azimuths & distances (in either miles or kilometers) from any QTH to points over the entire earth (10° intersection pts) plus sheet explaining how to use the printout to draw your own azimuthal projection map, with your own QTH as pole....\$3 US or 15 IRCs from John Lackmann, 509 South Main Street, Lexington, Virginia 24450, USA. US orders done in miles, all others in kilometers, unless otherwise requested....Another NASWA member providing a service to DXers!:



DX CAMPOUTS I know of several DXers who are planning DX campouts this fall. Having taken several such trips with DXers Ed Shaw, Dan Jamison, and others, I can attest to the fine fellowship, and often the good DX one can enjoy on such a trip. Last year's trips to a fire tower in Virginia, and a Southern West Virginia farm (remember the Mountain Creek DX Association?) were most enjoyable. I am looking forward to several such weekend trips this coming DX season... Try it, you'll like it!

Dan Ferguson



LANGUAGE REPORT FORMS For several months we have been out of the very popular language report forms, in Spanish, Portuguese, French, and Indonesian. Some of the forms are being revised at the present time. However, due to the demand, we have printed a supply of the forms, all of the above languages, via the spirit duplicator process. For those not familiar with it, it's the purple printing you got in school. (We tried to use hectograph, but Charlie Loudenboomer bought up all the orange jelly!) With the recent acquisition of an old Thermofax machine in fairly good condition we are now able to make thermal spirit masters and make these language forms available to members again, without having to retype the whole thing. (They run 5 & 6 pages each.) So, a warning! It is not a fancy printing job, but the material is available. And as we have long contended that our primary interest is in content, we don't at all mind using the spirit duplicator process to get these very useful language reporting guides to you now, rather than having to wait somewhat longer for them. So, they are available, from ED SHAW, NASWA REPRINT MANAGER, 621 BURLEIGH AVE., NORFOLK, VA 23505, USA. Cost in NA is 15 cents each in coin or stamps. Overseas, 2 IRCs each, or Airmail for 4 IRCs each. Get 'em now, for the next DX season!

THE APRIL COVER PHOTO was not intended to be a secret, it just turned out that way: The photo is of the RNE-Arganda transmitter site. Thanks to Harold Sellers, who supplied us with the photo.

The HDQ Shack..Recent additions to receiving equipment in use here are an AX190, and a BC-221. At the recent sale price of \$170, I decided I could not afford not to pick up an SK190, for portable, battery powered operation. Unfortunately, I could not locate an SK190. So, instead, I bought an AX190. There are differences, besides just the crystals supplied. The AX190 is designed to operate only three bandswitch positions on the lower range of the preselector, 3-10 mHz, with the remaining eight positions all on the upper range, 10-30 mHz. I believe it will be possible to convert all 11 bandswitch positions to operate on the lower range by just clipping 3 wires on the switch. I haven't done it yet, as I am still waiting for the crystals I ordered from International Crystal Company over three weeks ago. But when the crystals arrive I will be tearing into the receiver, and will report on the modification.

Dan Ferguson

FRENDX will take on a slightly altered appearance beginning with the September issue. The size will change from the current $5\frac{1}{2} \times 7\text{-}3/4$ to $5\frac{1}{2} \times 8\frac{1}{2}$ inches. The total number of pages will be reduced slightly, but without reducing the quantity of material used. In fact, there will even be room for some increase in the quantity! And, of course, the quality will continue at the usual fine level, due to your support of the various sections, and the hard work of a dedicated editorial crew.

The changes are designed to get FRENDX in the mail faster. We expect to cut the lead time considerably.

DF



Indonesian Phrase List



I began listening to your transmission.	Saja mulai mendengar pada siaran saudara.
I finished listening to your transmission.	Saja selesai mendengar pada siaran saudara.
Chimes were heard	Lonceng didengar
A recorded music selection was heard.	Musik dari piring hitam telah didengar.
The music selection featured Hawaiian Island type music.	Musik itu adalah musik dari kepulauan dilautan Pasifik.
The music selection featured a vocal selection by a man (woman) (male chorus) (female chorus) (mixed chorus).	Musik mempertunjukkan penjanjian oleh (penjanji laki) (suarawati) (sekumpulan penjanji laki laki) (sekumpulan penjanji perempuan perempuan) (sekumpulan penjanji 'Musik orkes dengan (piano) (orgel) (gendang) (selompret) (viola) (guitar) telah ditunjukkan.
Orchestra music with (piano) (organ) (drum) (trumpet) (strings) (guitar) music was featured.	
Classical music was heard.	Musik kelasik sudah didengar.
Popular music was heard.	Musik jang popular sudah didengar.
A program of music with no announcements was heard.	Ada musik atjara jang saja tidak dengar pengumuman.
Your signal was (under)(over) other stations on the same frequency.	Siaran saudara ada (bawah)(atas) stasion jang memakai frekwensi bersama saudara.
A heterodyne whistle interfered with reception of your station.	Suling heterodyne (ada dari frekwensi jang berlainan) menjampuri dengau penerimaan dari stasion saudara.
Your Interval Signal was heard.	Siaran selang saudara telah didengar.
I am enclosing (number) International Reply Coupons to pay for the return postage of the QSL.	Saja menjisipi () Internasional Djawaban Kartjis untuk membarj biasa pengiriman untuk QSL.
I am enclosing unused Indonesian stamps to pay for the return postage for the QSL.	Saja menjusipi tjap pos Indonesia untuk membarj biasa pengiriman untuk QSL.
The theme song of the program was heard.	Njanjian pokok digengar.
A program review was given by the man (woman) announcer.	Atjara periksa telah diumumkan oleh penjar laki (perempuan).
A speech by a man(woman) was heard.	Pidato oleh orang(wanita) didengar.
The program featured selections by:	Atjara menundjukkan pilihan oleh:
It was the first time I have heard your station.	Ini adalah kali pertama saja dengar stasion saudara.

Continued at bottom of page LR-4.

- 1 Garrett Deane Howell, P.O. Box 324, Dublin, Virginia 24084 joined NASWA early this year. He is 16 and a high school student. His receiver at present is a Star Roamer. He also uses a taperecorder. Other interests include hunting, fishing, swimming and spelunking (look that one up). Garrett plans for a larger receiver one day. In the meanwhile, Garrett, I'm sending you the names of a few people in your area also members of NASWA.
- 2 Richard A. Schwartz, 808 Townsend Blvd, Towne Point, Dover, Del., 19901. An Army Reserve officer currently on active duty for training at this publishing. Dr. Schwartz received his degree in Germanic Languages from the University of Virginia, and he is particularly interested in the German speaking broadcasters of the world. Richard is responsible for uncovering the existence of an East German home service "Vaterlandsender" on 7260 kHz, heretofore mistakenly thought to be Suddeutsch Rundfunk of West Germany, also on the same frequency. Richard uses several receivers including a Hallicrafters S-108, Drake SW-4A, and the Allied SX-190 (soon).
- 3 Wallace C. Treibel, 357 N.E. 149th Street, Seattle, Washington, 98155, is an administrator, a veteran of WWII, and a returnee to the SWL hobby in 1963 after an absence of over twelve years. He uses a Hammarlund HQ180 with a Hy-Gain vertical antenna. Other equipment includes a BC-221 frequency meter. His first prize QSL is one from Papua in 1949. He acquired news of NASWA from GilFer Associates. Welcome Wallace; I am sending you the name and address of an Ace DXer and hobby leader in your area.
- 4 Charles Foxx, Box 165, Suffolk, Virginia 23434. Active member of NASWA and also of regional branch ODDX. Has acquired numerous QSLs on a Sears portable so far, but is ready to graduate to something larger and is looking for an SX-190. Charles is a graduate of Norfolk State College, is married but no children at present. Charles enhances his hobby pleasure by acquiring studio recordings of broadcast ID's from individual stations.
- 5 Danny Jamison, 310 W. Roanoke - Apt #21, Richmond, Virginia 23225. Another active member of NASWA and other technical groups. Dan has used a Drake SW-4A and various antennas to good advantage. He is a recent addition to the FRENDX staff of editors in charge of Listener's Notebook, and he would appreciate hearing from NASWA members having schedules from the more desirable stations, or other tips and suggestions for making DX a bit easier. Here we see Dan sitting at this editor's shack. Dan has been a steady contributor of his talents for years. For those DXers interested, he has available language report forms in Vietnamese, Urdu, and Farsi for 50¢ each.
- 6 Bruce Churchill, 6012 Hillandale Court, San Diego, CA 92120. An Ace DXer from way back. This editor remembers Bruce's jubilation at pulling Nepal's 5 KW service with his Hammarlund HQ-180. It was a pleasure meeting with Bruce on several occasions when we lived in California. Bruce is a career naval officer and aviator, recently serving on one of our aircraft carriers - is married and has (as I recall) two children. Here's hoping that you are able to get to the San Diego convention, Bruce.
- 7 This composite of DXers is one of my favorites. Shown here are: our Executive Editor, Dan C. Ferguson; Fred White, 4404 Bel Pre Road, Rockville, Md. 20853; NASWA Awards Chairman Dan Henderson, 317 Brock Ridge Rd, Laurel, Md., 20810; and Scott Reeves, 16506 Forest Mill Court, Laurel, Md., 20810. Dan Ferguson uses an SB-310, HQ-145, and hopes for an SX-190; I can only recall that Fred's receiver was something special and no beginner's equipment; Dan Henderson uses an HQ-180 and an SX-190; and Scott Reeves uses an SX-190. Both Dons are also members of N-U. Fred, Dan H., and Scott are all members of the Washington Area DXers and are planning their first regional meeting in August - about the time you get this issue of FRENDX. Incidentally, if you haven't written for information about the NASWA Awards Program, write NASWA HQ today and include a return stamp. We've been promising the beginning of a great awards program, and Dan Henderson has really come through with some attractive awards. Keep an eye open for future illustrations of these awards in FRENDX.

Send your pix and biography today to Ed Shaw at the address on the photo page. Contrasty B & W fotos needed. Color will do if not overly red. 73 in 73, Ed Shaw

MAIL CALL

Editor: Edward C. Shaw
621 Burleigh Avenue
Norfolk, Va. 23505

Deadline: 20th of the month

LETTERS FROM MEMBERS WITH PROBLEMS

Summer has naturally taken its toll of contributors to all departments of FRENCH, and for this reason Mail Call was omitted last month for lack of sufficient general interest questions. Keep in mind that for whatever hobby related problem you may have, Mail Call will get an answer. Please enclose a return stamp with your inquiries, so that an answer can be mailed to you regardless of whether it is used in Mail Call.

WHY DOES AN ANTENNA TUNER WORK? Dear Ed: I was fascinated by the design of the pictorial antenna tuning unit project illustrated last month. I made it and am very pleased with the results although I haven't the faintest idea of why it works. Are there any easy explanations?

Answer: No, but I'll try to be brief and basic. An antenna of one certain length resonates best for one certain frequency. However, all of us use a single antenna for just about every band - vastly much more than just a single frequency. The project you built is a means to modify the "electrical" length of your antenna by adding inductance or capacitance (varying the knobs and switches). In this manner your antenna can be brought to optimum resonance for whatever band and frequency you desire.

DISTORTED AUDIO OUTPUT EASILY CORRECTED Dear Ed: Having recently purchased a military surplus receiver I was disappointed in the quality of sound coming from my headphones. Even the speaker I connected sounds bad. I took the receiver back for a check and they said it was O.K. I'm enclosing the bill, receiver handbook, and copies of correspondence I've had with the company.

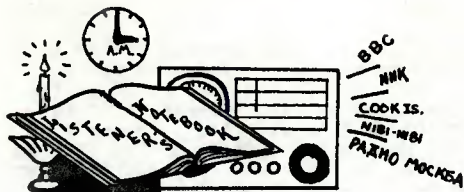
Answer: The company, Fair Radio Company of Lima, Ohio, is an old, respectable firm. Examination of the manual produced a satisfactory and solving answer which you have subsequently tried and are now satisfied. Your receiver had an audio output of 600 ohms. Hooking a normal 8 ohm speaker to this would definitely produce distortion of sound. In this case, we advised you to purchase an audio step down transformer from your local electronics supply store. One was found for stepping 500 ohms down to 8 ohms for less than \$3.00. Quite a difference, huh?

ZENITH TRANSOCEANIC VS: A 2-TUBE REGEN RIG Dear Ed: A friend says he can do as well with a 2-tube regenerative short wave set as I can with my Zenith Trans-Oceanic 7000. What do you think?

Answer: I think you shouldn't have tried to put me on the spot here. Inevitably someone is disappointed - usually the one in the middle. Hi. But, seriously, I doubt if your friends 2-tuber would equal the Trans-Oceanic. I've never seen one of the above in practical use, but I have used the Trans-Oceanic myself. Frankly, I am not impressed with the Zenith's performance as a DXer's receiver. It is a portable radio designed for grand tone entertainment - which it provides. It was not designed for Ham or SWL use. Its specifications are disappointing, not even meeting those of a Star Roamer. The price of your Zenith mainly paid for performance and tone of the AM and FM bands, plus sturdy construction, which means something, too. But, for the same or less money, a spectacular difference in SWBC DXing could have been purchased. Even though your friend exaggerated a bit, I wouldn't care to wager your Zenith against a standard 5-tuber

SX-190 CAN DETECT MARINE OPERATORS - 120 Meters Dear Ed: When I remove the crystal from one of the low range sockets, I can tune the preslector on my SX-190 way down low below 3.5 and hear marine operators. What is this?

Answer: You are listening to the only signal coming from the mixer stage - the raw VFO range of 2,920 down to 2,420 kHz. Normally, the crystal frequency beats against this VFO output to give the correct band range. Doing what you did, you can figure that zero on your dial is approximately 2,920 kHz and 500 on the dial is 2,420 kHz. Look for WWV on 2,500 kHz at about 420 on your dial. A few latins and other stations are found here, but this inefficient arrangement on the SX-190 will probably not yield you anything better than WWV and the more powerful marine operators you've heard.



Dan Jamison
 310 Roanoke Street
 Apartment 21
 Richmond, VA 23225

Deadline: 15th

SURVEY RESULTS The result of our survey - the five SWBC stations you most desire to receive- shows that the five most sought after stations by NASWA members are: 1. FIBS, Falkland Islands 2. Grønlands-Radio, Greenland 3. Radio Maldives 4. Radio Ulan Bator, Mongolia and 5. Radio Vila, New Hebrides. These were the top five stations from a list of 59 stations received. This month we will spotlight the top five stations in LN. We will comment on the remaining 54 stations in upcoming LN's. But first let us view the results of the survey.

- | | |
|--------------------------------|---------------------------------|
| 1. FIBS, Falkland Isl. | RRI, Indonesia |
| 2. Grønland's Radio, Greenland | Suddeutscher Rundfunk |
| 3. R. Maldives, Maldive Isl. | R. Nordsee Internat'l |
| 4. R. Ulan Bator, Mongolia | RC Mozambique, Beira |
| 5. R. Vila, New Hebrides | North Korea |
| 6. ORTF, Reunion | Laos |
| 7. R. Cook Isl. | Cambodia |
| 8. LV de Galapagos | Burma |
| 9. All India Radio | World Music Radio, Channel Isl. |
| Tied for 10th: Tristan | Afars & Issas |
| Paraguay | Borneo |
| Sender Freies Berlin | New Zealand, R. New Zealand |
| Emis. de RDF Timor | Luxembourg |
| Azad Kashmir Radio | SIBS, Solomon Isl. |
| R. Nepal | R. Granada, Windward Isl. |
| R. Thailand | Kenya |
| Swazi Radio | Chad |
| R. Athens | Niger |
| Angola | Somalia |
| VTVN, S. Viet Nam | RC Cabo Verde, Cape Verde |
| Tied for 11th: | Rio Muni, R. Bata |
| R. Bangladesh | UAE, Abu Dhabi |
| N. Viet Nam | Sierra Leone |
| St. Helena | Ghana |
| Zambia | Sri Lanka |
| VOFC, Taiwan | Israel |
| DW, Rwanda | Comoro Isl., ORTF |
| R. Nederland, Malagasy | R. Lesotho, Lesotho |
| Syria | |
| VON, Nigeria | |
| RBC, Rhodesia | |
| Yugoslavia | |

... and now, on to the spotlight.

FALKLAND ISLAND BROADCASTING SERVICE: FBIS may be heard, if you are lucky, during severe magnetic storms when many of the 75 meter band local hams are not heard. As DX'er Larry Magne once put it, "this is sterling proof that a 'bad night' is really a chance to snare the elusive stations of the south." At least two magnetic storms occurred in the past year, one in August and one in January, which resulted in the logging of FIBS for several NASWA members. Also watch the sunspot count. Our chances for logging this 500 watt station are somewhat greater during times of a low sunspot count. Also when planning your listening hours, figure sunset time in Stanley and your local sunset time too. Programming from FIBS is in EE and consists usually of US oldies and some BBC dramas, etc. Sign off is listed at 0130 w/GSTQ. NA reception of FIBS seems to fall between 0100 - 0130. Good luck!!

GRONLANDS RADIO: Grønlands Radio has been noted by many DX'ers in the past year. The 10 KW xmtr on 11745 Khz has been noted only for a period of two minutes, from 1458-1500. The IS has been heard in the clear but was smeared by ORTF signing on at 1500. Sometimes it is possible to hear GR through ORTF til as late as 1715. It seems like the best time to log GR is at 1011 when they begin their IS. Sign on is at 1015. The freq's of 3999, 5960, or 5980 seem to yield the best results and also seem to be used interchangeably during this time slot. Also, you might try 9575 during this time period which has been noted to about 1045 fade out. An IS has also been observed at 1929 on 5960 but then was covered at 1930 by Moscow. In summarizing, the 1011 transmission appears to be the best time for reception in NA on the 49 and 75 meter band freq's.

RADIO MALDIVES: Ye ed's loggings of Radio Maldives have all been at SINPO 3444411 (and no QSL to show for it ... shucks!) But then I was almost in their own back yard at the time ... in SEA. As we all know, reception of RM in NA is not accomplished with that much ease. RM has been noted during the past DX season in the midwest from approx. 1230-1300 and on the west coast after 1300 from the 15 KWer on 3331. EE has been noted from the 30 KW xmtr on 4740 from approx. 1515-1530 on WCNA. Our monitor in Japan has informed us that 4740 signs off at 1730. Signals were barely audible and I can imagine that the DX'ers were anxious and tense during this exceptionally rare experience. Our chances for logging RM are somewhat greater when there is a low sunspot count. Also use Azad Kashmir Radio and some of the AIR regional stations as bench marks. There seems to be a greater possibility of receiving RM during periods of good India subcontinental reception.

RADIO ULAN BATOR: English is broadcast from Mongolia from 1220-1250 on 15445 or 8890. 8890 has seemed to be the most productive freq of the two, for ye ed that is. However, very, very occasionally is anything ever noted. Tentative reception of Ulan Bator has also been noted on 6383 from 1219-1230 in a Chinese like language. Bare in mind that the regular sign off time for 6383 is 1210 though. 6383 is often flanked by ute's which, at times, cover the freq. Also be advised that the North Vietnamese regional station at Tay Bac has been noted wandering around this segment of the band and has been noted on 6383 occasionally. RUB also relays the Moscow Mongolian svc on 7100 from 1130-1200. The BECMS has listed additional updated freqs for the Moscow relay of 9590 and 5960. Good luck DX'ers!

RADIO VILA: DX'er Ralph Perry, Il., has copied programming in FF from 0837-0858 from Radio Vila's 2 KW xmtr on 3945. There is no anthem at the 0900 sign off. Signals were at a strained level and a notch filter was needed. The exalted carrier LSB seemed to help. NSB, Japan and ham QRM were quite bothersome. West coast DX'ers have noted RV at a fair level from 0730-0815 when NSB was off the air. RTTY, ARO, and NSB QRM, aside from favorable conditions, seem to be the major factors preventing improved reception of RV in NA. To at least reduce some of the ARO QRM, tune 3945 on a local Sunday night when ham band activity is low.

BELGIUM To avoid interference fm R, Havana, BRT to NA has moved fm 9550 to 9655 fm 2215-0100. EE at 2255-2315 and 0040-0100. 15235 to South America remains in parallel. (Dr. Richard E. Wood, LA)

BOLIVIA R. Norte, Montero, has been hrd in EE asking for reports "so that your engineers could do their job properly!" Sign off time is at 0400. (Radio Nederland's DX Job Box)

BRAZIL Don King of Pa. reports that Mauricio de Carvalho, Coordenador Gen. of R. Nac de Brasilia has infromed him of a new mailing address for RNB. Now try P.O. Box 1620. Also send 5 IRC's for an airmail reply.

BRUNEI The most recent sked fm R. Brunei is as follows:

Malay Svc 1100-1215 & 1230-1430 on 4865
 Iban & Dusun Svc 1215-1230 on 4865
 English Svc 2258-0030 & 0300-0500 & 1200-1430 on 7215
 Chinese Svc 0030-0300 & 0800-1100 on 7215
 Ghurka Forces Svc 1100-1200 on 7215

Reports may be sent to: The Dept. of Broadcasting & Information,
 Bandar Seri Beganwan, BRUNEI, North Borneo (Larry Marshall, Calif)

CHINA R. Peking to NA fm 0300-0400 is now observed only on 15060, 15385, and 17735 plus the Tirana relay 7120 and 9780. From 0400-0500 on 15060, 15385, 17735, & 17855. The HS has been observed fm 0200-0400 on 15113, probably nominal 15115. (Dr. Richard E. Wood, LA)

REP. POPULAIRE DU CONGO Voix de la Revolution Congolaise runs from 0430-0700 on 3232 using 4 KW's, 6115 & 4765 running 50 KW's
 0700-1700 on 3232 using 4 KW's, 4795-4 KW, 7175 - 25 KW & 9610 - 50 KW
 1700-2300 on 3232 using 4 KW's, 4765 & 9715 at 50 KW & 15190 at 50 KW
 1030-1400 on 15190 using 50 KW's.
 The address is: B.P. 2.241, BRAZZAVILLE, Rep. Populaire du Congo
 (Many thanks Mr. A.E. Martin, England)

ECUADOR The following note in reference to a freq change has been rec'd direct fm the HCJB Engineering Freq Div. 11915 will replace 11845 to ECNA fm 1100-1300. "This affects Spanish pgm'ing and means that there are in use two transmitters during this time block on 11915, one directed to SA, and the other to NA, both of them carrying pgms in the SS language." Reception reports are requested.
 (Roger Stubbe, HCJB Engineering Freq Div.)

EGYPTIAN ARAB REPUBLIC Cairo's EE summer sked lists
 9475 fm 0200-0330 to NA 17725 fm 2030-2200 to West Africa
 17920 fm 1315-1430 to S. Asia 9805 fm 2145-2300 to Europe
 17655 fm 1730-1845 to E,C,S,Afr
 (S.W. Eichenhorn, Michigan)

FINLAND The Finnish Broadcasting Co b/c's EE to Na fm 2300-2330 on 15185. You might also tune to 15185 fm 2030-2100 to catch their EE xmsm directed to Europe and SA. Also 9550, 11755, and 21605 (1 KW) are listed in //.
 (Steve Estes, Virginia)

FRANCE The summer sked of ORTF lists
 EE to E. Africa at 0515-0545 & 1030-1115 on 17730
 EE to W. Africa at 0515-0545 & 1030-1115 on 11735, 9680, 7135
 EE to Cen & S Afr at 0515-0545 on 6030, 9710, 15295
 1030-1115 on 15295, 21580
 (Again, many thanks Dr. Richard Wood)

GRENADA R. Grenada is scheduled fm
 0000-0215 on 11975 The mailing address is: Radio Grenada
 1545-1930 on 9550 P.O. Box 34
 1545-0000 on 5015 St. George's
 2000-2135 on 11930, 15105 GRENADA
 2145-0215 on 3300 West Indies
 (Steve Estes, Virginia and Dan Srebnick, New York)

INDONESIA ***** Larry Yamron of Pa. informs us that the RRI network is going to reorganize between 1974 - 1979. All shortwave stations except the foreign service will change to medium wave.***** This is really going to hurt! Better get started on those Indonesian loggings now!

GABON Radio Gabon expects 3 new transmitters of 300 KW. ORTF will also use these. (SCDX via Larry Yamron, PA)

INDONESIA The agreement for the unification of the spelling systems of Bahasa Malaysia and Bahasa Indonesia has been implemented. Largely involves a move from the Dutch-based spellings of Indonesian to the English-based forms of Malay. Hence Dj now simply j and former i now y; likewise sj now sh, tj now ch; thus former ch now becomes kh. Examples: Djakarta now Jakarta; Tjirebon now Chirebon; Djajapura now Jayapura; Djalan "street" now Jalan.
(Dr. Richard E. Wood, Professor of Foreign Languages, LSU)

JAPAN Although the printed sked for NHK for the period of May 6 - Sept. 1, 1973 shows 9505 used in the Gen. Svc to NA at 1600, 1700, 1800, 1900, 2000, & 2100 (duration of half an hour each), unlisted 15105 is in fact hrd and announced instead. 11815 beamed to Asia and 15300 beamed to Europe are in parallel.
(Dr. Richard E. Wood, LA)

PAKISTAN R. Pakistan has a new World Svc transmission fm 1745-1800 on 11672 and 15325 w/nx in EE at dictation speed. (RN DX Juke Box)

POLAND The summer sked of Polish Radio, Warsaw to NA in mixed Polish/EE fm 0200-0400 is observed on 6095, 6135, 9675, 11810, 11815, 15120, and 15275. Note the unusual use of 11810 and 11815 with only a 5 kHz separation, simultaneously to the same target area. All except 6095 give fair to excellent reception in the U.S.
(Dr. Richard Wood)

REUNION ***** St. Denis: "4807 kHz .. was hrd several days ago between 1955 & 2025 w/ pop mx - ID was given in EE & FF at 2020 w/ 'you are listening to ORTF the FF B/c'ing System fm Reunion Island. We b/c every day on 654 MW... & on 4230 & 2224 KHz SW ... We would be pleased to receive your letters ... etc; and now we say goodnight .." Then the above was repeated in FF. Mr. A.E. Martin says also, "I wouldn't be too certain as to the frequencies given as the signal worsened toward 2020 - but I am sure that 4807 wasn't used."
(A.E. Martin, England)

SAUDI ARABIA If you have not been lucky w/rpts sent to the Saudi - Arabian B/C Svc, try addressing your rpts to Mr. Werner Storg, Chief Engineer, P.O. Box 2476, Riyadh, Saudi Arabia. (RN DX Juke Box)

SEYCHELLES Our man in Africa, Charly Wootten, has learned fm Mrs. Mary Berry of FEBA, that FEBA is planning to beam transmissions to East and South Africa at the end of this year or the beginning of next year.
(Charly Wootten, Morocco)

SPANISH SAHARA Hank Michalenka fires to ye ed's desk a NASWA exclusive ... the first release of the Spanish Sahara piece for the 1974 WRTH as received from the new verie signer, Amparo Martin!!
Local Time - GMT
Principal Language - Castillian Spanish and Hassania
Address: RADIO SAHARA, Apartado 106, Aaiún (Sáhara) España
Director: Carlos Guisasaola Estelar
Administrator: Angel Veiga Mollon
EMISORAS EAJ 203 y EAJ 202

El Aaiún	656 kHz	50 KW	455.3 m.
	746 kHz	2.5 KW	402.1 m.
	7230 kHz	10 KW	42.1 m.
El Aaiun-Villa Cisneros ..	4627 kHz	SSB 5 KW	64.8 m.
Villa Cisneros	998 kHz	10 KW	300.6 m.

All frequencies are from 0645 to 0100 hours
Station identification: "Aqui Radio Sahara."

(NOTE: 4627 is a feederlink in SSB, and does not count for NASWA purposes.) (DX'er Hank Michalenka, Rhode Island)

SWEDEN Due to heavy QRM, R. Sweden has made the following frequency changes: To ECNA fm 0000-0230, 9665 replaces 11955. And 17840 replaced 17815 to the Far East fm 1230-1330. (R. Australia's "DXers Calling")

SYRIA The BBCMS has noted that R. Damascus has retimed some b/c's and is using the new freq of 9655 for the following:
RR fm 1700-1730 FF fm 1800-1930
GG fm 1730-1800 EE fm 1930-2100 (R. Australia's "DXers Calling")

TURKEY R. Ankara has dropped the 1430 b/c to the Far East and Asia. Now there is only one EE transmission per day fm R. Ankara at 2200 on 11880. (R. Nederland DX Juke Box)

VATICAN Vatican Radio's NA svc has recently been observed in EE commencing at 0100 rather than former 0050 on 5995, 9605 and 11845. The duration of the b/c is generally 15 minutes. (Dr. Richard Wood)

USSR Have you ever wondered how the Soviet station at Petropavlovsk, Kamchatka, ID's? I sure have. Soviet DX'pert Bill Davis notes that the station ID's as follows ... the words in () are phonetic spellings of untranslating words. "Attention, speaks Petropavlovsk, Kamchatka. Workers radio station (nivilnak) twenty four point eight (eschatter), thirty one point forty six (sorter), forty one point eight one (sorter), forty two point twenty six (sortes) meters. Good day Comrades" Bill said that the freq's announced did not jibe with the freq's actually used. As a matter of fact ...
wavelength = freq anced freq actually used
24.8 12095 12010
31.46 9535 9540 (Many thanks for your
41.81 7175 7160 interesting observations
42.26 7099 7100 Bill)

USSR In response to a query asking why Alma Ata would not QSL direct, Charles Wotten was informed by Mrs. S that only Moscow, Baku, Dush-anbe, Kiev, Minsk, Riga, Tallinn, Tashkent, Tbilisi, Vilnius, and Yerevan will issue QSL's. The HS stations will not.
(Charly Wootten, Morocco)

UZBEK SSR EE fm R. Tashkent may be hrd fm 1200-1230 or fm 1400-1430 on 15460, 15115, 11925, 11730. (S.W. Eichenhorn, Michigan)

TAPED REPORTS Fm the Code of Federal Regulations: Postal Service - Manual, Title 39 of the Code of Federal Reg's... Tip for those who send taped reports and who are tired of paying high postal rates. Taped reports may be sent as "combination package" as defined in Art. 22.7 of the Postal Svc Manual. A combination package is a regular airmail letter firmly attached to a second envelope containing the taped report. The first letter goes for the regular 21¢ per half oz. and the second envelope goes for the "A.0" rate depending on the country. In any case, a typical four oz. taped rpt will go for nearly half of what you have been paying. Your bonified communications letter would go in the first letter and the tape goes as merchandise in the second letter and both letters are then firmly attached. (Ed Shaw, VA)

SPECIAL PROJECTS ***If you would like to participate in some of the LN special projects, drop us a line. Please list your receiver type, antenna design, and areas of interest in DX'ing. Also please enclose a SASE. We are trying to initiate a number of special projects and your suggestions are always welcome. I am sure that these special projects will prove interesting to NASWA members.

A hardy word of thanks is once again extended to all of our contributors. Any comments or suggestions of how LN may be improved to help you and your fellow DX'ers are always welcome. Have U contributed lately?

QSL Report

Larry Yamron
6830 Linden Lane
Pittsburgh, Pa.
U.S.A. 15208

Telephone: (412) 361-6832

Deadline: 12th of month.

QSLs RECEIVED—AUGUST

Many interesting QSLs in this month. Radio Belgrade, Yugoslavia has started to verify again. At last! Your editor finally managed to squeeze a verie out of R.T.V. Ivoireenne. Brazilians and many other South Americans are plentiful this month....Please! When reporting to QSL REPORT print your name at the end of each item. On with the veries.

ALBANIA: R. Tirana, folder card w/full data and magazines in 3 months registered mail, 2 IRCs. (Reeves)

ALGERIA: R.T.V. Algerienne, 17790, card w/blue emblem, details in EE, plus sked, 12 weeks sea. (Padula) 11715//11968, card w/all data in 15 weeks air, plus sked, 2 IRCs. (Barhart)

ANGOLA: R. Clube Do Moxico, 5076, v/s. Manuel Pinheriro, Pela Direccao O Secretario 4 weeks for EE report, 1 IRC. (Barto) 5005, card w/full data and new freq. 5076, (Field) R. Clube Do Lobito, 4932, card in 6 weeks for EE report, 1 IRC. (Barto)

R. Clube Do Hoila, 5024, card of studios in 4 weeks for EE report. (Barto)

A Voz de Angola, card with view of beach at Luanda, full data in 6 weeks for EE report and 1 IRC. (Padula)

R. Ecclesia, 4985, letter from v/s. Inocencio Augusto Pereira, cards not yet available but promised card in future, 2 months air, 2 IRCs. (Field)

ARGENTINA: RAE, 9690, card w/full data, 6 months for 2 IRCs. (Carrington) full data 4 weeks air. (Castello) full data, 98 days, no IRCs. (Schwartz)

AUSTRALIA: R. Australia, 11710, card in 6 days for 1 IRC. (O'Malley) card in 10 months for no IRCs. (Wahlman)

VLW6, 6140, card in 3 months. (Barto)

VLW9, 9610, mimeo letter from v/s. Noel Miles, 126 days sea for EE rpt. and 4 IRCs. (Willshaw)

AUSTRIA: ORF, 6155, 17 weeks for no return postage. (Earhart)

BANGLADESH: R. Bangladesh, 15520, plain card w/full data in 32 days, 2 IRCs. (Hunt)

BELGIUM: ORU, 15235, wrong date and no time, 1 month, 1 IRC. (Ghioto) 9655, full data in 3 weeks, no IRCs. (Fino)

BELORUSSIA S.S.R.: Minsk, 9690, card for U.K. svc. 3 months. (Barto)

BOLIVIA: R. Fides, 4845, form letter and pennant for SASE used, 6 weeks, (Field) card and pennant for SS report. (Barto)

R. Progreso, 6005, card and pennant from v/s. Samuel Mendoza, Dir. 3 weeks air. (Barto)

BRAZIL: R. America, 11855, letter w/out data from v/s. Luiz Mocellin, for PP report and post card. (Lohe)

R. Alvdora De Londrina, card in 24 days. (Barto)

R. Clube De Riberio Preto, 15415, letter w/no data from v/s. Ticiano Mozet-to, Dir. 4 weeks air for PP report. (Lohe) PP letter in 4 weeks for SASE used, (Fields)

R. Clube De Teresina, 3385, letter and sked. from v/s. Sergio Pinherio, Dir. 15 days, 1 IRC. (Barto)

R. Globo, card w/full data for EE report, no IRCs. (Yamron)

R. Jornal Do Comercio, 6085, card w/full data in EE from v/s. A.S. Miranda, technician in charge, PP report and mint stamps, 2½ months. (Lohe)

R. Sociedade FERIA De Sentana, 4765, card w/photo of studios from v/s. Fr. Agatangelo de Crato, Supt. air in 6 weeks. (Field)

R. Nacional De Brasilia, 15445, card, sked and pennant, 25 days, 1 IRC, (King) card w/full data from v/s. Jose Mauricio de Carvalko, stated that he express-ed concern over failure to receive replies to other reports; be sure to send reports to: P.O. Box, 1620, International Dept. (Field)

BULGARIA: R. Sofia, 9700, university card in 4 months, no IRCs. (Wahlman) card in 2½ months, no IRCs. (Ghioto)

CANADA: R. Canada International, 11860, map card w/full data in 3 weeks for no IRCs, (Fino) 11945, card in 6 weeks, no return postage. (Earhart)

CFCX, 6005, card w/date and freq. only, 7 months. (Gendron) card w/photo of studio buildings. 6 months, 2½ months after follow up, mint stamps. (Calkin) 1 year, mint stamps. (Megeesy) 5½ months. (Fino) 151 days. (Burlaw)

CHNX, Halifax, 6130, card w/freq. only, 136 days, 2 IRCs. (Willshaw) card in 1 month. (Eichenhorn)

CHU, 7335, time signal, full data card. 16 days, no return postage. (McBeo)
CKZN, St. Johns. card and form letter, 5 days. (Brock) ch)

CAPE VERDE IS: 4807, card in 4 months for EE report. (Barto)

CENTRAL AFRICAN REP: 5035, mimeo letter w/full data, 5½ months for 3 IRCs. (Plum) letter w/full data in 3 months for EE report. (Cwikla) full veri. letter in 7 months air for tape report, 3 IRCs. (Pappas)

COLUMBIA: Ecos De Puerto Martinez, 5565, letter w/tourist info. in 3 weeks air for SASE not used. (Field) great!

Emisores Nuevo Mundo, 4755, card in 2 weeks for SS report for mint stamps full data. (Eichenhorn)

R. Guatapuri, 4915, v/s. Glenix Peraza Moron Sec. also sent pennant, 4 weeks for SS report for 1 IRC. (Barto)

R. Nacional, 4955, color card from v/s. German Vargas, Dir. 2 months for SS report and 2 IRCs. (Ball)

Ondas del Meta, letter w/no data from v/s. Jairo E. Cifuentes; Generte, also sent records, 34 days for mint stamps. (Foxx)

CHINA P.R.: R. Peking, 9780, card in 3½ months. (Earhart) 15060, 24 days air, plus magazines. (McBeoch)

CONGO: La Voix de la Revolution Congalaise, 15190, f/data letter for NASWA french report form, 2½ months, 2 IRCs. (Gendron)

R.T.V. Congalaise, 15190, letter w/full verie. from v/s. J.P. Ngole, 5 month for 2 IRCs. (Earhart)

Mouvement Poulair De Liberation De l'Angola, form letter QSL in 2 months, asked for contributions. (Barto)

COSTA RICA: TIFC, 9645, plain card w/all data for EE report, 2 months, 2 IRCs. (Orcutt) full data card in 1½ months air, 2 IRCs. (Gendron) 1 month (Smith)

YSS Radio Nacional de El Salvador

San Salvador, C. A.

QSL

FRECUENCIAS:

- 655 Kcs. Onda Larga.
- 5980 Kcs. BANDA de 49 mts.
- 9555 Kcs. BANDA de 31 mts.



CUBA: R. Havana, 15240, card in 15 weeks, no IRCs. (McBeoch) 6060//15230, cards in 2 months, no IRCs. (Barto) 15255, card and mimeo letter in 8 weeks air. (Padula) 11760, full data card in 3½ months air. (Reynolds)

VOV, 11760, full data card in 1 year. (Reynolds) full data, 20 months. (Reeves)

CYPRUS: BBC relay, 15420, card with location typed in, 58 days, no IRCs. (Brock)

CZECHOSLOVAKIA: R. Prague, 9745, card and letter with first day issue stamps, 19 days air, no IRCs. (?) 9740, 80 days no IRCs. (Ghioto) 5930//7345, full data cards in 3 months. (Fino) 7345, full data card in 2 months sea. (Plum)

DENMARK: R. Denmark, full data card in 20 days air, 1 IRC. (Kaufman) full veri, 20 days. (Foxy) 2 weeks. (Smith)

DOMINICAN REP.: R.T.V.D., 9505, no data letter and pennant, 1½ months for SS report and mint stamps. (Plum) 9505//5970, letter and pennant, 3 months sea on 2nd try, SASE sent but not used. (Field) letter and pennant, 3 months, no IRCs. (Wahlman) 2 months air. (Castello)

Radio HIN, 4910, map card w/freq. only, 3 months for SS report and mint stamps. (Orcutt)

SWL

DE
RADIO
ABIDJAN

A = 11.820 kc/s - 100 KW
B = 7.215 kc/s - 1 KW
C = 6.015 kc/s - 100 KW
D = 4.940 kc/s - 25 KW
E = 3.242 kc/s - 10 KW
F =

MERCI POUR VOTRE REPORT
CONCERNANT NOTRE EMISSION

le 23/4/73.

a - b - c - d - X - Y - Z
 a - b - c - d - X - Y - Z
 a - b - c - d - X - Y - Z
 a - b - c - d - X - Y - Z
 a - b - c - d - X - Y - Z
 a - b - c - d - X - Y - Z

Heure GMT

a = 00 h 00 05 10 h
 b = 05 10 h 15 20 h
 c = 12 00 h 13 00 h
 d = 18 00 h 24 00 h
 X = FRANCAIS
 Y = VERBALE
 Z = ANGLAIS

Dear Friend,
Thanks a lot for your letter which contains our

ECUADOR: R. El Mercurio, 6070, card and pennant in 3 months after f/up, v/s. Fabian Molineros, Gerente. (Dexter) same. (Fields)

R. Centinela del Sur, 5023, friendly letter from v/s. Herman Cornal V. who collects stamps of flora and fauna, 5 weeks air for SSreport and mint stamps. (Lohe) R. Paz y Bien, 4820, letter from v/s. Jorge Enrique S., Gerente, 7 weeks air for SSreport and mint stamps. (Lohe)

R. Rio Amazonas, 4870, letter and pennant from Jim Hedlund, station eng. 4 months air. (Field) 4870, form letter in 4 months. (Dexter)

EGYPT U.A.R.: R. Cairo, 11915//11630//15475, cards in 3 months. (Barto)

EL SALVADOR: YSS, R. Nacional, 5980, card and pennant in 3 months, 2 IRCs. (Hagen) card and pennant in 126 days air, 2 IRCs. (Willshaw) 24 days for mint stamps. (Foxy)

ENGLAND: MSF Time signal, National Physical Labrotory, Teddington, 5000, short confirmation letter from B.R. Swabey, Div. Electrical Sci; 2 weeks for mint stamps for reception in Britian. (Calkin)

ETHIOPIA: ELTF, 11945, full data card, 8 weeks air, 3 IRCs. (Carrington) card in 2 weeks, no return postage. (Megyesy)

EUROPEAN S.S.R.: R. Moscow, Vorenzh, 15230, card from v/s. O. Rakito, Afr. Svc. 2 months air. (Fields)

FINLAND: R. Finland, 15185, full data card, pennant, 26 days. (Self) 5 weeks, 2 IRCs. (Wallace) 2½ weeks. (Smith) 22 days, no IRCs. (Estes) 16 days, 2 IRCs. (Hagen)

FRANCE: O.R.T.F., 7135, card and sked in 4 months air, no IRCs. (Carrington)

FRENCH GUIANA: O.R.T.F., 3385, letter w/all data except time, 1 month for FF report and 2 IRCs. (Orcutt)



World Inter-National Broadcasters
— INC. —

Transmitter Power: 50,000 Watts - ERP In Target Area in Excess Of 1,000,000 Watts

GERMANY REP.: DW, 6170, card in 10 months. (Cwikla) 6075, card w/all data, 151 days air, no IRCs. (Burlew) 6075//9765, 5 months. (Barto) 151 days. (King)
GHANA: CBC, Accra, 4915, card w/all data from v/s. M. Saiko, 45 days sea for EE report and 2 IRCs. (Willshaw)
GREECE: VOA, Kavala, 11840, card in 6 days. (Smith) 15300, 1 month. (Ball)
GUATEMALA: La Voz de Atitlan, 2390, SS letter, 6 weeks on 4th try, SASE used. (Field) R. Tesulutlan, 4835, letter in 1 month from Padre Bernardino O.S.B., Station is one of Padre Benedictino. 4835 was test freq. and now waiting for authorization from gov't to broadcast on regular basis. Address: Barrio San Marcos, Coban A.V., Guatemala. (Field) verie interesting! See SWC-12, June. ed.
 TGW, card in 1 month, no IRCs. (Masek)
 TGNA, R. Cultural, 5955, Quetzal card from V/S. David Keeler, 143 days, EE report, 2 IRCs. (Willshaw) card w/all data, 4 months, no return postage. (Fino) card in 8 weeks for 2 IRCs. (Earhart)
GUYANA: GBS, 3290, letter w/full verie, 24 days, 2 IRCs. (Earhart) 3290, 6 weeks for EE report, 1 IRC. (Barto)

HAITI: 4VEH, 9770//11835, card and sked. in 3 months for 1 IRC. (Field)
HAWAII: WVVH, Warrior card in 2 weeks. (King)
HOLLAND: R. Nederland, 11730, Dx card in 12 days air. (Castello)
HONDURAS: LV de Honduras, 5875, letter from v/s. Carlos E. Riedel, Dir. 3½ months, 2 IRCs. (Plum) mimeo letter w/all data except time, SS report, mint stamps. (Lohe)
 HRVC, 4820, card in 2 months. (Wahlman)
 R. Juticalpa, 4780, friendly letter from Victor Rubi Zapata, Owner&manager, plus pennant and info on station and places with the listeners around the world, SS report, mint stamps. (Lohe)
 R. Progreso, 4920, letter and pennant from v/s. Jerry E. Tolle, 3 weeks air for SS report and mint stamps. (Lohe) letter and pennant for SS report and mint stamps. (Cwikla)
HUNGARY: R. Budapest, 9833, full data card in 6 weeks for aerogram report, (Reynold) full veri card in 42 days, no return postage. (Foxx)



ICELAND: 12175, Gufunes, card in 2 months, 2 IRCs. (Hagen)
INDIA: AIR, 11740, card, letter, and sked after follow up, v/s. M.R. Ali, 39 days air, 2 IRCs, (Hagen) 11810, card w/full verie in 5 months, no IRCs. (Carrington)
INDONESIA: RRI, Jambi, 4927, personal letter in Ind. from v/s. Azil Azwar, reply by registered mail in 3 weeks for Indonesian report, no return postage. (Padula)
 RRI, Sumenep, 3355, personal letter in Ind. from R. Soerjono, studio Dir. air in 3 weeks, believe one of first QSLs from this station! (Padula)
 RRI, Menado, 5987, letter from Rein Wuisang, air 10 weeks. (Padula)
 RRI, Yogyakarta, 5047, card w/full data from v/s. Mrs. S. Sutadi, Public relations officer, 123 days for 5 IRCs and NASWA report form. (Michalenska)
INTERNATIONAL WATERS: R. Nordsee, card w/no data, air in 121 days, 2 IRCs. (Burlew) 2 months, 2 IRCs. (Gendron) 74 days, 2 IRCs. (Foxx) 102 days, 2 IRCs. (Willshaw)
IRAN: Voice of Iran, 9025, card w/picture of studio, 2 weeks air, returned IRCs with sked etc. (Megyesy)
ITALY: RAI, 11810//9575, cards w/full data in 6 weeks, no IRCs. (Earhart) 9575, map card w/full data, 38 days air, no return postage. (McBeoch)
 IBF, 5000, time signal, clock card in 43 days air, no IRCs. (O'Malley)
IVORY COAST: 11920, card in 1 month and letter from station announcer, 2 IRCs, (Masek) 11920, card in 2½ months for EE report and SASE used. (Yamron) SEE QSL-3

KOREA REP.: R. Korea, 15335, card in 3 weeks for 1 IRC. (Field)
KUWAIT: R. Kuwait, 15415, folder card in 3 weeks. (Hagen) folder card in 1 month (Smith) 15415, card in 25 days, 3 IRCs. (Wallace)

LATAVIAN S.S.R.: Riga, 5935, card w/full data from v/s. L. Brjantseva, also sent Swedish form letter, 95 days, 3 IRCs, EE report. (Michalenska)
LITHUANIAN S.S.R.: R. Vilnius, 7150, full data card in 4 months, no IRCs. (Carrington)
LUXEMBOURG: R. Lux, 6090, 5 weeks for EE report, 1 IRC. (Barto) 67 days, card, 1 IRC. (Brock)

MALAGASY REP.: R. Nederland, 11720, card in 13 days for 1 IRC. (O'Malley)
MALAYSIA: BBC, 11750, card w/site in 1½ months. (Cwikla)
MARTINIQUE: O.R.T.F, 3315, beach card in 3½ months w/all data and short message in EE for 2 IRCs, EE report. (Orcutt)

Postes et Telecommunications, Fort de France, 4935, utility station replied in 17 days, said they don't need further reports. (Lohe) interesting, ed.
MEXICO: R. Mexico, XERMX, 11770, complete QSL letter w/pennant, 3 months, no return postage. (Wahlman) 15125, letter w/full data, pennant, 108 days air, for EE report and 2 IRCs. (Willshaw)

Sistema Radio Yucatan, XEQM, 6105, QSL letter w/all data and record of Yucatan music, V?S. Luis de Sales Cob Estralles, Jefe de Personal, SS report, mint stamps. (Lohe)

MONACO: TWR, 7290, antenna card w/full data, 5½ months air. (Plum)
MOZAMBIQUE: R. Pax, 3960, red and white card w/full data, EE report, 1 IRC. (Barto)



His Majesty's Government
Department of Broadcasting

RADIO NEPAL

Kathmandu

Nepal. 8/3/1973

Dear Sir,

Many thanks for your reception report.

I am pleased to confirm that your report was correct.

Date of reception *10 Feb 1970*

Frequency *11970 Kcs*

Time *2130 - 2:00 G.M.T.*

Our present transmission are as follows. Yours sincerely,

1:20 - 9:50 G.M.T. 7105 and 11970 Kcs

9:20 - 9:20 " 7165 Kcs

13:20 - 16:50 " 7165 and 11970 Kcs

K. B. Khatri
(K. B. Khatri, C. Eng.)
Chief Engineer

NEPAL: R. Nepal, 5000, QSL in 5 months for EE report, v/s. K.B. Khatri, C.E. for 1 IRC. (VIC 180) (Barto) SEE QSL ABOVE, ed.

NETH ANT: T.W.R, 15250, QSL card, 3 months, no IRCs. (Fino)

NEW ZEALAND: R. New Zealand, 9540, globe card in 1 year after f/up, no IRCs. (Megyes y)

NICARAGUA: R. Mar, 9595, letter giving date and timr from Ricardo Perez Ulloa, Dir. 18 days air, SS report, mint stamps. (Lohe)

NIGERIA: R. Nigeria, Benin city, 4932, flag card, 15 days. (Cwikla)

R.N. Calabar, 6145, white card in 16 days. (Cwikla)

R.N. Enugu, 6025, card in 14 days. (Cwikla)

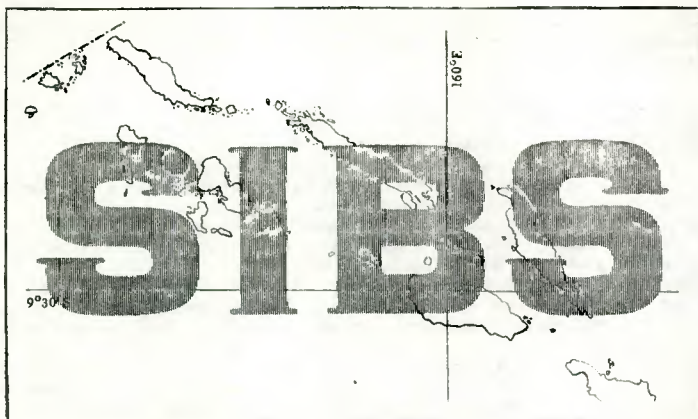
R.N. Shogunle, 4990, card in 15 days. (Cwikla)

N.B.C. Maiduguri, 6100, aerogram QSL from Mu Azu Ahmed, Eng. in charge, direct from Maiduguri., 10 weeks. (Field)

NORWAY: R. Norway, 17825, card and sked. 6 weeks sea, no return postage. (Brock)

PAPUA: VLT4, Port Moresby, 4890, ABC Svc card w/full data, air in 7 weeks 2 IRCs, (Castello) 4890, map card in 1 month for 3 IRCs. (Wallace) 4890, map card in 6 weeks sea, no IRCs. (Eichenhorn)

PERU: R. del Pacifico, 9675, card and info about station from v/s. Lorne Kliever, C.E. SASE not used, 3 months. (Field)



QSL from the Solomon Islands Broadcasting Service.....

OFFICIAL VERIFICATION			O.H.M.S. AIRMAIL
This confirms your reception of <u>VQ04</u> on <u>3995</u> KHZ on <u>9 JUNE 1973</u> at <u>0950</u> G.M.T.			
Aerial power... <u>5000</u> watts.			
We thank you for your report.			
Date: <u>18 JUNE 1973</u>		To <u>MR L. YAMRON</u> <u>6830 LINDEN LANE</u> <u>PITTSBURGH,</u> <u>PENNSYLVANIA,</u> <u>U.S.A.</u>	
SOLOMON ISLANDS BROADCASTING SERVICE HONIARA, B.S.I.P. - WESTERN PACIFIC			

PERU: R. Quillabamba, 5025, letter and pennant from v/s. Joaquin Barreales A. Dir. states that "Quillabamba" is from Inca lang and means "great plains of the moon" 3 weeks air for SASE used. (Fields)

R. Tacna, 9492, letter and pennant from v/s. Alfonso Caceres Contresas, Sub-Generente, tecnico. air in 3 weeks for SASE used. (Field)

R. Victoria, 6020, letter w/no data from Jose M. Vargas, 1 month for SS report and mint stamps. (Lohe)

PHILIPPINES: FEBC, 15440, globe card in 3 months, 1 IRC. (Cwikla) 11890, card in 25 days air, 1 IRC. (Castello)

VOA, Poro, 15155, card in 1 week. (Field)

POLAND: R. Poland, 9540, card, sked in 37 days, no IRCs. (Brook) 7285, map card, personal letter from Lech Stanislawski, books and info, no IRCs. (Fino) card, in 35 days. (Self)

PORTUGAL: R. Portugal, 11935, map card w/full data, air in 2 weeks, no IRCs. (Fino) 13 days, 1 IRC. (Foxy) card in 13 days, no IRCs. (Earhart) 15 days. (Self)

Radio Free Europe, 17735, card w/full data, 2 weeks, no IRCs. (Estes)

ROMANIA: R. Bucharest, 9570, card in 51 days air, no return postage. (McBeoch)
RWANDA: Radiodiff. De La Rep. 6055, white card in 4 months w/no data for 2 IRCs, and EE report, (Orcutt)

SENEGAL: R. Senegal, banjo card with details in french, 19 days, 2 IRCs. (Foxy)

SIERRE LEONE: 3316, letter in 3 weeks for 2 IRCs. (Hagen)

SOUTH AFRICA: RSA, 11970, 22 days, no IRCs, (McBeoch)

Springbok Radio, 2 months, no IRCs. (Wahlman)

ZUO, time station, Pretoria, 5000, returned prepared QSL card w/all data in 13 days. v/s. R. Lake, SASE sent used. (Wallace)

SPAIN: RNE, 9520, card in 2 months for EE report. (Eichenhorn) 6065, card in 22 days, no IRCs. (O'Malley) card w/full data for EE report, 60 sea, no IRCs. states that no pennants available until mid-July. (Willshaw)

SPANISH SAHARA: El Aaiun, 7230, answered my several SS reports finally in 17 days for the last follow up, total time 505 days. SS letter from Amparo Martin, no data except for confirmation statement, prized QSL. (Michalenska) reminiscence of Ed Shaws ordeal, ed.

SWEDEN: R. Sweden, 11705, Dx card, 8 days air. (Castello) card and pennant, 9 days (Self) 6165, card w/full veri, 51 days, no IRCs. (Earhart) 1 month. (Eichenhorn)

SWITZERLAND: SBC, 6120, card w/bobsled, 52 days air, no IRCs. (Earhart)

TAIWAN: VOFC, card w/full veri in 94 days, 1 IRC. (Foxy)

TOGO: Rdif. Du Togo, 5042, map card in 42 days, 2 IRCs and post card. (Hunt)

TURKEY: TRT, 11880, card w/full veri in 22 days, no IRCs. (Earhart)



FEBA - Seychelles

CONFIRMING YOUR REPORT

on 11.955 MHz, at 17.45 hours, GMT

on 12th December 1972

With thanks,

Mary Barry

QSL Secretary

Far East Broadcasting Ass'n,
 P. O. Box 234, Victoria,
 Seychelles (was Mombasa-Kenya)

FEBA - Seychelles
 is a member station of
 FEBC Radio International

URUGUAY: R. Carve, 6155, card and pennant from v/s. Juan Antonio Gatti, Dir. Tecn-ico, for SS report, 1 IRC, 5 weeks. (Barto)

U.S.A.: AFRTS, 17765, card in 29 days, full data, sked. (McBeoch)

WNYW, 9690, ornage card in 10 days. (McBeoch)

UZBEK S.S.R.: R. Taskent, 9540, chimes tower card, in 11 weeks. (Ball)

VATICAN: Vatican Radio, 5995, painting card, air in 2 weeks, best vatican QSL, (rarely audible here) (Padula)

VENEZUELA: Ecos del Torbes, 4890, letter, pennant from v/s. Edrid Gonzalez de Chacon, 4 months air, 2 months after f/up. (Calkin)

R. Anggostura, 6120, QSL in 5 weeks, v/s. Sinar Guerra Madriz, SS report, 1 IRC. (Barto)

R. Mundial, 5050, card w/all details, air in 3 weeks for SS report, no return postage. (Padula)

R. Tachira, 4830, letter and pennant, 6 weeks air, SSreport, mint stamps. (Lohe)

VENEZUELA: R. Tropical, 4870, SS letter in 6 weeks from v/s. Angelo Grasso, Pres. pennant, air in 6 weeks. (Field)

R. Universo, 4880, card w/date and freq. 48 days air, SS report, 2 IRCs (Willshaw) R. Universidad, 3395, vague note on post card. (Dexter)

VIET NAM NORTH: VOV, 12020, paper QSL in 3 months w/all data, no IRCs. (Orcutt) small letter verie for 9890, 2 weeks. (Megyesy)

WINWARD IS: Radio Grenada, 5015, form letter veri giving date and freq. 5 months 2 months after f/up, 3 IRCs, v/s. N.P. DaBreo, Manager. (Calkin)

CASCATA NO INTERIOR DA ILHA DE S. TOMÉ—S. TOMÉ E PRÍNCIPE	BILHETE POSTAL	
O EMISSOR REGIONAL DE S. TOMÉ E PRÍNCIPE.		<i>Edwards and Shaw</i>
agradece e verifica o relato de escuta refe- rente à emissão transmitida no dia <u>6. 8. 1973</u> entre às <u>22.15 e 23.45</u> TMG na frequência de <u>4 80.7</u> KHz. banda de <u>60</u> metros enviado por <u>Sr. Edward</u> <u>E Shaw</u>		<u>Naswa-WDX4EOV</u> <u>415 North Shore Road</u>
Cx. P. 44 <u>SÃO TOMÉ</u> <u>PORTUGAL</u>		<u>Norfolk, VA 23505</u>
AGENCIA-GERAL DO ULTRAMAR—LISBOA		<u>U. S. A.</u>

YUGOSLAVIA: R. Belgrade, 9620, folder card w/full data, and booklet, 59 days, 2 IRCs. (Earhart) card, sked, and calander, air in 100 days, no IRCs. (Brock) card in 2 years! after f/up, also sent 1972 calander! no IRCs. (Megyesy)

ZAIRE: Voix du Zaire, 15245, FF letter in 1 month for FF report, v/s. Mabumba-Bulisi, Le directeur technique. (Cwikla)

ZAMBIA: R. Zambia, 17895, card air in 15 days. (Brock)

+++++ MANY THANKS TO THIS MONTHS 43 REPORTERS +++++

David Ball, ONT.
 Sam Barto, CT.
 Pauline Brock, ONT.
 Doug Burlew, PA.
 Gregg Calkin, SPAIN.
 Wendell Carrington, TN.
 George Castello, CA.
 Tom Cwikla, CT.
 Gerry Dexter, WI.
 Evelyn Dolyak, IO.
 Ken Earhart, PA.
 Steve Estes, VA.
 S.W. Eichenhorn, MI.
 Marlin Field, MI

Henry Fino, NY.
 Charles Foxx, VA.
 John Gendron, VA.
 Greg Ghioto, FL.
 Jim Hagen, FL.
 Ken Hunt, CA.
 Irving Kaufman, NY.
 Don King, PA.
 Ernst Lohe, VA.
 Jackie Masek, IL.
 Lyle Mc Beoch, OH.
 Dave Megesy, NJ.
 Henry Michalenka, RI.
 Pat O'Malley, PA.

Frank Orcutt, NY.
 Bob Padula, AUSTR.
 Andrew Pappas, IL.
 Scott Reeves, MD.
 Al Reynolds, TN.
 Charles Self, IL.
 R. Schwartz, DL.
 Arthur Smith, AL.
 Larry Talbot, WI.
 Gayle Wahlman, MO.
 Steve Wallace, PA.
 Fred Willshaw, SC.
 Larry Yamron, PA.

+++++
 May Quinten S. Leek raid your mail box....Until September, 73's & good Dx.
 Larry Yamron.

Log Report

NASWA LOG REPORT
M.R. LEONHARDT
P.O. BOX 13
LIBERTY, IND. 47353

Section editors:

Elliot Straus
300 Brinley Ave.
Bradley Beach, NJ
07720

Fred Heutte
1600 Newton St. NE
Washington, DC
20018

David Potter
1307 Reynolds St
Key West, Fla.
33040

Jerry Lineback
411 S. Fourth
St. Joseph, Ill.
61873

- 3015 N.KOREA R.Pyongyang JJ tx 1158 t/i; ID presumed (Bundy)
3204 INDON. RRI-Bandung 1305 OM w/Indo. mx,nx, Jakarta ID's at end
nx, presumed ID, also Jak. relay @ 1200 (Bundy)
3200 CHINA PR Fulkien 1030 CC tx // 3400 (Behr)
3210 MOZAMBIQUE R.Cl. 2134 PP pops (Bruce)
3215v DOM.REP. R.Libertad 0330-0431 orch.,lt.mx,SS,ID-0431 (Burlew,
Lineback,Collier,Tuchscherer)
X 3220 PAPUA R.Morobe 0825 island mx,Pid.tx,f/i abt 0800 (Bundy)
3223 INDON. RRI-Mataram presumed sta. relaying Jakarta nx 1203,
cw QRM (Bundy)
3225 VENEZ. R.Monagas 0200 mx px, ID's (Field)
3227 LIBERIA ELWA OM in vernac. 2128 (Bruce)
3232 CONGO RTVC 2127 lcl mx, anns in FF (Bruce)
3240 PERU R.America 0337-0403 SS US pops& LA mx,ads,ID (Tuch'er)
3240 UNID 0840-1010 SS LA mx, nx 1002 m&w (Tuchscherer)
3241.5 INDON. RRI-Ambon t/i 1305 to OM w/Indo mx presumably Jakarta
relay; presumed ID (Bundy)
3245 VENEZ. R.Libertador 0340-0350 SS,mx,m&w ann. hvy noise(Line
back)
3245 PAPUA/N.GUINEA R.Kerema t/i 1301 to Pid. & EE ID's @ s/off
followed by GSTQ surprisingly good-other days barely aud.
(Bundy)
3250 INDON. RRI-Bandjarmasin; RRI is concluding 1300 and into
Jakarta relay, presumed ID (Bundy)
3250 S.AFRICA SABC Natl. Comm. Svc.ads,LM @ 0505// 3997 (Burlew)
2131 (Bruce)
3252 ENGLAND BBC GG nx 0425 (Straus)
3259 JAPAN NHK Sendai t/i 1121 to excited JJ OM w/sports coverage
USB,QRM R.Madang 3260 (Bundy)
3265 BRAZIL R.Ribeirao Preto. 0155-0330 late, also tent.at 0410-
0421* (Reeves) 0233-0252 LA mx ID 0236 (Tuchscherer)
3275 PAPUA R. Southern Highlands(Mendi) New station lst noticed
6/8 lcl mx 1000 ann. of P.O.# in Mendi for rpts. f/i here
0815 most nights(Padula)
3276 JAVA? RRI-Jakarta? Indian like mx @ 1255 t/i; 1258 YL w/Indo.
anns.then RRI IS, could be RRI-Jakarta but has been steady on
3277 for some time (Bundy)
3285 S.AFRICA EE svc. not//3320,3250, hrd. irr. 0400-0500(Reeves)
SABC EE svc. nx- 0510 (Burlew)
3286 UNID mx here 1215 on 6/29, 1259 on 6/28,prob. Phillipine but
no attempt to ID (Bundy)
3290 GUYANA Action R. *0825 Hindi mx, gud lvl unusual (Padula)
3295 VENEZ. R.Trujillo 0210-0256* close ann. "Buenos Dias"& NA
(Reeves)
3295 GHANA Accra 2136 organ mx,EEanns.(Bruce) 0900-1000 mx& mrng
wake up prog. (Smith)
3300 GUATEMALA TGNA 0330-0340 EE,rel.px.,tx, best on LSB(Lineback)

- 3300 GABON Libreville 2142 FF ann. cw QRM (Bruce)
 3305 PAPUA R.West.Dist. 1020-1040 vern. island mx (Tuchscherer)
 3306 RHODESIA 2148 EE pops vern.anns (Bruce)
 3315 UNID weak traces of YL barely aud. on 6/28 nothing other days (Bundy)
 3315 BRAZIL R.Gazeta do Alagoas 0155-0410 LA mx, ID's PP (Reeves, Tuchscherer)
 3320 N.KOREA KK tx 1222 assumed ID (Bundy)
 3320 S.AFRICA SABC African svc. Africaans 0425-0540 nx-0510(Burlew Reeves)
 3322.5 PAPUA/N.GUINEA R.Bougainville Fid.tx @0750 this & R.Rabaul are 1st P/WG stas. to f/i (Bundy)
 3325 VENEZ. R.Monagas 0150-0359* "musica en la noche" px also ID as "LV de Maturin"(Reeves) 0405-0410t 33 sports(Lineback)
 3335 N.CALEDONIA ORTF Noumea? traces of mx here 0821 & other times but severe UTE QRM most of time (Bundy)
 3339t ZANZIBAR R.Tanzania lcl mx faint @ 1915 (Bruce)
 3344 W.IRIAN RRI-Manokwari(presumed ID) om w/seemingly Indo tx, Indo songs sl245 but beginning to fade, ID'd from Truk as Manokwari this freq. (Bundy)
 3345 ANGOLA R.Cl.do Huambo noted 6/9 after Lusaka s/off @2205 w/ PP git.mx & ballads to past 2230 (Padula)
 3350 GHANA Ejura 2113 rel.px lcl.lang.(Bruce)0555 Afr.mx(Burlew)
 3360 GUATEMALA LVdeNahala 0410-0430 SS.mx.tx.ID (Lineback)
 3365 BRAZIL R.dif.do Barana sound like list 500w.at 0500w/tx(Reeg)
 3366 GHANA Accra 2117 pop.rel.sgs."Elvis" (Bruce)
 3375 BRAZIL R.Olinda 0055 past 0115 despite list 0100*(Reeves) pops &anns. to 0304* (Collier)
 3375 ANGOLA R.Oficial PP anns. gud 2133 (Bruce)
 3377 JAPAN NHK Osaka 1228 OM w/JJ tx UTE QRM assumed ID (Bundy)
 3380 MALAWI MBC EE px 1911, ID 2002 off suddenly 2003in middle of mx, no other Africans on the band at this time. could the carrier of Malawi have been picked up on the open carrier of another sta? (Bruce) 0310 Afr mx EE ID 0315 QRM R.Iris & R. Chortis (Wallace)
 3380 GUATEMALA R.Chortis 0410 SS nx(Mayer)
 3385 VENEZ. R.Barcelona 0355-0407* SS anns.ID (Tuchscherer)
 3385 N.BRITAIN R.Rabaul 1010-1020 choral mx (Mayer)
 3385 DOM.REP. R.Hit Musical0245-0300* SS,mx,toneon hr.(Lineback)
 3390 ECUADOR R.Zaracuay 0545-0553* w/sked no NA (Reeves)
 3396t RHODESIA RBC 0410 tx by M way down in muck (Wallace)
 3397 S.AFRICA 0426-0530 EE Afr mx,anns.(Straus,Wallace)
 3535 CHINA Fulkien Front. Sta. CC px 1309 (Bundy)
 3668 TIMOR Em.de R.dif.de Timor,Dili,vocals 1310 ham QRM(Bundy)
 3905 INDIA AIR EE tx 2322 (Bruce)
 3905 W.IRIAN RRI-Jayapura Indo.mx,tx,under hams at 1242 noted as early as 0830 but severe ham QRM (Bundy)
 3910 JAPAN FSN Tokyo 1030 mx&songs,USBR QRM(Behr) 0956 OM w/EE cntry (Bundy)
 3915 MALAYSIA BBC Tebrau(presumed TH) OM w/viet.tx, //9725 (Bundy, Johnson)
 3930t CAPE VERDE R.Barlavento PP -0102* (Bruce)
 3960t IRAQ R.Bagdad 2120 chants (Bruce)
 3960t MOZAMBIQUE R.Pax 0500-0530 mx,ham QRM (Smith)
 3970 CAMEROON R.C.Buea EE pops&nx 2156-2200 anns in EE "You are listening to R.C. from the Buea Studios" 2202* (Reeves)
 3995 SOLOMON IS. SIBS f/i w/island mx 0705, no sign of SCDX reported SIBS on 9545 (Johnson/Bundy)
 3995 INDON. RRI-Kendari (Presumed ID) very weak Indo. tx @ 1316 no ID but Kendari hrd prior to depart. Truk, likely at increased pwr from list 800w. (Bundy)
 3997 S.AFRICA SABC Africaans&EE mx 0020-0515(Miller,Reeves,Brock, Bruce, Straus,Megysej)

- 4066.5 W.IRIAN RRI-Merauke Indo.mx&tx @ 0836 (Bundy/Johnson)
 4467 cf.June LR-Heutte's UNID rptd by SCDX as R.Molina Sta.Ana, Beni,CF142 0230 (Behr)
- 4552.5 USA VOA Delano cmtry in spcl EE 1322 (Bundy)
 4560 Cland.(N.KOREA) Voice for Reunification(Presumed ID) KK mx&tx UTE QRM (Bundy)
- 4658 Cland.Voice of Pathet Lao t/i 1228 to Laotian vocals/chants 1229 theme mx&ID's (Bundy)
- 4679 ECUADOR R.Nac.EspejoSS sports event 0410 (Burlew)
- 4700.5 UNID believe N.KOREA QTH Y1 w/KK dictation at t/i 1225 still here 1235..A curious sta. signs on @ 1200 w/Asian tune..Nvr noted //any of KK dictations freq. hrd on KCBS H3 outlets (Bundy)
- 4755 COLOMBIA Em.Nuevo Mundo 0400-0510 SS,LA pops ID 0500(Megysey, Martin)
- 4755 DOM.REP. Onda Musical 0400 SS full ID & 0435* (Martin)
- 4764 ~~2020~~ INDON. RRI-Medan YL w/Indo.tx @1239 presumed ID believe *1200 (Bundy)
- 4765 CONGO RTVC OM in FF 2000 (Bruce)
- 4765 BRAZIL Feira de Santana 2345 PP Id&pop mx (Martin)
- 4770 Venez. R.Bolivar 0930 SS, tx lclmx (Zilmer) 0100 ID's(Cwikla)
- 4770 LIBERIA ELWA 0624-0659 rel tx, BBCnx,mx EE (Hermann)
- 4777 GABON Libreville FF het-QRM 2109 (Bruce)
- 4780 ECUADOR R.Atuhualpa pretty reg 0400-0517* Andean mx SS OM het QRM off without NA (Reeves)
- 4781 MALI RB stabilized here hrd 0606 s/on IS,IS (Reeves)
- 4785 PERU R.Atlantida 0105-0410 SS Peruvian/LA mx many ID(Cwikla) (Martin,Tuch'er) 1030 Andean mx (Collier)
- 4790 ECUADOR Em.Atalaya 0346-0515 Spts,vocal anns.movie ads (Collier,Lineback)
- 4794 ANGOLA R.Comu. 2200-2256*/2300*v Many ID's,IS,at s/off(Martin Calkin)
- 4800 VENEZ.R.Lara 0216 SS LA MX,(Estes) ?-ed. not heard recently, Reeves reports inactive recently, no HCor Lesotho.
- 4805 KENYA Nairobi EE 1810-1900 nx (Martin,Bruce)
- 4805.5v BRAZIL R.dif.doAmazonas pretty reg. to 0400* not much UTE (Reeves)4807, 0330 PP anns.(Straus)
- 4807 REUNION s/Off 1845-1915v w/ID in var.langs(Bruce) 2000 EE, FF ID@2020 freqs as 2224,4807 (Martin)
- 4807 ECUADOR R.Popular 0220 SS tx (Estes)
- 4810 VENEZ.R.Popular 1000 SSmx (Zilmer) 0358 ID NA 0400*(Mayer)
- 4815 PERU R. Samarin,Samari,or Samarilla ex-Amazonas 0315-0500* 1115-1150 SS&US pops rare tx some pol.tx "patrilibre""Transmittiendo do desde Isquitos" off w/NA same as 5010 R.Eco (Reeves,Collier,Tuchscherer)
- 4820 GAMBIA RG 1815 lcl mx (Martin) 2215 VOA type px in EE 2212 (Bruce) *0630-0715 ID chants BBCnx 0700(Wallace,Burlew,Hunt, Collier,Smith)
- 4820 ANGOLA Em.Off, 2320 PP lcl mx-het anns. (Martin)
- 4824 ECUADOR R.LuzyVida noted AN drifting (Reeves)
- 4830 VENEZ. R.Tachira from 0300 mx px, 0400*(Straus,Field)
- 4832 COSTA RICA R.Capital 0425-0535 SS mx spts (Perry,Earhart,Per_{erg})
- 4839 ZAIRE R.Bukavu 1915-2035 lcl mx FF tx (Bruce,Martin)
- 4840 PERU R.Andahuayalas 0318-0419* SS Andean mx, tc 0340, coke ads&nx 0400 (Tuchscherer)
- 4845 BOLIVIA R.Fides LA mx SS Anns 2337 (Bruce)
- 4845 BOTSWANA RB 0430-0516 BBCnx 0500 EE (Tuch'er,Collier) EE pops 2100*(Bruce)
- 4845 MALAYSIA RM Kuala Lumpur 1045 Oriental mx, anns. 1100(Collier *2200 Indian songs 2209 (Bruce)
- 4849 MAURITANIA RM 2230 AA chants (Bruce) 4850, 1845 AA,lcl mx (Martin)
- 4853 BOLIVIA R.Centenario 0148-0315 SS US&LA mx, ID's(Tuchscherer)

- 4855 INDON. RRI-Palembang 1105 moslem like mx, 1111 Indo.tx oldies like "Bicycle blt fr 2" several ID-"Inilah Radio Republic Indonesia Palembang" (Johnson/Bundy)
- 4855 MOZAMBIQUE R.Cl.1916 mx, ann in lcl lang.(Bruce)
- 4856 UNID inst.mx,1tl tx in SS or any other lang. 0200-0420* def. not R.Cobijsa (Reeves)
- 4859 UNID weak mx @ 0405-0450 LA or Afr? not YV see Jan/Mar LR (Reeves)
- 4856.5 PERU R.Chinchaecocha,Junin,fr.0430 Andean mx, since mid-may not sure of ID vy gud some days (Behr)
- 4860 VENEZ. R.Maracaibo 0920-1005 SS LA mx (Zilmer,Eichenhorn)
- 4865 MOZAMBIQUE R.Cl songs,anns lcl lang 1916 (Bruce)
- 4870 VENEZ. now on nominal, down fr. usual 4871.5 ID 0337 (Reeves)
- 4871 W.IRIAN RRI-Sorong 0845 c&w mx 0858 ID "Inilah RRI-Sorong" then RRI IS 0900 Jayapura reg. nx relay(Johnson/Bundy)
- 4875 BOLIVIA LaCruz del Sur 2301-0205 nx-2301, spts, sft mx, SS ID 0130 (Lineback,Bruce,Mayer)
- 4877 S.VIET. VTVN melancholy viet songs 1253 (Bundy)
- 4880 VENEZ. R.Universo 2347, 0335-0350 SS, LA mx anns (Bruce, Tuchscherer)
- 4882 CHINA PR "Internationale" ending 1254, Mongolian 1200-1255 per BBC MS (Bundy)
- 4885 BRAZIL UNID presumed Teresine when on late w/spts event 6/10 0525, seemed to s/off abruptly 0530, also prob the one on 08-0915 period 60 mb Brazilians rare here (Padula)
- 4885 COLOMBIA Ondas del Meta 0445-0455* SS, mx (Martin)
- 4890 PAPUA Port Moresby 0800-0946 nx-0800-0810 ABC,EE mx (Hermann, Eichenhorn,Burlew)
- 4890 SENEGAL Dakar 2245-0003* FF anns,orch.mx(Bruce,Padula) 0555-0720 FF mx, nx0700 (Cwikla,Smith,Wallace)
- 4890v MOZAMBIQUE LM "B" px EE anns w/pops 2150 (Padula)

3 1/2 pages is a big increase from the last few months, it seems that DX is picking up now and will continue to do so. Let's here from more of you now. Thanks to the regular contributors-ERS



One	Satu
Two	Dua
Three	Tiga
Four	Empat
Five	Lima
Six	Enam
Seven	Tujuh
Eight	Delapan
Nine	Sembilan
Ten	Sepuluh

NOTE: Several years ago NASWA first made available a reporting guide for the Indonesian language. This list of additional phrases should prove useful. The complete guide is also available once again. See elsewhere in this issue of **FRENDX**



The above phrase list was translated by Joe Warren, a government Indonesian language expert. The very minor differences between the two phrase lists are not significant and should make no difference in the replays from each station.

Just for DXers interest, the short music selection of Pacific Island music which some of the RRI stations use at their sign/off is entitled, Love Ambon.

- 4815 All indications on the Peruvian stn here are for R Samarín; hrd well at 0350-0500* with many IDs, TCS, much music; R San Martín is a MW stn in Arequipa on 1380, so I doubt that this one would use the same ID (Heutte)
- 4894½ R Baré loud with hets, running late in all PP at 0310-0420v* (Reeves)
- 4896-7 R Chanchamayo at low lvl 0330-0430 with SS mx (Reeves)
- 4900v R Libertador/LV de Sasquisilí, Ecuador, at 0328* and 1050-1130, SS (Reeves)
- 4904½ RTV Tchadienne with Afro mx, FF talk by man, poor at 0645, extended sked?
- 4905 R Relogio at 2345 with PP rel pgm, many alelujahs (Martin-Eu) (Wallace)/
- 4907 Phnom Penh at 2218 fair with chant; gone by 2300 (Bruce-Eu)
- 4910 R HIN poor-fair at 0130-0230 with LA nx, mx, SS IDs (Mayer, Wallace)
- 4910 R Conakry hrd carrying R Libertação (cf 6240 7300) on 20 June at *2300-2335* and back to normal Conakry pgm at 2335 (Bruce-Eu) FB, clears up this one!
- 4915 R Ghana good in EE nx, vernacs, rel pgm at 0533-0614 (Hermann) 2258 with rel mx & talk in lang (Miller)
- 4915 VO Kenya at 0310-0505 fade with local chants, talks by two men and a woman with exc signal after Guatapuri off at 0300* on Monday GMT (Reeves) 1921 best African on the band; local mx, anmts (Bruce-Eu) (Peeves,)
- 4920 R Progreso running late at 0440-0459* with lively mx, freq, IDs (Martin-Eu)
- 4920 VLM4-Brisbane with drama, list of actors, ID at 1100: This is ABC Radio, Brisbane. Eastern Time is 9 o'clock (Patterson)
- 4925 Unid with classical mx at 0415 (Heutte)
- 4925 RC Moçambique with EE pops and PP anmts, QRM de illegal hams 1951 (Bruce-Eu)
- 4926 R Bata at 0430-0630, best after 0500 tho irreg, often loud (Reeves) t 0535-0600 fade with talking, drums (Burlew) 0505-0545 poor with Afro mx, SS talk, IDs, mentions of Rio Muni (Wallace) 2130 vernac talk, fair (Bruce-Eu)
- 4927 RRI-Jambi (Sumatra) at 1040-1130, no R Mil, chants and talks in II (Peeves) t unid in noise with chants, 6 pips at 2300, not clear enough to ID (Bruce-Eu)
- 4930 R Mil at 0445-0650 with LA mx, IDs, fair (Barhart, Martin-Eu)
- 4930 R Catolica, Escuelas Radio Suyapa, Tegucigalpa, Honduras, hrd at *2200-0000* in SS with educational pgms (Lohe-Honduras) FB, Ernie, will be tough in NA! FH
- 4938t R Norte in noise at 0020 with talks by man (Reeves)
- 4940 RTV Ivoirienne good with jazz and FF mx at 2215 (Bruce-Eu)
- 4940 R Yaracuy very irregular these days, some nights on, others off (Reeves)
- 4945 R Colosal poor-fair with bad static at 0625-0640, SS mx (Barhart)
- 4955 R Nac at 0305 poor with orchestral mx, SS anmts (Perry)
- 4960 R Sucre relaying Rumbos net, suddenly pulled the big switch at 0352* (Reeves)
- 4965 R Santa Fé fair with LA mx, tangos, TCS, ID at 0400-0700 (Barhart, Patterson)
- 4970 R Rumbos good at 0350-0500* with long newscasts, TCS, IDs (Perry, Patterson)
- 4972½ R Yaoundé good with FF & African jazz, woman ancr (Bruce-Eu, Martin-Eu) 2230
- 4975 R Dushanbe, Tadzhik SSR, at *0000 Govorit Dushanbe (Bruce-Eu) Winter ECNA? FH
- 4976 R Uganda with EE nx and ID, fair 1950 (Bruce-Eu) Not often noted anywhere. FH
- 4980 R Ghana-Ejura good at light mx, EE at 2213 (Bruce-Eu)
- 4980 Ecos del Torbes at 0315-0350 with pretty LA mx, IDs in SS (Perry, Patterson)
- 4985 R Malaysia Penang fair at 2240 with brass band mx (Bruce-Eu)
- 4990 NBO-Lagos at 0450-0510 in lang/EE? with chants, three long and one short tone at 0500, then N:E? (Lineback) 2100 N:E good (Bruce-Eu)
- 4990 R Barquisimeto good at 0348-0400* with LA mx, SS IDs, TCS (Perry) 1043-1054 with campesino mx, TCS & ID, fair (Patterson)
- 4994v Unid still around here; don't think it's Brasil Central or Sudan; possibly an anemic 120 meter harmonic or new LA/Portuguese African (Heutte, Reeves)
- 4995 R Brasil Central very weak at 0415 with mx pgm (Field) 2210-0015 with PP man and mx (Zilmer, Bruce-Eu)
- 4995 R Andina, Peru, very weak at 0945 July 2, mx pgm (Field)
- 5010 R Garoua, Cameroun, irregular, but fair-good when on, *0500-0520 fade, short talk in lang, morning prayer, instrumental mx (Reeves) 2108 local mx (Bruce-Eu)
- 5010 R Cristal at 0440-0715 fair with LA mx, IDs, anmts (Padula-Pac, Barhart)
- 5010t R Singapore fair with CC svc at 2236, mx (Bruce-Eu) Still here far as I know.
- 5010 R Eco, Peru, in absence of Cristal, 0300-0500* with ads, TCS, IDs, nx, chimes; ID after each record, nx every 10 minutes (Reeves) 1000 on 3 July with mx, ID and TC after each selection, good (Field)
- 5015 R Grenada fair-poor with instrumental mx, nx at 2320 (Wallace)
- 5015 Vladivostok regular at 1030-1200 with classical mx, RR talks (Reeves)
- 5016½ R Universo, Bolivia, reactivated, good 0400 with SS nx, Andean mx (Heutte)

- 5020 R Niger hrd with chants to 0600, FF ID, man & woman ancrs, FF pops (Reeves)
 5023 R Centinela del Sur good at 0330 with instrumental mx, anmts to 0357* (Collier)
 5025 R Quillabamba, Peru, in SS with talks, mx at 0300-0400 (Reeves, Heutte) 0950-1000 fade (Field) (Reeves)
 5026 R Uganda with EE mx at 0420, ID, local chants to 0450 fade; on 25 June when/conditions were unsettled according to WTV/NBS; Kenya also hrd same night
 5030 R Continente at 0100-0501* with LA mx, ads for Rinsó, ancg as Romantica Continente, off after NA (Martin-Eu, Reeves, Wallace)
 5034v R Bangui returned here from 5038; at 2205 and 0610 tune in FF (Reeves) 5035 very poor with FF talk, African mx at 2230-2250, QRM (Agner) 2205 in FF, good with FF comments, African rhythms (Martin-Eu) 2100 very good on 5038 (Bruce-Eu)
 5035t R Anhanquera at 0038-0130 PP?, US & Brazilian pops, DJ format, poor (Lineback)
 5039 R Omdurman LOUD at *0230-0400 with AA mx, time sigs, rel svc, nx at 0300 and 0330 (Heutte, Lohe, Reeves)
 5038 R Bangui at *0430 with FF and local mx, fair (Mayer) 0955 with Afro mx (Zilmer) 2200-2302* with pop mx, classical selections, NA, good (Wallace)
 5039 R Libertad de Junín hrd with SS ID at 0318 (Reeves) 0927-1006 on 5040 (Field)
 5040 R Nac Espejo, Ecuador, poor at 0530 with local mx, ID on Sunday (Martin-Eu)
 5045 RRI-Merauke barely audible at 0906 relaying Jayapura nx, dual 6070; QTH previously determined on Truk, parallels 4066½ (Bundy, Johnson)
 5047 R Togo at 0535-0610 with FF man, African mx, nx, strong (Burlaw, Smith, Wallace) 0945 FF mx (Zilmer) 2112 FF talk (Bruce-Eu)
 5050 R Mundial to 0514* on Saturday (FDT) night, Muy Buenas Noches, NA (Reeves)
 5052 R Singapore with light mx, EE anmts at 2245, poor with CW QRM (Bruce-Eu) t 1055-1130 on 20 June only; CC mx and lang (Reeves) Believe it or Nuts. SR
 5053-5 RRI-Ujungpandang fair-good with usual in II at 1045-1145 (Reeves) 1010 with nx, mx at 1015 (Field)
 5055 R Vitoria, Brasil, at 0100-0304* with PP ancrs, rel type mx (Heutte, Reeves)
 5055 R San Rafael, Bolivia, at 0110, local QRM; mixing with R Vitoria, poor-fair with educational pgm (Heutte)
 5060 R Clube do Huambo with light mx at 2251 (Bruce-Eu)
 5075 R Sutatenza good at 0936 with SS, mx, talk (H.Peters) 2300 fair with SS talk, LA mx, ID by man (Wallace) (Martin-Eu)
 5095 R Sutatenza exc at 0000-0140 with full ID in SS, female vocals (Lineback)
 5655a Unid with man, mx, at 0420-0445, seemingly a Latin (Smith)
 5930 R Prague with EE to ECNA at 0100-0135, IDs, DX-program (Schwartz)
 5950 Harbin, PR China, Heilungkiang Provincial Station (Manchuria), in KK at 0950, local IDs at 0953, 0955; Heilungkiang JKT, 1000 time pipe, another ID, fair (Bundy, Johnson) Did you check dual 4918, Bob? FH
 5950 R Arequipa at 0150-0203 with SS anmts, LA mx, ID (Tuchscherer)
 5955 R Cultural, TONA, with EE rel pgms at 0330-0430 (Earhart, Calkin-Eu)
 5960 R Canada at *0122 with EE, nx, ID, exc (Schwartz) 0400-0430 with Northern Svc, mx, nx, cntry in EE, good (Austin, Fino) You sure about this one, Ken? Wef-
 5965 R Botswana at 0855 with Setswana group singing, fair (Earhart) inite ID helps.
 5965 BBC now here dual 7230 with Hindi 0145, Farsi 0200-0230*, not sure if its England or Cyprus relay (Padula-Pac)
 5970 R El Sol with pretty Peruvian mx at 1035-1050, SS PSAs, no ads (Lohe)
 5980t R Malaysia Kota Kinabalu poor-fair on 30 June only, 1130 mx, EE (Collier)
 5981v R Panamericana at 0222-0242 with US & LA mx, IDs (Tuchscherer) 1105-1140 fade good with Andean mx, talks with IDs (Reeves)
 5987 RRI-Menado, Sulawesi, 0919 with C&W mx, het 5990 (Bundy, Johnson) 1045-1300 variable reception with IS, ID on hour, EE pops, II anmts (Reeves)
 5990 R Bucharest at 0145-0200 when wiped out by VOA, fair-poor in EE (Brock)
 5995 R Australia fair with N:E (Lineback) at 1120-1130, I meant
 5995 R Mali fair with FF & vernac mx at 2300 (Zilmer)
 5995 Vatican R at 0120-0130 with Laudetur Jesus Christus, N:F, ID, good (Schwartz)
 6000 R Inconfidencia good at 2315-0000 with ads, mx, IDs, N:P (Cwikla, Estes)
 6000 R RSA at *2325-0000, ex-11970, N:E to ECNA (Jones, Zilmer) Also 2153 (Jones)
 6005 CRCX poor with EE DJ pops, nx, ads, ID at 2300 (Lineback) 1010 fair (Mayer) 0830 sports (Smith)
 6008 R Reloj in SS at 0145, blocked by VOA at *0200 (Smith)
 6010v R Nac de El Salvador with SS sports 0000 (Zilmer) 1208 with marimbas (Miller)
 6010 CJCX fair with EE religious show 1220 (Mayer) Reported off the air? FH
 6010 R Merida with Ads, TCs, IDs, 1118-1200 (Reeves) Also IDs as R Los Andes, Scott.

- 6015 R Clube Pernambuco at 1100-1130 with PP ID, chime (Reeves)
 6020 R Nederland Bonaire good with SS mx, nx, anmts, songs, 0130-0150 (Fino)
 6025 R Portugal at *0200 with ID, N:E, excellent (Schwartz)
 6020 R Victoria at 1030 with SS mx, IDs, Campesinos Revolucionarios pgm (Lohe)
 6040 VOA-WooFerton fair at 0430 with N:E (Lineback)
 6045 RTI-Jakarta, Java, with II nx at 1300, Programa Nasional at 1335 (Bundy)
 6050 HCJB good with pips 0100, N:S 0103, rel pgm in SS, wiped out by DW (Burlew)
 6055 K Rep Mwanoaise with local mx, talk by woman in vernac, ID 0430 (Mayer)
 t 0350-0405 in FF with talk by man, pops, QRM de HCJB, fair (Perdue)
 6060 RAI-Rome with Notturmo d'Italia FS pgm, till 0400; then switch to HSI pgm;
 nx and commercials (Martin-Fu) 2330 Notturmo pgm, GG nx, good (Lohe)
 6065 R Super good with TCS, IDs, LA mx, SS nx headlines (Cwikla)
 6065 RNE-Noblejas quite good at 0130 (11:30 a.m. local!) with EE to NA, very unu-
 sual here (Padula-Pac) 0130*, EE, ID, nx, folk mx, good (Schwartz) 0305 with
 EE, mx, talks, discussions, good (Eichenhorn, Schwartz) 2220 FF mx (Estes)
6070 R Thailand with Thai mx and anmts at 2315, in HS (Padula-Pac) Thai talks dual
 4831, fair (Bundy) Assume around 0900 or so, Bob. FH
6070 RRI-Jayapura, West Irian, C&W mx at 0806 dual 7165 $\frac{1}{2}$, QRM from CFRX; now
 operates here *0755-1100* (Bundy, Johnson)
 6070 CFRX fair at 1615 with EE, pops, ads, anmts (Lineback)
 6075 DW with IS, ID, N:E at 0130, excellent; dual 6010 6040 (Burlew) 0500 nx, mx
 and features, EE (Talbot)
 6076 LV de Junco fair at 1055 with ads, IDs, QRM de R Sutatenza (Lohe)
 6080 R RSA good at 0011 with N:E, ID (Schwartz)
 6083 R Mac del Perú weakly at 1645 on 30 June (eclipse day, whatever that has to
 do with it)(Reeves) Believe it or Nuts. SR
 6085 R Canada at *0100 with N:E (Nathman)
 6085 DW fair at 0240-0300 with GG, nx, anmts, mixed mx, ID (Fino)
 6090 R Luxembourg good at 0114 with EE-GG, nx, mx and ID (Schwartz)
 6095 R Tupi-Sao Paulo good at 2300 with PP talk (Brock) 1
 6095 Polish R closing EE, into PP with mx 0330 (Zilmer) PP Polish, not PP Portuguese
 6100 R Beograd closing in EE with IS at 1900*, good level (Calkin-Eu)
 6100 NBC-Maidugari poor at 2245 with chants, Afro mx, nx, NA, 2305* (Cwikla)
 2230-2300, joins national network for N:E, to 2305* (Reeves)
 6100 DW good at 0000-0030 with N:G, cmtry, ID (Schwartz)
 6100 YTC, Señales Horarios, Venezuela, with time pips at 0845, weak (Smith)
 6100 R Calama, Chile, exc at 1010-1045 with SS mx, talks (Reeves)
6100 R Hernandez de Córdoba at 2230-0010* with mx, ads, TCS, rel svc 2330; obser-
 vation of this and other Nicaraguan stns shows time is GMT-5, not -6 as
 noted in WRTVH and others (Lohe-Honduras) Good show, Ernie. FH
 6105 R Mérida, Mexico, at 1155-1645, with talks, L&C (Reeves) What's L&C?
 6110 BBC good at 0300 with N:E, mx, cmtry, ID, IS (Fino)
 6115 LV del Llano very good at 0950-1000 with LA mx, ID (Tuchscherer)
 6120 SBC at 0300-0315 with N:G, IOS scandal, ID (Schwartz) IOS?
 6125 VOA-Greenville with mx, mx, IDs, IS, *0400 Slovenian, *0415 Hungarian,
 *0430 Czechoslovak, *0445-0515* Polish (Fino)
6125 R Continental, Colombia, fair at 0806 with LA mx, IDs (Collier) t at 1110
 with QRM de R Suyapa, mx and talks in SS (Lohe)
 6130 CHNX at 2230 with rock mx, TCS, ads, DJ in EE, good-exc (Estes, Lineback)
 6135 R Universidad de Concepción, 1030-1050 with local mx, SS IDs, nx (Reeves)
 6135 Polish R at 0205-0232* with EE nx, dual 9675, 11955 also hrd (Perdue)
 0200 EE, frequency sked, song of the day, fair (Zilmer)
 6142 R El Sol, Colombia, exc at 0855 with EE and LA mx, IDs (Cwikla, Earhart)
 6145 R Canada exc in FF at 0745-0800. mailbag pgm; not sked for this time(Earhart)
 6145 $\frac{1}{2}$ R Citadelle I&C (Whazzat?-ed) at 1135-1205 when lost under VOA (Reeves)
 6145 Unid with CC man and woman speaking, poor at 1430 (Eichenhorn)
 6150 P Atena good with SS ID 0404 (Collier) 1050 with SS talk, fair (Agner)
 6155 P Renascencia in PP with LM and ID; tuned 0805; much better by 1000 (Calkin-Eu)
 6155 CRF-Vienna good with ID, N:G, mx, QRM at 0200-0243 (Schwartz)
 6160 En Nueva Granada at 0300-0800 with typical LA mx, SS anmts, also IDs as R
 Colombia (Collier, Cwikla, Earhart, Gendron, Lineback)
 6160 CKZN poor at 0330-0357* with conservative pop mx (Gendron)

- 6165 LV de America Latina, N:S at 0540, ancing La Hora en México; blocked by SBC at 0550; rarely heard this time slot (Padula-Pac) 0505 N:S, TCs, sports headlines and cmtry on Frazier-Bugner fight, excellent (Cwikla)
- 6175 BBC excellent with KE at 0200 (Brock)
- 6175 Unid, possibly R Tahuantisuyo, Peru, with long Andean selections, few anmts, 18 June, noted after BBC off at 0330, past 0400 (Padula-Pac) Quite likely, Bob
- 6175 R Guarani running late with mx and PP TCs at 0450 (Lohe) 0715-0736 with songs, orchestral mx with non-Latin flavor, fair (Earhart)
- 6188 RRI-Manokwari, seemingly reactivated; noted 18 June with II political mx 0845, dual 3344 also hrd; continued past 0930 (Padula-Pac) Possible NA on this split
- 6190t RTV Tunisienne fair with AA talk by man, no ID at 0530 (Wallace)
- 6190 Sender Freies Berlin on 10 June, N:G 0500; into modern pops 0515; extremely rare here, as freq. usually dominated by Tunisia or Morocco; not heard before 0500 due to Bucharest also on 6190 (Padula-Pac) FB on long path, Bob! FH
- 6195 Bm Continental fair at 0905 with vocals by man, ID in PP (Collier)
- 6195 NBC-Sokoto poor with BBC & VOA QRM with chants, EE at 2250 (Cwikla)
- 6195 BBC good with N:G, ID, good at 0430-0445; Londcner Rundfunk (Schwartz)

That wraps it up for another month. We've resurrected the old DF abbreviation, N:E (news in English) as well as concocting N:S, N:F, N:G for Spanish, French and German respectively. This saves a good deal of time and space, as well as calling attention to newscasts, one of the best program details. Three comments were received in regard to omitting country name: one against and two in favor. Neal Perdue sites the beginners may have in identifying stations. I feel that most of the stations likely to be heard by a newcomer are well enough known to be identified by initials; for instance the VOA or BBC; or by station name, such as Radio Prague. Most everyone has a WRTVH nowadays anyway, and the sacrifice of country name leaves much more room for program details. The decision is up to the regular users of the column. Three opinions is not enough for a subject that merits a little bit of thought. Conditions are improving slowly; hopefully we will see another good August and maybe even a shot at Falkland Islands, hi. During August, you can contact this editor at: Fred Heutte, Jr. General Delivery, Patterson Road, Austin, Brome Comte, P. Que, Canada. Until next month, muchas gracias y bueno sintonizandol 73

WILLIAM P. EDDINGS MEMORIAL AWARD

One year ago this month the DX hobby lost a long time friend and worker, when former NASWA Executive Editor William P. Eddings died. This first William P. Eddings Memorial Award is made to honor a member who has well demonstrated the spirit of UNITY and FRIENDSHIP which was constantly in Bill's mind during his administration of NASWA. This year's award goes to MISS DIANE LEVESQUE, of Marion, Illinois. Diane's artistic efforts are seen in just about every issue of FRENEX in recent months. Sincere thanks from the editorial staff, and from the membership in general, Diane, for your willingness to share your talents.

- 6225 ENGLAND Hobby Pirate 1130 Sun, pop mx, request reports to 339 Derby Road, Nottingham, England. 1200* (Martin-Eu) Tower Radio
- 6235 CLANDESTINE R Gemini, pop mx pgm 1 July 1037-1102t/o, v weak; fqcy, ident and address given and repeated (Calkin-Eu)
- 6237 SCOTLAND Time Radio (Hobby Pirate) 0915 Sun; test-15 miles off West Coast Scotland; reports to P. O. Box 2061, Eindhoven, Holland; power 225 watts; hrd to 0935* (Martin-Eu) If it is 15 miles off Scotland then it would be international waters, right? --DP
- 6250 CLANDESTINE World Music Radio, pop mx, EE+DD annts, list sked as Sundays 0900-1500; W at 1030 tune (Calkin-Eu)
- 6255 AUSTRIA OEY 21 mx& Morse ID+GG ID every 15 minutes, G at 1840 (Calkin-Eu)
- 6260 ENGLAND R England International Sun 1000 EE-took over R Atlantis freq when they left the air at 1000 (Martin-Eu)
- 6260 ENGLAND R Atlantis International 0920-1000*, reports to Dept A3A-BIRM, 63 Gleton Avenue, Hove, Sussex, England (Martin-Eu)
- 6340 TURKEY Ankara Turkiye Polis Radyosu TT mx, brief annt and close at 1800, one hour earlier than listed. Address anyone? (Calkin-Eu)
- 6580 N KOREA Pnyong EE commentary at 1925, G (Calkin-Eu)
- 7000NF RSPSR(As) Petropavlovsk, Kamchatka; *1700-2030*, All RR, Majak program except at 1900-2030 on Thursday when a special pgm from Moscow for Kamchatka is relayed. //7160,9540,12010. Local ID irregularly on Thurs 1857 (Davis)
- 7024 CLANDESTINE VNUFK YL w/ Khmer tx, mention Kampuchea, //9989,10079 (Bundy) Time?
- 7039.3 N VIETNAM VoV (presumed) VV tx, //10120, not //7102,10060, 233 4 July (Bundy) ??
- 7050 PR CHINA Sinkiang Provincial Station, Urumchi, OM w/ weak Mongolian-like tx, barely audible 4 July (Bundy) You must have left your clock in Truk, hi-DP
- 7085 S VIETNAM (presumed) Still Unid, t/i 1227 VV songs believed to be signing on at this time, 1229 OM w/ VV rx 34444 June 28; Is the same station heard at various times on 7462,9715,11655 tho none of latter noted from Calif (Bundy)
- 7102 N VIETNAM VoV HS in VV w/melancholy VV songs at 1223, R Moscow QRM on 7100 25443 28 June, has been //10060 tho didn't check this time (Bundy) //(Bundy)
- 7108 THAILAND Thai TV (presumed) Thai tx at 1321 233 on 4 July, better than on Truk!
- 7139 INDONESIA (Moluccas) RRI Ambon 0820 children's mx pgm 11 June; this type of pgm is common from this outlet (Padula-Oc) 0910 If rx, 0912 ID, //4839 (Bundy)
- 7155 JORDAN Amman 0355-0430 AA w/ Islamic chanting, rx, F (Schwartz)
- 7160 SARAWAK Kuching CC svce w/ traditional songs 1040 on 8 June (Padula-Oc)
- 7165 ETHIOPIA ETIF 0350 W ancd end of Swahili pgm then ID, P (Wallace)
- 7165.5 W IRIAN RRI Jayapura 0755 s/on tune, 0758 OM w/ID "Inilah Radio Republic Indonesia, Studio Jayapura", // 6070,243 on 2 July (Bundy/Johnson)
- 7177.5 S VIETNAM Vo Tuyen Vietnam, Saigon, YL w/ VV tx, //6165,9620 1220; F 28 June; f/i around 0850 on 1 July (Bundy)
- 7200 YUGOSLAVIA Belbrade, pleasant Mediterranean mx, relay of HS 2225, s/off 2305 with Internationale, FS continues to use 7240 same period 8 June (Padula-Oc)
- 7210 SENEGAL Dakar 0700 FF OM gave address in Dakar, EE songs, 44333 (Eichenhorn) Believe Senegal 0600-0730w/ variety of mx, FF, VG 4 July (Earhart)
- 7210.3 INDONESIA (W Irian) RRI Biak V strong w/ local ID 0830, freq later QRMED by the Siberian outlet of RM, 11 June (Padula-Oc) Station hetting Soviet HS at 0855, suspect Biak, poss same on 7211.5 at 1030 on 3 July (Bundy)
- 7215 BRUNEI Tutong CC mx and commentary 0825 early f/i on 11 June (Padula-Oc) YL in CC 0857, CC mx 0900 P 1 July (Bundy) Brunei (presumed) 1145 oriental mx, R, 1158 lang annt then obliterated by ARO at 1200; also at 1310 t/i, W (Potter)
- 7215 TAIWAN AFNT 1034 EE ID, EE rx, dominating the freq 3 July, 233?2 (Bundy)
- 7215.3 CLANDESTINE Voice of the Patriotic Militiamen's Front; OM+YL w/ VV cmtry best on USB, 333, 28 June; presumed ID (Bundy) time?! DP
- 7220 UNID AA noted after 0600, also daily at 2400*, generally good (Jaar)
- 7245 ANGOLA Em Oficial 2340 PP w/ US pops + PP mx, s/off at 0000, 444, 6/20 (Cwikla)
- 7245 S VIETNAM Vo Tuyen Vietnam EE rx tunes, VV tx at 1035, F, 3 July (Bundy)
- 7260 GERMANY New high powered xmtr of RBI noted w/ HS relay, as at 0400 w/ GG mx all over co-channel BBC. Also noted w/ RBI European svce pgmg until 0015 when FF svce ends. Separate station from Rohrdorf, noted here as s/on around 0340-0350 (Padula-Oc) GG HS 2345-0205, nx, mx, wrp, cmtry; *0300 GG ID (Schwartz)
- 7286 UNID YL w/ II tx 1040, wiped out by jammers for 7290 before could catch ID Menado here per Bob Padula June LR, not //5987, 3 July (Bundy)

- 7295 MALAYSIA Penang EE svce w/ pops, local adverts 2300 20 June (Padula-Oc)
 7300 CIANDESTINE R Libertacao 0655 IS of talking drums, opening anmts in PP by M at 0658, 0701 W African mx, VP, RTTY (Burlaw)0655 talking drum IS, *0700 w/IDS by YL, Afr mx(Collier)0700 Afr mx, YL ID as Libertacao, V Strong (Wallace)
- 7318 CIANDESTINE V Pathet Lao, OM w/ Lao tx 1232, //7479.8 which is QR'd on USB by Peking JJ on 7480; 24443 28 June (Bundy)
- 7443 SWITZERLAND UNR Prangins *1825 w/ 6 note IS as per WRTN, 10 min pgm in RR and close w/ IS at 1840, 29 June; Fridays only (Calkin-Bundy)
- 7512 UNID tx in Thai/Lao or Khmer at 1101 on 3 July (Bundy)
- 7650 USA VOA (PTP) 0444 EE ID in RCLSB mode as being VOA "in the point-to-point service", pgm continued at 0445 in Polish; at the same time an EE pgm was being broadcast in the RCLSB mode, 2 July; interesting as neither of us can recall hearing pt-to-pt actually mentioned in the ID before(Bundy/Johnson)
- 8915 PR CHINA hd fairly regularly in CC, t/i1340-1600*; *0400, but not known if continuous from 0500f/o to 1340 t/i; not //11290-program is separate; East is Red and Internationale are the orchestral versions (Davis) (Davis)
- 8965 PR CHINA CC HS still *2000-1730*; //7504(rare at s/on), 8980, 11290, 11330 / 9375M RSPSR(As)(Khabarovsk per Bill Davis-DP)1050-1101t/o orchestra mx (Tuchscherer)
- 9455 EGYPT Cairo (General Pgm-DP) 0435-0455+ AA mx, AA tx, F-G 11/17 June(Perdue)
- 9465 PAKISTAN RP 2030 EE cmtry on how misunderstood Pak. is in the West(Calkin-Eu)
- 9500 RSPSR(As) Magadan has a second exercise pgm for 'late' risers from 1930-1945 (Late, hah, 1930-0630 Magadan). Usual //s 7380, 12240 continue Moscow HS relay during the period. 9500 rejoins regular HS at 2000 (Davis)
- 9500 E GERMANY RBI 1805 FF nx, cmtry, mx, 1828* (Austin)
- 9504 CHINA RP 1350 w/ YL ID "Govorit Pekin" 54444 28 June (Bundy)
- 9505 JAPAN RJ 1415-1425 EE tx(Tuchscherer)*1158, no RTVD(Reeves) RTVD seems irregular, I noticed that had xmtr problems one day at least-DP
- 9505 DOMINICAN REP EE nx 0215-0230 on Fri, Sat 6/29,30; must be irreg(Mayer)
- 9520 PAPUA Pt Moresby 0645-0800 EE pop mx, C+W mx, strong!(Smith,Perdue, Megyesy)
- 9520 PERU R La Cronica 0230 LA mx, SS ads & ID, G since July 1 (Behr)
- 9521.5 UNID Carrier being noted daily from about 2000-2130; on 29 June noted w/ Indian-like mx at 2050, lang tx at 2055 ending w/ "...Karachi, Joi Bangla" at 2059, 2100-2115 EE nx w/ many mentions of Bangladesh, 2115 more Indian-like mx--other days little or no audio detected; 131 or worse(Bundy/Johnson)who?
- 9540NF POLAND Warsaw EE to Europe 2235, recent NF this svce (Bundy-Oc)
- 9545 GHANA Tema EE to Eu w/ local mx 2148-2205(Perdue, all over VOA PHL-Padula-Oc)
- 9550NF CUBA R Habana Creole1100-1200, ex-6060 list (Reeves)
- 9555 PHILIPPINES VOA Tinang 1140-1150 SEA lang tx, P (Lineback)
- 9560 JAPAN RJ 1515 EE GOS, mx, mx; 555 24 June (Trigilio)
- 9570 NETH ANTILLES TWR *1000 GG, OM ID 32222 (Eichenhorn)
- 9580 USSR (Soviet Citizens Abroad-BBC'S) 0145-0203t/o RR, mx BBC (Tuchscherer)
- 9585 S AFRICA R RSA *2215 EE, nx (Estes)
- 9585 BRAZIL R Excelsior F at 2352 w/ tx re Argentina (Collier)
- 9595 JAPAN NSB 1045 EE Hitachi ads then "Let's Learn Japanese", 1100 EE ID, mailing address; Excellent, //6055(Castello,Zilmer) 1155-1205 JJ tx,F,(Lineback)
- 9600 MEXICO R Universidad 1217 CC, class mx 1233-1300 EE lesson 1300-1320, past 1800(Reeves)1235-1330 SS tx, lite mx(Tuchscherer)2350 LA songs,0015ID,F(Behr)
- 9601v TUNISIA AA chants, tx 1950-2300//11970(Reeves)2100-2325, ORM (Jaar)
- 9605NF MALAGASY REP RN Talata EE to SEA *0030, NF ex 11840 21 June(Padula-Oc)
- 9618 MOZAMBIQUE ROM should be 1300-1501*my mistake, PP YL, Afr mx, PP pops, hundreds of chimes, IDs (Reeves) tnx for correction-DP
- 9630NF CZECHOSLOVAKIA R Prague EE to NA 0145, ex-9740(Padula-Oc)
- 9630NF SPAIN RNE 2115-2200 new IS, 2200 SS(Zilmer,Mayer,Behr)2320,2335 IS, s/on at 0000(Behr, Tuchscherer) 700 kW, Noblejas-DP
- 9630 SWEDEN RS1100 EE to Europe June 22, 322 (Zilmer)
- 9640 S KOREA R Korea 0900,1200 EE, 1230 CC; new ID, F (Behr, Castello)
- 9650 GUINEA Rdiif Nat 2345 vernacular mx w/ drums; 433 June 30 (Zilmer)
- 9650 CYPRUS?? BBC EE WS 0200-0330, very strong; NF? site?(Behr,Bröck)
- 9652.5 USA VOA Gvl VOA EE nx here-a spur from 9670 0423, 28 June(Bundy/Johnson)
- 9654 THAILAND R Thailand just barely detectable under R Moscow-9655 at 1013; IDed later by //11905 in EE after 1025; useless July 2 (Bundy/Johnson)
- 9655 AUSTRIA ORF 0200 GG pgm, F; better on //9770(Behr)

- 9655 BELGIUM ORU EE to 2315, 0040-0100*(Fino, Zilmer)DD 2345(Agner)PF 2330;SS 2345 (Behr)
- 9665NF SWEDEN RS 0000SS, 0030 EE, 0100 Swedish, 0130 SS, 0200 EE to 0230*, ex-11955 (Behr, Padula-Oc, Tuchscherer, Zilmer, Potter)
- 9665t BRAZIL R Rio PP tx under Sweden 0015 on July 2, 312 (Zilmer)
- 9670 PORTUGAL V6Hope, via RTE, Sines. FF to 2115 then IS, into lang (Brock)
- 9675 BRAZIL R Diario da Manha 0025 PP tx July 6, 322 (Zilmer)
- 9680 ENGLAND VCA via BBC, local ID 1430 into lang; no sign RRI (Reeves)
- 9685 MONACO TWR EE to 1630* "World of Life", F-P (Brock) Johnson)
- 9687.5 USA VOA Greenville EE nx matching spur on 9652.5, F, 28 June, 0423(Bundy/
- 9685 BRAZIL R Gazeta PP anc 1230-1245, fast fade(Reeves) Out of order. DXers in NA should continue looking for rare 31m IAs in daylight as conditions continue to be rather good. How about trying for 31m Bolivians?—DP Reeves)
- 9695NF AUSTRALIA RA Darwin 0830 Indonesian, 1130Cantonese 1230-1500*CC(Behr, Padula,
- 9695 BRAZIL R Rio Mar 0050 PP, local+cl mx July 2 322(Zilmer)1130-1600 plus; the usual, but QRM's RA's NF (Reeves) 1445 PP tx, 25 June, V strong (Potter)
- 9705NF FRANCE ORTF SS nx for LA 0155-0158*, NF this service June 9 (Padula-Oc)
- 9710v PERU R Tropical 1204-1315 fade, G w/ hets, the usual (Reeves)
- 9710NF ITALY RAI Rome, Italian pops, Ukrainian svce 0405, NF ex 9575 9June(Padula-Oc)
- 9710 GREECE Radiofonikas Stathmos Macedonias, Greek mx+annts to 1430w/ID(Calkin)
- 9725NF USSR Mongolian svce of Peace&Progress 0915, recent NF 19 June(Padula-Oc)
- 9735 RWANDA DW Kigali EE to 1745* w/local ID in FF (Bruce-Eu)
- 9740 PORTUGAL RP via long path PP svce 0650, 9 June, unusual (Padula-Oc)
- 9745 INDONESIA RRI Merauke, II pops 2240, often heard to 2300* (Padula-Oc)
- 9770 PERU R Amazonas 1045 SS, LA& Andean mx, lost to Haiti 1115(Tuchscherer)
- 9805 EGYPT R Cairo Eu Svce in EE w/ up-to-date pop mx 2230(Calkin-Eu)
- 9810 USSR (As) relay station for regular RR HS, not Majak, *2200-0800* (Davis)
- 9912 INDIA AIR powerful signal from GOS at 2020 on 23 June, EE cmtry(Calkin-Eu)
- 9990 IRAQ Baghdad noted on this offbeat freq. June 27 w/ EE pgm 1950-2020 but announcing 9745 where there was nothing. One night stand? (Calkin-Eu)
- 11600 PR CHINA RP II *1400-1425*, signal usually fair (Davis)
- 11620 INDIA AIR 2200 EE nx June 30, 342 (Zilmer) 17935 (Jaar)
- 11623vNF PAKISTAN *1800-1900* FF to W Afr, daily for past month(Hagen)1830 FF, //
- 11627v USSR Unid tx, 2215 RR& mx to 2255*v; freq varies 11643-11647v, noisy and distorted, possibly a jammer for Peking (Behr)
- 11672 PAKISTAN RP 2000 EE nx, 2015 EE & lang tx, chants(Schwartz, Zilmer, Brock)
- This is an unusually good sampling of mid-summer DX. Many interesting loggings, especially from the Asian area. Welcomes are extended to Dan Triglio and Victor Jaar. Bob Bundy sends us his report from Don Johnson's place in Elsinore, California—Bob reports having made virtually all of his loggings in USB or LSB modes. Gregg Calkin has forwarded his first report from his new Spain QTH, Good luck over there, Gregg. Until next month— Best 73s from Key West, David Potter—

3. LIBYA The Libyan radio has recently extended its transmission time and now normally closes down at 0030 instead of 2330. However, over the past few days while the march to Egypt has been taking place, the service has stayed open until 0258 and on the night of 22nd/23rd July it broadcast continuously. *

On the morning of 23rd July the Libyan radio relayed President Sedat's speech on the occasion of the 21st anniversary of the 23rd July revolution in Egypt which was being broadcast live by Radio Cairo's main Arabic services.

4. SYRIA Broadcasts to Latin America by Radio Damascus are currently heard as follows:

2300-2345 in Spanish on 17865 and 15165 kHz
2345-0100 in Arabic on 15165 kHz.

From EBC Monitoring Service data, used by permission. NASWA cannot grant the right to reproduce this material.

- 11705 N ZEALAND RNZ 1206, 0910 EE, mx, wx, spts, nx, F (Zilmer, Miller)
 11705 SWEDEN RS 0330-0350 EE, nx to WNA, ID, IS, DX px, F (Zilmer, Eichenhorn)
 11705 ISRAEL IBA 2000 EE, nx, QRM de USSR, P (Zilmer)
 11710 INDIA AIR 2300-2400 EE, ID, GOS, nx, interview, M&W ann, Indian mx, P (Zilmer, Lineback)
 11710 N CALEDONIA ORTF Noumea 0530-0545, 0815, 0915 FF, pops, ID, P-F (Mayer, Zilmer, Eichenhorn)
 11710NF GERMANY (DR) RBI 1400 AA, ME mx, ID as "Huna al Berlin", F-G (Agner)
 11710 ARGENTINA RAE 2315 EE, nx, mx, tlk, F (Trigliio)
 11713.5 INDONESIA-JAVA VoI Jakarta, 1056 Indon tlk, 1058 "Love Ambon" played on Hawaiian guitars, 1059 ID "Suara Indonesia", "Love Ambon" cont., 1101 YW w/EE ID and anmts, then Indon mx, //9585, VP (Bundy/Johnson)
 11715 ALGERIA RTVA 2130*, 2210, 2345 AA, chants, nx, //17790, F-G (Estes, Schwartz, Eichenhorn)
 11715 SWITZ SBC 2132-2145 GG, 0150, 0425-0430 EE, nx, cmntry, F-G (Peters, Castello, Eichenhorn, Schwartz)
 11720NF ISRAEL IBA *1400 RR, Jammed (Calkin-Spain)
 11720 USSR RM 1100, Majak px, mix w/RCI (Reeves)
 11725 UNID CF-June LR, 2245* probably Israel testing (Behr)
 11725 SRI LANKA RC 1430-1445 f/o, 1525-1545, EE, rel px, US pops, TC, ID as R Ceylon, (Hunt, Brock)
 11725 VATICAN VR 0000-0030 SS, 0055-0110 EE, 0110-0130 FF, rel tlk & vocals, anmts, cmntry, IS, G (Fino)
 11725 PORTUGAL(?) RFE 2125 Romanian ID, EE interviews translated, swamped by RN IS on 11730, F (Brock)
 11730 NETH ANT RN 0320* EE, mx; 0210-0250 SS, Happy Sta px, G (Talbot, Fino)
 11730 MALAGASY REP RN 1900 EE, Small World to SE Africa, F (Zilmer)
 11730 HOLLAND RN Lopik 2130 EE, nx, cmntry, F (Castello)
 11735 USSR R Vilnius 2231 EE, //11770, 11790, 11920, 11960 hrd (Behr)
 11740 USA Bethany OAS 2345 EE, nx, mx, E (Castello)
 11740 AUSTRALIA RA 1100 EE, mx, protest against French A test, F (Eichenhorn)
 11745 ECUADOR HCJB 0030-0101 EE, DX party line, VP (Wahlmann, Burlew)
 11760 CUBA RHC 0600* EE, ID, freq., anthem, E (Burlew)
 11765 AUSTRALIA RA 0910 EE, 0700-0720, mx, //9570 (Zilmer, Wahlmann)
 11770 MEXICO R Mex 2300 SS (Wahlmann)
 11773.5, 11775 ROMANIA RB 1900 SS, 1930-2030 EE, DX mailbag, px on AROs, sometimes on split freq to avoid QRM?, (Reeves, Eichenhorn)
 11780 N ZEALAND RNZ 0730-0735 EE (Wahlmann)
 11783 IRAQ R Baghdad 1810-2115 AA, tlk by M&W, het, IS, nx at 1902&2102, //7180, 17770, (Reeves)
 11785NF BELGIUM RTB 0530-0540* DD, nx, (Padula-Australia)
 11785 BRAZIL R Guaíba 1840 PP, fast tlk, QRM de DW at 1855 (Reeves)
 11790 LEBANON RL 0145-0325 FF, EE, AA, SS, 0230-0257 EE to NA, tlks, mx, F-G (many)
 11795 ZAIRE LV du Zaire 0700-0730 FF, vern, LA-like mx, (Reeves)
 11800 CANARY IS RNE 0153, 0345, SS, mx, ID, G (D'Angelo, Wahlmann)
 11800 SRI LANKA RC 1046-1105 EE, local mx, F-P (Earhart)
 11810 ITALY RAI 0100-0140 II, IS, tlk, G (Jones, Wahlmann)
 11810NF POLAND Polish R 0200 EE, Freq sched, mx, under RAI, P (Zilmer)
 11810 INDIA AIR 1330-1400 EE, nx, cmntry, ID "This is Delhi", P (Estes, Ei-horn)
 11815 POLAND Polish R 0300 EE, mailbag, interview, F (Zilmer)
 11815 JAPAN NHK 1215 EE, (Perdue)
 11820 GERMANY (DR) RBI 0345 EE, press rev by YW, list 11825, measured 11820, //11840, G (Eichenhorn)
 11825RF CANADA RCI 0700 EE to Eu, back from 6145, (Padula-Australia)
 11825 TAHITI RT *0300 Tahitian, M ann, local px, //15170, F (Estes)
 11828v USSR RM 1300 RR Mayak, up to 11830 by 2230, IS, ID on hour, //11995, 12010, 12000 (Behr, Reeves)
 11835 HAITI 4VEH 1445, mx, (Nathman)
 11835 CANADA RCI 2300-2309 (Wahlmann)
 11840 AUSTRALIA RA *1755 EE, IS, QRM de Kavala RR tx, (Brock)
 11840 GERMANY (DR) RBI 0330 EE, nx, QRM de Port., P (Castello)
 11840 PORTUGAL RP 0315 EE, DX'ers mag, good sched info, (Castello)
 11840 GREECE VoA Kavala 2200* EE (Smith)

- 11845 VATICAN VR 0100 EE, rel px, G (Trigilio)
 11845 CANADA RCI 1920-1950 FF, tlk, pops, ID, G (Fino)
 11850 NORWAY RN 0500 NN, 0628 EE, ID, mx, tlk, freq, nx, P (Austin, Burlew)
 11850 CAHANA R Accra 2045-2100, (Wahlmann)
 11855 PHILIPPINES FEBC 1220 Thai(?), tlk, rel mx, P-F (Miller)
 11860 NORWAY RN 0220-0228* SS(?), w/EE ID; 1605 EE, tlk, F-G (Brock, Jones)
 11865 PORTUGAL IW Sines 0415 Bulg, 0455 Rom, //9615, F (Behr)
 11870 USSR RM 0227* EE, DX px, ID, class mx, G (Perdue)
 11870 AUSTRIA ORF 0130 IS, ID, under RM, P (Schwartz)
 11875 JAPAN NHK 1705 EE, nx by M, ID, P (Wallace)
 11875 PORTUGAL RP 1920-2000* EE, world nx, lt mx, some days over jammer, (Tuch-er)
 11880 TURKEY VoT 1630 lang, 1904 TT, 2100 GG, 2200-2230 EE, tlk, mx, nx, (many)
 11890 USSR RM *1900-1930* PP to Africa, //11820, (Reeves)
 11890 GERMANY (DR) RBL 0300-0355 EE, M&W ann, tlk, ID, G (Burlew, Eichenhorn)
 11897-8v NIGERIA VoN 1730-2000, 0605-0730 EE, local mx, nx, tlk, some Hausa, alternate days with 11923, //15183v, ID, F (Hagen, Miller, Reeves, Castello)
 11900 MALAYSIA VoM 0730 EE, nx, then mx, QRM jammers, P (Bundy/Johnson)
 11905t TAIWAN BCC *1420 CC, ID & Mongol type lang, repeats same px 1450,1520, s/off varies 1550-1555, (Behr)
 11905 THAILAND RT 1035 t/i EE nx of SEA, //9654 barely detectable, P, inaudible before 1025 (Bundy/Johnson)
 11910 HUNGARY RB 0030-0340, Soccer; 0305 EE, nx, cmntry, mx, F (Schwartz, Castello)
 11920 IVORY COAST RTVI 1946-2001*, 2347-0002*, 0805, FF, nx, various types of mx, F-E (Perry, Hermann, Perdue) (Reeves)
 11920 SPAIN RNE 1440-1520 SS, SS mx, tlk, Sunday only, over RTVI w/African mx, /
 11920 PHILIPPINES FEBC 1155-1200 EE, nx, P (Zilmer)
 11923NF NIGERIA VoN 0630-0645 EE, nx, cmntry, ID, QRM de Peking HS on 11924, P (Johnson/Bundy); 1800-1930 EE, nx, cmntry, pops, alternate days w/11897 (Hagen)
 11925NF? ECUADOR HCJB heard here twice about 2000 w/EE rel px, test? (Reeves)
 11925 GERMANY (FR) DW 1410-1420 GG, Polkas and pops, ID, (Tuchscherer)
 11925 SPAIN RNE 0200 EE to NA (Bruce-Scotland)
 11925 USSR R Tashkent 1203 EE, nx, F (Miller)
 11930 NETH ANT TWR *0530 RR to Eu, (Padula-Australia)
 11930 FRANCE ORTF 0530-0536, (Wahlmann). Details please.
 11935 UNID Class mx, 1945-2030, GG tlk 2002-2004, FF 2115-2130*, mix over Pakistan, (Reeves)
 11935NF PAKISTAN RP 2010-2115* EE/Urdu tik, chants, off w/NA, //11672 (Reeves)
 11960NF? ISRAEL *0500-0515* EE, nx, G-E (Estes)
 11965 JAPAN NHK 1340 Lang, tlk by M&W, mx, P (Eichenhorn)
 11965 RWANDA DW Kigali 2138-2150 GG, ID, cmntry, E (Schwartz)
 11965 FRANCE ORTF 0155 SS, F-G (Brock)
 11970 S AFRICA RSA 1941 EE, ID, amnts, G (Schwartz)
 11970 TUNISIA RT 1945-2300 AA chants, mix w/RSA, //960lv, sched 1700*, E(Reeves)
 11980 USSR Chita 2100 KK, 2130 CC, 2200-2300 RR (R Kiev relay, how should I know why?), 2300 joins EE to ENA group, //12050 (Khabarovsk) from 2200, (Davis)
 11980 USSR R S. Rodina 1930-2030 //stronger 11900, (Reeves)
 11990NF CHINA RP 1500-1555 unid Asian lang, v. strong in So Cal, (Davis)
 11990 CZECH RP 0110-0150 EE, nx, tlk, 2330 SS, contest amnt; 2100 FF, tlk, mx, usually good (Burlew, Fino, Perry, Nathman)
 12012 N VIETNAM VoV 1820-1830 EE, mailbag, tlk, F (Earhart)
 12012NF CHINA RP 1430-1455* Malayan, Good except on Wed. & Fri. when Petropavlovsk, Kamchatka wipe them out (Davis)
 12045 USSR R S Yunost 1359-1413 f/o, pips, ID, RR tik, mx; also hrd something weak at 1945, doubt Tallinn list (Reeves) (Fino)
 12050 USSR RM 0000-0045 EE, amnts, cmntry, nx, tlks in RR translated into EE, G/
 12080 VENEZUELA R Euzkadi 2015 SS, nx, tlk by M&W, jammed, F (Wallace)
 12115 VIETNAM (CLAND) Liberation R 2050 EE ID, nx, cmntry, G (Calkin-Spain)
 12140-lv CLAND R España Independiente, clear 1645-1730 then jammed, barely audible after; ID 2100, mx, tlk, (Calkin-Spain, Collier)
 14480 CLAND R España Independiente 1340 SS, tlk over jammer, jammers only hrd on other freq., (Mayer)
 14780NF? USSR Murmansk? 1255-1300*RR, orch. mx, RR amnts at 1255, 6 pips, 1300-

- female ann, then off, (Martin-England)
- 14990t VIETNAM (Cland) Liberation R 2047* EE, tkl by YW, VP (Gendron)
- 15013v N VIETNAM VOV 1300-1328 EE, nx, cmntry, mx, F-G (Estes)
- 15015 UNID just 2-3 khz above Hanoi, 1345-1657*, assorted Asian langs, weaker than Hanoi, steady signal (no polar fade) (Davis). CF-July LR Behr sez is Liberation R.
- 15030 CHINA RP *1500-1655* CC, //15080, E (Davis)
- 15060 CHINA RP 0015-0130 EE, cmntry, ID, P (Schwartz)
- 15084 IRAN R Iran 1205, 1700-1730, 1830, 2030-2148 Farsi, nx, mx, M&W ann, time tone just after half hour, often Excellent level (many)
- 15085 EGYPT R Cairo 2345 PP, tkl, mx, F (Brock); 0145 SS, ID, mx, G (Schwartz); 0317 AA chants, G (D'Angelo)
- 15095 CHINA RP *2300-2359* SS, nx, tkl, ID, F-G (Miller, Schwartz)
- 15105 JAPAN NHK *1600 EE, E (Reeves); *0500 EE/JJ ID? EE nx, tkl, (Nathman, Smith)
- 15110 PHILIPPINES AFRTS *0100, usual px, (Bruce-Scotland)
- 15110 N ZEALAND RNZ 0230-0310 EE, 1t mx, soccer, F-E (Zilmer, Perry)
- 15115 ECUADOR HCJB 0110-0130 EE, rel px, G (Bruce-Scotland, Fino)
- 15120 NIGERIA VoN *1530 EE, nx, P (Cwikla)
- 15120 FRANCE ORTF 2333 FF, nx, VG (Austin) Bruce-Scotland)
- 15120 SRI LANKA RC 0210, 0300, 1525-1545 EE, pops, //11725, P-F (Zilmer, Brock, /
- 15120 POLAND Polish R *0000 PP, 0300-0330 EE, ID, tkl, mx, F-E (Perry, Zilmer Mayer)
- 15123 MEXICO R Mex 0010 SS, ID, LA mx, P (Miller)
- 15125 TAIWAN VoFC 0251 EE, fade in and out, P (Bruce-Scotland)
- 15130 SPAIN R Liberty 0122-0134 SS, mx, tkl, P (D'Angelo); 2100 RR, ID, nx, F, jammed (Behr)
- 15135 BRAZIL R Soc do Bahia 2130 PP, sports, ID, noted 6/10, not on 15125, (Behr)
- 15135 BRAZIL R Panamerica 01610-1730, 1500 PP, soccer, very loud yelling, ads, ID, TC, (Reeves, Mayer)
- 15135NF PORTUGAL R Nac 0119 SS, ID, lbx px, pops, G (Schwartz)
- 15135 EGYPT R Cairo 2100 Yoruba for Nigeria, off w/ anthem, (Behr)
- 15140 CUBA RHC 1900-2010 FF, 2010-2140 EE, nx, ID, IS, (Fino, Nathman)
- 15145 SPAIN RNE 0230-0305 SS, ID, nx, mx, G (D'Angelo, Schwartz)
- 15148 N KOREA R Pyongyang t/i 0820, strange sounding OM in EE, 0825 YW tkl, then vocals, bad fading, F (Johnson/Bundy) (Mayer, Reeves)
- 15155v BRAZIL R dif de São Paulo 1740, 2300 PP, tkl, nx, rept as low as 15150, /
- 15155 FRANCE ORTF *1045-1115* EE, mx, nx, F (Zilmer)
- 15160 AUSTRALIA RA 0515, nx, class mx, F (Burlaw)
- 15160 GERMANY (DR) RBI 1915 FF, 2000 EE, 2045 FF, RTVA on 15163, (Behr)
- 15160 DENMARK RD *1830-1948 EE ID then Danish, P-G (Herzma)
- 15160 UNID BBC 1450 IS, 1500 EE to NA, 1515*, (Behr). Malaysia?-ed.
- 15165 SYRIA R Damascus 2330-0000 SS tkl, AA chants, // weaker 17865, (Reeves); 0027-0105 AA, AA mx, ID, nx, G (Schwartz)
- 15165 ISRAEL IBA 1715 lang, IS, nx, (Jaar); *2000-2045* EE, nx, cmntry, features, generally excellent (many) Tuchscherer, Cwikla)
- 15170 TAHITI RT 2340-0020, 0300, 0515-0540 FF, EE&FF pops, F-E (Burlaw, Perry, /
- 15175 NORWAY RN 1923 NN, nx, ID, G (Schwartz)
- 15183v NIGERIA VoN 0640-0735* EE, male-chauvinist cmntry abt place of W in Nigeria, nx, E. Excellent African rx here 6/16 on 19m after 0500, (Perdue); 15185 *0547-0600 IS (bells and drumming), ID, EE nx, G-E, //11925, (Burlaw, Perry)
- 15185 FINLAND RF *1358-1408 EE, IS; 1620-1630 EE, nx, mx; 1800-1830; 2322 EE, nx, P-E, (Eichenhorn, Schwartz, Perry, Miller, Wahlmann)
- 15185 CLAND R España Independiente 2005-2025*, QRM de Finland & jammers, Jammers off at 2043, (Calkin-Spain)
- 15185 USA WINB 2017-2219 EE, rel px, mx, (Eichenhorn, Richards, Hermann)
- 15190 CONGO RTVC LV de la Rev. 1735-2158 FF, tkl, African mx, also ID as Ici Brazzaville, (many)
- 15190 ETHIOPIA ETLF 1330 EE nx, G, QRM de Congo, (Calkin-Spain)
- 15195 MOROCCO VoA Tangiers 1830 EE ID, (Smith)
- 15200 USSR RM *1400 FF, nx, P (Estes)
- 15200NF LEBANON RL *1830-1900 EE to Eu, Good (Calkin-Spain)
- 15220 NETH ANT RN 2245 DD, ID, nx, E (Schwartz) (Earhart, Schwartz, Peters)
- 15235 BELGIUM RTB 2254-2320 EE, FF, ID, nx, mx, tkl, QRM de USSR at *2300, F-P /

- 15240 AUSTRALIA RA 0600, pips then nx in EE, F (Burlew)
 15240 SWEDEN RS 1830 EE, nx, Panorama, F (Cwikla)
 15245 ZAIRE LV du Zaire 2310, 0532-0545 FF, mx, nx, P-G (Earhart, Martin-Eng.)
 15250 ETHIOPIA ETLF 0429-0530, AA/EE/FF, IS, ID at 0430 in EE, nx, mx, rel px, G (Schwartz, Megyesy, Earhart)
 15265NF NETH ANT TWR 2155-2215 FF, rel px, (Tuchscherer)
 15265 AFGHANISTAN R Afghanistan 1800-1830 EE to Eu., nx, mx, F-E (Hagen, Calkin-Spain). Watch this one now that the government has changed. Lineback)
 15273 URUGUAY SODRE 0105-0135 SS, concert mx, tik by M, weak (Tuchscherer, /
 15275 POLAND Polish R 1700 FF, IS, F-P (Brock)
 15280 USA KGET 0306 EE/SS tik, 0412-0429 SS, rel px; 0430-0500 EE, rel px, (D'Angelo, Herman, Smith)
 15289 ARGENTINA R El Mundo 0133-0152 SS, sports event (Tuchscherer)
 15290 SYRIA R Damascus 0310-0330 AA, chants, E (Lineback)
 15295 USSR RM *2100-2117 EE, nx, mx, (Tuchscherer)
 15295NF PORTUGAL R Nac 2300 PP, mx, //15315, 11840 since mid-June, (Behr)
 15300NF JAPAN NHK 0013 EE, cmntry (Bruce-Scotland)
 15300 CHINA RP 0147* SS, cmntry then off w/anthem, F (D'Angelo)
 15305 SWITZ SBC 1700*, 0245-0315 GG, 1129 EE into GG, 0215-0245 SS, ID, nx, tik, mx, F-G (Schwartz, Peters, Fino) (Perdue)
 15310 GUINEA Conakry 0725-0823 vern, M&W tik, African mx, mention Conakry, E /
 15315 ECUADOR HCJB 2030-2045 EE, 2045 FF, 2111* GG, ID, rel px, E (Schwartz, T-er)
 15315 PORTUGAL R Nac 0110-0130 SS, nx, cmntry, ID, G (Fino)
 15320 AUSTRALIA RA 0020, 0220 EE, nx, pops; 0440 FF, pops (Bruce, Brock, Jones)
 15320 MALAGASY REP 1100 EE, Spotlight to W Australia, P, (Zilmer)
 15330 ITALY RAI 0214* II, ID, mx, nx, G (Schwartz)
 15335NF PAKISTAN RP 0235-0245* lang, local mx, //17937, F (Zilmer)
 15345 INDONESIA RRI Jayapura 2200-2330, Hawaiian style mx, Indon amnts, (Padula)
 15350 LUXEMBOURG RL 1230, 1630, 1815, 1901-2031, 0520-0658, mostly GG, some FF, Polish, ads, multilingual pops, G-E (many)
 15350 USSR RP&P 1445 EE, cmntry, F (Eichenhorn)
 15360 MOROCCO RTVM 1330 AA, HS to Sahara, G, //9615, 11735, (Calkin-Spain)
 15365 CANARY IS RNE 0251-0342* SS, ID, opera, nx, mx, E-G (Schwartz)
 15375 ECUADOR HCJB 2300-2330 GG, 2330-0000 JJ, 0000-0030 PP rel px, mx, F (Fino)
 15380 RWANDA DW Kigali 2230 GG, class mx, nx, E (Wallace)
 15390 CYPRUS BBC 1900-1930 Greek, 2000 Rom, ID, nx, G (Schwartz)
 15400 USSR RP&P *1500 EE to ME, F (Agner); RM 1135 EE, nx, YW reads Nixon-Breznev treaty, F (Eichenhorn)
 15410 RWANDA DW Kigali 2345 GG, drama, G (Miller)
 15415 KUWAIT RK 1600-1900 EE, pops, rock, nx, tik, F-G (many)
 15425v ISRAEL IBA 1730 IS then jammed, 1900 RR, 1950 jammer off (Behr)
 15425 HOLLAND RN Lopik *2130-2250 SS, mx, ID, IS, G (Fino)
 15425 AUSTRALIA VWL15 Perth 0940 EE, drama, TC, ID, P (Eichenhorn)
 15445t BRAZIL R Rio0015 PP, tx under R Nac & jammer, //9665, P (Zilmer) Reactivated?
 15447 BRAZIL R Nac 2231 EE, F (Bruce-Scotland)
 15450 USSR RM 1950 lang, African mx, P (Wallace)
 15455 USSR R Kiev 2200 Ukrain., 2300 EE, RM, 0030 R Vilnius px to 0100*, VG (Behr)
 15455 BANGLADESH RB *1230-1300* EE, nx, cmntry, local mx, P (Zilmer)
 15475 EGYPT R Cairo 1700 AA tik by M, F (Estes)
 15490 USSR RM *1700 FF, nx, tik, P (Estes)
 15505 USSR R Kiev 0030 Ukrain., 0100 RM EE to 0300*, Sverdlovsk?, F (Behr)
 15520 CHINA RP 2300-0355 SS to LA, 0400 CC, ID, CC mx, F-E (Davis, Wallace)(Davis)
 15545 CHINA RP 0403t/i, 1355e/i, 1505* CC, HS, //11290, not known if continuous/
 15590 CHINA RP CC HS same hours as //11290 & 15545, (Davis)
 17710 USSR RM 1455 EE cmntry on trade agreement, (Eichenhorn)
 17715 AUSTRALIA RA Darwin 0415 EE to S Asia, mx, F (Behr) Earhart)
 17720 TAIWAN VoFC 0159-0300 EE, nx, IS, ID, vocals by W, tlks, P-G (Zilmer, Austin)
 17725 MALI R MALI 1500 EE, TC by M, amnts, male vocal, ID/WRTH, P (Eichenhorn)
 17730 MALAGASY REP R Madagascar 1405-1600* FF, EE at 1540, S/off w/NA 3 IS, mix w/ORTF, (Reeves)
 17735 CHINA RP 0340-0355* EE, Mao quotes, CC mx, ID, off w/Int'l, G (Perdue)
 17735 IRAN R Iran 1400, // stronger 15084, F (Jaar)
 17755NF ITALY RAI *1400 II to Canada, F-G (Brock)

- 17770 IRAQ R Baghdad 2055-2103 AA, chants, mx, P (Richards); 0330-0345 AA, ID, mx, P (Schwartz)
 17770 SWEDEN RS 1400 EE, nx to S Asia //17805, P (Zilmer)
 17770 N ZEALAND RNZ HS 0210-0300, concert mx, nx at 0300, G (Richards)
 17780 AUSTRIA ORF 1236 GG, nx, P (Miller)
 17780 TAIWAN VoFC 0200-0245 EE, ID, nx, cmntry, mx, (Smith); *1800-1900* VG over Austria, first good rx in 4 years here (Bruce-Scotland)
 17790 ALGERIA RTVA 1800-0000 AA, mx, chants, tlk, G (Estes)
 17795 AUSTRALIA RA 2334 EE, nx, F (Miller)
 17800NF ENGLAND CBC relay by BBC, EE to Africa at 0700, ex 17810, (Padula-Australia)
 17805 S AFRICA RSA 0710 GG, nx to Eu, QRM de RFE, (Padula-Australia)
 17805 SPAIN RNE 1252-1315 SS, IS, ID, nx, mx, (Tuchscherer)
 17805 PORTUGAL RFE 2030 Polish (Reeves)
 17810 MALAGASY REP RN Talata 0800-0920 DD to A & NZ, (Padula-Australia)
 17815 SWEDEN RS 1400 EE, press review, D px, G (Cwikla)
 17825 ALGERIA RTVA 2329 FF, old US jazz, F (Miller)
 17830 SWITZ SBC 1600 GG, nx, ID, G (Schwartz)
 17860 BELGIUM RTB 1815 FF, nx, F (Miller)
 17860 USSR RM 0315-0330, many //, class mx, G (Earhart, Burlew)
 17865 USSR RM ID at 0330, R Erevan at 0325, nx, cmntry, G (Perdue, Zilmer)
 17870 ISRAEL IBA 1200-1229 FF, then overpowered by Moscow, (Jaar)
 17880 ALGERIA RTVA 1800-0000* AA, nx, chants, tlk, ID, //17790, 11715, 15160, (many)
 17900 VATICAN VR 1615 FF, 1634* EE, tlk, nx, ID in EE, F (Peters, Miller)
 17933-17937v PAKISTAN RP 1530 EE dict. speed nx, 1815-1845 lang, to 1900* FF, TC, 0230 lang, tlk, local mx, F-P (Reeves, Zilmer, Jaar)
 17935 BANGLADESH RB 0229-0244*, Bengali, Female vocals, F (Earhart)
 21535 S AFRICA RSA 1435 EE, football game, F (Jones)
 21550 AUSTRALIA RA 0402 EE, nx, E (Perdue)
 21570 NETH ANT RN 1930-1950 EE, to Africa, //17830, tlk, G (Earhart)

We thank those who contributed. Special thanks and welcome to those who contributed for the first time. We see many of the regulars report each month, so a new name stands out. We also owe special thanks to those who keep track of special classes of stations such as Bill Davis, or who provide interesting information about stations. Keep in mind that each report should, where possible, have frequency, country, station, TIME, language(s), program details, reception quality, your name and date heard. Thanks and 73's to all. Jerry A. Lineback

HEADQUARTERS NOTES A couple of sections are missing this time, due vacations, space, etc., but will return next month.

Several times over the past few months we have mentioned a list of English language program schedules. The project got sidetracked temporarily, due to HDQ having to take on some additional editing responsibilities. We still have the list in the works, and expect to provide it shortly, either in FRENDX, or in a separate mailing.

Band surveys are under way, and will be released in a few weeks. They will be very useful for the coming DX season. Format will be 8 1/2 x 11, double spaced, for insertion in notebooks, and for easy updating.

The Danish Shortwave Club International has a survey of the SW freqs up to 5900 kHz (I believe, someone made off with my copy) available for 6 IRCs. Write Danish Shortwave Club International, DK - 8382 Hinnerup, Denmark.

A few members have recently asked about the club letterheads which have been available in the past. Currently they are not available. Demand was never very much, not really sufficient to justify the effort that went into handling them. Most were used for information sheets. If it is determined that there is now greater demand for the letterheads, some could be printed - BUT only enough to take care of current demand. If you are interested, drop a note to HDQ. If enough people want them, we will run a note in an up-coming FRENDX before deciding how many to print.

Thanks to this month's 44 Log Report reporters.....Here's the list:

AGNER, Mike, Waldwick, NJ.....Midland 11-500/Lafayette 17-0180L
AUSTIN, Marty, Wethersfield, Connecticut.....
BEHR, Ernie, Winnipeg, Manitoba, Canada.....R4B/XCR30
BROCK, Pauline, Montreal, Quebec, Canada.....SX190
BRUCE, Robert F., Brechin, Angus, Scotland.....Eddystone 830/7
BUNDY, Bob, Elsinore, California.....SPR4/SX190
BURLEW, Doug, York, Pennsylvania.....GR-64
CALKIN, Gregg A., Madrid, Spain.....SW4A
CASTELLO, George, Los Angeles, California.....Triumph 818
COLLIER, Mike, Williamsville, New York.....HQ 129X
CWIKLA, Tom, Wethersfield, Connecticut.....DX150A
D'ANGELO, Rich, Brooklyn, New York.....
DAVIS, Bill, Laguna Niguel, California.....Homebrew
EARHART, Kenneth A., Allentown, Pennsylvania.....DX150A/SX190
EICHENHORN, Sandy, Troy, Michigan.....SX190
ESTES, Steve, Newport News, Virginia.....SX190
FIELD, Marlin A., Benton Harbor, Michigan.....SX100
FINO, Henry E., Rochester, New York.....RCA Victor Console
GENDRON, John C., Arlington, Virginia.....SX190
HAGEN, Jim, Portsmouth, Virginia.....R390A/URR
HERMANN, Frank J., Montreal, Quebec, Canada...Hallcrafters S-125
HUNT, Ken, Lakewood, California.....Zenith R-7000
JAAR, Victor C., Quebec, Quebec, Canada.....
JONES, Jimmy, Nashville, Tennessee.....DX150A
LINEBACK, Jerry A., St. Joseph, Illinois.....SPR4
MARTIN, A.E., Warrington, Lancaster, United Kingdom.....AR88D
MAYER, Alan, Park Forest, Illinois.....SB310/DX150B/MC173/A20
MEGYESY, Dave, Trenton, New Jersey.....
MILLER, Albert A., Jr., Youngstown, Ohio.....HRC-500
NA THMAN, Doug, Indialantic, Florida.....RE-8000
PADULA, Bob, Surrey Hills, Victoria, Australia.....Marconi CR100
PATTERSON, Carroll R., Decatur, Georgia.....
PERDUE, Neal, Millington, Tennessee.....SW4A/A20
PERRY, John, Westchester, Illinois.Hallcrafter S-85/ Heath GD125
PETERS, Harold, Washington, Pennsylvania.....SX190
RICHARDS (?), (?) New Jersey.....
SCHWARTZ, Richard A., Dover, Delaware.....SW4A
SMITH, Arthur, Wilsonville, Alabama.....BC342N
TALBOT, Larry, Milwaukee, Wisconsin.....
TRIGILIO, Dan, San Antonio, Texas.....Realistic Astronaut 8
TUCHSCHERER, John, Neenah, Wisconsin.....HQ100A
WAHLMANN, Gayle, Kirkwood, Missouri.....GR 78
WALLACE, Steve, Lewiston, Pennsylvania.....DX150A/A20
ZILMER, Robert, Milwaukee, Wisconsin.....SPR4(Two)
Also acknowledged are late reports from Paul Jordan, Houston, TX;
Marlin Sigler, Evansville, IN; and Michael Ross, Ronkonkoma, NY.

o o o (MRL)

1. CHINA Radio Peking's recently introduced broadcasts in Pushtu from 1500-1530 and 1530-1600 have been observed on 8260, 7470, 5220 and 4130 kHz. (c.f. Reception Notes No. 29). *
2. ISRAEL On 16th July Jerusalem home service reported that the Transport and Communications Minister had announced that a new 1200 kw transmitter beamed to the Middle East would be in operation in two weeks time. The transmitter will carry the Arabic-language broadcasts.

It was also announced that some disruption of services would take place between 16th and 19th July due to development work to be carried out on domestic service transmitters and in the centre for external broadcasts. *

FLASHSHEET

The FLASHSHEET is published twice monthly by NASWA, Box 8452, S. Charleston, W.Va.

AUGUST - 1973

Freq: KCS

Time: GMT

IL NIBLACK, Editor, 420 Shelby St., Vincennes, Ind. 47591 DEADLINES: 15 & 26 Month

AFGHANISTAN 15265 Kabul irregularly heard around 1730 in GG; into EE at 1800, poor, strain lvl with severe QRM from RM on 15260. (August Balbi, Cal.)
ANGOLA 3375 EM Official at 2305 with news in PP, some pops, poor lvl. (A.E. Martin, Australia RA, Shepperaton, S/on at 0830 in Indonesia, on new fqy. (Aug- / England) 1st Balbi). (NO fqy quote, Editor)
BANGLADESH RB 11650/15520, in language, heard after 1300, NO EE at 1700. (August ...17935 at 0234 with YL talking and reading news in language, an ID, at / Balbi) fair to good lvl, NA at 0245. (Joe Helm, Ind.)
BOTSWANA R. Botswana, 0855, on 5965, group singing and Setswana. (Kenneth Earhart, Pa.)
BRAZIL 4795 (Unidentified (two listed) On 16th July from 0830 with musical prgm, fade out by 0940. (Marlin Field, Mich.)...4895 R. Bare with pops, some native music, roman in PP, ID at 0014, fair to easy listening lvl. (Joe Helm)...5035 R. Anhanguera heard some nights, when audible, peaks around 0050. A clear ID at 0100. (John Tuch...11765 ZYB8 noted at 0045 with man reading news in PP, followed by wo- / scherex, Wisc.) an in PP, an ID 0043. (Joe Helm)
AMEROUN 5010 R. Garoua S/on 0457 with IS on flute and drums, FF ID, NA, chants and fro music till 0525 tune out. (Steve Wallace, Pa.)
COLOMBIA On 7/14, 7/15, 0415-0435, 0215-0245 respectively, I heard a new station or possibly a harmonic) on 3140, definitely. IDs as, "La Voz San Carlo, Colombia". Also mention of Bogota in SS between LA pops. (Might be 2 x 1570 but ID oes not fit). (Jerry Lineback, Ill.)...5035 La Voz de Caqueta logged 0115 with latin type music, all SS talks by man, several IDs. (Joe Helm)
HINA (PR) R. Shanghai now seems to run its own SW Svc. Chinese music and annets heard between 1230-1600 on 15580A. Time sigs on the hour, and in the Chinese annets hanchai was always mentioned, says an Austrian DXer. (SCDXERS)...Peiking has 4 hours n EE 1400-1800, on 15095/79860, good strong lvl. (August Balbi)
IEGO GARCIA (See July FS) In inference this item, Diego Garcia is a UTE most definitely. (Charles Wootten, Morocco)
ALAPAGOS (ECUADOR) (FLASH) La Voz de Galapagos has ordered a new higher power SW transmitter, fqy will be changed, possibly to the 49 MB. (DX Party Line via Larry amron, Pa.)
HANA GBS with EE news on 3350, 3366, 4980, all fair, strong lvl on 4915. (August ERMANY (E) 7260 (See previous items in FS) Weltweit Horen of ADDX reports / Balbi) t 1620 GMT Stimme der DDR, Berlin on this fqy, good to very good lvl. This constitutes a collateral confirmation of my earlier reports. (Richard Schwartz, Del.)
NDIA 11710 AIR, Aligarh, observed 2330 with native music, possibly in Hindu, says oe Helm...Bombay, 15080 in language 1530, EE news 1800, not a good signal. (August NDONESIA (TENT) RRI, Sorong, West Irian, in II(?) by man, US and II type/ Balbi) usic from 0905-0920 when lost 'em. (Steve Wallace) (4871)
ORDAN 7115 (new fqy?) R. Amman, 0355-0430 in AA, with an AA ID. (Richard Schwartz)
SRAEL IBA S/on in EE news on new 11960, replacing 11945, in the clear, nice listening lvl; FF 0515 to S/off 0530. S/on is 0500. (August Balbi)
DREA (N) Pyongyang, 15150, heard most days at 1330 in EE. (August Balbi)
EXICO Though absent for several months, XEER, R. Cuauhtemoc, was heard again on 980 kos at 0130 with IDs, musical variety, claiming to have an "FM" sound in its usical prgming. Bob Bundy, visiting here, also logged it. (Gleam Hauser, Tex.)... 165 LV Latin America, 0515, with news, including reports direct from Monterey. (Marin Field)...XEYU, 9600 with news in SS by YL, with ID at 1400. (Joe Helm)
DNACO TWR, Monte Carlo on 9575, S/on at 0800, on 7/20, then religious prgming, talks, yms, etc, in FF. Though some QRM, fair enough lvl. (Joe Helm)
ETH ANTILLES TWR, Bonaire, 9535 in language 0200, QRM de SBC. (August Balbi)
EW CALEDONIA 7170 R. Noumea, 0615, 7/20, caught end of news in FF, poor lvl. (Joe Helm)
IGER 5020 ORIN, Niamey, carrier 0521-0529, then heard 15 seconds of Niger NA, then nashed by RTTY, durn it! Poor lvl on 6/14. (Steve Wallace)
IGHEIA 4932 NBC, Benin, 0430 S/on, drums, NA at 0434, then EE ID by man, "This is ne R. Nigeria News". (Steve Wallace)...Kaduna, 9570, heard but poorly 0500-0700, fro lang, music, probably will get better as Darkness Pattern improves. (Jim Hagen, Va.) continued)

(PLEASE TURN OVER)

NIGERIA (continued) Lagos heard on 11923, EE 0530-0735. (Jim Hagen) ...VON, Lagos, 11920, daily S/on 0550 with chimes, EE news 0600. (August Balbi)

PAKISTAN 17845 1250-1310 R. Pakistan noted with vry good signal, fgy measured. (Grady PAPAUNG 3385 R. Rabaul, Pldgin, local music, ID 1000. (Steve Wallace) / Ferguson, S.C.)

PERU 5010.5 (Early riser special) R. Eco beuat of a sig from 0945 to 1010 tune out with Andean music, other types. (John Tuhscherer; Neal Perdue, Tenn; (Marlin Field) ...5970 Radio El Sol with SS news 0500...5982 Radio Panamericana on 7/13, from 0230 with mostly music, little news. Some QRM. (Both to Marlin Field)

PHILIPPINES FEBG, 15440, 2345, YL reading news, ID at 0000, on 7/12. (Joe Helm)

ROMANIA 15250 R. Bucharest news and music, fair lvl (Joe Helm) (NO time quote, Editor)

SWEDISH Swedish Telecommunications Administration was heard testing its Hobby transmitters, July 17, 1973, from tuning 1803, till fade out 1813; was amcd as 500kW, call of FTA3. (Frank Hermann, Canada) (Freq: 17860A)...17815 1300-1308 R. Sweden noted 7/18, amcing test of their new 500kWatter in EE, and measured here as above; call of, STA3. (Grady Ferguson)

SAUDI ARABIA Djeddah, 11855, in EE, fair lvl 1800-2000 news, pop music last. (Jim Hagen)

SWAZILAND (FLASH) The Swaziland Gvt has given permission to TWR to construct a station there. (Marlin Field) (NW, SW, or both, Editor?)

VIEINAM (N) 10039V, 1000, fanfare, EDD ID and news by YL, fair lvl. (Steve Wallace)... VoV, Hanoi, 10040, EE at 1300, irregularly heard, in parallel with 15012, a powerful signal. EE news 1800. (August Balbi). Same fgys also in language 1400-1900 and at 0900. Reports from Japan list Hanoi as like local, using 500kW now! (August Balbi)

SENEGAL 7210 Dakar, 0230, in FF, news by M and W, music, so on. (Joe Helm)

SO AFRICA RSA to NA 2530-0330 on new 6000, replacing 11970; 6080, 9585, 9695, also in use, with latter fgy the best. (August Balbi)

TIMOR (PT) 3668 Emissora de Rdifusora noted at 1310 with vocal music. (Bob Bundy, Cal.)

TUNISIA 11970 R. Tunisia from 2135 with music, chanting in AA to 2145, then carrier off, or R. Habana came on. (Marlin Field)

UPPER VOLTA 4815 Ouagadougou, 0602, stringed music, FF ID by man, as, "Jci Ouagadougou", at 0629. (Steve Wallace)

YEMEN (PDR) 5060 Heard with local music, talk (sounded like news in AA); noisy-with galactic type noise, 2130-2150...then lost.... (A.E. Martin)

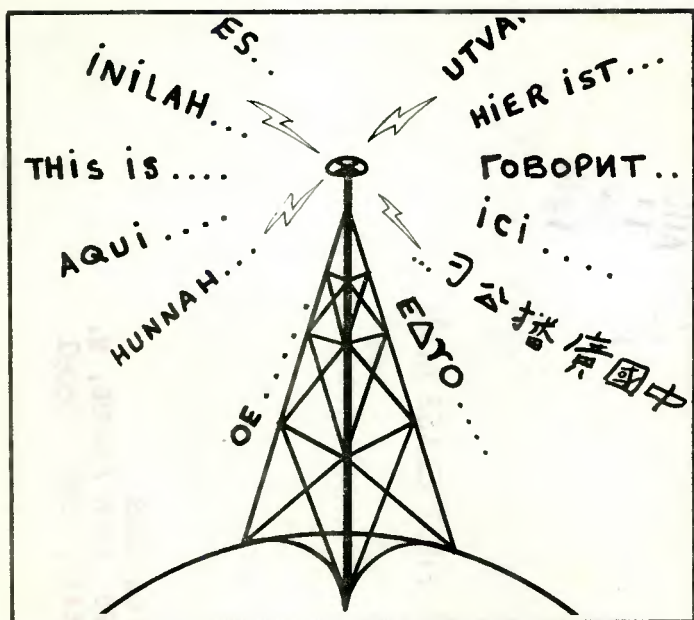
YEMEN (ARAB REP) 5804 R. Sana 0540-0550 fade out, AA news possibly, by man, too late, but what else?? (Steve Wallace)

CLANDESTINE: (FLASH) As a result of monitoring this Portuguese speaking outlet on 6240, I sent report to Radio Senegal (B.P. 1765-Dakar)..stating that I knew not the QTH of this one, but would they kindly forward it to the correct source--three weeks afterwards I received a QSL from Dakar informing me that my report was exact..the QSL card was of the "banjo type" (leaning against the bole of a tree)...So, to all intents and purposes this was a card of the Dakar stn..They (I repeat), said it was a correct report..so in my estimation this proves (to me) that they sent it for the clandestine report..In the top left-hand corner of the card (at back) was a small sentence and this is what it said..."Receive the brotherly greetings from your friend Pep (or Pop) Seydon. Jeve Vous! and then follows a signature. (A. E. Martin) The question is..What do you all think about it?? (A.E. Martin) (Possibly the outlet is not one of the Guinea Republic transmitters as was thought; a good problem here, What say you clandestine experts, Editor?)...Hobby Pirate, "Time Radio", 6237, verified in 19 days with large pink gal card..Here is the info: (See if you can unwrangle the tangle!! Heard testing on 24th of June, at 0930 GMT (Sunday): Power 225 Watts - Antenna Bended Dipole (Bended?, Editor)-Test xmission-Regular schedule starting soon on 6290 khz. Stamps on envelop are Belgium; enclosed stickers printed in Canada--the QTH is Eindhoven (Holland); and, the station supposedly boasts from the West Coast of Scotland!! (A.E. Martin)

NEW EQUIPMENT: Ed Insinger, N. J., kindly passes on some information on a new pre-selector from Gilfer which goes under the name of GILFER/HAMGEAR Model PM-IICX. The new unit is manufactured in England and has a number of features that make it better than the Model A-20. The PM-IICX has bandswitching and covers 3 to 26 MHz. The unit is a combination antenna tuner, as well as a preselector. It also has other numerous features. In fact, we will say that the PM-IICX is a little better looking! (A thought, you had better get in touch with Perry Ferrell at Gilfer Associates, Editor).

JUNE 1973: SUNSPOT COUNT AS FURNISHED BY THE ZURICH OBSERVATORY, 7-7-73- 1-8, 2-8, 3-16, 4-14, 5-7, 66-16, 7-37, 8-34, 9-28, 10-35, 11-60, 12-58, 13-52, 14-51, 15-46, 16-41, 17-34, 18-18, 19-38, 20-46, 21-75, 22-61, 23-48, 24-48, 25-47, 26-43, 27-38, 28-39, 29-51, 30-33. MEAN-37.6 PREDICTED AUG-36 SEP-34 OCT-32 NOV-30 (Grady Ferguson)

ACKNOWLEDGEMENT: Thanks for all the fine material. Please keep it coming! Phone Flash Items to 812-882-3976, after 2200 GMT. See you, Vy 73..... AL



RECOGNITION

OF

LANGUAGES

Free for SASE from ED SHAW

by

R.E. Wood, Ph.D.

ASDA

1-307-55-212

73 from

NASWA

BOX 8452

So. Charleston, W. Va. 25303

Publishing ~~FREE~~ Monthly

Unity and Friendship



FIRST CLASS MAIL

