

# FRENDX

The SWBC journal

J V  
A O  
N. L.  
XI  
1 #  
9 #  
7 1  
2 1



official publication of

NORTH AMERICAN SHORT WAVE ASSOCIATION  
P.O. BOX 989 ALTOONA, PA. 16603

## NOTES, NEWS, NIDBITS

1972-The year for you? Like any in the past or those in future, it depends on how you make it. One thing sure, NASWA will try to continue being the top rated all-SWBC club, and even though some changes are planned, such will be improvements beneficial to members. We begin this month with the above new frontal page masthead. True it is not fancy, but it surely is an advance over the old one we used the past ten or so years. Even this one may not be that which we will use indefinitely, we may try others before finding one that is all ways accepted and approved. Thus, as the club seeks to improve to benefit you, why dont you consider reciprocating by seeking to improve your support, via reports, etc., as often as possible. This months SWC will be the last done by William Matthews; He has submitted formal notice of resignation for reasons he deems justifiable, but he plans to remain an active and reporting member. Needless to say we are grateful to him for his works/efforts over the past many months and we especially thank him for the sections such as that in December bulletin which had photo's. He paid the added expense out of his own pocket. Thanks again Bill! Good luck to you in your new/future DXing activities. Taking over the SWC beginning next month is Ralph Perry who is presently attending the University of Illinois, majoring in journalism. Ralph has some new idea's and plans for his future sections and has already taken initiative to have them become reality. But regardless of what any editor plans, no matter his name be Matthews, Perry or what, he still needs and very much depends on support from the general membership. Be sure that he gets yours! His address: Ralph Perry, 301 East Chalmers, Champaign, Illinois 61820. A total of 111 members took advantage of the WRTM'72 offer made in last months bulletin. All goes according to expectations, these members should have their copies by end of this month (Jan.) The talk/rumors are still going around concerning possible merger of NASWA with another club/organization. Again we want to reiterate that there is not even the slightest thought, on part of NASWA, to merge or anything else. And should the time come when we would consider such action 1. We would have to be certain it would benefit all concerned 2. It would be put to vote of members. B.L.

## INTERESTED IN CLANDESTINES, ETC.??

A study recently done by eight top DXers (Donald Jensen, Dr. Richard Wood, Gregg Calkin, Glenn Hauser, Bernard Chenal, Carol Feil, Victor Goonetilleke, Hideharu Torii) and compiled by NASWAer Larry Magne, titled "Broadcasting Stations of Exile, Intelligence, Liberation and Revolutionary Organizations" (this rather unwieldy title was used to avoid getting into the knotty question of what constitutes a 'clandestine' station that is not a 'pirate'). Although studies of this sort on this topic are nothing new, this one is probably unique in the sense that it is based largely on data gathered firsthand or verified firsthand. Therefore it should be more accurate than past such studies.

Interested DXers can have a copy of this study (it is 10 pages long) by sending to Larry Magne - P.O.Box 2133, Mid-City Station, Philadelphia, Pa. 19103. In North America, send 1 C with your request; Outside NA, send 3 IRCs.

This study was a most worthy project and each of the contributing DXers deserve both thanks and plaudits. We are most appreciable that they make it available via NASWA.

\* \* \* \* \*

(NOTE: Hdqs wishes to thank the many friends/members who sent holiday greetings. All were warmly and humbly received. Our sincere thanks again to each and everyone. HAPPY NEW YEAR!)

NEW MEMBERS, WELCOME!

Larry K. Marshall, San Diego, California. Via NASWA Hdqs/Bill Eddings.  
 Ed Worner Jr., Alsip, Illinois. Via member Robert Moser.  
 Richard L. Levesque, Fort Bliss, Texas. Via PE Communications Handbook.  
 Wolfgang Winkel, Vancouver, B.C., Canada. Via PE Communications Handbook.  
 Paul Kluewe, Edmore, Michigan. Via PE Communications Handbook.  
 Steve Sykes, Cincinnati, Ohio. Via "DX Party Line/HCJB".  
 Kenneth Compton, Brighton, Massachusetts. Via Communications World  
 Robert Maida, Park Ridge, New Jersey. Via member Dave Sturm.  
 Dennis Pacheco, Lincoln, Rhode Island. Via member Hank Michalenska.  
 Tom Jeffrey, Bend, Oregon. Via World Radio-TV Handbook.  
 Matthew Losordo, Howard Beach, New York. Via a friend.  
 Walter Fair Jr., Houston, Texas. Via NASWA Headquarters.  
 George McCaul Jr., East Haven, Connecticut. Via PE Communications Handbook.  
 George Betz, Denver, Colorado. Via PE Communications Handbook.  
 Woodrow Seymour Jr., Sanford, North Carolina. Via member Al Reynolds.  
 Casey McWilliams, Rochester, Michigan. Via Communications World.  
 Odell Hamilton Jr., Houston, Texas. Via Communications World.  
 Bill Gardiner, Edwardsport, Indiana. Via member/FS Editor, Al Niblack.

RENEWALS

Second year; Donald Dickey Richard Walsh, Gerg Danzker, Prentiss Shepherd Jr., Charles Wackerman.  
 Third year; Anthony Marks, Mark Duba, Julian Kratter.  
 Fourth year; Roger Legge, Ronald Vysockey, Bill Murphy, Victor C. Jaar.  
 Fifth year; George Schnabel, Rolf Erny, C.J. Schillmiller, Robert Kirkpatrick.  
 Sixth year; Dr. William Caldwell, Stan Cabral, Bruce Churchill.  
 Seventh year; Glenn Hauser.

(NOTE: Members joining or renewing after the 15th of the month will be listed next month.)

: : : : :  
 : : : : :

HELPING HAND SERVICE

For sale/trade; Hammarlund HQ-205 4 band radio with 5 channel CB xmtr/rx complete with desk mike, speaker. Write Bob King, Route #1, LeRoy, Minnesota 55951.  
 For sale; Matching speaker for DX-150. In like new condition. Write Bob Sawallesh, 4313 Granby Road, Woodbridge, Va. 22191.  
 For sale; Hallicrafters SX-122A with speaker and crystal calibrator. Contact Al Andrews, 221 Emerson Ave., Weirton, WVA. 26062.  
 For slae; Realistic DX-120 receiver just like new. Write Mike Brambley, D7 Presidential Court Apts., Runnemede, NJ. 08078.  
 Wanted; BC-221 frequency meter w/1000kHz crystal and complete operating manual. Write C.A.Bugbee, 185 Jobin Drive, Manchester, New Hampshire 03103.  
 For sale; Ameco PCL-P Preamp with motorola lead-in plugs and wires. No soldering needed. Contact Ed Pyatt, 606 McBain Hall, 562 West 113th St., NYC., NY. 10025.  
 For sale; Heathkit Q-multiplier completely assembled. Write Tom Roseliep, 3063 Central Avenue, Dubuque, Iowa. 52001.  
 For sale; Drake R4A and Collins 75S-1 rx's. Both in top condition. Quick reply to Bill Whitacre, 2609 Devonshire, Lansing, MI.48910  
 Wanted; JoyStick antenna dn JoyMatch. Write Ed Pyatt, 606 McBain Hall, 562 West 113th St. New York, NY. 10025.  
 For sale; Realistic DX-120 receiver. Contact Dave Tubbs, 1583 MeadowMoor Road, Salt Lake City, Utah 84117.

ANOTHER NEW GROUP

Most everyone is now familiar with the BADs or Boston Area DXers; But now comes word of a new group, the ODD Fellows, or the Old Dominion DXers, made up of several of our more southern members. The more the merrier!

RENEWAL NOTICES

Each member is notified, along with his last bulletin, that he is due to renew. There may be an occasion when notice is inadvertantly omitted, but this is seldom. If members try to remember they are due to renew upon receipt of 12th bulletin, there would be no GRM. Before you throw your envelope away, look inside, this may be the month your renewal notice is enclosed. If it is, we suggest you act immediately so as not to miss any editions of French. We seldom, if ever, have any back issues on hand, cannot make up for those not received. So if you dont renew when due, you stand good chance of missing certain editions.

## THE LOUDENBOOMER REPORT

Something had happened. I was perplexed and greatly disturbed. For years I'd enjoyed a fabulous return from my reception reports to rare DX stations. In fact, a hand-lettered poster reading "99 and 44/100 percent pure" hung in a prominent place near my receiver, a gift from one of my admiring fans, alluding to the fact that nearly every reception report I sent out was promptly rewarded with a QSL.

When nobody but nobody was getting a verification from Tibet, I received a three-page confirmation letter. I'd garnered QSLs from the likes of Zanzibar, Radio Clube de Benguela and Tristan da Cunha. There were, in my files, literally dozens of veries from domestic Chinese stations, all addressed to "Running Dog of American Imperialism C. Loudenboomer."

But suddenly, something happened. I'd become accustomed to daily receipt of at least a half dozen rare QSLs. One day, though, the mailbox was empty! A postal holiday, I thought. But a quick check of the calendar showed that the only festive occasion on that date was the anniversary of Henry the VIII's third marriage.

When the mailbox remained empty the next day, and the next, and the next, I really became worried. After two weeks without mail, panic set in.

I began to study carbons of recent reports. Quickly I concluded that the problem must be elsewhere. Those reception reports were no different from earlier ones that had brought prompt replies. They were, indeed, up to the usual high standards of Loudenboomer reportage.

Suspecting the answer lay with the postal deliveries, I checked with my postmaster.

"My mail is being mis-delivered or lost," I wailed.

"Utter nonsense", he replied scornfully. "The American postal service is the finest in the world. We are never stayed from our appointed rounds by snow, sleet or gloom of night. And, more importantly, we never make mistakes!"

But after my tears of anguish had begun to dilute the magenta ink in his stamp pad, he took pity on me and suggested I contact the chief postal inspector.

Now we'll get to the bottom of the mystery, I thought, as I was ushered into the office of Chief Postal Inspector, Oscar Blunt. For Blunt was the very picture of a chief postal inspector. He had a no-nonsense air, a brisk, efficient manner, steely, inquiring eyes and a probing, direct approach to my postal problem.

"So you're not getting any QSLs eh?" he commented. "Well, you've brought your problem to the right man. Not only am I chief postal inspector, but a DX'er myself. I'll look into it and you'll be hearing from me."

I went home relieved and waited. Several weeks passed. Then one morning, my gloomy mood was shattered by the doorbell ringing. At the door stood my mailman. Triumphantly, for I'd made him well aware of my distress, he handed me two objects; a long overdue club bulletin and an official-looking letter. I ripped open the envelope and found a letter from Inspector Blunt.

"Be advised that your complaint has been personally investigated and found unwarranted. I can only suggest that your lack of QSL replies is due to erroneous reports. Signed, O. Blunt, Chief Postal Inspector."

I was crushed. In a daze I opened the other bit of mail, the club bulletin. Then something caught my eye. It was a page one announcement by the Editor:

"The 1971 award for Man of the Year goes to Oscar M. Blunt, a newcomer to the SWL hobby. He is cited for his DXing efforts which have resulted in verifications from 215 different countries in the space of three months time. Congratulations, Oscar. Please tell us the secret of your tremendous success!!"

EUROPEAN DX COUNCIL. In cooperation with Radio Sweden, the European DX Council (ANARC's counterpart in Europe) will soon publish an International Club Listing. Another project is the compiling of information on how to begin and operate a DX Club; information on how this has been done by various clubs in various countries is being solicited.

ANARC ABBREVIATION LIST. This reminder comes just at a time when a couple of persons were asking FRENEX officers about this subject. Many are confused by the abbreviations and DX terms used in most hobby bulletins - particularly in the loggings and other sections of FRENEX. Stewart MacKenzie advises that there still is approximately 100 copies of the abbreviations lists remaining. The 28 page list is sent 1st class mail only, and the price is \$1.35. Order today from American SWL Club, 16182 Ballad Lane, Huntington Beach, California 92649.

UTILITY DXING. A four-page reprint from the August 1971 SPEEDX entitled UTILITY DXING has been published as SPEEDX' special publication #1. Interested Utility DXers may receive a copy of this pamphlet by sending one IRC or stamped return envelope to: SPEEDX, P.O. Box 321, Santa Ana, Calif. 92702.

Also, orders will be accepted for the UTILITY DXER'S HANDBOOK - a 72 page booklet of information for the expert or novice Utility DXer - and chock full of what you need to know. Send \$3.00 (U.S.) in check or money order to "SPEEDX", 2409 Ocean Parkway, Brooklyn, N.Y. 11235.

ITU FREQUENCY LISTS. International Telecommunications Union at Geneva, Switzerland publishes an extensive listing of all radio stations and frequencies under the auspices of an international treaty agreement. Typical lists and prices are: "List of Ship Stations - \$5.25; and List of Broadcasting Stations Operating Below 5950 KHz - \$11.50" An excellent source of reliable information for the discriminating DXer. Orderable from GILFER Associates, P.O. Box 239, Park Ridge, N.J. 07656. Send for information now.

FREQUENCY RECOMMENDATION COMMITTEE. This committee is chaired by Mr. Glenn Hauser. The south and midwest states are well represented, but the committee is still in need of members in other areas of North America. Dr. Richard Wood, member of the committee, has been attempting to get the Swedish (FCC) to choose frequencies by actual band conditions rather than theoretical ITU availabilities. 6.175 KHz may be used by Radio Sweden for its NA service as a result of Dr. Wood's recommendations. Bill Matthews has been working with DeutscheWelle and Radio Bucharest to convince them to drop certain ineffective channels. He and Dan Ferguson have also undertaken to improve the situation on 9.77 MHz by suggesting to Austria and 4VEH that one or the other should move. Dan Jamison has been searching for a clear frequency for Thailand's 1300-1400 GMT service to North America - which, if successful, will be gratefully appreciated by hundreds of DXers needing this country for HIC/VIC.

1972 ANARC CONVENTION. Three locations are in consideration for the 1972 convention. Club de DXers du Quebec offers to host the convention 21-23 July in Quebec City; The Midwest DX Club and Richard Clark kindly offer southern Florida as the site; and The BAD Guys from Boston would like to host the convention in late July or early August. If you desire to make your wishes known, drop a card on Bill Eddings at headquarters.

And, that about does it for this month. Thanks for keeping tuned. 73, Peace & Gud DX.

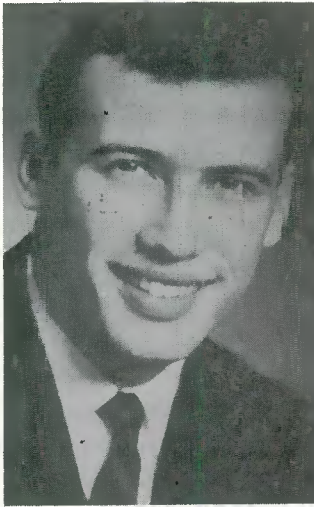
Del Hirst  
202 Birch Street  
Snyder, Tex. 79548

Gerry Dexter  
Rt# 1, Maple Road  
Lake Geneva, Wisc. 53147

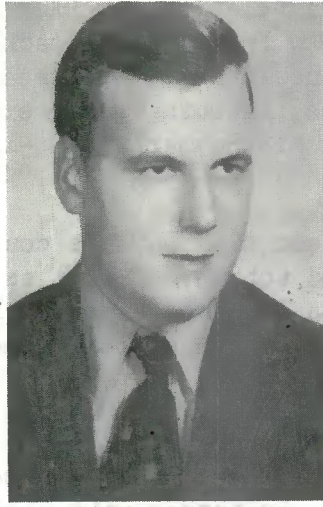
Ed C. Shaw  
415 No. Shore Rd.  
Norfolk, Va. 23505

YOUR FRIENDLY REPRESENTATIVES TO ANARC

Pix Parade Page



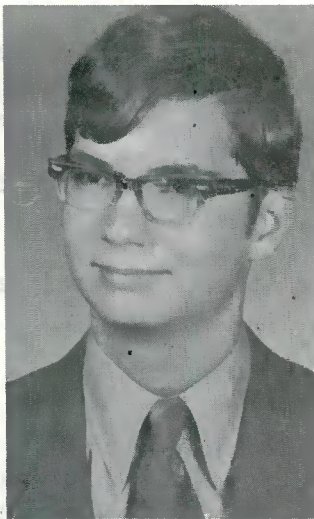
1



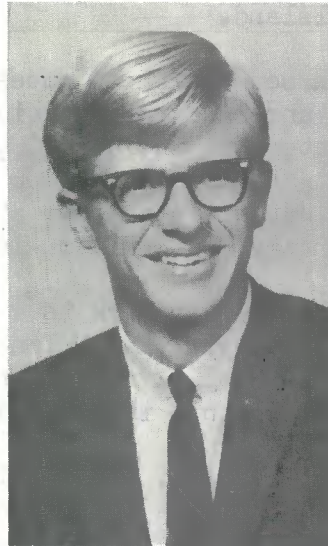
2



3



4



5



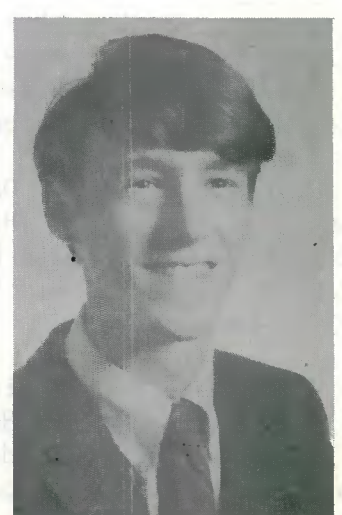
6



7



8



9

1. William F. REYNOLDS. Bill is a relative new DXer having been with NASWA a year. He is married, and living in Depew, New York. Bill teaches instrumental music. (I envy persons who can read music - an invaluable asset when reading WRTH and trying to identify interval signals heard). He enjoys listening to foreign news broadcasts, and trying to DX new countries and stations with his Hammarlund HQ-100 and 11 ft. vertical antenna. Bill has VIC 57 at present.
2. Richard M. BARTOS. Dick has been with NASWA a couple of years, is single, and likes to concentrate on upping his veried totals, as well as just listen. With 25 QSLs to date, Dick is making good use of Allied's Star Roamer and a 100 ft. longwire. Many DXers started out with the Star Roamer, Dick..... I have some fond memories.
3. Henry J. MICHALENKA. (Henry J? Seems I remember a 50¢ automobile by that name.) Hank is one of the dyed-in-the-wool DXers who saw the light some five years ago when he joined NASWA. Still putting in hours at college, Hank does some newscasting for WXTR radio. Recently trading up to a Drake R4B, in tandem with his Joystick/Joymatch combo, he has racked up some 104 veries to put him in that magic circle. His main goal is to chase down those veries and put Al Sizer to shame (who started DXing after himself). Hank remains single, sane, and living in Rhode Island.
4. Bruce A. BOOMER. (The NAMES on some of these dudes!!) Bruce hails from the hills in West Virginia, but is currently an undergrad at Georgia Tech. Although new to NASWA, Bruce is no newcomer to the hobby. His interests include ECB, Ute, as well as SWBC. He has a total of 138 QSLs from all sources. He uses an HQ-200 and a 60 ft. longwire. Bruce attended the '71 ANARC convention, but was unable to attend a convention of his own home grown club which was held in the Khatry House Hilton in Kathmandu, Nepal. Shazam!
5. Mark. L. HANNA. Out of Amerillo, Texas, Mark is a single grad student and only recently discovered this exasperating hobby. (He'll find out, won't he!?) With FB equipment to work with - a Hammarlund HQ-129X and a horizontal longwire, Mark's main interest at present is to compare viewpoints in various foreign news broadcasts.
6. Rick CHARNES. Rick is a student, single, and still debating whether he has time enough to devote to serious DXing. He uses a Lafayette HA-230 and a longwire to good advantage, though. He has racked up some 76 Veried Countries in the three years he has been with NASWA. Stick with us, Rick, we're going places!
7. Bill WULFF. Currently doing his thing with Uncle Sam's finest, Bill is a Chemist by profession. He is still single for the present. Using a Norde Mende Globetrotter Fro, Bill has whipped up some 40 VIC in the 2 years he has been with NASWA. He uses a 10' dipole with the Norde Mende. Bill says he enjoys adding a new country to the logs, and also enjoys the educational aspects of listening to shortwave.
8. J. David SCHMIDT. Dave has been with NASWA only one year, but is familiar with the communications hobby. He is on the Board of Directors at KFGD in Anchorage. (BCB DXers take note). Dave uses a Hammarlund HQ-180A and TWO Moseley SWL-7 dipoles - which have afforded him 54 VIC so far. His main interst is to study the various viewpoints of the world's broadcasters.
9. Robert WELLS. Bob is a High School senior and is relatively new to NASWA. Already he is receiving QSLs. He uses Realistic's DX-150 and a folded dipole. His desires are to become an experienced DXer, and he likes to listen to foreign news. Keep tuned in, Bob. The FRENDX log reports, SWC, QSL Section, Listener's Notebook, and Flash Sheet will help you do what you want to do.

OFFICE DE RADIODIFFUSION-TELEVISION FRANCAISESTATUS AND ADMINISTRATION

Office de Radiodiffusion-Télévision Française (O.R.T.F.) - as the French Broadcasting System is known to the French - is the only radio and television broadcasting organization authorized to operate in France. An official agency of the French Government, O.R.T.F. is empowered, by a series of decrees passed in the National Assembly since 1939, to function as an autonomous agency of the government, its funds to be derived from the collection of a user's fee or Tax, (25 Francs, (about \$5) per year for radios and 120 Francs (about \$24) per year for TV sets. The combined rate for both is 120 Francs, and to engage in industrial and commercial activities. However, since its inception, it has operated on a non-commercial basis, its programs being sustained entirely without advertising. Commercials were introduced in October, 1968 and are shown a total of about 10 minutes per day. Until June 1964, O.R.T.F. was known as R.T.F. This last decree was passed in order to insure the organization autonomy, whereas the Ordinance of 1959 only recognized its principle. With the passing of this last decree, R.T.F. became an "Office" so as to eliminate any doubt as to the organization being a public concern.

O.R.T.F. is administered by a Director-General, who is assigned to this post for an indefinite period by the Minister of Information, upon the approval of the Cabinet. He is assisted by a Council of advisors, drawn from prominent figures in public life, directors of the various divisions, and directors of the regional O.R.T.F. offices.

RADIO AND TV IN FRANCE

O.R.T.F. headquarters is located in Paris in the MAISON DE L'O.R.T.F., 116 Avenue du Président Kennedy, Paris 16, and is composed of Administrative, Financial, Technical, Artistic, News and Information, International Exchange, Television, and Short-Wave Divisions.

HISTORY OF O.R.T.F.

At present there are in France 190 short wave, standard broadcast, and long wave radio stations having a combined power rated at more than 6,000 kilowatts. Thirty-five of these are for FM programs only and have a combined power of about 250 kilowatts. In addition, 20 short-wave transmitters beam programs, which include relays of the three AM networks to all parts of the globe (more than 5,700 hours yearly). Every European receiver set is equipped to pick-up these three different means of transmission. In this way, O.R.T.F.'s home audience of more than 35 million listeners is enhanced by millions more in some 65 foreign countries. For the metropolitan area of France, tax statistics for December 1964 show over 10 million radio receiver sets in use.

SHORT WAVE

The short-wave division is divided into three sections: Foreign, Arabic-Kabyle, and French Overseas. These beam news and commentaries to more than 65 countries on 7 continents in 16 different languages, for a total of 22 hours a day. The main short-wave transmitters are located at Issoudun and Allouis in France, and the Republic of the Congo, where O.R.T.F. maintains this service in Brazzaville.

INTERNATIONAL DIVISION

In addition to its key role in the founding of the International University of the

OFFICE DE RADIODIFFUSION-TELEVISION FRANCAISE  
(continued)

Air and Eurovision, O.R.T.F. has maintained branch offices in New York, Moscow, London, Bonn and Rome for many years, and has now opened additional ones in Canada, Japan, and Washington, D.C.

ORTF...via Richard Anderson

MODIFY YOUR CLOCK

John W. Creamer

Knowing the exact G.M.T. that a SW station signs on, or is broadcasting on, or signs off, is a "must" whether you are listening to a U.S. station or any other station from around the world.

Of course you will need to list the G.M.T. in making your log report for requests for verification cards. Yes, a G.M.T. Conversion Chart is a most handy device to have and it does give you the correct G.M.T. (if you read your Chart correctly), but what if you have no access to a Chart, or if you have mislaid same just when you need it?

I am sure that every NASWA member has at least a 12 hour clock of some type, near the radio receivers, etc. Wanting to use my cheap electric wall clock to tell the local Daylight Saving Time as well as the correct G.M.T. gave me the idea of modifying the clock dial, so now at any hour of the day or night I can look at my clock, and tell exactly to the minute the correct G.M.T. or the local Mountain Daylight Time. Of course, I check daily with WWV at Fort Collins, Colorado on 15.0.

Perhaps it would be best if I just tell you what I did to my clock, then you change yours to suit yourself, and use your own ideas.

My clock has a 5" round dial. First I cut a 9" square piece of stiff cardboard, and cut out of this cardboard a circle a trifle less than the 5" dial. The square cardboard fits over the clock, and is glued to the dial. I did not cover any hour numerals nor the hands, next I cut out 12 circles the size of a penny for the 12 G.M.T. Indicators. A light color was used for the circles, to contrast with the red background of the 9" square.

Opposite each hour I glued one of the circles to the face of the cardboard close to the dial...each circle or "G.M.T. Indicator" has a horizontal line, dividing the circle into a top half and a bottom half. After I got my 12 circles fixed to the cardboard, they were ready to be numbered with the correct 24 G.M.T. hours. Each circle carrying two different G.M.T. hours. This is the only tedious part of the modification, so take it slowly.

No matter what your Q.T.H. is, you are either on G.M.T. or ahead of G.M.T. or behind G.M.T. by a certain number of hours. In my case Mt. D.S. T. is 6 hours behind G.M.T. meaning when it is 0000 G.M.T. it is just 6 P.M. local time. So knowing this I decided to start at the 6 P.M. position, and letter the bottom half of the G.M.T. Indicator like this 0000.

- then the 7 PM Indicator reads as 0100 or 1 AM. G.M.T.
- the 8 PM " " as 0200 or 2 AM. "
- the 9 PM " " as 0300 or 3 AM. "
- the 10 PM " " as 0400 or 4 AM. "
- the 11 PM " " as 0500 or 5 AM. "
- the 12 PM " " as 0600 or 6 AM. "



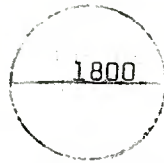
-----Now Watch this Carefully-----

At the local 1 AM. time the Indicator shows the G.M.T. figure of 0700 at the top of the Circle, meaning it is an AM. time and NOT a PM. time (as you are now reading the Indicator at 1 A.M. and not at 1 P.M. or 13 hours local time...this continues in



MODIFY YOUR CLOCK  
(continued)

sequence on around the clock to 12 NOON local time (when the G.M.T. Indicator shows 1800 at the TOP OF THE CIRCLE.



Then at 1 P.M. local time or 13 hours plus 6 hrs. G.M.T. 1900 G.M.T. the figure shows at BOTTOM of Indicator circle as you are now reading it at 1 P.M. local time-not 1 A.M. as previously.

Then 2 P.M. or 14 hours local time + 6 hr. G.M.T. = 2000 G.M.T.

3 P.M. or 15 " " " + 6 hr. G.M.T. = 2100 G.M.T.

4 P.M. or 16 " " " + 6 hr. G.M.T. = 2200 G.M.T.

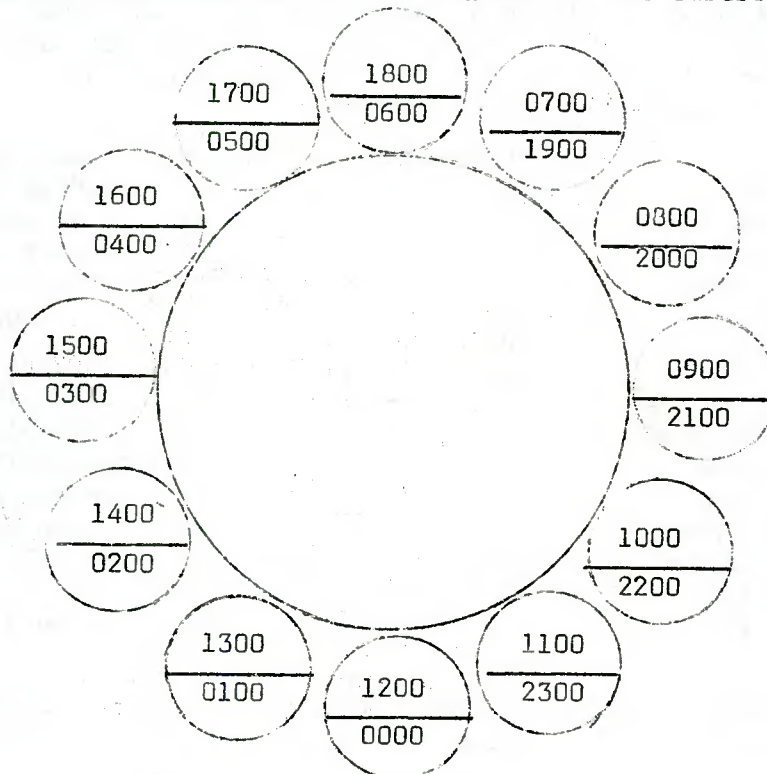
5 P.M. or 17 " " " + 6 hr. G.M.T. = 2300 G.M.T.

6 P.M. or 18 " " " + 6 hr. G.M.T. = 0000 G.M.T.

Thus ending 24 hours of G.M.T. Indications on a 12 hour clock face, and you are back to where you started your marking of the circle G.M.T. Indicators.....

If you have a 24 hour clock, you will need 24 circle Indicators, and each will have only one G.M.T. hour on it. Square clock faces can be modified easily, using square G.M.T. Indicators instead of round ones. Also, remember this important fact, if you are now on Daylight Saving Time....you will have to move your G.M.T. Indicators backward (counter clock-wise one hour) when you return to Standard Time this Fall.

This should give a fair idea of the modification of the 12 hour clock to read the 24 hours of G.M.T...this is drawn to 8 inches square, with a 4/7-8 circle cutout for the dial face. The G.M.T. hours can be lettered direct on the cardboard, to save making circles, etc.



(Illustration has been reduced)

PAGES FROM THE PAS1  
Barry C. Williams

Reception of European stations in the early thirties must have been difficult and rare. When one considers the relatively crude transmitters used and the TRF receiver that Alan must have used then it is no wonder that he verified only one European in 1931 and one in 1932.

Naturally the first was PCJ Holland. As most of you know PCJ was one of the first stations to commence regular shortwave transmissions. PCJ began operating during March 1927 with a transmission to the Dutch East Indies. Alan Breen verified them on March 7th 1931. They confirmed his reception of PCJ on  $9.59 \times 10^6$  cycles/sec. with a power of 27 kilowatts. PCJ was operated by the Philips Radio Laboratories Eindhoven, Holland. The QSL card gave their schedule as Wednesday 1600 - 2000 GMT, Thursday 1400 - 1800, 2200 - 0200, Friday 1800 - 2000. A brief personal letter was also received from Philips Radio.

Alan's next verification from Holland was in 1934 and was a photo card of the masts and aerials at the Phohi station. The station was built by Philips Radio but now operated by Hilversum Radio and transmitted over PHI on either 17775 kcs or 11730 kcs with 130 kW input. Announcements were in Dutch, German, French, English, Spanish or Portuguese. On Dec. 2nd 1934 Alan logged PCJ on their new frequency of 15220 kcs. Philips Radio Laboratories, Eindhoven verified with an attractive card. PCJ had regular broadcasts on Sundays from 1330 GMT relaying the Radio Hilversum program to PHI Huizen. Power details were given as 4 x 20 kW; tube type Philips TA12/20000 in the final stage. So much for the famous PCJ and PHI.

The other early European was EAQ Transradio Espanola S.A. Madrid, Spain. They verified with a form letter and card. Details were EAQ 20 kW on a frequency of 9860 in 1933 and 34 saw another one or two Europeans verified but it was not till 1935 that they were being heard regularly.

The only correspondence I found from the BBC was a verification letter dated 18th January 1934 verifying reports of the BBC Empire Broadcasting Service. The only reference of importance in the letter was their power which was 20kW. (The Empire Service was inaugurated in 1932.) The BBC had quite a substantial overseas Service and the lack of verifications may indicate they were just as reluctant to verify in those days as they have been in recent times.

The League of Nations were as active of shortwave as the United Nations is today. The League of Nations, Geneva, transmitting over "Radio Nations" verified with a card and a long letter. Station verified was HBL 31.3 metres, 9595 kcs on January 20th 1934. In 1937 another verification was received in the form of a card giving transmission details. Stations active were HBL 9345 kcs; HBP 7797 kcs; HBO 11402 kcs all 20 kW. HBO was used for official bulletins, HBP for Information Section, League of Nations; HBL for the International Labour Office.

Deutsche Kurzwellensender, Berlin operated five stations from Zeesen in 1934. The German Shortwave Station as they were known as had quite a comprehensive schedule and broadcast to North America, Africa, East Asia, South America, and South Asia, over stations DJA, DJB, DJN, and DJC. Berlin seemed to be fond of sending literature like many of today's stations do. As well as QSL card and letter Alan received a questionnaire and an "interesting article on their station activities". In a letter to Alan he mentioned that in March 1935 DJA sent a 4" record. It had on it their time interval signal, the DJA announcer, and two folk songs sung by a German boy's choir.

As well as the German Shortwave Station the "Deutsche Reichpost" telegraph stations - Nauen must have been well heard as Alan had several verifications from them also in the mid thirties.

Form letter from the Ministry of P & T, the Czechoslovakian Republic, March 4th 1937, confirms reception report of Sept. 1936 of their new shortwave station at Podebrady

PAGES FROM THE PAST  
(continued)

near Praha. Testing on wave length 49.05 metres and 19.698 metres, power 30 kW, using nondirectional antenna. Call sign OLR2C.

10th January 1935. 16 miles west of Lisbon facing the Atlantic Ocean is Europes most western broadcasting station. CT1GO Radio Club Portuguese, Parade, 350 watts on 6198 kcs and 12396 kcs. All transmitters were entirely designed and built by Portuguese Amateurs and were located in special club buildings which include two studios, libraries, workshop and adjoining the station there were two lawn tennis courts, basket and volley ball, skating and hockey rinks. Quite a social club.

Another early Portuguese station was CT1AA, Lisbon. CT1AA, Radio Colonial, was verified in 1935 also, and transmitted on 9600 kcs with a power of 2000 watts on Tuesday, Wednesday and Saturday 2130 - 2400 GMT. The interval signal being three cookoo calls. Both stations verified with attractive and detailed cards, CT1AA having five station views on it.

Below I have listed several other European verifications Alan had some with call signs that have not been heard for many decades.

HAS	Station of the Royal Hungarian Post.
2 RO3	EIAR, Ente Italiano Avdizioni Radiofoniche, Rome
RNE	Radio Centre, Moscow
ZAA	Radio Tirana
OFE	Lahti, Finland
LZA	Sofia, Bulgaria
ORK	Radio Ruysselede, Belgium
EAJB	Radio Espana, San Sebastian
OZF	Danish State Broadcasting Service
SPW, SPD	Polskie Radio, Warsaw (very attractive QSL cards)
LYK	Kuanas, Lithuania, 9285 kcs 500 watts
YTC	Post de Radio Emetter a Onda Cortes de Belgrade, Yugoslavia

During the early thirties, apart from the old European and Australian station, the shortwave bands seemed to offer little other than the American stations. Alan verified about ten of these stations. One of the earliest was W1XAZ who verified by letter from Westinghouse Radio Station of New England, dated May 5th 1931. They acknowledged and confirmed reception of their shortwave transmitter and gave the following details; crystal controlled, 100% modulation and a carrier power of 4 kilowatts operating on 9570 kcs. W1XAZ relayed the program of WBZ Springfield.

All the American stations were privately owned and relayed the programs of a broadcast station. I have listed some of the stations showing the networks or broadcast stations relayed.

1931	W3XAL	6100	kcs		NBC, Boundbrook
1931	W8XAL	6060	kcs	3500 watts	Crosley Radio Corp, WLW
1931	W9XF	6020	kcs	5000 watts	NBC, Chicago
1932	W2XAD	15330	kcs		NBC, WGY testing
1932	W2XE	6120	kcs	5000 watts	CBS, WABC
1933	W3XAU	9590	kcs	1000 watts	WCAU
1936	W1XAL	11790	kcs		World Wide Broadcasting Corp.

PAGES FROM THE PAST

(continued)

1939 W4XB 6040 kcs 5000 watts Relays WIOD, Miami

Towards the end of the thirties more and more stations were moving up the shortwave bands. One of these stations was W8XNU the high frequency experimental station of the WLW network which operated 25950 kcs with a power of 1000 watts. In a form letter they stated that during that period of solar cycle (1940) it appeared that distant reception was quite consistent. Their regular shortwave outlet was WLWO, 10000 watts on 6060 kcs.

The earliest Canadian heard by Alan was VE9GW, Bowmanville, Ontario, a 500 watt station operated on 6005 by the Canadian Radio Commission. VE9GW verified by QSL card and letter giving all relevant details. A letter from CJRX, Winnipeg, Canada's pioneer shortwave station, showed what value stations placed in reception reports in the thirties. The station manager gave full details of the recent modernization of CJRC and CJRX to conform with the new rigid standards required, and requested further reports. He also showed concern in the lack of reports from Australia over the last six months and asked Alan, if possible, to inform Australian listeners of the new 2000 watt transmitter and ask them to report reception of CJRX.

Latin America during the later thirties must have been a great field for DX. Numerous private stations were operating from all the Latin countries and these stations appreciated shortwave listeners reports and verified with attractive QSL cards. During the thirties Alan verified every Latin American country with the exception of Uruguay.

Today we are limited to Radio Havana from Cuba. In Alan's day Cuba offered many private shortwave stations. The following calls appear amongst Alan's veries, COCQ, COGF, COBC, COCD, COCX, COH, CO9CG, COKG, COC (1934) and COBZ.

Columbia was another prolific country for shortwave stations. Some of the calls in Alans veries were HJ3ABH, HJU, HJ1ABL, HJ1ABE, HJ4ABE, HJ4ABA, HJ5ABD, HJ1ABP, HJ5ABE. Most Latins verified by card with details filled in, in English. Three cards of extra interest were VP3BG 6130 kcs, British Guiana, ZP14 Radio Cultura, Paraguay, and YN3DG Nicuragua 13900 kcs. Also special mention to Panama. Alan had verified three stations from Panama and judging from DX publications Panama was a far easier country to hear then than it is today. Alans three Panamanian's were HP5K La Voz del Victor, HP5A Radio Teatro, HP5J La Voz Panama.

Of course HCJB "La Voz de los Andes" was amongst Alan's verifications. There were three cards dated 1935 -36 -38 and it is interesting to note power increases respectively, 250, 500 and 1000 watts. They verified with a novel black and white card with no reference to missionary work.

Duplication of slogans was even a problem in the early days even with the smaller number of stations. Just in Alan's collection there were three "La Voz de la Victor"; TIPG, HJ3ABH and HP5K. I also noted some stations still active today although call signs and ownership may have changed. LRX Radio El Mundo, YV8RB La Voz de Lara, Barquimento, XEBR Radiodif, de Sonora, XEFT La Voz de Veracruz, XEWW La Voz de la America, HJ1ABG Emisora Atlantico and HJU La Voz del Pacifico, Buenaventura.

I made reference in an earlier series of Pages From the Past, May 1970, to TI4NRH. I have now had the pleasure of viewing TI4NRH's large (12" x 7") and impressive card. Evidently TI4NRH Heridia, Costa Rica was one of radios pioneer stations with the station manager and engineer, Amando Cespedes Marin forming station NRH in 1922. On the QSL card he makes mention of his membership to the Chicago Shortwave Radio Club and the International DX Alliance, USA. He also mentions that his station was the first to broadcast in Spanish on shortwave from the American continent.

\* \* \* \* \*  
SPY "NUMBERS" STATIONS

Gregg A. Calkin

The so-called "numbers" stations which most NASWA members have heard broadcasting at

Verification Information

QSL REPORT  
QSL REPORT  
QSL REPORT  
QSL REPORT

Verification Information

GREGG A. CALKIN-EDITOR, CALLE RIO BALSAS 35-702, COLONIA CUAUHEMOC, MEXICO 5, D.F.MEX.

\* \* \* \* \*  
 Note: Foreign language report forms may be had from your editor for 1 IRC each. Do not send SASE with US or VE stamps as I cannot use from this QTH. Please allow time for delivery as the XE mail system is even worse than others in North America. When ordering forms, be sure to specify which you want - Spanish, French, Portuguese or Indonesian. Remember to remit 1 IRC for each copy ordered.

GAC

\*\*\*\*\*

QSLs RECEIVED

ALBANIA: Radio Tirana, folder card in 5 months. No return postage (Munger) 87 days for foldercard; seamail. 2 IRCs (Schultz) 6200, black and white folder; 149 days w/ full details (Ingram)

ALGERIA: Radio TV Algerienne, 11810, white and green caravan card w/all details (Konen) 9660, card showing camels and crest, seamail in 10 weeks plus schedule (Fadula)

ARGENTINA: R.A... 9090 green globe card in 2½ months seamail. No data (Rosen)  
 Radio Nacional, Mendoza, 6180, Spanish letter w/pennant in 13 months sea; from V/S: Carlos O. Fignolo, Director. Stated that my report first ever to be rcvd from Australia. (Fadula)

ASCENSION IS: BBC, 9510, Thames card in 6 weeks for 2 IRCs (Linsenmeyer)

AUSTRALIA: Radio Australia, 11520/17795, cards in 65 and 70 days (Dickey) 9570, pic card in 25 days for 3 IRCs (Sorknes) 21540, Darwin aerial card received in 3 months seamail (Tubbs)

AUSTRIA: ORF, Vienna, 8155, picture of Vienna rooftops card and sked; 56 days (Kelleher) Lake scene card; air w/sked in 4 weeks for 2 IRCs (Linsenmeyer)

BRAZIL: Radio Guaiba, 5905, card in 1 month seamail:

Radio R.L.C., 11950, two separate reports sent netted two replies; air in 2 months from the Director: Avelino Henrique (Howard)

Radio record, 11965; letter, pennant and decals from Roberto Corvalho in 18 days airmail (Dexter)

Radio Taboajara João Pessoa, 4795, letter and 2 post cards in 1 month seamail. 2 IRCs sent; reply omitted time (Shaw)

BULGARIA: Radio Sofia, 9700, Sofia University card in 82 days for taped rpt (McClellan) 55 days w/2nd card in series of 6. No IRCs sent (Webb)

BYELORUSSIA: Radio Moscow, Minsk, 9050, card in 29 days air (Kelleher)

CANADA: CFCX, Montreal, 6005, card in 19 days (Kelleher)

CHU, Ottawa, 5500, card showing Observatory and detailed literature on station; 18 days air. No IRCs (Sturm)

CFRX, Toronto, 6070, color card of old and new city halls from V/S: Clive Eastwood. 12 days (Kelleher) 8 days for 2 IRCs (Webb)

CHNX, Halifax, 6100, card in 13 days (Kelleher)

CANAL ZONE: NBA, 17697.5, letter air in 3 weeks. No IRCs (Shaw)

CANARY ISLANDS: Radio Nacional, 11800, card with studio console photo on front; date and frequency on reverse. 2 IRCs. Air in 2½ months direct (Gero)

CEYLON: VOA/Colombo, 11005, card in 7 days from Vivian Despot (Kelleher) 11835; 27 days (Sorknes)

CHAD: Radio Nationale Tchadienne, Fort Lamy, 4904, card w/all details for 3 IRCs and report in French. (Konen)

CHINA (FLOPFLS REF. OF): Radio Peking, 15000, color card/sked air in 30 days (Webb)

CLANDESTINE: R. Liberation, 10010, letter in 150 days air; w/sked (Martin)

COMORO IS: ORTF; Le Chef des Services Techniques, Rene Loncellet sent French letter w/no data apart from verie statement in 1 month for French report. 4 IRCs on 7260. Sent to New Haven, Sussex, England who relayed it to me! (Sizer) 10 days air for 1 bill (Shaw)

COLOMBIA: Radio Colosal, 4945, full verification letter in 42 days air for 2 IRCs for report in Spanish who also netted a nice blue and white pennant (Coleman) 6 weeks for f/up in Spanish and mint stamps (Bruns)

Radio Vision, 6105, letter and stamps in 8 days from Maria Eleanor Vasquez U. (Dexter)

COSTA RICA: TIFC, San José, QSLd in 5 weeks with sked, letter explaining purpose and Spanish literature on country. APTed in English w/mint stamps (Stone) 9645, 45 days air (Ingram)

CUBA: Radio Habana, 11760, multicolored card from Maria Montero Triana; air for 2 IRCs in 136 days (Schultz) attractive pennant 4 months after receipt of QSL and 1 yr after report (Burnell) 16 weeks; 9 color card airmail w/ full data (webb) 9525 in 90 days air (Tubbs) 70 days air for 9550 (Kelleher)

CZECHOSLOVAKIA: Radio Prague, 7545, cards in 51, 40 and 57 days (Dickey) colorful bldg card for 35 years of Czech broadcasting. 36 days air (Tubbs)

DODECANESE IS: VOA Rhodes, 7110, blue projection card seamaile in 7 days (Schultz)

ECUADOR: HCJB, 11745, card in 20 days w/sked and tract; full data air for 2 IRCs (Webb) 17880, 22 days air for 2 IRCs from V/S: Roger Stubbe. Full data (Schultz)

EL SALVADOR: Radio Nacional, 9555, blue and white card in 13 days air for mint stamps; also blue and white felt pennant and colorful tourist brochure (Schnur)

ENGLAND: BBC World Radio Club sent "DX Award", large red and white card, gold embossed station seal. Reverse has full data verification of transmissions from Britain, Far East relay, Ascension relay and Cyprus relay. 3½ weeks air; no return postage (Berg) BBC, 15260, card in 45 days seamaile (Dickey) 9600, Thames card air in 2 wks (Sturm)

EQUATORIAL GUINEA: R. Santa Isabel, 6250 kHz, b/w card of studio building w/QSL stmnt typed on reverse. V/S: Conchita Aguema Mangué, La Jefe de Programacion; 10 months for Spanish report, local p/card and some used Canadian commemorative stamps (Burnell)

FRANCE: ORTF, 17720, all data card in 18 weeks air w/pennant, book and sked under separate cover (Munger) 11920, 11 weeks air (webb) 11920, 77 days w/photo card (Ingram)

GABON: RTVG, 4777, map card in 19 days seamaile w/full data (Rosen) 52 days seamaile w/full data except frequency (Schnur)

GAMBIA: Radio Gambia, 4820, form letter w/information on station and country; 16 days airmail for 1 IRC (Howard)

G. F. Süddeutscher Rundfunk, Mühlacker, 6030, long red-green-blue card and report form plus mimeo note in German about their "Kurzwellenbummel"; 27 weeks seamaile for English report w/2 IRCs (Burnell) (Ingram)

GHANA: Radio Ghana, 17570, card in 57 days (Johnson) 11850, full details in 33 days/

GREECE: Hellenic Nat'l Being Institute, 15425, b/w card airmail in 11 days for 1 IRC and with full data (Shaw)

VOA/Thessaloniki, 7205, card in 12 days from Anita Milavec (Kelleher)

GUATEMALA: TGM, 5955, Quetzal card w/sked and religious info in 1 year "due to shortage of personnel" from V/S: Wayne Berger, C.E. (Stone)

Radio Chortis sent letter in 28 days for Spanish report and mint stamps. V/S: Prof. Raul Amilcar Casasola, Director (Bruns)

GUYANA: Radio Demerara, 5980, card in 12 days for 3 IRCs from V/S: J. Jones for EIC (Howard)

HAITI: 4VEH, 11835, map folder card and letter from Mrs. Kent Ragsdale; air for mint stamps w/full information (Webb)

HAWAII: WWVH, beige and brown card of Kauai and native men in 16 days for 15000 (Bruns) 30 days (Martin) 19 days for 5000 (Schultz)

HONDURAS: Radio Progreso, 4920, long letter w/full verie data; 2 weeks for Spanish report, report, IRCs and state decal (Smallshaw)

HRVC, 4820, card and sked air for 2 IRCs (Schultz)

La Voz de Honduras, 5875, letter from Carlos E. Riedel, airmail in 2½ weeks after 9th try (Dexter)

HUNGARY: Radio Budapest, 9033, card in 83 days and second card in 60 days (Dickey)

INDONESIA: Radio Angkatan Udara, 11320, replied in 11 months for English report with mint stamps. nice b/w card, all data, official seal and apology for delay from F.H. Hasibuan, duty officer (Sizer)

8FC2, 11715, card in 44 days for 2 IRCs. Full data, very friendly (Martin)

RRI Ambon replied after 5 reports w/RRI card, full data, Indonesian letter from A.W. Ramikin, Director, for Sept/71 rpt on 7140 with mint stamps (Sizer)

INTERNATIONAL WATERS: RMI, 6205, beautiful color photocard of ship in 4 months sea; no data (Rosen) color photo card seamail in 58 days for 6205 kHz plus RMI Book (Coleman) 2 months for 2 IRCs seamail (Schnur)

IRAN: Radio Iran, 12176, cards in 4 months in 2 weeks for 2 reports from the Dir. Gen. (Schnur) 15004, plain full data card, sked and copy of "Persopolis"; 5 months for IRCs and state decal (Smallshaw)

ISRAEL: IBA, 6180, card of 19th Century Jerusalem; 4 months w/full data; seamail for IRCs. Experimental frequency (Lobdell) 9025, card air in 2 months w/multi-language sked (Banta) 18 days air w/sked (Sturm)

ITALY: RAI, 15410, color card of antennae over map of Italy; 6 months (McClellan) 11610, antenna/map card w/full data in 57 days air. no IRCs (Johnson)

IVORY COAST: Radio Abidjan, 11920, antenna and map card "SWL de RADIO ABIDJAN", seamail in 63 days. 2 IRCs (Schultz)

JAPAN: NSB, 9595, hand and mike card in 2 months 2 days, w/sked air. Full data (Jamison)

NHK, 17825, colorful verification card, "R.J. News", and a colorful table cloth in a wooden box!!!; seamail reply in 1 month (Banta) 9670, 1972 calendar and sked; air in 18 days (Marshall) 15195, picture card of "Sacred Cranes" w/full info; 18 days for no IRCs (Sorknes) 17785, 35th anniversary card in 14 days (Jamison) 9505, 20 days, no IRCs (Sturm) 14 days air. No IRCs (Schultz) 17825, card in 17 days air (Lobdell)

LEBANON: Radio Lebanon, 11970, card, sked and tourist lit. in 4 months air (Jamison) 15355, card in 15 weeks w/sked (Padula)

LIBERIA: LLWA, 15170, native card and sked, received in 2 months for 1 IRC (Howard) 11940, color card, sked, folder in 18 days air (Webb) 5 weeks w/religious info and sked for mint stamps; 11950 (Stone) 4770, drummer card in 2 months (Smallshaw)

LIBYA: Tripoli, 8630, letter, sked in 30 days w/request for more reports. V/S: Nouri el Sharif. 1 IRC sent; this channel 10 kw only (Martin) 6 weeks air for mint stamps (Berg)

LITHUANIA: "Radio Vilnius" program, 11900, plain card of flowers in 4 months 10 days seamail. No IRCs (Schnur) 11850, nice card in 14 weeks seamail (Padula)

MALAWI: MBC-Blantyre sent form letter veri with map of Africa at top; sked and full data from V/S: the Chief Engineer. 3 weeks, air, for mint stamps and some cancelled US stamps (Berg)

MALAYSIA: BBC, 9740, Thames River card with verie statement, but no data. 32 days for no IRCs (Sorknes)

Radio Malaysia, 11900, colorful card with flag and map; little data, but verie statement; 34 days for 3 IRCs (Sorknes)

MARTINIQUE: ORTF, Fort de France, 5995, letter from L-M Cohic; 5 weeks. Rpted in French and would like more reports according to QSL (Konen)

MEXICO: XERMX, 21705, card, pennant; sked in 31 days by registered mail for English report (Kelleher) 36 days air for 2 IRCs, nice pennant showing outline of republic plus beam antenna (Coleman)

MONACO: TWR, Monte Carlo, card for 11790 w/ religious material in 19 wks sea (Padula)

- MONGOLIA: Ulan Bator, for home service on 5052, card w/very friendly letter air from the Head of English Section; 70 days (Martin)
- MOROCCO: VOA, Tangiers, 9760, card in 15 days from Anita Milavec (Kelleher)
- MOZAMBIQUE: Lourenço Marques, 4925, usual RCM card w/picture of building on front, frequency and power only on reverse. Also sent letter and cancelled stamps. 1 month air for 4 IRCs (Berg) 4855, 11 days w/color photo of studio bldg; seamail (Rosen)
- NETHERLANDS: RN, card showing recording of IS, 7 days air (Schultz) 11730, 7 days, air (Dickey) 9715, air in 10 days (Banta)
- NETHERLANDS ANTILLES: RN/Bonaire, 9715, card air in 6 days. No IRCs (Dickey) 17830, color car w/scene of studios; air in 2 weeks from French Dept; also car decals (Padula) TWR, card, sked, religious pamphlets, air in 2 weeks for IRC. new frequency of 9735 kHz (Padula) 8 days for 11815 for 3 IRCs (Rosen) air in 2 wks for 3 IRCs (Sturm)
- NEW ZEALAND: RNZ, 15280, globe card in 3 months seamail w/tourist pamphlets (Rosen) 15110, 60 days, globe card, sked, tourist brochure, airmail; no IRCs. (Webb)
- NICARAGUA: Radiodif. Nacional, Managua, 11875, postcard from V/S: Tacho Sanchez Diaz, Director Artistico, shows view of active volcano at Leon. Air in 2 weeks for Spanish report w/one US \$ bill (Padula)
- NIGERIA: RTV Kaduna, 9570, green card air in 3 months 20 days w/full data (Jamison) NBC, Lagos, green/white card from Lagos, air in 5 weeks and sked for new outlook on 4900. (Padula)
- NORWAY: Radio Norway, 9550, full data card in 19 days air for 1 IRC (Coleman) 10 days for 6130 (Lobdell) 12 days for 21655 kHz (Lobdell)
- PAPUA: A.B.C., Port Moresby, 9520, map card via airmail in 25 days for 3 IRCs (Howard) 4890, map card in 5 weeks for 2 IRCs; airmail (Munger) 36 days (Schultz)
- PERU: Radio Pana,ericana, 5980, letter from Oscar Collado, Administrator General who says earlier letters did not reach him. Does he mean all of the other nine?? hi (Dexter)
- PHILIPPINES: FLBC, 11920, green tinted hut card in 25 days w/religious pamphlets; 3 IRCs; air w/full data (Rosen) AFRTS, 15155, card w/full info and sked in 19 days (Sorknes) VOA/Foro, 11730, blue projection card seamail in 9 days (Schultz) 9760, card w/full info in 19 days (Sorknes) Radio Veritas, Manila, 15315, card airmail in 4 weeks; all details; recent new frequency (Padula) S.B.A.R.V., Manila, card airmail in 3 weeks for special tests to India, believed the 1st for Australia (Padula) Freq: 17705 kHz
- PORTUGAL: Voice of Hope, via Sines, Radio Trans-Europa, 9670, letter from V/S: Allen R. Steele, Co-ordinator, advised this report from Australia is their 1st from this country. Air in 3 weeks and indicated QSL cards being printed (Padula) Radio Portugal, 21495, world map card in 47 days air (Kelleher) 11840, map card and Listeners magazine in 14 days airmail (Tubbs)
- QATAR: Qatar Broadcasting Soc., 9570, card in 2½ months from Mahmoud Shahid, Dep. Director of Information; for English report. 4 IRCs (Sizer) 2½ months for taped rpt and mint stamps (d'Adolf) 3 months after taped report and mint stamps (Berg)
- R.S.F.S.R. Radio Peace and Progress, 17790, yellow card, without site, in 9 wks; no IRCs (Burnell) Radio Moscow sent cards, w/sites, for Armavir/7310 and Tula/7240 in 2 months. (Sizer) ditto plus Tula/9610 and Armavir/9610 in 25 days (Schultz) Ivanofrankovsk/9660 in 29 days (Kelleher) Tula/9610, Moscow/9680, Armavir/9800 and 9700 (Burnell)
- ROMANIA: Radio Bucharest, 11940, color card, note, sked, air in 13 weeks (Webb) 9570, 15250, cards in 54 and 43 days resp (Dickey)
- RWANDA: DW/Kigali, blue/yellow African map card in 61 days air; full data (Schultz)
- RYUKYU IS: VOA/Okinawa, 15210, card in 15 days from Anita Milavec; no date given.



- SARAWAK: Radio Malaysia, Kuching, 4950, studio card in 4 weeks; airmail; IRC (Munger)
- SAUDI ARABIA: Jeddah, 11855, crossed swords card from Werner Storg, C.E.; air for 2 IRCs (Schultz) 15150, card in 98 days for 3 IRCs (McClellan)
- SENEGAL: Radio Sénégal, b/w foto card of stringed instrument, minus freq.; 1 month for English report, IRCs and state decal. Addressed to "English Section" (Smallshaw)
- SEYCHELLES: FBBA, 11935, blue/white card in 30 days air for 3 IRCs; plus sked and note from V/S: Brenda Bacon, QSL Secretary. (Michalenka) 11935, card, sked and religious leaflet (Marshall)
- SINGAPORE: Radio Singapore, 5052, card w/out data apart from veri stmt; 22 days for 3 IRCs (Sorknes) 5052, 18 days air w/sked for following week; IRCs sent (Munger)
- SOLOMON ISLANDS: S.I.B.S., 3995 kHz, card w/map and SIBS overprinted; 4 IRCs; air in 5 weeks (Gero) 5½ months, seamail for 5 IRCs (Berg) 14 weeks for 7235 kHz (Konen)
- SOMALI REP: R. Mogadiscio sent white card, name, towers and wreath on front, full data on reverse. 3 weeks air after English rpt, pennant and mint stamps sent (Berg)
- SOUTH AFRICA: Springbok Radio, 6195, card in 1 month w/sked (Webb) 4945, 31 days w/full data; also pennant; 1 IRC (Martin) 6195, 27 days w/sked (Schultz)
- Radio RSA, 9695, card in 20 days air (Dickey) 21 days air (Marshall)
- 2 weeks air (Sturm) 9600, 33 days air (Jamison)
- SPAIN: Radio Nacional, 6140, folder QSL by air in 8 days w/sked (Dickey) separate folding cards for 15145, 11775, 9520 and skeds in 6-8 weeks (Padula)
- SWEDEN: R. Sweden, 21505, Northern Lights card w/all data in 13 days by air (Johnson)
- IBRA RADIO, 9660, card, letter, sked and pennant in 152 days. 1 IRC (Martin)
- SWITZERLAND: SBC, 9535, airport card w/all data; 15 days by airmail (Johnson) 2 weeks, (Roseliep) 9750, card by airmail in 17 days (Banta)
- SYRIA: Syrian Arab Rep. Being Sec, 15165, globe card w/date and time only; plus sked in 13 weeks registered mail for English report w/3 IRCs (Burnell)
- TAHITI: Radio Tahiti, 15170, mermaid card w/sked on card; air in 2½ months (Rosen) 4 months for mint stamps; seamail (Schnur)
- TAIWAN: VOFC, Taipei, 15125, pennant, post card, QSL card in 56 days for IRC (Martin)
- TANZANIA: R.T. 9550, drum and studio card in 1 month from the C.E. (Howard)
- TCHAD: Radiodiff. Nationale Tchadienne, 4904.5, card w/time, date and freq. verified; sked on reverse of card. Rpted in English w/2 IRCs; reply in 8 months (Kusalik)
- THAILAND: Thai TV Company, 7107, letter on colorful stationary w/full data from V/S: Mr. Choo Malampang, Director. One month, registered airmail for mint stamps and cancelled US stamps. (Berg) 6095, letter w/full info and registered; 28 days (Sorknes)
- TUNISIA: RTP, Tunis, beautiful color photo card in 11 days sea (Rosen) 5 weeks for 11900; full data; 3 IRCs sent; rpted in English (Konen) 17 days for 2 IRCs (Howard) 180 days for taped report on 6195 (McClellan)
- TURKEY: TAS, 15190, color card in 14 weeks, w/sked; air for 3 IRCs (Webb)
- TURKS AND CAICOS IS: Cable and Wireless Ltd., 4788 kHz, personal letter w/date and veri statement from the Manager in 19 days for 2 IRCs (d'Adolf) 19 days for 2 IRCs. V/S: D.R. Mattocks (Lobdell) 2½ weeks for 5 IRCs; says looking for rpts (Berg)
- U.S.A. VOA, Greenville, 15205, color card air in 13 days; no time (Webb)
- URUGUAY: R. El Espectador, 11835, card, pennant in 4 months by air (Field)
- VATICAN: Radio Vatican, 9615, attractive card in 15 days air. No IRCs (Johnson) 6 wks for 3 IRCs (Sorknes) 9615, card in 9 days air (Dickey) 9615, 17 days (Sturm) (Padula)
- VENEZUELA: Radio Valera, b/w card of main street in Valera in 29 days for Spanish rpt w/mint stamps. All data apart from time. V/S: Carlos Julio Balza, Dir. (Bruns)
- WEST IRIAN: RRI-Manokwari, letter airmail in 1 month from R. Soebandi, (Dexter)
- ZAIRE REPUBLIC: (formerly Dem. Rep. of the Congo) Kinshasa, 15245, letter from V. Sikuna stating QSLs not in stock and indicates that station name is now "La Voix du Zaïre". 5 IRCs sent; 43 days air (Michalenka) 7 weeks for registered French rpt (Burnell)

QSL OF THE MONTH

presents

September 28, 1967

Dear Sir,

We received your kind letter to  
" Peyke Iran ". Thank you.

Actually we are not used to answer  
such letters, for the obvious reason that  
you may guess. But as you have insisted  
and in order to be helpful to you, we would  
like to verify with this letter your  
reception of our radio.

Sincerely yours,

Q  
S  
L  
  
O  
F  
  
T  
H  
E  
  
M  
O  
N  
T  
HQ  
S  
L  
  
O  
F  
  
T  
H  
E  
  
M  
O  
N  
T  
H

Our featured QSL this month is shown to us by our former SWC Editor, Bill Matthews and comes from an extremely rare Clandestine, Radio Peyk-y-Iran. The report was mailed to the headquarters of the Communist Party of Iran at their Stockholm address, but Bill reports that the QSL was mailed in West Berlin. This is the only reply from this station known to your editor! Congratulations Bill - a fine catch.

And many thanks to the following fine people who made this month's column possible:

Steven d'Adolf, Mass.  
John Banta, New York  
Jerry Berg, Mass.  
Ron Bruns, Missouri  
Jean Burnell, P.Q.  
W.R. Coleman, N. C.  
Gerry L. Dexter, Wisc.  
Donald Dickey, Minn.  
Marlin A. Field, Mich.  
Angelo Gero, Ill.  
Ron Howard, Md.  
Bob Ingram, Ohio

Danny Jamison, Kentucky  
Elmer M. Johnson, Fla.  
Robert Kelleher, N. Y.  
Mark S. Konen, Wisc.  
Edward Kusalik, Ont.  
Albert Linsene Meyer, Ill  
Chris Lobdell, Mass.  
Mrs. M. Marshall, N. Dak.  
A.E. Martin, England  
Doug McClellan, N. Mex.  
Doug Munger, N. Mexico  
Henry Michalenska, R.I.

Ralph W. Ferry, Illinois  
Tom Roseliep, Iowa  
Evan Rosen, New York  
Kenneth Schmur, N. Y.  
Bill Schultz, Penna.  
Ed C. Shaw, Virginia  
Harold T. Sellers, Ont.  
Alvin Sizer, Connecticut  
Greg Sorknes, Thailand  
John M. Smallshaw, Wisc.  
Dave Tubbs, Utah

Until next month, best 73s and if you have received a new QSL, why not tell the rest of us about it? But please do not forget the deadline; February 12th! GREGG.

News  
Tips  
Skeds

LISTENERS NOTEBOOK  
LISTENERS NOTEBOOK  
LISTENERS NOTEBOOK

Deadline - 18th

Dan Ferguson, 1521 Smith Road, Apt.7, Charleston, W.Va. 25314. Phone (304) 346-5738.

CORRECTION, APOLOGY, RESOLUTION.

The information recently given in this section concerning the DW Wertachtal transmitter facility was premature. Latest information indicates the facility will not be operational until April. (This info from Richard Wood.) There is the correction. The apology is for failing to indicate the source of information when the item was originally published. The source was the ITU lists. And the resolution is not to be so sloppy about crediting in the future. (DF)

TURKEY The Voice of Turkey broadcasts as follows:

- 915 1000-1300(Sat/Sun) in Turkish
  - 1500-2055 in Turkish
  - 2115-2200 in Arabic
  - 11880 0400-0600 in Turkish
  - 0400-1311(Sat/Sun) in Turkish
  - 1500-2055 in Turkish
  - 15160 0500-0530 Arabic
  - 0530-0600 Rumanian
  - 0600-0630 Bulgarian
  - 0630-0700 Serbo-Croatian
  - 0700-0730 Greek
  - 15195 2100-2130 German
  - 2130-2200 French
  - 2200-2230 English(also on 9515)
  - 17820 1300-1330 Peshtu
  - 1330-1400 English
  - 1400-1430 Urdu
  - 1430-1455 Persian
- (Voice of Turkey sked, via Corky Webb)

AUSTRALIA Cricket match bcsts from RA from 2350-0710 on

- 15145 50 kw, Shepparton to S & SE Asia
  - 17810 10 kw, Lyndhurst to NZ & S.Pacific.
- Tests in Adelaide will be ½ hour later.  
Tests in Perth will be 3 hours later.  
(Robert Jones in Australian DX News)

NETHERLANDS As noted in a special insert with the December FRENDX, the Radio Nederland relay on Madagascar was to begin tests in the 9-15 December period on 15330 at 1230-1520 GMT. At this time(18 December) I have been unable to check the fqy. Information as to the exact date tests began would be much appreciated. (DF)

TANZANIA Radio Tanzania, Dar es Salaam, is scheduled on 4785, 5050, 5985, 6105, 7165, 7280, 9530, 9550 and 15435 kHz. The 5985 kHz outlet is well heard in NA after 0300 s/on, till 0400 when RFE-Lisbon signs on on the same fqy. The 15435 kHz outlet is heard in the 1700-1900 period....Of interest is the 6105 kHz outlet, which does not appear in the WRTH 71, but is listed in the ITU registrations. ITU shows 6105 in operation at 0300-0700, presumeably in // 5985. And at 1500-2100, with 50 kw pwr. A worthy catch even for the high power, and even if you already have Tanzania logged. (DF)

CLANDESTINE Larry Magne, P.O. Box 2133, Mid City Station, Philadelphia, PA 19103, has published a 10 page list of Clandestine stations, along with their current operating schedules/fqys, as determined from actual monitoring. Some of the information is given below. The list is available from Larry for an SASE in US, 1 IRC in Canada, Mexico, 2 IRCs elsewhere.

Radio España Independiente, RUMANIA

- 0600-0655 7690v/10110v/12140v/14482-14505v
- 1300-1355 10110v/12140v/14482-14505v/15507v and 17660v.
- 1600-2310 7690v/10110v/12140v/14482-14505v
- 2230-2250 9833(relay via R.Budapest)

Radio Euzkadi (E=English/S=Spanish/B=Basque)

- Transmitters near Caracas, VENEZUELA
- 2025a-2055a S/B 12060-12120v, 13200-13320v
- 2055a-2105a E 12060-12120v, 13200-13320v
- 2125a-2155a S/B as above
- 2155a-2205a E as above
- 2225a-2255a S/B as above (1925a-2005a alt.)
- 2255a-2305a E as above (1925a-2005a alt.)

Radio Free Russia (mobile txs in W.Germany)

- 1300-2000 6350-6455v, 11488v
  - 1430-1445 VoFK fqys(see WRTH)
  - 1710-1730 BCC & VoFK fqys(see WRTH)
  - 2330-2345 VoFK fqys (see WRTH)
- As noted, Radio Free Russia is also broadcast from BBC Taiwan, and VoFK S.Korea txs. Larry's list gives IDs, addresses, QSL policies, where known. (Larry Magne)

UGANDA R. Uganda sends a schedule, via John Tuchscherer, dated 21 March 1970, but the accompanying letter says it is "our current Time/Frequency/Language Schedule". SW txs listed as follows:

Red Network LL = Local Languages  
 0300-0545 on 4976 7.5 kw in EE/LL  
 0600-1130 on 7195 7.5 kw in EE/LL  
 1400-2102 on 4976 7.5 kw in EE/LL

Blue Network  
 0300-0545 on 5026 7.5 kw in EE/LL  
 0600-1130 on 7110 7.5 kw in EE/LL  
 1400-2102 on 5026 7.5 kw in EE/LL

(John Tuchscherer)

Can anyone verify this schedule? Info desired, if from source other than your own loggings, please state source. (DF)

SINGAPORE Radio Singapore is now using the tx of FBS on 5010. FBS left the air permanently in the fall of 1971. R. Singapore has been noted using the transmitter in the 1530-1600 time slot, beginning with English news. (Victor Coonetilleke, via SCDX)

PORTUGAL The WRTH 71 lists R. Renascenca with 3kw. ITU listings show 6kw. WRTH 71 says sked is 0700-0200. ITU list says 0600-0100 -- it should be noted that the ITU information has remained the same for over a year. Is the station active? Information requested. (DF) Another low power Portuguese listing is Radio Clube Portugues. Seems I recall seeing info to the effect that this one was off the air while a higher pwr transmitter is being installed. Have been unable to dig up the source of the info though; has not been reported in recent months, to my knowledge. (DF)

AFGHANISTAN Kabul currently using 9530 and 11785 kHz for German at 1730, English at 1800 to 1830, both to Europe. (Kenneth Alyta, Jr., Afghanistan, via SCDX)

CANADA Sked issued by R. Canada Int'l should be used with discretion; many times shown are NOT in GMT - some are in Central European Time. (Australian Radio DX Club)

VENEZUELA Apparent new International Svc, noted during December on 11725 at various times of the day & evening. (DF) Noted on 11725, announcing also 11970, 15390, 15400. The 15400 fqy has been heard also. (Bob Padula in Australian DX News)

USA WINB has moved to 15340 kHz at 2100 to 2245 s/off (Australian DX News) When did this station last change fqy? I cannot recall any changes all during the time I edited LOG REPORT (DF)

NIGERIA A survey of various sources of information, including NASWA's LOG REPORT, NNRC SW Section, SPEEDX, ASWLC, WRTH, ITU lists, and my own loggings, also ADXN, yields this rundown of SW operations in Nigeria.

3204 NBC Ibadan \*0430 past 0630. 2200 to 2300 & believed s/off 2300.  
 3396 NBC Kaduna, similar sked to 3204  
 3986 NBC Lagos, 0430-0730. 2100-2305\*  
 4900 NBC Maiduguri, \*0430 past 0600, 2200-2300  
 4932 NBC Benin, \*0430 past 0630, 2100-2300A\*  
 4990 NBC Lagos, \*0430 past 0600, 2100-2300A\*  
 6035 NBC Enugu, s/on uncertain, as VoA on fq in past, now TWR Bonaire there. 2305\*

6050 Western Nigeria Radiovision Svc, Ibadan, still active? Presume so, but have no recent info. Would expect sked to be something like 0430-2300.

6090 RTV Kaduna, \*0430, ITU says 2200\*, that probably correct.

6144v NBC Calabar, \*0430 past 0700. 2030 past 2200, probably to 2300, as per WRTH.

6175 NBC Kaduna sked unknown

7255 NBC Lagos, internal svc here daytimes (local)

7255 VoN, 0530-0730

7275 NBC Lagos, internal svc here local daytimes.

7285 NBC Ibadan, active? ITU says \*0700

9569 RTV Kaduna, \*0430-2215\*

11965 RTV Kaduna, list here by WRTH & ITU. ITU says 0800-1600. Is it active?

7301 East Central State BC Svc, Enugu, 0500-2300.

15120 VoN, 0530-0730/1330-1430/1530-1800.

15185 VoN, 0530-0730/1330-1430/1530-1800

15200 VoN, 0530-0730/1330-2030.

11925 VoN, 1800-2030.

The sked on the last four fqys listed is not known precisely, with various sources differing. Perhaps NASWA members can clear up the confusion by some monitoring of those four frequencies in the 1530-2030 period. 11925 is, to my knowledge, a new fqy, and so far unheard. (DF)

MALDIVES IS According to Victor Coonetilleke, in SCDX, Radio Maldives has a news broadcast at 0500 on 6150. (SCDX) NA DXers should keep the 0300-0500 broadcast on 7225 kHz in mind. This broadcast should be audible in NA.

SWEDEN Radio Sweden has altered the fqy for the 0515-0615 bcst to FE. Now on 9585 kHz, ex 9590. (ADXN)

YOUR COMMENTS, criticisms, etc., concerning this section always welcome. If you want a reply, please include a self-addressed, stamped envelope. (DF)

Jerry S. Berg  
38 Eastern Avenue  
Lexington, Mass. 02173

LOGROOM  
LOGROOM  
LOGROOM

Deadline: 12th  
Late Reports Can  
Not Be Used

FLASH! FLASH! This hot tip being added at Headquarters - even too late for Flash Sheet. R. Nederland's relay at Tananarive, Madagascar hrd Christmas Day 15,260 KHz in EE at 1358 S/on. Gave Tananarive Relay ID. QRM de BBC at 1422. (Berg)

Two country changes this month. CONGO-Kinshasa is now the ZAIRE REP. and will be so listed. The UAR is now calling itself the Arab Rep. of Egypt, and will be listed simply as EGYPT. On to the tips . . .

- 2340 CHINA Foochow, weak-fair w/lang tlks at 1213 (DJ).  
2360 GUAT R.Maya good at 0230-0245 w/lite mx, ID hrd. //3325 (ARN).  
2390 Unid. LA, variety of mx and man ancr 0040-0110, not sure if XEJN or TGDF. weak. Same or different stn here 0258 to after 0300 (GLD).  
2446 REUNION ORTF-St.Denis, stringed IS and anthem, FF ID 0229, FF nx to 0234, then mx. Weak at s/on, peaked 0249, f/o 0304 (RWP).  
2450 HAITI 4VSO, hymns, tlk at 1100 in Creole(?), ID, more hymns(SD).  
2475 CHINA Hangchow, fair w/CC cntry at 1207 (DJ).  
2510 S.KOREA Taegu, weak w/lang tlks at 1200 (DJ).  
2600 CHINA PLA, CC tlk 1118 (GH), fair-good w/revol songs 1157 (DJ). Also hrd on 3199 at 1220 (DJ), better on 3400 at 1240(DJ) and 1135 (CSW), and on 3535 at 1240 (DJ).  
2850 N.KOREA Pyongyang (listed), at 1149 w/tlks (DJ), ditto 1252(GH).  
3170 CZECH OLB5 time pips 0210 (AR), 0240 (DJ), 0415 w/CW ID on the hour, and considerable QRM (ECS).  
3215 DOM.REP R.Libertad, fair in SS 0335 (SC), mx and anmts 0402(KL).  
3230 FIJI Suva, EE, pops and TCs at 0626 (AG), BBC nx 0700 (RO).  
3245t PAPUA R.Kerema, choral singing, native hymns 1112, tentative ID 1153. Off at 1200 w/GSTQ (DW).  
3245 VENEZ R.Libertador, SS cntry, ID 0100, then mx prgm (KS).  
3250 S.AFR SABC, 0001 w/ID and pops, EE/Afrikaans anmts (AAM). ID hrd in EE 0200 (DW), more pops after 0200 (JDT, SC).  
3255 VENEZ LV Tigre, hrd at \*1000 in mid-Nov (MAF).  
3259t SARAWAK Kuching, maybe, at 1226, low, in local lang (DJ).  
3264 CONGO RTVC-Brazzaville, hrd in native tongue and mx at 0100-0130 (MF). Strange hour . . . (Ed)  
3265 GUYANA R.Demarara, weak in EE at 0200 (SC).  
3275 VENEZ R.Mara fair w/closing anmt 0358, ads, IDs, anthem to 0400\*. Also at 1135 w/nx and ads (RWP, JDT).  
3284 FIJI Suva, nx 0715, nx 0732. Fair (DW). Poor in Pidgin 0640 (AG), EE ads, oriental nx 0910 (MSK). Tent, island mx 1005, lang anmts(RWP)  
3290 GUYANA GBS, EE, pop and show nx 2358 (AAM), DJ show 0145 (RWP), tlk 0215 (RWP). Good at 0310 (MD), jazz 0425-0440\*(JDT). Boxing 0445 (AR). \*0845 w/EE, mx, ads (KE), Hindi mx 0920 (RL).  
3295 VENEZ R.Trujillo, soccer, infrequent IDs, at 0425 (RWP). Anmts and LA mx 0048, ID 0120 (JDT).  
3300 GRENADA WIBS hrd w/BBC sports 2245, BBC nx 2300 (JA, WS). Mx 0000 (AAM), N:E 0100 (CSW). News 0200 to s/off (RB), still fine lvl at 0207 w/nx (RWP).  
3311 CHINA Changchun (per FBIS), f/in in CC at 1231 (DJ).  
3315 MARTINIQUE ORTF, semi-clas.mx 2332 (AAM) and 0200 (RWP). Poor at 0250\* w/anthem and guitar. Tentative (AR).  
3322.5 BOUGAINVILLE Island and pop mx 0720, anmts 0727, chines IS and ID 0729 (DJ). Mx prgm, chimes, Pidgin lang arnd 0745 (AG).  
3323 ECUADOR Ondas Quevedenas, SS, several IDs 0605-0631. Nowhere near listed 3308 (CP).  
3325 GUAT R.Maya, fine w/dictation speed SS nx 1135 (RWP). ID 1230,

- good lvl (AM). 0308\* w/full ID and Lord's Prayer (JDT).
- 3325 VENEZ R.Monagas, ID and ads, LA mx 0347 (AAM).
- 3346 ZAMBIA Lusaka hrd w/man tlking 0335, not same as 3295 (MAF).
- 3350 GHANA Ejura, hymns, local N:E 2200, more hymns (BL). Also hymns and ID at 2245 (AEM).
- 3355 N.CALEDONIA Noumea, FF 0640, //7170,11710 (RO). FF mx, IS at 0644 (AG), FF tlk at 0745 (SC).
- 3360 GUAT LV Nahuala, marimba mx 0410, IDs, anmts, to 0436\* w/anthem (DM). SS mx, TCs, IDs hrd arnd 1120 (CP, AAM).
- 3365 DOM.REP R.Exitos, LA mx and IDs 0307-0321 (KS), and fair at 0340 w/fast tlking SS anmts and LA pops (RWP).
- 3375 INDIA Gauhati fair in EE at 1445 w/tlk on the war (SC).
- 3380 GUAT R.Chortis, mx and IDs every 5 mins arnd 0234 (KS), also good to 0359\* w/ID and frequency anmt (DM).
- 3380 MALAWI Blantyre hrd 0321 w/Afr mx (AAM), and at 0427 w/native mx and cock crows, but then lost to the QRM (JDT).
- 3385 FR.GUIANA Cayenne hrd at \*0914 w/guitar IS, LM, FF ID and into rock mx. Hrd to 0940 (CP).
- 3385 N.BRITAIN R.Rabaul, US mx and Pidgin(?) tlks at 0735 (AG).
- 3385 VENEZ R.Barcelona, SS mx, ID 0300 (MSK). Also 0524 w/LA mx and ads (AAM), and s/off 0600\* (CP, RH).
- 3390 ECUADOR R.Zaracay, ID 1030, tlk, mx to 1058 f/o (WS). Hrd w/ID 1100, frequent anmts and TCs (DW). And good 0415 w/LA mx, IDs (JDT). Tentative, muffled IDs to 0500\* w/anthem (RB).
- 3395 BRAZIL R.Cl.Conquista, fair, pops and IDs, to 0333\* w/anthem(RWP).
- 3395 Unid. Latin weak at 0055 w/futebol, much QRM (AEM).
- 3406 DOM.REP R.Santiago good after 0030 w/SS IDs, etc (ARN). ID and sports 0004 (MAF), baseball 0235, easy listening mx other nites (HM), TCs, IDs, ads arnd 0315 (ECS), and vocals and IDs 0330-0345 (SD). HOWEVER, R.Clarin also here, athletic prgm 0037 (AAM), and lite mx to 0335\* w/anthem (JDT). And unid. LA at 0045 (AEM).
- 3883t CAPE VERDE R.Cl.Cabo Verde, hrd to apparent 2300\*, much QRM(DJ).
- 3900 CHINA Presumed Peking HS, fair w/tlks (RWP). Time? (Ed)
- 3905 Unid., maybe New Hebrides, Pidgin tlks, island mx at 0805 thru FEN and India QRM, and hams (AG).
- 3925 JAPAN NSB, mx and ID on the hour, to 0725, //3925,6055 (RO), and good in Jap talks at 0817 (AG).
- 3925 PAPUA ABC, low Pidgin/EE wrds at 1250 under hvy ARO QRM (ECS).
- 3930 CAPE VERDE R.Barlavento, pops and full ID at 0100\* (AEM), and bits and pieces of mx and PP tlk arnd 2354 (GLD).
- 3945 JAPAN NSB, weak mx and Jap talks under CW QRM at 0850 (RO).
- 3958 Unid. at 2340, sounded SS, nx and cmtry, mx on hour, then tlk(ECS).
- 3965 S.AFR SABC, vy poor at 0514 (WB).
- 3985 CHINA Peking, good in EE 1425 (SC), EE ID 1433 (DW).
- 3985 SWITZ SBC in HS relay, semi-rel mx, lang anmts to 2246\*, //6165 (ARN), and w/EE ID and TC at 0700 (TS).
- 3995 SOLOMON IS SIBS, EE, mx, ads, TCs thru hams 0700 (AG), also EE anmts and orch mx 1007, ID 1015. Weak, gone by 1030 (RWP).
- 4430 RSFSR(As) Novosibirsk, healthy sig w/RR cmtry, 2155 (DJ).
- 4680 ECUADOR R.Nacl Espejo, ID, sports, ads at 0306 (VA), time pips 0400. No ID, but likely them (ECS).
- 4690 C.RICA R.Reloj, SS sports 0310, vy good(ER).FBIS lists here (Ed).
- 4700 Unid. vy weak LA at 0025, only bits audible. Maybe R.Emis.San Miguel, Bolivia? (GLD).
- 4719 INDONESIA Makassar, nx 1303, EE song, cmtry and tlk (DJ).
- 4735v ECUADOR R.Nacl Progreso, fair 0350 w/flute and guitar mx (ECS), LA mx 0130 (TS), IDs, low lvl w/nx 0045 (RWP).
- 4749 VENEZ There's one here, hrd on and off to 0400\*, but quite weak and no ID yet (GLD).
- 4750 ZAIRE Lubumbashi, weak, hrd w/mx 0045 to past 0315 11/24 (MAF).

- 4765 CONGO RVVC-Brazzaville, FF mx 0527, then rel mx (VA).
- 4765 ECUADOR CRE, good w/mx, IDs, SS nx before 0500\* (BL).
- 4767 COLOMBIA R.Catatumbo, SS mx, IDs, anmts, etc at 0320-0335 (DW).  
And LA mx and IDs arnd 0424 (AG).
- 4770 LIBERIA ELWA, IS and ID at 0615 (AEM), BBC nx relay 0707, then  
local nx. Later hrd at 2220 w/EE rel prgm, and good then (RWP,JA).
- 4770 VENEZ R.Bolivar, good w/SS jingles 2305 (RWP), nx 0045 (AEM),  
nx, mx, TCs, ads 0215(ER).
- 4775 AFGHANISTAN Kabul, strong in EE 1445, but QRM (SC). Local nx and  
mx 1515, ID and IS 1530 (AEM).
- 4777 GABON Libreville, Afr mx and FF tlk at 2108 (AAM), 2155 f/i(RWP).
- 4780 AFARS & ISSAS Hrd during Ramadan, R.Djibouti vy poor 2210, some  
pops, chants, FF tlk (RWP), and hrd to 2202 when LA took over.  
Have to get em just before the Latins fade in (ARN).
- 4780 VENEZ LV Carabobo, ads, soccer, jingles arnd 2240 (RWP), ID  
and fqys at 0443, also LA mx (VA, KL), to 0600\*, or earlier (AG).
- 4781 ECUADOR R.Atahualpa, hrd w/mx at 1200 (TS).
- 4782 DOM.REP Onda Musical, good w/ID and fqys at 2259, then nx (RWP),  
and strong in SS at 0330 ID (SC). See 4795 (Ed)
- 4783 MALI Bamako, FF tlk 2243 (RWP), and fair w/native mx at 0655(GLD).
- 4787 Unid. at 1435, much mx, sounds like FE lang (SC).
- 4790 VENEZ Ondas Portenas, fair w/SS versions of US pops, 0245 (AR).
- 4794 BRAZIL R.Congonhas, ID 2326, mx and tlk. A real jumble (GLD).
- 4795 ANGOLA R.Comercial, PP tlk and cmtry, nx at 2350 (AEM).
- 4795 DOM.REP Onda Musical, good in SS, LA mx at 0256 (KL), to 0401\*  
w/ID and fqys (KS). See 4782 (Ed)
- 4797 BOLIVIA R.Nuevo America, "Panorama de la Noche" 0402, some ads,  
ID 0421, then short nx (Dw).
- 4797 ECUADOR LV Caras, LA mx, not many anmts but two IDs hrd. Off  
w/march at 0520\* (CP).
- 4800t LESOTHO Weak from 0410 t/i, mx, some talks, maybe ID 0429 (RWP).
- 4800 VENEZ R.Lara, good crisp sig w/soccer game 0100 (RWP).
- 4807 ECUADOR R.Popular hrd w/ID at 0515 (GLD).
- 4807 SAO TOME Emis.Regional, PP tlks 2250, off 2305\* w/AP (RWP).
- 4810 VENEZ R.Popular, LA mx, ads, IDs at 0145. Fair (AG). Also hrd  
w/ID 0300 and also 1007, then mx (RO).
- 4815 ECUADOR Canal Manabita, nx 0415 on extended sked. Fair (RWP).  
4810, also hrd various times w/nx after 0400 (MAF).
- 4815 UPPER VOLTA Ouagadougou, fair w/Afr mx 0705, till gone arnd  
0740 (RWP), vy good w/pop and local mx in FF, 2145-2201 t/o(JDT).
- 4815 USSR Seemingly a Russian, 1220, ID 1300 and continues (JDT).
- 4820 GAMBIA Bathurst, IS 0626, EE ID 0628, into chants (WS). BBC nx  
0700, then local nx and mx (RB, JA, KE, WB).
- 4820 HONDURAS LV Evangelica, EE rel play, poor, at 0406 (AG).
- 4825 DOM.REP LV Fuerzas Armadas, ID 2200 then rock mx (KS). Clas.mx  
to 2227 (DJ), more mx 0250 (DS). ID 0340 (VA), to 0432\* after ID  
and anthem (CP). Also hrd at 1036 w/ID and LA mx (JDT).
- 4833 C.RICA R.Capital, LA mx, full ID 0357, then nx at 0400 (ER).
- 4835t BRAZIL Rdif.Roraima, SS at 0405, hvy RTTY(VA). PP maybe? (Ed)
- 4839 ZAIRE Bukavu, native mx, guitars, ID at 2100\*. Weak (BL).
- 4839a INDONESIA Ambon, pop mx 1157, RRI IS 1159, then nx. Noisy (CP).
- 4840 VENEZ R.Valera, strong 0045 w/LA mx and IDs (AEM), and 1033(JDT).
- 4845 BOTSWANA Gaborones, vy poor 0410 w/Afr choral mx (RWP).
- 4845 BRAZIL Rdif.Teresina, on late w/mx, ID hrd 0351 (MAF).
- 4845 MALAYSIA RM, vy fine at 1230 w/IS, changing languages (RWP).
- 4850t ANGOLA R.Cl.do Uige, maybe the one w/drums 2045, under Mauri(BB).

- 4850 MAURITANIA Nouakchotte, long chants, FF anmts, weak at 2115-2145 (BL). Chants 2220 under RTTY (GLD), ditto, but vy strong w/chants and flutes at 0700 (RWP).
- 4850 PERU Presumed R. Atlantida, sports prgm at 0409 (GLD).
- 4850 UZBEK Tashkent (list), tlk, clas. mx 1215, then R/S Rodina IDs and IS at 1245 (JDT).
- 4850 Unid. under hvy RTTY 2256-2307 t/o---no idea what lang (GLD).
- 4855t MOZAMBIQUE RCM, PP anmts 1710, pop mx, rapid fade arnd 1720. Fantastic long path rcprn (DW). Also hrd here afternoons (Ed)
- 4855 INDONESIA Palembang, chimes 1110, ID and into drama (Ed), clear tlk 1130 (BB). Also in EE w/pops 1546, EE ID 1605, pop mx, listener's ltr. This on a Sat (DW). Nx and singing at 1540 (AEM).
- 4860 VENEZ R. Maracaibo, SS tlk to 0403\* after IDs (VA).
- 4863 BRUNEI Berakas, good in native lang at 1412 (SC).
- 4865 BRAZIL R. Cl. do Para, FP IDs and futebol 0200-0230 (BL), soccer and comls past 0300 (CP). Vocals to 0924, comls, a prayer to 0933 t/o after het developed (SD).
- 4865 AZORES Ponta Delgada, American pops and PP ID 2119 (AAM), ditto at 2245 to 2301\* w/AP. RTTY under them most days (JDT).
- 4870 DAHOMEY Cotonou, nx 2100, native mx and IS alternating (HM). FF ID 2130, then native mx (BL). Good to 2215\* on Sun (JDT), and also to 2300\* (AEM).
- 4874t INDONESIA Sorong, hrd w/singing 1200, but off suddenly (TS).
- 4875 S.AFR SABC, Afrikaans tlk 1630, ID 1659, pips 1700. Long path (DW). Pops 2130 (AAM), clas. mx and rel tlk at 0445 (TS).
- 4880 DOM.REP R. Comercial, ID, nx 0300 (ER), mx and IDs 0445 (DM) and 0503 (AAM). Same 0550 (AG), and nx and TCs 2225-2237 (KS).
- 4880 VENEZ R. Universo, ID 0000 then tlks (AEM), ads, mx, ID 0130 (VA) and ID 0157, into LA mx (ER).
- 4885 COLOMBIA Ondas del Meta, SS mx and ID 0100 (VA), 0200 (DS), and SS bulletins at 1115 (JDT).
- 4890 HONDURAS R. Lux, SS mx, comls 1158-1211 (CP), ID, ads at 1200 (BB).
- 4885 KENYA Nairobi, N:E at 2100 on extended Sat sked (BB).
- 4890 PAFUA ABC, EE soap opera 0750 (RL), native songs 0923 (AG), QRMed R. Lux badly at 1200 (CP). Fair 1300 w/mx and nx (CSW), pop songs 1308 (AAM), also N:E one day at 1308 (WS).
- 4890 PERU R. San Juan, weak 0403, Andean mx. Improving (GLD).
- 4890 SENEGAL Dakar, pops 2030, FF ID 2108. Fair sig (BL).
- 4890 VENEZ Rdif. Venez, US pops, IDs 0245 (AG), SS rock mx 0325 (MD).
- 4895 USSR RR tlk 0450, HS IS 0500, more tlk. Ashkhabad and Tyumen listed (GLD). Also w/lite mx 1253, IS and tking at 1300 (JDT).
- 4896 PERU R. Chanchamayo, local mx 0432, several tentative IDs, TC 0450, definite IDs 0455 and 0459, then off suddenly 0500 (DW).
- 4900 BURUNDI R. Cordac, native mx 2115, lang anmt 2140. Weak but clear (BL). Any chance this was the Nigerian here? (Ed)
- 4900 INDONESIA Gorontalo, tlk 1440, Indo pops 1444, splash from RM-4895. Hrd to 1452 t/o (DW).
- 4900 NIGERIA Hrd 0435 after Venez s/off, chants, then into EE. Sounded like same chant as 6140, but Maidugari says it wasn't them at this time (MAF). Poor w/mx 0458, N:E 0500---is either Enugu or Lagos (RWP). Take ur pick--one DXer says he has Maidugari QSLed here (Ed)
- 4900 VENEZ R. Juventud, SS mx, ID 2359 (VA), and pops at 0335 (AAM).
- 4904 CHAD Ft. Lamy weak w/Afr mx, FF anmts at 2200. High QRN (RWP).
- 4905 BRAZIL R. Relogio, FP sportscast at 0145 (TS).
- 4905 CAMBODIA Phnom-Penh, good at 1420 w/native songs (SC).
- 4910 ECUADOR Emis. Gran Colombia, LA mx, ID 0436 (TS), ID, ads 0514 (AAM).
- 4910 GUINEA Conakry hrd w/Afr songs 2115, FF anmt and FF nx. Fair (BL). Also fair w/FF tlk 2210 (RWP).
- 4910 DOM.REP R. HIN, nx and ads in SS hrd at 2200 (KL).



- 4915 COLOMBIA h.Guatapuri, fair 0000 w/LA mx (KL), many IDs arnd 0235 (HM), and ID and anthem at 0502\* (AAM).
- 4915 GHANA Accra, vy good at 0600 w/N:E (RWP), same but poorer (WB, AG, TS), and EE tlks and anmts at 2200 (KL).
- 4915 KENYA Nairobi hrd w/drums, lady tking, Swahili chants arnd 0320 (BB), and w/nx in lang on Sat 2100, to 2110\* (Ed). Tentative, talks, anmts, maybe nx, seemed like ID 1600, then 6 pips (DW).
- 4920 AUSTRALIA Brisbane hrd w/jazz records 1150, N:E 1200 (JDT), and poor w/N:E at 1255 (AAM).
- 4920 VENEZ R.Caracas, LA mx and IDs 0332 (AAM), rock mx 0619 (WS), pop mx and an ID at 0700 (AEM).
- 4920 USSR R.P&P, \*1900 in GG, mixing w/Brisbane (BP).
- 4923 ECUADOR R.Quito, sports 0157 (AAM), clas. mx arnd 0230, ID 0227 (BL), more IDs and anmts at 1130 (JDT).
- 4925 BRAZIL Unid. stn hrd from 2230 w/sports (MAF).
- 4926 EQ.GUINEA Bata, hrd w/mx 2240 to past 2315 (MAF).
- 4930 DOM.REP R.Mil, ads 2335, mx, ID 2345 (ER), ads, LA mx arnd 0239(AAM)
- 4932 INDONESIA Surakarta, mx and tlks 1145 (RWP). RRI IS 1159, gongs, into Djakarta nx relay to 1215, then local prgm (Ed).
- 4932 NIGERIA Benin, N:E, sked at 0510 (AEM), N:E also 0600, poor(JDT).
- 4940<sub>t</sub> INDIA Gauhati (list), weak w/tlks at 1230 (TS).
- 4940 IVORY COAST Abidjan, good at 2200 w/FF anmts, hi-life mx (RWP). Tentative, jazz 2325, 0000\* //11920, both in the mud (DM).
- 4945 COLOMBIA R.Colosal, LA mx, many ads at 0326 (AAM), poor 0515 (AG).
- 4945 S.AFR SABC, pop mx at 2200 (TS).
- 4950 SARAWAK Kuching, fair-good in EE 1200, nx, clear IDs. F/i early as 0950 (RWP). N:E 1400, also LA mx, tlks (DM).
- 4955 COLOMBIA R.Nacional, ID 0135, nx, then LA mx (ER), and at 1020 w/FF radio play, SS ID 1030 (RWP). They also have EE lessons in the morning sometimes, arnd 1000-1130, not sure exactly (Ed).
- 4957 INDONESIA Banda Atjeh, male chants hrd 1550 (AEM).
- 4960 PERU R.Lambayeque, weak at 0230-0300, LA mx and IDs hrd thru R.Antillas (BL).
- 4962 DOM.REP R.Antillas, ID 0220 ancng "new power" (HM).
- 4965 COLOMBIA R.Santa Fe, LA DJ show, mx and ads at 0145 (AAM), ID 0500, more mx (RH), and ID and mx at 0528 (VA).
- 4965 S.AFR SABC, pops 2132 (KL), strong 0405 (GLD), EE cmtry 0410(RWP).
- 4966 ANGOLA R.Cl.Malange, man in PP, variety mx to 2302, then tking and off 2304\* w/AP. Poor-fair, and R.Santa Fe QRM (GLD).
- 4970 SABAH Kota Kinabalu, fair 1420 w/tlks in CC or Malay (SC). Tentative, vy weak w/Asian mx 1100, much ute QRM (RWP).
- 4970 VENEZ R.Rumbos, ID 0206, also ads (VA).
- 4970 CLAND (Port.Guinea) LV Libre du Peuple de Guinee, chants thru R.Rumbos, unique IS to 2200\* (LM).
- 4972 CAMEROUN Yaounde, good 2147 w/native mx, but lost 2210 (JDT).
- 4980 GHANA Ejura, weak EE ID 0608, //4915 (TS), and anmts 0640, rock mx, TC 0700, nx, EE ID--vy good (RWP).
- 4980 VENEZ Ecos del Torbes, SS ID, tlk, mx 2310 (WS), SS 0100-0300 (JG), SS nx 0130 (AAM), tlks 0138 (VA), pops to 1047, ID, ads, vocals to 1100 t/o (SD).
- 4985 INDONESIA Unid. RRI, orch mx to 1214, then ID and into Djakarta relay, still going at 1250 f/o. Who? (Ed) My earlier report of Penang here apparently wrong--must be the Indonesian (GH).
- 4990 NIGERIA Lagos, EE sermon 0440, TC, ID 0500, then mx (BL).
- 4990 VENEZ R.Barquisimeto, SS and EE pops, IDs 2300-2345 (WP).
- 4994 SUDAN Omdurman, hrd late one day w/chants, ID 2232 (ER). 4996, good lvl w/AA chants at 0402 (GLD).
- 4995<sub>m</sub> BRAZIL R.Brasil Central, positive ID 0100, then pops (TS).
- 4995 PERU R.Andina, mx and anmts at 0505 (GLD).

- 5000 HAWAII w/Vh, vy faint time anmt by lady under w/V, 1140 (CSW).
- 5000 ITALY IBF, Turin, Italian, EE, FF ID 0644 and 0700, maybe code in between, not sure. Much w/V RM (WS).
- 5002 Unid. w/M-E mx, maybe nx, arnd 1630. Thought Dacca (AEM). I think there's been talk about Nepal arnd here, too (Ed)
- 5010 CAMEROUN Garoua, drum and flute mx, maybe AA 2155, 2200\* (AEM).
- 5010 DOM.REP R.Cristal, SS 0545 (AG), pops, bongos, etc at 0605 (RWP).
- 5010 SINGAPORE BFBS, EE tlk and mx, good but RM, 1420 (SC). Latest wrd is that they've closed recently, xmtrs being used by R.Sing.(Ed)
- 5015 ANGOLA R.Cl.Mocamedes hrd 2220-2230 w/anmts, lite mx, maybe ads, but a Brazilian, WIBS or numbers stn are usually dominant (ARN).
- 5015 GRENADA WIBS, hrd w/ads 2245-2300. Something new? (ARN). EE 2300 (MD), local nx 2345-2356\* (WP).
- 5015 RSFSR(As) Vladivostok, fine in HS at 0950, RR anmts, opera (RWP), local ID 1230, then nice mx. Took 3 wks to get ID (DM).
- 5020 COLOMBIA Trans.Caldas, band mx 0135, fair (AAM), ID 0201, then Ss mx (VA), and mx, nx and IDs at 0410 (RO).
- 5030 SARAWAK Kuching, tlks by man at 1251 (DJ).
- 5030 VENEZ R.Continente, good w/LA mx, comls 0455 (AR), ID 0515 (AEM).
- 5035 COLOMBIA LV Caqueta, LA mx 0225, ID 0250, but good 0340 (JDT).
- 5038 C.AFR.RLP Bangui, exc w/native mx 0350. Earlier s/on? (GLD). Tlks and Afr mx 2103 (AAM), fair w/N:E 2215 (BL).
- 5040 BURMA BBS, lang nx 1132, ID 1146, vocals to 1201 t/o (SD). Tlks 1212, local mx 1217 (JDT), good at 1245 peak w/oriental mx (RWP). Good w/vocals 1303 (DJ), tlks in native lang 1415 (SC).
- 5040 VENEZ R.Maturin, LA mx 0354, ID, anthem 0356, then off (RWP).
- 5041 PORT.GUINEA Bissau, strong 2315 w/pop mx (JDT). Tentative, nightly arnd 0049 w/pop mx and PF tlk (ER).
- 5047 INDONESIA Jogjakarta, good in native at 1410 (SC). Mx to 1145, then chimes, N:E, chimes 1156, back to lang. Then lost em (Ed)
- 5047 TOGO Lome, 2050 w/Afr drums, tlks (AAM), clas.mx 2143 (KL), f/i 2115 w/rock mx, peaks as best in band 2200 (RWP). FF nx and lite mx to 2300\* (MD). Good early as 1952 w/N:E, back to FF 2200 (Ed). And US, Afr mx, tlks, drums arnd 0553 (AG).
- 5050 PERU R.Loreto, vy good from YV s/off 0400, ads, clear ID (RWP).
- 5050 VENEZ R.Mundial, LA mx, ID 0359, off 0405\* after anthem. Strong (RWP). Long IDs during LA mx prgm, 0320 (HM).
- 5052 SINGAPORE RS, good w/EE tlks 1405 (SC), EE nx, mx, TC 1530 (RO).
- 5060 ALBANIA Tirana, good in HS at 2045, no chance for Aden (HM).
- 5060 S.YEMEN Aden, chants to 2130, martial mx, tk, instr mx, prayer, anthem, 2200\*. Tirana seems about 3 kHz higher these days (Ed).
- 5075 COLOMBIA R.Sutatenza, ID 0000, nx, ID (VA). LA mx, IDs 0030-0200 (HD), ID 0132 (WP), SS mx 0213 (MD), mx to 0355\* (DT).
- 5095 COLOMBIA R.Sutatenza, poor in SS 0158, //5075 (AG).
- 5490 INDONESIA Unid. RRI, fine lvl w/vocals 1242. JTH? (DJ).
- 5558 INDONESIA Unid. here too, vocals at 1240 (DJ).
- 5804y YEMEN Sanaa, local mx, AA tlk, s/off varies 2125-2135 (AEM). ID, martial mx, chants at \*0330 (ECS).
- 5875 HONDURAS LV Honduras, poor 0256 w/mx and ads (AG).
- 5830 Unid., all GG sports event 2145, on SSB, apparently PTP (ECS).
- 5920 BYELORUSSIA Minsk, RM to UK, hrd w/sports 1915-1928\* (WP).
- 5930 CZECH R.Prague, EE to Eur 1900-1930 (JG), N:E, cmtry, mx 0100-0130 (DN), fair-good to NA w/EE, and mx, 0330 (DM).
- 5940 RSFSR(As) Magadan hrd 0315, not sure if HS or what (RWP).
- 5945 ALBANIA Tirana, IS and "Govorit Tirana" at 2230 (ARN).
- 5955 E.GERMANY RBI, N:E, cmtry, mx to NA arnd 0345 (RBa).
- 5955 GUAT TGNA, EE rel prgm to 0505, then SS. Fair (RH).
- 5960 FRANCE Paris, FF nx 0630, 0730\*, mixing w/HCJB. NF (BP).
- 5960 GREENLAND Godthab, faint IS/ID 1929, but hit by RM at 1930 (ECS).

- 5962a BOLIVIA Maybe R.Pio XII, some lite mx 0000-0030, one SS ID hrd(ARN)  
5962 HONDURAS LV Occidente, 0000 check, SS ID. Listed 5960 (ARN).  
5970 PERU R.El Sol, good w/pops, SS IDs and jingles 0600 (RB).  
5975 CANADA CBC, now EE here 0715-0745, ex-5990, //9625 (BB).  
5980 LEBANON Beirut, abrupt HS s/on \*0415, AA nx to 0430 (CL).  
5980 SIERRA LEONE Freetown, BBC nx 0800, EE/lang ads 0805, tlk,mx(WS).  
5981 PERU R.Panamericana, SS mx, definite ID 0500. Past 0640 (RO).  
5985 TANZANIA Dar es Salaam, IS 0257, Swahili ID 0258, anthem, tlks to  
0345 f/o(CL). Tent, mx and anmts till covered by RFE,0342 (MW).  
5988 VENEZ Ecos del Torbes, IDs arnd 0255-0315, fine lvl, //4980. Not  
sure if spur or 2d xmtr(ARN).Hrd 1030, but 4980 much better(Ed)  
5990 CANADA CBC Northern Svc, nx at 0700 (WB).  
5990 VATICAN VR, almost perfect rcptn at 0050 (HSt).  
5995 AUSTRALIA RA, N:E, newsreel at 1100 (HSt).  
5995 MALI Bamako, Afr mx, hvy noise lvl, 2340. All FF (MD).  
5995 MARTINIJE ORTF, FF anmts and slow tunes 0128, wiped out by  
het and VOA at 0140 (MSK).  
5995 VATICAN VR, good in lang ID 0008 (ARN), and EE 0050 (MB).  
6000 BRAZIL R.Inconfidencia, sports prgm, good at 2315 (SC), strong w/  
nx 0215 (MD), PP tlks and LA mx arnd 0235 (ER).  
6005 BOLIVIA R.Progreso, poor-fair w/SS mx 0210, QRM (MD).  
6005 CANADA CFCX, records and traffic rpt 1245 (MB), strong 2305 (SC).  
6005y C.RICA R.Reloj, pops, ads, ID 0230 (MB), nx 0303 (KL), hrd w/ID  
0815 way after listed s/off (RO). LA mx, TCs arnd 0945 (CSW).  
6010 ITALY RAI, N:E 0103, then mx, ID and off 0120 (DN, JPR).  
6012 THAILAND Thai TV Co, tlk and some mx 1355, fairly good but VOA  
QRM from 6010 (SC).  
6015 DODECANESE IS VOA-Rhodes, just readable w/local ID at 0000\*(ECS).  
6015 BRAZIL R.Cl.Pernambuco, fair w/mx and comls at 0812 (GLD).  
6015 PARAGUAY R.Paraguay, mx and anmts from 0925 tune, ID 0937. Fair  
w/QRM. Other 2 Paraguayans on 59 m not noted (GLD).  
6020 HOLLAND RN, good sig in native lang at 2300 (SC).  
6020 PERU R.Victoria, SS, quiet LA mx 1144. Poor-fair (AAM).  
6020 UKRAINE Kiev, local ID, 0630. Is Ukrainian HS (BP).  
6025 PORTUGAL Lisbon, poor recently arnd 0200, //11935 not hrd (HD).  
EE to NA hrd 0345-0430 (JG), good w/ID in EE at 0430\* (DT).  
6035 BRAZIL R.Globo, PP mx, ads, TCs, etc arnd 0230. Good (KL).  
6035 RSFSR(As) Vladivostok (list), opera mx, RR tlking, 1334.Good(AAM).  
6040 COLOMBIA LV Tolima, ID and LA mx hrd 0249 (MW).  
6040t TRUCIAL STATES Maybe this one, hrd twice arnd 0425 after LAs  
gone. Intra-prgm IS, not that of Syria, Iraq, etc. Short AA nx  
hrd, then singing. Weak, and gone by C 45 (RWP).  
6045 PERU R.Santa Rosa, IDs and LA mx at 0250 (MW).  
6050 W.GERMANY VOA-Munich, poor in EE at \*0200 (MD).  
6055 CZECH Prague, \*0630 in Italian to Eur, via long-path (BP).  
6055 JAPAN NSB, organ mx and ID 1300 after pips. Good lvl (RWP).  
6060t ZAMBIA Lusaka, in EE 0725, definite mentions of Lusaka. Variety  
prgm. Not well hrd, and faded quickly (ECS).  
6065 COLOMBIA R.Super, vy strong, easy ID 0727--seems 24 hrs (RWP).  
Mx 0615, ID 0630 and TC (RB).  
6070 BULGARIA Sofia, in Greek 0620, Bulgarian 0630 (BP). Fair w/N:E  
at 2130 (JA).  
6070 CANADA CFRX, good 0155, but much QRM by 0215 (AEL), and pops,  
ads, IDs 1350, all EE natch (MB).  
6075 W.GERMANY DW, presumed the new Wertachtal site, exc to 0555\*(GLD).  
6080 ENGLAND BBC relaying CBC in Polish 1945. NF ex-6010 (BP).  
6080 S.AFR RSA, exc at \*2215 w/N:E (HSt), exc 0100-0120\* w/no QRM(HD),  
and EE cmtry at 0130 (EAR).  
6085 ESTONIA Tallinn, "A" tuning sig 0355, then horn IS, anmt, pips  
0400, ID "Govorit Tallinn" tho not too clear (ARN).

- 6085 W.GERMANY BR, Munich hrd at 0510 w/GG cmtry (DJ).
- 6085 INDIA Madras, vy readable 1307 w/Ind mx, some QRM (DJ). Also good w/mx in native lang at 1350 (SC).
- 6090 ARGENTINA R.Belgrano, men tiking 0325, ID, off 0330\* (MAF).
- 6090 LUXEMBOURG RL, hrd at various times 2240-0200\* w/pops, EE amnts and IDs, wx, etc, and nx just before s/off (MB,DM,RL,RB,RO).
- 6092 CAMBODIA Phnom-Penh hrd on natl day, fair lvl w/patriotic songs, FF/EE/lang tlks (RWP). Time? (Ed)
- 6093 SOMALI Mogadishu, anthem 0258, AA chants, march mx, some guitar mx (BL, SC). Still going in AA at 0350 (JMS).
- 6095 IRAQ Baghdad strong in AA at 1450 (SC).
- 6100 VENEZ YVTO time sig stn, fair, no QRM, at 0840.ID every 5 mins(KE)
- 6100 YUGOSLAVIA Belgrade, N:E at \*2000 (MW).
- 6105 COLOMBIA R.Vision, fair at 1010 w/orch mx, IDs, jingles (RWP). Strong w/full ID 1038, mx, comls (GLD). See 6200 below (Ed)
- 6105 MEXICO Sis.R.Yucatan, SS tlks and songs 1311 (DJ), SS prgm w/ local emphasis at 1300 (BB).
- 6110 ENGLAND BBC, good in EE 0219-0247, much improved since Nov (HD).
- 6115 CONGO RTVC-Brazzaville, good w/rock and jazz from 2110 t/i(RWP). FF variety to 0700, IS/ID. Hvy RFE QRM (ECS).
- 6115 MEXICO R.Univ.Sonora, vy good 1720 w/US march mx (DM).
- 6125 COLOMBIA R.Continental, poor at 2330 w/nx and cmtry (AEM).
- 6125 HONDURAS R.Suyapa, hrd after VOA goes off. SS mx, IDs 0615(RO).
- 6130 CANADA CHNX, fair at 0715 (WB), telephone talk show 1305 (MB).
- 6130 NORWAY Oslo good w/EE ID 0623 (GLD), to Pac 0625.NF ex-9550(BP).
- 6140 MEXICO R.Univ.Chihuahua, lite mx, ID 1735. Vy good sig (DM).
- 6140 SPAIN RNE, in EE to NA 0100, 0200, 0300 (RBA). LA mx 0309 (FA).
- 6145 W.GERMANY DW, EE to NA 0435-0555 (JG), good at 0445 (DM).
- 6144 NIGERIA Calabar, IS and opening ID 0446, good lvl (ARN), local ID and N:E 0600 (GLD), pop mx after 0612 ID (DM).
- 6155 AUSTRIA Vienna, EE nx, mx, cmtry 0031-0045 (DN), exc when ending EE 0150 (MD), ditto at 0155 w/old pops (AG).
- 6155 JAPAN FEN, N:E 0700, good sig (DM).
- 6165 HUNGARY Budapest, good in EE to NA 0100-0125 (JPR), 0300 (RBA).
- 6165 MEXICO LV Amer.Latina, exc arnd 0500 w/SS mx, many IDs (KS).
- 6165 SWITZ SBC, TC and nx 2046, vy strong sig (CSW).
- 6165 S.VIETNAM VTVN, fair-good under Brazil 1000, tlks, oriental mx(ECS)
- 6173 SWEDEN Stockholm, SS cmtry 0135, NF. Vy good (ER).
- 6175 ANGOLA Voz de Angola from 0458 w/variety mx, ID 0500 (GLD).
- 6175 FRANCE Paris, FF mx prgm hrd 0837, good lvl (AG).
- 6175 MALAYSIA RM fair at 1115 in Mandarin (RWP).
- 6180 GUAT LV Guat, good at 0200 nx (JPR), opera mx, SS ID 0445 (RO), and tlk and mx arnd 0448, good lvl (AG).
- 6180 ISRAEL IBA, EE here 2115, fairly good but BBC QRM (ER).
- 6185 W.GERMANY D. in GG to WCNA 0555 (FA).
- 6190 HUNGARY Budapest hrd well w/N:E at 0400 (JA).
- 6190 W.GERMANY presumably, hrd 2130-2230, nx, cmtry, mx. ID and IS (4/4/7 organ notes) nightly at 2210. Maybe Bremen or new Sender Freies Berlin? (ECS) All I hear is Bucharest in GG arnd this time, but this doesn't sound like it . . . (Ed)
- 6195t INDONESIA Manokwari poor at 1305 w/mx, then Djakarta nx (RWP).
- 6195 TUNISIA Tunis, AA chants frm 2130, ID 2200, more mx (ER).Tone to 0500, anthem, ID, more chants (RL), hrd to 0555\* (DM).
- 6199a CLAND Voice of Pathet Lao, Lao tlk 1300, SEA mx, seemed to close at 1328 (RWP).
- 6200 ALBANIA Tirana, exc 2000-2100, N:E (Hst), EE tlk 0130 (CSW,JPR), more EE 0245-0300 (DN). And in Indonesian 0630-0700 (BB).
- 6200 COLOMBIA R.Vision found here now at 0000-0030 check, many ads (ARN). Also hrd w/tlks, ID 1120 (LM). Nominal 6105 (Ed).

- 6205 INT'L WATERS RNI, usual EE rock style prgms 2300 (AB), 0130 and seemingly 24 hrs on weekends (JMS), 0705 (WS), and in Dutch at 0500 (RL).
- 6242 Unid. SS stn 0420, good sig w/sports prgm (DJ). Unid. also hrd at 0420 w/pop mx just before f/o (ECS).
- 6250 EQ. GUINEA S. Isabel, good from 2215 f/i to 2255\*, local pops and SS (JMS), and ID 0616 after SS mx and tlks (RB).
- 6250 PERU R. Cuzco, ID and anthem hrd at 0545\*, good, in the clear (ECS).
- 6251 N. KOREA Pyongyang HS, tlks, mx, nx 2100-2300, ID 2201 (LM).
- 6255t AUSTRIA OYE21, seemingly GG, way down in mud, 0445 (ECS).
- 6270 GALAPAGOS hrd 0000, presumed, tlk to 0014, badly clobbered (AG).
- 6277a INDONESIA Unid. stn fair at 1100 (RWP).
- 6288 N. KOREA Pyongyang hrd 2225 in Korean, chimes 2230, march, back into lang. Don't confuse w/Peking slightly higher (ARN).
- 6290 CHINA Peking exc at \*2230 w/IS and ID (GLD).
- 6342 TURKEY Turkiye Polis Radiosu, local mx, anmts. 1855 (AEM).
- 6376 N. VIETNAM Tay Bac (list), Viet tlk, quite readable 1040-1140 (LM).
- 7025 CHINA Peking, YL at 1155, piano mx. Poor modulation (RWP).
- 7050 EGYPT Cairo, poor 0510 in AA(?) w/natl mx and tlks (AG).
- 7065 ALBANIA Tirana, SS tlk 0135, some ARO JRM (TS).
- 7095 W. PAKISTAN (I guess we can forget the "w") March mx 1935, IDs in lang till 1945, carrier only till N:E 2000. Ex-11672 (CL).
- 7100 HUNGARY Budapest, lively mx 1905, Hung anmts. Also hrd closing EE 2154\* (JDT). Hrd at 2130 w/N:E, fair sig (JA).
- 7105tv CLAND LV Cuba Libre, feeble w/tlk, some mx at 1125, also 1216-1232\*. A/k/a R. de Luego, probably in S. Florida (LM).
- 7106 THAILAND Thai TV Co, Asian vocals 1114-1200, then some "Gone with The Wind," their identifying melody arnd this time (SD).
- 7110 DODECANESE IS VOA-Rhodes, lang prgm w/EE ID at \*0359 (AG).
- 7110 MALI Bamako, two anthems 0800, ID, some xmtr problems (KE), and vernac and FF tlks at 0830. Poor sig (AG).
- 7115 ZAIRE Kinshasa, mx, tlks in FF at 0125 (TS).
- 7120 CHINA Peking in EE at 0340 (WP), and at 0300-0355 (JG).
- 7125 GUINEA Conakry, Afr mx w/ID 0207 (KS), FF cmtry 0316 (AG).
- 7140 CYPRUS BBC-Limassol, local ID and into EE at 2100 (CSW).
- 7140 INDONESIA Ambon hrd fair at 1123 w/Indo mx (RWP). Xmas songs 1030, Jakarta nx 1100-1110, but JRMd by NHK s/on 1117 (Ed).
- 7155 JORDAN Amman, hrd intermittently arnd 0442 w/AA anmts, chants (RWP).
- 7160 FRANCE Paris, EE ID 0515, fgys, then N:E to Afr (CL).
- 7165 RYUKYU IS VOA-Okinawa, \*1100 w/N:E to SEA (CSW).
- 7170 N. CALEDONIA Noumea in FF w/mx, maybe radio play at 0654 (AG), and IS, ID at \*0600. Not Tahiti as rptd in Oct (RO).
- 7180 HOLLAND RN, SS to Afr 2035, mixes w/Vienna, Baghdad. New svc (BP).
- 7185 AUSTRALIA RA hrd w/N:E 1200 (JDT), ditto 1230 (TS).
- 7195 LIBERIA VOA-Monrovia, EE to Afr hrd well at 0300 (CSW).
- 7200 SUDAN Omdurman hrd 0412-0431 w/AA chants, pips 0430, tlk (JDT).
- 7200 TAIWAN Voice of Righteousness, \*1100 w/few wrds, choral singing, gal giving "BEC76/77/78" calls. Weak, clear, gone by 1115 (Ed).
- 7215 ANGOLA R. Ecclesia hrd 0213-0315 w/varied mx, few anmts but one ID hrd 0240. Not much ARO JRM this nite (Ed).
- 7220 USSR "R. Vilnius" prgm in EE 2230-2300, Fri/Sun only (BB).
- 7225 RWANDA Dw-Kigali, Afr mx and pops, lang anmts arnd 0323 (AG).
- 7230 JAPAN NSB, fine lvl and in the clear in Jap at 1145 (ECS).
- 7230 MONACO TWR, IS 0844, EE ID and into Yiddish (SD).
- 7230 PHILIPPINES FEBC, exc w/lang nx, ID at 1300 (DM).
- 7230 SP. SAHARA Aaiun, RNE IS arnd 0800, useless some days, others good to as late as 0915 (ECS). Hrd once at \*0806, vy good in AA, AA mx, then SS ID briefly at 0900, into pop mx. Unbelievable (Ed).
- 7230 BYELORUSSIA Minsk, maybe HS 0505 in RR, seemingly into M-E lang 0510. Fair till f/o or lost at 0520 (RWP).

- 7233 MONACO TWR, EE anmt 0905, then into GG. Fair sig (ECS).  
 7235 ENGLAND BBC relaying CBC Slovak at 1930. 1945 switches to 7230 for CBC Polish, Hungarian 2000 (BP).  
 7240 ZAMBIA Lusaka, ID 0630, mx/ltr prgm to 0700, then rel prgm(ECS).  
 7245 AUSTRIA Vienna, N:E, cmtry, exc at 0730 (KE).  
 7245 MAURITANIA Nouakchotte, AA chants 0806 t/i, Afr mx (MSK).  
 7250 VATICAN VR, EE ending at 2057 (JDT).  
 7255 NIGERIA Lagos, N:E 0600, then mx (JF, BP, WS).  
 7255 BULGARIA Sofia, N:E 0210 (TS).  
 7255 FRANCE Paris hrd 0459 w/IS, then FF nx. Lost to AROs (JDT).  
 7260 COMORO IS Moroni hrd some nights 0415 after EBC s/off if AROs don't take over. Much mx w/FF singing. 4 kw list (ARN).  
 7260 See unid. here 12/71 LR. CE at New Hebrides said was not them, but that he'd rcvd other rpts w/almost identical details for that fgy, time, date. Who? (RWP) Hmmm. . . (Ed)  
 7270 POLAND Warsaw, EE forestry feature at 2248 (MW).  
 7280 MONACO TWR, EE at \*0729, then rel prgm. A day earlier hrd on 7290 (AG). 7290, EE to 0800 when had ID. Bad ARO QRM (RO).  
 7285 POLAND Warsaw hrd well in EE \*0300-0355\* (MD).  
 7295 MOROCCO VOA-Tangier, UN nx in Italian 0645, NF ex-17825 (BP).  
 7300 ALBANIA Tirana, EE 0130-0155, good sig (AEL).  
 7335 CLAND Rfonikos Stathmos I Foni Tis Alithias, Bulgaria, Greek nx, flute IS, IDs 1016\*, \*1800-1846\*, \*1900-1945\*, 2056\* (LM). Also hrd 0715 w/tlk by lady (BB), and 0705, vy strong (ECS).  
 7345 CZECH Prague, EE prgm, good mx 0139 (AG), 0345 (RBa), 0440 (DT).  
 7390 Unid. hrd 0340 w/accordian mx, lang anmts. Moscow? (JMS).  
 7393v See 12/71 LR. It's Hanoi, 1100-1200, //10118v (LM). 7394, R. Liberation hrd w/cmtry 1115, believed same as LM's (ECS).  
 7416 CLAND R.Liberation, Viet ID 1200, //10223v (LM).  
 7470 CHINA Peking is unid. here in 12/71 LR, hrd \*1100 (LM).  
 7479 CLAND Voice of Pathet Lao, 1215-1225, Asian mx, lang tlks, Peking QRM (LM). weak and jammed at 1225 (RWP).  
 7500 Unid. pips, no anmts, ute QRM, at 2015. VNG at that hour? (LM).  
 7510 N.VIETNAM VoV, tlks and mx 1130-1235, ID 1132, //9838v. Not the usual ID, but Jap DXer says it's VoV. See 12/71 LR (LM).  
 7590 CHINA Peking hrd in EE at 2225\*, fair sig (AR).  
 8068 W.GERMANY See 11/71 LR. Is DW LSB feeder to Sines, not Greek clandestine. In Polish (LM).  
 8167 ARGENTINA Time stn LBQ9, 2345-2350\* w/pulses, brief CW 2350 (GLD).  
 8405 CLAND Voice of Free South, AA 1835 (AEM), AA mx, chants 1954, to 2000\* post-Ramadan (LM). Poor-fair, hvy QRM at 1945 (GLD).  
 8630 LIBYA Tripoli, AA mx and tlks, ID 2300 (AEM).  
 8777 Unid. in lang here 1206-1225, maybe //8910, excited tlking. Pei Hai Fisheries Stn, China rptd here (LM).  
 8890 MONGOLIA Ulan Bator hrd w/N:E 1228, mx 1230, tlk about Mong industry 1232. May be Sat only (DJ).  
 9009 ISRAEL IBA, 2045, not //9625 to 2110 (ECS). N:E 2110 (JF).  
 9360 SPAIN RNE, strong in SS at 0115 (SC).  
 9423 CLAND Voice of Thai People, nice IS 1158, then anmt by YL. Not hrd on //12105 (ECS).  
 9429 CLAND Voice of Patriotic Militiaman's Front, fair at 1405 w/Viet tlks, mx interludes. Het (DJ).  
 9475 EGYPT Cairo, hrd various times 1800-2330 (JG). SS ID 0130 (WP), EE 0246 (AG), mailbag, nx, mx 0300-0330\* (DN).  
 9492 PERU Definitely an OAX here, 2325-2350. Some pops, native, probably Tacna (ARN).  
 9505 GUAT FGNA fair in SS at 0130 (MD).  
 9510 ALGERIA Algiers good in AA 2235 (SC). 9512m, AA, fair 1730 (JMS).  
 9515 EGYPT Cairo, mx, poetry, N:E hrd 0230 (EAR).

- 9515 MEXICO LV Amer.Latina, SS songs, IDs 1700. Good, NHK QRM (DM).  
 9515 URUGUAY R.Sarandi, nx to 0100 one eve, genly off 0030 (MAF).  
 9520 PAPUA ABC, EE wx 0300 (RL).  
 9520 SPAIN RNE opening strong 0000, IS, ID, target areas (ARN, RL).  
 9530 N.ZEALAND RNZ, EE mailbox prgm hrd 0730 (JF).  
 9545 BRAZIL R.Em.Paranaense, sports 0100-0220\*, much QRM (MAF).  
 9545 LEBANON Beirut, IS, ID, N:E to NA 0230 (RO, RH, MAF, MD), and ending 0255, into SS (BP). Pop mx to 0300 close (AR).  
 9562 PERU R.Nac, ID 0420, nx (ER), LA mx hrd 0458 (MW).  
 9569 NIGERIA RTV-Kaduna, hrd 0605, slightly down from Chile (ECS).  
 9575 EL SALVADOR R.Comercial, twice at \*1200, rel prgm one AM (MAF).  
 9575 PAPUA VL8BM, ex-11880, EE/Pidgin nx 0450, sked 0430-0530, 0100-0200 (BP). Maybe the weak one here at 0510 in EE (BB).  
 9600 UZBEK Tashkent, N:E 1200, cmtry, features, mx (AB, WS).  
 9610 AUSTRALIA Perth, nx, cmtry 1130 (CP), request show 1330 (MB, JPR), to 1600\* (HST, HD).  
 9620 BRAZIL R.9deJulho, strong w/pop mx, ID 0035 (AEM).  
 9620 W.GERMANY DW \*1320, into Mandarin, NF ex-17845 (BP).  
 9622 PERU R.Atlantida, vy good w/pops, comls, many IDs (ECS).  
 9625 ISRAEL IBA, EE 2045-2130, nx, IDs, tlks, then FF(JMS;JG;AEL,DM, SC,MD,HD).  
 9636 COLOMBIA R.Nac, strong, SS nx, ID, 0045-0100 (ARN).  
 9640 VENEZ R.Nac, 0305-0346 w/nx, comls. Strong (KS), vy low but clear w/SS songs 0315 (ER).  
 9650 GUINEA Conakry, FF tlk, Afr songs 0335-0404, ID 0357 (CP).  
 9650t KUWAIT AA mx, low and weak at 1810 after DW closes (ECS).  
 9655 MONACO TWR, RR \*1910-1935\* (BP).  
 9655 SYRIA Damascus, FF nx 1900, ID 1915 (ECS). Pops to ID at 2200\*(ER).  
 9660 ANGOLA Voz de Angola, low at 0630 w/church svc (ECS).  
 9660 VENEZ R.Rumbos, sports 0110 (MD), and nx and mx at 1000-1030 (DN).  
 9670 PORTUGAL IBRA over RTE, EE ID 1945, then rel prgm. Asks for rpts to Sweden. Maybe also this one w/rel prgm to 2100\* (MAF).  
 9675 BRAZIL R.Diario da Manha, man tlking in PP (MAF). Time? (Ed).  
 9675 PERU R.del Pacifico, rel prgm 1200, ad and ID 1231 (MAF).  
 9685 BRAZIL R.Gazeta hrd couple times to past 0200 w/sports (MAF).  
 9690 CHILE LV Chile, hrd 0100 w/nx (MAF).  
 9690 ARGENTINA RAE, EE 0300-0400, RSA QRM to 0320 (AEL). SS before and after (JMS), mx and M&W ancrs 0403-0423 (CP).  
 9705 INDIA AIR, Hindi singing 1245, tlks. FF/EE/Ind mx 1310 (ECS).  
 9715 CONGO RFVC-Brazzaville, mx 2120, to 2200\* on Sat here (RWP).  
 9715 ITALY RAI, N:E and opera mx to UK, \*1930-1955\* (WP).  
 9725 MALAYSIA BBC-Tebrau, EE ID \*0858, then BBC nx (WS).  
 9725 TAHITI Papeete, tlking 0420, drums and ID, //6134,11825,15159(TS).  
 9730 BRAZIL R.Farroupilha, pops 0226, PP ID 0230 (ER).  
 9750 USSR R.Vilnius prgm, EE nx, mx, cmtry at 2230-2300 (DN).  
 9770 AUSTRIA Vienna, N:E 0030 (JF).  
 9770 HAITI 4VEH, EE Xmas mx 1430 (FA), rel prgm 1730, ID 1745 (CP).  
 9775 RSFSR(Eur) Mirchurinsk? Fair-poor in LA svc \*0200. A new one to me, but at least one DXer has it QSLed (GLD).  
 9800 USSR Kazan, fair in RM EE 0245 (MD), and probably at 0750 w/RR cmtry and organ mx (DJ).  
 9805 EGYPT Cairo, good in EE 2230 (AR), to 2255\* (JPR).  
 9838y N.VIETNAM VoV in Viet, maybe Khmer 1130-1230, //7510 (DM). Unid. weak one in SEA lang and mx, 1220 (TS).  
 9912 INDIA AIR, poor-fair 2030 in EE w/"Lstnrs Choice" mx (AR).  
 9920 CHINA Peking here, not R.Liberation, 1220-1320 (LM).  
 9935 INT'L WATERS RNI, poor w/rock mx, EE tlk at 1244 (WS).  
 10008 CLAND LV du FUNK, exc at 1937 w/anmts by YL (ECS).  
 10010 CLAND R.Liberation, fair w/EE nx, tlks, mx 2330-2355 (KE, ECS).  
 10040 N.VIETNAM VoV, EE tlk, nx, cmtry, 1530 (RO,MD), 2325\* (DJ,KE).

- 10120 CLAND R.Liberation, tlk to 2315 when jammed out, then opened on 10010 (ECS). 10018, unid. Asian 1410, not //10176(R.Lib) or 10038(VoV)(DJ).
- 10153 N.VIETNAM Hanoi fair 1400 (DJ).
- 10176 N.VIETNAM VoV in Viet 1130-1500, new ID as "R.Free South"(LM).
- 11352 N.KOREA Pyongyang weak 2000-2100 w/clas.mx, lang talk (BL).
- 11672 PAKISTAN Karachi, chants, lang tlk, mx, 1700-1800 (BL).
- 11695 CLAND R.Peyk-e-Iran, ID and mx 1615 (AEM), tlks, chants 1630(JMS).
- 11700 VATICAN VR, EE to Afr 1710 (ARN, JA), into FF 1726 (DW).
- 11705 JAPAN NHK, weak w/IS and into CC at 2300 (DM).
- 11705 LEBANON Beirut, ending EE to Afr 1900, into AA (BP).
- 11710 ARGENTINA RAE, SS/EE ID 2315(MD), EE to 2345, 2350\* (DM).
- 11715 POLAND Warsaw w/HS at 0905, w/GG lang lessons (BP).
- 11720 MEXICO XERMEX, SS mx and nx hrd 0015 (FA).
- 11725 VATICAN VR, Latin mass 0800, //7250 also hrd (BP).
- 11725 VENEZ R.Nacional, Caracas now using this fqy for an intl svc, w/mx, IDs, fqys, requests for rpts. Hrd 1103 (SD), arnd 0000 (HD,RS,DM), 0110 (CL), arnd 1700 (JDT,WP), and all day (JA).
- 11730 HOLLAND RN, in AA 1735 (ARN), in FF at \*2000 (WP).
- 11740 CEYLON VOA-Colombo, N:E 0100, apparently ex-11735 (BP).
- 11745 ECUADOR HCJB, strong 0039-0135, nx, mx, etc, mentioning 40th anniversary QSL card (HD).
- 11745 ETHIOPIA ETLF 1645-1655\* w/lite mx, EE ID at closing (ARN).
- 11745 GREENLAND After ETLF goes off, lite mx to 1700 anmt in Nordic lang. Church bells, into rel svc. Think it's Godthab, but watch out for Paris which is also here lately smothering both (ARN). Definite celeste IS hrd \*1857, but useless sig (ECS). They use that IS during the prgm as well as at s/on (Ed).
- 11792 LIBYA LBS hrd 1530 w/AA ID, pol tlk. Djakarta weaker on 11793, and DW in AA at 1910-2100 on 11795 (BB).
- 11800 CEYLON Colombo, good w/oriental mx 1030 (ECS); EE ID 1532 (KM).
- 11815 MALI Bamako (presumed), pops 2130 after NHK off, FF anmts to 2300\*, but hi noise by then. Bamako used to be here yrs ago(BP).
- 11820 MEXICO R.Heraldo de Sonora, SS pops, ads, TC at 1835 (DW).
- 11825 TAHITI Papeete, FF tlks, mx 0325 (AG), Tahit.tlk 0400 (WS).
- 11835 URUGUAY R.El Espectador, fair w/SS pol tlks 0230 (JMS).
- 11845 MOZAMBIQUE RCM, fair w/pops, several 4-gong ISS (ECS). At 1840.
- 11855 BRAZIL R.America, PP ID 2243, then pops and rock mx (CL), and ID 2300 followed by sports (MAF).
- 11855 CLAND V.of Palestine Revol, all AA mx and cmtry at 1605 (ECS).
- 11860t MONGOLIA Oriental mx, flutes and strings, 1845, QRMEd by Norway at 1855 (ECS). VoFC here going frm EE to FF 1800 (Ed).
- 11862 ZAIRE Lubumbashi, Afr mx, FF ID and nx 0530 (ER), pop mx, all FF w/good sig 2010 (GLD). Fair w/FF nx 0440 (BL).
- 11875 NICARAGUA R.Nac, LA pops 1735 (JMS), mx arnd 2200-2300 (JF, DN), EE lessons 2300 (MD). Also mx and IDs at 0320 (AG).
- 11880 ARGENTINA R.Splendid, early \*0915, nx, cmtry before RA s/on(BB).
- 11890 PHILIPPINES FEBC, ID 0800, EE 0830 (BP).
- 11895 SENEGAL Dakar, FF play 2135, RFE off this time (BP), ID in FF and FF nx 2215, off abruptly 2234 (MW).
- 11900 USSR R.Kiev prgm, EE 0030-0100 Mon/Wed/Sat (DN).
- 11910 ETHIOPIA ETLF, Afr nx in EE, also cmtry, arnd 1933 (DJ).
- 11920 IVORY COAST Abidjan, FF at \*1800, N:E 1830 (AB, Ed). Exc w/Afr rhythms 2355 (BP).
- 11925 UZBEK Tashkent, good w/pol cmtry, mx at 1410-1430 (JDT).
- 11940 KUWAIT Hrd 1730 in AA, IDs 1750 and 1800 (AB).
- 11940 LIBERIA ELWA, Afr tlk, gospel mx 1845 (AB), EE tlk at 1925 (JDT), 2025 (ARN, DJ).
- 11950 BRAZIL R.Min.Educ, EE/FF, mx, 2205-2258 f/o (WF), PP nx 0004, clas.mx before and after. Tentative, couldn't get ID (MW).



- 11950 SEYCHELLES FEBA, EE/AA test to M-E 1800 (AB), EE to 1838, then lang to 1900\*. Asking for rpts (DJ). EE ID 1820, w/big sig arnd this hour (ARN, BB, KS).
- 11960 MONACO TWR, ending Yiddish 1915, NF ex-11705 (BP).
- 11970 S.AFR RSA, good in EE various times, 2210-0120 (JG, HD).
- 12030 N.VIETNAM VoV w/EE cmtry, poor, 1550 (MD), to 1555\* (MDu).
- 12080a CLAND R.Euzkadi, SS/Basque, 2240-2328\* w/8-note IS (RL).  
13250, 2031 w/tlk and folk mx. Fair-poor, w/jamming (KL).
- 15000 USSR RNM-Moscow, pips and CW 1300 way over WWV. And 15004, RID-Irkutsk good w/same format 0115, //10004 (JMS).
- 15010 N.VIETNAM VoV, 1300-1325, fair when far away frm WWV (JMS).
- 15080 INDIA Delhi, lang tlks 1710 (LM). Bombay, poor-fair in EE at 1800, mx, nx, statements, etc (AR). N:E 1900, cmtry (WS).
- 15100 GRENADA WIBS, pops, IDs, ads 2120 (RL), sports 2115 (AB).
- 15105 ASCENSION BBC, N:E to Afr at \*0730 (TS).
- 15120 CEYLON Colombo, pops 0157, N:E 0200 (ER).
- 15120 TAIWAN VoFC, weak w/EE, 0245-0300 (AEL).
- 15150 CHILE R.Corporacion, sports, mx, ads, good lvl at 2345-0015 (ARN), and TC, nx 1005, sometimes arnd 0230-0315. Regular now?(BP).
- 15150 MALI Bamako, NF noted 1045 on Sun w/FF/EE talks (BB).
- 15155 BRAZIL Rdif.do S.P., rock mx, PP anmts to 2030 when Cuba QRM(BL).
- 15155 SPAIN RNE, IS 2150, into SS 2200 (Hst).
- 15158 BRAZIL R.Tupi, PP anmts 0306, LA mx. Low but clear (ER).
- 15170 LIBERIA ELWA, good in FF 2000-2040(BL), in AA by 2130 (DM).
- 15175 S.AFR RSA, IS 1850, then EE to Ghana/Nigeria (HST, JPR).
- 15180 ETHIOPIA EPLF, N:E 1330, then ID and cmtry (ER).
- 15185 FINLAND Helsinki hrd 1800-1830, 2300-2330 (MF). Vy good 2300(JF).
- 15185 PHILIPPINES VOA fair-good at 0000 in EE. Call to VOA reveals this is Tinang to Japan (AR).
- 15200 NIGERIA VoN, N:E at 1530 AEM, MD, JDT), cmtry 1640 (RL), and at 1800 after drum IS and into EE (ECS).
- 15225 w.GERMANY DW hrd at \*0900 in GG (BP).
- 15230 EGYPT Cairo, Voice of Arabs prgm w/AA ID 0654 (BP).
- 15245 ZAIRE Kinshasa, strong w/FF cmtry 2325 (ER), rock mx 0200 (BL), barely audible due to fading by 0235 (KS).
- 15255 BELGIUM ORU, FF nx 2250, NF ex-11875 (BP).
- 15260 ENGLAND BBC, special 15 min beam of R.Newsreel to Americas hrd at 1500-1515, strong sig (HD). See FLASH beginning of Log Room Section.
- 15310 JAPAN NHK, \*0900 in Jap to LA, mixing w/BBC FES (BP).
- 15315 PHILIPPINES R.Veritas, Indo sermon 1115, new language (BP).
- 15325 TAIWAN VoFC, good sig 0215, EE, asking for rpts (SC).
- 15340 INDIA Delhi, poetry at 0048, nx 0100 (AG).
- 15340 USA WINB, EE rel prgms, mx, pol cmtries, etc to new late s/off of 2245\*, on this NF (KE, RH, BP).
- 15345 ENGLAND BBC relaying CBC, CBC IS, BBC ID 1830. Low (ECS).
- 15380 RWANDA DW-Kigali, strong w/cmtry, chorus 2100-2130 (BL).
- 15400t VENEZ Almost certainly R.Nac testing here 1800 w/SS ID under BBC, not hrd since early Dec (BB).
- 15417 BRAZIL R.Cl.Ribeirao Preto, PP, chimes, mx, 2110-2130 (BL).
- 15435 TANZANIA Dar es Salaam, EE cmtry 1930, ID 1942, mx. Fair (BL). EE ID 1959, off 2000\* w/anthem. AFRTS QRM (HM).
- 15450 BRAZIL R.Nac.Brasilia, ID 2135, tlks, ads, TCs. Good (BL).
- 15722t SUDAN Omdurman, FBIS listed, low w/AA tlk, mx arnd 1910 (ECS).
- 15786 CLAND Voice of Malayan Revol, good w/talking 2245, some oriental martial mx at breaks. ID 2319, 2321, strength improving (ARN).
- 17710 MOROCCO VOA-Tangier, loud 1630 w/EE ID and into Turkish (ECS).
- 17720 USA WINB, EE frm \*1745, except AA Mon-Fri 1830-1900 (KE). Ending EE 2100\*(DJ).
- 17740 ASCENSION BBC, hrd well in EE to 1745\* (JPR).

- 17750 SPAIN R.Liberty, good sig 1600, nx in RR lang, bad jamming (JM).
- 17785 AUSTRIA Vienna, \*1000 to Aus/Asia, NF ex-17755 (BP).
- 17825 JAPAN NHK, IS 2340, nx and cmtry 2345, Jap lesson. Good (KM).
- 17825 NORWAY Oslo, EE ID hrd 1630. Good sig (DT).
- 17830 CEYLON Colombo, N:E 1110, Sinhala 1115-1145 (Sun)(BB).
- 17835 MEXICO XERMX, EE ID 2105, 2154. Much good mx (HD).
- 17840 VENEZ R.Nac, also here 1212, SS mx and anmts, //11725 (CL).
- 17860 MALAYSIA BBC-Tebrau, N:E at \*0000 (TS).
- 17935 PAKISTAN Karachi w/N:E 1335, war statistics (AR).
- 21465 E.GERMANY RBI, new Persian svc closing here at 0800 (BP).
- 21480 S.AFR RSA, IS 1755, N:E to UK 1800, to 1850 (Hst, HD).
- 21505 SWEDEN Stockholm, hrd 1400-1430 (JG).
- 21510 W.GERMANY DW, FF nx to Afr, 1230, NF ex-21600 (BP).
- 21585 SWITZ SBC, Swiss mx for Afr 1220 (BP). Presumed new Sottens xmtr, SS to LA, fair 1647-1704\* (GLD).
- 21690 GRENADA WIBS, hrd w/EE DJ prgm at 2015 (BB).

It's a long list this month . . .

- |                                    |   |
|------------------------------------|---|
| AAM Al.A.Miller,Jr, Ohio/HRO500    | JF Jackie Fain,Ky/HQ180                 |
| AB Alan Brooks, N.H/DX150A         | JG Jay Goldstein,N.Y./Trans Oceanic     |
| AEL Al.E.Linsenmeyer, Ill/SW4A     | JPR James P.Ronda, Ohio/RF5000          |
| AEM A.E.Martin,Lancashire,Eng/51J2 | JMS John M.Smallshaw,Wis/SW4A           |
| AG Art Glover, Wash/HQ180A         | KE Kim Elliott, Mo/SPR4                 |
| AR Al Reynolds, Va/SPR4, SX130     | KL Ken Lazear, Ohio/SX130               |
| ARN Al.R.Niblack, Ind/SX100, HQ200 | KM Kevin Murray,N.Y./HA600A             |
| BB Bill Berghammer, N.Y.           | KS Kenneth Schnur,N.Y./HQ180            |
| BL Ben Lewis, Mass/HQ180A          | LM Larry Magne,Pa/R4B                   |
| BP Bob Padula,Victoria,Aus/CR100   | MAF Marlin A.Field,Mich/SX100           |
| CL Chris Lobdell,Mass/SW4A         | MB Michael Brambley,N.J./SX190          |
| CP "Pat" Patterson, Ga/SX99        | MD Mark Duba,Vt/SX190                   |
| CSW Chas.S.wackerman,Md/HQ100C     | Mdu Mark Dujmich,Pa/HQ150               |
| DJ Danny Jamison,Ky/R390,51J3,75S1 | MF Melvin Flannagan,Jr,Va. <b>S-120</b> |
| DM Doug McLellan, N.M./GR64        | MSK Mark S.Konen, Wis/SX71              |
| DN Doug Nathman, Fla/Ross RE8000   | MW Mike Watman, N.H./SX190              |
| DS Douglas Souligny,Ok1/HQ180A     | RB Ron Bruns, Mo/DX150A                 |
| DT Dave Tubbs, Utah/DX120          | RBa Rizal Baysa,Minn/SB310              |
| DW Dave Williams,Ore/SPR4,75S3C    | RH Richard Heggs,BC/SB310,GR64          |
| EAR Edw.A.Richardson, La/S120      | RL Russell Lay,Va/HQ180                 |
| ECS Edw.C.Shaw, Va/SX190           | RO R.B.Odlin II,Wash/R4B                |
| ER Evan Rosen, N.Y./SX133          | RS Robt.Sawallesh,Va.                   |
| FA Frank Alexander, N.C./DX150A    | RVP Ralph W.Perry,Ill/S85               |
| GH Glenn Hauser, Tex/HQ160         | SC Stanley Cabral,Cal/R530              |
| GLD Gerry L.Dexter,Wis/HQ180, R4B  | SD Steven d'Adolf,Mass/R530             |
| HD Harry Dyer,Ont/XCR30 Portable   | TS T.D.Smith,Texas/Super Pro            |
| HM Hank Michalenska, R.I./R4B      | VA Vic Argabright,Colo/GR64             |
| Hst Howard Stevens, Mich/DX150A    | WB Wm.Buell,Ohio                        |
| JA John Alcock,Fla/SX43            | WP Wm.Plum,N.J./WR600                   |
| JDT John D.Tuchsherer,wis/HQ100A   | WS Wm.Schultz,Pa/SW4A,DX718             |
- Ed Yours truly,Mass/SB310

All area DXers are invited to a DX bash at ye ed's place on January 23, 1972, any time after 1:00 p.m. That's a Sunday. Bring tapes, QSLs, tales of the rare ones that just got away, etc. For directions or other info drop me a card or call 617-861-8481. Look forward to seeing you then. And special thanks to all those sending along season's greetings--your good wishes were appreciated.

See you next month -- Good DX and 73 -- JB

(HQ Note: I see quite a few of the new SX-190 showing up in above list. - ECS)

Flash Minute News/Tips

Last Minute News/Tips

FLASH SHEET

AL NIBLACK, EDITOR

420 Shelby St., Vincennes, Indiana

DEADLINE 20TH MONTH

TIMES: GMT

FREQUENCY: KCS

NOVEMBER 1971: SUNSPOT COUNT AS FURNISHED BY THE ZURICH OBSERVATORY, 12-3-71. 1-76, 2-69, 3-62, 4-66, 5-64, 6-61, 7-47, 8-43, 9-56, 10-32, 11-40, 12-51, 13-48, 14-34, 15-28, 16-26, 17-42, 18-45, 19-48, 20-42, 21-60, 22-76, 23-77, 24-86, 25-87, 26-97, 27-102, 28-93, 29-84, 30-73 MEAN--60.5 PREDICTED: DEC-49 JAN-47 FEB-45 MAR-43 APR-41 (Grady Ferguson, N. Car.)

AUSTRALIA 6090 WLL16, Sydney, logged 1230-1300 in EE prgming. (Bill Whitacre, Mich.)

BRAZIL R. Clube de Pernambuco, 6015, heard 0827 with PP ID, talk, PPMx. (Bill Schultz, Penn.)

CEYLON 9720 RC heard with religious prgming, and all EE format, 1545-1700. (Alan Brooks, N.H.)....This one, RC, 9720, noted 1530-1700 S/off, in Commercial Svc. (August Balbi, Calif.)

CAMBODIA (KHMERE REP) 6092.5 "Voice of the Khmere Republic", found on Sunday 1210-1246, listening in EE. Currently is gud lvl though modulation a bit weak. (Bill Whitacre)

CONGO (R) 9715 "Ici Brazzaville, RTVC", observed with IDs FF, at 1959, and 2001. (Alan Brooks)

CZECHOSLOVAKIA Prague NA bcst sked for 1972 to USA & Canada is as follows; at 0100 & 0300 on 9530//7345//9540//9630//and 11990. (Ed Insinger, N.Y.)

COLOMBIA (FLASH) Heard what I believe is a new sender with anncts sounding like, "Radio Villa", on 6016; mark ID as TENT. QTH Bogota, signal strength good. (Dan Jamison, Ky.)

DOMINICAN REP 4840A Radio Capital found up in fqy from regular 4832, with TCs, and an ID at 0407, all SS. (Ron Bruns, Mo.)

ECUADOR 3381A R. Iris, 12/1, LA mx from 0440 to 0502 close with full anthem. M&W anners, clear ID 0455. Not heard nightly. (John Tuchscherer, Wisc.)....Emis. Gran. Colombia; 4915A, observed with fair signals at 0515 following an ID and TC, SS. Then LA mx. (Ron Bruns)

ETHIOPIA 11910 ERLF S/on 1700 EE ID, follows a prgm in FF, fair lvl, RVOG. (August Balbi)

GUINEA (R) Conakry, 15310, heard 0806 with local mx and FF talk//7125 also heard (Bill Schultz)

INDIA AIR, 11755, S/on 1000, EE news follows. Most days good lvl. (August Balbi)....AIR, 570, S/on in EE 2245 fair lvl, amidst some QRM. (August Balbi)

ISRAEL Jerusalem, 6170, vy strong lvl in EE, an ID 2115, anned test to Europe (Al Niblack,

KOREA (N) 2750 Chongjin, 1236, talks in language and mx interludes, Ute QRM. Suspect / Ind. 5kW. (Dan Jamison, Ky.)....Hamhung, 2776, talks in language, fair lvl, probably a 5kW sender, also. (Dan Jamison) (There goes that Rhombic again, Editor)

LEBANON 9540A Beriut in EE to NA at 0225 currently with nice sigs, some QRM. (Ed Insinger)

LIBERIA 11940 ELWA S/cn with FF prgm 1700, new fqy, only fair lvl. (August Balbi)....VOA 11825, Monrovia, logged 0442-0507, in EE prgming, including EE news. (Bill Gardner, Ind.)

MADAGASCAR 15330 Effective 19 Dec., RN's "M" Relay (according to latest info) from 1400-1520 should be steadily in use to East and SE Asia. (Bill Gardner)....(Current checks indicate that there is a station under AFRTS on 15330, 1430. Possibly is the relay (Al Niblack)

MALAWI MBC; 3380, noted 0305 with anthem, then mx and anncts. (Forester Isen, Md.)

MALAYSIA BCFES noted with EE news 0900 S/cn; //7235//9725//11955, Tebrau. (August Balbi)

MEXICO XEHR 11820, and XEHH 11880, back in operation, heard regularly around 2000, all in SS. (August Balbi)....9515 XEWW, found 0156-0212, in SS talk. (Bill Gardner)

MOZAMBIQUE 11780 R. Clube de Mozambique, L. Marques, noted with, "IM Breakfast Show", heard from 0509 to 0528 fade out with EE, ads, TCs, and pop mx. (Bill Schultz)

NIGER ORTN, 9705, found with flute IS at 0659, then anthem, clear ID FF, followed with mx, in moderate QRM. This one Sunday only. (Forester Isen)

PERU 5981A Radio Panamerica noted from 0540 to 0610 T/out with big signals, a SS ID at 0600. (John Tuchscherer)

SPANISH SAHARA (TENT) 7230 This one heard regularly with RNE IS around 0756, fanfare of trumpets and drums 0800, followed by AA, chants, native mx. (Bill Schultz)....Radio Sahara, 7230, Aaiun, good lvl at 0810 check, with AA chants. (Ralph Perry, Ill.)....Don Jensen, Wisc.,

FLASHES that he has received QSL letter and two picture postal cards. Said reports, "totally correct and of interest to us". Signed by Federico Campos Alvarez for Radio Sahara.

SARAWAK Radio Malaysia on 4950//7160 is noted with EE news currently at 1100, 1400, and 00. (August Balbi)

FLASH!! FLASH!! FLASH!!

MALAGASY REP. (MADAGASCAR) Radio Nederland hrd 12/25 & 12/26 in New England QTH at 1358 s/on. 15,260 KHz hrd with regular IS fol by EE annmt of Tananarive Relay ID. Fair to good level until blocked by BBC carrier at 1422.. Not parallel to any other frequency. Regular "Happy Station" program hrd 26th 1400-1524 - BBC absent. (J. Berg) Congrats, Jer!

SEYCHELLES 11950 FEBA to ME with EE annot at 1759, mx at 1800, possibly in AA. Fair sigs, QRM from 1830 de Sweden. In a sked just in from FEBA, they list the following: 11935 and 11950 to ME. 1700 Persian, 1730 Amaharic, 1800 Arabic, 1900 close down. No EE listed. (Ed Insinger)....FEBA, Victoria, has started regular xmissions to the ME after a period of testing. Noted in AA at 1854 on 11950, good signals. Their schedule is: 1700-1730, 11950/15165, Persian; 1730-1800, 11950/15165, EE to Iran/Ethiopia and the ME; 1800-1900, 11950/15165, AA, likewise schedule. (Chris Lobdell, Mass.) (FEBA currently has been putting in a tremendous sig in Southern Indiana, Editor)

SWAZI At 1800, no further word on Swazi Radio's status. Mark Wodlinger hasnt answered inquiry. (Glenn Hauser, Tex.) (Tentative plans called for Swazi Radio to be on the air early December 1971 target date, in the 25 and 60 MBS. DXers might scan these bands around 0500, pending further developments, Editor)

TAHITI Papeete noted on 15170 at 0300 with nice mx, though QRM lvl high. (Ed Insinger)

TANZANIA 15435 New S/off time for RT is 2000 in EE, signals poor to fair. Heard daily with Western type mx 1945. (August Balbi)....RT, 15435, Dar Es Salaam, heard from 1910 to 2000 S/off, with EE revolutionary talks, IDs and local mx. (Bill Schultz)....RT, 5985, currently is well heard with IS, followed by S/on in Swahili, just prior to 0300. Full identity is easily heard.

TANZANIA ZANZIBAR RTZ, 3339, noted with clear Swahili ID 0329A, opening amcts, and into chant at 0332. Fair lvl but off and on Ute QRM. Fade out by 0350. Will once again try to get sweet Omar to QSL. Seems to be an annual ritual! (Ralph Perry)(Would be a neat trick, Editor)....(TENT) RTZ IS at 0328, 0330 amcts in language, then chants and talks to 0350 T/c. RTPY moderate. (Forester Isen) (3339)

USA UN Radio, NY, transmitting live from the Security Council when in session on 11905. Logged at 2200. (Ed Insinger)

VENEZUELA (FLASHES) R. Nacional de Venezuela heard on 11725 with good no pain, no strain signal. WRTH says is inactive s<sup>a</sup> is possibly testing. Clear ID at 0225 as, "Este es R. Nac. de Ven.". Lots of mx, 12/17. (Ron Burns)....11725, R. Nacional, Caracas, with ID on 11 around 0045, very good 55555, 1215. QRM de R. Nederland at 0055. (Robert Koller).... I found station IVLS, Radio Nacional, Caracas, on 11725, around 2300 with a bodacious signal. Is listed as inactive but currently is on the air. (M. R. Jacobardt, Ind.)....This is the new International Svc and has been observed giving also EE IDs, asking for reports to P. O. Box 3979. Says is owned by the Venezuelan Telephone Co. (Al Niblack)

ZAMBIA RZ in General Svc, 3346, found at 0318 T/in, fair lvl but a het; OM amcr, EE and vernaculars; regional mx, TCs, pops, some drum mx. (Ralph Perry)

HARMONIC DXING: GUATEMALA 2200 At 0100, TGRS, R. Supericr, Escuintla, (2x1100) again heard, and dominating YNQ, 12/5, at 4444 rating....2340 TGRL, R. Cadena Landivar, Quetzaltenango, 0147. (2x1170), at ID; at 0135 light mx, is possibly new! No sign of TGRW listed here, do not confuse them!...MEXICO 2540 XENX, Mazatlan, at 0127, 12/5, "NX mas musica", then quickly gone. 2x1270 where previously heard!...2798.5 XELH, 0059 with ID. In Acaponeta, Nayarit, as previously reported, but now slightly lower in freq, making it a split-fundamental around 1399 kcs....XETKR 2958 ID at 0022, indicating a fundamental at Monterrey, varied down to 1479 kcs. Credit all the foregoing items to Glenn Hauser)....CUBA An unidentified MW harmonic on 3600, with SS talks to 0627, then an IS and SS ID. Thought to be 4th harmonic of R. Liberacion, 900 kcs. Fair signals, possibly overmodulated. (Dan Jamison)

CLANDESTINE LISTING Larry Magne, Pa., has forwarded to this QTH the most complete and best compiled listing of broadcasting stations of Exile, Intelligence, Liberation, and Revolutionary stations that it has ever been our privilege to examine. 10 pages in length and tells all you want to know about stations of this type. If you want an up-to-date listing on this subject matter, we recommend it heartily. It may be obtained for an SASE in the USA; 1 IRC in Canada and Mexico; and 1 IRC surface, or 3 IRCs air, outside North America. Orders should be mailed to Larry at: P. O. Box 2133, Mid-City Station, Philadelphia, Pa., 19103, USA.... Ed Shaw, Va., informs that the troubles that some of the new Allied Radio Shack SX-190 Receivers have been developing have been traced to cold solder joints in the VFO section. Specifically, components are not pushed down into the circuit boards for enough, consequently broken connections ensue during shipment.

ACKNOWLEDGEMENT: Thanks for the excellent support to this column. Please keep the reports coming, you old timers, and you newcomers. All are welcome. It is an impossibility for me to personally to thank each of you for the Christmas cards. Thanks again. Please phone last minute FLASH items to 882-5976 after 2200 GMT. THANKS. ....73 to all, Al