

# THE GLOBE CIRCLER

COMPLETE GUIDE-BOOK FOR SHORT-WAVE LISTENERS



British Airmen in a Trench "Somewhere in France" Listening to a Radio Program.

### WAR NEWS (ENGLISH) FROM EUROPE (Daily E. S. T.)

8:15 a.m.	London	GSV	17.81	8:03 p.m.	Paris	TPC	11.885
8:15 a.m.	Berlin	DJL	15.11	8:15 p.m.	Berlin	DJL	15.20
11:00 a.m.	London	GSV	17.81	9:45 p.m.	London	GSD	11.75
11:30 a.m.	Paris	TPB	15.13	10:00 p.m.	Rome	2R04	11.81
3:50 p.m.	London	GSP	15.31	10:30 p.m.	Berlin	DJD	11.77
4:45 p.m.	London	GSP	15.31	11:00 p.m.	London	GSD	11.75
6:00 p.m.	Berlin	DJB	15.20	11:30 p.m.	Paris	TPC	9.520
7:30 p.m.	London	GSD	11.75	12:00 mid.	Berlin	DXB	9.610
8:00 p.m.	Moscow	RV96	15.18	12:30 a.m.	Paris	TPC	9.520
8:00 p.m.	Stockholm	SBT	15.15	1:35 a.m.	Rome	2R03	9.630

ten cents

## INTERNATIONAL DX'ERS ALLIANCE

# SHORT-WAVE NOTES

EDITOR: Chas.A.Morrison; ASSOCIATE EDITOR: M.W.Soplop; U.H.F. EDITOR: Perry Ferrell; FREQUENCY CHECKING EDITORS: R.B.Oxrieder and John Larsen; AMA-TOURING EDITORS: Roger Legge and Roy Waite; IDA PROGRAMS DIRECTOR: Herb Tucker.

PRESS DEADLINES: For June Globe Circler; May 16; For June Stop Press Sheet: May 30; For June Ama-Touring: May 25 (For Ama-Touring, send news items to Roger Legge, 20 Beethoven St., Binghamton, New York). . . MAKE OUT SHORT WAVE REPORTS AS FOLLOWS: Double space lines...USE ONE SIDE OF PAPER ONLY... group items by continents and state time used...Items in order of importance are: NEW stations; exact frequencies or frequency changes; exact schedules or addresses; indentifying signals, and unusual receptions. RUSH IMPORTANT ITEMS BY FASTEST MAIL. FOUR STAR items denote exceptional merit. EACH FIVE STAR ITEM pays its contributor \$1.00.

Next issue the latest revised list of IDA 100 CLUB ratings.

## BYRD. ANTARCTIC EXPEDITION

KRTK, Byrd commercial station at the West Base camp six miles from the former site of "Little America," 1kW, is now on the air and tests almost nightly after 10pm EST, with RCA commercial stations or WGEO in Schenectady - the usual frequencies are 12.862 or 17.31 although 11.06 is used irregularly. KRTK broadcasts a program for relay by CBS Saturdays at 11:15pm (may be 10:15pm EST after May 1)...KC4USA (14.152), Clay Bailey operator, went on air April 6, and was worked at 3 am by W2IXY for first YL contact. KC4USA is amateur transmitter at West Base camp, and is in operation almost nightly from as early as 8 p.m. to as late as 8:00am EST...KC4USC (14.245 or e.c.o. 14.140-14.152), located in the snow cruiser is still heard irreg. 7-8am and 10pm-12 mid. EST...Reports to any of the Byrd stations can be sent to the A.R.R.L., West Hartford, Conn. (\*\*\*)Emarine, W2IXY, Balbi, Soplop, Callan, Roberts)

(E.S.T.)

## NORTH AND CENTRAL AMERICA

(E.S.T.)

CANADA CFCX (6.005), Canadian Marconi Co., P.O.Box 1690, Montreal, broadcasts daily 8am-1am and Sun. 9am-11:15pm; verifies promptly with red, yellow and black card (Torok)...CFRX (6.07), Roger's Short Wave Station, Toronto, operates 6:45am-12:30am; verifies with pictorial card (Torok)...CJCK (6.01), Sydney, operates 8am-11:30pm; news at 10:30pm; verifies with pictorial card C.R. TIWS (6.37), "Ecos del Pacifico," Apartado 30, Puntarenas, operates 4-11pm; Sun. 2-8pm (Legge)...TI7RVM (6.035), 1kW, operated by Ruben Venegas M, is located at Las Juntas de Abangarez, C.R.; is heard irreg.; promises beautiful pictorial card to those reporting (Shaffar, Fern)

CUBA NEW: COCSD (11.57) - the CSD stands for Conjunto Socialista Democrático, a union of several political parties sponsoring Colonel Fulgencio Batista, for president, broadcasts nightly 7:30-11:30pm, in English. Call changed to COK on Apr. 15. A verification and free view cards will be sent to all reporting. No postage or stamps necessary. Address is Colonel Fulgencio Batists, Estacion COK, Ave. de Belgica, Reparto Kohly, Havana. Station will probably go off air after election (\*\*\*)Ramirez; Shaffar, Balbi, Stark, Skyten, Pichler, Callan, Torok, Roberts, Shanks, Acton, CAM)...COCQ has shifted to 6.365 (Larsen, RBO)...COCY (9.25), Campanario 667, Havana, -slogan "Radio-mania," verifies with red and black card (Larsen, Lundberg)...COGF (11.80), broadcasts all-English program, "Pan-American Hour", daily 4-5pm (CAM)

D.R. HI1J is on 5.975 at present (RBO, Larsen)...HI9B (6.395), "Broadcasting Hotel Mercedes," Santiago, verifies with attractive view card (LL).

GUATEMALA TG2 has shifted to 6.2; TGQA to 6.39 (RBO, Larsen) (Legge)

HAITI HH2S has shifted to 5.957 (RBO, Torok, Balbi)...HH3W has moved to 6.57 (Legge, Torok)...HH3W (9.78) seems to be operating irreg. at present.

HAWAII "Hawaii Calls" program is sometimes broadcast on KIO (11.68)

HONDURAS HRP1 is operating on 6.348 mcs. at present (RBO)

JAMAICA VP5PZ, now ZQ1 (4.75), is an amateur transmitter that was presented to the government by John Grinan at the outbreak of war. Station only operates Fridays 5:30-6:30pm, but hope to be broadcasting regularly soon

MEXICO XEBR (11.82) is being heard evenings after 8pm with good signals; uses chimes for identification (Skyten)

PANAMA HP5G has shifted to 11.775 mcs. (Larsen)...HP5K (6.005), "La Voz de la Victor," Colon, broadcasts Trans-Radio news in English at 8:30pm; verifies with blue, gray and red card (Torok, Skyten)

ST. KITTS ZIZ (6.384) heard Wednesdays at 8pm, with war talk (Skyten)

U.S.A. A very significant decision was handed down by the FCC on April 13, namely that standard and non-commercial educational stations will hereafter be permitted to rebroadcast the non-commercial programs of any short wave stations providing they have the permission of the station to do so. This opens the way for any local U.S. station to rebroadcast foreign short wave programs by direct pickup (FCC)...The A.T.T. at Lawrenceville, N.J., has opened seven new frequencies for telephone work: WMA2 (7.315), WMA3 (10.110), WMA5 (14.615), WMA7 (18.37), to Europe; and WMA4 (10.56), WMA6 (15.395), and WMA8 (21.31), to S.A...The Greater Cincinnati Amateur Radio Assoc., is conducting a beginners code class daily 7-7:30pm EST, as follows: over W9TLZ (7.99), Mon. (3 to 5 words per min.), and Thurs (13 to 16); over W8SHD (7.04), Tues (6 to 9), and Fri. (6 to 9), and over W9LBX (7.149), Wed. (10 to 13) (Jacobs). . . WCBX (17.83), is playing host to the world's radio listeners daily 9-11am, with a program entitled, "The World Listens" (CBX).. A chart that enables listeners to compute the time of day at any point on the globe may be had free by writing to WGEO/WGEA or KGEI (GE)...The transmitter of WRUW, Boston, may now be used on 11.79, and 15.25, as well as 15.13, and 11.73 mcs. (WRUW)...See list for revised skeds for U.S. short-wave stations, several of which are now operating under Daylight Saving Time- Ed

**SOUTH AMERICA**

ARGENTINA LRAL verifies by letter (Stark)

BOLIVIA NEW unidentified Bolivian, may be CP-43, is being heard on 15.165, afternoons to 5pm; signs-off with band march (Skyten\*)...According to CP2AC, the 10kW Bolivian short-wave station has been silent for some time due to failure to a tube in the final stage of the transmitter (\*Soplop)

CHILE CB960 (9.6), suffers badly from QRM from RAN, DXB and HP5J; signs off at 11pm (Callan, Lundberg)...CB970 (9.73), is now being heard regularly, with some side-band overlap from CSW7. Uses "Anchors Aweigh", chimes and a gong during station identification (Lundberg, Callan, Shanks) ...CB1174 (11.74), uses "Anchors Aweigh" and bugle call during station identification (Shanks)...CB1180 (11.945), opens daily at 6:30am; gives time signal, then two marches, then news (Simpson)

COLOMBIA HJAG (4.905), Barranquilla, has been testing late at night on 9.81, perhaps preparatory to adopting it as daylight frequency (Simpson, A. Breen)...HJDP (4.885), Medellin, signs-off with "Glow Worm" on pipe organ (Shanks)...HJFK (9.73), comes on air at 7am. Opening announcement in English & Spanish, requests reports be sent to P.O.Box 99, Pereira; chimes for identification (Skyten)...HJGB and HJAP verify with old cards (Stark)

DUTCH GUIANA PZH, Paramaribo, has shifted frequency to 6.53 (NNRC and QRC)

ECUADOR HCIGQ has shifted to 9.17; HC2CW to 9.12 mcs. (Larsen)...HCETC (9.355), heard opening daily at 7am, gives call and Teatro Bolivar, then news in Spanish to close-down at 7:45am (Simpson). HCFC was the call as understood by Roberts while station was broadcasting 9:30-10:20pm (Roberts)...HCJB (12.46), 10kW, Quito, is being heard nightly with very loud signals 6-10 pm. English programs are Ecuadorian Echoes at 6-7, and the Friendship Hour, 9-10pm. Don't miss native flute & drum music Wed/Fri at 6pm, and the "Arm chair Travelers Club", Tues/Thurs/Sat at 6pm. HCJB verifies with attractive three-color QSL card and booklet descriptive of station (\*\*Callan, Skyten, Jenkins, Moreland, W2IXY, Simpson, CAM)

PERU NEW: OAX4R (15.15), "Radio Nacional de Peru", Lima, broadcasts to N.A., in English, Saturdays 5:15-5:50pm; includes music, news and information on Peru. Reports and comments requested (Skyten\*\*)...OAX5C, Ica, is now operating on 9.43 mcs. (Shanks)

URUGUAY NEW: CXA3 (6.005), "Radio Nacional", operated by Servicio Oficial de Difusion Radio Electrica, Mercedes 823, heard 11:30pm-1:30am (Shaffar)...CXA6 (9.625), 20kW, is also operated by Servicio Oficial de Difusion. Other frequencies & calls for this transmitter are CXA4 (6.125), CXA10 (11.895), & CXA18 (15.30). CXA6 verifies with attractive multi-color booklet (Torok, Lundberg, Callan, Magnuson)...Reports on CXA8 (9.64) should be sent to LR3, in Buenos Aires, since reports to Colonia, have been unanswered (Lundberg).. CXA19 (11.703), "Difusoras El Espectador", heard at 6pm (Roberts)

4 VENEZUELA YV3RX verified after seven months with card using same design as old YV8RE (Stark)...Veri', received in 18 days, states YV5RR (4.96), "Estudios Universo", Caracas, relays YV5RS (1320) (Shanks-Tenn)...YV4RO (4.953), relays YV4RA (1350), llam-2, and 5-10pm, according to veri (Shanks)...YV4RQ (5.02), Puerto Cabello, verifies promptly (Shanks)...YV5RV is still on 3.545

== EUROPE ==

ANDORRA Station on 8.795, heard coming on air at 3pm with national anthem, followed by words "Ici Radio Andorra", given by woman announcer. Program consisted of brief talks by man and woman announcers, with occasional orchestral selections, and station left air at 3:57pm (Stark-Wisc.)

ALBANIA ZAA's (6.085) program includes the following news bulletins: 12:20pm, Turkish; 12:50pm, Roumanian; 1:20pm, Greek; 1:50pm, Bulgarian; 2:20pm, Yugoslav; 4:20pm, French, and 4:50pm, Italian (May, Soplop, Tuff)

BULGARIA NEW: "Radio Sofia" (10.31), heard Sundays 1-3am and 3-4pm. News is given at 1am, one chime after news, interval signal of 7 notes on piano until church service starts at 2am (\*\*\*Simpson-Australia)

DENMARK First news of the invasion of Denmark and Norway by German troops was telephoned to IDA Headquarters from Chicago by well-known Chicago Daily Times columnist B.E. Lucas, at 5am CST, on April 9. (C.A. Morrison) ...No broadcasts have been heard from Skamlebak since German troops seized the short-wave station on April 9. Nazi sponsored broadcasts may soon be heard over OZH (15.32) and OZF (9.52) (Pedersen, CAM)

ENGLAND Important news bulletins are now being radiated by BBC, in Finnish, to Finland, at 1:15pm; in Norwegian, to Norway, at 12:30pm, and in Swedish, to Sweden, at 12:45pm, all over GRX (9.69), and GSW (7.23)...GSP (15.31) now broadcasts to N.A. daily 11:55am-3:30, and 3:55-5:45pm (Su to 6pm (AB)

FINLAND News bulletins in English are being broadcast by OFD (6.12), OFD (9.5) and OIE (15.19), daily at 6:40am, 1:20 and 4:30pm; In addition over OFD (6.12) at 3:40pm and over OFD (9.5) at 8:15am (\*\*Tuff-England). The announcer is usually a woman, and announces "This is Finland calling" (Tuff). ...OIH (17.8) was heard at 6:45am (Skyten)

FRANCE TPC- (15.13) broadcasts to Pacific coast 10-10:30am (Balbi)...TPC23 (9.68), broadcasts 1-3am, and in parallel with TPC8 (11.843) and TPA3 (11.385), 1:20-4:15pm; news in English 2:30pm (Skyten, Balbi)...Amateur F8GO (14.27), Palaiseau, Pres Paris, France, believed to be operating under govt. sanction, is putting very strong signals into the U.S. (\*\*Soplop)

GERMANY DJB (15.2) broadcasts 12-3, 6:30-9, 9-11am, and 4:50-11pm (Balbi, CAM)...DXS (15.16), operates 6:30-7:30am and DXT (15.23), 8-9am in parallel with DJB to NA...DJL (15.11) is sometimes heard 6:30-9am for NA in place of DJB (Skyten, CAM)...DJ? (15.32), operates 9:30-11am (Balbi). This is very likely transmitted over German controlled OZH (CAM)...DJD (11.77) now operates 10:40am-12 noon, 4:50-11pm (Balbi)...DXB (9.61) has Arabic program 1-3, and Lord Haw Haw program at 3:15 and 4:15pm (Callan)...The Deutscher Freiheitssender (10.07) is still going strong daily 3-3:30pm (Callan)

HUNGARY The new Budapest transmitter was inaugurated on April 14, and is now broadcasting as follows: over HAD3 (11.85), 5-6:20pm to SA, and over HAT5 (9.625), 6:35-8pm to NA. HAS3 and HAT4 have been retired from service. HAT5 is very poorly heard in NA due to QRM and this frequency will very likely be abandoned in favor of a better one very soon (\*\*\*Kriebel, Lundberg, Soplop, Pedersen, Skyten, CAM, HAT5)

ITALY NEW: 2RO7 (17.77) heard irreg. 8:30-9:25am (Balbi). 2RO2O (17.77) heard 9am-12:30pm (Tuff)...2RO14 (15.23), heard daily 9:30-11am (Balbi)

JUGOSLAVIA Latest revised sked: YUF (15.24), 7:55-8:50pm to S.A. and over YUG (15.24), 8:55-9:55pm to N.A. YUC (9.5050) not heard with afternoon sked lately...YUC heard 1-2:30am irreg. (\*\*Callan, Balbi, Soplop, Skyten, Torok, CAM)

LITHUANIA LYR (9.29), Kaunas, was heard on a recent Sunday 3:30-4:08pm, with R7 signals. The announcer was a lady (Skyten-Mass.)

MADEIRA CUQ2 (5.03) heard foning Lisbon at 6:30 to 7:15pm (Kriebel)

NORWAY No broadcasts from the Oslo short-wave station have been heard since it was seized by German troops on April 9. Watch for Nazi broadcasts on Oslo frequencies of 9.645, 11.735 or 15.17 (Pedersen, Cam, Clark)

ROUMANIA "Radio Bucharest" (9.234) has news in English at 4:45pm (Ramirez)

SPAIN "Radio Nacional de Espana" (14.44) heard at 6:15pm in Spanish. This is the old "Radio Malaga", with a different program than EAQ (Callan)

SWEDEN The Swedish short-wave station is still on the air and broad



casts to N.A. daily 8-9pm, over SBT (15.155) and SBP (11.705). SBT is being heard with good signals. News in English is read shortly after 8pm (Skyten, Pedersen, Torok, Balbi, CAM)

SWITZERLAND HBJ (14.535), Geneva, is now broadcasting to N.A., Mon/Wed 8:45-10:15pm; irreg. to 10:30pm (Balbi). The new identification signal for the swiss short-wave stations is the first few bars of "O mein Heimatland" (O My Home), which is heard at the beginning of each broadcast (R.P.S.)

TURKEY A powerful new transmitter under construction at Istanbul, to be known as "The Voice of the Balkans", will be on the air soon (Moreland)

U.S.S.R. According to an official list Moscow now has the following transmitters in use: RNE (6.00/12.00), 20kW; RV96 (6.03, 9.52, 9.685, 15.18, 15.27, 15.41), 100kW; RAN (9.6, 10.49, 16.3), 20kW; RKI (7.52, 7.54, 15.04, 15.08), 25kW; RIF (11.9, 18.02); RIA (11.705, 16.12); RWG (14.72, 7.36); RIC (11.64), 15kW; RKE (11.63), 15kW, and RV59 (6.05), IFKutsk, 20kW, and RV15 (4.274), Khabarovsk, 20kW (Com. Bul.)... RV96 (15.18) is now carrying the N.A. program nightly 7-8:30pm, in parallel with RNE and RAN (Soplop, Callan)... RV96 (15.41), broadcasts 5-11am, and 10pm-1 or 2am (Callan, Balbi)

VATICAN CITY HVJ is issuing new QSL card picturing their modulator tubes. Is now broadcasting to N.A., in English, on 9.66, Sun/Thurs 8:30-8:50pm. There is considerable QRM on this channel (Callan, Torok, Schubert)

**==AFRICA==**

ANGOLA CR6RE (10.95), Radio Club de Benguela, operates 2:30-4pm, Sun. 12-1:30pm; also conducts experiments on 20M; verifies (Butcher)

F.SOMALILAND FZES (17.28), Djibouti, still tests the first Thursday of each month, 8:15-8:30am. Next test will be June 6. The op. M. Franchette, verifies with a letter (\*\*Soplop)

KENYA VQ7LO (6.083), 500w, broadcasts 5:45-6:15, and 11:30am-2:30pm, and 11:30am-2pm on Sun, also special tests Tues/Thurs 8:30-9:30am (Com. Bl)

MADAGASCAR The P.T.T. station at Tananarive is intended for telegraphic communications between France and Madagascar, but is also used for broadcasting as follows: on 9.695 and 6.063, 1:30-1:45, 4-5, and 10:30-11:30am, and Sundays 2:30-4am (Tune in)

MOZAMBIQUE CR7BE has shifted to 9.71 mcs. (Callan, Skyten)... CR7AA (6.137), CR7AB (3.49), CR7BD (15.255), and CR7BH (11.718), operate 12-1, 4:30-6:30am, 12-4pm and Sun. 5-7, and 10am-2pm (Robinson)... CR7BE verifies by letter but will have QSL cards later (Riggle, Beyer, Butcher)

REUNION "Radio St. Denis" (9.600), 60 watts, operated by the Govt. Dept. of Posts, Telegraphs & Telephones, broadcasts news, weather, shipping information music & advertising irregularly (Com. Bul.)

SO.AFRICA See list for revised schedules (SABC)... Amateur ZS1BL verified with blue card having red letters. He will swap a pair of new Fleming valves. What will you swap. Write to ZS1BL, De Aar, C.P., South Africa (Riggle)

SPAN MOROCCO EA9AT (14.07), heard at 8:42pm (Waite)

SO.RHODESIA Bulawayo (6.147) (6.75), heard operating Mon/Wed/Fri at 2:55, and Tu/Thur at 5:55pm (Butcher)

**==ASIA AND OCEANIA==**

AUSTRALIA VKG (1.72), Sydney, police, and VKK (2.15), Melbourne, police, are being heard frequently in N.Z. (Tune In)... VLQ5 (9.68), is also carrying the 8:15-8:45am broadcast now (Balbi)... VLW3 (11.83), Perth, now operates, 11pm-2, 2-5am, 5:30-9:15pm (Sun. 6-11:15pm); VLW2 (9.64), operates 5:15-10:30am, and VLW4 (9.66), operates 11:30am-12:30pm (Balbi, Kriebel, ABC)

CANTON KF6JEG (14.18), op. ex-K6JEG, is on the air daily 2:30-4:30 or 5am. Uses V beam on U.S. and 300 watts power. Contacts WCFT (8.26), the yacht "Yankee", irreg. near 2:30am (W2IXY, Callan, Roberts)... KVZC (8.1), was heard on April 13, 1:38-1:48am, in contact with KVZJ on Jarvis Isl. (Roberts)

CHINA XGOY (15.19), now operates 8:30-9:30, 10-11:05pm to NA... XGOY (11.9), now operates 5:15-8:55, 9:40-11, 11:05-11:25, 11:30-11:50am, 12 noon-12:30pm, 11:30pm-1am... News in English at 5:30 & 7:30am (Ong)... XGOY (9.65) operates 9-9:35am... XPSA (6.976), operates 5:30-11:10am, 6-7pm (Ong)... NEW XGSB (9.74 or 9.84), Shanghai, broadcasts 7-9am; English announcements by lady announcer (Breen, ADXC)... XGOK (8.05), Canton, broadcasts irreg. 5-7am.

FIJI'S VPD2 (9.535), is now operating 3-4:10am, and irreg. to as late as 6:30am according to reports; English news at 4am (Balbi, Callan, NRC)

F.INDO-CHINA "Radio Saigon" (11.78) now signs-on at 5:30am, with a 3/4 hour English program to 6:15 am (Callan)

GUAM NEW: KBGCBN (14.245), operated by R.C.Henning, Commercial Pacific Cables Co., Sumay, is being heard with excellent sigs 6-8am (Soplop, Roy  
INDIA .VUM2 (11.87), is by far the best heard Indian now. -Waite)  
 This station was heard to announce "Delhi calling", but it may have been a relay. VUM2 has been previously listed as in Madras (Kriebel, Callan)

IRAN EQC (9.68), 25kW, Teheran, is definitely on the air, and has been testing (R.P.S.)

JAPAN JZK (15.16), has replaced JZI in the 7-9:30am broadcast (Sky-ten, Balbi)...NEW: JVS (6.98), operates daily 8-9:30; irreg. to 10am (Balbi)...JVW3 (11.725), operates daily 12:45-2:30, 4-7:45am (Balbi)...JVH (14.60) relays JBC programs daily starting at 10pm (Honda)...The Japanese Short Wave Station is licensed to operate on the following freqs., and with the following calls: JLT (6.19), JVW (7.257), JLG (7.285), JZI (9.535), JLT2 (9.645), JLG3 (11.705), JZJ (11.8), JVZ2 (11.815), JLU3 (15.135), JZK (15.16), and JZL (17.785) (Com. Bul.)

JOHNSTON & PALMYRA ISLANDS K6NYD (14.185), operated portable in the KE6 district, on Puka Pinicle, near Johnston Island, March 13-17. Those fortunate enough to hear Johnston Isl. will receive special QSL cards (W2IXY, Am-Touring)...NIQ (7.995), Johnston Isl, was heard two Sundays at 2:30 & 3:45 am, contacting NIX at Palmyra; verified with airmail letter (Roberts)

MANCHUKUO JDY (9.925) is believed off the air (Skyten)

P.I. NEW: On March 1, H.E.Heacock Co., owners of KZRH, inaugurated a low power station KZRC (6.105), "The Voice of Cebu", at Cebu, which operates 4-9am, 5-7, 11pm-12 mid. (\*\*Fern, Breen)...KZFP (8.85 and 6.63), a motorship, has been heard a number of times testing near 6:30am (Breen)

#### — FREQUENCY MODULATION —

-Perry Ferrell, Jr.-

FM is a form of aural broadcasting in which the audio frequencies affect the carrier frequency. Since almost all noise is a radio signal created as an amplitude modulated signal, in a receiver designed only for wide-band FM signals complete noise suppression is obtained, that is the noise suppression is complete if the signal to noise ratio is 2/1. In the ordinary amplitude modulated transmissions noise suppression can only be had if the signal to noise ratio is 20/1. As far as natural static is concerned you will find it almost absent on amplitude modulated stations using frequencies this high, but on the other hand electrical interference is very bad whereas on FM stations you have no electrical interference. FM transmissions can be received on any superheterodyne that will tune to 44 megacycles but sharp tuning is necessary; the distortion is very high. Amplitude modulated stations can also be tuned in on FM receivers but reception is quite unsatisfactory. Contrary to reports FM receivers are not perfectly quiet during the tuning operation as the same rushing noise characteristic of supers can be noted but this vanishes when a carrier wave is tuned in. Then the set is absolutely quiet. FM broadcasting can not be adopted to our present broadcast band because channels 200 kilo cycles wide are needed for FM, which would allow only six channels. Again in the ultra-high frequency bands reception can only be had over a small area from the station, thus allowing almost an unlimited number of stations to operate on the same channel when separated by proper distances. Program fidelity is remarkable on FM transmissions due to the suppression of background noise and to the wide range of frequencies that can be faithfully reproduced. In FM no fake sounds are necessary, as all sounds are reproduced with exactness. Members are advised to wait a few months before buying FM receivers to make sure changes in FM frequency bands won't make the receiver obsolete. FM broadcasters wish to extend FM bands, now restricted to 42.6 to 43.6 megs, to take in the entire band of 44 to 50 megs. The following FM stations are, or soon will be, in operation: (Fern)

WLXK, Boston, Mass	42.6	W9XEN, Zenith,	42.8	W2XDA, Schenectady	43.2
WLXSN, Springfield		Chicago (CBS)		W2XOY, Albany, N.Y.	
W2XWG, New York City		WLXOJ, Paxton, Mass.	43.0	W2XQR, New York City	
W3XMC, Bethesda, Md.		WLXPW, Hartford, Conn.		W3XO, Washington, D.C.	
W8XAD, Rochester, N.Y.		W8XVH, Columbus, Ohio		W8XVB, Rochester, N.Y.	
W9XAO, Milwaukee, Wis.		W9XYH, Superior, Wis.		W1XTQ, Worcester,	43.4
W2XMN, Alpine, N.J.	42.8	WLXSO, Hartford,	43.2	W2XOR, Newark, N.J.	

# SHORT-WAVE BROADCASTING STATIONS

SYMBOLS: N- NEW stations; F- Frequency changes; S- Change in sked; J- Stations persisting in hopping about; V- varying in frequency; \* See shortwave notes....NEWS IN ENGLISH: The most important English news periods are indicated in list as NEWS (Frequency calibrations, Larsen/Oxrieder Bureau)

DIAL METERS	MEGS.	CALL	STATION	TIME-----EASTERN STANDARD
11.47	26.15	W4XA	Nashville, Tenn.	Noon-1, 6:30-10pm
11.49	26.135	W5XAU	Oklahoma City, Okla.	6am-10pm.
11.52	26.05	W9XH	Southbend, Indiana	Mon/Tues/Wed/Fri 2:30-6:30pm.
11.54	26.00	W9XA	Kansas City, Mo.	12 noon-3pm.
11.56	25.95	W8XNU	Cincinnati, Ohio	7am-2, 4pm-1am. (11)
11.58	25.90	W9XPD	St. Louis, Mo.	10am-1, 4-8pm.
11.81	25.40	W9XLA	Denver, Colorado	10am-12 mid.
11.86	25.30	W9XOK	St. Louis, Mo.	Testing irreg.
11.86	25.30	W5XD	Dallas, Texas	12:30-2:30pm.
13.87	21.63	WRCA	New York City, N.Y.	12 noon-3:30pm to Latin Amer.
13.92	21.55	GST	London, England	5:40-8:45, 9-9:15, 9:20-11:30am.
13.93S	21.54	WPIT	Pittsburgh, Pa.	6-9am
13.93	21.53	GSJ	London, England	5:40-8:45am to India/Australia
13.96S	21.50	WGEA	Schenectady, N.Y.	7-10am.
13.97	21.47	GSH	London, England	5:40-8:45am to Africa (13)
13.99	21.45	DJS	Berlin, Germany	12:05-7:55am to Asia
15.77	19.02	HS6PJ	Bangkok, Thailand	Mondays 8-10am.
16.23	18.48	HBH	Geneva, Switzerland	Fridays 8:45-10:15am to Orient
16.69	17.97	KHE	Kahuku, Hawaii	Sat/Sun 8:30-9pm to N.A.
16.82	17.845	DJH	Berlin, Germany	12:05-7:50, 8-9, 9-11am.
16.83	17.83	LRA5	Buenos Aires	Fridays 5-5:30pm (16)
16.83S	17.83	WCBX	New York City, N.Y.	7-11:30am to Europe
16.84	17.82	2RO8	Rome, Italy	4:30-4:55, 5-7:15, 7:30-7:50, 9:30-10:55am, 6-7:55pm.
16.85	17.81	GSV	London, England	7-8:45, 9-11:30am to NA...NEWS-
16.85	17.80	OIH	Lahti, Finland	Heard irreg. (8:15 & 11am.
16.86S	17.79	GSG	London, England	5:40-8:45, 9-10:15am.
16.87	17.78	WNBI	New York City, N.Y.	8am-4, 4-9:15pm.
16.88	17.77	PHI2	Huizen, Holland	Sun. 6:40-7:40am to Far East
16.88N	17.77	2RO--	Rome, Italy	8:30-9:25 & irreg.
16.89	17.765	TPB3	Paris, France	5-10am to Far East
16.89	17.76	DJE	Berlin, Germany	12:05-11am.
17.36	17.28	FZE8	Djibouti, Fr. Somaliland	June 6, 8:15-8:30am. *
19.47S	15.41	RV96	Moscow, U.S.S.R.	5-11am, 10pm-1 or 2am. *
19.56	15.34	DJR	Berlin, Germany	12:05-11am, 4:55-10:50pm to CA.
19.57S	15.33	WGEA	Schenectady, N.Y.	10:15-5 to Europe; 5:15-8:15pm-
19.57	15.33	KGEI	San Francisco, Calif	6:30-11:15pm to S.A. (to SA
19.58	15.32	OZH	Skamlebak, Denmark	Not heard since April 8. *
19.53N	15.32	DJO	Berlin, Germany	9:30-11am. * (NA*
19.60S	15.31	GSP	London, England	2-5am; 1:35-3:30, 3:50-6pm to-
19.60	15.31	YDB	Soerabaja, Java	10:30am-2am, and Sat. 7:30pm-2am
19.61	15.30	2RO6	Rome, Italy	1-2, 5-9:25, 11am-2:35, 3-5:30, 8:15-10:10pm to N.A. (19)
19.61	15.295	TPB4	Paris, France	5-5:30, 7:30-8am.
19.62	15.29	LRU	Buenos Aires, Argentina.	7-9am. (11:30pm
19.62	15.29	VUD2	Delhi, India	1:30-2:30, 7:30am-12:30, 9:30-
19.62	15.285	CR7BG	Lourenco Marques, Mozambique,	7-8am to N.A.
19.63	15.28	DJQ	Berlin, Germany	12:05-11:10am...NEWS- 9am.
19.64S	15.27	WCAB	Philadelphia, Pa.	11am-5pm to S.A.
19.66S	15.26	GSI	London, England	12:57-5am, 11:52am-3:30pm.
19.66	15.255	CR7BD	Lourenco Marques, Mozambique,	12-1, 4:30-6:30am, 12-4
19.67S	15.25	WRUL	Boston, Mass.	1-4:30pm ex. Sat/Sun. (pm
19.68	15.24	TPA2	Paris, France	7:45-8:20, 11:30am-12:30, 1:20-4:15
19.68S	15.24	YUF	Belgrade, Jugoslavia	7:55-8:50pm to S.A. (pm
19.68S	15.24	YUG	Belgrade, Jugoslavia	8:55-9:55pm to N.A.
19.70N	15.23	2RO14	Rome, Italy	9:30-11am. *
19.70N	15.23	DXT	Berlin, Germany	8-9am. *

19.71	15.22	PCJ2	Huizen, Holland	Sa. 7:40-10:05, Mon/Th. 7:40-9am, Tu. 8-4:30am, Tu/Fr./Sa 7:40-8:45a 9-10am
19.72S	15.21	WPIT	Pittsburgh, Pa.	12-3, 6:30-9 to NA, 9-11, 11:10- 11:40am to NA, 4:50-11pm to NA.
19.74S	15.20	DJB	Berlin, Germany	NEWS- 6:45, 8:15am, 8:8:15, 10:30p 5:30-7:30am...NEWS- 7:15am. 8:30-9:30, 10-11:05pm to N.A. 6:30am-5:15pm...NEWS- 1:20pm. *
19.74	15.195	TAQ	Ankara, Turkey	8:55am-12:55pm, 7-8:30pm to NA. 12:45-1:45pm to NA; Sun. 1:45- Not heard since Apr. 9* (5:15pm. 7-9:30am, 4:30-5:30, 8-9pm to NA. 6:30-7:30am. (-8pm
19.75F	15.19	XGOX	Szechwan, China	12:57-4:15pm, 8-9pm to NA...NEWS 4:30-10:30am; 6-9pm ex.Sat. Sat. 5:15-5:50pm to N.A.
19.75S	15.19	OIE	Lahti, Finland	3:30-5, 5:40-8:45, 9-11:30am, 3:50 1-4:30, 7:45- 9:30pm irreg. (-6pm
19.76S	15.18	RV96	Moscow, U.S.S.R.	10-10:30, 11:30am-12:30pm to NA. Sun. 7-7:30, 8-8:30, Wed. 2:30-3pm. 12:05-2, 6:30-9am to NA, 10:40am- 7-8:20, 8:30-9p.m. (4:25pm.
19.78	15.17	TGWA	Guatemala, Guatemala	Daily starting at 10pm. *
19.78	15.17	LKV	Oslo, Norway	Mon/Wed 8:45-10:15pm or later.*
19.79S	15.16	JZK	Tokio, Japan	11:40am-1:40, 7:10-9:10pm. 7-8:15, 11:30am-2:30, 6-10pm. *
19.79N	15.16	DXS	Berlin, Germany	9-11am, 7-9, 9:10pm-2am or later* 6:30-8am, 4:50-11pm. 10am-1, 5-10:30pm.
19.80S	15.155	SBT	Motala, Sweden	5:15-6, 6-6:30, 6:30-8, 8-8:55, 940 -11, 11:05-11:25, 11:30-11:50am, - 12-12:30pm, 11:30pm-1am...NEWS- 5:30 & 7:30am.
19.81	15.15	YDC	Bandoeng, Java	5:30-6, 6-6:30am (English) 1-4, 1:20-4:15pm to Asia/Africa. 4:45-7:45 to SA; 8pm-12:45am to NA...NEWS-8:03, 11:30pm, 12:15am 6:30am-12:30pm.
19.81N	15.15	OAX4R	Lima, Peru	2:30-3:30am to So. Europe. 10am-11pm. 6:24-9:15pm, to S.A. Intermittently daily
19.82S	15.14	GSF	London, England	5:55-7pm. 11:30pm-2:15am, 6:35-7am to P.I. 5-6:20pm to S.A. *
19.83S	15.13	WRUW/WRUL	Boston, Mass.	10-10:30, 11:30am-12:30pm to NA, 2:45-5:30p.m. (1:15-4:15pm
19.83S	15.13	TPB-	Paris, France	11pm-2, 2-5am, 5:30-9:15 (Sun. 6- 12-5pm, 5:30-9pm. (11:15pm
19.84S	15.12	HVJ	Vatican City	3:30-9:05pm. 10am-4, 8-11pm. 3:30-3:45, 4:30-4:55, 7:20-9:25, 9:30-10:55, 11am-2:25, 2:30-5:30, 6-7:55, 8:15-10:10pm to NA...NEWS 8am-10pm intermit. (10pm.
19.85S	15.11	DJL	Berlin, Germany	12-1:30am to NA, 7-9:30am, 2-4, 4:30-5:30pm...NEWS- at 12:03am. 1-4, 4:30-7:30pm irreg.; Sun. 9-11 5:30-10:15, 10:30-11am to NA, (am 6:35-7:15pm, 12:05-12:45am..... NEWS- 10:30am.
19.95	15.04	RKI	Moscow, U.S.S.R.	12-1:30, 6-10pm; Sun. 9am-12 noon 1:30-2:20am to NA; 8:40-9:30, 950 -10:50am, 4-4:50pm.
20.55	14.60	JVH	Tokio, Japan	
20.64	14.535	HBJ	Geneva, Switzerland	
24.02	12.49	HLN	Trujillo City, D.R.	
24.03S	12.46	HCJB	Quito, Ecuador	
25.00S	12.00	RNE	Moscow, U.S.S.R.	
25.12S	11.945	CB1180	Santiago, Chile	
25.19	11.91	CD1190	Valdivia, Chile	
25.22S	11.895	XGOY	Szechwan, China	
25.22C	11.895	RIF	Moscow, U.S.S.R.	
25.24S	11.885	TPA3	Paris, France	
25.25	11.880	TPB7	Paris, France	
25.26	11.873	VUM2	Madras, India	
25.27	11.87	VLQ2	Sydney, Australia	
25.27S	11.87	WPIT	Pittsburgh, Pa.	
25.30S	11.86	GSE	London, England	
25.30	11.855	DJP	Berlin, Germany	
25.30	11.855	PRF5	Rio de Janeiro, Brazil	
25.32S	11.85	VLR3	Melbourne, Australia	
25.32N	11.85	HAD3	Budapest, Hungary	
25.33S	11.845	TPC8	Paris, France	
25.34N	11.84		Radio Morocco	
25.36S	11.83	VLW3	Perth, W. Australia	
25.36S	11.83	WCBX	New York City, N.Y.	
25.37	11.825	CXA14	Colonia, Uruguay	
25.38S	11.82	XEBR	Hermosillo, Mexico	
25.40	11.81	2R04	Rome, Italy	
25.42	11.80	COGF	Matanzas, Cuba	
25.44	11.795	JZJ	Tokio, Japan	
25.45S	11.79	WRUL/WRUW	Boston, Mass.	
25.47	11.78		Saigon, F. Indo-China	
25.48F	11.775	HP5G	Panama City, Panama	
25.48	11.775	MTCY	Hsinking, Manchukuo	



25.49S	11.77	DJD	Berlin, Germany	10:40am-12 noon, 4:50-11pm to NA ...NEWS- 6:00, 8:15, 10:30pm.
25.15	11.76	ZRO15	Rome, Italy	11:40am-3, 6:30-7pm.
25.53	11.75	GSD	Daventry, England	12:57-5, 9-11:30, 11:52am-3:30, 3:50-6, 6:24-9:15, 9:37pm-12:30am ...NEWS- 3:50, 4:45, 6:30, 7:30 6-11pm. (9:45, 11:00p Sun. 7:30-8pm, Tu. 8:30-9, 10-1030 Not heard since April 9. * (am 7:45-9:30pm ex. Sat/Sun. 12-2:30, 4-7:45am. Off air at present. 4-7:50pm; Sa/Sun 11am-6pm. 1-5:15 to Afr, 6-7:45pm to SA, 8pm-12:30am to N.A.
25.55	11.74	CB1174	Santiago, Chile	
25.55S	11.74	HVJ	Vatican City	
25.57	11.735	LKQ	Oslo, Norway	
25.58S	11.73	WRUW/WRUL	Boston, Mass.	
25.59S	11.725	JVW3	Tokio, Japan	
25.60	11.72	CJRX	Winnipeg, Canada	
25.60	11.72	ZP14	Villarica, Paraguay	
25.61	11.715	TPA4	Paris, France	
25.62	11.71	YSM	San Salvador, El Salvador	12:57-4:15pm (Sun. 3am-4:15pm), Daily 8-9pm to NA...NEWS- 8pm.
25.63S	11.705	SBP	Motala, Sweden	Testing irregularly. 5-9 p.m. 3pm. 7-10:40am, 5-10:45pm, Su. 6-10:45- 10am-2, 3:30-pm-12 mid. (pm 5:20-5:40am (ex. Su), 1:50-2:30pm 7-9am...NEWS- 8:10am. 7:30-11:30pm. *
25.63	11.705	ZP7	Asuncion, Paraguay	
25.63N	11.703	CXA19	Montevideo, Uruguay	
25.64	11.70	HP5A	Panama City, Panama	
25.64	11.70	CB1170	Santiago, Chile	
25.64	11.70	IQY	Rome, Italy	
25.75	11.65	XGOK	Canton, China	
25.93N	11.57	COK	Havana, Cuba	
27.17	11.04	CSW3	Lisbon, Portugal	11am-2 (Su. to 3:45), to Angola.
27.27	11.00	PLP	Bandoeng, Java	4:30-10:30am, 6-9, 10:30pm-2am. 2:30-4pm.
27.39S	10.955	CRGBD	Benguela, Angola	
28.30	10.60	ZIK2	Belize, Brit. Honduras	Tu/Th/Sat 1:30-2, 8:30-9pm.
28.48	10.535	JIB	Taihoku, Taiwan	Relays JFAK 9-9:55am, 4-5am ir.
28.55	10.40	YSP	San Salvador, El Salvador	1-3, 6:30-11pm.
29.04	10.33	ORK	Ruyssede, Belgium	1:30-3pm to Belgian Congo.
29.10H	10.31		Sofia, Bulgaria	Sundays 1-3am 3-4pm.
29.15	10.29	DZC	Berlin, Germany	4:50-10:45pm. (Su.
29.24	10.26	PMN	Bandoeng, Java	4:30-11:30am, 6-9, 10:30pm-2am ex
29.35	10.22	PSH	Rio de Janeiro, Brazil	5:55-7pm; Mon. 8-8:30pm to NA.
29.82	10.07		Anti-Nazi Freiheits	Sender 3-3:30pm.
29.83	10.065	TIEM	San Jose, C.R.	4:30-8pm.
29.88	10.042	DZB	Podebrady, Bohemia	2:40-3:25pm...NEWS- 2:50pm.
30.43	9.86	EAQ	Madrid, Spain	5-7:30, 7:30-9:30pm to NA: Sat. 1-3pm to Canarys...NEWS- 8:40pm 8am-12 mid.; Sun. 8am-11pm. 5:20-5:40am, 1:50-2:30pm.
30.51J	9.835	COCM	Havana, Cuba	
30.57	9.815	IRF	Rome, Italy	
30.58	9.81	HJAG	Barranquilla, Colombia	Heard testing late nights.
30.67	9.78	HH3W	Port-au-Prince, Haiti	1-2, 7-9pm; Sun. 1-2, 5-8pm.
30.76S	9.755	ZRO	Durban, So. Africa	11:45pm-12:50, 3:30-7:30, 9-11:15 am, 11:20am-3:45; Sun. 5:30am-3:20 2:15-3 ex. Su, 3:15-6 (Su 4-6) (pm 6:05-8pm to N.A.
30.80	9.74	CSW7	Lisbon, Portugal	
30.80N	9.74	XGSB	Shanghai, China	7-9am *
30.83	9.73	CB970	Valparaiso, Chile	7am-11:30pm intermittently.
30.83	9.73	HJFK	Pereira, Colombia	7-9am.
30.90	9.71	HJCF	Bogota, Colombia	Nightly (sked unknown).
30.90F	9.71	CR7BE	Lourenco Marques, Mozambique	2-4pm to Europe. *
30.92	9.705		Fort-de-France, Martinique	6-8:10pm.
30.92	9.705	ZHP	Singapore, S.S.	4:40-9:40am; Wed/Sat 12:40-1:40 am; Sun. 5:40-9:40am. 9:05-10:20am. Tu/Th/Sat 9-10pm. 12:25-5, 11:52am-8, 11:30pm-12:15 10:30am-1, 2:30-3:30, 4-9pm. (am 10-11:30pm ex. Su; Su. 7pm-mid. 9:55am-12:45am. (NA 8:15-8:45, 7-8, 10:30-11:30am to- 1-3am, 1:20-4:15pm. *
30.95	9.695	JIE3	Tyureki, Taiwan	
30.96	9.69	TI4NRH	Heredia, Costa Rica	
30.96S	9.69	GRX	London, England	
30.96	9.688	LRA1	Buenos Aires, Arg.	
30.98	9.685	TGWA	Guatemala, Guatemala	
30.99	9.68	XEQQ	Mexico D.F., Mexico	
30.99S	9.68	VLQ5	Sydney, Australia	
30.99	9.68	TPC23	Paris, France	

31.02	9.67	WRCA	New York City, N.Y.	4pm-12 mid. to S.A.
31.02	9.67		Saigon, F. Indo-China	11:40am-3:30, 5:30-6, 6:30-7:40p
31.03	9.667	2RO9	Rome, Italy	6:30-7:45, 10:15am-11pm.
31.06	9.66	LRX	Buenos Aires, Argen.	Sun. 5-5:30am, Mon/Th 6:30-7am, -
31.06S	9.66	HVJ	Vatican City	Th. 8-8:15pm, Sun/Th. 8:30-8:50pm
31.06N	9.66	VLW4	Perth, W. Australia	11:30am-12:30pm. to NA.
31.09	9.65	12AA	Addis Abeba, I.E.A.	3:30-5:30, 8am-2:30pm.
31.09	9.65	DJW	Berlin, Germany	4:50-10:50pm to S.A. & C.A.
31.09S	9.65	WCBX	New York City, N.Y.	9:30-10:30pm to Latin America.
31.11S	9.645	VLW2	Perth, W. Australia	5:15-10:30am... NEWS- 8:50am.
31.11	9.645	LLH	Oslo, Norway	Not heard since April 9. *
31.12	9.64	XGOY	Szechwan, China	9-9:35am to N.A.
31.12	9.64	CXA8	Colonia, Uruguay	5-11pm; Sat. to mid.
31.14	9.635	KZRH	Manila, Philippines	4-11am.
31.14S	9.63	2RO3	Rome, Italy	1-2am, 12:50-2:59, 3:30-4:45, 6-7:55, 8:15-10:10pm to NA... NEWS- (10pm.
31.15	9.63	JFO	Taihoku, Taiwan	4-10:30am.
31.15S	9.63	HJCT	Bogota, Colombia	10am-2, 5:15-11:30pm.
31.17	9.625	CXA6	Montevideo, Uruguay	10:30am-12:30, 3:30-9pm.
31.17N	9.625	HAT5	Budapest, Hungary	6:35-8pm to N.A.
31.19S	9.62	TIPG	San Jose, C.R.	7-9:30am, 12-2, 7-11:30pm.
31.21	9.615	ZRL	Capetown, So. Africa	11:45-12:50am, 3:20-7:30, 9-11:45 am; Sun. 3:30-4:30, 5:30am-11:42a
31.21	9.61	VLQ	Sydney, Australia	2-4, 6:15-6:45am
31.22	9.61	DXB	Berlin, Germany	11-4:50, 7pm-1am to NA... NEWS- 4:15, 8:15, 10:30pm-12 mid.
31.23	9.607	HP5J	Panama City, Panama	7-8am, 12-1:30, 6:30-10:30pm.
31.25	9.60	RAN	Moscow, U.S.S.R.	3-3:30, 4:30-5:30, 6-8:30pm, 8:30-9pm... NEWS*- 8pm.
31.25S	9.60	CB960	Santiago, Chile	8-11pm.
31.27	9.595	EIRE	Athlone, Ireland	7:30-8:30, 9-10am, 12:30-4:30, 5-6 Su. 1:40-3, 7:15-8:15, 8:25- (pm 9:50pm to NA; Tu. 1:45-3:30, 7:30-8:30, 8:45-9:45pm to NA; Wed. 7:15-8:15, 8:25-8:40pm to N.A. Mon/Th/Sa 5:30pm-1am; Wd. 8pm-1 1:30-3:30, 6:30am-12:30, (am 9:30-11pm.
31.28	9.59	WCAB	Philadelphia, Pa.	2:30-9, 9-9:30am.
31.28	9.59	VUD2	Delhi, India	12:57-1:45am, 11:52am-3:30, 3:50-6, 6:24-9:15, 9:37pm-12:30am.... NEWS-6:30, 7:30, 9:45, 11pm.
31.32	9.59	VLR	Melbourne, Australia	5-10:30am; Sat. 5-10am.
31.32	9.58	GSC	London, England	5-10:30am; Sat. 5-10am.
31.35	9.57	KZRM	Manila, Philippines	5-10:30am; Sat. 5-10am.
31.35	9.57	HJAB	Barranquilla, Colombia	5-10:30am; Sat. 5-10am.
31.35	9.57	TYB	Paris, France	12:30-4pm.
31.35S	9.57	WBOS	Boston, Mass.	3pm-2am.
31.35	9.57	CXA2	Montevideo, Uruguay	11am-4, 4:30-9:30pm.
31.37	9.562	OZX4T	Lima, Peru	11:30am-1:30pm.
31.38	9.56	DJA	Berlin, Germany	9am-10:50pm.
31.38	9.555	XETA	Monterrey, Mexico	8:45am-12 mid.
31.40	9.55	YDB	Soerabaja, Java	4:30-10:30am, 6-9, 10:30pm-2am.
31.40	9.55	VUB2	Bombay, India	1:30-3:30, 5-6am, 9:30-10:30pm.
31.41S	9.55	WGEA	Schenectady, N.Y.	5:15-8:15pm to Latin America.
31.47S	9.535	SBU	Motala, Sweden	4:15-5:15pm.
31.47S	9.535	VPD2	Suva, Fiji's	3-4:10am or later. *
31.48S	9.53	WGEO	Schenectady, N.Y.	2-4:45pm to Europe, 5-11pm to SA
31.48	9.53	KGFI	San Francisco, Calif.	12-3, 7am-12 noon to Asia.
31.48	9.528	VUC2	Calcutta, India	2-4am, 10pm-2am. (am
31.50	9.525	ZBW3	Hong Kong, Hong Kong	5-10am, 11:30pm-1:15am; Su. 5-9:30
31.50	9.52	TPC-	Paris, France	4:30-7:45, 8pm-12:30am, 12:45am-1:45am to NA... NEWS- 8:03, 11:30
31.50S	9.52	RV96	Moscow, U.S.S.R.	9-10am irreg. (pm, 12:15am.
31.50S	9.52	ZRG	Johannesburg, S.Afr.	5-6:15; Sun. 3:30-6:15am.
31.51	9.52	OZF	Skamlebak, Denmark	Not heard since April 9. *

31.52	9.517	XEDQ	Guadalajara, Mexico	Noon-4:30, 7pm- 12 mid.
31.55	9.51	GSB	London, England	12:57-3:15am, 3:50-6, 6:24-9:15, 9:37pm-12:30am to Latin Ameri.
31.57	9.505	YUC	Belgrade, Yugoslavia	1-2:30am.
31.57	9.503	XEWW	Mexico D.F., Mexico	7:45am-12:30am.
31.58	9.50	OFD	Lahti, Finland	Schedule uncertain.
31.60	9.492	KZIB	Manila, Philippines	5:30-10am, 6-11...NEWS-7:30am.
31.65	9.48	VONG	St. John's, Nfld.	8:30am-1:30pm; 4:30-9:30pm ir.
31.70	9.465	TAP	Ankara, Turkey	19:30am-4:30pm...NEWS- 2:15pm
31.77	9.445	HCODA	Guayaquil, Ecuador	8:15-10:15pm ex.Sundays.
31.78	9.44	COCH	Havana, Cuba	6:40am-12 mid.
31.81F	9.43	OAX5C	Pca, Peru	7-11:30pm.
32.05V	9.36	COBC	Havana, Cuba	7am-12 mid.; Sun.7am-10:30pm.
32.07N	9.355	HCFG	, Ecuador	7-7:45am, 9:30-10:20pm. *
32.12	9.34	OAX4J	Lima, Peru	Noon-3, 5pm- 12 mid.
32.28	9.295	HI2G	Trujillo City, D.R.	7:10-8:40, 11:40am-2:10, 7:10-
32.29	9.29	LYR	Kaunas, Lithuania	Heard 3:30-4:10pm. *
32.43F	9.250	COCY	Havana, Cuba	8am-12 mid.; (Sun.to 10)(9:40pm. *
32.44	9.234		Bucharest, Roumania	12:02-7pm. *
32.59	9.205	PYA2	Rio de Janeiro, Brazil	5-5:55pm.
32.61	9.200	COCX	Havana, Cuba	8am-12 mid.
32.64	9.19	HC2ET	Guayaquil, Ecuador	8-10pm; Sun.8:30-10:30pm.
32.72FV	9.17	HClGQ	Quito, Ecuador	Mon/Wed/Sat 9-10:30pm.
32.89J	9.12	HC2CW	Guayaquil, Ecuador	11am-1, 7-11pm.
33.19	9.04	TYA2	Paris, France	1:30am; 1:30, 2:30 & 4:30pm.
33.22	9.03	COBZ	Havana, Cuba	7:45am-12 mid.; Su.7:45am-lam.
33.48	8.96	TPZ2	Algiers, Algeria	Tuesdays 12:30-1:30pm.
33.48	8.96	COKG	Santiago, Cuba	6:42am- 12 mid. irreg.
33.90V	8.85	COCQ	Havana, Cuba	6:50am-lam.
34.11N	8.795		"Radio Andorra"	3-4pm. *
34.43	8.70	COCO	Havana, Cuba	7:30am- 12 mid.
34.62	8.665	COJK	Camaguey, Cuba	11:30am-12:30, 3:30-7, 8-8:30pm. *
37.27N	8.05	XGOK	Canton, China	5-7am irreg.
37.50	8.00	HClETC	Quito, Ecuador	Sat.8-10:30pm. Heard lately?
37.65	7.968	HSP6	Bangkok, Thailand	8-11am ex.Mondays.
38.00	7.894	YSD	San Salvador, El Salvador	7-10:30pm.
38.12	7.87	HClRB	Quito, Ecuador	8:30-11:30pm.
38.15	7.865	SUX	Cairo, Egypt	12:30-3:30pm (Arabic)
38.20	7.854	HC2JSB	Guayaquil, Ecuador	11am-2, 4-11pm.
38.26S	7.85	ZAA	Tirana, Albania	6:30-8am (Su.6:30-8:30am.), 12:20-5pm. (MAY 15, 9-10pm)
39.16	7.66	YNDG	Leon, Nicaragua	8:30-9:30am ex.Sundays.
39.89S	7.52	RKI	Moscow, U.S.S.R.	4:30-5:30pm.
40.05	7.49	EAJ43	Tenerife, Canarias	7-8pm.
40.30	7.445	FG8AH	Pointe-a-Pitre, Guadeloupe	6-7:10pm; Su.9:30-11am.
40.76	7.36	RWG	Moscow, U.S.S.R.	4-4:30, 4:30-5pm (English)
41.01	7.31	VIG	Port Moresby, Papua	May 11/25 3-5am.
41.13	7.295	JIE	Tyureki, Taiwan	9:05-10:20am.
41.15	7.29	DJI	Berlin, Germany	5-5:30pm (English)
41.19	7.284	YNLIP	Managua, Nicaragua	Sundays 10-11am.
41.21	7.28	TPB25	Paris, France	1-4, 10:15am-4:15pm to Africa.
41.27	7.27	DXM	Berlin, Germany	4:15-4:30, 6:15-6:30pm (English)
41.32	7.26	OZU	Skamlebak, Denmark	2-5pm.
41.34	7.257	JVW	Tokio, Japan	2-4pm to Europe.
41.38	7.25	YDA	Bandoeng, Java	10:30pm-2am; Sat.7:30pm-2am.
41.44	7.24	DXJ	Berlin, Germany	8-8:15, 8:15-8:30pm (English)
41.44	7.24		Paris, France	4-5:30pm.
41.49S	7.23	GSW	London, England	12:25-5, 5:40-11:30, 11:52am-8pm.
41.55	7.22	YDX	Medan, Sumatra	6-10:30am; 10:30pm-2am.
41.55	7.22	2R011	Rome, Italy	6-7:55, 8:15-10:10pm to NA...NEWS
41.55	7.22	EAJ9	Malaga, Spain	4-6pm. (10pm)
42.24	7.10	FO8AA	Papeete, Tahiti	Tues/Fri 11pm-12 mid.
42.98N	6.98	JVS	Tokio, Japan	8-9:30am. *
43.00S	6.976	XPSA	Kweiyang, China	5:30-11:10am, 6-7pm.
43.73J	6.86	YNOP	Managua, Nicaragua	8-9:30pm; Sun.2-3pm.

43.80	6.85	XOJD	Hankow, China	6-8:35am.
44.25	6.78	HIH	San Pedro, D.R.	7-8pm; Su. 5:20-6:40pm
44.38	6.76	YNRS	Managua, Nicaragua	6:40-10:40pm.
44.38	6.76	HI7P	Trujillo City, D.R.	7:10-8:40pm; Sun. 9:40-10:40pm.
44.64	6.72	PMH	Bandoeng, Java	4:30-11am; Sun. 8:30pm-1:30am.
44.81	6.695	TIEP	San Jose, C.R.	7am-12 mid.
45.06	6.66	HI5G	Trujillo City, D.R.	To 8:40pm.
45.22	6.635	HC2RL	Guayaquil, Ecuador	Sun. 5:45-7:45 & Tu. 9:15-11:15p
45.25	6.63	HIT	Trujillo City, D.R.	12:10-1:40, 4:40-8:40pm.
45.39	6.61	YNLG	Managua, Nicaragua	1:30-2:30, 6-10:15pm.
45.66F	6.57	HH3W	Port-au-Prince, Haiti	1-2, 7-9pm; Sun. 5-8pm.
45.70	6.565	HI5P	Puerto Plata, D.R.	5:40-7:40, 9:40-11:40pm
45.87	6.54	YNLGG	Managua, Nicaragua	1-2:30, 8-10pm ex. Sundays.
45.94F	6.53	PZH	Pamaribo, D. Guiana	Tues/Fri 5:40-8:40pm; Su. 8:40-10:40am; 1st & 3rd Thurs. 6:40-12:30-2, 6-8pm ex. Sun. (8:40pm
46.15	6.50	HIL	Trujillo City, D.R.	5:30-7:30pm ex. Sundays.
46.26	6.485	HILL	Santiago, d.l.c., D.R.	7:45-9, 12:45-3:45, 7:30pm-12:15
46.41	6.465	TGWB	Guatemala, Guatemala	am, Sun. 10:30am-5:15, 7pm-12mid.
46.48	6.455	COHI	Santa Clara, Cuba	6:42am-12:15am.
46.66	6.43	HI1S	Santiago, D.R.	5:40-9:10pm ex. Sundays.
46.92	6.395	HI9B	Santiago, D.R.	7:40-8:40pm.
46.95	6.39	TGQA	Quezaltenango, Guatemala	8-11pm; Sat. 8pm-1am, Sun.
46.99	6.384	ZIZ	Basseterre, St. Kitts	4-4:45pm; Wed. 7-7:30p (7am-3pm.
47.10S	6.37	TIWS	Puntarenas, C.R.	4-11pm; Sun. 2-8pm.
47.14	6.365	COCQ	Havana, Cuba	6:50am-1am.
47.20	6.355	IAC	Rome, Italy	3-3:25pm.
47.26F	6.348	HRP1	San Pedro Sula, Honduras	6-7:30am, 2-4, 6-9:30pm.
47.32	6.34	HI1X	Trujillo City, D.R.	8:10-10:10pm; Sun. 7:40-9:40am.
47.36	6.335	OAX1A	Chiclayo, Peru	7:30-11pm. (am
47.39	6.33	COCW	Havana, Cuba	7:55am-12:15am; Su. 9:55am-12:15
47.51	6.315	HI1Z	Trujillo City, D.R.	11:40am-12:40pm; 5:10-7:40pm-6pm-12 mid. (ex. Sun
47.62V	6.30	OAX4G	Lima, Peru	6pm-12 mid. (9:40pm
47.69	6.29	HI1G	Trujillo City, D.R.	7:10-8:40, 11:40am-2:10, 3:40-
47.96	6.255	CP12	La Paz, Bolivia	7-9pm.
48.04	6.245	HI1N	Trujillo City, D.R.	11:40am-1:40, 7:10-9:10pm.
48.11	6.235	HRD	La Ceiba, Honduras	8-11pm; Sun. 4-6pm.
48.27	6.215		Saigon, F. Indo-China	7:30-9:45am, 11:45pm-1am.
48.39	6.20	CP5	La Paz, Bolivia	6:30-11pm.
48.39F	6.20	TG2	Guatemala, Guatemala	7:30-10am, 6-11:30pm, Sa. 6pm-3am, Sun. 3-8pm. For IDA, Sun. 1:30am.
48.43	6.195	HI2D	Trujillo City, D.R.	5:10-7:10pm.
48.47	6.19	HI1A	Santiago, D.R.	10:40am-1:40, 6:40-9:40pm.
48.47	6.19	HVJ	Vatican City	Weekdays 2-3 or 3:30pm.
48.51	6.185	TIRCC	San Jose, C.R.	Tu/Thurs/Sat 6-7pm; Sun. 8-10pm.
48.54	6.18	LRA2	Buenos Aires, Argen.	6-9pm; Sat/Sun 7-9pm.
48.54	6.18	XEXA	Mexico D.F., Mexico	8-11am, 2:30-4, 7:30pm-12:30am.
48.58	6.175	HI4V	S.F. de Macoris, D.R.	5:10-7:40pm; to 10pm irreg.
48.62	6.17	DXQ	Berlin, Germany	2:40-3:25pm... NEWS- 2:50pm.
48.62S	6.17	WCBX	New York City, N.Y.	11pm-1am.
48.66	6.165	TILS	San Jose, C.R.	Noon-2:30, 6-11pm.
48.70	6.16	HJCD	Bogota, Colombia	To 11pm.
48.78	6.15	HI3C	La Romana, D.R.	4:55-6 or 8pm.
48.78	6.15	CJRO	Winnipeg, Canada	8:30pm-1:30am... NEWS- 10:45pm.
48.78	6.15	OQ2AA	Leopoldville, Bel. Congo	heard near 6:15am.
48.81S	6.147	ZRD	Durban, So. Africa	11:45pm-12:50, 3:30-7:30, 9-11:15
48.82	6.145	HJDE	Medellin, Colombia	am, 11:20am-3:45pm; Sun. 5:30am-
48.86	6.14	WPIT	Pittsburgh, Pa.	9:30am-1, 5-11:30pm. (3:20pm.
48.86	6.14	KZRF	Manila, Philippines	11pm-1am.
48.88	6.137	CR7AA	Lourenco Marques, Mozambique	4:30pm-11am; Sun. 6pm-11am.
48.90	6.135	FK8AA	Noumea, New Caledonia	12-1, 4:30-6:30, 12-4pm, Sun. 5-7, 10am-1:15pm.
48.93	6.132	COCD	Havana, Cuba	2:30-3:30am ex. Sundays.
48.93S	6.132	CHNX	Halifax, N.S., Canada	9am-10:30p, Sun. 5:30-8pm. 7am-11:15pm; Sat. 8am-11:30pm.

48.94	6.13	VP3BG	Georgetown, B. Guiana	3:45-7:45pm ex. Su; Su. Noon-11pm.
48.98	6.125	MTCY	Hsinking, Manchukuo	4-9am.
49.00	6.122	HP5H	Panama City, Panama	6-10:30pm; to mid. irreg.
49.04	6.117	XEUZ	Mexico D.F., Mexico	9am-1, 7pm-2am.
49.05	6.116		Saigon, F. Indo-China	12:05-12:45, 6-10:15am.
49.08	6.115	HIGH	Trujillo City, D.R.	9:40am-5:40pm.
49.10	6.11	GSL	London, England	Not on air at present.
49.14N	6.105	KZRC	Cebu, Philippines	4-9am, 5-7, 11pm-12 mid.
49.14	6.105	HJFB	Manizales, Colombia	5:30-10pm ex. Sun.
49.18	6.100	YUA/YUB	Belgrade, Jugoslavia	12:43-2, 7:55-8:50, 8:55-9:55pm
49.18	6.100	WNBI	New York City, N.Y.	9:45pm-12 mid.
49.20	6.097	ZRK	Capetown, So. Africa	12-4pm; Sun. 12-3:20pm.
49.20S	6.097	ZRJ	Johannesburg, S. Afr.	11:45pm-12:50, 3:15-7, 9-11:30am.
49.23	6.094	ZHJ	Penang, S.S.	6:40-8:40am ex. Sun.
49.25	6.09	ZNS2	Nassau, Bahamas	8-9, 1:30-2, 6:30-11pm... NEWS-
49.25	6.09	XEBF	Jalapa, Mexico	To 9:30pm. 8:15am.
49.32	6.083	VQ7LO	Nairobi, Kenya	5:45-6:15, 11:30am-2:30, Tu/Thur-
49.34	6.08	CRY9	Macao, Macao	Mon. 8:30-10am (8:30-9:30am.
49.34	6.08	CKFX	Vancouver, Canada	1-3am ex. Mondays.
49.34	6.08	OAX4Z	Lima, Peru	7pm-1:30am.
49.42S	6.07	CFRX	Toronto, Canada	6:45am-12:30am; Sun. 10am-11pm.
49.46S	6.065	SBO	Motala, Sweden	4:15-5:15pm. (Sun. 2:30-4am.
49.48S	6.063		Tananarive, Madagascar	1:30-1:45, 4-5, 10:30-11:30am; -
49.50S	6.06	WCAB	Philadelphia, Pa.	Su/Tu/Fri 5:30-10pm, Wed. 5:30-7:30pm.
49.50S	6.06	WLWO	Cincinnati, Ohio	Su. 8am-5:30, 10pm-1am; Mon/Thurs Sat 5:45-1am; Tu/Wd/Fri 5:45am-5:30, 10pm-1am.
49.54	6.056		Rangoon, Burma	Daily to 10am.
49.55	6.054	HJFA	Pereira, Colombia	9am-noon, 6:30-11pm.
49.56	6.05	GSA	London, England	12:25-5, 11:52am-8pm.
49.56	6.05	HP5F	Colon, Panama	7-9pm.
49.63	6.045	XETW	Tampico, Mexico	7pm-1am.
49.67S	6.04	WRUL	Boston, Mass.	4:30-7:45; Sun. 1-8pm.
49.67	6.04	WDJM	Miami, Florida	1-3, 9pm-1am.
49.67	6.04	KZIB	Manila, Philippines	5:30-10am, 6-11pm.
49.73	6.033	HP5B	Panama City, Panama	10:30am-2, 6-10pm.
49.75	6.03	CFVP	Calgary, Alta., Canada	10am-2am.
49.75	6.03	XEKW	Morelia, Mexico	Nightly to 11:40pm.
49.76	6.03	RV96	Moscow, U.S.S.R.	2-6, 7-8:30, 8:30-9pm.
49.81	6.023	XEUW	Veracruz, Mexico	10pm-1am.
49.83	6.02	DJC	Berlin, Germany	11:30am-4:25pm.
49.83	6.02	HI3U	Santiago, D.R.	7:10-8:55, 11:40am-1:40, 4:40-
49.85	6.018	HJCX	Bogota, Colombia	6-11:30pm. (6:40pm.
49.92	6.01	PRA8	Pernambuco, Brazil	4-9pm.
49.92S	6.01	CJXC	Sydney, Nova Scotia	7am-1:30, 8-11:30pm.
49.96	6.005	CFCX	Montreal, Canada	8am-1am, Sun. 9am-11:15pm.
49.96	6.005	XYZ	Rangoon, Burma	6:30-10am, 9-11pm; Sa. 9:30-11:30
49.96	6.005	ZRH	Johannesburg, S. Afr.	3:30-4pm ex. Sat/Sun (pm
49.96	6.005	XEBT	Mexico City, Mexico	10am-1:45am.
49.96	6.005	HP5K	Colon, Panama	
50.21	5.975	OAX4P	Huancayo, Peru	9-11pm.
50.21F	5.975	HILJ	San Pedro, D.R.	11:40am-1:40, 6:10-8:40pm.
50.22	5.973	VONG	St. John's, Nfld.	4:30-9:30pm.
50.37J	5.957	HH2S	Port-au-Prince, Haiti	6:30-10pm.
50.51	5.94	OAX2A	Trujillo, Peru	Tues/Wed/Sat/Sun 7-10pm.
50.54	5.936	PCJ1	Curacao, D.W.I.	6:36-8:36pm; Su. 10:36am-12:36pm
50.95	5.90	ZNB	Mafeking, Bechuanaland	1-2:30pm; 6-7am ex. Sundays.
51.07	5.875	HRN	Tegucigalpa, Honduras	6-11pm; Sun. 6-9:30pm.
51.46	5.83	TIGPH/TIX	San Jose, C.R.	7-10, 10pm-12 mid.
52.26F	5.74	YNJAT	Leon, Nicaragua	7-10:20pm.
52.40	5.725	HCLPM	Quito, Ecuador	Mon/Tues/Thurs/Sat 8-10pm.
53.31	5.14	PMY	Bandoeng, Java	5:30am-noon.
59.58V	5.035	YV5RN	Caracas, Venezuela	4-11:30pm; Su. 8:30-11:30am, 3:30-

NOTE: See April Globe Circler for 60 Meter Band.



**International**PUBLISHED MONTHLY  
EXCEPTING JULY


**The GLOBE CIRCLER**  
BLOOMINGTON, ILLINOIS, U. S. A.

**Dx'ers Alliance**CHARLES A. MORRISON  
EDITOR

Volume 8

May, 1940

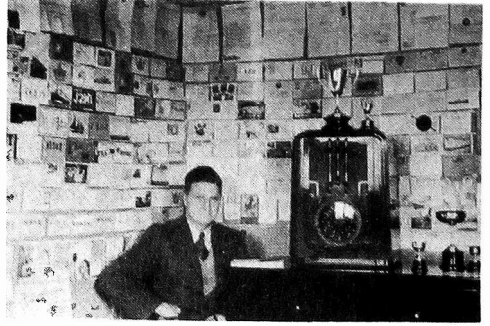
Number 5

**— NEW MEMBERS —**

J.B. Hopkins, M.D., Bridgewater, Virginia  
 ... Ralph W. Swetman, Principal, State Normal School, Oswego, N.Y. ... Edward Startz, PHI-PCJ Studios, Hilversum, HOLLAND ... Geo C. Starry, Latrobe, Pennsylvania ... Ray Reinhardt, East Bernard, Texas ... H. Brown, Chicago, Illinois ... J.C. Hensley, Oakland, California.

**CALENDAR FOR IDA LOCAL CHAPTERS**

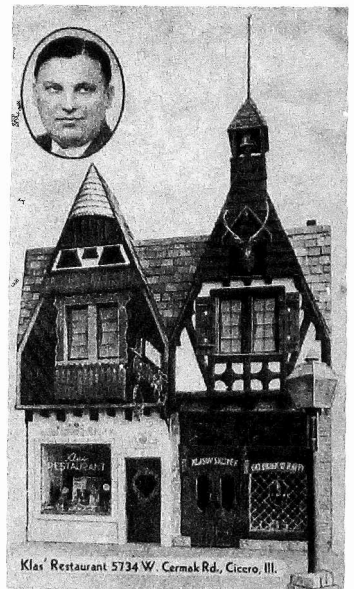
LAKES (Mpls area)- Meetings are held regularly. For exact information as to next meeting date contact Larry Lundberg, 1020 Lowry Ave. N., Minneapolis. ....  
SOUTH JERSEY (Philadelphia area)- Has its own well equipped club house at 104 Broadway, Camden, where members can congregate at any time, and where regular dx meetings are held each Saturday evening...  
SO. CALIF. (L.A. Area)- Next meeting will be held on Sat., May 25. For details contact Hal Clein, 1427 Maltman, Los Angeles, California ...  
WORLD WIDE DIAL CLUB and WINDY CITY CHAPTER (Chicago land) ... Next meeting on May 8 (then June 12), at the Central Y.M.C.A., 19 So. La Salle St., Chicago. Regular neighborhood meetings of an informal character are also held regularly.

Frank Hutchings of Auckland, N.Z.**— PERSONAL —**

Roy and Lena DeMent of Plainview, Texas, welcomed a baby girl into the home on April 7... IDA Director John DeMyer, Lansing, Michigan, is still suffering from a bad influenza infection which was contracted more than a month ago. We all wish John a speedy recovery... Charles Morrison, has been named an honorary member of the Cuban "Club de Ondas Cortas, an honor for which he is grateful.

**— THE IDA/NRC MID-SUMMER CONVENTION —**

A private dining room on the second floor of the interesting and picturesque Klas' Moravian Restaurant (see picture) at 5734 W. Cermak Road, Cicero, Ill., has been chosen as the scene for the IDA-NRC mid-summer conclave to be held on Sunday, July 27. The registration fee of \$1.50 per person which includes a full turkey dinner and plenty of beer, must be sent to Robt. Irwin, 3920 Cortland Av, Chicago, Ill., not later than July 20. Information regarding the convention, transportation, hotels, etc. should be addressed to Gail Beyer, 3226 Sunny side Ave., Chicago, Ill. The meeting will be informal in every respect and everyone is assured of a good time. Wives, sisters and sweethearts of dx'ers are also cordially invited. Dancing will be available for those wishing to indulge. Special door prizes will be provided. Plan now to spend this week-end in Chicago- the vacation headquarters of the middle-west. All details are being arranged by the WORLD WIDE DIAL CLUB and WINDY CITY CHAPTER of IDA who are acting as hosts for this auspicious event.



Klas' Restaurant 5734 W. Cermak Rd., Cicero, Ill.

# BROADCAST STATION NOTES AND DX TIPS

**AUSTRALIA** 2BH has shifted temporarily to 790 kcs...3BO (970), Bendigo, has increased power to 500w (ADXC)... "Just received veri' from 2CO. I now have 3 continents and 9 countries on the BCB" (Schubert-Iowa)

**CANADA** Stations CKCD (1010) and CKFC (1410), Vancouver, are off the air... CKWX will move to 950 Kcs. on June 1, and increase power to 1kW (Sampson)

**CHINA** BCB stations operated by the Central Broadcasting Administration of Szechwan, China, are as follows:-

<u>XGOA</u> 1200	Central Station	<u>XGOG</u> 560	Chengtu	<u>XKDA</u> 1000	Sian
<u>XGOD</u> 890	Chekiang	<u>XGOL</u> 950	Fookien	<u>XKPA</u> 1290	Shansi
<u>XGOE</u> 680	Kwangsi	<u>XGOP</u> 1150	Kwangtung	<u>XLPA</u> 860	Hunan

.. XMHD (760) and XQMW (980), in Shanghai, are both off the air... The mystery station on 1010 kcs. has now been identified as XOJD of Hankow (ADXC)

**COLOMBIA** BCB stations of 1000 w or over are as follows: HJFX (600), 1kW, Manizales... HJCU (720), 5kW, Bogota (under const.)... HJGZ (1040), 2½kW, Bogota... HJCB (1105), 2kW, Bogota... HJCO (1160), 1kW, Bogota... HJAN (1190), 1kW, Barranquilla... HJCR (1200), 5kW, Bogota... HJCE (1220) 1kW, Bogota... HJDQ (1320) 1800w, Medellin.

**CUBA** CMQ is to head a new network with several powerful stations in each of the six provs. of Cuba... Another new network, Cadena Cubana de Radio, will be built around CMCF (810) and COCH (9.437)... The RHC and Cadena Azul networks have combined to form one chain including CMAN (570), CMCY (590), CMGN (760), CMHL (830), CMHN (950), CMJM (870), CMJN (610), CMKV (510), CMKN (640) and COHI (6.45) (Ramirez-Cuba)

**ENGLAND** "The following stations have been heard in London since Feb. 24 -- VONF LS1 PRA8 PRES LR6 LR5 LR4 LR1 WKAQ LS11 WCKY CMQ WCAU WVIC CBA WNEL PR13, WCKY considered best dx heard during period." (Burton-London)

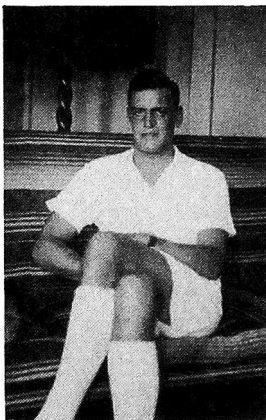
**MEXICO** XEAW, Reynosa, has shifted to 1020kc (Callan, Skyten)... **NEW:** XEON (920), 2000w, is now broadcasting nightly 4-10pm EST. Mailing addresses are P.O.Box 115, Tijuana, or P.O.Box 101, San Diego, Calif. (Walcott)... "La Red Pan americana" network consists of XEG, XEAS, XETB, XECZ, XEQ, XES, XELW, XEAG, XED, XEU, XEA, XEZ... XEAD, XEMX, XEBC, XEPN and XEXB are temporarily off air (C.J.Fern)

**MONTREAUX** wave-length plan for wholesale shift of European frequencies has been abandoned at least for the duration of the war (Com.Bul.)

**UNITED STATES** WLW is said to be best U.S. station heard on Pitcairn Island (WLW)... Station WJW, Akron, will probably be sold to Wm. O'Neil, and join the MBS (Tucker)... The Presque Isle Broadcasting Co. of Erie, Pa., have been granted a construction permit for a 100/250 watt station to operate on 1500

## BORNEO MEMBER VISITS IDA HEADQUARTERS

It was a pleasant surprise when on Sat., April 6, Lieutenant John H.A. Hardeman of the Royal Dutch Engineers, who has been stationed for the past 7½ years in the Dutch East Indies (last 2½ years at Balikpapan, Borneo), visited IDA Headquarters and stopped overnight in Bloomington, Ill. enroute to Holland to visit his family. Mr. Hardeman has been a member of the IDA and our Official Rep. in the D.E.I. for the past five years. The photo at right shows John in his tropical attire.



## == DX TIPS BROADCASTS ==

The KSL (1130) DX TIPS broadcast is now being broadcast the 2nd & 4th Thursday of each month, from 2:45 to 3:00 A.M. EST... The WTAM DX CLUB BROADCAST heard Saturdays at 11:30 pm EST, sponsored by the Cleveland Radio Club, has received letters from almost every state in the Union.

## WITH THE OTHER DX CLUBS

The IRM (International Radio Monitors), Box 41, Ogden, Utah, announce the merger of their organization with the former DXIEC, under the name IRM.

...If you wish to use report forms, The IDA heartily recommends the very excellent and complete dx report forms published by the National Radio Club, 317 East 10th St., Erie, Pennsylvania. Prices and samples can be obtained by applying to the above club at the address given. Please mention the IDA when writing- Ed.

# VIC-VAC HONOR ROLLS

**VAC: VERIFIED  
ALL CONTINENTS**

DIST. 1: No changes reported. See Feb. G.C. DIST. 2: 69  
ROY MYERS, 37-W.BRITTING, 22-H.ALLEN, 20-JAS.MOORE, 20  
H.CLEIN, 19-Amers, 16-C.Streuber, 15-F.Harris, 8-H.Honda, 7-A.Balbi, 5- M.  
Fisher, 4-W.Guthrie, 3-A.Field, D.Williams, 2-L.McNamara. DIST. 4: 29- GAIL  
BEYER, F.MURPHY, 18-C.&A.Eders, 17-T.Grey, 16-R.&I.Brian, 15-L.Herz, 11-Léo  
Herz, 10-Carlson & Schuckhart, 8-C.Treize, K.Schram, H.Schrock, 7-D.Traister,  
F.Anzalone, 6-R.DeMent, 5-C.Myers, E.Bristow, A.Deterly, 4-Ray Swenson, A.Paul  
Z.Kandle, R.Dissinger, P.Loyd, 3-K.Miller, H.Schubert, 2-E.Schenk, S.Graham, J.  
Michalski, 1-G.Jensen, N.Cannata, K.Skoog, W.Scholz, K.Fountain, E.Danielson, J.  
Delaney, J.Jenkins, R.Kramer, L.Lundberg, C.Robinson, R.Shaffar. DIST. 5: No  
changes reported. See Feb. G.C. DIST. 6: 133-JOHN MAY, 117-H.S.BRADLEY,  
R.GOZEN, 94-R.LEGGE, 90-J.DeMYER, 87-N.KRIEBEL, 58-L.CAVILEER, 51-J.SIRIN  
GER, 50-H.ECK, 49-M.BUTTEKANT, D.THOMAS, 45-E.ROBERTS, 42-R.WAITE, 37-IRVING  
GOODEVE, 35-J.BUTTEKANT, 33-J.BARRE, 32-P.RUSH, 31-E.POWERS, 28-D.HALL, 26-  
P.ALBERTO, M.SOPLOP, E.WOKATY, 24-L.WINDISCH, 21-E.HATCH, 19-R.B.Oxrieder,  
18-Wm.Palmer, 17-M.Cassina, 14-E.G.Riggle, 13-C.Bolton, E.Nicolassy, 12-J.E.  
Gardner, W.Herzog, 10-M.Bruscia, 9-E.Goss, 8-M.Bass, J.Hager, 7-l.Miller, R.  
Powell, 6-B.Nordgren, Geo.Graham, R.Partridge, D.Stone, 5-A.Bartholomew, James  
Steele, I.Van Zandt, D.Wright, 4-R.Daneker, M.Garvey, L.Salazar, C.Seth, R.Ver-  
brugge, 3-B.Horne, H.Lueth, S.Mann DIST. 7: 27-R.MESSER, 25-G.ROCKWELL,  
16-L.Hutchinson, 12-J.Lippincott, 9-J.Pratt, J.Kneeland, 8-J.Graham, A.Bond,  
5-H.Ward, A.Willis, 4-E.Barker, 3-F.Stockbridge, 2-J.Harvey, R.Collins, A.Long,  
D.Hoadley, 1-G.Cote, R.Ritchie, I.Witty, S.Rudd. GT.BRITAIN: No report re-  
ceived. N.Z.: 27-A.BREEN, 3-B.Connor. AUSTRALIA: R.Simpson. JAPAN- 16  
-S.Yoshimura. CANAL ZONE- 4-J.Gallivan.

**VIC: TOTAL NUM-  
BER OF COUNTRIES  
VERIFIED**

DIST. 1: 94-H.ORLAW, 81-W.ANSELL, 79-L.UNDERWOOD, 52-N.  
 Eblling, 51-W.King, 42-J.Christie, 41-W.Wood, 39-D.White,  
 35-G.Cheeseman, 33-R.Thompson, 32-Mrs.Baird, 27-S.Barnet  
 son, 26-F.Newton, 23-G.Young, 21-J.Hodges, 15-J.Dickenson, J.Frederick, 14-W  
 White. DIST. 2: 113-R.MYERS, 111-H.GLEIN, 104-W.BRITTING, 101-H.ALLEN,  
 98-J.MOORE, 88-AMERS, 85- E.Bartels, 66-F.Harris, 59-C.Streuber, 54-H.Honda  
 49-A.Field, 45-A.Balbi, 43-W.Guthrie, D.Williams, 37-L.McNamara, 29-M.Fisher  
 16-B.Purcell. DIST. 4: 117-R&I.BRIAN, 105-G.BEYER, 100-R.HETZEL, 98-F.  
 MURPHY, 87-Z.KANDLE, 86-T.GREY, 83-R.IRWIN, 81-L.HERZ, C&A.EDERS, 79-C.TRE-  
 ZISE, 74-F.Anzalone, 68-H.Schrock, K.Schram, 66-Carlson & Schuckhart, 60-D.  
 Traister, 59-L.Pardini, E.Schenk, 58-R.DeMent, 53-E.Bristow, 50-J.Michalski,  
 C.Meyers, 44-A.Deterly, 41-K.Miller, R.Dissinger, 40-C.Robinson, R.Swenson,  
 H.Schubert, 38-A.Paul, 37-W.Scholz, P.Loyd, 35-S.Graham, 34-C.Will, 31.J.De-  
 laney, 29-N.Cannata, J.Jenkins, L.Eikamp, 28-R.Kramer, G.Jensen, 26-L.Lundberg,  
 23- R.Shaffar, 20-S.Cashio, 19-H.Gustafson, 17-E.Danielson, K.Skoog, 15-K.  
 Fountain. DIST. 6: 154-J.MAY, 149-J.DeMYER, 146-H.S.BRADLEY, 132-R.LEGGE,  
 130-N.KRIEBEL, 127-L.CAVILEER, 126-R.GOZEN, 124-M.SOPLOP, 122-H.ECK, J.SIRIN  
 GER, 119-R.WAITE, 118-D.THOMAS, 116-P.RUSH, 115-E.ROBERTS, 114-P.ALBERTO, G.  
 WEBER, 110-M.BUTTEKANT, 109-J.BARRE, 104-ELI POWERS, 103-I.GOODEVE, 101-J.  
 BUTTEKANT, 98-E.HATCH, E.WOKATY, 86-R.B.OXRIEDER, 85-Wm. PALMER, L.WINDISCH,  
 82-B.NORDGREN, 81-E.GOSS, T.SERAFIN, E.G.RIGGLE, 79-W&R.BUTTS, 76-E.NICOLASSY  
 75-M.BRUSCIA, 72-M.Bass, J.Gardner, 70-B.Fiederowicz, W.Herzog, 69-M.Cassina,  
 R.Powell, 67-A.Bartholomew, M.Garvey, 65-C.Bolton, 63-C.Seth, 62-R.Partridge  
 L.Salazar, 61-D.Hall, 58-J.Steele, 57-L.Miller, D.Stone, 54-I.Van Zandt, 53-  
 R.Daneker, H.Hager, B.Horne, S.Mann, 50-G.Graham, A.Rhoads, D.Wright, 42-John Ed-  
 wards, M.Vanderhaeghe, R.Verbrugge, 40-H.Lueth, E.Prendergast, 36-R.Taglauer,  
 33-J.Johnson, H.Magowan, J.Richrod, 30-H.Braeme, 28-L.Ambrosius, Wm.Miller, 27  
 -M.Kennedy, W.Samnis, 25-G.Cook, 23-G.Batson, 22-C.Ast, 16-K.Nelson, 13-Jack  
 Brimmer, 13-E.Kline, 12-Julia Neilson, 9-R.Cooper, 7-R.Nagle. DIST. 7:  
 127- G.ROCKWELL, 91-R.MESSER, 77-L.HUTCHINSON, 75-J.GRAHAM, 71-J.Lippincott  
 70-J.Pratt, 58-J.Kneeland, A.Bond, 52-F.Stockbridge, 50-H.Ward, 41-A.Willis,  
 40-J.Harvey, 39-E.Barker, A.Long, 37-R.Collins, 34-R.Ritchie, 29-G.Cote, 28-  
 D.Hoadley, D.Callan, 27-I.Witty, 26-P.Barter, 22-J.Hardy, 21-J.Kernan, 17-  
 S.Rudd, 14-D.Witthun, 6-K.Morey, F.Heiss, 4-T.Hogg, 3-J.Pedersen. DIST. 5,  
 & GT.BRITAIN: No changes reported. JAPAN: 95-S. YOSHIMURA. N.Z.: 94-ALAN  
 BREEN, 53-B.Connor. AUSTRALIA: 114-R.SIMPSON. CANAL ZONE: 57-J.Gallivan  
 NOTE: Send your revised VIC/VAC listings in to your director before Sept.5,  
 for publication in OCT.G.C. We must have more interest in VIC/VAC listings.