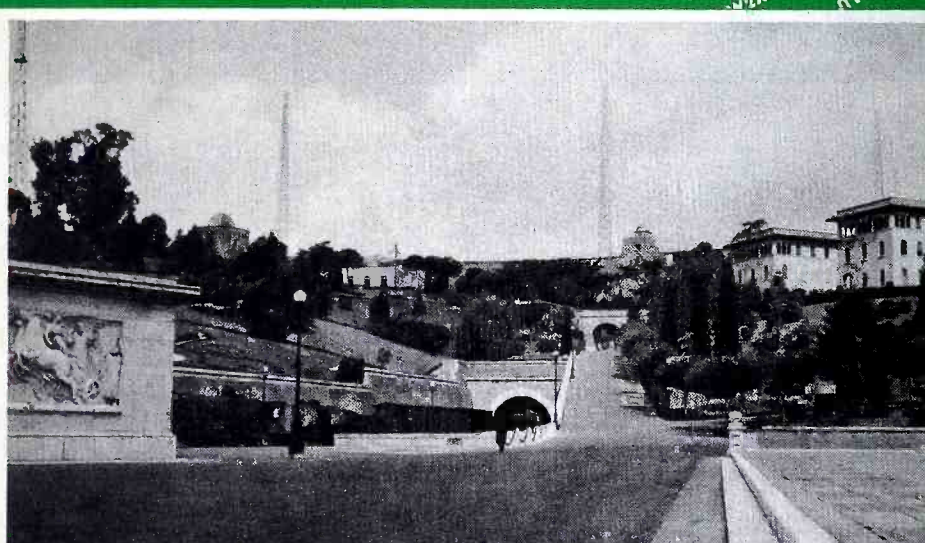


THE GLOBE CIRCLER

OCTOBER, 1939



Site Of "Radio Vaticano" At Vatican City

In this issue

VAC/VIC S.W. HONOR ROLLS—NATIONAL DEFENSE LISTENERS LEAGUE—
DX TRANSMISSIONS—THE I.D.A. 100 CLUB—ULTRA HIGH FREQUENCY—
WAR NEWS—SHORT-WAVE NOTES—SHORT-WAVE LIST.

ten cents

INTERNATIONAL DX'ERS ALLIANCE

SHORT WAVE NOTES

Editor-in Chief, C. Morrison; UHF Editor, P. Ferrell; Frequency Checking Editors, R. B. Oxrieder, J. Larsen; Ama-Touring Editors, R. Legge and Roy Waite.

IDA PROGRAMS

NOV. 19, 7-8pm EST, 6.03mc RV96 DEC. 17, 1-2am EST, 13.9mc YNDG.

THE I.D.A. 100 CLUB

1. John May, Wilkinsburg, Pa. (VIC)	148	11. P. Alberto, New York, N.Y. (VIC)	111
2. Howard Bradley, Hamilton, N.Y.	144	R & I Brian, Minneapolis, Minn.	111
John DeMyer, Lansing, Mich.	144	12. M.W. Soplop, Alleghany, N.Y.	110
3. Roger Legge, Binghamton, N.Y.	130	M. Buitekant, New York, N.Y.	110
4. Ralph Gozen, Yonkers, N.Y.	124	Earl Robert, Indianapolis, Ind.	110
Norman Kriebel, Ambler, Penna.	124	Ray Simpson, Concord, Australia	110
5. Lem Cavileer, Haddon Hts, N.J.	123	13. Jack Siringer, Lakewood, Ohio	109
6. G. Rockwell, Halifax, N.S., Canada	119	14. Hal Clein, Los Angeles, Calif.	107
7. Philip Rush, Pittsburgh, Penna.	116	Carl Weber, Camden, N.J.	107
8. H. Eck, East Lansing, Mich.	115	15. John Barre, New York, N.Y.	106
Roy Waite, Ballston Spa, N.Y.	115	16. Robt. Pybus, Manchester, England	102
9. Guy Bigbee, Ft. Benning, Georgia.	114	Eli Powers, Brooklyn, N.Y.	102
10. Roy Myers, Los Angeles, Calif.	113	W. Britting, Montebello, Calif.	102
Davis Thomas, Proctorville, Ohio	113	17. Gail Beyer, Chicago, Illinois.	100

WAR NEWS

E.S.T. U.S.A. NBC (including WGEA, WGEO, WNBI, WRCA, WPIT) -- Weekdays: 8, 9am, noon, 5:15, 6:25, 12 mid. and 1:55 a.m.; Sundays: 8, 11am, 10pm, 12 mid., 12:55 and 1:55am. . . CBS (including WCBX (W2XE) and WCAB): Weekdays: 8, 11am, 6, 6:30, 8:55, 11pm and 1:55am; Sundays: 9, 11am, 4:55, 7, 8:55, 11pm.
 ENGLAND 8:15am (GSF, GSG, GSJ); 11am (GSF, GSG, GSJ); 1pm (GSG, GSI, GSD); 4:30 pm (Sun 4:05pm) (GSD, GSC, GSF, GSO, GSP); 7:45pm (Sun 7:30pm) (GSB, GSD, GSF); 11pm (GSB, GSC, GSD). . . FRANCE- 2pm (TPA2); 8:15, 11:30pm (TPB11 & 9.68);
 GERMANY 6, 8:15 and 10:30pm (DJB, DJD). . . ITALY- 7:30pm (2R03, 2R04, 2R06)
 U.S.S.R. -- 7pm (RKI, RNE, RAN, RV96). . . HUNGARY- 7:30pm (HAT4)

APPOINTMENT: DIST. DIRECTOR for IDA 7th DIST: Desmond Callan, Green Street, Readville, Mass. (Includes New England States; N.B., N.S., P.Q., Ont., Nfld).

PRESS DEADLINES: for NOVEMBER GLOBE CIRCLER: Oct. 14; for NOVEMBER STOP

PRESS SHEET: Oct. 31; for NOVEMBER AMA-TOURING: Oct. 28 (For Ama-Touring, send your news items to Roger Legge, 20 Beethoven St., Binghamton, N.Y.)

IMPORTANT: MAKE OUT YOUR SHORT-WAVE REPORTS AS FOLLOWS: Double space lines; use one side of page only; group items by continents and state time time used. Items in order of importance are: NEW stations; exact frequencies or frequency changes; exact schedules or addresses; identifying signals and unusual receptions. RUSH important items by fastest mail. FOUR STAR items denote exceptional merit. EACH FIVE STAR ITEM PAYS \$1.00 to the contributor.

ULTRA HIGH FREQUENCY

-By Perry Ferrell-

Dx'ers should watch the 8 and 9 meter regions for small transmitters used by the various armies now involved in the present European situation, such as those used in tanks, field units etc... My reports to WQKC (New Rochelle, N.Y. Police), KQCF (Tyler, Texas Police) and WLXKB (Springfield, Mass. 50 watt broadcaster) all verified as "firsts"! (Ray Simpson, N.S.W., Australia)... I.B. Robinson, Chief Engineer of WLXOJ informs us that their xmt. is now using about 3 kw., but will soon increase to 50kw on 43.00 megs. It broadcasts frequency modulated programs from 8am-12 mid. daily... Aircraft radio beam signal from Mascot, N.S.W., Australia can be heard here with exceptionally strong signal from time to time while signing "SY" on 32.20 mcs (C. Criswell, H. Clein O. Barneson)... W9XYH to 43.00 from 26.3 megs (FCC)... W6XDA has moved to 42.3 from 38.6 mcs. and is operating their regular 3-9pm sked (Barneson)... Seems to be a slight (10kc?) difference in the operating frequencies of W6XKG and W8XNU although both are assigned as 25.95 mcs. Who else notices this? (Clein)... W4XA has one of the best signals on the eleven meter band according to reports received from 3 continents and is often heard R9 plus on the W. Coast.

SHORT WAVE NOTES

Editor-in Chief, C. Morrison; UHF Editor, P. Ferrell; Frequency Checking Editors, R. B. Oxrieder, J. Larsen; Ama-Touring Editors, R. Legge and Roy Waite.

IDA PROGRAMS

NOV. 19, 7-8pm EST, 6.03mc RV96 DEC. 17, 1-2am EST, 13.9mc YNDG.

THE I.D.A. 100 CLUB

1. John May, Wilkinsburg, Pa. (VIC)	148	11. P. Alberto, New York, N.Y. (VIC)	111
2. Howard Bradley, Hamilton, N.Y.	144	R & I Brian, Minneapolis, Minn.	111
John DeMyer, Lansing, Mich.	144	12. M.W. Soplop, Alleghany, N.Y.	110
3. Roger Legge, Binghamton, N.Y.	130	M. Buitekant, New York, N.Y.	110
4. Ralph Gozen, Yonkers, N.Y.	124	Earl Robert, Indianapolis, Ind.	110
Norman Kriebel, Ambler, Penna.	124	Ray Simpson, Concord, Australia	110
5. Lem Cavileer, Haddon Hts, N.J.	123	13. Jack Siringer, Lakewood, Ohio	109
6. G. Rockwell, Halifax, N.S., Canada	119	14. Hal Clein, Los Angeles, Calif.	107
7. Philip Rush, Pittsburgh, Penna.	116	Carl Weber, Camden, N.J.	107
8. H. Eck, East Lansing, Mich.	115	15. John Barre, New York, N.Y.	106
Roy Waite, Ballston Spa, N.Y.	115	16. Robt. Pybus, Manchester, England	102
9. Guy Bigbee, Ft. Benning, Georgia.	114	Eli Powers, Brooklyn, N.Y.	102
10. Roy Myers, Los Angeles, Calif.	113	W. Britting, Montebello, Calif.	102
Davis Thomas, Proctorville, Ohio	113	17. Gail Beyer, Chicago, Illinois.	100

WAR NEWS

E.S.T. U.S.A. NBC (including WGEA, WGEO, WNBI, WRCA, WPIT) -- Weekdays: 8, 9am, noon, 5:15, 6:25, 12 mid. and 1:55 a.m.; Sundays: 8, 11am, 10pm, 12 mid., 12:55 and 1:55am. . . CBS (including WCBX (W2XE) and WCAB): Weekdays: 8, 11am, 6, 6:30, 8:55, 11pm and 1:55am; Sundays: 9, 11am, 4:55, 7, 8:55, 11pm.
 ENGLAND 8:15am (GSF, GSG, GSJ); 11am (GSF, GSG, GSJ); 1pm (GSG, GSI, GSD); 4:30 pm (Sun 4:05pm) (GSD, GSC, GSF, GSO, GSP); 7:45pm (Sun 7:30pm) (GSB, GSD, GSF); 11pm (GSB, GSC, GSD). . . FRANCE- 2pm (TPA2); 8:15, 11:30pm (TPB11 & 9.68);
 GERMANY 6, 8:15 and 10:30pm (DJB, DJD). . . ITALY- 7:30pm (2R03, 2R04, 2R06)
 U.S.S.R. -- 7pm (RKI, RNE, RAN, RV96). . . HUNGARY- 7:30pm (HAT4)

APPOINTMENT: DIST. DIRECTOR for IDA 7th DIST: Desmond Callan, Green Street, Readville, Mass. (Includes New England States; N.B., N.S., P.Q., Ont., Nfld).

PRESS DEADLINES: for NOVEMBER GLOBE CIRCLER: Oct. 14; for NOVEMBER STOP

PRESS SHEET: Oct. 31; for NOVEMBER AMA-TOURING: Oct. 28 (For Ama-Touring, send your news items to Roger Legge, 20 Beethoven St., Binghamton, N.Y.)

IMPORTANT: MAKE OUT YOUR SHORT-WAVE REPORTS AS FOLLOWS: Double space lines; use one side of page only; group items by continents and state time time used. Items in order of importance are: NEW stations; exact frequencies or frequency changes; exact schedules or addresses; identifying signals and unusual receptions. RUSH important items by fastest mail. FOUR STAR items denote exceptional merit. EACH FIVE STAR ITEM PAYS \$1.00 to the contributor.

ULTRA HIGH FREQUENCY

-By Perry Ferrell-

Dx'ers should watch the 8 and 9 meter regions for small transmitters used by the various armies now involved in the present European situation, such as those used in tanks, field units etc... My reports to WQKC (New Rochelle, N.Y. Police), KQCF (Tyler, Texas Police) and WLXKB (Springfield, Mass. 50 watt broadcaster) all verified as "firsts"! (Ray Simpson, N.S.W., Australia)... I.B. Robinson, Chief Engineer of WLXOJ informs us that their xmt. is now using about 3 kw., but will soon increase to 50kw on 43.00 megs. It broadcasts frequency modulated programs from 8am-12 mid. daily... Aircraft radio beam signal from Mascot, N.S.W., Australia can be heard here with exceptionally strong signal from time to time while signing "SY" on 32.20 mcs (C. Criswell, H. Clein O. Barneson)... W9XYH to 43.00 from 26.3 megs (FCC)... W6XDA has moved to 42.3 from 38.6 mcs. and is operating their regular 3-9pm sked (Barneson)... Seems to be a slight (10kc?) difference in the operating frequencies of W6XKG and W8XNU although both are assigned as 25.95 mcs. Who else notices this? (Clein)... W4XA has one of the best signals on the eleven meter band according to reports received from 3 continents and is often heard R9 plus on the W. Coast.

...W9XPD (25.9) and W2XJI (26.3) both being heard well here with much improved conditions (Hiatt)...NEW: Bamberger Broadcasting Service on 43.20 with 1kW....N.B.C. (frequency modulation) on 42.6 mcs. with 1kW....W2XQR to 43.2, all three New York City stations.... Have logged Army Signal Corp. stations U11 and TH178 from time to time on 43.6 mcs. (Criswell, Ferrell)... Have letter from Head of signal Corp. cordially refusing to verify reception because they are used in National Defense work (Criswell)...NEW: W9XOK (25.3), Metropolitan Bldg., Grand & Olive, St. Louis, Mo., heard at 7pm (Scholz). ...CBS evening programs will be piped regularly into W2XMN at Alpine, N.J. for its "frequency modulation" transmissions (CBS)

TELEVISION: First demonstration of television in color was given by the Baird Corp. at Sydenham, England on Aug. 2. The color photo of King George on a large screen was in full color and perfect definition (Com. Bul)...First football telecasts over W2XBS, namely views of the Fordham Univ. Rams going through their paces, were reported very successful (NBC).

(E.S.T.)

== NORTH AND CENTRAL AMERICA ==

(E.S.T.)

CUBA NEW: COHI (6.450), 5kW, Santa Clara, was inaugurated on Sept. 1.....
 ...COX4 (6.39), Havana, heard testing (Hidalgo, Amers)...A COCE or COCA at Santa Clara, heard relaying CMHE daily 7pm to mid., on 6.47, may be same as COHI above (Balbi)...COGF is on exactly 11.8 now (Balbi)...COCQ now has a second xmtr. on 6.36mcs (Amers, Balbi, Larsen, Schubert); COCH now has a second xmtr., on 6.46mcs (Larsen, Schubert); an unidentified Cuban on 7.77, relaying COCW at times, and COBZ also at times, is being heard irreg. (Larsen)
 ...CUBAN NETWORKS: CADENA CRUSSELLAS (Crusselas Network: Colgate-Palmolive) composed of CMQ (main station), CMJK, CMJA, CMKD, CMKG, is relayed by COCQ and COKG; CADENA AZUL (Blue Network), composed of CMHI (main station), CMCF, and CMKQ, is relayed by COHI and COCH; RADIO CADENA-NACIONAL (National Network) composed of CMK (main station), CMHW, CMGF, CMGF, CMAR, CMKF, CMKR, CMJC and CMJX is relayed by COGE (**Hidalgo-Cuba)

CURACAO PJCL, "Radio Curon", is now back on 5.941 mcs. (RBO)

D.R. HIIS has shifted to 5.926 (RBO)...HIIN (6.243), "La Voz Del Partido Dominicano", Trujillo City, issues an attractive colored QSL cd (Batson)
 ...HI6H (6.9), is now operating from 5 to 8:50pm. At 40 mins. before every hour the same recording of a song and crude laughter is played (*Larsen)

GUATEMALA TGX1 is now being heard on 5.855, nightly to about lam (RBO)

MEXICO S.W. relay for XEBH, is being heard on 10.8 mcs, with same program as XEBR (11.826), the latter being well heard afterwards (Butcher)...XEQQ (now on 6.029), relays XEQ (730 kc), nightly until 12:30 or lam (*Walcott)

PANAMA HP5F is now on an announced frequency of 6.05 (RBO)...HP5F, Colon, QSL's with a gray card, having printing and call in red and blue (Batson)

P.R. Special 250w emergency xmtr. to operate on 2.726, set up at Ponce.

U.S.A. W9ZJB has worked all districts on 5 meters (Ferrell)...The Nat. Geographic, University of Virginia Exped. announced in the last G.C. has been called off on account of the war (NBC)...NEW CALLS: WLXAL has been changed to WRUL; WLXAR to WRUW; W2XE to WCBX; W4XB to WDJM, and W9XAA to WCBI...W2USA Radio Club" of the N.Y. Worlds Fair, sponsors a program on the amateur bands, Fridays at 9:45pm; over W2XJI (25.3) on Fridays at 5pm (Brehmer, Kibling)...REVISED SCHEDULES: See S.W. list for revised schedules for WRUL/WRUW, WLWO, and WGEA/WGEO...KGEI, San Francisco, now operates daily, on 6.19mcs, 12 mid.-3am; on 9.53 mcs., 7am-noon and on 15.33mcs., 6:30-11:15p (GE, Balbi, Meyers, Walcott, Callan)...WCAB, Philadelphia, now operates on 21.52 mcs., daily 8am-5pm, on 9.59mcs., Mon/Thurs/Sat 5:30pm-lam, and Wed. 9pm-lam, and on 6.06mcs., Sun. 6:30-11pm, Tues/Fri 5:30-11pm and on Wed. 5:30-8:30pm...WCBX (W2XE), New York, now operates on 21.57, 7am-11:30pm, on 15.27, noon-2:30 pm, on 11.83, 3-5pm and 5:30-9pm, on 9.65, 9:30-10:30pm and on 6.12, 11pm-lam and Sundays only same sked except. on 15.27, noon-1:30pm and on 11.83, 2-5p (CBS)... The Mail Bag Program over W2XAF/W2XAD which for 5 years has included S.W. items furnished by the IDA is now off the air for the duration of the war (Darlington)... WLWO is on the air 24-hours daily frequently broadcasting latest war news. You can obtain an elaborate war map free from radio stations WLW/WLWO simply by writing to these stations (WLW).

== SOUTH AMERICA ==

BOLIVIA CP5 (6.2), La Paz, 1kW, operates daily 6:30-11:30pm (QRC via Legge).

BR. GUIANA VP3BG (6.13), is now issuing an elaborate QSL card (Yoshimura).

CHILE A new 5kW xmtr. to operate on 9.46mcs., relaying programs of CB118

...W9XPD (25.9) and W2XJI (26.3) both being heard well here with much improved conditions (Hiatt)...NEW: Bamberger Broadcasting Service on 43.20 with 1kW....N.B.C. (frequency modulation) on 42.6 mcs. with 1kW....W2XQR to 43.2, all three New York City stations.... Have logged Army Signal Corp. stations U11 and TH178 from time to time on 43.6 mcs. (Criswell, Ferrell)... Have letter from Head of signal Corp. cordially refusing to verify reception because they are used in National Defense work (Criswell)...NEW: W9XOK (25.3), Metropolitan Bldg., Grand & Olive, St. Louis, Mo., heard at 7pm (Scholz). ...CBS evening programs will be piped regularly into W2XMN at Alpine, N.J. for its "frequency modulation" transmissions (CBS)

TELEVISION: First demonstration of television in color was given by the Baird Corp. at Sydenham, England on Aug. 2. The color photo of King George on a large screen was in full color and perfect definition (Com. Bul)...First football telecasts over W2XBS, namely views of the Fordham Univ. Rams going through their paces, were reported very successful (NBC).

(E.S.T.)

== NORTH AND CENTRAL AMERICA ==

(E.S.T.)

CUBA NEW: COHI (6.450), 5kW, Santa Clara, was inaugurated on Sept. 1.....
 ...COX4 (6.39), Havana, heard testing (Hidalgo, Amers)...A COCE or COCA at Santa Clara, heard relaying CMHE daily 7pm to mid., on 6.47, may be same as COHI above (Balbi)...COGF is on exactly 11.8 now (Balbi)...COCQ now has a second xmtr. on 6.36mcs (Amers, Balbi, Larsen, Schubert); COCH now has a second xmtr., on 6.46mcs (Larsen, Schubert); an unidentified Cuban on 7.77, relaying COCW at times, and COBZ also at times, is being heard irreg. (Larsen)
 ...CUBAN NETWORKS: CADENA CHUSSELLAS (Crusselas Network: Colgate-Palmolive) composed of CMQ (main station), CMJK, CMJA, CMKD, CMKG, is relayed by COCQ and COKG; CADENA AZUL (Blue Network), composed of CMHI (main station), CMCF, and CMKQ, is relayed by COHI and COCH; RADIO CADENA-NACIONAL (National Network) composed of CMK (main station), CMHW, CMGF, CMGF, CMAR, CMKF, CMKR, CMJC and CMJX is relayed by COGE (**Hidalgo-Cuba)

CURACAO PJCL, "Radio Curon", is now back on 5.941 mcs. (RBO)

D.R. HIIS has shifted to 5.926 (RBO)...HIIN (6.243), "La Voz Del Partido Dominicano", Trujillo City, issues an attractive colored QSL cd (Batson)
 ...HI6H (6.9), is now operating from 5 to 8:50pm. At 40 mins. before every hour the same recording of a song and crude laughter is played (*Larsen)

GUATEMALA TGX1 is now being heard on 5.855, nightly to about lam (RBO)

MEXICO S.W. relay for XEBH, is being heard on 10.8 mcs, with same program as XEBR (11.826), the latter being well heard afterwards (Butcher)...XEQQ (now on 6.029), relays XEQ (730 kc), nightly until 12:30 or lam (*Walcott)

PANAMA HP5F is now on an announced frequency of 6.05 (RBO)...HP5F, Colon, QSL's with a gray card, having printing and call in red and blue (Batson)

P.R. Special 250w emergency xmtr. to operate on 2.726, set up at Ponce.

U.S.A. W9ZJB has worked all districts on 5 meters (Ferrell)...The Nat. Geographic University of Virginia Exped. announced in the last G.C. has been called off on account of the war (NBC)...NEW CALLS: WLXAL has been changed to WRUL; WLXAR to WRUW; W2XE to WCBX; W4XB to WDJM, and W9XAA to WCBI...W2USA Radio Club" of the N.Y. Worlds Fair, sponsors a program on the amateur bands, Fridays at 9:45pm; over W2XJI (25.3) on Fridays at 5pm (Brehmer, Kibling)...REVISED SCHEDULES: See S.W. list for revised schedules for WRUL/WRUW, WLWO, and WGEA/WGEO...KGEI, San Francisco, now operates daily, on 6.19mcs, 12 mid.-3am; on 9.53 mcs., 7am-noon and on 15.33mcs., 6:30-11:15p (GE, Balbi, Meyers, Walcott, Callan)...WCAB, Philadelphia, now operates on 21.52 mcs., daily 8am-5pm, on 9.59mcs., Mon/Thurs/Sat 5:30pm-lam, and Wed. 9pm-lam, and on 6.06mcs., Sun. 6:30-11pm, Tues/Fri 5:30-11pm and on Wed. 5:30-8:30pm...WCBX (W2XE), New York, now operates on 21.57, 7am-11:30pm, on 15.27, noon-2:30 pm, on 11.83, 3-5pm and 5:30-9pm, on 9.65, 9:30-10:30pm and on 6.12, 11pm-lam and Sundays only same sked except. on 15.27, noon-1:30pm and on 11.83, 2-5p (CBS)... The Mail Bag Program over W2XAF/W2XAD which for 5 years has included S.W. items furnished by the IDA is now off the air for the duration of the war (Darlington)... WLWO is on the air 24-hours daily frequently broadcasting latest war news. You can obtain an elaborate war map free from radio stations WLW/WLWO simply by writing to these stations (WLW).

== SOUTH AMERICA ==

BOLIVIA CP5 (6.2), La Paz, 1kW, operates daily 6:30-11:30pm (QRC via Legge).

BR. GUIANA VP3BG (6.13), is now issuing an elaborate QSL card (Yoshimura).

CHILE A new 5kW xmtr. to operate on 9.46mcs., relaying programs of CB118

and CB150 (Radio Guia)...CB1174 (11.74), "Radio Hucke", Santiago, relays CB93 nightly till 10:30pm; CB970, (9.74), relays CB76 of Santiago, intermittently from 7am to 11:30pm. Signs-off with "Pomp and Circumstance (AW) COLOMBIA HJAB is on 4.782; HJGB on 4.772; HJDU (4.805), signs-off at 8:50pm with a march (Larsen)...HJCD, Neuva Granada, heard on 9.4mcs. (RBO)

ECUADOR Latest move of HCIETC is to 8.00 mcs. (RBO)

PERU OAXIA has shifted to 6.18 mcs. (RBO)

VENEZUELA New 30kW Govt. xmtr. under construction at Caracas, will operate as follows when completed: YVKF on 6.172; YVSC on 9.64; YVOR on 11.725, and YVPX on 15.315 (DXIEC)...NEW: YV5RJ/G (4.967), heard nightly to 9:30pm. S.O. is military march (Larsen)...YV4RX, La Voz de Aragua, Maracay (4.84), is now on the air and broadcasting nightly to 10pm...YV5RY, "La Voz de la Esfera", is being heard on 4.76 (RBO, Larsen)... See list for other slight corrections

= EUROPE =

ANDORRA "Radio Andorra", has been testing on 11.835 mc, since August (**Tuff)

BOHEMIA Replacing OLR5A; OLR4A (11.84), is now operating 7:55-10:15pm (DC)

DENMARK OZH (15.32) now operates Sun. 8am-1:30pm and weekdays 1-1:30pm;

OZU (7.26), operates daily 2-5pm; OZF no change in sked (*Pedersen)

ENGLAND GSA (6.05), now operates 6:20-9:15pm for Europe (Larsen, Scholz)...

GST (21.55), is being heard daily 5:45-8:50 and 9-10:15am (Callan, Larsen)...

GSE (11.86), is being used irreg. throughout day (Callan)...GSW (7.23), is operating daily 1-3:15am (Balbi)...GSG is beamed on N.A., now 5:45am-4pm (CAM)

ESTONIA ES4G (14.11), was heard recently R7 from 3 to 4 p.m. (Legge-N.Y.)

FRANCE The new 100kW xmtr. of "Paris Mondial" is on the air, and operating on 15.243, is beamed on N.A., daily 1:30-2:30pm (news in English at 2pm); operating on 9.68, is beamed on N.A., daily 9pm-1:45am; on 9.68mcs., is beamed on S.A., daily 7-8:45pm (**Wilson, Callan, Skyten, Balbi, Larsen, Christie, Prender-

GERMANY New xmtr. DXB (9.61), broadcasts Latin program nightly 7 to (past

10:50pm. American network pick-ups originate over DXB, DJL (15.11) or DJD

(11.77) (*Balbi, Christie, Callan, Pedersen, Wilson)...DXD (21.66), has been test

ing near 11pm (NRC)...DZH (14.46), is on almost nightly after 6 or 7pm (JL).

...S.W. listening in Germany is forbidden under maximum sentence of death.

...News in English is often heard over DJE (17.76) at 9:15am (CAM)

HUNGARY HAD (21.68, 11.85 or 9.625), will make experimental transmissions

again from Oct. 24 to Nov. 12, and from Jan. 24 to Feb. 12, 1940 (QRC via Legge)

ITALY NEW frequencies being used irreg., include: 2R012 (15.10, after-

noons; 2R013 (11.9); 2R014 (15.23), afternoons, 2R015 (11.76) and 2R016

(21.51). 2R09 (9.67), is relaying the American Hour irreg. (Callan)....2R03

is operating daily 1-2am for the Far East (Balbi)

LIECHTENSTEIN A S.W. xmtr. to transmit commercially sponsored programs to

N.A. and Gt. Britain is under consideration (Com. Bul.)

LITHUANIA LYR (9.29), 500w, relays Kaunas I (153kC), weekdays 12 mid.-12:40am,

2:30-3pm and Sundays 1:30-2:15, 6-7:45am, 11:30am-1:15 and 2-3:30pm (Yoshimura

LUXEMBOURG "Radio Luxembourg's" schedule for October follows: on 15.35mcs,

Oct. 1-2-3, 8-9am; 4-5-6, 9-10am; 7-8-9, 10-11am; on 6.09 mcs., Oct. 1-2-3, 4-5

pm; 4-5-6, 5-6pm; 7-8-9, 6-7pm; on 9.527mcs., Oct. 10-11-12, 11pm-mid; 13-14-15,

mid-1am; 16-17-18, 1-2am; 19-20-21, 2-3am; 22-23-24, 7-8pm; 25-26-27, 8-9pm;

28-29-30, 9-10pm; 31, Nov. 1-2, 10-11pm; on 11.782mcs, Oct. 10-11, 7-8pm; Oct. 12-

13-14, 8-9pm; 15-16-17, 9-10pm; 18-19-20, 10-11pm; 21-22-23, 11-12; 24-25-26, 12-

1am; 28-29-30, 1-2am; Oct. 31-Nov. 1-2, 2-3am. Reports should be sent to "Radio

Luxembourg" Compagnie Luxembourgeoise-de Radiodiffusion, Luxembourg (Skyten

RBO, Balbi, Tuff, Froelich)

NORWAY LKV (15.165) can easily be identified when giving news in French

at 9:15 a.m. EST (*Callan)

POLAND A new station in Warsaw on 11.99, was heard on Aug. 24 and 25, broad

casting with loud signals in parallel with SPW (Skyten, Deptula)... All Po-

lish short-wave stations have been off the air since Sept. 5.

ROUMANIA A 300w xmtr. in Bucharest has been transmitting daily from 2 to 5

p.m., since its inauguration last November (Com. Bul.) (Batson)

SWEDEN The Swedish stations issue letters of verification but no cards.

SWITZERLAND The Govt. may acquire "Radio Nations", at Prangins, to replace

the transmitter recently destroyed by fire at Schwarzenburg (R.P.S.)

U.S.S.R. RNE (12) now broadcasts from 7 to 8:50pm in English for N.A., in

parallel with RV96, RKI and RAN (*Skyten)... The Soviet station on 15.41 is

RV96, Moscow (Koslapoff, Christie, Skyten).

and CB150 (Radio Guia)...CB1174 (11.74), "Radio Hucke", Santiago, relays CB93 nightly till 10:30pm; CB970, (9.74), relays CB76 of Santiago, intermittently from 7am to 11:30pm. Signs-off with "Pomp and Circumstance (AW) COLOMBIA HJAB is on 4.782; HJGB on 4.772; HJDU (4.805), signs-off at 8:50pm with a march (Larsen)...HJCD, Neuva Granada, heard on 9.4mcs. (RBO)

ECUADOR Latest move of HCIETC is to 8.00 mcs. (RBO)

PERU OAXIA has shifted to 6.18 mcs. (RBO)

VENEZUELA New 30kW Govt. xmtr. under construction at Caracas, will operate as follows when completed: YVKF on 6.172; YVSC on 9.64; YVOR on 11.725, and YVPX on 15.315 (DXIEC)...NEW: YV5RJ/G (4.967), heard nightly to 9:30pm. S.O. is military march (Larsen)...YV4RX, La Voz de Aragua, Maracay (4.84), is now on the air and broadcasting nightly to 10pm...YV5RY, "La Voz de la Esfera", is being heard on 4.76 (RBO, Larsen)... See list for other slight corrections

= EUROPE =

ANDORRA "Radio Andorra", has been testing on 11.835 mc, since August (**Tuff)

BOHEMIA Replacing OLR5A; OLR4A (11.84), is now operating 7:55-10:15pm (DC)

DENMARK OZH (15.32) now operates Sun. 8am-1:30pm and weekdays 1-1:30pm;

OZU (7.26), operates daily 2-5pm; OZF no change in sked (*Pedersen)

ENGLAND GSA (6.05), now operates 6:20-9:15pm for Europe (Larsen, Scholz)...

GST (21.55), is being heard daily 5:45-8:50 and 9-10:15am (Callan, Larsen)...

GSE (11.86), is being used irreg. throughout day (Callan)...GSW (7.23), is operating daily 1-3:15am (Balbi)...GSG is beamed on N.A., now 5:45am-4pm (CAM)

ESTONIA ES4G (14.11), was heard recently R7 from 3 to 4 p.m. (Legge-N.Y.)

FRANCE The new 100kW xmtr. of "Paris Mondial" is on the air, and operating on 15.243, is beamed on N.A., daily 1:30-2:30pm (news in English at 2pm); operating on 9.68, is beamed on N.A., daily 9pm-1:45am; on 9.68mcs., is beamed on S.A., daily 7-8:45pm (**Wilson, Callan, Skyten, Balbi, Larsen, Christie, Prender-

GERMANY New xmtr. DXB (9.61), broadcasts Latin program nightly 7 to (past

10:50pm. American network pick-ups originate over DXB, DJL (15.11) or DJD

(11.77) (*Balbi, Christie, Callan, Pedersen, Wilson)...DXD (21.66), has been test-

ing near 11pm (NRC)...DZH (14.46), is on almost nightly after 6 or 7pm (JL).

...S.W. listening in Germany is forbidden under maximum sentence of death.

...News in English is often heard over DJE (17.76) at 9:15am (CAM)

HUNGARY HAD (21.68, 11.85 or 9.625), will make experimental transmissions

again from Oct. 24 to Nov. 12, and from Jan. 24 to Feb. 12, 1940 (QRC via Legge)

ITALY NEW frequencies being used irreg., include: 2R012 (15.10, after-

noons; 2R013 (11.9); 2R014 (15.23), afternoons, 2R015 (11.76) and 2R016

(21.51). 2R09 (9.67), is relaying the American Hour irreg. (Callan)....2R03

is operating daily 1-2am for the Far East (Balbi)

LIECHTENSTEIN A S.W. xmtr. to transmit commercially sponsored programs to

N.A. and Gt. Britain is under consideration (Com. Bul.)

LITHUANIA LYR (9.29), 500w, relays Kaunas I (153kc), weekdays 12 mid.-12:40am,

2:30-3pm and Sundays 1:30-2:15, 6-7:45am, 11:30am-1:15 and 2-3:30pm (Yoshimura

LUXEMBOURG "Radio Luxembourg's" schedule for October follows: on 15.35mcs,

Oct. 1-2-3, 8-9am; 4-5-6, 9-10am; 7-8-9, 10-11am; on 6.09 mcs., Oct. 1-2-3, 4-5

pm; 4-5-6, 5-6pm; 7-8-9, 6-7pm; on 9.527mcs., Oct. 10-11-12, 11pm-mid; 13-14-15,

mid-1am; 16-17-18, 1-2am; 19-20-21, 2-3am; 22-23-24, 7-8pm; 25-26-27, 8-9pm;

28-29-30, 9-10pm; 31, Nov. 1-2, 10-11pm; on 11.782mcs, Oct. 10-11, 7-8pm; Oct. 12-

13-14, 8-9pm; 15-16-17, 9-10pm; 18-19-20, 10-11pm; 21-22-23, 11-12; 24-25-26, 12-

1am; 28-29-30, 1-2am; Oct. 31-Nov. 1-2, 2-3am. Reports should be sent to "Radio

Luxembourg" Compagnie Luxembourgeoise-de Radiodiffusion, Luxembourg (Skyten

RBO, Balbi, Tuff, Froelich)

NORWAY LKV (15.165) can easily be identified when giving news in French

at 9:15 a.m. EST (*Callan)

POLAND A new station in Warsaw on 11.99, was heard on Aug. 24 and 25, broad-

casting with loud signals in parallel with SPW (Skyten, Deptula)... All Po-

lish short-wave stations have been off the air since Sept. 5.

ROUMANIA A 300w xmtr. in Bucharest has been transmitting daily from 2 to 5

p.m., since its inauguration last November (Com. Bul.) (Batson)

SWEDEN The Swedish stations issue letters of verification but no cards.

SWITZERLAND The Govt. may acquire "Radio Nations", at Prangins, to replace

the transmitter recently destroyed by fire at Schwarzenburg (R.P.S.)

U.S.S.R. RNE (12) now broadcasts from 7 to 8:50pm in English for N.A., in

parallel with RV96, RKI and RAN (*Skyten)... The Soviet station on 15.41 is

RV96, Moscow (Koslapoff, Christie, Skyten).

YUGOSLAVIA The new 10kW xmtr. at Belgrade is now operating as follows: as YUG (15.24), 7:30-9pm for N.A. and as YUC (9.505) 4 to 5:30pm (news in English at 4:15pm). YUA operates in parallel with both YUG and YUC (**Eders, gren)

==AFRICA==

BEL. CONGO The OQ5ZZ QSL has a large black call and pictures a tiger (Nord-I.E.A. IABA (9.65), now operates 4:30-5:30am and 11am-2:30pm (Radiocor.)
MADAGASCAR "Radio Tananarive" is now broadcasting on 5.8 mcs. (Roche-S.A.)
MAURITIUS VQ8JM (14.11), heard 7-7:30am with good signals during the early part of August is apparently off the air now (**DeMyer, Legge)...A station in Mauritius on 7.19 mcs. was heard testing (Roche-So. Africa) (Roche).
MOZAMBIQUE CR7AA, Lourenco Marques, has shifted in frequency to 6.02mcs.

==ASIA AND OCEANIA==

AUSTRALIA New Perth station to operate as VLW (6.13); VLW2 (9.56) and VLW3 (11.83), will be on the air in December...VLR3 (11.89), relays BBC program daily 11pm-12:30am. VLR (9.58), operates daily 1-9am. (Balbi)...S.W. xmtrs. of the Australian Aerial Medical Services are: VK8SI (1600-5300-8830), Wyndham; VK8SC (1600-4030-6960), Port Hedland; VK8SUB (1600-5360-8750), Kalgoorlie; VK8US (1600-5410-8690), Alice Springs; VK8SK (2020-4130, 6690), Broken Hill and VJI (2020-5110-8630), Cloncurry. Reports should be sent to Federal Council of Australian Aerial Medical Services, 434 Collins St., Melbourne, C.1 (Tune In)

BAKER ISL. Yellow and blue QSL card from KF6PUL (10M only), received after 6 months. QRA is 236 Kaia St., Honolulu, Hawaii (*Amers)

CHINA XGOX/XGOY was bombed on Sept. 3, Programs of the Central Broadcasting Administration are now being broadcast over XGX of Yunnan as follows: on 17.8; 9-10:40pm (English news at 9:50pm), for N.A.; on 11.9, 5:30-7:20am (news in English at 6:30am), for N.E. China, 7:20-7:50am for Japan, 8-11am (English news at 9am), for So. China, 11:10-11:30am for U.S.S.R., 2-4:20pm, for China, 4:30-6:20pm-for Europe (**Ong)...XPSA (7.01), relays English news broadcast by XGX at 9am; Is on daily 5:30-11am and 5-6pm (Ong)**)...KMHA, now operates 7pm-11am...A strong new Chinese station on 9.525, location unknown, is being heard daily 5-7am or later (**Callan)

FR. INDO-CHINA "Radio Saigon" (6.116) gives news in English at 6am; operates on 11.78 mcs., daily 6:30-6:45am (*Beyer, Legge, Yoshimura)

GUAM KB6OCL (14.17), heard with R5 sigs Sept. 7 & 8, at 7am (**Roberts)

JAPAN JZK (15.16), now operates 12-1:30, 7-9:30am, 2-4pm (JBC)

JAVA PMN (10.26) now broadcasts regularly to 11:30am (*Tuff)...A new Batavia station on 4.85, is being heard daily to 8:30am (Roche-So. Africa)

MANCHOUKUO MTCY (11.775), is now operating 1:30-2:30am for N.A.; 9:50-10:50am (news in Japanese at 9:50am), and 11 to 11:50am for Europe (*Balbi, Amers Honda, Tuff)

NEW CALEDONIA FK8AA (6.12), 50 watts, issues a white QSL card with red call letters and blue printing. The present sked is daily except Sundays and holidays 2:30-3:30am (**Amers)

NEW HEBRIDES Two amateurs are operating, one YHLRV on Epi Island, the other FUSAA at Norsup, Malekula (Com. Bul.)

NEW ZEALAND ZL4ZF (4.25) relays 4ZB irregularly when ordinary line facilities are out of action due to snow storms (*Breen)

NIAS AND MENTAWI ISLS. Short-wave stations will probably be established on these islands before the end of 1939 (Com. Bul.)

PHILIPPINES KZIB (9.492 and 6.04), now operate daily 6-10am. Cabaret program is broadcast at 9am. A three-note musical chime is heard hourly (*Yoshimura)...KZRM (9.57) now broadcasts a program for Chinese listeners daily starting at 10am (*Honda)

SUMATRA YDX (7.22), Medan, 500w, relays the Western network of the NIROM daily 8:30-10:30am and 10:30pm-2am, and originates a native program daily 6-8:30am (*Ebling)

U.S.S.R. RV99 (15.39), at Irkutsk, operates irreg. 9-10am (Honda)

STOP PRESS Effective Sept. 22, the following new schedule for English news bulletins went into effect over Daventry: Daily: 12:30am, 2:45 (summary), 4, 6:15, 8 (summary), 9, 10:45 (summary), 11:30am, 1:15pm, 4, 5:30, 7 (summary), 8:50 (summary), 9:45 and 11:30pm (summary). (ALL TIMES GMT)

NOTE: We are rather proud of the fact that despite the war situation in Europe listeners have cooperated in sending in notes to such an extent that we can still include S.W. notes from 54 separate countries-Ed.

YUGOSLAVIA The new 10kW xmt. at Belgrade is now operating as follows: as YUG (15.24), 7:30-9pm for N.A. and as YUC (9.505) 4 to 5:30pm (news in English at 4:15pm). YUA operates in parallel with both YUG and YUC (**Eders, gren)

==AFRICA==

BEL. CONGO The OQ5ZZ QSL has a large black call and pictures a tiger (Nord-I.E.A. IABA (9.65), now operates 4:30-5:30am and 11am-2:30pm (Radiocor.)
MADAGASCAR "Radio Tananarive" is now broadcasting on 5.8 mcs. (Roche-S.A.)
MAURITIUS VQ8JM (14.11), heard 7-7:30am with good signals during the early part of August is apparently off the air now (**DeMyer, Legge)...A station in Mauritius on 7.19 mcs. was heard testing (Roche-So. Africa) (Roche).
MOZAMBIQUE CR7AA, Lourenco Marques, has shifted in frequency to 6.02mcs.

==ASIA AND OCEANIA==

AUSTRALIA New Perth station to operate as VLW (6.13); VLW2 (9.56) and VLW3 (11.83), will be on the air in December...VLR3 (11.89), relays BBC program daily 11pm-12:30am. VLR (9.58), operates daily 1-9am. (Balbi)...S.W. xmtrs. of the Australian Aerial Medical Services are: VK8SI (1600-5300-8830), Wyndham; VK8SC (1600-4030-6960), Port Hedland; VK8SUB (1600-5360-8750), Kalgoorlie; VK8US (1600-5410-8690), Alice Springs; VK8SK (2020-4130, 6690), Broken Hill and VJI (2020-5110-8630), Cloncurry. Reports should be sent to Federal Council of Australian Aerial Medical Services, 434 Collins St., Melbourne, C.1 (Tune In)

BAKER ISL. Yellow and blue QSL card from KF6PUL (10M only), received after 6 months. QRA is 236 Kaia St., Honolulu, Hawaii (*Amers)

CHINA XGOX/XGOY was bombed on Sept. 3, Programs of the Central Broadcasting Administration are now being broadcast over XGX of Yunnan as follows: on 17.8; 9-10:40pm (English news at 9:50pm), for N.A.; on 11.9, 5:30-7:20am (news in English at 6:30am), for N.E. China, 7:20-7:50am for Japan, 8-11am (English news at 9am), for So. China, 11:10-11:30am for U.S.S.R., 2-4:20pm, for China, 4:30-6:20pm-for Europe (**Ong)...XPSA (7.01), relays English news broadcast by XGX at 9am; Is on daily 5:30-11am and 5-6pm (Ong)**)...KMHA, now operates 7pm-11am...A strong new Chinese station on 9.525, location unknown, is being heard daily 5-7am or later (**Callan)

FR. INDO-CHINA "Radio Saigon" (6.116) gives news in English at 6am; operates on 11.78 mcs., daily 6:30-6:45am (*Beyer, Legge, Yoshimura)

GUAM KB6OCL (14.17), heard with R5 sigs Sept. 7 & 8, at 7am (**Roberts)

JAPAN JZK (15.16), now operates 12-1:30, 7-9:30am, 2-4pm (JBC)

JAVA PMN (10.26) now broadcasts regularly to 11:30am (*Tuff)...A new Batavia station on 4.85, is being heard daily to 8:30am (Roche-So. Africa)

MANCHOUKUO MTCY (11.775), is now operating 1:30-2:30am for N.A.; 9:50-10:50am (news in Japanese at 9:50am), and 11 to 11:50am for Europe (*Balbi, Amers Honda, Tuff)

NEW CALEDONIA FK8AA (6.12), 50 watts, issues a white QSL card with red call letters and blue printing. The present sked is daily except Sundays and holidays 2:30-3:30am (**Amers)

NEW HEBRIDES Two amateurs are operating, one YHLRV on Epi Island, the other FUSAA at Norsup, Malekula (Com. Bul.)

NEW ZEALAND ZL4ZF (4.25) relays 4ZB irregularly when ordinary line facilities are out of action due to snow storms (*Breen)

NIAS AND MENTAWI ISLS. Short-wave stations will probably be established on these islands before the end of 1939 (Com. Bul.)

PHILIPPINES KZIB (9.492 and 6.04), now operate daily 6-10am. Cabaret program is broadcast at 9am. A three-note musical chime is heard hourly (*Yoshimura)...KZRM (9.57) now broadcasts a program for Chinese listeners daily starting at 10am (*Honda)

SUMATRA YDX (7.22), Medan, 500w, relays the Western network of the NIROM daily 8:30-10:30am and 10:30pm-2am, and originates a native program daily 6-8:30am (*Ebling)

U.S.S.R. RV99 (15.39), at Irkutsk, operates irreg. 9-10am (Honda)

STOP PRESS Effective Sept. 22, the following new schedule for English news bulletins went into effect over Daventry: Daily: 12:30am, 2:45 (summary), 4, 6:15, 8 (summary), 9, 10:45 (summary), 11:30am, 1:15pm, 4, 5:30, 7 (summary), 8:50 (summary), 9:45 and 11:30pm (summary). (ALL TIMES GMT)

NOTE: We are rather proud of the fact that despite the war situation in Europe listeners have cooperated in sending in notes to such an extent that we can still include S.W. notes from 54 separate countries-Ed.

6 **SHORT WAVE BROADCASTING STATIONS**

SYMBOLS: N- NEW stations; F- Frequency changes; S- Change in sked; B- Frequency calibrations according to Oxrieder-IDA Frequency Bureau; J- stations persisting in hopping about; V- Varying in frequency; Y- Does not verify; X- Doesn't verify direct; U- Frequency in doubt; *See S.W. Notes.

DIAL METERS MEGS. CALL STATION TIME-----EASTERN STANDARD

13.35N	21.66	DXD	BERLIN, GERMANY	Heard testing late evenings *
13.37S	21.63	WRCA	New York City, N.Y.	9am-5pm to Europe
13.91C	21.57	WCBX	New York City, N.Y.	7-11:30am to Europe *
13.92NY	21.55	GST	LONDON, ENGLAND	Testing 5:45-8:50, 9-10:15am. *
13.93S	21.54	WPIT	Pittsburgh, Pa.	6:30-9am.
13.93Y	21.53	GSJ	London, England	5:45-8:50, 9am-noon (13M)
13.94N	21.52	WCAB	PHILADELPHIA, PA.	8am-5pm to South America
13.96S	21.50	WGEA	Schenectady, N.Y.	8-11am to South America
13.97Y	21.47	GSJ	London, England	5:45-8:50, 9am-noon to Africa
13.99	21.45	DJS	Berlin, Germany	12:05-7:55am to Asia

15.77	19.02	HS6PJ	Bangkok, Thai	Mondays 8-10am.
16.26	18.45	HBF	Geneva, Switzerland	Fridays 8:45-10:45am
16.31S	17.85	TPB3	Paris, France	9:30-11am.
16.82	17.845	DJH	Berlin, Germany	12:05-7:50, 8-9, 9-11am.
16.82S	17.84	EIRE	Athlone, Ireland	8:30-10; even dates 12:30-4:30p 5:30-6pm; odd days 12:30-2:30pm

16.84	17.82	2R08	Rome, Italy	5-8:45am, 6-7:25pm.
16.85Y	17.81	GSV	London, England	5:45-8:50, 9-11:15am. (16M)
16.85	17.80	OIH	Lahti, Finland	4-9am.
16.85N	17.80	XGX	YUNNAN, CHINA	9-10:40 pm to Western U.S.A. *
13.86Y	17.79	GSG	London, England	5:45-8:50, 9am-noon, 12:25-4pm to (N.A.)
16.97	17.785	JZL	Tokio, Japan	4:30-5:30, 8-9pm.
16.87S	17.78	WNBI	New York City, N.Y.	5-10pm to Latin America.
16.87S	17.78	WRCA	New York City, N.Y.	9am-6pm omnidirectionally
16.89	17.77	PHI2	Huizen, Holland	Sun. 6:40-10:05am; Mon/Th 7:40-9am; Tues/Wed/Fr/Sat 7:40-8:40am 12:05-7:45, 8-11am, 4:55-9pm.

16.89S	17.76	DJE	Berlin, Germany	12:05-7:45, 8-11am, 4:55-9pm.
--------	-------	-----	-----------------	-------------------------------

19.47C	15.41	RV96	Moscow, U.S.S.R.	8:30-11am, 8:55-10:30pm. *
--------	-------	------	------------------	----------------------------

19.52	15.37	HAS3	Budapest, Hungary	Sundays 9-10am.
-------	-------	------	-------------------	-----------------

19.54S	15.35		Luxembourg, Luxembourg	Oct. 1-9, 8-11am approx. (19M)
--------	-------	--	------------------------	--------------------------------

19.56	15.34	DJR	Berlin, Germany	4:55-10:50pm to C.A.
-------	-------	-----	-----------------	----------------------

19.57S	15.33	WGEA	Schenectady, N.Y.	11am-6pm to Europe
--------	-------	------	-------------------	--------------------

19.57	15.33	KGFI	San Francisco, Calif	6:30-11:15pm.
-------	-------	------	----------------------	---------------

19.58S	15.32	OZH	Skamlebak, Denmark	1-1:30pm; Sundays 8am-1:30pm. *
--------	-------	-----	--------------------	---------------------------------

19.60Y	15.31	GSP	London, England	1:15-4; 4:20-6pm to N.A.
--------	-------	-----	-----------------	--------------------------

19.60	15.31	YDB	Soerabaja, Java	10:30pm-2am and Sat. 7:30pm-2am.
-------	-------	-----	-----------------	----------------------------------

19.61	15.30	2R06	Rome, Italy	4:10-4:55, 10am-12:06, 1:38-2:30, 4:10-4:55, 10am-12:06, 1:38-2:30, 7:30-9pm.
-------	-------	------	-------------	---

19.62	15.29	LRU	Buenos Aires, Argentina	7-9am (3-5:30, 7:30-9pm).
-------	-------	-----	-------------------------	---------------------------

19.62	15.29	VUD3	Delhi, India	1:30-3:30, 7:30am-12:30, 9:30-
-------	-------	------	--------------	--------------------------------

19.63S	15.28	DJQ	Berlin, Germany	12:05-11am, 4:50-10:50pm. (11:30p
--------	-------	-----	-----------------	-----------------------------------

19.64CS	15.27	WCBX	New York City, N.Y.	12-2:30pm; Sundays 12-1:30pm. *
---------	-------	------	---------------------	---------------------------------

19.64	15.27	HI3X	Trujillo City, D.R.	Sun. 7:40-9:40am; Tu/Fri 8:10-
-------	-------	------	---------------------	--------------------------------

19.66Y	15.26	GSI	London, England	1:30-3:45am, 12:25-4pm. (10:10pm
--------	-------	-----	-----------------	----------------------------------

19.68S	15.243	TPA2	Paris, France	6-11am; 1:30-2:30pm to N.A. *
--------	--------	------	---------------	-------------------------------

19.68S	15.24	YUG	Belgrade, Yugoslavia	7:30-9pm to N.A. *
--------	-------	-----	----------------------	--------------------

19.68	15.24	CR7BD	Lourenco Marques, Moz.	4:30-6:30, 9:30-11am, noon-4pm
-------	-------	-------	------------------------	--------------------------------

19.70N	15.23	2R014	ROME, ITALY	Afternoons irregularly *
--------	-------	-------	-------------	--------------------------

19.71	15.22	PCJ2	Huizen, Holland	Su/M/Th 7:40-9am; M/Tu/We/F/Sat- 7:40-8:45am; Tu 1-2:30am; Wd 9:30-9am-2pm. (-11a
-------	-------	------	-----------------	---

19.72S	15.21	WPIT	Pittsburgh, Pa.	12:05-11am; 4:50-10:50pm to NA
--------	-------	------	-----------------	--------------------------------

19.74	15.20	DJB	Berlin, Germany	5:30-7am (Sun 11:10am-12:25pm.
-------	-------	-----	-----------------	--------------------------------

19.74	15.195	TAQ	Ankara, Turkey	1:05-4, 9am-5pm.
-------	--------	-----	----------------	------------------

19.75	15.19	OIE	Lahti, Finland	11:55pm-2a, 3-4am, 7-8:50pm. (NA
-------	-------	-----	----------------	----------------------------------

19.76	15.18	RV96	Moscow, U.S.S.R.	4:20-6pm; 6:25-9:30pm to S.A.
-------	-------	------	------------------	-------------------------------

19.76Y	15.18	GSO	London, England	12:45-1:45pm; Sun. 12:45-5:15pm
--------	-------	-----	-----------------	---------------------------------

19.78	15.17	TGWA	Guatemala, Guatemala	6:40am-5pm.
-------	-------	------	----------------------	-------------

19.78	15.165	LKV	Oslo, Norway	12-1:30, 7-9:30am, 2-4; 8-9pm (NA)
-------	--------	-----	--------------	------------------------------------

19.79S	15.16	JZK	Tokio, Japan	
--------	-------	-----	--------------	--

SHORT WAVE BROADCASTING STATIONS

SYMBOLS: N- NEW stations; F- Frequency changes; S- Change in sked; B- Frequency calibrations according to Oxrieder-IDA Frequency Bureau; J- stations persisting in hopping about; V- Varying in frequency; Y- Does not verify; X- Doesn't verify direct; U- Frequency in doubt; *See S.W. Notes.

DIAL METERS	MEGS.	CALL	STATION	TIME-----EASTERN STANDARD
13.35N	21.66	DXD	BERLIN, GERMANY	Heard testing late evenings *
13.37S	21.63	WRCA	New York City, N.Y.	9am-5pm to Europe
13.91C	21.57	WCBX	New York City, N.Y.	7-11:30am to Europe *
13.92NY	21.55	GST	LONDON, ENGLAND	Testing 5:45-8:50, 9-10:15am. *
13.93S	21.54	WPIT	Pittsburgh, Pa.	6:30-9am.
13.93Y	21.53	GSJ	London, England	5:45-8:50, 9am-noon (13M)
13.94N	21.52	WCAB	PHILADELPHIA, PA.	8am-5pm to South America
13.96S	21.50	WGEA	Schenectady, N.Y.	8-11am to South America
13.97Y	21.47	GSJ	London, England	5:45-8:50, 9am-noon to Africa
13.99	21.45	DJS	Berlin, Germany	12:05-7:55am to Asia
15.77	19.02	HS6PJ	Bangkok, Thai	Mondays 8-10am.
16.26	18.45	HBF	Geneva, Switzerland	Fridays 8:45-10:45am
16.31S	17.85	TPB3	Paris, France	9:30-11am.
16.82	17.845	DJH	Berlin, Germany	12:05-7:50, 8-9, 9-11am.
16.82S	17.84	EIRE	Athlone, Ireland	8:30-10; even dates 12:30-4:30p 5:30-6pm; odd days 12:30-2:30pm
16.84	17.82	2R08	Rome, Italy	5-8:45am, 6-7:25pm.
16.85Y	17.81	GSV	London, England	5:45-8:50, 9-11:15am. (16M)
16.85	17.80	OIH	Lahti, Finland	4-9am.
16.85N	17.80	XGX	YUNNAN, CHINA	9-10:40 pm to Western U.S.A. *
13.86Y	17.79	GSG	London, England	5:45-8:50, 9am-noon, 12:25-4pm to
16.97	17.785	JZL	Tokio, Japan	4:30-5:30, 8-9pm. (N.A.)
16.87S	17.78	WNBI	New York City, N.Y.	5-10pm to Latin America.
16.87S	17.78	WRCA	New York City, N.Y.	9am-6pm omnidirectionally
16.89	17.77	PHI2	Huizen, Holland	Sun. 6:40-10:05am; Mon/Th 7:40-9am; Tues/Wed/Fr/Sat 7:40-8:40am 12:05-7:45, 8-11am, 4:55-9pm.
16.89S	17.76	DJE	Berlin, Germany	
19.47C	15.41	RV96	Moscow, U.S.S.R.	8:30-11am, 8:55-10:30pm. *
19.52	15.37	HAS3	Budapest, Hungary	Sundays 9-10am.
19.54S	15.35		Luxembourg, Luxembourg	Oct. 1-9, 8-11am approx. (19M)
19.56	15.34	DJR	Berlin, Germany	4:55-10:50pm to C.A.
19.57S	15.33	WGEA	Schenectady, N.Y.	11am-6pm to Europe
19.57	15.33	KGFI	San Francisco, Calif	6:30-11:15pm.
19.58S	15.32	OZH	Skamlebak, Denmark	1-1:30pm; Sundays 8am-1:30pm. *
19.60Y	15.31	GSP	London, England	1:15-4; 4:20-6pm to N.A.
19.60	15.31	YDB	Soerabaja, Java	10:30pm-2am and Sat. 7:30pm-2am.
19.61	15.30	2R06	Rome, Italy	4:10-4:55, 10am-12:06, 1:38-2:30, 4:10-9am (3-5:30, 7:30-9pm).
19.62	15.29	LRU	Buenos Aires, Argentina	
19.62	15.29	VUD3	Delhi, India	1:30-3:30, 7:30am-12:30, 9:30-
19.63S	15.28	DJQ	Berlin, Germany	12:05-11am, 4:50-10:50pm. (11:30p
19.64CS	15.27	WCBX	New York City, N.Y.	12-2:30pm; Sundays 12-1:30pm. *
19.64	15.27	HI3X	Trujillo City, D.R.	Sun. 7:40-9:40am; Tu/Fri 8:10-
19.66Y	15.26	GSI	London, England	1:30-3:45am, 12:25-4pm. (10:10pm
19.68S	15.243	TPA2	Paris, France	6-11am; 1:30-2:30pm to N.A. *
19.68S	15.24	YUG	Belgrade, Yugoslavia	7:30-9pm to N.A. *
19.68	15.24	CR7BD	Lourenco Marques, Moz.	4:30-6:30, 9:30-11am, noon-4pm
19.70N	15.23	2R014	ROME, ITALY	Afternoons irregularly *
19.71	15.22	PCJ2	Huizen, Holland	Su/M/Th 7:40-9am; M/Tu/We/F/Sat- 7:40-8:45am; Tu 1-2:30am; Wd 9:30- 9am-2pm. (-11a
19.72S	15.21	WPIT	Pittsburgh, Pa.	
19.74	15.20	DJB	Berlin, Germany	12:05-11am; 4:50-10:50pm to NA
19.74	15.195	TAQ	Ankara, Turkey	5:30-7am (Sun 11:10am-12:25pm.
19.75	15.19	OIE	Lahti, Finland	1:05-4, 9am-5pm.
19.76	15.18	RV96	Moscow, U.S.S.R.	11:55pm-2a, 3-4am, 7-8:50pm. (NA
19.76Y	15.18	GSO	London, England	4:20-6pm; 6:25-9:30pm to S.A.
19.78	15.17	TGWA	Guatemala, Guatemala	12:45-1:45pm; Sun. 12:45-5:15pm
19.78	15.165	LKV	Oslo, Norway	6:40am-5pm.
19.79S	15.16	JZK	Tokio, Japan	12-1:30, 7-9:30am, 2-4; 8-9pm (NA)

19.80	15.155	SBT	Motala, Sweden	1-4:15pm; Wed/Sat 8-9pm to N.A.
19.80	15.15	YDC	Bandoeng, Java	4:30-10:30am; 6-9pm ex.Sat; 10:30pm-2am; Sat. 7pm-2am.
19.82Y	15.14	GSF	London, England	5:45-8:50, 9am-noon, 4:20-6, 6:20-2-5am. (9:15pm)
19.83S	15.13	TPB6	Paris, France	3:30-5:30 ex.Sa/Su; M/T/F 5:30-7pm; 8-9:30pm ex.Sa/Su; Sa 2pm-
19.83SC	15.13	WRUW	Boston, Mass.	Not heard recently * (6:30pm.
19.84S	15.12	SP19	Warsaw, Poland	7-9am. (-4:25pm)
19.84	15.12	HVJ	Vatican City	12:05-2; 8-9am to N.A.; 10:40am
19.84S	15.12	CSW4	Lisbon, Portugal	4-5:30, 6-7:25, 7:30-9pm irreg. *
19.85	15.11	DJL	Berlin, Germany	7-8:50pm to N.A.
19.87	15.10	2R012	Rome, Italy	
19.95S	15.04	RKI	Moscow, U.S.S.R.	
20.08	14.94	PSE	Rio de Janeiro, Brazil	6-7pm; Wed. 4-4:10pm; Thur 3p
20.11	14.92	KQH	Kahuku, Hawaii	Sat. 7:30-8pm; Sun. 9-9:30pm. (NA)
20.64	14.535	HBJ	Geneva, Switzerland	Wed. 6:45-8:15; 8:40-10:15pm to-
20.75	14.46	DZH	Berlin, Germany	7-10:50pm almost nightly *
20.80	14.42	HCIJB	Quito, Ecuador	7-8:15, 11:30am-2:30, 4:45-10:15p
21.58	13.90	YNDG	Leon, Nicaragua	Sat. 9:30-10pm or later. (exMon
22.00S	13.635	SPW	Warsaw, Poland	Not heard recently *
24.03	12.486	H11N	Trujillo City, D.R.	6:40-10:40am, 5:10-10:40pm.
24.08	12.46	HCJB	Quito, Ecuador	7-8:15, 11:30am-2:30, 5-10:30pm-
24.53	12.235	TFJ	Reykjavik, Iceland	Sundays 1:30-2:30pm. (ex.Mon
25.00S	12.00	RNE	Moscow, U.S.S.R.	6am-6pm inter, 7-8:50, 9-10pm ir.
25.06	11.97	CB1180	Santiago, Chile	7-11pm.
25.06	11.97	H12X	Trujillo City, D.R.	Tues/Fri 8:10-10:10pm; Sun 7:40-
25.13	11.94	TI2XD	San Jose, C.R.	7:30am-noon, 4-10pm. (9:40am
25.19	11.91		Hanoi, F. Indo-China	3:45-4:15, 7-9:30am.
25.19S	11.91	CD1190	Valdivia, Chile	10am-1, 3-10pm.
25.21	11.90	XEWI	Mexico D.F., Mexico	7:30pm-mid.; Sun. 12:30-2pm.
25.21N	11.90	YGX	YUNNAN, CHINA	5:30-7:50, 8-11, 11:10-11:20am, 2-
25.23FS	11.89	VLR3	Melbourne, Australia	3:30pm-12:30am. *(6:20pm
25.23S	11.885	TPB11	Paris, France	1:30-2:30; 9pm-12:45am to N.A. *
25.23S	11.885	TPB12	Paris, France	7-8:45pm to S.A. *
25.27S	11.87	WPIT	Pittsburgh, Pa.	2-11pm.
25.27	11.87	VUM2	Madras, India	Mon/Wed/Fr 3:30-4am.
25.30Y	11.86	GSE	London, England	Afternoons.
25.30	11.855	DJP	Berlin, Germany	12:05-2am, 4:50-10:50pm irreg.
25.30S	11.855	XMHA	Shanghai, China	7pm-11am. *
25.32	11.85	CB1185	Santiago, Chile	Sat. 6-11pm.
25.34S	11.84	OLR4A	Prague, Bohemia	7:55-10:15pm to N.A. *
25.36CS	11.83	WCBX	New York City, N.Y.	3-5, 5:30-9pm; Sun 2-5, 5:30-9pm.
25.37	11.826	XEBR	Hermosillo, Mexico	9-11am, 8-10:30pm or later. (ly
25.38	11.82	XGOK	Canton, China	6-8:35am. Has anyone heard late
25.40	11.81	2R04	Rome, Italy	4:30-8:45, 10am-3, 6-7:30; 7:30-9
25.42	11.801	DJZ	Vienna, Germany	4:50-10:50pm. (pm to N.A.
25.42F	11.80	COGF	Matanzas, Cuba	6am-9pm.
25.42	11.80	JZJ	Tokio, Japan	7-9:30am, 2-4pm.
25.45CS	11.79	WRUL	Boston, Mass.	3:30-5:30pm ex.Sa/Su; Sa. 2-6:30p
25.47S	11.782		Luxembourg, Luxembourg	Oct. 10-Nov. 2, 7pm-3am, prox.*
25.47S	11.78		Saigon, F. Indo-China	12:15-12:45, 6:30-6:45, 8:30-9:45
25.47	11.78	HP5G	Panama City, Panama	Noon-1, 6-10pm. (am
25.47	11.78	OFE	Lahti, Finland	1:15am-12:05pm. (am
25.48S	11.775	MTCY	Hsinking, Manchoukuo	1:30-2:30am to N.A.; 9:50-11:50
25.49	11.77	DJD	Berlin, Germany	11:30am-4:25pm; 4:50-10:50pm (NA)
25.53Y	11.75	GSD	London, England	1:30-3:45, 12:25-4; 4:20-6, 6:20-9:15, 9:40-11:30pm to N.A.
25.55S	11.74	CB1174	Santiago, Chile	Nightly to 10:30pm. *
25.55S	11.74	SP25	Warsaw, Poland	Not heard recently *
25.57V	11.735	COCX	Havana, Cuba	8am-12 mid.
25.57	11.735	LKQ	Oslo, Norway	4:30-6:40am; Sun. 2:30-6:40am.
25.58CS	11.73	WRUW	Boston, Mass.	M/T/W/Th 8-9:30, 10-11:30pm; Sun-
25.59	11.725	JVW3	Tokio, Japan	2-4, 4-8am irreg. (2-5:30p
25.60	11.72	CJRX	Winnipeg, Canada	Sa. 6pm-Sun. 4am. (6pm.
25.60	11.72	ZP14	Villarica, Paraguay	Mon. thr Fri. 5-8pm; Sa/Su 11am-

25M

19.80	15.155	SBT	Motala, Sweden	1-4:15pm; Wed/Sat 8-9pm to N.A.
19.80	15.15	YDC	Bandoeng, Java	4:30-10:30am; 6-9pm ex.Sat; 10:30pm-2am; Sat. 7pm-2am.
19.82Y	15.14	GSF	London, England	5:45-8:50, 9am-noon, 4:20-6, 6:20-2-5am. (9:15pm)
19.83S	15.13	TPB6	Paris, France	3:30-5:30 ex.Sa/Su; M/T/F 5:30-7pm; 8-9:30pm ex.Sa/Su; Sa 2pm-
19.83SC	15.13	WRUW	Boston, Mass.	Not heard recently * (6:30pm.
19.84S	15.12	SP19	Warsaw, Poland	7-9am. (-4:25pm)
19.84	15.12	HVJ	Vatican City	12:05-2; 8-9am to N.A.; 10:40am
19.84S	15.12	CSW4	Lisbon, Portugal	4-5:30, 6-7:25, 7:30-9pm irreg. *
19.85	15.11	DJL	Berlin, Germany	7-8:50pm to N.A.
19.87	15.10	2R012	Rome, Italy	
19.95S	15.04	RKI	Moscow, U.S.S.R.	
20.08	14.94	PSE	Rio de Janeiro, Brazil	6-7pm; Wed. 4-4:10pm; Thur 3p
20.11	14.92	KQH	Kahuku, Hawaii	Sat. 7:30-8pm; Sun. 9-9:30pm. (NA)
20.64	14.535	HBJ	Geneva, Switzerland	Wed. 6:45-8:15; 8:40-10:15pm to-
20.75	14.46	DZH	Berlin, Germany	7-10:50pm almost nightly *
20.80	14.42	HCIJB	Quito, Ecuador	7-8:15, 11:30am-2:30, 4:45-10:15p
21.58	13.90	YNDG	Leon, Nicaragua	Sat. 9:30-10pm or later. (exMon
22.00S	13.635	SPW	Warsaw, Poland	Not heard recently *
24.03	12.486	H11N	Trujillo City, D.R.	6:40-10:40am, 5:10-10:40pm.
24.08	12.46	HCJB	Quito, Ecuador	7-8:15, 11:30am-2:30, 5-10:30pm-
24.53	12.235	TFJ	Reykjavik, Iceland	Sundays 1:30-2:30pm. (ex.Mon
25.00S	12.00	RNE	Moscow, U.S.S.R.	6am-6pm inter, 7-8:50, 9-10pm ir.
25.06	11.97	CB1180	Santiago, Chile	7-11pm.
25.06	11.97	H12X	Trujillo City, D.R.	Tues/Fri 8:10-10:10pm; Sun 7:40-
25.13	11.94	TI2XD	San Jose, C.R.	7:30am-noon, 4-10pm. (9:40am
25.19	11.91		Hanoi, F. Indo-China	3:45-4:15, 7-9:30am.
25.19S	11.91	CD1190	Valdivia, Chile	10am-1, 3-10pm.
25.21	11.90	XEWI	Mexico D.F., Mexico	7:30pm-mid.; Sun. 12:30-2pm.
25.21N	11.90	YGX	YUNNAN, CHINA	5:30-7:50, 8-11, 11:10-11:20am, 2-
25.23FS	11.89	VLR3	Melbourne, Australia	3:30pm-12:30am. *(6:20pm
25.23S	11.885	TPB11	Paris, France	1:30-2:30; 9pm-12:45am to N.A. *
25.23S	11.885	TPB12	Paris, France	7-8:45pm to S.A. *
25.27S	11.87	WPIT	Pittsburgh, Pa.	2-11pm.
25.27	11.87	VUM2	Madras, India	Mon/Wed/Fr 3:30-4am.
25.30Y	11.86	GSE	London, England	Afternoons.
25.30	11.855	DJP	Berlin, Germany	12:05-2am, 4:50-10:50pm irreg.
25.30S	11.855	XMHA	Shanghai, China	7pm-11am. *
25.32	11.85	CB1185	Santiago, Chile	Sat. 6-11pm.
25.34S	11.84	OLR4A	Prague, Bohemia	7:55-10:15pm to N.A. *
25.36CS	11.83	WCBX	New York City, N.Y.	3-5, 5:30-9pm; Sun 2-5, 5:30-9pm.
25.37	11.826	XEBR	Hermosillo, Mexico	9-11am, 8-10:30pm or later. (ly
25.38	11.82	XGOK	Canton, China	6-8:35am. Has anyone heard late
25.40	11.81	2R04	Rome, Italy	4:30-8:45, 10am-3, 6-7:30; 7:30-9
25.42	11.801	DJZ	Vienna, Germany	4:50-10:50pm. (pm to N.A.
25.42F	11.80	COGF	Matanzas, Cuba	6am-9pm.
25.42	11.80	JZJ	Tokio, Japan	7-9:30am, 2-4pm.
25.45CS	11.79	WRUL	Boston, Mass.	3:30-5:30pm ex.Sa/Su; Sa. 2-6:30p
25.47S	11.782		Luxembourg, Luxembourg	Oct. 10-Nov. 2, 7pm-3am, prox.*
25.47S	11.78		Saigon, F. Indo-China	12:15-12:45, 6:30-6:45, 8:30-9:45
25.47	11.78	HP5G	Panama City, Panama	Noon-1, 6-10pm. (am
25.47	11.78	OFE	Lahti, Finland	1:15am-12:05pm. (am
25.48S	11.775	MTCY	Hsinking, Manchoukuo	1:30-2:30am to N.A.; 9:50-11:50
25.49	11.77	DJD	Berlin, Germany	11:30am-4:25pm; 4:50-10:50pm (NA)
25.53Y	11.75	GSD	London, England	1:30-3:45, 12:25-4; 4:20-6, 6:20-9:15, 9:40-11:30pm to N.A.
25.55S	11.74	CB1174	Santiago, Chile	Nightly to 10:30pm. *
25.55S	11.74	SP25	Warsaw, Poland	Not heard recently *
25.57V	11.735	COCX	Havana, Cuba	8am-12 mid.
25.57	11.735	LKQ	Oslo, Norway	4:30-6:40am; Sun. 2:30-6:40am.
25.58CS	11.73	WRUW	Boston, Mass.	M/T/W/Th 8-9:30, 10-11:30pm; Sun-
25.59	11.725	JVW3	Tokio, Japan	2-4, 4-8am irreg. (2-5:30p
25.60	11.72	CJRX	Winnipeg, Canada	Sa. 6pm-Sun. 4am. (6pm.
25.60	11.72	ZP14	Villarica, Paraguay	Mon. thr Fri. 5-8pm; Sa/Su 11am-

25M

25.60	11.718	CR7BH	Lourenco Marques, Moz.	4:30-6:30, 9-11am, Noon-4pm, Su 4-7, 10am-2pm.
25.61S	11.713	TPA4	Paris, France	7-8:45pm; 9pm-12:45am to NA.
25.62	11.71	YSM	San Salvador, El Salvador	1-2:30pm.
25.62	11.71		Saigon, F. Indo-China	7:30-9:45am. (8-9pm to N.A.)
25.63	11.705	SBP	Motala, Sweden	1-4:15pm; Sun 3am-4:15pm; Wed/Sat
25.64	11.70	HP5A	Panama City, Panama	7-8:30am, 10am-1, 5-10pm; Su 6-10p
25.64	11.70	CB1170	Santiago, Chile	10am-2, 3:30-11pm. (2:30pm
25.74	11.67	IQY	Rome, Italy	5:20-5:40am, 12:07-12:56, 1:50-
26.01S	11.535	SPD	Warsaw, Poland	Not heard recently *
26.32	11.402	HBO	Geneva, Switzerland	Mon. 6:45-8:15; 8:45-10:15 to NA; Tu 12:45-2:45pm; 1st Su. 12:45-12-5:30pm; Su 11am-5:30p. (2:30am
27.17S	11.04	CSW5	Lisbon, Portugal	4:30-10:30am, 6-9, 10:30pm-2am.
27.27	11.00	PLP	Bandoeng, Java	Relays JFAK 9-9:55am.
28.48	10.535	JIB	Taihoku, Taiwan	San Salvador, El Salvador 1-3, 6:30-11pm.
28.55V	10.40	YSP	San Salvador, El Salvador	3-4, 5-7, 7:45-8:45, 9-10pm.
28.96	10.36	EAJ43	Tenerife, Canarias	Ruyssedege, Belgium 1:30-3pm to Belgian Congo (Sun
29.04	10.33	ORK	Ruyssedege, Belgium	4:30-11:30am, 6-9, 10:30pm-2am ex
29.24S	10.26	PMN	Bandoeng, Java	Rio de Janeiro, Brazil 6-7pm; Mon 8-8:30pm to NA; Fr
29.35	10.22	PSH	Rio de Janeiro, Brazil	4:30-8pm. (7-7:30pm
29.81	10.065	TIEM	San Jose, C.R.	6am-mid.
30.03VF	9.99	COBC	Havana, Cuba	7-8am. (9:30-10:30
30.23	9.925	JDY	Darien, Manchoukuo	6-8:30pm; Sat 2-4pm; Su 6-8:30,-
30.45S	9.855	EAQ	Madrid, Spain	5:20-5:40, 12-2:30, 6-7:30, 7:30-9
30.52	9.83	IRF	Rome, Italy	8am-12:30am. (pm to N.A
30.57J	9.815	COCM	Havana, Cuba	Port-au-Prince, Haiti 1-2, 7-9:15pm.
30.71	9.77	HH3W	Port-au-Prince, Haiti	11:45pm-12:50, 3:30-7:30, 9-11:15
30.77	9.752	ZRO	Durban, So. Africa	am; Sun. 5:30-7, 9-11:15am.
30.80	9.74	CSW7	Lisbon, Portugal	6-9pm.
30.80	9.74	CB974	Santiago, Chile	7am-11:30pm inter. *
30.93	9.70		Fort-de-France, Martinique	6-8:10 or 9:30pm.
30.95	9.695	JIE2	Tyureki, Taiwan	9:05-10:20am. (am, Sun. 2:30-4am.
30.95	9.693		Tananarive, Madagascar	12:30-12:45, 3:30-4:30, 10-11-
30.96	9.69	TI4NRH	Heredia, Costa Rica	Tu/Th/Sat 9-10pm; Sun. 7-8am.
30.96	9.69	LRA1	Buenos Aires, Argen.	Mon. to Th. 6-9pm; Fri. 4-9pm, Sat
30.96V	9.69	ZHP	Singapore, S.S.	Sun. 7-9pm. (am, Sun 5:40-9:40am.
30.98	9.685	TGWA	Guatemala, Guatemala	4:40-9:40am; Wed/Sat 12:40-1:40
30.98	9.683	HNF	Baghdad, Iraq	10-11:30pm ex. Su; Su 7pm-mid to
30.99N	9.68	TPB--	PARIS, FRANCE	Heard on West coast 8-9:30a. (NA
31.01	9.675	DJX	Vienna, Germany	9pm-12:45am to N.A. *
31.01V	9.675		Saigon, F. Indo-China	10:40am-4:25pm to Africa.
31.02S	9.67	WRCA	New York City, N.Y.	7:30-9:45am.
31.03	9.67	2RO9	Rome, Italy	6pm-1am.
31.06	9.66	LRX	Buenos Aires, Argen.	12:40-5:30, 6-6:30, & 7:30-9pm ir.
31.09S	9.65	IABA	Addis Abeba, I.E.A.	6-6:45am, 9:15am-10pm.
31.09	9.65	WCBX	New York City, N.Y.	4:30-5:30am, 11am-2:30pm. *
31.12	9.64	CXA8	Colonia, Uruguay	9:30-10:30pm. *
31.15	9.63	2RO3	Rome, Italy	5am-10:45 or 11pm; Sat. to lam.
31.15	9.63	JFO	Taihoku, Taiwan	1-2am, 12:07-2:55, 5:30-7:30, 7:30
31.19	9.625	CXA6	Montevideo, Uruguay	4-10:30am. (-9pm to NA
31.21	9.615	TIPG	San Jose, C.R.	10:30am-12:30, 3:30-9:30pm.
31.22	9.61	ZRL	Capetown, So. Africa	7-9:30am, 12-2, 8-11:30pm.
31.22	9.61	DXB	Berlin, Germany	11:45pm-2:50am ex. Sat; 3:30-7:20
31.22	9.61	HP5J	Panama City, Panama	9-11:45am; Sun. 3:30-11:45am int. *
31.24	9.614	KEYU	Mexico D.F., Mexico	7-10:50pm.
31.25	9.60	RAN	Moscow, U.S.S.R.	Noon-1:30, 6:30-10:30pm.
31.25	9.60	CB960	Santiago, Chile	9-11pm irreg.
31.27S	9.595	EIRE	Athlone, Ireland	6-7, 7-8:50pm to NA; 9-10pm. (31M
31.28	9.59	PCJ	Huizen, Holland	8-11:30pm.
31.28	9.59	VK6ME	Perth, W. Australia	Odd dates 2:30-4:30, 5:30-6pm
31.28	9.59	VK2ME	Sydney, Australia	Sun 1:40-3, 7:15-9:50pm; Tu 1:45-3:30pm, 7-10:15pm; Wd 7:15-8:40pm
				Weekdays 6-8am. (Fri. 8-9pm
				Sun. 12-2, 4:30-8:30, 10:30am-1230

25.60	11.718	CR7BH	Lourenco Marques, Moz.	4:30-6:30, 9-11am, Noon-4pm, Su 4-7, 10am-2pm.
25.61S	11.713	TPA4	Paris, France	7-8:45pm; 9pm-12:45am to NA.
25.62	11.71	YSM	San Salvador, El Salvador	1-2:30pm.
25.62	11.71		Saigon, F. Indo-China	7:30-9:45am. (8-9pm to N.A.)
25.63	11.705	SBP	Motala, Sweden	1-4:15pm; Sun 3am-4:15pm; Wed/Sat
25.64	11.70	HP5A	Panama City, Panama	7-8:30am, 10am-1, 5-10pm; Su 6-10p
25.64	11.70	CB1170	Santiago, Chile	10am-2, 3:30-11pm. (2:30pm
25.74	11.67	IQY	Rome, Italy	5:20-5:40am, 12:07-12:56, 1:50-
26.01S	11.535	SPD	Warsaw, Poland	Not heard recently *
26.32	11.402	HBO	Geneva, Switzerland	Mon. 6:45-8:15; 8:45-10:15 to NA; Tu 12:45-2:45pm; 1st Su. 12:45-12-5:30pm; Su 11am-5:30p. (2:30am
27.17S	11.04	CSW5	Lisbon, Portugal	4:30-10:30am, 6-9, 10:30pm-2am.
27.27	11.00	PLP	Bandoeng, Java	Relays JFAK 9-9:55am.
28.48	10.535	JIB	Taihoku, Taiwan	San Salvador, El Salvador 1-3, 6:30-11pm.
28.55V	10.40	YSP	San Salvador, El Salvador	3-4, 5-7, 7:45-8:45, 9-10pm.
28.96	10.36	EAJ43	Tenerife, Canarias	Ruyssedege, Belgium 1:30-3pm to Belgian Congo (Sun
29.04	10.33	ORK	Ruyssedege, Belgium	4:30-11:30am, 6-9, 10:30pm-2am ex
29.24S	10.26	PMN	Bandoeng, Java	Rio de Janeiro, Brazil 6-7pm; Mon 8-8:30pm to NA; Fr
29.35	10.22	PSH	Rio de Janeiro, Brazil	4:30-8pm. (7-7:30pm
29.81	10.065	TIEM	San Jose, C.R.	6am-mid.
30.03VF	9.99	COBC	Havana, Cuba	7-8am. (9:30-10:30
30.23	9.925	JDY	Darien, Manchoukuo	6-8:30pm; Sat 2-4pm; Su 6-8:30,-
30.45S	9.855	EAQ	Madrid, Spain	5:20-5:40, 12-2:30, 6-7:30, 7:30-9
30.52	9.83	IRF	Rome, Italy	8am-12:30am. (pm to N.A
30.57J	9.815	COCM	Havana, Cuba	Port-au-Prince, Haiti 1-2, 7-9:15pm.
30.71	9.77	HH3W	Port-au-Prince, Haiti	11:45pm-12:50, 3:30-7:30, 9-11:15
30.77	9.752	ZRO	Durban, So. Africa	am; Sun. 5:30-7, 9-11:15am.
30.80	9.74	CSW7	Lisbon, Portugal	6-9pm.
30.80	9.74	CB974	Santiago, Chile	7am-11:30pm inter. *
30.93	9.70		Fort-de-France, Martinique	6-8:10 or 9:30pm.
30.95	9.695	JIE2	Tyureki, Taiwan	9:05-10:20am. (am, Sun. 2:30-4am.
30.95	9.693		Tananarive, Madagascar	12:30-12:45, 3:30-4:30, 10-11-
30.96	9.69	TI4NRH	Heredia, Costa Rica	Tu/Th/Sat 9-10pm; Sun. 7-8am.
30.96	9.69	LRA1	Buenos Aires, Argen.	Mon. to Th. 6-9pm; Fri. 4-9pm, Sat
30.96V	9.69	ZHP	Singapore, S.S.	Sun. 7-9pm. (am, Sun 5:40-9:40am.
30.98	9.685	TGWA	Guatemala, Guatemala	4:40-9:40am; Wed/Sat 12:40-1:40
30.98	9.683	HNF	Baghdad, Iraq	10-11:30pm ex. Su; Su 7pm-mid to
30.99N	9.68	TPB--	PARIS, FRANCE	Heard on West coast 8-9:30a. (NA
31.01	9.675	DJX	Vienna, Germany	9pm-12:45am to N.A. *
31.01V	9.675		Saigon, F. Indo-China	10:40am-4:25pm to Africa.
31.02S	9.67	WRCA	New York City, N.Y.	7:30-9:45am.
31.03	9.67	2RO9	Rome, Italy	6pm-1am.
31.06	9.66	LRX	Buenos Aires, Argen.	12:40-5:30, 6-6:30, & 7:30-9pm ir.
31.09S	9.65	IABA	Addis Abeba, I.E.A.	6-6:45am, 9:15am-10pm.
31.09	9.65	WCBX	New York City, N.Y.	4:30-5:30am, 11am-2:30pm. *
31.12	9.64	CXA8	Colonia, Uruguay	9:30-10:30pm. *
31.15	9.63	2RO3	Rome, Italy	5am-10:45 or 11pm; Sat. to lam.
31.15	9.63	JFO	Taihoku, Taiwan	1-2am, 12:07-2:55, 5:30-7:30, 7:30
31.19	9.625	CXA6	Montevideo, Uruguay	4-10:30am. (-9pm to NA
31.21	9.615	TIPG	San Jose, C.R.	10:30am-12:30, 3:30-9:30pm.
31.22	9.61	ZRL	Capetown, So. Africa	7-9:30am, 12-2, 8-11:30pm.
31.22	9.61	DXB	Berlin, Germany	11:45pm-2:50am ex. Sat; 3:30-7:20
31.22	9.61	HP5J	Panama City, Panama	9-11:45am; Sun. 3:30-11:45am int. *
31.24	9.614	KEYU	Mexico D.F., Mexico	7-10:50pm.
31.25	9.60	RAN	Moscow, U.S.S.R.	Noon-1:30, 6:30-10:30pm.
31.25	9.60	CB960	Santiago, Chile	9-11pm irreg.
31.27S	9.595	EIRE	Athlone, Ireland	6-7, 7-8:50pm to NA; 9-10pm. (31M
31.28	9.59	PCJ	Huizen, Holland	8-11:30pm.
31.28	9.59	VK6ME	Perth, W. Australia	Odd dates 2:30-4:30, 5:30-6pm
31.28	9.59	VK2ME	Sydney, Australia	Sun 1:40-3, 7:15-9:50pm; Tu 1:45-3:30pm, 7-10:15pm; Wd 7:15-8:40pm
				Weekdays 6-8am. (Fri. 8-9pm
				Sun. 12-2, 4:30-8:30, 10:30am-1230

31.28S	9.59	WCAB	Philadelphia, Pa.	M/Th/Sa 5:30pm-lam; Wd 9pm-lam.
31.28	9.59	VUD2	Delhi, India	1:30-3:30, 7am-12:30, 9:30-11:30p
31.30	9.58S	KZHS	Manila, Philippines	Daily from 6am on.
31.32Y	9.58	GSC	Daventry, England	1:30-4, 4:20-6, 6:25-9:30pm; 9:40-11:30pm to N.A.
31.32S	9.58	VLR	Melbourne, Australia	mid-9am ex. Sun; Sun 12-7:30am.
31.35	9.57	WBOS	Boston, Mass.	8am-lam.
31.35	9.57	KZRM	Manila, Philippines	Weekdays 4:30-6pm; Mon. to Fri. 5-9am; Sat. 5-10am; Sun. 4-10am.
31.35	9.57	CXA2	Montevideo, Uruguay	5:30-10:30pm.
31.38	9.556	OAX4T	Lima, Peru	11:30am-1:30pm.
31.38	9.56	DJA	Berlin, Germany	6:30-10:50pm to C.A.
31.40	9.55	YDB	Soerabaja, Java	4:30-10:30am, 6-9, 10:30pm-2am-ex. Sat; Sat. 7pm-2am.
31.40	9.55	VUD2	Bombay, India	1:30-3:30, 5-6a, 9:30-10:30pm.
31.41S	9.55	WGEA	Schenectady, N.Y.	6:15-9:15pm
31.41	9.55	XEFT	Veracruz, Mexico	7:30pm-midnight.
31.45	9.54	DJN	Zeesen, Germany	12:05-2:30am, 4:50-10:50pm.
31.46	9.538	VPD2	Suva, Fiji's	5:30-7am ex. Sundays.
31.47	9.535	SBU	Motala, Sweden	4:15-5:05pm.
31.47	9.535	JZI	Tokio, Japan	4:30-5:30pm.
31.48S	9.53	KGEI	San Francisco, Calif.	7am-noon.
31.48S	9.53	WGEO	Schenectady, N.Y.	3-6pm to Europe, 6pm-mid. to S.A
31.43	9.528	VUC2	Calcutta, India	2-4am, 10pm-2am.
31.48S	9.527		Luxembourg, Luxembourg	Oct. 10-Nov. 2, 8pm-2am int.*
31.50	9.525	ZBW3	Hong King, Hong Kong	5-10am, 11:30pm-1:15am; Sun 5-
31.50	9.525	OQ2AA	Leopoldville, Bel. Congo.	5:25-7am (9:30am; Sa 9pm on
31.50S	9.525	SP31	Warsaw, Poland	Not heard recently *
31.50	9.523	ZRG	Pretoria, So. Africa	5-7am; Sundays 5:30-7am.
31.51	9.52	OZF	Skamlebak, Denmark	8-9:30, 9:30-11pm.
31.51	9.52	RV96	Moscow, U.S.S.R.	1-3, 4-7pm & irreg.
31.52	9.517	XEDQ	Guadalajara, Mexico	Noon-4:30, 7pm-mid.
31.55Y	9.51	GSB	London, England	1:30-3:45am, 6:20-9:15; 9:40pm-
31.55	9.51	HS8PJ	Bangkok, Thai	7-10am ex. Mon. (11:30pm to N.A.
31.57N	9.505	YUC	BELGRADE, YUGOSLAVIA	Daily to 5:30pm. *
31.57	9.503	XEWW	Mexico D.F., Mexico	7:45am-12:30am.
31.58	9.501	PRF5	Rio de Janeiro, Brazil	4:45-5:55pm ex. Sundays.
31.58	9.50	OFD	Lahti, Finland	12:15-5pm.
31.58	9.50	VK3ME	Melbourne, Australia	4-7am except Sundays.
31.60VS	9.492	KZIB	Manila, P.I.	8:30pm-2:40am, 6-10am. *
31.70	9.465	TAP	Ankara, Turkey	11:30am-5pm.
31.77	9.445	HCODA	Guayaquil, Ecuador	8:15-10:15pm ex. Sundays.
31.78V	9.44	COCH	Havana, Cuba	8am-11pm; Sun. 8am-10pm.
31.95	9.39	OAX5C	Ica, Peru	7-11:30pm.
32.12	9.34	OAX4J	Lima, Peru	Noon-3 and 5pm-mid.
32.28	9.295	XTC	Shanghai, China.	8-9am in Chinese (4:40pm
32.28	9.295	HI2G	Trujillo City, D.R.	6:40-8:40, 11:40am-2:10, 3:40-
32.29S	9.29	LYR	Kaunas, Lithuania	12-12:40am, 2:30-3pm; Su. 1:30-2:15-6-7:45am, 11:30-1:15, 2-3:30
32.54N	9.23		Bucharest, Roumania	2-5pm. * (pm
32.56	9.205	COBX	Havana, Cuba	8am-11:30pm.
32.61	9.20		Sofia, Bulgaria	Near 1:45am and Sun. at 8:15am.
32.64	9.19	HC2ET	Guayaquil, Ecuador	8-10pm; Sun 8:30-10:30pm.
32.72	9.17	HC1GQ	Quito, Ecuador	Mon/Wed/Sat 9-9:55pm.
32.88	9.125	HAT4	Budapest, Hungary	7-8pm; Sat. 6-7pm.
32.89	9.12	HC2CW	Guayaquil, Ecuador	11am-1, 7-11pm.
33.00V	9.09	COCA	Havana, Cuba	Noon-1:15am; till 3am irreg.
33.26V	9.02	COBZ	Havana, Cuba	7:45am-1:15am.
33.48	8.96	COKG	Santiago, Cuba	5-6, 9:30-10:30pm.
33.48	8.96	TPZ2	Algiers, Algeria	Tuesdays 12:30-1:30pm.
33.94J	8.84	COCQ	Havana, Cuba	5:55am-12 mid.
34.50	8.695	COCO	Havana, Cuba	7:55am-12 mid.
34.68J	8.65	COJK	Camaguey, Cuba	11:30am-12:30, 3:30-6, 8-8:30pm.
34.97	8.58	YNPR	Managua, Nicaragua	12:45-2:15, 6:45-10:15pm.
37.50F	8.00	HC1ETC	Quito, Ecuador	Saturdays 8-11pm.

31M

31.28S	9.59	WCAB	Philadelphia, Pa.	M/Th/Sa 5:30pm-1am; Wd 9pm-1am.
31.28	9.59	VUD2	Delhi, India	1:30-3:30, 7am-12:30, 9:30-11:30p
31.30	9.58S	KZHS	Manila, Philippines	Daily from 6am on.
31.32Y	9.58	GSC	Daventry, England	1:30-4, 4:20-6, 6:25-9:30pm; 9:40-11:30pm to N.A.
31.32S	9.58	VLR	Melbourne, Australia	mid-9am ex. Sun; Sun 12-7:30am.
31.35	9.57	WBOS	Boston, Mass.	8am-1am.
31.35	9.57	KZRM	Manila, Philippines	Weekdays 4:30-6pm; Mon. to Fri. 5-9am; Sat. 5-10am; Sun. 4-10am.
31.35	9.57	CXA2	Montevideo, Uruguay	5:30-10:30pm.
31.38	9.556	OAX4T	Lima, Peru	11:30am-1:30pm.
31.38	9.56	DJA	Berlin, Germany	6:30-10:50pm to C.A.
31.40	9.55	YDB	Soerabaja, Java	4:30-10:30am, 6-9, 10:30pm-2am-ex. Sat; Sat. 7pm-2am.
31.40	9.55	VUD2	Bombay, India	1:30-3:30, 5-6a, 9:30-10:30pm.
31.41S	9.55	WGEA	Schenectady, N.Y.	6:15-9:15pm
31.41	9.55	XEFT	Veracruz, Mexico	7:30pm-midnight.
31.45	9.54	DJN	Zeesen, Germany	12:05-2:30am, 4:50-10:50pm.
31.46	9.538	VPD2	Suva, Fiji's	5:30-7am ex. Sundays.
31.47	9.535	SBU	Motala, Sweden	4:15-5:05pm.
31.47	9.535	JZI	Tokio, Japan	4:30-5:30pm.
31.48S	9.53	KGEI	San Francisco, Calif.	7am-noon.
31.48S	9.53	WGEO	Schenectady, N.Y.	3-6pm to Europe, 6pm-mid. to S.A
31.43	9.528	VUC2	Calcutta, India	2-4am, 10pm-2am.
31.48S	9.527		Luxembourg, Luxembourg	Oct. 10-Nov. 2, 8pm-2am int.*
31.50	9.525	ZBW3	Hong King, Hong Kong	5-10am, 11:30pm-1:15am; Sun 5-
31.50	9.525	OQ2AA	Leopoldville, Bel. Congo.	5:25-7am (9:30am; Sa 9pm on
31.50S	9.525	SP31	Warsaw, Poland	Not heard recently *
31.50	9.523	ZRG	Pretoria, So. Africa	5-7am; Sundays 5:30-7am.
31.51	9.52	OZF	Skamlebak, Denmark	8-9:30, 9:30-11pm.
31.51	9.52	RV96	Moscow, U.S.S.R.	1-3, 4-7pm & irreg.
31.52	9.517	XEDQ	Guadalajara, Mexico	Noon-4:30, 7pm-mid.
31.55Y	9.51	GSB	London, England	1:30-3:45am, 6:20-9:15; 9:40pm-
31.55	9.51	HS8PJ	Bangkok, Thai	7-10am ex. Mon. (11:30pm to N.A.
31.57N	9.505	YUC	BELGRADE, YUGOSLAVIA	Daily to 5:30pm. *
31.57	9.503	XEWW	Mexico D.F., Mexico	7:45am-12:30am.
31.58	9.501	PRF5	Rio de Janeiro, Brazil	4:45-5:55pm ex. Sundays.
31.58	9.50	OFD	Lahti, Finland	12:15-5pm.
31.58	9.50	VK3ME	Melbourne, Australia	4-7am except Sundays.
31.60VS	9.492	KZIB	Manila, P.I.	8:30pm-2:40am, 6-10am. *
31.70	9.465	TAP	Ankara, Turkey	11:30am-5pm.
31.77	9.445	HCODA	Guayaquil, Ecuador	8:15-10:15pm ex. Sundays.
31.78V	9.44	COCH	Havana, Cuba	8am-11pm; Sun. 8am-10pm.
31.95	9.39	OAX5C	Ica, Peru	7-11:30pm.
32.12	9.34	OAX4J	Lima, Peru	Noon-3 and 5pm-mid.
32.28	9.295	XTC	Shanghai, China.	8-9am in Chinese (4:40pm
32.28	9.295	HI2G	Trujillo City, D.R.	6:40-8:40, 11:40am-2:10, 3:40-
32.29S	9.29	LYR	Kaunas, Lithuania	12-12:40am, 2:30-3pm; Su. 1:30-2:15-6-7:45am, 11:30-1:15, 2-3:30
32.54N	9.23		Bucharest, Roumania	2-5pm. * (pm
32.56	9.205	COBX	Havana, Cuba	8am-11:30pm.
32.61	9.20		Sofia, Bulgaria	Near 1:45am and Sun. at 8:15am.
32.64	9.19	HC2ET	Guayaquil, Ecuador	8-10pm; Sun 8:30-10:30pm.
32.72	9.17	HC1GQ	Quito, Ecuador	Mon/Wed/Sat 9-9:55pm.
32.88	9.125	HAT4	Budapest, Hungary	7-8pm; Sat. 6-7pm.
32.89	9.12	HC2CW	Guayaquil, Ecuador	11am-1, 7-11pm.
33.00V	9.09	COCA	Havana, Cuba	Noon-1:15am; till 3am irreg.
33.26V	9.02	COBZ	Havana, Cuba	7:45am-1:15am.
33.48	8.96	COKG	Santiago, Cuba	5-6, 9:30-10:30pm.
33.48	8.96	TPZ2	Algiers, Algeria	Tuesdays 12:30-1:30pm.
33.94J	8.84	COCQ	Havana, Cuba	5:55am-12 mid.
34.50	8.695	COCO	Havana, Cuba	7:55am-12 mid.
34.68J	8.65	COJK	Camaguey, Cuba	11:30am-12:30, 3:30-6, 8-8:30pm.
34.97	8.58	YNPR	Managua, Nicaragua	12:45-2:15, 6:45-10:15pm.
37.50F	8.00	HC1ETC	Quito, Ecuador	Saturdays 8-11pm.

31M

38.00	7.894	YSD	San Salvador, El Salvador	7-10:30pm.
38.12	7.87	HCLRB	Quito, Ecuador	8:30-11:30pm.
38.22	7.85	ZAA	Tirana, Albania	6:30-8:30am.
38.20	7.854	HC2JSB	Guayaquil, Ecuador	11am-2, 4-11pm.
38.46	7.80	COBS	Havana, Cuba	Evenings.
39.16	7.66	YNDG	Leon, Nicaragua	8:30-9:30pm ex. Sundays.
39.89	7.614	CR6AA	Lobito, Angola	Mon/Wed/Sat 2:30-4:30pm.
39.89	7.52	KKH	Kahuku, Hawaii	Sun. 9-9:30pm, Sat. 7:30-8pm.
40.05	7.49	EAJ43	Tenerife, Canarias	7-7:45; 8-9:30pm irreg.
40.27	7.45	TI2RS	San Jose, C.R.	7-11pm.
40.32	7.44	FGSAH	Pointe-a-Pitre, Guadeloupe	6-7:10pm.
40.65	7.38	XECR	Mexico D.F., Mexico	Sundays 6-7pm.
41.01	7.31	VIG	Port Moresby, Papua	Oct. 14/28, 3-5am.
41.13	7.295	JIE	Tyureki, Taiwan	9:05-10:20am.
41.19	7.284	YN1IP	Managua, Nicaragua	Sundays 10-11am.
41.21S	7.28	TPB11	Paris, France	11:15am-1:45, 2-6:15pm.
41.32S	7.26	CSW8	Lisbon, Portugal	Tues/Thurs/Sat 5:05-6pm.
41.32N	7.26	OZU	SKAMLEBAK, DENMARK	2-5pm.
41.38	7.25	YDA	Bandoeng, Java	10:30pm-2am; Sat. 7:30pm-2am.
41.49N	7.23	GSW	LONDON, ENGLAND	6am-12:45pm.
41.55S	7.22	YDX	Medan, Sumatra	6-10:30am; 10:30pm-2am.
41.78	7.18	EA9AI	Mellila, Span. Morocco	Sat. 9-10pm.
42.25	7.10	FO8AA	Papeete, Tahiti	Sat. 12:01-3:30am.
42.80S	7.01	XPSA	Kweiyang, China	5:30-11am, 5-6pm. *
43.80V	6.85	XOJD	Hankow, China	6-8:35am.
44.12	6.80	PZH	Paramaribo, D. Guiana	Mon/Wed/Fri 5:41-8:41pm.
44.25	6.78	HIH	San Pedro, D.R.	7-9:40pm; Sun. 5:20-6:40pm.
44.38	6.76	HI7P	Trujillo City, D.R.	7:10-8:40pm; Sun. 9:40-10:40pm.
44.38	6.76	YNRF	Managua, Nicaragua	6:45-10:15 or 11pm.
44.58	6.73	HI3C	La Romana, D.R.	To 8:20pm.
44.64	6.72	PMH	Bandoeng, Java	4:30-11am; Sun. 8:30pm-1:30am.
44.81	6.695	TIEP	San Jose, C.R.	7pm-midnight.
45.06	6.66	HI5G	Trujillo City, D.R.	To 8:40pm.
45.22	6.635	HC2RL	Guayaquil, Ecuador	Sun. 5:45-7:45 & Tues. 9:15-11:15 (pm)
45.25	6.63	HIT	Trujillo City, D.R.	12:10-1:40, 4:40-8:40pm.
45.29	6.625	PRADO	Riobama, Ecuador	Thursdays 9-11pm.
45.39V	6.61	YNLG	Managua, Nicaragua	1:30-2:30, 6-10:15pm.
45.70	6.565	HI5P	Puerto Plata, D.R.	5:40-7:40, 9:40-11:40am.
45.80	6.55	TIRCC	San Jose, C.R.	Tu/Th/Sat 6-7pm; Sun. 8-10pm.
45.87	6.54	YNLG	Managua, Nicaragua	1-2:30, 8-10pm ex. Sundays.
46.15	6.50	HIL	Trujillo City, D.R.	12:30-2, 6-8 or 9pm ex. Sundays.
46.25	6.486	TGWB	Guatemala, Guatemala	7:45-9, 12:45-3:45, 7:30pm-12:15 am; Sun. 10:30am-5:15, 7pm-mid.
46.26	6.485	HILL	Santiago, d.l.c., DR	Weekdays 5:30-9:30pm.
46.44N	6.46	COCH	HAVANA, CUBA	Relays COCH evenings. *
46.44	6.455	HI4V	S.F. de Macoris, D.R.	5:10-7:40pm; to 10pm irreg.
46.51N	6.45	COHI	SANTA CLARA, CUBA	7pm-mid.
46.88	6.40	TGQA	Quezaltenango, Guatemala	8-11pm; Sat. 8pm-1am, Sun. (7:30am-3pm.)
46.97V	6.388	HI9B	Santiago, D.R.	5-8:45pm.
46.99	6.384	ZIZ	Basseterre, St. Kitts	4-4:45pm; Wed. 7-7:30pm.
47.02	6.38	TIWS	Puntarenas, C.R.	5-7, 7:30-10pm; Sun. 5-6pm.
47.17N	6.36	COCQ	HAVANA, CUBA	7pm-mid. (49M)
47.20	6.357	HRP1	San Pedro Sula, Honduras	6-7:30am, 2-4; irreg. to 10.
47.32	6.34	HI1X	Trujillo City, D.R.	8:10-10:10pm; Sun. 7:40-9:40am.
47.39	6.33	COCW	Havana, Cuba	6:55am-1am; Sun. 9:55am-10pm.
47.51	6.315	HI1Z	Trujillo City, D.R.	11:40am-12:40pm; 5:10-7:40pm ex. (Sun. 6 or 7pm to mid.)
47.66	6.295	OAX4G	Lima, Peru	6 or 7pm to mid. (Sun. 9:40pm.)
47.69V	6.29	HI1G	Trujillo City, D.R.	6:40-8:40, 11:40am-2:10, 3:40-7-9pm.
47.96	6.255	CPI2	La Paz, Bolivia	7-9pm. (9:40pm.)
48.05	6.243	HI1N	Trujillo City, D.R.	5:10-10:40pm or later.
48.11	6.235	HRD	La Ceiba, Honduras	8-11pm; Sun. 4-6pm.
48.23FJ	6.22	HI6H	Trujillo City, D.R.	5-8:50pm.
48.27	6.215		Saigon, F. Indo-China	7:30-9:45am, 11:45pm-1am.
48.39	6.20	CP5	La Paz, Bolivia	6:30-11:30pm.
48.43	6.195	TG2	Guatemala, Guatemala	7:30-10am, 6-11:30pm, Sat 6pm-3

38.00	7.894	YSD	San Salvador, El Salvador	7-10:30pm.
38.12	7.87	HCLRB	Quito, Ecuador	8:30-11:30pm.
38.22	7.85	ZAA	Tirana, Albania	6:30-8:30am.
38.20	7.854	HC2JSB	Guayaquil, Ecuador	11am-2, 4-11pm.
38.46	7.80	COBS	Havana, Cuba	Evenings.
39.16	7.66	YNDG	Leon, Nicaragua	8:30-9:30pm ex. Sundays.
39.89	7.614	CR6AA	Lobito, Angola	Mon/Wed/Sat 2:30-4:30pm.
39.89	7.52	KKH	Kahuku, Hawaii	Sun. 9-9:30pm, Sat. 7:30-8pm.
40.05	7.49	EAJ43	Tenerife, Canarias	7-7:45; 8-9:30pm irreg.
40.27	7.45	TI2RS	San Jose, C.R.	7-11pm.
40.32	7.44	FGSAH	Pointe-a-Pitre, Guadeloupe,	6-7:10pm.
40.65	7.38	XECR	Mexico D.F., Mexico	Sundays 6-7pm.
41.01	7.31	VIG	Port Moresby, Papua	Oct. 14/28, 3-5am.
41.13	7.295	JIE	Tyureki, Taiwan	9:05-10:20am.
41.19	7.284	YN1IP	Managua, Nicaragua	Sundays 10-11am.
41.21S	7.28	TPB11	Paris, France	11:15am-1:45, 2-6:15pm.
41.32S	7.26	CSW8	Lisbon, Portugal	Tues/Thurs/Sat 5:05-6pm.
41.32N	7.26	OZU	SKAMLEBAK, DENMARK	2-5pm.
41.38	7.25	YDA	Bandoeng, Java	10:30pm-2am; Sat. 7:30pm-2am.
41.49N	7.23	GSW	LONDON, ENGLAND	6am-12:45pm.
41.55S	7.22	YDX	Medan, Sumatra	6-10:30am; 10:30pm-2am.
41.78	7.18	EA9AI	Mellila, Span. Morocco	Sat. 9-10pm.
42.25	7.10	FO8AA	Papeete, Tahiti	Sat. 12:01-3:30am.
42.80S	7.01	XPSA	Kweiyang, China	5:30-11am, 5-6pm. *
43.80V	6.85	XOJD	Hankow, China	6-8:35am.
44.12	6.80	PZH	Paramaribo, D. Guiana	Mon/Wed/Fri 5:41-8:41pm.
44.25	6.78	HIH	San Pedro, D.R.	7-9:40pm; Sun. 5:20-6:40pm.
44.38	6.76	HI7P	Trujillo City, D.R.	7:10-8:40pm; Sun. 9:40-10:40pm.
44.38	6.76	YNRF	Managua, Nicaragua	6:45-10:15 or 11pm.
44.58	6.73	HI3C	La Romana, D.R.	To 8:20pm.
44.64	6.72	PMH	Bandoeng, Java	4:30-11am; Sun. 8:30pm-1:30am.
44.81	6.695	TIEP	San Jose, C.R.	7pm-midnight.
45.06	6.66	HI5G	Trujillo City, D.R.	To 8:40pm.
45.22	6.635	HC2RL	Guayaquil, Ecuador	Sun. 5:45-7:45 & Tues. 9:15-11:15
45.25	6.63	HIT	Trujillo City, D.R.	12:10-1:40, 4:40-8:40pm. (pm
45.29	6.625	PRADO	Riobama, Ecuador	Thursdays 9-11pm.
45.39V	6.61	YNLG	Managua, Nicaragua	1:30-2:30, 6-10:15pm.
45.70	6.565	HI5P	Puerto Plata, D.R.	5:40-7:40, 9:40-11:40am.
45.80	6.55	TIRCC	San Jose, C.R.	Tu/Th/Sat 6-7pm; Sun. 8-10pm.
45.87	6.54	YNLG	Managua, Nicaragua	1-2:30, 8-10pm ex. Sundays.
46.15	6.50	HIL	Trujillo City, D.R.	12:30-2, 6-8 or 9pm ex. Sundays.
46.25	6.486	TGWB	Guatemala, Guatemala	7:45-9, 12:45-3:45, 7:30pm-12:15
				am; Sun. 10:30am-5:15, 7pm-mid.
46.26	6.485	HILL	Santiago, d.l.c., DR	Weekdays 5:30-9:30pm.
46.44N	6.46	COCH	HAVANA, CUBA	Relays COCH evenings. *
46.44	6.455	HI4V	S.F. de Macoris, D.R.	5:10-7:40pm; to 10pm irreg.
46.51N	6.45	COHI	SANTA CLARA, CUBA	7pm-mid.
46.88	6.40	TGQA	Quezaltenango, Guatemala	8-11pm; Sat. 8pm-1am, Sun.
46.97V	6.388	HI9B	Santiago, D.R.	5-8:45pm. (7:30am-3pm.
46.99	6.384	ZIZ	Basseterre, St. Kitts	4-4:45pm; Wed. 7-7:30pm.
47.02	6.38	TIWS	Puntarenas, C.R.	5-7, 7:30-10pm; Sun. 5-6pm.
47.17N	6.36	COCQ	HAVANA, CUBA	7pm-mid. (49M)
47.20	6.357	HRP1	San Pedro Sula, Honduras	6-7:30am, 2-4; irreg. to 10.
47.32	6.34	HI1X	Trujillo City, D.R.	8:10-10:10pm; Sun. 7:40-9:40am.
47.39	6.33	COCW	Havana, Cuba	6:55am-1am; Sun. 9:55am-10pm.
47.51	6.315	HI1Z	Trujillo City, D.R.	11:40am-12:40pm; 5:10-7:40pm ex.
47.66	6.295	OAX4G	Lima, Peru	6 or 7pm to mid. (Sun.
47.69V	6.29	HI1G	Trujillo City, D.R.	6:40-8:40, 11:40am-2:10, 3:40-
47.96	6.255	CP12	La Paz, Bolivia	7-9pm. (9:40pm.
48.05	6.243	HI1N	Trujillo City, D.R.	5:10-10:40pm or later.
48.11	6.235	HRD	La Ceiba, Honduras	8-11pm; Sun. 4-6pm.
48.23FJ	6.22	HI6H	Trujillo City, D.R.	5-8:50pm.
48.27	6.215		Saigon, F. Indo-China	7:30-9:45am, 11:45pm-1am.
48.39	6.20	CP5	La Paz, Bolivia	6:30-11:30pm.
48.43	6.195	TG2	Guatemala, Guatemala	7:30-10am, 6-11:30pm, Sat 6pm-3

				am, Su 3-8p. For IDA Sun. 2-2:30am
48.43	6.195	HI2D	Trujillo City, D.R.	5:10-7:10pm.
48.47N	6.19	KGEI	San Francisco, Cal.	12 mid.-3am to Alaska. *
48.47	6.19	HILA	Santiago, D.R.	10:40am-1:40, 6:40-9:40pm.
48.51	6.185	LRA2	Buenos Aires, Argen	5:30-9pm ex. Sun; Sat/Sun 7-9pm.
48.54FJ	6.18	OAXLA	Chiclayo, Peru	8-11pm.
48.58	6.175	XEXA	Mexico D.F., Mexico	8-11am, 2:30-4, 7:30pm-12:45am;
48.66	6.165	TILS	San Jose, C.R.	Noon-2:30pm, 6-11pm.
48.78	6.15	HJ4DAE	Medellin, Colombia	9:30am-1pm, 5-11:30pm.
48.81	6.147	ZTD	Durban, So. Africa	11:20am-3:45pm; Sun. 11:30-3:20p
48.81	6.147	CJRO	Winnipeg, Canada	Sat. 6pm-Sun. 4am.
48.86S	6.14	WPIT	Pittsburgh, Pa.	11pm-1am.
48.86	6.14	KZEG	Manila, Philippines	5-10am.
48.86	6.14	QO2AA	Leopoldville, Bel. Congo	Sundays 5:35-7am.
48.86S	6.14	SP48	Warsaw, Poland	Not heard recently. *
48.88	6.138	COCD	Havana, Cuba	10am-11pm; Sun. 10am-9pm. (12-11p
48.93	6.132	CHNX	Halifax, N.S., Canada	7am-11:15pm; Sat 8am-11pm; Sun
48.94	6.13	VP3BG	Georgetown, B. Guiana	10:15-11:15am, 3:45-7:45pm ex.
48.94	6.13	LKJ	Jeloy, Norway	Noon-6pm irreg. (Sun
48.94	6.13	KZRM	Manila, Philippines	6-9am.
48.98	6.125	MTCY	Hsinking, Manchoukuo	4-9am. *
49.00S	6.122	FK8AA	Noumea, New Caledonia	2:30-3:30am ex. Sun. *
49.00V	6.122	HP5H	Panama City, Panama	6-10:30pm; to mid. irreg.
49.00S	6.12	WCBX	New York City, N.Y.	11pm-1am. *
49.04	6.117	XEUZ	Mexico D.F., Mexico	9am-1, 7pm-2am. (12:15am
49.05	6.116		Saigon, F. Indo-China	6-6:30am, 6:45-7:15am, 11:45pm-
49.18VS	6.10	YUA	Belgrade, Yugoslavia	12:43-3, 6:30-8:30am, 12-5:30, -
49.18S	6.10	WNBI	New York City, N.Y.	10pm-1am to S.A. (7:30-9pm
49.18S	6.10	KZRH	Manila, Philippines	Testing from 5 to 10am.
49.18	6.10	ZHJ	Penang, S.S.	6:40-8:40am ex. Sun & irreg.
49.20	6.097	ZRK	Capetown, So. Africa	12-4pm; Sun. 12-3:20pm.
49.20S	6.097	ZRJ	Johannesburg, S. Afr.	11:45pm-12 noon inter ex. Sat.
49.25	6.09	ZNS	Nassau, Bahamas	1:30-2, 6:20-10pm.
45.25S	6.09		Luxembourg, Luxembourg	Oct. 1-9, 4-7pm approx. *
49.25	6.09	XEBF	Jalapa, Mexico	Irreg. in evenings.
49.30	6.085	ZAA	Tirana, Albania	12:20-6pm.
49.32	6.083	VQ7LO	Nairobi, Kenya	5:30-6, 11:15am-2:15pm; Tu/Th 815
49.34	6.08	CRY9	Macao, Macao	Mon. 8:30-10am. (-9:15am
49.34	6.08	CKFX	Vancouver, Canada	1-3am ex. Mondays.
49.37	6.077	OAX4Z	Lima, Peru	7am-1:30am.
49.42	6.07	OPRX	Toronto, Canada	7am-12:30am; Sun. 10am-11pm.
49.46	6.065	SBO	Motala, Sweden	4:15-5pm. (-4am
49.48	6.063		Tananarive, Madagascar	12:30-12:45, 10-11am, Sun 230-
49.50S	6.06	WCAB	Philadelphia, Pa.	Su. 6:30-11pm; Tu/Fr 5:30-11pm; Wed. 5:30-8:30pm.
49.50	6.06	WLWO	Cincinnati, Ohio	Su. 8am-6:30pm; M.Th 5:40-2am, Tu/Wed/Fri 5:45-5:30pm; Sa 5:45a
49.54	6.056	9MI	M/V Kanimbla	6:45-7:30am irreg. (-2am
49.56Y	6.05	GSA	London, England	6:20-9:15pm for Europe.
49.56J	6.05	HP5F	Colon, Panama	7-9pm. *
49.63	6.045	XETW	Tampico, Mexico	7-11pm.
49.67S	6.04	WRUL	Boston, Mass.	6:30-7pm ex. Sat/Sun; 10-11:30pm ex. Sat/Sun.; Su. 2-5:30p
49.67S	6.04	KZIB	Manila, Philippines	6-10am. *
49.67C	6.04	WDJM	Miami, Florida	1-3, 9pm-2am; Sun. 4-6pm.
49.73	6.033	HP5B	Panama City, Panama	10:30am-2, 6-10pm.
49.75	6.03	CFVP	Calgary, Alta., Canada	10am-2am.
49.75	6.03	RV96	Moscow, U.S.S.R.	1-3, 4-7pm.
49.76F	6.029	XEQQ	Mexico D.F., Mexico	6-11pm. *
49.81	6.023	XEUW	Veracruz, Mexico	10pm-1am.
49.83	6.02	DJC	Berlin, Germany	11:30am-4:25pm to Africa.
49.83	6.02	CR7AA	Lourenco Marques, Mozam.	12-1am ex. Sun.
49.88F	6.015	PRA8	Pernambuco, Brazil	4-9pm.
49.92	6.01	CJCX	Sydney, Nova Scotia	7am-1:30, 4-8:30pm. (pm.
49.94	6.007	XYZ	Rangoon, Burma	6:30-10am, 9-11pm; Sat 9:30-11:30

				am, Su 3-8p. For IDA Sun. 2-2:30am
48.43	6.195	HI2D	Trujillo City, D.R.	5:10-7:10pm.
48.47N	6.19	KGEI	San Francisco, Cal.	12 mid.-3am to Alaska. *
48.47	6.19	HILA	Santiago, D.R.	10:40am-1:40, 6:40-9:40pm.
48.51	6.185	LRA2	Buenos Aires, Argen	5:30-9pm ex. Sun; Sat/Sun 7-9pm.
48.54FJ	6.18	OAXLA	Chiclayo, Peru	8-11pm.
48.58	6.175	XEXA	Mexico D.F., Mexico	8-11am, 2:30-4, 7:30pm-12:45am;
48.66	6.165	TILS	San Jose, C.R.	Noon-2:30pm, 6-11pm.
48.78	6.15	HJ4DAE	Medellin, Colombia	9:30am-1pm, 5-11:30pm.
48.81	6.147	ZTD	Durban, So. Africa	11:20am-3:45pm; Sun. 11:30-3:20p
48.81	6.147	CJRO	Winnipeg, Canada	Sat. 6pm-Sun. 4am.
48.86S	6.14	WPIT	Pittsburgh, Pa.	11pm-1am.
48.86	6.14	KZEG	Manila, Philippines	5-10am.
48.86	6.14	QO2AA	Leopoldville, Bel. Congo	Sundays 5:35-7am.
48.86S	6.14	SP48	Warsaw, Poland	Not heard recently. *
48.88	6.138	COCD	Havana, Cuba	10am-11pm; Sun. 10am-9pm. (12-11p
48.93	6.132	CHNX	Halifax, N.S., Canada	7am-11:15pm; Sat 8am-11pm; Sun
48.94	6.13	VP3BG	Georgetown, B. Guiana	10:15-11:15am, 3:45-7:45pm ex.
48.94	6.13	LKJ	Jeloy, Norway	Noon-6pm irreg. (Sun
48.94	6.13	KZRM	Manila, Philippines	6-9am.
48.98	6.125	MTCY	Hsinking, Manchoukuo	4-9am. *
49.00S	6.122	FK8AA	Noumea, New Caledonia	2:30-3:30am ex. Sun. *
49.00V	6.122	HP5H	Panama City, Panama	6-10:30pm; to mid. irreg.
49.00S	6.12	WCBX	New York City, N.Y.	11pm-1am. *
49.04	6.117	XEUZ	Mexico D.F., Mexico	9am-1, 7pm-2am. (12:15am
49.05	6.116		Saigon, F. Indo-China	6-6:30am, 6:45-7:15am, 11:45pm-
49.18VS	6.10	YUA	Belgrade, Yugoslavia	12:43-3, 6:30-8:30am, 12-5:30, -
49.18S	6.10	WNBI	New York City, N.Y.	10pm-1am to S.A. (7:30-9pm
49.18S	6.10	KZRH	Manila, Philippines	Testing from 5 to 10am.
49.18	6.10	ZHJ	Penang, S.S.	6:40-8:40am ex. Sun & irreg.
49.20	6.097	ZRK	Capetown, So. Africa	12-4pm; Sun. 12-3:20pm.
49.20S	6.097	ZRJ	Johannesburg, S. Afr.	11:45pm-12 noon inter ex. Sat.
49.25	6.09	ZNS	Nassau, Bahamas	1:30-2, 6:20-10pm.
45.25S	6.09		Luxembourg, Luxembourg	Oct. 1-9, 4-7pm approx. *
49.25	6.09	XEBF	Jalapa, Mexico	Irreg. in evenings.
49.30	6.085	ZAA	Tirana, Albania	12:20-6pm.
49.32	6.083	VQ7LO	Nairobi, Kenya	5:30-6, 11:15am-2:15pm; Tu/Th 815
49.34	6.08	CRY9	Macao, Macao	Mon. 8:30-10am. (-9:15am
49.34	6.08	CKFX	Vancouver, Canada	1-3am ex. Mondays.
49.37	6.077	OAX4Z	Lima, Peru	7am-1:30am.
49.42	6.07	OPRX	Toronto, Canada	7am-12:30am; Sun. 10am-11pm.
49.46	6.065	SBO	Motala, Sweden	4:15-5pm. (-4am
49.48	6.063		Tananarive, Madagascar	12:30-12:45, 10-11am, Sun 230-
49.50S	6.06	WCAB	Philadelphia, Pa.	Su. 6:30-11pm; Tu/Fr 5:30-11pm; Wed. 5:30-8:30pm.
49.50	6.06	WLWO	Cincinnati, Ohio	Su. 8am-6:30pm; M.Th 5:40-2am, Tu/Wed/Fri 5:45-5:30pm; Sa 5:45a
49.54	6.056	9MI	M/V Kanimbla	6:45-7:30am irreg. (-2am
49.56Y	6.05	GSA	London, England	6:20-9:15pm for Europe.
49.56J	6.05	HP5F	Colon, Panama	7-9pm. *
49.63	6.045	XETW	Tampico, Mexico	7-11pm.
49.67S	6.04	WRUL	Boston, Mass.	6:30-7pm ex. Sat/Sun; 10-11:30pm ex. Sat/Sun.; Su. 2-5:30p
49.67S	6.04	KZIB	Manila, Philippines	6-10am. *
49.67C	6.04	WDJM	Miami, Florida	1-3, 9pm-2am; Sun. 4-6pm.
49.73	6.033	HP5B	Panama City, Panama	10:30am-2, 6-10pm.
49.75	6.03	CFVP	Calgary, Alta., Canada	10am-2am.
49.75	6.03	RV96	Moscow, U.S.S.R.	1-3, 4-7pm.
49.76F	6.029	XEQQ	Mexico D.F., Mexico	6-11pm. *
49.81	6.023	XEUW	Veracruz, Mexico	10pm-1am.
49.83	6.02	DJC	Berlin, Germany	11:30am-4:25pm to Africa.
49.83	6.02	CR7AA	Lourenco Marques, Mozam.	12-1am ex. Sun.
49.88F	6.015	PRA8	Pernambuco, Brazil	4-9pm.
49.92	6.01	CJCX	Sydney, Nova Scotia	7am-1:30, 4-8:30pm. (pm.
49.94	6.007	XYZ	Rangoon, Burma	6:30-10am, 9-11pm; Sat 9:30-11:30

49.94	6.007	ZRH	Pretoria,S.Africa	11:45-12:45am ex.Sat,9:30am-4pm Sun.9:40am-noon,12:15-3:15pm.
49.94V	6.005	CFCX	Montreal,Canada	7:45am-1am; Sun.9am-11:15pm.
50.00V	6.000	HP5K	Colon,Panama	7-9am, 12-1, 6-11pm.
50.00	6.000	XEBT	Mexico D.F.,Mexico	10am-1:45am.
50.11	5.987	HH2S	Port-au-Prince,Haiti	6:30-9 or 10pm.
50.17	5.98	VONG	St.John's,Newfoundland	8:30am-12:30,1:30-9:30pm.
50.21	5.975	OAX4P	Huancayo,Peru	9-11pm.
50.50F	5.941	PJCL	Curacao,D.W.I.	6:36-8:36pm; Su.10:36am-12:36pm
50.51	5.94	TG2X	Guatemala,Guatemala	Mon/Thurs 9-11:30pm;Sa.10pm-
50.51	5.94	OAX2A	Trujillo,Peru	Tues/Wed/Sat/Sun 7-10pm. (mid
50.63FJ	5.926	HI1S	Santiago,D.R.	5:40-7:35pm ex.Sundays. *
50.74	5.913	HI1J	San Pedro,D.R.	11:40am-1:40,6:10-8:30pm.
50.85	5.90	ZNB	Mafeking,Bechuanaland	1-2:30pm; 6-7am ex.Sun. *
51.07	5.875	HRN	Tegucgalpa,Honduras	6-11pm.
51.24F	5.855	TGX1	Guatemala,Guatemala	Nightly to approx. 1am *
51.46	5.83	TIGPH	San Jose,C.R.	7-10pm.
51.46	5.83	TIXGP3	San Jose,C.R.	10-11pm.
51.50	5.82	TIGPH2	San Jose,C.R.	Noon-2, 7-11pm ex.Sundays.
51.77	5.795	HRK	Tegucigalpa,Honduras	Nightly to 11pm.
52.12J	5.755	YNOP	Managua,Nicaragua	8-9:30pm; Sundays 2-3pm.
52.40	5.725	HCLPM	Quito,Ecuador	Sundays 9-11pm.
55.97J	5.36	HCK	Quito,Ecuador	Evenings irreg.
56.60	5.30	ZIK3	Belize,Brit.Honduras	Tu/Th/Sa 1:30-2,8:30-9pm.
58.31	5.14	PMY	Bandoeng,Java	5:30am-noon,
59.58V	5.035	YN5RN	Caracas,Venezuela	4-11:30pm;Sun 8:30-11:30am,3:30
59.76	5.02	YV4RQ	Puerto Cabello,Venez.	Broadcasting nightly (-11pm.
59.88	5.01	YV5RM	Caracas,Venezuela	3:30-10pm; Sun.8am-10:30pm.
60.12	4.99	YV3RX	Barquisimeto,Venez.	10am-11pm.
60.31	4.975	YV1RJ	Coro,Venezuela	Signs-off at 9:35pm.
60.48	4.96	VUD2	Delhi,India	7:30am-12:30pm.
60.48	4.96	YV5RS	Caracas,Venezuela	4:30-9:30pm or later.
60.57V	4.953	YV4RO	Valencia,Venezuela	Noon-1, 6-10pm.
60.73	4.94	YV5RO	Caracas,Venezuela	Signs-off at 10pm.
60.85	4.93	YV4RP	Valencia,Venezuela	5-9:30pm.
60.92	4.924	HJAP	Cartagena,Colombia	9am-1:30,7-10:15pm Sundays.
60.98	4.92	YV5RU	Caracas,Venezuela	5-9:30pm; Sun. to 10:30pm.
60.98	4.92	VUM2	Madras,India	6:30am-noon.
61.04	4.915	HJFC	Pereira,Colombia	
61.10	4.91	YV1RY	Coro,Venezuela	6:30-9:30pm ex.Sundays.
61.16	4.905	HJAG	Barranquilla,Colom.	11am-11pm; Sun.11am-8pm.
61.22	4.90	YV6RT	Bolivar,Venezuela	Signs-off at 9:30pm.
61.29	4.895	HJCH	Bogota,Colombia	11:30am-2, 6-11pm.
61.35V	4.89	YV1RX	Maracaibo,Venez.	10:30am-1:30,4:30-10:30pm.
61.42	4.885	HJDP	Medellin,Colombia	8am-2, 6-11pm.
61.48	4.88	YV6RU	Ciudad Bolivar,Venezuela	
61.48	4.88	VUB2	Bombay,India	7:30am-12:30pm.
61.54	4.875	HJFH	Armenia,Colombia	8-11am, 6-10pm.
61.60	4.87	YV2RN	San Cristobal,Venez.	11:30am-12:30pm, 6-9pm ex.Sun
61.67	4.865	HJBJ	Santa Marta,Colom.	5:30-10:30pm.
61.73	4.86	YV1RL	Maracaibo,Venez.	11am-1pm, 4:30-10:30pm.
61.80	4.855	HJCF	Bogota,Colombia	7pm-mid. ex.Sundays.
61.88	4.85	YV1RZ	Valera,Venezuela	11:30am-1, 5:45-8:45pm.
61.98	4.84	VUC2	Calcutta,India	6:30am-noon,
61.98F	4.84	YV4RX	Maracay,Venezuela	Nightly to 10pm.
62.05	4.835	HJAE	Cartagena,Colombia	7am-6, 7-11pm.
62.11	4.83	YV5RH	Caracas,Venezuela	6:30-7:30,10:30am-1,3:30-10pm.
62.17	4.825	HJED	Cali,Colombia	7-11pm ex.Sundays.
62.24	4.82	YV3RN	Barquisimeto,Venez.	11:30am-1:30,5:30-9:30pm.
62.31	4.815	HJBB	Cucuta,Colombia	
62.38	4.81	YV1RU	Maracaibo,Venezuela	10:45am-12:45,4:30-10:30pm.
62.44	4.805	HJDU	Medellin,Colombia	7-8:50pm.
62.53V	4.798	YV1RV	Maracaibo,Venezuela	10:45am-12:45,4:30-10:30pm.
62.57	4.795	HJFI	Ibague,Colombia.	
62.63	4.79	YV5RY	Caracas,Venezuela.	

49.94	6.007	ZRH	Pretoria,S.Africa	11:45-12:45am ex.Sat,9:30am-4pm Sun.9:40am-noon,12:15-3:15pm.
49.94V	6.005	CFCX	Montreal,Canada	7:45am-1am; Sun.9am-11:15pm.
50.00V	6.000	HP5K	Colon,Panama	7-9am, 12-1, 6-11pm.
50.00	6.000	XEBT	Mexico D.F.,Mexico	10am-1:45am.
50.11	5.987	HH2S	Port-au-Prince,Haiti	6:30-9 or 10pm.
50.17	5.98	VONG	St.John's,Newfoundland	8:30am-12:30,1:30-9:30pm.
50.21	5.975	OAX4P	Huancayo,Peru	9-11pm.
50.50F	5.941	PJCL	Curacao,D.W.I.	6:36-8:36pm; Su.10:36am-12:36pm
50.51	5.94	TG2X	Guatemala,Guatemala	Mon/Thurs 9-11:30pm;Sa.10pm-
50.51	5.94	OAX2A	Trujillo,Peru	Tues/Wed/Sat/Sun 7-10pm. (mid
50.63FJ	5.926	HI1S	Santiago,D.R.	5:40-7:35pm ex.Sundays. *
50.74	5.913	HI1J	San Pedro,D.R.	11:40am-1:40,6:10-8:30pm.
50.85	5.90	ZNB	Mafeking,Bechuanaland	1-2:30pm; 6-7am ex.Sun. *
51.07	5.875	HRN	Tegucgalpa,Honduras	6-11pm.
51.24F	5.855	TGX1	Guatemala,Guatemala	Nightly to approx. 1am *
51.46	5.83	TIGPH	San Jose,C.R.	7-10pm.
51.46	5.83	TIXGP3	San Jose,C.R.	10-11pm.
51.50	5.82	TIGPH2	San Jose,C.R.	Noon-2, 7-11pm ex.Sundays.
51.77	5.795	HRK	Tegucigalpa,Honduras	Nightly to 11pm.
52.12J	5.755	YNOP	Managua,Nicaragua	8-9:30pm; Sundays 2-3pm.
52.40	5.725	HCLPM	Quito,Ecuador	Sundays 9-11pm.
55.97J	5.36	HCK	Quito,Ecuador	Evenings irreg.
56.60	5.30	ZIK3	Belize,Brit.Honduras	Tu/Th/Sa 1:30-2,8:30-9pm.
58.31	5.14	PMY	Bandoeng,Java	5:30am-noon,
59.58V	5.035	YN5RN	Caracas,Venezuela	4-11:30pm;Sun 8:30-11:30am,3:30
59.76	5.02	YV4RQ	Puerto Cabello,Venez.	Broadcasting nightly (-11pm.
59.88	5.01	YV5RM	Caracas,Venezuela	3:30-10pm; Sun.8am-10:30pm.
60.12	4.99	YV3RX	Barquisimeto,Venez.	10am-11pm.
60.31	4.975	YV1RJ	Coro,Venezuela	Signs-off at 9:35pm.
60.48	4.96	VUD2	Delhi,India	7:30am-12:30pm.
60.48	4.96	YV5RS	Caracas,Venezuela	4:30-9:30pm or later.
60.57V	4.953	YV4RO	Valencia,Venezuela	Noon-1, 6-10pm.
60.73	4.94	YV5RO	Caracas,Venezuela	Signs-off at 10pm.
60.85	4.93	YV4RP	Valencia,Venezuela	5-9:30pm.
60.92	4.924	HJAP	Cartagena,Colombia	9am-1:30,7-10:15pm Sundays.
60.98	4.92	YV5RU	Caracas,Venezuela	5-9:30pm; Sun. to 10:30pm.
60.98	4.92	VUM2	Madras,India	6:30am-noon.
61.04	4.915	HJFC	Pereira,Colombia	
61.10	4.91	YV1RY	Coro,Venezuela	6:30-9:30pm ex.Sundays.
61.16	4.905	HJAG	Barranquilla,Colom.	11am-11pm; Sun.11am-8pm.
61.22	4.90	YV6RT	Bolivar,Venezuela	Signs-off at 9:30pm.
61.29	4.895	HJCH	Bogota,Colombia	11:30am-2, 6-11pm.
61.35V	4.89	YV1RX	Maracaibo,Venez.	10:30am-1:30,4:30-10:30pm.
61.42	4.885	HJDP	Medellin,Colombia	8am-2, 6-11pm.
61.48	4.88	YV6RU	Ciudad Bolivar,Venezuela	
61.48	4.88	VUB2	Bombay,India	7:30am-12:30pm.
61.54	4.875	HJFH	Armenia,Colombia	8-11am, 6-10pm.
61.60	4.87	YV2RN	San Cristobal,Venez.	11:30am-12:30pm, 6-9pm ex.Sun
61.67	4.865	HJBJ	Santa Marta,Colom.	5:30-10:30pm.
61.73	4.86	YV1RL	Maracaibo,Venez.	11am-1pm, 4:30-10:30pm.
61.80	4.855	HJCF	Bogota,Colombia	7pm-mid. ex.Sundays.
61.88	4.85	YV1RZ	Valera,Venezuela	11:30am-1, 5:45-8:45pm.
61.98	4.84	VUC2	Calcutta,India	6:30am-noon,
61.98F	4.84	YV4RX	Maracay,Venezuela	Nightly to 10pm.
62.05	4.835	HJAE	Cartagena,Colombia	7am-6, 7-11pm.
62.11	4.83	YV5RH	Caracas,Venezuela	6:30-7:30,10:30am-1,3:30-10pm.
62.17	4.825	HJED	Cali,Colombia	7-11pm ex.Sundays.
62.24	4.82	YV3RN	Barquisimeto,Venez.	11:30am-1:30,5:30-9:30pm.
62.31	4.815	HJBB	Cucuta,Colombia	
62.38	4.81	YV1RU	Maracaibo,Venezuela	10:45am-12:45,4:30-10:30pm.
62.44	4.805	HJDU	Medellin,Colombia	7-8:50pm.
62.53V	4.798	YV1RV	Maracaibo,Venezuela	10:45am-12:45,4:30-10:30pm.
62.57	4.795	HJFI	Ibague,Colombia.	
62.63	4.79	YV5RY	Caracas,Venezuela.	

BROADCAST STATION NEWS

AUSTRALIA 6TZ (1340), 500w, Dardanup, sister station of 6PR, Perth, W.A., should be testing shortly (Wignall). (Callan)

BAHAMAS ZNS (790), 200w, Nassau, is considering a shift to a new frequency-

CANADA CBK (540), 50kW, Watrous, Sask., went on air July 29... NEW: CKLN (1420), 100w, Nelson, B.C. (Callan)

CUBA CMHI (830), has been testing a new xmtr. after 2am (Shaffar).....

CMHX (1480), off the air... NETWORKS: CADENA CRUSSELAS (Crusselas Network: Colgate-Palmolive) is composed of CMQ, COCQ (8.85), CMJK, CMJA, CMKD, CMKG, and COKG (8.96); CADENA AZUL (Blue Network) is composed of CMHI (830), COHI (6.45), CMCF and COCH (9.436); RADIO-CADENA-NACIONAL (Radio-Habana-Cuba) (1460), CMKR (1400), CMJC (1390), and CMJX (640) (Enrique Hidalgo-Havana)

INDIA NEW: a 5kW station at Hyderabad, operating on 730kC, and a 1/2kW station at Aurangabad, operating on 940kC (Com. Bul.)

MEXICO XENT expects to have its new transmitter on the air this month.

NEWFOUNDLAND VOMA (655), Battle Harbor, operated by Marconi Co., comes on air daily exc. Sun. at 3pm EST, with mouth organ selections, gives days news and signs-off at 3:10pm. Uses low power (RADEX-Callan)

POLAND With the political existence of this country seriously threatened and radio the only means of communication the following list of stations in operation (as of Sept. 18) should be of value: WARSAW I (224), 120kW; WARSAW II (1384), 7kW; BARANOWICZE (520), 50kW; CRACOW (1022), 10kW; KATOWICE (758), 50kW; LNOW (795), 50kW; LODZ (1339), 10kW; POZNAN (868), 16kW; TORUN (986), 24kW; WILNO (536), 50kW; LUCK, 50kW (Under construction) (Com. Bul.)

SO. AFRICA NEW station at Kimberley (1380), relaying Johannesburg.

U.S.A. NEW STATIONS AUTHORIZED SINCE JAN. 1, 1939.

WMOB, Mobile, Ala., 1200kC, 100w day	KWBD, Plainview, Tex., 1200kC, 100w day.
WGBR, Goldsboro, N.C., 1370kC, 100w	KWFC, Hot Springs, Ark., 1310kC, 100w.
WINN, Louisville, Ky., 1210kC, 100w	WFSX, Salem, Mass., 1200kC, 100w.
WISE, Asheville, N.C., 1370kC, 100w	WFIG, Sumter, S.C., 1310kC, 100/250w.
WBAB, Atlantic City, N.J., 1200kC, 100w	WHUB, Cookeville, Tenn., 1370kC, 100/250
WTMC, Ocala, Fla., 1500kC, 100w	WJPF, Herrin, Ill., 1310kC, 100/250w.
KDRO, Sedalia, Mo., 1500kC, 100w (250w)	WJPR, Greenville, Miss., 1310kC, 100/250
KOVO, Provo, Utah, 1210kC, 100/250w.	WMGA, Moultrie, Ga., 1370kC, 100/250w.
WTSP, St. Petersburg, Fla., 1370kC, 100w	WSPB, Sarasota, Fla., 1420kC, 100/250w.
WFVA, Fredericksburg, Va., 1260kC, 250w day	Ft. Lauderdale, Fla., 1370kC, 100w.
WSKB, McComb, Miss., 1200kC, 100w day	Brunswick, Ga., 1500kC, 100/250w
KXOX, Sweetwater, Tex., 1210kC, 250w day	Ft. Dodge, Iowa, 1370kC, 100/250w
WCNC, Elizabeth, N.C., 1370kC, 100w	Mansfield, Ohio, 1370kC, 250w day
WLBJ, Bowling Green, Ky., 1310kC, 100/250w	Pontiac, Mich., 1100kC, 1000w day
WMAM, Marinette, Wisc., 570kC, 250w day	Greenville, N.C., 1500kC, 250w day
WRSR, Panama City, Fla., 1200kC, 100w	Columbia, S.C., 1310kC, 100/250w
KHAS, Hastings, Nebr., 1200kC, 100/250w	Spartanburg, S.C., 1370kC, 100/250
WKIN, Kingston, N.Y., 1500kC, 100w day	KYUM, Yuma, Arizona (1210), 100/250w.
KVIC, Victoria, Tex., 1500kC, 100w day	WAKR, Akron, Ohio, 1530kC, 1kW.
WHLN, Niagara Falls, N.Y., 1260kC, 1kW	WLPM, Suffolk, Va., 1420kC, 100/250w.

The following stations have been deleted this year: KGCI, Coeur d'Alene, Idaho; KGVL, Greenville, Texas; WRKL, Rock Hills, S.C., and KECA, Los Angeles, Cal. ... WCKY, Covington, Ky., now 50kW, has joined the CBS Network... KRLD to 50kW.

— CHAPTERS —

ACC (Detroit)-- Chapter has been re-organized and plans many activities for coming season. Next meeting will be held in Detroit News room on Tues., Oct. 17.

SO. JERSEY (Philadelphia area)-- Meetings are held regularly Saturdays at 8 p.m. on the 2nd floor of the Camden, N.J. YMCA. For further details contact Lem Cavileer, 1223 Keswick Ave., Haddon Heights, N.J.

SO. CALIF. (Los Angeles)-- Meeting of

Aug. 26, was a very fine barbecue picnic attended by 26 members. Meeting of Sept. 30, was held at the home of Aug. Balbi. The chapt. contest for July was won by M & H Amers, while the August contest was won by Hal Clein. For further chapt. details contact Hal Clein, 1427 Maltman Ave., Los Angeles, Calif.

WINDY CITY (Chicago)-- Next regular chapt. meeting will be on Wed., Oct. 11 at YMCA, 19 So. La Salle St., Chicago. For further details contact C. Trezise, 7638 So. Lafayette Ave., Chicago, Ill.

BROADCAST STATION NEWS

AUSTRALIA 6TZ (1340), 500w, Dardanup, sister station of 6PR, Perth, W.A., should be testing shortly (Wignall). (Callan)

BAHAMAS ZNS (790), 200w, Nassau, is considering a shift to a new frequency-

CANADA CBK (540), 50kW, Watrous, Sask., went on air July 29... NEW: CKLN (1420), 100w, Nelson, B.C. (Callan)

CUBA CMHI (830), has been testing a new xmtr. after 2am (Shaffar).....

CMHX (1480), off the air... NETWORKS: CADENA CRUSSELAS (Crusselas Network: Colgate-Palmolive) is composed of CMQ, COCQ (8.85), CMJK, CMJA, CMKD, CMKG, and COKG (8.96); CADENA AZUL (Blue Network) is composed of CMHI (830), COHI (6.45), CMCF and COCH (9.436); RADIO-CADENA-NACIONAL (Radio-Habana-Cuba) (1460), CMKR (1400), CMJC (1390), and CMJX (640) (Enrique Hidalgo-Havana)

INDIA NEW: a 5kW station at Hyderabad, operating on 730kC, and a 1/2kW station at Aurangabad, operating on 940kC (Com. Bul.)

MEXICO XENT expects to have its new transmitter on the air this month.

NEWFOUNDLAND VOMA (655), Battle Harbor, operated by Marconi Co., comes on air daily exc. Sun. at 3pm EST, with mouth organ selections, gives days news and signs-off at 3:10pm. Uses low power (RADEX-Callan)

POLAND With the political existence of this country seriously threatened and radio the only means of communication the following list of stations in operation (as of Sept. 18) should be of value: WARSAW I (224), 120kW; WARSAW II (1384), 7kW; BARANOWICZE (520), 50kW; CRACOW (1022), 10kW; KATOWICE (758), 50kW; LNOW (795), 50kW; LODZ (1339), 10kW; POZNAN (868), 16kW; TORUN (986), 24kW; WILNO (536), 50kW; LUCK, 50kW (Under construction) (Com. Bul.)

SO. AFRICA NEW station at Kimberley (1380), relaying Johannesburg.

U.S.A. NEW STATIONS AUTHORIZED SINCE JAN. 1, 1939.

WMOB, Mobile, Ala., 1200kC, 100w day	KWBD, Plainview, Tex., 1200kC, 100w day.
WGBR, Goldsboro, N.C., 1370kC, 100w	KWFC, Hot Springs, Ark., 1310kC, 100w.
WINN, Louisville, Ky., 1210kC, 100w	WFSX, Salem, Mass., 1200kC, 100w.
WISE, Asheville, N.C., 1370kC, 100w	WFIG, Sumter, S.C., 1310kC, 100/250w.
WBAB, Atlantic City, N.J., 1200kC, 100w	WHUB, Cookeville, Tenn., 1370kC, 100/250
WTMC, Ocala, Fla., 1500kC, 100w	WJPF, Herrin, Ill., 1310kC, 100/250w.
KDRO, Sedalia, Mo., 1500kC, 100w (250w)	WJPR, Greenville, Miss., 1310kC, 100/250
KOVO, Provo, Utah, 1210kC, 100/250w.	WMGA, Moultrie, Ga., 1370kC, 100/250w.
WTSP, St. Petersburg, Fla., 1370kC, 100w	WSPB, Sarasota, Fla., 1420kC, 100/250w.
WFVA, Fredericksburg, Va., 1260kC, 250w day	Ft. Lauderdale, Fla., 1370kC, 100w.
WSKB, McComb, Miss., 1200kC, 100w day	Brunswick, Ga., 1500kC, 100/250w
KXOX, Sweetwater, Tex., 1210kC, 250w day	Ft. Dodge, Iowa, 1370kC, 100/250w
WCNC, Elizabeth, N.C., 1370kC, 100w	Mansfield, Ohio, 1370kC, 250w day
WLBJ, Bowling Green, Ky., 1310kC, 100/250w	Pontiac, Mich., 1100kC, 1000w day
WMAM, Marinette, Wisc., 570kC, 250w day	Greenville, N.C., 1500kC, 250w day
WRSR, Panama City, Fla., 1200kC, 100w	Columbia, S.C., 1310kC, 100/250w
KHAS, Hastings, Nebr., 1200kC, 100/250w	Spartanburg, S.C., 1370kC, 100/250
WKIN, Kingston, N.Y., 1500kC, 100w day	KYUM, Yuma, Arizona (1210), 100/250w.
KVIC, Victoria, Tex., 1500kC, 100w day	WAKR, Akron, Ohio, 1530kC, 1kW.
WHLN, Niagara Falls, N.Y., 1260kC, 1kW	WLPM, Suffolk, Va., 1420kC, 100/250w.

The following stations have been deleted this year: KGCI, Coeur d'Alene, Idaho; KGVL, Greenville, Texas; WRKL, Rock Hills, S.C., and KECA, Los Angeles, Cal. ... WCKY, Covington, Ky., now 50kW, has joined the CBS Network... KRLD to 50kW.

— CHAPTERS —

ACC (Detroit)-- Chapter has been re-organized and plans many activities for coming season. Next meeting will be held in Detroit News room on Tues., Oct. 17.

SO. JERSEY (Philadelphia area)-- Meetings are held regularly Saturdays at 8 p.m. on the 2nd floor of the Camden, N.J. YMCA. For further details contact Lem Cavileer, 1223 Keswick Ave., Haddon Heights, N.J.

SO. CALIF. (Los Angeles)-- Meeting of

Aug. 26, was a very fine barbecue picnic attended by 26 members. Meeting of Sept. 30, was held at the home of Aug. Balbi. The chapt. contest for July was won by M & H Amers, while the August contest was won by Hal Clein. For further chapt. details contact Hal Clein, 1427 Maltman Ave., Los Angeles, Calif.

WINDY CITY (Chicago)-- Next regular chapt. meeting will be on Wed., Oct. 11 at YMCA, 19 So. La Salle St., Chicago. For further details contact C. Trezise, 7638 So. Lafayette Ave., Chicago, Ill.

International

Published Monthly Excepting July



BLOOMINGTON, ILLINOIS, U. S. A.

Ax'ers AllianceCHARLES A. MORRISON
EDITOR

Volume 7

October, 1939

Number 9

EDITORIAL

War has come! The IDA like many other organizations is feeling the effect of this grave condition. Many foreign members are finding it impossible to dx much, if at all. As a result our foreign enrollments, renewals and news items from foreign countries have been tremendously reduced. With cooperation and finances thus impaired it may be tough sledding for a time, but we have no intentions of laying-down or quitting. With your cooperation and support we intend to keep right on plugging ahead. This fellow members is important, we do need your loyal support now as never before. We need plenty of domestic enrollments. You can help us maintain our present news standards by sending in more items and at more frequent intervals.

NATIONAL DEFENSE LISTENERS LEAGUE

I propose to organize at once a National Defense Listeners League. In this time of grave emergency, we believe United States listeners can be of valuable service to their government by organizing their listening periods according to a systematic plan that will be worked out to the end that accurate, reliable and up-to-date short-wave information concerning all short-wave stations, particularly those in Europe, may be readily available for governmental reference purposes. With your G.C. you will find an Application blank. If you are willing to give part of your time to this serious and worthy project care fully fill out the blank and return as soon as possible. A filing card will be made out for each observer giving a detailed description of his or her experience, qualifications and



MEMBERS AT THE IDA CONVENTION AT DOWNERS GROVE, ILL.

receiving equipment. Thus classified and catalogued, each observer will be come an important unit in this new National Listeners network. Each observer will be given a definite assignment- either to monitor certain frequencies, or certain countries, regularly at such hours as he may have set-aside for that purpose. Report forms will be given each observer on which he will make out a report covering each listening period. A clearing House will be set-up for handling, sorting and carefully tabulating all reports so that the information may be available for government reference in as clear and concise form as possible.

All observers and officers will donate their services asking no reward other than that of cooperating in a much needed enterprise.

Although we hope many IDA members will enroll as Official Observers in the National Defense Listeners League, it will by no means be restricted to the IDA and all listeners regardless of club or non-club affiliations will be asked to cooperate. Tell your radio friends to send for an application blank.

-- Charles A. Morrison.

International

Published Monthly Excepting July



BLOOMINGTON, ILLINOIS, U. S. A.

Ax'ers AllianceCHARLES A. MORRISON
EDITOR

Volume 7

October, 1939

Number 9

EDITORIAL

War has come! The IDA like many other organizations is feeling the effect of this grave condition. Many foreign members are finding it impossible to dx much, if at all. As a result our foreign enrollments, renewals and news items from foreign countries have been tremendously reduced. With cooperation and finances thus impaired it may be tough sledding for a time, but we have no intentions of laying-down or quitting. With your cooperation and support we intend to keep right on plugging ahead. This fellow members is important, we do need your loyal support now as never before. We need plenty of domestic enrollments. You can help us maintain our present news standards by sending in more items and at more frequent intervals.

NATIONAL DEFENSE LISTENERS LEAGUE

I propose to organize at once a National Defense Listeners League. In this time of grave emergency, we believe United States listeners can be of valuable service to their government by organizing their listening periods according to a systematic plan that will be worked out to the end that accurate, reliable and up-to-date short-wave information concerning all short-wave stations, particularly those in Europe, may be readily available for governmental reference purposes. With your G.C. you will find an Application blank. If you are willing to give part of your time to this serious and worthy project care fully fill out the blank and return as soon as possible. A filing card will be made out for each observer giving a detailed description of his or her experience, qualifications and



MEMBERS AT THE IDA CONVENTION AT DOWNERS GROVE, ILL

receiving equipment. Thus classified and catalogued, each observer will be come an important unit in this new National Listeners network. Each observer will be given a definite assignment- either to monitor certain frequencies, or certain countries, regularly at such hours as he may have set-aside for that purpose. Report forms will be given each observer on which he will make out a report covering each listening period. A clearing House will be set-up for handling, sorting and carefully tabulating all reports so that the information may be available for government reference in as clear and concise form as possible.

All observers and officers will donate their services asking no reward other than that of cooperating in a much needed enterprise.

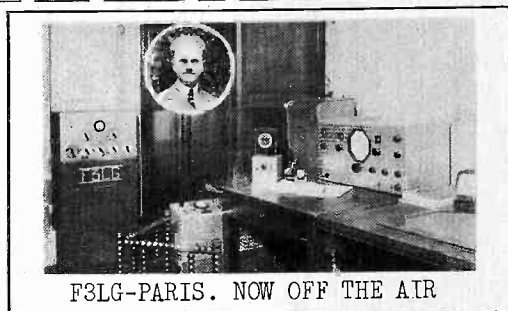
Although we hope many IDA members will enroll as Official Observers in the National Defense Listeners League, it will by no means be restricted to the IDA and all listeners regardless of club or non-club affiliations will be asked to cooperate. Tell your radio friends to send for an application blank.

-- Charles A. Morrison.

(VIC ratings cont. from back cover) 6-F.Heiss, 4-T.Hogg, 3-J.Pedersen. . .
GT.BRITAIN: 102-R.PYBUS, 88-R.COALES, 57-J.Shaw, 27-G.Haylock, 20-W.Raw-
 lins, 18-P.Fawcett (Send reports to R.Pybus, 4 Highfield Rd., Manchester 21
 England) JAPAN: 88-S.Yoshimura. N.Z.: 83-A. BREEN, 53-B.Connor. CANAL
ZONE: 57-J.Gallivan (Next VIC/VAC Lists will appear in the January G.C.)

NEW MEMBERS

H.G.Starr, Roxbury, Mass... Mario T.
 Catini, Ashland, Ky... Van R. Field, Cen-
 ter Moriches, N.Y... F.C.Flater, White
 Bear Lake, Minn... Vernon Easley, Santa
 Fe, New Mexico... Charles R. Maul, Den-
 ver, Colorado... R. F. Young, Christ-
 church, New Zealand... August Manza,
 Port Washington, New York... Earl G.
 Bartels, Denver, Colorado... Roger
 Place, Schererville, Indiana... Fred L.
 Voorhees, Grove City, Pennsylvania.



F3LG-PARIS. NOW OFF THE AIR

DX TRANSMISSIONS

(EST)			(Kcs)
OCT. 4 (Wed),	2-3am	WSPD, Toledo, Ohio	NNRC 1340
OCT. 7 (Sat),	2-4am	WCOL, Columbus, Ohio	NNRC 1210
OCT. 10 (Tues),	3:35-3:50am	WICA, Ashtabula, Ohio	NNRC 940
OCT. 14 (Sat),	4:15-4:30am	WOSU, Columbus, Ohio	NNRC 570
OCT. 14 (Sat),	5:10-5:25am	WROL, Knoxville, Tenn.	NNRC 1310
OCT. 16 (Mon),	3-4am	WADC, Akron, Ohio	NNRC 1320
OCT. 18 (Wed),	2-3am	WLOK, Lima, Ohio	NNRC 1210
OCT. 18 (Wed),	3-4am	WPAY, Portsmouth, Ohio	NNRC 1370
OCT. 20 (Fri),	2-3am	WJW, Akron, Ohio	NNRC 1210
OCT. 21 (Sat),	4:15-5pm	TAP, ANKARA, TURKEY	ISWC 9465
OCT. 21 (Sat),	2-4am	WKRC, Cincinnati, Ohio	NNRC 550
OCT. 22 (Sun),	2-4am	WGAR, Cleveland, Ohio	NNRC 1450
OCT. 29 (Sun),	1-2am	WCPO, Cincinnati, Ohio	NNRC 1200
OCT. 31 (Tues),	3-5am	LS11, LA PLATA, ARGENTINA	URDXC 1310
NOV. 2 (Thur),	1:30-2am	WLW, Cincinnati, Ohio	700
NOV. 2 (Thur),	1:30-2am	WLWO, Cincinnati, Ohio	6060
NOV. 8 (Wed),	4:30-4:45am	WEDA, Evansville, Indiana	NNRC 1370
NOV. 9 (Thur),	4:25-4:40am	WGBF, Evansville, Indiana	NNRC 630
NOV. 15 (Wed),	4-6am	ZP15, VILLARICA, PARAGUAY	URDXC 700
NOV. 15 (Wed),	4-6am	ZP14, VILLARICA, PARAGUAY	URDXC 11721
NOV. 19 (Sun),	1-2am	YNDG, LEON, NICARAGUA	NRC 13900
NOV. 19 (Sun),	7-8pm	RV96, MOSCOW, U.S.S.R.	IDA 6030
DEC. 17 (Sun),	1-2am	YNDG, LEON, NICARAGUA	IDA 13900
JAN. 14 (Sun),	2-6am	CMHJ, CIENFUEGOS, CUBA	All 1160
FEB. 18 (Sun),	2-6am	CMHJ, CIENFUEGOS, CUBA	All 1160
DAILY 12 mid.-6am.		KPAB, Laredo, Texas	All 1500
Mexican Tourist program, with souvenirs of Old Mexico for each report.			
WEEKLY (Sun),	2-2:30am	TG2, GUATEMALA, GUATEMALA	IDA 6195

Prizes for best, and most distant reports each week include: 100 Spatari seals; One honorary membership in, and 10 seals of the SRRL; One Universal Time Chart; One year's membership in IDA (twice-monthly)

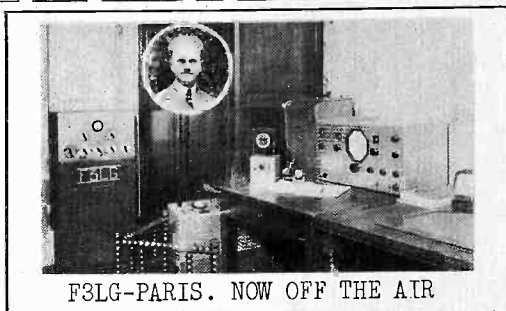
BROADCAST BAND DX

LRI (1070), LR3 (950), LR5 (830), LR6 (870) and LS2 (1190), have been coming in very strong 9-10pm. LRI has been better than its S.W. outlet LRX many nights (Skyten-Mass)... Most recent veri' is 2CY which gives me 11 TP stations verified with 100 veri's of 2000 miles or more away (Lippincott). ... ZJV (920), heard signing-off at 4am EST (Tarr)... Aussies coming in quite well. Volume from 2NZ (1170) and 2NC (1230), is extraordinary. Signals are best from 1:30 to 3:30am PST. Those well received include 4BH (1380), 4AK (1220), 2NR (700), 3GI (830), and sometimes 2BL (740). Those received fairly well are 3GL (1350), 3SR (1260), 2SM (1270), 2CH (1190), 3LK (1090) 2FC (610), 2CO (670), 2GB (870) and some 23 others. The principal ZI's, 2YA (570), 1YA (650), 3YA (720), 4YA (790), 2YC (840), and 1ZB (1070) are very good ... Sometimes JOAK2 (870), is heard 3-5am and JOIK' (810), near 5 (Walcott-Cal)

(VIC ratings cont. from back cover) 6-F.Heiss, 4-T.Hogg, 3-J.Pedersen. . .
GT.BRITAIN: 102-R.PYBUS, 88-R.COALES, 57-J.Shaw, 27-G.Haylock, 20-W.Raw-
lins, 18-P.Fawcett (Send reports to R.Pybus, 4 Highfield Rd., Manchester 21
England) JAPAN:88-S.Yoshimura. N.Z.: 83-A. BREEN, 53-B.Connor. CANAL
ZONE: 57-J.Gallivan (Next VIC/VAC Lists will appear in the January G.C.)

NEW MEMBERS

H.G.Starr, Roxbury, Mass... Mario T.
 Catini, Ashland, Ky... Van R. Field, Cen-
 ter Moriches, N.Y... F.C.Flater, White
 Bear Lake, Minn... Vernon Easley, Santa
 Fe, New Mexico... Charles R. Maul, Den-
 ver, Colorado... R. F. Young, Christ-
 church, New Zealand... August Manza,
 Port Washington, New York... Earl G.
 Bartels, Denver, Colorado... Roger
 Place, Schererville, Indiana... Fred L.
 Voorhees, Grove City, Pennsylvania.



F3LG-PARIS. NOW OFF THE AIR

DX TRANSMISSIONS

(EST)			(Kcs)
OCT. 4 (Wed),	2-3am	WSPD, Toledo, Ohio	NNRC 1340
OCT. 7 (Sat),	2-4am	WCOL, Columbus, Ohio	NNRC 1210
OCT. 10 (Tues),	3:35-3:50am	WICA, Ashtabula, Ohio	NNRC 940
OCT. 14 (Sat),	4:15-4:30am	WOSU, Columbus, Ohio	NNRC 570
OCT. 14 (Sat),	5:10-5:25am	WROL, Knoxville, Tenn.	NNRC 1310
OCT. 16 (Mon),	3-4am	WADC, Akron, Ohio	NNRC 1320
OCT. 18 (Wed),	2-3am	WLOK, Lima, Ohio	NNRC 1210
OCT. 18 (Wed),	3-4am	WPAY, Portsmouth, Ohio	NNRC 1370
OCT. 20 (Fri),	2-3am	WJW, Akron, Ohio	NNRC 1210
OCT. 21 (Sat),	4:15-5pm	TAP, ANKARA, TURKEY	ISWC 9465
OCT. 21 (Sat),	2-4am	WKRC, Cincinnati, Ohio	NNRC 550
OCT. 22 (Sun),	2-4am	WGAR, Cleveland, Ohio	NNRC 1450
OCT. 29 (Sun),	1-2am	WCPO, Cincinnati, Ohio	NNRC 1200
OCT. 31 (Tues),	3-5am	LS11, LA PLATA, ARGENTINA	URDXC 1310
NOV. 2 (Thur),	1:30-2am	WLW, Cincinnati, Ohio	700
NOV. 2 (Thur),	1:30-2am	WLWO, Cincinnati, Ohio	6060
NOV. 8 (Wed),	4:30-4:45am	WEDA, Evansville, Indiana	NNRC 1370
NOV. 9 (Thur),	4:25-4:40am	WGBF, Evansville, Indiana	NNRC 630
NOV. 15 (Wed),	4-6am	ZP15, VILLARICA, PARAGUAY	URDXC 700
NOV. 15 (Wed),	4-6am	ZP14, VILLARICA, PARAGUAY	URDXC 11721
NOV. 19 (Sun),	1-2am	YNDG, LEON, NICARAGUA	NRC 13900
NOV. 19 (Sun),	7-8pm	RV96, MOSCOW, U.S.S.R.	IDA 6030
DEC. 17 (Sun),	1-2am	YNDG, LEON, NICARAGUA	IDA 13900
JAN. 14 (Sun),	2-6am	CMHJ, CIENFUEGOS, CUBA	All 1160
FEB. 18 (Sun),	2-6am	CMHJ, CIENFUEGOS, CUBA	All 1160
DAILY 12 mid.-6am.		KPAB, Laredo, Texas	All 1500
Mexican Tourist program, with souvenirs of Old Mexico for each report.			
WEEKLY (Sun),	2-2:30am	TG2, GUATEMALA, GUATEMALA	IDA 6195

Prizes for best, and most distant reports each week include: 100 Spatari seals; One honorary membership in, and 10 seals of the SRRL; One Universal Time Chart; One year's membership in IDA (twice-monthly)

BROADCAST BAND DX

LRI (1070), LR3 (950), LR5 (830), LR6 (870) and LS2 (1190), have been coming in very strong 9-10pm. LRI has been better than its S.W. outlet LRX many nights (Skyten-Mass)... Most recent veri' is 2CY which gives me 11 TP stations verified with 100 veri's of 2000 miles or more away (Lippincott). ...ZJV (920), heard signing-off at 4am EST (Tarr)... Aussies coming in quite well. Volume from 2NZ (1170) and 2NC (1230), is extraordinary. Signals are best from 1:30 to 3:30am PST. Those well received include 4BH (1380), 4AK (1220), 2NR (700), 3GI (830), and sometimes 2BL (740). Those received fairly well are 3GL (1350), 3SR (1260), 2SM (1270), 2CH (1190), 3LK (1090) 2FC (610), 2CO (670), 2GB (870) and some 23 others. The principal ZI's, 2YA (570), 1YA (650), 3YA (720), 4YA (790), 2YC (840), and 1ZB (1070) are very good ... Sometimes JOAK2 (870), is heard 3-5am and JOIK' (810), near 5 (Walcott-Cal)

VIC VAC HONOR ROLLS

VAC: VERIFIED DISTRICT 1: 17-H.Orlaw, 14-L. Underwood, 10-W. Ansell, 4-Wm. King, N. Ebling, J. Christie, J. Maguire, 2-Mrs. Baird, J. Hodges, D. White. 1-W. Wood, S. Barnetson, G. Young, G. Cheeseman. DISTRICT 2: 69-ROY MYERS, 45-W. BRITTING, 22-H. ALLEN, 19-Amers, 16-C. Streuber, 17-J. Moore, 15 F. Harris, 14-H. Clein, E. Butcher, 8-H. Honda, 6-A. Balbi, 5-M. Fisher, 4-W. Guthrie, 3-A. Field, 2-L. McNamara. DISTRICT 4: 27-G. BEYER, 25-F. MURPHY, 17-Tom Grey, 16-R&I Brian, 15-Eders, 13-L. Herz, 9-B. Hetzel, 8-K. Schram, H. Schrock, 7-F. Anzalone, 6-R. DeMent, C. Trezise, 5-C. Myers, E. Bristow, A. Deterly, 4-Ray Swenson, A. Paul, Zana Kandle, R. Dissinger, 3-K. Miller, 2-E. Schenk, S. Graham, 1-P. Loyd, J. Michalski, G. Jensen, K. Fountain, E. Danielson, J. Delaney, J. Jenkins, R. Kramer, L. Lundberg, C. Robinson, Mrs. Rogers, R. Schaffar. DISTRICT 5: 20-GUY BIGBEE, 15-Dr. Kash, 7-G. Magee, 4-H. Weatherly, 1-W. Byrn. DISTRICT 6: 114 H. BRADLEY, 103-J. MAY, 100-R. GOZEN, 86-J. DeMYER, 79-R. LEGGE, 70-N. KRIEBEL, 53-L. CAVILEER, 49-D. THOMAS, 36-L. GOODEVE, 35-R. WAITE, 33-E. ROBERTS, 32-P. RUSH, 32-J. STRINGER, 31-J. BUTTEKANT, 30-H. ECK, 28-M. BUTTEKANT, D. HALL, 27 J. BARRE, 26-P. ALBERTO, ELPOWERS, M. SOPLOP, 21-E. HATCH, 18-Wm. Palmer, 17-Glen Windisch, M. Cassina, 15-E. Wokaty, 14-R. B. Oxrieder, 13-C. Bolton, C. Hartzell, E. Nicolassy, 12-J. Gardner, W. Herzog, H. Kentzel, C. Weber, 10-T. Serafin, 9-Edw. Goss, 8-M. Bass, J. Haeger, M. Reamy, 7-M. Bruscio, L. Miller, R. Powell, 6-G. Graham, R. Partridge, G. Rhoads, D. Stone, 5-A. Bartholomew, E. Reinhard, J. Steele, I. Van Zandt, D. Wright, 4-C. Dawson, R. Verbrugghe, 3-M. Garvey, B. Horne, H. Lueth, E. Payette, B. Nordgren. DISTRICT 7: 24-G. ROCKWELL, 23-R. MESSER, 13-L. Hutchinson, 9-J. Pratt, J. Kneeland, 8-J. Graham, 5-H. Ward, 4-J. Lippincott, E. Barker, A. Willis, 2-Stockbridge, J. Harvey, R. Collins, A. Long, D. Hoadley, 1-G. Cote, Ivan Witty, S. Rudd, R. Ritchie. **GT. BRITAIN:** 25-R. PYBUS, 8-J. Shaw, 7-R. Coales, 1 G. Haylock. **N. Z.:** 22-A. BREEN, 3-B. Connor. **CANAL ZONE:** 4-J. Gallivan, **JAPAN:** 14-S. Yoshimura. (Next VAC listings will appear in January G.C.)

VIC: TOTAL NUM- DISTRICT 1: 94-H. ORLAW, 79-W. ANSELL, L. UNDERWOOD, 51-W. King, **BER COUNTRIES** 42-N. Ebling, J. Christie, 41-W. Wood, 39-D. White, 32-Mrs. Baird **VERIFIED** 27-S. Barnetson, 26-F. Newton, 21-J. Hodges, 20-R. Thompson, 19 -G. Young, 17-G. Cheeseman, 15-J. Dickenson, J. Frederick, 14-W. White. DISTRICT 2: 113-R. MYERS, 107-H. CLEIN, 102-W. BRITTING, 96-J. MOORE, 95-H. ALLEN, E. BUTCHER, 85-E. BARTELS, 84-AMERS, 66-F. Harris, 59-C. Streuber, 54-H. Honda, 46 A. Balbi, 43-W. Guthrie, 37-L. McNamara, 32-A. Field, 29-M. Fisher, 16-R. Purcell. DISTRICT 4: 111-R&I BRIAN, 100-G. BEYER, 93-F. MURPHY, 82-T. GREY, 80-ROBT. IRWIN, 78-B. HETZEL, L. HERZ, 74-C. Trezise, 70-Eders, 68-F. Anzalone, Zana Kandle, H. Schrock, K. Schram, 58-R. Dement, 53-E. Schenk, 50-C. Meyers, 46-E. Bristow, 45-D. Traister, 44-A. Deterly, 41-K. Miller, 41-R. Dissinger, 40-C. Robinson, R. Swenson, 36 -P. Loyd, 35-S. Graham, 34-C. Will, 32-J. Michalski, 31-J. Delaney, 30-Mrs. Rogers, 29-L. Eikamp, 28-R. Kramer, 26-L. Lundberg, 25-G. Jensen, 23-R. Shaffar, 20-S. Cashio, J. Jenkins, 19-H. Gastafson, 17-E. Danielson, 15-K. Fountain. DIST. 5: 114-G. BIGBEE, 80-DR. KASH, 72-G. Magee, 53-H. Weatherly, 38-W. Byrn, 27-H. Gunn, 24-M. Mosler, 17-G. Hinson, 9-A. Pleyte. DIST. 6: 148-J. MAY, 144-H. BRADLEY, J. DeMYER, 130-R. LEGGE, 124-R. GOZEN, N. KRIEBEL, 123 -L. CAVILEER, 116-P. RUSH, 115-H. ECK, R. WAITE, 113-D. THOMAS, 111-P. ALBERTO, 110-M. BUTTEKANT, M. SOPLOP, E. ROBERTS, 109-J. STRINGER, 107-C. WEBER, 106-JOHN BARRE, 102-E. POWERS, 98-E. HATCH, 97-I. GOODEVE, 96-J. BUTTEKANT, 85-W. PALMER E. REINHARD, E. WOKATY, 83-G. WINDISCH, 81-ED. GOSS, 79-W&R BUTTS, H. KENTZEL, TED SERAFIN, 78-R. OXRIEDER, 72-M. Bass, J. Gardner, 71-C. Hartzell, 70-B. Fiederowicz, W. Herzog, E. Nicolassy, 69-M. Casina, R. Powell, 65-C. Bolton, M. Garvey, 64-A. Bartholomew, 62-R. Partridge, 61-D. Hall, 58-J. Steele, 57-W. Miller, B. Nordgren, D. Stone, 54-J. Newcomer, I. Van Zandt, 53-J. Hager, B. Horne, 51-M. Bruscio, 50-G. Graham, D. Wright, 49-M. Reamy, G. Rhoads, 44-C. Dawson, E. Payette, 43-C. Seth, 42-J. Edwards, M. Vanderhaeghe, R. Verbrugghe, 40-H. Lueth, 38-S. Mann, 37-E. Prendergast, J. Tate, 36-J. Brauner, R. Taglauer, R. Trubee, 34-W. Mathers, 33-J. Johnson, H. Magowan, 32-G. Soderberg, 31-W. Patton, 30-J. Richrod, 28-Wm. Miller, 27-M. Kennedy, W. Sammis, 26-H. Graeme, 25-G. Cook, 24-J. Voisich, 23-Daryl Sebastian, 22-C. Ast, 16-K. Nelson, 13-J. Brimmer, 8-R. Cooper, 7-R. Nagle. DISTRICT 7: 119-G. ROCKWELL, 83-R. MESSER, 75-J. GRAHAM, 73-L. Hutchinson, 70 J. Pratt, 58-J. Kneeland, 52-J. Lippincott, 50-H. Ward, 48-F. Stockbridge, 40 J. Harvey, 39-E. Barker, A. Long, 37-R. Collins, 34-R. Ritchie, J. Harvey, 31-Art Willis, 29-G. Cote, 28-D. Hoadley, 27-I. Witty, 25-D. Callan, 22-J. Hardy, 21 J. J. Kernan, 17-S. Rudd, 14-D. Witthun, 6-K. Morey (Cont. on page 15).

VIC VAC HONOR ROLLS

VAC: VERIFIED DISTRICT 1: 17-H.Orlaw, 14-L. Underwood, 10-W. Ansell, 4-Wm. King, N. Ebling, J. Christie, J. Maguire, 2-Mrs. Baird, J. Hodges, D. White. 1-W. Wood, S. Barnetson, G. Young, G. Cheeseman. DISTRICT 2: 69-ROY MYERS, 45-W. BRITTING, 22-H. ALLEN, 19-Amers, 16-C. Streuber, 17-J. Moore, 15 F. Harris, 14-H. Clein, E. Butcher, 8-H. Honda, 6-A. Balbi, 5-M. Fisher, 4-W. Guthrie, 3-A. Field, 2-L. McNamara. DISTRICT 4: 27-G. BEYER, 25-F. MURPHY, 17-Tom Grey, 16-R&I Brian, 15-Eders, 13-L. Herz, 9-B. Hetzel, 8-K. Schram, H. Schrock, 7-F. Anzalone, 6-R. DeMent, C. Trezise, 5-C. Myers, E. Bristow, A. Deterly, 4-Ray Swenson, A. Paul, Zana Kandle, R. Dissinger, 3-K. Miller, 2-E. Schenk, S. Graham, 1-P. Loyd, J. Michalski, G. Jensen, K. Fountain, E. Danielson, J. Delaney, J. Jenkins, R. Kramer, L. Lundberg, C. Robinson, Mrs. Rogers, R. Schaffar. DISTRICT 5: 20-GUY BIGBEE, 15-Dr. Kash, 7-G. Magee, 4-H. Weatherly, 1-W. Byrn. DISTRICT 6: 114 H. BRADLEY, 103-J. MAY, 100-R. GOZEN, 86-J. DeMYER, 79-R. LEGGE, 70-N. KRIEBEL, 53-L. CAVILEER, 49-D. THOMAS, 36-L. GOODEVE, 35-R. WAITE, 33-E. ROBERTS, 32-P. RUSH, 32-J. STRINGER, 31-J. BUTTEKANT, 30-H. ECK, 28-M. BUTTEKANT, D. HALL, 27 J. BARRE, 26-P. ALBERTO, ELPOWERS, M. SOPLOP, 21-E. HATCH, 18-Wm. Palmer, 17-Glen Windisch, M. Cassina, 15-E. Wokaty, 14-R. B. Oxrieder, 13-C. Bolton, C. Hartzell, E. Nicolassy, 12-J. Gardner, W. Herzog, H. Kentzel, C. Weber, 10-T. Serafin, 9-Edw. Goss, 8-M. Bass, J. Haeger, M. Reamy, 7-M. Bruscio, L. Miller, R. Powell, 6-G. Graham, R. Partridge, G. Rhoads, D. Stone, 5-A. Bartholomew, E. Reinhard, J. Steele, I. Van Zandt, D. Wright, 4-C. Dawson, R. Verbrugghe, 3-M. Garvey, B. Horne, H. Lueth, E. Payette, B. Nordgren. DISTRICT 7: 24-G. ROCKWELL, 23-R. MESSER, 13-L. Hutchinson, 9-J. Pratt, J. Kneeland, 8-J. Graham, 5-H. Ward, 4-J. Lippincott, E. Barker, A. Willis, 2-Stockbridge, J. Harvey, R. Collins, A. Long, D. Hoadley, 1-G. Cote, Ivan Witty, S. Rudd, R. Ritchie. GT. BRITAIN: 25-R. PYBUS, 8-J. Shaw, 7-R. Coales, 1 G. Haylock. N. Z.- 22-A. BREEN, 3-B. Connor. CANAL ZONE: 4-J. Gallivan, JAPAN: 14-S. Yoshimura. (Next VAC listings will appear in January G.C.)

VIC: TOTAL NUM- DISTRICT 1: 94-H. ORLAW, 79-W. ANSELL, L. UNDERWOOD, 51-W. King, BER COUNTRIES 42-N. Ebling, J. Christie, 41-W. Wood, 39-D. White, 32-Mrs. Baird VERIFIED 27-S. Barnetson, 26-F. Newton, 21-J. Hodges, 20-R. Thompson, 19 -G. Young, 17-G. Cheeseman, 15-J. Dickenson, J. Frederick, 14-W. White. DISTRICT 2: 113-R. MYERS, 107-H. CLEIN, 102-W. BRITTING, 96-J. MOORE, 95-H. ALLEN, E. BUTCHER, 85-E. BARTELS, 84-AMERS, 66-F. Harris, 59-C. Streuber, 54-H. Honda, 46 A. Balbi, 43-W. Guthrie, 37-L. McNamara, 32-A. Field, 29-M. Fisher, 16-R. Purcell. DISTRICT 4: 111-R&I BRIAN, 100-G. BEYER, 93-F. MURPHY, 82-T. GREY, 80-ROBT. IRWIN, 78-B. HETZEL, L. HERZ, 74-C. Trezise, 70-Eders, 68-F. Anzalone, Zana Kandle, H. Schrock, K. Schram, 58-R. Dement, 53-E. Schenk, 50-C. Meyers, 46-E. Bristow, 45-D. Traister, 44-A. Deterly, 41-K. Miller, 41-R. Dissinger, 40-C. Robinson, R. Swenson, 36 -P. Loyd, 35-S. Graham, 34-C. Will, 32-J. Michalski, 31-J. Delaney, 30-Mrs. Rogers, 29-L. Eikamp, 28-R. Kramer, 26-L. Lundberg, 25-G. Jensen, 23-R. Shaffar, 20-S. Cashio, J. Jenkins, 19-H. Gastafson, 17-E. Danielson, 15-K. Fountain. DIST. 5: 114-G. BIGBEE, 80-DR. KASH, 72-G. Magee, 53-H. Weatherly, 38-W. Byrn, 27-H. Gunn, 24-M. Mosler, 17-G. Hinson, 9-A. Pleyte. DIST. 6: 148-J. MAY, 144-H. BRADLEY, J. DeMYER, 130-R. LEGGE, 124-R. GOZEN, N. KRIEBEL, 123 -L. CAVILEER, 116-P. RUSH, 115-H. ECK, R. WAITE, 113-D. THOMAS, 111-P. ALBERTO, 110-M. BUTTEKANT, M. SOPLOP, E. ROBERTS, 109-J. STRINGER, 107-C. WEBER, 106-JOHN BARRE, 102-E. POWERS, 98-E. HATCH, 97-I. GOODEVE, 96-J. BUTTEKANT, 85-W. PALMER E. REINHARD, E. WOKATY, 83-G. WINDISCH, 81-ED. GOSS, 79-W&R BUTTS, H. KENTZEL, TED SERAFIN, 78-R. OXRIEDER, 72-M. Bass, J. Gardner, 71-C. Hartzell, 70-B. Fiederowicz, W. Herzog, E. Nicolassy, 69-M. Casina, R. Powell, 65-C. Bolton, M. Garvey, 64-A. Bartholomew, 62-R. Partridge, 61-D. Hall, 58-J. Steele, 57-W. Miller, B. Nordgren, D. Stone, 54-J. Newcomer, I. Van Zandt, 53-J. Hager, B. Horne, 51-M. Bruscio, 50-G. Graham, D. Wright, 49-M. Reamy, G. Rhoads, 44-C. Dawson, E. Payette, 43-C. Seth, 42-J. Edwards, M. Vanderhaeghe, R. Verbrugghe, 40-H. Lueth, 38-S. Mann, 37-E. Prendergast, J. Tate, 36-J. Brauner, R. Taglauer, R. Trubee, 34-W. Mathers, 33-J. Johnson, H. Magowan, 32-G. Soderberg, 31-W. Patton, 30-J. Richrod, 28-Wm. Miller, 27-M. Kennedy, W. Sammis, 26-H. Graeme, 25-G. Cook, 24-J. Voisich, 23-Daryl Sebastian, 22-C. Ast, 16-K. Nelson, 13-J. Brimmer, 8-R. Cooper, 7-R. Nagle. DISTRICT 7: 119-G. ROCKWELL, 83-R. MESSER, 75-J. GRAHAM, 73-L. Hutchinson, 70 J. Pratt, 58-J. Kneeland, 52-J. Lippincott, 50-H. Ward, 48-F. Stockbridge, 40 J. Harvey, 39-E. Barker, A. Long, 37-R. Collins, 34-R. Ritchie, J. Harvey, 31-Art Willis, 29-G. Cote, 28-D. Hoadley, 27-I. Witty, 25-D. Callan, 22-J. Hardy, 21 J. J. Kernan, 17-S. Rudd, 14-D. Witthun, 6-K. Morey (Cont. on page 15).