

THE GLOBE CIRCLER

JANUARY, 1939



AMATEUR STATION ZBIH, IN MALTA

In this issue

OFFICIAL LIST OF COLOMBIAN STATIONS—IDA, PAST, PRESENT, AND FUTURE—ACCURATE SHORT-WAVE LIST—INTERNATIONAL FRIENDSHIP BROADCASTS—BROADCAST STATION NEWS—SHORT-WAVE NOTES—

ten cents

INTERNATIONAL DX'ERS ALLIANCE

SHORT WAVE NOTES

Editor-in-Chief, Charles A. Morrison;
 Ama-Touring Editors, Roger Legge, Roy
 Waite; Frequency Checking Bureau,
 R. B. Oxrieder, John Larsen.

INTERNATIONAL FRIENDSHIP PROGRAMS:

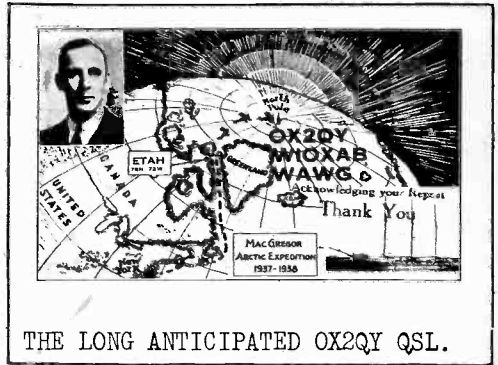
See complete list on page 13.

AMA-TOURING: The December issue of this publication, the first under the editorship of Messrs. Legge, and Waite was a knock-out. Some of its features were: Complete building instructions and diagrams for the W8JK Beam Aerial; a 10 Meter Reception and Calibration Chart; comprehensive reception notes on 10,20, and 40 meter stations .. QSL Descriptions; QRA's of new stations; Jottings, and data on the next "3 Hour Reception Contest." Send for a free copy, or subscribe today: 75¢ per year, or also including the Globe Circler \$1.75 per year.

The DSW Degree has been conferred upon W. Kammann (Venezuela); L. Herz (Chicago), and K. Schram (Wisconsin) ... Eligible: T. Grey, G. Beyer, R. Irwin, E. Bristow, E. Schenk and Chas. Trezise.

DEADLINE, for FEBRUARY GLOBE CIRCLER, Jan. 16; for FEBRUARY STOP PRESS SHEET, Jan. 30; for FEBRUARY AMA-TOURING, Jan. 21. (For Ama-Touring send your news items to Roger Legge, 20 Beethoven Street, Binghamton, New York)

MAKE OUT YOUR SHORT-WAVE REPORT AS FOLLOWS: Double space lines; use one side page only; group items by continents, and state time used. Items in order of importance are: **NEW** stations; exact frequencies, or frequency changes; exact schedules, or addresses; identifying signals and unusual receptions. **RUSH** important items by fastest mail... **FOUR STAR** items denote exceptional merit. **EACH FIVE STAR** (*****) item pays contributor \$1.00.



THE LONG ANTICIPATED OX2QY QSL.



LISTEN FOR THE IDA PROGRAM FROM YL2CD

EST)

— NORTH AND CENTRAL AMERICA —

(EST

WANTED: A "Eleven Meter Band" Editor, who will give us each month an accurate and complete list of 11 meter S.W. stations with schedules for each **DO NOT QSL:** R. Legge nominates the following N.A. stations as non-QSL'ers: **HTLS, HILA, HI5N, TIGPH, YN1GG, HPF, and ZFB.**

ALASKA **WXE** (12.25), Anchorage, verifies. **WXA** (9.74), Seattle does not
BERMUDA **ZFB** (10.05), St. Georges, usually works ships at noon, 5 and 7pm.
CANADA Station using call **CFBT** (6.03), heard testing at 3:40am. May be new call for **VE9CA** (*Shaffar)... **CHNX** (6.132), Halifax, operates weekdays to 11:15pm (Sat to 11:30); QSL card is pink printed in blue, picturing a small map of N.S. in the center (*Larsen, Amers)... **CJRO** has been testing early Sunday mornings on 6.175mc; modulation terrible (Larsen, Smith, Shaffar)... Following is a complete list of the Canadian Police transmitters (**NNRC):

1.690	CJR Belleville, Ont.	2.342	CY2J Westmount, P.Q.
	VDM Halifax, N.S.	2.358	CY6D Sudbury, Ont.
1.698	CZ6F Hamilton, Ont.		CZ7S St. John's, P.Q.
1.706	CY4M Moncton, N.B.	2.366	CZ5O Ottawa, Ont.
	VYR Montreal, P.Q.	2.390	CGZ Vancouver, B.C.
2.310	CY6A Cornwall, Ont.		CJW St. John, N.B.
	CY6U Brantford, Ont.		CJZ Verdun, P.Q.
2.318	CYQ Toronto, Ont.		CY2G New Westminster, B.C.
2.326	CZ9Z Sherbrooke, P.Q.	2.396	VYW Winnipeg, Man.

C.R. **TIEM** (10.05), Apartado Postal 1049, San Jose, operates daily 4:30-8pm; verifies direct with black & gold cd (**Gardner)... **TIGPH2**, San Jose, now on 5.883 (RBO)... **TI2XD** now on 11.935... **TI4NRH** now on 9.692 (Herz, J.L.)

CUBA COBC now on 9.98; verifies with red & blue cd showing scenes in Cuba (Wells,Larsen)...COBZ now 9.025; verifies with photographic cd showing views of studios & xmtr. (Shaffar,Larsen)...COCD variable 6.13 to 6.14 mc (Smith,Larsen)...COCM now on 9.84 (Larsen); official freq. 9.833...COCQ now on 8.83. Has been added to NBC network (Shaffar,Gardner,RBO,Amers,J.L.)

CURACAO PJCl (9.091),"Radio Curom," operates nightly 7-9pm (*Campbell)

D.R. HI3C heard on 6.73 after a long silence (RBO)...After 2 years HI9B (6.67),"Broadcasting Hotel Mercedes,"verified with white card printed in blue, having grey call and grey borders (**Amers). -Larsen,Amers)

EL SALVADOR YSP varying between 10.36 and 10.41,is usually near 10.4mc (RBO)

GREENLAND OX2QY-WLOXAB QSL cards are now being mailed out. See reproduction on page 2 (Legge, Amers, Roberts, CAM)

GUADELOUPE FG8AA (7.05),"Radio Guadeloupe,"Boite Postale 125,Pointe a Pitre,operating nightly 6-7pm, occasionally under heavy cw QRM, will soon receive a substantial boost in power and move to a new frequency. Announcements are in French and signs with band selection (**Legge, DeMyer, Weber)

GUATEMALA Unidentified Guatemalan being heard near 11.704 (RBO,Larsen)...TG2 (6.197), TGQA (6.4), and TG3 (2.34), operate as network Sundays 1-3am

HAITI HH2S (5.955) heard nightly from 6 pm on (Tuff) - (Hetzl)

HONDURAS HRPI (6.357) heard frequently to 10pm,or later (Larsen,Shaffar)

JAMAICA VR4 (11.595) heard working WNC (15.055), 7-7:15pm (Stark)

MEXICO XEBF (6.09),Jalapa, heard Q4/R7 at 9pm on Dec.8 (*Smith)...XEBR (Saturdays 7:15-7:45pm). See list for revised skeds for PCJ (9.59) and PHI (17.77). These schedules are subject to frequent revisions.

ITALY The Italian mystery xmtr. on 9.67mc is being heard irreg. in the afternoons with very loud signals (Shaffar,Smith)...2RO5 (15.3)is being used intermittently throughout the day. -VIA)

LATVIA See page 13 for information about the IDA transmission from LAT

NORWAY On Fri.Dec.9,at 6:05am EST, the new S.W. station at Oslo,Norway was heard on approx. 11.73mc. An announcement in English stated this was a new 5kW xmtr. at Oslo; reports were requested which should be sent to the Telegraph Dept. at Oslo. The same station was again heard after 7:40 pm, on approx. 15.19mc, with an announcement in English at 9pm (**White) "Reports on the new Norwegian xmtr. broadcasting on 9.522,from 8 to 9 and 10 to 11pm,and on 15.17mc,Sundays 8am to 2pm are wanted". The transmitter heterodynes TGWA on Sundays (J. Pedersen**)

POLAND The only Polish station being heard in U.S. at present is SPW.

ROUMANIA NEW: "Radio Bucuresti," an experimental 250w xmtr. operating on 8.572mc, is on daily 8:15-10:30am and 4-7pm (***E. Radio)

SPAIN NEW: RR6 (11.991),"Radio Requete,"Postas 19,Vitoria, 450w, operating daily 4-4:30,8-10am and 1-1:50 and 4-7pm; and Tues/Fri 8:30-10pm for Latin America,verifies promptly with a small white and red card (***Legge) ... "Radio Nacional de Espana," Burgos (formerly Salamanca), is still being heard on 10.37... on Treasure Island,site of San Francisco's World's Fair, and will be ready to operate with the opening of the Fair the middle of February (***GEC)... Sked for W9XF (6.1) is weekdays 4-6:50pm (Sat to 5:30), 1-2am and Sun.1 5:30pm (URDXC). . . COMMERCIAL: KFZT (6.66),Yacht Mizpah, heard at 9:30pm; send reports to Zenith Radio Corp.,Chicago (*Legge)...WND (4.097),Hialeah, heard at 8pm (Campbell)...WAGQ,Geneseo,Ill.,KIPQ,Beatrice,Neb.,KIPR,Redoak,Iowa,and KIPI,Harper,Iowa,all on (2.76), and owned by Natural Gas Pipe Line Co. of America,Telephone Dept.,Beatrice, Neb.,power 50w each, test at 11am,4 and 9pm (**FCC)...Member D.Thomas,Proctorville,Ohio,has requested a permit for a special emergency xmtr (5 and 15w),to operate on 2.726,31.42, 39.66,and 39.86(FCC)...W2XGB,Press Wireless, Box 296, Hicksville, N.Y. is testing on 17.310 with W9XDH (12.862),Elgin,near 11:30am; verify (Campbell)WLOXDA QSL cards (1938 Bartlett Arctic Exped.), grey and red with black call letters are now being mailed out (*Legge). . . TELEVISION:W9XAK (2.05),Television xmtr. of Kansas State College,Manhattan, Kans., operates irreg. 8-9pm with audio and video transmissions; verifies promptly (*Wells) . . . UHF: WBOE (41.5), non-commercial educational xmtr. of City Board of Education,Cleveland,Ohio, 500w, will soon be on air (FCC)...W2XQQ (26.55), Knickerbocker Broadcasting Co., Flushing, N.Y. granted permit to operate with power of 100w (NNRC)... "Best 9 meter band xmtr. here recently has been W5XD (31.6), relaying WFAA of Dallas,Texas; verifies promptly (*Camp-

bell)... W9XA (26.45), Kansas City, Mo., the best heard station on the 11 Meter Band at present, broadcasts a "mailbag" weekdays at noon, and 5pm; reports are welcomed and verified with overprinted copy of "The Radio Engineer" (*Campbell)... W9XUP (25.95), St. Paul, Minn., to move to 26.15mc soon, is often heard with loud signals near 1pm (Larsen, N.Y.)

SOUTH AMERICA

DO NOT QSL: R. Legge nominates the following S.A. stations as non-QSL'ers: HJ1ABB, HJ2ABJ, HJ3ABF, HJ6ABB, HJ6ABC, YV1RD, YV3RA, LSN, LSN, HC2ETC, CEC ARGENTINA LRA5 (17.83), Buenos Aires, operates Fri. 3-4:30pm (QRC via NNRC) LSY (18.11), relayed most of the Pan-American Conference broadcasts to NBC. BOLIVIA CP1AA, owned by H.E.J. Smith, Casilla 669, La Paz, will hereafter send QSL cards only under the following conditions: (a) Sufficient data to check with station log; (b) receipt of IRC, self-addressed envelope and QSL card to be filled in by CP1AA (CP1AA) BRAZIL PSH (10.22), is operating nightly from 8 to 8:30pm now (*Larsen) CHILE CB970 (9.73), "La Cooperative Vitalicia," Calle Lira 543, Valparaiso, relays CB76 and CB78. Power is 1kW (**Com. Bul, NNRC)... ADDRESSES: CB1170 (11.7), Casilla 706, Santiago (150w); CB1174 (11.74), Orlandini y Raggio Lfda, Casilla 3455, Santiago (4kW); CB1180 (11.97), Soc. Nacional de Agricultura, Casilla 40-D, Santiago; CB1185 (11.85), Jorge Echegoyen, Santiago (2½kW); CD1190 (11.913), Radio Sur, Alberto Carrasso, Casilla 642, Valdivia (250w) (**Larsen, Tune-In)

..... (The above list courtesy A. Breen****) (Tolima), Ibaque Notes: HJ1ABB also heard on 8mc... NEW: HJ4ABG (official HJ4DAG), "La Voz de Choco," heard operating near 6.065mc (**RBO)

D. GUIANA PZH (6.8), Paramaribo, 25w, is verifying at long last with same card as PZ1AA, picturing transmitter building & flag (*Legge, Demyer)

ECUADOR HC2CW, Guayaquil, now on 9.13, and signs-off at 10:40pm (Larsen).. Guayaquil station on 4.56 is HC2ET (*RBO) -NNRC)

PARAGUAY ZP8, Asuncion, has shifted to 9.64 where it QRM's CX48 (QRC via

PERU OAX4C (15.3), "Radio Nacional del Peru," Lima, relayed OAX4A from 6-7:30pm, and later, frequently during Pan-American Conference (*Legge, Brewer, Pratt)... Com. xmtrs. OCJ (14.84), and QCH2 (7.82), were also quite active (Amers)... NEW: OAX2A (11.85), 250w, owned by Rafael Larco H. Hoyle, Hacienda Chiclin, Trujillo, has been testing near noon (**RBO, Tune-In)... Two small stations, listed but seldom heard, are: OAX7A (6.128), 100w, Carlos Lizarraga Fisher, Montero No. 43, Cuzco, and OAX4P (5.975), 250w, J. Alberto Madvere, Cuzco No. 25, Huancayo (Tune-In)

VENEZUELA YV3RD (6.465), verifies promptly with red, white & blue cd (Amers) ... YV5RR (5.835) and YV1RB (5.845) sometimes work in parallel (*Larsen)

EUROPE

ALBANIA NEW: ZAA, a 3kW xmtr. at Tirana, inaugurated on Nov. 28, operates on 7.4875, and 9.9875mc for Europe, and irreg. on 15.765mc for America. Will

be used for both commercial and broadcasting purposes (**Com.Bul,RPS)... Amateur ZALCC (14.1),heard near mid. is believed to be an unlicensed Italian station using the ZA call to escape detection (*Ama-Touring) CZECHOSLOVAKIA OLR5C (15.16),being heard near noon EST (*Brewer)

DENMARK S.O.S! What station is causing the severe heterodyne on OZF (9.52), between the hours of 9 and 10pm? (J. Pedersen)

FINLAND New calls and frequencies for the Lahti xmtr. follow: OII (21.55), OIH (17.8), and OIE (15.10) (**Legge)...OFF (11.78) verifies promptly with a card picturing the station transmitter (*Weber)

FRANCE (or Italy) An unidentified commercial xmtr., using a four tone signal, is being heard almost daily near 4-4:30pm on approx. 9.46mc (Weber)

GERMANY Additional frequencies for the new 50kW Vienna xmtr. are being heard as follows: DJM (6.08), first heard Dec.4, now operating nightly 4:50-10:50pm in parallel with DJB,DJD,and DJZ (**Larsen,Gardner,RBO,Smith) and DJG (17.815),first heard Dec.4, now operating daily 11:15am-1pm,with beam directed on Africa (*Brewer,Campbell,Smith,Roberts). . . German Short Wave Station is now issuing beautiful new QSL cards showing a vertical antenna rising in a light green background of concentric circles,with the black words "Germany Calling" at the top of the mast. At the bottom of the card is an old German castle in natural colors (Roberts). . . According to a technical report the German transmitters are again operating with their full power for the first time since the "Olympic Games" in 1936 (RRG)

HOLLAND PHI (11.73), is now operating as follows: weekdays 6:15-7:45pm (Saturdays 7:15-7:45pm). See list for revised skeds for PCJ (9.59) and PHI (17.77). These schedules are subject to frequent revisions.

ITALY The Italian mystery xmtr. on 9.67mc is being heard irreg. in the afternoons with very loud signals (Shaffar,Smith)...2R05 (15.3)is being used intermittently throughout the day. -VIA

LATVIA See page 13 for information about the IDA transmission from LAT

NORWAY On Fri.Dec.9,at 6:05am EST, the new S.W. station at Oslo,Norway was heard on approx. 11.73mc. An announcement in English stated this was a new 5kW xmtr. at Oslo; reports were requested which should be sent to the Telegraph Dept. at Oslo. The same station was again heard after 7:40 pm, on approx. 15.19mc, with an announcement in English at 9pm (**White) "Reports on the new Norwegian xmtr. broadcasting on 9.522,from 8 to 9 and 10 to 11pm,and on 15.17mc,Sundays 8am to 2pm are wanted". The transmitter heterodynes TGWA on Sundays (J. Pedersen**)

POLAND The only Polish station being heard in U.S. at present is SPW. ROUMANIA NEW: "Radio Bucaresti," an experimental 250w xmtr. operating on 8.572mc, is on daily 8:15-10:30am and 4-7pm (**E. Radio)

SPAIN NEW: RR6 (11.991), "Radio Requete," Postas 19,Vitoria, 450w, operating daily 4-4:30,8-10am and 1-1:50 and 4-7pm; and Tues/Fri 8:30-10pm for Latin America,verifies promptly with a small white and red card (**Legge) ... "Radio Nacional de Espana," Burgos (formerly Salamanca), is still being heard on 10.37, and near 11.01mc, daily 3-4:30 and 5-7pm for Europe; 7:45-8:45pm for S.A.,and 9-10pm for N.A.. "Radio Nacional de Espana," Burgos, on 7.50mc,operates 4-4:30,9-10am,1:30-4:30, 5:30-8:45, 9-10pm...FET5 (7.353), Burgos,relays "Radio Nacional" daily 5:45-7:15 (or 7:30pm).Send reports to 52 Avenue de la Grande Armee,Paris 17,France...EAJ28 (7.24),Bilbao,also relays "Radio Nacional" to 6:40pm,as does EA9BJ (7.12),Alcazarquivir,Spanish Morocco (**Legge,E.Radio,Tuff, RBO)...Loyalist xmtr. EAR4M (7.006), heard 2-3am (Campbell)...EAQ (9.855),also broadcasting 8:30-9pm at present (CAM) U.S.S.R. RIR (10.08),Tiflis,can be heard nightly near lam (Roberts).... RV59 (6.03),Moscow,is audible from 9am on (*Walcott) ..RAN is still broadcasting irreg. on a freq. of 9.565mc (Larsen)...The Moscow xmtr. on 9.52, broadcasts in German daily 4-5pm; announces "Achtung Moscow" (*CAM); also heard broadcasting late at night (*Pedersen)

VATICAN CITY HVJ (11.74),broadcasts Wed. 2:30-3pm;and Sundays 1-1:40pm irregular. See list for other slight revisions in schedule (CAM,RadioCor.)

==== AFRICA ====

CANARY ILS. The transmissions of "Radio Nacional" on 10.37 and 7.5mc, are presumably made over the commercial xmtr. of EAJ43,at Tenerife (RBO, Herz) ...EABAE (7.16),Tenerife,was heard signing-off at 10:10pm (Soplop) -Stark

EGYPT SUZ (13.82),heard calling GBB2 (13.595),at 3, and 4:45am (Pratt, ETHIOPIA "Radio Addis Ababa" (9.525), is testing with low power daily

1:30-2:30pm. Power will soon be boosted to 10kW (Tune-In) (ge)
KENYA COLONY VQ7LO (10.73), Nairobi, verified by letter in 4 months (Leg-
MADAGASCAR Correct 49M Band frequency for "Radio Tananarive" is 6.063mc.
SO. AFRICA ZRD (9.72), Durban, now with greatly increased power, is operating
 daily 3:30-7, 9am-noon and 11:45pm-12:30am. (**Mrs. Roche)...A "ZS Amateur
 Contest," will be held Jan. 7, 11am to Jan. 8, 5pm, and Jan. 14, 11am to Jan. 15,
 5pm. The rules will be about the same as the ARRL Contest (Mathers)
SPAN. MOROCCO EA9AI (7.18), Melilla, heard broadcasting Sat. 9-10pm (*Legge)
TANGIER The new station mentioned in last issue will not be built (RPS)

ASIA AND OCEANIA

AUSTRALIA VLR3 (11.88), Melbourne, operates daily intermittently from 3:30
 pm to 3am, the last transmission being 11:30pm-3am (Wignall, Fern)...VK2MR
 (9.59), is sometimes heard Sundays to 12:30pm, in England (*Tuff)
BURMA The Govt. will install a new 10kW xmtr. at Rangoon (**NRC)...
KYO (6.007 and 3.488), Rangoon, operates daily 9-11pm (Sat from 9:30pm,) and
 7-10am; on 3.488mc only, 11-11:30pm and 6:30-7am (**Walcott)
CHINA The xmtr. announcing as "The Voice of China" (11.38-11.44),
 heard mornings 8-8:30am, is XGRV, Chungking (Wells, Beyer, Trezise)...XTV (9.49)
 uses the call XGOY when broadcasting near 2:30am (**Fern-Hawaii)
DUTCH BORNEO YCP (9.12), Balikpapan, verifies promptly with a neat black on
 buff QSL, signed by L.F.J. Verboeket, Java Wireless Stations, Bandoeng, Java,
 N.E.I. (**Wells, DeMyer)
F. INDO-CHINA Saigon (9.76), is reported to be off the air (*Larsen)
INDIA Schedules for the India xmtrs. on the 62M Band are as follows:
VUD2 (4.995), Delhi, 7:30am-12:30pm; VUM2 (4.950), Madras, 7am-noon; VUB2
 (4.905), Bombay, 7am-12:30pm, and VUC2 (4.88), Calcutta, 6:36am-12:05pm. All
 of these stations are being well heard in the U.S.A., from 7-8am (**DeMyer,
 Soplop, Pratt, CAM)...VUD2 (4.995) and VUM2 (4.95) read the English news at
 7:30am (DeMyer, Pratt). All stations verify promptly. Send Calcutta report
 to Indian State Broadcasting Service, 1 Garstin Place, Calcutta, and Madras
 reports to the Director of Programs, Office of Station Director, All-India
 Radio, Madras (**Walcott, Beyer, Amers). All-India QSL cards will be avail-
IRAQ Y12BA (14.33), being heard near 12:15am. New op. is - (able soon.
 Eddie Behnan. He is trying to catch up on QSLs Mellon didn't send out (A-T)
JAPAN JZJ now broadcasts all Overseas schedules. In addition JVI
 (9.535), operates daily 2:30-4 and 4:30-5:30pm and JVP (7.51) operates dly
 8-9:30am (Tokio)...New QRA for the FV- phones is: Kokusai Denkitusin Kabus
 iki Kaisya, Nissin Seimei Bldg., Ote-Mati, Tokio (**Legge)...Both JZ and JV
 stations are issuing picturesque new QSL cards (Stark, Legge, Amers)...A JV
 phone on approx. 12.6mc, sounding like JKQ, called JVA at 11pm (Amers)
JAVA PMY (5.14), heard weakly at 6:45am, and PMH (6.72), heard best at
 7am (Soplop-Penna)...PLV (9.41), heard calling and working KWV at 10am.
MACAO The mystery xmtr. on 6.08 heard about once a month is definite-
 ly CRY9, Macao (**Amers)...CRY9 (6.08) operates Mondays 8:30-10am and Wed-
 nesdays 8:30-9:10am. Identifies in Portuguese and English (QRC via NNRC)
NEW CALE- FK8AA (6.122), owned by M. Chas. Gaveau of Noumea, 30w, shortly to
DONIA be 70w, operating Wed/Sat 2:30-3:30am, verifies reception with
 plain black & white card having one inch call letters (**Breen)
NIUE QSL card received from ZK2AA at Niue (Oceania). IS a nice postal
 card view of Niue harbour (**Kammann-Venezuela)
P.I. KZIB (9.5), Manila, heard daily 6-7am (**DeMent); has interval
 signal similar to NBC chimes. Call may be KZRB (Yoshimura) -cott)
SIAM Bangkok (6.11) is no longer being heard Wednesday mornings (Wal
S.S. ZHP (9.69) verifies with a white card with a sunset through
 palm trees in black and orange depicted (NNRC)...ZGE (6.24), Kuala Lumpur,
 has been taken over by the Govt. and is relaying the programs of ZHP.
SUMATRA YBG (10.425), verified in 11 weeks, with a card also verifying
PLQ. Send reports to Ir. P.C. Arends, Engineer, Java Wireless Stations, Bandoeng
TAIWAN JIB (10.535), Taihoku, comes on air at 9am with a musical select-
 ion, followed by chimes at 9:05am, and then news in English to 9:20am (Weber)
TURKEY TAP (9.465), Ankara, heard as late as 4:45pm badly QRM'ed (-Pratt
 by code. Not heard at all lately however (Weber)...TAQ (15.195), heard test-
 ing at 7am with a good signal (Pratt)
U.S.S.R. RV15, Khabarovsk, has moved back to 4.275mc (**Walcott, Pratt, Wal-
 cott, Soplop)...Unidentified Soviet heard on 3.8, 1-4am irreg. (**Walcott)

SHORT-WAVE BROADCASTING STATIONS

SYMBOLS: N-NEW stations; F- Frequency change; S- Change in sked; B- Frequency calibrations according to Oxrieder-IDA Frequency Bureau; J- stations persisting in hopping about; V- varying in frequency; Y- does not verify; X- does not verify direct; U- Frequency in doubt; * See short-wave notes.

DIAL METERS	MEGS.	CALL STATION	TIME	EASTERN STANDARD
13.91N	21.57	W2XE New York City, N.Y.	7:30-10am;	Sat/Sun 8am-1pm;
13.92	21.54	W8XK Pittsburg, Penna.	6:45-9am.	
13.93YS	21.53	GSJ Daventry, England	5:45-8:50, 9-10am.	(13M)
13.96	21.50	W2XAD Schenectady, N.Y.	8am-noon directed to S.A.	
13.97Y	21.47	GSH Daventry, England	5:45-8:50, 9am-noon.	
15.77	19.02	HS6PJ Bangkok, Siam	Mondays 8-10am.	
16.84	17.82	2R06 Rome, Italy	6-7:30, 10-11:15am.	
16.84N	17.815	DJG VIENNA, GERMANY	11:15am-1pm.	
16.85	17.81	TPB3 Essarts, France	9:30-11am.	(16M)
16.86Y	17.79	GSG Daventry, England	5:45-8:50, 9am-noon, 12:20-4pm.	
16.87	17.78	W3XL New York City, N.Y.	9am-5pm to Europe, 5-11pm to SA	
16.88S	17.77	PHI2 Huizen, Holland	Sun 6:25-9:40am, M/Th 7:40-8:55am, T/W/F/9 7:40-8:40am.	
16.89S	17.76	DJE Zeesen, Germany	12:05-5:50, 6-7:50am.	
17.36	17.28	FZEB Djibouti, F.Somaliland	Feb.2/Mar.2 8-8:30am.	
19.52	15.37	HAS3 Budapest, Hungary	Sundays 9-10am.	
19.56S	15.34	DJR Zeesen, Germany	12:05-11am to Asia.	
19.57	15.33	W3XAD Schenectady, N.Y.	12:15-7pm (W6XBE, 3-9am.*)	
19.60Y	15.31	GSP Daventry, England	1:45-4pm to Canada	
19.61S	15.30	2R05 Rome, Italy	11:15am-12:15, 2-4pm & irreg.*	
19.62	15.29	LRU Buenos Aires, Argent	na 7-9am. (11:10am-12:25pm.	
19.63S	15.28	DJQ Zeesen, Germany	12:05-11am, 4:50-10:50pm; Sun.	
19.64	15.27	HI3X Trujillo City, D.R.	Tues/Fri 8:10-10:10pm & Sun AM	
19.64	15.27	W2XE New York City, N.Y.	1-3pm; Sat/Sun 1:30-2:30pm.	
19.64	15.27	RV96 Mosco, U.S.S.R.	9am-4pm; 6-9pm irreg.	
19.66Y	15.26	GSI Daventry, England	3-5:15am, 12:20-1:30pm.	(19M)
19.67	15.25	WLXAL Boston, Mass.	2-3:30, or 4pm ex. Sat & Sun.	
19.68	15.243	TPA2 Pontoise, France	6-11am.	
19.70U	15.23	HS6PJ Bangkok, Siam	Mondays 8-10am.	
19.72	15.21	W8XK Pittsburgh, Penna.	9am-1pm. -12:25pm)	
19.74S	15.20	DJB Zeesen, Germany	6-7am, 4:50-10:50pm; Sun. 11:10am	
19.74	15.195	TAQ Ankara, Turkey	9:30-11am; 5:30-7am irreg. *	
19.76S	15.18	GSO Daventry, England	3-5:15am, 4:15-6, 6:20-8:30pm	
19.78	15.17	TGWA Guatemala, Guatemala	12:15-1:15pm; Sun 12:45-5:15pm.	
19.78	15.165	OZH Skamlebak, Denmark	Sundays 8am-1:30pm.	
19.79	15.16	VUD3 Delhi, India	9:30-11:30pm, 1:30-3:30am.	
19.80	15.155	SM5SX Stockholm, Sweden	11am-5pm; Sundays 9am-5pm.	
19.80	15.15	YDC Bandoeng, Java	4:30-10:30am; 6-7:30pm ex. Sat, 10:30pm-2am; Sat 7:30pm-2am.	
19.82Y	15.14	GSF Daventry, England	3-5:15, 5:45-8:50, 9am-noon.	
19.83	15.13	TPB6 Essarts, France	7-9:15pm.	
19.83	15.13	WLXAL Boston, Mass.	Sundays 10am-1pm.	
19.84	15.12	SP19 Warsaw, Poland	6-9pm. (am	
19.84	15.12	HVJ Vatican City, Italy	Sun. 1-1:30pm; Tues. 10:30-10:45	
19.85	15.11	DJL Zeesen, Germany	12:05-2, 8-9, 10:35-4:25pm.	
19.89	15.08	RKI Moscow, U.S.S.R.	3-4, 7-9:15pm; Sun 6:30am etc.	
20.11	14.92	KQH Kahuku, Hawaii	Fri. 12:15-12:30am; Sat. 9-9:30pm	
20.64	14.535	HBJ Geneva, Switzerland	Sun 10:45-11:30(Su 12-12:30am. am; Mondays 4-4:15am.	
20.78	14.44		Malaga, Spain	
20.79	14.43	HCLJB Quito, Ecuador	5:40-8:40pm & later.	
21.43	13.997	EA9AH Tetuan, Span. Morocco	10-10:30pm except Mondays.	
22.00	13.635	SPW Warsaw, Poland	4-8, 9-9:30pm; to 11pm irreg.	
24.03	12.486	HIN Trujillo City, D.R.	6-9pm.	
24.08	12.46	HCBJ Quito, Ecuador	7:10-10:10pm	
24.53	12.235	TFJ Reykjavik, Iceland	8-10:30pm ex. Mondays.	
25.00	12.000	RNE Moscow, U.S.S.R.	Sundays 1:30-2:30pm.	
			8:30-9:15, 10:15-11pm, 3-6pm; Sun 6-7, 10-11am; Wed 6:30-7:30am.	

25.02N	11.991	RR6	VITORIA, SPAIN	4-4:30, 8-10am, 1-1:50, 4-7pm; Tu/
25.02	11.99	CB1180	Santiago, Chile	7-11pm. (Fri 8:30-10pm)
25.06	11.97	HI2X	Trujillo City, D.R.	Tues/Fri 8:10-10:10pm.
25.12F	11.935	TI2XD	San Jose, Costa Rica	10am-noon, 4-10pm.
25.19	11.91		Hanoi, F. Indo-China	Daily 3:45-4:15, 7-9:30am.
25.21	11.90	CD1190	Valdivia, Chile	10am-1pm, and 7-10pm.
25.21	11.90	XEWI	Mexico D.F. Mexico	7:30pm-mid; Sun. 12:30-2pm.
25.23	11.885	TAP3	Pontoise, France	2-5, 11:15am-6, 7-9:15pm.
25.23	11.885	TPB7	Essarts, France	9:30-Midnight; 12:15-2am.
25.25S	11.88	VLR3	Melbourne, Australia	3:30pm-3am. *
25.27	11.87	W8XK	Pittsburgh, Penna.	1-11pm.
25.30Y	11.86	GSE	Daventry, England	3-5:15, 5:45am-noon, 2-2:30pm; Su
25.32	11.85	CB1185	Santiago, Chile	Sat. 6-11pm & irreg. *(1-1:30p
25.32N	11.85	OAX2A	TRUJILLO, PERU	Heard testing near noon *
25.34	11.84	OLR4A	Prague, Czechoslovakia	M/T/W/T/F/ 7:50-10:55pm; Daily
				1:55-4:30pm; Sunday 5:55-8:55pm
25.36	11.83	W2XE	New York City, N.Y.	3:30-6pm; Sat/Sun 3-6pm,
25.37S	11.826	XEBR	Hermosillo, Mexico	9-11am, 8-10:30pm, or later.
25.40	11.81	R2O4	Rome, Italy	4:40am-12:05pm.
25.42S	11.801	DJZ	Vienna, Germany	4:50-10:50pm to No. America.
25.42	11.80	COGF	Matanzas, Cuba	6pm-midnight. (25M)
25.42	11.80	JZJ	Tokio, Japan	12:30-1:30, 7-7:30, 8-9:30am,
				2:30-4, 4:30-5:30, 8-8:30pm.
25.45	11.79	WLXAL	Boston, Mass.	4:40-6:30pm; Sat 1:45-6pm; Su 3-
25.47S	11.79	HP5G	Panama City, Panama	6-10pm. (6:30pm.)
25.47	11.78	OFE	Lahit, Finland	1:05-3, 5-6:30, 10am-12:30pm. *
25.49S	11.77	DJD	Zeesen, Germany	11:30am-4:25, 4:50-10:50pm.
25.50	11.76	XETA	Monterrey, Mexico	Noon-3:30pm.
25.53YS	11.75	GSD	Daventry, England	3-5:15, 9am-noon, 12:20-6, 6:20-
25.55	11.74	SP25	Warsaw, Poland	6-9pm. (8:30pm.)
25.55N	11.74	HVJ	Vatican City, Italy	Wed. 2:30-3; Sun 1-1:40pm irr. *
25.55	11.74	COCX	Havana, Cuba	8am to lam.
25.58	11.73	WLXAL	Boston, Mass.	9:15-11:30pm ex. Sat/Sun. (7:45p
25.58N	11.73	PHI	Huizen, Holland	Weekdays 6:15-6:45pm; Sat 7:15-
25.60	11.72	CJRO	Winnipeg, Canada	Saturdays only irreg.
25.60	11.718	CR7BH	Laurenco, Mozambique	12-1, 4:30-6:30, 9-11am, noon-4pm
				-Sun 5-7, 10am-2pm.
25.61V	11.713	TPA4	Pontoise, France	7-9:15, 9:30-12 mid. to N.A.
25.62	11.71	YSM	San Salvador, El Salvador	1-2:30pm.
25.62	11.71		Saigon, F. Indo-China	7:30-9:15am. (Sat. 8-9pm.)
25.63	11.705	SBP	Motala, Sweden	1-4:15pm; Sun 1:15-4:15pm; Wed/-
25.64	11.70	HP5A	Panama City, Panama	7-8:30am, 10am-1, 5-10pm; Su 6-10
25.64	11.70	CB1170	Santiago, Chile	10am-2, 3:30-11pm. (pm)
25.74	11.67	IQY	Rome, Italy	12:10-9pm intermittently.
26.01	11.535	SPD	Warsaw, Poland	6-9pm.
26.32	11.402	HBO	Geneva, Switzerland	Sun 1:45-2:30pm; Mon 3:30-3:45a
26.36N	11.38	XGRV	CHUNGKING, CHINA	8-8:35am. *
27.17	11.04	CSW2	Lisbon, Portugal	9:30am-noon, 2-5:30pm. (amexSa
27.27	11.00	PLP	Bandoeng, Java	4:30-10:30am, 6-7:30, 10:30pm-2
27.40	10.95		Tananarive, Madagascar	12:30-12:45, 10-11am; 2:30-4
28.14	10.66	JVN	Tokio, Japan	1:50-7:40am. (am ex. Sun.)
28.30	10.60	ZIK2	Belize, Br. Honduras	Tu/Th/Sat 1:30-2, 8-8:30-9pm.
28.48S	10.535	JIB	Taihoku, Taiwan	Relays JFAK 9-9:55am.
28.55FV	10.40	YSP	San Salvador, El Salvador	1-3, 6:30-11pm.
28.93	10.37	(EAJ43)	Burgos, Spain	3-4:30, 5-7, 7:45-8:45, 9-10pm. *
29.04	10.33	ORK	Ruyssede, Belgium	1:30-3pm to Belgian Congo.
29.24	10.26	PMN	Bandoeng, Java	4:30-10:30am, 607, 10:30pm-2am.
				ex. Sat; Sat 7:30pm-2am.
29.35S	10.22	PSH	Rio de Janeiro, Brazil	Mondays 8-8:30pm.
29.70J	10.10		Deutsche Freiheits Sender	4-5pm.
29.85F	10.05	TIEM	San Jose, C.R.	4:30-8pm *
30.06FV	9.98	COBC	Havana, Cuba	6:55am-1am.
30.24	9.92	JDY	Darien, Kwantung	7-8am, or later. (8:30-9pm. *
30.455S	9.855	EAQ	Madrid, Spain	3:45-4:05am, 4:45-5:05, 7:30-8,
30.49JF	9.84	COCM	Havana, Cuba	8am-12:30am; irreg. to 2am.

30.52	9.83	IRF	Rome, Italy	12:40-9pm intermit.
30.82J	9.735	CSW7	Lisbon, Portugal	Noon-2, 6-9pm for N.A.
30.83	9.73	CB970	Valpariso, Chile	6:30-11:30pm or midnight
30.86S	9.72	ZRD	Durban, So. Africa	3:30-7, 9am-noon, 11:45pm-12:45
30.93J	9.70		Fort-de-France, Martinique	6-8:10 or 9:30pm. (am
30.95FV	9.692	TI4NRH	Heredia, Costa Rica	Tu/Th/Sat 9-10pm; Sun 7-8am.
30.96S	9.69	ZHP	Singapore, S.S.	4:40-9:40am; Wed/Sat 12:40-140 am, Sun 5:40-9:40am.
30.96	9.69	LRA	Buenos Aires, Argen.	Mon to Th. 6-9pm; Fri. 4-9pm. Sat/Sun 7-9pm. (pm
30.98	9.685	TGWA	Guatemala, Guatemala	10-11:30pm ex. Sun; Sun 7-10:45
31.01	9.675	DJX	Vienna, Germany	11:30am-4:25pm to Africa.
31.02	9.67		Italian station	Relays 2R03 7:30-9pm.
31.02	9.67	W3XAL	New York City, N.Y.	5pm-1am.
31.06	9.66	LRX	Buenos Aires, Argen.	9:30am-10pm; Sat. to mid.
31.09J	9.65	CS2WA	Lisbon, Portugal	Tues/Thurs/Sat 4-7pm.
31.09	9.65	W2XE	New York City, N.Y.	6:30-11pm.
31.11	9.645	HH3W	Port-au-Prince, Haiti	1-3, 7-9pm. (am
31.12	9.64	CXA8	Colonia, Uruguay	Relays LR3 7am-9pm; Sat to 2:15
31.12F	9.64	ZP8	Asuncion, Paraguay	6:30-8pm. *
31.13	9.636	JFO	Taihoku, Taiwan	4-10:30am.
31.15F	9.63	2R03	Rome, Italy	12:05-9pm.
31.15	9.63	HJ7GAD	Bucaramanga, Colombia	Not being heard at present
31.20	9.618	HJ1ABP	Cartagena, Colombia	Weekdays 9am-1:30pm, 4:30-10:15
31.22FJ	9.61	HP5J	Panama City, Panama	Noon-1:30pm, 6:30-10:30pm* (pm
31.22	9.61	ZRK	Klipheuvell, S. Africa	11:45pm-12:45am ex. Sa; 3:30-7, 6-7, 7-9:10, 9:15-10:15pm (9-11a
31.25	9.60	RAN	Moscow, U.S.S.R.	Su 2-3, 7:15-8:15, 8:25-9:25pm.
31.28S	9.59	PCJ	Huizen, Holland	Tu 1:45-3:30, 7:15-10:30pm, Wed 7:15-8:40pm, Fri 8-9pm.
31.28	9.59	VK6ME	Perth, W. Australia	Weekdays 6-8am. (31M
31.28	9.59	VK2ME	Sydney, Australia	Sundays 1-3, 5-11am.
31.28	9.59	W3XAU	Philadelphia, Penna.	M/Th/Sa 1pm-1am; Tu/F/Su mid-1 am; Wed 10pm-1am. (am-12:30pm*
31.28	9.59	VUD2/3	Delhi, India	8:30-10:30pm, 1:30-3:30, 6:30am.
31.32	9.58	GSC	Daventry, England	4:15-6, 6:20-8:30, 9:20-11:20pm
31.32	9.58	VLR	Melbourne, Australia	Weekdays 3:15-8:30am or later
31.35	9.57	WLXK	Springfield, Mass.	6am-1am.
31.35	9.57	KZRM	Manila, Philippines	Weekdays 4:30-6pm; Mon to Fri. 5-9pm; Sat 5-10am; Sun 4-10am.
31.38	9.56	XUD	Peking, China	Relays XGAP 4-9am.
31.38	9.562	OAX4T	Lima, Peru	7-8, 11:30am-1:30, 4-6:15pm.
31.38S	9.56	DJA	Zeesen, Germany	12:05-11am, 4:50-10:50pm.
31.41	9.55	YDB	Soerabaja, Java	4:30-10:30am; 6-7:30, 10:30pm- 2am ex. Sat; Sat 7:30pm-2am.
31.41	9.55	VUB2	Bombay, India	9:30-10:30pm, 1-3:30am.
31.41	9.55	or 9.66 HVJ,	Vatican City,	Sundays 5-5:30am.
31.41	9.55	TPB11	Essarts, France	2-5am; 11:15am-6pm.
31.41	9.55	OLR3A	Prague, Czechoslovakia	Mondays 4:40-5:10pm.
31.41	9.55	W2XAD	Schenectady, N.Y.	7:15-10pm to S.A.
31.41X	9.55	XEFT	Veracruz, Mexico	7:30pm-midnight.
31.45S	9.54	DJN	Zeesen, Germany	12:05-11am 4:50-10:50pm.
31.46	9.538	VPD2	Suva, Fiji's	5:30-7am ex. Sundays.
31.47	9.535	JVI	Tokio, Japan	2:30-4, 4:30-5:30pm.
31.48	9.53	W2XAF	Schenectady, N.Y.	4pm-mid. (W6XBE, 3-9am.)
31.48	9.53	VUC2	Calcutta, India	2:06-4:06am.
31.50	9.526	ZBW3	Hong Kong, Hong Kong	4-11am; Sun. 3-9:30am etc.
31.50X	9.526		Guadalajara, Mexico	Noon-4:30, 8-11:30pm.
31.50N	9.525		Addis Abeba, Ethiopia	1:30-2:30pm. *(2:30-10:30am.*
31.51	9.522	LKC	Jeloy, Norway	4:30-10:30am 8-9, 10-11pm; Sun-
31.51	9.52	OZF	Skamlebak, Denmark	8-9:30, 9:30-11pm.*
31.51S	9.52		Moscow, U.S.S.R.	9am-5pm; 6-9pm irr.* (11:20pm
31.55Y	9.51	GSB	Daventry, England	1:3004, 4:15-6, 6:20-8:30, 9:20-
31.55V	9.51	HS8PJ	Bangkok, Siam	Thurs. 8-10am (4am ex. Sunday
31.55	9.51	FIQA	Tananarive, Madagascar	12:30-12:45am, 10-11am, 2:30-

31.57S	9.503	XEWW	Mexico D.F., Mexico	8am-12:30am.
31.57S	9.503	KZIB	Manila, P.I.	6-9:05am.
31.58	9.501	PRF5	Rio de Janeiro, Brazil	4:45-5:55pm ex.Sundays.
31.58	9.50	OFD	Lahti, Finland	12:15-5pm.
31.58	9.50	VDSME	Melbourne, Australia	4-7am except Sundays.
31.61V	9.49	OAX5C	Ica, Peru	8-11:30pm.
31.62V	9.488	EAR	Madrid, Spain	3:40-4, 7:30-8, 8:40-9pm.
31.70S	9.465	TAP	Ankara, Turkey	11:30am-4, or 5pm.
31.77	9.445	HCODA	Guayaquil, Ecuador	8:15-10:15pm ex.Sundays.
31.79	9.436	COCH	Havana, Cuba	8am-11pm; Sun 8am-10pm.
32.07V	9.354	HC1ETC	Quito, Ecuador	8-11pm Saturdays. (8:15pm
32.11	9.345	HBL	Geneva, Switzerland	Sun 7-7:45, 8-8:45pm; Mon 6:50-
32.12	9.34	OAX4J	Lima, Peru	Noon-3, and 5pm-midnight.
32.29	9.29		Shanghai, China	8-9:05am. (4:40pm
32.29FX	9.29	HIG	Trujillo City, D.R.	6:40-8:40, 11:40am-2:10, 3:40-
32.61V	9.20	COBX	Havana, Cuba	Relays CMBX 8am-11:30pm.
32.68VS	9.18	HC1GQ	Quito, Ecuador	Mon/Wed/Sat 9-10:30pm.
32.86JF	9.13	HC2CW	Guayaquil, Ecuador	7-10:30pm; Sun 3:30-6pm.
32.89	9.12	HAT4	Budapest, Hungary	7-8pm.
32.97	9.10	HI9C	Trujillo City, D.R.	Evenings.
32.97V	9.10	COCA	Havana, Cuba	Noon-12:15am, or later.
33.00	9.091	PJCI	Curacao, D.W.I.	6:36-8:36pm; Su 10:36am-12:36pm.
33.24V	9.025	COBZ	Havana, Cuba	7:45am-1:15am.
33.48	8.96	COKG	Santiago, Cuba	5-6, 9:30-10:30pm.
33.98JF	8.83	COCQ	Havana, Cuba	6:55-lam. *(or 10p
34.53	8.688	COJK	Camaguey, Cuba	11:30am-12:30pm, 3:30-6, 8-9pm,
34.67VC	8.652	HJ4DAU	Medellin, Colombia	Weekdays 7-10pm.
34.97C	8.58	YNPR	Managua, Nicaragua	12:45-2:15, 6:45-10:15pm.
35.02N	8.572		BUCHAREST, ROMANIA	8:15-10:30am, 4-7pm. (pm-2am.
37.08	8.09	YDX	Medan, Sumatra	Weekdays 10:30pm-2am; Sun 7:30
38.00	7.894	YSD	San Salvador, El Salvador	7-10:30pm.
38.12	7.87	HC1RB	Quito, Ecuador	8:30-11:30pm.
38.20	7.854	HC2JSB	Guayaquil, Ecuador	11am-2pm, 4-11pm.
38.48	7.797	HBP	Geneva, Switzerland	Mondays 6:50-8:15pm.
39.39	7.614	CR6AA	Lobito, Angola	Wed/Sat 2:45-4:30pm. (12-12:30a
39.89S	7.52	KKH	Kahuku, Hawaii	Sa. 12:15-12:30am, 9-9:30pm, Sun-
39.95	7.51	JVP	Tokio, Japan	8-9:30am (8:45, 9-10pm. *
40.05S	7.49	(EAJ43)	Burgos, Spain	4-4:30, 9-10am, 1:30-4:30, 5:30-
40.27	7.45	TI2RS	San Jose, Costa Rica	7-11pm.
40.65	7.38	XECR	Mexico D.F., Mexico	Sundays 7-8pm.
40.79N	7.353	FET5	Burgos, Spain	5:45-7:15, or 7:30pm. *
41.01S	7.31	VIG	Port Moresby, Papua	Jan. 7/21, Feb. 4, 3-5am.
41.55	7.22		Malaga, Spain	9-10am, 4-5:30pm etc.
41.80	7.177	CR6AA	Lobito, Angola	Wed/Sat 2:45-4:30pm.
42.25	7.10	FO8AA	Papeete, Tahiti	Tues/Fri 11pm-12:30am.
42.55	7.05	FG8AA	Point A Pitre, Guadeloupe,	6-7pm. *
42.80	7.00	XGSA	Kweiyang, China	1-2, 8-10:10am, 6:30-7:30pm.
43.10	6.96	2ZB	Wellington, N.Z.	Mid.-7am.
43.99	6.82	XGOX	Nanking, China	Reported on air 6-6:30am.
44.12	6.80	PZH	Paramaribo, D.Guiana	Mon/Wed/Fri 5:41-8:41pm.
44.28	6.775	HIH	San Pedro, D.R.	7:40-8:40pm; Sun 5:20-6:40pm.
44.38V	6.76	HI7P	Trujillo City, D.R.	7:10-8:40pm; Sun 9:40-10:40pm.
44.38VF	6.76	YNRF	Managua, Nicaragua	6:45-10:15pm, or 11pm. *
44.51	6.74	HC1TQ	Quito, Ecuador	Sundays 5-7pm.
44.58	6.73	HI3C	La Romana, D.R.	Being heard evenings again. *
44.60	6.727	PMH	Bandoeng, Java	4:30-11am; Sun 8:30pm-1:30am.
44.81V	6.695	TIEP	San Jose, C.R.	7-11pm.
44.95	6.676	HBQ	Geneva, Switzerland	Sun 1:45-2:30, 2:30-2:45pm.
44.98	6.67	HI9B	Santiago, D.R.	6:40-7:40pm.
45.05	6.66	HI5G	Trujillo City, D.R.	To 5:55pm ex.Sundays.
45.22	6.635	HC2RL	Guayaquil, Ecuador	Sun 5:30-7:30pm; Tues 9-11pm.
45.25X	6.63	HIT	Trujillo City, D.R.	12:10-1:40pm, 4:40-8:40pm.
45.29B	6.625	PRADO	Riobamba, Ecuador	Thursdays 9-11pm.
45.39V	6.61	YNLG	Managua, Nicaragua	1:30-2:30, 6-10:15pm.
45.70	6.565	HI5P	Puerto Plata, D.R.	5:40-7:40, 9:40-11:40pm.

45.80	6.55	TIRCC	San Jose, C.R.	Tu/Th/Sa 6-7pm; Sun 8-10pm.
45.87FJ	6.54	YN1GG	Managua, Nicaragua	1-2:30, 8-10pm ex. Sundays.
45.84X	6.545	YV6RB	Bolivar, Venezuela	6:30-9:30pm ex. Sundays.
46.01V	6.52	YV4RB	Valencia, Venezuela	11am-1:30pm, 5-9:30pm.
46.15	6.50	HIL	Trujillo City, D.R.	12:30-2, 6-8, or 9pm ex. Sun.
46.19F	6.495	TGWB	Guatemala, Guatemala	7:45-9am, 12:45-3:45, 7:30pm-1245 am; Su. 10:30am-midnight.
46.26	6.485	HILL	Santiago, d.l.c., DR.	Weekdays 5:30-9:30pm.
46.41	6.465	YV3RD	Barquisimeto, Venez.	11:30am-1:30, 5:30-9:30pm.
46.44	6.455	HI4V	S.F. de Macoris, D.R.	5:10-7:40pm; to 10pm irreg.
46.66Y	6.43	HILS	Santiago, D.R.	5:40-7:10pm ex. Sundays.
46.77	6.416	YV6RC	Bolivar, Venezuela	10:30am-1:30pm, 4:30-9:30pm.
46.80V	6.41	TIPG	San Jose, C.R.	7-9:30am, 12-2, 4-11:30pm.
46.88	6.40	YV5RH	Caracas, Venezuela	5-9:30 ex. Sundays.
46.88JS	6.40	TGQA	Quezaltenango, Guatemala	Mon/Fri 9-11pm, Sat 10pm-1 lam; Sun 1-3am, 1-3pm.
46.99	6.384	ZIZ	Basseterre, St. Kitts	4-4:45pm; Wed. 7-7:30pm.
47.02	6.38	YV5RF	Caracas, Venezuela	11am-1pm, 5:30-9:30pm ex. Sunday
47.06J	6.375	T1WS	Puntarenas, C.R.	5-7, 7:30-10; Sun 5-6pm.
47.14	6.365	YV1RH	Maracaibo, Venezuela	10:30am-1:30, 4:30-10:30pm. (pm
47.20S	6.357	HRPL	San Pedro Sula, Honduras	6-7:30am, 2-4pm; irreg. to 10-
47.32	6.34	HI1X	Trujillo City, D.R.	Tues/Fri 8:10-10:10pm.
47.36	6.334	OAX1A	Chiclayo, Peru	8-11pm.
47.43	6.324	COCW	Havana, Cuba	6:55am-lam; Sun 9:55am-10pm.
47.51S	6.315	HIZ	Trujillo City, D.R.	5:10-7:40pm ex. Sun; irreg. to
47.62	6.30	YV4RD	Maracay, Venezuela	6-11pm except Sundays (1040pm
47.66S	6.295	OAX4G	Lima, Peru	6, or 7pm to mid. (9:40p
47.69FV	6.29	HIG	Trujillo City, D.R.	6:40-8:40, 11:40am-2:10, 3:40-
47.81FV	6.275	YV5RP	Caracas, Venezuela	4:30-9:30pm or later.
47.96	6.255	YV5RJ	Caracas, Venezuela	5:30-8pm.
48.05XV	6.243	HIN	Trujillo City, D.R.	5:25-10:10pm or later.
48.08	6.24	ZGE	Kuala Lumpur, F.M.S.	Sun/Tues/Fri 6:40-8:40am. *
48.11	6.235	HRD	La Ceiba, Honduras	8-11pm; Sun 4-6pm.
48.15	6.23	YV1RG	Valera, Venezuela	11:30am-lpm, 5:45-8:45pm.
48.31	6.21		Saigon, F. Indo-China	7:30-9:15am & irreg.
48.31	6.21	YV1RI	Coro, Venezuela	6:30-9:30pm ex. Sundays.
48.43	6.195	HI2D	Trujillo City, D.R.	5:10-7:10pm.
48.45S	6.193	TG2	Guatemala, Guatemala	7:30-9am; Mon/Fri 6-11pm; Sat 6pm-lam; Sun 1-3am, 3-8pm. *
48.47S	6.19 or 6.03	HVJ	Vatican City	M/Tu/T/F 2-3pm; Wed 2-2:30, 3-330 pm; Sat. 2-3:30pm.
48.47YV	6.19	H1LA	Santiago, D.R.	10:40am-1:40, 6:40-9:40pm.
48.58	6.175	CJRO	Winnipeg, Canada	Heard testing here Sun mornings
48.62	6.17	XXEA	Mexico D.F., Mexico	8:30-10:30am, 2:40-4:30, 7pm-mid.
48.62	6.17	W3XE	New York City, N.Y.	11:30pm-12:30am.
48.70	6.16	YV5RD	Caracas, Venezuela	3:30-10pm; Sun 8am-10:30pm.
48.78FC	6.15	HJ4DAE	Medellin, Colombia	9:30am-lpm, 5-10:30pm.
48.78	6.15	VPB	Colombo, Ceylon	7-11am, or later.
48.78	6.15	ZP14	Villarica, Paraguay	4-6pm.
48.78V	6.147	CJRO	Winnipeg, Canada	Saturdays only irregular.
48.86	6.14	W8XK	Pittsburgh, Penna.	11pm-lam.

49M

**Special announcements and items in SPATARI, the new radio language.

== OFFICIAL REVISED LIST OF COLOMBIAN STATIONS ==

550	30w	HJ1ABC	Sincelejo	1150	300w	HJ5EAB	Cali (Rel. by 5EAD)
590	250	HJ3CAL	Bogota	1160	2400	HJ3CAI	Bogota
870	1000	HJ3CAC	Bogota	1190	250	HJ1ABN	Barranquilla
890	250	HJ6FAE	Pereira (HJ6FAC)	1210	250	HJ1ABM	Monteria
970	2500	HJ3CAW	Bogota	1220	460	HJ3CAE	Bogota
1040	1100	HJ3CAZ	Bogota	1240	250	HJ1ABF	Cartagena (HJ1ABE)
1060	250	HJ3CAG	Bogota	1250	750	HJ4DAK	Antioquia (HJ4DAE)
1080	500	HJ1ABH	Barranquilla (LABG)	1260	250	HJ6FAX	Manizales
1090	250	HJ5EAE	Cali	1270	250	HJ2BAC	Cucuta (HJ2BAB)
1120	960	HJ3CAB	Bogota	1280	280	HJ7GAK	Bucaramanga (7GAB)
1130	350	HJ7GAE	Bucaramanga (7GAD)	1290	250	HJ3CAK	Bogota (Cont. pg 15)

49.18S	6.10	W9XF	Chicago, Illinois	4-6:50pm (Sat to 5:30), 1-2am, Su
49.18V	6.10	YUA	Belgrade, Yugoslavia	1-3, 6:30-8:30am, 12-6:30pm (1-6pm
49.20	6.097	ZRK	Klipheuvell, So. Africa	11:45am-4pm; Sun noon-3:20pm.
49.20	6.097	ZRJ	Johannesburg, So. Africa	11:45pm-11:30am.
49.30XJ	6.085	XECU	Guadalajara, Mexico	Evenings irreg. (8:15-9:15am.
49.32	6.083	VQ7LO	Nairobi, Kenya	5:30-6, 11:15am-2:15pm; Tues/Th-
49.33	6.081	YV1RD	Maracaibo, Venezuela	5-10, or 11pm. (am.*
49.34N	6.080	CRY9	MACAO, MACAO	Mondays 8:30-10am; Wed 8:30-9:10
49.34N	6.080	DJM	BERLIN, GERMANY	4:50-10:50pm. *
49.37	6.077	OAX4Z	Lima, Peru	7pm-1:30am ex. Sundays.
49.42	6.07	CFRX	Toronto, Canada	7:30am-mid; Sun 10am-11pm.
49.46	6.065	SBO	Motala, Sweden	4:15-5pm.
49.46N	6.065	HJ4DAC	QUIBDO, COLOMBIA	Heard testing in evenings. (ex S
49.48F	6.063		Tananarive, Madagascar	12:30-12:45, 10-11am; 2:30-4am-
49.50	6.06	W3XAU	Philadelphia, Penna.	Tues/Fri/Sun 1pm-mid; Wed 1-10pm
49.50	6.06	W8XAL	Cincinnati, Ohio	6:45-8pm; 11pm-2am; Su 8am-8pm.
49.53	6.057	ZHJ	Penang, S.S.	6:40-8:40am ex. Sundays.
49.59Y	6.05	GSA	Daventry, England	12:20-6pm.
49.59	6.05	HJLABG	Barranquilla, Colom.	11am-11pm; Sun 11am-8pm.
49.63	6.045	XETW	Tampico, Mexico	7-11pm.
49.67	6.04	WLXAL	Boston, Mass.	7-8:30, or 9pm ex. Saturdays.
49.67	6.04	W4XB	Miami, Florida	1-3, 9pm-mid; Sun 4-6, 9pm-mid.
49.67	6.04	YDA	Tandjong Priok, Java	4:30-10:30am & irreg.
49.73B	6.033	HP5B	Panama City, Panama	10:30am-2, 6-10pm.
49.75	6.03	VE9CA	Calgary, Alta., Canada	10am-2am.
49.75	6.03	HVJ	Vatican, City, Italy	See 6.19mc.
49.75	6.03	RV59	Moscow, U.S.S.R.	9am-11pm intermittently. *
49.81	6.023	XEUW	Veracruz, Mexico	10pm-1am.
49.83S	6.02	DJC	Zeesen, Germany	1-4:25, 4:50-10:50pm.
49.86	6.017	HI3U	Santiago, D.R.	4:40-9:40pm ex. Sundays.
49.88X	6.105	PRA8	Pernambuco, Brazil	4-9pm.
49.92FX	6.01	HJ3CAX	Bogota, Colombia	5:30-11:15pm; Sun 6-11pm.
49.92	6.01	OLR2A	Prague, Czechoslovakia	Wed/Thurs 4:40-5:10pm.
49.92	6.01	CJCK	Sydney, Nova Scotia	7am-1:30, 4-8:30pm. (week.
49.92	6.01	9MI	S.S. Kanimbla	7-7:30am two or three times a
49.92V	6.01	COCO	Havana, Cuba	7:55am-midnight.
49.94S	6.007	XYO	Rangoon, Burma	7-10am, 9-11pm (Sat 9:30-11pm)*
49.94	6.007	ZRH	Roberts Heights, S. Afri.	11:45pm-12:45am, 5-7:30am, -
49.94	6.007	ZRJ	Klipheuvell, So. Africa	3:30-4pm. (10am-4:45pm
49.95V	6.005	CFCX	Montreal, Canada	7:45am-1am; Sun 9am-11:15pm.
49.95V	6.005	HP5K	Colon, Panama	7-9am, 12-1, 6-11pm.
49.99S	6.002	CXA2	Montevideo, Uruguay	5:30-10:30pm.
50.00	6.00	XEBT	Mexico D.F., Mexico	10am-1:45am.
50.20	5.977	CS2WD	Lisbon, Portugal	2:30-5:30pm; Sun/Thurs 6-7am.
50.21	5.975	OAX4P	Huancayo, Peru	9-11pm. (9:30p
50.22	5.973	YV5RC	Caracas, Venezuela	4-10pm; Sun 8:30-11:30am; 3:30-
50.38S	5.955	HH2S	Port-au-Prince, Haiti	6-10:15pm ex. Sun. (Sun 2-5a
50.51F	5.94	TG2X	Guatemala, Guatemala	Mon/Thur 9-11:30pm; Sa 10pm-mid.
50.55	5.935	YV1RL	Maracaibo, Venezuela	11am-1pm, 4:30-10:30pm.
50.68	5.92	YV4RH	Valencia, Venezuela	5-9:30pm.
50.80F	5.905	TILS	San Jose, C.R.	Noon-2:30, and 6-11pm.
44.30F	6.00			
44.38VF	6.76	YNRF	Managua, Nicaragua	6:45-10:15pm, or 11pm. *
44.51	6.74	HC1TQ	Quito, Ecuador	Sundays 5-7pm.
44.58	6.73	HI3C	La Romana, D.R.	Being heard evenings again. *
44.60	6.727	PMH	Bandoeng, Java	4:30-11am; Sun 8:30pm-1:30am.
44.81V	6.695	TIEP	San Jose, C.R.	7-11pm.
44.95	6.676	HBQ	Geneva, Switzerland	Sun 1:45-2:30, 2:30-2:45pm.
44.98	6.67	HI9B	Santiago, D.R.	6:40-7:40pm.
45.05	6.66	HI5G	Trujillo City, D.R.	To 5:55pm ex. Sundays.
45.22	6.635	HC2RL	Guayaquil, Ecuador	Sun 5:30-7:30pm; Tues 9-11pm.
45.25X	6.63	HIT	Trujillo City, D.R.	12:10-1:40pm, 4:40-8:40pm.
45.29B	6.625	PRADO	Riobamba, Ecuador	Thursdays 9-11pm.
45.39V	6.61	YNLG	Managua, Nicaragua	1:30-2:30, 6-10:15pm.
45.70	6.565	HI5P	Puerto Plata, D.R.	5:40-7:40, 9:40-11:40pm.

= I. D. A. INTERNATIONAL FRIENDSHIP PROGRAMS = ¹³

JAN. 4, WED.	5pm EST,	Los Angeles, Calif.	25950kc	W6XKG
Good-Will broadcast dedicated to S.W. station TGWB.				
JAN. 7, SUNDAY,	2-3am EST,	Prince Albert, Canada	NRC 1210	CKBI
JAN. 8, SUNDAY,	1-1:30am EST,	HT Cleveland, Ohio	IDA 1070	WTAM
NOTE: This is a feature broadcast including all-star local talent, and a talk by IDA Programs Director Herb Tucker. An even better program than last year's is promised. Reports on WTAM's new vertical antenna are solicited from all dx'ers.				
JAN. 8, SUNDAY,	1-2am EST,	HT Strasbourg, France	IDA 859	
	8, SUNDAY, (9:45pm EST,)	HT Zeesen, Germany	IDA 6020	DJC
JAN. 11, WED.	3pm EST,	Los Angeles, Calif.	25950	W6XKG
Good-Will program dedicated to Colombia, and Venezuela stations. Greetings from IDA So. Calif Chapter.				
JAN. 12, THURS,	3-4am EST,	Quebec, P.Q.	NRC 1310	CKCV
JAN. 13, FRI.	3-4am EST,	Moose Jaw, Sask.	NRC 1200	CHAB
JAN. 14, SAT.	3-4am EST,	Sherbrooke, P.Q.	NRC 1210	CHLT
JAN. 15, SUNDAY,	2-3am EST,	Quebec, P.Q.,	NRC 580	CHRC
	15, SUNDAY, 4-5am EST,	HT Calgary, Alta., Canada	IDA 930**	CFAC
	15, SUNDAY, 9-10pm EST,	HC Lima, Peru	IDA 9330	OAX4J
JAN. 21, SAT.	9-10pm EST,	JG Panama City, Panama	IDA 11780	HP5G
JAN. 21, SAT and JAN. 22, Sun,	3-4am,	Guatemala, Guatemala	IDA 1310**	TG1
Good-Will program dedicated to the I.D.A., with special announcements and items in SPATARI.				
			IDA 2340**	TG3
			IDA 6190**	TG2
JAN. 22, SUNDAY,	2-6am EST,	EH Cienfuegos, Cuba,	All 1160**	CMHJ
Send reports accompanied by 10¢ to E.Hidalgo, 210 Prado, Cienfuegos, Cuba, for special verifications.				
JAN. 22, SUNDAY,	3-4am EST,	Sao Paulo, Brazil	960	PRF3
JAN. 28, SAT.	2-6am EST,	EH Cienfuegos, Cuba,	All 1450**	CMHM
Send reports accompanied by 10¢ to E.Hidalgo, Prado 210, Cienfuegos, Cuba, for special verifications.				
JAN. 29, SUNDAY,	1-2am EST,	HT Cleveland, Ohio	IDA 1450	WGAR
FEB. 12, SUNDAY,	10-10:15am EST,	RL RIGA, LATVIA	IDA 28080	YL2CD
(26, SUNDAY,	10-10:15am EST?)	RIGA, LATVIA	IDA 28080	YL2CD
A real feature IDA Dx broadcast including Greetings to IDA, and a description of ham radio in Latvia. Send reports accompanied by an IRC to Arvids Vitolins, Miera iela 52-5, Riga, Latvia... A good opportunity to add Latvia to your VIC.				
MAR. 20, MONDAY,	1-2am EST,	LA San Salvador, El Sal-	IDA 7894	YSD
		vador.	IDA 640	YSS

= TIPS BROADCASTS =

1st and 3rd Sundays monthly,	2-4am EST,	Baton Rouge, La.	NRC 1120	WJBO
1st and 3rd Thurs. of each month,	2:45-3am EST,	Salt Lake City,	1130	KSL
Tuesdays,	5:30-6pm EST,	(IDA Tips) Schenectady, N.Y.	15330/9530	W2XAD/F
Tues. 8pm, Fri. mid. EST,	(NNRC)	New York City, N.Y.	NNRC 26300	W2XJI
Wednesdays,	10:30-11pm EST (IDA)	Detroit, Michigan.	IDA 41000	W8XWJ

NOTE: Programs arranged by: HT, Herb Tucker; HC, Herb Campbell; JG, John D. Gallivan; EH, Enrique Hidalgo; RL, Rog Legge; LA, Louis Ambrosius.....
 **Special announcements and items in SPATARI, the new radio language.

= OFFICIAL REVISED LIST OF COLOMBIAN STATIONS =

550	30w	HJ1ABC, Sincelejo	1150	300w	HJ5EAB, Cali (Rel. by 5EAD)
590	250	HJ3CAL, Bogota	1160	2400	HJ3CAI, Bogota
870	1000	HJ3CAC, Bogota	1190	250	HJ1ABN, Barranquilla
890	250	HJ6FAE, Pereira (HJ6FAC)	1210	250	HJ1ABM, Monteria
970	2500	HJ3CAW, Bogota	1220	460	HJ3CAE, Bogota
1040	1100	HJ3CAZ, Bogota	1240	250	HJ1ABF, Cartagena (HJ1ABE)
1060	250	HJ3CAG, Bogota	1250	750	HJ4DAX, Antioquia (HJ4DAE)
1080	500	HJ1ABH, Barranquilla (LABG)	1260	250	HJ6FAX, Manizales
1090	250	HJ5EAE, Cali	1270	250	HJ2BAC, Cucuta (HJ2BAB)
1120	960	HJ3CAB, Bogota	1280	280	HJ7GAK, Bucaramanga (7GAB)
1130	350	HJ7GAE, Bucaramanga (7GAD)	1290	250	HJ3CAK, Bogota (Cont. pg 15)

International

Published Monthly Excepting July



THE GLOBE CIRCLER

 BLOOMINGTON, ILLINOIS, U. S. A.

Rx'ers Alliance

CHARLES A. MORRISON
EDITOR

Volume 7

January, 1939

Number 1

IDA, PAST, PRESENT AND FUTURE

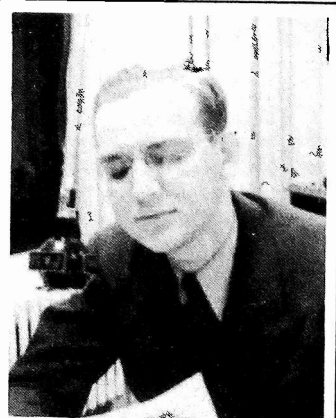
In Nov. 1932, IDA came into being. On Jan. 1, 1933 - just 6 years ago, the GLOBE CIRCLER, issue #1, a 4 page mimeographed bulletin was mailed to our less than 50 members. Since that date our history has been one of steady but not mush-room growth. Today we have on our books over 1700 members scattered throughout 45 states and in over 75 foreign countries. In our span of existence we have seen many dx clubs come and go, but so far as I know, there are only two clubs now active that were functioning before IDA was organized. We have never tooted our own horn or felt it necessary to tell you what a great outfit we are. We have always felt our continued activity and service should be sufficient evidence of this fact. A dx club has one, and only one excuse to exist, that is to serve the dx fraternity to the best of its ability. To furnish accurate and up-to-date dx news and tips we have considered of prime importance. This we have tried to do. This we will continue to do, devoting our entire space as always to NEWS, news that is as hot and accurate as we can possibly obtain.

Today we are ready to take another step forward insofar as the Globe Circler is concerned, namely to give you a bigger and more complete book. This will cost more money. Money can come through two sources only: more new members and a better percentage of renewals. The solution is more active members. Are YOU an active member? If you can answer the following four questions honestly you are: (1) Do I sell the advantages of IDA membership upon every possible occasion? (2) Have I ever enrolled a member in IDA? (3) Do I contribute news items regularly? (4) Do I pay my renewal subscription promptly? Now is the time to take a little self inventory, turn over a new leaf, and EACH one of us, do our very best to make this the most successful and most active year of our existence-

-Charles A. Morrison

== CHAPTERS ==

ACC (Detroit): MEETINGS HELD 3rd Tues. of month, 8 pm EST, at the News Bldg: next, Jan. 17. For further information contact R. Verbrugge, 10904 East Warren, Detroit, Michigan.



The SWL Chatterbox "On the Air." R. Verbrugge at the mike of W8XWJ.

BETA (NYC): MEETINGS ARE HELD on alternate Saturday nights at home of Ed Goss, 812 Prospect Place, Brooklyn: next Jan. 7. All dx'ers invited.

EPSILON (London): This chapter is to be revised. All interested members and dx'ers please contact R. G. Baker, 40 Stilehall Gardens, Chiswick, London W4, England, as soon as possible.

REGINA JUBILEE (Regina): Pre-Xmas meeting of Dec. 9, at home of J. Dicken son, was well attended. A good deal of fun was afforded by the exchange of dime store gifts. The Jan. meeting will be held at the home of Mrs. Morphy on Thursday, January 19, 1939.

WINDY CITY (Chicago): MEETINGS ARE HELD 2nd Wednesday of each month, 8pm CST, at Central YMCA: next, Jan. 11. Home meetings featuring social activities and receiver try-outs are held frequently.

JEWEL OF MEDITERRANEAN (Malta): The first winter meeting is to be held in December. Latest veri's received by members include: G5PD, G2ZP, G5NI, G6XR, G2TR, ON4RR, SULKG, F3LE, F8VP, VUD, F8WOA, EAR, OLR and ZL6AJ.

NOTE CHAPTER SECRETARIES: Please send brief reports on your meetings, and in particular regular stated times and places for your meetings.

(Cont. from page 13)
 1300 250 HJ5EAC, Cali
 1310 250 HJ1ABK, Barranquilla
 1320 1800 HJ4DAQ, Medellin (HJ4DAQ)
 1330 250 HJ1ABA, Barranquilla (1ABB)
 1340 250 HJ5EAF, Cali
 1350 250 HJ4DAC, Medellin
 1370 250 HJ4DAT, Medellin
 1380 300 HJ3CAJ, Bogota
 1380 250 HJ4DAR, Medellin
 1390-480 HJ6FAD, Manizales (HJ6FAB)
 1400 1400 HJ1ABR, Cartagena (HJ1ABP)

1410 250w HJ1ABL, Monteria
 1420 250 HJ4DAV, Medellin
 1420 30 HJ4DAI, Yarumal
 1430 250 HJ2BAI, Cienaga
 1450 200 HJ5EAG, Popayan
 1500 25 HJ6FAF, Pereira

NOTE: Stations in paranthesis are the short-wave relays of broadcast transmitters listed. This is the latest revised list of Colombian broadcasting stations and has been furnished us by Alan Breen.

== BROADCAST BAND DX ==

Have heard OAX4A in evening...Dec. 11, 3-3:30am EST, heard LRA (750), testing for "Bureau of Standards"...TIXD was heard fine both mornings with frequent mention of IDA & NNRC. Not a whisper from TIRH...TP's were good in October, and I added 3ZB and 4BU. No TA's heard yet (A. Bartholomew, NY)... "TIXD came in fairly well on Dec. 10, from 2 to 3am. Static was bad and logging thus difficult. Could not hear the S.W. frequency" (DeMyer, Mich)... "Cubans coming in strong; unknown drowned out WBBM on 770, Dec. 9. CMCU on 780 thru WEAN, WMC, WTAR etc.. CMCY on 590 drowns out WOW. CMBF on 1560 comes in better than local WJBK...CMRT (not CM9RT) on 1580 heard on Dec. 11. Had English announcements" (Smith, Mich)

RETURN POSTAGE BUREAU

Brazilian stamps at 5¢ each are now available from the Return Postage Bureau, 85 Francisco Ave., Rutherford, N. J. Recently stocked mint stamps from Trinidad, Grenada, and Antigua, are now 5¢ each instead of 6¢ each. Mint stamps to be used in pre-paying postage on QSL or SWL cards are now available at the Bureau from over 50 countries. Send for free list

RADIO LISTENER MAGAZINE

The 2nd issue of the Radio Listener Magazine came out on Dec. 1. It contains station lists starting with the long-wave stations right on down through the ultra-short waves. Gives call letters, frequency, power, location, QRA, interval signals etc. Includes latest Ecuadorian, Dominican, Venezuelan, Mexican, and Chinese lists 25¢ in coin per copy in U.S., 30¢ elsewhere. Address: The Radio Listener, P.O. Box 1, W. Newton, Mass., U.S.A.

APPOINTMENT: Chas. C. Trezise, 7638 Lafayette Ave., Chicago, Ill., has been appointed IDA State Manager for Ill.



WELL EQUIPPED LISTENING POST OF, JAMES MOORE, SAN FRANCISCO, CALIF.

== IDA EXCHANGE CORNER ==

Robt. Cooper, 733 Washington Ave., Palmyra, N.J. (swap letters with other members around 15 years of age)...
Wm. Miller, 498 Bergen Ave., Bronx, New York City, N.Y. (swap SWL cards)...
H.V. Gribble, Traffic Box 42, Minneapolis, Minn. (swap SWL cards 100%).

NEW MEMBERS

Jos. Richrod, Long Island City, N.Y...
Robt. B. Bass, Belle Harbor, N.Y...
C. Carper, Roanoke, Va...
W.H. Guthrie, Los Angeles, Calif...
H.M. Smith, Bristol 4, ENGLAND...
W.V. Scholz, Webster Groves, Mo...
H. Harjes Jr., Jackson Heights, N.Y...
S.W. Kerr, Detroit, Mich...
A.P. Campbell, Chicago, Ill...
Jack Bock, St. Clair Mich...
R.S. Hartogs, Rotterdam W, NETHERLANDS...
Grant Batson, Westfield, N.Y...
C.M. Robinson, Waterloo, Iowa...
C. Fern Jr., Lihue, Kauai, HAWAII...
Theo. F. Obrigg, Mamaroneck, N.Y...
J. Pedersen, Bridgeport, Conn...
C.H. Gardner, Tucson, Ariz...
D. White, Seattle, Wash...
D.E. Muir, New Rochelle, N.Y...
John Vargas, Chicago, Ill...
R.E. White, St. John's, NEW FOUNDLAND...
J. Nichalski, Chicago, Ill...
J.J. Oskay, New Brunswick, New Jersey.

The UDXC (Universal DX Club) has been officially merged with the NNRC (Newark News Radio Club).

BROADCAST STATION NEWS

- AUSTRALIA NEW:** 6WN (790), Perth, 500/1000w, officially opened Nov. 10...6BY (1340), 200w, testing...TO BE OPENED SOON: 2CK (1460), Cessnock, 200w; 4AT (680), Atherton; 2CY (850), Canberra; and 3LO (770), Melbourne, 10kW, where it will broadcast simultaneously from same site as 3AR...CHANGES: 2CA (1050), Canberra, to 2kW, to 24 hours daily; 3GL (1350), Geelong, to 500w; 3SH (1330), Swanhill, to 200w, and 5RM, Renmark, 1kW, to 810kC (Niven, Breen, Forest, Wignall)
- BESSARABIA** "Radio Bessarabia," (1422), 20kW, at Chisinau, to be opened soon.
- BRAZIL** The Green-Yellow Chain, consisting of PRD2, PRB6, PRA7, PRB3, PRB5, PRB4, PRD9, PRG9, PRF2, PRD4, PRD6, and PRB2, operates nightly 7:30 to 8:30pm EST
- PRD2 (1240), 5kW, Rio de Janeiro, is the key station (Com. Bul.)
- CANADA** CHNC, New Carlisle, P.Q., 1kW, to 610kC (NRC)
- CHINA** NEW: XOJC (660), 10kW, Nanking...XHTM (1160), 100w, Shanghai...XMHI (1120), 100w, Shanghai...XQCT (1300), 200w, Shanghai...XHHG, Shanghai, 100w, to 1220kC... Meaning of Chinese calls; X-China prefix; 2nd letter indicates power, i.e., L for 50w or lower; H for 100w, or lower; Q for 250w or lower; M for 500w or lower; G for Government owned; 3rd letter indicates location as H for Shanghai; 4th letter is for different station in same location. (Saito, Breen, ADXC, Tune-In)
- CHOSEN** NEW: JBCK (850), 10kW, Seishin...JBDK (1050), 250w, Kanko...JBFK (570) Riri, 500w (Com. Bul, Yoshimura) -CMRT (Hidalgo)
- CUBA** CMHX (1480), Cienfuegos off air...CM9RT (1580), Guines, changed to CMQ (1010), 25kW, Havana, has been added to the NBC network as station 166.
- CZECHOSLOVAKIA** The xmtr. of the Moravska Ostrava station (1204kC), located at Svinov, now occupied by the Germans, will hereafter be operated by Germany as the "Schonbrunn" station. Czechoslovakia will replace this station with a new 100kW station- studios at Moravska Ostrava, but xmtr. at Prostejov (R.P.S.)...Melnik (1113), 100kW, now becomes an international station.
- FRANCE** The new "Radio Normandie" xmtr. at Louvetot, has been making tests on 1093, and 1410kC (Guilbert)
- INDIA** VUT (758), 5kW, Trichinopoly, was inaugurated in December.
- ITALY** NEW: Catania (565kC), 5kW, was inaugurated on November 27 (R.P.S.)
- NEWFOUNDLAND** A new 10kW xmtr. is to be constructed at St. John's (E. Radio)
- N.Z.** NEW: 2YH (760), 5kW, National xmtr. at Napier, was officially inaugurated on Nov. 17...2ZA (1400), 200w, Palmerston North, was officially opened on Oct. 10...2YB, New Plymouth, 100w, is now on 810kC (Breen, Forest, Niven)
- NORWAY** NEW: A 100kW transmitter has been ordered for installation at Stavanger (Com. Bul.)
- PANAMA** NEW: HOC (780), will be testing soon (Gallivan)... Other stations are: HP5C (730), 100w, Panama City; HP6O (1358), 250w, Panama City, and HP5O (1440), 250w, Colon (Com. Bul.)
- SWEDEN** NEW: A 100kW xmtr. is now under construction at Borlange in the province of Dalarna. It will replace the private station at Falun (Com. Bul.)
- TRIPOLI** NEW: The new Imperial EIAR 50kW (1104), xmtr., located in the Zan-zur Oasis, near Tripoli, was officially inaugurated on November 12 (RC)
- TUNISIA** "Poste Imperial de Radiodiffusion P.T.T. Tunis," at Djedeida, power 20kW, frequency 870kC, inaugurated on Oct. 12, is now operating daily from 5 to 7 and from 1 to 3 p.m. EST (R.P.S., E. Radio, Radiocorriere)
- U.S.A.** NEW: Construction permits granted: KFDA (1500), 100w, Amarillo, Tex...KWAL (1420), 100w, Wallace, Idaho...WJHP (1290), 250w, Jacksonville, Fla (NRC, FCC)... Hollywood Radio City, NBC's new film capital headquarters, was officially opened to the public on December 1 (NBC)
- YUGOSLAVIA** The power of Ovde Radio Beograd (686), Belgrade, is to be increased to 100kW. Other improvements will include a 10kW xmtr. at Subotica, a 5kW xmtr. at Zagreb, a 5kW xmtr. at Split, a 25kW xmtr. at Ljubljana, and a 5kW xmtr. at Maribor (Com. Bul., RPS)

LET'S OUTLAW ELECTRICAL INTERFERENCE

The battle against man-made QRM moves forward on many fronts. In the South West, J.F. Pichler is leading a campaign to outlaw interference in Santa Fe, N.M., while over in Phoenix, Arizona, L.D. Brewer, with the backing of several civic organizations is almost assured of a victory over QRM in that city. The NAPRI, leading in the National fight, urges EVERY dx'er to write their senator or congressmen requesting them to push through the anti-QRM. Bill.