

THE GLOBE CIRCLER

OCTOBER 1936



IDA REPRESENTATIVE D. R.-D. WADIA
Opens the Finest Radio Sales Rooms in India at Bombay

ONE
DIME

INTERNATIONAL DX'ERS ALLIANCE

SHORT-WAVE NOTES

BROADCAST BAND DX TABLE

THE BRUCE AERIAL SYSTEM

ACCURATE SHORT-WAVE LIST

EUROPEAN BROADCAST STATIONS

EUROPEAN BROADCASTING STATIONS

| KC/S | M. | STATION | KW | KC/S | M. | STATION | KW |
|------|-------|------------------------------------|-----|------|-------|--|-----|
| 153 | 1961 | Ankara, Turkey | 5 | 648 | 463 | Lyons, PTT, France | 100 |
| | | Kaunas, Lithuania | 7 | | | Petrozavodsk, USSR. | 10 |
| 160 | 1875 | Hilversum, Holland | 100 | 658 | 455.9 | Cologne, Germany | 100 |
| | | Brasov, Romania | 150 | 668 | 449.1 | North Regional, Great Britain | 70 |
| 166 | 1807 | Lahti, Finland | 150 | | | | |
| 172 | 1744 | Moscow, U. S. S. R. -I- | 500 | 677 | 443.1 | Sottens, Switzer- land | 100 |
| 182 | 1648 | Radio Paris, France | 80 | | | | |
| 185 | 1622 | Istanbul, Turkey | 5 | 686 | 437.3 | Belgrade, Yugoslavia | 2.5 |
| 187 | 1600 | Irkoutsk, U. S. S. R. | 20 | | | Bodo, Norway | .5 |
| 191 | 1571 | Deutschlandsender, Germany | 60 | 695 | 431.7 | Paris PTT, France | 120 |
| 200 | 1500 | Droitwich, G. Britain | 50 | 704 | 426.1 | Stockholm, Sweden | 55 |
| 208 | 1442 | Minsk, U. S. S. R. | 35 | 713 | 420.8 | Rome, Italy -I- | 50 |
| | | Reykjavik, Iceland | 16 | 722 | 415.4 | Kharkov, U. S. S. R. -1- | 10 |
| 216 | 1389 | Motala, Sweden | 150 | | | Kiev, U. S. S. R. | 35 |
| 217 | 1379 | Novosibirsk, U. S. S. R. | 100 | 731 | 410.4 | Seville, Spain | 5.5 |
| 224 | 1339 | Warsaw, Poland -I- | 120 | | | Assiut, Egypt | |
| 232 | 1293 | Luxembourg | 120 | 740 | 405.4 | Tallinn, Estonia | 20 |
| | | Leningrad, U. S. S. R. | 100 | 749 | 400.5 | Munich, Germany | 100 |
| 240 | 1250 | Kalundborg, Denmark | 60 | | | Pori, Finland | 1 |
| | | Vienna, Austria | .5 | 758 | 395.8 | Sortavala, Finland | .25 |
| 253 | 1185 | Aalesund, Norway | 10 | 767 | 391.1 | Katowice, Poland | 12 |
| 256 | 1170 | Tashkent, U. S. S. R. | 25 | | | Scottish Regional Great Britain | 50 |
| 260 | 1153 | Oslo, Norway | 60 | 776 | 386.6 | Stalino, U. S. S. R. | 10 |
| 271 | 1107 | Moscow, U. S. S. R. -2- | 100 | | | Toulouse PTT, Fr. | 120 |
| 282 | 1063 | Tromso, Norway | 10 | | | Fredrikstad, Norway | 1 |
| 283 | 1060 | Tiflis, U. S. S. R. | 35 | 785 | 382.2 | Leipzig, Germany | 120 |
| 340 | 882.3 | Saratov, U. S. S. R. | 10 | 795 | 377.4 | Lwow, Poland | 16 |
| 347 | 864.6 | Finmark, Norway | 10 | | | Barcelona, Spain | 7.5 |
| 355 | 845.1 | Rostov-on-Don, USSR | 20 | 804 | 373.1 | West Regional, Great Britain | 70 |
| 359 | 834.5 | Budapest, Hungary-2- | 18 | | | Milen, Italy | 50 |
| 375 | 800 | Sverdlovsk, USSR. | 40 | 814 | 368.6 | Bucharest, Romania | 12 |
| 392 | 765 | Banska-Bystrica, Czechoslovakia | 15 | 823 | 364.5 | Moscow, USSR. -4- | 100 |
| 401 | 748 | Moscow, USSR. -3- | 100 | 832 | 360.6 | Agen, France | .5 |
| | | Geneva, Switzerland | 1.3 | 841 | 356.7 | Berlin, Germany | 100 |
| 413 | 726 | Ostersund, Sweden | .6 | 850 | 352.9 | Bergen, Norway | 1 |
| | | Voronezh, USSR. | 1.0 | | | Porsgrund, Norway | 1 |
| 431 | 695 | Oulu, Finland | 1.2 | | | Sofia, Bulgaria | 1 |
| 519 | 578 | Hamar, Norway | .7 | 859 | 349.2 | Valencia, Spain | 1 |
| | | Innsbruck, Austria | 1 | | | Strasbourg, France | 100 |
| 522 | 585 | Tartu, Estonia | .5 | 868 | 345.6 | Simferopol, USSR. | 10 |
| 527 | 569.3 | Viipuri, Finland | 10 | 877 | 342.1 | Poznan, Poland | 16 |
| 536 | 559.7 | Bolzano, Italy | 10 | | | London Regional, Great Britain | 50 |
| | | Wilno, Poland | 16 | 886 | 338.6 | Linz, Austria | 15 |
| 546 | 549.5 | Budapest, Hungary-I- | 120 | | | Graz, Austria | 7.5 |
| 556 | 539.6 | Beromunster, Switzerland | 100 | 895 | 335.2 | Helsinki, Finland | 10 |
| 565 | 531 | Athlone, I. F. S. | 100 | 904 | 331.9 | Limoges, PTT, France | 1.5 |
| | | Palermo, Italy | 3 | 913 | 328.6 | Hamburg, Germany | 100 |
| 574 | 522.6 | Stuttgart, Germany | 100 | | | Toulouse (Radio- Toulouse) France | 60 |
| 583 | 514.6 | Madona, Latvia | 50 | 922 | 325.4 | Brno, Czechoslovakia | 32 |
| | | Alpes-Grenoble PTT, France | 15 | 932 | 321.9 | Brussels, Belgium-2- | 15 |
| 586 | 512 | Archangel, USSR. | 10 | 941 | 318.8 | Algiers, Algeria | 12 |
| 592 | 506.8 | Vienna, Austria | 100 | | | Goteborg, Sweden | 10 |
| 601 | 499.2 | Rabat, Morocco | 25 | 950 | 315.8 | Braslaw, Germany | 100 |
| | | Sundsvall, Sweden | 10 | 959 | 312.8 | Algiers, Algeria France | 60 |
| 610 | 491.8 | Florence, Italy | 20 | 68 | 309.9 | Bordeaux-Sud-Ouest, France | 30 |
| 620 | 483.9 | Brussels, Belgium-I- | 15 | | | Odessa, U. S. S. R. | 10 |
| | | Cairo, Egypt -I- | 20 | 977 | 307.1 | Northern Ireland Regional, G. Brit. | 100 |
| 629 | 476.9 | Trondelag, Norway | 20 | | | Beziers, France | .4 |
| | | Lisbon, Portugal | 15 | 979 | 306.4 | | |
| 638 | 470.2 | Prague, Czechoslovak | 120 | | | | |

| | | | | | | | |
|------|-------|-------------------------|-----|------|-------|---------------------------------------|---------|
| 986 | 304.3 | Genoa, Italy | 10 | 1276 | 235.1 | Radio Cote d'Azur | 27 |
| | | Torun, Poland | 24 | 1285 | 233.5 | Aberdeen, Gt. Britain | 1 |
| 995 | 301.5 | Hilversum, Holland-2- | 60 | | | Dresden, Germany | .25 |
| 1004 | 298.8 | Bratislava, Czecho- | | 1294 | 231.8 | Klagenfurt, Austria | 5 |
| | | slovakia | 13 | | | Vorarlberg, Austria | 5 |
| 1013 | 296.2 | Midland Regional, | | 1303 | 230.2 | Denzig, Denzig | .5 |
| | | Great Britain | 70 | 1312 | 228.7 | Karlstad, Sweden | .25 |
| | | Chernigov, U.S.S.R. | 5 | | | Malmo, Sweden | 2.5 |
| 1022 | 293.5 | Cracow, Poland | 2 | | | Norrkoping, Sweden | .25 |
| | | Barcelona, Spain | 3 | | | Trollhattan, Sweden | .25 |
| | | Oviedo, Spain | .7 | 1321 | 227.1 | Magyarover, Hungary | 1.2 |
| 1031 | 291 | Konigsberg, Germany | 100 | 1330 | 225.6 | Bremen, Germany | 2 |
| | | Paredes, Portugal | 5 | | | Kiel, Germany | 2 |
| 1040 | 288.5 | Rennes-Bretagne | | | | Hanover, Germany | 2 |
| | | France | 120 | | | Stettin, Germany | 2 |
| 1050 | 285.7 | Scottish National, | | 1339 | 224 | Montpelier, PTT, | |
| | | Great Britain | 50 | | | France | 1.2 |
| 1059 | 283.3 | Bari, Italy -I- | 20 | | | Lodz, Poland | 2 |
| 1068 | 280.9 | Tiraspol, U.S.S.R. | 4 | 1348 | 222.6 | Dublin, I. F. S. | .5 |
| | | Radio-Cite, Paris, Fr. | .8 | | | Rjukan, Norway | .15 |
| 1077 | 278.6 | Bordeaux-Lafayette, | | | | Salzburg, Austria | 2 |
| | | France | 12 | | | Tampere, Finland | .7 |
| 1086 | 276.2 | Falun, Sweden | 2 | | | Cairo, Egypt -2- | .5 |
| | | Zagreb, Yugoslavia | .7 | | | Konigsberg, Germany-2- | 2 |
| 1095 | 274 | Vinnitsa, U.S.S.R. | 10 | 1357 | 221.1 | Notodden, Norway | .15 |
| | | Madrid, Spain- EAJ7 | 5 | | | Milan, Italy -2- | 4 |
| 1104 | 271.7 | Kuldiga, Latvia | 50 | | | Turin, Italy -2- | .2 |
| | | Naples, Italy | 1.5 | | | Bari, Italy -2- | 2 |
| 1113 | 269.5 | Radio Normandie, | | 1366 | 219.6 | Lille de France. | .7 |
| | | Fecamp, France | 10 | 1375 | 218.2 | Basle, Switzerland | .5 |
| | | Moravska-Ostrava, | | | | Berne, Switzerland | .5 |
| | | Czechoslovakia | 11 | 1384 | 216.8 | Warsaw, Poland | 2 |
| 1122 | 267.4 | Nyireghyaza, Hungary | 6.4 | 1393 | 215.4 | Radio Lyons, France | 25 |
| | | Newcastle, G. Britain | 1 | 1402 | 214 | Stara-Zagora, | |
| | | Alexandria, Egypt -I- | 25 | | | Bulgaria | 2 |
| 1131 | 265.3 | Horby, Sweden | 10 | 1420 | 211.3 | Vaasa-Vasa, Finland | .5 |
| 1140 | 263.2 | Trieste, Italy | 10 | 1429 | 209.9 | Alexandria, Egypt-2- | .5 |
| | | Turin, Italy -I- | 7 | | | Turku, Finland | .5 |
| 1149 | 261.1 | London National, | 20 | 1438 | 208.6 | Miskolc, Hungary | 1.2 |
| | | North Regional, | 20 | 1456 | 206 | Eiffel Tower, Paris | 5 |
| | | West National, | | 1465 | 204.8 | Antwerp, Belgium | .1 |
| | | Great Britain | 20 | | | Pecs, Hungary | 1.2 |
| 1158 | 259.1 | Kosice, Czechoslovakia | 10 | | | Courtrai, Belgium | .1 |
| 1167 | 257.1 | Monte Ceneri, | | 1474 | 203.5 | Bournemouth, | 1 |
| | | Switzerland | 15 | | | Plymouth, G. Britain | .3 |
| 1176 | 255.1 | Copenhagen, Denmark | 10 | 1487 | 201.7 | Binche, Belgium | .1 |
| 1185 | 253.2 | Nice-Corse, France | 60 | 1492 | 201.1 | Chatelineau, Belgium | .1 |
| | | Kharkov, U.S.S.R. -2- | 10 | | | Wallonia, Belgium | .1 |
| 1195 | 251 | Cassel, Germany | .5 | | | Nimes, France | .7 |
| | | Coblenz, Germany | 2 | | | Albacete, Spain | .2 |
| | | Frankfurt, Germany | 25 | | | Santiago, Spain | .5 |
| | | Freiburg-im-Breisgau | 5 | 1500 | 200 | Liege Experimental, | |
| | | Kaiserslautern | .5 | | | Radio-Cointe, Belgium | 1 |
| | | Trier, Germany | 2 | | | Pietersaari (Jacob- | |
| 1204 | 249.2 | Prague, Czechoslovakia | 5 | | | stadt), Finland | .25 |
| 1213 | 247.3 | Lille (Radio PTT Nord) | | | | Wallonia, Seraing, | |
| | | France | 60 | | | Verbiers, Belgium | .1 |
| 1222 | 245.5 | Radio-Marconi, Bologna, | | | | Radio-Alcala, Spain | .2 |
| | | Italy | 50 | 1530 | 196 | Karlskrona, Sweden | .2 |
| | | Narvik, Norway | .3 | 1737 | 173 | Liepaga, Latvia | .1 |
| 1231 | 243.7 | Gleiwitz, Germany | 5 | | | NOTE: European broadcast stations | |
| 1240 | 241.9 | Cork, I. F. S. | 1 | | | as listed in "World Radio". | |
| 1249 | 240.2 | Saarbrucken, Germany | 17 | | | FRONT COVER PHOTOGRAPH | Sitting |
| 1258 | 238.5 | Riga, Latvia | 10 | | | from left to right, Mrs. Sethna, H.H. | |
| | | Rome, Italy -3- | 1 | | | The Maharaja of Limbi, Mrs. D. Wadia, | |
| | | San Sebastian, Spain | 1 | | | H. H. The Maharaja of Morvi, D. R. D. | |
| 1267 | 236.8 | Nurnberg, Germany | 2 | | | Wadia, Mrs. Dinshaw. Behind J to R, | |
| 1276 | 235.1 | Christiansand, Norway | .5 | | | C. B. Sethna (VUB), Sgt. H. J. Dent. | |

BROADCAST STATION NEWS

AUSTRALIA 2NR, North Regional Station, Lawrence, N.S.W., 700kC, 7 $\frac{1}{2}$ kW, is broadcasting a regular schedule.. 3MB, Birchip, Vict., has moved to 1490 kC.. 4CA, Cairns, Qld, 1470kC, 100 watts, is on the air.. 6AM, Northam, W.A. 980kC, has increased power to 2kW.. 6WA, Minding, W.A., 560kC, 10kW, will be testing soon.. 6WB, Katanning, W.A., 1070kC, 2kW, will be on the air soon. 6WB will relay the programs of 6ML and 6IX. (NZDXRA, Wignall).

BRAZIL PRE3, Rio de Janeiro, 1220kC, 10kW, signs off nightly at 9pm EST (Saturdays at midnight), with the organ selection, "Beautiful Ohio Waltz" (R. Stansfield) (oble).

FRANCE A powerful new national station will be erected at Gren-

JAPAN All Japanese BC stations assumed their new frequencies on July 1, 1936 (Saito)

POLAND The power of stations Wilno, 536kC, and Lwow, 795kC, will be 50kW each very soon.

TUNISIA Tunis, will have a new 20kW station on 877kC shortly.

U.S.A. New station will be erected at Eau Claire, Wisconsin, to operate on 1050kC, with 250 watts (daytime) power.. WEXF changed to WBLK, Clarksburg, West Virginia, 1370kC, 100 watts.

U.S.S.R. A very strong signal on 585kC is interfering with JOAK-1 on 580kC. The station uses Russian language, is as strong as MTCY on 560kC and is believed to be in Khabarovsk. Who can identify? (Saito)

ENGLISH TRANSMISSIONS SPONSORED BY THE I.B.C.

| KC/S | M. | STATION | TIME | (E.S.T.) |
|------|-------|------------------------------|-------------------------------------|----------|
| 232 | 1293 | Luxembourg, Luxembourg. | Sunday, 4:30-8:30, 5:30-7pm. | |
| | | | Weekdays, 3:15-5am, 1:15-2:15pm. | |
| 527 | 569 | Radio, Ljubljana, Yugoslavia | Sunday, 5:30-6pm. | |
| 959 | 312.8 | Poste Parisien, Paris, | Sunday, 1-2pm, 5:30-6:30pm. | |
| | | France | Weekdays, 5:30-6pm. | |
| 1113 | 269.5 | Radio Normandie, Fecamp, | Sunday, 3-6:30am, 9am-2:30pm, 5-8pm | |
| | | France | Weekdays, 5:30-6pm. | |
| 1276 | 235.1 | Radio Cote D'Azur, France | Thursday, 9:30am-1pm, 7-8pm. | |
| | | | Sunday, 5:30-8pm. | |

BROADCAST BAND WORLD DX CHART

| FREQ | CALL | GAEPN | FREQ | CALL | GAEPN | FREQ | CALL | GAEPN |
|------|-------------|-------|------|-------------|-------|---|-------------|-------|
| 182 | Radio-Paris | 4 | 859 | Strasbourg. | 3 | 1070 | LRL | 1 |
| 200 | Droitwich | 1 | 860 | XEMO | 2 | 1077 | Bordeaux | 32 |
| 590 | WEEL | 3 | 860 | WABC | 2 | 1080 | WBT | 2 |
| 650 | 1YA | 4 | 866 | PRA6 | 3 | 1095 | Madrid | 23 |
| 660 | WEAF | 3 | 870 | JOAK2 | 2 | 1100 | WPG | 2 |
| 668 | NR | 3 | 870 | LR6 | 2 | 1110 | WRVA | 3 |
| 670 | JFAK | 2 | 877 | LR | 3 | 1113 | Normandie | 11 |
| 680 | KPO | 3 | 880 | CMQ | 3 | 1130 | KSL | 3 |
| 700 | 2NR | 4 | 895 | PRF3 | 3 | 1149 | NN-WN-LN | 3 |
| 700 | WLW | 3 | 904 | Hamburg | 3 | 1150 | WHAM | 3 |
| 710 | WOR | 2 | 910 | CRCM | 2 | 1170 | WCAU | 1 |
| 710 | 7NT | 2 | 910 | XENT | 1 | 1180 | WINS | 2 |
| 720 | 3YA | 3 | 913 | Toulouse | 4 | 1185 | Nice-Corse | 22 |
| 730 | CKAC | 3 | 920 | CMX | 2 | 1190 | LS2 | 2 |
| 730 | LVI | 3 | 920 | JOQK | 4 | 1195 | Frankfurt | 2 |
| 730 | 5CL | 4 | 923 | PRF4 | 2 | 1213 | Lille | 44 |
| 760 | WJZ | 3 | 930 | CHNS | 2 | 1220 | PRE3 | 2 |
| 770 | JOHK | 2 | 950 | LR3 | 2 | 1230 | WNAC | 1 |
| 776 | Toulouse | 13 | 959 | P.P. | 3 | 1230 | LS8 | 2 |
| 790 | 4YA | 4 | 960 | XEAW | 1 | 1240 | CJCB | 2 |
| 795 | Barcelona | 3 | 970 | JOBG | 4 | 1240 | WKAQ | 3 |
| 800 | 4QG | 4 | 990 | WBZ | 2 | 1250 | KFOX | 3 |
| 804 | WR | 3 | 1000 | WHO | 2 | 1276 | Cote d'Azur | 3 |
| 810 | JOCK1 | 2 | 1010 | WHN | 2 | NOTE: CCB stations best heard at present: G-GMT. A-AST; E-EST; P-RST; N-NZT | | |
| 820 | WHAS | 3 | 1017 | PRB9 | 2 | Signal strength: 1-R/9; 2-R/7; 3-R/5; 4-R/3 All values are approximate. | | |
| 830 | KOA | 2 | 1030 | LR9 | 2 | | | |
| 830 | LR5 | 2 | 1031 | CT1GL | 1 | | | |
| 830 | 3GI | 43 | 1040 | WTIC | 1 | | | |
| 840 | CRCT | 2 | 1040 | Rennes | 4 | | | |

D I S T R I C T H O N O R K O L L S

| | | |
|----------------|--|--------------------------|
| DISTRICT -4- | Ill, Wisc, Minn, Ia, Mo, Ark, La, Texas, Okla, Kans. | (Frankfort.) |
| C. H. Long | 21X Mo. 1ZR, 2NC, 2ZW, 3BO, 5AD, 6WF, 7LA, 7ZL, KZRM, XGOA, COHB, JOCK2, JODK1, JOJK, JOLK, JORK, JOTK, JOUK, JOCG, OAX. | |
| H. Gustafson | 8X Ill. 2GZ, JOPK, CT1GL, EAJ7, EAJ15, 11TO, Munich, Cologne, | |
| Ray Swenson | 4X Ill. JOBK2, Rennes, PRB9, LR3. | |
| C. R. Anderson | 3X Iowa 3TO, JOCK, YV3R3. | |
| DISTRICT -6- | Mich, Ind, Ohio, Ky, Va, W. Va, Penna, N. Y., Del, Md, N. J. | |
| David Thomas | 19X Ohio VQ7LO, NRH, EAJ5, ZTF, LOV, Santo Paulo, CX20, FN, PRAK, KZRC, G6BM, 2BD, 1YX, VUO, ZBW, Huizen, Warsaw, Moscow, Droitwich. | |
| R. Tomlinson | 13X N. Y. HAL2, CE62, CX34, HAE2, Toulouse-Muret, Lille, Nice, Dresden, Konigsberg (1348), Kosice, LS8, LR2, LT3. | |
| Ray Lewis | 10X Ohio LVL, TIC, 5DN, EAJ41, JOCK2, JFAK, 8WMC, Palermo, Naples Mersilles. (Augsberg.) | |
| Howard Eck | 8X Mich 3KZ, PRA6, JOCG, Innsbruck, Stettin, Freiberg, JOVK, | |
| C. Wyborski | 7X Penn HJ3ABD, CX14, TIRC, TIRCA, YN1GG, LS6, Cracow. | |
| Don Reynolds | 4X N. Y. Eiffel Tower, Riga, Monte Ceneri, HJ4ABK. | |
| Carl Lord | 3X Ohio NN, SN, Suisse Romande. | |
| John DeMyer | 2X Mich JOPK, JQAK. | |
| I. Beitman | 1X Ohio PRAR. | I. Goodeve 1X Mich 1ZM. |
| R. Hough | 1X N. Y. OAX. | S. Steele 1X Ohio JOAK2. |
| DISTRICT -5- | Tenn, N. C., S. C., Miss., Ga., Ala. Florida. | |
| John Shanks | 29X Tenn 2CH, 2FC, 2GB, 2GZ, 2HD, 2SM, 3AR, 2DB, 3HA, 3KZ, 3LO, 3YA, 4ZW, 4BH, 5AD, 5CK, 5CL, 7NT, 7ZL, JOAK1, 11GE, 11MI, 4BK, 11TO, 11TR, Berlin-Tegel, Hamburg, Bordeaux, Rennes. | |
| Guy Bigbee | 2X Ga. Radio Maroc, LU7. | |
| Mervin Dixon | 1X N. C. CX18 Joel Armantrout 1X Ga. 3XY | |

| EST | DX TIPS PERIODS | | | | |
|-------------------------|-----------------|-------|--------------------------|-------|--|
| Weekly Tues, 1-1:30am | 1300kC | 1kW | Los Angeles, California | KEAC | |
| Weekly Tues, 5:35-6pm | 9530kC | S. W. | Schenectady, New York | W2XAF | |
| Weekly Fri., 11-11:30pm | 980kC | 50kW | Pittsburgh, Pennsylvania | W8XK | |
| Weekly Sun., 1-1:15am | 930kC | 100W | Calgary, Alta, Canada | CFAC | |
| Weekly Sun., 1-1:15am | 640kC | 50kW | Los Angeles, California | KFI | |

TRANS-ATLANTICS APPEAR EARLY

The first TA station Radio Normandie (1113kC), was heard August 21, between 7:30 and 8pm AST, which is the earliest in the season I've ever heard an European station. B3C stations on 1149kC are coming through at about 6:45pm AST. They sign off at 7pm AST with Big Ben. At times Toulouse PTT (776), is even better than Radio Normandie. Both CT1GL and EAJ7 are good until their sign-off at 7:45pm AST. Long Wave stations Droitwich, Radio-Paris and Deutschlandsender are being heard at 6:30pm AST. West Regional, Nice-Corse and Bordeaux have also all been logged this season.

(E. L. Peters, Westport, Nova Scotia)
The TA's started out with a bang here on Sept 1. Radio Normandie was excellent from 6:45 to 7pm EST. Frankfort was R5/6, Hamburg was R4 to R5. EAJ1 and EAJ7 were good. Also had LR, Lyons (1393), Toulouse (913) and 776) all excellent between 6 and 7pm EST. Cote d'Azur (1276) is coming in great now. One evening Bordeaux (1077), Nice-Corse (1185) and Nurnberg were all about an R7

between 6 and 6:30pm EST. Some TP's have been heard through heavy static, 3GI and 1YA being the best. SA's have dropped out of the picture for the time being.

(R. H. Tomlinson, Port Chester, N. Y.)

TRANS-PACIFIC RECEPTION

Australians and New Zealanders are heard best between 2 and 3:45 am PST, on Sunday mornings. 7NT (710), 3YA (720) and 3GI (830) are the best with traces of 2NR, 5CL, 4YA, and 4QG being heard. The Japanese stations are heard almost every morning from 2:30 to 5am PST, with JPAK (670), JOHK (770), JOCK1 (810), JOAK1 (870), and JOCK (920), best heard.

(W. Russell DuCette, Seattle, Wash.)

NEW ZEALAND REPORTS

Latest loggings here are 2DU, 2NR, 3YB, VUC, VPB, MTFY and ZVJ. 4TO, 3YB, OGNC, XERA and WIND. The Japanese stations on their new channels are good. Also logged VK-3HK. Have had power noise at times (Ernest M. Niven, Dunedin, N. Z.)

Subscription price \$1.25 per year anywhere.

International



Dx'ers Alliance

Published Monthly Excepting July

CHARLES A. MORRISON
EDITOR

VOLUME 4

BLOOMINGTON, ILLINOIS, U. S. A.

NO. 9

ALPHA (Toledo), held first meeting of season in Park Shelter House on Sept. 19. ALPHA challenged DELTA Chapter at Lansing to an inter-chapter DX contest, based on mileage. Worthwhile prizes will be awarded. An inter-chapter membership contest is also being considered, the losers to provide a banquet for the winners.

DELTA (Lansing), held first meeting of what they expect to make a banner year on September 15.

EPSILON (London), has been going strong right through the summer. One of the highlights of the summer was a visit by chapter members to "Radio Olympia". The local short wave contest is progressing with enthusiasm. Ward has a QSL from K6-KDX and Simms one from VK2BC. Caulfield now has a set going and reports on the Spanish stations for us. He is receiving COCX (11.65) dally.. The chapter plans to start publication of the British Globe Circler again. Subscription will be 3/6 per year. A. G. Ward, 237 Court Rd Eltham, London S.E. 9, will act as Editor and R. M. Kiley as printer. News should be in Mr. Ward's hand not later than the 20th of the month.. Chapter meetings are held the last Tuesday in each month at 45 Essex St., Strand, London W.C. 2. Any members or other dx'ers residing in London, or visiting that city, will be welcome at the meetings.. EPSILON plans to engage in a membership contest with BETA chapter in New York City, said contest to get under way October 1.

GLOBE RADIO DX'ERS (Australia), has added several more members in membership contest, which is being vigorously backed by "Teleradio", official publication of the GRDA. Teleradio has furnished a printers cut to the GRDA and are paying for having dodgers printed advertising the GRDA and their publication. The IDA-GRDA is deeply indebted to Teleradio for their interest and support.. Thanks also to VK3JE, VK2KV, VK3RI, VK5HR, VK3HF and VK3AC for the special broadcasts dedicat

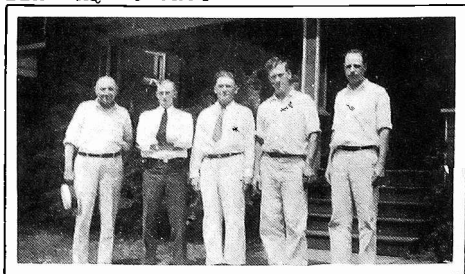
ed to the IDA-GRDA.. Arthur Preece of 61 Lipson St., Adelaide, South Australia, is Australian General-IDA Representative in charge of all IDA-GRDA activities there.

REGINA JUBILEE (Regina)- Following are the results of the local DX contests for past season: Short-Wave- Ansell 9449, Newton 4556, West moreland 2028, Hodges Sr. 1739, Dickenson 1139, Johnston 1029, Thompson 861, Corbett 791, Hodges Jr. 588, Wehner 504; Broadcast Band-Westmoreland 1827, Dickenson 1428, Ansell-518, Newton 368, Johnston 334, Corbett 334 and Hodges Sr. 334. REGINA has started regular meetings again and is all set to make this the best season yet. It is rumored that CALGARY FOOTHILLS intends to give Jubilee a good race for top notch honors this year.

CALGARY FOOTHILLS (Calgary), have held first meeting of new year and have launched into a vigorous membership drive.

BETA (New York) will have a few surprises to pull this season and are getting an early start, not only to trim their British cousins but to bid for top honors. For information on BETA chapter, contact Ed. Goss, 812 Prospect Pl, Brooklyn.

LOS ANGELES: All members in L.A. area wishing to see a local DX chapter started again, and who will support it, kindly write to IDA HQ at once.



LEADING MICHIGAN DX'ERS CONFER
Left to Right are: Homer Hughes of Lansing, C.M. Bolton of Detroit, John DeMyer of Lansing, Michigan, Irving Goodeve of Kalamazoo and Howard Eck of East Lansing, Michigan.

It is with sadness we must record the passing of Ed. Wetton of Sydney, Australia, former IDA Rep. for N.S.W. Although an invalid for many years, Mr. Wetton was an ardent dx'er and always cheerful, enthusiastic and energetic.

IDA STAMP GUILD: The following members have already pledged their support and wish to correspond with other stamp enthusiasts: Jas. T. Spalding, 531 Warwick Ave., Louisville, Ky; L. C. McCormick, 73 Baird St., Invercargill, N. Z.; J. J. Barlow, 2803 Woolsey St., Berkeley, Calif; A. J. Paul, Rt. 2, Box 279, Austin, Texas; R. Schofield, Stamp Window Ltd., Missoula, Mont; Elwin Smith, Harrah, Wash; Mrs. C. Morrison, 1018 North Prairie St., Bloomington, Ill... We plan features of unusual interest for our stamp collecting members and wish all interested in this hobby to contact IDA HQ at once.

Write Walter Mischek, of So. Norwalk, Conn. for information concerning the Beson Stamp Exchange Club. Membership, including magazine subscription only \$1.00 per year.

IDA AMATEUR GUILD: We wish to compile a directory of all IDA members, who are amateurs, at once. Send details concerning your rig to Hugh Compton, W6MKW, Box 752, San Diego, Calif. Hugh was formerly W6-AUB, KDLK, WBD, WBE, KPFU, KITX, KDTG, KDTJ, KODR and KERJ.

VK2ZE, 8 Kooba St., Leeton, N.S.W., Australia, operates on 1380kC, with 25 watts. J. H. Woodman is the op. The station is on Sundays at 7:30am EST. VK2ZE will dedicate several programs to the IDA.

INTERNATIONAL DX CONTESTS

Entries are beginning to pour in for the International BCB and SW Contests being sponsored by IDA to determine Champion Dx'ers for 1936-1927 season. Send in your entry fee of 50¢ at once to IDA Contests Director, J. Dickenson, Box 95, Regina Canada. A registration number, handicap rating and detailed rules will be furnished each entrant. A few back copies of the September Globe Circler are still available giving full information on the contests. These contests are open to ANY DX'ER, whether belonging to the IDA or not. This contest is being supported by leading Radio Clubs and periodicals and will be

the biggest event of this kind ever staged. Awards will be well worth every effort expended on the contest, and the list of prizes will be published in December. The sooner you enter the better are your chances for victory. We EXPECT EVERY IDA MEMBER to get behind the contests, BOOST THEM, ADVERTISE THEM, and most important of all, ENTER THEM. ENTER TODAY!

The proposed VK6ME reception duel between members Amlie and Thomas has been definitely cancelled.

Ray LaRocque, BCB Dx Editor of All-Wave Radio Magazine, 135 Highland St., Worcester, Mass., will be glad to furnish any member data on the BCB Contest being sponsored by the above named publication.

A tri-state, Washington, Oregon and Idaho, DX Contest is proposed by W. Russell DuCette, of 314 Union St, Seattle, Washington. All members in these states contact Mr. DuCette. Such a contest would be in connection with the International DX Contests and each entrant would also be expected to enter the major contests and send in registration fee to Contests Director Dickenson

GOLDEN GATE WORLD DX CONVENTION

-San Francisco-July-1939-

Convention Director, George C. Sholin of 55 Lapidge St, San Francisco California, states Mr. Leland W. Cutler, President of the Golden Gate International Exposition has expressed his interest in the DX Convention to be held in connection with the Exposition.

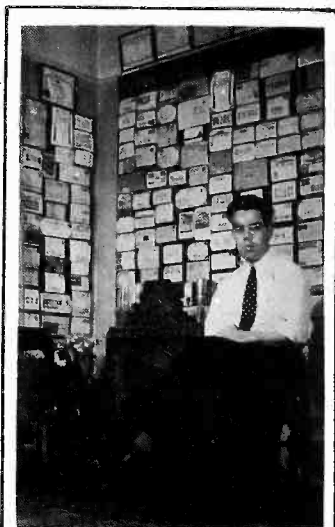
Beautiful four-color official Exposition stickers 1-5/8" X 2 1/4" in perforated sheets of 20 stamps each are now available. Cost to IDA members or other interested dx'ers will be about 35¢ per 100. Write to Mr. Sholin and tell him how many you would like to order. As soon as sufficient orders have been guaranteed Mr. Sholin will be able to place a blanket order for stickers -We believe every member will want to start advertising the DX Convention and Exposition by placing the stickers on your envelopes.

IDA two-color letterheads on Hammermill bond, 70¢ per 100 or \$1.25 per 200 sheets post-paid in the United States or Canada. Add few cents extra for foreign postage.

WITH OUR MEMBERS

Robt. B. Hammersley, 73 Bond St., Galt, Ontario, Canada, would like to exchange SWL cards with other I. D. A. members.

Members of 6th District- Please send in a list of your veri's as you receive them to 545 Baker St., Lansing, Mich., or to your State Manager (J. DeMyer).. New veri's reported: LT3, Strasbourg (R. Tomlinson-NY); Strasbourg (Ray Lewis, Ohio); Strasbourg (E. Goss, NY); Strasbourg Bordeaux, Milan, Turin, Maroc, Alger, LR1, LR3, LR4 (C. Forestieri, NYC); Strasbourg (R. Swenson-Ill) LR1, 3GI, TIPG (J. Brauner-NY).. Account heavy QRM from electric fans have not used receiver more than six or seven days this summer (L. Miller-Ill).. Congrats! to Joe Miller of Beta Chapt. Brooklyn, NY, for being appointed new S.W Editor for Short Wave Craft.. G. Sholin of San Francisco, Calif., is doing some more FB stories for All-Wave Radio.. Lets all drop a line to R. Stockdale, 731 Elberon Ave, Zanesville, Ohio, sick for many months.. Have added a Miller two-stage preselector to my equipment, which works very fine (Smith, Calif.).. Am testing a new V type doublet 85' long and 100' above ground, running E-W, which really brings them in (J. Maguire-Alta).. Herman Koschmidder, of Bloomington, Ill., dx'er & stamp collector, now has a wife to help twist the dials, while it is rumored Mike Michelson, of Mpls, Minn will be taking the leap before long.. Howard Eck, of Lansing, Mich., is vacationing in Canada.. Dave Thomas of Proctorville, Ohio will take in the World's Series in NYC.. J. Spalding, Louisville, Ky, has landed fine WPA position.



IDA N.Y. STATE MANAGER
EDWARD GOSS
BROOKLYN, NEW YORK



IDA MEMBER ROY CATTELL
CHIEF OP. S.S. MAYAN,
AT CRISTOBAL, CANAL-ZONE



LISTENING POST OP,
CARL FORESTIERI
-THE BRONX OWL-



RUDOLPH KURE
CINCINNATI, OHIO
Above (Listening Post)

THE BRUCE AERIAL SYSTEM

(Data from African Radio Announcer)

The Bruce Aerial System, which was tested by the Technicians of the African Radio Announcer, was found to be exceptionally efficient on the short-wave bands from 13 to 51 meters. The increase in signal strength for the Bruce System over an ordinary horizontal, inclined or vertical single wire type was as follows:- On the 16 meter band signals 3 to $4\frac{1}{2}$ times as strong. On the 19 meter band signals twice as loud. On the 25 meter band signals twice as loud. On the 31 meter band signals almost twice as loud. The 49 meter band showed a slight increase in signal strength.

Ordinary aerial wire can be used but it is important to connect the aerial to the right point on the aerial coil of the receiver. When you have completed the new aerial tune in a 16 meter station and try the aerial on different points of the aerial coil until the best position is found. If on your receiver the grid bias to the grid of the first tube passes thru the aerial coil, you should put a .001 mfd condenser in series with the aerial so that grid bias cannot ground via the 400 ohm resistance at the far end of the aerial system. In cases where the aerial coil is only coupled capacitatively or inductively to a secondary coil, which feeds the grid of the first tube, the aerial can be connected direct to the coil. If you find it difficult to tap directly to your aerial coil you may connect the aerial to the ordinary aerial terminal, but a variable condenser of say .0001 mfd should be connected in series with the aerial so that your aerial can be permanently tuned to the best position.

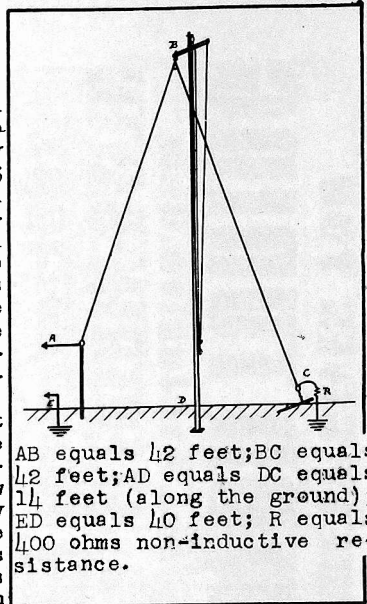
The lead-in from the inclined portion of the aerial to your receiver should be as short as possible.

The Bruce Aerial is directional and should point towards the direction from which most stations are expected to be received.

The Aerial can easily be hauled up and down from the top of the mast by attaching it to crosspiece which is in turn fastened to a pulley for raising or lowering it as illustrated.

The 400 ohm resistance should be connected between one end of the aerial and a metal plate or some other device for grounding, which is buried at this point. The strain from the aerial should of course not be borne by the resistance but should be attached directly to the ground via an insulator.

We will be pleased to learn how this aerial works out for you. Ed.



AB equals $4\frac{1}{2}$ feet; BC equals $4\frac{1}{2}$ feet; AD equals DC equals 14 feet (along the ground); ED equals 40 feet; R equals 400 ohms non-inductive resistance.

NEW I. D. A. MEMBERS

Mrs. Ida P. Rogers, Dearborn, Mo.
 Jacques Gaujal, 1 Avenue de la Republique, Beziere, (Herault), FRANCE
 Mrs. Inna Marr, Radio Center, Moscow U.S.S.R.
 Royal Bailey, Pacific Palisades, Cal
 David Hutchinson, Manchester, Conn.
 David E. Evans, Staff T.S.M.V. Mancoora, Australian Ports, AUSTRALIA.
 L.G. Mackie, Mt. Isa Mines Ltd., Mount Isa, Queensland, AUSTRALIA.
 Mrs. L.H. Clifford, Box 25, Thursday Island, Queensland, AUSTRALIA.
 Arthur Green, East Liverpool, Ohio.

Thaddeus L. Grabek, Niagara Falls, NY
 Kenneth Young, 412 Walnut Street, Erie, Pennsylvania.
 Erwin L. Frost, Superior, Wisconsin.
 Glenn Watt, Chanute, Kansas.
 Fred Dear, Calgary, Alta. Canada.
 James Dunyak, Phoenixville, Penna.

APPOINTMENTS

FAD SHORT WAVE DIRECTOR

A. E. MacLean, 1640 Tenth Ave, West, Calgary, Alta. Canada.

STATE MANAGER.

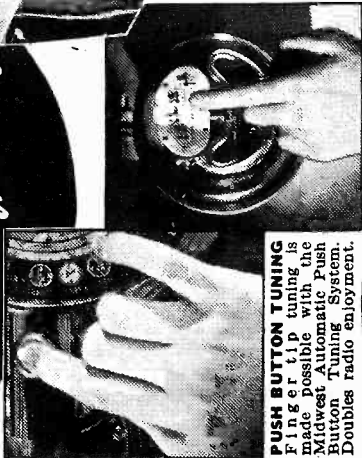
Edward Goss, 812 Prospect Place, Brooklyn, New York.

Only MIDWEST GIVES YOU
PUSH BUTTON TUNING

plus Exclusive New
ELECTRIK-SAVER

for 1937

*Doubles
 World-Wide
 Enjoyment
 Radio Slashes Bills
 and Current!
 Radio in Half!*



PUSH BUTTON TUNING
 Finger tip tuning is made possible with the Midwest Automatic Push Button Tuning System. Doubles radio enjoyment.

ELECTRIK-SAVER
 This exclusive feature cuts radio wattage consumption 50%. Enables 18 and 16-tube Midwests to consume no more current than ordinary 7-tube radios and to operate on voltages as low as 80 volts.

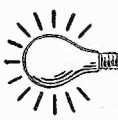
NEW 1937 Air Tested
16-TUBE
 MIDWEST
 FIVE-BAND
 RADIO
only
\$40.95

SAVE 1500

WIRELESS FROM ITALY!

NO middlemen's profits to pay! See for yourself that Midwest offers you greater radio values—enables you to buy the more economical factory-to-you way that scores of thousands of radio purchasers have preferred since 1920. Never before so much radio for so little money! Why pay more? The broad Midwest Foreign Reception and Money-Back Guarantees insure your satisfaction. You get 30 days FREE trial in your own home!

Once again, Midwest demonstrates its leadership by offering the world's most powerful and most beautiful ALL-WAVE 16-tube, 5-Band Radio. A startling achievement, it makes the whole world your playground. Powerful Triple-Twin tubes (two tubes in one!) give 18-tube achievement, a highly perfected, precisely built, radio-musical instrument that will thrill you with its marvelous super performance...glorious crystal-clear "concert" realism...and magnificent foreign reception. The Dual Audio Program Expander gives MIDWEST uses less CURRENT THAN AN ORDINARY LIGHT BULB



Fill in coupon NOW, and mail TODAY!



I FIND MYSELF SINGING ALONG WITH MIDWEST'S MARVELOUSLY LIFE-LIKE PROGRAMS -
Irene Dunne



A COMPARISON CONVINCED ME I SHOULD HAVE A MIDWEST. IT IS A SPLENDID PERFORMER.
Fred Mac Murray

MIDWEST RADIO CORP.
DEPT. D-163
Established 1920

CINCINNATI, OHIO, U.S.A.
Cable Address MIRACO. All Codes

QUALITY RADIO SINCE 1920

74 ADVANCED 1937 FEATURES
This Super Deluxe Midwest is so powerful, so amazingly selective, so delicately sensitive that it brings in distant foreign stations with full loud speaker volume on channels adjacent to powerful locals. Scores of them—velous Midwest features, many of them exclusive, make it easy to parade the nations of the world before you. You can switch instantly from American programs . . . to Canadian, police, amateur, commercial, airplane and ship broadcasts. . . to the finest and most fascinating foreign programs. With a Midwest, the finest entertainment the world has to offer is at your command. It is preferred by famous orchestra leaders, musicians, movie stars and discriminating radio purchasers everywhere. You can order your Midwest "Air-Tested" radio from the new 40-page catalog with as much certainty of satisfaction as if you were to come yourself to our great factory. (It pictures the beautiful 1937 radios . . . in their actual colors!) You pay as little as \$5.00 down! Three iron-clad guarantees protect you: (1) A Foreign Reception Guarantee — (2) Absolute Guarantee of Satisfaction — (3) One-Year Warranty.

WITH **GIANT THEATRE-SOIC SPEAKER**
(LESS TUBES)
TERMS AS LOW AS \$5.00 DOWN.

Only MIDWEST Gives You
16 TUBES • 5 WAVE BANDS
9 TO 2200 METERS • ELECTRIK SAVER

- PUSH BUTTON TUNING •
- AUTOMATIC AERIAL ADAPTION •

DUAL AUDIO PROGRAM EXPANDER

30 DAYS FREE TRIAL!

MAIL COUPON TODAY for
Free 30-DAY TRIAL OFFER
and 40-PAGE FOUR-COLOR Free CATALOG

MIDWEST RADIO CORPORATION
Special offer and prices prevail only when dealing direct with factory by mail.

Dept. D-163 Cincinnati, Ohio
Without obligation on my part, send me your new FREE catalog and complete details of your liberal 30-day FREE trial offer. This is NOT an order.

Name _____ State _____
Address _____
Town _____

Short-Wave News

OCT 12, MONDAY 7:30-8am EST. MACAO, CHINA. 9.67mc IDA PROGRAM CQN
OCT 16, FRIDAY 7:30-8am EST. MACAO, CHINA. 9.67mc See Note CQN
NOTE: Special program of a troop "Braga-Zinho" using native instruments and a girl singer. Send reports to J. Estrela, Government Broadcasting Station CQN, Post Office Bldg, Macao.

HERE AND THERE: Tests by the Zenith Radio Corp. prove that an ordinary doublet has five times the signal strength at right angles to the direction of S.W. signals that it has pointed directly at the station. ..If you can't get a close enough reading on your S. W. dial, try using a magnifying glass or a microscope. W. S. Paley, Pres. of the Columbia Broadcasting System has established a permanent annual award to be presented to the amateur who has contributed most usefully to the American people in research, technical development or operating achievement.

Kindly report any important bit of short-wave news at once. Regular monthly short-wave reports should be in this office by the 17th. Write on one side page only, double space lines, divide items into continents and always state time used. Items in relative order of importance are: new stations; frequency or schedule changes; identifying signals; commercial schedule tips; addresses, station photos and unusual receptions. Number of stars denotes importance of item. Four stars is highest rating given. How many four-star items (****) can you turn in?

(E.S.T.) NORTH AMERICA-CENTRAL AMERICA (Megacycles used)

CANADA CGO, 4.505, Ocean Falls, B.C., with woman at mike, heard calling Vancouver at 11:15pm EST (* Sholin)

C.R. TIPG, San Jose, is being heard on 6.41mc only at present (Oxrieder) ** TI4NRH, The Voice of C.R., Heredia, owned by A. Cespedes Marin on 9.67mc, transmits from 9-10pm and 11:30-midnight daily. Power is 200 watts. Identification signals include triple call of cuckoo, a bugle call and the call in code. Send 5¢ U.S. stamp for reply in form of a FB veri' 7½ by 12½" suitable for framing (Oxrieder, Roberts, CSWRC)

CUBA Address of COCQ, 9.746, is P.O. Box 1373, Havana. Slogen is "RCA Victor La CASA de las Medias" (R.N.) ** COCX, Casa Lavin, Edificio-Calles, Oficio y Obrapia, Havana, heard anywhere from 11.40 to 11.65, has settled on 11.43mc for the present. Power 2kW. Announces in Spanish and English and has a set of gongs. Transmits from 5pm to 10pm or later (Graham, Oxrieder, Andrews, Sholin, Gozen, Deibe, Balbi, Forestieri, Roberts) ** Mystery Cuban with gong identification heard on 8.8mc, near 8:30pm EST. Call sounds like CMRE or CMRX (Graham, Johnson)

D.R. HIG, 6.28, G as in Galveston, Trujillo City, broadcasts irregularly as late as 11pm (Roberts) ** HIN, N for Normandie or for Nebraska, Voice of the Dominican Political Party, Trujillo City, D.R. Has a four-note identification signal and makes announcements in English, Spanish and French. Power is 750 watts. Transmits on 11.28mc from 11:40am-1:40pm and 4:40-5:40pm; on 6.245mc from 7:10 to 9:10pm (Putnam, Oxrieder, Patton, Metzger, Graham, Roberts, Morrison) ** HIX, Trujillo, is using a new frequency of 6.34mc since Sept 15 (Oxrieder) * HIAA, A for America, La Voz del Yaque, Santiago de los Caballeros, 6.19mc, transmits from 10:40am-1:40pm and 6:40-9:40pm, Sundays 7:40-9:40pm. Chimes similar to NBC used. Signs off with "All Hands" (CSWRC) * HI3C, La Romana has moved slightly to 6.73mc (Oxrieder) * HIBA, Trujillo, is operating near 6.477mc (Oxrieder) * HIBQ, La Voz de Los Muchachos, Trujillo City, reported on 6.38mc (Roberts), but reported on 6.24mc by Oxrieder.

HAITI HH3NW, listed on 6.35mc, is supposed to be on 6.135mc, according to statement of owner, IDA member G. Ricardo Widnaier, who also owns HH3W of Port-au-Prince... HH2T, Port-au-Prince, heard on 11.57mc, broadcasting program from 8:30-9pm (Twomey)

HAWAII Program dedicated to a different western state each week is being transmitted to CBS on Thursdays at 12:30-1am by KKH, 7.52 and KIO, 11.68mc (** McWarren, Balbi, Ambrosius) * K6XQ, 16.03, Kahuku, calls JFZC, 13.24, S.S. Chichibu Maru at 4:45 and 9:25pm (Sholin)

JAMAICA YRR4, 11.595, Stoney Hill, works WNC, 15.06, Hialeah, at 10am and 5pm and irregularly (Graham)

MEXICO XEWI, 11.9, Mexico D.F. transmits a special program for

European listeners, Sundays from midnight to 3:30am (** Graham) * Amateur XE2HF, issues a fine QSL card 7 X 10" in size (Chas. Miller)

NICARAGUA YNLF, Managua, is operating at present on 9.66mc (*Oxrieder) ** YNLGG, La Voz de los Lagos, heard on 6.58mc near 10:45pm (CSWRG)

TRINIDAD New station believed to be at Port-of-Spain reported on approximately 10.35mc between 6 and 8pm (NRC)

U.S.A. The Empire State Bldg (NYC), television transmitter is undergoing alterations, probably to prepare for 450 line scanning (** Bragdon) ** F.C.C. has added following frequencies for experimental purposes: 38.9, 39.1, 39.3, 39.5, 39.7, 39.9, 40.8 and 41.1mc. (FCC) ** FCC has granted WNC additional frequency of 9.355mc. WNC, 15.055, Hialeah, Florida, calls following stations at 9:45am: HPF, 14.485, Panama City; TIU, 14.485, Cartago, C. R.; YNA, 14.485, Managua, Nicaragua; HRF, 14.485, Tegucigalpa, Honduras; HRL, 5, 14.485, La Lima, Honduras; YSJ, 13.41, San Salvador; WCT, 13.41, San Juan, P.R.; HIJ, 14.93, Trujillo City; VRH, 11.595, Stoney Hill, Jamaica; HJB, 14.93, Bogota, Colombia and HJA, 14.93, Barranquilla, Colombia (Gozen) *** WOEH, has been installed aboard Aircraft NC223Y (KHAIR), owned by H.R. Hughes, for flight around World. Main communication frequencies will be 4797.5, 6.425, 8.655, 12.862 and 17.31mc. WKP, WQW, WQP and WQH will act as contact stations (FCC) ** New apex station W3XEY, 31.6mc, 100 watts heard relaying WFBR of Baltimore (Roberts) ** New general experimental station W1XAD, owned by University of Florida at Gainesville granted license by FCC.

-SOUTH AMERICA-

ARGENTINA LSN, 9.89, Buenos Aires, broadcasts Thursdays at 6pm (* Earl Roberts) * Best amateur stations at present, 6:30-8pm: LU1DJ, 14.29; LU2HN, 14.28 LU7VE, 14.09 and LU7MB 14.06mc (Roberts)

BOLIVIA New amateur CP1AA, 14mc, 50 watts, located at La Paz, being heard near 7:45pm (Goodeve, DeMyer)

BRAZIL Best amateurs heard 6-8pm: PY2AR 14.4, PY2BA 14.122, PY2CA 14.06, PY2CK 14.09, PY2CM 14.09, PY2CU 14.38 and PY7BB 14.035mc.

B. GUIANA VP3MR, Georgetown, although announcing frequency as 6.01, is actually on 5.997mc. Sked is 4:45-9pm EST (** Oxrieder, Thomas) ** VP3BG, Georgetown, announces frequency as 6.13mc. Also transmits on amateur frequencies of 14.13 and 14.3mc, 6-9pm EST (Thomas, Roberts)

CHILE CED at Antofagasta is on 10.225mc, with about the same sked as CEG, Santiago, whom it contacts (* Oxrieder) * Amateur stations heard between 7:30 and 9:30pm and also around 2-3am: CE1BC 14.07, CE3AC 14.09, CE3AG 14.4, CE3DG 14.38, CE3EM 14.38 and CE3QJ 14.295.

COLOMBIA New station, Radiodifusora Colombiana, La Voz de Armenia, Armenia, heard Sept 11, 12 and 13, heterodyning W2XAF and transmitting on frequency of 9.531 to 9.533mc. Spanish announcements only (** Oxrieder, Morrison, Putnam) * HJ1AB, Barranquilla, now on approx. 6.132mc (Oxrieder) * HJ1ABG, Barranquilla, is heard at times on frequency of 6.0425mc (Oxrieder) * HJ1ABE, Cartagena, 9.5mc, is again broadcasting DX programs Monday nights from 9:30-10:30pm (CSWRG) * HJ1ABP, 9.616, Cartagena, has been signing off at 10:15pm (Forestieri) * HJ2ABC, La Voz de Cucuta, Cucuta, and not HJ3ABF, as reported last month, is the station wandering around from 9.588 to 9.597mc (Oxrieder) * HJ2ABD, Bucaramanga, after a long silence is again being heard near 5.987mc (Oxrieder) * HJ2ABF, 6.17, Bogota, usually heterodyned by XEXA until 11pm (Oxrieder) * HJ2ABX, 6.122, Bogota, is reported on the air Sunday nights also (Horne) * HJ4ABA, 11.71, Medellin, transmits from 11:30am-1:30pm only at present (Horne) * HJ4ABD, La Voz de Catia, Medellin, is very unstable, but is being heard in the vicinity of 5.93 at present (Oxrieder) * HJ4ABE, Medellin, has moved to 6.0975, his assigned frequency (Oxrieder) * Best heard amateurs are: HK1Z, HK3AP 14.35 and HK3JA 14.03.

ECUADOR HC2CW, Guayaquil, being heard near 8.2mc recently. Is usually on the air from 10pm to 11pm or later (Oxrieder) ** New amateur HC1ETC located at Bolivar Theater, Quito, is on 14.075, irregularly between 11pm and 1am. Operator is an American named Sandy (Goodeve, DeMyer, Stark) * New amateur HC1KCS, 14mc, being heard near 10pm (Roberts)

PERU OALAA, 14.265, is no longer on the air (Roberts) * Amateur, OALAI, A-America, I-Italy, 14mc, being heard near 6pm (Roberts)

VENEZUELA YV2RC, Radio Caracas, 5.8mc, transmits daily 4:15-9pm, Sundays 8:30-11:30am and 3:30-9pm * Best heard amateurs at present are: YV5AA 14.135, YV5AM 14.062, and YV5AA 14.16mc, all heard between 5:15 and 6:45pm (Hock, Roberts)

EUROPE

BELGIUM Amateurs best heard 6-7:30pm: ON4VK 14.1 and ON4CH 14.14mc
CZECHO-SLOVAKIA OLR, 15.23 (on 11.76 and 6.115 irreg), Czechoslovak Broad-
casting Corp. Prague, is transmitting 4-6am, 11am-1pm and
2:25-4:35pm daily; To North America, Monday and Thursday 9-11pm.
Interval signal is great cathedral bells. Deep pitched hum on carrier.
Announcement, "Here is Prague". English news at 4:15pm. Woman makes
station calls in English (** Metzger, Caldwell, Duncan, Levison, Peters,
Roberts, Guilbert, Graham, Morrison, Putnam)

ENGLAND London television station located in Alexandra Palace, atop
a 300-foot hill, has started experimental transmissions using both the
Baird and Marconi systems. Sight frequency 45mc, sound frequency 41.5mc.
Emitron instantaneous television cameras are used for scanning (Stans-
field, BBC) * G8 is not a regular amateur zone but used by newly licen-
sed hams with a maximum of 10 watts input (Campbell) * Amateurs, G6HW,
14.13, G6VX 14.08, and G6CW 14.12 are being heard from 6-7pm.

FRANCE The new French Govt. S.W. transmitters will probably not be
completed before the first of the year.. FYD, a French phone on 13mc,
was heard testing at 11:30pm (* Chas. Miller)

GERMANY DJR, 15.34, broadcasts for Brazil and Chile at 4:50pm. On
Sundays DZC, 10.29, transmits to Argentina at about 8:45pm; DZE, 12.13
and DJL, 15.11, transmit to Mexico from 9:15 to 9:45pm (* Roberts) *
DJL, 15.11, transmits to North America 8-9am daily.

HOLLAND Present sked of PCJ, Eindhoven is: On 15.22mc, Tuesday 4:30
to 6am to Australia and N.Z; Wednesday 8 to 11am to Asia; On 9.59mc,
Sunday 2-3pm to Africa, Tuesday 1:30-3pm to Africa and Wednesday, 7 to
10pm to North America. Sked of PHI, Huizen, 17.77mc is: Mon, Thurs, Friday
and Saturday 8-11am and Sunday 7-10am (** Laul, Patton, RMA)

HUNGARY A new station on 13.685, using call HAT has been heard test
ing in the evenings on the Pacific coast (J.W. Partner)

I.F.S. A new amateur E18G, 14.025mc, heard at 6pm (* Roberts) (chel.)

ITALY IIIT, 14.35 and IIKS, 13.36, heard between 10pm-1am (Schmei-

NORWAY New LKJL, 9.53, Jeloy, will be testing shortly (* Herz)

PORTUGAL New station, CSW, National Broadcasting Station of Portugal
at Lisbon, 9.55mc, is broadcasting frequently up to 6pm. Relays the
national program of Portugal (** Oxrieder, Hutchinson) * CT1AA, Radio
Coloniale, Lisbon, decidedly unstable in frequency, is now on 9.664 (RO)

SWEDEN Amateur SM5SX, 14.344, is being heard 6-8pm (Goodeve, Miller)

SPAIN Spanish mystery station, announcing "This is Spain", on 7.23
mc, transmits news bulletins in English and Spanish irregularly from
7:45 to 8:15pm (** Oxrieder) * Spanish amateurs are using the 7mc band
principally, at present from 2 to 7pm (Guilbert) ** War news is given
over EAQ, 9.86, in several languages, including English at 9:15pm (Laul)

SWITZERLAND HBO, Geneva, 11.402, transmits League of Nations bulletins to

LAND Australia, Mondays from 12:30 to 1:30am (** Balbi, Ambrosius)
New frequencies of commercial stations: HBF 18.45, HBJ 14.535, HBO
11.402 (All-Wave Radio)

U.S.S.R. RAN, Moscow, now on 9.6mc, transmits daily 6-7pm in Spanish,
7 to 7:30pm in English and Sun, Wed and Fri 7:30 to 8pm in German (Ox-
rieder, Sholin, Peters) * RRR, Khabarovsk, 15.95mc, heard calling Moscow at
7:45am. RVU, Vladivostok, 17.01, calling RRR at 6:15am. RIO now on 10.16

-AFRICA-

ALGERIA FVA, 8.963, Alger, works TYA2, 9.037, regularly at 1:30am (C.
CANARIAS EHZ, 10.37, El Tablero, broadcasts news in French, Spanish, Ger-
man and English between 2:40 and 3:10pm and 6 and 8pm (** Oxrieder,
Guilbert) ** EDX, Las Palmas, Gran Canarias, 10.74mc, has been playing
phonograph records and reading Spanish news bulletins near 9:30pm. Says
"attencion, attencion", before announcing (Oxrieder)

EGYPT SUZ, 13.81, Cairo, calls GBB, Rugby, 13.595, at 11am (* J. Miller)
Watch for the following hams between 3 and 6pm: SULCH, 14.31, SULKG
14.04, SULRK 14.275, SULSG 14.4, SU5NK 14.06, SU8MA 14.1 (** J. Miller,
Messer, Peters, Goodeve, Roberts)

ETHIOPIA IUC, 11.955 and IUB 7.62, of Addis Abeba, are testing with
speech and music with IBR, 14.36, Rome, Italy. The Addis Abeba stations
have been reconstructed and now use a power of 10kW (Egyptian Radio)

KENYA VQG, 19.63, Nairobi, heard working GAD, Rugby, 19.48, at 8-9am
and 9:12am (** Chas. Miller)

MOROCCO CNR, 12.83, Rabat, works Paris at 11:15am and 4-5pm (C. Miller)

SO. AFRICA ZSS, 18.89, Capetown, works GAU, Rugby, 18.62, at 6:30am (Miller)
-ASIA-AUSTRALASIA-

AUSTRALIA A new short-wave station located at Brisbane, will soon be testing from 3 to 4am on 13.955mc (** Teleradio) * VK3ME, 9.495, Melbourne, is transmitting irregularly from 2-3am. * VK6ME, Perth, may not be on the air for some time yet ** VK8SC, The Flying Doctor, station at Port Hedland, 6.96mc, operates Sundays from 4:30-5am (Wignall, Sholin) * VJ1, Cloncurry, 8.63mc, now uses call VK8XT (W.A.W.N.) ** VK9MI, aboard the S.S. Kanimbla, 6.01 and 11.712mc, power 250 watts, transmits daily from 6-6:30am. Call is given as 9MI by a lady announcer. Address reports to McIlwraith and McEacharn, Bridge St., Sydney, N.S.W. * Amateurs reported between 3 and 9am: VK2AZ 14.015, VK6MW 14.03, VK4DB 14.035, VK2OG 14.04, VK2QR 14.07, VK3ZZ 14.07, VK3HL 14.08, VK3HQ 14.08, VK-2JU 14.1, VK2BK 14.1, VK2ABD 14.15, VK2AG 14.28, VK2CG 14.29, VK2ADA 14.3, VK2WR 14.31. QRA of VK2ABD is C.C. Galbraith, 77 Drumalbyne Rd, Sid new NSW (Stark, Goodeve, DeMyer, Schmeichel)

CELEBES PNI, Makassar, 8.775, heard phoning Java at 5:30am (C. Miller)

CEYLON Colombo, reported on 6.01 and 6.05, being heard from 8:30 to 10am irregularly. Announcements are very infrequent (** Stansfield, TI)

CHINA XGOX, 6.82mc, Nanking, heard 6:30-8:30am (Sun to 9:30am). (*Sholin, Balbi) * XOJ, 15.785, Shanghai, contacts JVD or JVF between 8pm and midnight (J. Miller) * XGM, 17.65, Shanghai works GBA at 6:17am (JM).

FIJI'S VPD2, new 1kW Xmtr. at Suva, came on the air Aug. 23. Transmits on a frequency of 9.548mc, from 5:30 to 7:10am. Signs off with "Song of the Islands" (** Kiesling, DeMyer, Sholin, Balbi, Goodeve, Stark, Roberts)

F.M.S. New amateur, VS2AK, 14.04, Kuala Lumpur, heard 6:20am (DeMyer)

GUAM Amateurs, OM2BC and OM2RX, Agaña, both on approximately 14.212mc, are being heard from 2-3:30am (** Sholin, Roberts)

INDO-CHINA A station announcing as Indo-China is being heard on 11.73mc, between 7 and 9:30 a.m. on Pacific coast (Craft)

JAPAN The regular Overseas Broadcasting Schedule has been inaugurated as follows: To Europe, 2-3pm daily, JVF, JVN, JVH, JVA (one or more will be used); To S.A. and Atlantic coast of N.A., 4-5pm daily, JVN, JVH or JVA; To Malay and Java, 9-10am daily, JVN, JVH or JVA; To Pacific coast of N.A. and Hawaii, Midnight to 1am daily, JVN or JVH. As soon as the new 50kW short-wave transmitter at Nazaki is completed, which will be sometime this fall, the following official frequencies will be used for all Overseas Broadcasts: JZH 6.095, JZI 9.535, JZJ 11.8, JZK 15.16, JZL 17.785, JZM 21.52mc (**** Akifusa Saito, Jumamoto, Japan) ** JZB, 10.96, Shinkio, Manchukuo, works JVO, 10.375, Nazaki, at 5:26am (J. Miller) JZB is on Saturdays at 10:50pm (J. Miller)

JAVA PMA, 19.345 and PLE, 18.83, are broadcasting Sundays between 7-8am (** CSWRC) * YDC, 15.15, Bandoeng, is being heard widely from 4:30 to 10:30am (J. Miller, Hock, DeMyer) * PMH, 6.72, Bandoeng, is heard with excellent volume from 5:30 to 10am EST, on the Pacific coast, with the native Javanese programs (Sholin) * PLV, 9.415 and YBG, 10.43, phone near 5:36am (J. Miller) ** The NIROM network programs heard in the U.S.A. include -a Children's Half Hour at 6:25am, followed by the Mayfair dance orchestra and the news in Dutch at 7:25am (F. Andrews) * The smaller Javanese stations heard from time to time include: PMY, 5.14, Bandoeng; YDL2, 4.81, Solo; YDG2, 3.47, Batavia; YDL3, 3.45, Solo; YDL5, 3.21, Djokjakarta; YDG3, 3.15, Batavia; YDOL, 3.17, Soerabaja; YDG7, 3.3, Batavia; YDK3, 2.91, Semarang; YDV2, 3.33, Banderjermasin, Borneo (Tune In) * Amateurs reported 6:30-8am: PK1MK, 45 watts, 14.09, Batavia; PK1MV, 14.075 and PK1PK, 14.04mc (Sholin, Schmeichel, DeMyer)

MACAO CQN, Macao, officially announces its frequency as 9.675mc, although actually it is reported almost anywhere on the 31-meter band.

P.I. KAZ, 9.99, Manila, heard phoning at 5:30am (* Joe Miller) * Amateurs reported from 3-11am: KALBH, 14.24; KALME, 14.14 and KALVH 14.12 (YL operator), (Sholin).

SIAM HS8PJ, Bangkok, is reported on 19.02mc, Mondays 8-10am by Rene Plieber in Algeria. Usually broadcasts on 10.955mc. HS8PJ transmits on 8.35mc, Thursdays from 8-10am. According to the Chief Engineer of the station there is no Siamese station HSH (** Plieber, NRC) * HSP, Bangkok, 17.74mc, heard calling Berlin at 5:47am (Schmeichel).

STOP PRESS NEWS: The new Javanese station is YDC, 15.15, Bandoeng, Power is 3kW. Transmissions experimental only. (** Hardeman-NIROM) *** CR6AA, Lobito, Angola, is now on 9.66mc, Wed/Sat 3:45 to 5:30pm EST.

SHORT-WAVE BROADCASTING STATIONS

NOTE: Commercial stations shown in September G.C. SYMBOLS: N- New stations; F- Changes in frequency; S- Changes in schedule; C- Changes in frequency and schedule; B- Frequency calibrations according to Oxford-IDA Frequency Bureau; D- Unstable frequency.

| DIAL | METERS | MEGS | CALL | STATION | TIME | E.S.T. |
|--------|--------|------|-------|-------------------------|--|--------|
| S13.92 | 21.54 | | W8XK | Pittsburgh, Penna. | 6:45-10am. | |
| S13.94 | 21.52 | | W2XE | Wayne, New Jersey. | 7:30am-1pm. | 13M |
| N13.94 | 21.52 | | JZM | Nazaki, Japan. | Will be on the air shortly | |
| 13.97 | 21.47 | | GSH | Daventry, England. | 6-8:45, 9-11:30am. | |
| 16.86 | 17.79 | | GSG | Daventry, England. | 6-8:45, 9-11:30am, 3:40-5:45pm. | |
| N16.87 | 17.785 | | JZL | Nazaki, Japan. | Will be on the air shortly | |
| S16.87 | 17.78 | | W3XAL | Boundbrook, N.J. | 9am-5pm. | 16M |
| S16.88 | 17.77 | | PHI | Huizen, Holland. | M, Th, F, Sa 8-11am, Sun 7-10am | |
| 16.89 | 17.76 | | DJE | Zeesen, Germany. | 12:05-5:15, 5:55-11am. | |
| 18.71 | 16.03 | | KKP | Kahuku, Hawaii. | Tu 12:30-1am, Thur 1:30-2am | |
| 19.52 | 15.37 | | HAS3 | Budapest, Hungary | Sunday 9-10am. | |
| S19.56 | 15.34 | | DJR | Zeesen, Germany. | 8-9am to Central America. | |
| 19.57 | 15.33 | | W2XAD | Schenectady, N.Y. | 10am-3:45pm. | |
| 19.60 | 15.31 | | GSP | Daventry, England. | 6-8pm. | |
| 19.62 | 15.29 | | LRU | Buenos Aires, Arg. | 7am-3:45pm. (pm to S.A.) | |
| S19.63 | 15.28 | | DJQ | Zeesen, Germany. | 8:15-11am, 6-8am, 4:50-10:45 | |
| S19.64 | 15.27 | | W2XE | Wayne, New Jersey. | 1-6pm. | |
| S19.68 | 15.243 | | TPA2 | Pontoise, France. | 2-2:40am, 5:55-11am. | 19M |
| S19.70 | 15.23 | | OLR | Prague, Czechoslovakia. | 4-6am, 11am-1pm, 2:25-4:35pm | |
| S19.71 | 15.22 | | PCJ | Eindhoven, Holland | Mon/Thur 9-11pm to N.A. | |
| S19.72 | 15.21 | | W8XK | Pittsburgh, Penna. | Tu 4:30-6am, Wed. 8-11am. | |
| S19.74 | 15.20 | | DJB | Zeesen, Germany. | 10am-8pm. (-10:45pm to N.A.) | |
| 19.76 | 15.18 | | GSO | Daventry, England. | 12:05-5:15, 5:55-11am, 4:50 | |
| 19.76 | 15.18 | | RV96 | Moscow, U.S.S.R. | 12:15-3:40pm. | |
| N19.79 | 15.16 | | JZK | Nazaki, Japan. | Sunday 1-2pm. to N.A. | |
| N19.80 | 15.15 | | YDC | Bandoeng, Java. | Will be on the air shortly | |
| 19.82 | 15.14 | | GSF | Daventry, England. | 5:30-10:30am. | |
| 19.84 | 15.12 | | HVJ | Vatican City, Italy | 9am-N'n, 3:40-5:45pm, 9-11pm | |
| S19.85 | 15.11 | | DJL | Zeesen, Germany. | 10:30-10:45am. | |
| 19.91 | 15.07 | | RKI | Moscow, U.S.S.R. | Mid-2am, 11:35-4:30pm; 8-9am to N.A., Sundays 6-8am. | |
| 20.04 | 14.97 | | LZA | Sofia, Bulgaria. | Sunday 10-11am. | |
| S20.55 | 14.60 | | JVH | Nazaki, Japan. | Su 12:30-8, 10am-4:30pm, M/W F/S 5-7am, Tu/Thur 1-3pm. | |
| 22.00 | 13.635 | | SPW | Babice, Poland. | 12-1am, Mon/Thur 4-5pm, Tues/Fri 2-3pm and irreg. | |
| N23.01 | 13.04 | | HC2FA | Guayaquil, Ecuador | Monday 8-10pm. | |
| 24.52 | 12.235 | | TFJ | Reykjavik, Iceland | Mon, Wed, Fri 11:30am-12:30pm | |
| 25.00 | 12.00 | | RNE | Moscow, U.S.S.R. | Sundays 1:40-2:30pm. (6-7am | |
| 25.09 | 11.955 | | IUC | Addis Abeba, Ethiopia | 3-6pm, Sun 6-7, 10-11am, Wed | |
| S25.21 | 11.90 | | XEWI | Mexico D.F. | addis tests with Rome 3-4pm. | |
| S25.24 | 11.885 | | TPA3 | Pontoise, France. | 8pm-mid., Sun. mid-3:30am. | |
| S25.27 | 11.87 | | W8XK | Pittsburgh, Penna. | 2-2:40am, 2:55-5, 12:15-6pm. | |
| 25.29 | 11.86 | | YDB | Sourabaya, Java. | 8-11pm. | |
| S25.36 | 11.83 | | W2XE | Wayne, New Jersey. | 11:30pm-3am, Sat 8pm-Sun 3a | |
| 25.36 | 11.83 | | W9XAA | Chicago, Illinois. | 6-11pm. | |
| 25.40 | 11.81 | | 2R04 | Rome, Italy. | Sunday 9am-1am. | 25M |
| N25.42 | 11.80 | | JZJ | Nazaki, Japan. | 6:43am-5:30pm, 6-6:20pm, 6:20-7:30pm | |
| S25.43 | 11.79 | | W1XAL | Boston, Mass. | Will be on the air shortly | |
| 25.49 | 11.77 | | DJD | Zeesen, Germany. | 4:30-5pm, Sun 9:45-11am, | |
| 25.51 | 11.76 | | OLR | Prague, Czechoslovakia | 2:30-4pm, Wed 4-5pm. | |
| 25.53 | 11.75 | | GSD | Daventry, England. | 11:35-4:30pm, 4:50-10:45pm | |
| N25.58 | 11.73 | | F31CD | Saigon, F. Indo-China | Prague, Czechoslovakia testing irregularly. | |
| 25.60 | 11.72 | | CJRJ | Winnipeg, Canada. | Daventry, England. 2:15-4:15am, 12:15-3:25pm, 6-8pm. | |
| S25.61 | 11.714 | | TPA4 | Pontoise, France. | Signs off 9:30am. | |
| N25.62 | 11.712 | | VK9MI | S.S. Kanimbla. | 7-12m, S 4pm-1a, Su 3-9:30pm | |
| S25.63 | 11.705 | | SM5SX | Stockholm, Sweden. | 6:15-8, 8:15pm-1am. | |

| | | | | | |
|--|--------|--------|--------|------------------------|------------------------------|
| | 25.68 | 11.63 | KIO | Kahuku, Hawaii | Tu 12:30-1am, Th 1:30-2am, |
| | D26.25 | 11.43 | COCX | Havana, Cuba. | 5-10pm irreg. |
| | N26.60 | 11.28 | HIN | Trujillo City, D.R. | 11:40am-1:40pm, 4:40-5:40p |
| | 27.27 | 11.00 | PLP | Bandoeng, Java. | Relays NIROM 5:30-11am. |
| | 27.39 | 10.955 | HS8PJ | Bangkok, Siam. | Monday 8-10am irreg. |
| | S27.93 | 10.74 | JVM | Nazaki, Japan. | Tu/Fri 2-3pm and irreg. |
| | N27.93 | 10.74 | EDX | Las Palmas, Canarias | 9:30-10:15pm. |
| | 28.12 | 10.67 | CEC | Santiago, Chile. | 7-7:15pm. |
| | S28.14 | 10.66 | JVN | Nazaki, Japan. | 4-7:40am, Mon/Thur 4-5pm. |
| | N28.93 | 10.37 | EHZ | El Tablero, Canarias | 2:40-3:10pm, 6-8pm irreg |
| | S28.98 | 10.35 | LSX | Buenos Aires, Argen | 8-9pm irreg. |
| | S29.04 | 10.33 | ORK | Ruyselede, Belgium | 2:30-4pm. |
| | S29.24 | 10.26 | PMN | Bandoeng, Java. | 5:30-11am to Sumatra. |
| | 30.32 | 9.89 | LSN3 | Buenos Aires, Argen | Thursdays at 6pm. |
| | S30.43 | 9.86 | EAQ | Madrid, Spain. | 5:15-10pm, Sat 1-3pm. |
| | 30.78 | 9.746 | COCQ | Havana, Cuba. | Relays CMQ 7am to 1am. |
| | D30.80 | 9.74 | CSW | Lisbon, Portugal. | Sign-off at 6pm. |
| | F31.02 | 9.67 | TI4NRH | Heredia, C.R. | 9-10pm, 11:30pm-midnight. |
| | 31.04 | 9.666 | CQN | Macao, Macao. | Mon/Fri 7-8:30am. |
| | B31.05 | 9.664 | CT1AA | Lisbon, Portugal. | Tues, Thurs, Sat 3-6pm. |
| | 31.06 | 9.66 | LRX | Buenos Aires, Argen | 8-9pm. |
| | D31.06 | 9.66 | YNLF | Managua, Nicaragua. | 6:15-9:45pm. |
| | F31.09 | 9.65 | YDB | Sourabaja, Java. | 5:30-11am. |
| | B31.12 | 9.64 | HH3W | Port-au-Prince, Haiti, | 1-2, 7-8:30pm. |
| | 31.13 | 9.635 | 2R03 | Rome, Italy. | |
| | B31.20 | 9.616 | HJ1ABP | Cartagena, Colom. | 11am-1pm, 5-11pm, Sun 5-8pm |
| | 31.23 | 9.605 | HP5J | Panama City, Panama | 11:45-1:15pm, 7-10pm. (8pm |
| | F31.25 | 9.60 | RAN | Moscow, U.S.S.R. | 6-7:30pm; Su, Wed, Fri 7:30- |
| | 31.25 | 9.60 | CB960 | Santiago, Chile. | 11am-1pm, 9-11pm. |
| | 31.27 | 9.595 | HBL | Geneva, Switzerland | Sat 5:30-6:15pm. |
| | 31.28 | 9.59 | PCJ | Eindhoven, Holland. | Sun 7-8pm, Wed 7-10pm. |
| | 31.28 | 9.59 | VK6ME | Perth, W. Australia. | (Sun 2-3pm, Tues 1:30-3pm. |
| | 31.28 | 9.59 | VK2ME | Sydney, Australia. | Sundays 12:30-2:30, 4:30- |
| | 31.28 | 9.59 | W3XAU | Philadelphia, Penna | 8:30 and 9:30-11:30am. |
| | D31.28 | 9.59 | HJ2ABC | Cucuta, Colombia. | Noon-8pm, Sun N'n-7pm 31M |
| | 31.32 | 9.58 | GSC | Daventry, England. | 6-10pm, except Sundays. |
| | 31.32 | 9.58 | VK3LR | Melbourne, Austr. | 6-8pm and 9-11pm. (Fr 10pm |
| | 31.35 | 9.57 | WLXK | Springfield, Mass. | 3:30-8:30am, Sun 3-7:30am. |
| | 31.36 | 9.565 | VUB | Bombay, India. | 6am-mid., Sun 7am-midnight |
| | 31.38 | 9.56 | DJA | Zeesen, Germany. | Su 1-2:30am, Tu/Sat 11:30a |
| | D31.41 | 9.55 | CSW | Lisbon, Portugal. | 12:05-5:15am, 4:50-10:45pm |
| | 31.45 | 9.54 | DJN | Zeesen, Germany. | Heard here near 6pm. |
| | N31.45 | 9.54 | VPD2 | Suva, Fiji's. | 12:05-5:15am, 4:50-10:45pm |
| | 31.45 | 9.54 | CB954 | Santiago, Chile. | 5:30-7:10am except Sunday |
| | N31.46 | 9.535 | JZI | Nazaki, Japan. | Will be operating shortly |
| | N31.47 | 9.533 | | Armenia, Colombia. | Will be on the air soon. |
| | 31.48 | 9.53 | W2XAF | Schenectady, N.Y. | Testing in evenings. |
| | 31.55 | 9.53 | GSB | Daventry, England. | 6-11pm. |
| | 31.55 | 9.51 | HJU | Buenaventura, Col. | 2:15-4:15am, 12:15-5:45pm. |
| | N31.55 | 9.51 | HC2JSB | Guayaquil, Ecuador | Mon/Wed/Fri N'n-2, 8-11pm. |
| | 31.57 | 9.505 | KEFT | Veracruz, Mexico. | 6-11pm except Sundays. |
| | S31.58 | 9.50 | HJ1ABE | Cartagena, Colom. | Evenings irreg. (10:30pm. |
| | 31.58 | 9.50 | PRF5 | Rio de Janeiro, Brz | 7:30-9pm Ex. Sun, Mon 9:30- |
| | B31.60 | 9.495 | VK3ME | Melbourne, Austr. | 4:15-5:45pm ex. Sunday. |
| | 31.73 | 9.45 | TGWA | Guatemala, Guat. | 4-7am ex. Sun, 2-3am irreg |
| | S31.80 | 9.428 | COCH | Havana, Cuba. | 8-10, 11pm-mid, to 5am Sun. |
| | S31.84 | 9.415 | PLV | Bandoeng, Java. | 7am-mid, Sun 8-9, 11:30am- |
| | 32.88 | 9.125 | HAT4 | Budapest, Hungary. | 1:30pm, 6-9pm. |
| | 33.53 | 8.948 | HCJB | Quito, Ecuador. | Tu, Th, Sa 10-10:30am. |
| | 34.26 | 8.75 | ZBW | Hong Kong, China. | Sunday 6-7pm. |
| | 34.66 | 8.665 | CO9JQ | Camaguey, Cuba. | 7-11:30pm ex. Monday. |
| | 34.76 | 8.63 | VK8XT | Cloncurry, Austr. | 4-10am. |
| | B36.59 | 8.20 | HC2CW | Guayaquil, Ecuador. | 8-9pm and irreg in Even. |
| | D38.02 | 7.89 | F08AA | Papeete, Tahiti. | Fridays at 4am. |
| | 38.47 | 7.797 | HBP | Geneva, Switzerland | 8-11pm except Sundays. |
| | S39.87 | 7.52 | KKH | Kahuku, Hawaii. | Friday 11pm-midnight. |
| | | | | | Saturday 5:30-6:15pm. |
| | | | | | Thurs 1:30-2am & irreg. |

| | | | | | |
|--|--------|-------|--------|-------------------------|-----------------------------|
| | 39.92 | 7.51 | JVP | Nazaki, Japan. | Irregular. |
| | 40.65 | 7.38 | XECR | Mexico D.F. | Sunday 7-8pm. |
| | 41.30 | 7.265 | | Tunis, Tunisia. | 6-8am and noon-2pm. |
| | N41.49 | 7.23 | | Madrid, Spain. | 7:45-8:15pm irregular. (pm |
| | F41.60 | 7.211 | EASAB | Tenerife, Canarias. | Mon/Wed/Fri/Sat 3:15-4:15 |
| | C31.06 | 9.66 | CR6AA | Lobito, Angola. | Wed/Sat 3:45-5:30pm. |
| | D42.25 | 7.10 | F08AA | Papeete, Tahiti. | Fri 11pm-midnight. |
| | 42.97 | 6.996 | PZH | Paramaribo, D. Guiana | Mon/Wed/Fri 5:40-9:40pm. |
| | N43.10 | 6.96 | VK8SC | Port Hedland, Australia | Sundays 4:30-5am. |
| | S43.51 | 6.895 | HCOYC | Quito, Ecuador. | Thurs 8-10:30pm |
| | F43.99 | 6.82 | XGOX | Nanking, China | 6:30-8:40am, Sun 7:30-9:30a |
| | D44.12 | 6.80 | HI7P | Trujillo City, D.R. | |
| | 44.25 | 6.78 | HIH | San Pedro, D.R. | 7:40-9:10pm ex. Sundays. |
| | S44.51 | 6.74 | HC1TQ | Quito, Ecuador. | Sunday 5-7pm. |
| | D44.58 | 6.73 | HI3C | La Romana, D.R. | 6:10-7:40pm. |
| | F44.60 | 6.727 | PMH | Bandoeng, Java. | 5:30-11am. |
| | B44.96 | 6.673 | TIEP | San Jose, C.R. | 7-10:30pm ex. Sundays. |
| | B45.22 | 6.635 | HC2RL | Guayaquil, Ecuador. | Sun 5:30-7:30p, Tu 9-11pm. |
| | 45.25 | 6.63 | HIT | Trujillo City, D.R. | 12:10-1:40pm, 5:40-8:40pm. |
| | B45.29 | 6.625 | PRADO | Riobamba, Ecuador. | Thursday 9-11pm. |
| | 45.76 | 6.555 | HL1D | Trujillo City, D.R. | 4:40-7:40pm ex. Sunday. |
| | 45.80 | 6.55 | TIRCC | San Jose, C.R. | N'n-2, 6-7, Thur 6-11pm. |
| | 45.84 | 6.545 | YV11RB | Bolivar, Venezuela. | |
| | 46.01 | 6.52 | YV6RV | Valencia, Venezuela | 5:30-9:30pm. |
| | B46.21 | 6.492 | HL | Trujillo City, D.R. | 5:40-7:40pm ex. Sundays. |
| | B46.32 | 6.477 | HIB4 | Trujillo City, D.R. | 5:40-7:40pm ex. Sundays. |
| | B46.34 | 6.475 | HL4V | Trujillo City, D.R. | 5:10-6:40pm ex. Sundays. |
| | 46.70 | 6.425 | VE9AS | Fredericton, N.B. | Thurs 10:30pm-1:30am. |
| | 46.70 | 6.425 | OAX4K | Lima, Peru. | 7pm daily. |
| | 46.69 | 6.425 | W3XL | Boundbrook, N.J. | NBC Experimental. |
| | 46.73 | 6.42 | HILS | Puerto Plata, D.R. | 6:10-8:10pm ex. Sundays. |
| | 46.80 | 6.41 | TIPG | San Jose, C.R. | 6-11:30pm |
| | 46.88 | 6.40 | YV9RC | El Valle, Venezuela | 5:30-9:30pm ex. Sunday. |
| | 47.02 | 6.38 | YV4RC | Caracas, Venezuela. | 11am-1pm, 5:30-9:30pm ex S |
| | 47.20 | 6.357 | HRP1 | San Pedro Sula, Hon | 7-9pm ex. Sunday. |
| | 47.24 | 6.35 | HH3NW | Port-au-Prince, Haiti | testing in evenings. |
| | B47.32 | 6.34 | HIX | Trujillo City, D.R. | Tues/Fri 8:10-10:10pm. |
| | 47.54 | 6.31 | HLZ | Trujillo City, D.R. | 5:10-7:40pm ex. Sundays. |
| | 47.62 | 6.30 | YV12RM | Maracay, Venezuela. | 6-10pm except Sundays. |
| | 47.76 | 6.282 | C09WR | Sancti Spiritus, Cuba | N'n-1, 4-6, 9-11pm. |
| | 47.77 | 6.28 | HIG | Trujillo City, D.R. | 8:10-9:40pm, T/F 6:40-8:10 |
| | 48.00 | 6.25 | C05RY | Matanzas, Cuba. | 7-9pm. |
| | 48.00 | 6.25 | YV5RJ | Caracas, Venezuela. | Will be on the air soon. |
| | C48.04 | 6.245 | HIN | Trujillo City, D.R. | 7:10-9:10pm. |
| | S48.08 | 6.24 | HI8Q | Trujillo City, D.R. | 4:40-8:40pm. |
| | 48.11 | 6.235 | HRD | La Ceiba, Honduras. | 8-11pm, Sun 1pm-1am. |
| | 48.15 | 6.23 | OAX4G | Lima, Peru. | 7-11pm, Wed 6-11pm. |
| | 48.47 | 6.19 | HILA | Santiago, D.R. | 10:40-1:40p, 6:40-9:40pm. |
| | 48.61 | 6.171 | XEXA | Mexico D.F. | 8-8:30am, 6-11:15pm. |
| | 48.61 | 6.17 | HJ3ABF | Bogota, Colombia. | 7-11pm except Sundays. |
| | 48.62 | 6.17 | HJ2ABA | Tunja, Colombia. | 7-10pm except Sundays. |
| | B48.73 | 6.156 | YV3RC | Caracas, Venezuela. | 3:30-10pm. |
| | 48.78 | 6.15 | CB615 | Santiago, Chile. | 11am-1pm, 7-10pm. (10:30pm |
| | 48.78 | 6.15 | CJRO | Winnipeg, Canada. | 7-mid, Sat 4pm-1am, S 3pm- |
| | 48.81 | 6.147 | COKG | Santiago, Cuba. | 8-9am, 11am-2pm, 5-9pm. |
| | 48.81 | 6.147 | ZEB | Bulawayo, S. Rhodesia | Tu/F 12:15-3:15p, M 11am- |
| | | | | | N'n, Th 10am-N'n, S 3:30-6p |
| | 48.82 | 6.145 | HJ1ABU | Pereira, Colombia. | 7-8pm except Sundays. |
| | 48.86 | 6.140 | W8XK | Pittsburgh, Penna. | 11pm-2am. |
| | 48.89 | 6.137 | CR7AA | Laurenco Marques. | 12:45-3pm, Sun 8-10:30am. |
| | B48.93 | 6.132 | CHNX | Halifax, N.S., Canada, | relays CHNS. |
| | B48.93 | 6.132 | HJ1ABB | Barranquilla, Colom | 6-10pm except Sundays. |
| | 48.94 | 6.13 | ZGE | Kuala Lumpur, FMS. | Sun/Tues/Fri, 6:40-8:40am. |
| | 48.94 | 6.13 | COCD | Havana, Cuba. | 11am-12 mid, Sun 5-11pm. |
| | F48.94 | 6.13 | VP3BG | Georgetown, B. Guiana | |
| | 49.01 | 6.122 | HJ3ABX | Bogota, Colombia. | 6-11:30pm. |
| | 49.01 | 6.122 | OAX4P | Lima, Peru. | Noon-1pm, 9-11pm. |
| | 49.02 | 6.12 | W2XE | Wayne, New Jersey. | 10-11pm. |

| | | | | |
|-------|-------|--------|------------------------|--|
| 49.02 | 6.12 | XEFT | Veracruz, Mexico. | 7:30-midnight. |
| 49.06 | 6.115 | OLR | Prague, Czechoslovakia | testing irregularly. |
| 49.11 | 6.109 | VUC | Calcutta, India. | Sat 9:35pm-Sun 2:05am, Sun 7:05-10:35, dly 1:35a-1120 |
| 49.11 | 6.108 | HJ4ABB | Manizales, Colombia | 8-10pm except Sundays. |
| 49.18 | 6.10 | W3XAL | Boundbrook, N.J. | Mon/Wed/Sat 5pm-1am. |
| 49.18 | 6.10 | W9XF | Chicago, Illinois. | Su/T/Th/F 8pm-1am, Mon, Wed Sat 1-2am. |
| 49.18 | 6.10 | | Seville, Morocco. | Testing irregularly. |
| 49.20 | 6.097 | HJ4ABE | Medellin, Colombia. | 7:30-10:30pm. |
| 49.20 | 6.097 | ZTJ | Johannesburg, S.Afr | 11:45-12:30am, 3:15-7am, 9- 11:15am, 11:45-4pm. |
| 49.22 | 6.095 | JZH | Nazaki, Japan. | Will be on the air soon. |
| 49.26 | 6.09 | CFCX | Bowmanville, Ont. | 5-11pm, Sun 2-11pm. |
| 49.26 | 6.09 | | Belgrade, Yugoslavia | 2-3:45am, 7-8:30am, 11:30a (to 4:45pm daily). |
| 49.30 | 6.085 | 2R01 | Rome, Italy. | 7-10pm. |
| 49.30 | 6.085 | HJ5ABD | Calif, Colombia. | 5:45-6:15am ex. Sat/Sun & 7-10:30pm ex. Sundays. |
| 49.33 | 6.082 | VQ7LO | Nairobi, Kenya. | 6:30-8:30am, 5pm-midnight |
| 49.34 | 6.08 | HP5F | Colon, Panama. | 6:40-8:40am ex. Sundays. |
| 49.34 | 6.08 | W9XAA | Chicago, Illinois. | 9am-5pm ex. Sun, Sat 9am-6p |
| 49.34 | 6.08 | ZHJ | Penang, S.S. | |
| 49.42 | 6.072 | OER2 | Vienna, Austria. | |
| 49.42 | 6.07 | YV7RMO | Maracaibo, Venezuela. | |
| 49.46 | 6.065 | HJ4ABH | Manizales, Colombia | 6-7:45pm. |
| 49.50 | 6.06 | OXY | Skamlebaek, Denmark | 1-6:30pm, Sun 11am-7pm. |
| 49.50 | 6.06 | W3XAU | Philadelphia, Penna | 8-11pm. |
| 49.50 | 6.06 | W8XAL | Cincinnati, Ohio. | 7:30-8pm, 11pm-1:30am. Sun 8am-8pm, 11pm-1:30am. |
| 49.59 | 6.05 | HJ3ABD | Bogota, Colombia. | 7-11:30pm. |
| 49.59 | 6.05 | | Colombo, Ceylon. | 8:30-10am irreg. |
| 49.63 | 6.045 | HI9B | Santiago, D.R. | 11am-9pm, Sun 12:15-1:15am |
| 49.67 | 6.04 | W4XB | Miami, Florida. | Temporarily off the air. |
| 49.67 | 6.04 | W1XAL | Boston, Mass. | Sun 3-9pm, Mon-Fri 7-9pm. |
| 49.69 | 6.037 | HJ1ABG | Barranquilla, Col. | 6:30-10pm ex. Sundays. |
| 49.71 | 6.035 | HJ4ABC | Ibague, Colombia. | 8-10pm ex. Sundays. |
| 49.75 | 6.03 | HP5B | Panama City, Panama | 8-10:30pm. |
| 49.75 | 6.03 | VE9CA | Calgary, Canada. | 7pm-1am. |
| 49.77 | 6.028 | PRA8 | Pernambuco, Brazil. | 2:30-8:30pm. |
| 49.77 | 6.028 | HJ4ABP | Medellin, Colombia. | 7-11pm ex. Sundays. |
| 49.83 | 6.02 | XEUW | Veracruz, Mexico. | 10pm-1am. |
| 49.85 | 6.018 | ZHI | Singapore, S.S. | Sat 10:40pm-1:10am, Mon/Wd Thur 5:40-8:10am. |
| 49.85 | 6.018 | HJ1ABJ | Santa Marta, Colom. | 6-10pm. |
| 49.88 | 6.015 | HI3U | Santiago, D.R. | 4:40-9:40pm, ex. Sundays. |
| 49.91 | 6.012 | HJ3ABH | Bogota, Colombia. | 4-11pm, Sunday 4-9pm. |
| 49.92 | 6.01 | GOGO | Havana, Cuba. | 7:55am-10pm. |

"Believe it or not" Robert L. Ripley and
Bangkok, Siam, Temple Dancers.

ONE
DIME

INTERNATIONAL DX'ERS ALLIANCE

SHORT-WAVE COMMERCIAL STATION LIST

W2XAF/IDA CHRISTMAS PROGRAM

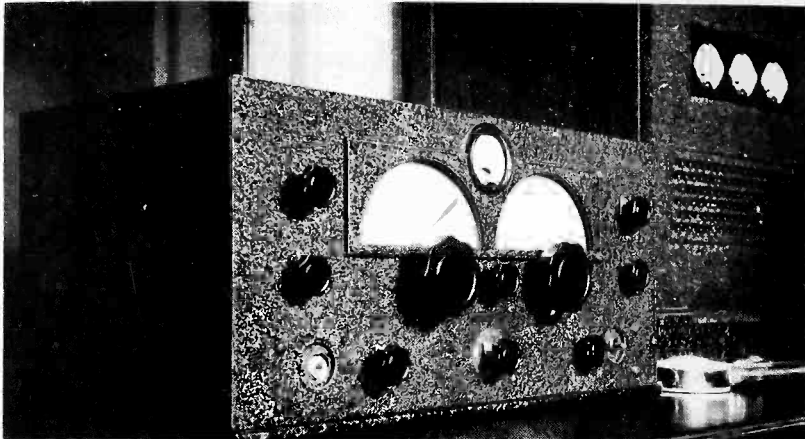
BUILDING AN 86 FOOT AERIAL MAST

DX AROUND THE WORLD

SHORT-WAVE STATION NOTES

CHINA-JAPAN BROADCAST STATIONS

THE RME-69 SINGLE SIGNAL SUPER



A TYPICAL RME-69 RECEIVER INSTALLATION.

AN IDEAL SET FOR THE DISCRIMINATING DX'ER OR HAM WHO WISHES THE ULTIMATE IN RECEPTION

* R.F. stage ahead of 1st detector builds up high ratio of signal to noise level and reduces image frequency response to a minimum..... Optional crystal filter, with variable selectivity control, for knife-edge selectivity on either phone or CW signals... Maximum sensitivity below one micro volt absolute..... Built in coil arrangement with wiping silver contacts on all switches.... Band spread continuous over entire range of 550 to 32000KC... Regular tuning dial calibrated accurately in megacycles..... Separate trimmer used for maximum resonance of R.F. circuits..... Carrier level indicator calibrated in R's and DB's... CW beat pitch control... Head phone jack... Optional beat oscillator... Manual gain control... Optional AVC control.. All elements carefully treated for tropical use.

FOR FULL PARTICULARS WRITE ADDRESS BELOW

| | | | | |
|-------|-------|--------|------------------------|--|
| 48.15 | 6.23 | OAX4G | Lima, Peru. | 7-11pm, Wed 6-11pm. |
| 48.47 | 6.19 | H11A | Santiago, D.R. | 10:40-1:40p, 6:40-9:40pm. |
| 48.61 | 6.171 | XEXA | Mexico D.F. | 8-8:30am, 6-11:15pm. |
| 48.61 | 6.17 | HJ3ABF | Bogota, Colombia. | 7-11pm except Sundays. |
| 48.62 | 6.17 | HJ2ABA | Tunja, Colombia. | 7-10pm except Sundays. |
| 48.73 | 6.156 | YV3RC | Caracas, Venezuela. | 3:30-10pm. |
| 48.78 | 6.15 | CB615 | Santiago, Chile. | 11am-1pm, 7-10pm. (10:30p |
| 48.78 | 6.15 | CJRO | Winnipeg, Canada. | 7-mid, Sat 4pm-1am, S 3pm- |
| 48.81 | 6.147 | COKG | Santiago, Cuba. | 8-9am, 11am-2pm, 5-9pm. |
| 48.81 | 6.147 | ZEB | Bulawayo, S. Rhodesia | Tu/F 12:15-3:15p, M 11am- N'n, Th 10am-N'n, S 3:30-6p |
| 48.82 | 6.145 | HJ4ABU | Pereira, Colombia. | 7-8pm except Sundays. |
| 48.86 | 6.140 | W8XK | Pittsburgh, Penna. | 11pm-2am. |
| 48.89 | 6.137 | CR7AA | Laurenco Marques. | 12:45-3pm, Sun 8-10:30am. |
| 48.93 | 6.132 | CHNX | Halifax, N.S., Canada. | relays CHNS. |
| 48.93 | 6.132 | HJ1ABB | Barranquilla, Colom | 6-10pm except Sundays. |
| 48.94 | 6.13 | ZGE | Kuala Lumpur, FMS. | Sun/Tues/Fri, 6:40-8:40am. |
| 48.94 | 6.13 | COCD | Havana, Cuba. | 11am-12 mid, Sun 5-11pm. |
| 48.94 | 6.13 | VP3BG | Georgetown, B. Guiana | |
| 49.01 | 6.122 | HJ3ABX | Bogota, Colombia. | 6-11:30pm. |
| 49.01 | 6.122 | OAX4P | Lima, Peru. | Noon-1pm, 9-11pm. |
| 49.02 | 6.12 | W2XE | Wayne, New Jersey. | 10-11pm. |