

# THE GLOBE CIRCLER

MAY 1935



A Chorus of Esquimaux girls from Greenland giving a Concert before the Microphone at Copenhagen, Denmark

ONE  
DIME

## INTERNATIONAL DX'ERS ALLIANCE

NEW CUBAN LIST

SHORT WAVE LIST

RADIO IN GREENLAND

VOICES FROM THE EAST

THOSE COLOMBIANS AGAIN

## APPOINTMENTS

We are pleased to announce the appointments of IDA Official Foreign Representatives: for COLOMBIA Sr. Hector McCormick, of Bucaramanga; for GREECE, Mr. Mimis C. Zamsis of Salonika.

Wm. Ansell announces the Appointment of Mr. C.H. Chapman of Dawson, as IDA Mgr. for the Yukon.

John Shanks announces the Appointment of Mr. G.T. Magee, of Birmingham as Mgr. for Alabama.

## MORE CHINA NEWS

T.E. Plewman, Chengtu, W. China, reports that the correct data on XGOY is: XGOY, Yunnanfu (Kunming), Yunnan Province, 698kC, 500 watts. A new station is XGOW, Hankow, about 990kC, with probably 500 watts, and another new one with about 500 watts is located in Nanning, Kwangsi Prov. and transmits on 1300kC.

## 3AR DEDICATES TO THE IDA.

Unfortunately arriving too late for use, comes the information that Mr. T.W. Bearup arranged an I.D.A. programme on 3AR, April 3rd, starting at 5am EST. Mr. W. Ansell, FAD correspondent to Australia, has requested a repeat broadcast for next October. If any of you heard this broadcast be sure and write to 3AR thanking them for it.

## EAQ BROADCAST A HUGE SUCCESS

Quoting from a letter Earl Roberts received from EAQ, we read:--- "We beg to inform you that as far as we can judge, the program dedicated to your Organization on Feb. 23rd, has been a complete success. The number of letters received is simply tremendous and we are pleased to have co-operated with you on this occasion".

## SILVER JUBILEE CELEBRATION

We, the members of the I. D. A., wish to extend our heartiest best wishes to "The King and Queen" of England upon this happy occasion of their SILVER JUBILEE CELEBRATION. We trust they may reign for many years to come, and we trust that their Great British Empire may be blessed with continued Peace and Prosperity.

\*\*\*

For IDA Stamp collectors--we understand there is to be an entire Special Stamp Issue throughout the Empire celebrating this Occasion

\*\*\*

DONT MISS THE JUNE GLOBE CIRCLER WITH SOME SPECIAL SURPRISE FEATURES

## MR. A. DOUGALL OF LR5 PRAISES IDA.

"I wish to convey to you our most sincere appreciation for the kindness and interest shown by your Club in LR5, RADIO EXCELSIOR, Buenos Aires. We feel that we now have many friends in your big land who take a kindly interest in our welfare, whereas formerly, before arranging these transmissions, we were not so well known and consequently, perhaps not so well appreciated as at the present time. I would like you to feel that you have in me, personally, a friend willing and anxious to be of service to you at any time, and if our station can be of any assistance to your Club, please let us know, as we would like you to feel that we have towards you and your Club the greatest feeling of friendship and Good Will."

-We sincerely appreciate these words of Mr. Dougall's, and he may feel they are reciprocated to the fullest extent, for if we have in a small way contributed to a better feeling of Good Will, and friendship between our two great nations, we are indeed happy. -Pres

## WZDXRA GOING GREAT

The WZDXRA which suspended publication of their own magazine, "Tune In", some time ago, have adopted THE N.Z. RADIO NEWS, as the Official Organ of the Club, and publish monthly an FB section in this Magazine called "Tune In". The WZDXRA is a fine N.Z. Club of some several hundred members, with Headquarters in Dunedin.

## OLIVER AMLIE OUT FOR AUSSIE RECORD

Mr. Amlie, of Philadelphia, seeks to establish a new record for continuous reception of the three main Australian S.W. Stations. He now has 115 reports chalked up for the last 6½ months. He uses his own three tube 'Amlie Dx'er', which he hopes to put on the market in 1936, as a plugless receiver, tuning from 14 to 3000 meters. Mr. Amlie will broadcast an account of his DX conquest from WCAU-WXXAU the first part of October, he advises.

## "LETS DX" FROM WTCN

Several IDA members are now conducting FB DX Broadcasts. The latest is the "Lets DX" Program from WTCN, Sundays 12:45-1am EST, with our Vice Pres., Mr. M. Mickelson, and Mr. G. Spencer Morgan at the Mike. Your comments and suggestions are cordially solicited.

## THE RANDOLPH-IDA DX TROPHY CONTEST

Revised Standings of Leaders

|                             |    |      |
|-----------------------------|----|------|
| W.K. Walton (England)       | 1  | 3880 |
| Warren Reichardt (Mass.)    | 2  | 3665 |
| Charles Hesterman (Sask.)   | 3  | 3381 |
| R.T. Coales (England)       | 4  | 2350 |
| Howard Eck (Michigan)       | 5  | 2067 |
| R.H. Tomlinson (New York)   | 6  | 1680 |
| Fred Crowder (England)      | 7  | 1535 |
| R.S. Swenson (Illinois)     | 8  | 1288 |
| F. Farr (England)           | 9  | 1100 |
| J.L. Sullivan (New Zealand) | 10 | 1011 |
| John Shanks (Tennessee)     | 11 | 882  |
| R.F. Thompson (England)     | 12 | 860  |
| G. Haylock (England)        | 13 | 835  |
| R. Stansfield (England)     | 14 | 715  |
| Robert Hough (New York)     | 15 | 710  |
| Dr. H. Jacobs (New York)    | 16 | 555  |
| Alan Walker (New Jersey)    | 17 | 475  |

Help to boost your District for one of those prizes. SEND IN YOUR VERI'S. Every One will help.

### BEST CATCH REPORTS

Best Veri's received by Districts.

#### Dist. 1-

- YLZ, Riga, Latvia 15kW  
Chas. Hesterman, Saskatoon, Sask.
- Frankfurt, Germany 17kW  
C.H. Chapman, Dawson, Yukon.  
RW39, Moscow, U.S.S.R. 100kW  
Wm. H. Ansell, Regina, Sask, Canada

#### Dist. 2-

- XLHJ, Shanghai, China 100 watts  
Walter McMenamy, Los Angeles, Ca
- CTLGL, Parede, Portugal 5kW  
6IX, Perth, W. Australia, 300 watts  
Clyde Lowe, Merced, Calif.

#### Dist. 3-

- 4ZF, Invercargill, N.A., 500 watts  
J.H. Woodhead, Monarch, Wyo.
- JOQK, Niigata, Japan. 500 watts  
Eric Butler, Cokeville, Wyo.

#### Dist. 5-

- CTLGL, Parede, Portugal 5kW  
J.R. Maloney, Shelby, N.C.
- KGMB, Honolulu, Hawaii 250 watts  
John Shanks, Russellville, Tenn.

#### Dist. 6-

- RADIO ALGER, Algiers, Alg. 12kW  
John DeMyer, Lansing, Michigan.
- Klagenfurt, Austria 4kW  
Howard Eck, E. Lansing, Michigan.

#### Dist. 7-

- JOQK, Tokushima, Japan 500 watts  
Warren Reichardt, Reading, Mass.

#### Dist. 8-

- EAJB, San Sebastian, Spain 3kW  
E.L. Peters, Westport, N.S.
- P.P., Paris, France. 100kW  
O.C. Dakin, Westport, N.S.

#### Dist. 42-

- WLXBS, Waterbury, Conn. 1kW  
W.K. Walton, Lands End, England.

(NOTE) Directors have your revised Dist. Honor Rolls in by May 17th. Each member kindly keep your Director informed of latest veri's.

## EAST VERSUS WEST CONTEST (3

The East versus the West IDA membership Contest between Bill Ellis's Pacific Coast Dist. # 2, and John DeMyer's East States Dist. # 6, came to an official end on April 15th, with an unexpected Victory for the WEST, after a closely contested battle which began on October 1st, 1934.

The West Coast got off to a late start and were in fact, so far behind that it looked like a cinch for the East. Then Bill Ellis, and his trusty cohorts, Walter McMenamy, Stuart Walmsley, Carl Haverlin, and others, began to go into action and from then on members began to roll in at a furious pace and steadily the West began to overhaul the East. During the last month it has been a close race, and only during the last week did the West actually move into the lead, and finally win the Contest with a last minute deluge of members.

Starting with only 16 members in the entire Dist. 2, this District has achieved its season's goal of 100 members.

In Dist. 6, we wish to call attention to the very energetic, and successful membership drive of Capt. H. L. Hall.

The final score was WEST 84, and EAST 74. To Walter McMenamy goes Bill Ellis's first award for membership enrollment in Dist. 2, and second place to Stuart Walmsley.

Our thanks to every one who enrolled a single member or in any way helped to make this remarkable Contest possible. Our sincere Congratulations to that great pair of IDA Directors, Ellis and DeMyer for their splendid achievements.

### WORLD RADIO RESEARCH LEAGUE

On the occasion of the First Anniversary of the W.R.R.L., we wish to tender our Congratulations both to brother Ralph Stranger, and to those thousands of members in all parts of the world who have helped to make this first year of scientific endeavor so eminently successful. By mass research, the W.R.R.L. has been able to accomplish in 12 months' time results what would ordinarily take a life time of hard individual effort. Already the W.R.R.L. have made lasting contributions in the matters of "Echoes of Long Delay", "Interaction of Radio Waves", the "Question of Fading", and "The Influence of Solar Spots, Moon and Weather on propagation of Radio Waves. Vive la WRRL!

Price, \$1 a year by subscription in the United States.

International



Ax'ers Alliance

Published Monthly Excepting July

CHARLES A. MORRISON  
EDITOR

VOLUME III

BLOOMINGTON, ILLINOIS, U. S. A.

NO. 5

## I. D. A. CHAPTERS

## RADIO FELLOWSHIP

-Beverly Hills-Hollywood Chapter-  
Mr. M.H. Ryder, of Beverly Hills, Calif., Chairman of "RADIO FELLOW SHIP", reports on the remarkable progress their group is making.

He states that on account of the terrific local QRM, it was found as viable to abandon the idea of using the old KMTR studios as a Club House. Nothing daunted, the Chapter came forward with contributions of about \$150.00, with which to construct their own Club House. A site was chosen out in the Baldwin Hills near the site of the L. A. Olympic Games, which is rated as one of the best reception spots in Calif. The land for the building site was generously donated, and some of the members are procuring the building materials at cost. Suitable towers will be erected and the Club House, in addition to being fitted for a Listening Post, will also have provisions for cooking, and serving refreshments. The present membership of the Chapter is about 40 with more coming in all the time.

Arrangements have been made to place the Radio Branch of the big Federal Housing Exposition soon to be held in L.A. under the auspices of RADIO FELLOWSHIP Chapter of the IDA. Frank D. Andrews will be in active charge of the exhibit.

## LOS ANGELES ETA CHAPTER

Chairman, Stuart Walmsley, informs us that the L.A. Chapter is making fine progress. At a Charter meeting on April 5th, at the home of Forest Johnson, a petition was made for a I.D.A. branch Charter. Charter members signing the petition were Messrs. Bower, Burns, Chavez, DeHaven, Eberlein, Ellwood, Hodge, Johnson, Nelson, Purkey, Solfen, Streuber, Balbi, O'Donnell, Gilmour and Walmsley. In due recognition of this formal application, this group will hereafter be known as the LOS ANGELES ETA CHAPTER of the I.D.A. Arrangements were made for a DX tuning party to

be held at the home of Mr. E.D. Purkey. Charles Streuber and Mr. Pershing, a guest, invited all members to visit their mythical receiving station "KPRX".

## LANSING DELTA CHAPTER

Miss Marian Canniff, Sec. of Delta Chapter, reports that a meeting of Lansing Delta took place on April 2, at the home of Mr. J. McCoy. The big event being the arrival on time of Mgr. H. Eck. Six members were present, and Delta member, Miss Margaret Hamilton, drove the eighty miles from Coopersville to be present. Notes and comments were exchanged. The next meeting will be held at the home of Mr. John DeMyer

## MANCHESTER ZETA CHAPTER

R. Lawton, Mgr. of Manchester, England Chapter, reports the 4th meeting of the Chapter was held on April 1, at 19 Davenport Ave, Withington. It was decided immediate steps ought to be taken to get the Annual British S.W. Contest going. After the meeting, tests were made on an Eddystone "Kilodyne 4", property of Mr. C. Wright. Innumerable US 20meter hams were tuned in at 10pm - The next meeting will be held May 6th, at the home of Mr. Robt. Pybus.

## PSSWC PROPOSE TO MERGE WITH IDA.

Mgr. John D. Clark, of the Pacific States Short Wave Club, announces that in a recent conference with Wm. Ellis, Pacific Coast Director of the I.D.A., arrangements have about been completed for a merger of the PSSWC with the I.D.A. In this event the some seventy members of the PSSWC would become the nucleus for a large and VFB San Francisco, and Bay Area Chapter of the IDA. Mr. Clark who is a well known Pacific Coast Journalist and Radio Commentator, will be added to the Editorial Staff of the Globe Circler, as well as helping in the compilation of the "Circleette".

\*\*\*

Mr. J. DeMyer, 545 Baker St, Lansing Mich. Director of Dist 6, asks all members to kindly report veris.



The Vicomte Jean de la Brosse  
Paris, France

Scrap Book and would like to hear from EVERY member, giving address, Total verified log, Best catches, Type of aerial, whether interested in SW or BC, and if belonging to any other clubs.

Please add JOCK-1, LR5 and JOXK to my log. Received 3 veri's from JOXK at once. The LR5 veri' is going to get a frame (R. Hunt, Calif).. I hope to be able to get the Editor of "The World's Smallest Newspaper" to print out Dist. bulletin next fall. I am still hearing what I assume is RENNES after WTIC signs off. He signs off at 2am AST with the French Anthem (E. L. Peters-N.S.).. I have a card index which covers the whole ECB with every station included. I bring it up to date each month from the GC. I have a sort of history of every station (G.E. Gaunt-England).. CX26 came thru static with tremendous volume. Latest Veri's are LR5 & 2HD (H. Diedrich-Ill).. CX26 came thru swell here, too (Roberts-Ind).. I now have a 2nd Class radiotelegraph ticket, and a 1st class radiotelephone ticket. I averaged 90.6% (Cattell-N.J.).. As per March G.C. I had my mechanics build me a vertical Antenna. It is 30' long and made of 2" and 1" old water line. Have it painted with aluminum paint (Boyd-Mexico).. Am crossing over in May for my operation in London. Will have as a London address- C/o W.B. Woolley, Esq., 36-38 Broad St, London E.C.2. (D.R. Wadia-Bombay).. Have put up four directional antennas: 1, a "ZEP" directional to S.A., and peaked on 49m. 2, a 25m East and West half wave doublet. 3, a 31m East and West half wave doublet. 4, Vertical 20m "ZEP" Increase on 49m is 300% (Weaver-Idaho).. Received Sottens, and my prize veri', 7UV (Hammond-Maine).. CE76 coming in like house afire on 760kc. They sign off at 8:30-9pm PST (Pollard-B.C.).. DX here has been rotten & USA stations have done a bunk. The SA's and WNEL and WKAQ can be had most any night. (Crowder-England).. Being transferred to N. Y. with the Acme N.E.A., and will enter the RCA institute. May have to give up DXing temporarily (Gootee-Mo).. Just received a specific BROADCAST BAND veri' from RADIO-ALGER. Heard him at 4:40pm EST (DeMyer-Mich).. It is unfortunate most of the foreign stations on the ECB are heard here after 11 pm, as when one is tired, it is difficult to stay up late (Mant-Honolulu).. I would like to request USA Amateurs to try and establish contact definitely with S. Africa, say between 3-6pm on Sunday our time (8-11am EST. Lyell-S. Africa).. Has anyone had a veri' from EAJ7 yet? Have veri's from LR5, LS2, CX26, Rennes, Bordeaux, Cologne, CTIGL, TGW, this year (Leboeuf-Conn).. Walton has just turned in another 10 veri's including WTAR WHAZ and WIXBS, which brings his Con test total to 80 veri's. (Crowder-England).. Was checking up and find I have 135 Foreign SW Veri's, 74 for eign ECB veri's, and total of 53 countries verified (DeMyer-Mich.).. Am sending veri' to you from Miskolc, Hungary. Their power is less than 1000 watts (T.E. Flewman-Canadian Mission Press, Chengtu-W. China).



M. de Woestyne  
Malines  
..BELGIUM..



Irving Goodeve  
Kalamazoo,  
Michigan

### -Correspondence Corner-

Frank Petch, Gananoque, Ont, Canada, would like to correspond with other members, and trade stamps.

Stanley Yurek, 768 Broadway, Bayonne, N. J. would like to correspond.

Murray Butekant, 2961 Brighton 8th-St, Brooklyn, N.Y. would like to have IDA correspondents and will answer all mail.

L. M. Young, 193 Venice Rd, Durban, Natal South Africa, will be glad to answer any questions concerning South Africa.

Clifford Drain, 617 Camden St, Parkersburg, W. Virginia, is making up an IDA

R A D I O I N G R E E N L A N D

-Hans W. Priwin-

We are indebted to Mr. Hans Priwin, of Copenhagen, Denmark, for this exclusive article about that little-known country of "Greenland". Mr. Priwin is an IDA member and one of the best known, and most famous Radio Correspondents of Europe.

-----

The Danish colony of Greenland seems to be situated in Europe, but it is nearer to America than to Europe. At this outpost of human settlements there live a lot of Danish people together with the native Esquimaux. Greenland is a "locked country"--that means that the whole country with all its little towns and villages, with harbours and radio stations, is the property of the Danish and no private property may be acquired in Greenland. Therefore, entering Greenland is a very difficult task, as a special permit by the Greenland Administration at Copenhagen is necessary for any person travelling to this most Northern country.

As the passage from Copenhagen to Godthaab or other Greenlandish harbours is longer than from the same ports to New York, the white population in Greenland is not well supplied with European newspapers, and the only possibility of giving them a contact with the outside world is through wireless. Quite a lot of wireless stations are erected on both the Western and Eastern coasts providing the European population with news, as well as supplying the trawlers with weather bulletins, storm warnings and ice reports. There are three principal stations in Greenland of which the output is more than 500 watts. First, there is Julianehaab, Greenland's 'Giant-transmitter', which has 1000 watts in the aerial. Julianehaab is a very excellent catch for DX-fans as it works only in the afternoon, and on the long wave of 1900 meters -The transmissions of Julianehaab begin at 4p.m. GMT (11am EST which corresponds to 1 p.m. Greenland time). Earlier in the afternoon another station transmits a news-bulletin. It is located at Godthaab and its wave length is 1100 meters, but this station has only 500 watts. Godthaab transmits at

2:30pm G.M.T. (9:30am E.S.T.). The third of the principal Greenlandish stations is erected near Godhavn, also with an energy of 500 watts. Godhavn can be received on a wave length of 1500 meters at 8:45pm G.M.T. (3:45pm EST).

I learn from the Greenland Administration at Copenhagen that none of these three stations can be heard in Europe because of their low power. Also many other stations whose energy is below 500 watts are of course unattainable for normal DX-reception.

On the other hand, European stations are quite well received in Greenland, especially the big Danish long-wave transmitter of Kalundborg. Therefore, the Danish broadcasting authorities introduced a very nice item into their Christmas Programmes; all relations and friends of those Danes who pass the winter in Greenland are allowed to speak their Christmas greetings over the Copenhagen Microphone from which they are transmitted via Kalundborg to Greenland and as the Broadcasting company does not charge a fee for these greetings, more than 1000 people meet before the Copenhagen radio-house, as well as before the many provincial studios. One will understand that these Christmas Greetings are therefore, limited to thirty seconds each. Also those Esquimaux who pass the winter in Denmark to learn an European profession as guests of the State there are 25 every year-are guests of the Copenhagen Broadcasting Company. They sing their old folksongs full of unusual melancholy, songs such as the Red Indians in the North American reservations still sing.

So the Danish Government brings the people of Greenland into vivid contact with European culture and civilization so that during the long and icy Arctic winter, the small European population never has the feeling of being lonely.

We wish to apologize for incorrectly stating in the April G. C. that Mr. C. H. Hodge, of Huntington Park, Calif., had heard a Short-wave Station, TPK of Iceland. Mr. Hodge STATED that he understood that it was being heard in California.

**- C U B A N S T A T I O N S -**

Latest Official Govt. List courtesy Alec. Kinghorn, of Havana, Cuba.

| Call | Kc/s | Watts | Owner and Location.  |                  |
|------|------|-------|--|------------------|
| CMW  | 600  | 1000  | Sres. Troncoso- Gil. Paseo de Martif No.103  | HAVANA           |
| CMBY | 640  | 125   | Sres. Callejss- Estefani. Infanta No.132   | HAVANA           |
| CMCX | 660  | 250   | Sr. Juan de Dios Carreno.- Guanabacca.   | HAVANA           |
| CMCQ | 680  | 250   | Sr. Andres Martinez. Vibora-   | HAVANA           |
| CMAF | 730  | 250   | International Broadcasting Company.  | HAVANA           |
| CMCW | 750  | 117   | Sr. A. D. Cervantes. San Lazaro No. 113.   | HAVANA           |
| CMJK | 760  | 150   | Cia. Cubana Nacional de Radio S. A.,   | CAMAGUEY         |
| CMES | 770  | 130   | Sr. Enrique Artealejo. Calzada y H- Vedado-  | HAVANA           |
| CMOA | 790  | 72    | Sr. Juan Fernandez Duran. Aguilar No. 126-   | HAVANA           |
| CMHW | 810  | 100   | Sr. Ramon Gonzalez- Arguelles No. 200  | CIENFUEGOS       |
| CMCF | 815  | 250   | Sr. Raoul Karman. Rayo No. 67  | HAVANA           |
| CMQ  | 840  | 500   | Sr. Miguel Gabriel. Calle 25 No. 445-Vedado-   | HAVANA           |
| CMX  | 920  | 650   | Sr. Francisco Lavin. Oficinas y Obrapia-   | HAVANA           |
|      |      |       | This station was completely destroyed by eight armed men. Not on the air at present. |                  |
| CMBC | 940  | 195   | Sr. Domingo Fernandez. Maximo Gomez No. 139-   | HAVANA           |
| CMCD | 960  | 180   | La Voz del Aire', Calle 25 y D- Vedado-  | HAVANA           |
| CMBZ | 1000 | 120   | Sres. M. y G. Salas. San Rafael No. 14-  | HAVANA           |
| CMJC | 1010 | 50    | Sr. Rafael Valdes- Maceo No. 1.  | CAMAGUEY         |
| CMCY | 1030 | 1000? | Sr. M. D. Autran Calle G No. 215 -Vedado-  | HAVANA           |
| CMK  | 1060 | 1500? | Cia. Nacional de Radio S. A. -Hotel Plaza-   | HAVANA           |
| CMHA | 1070 | 50    | Sr. Abelardo Menocal- Carrillo No. 31, SAGUA LA                                      | GRANDE           |
| CMCO | 1110 | 150   | Sr. Enrique Lasanta. Oficinas 16-  | HAVANA           |
| CMGF | 1120 | 100   | Sr. Bernabe de la Torre- Gral. Betancourt 51,  | MATANZAS         |
| CMJI | 1130 | 45    | Sr. Gilberto Gessa. Independencia 95-  | CIEGO DE AVILA   |
| CMBJ | 1140 | 325   | Mr. John L. Stowers. Hospital No. 100-   | HAVANA           |
| CMJF | 1150 | 200   | Mr. John L. Stowers. Republica No. 88-   | CAMAGUEY         |
| CMED | 1170 | 163   | Sr. Luis Perez Garcia. Calle 17 y O-Vedado-  | HAVANA           |
| CMJO | 1180 | 50    | Sr. J. M. Rey Sarmiento- Maceo y C. Gen. CIEGO DE AVILA                              | CIENFUEGOS       |
| CMHJ | 1180 | 100   | Sr. Romualgo Ugalde- Sta. Elena No. 104-   | HAVANA           |
| CMCJ | 1200 | 500   | Sr. Rafael Rodriguez. Independencia No. 34   | HAVANA           |
| CMHI | 1210 | 150   | Sres. Laviz y Paz- Independencia No. 34  | STA. CLARA       |
| CMJE | 1220 | 50    | Sr. Manuel Fernandez- Hnos Aguero No. 2  | CAMAGUEY         |
| CMCB | 1230 | 112   | Sr. Antonio Capablanca. O'Reilly y Aguacate.   | HAVANA           |
| CMHB | 1240 | 30    | Sr. V. E. Weis y Cia. S. en C.   | SANCTI SPIRITUS  |
| CMKC | 1250 | 150   | Sres. Pinol, Balles y Cia. J. A. Saco-   | SANTIAGO DE CUBA |
| CMCG | 1255 | 162   | La Onda S. A., Malecon No. 340 Altos-  | HAVANA           |
| CMHD | 1270 | 250   | Sr. Manuel Alvarez- Maria Escobar No. 17-  | CAIBARIEN        |
| CMCU | 1280 | 152   | Sr. Jorge Garcia Serra. San Francisco No. 13   | HAVANA           |
| CMOX | 1320 | 250   | Sres. Perez- Chisholm. Calle 10 entre 17 y 19.                                       | HAVANA           |
| CMHK | 1330 | 250   | Sr. Virgilio Villanueva- Heredia No. 61-   | CRUCES           |
| CMCA | 1350 | 435   | Sr. Augusto Testar, Galiaho No. 102-   | HAVANA           |
| CMJH | 1360 | 50    | Sr. Luis Marauri- H. Castillo No. 37   | CIEGO DE AVILA   |
| CMGE | 1370 | 30    | Sr. Genaro Sabater- Céspedes No. 180-  | CARDENAS         |
| CMJC | 1380 | 150   | Sr. Felix Sanchez- Cisneros y Gral Gomez-  | CAMAGUEY         |
| CMEX | 1380 | 171   | Sr. Alberto Alvarez. San Miguel No. 194  | HAVANA           |
| CMGC | 1400 | 100   | Sr. Oscar S. Mechoso- Independencia No. 56   | MATANZAS         |
| CMCR | 1410 | 122   | Sr. Aurelio Hernandez. Milagros No. 35, Vibora,                                      | HAVANA           |
| CMGI | 1420 | 30    | Sr. Armando Lizama- Marti No. 35-  | COLON            |
| CMJP | 1430 | 75    | Sr. Cesar Canales- Callejas No. 28-  | MORON            |
| CMKF | 1460 | 30    | Sr. Manuel J. Gongora- Libertad Esq. Arias-  | HOLGUIN          |
| CMOK | 1470 | 184   | Sr. Rafael Valdes, Marquex Gonzales No. 52,  | HAVANA           |
| CMCN | 1500 | 162   | Sr. Antonio Ginard. Reina y Buen Retiro-   | HAVANA           |

**OUR FAMOUS DX TIPSTERS**

|      |               |      |  |        |
|------|---------------|------|--|--------|
| EST  | 12:15-12:30am | CKCK | Regina, Sask, Canada. (L. Westmoreland)                        | 1010kc |
| SAT. | 12:01-12:30am | KDKA | Pittsburg, Penna. "THE KDKA DX CLUB"                           | 980kc  |
|      |               |      | Pioneer DX Club of the Air with our Joe Stokes as M.C.         |        |
| SAT. | 2:30-3:00am   | KFI  | Los Angeles, Calif. "KFI DX CHAT"                              | 650kc  |
|      |               |      | Around the World', with that Ace Commentator Frank D. Andrews. |        |
| SUN. | 12:45-1:00am  | WTCN | Minneapolis, Minn. "DX TIP PERIOD"                             | 1250kc |
|      |               |      | With M. Mickelson, famous Dx'er, and G. Spencer Morgan at bat. |        |

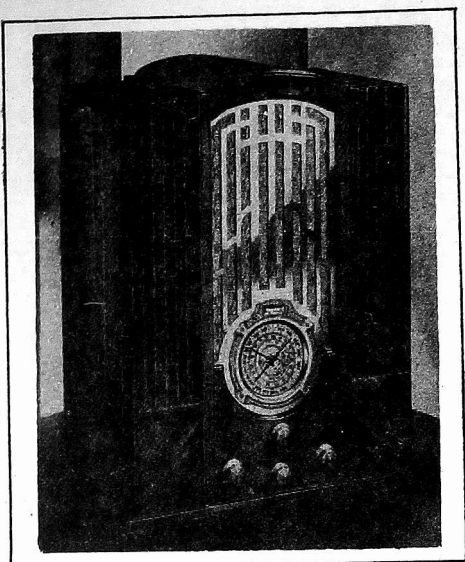
|             |                    | (NEW)  |      |
|-------------|--------------------|--|------|
| EUROPE      | <u>Sweden</u>      | Motala, 1389m, 150kW testing after 5pm E.S.T.  |      |
|             | <u>Norway</u>      | The Seven Year Plan: Main stations will be Oslo 60kW, Kristiansand 20kW, Bergen 20kW, Aslesund 10kW, Stavanger, Trondelag, Bodo, Tromso, and Finnmark; Relay stations will be Rjukan, Fredrikstad, Hamar, Notodden, Progrunn, Vega, Narvik, Tromso, Kristiansand and Hammerfest. |      |
| ASIA        | <u>India</u>       | Peshawar transmitter inaugurated on March 6.   |      |
|             | <u>Persia</u>      | Teheran, Tchask and Schiras to have stations.  |      |
| AUSTRALASIA | <u>Australia</u>   | Kaloorlie (W.A.) to have National Sta. of 2kW  |      |
|             |                    | Tamworth, 1300kC already on the air  | 2TM  |
|             |                    | Warwick, 900kC to begin this summer  | 4WK  |
|             |                    | Cairns, 1450kC to begin this summer  | 4CA  |
|             |                    | Burnie, 1360kC to begin this summer  | 7BU  |
|             | <u>New Zealand</u> | Wellington to have 60kW, (570kC) by 6/36   | 2YA  |
| SO. AMERICA | <u>Brazil</u>      | Rio de Janeiro, 1010kC, to have 25kW/s   | PRA9 |
| NO. AMERICA | <u>U.S.A.</u>      | Frederick, (MO), 900kC, 500 watts.   |      |
|             |                    | Parkersburg, (W. VA.), 1420kC, 100 watts.  |      |
|             |                    | Astoria, (ORE.), 1370kC, 100 watts.  |      |
|             |                    | Tallahassee, (FLA), 1310kC, 100 watts.   |      |
|             |                    | Milwaukee, (WIS.), 1310kC, 100 watts.  |      |
|             |                    | Lake Charles, (LA.), 1500kC, 100 watts.  |      |
|             |                    | (CHANGES)  |      |
| EUROPE      | <u>France</u>      | Paris, (Eiffel Tower), to go to 1450kC, May 1.   |      |
|             |                    | Fecamp, (RN), 10kW, from 1456 to 1113kC, April 1   |      |
|             | <u>Holland</u>     | Hilversum, testing with call PCJJ on 995kC, with 120kW, from 9 to 11pm E.S.T. irregularly.   |      |
|             |                    | L.N., W.N., and N.N., 149kC from 50 to 20kW/s.   |      |
|             | <u>Gt. Britain</u> | Reykjavik, 1200m to go from 16 to 100kW.   |      |
| AUSTRALASIA | <u>Iceland</u>     | Erisbane, 1145kC from 750 to 1000 watts  | 4BC  |
| NO. AMERICA | <u>Australia</u>   | Reported that CMQ, CMCY, CMCD will go to 5kW.  |      |
|             | <u>Cuba</u>        | San Antonio, (Texas), 1290 to 550kC, 1kW   | KTSA |
|             | <u>U.S.A.</u>      | Greenville, (Tex), 15 watt, 1310kC deleted   | KFPM |
|             |                    | Spokane, (Wash), 900kC, 1kW to 1470kC, 5kW   | KGA  |
|             |                    | Honolulu, 1320kC from 250 to 1000 watts  | KGMB |
|             | <u>Hawaii</u>      |  |      |

## NEW I. D. A. MEMBERS

Thomas Jordan, Scranton, Penna.  
 Charles Richardson, Elkhart, Indiana  
 L. A. Phillips, Kalamazoo, Michigan.  
 LOUIS BAMBERGER, White Plains, N. Y.  
 Le Roy Whitener, Hayti, Missouri.  
 M. N. Sanchez, Waipahu, HAWAII.  
 Edward Kelleher, Morristown, N. J.  
 ALFRED DUCOMMON, Los Angeles, Calif.  
 J. Mason, Covington, Kentucky.  
 Clarence Bakken, Binford, N. Dakota.  
 Mimis C. Zamzis, Salonika, GREECE.  
 Aug Balbi, Los Angeles, California.  
 S. Gilmour, Los Angeles, California.  
 Joe Meyer, Merced, California.  
 C. Wyborski, Philadelphia, Penna.  
 Peter Kamm, White Sulphur Springs, West Virginia.  
 Victor Y. Briggs, Santa Monica, Calif  
 H. S. Smith, Birmingham, Alabama.  
 J. Schlenker, Normal, Illinois.  
 R. M. Ferguson, Montreal, Quebec, CAN.  
 Lewis Brown, San Pedro, California.  
 KENNETH ORMISTON, KNX Chief Tech., Hollywood, California.  
 Q. A. SMITH, Vice-Pres. Edison Co, San-Marino, California.  
 HECTOR McCORMICK, Bucaramanga, COLOMBIA, SOUTH AMERICA.

E. B. Sword, Los Angeles, California.  
 Joseph Lefferd, Beverly Hills, Cal.  
 A. N. McLean, Los Angeles, California.  
 J. E. Faulkner, Santa Monica, Calif.  
 Melvin S. Wood, Gardena, California.  
 E. PAN, Chief Engineer Station XGOD, Hangchow, CHINA.  
 EARL READ, Editor of N. Z. Radio Times, Wellington, NEW ZEALAND.  
 Elwin T. Smith, Harrah, Washington.  
 E. E. Mullen, San Diego, California.  
 M. S. Hart, Kansas City, Missouri.  
 C. H. Kuebert, Wilkinsburg, Penna.  
 James H. Burns, Harbor City, Calif.  
 Phil E. Lockwood, Santa Ynez, Calif.  
 NAILOR RODGERS, Mgr. Radio Station, KNX, Hollywood, California.  
 BEN McGLASHIN, Owner Station KGFJ, Los Angeles, California.  
 Frank Orth, Hollywood, California.  
 GERALD KING, Mgr. Radio Station, KFWB Hollywood, California.  
 Fred Arkenberg, Los Angeles, Calif.  
 Harry Weil, Los Angeles, California.  
 H. E. SHERMAN, Sales Mgr. Stewart Warner, Los Angeles, California.  
 Walter J. Buckley, Winter, Wisconsin.  
 G. H. Millican, Amarillo, Texas.  
 G. RIJSAGER, Landbrugministeriet, Copenhagen, DENMARK.





# ZENITH

## MODEL 935 . . .

Through the courtesy of Comdr. E. F. McDonald, Jr., we have been able to conduct thorough tests on the NEW 10 tube ZENITH All-wave receiver # 935 during the past three weeks.

The Model # 935 is a powerful Superhet employing T.R.F. on both BC, and all SW Bands. The # 935 has a class AB power amplifier capable of delivering 16 watts of power to the 10" loud speaker. The following tubes are utilized: three 6D6's, one 6A7, one 75, one 76, three 42's, and a 5Z3 rectifier. All frequencies between 530 and 46150kc (6 $\frac{1}{2}$ m) are covered by five separate band changes.

Considering the number of tubes and price, the #935 is a remarkable receiver.

A unique tone control gives four separate tone shades. In deep base position there is an actual gain in signal strength. No high notes are at any time removed so that a true tone balance is maintained.

The RED Split second hand which turns 36 times as fast as the black calibration hand permits extreme simplicity of operation, accuracy in logging, and that valuable asset of being able to re-locate a station in exactly the same spot again.

A Shadow-tuning device aids in tuning.

The General Outstanding features of the #935 are:

- (1) Extreme simplicity of Operation.
- (2) Unusually rich and realistic tone.
- (3) Very wide frequency range permitting field for experimentation on the ultra-high frequencies.
- (4) Excellent BCB performance.
- (5) Ultra selectivity
- (6) the proper degree of sensitivity to permit a low noise level for DX.

On the BCB such stations as WEAF WJZ, WABC, WBAP, and KOA could often be tuned in at noon (during March) and although late in the season for foreign BCB DX, several South Americans could still be logged in the evenings.

On the Short-waves all Continents with the exception of Africa were logged frequently. Japan was logged every afternoon, except two during the tests. VIZ3, VPIA and PLV are some of the more unusual ones heard.

Foreign stations actually logged during the three weeks with the little time we could spare were: CJRO, CJRX, YV3RC, VE9GW, GSA-B-C-D-E-F-G-L, DJA-B-C-D-E, DJN, Pontoise (on 3 Freqs), HJ1ABG, HJ1ABE, HJ1ABE, HP5B, HP5J, XEBT, YV2RC, YV5RMO, HJ2AB, HIX, TIGPH, YV6RV, COC, COH, OAX4B, HJ1ABB, PRADO, HG2RL, TTEP, YN1GG, HJ5ABD, LSX, EAQ, ZFB, 2RO, KKP, LSM, RNE, RKI, KKQ, PHI, PCJ, CGA4, VIZ3, VK2ME, VK3ME, VK3-1R, JVF, JVE, PLV, HVJ, TIU, HPF, YVQ, TGF, HJB, 2RO, HJY, LU6AP, VP5PA, G5ML, CT1BY

### THE G.E. "V" DOUBLET

The G.E. "V" Doublet described in the April GC was erected direction al N.E. and S.W., and was compared with three straight Doublets, an underground aerial and an "L".

Conclusions reached were (1) The "V" Doublet reduced local QRM more than 50% over the other aeriels. In fact when not a single station could be tuned in thru certain types of QRM by switching to the V Doublet, the louder stations would pop right out of the noise. (2) The aerial showed a better all-around efficiency than the other aeriels, turning in a better performance on the BCB than any other type. Very efficient on the Ultra-high frequencies, Excellent on 16meters, Good on 19 meters, Fair on 25meters, Fair on 31 meters, Average on 49 meters.

Although it did not show as much signal gain as a Doublet tuned to a given frequency, it did show a much higher ratio of signal to QRM

\*\*\*\*\*

The greatest advance in tubes since crystal days has been achieved in the NEW G.E. METAL tubes. Full details in the JUNE GLOBE CIRCLER.

## SPECIAL S. W. FEATURES

|         |   |              |         |   |                              |       |
|---------|---|--------------|---------|---|------------------------------|-------|
| EST     |   |              |         |   |                              |       |
| May     | 5 | 8:00-9:00am  | 12000kc | Moscow, U.S.S.R.  | IDA                          | RNE   |
|         |   | 8:00-9:00am  | 15000   | Moscow, U.S.S.R.  | IDA                          | RKT   |
| May     | 6 | 12:30-3:45pm | 9510    | Daventry, England.  | ("SILVER JUBILEE PROGRAMME") | GSB   |
|         |   | 12:30-3:45pm | 11750   | Daventry, England   |                              | GSD   |
|         |   |              |         | Including Speeches by H.M. The King, and Rudyard Kipling, and 25 year review of events. |                              |       |
| June 14 |   | Evening      | 6030    | Panama, Republic of Panama  | IDA                          | HP5B  |
| Weekly  |   | 5:45-6pm     | TUES    | Schenectady, N.Y.   | QST Programme.               | W2XAF |
| Weekly  |   | 5:40-5:45    | "       | Schenectady, N.Y.   | IDA WORLD NEWS.              | W2XAF |

## DOCTOR OF SHORT WAVES DEGREE

I wish to hereby appoint the following Committee to draft the rules for acquiring the D.S.W. Degree. These rules will be accepted as final and should be in our hands for announcement by July 15th, 1935. The first named member of this Committee will serve as Chairman and each Committeeman should write his suggestions to the Chairman at once. The Committee is as follows:

1. Guy L. Bigbee, Hq Co., 66th Inf., Light Tanks, Fort Benning, Ga.
2. H. M. Ryder, 257 S. Palm Drive, Beverly Hills, California.
3. Wm. W. Warner, 56 East Grove Rd, St. Leonards, Exeter, England.
4. John DeMyer, 545 Baker St, Lansing Michigan.
5. R. Lawton, 10 Dalton Ave, Thatch Leach Lane, Whitefield, Near Manchester, Lancashire, England.

KINDLY address ALL SHORT WAVE NOTES to Headquarters. Write your notes on a separate sheet of paper giving the facts briefly and clearly. For publication, all material must be in by the 17th of the mth.

## NEW STATIONS

YN1GG, Managua, Nicaragua, 6.40MC, "La Voz de los Lagos", 7-9:30pm EST (Shanks-Tenn)... TIPG, Casa Victor San Jose, Costa Rica, 6.55MC, testing in evenings (Patch-Dilg)..

W2XHI, Newark, N.J. (WOR) will not be completed till Nov. 1, 1935. Honolulu, T.H., S. W. Xmt to relay KGU will transmit on 17.78MC, and 9.57MC with 2kW... New R.C.A. Xmt's for Kahuku, Hawaii, 40kW, will transmit on 5.84, 7.52, 11.68 and 16.03MC's, to be used primarily for communication with "Empress of Britain"... CMHB, P.O. Box 85, San Spiritus, Cuba, 10.2MC heard from 5:30 to 7:40pm EST (Messer) heard from 4-6pm CST (Shanks)... HH2R, Port-au-Prince, Haiti; about 9.55MC heard April 13, 9:30-10:45pm CST. Announcements in French, Spanish, and English (Shanks)... XECR, Ministry of

Foreign Affairs, Mexico, D.F., 7.38MC -on Sundays, only, from 5-6pm CST. The first Broadcast was April 14th. (Dilg-Walmsley)..

ZBW, HONG KONG, CHINA; about 8.7MC -Heard 7am EST, March 6th. Probably broadcasts on Wednesdays only. (Walker-Australia)... XU8MT, SHANGHAI, CHINA; on 3.95MC, broadcasts weekdays at 5am P.S.T., power 30 watts, may occasionally be heard in the States. (Plewman-W. China)..

VJI, Cloncurry, Qld, Australia; 8.62MC heard 12:30-1am EST. A low power station, used for commercial communication with outlying stations in Central and Western Aust. (Walker-Australia).

HJ2ABD, Bucaramanga, Colombia, testing on 5.97MC, 8-9pm CST, April 11, (Schumacher)... Station called "La Voz de Pereira, Colombia" heard irregularly at night on 4.8 meters, with music and voice (Shanks)... HKV, Radio Dept. Ministry of War, Bogota, Colombia, on 8.8MC. Heard 6-7pm EST on Apr. 11. Want reports (Messer)... LU6AP heard saying a NEW 50kW Xmt will be testing on S. W. in Buenos Aires in May (Goodeve)... HJ4ABA, "Ecos de la Montana", Medellin, Colombia, being heard nightly 4-9pm CST on 11.7MC with tremendous volume ( Bills-Campbell-Shanks-Robinson--Dilg-Whitehouse, Dreiback)... HC2AT, Guayaquil, Ecuador; 8.4MC came in strong on March 23. (Dilg)... HJ3ABH "La Voz de la Victor", Bogota, Colombia; 6.015MC, heterodynes DJC. Use 1600 watts; are usually on from 7 to 10pm CST. Identification signal is three chimes, and they play an Organ selection at 10pm (Shanks -Magee-Bills-Dilg-Morrison)... HJ-LABE, Cartagens, Colombia, 6.12MC inaugurated NEW Xmt, Mar. 25th, 9-10 pm CST. SKED is weekdays, 6:30-8pm CST, and Mondays a special DX Programme from 9:30-10:30pm CST partly dedicated to the I.D.A. (Dilg).

Rumored that Cairo, Egypt, has two new S.W. Stations which will operate on 11.78MC, and 6.01MC, respectively (Joe Stokes).

# VOICES OF THE EAST

-John D. Clark

Three weeks ago last Saturday, JVT returned to the air with the regular JOAK relays, replacing JZG. The times are 10:40-11:20pm PST, and 1 to 4:40am PST. Then last Saturday JVT went off the air and was replaced by JVM on these transmissions. Evidently the change is permanent.

JVN, 10.66MC has been on the air every day this week from 7:40 to 10:25pm PST broadcasting Japanese recordings without even a word of announcing during that period.

JVF, phones KWU, now every day from 12:45 to 1:05pm PST, and JVM on 10.74MC phones KWU almost every day at 9pm PST. JIC, on 5.89MC phones JVU on about 5.85MC quite often between 11:05 and 11:20pm PST.

A powerful new Japanese station was heard relaying JOAK last Sunday after 1am on 10.51MC. The relay was effected simultaneously with JVM on 10.74MC.

JVN relayed baseball games several times during the past two weeks between 9:30 and 10:30pm PST.

3LR is now on a daily, except Sunday, Sked from Midnight to 4:30am PST, instead of from 12:15am. On Friday nights they relay 3AR from the Melbourne Race Track between 9:30 and 11:10pm PST.

3ME is still on Wednesdays, Thursdays, Friday, and Saturday between 2-4am PST with tremendous power.

VPLA, Suva, went off the air about a week ago, but is now back on each night except Saturday, from 9:30 to 10:30pm PST. They are on 13.007MC, and announce "Radio Suva Calling". All programs are concluded with the familiar "God Save the King".

XGW, Shanghai, China, was on daily for two weeks on 8.75MC between 3-5am PST but suddenly they announced a shift to 4.51MC, but were not heard on this wave. I picked up a station for awhile on about 4.46 which I thought was them, but it turned out to be YDB.

ZHI was heard with excellent volume on Wednesday, and Thursday signing off at 5:10am PST with "God Save the King". All programme material and announcements, as is the case with XGW, were in English.

VUB, was heard again Sunday morning at 4:30am PST threatening to discontinue their short wave station, unless more reports were received. They announce "Bombay Calling". This is the Bombay station of the Indian State broadcast

ing service

VLK, on 10.52MC, and PMN, on 10.26 MC, were both heard many times on plain voice near 3:45am PST. Also VLJ, on 9.76MC, is heard near 11pm PST nearly every night.

## NETHERLAND INDIA STATIONS

-D.R.D. Wadia-

|      |                 |         |        |      |
|------|-----------------|---------|--------|------|
| YDA  | Tdg. Priok      | 49.69m  | 6040kC | 10kW |
|      | Tdg. Priok      | 98.68m  | 3040kC | 10kW |
| YDA  | Bandoeng        | 49.02m  | 6120kC | 1kW  |
| YDB  | Soerabaja       | 67.11m  | 4470kC | 1kW  |
| YDA2 | Batavia-C.      |         | 2500kC | 50w  |
| YDA3 | Suitzencorg     |         | 1640kC | 25w  |
| YDA4 | Soekaboeml      |         | 1550kC | 25w  |
| YDB2 | Semarang        | 122.45m | 1450kC | 150w |
| YDB3 | Djokja          | 180.72m | 1660kC | 100w |
| YDB4 | Tjepoe          | 185.76m | 1615kC | 25w  |
| YDB5 | Solo            | 188.09m | 1595kC | 100w |
| YDB6 | Malang          | 191.08m | 1570kC | 100w |
| YDD2 | Bandoeng Inh.   |         | 1630kC |      |
| YDD3 | Batavia-C. Inh. |         | 1585kC | 50w  |
| YDE2 | Solo Inh.       | 62.37m  | 4810kC | 100w |
| YDE3 | Semarang Inh.   |         | 2910kC | 15w  |
| YDE4 | Soerabaja Inh.  |         | 2415kC | 75w  |
| YDE5 | Djokja Inh.     |         | 2350kC | 25w  |

## BEST FOREIGN AMATEURS BEING HEARD- -20 Meter Band-

LU6AP, Ian Colin Grant, Pariossien 3960, Buenos Aires, ARGENTINE HF

LU8DR, Adolfo Hournon, J. J. Diaz 623 San Isidro, Buenos Aires.

CE1EG, John Pyster, Barquito Chanaral, CHILE.

OA4B, German Gallo, Box 2679, Lima, Peru.

CX2AM, Americo Mantegani, Box 37, Montevideo, Uruguay.

HC1FG, Carlos Cordovez, Box 30, Rio-Bamba, Ecuador.

HP1A, R. D. Prescott, Box 32, Panama, Republic of Panama. HF

YN1OP, Ernest H. Andreas, Radiodifusora Bayer YNOP, Managua, Nicaragua

TI3WD, J. Walter Dittel, Box 56, Cartago, Costa Rica.

TI2FG, Federico Gonzalez, Box 384, San Jose, Costa Rica. LF (HF)

VP3EG, Georgetown, British Guiana.

VP6YD, Thos. A. Archer, "Verona", Bank Hall Rd, Barbados. (6pmCST) 1431kC.

VP5PA, (Portable HH5PA) C. L. Isaacs, Brimmer Hall, Port Maria, Jamaica.

HI7G, H. H. Gosling, Calle Cesar Nicolas Penson, Santo Domingo, RD. LF

HI9L, M. E. Imbert, Box 824, Santo Domingo, R.D. (Early Evening) LF

K6BAZ, K. L. King, 1317 S. Beretania, Honolulu, T.H. (Evenings).

G5ML, F. Miles, "Tudor Lodge", Gibbet Hill, Kenilworth, England. HF

LA1G, Sekr. Leif Salicath, Voksenlisa pr. Oslo, Norway. (HF of G5ML).

HB9AQ, John Braun, 5 Croix-rouge, Lausanne, Switzerland. LF (band.

HF-High Freq. LF-Low Freq. end of

LATEST LIST OF COLOMBIAN S.W.XMTRS

-Sr.Hector McCormick-

| Call  | Megs | Wts.  | City                | P.M.-EST   |
|---|------|-------|---------------------|------------|
| <u>DISTRICT 1: Capital Quibdo; States: Magdalena, Atlantico, Bolivar, and Intendencia del Chocco.</u> |      |       |                     |            |
| HJ1ABA  | 1.33 | 100   | Barranquilla        | 7-10       |
| HJ1ABB  | 6.45 | 300   | Barranquilla        | 7-10       |
| HJ1ABC  | 6.10 | 7 1/2 | Quibdo, works Hams. |            |
| HJ1ABD  | 7.28 | 50    | Cartagena           | 7:45-9:15. |
| HJ1ABE  | 6.12 | 100   | Cartagena           | 6:30--8.   |
| HJ1ABF  | 6.00 | 25    | Barranquilla.       |            |
| HJ1ABG  | 6.04 | 100   | Barranquilla        | 7-10       |
| HJ1ABH  | 6.30 | 48    | Cienaga, works Hams |            |
| HJ1ABI  | 6.10 | 50    | Cienaga, works Hams |            |
| HJ1ABJ  | 6.06 | 50    | Santa Merta         | 7-10       |
| HJ1ABK  | 6.00 | 10    | Barranquilla irreg  |            |

DISTRICT 2: Capital Bucaramanga; States Santander, Santander del Norte, and Boyaca.

|        |      |     |                |            |
|--------|------|-----|----------------|------------|
| HJ2ABA | 6.22 | 50  | Tunja, usually | 7-10       |
| HJ2ABB | 6.20 | 30  | Tunja.         | Silent now |
| HJ2ABC | 5.87 | 50  | Cucuta.        | 6:30-9:30  |
| HJ2ABD | 5.98 | 100 | BUARAMANGA     | SOON       |

DISTRICT 3: States Cundinamarca, Huila, and Tolima; Capital Bogota.

|        |       |     |                     |                    |
|--------|-------|-----|---------------------|--------------------|
| HJ3ABC | 1.11  | 50  | Bogota, )           | BCB 7-10           |
| HJ3ABD | 7.40  | 50  | Bogota, )           | 7-10               |
| HJ3ABE | 1.20  | 50  | Bogota, )           | BCB 7-10           |
| HJ3ABF | 6.20  | 50  | Bogota, )           | 7-10               |
| HJ3ABG | 1.00  | 50  | Bogota, )           | BCB 7-10           |
| HJ3ABH | 6.02  | 1kW | Bogota, )           | 7-10               |
| HJ3ABI | 6.05  | 50  | Bogota, irregular,  | relays 3ABC, 3ABD. |
| HJ3ABK | 7.20  | 50  | Bogota, works Hams. |                    |
| HJN    | 681kc | 1kW | Bogota, )           | BC 7:30-10         |
| HJN    | 6.07  | 50  | Bogota, )           | 7:30-10            |
| HKE    | 7.10  | 178 | Bogota,             | 8-9 irreg.         |

DISTRICT 4: States Antioquia, Calcas.

|        |      |     |                     |       |
|--------|------|-----|---------------------|-------|
| HJ4ABA | 11.7 |     | Medellin, testing.  |       |
| HJ4ABB | 7.13 | 300 | Manizales, T/F      | 8-10  |
| HJ4ABC | 6.09 | 50  | Pereira.            | 7-10  |
| HJ4ABD | 6.06 | 4kW | Medellin, works H's |       |
| HJ4ABE | 5.93 | 50  | Medellin, Off air   |       |
| HJ4ABF | 9.60 | 50  | Medellin, Off air   |       |
| HJ4ABG | 6.11 | 15  | Medellin, irregular |       |
| HJ4ABH | 9.40 |     | Palmira, Off air    |       |
| HJ4ABI | 6.60 | 10  | Medellin, irregular |       |
| HJ4ABL | 6.10 | 300 | Manizales, Sa       | 10-11 |

DISTRICT 5: States Cauca, Valle del cauca, and Narino.

|        |      |     |                      |      |
|--------|------|-----|----------------------|------|
| HJ5ABC | 5.60 | 30  | Calli, 3 times a wk. |      |
| HJ5AB  | 6.49 | 100 | Calli,               | 7-10 |
| HJ5ABE | 7.00 | 50  | Calli, works Hams.   |      |
| HJ5ABF | 8.02 | 50  | Popayan, works Hams  |      |
| HJ5ABG | 7.02 | 15  | Calli, works Hams.   |      |

SHORT WAVE DATA

VE9AS, Fredericton, NB, 6430kc re-  
lays the CRC, Thurs at 8:30pm CST  
(Schumacher)...WVD, Seattle, end of  
Alaskan Telegraph Co. testing on  
4990kc in pm. National Parks Xmtrs  
near 83m, quite active (Hodge)...  
CO9GC, Laboratorio Radio-electrico,  
Grau y Caminero, Apartado 137, San-  
tiago de Cuba, 48.78m is on daily  
10-11pm EST (Shanks)...HIH, San Ped

ro Macoris, D.R., 44m, have DX prog-  
rams Sun. 3-4am EST (Richardson)...  
New Sked of W2XAF is 5:30-11pm, and  
W2XAD, 2-3pm EST.

PRADO's Sunday afternoon program  
mes on 15.44MC, will start in May  
...Address of new Station on 6.0Mc  
is C/O Teatro Bolivar, P.O.Box 134,  
Quito, Ecuador (McCormick)...HCK,  
Quito, Ecuador, heard on 6530kc at  
10:30pm CST (Schumacher)...TIGPH,  
"Alma Tica", give their official  
Freq. as 5823kc (Shanks)...Sat. nite  
dance music on HJ1ABG to lam EST,  
and on HJ1ABB from 10pm-12:30am EST.  
...HJ4ABL "Ecos de Occidente", say  
they are on 6065kc daily 6:30-7:30  
pm, and English program Sat. from  
10:30-11:30pm EST (Shanks)...Robt.  
Grellaud of OAX4B, says his SKED  
with his new 250w Collins Xmr.1a  
Wednesday 7-10:30pm EST (DeMyer)..

JVM/JVN of Nazaki, Japan, on Fri,  
and Sat. 10:30-1am EST (Balbi)..Rad  
io Telephone service between Japan  
and Gt. Britain opened Mar.12th...  
Sked of PMY, Bandoeng, 58m, is 8:40am  
to 12:40pm EST (Lawton)...VK3ME,  
Melbourne, Australia, are now on Wed  
Thurs, Fri, Sat. 5-7am EST (Dilg  
-Shanks)...PLY, Bandoeng, 31.86m,  
phones Tokyo at 6-7am CST (Shanks)  
...ZLT, 27.3m, is working phone be-  
tween 1-2am CST.

HP5J, "The Voice of Panama", Pana-  
ma, 9.59MC, 160 watts-will increase  
to 1000 watts (Dilg)...YNLGG, owned  
by Sr.Raul Guitierrez, of Managua,  
Nicaragua, works irreg. on 6400  
kc...YNOP, 1kW Xmr.on 1230kc, will  
soon be put on the Short Waves by  
the owners, Edmundo Tefel, and E.H.  
Andreas, of Managua, Nicaragua.

GSD, is testing V, X and Z serials  
on last half of transmission # 4,  
from 4:15-5:45pm EST. GSB has repla-  
ced GSA on transmission #5, 6-8pm  
EST...OXY, Skamleback, Denmark, is on  
49.5m, 1-6:30pm EST daily, ex. Sunday  
(Lawton)...OER2, on 49.42m now has  
a power of 500 w. Try for them 4:45  
-5:30pm EST (Reichardt)...PHI, is  
now on 16.88m again...2RO, now on  
31.13meters and may put the "Ameri-  
can Hour from Rome" on this chan-  
nel. 2RO is also testing on 25.40m  
(Dilg)...LKJ1, Jeloy, Norway, now on  
9572kc to escape the QRM from DJN  
on their old Freq. (Priwin) S. W.  
tests from Iceland are impossible  
as transmitter not finished and  
only the aerial masts up (Priwin).  
Nevertheless, Mr. Rossi, a CSWRC mem-  
ber joins the ranks of those who  
claim to have heard TFK on the SWs  
on 33.1meters...PCJ, 19.71m, has a  
music box at 7:40, 8:40am, etc-CT1AA  
heard 49.4m, 2:30-5pm EST (Shanks).

# SHORT-WAVE BROADCASTING STATIONS

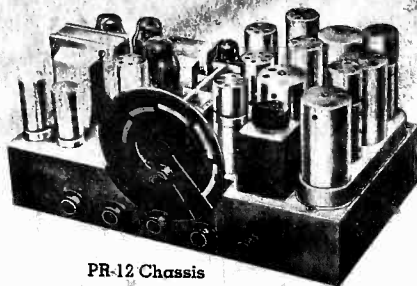
| DIAL  | METERS | MEGS  | CALL                  | STATION                    | TIME | E.S.T. |
|-------|--------|-------|-----------------------|----------------------------|------|--------|
| 13.93 | 21.54  | W8XX  | Pittsburg, Penna.     | 6-8am                      |      |        |
| 15.93 | 18.82  | PLE   | Bandoeng, Java        | 7-8pm phones San Fran etc  |      |        |
| 16.11 | 18.61  | GAU   | Rugby, England        | Phones irreg.              |      |        |
| 16.19 | 18.53  | PCM   | Kootwijk, Holland.    | Phones irreg.              |      |        |
| 16.25 | 18.46  |       | Geneva, Switzerland.  | Mondays 3:15am             |      |        |
| 16.25 | 18.44  | HJY   | Bogota, Colombia.     | Phones LSM at noon.        |      |        |
| 16.33 | 18.37  | FZS   | Saigon, F. Indo China | Phones 5am.                |      |        |
| 16.39 | 18.30  | YVR   | Maracay, Venezuela.   | Phone.                     |      |        |
| 16.47 | 18.21  | KUS   | Manila, P.I.          | Phones.                    |      |        |
| 16.55 | 18.13  | PMC   | Bandoeng, Java.       | Phones irreg.              |      |        |
| 16.56 | 18.11  | LSY3  | Monte Grande, Argen.  | Phone.                     |      |        |
| 16.85 | 17.80  | PCV   | Kootwijk, Holland.    | Phones in early am.        |      |        |
| 16.86 | 17.79  | GSG   | Daventry, England.    | 6-8:45am; 9-10:45am.       |      |        |
| 16.87 | 17.78  | W3XAL | Boundbrook, N.J.      | 8-9am, Tues/Thur/Fri 2-3p  |      |        |
| 16.88 | 17.76  | PHI   | Huizen, Holland.      | 8:30-10:10am Ex Tu/Wed.    |      |        |
| 16.89 | 17.76  | DJE   | Zeesen, Germany.      | 7-11:30am                  |      |        |
| 16.91 | 17.74  | HSP   | Bangkok, Siam.        | Phones in early am.        |      |        |
| 17.12 | 17.52  | DFB   | Nauen, Germany.       | Phones irreg.              |      |        |
| 17.13 | 17.50  | VWY   | Kirkee, India.        | Phones irreg.              |      |        |
| 17.37 | 17.26  | DAF   | Norden, Germany.      | Phones at 9:15am irreg.    |      |        |
| 18.47 | 16.24  | KTO   | Manila, P.I.          | Phone.                     |      |        |
| 18.51 | 16.21  | FZR3  | Saigon, F. Indo China | Phones 8:30am irreg.       |      |        |
| 18.71 | 16.03  | KKP   | Kahuku, Hawaii.       | Phone.                     |      |        |
| 18.90 | 15.88  | FTK   | St. Assise, France.   | Phones French Colonies.    |      |        |
| 19.16 | 15.65  | JVE   | Nazaki, Japan.        | Phones Java evenings.      |      |        |
| 19.19 | 15.62  | JVF   | Nazaki, Japan.        | Fones KWU 3:45-4pm & irr   |      |        |
| 19.51 | 15.37  | HAS3  | Budapest, Hungary.    | Sunday 9-10am.             |      |        |
| 19.52 | 15.36  | KWU   | Dixon, California.    | Phones, JVF, KKP, PLV etc. |      |        |
| 19.56 | 15.33  | W2XAD | Schenectady, N.Y.     | 2-3pm.                     |      |        |
| 19.63 | 15.28  | DJQ   | Zeesen, Germany.      | 12:30-2am to East Asia.    |      |        |
| 19.64 | 15.27  | W2XE  | Wayne, New Jersey.    | 10am-Noon.                 |      |        |
| 19.68 | 15.24  |       | Pontoise, France.     | 6-10am.                    |      |        |
| 19.71 | 15.22  | PCJ   | Eindhoven, Holland.   | 7:10-11:10am.              |      |        |
| 19.72 | 15.21  | W8XX  | Pittsburg, Penna.     | 8am-3:15pm.                |      |        |
| 19.74 | 15.20  | DJB   | Zeesen, Germany.      | 12:30pm-2am; 3:45-7:15 am  |      |        |
| 19.82 | 15.14  | GSF   | Daventry, England.    | 6-8:45am                   |      |        |
| 19.84 | 15.12  | HVJ   | Vatican City, Italy.  | 10:30-10:45am.             |      |        |
| 19.91 | 15.05  | WNC   | Hialeah, Florida.     | Works CA, and SA on phone  |      |        |
| 19.95 | 15.00  | RKI   | Moscow, U.S.S.R.      | Relays RNE early am.       |      |        |
| 20.01 | 14.98  | KAY   | Manila, P.I.          | Phone.                     |      |        |
| 20.08 | 14.93  | HJB   | Bogota, Colombia.     | Phones WNC.                |      |        |
| 20.54 | 14.60  | JVH   | Nazaki, Japan.        | Works Europe mornings.     |      |        |
| 20.69 | 14.50  | HPF   | Panama City, Panama   | Phones WNC.                |      |        |
| 20.70 | 14.49  | YNA   | Managua, Nicaragua.   | Phones WNC.                |      |        |
| 20.78 | 14.44  | GEW   | Rugby, England.       | Phones irreg.              |      |        |
| 21.57 | 13.90  | WQP   | Rocky Point, N.Y.     | Phones RNE/RKI etc.        |      |        |
| 22.48 | 13.34  | YVQ   | Maracay, Venezuela.   | Phones WNC etc.            |      |        |
| 22.94 | 13.08  | VPIA  | Suva, Fiji Islands.   | 12:30-1:30am Ex. Sunday.   |      |        |
| 23.35 | 12.84  | WOO   | Ocean Gate, New Jer.  | Phones Ships.              |      |        |
| 23.39 | 12.83  | CNR   | Rabat, Morocco        | Sun. 7:30-9am.             |      |        |
| 23.45 | 12.80  | IAC   | Coltano, Italy.       | Phones Ships.              |      |        |
| 23.46 | 12.78  | GBC   | Rugby, England.       | Phones Ships.              |      |        |
| 24.19 | 12.40  | DAF   | Norden, Germany.      | Phones Ships. (1-2:15pm.   |      |        |
| 24.20 | 12.40  | CTLGO | Paredes, Portugal.    | Sun 10-11:30am; Tu/Th/Fr-  |      |        |
| 25.00 | 12.00  | RNE   | Moscow, U.S.S.R.      | Mornings at 8am irreg.     |      |        |
| 25.02 | 11.99  | VIY   | Melbourne, Australia  | Phones CJ44 in Canada.     |      |        |
| 25.23 | 11.88  |       | Pontoise, France      | 10:15am-1:15pm; 2-5pm.     |      |        |
| 25.27 | 11.87  | W8XX  | Pittsburg, Penna.     | 3:30-9pm.                  |      |        |
| 25.29 | 11.86  | GSE   | Daventry, England.    | 9am-Noon.                  |      |        |
| 25.36 | 11.83  | W2XE  | Wayne, New Jersey.    | 2-4pm.                     |      |        |
| 25.42 | 11.80  | WLXAL | Boston, Mass.         | Irreg.                     |      |        |
| 25.51 | 11.77  | DJD   | Zeesen, Germany.      | Noon-4:30pm. (# 6 10-11pm  |      |        |
| 25.53 | 11.75  | GSD   | Daventry, England.    | 11:30-1:30am; 12:15-5:45p  |      |        |
| 25.60 | 11.72  | CJRX  | Winnipeg, Canada.     | 7-12pm; Sun 5-10:30pm.     |      |        |

|       |       |        |                          |                                     |
|-------|-------|--------|--------------------------|-------------------------------------|
| 25.60 | 11.71 |        | Pontoise, France         | 6-9pm; 10pm-12pm.                   |
| 25.65 | 11.70 | HJ4ABA | Medellin, Colombia.      | 5-10pm.                             |
| 25.68 | 11.68 | KIO    | Kahuku, Hawaii.          | Phones evenings.                    |
| 25.69 | 11.67 | PPQ    | Rio de Janeiro,          | Phones irreg.                       |
| 26.50 | 11.32 | XAM    | Merida, Yucatan, Mex     | Phones Mexico DF in pm.             |
| 27.66 | 10.84 | KWV    | Dixon, California.       | Phone.                              |
| 27.93 | 10.74 | JVM    | Nazaki, Japan            | 1:40-2:20am; 4-7:40am.              |
| 28.14 | 10.66 | JVN    | Nazaki, Japan            | Testing 10:40pm-1:25am.             |
| 28.80 | 10.41 | KES    | Bolinas, California      | Phone                               |
| 28.80 | 10.41 | YBG    | Medan, Sumatra.          | Tests at 10:30am.                   |
| 28.91 | 10.37 | WCG    | Rocky Point, N.Y.        | Experimental.                       |
| 28.97 | 10.35 | LSX    | Buenos Aires, Arg.       | Phones irreg.                       |
| 29.04 | 10.33 | ORK    | Ruyssede, Belgium        | 1:30-3pm                            |
| 29.15 | 10.29 | DIQ    | Nauen, Germany           | Phones Sydney & Others.             |
| 29.41 | 10.20 | CMHB   | San Spiritus, Cuba       | Early evenings.                     |
| 29.59 | 10.14 | OPM    | Leopoldville, Congo      | Sun 3:45-4:15pm & irreg.            |
| 29.84 | 10.05 | SUV    | Abou-Zabal, Egypt        | Works DGU 4:30-5pm.                 |
| 30.01 | 9.99  | KAZ    | Manila, P.I.             | Phones.                             |
| 30.30 | 9.90  | LSN    | Buenos Aires, Arg.       | Phones.                             |
| 30.43 | 9.86  | EAQ    | Madrid, Spain            | 5:15-7:30pm; Sat 1-3pm.             |
| 30.52 | 9.83  | IRM    | Rome, Italy.             | Phone. (9:15pm, to S.A.             |
| 31.13 | 9.64  | ZRO    | Rome, Italy.             | 2:30-5pm; Mo/We/Fri 7:45-           |
| 31.27 | 9.60  | HBL    | Geneva, Switzerland      | Sat 5:30-6:15pm.                    |
| 31.27 | 9.59  | HP5J   | Panama City, Panama      | 7:30-10pm.                          |
| 31.28 | 9.59  | CT1AA  | Lisbon, Portugal.        | Tues/Thurs/Sat 3:30-6pm.            |
| 31.28 | 9.59  | VK2ME  | Sydney, Australia.       | 1-3, 5-9, 9:30-11:30am <u>SUN</u> . |
| 31.28 | 9.59  | W3XAU  | Philadelphia, Penna      | 11am-6pm. (pm.                      |
| 31.32 | 9.58  | GSC    | Daventry, England.       | 6-8pm, Tu/Th/Sa/Sun 10-11           |
| 31.32 | 9.58  | VK3LR  | Melbourne, Austral.      | 3-7:30am, Ex. Sunday.               |
| 31.35 | 9.57  | WLXK   | Springfield, Mass.       | 6am-Midnight.                       |
| 31.35 | 9.57  | KGU    | Honolulu, Hawaii.        | To go on air this summer.           |
| 31.36 | 9.57  | VUB    | Bombay, India.           | Sun 8:30-10:30am (11:30am)          |
| 31.28 | 9.57  | LKJ1   | Jeloy, Norway.           | 5-8am.                              |
| 31.38 | 9.56  | DJA    | Zeesen, Germany.         | 5:05-9:15pm.                        |
| 31.45 | 9.54  | DJN    | Zeesen, Germany.         | 5:05-10:30pm.                       |
| 31.48 | 9.53  | W2XAF  | Schenectady, N.Y.        | 5:30-11pm.                          |
| 31.55 | 9.51  | VK3ME  | Melbourne, Austral.      | 5-7am Wed/Thurs/Fri/Sat.            |
| 31.55 | 9.51  | GSB    | Daventry, England.       | 11:30pm-1:30am; 11-12 Noon.         |
| 31.58 | 9.50  | PRF5   | Rio de Janeiro, Br.      | 12:15-5:45pm; 6-8pm.                |
| 31.61 | 9.49  | WEF    | Rocky Point, N.Y.        | 5:30-6:15pm Ex. Sunday.             |
| 31.70 | 9.46  | COH    | Havana, Cuba.            | Experimental.                       |
| 31.86 | 9.41  | PLV    | Bandoeng, Java.          | 10am-Noon, 5-7pm, 8-10pm.           |
| 32.88 | 9.12  | HAT4   | Budapest, Hungary.       | 9:45-9:55am; 9:45-9:55pm            |
| 33.15 | 9.05  | TFK    | Reykjavik, Iceland.      | 6-7pm Sundays.                      |
| 34.09 | 8.80  | HKV    | Bogota, Colombia.        | Rumored testing.                    |
| 34.19 | 8.77  | PNI    | Macassar, Celebes.       | 6-7pm irregular.                    |
| 35.72 | 8.40  | HG2AT  | Guayaquil, Ecuador.      | Phones Java in early am.            |
| 37.33 | 8.04  | CNR    | Rabat, Morocco.          | 8-10pm irreg.                       |
| 38.31 | 7.83  | HG2JSB | Guayaquil, Ecuador.      | Sun 3-5:30pm.                       |
| 38.46 | 7.80  | HBP    | Geneva, Switzerland      | 7:20-11:20pm.                       |
| 39.87 | 7.52  | KKH    | Kahuku, Hawaii.          | Sat 5:30-6:15pm.                    |
| 40.16 | 7.47  | JVQ    | Nazaki, Japan.           | Phones & relays KGMB.               |
| 40.55 | 7.40  | HJ3ABD | Bogota, Colombia.        | Phones Philippines.                 |
| 40.60 | 7.39  | ZLT    | Wellington, N.Z.         | 7-11pm Ex. Sunday.                  |
| 40.60 | 7.39  | XECR   | Mexico, D.F.             | Commercial Phone.                   |
| 41.21 | 7.28  | HJ1ABD | Cartagena, Colombia      | Sundays 6-7pm.                      |
| 41.60 | 7.20  | HJ4ABB | Manizales, Colombia      | 7:45-9:15pm Ex. Sunday.             |
| 42.25 | 7.10  | HKE    | Bogota, Colombia.        | 8-10pm Tues and Friday.             |
| 42.60 | 7.04  | HRP1   | San Pedro Sula, Honduras | 8-9pm Tues and Saturday.            |
| 42.83 | 7.00  | VK3ZX  | Victoria, Australia      | Surplus Testing.                    |
| 44.03 | 6.81  | HIH    | San Pedro, R.D.          | Sundays 12:30-2am. (3-4am.          |
| 44.44 | 6.75  | JVT    | Nazaki, Japan.           | Th/Fri 5:40-7:40pm; Sun-            |
| 44.71 | 6.71  | TIEP   | San Jose, Costa Rica     | Phones irregular.                   |
| 45.00 | 6.66  | HC2RL  | Guayaquil, Ecuador       | 7-10pm Ex. Sundays. (11:15          |
| 45.31 | 6.62  | PRADO  | El Riqbamba, Ecuad.      | Sun 5:45-7:45pm; Tu 9:20-           |
| 45.54 | 6.59  | HI4D   | Santo Domingo, R.D.      | Thursday 9-11:40pm.                 |
| 45.80 | 6.55  | TIPG   | San Jose, D.R.           | 4:40-7:40pm Ex. Sunday.             |
|       |       |        |                          | Testing evenings.                   |

|       |      |        |                       |                               |
|-------|------|--------|-----------------------|-------------------------------|
| 46.01 | 6.52 | YV6RV  | Valencia, Venezuela   | 4:30-9:30pm.                  |
| 46.23 | 6.49 | HJ5ABD | Calí, Colombia.       | 7:00-10:00pm Ex. Sunday.      |
| 46.60 | 6.44 | HJ1ABB | Barranquilla, Colom.  | 6-10pm Ex. Sunday.            |
| 46.69 | 6.43 | W3XL   | Boundbrook, N.J.      | N.B.C. Cue station.           |
| 46.70 | 6.43 | VE9AS  | Fredericton, N.B.     | Relays GRC Thur 9:30pm.       |
| 46.88 | 6.40 | YN1GG  | Managua, Nicaragua.   | 7-9:30pm Ex. Sunday.          |
| 47.06 | 6.37 | YV4RC  | Caracas, Venezuela.   | 4:30-9pm Ex. Sunday.          |
| 47.50 | 6.31 | HIZ    | Santo Domingo, R.D.   | 11pm-12:30am Ex. Sunday.      |
| 48.15 | 6.23 | OAX4B  | Lima, Peru.           | Wednesday 7-10:30pm.          |
| 48.23 | 6.22 | HJ2ABA | Tunja, Colombia.      | 8-10pm. (noon)                |
| 48.40 | 6.20 | CT1GO  | Paredo, Portugal.     | 6:20-7:30pm; Sun 10:30am-     |
| 48.50 | 6.19 | H1LA   | Santo Domingo, R.D.   | 6:40-9:40pm Ex. Sunday.       |
| 48.62 | 6.17 | HJ3ABF | Bogota, Colombia.     | 7-11pm Ex. Sunday.            |
| 48.78 | 6.15 | YV3RC  | Caracas, Venezuela.   | 4:30-10pm.                    |
| 48.78 | 6.15 | CSL    | Lisbon, Portugal.     | 6-7:30am; 1-5pm.              |
| 48.83 | 6.14 | CO9GC  | Santiago de Cuba.     | 1:30-4:30pm; 10-11pm. (10:30  |
| 48.86 | 6.14 | CJRO   | Winnipeg, Canada.     | 7-12pm, Sat 4pm-1am, Sun 5-   |
| 48.92 | 6.13 | W8XK   | Pittsburg, Penna.     | 3:30pm-Midnight.              |
| 48.94 | 6.13 | ZGE    | Kuala Lumpur, F.M.S.  | Sun/Tues/Fri 6:40-8:40pm.     |
| 49.02 | 6.12 | LKJ1   | Jeloy, Norway.        | 11am-6pm.                     |
| 49.02 | 6.12 | YDA    | Bandoeng, Java.       | 6:20-10:40am.                 |
| 49.05 | 6.12 | W2XE   | Wayne, New Jersey.    | 5-10pm.                       |
| 49.08 | 6.11 | HJ1ABE | Cartagena, Colombia.  | 7:30-9pm; Mon 10:30-11:30p    |
| 49.10 | 6.11 | YV2RC  | Caracas, Venezuela.   | 5:15-9:30pm.                  |
| 49.10 | 6.11 | VUC    | Calcutta, India.      | 2-3am; Sun 11:30pm-2:30am.    |
| 49.18 | 6.10 | GSL    | Daventry, England.    | Tu/Thur/Sat/Sun 10-11pm.      |
| 49.18 | 6.10 | HJ4ABL | Manizales, Colombia.  | 10:30-11:30pm Saturday.       |
| 49.18 | 6.10 | W3XAL  | Boundbrook, N.J.      | Mon-Wed-Sat 4-5pm; Sat 11pm   |
| 49.18 | 6.10 | W9XF   | Chicago, Illinois.    | 8-9am; 12-1pm; Sat 12-1:30pm  |
| 49.20 | 6.10 | ZTJ    | Johannesburg, S.Afr.  | 11:30pm-12:30am; 3:30-7am &   |
| 49.26 | 6.09 | VE9GW  | Bowmanville, Ontario  | M/T/W 2-11pm; T/F/8 6a-11pm   |
| 49.30 | 6.09 | ZRO    | Rome, Italy.          | Mon, Wed, Fri 6-7:30pm; 1-2pm |
| 49.34 | 6.08 | CP5    | La Paz, Bolivia.      | 7:45-9:15pm.                  |
| 49.34 | 6.08 | VE9HX  | Halifax, Nova Scotia  | 8-10:30am; 3-10pm.            |
| 49.34 | 6.08 | W9XAA  | Chicago, Illinois.    | Sunday 1-2:30pm.              |
| 49.40 | 6.07 | ZHJ    | Penang, F.M.S.        | 9am-5pm.                      |
| 49.42 | 6.07 | OKR2   | Vienna, Austria.      | 6-11pm.                       |
| 49.45 | 6.07 | HJH    | Bogota, Colombia.     | 1-6:30pm; Sun 11am-6:30pm.    |
| 49.50 | 6.06 | OXY    | Skamleback, Denmark.  | 7-10pm.                       |
| 49.50 | 6.06 | W3XAU  | Philadelphia, Penna   | 6-7pm, 10-12pm.               |
| 49.50 | 6.06 | W8XAL  | Cincinnati, Ohio.     | Evenings.                     |
| 49.50 | 6.06 | PR4B   | Pernambuco, Brazil    | Not in use at present.        |
| 49.59 | 6.05 | GSA    | Daventry, England.    | Sun 4-6pm; W/F 6:30-7:45pm.   |
| 49.67 | 6.04 | W1XAL  | Boston, Mass.         | 6:30-10pm Ex. Sunday.         |
| 49.67 | 6.04 | HJ1ABG | Baranquilla, Colom.   | 8-10:30pm.                    |
| 49.75 | 6.03 | HP5B   | Panama City, Panama.  | 5:05-10:30pm.                 |
| 49.83 | 6.02 | DJC    | Zeesen, Germany.      | 7-11pm Ex. Sunday. (-12:30a   |
| 49.87 | 6.02 | HJ3ABH | Bogota, Colombia.     | 9:30am-1pm; 4-7pm; Sat 11:30  |
| 49.90 | 6.01 | COC    | Havana, Cuba.         | 3-6pm.                        |
| 49.90 | 6.00 | RV59   | Moscow, U.S.S.R.      | 10am-11pm. Relays XEB.        |
| 49.92 | 6.00 | XEBT   | Mexico City, D.F.     | Early evenings.               |
| 50.16 | 5.98 | HJ2ABD | Bucaramanga, Colom.   | Tues/Fri 8:10-10:10pm.        |
| 50.16 | 5.98 | HIX    | Santo Domingo, R.D.   | evenings irreg.               |
| 50.16 | 5.98 | XECW   | Mexico, D.F.          | 7-9pm irreg.                  |
| 50.34 | 5.96 | YNLF   | Managua, Nicaragua.   | 7:30-11:30pm Ex. Sunday.      |
| 50.42 | 5.95 | HJ4ABE | Medellin, Colombia.   |                               |
| 51.02 | 5.88 | YV8RE  | Barquisimeta, Venez.  | 6:30-9pm Ex. Sunday.          |
| 51.11 | 5.87 | HJ2ABC | Cucuta, Colombia.     | 10:30pm-12:15am.              |
| 51.28 | 5.85 | YN2A   | Managua, Nicaragua.   | 5:15-10pm Ex. Sunday.         |
| 51.28 | 5.85 | YV5RMO | Maracaibo, Venezuela  | 7-10pm Ex. Sunday.            |
| 51.46 | 5.83 | TIGPH  | San Jose, Costa Rica  | 6-9:30pm.                     |
| 51.90 | 5.78 | H11J   | San P de Macoris, RD  | Wed/Sat 9-11:30pm.            |
| 51.90 | 5.78 | OAX4D  | Lima, Peru.           | Wed/Sat 9:30-10:45pm.         |
| 65.22 | 4.60 | HC2ET  | Guayaquil, Ecuador.   | 4:30-9:30am.                  |
| 67.11 | 4.47 | YDB    | Soerabaja, D.E.I.     | 1-9am.                        |
| 70.02 | 4.27 | RV15   | Kharbarovsk, U.S.S.R  | 8:30-11:30pm Ex. Sunday.      |
| 73.00 | 4.10 | HCJB   | Quito, Ecuador.       | Wed/Sat 5-7pm.                |
| 75.00 | 4.00 | CT2AJ  | Ponte Delgada, Azores |                               |

# PATTERSON'S MASTERPIECE.

# PR



# - 12

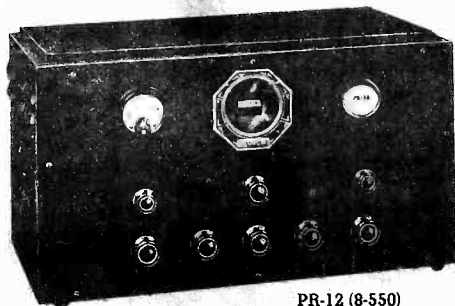
PR-12 Chassis

## COMMUNICATION RECEIVER

MODEL PR-12; 8-550 meters; 12 tubes; the wonder set of all time. Successor to the World-famous PR-10; Will out-perform any set, at any price, on any band; 5 Bands; every feature of value known to modern science, several exclusive with this model; new six-section tuning and R meter; Crystal filter, monitor switch; Unit construction. Astounding selectivity and sensitivity; the world's finest tone. Doublet antenna input system; Patterson selector-Band Dial; 10 to 1 and 50 to 1 vernier tuning; Automatic volume control. Full 10" matched dynamic speaker; heavy gauge auto body steel case with baked enamel finish.

SPECIAL DISCOUNT FOR IDA MEMBERS.  
WRITE FOR FULL PARTICULARS TO THE ADDRESS BELOW.

## BUT ONE EXCELS: PR-12!



PR-12 (8-550)

**The DX Radio Sales Co. --- Distributors**  
Cable Address "DEEX" WYoming 0429 P. O. BOX 291  
BEVERLY HILLS, CALIFORNIA, U.S.A.