

The Scott News

Vol. 5

MAY, 1933

No. 3

AGAIN SCOTT PROVES RECEPTION SUPREMACY OF HIS RECEIVER UNDER MOST DIFFICULT CONDITIONS

The Associate Editor can think of no clearer, concise way to present the report of the first leg of Mr. Scott's 20,000-mile research tour than to reproduce here his letter to us written on the eve of his disembarking from the SS Manganui at Wellington, New Zealand. So here is the letter:

Aboard SS Manganui, March 5th, 1933

Dear Folks at Laboratory:

Tomorrow morning we will arrive at Wellington and the first part of the journey will be finished.

Of course you know from my cables what excellent results we had picking up WBBM all the way. I had some uneasy hours when we first set up on the ship. It seemed that every known obstacle to good reception presented itself against the success of our test. This situation is well described in the report of Mr. Davidson, the Radio Operator which I send you herewith.

I want you to present this evidence in the next issue of Scott News. As you know we have so long stressed the power and efficiency of the DeLuxe on Short Wave reception that the public has lost sight of its reach and power on broadcast band reception. This is, of course, our own fault.

But the log I have and the reports already made by me via cables to WBBM nightly should surely convince anyone who might be skeptical.

If out here in the middle of the Pacific, with a make-shift, short aerial, with converted current power we can reach out practically 10,000 miles on the broadcast band, we certainly need not be bashful in our claims when the receiver is to be used under normal operating conditions.



E. H. SCOTT

The trip from Papeete on has been quite hot and moist, but fortunately the weather has been fairly good, only one or two rough days. At times the static has been bad, but we have missed scarcely an announcement and all have enjoyed the music immensely.

With these brief remarks and the reports from Captain Totem and Mr. Davidson sent herewith you will know exactly what we have been up against and the remarkable results we were able to obtain.

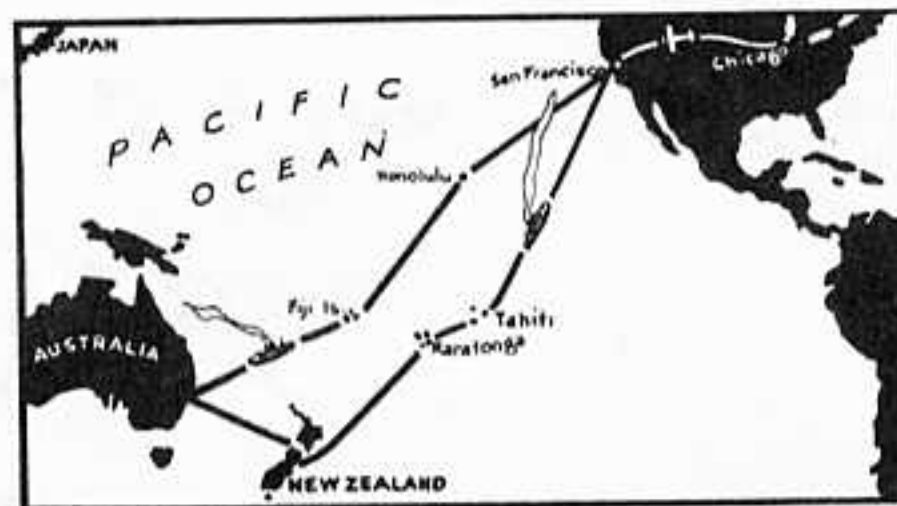
Incidentally, let us adopt the new transposed type aerial as standard equipment as soon as possible. I realize this is going to cost us more, another inroad on the slim margin we work on at our present price, but I think it will pay us in the end considering the extra satisfaction to our owners everywhere.

I think this is all for the present. I'll keep in close touch direct with you and through WBBM so that every day you will know of our progress. I have no fears now of the results on land in New Zealand and Australia. Once more we will have proven beyond any fear of contradiction the supremacy of the receiver. I hate to be away from the laboratory so long, but there seems no other way to definitely establish our right to make the claims we do and to overcome

what I know are exaggerations by some of the manufacturers who claim to compete with us to the confusion of some of our prospective owners.

When we land, I'll send you all post cards and in the meantime, I must sign off.

Sincerely yours,



Mr. Scott's route. San Francisco to Tahiti, Rarotonga, Wellington, Nelson, Christchurch, Sydney, Melbourne, Fiji Islands, Honolulu and back to America! 20,000 miles!

ALL DAY, ALL YEAR — THE WORLD AROUND

CAPTAIN TOTEM OF THE MAUNGANUI VERIFIES MR. SCOTT'S RECEPTION

Conclusive proof of Mr. Scott's extraordinary feat of receiving broadcast under the most trying circumstances is given in this signed statement by Captain S. F. Totem, Master of the good ship Manganui.

Your Associate Editor is somewhat disappointed, however, that Captain Totem did not attest the fact that the receiver used was the regular Scott Allwave DeLuxe. There was nothing special about the receiver itself. Many might think that we built very special equipment for this phenomenal recep-

tion demonstration. Yet, such is not the case. The receiver Mr. Scott used was exactly like we ship to our new owners every day. No extra sensitivity or selectivity—you may have exactly the same receiver, because each and every one we build is made to one standard—as high a standard as we know how to set.



IN ANY FURTHER CORRESPONDENCE
ON THIS SUBJECT, PLEASE QUOTE
REFERENCE HEREUNDER.

YOUR REFERENCE

UNION STEAM SHIP COMPANY OF NEW ZEALAND, LIMITED

R.M.S. MAUNGANUI

March 5th 1933.

Dear Mr. Scott,

I am very glad to comply with your request for a statement regarding the reception accomplished with your receiver during your trip on the R.M.S. Maunganui.

Being interested in radio reception and having a receiver of my own aboard the ship, I was naturally interested in observing the results secured by you.

From the day we left San Francisco to our arrival at Wellington, New Zealand, I can verify the fact that each evening you were able to bring in, on the loud speaker, programmes from various parts of U.S.A.

On occasions when we had dancing on deck, the music brought in from the various orchestras you tuned in with your receiver, was much appreciated by both passengers and officers, and the fact that it was possible to hear the music all over the ship speaks for itself.

I was particularly interested in the reception from station W.B.B.M. Chicago which sent out a message to you each evening during the voyage. It was interesting to hear a voice coming out of the speaker announcing that you were aboard the Maunganui on a research cruise, then to hear a message read which you had cabled during the evening only a short time before giving the names of some of the selections on the programme and how it was being received.

Stations from New York to California were heard each evening with great volume and I and my officers who also heard this reception are more than glad to confirm this fact for you.

Wishing you success during the remainder of your cruise.

I am

Yours very truly,

S. F. Totem

MASTER.

CHIEF RADIO OPERATOR OF THE MAUNGANUI DESCRIBES GREAT HANDICAPS UNDER WHICH THE TEST WAS MADE

A REPORT ON RECEPTION WITH A SCOTT ALLWAVE DELUXE RECEIVER ON BOARD R. M. S. MAUNGANUI . . .

March 5, 1933

To Whom It May Concern:

I am glad to confirm the following facts with reference to the installation and reception accomplished with a Scott Allwave Deluxe receiver during the voyage of the R.M.S. Maunganui between San Francisco and Wellington, New Zealand, leaving San Francisco on February 15th, and arriving in Wellington on the morning of March 6th.

The antennae equipment consisted of verticle unshielded section of 46 ft. 5 inches and a shielded and grounded lead in of 41 ft. 3 inches, to the receiver. This antennae installation was one developed by Mr. Scott to meet the special conditions aboard the ship. It has been my experience aboard ship that the efficiency of a vertical antennae is considerably less than the usual horizontal type, but owing to the construction of the vessel's transmitting aerial and to the location of various stays, etc., it was not possible to erect a horizontal antennae, thus signal strength was considerably reduced.

Another great handicap was the fact that the antennae connected to Mr. Scott's machine was installed directly under the ship's antennae, thus partly screening and reducing its pickup.

Owing to the large amount of electrical equipment used, none of which was filtered to prevent electrical interference, it was found impossible to use a regular unshielded antennae and receive distant stations, owing to the amount of interference picked up when the full sensitivity of the receiver was used.

The special antennae as finally worked out by Mr. Scott, together with the "static controller" incorporated in the design of the receiver, eliminated at least 70% of the interference from the electrical

equipment aboard the ship, and enabled him to bring in distant stations clearly.

The efficiency of this installation was tested in the following manner: A regular antennae was hauled up the mast to the same length as both unshielded and shielded sections of the special antennae. A distant station was tuned in on the special antennae, then the antennae was disconnected and the regular type antennae connected. As soon as the regular antennae was connected, the local electrical interference was so great that the signal was either drowned out entirely, or came in with so much racket, that it could not be listened to.

During the voyage either myself or one of the other radio operators listened in with Mr. Scott each evening and can verify

the fact that programmes were brought in from stations in all parts of the U.S.A., generally with enough volume to be heard all over the ship when the volume was turned up.

In all my radio experience I have never heard such reception of broadcast stations on board ship as that accomplished by the Scott receiver. When it was considered that a large part of the reception was in the tropical area, where static is bad and the air so humid and moist that reception of any kind is out of the question for most receivers, the reception achieved was, in my opinion, quite remarkable.

Yours very truly,

(signed) Y. M. Davidson

Chief Radio Operator R.M.S. Maunganui Union Steamship Company of New Zealand, Ltd.

Radio Engineer Testing WBBM's Distance Power on Voyage to Australia

BY CHARLES J. GILCHREST
(Radio Editor The Daily News)

E. H. SCOTT is a Chicago radio engineer and manufacturer who has been conducting long-distance tests. . . . In his north side laboratory he keeps phonograph records of months of consistent broadcasting from the Australian stations. . . . Now he has reversed the idea. . . . In collaboration with WBBM, Mr. Scott is testing that station's power and clarity as his ship steams toward Aus-

—The Daily News, Chicago, March 2, 1933

tralia. . . . The other night WBBM received this wireless from aboard the S. S. Maunganui, 5,000 miles out of San Francisco, or almost 7,000 miles from Chicago: "Receiving **Herbie Mintz'** Granada Cafe orchestra with great clearness and volume. All passengers dancing to his music. Your announcer just said it is 12:30 a. m. in Chicago. Aboard ship it is exactly 4:30 in the afternoon."

the S. S. Maunganui on the Pacific en route to Australia will be included in tonight's bill from this station.

During the **Around the Town** program, 12, midnight, to 2 a. m., a report from the ship on the first stages in a series of experiments arranged by **H. Leslie Atlass**, Columbia district manager, and **E. H. Scott**, radio engineer, will be broadcast. Scott, aboard ship, is measuring the strength of the WBBM signals over a 20,000-mile trip.

—The Daily Times, Chicago, Feb. 17, 1933.

**LISTENING
IN** with
Yank Taylor

Wireless reports on a series of experiments being conducted between WBBM and the DAILY TIMES and

Improvements in All-Wave De Luxe "Super" Design

By S. Gordon Taylor
and John M. Borst

In the August, 1932, issue a description of the then new Scott all-wave De Luxe receiver began. In these articles were included a description of the receiver and reports on reception tests conducted by the RADIO NEWS Laboratory at various locations in and around New York City.

The present article is concerned with numerous improvements recently incorporated in this receiver. Also, farther on are given the results obtained in operating tests made by the authors. The improvements are so numerous that it can almost be considered a new receiver. Not only have modern operating refinements such as automatic volume control and a tuning meter been included, but the already fine electrical characteristics of the circuit have been greatly improved.

Before going into the details of the alterations made, it is interesting to know the conditions under which the tests of this improved model were made by the RADIO NEWS Laboratory. During October one of the authors happened to be in Chicago on business. Among other calls, one was made at the Scott Laboratories. During this visit a demonstration of this improved receiver was heard. At the time it was felt that the changes were such as to be of considerable interest to RADIO NEWS readers, and arrangements were made to ship one of the receivers to the RADIO NEWS Laboratory to permit further tests to be carried on.

During the discussion of the receiver one of the points stressed by the manufacturer was their absolute uniformity. To prove this point, Mr. Scott suggested that the visitor go down to the shipping room and there select at random one of the receivers awaiting shipment, then accompany this receiver to the Scott Laboratory, where a complete set of curves could be run and the receiver then shipped to the RADIO NEWS Laboratory for operating tests. This was done, all in the visitor's presence and the resulting curves are included in this article. Certainly the laboratory

measurements backed up the claims for uniformity, as the curves were almost identical with the "laboratory standard" curves for this model. The electrical fidelity curve was slightly better than the standard in that the drop was slightly less marked at the high-frequency end. The sensitivity curve showed an average of a few hundredths of a microvolt less than the standard.

It might be mentioned, in passing, that the sensitivity shown by the curve in Figure 3 is greater than can be used even in a location where noise is at a minimum. Such sensitivity only results in a higher noise level between stations, and word has been received that the sensitivity has purposely been decreased since these curves were run, still leaving a considerably greater degree of sensitivity than can be used to advantage even under the most ideal conditions. This decrease in sensitivity has been accomplished by increasing the value of the resistor providing minimum bias for the three i.f. tubes.

The two most obvious improvements over the earlier model are the inclusion of the highly effective automatic volume-control system and a unique tuning-meter arrangement. As indicated in Figure

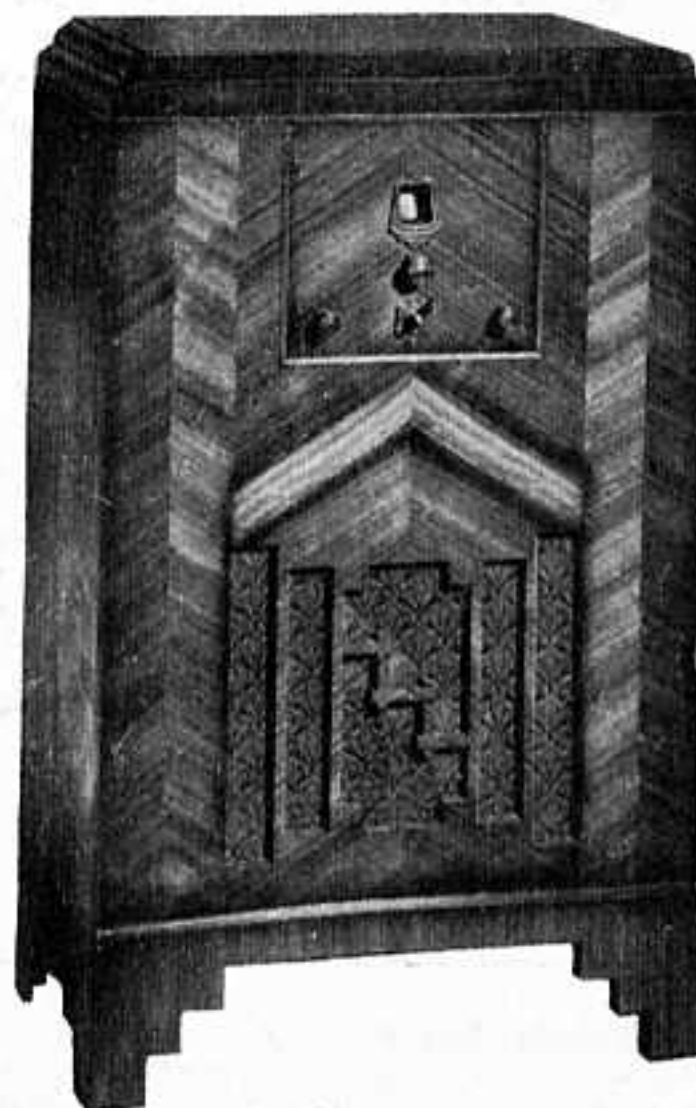
6, a close approximation to the full rated power output of the receiver is obtainable with an input of only .1 microvolt. From inputs about .3 microvolt and upward, the full power output is obtained.

The tuning meter is an improvement which offers a decided operating advantage. Its method of application in this receiver is of particular interest. The meter itself is not visible but is completely concealed behind the front panel. Only the image of its needle is visible. This image is projected on the calibrated tuning scale and is therefore always directly in the field of vision while tuning the receiver, making it unnecessary to move the eyes back and forth from the tuning scale to the tuning meter while operating the receiver. This tuning meter is included in the plate circuit of the second detector and gives a direct indication of the r.f. signal strength. It does not fluctuate with modulation nor is it in any way affected by the adjustment of the manual volume control. It has a wide range of deflection with a readily evident movement even on extremely weak signal inputs.

The improved electrical characteristics of the receiver are accounted for primarily in the use of the latest types of tubes in all but the power output stage, where push-pull -45's are still employed, and the power supply, which employs an -80 type rectifier. The other nine tubes are three type -56, one type -57, four type -58 and a Wunderlich tube for the second detector and automatic volume control.

Starting at the input, the other improvements and refinements which have been made will be taken up.

The first is the provision for use of a tuned transmission type antenna lead for short-wave reception. The manufacturer has found such an antenna system to offer considerable advantage over the ordinary "L" type antenna for the short waves. The effect of tuning the antenna is to greatly increase signal strength on weak short-wave stations, while the use of a parallel lead-in tends to con-



The LIDO Console

ALL DAY, ALL YEAR — THE WORLD AROUND

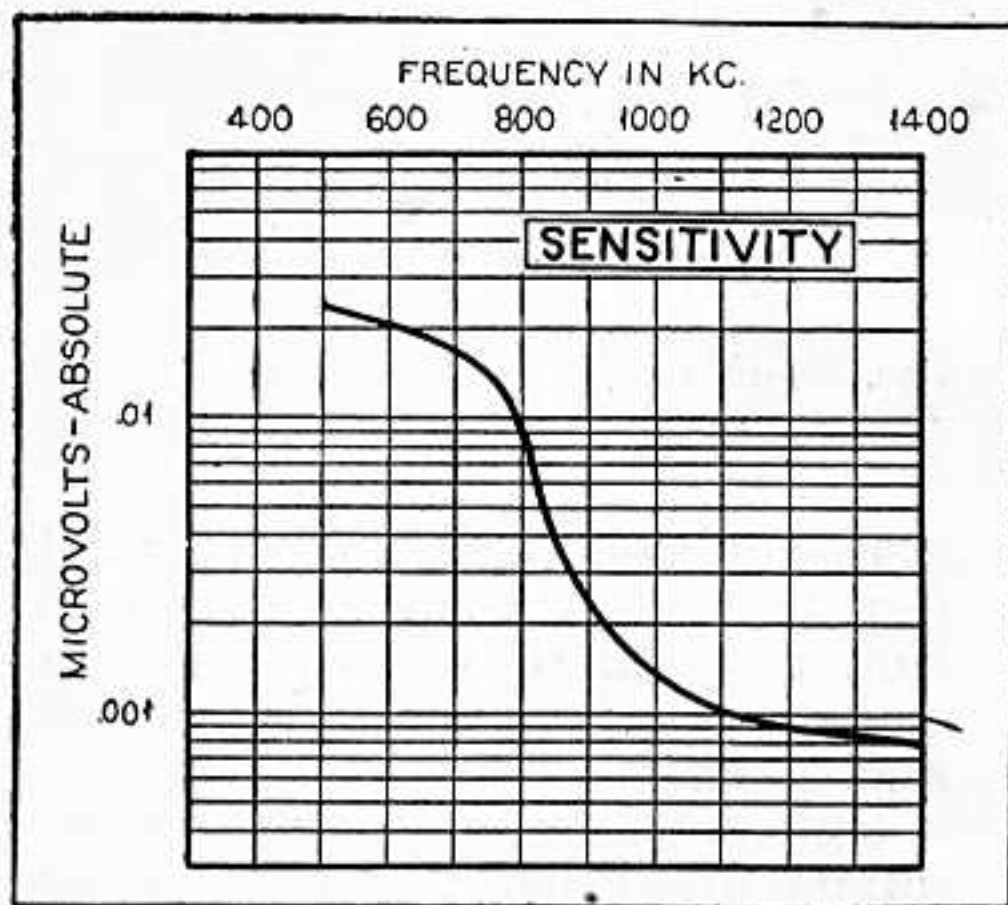


FIGURE 3

fine signal pick-up to the antenna wire proper, thus reducing certain types of interference. A complete antenna with two-wire parallel lead is shipped with every receiver, and also an antenna tuning unit. This unit consists of an antenna-coupling transformer tapped for the different wave-bands, a variable condenser and an inductance switch, all mounted on a metal plate. Binding posts are included for connecting the two lead-in wires, and two wire terminals provide the connections to the short-wave input of the receiver. A regular untuned antenna of the "L" type is recommended for broadcast reception, and the transfer from this to the short-wave antenna system is accomplished automatically by means of the switch in the grid circuit of the r.f. tube which is a part of the main band-selector switch.

The use of the special short-wave antenna and tuning unit is not essential and is provided for those who desire to obtain maximum results on the short-wave bands. By connecting a wire between the short-wave and broadcast antenna binding posts at the rear of the chassis, short waves can be received on the ordinary broadcast antenna in the same manner as the broadcast stations.

Each receiver is carefully balanced and all balancing adjustments locked before leaving the manufacturer's laboratory. The chassis is then sealed to prevent tampering with these adjustments. The permanency of adjustment is guaranteed for a period of years, providing the chassis seals remain unbroken. The fact that such a highly refined and efficient receiver can be guaranteed to maintain

these characteristics over a period of years certainly represents an achievement on the part of the design engineers.

Coming to the a.f. amplifier, the improved receiver includes two features not included in the original. The first of these is in the provision of manual static control. The De Luxe receiver offers a considerably wider range of audio-frequency response than does the average receiver, particularly in the extension of the high-frequency end of the response curve. Such a good curve offers decided advantage so far as the naturalness of reproduction of speech and music are concerned, but will also reproduce noise and interference of the high-frequency type. In the reception of strong signals such as those from local and even many distant stations, noise is not ordinarily encountered, but when stepping out for real distance reception where the action of the automatic volume control on weak signals permits the sensitivity to rise to extreme degrees, a reduction of the high-frequency response by means of the static control tends to reduce this type of noise and results in a more favorable signal-to-noise ratio. This feature is therefore one which is not essential, but represents a refinement which will be appreciated under certain conditions and in certain locations.

The second new feature of the audio amplifier is the automatic acoustic compensator, consisting of the choke, resistor and condenser connected in series between the midpoint of the volume-control potentiometer and ground, in the grid circuit of the first a.f. tube. It is the purpose of this unit to maintain tone quality constant regardless of output volume. It is a generally recognized fact that the best tone quality of which a receiver is capable is obtained only when volume is turned relatively high. Where conditions make it essential to operate the ordinary receiver at low volume levels, the tone suffers. It is to overcome this that the automatic compensator was designed.

The last important change in the receiver is found in the loudspeaker equipment. The early model was equipped with dual speakers. These speakers

are still available, but there is also a new type auditorium speaker available for those who prefer this type. This is a single speaker of wide frequency response range and high frequency.

In addition to the improvements described all of the features of the earlier receiver have been retained. These include the line-voltage compensator switch, which permits the receiver to be instantly adapted to operation from line voltages which are considerably in excess of or below the normal 110 volts; a jack into which headphones may be plugged when desired and which automatically cuts off the loudspeaker when headphones are used; connections for a phonograph pick-up; full chromium plating on all visible parts of the chassis; dial calibration in frequency, accurate to better than 1 per cent maximum; a separate unit which includes the power supply and power output stage; simple connections consisting of a single cable and plug between the tuner and power supply and another cable and plug between power supply and loudspeaker equipment; and last, but by no means least, a band-selector switch on the front panel which permits instantaneous selection of any one of four bands.

Some idea of the effectiveness and consistency of the receiver is found in the results of the RADIO NEWS tests, started late in November and continuing through to December 16.

In carrying on operating tests

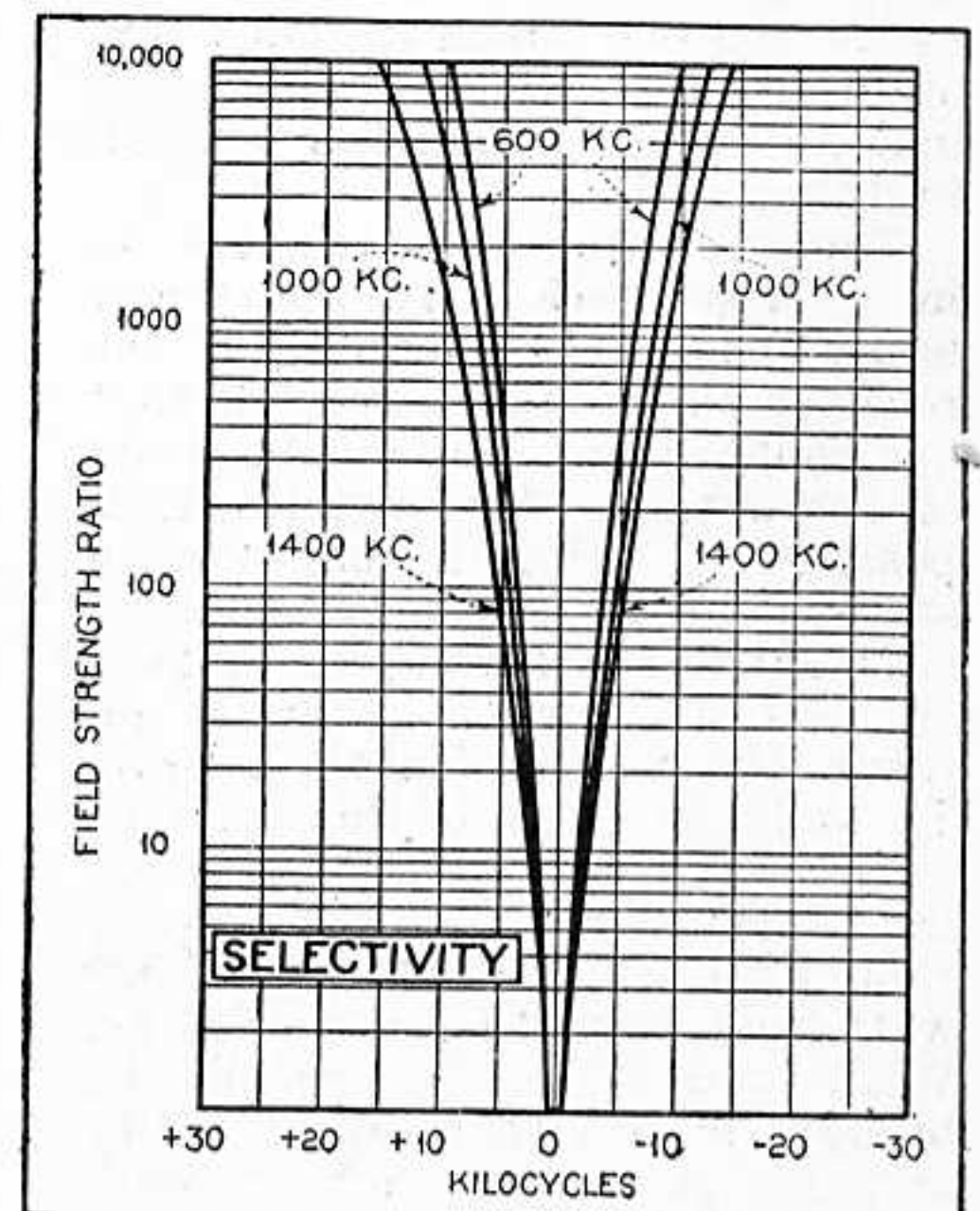


FIGURE 4

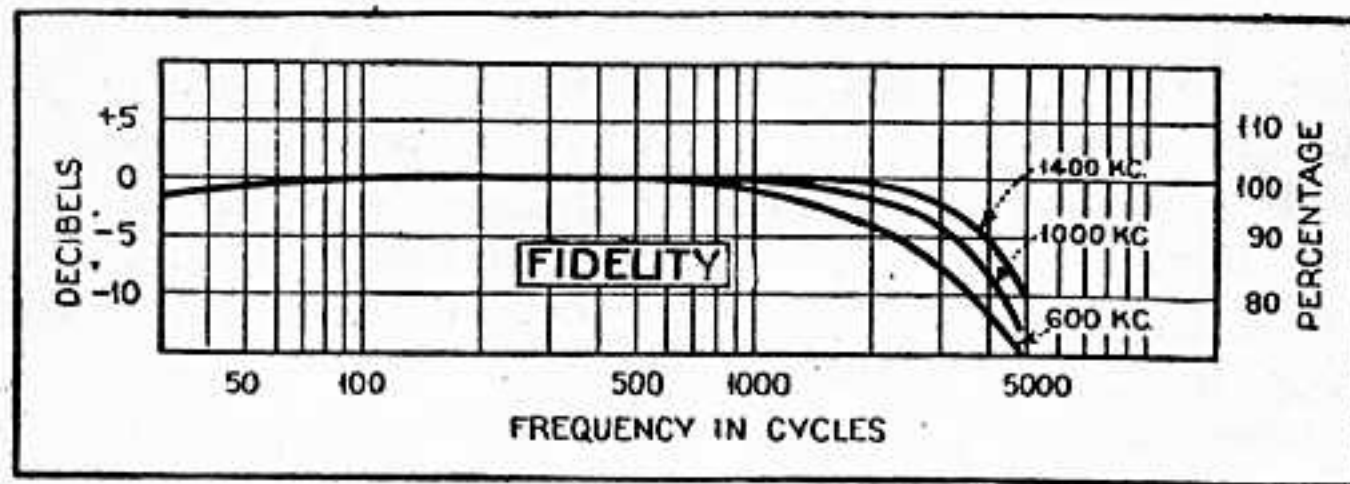


FIGURE 5

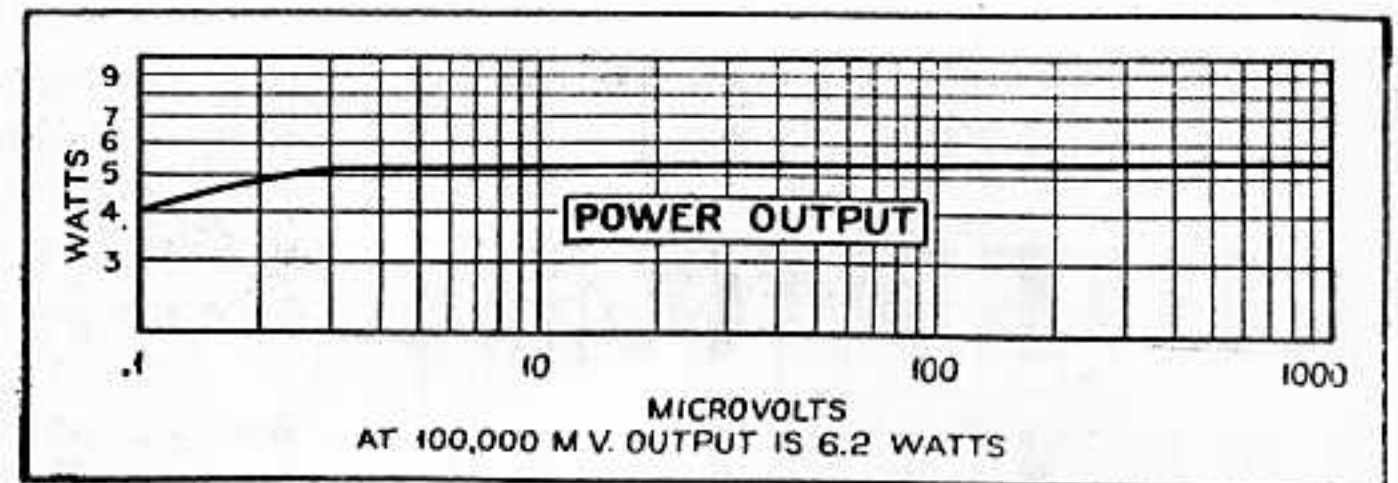


FIGURE 6

of this receiver, the RADIO NEWS staff gave particular attention to broadcast reception, for the reason that in the reports on the tests of the earlier receiver most attention was given to short-wave results. The short-wave ability of the latest receiver was taken as a foregone conclusion and just enough short-wave testing done to confirm this opinion.

The tone quality of the new receiver was found to offer a noticeable improvement over the old one. This was first made apparent by a study of the curve of Figure 5 in comparison with a similar curve on the earlier model, as shown on page 81 of the August issue. In the case of the earlier model, the high-frequency end of the curve (at 1000 k.c.) dropped to 10 db. down at about 2700 cycles, whereas in the new job this drop is reached only at 4400 cycles and higher. Thus the reproduction of the high notes and overtones was much better on the new one, giving greater brilliance and better definition in the reproduction of music. Also, the curve of Figure 5 shows response flat to within 2 db. (the minimum variation discernible to the ear) from 30 cycles to 2000 cycles—an unusually wide range and one which includes substantially all voice frequencies, making voice reproduction exceedingly natural.

The operating tests carried on in a New York City apartment house showed the selectivity of the receiver to be just about all that one could desire. During the heart of the evening, for instance, it is possible to bring in out-of-town stations on channels immediately adjacent to those occupied by local stations, even when using an antenna 100 feet in length, overall. The only exception to this is an occasional difficulty found in bringing Shreveport or New Orleans (850 k.c.) while WABC, a 50,000 watt local, is on the air on 860 kc. WLW and WGN can readily be brought in on either side of WOR, and this is quite an achievement, as anyone will admit who is famil-

iar with receiving conditions on the upper west side of New York City.

As for the sensitivity, the tests made were quite extensive. Fourteen West Coast stations were received during the tests, for instance. KFI, Los Angeles, was brought in between 6:00 and 9:00 p.m. (Eastern Standard Time) during every one of the seventeen evenings during which the tests were carried on between these hours. Three other evenings, when tests were limited to later hours, this station was also brought in. The only evenings on which it was not heard during the entire test period of 22 days were two on which tests were concluded before 6:30 p.m.

Three other stations tried for quite regularly were KOA, Denver; WCCO, Minneapolis, and WFAA-WBAP, Texas. During the 22-day test period the Texas stations were heard every evening, WCCO was missed only one evening and KOA was heard 15 evenings. The KOA record was poorest because during part of the evening other stations work on this same channel or on split frequencies sufficiently close to 830 kc. to cause audible heterodynes, and it was therefore sometimes impossible to positively identify KOA. Reception was not counted unless each station was positively identified.

One of the remarkable things about this record is found in the fact that two evenings, November 28th and December 10th, KFI was brought in before 6:30 p.m. (Eastern Standard Time) or 3:30 in the afternoon in Los Angeles. KOA, a station of lower power, was brought in two evenings, December 8th and 11th, before 7:00 p.m. (E.S.T.); Minneapolis before 6:00 p.m. on November 27th and December 1st, 8th and 10th; and Texas was brought in 10 evenings before 7:00 p.m. During many of these evenings all of these stations were received well enough to be valued for their pure entertainment value and well enough to be classed as an extremely close approach to "local reception."

ALL DAY, ALL YEAR—THE WORLD AROUND

In addition to the above broadcast records, the log shows reception of numerous low-power stations throughout the U. S., Canada and Cuba.

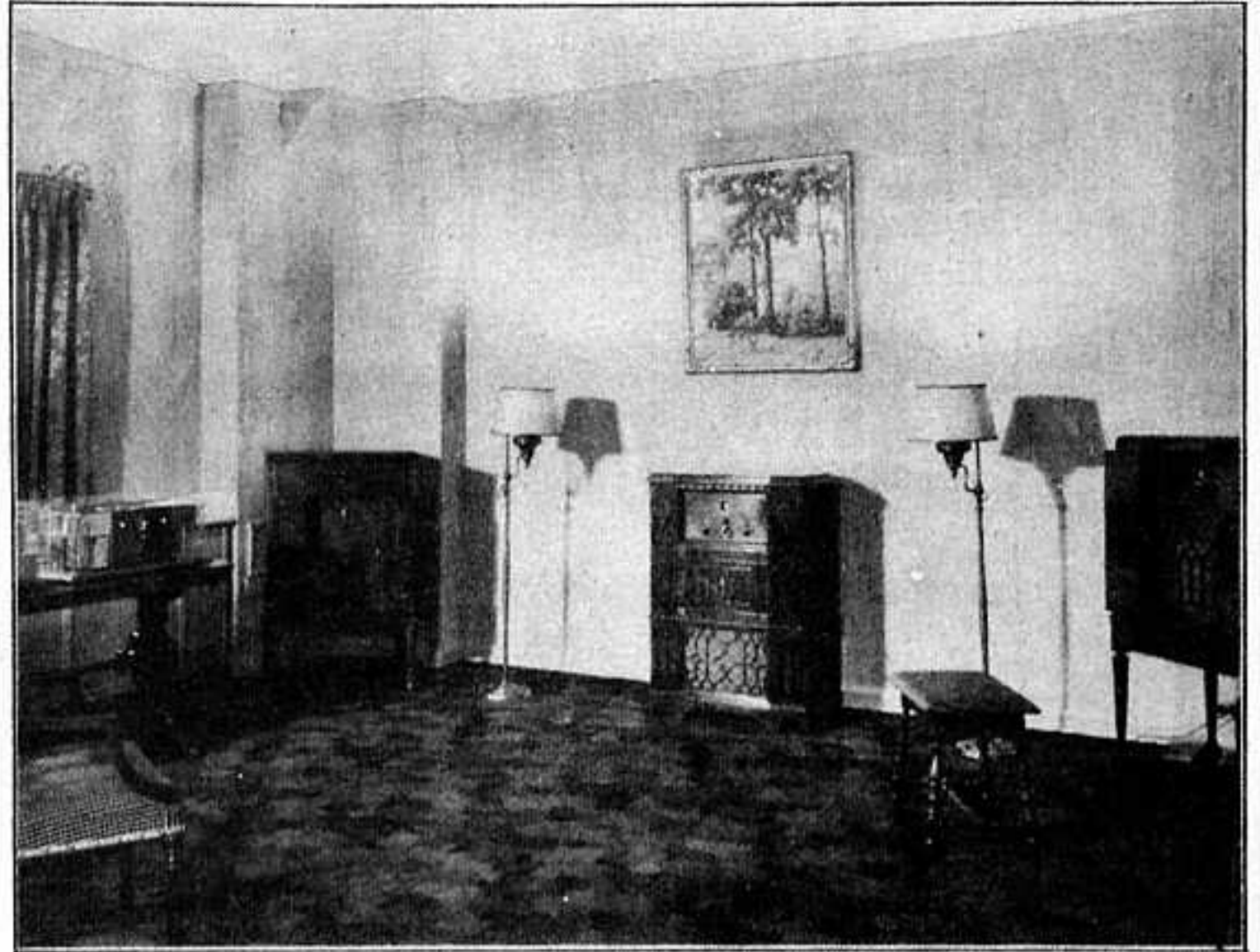
One question may arise in the minds of readers concerning the reception of KFI around 6:00 p.m. while WAIU of Columbus is operating on the same channel. This was of course, not accomplished without interference from WAIU. The greatest frequency difference between these two stations was found to be only about 6 cycles per second. This frequency difference did not, of course, result in an audible heterodyne and both stations could be heard. On numerous occasions when the two were transmitting dissimilar programs, as when one was announcing and the other transmitting music, each could be distinguished from the other, and frequently the announcement of one could be distinctly understood through the other. Incidentally, the frequency difference mentioned above was estimated by watching the tuning meter image. With a 6-cycle difference the indicator would swing back and forth six times per second, as a result of the changing phase relationship of the two carriers.

Some of the other West Coast stations were heard during the early evening, notably KNX, Hollywood, and KPO, San Francisco. The balance of the 14 mentioned previously were heard during the two evenings when tests extended past midnight. No attempt was made for the extremely distant foreign broadcast stations, which can only be heard shortly before sunrise, but judging from the DX performance of the receiver during early evening hours, it appears more likely that had tests continued until daybreak it would have given a good account of itself on the Hawaiian, Australian and Japanese stations operating on the broadcast band.

In closing, stress should be laid on the fact that all reception discussed here was obtained in an apartment house, located on a heavy traffic artery with one street-car line in front of the door and another crossing it about 125 feet away. The antenna used during most of the tests consisted of an outdoor wire about 60 feet long, located on the roof with a dozen or more other broadcast antennas. The lead-in was roughly 40 feet in length, making the overall length of the system about 100 feet.

YOU ARE CORDIALLY INVITED TO VISIT US WHEN YOU ATTEND THE WORLD'S FAIR

**TELEPHONE LONGBEACH 5172
FROM YOUR STATION OR HOTEL
AND AN OFFICIAL SCOTT GUEST
MOTOR CAR WILL BE SENT TO
CONVEY YOU TO OUR LABORA-
TORIES AND STUDIOS**



LOOKING INTO THE FIRST OF OUR SPACIOUS STUDIOS FOR DEMONSTRATING OUR RECEIVER AND ENTERTAINING OUR GUESTS

Scott Receivers will not be displayed within the grounds of A Century of Progress—Chicago's 1933 World's Fair.

We felt that our friends, acquaintances and the new friends we might make because of this great Exposition would best be served by visiting direct at our Laboratories. We have a closely knit little organization that might seriously be disturbed by providing a comprehensive display of our receivers on the grounds of the exposition. Quite obviously our production is a limited one—a few hand made receivers daily to supply those throughout the world who will be satisfied only with the ultimate in radio.

Therefore, quite reluctantly we are foregoing the pleasure of participating in this great educational,

constructive, scientific, industrial exposition, the greatest, most comprehensive in the history of man. We hope all of you—our friends and new acquaintances — will find it convenient to attend A Century of Progress.

And, most important of all to us, we earnestly hope that you will arrange your schedule to spend as long as you can in a visit to our Laboratories and Studios.

We are located on the middle North side of the city—five miles from the "Loop" or center of the city. You may reach us in these five convenient ways:

By Scott Guest Motor Car

Merely telephone Longbeach 5172 from your railroad station or hotel or wherever in the city you may be staying and we will dispatch a motor car to convey you to the Laboratories.

By Your Own Motor Car

From the heart of the city or "Loop" district drive North on Michigan Avenue through beautiful Lincoln Park along Lake Shore Drive into Sheridan Road to Montrose Avenue. Turn left (West) into Montrose to Ravenswood Avenue which is 1900 West (at the Northwestern Railroad Tracks). Turn right and go one block North to Sunnyside.

We are on the Southwest corner of Ravenswood.

By Rapid Transit (Elevated)

Take a Ravenswood Express or Local train at any station in the Loop and in 20 minutes you will arrive at Montrose Avenue Station. Walk one short block north to 4450 Ravenswood Avenue.

By Surface Lines

Take any "Broadway" car on State Street or "Clark Street" car on Clark Street in the Loop and go North to Montrose Avenue (4400 North). Transfer at Montrose and go West to Ravenswood Avenue. Walk one block North to 4450 Ravenswood Avenue.

By Motor Coach (Bus)

Take Wilson Avenue Coaches in Loop, going North in the Drive through Lincoln Park and West in Wilson Avenue. Get off at Wilson and Ravenswood Avenues and walk one block South to 4450 Ravenswood Avenue.

4450
RAVENSWOOD
AVENUE
CHICAGO



ALL DAY, ALL YEAR—THE WORLD AROUND

Lombardo Hears Himself

Guy Lombardo is a short-wave fan. . . . In the early morning hours after work Guy tunes in the short-wave stations around the world. . . . He just got a new (Scott All-wave DeLuxe) set and was playing with it one night. . . . About 5 in the morning Guy decided to tune off for the night. . . . But he heard strains of music which seemed very familiar. . . . Berlin, Germany, announcer came on and said they were broadcasting a record of Guy Lombardo's orchestra playing "Goodnight, Sweetheart."

(Mr. Lombardo is an enthusiastic Scott owner—so is his brother and many of his friends!)

—The Chicago Daily News, April 20, 1933

A CENTURY OF PROGRESS

CHICAGO'S 1933 WORLD'S FAIR



Admiral Byrd's polar ship "The City of New York" moored in lagoon at the Century of Progress Exposition. Fully equipped and manned with four members of Byrd's original crew on board. Below decks is complete museum of relics brought back from the Antarctic.

A world of wonder concentrated into 424 magic acres of land and water. An encyclopedia come to life, with thrilling chapters told by means of animated displays.

The world of today, the world of tomorrow and the world of yesterday, will be placed on parade. Attractions of historic and educational interest, which would require a trip half-way round the world if one sought them individually, may be seen here for admission price to the grounds—fifty cents for adults and twenty-five cents for children.

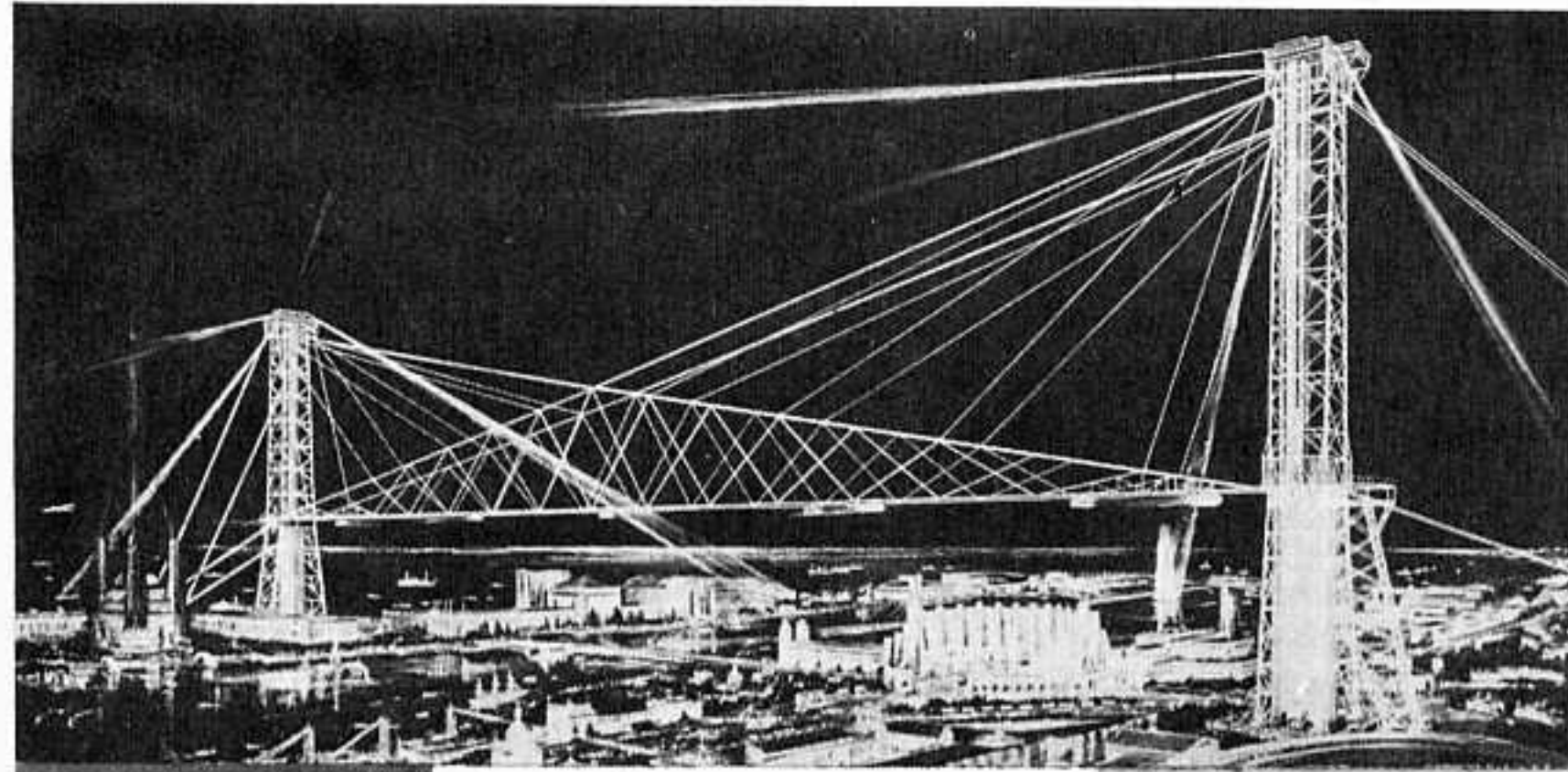
By day the grounds will be a fascinating panorama of color, with crowds of people moving against the background of windowless buildings. By night they will be transformed into a fairyland of light, bathing the buildings in mellow tints and projecting an ever-changing series of spectacular lighting effects.

While the story of science's contributions to human progress will be the nucleus of the exhibits scheme, it will not be a dry and uninteresting presentation, but a vivid, swift-moving spectacle.

Scientists on the staff of the Exposition, aided by members of the National Research Council, have prepared exhibits that will unfold in entertaining, understandable fashion, many of the mysteries of nature in the great Hall of Science, physics, chemistry, mathematics, biology, geology and astronomy and their contributions to human progress will be presented.

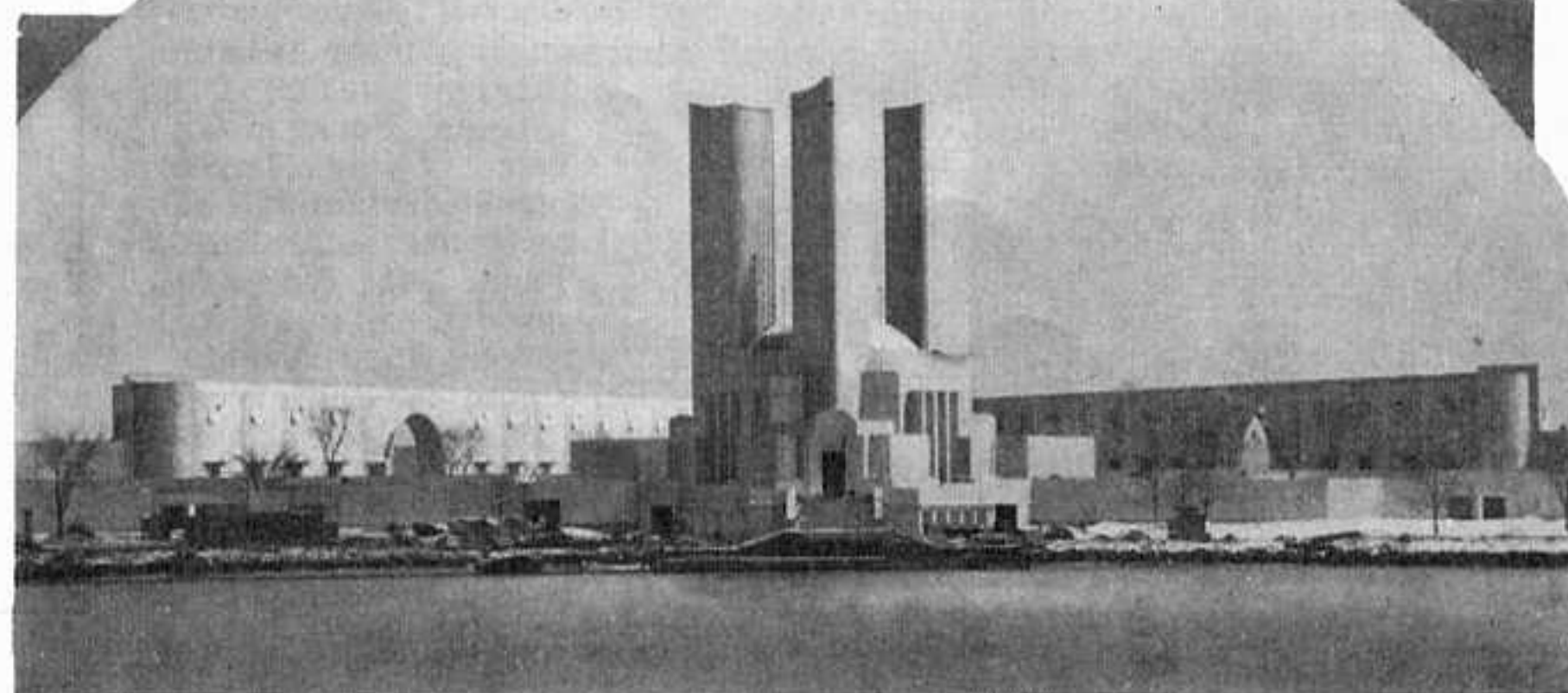
A Century of Progress, however, will not be merely an instructive or educational celebration. There will be features to thrill and delight visitors of all ages. People visit World's Fairs primarily to be amused and made to wonder. They may be educated by what they see and their minds enriched by new ideas acquired, but essentially they are in a holiday mood, receptive to thrills and recreation.

We hope you can come sometime between June and November and that you will spend a few hours with us at the Laboratories.



Architect's sketch of the "Sky Ride," a spectacular feature of the exposition. Two steel towers 600 feet high, 2000 feet apart, spanned with huge cables which carry rocket cars at high speed. Observation towers reached by high speed elevators. A thrill of a lifetime is this ride—a complete view of the Fair from the towers.

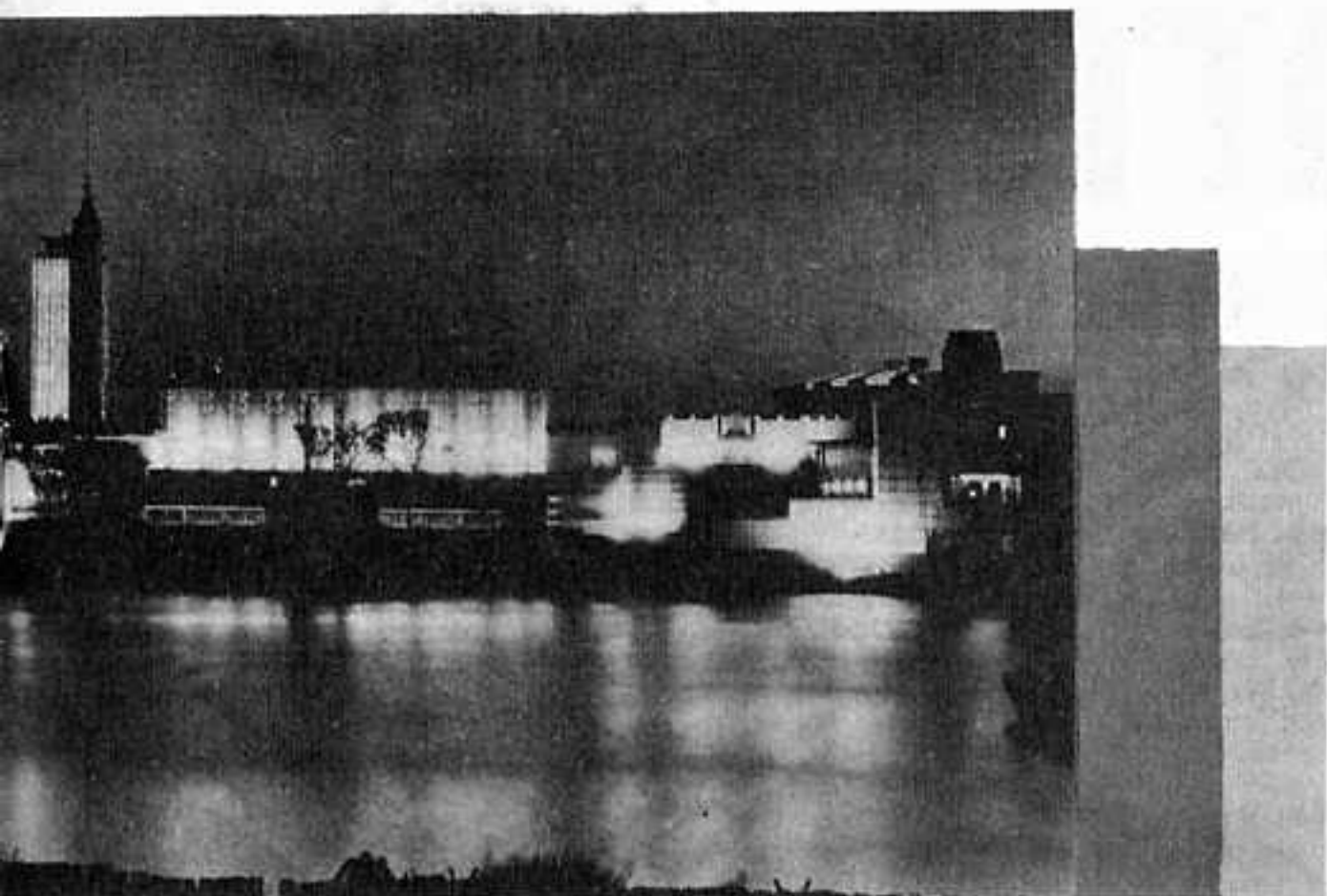
The imposing Federal Building and Hall of States. The three majestic fluted towers represent the three branches of government — executive, legislative and judicial. Exhibits of all States and Territories will be shown in the great horse-shoe structure. A sunken garden and pool complete a picture of striking beauty and strength. Startling night lighting effects, reflected in the lagoon, transform the scene into one of never to be forgotten elegance and force.



The Hall of Science, the most stupendous the East view of in a mysterious bl will be played dai West extremity of



Electrical Group circular built Northernly Island electricity's w given a drama tion in ind plays, a complet exchange in everything to production and of the magic electricity. Br luminated gard cascades and gilded pylons terraces. It ho its portraying tion, distribut ion of ele structure of st ern design, lav with the most lighting effects



...e, where the marvels of scientific progress will be unfolded in
 us gathering of scientific displays ever attempted. Shown is
 the building. The tower is illuminated with huge Neon tubes
 in blue and rose color. At the top are a set of carillon chimes which
 play music. To the right of the tower extends a wall which forms the
 the great court. In many respects, the heart of the Exposition.



The Golden Temple of Jehol. Celebrated Chinese Lama Temple. The Golden Pavilion, seat of worship of the Manchu emperors, was copied faithfully by native Chinese architects and artisans and shipped in 28,000 pieces to Chicago and then assembled for the Exposition. Within are images of Buddha, other Lama Gods, incense burners, oil lamps, prayer wheels, pagodas, temple bells, and a host of other paraphernalia of this vanishing form of worship.

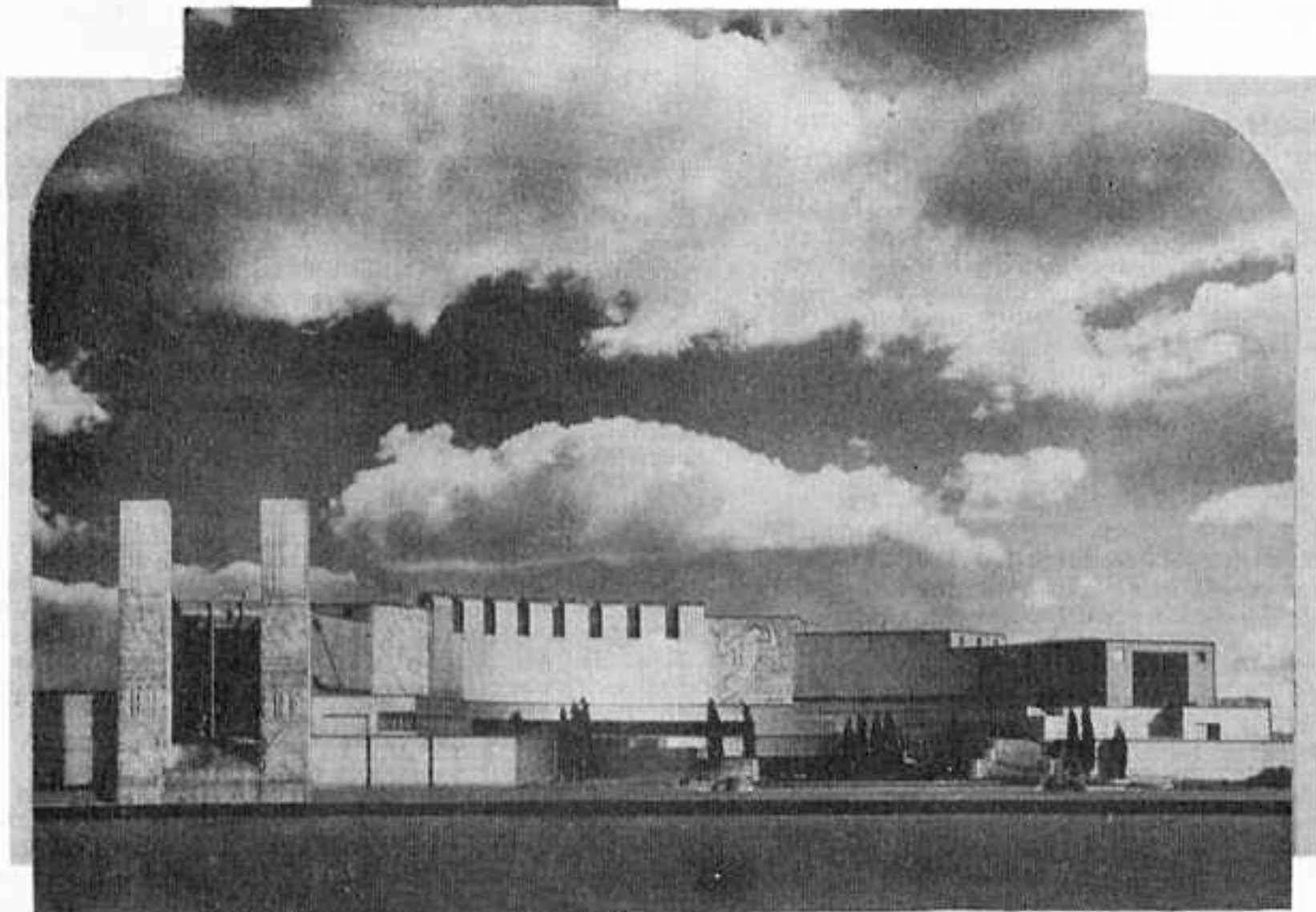


Fort Dearborn in replica—a thrilling monument to the picturesque beginning of Chicago. Near here, a century ago, stood the original Fort Dearborn and nearer still the site of the massacre by Indians in 1812 of the brave occupants of the Fort. Shown, left to right, the officer's barracks. A corner of the block-house, the powder magazine, soldier's barracks. Built of logs in exact reproduction of the original fort.



Hall of Science—the North approach. The beautiful carillon tower rising above the Hall is equipped with mellow-toned chimes that will send their music floating out over the grounds day and night. Inside is a stupendous array of dramatic action exhibits of industries related to the basic sciences. A superb example of modern architecture surrounded by a fascinatingly beautiful arrangement of pools, flower gardens, fountains—colorful, scintillating, unforgettable.

p, a semi-
 ding on
 d wherein
 ardry is
 ic presen-
 strial dis-
 telephone
 operation,
 depict the
 distribution
 force of
 lliantly il-
 ens, electric
 fountains,
 and paved
 uses exhib-
 the genera-
 n and util-
 tricity. A
 iking mod-
 sh, blazing
 spectacular
 of all times.



THE VOICE OF SCOTT OWNERS

PICKED AT RANDOM FROM THE HUNDREDS RECEIVED AND SOMEWHAT

A Real DXer Reports!

My Scott DeLuxe Allwave Receiver has certainly pulled in the stations. I have only had the set a little while and have pulled in 225 stations on the broadcast band from all over the North American Continent. I have received 86 stations on the short waves of which 62 have been foreign stations. On February 12 and 13 I received 27 foreign stations (short waves) of which nearly all were regular broadcasts with good loud speaker volume. I do not record any station as received until I am positively sure of its identification. In all I have received 20 different countries to date. The tonal qualities are the best. The sensitivity and selectivity cannot be beaten.

J. F. Luttmann,
Milltown, N. J.

Long Distance Daytime Reception

Now look at your map and look at our location and I will tell you that in the two hours between 11:00 A.M. and 1:00 P.M. I tuned in the following stations. Please note they are in kilocycles consecutively from 650 to 790. The stations are as follows:

WSM	WPFT	WOR	WSB	WBBM
WEAF	CFRB	WGN	WJR	WTAR
WMAQ	WLW	CKAC	WJZ	WGY

You will note there are three Chicago stations and they were heard at noon. I like the visual tuning meter very much and also the operation of the automatic volume control.

Mr. Burton Proctor,
Preston, Md.

Good Returns in Minnesota

The following are the foreign stations being received at present: FYA, Pontoise; GSA, Daventry, England; EAQ, Madrid, Spain; YV1BC, Caracas, Venezuela; VK2ME, Sydney, Australia; DJB, Germany and CMCL, Cuba.

L. C. Melville,
Minneapolis, Minn.

Everything Good Radio Needs

I have been having wonderful results with it since you returned it to me. We have had Germany, England, Spain, Paris, Rome, Australia, and many other distant stations, in fact, we listen to Big Ben in England from Station GBS about every night at 6:00 P.M. E.S.T. The tone is wonderful and it has everything that a good radio needs from power up.

Justus H. Alvord,
Westfield, Mass.

None to Compare

I have listened to practically all of the present run-of-manufactured receivers and there is no comparison between the Scott and others. There is no receiver built yet to compare with our SCOTT ALLWAVE DELUXE. How is this for an afternoon's work on the short waves: W8XK, W2XE, I2RO, DJD, FYA and EAQ.

W. T. Camp,
Haynesville, La.

England on 8-Foot Antenna

After 5 months' service, I believe this receiver is in a class all by itself. A number of friends have heard my receiver and were very much amazed at the fine tone quality, absolutely 10 KC selectivity and its powerful receiving ability daily.

I will list the foreign stations we received regularly: DJB, Zeesen; GSE, Daventry; I2RO, Rome; Pontoise, France, DIQ, LSX heard testing. VK2ME and VK3ME heard each time tuned for and received each on two occasions on an eight foot antenna and the music and announcements could be heard in all parts of the house. I have also heard GSA, England, with no antenna or ground connection and when the 8-foot antenna and ground wire connected it came in very loud and clear. YV1BC, Caracas, Venezuela; HKD, Colombia, and many amateurs on phone were received from Hawaii.

O. F. Hobson,
Edna, Texas.

In Oklahoma, They Get Them Too!

I got EAQ, Madrid, Spain, up to date and have received GSA, VK3ME, VK2ME, YV1BC, HKD. I am certainly in love with this set. I think I got DJD also.

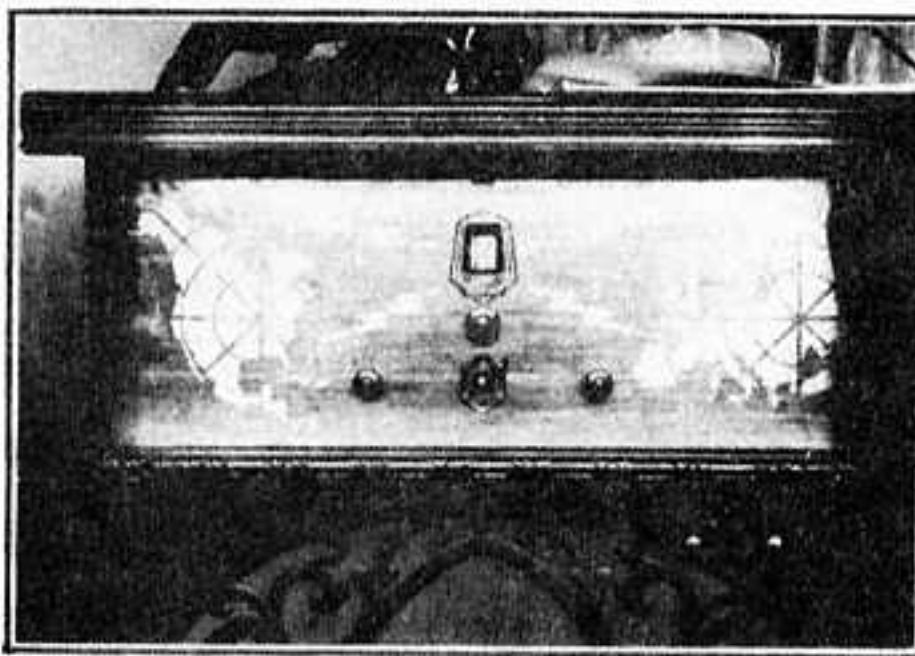
Dr. A. Dixon,
Hennessey, Okla.

Good Returns in Dixie

I have been getting excellent results with my Scott DeLuxe Receiver. During the last week I have received GSB and GSA every evening from 6:00 P.M. until 8:00 P.M., with excellent volume and tone. VK2ME Sydney, Australia, was received Sunday morning at 7:00 A.M. E.S.T. with good volume. EAQ is received nightly from 5:30 P.M. until 7:00 P.M. and on March 14, at 7:00 P.M. CT1AA (Lisbon) was received very well. On March 19, Rabat, Morocco was received at 4:00 P.M. very well.

I have also picked up during the past week the following stations: DJB Pontoise, I2RO, GSE, GSF and YV1BC. All of these stations were received whenever they were on the air and all came in with good volume and clear tone.

Mr. Edw. F. Bahan,
Greenville, S. C.



PANEL INLAID WITH METAL IN A WORLD-MAP DESIGN BY MR. HENRY D. HIRSCH, CHICAGO

Germany With No Aerial in DC

The results on the short wave bands were astonishing. For the first time in my experience I am enabled to tune in foreign short wave stations loud enough and clearly enough to enjoy the program, instead of merely DXing for call letters. The automatic volume control is invaluable in producing the steady output necessary before a program may really be enjoyed. I did not expect much in the way of European reception during these winter months which usually are not satisfactory, but they come in on the DeLuxe just like broadcast stations a few hundred miles away.

During the week, I have received and enjoyed! Rabat, Morocco; France; England; Germany; Madrid, Spain; Lisbon, Portugal; Denmark; Guatemala; Caracas, Venezuela; Bogota, Colombia; Sydney, Australia; Rome, Italy.

I also tried a few trick reception tests. A German station was tuned in and I removed the antenna lead, leaving only the tuner and its 18" leads. The background hiss increased and the station continued to come right in.

Joseph Q. Stansfield,
Washington, D. C.

Results in Bad Location

I made it my point to try for VK3ME Australia and picked them up at 7:45 and held them to 9:00 A.M. Sunday morning April 2, 1933. I certainly am more than convinced that your receiver is the only one that I have seen that will do as you said. Also tuned in the following stations with good results, considering the cloudy and unsettled weather conditions, and my locality in which I am surrounded by all kinds of electrical machinery. The stations I have received are VK3ME, Rabat, Morocco, Pontoise, France, Germany, England, I2RO, Italy.

Mr. Fred L. Roenbeck
Chester, Pa.

Enjoyable Reception in Bad Location

Perhaps you recall that you warned me that I was in a bad location, well even in this location I have tuned in England, Spain, France, Germany, Italy, Venezuela, Columbia, Canada and of course, a number of the U.S. short wave stations. When I say tuned in, I mean with enough volume and clarity to sit back and enjoy the program.

I have had a number of sets but I believe that the Scott is the finest Radio that I have ever owned.

L. C. Miller,
Atlanta, Ga.

1400 Miles in Daylight!

It is the finest broadcast set I have ever seen both as regards tone quality, power and distance pick up. I had the large New York and Chicago stations during daylight at all times on the Mexican Gulf (aboard ship) and that is a distance averaging 1400 miles. This, of course, was not necessary as the same programs could be had from closer stations and with better tone, but that is what it will do on broadcast in daylight. At night it practically commands coast to coast reception any time after dark.

Frederick N. Hansen,
New York City, N. Y.

Tests on 23-Inch Aerial

The short wave results so far have been DJA, B.D. & DIQ Berlin; HBP, Geneva; "El Prado," Riobamba; OHK2, Vienna; VK3ME; VK2ME; FYA on its three wave lengths; Daventry on 25 and 49 meter waves; and of course, I2RO and EAQ. Also a number of South Americans.

An interesting test was made last Wednesday about 4:00 P.M. using only a 23" piece of bus bar wire for an antenna and no ground. At this time the following stations were heard clearly enough to identify them on the local switch! FYA, GSD, I2RO, EAQ, VE9GW, W9XF, W8XK and WGBF, WSM, WLW, WGN, WBBM, WHAS, WENR, WCFL, KYW, WTAM, KMOX, WJJD, WOWO, WCAU, WFBM, WLAC. And on Sunday morning early, using the same pick up: VK2ME and amateurs in Oregon, North Carolina, Georgia, California, Massachusetts, Pennsylvania, Utah, and one W5ATW.

William S. Teter,
Bloomington, Indiana

A Wonderful Experience

Have received both England and Spain every night for two weeks. EAQ Spain comes in on number 32 and GSA on 75 and I get them with plenty of volume and I think that is wonderful to sit at home in Toledo and hear voices and music from the other side of the World.

Solomon Ford,
Toledo, Ohio

Japan on Broadcast Band

Did a little prospecting this week and got the following results:

VK3ME Melbourne, Good; VK2ME Sydney, Fair; RV 15 Siberia, Good; HC1SC Ecuador, Fair Broadcast; JOHK Sendal Japan, 770 KC 3:00 A.M. Good; JOIK Sapporo Japan 830 KC 3:20 A.M. Fair.

Walter Cox,
San Francisco, Calif.

Gets Sweden on West Coast

I really can't explain how pleased I am with my set which brings in stations that other sets don't even show they are in the air. There are two other Scotts in town and the others are as well pleased with them as I am with mine.

I have a log of over 750 in all states and around 15 foreign countries. On my log I have Motala, Sweden, which I think is extremely good from the West Coast.

Charles Maylone,
Placerville, Calif.

Regular World-Wide Reception

You have a wonderful radio! I believe I have played on the regular broadcast all of the high powered radio stations in the United States, Canada and Mexico. All with more volume than you can use. Have played WBZ at Boston, WBA at Springfield, Massachusetts, WTIC at Hartford, Connecticut, which I think very few if any other radios will play here on the Pacific Coast. On the short waves I have played stations in many foreign states and countries, France, England, Spain, Hawaii, Mexico, Central America, Indo-China, Siberia, and Australia. These stations are regular.

E. F. Atmore,
Fillmore, Calif.

2500 Miles Like a Local

I have been thrilled with its wonderful performance. I have had practically all the short wave broadcasters in the U.S.A. and Canada as well as EAQ in Madrid, a British station and I believe I2RO. Being able to get CLEAN CUT station about every ten kilocycles in the broadcast band is a decided improvement over what I have been used to.

Your WGN has the clarity of a local and can be enjoyed like a local. This also is true of many others.

Stuart F. Wainwright,
Burbank, Calif.

THE COUNTRY OVER AS REPORTED FOR MARCH AND APRIL

ABRIDGED (WITH APOLOGIES TO THE WRITERS) ACCOUNT OF LIMITED SPACE

Conquers Southern Static!

Tuned in DJU on 31.38 meters with both W1XAZ and W2XAB on the air. My log may not be a record for you, or for other Northern localities, but of the South where static is so much worse than with you, I truly believe it is one. You will note I received programs from fourteen foreign countries February 7. London was heard on three different wave lengths at various times, Paris on three and Berlin on three.

S. O. Kennedy,
Tuskegee, Ala.

Hears USA News From England!

You might be interested to learn that the Scott Allwave Deluxe Receiver has made a record in the backwoods of Alabama, which to say the least is unusual. With a group of students, I was enjoying a program broadcast from London, England when the announcer stated that he would give the latest news. Imagine our surprise when we, here in the backwoods of Alabama and adjoining the state of Florida were told for the first time the news of the death of Anton J. Cermak. The boys were quite thrilled and Scott Allwave Deluxe made a few new friends.

Rev. B. Kinapke,
St. Bernard, Ala.

Across the Continent!

We are sending to Australia for a verification on a program which I received last Saturday. Will send you a copy. Short wave is very good now and on the broadcast band are picking up WCAU, WHAN, WGY, WSB, WOWO, WENR, WABC, WEA, WCCO, CKOK, WLW, WWL, and other stations including several Mexican stations.

F. A. Grauman,
Seattle, Wash.

From Washington State to France!

I wish to say that I have been very successful in tuning in FYA, Pontoise, France on the 25-20 meter length and received several excellent programs.

James Stewart,
Yakima, Washington

Rome Comes in Too Loud!

I greatly appreciate your interest in your radio receiver and its performance for me. While I am on the subject I want you to know that your honest presentation of the facts in your advertising literature made a most favorable impression on me.

Yesterday I had VK2ME, Rome, France, Germany and Spain, which I consider good for the first day. Rome actually came in so loud on the local button that I had to run in and turn the volume down to about 1/4 its capacity.

Dr. Russel C. Boyd,
Huntington, W. Va.

Europe Strong at Washington

I have not been able to utilize the long antenna furnished but with the 60 foot flat top and about 30 feet lead-in already on the apartment roof, I have been able to pick up VK3ME (once) GSA, I2RO, EAQ and French and German stations, call letters not determined. GSA was very strong and clear.

Albert M. Lewers,
Washington, D.C.

Best of All-Around the World!

I have had the pleasure of testing the Deluxe alongside my—There is no comparison at all. I have now had every high priced short and all wave radio made and can truthfully say I never have seen such performance on any set. On broadcast for instance, I logged sixty-three stations at two P.M., February the 22nd, 20 or more than any other on any other set in my home and I have nine of them.

On short wave the Deluxe stands out in front of any other set and will give reception of signals two to three times louder. At the present writing stations in the following countries have been received at my home: England, France, Holland, Spain, Germany, Australia, Honduras, Colombia, Ecuador, Denmark, Italy, Mexico, Japan, Hawaii, Russia, Indo-China, Siam, Switzerland and many other commercial phones and ship to shore stations. Certainly a list very pleasing to one who has continually been using the best of sets since radio reception.

Erwin S. Jennings,
Bridgeport, Conn.

Hears Hitler Speech

Have been enjoying very good reception recently. We heard Hitler's speech over DJB just before the German elections as well as the re-broadcast and after it was over heard the Columbia representatives in Berlin describing the crowds and demonstrations and then the New York operator talking to the German operator. Have been hearing GSA in England very well also. An interesting talk from Capetown, South Africa and then Big Ben striking 3:00 A.M. in London. Reception from YV1BC Caracas, Venezuela, South America, was very good last evening, as clear and strong at times as stations on broadcast band.

Harold Pound,
Warsaw, Indiana

His First Testimonial Letter

I have never had much faith in these enthusiastic letters that manufacturers receive from owners of their products and which they show to prospective buyers. And yet, here I am writing just such a letter, my first I assure you. I take off my hat to you. Your radio is without doubt the finest I have ever handled. For 12 years I have made practically every new circuit myself and have owned most of the nationally known sets. None of them have even been in the Deluxe class. All stations come in just the same. Your fading device is perfect. The tone is so far ahead of everything else that I am planning to build my Scott into my new home.

Mr. K. G. Pfeiffer,
Piggott, Arkansas

Spain and England With Bang!

I have done only an occasional tuning in on short waves as I am still using the broadcast antenna for short waves.

However, last night we listened to EAQ Madrid, Spain, from 5:30 P.M. to after 7:00 P.M. with full enjoyment and with volume control just on, could not use any more power. At 9:15 P.M. I picked up for the first time GSA Daventry, England. The reception from this station was really wonderful and with volume control barely on. The comment was made that this was worth the price of the set!

Edward F. Roy,
Watervliet, New York

Hears Big Ben Chimes

Just listened to England sign off 2:00 P.M. with the chimes. Today I listened to France, Italy, England, two stations in Germany, Venezuela, Canada. I get Madrid, Spain pretty regular, also quite a few Spanish speaking stations in the evening.

Edw. P. Riedel,
Appleton, Wisc.

Daily European Reception

Just a few lines on short wave foreign reception:

France	Daily	GSC	Daily
GSE	Daily	RABAT	Sunday
I2RO	Daily	YV11BMO	Daily
France	Daily	YV1BC	Daily
EAQ	Daily	GSA	Daily

All these stations come in daily with best volume between 2:00 and 5:00 P.M.

A. T. Dobratz,
Milwaukee, Wisc.

Outperforms Other Receiver

Tone—Just perfect. Sensitivity—I can hear the little 15 to 100 watt stations that I have never heard before. Selective—10 KC from local station, average even less than 10 KC average for entire band. Power—More than I will ever use. Appearance—Well one must see a Scott Deluxe as words cannot describe it.

Short Waves—Scott receiver placed side by side with another highly advertised Custom Built Allwave Receiver of equal cost price with only antenna tuner (no antenna) outplayed the other receiver with 150 foot antenna including the lead-in. Each receiver was tuned to following stations on above check COLONIAL PONTOISE, I2RO, GSA, EAQ, GSF, YV1BC. Scott signal 50 per cent stronger and over 100 per cent stronger when placed on equal antenna. Scott also tuned in following stations at which time could not be located on the other receiver: VK3ME, HKA, HKO, HKM, DJB, CT1AA, PRADO, GSE (test made at various times as I have had receivers together for 90 days.)

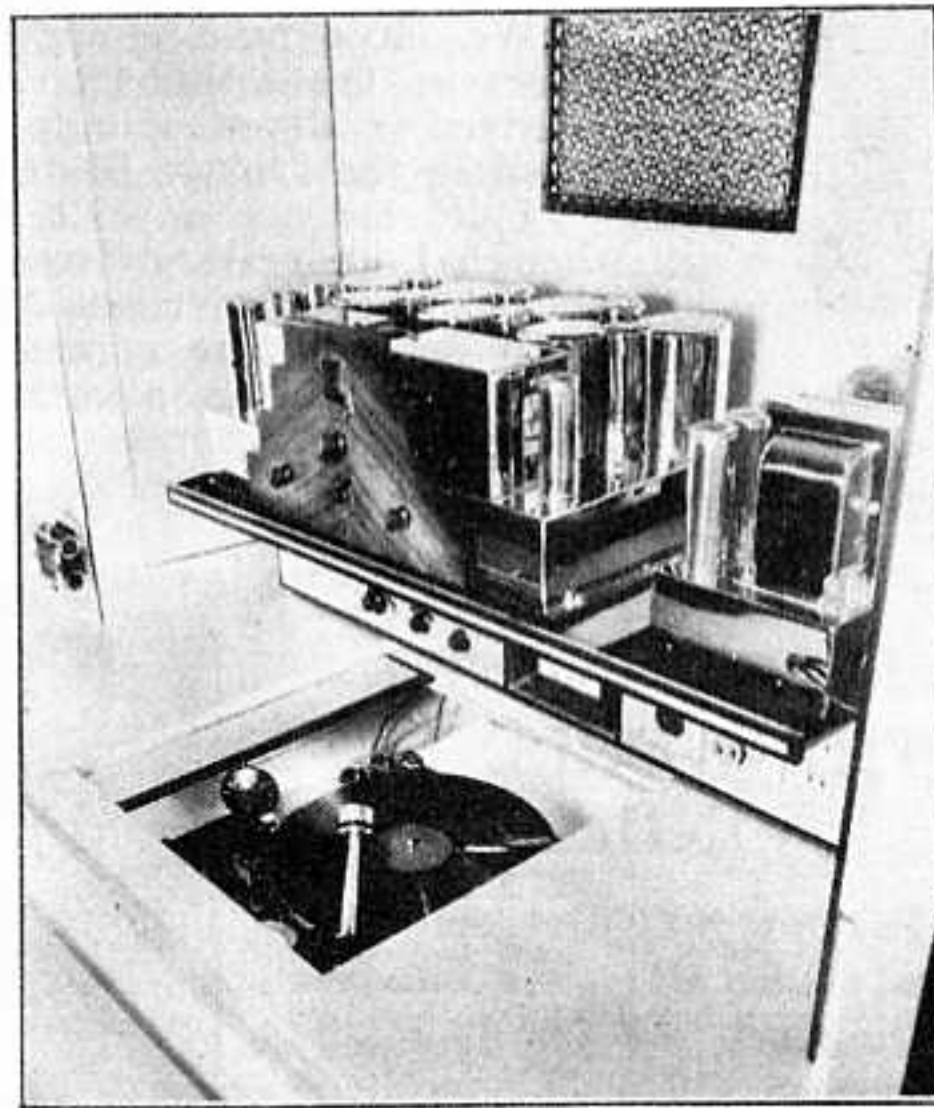
I merely set my dial and volume for VK2ME, VK3ME, GSA, GSF, I2RO, Pontoise, YV1BC, CT1AA, HKA, HKM, HKD, DJB, DIQ, PRADO, EAQ, etc. as I do my local station WOOD and then sit down comfortably and listen.

W. M. Dettor, Jr.,
Chattanooga, Tenn.

Off to a Good Start

My Scott Receiver has now been on the air three days and I am highly pleased with it. I have had one bad night on which short wave reception was very poor yet I heard what I suppose to be HKD at Columbia and Pontoise, France. Several others also, all speaking foreign language I have no way of being certain just whom I have heard due to the fact that they make no announcement in English.

Alfred D. Seals,
Druid Hills, Atlanta, Ga.



CLOSE-UP SPECIAL INSTALLATION OF RECEIVER WITH PHONOGRAPH BY FRED BAUM, ST. LOUIS, MO.

30 Trans-Pacific Stations

Have had very good results since last I wrote. The little post card you sent me helped a lot. The following is a partial list of the distant stations I picked up: VK3ME, PLE, YV1BC, EAQ, Colonial, YV11BMO, CMCI, Pontoise, PRADO, CMC, XED, CMGF, WBSO, 2 GB, 2YA, 3LO, XGOA. Altogether I have 30 trans-Pacific stations and 226 stations long wave.

Mr. Esmond Martin,
Santa Barbara, Calif.

Away Out in New Mexico

I am more than pleased with the results obtained with your new DeLuxe model receiver. YV1BC—Venezuela comes in here with the greatest volume of any of the South American stations. Pontoise, France—just fair; EAQ, Spain—volume marvelous; VK3ME Australia—fair; VK2ME fair.

A. Arnold,
Tochatchi, New Mexico

A Great Social Aid!

During the last winter there have been few Saturdays and Sundays when we didn't have company. And the reasons?

Saturday afternoons operas are broadcasted from the Metropolitan Opera House in New York and on Sunday afternoons the concert of the New York Philharmonic Orchestra is broadcasted. Some of my friends have their own radios and yet they prefer to have good music from the Scott radio. Then the fun we have had listening to EAQ, PRADO, YV1BC, YV11BMO, VE9GW, HKD, to mention just a few.

Fred Dudy,
Milwaukee, Wisc.

ALL DAY, ALL YEAR—THE WORLD AROUND

FROM FAR AWAY OF STRIKING PERFORMANCE

Each succeeding month sees an ever widening circle of Scott ownership throughout the world. Not a leading country is now without this reception service equipment.

Reported here are expressions from India, Egypt, Guam, France, Germany, Guiana and our own Alaska. There are more reports here, but space permits of but these few for showing in this issue.

It is in these far away, isolated lands that the great sensitivity and phenomenal reception range of the Scott Allwave DeLuxe finds its greatest

THANKS G. E.—WE APPRECIATE THE COMPLIMENT

I need hardly tell you that the is not in the same street as a SCOTT. I think it would interest you very much for me to give you an extract of 2 paragraphs in a letter dated January 28th from the General Electric Co. to the Kingston Industrial Agencies, Kingston:

"We have been confidentially advised by the Department of Overseas Trade that the King's Christmas Broadcast message was received in Jamaica only on a Scott Allwave Receiver manufactured in the United States of America.

"I did not see any Receivers of this make during my visit, although I understand from our Radio Department that it is probably the best American All Wave Set."

That is some praise commendation coming from such a source as the General Electric Co. is a very great compliment indeed.

Frank E. Lyons,
Kingston, Jamaica, B.W I



MR. LYONS IN HIS SPECIALLY-BUILT RADIO "COTTAGE" ON HIS BEAUTIFUL ESTATE, KINGSTON, JAMAICA, BRITISH WEST INDIES. NOT SHOWN IS AN OUTSIDE SPEAKER SERVING THE SPACIOUS LAWN AND PIAZZA OF THE HOUSE

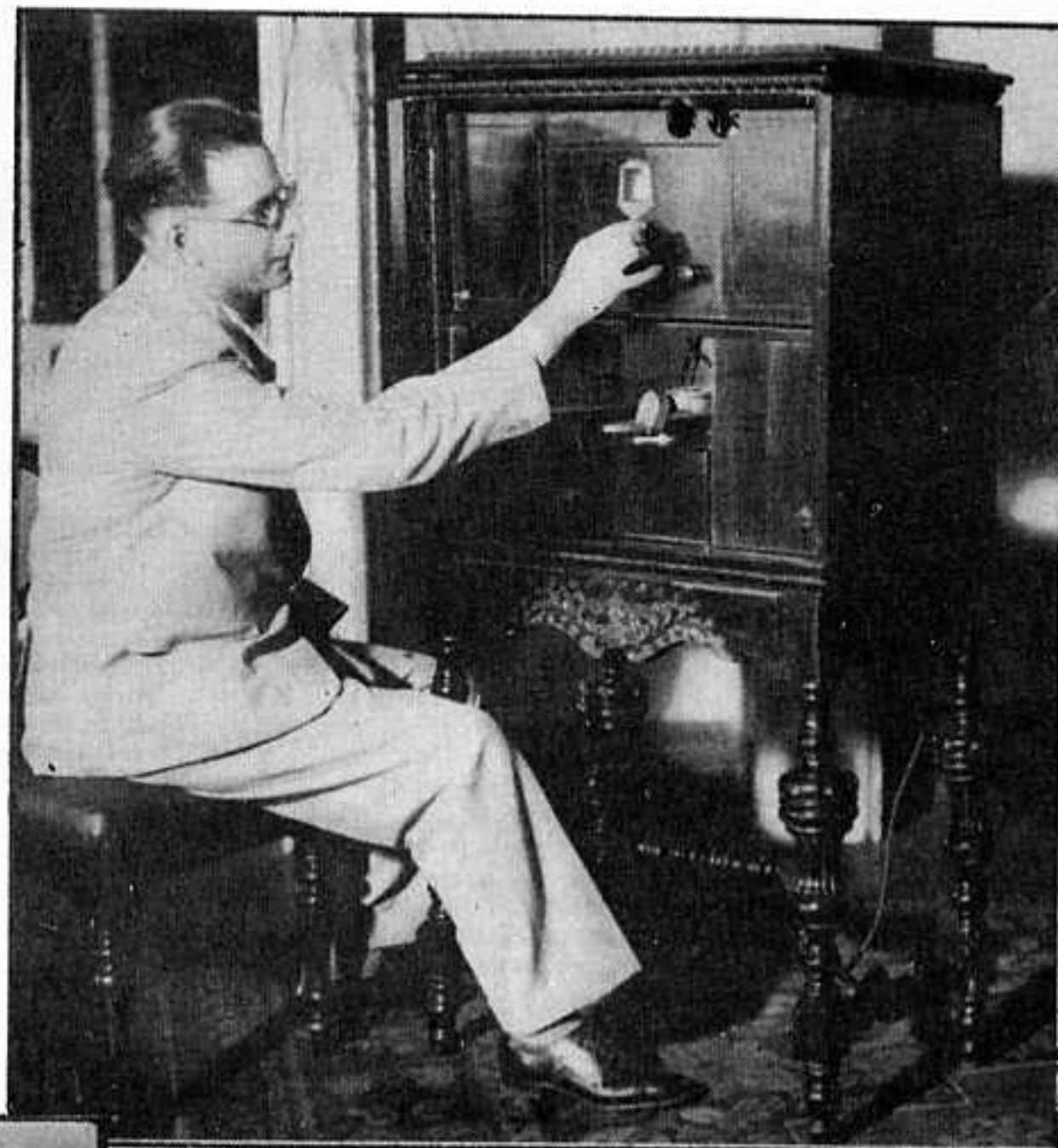


MRS. WADIA AT THE DIAL

LISTENING TO THE WORLD IN INDIA

The new AVC DeLuxe is to hand and it sure is a dandy-looking set. As far as I am concerned, so far, I have had complete satisfaction from this set having got Pontoise Paris, 12RO Rome, G5SW Chelmsford and Moscow on 50 meters and one or two other stations, also Colombo on 425 M., a 2 KW station 900 miles distant. The new ALLWAVE DELUXE is all that one can desire.

A. R. Wadia,
Bombay, India



BRITISH GUIANA—24 HOUR SERVICE

I know you will be pleased to learn that I am getting excellent results with my DELUXE both on the Short Waves and the Broadcast Band. The volume is great and the tone good on many distant stations. I consider this receiver a real Masterpiece and able to satisfy the demands of the most critical DX fans. With this Receiver entertainment can be got all through the day, also during the night. The principal short wave stations received during the day are W3XA1, WBZ, W2XAF, KDKA, Zeesen, and at night GSW, W2XAF, KDKA, and many others, WCAU, WEAU, WJZ, WKAU—San Juan, Puerto Rico; Caracas; are also heard, as well as several others every night on the broadcast band.

R. F. Jardim,
Georgetown, B. Guiana

TOO GOOD IN ALASKA!

I received the radio set this month, from Cordova to Katalla by plane. The set brings in on the broadcast band any station in the U. S. A. or Canada and with all kinds of volume. On the short wave lots of volume too, we have had England and Germany and lots of American and Canadian short wave stations.

There is only one complaint I have on the broadcast and that is, it is so good that the whole dam camp comes in to listen to it, and when you are 70 years old and spend 45 of them in the Far North, you will understand, you don't want company.

Just heard Denmark on low wave and on Monday night heard your broadcast on low waves.

Thos. G. White,
Katalla, Alaska



ALL DAY, ALL YEAR — THE WORLD AROUND

LANDS COME REPORTS AND IMPRESSIVE REPRODUCTION

power for good. Reaching out over thousands of miles of land and sea, it brings to these owners the choice broadcast programs of the centers of civilization. Thus education, entertainment and news of the day are brought to the far reaches of the globe bringing final truth to the old saying "the world is a small place after all."

Let us hear from you, all you Scott owners in the outposts, together with photographs which will be shown in succeeding issues of Scott News!

LISTENING TO AMERICA IN FRANCE

I am pleased to inform you that through the kindly consideration and courtesy of your Paris agent, I am now the proud possessor of your new SCOTT ALLWAVE DELUXE RECEIVER. Allow me, Dear Sir, to tender you my congratulations on the creation of this really wonderful receiver.

I now listen with pleasure to the World's programmes on both the broadcast and short wave bands. The programmes come in with purity and richness that it is difficult to believe that one is listening to a radio.

I consider that your claims for this splendid instrument are extremely modest, for it more than fulfills all you claim for it. It affords me pleasure to invite my friends to hear the brilliant performance of your receiver and they are all unanimous in its praise. Though I am only employing a short antenna badly placed between walls and overhung by trees, I can daily receive several American stations with clearness and power.

A few evenings ago, February 9th, at 8:00 p. m. I listened for over an hour—till the station closed down—to a Philharmonic Concert broadcast by the National Broadcasting Corp. from the Eastman Theatre, Rochester, N. Y. At intervals in the programme the speaker from WGY clearly called—"Hello, Geneva," "Hello Berlin."

J. H. Hessenbruck,
Versailles, France



FINEST AT ANY PRICE—GUAM

My Scott Deluxe Allwave receiver is a source of great pleasure to my family, my friends and myself.

I firmly believe that the Scott is the finest receiver that can be bought at any price. Certainly anyone who appreciates extraordinary human accomplishments must see in its appearance and its operation a fineness worthy of enthusiasm.

Jose M. Torres,
Agana, Guam

FROM THE LAND OF THE NILE

I desire to state that I am very proud of my radio receiver, which is working fine since I received it.

In my opinion there is no other set in the world that can be compared with the Scott Superheterodyne. Nearly all the principal European stations come in like locals and clear as a bell.

Paul Lifshitz,
Cairo, Egypt



THE LITTLE HESSENBRUCKS LISTENING TO PHILHARMONIC CONCERT FROM EASTMAN THEATRE, ROCHESTER, N. Y.

"JUST FRIENDLY CHATS" BRINGS CHEER TO THE EDGE OF THE BLACK FOREST — GERMANY

For a long time I wanted to write you, and only now I am coming to do it. From this little town on the edge of the Black Forest I greet you. My admiration for you comes not only from the fact that you sold me a radio with which I am well pleased, but also because every month your "Just Friendly Chats" booklets bring cheer and inspiration in my otherwise not too happy life.

Since coming home a year ago, I have made not more than just my living. In spite of the fact that I have learned what life could be (from being in America for five years) I am satisfied with my life. Most of the others in my age are out of work and depending on charity, while I have still my savings in the bank.

I do not know where any improvement could be made from what my receiver is able to accomplish. Please keep on, Mr. Scott, sending me "Friendly Chats," they bring back to me so many memories, memories of America, which I have come to like, and which I am perhaps never to see again. In closing, I wish you and your work for the future all the success you deserve.

Ernst Walz,
Nagold, Wttb. Germany

IN THE BEAUTIFUL LIBRARY OF MR. LIFSCHITZ



ALL DAY, ALL YEAR — THE WORLD AROUND

AS LONG AS A SCOTT RECEIVER IS IN YOUR POSSESSION YOU WILL GET THIS SERVICE

"I want you to know that at all times," says Mr. Scott, in his operating Manual, "not merely for the five years of your receiver's guarantee, but just as long as the receiver is in your possession, my entire staff and I stand ready and eager to lend you every assistance to the end that radio reception from your Scott Allwave Deluxe will bring you a new thrill, a wider appreciation and greater depth of enjoyment than that ever before obtained from any radio receiver you have previously owned."

This pledge takes concrete form in the definite, consistent service given every Scott owner from the day of purchase.

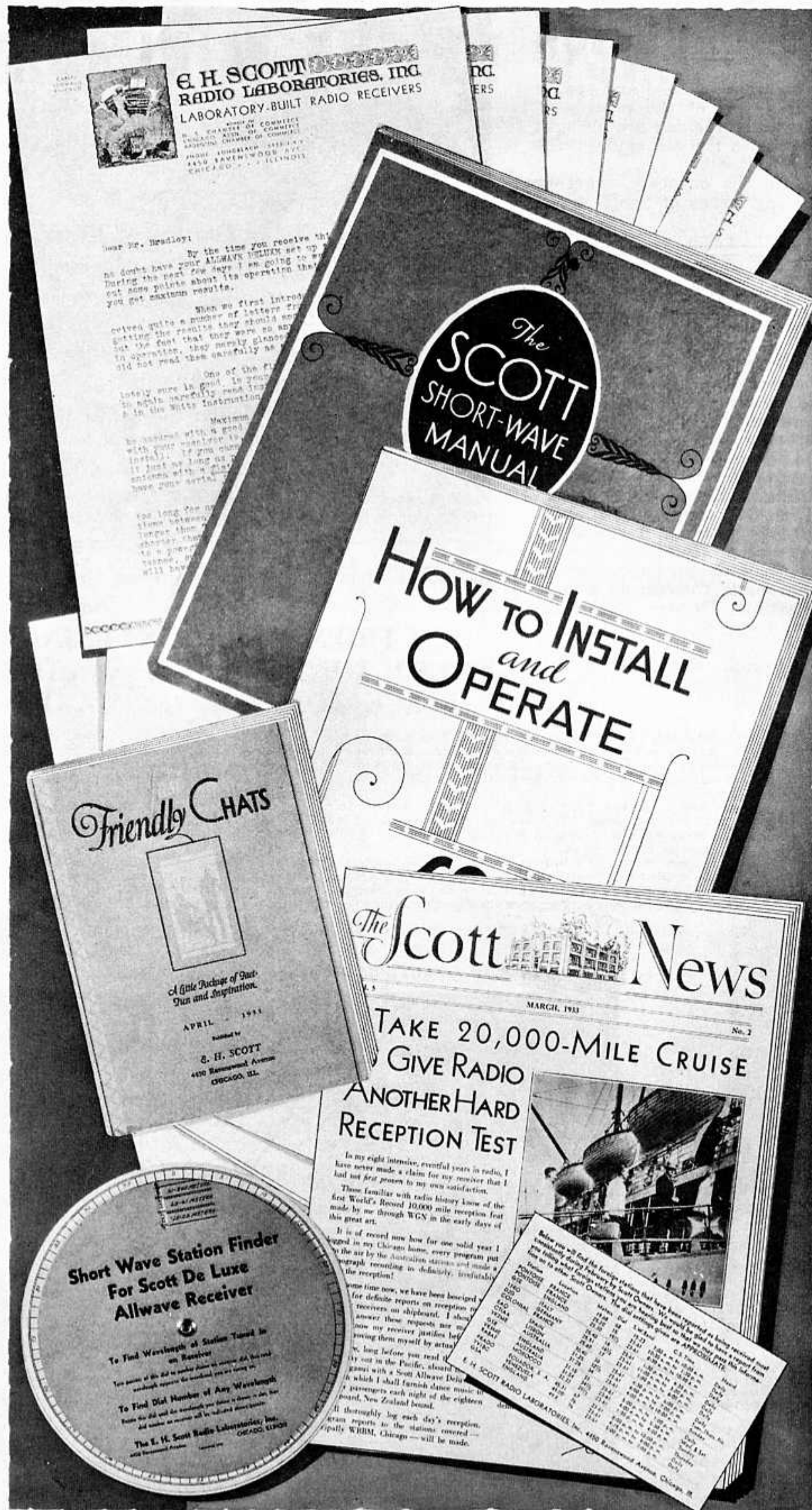
During the first seven days of your ownership, you will receive each day a letter from Mr. Scott coaching you in the proper operation of your receiver.

The most complete comprehensive Short Wave Manual ever compiled will be sent together with a Short Wave Station Finder that will make locating and tuning for the Foreign Stations a thrilling, yet simple adventure.

Each month, a Postal Card will be mailed to you giving a list of the most popular Short Wave Foreign Stations coming through to best advantage during that month. Dial settings, call letters and time in the air will be specified for each station making tuning for these far away stations as simple as picking up locals.

With the Receiver you will receive a complete detailed Manual on the proper Installation and Operation of the Receiver presented in simple terms that may be comprehended by the most uninitiated layman.

Last, but by no means least, you will receive each month Mr. Scott's own personal publication "Just Friendly Chats"—a fascinating little book of fact, good cheer and philosophy. Wholly devoid of commercialism, it has established itself as a most welcome guest twelve times a year to the homes of Scott owners all over the world.



THE NEW SCOTT SW ANTENNA REDUCES INTERFERENCE TO THE MINIMUM

While the high frequencies on short waves are less susceptible to atmospheric static, they are more sensitive to so-called man-made static. Electrical disturbances caused by street cars, motor cars, motorized and vibrating appliances, X-ray machines, flashing signs, elevators and similar devices seldom disturb the broadcast band, but they often ruin short wave reception. In some neighborhoods these conditions offer a real problem to the operator of a short wave receiver.

Noises Through Lead-In

We have long experimented with and tested all proposed means of combating this menace to good short wave reception. Like others operating in this field, we found that such noises are usually picked up by the lead-in and not by the

antenna flat-top as was previously generally accepted.

Our research and experiment in this direction has shown us that the so-called "Lynch" transposed type lead-in, taking its name from its creator, Mr. Arthur H. Lynch, is the most effective in the reduction of this class of interference.

New Transposition Block

The basis of this lead-in is the Transposition Block as illustrated at the right below. Through slots provided in it, the lead-in wire, is threaded through each block, criss-cross. Note that the wires do not touch each other, one going down one side while the other runs on the opposite side of the block.

These blocks are spaced 15 inches apart throughout the length of the lead-in or to as near the receiver as is practical. From the

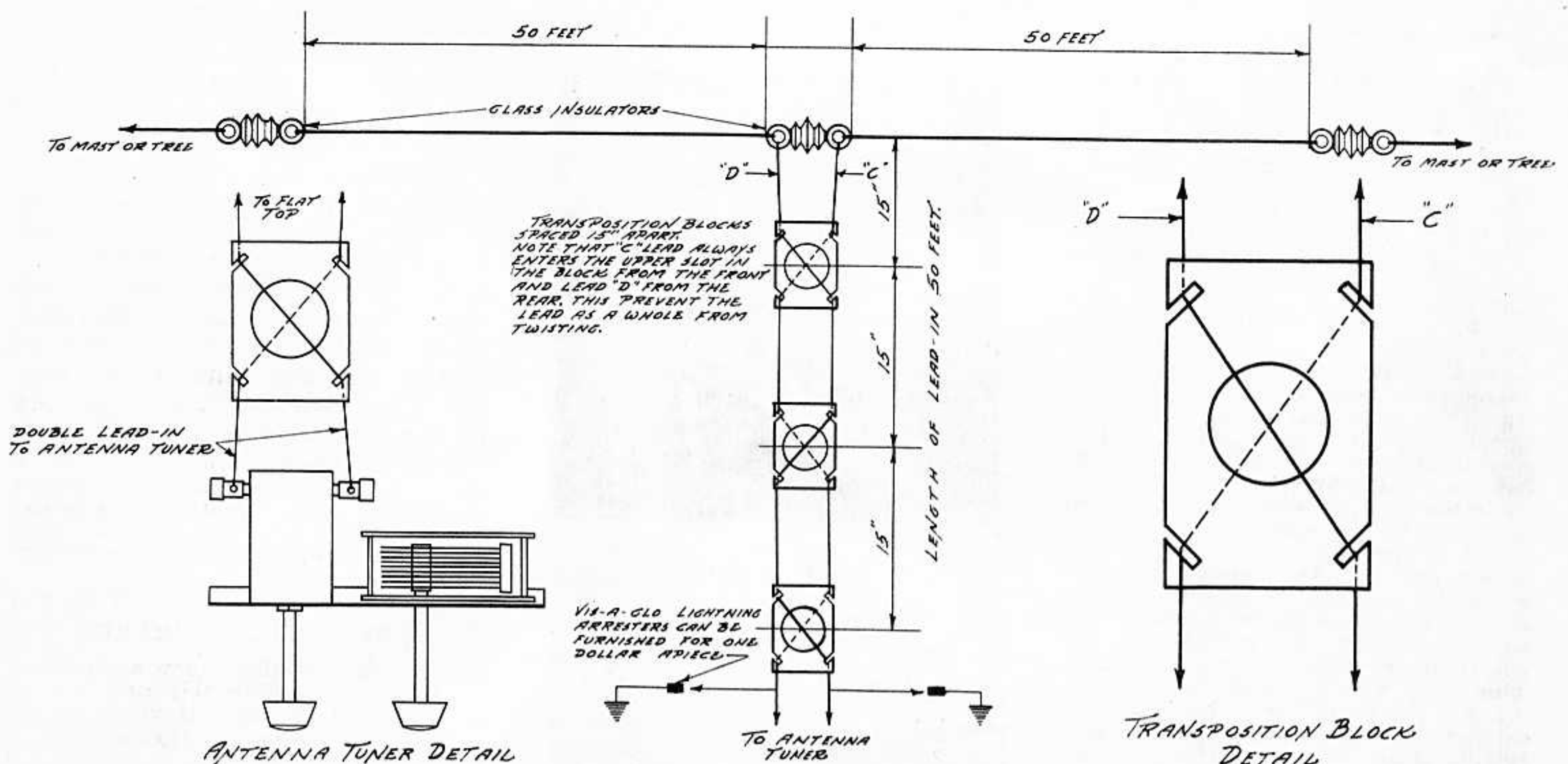
point where the blocks end, the pair of insulated wires may be twisted and run up to the receiver.

Take Off in Center of Flat-Top

The illustration below graphically illustrates how this type of aerial is arranged. It will be noted that the lead-in is taken off exactly in the center of the flat top. Such an arrangement is urged, though in cases where it may not be found practical a substitute course may be taken in placing the flat top at a varying angle or you may take off of one end. It is recommended, however, to take off in the exact center if at all possible.

Now Regular Equipment

We shall now furnish this antenna as regular equipment with the SCOTT ALLWAVE DELUXE RECEIVER. The lengths of flat top and lead-in will be as designated on the illustration below.



ALL DAY, ALL YEAR — THE WORLD AROUND

A SCOTT OWNER RECOMMENDS ALL TO VISIT US DURING THE WORLD'S FAIR

"We all know that applause to the actor on the stage, or the lack of applause tells the story of his, or her success. We also know that all of us, regardless of our line of business, like to receive a 'pat on the back' and a kind word when we have done our best, and so too, does the manufacturer of any article like to receive applause in the way of letters telling about the fine points of his product. So, as a radio enthusiast and DX'er of many years, it would be unfair indeed, if I did not voice my appreciation of the very fine cooperation extended to me by the entire SCOTT organization.

"When a visitor first visits your laboratory he is immediately impressed with the orderly and business like appearance that is seen everywhere and would possibly at first entertain the idea that this was just another place of business and wonder if there was anyone in this organization with time to show the visitor around. But how quickly are these thoughts put at rest when someone of the organization approaches and very courteously inquires your wants. If it should be a demonstration, the visitor is shown into a suite of rooms that are exact replicas of living rooms in a well-kept home. Besides the several radios that one sees, the visitor will immediately feel at 'ease' in the many comforts that have been installed to make one feel 'at home.'

"The attendant in charge is tireless in explaining even the smallest detail. Even to the layman, he could not help but appreciate the exactness to which even the smallest thing is attended to in the manufacture of this extra fine 'hand made receiver.' No mass production here and no dissatisfied employees. It

has been my pleasure to meet Mr. Scott personally several times and even though he is the head of your organization, I have found to my delight that he is as common as the proverbial 'old shoe' ready and willing to explain personally anything that might be referred to him.

"In December of last year I purchased your latest type DELUXE ALLWAVE RECEIVER and oh, boy! I never believed any radio could reproduce notes of all instruments as does this set. And too, the sensitivity is the greatest of any make of radio I have ever seen. The selectivity is fine and I do not believe that any make of radio can equal the selectivity and still retain the tone qualities that are so apparent in the SCOTT DELUXE ALLWAVE. I truly hope that all lovers of fine radios who visit the Century of Progress this year, will avail themselves of the opportunity to visit your laboratory and showrooms. I feel that a visit to your laboratory will be just as interesting as anything to be seen at the Century of Progress; because everything there and everything in your laboratory shows progress.

"Before purchasing the SCOTT I 'looked over' other custom built receivers and found with the exception of the SCOTT all their claims through advertisements and otherwise to be very much exaggerated, but not so with the SCOTT DELUXE ALLWAVE, for it will do all that is claimed for it.

"In closing I wish to again thank you and your entire organization for the very fine cooperation I have enjoyed and I might add that I look forward to many more pleasant contacts. With best wishes, I am,"

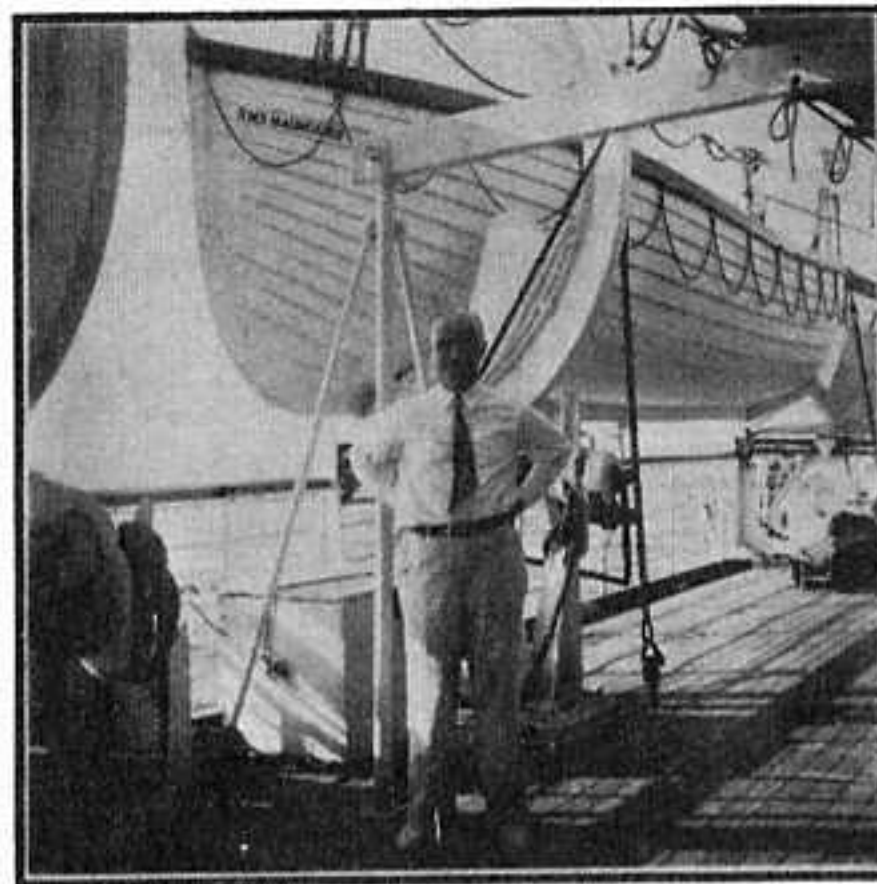
C. E. Marshall,
Chicago, Illinois

A RECEIVER WITH A PERSONALITY!

"If there is anything more outstanding in your relationship with your customers and prospects than your cordiality, I don't know what it is.

"Reflecting on our past correspondence, as well as our business relationship, it certainly is a pleasure to have had the opportunity of owning a product of an organization, whose ideals are so high. Of course, any organization is as its individual members, and so are its ethics and standards of business management. To read your letters, and to operate and own a SCOTT radio, is to feel the pulse of the entire SCOTT organization—to see within, to know that the whole unit functions with one ideal—that of making friends of its customers, and to please them to the uttermost, and last but not least—to have them find that the one something which cannot be bought with money—that one something is there, almost a tangible thing built into their product. Yes, I do say that the SCOTT radio has a personality, and it surely must be the personality of Mr. Scott himself."

F. L. Pullen,
Baton Rouge, La.



Mr. Scott on Maunganui

An informal snapshot of Mr. Scott in his "working togs" aboard the good ship Maunganui. This was taken by Mrs. Scott on the afternoon of March 5th just a few hours before they docked at Wellington, thus ending the first leg of their tour on board ship. The weather was quite hot, but reception results were surprisingly good, as he reports.

ALL DAY, ALL YEAR — THE WORLD AROUND

The SCOTT NEWS

Published Frequently at Chicago by
E. H. SCOTT RADIO LABORATORIES
4450 Ravenswood Ave.
Chicago

E. H. SCOTT, Editor

INFLATION AND OUR PRICE POLICY

Quite obviously our costs are never affected by production activity. Our receivers are entirely hand made by engineers and their cost of production varies only with the market on basic materials. Our price is very sensitive to these costs.

In adjusting ourselves to the generally wretched business conditions which prevailed during the Winter and Spring, we had announced a very Special Price Offer which reflected our advantageous procurement of materials and our desire to provide as much activity in this line as was practically possible. Due to the Bank Holiday, of course, when nearly everything was at a standstill, we were permitted to extend this offer far beyond its original anticipated duration.

As we go to press now we may definitely continue this offer until May 25th, 1933, basing our operations upon a reasonable anticipated demand for this period. Beyond that it is not given us exactly to predict our policy.

With the advent of Inflation which is imminent at this time, no one is permitted to know just how marked will be the advance in raw material costs, but advance they surely will. In fact all price standards will obviously be readjusted to the new value basis of the dollar. Of necessity, we shall be obliged to regulate our policies accordingly.

In our opinion, never again in this generation will we be able to purchase so much for so little as at this time.

April 28th, 1933.

Lives Up to Claims in New Jersey

I cannot profess to have fully mastered the short wave tuning but believe that it would be impossible to surpass the performance I have had with this set. As you have promised I have listened to stations in England, France, Germany, Italy and to Caracas, Venezuela. When I say listened to I mean just that—each one an hour or more and as I understand French and German these stations are properly identified to my full satisfaction.

I have also listened to the short wave aviation field stations all across the country including Los Angeles and to planes in flight beyond Kansas City. On the broadcast band the results have been just as satisfactory. The first evening I listened to four Pacific Coast stations.

Mr. A. R. Jacobus,
Maplewood, New Jersey

THE WESTERLY GRANDE

We have available now a special Folder illustrating this new Console in actual colors. It will be forwarded on request of anyone interested.