

DISTRIBUTOR IN THE UNITED STATES
Graybar
ELECTRIC COMPANY
General Offices: 129 Lexington Avenue
New York, N. Y.

DISTRIBUTOR FOR CANADA AND NEWFOUNDLAND
Northern Electric Company Limited
General Sales Offices: 1201 Shearer Street, Montreal, P. Q.

FOREIGN DISTRIBUTORS
International Standard Electric Corporation
67 Broad Street, New York, U. S. A.



Western Electric Plate Voltage Rectifier

No. 8A 163⁰⁰
716-A Filter - 46⁰⁰

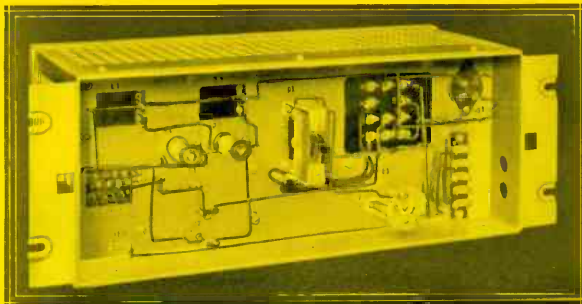


For Radio Telephone Broadcasting Systems

A development of Bell Telephone Laboratories, the Research Laboratories of the American Telephone and Telegraph Company and the Western Electric Company.

THE Western Electric 8A Rectifier is a full-wave vacuum tube rectifier designed to supply plate power to speech input amplifiers. The DC output consists of four circuits, three of which may be used to supply two 82A (high level) Amplifiers and a 700A Volume Indicator and include filtering networks for smoothing the rectified currents. The fourth output circuit, intended for supplying an 81A (low level) Amplifier, is unfiltered. A filter such as the 716A should be provided when this amplifier is operated from the rectifier.

A Western Electric 263A Voltage Regulator Panel ordinarily is employed in conjunction with the 8A Rectifier. The voltage regulator panel supplies a constant 10 volt, 60 cycle AC potential for the filaments of the vacuum tubes in the amplifiers and volume indicator of speech input equipments. If

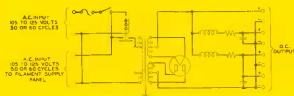


FRONT VIEW — MAT REMOVED

the frequency of the power supply is 50 cycles, the Western Electric 263B Voltage Regulator Panel should be used.

A switch in the rectifier applies AC power to the voltage regulator. A control circuit, included as a part of the rectifier, delays the operation of the rectifying tube until the filaments of the vacuum tubes in the connected amplifier and volume indicator panel have reached their proper operating temperatures. This control is automatic in operation.

The component parts of the 8A Rectifier are assembled on a recessed metal panel which is designed for standard rack or cabinet mounting. The larger units are mounted on the rear of the panel. Terminals project through to the front where the smaller units, together with all wiring, are mounted.

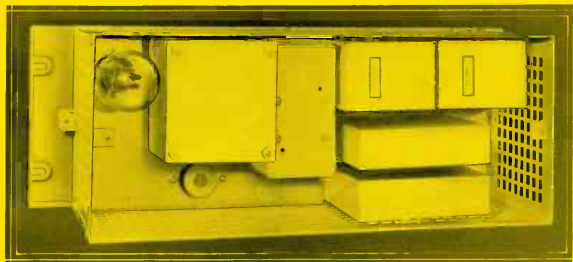


SCHEMATIC CIRCUIT

The front of the panel is protected by a metal mat and the rear by a cover when the panel is mounted on a rack. The mat is finished in dark gray and the rear cover in aluminum. The cover is perforated to provide ventilation. Both cover and mat will be furnished in black if this is specified in the order.

SPECIFICATIONS

- General:** Full-wave vacuum tube rectifier.
- Input:** Operates from 105-125 volt, 50 to 60 cycle AC. Power consumption approximately 80 watts for full power output.
- Output:** 116 milliamperes maximum at 375 volts DC divided among the following four circuits:
 Two high level amplifiers (Common filter circuit in rectifier.)
 One low level amplifier (No filter circuit in rectifier—716-A filter recommended).
 Volume Indicator (Separate filter circuit in rectifier).
- Vacuum Tube:** One 274-A.
- Weight:** Approximately 30 pounds.
- Dimensions:** 19" long—7" high—1½" deep.



REAR VIEW — COVER REMOVED

DISTRIBUTOR IN THE UNITED STATES
Graybar
ELECTRIC COMPANY
General Office: 420 Lexington Avenue
New York, N. Y.

DISTRIBUTOR FOR CANADA AND NEWFOUNDLAND
Northern Electric Company Limited
General Sales Offices: 1261 Steeles Street, Montreal, P. Q.

FOREIGN DISTRIBUTORS
International Standard Electric Corporation
67 Broad Street, New York, U. S. A.

Western Electric Plate Voltage Rectifier

No. 8A 163⁰⁰
716-A 71/2⁰⁰ - 46²⁵⁰



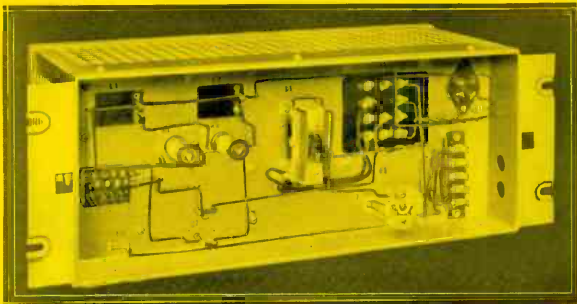
For Radio Telephone Broadcasting Systems

A development of Bell Telephone Laboratories, the Research Laboratories of the American Telephone and Telegraph Company and the Western Electric Company.

THE Western Electric 8A Rectifier is a full-wave vacuum tube rectifier designed to supply plate power to speech input amplifiers. The DC output consists of four circuits, three of which may be used to supply two 82A (high level) Amplifiers and a 700A Volume Indicator and include filtering networks for smoothing the rectified currents. The fourth output circuit, intended for supplying an 81A (low level) Amplifier, is unfiltered. A filter such as the 716A should be provided when this amplifier is operated from the rectifier.

A Western Electric 263A Voltage Regulator Panel ordinarily is employed in conjunction with the 8A Rectifier. The voltage regulator panel supplies a constant 10 volt, 60 cycle AC potential for the filaments of the vacuum tubes in the amplifiers and volume indicator of speech input equipments. If



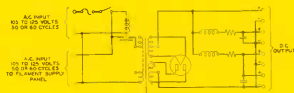


FRONT VIEW — MAT REMOVED

the frequency of the power supply is 50 cycles, the Western Electric 263B Voltage Regulator Panel should be used.

A switch in the rectifier applies AC power to the voltage regulator. A control circuit, included as a part of the rectifier, delays the operation of the rectifying tube until the filaments of the vacuum tubes in the connected amplifiers and volume indicator panel have reached their proper operating temperatures. This control is automatic in operation.

The component parts of the 8A Rectifier are assembled on a recessed metal panel which is designed for standard rack or cabinet mounting. The larger units are mounted on the rear of the panel. Terminals project through to the front where the smaller units, together with all wiring, are mounted.

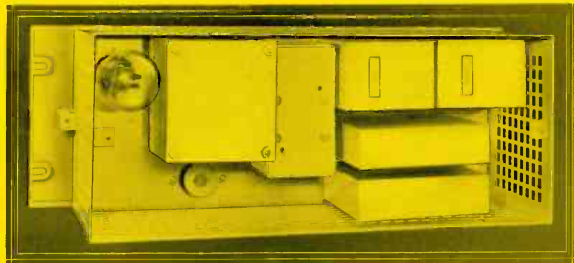


SCHEMATIC CIRCUIT

The front of the panel is protected by a metal mat and the rear by a cover when the panel is mounted on a rack. The mat is finished in dark gray and the rear cover in aluminum. The cover is perforated to provide ventilation. Both cover and mat will be furnished in black if this is specified in the order.

SPECIFICATIONS

- General:** Full-wave vacuum tube rectifier.
- Input:** Operates from 105-125 volt, 50 to 60 cycle AC. Power consumption approximately 80 watts for full power output.
- Output:** 116 milliamperes maximum at 375 volts DC divided among the following four circuits:
 Two high level amplifiers (Common filter circuit in rectifier.)
 One low level amplifier (No filter circuit in rectifier—716-A filter recommended).
 Volume Indicator (Separate filter circuit in rectifier).
- Vacuum Tube:** One 274-A.
- Weight:** Approximately 30 pounds.
- Dimensions:** 19" long—7" high—7½" deep.



REAR VIEW — COVER REMOVED