

FOR WEEK OF
OCTOBER
15th to 21st

BROADCAST WEEKLY



"PETER AND PAN"
The "Wheatenaville" twins portrayed
by Elizabeth Mallory and Eddie Fire-
stone, are heard over the NBC-KGO
network nightly, except Sunday and
Thursday at 5:30 P. M.



THE LEADING RADIO GUIDE OF THE PACIFIC COAST

10

KYA

contributes generously to the
spiritual life of the community
with these fine religious
programs . . .

Fellowship of the Air — Glide Memorial Church
SUNDAYS, 9 A. M.

Scripture Readings — American Bible Society
WEEKDAYS, 12 O'CLOCK NOON

Old St. Mary's Catholic Church Services
SUNDAYS, 11 A. M.

First Congregational Church News
WEEKDAYS, 11:58 A. M.

Sacred Hour
SUNDAYS, 6 P. M.

Christian Science Devotions
WEEKDAYS, 7:45 A. M.
SUNDAYS, 8:15 A. M.

Jewish Holiday Services

1230 Kilocycles

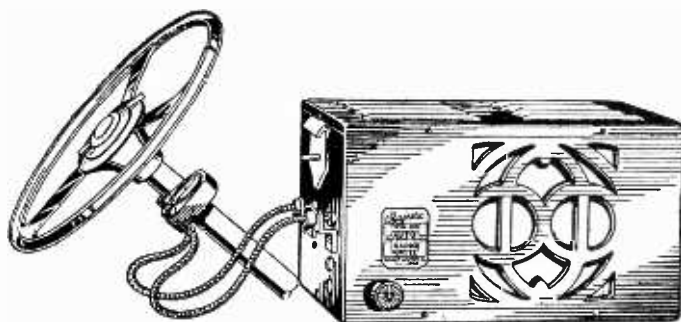
You Don't Have to Miss It!

How many times have you been forced to leave an intensely interesting radio program because of an appointment somewhere? Or perhaps you were returning home in your car, but arrived just too late to listen to the program you wanted most of all to hear.

Are you a football fan? Will you have to miss some of the most important games this year because you will be on the road and either can't get to the games or home to listen to them over the air?

Don't miss these things! See your Majestic Dealer today and have him install the famous "Twin Six" auto set in your car.

Take the world with you when you step on the starter!



Majestic

TWIN-SIX AUTO RADIO

The Majestic Twin Six is priced at \$54.50. You can buy cheaper sets, but in selecting an auto radio remember that **STURDY CONSTRUCTION** is of paramount importance. A good auto radio cannot be built cheaply. It will pay you to buy Majestic.

THOMPSON & HOLMES, LTD.

Wholesale Distributors

171 Bluxome Street

San Francisco

ETHER GLEANINGS

By J. CLARENCE MYERS

ATTEMPTS of the San Francisco Bay District radio broadcast technicians and announcers to organize have met with a number of snags. Naturally, the managers of the stations frowned upon the idea from the start. For haven't they enough troubles, they ask, what with the musicians' union constantly making demands upon them?

The idea of a general technicians' union has been temporarily abandoned, but in its stead the operators at the NBC in San Francisco have formed their own organization, which has the sanction of the network chiefs. The whole thing is still in its embryonic stages and doesn't know just which way it is going to turn to better working conditions, if at all.

The announcers' organization is still just talk, although its initial meeting was held last week, in which representatives of practically every bay district station were present. All were in accord with the idea of organizing, but whether they will or not is yet to be seen.

Meanwhile, the station execs are not a little uneasy about the whole affair.

* * *

The selection of Helen Musselman by the sponsors of the Acme Beer program as feminine soloist on their Stars of the West program is quite a "feather in her cap."

Some years ago we remember Miss Musselman playing kiddie rôles on the radio. That was before the NBC days. Miss Musselman, a young lady now, has been prominently identified in dramatic programs originating at the network studios, but in the past six months has even made greater strides with her singing voice, a true, sweet contralto. In fact, the NBC production department didn't even know she could sing until a few months ago when she sang a song during an impromptu broadcast. From then on her singing has been in demand.

The Acme Beer program, on which she is co-starred with Irving Kennedy, Meredith Willson, and the Acme Quartet, is broadcast over the western NBC chain Monday nights at 8:30 o'clock.

* * *

Tom Coakley, whose band is now playing nightly at the Palace Hotel in San Francisco, and which is heard from 11 to 11:30 p. m. over KGO, has the distinction of being the only Oakland maestro to ride the famous Lucky Strike "magic carpet" a little over a year ago. Coakley was at the Athens Athletic Club in Oakland then. Since that time he has been on various broadcasts and made

a tour in the Pacific Northwest with Dobbsie some months back.

* * *

And speaking of Dobbsie reminds us of an incident that occurred the other day. The mayor, Chamber of Commerce, and other civic groups of Portland invited the veteran radio skipper, who is at present under the sponsorship of the packers of Del Monte products, to be master of ceremonies on their big civic NRA program.

Dobbsie accepted, hopped in a plane Sunday, arriving there just in time for the show Sunday night which, incidentally, bulged the huge Civic Auditorium with humanity. He left Portland shortly after sunup Monday morning, arriving in San Francisco a few hours later and in time to rehearse his Del Monte program for that night.

* * *

General Mills, probably one of the largest users of radio broadcasting time, is now paying for some of those periods put on by Al Pearce and His Gang over the coast NBC wireup.

* * *

Not to be overshadowed by the other motor car manufacturers on the air, Plymouth Motors has stepped onto the ether stage via the CBS coast-to-coast chain with a quarter hour script act, which goes on thrice weekly.

The act has to do with one Elmer Everett Yess, a surefire salesman, which is played by Harold K. Dawson, Broadway actor.

KFRC releases the feature Tuesdays, Thursdays, and Saturdays, at 8:15 p. m.

* * *

Harry Bechtel, KYA announcer and actor, is the new KYA News Man, giving a nightly broadcast at 9 o'clock. He succeeds Harold Bock, who is confining his entire time as news editor of the local NBC.

* * *

The New York Philharmonic Orchestra may be heard again, too, Sundays, from 12 noon to 2 p. m., on the CBS stations.

* * *

Tom Gerun is coming home to San Francisco this month.

After nearly six months playing at the Century of Progress and the Chez Paree night club in Chicago, the popular director of the Bal Tabarin Cafe and his orchestra will be more than glad to see San Francisco's rolling hills, tipped with creamy fog, once again, they write. Kay Kyser, who has enjoyed a successful engagement at the night club in Gerun's absence, will be tendered a farewell party on October 22.

March of Time, one of the more popular programs last season, is back on CBS—KFRC locally, Fridays, from 5:30 to 6 p. m.—unsponsored.

* * *

Sydney Dixon, erstwhile vocal star and program director of KYA, is occupying a shiny new desk in the NBC headquarters, as manager in charge of local sales in the NBC's Pacific Coast division. He succeeded Lindsay Spight, who has become a partner in the Gregg and Blair Company, radio station representatives.

* * *

Herman Reinberg's offspring, born recently and monickered Donald, is going to follow in the footsteps of his world-famous uncle, Joseph Lheviinne, the pianist, Reinberg firmly believes. "You see," he explains to his colleagues at KFRC, "my son has long graceful fingers and large hands, and that's a sure sign that he will be a great artist some day."

* * *

Gene Sullivan comes by his love for nimbrodng and fishing through inheritance. His dad, just 75 years young, is still a sportsman through and through and only recently strolled into KYA to tell his son, who conducts sports talks there, that he had just bagged two bucks in Mendocino County.

The Occidental Life Insurance Company breaks a program over the NBC coast chain, October 31, which will be "aired" once a week—Tuesdays, 9:30 to 10 p. m. Their vehicle is a drama written by Wilbur Hall, entitled "Winning the West."

* * *

Leave it to the effervescent Rush Hughes to give birth to a new idea on the air. His latest is a "precreation" of football games. In other words, during those NBC football rallies on Friday nights, Hughes is creating what, in his mind, will happen on the gridiron the following day. He is also recreating some of the more important games of the past.

* * *

Any of you who have heard Joseph Henry Jackson discuss the latest literary works of the modern authors on the air, nine chances out of ten you would picture him as a cultured old gentleman, weighed down with wisdom. Barbara Jo Allen, fair NBC actress, had him pictured that way, too. And so when she was introduced to him at the NBC the other night between programs, she was astounded to learn that he was such a young man. He's in his early thirties. "I pictured you as a grey-haired man with a goatee," she told him. She had in mind another gentleman who is a regular NBC speaker likewise.

HOTEL PLAZA

Ray Maxwell, Manager

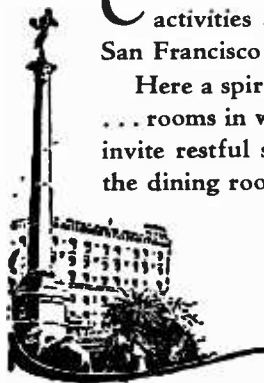
POST STREET at STOCKTON / / / SAN FRANCISCO

CENTRALLY located in the heart of business and amusement activities . . . facing beautiful Union Square . . . your stay at San Francisco will be more enjoyable at the Hotel Plaza.

Here a spirit of real hospitality awaits you . . . the best of service . . . rooms in which you will feel at home . . . comfortable beds that invite restful sleep . . . and food to tempt your appetite served in the dining room at popular prices.

*Private dining rooms for group luncheons
and conventions*

RATES NOW BEGIN AT—
\$2 SINGLE WITH BATH
\$3 DOUBLE WITH BATH



STARS OF THE RADIO



THEODORA WARFIELD
KFSB



DOUGLAS NOWELL
KYA



ADELE VASA
CBS



NORMAN NIELSEN
KHJ



TONY WONS
CBS



JERRY KILGORE
NBC



MOREY AMSTERDAM
NBC



WHY you should buy your

Majestic



REFRIGERATOR

NOW!

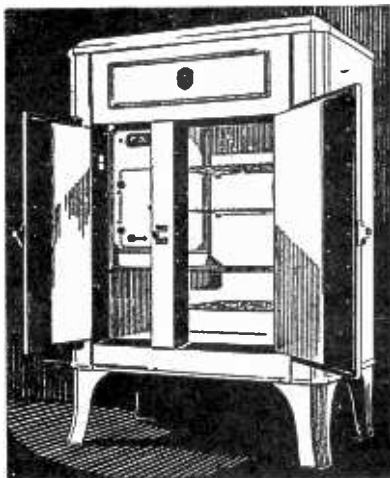
MANY of you who read this ad are contemplating buying a refrigerator—perhaps for Christmas, perhaps next Spring, *but—the longer you wait the more you will pay!*

Except for a slight increase on July 1, prices on Majestic Refrigerators are the same as in January of this year. You can buy **NOW** at depression prices.

The only reason we are still able to offer these refrigerators at low prices is that we as Northern California distributors, as well as the Majestic factory, have anticipated our requirements and bought ahead.

We say to you in all sincerity that Majestic Refrigerator prices will have to advance anywhere from 20 to 40 per cent—**SOON**—just when we can not definitely say.

See your Majestic Dealer at once. There is a lifetime **MAJESTIC** to meet



every requirement at prices ranging from \$99.50 to \$429.50. A small down payment will deliver your refrigerator—balance on convenient terms.

Buy Now—Save from \$25 to \$75

THOMPSON & HOLMES, LTD.

Wholesale Distributors

171 Bluxome Street

San Francisco

Save \$3.20

BY SUBSCRIBING TO BROADCAST WEEKLY

☐ It costs you less than four cents a week to subscribe to BROADCAST WEEKLY and have it delivered to your door. Why not subscribe right now and be assured of getting your copy every week. It costs only \$2 a year or \$1 for six months.

----- USE THIS COUPON -----

BROADCAST WEEKLY,
36 Powell Street, San Francisco.

Gentlemen: Send me BROADCAST WEEKLY for one year (or six months). I enclose herewith two dollars (or one dollar).

Name.....

Address.....

City..... State.....

NEW RENEWAL EXTENSION

MICROPHONE GOSSIP



• • • Benjamin Franklin, experimenting with a kite, discovered electricity. Two small boys, experimenting along similar lines near Bellmore, L. I., one morning recently, put the transmitter of NBC's station WEAJ off the air. The boys tried sailing their kite with thin wire instead of the usual string. The wire proved too heavy, pulled the kite down over high tension wires leading to the transmitter, caused a short circuit and the station ceased broadcasting until engineers could rig up emergency lines. The boys have made no formal report of the results of their experiments.

• • • Lee Sims and Ilomay Bailey finished their long contract on that Sunday night coffee hour and then went shopping. Their first purchase was a sixteen-cylinder auto. But even at that Lee fussed about until he got a special body big enough for their 225-pound Great Dane to ride in the front seat with Lee.

• • • Although the knowledge came as a surprise to him, Howard Claney, NBC artist-announcer, finds himself groomed by the tailor to His Majesty, the King of England. Claney, while in London on vacation, gave measurements for a suit or two to be delivered to him back in America. When the invoice arrived, Claney discovered that the tailor accidentally selected also was "by appointment to His Majesty."

• • • Cynthia, NBC blues singer, who made her debut in pictures while she was attending college in Southern California, didn't dare tell her family she had become a picture actress. Her father and

she were sitting side by side in a small neighborhood house one night when "Across the Counter," a comedy short in which she was featured, flashed on the screen.

• • • A seventeenth century Italian painting, appraised at \$5,000, adorns the den of John Brewster, NBC actor and poetry reader. A fan sent it to him with a note that she had been listening to his radio programs for three and a half years. Another of his prized possessions is a hand-carved sixteenth century cradle another fan had picked up in Florence, Italy.

• • • Stuart Churchill, of Fred Waring's Pennsylvanians, has a tenor voice as sweet and clear as Poley McClintock's is rough and harsh. He sings the high, lilting solos and the featured parts with the glee club selections. Stuart came to Waring with a diploma from the University of Michigan in one hand and a satchel full of instruments in the other. Fred told him to give an audition. Stuart gave Fred one of the longest auditions on record. He demonstrated his ability to play the saxophone, guitar, bassoon, tympani, vibraphone, violin, flute and four other instruments—then he sang. Fred then established a speed record for hiring a musician.

• • • Gayne Whitman, the famous portrayer of "Chandu" over KNX, was signally honored recently when he was asked to attend the drive-meeting of the Parent-Teachers' Association and NRA groups in Los Angeles. Whitman delivered a talk of great interest to the attending executives of both the NRA and the Parent-Teachers' Association, and was warmly

commended for his program—"Chandu"—as an attraction for the children.

• • • Don E. Gilman, vice-president in charge of the Pacific Division, National Broadcasting Company, has announced the appointment of Sydney Dixon, formerly production manager at Station KYA, as manager in charge of local sales in NBC's Pacific Division.

Dixon's appointment followed the resignation of Lindsey Spight, who becomes affiliated with a firm of radio station representatives.

Dixon is well known to western radio listeners as a singer and program builder, but in addition to his recent duties as production manager at KYA he has been handling sales also for that station. He was born in Muskegon, Michigan, but grew up in Seattle, Washington, and is a graduate of the University of Washington. He studied at the Damrosch School of Fine Arts in New York, and at Columbia University, and was a pupil of Clifford Kantner of Seattle and Edmond J. Myer, noted singing coach, in New York. Following his New York studies he toured the United States in concert, then became leading tenor of the American Opera Company. In 1926 he became affiliated with the American Broadcasting Company, handling program production and sales, then joined the Northwest Broadcasting System as national sales manager.

He is a member of the Bohemian Club and the National Exchange Club.

• • • The "Red Davis" series, Mondays, Wednesdays, and Fridays, between 7:30 to 7:45 p. m. on KNX, stars a young actor whose name is

Curtis Arnall. Each evening Curtis does his part of "Red Davis"—typical American boy, on the NBC-WJZ network—and in the daytime makes the new type transcriptions of the program which KNX releases exclusively on the Pacific Slope. The Red Davis series is written by a well-known young fiction writer, Elaine Carrington, whose play, "Night Stick," caused an upheaval in New York City's politics some years ago. Later it was made into the Howard Hughes exposé—Alibi. The story of Red Davis is typical of almost any American boy with a sister, a group of young friends, and a new "girl" every week. It is the first of the new series of eastern programs brought back to KNX by Naylor Rogers, chief executive of the Hollywood outlet.

• • • Victor Linfoot, NBC announcer, likes active sports—but as a spectator only. He attends every football game and boxing match for which he can find time.

• • • Jimmy Noel has talents which the Whiteman band cannot use. Jimmy is a stunt man, a "Human Fly" with a long record of high building climbing, hand standing on skyscraper ledges and other feats removed from his job of making rhythm as one of the Rhythm Boys.

• • • Peter Van Steeden, youthful NBC conductor, started out to be a violinist. At the age of six he was studying under Arthur Lang, but discontinued his playing when he began to direct an orchestra while attending New York University.

• • • Milton Berle, whose talent for fast comedy is getting laughs for the Fred Waring program, is a clever lad in more ways than one. When he isn't working at being funny, he often sits down and composes a song or two.

Among the more popular compositions from his pen are "Gotta a Darn Good Reason for Being Good," "Blame It On Love," "If I Had a Million" and "Me and My Little Red Book."

• • • Since the announcement was made that two radio men, an engineer and a combination production man-announcer would go to Little America with Admiral Byrd for the purpose of broadcasting regular programs over the Columbia network direct from the scene of operations in the Antarctic, the offices of Edwin K. Cohan, CBS technical chief, and John Carlile, production manager, have been swamped with applicants for the assignments. The chance to take part in one of the most stirring adventures imaginable as well as the most remarkable radio engineering event in the history of broadcasting has brought forth an avalanche of candidates who apparently think nothing of being separated from civilization and spending two years in the coldest and most desolate region in the world.

• • • During her two and a half years on the radio over Columbia, Kate Smith's songs necessitated the fashioning of more than 1,200 orchestral arrangements for Nat Brusiloff's accompanying music. But when Kate inaugurated her sustaining schedule, the Brusiloff orchestra was augmented to twenty-two musicians. Now, each number, such as the "memory songs" which she often repeats by popular request, must be scored again for the larger orchestra. And that means at least fourteen arrangements weekly.

• • • "Gilmore Circus," NBC Pacific Coast Orange Network, is accorded top spot among popular revue coast programs.

Since January, broadcasts have been from the stage of

the Radio Playhouse in Los Angeles. Admission is by tickets obtained with the purchase of four quarts of Gilmore Lion Head Motor Oil.

Demand for tickets exceeded the capacity of the theater to such an extent that the September 15 program was broadcast from the stage of the Shrine Civic Auditorium, before 8,200 persons.

The stage was dressed to resemble a real circus, and the overflow took seats in "Circus Blues" on the stage, becoming part of the cast.

Another mammoth Gilmore Circus is planned for the middle of December.

• • • After a recent Gilbert and Sullivan performance in Light Opera Gems, Channon Collinge, CBS conductor, received a phone call from Lord Carwyn of England, who wanted to compliment him on the production.

• • • Arlene Jackson, NBC star, was born in Toronto, Canada, the daughter of Thomas Jackson of London, England, and Viola Frash of Chicago. She is 4 feet 11 inches tall, weighs 106 pounds, is fair and blonde. Her first radio audition was obtained at KFI, Los Angeles. At fifteen she was a concert pianist and toured Canada. She did her own piano act, combining songs and monologues with piano solos. For two years Arlene starred in English musical comedy.

• • • Julie Kellar, nationally prominent harpist and KNX staff feature, has a special harp with an innovation in the sounding board which makes it possible to broadcast the natural beauty of the instrument . . . heretofore considered very difficult.

• • • Milton Berle is another of the boys who doesn't feel right when transplanted from stage to microphone unless he brings all his footlight regalia along. He appears be-

fore the Carnegie Hall audience for his cigarette series with Harry Richman and Fred Waring's Pennsylvanians in his battered hat and with a rubber cigar hanging from a corner of his mouth.

• • • Deems Taylor, master of ceremonies for Al Jolson and Paul Whiteman, is one of the most versatile chaps on the air. He is a contributor of several articles in the latest edition of the Encyclopedia Britannica.

• • • Tiny Ruffner of Capt. Henry's Showboat is just about the hardest working man in radio. He is on the air six times a week, which means hours of rehearsals for each program. But, more important than merely announcing the programs on which he appears, Tiny is responsible for their production. He is the head of the radio department of the advertising agency for which he works.

• • • Now that autumn is turning into fall, KNX starts its old record-breaking campaign for distant reception. A letter was recently received from Manchester, England, written by a "dx fan" who sat up until 5 a. m. to listen to the "Grocers' Show," which was until last week, a regular Wednesday night feature over Hollywood's 25,000-watt broadcast station.

• • • Milton Wood, NBC announcer, who has been an actor and a writer, also had a short career as an agriculturist. He once helped to raise forty acres of head lettuce, and explains:

"It was so pretty they wouldn't let me pick it. It made grand Christmas trees!"

• • • Verna Felton, NBC actress, got her very first fan letters exactly three months after her first radio broadcast. Not because her listeners were slow in showing their appreciation, but because

she made her microphone debut in a special short-wave program which was sent to a far-away spot in Alaska—so far that it required three months for the letters to reach the United States.

• • • Far away in the South Seas the problems of that very modern American household of "One Man's Family" intrigue listeners just as they do here. From Pago Pago comes a letter to Carlton E. Morse, author of the serial, telling how American and English residents there are following the Barbour family's affairs.

"Imagine what a touch of home it is in this exotic setting," the writer says.

• • • Lulu McConnell, who shares starring honors on the "Big Show" over the CBS network with Gertrude Niesen and Isham Jones' Orchestra, is sure to gain a place with radio's best known rapid-fire talkers. At a rehearsal the other day she was handed a new script, one she hadn't seen before. Stepping to the microphone she started to work on it—at the rate of 275 words a minute.

• • • Rudy Vallee, addressing guests at a lunch of the Sales Executives Club of New York, said the public had two outstanding illusions about song-writing—that there was much money to be made at it, and that it was easy. As a consequence of these illusions, Rudy declared, he received as many as two hundred songs a week from amateurs.

• • • There's a marked contrast between the way Ruth Etting and Jimmy Durante, appearing on the Chase and Sanborn hour each Sunday from Hollywood, act before the microphone. Miss Etting stands so close that her voice is barely audible in the studio above the orchestra. Not so with "Schnozzle." He weaves and ducks around the "mike,"

at arm's length, barking at it as if daring it to come closer.

• • • Jack Clifford, former vaudeville favorite, has turned radio and is gaining friends with his comical and sympathetic portrayal of the deaf sheriff on the Gilmore Circus, NBC network. Clifford also makes personal appearances in an antiquated horseless carriage with lots of trick fun-making gadgets. He was a highspot at the State Fair in Sacramento, California, and at the Los Angeles County Fair in Pomona, where he broadcast daily from the racetrack in front of the grandstands with his horseless carriage.

• • • Chief Announcer Don Wilson emphatically denies that "NRA" means "Nurts to Radio Announcers."

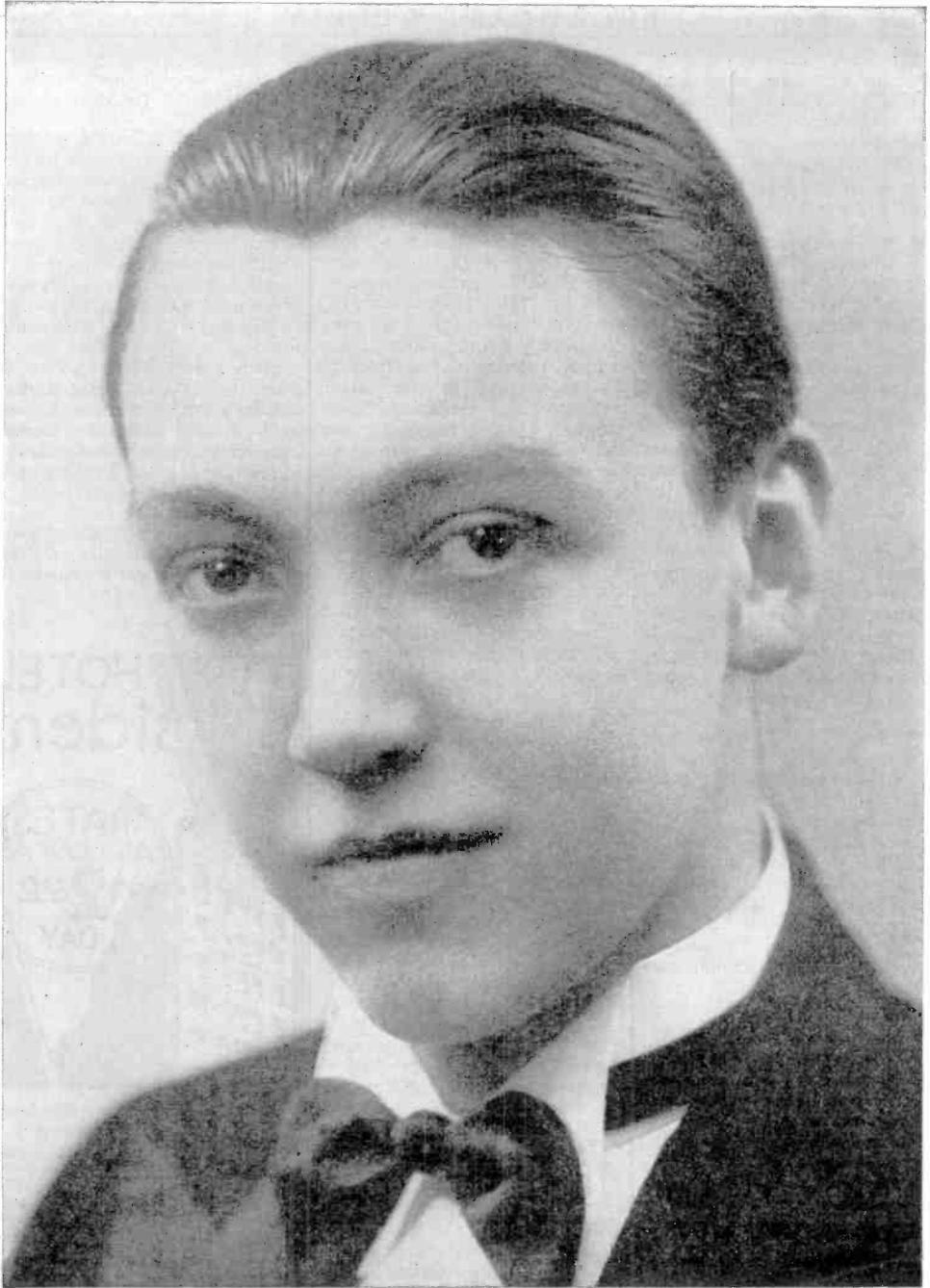
HOTEL President

RATES AS LOW AS \$2.00 DAY

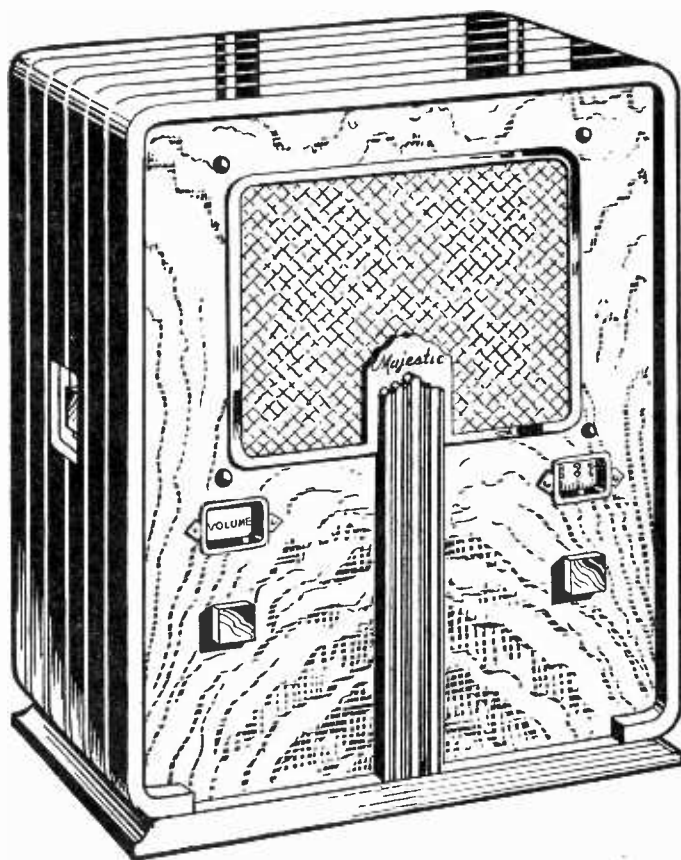
New & Modern Refined

While in San Francisco, why not live at Hotel PRESIDENT and enjoy the best? It costs no more. Shower and tub in every room. One of San Francisco's newest and finest hotels. Special low weekly rates. Write for particulars.

935 GEARY near LARKIN



ALVINO FEY, guitarist and arranger, was born in Oakland, July 1, 1908. His schooling was obtained in and around the bay district and in New York. He is 6 feet 2 inches in height, weighs 180 pounds, has brown hair and eyes and a serious countenance. While in the East he had an opportunity to join a vaudeville act and eventually landed at his starting point. As a youngster he was much interested in the technical end of radio and at one time toyed with a sending station of his own. Aviation is his latest thrill. Is a licensed flyer. Single.



Majestic Master Six

Model 461

\$47.50

THE RADIO THAT "MADE GOOD"

The most critical judge of a radio set and its performance is the Radio Dealer. He has handled and listened to many hundreds of radios of all types and descriptions. He knows what it is all about and can't be fooled.

Before this critical audience of Radio Dealers, the Majestic Master Six and its companion model, the Century Six, have very definitely "made good."

We ourselves think that for a table model this is the PERFECT RADIO. Beautifully styled, it is one of the Majestic "Smart Sets of 1934." In general performance it is a good deal better than you'd expect—even of a Majestic.

ASK YOUR DEALER FOR A DEMONSTRATION

THOMPSON & HOLMES, LTD.

Wholesale Distributors

171 Bluxome Street

San Francisco

The title 'SILHOUETTES' is centered at the top in a large, bold, serif font. On either side of the title is a stylized silhouette illustration. On the left, a figure stands playing a saxophone with musical notes floating around. On the right, a figure sits at a desk with a typewriter, holding a pen to their chin in a thoughtful pose. The entire title and illustrations are framed by decorative flourishes.

SILHOUETTES

DONALD McKAIG ROSS, heard over the Columbia network as Don Ross, the Pontiac Minstrel, was born at Osakis, Minnesota, on July 16, 1905. His father, Fred E. Ross, is a minister and his mother is the former Mary Hamm. The Ross family points with justifiable pride to its distinguishable Scottish ancestry. Among their forebears they list Rob Roy, one of the most famous of the clan chieftains. Don also is related to Betsy Ross, who made the first American flag. At an early age Don's father was transferred to a pulpit at Washington Court House, Ohio, and it was there that the baritone received his primary education. During vacations he took a job in the local theatre at \$2 a week. Although he served as general helper—his duties included selling tickets, acting as usher and being a prompter in the wings—his real interest was in the entertainment side and from those early days his ambition to be a performer. After graduation from high school at Washington Court House, he matriculated to Ohio State University. Among his college mates were Frank Crumit, popular singing comedian of radio and musical comedy, and James Thurber, noted humorist and artist on the New Yorker staff. College was no bed of roses for Don Ross. He had to help pay his way through by being a chauffeur, digging ditches and working for a roofing company. With it all he managed to receive good grades in the classroom as well as take part in several extra-curricular activities. He was a member of the football, baseball and basketball squads, took part in college dramatics and debating and was vice-president of the Glee Club.

A fellow singer was Jack Brooks. As a team he and Don were featured in several college shows. Their work was exceptionally well received by the students, who encouraged them to continue it after they left college. In a short time Brooks and Ross were known all over the country. They started with appearances in picture houses, were featured in an addition of the Greenwich Village Follies and for several seasons were on the Chicago staff of the Columbia Broadcasting System. While on tour the harmonists played an engagement at Cincinnati and were invited to make a broadcast over a local station. They were introduced to an attractive, brown-haired girl. Soon after Don Ross formed a new partner-

ship, this time for life. The girl was Jane Froman, now a radio star in her own right. The team of Brooks and Ross was dissolved early this year. Jane was enjoying radio and personal appearance success in the East and Don decided to follow her to New York. The Rosses live in Garden City, a Long Island suburb of New York. This winter Don and Jane will be in the Follies, their first regular joint appearance and the first radio performers to be engaged for the famous Ziegfeld production.

WHEN the roll is called up yonder for radio veterans, perhaps the first voice to answer will say: "Present! And don't go 'way, folks!"

Charlie Wellman, now a KFI-KECA artist, started broadcasting in 1921 over KYW in Chicago. Since then he has been featured and starred in a dozen or more major stations throughout the country, and has been prominently identified with every leading broadcaster in the Los Angeles metropolitan district.

He started in vaudeville in 1909, and as he says, "made my living giving a good imitation of George M. Cohan." In 1909, Charlie had a spark coil transmitter in Chicago over which the race track returns used to come quicker than over the telegraph. So his room was a gathering place for touts who used to wrack their brains to read code so as to put last-minute bets on the winning nags. Charlie himself never wagered a dollar, to his eternal regret, as he now admits.

Wellman was manager of KFVB and KMIC, was the first voice heard over KMTR and KNX, and at the last station created a record of telegraphic response, a record not bested for several years.

The now famous phrase "Don't go 'way, folks" was an accidental hit. The usual sentence, when programs were delayed, used to be "Stand by." Once, however, at KYW, Charlie's music fell off the stand, and as he reached for it he unconsciously said "Don't go 'way, folks." The reaction was immediate, and Charlie has used the phrase since then as his microphone signature.

Wellman is of medium height, slender, blue-eyed, carefully groomed. He has been married for many years, "to the same lovely woman," and has a grown son who studies law and listens to whatever Wellman program is on the air.

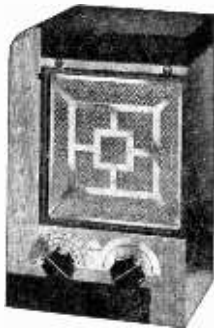


DRURY LANE is another minister's son who chose to express himself in the theatre. He worked hard and long to reach his goal, only to face disappointment. His voice, they said, had been used improperly and failed him at the crucial moment. But Drury could wait, could make himself useful, while he began all over again rebuilding on a more sure and lasting foundation, and now he is back, reaping the benefits of faith and toil. He is a quiet, sincere personality, greatly respected and loved by all who know him.

Majestic Sales

“BOOM” up
ABOVE 1929
Sales Record

‘SMART SET’
APPEARANCE *plus*



MODEL 49—DUO-MODERN
FOUR-TUBE RADIO

Six-tube performance . . . two-tone finish . . . Police and short-wave to 3500 kilocycles.

\$28.50

—**—



MODEL 59—STUDIO
FIVE-TUBE RADIO

Seven-tube performance . . . Smart modern design . . . Automatic volume . . . broadcast and short-wave to 4400 kilocycles.

\$44.50

—**—



MODEL 463—CENTURY SIX
SIX-TUBE RADIO

Eight-tube performance . . . Ultra modern design . . . automatic volume . . . police calls.

\$47.50

LIBERAL
TRADE-IN
ALLOWANCE

COMPLETE 1934 LINE OF MAJEST

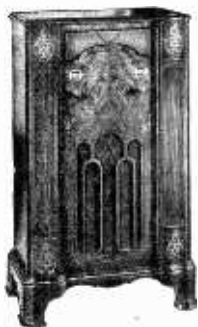
BROADCAST WEEKLY

36 POWELL STREET

DOUGL

Majestic 'DUO-VALVE' PERFORMANCE
 CREATES BIG DEMAND and

Remember, we are making a
*Special Trade Allowance on your old set on
 the purchase of a New 1934 Model*



This popular Plaza Model Console is a great value. It compares favorably with other makes at much higher prices.

SIX-TUBE RADIO — EIGHT-TUBE PERFORMANCE
\$66.00



Words or pictures can not describe this
ROYALE MODEL

We invite you to come to our store to see and hear it.

EIGHT-TUBE RADIO — TEN-TUBE PERFORMANCE
\$109.50



\$54.50

TWIN SIX
Auto Radio
 SIX TUBES
 (2 Duo-Valve)
 Automatic Volume
 Booster Switch
 Airplane Dial
 Dynamic Speaker

**NEW
 SELF-SHIELDED TUBES!**

In addition to the double-duty Duo-Valve tubes, all these "Smart Sets" employ the new, exclusive Majestic Self-Shielded tubes—perfectly shielded by metal fused directly on the glass ... for superlative reception!

IC RADIOS NOW ON SALE AT

'Sown RADIO STORE

AS 5272

SAN FRANCISCO

SUNDAY Programs • • • • • October 15, 1933

379.5 Mtrs. NBC-KGO Sutter 1920
790 Kcys. 7500 Watts
National Broadcast. Co., San Francisco

- 8 A.M.—Chronicle Comics
- 8:30—Arlon Trio
- 9:30—Sax-o-Tunes
- 10—Stringwood Ensemble
- 10:30—Highlights of the Bible
- 11—Gene Arnold's Commodores
- 11:30—Yeast Foamers
- 12 noon—Lady Esther Serenade
- 12:30—Radio Pulpit
- 1—Fiddlers Three
- 1:15—Wildroot Program
- 1:30—Hoover Sentinels Concert
- 2—The Friendly Hour
- 2:30—Grand Hotel: Drama
- 3—Catholic Hour
- 3:30—"Our American Schools"
- 4—Real Silk Program
- 4:30—The Bakers Broadcast
- 5—Chase and Sanborn Program
- 6—Manhattan Merry-Go-Round
- 6:30—American Album of Music
- 7—Chevrolet Program: Jack Benny
- 7:30—Col. Louis Howe
- 7:45—Sunday at Seth Parker's
- 8:15—Talk Under the Auspices of NRA
- 8:30—Death Valley Days: Drama
- 9—Do You Believe in Ghosts?
- 9:15—Reader's Guide
- 9:30—Carlos Molina's Tango Orch.
- 10—Richfield News Flashes
- 10:15—Paul Carson, organist
- 11 to 12 midnight—Bal Tabarin Orch.

322.4 Meters KROW Glenc. 6774
930 Kcys. 1000 Watts
Educa. Broad. Corp., Oakland, Calif.

- 8 A.M. to 12—Various programs
- 12 noon—Bits of Philosophy
- 12:30—William Hamlyn, tenor
- 1—Gladys Kaul
- 1:15—Johnny Bozic, Accordion
- 1:30—Bible Questions and Answers
- 2—Marie George, soprano
- 2:30—Soccer—Football
- 4:30—Hi-Lites of History
- 4:45—YMCA Program
- 5—Oakland Council of Churches
- 5:30—YWCA Program
- 6—Watch Tower program
- 6:30—Sunday Evening Concert
- 7—Jay Burk
- 7:15—Children's Story Hour
- 7:30—Homeland Melodies
- 8—Sally Snow, Hillnely
- 8:15—Gladys Kaul
- 8:30—Montana Waddies
- 9—Italian Watch Tower
- 9:30—Omega Gamma Dance
- 10 to 11 P.M.—Dance Music

535.4 Meters KTAB Garfield 4700
560 Kcys. 1000 Watts
Assoc. Broadcasters, Oakland, Calif.

- 8:30 A.M. to 1—Various programs
- 1 P.M.—Church of Latter Day Saints
- 1:30—Studio program
- 2—Little Journeys
- 2:30—Dance Orchestra
- 3:30—Popular recordings
- 4—Opera Gems
- 4:30—Salon Favorites
- 5—Organ Concert
- 6—Echoes of Portugal
- 7—Prof. George Kruger, pianist
- 7:15—Amateur Sports News
- 7:30—Church Services
- 9:15—Rod Hendrickson; Organ
- 9:45—Famous Artists
- 10—Studio program
- 10:30 to 11 P.M.—Sun. Night Club

440.9 Meters KPO Sutter 1920
680 Kcys. 50,000 Watts
National Broadcast. Co., San Francisco

- 8 A.M.—Gruen and Hall, piano duo
- 8:15—Major Bowes' Family
- 9:15—Seeing the Other Americas
- 9:30—Radio City Concert
- 10:30—Cecilians: Vocal and Instr.
- 11—Bible Stories
- 12 noon—Music Garden
- 12:15—Melodians, orchestra
- 2—John and Ned, harmony duo
- 2:15—Football Game: Santa Clara vs. Olympic Club
- 5—Organ Concert
- 5:30—Evening Concert
- 6—Gunnar Johansen, pianist
- 6:30—Silhouettes: Orch. and Vocal
- 7:15—Personal Close-ups, interview by Gypsy
- 7:30—Song Nuggets: Dance orch.
- 8—Rudy Seiger and His Fairmont Hotel Orchestra
- 8:30—Orchestral Gems
- 9—Dance Nocturne
- 9:30—University of California prog.
- 10—Hotel Cosmopolitan Orchestra
- 10:30—On Wings of Music
- 11 to 12 mid.—Chas. Runyan, organ

243.8 Meters KYA Prospect 3456
1230 Kcys. 1000 Watts
Pac. Broadcast. Corp., San Francisco

- 8:15 A.M.—Christian Science Devotions
- 8:30—Sabbath Reveries
- 9—"Fellowship of the Air"
- 9:15—Pianoforte Etudes
- 9:45—Tango Time
- 10—Village Boys
- 10:30—Three Four Melodies
- 10:45—Musical Strings
- 11—Old St. Mary's Church Services
- 12 noon—Pipe Organ Concert
- 12:30—Paraders: Waltz Idylls
- 2—Light Opera Concert
- 3:30—Chamber Group
- 4—Community Forum
- 4:30—Symphony Concert
- 5:30—Violin Masters
- 6—Sacred Hour
- 7—Heart Throb Harmonies
- 7:30—Opera
- 9:30—"Beauty That Endures"
- 9:45 to 11 P.M.—Concert Memories

296.6 Meters KQW Ballard 777
1010 Kcys. 500 Watts
Pac. Agric. Foundation, Ltd., San Jose

- 10:15 A.M.—Sunday School Lesson, First Baptist Church
- 11—First Baptist Church Services
- 12:30 P.M.—Silent period
- 7:30 to 9 P.M.—Church Services

340.7 Meters KLX Lake. 6000
880 Kcys. 1000 Watts
Tribune Pub. Co., Oakland, Calif.

- 12 noon—Records
- 12:30—M. F. Morse, tenor: Anita and Orsoco, novelty guitar duo, and Jean Ardath, pianist
- 1:30—Records: Brahms Trio
- 3:30—Manila String Orchestra
- 4—Records
- 4:30—Violin Ensemble
- 5—Covered Wagon Jubilee
- 5:30—The Famous Troubadour
- 5:45—Old Man Soliloquy
- 6—Mixed Quartet
- 6:30—Hotel Oakland Trio
- 7:30—Dot Kay and Nancy Hersey
- 7:45—"Leaders in Sports"
- 8—John Lewis Quintet

9—Nevada Nite Herders
9:30—Wm. Don, "The Count of Monte Crisco"

9:45—Studio Program

10—Freddie Skinner

10:30 to 11—Dance program

491.5 Meters KFRC Prospect 0100
610 Kcys. 1000 Watts
Don Lee Broadcast. System, S.F., Cal.

- 8 A.M.—Examiner Comics
- 8:30—CBC, Salt Lake Tabernacle Choir and Organ
- 9:30—Jean Ellington, contralto, and Dick Aurandt, Organist
- 9:45—CBS, Madison Ensemble
- 10—Home Sweet Home Concert
- 11—CBS, Broadway Melodies
- 11:30—Georgians, male quartet
- 12 noon—N. Y. Philharmonic Orch.
- 2—CBS, Willard Robison
- 2:15—CBS, Vera Van, contralto
- 2:30—"Melodies Organistique"
- 2:45—Claude Sweeten's Concert
- 3—CBS, The Islanders
- 3:30—CBS, Smilin' Ed McConnell
- 3:45—CBS, Bright Interlude
- 4—CBS, Current Events
- 4:15—CBS, The Gaudios
- 4:45—CBS, Between the Bookends
- 5—Freddie Rich Entertains
- 6—CBS, Seven Star Revue
- 7—Angelo Patri, Child Psychologist
- 7:30—Union Oil program
- 8—Salon Moderne
- 8:30—CBS, Jerry Freeman's Orch.
- 9—The Ford "Merrymakers"
- 10—Darrell Donnell, news
- 10:10—Gus Arnheim's Orchestra
- 10:30 to 12 mid.—Ted Fio-Rito Orch.

280.2 Meters KJBS Ord. 4148-49
1070 Kcys. 100 Watts
J. Brunton & Sons, San Francisco

- 8 A.M. to 5:30—Recordings; News
- 5:30 P.M.—Silent period
- 12:01 to 6 A.M.—Owl program

265 Meters KSL Wasatch 3901
1130 Kcys. 50,000 Watts
Radio Serv. Corp. of Utah, Salt Lake

- 7 A.M. to 5—Various programs
- 5 P.M.—Freddie Rich entertains
- 6—CBS, Seven Star Revue
- 7—CBS, Angelo Patri
- 7:30—L. D. S. Program
- 8—CBS, Guy Lombardo's Canadians
- 8:15—CBS, Cathedral Madeleine
- 8:45—CBS, The Keeley Program
- 9—The Merrymakers
- 10 to 11 P.M.—Tabernacle Organ

225.4 Meters KGB Franklin 6151
1330 Kcys. 1000 Watts
Don Lee Broadcast. System, S. D., Cal.

- 8 A.M. to 3—Various programs
- 3—Musical Program
- 3:30—CBS, Ed McConnell
- 3:45—CBS, Bright Interlude
- 4—CBS, H. V. Kaitenborn
- 4:15—CBS, Modern Male Chorus
- 4:30—Devotional Quarter Hour
- 4:45—CBS, Between the Bookends
- 5—CBS, Freddie Rich entertains
- 6—CBS, Seven Star Revue
- 7—CBS, Angelo Patri
- 7:30—Union Oil program
- 8—Salon Moderne
- 8:30—CBS, Jerry Freeman's Orch.
- 9—Merrymakers
- 10—World-Wide News
- 10:10—Dance Music
- 12 to 1 A.M.—Recordings

333.1 Meters KHJ V Andike 7111
900 Kcys. 1000 Watts
Don Lee Broadcast. System, L. A., Cal.

8 A.M. to 12—Various Programs
12 noon—CBS, Symphonic Hour
1—CBS, Cathedral Hour
2—Professor Lindsay
2:15—CBS, Vera Van
2:30—To be announced
2:45—Rabbi Magnin
3—Musical program
3:30—CBS, Smilin' Ed McConnell
3:45—Bright Interlude
4—CBS, H. V. Kaltenborn
4:15—CBS, Modern Male Chorus
4:30—Marvelous Melodies
4:45—CBS, Between the Bookends
5—CBS, Freddie Rich entertains
6—CBS, Seven Star Revue
7—CBS, Angelo Patri
7:30—Union Oil program
8—CBS, Guy Lombardo's Orchestra
8:30—CBS, Jerry Freeman's Orch.
9—Ford V-8 Merry-makers
10—News Items; Orchestra
11 to 12 midnight—Organ Recital

468.5 Meters KFI Richm'd 6111
640 Kcys. 50,000 Watts
Earle C. Anthony, Inc., Los Angeles

9 A.M.—Church Quarter Hour
9:15—NBC, Seeing Other Americas
9:30—NBC, Radio City Concert
10:30—NBC, Highlights of the Bible
11—NBC, Gene Arnold's Com-mo-dores
11:30—NBC, Jan Garber's Orchestra
12 noon—NBC, Wayne King's Orch.
12:30—Dr. Casselberry
12:45—Rudy Wiedoff, transcription
1—Philosopher's Corner
1:15—NBC, Wildroot Institute
1:30—NBC, Hoover Orch. and Choir
2—Classic Hour, String Trio
2:30—NBC, Grand Hotel
3—U. S. C. College of Music
3:30—NBC-KGO Programs to 7
7—NBC, Chevrolet program
7:30—"Makers of History"
8—Orchestra
8:15—NBC, NRA Talk
8:30—NBC, Death Valley Days
9—NBC, Do You Believe in Ghosts
9:15—Orchestra
9:30—Zip's Mirth Parade
9:45—Orchestra
10—NBC, Richfield Reporter
10:15 to 10:45 P.M.—Richelieu, Car-dinal or King

499.7 Meters KFSD Franklin 6353
600 Kcys. 1000 Watts
Airfan Radio Corp., Ltd., San Diego

7:45 A.M. to 12—Various programs
12 noon—Gus the Funny Man
12:30—NBC, Radio Pulpit
1—NBC, Fiddlers Three
1:15—Studio program
1:30—NBC, Organ Recital
2—NBC, Friendly Hour
2:30—NBC, Eva Jessye Choir
3—Old-Time Program
3:30—NBC, Essex House Ensemble
4—To be announced
6—Twilight Hour
6:30—Dr. Straus' Sketchbook
7—NBC, Chevrolet Program
7:30—Mollie Thompson, Organist
7:45—NBC, Seth Parker
8:15—NRA Program
8:30—Studio program
9:15—NBC, Reader's Guide
9:30—NBC, Univ. of California
10—NBC, Richfield News Flashes
10:15—NBC, Bridge to Dreamland
11 to 12—NBC, Bal Tabarin Orch.

236.1 Meters KOL Main 2312
1270 Kcys. 1000 Watts
Seattle Broadcast. Co., Seattle, Wash.

8 A.M. to 12—Various programs
12 noon—CBS, Symphonic Hour
1—CBS, Cathedral Hour
2—CBS, Willard Robinson
2:15—CBS, Vera Van
2:30—CBS, Dick Auerand
2:45—Claude Sweeten's Concert
3:30—CBS, Smiling Ed McConnell
3:45—CBS, Bright Interlude
4—CBS, H. V. Kaltenborn
4:15—CBS, The Gauchos
4:30—To be announced
5—CBS, Freddie Rich Entertains
6—CBS, Seven Star Revue
7—CBS, Angelo Patri
7:30—"76 All-Star Revue"
8—Fashion Bootery
8:15—Guy Lombardo's Canadians
8:30—CBS, Jerry Freeman Orch.
8:45—"Marvelous Melodies"
9—String Quartette
9:15—Buccaneers
9:30—Donald Graham
9:45—Haywire Mac
10—Ted Fio-Rito's Orch.
11 to 12 mid.—Midnight Moods

483.6 Meters KGW Atwater 2121
620 Kcys. 1000 Watts
Morning Oregonian, Portland, Ore.

8 A.M. to 12—Various programs
12 noon—NBC, Lady Esther Sere-nade
12:30—Gystex-Knox Co.
12:45—Orchestra
1—NBC-KGO Programs to 2
2—Leif Erickson Day
2:30—NBC-KGO Programs to 8:15
8:15—Venetian Quarter Hour
8:30—NBC, Death Valley Days
9—Do You Believe in Ghosts?
9:15—G. A. Paine Program
9:30—Homicide Squad
10—NBC, Richfield News Flashes
10:15—Racetrack Recreations
10:20 to 12 midnight—Dance Music

309.1 Meters KJR Seneca 1515
970 Kcys. 5000 Watts
Northwest Broad. System, Seattle, Wn.

9 A.M. to 1—Various programs
1 P.M.—NBC, Fiddlers Three
1:15—Sohl & Lundberg, vocal
1:30—NBC, Organ Concert
2—NBC, The Friendly Hour
2:30—Musical Etchings
3—NBC, Catholic Hour
3:30—Musical Program
4—Cornish School
4:30—Clef Dwellers
5—Recorded program
6—Angelus Hour
7—Song Recital
7:15—To be announced
7:45—Lullaby Land, Leon
8—First Church of Christ, Scientist
9—Wandering Minstrel
9:15—NBC, Reader's Guide
9:30—Orchestra; Emil Hanson
10:15 to 11 P.M.—Organ Recital

526 Meters KVI Broadway 4211
570 Kcys. 1000 Watts
Puget Sound Broadcast. Co., Tacoma

8 A.M. to 12—Various programs
12 noon—CBS Programs to 2:30
2:30—Judge Rutherford
2:45—Claude Sweeten Concert
3—A Visit with Betty
3:30—"Smilin' Ed McConnell"
3:45—CBS, Bright Interlude
4—CBS, H. V. Kaltenborn
4:15—CBS, The Gauchos
4:45—CBS, Between the Bookends

5—CBS, Freddie Rich Entertains
6—CBS, Seven Star Revue
7—Angelo Patri
7:30—Union Oil program
8—Guy Lombardo's Orchestra
8:30—CBS, Jerry Freeman's Orch.
9—String Quartet
9:15—Buccaneers
9:30—Donald Graham
9:45—Haywire Mac
10—Gus Arnheim Orchestra
10:30—To be announced
11 to 12 mid.—Ted Fio-Rito's Orch.

285.5 Meters KNX Hemp. 4101
1050 Kcys. 25,000 Watts
Western Broadcast. Co., Los Angeles

7 A.M. to 5—Various programs
5 P.M.—Speaker; Organ
5:30—First Radio Church
6:30—Humanist Society
7—Rubanoff's Concert Ensemble
7:15—Dance Orchestra
7:30—Charlie Hamp, vocal & piano
8—First Presbyterian Church
9—News Service
9:15—Judge Rutherford
9:30 to 10:30 P.M.—Calmon Lubo-viski and Claire Mellonino

325.9 Meters KOMO Elliott 5890
920 Kcys. 1000 Watts
Fisher's Blend Station, Inc., Seattle

9 A.M. to 12—Various programs
12 noon—NBC, Lady Esther Serenade
12:30—Viennese Vagabonds
1—NBC, Fiddlers Three
1:15—NBC, Wildroot Institute
1:30—NBC, Hoover program
2—Old Songs of the Church
2:30—NBC, Grand Hotel
3—Betty and Music
3:30—Smoke Rings
4—NBC, Real Silk Hosiery
4:30—NBC, The Bakers Broadcast
5—NBC, Chase and Sanborn prog
6—NBC, Manhattan Merry-Go-Round
6:30—NBC, Album of Familiar Music
7—NBC, Chevrolet program
7:30—NBC, Col. Louis Howe
7:45—NBC, Sunday at Seth Parker's
8:15—Lee Sisters
8:30—NBC, Death Valley Days
9—NBC, Do You Believe in Ghosts?
9:15—Pioneers
9:45—To be announced
10—NBC, Richfield News Flashes
10:15—Three Jacks
10:30 to 11 P.M.—Greater Washing-ton Hour

508.2 Meters KHQ Main 5383
590 Kcys. 1000 Watts
Louis Wasmer, Inc., Spokane, Wash.

9 A.M. to 1—Various programs
1 P.M.—U. S. Forest Service
1:15—NBC, Wildroot program
1:30—NBC, Hoover Co. Program
2—N. W. on Parade
2:30—NBC, Grand Hotel
3—To be announced
3:15—N. W. Stories
3:30—G. A. Paine & Co.
3:45—A. C. Gilbert Program
4—NBC, Real Silk program
4:30—NBC, The Baker Broadcast
5—NBC, Chase & Sanborn
6—NBC, Merry-go-Round
6:30—NBC, Amer. Album of Music
7—NBC, Chevrolet Program
7:30—Crazy Wells Program
7:45—NBC, Sunday at Seth Parkers
8:15—Studio program
8:30—NBC, Death Valley Days
9—Croonaders
9:15—NBC, Readers Guide
9:30—NBC, Congress Hotel Orch.
10 to 12 mid.—NBC Programs

MONDAY Programs

October 16, 1933

379.5 Mtrs. **NBC-KGO** Sutter 1920
790 Kcys. 7500 Watts
National Broadcast. Co., San Francisco

7 a.m.—Four Southern Singers
7:15—Organ Concert
7:30—Financial Service
7:45—Exercise and Applesauce—
Hugh Barrett Dobbs
8—Lee S. Roberts
8:15—U. S. Navy Band
9—Johnny Toffoli, accordionist
9:15—Johnny Marvin, tenor
9:30—Arion Trio; Organ
10:30—Magazine of the Air
11:30—Daytime Speakers
11:45—Carr and McKenzie, vocalists
12 noon—Financial Flashes
12:15—Farm and Home Hour
1—Betty and Bob
1:15—To be announced
1:45—Art and Music
2—Al Pearce and Gang
3—Langendorf Pictorial
3:15—Viennese Ensemble
3:30—Three X Sisters
3:45—Twenty Fingers of Harmony
4—The Well-Dressed Woman
4:15—Rhythm Rascals
4:30—Soloist: Chicago Studio
4:45—Piano Pals
5—Stories of Human Behavior
5:15—Arion Trio
5:30—Wheatenaville: dram. sketch
5:45—Little Orphan Annie
6—Eileen Piggott, soprano
6:15—Chester Rowell
6:30—Just Around the Corner
7—Carnation Contended program
7:30—Demi-Tasse Revue
8—Amos 'n' Andy
8:15—The Philistine: Dr. Maker
8:30—Stars of the West
9—NBC, Floyd Gibbons
9:15—Don Bestor Orchestra
9:30—Terrace Gardens Orchestra
9:45—Tim and Irene: Comedy
10—Richfield News Flashes
10:15—Melody Mixers
11—Tom Coakley's Orchestra
11:30 to 12 midnight—Arion Trio

440.9 Meters **KPO** Sutter 1920
680 Kcys. 50,000 Watts
National Broadcast. Co., San Francisco

7:30 A.M.—Morning Parade
8—Organ Concert
8:15—Crossteuts, Log o' the Day
9:15—Julia Hayes, beauty talk
9:30—Johnnie O'Brien, harmonica
9:45—News; Sarah Kreindler, violin
10:15—Songs by the Kitchen Sink
10:30—Orlando's Concert Ensemble
11—Musical Originalities
11:15—Calif. Fed. of Women's Clubs
11:45—Agricultural Bulletins
12 noon—Outstanding Speaker
12:15—Midday Musicale
1—News; 1:15, Ann Warner chats
1:45—John and Ned, harmony duo
2—Casino Orchestra
2:30—Mobile Moans
2:45—Musical Moments
3—Dr. Copeland's Health talk
3:05—Viennese Ensemble
3:15—Mud Caves: dramatic skit
3:30—Little Colleen
3:45—University of California
4—Dance Masters
4:30—Sax-o-Tunes; 5, Melodians
5:15—Two Men and a Maid
5:30—Intermezzo: Arion Trio
5:45—News; Comedy Skit
6—Organ Concert
6:30—Safety First: Traffic Talk

6:45—Detectives Black and Blue
7—Real Life Dramas
7:05—So. Harmony Four
7:15—Tarzan of the Apes
7:30—Realm of Terpsichore
8—Edna Fischer, pianist
8:15—Red Davis: dramatic sketch
8:30—Southern Symphonies
9—Marvelous Melodies
9:15—NBC Drama Hour
9:45—Pacific Serenaders
10:30—Piano Pictures
11—Ambassador Hotel Orchestra
11:30 to 12 midnight—Organ Concert

243.8 Meters **KYA** Prospect 3456
1230 Kcys. 1000 Watts
Pac. Broadcast. Corp., San Francisco

7:30 A.M. to 12—Various programs
12 noon—Scriptures
12:03—Harmonies; Organ
1—Concert; Royal Serenaders
2—Parent-Teachers' Association
2:15—Modern Maestros; Organ
3:30—Three X Sisters
3:45—Tango Time
4—Music Masters; 5, Sunset Revue
5:30—Corriere Dell' Aria
5:45—Campbell Digest
6—Paraders; Waltz Idylls
6:45—"Eb and Zeb"
7—Bob Allen: Piano Stylist
7:15—Mountain Boys
7:30—Musical Whims
8—Eugene Mancini & Virginia Miller
8:30—S. F. Musical Club Choral
9—News Flashes
9:15—"National Defense"
9:30—Captain Argus
10—Organ Serenade
11 to 12 midnight—Concert Memories

535.4 Meters **KTAB** Garfield 4700
560 Kcys. 1000 Watts
Assoc. Broadcasters, Oakland, Calif.

7 a.m. to 1—Various programs
1 P.M.—Radio Frolic
1:30—Over the Teacups
2—News; Town Crier
3—X-Bar-B Boys; 3:30, Beauty Talk
3:45—Fashion Talk; 4, Old Rajah
4:30—Old Bachelor
4:45—Child Psychology Talk
5—Smile Club; Health Talk
6—Auto Question Box
6:15—Famous Artists; News
6:45—Ernie Smith's Sport Page
7—Popular Concert
7:15—Elbert La Chelle, Organist
7:30—Minstrel Show
8—Studio program
8:30—Lyric Ensemble
8:45—Miracle Diamonds
9—News; Souvenirs
9:45—Herb Allen, pianist
10—Recordings
10:30—Paul Kellar, pianist
10:45 to 12 midnight—Records

296.6 Meters **KQW** Ballard 777
1010 Kcys. 500 Watts
Pac. Agric. Foundation, Ltd., San Jose

6:30 A.M. to 8—Various programs
6 P.M.—Dinner Music
6:15—Franco's program
6:30—Fed. State Market Reports
6:45—Farmers' Exchange and Mar-
ket Place
7—U. S. Weather Forecast
7:03—Radio News and Forum
7:30—Minute Man
7:45—Famous Campers
8—Sacred and Golden Memories
9—Accordion Capers
9:30 to 10 P.M.—Mauna Keans

491.5 Meters **KFRC** Prospect 0100
610 Kcys. 1000 Watts
Don Lee Broadcast. System, S. F., Cal.

7 A.M.—Recordings; Stocks
7:30—Exercise Period, Bob Bence
8—Popular Selections
8:15—CBS, Ann Leaf, Organist
8:30—To be announced
8:45—CBS, Rhythm Kings
9—CBS, Voice of Experience
9:15—CBS, Gypsy Nina
9:30—Popular selections
9:35—CBS, Concert Miniatures
10—CBS, George Hall's Orchestra
10:30—Better Business Lecture
10:45—CBS, Mischa Raginsky
Ensemble
11—CBS, The Round Towners
11:15—Prudence Penny
11:30—CBS, The Captivators
11:45—Instrumental Trio
12 noon—Noonday Concert
1—CBS, Harriet Cruise and Orch.
1:30—N. Y. Stock Exchange
1:35—CBS, Artist Recital
2—Happy-Go-Lucky Hour
3—Feminine Fancies
4—Hodge Podge Lodge
4:30—CBS, Kasper Sisters
4:45—Lost and Found Items
4:50—Records; Town Topics
5—CBS, Village Choir
5:15—Organalities
5:30—CBS, Bing Crosby
5:45—CBS, Fray & Braggiotti
6—CBS, H-Bar-O Rangers
6:15—Francisco del Campo, tenor
6:30—CBS, The Big Show
7—Lincoln Finance Corp.
7:15—Connie Moffatt, fashion talk
7:30—CBS, NRA Speaker
7:45—CBS, Myrt and Marge
8—Shell Show
9—Blue Monday Jamboree
10—Darrell Donnell, News
10:10—Intimate Hollywood News
10:15—Earl Dancer's Band
11:30 to 12 mid.—Red Stanley's Orch.

340.7 Meters **KLX** Lake. 6000
880 Kcys. 1000 Watts
Tribune Pub. Co., Oakland, Calif.

8 A.M.—Records
8:30—Covered Wagon Jubilee
9—Records; Clinic of the Air
10:15—Stocks; News Flashes
10:30—International Kitchen
11—Clark Sisters; News Flashes
11:30—Novelty Guitar Duo
11:45—Madelon Sivyer and Nancy
Hersey
12 noon—Bill Duncan's Band
1—Jean's Hi-Lights; News Flashes
2—Records; News; Stocks
2:45—Opportunity Hour
3:30—News Flashes; Records
4:15—Brother Herb's Club
4:45—McCoys Health School
5—Covered Wagon Jubilee
5:30—Famous Troubadour
5:45—Lovable Liars
6—Betty Babbish Band
7—K-9 Programs; News
7:30—"Beauty That Endures"
7:45—Club News Parade
8—Merriell Bond, tenor; Helen Parm-
elee, pianist
8:25—Better Business Talk
8:30—Faucit Theatre Players
9—Nevada Night Herders
9:30—Bungling Bunglers
9:45—Romine Sisters
10—Freddie Skinner
10:30 to 11—Dance program

468.5 Meters **KFI** Richm'd 6111
640 Kcys. 50,000 Watts
Earle C. Anthony, Inc., Los Angeles

7:45 A.M. to 5—Various programs
5 P.M.—NBC, Stories of Human Behavior
5:15—NBC, Arion Trio
5:30—NBC, Wheatonville
5:45—NBC, Little Orphan Annie
6—NBC, Eileen Piggott
6:15—To be announced
6:30—NBC-KGO Programs to 9:15
9:15—Orchestra
9:30—Zip's Mirth Parade
9:45—NBC, Tim and Irene
10—NBC, Richfield Reporter
10:15—NBC, Melody Mixers
10:30—Dance Music
11:30 to 12 midnight—Arion Trio

499.7 Meters **KFSD** Franklin 6353
600 Kcys. 1000 Watts
Airfan Radio Corp., Ltd., San Diego

7:30 A.M. to 6—Various programs
6 P.M.—NBC, Eileen Piggott
6:15—NBC, Chester Rowell
6:30—NBC, Just Around the Corner
7—To be announced
7:30—NBC, Demi-Tasse Revue
8—Studio program
8:15—NBC, The Phillistine
8:30—NBC, Stars of the West
9—NBC, Floyd Gibbons
9:15—NBC, Drama Hour
9:45—Rafael Villagrana
10—NBC, Richfield News Flashes
10:15—NBC, Melody Mixers
11—NBC, Ambassador Hotel Orch.
11:30 to 12 mid.—NBC, Arion Trio

333.1 Meters **KHJ** VAndike 7111
900 Kcys. 1000 Watts
Don Lee Broadcast. System, L. A., Cal.

7 A.M. to 5—Various Programs
5 P.M.—CBS, Twilight Dreams
5:15—Town Topics
5:30—CBS, Bing Crosby
6—H. O. Hecker program
6:15—To be announced
6:30—CBS, The Big Show
7—CBS, Andre Kostelanetz
7:15—Ingewood Park Ass'n
7:45—CBS, Myrt & Marge
8—Shell Show
9—Blue Monday Jamboree
10—News Items
10:10—Electrical Transcription
10:20—The Islanders
10:30—Colonial Dames
10:45—Dance Music
12 to 1 A.M.—Claude Reimer, organ

280.2 Meters **KJBS** Ord. 4148-49
1070 Kcys. 100 Watts
J. Brunton & Sons, San Francisco

6 A.M. to 5:30—Records; News; Talks
5:30 P.M.—Silent period
12:01 to 6 A.M.—Owl program

322.4 Meters **KROW** Glenc. 6774
930 Kcys. 1000 Watts
Educa. Broad. Corp., Oakland, Calif.

7 A.M. to 5—Various programs
5 P.M.—Twilight Reveries
6—Gypsy Melodies
6:15—Dell Perry
6:30—Organ; Senator Loyal
7:15—Sports Review
7:30—Italian program
8—Gladys Kaull
8:15—Classical Favorites
8:30—Latin-American Program
9:30—Martha Browning
9:45—Lee Patrick
10 to 12 midnight—Dance Music

483.6 Meters **KGW** Atwater 2121
620 Kcys. 1000 Watts
Morning Oregonian, Portland, Ore.

7 A.M. to 12—Various programs
12 noon—The Oregonian of the Air
12:15—Studio programs
12:45—Forum Luncheon
1:30—Parker Dental Clinic
1:45—Orchestra
2—NBC, Al Pearce and Gang
3—Krazy Limericks
3:05—NBC, Viennese Ensemble
3:15—As If by Magic
3:20—Ideal Dairy; Friendly Chat
4—NBC-KGO Programs to 5
5—Fairview Farms; Orchestra
5:15—Collins & Erwin
5:30—NBC, Wheatonville
5:45—NBC, Orphan Annie
6—Traffic Talk; Crazy Crystals
6:30—Just Around the Corner
6:55—Flavor Foods
7—NBC-KGO Programs to 9:15
9:15—Four Shades of Rhythm
9:30—F. A. Cook Local News
9:45—NBC, Tim and Irene
10 to 12 mid.—NBC-KGO programs

285.5 Meters **KNX** Hemp. 4101
1050 Kcys. 25,000 Watts
Western Broadcast. Co., Los Angeles

6:45 A.M. to 6—Various programs
6 P.M.—News Service
6:15—King Cowboys
6:30—The Hawk
6:45—Lawrence King and Orchestra
7—Frank Watanabe and Archie
7:15—Black and Blue
7:30—Red Davis (Elec. Trans.)
7:45—Marion Mansfield, ballads
8—Count of Monte Cristo
8:15—Calmon Luboviski
9—News Service
9:15—Charlie Hamp
9:45—Spanish Music
10 to 11:30 P.M.—Dance Orchestra

526 Meters **KVI** Broadway 4211
570 Kcys. 1000 Watts
Puget Sound Broadcast. Co., Tacoma

6 A.M. to 5—Various programs
5 P.M.—CBS, Twilight Dreams
5:15—CBS, Organalties
5:30—CBS, Bing Crosby
6—CBS, H-Bar-O Rangers
6:15—Francisco Del Campo, tenor
6:30—NBC, The Big Show
7—CBS, Andre Kostelanetz
7:30—Dr. Mellor, Mellor System
7:45—CBS, Myrt and Marge
8—Shell Show
9—Blue Monday Jamboree
10—Crazy Quartet
10:15 to 12 mid.—Dance Music

236.1 Meters **KOL** Main 2312
1270 Kcys. 1000 Watts
Seattle Broadcast. Co., Seattle, Wash.

6:45 A.M. to 5—Various programs
5 P.M.—CBS, Village Choir
5:15—CBC, Organalties
5:30—CBS, Bing Crosby
6—H. O. Program
6:15—To be announced
6:30—CBS, The Big Show
7—"Strange Adventures"
7:15—Radio Speaker Stevenson
7:30—CBS, NRA Talk
7:45—CBS, Myrt and Marge
8—The Shell Show
9—Detectives Black and Blue
9:15—Superstitions
9:30—Globe Trotter
9:45—Ralph Horr, talk
10—Musical program
10:30 to 12 mid.—Dance Music

508.2 Meters **KHQ** Main 5383
590 Kcys. 1000 Watts
Louis Wasmer, Inc., Spokane, Wash.

7 A.M. to 1—Various programs
1 P.M.—Studio Programs
1:15—Sylvia Gray; Fur Facts
1:45—NBC Program
2—NBC, Al Pearce and Gang
3—NBC, Viennese Ensemble
3:15—Club Bulletin
3:30—Business and Pleasure
4—Protective Diet League
4:15—NBC Program
4:30—Parade of Happy Feet
4:45—Studio programs
5:15—NBC, Arion Trio
5:30—NBC, Wheatonville
5:45—NBC, Little Orphan Annie
6—NBC, Elmore Vincent
6:15—Crazy Wells Water Program
6:30—NBC-KGO Programs to 8:15
8:15—Sports Review
8:30—Three Little Maids
8:45—NBC, Black and Blue
9—To be announced
9:30—NBC, Terrace Gardens Orch.
9:45—Frank and Archie
10—NBC, News; Music
10:30—Radio Specials
11 to 12 mid.—Dance Music

309.1 Meters **KJR** Seneca 1515
970 Kcys. 5000 Watts
Northwest Broad. System, Seattle, Wn.

8:30 A.M. to 1—Various programs
1 P.M.—NBC, Radio Guild
2—Monday Musical
3—Viennese Ensemble
3:15—Bismarck Bavarian Ensemble
3:30—Three X Sisters
3:45—Harry Watts and Edna Cool-ey, pianos
4—Dream Melodies
4:30—NBC Program
5—Steamboat Bill
5:15—Shades of Yesterday
5:30—Recorded program
6—NBC programs to 7
7—Handwriting by Doma
7:15—Tarzan (E. T.)
7:30—Seattle Times News
7:45—Viennese Vagabonds
8:15—The Poet Prince
8:30—The South Americans
8:45—Frank Watanabe and Archie
9—Cowboy Joe
9:30—Terrace Gardens Orchestra
9:45—Evening Reveries
10:15—NBC, Melody Mixers
11 to 12 mid.—Dance Music

325.9 Meters **KOMO** Elliott 5890
920 Kcys. 1000 Watts
Fisher's Blend Station, Inc., Seattle

8 A.M. to 1—Various programs
1 P.M.—Proctor's, Inc.; Betty
1:15—Vindabonias
1:45—Easy Chair; Grant Merrill
2—NBC, Al Pearce and Gang
3—Varieties; Red Shadow
3:45—The Observer
4—To be announced
5—NBC-KGO Program to 6
6—Thirty Minutes of Music
6:30—Three Jacks
7—Carnation Contented program
7:30—NBC, Demi-Tasse Revue
8—NBC, Amos 'n' Andy
8:15—Arkansas Travelers
8:30—NBC, Stars of the West
9—NBC, Floyd Gibbons
9:15—Four Shades of Rhythm
9:45—NBC, Tim and Irene
10—NBC, Richfield News Flashes
10:15—Dollars and Cents
11 to 12 midnight—Dance Music

TUESDAY Programs

October 17, 1933

379.5 Mtrs. **NBC-KGO** Sutter 1920
790 Kcys. 7500 Watts
National Broadcast. Co., San Francisco

7 A.M.—Four Southern Singers
7:15—Organ Concert
7:30—Financial Service
7:45—Exercise and Applesauce —
Hugh Barrett Dobbs
8:15—Morin Sisters, vocal trio
8:30—Regimentalists: Male Chorus
9—Mrs. Curtis Burnley Railing;
9:15—The Widow and Angel
9:30—Martha Meade Society
9:45—Sax Appeal
10—Organ Concert
10:30—Woman's Magazine of the Air
11:30—Concert Echoes
11:45—Carr and McKenzie
12 noon—Financial Flashes
12:05—Blue Room Echoes
12:15—Farm and Home Hour
1—Betty and Bob; sketch
1:15—Meredith Willson's Orchestra
1:45—Contract Bridge
2—Al Pearce and Gang
3—Langendorf Pictorial
3:15—Viennese Ensemble
3:30—Arion Trio
3:45—Shirley Howard, songs
4—Family Cook Book
4:15—Music Room
4:45—Back Stage Chatter
5—Vincent Lopez' Orchestra
5:30—Wheatenaville, dram. sketch
5:45—Little Orphan Annie
6—Arion Trio
6:15—Historical Sketches of S. F.
6:30—The Texaco Fire Chief Prog.
7—Lives at Stake
7:30—Madame Sylvia & Movie Stars
7:45—Simmons and Sears Orchestra
8—Amos 'n' Andy
8:15—Memory Lane
8:45—Horlick's Adventures in Health
9—Ben Bernie's Orchestra
9:30—Edgewater Beach Orchestra
10—Richfield News Flashes
10:15—Anson Weeks' Orchestra
11—Tom Coakley's Orchestra
11:30 to 12 mid.—Organ Concert

440.9 Meters **KPO** Sutter 1920
680 Kcys. 50,000 Watts
National Broadcast. Co., San Francisco

7:30 a.m.—Morning Parade
8—Your Child
8:15—Log o' the Day Crosscuts
9:15—Julia Hayes, beauty talk
9:30—Johnny O'Brien, harmonica
9:45—News
10—New Kitchen Secrets
10:15—Rumford School of Cookery
10:30—Merry Men Quartet
10:45—Smackout: Comedy & songs
11—Musical Originalities
11:30—Argentine Trio
11:45—Agricultural Bulletins
12 noon—Midday Musicals; News
1:15—Ann Warner, Neighborly Chats
1:45—John and Ned
2—Casino Orchestra
2:30—Alma Schirmer, pianist
2:45—Fashion Flashes
3—Dr. Copeland's Health Talk
3:05—Viennese Ensemble
3:15—Mud Caves: Dramatic skit
3:30—Mid-Week Hymn Sing
3:45—Univ. of California Program
4—The Sizzlers, male trio
4:15—You and Your Government
4:45—Concert Petite
5—Lavender and Old Lace
5:40—Westclox Sketch; Drama
5:45—News; Melody Mixers

6:30—Flori Gough Shorr and Lev
Shorr, cellist and pianist
7—Doric Quartet
7:30—Boris Kramarenko and his
Balalaika Orchestra
7:45—California State Chamber of
Commerce program
8—Edna Fischer, pianist
8:15—The Hollywood Looking Glass
8:30—The Orchestra
9—The Story Teller
9:30—Magnolia Minstrels
10—Stringwood Ensemble
10:30—Rhythm Aces
11—Ambassador Hotel Orchestra
11:30 to 12 mid.—Kay Kyser's Orch.

535.4 Meters **KTAB** Garfield 4700
560 Kcys. 1000 Watts
Assoc. Broadcasters, Oakland, Calif.

7 A.M. to 1—Various programs
1 P.M.—Radio Frolic
1:30—Over the Teacups
2—News; Town Crier
3—Bar B Boys
3:30—Studio program
4—The Old Rajah
4:30—The Old Bachelor
5—Smile Club; Health Talk
6—Organ and Vocalist
6:30—News; Sport Page
7—Gertrude Ahearn and Lee Baker
7:15—Elbert La Chelle, Organist
7:30—Don Steele and Symphonettes
7:45—Voice of Democracy
8—Piano Recital
8:15—In the Gloaming
8:30—John D. Barry
8:45—Popular Concert
9—News; Souvenirs
9:45—Herb Allen, pianist
10—Kelli-Widner Orchestra
10:30—Paul Kellar, pianist
10:45 to 12 mid.—Records

340.7 Meters **KLX** Lake, 6000
880 Kcys. 1000 Watts
Tribune Pub. Co., Oakland, Calif.

8 A.M.—Records; Stocks
8:30—Covered Wagon Jubilee
9—Records
9:15—Julia Lee Wright; Records
10:15—S. F. Stocks; News
10:30—International Kitchen
11—Clark Sisters; News Flashes
11:30—Novelty Guitlar Duo
11:45—Fred Skinner
12 noon—Bill Duncan's Band
1—Jean's Hi-Lights
2—Recordings; News
2:40—Closing Stocks
3:15—Carmen Rushing, pianist
3:30—News Flashes; Records
4:15—Brother Bob's Club
4:45—McCoy Health School
5—Covered Wagon Jubilee
5:30—The Famous Troubadour
5:45—Helen Parmelee, pianist
6—Hotel Oakland Trio; News
7:30—Los Tres Caballeros
7:45—"Slip" Madigan, Football Re-
views and Previews
8—John Wharry Lewis Quintet
9—Old Gospel Hymns
9:30—Bungling Bunglers
9:45—Helen Parmelee, pianist
10—Freddie Skinner
10:30 to 11—Dance Records

280.2 Meters **KJBS** Ord. 4148-49
1070 Kcys. 100 Watts
J. Brunton & Sons, San Francisco

6 A.M. to 5:30—Records; News; Talks
5:30 P.M.—Silent period
12:01 to 6 A.M.—Owl program

491.5 Meters **KFRG** Prospect 0100
610 Kcys. 1000 Watts
Don Lee Broadcast. System, S. F., Cal.

7 A.M.—Recordings; Stocks
7:30—Exercise Period
8—CBS, Melody Parade
8:15—Popular Selections
8:30—CBS, Tony Wons
8:45—CBS, Carlile and London
9—CBS, Voice of Experience
9:15—CBS, Connie Gates, songs
9:30—Globe Grain and Milling Co.
9:45—George's Scherban's Orchestra
10—CBS, Little French Princess
10:15—CBS, Reis & Dunn
10:30—CBS, Easy Aces
10:45—Popular Selections
11—Household Hints
11:15—Frances Lee Barton
11:30—Instrumental Trio
11:45—CBS, Ann Leaf, Organist
12 noon—Noonday Concert
1—CBS, U. S. Navy Band
1:30—Stocks; Health Talk
1:45—CBS, Enoch Light Orchestra
2—Happy-Go-Lucky Hour
3—Feminine Fancies
4—Singing Chef
4:05—Popular Selections
4:15—CBS, Texas Rangers
4:30—Popular Selections
4:45—Lost and Found Items
4:50—Records; Town Topics
5—CBS, Mills Brothers
5:15—Children's Radio Theatre
5:30—Bob, Sports Authority
5:45—CBS, Kate Smith
6—CBS, California Melodies
6:30—CBS, Nino Martini, tenor
7—CBS, Legends of America
7:30—CBS, Boswell Sisters
7:45—CBS, Myrt and Marge
8—CBS, Howard Barlow's Orch.
8:15—CBS, "Elmer Everett Yess"
8:30—CBS, Jerry Freeman Orchestra
8:45—CBS, Voice of Experience
9—Ted Fio-Rito Orchestra
9:30—Hodge Podge Lodge
10—News Editor of the Air
10:10—"Intimate Hollywood News"
10:15—Ted Fio-Rito's Orchestra
10:30—Colonial Dames
10:45 to 12 mid.—Dance Music

243.8 Meters **KYA** Prospect 3456
1230 Kcys. 1000 Watts
Pac. Broadcast. Corp., San Francisco

7:30 A.M. to 12—Various programs
12 noon—Scriptures; Concert
12:30—Organ Recital
1—Aviation Club
1:30—Footlight Features
1:45—Lady Next Door
2—Symphonic Band
2:15—New Era Symphony
2:30—Verses: Mrs. M. C. Sloss
2:45—Musical Moments
3—Organ Matinee; Records
5:30—Corriere Dell' Aria
5:45—Campbell Digest
6—Social Service News
6:15—Waltz Idylls
6:45—Lavender and Old Lace
7—Bob Allen, Piano Stylist
7:15—Romance of Music
7:30—Maurice Gunsby Revue
8—Vocalist and Pianist
8:15—Poet Prince
8:30—NBC Orchestra
8:45—Musical Strings; News
9:15—Jack and Ethel in "Roads to
Hollywood"
9:30—"Milly & Billy," Cub Reporters
9:45—Opera Phantoms; Organ
11 to 12 midnight—Concert Memories

322.4 Meters KROW Glenc. 6774
930 Kcys. 1000 Watts
Educa. Broad. Corp., Oakland, Calif.
7 A.M. to 5—Various programs
5 P.M.—Twilight Reveries
6—Gypsy Melodies
6:15—Dell Perry, pianist
6:30—Organ; Senator Loyal
7:15—Sports; Bobbie Lee
7:45—San Doval Twins
8—Gladys Kaul
8:15—Watch Tower program
8:30—Radio Playmakers
9—Motorcycle Races
10 to 12 midnight—Dance Music

508.2 Meters KHQ Main 5383
590 Kcys. 1000 Watts
Louis Wasmer, Inc., Spokane, Wash.
7:30 A.M. to 1—Various programs
1 P.M.—Studio Programs
2—NBC, Al Pearce and Gang
3—Model Boot Shop
3:15—Club Bulletin
3:30—Business and Pleasure
4—NBC Programs to 5
5—Tull & Gibbs Express
5:15—NBC, Congress Hotel Orch.
5:30—NBC, Wheatenaville
5:45—NBC, Orphan Annie
6—N. W. on Parade
6:30—NBC, Texaco Fire Chief Prog.
7—NBC, Lives at Stake
7:30—NBC, Madame Sylvia
7:45—Frank Funkhouser
8—NBC, Amos 'n' Andy
8:15—NBC, Memory Lane
8:45—NBC, Adventures in Health
9—NBC, Ben Bernie's Orch.
9:30—To be announced
9:45—Frank and Archie
10—NBC News; Music
11 to 12 mid.—Dance Music

325.9 Meters KOMO Elliott 5890
920 Kcys. 1000 Watts
Fisher's Blend Station, Inc., Seattle
8 A.M. to 1—Various programs
1 P.M.—Proctor's, Inc.; Betty
1:15—Southern Serenader
2—NBC, Al Pearce and Gang
3—Cecile Barbezat; Varieties
3:45—The Observer
4—Viennese Vagabonds
4:30—Pastel Harmony
5—Saxophone Melodies
5:15—Three Jacks
5:30—NBC, Wheatenaville
5:45—NBC, Orphan Annie
6—NBC, Arion Trio
6:30—NBC-KGO Programs to 7:45
7:45—Dr. Williams' Drug Store
8—NBC-KGO programs to 9
9—NBC, Ben Bernie's Orchestra
9:30—Montag Fireside Hour
10—NBC, Richfield News Flashes
10:15—The Haunted Rancho
10:30—Melodic Moods
11 to 12 mid.—Dance Music

499.7 Meters KFSB Franklin 6353
600 Kcys. 1000 Watts
Airfan Radio Corp., Ltd., San Diego
7:30 A.M. to 6—Various programs
6 P.M.—NBC, Arion Trio
6:30—NBC, Texaco Fire Chief Prog.
7—Beauty That Endures
7:15—Thurman Robertson
7:45—To be announced
8—Studio program
8:15—NBC, Memory Lane
8:45—NBC, Adventures in Health
9—Feature program
9:30—NBC, Magnolia Minstrels
10—NBC, Richfield News Flashes
10:15 to 12 mid.—Dance Music

285.5 Meters KNX Hemp. 4101
1050 Kcys. 25,000 Watts
Western Broadcast. Co., Los Angeles
6:45 A.M. to 6—Various programs
6 P.M.—News Service
6:15—Jaye Rubanoff's Ensemble
6:30—The Hawk
6:45—Lawrence King & Orchestra
7—Frank Watanabe and Archie
7:15—Singing Guardsmen
7:30—Musical Program
7:45—Chandu, the Magician
8—Count of Monte Cristo
8:15—Tax Reduction Program
8:45—Drury Lane; News
9:15—Light Opera
9:45—Marian Mansfield, vocalist
10 to 11:30 P.M.—Dance Orchestra

468.5 Meters KFI Richm'd 6111
640 Kcys. 50,000 Watts
Earle C. Anthony, Inc., Los Angeles
6:30 to 5—Various programs
5 P.M.—News Release
5:15—Barbara Burr's Rhyme and Rhythm
5:30—NBC, Wheatenaville
5:45—NBC, Little Orphan Annie
6—Raine Bennett, Poet's Corner
6:15—Perce Brothers Quartet
6:30—NBC-KGO Programs to 7:45
7:45—Orchestra and Tenor
8—NBC-KGO Programs to 9:30
9:30—Eno Crime Clues
10—NBC, Richfield Reporter
10:15—Comedy Stars of Hollywood
10:30 to 12 midnight—Dance Music

333.1 Meters KHJ VAndike 7111
900 Kcys. 1000 Watts
Don Lee Broadcast. System, L. A., Cal.
7 A.M. to 5—Various programs
5 P.M.—CBS, Mills Brothers
5:15—Town Topics; Recordings
5:30—Charlie Lung and Gang
5:45—CBS, Kate Smith
6—CBS, California Melodies
6:30—CBS, Nino Martini
7—CBS, American Legend
7:30—CBS, Boswell Sisters
7:45—CBS, Myrt and Marge
8—Globe Mills Headlines
8:15—CBS, "Elmer Everett Yess"
8:30—CBS, Jerry Freeman's Orch.
8:45—CBS, Voice of Experience
9—Marvelous Melodies
9:15—Ted Fio-Rito's Orch.
9:30—Hodge Podge Lodge
10—News Items
10:10—Gus Arnheim's Orchestra
10:30—Dance Music
12 to 1 A.M.—Claude Reimer, organ

225.4 Meters KGB Franklin 6151
1330 Kcys. 1000 Watts
Don Lee Broadcast. System, S. D., Cal.
7 A.M. to 5—Various programs
5 P.M.—CBS, Mills Bros.
5:15—Children's Radio Theatre
5:30—CBS, In the Gloaming
5:45—Eb and Zeb
6—CBS, California Melodies
6:30—CBS, Nino Martini, tenor
7—CBS, Legends of America
7:30—CBS, Boswell Sisters
7:45—CBS, Myrt & Marge
8—CBS programs
8:30—CBS, Jerry Freeman's Orch.
8:45—CBS, Voice of Experience
9—CBS, St. Francis Hotel Orch.
9:30—Hodge Podge Lodge
10—World-Wide News
10:10—Dance Music
12 to 1 A.M.—Recordings

309.1 Meters KJR Seneca 1515
970 Kcys. 5000 Watts
Northwest Broad. System, Seattle, Wn.
8:30 A.M. to 1:15—Various programs
1:15—Meredith Wilson's Orchestra
1:45—NBC, Lady Next Door
2—Recorded program
3—Better Business Talk
3:05—NBC Programs to 5:30
5:30—Table for Two
6—NBC, Arion Trio
7—Handwriting by Dama
7:15—Lee Sisters; News
7:45—Next Door Neighbors
8—Orpheus Ensemble
8:30—Dr. Williams' Drug Store
8:45—Frank Watanabe and Archie
9—Concert Trio
9:30—To be announced
10—Cowboy Joe
10:15 to 12 mid.—Dance Music

483.6 Meters KGW Atwater 2121
620 Kcys. 1000 Watts
Morning Oregonian, Portland, Ore.
7 A.M. to 12—Various programs
12 noon—Oregonian of the Air
12:15—NBC-KGO Programs to 1:30
1:30—Dental Clinic of the Air
1:45—NBC-KGO programs to 3:15
3:15—As If by Magic
3:20—Friendly Chat
4—NBC-KGO Programs to 6:25
6:25—Portland Cleaning Works
6:30—NBC-KGO Programs to 7:45
7:45—Venetian Quarter Hour
8—NBC, Amos 'n' Andy
8:15—NBC, Memory Lane
8:45—NBC, Health Adventures
9—NBC, Ben Bernie Orchestra
9:30—Montag Fireside Hour
10 to 12 mid.—News; Dance Music

236.1 Meters KOL Main 2312
1270 Kcys. 1000 Watts
Seattle Broadcast. Co., Seattle, Wash.
6:45 A.M. to 5—Various programs
5 P.M.—CBS, Mills Brothers
5:15—Children's Radio Theatre
5:30—CBS, In the Gloaming
5:45—CBS, Kate Smith
6—California Melodies
6:30—Sports Review
6:45—Charles A. Reynolds
7—To be announced
7:15—Radio Speaker Stevenson
7:30—CBS program
7:45—CBS, Myrt and Marge
8—Hollywood Newshawk
8:15—CBS, "Elmer Everett Yess"
8:30—The Cascadians
8:45—Voice of Experience
9—Globe Trotter
9:15—"Marvelous Melodies"
9:30—Boxing Bout
10:30—The Islanders
11 to 12 mid.—Earl Dancer Orch.

526 Meters KVI Broadway 4211
570 Kcys. 1000 Watts
Puget Sound Broadcast. Co., Tacoma
6 A.M. to 6—Various programs
6 P.M.—California Melodies
6:30—CBS, Nino Martini
7—Strange Adventures
7:15—Studio program
7:30—Dr. Meller
7:45—Myrt and Marge
8—CBS, Columbia Symphony
8:15—CBS, "Elmer Everett Yess"
8:30—Crazy Capers
8:45—Voice of Experience
9—CBS, Ted Fio-Rito's Orchestra
9:30—Hodge Podge Lodge
10 to 12 midnight—Dance Music

WEDNESDAY Programs

October 18, 1933

379.5 Mtrs. **NBC-KGO** Sutter 1920
790 Kcys. 7500 Watts

National Broadcast. Co., San Francisco

7 A.M.—Four Southern Singers
7:15—Organ Concert
7:30—Financial Service
7:45—Exercise and Applause
8:15—To be announced
9—Johnny Toffoli, accordionist
9:15—The Widow and Angel
9:30—Coquettes: Vocal trio
9:45—Jean Abbey, Shop News
10—Sarah Kreindler, violinist
10:15—Books for Children
10:30—Woman's Magazine of the Air
11:30—Magic Moments
11:45—Carr and McKenzie
12 noon—Financial Flashes
12:05—Grande Trio
12:15—Farm and Home Hour
1—Betty and Bob
1:15—Southern Symphonies
1:30—Texas Cowgirl
1:45—Lady Next Door
2—Al Pearce and Gang
3—Langendorf Pictorial
3:15—Viennese Ensemble
3:30—Back of the News
3:45—Soloist
4—Society Sidelines
4:15—Ramblers
4:45—Children's Corner
5—Stringwood Ensemble
5:30—Wheatenville, dram. sketch
5:45—Little Orphan Annie
6—Ipana Troubadors
6:30—John McCormack, tenor
7—Corn Cob Pipe Club
7:30—National Radio Forum
8—Amos 'n' Andy
8:15—Spratt's Dog Show
8:30—One Man's Family
9—Lee S. Roberts Memory Box
9:15—Herb Dana on Football
9:30—Edgewater Beach Hotel Orch.
10—Richfield News Flashes
10:15—Anson Weeks' Orchestra
11—Tom Coakley's Orchestra
11:30 to 12 mid.—Organ Concert

440.9 Meters **KPO** Sutter 1920
680 Kcys. 50,000 Watts

National Broadcast. Co., San Francisco

7:30 A.M.—Three Scamps, vocal trio
7:45—Organ Concert
8—Singing Strings
8:15—Crosscuts, Log of the Day
9:15—Julia Hayes, beauty talk
9:30—Johnny O'Brien, harmonica
9:45—News; Elmore Vincent, tenor
10:15—Songs by the Kitchen Sink
10:30—Merrie Men Quartet
10:45—Smackout: Comedy & Songs
11—Musical Originalities; Orchestra
11:40—Pontiac Singers
11:45—Agricultural Bulletins
12 noon—Midday Musicale; 1. News
1:15—Ann Warner's Chats
1:45—John and Ned, harmony duo
2—Casino Orchestra
2:15—Winnie the Pooh
2:30—Mobile Moaners
2:45—Musical Moments
3—Dr. Copeland's Health Talk
3:05—Viennese Ensemble
3:15—Mud Caves: dramatic skit
3:30—Organ Concert
3:45—Univ. of California Program
4—Dance Masters: Orchestra
4:15—Harold Stern's Orchestra
4:30—Reggie Childs' Orchestra
4:45—Rhythm Rascals
5—Facing the Music
5:15—Tea Dansante; News
6—Tone Portraits

6:30—Paul Martin, banjoist; Kathryn Julye, harpist
6:45—Detectives Black and Blue
7—Dramas from Real Life
7:05—Louis Ford, violinist
7:15—Tarzan of the Apes
7:30—Irving Kennedy, tenor
7:45—Agriculture Today
8—Edna Fischer, pianist
8:15—Red Davis: dramatic sketch
8:30—Californians on Parade
9—Marvelous Melodies
9:15—Book Parade
9:30—Waltz Time
10—Marshall's Mavericks
10:30—Seven Seas: Orchestra
11—Ambassador Hotel Orchestra
11:30 to 12 mid.—Dance Music

243.8 Meters **KYA** Prospect 3456
1230 Kcys. 1000 Watts

Pac. Broadcast. Corp., San Francisco

7:30 A.M. to 12—Various programs
12 noon—Scriptures; Concert
12:30—Organ; Royal Serenaders
1:30—Art Lecture
1:45—Modern Maestros; Quartette
2:30—Com. Chest Question Box
2:45—Organ Matinee
3:45—Mountain Boys
4:15—Better Business Bureau
4:30—Symphony High-Lights
5—Sunset Revue
5:30—Corriere Dell' Aria
5:45—Campbell Digest
6—Paraders; Waltz Idylls
6:45—"Eb and Zeb"
7—Musical Novelties
7:15—Bob Allen: Piano Stylist
7:30—Light Opera
8—"Souvenirs of Italy"
9—News Flashes
9:15—John Wolohan's Orchestra
10—Organ Serenade
11 to 12 midnight—Concert Memories

340.7 Meters **KLX** Lake. 6000
880 Kcys. 1000 Watts

Tribune Pub. Co., Oakland, Calif.

8 A.M.—Records; Stocks
8:30—Covered Wagon Jubilee
9—Stocks; Records; News
10:30—International Kitchen
11—Clark Sisters; News Flashes
11:30—Novelty Guitar Duo
11:45—Lola Chatfield, pianist
12 noon—Bill Duncan's Band; News
1—"Timely Garden Tips
1:15—Jean's Hi-Lights; News
2—Records; News
2:35—Better Business Talk
2:40—Stocks; Recordings
3:15—Nancy Ann Hersey, pianist
3:30—News Flashes; Records
4:15—Brother Bob's Club
4:45—McCoy Health School
5—Covered Wagon Jubilee
5:30—The Famous Troubadour
5:45—Lovable Liars
6—Hotel Oakland Trio
7—K-9 Programs; 7:05. News
7:30—Manila Stringed Orchestra
8—Miniature Revue
9—Nevada Night Herders
9:30—Bungling Bunglers
9:45—Helen Parmelee, pianist
10—Freddie Skinner
10:30 to 11—Dance program

280.2 Meters **KJBS** Ord. 4148-49
1070 Kcys. 100 Watts

J. Brunton & Sons, San Francisco
6 A.M. to 5:30—Records; News; Talks
5:30 P.M.—Silent Period
12:01 to 6 A.M.—Owl program

491.5 Meters **KFRC** Prospect 0100
610 Kcys. 1000 Watts

Don Lee Broadcast. System, S.F., Cal.

7 A.M.—Recordings; Stocks
7:30—Exercise Period
8—Popular Selections
8:15—CBS, Four Showman
8:30—CBS, Tony Wons
8:45—CBS, Dancing Echoes
9—Voice of Experience
9:15—Popular Selections
9:30—Betty Crocker
9:45—CBS, Raginsky Edison En-semble
10—CBS, Little French Princess
10:15—CBS, The Playboys
10:30—CBS, Easy Aces
10:45—Popular Selections
11—CBS, Ann Leaf, Organist
11:10—Goodwill Industries Talk
11:15—Prudence Penny's Hints
11:30—CBS, Husk O'Hare's Orch.
11:45—Instrumental Trio
12 noon—Noodan Concert
1—Women's Institute of the Air
1:15—CBS, Artist Recital
1:30—N. Y. Stock Quotations
1:35—CBS, Artist Recital
1:45—CBS, Mark Warnow's Orch.
2—Happy-Go-Lucky Hour
3—Feminine Fancies
4—Hodge Podge Lodge
4:30—Organ and Vocalist
4:45—Lost and Found Items
4:50—Recordings; Town Topics
5—CBS, Stranger than Fiction
5:15—CBS, Organalities
5:30—CBS, Centaur Company
6—H-Bar-O Rangers
6:15—CBS, Kate Smith
6:30—Lombardo; Burns and Allen
7—CBS, Old Gold Program
7:30—CBS, Alexander Woolcott
7:45—CBS, Myrt and Marge
8—Globe Headlines
8:15—CBS, News Service
8:30—CBS, Edwin C. Hill
8:45—CBS, Charlie Davis Orchestra
9—CBS, St. Francis Hotel Orch.
9:30—Catherine. The Great
10—Darrell Donnell, news
10:10—"Intimate Hollywood News"
10:15—Gus Arnheim's Orchestra
10:30—Dance Music
11:30 to 12 mid.—Flo-Rito's Orch.

535.4 Meters **KTAB** Garfield 4700
560 Kcys. 1000 Watts

Assoc. Broadcasters, Oakland, Calif.

7 A.M. to 1—Various programs
1 P.M.—Radio Frolic
1:30—Over the Teacups
2—News; Town Crier
3—X-Bar-B Boys
3:30—Beauty and Fashion Talk
4—The Old Rajah
4:30—The Old Bachelor
5—Smile Club; Health Talk
6—Auto Question Box
6:15—Elbert La Chelle, organist
6:30—Columbia News Page
6:45—Ernie Smith's Sport Page
7—Lyric Ensemble
7:15—Organ Concert
7:30—Wm. Powers and Elbert La Chelle
7:45—Family Album
8—Studio; 8:30—Crazy Quilt
8:45—Miracle Diamonds
9—News; Souvenirs
9:45—Herb Allen, pianist
10—Studio program
10:30—Paul Kellar, pianist
10:45 to 12 midnight—Records

322.4 Meters KROW Glenc. 6774
930 Kcys. 1000 Watts
Educa. Broad. Corp., Oakland, Calif.
7 A.M. to 5—Various programs
5 P.M.—Twilight Reveries
6—Gypsy Melodies
6:15—Dell Perry, pianist
6:30—Organ; Senator Loyal
7:15—Sports Review
7:30—Italian program
8—Glady's Kaul
8:15—Sally Snow
8:30—Musical
9—Orlando Meniketti
9:15—Voice of the Past
9:30—International Serenaders
10 to 12 midnight—Dance Music

508.2 Meters KHQ Main 5383
590 Kcys. 1000 Watts
Louis Wasmer, Inc., Spokane, Wash.
7 A.M. to 1—Various programs
1 P.M.—Studio programs
2—NBC, Al Pearce and Gang
3—Studio programs
4—Theatrical Review
4:30—Studio Programs
5:30—NBC, Wheatenaville
5:45—NBC, Orphan Annie
6—NBC, Ipana Troubadours
6:30—John McCormack, tenor
7—NBC, Corn Cob Pipe Club
7:30—Book of Memories
8—NBC, Amos 'n' Andy
8:15—Spratts Dog Show
8:30—NBC, One Man's Family
9—NBC, Lee Roberts
9:15—Herb Dana on Football
9:30—Thru Hollywood Looking Glass
9:45—Frank and Archie
10—NBC, News; Music
10:30—Radio Specialties
11 to 12 mid.—NBC Programs

309.1 Meters KJR Seneca 1515
970 Kcys. 5000 Watts
Northwest Broad. System, Seattle, Wn.
7:30 A.M. to 1:30—Various prog.
1:30—To be announced
2—Recorded program
3—NBC, Viennese Ensemble
3:30—Back of the News
4—String Varieties
4:30—NBC Programs to 5:30
5:30—Recorded program
6—Dinner Dansant
6:30—Community Fund Talk
7—Handwriting, by Dorma
7:15—Tarzan (E. T.)
7:30—Nuggets; News
8:15—Lee Sisters
8:30—The South Americans
8:45—Frank Watanabe and Archie
9—Cotton Club Orchestra
9:15—Chamber of Commerce talk
9:30—NBC, Waltz Time
10—Cowboy Joe
10:15 to 12 mid.—Dance Music

526 Meters KVI Broadway 4211
570 Kcys. 1000 Watts
Puget Sound Broadcast. Co., Tacoma
6 A.M. to 6—Various program
6 P.M.—Hecker H-O Rangers
6:15—CBS, Kate Smith
6:30—Lombardo; Burns & Allen
7—CBS, Old Gold
7:30—Dr. Mellor
7:45—CBS, Myrt and Marge
8—CBS Program
8:15—Doc Williams
8:30—Edwin C. Hill
8:45—Beauty That Endures
9—Crazy Wells Water
9:15—Ted Flo-Rito's Orchestra
9:30—DeHoney's Orchestra
10 to 12 mid.—Dance Music

236.1 Meters KOL Main 2312
1270 Kcys. 1000 Watts
Seattle Broadcast. Co., Seattle, Wash.
6:45 A.M. to 5—Various programs
5 P.M.—Walter Schelp
5:15—CBS, Organalties
5:30—CBS, Centaur program
6—CBS, Hecker H. O. program
6:15—CBS, Kate Smith
6:30—CBS, White Owl program
7—CBS, Old Gold Program
7:30—Radio Speaker Stevenson
7:45—CBS, Myrt and Marge
8—CBS, Evan Evans and Orch.
8:15—CBS, Vera Van, vocalist
8:30—CBS, Singing Sam
8:45—CBS program
9—Detectives Black and Blue
9:15—Through the Looking Glass
9:30—Globe Trotter
9:45—Dance Music
10:30—Isle of Golden Dreams
11—Dance Orchestra
11:30 to 12 mid.—McElroy's Band

325.9 Meters KOMO Elliott 5890
920 Kcys. 1000 Watts
Fisher's Blend Station, Inc., Seattle
8 A.M. to 1—Various programs
1 P.M.—Proctor's, Inc.; Betty
1:15—To be advised; 1:20, Pianolo
1:30—Community Fund Talk
1:45—Easy Chair
2—NBC, Al Pearce and Gang
3—Aeolian Trio
3:30—Red Shadow; The Observer
4—Dance Master
4:30—Children's Program
5—Piano Sketches; Three Jacks
5:30—NBC, Wheatenaville
5:45—NBC, Orphan Annie
6—American Legion
6:30—John McCormack, tenor
7—Corn Cob Pipe Club
7:30—To be announced
7:45—Hill Billies
8—Amos 'n' Andy
8:15—Spratt's Dog Show
8:30—One Man's Family
9—Song Recital
9:15—Herb Dana, football talk
9:30—Musical Mannequins
10—NBC, Richfield News Flashes
10:15—Dollars and Cents
10:30—Rocky Mountaineers
11 to 12 midnight—Dance Music

483.6 Meters KGW Atwater 2121
620 Kcys. 1000 Watts
Morning Oregonian, Portland, Ore.
7 A.M. to 12—Various programs
12 noon—The Oregonian of the Air
12:15—Star Furniture Company
1:30—Dental Clinic of the Air
1:45—NBC Programs to 3
3—Krazy Limericks
3:05—Viennese Ensemble
3:15—As If by Magic
3:20—Operatic Miniatures
3:25—Friendly Chat
4—NBC-KGO Programs to 5
5—Fairview Farms program
5:05—Stringwood Ensemble
5:15—Piano Surprises
5:30—NBC, Wheatenaville
5:45—NBC, Orphan Annie
6—NBC, Ipana Troubadours
6:30—John McCormack, tenor
7—NBC, Corn Cob Pipe Club
7:30—National Radio Forum
8—NBC, Amos 'n' Andy
8:15—NBC, Spratt's Dog Show
8:30—NBC, One Man's Family
9—NBC, Lee S. Roberts
9:15—Herb Dana on Football
9:30—Frances Ingram
9:45—Feenamint program
10 to 12 mid.—News; Music

468.5 Meters KFI Richm'd 6111
640 Kcys. 50,000 Watts
Earle C. Anthony, Inc., Los Angeles
6:45 A.M. to 5:30—Various Prog.
5:30—NBC, Wheatenaville
5:45—NBC, Little Orphan Annie
6—NBC, Ipana Troubadours
6:30—NBC, John McCormack, tenor
7—NBC, Corn Cob Pipe Club
7:30—Orchestra
8—NBC, Amos 'n' Andy
8:15—NBC, Spratt's Dog Show
8:30—NBC, One Man's Family
9—Orchestra
9:15—Herb Dana, football talk
9:30—Eno Crime Club
10—NBC, Richfield Reporter
10:15 to 12 mid.—Dance Music

285.5 Meters KNX Hemp. 4101
1050 Kcys. 25,000 Watts
Western Broadcast. Co., Los Angeles
6:45 A.M. to 6—Various programs
6 P.M.—News Service
6:15—King Cowboys
6:30—1933 Marches On
6:45—Lawrence King and Orchestra
7—Frank Watanabe and Archie
7:15—"Black and Blue"
7:30—Red Davis (Elec. Tr.)
7:45—Chandu, the Magician
8—Count of Monte Cristo
8:15—Varieties; News
9:15—Charlie Hamp
9:45—Musical Program
10 to 11:30 P.M.—Dance Music

333.1 Meters KHJ VAndike 7111
900 Kcys. 1000 Watts
Don Lee Broadcast. System, L. A., Cal.
7 A.M. to 5—Various programs
5 P.M.—CBS, Stranger than Fiction
5:15—Town Topics
5:20—Oxydol, transcription
5:25—Organalties
5:30—CBS, Centaur program
6—CBS, H-Bar-O Rangers
6:15—CBS, Kate Smith
6:30—CBS, Lombardo; Burns & Allen
7—CBS, Old Gold program
7:30—CBS program
7:45—Myrt and Marge
8—Globe Mills Headlines
8:15—CBS program
8:30—CBS, Edwin C. Hill
8:45—CBS, Orchestra
9—Ted Flo-Rito's Orchestra
9:30—Orchestra; News
10:10—Elec. Transcription
10:20—Johnny Robinson's Orchestra
10:30—Weaver of Dreams
10:45—Dance Music
12 to 1 A.M.—Claude Reimer, Organist

225.4 Meters KGB Franklin 6151
1330 Kcys. 1000 Watts
Don Lee Broadcast. System, S. D., Cal.
7 A.M. to 5—Various programs
5 P.M.—CBS, Stranger than Fiction
5:15—Town Topics and Police Talks
5:30—CBS, Centaur program
6—CBS, H Bar O Rangers
6:15—CBS, Kate Smith
6:30—CBS, Lombardo; Burns & Allen
7—CBS, Old Gold
7:30—Tarzan
7:45—CBS, Myrt & Marge
8—Globe Headlines
8:15—CBS, News Service
8:30—CBS, Edwin C. Hill
8:45—CBS, Orchestra
9:30—Studio program
10—World-Wide News
10:10—Dance Music
12 to 1 A.M.—Recordings

THURSDAY Programs

October 19, 1933

379.5 Mtrs. NBC-KGO Sutter 1920
790 Kcys. 7500 Watts
National Broadcast. Co., San Francisco
7 A.M.—Four Southern Singers
7:15—Organ Concert
7:30—Exercise and Applesauce
8—Del Monte Ship of Joy
8:30—U. S. Navy Band
9—Elmore Vincent, tenor
9:15—The Widow and Angel
9:30—Martha Meade Society
9:45—Edna Fischer, pianist
10—Woman's Magazine of the Air
11—Standard School Broadcast
11:45—Carr and McKenzie
12 noon—Financial Flashes
12:05—Grandmother's Trunk
12:15—Farm and Home Hour
1—Betty and Bob; dramatic skit
1:15—Thursday Special
2—Al Pearce and Gang
3—Langendorf Pictorial
3:15—Village Barn Orchestra
3:30—John B. Kennedy
3:45—The Sizzlers
4—The Well Dressed Woman
4:15—California Dons
4:30—Concert Footlights; Mario
Cozzi, baritone, with orchestra
4:45—Piano Pals
5—Rudy Vallee and Orchestra
6—Capt. Henry's Showboat
7—Al Jolson; Paul Whiteman
8—Amos 'n' Andy
8:15—Standard Symphony Hour
9:15—Do You Believe in Ghosts
9:30—Steamboat Harmony
10—Richfield News Flashes
10:15—Anson Weeks' Orchestra
11—Tom Coakley's Orchestra
11:30 to 12 mid.—Organ Concert

491.5 Meters KFRC Prospect 0100
610 Kcys. 1000 Watts
Don Lee Broadcast. System, S.F., Cal.
7 A.M.—Records; Stocks
7:30—Exercise Period
8—CBS, Sunny Side Up
8:30—Popular Selections
8:45—CBS, Academy of Medicine
9—CBS, Voice of Experience
9:15—CBS, Connie Gates
9:30—Globe Grain & Mill
9:45—CBS, George Scherban's Or.
10—CBS, Little French Princess
10:15—CBS, Reis and Dunn
10:30—CBS, Easy Aces
10:45—Popular Selections
11—Prudence Penny
11:15—Frances Lee Barton
11:30—CBS, Ann Leaf, organist
11:45—Instrumental Trio
12 noon—Noonday Concert
1—Discovery Hour
1:30—Stock Ex. Quotations
1:35—CBS, Amer. Legion Speaker
1:45—CBS, Rhythm Kings
2—Happy-Go-Lucky Hour
3—Feminine Fancies
4—Singing Chef
4:05—Organ and vocalist
4:15—CBS, Texas Rangers
4:30—CBS, Popular Selections
4:45—Lost and Found Items
4:50—Records; Town Topics
5—CBS, The Mills Brothers
5:15—Children's Radio Theatre
5:30—CBS, Harlem Serenade
6—CBS, WJAS Dedication Prog.
6:30—CBS, Col. Dramatic Guild
7—CBS, Deep River
7:30—CBS, Boswell Sisters, Songs
7:45—CBS, Myrt and Marge
8—Globe Headlines
8:15—CBS, Plymouth Motor Co.

8:30—CBS, Singin' Sam
8:45—Union Oil program
9:15—Ted Fio-Rito's Orchestra
9:30—Sports Parade
10—Darrell Donnell, news
10:10—"Intimate Hollywood News"
10:15—Ted Fio-Rito's Orchestra
10:30 to 12 mid.—Dance Music

243.8 Meters KYA Prospect 3456
1230 Kcys. 1000 Watts
Pac. Broadcast. Corp., San Francisco
7:30 A.M. to 12—Various programs
12 noon—Scriptures
12:03—Tango Time; Organ
1—Shrine Luncheon Club
1:30—Mid-day Concert
2—International Troubadours
2:15—Hawaiian Melodies; Organ
3:45—NBC, Concert Footlights
4—Musical Strings; "Old Songs"
4:30—Recorded program
4:35—Corriere Dell' Aria
5:45—Campbell Digest
6—Harmony Highlights
6:15—Waltz Idylls
6:45—Lavendar and Old Lace
7—Musical Novelties
7:15—Sportsman's Corner
7:30—Paraders; Sports Review
8—John Wolohan's Orchestra
9—News Flashes
9:15—NBC Orchestras
10—Organ Serenade
11 to 12 midnight—Concert Memories

535.4 Meters KTAB Garfield 4700
560 Kcys. 1000 Watts
Assoc. Broadcasters, Oakland, Calif.
7 A.M. to 1—Various programs
1 P.M.—Radio Frolic
1:30—Over the Teacups
2—News; Town Crier
3—X-Bar-B Boys
3:30—Studio program
4—The Old Rajah
4:30—Evelyn Newman, pianist
4:45—The Old Bachelor
5—Smile Club; Health Talk
6—Organ; 6:15—The Law
6:30—Columbia News Page
6:45—Ernie Smith's Sport Page
7—Borden "Capers"
9—News; Souvenirs
9:45—Herb Allen, pianist
10—Kelli-Widner Orchestra
10:30—Paul Kellar, pianist
10:45 to 12 mid.—Records

322.4 Meters KROW Glenc. 6774
930 Kcys. 1000 Watts
Educa. Broad. Corp., Oakland, Calif.
7 A.M. to 5—Various programs
5 P.M.—Twilight Reveries
6—Gypsy Melodies
6:15—Dell Perry
6:30—Organ; 7, Senator Loyd
7:15—Sports Review; Madrid Trio
8—Gladys Kaul
8:15—Watch Tower program
8:30—Hill Billy Music
9—Femm Repertory Players
9:30—Musical
10 to 12 mid.—Dance Music

280.2 Meters KJBS Ord. 4148-49
1070 Kcys. 100 Watts
J. Brunton & Sons, San Francisco
6 A.M. to 2—Records; News; Stocks
2 P.M.—Blindcraft Ensemble
2:30—Recordings; News
5:30 P.M.—Silent period
12:01 to 6 A.M.—Owl program

440.9 Meters KPO Sutter 1920
680 Kcys. 50,000 Watts
National Broadcast. Co., San Francisco
7:30 A.M.—Morning Parade
7:45—Organ Concert
8:15—Lor o' the Day Crosscuts
9:15—Julia Hayes, beauty talk
9:30—Johnny O'Brien, harmonica
9:45—News
10—New Kitchen Secrets
10:15—Strange Interview
10:30—Concert Ensemble
11—Standard School Broadcast
11:45—Agricultural Bulletin
12—Five Cards, vocal, guitar, piano
12:30—Melody Mixers
1—News; Ann Warner's Chats
1:45—John and Ned, harmony duo
2—Federation of Women's Clubs
2:15—Casino Orchestra
2:30—Jack and Loretta Clemens
2:45—Fashion Flashes
3—Dr. Copeland's Health Talk
3:05—Village Barn Orchestra
3:15—Mud Caves; dramatic skit
3:30—Arion Trio
3:45—University of California prog.
4—Twenty Fingers of Harmony
4:15—Century of Progress Orchestra
4:30—Concert Footlights
5—Arion Trio
5:15—Behind the Footlights
5:30—Harry Stanton, basso
5:40—Westlox Sketch; News
6—Dance Journal, orchestra
6:30—Federal Business Talk
6:45—Yester-Thots; Instrumentalists
7:15—Review of Activities of San
Francisco Municipal Government
7:30—Powderpuff Revue
8—Josef Hornik's Orchestra
8:30—Eno Crime Clues
9—Ernie Holist Orchestra
9:30—Dancing in Twin Cities
10—Music Box
10:30—Voice of Pan
11—Ambassador Hotel Orchestra
11:30 to 12 mid.—Kay Kyser's Orch.

340.7 Meters KLX Lake. 6000
880 Kcys. 1000 Watts
Tribune Pub. Co., Oakland, Calif.
8 A.M.—Records; Stocks
8:30—Covered Wagon Jubilee
9—Records
9:30—Clinic of the Air
10:15—Stocks; News Flashes
10:30—International Kitchen
11—Clark Sisters; News Flashes
11:30—Curtain Calls
11:45—Fred Skinner
12 noon—Bill Duncan's Band
1—Jean's Hi-Lights
2—Mildred Miller's Bridge Talk
2:15—Records; News; Stocks
3:15—Carmen Rushin, pianist
3:30—News Flashes; Records
4:15—Brother Bob's Club
4:30—News Flashes
4:45—McCoys Health School
5—Covered Wagon Jubilee
5:30—High School News
6—Hotel Oakland Trio; News
7:30—Los Tres Caballeros
7:45—Sports Hi-Lights
8—Herb Kennedy and Nancy Ann
Hershey
8:30—Helen Parmelee, pianist
8:45—Eleanor Nielson, soprano
9—Nevada Night Herders
9:30—Bungling Bunglers
9:45—Helen Parmelee, pianist
10—Freddie Skinner
10:30 to 11—Dance program

468.5 Meters KFI Richm'd 6111
640 Kcys. **50,000 Watts**
Earle C. Anthony, Inc., Los Angeles
6:45 A.M. to 5—Various Programs
5 P.M.—Rudy Vallee Orchestra
6—NBC, Capt. Henry's Showboat
7—NBC, Whiteman & Jolson
8—NBC, Amos 'n' Andy
8:15—NBC, Standard Symphony Hr.
9:15—"Do You Believe in Ghosts?"
9:30—NBC, Steamboat Harmony
10—NBC, Richfield Reporter
10:15—Comedy Stars of Hollywood
10:30 to 12 midnight—Dance Music

499.7 Meters KFSD Franklin 6353
600 Kcys. **1000 Watts**
Airfan Radio Corp., Ltd., San Diego
7:30 A.M. to 5—Various programs
5 P.M.—Studio Programs; News
5:55—The Last Word
6—Capt. Henry's Showboat
7—Viratelle Quartette
7:30—Stevensville Folks
7:45—Morales Hawaiians
8—To be announced
9—Rafael Villagrana, baritone
9:15—Angelita, Accordioniste
9:30—Voice, Violin and Piano
10—NBC, Richfield News Flashes
10:15 to 12 midnight—Dance Music

285.5 Meters KNX Hemp. 4101
1050 Kcys. **25,000 Watts**
Western Broadcast. Co., Los Angeles
6:45 A.M. to 6—Various programs
6 P.M.—News Service
6:15—Jaye Rubanoff's Ensemble
6:30—The Hawk
6:45—Lawrence King and Orchestra
7—Frank Watanabe and Archie
7:15—Singing Guardsmen
7:30—KNX Dance Band
7:45—Chandu, the Magician
8—Monte Cristo
8:15—Mid-Week Parade
8:45—Drury Lane in Reveries
9—News Service
9:15—The Treasure Chest
9:45—Musical Program
10 to 11:30 P.M.—Dance Music

225.4 Meters KGB Franklin 6151
1330 Kcys. **1000 Watts**
Don Lee Broadcast. System, S. D., Cal.
7 A.M. to 6 P.M.—Various progs.
6—CBS, WJAS Dedication program
6:30—CBS program
7—CBS, Deep River
7:30—CBS, Boswell Sisters
7:45—CBS, Myrt & Marge
8—Globe Headlines
8:30—CBS, Singing Sam
8:45—Buccaneers
9—St. Francis Hotel Orchestra
9:30—Milt Taggart's Orchestra
10—World-Wide News
10:10—Dance Music
12 to 1 A.M.—Recordings

296.6 Meters KQW Ballard 777
1010 Kcys. **500 Watts**
Pac. Agric. Foundation, Ltd., San Jose
6:30 A.M. to 6:15—Various progs.
6:15 P.M.—Franco's program
6:45—Farmers' Exchange
7—Weather Forecast
7:03—Radio News and Forum
7:30—C. B. Sylvester
7:45—Mystery Drama
8—The Old Church Choir
9—Gene Mancini, tenor
9:15—Mabel Adams in "Favorites,
Old and New"
9:30—Musical Readings
9:45 to 10 P.M.—Studio program

309.1 Meters KJR Seneca 1515
970 Kcys. **5000 Watts**
Northwest Broad. System, Seattle, Wn.
8:30 A.M. to 1:15—Various programs
1:15—Master Works of the Piano
2—Recorded program
2:30—The Explorer
3—NBC programs
4—Steamboat Bill
4:15—Piano Sketches
4:30—Concert Footlights
5—Castles in the Air
5:30—Recorded program
6—Dinner Dansant
6:30—Community Fund Talk
6:35—Aeolean Trio, Strong
7—Handwriting, by Doma
7:15—Moment Musicale, Russell
7:30—Nuggets; News
8:15—Rhythm Aces
8:45—Frank Watanabe and Archie
9—Lee Sisters
9:15—Around the Town
9:30—Singing Stars; Merrie Maniacs
10:15 to 12 mid.—Dance Music

526 Meters KVI Broadway 4211
570 Kcys. **1000 Watts**
Puget Sound Broadcast. Co., Tacoma
6 A.M. to 6—Various programs
6 P.M.—WJAS Dedication Program
6:20—CBS, Colum. Dramatic Guild
7—CBS, Deep River
7:30—Dr. Mellor
7:45—Myrt and Marge
8—CBS, Orchestra and Vocalist
8:15—Crazy Capers
8:30—CBS, Singing Sam
8:45—The Buccaneers
9—Ted Fio-Rito's Orchestra
9:30—Milt Taggart's Orchestra
10 to 12 mid.—Dance Music

333.1 Meters KHJ Vandike 7111
900 Kcys. **1000 Watts**
Don Lee Broadcast. System, L. A., Cal.
7 A.M. to 5—Various programs
5 P.M.—CBS, Mills Brothers
5:15—Town Topics
5:20—Fire Dept. and Recordings
5:30—CBS, Harlem Serenade
6—CBS, WJAS Dedication program
6:30—CBS, Col. Dramatic Guild
7—CBS, Deep River
7:30—CBS, Boswell Sisters
7:45—CBS, Mvrt and Marge
8—Globe Headlines
8:15—CBS, Little Jack Little
8:30—CBS, Singin' Sam
8:45—"76 All-Star Revue"
9:15—Marvelous Melodies
9:30—CBS, Clyde Lucas' Orchestra
10—News; The Islanders
10:30—Dance Music
12 to 1 A.M.—Claude Reimer, organ

265 Meters KSL Wasatch 3901
1130 Kcys. **50,000 Watts**
Radio Serv. Corp. of Utah, Salt Lake
6 A.M. to 6—Various Programs
6 P.M.—WJAS Dedication Players
6:30—CBS, Colum. Dramatic Guild
7—Famous Furniture Stories
7:15—Crazy Crystals Program
7:30—CBS, The Boswell Sisters
7:45—CBS, Myrt and Marge
8—CBS, Gladys Rice & Orchestra
8:15—CBS, Plymouth Motors Prog.
8:30—CBS, Singin' Sam
8:45—Richard Condie, tenor
9—Univ. of Utah
9:30—Milt Taggart's Orchestra
10—Brigham Young Univ. Program
10:30 to 11 P.M.—Gus Arnheim's
Orchestra

325.9 Meters KOMO Elliott 5890
920 Kcys. **1000 Watts**
Fisher's Blend Station, Inc., Seattle
8 A.M. to 1—Various programs
1 P.M.—Betty
1:15—To be announced
1:30—Songs New and Old
1:45—Saxophone Melodies
2—NBC, Al Pearce and Gang
3—Song Recital
3:15—Community Fund Talk
3:20—Vindabonians; Observer
4—20 Fingers of Harmony
4:15—NBC, Soloist
4:30—Children's Program
5—NBC, Fleischmann Sunshine Hr.
6—NBC, Capt. Henry's Show Boat
7—Whiteman's Orch. and Jolson
8—NBC, Amos 'n' Andy
8:15—NBC, Standard Symphony Hr.
9:15—Do You Believe in Ghosts?
9:30—NBC, Steamboat Harmony
10—NBC, Richfield News Flashes
10:15—Three Jacks
11 to 12 mid.—Dance Music

508.2 Meters KHQ Main 5383
590 Kcys. **1000 Watts**
Louis Wasmer, Inc., Spokane, Wash.
7 A.M. to 1—Various programs
1—NBC, General Mills Program
1:15—Sylvia Gray
1:30—Fur Facts
1:45—To be announced
2—NBC, Al Pearce and Gang
3—Model Melodies
3:15—Club Bulletin
3:30—Business and Pleasure
4—NBC Programs to 4:45
4:45—Tull & Gibbs Express
5—NBC-KGO Program to 8:15
8:15—Standard Review
9:15—Sports Review
9:30—NBC-KGO Programs to 10:30
10:30—Radio Specialties
11 to 12 mid.—NBC Programs

483.6 Meters KGW Atwater 2121
620 Kcys. **1000 Watts**
Morning Oregonian, Portland, Ore.
7 A.M. to 12—Various programs
12 noon—Oregonian of the Air
12:15—NBC-KGO programs to 1:30
1:30—Dental Clinic of the Air
1:45—NBC-KGO programs to 3
3—Viennese Ensemble
3:15—As If by Magic
3:20—Friendly Chat
4—NBC-KGO Programs to 10:15
10:15—Flavor Foods
10:20 to 12 mid.—Dance Music

236.1 Meters KOL Main 2312
1270 Kcys. **1000 Watts**
Seattle Broadcast. Co., Seattle, Wash.
6:45 A.M. to 5—Various programs
5 P.M.—CBS, Mills Brothers
5:15—CBS, Organalties
5:30—CBS, Harlem Serenade
6—L. E. Hill
6:15—Sports Review
6:30—CBS, Col. Dramatic Guild
7—CBS, Deep River
7:15—Radio Speaker Stevenson
7:30—Oldsmobile Program
7:45—CBS, Myrt and Marge
8—Hollywood Newshawk
8:15—CBS, Plymouth Motor Prog.
8:30—Singing Sam
8:45—"76 All Star Revue"
9:15—"Marvelous Melodies"
9:30—Donald Novis
9:45—Dem. Educ. Feature
10—American Weekly
10:15—Musical program
11 to 12 mid.—Dance Music

FRIDAY Programs October 20, 1933

379.5 Mtrs. NBC-KGO Sutter 1920
790 Kcys. 7500 Watts
National Broadcast. Co., San Francisco

7 A.M.—Four Southern Singers
7:15—Organ Concert
7:30—Financial Service
7:45—Exercises and Applause
8—Lee Roberts' Memory Box
8:15—Log O' the Day
9:15—The Widow and Angel
9:30—Organ Concert
10—Arion Trio
10:30—Woman's Magazine of the Air
11:30—Rhythm Rascals
11:45—Carr and McKenzie
12 noon—Financial Flashes
12:15—Farm and Home Hour
1—Betty and Bob
1:30—The Arcadians
2—Al Pearce and Gang
3—Langendorf Pictorial
3:15—Viennese Ensemble
3:30—Memory's Melody
4—The Family Cook Book
4:15—Ramblers; Orchestra
4:45—Edna Fischer, pianist
5—Balladettes
5:30—Wheatenaville, dram. sketch
5:45—Little Orphan Annie
6—Let's Listen to Harris
6:30—Phil Baker, Armour Jester
7—The First Nighter
7:30—Eddie Peabody, banjoist
8—Amos 'n' Andy
8:15—Gilmore Circus
9:15—Fred Allen's a la Carte Revue
9:45—Tim and Irene
10—Richfield News Flashes
10:15—Anson Weeks' Orchestra
11—Tom Coakley's Orchestra
11:30 to 12 mid.—Organ Concert

440.9 Meters KPO Sutter 1920
680 Kcys. 50,000 Watts
National Broadcast. Co., San Francisco

7:30 a.m.—Strolling Fiddler
7:45—Organ Concert
8—Music Appreciation Hour
9—Johnnie Toffoli, accordionist
9:15—Julia Hayes, beauty talk
9:30—Canzonetta; Arion Trio
9:45—News; Alvin Rey, guitarist
10:15—Rumford School of Cookery
10:30—Melody Mixers
11—Magic of Speech
11:30—Organ Concert
11:45—Agricultural Bulletin
12 noon—State Department of Agric.
12:15—Stringwood Ensemble
12:45—Commonwealth Club Lunch
1:30—Ann Warner's Chats
2—Norman Cloutier's Orchestra
2:30—News; Musical Moments
3—Dr. Copeland's Health Talks
3:05—Viennese Ensemble
3:15—Mud Caves; dramatic skit
3:30—Three X Sisters
3:45—Univ. of California Program
4—Dance Masters; Orchestra
4:15—Century of Progress Orch.
4:30—Jack and Loretta Clemens
4:45—Symphonettes
5:15—For Girls and Boys Only
5:45—News; Evening Prelude
6:30—Paul Martin, banjoist and
Kathryn Julye, harpist
6:45—Detectives Black and Blue
7—Dramas from Real Life
7:05—Rhythm Rascals
7:15—Tarzan of the Apes
7:30—Sports Revue
7:45—American Weekly Program
8—Instrumentalists
8:15—Red Davis; dramatic sketch
8:30—Eno Crime Clues

9—Marvelous Melodies
9:15—Concert in Miniature
9:30—Football Rally
10—Melody Train
10:30—Out of the East
11—Ambassador Hotel Orchestra
11:30 to 12 midnight—Dance Music

491.5 Meters KFRC Prospect 0100
610 Kcys. 1000 Watts
Don Lee Broadcast. System, S.F., Cal.

7 A.M.—Records; Stocks
7:30—Exercise Period
8—Popular Selections
8:30—CBS, Tony Wons
8:45—CBS, Dancing Echoes
9—CBS, Voice of Experience
9:15—CBS, Gypsy Nina
9:30—Betty Crocker, Cooking School
9:45—CBS, Harold Knight's Orch.
10—Little French Princess
10:15—CBS, The Playboys
10:30—CBS, Easy Aces
10:45—Popular Selections
11—Prudence Penny
11:15—CBS, Mark Warnow's Orch.
11:30—CBS, Artist Recital
11:45—Instrumental Trio
12 noon—Noonday Concert
1—Women's Institute of the Air
1:15—CBS, The Grab Bag
1:30—N. Y. Stock Quotations
1:35—CBS, U. S. Army Band
2—Happy-Go-Lucky Hour
3—Feminine Fancies
4—Hodge Podge Lodge
4:30—CBS, Don Russo Orchestra
4:45—Lost and Found Items
4:50—Records; Town Topics
5—CBS, The Collegians
5:15—Armchair Philosopher
5:30—CBS, March of Time
6—H-Bar-Rangers
6:15—CBS, Threads of Happiness
6:30—All-American Football Show
7—CBS, Olsen and Johnson, comedians
7:30—CBC, Alexander Woolcott
7:45—CBS, Myrt and Marge
8—Globe Headlines
8:15—S & W Mellow'd Melodies
8:30—CBS, Edwin C. Hill
8:45—The Buccaneers
9—Hotel St. Francis Orchestra
9:15—American Weekly
9:30—CBS, Leon Belasco's Orch.
10—Darrrell Donnell, news
10:10—"Intimate Hollywood News"
10:15 to 12 mid.—Ted Flo-Rito Orch.

535.4 Meters KTAB Garfield 4700
560 Kcys. 1000 Watts
Assoc. Broadcasters, Oakland, Calif.

7 A.M. to 1—Various programs
1 P.M.—Radio Frolic
1:30—Over the Teacups
2—News; Town Crier
3—X-Bar-B Boys
3:30—Beauty and Fashion Talk
4—The Old Rajah
4:30—The Old Bachelor
5—Smile Club; Health Talk
6—Auto Question Box
6:15—Fishin' Fool; News
6:45—Ernie Smith's Sport Page
7—Organ Concert
7:30—Reminiscences of Vic. Herbert
7:45—London Music Hall
8:15—American Weekly Drama
8:30—Studio program
8:45—Mystery Drama
9—News; Souvenirs
9:45—Studio program
10—Gypsy Vignettes
10:30—Paul Kellar, pianist
10:45 to 12 mid.—Recordings

243.8 Meters KYA Prospect 3456
1230 Kcys. 1000 Watts
Pac. Broadcast. Corp., San Francisco

7:30 A.M. to 12—Various programs
12 noon—Scriptures; Concert
1—Hawaiians; Modern Maestros
1:45—NBC, Melodic Wandering
2—International Troubadours
2:30—Mobile Moaners; 2:45, Organ
3:45—Betty Boop Frolics
4—Artist Celebrities
4:30—Mountain Boys
5—Sunset Revue
5:30—Corriere Dell' Aria
5:45—Campbell Digest; Paraders
6:15—Waltz Idylls
6:45—"Eb and Zeb"
7—Bob Allen, piano stylist
7:15—Donald Novis, vocalist (E.T.)
7:30—Maurice Gunsky Revue
8—John Wolohan's Orchestra
9—News Flashes
9:15—Jack and Ethel, "Roads to Hollywood"
9:30—The Cub Reporters
9:45—Hotel Congress Orchestra
10—Organ Serenade
11 to 12 midnight—Concert Memories

340.7 Meters KLX Lake. 6000
880 Kcys. 1000 Watts
Tribune Pub. Co., Oakland, Calif.

8 A.M.—Records; Stocks
8:30—Covered Wagon Jubilee
9—Records; 9:15—Julia Lee Wright
9:30—Climate of the Air
10:15—Stocks; News
10:30—International Kitchen
11—Clark Sisters
11:30—Novelty Guitar Duo
11:45—Nancy Hersey, pianist
12 noon—Bill Duncan's Band
1—Jean's Hi-Lights; 1:30, News
2—Recordings; News
2:35—Better Business Talk
2:40—Stocks; Records
3:15—Carmen Rushing, pianist
3:30—News Flashes; Records
4:15—Brother Bob's Club
4:30—News Flashes
4:45—McCoy Health School
5—Covered Wagon Jubilee
5:30—The Famous Troubadour
5:45—Lovable Liars
6—Hotel Oakland Trio
7—K-9 Programs; 7:05, News
7:30—F. M. Morse, tenor
7:45—Helen Parmelee, pianist
8—KLX Hi-Jinks
9—Freddie Skinner
10:30 to 11 P.M.—Dance Music

322.4 Meters KROW Glenc. 6774
930 Kcys. 1000 Watts
Educa. Broad. Corp., Oakland, Calif.

7 A.M. to 5—Various program
5 P.M.—Twilight Reveries
6—Gypsy Melodies
6:15—Dell Perry, pianist
6:30—Organ; Senator Loyal
7:15—Sports Review
7:30—Maud Nickerson
7:45—Tom King; 8, Gladys Kaull
8:15—Nellie Alsing, soprano
8:30—Hillbilly Music
9—Wrestling Matches
10:30 to 12 midnight—Dance Music

280.2 Meters KJBS Ord. 4148-49
1070 Kcys. 100 Watts
J. Brunton & Sons, San Francisco

6 A.M. to 5:30—Records; News; Talks
5:30 P.M.—Silent period
12:01 to 6 A.M.—Owl program

285.5 Meters KNX Hemp. 4101
1050 Kcys. 25,000 Watts
Western Broadcast. Co., Los Angeles
6:45 A.M. to 6—Various programs
6 P.M.—News Service
6:15—King Cowboys
6:30—Dance Orchestra
6:45—Lawrence King and Orchestra
7—Frank Watanabe and Archie
7:15—"Black and Blue"
7:30—Red Davis
7:45—Chandu the Magician
8—Optimistic Revue
8—News Service
9:15—Colonial Dames
9:20—Poetry, Prose, Melody
9:45—Hollywood Legion Fights
10:45 to 11:30 P.M.—Dance Orch.

325.9 Meters KOMO Elliott 5890
920 Kcys. 1000 Watts
Fisher's Blend Station, Inc., Seattle
8 A.M. to 1—Various programs
1 P.M.—Proctor's, Inc.; Betty
1:15—To be announced
1:30—Community Fund Talk
1:35—Vindabonians Birnbaum
2—NBC, Al Pearce and Gang
3—Concert Serenaders
3:25—Captain Sanliso
3:30—Red Shadow; Observer
4—String Varieties
4:30—Children's Program
5—Balladettes; Three Jacks
5:30—NBC, Wheatanville
5:45—NBC, Orphan Annie
6—NBC, Phil Harris' Orchestra
6:30—NBC, Phil Baker
7—NBC, The First Nighter
7:30—NBC, Eddie Peabody
8—NBC, Amos 'n' Andy
8:15—NBC, Gilmore Circus
9:15—NBC, Best Foods Revue
9:45—NBC, Tim and Irene
10—NBC, Richfield News Flashes
10:15—Anson Weeks' Orchestra
11 to 12 midnight—Dance Music

225.4 Meters KGB Franklin 6151
1330 Kcys. 1000 Watts
Don Lee Broadcast. System, S. D., Cal.
7 A.M. to 5—Various programs
5 P.M.—CBS, Collegians
5:15—CBS, Armchair Philosopher
5:30—CBS, March of Time
6—CBS, H-O Hecker
6:15—CBS, Threads of Happiness
6:30—All-Amer. Football Show
7—CBS, Olsen and Johnson
7:30—Tarzan
7:45—CBS, Myrt & Marge
8—Globe Headlines
8:15—Recordings
8:30—CBS, Edwin C. Hill
8:45—Bucobers
9—Ted Flo-Rite's Orchestra
9:30—CBS, Leon Belasco's Orch.
10—World-Wide News
10:10—Dance Music
12 to 1 A.M.—Recordings

296.6 Meters KQW Ballard 777
1010 Kcys. 500 Watts
Pac. Agric. Foundation, Ltd., San Jose
6:30 A.M. to 6—Various programs
6 P.M.—Dinner Music
6:15—Franco's program
6:30—Fed. State Market Reports
6:45—Farmers' Exchange
7—Weather Forecast
7:03—Radio News and Forum
7:30—Chamber of Commerce
7:45—Famous Campers
8—San Jose Accordion Club
8:30—The Two Millers
9—Fireside program
9:30 to 10 P.M.—Mauna Keans

483.6 Meters KGW Atwater 2121
620 Kcys. 1000 Watts
Morning Oregonian, Portland, Ore.
7 A.M. to 12—Various programs
12 noon—Oregonian of the Air
12:15—NBC, Farm and Home Hour
12:30—Pontiac Singers
12:45—O. M. Plummer
1—NBC program
1:30—Dental Clinic of the Air
1:45—NBC-KGO Programs to 3
3—Krazy Limericks
3:05—Viennese Ensemble
3:15—As If By Magic
3:20—Ideal Dairy; Friendly Chat
4:15—NBC Program
5—Fairview Farms program
5:05—Collins & Erwin
5:30—NBC, Wheatanville
5:45—NBC, Orphan Annie
6—NBC, Let's Listen to Harris
6:30—NBC, Phil Baker
7—NBC, First Nighter
7:30—NBC, Eddie Peabody
8—NBC, Amos 'n' Andy
8:15—NBC, Gilmore Circus
9:15—NBC, Fred Allen's Revue
9:45 to 12 mid.—NBC-KGO Progs.

468.5 Meters KFI Richm'd 6111
640 Kcys. 50,000 Watts
Earle C. Anthony, Inc., Los Angeles
6:45 A.M. to 5:30—Various Prog.
5:30 P.M.—NBC, Wheatanville
5:45—NBC, Little Orphan Annie
6—NBC-KGO Programs to 7:30
7:30—NBC, Safeway to Happiness
8—NBC, Amos 'n' Andy
8:15—NBC, Gilmore Circus
9:15—NBC, Fred Allen's Revue
9:45—NBC, Tim and Irene
10—NBC, Richfield Reporter
10:15 to 12 mid.—Dance Music

499.7 Meters KFSD Franklin 6353
600 Kcys. 1000 Watts
Airfan Radio Corp., Ltd., San Diego
7:30 A.M. to 5—Various programs
5 P.M.—Better Business Bureau
5:05—NBC, Balladettes
5:30—News; Carlton's Program
6—Safety Talk; Concert
7—NBC, First Nighter
7:30—Robertson and Cota
7:45—Joe Blake, Fairway Facts
8—Piano Moods
8:15—L'Heure Exquise
9:15—Fred Allen's Revue
9:45—The Confidence Man
10—NBC, Richfield News Flashes
10:15 to 12 midnight—Dance Music

333.1 Meters KHJ VAndike 7111
900 Kcys. 1000 Watts
Don Lee Broadcast. System, L. A., Cal.
7 A.M. to 5—Various programs
5 P.M.—Organ; Town Topics
5:15—To be announced
5:30—CBS, "March of Time"
6—H. O. Hecker program
6:15—CBS, Threads of Happiness
6:30—CBS program
7:30—CBS, Alexander Woolcott
7:45—Myrt & Marge
8—Globe Headlines
8:15—S & W Mellow'd Melodies
8:30—CBS program
9—"Tapestries of Life"
9:30—Philharmonic Orch. Group
10—News; Transcription
10:20—Harlem Gentlemen
10:30—Red Stanley's Orchestra
11—Harlem Gentlemen
12 to 1 A.M.—Claude Reimer, Organist

508.2 Meters KHQ Main 5383
590 Kcys. 1000 Watts
Louis Wasmer, Inc., Spokane, Wash.
7:45 A.M. to 1—Various programs
1 P.M.—Studio program
2—NBC, Al Pearce and his Gang
3—By the Fireside
3:15—Club Bulletin
3:30—Business and Pleasure
4—Protective Diet League
4:15—NBC, Just Relax
4:30—Parade of Happy Feet
4:45—Studio programs
5:15—Hollywood News Hawk
5:30—NBC-KGO Programs to 8:15
8:15—To be announced
8:45—Black and Blue
9—Dr. Williams
9:15—NBC, Fred Allen's Revue
9:45—Frank and Archie
10—NBC, Richfield News; Music
10:30—Radio Specialties
11 to 12 mid.—NBC Programs

236.1 Meters KOL Main 2312
1270 Kcys. 1000 Watts
Seattle Broadcast. Co., Seattle, Wash.
6:45 A.M. to 5—Various programs
5 P.M.—CBS, Kasper Sisters
5:15—CBS, Organalties
5:30—CBS, March of Time
6—CBS, Hecker H O Program
6:15—Threads of Happiness
6:30—All American Football Show
7—CBS, Swift Revue
7:30—Radio Speaker Stevenson
7:45—CBS, Myrt and Marge
8—Front Page Headlines
8:15—S & W Mellow'd Melodies
8:30—CBS, Edwin C. Hill
8:45—CBS, Dance Music
9—Detectives Black and Blue
9:15—Fun Fest
9:30—Globe Trotter
9:45—To be announced
10:15—Musical Program
11 to 12 mid.—Dance Music

526 Meters KVI Broadway 4211
570 Kcys. 1000 Watts
Puget Sound Broadcast. Co., Tacoma
6 A.M. to 6—Various programs
6 P.M.—H-Bar-O Rangers
6:15—CBS, Threads of Happiness
6:30—All-Amer. Football Show
7—Olsen and Johnson
7:30—Dr. Mellor
7:45—Myrt and Marge
8—CBS, Columbia Symphony
8:15—S & W Mellow'd Melodies
8:30—Edwin C. Hill
8:45—Crazy Quartet
9—Scandinavian Hour
9:30—CBS, Leon Belasco's Orch.
10 to 12 mid.—Dance Music

309.1 Meters KJR Seneca 1515
970 Kcys. 5000 Watts
Northwest Broad. System, Seattle, Wn.
7:30 A.M. to 5—Various program
5 P.M.—Tunes for Tots
5:15—NBC, Balladettes
5:30—Recorded programs
6—Dinner Dansant
6:30—Community Fund Talk
6:35—Viennese Vagabonds
7—Handwriting by Doma
7:30—Nuggets; News
8:15—Muted Strings
8:30—The South Americans
8:45—Frank Watanabe and Archie
9—Cotton Club Orchestra
9:15—Clef Dwellers
9:30—Latin American Nights
10—Cowboy Joe
10:15 to 12 mid.—Dance Music

SATURDAY Programs

October 21, 1933

379.5 Mtrs. NBC-KGO Sutter 1920
790 Kcys. 7500 Watts
National Broadcast. Co., San Francisco
7 A.M.—Pollock & Lawnhurst, pianists
7:15—Morning Parade
7:30—Financial Service
7:45—Exercise and Applesauce
8:15—The Story Singer
8:30—Down Lovers' Lane
9—Salt and Peanuts
9:15—To be announced
9:30—National Grange Program
10:30—Woman's Magazine of the Air
11:30—Concert Echoes
12 noon—Financial Flashes
12:05—Edna Fischer, pianist
12:15—Western Agriculture
1—Dance Masters
1:30—Melody Mixers
2—Associated Football: Univ. of California vs. Washington State
5—K-7 Secret Service Spy Story
5:30—Wheatenaville, dram. sketch
5:45—Little Orphan Annie
6—The Baron Munchausen: Jack Pearl and Al Goodman's Orchestra
7—Saturday Night Dancing Party
8—Caswell Concert
8:15—Sarah Kreindler, violinist
8:30—Hollywood on the Air
9—Nathan Abas, violinist
9:30—Anson Weeks Orchestra
10—Brown Palace Hotel Orch.
10:30—Serenata: Orchestra
11—Tom Coakley's Orchestra
11:30 to 12 mid.—Slumber Hour

535.4 Meters KTAB Garfield 4700
560 Kcys. 1000 Watts
Assoc. Broadcasters, Oakland, Calif.
7 A.M. to 1—Various programs
1 P.M.—Concert, Lyric Ensemble
1:30—Studio program
2—Ye Olde Towne Crier
3—Madelon Sevier, violinist
3:30—Studio program
4—Old Tunes
4:30—The Old Bachelor
4:45—Post-Enquirer Funnies
5—Young People's program
5:30—Travelogue
6—Organ and John Collins, baritone
6:30—Columbia News Page
6:45—Ernie Smith's Sport Page
7—Light Opera Gems
7:15—Organ Concert
7:30—Ensemble
7:45—Romance
8—Home Favorites
8:30—Song Composers
8:45—Studio program; News
9:15—Souvenirs
9:45—Herb Allen, pianist
10—Kelli-Widner Orchestra
10:30—Paul Kellar, pianist
10:45 to 12 mid.—Records

322.4 Meters KROW Glenc. 6774
930 Kcys. 1000 Watts
Educa. Broad. Corp., Oakland, Calif.
7 A.M. to 5—Various programs
5 P.M.—Twilight Reveries
6—Gypsy Melodies
6:15—Dell Perry
6:30—Organ; Senator Loyal
7:15—Sports Review; Poet's Gold
7:45—Jack Warren, Whistling tenor
8—Glady's Kaull
8:15—Annette Thompson
8:30—NRA Program
9:30—Italian program
10:30 to 12 midnight—Dance Music

440.9 Meters KPO Sutter 1920
680 Kcys. 50,000 Watts
National Broadcast. Co., San Francisco
7:30 a.m.—Morning Parade
8—Vass Family
8:15—Log o' the Day Crosscuts
9:15—Sax-o-Tunes: Mickey Gillette
9:45—News; Organ Concert
10:30—Merrile Men Quartet
10:45—Smackout: Songs and Comedy
11—Musical Originalities
11:30—Canzonetta: Arion Trio
11:45—Agricultural Bulletins
12 noon—Words and Music
12:30—Wealth of Harmony
1—News Service
1:15—John and Ned, harmony duo
1:30—Concert Favorites
2—Casino Orchestra
2:30—Three Scamps: Vocal trio
2:45—Carolyn Rich, violinist
3—The Sizzlers
3:15—Viennese Ensemble
3:30—Three Jesters
3:45—Twenty Fingers of Harmony
4—News; Orchestra
4:30—The Optimistic Mrs. Jones
4:45—Stringwood Ensemble
5:30—Sous Les Ponts de Paris
6—Musical Echoes: Gail Taylor
6:30—Education at Crossroads
6:45—Souvenirs of Song
7:15—Boris Kramarenko Orchestra
7:30—Kay Kyser's Orchestra
8—Aesop's Fables
8:30—Plano Pals
9—Carefree Carnival: Variety
9—Charles Hart Instrumentalists
10:30—Blue Moonlight: Paul Carson, organist; Alvin Rey, guitarist
11—Ambassador Hotel Orchestra
11:30 to 12 midnight—Organ Concert

243.8 Meters KYA Prospect 3456
1230 Kcys. 1000 Watts
Pac. Broadcast. Corp., San Francisco
7:30 A.M. to 12—Various programs
12 noon—Scriptures
12:03—Harmony Highlights; Concert
1:30—Hawaiian Entertainers
2—Rhythmic Ripples
2:30—Song Vogues; Organ
2:45—Organ Matinee
3:45—School News, Lester Malloy
4—Hotel St. Regis Orchestra
4:15—Symphony Series
5—Sunset Revue
5:30—Corriere Dell' Aria
5:45—Campbell Digest; Paraders
6:15—Waltz Idylls
6:45—Lavendar and Old Lace
7—Bob Allen, piano stylist
7:15—Mountain Boys
7:30—G. D. Gray and Virginia Miller
8—John Wolohan's Orchestra
9—NRA Program
10—Organ Serenade
11 to 12 midnight—Concert Memories

296.6 Meters KQW Ballard 777
1010 Kcys. 500 Watts
Pac. Agric. Foundation, Ltd., San Jose
6:30 A. M. to 6—Various programs
6 P.M.—Dinner Music
6:15—Franco's program
6:30—Band Music
6:45—Farmers Exchange
7—U. S. Weather Forecast
7:03—Radio News and Forum
7:10—Fifteen Minutes in Paris
7:30—Soul of Portugal
8—Music Lovers' Half-hour
8:30—Mystery Drama
8:45 to 10 P.M.—Italian program

491.5 Meters KFRC Prospect 0100
610 Kcys. 1000 Watts
Don Lee Broadcast. System, S. F., Cal.
7 A.M.—Records; Exercise Period
8—CBS, Helen and Mary
8:30—CBS, Concert Miniatures
9—CBS, Vincent Travers' Orchestra
9:30—CBS, Enoch Light Orchestra
10—Junior Artists program
10:45—In event of Eastern football broadcast, listed programs will be cancelled
10:55—Church Announcements
11—CBS, Dancing Echoes
11:15—Prudence Penny
11:30—CBS, Savitt String Quartette
12 noon—Noonday Concert
1—CBS, Mischa Ruginsky Ensemble
1:30—N. Y. Stock Quotations
1:35—CBS, Saturday Sycopators
2—Stanford-U. S. F. Football Game
4:30—Lost and Found Items
4:35—Town Topics
4:40—Ted Fio-Rito's Orchestra
5—Dr. J. C. Campbell
5:15—CBS, Elder Michaux Congreg.
5:45—CBS, Gertrude Niesen
6—CBS, Triple Bar X Days
6:30—CBS, Symphonic Strings
7—CBS, Col. Public Affairs
7:15—CBS, Ann Leaf, Organist
7:30—CBS, George Jessel
7:45—CBS, Willard Robinson's Orch.
8—CBS, Isham Jones' Orchestra
8:15—CBS, Plymouth Motor Co.
8:30—NRA Program
9:30—Ted Fio-Rito's Orchestra
10—Darrell Donnell, news
10:10 to 12 mid.—Dance Music

340.7 Meters KLX Lake. 6000
880 Kcys. 1000 Watts
Tribune Pub. Co., Oakland, Calif.
8 A.M.—Records
8:30—Covered Wagon Jubilee
9—Records; Clinic of the Air
10:15—Financial Information
10:30—International Kitchen
11—Clark Sisters; News Flashes
11:30—Novelty Guitar Duo
11:45—Fred Skinner
12:05—Bill Duncan's Band
1—Jean's Hi-Lights
2—Recordings; News
2:45—Jean Ardath, pianist
3—Recordings; News
4:15—Brother Bob's Club; News
5—Covered Wagon Jubilee
5:30—Famous Troubadour
5:45—Helen Parmelee, pianist
6—Hotel Oakland Trio
7—News Items
7:30—Musical Solree
8:30—Faucit Theater of the Air
9—NRA Rerebroadcast from KGO
10 to 12 midnight—Dance program

499.7 Meters KFSD Franklin 6353
600 Kcys. 1000 Watts
Airfan Radio Corp., Ltd., San Diego
7:30 A.M. to 2—Various programs
2—To be announced
5—NBC, K-Seven: drama
5:30—Studio program
6—NBC, Lucky Strike Hour
6:30—NBC, Jamboree
7—Morales Hawaiians
7:30—Ray de O'Fan
7:45—Trio; American Weekly
8:15—NBC, Sarah Kreindler, violin
8:30—NBC, Hollywood on the Air
9—NBC, Carefree Carnival
10—NBC, Chas. Hart Ensemble
10:30—NBC, Blue Moonlight
11 to 12 mid.—Slumber Hour

236.1 Meters KOL Main 2312
1270 Kcys. 1000 Watts
Seattle Broadcast. Co., Seattle, Wash.
6:45 A.M. to 2 P.M.—Various progs.
2:30—Football Game—Wash. vs. Col. of Puget Sound
5 P.M.—CBS, Connie Boswell
5:15—CBS Program
5:45—CBS, Vocalist
6—CBS, Glen Gray Orchestra
6:30—CBS, Symphonic Strings
7—CBS, Col. Public Affairs
7:15—Radio Speaker Stevenson
7:45—CBS, Willard Robinson Orch.
8—CBS, Jerry Freeman Orchestra
8:15—CBS, Plymouth Motors
8:30—CBS program
9—Globe Trotter
9:15 to 12 mid.—Dance Music

309.1 Meters KJR Seneca 1515
970 Kcys. 5000 Watts
Northwest Broad. System, Seattle, Wn.
8:30 A.M. to 1—Various programs
1 P.M.—NBC, Rhythm Rascals
1:15—Varieties
1:30—String Varieties
2—Blue Moments
2:30—Over the Skyways
2:45—Songs of the South
3:15—Vindabonians, Birnbaum
3:45—Song Recital
4—Pastel Harmony
5—Waldorf Astoria Orchestra
5:30—Recorded program
6—NBC, Antobals Cubans
6:30—Concert Ensemble
7—Your Handwriting
7:15—Moment Musicales
7:30—Viennese Vagabonds; News
8:30—Arion Trio
8:45—Frank Watanabe and Archie
9—NBC, Carefree Carnival
10—String Novelties
10:30—Rocky Mountaineers
11:30 to 12 mid.—Slumber Hour

325.9 Meters KOMO Elliott 5890
920 Kcys. 1000 Watts
Fisher's Blend Station, Inc., Seattle
8 A.M. to 12:30—Various programs
12:15—NBC, Western Agriculture
1 P.M.—Dance Masters
1:30—Melody Mixers
2—Football Game: WSC vs. UC
4:30—Children's program
5—Waldorf Astoria Orchestra
5:30—NBC, Wheatenaville
5:45—NBC, Little Orphan Annie
6—Dinner Dansant
6:30—NBC, K-7 Drama
7—Saturday Night Dancing party
8—NBC, Caswell Concert
8:15—Home Dramas
8:30—Fisher's Blend Half Hour
9—Melodic Moods, Marcus
9:30—To be announced
10—Charles Hart Instrumentalists
10:30—Blue Moonlight
11 to 12 mid.—Dance Orchestra

280.2 Meters KJBS Ord. 4148-49
1070 Kcys. 100 Watts
J. Brunton & Sons, San Francisco
6 A.M. to 5:30—Records; News; Talks
5:30 P.M.—Silent period
12:01 to 8 A.M.—Owl program

285.5 Meters KNX Hemp. 4101
1030 Kcys. 25,000 Watts
Western Broadcast. Co., Los Angeles
6:45 A.M. to 5—Various programs
5 P.M.—Storytown Express
5:15—First Radio Church
5:45—Bouquet of Memories
6—Newspaper of the Air
6:15—Phillip Musgrave
6:30—1933 Marches On
6:45—Lawrence King
7—Musical program
7:15—Musical program
7:45—Chandu the Magician
8—NRA Program
9—News Service
9:15—Sandoval
9:45—Singing Strings and Vocalist
10 to 11:30 P.M.—Dance Music

526 Meters KVI Broadway 4211
570 Kcys. 1000 Watts
Puget Sound Broadcast. Co., Tacoma
6 A.M. to 2—Various programs
2—Football Game: Wash. vs. Col. Puget Sound
4:30—Tea Dance
5—CBS, Connie Boswell
5:15—CBS, Elder Michaux
5:45—Musical Crediters
6—CBS, Triple X Days
6:30—Mary March
7—CBS, Columbia Public Affairs
7:15—CBS, Ann Leaf, organist
7:30—Dr. Mellor
7:45—CBS, Willard Robinson Orch.
8—Isham Jones' Orchestra
8:15—Crazy Quartet
8:30 to 12 mid.—Dance Orchestra

483.6 Meters KGW Atwater 2121
620 Kcys. 1000 Watts
Morning Oregonian, Portland, Ore.
7 A.M. to 1:30—Various programs
1:30 P.M.—Dental Clinic of the Air
1:45—NBC-KGO programs to 3:15
2—Football Game
5—NBC, K-Seven; drama
5:15—Collins & Erwin
5:30—NBC, Wheatenaville
5:45—NBC, Orphan Annie
6—NBC, Baron Munchausen
6:30—NBC, Jamboree
7—NBC, Dancing Party
8—NBC, Caswell Concert
8:15—Crazy Crystals
8:30—Fisher's Blend Half Hour
9—Shanghai Days
9:30—Broadway Revue
10—Silent Period
10:15 to 12 mid.—NBC programs

225.4 Meters KGB Franklin 6151
1330 Kcys. 1000 Watts
Don Lee Broadcast. System, S. D., Cal.
7 A.M. to 5—Various programs
5 P.M.—CBS, Connie Boswell
5:15—CBS programs
7—CBS, Public Affairs Institute
7:15—CBS, Ann Leaf, organist
7:30—CBS, George Jessel
8—CBS, Jerry Freeman's Orch.
8:30—CBS, Dance Orchestra
10—World-Wide News
10:10—Ted Fio-Rito's Orchestra
11—To be announced
12 to 1 A.M.—Recordings

333.1 Meters KHJ VAndike 7111
900 Kcys. 1000 Watts
Don Lee Broadcast. System, L. A., Cal.
7 A.M.—News Briefs and records
8—CBS, Helen and Mary
8:30—CBS, Concert Miniatures
8:55—Bullock's, Door Opening
9—CBS Orchestras
10:30—CBS, Madison Ensemble
10:45—CBS, Michigan-Ohio Football game
1—Worldwide News
1:15—CBS, Edison Ensemble
1:30—U. S. C. vs. Oregon Football Game
4—CBS, Frederic William Wile
4:15—CBS, Mildred Bailey
4:30—CBS, Husk O'Hare's Orch.
5—CBS, Connie Boswell
5:15—Hon. Elder Michaux
5:45—CBS, Gertrude Niesen
6—CBS, Casa Loma Orchestra
6:30—CBS, Symphonic Strings
7—CBS, Col. Public Affairs
7:15—CBS, Ann Leaf, organist
7:30—CBS, Robinson's Orchestra
8—CBS, Isham Jones' Orch.
8:30—NRA program
9:30—Dance Music
10—News Items
10:10—Hotel St. Francis Orchestra
11—Dance Orchestra
12 to 1 A.M.—Claude Reimer, organ

468.5 Meters KFI Richm'd 6111
640 Kcys. 50,000 Watts
Earle C. Anthony, Inc., Los Angeles
6:45 A.M. to 2—Various programs
2—Football Game, U. C. L. A. vs. Loyola
5:30—NBC, Wheatenaville
5:45—NBC, Little Orphan Annie
6—NBC, Baron Munchausen
6:30—To be announced
7—NBC, Saturday Night Dancing Party
8—NBC, Caswell Concert
8:15—NBC, Sarah Kreindler
8:30—To be announced
9—NBC, Mark Hopkins Hotel Orchestra
10—NBC, Instrumentalists
10:15—Comedy Stars of Hollywood
10:30 to 12 midnight—Dance Music

508.2 Meters KHQ Main 5383
590 Kcys. 1000 Watts
Louis Wasmer, Inc., Spokane, Wash.
7:30 A.M. to 2 P.M.—Various progs.
2—Football Game—WSC vs. UC
5—Tull & Gibbs Express
5:15—K-Seven; drama
5:30—NBC, Wheatenaville
5:45—NBC, Orphan Annie
6—NBC, Baron Munchausen
6:30—To be announced
7—Crazy Wells
7:15—American Weekly
8—NBC, Caswell Coffee Co.
8:15—Sarah Kreindler, violinist
8:30—NBC, Hollywood on the Air
8:45—Black and Blue
9—To be announced
9:45—Frank and Archie
10—NBC, Blue Moonlight
10:30—Radio Specialties
11 to 12 mid.—NBC Programs

Published weekly by the Broadcast. Weekly Publishing Company, 36 Powell Street, San Francisco, Calif.
Telephone DOUGLAS 5272

Vol. XII, No. 42

A. J. URBAIN, Editor and Publisher

October 14, 1932

Yearly subscription: \$2 in the United States. Entered as second class matter, March 25, 1923.
at the Post Office, San Francisco, Calif., under Act of March 3, 1879.

Copyright, 1933, by Broadcast Weekly Publishing Company.

Don't miss Benny Rubin!

Don't miss Edwin Imhaus!

Don't miss the Heidt of Entertainment!

Don't miss the guest star surprise!

Don't miss any of the big features on the

SHELL SHOW MONDAY NIGHT

On these stations — Columbia (Don Lee) Network

San Francisco	KFRC	Spokane	KFPY
Los Angeles	KHJ	San Diego	KGB
Portland	KOIN	Sacramento	KFBK
Seattle	KOL	Fresno	KMJ
Salt Lake City	KSL	Stockton	KWG
Reno	KOH	Bakersfield	KERN
Tacoma	KVI	Santa Barbara	KDB

and by electrical transcription over

San Bernardino	KFXM	Missoula	KGVO	Yakima	KIT
Walla Walla	KUJ	Honolulu	KGU	Great Falls	KFBB
Boise	KIDO	Wenatchee	KPQ	Phoenix	KTAR

AND REMEMBER —

SUPER SHELL GASOLINE

the premium-type fuel, is today's big gasoline bargain