

FOR WEEK OF  
April 30th  
to May 6th

# BROADCAST WEEKLY

## IMPORTANT

Effective Sunday, April 30, when certain sections of the East begin operating on a Daylight Saving Time schedule, all eastern programs will be broadcast on the Pacific Coast one hour earlier than during the winter months. Because of this fact, numerous changes on the NBC and CBS schedules are necessary, and all programs listed are subject to change without notice.



THE LEADING RADIO GUIDE OF THE PACIFIC COAST



# Smiling Associated Dealers help you KNOW YOUR WEST



The Associated Dealer in your neighborhood invites you to enlist in Associated Oil Company's "Know Your West" campaign. Visit scenic and historic western spots you've never seen before.

Plan your trip from the free Associated highway maps your Smiling Associated Dealer offers. Then, when you're ready to leave, have him groom your car for the trip.

He'll check every lubrication point and protect your car with the same Cocol used by the U. S. Navy in its battleships and fighting planes. He'll fill your tank with *Flying A*, the *fast-action* gasoline that *puts wings on your car*.

Every Associated dealer operates his own business, whether service station, garage, or auto camp. His business code is "Get Associated With a Smile." You'll like his friendly, courteous service.



Hear about western points of interest on the Associated  
Spotlight, 9-10:30 p. m. every Saturday night.  
KGO, KFI, KOMO, KGW, KHQ

● To the readers of *Broadcast Weekly*: Associated Oil Company offers a \$10 Scrip Book each week for the 250-word essay on some western trip that is read on the Associated Spotlight. Get your free entry card from your Smiling Associated Dealer, and send it in with your essay to Associated Oil Company, San Francisco, California.

# BROADCAST WEEKLY

LOS ANGELES  
R. J. Birch Co.  
846 S. Broadway  
Los Angeles

NEW YORK  
Edwin F. Ripley  
118 East 28th Street  
New York City

*The Leading Radio Guide of the Pacific Coast*

Vol. XII, No. 18

A. J. URBAIN, *Editor and Publisher*  
726 Pacific Building, San Francisco, Calif.

April 29, 1933

## "DAYLIGHT SAVING" TIME

GET out your compass, slide rule, and logarithm table. The semi-annual re-orientation of the clock is imminent. Eastern "daylight saving" time goes into effect at midnight, April 29.

On that date all eastern time pieces are set ahead one hour. In Chicago, for instance, five o'clock is no longer five o'clock, but six o'clock. When the fatuous family alarm clock raucously rouses Mr. Jones from his hard-earned slumber at seven a.m., it is really rousing him out at six, robbing him of an hour's sleep. And if, on his night at the Club, he carelessly promises Mrs. Jones to be home at eleven, he must leave his convivial haunts an hour prematurely.

Although the West has repeatedly repudiated this futile effort to change the unchangeable, the close relationship between sections of the country spreads the consequent confusion and necessitates a considerable readjustment even here.

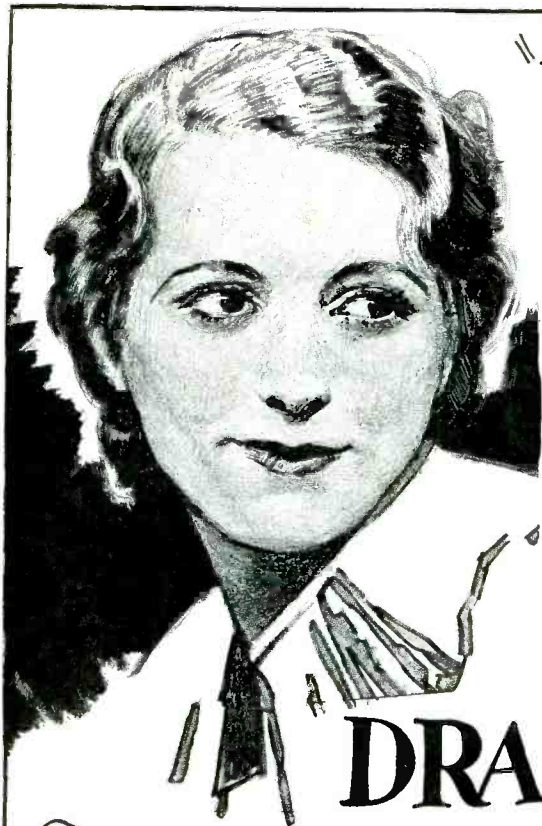
Radio schedules particularly will be affected. Transcontinental programs broadcast through chain stations on eastern "daylight saving" time will really come on the air here an hour earlier than previously, and thus necessitate an extensive rearrangement of western chain schedules to avoid conflict. Your favorite programs will probably be shifted. To avoid disappointment, take no period for granted. Beginning Sunday, April 30, check the time for each program *in advance* in BROADCAST WEEKLY. This issue contains

the new schedules insofar as they have been released by the stations up to this time.

If, however, you should absent-mindedly forget to check the changes, and thereby miss an episode or two in your favorite serial, do not blame the station. Broadcasters have no alternative but to revise their schedules to meet an emergency thrust upon them, and are entitled to your forbearance in conforming with a situation as unwelcome to them as it is aggravating to you. Eastern "daylight saving" time is entirely responsible.

It is to be hoped that some day people who have a predilection for tinkering will be compelled to concentrate on jig-saw puzzles, or Rube Goldberg inventions, and rendered harmless to turn the world topsy turvy periodically with their ridiculous experiments. Time is the common denominator of life, and cannot be tinkered with in one section without affecting the people in another. Absurd as are any attempts to change the radio between daylight and darkness, if it is contended governments can amend the *natural* laws of the universe, then none but the *national* government should be entrusted with such legislation, so that its effects will at least be uniform.

In the meantime, remember the date: April 29, at midnight. Watch your BROADCAST WEEKLY for changes, and bear with the broadcasting companies in their effort to minimize your inconvenience.



## "PRIMA DONNA OF RADIO"

JESSICA DRAGONETTE IS HER REAL NAME . . . SHE WAS BORN IN CALCUTTA, INDIA . . . RECEIVED HER EDUCATION AND MUSICAL TRAINING AT GEORGIAN COURT CONVENT, LAKEWOOD, N.J. . . WHICH SHE ATTENDED FROM THE AGE OF 6 UNTIL SHE WAS A YOUNG WOMAN . . .

# JESSICA DRAGONETTE

THEN TO NEW YORK . . . FRESH FROM SCHOOL . . . TO APPLY TO MAX REINHARDT . . . AMONG A HUNDRED OTHERS . . . FOR THE ONLY SOLO PART IN "THE MIRACLE" . . . SHE GOT THE PART . . . SINGING AS AN ANGEL FROM ABOVE STAGE . . . CHALIAPIN SAID "THE ANGEL IS THE BEST VOICE, IT IS A SUPERB VOICE" . . . HER FUTURE WAS ASSURED . . . NEXT SHE APPEARED IN "THE STUDENT PRINCE" . . . SINGING KATHIE, THE PRIMA DONNA PART . . . AND WAS THE SOPRANO INGENUE IN THE 1926 "GRAND STREET FOLLIES" . . . THENCE TO NBC . . . FORSAKING A BRILLIANT STAGE CAREER FOR RADIO . . . SHE'S STILL IN HER EARLY TWENTIES . . . HAS GOLDEN HAIR AND HAZEL EYES . . .



Courtesy of E.T. Cunningham, Inc. - Manufacturers of Cunningham Radio Tubes.

# THE NEW GRUNOW REFRIGERATOR

WHEN a man has the courage today to bet a million dollars, cold cash, on trying to improve his business, that's news which makes people sit up and take notice. But when a man is willing to bet a million, cold cash, to start an entirely new proposition, from scratch, without any particular reason for doing so, this most certainly comes within the scope of the old saying—"When a dog bites a man there is nothing startling about it, but when a man bites a dog, that's news."

William C. Grunow, energetic, resourceful young Chicago multi-millionaire, is the man who has literally "bitten a dog."

A few years ago Mr. Grunow was front-page news all over America. Born of humble parentage, his life to date has been a typical story of a typical American boy's chances of making good in a big way. With no financial backing but with a will and natural ability, which could not be downed, Wm. C. Grunow, in the short space of three years became the "Radio King" of America. His company grew from small beginning to the largest institution of its kind in the world, turning out as high as six thousand complete radio receivers per day.

Through it all, Mr. Grunow, better known as "Bill" to his executives and even to the employes in his factory, worked like a madman, inventing and perfecting new things which would improve his radios, and new methods of production which would and did permit him to sell an amazing and beautiful radio set for the lowest price known at that time for a quality musical instrument.

Then two years ago, considerably under forty years of age, Mr. Grunow retired, a multi-millionaire. Owning a ranch in Arizona, an estate at Lake Geneva, Wisconsin, a hunting camp in Canada and a beautiful home in the City of Chicago, and with ample funds for a life-time of rest, it still was incomprehensible to Mr. Grunow that he should not continue to build something.

Voted one of the greatest "natural" industrial leaders of his time, with boundless energy and good health, and with the realization that play, after a time, became the hardest work in the world—Mr. Grunow determined to look around for something

that would afford him an opportunity, once more to use his talents for manufacturing.

When he announced that he had discovered and adapted for household use, a refrigerating liquid which was non-poisonous, non-corrosive, non-combustible—which could be carried around in open pails, like water; and that he intended to start a manufacturing business to make refrigerators, using this liquid, people told him he was crazy. Financiers, especially, warned him that the times were all against him, and that he had best hang on to his money and "wait for a more propitious era." Mr. Grunow's answer was to start in business with an initial expenditure of a million dollars to insure its success. In typical Grunow fashion he explained—"I know we have the greatest refrigerant that was ever known. I know it fills a real need, by permitting us to build a household refrigerator that is safe, that is economical to operate and that will start a new era in refrigerator history. Why should I hoard my money when I know I have something good that the public needs—that will enable me to give hundreds of people work—conferring a blessing on hundreds of thousands of other people."

So Bill Grunow explained his venture, his faith in America, and in the refrigerator he is now building. Not only does it contain a new type of refrigerant but it sets a new style in appearance, having a flush door and hardware fittings that are described as being "jewel-box type."

Although his company started from scratch, a few months ago, Mr. Grunow states that distribution has already been secured all over America for the Grunow refrigerator. In fact, the magic of his name enabled this distribution to be secured over the long distance telephone—the first time that such an amazing reception has ever been given a product, in good times or bad. Approximately five thousand dealers are "all set to go" with the Grunow refrigerator.

The new Grunow Electric Refrigerator is distributed in Northern California by the H. R. Curtiss Company of San Francisco, and there is already a Grunow dealer in practically every community.

# ETHER GLEANINGS

By J. CLARENCE MYERS

WE wonder how many of you readers are aware of the fact that right in our midst is a radio broadcasting station that lays claim to being the oldest in the world?

It first saw the light of day and its voice had its initial ride over thin ether way back in 1909, was acclaimed the marvel of the age when it broadcast programs to the visitors at the Panama Pacific International Exposition in San Francisco in 1915 and has been functioning ever since!

We have reference to KQW in San Jose, which is owned and operated by the Pacific Agricultural Foundation, Ltd.

The other day we cornered Fred J. Hart, present managing director of the Santa Clara valley station and obtained from him the absorbing life story of this station which gained world-wide attention long before any of our metropolitan areas ever heard of such a thing as broadcasting, years before networks and radio chains were dreamed of.

Hart told us so many interesting things about this pioneer in the business of transmitting voice and music that we couldn't jot down the notes fast enough. But we'll attempt to tell you some of the outstanding things in KQW's unusually interesting career.

The station was the brain child of Charles D. Herrold, experimenter and inventor, who lived in San Jose. To the radio fraternity he is affectionately known as "Doc." He carefully watched the experiments of the early pioneers in wireless—Vladimir Pourson, Count Arco Majorana and others—duplicating and exceeding their efforts in that direction.

One morning in 1909 the townsfolk were aghast when they espied a huge aerial containing over 11,500 feet of wire suspended from the roofs of two seven-story buildings in the down town section. Right then and by establishing all sorts of world records for both telegraph and telephone communication.

Increasing use of wireless by ships caused reports to come in from various points announcing the success of these early efforts. Doc Herrold's station was being heard consistently 1,000 miles distant. E. A. Portal, now a San Francisco radio merchant, was one of the early operators for Herrold.

Mr. Hart said:

"This early station, which was eventually to become KQW, carried on under a variety of names—the Herrold Laboratory, the National Wire Telephone and Telegraph Co., and others. In 1912 two-way communication by voice with occasional presentation of

music was established between San Jose and the Fairmont Hotel in San Francisco. This undoubtedly was the first two-way voice broadcast by radio. The first receiving studio was established in 1912 by Doc Herrold. It consisted of two master receiving sets and two dozen pairs of telephone receivers hanging around the wall with chairs arranged for the comfort of the guests.

"All these efforts and experimentations led up to the most spectacular achievements of Doc Herrold's radio career—the continuous broadcasting of music and entertainment from the San Jose station to the Panama Pacific International Exposition in 1915. A daily program from 6 to 8 hours was presented."

In those embryonic radio days the possibilities of wireless broadcasting was seen and the public was urged to build sets and listen in to the newest wonder of invention.

It was in those early days that the Pearce Brothers—Al and Cal—prominent ether stars now, made their initial broadcast over Doc Herrold's San Jose station.

Came the world war and the United States' entry into the mess. Immediately censorship of all radio transmission and receiving sets was ordered. Doc Herrold suspended his activities, but resumed them at the close of the war. The call letters—KQW—were first assigned December 9, 1921. In 1925 the ingenious inventor retired from the broadcasting business, transferring his broadcasting rights to the First Baptist Church of San Jose. Later it was taken over by the Pacific Agricultural Foundation, Ltd., the present owners.

\* \* \*

Ted Fio Rito and his grand band of the Hotel St. Francis heard regularly on the Don Lee chain, are scheduled to leave their present berth some time in May. There are various reports as to where the next stop will be. Portland, say some.

\* \* \*

The Tarzana Hillbillies who had been wafting out mountain ditties for a year and a quarter on KTAB, were cancelled on that station a short time ago.

\* \* \*

The "Skippy" program, patterned after Percy Crosby's comic strip, folded up on KFRC April 22. It may return in fall.

To offset that, though, KFRC reports several new accounts—among them being a CBS coast to coaster for Acme Paint, featuring "Smilin'" Ed O'Connell on Friday from 9:45 to 10 a. m.; another CBS transcontinental beginning June 6 starring the Street

Singer, Mondays, Wednesdays and Fridays from 5:15 to 5:30 p. m. for the Nonspi Company; and another Bourjois program beginning May 1.

\* \* \*

The "Symphonies Under the Stars" will be broadcast in July by the Don Lee system under the sponsorship of the Union Oil Company.

The Los Angeles Soap Company unexpectedly pulled off its nightly serial of adolescence—"Growin' Up"—which featured Emerson Tracy and Gay Seabrook. No explanation.

\* \* \*

Whispers have reached our ears that Anson Weeks and his orchestra will supplant Ted Fio Rito's group on those M. J. B. Demi Tasse Revues when Fio Rito leaves town next month.

\* \* \*

The Golden State Family Robinson concludes on NBC April 29 and Swift's "Thurston, the Magician" program folds up on the same network on May 19.

\* \* \*

Warning!

Watch your favorite radio programs. Most of them that originate in the East will be heard one hour earlier and others will be released at various new times beginning April 30. For, on that date the Eastern states observe Daylight Saving Time, making four hours difference in time between the Atlantic coast and this.

For instance, Amos 'n' Andy will be heard at 7 o'clock instead of 8, and so on. Among the important NBC time changes in programs is the Maxwell House Showboat, which will be broadcast from 9 to 10 our time on Thursday nights; (which means that the program will be staged from 1 to 2 a. m. in the East); Best Foods Musical Grocery Store, comes on from 7:30 to 8 Friday nights; "One Man's Family" on Wednesday nights from 9 to 9:30 o'clock.

\* \* \*

In addition to its Monday, Wednesday and Friday matinees over the Don Lee chain, Hodge Podge Lodge, Jennison Parker's nutty act is now being wafted out Tuesday nights over KFRC from 8:30 to 9 o'clock.

\* \* \*

'Tis said that the sponsors of the Goldbergs are seriously thinking of reinstating the program in the West as the result of the avalanche of letters received by the NBC when they were yanked recently.

\* \* \*

C. E. Twiss, for several years associated with KQW's San Francisco studios, is the NBC's newest announcer. Preceding his radio activities here, Twiss owned his own station

in Idaho. Recently Twiss was chosen from a long list of announcers, to appear in a series of electrical transcriptions for the Sperry Flour Company, which were made at the MacGregor and Sollie laboratories.

\* \* \*

Two San Francisco dentists are beckoning trade via the KFRC microphone—Dr. Painless Parker and Dr. J. C. Campbell. Parker's program is heard Mondays and Thursdays and features "The Philistine" and Campbell's broadcast is on Mondays, Wednesdays and Saturdays from 5 to 5:15 o'clock and features Ronald Graham, barytone and Dick Aurandt, organist.

The "Philistine" likewise broadcasts daily over KQW at 10:15 a. m. for the painless bicuspid extractor.

\* \* \*

Although KTAB prohibits the mention of "beer" over its station it is now presenting a program direct from the Tap Room of the College Inn, newest suds emporium in San Francisco. The program, heard Monday, Wednesday and Friday nights, features music by Al Mason's string trio.

\* \* \*

Florence Lake, Medbury's original "Dumb Dora" was seen awaiting an audition at the NBC another day.

**W**INNERS in the Associated Spotlight Jig-Saw Puzzle Contest just concluded in BROADCAST WEEKLY have been announced by Associated Oil Company as follows:

Ethel T. Pflaum, 200 Magnolia Avenue, Piedmont, California; Ora B. Sullivan, 2314 V Street, Sacramento, and W. M. Cummings, 120 Virginia Street, Vallejo, California.

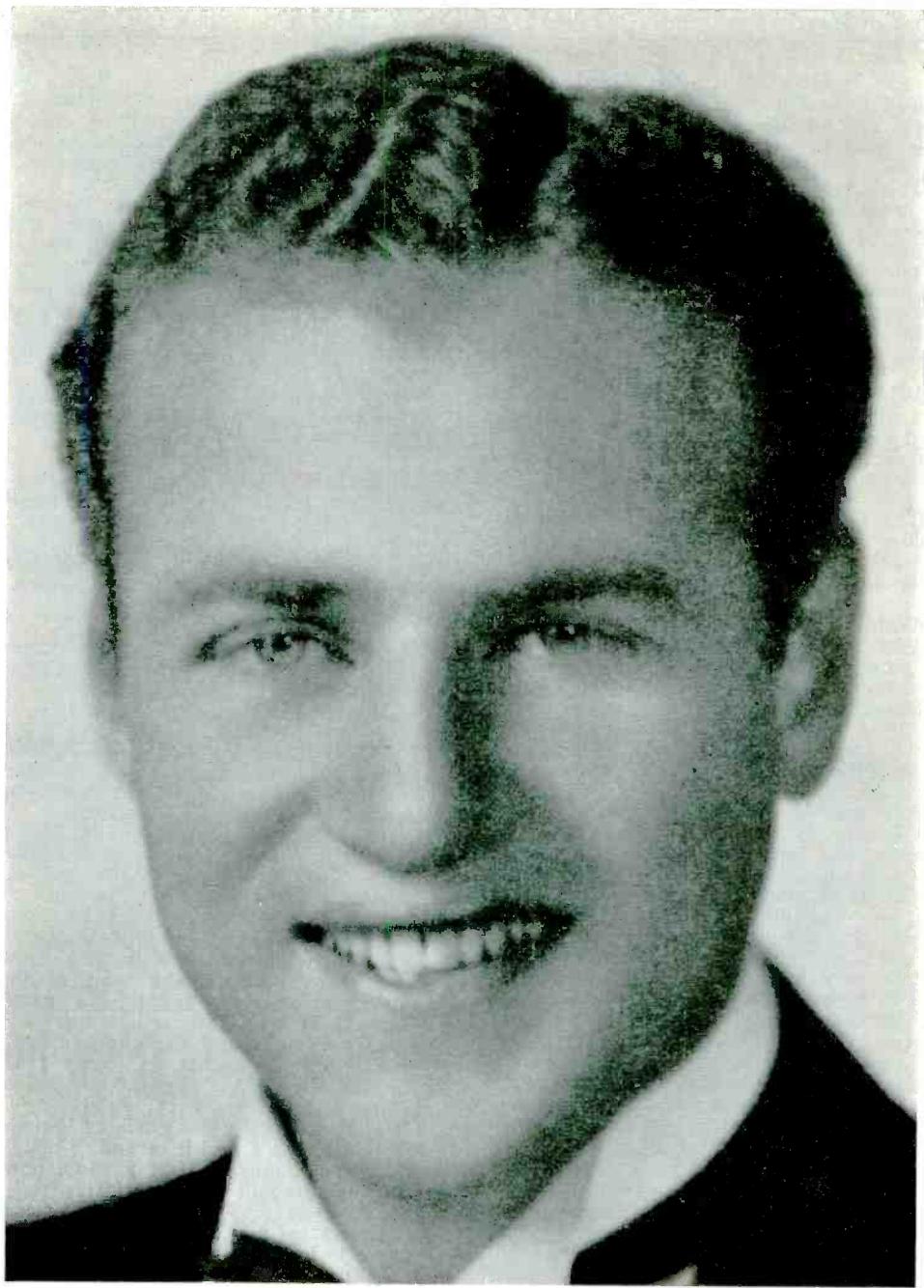
The winners, each of whom have been awarded a prize of one ten-dollar Associated scrip book, were chosen, according to the contest rules, both on the basis of their ability in assembling the jig-saw puzzles of Associated Spotlight artists printed in BROADCAST WEEKLY and the effectiveness of their 25-word statements on "Why I Use Associated Flying A Gasoline."

Winning statements were:

Miss Pflaum: "I use Associated Flying A Gasoline because I find it second to none in quick starting, mileage, fast pick-up, power on hills and smooth motor performance."

Mr. Cummings: "Being human, friendly service attracted me; being careful, Flying A Gasoline had to prove its great power and mileage qualities. Now we are all Associated."

Miss Sullivan: "I use Associated Flying A Gasoline because it keeps my twelve-year-old car running with that steady purr which gives confidence and complete satisfaction."



**HARRY STANTON** is one of the few bassos who looks the part. He is over 6 feet tall and weighs 225 pounds. Walla Walla, Wash., was his home before he went to college and discovered he could sing. Shortly after graduation he became a member of the quartet billed in vaudeville as the "Foursome." He wanted to further his musical knowledge, concentrated on San Francisco and has been studying and singing over radio for the past four years or more. Grandson of a Western pioneer. Bachelor; blue eyes, light brown hair.





One of the most picturesque personalities of the air is Harry Kirby McClintock, known far and wide as "Mac." His boyhood was spent in Knoxville, Tenn. He has been in every corner of the world since then. Served in the Spanish-American War; became a seaman; joined a traveling professional baseball team; witnessed the coronation of Edward VII; helped organize the unemployed in Portland, Ore., in 1913; attended the Chicago School of Fine Arts; railroaded; entered radio in 1925. Is married and has a daughter.



# SILHOUETTES



**P**AUL, the war-crippled aviator son of the Barbour household, is one of the most interesting figures in "One Man's Family," Carlton E. Morse's great serial story of a modern American family group, which is heard Wednesday nights at 9:00 o'clock P. S. T., over the NBC-KGO network.

Michael Raffetto, youthful microphone actor who plays Paul with such exquisite skill and understanding of the rebel-soul of the eldest Barbour son, is every whit as interesting as his ether character. A darkly handsome young man whose countenance bears the stamp of his mingled British and Italian ancestry, Raffetto's own life has been filled with incidents as varied as that of Paul.

The descendant of a pioneer California family whose founder built the famous Placerville Inn, Raffetto was brought up and educated in the San Francisco Bay region. At the University of California he studied law because his parents wanted him to be an attorney, but his natural bent for the theater made him prominent in campus theatricals, and he was director of student dramatics in his Senior year. Too young for regular army service, he was a member of the Students' Training Corps during the World War.

Just as it might have happened to his microphone personality, Paul, the wanderlust attacked Raffetto while in college, and between his Junior and Senior years he went to Honolulu, where he became, of all things, automobile editor on the Honolulu *Advertiser*. Before long he was, of course, a member of the Footlights Club, noted amateur theatrical organization of the Islands, and spent six months happily engaged in writing about automobiles by day and directing Footlights productions by night.

When he returned to the mainland he got his degree of Doctor of Jurisprudence at U. C. and went to Hollywood to try his fortune in the films. He played with Bebe Daniels in "A Kiss in a Taxi" and with Gary Cooper in "Only the Brave."

"I played an army lieutenant and looked like an Armenian," he insists gaily when you ask him about his picture experience, but close friends of Mike know a different version. They know that when the talkies began to overshadow many a successful star of the silent days, more than one of them recognized that the rich voice and perfect diction of the young San Francisco actor was

an asset worth annexing. So for many months Mike was one of that obscure army of diction specialists who slowly, painfully, taught Hollywood how to speak. It paid well, but it was an effective barrier to a film career of his own.

One of his pupils—a male star who has won new triumphs in the talkies and whose enunciation bears unmistakable resemblance to that of Mike himself—so appreciated his tutor's ability that he made an almost unprecedented offer to finance Mike for as long as would be necessary for him to get his "break." Mike refused with characteristic independence, and returned to San Francisco, where he took up his long-delayed law practice.

He believed he had put all his Thespian ambitions behind him until the drama of court procedure began to fill him with his old-time wish. To get it out of his system, he wrote "The Arms of the Law," a radio serial based on a picturesque old lawyer, and sent it to NBC. To his surprise, it was accepted, and when the identity of its author was learned, he was enlisted to play the principal role.

He has been before the microphone ever since, in characterizations noted for their keen, brilliant insight. Among them Paul has become such a favorite that recently the Wesson Oil Company, sponsors of "One Man's Family," signed Mike as an exclusive artist in this role. He has been placed in charge of dramatic productions in NBC's San Francisco headquarters, but hereafter will be heard, save on rare occasions, only as Paul Barbour.

## Wilda Wilson Church School of Broadcasting

Eleven years' experience in directing, producing, acting, writing and training of radio stars. Full microphone equipment. Phone or write for more information.

2340 PACIFIC AVE., San Francisco  
Phone WEst 1355



**JERRY JERMAINE**  
KTAB—Staff Artist



**EARLE SANDERSON**  
KFWI—Chief Announcer



**FLOY MARGARET HUGHES**  
NBC—"Little Orphan Annie"

★ **Stars of the Radio** ★



**ANITA CALFOT**  
NBC—Dramatic Artist



**HARRISON HOLLIDAY**  
KFRC—Station Manager



**VIRGINIA MILLER**  
KYA—Pianist



# MICROPHONE GOSSIP



• • • KYA brings a new feature and a welcome guest into the homes of its listeners. Rita Murray, who earned the title of "radio's personality girl" during her sustaining program—Rita Murray's Friendship Club—over the Columbia Don Lee network will be heard with her human interest stories every afternoon at 4:30 except Sundays. The engaging voice of this artist attracted the attention of a radio committee seeking exhibits for the World Educational Conference at Geneva, Switzerland. Her educational talks on economics were chosen to represent radio at the last conference.

• • • Phillips H. Lord, better known to millions of NBC listeners as Seth Parker of Jonesport, Maine, is going to abandon the radio studios for twelve months of blue water. Lord, barely 30 years old, plans to set out for a year's cruise around the world in his reconditioned schooner, the "Georgette," some time after July 1.

Member of an old New England seacoast family, the lure of the sea long has tempted him. It was this love of the sea and its people that inspired the Sunday Night at Seth Parker's program, one of the National Broadcasting Company's popular features.

A party of college and boyhood friends, with whom Lord often planned to sail around the world will accompany him on the voyage as members of the crew. Lord does not plan an expedition, but describes his trip as "a group of men seeking the thrill and excitement of far-off lands and unusual places."

The "Georgette" was built in Portland, Ore., in 1918. She is 186 feet long with a beam of thirty-seven feet and dis-

placement of 757 tons. The schooner was built for Australian trade. Two diesel engines have been installed, with two tanks providing 10,000 gallons of fuel oil. Her speed is eleven knots under sail, and six knots under power.

• • • Police Chief Quinn of San Francisco has a voice which might be called well known, owing to the fact that it has been heard on the air so many times. Not long ago he telephoned a local merchant and ordered a gift which was to be delivered at the office of a friend. "Charge it to my account," he said. "This is Police Chief William J. Quinn speaking." "Not a chance, buddy," returned the clerk. "I've had people pull this 'charge it' line before. I listen to Chief Quinn every Friday night on the radio, and I know his voice. If you're Quinn, I'm Mussolini." The Chief, as it happened, was suffering from a severe cold which lowered his usually genial tones a whole pitch, but the clerk refused to take his word for it and he had to appear in person before he was believed.

• • • Freeman Gosden and Charles Correll of Chicago, known to the radio world as Amos Jones and Andrew Brown of Harlem, proprietors and operators of the Fresh Air Taxicab Company, Incorporated, arrived in New York recently for a brief visit.

Radio's two premier black-face comics made an animated cartoon movie short, and gathered local color material in the highways and byways of the real Harlem. The movie short was the second in a series they are making. The animated cartoon is based on the familiar radio act. The two radio actors synchronize their

extensive collection of character voices with the animated characters on the celluloid.

• • • Columbia convalescents now include Gertrude Niesen, the torch singer, and William (Big Bill) O'Neal, CBS tenor, who succumbed to laryngitis during New York's April blizzards.

• • • Not only will Myrtle Vail be out of "Myrt and Marge" for some time to come, but she must also cease even the efforts of collaborating with Director Bobby Brown in the writing of the scripts. Her physician has spoken and Myrt, still quite helpless from that automobile accident, is forced to admit that the medical gentlemen hold all the cards. While her progress toward recovery is termed "satisfactory," her physician insists that she leave entirely in Brown's hands the writing of the episodes, threatening that if she does not he will even remove the bedside radio receiver on which she has been enjoying the unique experience of hearing—"Where Is Myrt?" All of which means that young Mr. Brown might lay some claim to the title of radio's busiest mortal.

• • • Service Bell, one of the talented cast working with Juano Hernandez and Rose McClendon in Columbia's Sunday night folk-lore series, "John Henry—Black River Giant," is one gentleman who appreciates the sabbath quiet of the broadcasting studio, despite an occasional script calling for a noisy railroad gang or a tempestuous conjure scene.

You see, Service's nightly job during the rest of the week takes him into the stormy and exciting precincts

of Broadway's newest negro play, "Run Little Chillun." He is a member of the large group of Hall Johnson singers who roar, wail and chant the spirituals and African voodoo songs of that moving play.

• • • NBC visitors who see Wilda Wilson Church, radio actress, as she passes through the studios, a stately white-haired figure invested with gracious charm, would have trouble guessing her favorite sport. It is—believe it or not—skipping rope. Wilda keeps her supple carriage and youthful figure with the assistance of a skipping rope, and she can execute intricacies of step with the same ease as when she was a pig-tailed little girl.

• • • KMTR's mammoth pipe organ, housed in a separate building, and the only one of its kind on the Pacific Coast, now has the added advantage of heat control, which will insure a constant temperature for the delicate mechanism during the foggy nights and sunny days of the summer and winter months. The thermostatic heat control is the brain child of Forbes van Why, chief engineer at the Hollywood station.

• • • Robert Ward, jug player of the Southern Singers, has been blowing into the same jug for fifteen years and can't get accustomed to any other. Robert began practicing blowing tunes out of the jug when it decorated the shelf of the family's log cabin in Kentucky.

• • • Portland Hoffa, young wife and partner of Fred Allen, the "dead pan" comic, prides herself on her culinary ability . . . and when she forgot to put baking powder in prize biscuits, Fred congratulated her as the dead pan cook . . . Portland reveals that Fred writes all of his stuff in a vacant room with a vacant stare . . . their apartment has

no up stares nor down stares . . . just a dumb waiter for thoughts . . . it's Allen the day's work.

• • • Before John P. Medbury, humorist of the Columbia Revue, found that wisecracks and gags could earn one a very comfortable living, he learned that they also could do one out of a livelihood. In his youth, as a salesman in a San Francisco haberdashery store, John used to jot down some of the humorous quips on wrapping paper as they came to his mind. In the excitement of making a sale, he would send the purchase out for delivery enlivened with wisecracks scribbled on the wrapping—usually before he had edited them.irate customers complained to the German proprietor, who wisely observed "Vell, if you must be a wisecracker, why don't you do it vere you get paid for it? You're fired." John left. He got a job writing for a newspaper, which eventually was more remunerative than writing for wrapping paper.

• • • Connie, Martha and Vet Boswell are back in their Central Park apartment after a nine-weeks theater tour which covered six thousand miles, 126 appearances and six hundred songs. It included, of course, "Noo Awlins" and a Gulf coast sun-tan.

Back in Manhattan, Vet succumbed to a cold, and Connie did a solo for their CBS network return. She recalled their New York debut when, after touring cross-country for a guest appearance, the trio was stricken with the flu. They met their microphone engagement with high temperatures, went tearfully to bed for two weeks, and woke up to find themselves stars.

• • • The mellow marimba music heard with Tito Guizar and Vincent Sorey's Gauchos on the Columbia network is

produced by the son of the man who adapted the Central American instrument to the works of the masters. He is Celso Hurtado, son of Sebastian Hurtado, who gave the small Guatemalan marimba the full tonal range it has today.

Hurtado explains that the word marimba means "sea sound," and that for centuries it had only the range of one octave. It was played at the doors of native churches, where the modulated sweetness of its tone attracted passers-by to worship. Hurtado, now thirty-nine, has spent thirty-three years making music from the wooden bars.

• • • It has just recently been announced that Herb R. Beaven has joined the Don Lee Broadcasting System. He will be connected with the advertising department of KFRC in San Francisco. Mr. Beaven began his advertising career with the Los Angeles *Examiner's* merchandising department approximately five years ago, and was graduated from this branch of the business into the national advertising department, which was absorbed later by the Rodney E. Boone Organization.

• • • Ann Chase, NBC actress, conceals a firm character beneath a gentle exterior. When she was playing in stock in Pittsburgh, Pennsylvania, and the manager refused to pay her the salary she felt she deserved she resigned and took a job as a waitress in a local tea room until he met her demand.

• • • It sounds so much like one of those stories that Emery Deutsch, Columbia's popular conductor, hesitates to tell, this tale. But it actually happened in Columbia's television studio the other night while a violinist was playing Deutsch's own composition, "Play Fiddle, Play." Deutsch, in the outer hall, was

tapping a typewriter, and two elderly ladies, trying to listen to the music, waxed indignant. The fiddler fiddled and Deutsch kept on typing. Finally one of the ladies exploded: "Young man, will you please stop that noise? If you could compose a piece of music as good as the one I'm trying to listen to, you might amount to something some day." Deutsch listened politely and quietly to the rest of his own composition.

• • • Asked what handicaps, if any, they have overcome in their joint career, John and Ned, NBC harmony duo, answer: "Singing lessons!"

Both the boys have clear, sweet natural voices which blended in harmony from the first time they ever sang together over a piano in a hometown parlor, and neither of them ever had any professional training until they began playing big time a few years ago. Then they decided they ought to take vocal lessons, and inaugurated a series with a noted teacher. The series stopped abruptly a month later, for the duo suddenly discovered that although they might be picking up a fine technique apiece, their voices no longer harmonized, and it took them six months of hard labor to get back their old-time teamwork. They've never taken a lesson since.

• • • Bob Olsen can now be heard over KTAB singing again the type of songs which has made him one of the most popular stars on the air.

• • • Life for Fred Waring, post-graduate conductor of the Pennsylvanians, isn't just an old smoothie. Fred might well be listed as a producer. His CBS show band is virtually a troupe. On his payroll are thirty musicians and singers, three arrangers, two librarians, five clerks, three tune "scouts," a costumer, and the rent of a rehearsal hall. What, no Mickey Mouse?

## QUESTIONS AND ANSWERS

By GYPSY

### QUESTIONS

1. Who writes the Sherlock Holmes sketch?
2. How long was Maurice Webster an announcer before attaining his sixteenth birthday?
3. What organist illustrated the Standard Symphony lectures last fall?
4. From what station does Richard LeGrand now broadcast?
5. Who enacts the part of Beth Holly in "One Man's Family"?
6. What is Lanny Ross' full name?
7. Who is "Sharlie," the straight man, heard with Jack Pearl, "Baron Munchausen"?
8. What popular numbers has Erno Rapee, the conductor, written?
9. What was Jack Meakin's vocation before he became a radio pianist?
10. What orchestra drummer and radio comedian was featured in the talkies without previous motion picture experience?
11. How long have Amos 'n' Andy been friends?
12. Who were some of the stars with whom Cameron Prud'Homme appeared in motion pictures in his pre-radio days?
13. Is it true that Ben Bernie once suffered a broken back?
14. What well known comedian got his start as a singing-waiter in Carey Walsh's at Coney Island and who played his accompaniments at the time?
15. What is Barbara Blanchard's favorite outdoor diversion?
16. Who is Mr. Carnation Albers, heard during Dr. Cross' Crosscuts Log o' the Day?
17. What relationship are Winifred (Wyn) Louthain and Jean Kent?
18. What is Jim Hanvey's (Townsend Murder Mystery detective) real name?
19. Who are the Whiteman Rhythm Boys?
20. What well known NBC actor and producer is a musician and practiced law at one time?

### ANSWERS

1. Edith Meiser, Vassar girl, in private life the wife of Thomas H. McKnight.
2. Six months.
3. Paul Carson.
4. Station KHJ.
5. Barbara Jo Allen.
6. Lancelot Patrick Ross.
7. Cliff Hall.
8. "Charmaine," "Diane" and "Angela Mia."
9. He was engaged in the brokerage business.
10. Pete Barlow (Axel Axelsson).
11. For a period of over thirteen years.
12. Walter Huston, Douglas Fairbanks, Jr. and Loretta Young.
13. Yes, at the age of nineteen while playing football.
14. Eddie Cantor was the singing-waiter. Jimmy Durante was the accompanist.
15. Bicycling.
16. George Nelson.
17. Sisters.
18. Thurston Hall.
19. Jimmy Noel, George McDonald, Ray Kulz and Al Dary.
20. Michael Raffetto.

# WILD AUSTRALIA ON ELECTRICAL TRANSCRIPTIONS

ONE of the most interesting recent developments of electrical transcriptions is the production by MacGregor and Sollie, Inc., San Francisco, of a series of recordings dealing with the remarkably interesting wild animals and birds, aborigines, flowers and covering Australia in general.

These programs have been sponsored by the Australian Press Bureau, a semi-official organization created to promote goodwill in the United States and to spread knowledge of our neighbors across the Pacific.

The story is told by Mr. Arthur O'Connor, "The Australian Sundowner," a widely travelled newspaper man who has tramped from one end of Australia to the other. He is a recognized authority on his subjects, and has the great advantage of a friendly and altogether delightful voice for radio broadcasting.

The continuity was written by Grace Sanderson Michie, for many years connected with movie production in Hollywood and more recently associated with the National Broadcasting Company, where her *Miniature Biographies* and *Travel* program were two outstanding features.

In Australia, the term "Sundowner" is an alternative for tramp or hobo. He obtains his name from his habit of tramping the country roads and planning always to arrive at a farmhouse or cattle ranch as the sun goes down, knowing that it is a tradition in Australia that no man arriving at that hour shall be refused a meal and a bed.

The first two of these "Sundowner" programs are devoted mainly to an intensely interesting and highly colored picture of the South Sea Islands and of the outstanding features of Australia. The glories of Sydney harbor, which all Australians claim to be the most beautiful sheet of water in the world. Another to the Great Barrier Reef, 1200 miles of vast coral wall off the coast of Queensland, it is described in so telling a manner that one necessarily feels the urge to go and take possession of one of the tiny atolls that dot the reef, and there spend the rest of his life fishing, turtle back riding and otherwise lazying away the hours under a tropic sun or moon.

Another fascinating program is devoted almost entirely to the Australian aborigines, a strange race of black people who, cut off from the rest of the world cons ago, have developed little beyond the stage of our stone ancestors. Mr. O'Connor tells an amazing story of their tribal customs, their

extraordinary skill in the making of weapons and implements, found nowhere else in the world, and their ability as hunters of the bushland.

This series is one of the finest ever produced by means of electrical transcription. Excellent continuity, the delightful and typically Australian voice of the reader, and the craftsmanship of Mac Gregor and Sollie in the production of recording.

COLUMNIST

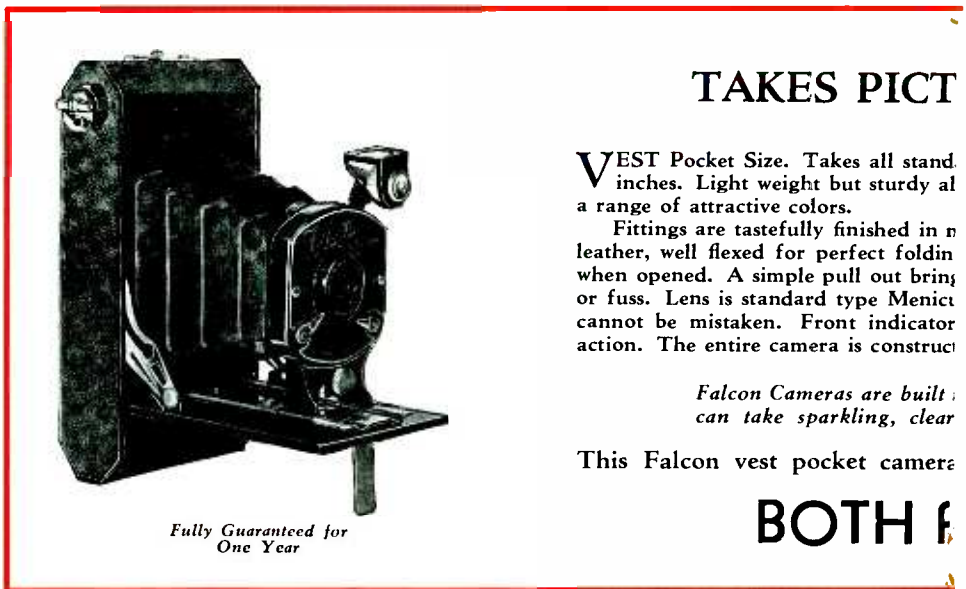
CONNIE MOFFATT

Now  
on the air

KFRC  
Monday  
7:15 p.m.

# FREE WITH A TO

## This Wonderful Falcon



### TAKES PICT

VEST Pocket Size. Takes all stand inches. Light weight but sturdy al a range of attractive colors.

Fittings are tastefully finished in n leather, well flexed for perfect folding when opened. A simple pull out bring or fuss. Lens is standard type Menict cannot be mistaken. Front indicator action. The entire camera is construct

*Falcon Cameras are built  
can take sparkling, clear*

This Falcon vest pocket camera

*Fully Guaranteed for  
One Year*

## BOTH F

### This Special Offer for Short Time Only

This genuine Falcon Vest Pocket Camera and "Broadcast Weekly" **\$3.00** for one full year. Both for only . .

NEW  
RENEWAL  
or  
EXTENSION



# ONE YEAR SUBSCRIPTION BROADCAST WEEKLY

## Vest Pocket Camera

PICTURES THIS SIZE



ward eight exposure roll film. Pictures  $1\frac{3}{8} \times 2\frac{1}{2}$   
l-metal case, covered in pin seal, grain finish, in

nickel and black enamel. Bellows are of genuine  
g. Front locks into rigid position automatically  
s camera into operating position without bother  
is. Aperture has three easily adjusted stops that  
for choice of instantaneous or time exposure  
ted for foolproof operation.

to fine precision so that any amateur  
pictures with the greatest of ease

and *Broadcast Weekly* for one year—

or only **\$3.00**



*Actual Size*

..... GET YOURS NOW .....

Gentlemen: Herewith is \$3.00 for which send me immediately the Falcon vest pocket camera  
and *Broadcast Weekly* for one year.

NAME .....

ADDRESS .....

CITY .....

STATE .....

New

Renewal

Extension

# SUNDAY Programs

April 30, 1933

**379.5 Meters KGO Sutter 1920**  
**790 Kcys. 7500 Watts**  
 Nat'l. Broadcasting Co., San Francisco  
 8 A.M.—Major Bowes' Capitol Family  
 8:15—Radio City Concert  
 8:15—Concert Orchestra  
 9:30—Moonshine and Honeysuckle, dramatic sketch  
 10—Monarch Mystery Tenor  
 10:15—International Radio Forum  
 10:30—Northwestern Chronicle  
 11—Wayne King's Orchestra  
 11:30—Hour of Worship  
 12 noon—Singing, the Well-Spring of Music  
 12:15—Wildroot Institute  
 12:30—National Youth Conference  
 1:30—Pages of Romance  
 2—Cecilians: Vocalists  
 2:30—Tunes of the Times; Orchestra  
 3—Borrah Minevitch and his Harmonica Rascals  
 3:15—The Morin Sisters; Vocalists  
 3:30—Great Moments in History  
 4—Chase and Sanborn program  
 5—Manhattan Merry-Go-Round  
 5:30—American Album of Familiar Music  
 6—Current Government  
 6:15—Lopez and the Two Doctors' Comic Congress  
 6:45—Sunday at Seth Parker's  
 7:15—Walter Winchell  
 7:30—Echoes of the Palisades  
 8—Charles Hart; Instrumentalists  
 8:30—Jan Garber's Orchestra  
 9—The Readers Guide  
 9:30—Voice of Pan  
 10—Richfield News Flashes  
 10:15—Paul Carson, Organist  
 11 to 12 mid.—Tom Gerun and his Bal Tabarin Orchestra

**243.8 Meters KYA Prospect 3456**  
**1230 Kcys. 1000 Watts**  
 Pac. Broadcast Corp., San Francisco  
 8:15 A.M.—Christian Science Prog.  
 8:30—"Uncle Harry" Comics  
 9—Sabbath Reveries; Orchestra  
 9:45—Salon Melodies; Harmonies  
 10:15—The Troubadour  
 10:30—Singing Strings  
 11—Old St. Mary's Church Services  
 12 noon—Organ; Paraders  
 1—Modern Maestros  
 1:30—Waltz Idylls; Opera at 2  
 4—Royal Serenaders  
 4:30—Symphony Series  
 5:30—Rabbi Elliott Burstein  
 5:45—Violin Masters  
 6—Church Choir Series  
 6:30—Light Opera Concert  
 8—John Volohan's Orchestra  
 9—News Flashes; Lullaby  
 9:30—Orchestra  
 9:45 to 11 P.M.—Concert Memories

**322.4 Meters KROW Glenc. 6774**  
**930 Kcys. 1000 Watts**  
 Educa. Broad. Corp., Oakland, Calif.  
 8 A.M.—Sunday Classics  
 8:45—Dance of the Hour  
 9—Health Talk; recordings  
 10—Music and Lecture  
 10:30—Walk-a-thon  
 11:30—Recordings  
 12:30—String Ensemble  
 1 P.M.—Studio program; Records  
 1:30—Bible Questions & Answers  
 2—Guy Smith and Artists  
 2:30—Silent period  
 6—Music and Lecture  
 6:30—Constance Yates, pianist  
 6:45—Studio program

7—A. O. Arseneau, speaker  
 7:15—Roy Edwards, tenor  
 7:45—Records; Silent at 7:52  
 9—Armenian Watch Tower program  
 9:40 to 11 P.M.—Records; Walk-a-thon  
  
**440.9 Mtrs. KPO Sutter 1920**  
**680 Kcys. 50,000 Watts**  
 National Broadcast Co., San Francisco  
 8 A.M.—Comics read by Scotty  
 8:30—Arion Trio  
 9:30—Melody Mixers  
 10:30—Bohemians, orch and vocal  
 11—Bible Stories  
 12 noon—Lucile Kirtley, soprano; woodwind ensemble direction Willard Flashman.  
 12:30—Melody Train, orchestra direction Josef Hornik  
 1:30—Olympians, quartet  
 2—Catholic Hour  
 2:30—Our American Schools  
 3—Stringwood Ensemble, vocalist  
 4—Community Forum  
 4:30—Nathan Abas, Violinist  
 5—Rendezvous, vocal trio  
 5:30—Evening Concert  
 6—Melodians  
 6:30—Everett Foster, baritone  
 7:15—Personal Close-ups—Gwynfi Jones, tenor, interviewed by Gypsy  
 7:30—Gunnar Johansen, pianist  
 8—William Stoess Orchestra  
 8:30—Rudy Seiger's Orchestra  
 9—Rainbow Harmonies, vocalist and orchestra  
 9:30—University of California  
 10—Victor Schilling Orchestra  
 10:30—On Wings of Music  
 11 to 12 midnight—Midnight Melodies

**322.4 Meters KFWD Franklin 0200**  
**930 Kcys. 500 Watts**  
 Radio Entertainments, San Francisco  
 2:30 P.M.—Spanish Melodies  
 2:45—Mississippi Roustabouts  
 3—Chesley Mills Trio  
 3:30—Blues Chasers  
 4—Musical Masterpieces  
 5—Dance Music; silent at 6  
 7:50 to 9 P.M.—Services from First Church of Christ, Scientist

**319 Meters KOIN Atwater 3333**  
**940 Kcys. 1000 Watts**  
 The Journal, Portland, Oregon  
 9 A.M.—CBS, Church of the Air  
 9:30—Programs from KHJ & KFRC  
 11:15—CBS, Symphonic Hour  
 12 noon—CBS, Cathedral Hour  
 1—CBS, Poet's Gold  
 1:15—CBS, Four Clubmen  
 1:30—CBS, Chicago Knights  
 2—CBS, Professor Lindsley  
 2:15—Rabbi Magnin  
 2:30—CBS, Lawyer and the Public  
 3—CBS, Fray & Braggiotti  
 3:15—CBS, Current Events  
 3:30—CBS, Lon Ross' Troupe  
 3:45—CBS, Between the Bookends  
 4—CBS, Black River Giant  
 4:15—CBS, Andre Kostelanetz  
 4:45—CBS, The Gauchos  
 5:30—Melody Hour  
 6—CBS, Columbia Revue  
 6:30—CBS, Organ and Singers  
 7—CBS, Eddie Duchin Orchestra  
 7:15—CBS, Angelo Patri  
 7:30—CBS, Abe Lyman's Orchestra  
 8—Journal Colyum  
 8:15—Orchestra  
 9—KHJ Merry-makers  
 10 to 11:30 P.M.—Fio-Rito's Orch.

**491.5 Meters KFRC Prospect 0100**  
**610 Kcys. 1000 Watts**  
 Don Lee Broadcast. System, S. F., Cal.  
 8 A.M.—Examiner Comic Section  
 8:30—CBS, Emery Deutsch's Orch.  
 8:45—CBS, Street Singer  
 9—CBS, Church of the Air  
 9:30—To be announced  
 9:45—Fred Lane's Book Review  
 10—Home Sweet Home Concert  
 11—Consuelo Gonzales, vocalist, and Dick Aurandt, organist  
 11:15—CBS, Symphonic Hour  
 12 noon—CBS, Cathedral Hour  
 1—CBS, Poet's Gold  
 1:15—CBS, Four Clubmen  
 1:30—CBS, Chicago Knights  
 2—Prof. Lindsley  
 2:15—Rabbi Magnin, world topics  
 2:30—CBS, Lawyer and the Public  
 3—CBS, Fray and Braggiotti  
 3:15—CBS, Current Events  
 3:30—CBS, Lon Ross' Troupe  
 3:45—CBS, Between the Bookends  
 4—CBS, Black River Giant  
 4:15—CBS, Andre Kostelanetz presents  
 4:45—CBS, Black River Giant  
 5—CBS, The Gauchos  
 5:30—"The Melody Hour"  
 6—CBS, Columbia Revue  
 6:30—CBS, Organ; Madison Singers  
 7—CBS, Eddie Duchin's Orchestra  
 7:15—CBS, Angelo Patri  
 7:30—"Wampum Trading Post"  
 8—CBS, Ben Pollack's Orchestra  
 8:30—CBS, Bernie Cummins' Orch.  
 9—The Merry-makers  
 10—Ted Rio-Rito Orchestra  
 11:30 to 12 mid.—Midnight Moods

**280.2 Meters KJBS Ord. 4148-49**  
**1070 Kcys. 100 Watts**  
 J. Brunton & Sons, San Francisco  
 8 A.M. to 6:45—Records; News; Music; silent at 6:45 P.M.  
 12:01 to 6 A.M.—Owl program

**296.6 Meters KQW Ballard 777**  
**1010 Kcys. 500 Watts**  
 Pac. Agric. Foundation, Ltd., San Jose  
 10:15 A.M.—Sunday School Lesson  
 11 to 12:30—First Baptist Church Services; Silent at 12:30  
 7:30 to 9 P.M.—Evening Church Service

**535.4 Meters KTAB Garfield 4700**  
**560 Kcys. 1000 Watts**  
 Assoc. Broadcasters, Oakland, Calif.  
 8:30 A.M.—Hour of Prayer  
 9—Children's program; Records  
 9:30—Watch Tower prog.; Records  
 10—Baptist Church Bible Class  
 11—Church services  
 12:30—Chapel of Chimes Organ  
 12:45—Calvary Meditations  
 1—Church of the Latter Day Saints  
 1:30—The State; Crazy Serenaders  
 2—Golden Memories, Louise Taber  
 2:15—Organ Recital  
 3—Low Reynolds' Orchestra  
 4—Comedy Team  
 5—Organ Recital  
 6—Portuguese program  
 7—Records; Viennese Nights  
 7:30—Oliver Williamson, pianist  
 7:45—Church Services  
 9:15—Rod Hendrickson; Organ  
 9:45—Putnam's Treasure Chest  
 10—Jess Stafford's Orchestra  
 11 to 11:15 P.M.—Emeryville Walk-athon

**340.7 Meters KLX Lake. 6000**  
**880 Kcys. 500 Watts**  
 Tribune Pub. Co., Oakland, Calif.

- 12 noon—Records
- 12:30—John Wharry Lewis' quintet
- 1:30—Recordings
- 2:30—Helen Thurlby, soprano; Donald Neal, baritone; Arco and Anita, novelty guitar duo; Jean Ardath, pianist
- 3:30—Records; violin ensemble
- 5—Covered Wagon Jubilee
- 5:30—Helen Parmelee, pianist
- 5:45—"Old Man Soliloquy"
- 6—Mixed Quartet
- 6:30—Hotel Oakland Trio
- 7:30—Amateur baseball results
- 7:45—Dot Kay and Ethel Rhinard
- 8—Eight o'clock players
- 9—Brahms Trio
- 9:30—Studio program
- 9:45—Marge Vogel & Ethel Rhinard
- 10 to 11 P.M.—Dance program

**508.2 Meters KHQ Main 5383**  
**590 Kcys. 1000 Watts**  
 Louis Wasmer, Inc., Spokane, Wash.

- 9 A.M.—Post-Intelligencer Comics
- 9:15—NBC, Pop Concert
- 9:30—NBC, Moonshine and Honey-suckle
- 10—Judge Rutherford
- 10:15—NBC, International Radio Forum
- 10:30—NBC, Northwest Chronicle
- 11—NBC, Wayne King's Orchestra
- 11:30—NBC, Hour of Worship
- 12 noon—NBC, Well Spring of Music
- 12:15—NBC, Wildroot Institute
- 12:30—Nat'l Youth Conference
- 1—NBC, National Vespers
- 1:30—NBC, Pages of Romance
- 2—Studio program
- 3—Book Reviews
- 3:15—NBC, Morin Sisters
- 3:30—NBC, Moments in History
- 4—NBC, Chase & Sanborn
- 5—NBC, Merry-Go-Round
- 5:30—NBC, American Album
- 6—NBC, Current Government
- 6:15—NBC, Real Silk, Vincent Lopez
- 6:45—NBC, Sunday at Seth Parker's
- 7:15—NBC, Walter Winchell
- 8—"Rainbow Hawaiians"
- 8:30—NBC, Jan Garber, Orchestra
- 9—NBC, Reader's Guide
- 9:30—To be announced
- 10—NBC, Richfield News Flashes
- 10:15—NBC, Bridge to Dreamland
- 11 to 12 mid.—NBC, Orchestra

**236.1 Meters KOL Main 2312**  
**1270 Kcys. 1000 Watts**  
 Seattle Broadcast. Co., Seattle, Wash.

- 8 A.M.—P. I. Comic Section
- 8:30—CBS, Emery Deutsch's Orch.
- 8:45—CBS, Street Singer
- 9—CBS, Church of the Air
- 9:45—Cecil Solly
- 10—To be announced
- 10:45—Democratic Educ. Feature
- 11—To be announced
- 11:15—CBS, Symphonic Hour
- 12 noon—CBS, Cathedral Hour
- 1—CBS, Poet's Gold
- 1:15—CBS, Four Clubmen
- 1:30—CBS, Chicago Knights
- 2—Professor Lindsley
- 2:15—Rabbi Magnin
- 2:30—CBS, Lawyer and the Public
- 3—CBS, Fray and Braggiotti
- 3:15—CBS, Current Events
- 3:30—CBS, Lon Ross Troupe
- 3:45—CBS, Between the Bookends
- 4—CBS, Black River Giant
- 4:15—CBS, Andre Kostelanetz
- 4:45—CBS, Black River Giant

- 5—The Stamp Man
- 5:10—CBS, The Gauchos
- 5:30—To be announced
- 6—CBS, Columbia Revue
- 6:30—CBS, Ann Leaf and Singers
- 7—CBS, Eddie Duchin's Orchestra
- 7:15—CBS, "Your Child"
- 7:30—CBS, Abe Lyman's Orch.
- 8—CBS, Ben Pollack's Orchestra
- 8:30—CBS, Bernie Cummins' Orch.
- 9—Merrymakers
- 10—Crazy Minstrel
- 10:15—Ted Fio-Rito and Orchestra
- 11:30 to 12 mid.—Midnight Moods

**483.6 Meters KGW Atwater 2121**  
**620 Kcys. 1000 Watts**  
 Morning Oregonian, Portland, Ore.

- 8 A.M.—NBC, Major Bowes' Family
- 9—Reading the Comics
- 9:15—NBC, Concert Orchestra
- 9:30—NBC, Moonshine and Honey-suckle
- 10—Judge Rutherford
- 10:15—Musical Master Works
- 10:30—NBC, Northwest. Chronicle
- 11—NBC, Wayne King's Orchestra
- 11:30—NBC, Hour of Worship
- 12 noon—NBC, Well-Spring of Music
- 12:15—NBC, The Wildroot Institute
- 12:30—NBC, Nat'l Youth Confer.
- 1:50—NBC, Pages of Romance
- 2—NBC, Catholic Hour
- 2:30—NBC, Our American Schools
- 3—NBC, Harmonica Rascals
- 3:15—NBC, Morin Sisters
- 3:30—NBC, Moments in History
- 4—NBC, Chase and Sanborn
- 5—NBC, Merry-Go-Round
- 5:30—NBC, American Album
- 6—NBC, Current Government
- 6:15—NBC, Lopez Orch. and Comics
- 6:45—Seth Parker Program
- 7:15—NBC, Walter Winchell
- 7:30—To be announced
- 8:30—G. A. Paine, violinist
- 8:45—NBC, Jan Garber's Orchestra
- 9—Baldy's Homespun Melodies
- 9:15—To be announced
- 10—NBC, Richfield News Flashes
- 10:15—Natl. Symphonic Singers
- 10:45—NBC, Bridge to Dreamland
- 11 to 12 mid.—Dance Music

**333.1 Meters KHJ VAndike 7111**  
**900 Kcys. 1000 Watts**  
 Don Lee Broadcast. System, L. A., Cal.

- 8 A.M.—Sunday Times Comics
- 8:30—CBS, Emery Deutsch's Orch.
- 8:45—CBS, Street Singer
- 9—CBS, Church of the Air
- 9:30—Hazel Warner and Organ
- 9:45—Francisco Del Campo
- 10—"Home Sweet Home" Concert
- 11—Herman Reinberg, Cellist
- 11:15—CBS, Symphonic Hour
- 12 noon—CBS, Cathedral Hour
- 1—CBS, Poet's Gold
- 1:15—CBS, Four Clubmen
- 1:30—CBS, Chicago Knights
- 2—Prof. Lindsley
- 2:15—Rabbi Magnin
- 2:30—CBS, Lawyer and the Public
- 3—Ascot Auto Races
- 4:30—CBS, Andre Kostelanetz
- 4:45—CBS, Black River Giant
- 5—CBS, The Gauchos
- 5:30—Melody Hour
- 6—CBS, Columbia Revue
- 6:30—Ann Leaf and Chas. Carliie
- 7—CBS, Eddie Duchin's Orchestra
- 7:15—CBS, "Your Child"
- 7:30—CBS, Chas. Barnett and Orch.
- 8—CBS, Ben Pollack's Orchestra
- 8:30—CBS, Bernie Cummin's Orch.
- 9—Merrymakers; News Items
- 10:10—Ted Fio-Rito's Orchestra
- 11:30 to 12 mid.—Organ recital

**325.9 Meters KOMO Elliott 5890**  
**920 Kcys. 1000 Watts**  
 Fisher's Blend Station, Inc., Seattle

- 8 A.M.—Major Bowe's Family
- 8:15—NBC, Radio City Concert
- 9:15—NBC, Pop Concert
- 9:30—NBC, Moonshine and Honey-suckle
- 10—Fred Shorter; Sermonette
- 10:15—NBC, Int'l Radio Forum
- 10:30—NBC, Northwestern Chronicle
- 11—NBC, Wayne King's Orchestra
- 11:30—NBC, Hour of Worship
- 12 noon—NBC, Well-Spring of Music
- 12:15—NBC, Wildroot Institute
- 12:30—For All the Family
- 1:30—NBC, Centaur Pages Romance
- 2—To be announced
- 3—NBC, Harmonica Rascals
- 3:15—NBC, Morin Sisters
- 3:30—NBC, Moments in History
- 4—NBC, Chase & Sanborn program
- 5—NBC, Merry-Go-Round
- 5:30—NBC, Amer. Album of Music
- 6—NBC, Current Government
- 6:15—Lopez Orchestra and Comics
- 7:15—NBC, Walter Winchell
- 7:30—Musical Program
- 8:30—Jan Garber's Orchestra
- 9—Baldy's Homespun Melodies
- 9:15—Univ. of Washington talk
- 9:30—To be announced
- 10—NBC, Richfield News Flashes
- 10:15 to 11 P.M.—NBC, Organ

**285.5 Meters KNX Hemp. 4101**  
**1050 Kcys. 25,000 Watts**  
 Western Broadcast. Co., Los Angeles

- 6:45 A.M. to 12—Various programs
- 12:10 P.M.—Story of India
- 12:30—Louise Johnson, Interpreter of Cosmic Law
- 1—Jehovah's Witnesses
- 2—Concert, Westlake Park
- 4—Organ
- 4:30—Bob Shuler
- 5—Talk, Ethel Hubler
- 5:15—Recordings
- 5:30—Dr. John Matthews
- 6:30—Dr. Abel, Humanist Society
- 7—Don Wilkie; Mert York
- 7:45—Singing Guardsmen
- 8—First Presbyterian Church
- 9—News Service
- 9:15—Calmon Luboviski, violinist
- 10 to 11 P.M.—Back Home Hour

**468.5 Meters KFI Richm'd 6111**  
**640 Kcys. 50,000 Watts**  
 Earle C. Anthony, Inc., Los Angeles

- 8:45 A.M. to 12—Various programs
- 12 noon—The Well-Spring of Music
- 12:15—NBC, Wildroot Institute
- 12:30—Organ program
- 1:15—Julie Kellar, harpist
- 1:30—NBC, Pages of Romance
- 2—String Trio
- 2:30—Barbara Jamieson, pianist
- 2:45—"Justice Through Law"
- 3—Univ. of So. Calif. music prog.
- 3:30—NBC, Great Moments in History
- 4—NBC, Chase & Sanborn program
- 5—NBC, Merry-Go-Round
- 5:30—NBC, Amer. Album of Music
- 6—Singing Service Man
- 6:15—NBC, Lopez Orchestra
- 6:45—Orchestra
- 7:15—NBC, Walter Winchell
- 7:30—Orchestra
- 7:45—"Hour of Golden Memories"
- 8—Orchestra
- 9—"Tapestries of Life"
- 9:30—Eno Crime Clues
- 10—NBC, Richfield News Reporter
- 10:15 to 11 P.M.—Gus Arnheim's Orchestra

# MONDAY Programs

May 1, 1933

**379.5 Meters KGO** Sutter 1920  
790 Kcys. 7500 Watts  
Nat'l. Broadcasting Co., San Francisco  
7 A.M.—Morning Parade  
7:30—Sonata Recital  
8—Lee S. Roberts' Memory Box  
8:15—Jack Patsy, Sambo & Mandy  
8:30—Arion Trio  
9—Edna Fischer, pianist  
9:15—Chas. Marshall & Ted Maxwell  
9:30—Organ Concert  
10—Sax-o-Tunes  
10:30—Woman's Air Magazine  
11:30—Fun With Facts: Monroe Upton  
11:45—Marshall's Mavericks  
12:15—Western Farm and Home Hr.  
1—Soloist  
1:15—Songs at Twilight  
1:30—Schirmer & Schmitt, pianists  
1:45—John and Ned, harmony duo  
2—Al Pearce and his Gang  
3—News talk by Rush Hughes  
3:15—Melody Mixers: Vocalists  
4:15—Hotel Hollenden Orchestra  
4:30—Little Orphan Annie  
4:45—Morin Sisters  
5—Mindways: Stories of Human Behavior  
5:15—'Round-the-World Club  
5:30—Pageant of Colorado  
6—The Hour Glass  
6:30—National Radio Forum  
7—Amos 'n' Andy  
7:15—Octavus Roy Cohen Mystery  
7:30—M.J.B. Demi-Tasse Revue  
8—NBC Drama Hour  
8:30—Dog Show of the Air  
8:45—Hollywood on the Air  
9—Charles Hart: Instrumentalists  
9:30—The Doric Quartet  
10—Richfeld News Flashes  
10:15—Anson Weeks' Orchestra  
11—Phil Harris' Orchestra  
11:30 to 12 mid.—To be announced

**440.9 Mtrs. KPO** Sutter 1920  
680 Kcys. 50,000 Watts  
National Broadcast Co., San Francisco  
7:30 A.M.—Organ Concert  
8—Financial Service  
8:15—On Wings of Song  
8:30—The Merrie Men, male quartet  
8:45—Harold Stokes' Orchestra  
9—Words and Music  
9:30—Alvino Rey, guitarist  
9:45—News Service  
10—Tom Mitchell, baritone  
10:15—Harvey Peterson, violinist  
10:30—Outstanding Speakers  
10:45—Sisters of the Skillet  
11—Outstanding Speakers  
11:15—Soloist  
11:30—Calif. Fed. Women's Clubs  
12 noon—Midday Musicals; News  
1:15—Ann Warner's Chats  
1:45—Musical Moments, orchestra  
2—Waldorf Astoria Orchestra  
2:30—Richard Himber's Essex House Ensemble  
2:45—Olga, Countess Albani, soprano  
3—Slow River—Eva Taylor, crooner; Southernaires, male quartet  
3:15—Concert Ensemble  
3:30—Eileen Piggott, soprano  
3:45—Univ. of Calif.  
4—Oahu Serenaders  
4:15—Health Ways  
4:30—Arion Trio  
5:15—Ramblers, orchestra  
5:45—News Astoria Orchestra  
6—Orchestra and Singers  
6:30—Safety First, Traffic Talk  
6:45—Detectives Black and Blue  
7—Dr. Copeland's Health Talks  
7:05—Organ Concert

7:15—Tarzan of the Apes  
7:30—Kenneth Spencer, basso  
7:45—In the Days of the Don  
8—Ralph Kirby, dream singer  
8:05—Vincent Lopez Orchestra  
8:30—Talent Parade, variety prog.  
9:30—Pair of Pianos, Grace Frankel, Gertrude Lyne  
10—Rhythm Vendors, orchestra  
10:30—Stringwood Ensemble  
11 to 12 mid.—Organ Concert

**535.4 Meters KTAB** Garfield 4700  
560 Kcys. 1000 Watts  
Assoc. Broadcasters, Oakland, Calif.  
6:45 A.M.—The Milkman  
7—Portuguese News  
7:15—Vocalities; Reporter; Serenade  
8—Rod Hendrickson  
8:30—Jack Hall and Clem Kennedy  
9—Morning Prayer Hour  
9:30—Dr. J. D. Thompson  
10—Household Hour; Records  
10:35—Health talk; Records  
11:15—Lillian R  
11:30—X-Bar-B Boys; Talk  
12 noon—Concert; News Service  
12:30—Prof. Lataner  
12:45—Studio program  
1—Over the Teacups; Health Talk  
1:45—George Taylor, Radio Frolic  
2:15—Records; Matinee Melodies  
3:30—Famous Artists  
3:45—Putnam's Treasure Chest  
4—"Keep Smiling" Revue  
4:30—Taylor Made Tempos  
4:45—Happy Hoboe  
5—Uncle Rod's Smile Club  
5:30—Health talk; Question Box  
6:15—Emeryville Walkathon; News  
6:45—Ernie Smith, Sports  
7—Frank Watanabe and Archie  
7:15—Cuban Cabaret; News  
7:45—Romance of the Turf  
8—Organ; Lyric Trio  
8:30—Al Cook's Cowboys  
9—KNX News; Organ Recital  
9:45—Boxing Bouts  
10:45—College Inn  
11—Emeryville Walkathon  
11:15 to 12 mid.—Night Owls

**340.7 Meters KLX** Lake. 6000  
860 Kcys. 500 Watts  
Tribune Pub. Co., Oakland, Calif.  
8 A.M.—Records; Stocks  
8:30—Covered Wagon Jubilee  
9—Records; Clinic of the Air  
10:15—Stocks; News Flashes  
10:30—International Kitchen  
11—Sunshine Twins; News Flashes  
11:30—Arco and Anita, guitarists  
11:45—Madelon Sivyer and Nancy Hersey, piano and violin  
12 noon—Jack Delaneys band  
1—Jean's Hi-Lights; News Flashes  
2—Recordings; stocks  
2:45—Opportunity Hour; News  
3:45—Health School; Records  
4:30—Brother Bob's Club  
5—Covered Wagon Jubilee  
5:30—Lovable Liars  
5:45—Cora Scott and Lilah Clark  
6—Betty Babbish band  
6:55—Varieties  
7—News Items; Clark Sisters  
7:45—Fred and Morris, comedians  
8—String Quartet  
8:25—Business Bureau talk  
8:30—Fauit Theatre Players  
9—String Orchestra  
9:30—Bungling Bunglers  
9:45—Helen Parmelee, pianist  
10—Fred Skinner  
10:15 to 11 P.M.—Dance program

**491.5 Meters KFRC** Prospect 0100  
610 Kcys. 1000 Watts  
Don Lee Broadcast. System, S. F., Cal.  
7 A.M.—Records; Barnyard Melodies  
7:25—Stocks; Exercises  
8—CBS, Paul Tremaine's Orchestra  
8:30—CBS, Concert Miniatures  
8:55—Bisquick  
9—CBS, Billy Hays' Orchestra  
9:30—Through the Looking Glass  
9:45—CBS, Palmer House Ensemble  
10—CBS, Nat. Student Federation of America  
10:15—CBS, Sylvia Sapira, pianist  
10:30—CBS, The Captivators  
10:45—CBS, Ann Leaf, Organist  
11:15—Prudence Penny  
11:30—CBS, Ethel Hayden and Arthur Lang  
11:45—CBS, Eton Boys  
12 noon—Noonday Concert  
1—Edna Wallace Hopper  
1:05—Recordings; Orchestra  
1:30—Stocks; Records; Beauty talks  
2—Happy Go Lucky Hour  
3—Feminine Fancies  
4—"The Phillistine"  
4:15—Hodge Podge Lodge  
4:45—Lost and Found  
4:50—Recordings; Town Topics  
5—To be announced  
5:15—Sunshine Discovers' Club  
5:30—CBS, Bourgeois program  
6—The Lowdown; The Dons  
6:30—CBS, Edwin C. Hill  
6:45—CBS, Columbia Symphony Or.  
7:15—Connie Moffatt  
7:30—CBS, Ted Lewis' Orchestra  
8—Blue Monday Jamboree  
10—Bisquick Band; Organ  
10:15—The Islanders  
10:30—Frank Greenough's Orchestra  
11—Café De Paris Orchestra  
12 to 1 A.M.—Request hour

**243.8 Meters KYA** Prospect 3456  
1230 Kcys. 1000 Watts  
Pac. Broadcast Corp., San Francisco  
7:30 A.M.—Dawn Salute  
7:45—Christian Science Program  
8—Emporium Breakfast Hour  
9—Melody Moods  
10—Marian Day's Matinee  
10:30—Sunshine Hour  
11—Lillian Cooper, cosmetician  
11:15—Album Leaves  
11:45—Rhythmsters  
12 noon—Scriptures; Salon Group  
12:15—The Youth Forum  
12:30—Glen Goff, Organist  
1—Afternoon Concert  
2—P. T. A. Lecture  
2:15—Glen Goff, Organist  
3—Orchestral music  
3:15—International Troubadours  
3:30—Music Masters  
4:30—Rita Murray's Friendship Club  
4:45—Singing Strings  
5—Harmony Highlights  
5:15—Tourist Bureau Talk  
5:20—Sunset Revue  
5:45—Campbell Digest; Serenade  
6:30—Waltz Idylls  
6:45—Cecil and Sally  
7—Paraders  
7:30—Sydney Dixon & Donald Gray  
8—Hawaiian Melodies  
8:15—Calif Library Assoc. Prog.  
8:30—Cantoria Choir  
9—Modern Maestros  
9:15—Junior Chamber of Commerce  
9:30—Musical Novelties  
9:45—News Flashes; Organ  
11-12 mid.—Concert Memories

**322.4 Meters KFWI** Franklin 0200  
930 Kcys. 500 Watts  
Radio Entertainments, San Francisco  
7 A.M.—Early Bird; silent at 8  
9—Blues Chasers; Dr. Corley  
10—White House and Bellevue Prog.  
10:30—Topics and Music  
11—Helen Gordon Barker  
11:15 A.M.—Melodies; Melody Girl  
11:45—Musical Portraits  
12 noon—Oklahoma Cowboys  
12:30—Dance Music; silent at 1  
6—Dance Music  
6:30—Russian Balalaika Orchestra  
6:45—Studio program  
7—Christian Science program  
7:15—Bellevue Trio; silent at 7:30  
8:30—Mildred Epstein, vocalist  
8:45—Contest Review  
9—Ella Stankevich, pianist  
9:15—Blas Players, drama hour  
9:45—C. Martin Erburg, tenor  
10—Master Melodies  
11—Salon Serenade; Dance Music  
12 to 1 A.M.—Hi-Dee-Ho!

**322.4 Meters KROW** Glenc. 6774  
930 Kcys. 1000 Watts  
Educa. Broad. Corp., Oakland, Calif.  
8 A.M.—News; "Toupee Tommy"  
9—Silent period  
1 P.M.—Latin-American program  
1:30—Studio program  
2—Recordings  
2:15—Auction program; Records  
2:45—Bob Moore, baritone  
3—Radio Advisor; Studio program  
3:30—Amer. Veterans' Magazine  
4—"Doc" Shanahan and Ramblers  
4:30—Health Talk and Recordings  
5—Wade W. Forrester, talk  
5:15—Muff and Millie  
5:30—Walk-a-thon; Silent at 6  
7:30—Studio program  
8 to 8:30 P.M.—Italian program

**468.5 Meters KFI** Richm'd 6111  
640 Kcys. 50,000 Watts  
Earle C. Anthony, Inc., Los Angeles  
6:45 A.M. to 5—Various programs  
5 P.M.—Baron Keyes' Air Castle  
5:15—NBC, Round-the-World Club  
6—Kellar, Sargent and Ross  
6:15—Orchestra  
7—NBC, Amos 'n' Andy  
7:15—NBC, Octavus Cohen Mystery  
7:30—NBC, Demi-tasse Revue  
8—"The Days of the Dons"  
8:15—Orchestra  
8:30—NBC, Spratts Dog Show  
8:45—Girls' Trio  
9—Orchestra and Soloists  
9:30—Eno Crime Clues  
10—NBC, Richfield News Reporter  
10:15—Phil Harris' Orchestra  
11:30 to 12 mid.—NBC Program

**285.5 Meters KNX** Hemp. 4101  
1050 Kcys. 25,000 Watts  
Western Broadcast. Co., Los Angeles  
6:45 A.M. to 5:30—Various programs  
5:30—Happy Chappies  
5:45—Rhythm Boys; News  
6:15—Arizona Wranglers  
6:30—Orchestra and Lawrence King  
6:45—Growin' Up  
7—Frank Watanabe and Archie  
7:15—Black and Blue  
7:30—Auto Club program  
7:45—Dance Orchestra  
8:15—L. A. Realty Board  
8:45—Drury Lane, vocalist  
9—News Service  
9:15—Dr. Ward Laboratories  
9:30—Jay Whidden's Orchestra  
10 to 11 P.M.—Dance Orchestra

**236.1 Meters KOL** Main 2312  
1270 Kcys. 1000 Watts  
Seattle Broadcast. Co., Seattle, Wash.  
6:45 A.M. to 12—Various Programs  
12 noon—CBS, Frank Westphal's  
Orchestra  
12:30—CBS, Columbia Artist Recital  
1—CBS, "Animal Stories"  
1:15—CBS, Fred Berren's Orch.  
1:45—CBS, Tito Guizar  
2—Happy Go Lucky Hour  
3—Feminine Fancies  
4—Hodge Podge Lodge  
4:30—CBS, Grand Opera Miniatures  
5:30—Skippy  
5:45—Don Lee Feature  
6—CBS, Four Norsemen  
6:15—CBS, Ben Pollack's Orchestra  
6:30—Sports Review, Ken Stuart  
6:45—CBS, Howard Barlow's Orch.  
7—Ditmars' Musical Technocrats  
7:15—Radio Speaker Stevenson  
7:30—Black and Blue  
7:45—CBS, Abe Lyman's Orchestra  
8—Eb and Zeb  
8:15—Blue Monday Jamboree  
10—Globe Trotter  
10:15—The Islanders  
10:30—Frank Greenough's Orch.  
11 to 12 mid.—Cafe de Paris Orch.

**483.6 Meters KGW** Atwater 2121  
620 Kcys. 1000 Watts  
Morning Oregonian, Portland, Ore.  
7 A.M. to 12—Various Programs  
12 noon—The Oregonian of the Air  
12:15—NBC, Farm and Home Hour  
1:30—Dental Clinic of the Air  
2—Edna Wallace Hopper  
2:05—NBC, Al Pearce and Gang  
3—Foreign Affairs  
3:15—Musical Program  
3:45—Friendly Chat  
4—Studio Program  
4:30—NBC, Little Orphan Annie  
4:55—Lambert Pharmaceutical Co.  
5—Piano Surprises  
5:15—NBC, Round the World Club  
5:30—NBC, Pageant of Colorado  
6—Traffic Talk  
6:15—Orchestra and Soloist  
6:25—Round the World  
6:30—To be announced  
7—NBC, Amos 'n' Andy  
7:15—NBC, Mystery Serial  
7:30—NBC, Demi-Tasse Revue  
8—NBC, Drama Hour  
8:30—NBC, Spratts Dog Show  
8:45—NBC, Hollywood on the Air  
9—Four Shades of Rhythm  
9:30—Homicide Squad  
10—NBC, Richfield News Flashes  
10:15—NBC, Anson Weeks Orch.  
11—NBC, Ambassador Hotel Orch.  
11:30 to 12 mid.—To be announced

**333.1 Meters KHJ** VAndike 7111  
900 Kcys. 1000 Watts  
Don Lee Broadcast. System, L. A., Cal.  
7 A.M. to 4:45—Various programs  
4:45—CBS, Grand Opera Miniatures  
5:15—News Items; Town Topics  
5:30—CBS, Evening in Paris  
6—"Maude and Cousin Bill"  
6:15—Kay Thompson and Frank  
Jenks  
6:30—CBS, Edwin C. Hill  
6:45—CBS, Colum. Symphony Orch.  
7:15—CBS, William O'Neal  
7:30—Balto Dog Catchers  
7:45—CBS, Abe Lyman's Orchestra  
8—Blue Monday Jamboree  
10—News Items; Bisquick Band  
10:15—The Islanders  
10:30—Frank Greenough's Orchestra  
11—Bob Holman's Orchestra  
12 to 1 A.M.—Organ recital

**508.2 Meters KHQ** Main 5383  
590 Kcys. 1000 Watts  
Louis Wasmer, Inc., Spokane, Wash.  
7 A.M. to 12:15—Various Progs.  
12:15 P.M.—NBC, Farm and Home  
1—Studio Programs  
2—NBC, Al Pearce and his Gang  
3—Musical program  
3:45—Magnetic Corrector  
4—KHQ News  
4:15—Schulein Shoes, Happy Feet  
4:30—NBC, Little Orphan Annie  
4:45—Studio program  
5—General Mills—"Skippy"  
5:15—NBC, Round the World Club  
6—Peerless Dentists  
6:30—To be announced  
6:45—Voice of Texas  
7—Amos 'n' Andy  
7:15—NBC, Mystery Serial  
7:30—NBC, Demi-Tasse Revue  
8—NBC, Drama Hour  
8:30—NBC, Spratts' Dog Show  
8:45—NBC, Hollywood on the Air  
9—NBC, Instrumentalists  
9:30—Musical Program  
10—NBC, Richfield News Flashes  
10:15—NBC, Anson Weeks' Orch.  
11—NBC, Phil Harris' Orchestra  
11:30 to 12 mid.—To be announced

**319 Meters KOIN** Atwater 3333  
940 Kcys. 1000 Watts  
The Journal, Portland, Oregon  
6:30 A.M. to 12—Various Programs  
12 noon—Programs to be announced  
1:30—Book of Life  
2—Happy Go Lucky Hour  
3—Feminine Fancies  
3:30—Newspaper of the Air  
5:15—Skippy  
5:30—Davidson Prize Club  
6—The Lowdown  
6:15—Bells of Harmony  
6:30—Bisquick Band  
6:35—The Wanderer  
7—Musical Technocrats  
7:15—To be announced  
7:30—Black and Blue  
7:45—CBS, Abe Lyman Orchestra  
8—Redding White, tenor  
8:15—Blue Monday Jamboree  
10—Ted Fio-Rito's Orchestra  
10:15—Sport Flashes  
10:30—Rose City Beavers  
11 to 12 mid.—Dance Music

**325.9 Meters KOMO** Elliott 5890  
920 Kcys. 1000 Watts  
Fisher's Blend Station, Inc., Seattle  
6:55 A.M. to 12—Various Programs  
12 noon—Farm program  
12:15—NBC, Farm and Home Hour  
1—Tea-time Tales  
1:15—Zac Kalbach's Orchestra  
1:45—Red Shadow  
2—NBC, Al Pearce and his Gang  
3—Programs to be announced  
4:30—NBC, Little Orphan Annie  
4:45—NBC, Morin Sisters  
5—NBC, Mindways  
5:15—NBC, Round the World Club  
5:30—NBC, Pageant of Colorado  
6—NBC, The Hour Glass  
6:30—NBC, Radio Forum  
7—NBC, Amos 'n' Andy  
7:15—NBC, Mystery Serial  
7:30—NBC, Demi-Tasse Revue  
8—NBC, Drama Hour  
8:30—NBC, Spratts Dog Show  
8:45—NBC, Hollywood on the Air  
9—Four Shades of Rhythm  
9:30—NBC, Doric Quartet  
10—NBC, Richfield News Flashes  
10:15—NBC, Dance Music  
11:30 to 12 mid.—To be announced

# TUESDAY Programs

May 2, 1933

**379.5 Meters KGO Sutter 1920**  
**790 Kcys. 7500 Watts**  
**Natl. Broadcasting Co., San Francisco**  
 7 A.M.—Organ Concert  
 7:30—United States Army Band  
 8—Johnny Marvin, tenor  
 8:15—Jack, Patsy, Sambo & Mandy  
 8:30—Crosscuts Log o' the Day  
 9—Edna Fischer, pianist  
 9:15—Buckaroos; songs and dialogue  
 9:30—Martha Meade Society  
 9:45—Rhythm Vendors  
 10:30—Woman's Air Magazine  
 11:30—Sego Gift Girl  
 11:45—Meredith Willson's Orchestra  
 12:15—West. Farm and Home Hour  
 1—Melodie Thought: Soloists with orchestra  
 1:30—Schirmer and Schmitt, piano duo  
 1:45—John and Ned, vocal duo  
 2—Al Pearce and his Gang  
 3—News Talk by Ruth Hughes  
 3:15—Arion Trio  
 3:45—Irish Songs and Stories  
 4—Moroni's Beach View Orchestra  
 4:15—Tea Timers  
 4:30—Little Orphan Annie  
 4:45—Balladettes: Orch. & vocalists  
 5:15—Round the World Club  
 5:30—Ed Wynn for Texaco  
 6—Lives at Stake: Dramatization  
 6:30—Walter Damrosch Symphonic Concert  
 7—Amos 'n' Andy  
 7:15—Memory Lane: Drama  
 7:45—Adventures in Health  
 8—Duke Ellington's Orchestra  
 8:30—Ben Bernie's Orchestra  
 9—Waltz Time  
 9:30—The Story Teller: Drama  
 10—Richfield News Flashes  
 10:15—Anson Weeks' Orchestra  
 11—Phil Harris' Orchestra  
 11:30 to 12 mid.—Gus Arnheim's Orchestra

**440.9 Mtrs. KPO Sutter 1920**  
**680 Kcys. 50,000 Watts**  
**National Broadcast Co., San Francisco**  
 7:30 A.M.—Organ Concert  
 8—Financial Service  
 8:15—Pollock & Lawnhurst, pianists  
 8:30—Rex Battle Concert Ensemble  
 9:30—Johnny O'Brien, harmonica  
 9:45—News Service  
 10—Tom Mitchell, baritone  
 10:15—Songs by the Kitchen Sink  
 10:30—Harold Stokes' orchestra  
 10:45—Sisters of the Skillet  
 11—Vocal Art Quartet  
 11:45—Organ recital  
 12 noon—Midday Musicale: News  
 1:15—Ann Warner's Chat  
 1:45—Nursery Favorites: Milton Cross and Lewis James, tenor  
 2—Mme. Frances Alza, soprano  
 2:30—Mid-week Federation Hymn Sing  
 2:45—Soloist  
 3—Three Keys, vocal trio  
 3:15—You and Your Government  
 3:45—University of California  
 4—Stringwood Ensemble  
 4:30—Mickey Gillette, saxophonist  
 4:45—Negro Quartet and Jug-band  
 5—Scotty's Talkathon  
 5:15—Arion Trio  
 5:45—News Service  
 6—Rhythm Vendors  
 6:30—Social Planning  
 6:45—Irving Kennedy, Tenor  
 7—Dr. Copeland, Talk  
 7:05—Organ Concert  
 7:15—Oliver Smith, tenor  
 7:30—Argentine Trio

7:45—Calif. State Chamber of Com.  
 8—Chiffon Jazz; orchestra and vocal  
 8:30—Eno Crime Clues  
 9—NBC Artists Service Program  
 9:30—Bal Tabarin Orchestra  
 10—Powder Puff Revue  
 10:30—Charles Hart, instrumentalists  
 11 to 12—Dollo Sargent, Organist

**491.5 Meters KFRC Prospect 0100**  
**610 Kcys. 1000 Watts**  
**Don Lee Broadcast. System, S. F., Cal.**  
 7 A.M.—Records; Barnyard Melodies  
 7:25—N. Y. Stocks; Exercises  
 8—CBS, Buddy Harrod's Orch.  
 8:30—CBS, Concert Miniatures  
 8:55—Bisquick  
 9—CBS, The Little French Princess  
 9:15—CBS, Vincent Traver's Orch.  
 9:30—CBS, George Scherban's Orch.  
 10—CBS, Ann Leaf, Organist  
 10:30—CBS, The Merry-makers  
 10:45—Protective Diet League  
 11—Prudence Penny  
 11:15—Frances Lee Barton  
 11:30—CBS, Frank Westphal's Or.  
 12 noon—Noonday Concert  
 1—CBS, "Meet the Artist"  
 1:15—CBS, Dancing Echoes  
 1:30—Stocks; Program  
 2—Happy Go Lucky Hour  
 3—Feminine Fancies  
 4—CBS, Modern Male Chorus  
 4:15—Medical Society Health Talk  
 4:30—To be announced  
 4:45—Lost and Found  
 4:50—Recordings; Town Topics  
 5—CBS, The Songsmiths  
 5:15—CBS, Threads of Happiness  
 5:30—California Melodies  
 6—CBS, Barn Dance Varieties  
 6:30—CBS, Edwin C. Hill  
 6:45—CBS, Colum. Symphony Orch.  
 7:15—To be announced  
 7:30—CBS, Abe Lyman's Orchestra  
 8—Globe Headlines  
 8:15—CBS, Joe Haymes' Orchestra  
 8:30—Hodge Podge Lodge  
 9—Marboro Band of Distinction  
 9:15—To be announced  
 9:30—Eb and Zeb  
 9:45—To be announced  
 10—Bisquick Band  
 10:05—Ted Fio-Rito's Orchestra  
 11—Dance Orchestra  
 12 to 1 A.M.—Request hour

**280.2 Meters KJBS Ord. 4148-49**  
**1070 Kcys. 100 Watts**  
**J. Brunton & Sons, San Francisco**  
 6 A.M.—Alarm Klock Klub  
 8—Records; Talks; Music  
 7:15 P.M.—Silent period  
 12:01 to 6 A.M.—Owl program

**535.4 Meters KTAB Garfield 4700**  
**560 Kcys. 1000 Watts**  
**Assoc. Broadcasters, Oakland, Calif.**  
 6:45 A.M. to 11:15—Records; News Talks  
 11:15—Margaret Reynolds  
 11:30—X Bar B Boys  
 12 noon—Concert; News; Trio  
 1—Over the Teacups; Talk  
 1:45—George Taylor, Radio Frolic  
 2:15—Studio program; Talk  
 2:45—Better Homes, Frank Cox  
 3—Women in the Home  
 3:30—Health Talk, Dr. Loomis  
 3:45—Putnam's Treasure Chest  
 4—"Keep Smiling" Revue  
 4:30—Comedy Program  
 5—Uncle Rod's Club  
 5:30—Dr. J. D. Thompson  
 6—Dance Music; Walkathon; News  
 6:45—Sport Page of the Air  
 7—Frank Watanabe and Archie  
 7:15—Maurice Gunsky, tenor; News  
 7:45—Rance of the Turf  
 8—Lyric Trio  
 8:30—Robert Olsen, vocalist  
 9—News; Organ; Orchestra  
 10—Famous Artists  
 10:15—Walter Rudolph, pianist  
 10:45—Dance Music  
 12 to 1 A.M.—Night Owls

**340.7 Meters KLX Lake. 6000**  
**800 Kcys. 500 Watts**  
**Tribune Pub. Co., Oakland, Calif.**  
 8 A.M.—Records; stocks  
 8:30—Covered Wagon Jubilee  
 9—Records; Stocks; News  
 10:30—International Kitchen  
 11—Sunshine Twins; News Flashes  
 11:30—Guitar Duo  
 11:45—Fred Skinner  
 12 noon—Jack Delaney's band  
 1—Jean's Hi-Lights  
 2—Recordings; News; Stocks  
 2:45—Ethel Rhinard, pianist  
 3—Records; Health School  
 4—Garden Tips; Records  
 4:30—Brother Bob's Club  
 5—Helen Parmelee, pianist  
 5:30—Wallele Trio  
 6—Hotel Oakland Trio  
 6:55—Varieties; News  
 7:30—William Don, comedian  
 7:45—Fred & Morris, comedians  
 8—Organ Recital  
 8:30—John Lewis, violinist  
 8:45—Banjo Girls  
 9—Old Gospel hymns  
 9:30—Bungling Bunglers  
 9:45—Helen Parmelee, pianist  
 10:15-11 P.M.—Dance Program

**322.4 Meters KFWI Franklin 0200**  
**930 Kcys. 500 Watts**  
**Radio Entertainments, San Francisco**  
 7 A.M.—Early Bird; silent at 8  
 9—Blues Chasers  
 9:45—Romance of the Kitchen  
 10—White House & Bellevue prog.  
 10:30—Topics and Music  
 10:45—Vocalist and Guitarist  
 11—Concert Melodies; Mills Trio  
 11:45—Correct English, Bertha Hunt  
 12 noon—Oklahoma Cowboys  
 12:30—Dance Music; silent at 1  
 6—Downey Sisters; Dance Music  
 6:30—Russian Balalaika Orchestra  
 6:45—Studio program  
 7—Christian Science program  
 7:15—Bellevue Trio; silent at 7:30  
 11—Joe Wright's Orchestra  
 11:30—Salon Serenade  
 12 to 1 A.M.—Hi-Dee-Ho!

## 3 p.m. Don Lee Stations

Your Own Home  
 Decoration Problems  
 solved by

**FAY FRASER**

Home Decoration  
 Specialist

A Free Service to All

A "General Paint" Program

**243.8 Meters KYA Prospect 3456**  
**1230 Kcys. 1000 Watts**  
 Pac. Broadcast Corp., San Francisco

- 7:30 A.M.—Dawn Salute
- 7:45—Christian Science Program
- 8—Emporium Breakfast Hour
- 9—Melody Moods
- 9:15—School Broadcast
- 9:45—Townhall Harmonies
- 10—Marian Day's Matinee
- 10:30—Sunshine Hour
- 11—Album Leaves; Rhymsters 11:30
- 12 noon—Scriptures; Concert
- 12:45—Aviation Club
- 1:15—Footlight Features
- 2:15—Royal Serenaders
- 2:30—Verse: Mrs. M. C. Sloss
- 2:45—Paraders
- 3—Rhythm Vendors
- 3:15—Glen Goff, organist
- 4:15—Artist Celebrities
- 4:30—Rita Murray's Friendship Club
- 4:45—Salon Group; Dr. Graham
- 5:05—Sunset Revue; Digest
- 6—Serenade; Waltz Idylls
- 6:45—Cecil and Sally
- 7—Hawaiian Novelties
- 7:15—Musical Novelties
- 7:45—Bob Allen, Pianist
- 8—KYA Dramatic Players
- 8:30—To be announced
- 8:45—Mountain Echoes
- 9—Modern Maestros
- 9:15—Tango Time
- 9:30—The Cub Reporters
- 9:45—News Flashes
- 10—Sandman Organ
- 11-12 mid.—Concert Memories

**468.5 Meters KFI Richm'd 6111**  
**640 Kcys. 50,000 Watts**  
 Earle C. Anthony, Inc., Los Angeles

- 6:45 A.M. to 5—Various programs
- 5 P.M.—Baron Keyes' Air Castle
- 5:15—NBC, Round-the-World Club
- 5:30—NBC, Ed Wynn for Texaco
- 6—NBC, Lives at Stake
- 6:30—Orchestra
- 7—NBC, Amos 'n' Andy
- 7:15—NBC, Memory Lane
- 7:45—NBC, Adventures in Health
- 8—Orchestra
- 8:30—NBC, Ben Bernie's Orchestra
- 9—"Tapestries of Life"
- 9:30—Orchestra
- 10—NBC, Richfield News Reporter
- 10:15—Phil Harris' Orchestra
- 11:30 to 12 mid.—Arnheim's Orch.

**296.6 Meters KQW Ballard 777**  
**1010 Kcys. 500 Watts**  
 Pac. Agric. Foundation, Ltd., San Jose

- 7 A.M. to 3—Records; Talks; News
- 4:30 P.M.—Various programs
- 6—Dinner Music
- 6:15—Franco's program
- 6:30—Market Reports; Farmers' Exchange
- 7:03—Radio News and Forum
- 7:30—Federation of Labor
- 7:45—Taxpayers' Association
- 8 to 10 P.M.—You Never Can Tell

**285.5 Meters KNX Hemp. 4101**  
**1050 Kcys. 25,000 Watts**  
 Western Broadcast. Co., Los Angeles

- 6:45 A.M. to 5:15—Various programs
- 5:15—Crockett Mountaineers
- 5:45—Chandu, the Magician
- 6—News Service
- 6:15—Arizona Wranglers
- 6:30—Lawrence King and Orchestra
- 6:45—Growin' Up
- 7—Frank Watanabe and Archie
- 7:15—Singing Guardsmen
- 7:30—Tessie the Typist
- 7:45—Happy Chappies

8—Helene Handin, interview  
 8:15—Calmon Luboviski, Violinist  
 8:45—Drury Lane; News  
 9:15—Singing Strings  
 9:30—Jay Whidden's Orchestra  
 10—Back Home Hour  
 11 to 12 mid.—Dance Orchestra

**333.1 Meters KHJ VAndike 7111**  
**900 Kcys. 1000 Watts**  
 Don Lee Broadcast. System, L. A., Cal.

- 7 A.M. to 5—Various programs
- 5 P.M.—CBS, The Songsmiths
- 5:15—News Items; Town Topics
- 5:30—California Melodies
- 6—CBS, Barn Dance Varieties
- 6:30—CBS, Edwin C. Hill
- 6:45—CBS, Colum. Symphony Orch.
- 7:15—CBS, Threads of Happiness
- 7:30—Chandu, the Magician
- 7:45—CBS, Abe Lyman's Orchestra
- 8—"Globe Headlines"
- 8:15—CBS, Joe Haymes' Orchestra
- 8:30—CBS, Leon Belasco's Orch.
- 9—Marlboro Band of Distinction
- 9:15—To be announced
- 9:30—College Concerts
- 10—News Items; Bisquick Band
- 10:15—Ted Fio-Rito's Orchestra
- 11—Bob Holman's Orchestra
- 12 to 1 A.M.—Organ recital

**325.9 Meters KOMO Elliott 5890**  
**920 Kcys. 1000 Watts**  
 Fisher's Blend Station, Inc., Seattle

- 6:55 A.M. to 12:15—Various prog.
- 12:15—NBC, Farm and Home Hour
- 1—Tea Time Tales
- 1:15—Programs to be announced
- 2—NBC, Al Pearce and his Gang
- 3—Musical program
- 4:30—NBC, Little Orphan Annie
- 4:45—Remington Rand
- 5—To be announced
- 5:15—NBC, Round the World Club
- 5:30—NBC, Ed Wynn
- 6—NBC, Lives at Stake, drama
- 6:30—NBC, Damrosch Symphony
- 7—NBC, Amos 'n' Andy
- 7:15—NBC, Memory Lane
- 7:45—NBC, Adventures in Health
- 8—To be announced
- 8:30—NBC, Ben Bernie's Orchestra
- 9—Musical Mannequins
- 9:30—Studio program
- 10—NBC, Richfield News Flashes
- 10:15 to 12 mid.—NBC, Dance Music

**483.6 Meters KGW Atwater 2121**  
**620 Kcys. 1000 Watts**  
 Morning Oregonian, Portland, Ore.

- 7 A.M. to 12—Various programs
- 12 noon—Oregonian of the Air
- 12:15—NBC, Farm and Home
- 1:30—Dental Clinic of the Air
- 2—NBC, Al Pearce and Gang
- 3—Crazy Crystals program
- 3:15—Musical programs
- 3:45—Friendly Chat
- 4:30—NBC, Little Orphan Annie
- 4:45—Lambert Pharmaceutical Co.
- 5—Mahdi, the Magician
- 5:15—NBC, Round the World Club
- 5:30—NBC, Ed Wynn
- 6—NBC, Lives at Stake, drama
- 6:30—NBC, Symphony Orchestra
- 7—NBC, Amos 'n' Andy
- 7:15—NBC, Memory Lane
- 7:45—NBC, Adventures in Health
- 8—To be announced
- 8:30—NBC, Ben Bernie's Orchestra
- 9—Musical Mannequins
- 9:30—Studio program
- 10—NBC, Richfield News Flashes
- 10:15—NBC, Mark Hopkins Orch.
- 11—NBC, Phil Harris Orchestra
- 11:30 to 12 mid.—Arnheim's Orch.

**508.2 Meters KHQ Main 5383**  
**590 Kcys. 1000 Watts**  
 Louis Wasmer, Inc., Spokane, Wash.

- 7 A.M. to 12:15—Various Programs
- 12:15 P. M.—Chamber of Commerce
- 1—Studio programs
- 2—NBC, Al Pearce and Gang
- 3—To be announced
- 4—KHQ News
- 4:15—National Advisory Council
- 4:30—NBC, Little Orphan Annie
- 5—Skippy
- 5:15—NBC, Round the World Club
- 5:30—NBC, Ed Wynn for Texaco
- 6—NBC, Lives at Stake
- 6:30—Musical program
- 7—Amos 'n' Andy
- 7:15—NBC, Memory Lane
- 7:45—NBC, Adventures in Health
- 8—Studio program
- 8:30—NBC, Ben Bernie Orchestra
- 9—Northwest on Parade
- 10—NBC, News Flashes
- 10:15—NBC, Anson Weeks' Orch.
- 11—NBC, Phil Harris' Orchestra
- 11:30 to 12 mid.—Arnheim's Orch.

**319 Meters KOIN Atwater 3333**  
**940 Kcys. 1000 Watts**  
 The Journal, Portland, Oregon

- 6:30 A.M. to 12—Various Programs
- 12 noon—To be announced
- 1—CBS, Meet the Artist
- 1:15—CBS, Dancing Echoes
- 1:30—Book of Life
- 2—Happy Go Lucky Hour
- 3—Feminine Fancies
- 3:30—Newspaper of the Air
- 5—CBS, The Songsmiths
- 5:15—Skippy
- 5:30—Davidson Prize Club
- 6—CBS, Earn Dance Varieties
- 6:30—CBS, Edwin C. Hill
- 6:45—CBS, Symphony Orchestra
- 7:15—Tarzan (E. T.)
- 7:30—CBS, Abe Lyman Orchestra
- 8—Redding White, tenor
- 8:15—Bisquick Band
- 8:20—CBS, Joe Haymes' Orchestra
- 8:30—CBS, Leon Belasco's Orch.
- 9—Bells of Harmony
- 9:30—Fight Broadcast
- 10:30—Ted Fio-Rito Orchestra
- 11—Rose City Beavers
- 11:30 to 12 mid.—Dance music

**236.1 Meters KOL Main 2312**  
**1270 Kcys. 1000 Watts**  
 Seattle Broadcast. Co., Seattle, Wash.

- 6:45 A.M. to 12—Various Programs
- 12 noon—CBS, Gypsy Music Makers
- 12:30—CBS, Annual Boys Week
- 12:45—CBS, Fred Berren's Orch.
- 1—Health Hints
- 1:15—NBC, Dancing Echoes
- 1:30—To be announced
- 2—Happy Go Lucky Hour
- 3—Feminine Fancies
- 4—CBS, Modern Male Chorus
- 4:15—Walter Schelp, trio
- 4:30—Studio program
- 5—CBS, Songsmiths
- 5:30—Skippy (E. T.)
- 5:45—California Melodies
- 6—CBS, Barn Dance Varieties
- 6:30—Sports Review, Ken Stuart
- 6:45—Charles A. Reynolds
- 7—CBS, Howard Barlow's Orch.
- 7:15—CBS, Threads of Happiness
- 7:30—CBS, Abe Lyman's Orch.
- 8—To be announced
- 8:15—CBS, Joe Haymes' Orchestra
- 8:30—Hill and Dale
- 8:45—CBS, Leon Belasco's Orch.
- 9—The Globe Trotter; Music
- 9:30—Boxing Bouts
- 11 to 12 mid.—Dance Music

# WEDNESDAY Programs

May 3, 1933

**379.5 Meters KGO Sutter 1920**  
**790 Kcys. 7500 Watts**  
Natl. Broadcasting Co., San Francisco

7 A.M.—Organ Concert  
7:30—Rhythm Ramblers  
8—Lee S. Roberts' Memory Box  
8:15—Jack, Patsy, Sambo & Mandy  
8:30—Crosscuts Log o' the Day  
9—Edna Fischer, pianist  
9:15—The Buckaroos  
9:30—Organ Concert  
9:45—Jean Abbey, Shop News  
10—Sarah Kreindler, violinist  
10:15—Books for Children  
10:30—Woman's Air Magazine  
11:30—Sax-o-Tunes  
12 noon—Bluettes; Vocal trio  
12:15—West. Farm and Home Hour  
12:45—Charis Musical Review  
1—Al Bernard, the Minstrel Man  
1:15—Trio Romantique  
1:30—Winnie the Pooh  
1:45—John and Ned, harmony duo  
2—Al Pearce and his Gang  
3—Langendorf Pictorial  
3:15—Dinner Concert  
3:30—Elvia Allman, the California  
Cocktail  
3:45—Carl Kalash, violinist  
4—Pair of Pinches  
4:30—Little Orphan Annie  
4:45—Rialto Echoes; Dance orch.  
5:15—Around the World Club  
5:30—Josef Lhevinne, pianist  
6—Corn Bob Pipe Club  
6:30—Charles Hart: Instrumental-  
ists  
7—Amos 'n' Andy  
7:15—Octavus Roy Cohen Murder  
Mystery  
7:30—Eddie Peabody, entertainer  
8—Ralph Kirbyer, baritone  
8:15—Adventures Sherlock Holmes  
8:45—Mark Fisher's Orchestra  
9—One Man's Family; Drama  
9:30—Bits of Broadway  
10—Richfield News Flashes  
10:15—Anson Weeks' Orchestra  
11—Phil Harris' Orchestra  
11:30 to 12 mid.—Gus Arnheim's Or.

**440.9 Mtrs. KPO Sutter 1920**  
**680 Kcys. 50,000 Watts**  
National Broadcast Co., San Francisco

7:30 A.M.—Organ Concert  
8—Financial Service  
8:15—On Wings of Song  
8:30—Merrie Men, male quartet  
8:45—Rhythmic Serenader  
9—Words and Music  
9:30—Johnny O'Brien, harmonica  
9:45—News Service  
10—Tom Mitchell, baritone  
10:15—Fashion Flashes  
10:30—Westminster Choir  
11—Grand Trio  
11:30—Organ Concert  
12 noon—Midday Musicale; News  
1:15—Ann Warner, household talks  
1:45—Musical Moments  
2—Waldorf-Astoria Orchestra  
2:30—Back of the News  
2:45—Polish Constitution Day Prog.  
3—Melody Mixers  
3:45—Univ. of Calif. program  
4—Dance Moods  
4:30—L'Amour Melodique  
5—Scotty's Talkathon  
5:15—Rockin' Chair Memories  
5:30—Synco-Thots, piano duo  
5:45—News Items  
6—Sunset Serenaders  
6:45—Detectives Black and Blue  
7—Dr. Copeland Talk  
7:05—Organ Concert

7:15—Tarzan of the Apes  
7:30—Myron Niesley, tenor  
7:45—Southern Harmony Four  
8—Californians on Parade  
8:30—Eno Crime Clues  
9—Stringwood Ensemble  
9:30—Bal Tabarin Orchestra  
10—Music Box  
10:30—Meredith Willson Orchestra  
11 to 12 mid.—Organ Recital

**340.7 Meters KLX Lake. 6000**  
**880 Kcys. 5000 Watts**

Tribune Pub. Co., Oakland, Calif.  
8 A.M.—Records; Stocks  
8:30—Covered Wagon Jubilee  
9—Records; Stocks; News  
10:30—International Kitchen  
11—Sunshine Twins; News Flashes  
11:30—Novelty Guitar Duo  
11:45—Clark Sisters  
12 noon—Jack Delaneys band  
1—"Timely Garden Tips"  
1:15—Jean's Hi-Lights; Records  
2:35—Better Business talk; Stocks  
2:45—Organ recital; Records  
3:30—Nancy Hersey, pianist  
3:45—Health School  
4—Records; Brother Bob's Club  
5—Helen Parmelee, pianist  
5:30—Lovable Liars  
5:45—Novelty Guitar Duo  
6—Hotel Oakland Trio  
6—News Items  
7:30—The Clark Sisters  
7:45—Fred and Morris, comedians  
8—John Lewis quintet  
9—Dot Kay and Ethel Rhinard  
9:15—Studio program  
9:30—Bungling Bunglers  
9:45—Studio program  
10—Fred Skinner  
10:15 to 11:30 P.M.—Dance program

**285.5 Meters KNX Hemp. 4101**  
**1050 Kcys. 25,000 Watts**

Western Broadcast Co., Los Angeles  
6:45 A.M. to 5:30—Various programs  
5:30—Crockett Mountaineers  
5:45—Chandu, the Magician  
6—News Service  
6:15—Arizona Wranglers  
6:30—Concert Orchestra  
6:45—Growin' Up  
7—Frank Watanabe and Archie  
7:15—Black and Blue  
7:30—Auto Club program  
7:45—Happy Chappies  
8—Light Opera, Charlotte Woodruff  
8:30—Patches; News  
9:15—Rance Valentine, singer  
9:30—Jay Whidden's Orchestra  
10 to 11 P.M.—Dance Music

**333.1 Meters KHJ VAndike 7111**  
**900 Kcys. 1000 Watts**

Don Lee Broadcast. System, L. A., Cal.  
7 A.M. to 5—Various programs  
5 P.M.—CBS, Mary Eastman  
5:15—News Items; Town Topics  
5:45—"Maude and Bill"  
6—CBS, Old Gold  
6:30—CBS, Edwin C. Hill  
6:45—CBS, Colum. Symphony Orch.  
7:15—CBS, Little Jack Little  
7:30—Chandu, the Magician  
7:45—CBS, Joe Haymes' Orchestra  
8—"Globe Headlines"  
8:15—CBS, Bob Holman's Orchestra  
8:30—CBS, Ozzie Nelson's Orchestra  
9—To be announced  
10—News Items; Bisquick Band  
10:15—Ted Fio-Rito's Orchestra  
11—Bob Holman's Orchestra  
12 to 1 A.M.—Organ Recital

**491.5 Meters KFRC Prospect 0100**  
**610 Kcys. 1000 Watts**

Don Lee Broadcast. System, S. F., Cal.  
7 A.M.—Records; Barnyard Melodies  
7:25—Stocks; Exercises  
8—CBS, Harold Knight's Orchestra  
8:30—CBS, Concert Miniatures  
8:55—Bisquick  
9—CBS, Little French Princess  
9:15—CBS, George Hall's Orchestra  
9:45—Betty Crocker  
9:45—CBS, Geo. Scherban's Orch.  
10—CBS, Ann Leaf, Organist  
10:30—CBS, Colum. Artists Recital  
10:45—CBS, Rhythm Kings  
11—Goodwill Industries  
11:05—Mary Haines, household hints  
11:15—Prudence Penny  
11:30—CBS, Vocalist and Orchestra  
11:45—Eton Boys  
12 noon—Noonday Concert  
12:45—CBS, "Going to Press"  
1—Edna Wallace Hopper  
1:05—CBS, The Captivators  
1:30—N. Y. Stocks; Records  
1:45—CBS, Do Re Mi  
2—Happy Go Lucky Hour  
3—Feminine Fancies  
4—"The Phillistine"  
4:15—Hodge Podge Lodge  
4:45—Lost and Found  
4:50—Recordings; Town Topics  
5—CBS, Mary Eastman  
5:15—"Sunshine Discovers' Club"  
5:30—To be announced  
5:45—Cowboy Tom's Roundup  
6—Star Dust Revue  
6:30—CBS, Edwin C. Hill  
6:45—CBS, Columbia Symphony Or.  
7:15—CBS, Little Jack Little  
7:30—CBS, Joe Haymes' Orchestra  
8—Globe Headlines  
8:15—CBS, Eddie Duchin's Orch.  
8:30—Remar Jubilee  
9:30—Eb and Zeb  
9:45—To be announced  
10—Bisquick Band  
10:05—Ted Fio-Rito's Orchestra  
11—Dance Orchestra  
12 to 1 A.M.—Request hour

**243.8 Meters KYA Prospect 3456**  
**1230 Kcys. 1000 Watts**

Pac. Broadcast Corp., San Francisco  
7:30 A.M.—Dawn Salute  
7:45—Christian Science Program  
8—Emporium Breakfast Hour  
9—Melody Moods; Organ  
10—Marian Day's Matinee  
10:30—Sunshine Hour  
11—Lillian Cooper, cosmetician  
11:15—Album Leaves; Rhythmsters  
12 noon—Scriptures; Concert  
12:30—Glen Goff, Organist  
1:30—Modern Maestros  
2:15—Quartet; Question Box  
2:45—Mountain Echoes; Orchestra  
3:15—Symphony Highlights  
3:45—Business Talk; Hawaiians  
4:30—Rita Murray's Friendship  
Club  
4:45—Royal Serenaders  
5—"Safety First," Talk  
5:15—Sunset Revue  
5:45—Campbell Digest  
6—Paraders; Waltz Idylls  
6:45—Cecil and Sally  
7—Slavic Concert; Tango Time  
7:45—Bob Allen, Pianist  
8—John Wolohan's Orchestra  
9—Sydney Dixon & G. Donald Gray  
9:30—Musical Novelties  
9:45—News; Sandman Organ  
11-12 Mid.—Concert Memories



**535.4 Meters KTAB** Garfield 4700  
**560 Kcys.** 1000 Watts  
 Assoc. Broadcasters, Oakland, Calif.  
 6:45 A.M.—The Milkman  
 7—Portuguese News Broadcast  
 7:15—Vocalities; Reporter  
 7:45—Crazy Serenaders  
 8—Rod Hendrickson, "Early Riser"  
 8:30—Jack Hall and Clem Kennedy  
 9—Morning Prayer Hour  
 9:30—Dr. J. D. Thompson  
 10—Household hour; Records  
 10:30—Records; Dr. Corley  
 11:30—X-bar-B Boys; Health Talk  
 12 noon—Concert; News  
 12:30—Prof. Lataner; Records  
 1—Over the Teacups; Talk  
 1:45—George Taylor, Radio Frolic  
 2:15—Records; Matinee Melodies  
 3:30—Famous Artists  
 3:45—Putnam's Treasure Chest  
 4—"Keep Smiling"; Revue  
 4:30—Records; Happy Hoboe  
 5—Uncle Rod's Club  
 5:30—Dr. J. D. Thompson  
 6—Question Box; Walkathon  
 6:30—News Reporter; Sport Page  
 7—Frank Watanabe and Archie  
 7:15—"Chinese Fantasies"; News  
 8—Organ Recital; Lyric Trio  
 8:30—Al Cook's Cowboys  
 9—News; Organ; Orchestra  
 10—Famous Artists  
 10:15—College Inn Trio  
 10:30—Studio program  
 10:45—Lyric Trio; Walkathon  
 11:15 to 12 mid.—Night Owls

**322.4 Meters KFWI** Franklin 0200  
**930 Kcys.** 500 Watts  
 Radio Entertainments, San Francisco  
 7 A.M.—Early Bird; silent at 8  
 9—Blues Chasers; Dr. Corley  
 10—White House & Bellevue prog.  
 10:30—Topics and Music  
 11—Concert Melodies  
 11:15—Franklin Riker, tenor  
 11:30—Melody Girl; Novelities  
 12 noon—Oklahoma Cowboys  
 12:30—Dance Music; silent at 1  
 6—Dance Music  
 6:30—Russian Balalaika Orchestra  
 6:45—Studio program  
 7—Christian Science program  
 7:15—Bellevue Trio; silent at 7:30  
 8:30—Virginia Mifka, pianist  
 8:45—John D. Barry  
 9—Domestic Relations program  
 9:30—Open Forum  
 9:45—George Eldredge, baritone  
 10—Master Melodies  
 11—Joe Wright's Orchestra  
 11:30—Salon Serenade  
 12 to 1 A.M.—Hi-Dee-Ho!

**508.2 Meters KHQ** Main 5383  
**590 Kcys.** 1000 Watts  
 Louis Wasmer, Inc., Spokane, Wash.  
 7 A.M. to 12—Various programs  
 12 noon—NBC, Bluettes, vocal trio  
 12:15—NBC, Farm and Home Hour  
 12:45—NBC, Charis Review  
 1—Studio programs  
 2—NBC, Al Pearce and Gang  
 3—Studio program  
 3:15—NBC, Dinner Concert  
 3:45—NBC, Carl Kalash, violinist  
 4—KHQ News  
 4:30—NBC, Orphan Annie  
 4:45—To be announced  
 5—"Skippy" Elec. Trans.  
 5:15—NBC, Round the World Club  
 6:45—To be announced  
 6—NBC, Corn Cob Pipe Club  
 6:45—Voice of Texas  
 7—NBC, Amos 'n' Andy  
 7:15—NBC, Mystery Serial

7:30—NBC, Eddie Peabody, banjoist  
 8—Musical Program  
 8:15—NBC, Sherlock Holmes  
 9—NBC, One Man's Family  
 9:45—Grossman's Home Beautiful  
 10—NBC, News Flashes  
 10:15—Anson Weeks' Orchestra  
 11—NBC, Phil Harris' Orchestra  
 11:30 to 12 mid.—Gus Arnheim Or-  
 chestra

**236.1 Meters KOL** Main 2312  
**1270 Kcys.** 1000 Watts  
 Seattle Broadcast. Co., Seattle, Wash.  
 6:45 A.M. to 12—Various Programs  
 12 noon—CBS, Claud Hopkins' Or.  
 12:30—CBS, Jack Brooks' Orchestra  
 1:30—To be announced  
 1:45—CBS, Do Re Mi  
 2—Happy Go Lucky Hour  
 3—Feminine Fancies  
 4—Studio program  
 4:15—Hodge Podge Lodge  
 4:45—CBS, Howard Ely, Organ  
 5—CBS, Mary Eastman  
 5:15—CBS, Manhattan Serenaders  
 5:30—Skippy  
 5:45—To be announced  
 6—CBS, Old Gold program  
 6:30—Sports Review, Ken Stuart  
 6:45—CBS, Col. Symphony Orch.  
 7—Radio Speaker Stevenson  
 7:30—Black and Blue  
 7:45—CBS, Joe Haymes' Orch.  
 8—Eb and Zeb  
 8:15—Ralph Horr  
 8:20—Hill and Dale  
 8:45—CBS, Ozzie Nelson's Orch.  
 9—Globe Trotter  
 9:15—Don Lee Feature  
 10—Ted Pio-Rito's Orchestra  
 11 to 12 mid.—Dance Orchestra

**468.5 Meters KFI** Richm'd 6111  
**640 Kcys.** 50,000 Watts  
 Earle C. Anthony, Inc., Los Angeles  
 6:45 A.M. to 5—Various programs  
 5 P.M.—Baron Keyes' Air Castle  
 5:15—NBC, Round-the-World Club  
 5:30—Orchestra & Charlie Weiland  
 6—NBC, Corn Cob Pipe Club  
 6:30—To be announced  
 7—NBC, Amos 'n' Andy  
 7:15—NBC, Mystery Serial  
 7:30—NBC, Eddie Peabody  
 8—Orchestra  
 8:15—NBC, Sherlock Holmes  
 8:45—Orchestra  
 9—NBC, One Man's Family  
 9:30—Packard Orchestra  
 10—NBC, Richfield News Reporter  
 10:15—Phil Harris' Orchestra  
 11:30 to 12 mid.—Gus Arnheim's  
 Orchestra

**322.4 Meters KROW** Glenc. 6774  
**930 Kcys.** 1000 Watts  
 Educa. Broad. Corp., Oakland, Calif.  
 8 A.M.—News; "Toupee Tommy"  
 8:30—Woman's Scrap Book  
 8:45—Walkathon; Records  
 9—Silent period  
 1 P.M.—Latin-American program  
 1:30—Studio program  
 2—Recordings  
 2:15—Prosperity Auction program  
 2:30—Lecture by Judge Rutherford  
 2:45—Recordings; Radio Advisor  
 3:30—Amer. Veterans' Magazine  
 4—"Doc" Shahan's Ramblers  
 4:30—Recordings; Health talk  
 5:15—Ruff and Millie  
 5:30—Walkathon; Silent at 6  
 7:30—Tom King, Crime News  
 7:45—The Favo' Sisters  
 8 to 8:30 P.M.—Italian program

**325.9 Meters KOMO** Elliott 5890  
**920 Kcys.** 1000 Watts  
 Fisher's Blend Station, Inc., Seattle  
 6:55 A.M. to 12—Various Programs  
 12 noon—Farm program  
 12:15—NBC, Farm and Home Hour  
 12:45—NBC, Charis Musical prog.  
 1—Tea Time Tales  
 1:15—NBC, Al Bernard  
 1:30—Red Shadow  
 2—NBC, Al Pearce and His Gang  
 3—Musical program  
 3:15—NBC, Dinner Concert  
 4—To be announced  
 4:30—NBC, Little Orphan Annie  
 4:45—NBC, Rialto Echoes  
 5:15—NBC, Round the World Club  
 5:30—Program to be announced  
 6—NBC, Corn Cob Pipe Club  
 7—NBC, Amos 'n' Andy  
 7:15—NBC, Mystery Serial  
 7:30—NBC, Eddie Peabody  
 8:15—NBC, Sherlock Holmes  
 8:45—Musical Program  
 9—NBC, One Man's Family  
 9:45—Dollars and Cents  
 10—NBC, Richfield News Flashes  
 10:15—Greater Washington hour  
 11:15—NBC, Dance Orchestra  
 11:30 to 12 mid.—Music

**319 Meters KOIN** Atwater 3333  
**940 Kcys.** 1000 Watts  
 The Journal, Portland, Oregon  
 6:30 A.M. to 12—Various Programs  
 12 noon—CBS program  
 1:30—Book of Life  
 2—Happy Go Lucky Hour  
 3—Feminine Fancies  
 3:30—Newspaper of the Air  
 5—CBS, Mary Eastman  
 5:15—Skippy  
 5:30—Davidson Prize Club  
 6:30—Bells of Harmony  
 6:45—CBS, Symphony Orchestra  
 7—CBS, Old Gold program  
 7:30—Black and Blue (E. T.)  
 7:45—CBS, Joe Haymes' Orchestra  
 8—Redding White, tenor  
 8:15—CBS, Eddie Duchin's Orch.  
 8:30—Program to be announced  
 10—Fio-Rito's Orchestra  
 11—Rose City Beavers  
 11:30 to 12 mid.—Dance music

**483.6 Meters KGW** Atwater 2121  
**620 Kcys.** 1000 Watts  
 Morning Oregonian, Portland, Ore.  
 7 A.M. to 12—Various Programs  
 12 noon—Oregonian of the Air  
 12:15—NBC, Farm and Home Hour  
 12:45—Charis Musical Review  
 1—Musical program  
 1:45—NBC, John and Ned  
 2—Edna Wallace Hopper  
 2:05—NBC, Al Pearce and Gang  
 3—Better English Talk  
 3:15—NBC, Dinner Concert  
 3:30—NBC, Elvia Allman, vocalist  
 3:45—Friendly Chat  
 4:30—NBC, Little Orphan Annie  
 4:45—NBC, Rialto Echoes  
 5—Piano Surprises  
 5:15—NBC, Round the World Club  
 5:45—To be announced  
 6—NBC, Corn Cob Pipe Club  
 6:45—Sam Gordon, Kibitzer  
 7—NBC, Amos 'n' Andy  
 7:15—NBC, Mystery Serial  
 7:30—NBC, Eddie Peabody  
 8:15—NBC, Sherlock Holmes  
 9—NBC, One Man's Family  
 9:45—G. A. Paine, violinist  
 10—NBC, Richfield News Flashes  
 10:15—NBC, Mark Hopkins Orch.  
 11—NBC, Ambassador Hotel Orch.  
 11:30 to 12 mid.—Gus Arnheim's Or.

# THURSDAY Programs

May 4, 1933

**379.5 Meters KGO Sutter 1920**  
**790 Kcys. 7500 Watts**  
**Nat'l. Broadcasting Co., San Francisco**  
 7 A.M.—Organ Concert  
 7:30—Rhythm Ramblers  
 8—Smackout; Comedy with Marion and Jim Jordan  
 8:15—Jack, Patsy, Sambo & Mandy  
 8:30—Crosscuts, Log o' the Day  
 9—Edna Fischer, pianist  
 9:15—The Buckaroos  
 9:30—Martha Meade Society  
 9:45—Johnny Toffoli, accordionist  
 10—Woman's Magazine of the Air  
 11—Std. School Broadcast  
 11:45—Organ Concert  
 12:15—Western Farm and Home  
 1—Schirmer and Schmitt, piano duo  
 1:15—Three Scamps  
 1:30—Fairy Tales; Dramatizations  
 1:45—John and Ned, harmony duo  
 2—Al Pearce and His Gang  
 3—Langendorf Pictorial  
 3:15—Regimentalists; Male octet  
 3:30—Melody Mixers  
 3:45—Talk by Merle Thorpe  
 4—Fleischmann Hour  
 5—Dance Journal  
 5:30—Piano Pictures  
 6—Lucky Strike; Baron Munchausen  
 7—Amos 'n' Andy  
 7:15—Thurston, the Magician  
 7:30—Chamber of Commerce Convention  
 8—Standard Symphony Hour  
 9—Captain Henry's Showboat  
 10—Richfield News Flashes  
 10:15—Anson Weeks Orchestra  
 11—Phil Harris Orchestra  
 11:30 to 12 mid.—Gus Arnheim's Or.

**491.5 Meters KFRC Prospect 0100**  
**610 Kcys. 1000 Watts**  
**Don Lee Broadcast System, S. F., Cal.**  
 7 A.M.—Records; Barnyard Melodies  
 7:25—Stocks; Exercises  
 8—CBS, Buddy Harrod's Orchestra  
 8:30—CBS, Concert Miniatures  
 8:55—Bisquick  
 9—CBS, Little French Princess  
 9:15—CBS, Vincent Traver's Orch.  
 9:30—CBS, Palmer House Ensemble  
 10—Ann Leaf, Organist  
 10:15—CBS, Boy's Week program  
 10:30—CBS, The Merry-makers  
 11—Prudence Penny  
 11:15—Frances Lee Barton  
 11:30—CBS, Frank Westphal's Or.  
 12 noon—Noonday Concert  
 12:45—CBS, Amer. Legion Trade Revival  
 1—CBS, George Hall's Orchestra  
 1:25—Stock Ex. Quotations  
 1:30—"Farm News"  
 1:45—To be announced  
 2—Happy Go Lucky Hour  
 3—Feminine Fancies  
 4—Discovery Hour  
 4:30—To be announced  
 4:45—Lost and Found  
 4:50—Records; Town Topics  
 5—CBS, Texas Rangers  
 5:15—CBS, Fray and Braggiotti  
 5:30—CBS, Col. Stoopnagle & Budd  
 6—CBS, The Foreign Legion  
 6:30—The Boswell Sisters  
 6:45—CBS, Colum. Symphony Orch.  
 7:15—CBS, Charles Carlile  
 7:30—CBS, Ted Lewis' Orchestra  
 8—Globe Headlines  
 8:15—CBS, Charles Barnet's Orch.  
 8:30—Hal Kemp's Orchestra  
 8:45—Clyde McCoy's Orchestra  
 9—Marlboro Band of Distinction  
 9:15—Dick Aurandt, Orchestra

9:30—Ed and Zeb  
 9:45—The Personality Trio  
 10—Bisquick Band  
 10:05—Ted Fio-Rito's Orchestra  
 11—Dance Orchestra  
 12 to 1 A.M.—Request Hour

**340.7 Meters KXL Lake. 6000**  
**880 Kcys. 500 Watts**  
**Tribune Pub. Co., Oakland, Calif.**  
 8 A.M.—Records; Stocks  
 8:30—Covered Wagon Jubilee  
 9—Records; Clinic of the Air  
 10:15—Financial Information  
 10:30—International Kitchen  
 11—Sunshine Twins; Curtain Calls  
 11:45—Fred Skinner, What Have You  
 12 noon—Jack Delaney's band  
 1—Jean's Hi-Lights  
 2—Recordings; News; Stocks  
 2:45—Ethel Rhinard, pianist  
 3—Records; Health School  
 4:30—Brother Bob's Club  
 5—Covered Wagon Jubilee; News  
 5:30—Summerford and Clark  
 5:45—Heald's College program  
 6—Hotel Oakland Trio  
 7—News Items  
 7:30—Jack Manley, violinist  
 7:45—Sports Hi-Lights  
 8—Iversen's String Quartet  
 8:30—Helen Parmelee, pianist  
 8:45—Maredens, Ladies Trio  
 9—Manila String Orchestra  
 9:30—Bungling Bunglers  
 9:45—Organ Recital  
 10:15-11 P.M.—Dance Program

**236.1 Meters KOL Main 2312**  
**1270 Kcys. 1000 Watts**  
**Seattle Broadcast Co., Seattle, Wash.**  
 6:45 A.M. to 12—Various Programs  
 12 noon—CBS, U. S. Army Band  
 12:45—CBS, Amer. Legion Revival  
 1—CBS, Hotel Taft Orch.  
 1:30—To be announced  
 2—Happy Go Lucky Hour  
 3—Feminine Fancies  
 4—CBS, Ewan Evans and Orch.  
 4:15—Walter Schelp, trio  
 4:30—Studio program  
 4:45—CBS, Howard Ely, Organist  
 5—CBS, Texas Rangers  
 5:15—CBS, Fray and Braggiotti  
 5:30—Skippy  
 5:45—To be announced  
 6—CBS, Foreign Legion  
 6:30—Sports Review  
 6:45—CBS, Howard Barlow's Orch.  
 7:15—Radio Speaker Stevenson  
 7:30—CBS, Ted Lewis' Orchestra  
 8—CBS, Chas. Barnet's Orchestra  
 8:30—CBS, Hal Kemp's Orchestra  
 8:45—Globe Trotters  
 9—Midweek Jubilee  
 10—Ted Fio-Rito's Orchestra  
 11 to 12 mid.—Dance Orchestra

**322.4 Meters KROW Glenc. 6774**  
**930 Kcys. 1000 Watts**  
**Educa. Broad. Corp., Oakland, Calif.**  
 4:45 P.M.—Hazel Neilson, soprano  
 5—Records; Muff and Millie  
 5:30—Walkathon; Silent at 6  
 7:30—Tropical Beach Combers  
 8—Judge Rutherford, lecture  
 8:15—The Blue Jays  
 8:30—Studio program  
 9—Charles Follette, bass; Tonitsa Ivanov, soprano; Reba Fuller, pianist  
 9:30—Feliz Rossi's Caballeros  
 10—Walkathon  
 10:30 to 11 P.M.—Yodeling Hill Billies

**440.9 Mtrs. KPO Sutter 1920**  
**680 Kcys. 50,000 Watts**  
**National Broadcast Co., San Francisco**  
 7:30 A.M.—Organ Concert  
 8—Financial Service  
 8:15—Neil Sisters, vocal trio  
 8:30—Rex Battle Concert Ensemble  
 9:30—Johnny O'Brien, harmonica  
 9:45—News Service  
 10—Tom Mitchell, baritone  
 10:15—Songs by the Kitchen Sink  
 10:30—Syncoptors, dance orch.  
 10:45—Sisters of the Skillet  
 11—Standard School Broadcast  
 11:45—Morin Sisters, vocal trio  
 12 noon—Midday Musicale; News  
 1:15—Ann Warner's Chats  
 1:45—Genia Fonariva, soprano  
 2—Waldorf-Astoria Orchestra  
 2:30—John B. Kennedy  
 2:35—Three Keys, vocal trio  
 2:45—Soloist  
 3—Regimentalists  
 3:15—Concert Footlights  
 3:30—To be announced  
 3:45—Univ. of Calif. Program  
 4—California Dons' Orchestra  
 4:30—Arion Trio  
 5:30—Mickey Gillette, saxophonist  
 5:45—News; Tone Portraits  
 6:30—Federal Business Talk  
 6:45—Irving Kennedy, Tenor  
 7—Dr. Copeland Talk  
 7:05—Organ Concert  
 7:15—S. F. Municipal Government  
 7:30—Concert in Rhythm  
 8—Sam Robbins' Orchestra  
 8:30—Rosicrucian Order Program  
 8:45—Dancing in Twin Cities  
 9—Crosscuts o' the Day  
 9:30—Bal Tabarin Orchestra  
 10—Lev Shorr and Flori Gough, pianist and cellist  
 10:30—Myron Niesley and Austin Mosher, tenor and baritone  
 11 to 12 mid.—Dollo Sargent, organist

**243.8 Meters KYA Prospect 3456**  
**1230 Kcys. 1000 Watts**  
**Pac. Broadcast Corp., San Francisco**  
 7:30 A.M.—Dawn Salute  
 7:45—Christia Science Program  
 8—Emporium Breakfast Club  
 9—Melody Moods  
 9:45—Mountain Echoes  
 10—Marian Day's Matinee  
 10:30—Sunshine Hour  
 11—Words & Music; Album Leaves  
 11:45—Rhythmsters  
 12 noon—Scriptures  
 12:03—Town Hall Harmonies; Organ  
 1—Shrine Luncheon  
 1:30—Concert; Organ  
 2:45—Singing Strings  
 3—NBC, Melody Mixers  
 3:15—Florence Mendoza, Old Songs  
 3:30—Music Masters  
 4:30—Rita Murray's Friendship Club  
 4:45—International Troubadors  
 5—Sunset Revue  
 5:45—Campbell Digest  
 6—Serenade; Waltz Idylls  
 6:45—Cecil and Sally  
 7—Kay Kendall, vocalist  
 7:15—"Sportsman's Corner"  
 7:30—Musical Novelties  
 7:45—Bob Allen, pianist  
 8—John Wolohan's Orchestra  
 8:30—Sports Parade  
 9—Modern Maestros  
 9:15—Tango Time  
 9:30—The Cub Reporters  
 9:45—News Flashes; Organ  
 11-12 mid.—Concert Memories

**535.4 Meters KTAB** Garfield 4700  
560 Kcys. 1000 Watts  
Soc. Broadcasters, Oakland, Calif.

- 6:45 A.M.—The Milkman; News
- 7:15—Vocalities; Reporter
- 7:45—Serenaders; Doc Herrold
- 8:30—Jack Hall and Clem Kennedy
- 9—Morning Prayer Hour
- 9:30—Dr. J. D. Thompson
- 10—Household Hour; Records
- 10:35—Dr. B. L. Corley; Records
- 11:15—Margaret Reynolds
- 11:30—X Bar B Boys
- 12 noon—Concert; News; Trio
- 1—Over the Teacups; Talk
- 1:45—George Taylor's Frolic
- 2:15—Studio Home program
- 2:45—Better Homes program
- 3—Women in the Home
- 3:30—Famous Artists
- 3:45—Treasure Chest
- 4—"Keep Smiling" Revue
- 4:30—Oklahoma Cowboys
- 5—Uncle Rod's Club
- 5:30—Dr. J. Douglas Thompson
- 6—Dance Music; Walkathon
- 6:30—News Reporter
- 6:45—Sport Page of the Air
- 7—Frank Watanabe and Archie
- 7:15—Cuban Cabaret
- 7:30—News Service
- 7:45—Organ Recital
- 8—Popular Song Composers
- 8:15—Lyric Trio
- 8:45—Maurice Gunsky, tenor
- 9—News; Organ; Orchestra
- 9:15—Organ Recital; Orchestra
- 10—Famous Artists
- 10:15—Walter Rudolph, pianist
- 10:45—Dance Music; Walkathon
- 12 to 1 A.M.—Night Owls

**322.4 Meters KFWI** Franklin 0200  
930 Kcys. 500 Watts

- Radio Entertainments, San Francisco
- 7 A.M.—Early Bird; silent at 8
  - 9—Blues Chasers
  - 10—White House & Bellevue prog.
  - 10:30—Topics and Music
  - 10:45—Vocalist and Guitarist
  - 11—Bernard Katz, pianist
  - 11:15—Novelties; Mills Trio
  - 11:45—Correct English, Bertha Hunt
  - 12 noon—Oklahoma Cowboys
  - 12:30—Dance Music; silent at 1
  - 6—Downey Sisters; Dance Time
  - 6:30—Russian Balalaika Orchestra
  - 6:45—Studio program
  - 7—Christian Science program
  - 7:15—Bellevue Trio
  - 7:30—Silent period
  - 11—Joe Wright's Orchestra
  - 11:30—Salon Serenade
  - 12 to 1 A.M.—Hi-Dee-Ho!

**333.1 Meters KHJ** Vandike 7111  
900 Kcys. 1000 Watts

- Don Lee Broadcast. System, L. A., Cal.
- 7 A.M. to 5—Various programs
  - 5 P.M.—CBS, Texas Rangers
  - 5:15—News Items; Town Topics
  - 5:30—CBS, Col. Stoopnagle & Budd
  - 6—CBS, The Foreign Legion
  - 6:30—CBS, Boswell Sisters
  - 6:45—Pasadena Community Players
  - 7—Inglewood Park Concert
  - 7:30—"Chandu, the Magician"
  - 7:45—CBS, Ted Lewis' Orchestra
  - 8—Globe Headlines
  - 8:15—Laif Clinic
  - 9—Marjorie Band of Distinction
  - 9:15—To be announced
  - 9:30—CBS, Zoellner String Quartet
  - 10—Bisquick Band; News
  - 10:15—Ted Flo-Rito's Orchestra
  - 11—Bob Holman's Orchestra
  - 12 to 1 A.M.—Organ recital

**483.6 Meters KGW** Atwater 2121  
620 Kcys. 1000 Watts

- Morning Oregonian, Portland, Ore.
- 7 A.M. to 12—Various Programs
  - 12 noon—The Oregonian of the Air
  - 12:15—NBC, Farm and Home Hour
  - 1—Studio program
  - 1:30—Clinic of the Air
  - 2—NBC, Al Pearce and his Gang
  - 3—NBC, Melody Mixers
  - 3:45—Talk by Merle Thorpe
  - 4—NBC, Fleischmann Hour
  - 5—Musical program
  - 6—NBC, Lucky Strike Hour
  - 7—NBC, Amos 'n' Andy
  - 7:15—NBC, Thurston, the Magician
  - 7:30—To be announced
  - 8—NBC, Standard Symphony
  - 9—NBC, Capt. Henry's Showboat
  - 10—NBC, Richfield News Flashes
  - 10:15—NBC, Mark Hopkins Orch.
  - 11—NBC, Ambassador Hotel Orch.
  - 11:30 to 12 mid.—Gus Arnheim's Orchestra

**508.2 Meters KHQ** Main 5383  
590 Kcys. 1000 Watts

- Louis Wasmer, Inc., Spokane, Wash.
- 7 A.M. to 12—Various Programs
  - 12 noon—NBC, Edna Fischer, pianist
  - 12:15—NBC, Farm and Home Hour
  - 1—Studio program
  - 2—NBC, Al Pearce and Gang
  - 3:15—NBC, Regimentalists
  - 3:30—NBC, Melody Mixers
  - 4—NBC, Fleischmann Hour
  - 5—To be announced
  - 6—NBC, Lucky Strike Hour
  - 7—NBC, Amos 'n' Andy
  - 7:15—NBC, Thurston, the Magician
  - 8—NBC, Standard Symphony Hour
  - 9—NBC, Maxwell House Showboat
  - 10—NBC, Richfield News Flashes
  - 10:15—Anson Weeks' Orchestra
  - 11—NBC, Phil Harris' Orchestra
  - 11:30 to 12 mid.—Gus Arnheim's Orchestra

**325.9 Meters KOMO** Elliott 5890  
920 Kcys. 1000 Watts

- Fisher's Blend Station, Inc., Seattle
- 6:55 A.M. to 12—Various Programs
  - 12 noon—Club Minutes
  - 12:15—NBC, Farm and Home
  - 1—Tea Time Tales
  - 1 15—NBC, Three Scamps
  - 1:30—To be announced
  - 2—NBC, Al Pearce and his Gang
  - 3—Studio program
  - 3:45—NBC, Talk by Merle Thorpe
  - 4—NBC, Fleischmann Orchestra
  - 5—Studio program
  - 6—NBC, Lucky Strike Hour
  - 7—NBC, Amos 'n' Andy
  - 7:15—NBC, Thurston, the Magician
  - 7:30—Montag Fireside Hour
  - 8—NBC, Standard Symphony Hour
  - 9—NBC, Capt. Henry's Showboat
  - 10—NBC, Richfield News Flashes
  - 10:15—NBC, Dance Music
  - 11—NBC, Ambassador Hotel Orch
  - 11:30 to 12 mid.—Gus Arnheim's Orchestra

**296.6 Meters KQW** Ballard 777  
1010 Kcys. 500 Watts

- Pac. Agric. Foundation, Ltd., San Jose
- 7 A.M. to 6:30—Various programs
  - 6:30—Market Reports
  - 6:45—Farmers' Exchange; Weather
  - 7:03—Radio News and Forum
  - 7:30—"Topics of the Day"
  - 8—Old Church Choir
  - 9—Songs You Love to Sing
  - 9:15—Pezzolo Sisters
  - 9:30—Musical Readings
  - 9:45 to 10 P.M.—Three Pineapples

**285.5 Meters KNX** Hemp. 4101  
1050 Kcys. 25,000 Watts

- Western Broadcast. Co., Los Angeles
- 6:30 A.M. to 12—Various programs
  - 12 noon—News Service
  - 12:15—Health Talk; Records
  - 1—Dance Orchestra
  - 2—Bookworm
  - 2:30—French lesson, Prof. Leon
  - 3—Happy Chappies
  - 3:30—Louise Johnson, Cosmic Law
  - 4—Travelogue; Stocks
  - 4:15—Dr. John Matthews
  - 4:45—Recordings
  - 5:15—Crockett Mountaineers
  - 5:45—Chandu, the Magician
  - 6—News; Arizona Wranglers
  - 6:30—Lawrence King and Orchestra
  - 6:45—Growin' Up
  - 7—Frank Watanabe and Archie
  - 7:15—Musical program
  - 7:30—Tessie the Tylist
  - 7:45—Midweek Parade
  - 8:45—Golden Memories; News
  - 9:15—Marion Mansfield, vocalist
  - 9:30—Paris Inn Orchestra
  - 10—Back Home Hour
  - 11 to 12 midnight—Dance Orchestra

**468.5 Meters KFI** Richm'd 6111  
640 Kcys. 50,000 Watts

- Earle C. Anthony, Inc., Los Angeles
- 6:45 A.M. to 12:15—Various prog.
  - 12:15—NBC, Farm and Home Hour
  - 1—News Release
  - 1:15—Ann Warner Chats
  - 1:45—"Through the Looking-Glass"
  - 2—NBC, Al Pearce and Gang
  - 3—NBC, Langendorf Pictorial
  - 3:15—Organ Recital
  - 3:45—Bess Meals Menu Service
  - 4—NBC, Fleischmann Sunshine Hr.
  - 5—Baron Keyes' Air Castle
  - 5:15—Calif. Teachers' Assn. prog.
  - 5:30—String Trio
  - 6—NBC, Lucky Strike Dance Hour
  - 7—NBC, Amos 'n' Andy
  - 7:15—NBC, Thurston, the Magician
  - 7:30—Orchestra
  - 8—NBC, Standard Symphony Hour
  - 9—NBC, Captain Henry's Showboat
  - 10—NBC, Richfield News Reporter
  - 10:15—Phil Harris and his Orchestra
  - 11:30 to 12 mid.—Gus Arnheim's Orchestra

**319 Meters KOIN** Atwater 3333  
940 Kcys. 1000 Watts

- The Journal, Portland, Oregon
- 6:30 A.M. to 12—Various Programs
  - 12 noon—To be announced
  - 12:45—CBS, Amer. Legion Program
  - 1—CBS, George Hall Orchestra
  - 1:30—Book of Life
  - 2—Happy Go Lucky Hour
  - 3—Peminine Fancies
  - 3:30—Newspaper of the Air
  - 5—CBS, Texas Rangers
  - 5:15—Skippy
  - 5:30—Davidson Prize Club
  - 6—CBS, Foreign Legion
  - 6:30—CBS, Boswell Sisters
  - 6:45—CBS, Symphony Orchestra
  - 7:15—Tarzan (E. T.)
  - 7:30—CBS, Ted Lewis Orchestra
  - 8—Redding White, tenor
  - 8:15—Bisquick Band
  - 8:20—CBS, Chas. Barnet Orchestra
  - 8:30—CBS, Hal Kemp Orchestra
  - 8:45—CBS, Clyde McCoy Orchestra
  - 9—Fifth Avenue Four
  - 9:15—To be announced
  - 9:30—Dorothy Dix Dramatization
  - 10—Flo-Rito's Orchestra
  - 10:15—Sport Flashes; Orchestra
  - 11—Rose City Beavers
  - 11:30 to 12 mid.—Dance music

# FRIDAY Programs

May 5, 1933

**379.5 Meters KGO Sutter 1920**  
**790 Kcys. 7500 Watts**  
**Natl. Broadcasting Co., San Francisco**  
 7 A.M.—Morning Parade: Novelty  
 8—Lee S. Roberts' Memory Box  
 8:15—Jack and Patsy  
 8:30—Crosscuts, Log o' the Day  
 9—Edna Fischer, pianist  
 9:15—The Buckaroos  
 9:30—Organ Concert  
 10—Arion Trio  
 10:30—Woman's Air Magazine  
 11:30—Borden Program  
 11:45—Five Cards: Vocal trio; guitar; piano  
 12:15—Western Farm and Home  
 1—Oahu Serenaders  
 1:15—Four Sharps; Negro quartet  
 1:30—Winnie the Pooh  
 1:45—John and Ned  
 2—Al Pearce and His Gang  
 3—Langendorf Pictorial  
 3:15—Melody Mixers  
 4—Music Room: Orchestra direction Josef Hornik  
 4:30—Little Orphan Annie  
 4:45—Argentine Trio  
 5—The First Nighter  
 5:30—Phil Baker, the Armour Jester  
 6—Chevrolet Program: Jack Benny, 6:30—Soloist  
 6:45—Prof. Jack McLallen: Comedy sketch with Sarah and Sassafras  
 7—Amos 'n' Andy  
 7:15—Thurston, the Magician  
 7:30—Best Foods Musical Grocery Store  
 8—Gwynfi Jones, tenor  
 8:15—Gilmore Circus  
 9:15—Doric Quartet  
 9:45—Paul Carson, organist  
 10—Richfield News Flashes  
 10:15—Anson Weeks' Orchestra  
 11—Phil Harris' Orchestra  
 11:30 to 12 mid.—Gus Arnheim's Or.

**440.9 Mtrs. KPO Sutter 1920**  
**680 Kcys. 50,000 Watts**  
**National Broadcast Co., San Francisco**  
 7:30 A.M.—Organ Concert  
 8—Financial Service  
 8:15—John Fogarty, tenor  
 8:30—Merrie Men, male quartet  
 9:30—Through the Looking Glass  
 9:45—News Service  
 10—Tom Mitchell, baritone  
 10:15—Fashion Talk  
 10:30—Romances  
 10:45—Sisters of the Skillet  
 11—Sonata Recital  
 11:15—To be announced  
 12 noon—Mid-day Musical; News  
 1:15—Ann Warner's Chats  
 1:45—Musical Moments  
 2—Waldorf-Astoria Orchestra  
 2:30—Mae Questel, Betty Poo  
 2:45—Kentucky Derby Prospects  
 3—Harmonica Rascals  
 2:15—To be announced  
 3:30—Concert Ensemble  
 3:45—University of California  
 4—Arion Trio  
 5—Rhythm Vendors  
 5:15—Scotty's Talkathon  
 5:45—News Service  
 6—Musical Echoes  
 6:30—Synco-Thots  
 6:45—Detectives Black and Blue  
 7—Dr. Copeland Talk  
 7:05—Organ Concert  
 7:15—Tarzan of the Apes  
 7:30—Kenneth Spencer, basso  
 7:45—Charles Runyan, pianist  
 8—Duke Ellington's Orchestra

8:15—Sports Revue  
 8:30—Mark Fisher's Orchestra  
 9—Killed in Action, drama  
 9:30—Bal Tabarin Orchestra  
 10—Marshall's Mavericks  
 10:30—Joseph Hornik's Orchestra  
 11 P.M.—Dollo Sargent, organist

**243.8 Meters KYA Prospect 3456**  
**1230 Kcys. 1000 Watts**  
**Pac. Broadcast Corp., San Francisco**  
 7:30 A.M.—Dawn Salute  
 7:45—Christian Science Program  
 8—Emporium Breakfast Club  
 9—Melody Moods  
 10—Marian Day's Morning Matinee  
 10:30—Sunshine Hour  
 11—Lillian Cooper, cosmetician  
 11:15—Album Leaves  
 11:45—Radio Council  
 12 noon—Scriptures  
 12:03—Mid-Day Concert  
 12:45—Commonwealth Club  
 1:30—Rhythmsters  
 2—International Troubadours  
 2:30—Violin Masters  
 3—American Penwomen League  
 3:30—Glen Goff, Organist  
 4:30—Rita Murray's Friendship Club  
 4:45—Mountain Echoes  
 5—Sunset Revue; Campbell Digest  
 6—Paraders; Waltz Idylls  
 6:45—Ceil and Sally  
 7—S. F. Symphony Choir  
 7:15—"What's Behind the News"  
 7:30—Sydney Dixon, G. Donald Gray  
 8—John Wolohan's Orchestra  
 9—Captain Argus  
 9:30—Ariosa Trio  
 9:45—News Flashes; Organ  
 11-12 mid.—Concert Memories

**322.4 Meters KFWI Franklin 0200**  
**930 Kcys. 500 Watts**  
**Radio Entertainments, San Francisco**  
 7 A.M.—Early Bird; silent at 8  
 9—Blues Chasers  
 9:45—Dr. Corley program  
 10—White House & Bellevue prog.  
 10:30—Topics and Music  
 11—Concert Melodies  
 11:30—Baldwin Melody Girl  
 11:45—Musical Portraits  
 12 noon—Oklahoma Cowboys  
 12:30—Dance Music; silent at 1  
 6—Dance Music; News  
 6:30—Russian Balalaika Orchestra  
 6:45—Studio program  
 7—Christian Science program  
 7:15—"Back to Land"; Silent 7:30  
 8:30—Julie Foster, Dream Girl  
 8:45—Max Dolin, violinist  
 9—Jewish Classical Hour  
 10—Master Melodies  
 11—Joe Wright's Orchestra  
 11:30—Salon Serenade  
 12 to 1 A.M.—Hi-Dee-Ho!

**296.6 Meters KQW Ballard 777**  
**1010 Kcys. 500 Watts**  
**Pac. Agric. Foundation, Ltd., San Jose**  
 7 A.M. to 3—Records; Talks; Report  
 4:30 P.M.—Various programs  
 6—Scott Held's Orchestra  
 6:15—Franco's program  
 6:45—State Market Reports  
 7:03—Radio News and Forum  
 7:30—Ralph Taylor  
 7:45—Band Concert  
 8—San Jose Accordion Club  
 8:30—Fireside program  
 9:30 to 10 P.M.—Mauna Keans

**491.5 Meters KFRC Prospect 0100**  
**610 Kcys. 1000 Watts**  
**Don Lee Broadcast System, S. F., Cal.**  
 7 A.M.—Records; Barnyard Melodies  
 7:25—Stocks; Exercises  
 8—CBS; Paul Tremaine's Orch.  
 8:30—By En El Mfg. Co.  
 8:35—CBS; Concert Miniatures  
 8:55—Bisquick  
 9—CBS; Little French Princess  
 9:15—CBS; Billy Hays' Orchestra  
 9:30—Betty Crocker  
 9:45—Smiling Ed McConnell  
 10—CBS; Fred Berrens' Orchestra  
 10:30—CBS; Colum. Educ. Feature  
 11—Prudence Penny  
 11:15—CBS; Blanche Calloway's Orchestra  
 11:45—CBS; Alex Semmler, pianist  
 12 noon—Noonday Concert  
 1—Edna Wallace Hopper; records  
 1:15—CBS; John Kelvin, tenor  
 1:30—N. Y. Stocks; Records  
 1:45—CBS; Tito Guizar  
 2—Happy Go Lucky Hour  
 3—Feminine Fancies  
 4—CBS; Elizabeth Barthell  
 4:15—Hodge Podge Lodge  
 4:45—Lost and Found  
 4:50—Recordings; Town Topics  
 5—CBS; Freddie Rich's Columbians  
 5:30—CBS; Edwin C. Hill  
 6—CBS; Columbia Review  
 6:30—CBS; Street Singer  
 6:45—CBS; Colum. Symphony Orch.  
 7:15—CBS; Do Re Mi  
 7:30—CBS; Abe Lyman's Orchestra  
 8—Globe Headlines  
 8:15—CBS; Ben Pollack's Orchestra  
 8:30—Ted Flo-Rito, "Reminiscing"  
 8:45—CBS; Ozzie Nelson's Orchestra  
 9—To be announced  
 9:30—Eb and Zeb  
 9:45—Studio program  
 10—Bisquick Band  
 10:05—Ted Flo-Rito's Orchestra  
 11—Dance Orchestra  
 12 to 1 A.M.—Request hour

**535.4 Meters KTAB Garfield 4700**  
**560 Kcys. 1000 Watts**  
**Assoc. Broadcasters, Oakland, Calif.**  
 6:45 A.M.—The Milkman; News  
 7:15—Vocalities; Reporter  
 7:45—Serenaders; Doc Herrold  
 8:30—Jack Hall and Clem Kennedy  
 9—Morning Prayer Hour  
 9:30—Health Talk; Household Hour  
 10:30—Records; Health Talk  
 11:30—X Bar B Boys  
 11:45—Health Talk; Concert; News  
 12:30—Prof. Lataner; Records  
 1—Over the Teacups; Talk  
 1:45—George Taylor, Radio Frolic  
 2:30—Matinee Melodies  
 3:30—Famous Artists  
 3:45—Putnam's Treasure Chest  
 4—"Keep Smiling" Revue  
 4:30—Health Talk; Walkathon  
 5—Uncle Rod's Smile Club  
 5:30—Talk; Question Box  
 6:15—Fishing Fool; News  
 6:45—Sport Page of the Air  
 7—Frank Watanabe and Archie  
 7:15—Cuban Cabaret; News  
 7:45—Romance of the Turf  
 8—Dance Music  
 8:15—Grace Le Page, soprano  
 8:30—Lyric Trio; News  
 9:15—Organ; Orchestra  
 10—Famous Artists  
 10:15—College Inn Trio  
 10:30—Walter Rudolph, pianist  
 11—Walkathon; Orchestra  
 12 to 1 A.M.—Night Owls

- 340.7 Meters KLV** Lake. 6000  
880 Kcys. 500 Watts  
Tribune Pub. Co., Oakland, Calif.
- 8 A.M.—Records; Stocks  
8:30—Covered Wagon Jubilee  
9:30—Clinic of the Air  
10:15—Stocks, Financial Info.  
10:30—International Kitchen  
11—Sunshine Twins  
11:30—Novelty Guitar Duo  
11:45—Madelon Sivyer and Nancy Hersey, piano and violin  
12 noon—Jack Delaney's band  
1—Jean's Hi-Lights; Records  
2:35—Better Business Talks  
2:40—Stocks; Organ Recital  
3:15—Records; News Flashes  
3:45—Health School; Records; News  
4:30—Brother Bob's Club  
5—Covered Wagon Jubilee  
5:30—Lovable Liars  
5:45—Novelty Guitar Duo  
3—Hotel Oakland Trio; News  
7:30—Dr. Ross Pet Clinic  
7:45—Fred and Morris, comedians  
3—KLV Hi-Jinks program.  
10—Fred Skinner  
10:15 to 11 P.M.—Dance program
- 280.2 Meters KJBS** Ord. 4148-49  
1070 Kcys. 100 Watts  
J. Brunton & Sons, San Francisco
- 6 A.M.—Alarm Klock Klub  
8—Records; Talks; Music  
7:15 P.M.—Silent period  
12:01 to 6 A.M.—Owl program
- 468.5 Meters KFI** Richm'd 6111  
640 Kcys. 50,000 Watts
- Earle C. Anthony, Inc., Los Angeles  
6:45 A.M. to 5—Various programs  
5 P.M.—NBC, The First Nighter  
5:30—NBC, Armour Hour  
6—NBC, Chevrolet program  
6:30—String Orchestra  
7—NBC, Amos 'n' Andy  
7:15—NBC, Thurston, the Magician  
7:30—NBC, Best Foods program  
8—Orchestra  
8:15—NBC, Gilmore Circus  
9:15—String Orchestra  
10—NBC, Richfield News Reporter  
10:15—Phil Harris' Orchestra  
11:30 to 12 mid.—Gus Arnheim's Orchestra
- 325.9 Meters KOMO** Elliott 5890  
920 Kcys. 1000 Watts  
Fisher's Blend Station, Inc., Seattle
- 6:55 A.M. to 12—Various Programs  
12 noon—Music  
12:12—Grain Quotations  
12:15—NBC, Farm and Home Hour  
1—Tea Time Tales  
1:15—To be announced  
1:30—Arcadians  
2—NBC, Al Pearce and Gang  
3—NBC, Melody Mixers  
3:45—Totem Broadcasters  
4:30—NBC, Little Orphan Annie  
4:45—Cowboy Tom  
5—NBC, The First Nighter  
5:30—NBC, Phil Baker, jester  
6—NBC, Chevrolet program  
6:30—Old Song Contest  
6:45—Zac Kaibach, accordionist  
7—NBC, Amos 'n' Andy  
7:15—NBC, Thurston, the Magician  
7:30—NBC, Best Foods program  
8—Musical program  
8:15—NBC, Gilmore Circus  
9:15—Studio program  
10—NBC, Richfield News Flashes  
10:15—Dollars and Cents  
10:30—NBC, Dance Orchestras  
11:30 to 12 mid.—Gus Arnheim's Orchestra
- 483.6 Meters KGW** Atwater 2121  
620 Kcys. 1000 Watts  
Morning Oregonian, Portland, Ore.
- 7 A.M. to 12—Various Programs  
12 noon—Oregonian of the Air  
12:15—NBC, Farm and Home Hour  
12:45—O. M. Plummer  
1:30—Dental Clinic  
2—NBC, Al Pearce and his Gang  
3—Talk on Mental Hygiene  
3:15—NBC, Melody Mixers  
3:45—Friendly Chat  
4:30—NBC, Little Orphan Annie  
4:45—NBC, Argentine Trio  
5—NBC, First Nighter  
5:30—NBC, Armour Hour  
6—NBC, Chevrolet program  
6:30—To be announced  
7—NBC, Amos 'n' Andy  
7:30—NBC, Best Foods program  
8—Studio program  
8:15—NBC, Gilmore Circus  
9:15—Musical program  
10—NBC, Richfield News Flashes  
10:20—NBC, Mark Hopkins Orch.  
11—NBC, Ambassador Hotel Orch.  
11:30 to 12 mid.—Gus Arnheim's Orchestra
- 508.2 Meters KHQ** Main 5383  
590 Kcys. 1000 Watts  
Louis Wasmer, Inc., Spokane, Wash.
- 7 A.M. to 12—Various Programs  
12 noon—Studio program  
12:15—NBC, Farm and Home Hour  
1—Studio programs  
2—NBC, Al Pearce and Gang  
3:15—NBC, Melody Mixers  
4—KHQ News; Happy Feet  
4:30—NBC, Orphan Annie  
4:45—To be announced  
5—NBC, The First Nighter  
5:30—NBC, Armour Hour  
6—NBC, Chevrolet Big Six  
6:30—To be announced  
7—NBC, Amos 'n' Andy  
7:30—NBC, Best Foods program  
7:45—Voice of Texas  
8—Orchestra  
8:15—Electric Transcription  
8:30—Bohemian Club  
9—To be announced  
10—NBC, Richfield News Flashes  
10:15—Anson Weeks' Orchestra  
11—NBC, Phil Harris' Orchestra  
11:30 to 12 mid.—Gus Arnheim's Orchestra
- 319 Meters KOIN** Atwater 3333  
940 Kcys. 1000 Watts  
The Journal, Portland, Oregon
- 6:30 A.M. to 12—Various Programs  
12 noon—To be announced  
1:30—Book of Life  
2—Happy Go Lucky Hour  
3—Feminine Fancies  
3:30—Newspaper of the Air  
5—CBS, Freddie Beren's Orch.  
5:15—Skippy  
5:30—Davidson Prize Club  
6—CBS, Columbia Revue  
6:15—Bells of Harmony  
6:30—CBS, Street Singer  
7—CBS, Symphony Orchestra  
7:30—Black and Blue  
7:45—CBS, Abe Lyman Orchestra  
8—Redding White, tenor  
8:15—CBS, Ben Pollock Orchestra  
8:30—Ted Fio-Rito Orchestra  
8:45—CBS, Ozzie Nelson Orchestra  
9—Band Box Revue  
9:15—CBS program  
10—Bisquick Band  
10:05—Fio-Rito's Orchestra  
10:15—Sport Flashes; Orchestra  
11—Rose City Beavers  
11:30 to 12 mid.—Dance music
- 333.1 Meters KHJ** Vandike 7111  
900 Kcys. 1000 Watts  
Don Lee Broadcast System, L. A., Cal.
- 7 A.M. to 5—Various programs  
5 P.M.—CBS, Elizabeth Barthell  
5:15—News; Town Topics  
6—CBS, The Columbia Revue  
6:30—CBS, Street Singer  
6:45—CBS, Columbia Symphony Or.  
7:15—CBS, Do Re Mi  
7:30—Chandu, the Magician  
7:45—CBS, Abe Lyman's Orchestra  
8—Globe Headlines  
8:15—CBS, Ben Pollock's Orch.  
8:30—"Reminiscing"  
8:45—CBS, Ozzie Nelson's Orch.  
9—To be announced  
10—Bisquick Band; News  
10:15—Ted Fio-Rito's Orchestra  
11:30—Bob Holman's Orchestra  
12 to 1 A.M.—Organ recital
- 285.5 Meters KNX** Hemp. 4101  
1050 Kcys. 25,000 Watts  
Western Broadcast. Co., Los Angeles
- 6:30 A.M.—Various programs  
5 P.M.—All American Girl Trio  
5:15—Crockett Mountaineers  
5:45—Chandu, the Magician  
6—News Service  
6:15—Arizona Wranglers  
6:30—Concert Orchestra  
6:45—Growin' Up  
7—Frank Watanabe and Archie  
7:15—Black and Blue  
7:30—Auto Club program  
7:45—Eddie Bush Trio  
8—Optimistic Do-Nuts"  
9—News Items  
9:15—Dr. Ward Laboratories  
9:30—Jay Whidden's Orchestra  
9:45—Flights from Hollywood Stad.  
10:45 to 11 P.M.—Paris Inn Orch.
- 236.1 Meters KOL** Main 2312  
1270 Kcys. 1000 Watts  
Seattle Broadcast. Co., Seattle, Wash.
- 6:45 A.M. to 12—Various programs  
12 noon—CBS, The Grab Bag  
12:30—CBS, U. S. Army Band  
1—CBS, "True Animal Stories"  
1:15—CBS, John Kelvin  
1:45—CBS, Tito Guizar  
2—Happy Go Lucky Hour  
3—Through the Looking Glass  
3:15—Feminine Fancies  
4—Hodge Podge Lodge  
4:30—Studio program  
4:45—To be announced  
5—CBS, Freddie Rich's Orchestra  
5:30—Skippy  
5:45—To be announced  
6—CBS, Columbia Revue  
6:15—Sports Review, Ken Stuart  
6:45—CBS, Col. Symphony Orch.  
7:15—Radio Speaker Stevenson  
7:30—Black and Blue  
7:45—CBS, Abe Lyman's Orchestra  
8—Eb and Zeb  
8:15—L. E. Hill, financial expert  
8:30—Hill and Dale  
8:45—Charles A. Reynolds  
9—Globe Trotter  
9:15—To be announced  
10—Ted Fio-Rito's Orchestra  
11 to 12 mid.—Dance Orchestra
- 322.4 Meters KROW** Glenc. 6774  
930 Kcys. 1000 Watts  
Educa. Broad. Corp., Oakland, Calif.
- 5:15 P.M.—Muff and Millie  
5:30—Walkathon; Silent at 6  
7:30—Constance Yates, pianist  
7:45—George Gilly, baritone  
8 to 8:30 P.M.—Pemm Repertory Players

# SATURDAY Programs

May 6, 1933

379.5 Meters **KGO** Sutter 1920  
790 Kcys. 7500 Watts  
Nat'l. Broadcasting Co., San Francisco  
7 A.M.—Morning Parade  
7:30—Gay Gypsies  
8—Johnny Marvin, tenor  
8:15—Jack and Patsy  
8:30—Crosscuts, Log o' the Day  
9—Organ Concert  
9:30—National Farm & Home Hour  
10:30—Woman's Air Magazine  
11:30—Pair of Pianos  
12 noon—Winston Petty, 'cellist  
12:15—Western Agriculture  
1—Maurice Sherman's Orchestra  
1:30—Beau Balladeer  
1:45—John and Ned, harmony duo  
2—Ramblers; Orchestra  
2:30—Bouquets of Melodies  
3—American Taxpayers' League  
3:15—Bert Lown's Orchestra  
3:30—American Choir  
3:45—To be announced  
4—To be announced  
4:30—Little Orphan Annie  
4:45—Arion Trio  
5:15—Round-the-World Club  
5:30—Music Doctor  
6—Saturday Night Dancing Party  
7—The Buccaneers  
7:15—Octavus Roy Cohen Murder  
Mystery  
7:30—The Phantom Gypsy; Violinist  
8—Caswell Concert  
8:15—Louis Ford, violinist  
8:30—Anson Weeks' Orchestra  
9—Associated Spotlight  
10:30—Blue Moonlight  
11—Phil Harris Orchestra  
11:30 to 12 mid.—Gus Arnheim's  
Orchestra

491.5 Meters **KFRC** Prospect 0100  
610 Kcys. 1000 Watts  
Don Lee Broadcast. System, S. F., Cal.  
7 A.M.—Records; Barnyard Melodies  
7:25—Stocks; Exercises  
8—CBS, Harold Knight's Orchestra  
8:30—CBS, Felix Ferdinand's Or.  
9—CBS, George Hall's Orchestra  
9:30—CBS, Madison Ensemble  
10—Jr. Artists Program  
10:55—Church Announcements  
11—CBS, Italian Idyll  
11:15—Prudence Penny  
11:30—CBS, Hal Thompson's Orch.  
12 noon—Noonday Concert  
1—CBS, Eddie Duchin's Orchestra  
1:30—Stock Ex. Quotations  
1:35—To be announced  
2—CBS, Amer. Grub Street Speaks  
2:15—CBS, Paul Tremaine's Orch.  
2:30—Recordings  
2:45—Ozzie Nelson's Orchestra  
3—CBS, Frederic William Wile  
3:15—CBS, Charles Barnett's Orch.  
3:45—CBS, Melody Headlines  
4:15—Ted Fio-Rito's Orchestra  
4:45—Lost and Found  
4:50—Recordings; Town Topics  
5—CBS, Those McCarty Girls  
5:15—CBS, Boswell Sisters & Orch.  
5:45—CBS, Saturday Frivolities  
6:15—CBS, Columbia Public Affairs  
Institute  
6:45—CBS, Gertrude Niesen  
7—CBS, Joe Haymes' Orchestra  
7:30—CBS, Ben Pollack's Orchestra  
8—Ted Fio-Rito's Orchestra  
8:30—CBS, Kamakau's Serenaders  
9—Mariboro Band of Distinction  
9:15—To be announced  
10—Ted Fio-Rito's Orchestra  
11—Dance Orchestra  
12 to 1 A.M.—Request hour

535.4 Meters **KTAB** Garfield 4700  
560 Kcys. 1000 Watts  
Assoc. Broadcasters, Oakland, Calif.  
6:45 A.M.—The Milkman; News  
7:15—Vocalities; Reporter  
7:45—Serenaders; Doc Herrold  
8:30—Jack Hall and Clem Kennedy  
9—Morning Prayer Hour  
9:30—Talk; Household Hour  
10:30—Records; Dr. Corley  
11:15—Margaret Reynolds  
11:30—Morning Matinee  
12:30—Masterpieces of Melody  
1—Robert Olsen, tenor  
2—Studio program  
2:30—Watch Tower program  
2:45—Better Homes  
3—Women in the Home  
3:30—Piano Recital  
3:45—Treasure Chest; Records  
4—Troubadours; Organ Recital  
4:45—Famous Artists  
5—Young Peoples' program  
5:30—Wandering Through Spain  
6—Walkathon; Music; News  
6:45—Sport Page of the Air  
7—Frank Watanabe and Archie  
7:15—Italian Program  
7:30—Funnies, Uncle Putt  
7:45—Romance of the Turf  
8—Home Melodies; Organ Recital  
8:45—Jess Stafford's Band  
9—News; Organ; Orchestra  
10—Famous Artists  
10:15—March Players; Dance Music  
12 to 1 A.M.—Night Owls

340.7 Meters **KLX** Lake. 6000  
880 Kcys. 500 Watts  
Tribune Pub. Co., Oakland, Calif.  
8 A.M.—Records; Stocks  
8:30—Covered Wagon Jubilee  
9:15—Stocks; Clinic of the Air  
10:15—Stocks; Financial informat'n  
10:30—International Kitchen  
11—Sunshine Twins  
11:30—Guitar Duo; Fred Skinner  
12 noon—Closing Stocks  
12:05—Jack Delaney's Band  
1—Jean's Hi-Lights; Records  
2:45—Jean Ardath, pianist  
3—Records; Gay Caballeros  
4:30—Brother Bob's Club  
5—Covered Wagon Jubilee; News  
5:45—Song Stories, Clark Sisters  
6—Hotel Oakland Trio  
7—News Items and Hawaiian Trio  
7:45—Ardito Trio  
8—Musical Soiree  
9—Faucit Theater of the Air  
9:30—Studio program  
10—Hotel Oakland Dance Band  
11 to 12 midnight—Dance program

322.4 Meters **KFWI** Franklin 0200  
930 Kcys. 500 Watts  
Radio Entertainments, San Francisco  
7 A.M.—Early Bird; silent at 8  
9—Blues Chasers  
10—White House & Bellevue prog.  
10:30—Topics and Music  
11—John Manning, piano stories  
11:15—Concert Melodies  
11:45—Musical Novelties  
12 noon—Oklahoma Cowboys  
12:30—Joe Wright's Orchestra  
1—Silent period  
6—Downey Sisters; Dance Time  
6:30—Russian Balalaika Orchestra  
6:45—Studio program  
7—Christian Science program  
7:15—Bellevue prog.; silent at 7:30  
11—Joe Wright's Orchestra  
11:30—Salon Serenade  
12 to 1 A.M.—Hi-Dee-Ho!

440.9 Mtrs. **KPO** Sutter 1920  
680 Kcys. 50,000 Watts  
National Broadcast Co., San Francisco  
7:30 A.M.—Organ Concert  
8—Financial Service  
8:15—Amer. Legion National Trade  
Revival Campaign  
8:30—Syncopators  
9—Words and Music  
9:30—Synco-Thots, piano duo  
9:45—News Service  
10—Tom Mitchell, baritone  
10:15—Johnnie Toffoli, accordion  
10:30—NBC Farm Forum  
11—Radio Troubadours  
11:30—Wealth of Harmony  
12 noon—Dance Masters  
12:30—Concert Favorites  
1—News; Stringwood Ensemble  
1:45—Five Mesner Brothers' Orch.  
2—Waldorf-Astoria Orchestra  
2:30—Essex House Ensemble  
2:45—Southern Singers  
3—Melody Matinee; News  
4:30—The Economic World Today  
5—Reisenfeld's Viennese Ensemble  
5:30—To be announced  
6—Piano Program  
6:30—Education at the Crossroads  
6:45—Irving Kennedy, tenor  
7—Charles Hart, instrumentalists  
7:30—Medicine Show  
8—Mark Fisher's Orchestra  
8:30—Maxim Lowe's Orchestra  
9—Serenata  
9:30—Bal Tabarin Orchestra  
10—Vic Schilling's Orchestra  
10:30—Pacific Serenaders  
11-12 mid.—Dollo Sargent, Organist

296.6 Meters **KQW** Ballard 777  
1010 Kcys. 500 Watts  
Pac. Agric. Foundation, Ltd., San Jose  
7 A.M. to 3—Records; Talks; Report  
1:30 P.M.—Various programs  
6—Scott Held's Orchestra  
6:15—Franco's program  
6:30—Band Music  
6:45—Farmers' Exchange; Weather  
7:03—Soul of Portugal  
7:30—National Defense  
7:45—Rabbi Joseph Karesh  
8—Studio program  
8:45 to 10 P.M.—Italian program

243.8 Meters **KYA** Prospect 3456  
1230 Kcys. 1000 Watts  
Pac. Broadcast Corp., San Francisco  
7:30 A.M.—Dawn Salute  
7:45—Christian Science Program  
8—Emporium Breakfast Club  
9—Sunshine Moods  
10—Sunshine Hour; Album Leaves  
11:30—School News; Rhythmsters  
12 noon—Scriptures  
12:03—Town Hall Harmonies  
1—Vallejo Jr. High School Band  
1:30—Afternoon Concert  
2—Glen Goff Organist  
3—Rhythmic Ripples  
3:30—Symphony Series  
4:30—Rita Murray's Friendship Club  
4:45—Song Vogue; Sunset Revue  
5:15—To be announced  
5:30—Hawaiian Entertainers  
5:45—Campbell Digest  
6—Serenade; Waltz Idylls  
6:45—Cecil and Sally  
7—Paraders; Footlight Features  
8—John Wolohan's Orchestra  
9—Musical Novelties  
9:30—The Cub Reporters  
9:45—News Flashes  
10—Sandman Organ  
11-12 mid.—Concert Memories

**236.1 Meters KOL** Main 2312  
1270 Kcys. 1000 Watts  
Seattle Broadcast. Co., Seattle, Wash.

6:45 A.M. to 12—Various Programs  
12 noon—CBS, Sigurd the Viking  
12:15—CBS, Tony Wons  
12:30—CBS, Dick Mansfield's Or.  
1—CBS, Eddie Duchin's Orchestra  
1:30—CBS, Between the Bookends  
1:45—Studio program  
2—CBS, Grub Street Speaks  
2:15—CBS, Paul Tremaine's Orch.  
2:45—CBS, Ozzie Nelson's Orch.  
3—CBS, Political Situation  
3:15—CBS, Charles Barnet's Orch.  
3:45—CBS, Melody Headlines  
4—Ted Fio-Rito's Orchestra  
4:30—CBS, Leon Belasco's Orch.  
5—CBS, Thos McCarty Girls  
5:15—CBS, Boswell Sisters  
5:30—Skippy  
5:45—CBS, Saturday Frolivities  
6:15—CBS, Columbia Public Affairs  
6:30—Sports Review, Ken Stuart  
6:45—Democratic Educ. Features  
7—CBS, Joe Haymes' Orchestra  
7:15—Radio Speaker Stevenson  
7:45—CBS, Ben Pollack's Orchestra  
8—Business Men's Orch.  
9—Globe Trotter  
9:15—To be announced  
10—Ted Fio-Rito's Orchestra  
11 to 12—Cafe de Paris Dance Orch.

**285.5 Meters KNX** Hemp. 4101  
1050 Kcys. 25,000 Watts  
Western Broadcast. Co., Los Angeles

6:45 A.M. to 5—Various program  
5—Organ Concert  
5:15—Dr. John Matthews  
5:45—Chandu, the Magician  
6—News; Arizona Wranglers  
6:30—Concert Orchestra  
6:45—Don Wilkie  
7—Frank Watanabe and Archie  
7:15—Singing Guardsmen  
7:30—Philip Musgrave  
7:45—Agricultural Talk  
8—KNX Varieties; News  
9:15—Happy Chappies  
9:30—Dance Orchestra  
10 to 11 P.M.—New Paris Inn

**508.2 Meters KHQ** Main 5383  
590 Kcys. 1000 Watts  
Louis Wasmer, Inc., Spokane, Wash.

7 A.M.—Organ Concert; News  
7:45—Kronenberg's Shoe Hospital  
8—Voice of Texas  
8:15—NBC, Jack and Patsy  
8:30—NBC, Crosscuts of the Day  
9—Wait and Marian  
9:15—Burgan's Home Comfort  
9:30—NBC, Farm and Home Hour  
10:30—NBC, Woman's Magazine  
11:30—Organ Concert  
12 noon—Henacres, Chick Chat  
12:15—NBC, Western Agriculture  
1—Various programs  
1:30—To be announced  
2—NBC programs  
4—News Service  
4:30—NBC, Little Orphan Annie  
4:45—Studio program  
5—General Mills' "Skippy"  
5:15—NBC, Round the World Club  
5:30—To be announced  
6—B. A. Rolfe's Orchestra  
7—NBC, Buccaneers

7:30—NBC, Phantom Gypsy  
8—NBC, Caswell Concert  
8:15—To be announced  
9—NBC, Associated Spotlight  
10:30—NBC, Blue Moonlight  
11—NBC, Phil Harris' Orchestra  
11:30 to 12 mid.—NBC, Gus Arnheim's Orchestra

**325.9 Meters KOMO** Elliott 5890  
920 Kcys. 1000 Watts

Fisher's Blend Station, Inc., Seattle  
6:55 A.M. to 12—Various Programs  
12 noon—NBC, Winston Petty, 'cel-  
list  
12:12—Grain Quotations  
12:15—NBC, Bert Low'n's Agriculture  
1—NBC, Musical program  
1:30—Children's Matinee  
2—NBC, Ramblers  
2:30—NBC, Bouquet of Melodies  
3—NBC, Amer. Taxpayers' League  
5:15—NBC, Bert Low'n's Orchestra  
3:30—NBC, American Choir  
3:45—To be announced  
4:30—NBC, Little Orphan Annie  
5:15—NBC, Round the World Club  
5:30—To be announced  
7—NBC, Buccaneers  
7:15—NBC, Mystery Serial  
7:30—NBC, Phantom Gypsy  
8—NBC, Caswell Coffee Concert  
8:15—Studio program  
8:30—Fisher's Blend Half Hour  
9—NBC, Associated Spotlight  
10:30—NBC, Blue Moonlight  
11:15 to 12 mid.—Dance Music

**483.6 Meters KGW** Atwater 2121  
620 Kcys. 1000 Watts

Morning Oregonian, Portland, Ore.  
7 A.M.—Organ; Market Reports  
7:30—NBC, Gay Gypsies  
8—Crazy Crystals program  
8:15—NBC, Jack and Patsy  
8:30—NBC, Crosscuts from Log o'  
the Day  
9—Cherio; Cooking School  
10—NBC, Farm Forum  
10:30—Studio program  
11:30—Musical program  
12 noon—Oregonian of the Air  
12:15—NBC, Western Agriculture  
1:30—Dental Clinic of the Air  
1:45—Musical program  
2—NBC, Ramblers Orchestra  
3—Various programs  
4:30—NBC, Little Orphan Annie  
4:45—Piano Surprises  
5:15—NBC, Around the World Club  
5:30—To be announced  
7—U. S. 7th Infantry Band  
7:15—NBC, Mystery Serial  
7:30—NBC, Phantom Gypsy  
8—NBC, Caswell Coffee Concert  
8:30—Fisher's Blend Half Hour  
9—NBC, Associated Spotlight  
10:30—NBC, Blue Moonlight  
11—NBC, Hotel Ambassador Orch.  
11:30 to 12 mid.—NBC, Gus Arnheim's Orchestra

**280.2 Meters KJBS** Ord. 4148-49  
1070 Kcys. 100 Watts

J. Brunton & Sons, San Francisco  
6 A.M.—Alarm Klock Klub  
8 to 7:15—Records; News; Music  
7:15 P.M.—Silent period  
12:01 to 6 A.M.—Owl program

**333.1 Meters KHJ** VAndike 7111  
900 Kcys. 1000 Watts  
Don Lee Broadcast. System, L. A., Cal.

7 A.M. to 5—Various programs  
5 P.M.—CBS, Thos McCarty Girls  
5:15—News Items; Town Topics  
5:30—CBS, The Boswell Sisters  
5:45—CBS, Saturday Frolivities  
6:15—CBS, Columbia Public Affairs  
6:45—CBS, Gertrude Niesen  
7—CBS, Joe Haymes' Orchestra  
7:30—Chandu, the Magician  
7:45—CBS, Ben Pollack's Orchestra  
8—Women's Symphony Orchestra  
9—Mariboro Band of Distinction  
9:15—Bob Holman's Orchestra  
9:30—CBS, Honolulu program  
10—News Items  
10:10—Ted Fio-Rito's Orchestra  
11—Bob Holman's Orchestra  
12 to 1 A.M.—Organ recital

**319 Meters KOIN** Atwater 3333  
940 Kcys. 1000 Watts

The Journal, Portland, Oregon  
6:30 A.M.—KOIN Klock  
8—Cecil and Sally, E. T.  
8:15—CBS programs  
10:15—Hostess of the Air  
10:30—CBS programs  
10:45—This and That  
11:15—CBS programs  
12 noon—To be announced  
1—CBS, Eddie Duchin Orchestra  
1:30—Book of Life  
2—CBS, Amer. Grub Street Speaks  
2:15—CBS, Paul Tremaine Orches.  
2:45—CBS, Ozzie Nelson Orchestra  
3—CBS, Frederic William Wile  
3:15—CBS, Chas. Barnett Orch.  
3:30—Newspaper of the Air  
5—CBS, McCarty Girls  
5:15—Skippy  
5:30—Davidson Prize Club  
6—CBS, Saturday Frolivities  
6:15—Bells of Harmony  
6:30—CBS, Col. Public Affairs Inst.  
6:45—CBS, Gertrude Niesen  
7—CBS, Joe Haymes' Orchestra  
7:15—Tarzan (E. T.)  
7:30—CBS, Ben Pollack  
8—Redding White, tenor  
8:15—Ted Fio-Rito Orchestra  
8:30—CBS, Joseph Kamakau's Orch.  
9—McElroy's Orchestra  
9:30—Bisquick Band  
9:35—De Honey's Orchestra  
10:15—Ted Fio-Rito Orchestra  
11—Rose City Beavers  
11:30 to 12 mid.—Dance Orchestra

**468.5 Meters KFI** Richm'd 6111  
640 Kcys. 50,000 Watts

Earle C. Anthony, Inc., Los Angeles  
6:45 A.M. to 4:30—Various programs  
4:30—NBC, Little Orphan Annie  
4:45—News Release  
5—Univ. of So. Calif. program  
5:15—NBC, Round-the-World Club  
5:30—Orchestra  
6—NBC, B. A. Rolfe's Orchestra  
7—Orchestra  
7:15—NBC, Mystery Serial  
7:30—To be announced  
8—NBC, Caswell Coffee Concert  
8:15—Studio program  
9—NBC, Associated Spotlight  
10:30—Phil Harris' Orchestra  
11:30 to 12 mid.—Arnheim's Orch.

Published weekly by the Broadcast Weekly Publishing Company, 726 Pacific Building, San Francisco, Calif.  
Telephone DOuglas 5273

Yearly subscription: \$3.00 in the United States. Entered as second class matter, March 25, 1923,  
at the Post Office, San Francisco, California, under Act of March 3, 1879.

Copyright, 1933, by Broadcast Weekly Publishing Company.

# Philco's NEW RADIO DISCOVERY

Shown herewith is the world's finest, most beautiful speaker console, bringing to you the most gorgeous tone you ever heard, and remember, a single invisible flat tape is the only connection between this speaker console, and the superb Queen Anne control cabinet shown below.



The Amazing  
**LAZY-X**  
SIMPLY MARVELOUS  
REMOTE CONTROL

... at an amazingly  
**LOW PRICE**

## A Brand New RADIO IDEA

Now, lounge back in your easy chair and tune in everything on the air with simply the touch of your fingers. No more jumping up and across the room at the end of every 15-minute program. Relax completely. Perfect control without moving from your chair.

### SPECIAL! Trade-in Allowance

By special arrangement with the Philco factory, we are able to make you a full Trade-in Allowance for your old radio on the purchase of this new Lazy-X model. This extra trade-in offer must end by Saturday next, so call at once.

### FREE TRIAL

We want you to see the superb beauty of this radio in your home—its remarkable convenience—its rich tone—its distance range, power and selectivity, on an absolutely Free Trial.

Philco Radio & Television Corporation  
SAN FRANCISCO, CALIF.  
Dept. BW, 218 Fremont Street



## — free COUPON

Gentlemen:

Please send me Free, complete illustrated descriptive literature on the Philo Lazy-X Model, together with the full particulars of your special Free Trial, Easy Payment and Full Trade-in offer. It is understood that this request places me under no obligation.

My name is \_\_\_\_\_

Address \_\_\_\_\_