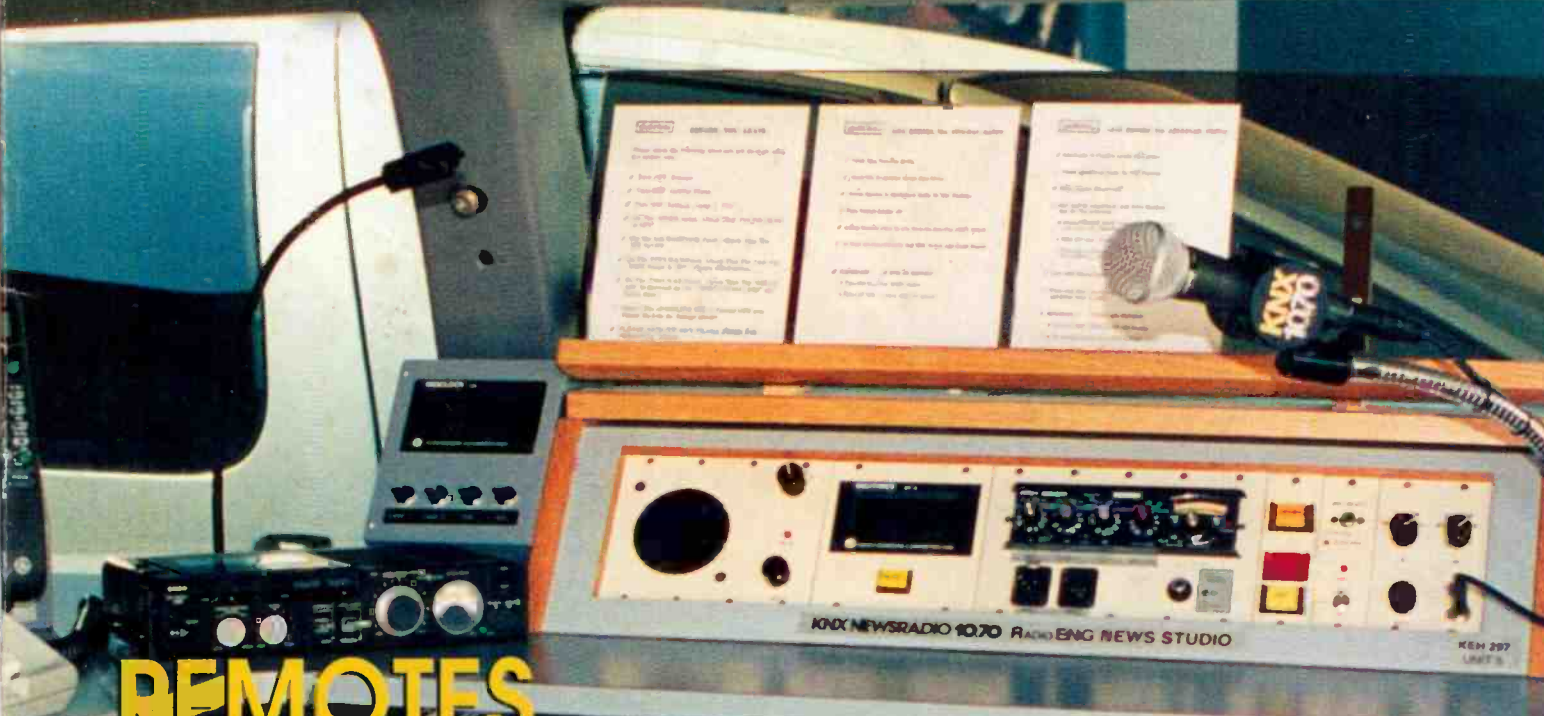


BE Radio[®]

July/August 1996/\$10.00
An INTERTEC[®]/K-11 Publication

...from the Editors of **BROADCAST**
ENGINEERING



REMOTES

Better, faster, cheaper ...

STUDIO-to-TRANSMITTER LINKS

The impact of digital

UPDATING THE NEWSROOM

Audio and text on the same PC?

MAINTAINING MULTI-STATION FACILITIES

The pros and cons



EXTREME REMOTE: BOSNIA



14x2 MICROSERIES

NEW MS1402-VLZ

14 INPUTS, 6 MIC PREAMPS, 3-BAND EQ... FOR \$599*, YOU CAN'T GET A BETTER MIXER THAN THE NEW MICROSERIES 1402-VLZ.

6 mono mic/line channels

4 stereo line channels

2 aux sends per channel



Studio grade mic preamps (chs. 1-6) with high headroom, low noise (-120 dBm EIN) and switcheable phantom power.

Balanced line inputs. Inputs 1-6 are mic/line mono; 7-14 are line-level stereo.

Low Cut Filter (chs. 1-6) cuts mic handling thumps, pops, room rumble and winz noise. Also lets you safely use Low Shelving EQ on vocals.

Trim control (chs. 1-6) with ultra-wide gain: +10 to +60dB mic in, -10 to +40dB line in.

Two aux sends per ch. with 15dB extra gain above Unity.

High shelving EQ ± 15 dB at 12kHz.

Peaking midrange with wide, musical bandwidth centered at 2.5kHz, +12dB.

Low shelving EQ ± 15 dB at 80Hz.

Pan control with constant loudness and very high L/R separation.

Four outputs on a Z-bus board! Mute switch routes channel output to extra Alt 3-4 stereo bus. Use it for feeding multitrack recorder inputs, creating subgroups (via Control Room/Phones matrix), monitoring a signal before bringing it into the main mixer creating a "mix minus."

Solo, AFL or PFL via global switching.

60mm logarithmic taper faders.

Main 1/4" balanced outputs.

RCA line inputs & outputs.

-10/+4dBu input level switching on stereo channels.

Steel chassis.

Sealed rotary controls.



60mm log-taper faders are accurate along their whole length of travel for smooth fades. They employ a new long-wearing contact material for longer fader life and improved resistance to dust, smudge and general schrunge.

Control Room/Phones matrix lets you select any combination of Main Mix, Tape In & Alt 3-4 signals for routing to Control Room, Phones & meters. Includes dedicated fader.

Balanced inputs & outputs (except RCA, phones & inserts).

Beefy headphone amp.

Fast, accurate level setting via Channel Solo. As the

Stereo aux returns with Return 1 to Aux Send 1 (for adding effects to monitor feeds).

Separate left & right Master Gain Controls. 60mm log-taper.

Aux 1 Master with Monitor/Pre-Post switch for live sound mixing flexibility.

VLZ (Very Low Impedance) circuitry for ultra-low noise & crosstalk.



Rude Solo light blazes forth, a soloed channel's level is displayed on the LED meters. Set the solo mode to PFL, adjust channel trim to 0dB on the meters, and you've optimized the MS1402-VLZ UnityPlus gain structure for maximum headroom & minimum noise.

12-LED meter display.

AFL/PFL switch.

*Suggested retail.

Control Room & Alt 3-4 Bus outputs.

Balanced XLR outputs with 1 switchable mic/line output level.

3-way Channel Inserts (chs. 1-6)

Switchable phantom power for condenser microphones.

Built-in power supply. No wall warts!

3 band equalization

AFL / PFL Solo

Control Room/Phones matrix

XLR & 1/4" bal. outputs

Rack mountable



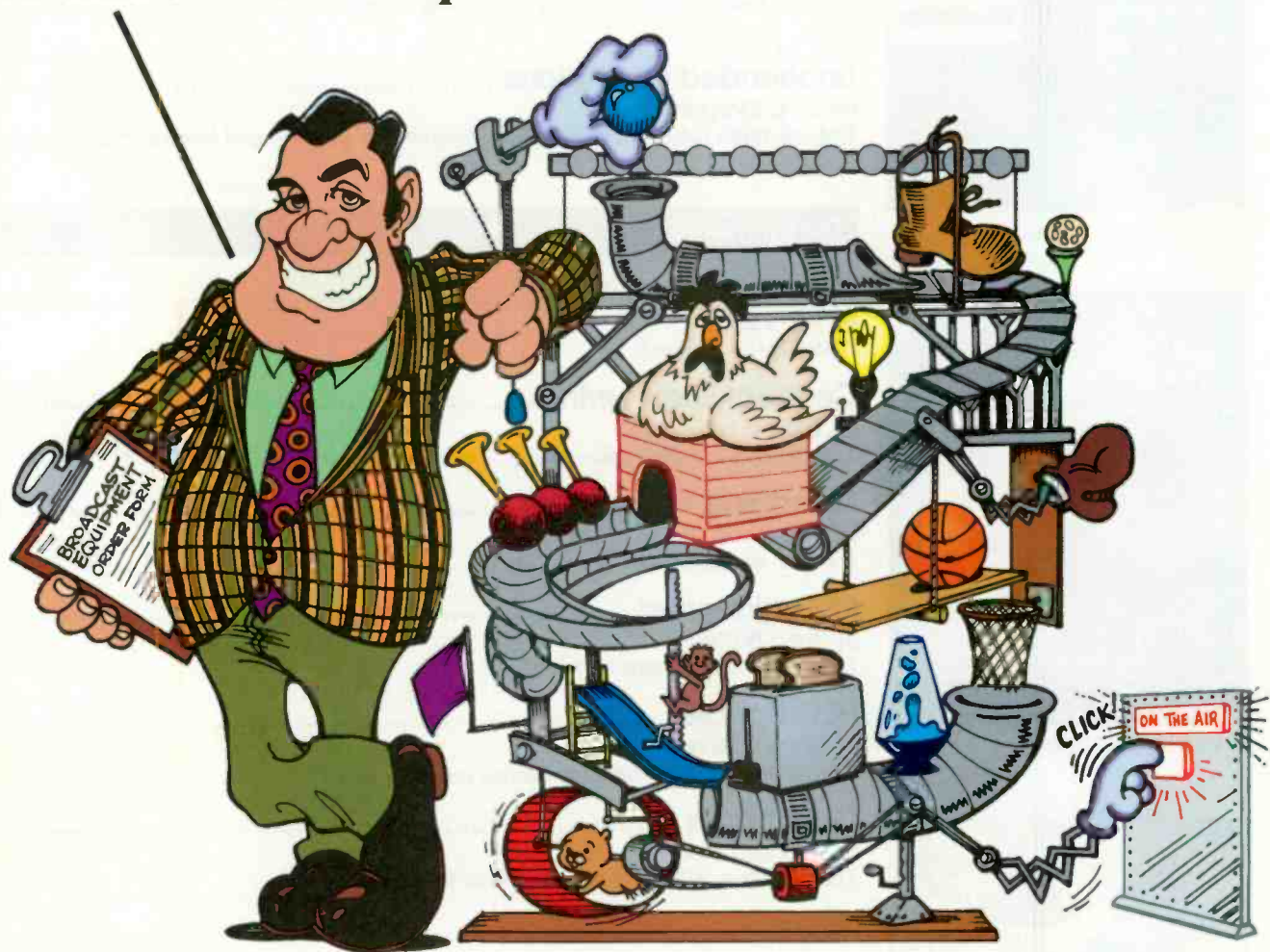
© 1996 Mackie Designs Inc.

MACKIE™

6220 Wood-Red Road • Woodinville • WA • 98072 • 800/898-3211 • 206/487-4337
 mackie.com • Outside the US, 206/487-4333 • Represented in Canada by S.F. Marketing • 800/363-8955

Circle 11 on Action Card

Works Great. . .
You're Gonna Love It. . .
Sign Here. . .
Press Hard—Five Copies. . .



**Sometimes
the business of
radio calls for
smarter answers.**

Automation	↑
LMA's	
Workstation	
Duops	
Triopoly	
TSA	
Cash Flow	
Harris Transmitters	
Harris Studio Products	
Harris Systems	
Budgets	
Remotes	
Return On Capital	↓

**Got questions?
Call Harris.**

Harris Corporation Broadcast Division

U.S.:
TEL.: 1-800-622-0022
FAX: 317-966-0623

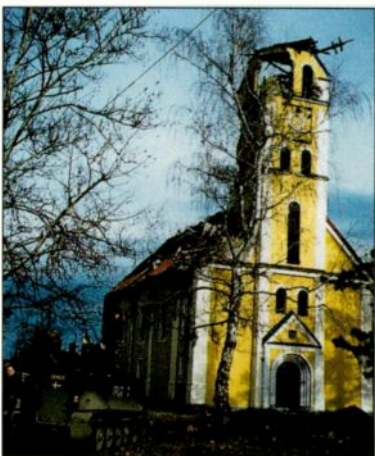
CANADA:
TEL.: 800-269-6871
FAX: 514-421-2712

<http://www.broadcast.harris.com>

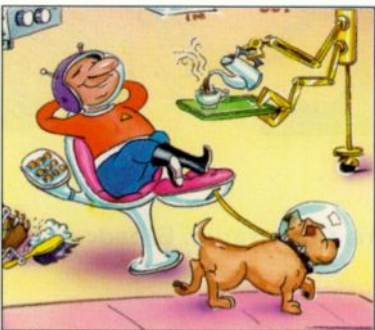




10 Managing Technology



24 (Not So) Remotes



36 Unattended Operations

This month...

(Not So) Remotes 24

By Flawn Williams

The well-traveled engineer brings you up-to-date on today's remote systems; also, the special challenges of reporting from a war zone.

Unattended Operations 36

By Chip Morgan

Robotic radio rules, as viewed by our frequent contributor and leading-edge consultant.

Departments...

Editorial 4

By Skip Pizzi

Radio is fun to watch.

Contract Engineering 6

By William Fawcett

Maintaining a multistation facility has its advantages.

Managing Technology 10

By Bob Read

It's time to update the newsroom.

RF Engineering 14

By John Battison

Digital STLs pay many dividends.

FCC Update 20

By Harry C. Martin

New action on dark stations, license renewals and fees.

EAS Update 22

By Leonard Charles

The rules are still being tweaked; here's the latest.

News 39

Business 40

Reader Feedback 41

New Products 42

Classified 47

Ad Index 48

ON THE COVER: Nowhere are the cost, size and weight advantages of new technologies having greater impact than on radio remote systems. This mobile news studio is one of three such minivans used by KNX 1070 Newsradio, Los Angeles. Inset: Portability and ruggedness are essential for wartime coverage. (Photo by Peter Breslow, NPR.)





OPTIMOD - FM 2200 DIGITAL PROCESSOR

We downsized everything except the OPTIMOD sound.

DIGITAL SOUND THAT ANY FM STATION CAN AFFORD.

As you can see, we've cut the cost of digital processing by two-thirds. But what you can't see, and really should hear firsthand, is what isn't downsized. The new 2200 is a direct descendant of the best selling digital processor in the world. So you not only get the same loud, clear OPTIMOD sound, the 2200 gives you key features you'll only find in high end processors, including 8 factory audio presets, the flexibility to program 8 user settings, and the choice of either protection limiting or two-band processing. A lot more than you'd expect in a downsized box. But then, it's not just any box. It's an OPTIMOD.

2200: \$3,850 US USER PRICE; 2200-D WITH DIGITAL I/O: \$4,450

orban

H A Harman International Company

© 1996 Orban, Inc. Orban and OPTIMOD are registered trademarks. 1625 Alvarado St., San Leandro, CA 94577 USA
Phone 1-510-351-3500 Fax 1-510-351-0500 E-mail custserv@orban.com

Circle (5) on Action Card

Watching radio

The 19th century statesman Otto von Bismarck was the first to observe that "Laws are like sausages. It's better not to see them being made."

Apparently this rule doesn't apply to radio. If current trends are any indication, there seems to be no shortage of interest in watching radio being made - on TV, the movies and in real life.

For example, among current TV series based on radio operations are NBC's "Frasier" and "NewsRadio," two certified prime-time hits. "Remember WENN" is a refreshingly new, original cable series on AMC set in radio's Golden Age. Produced by pop-star-turned-Broadway-composer Rupert Holmes, the show is receiving widespread critical acclaim. And still in syndication nearly 20 years after its premiere is "WKRP in Cincinnati," one of the most popular shows in TV history. (Of course, a radio-station setting is no guarantor of success, as proved by the rapid demise of last year's "The George Wendt Show.")

Meanwhile, movies have also had some success with the radio-station setting. A few years back, Eric Bogosian electrified audiences in "Talk Radio," and this year, "The Truth About Cats and Dogs" enjoyed a long and fruitful run. Unlike the license taken by some presentations, "The Truth..." showed a pretty realistic major-market radio station talk-show operation. (So truthful, in fact, that the January/February 1995 issue of *BE Radio* appeared as a prop in the film!) A number of other successful movies have also been set in the Golden Age, including the much lauded "My Favorite Year," in which an aging movie star (Peter O'Toole) discovers just how different the live radio broadcast is from the process of film making.

Remember how radio was used as a central and unifying motif in George Lucas' breakthrough hit, "American Graffiti," with Wolfman Jack in a semi-autobiographical role? And serious radio-movie buffs may recall "FM," probably more memorable for its soundtrack album (with the Steely Dan tune of the same name) than for the film itself - although it did serve as the inspiration for the above-mentioned "WKRP" series.

Several major, recent theater works have made radio a key element of their setting or story line, as well. Among these are the "Greater Tuna" series, "Buddy... The Buddy Holly Story" and "The 1940's Radio Hour," all of which have enjoyed successful runs around the United States and abroad.

Crossing the line from the other direction, live studio or theater audiences pack the house to watch actual radio broadcasts of national comedy, music and variety shows, ranging from the "Grand Ole Opry" to "A Prairie Home Companion." In some cities, local radio broadcasts draw similar crowds.

All of this proves that radio still captivates the American public, both in its product and its process. There is also something distinctly "American" about the heritage of radio broadcasting and its various styles. Of course, part of radio's mystique lies in the invisibility of its creation, but this makes the occasional opportunity to watch some radio-making all the more captivating. Playing to today's passions, watching a live radio broadcast also involves some elements of interactivity and multimedia.

The easiest way for most stations to capitalize on this intrinsic interest is by doing radio remotes - and they're becoming easier to do all the time. (See this issue's cover story, p. 24.) Any time you take your program origination outside of the studio, you give your listeners a chance to watch radio composition. It's OK to let them see the man behind the curtain once in a while; if you're doing a good job, it won't detract from their respect for the great and powerful Oz of the ether. So get out there and make some radio for your audience on location. Unlike legislation or breakfast meats, the exposure will do your station as much good as the sponsor or event you're covering.



By Skip Pizzi,
radio editor

Skip Pizzi



E-mail: beradio@inter-tec.com
FAXback: 913/967-1905

Future-Safe Audio Testing

Carved in Stone?

That's the way most audio test equipment is designed... The instrument maker chooses analog or digital, lays out a front panel, builds in a fixed level of internal processing power and adds a display from today's choices.

They'll never adapt to the future like System One and System Two from Audio Precision.

First a comprehensive selection of digital and analog measurement capabilities and options allows you to tailor your initial purchase to an exact fit for your needs of today.

Tomorrow, you benefit from continuous product and technology improvements, as System One and System Two grow with your needs. Both System One and System Two allow you to later add options not originally fitted.

DSP versions gain new functions and features by simply downloading different and newer versions of our DSP software.

You get better and faster system performance as well as higher resolution displays by upgrading PC technology without buying new audio measurement hardware. Upgrade to the popular Windows™ graphical user interface.

We introduced our first System One audio test sets in 1985. Today over 4000 of our PC and GPIB-based System One and System Two analyzers are in service worldwide, testing everything from aircraft to automobiles, satellites to cell phones, hi-fi to hearing aids.

Our customers who purchased System One in 1985 are still enjoying the benefits of our open-ended design philosophy. Those who purchase System Two in 1995 will enjoy the same benefits well into the next millennium. You can join them by contacting one of our worldwide Audio Precision representatives today for information and an onsite demonstration.

**Audio
precision**

P.O. Box 2209
Beaverton, OR 97075-3070
(503) 627-0832, 1-800-231-7350
FAX: (503) 641-8906

The recognized standard in Audio Testing



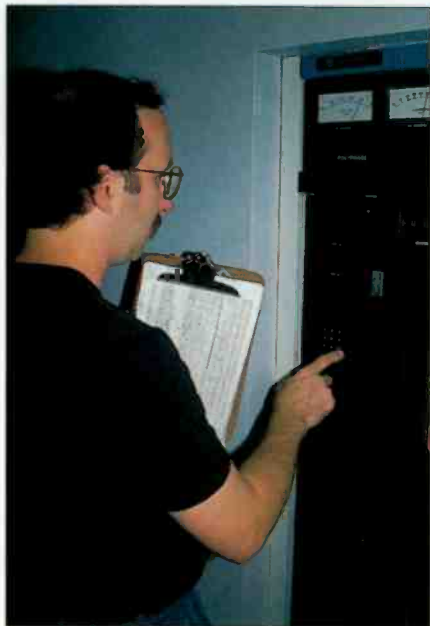
INTERNATIONAL DISTRIBUTORS: **Australia:** IRT Electronics Pty. Ltd., Tel: 2 439 3744 **Austria:** ELSINCO GmbH, Tel: (1) 815 04 00 **Belgium:** Trans European Music NV, Tel: 2 466 5010 **Brazil:** INTERWAVE LTDA., Tel: (21) 325-9221 **Bulgaria:** ELSINCO, h.e. Strelbichte, Tel: (2) 58 61 31 **Canada:** GERRAUDIO Distribution, Tel: (416) 696-2779 **China, Hong Kong:** A C E (Int'l) Co. Ltd., Tel: 2424-0387 **Croatia:** AVC Audio Video Consulting, Tel: (41) 624 622 **Czech Republic:** ELSINCO Praha spol. s.r.o., Tel: (2) 49 66 89 **Denmark:** nbn Elektronik aps, Tel: 86 57 15 11 **Finland:** Genelec OY, Tel: 77 13311 **France:** ETS Mesureur, Tel: (1) 45 83 66 41 **Germany:** RTW GmbH, Tel: 221 70913-0 **Greece:** KEM Electronics Ltd., Tel: 01-6478514/5 **Hungary:** ELSINCO KFT, Tel: (1) 269 18 50 **India:** HINDITRON Services PVT, Tel: 22 836-4560 **Israel:** Dan-El Technologies, LTD., Tel: 3-6478770 **Italy:** Link Engineering s.r.l., Tel: 0521/648723 **Japan:** TOYO Corporation, Tel: 3 (5688) 6800 **Korea:** B&P International Co., Ltd., Tel: 2 546-1457; B&P (Kum Office), Tel: 0546 53-7347/8 **Malaysia:** Test Measurement & Engineering Sdn. Bhd., Tel: 3 734 1017 **Netherlands:** Heynen b.v., Tel: 08851-96300 **New Zealand:** Audio & Video Wholesalers, Tel: 7 847-3414 **Norway:** Lydconsult, Tel: (47) 66-988333 **Poland:** ELSINCO Polska sp. z o. o., Tel: (22) 39 69 79 **Portugal:** Acutron Electroacustica LDA, Tel: 1 9414087 / 9420862 **Singapore:** TME Systems Pte Ltd., Tel: 747-7234 **Slovakia:** ELSINCO Bratislava spol. s.r.o., Tel: (7) 784 165 **South Africa:** SOUND FUSION Broadcast, Tel: 11 477-1315 **Spain:** Telco Electronics, S.A., Tel: 1 531-7101 **Sweden:** TTS Tal & Ton Studioteknik AB, Tel: 31-803 620 **Switzerland:** Dr. W.A. Gunther AG, Tel: 1 910 41 41 **Taiwan R.O.C.:** Cha Wei Electric Trading Co., Tel: 2-5612211 **Thailand:** Massworld Company Ltd., Tel: 662-294-4930 **United Kingdom:** Thurlby Thandar Instruments, Ltd., Tel: (1480) 412451

Windows is a trademark of Microsoft Corporation.

Circle (22) on Action Card

Maintaining multistation facilities

By William Fawcett



William Fawcett is president of Mountain Valley Broadcast Service, Inc., a broadcast engineering firm in Harrisonburg, VA.

Years ago it was common practice for a radio station to have a full-time staff engineer — or perhaps even an engineering department. Broadcast deregulation of the 1980s (and the concurrent increase in broadcast equipment's reliability) brought an end to that. Engineers who could adapt took on the role of "contract engineer." This business approach was further fueled by the establishment of Docket 80-90 stations shortly thereafter. By the late 1980s, it was not unusual for a contract engineer to have a dozen or more such stations on his or her roster.

But having a string of Class A FMs and daytime AMs for clients has its drawbacks, most of them monetary. Many of these stations hardly had enough money for good maintenance, much less capital expenditures.

Now consider the present day, where the trend is toward consolidation and formation of the "superduopoly," in many cases, this implies a multistation facility.

Even before recent changes in the law, stations were experimenting with consolidation through LMAs and earlier levels of duopoly. Now the prospect exists for outright ownership of up to eight stations in a market by one firm. This provides the potential (perhaps the requirement) for multistation owners to direct increased funds into technical capitalization and operations.

Will the circle be unbroken?

It is possible that this may signal the return of the staff engineer. The technical demands of a consolidated facility are great and may require a full-time presence. If we've learned anything from the last 20 years, it is this: The engineer who adapts is the engineer who survives.

Being a staff engineer (i.e., a station employee) may be advantageous. Larger companies may be able to offer various perks unavailable to the small business. On the other hand, the clever contract engineer who can structure his/her work within the IRS independent-contractor guidelines may also reap the benefits of consolidation.

Think of it this way: less travel, more money. Contract engineering firms might take a cue from other industries and assign individual technicians responsibility for certain major accounts. Under that scenario one person has working, day-to-day knowledge of the facility, but other (perhaps more senior) persons are available for major projects or disasters. This is where the field service firm, as opposed to either a single contract engineer or staff engineer, has a marked advantage: when lightning strikes three transmitters and two studios at once, there is only so much a single person can do.

A newly consolidated station group will typically require a lot of immediate engineer-

ing work, and it may need much more shortly thereafter. The design work and capital improvements involved will likely present plenty of challenges. Your client has probably paid millions for this group of stations, so try not to think small.

Start with planning (where else?)

Naturally, you should not proceed in a haphazard way. The client also must be convinced of the requirement for detailed planning — and the need to pay for such work. This is no longer a stand-alone radio station. The physical-facility infrastructure, audio distribution, studios and transmission facilities will all be stretched to their limits and interdependent on one another like never before. When five stations go down at once, redundancy ceases to be a luxury.

Besides extensive planning, the level of documentation must also be increased. Wiring tables, maintenance logs, even the location of buried cables all become critical issues. Contractors might consider an investment in a laptop computer if they don't already have one.

The engineer who adapts is the engineer who survives.

Speaking of computers, have you noticed the number of computers in some of these larger multistation facilities? Besides the expected office computers and LANs, there are computers in studios, automation systems, music playlist computers, traffic, billing and perhaps remote machine/transmitter-site control. Because of the specialized nature of many of these systems, the installation, maintenance and repair often fall upon the broadcast engineer. Here again, adapting and surviving will be key components of the successful engineer.

An engineer's dream

Consider the example of one typical superduopoly, which is faced with consolidating a three-tower AM array with another nondirectional AM, plus two (possibly three) FMs — including auxiliary antennas. This implies combiners, isocouplers, directional proofs and lots of detuning. With several full-power backup transmitters, this could amount to a facility rivaling that of a major short-wave broadcaster. Add to that the need for computer control and monitoring, sophisticated electrical distribution and generating systems, dummy loads and antenna switching, HVAC systems and Halon fire-suppression.

Clearly, a "seat-of-the-pants" approach will just not work here. This is a great challenge for the truly professional broadcast engineer.

ONE WORLD



UNITED AUDIO
FROM WORLDNET

WorldNet™ audio codecs and peripherals are the proven and effective solution to the worldwide acquisition and distribution of full bandwidth stereo audio over direct dial digital circuits such as ISDN or Switched 56.

DSM 100 Digital Audio Transceiver - uniquely provides the combination of high quality coding, low coding delay and error immunity essential to the professional audio community.



Pro-Link ISDN Manager - incorporates a direct dial-up adaptor and maintains maximum transmission security at all times - for both audio and other high speed data requirements.



DRT 128 Digital Reporter Terminal - delivers high quality stereo audio from remote locations. Lightweight, rugged and portable, the DRT 128 is the ideal solution for the mobile reporter.



MCE 800 - the elegant solution to the distribution of multi-channel audio over T1 and E1 digital circuits. Up to eight simultaneous channels available.



MCD 800 - for point to multipoint distribution the decoder incorporates demultiplexing for up to eight simultaneous full bandwidth audio channels.



RMC 240 - using the embedded data facility on all APT codecs, the RMC 240 provides complete remote control over all DAT functions.

APT
AUDIO PROCESSING
TECHNOLOGY

Headquarters Tel: +44 0 1232 371110

Japan Tel: +81 3 3520 1020

United States Tel: +1 213 463 2963

Circle (23) on Action Card

Contract Engineering: Maintaining multistation facilities

Skyport 2000

Here's another affected area to think about: An increasing number of individual stations now receive signals from multiple satellites. Adding more stations and a minor regional network or two, and before you know it, you've got six or 10 dishes out on the lawn, each feeding multiple users. (Even if all the stations need to look at the same satellite, you can only split the signal to so

many receivers.) It is, therefore, worth thinking about bigger and better dishes to feed those splits, and to build patchable redundancy into the system. Low-noise block converters (LNBs) complicate the situation even more. A possible solution is the global use of low-noise amplifiers (LNAs) instead, placing block converters downstream (inside) after the patch panel.

Another reason for upgrading the dishes has to do with increasing levels of terrestrial interference, as well as a fully populated 2° spacing plan. Only a quality dish will yield the desired signal-to-

noise ratio. Digital satellite receivers are not handling this problem as well as expected; pops and clicks are more noticeable than soft analog failures.

Audio distribution

Gone forever are the days when you could twist a few resistors together and split an audio feed to a few studios. A multistation facility might involve five or 10 studios, and may also include a high level of RF. This requires many distribution amps (perhaps even routing switchers), miles of cable, and most important, planning and documentation.


Make sure your plans are flexible; anticipate satellite network changes on a regular basis. Look also at your RPU's, ISDN and telephone interfaces. It is not uncommon for the sales staff of a multistation facility to bundle a remote package, often with the same announcer doing the remotes on one station after another. After all the stations have had a feed from the site, the cycle repeats.

For studio design, think generic. A uniform studio design is a real plus. Formats change and equipment breaks. A fully patchable facility can really take off the pressure. If you are not fully automated, at least put all your commercials on hard disk, and have your system networked to all of the studios. Where studios must be of a specific design, have at least one other studio capable of running that format.

That was then, this is now

These are just some of the factors that will be important in supporting a multistation facility. Consolidation is driven by capital investment, and the increased demands placed on a facility will drive that infusion of funds even more. It remains to be seen if this is just another short-lived, upward trend in a cyclical economic pattern, but it certainly is preferable to the lean times seen in the early 1990s.

For the capable contract engineer, it is important not to get hung up on labels. Changing conditions may precipitate a new business paradigm. Go with the flow; the prospect for high-quality employment opportunities with commensurate pay is good.

When the FCC dropped the first-class license and eliminated the requirement for most stations to have full-time engineers, the industry saw an influx of "jack-leg" engineers. The CB-radio installer who handles a station or two on the side may soon be looking for supplemental work flipping hamburgers. (Luckily, the minimum wage is going up.) Conversely, the professional broadcast engineer should strongly embrace this new era. There is work, there is money, and with a little talent plus some good business sense, it can be a positive time for you. 



The Dynamax DCR1000 MO

Rewritable Magneto Optical Diskettes

66 minutes of awesome stereo audio now under \$9

The Recorder offers cut & paste editing • 99 separate variable length cuts • AES/EBU digital input • direct digital dubbing from CD • start on audio • selectable sampling rates • secondary and tertiary cues • PC keyboard for titling • kill date checking • disk label printing

The Master Player features simple cart-like operation • no on-air personality training • just three front panel buttons • instant start and cue • maintenance-free design • rotation & chaining • replay lockout • count-up/count-down timer • RS232 logging/remote control

Call Fidelipac for more information.



Fidelipac Corporation P.O. Box 808 Moorestown, NJ 08057 U.S.A.
TEL 609-235-3900 FAX 609-235-7779

Circle (25) on Action Card



THE FIG LEAF
4000 B.C.

FITS ALL SIZE
NAKEDNESS



THE TUBE SOCK
1946

FITS ALL SIZE
FEET

THE TS612
1996

FITS ALL SIZE
RADIO STATIONS



It seems those things that develop the ability to adapt are the ones time treats most kindly. That's why the TS612 will be around for a while. No matter what size station you operate, or even how many stations



you'd like to network, the TS612 has the versatility to adapt to your needs. Regardless if you're a group owner, LMA, a large station or a single broadcaster, this system is prepared for any contingency. Need anywhere from 6 to 120 lines? No problem, just network multiple systems together. Want crystal clear audio for conferencing calls? That's what the dual superhybrids are for. Have a bunch of stations operating from the same facility? You can maintain each station's identity (even those with shared lines) with hold audio, dedicated lines and call screening. Go on or off air at the same time, expand to a second studio with just an additional control surface, have it calculate your taxes (well, OK, we're still working on that one). The point is, if you're looking for a system that's changing and adapting as fast as you are, you've found it. For more information, give us a call.

Circle (6) on Action Card

 **Gentner**

1-800-945-7730
OR 1-801-975-7200

Updating the newsroom

By Bob Reed



“Another cart just jumped its cue!” For the third time in four days, that cry, preceded and followed by a series of expletives, came from the news announce booth. It was time to replace our cart machines — and probably the whole concept of using carts for news operations, as well.

Three years previously, we had successfully converted our commercial delivery and traffic systems from tape cartridge to digital, using a file server and multiple PCs on a local area network (LAN). At that time, our four-person news department, sports director and two-person agribusiness department inherited the carts from the production and control rooms, to use in their news operations.

Our old reliable cart machines were into their third decade of use, and even the best of equipment can't be expected to last forever. The triple-decker playback machines had already undergone at least two rebuilds, so it was certainly time to consider replacement. Oxide on the cartridge tapes was becoming almost nonexistent.

Because of our positive experience with digital storage of our commercials and the successful integration of our traffic and digital audio system, we decided to check out the options available for our news operation. We had already converted our wire collection system to computer, using the AP Newsdesk. This allowed us to collect AP News, our network data wire and state newswire into a single computer and print only what we wanted, using a single printer. Previously, we had three printers cranking out paper 24-hours day — most of it ending up in the trash.

Our first question was, “If commercial audio and traffic can be integrated into a single system, how about wire copy and audio?” As we soon found out, several systems are available that can do this today, and they cover a wide range

of capabilities among them.

The best news was that we could replace the cartridge system with digital audio for little more than the cost of replacing the triple-deckers and cart recorders. The advantages were numerous: better quality and reliability, fewer mechanical parts to wear out, increased flexibility and other benefits that we hadn't even considered until we began investigating the systems available.

Planning the transition

Of course, abject fear gripped the news staff when word leaked out that the station was considering “computerizing the newsroom.” Many announcers and news people don't like change. They are accustomed to taking a

stack of news copy and carts into the announce booth, with each in the order they are to be used in a newscast. So we needed a digital system that would mimic a cart system, but still provide the advantages of computerization.

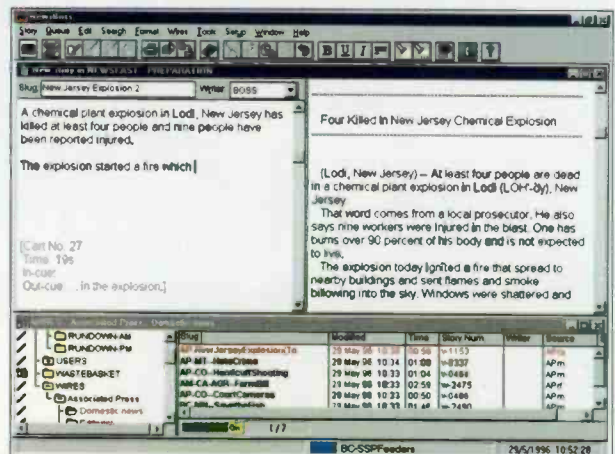
This implied that we should look for a system that would let the news reader organize the order of the stories, but switch the order on the fly as time constraints dictated. For example, what if a late-breaking story threw off the planned newscast sequence or the newscaster approached the end of a newscast intending to close with a 45-second story, but only 30 seconds remained?

Central storage of text and audio was also considered critical. Our commercial system stores the commercials locally at each of the terminals where they are used. That means transferring the audio from the production room to the control rooms, which takes time. A newscaster can't wait for transfer. If a story breaks with audio, it has to get on the air immediately. Therefore, central storage of the audio (i.e., stored on a file server and instantly available to all terminals) is a must.

The flexibility to run any audio cut either in a predetermined sequence or on-demand at any time is also necessary. In addition, all audio, wire copy and locally originated copy must be accessible from all editing terminals, as well as for use on the air at either of two stations that share the facility. This includes news announce booths, the newsroom, the agribusiness department office and both stations' control rooms. Again, central storage on a file server with distribution through a LAN is necessary.

Selection and implementation

What we found was a system that could collect as many wire services as we wanted into a single computer terminal, with the wire text accessible to all other terminals on the LAN. Audio could likewise be uploaded into a single terminal on the LAN, with original audio, as well as any edited cuts available at



A text-editing screen from the Windows-based NewsBoss system from Broadcast Electronics, which integrates wire copy or original scripts with audio clips stored on the company's AudioVAULT system.

Bob Reed is operations manager at KGNC-AM/FM, Amarillo, TX.

We let Rick Dees use one and now he won't give it back!

"Nope. No way. Forget it. This Instant Replay is mine!"

Hey, we understand. After all, Instant Replay puts 1,000 of his favorite noises right in front of him — ready for instant playback. No other audio player makes it so easy to be spontaneous and creative. It's fast, it's easy and it's fun.

Check it out. One Instant Replay can store up to 16 hours of stereo sound. That's 16 hours of sound effects, spots, promos, even entire songs — anything — and you can play any of them back instantly just by pressing one of 50 Hot-Keys! There's no need for a computer and no need for training. It's self-contained and it works right out of the box — just push the buttons and go!

**Try Instant Replay Free!
Call 818-991-0360**

To prove how Instant Replay can make your station better, you can Test Drive one with no obligation! Call us now for free overnight delivery of your Test Drive unit. And like Rick Dees, once you get your hands on Instant Replay you won't want to give it back either.



Print hard copy lists of all stored cuts so you always know what's where!



Store up to 16 hours of CD-quality digital audio on Instant Replay's internal hard disk.



Transfer one cut or one thousand between machines using the D-NET high-speed digital audio network.



360 Systems

PROFESSIONAL DIGITAL AUDIO

Circle (7) on Action Card

5321 Sterling Center Drive • Westlake Village, CA 91361
(818) 991-0360 • fax (818) 991-1360 • <http://www.360systems.com>



If you're a call-letter station, you can try Instant Replay for 10 days with no obligation. If you decide to buy Instant Replay, we'll make arrangements through one of our authorized dealers. Offer good in the continental US only. Offer expires December 31, 1996.

*Suggested retail prices: \$2995 for 4 hours of storage; \$3495 for 8 hours of storage and \$3995 for 16 hours of storage. 360 Systems Instant Replay is a registered trademark of 360 Systems. ©1996 360 Systems.

Managing Technology: Updating the newsroom

all other terminals. At any terminal a reporter/newscaster could rewrite the copy, embed audio cuts into the copy and put a story on the air. Likewise, locally originated copy could be created on a word processor by the newscaster and instantly be made available at the other terminals.

Digital editing of the audio is possible at all terminals, even though the raw audio is recorded into the system at only one terminal. This applies to network audio feeds, telephone interviews and even announcer-recorded voicer/actuality stories. It is also faster than dubbing to cart. The newscaster just points the mouse at the beginning and ending points of the audio segment, clicks the button, gives the audio cut a name or number and designates it "ready for air play." No reel-to-reel machines, no cart machines and no real-time dubbing steps are required.

Central storage of wire copy also gives control room announcers immediate

access to weather bulletins, sports scores and other information delivered by the wire services. No more rushing down the hallway after the alarm sounds, tearing off the copy and rushing back to the control room. (Oh, don't forget to make a photocopy for the other station.)

their hands, and the ability to shuffle papers and rearrange the order of the stories "the way they've always done it." Yet after a short time, you'll find them holding the scripts in their hands, but reading the story directly from the computer terminal screen in the announce booth. Soon, they'll not bother carrying the copy into the news booth and you can turn off the printer.

One precautionary note: When you make the decision to go digital in the newsroom, don't make price your predominant criterion of choice. The pace of technological change is so rapid that if you invest in "just enough to get by," after a year or two you'll find yourself facing the need to upgrade the software and your hardware may not be able to handle it. Get a system with enough memory, speed and hard-disk space to accommodate future expansion. It might cost a few hundred dollars more today, but will save thousands later when it's upgrade time.



The audio upload/editor screen from *NewsRoom*, an integrated, PC-based digital news system from Computer Concepts. A "virtual VU meter" helps users make the transition from traditional systems.

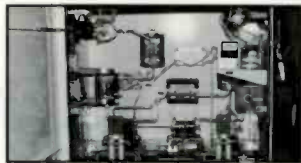
A *paperless* system is the ultimate goal. This won't happen immediately, however, because news people tend to need the comfort of holding a script in



For more information on digital newsroom systems, circle (100) on Action Card.

KINTRONIC  LABS INC.

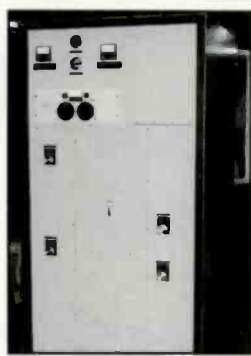
ANTENNA EQUIPMENT AND SUPPORT SERVICES TO PUT YOUR AM EXPANDED BAND STATION ON THE AIR



WIDEBAND ATU'S



2,3 OR 4-STATION MULTIPLEXERS



2-TOWER DA SYSTEMS

DESIGN / FABRICATION / INSTALLATION

P.O. BOX 845 BRISTOL, TN 37621
PHONE: (423)878-3141 FAX: (423)878-4224

E MAIL: ktl@kintronic.com

WEB SITE: <http://www.kintronic.com>

Circle (9) on Action Card



SPLIT IT!!

USDA is a handy 2-in, 4-out stereo "mini-DA" that can *combine* or split audio signals for distribution. Mix stereo to mono, get *both* stereo and mono outputs from a stereo source. Gain trims for each output. Great specs with lots of headroom. *Keep one on hand!*

HENRY ENGINEERING

503 Key Vista Drive
Sierra Madre, CA 91024 USA
TEL (818) 355-3656 FAX (818) 355-0077
FAX-on-Demand Doc #103 (818) 355-4210
<http://www.broadcast.harris.com/henryeng/>

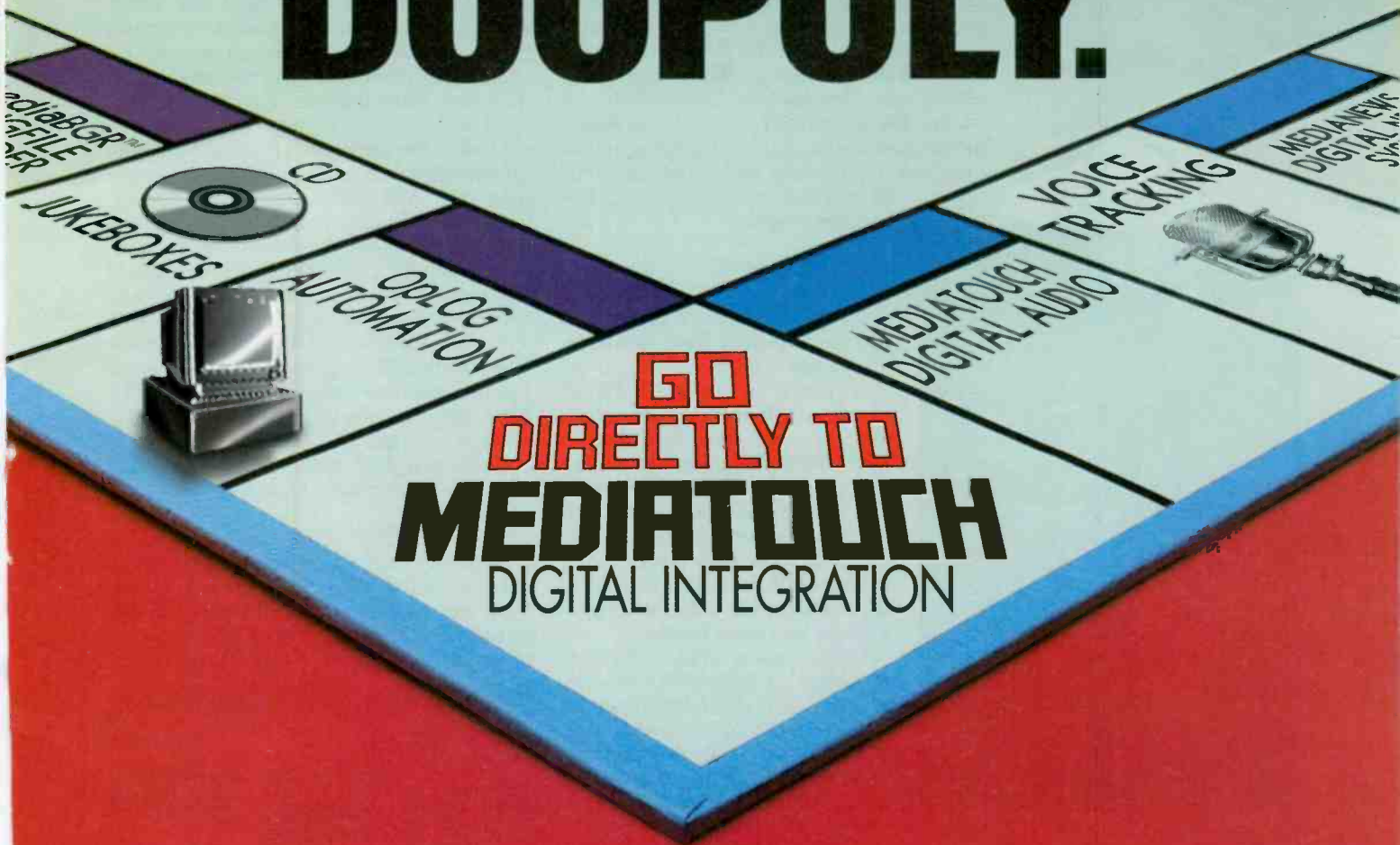


HENRY ENGINEERING

We Build Solutions.

Circle (10) on Action Card

SUPER DUOPOLY.



**GO
DIRECTLY TO
MEDIATOUCH
DIGITAL INTEGRATION**

Congratulations On Your Acquisition ... The Rules Of The Game Have Changed.

We worked on our first duopoly project over 4 years ago and our experience leaves nothing to chance. No matter what configuration of stations you have, no matter what format, no matter how many studios.

MEDIATOUCH can run it all through one central location, all with the ease of touch screen technology. And MEDIATOUCH works with your existing

platforms. No expensive equipment to buy.

Flexible. Affordable. Easy to use. Don't roll the dice in the game of Superduopoly. Give your stations the MEDIATOUCH advantage.



America's Digital Original

Salem, New Hampshire

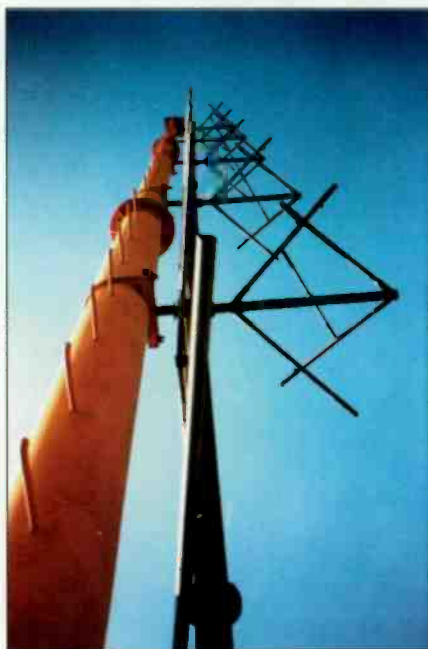
Toll Free 1-800-665-0501 Fax 204-783-5805



**Call Us Today
For information and demo.
Broadcasters General Store
Toll Free 1-800-636-0123**

STL update

By John Battison, P.E.



Now that digital AM transmitters and digital FM exciters are being installed, it seems inappropriate to feed them with analog studio-to-transmitter links (STLs), especially when so much of the equipment at the studio is also of the digital variety. But it's not just for such technical congruity that broadcasters use digital STLs. They can provide a literally transparent link between facilities, even those that are separated by significant distances.

Admittedly, if you have a first-class analog STL system that is working properly and has not yet been amortized, it may be difficult to persuade management of the need to convert to an all-digital path to the transmitter — especially if the transmitter is also a new, fully analog unit. Nevertheless, if you are in the market for a new STL, consider a digital system, both for its performance today and its readiness for interface with future elements of your increasingly digitized transmission chain.

Advantages of digital STLs

In practical terms, a digital STL provides freedom from distortion and clipping problems that sometimes plague an analog STL. Digital STLs also will operate with a much lower received signal than that required for analog operation — as low as 5 μ V at the receiver terminals. The fact that the typical digital STL also has a built-in 20dB fade margin adds to its attractiveness. This feature often makes it possible to use smaller dishes, thereby reducing cost and tower loading.

Unlike analog STLs, audio performance on digital STLs remains identical as received signal strength varies throughout the usable range. This eliminates the inconsistency of the noise floor on many analog STLs, caused by seasonal or other variations along the path. And in this age of consolidation, digital

STLs can even add to the capacity of a given link by allowing additional signals to be included in the bitstream.

Implementing digital STLs

First, a general caveat on STLs: Given today's proliferation of radio signals, it is essential to work with your local SBE frequency coordinator. If you don't know who that is, call the SBE headquarters at 317-253-1640 and ask. When working with a coordinator, it is important to keep him or her informed in a timely manner. If you select a frequency, and then end up not using it, be sure to tell the frequency coordinator. Otherwise it will be listed as occupied, and other legitimate users may not have access to a vacant channel.

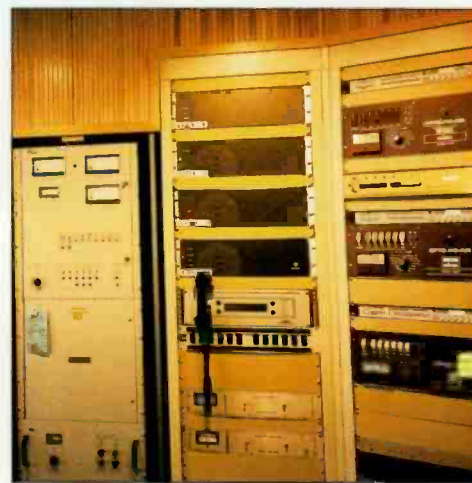
The second item to watch carefully is a change in your area's topography. An example: Several years ago, one of Columbus' major FM stations suddenly lost its STL

signal in the middle of the afternoon. As it turned out, a new building was being erected, and unknown to the station's chief engineer, it was directly between the studio and the transmitter. This kind of situation cannot always be anticipated years in advance, but before installing a new system make a survey to be sure that there are at least no *existing* blockages. If you have to locate downtown, it is a good idea to check out the buildings along the line of fire to see if they are soon to be expanded or torn down. Also, don't forget that Fresnel zone clearance should be checked where rural STL paths are planned. Occasionally, knife-edge propagation can be used, although usually its characteristics seem to apply more to higher-frequency links than the typical 950MHz aural STL.

Most of the major STL suppliers are now offering digital STLs. Increasingly, these systems offer AES/EBU connectivity. This allows digital audio devices preceding and following the STL in the chain to be interconnected without leaving the digital domain. It also permits two channels of digital audio to be serially conveyed over as much as 300 feet of shielded, twisted-pair cable and interfaced at the STL transmitter. No additional synchronization is required because the AES/EBU signal is self-clocking. The AES/EBU input accepts the start of each 32-bit block of audio as a clock pulse and thereby maintains synchronization inherently.

Spectral efficiency

As usual in these days of increasing emasculation of broadcaster's frequency bands, STLs are feeling the spectrum pinch. Almost daily, the FCC either generates itself, or publishes requests from RF users, for



At WWRC in Washington, DC, four T-1 circuits (top of center rack) are multiplexed onto a bidirectional 18GHz path for an uncompressed digital STL and a 20-channel TSL. The latter is used to return satellite downlinks from the transmitter site's dish to the studio. Bidirectional data and telephone circuits also share the links. An analog 950MHz STL (bottom of center rack) serves as backup, with analog telco program circuits used as a tertiary link. (Photo by Kevin McNamara, courtesy of Intralex.)

John Battison, *BE Radio's* consultant on antennas and radiation, owns John H. Battison and Associates, a consulting engineering company in Loudonville, OH.

PLATFORM FOR THE FUTURE



The 802D
Digital FM Exciter
from the world leader in
advanced RF products puts you in a
whole new universe of digital performance.

- A standard platform open architecture means simple software upgrades for RBDS and other technologies; plus, modular hardware design allows for expansion of DSP capacity to handle additional functions.
 - Flexibility in design allows for program input in either AES/EBU digital format, analog composite, analog left/right, or multiple SCA inputs, depending on configuration.
 - The 802D maximizes audio performance by using DSP's which adhere to the IEEE 754/854 standard 32-bit floating point format, thereby maintaining audio precision and dynamic range.
 - A frequency-agile direct conversion system makes the 802D perfect for use in N+1 applications.
 - Detailed control and monitoring information is available from a unique front panel LCD screen, plus front panel adjustment buttons provide full control over operating parameters. Complete test and analysis information is available at front panel BNC connectors.
- The 802D Digital FM Exciter won't limit your facility's ability to grow and advance in a rapidly changing world, providing a solid platform for performance and growth... only from Continental.

5.96.121

1946-1996. For 50 years, Continental Electronics has provided excellence in broadcast transmission products worldwide. Refuse to compromise... call Continental first!

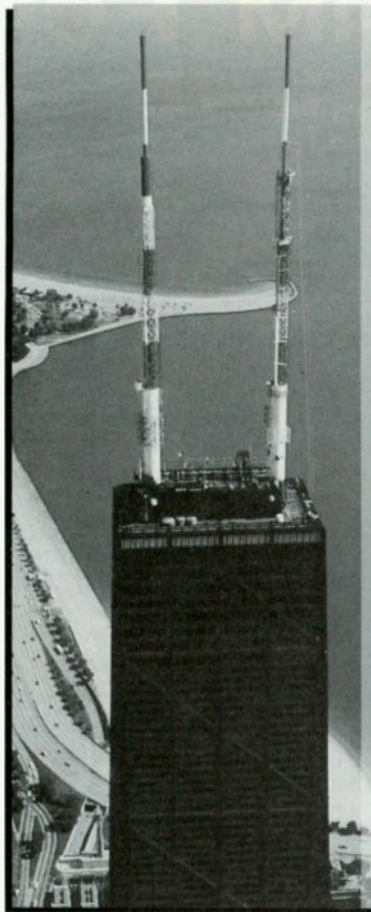
TEL 800-733-5011 • WWW.CONTELEC.COM



Continental Electronics Corporation

P.O. BOX 270879 • DALLAS, TEXAS 75227-0879 • 214-381-7161 • FAX 214-381-4949

© 1996 C.E.C., Pats. Pending



RF COMPONENTS

- Transmission Line Rigid/Heliac
- Waveguide
- Filters/Combiners UHF/VHF



TV ANTENNAS

- UHF • LPTV
- VHF • Dual mode



FM ANTENNAS

- Sidemounts
- Panels
- Combined Systems



PANEL ANTENNAS

- FM • UHF • VHF

**When
You Want More
Than Just An
Antenna**



Made in USA since 1954

JAMPRO ANTENNAS/RF SYSTEMS, INC.

P.O. Box 292880

Sacramento, CA 95829 USA

Phone (916) 383-1177 • Fax (916) 383-1182

Web address: <http://www.broadcast.net/jampro/>

E-Mail: jampro@ns.net

Circle (28) on Action Card

more slices off the broadcast auxiliary bands.

Digital STLs offer a good way to cope with these attacks on broadcasters' frequency domain. In some cases, a narrower-bandwidth channel than that required by the analog STL can be used for the digital path, with better audio quality at the same time. In other cases, a digital STL can allow two full-fidelity stereo audio feeds (or several lower-quality mono feeds for subcarrier services and the like) to be placed on the same channel that previously supported only one analog stereo link.

Of course, what enables this efficiency in the crowded 950MHz aural STL band is the use of data compression. Across the current crop of digital STLs, numerous algorithms are offered, including apt-x, Dolby AC-2 and ISO/MPEG Layer 2.


Not all of today's STLs use the narrow channels of the 950MHz band, however, and other types of digital STLs are available for these purposes. These systems use T-1 links from telco or microwave STLs in the 18GHz and 23GHz bands, which offer sufficient bandwidth to support uncompressed stereo audio. In the case of T-1 circuits, a transmitter-to-studio link (TSL) return path is intrinsically included, providing increased cost-effectiveness.

At present, there is no such thing as a "digital composite" 950MHz STL. All these systems operate like discrete analog STLs, requiring the FM baseband to be assembled at the transmitter site. Yet with the AES/EBU connectivity now offered on STLs, processors and excitors, there are many more options for high-quality air-chain configurations than existed in the analog STL world. It is possible to deliver a composite digital FM signal via T1 or 18/23GHz STLs, however. Consult with STL manufacturers and dealers for details. Some digital STL manufacturers also offer clever backup systems that allow quick, automatic switchover from digital primary to analog backup links.

The regulatory front

Remember that the Private Radio Bureau of the FCC took over the processing of all STL applications on Oct. 1, 1992. This may seem like old news, but if you've not had an occasion to file a Form 313 for some time, this change may have gone unnoticed. Applications that require a filing fee should go to FCC, Mass Media Services, PO Box 358700, Pittsburgh, PA 15251-5700.

If you have questions, call Ms. K. Garland at the FCC's Gettysburg office: 717-337-1212 or 800-322-1117. Form 313 has had several changes in recent years, and it is advisable to get the latest edition before filing. The fee-payment forms and requirements also seem to change from year to year. It's a good idea to request a supply of new Forms 313 and fee-paying instructions from the FCC. The latest number for ordering FCC Forms is 800-418-3676. (Delivery of forms can take about three weeks or more.)

Like everything else, the STL is going digital. With this change comes improved audio quality, increased reliability, uniform performance over time and greater spectral efficiency - not a bad bargain overall. 

Acknowledgment: The author wishes to thank Geoffrey Mendenhall of Harris Corporation for his assistance in preparing this article.

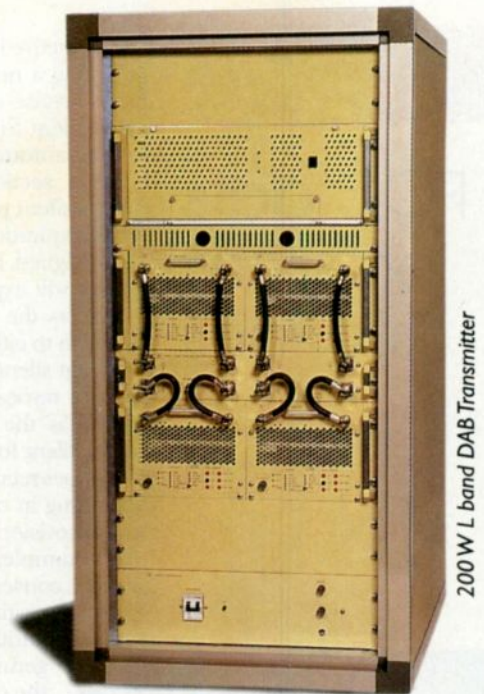


For more information on digital STLs, circle (101) on Action Card.

Istelco 1981-1996 **35** years of experience

- **Modular design**
- **Reduced dimensions**
- **Perfect signal**
- **Fully reprogrammable***

* under patent



To get an optimized **DAB** transmitter we have simply followed the ingenuity of our design rules

Istelco for Digital Broadcasting



For further details please contact:

**Central and South America
North America and Canada
International**

Istelco USA Inc. 8280 N.W. 27th street, Suite 501, Miami FL • phone 305 7159410, fax 305 7159414
Istelco USA Inc. 9035 Wadsworth Pkwy, Suite 4450, Westminster CO • phone 303 4311699, fax 303 4312868
Istelco S.p.A. via dei merciai, s.n.c. - P.O. Box 16 - zona industriale, Sferracavallo - Orvieto (TR) Italy
phone +39 763 316231 • Fax +39 763 316236 Telex 661013 Istelco

Circle (40) on Action Card

FCC acts on silent stations

By Harry C. Martin



Effective immediately, the FCC is enforcing a new rule that specifies that the license of a broadcast station that remains silent for a consecutive 12-month period will automatically expire. The rule implements a section of the Telecom Act. For stations silent prior to Feb. 8, 1996, their 12-month expiration clock begins on the date the act was signed, Feb. 8. Therefore, the first set of licenses will expire on Feb. 9, 1997.

Prior to the act, the commission had the discretion to either grant a station the authority to remain silent for a specified period or commence a revocation proceeding. The FCC no longer has the power to grant extensions to remain silent for more than 12 months. However, it does retain the right to begin a revocation proceeding in cases where the automatic expiration provision is not applicable.

For example, a station could be off the air for eight consecutive months, resume broadcasting for one day, and go silent for another five months without triggering the automatic expiration. But, the commission will still be able to initiate the revocation process in such a case. There have been no changes in the requirement that broadcasters must notify the commission and request consent for shorter periods of silence.

The commission warns licensees that the existence of pending applications by silent stations will not postpone the automatic expiration date. Thus, silent stations wishing to assign or modify their licenses should allow ample time for such applications to be processed.

Applications for facilities needed to return a silent station to the air should be accompanied with a transmittal letter with the label "Request to expedite application of silent station." An explanation also must be given why the action is necessary to return the station to the air and the date that the license will expire if it remains off the air.

New regulatory fee schedule proposed

The FCC has released its proposed fee schedule. (See Table 1.) Because Congress mandated the same total amount of revenues to be collected as in 1995, most of the adjustments made to fee amounts were minor.

In general, the proposed fees have increased by slightly more than 1%. The commission had considered eliminating separate fees for construction permits (CPs) and auxiliary stations. It concluded, however, that it would be fairer to retain these separate fee categories. In the case of CPs, eliminating the fee would require existing stations to subsidize the start-up operations of competitors in the market. With regard to auxiliaries, the substantial differences in numbers of auxiliaries licensed to different stations would likely result in stations in smaller markets paying a greater proportional share of the total costs of auxiliary regulation.

Accordingly, the fee schedule continues to categorize radio stations by station class.

FCC implements two-step renewal process

The Telecommunications Act is changing renewal rules and procedures for radio stations. The commission plans to adopt an eight-year license term for television, radio, FM and TV translator facilities, low-power TV stations and international broadcasting licenses. The FCC proposes to continue to issue licenses for experimental broadcast stations for a term of one year. The terms will run concurrently by state. The new uniform license terms should enable the commission to operate more efficiently. The commission suggests that broadcast renewal applications granted after the effective date of the new rules

	FY 1995	FY 1996
AM radio		
Class A	\$1,120	\$1,125
Class B	620	630
Class C	250	255
Class D	310	315
Unbuilt CP	125	125
FM radio		
Classes C, C1, C2, B	\$1,120	\$1,125
Classes A, B1, C3	745	755
Unbuilt CP	620	625

Table 1. FCC fee structures proposed for FY 96, compared to those of FY 95.

be given an eight-year term. As for renewals granted prior to the effective date, the commission proposes to extend the seven-year grants to eight years.

In addition to the changes in the license terms, the act has eliminated comparative renewal challenges by establishing a two-step procedure. The commission must first determine whether to grant an application by examining three criteria: 1) the station has served the public interest, convenience and necessity; 2) there have been no serious violations by the licensee of the act or the rules and regulations of the commission; and 3) there have been no other violations by the licensee of the act or the rules and regulations of the commission which, taken together, would constitute a pattern of abuse.

If a licensee does not meet all of these criteria, the commission can deny the application or renew the license on certain terms and conditions (e.g., the FCC may grant a renewal for a term of fewer than eight years). Only after the commission denies an application may it entertain competing applications.

The new rules are expected to be in place by the end of the year.

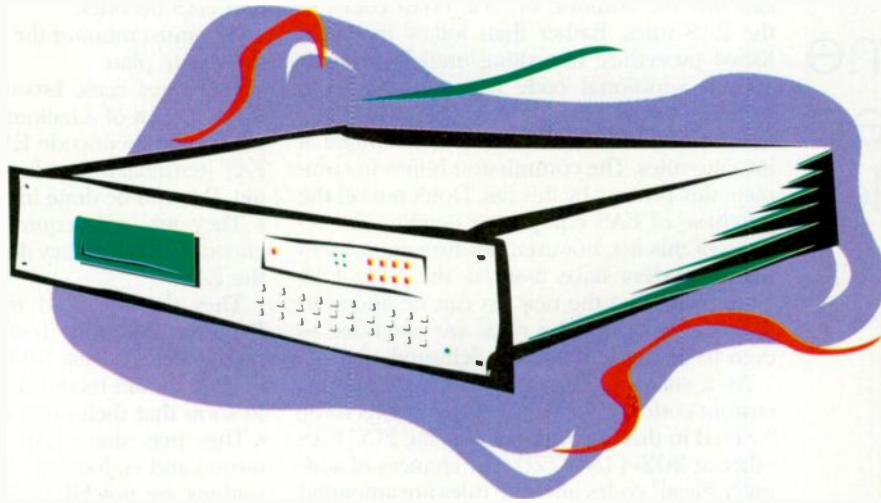
Dateline

Commercial stations in the following states must file their annual ownership reports or report certifications by Oct. 1, 1996: Florida, Puerto Rico, Virginia, Iowa, Missouri, Alaska, Oregon, Hawaii and Washington. Stations in Iowa and Missouri must file their license renewal applications by Oct. 1, 1996.

Harry C. Martin is an attorney with Fletcher, Heald & Hildreth, P.L.C., Rosslyn, VA.

[solutions]

can your codec do this?



“CDQPrima can!”



Remote Control: Using the powerful Ancillary Data MUX feature standard on CDQPrima models, you can control any RS232 and RS485 remotely controllable device from thousands of miles away. Just plug your remote control, keyboard, terminal or computer, into your local Prima ancillary data port, connect the device to be controlled to the far-end Prima and you're ready to go.



Backup STL: Using the silence detectors built into all Prima models in conjunction with up to eight (8) available isolated inputs, Prima can trigger user definable events based on the status of your main STL system. Prima can automatically take over when your primary aural STL fails.



Prima Logic Language: Use the power of CDQPrima™ to automatically re-configure itself to accept calls from up to three (3) different remote codecs. The most popular modes available on the CDQPrima, including single and multiple line ISO/MPEG Layer II, single and multiple line H.221, and G.722 can be detected automatically.

Send & Receive CD-quality Sound Over One [1] ISDN Phone Line!

- Best CD-quality stereo sound for radio broadcasters, recording studios, film, voice-overs & satellite operators
- 20 kHz CD-quality stereo sound with better than 89 dB dynamic range and .01% total harmonic distortion
- Exclusive MUSICAM® enhanced encoder algorithm is compatible with all standard ISO/MPEG Layer II decoders
 - Psychoacoustic tuning with results in real time
 - CD-quality sound over 2 ISDN B channels
- Cascade-proof mastering quality with up to 6 ISDN B channels at 384 kb/s
- AND MUCH MORE!

CDQPrima™

For information and your nearest dealer call:
Tel: 908-739-5600 Fax: 908-739-1818
Fax on Demand: 908-935-2777 Internet: <http://www.musicamwest.com>
MUSICAM USA 670 N. Beers Street, Building 4, Holmdel, NJ 07733



EAS Update

Some refined rules

By Leonard Charles

Leonard Charles is an engineer at WISC-TV, Madison, WI, and chairman of the SBE EAS Committee.

The clock ticks as the Jan. 1, 1997 EAS-implementation deadline nears. Feedback from manufacturers indicates that some broadcasters think this deadline will be pushed back once more. Another delay is unlikely, however.

Meanwhile, the FCC has decided that it will expedite the addition of local event codes to the EAS rules. Rather than follow its established procedure of waiting until local areas submit additional code requests, the FCC, working with FEMA and the NWS, will determine an all-inclusive list and then amend it into the rules. The commission hopes to complete this process by this fall. Don't put off the purchase of EAS equipment pending the release of this list, however, because equipment manufacturers have assured the SBE EAS Committee that the new list can be added to their devices once the rules are amended — even to equipment already delivered.

As a state or local area, you may suggest custom codes or local emergency events to be covered in this list by contacting the FCC EAS office at 202-418-1220. The chances of adding "official" codes after the rules are amended will be nearly impossible. The SBE suggests its list of local codes, which is published in its *EAS Primer*. This list is being reviewed by the three agencies for possible inclusion. You may find that an event unique to your local area is already covered in this list.

Another clarification that surfaced at NAB 96 involves the high-frequency (HF or shortwave)

broadcasters in the United States and its territories. International broadcasters are mentioned only once in the new rules, in paragraph 1.5.4(b)(9). Many questions have been raised by HF broadcasters and the FCC has responded with the following clarifications:

- HF broadcasters must install an FCC-certified EAS decoder.
- They must monitor the two sources listed in their state plan.
- They must cease broadcasting immediately upon receipt of a national EAS message containing the event code EAN, then wait for the EAT (termination) code to resume broadcasting. This can be done in the automatic mode.
- They are not required to have an EAS encoder, because they do not need to activate the EAS.
- They do not need to participate in the Required Monthly Test (RMT) or the Required Weekly Test (RWT).
- They should record the receipt of any tests to show that their equipment is working.
- They may share EAS equipment with co-owned and co-located stations, even if those stations are not HF broadcasters.

The SBE EAS Committee will post new, updated or clarified EAS information as it becomes available on the SBE web site at sbe.org. You may also E-mail the committee chair if you have questions. The address is lcharles@wisctv.com or click on the chairman's name under the EAS heading on the SBE web site.



If you do it in the studio, . . .

...you can do it with AudioVAULT®.

Unlike all the other competing products out there, only AudioVAULT® can do almost everything. It was the first Windows™-based studio system and is the most mature, stable and widely used software in the industry. It's not a pre-configured system. It's not bound by its designer's limitations. It doesn't dictate how you should work in the studio.

AudioVAULT is what you want, the way you want it.

A little now, or a whole bunch later. With AudioVAULT you can play carts, record liners and spots, edit, cut and paste, mix, play music, adjust levels,

go live, go automated, go both, capture feeds, create logs, adjust rotation, manage the news, generate traffic reports. And it's so easy to operate. In fact, your on-air staff already knows how.



From the world's most popular line of digital radio products, comes the world's most reliable digital studio solution - AudioVAULT. To find out more, or for a free demo kit, contact a Broadcast Electronics Digital Systems Consultant at 217-224-9600. Or visit AudioVAULT on the web at:

<http://www.bdcast.com> (e-mail: future@bdcast.com).

BE BROADCAST
ELECTRONICS, INC.

WORLD LEADER IN RADIO BROADCAST TECHNOLOGY

4100 N. 24th Street/P.O. Box 3606/Quincy, IL 62305-3606/(217)224-9600/Fax: (217)224-9607

Sharing programming? We have just enough



s p a c e.

How would you like to share programming coast to coast at a lower cost than ever before? Now you can – with a little more space. With our satellite services you can create your own network, increase programming quality at local levels, utilize state-of-the-art digital technology, and keep overhead low. Plus, it's all brought to you by people who understand your needs – the *radio-only* experts at NPR. Call us today at (202) 414-2626. Our satellite will increase your space.



NPR Satellite Services[®]
Link up with us[®]

635 Massachusetts Ave., NW., Washington, DC 20001-3753 • (202) 414-2626

Circle (42) on Action Card

(Not so) Remotes

Radio remotes are sounding better, costing less and getting easier to do than ever before.

By Flawn Williams

New technologies are making the radio remote not so "remote" anymore. The portability and reliability of today's audio equipment have combined with the growing availability of ISDN and other transmission systems to make the simple, high-quality and cost-effective remote a reality.



Long gone is the distant sensation of Edward R. Murrow's wartime reports from the rooftops of London or the big band broadcasts from hotel ballrooms or being able to tell by the sound whether your team was playing home or away.

Today you're more likely to treat your listeners to a full-fidelity remote from the Rock and Roll Hall of Fame in Cleveland, a stereo sportscast from the Super Bowl, a jazz brunch from a Singapore hotel or a riveting news report from Bosnia. The quality is *in your face*, no matter how distant the source.

Backhaul basics

Getting live audio back to the station so it can be a live broadcast is a large part of the challenge of radio remotes. For

Photo courtesy of Sennheiser Electric Corporation.

local originations, if you've got the gear and the available frequency clearance, RF pickups can work well. Where access to dial-up phone lines can be found, frequency extenders are still a useful alternative. But the maturing of Integrated Services Digital Network (ISDN) service across the country and around the world is making it the service of choice for moving audio in real-time from point to point.

At first, American rollout of ISDN lagged behind many other countries. Then, for a while, the terminal equipment was available but many regions couldn't get the necessary lines installed by their local telcos.

As of mid-1996, ISDN has progressed to being an accepted working tool. But when it comes to making audio connections with ISDN, you'd still be wise to take the advice of a certain U.S. president from the 1980s: "Trust, but verify."

Adventures in ISDN

For starters, there are many different options to select or reject when ordering an ISDN circuit. This is a predictable side effect of using a technology that is trying to be so many things to so many people. Voice telephony, computer data, high-quality audio and videoconferencing are just some of the tasks for which ISDN is used. But, for example, do you want your broadcast audio link interrupted by call-waiting beeps? Probably not. The manufacturers of ISDN audio codecs can give you good advice on what flavor of ISDN service their devices need. Work is also under way in the telco industry on codifying the service configurations required by different terminal equipment.

The dozens of different digital audio encoding algorithms available today can be intimidating, as well. In a few short years, the original 7.5kHz mono G.722 codecs have been joined by MPEG Layer

II (in several variant forms), ISO/MPEG Layer III, apt-x, Dolby AC-2 and others, in mono and stereo implementations and at various data rates. Stereo systems are further split into two modes: those that encode each channel separately (*discrete* or *dual-mono*), and those that use *joint coding*, in which audio common to both channels is encoded only once and "copied" to both channels at the receive end. (Joint stereo can provide greater coding efficiency than a discrete two-channel approach, although stereo separation can suffer slightly in some cases.)

Compounding this variety are two different basic data rates. Although ISDN is theoretically built around 64kb/s channels, some long distance service (LDS) providers pass only 56kb/s of user data, reserving the other 8kb/s for network signaling. This problem is steadily becoming less prevalent, but it's still worth confirming full 64kb/s bandwidth with your service providers.

If you'll be purchasing or leasing the codec and terminal adapter equipment for your studio and remote sites, the safe course is to pick a single manufacturer and configuration for all of your ISDN gear. This will mean fewer variables when making connections and will give you a better chance of getting problems solved with a single phone call. Many service bureaus also exist that can rent you the required hardware and help you set up ISDN circuits, either one-time or long-term, local or long distance.

But if you're willing to delve into other algorithms to try connecting to existing ISDN sites, a whole world of ad hoc remote audio sources opens up. For a quick taste of what's out there, get a copy of the *Audiobahn* list (currently about 300 listings) distributed by Jay Rose of the Digital Playroom. You can E-mail Jay at jcrose@pop.tiac.net. The list notes which model of codec each site employs, so it's also helpful for contacting real users to get their opinions of different gear.

As the market matures, vendors are taking steps to improve their units' ability to talk to other brands. Compatibility is still far from automatic, though. It requires hands-on coordination for each call to a new location.

For those interested in feeding live stereo music from remote locations, *inverse multiplexing* (IMUX) systems are available that can combine up to three basic-rate interface (BRI) ISDN lines to obtain a data rate of up to 384kb/s. BRI is the standard flavor of ISDN service offered to most nonPBX terminations. It includes two "B" or *bearer* channels of 64kb/s each, plus a "D" or *data* channel

of 16kb/s, used for call signaling – hence the nomenclature 2B+D is also used when describing ISDN-BRI. A 384 or 256kb/s link (on three or two ISDN-BRI lines, respectively) can transmit remarkably robust stereo. But even a 128kb/s link on a single ISDN-BRI line (which still involves IMUXing of two B-channels) can sound pretty good for a single-hop stereo path using Layer III encoding. And respectable mono voice feeds can be done on a single 64kb/s B-channel. (See "Using ISDN for Remotes," September/October 1995.)

Perils of the two-way street

Will your remote broadcast be self-contained from the remote site or will the



KFJC, Los Altos, CA, is a college FM station that does frequent remotes on a budget using ISDN lines for backhaul. (Photo courtesy of Mackie Designs.)

site interact with sources from home base? ISDN makes interactive remotes more cost-effective than ever before. Because ISDN is a full-duplex technology, the backfeed from the station to the remote site is provided at the same fidelity as the feed from the site.

But the data processing involved in the coding systems can introduce throughput delays that may approach a half second for the full round trip. Different algorithms introduce different amounts of delay, with a substantial range of possibilities currently available. In addition, an individual algorithm that offers a variety of transmission data rates may introduce longer delays for its lower data rates. Of course, on long-distance remotes, delay times are further extended by longer terrestrial transmission paths, and any satellite links will add about a quarter of a second apiece.

Any delay over a few hundredths of a second can make a full-mix backfeed from the studio unworkable for monitoring at the remote site, because the echo will confuse the remote talent. Therefore, be prepared to implement "mix-minus in both directions," and make sure you have a field mixer that will let you create

a headphone mix at the remote site that combines the backfeed signal with the local program mix.

Note that although the use of a higher bit rate usually implies less coding delay, ISDN connections that involve IMUXing of more than one B-channel may actually create *longer* delays. This is because the receiver uses additional buffering to accommodate the possibility of different paths being taken by the multiple B-channels. So in the quest for better fidelity, you actually may be elongating a path's throughput time.

These delays also interfere with the natural timing of conversational interaction between the studio and the remote. If your plans include interactivity between your studio and the remote site, consider all the alternative codecs and paths available, making throughput delay one of your primary criteria of choice. Another way to lessen (although not eliminate) the delay problem is to abandon the high-quality ISDN return path and instead use a standard dial-up phone line for the backfeed. The monitoring quality at the site won't be as good, but the timing will be more natural and an overall better program may result.

The POTS alternative

One of the newest transmission systems available is the so-called *POTS* (Plain Old Telephone Service) *codec*. These systems combine an audio codec with a 28.8kb/s analog modem and connect via standard analog telephone (POTS) lines. Here again, different systems offer a range of throughput delays, but some can have a low enough delay to allow conversation without perceived echoes, and possibly negate the need for "mix-minus" assignments. More important, they can also save you the wait and the expense of getting an ISDN line installed at the remote site.

POTS codecs can provide reasonably good voice-quality audio remotes over a single analog dial-up phone circuit. Noise and distortion are lower and frequency response is wider and more natural than a direct analog feed into the same phone line. On some units, if the phone line cannot support a full 28.8kb/s feed, a lower fidelity connection will be provided. For example, one such system delivers 7.7kHz audio bandwidth at 28.8kb/s and 5.7kHz on a 19.2kb/s path – still better than analog use of the line, even with a frequency extender.

POTS codecs cost about as much as their ISDN brethren, so there's not much savings to be squeezed out of the equipment budget. The currently available

(Not so) Remotes

systems are not compatible with one another (nor with other ISDN or Switched-56 codecs), so you need two of the same units - one for each end of the POTS-line path. The ability to use a single existing phone line for broadcast-quality audio should greatly expand your possible remote sites, however.

Could you be even more portable by combining one of these codecs with a cellular phone connection? Sorry, we're not quite there yet. Cellular phones with modem ports typically don't support data rates higher than 9.6kb/s, and the current crop of POTS codecs need twice that bandwidth to function even marginally.

Life on the noise floor

For connecting to remote sites within several miles of your station (or via a fixed relay point), consider another emerging technology: spread-spectrum wireless digital transmission. These techniques are used by uncensored, low-power wireless modems in

recently established spectrum at 902-928MHz and 2,400-2,485MHz. They can provide clean capture of signals using carriers that barely pop up out of the noise floor.

Various models support synchronous data rates of 64, 128 or 256kb/s in the 902-928MHz region (for use with the



During Super Bowl week last January, MJI Broadcasting established an ad-hoc network of stations for sports-talk programs fed directly from Phoenix via this ISDN codec/TA setup. (Photo courtesy of Comrex Corporation.)

same data-compression codecs employed in ISDN transmission) or at higher data rates in the 2,400MHz band (for

uncompressed audio feeds). When used with a directional Yagi antenna and line-of-sight path, these units can be used across distances of 10 miles or more. Combined with appropriate digital audio codecs operating at those data rates, you could have a broadcast-quality audio link with no installation or usage charges.

Some systems feed wideband audio in only one direction (although the feed direction on the link can be easily switched), while others are inherently full-duplex (two-way).

Remote recording

Of course, not everything your staff wants to put on the air from a remote site needs to be carried live. A substantial amount of new technology has been applied to equipment used in gathering and producing audio in the field.

Among these are new portable audio recording systems, including the DAT and NT-1 (or "Scoopman") tape formats, the MiniDisc format, the ADAT and DTRS formats of modular digital multitracks (MDMs) and a variety of portable hard-disk recorders.

Among the latter you'll find a wide range of fixed, removable or PCMCIA drives. Some of these systems allow field editing,

Remote Audio

When Quality,
Comfort and
Experience
are Important.



GBH Mobile

John Voci
GBH Mobile
125 Western Avenue
Boston, MA 02134
617 492-2777 x2302
617 864-7927 fax

Circle (45) on Action Card

RF ENGINEERS/ MANAGERS

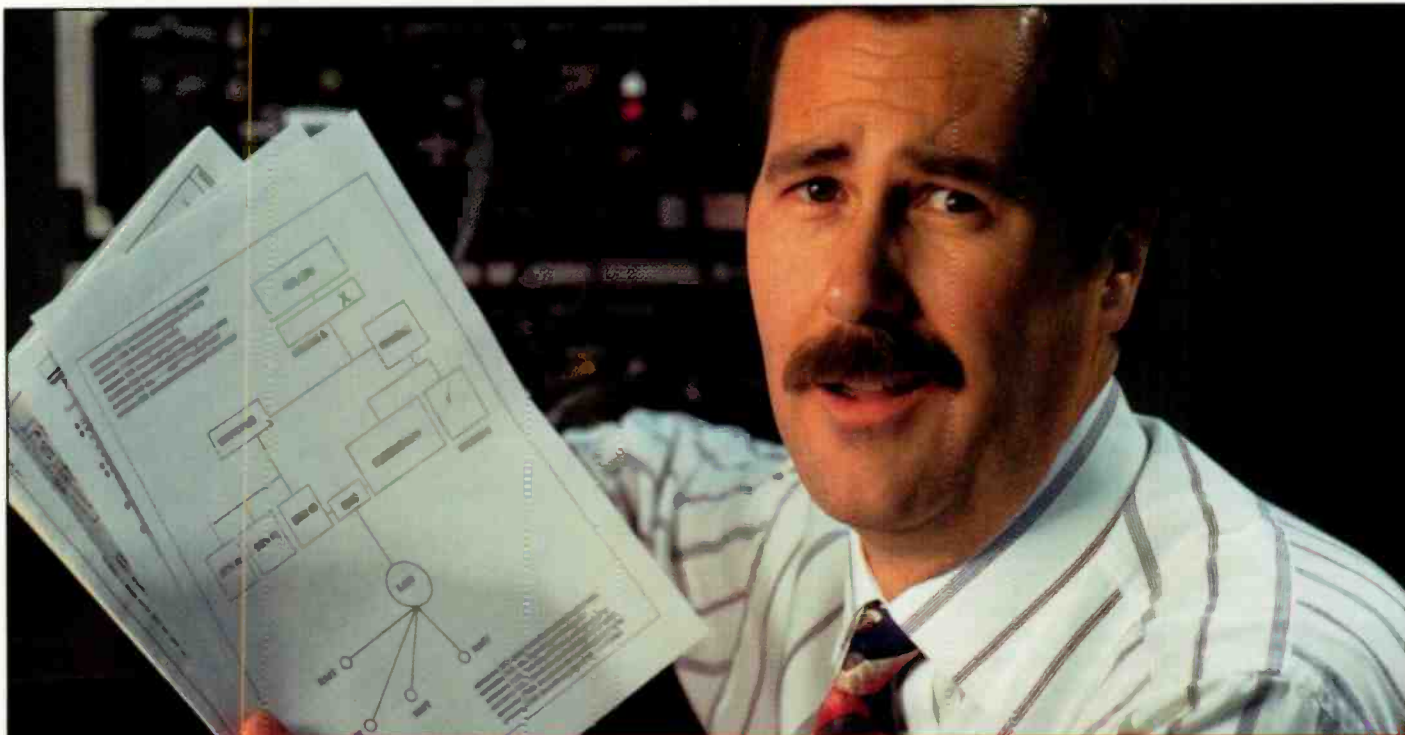
AzTech, a fee-free service, has clients involved in development, manufacture and marketing of Cellular, PCS, GPS and other communications systems. They seek experienced RF Engineers working across a wide range of frequencies:

- *Circuit and Module designs for Satellite receivers
- *Power Circuit Design
- *Power Supply Design
- *GPS Analysts
- *Frequency Converters/Synthesizers
- *RF/Analog IC Design
- *Cellular System Design
- *Firmware Design

All applicants need technical BA/BS/MS, good communication skills, and a strong desire to expand their horizons in RF circuit, systems or cellular design.

AzTECH Recruitment Co. Contact AzTech at 602-955-8080. or E-Mail us on aztech@amug.org or visit our Web Site at <http://www.azrecruit.com>

Circle (46) on Action Card



TRYING TO MAKE SENSE OUT OF DIGITAL AUDIO SYSTEMS?

There is a better way!

It's not easy trying to understand the conflicting claims made by different manufacturers when you're buying a Digital Audio On-Air & Production System, whether a single, multipurpose Workstation or an integrated, multiple studio setup. At one end of the spectrum, you're faced with a wide variety of simple "Cart Machine Replacements," and on the other, products whose complexity confounds even the most seasoned broadcast engineer.

The ENCO DAD486x Digital Audio Delivery System solves the problem! DAD is simply the most powerful On-Air & Production system available, yet its uncomplicated approach and inherent ease of operation makes immediate sense to any user.

- Intuitive On-Screen displays that are immediately familiar to operators. Optional Touchscreen makes operation quick and easy
- Complete On-Air flexibility with various "Virtual Machines" for Live Assist, Automation, or Satellite Programmed operations. Interface to other equipment plus scheduling and billing packages. Seamless segue and voiceover transitions sound "Live" in all modes. Script capabilities can be included.

- Full production capabilities, including Graphic Cut & Paste Assembly Editing. Includes analog and digital inputs/outputs. Interfaces with most multichannel editing packages.
- Runs on DOS for proven speed, reliability, and compatibility with other equipment; not an operating system originally intended for multimedia applications. This is a professional tool meant to produce efficiency and profits, not entertain the staff!

- Operates on common off the shelf computers and network architecture. You won't be locked into proprietary hardware that may not be available whenever you need service.

- No monthly licensing fees, DAD is an outright purchase. Software upgrades are free for the first year.

- DAD is proving itself everyday in radio and TV facilities worldwide.

*Call Your DAD486x Dealer or ENCO
For Complete Information*

 **ENCO**
SYSTEMS, INC.

24403 Halsted Road, Farmington Hills, MI 48335 USA
TEL: 800-362-6797 or 810-476-5711 FAX: 810-476-5712

(Not so) Remotes

and a few even incorporate a codec and an ISDN terminal adapter for real-time or file-based transmission back to the studio. New battery chemistries and out-board battery packs have also eased the hassles of keeping portable recorders powered in the field.

A variation of the portable hard-disk recorder is the "laptop audio workstation," which can be purchased as an off-the-shelf item or assembled by the user from commonly available, general-purpose computer hardware and software.

New MiniDisc field recorder features include a mono record option that doubles the recording time more than two hours per disc, plus some nifty high-speed playback options that make dubbing, logging and locating particular moments much easier. Remember, however, that MiniDisc recorders are susceptible to disruption of their recording due to jostling or vibration. A memory buffer helps protect MiniDisc playback from these motion-induced problems, but in most models, the recording process is not similarly protected. If you do all your field recording without moving the recorder, this should not be a worry.

Continued on page 35

Extreme remote: Bosnia

By Leo del Aguila

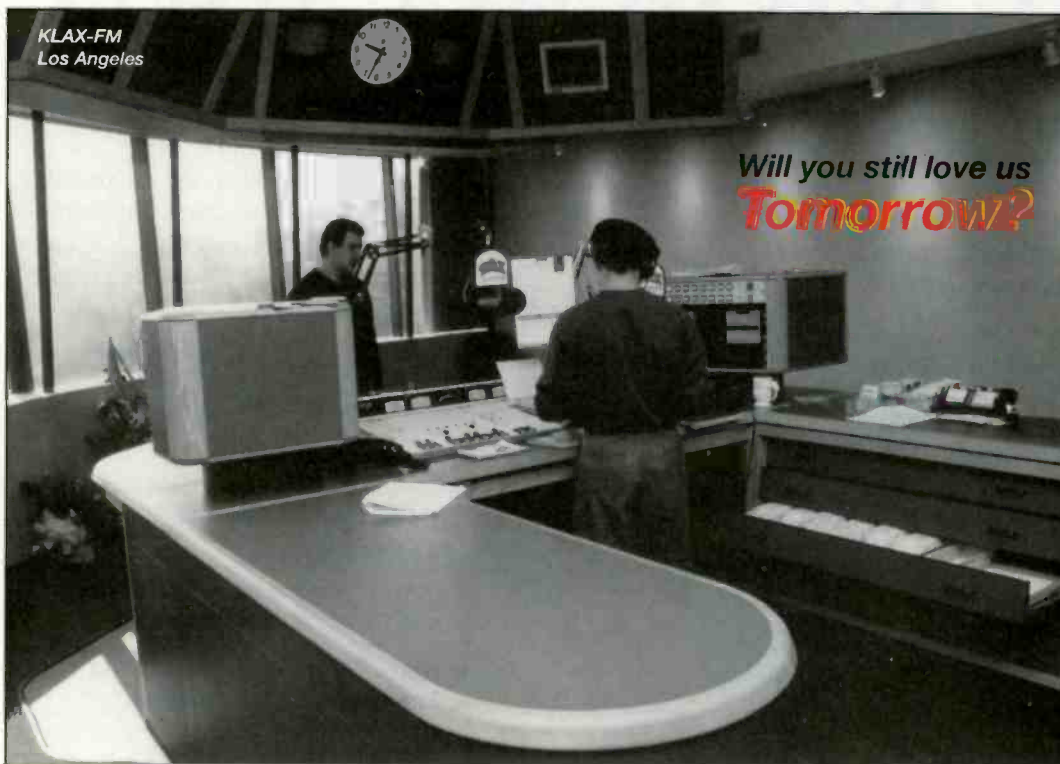
From the moment I was assigned to set up the technical operation for NPR's coverage of NATO's implementation of the Dayton Peace Agreement in Bosnia and Herzegovina (BiH), I tried to prepare for every possible scenario our crew (three reporters, one producer and myself) would face while in the field. This included situations like traveling with U.S. troops on reconnaissance and establishment-of-perimeter missions, interviews with local citizens and officials, visits by high brass and dignitaries and impromptu press briefings. Added to this was the lack of reliable communications and electrical service.

Beyond simple versatility, however, was the commitment to audio excellence by NPR's engineering and news departments. It paid hefty returns on this assignment, as the sonic quality of all the reports from BiH brought radio listeners to this military theater with vivid realism.

From past experiences in similar environments around the world, I knew that in order to keep up with the fast pace of unfolding news and programming deadlines, our field recording, production and communication equipment had to be compact, rugged and reliable. Most of this gear also had to be battery-powered. User-friendly operation was a plus. In case nontechnical members of the crew were called upon to operate technical equipment. (Under extreme field conditions such as these, jurisdictional and job-description boundaries are sometimes overlooked!)



Portable uplink feeding the Inmarsat AOR-E satellite through a window in a Tuzla, BiH apartment providing POTS or ISDN connectivity to the U.S. Codec and fax machine are on tables at rear.



Studio furniture is one decision you'll be living with for a long time. If you make it Murphy, you can count on a relationship that will last for years. Durability, deliverability and thoughtful design—all part of the enduring elegance of Murphy Studio Furniture.

MURPHY
STUDIO FURNITURE

▲ 4153 N. BONITA STREET ▲ SPRING VALLEY, CA 91977 ▲ TEL (619) 698-4658 ▲ FAX (619) 698-1268 ▲
▼ (800) 307-1060 ▼ Email dwmurphy@electriciti.com ▼ URL <http://www.electriciti.com/dwmurphy> ▼

Our service goes beyond design and fabrication, to total management of your concept's execution.

Circle (47) on Action Card

Leave The Rest Behind

PROGRAM MIXER, HEADPHONE AMPLIFIERS, PA FEED, TELEPHONE, FREQUENCY EXTENDER, STATION

Travel light to your next remote.

The Codec Buddy is a high-quality remote mixer that will work with any delivery system from POTS to RPU to ISDN. The Buddy handles program mix, headphone feeds, communications, codec return, and PA feed...with a built-in one-line frequency extender as a bonus.

All of this in a rugged 8 lb. package for only \$1900!

COMREX
We make great connections



Actual size: 11.25" W x 11.5" D x 4.5" H

Call us for details
800-237-1776
<http://www.comrex.com>

COMREX Corporation, 65 Nonset Path, Acton, MA 01720 USA Tel: 508-263-1800 Fax: 508-635-0401
Email: info@comrex.com Fax-on-Demand: 508-264-9973 Toll-free: 800-237-1776 in N.A. or 0-800-96-2093 in the U.K.

Traveling light?

Checked baggage for this trip amounted to eight large cases — including our flack jackets and cold-weather clothing. We also brought aboard two "M" Satphones, one reporter's kit and two large carry-ons. Traveling with this much gear requires a detailed inventory (for insurance and customs purposes) and lots of stamina, because you'll have to handle it all yourself every step of the way. While this minimizes the possibility of losing anything in transit, we also knew there would be no skycaps at the curb in BiH.

Our first destination in BiH was the city of Tuzla. Getting there took us from Washington, DC to Zurich, Switzerland to Zagreb, Croatia where I got UN credentials, and then to Split, a beautiful city on Croatia's Adriatic coast — all in one 21-hour journey. In Split, we had to rest for a day due to a violent winter storm. We rented two four-wheel drive vehicles for the trek to Tuzla, and then loaded one vehicle with the gear and the other one with groceries and supplies. (We were well aware of the lack of food and basic staples in BiH.) The adventures we encountered on that road trip would fill many pages. Suffice it to say that it included the experiences of several normal lifetimes.

Two days later, we were greeted in Tuzla by a member of our crew who had already secured a comfortable apartment. It had an enclosed porch with windows facing the southwestern sky — a critical point, because the Satphone we brought to transmit our reports back to the United States would use a satellite located in that part of the sky.

Field recording

Most of the time, NPR reporters work on their own and are issued a kit which contains modified Sony TCM-5000s or Marantz PMD-421s (both audio cassette recorders), with either a beyerdynamic M-58 or Audio-Technica AT-835 microphone

(or both), plus appropriate cables and headphones. The network also provides them with laptop computers on which they can log into the NPR mainframe computer via modem.

Because NPR reporters are accustomed to getting the story on their own, an engineer's job in the field is complementary. By using more technically sophisticated equipment, and by acting as an "audiophotographer" — capturing those unique sounds, often nonverbal, that sonically portray times and places — the detail and impact of the reports can be dramatically enhanced.

A typical engineer's kit for this work includes a Sony TCD-D7 or -D8 DAT recorder (usually modified with outboard battery pack that uses four D-cells), a Neumann KMR-81 short-shotgun microphone, a Sonosax SX-M2 stereo mic/line amplifier, Sony MDR-7506 headphones, zeppelin windscreen, shock-mount, pistol grip and collapsible fishpole, plus a variety of cables and adapters, mic-mounting hardware, batteries, gaffers tape, pads, pens and labels, plenty of blank tape and spares of practically everything.

The reliable and high-quality KMR-81 and the SX-M2 are a nice complement to "consumer" portable DAT recorders. The SX-M2 has three gain settings, a low-cut filter, balanced XLR inputs and unbalanced (3.5mm stereo mini-plug) line output. It provides up to four hours of 48V phantom power from two 9V batteries.

The Sony TCD-D7's recording capabilities are vastly improved by this combo. Because its line input is being used (instead of its mic input, which consumes battery power faster) the outboard D-cell tray can power the D7 for up to 14 hours.



NPR reporters Tom Gjelten and Martha Raddatz in Tuzla, BiH, during a live interview with an NPR studio host in Washington, DC.

Field production

Some of the remote recording gear noted earlier performs double duty during the production process. A second Sony portable DAT recorder and a couple of Sony TC-D5 Pro II cassette recorders are added, along with a Shure FP-31 mixer,

New Products at ERI!



ERI®

- ▶ Your single source for antennas, filters, λ mounting, towers, lightning protection, grounding systems, engineering and installation services.

ERI® ELECTRONICS RESEARCH, INC. 812-925-6000

- ▶ Low Power FM antenna CP-II Series
2000 W input
Circular Polarization
\$1,175.00 for 2 bays
Ideal for Translator or Booster
- ▶ Lightning Spur Protection System
Top and Side mount dissipators
Measured dissipation values
Low impedance ground interface
Anode and Cathode grounding systems
Spur's unit price is \$300.00

Circle (49) on Action Card

October 10-12, 1996 • Los Angeles Convention Center • Los Angeles, California USA

RADIO AUDIO EXPOSITION

SHAPE THE FUTURE OF BROADCASTING ■ ENTERTAINMENT ■ PRODUCTION The Hottest Fall Event in the Hottest Market!

See the Products That Are Shaping Tomorrow—Today

Planning for the future requires an ongoing commitment to pioneering new ideas, new products, and new solutions for your business. And as technology constantly advances, you need to continuously evaluate the products, services and applications critical to your success.

The World Media Expo Radio/Audio Exposition is your best fall opportunity to do just that. Experience hundreds of hands-on demonstrations and compare the full spectrum of the newest and most innovative products and services for radio broadcasting and audio production.

From digital workstations, data broadcasting and the Internet to radio automation, transmitters, DAB and remote broadcasting—you'll find the methods, technologies and solutions you need to stay successful.

Tune-In to Value-Packed Conferences

World Media Expo '96 combines four leading industry conferences from NAB, RTNDA, SBE and SMPTE to form the industry's most comprehensive fall event.



**AT WORLD MEDIA EXPO'S
RADIO/AUDIO EXPOSITION,
YOU'LL FIND THE TECHNOLOGIES
AND SOLUTIONS TO MOVE
YOUR BUSINESS AHEAD.**

Fax this completed form to: (202)429-5343

BER

Please send me information on World Media Expo Attending Exhibiting

Name _____

Title _____

Company _____ Call Letters | | | | AM FM

Address _____

City _____ State _____ Zip _____

Country _____

Phone _____ Fax _____

E-Mail Address _____

FOR MORE INFORMATION

For up-to-the-minute registration, exhibitor and program details:

- Visit the NAB Website at <http://www.nab.org/conventions/>
- Call the appropriate organization's Fax-On-Demand services (listed below) from the touch tone handset of your fax machine and follow the voice instructions.
World Media Expo (301) 216-1847, NAB Radio Show (301) 216-1847
RTNDA Conference (503) 721-5867, SBE Conference (301) 216-1853
SMPTE Conference (301) 216-1850

For more information on attending, call (800) 342-2460 or (202) 775-4970
To learn about exhibiting at World Media Expo call (202) 775-4988

WORLD MEDIA EXPO—RADIO/AUDIO EXPOSITION
October 10-12, 1996 • Los Angeles Convention Center • Los Angeles, California USA

Circle (27) on Action Card

**WHEN YOU'VE GOT
SOMETHING THIS GOOD, YOU CAN'T
HELP BUT BLOW YOUR OWN HORN!**

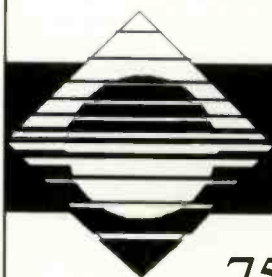


There comes a time when a company knows it has a break through product. And for Energy-Onix, that time is now.

The **ECO 15 - 30**, Single tube, High Power Grounded Grid Transmitters up to 32KW.

- ◆ Solid State driver up to 2 KW serves as emergency transmitter
- ◆ Straight Forward field proven control system
- ◆ VSWR Protection & More

- ◆ BEST OF ALL THEY ARE ECONOMICALLY PRICED!
- ◆ ECO TRANSMITTERS ARE AVAILABLE FROM 2KW



Energy-Onix

752 Warren Street

Hudson, New York 12534

518-828-1690 Fax: 518-828-8476

E-Mail:energy-onix@energy-onix.com

"The Transmitter People"

Circle (29) on Action Card

a Shure FP-22 headphone amplifier and a second set of MDR-7506 headphones for simultaneous monitoring by the engineer and the reporter or field producer. When no mics are open and the room is quiet, a Fostex 6301 personal monitor speaker may be employed in lieu of headphones.

For this kind of news coverage, where you may have to set up shop in the back of a car, an Army tent or a funky hotel room, the field production approach has to be simple. The process, after recording the day's events, goes something like this:

- the conceptualization of the report;
- listening and logging of recorded tape (absolute time for DAT or counter numbers for cassette);
- drafting of script;
- dubbing of sound bites and ambience beds from field recordings;
- content editing (with field producer or network editor via fax, POTS or Satphone);
- recording of reporter script.

The individual, edited elements are then transmitted back to the network HQ on ISDN via Satphone (typically using the 24kHz-sampled ISO/MPEG Layer II coding provided by the Musicam USA CDQ-1000 codec). The portable uplink is a California Microwave LYNXX Transportable Inmarsat-B earth station, equipped with the high-speed data (HSD) port, which provides full-duplex data calls at 56 or 64kb/s in addition to standard POTS-type analog service for voice or fax. Standard calls are billed at \$5/min, while HSD calls cost \$16.50/min.

The final fixing and mixing of the reporters' stories is done back at the network studios, and the pieces are then placed into various daily news programs and distributed to hundreds of broadcast stations across the United States. (This distribution adds another generation of Layer II coding, but there does not seem to be any audible problems from cascading.)

In many cases, the programs are also carried on *America One*, the US public radio channel carried in Europe on the Astra DBS service. This allows reporters in Europe to occasionally hear their work while they are still on location — a welcome, recent change that many U.S. broadcast crews are enjoying as a result of increased international distribution of American broadcast media.

The availability of high-quality, reasonably priced and reliable field equipment coupled with the numerous methods of digital audio backhaul make hi-fi radio remotes possible nowadays from anywhere — even the most extreme, hostile or inaccessible locations on the planet. □

Story and photos by Leo del Aguila, a bureau engineer for National Public Radio based in Los Angeles.

(Not so) Remotes

Continued from page 28

Microphones for the field


Advances in microphones are finding their way into field equipment. Improvements in the pickup patterns, off-axis response, output levels and handling-noise rejection of shotgun and short shotgun mics are welcome examples. Enhancements among the hand-held omnidirectional mics preferred for most reporter work include new designs, increased ruggedness and higher outputs.

Wireless microphones have also seen significant improvements in reception-reliability and range, audio fidelity, transmitter/receiver size and battery life. In addition, the growing selection of single-point stereo microphones also makes it easier for reporters to record events and ambiances in stereo.

Portable mixing

Need to create a mix-minus for sending to your ISDN codec? Even small tabletop mixers (less than a square foot in size) now have multiple buses or aux sends that can be applied to such purposes. Need to send a mic-level signal to a PA system or press mult and maintain separate level control? Several mixers are purpose-built for just these kinds of applications, and a few codec manufacturers have integrated codecs, terminal devices and/or small mixers into one- or two-box portable solutions.

For those multimed situations where there's no telling who will speak next, an automatic mixer can help. These mixers are continuing to improve in quality while coming down in price. But it takes a lot of processing power and programming intelligence to do this kind of mixing smoothly. Unlike sound-reinforcement applications where occasional closure of all inputs or missing the first part of a word may be tolerable, broadcast audio makes more stringent demands on an automatic mixer. So audition an automatic mixing system carefully, preferably with headphones, to see if it is suitable for broadcast use.

It's comforting to know that remote broadcasts are as much in radio's future as they are in its past. Even if you do remotes from the same venue over and over, each event will have a different challenge. If you prepare well for those challenges, remotes can be as much fun for you as they are for your listeners. 

Flawn Williams is a bureau engineer for National Public Radio, based in Chicago.



For more information on radio remote equipment, circle (102) on Action Card.

No Matter How You Play It, You'll Have a Winning Hand.



Intraplex

Intraplex, Incorporated
3 Liberty Way
Westford, MA 01886-3636 U.S.A.
TEL: (508) 692-9000 FAX: 2200
England TEL: +44 1442 870103 FAX: 870148

Play the LMA or DUOPOLY card. Intraplex digital audio multiplexers let you deliver programming to multiple stations from a single consolidated studio.

Or play the STL card. Radio stations and radio networks are saving money while enjoying higher audio quality by using Intraplex equipment for STL, LMA or networking applications.

Many radio stations have already chosen Intraplex for their LMA, DUOPOLY, or STL transmission solution. When you choose Intraplex, you'll get the benefits of dealing with the industry's digital transmission leader and the flexibility to handle all your communications needs.

Why gamble? Call for our free booklet on radio stations already using Intraplex. In it, radio professionals give their own reasons for choosing Intraplex for a quality transmission solution. **Intraplex, Inc.**
(508) 692-9000. In Europe, +44 1442 870103.

Web Address <http://www.intraplex.com>

Circle (30) on Action Card

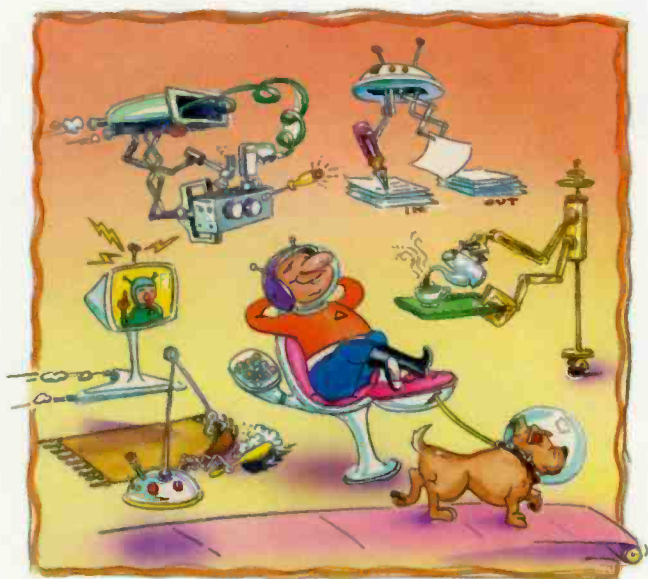
BE RADIO, July/August 1996 • 35

Unattended operations

Fully automated operation is now legal — but with some important caveats.

The FCC's new rules on unattended operations allow broadcasters unprecedented freedom in automating their stations. To do it right, however, some appropriate new equipment is required, and a few optimal items are not yet available. There are also some important new procedures to be followed.

By Chip Morgan



"Who's in charge around here?" asked the FCC inspector. "I am," replied the 10-year-old boy sweeping the floor. The inspector glanced up at the computer display indicating modulation peaks at 98%, day pattern "ON" and common point at 4.1 amps = 100%. "Looks like everything's OK at the transmitter. Could I see your ID, please?"

These days, all you need to operate a broadcast transmission facility is a system that monitors specific parameters, notifies you when something is wrong and shuts down the transmitter if you don't fix it in three hours. You don't need an operator on duty and you don't even need an operator's license. In the following paragraphs you'll learn about the new FCC rules on this subject, as well as how things got to where they are today. You'll also find some recommendations to keep your station legal and on the air without duty operators.

How it all started

Way back in the days of crystal radio, many of the on-air performers were also engineers. Not surprisingly, however, most of these people were far better at engineering than performing. Propeller-heads owned and operated radio stations. Later, when business owners realized the power of the ether, they started buying fledgling stations or building their own — so they could advertise.

With an influx of operating capital, the new owners hired and trained engineers to build and maintain the facilities. Radio prospered and became big business in the '30s and '40s. Transmitters grew larger and more complex. At the same time, the studios were becoming much more sophisticated. Radio stations needed transmitter engineering staffs to ensure maximum coverage and reliability and studio engineering staffs to ensure proper operation of the studio equipment. Radio was complicated. It involved live broadcasting, multiple formats, network affiliations and complex production needs.

When new technology combined radio with pictures, many of these engineers moved into television. The older radio folks who stayed in radio tended to work at transmitter sites while the younger ones worked in the studios as board operators. Meanwhile, radio station owners looked for ways to cut costs as revenues decreased. Manufacturers introduced equipment that allowed simple radio stations to be operated by remote control. This allowed the studio engineers to do the work previously done by the transmitter engineers.

Forward into the past

By 1950, improvements in telephone line quality and increased success in the sales of radio time dictated that studios should be built in prestigious locations rather than out in a field with the antennas. Newly built FM transmitters were often the first to be operated by remote control. Especially at smaller stations, engineers were expected to perform

double duty as studio and transmitter operators. With this change in technical operation, extra control and monitoring equipment became more common at the studios (because the FCC required it).

When records and locally produced shows became more popular than network programming in the '60s and '70s, it wasn't unusual for disk jockeys to run the mixing console except in the largest or unionized stations. Remote control of the transmitter was added to disc jockeys' responsibilities especially if they had a "first phone," allowing them to control the transmitter at lower-powered stations. This eliminated the need for engineers at studios except for maintenance.

By the 1980s automation and satellite programming had become a common way for stations to reduce programming costs. Because there was now little or no need for talent at the station, and the talent also served as an engineer, who would run the transmitter? The FCC still required an operator on duty. In fact, that person was required to make operation of the transmitter top priority, with programming taking a secondary position.

Owners began to try various semi-FCC-compliant schemes including using answering service operators or other 24-hour businesses to act as transmitter operators.

In October 1995, the FCC finally acknowledged that many stations saw no value in human transmitter control (or human operation of anything at the station, at least for some dayparts). By then, technical stability of equipment was reliable and an automatic system was more capable of determining an interference condition than the average disk jockey. The commission, therefore, eliminated all the operator-on-duty rules. A station owner could shut the door at the end of the day, and the station could run by itself until the next person came to work.

Moving into the 21st century

If you could have the ultimate unattended operation, what would it look like? First, it would have to automatically comply with all FCC regulations. Second, it would have to require minimal intervention for normal operation. Third, it would have to keep an accurate record of what happened. And fourth, it would have to be capable of obtaining human help when things got wacky.

The bad news is that from an engineering standpoint, many of the critical functions of fully unattended operation are just now being developed. But there are a few systems that already provide the capability or can be modified to provide the capability needed.

There may be added savings at smaller stations from replacing older transmit-

ter and remote-control systems with more modern designs. Older transmitters without automatic VSWR reduction or overload protection may literally burn up during a failure event. If there's no staff member on duty or listening when this happens, the fire department may be the first to know of the problem.

A simple and business-savvy way to deal with problems is to use backup systems. Often when a failure occurs, it can't be repaired within the aforementioned three-hour window even if your engineer sleeps at the transmitter. The smart solution is to have a complete backup transmission system that is tested

and ready for instant use. When the main system fails, the backup system automatically comes on-line and engineers are notified. For the bean counters, the advantages are obvious. More physical facility means higher property value; less off-air time means more revenues; and sad but true, investment in backup systems is cheaper in the short term than investment in engineers.

The three-hour limit for correcting problems that might result in interference applies even if an operator is on duty. In addition, all stations must have the capability to shut down within three minutes upon FCC request. The old fail-

ONCE YOU'VE
SET THE STANDARD,
THERE'S ONLY
ONE THING TO DO



RAISE IT.

Ward-Beck **RENAISSANCE** Series consoles once again set the standard for today's desktop radio environment. • They offer easy integration with automation systems; modular units to make expansion and service easier; 4 telco send outlets; 8 to 24 input channels; live, live assist and walk-away operating modes, and more. • Once you've seen the quality of Ward-Beck, you'll understand why Renaissance is the first choice of discerning radio engineers the world over. • Call toll-free 1-800-771-2556 or write, Ward-Beck Systems Ltd., 841 Progress Avenue, Scarborough, Ontario, Canada M1H 2X4. In Toronto call (416) 438-655C or fax us at (416) 438-3865.

W A R D — B E C K S Y S T E M S L T D .

Circle (8) on Action Card

Unattended operations

safe rule no longer applies, however. Dial-up control systems are acceptable.

Operating power, mode of operation, modulation levels, tower lights and AM DA parameters must be monitored. The

A simple and business-savvy way to deal with problems is to use backup systems.

FCC doesn't say how often these need to be monitored, but it's recommended that a log be kept either automatically or by operators. The modulation monitoring requirement is new (primarily because modulation monitors were not even required in recent years). Transmission system inspections by the designated chief operator are still required, but they don't have to be logged and can be done on a "periodic" rather than a weekly basis.

One of the primary motivations be-

hind the Emergency Alert System (EAS) was to make it fit within the context of a fully automated environment - something the EBS could not do. The design and programming of a station's EAS system is an integral part of any unattended operations plan.

Things to keep in mind

One fundamental rule has not changed: Licensees are still responsible for operation of their stations. You must monitor tower lights at least once a day or have automatic alarms. If you establish a new control point, you must notify the FCC within three days. Directional AM stations must still have a working antenna monitor. A station log is still required. A designated chief operator is still required. A main studio is still required.

Operating staff should be trained in the basics, such as how to find the transmitter site, how to get in the building, how to manually turn it on or off and how to take basic readings. In an emergency, anyone with a basic familiarity can perform technical functions while under the direction of an engineer on the telephone.

What lies ahead?

With today's proliferation of multiple stations under one roof, and the subsequent demands on all personnel at such facilities, having a computer do the

mundane tasks of monitoring and controlling transmitters makes good sense.

Most of today's broadcast transmitters aren't set up to be tuned or adjusted by computers, but there's no reason they couldn't be. As the jobs in radio engineering become even less glamorous (were they ever, really?) it won't be unusual to see a bunch of computers running the engineering department. After all, they've been running the programming department for years!

Of course, both departments will still benefit from human oversight and intervention during crises. But if day-to-day operations can be automated, operating costs are reduced, reliability can be increased, reaction time may be shortened, and the station's human resources can be better applied to those higher-level and creative tasks that keep radio interesting - and which machines will never be able to perform.

Chip Morgan owns Chip Morgan Broadcast Enterprises (CMBE), a broadcast design, systems integration and station fine-tuning firm based in Sacramento, CA.



For more information on transmitter remote control, circle (103) on Action Card.

HNAT HINDES inc



The UM-2000 is a self contained split band stereo FM processor, with AGC and an **-ultra transparent-** digital stereo generator. Designed to give you concert quality, at a price you will like.

Contact us for details and dealer information.

audio
processing
"hnaturally"

HNAT HINDES inc

42 Elaine Street, Thompson, CT
(860) 935-9066, 935-4242
Fax: (860) 935-9919

<http://www.hnat.com>

QEI
QUICK-LINK II
CALL YOUR FAVORITE
DISTRIBUTOR
OR QEI
FOR MORE
INFORMATION

NOW SHIPPING

**E
V
O
L
U
T
I
O
N**

Circle (11) on Action Card

USADR pulls out of DAB field tests

Field tests of proposed U.S. DAB formats will take place without the participation of USA Digital Radio's (USADR) AM and FM IBOC formats. The proponent withdrew its systems from further testing by the Electronic Industries Association (EIA) and the National Radio Systems Committee (NRSC) after negotiations on an agreement between USADR and the testing groups broke down.

One apparent sticking point was USADR's unwillingness to subject the technical details of its systems to further scrutiny (although EIA sources claim that similar language in agreements for the earlier round of laboratory tests drew no such complaint from the proponent). USADR also found fault with EIA's plan to compare the results of IBOC formats with non-IBOC formats in making its final recommendations to the FCC.

.....
Datacasting tests begin

The NRSC has begun a comprehensive series of laboratory tests for high-speed FM subcarrier data transmission systems at the NASA Lewis Research Center in Cleveland (the same site used for the EIA/NRSC lab tests for DAB formats). These systems are designed to allow FM broadcasters to implement revenue-producing or program-enhanc-

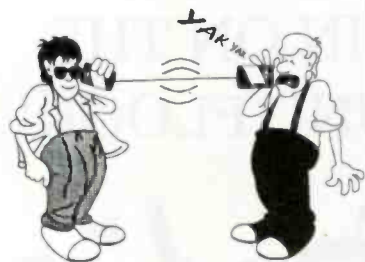
ing datacast services in the future, using existing subcarrier spectrum.

Three systems are being evaluated: the FM Subcarrier Information Service (FMSS) from Digital DJ/NHK, the High-Speed Data System from Seiko Communications, and the Subcarrier Traffic Information Channel (STIC) from the Mitre Corporation.

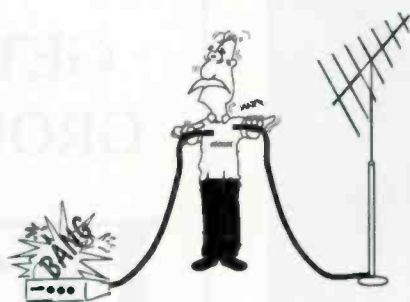
Meanwhile, Digital DJ has announced that it will begin commercial datacasting service in the San Francisco area on KPIX-FM (95.7MHz). KPIX will provide a variety of text and graphic ser-

On-line radio update

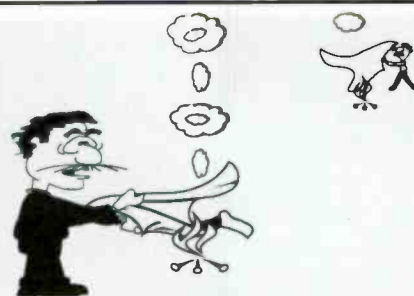
- NetRadio Network has introduced NetCompanion, an web browser that includes the capacity to create a personal audio program stream that can be built from a menu of music formats and news services.
- Audio Highway (formerly Information Highway Media Corp.) is developing a hand-held device that will allow users to select, store and playback audio content via the Internet, accessed through broadband wireless service partners. <http://www.audiohighway.com>
- FirstRadio Internet, an Internet-only radio station based in Melbourne, FL, has joined the NAB. <http://www.firstradio.com>
- A new and expanded listing of RealAudio-enhanced sites is now located at: <http://www.realaudio.com/raguide.cgi>
- PC WEEK magazine's Online service has added PC WEEK Radio, an audio news service featuring daily commentaries and opinions from the editors of PC WEEK. It requires a RealAudio 2.0 player. <http://www.PCWEEK.com/Radio>



FIRST UNLICENSED SECURE COMMUNICATIONS



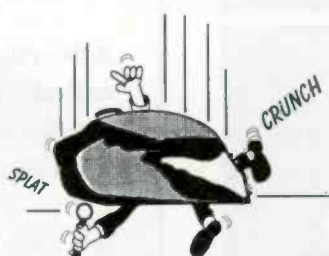
THE FIRST WIRELESS REMOTE



DIGITAL TECHNIQUES IMPROVED ACCURACY BUT SMOKE QUICKLY BECAME UNFASHIONABLE



WIRED SYSTEMS OFFER SOME IMPROVEMENT BUT ADD TO OPERATING COSTS



PRIMITIVE COMPRESSION TECHNIQUES OFTEN PROVED FATAL

QEI QUICK-LINK II

- ▶ LICENSE-FREE
 - ▶ WIRELESS SPREAD SPECTRUM
 - ▶ UNCOMPRESSED
 - ▶ DIGITAL STEREO TRANSMISSION SYSTEM
- FOR: STL/TSL, RPU & LMA AUDIO TRANSPORT



QEI CORPORATION, ONE AIRPORT DRIVE, P.O. BOX 805, WILLIAMSTOWN, NEW JERSEY 08094
 TOLL-FREE (800) 334-9154, LOCAL (609) 728-2020, FAX (609) 629-1751
 REACH US ON THE WORLDWIDE WEB AT [HTTP://WWW.QEI-BROADCAST.COM/](http://www.QEI-BROADCAST.COM/)

Business/People:

BUSINESS

The AudioVAULT digital audio storage system from **Broadcast Electronics**, Quincy, IL, has been chosen to control the Fountain of Rings in Centennial Olympic Park in Atlanta. During the Summer Games, the system, traditionally used by radio stations, will be programmed with musical selections, such as the Olympic theme song, the theme from *Chariots of Fire*, and *Santorini* by Yanni. The entire fountain project will remain in Atlanta following the Games as a gift from the Atlanta Committee for the Olympic Games to the city.

Sony Electronics, Park Ridge, NJ, produced a five-part videotape series on the care, handling, troubleshooting and manufacturing of videotape. The Media Forum Series includes the titles "Troubleshooter's Guide," "The Tape Handler's Guide," "Manufacturing the Magic," "Magnetic Magic" and "Magnetic Tape by the Numbers." For more information, call Leeann Lavin at 201-930-7321.



Harris Corporation's Broadcast Division, Quincy, IL, received an order for the world's first 2,000kW all-solid-state medium-wave (AM) broadcast transmitter, the Harris DX

2000. The Qatar Ministry of Information and Culture awarded the contract to Manco Contracting Company, Harris Broadcast Division's partner in Qatar.

TFT, Inc., Santa Clara, CA, announced an alliance with the Broadcast Supply Division of **Continental Electronics**, Dallas, to provide Emergency Alert System equipment to the broadcast market.

SYPHA, London, announced the publication of the fifth edition of the Tapeless Audio Directory. The new edition provides details of more than 300 systems, covering the range of professional tapeless systems, from cards and software packages to comprehensive turnkey systems. The directory costs \$24.95 (plus shipping and handling) and is available from NAB Publications, Washington, DC, 800-368-5644 or 202-429-5373; fax 202-775-3515.

PEOPLE

John George joined Continental Electronics Corporation, Dallas, as a district sales manager.

Neil M. Johnson was appointed vice president, engineering for Digital Courier International, Inc., Vancouver, BC.

Mary Higgins was named marketing communications manager for Switchcraft, Inc., Chicago.

CORRECTION:

Because of a reporting error, some information about the SADiE product line was incorrect as it appeared in the NAB wrap-up on page 27 of the May/June issue. The correct information is as follows:

"Using the new SADiE3 software, up to 10 24-track Octavia modules can be chained together for significant increases in processing power and storage capability."



<http://www.broadcast.net>

**THE
BROADCAST
INDUSTRY'S
HOME PAGE**

**GET IN ON THE
GROUND FLOOR!**

BE Radio

Advertise in BE Radio's new section called "The Gallery" and expose your products and services to more than 12,500 product buyers every issue.

It's easy...
it's cost effective...
and it's only a phone call away!
Call Steven Bell, National Marketing
Manager at 913-967-1848
for all the details today.

Reader Feedback:

DAB and the radio paramedic

Dear editor:

All I can say is "well done!" Your *BE Radio* piece on DAB ("Editorial," May/June 1996) has got to be the most concise evaluation of where things stand to date. And on one page, no less!

At the risk of sounding old-fashioned or trite, I've got to tell you that I miss short pieces in magazines that get right to the point.

Marty Sacks

Northeast Broadcast Lab, Inc.
Elkridge, MD

P.S.: Nobody seems to be able to answer a question that I have: Is the IEC-958 digital I/O format that is now showing up on broadcast equipment the same as SPDIF?

The editor replies:

Thanks for the nice letter, Marty. Your check is in the mail. Regarding your question, I guess I'll fill in for Dr. Radio this issue. (I'm not a real doctor, but I play one in the print media.) In any case,

you'll be sorry you asked. Trust me, I'm a doctor . . .

IEC-958 is a document that covers professional and consumer digital audio interconnections. Unfortunately, it blurs the boundaries between them. It describes both the AES/EBU and the SPDIF types of data structures and electrical formats, but (either accidentally or on purpose) it doesn't specify which data structure should be used with which electrical format. So simply saying a digital audio input or output is "IEC-958 compliant" doesn't really tell you whether it's AES/EBU or SPDIF - in fact, it could be a little of each! (There are actual devices out there like this.)

For clarity, the unofficial terminology of IEC-958 Type 2 has been applied to the SPDIF digital format. But SPDIF remains the most specific and widely used nomenclature for a now nearly universal and unambiguous format. So Marty, when you're referring to this consumer digital audio interface, keep using "SPDIF" and call me in the morning.

The best reference I've found for this subject is "The Digital Interface Handbook," by Francis Rumsey and John Watkinson, from Focal Press, Stoneham, MA, 1993.

FM Value Leaders ...at NAB '96

"DAVID-II" Processor / Generator \$1985



The "DAVID" tradition continues. A hot new *feedforward-PWM* processing section is coupled with flawless Digital Synthesis of the multiplex signal. Add the built-in, adjustable Composite Processor, and "DAVID-II" delivers the *density* you demand, and a sound that *keeps listeners tuned-in*.

FM Mod-Monitor Off-Air / Tunable \$2200



Accurate and affordable. Fully featured monitor displays total modulation, demodulated program audio, pilot and subcarrier injections. Removable Peak Flasher, plus alarms for loss of carrier and loss of program audio. Carrier level and multipath readouts.

FM "Relay" Receiver Single Channel / Tunable \$1100



A professional receiver for translator service. Composite and stereo audio outputs. Selectable IF bandwidth, carrier-loss and program-loss alarms. Front-panel metering and unique auto-mute and auto-blend functions.

Inovonics, Inc.

1305 Fair Ave. • Santa Cruz, CA 95060 U.S.A.
TEL: (408) 458-0552 • FAX: (408) 458-0554

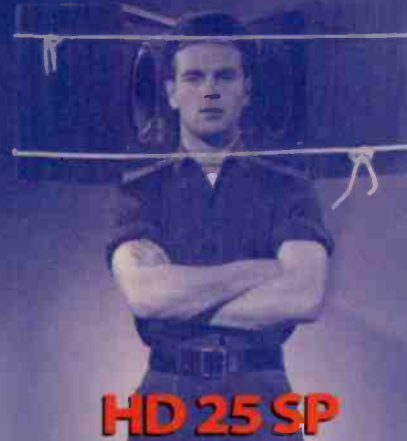


Circle (32) on Action Card

Think of Them as Reference Monitors You Can Wear

When you need to hear exactly what you've recorded, nothing more, nothing less... then only Sennheiser's HD 25 SP will do. Excellent isolation, with clear, accurate reproduction are the trademarks of these reference-quality headphones. Plus, they're MUCH more comfortable than wearing speakers.

Your project studio is incomplete without the HD 25 SP. Check them out today at your local Sennheiser dealer.



SENNHEISER

6 VISTA DRIVE, P.O. BOX 987, OLD LYME, CT 06371
TEL: 203.434.9190 • FAX: 203.434.1759

IN CALIFORNIA: 4136 WEST MAGNOLIA BLVD. SUITE 100,
BURBANK, CA 91505 • TEL: 818.845.7366 • FAX: 818.845.7140

IN CANADA: 221 LABROSSE AVE., PTE-CLAIRE, PQ H9R 1A3
TEL: 514.426.3013 FAX: 514.426.3953

Circle (31) on Action Card

New Products:

Self-setting analog clock

ESE

► **LX-5112:** a 12-inch wall-mount analog clock designed to operate as a time-code reader, a stand-alone clock or an impulse clock; it can automatically set itself to the correct time as received via any one of three different time-code inputs (SMPTE/EBU, ASCII or ESE); if time code is lost, an error indicator is lit and the clock continues counting while referencing an internal crystal time base.

310-322-2136; fax 310-322-8127

Circle (151) on Action Card



Turret for digital studio monitors

Spacewise Broadcast Furniture

► **DT-1:** a digital turret that swivels your digital workstation at eye level and gets your PC and cables out of the way; a swiveling feature allows the monitor to be viewed within a 240° rotation; a 3.5-inch floppy drive mounting bracket comes standard in the base for incorporation of an external floppy drive.

800-775-3660; fax 520-579-9877

Circle (155) on Action Card



Digital portable audio recorder

Maycom Automation Systems

► **Digicorder:** a portable digital audio recording, playback, editing and communication device; it stores up to four hours of audio on credit card-sized hard disks or flash cards; on-site recordings can be instantly edited using cut and paste techniques; the Digicorder can be directly connected to ISDN and telephone lines for data transmission.

+31(0)481-377740; fax +31(0)481-377380

Circle (163) on Action Card



Universal headset for lavalier mics

Sennheiser

• **NB2:** adjustable headsets with form-fitting boom assembly; the pliable boom is detachable for left or right placement and accepts any Sennheiser lavalier microphone including MKE2, MKE102 and MKE104; cable routing of the microphone along the boom is simplified by the assembly's flexible, rubberized construction.

860-434-9190; fax 860-434-1759

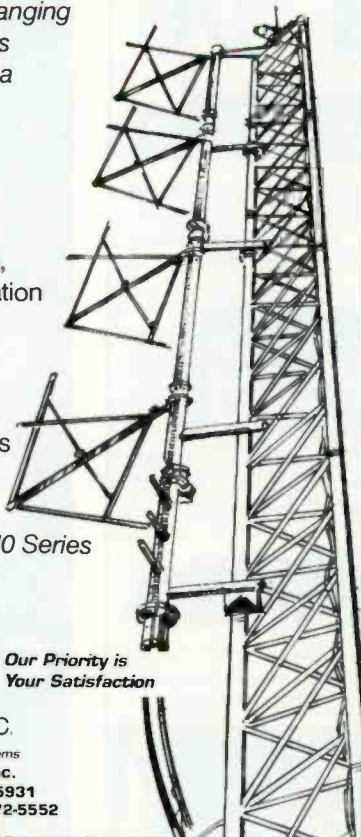
Circle (152) on Action Card

The FM Series

SWR's FM antennas, ranging from educational series to multi-station antenna arrays, are highly customized to meet broadcasters' needs.

Options

- Circular, horizontal, or vertical polarization
- Beam tilt
- Null fill
- Customized directional patterns



The FM10 Series



Our Priority is Your Satisfaction

Antennas and Transmission Line Systems
Systems With Reliability, Inc.
P.O. Box 856, Ebensburg, PA 15931
1-814-472-5436 FAX 1-814-472-5552

Circle (36) on Action Card



Svetlana
ELECTRONIC DEVICES

Quality Power Tubes

3CX2500A3	4CX400A	SV6550C
3CX2500F3	4CX800A	6AS7G
3CX2500H3	4CPX800A	6BM8
3CX3000A7	4CX1500A	811A
3CX3000F7	4CX1600B	833A
3CX10,000A3	4CX1600U	833C
3CX10,000A7	4CX3500A	EL34
3CX10,000H3	4CX5000A	SV811-3
3CX15,000A3	4CX10,000D	SV811-10
3CX15,000A7	4CX15,000A	TH5-4
3CX15,000H3	4CX15,000J	TH5-6
4CX250B	4X150A	TH6-3A
4CX250BC	5CX1500A	YC130
4CX250BM	5CX1500B	8560AS
4CX250R	572B	SK300A
4CX350A	5U4G	SK1300
4CX350AC		SK1320

- Manufactured in Russia's largest power tube factory.
- Generous warranty, based on high quality.
- Honest prices, based on quality—at low cost.
- Shipment from USA stock

<http://www.svetlana.com>

**Broadcasters,
End Users**
Phone (205) 882-1344
Toll Free 800-239-6900
Fax (205) 880-8077

**OEM's, Distributors,
Volume Purchasers**
Phone (415) 233-0429
Toll Free 800-578-3852
Fax (415) 233-0439

Circle (37) on Action Card

The GALLERY

TRANSCOM CORP.

Serving the Broadcast Industry Since 1978



THE CELLULAR DIFFERENCE

- Easy to Use
- Reliable
- Cost Efficient
- Portable
- Flexible



Technology & convenience combine to bring you on-the-spot remote broadcast capabilities with excellent sound quality. Cellular transceiver, frequency extender, and mixer all in one! Powered by Ni-cad rechargeable batteries or AC power supply — utilizes cellular technology or land lines.

For more information call

1-800-852-1333

Circle (33) on Action Card

Fine Used AM & FM Transmitters and Also New Equipment.
For the best deals on Celwave products,
Andrew cable and Shively antennas.

1kw	FM	1978	Collins 831C-2
2.5kw	FM	1983	Harris FM2.5K
5 kw	FM	1981	McMartin BF-5K
5 kw	FM	1969	RCA BTF 5D
10kw	FM	1968	RCA BTF 10D
10kw	FM	1971	Collins 830F-1B
10kw	FM	1976	RCA BTF 10E
20kw	FM	1974	Collins 831G2/ Continental 816R2
			RCA BTF 20E
20kw	FM	1968	
1kw	AM	1982	Harris SX1
1kw	AM	1978	Harris MW1A
1kw	AM	1963	RCA BTA-1R1
5kw	AM	1977	RCA BTA 5L
10kw	AM	1974	CSI T-10-A
25kw	AM	1982	CSI T-25-A
50kw	AM	1978	Harris MW50C3 (1100KHZ)

1077 Rydal Road #101, Rydal PA 19046

800-441-8454 • 215-884-0888 • FAX No. 215-884-0738

IF YOU WISH TO VISIT OUR HOME PAGE,

WE ARE AT www.voicenet.com/~transcom

IF YOU WISH TO E-MAIL US, WE ARE AT transcom@voicenet.com

Circle (34) on Action Card

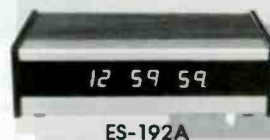
CREATE A MASTER CLOCK SYSTEM

ECONOMY MASTER CLOCK CAPABLE OF DRIVING 100 SLAVES FOR \$260.00

5 DIGITAL SLAVES FOR UNDER \$1000.00

MASTER CLOCK

- ESE TIME CODE OUTPUT
- EXTERNAL SYNC INPUT
- 1PPS OUTPUT
- 3 TYPES OF ENCLOSURES
- DRIVE 100 DIGITAL SLAVES
- NEW "LX" ENCLOSURE
- SYSTEMS UPGRADABLE TO CRYSTAL, WWV, MODEM AND GPS



ES-192A



ES-192AP



NEW! LX-192A

DIGITAL SLAVES

- 5 TYPES OF ENCLOSURES
- 4 SIZES OF L.E.D.'s
- DISPLAY TIME OR DATE
- OPTIONAL TIME ZONE OFFSET
- VIDEO INSERTER
- COMPUTER INTERFACE
- MANY OPTIONS AVAILABLE



3 YEAR WARRANTY
PRACTICAL SOLUTIONS SINCE 1971

142 SIERRA ST., EL SEGUNDO, CA 90245 • (310) 322-2136 / FAX: (310) 322-8127

Circle (35) on Action Card

LIGHTNING STRIKES!

THE "LAST" SURGE PROTECTOR YOU WILL EVER HAVE TO BUY!

PROTECTOR

HP Series
Now With
160,000 Amps
Per Phase
Peak Surge Current

That's right! With the purchase of the "Protector" comes a 10 year unlimited, free-replacement warranty! (Even if destroyed by lightning)

- ✓ Forget the Modules!
- ✓ Forget the Fuses!
- ✓ Forget the other guys!

Energy Control Systems is your choice for "unlimited replacement protectors"



"Our FM site went off the air during a heavy electrical storm. Further investigation revealed the HP 'Protector' had been destroyed, evidenced by its charred appearance. (see photo on left) I sincerely believe, without the protector, we probably would have sustained major equipment damage, and been off the air for a considerable length of time. As it turned out, the only thing damaged was the 'Protector' itself. The time we were off the air was minimal."

— KRKZ/KWKW Radio, Oklahoma

HP-3Y 3 phase WYE or HP-3D 3 phase DELTA \$1,545⁰⁰
HP-1S single phase 120/240 \$1,095⁰⁰

Energy Control Systems

Fort Worth, Texas 800-383-6956

Circle (50) on Action Card

BESCO
INTERNACIONAL

World Leader
in
AM - FM
Transmitters

"Now in our 30nd year"

AM & FM Pre-Owned Units in Stock

- ✓ ALL - Powers
- ✓ ALL - Manufacturers
- ✓ ALL- Instruction Books
- ✓ ALL - Complete
- ✓ ALL - Spares

Call and take advantage of our liberal trade-in plan.

Tune and test on your frequency, available on site.

Complete inventory on request.

Dick Witkovski — President

Robert Malany — National & International Sales

Rich Witkovski — Sales and Service

Besco Internacional

5946 Club Oaks Drive, Dallas, TX 75248

Phone (214) 630-3600 Fax (214) 226-9416

Circle (51) on Action Card

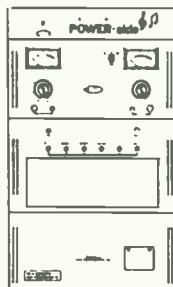
Kahn POWER-side™ is so good, that our competitor (Motorola) argued it must be illegal!
(But the FCC ruled it isn't.)

POWER-side™

Many
PROBLEMS

Adjacent Channel Interference
Antenna Null Distortion
Co-Channel Interference
Power-Line Re-Radiation
Building Re-Radiation
Receiver Tuning
Low Fidelity Home Radios
Co-Channel Beat
Selective Fading

One
SOLUTION!



POWER-side™
the solution to many
of AM radio's most
serious technical
problems.



(212) 983-6765

From the developers of the AM STEREO system that isn't afraid of the dark, and will let you drive right past FM Stereo.

Kahn Communications, Inc.

320 East 42nd Street, New York, New York 10017

Circle (38) on Action Card

AUTOMATE ANY PROCESS



Control ALL of your equipment with the MPI16 and any PC

Activate CD jukeboxes, Mini-Discs™, DAT Machines and other remote control equipment with four IR code outputs (expandable to 11) and included "stick on" infrared emitters.

- Activate pushbutton operated equipment with eight relay outputs.
- Sense equipment status with four isolated inputs.
- Read and save the code from your hand-held IR remote controls with the included "READ IR" utility.
- Expandable: up to four MPI16s may be connected together.

Simply connect the MPI16 to your PC's serial port (or to a modem for operation at a distance). Then use the "CONTROL" program to label command names in simple English and create multiple command routines and playlists to schedule on-air, production, tape delay recording and live assist.

Includes scheduling program to activate all of your equipment, and source code to help you write your own custom programs!
Call for free demo disk, literature and programming examples.

(208) 883-8080 **MOORE**
CONTROL

Call for free demo disk, literature and programming examples.

Circle (39) on Action Card

UNIVERSAL SCPC

**NEW
Receiver!**

XE-1000



SCPC BROADCAST AUDIO RECEIVER

New, affordable, frequency-agile receiver, direct channel entry by keyboard, selectable companding 1:1, 2:1, 3:1, wide/narrow bandwidth, de-emphasis selectable, 950-1450 MHz, line output 600 ohms, muting, transponder agile, LNB power supply, 50-channel memory, full baseband output, high-quality audio. Every needed feature at a sensible price (lowest in the industry). Write or call for full information on this quality receiver—the answer for your station. Networks call for prices.

Phone: (614) 866-4605 Fax: (614) 866-1201

UNIVERSAL ELECTRONICS, INC.
Communications Specialists
4555 Groves Road, Suite 12 Columbus, OH 43232

Circle (15) on Action Card

POWERFUL DIAL-UP CONTROLLER



The new CircuitWerkes DR-10 Dial-up remote control is perfect for studio & automation control. With features not found anywhere else, you might be amazed at the DR-10's list price of only \$439.00.

- 12 Dry relay contacts out (10 for DTMF, 2 auxiliaries).
- Auto-answers on user selectable ring number and auto-disconnects at call's end
- Each relay can be independently set to function as a momentary closure, latching closure with distinct on/off codes, or interlocked latching with other relays.
- Up to 8 digit user set password prevents pirating.
- Any relay can be assigned to any tone(s).
- Each relay is programmable to beep when activated.
- Two-tone & detection delay modes eliminate falsing.
- 4 Status inputs can dial 4 numbers and control relays.
- A simple, built-in audio hybrid lets you control equipment while monitoring a local audio source.
- Provides an active, balanced phone line audio output.
- All outputs appear on easy to use screw terminals
- Program it with a any DTMF phone
- Remembers its settings after a power failure.

CircuitWerkes

(352) 335-6555 / Fax 331-6999

3716 SW 3rd Place, Gainesville, FL 32607

Circle (17) on Action Card



Dateline El Paso, Texas - Peter Dahl Co., the transformer guys, are also providing transient suppressors, custom rectifier assemblies, three phase to single phase conversion kits, DC filter capacitors, TV beam power supplies, and 24-hour tech support. Is there anything these guys won't do to make a sale? Call now for a free catalog. or better yet, call to order.

(915) 751-2300



Write or Fax for an extensive catalog.
5869 Waycross, El Paso, Texas 79924 • Fax (915)751-0768
E Mail: pwinfo@1eagle1.com • Internet Address: <http://www.1eagle1.com/commercial/pwdbc/>

Circle (16) on Action Card

Shopping for a wire service?

LEARFIELD DATA

has what you're looking for!

Our "Basic Service" provides you with the most complete weather package available for only \$149 per month! We'll provide all of the hardware and software needed, with just a 30 day contract! The Basic Service includes:

- The complete NOAA Weather Wire Service®
- Weather Service Inc.® color radar images updated every 15 minutes
- Weather Express® forecast maps daily

Customize your service using some of the best news and information from across the nation. Pay only for what you need, because all of our premium services are optional! Choose from great services like:

- United Press International®
- The Sports Network®
- FarmDayta Elite®
- State News from 19 states



For more information call

800-210-9473

A division of Learfield Communications, Inc. 505 Hobbs Rd, Jefferson City, MO 65108, (573) 883-7200

Circle (18) on Action Card

**New Products
continued**

**Rack-mount CD player/
cassette deck**

Marantz Professional

► **PMD350:** a rack-mounted combination CD player/cassette deck; features include independent I/Os and pitch controls, headphone monitor select, stereo microphone inputs, independent fader starts, CD play programming and a lock for remaining track time.

708-820-4800

Circle (158) on Action Card



**Broadcast production DAW
Studer Editech**

• **Dyaxis IIbv:** a broadcast version of the Dyaxis II with all the features of the parent product minus the synchronization and expansion capabilities of the Dyaxis II; features include built-in automated digital mixer for dynamic level control, panning, five-band parametric EQ and metering.

415-326-7030; fax 415-326-7039

Circle (156) on Action Card

Digital radio system

Radio Wolf International

• **Radio Wolf:** a fully computer-based digital broadcast production studio in a single package; some of the features include play lists, automatic cue, effects, dynamic control, single page/single screen layout and repeat play; optional modem cards allow Radio Wolf to be controlled from a remote site.

+61 3 9421 0122;

fax +61 3 9421 0133

Circle (154) on Action Card

**Multipoint broadcast service
AT&T**

• **Multipoint Broadcast Service:** AT&T made a 40% cut in the price it charges radio stations to connect to its Multipoint Broadcast Service making "radio teleconferencing" a cost-competitive alternative for broadcast distributors; with digital sound quality equal to that of a compact disc; Multipoint Broadcast Service makes branching of broadcast distribution simple; to broadcast a football game or a concert, a distributor calls AT&T's service and obtains a teleconferencing 700 number for radio stations to dial into.

800-367-7956

Circle (157) on Action Card

Phono cartridge line

Shure Brothers

• **Phono cartridge line:** four new models in addition to two models from the previous line featuring a diamond-tipped stylus and all the necessary mounting hardware for use with most 1/2-inch commercial and consumer tonearms; two models may also be used on P-mount tonearm systems.

708-866-2200; fax 708-866-2279

Circle (153) on Action Card

Patch panel

Neutrik USA

• **PatchLink:** a 1/4-inch modular patching system that is designed to streamline patchbay installation for professional audio applications; the PatchLink offers a self-contained, fully wired, printed circuit board patch panel in a 19-inch rack-mount case.

908-901-9488; fax 908-901-9608

Circle (164) on Action Card

**INTRODUCING
ToneJack**

features

- 1 Hz-29,999 Hz (1 Hz steps)
- Sine and Square wave outputs
- RS-232 controllable
- Store and Recall 10 user frequencies
- Uses 9 V battery or external power
- Log sweep from 50 Hz to 20 kHz
- Level control from 0 to 6.3 V P-P
- Compact (5"W x 1.5"H x 3"D overall)

A Portable Audio Generator



VISIT OUR WEB SITE

www.conex-electro.com/~conex

CONEX ELECTRO SYSTEMS

1602 Carolina St • PO Box 1342 • Bellingham, WA 98227

1.800.645.1061 360.734.4323 FAX 360.676.4822

Circle (19) on Action Card

PHASETEK INC.

- CUSTOM AM/MW PHASING SYSTEMS
- AM/MW ANTENNA TUNING UNITS
- DIPLEXERS AND MULTIPLEXERS
- DETUNING UNITS/UNIPOLE KITS
- COMPLETE LINE OF RF COMPONENTS

PHASETEK INC.

550 CALIFORNIA ROAD
UNIT 11

QUAKERTOWN, PA 18951

PHONE: 215-536-6648 FAX: 215-536-7180

FOR MORE INFORMATION OR TO PLACE AN ORDER, CONTACT:

hotam@phasetec.com

Circle (20) on Action Card

"FROM QUINCY TO GUAM - IT'S THE QUALITY CHOICE!"



Digital Quad Series

JUST SOME FEATURES:

- Heavy Duty And Modular
- 1 1/2 Inch Thick Top Surfaces
- Custom Designing
- Wilsonart® Laminates
- 19 Inch Heavy Duty Rack Rails
- Digital Workstation Systems
- Oak Trim & Base Kickboards
- Adjustable Shelving

CALL YOUR ONE STOP FURNITURE STORE
"THE BROADCASTERS FURNITURE STORE"

SPACEWISE™

800-775-3660

digital & conventional studio furniture/big starr and rolling starr remote furniture/rack mounted studio ups systems

Circle (21) on Action Card

Nearfield monitor

Tannoy

▼ System 600 & 800: dual concentric nearfield monitoring with high sensitivity (+90dB) and power handling (150W+) that achieve high sound pressure levels at the mix position; a new, innovative landscape cabinet design provides a clear line over the console, improves overall tonal balance and results in deeper bass extension.



519-745-1158;
fax 519-745-2364
Circle (160) on Action Card

Digital audio system

MediaTouch

• MediaDISK IV: a digital audio system that operates in the production mode; each category database supports more than 3,000 items; features include tape transport-style buttons, outcue entry, mark start/stop position, fast forward/rewind with "Delta" set, rotation feature and buffered auto start.

800-636-0123; fax 352-629-7000; E-mail <bgs@mbs.net>

Circle (166) on Action Card

Teleconferencer

Gentner Communications Corporation

• ET10: a telephone accessory that turns virtually any business telephone into a high-quality, full-duplex teleconferencer; the user simply places the telephone handset on the ET10 to send two-way audio through its built-in speaker and microphone; the ET10 allows connection to most digital or analog telephones used in PBX and key systems.

800-945-7730 or 801-975-7200; rgentner@gentner.com or
kpaxman@gentner.com

Circle (161) on Action Card

PC card satellite receivers

International Datacasting

• SR253 DataNet & SR263 FlexData: complete satellite data broadcast downlinks in a plug-in expansion card that turn a computer into a high-speed satellite data broadcast terminal; the receivers install into a standard personal computer ISA slot and use the PC's power supply; they can provide serial data directly on the PC bus using a software driver or directly output the data on a rear data output connector.

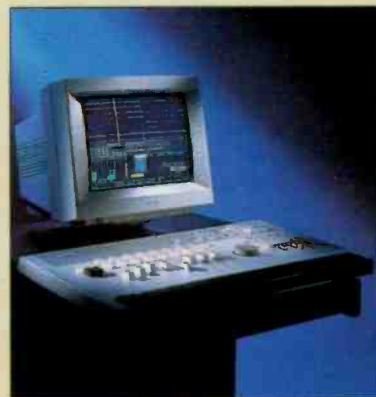
404-446-9684; fax 404-448-6396

Circle (159) on Action Card

Effects upgrade for DSE 7000

Orban

► DSE 7000 effects upgrade: a digital effects upgrade for the RAM-based, eight-track DSE 7000 digital audio workstation; the upgrade package includes a replacement DSP board with 24-bit internal processing and new version 6.0 software; the multi-effects upgrade package also may be retrofitted into existing Orban 7000 units.



510-351-3500; fax 510-351-0500

Circle (162) on Action Card

CLASSIFIED ADVERTISING RATES

Advertising rates in *BE Radio* Classified Section are \$45 per column inch, per insertion. There is a one inch minimum.

Ads may also be purchased By-The-Word for \$1.75 per word, per insertion. Initials and abbreviations count as full words. Minimum charge is \$30 per insertion. Contact **Matt Tusken** at 1-800-896-9939 or fax (913) 967-1735 to advertise in *BE Radio* Classifieds.

SOFTWARE

WinRADIR: THE RADIO STATION DATABASE

12,000+ U.S. licensed stations are contained in a database specifically designed for Windows! Searches on calls, formats, markets, etc. Gives phone/faxes/web site addresses, prints mailing labels. Only \$179.95/yr (incl. quarterly updates).

1-800-277-8224

Internet: <http://www.aceinfo.com/bbh/info>

PRODUCTION MUSIC

Chameleon Music™

Royalty-Free Music & SFX

\$30.00 Per Disc. All Styles Of Music

Free Demo 413.789.1917 MC/Visa

Fax 413.789.1917 • Quarterly Updates

FOR LEASE

TOWER SPACE AVAILABLE, Oklahoma City market. Construction begins July, 1996. Call Brad Ferguson at KCSC. (405) 460-5272. FAX (405) 330-3844. E-mail KCSCFM@aol.com.

BE Radio

SERVICES

HE & EDISON, INC.

CONSULTING ENGINEERS

RADIO AND TELEVISION

DANE E. ERICKSEN, P.E.

Box 280068
San Francisco, CA 94128
707/996-5200 707/996-5280 Fax

D.L. MARKLEY & Associates, Inc.

CONSULTING ENGINEERS

2104 West Moss Ave.
Peoria, Illinois 61604
(309) 673-7511
FAX (309) 673-8128
Member AFCCE

FM STATION OPTIMIZATION

FM SEARCHES / SHADOW AND INTERFERENCE STUDIES
FM MULTIPATH EFFECTS REDUCTION
TOTAL FM TRANSMITTER PLANT / ANTENNA IMPROVEMENTS
CALL OR FAX US FOR A DETAILED LIST OF SERVICES AND SAMPLES!

MOUNTAIN STATES TECHNICAL SERVICES
PH 520-579-7610 FAX 520-579-9877

CHAN & ASSOCIATES

Strategic Marketing • Public Relations • Advertising

1307 Shadow Lane, Suite C
P.O. Box 5509
Fullerton, CA 92635-0509
Phone: (714) 447-4993
Fax: (714) 578-0284
Pager: (714) 506-1357
E-mail: cchan@ix.netcom.com
CompuServe: 74601.2707

Curtis Chan
President

JOHN H. BATTISON P.E.

CONSULTING BROADCAST ENGINEER,
FCC APPLICATIONS AM, FM, TV, LPTV
Antenna Design, Proofs, Fieldwork
2684 State Route 60 RD #1
Loudonville, OH 44842
419-994-3849

	Page Number	Reader Service Number	Advertiser Hotline
Armstrong Transmitters Corp.	40	13	315-673-1269
Audio Precision	5	22	800-231-7350
Audio Processing Tech. Ltd.	7	23	+232-371-1110
AzTech Recruitment Company	7	46	602-955-8080
Besco Internacional	44	51	214-630-3600
Broadcast Electronics, Inc.	22	43	217-224-9000
Broadcastnet	40	14	713-926-2209
Cellcast	43	33	501-750-0277
Circuitwerkes	45	17	904-331-5999
Computer Concepts Corp.	IBC	2	913-541-0900
Comrex Corp.	29	48	508-263-1800
Conex Electro Systems	46	19	360-734-4323
Continental Electronics	15	26	214-381-7161
Enco Systems Inc.	27	44	810-476-5711
Energy Control Systems	44	50	518-828-1690
Energy - Onix	34	29	800-383-6956
ERI Electronics Research Inc.	30	49	812-925-3000
ESE	43	35	310-322-2136
Fidelipac Corporation	8	25	609-235-3900
GBH Mobile	26	45	617-492-2777
Gentner Communications	9	6	800-945-7730
Harris Corp./Broadcast Div.	1	4	217-222-8200
Henry Engineering	12	10	818-355-3656
HINAT HINDES	38	11	203-935-9066
Inovonics	41	32	800-733-0552
Intraplex, Inc.	35	40	508-692-9000
Itelco	19	40	305-715-9410
Jampro Antennas, Inc.	16	28	916-383-1177
Kahn Communications, Inc.	44	38	212-983-6765
Kintronic Labs Inc.	12	9	423-878-3141
Learfield Communications Inc.	45	18	573-893-7200
Mackie Designs Inc.	IFC	24	800-258-6883
Mediatouch	13	1	204-786-3994
Moore Control	44	39	208-883-8080
Murphy Studio Furniture	28	47	619-698-4658
Musicom	21	41	908-739-5600
NAB Broadcasters	33	27	202-429-5350
NPR Satellite Services	23	42	202-414-2613
Orban	3	5	510-297-2774
Peter W. Dahl	45	16	915-751-2300
Phasetek Inc.	46	20	215-536-6648
QEI Corporation	38-39	12	800-334-9154
Sennheiser Electronics Corp.	41	31	203-434-9190
Spacewise Broadcast Furniture	46	21	800-775-3660
Sveitona Electron Devices	42	37	415-233-0429
S.W.R. Inc.	42	36	814-472-5436
Transcom Corporation	43	34	215-884-0868
Universal Electronics Inc.	45	15	614-866-4665
Ward-Beck Systems Ltd.	37	8	416-438-6550
Wheatstone Corporation	BC	3	315-452-5000
360 Systems	11	7	818-991-0360

EDITORIAL

Skip Pizzi, *Editor*
 Brad Dick, *Editorial Consultant*
 Dawn Hightower, *Senior Associate Editor*
 Deanna Rood, *Associate Editor*
 Jim Saladin, *Editorial Assistant*
 Tom Cook, *Senior Managing Editor*
 Carl Bentz, *Directories Manager*

ART

Stephanie L. Masterson, *Art Director*

BUSINESS

Raymond E. Maloney, *President*
 Cameron Bishop, *Senior Vice President*
 Dennis Triola, *Publisher*
 Judson Alford, *Marketing Director*
 Annette Hulsey, *Classified Advertising Coordinator*
 Susan Jones, *Advertising Coordinator*
 Doug Coonrod, *Corporate Art Director*
 Barbara Kummer, *Circulation Director*
 Meghan Wright, *Circulation Manager*
Customer Service: 913-967-1711 or 800-441-0294

TECHNICAL CONSULTANTS

Jery Whitaker, *Contributing Editor*
 Eric Neil Angevine, *Broadcast Acoustics*
 John H. Battison, *Antennas/Radiation*
 Dennis Ciapura, *Radio Technology*
 Dane E. Erickson, P.E., *Systems Design*
 John Kean, *Subcarrier Technology*
 Donald L. Markley, *Transmission Facilities*
 Harry C. Martin, *Legal*

MEMBER ORGANIZATIONS

Sustaining Members of:

- Acoustical Society of America
- Audio Engineering Society
- Society of Broadcast Engineers

Member, American Business Press
 Member, BPA International



BE RADIO (ISSN 1081-3357) is published bi-monthly (except an additional issue in August) and mailed free to qualified recipients by Intertec Publishing Corporation, 9800 Metcalf, Overland Park, KS 66212-2215. Non-qualified persons may subscribe at the following rates: USA and Canada, one year, \$30.00; all other countries, one year, \$35.00 (surface mail), \$70.00 (air mail). Periodicals postage paid at Shawnee Mission, KS, and additional mailing offices. Canada Post International Publications Mail (Canadian Distribution) Sales Agreement No. 0956244.

POSTMASTER: Send address changes to *BE Radio*, P.O. Box 12937, Overland Park, KS 66282-2937. *BE Radio* is edited for corporate management, technical management/engineering and operations and station management at radio stations and recording studios. Qualified persons also include consultants, contract engineers and dealer/distributors of radio broadcast equipment.

SUBSCRIPTIONS

Authorization to photocopy items for internal or personal use, or the internal or personal use of specific clients, is granted by Intertec Publishing provided that the base fee of U.S. \$2.25 per copy; plus U.S. \$00.00 per page is paid to Copyright Clearance Center, 222 Rosewood Drive, Danvers, MA 01923. The fee code for users of the Transactional Reporting Service is ISSN 1081-3357/1996 \$2.25+00.00.

For those organizations that have been granted a photocopy license by CCC, a separate system of payment has been arranged. Prior to photocopying items for educational classroom use, contact CCC at 508-750-8400.

Organizations or individuals with large quantity photocopy or reprint requirements should contact Chris Lotesto, 312-435-2359. Microfilm copies of *BE Radio* are available by calling/writing UMI, 300 North Zeeb Rd, P.O. Box 1346, Ann Arbor, MI 48106-1346. Phone: 313-761-4700 or 800-521-0600.

CORRESPONDENCE

Editorial and Advertising: 9800 Metcalf, Overland Park, KS 66212-2215. Phone: 913-341-1300; Edit. Fax: 913-967-1905. Advt. Fax: 913-967-1904.

© 1996 by Intertec Publishing. All rights reserved.

WORLDWIDE SALES

OVERLAND PARK, KANSAS
 Steven Bell
 9800 Metcalf
 Overland Park, KS 66212-2215
 Telephone: (913) 967-1848
 FAX: (913) 967-1900

NEW YORK, NEW YORK

Josh Gordon
 335 Court Street, Suite #9
 Brooklyn, NY 11231
 Telephone: (718) 802-0488
 FAX: (718) 522-4751

Joanne Melton

1775 Broadway, Suite 730
 New York, NY 10019
 Telephone: (212) 641-5270
 FAX: (212) 459-0395

CHICAGO, ILLINOIS

Bill Wendling
 One IBM Plaza, Suite 2300
 Chicago, IL 60611
 Telephone: (312) 840-8428
 FAX: (312) 595-1983

AGOURA HILLS, CALIFORNIA

Duane Hefner
 Susan Simon
 5236 Colodny Ave., Suite 108
 Agoura Hills, CA 91301
 Telephone: (818) 707-6476
 FAX: (818) 707-2313
 E-Mail address: dnhefner@aol.com

SANTA MONICA, CALIFORNIA

Jason Perlman
 501 Santa Monica Blvd., Ste. 401
 Santa Monica, CA 90401
 Telephone: (310) 458-9987
 FAX: (310) 393-2381

OXFORD, ENGLAND

Richard Woolley
 Tony Chapman
 Intertec Publishing Corporation
 P.O. Box 250
 Banbury,
 Oxon OX16 8YJ U.K.
 Telephone: +44 (0) 1295 278407
 FAX: +44 (0) 1295 278408
 Telex: 837469 BES G

TOKYO, JAPAN

Mashy Yoshikawa
 Orient Echo, Inc.
 1101 Grand Maison
 Shimomiyabi-Cho 2-18
 Shinjuku-ku, Tokyo 162, Japan
 Telephone: (3) +81 3235-5961
 FAX: (3) +81 3235-5852
 Telex: J-33376 MYORIENT

CLASSIFIED ADVERTISING

Matt Tusken
 Telephone: (913) 967-1732
 FAX: (913) 967-1735

LIST RENTAL SERVICES

Lori Christie
 Telephone: (913) 967-1875
 FAX: (913) 967-1897

A K-III MEDIA COMPANY

Want creative control and performance that's out of this world?



Get
radio's
best
digital
system.

At Computer Concepts we believe the best measure of a digital system is how well the station team uses it—talent, managers and engineers. That is why we designed our system with out-of-this-world technology and down-to-earth practicality. The result, a powerful, friendly system that staff members eagerly embrace and use, proven in great stations around the globe.

Computer Concepts enhances the quality and efficiency of every area of your station—programming, production, scheduling and control.

We put you in charge of the station of your dreams with incredible tools ranging from digital, multi-track editing...to a computerized newsroom...to total on-air creative control.

Launch your station into the future. Call 800-255-6350 Ext. 01 and request a copy of our free booklet—Tour the Digitally Integrated Radio Station. In it you'll see how our advanced digital system can integrate your station for peak efficiency and communications.

 **Computer Concepts
Corporation**

8375 Melrose Drive, Lenexa, Kansas 66214 • Phone 800-255-6350 • Fax 913-541-0169

Circle (2) on Action Card

Some Countries Have It ALL!



WSIX - Nashville, Tennessee "Country Music Station of the Year"

A-500 Studio Furniture delivered March 1993
A-500 Console S/N 20789 delivered April 1993
A-500 Console S/N 20792 delivered April 1993
A-6000 Studio Furniture delivered March 1995
A-6000 Console S/N 22536 delivered March 1995
R-16 Console S/N 22557 delivered March 1995
SP-5 Console S/N 22593 delivered April 1995

1995 Academy of Country Music Award
1995 Marconi Country Music Award
1995 Billboard Country Music Award
1995 Country Music Association Award
1995 Country Music Association SRO Award
1995 Gavin Country Music Award
1996 Gavin Country Music Award
1995 Academy of Country Music Award

Wheatstone Model A-6000 Audio Consoles shown

 Wheatstone Corporation
tel 315-452-5000 / Syracuse, NY.

Circle (3) on Action Card