

SugarLand "STAY" MOST ADDED 4 WEEKS IN A ROW! R&R CHART #25

INSIDE

R&R Quarterly Panel Changes Revised, Explained, Outlined, Dissected, Applied



Garth Still Has The Mojo: Zero-To-140,000 In Less Than Two Hours



Feng Shui On Music Row; Shindler, Dean Part Of Mercury Rising



Happy 82nd Birthday, WSM-AM; Let's Party Like It's 1925!



Best Of Both Worlds: Hannah Montana Ready For The Country

Grapes will explode if you cook them in a microwave

Real news needed!

rcurtis@radioandrecords.com
323-954-3444

Revised Reporter Policy Applied, Quarterly Panel Changes Announced

As first announced in the July 16 **R&R Country Update**, our quarterly panel changes based on current music usage and the application of our revised criteria for reporting stations (R&R Country panel) are effective with the Oct. 8-14 Nielsen BDS tracking week (Oct. 19 R&R print issue).

As of Oct. 1, the revised policy for multiple reporters in local markets restricts multiple reporters to Arbitron markets 1-75. In Arbitron markets 76+, the highest-rated station that meets all other published criteria (ratings, current music usage) will be the lone reporter. Stations in markets 126+ will be considered only when such stations rank among Nielsen SoundScan's top 75 country music sales DMAs. Stations that are restricted by market size and sales index, but meet our current music and ratings policies, will be considered for the R&R Country Indicator panel.

Policies continuing without revision include current-music usage and ratings. During each calendar quarter, all R&R Country stations must maintain an eight-week average of at least 60% current songs **among their 30 most-played titles** in order to achieve or maintain reporting status. All stations must meet a minimum AQH audience threshold (total persons 12+) based upon market size. Additional reporters in markets 1-75 must maintain at least 50% AQH (total persons, 12+) of the leading country reporter in order to be eligible. ***The panel is reviewed at the end of each calendar quarter to ensure that all stations meet each of the aforementioned policies. Ratings-based changes are made using Arbitron results from the most recently published book in each market.***

R&R Country Panel, Drops (22):

WYAY/Atlanta

WDTW/Detroit

© 2007 Radio & Records. All Rights Reserved. No part of this material may be reproduced in any form or incorporated in any information retrieval system without written permission of the Publisher.

BON JOVI

"TILL WE AIN'T STRANGERS ANYMORE" (FEATURING LEANN RIMES)

"Sure to strike an emotional chord with your listeners! Our listeners are telling us it's a Big Hit. I love it when that happens."

- Stephen Giuttari, WCTK PD

"This is the best cut on the CD, with Jon and LeAnn delivering a vocally powerful song."

- Tim Roberts, WYCD PD



A UNIVERSAL MUSIC COMPANY



THE ISLAND DEF JAY MUSIC GROUP
A UNIVERSAL MUSIC COMPANY



LeAnn Rimes appears courtesy of Curb Records

© 2007 Mercury Records, a Division of UMG Recordings, Inc.

BRAD PAISLEY

FOLLOWING
BACK-TO-BACK
DOUBLE PLATINUM
ALBUMS
(*Mud On The Tires* &
Time Well Wasted),
5TH GEAR
SPENT 4 WEEKS AT #1
ON THE COUNTRY
SOUNDCAN CHART
AND IS OUT-PACING
ALL OF BRAD'S
RELEASES TO DATE

10 MILLION ALBUMS SOLD

9 #1 SINGLES

ONLY HALFWAY THROUGH THE

**BONFIRES &
AMPLIFIERS
TOUR**

BRAD HAS ALREADY
PLAYED FOR MORE
THAN 750,000 FANS

"Brad Paisley is a modern country marvel. ...He's simply the most consistently entertaining mainstream country artist of his generation."

— **The Atlanta Journal-Constitution**, Shane Harrison

"...the West Virginia native proved that he is the poster boy for new millennium country, effortlessly combining age-old tradition with a new age sensibility."

— **The Boston Globe**, Sarah Rodman

"This guy's a bona fide superstar who is going out and filling venues night after night ..."

— Jason Garner, Live Nation President
of North American Music

THIS YEAR'S CMA NOMINATIONS:

ENTERTAINER OF THE YEAR * MALE VOCALIST OF THE YEAR
ALBUM OF THE YEAR (5TH GEAR) * SINGLE OF THE YEAR ("TICKS")
MUSIC VIDEO OF THE YEAR ("ONLINE")

© 2007 BMG MUSIC

SONY BMG
NASHVILLE

ARISTA
NASHVILLE

The FITZGERALD HARTLEY Co

www.bradpaisley.com

R&R Country Panel, Drops (22): (cont.)

- WTQR/Greensboro, N.C.
- KSD/St./Louis
- WESC/Greenville, S.C.
- WPKX/Springfield, Mass.
- WIL/St./Louis
- KASE/Austin
- WSIX/Nashville
- KUSS/San/Diego
- KWLI/Denver
- KJJY/Des Moines
- KIXZ/Spokane
- KZSN/Wichita
- WWQM/Madison
- WLXX/Lexington, Ky.
- KRYS/Corpus Christi, Texas
- KRMD/Shreveport, La.
- WOKO/Burlington, Vt.
- WPUR/Atlantic City, N.J.
- WZKX/Biloxi, Miss.
- WNCY/Green Bay, Wis.

R&R Country Panel, Adds (3):

- WBUL/Lexington, Ky.
- WWYZ/Hartford
- KXKS/Shreveport, La.

These changes bring the total number of stations on the R&R Country panel to 111.

R&R Country Indicator Panel, Adds (19):

- KEGA/Salt Lake City
- WYAY/Atlanta
- KUSS/San Diego

This Week At Callout America

Kenny Chesney takes over as the No. 1 song this week, with "Don't Blink" also repeating as the No. 1 passion song. Both male and female listeners rank this song at No. 2 and at No. 1 passion.

Toby Keith stays strong with "Love Me If You Can" at No. 4 overall and the No. 3 passion song. Females are the strength at No. 3 both positive and passion; younger 25-34s rank the song at No. 3 as well .

Clay Walker moves strong with "Fall" ranking at No. 12, up from last week's No. 19, and as the No. 8 passion song, up from No. 12. Females rank this song at No. 11 and No. 9 passion, core 35-44s rank it at No. 11 and No. 7 passion; there's strong passion in all cells.

George Strait has the growth song of the week with "How 'Bout Them Cowgirls" ranking at No. 15, up 12 spots from last week's No. 27, and as the No. 12 passion song, up from No. 18. Females are at No. 15, and males at No. 19.

Whiskey Falls stay way out front of the spin chart with "Last Train Running" at No. 16 overall and No. 15 passion. Females are at No. 18, up from No. 22, and men rank the song at No. 16 and No. 14 passion. Younger 25-34 listeners are the strength at No. 12.

Joe Nichols stays more that healthy with "Another Side of You" ranking at No. 18 for the week with strong passion at No. 14. Core 35-44s rank this song at No. 14 passion. Females are at No. 16 passion, and men are at No. 11 passion. Core males are at No. 13 passion.

- KWLI/Denver
- KJJY/Des Moines
- KIXZ/Spokane
- KZSN/Wichita

© 2007 Radio & Records. All Rights Reserved. No part of this material may be reproduced in any form or incorporated in any information retrieval system without written permission of the Publisher.

MOST ADDED!!!
"Happy Endings" Lee Brice

New Adds Include:
KFRG, KBEQ, WSOC, WTQR, WGNE, WWQM, WMAD, KIZN, KJUG, WYPY, WCTQ, KATC

RR: Debut 57

Our Future is on Lee's Rising Star!

CURB
curb.com

WWQM/Madison
 WLXX/Lexington, Ky.
 KRYS/Corpus Christi, Texas
 KRMD/Shreveport, La.
 WOKO/Burlington, Vt.
 WPUR/Atlantic City, N.J.
 WZKX/Biloxi, Miss.
 WTWF/Erie, Pa.
 KDBR/Kalispell, Mont.
 WDWG/Rocky Mount, N.C.
 WMDH/Muncie, Ind.
 WAXX/Eau Claire, Wis.

No stations are being removed from the R&R Country Indicator panel at this time. This round of changes brings the total number of stations on this panel to 115.

Garth-Zilla Overtakes Kansas City In Just Under Two Hours

Nine shows, 140,000 tickets in one hour and 58 minutes. Based on those stats from Saturday's on-sale for Garth Brooks at the Sprint Center in Kansas City, let me be the first to boldly say there seems to be a slight demand for the G-man's services, even after nearly nine years of his self-imposed retirement. The concert was originally a one-off thank you for Wal-Mart employees, but was later opened up to the public and billed as "One Artist, One City, One Night." OK, two out of three ain't bad.... Oops, make that one out of three, because Trisha Yearwood will perform too. It's still just one city, but tickets simply kept selling and selling, something Wilks KFKF/Kansas City PD Dale Carter described as "one of the most unbelievable things I've seen in nearly 30 years of radio." Michael Cruise, PD at Entercom's WDAF (The Wolf) across town, called the on-sale "awesome" and said he and his staff "couldn't be more pumped." Well, he could be — if Garth decided to do an unlimited engagement at The Sprint Center, which, based on Saturday, seems entirely feasible. Mike Kennedy, PD of KFKF's clustermate

Country Dates

Oct. 9: Third and final CMA Award Ballot sent.
Oct. 14: iebaLIVE! Conference, Hilton Suites Downtown Nashville.
Oct. 14: Nashville Songwriters Hall of Fame Dinner and Induction Ceremony, Renaissance Nashville Hotel; Nashville.
Oct. 15: 45th annual ASCAP Country Music Awards, Ryman Auditorium; Nashville.
Oct. 23: Voting on final CMA Award Ballot ends.

KBEQ, called Saturday "over the top," he said. "Phones were nuts, ticket outlets jammed, people were really excited," and he added that calls from Garth on Friday made the on-sale even more special. Even outside the KC market, it was Garth-mania, according to Beverlee Brannigan, PD at Journal's KFDI/Wichita. "As usual, Garth's people were terrific keeping the info up-to-date on the hotline, letting us know as each show went — déjà vu, I tell you. At first, we got lots of complaints that no one was getting through on the Ticketmaster online site, but as time went on, it eased up a bit." Nine sold-out shows in Kansas City ties Garth's record for the highest number of tickets sold in any North American City, and it starts to make you wonder: Will Saturday's results tell that little voice in Garth's head that it's time to put together a full-blown tour? Not likely, says KFKF's Carter, who said when Garth appeared on the air last Friday (Oct. 5), he told KFKF he's still committed to staying off the road until his youngest daughter is out of the house. Meanwhile, each PD is hopeful this current wave of Garth Fever can fuel an exciting fall book. And Brannigan is wondering why Garth is taking the day off on Nov. 13, the day prior to the original show. "The 14th is the one all of us radio folks got to buy advance tickets for and a handful of comps. So what's up on the 13th? A charity

© 2007 Radio & Records. All Rights Reserved. No part of this material may be reproduced in any form or incorporated in any information retrieval system without written permission of the Publisher.

The follow up single to their #1 SMASH, "Moments."

Emerson
"You Still Drive"

Take the Research Challenge
 Yes it may be early but this is a callout MONSTER!

KFRG 49x (Testing Heavy)
KMPS 28x KRTY 25x WDAF 27x
WQBE 20x WQMX 22x WYCD 21x

New Adds This Week!
KWNR, KCYE, KKNB, WXBM,
KXKT, WRNS, KIIM

CCMA Winner – Video, Single and Group of the year
 CMA Nominations – Video and Group of the year

"Radio friendly in the extreme." -Robert K. Oermann – Music Row

thing he'll drop in? Could he really want a day off? It's *Garth*, so it's got to be something! And it seems obvious that they'll do a live shot from the CMAs on Nov. 7...."

Shindler Named VP Of National Promotion At Mercury

The longtime promotion executive was elevated after a shakeup in the department last week that saw John Ettinger exit the label after 13 years. Ettinger joined Mercury in 1994 as the Midwest regional, based out of Chicago. He rose to VP in 2000. Shindler has 35 years of radio promotion on his resume, including stints at RCA, MTM and Dreamworks. He also ran his own promotion/marketing company, Shindler/Turner. Concurrently, Kate Dean was named VP of radio marketing for UMG Nashville after two years with the label. Prior to joining UMG, Dean had a promotion position with Lyric Street records and was director of label sales and service at Mediabase. Both Shindler and Dean will report directly to Bill Catino, EVP of national promotion for the label group.

Ettinger told **R&R** he can be reached via e-mail at jwe10@comcast.net or by cell at 615-438-7667. He also told us, "There were terrific highs, highlighted by the talented staffs I served with. Thanks most to my dear friends programming country radio. It's been a great, great run."

And Now, Please Follow Radio's Bouncing Ball

Hey, speaking of that, a guy named Chuck Collins has a little more spring to his step these days, and it's not just because he works for Rubber City Radio/Akron. Collins is now the official owner of OM stripes for adult standards WAKR/Akron, which he already programs, but now will oversee clusterpals classic rock WONE and country WQMX too. Sue Wilson, PD of 'QMX, isn't going anywhere, as Collins tells **R&R**, "I have wonderful PDs working with me, so that made this transition the best

BILLBOARD BOXSCORE

| ARTIST VENUE/CITY/DATES | ATTENDANCE | GROSS |
|---|------------|-----------|
| Keith Urban, The Wreckers Verizon Center Washington, D.C. Aug. 17 | 11,845 | \$709,038 |
| Keith Urban, The Wreckers Wachovia Center Philadelphia Aug. 18 | 14,170 | \$670,893 |
| Rascal Flatts, Jason Aldean Freedom Hall Coliseum Louisville Aug. 16 | 11,208 | \$605,232 |
| Brad Paisley, Jack Ingram, Kellie Pickler Blossom Music Center Cleveland Sept. 14 | 19,337 | \$599,891 |
| Brad Paisley, Jack Ingram, Kellie Pickler Minnesota State Fair St. Paul Aug. 23 | 13,148 | \$564,014 |

Billboard Boxscore tracks recent country concert grosses and attendance figures. Copyright 2007, Nielsen Business Media. More concert grosses available at www.billboard.biz.

SHOWPREP 101

Oct. 9, 1946: The first electric blanket was sold in Petersburg, Va. for \$39.50.

Oct. 10: National Ratty Sweater Season begins today.

Oct. 11, 1992: Maintenance workers in Alexandria, Ind. solved a massive street-flooding problem by removing a 200-pound hairball from the city sewer.

Oct 12, 1962: A Little Richard concert in Liverpool was opened by a local group: The Beatles.

Quotable: "The only person who likes change is a wet baby." —*Mark Twain*

© 2007 Radio & Records. All Rights Reserved. No part of this material may be reproduced in any form or incorporated in any information retrieval system without written permission of the Publisher.

MOST ADDED

BREAKER

FAITH HILL
red umbrella

21 NEW ADDS!
41* - 36*
+280 Plays
+ 1,374,500 in Audience

FROM "THE HITS"
FAITH HILL
THE HITS

IN STORES NOW

possible scenario." ... After more than eight years, Dave Merz has left Martz Communications/Ogdensburg, NY., which includes top 40 WYSX, oldies WPAC and country WNCQ, to take the PD gig at Qantum's WYNR (Fun Country)/Brunswick, Ga., replacing Joe Willie Sousa, who left the station back in July. While Merz is physically gone, that familiar voice listeners hear doing mornings back at WNCQ is still Dave, delivered via the wonders of voicetracking.

Even at the ripe old age of 82, Gaylord Entertainment's venerable WSM-AM still knows how to party, and the birthday celebration looks like it'll continue through October. The monthlong bash started Friday (Oct. 5) with morning man Bill Cody broadcasting at the base of its 808-foot stick, where the original WSM studios are. The station's gala birthday month wraps up Oct. 29 with a Listener Appreciation Concert at the historic Ryman Auditorium featuring newly inducted Country Music Hall of Fame members Vince Gill, Mel Tillis and special guest host Ralph Emery, an original WSM announcer.

Good luck to Dallas Reese, who just joined West Virginia Radio Corporation's WKKM/Morgantown, W.Va. And good luck if you want to meet Reese, because his new duties call for a full day and multiple personalities as MD/APD/afternoons at 'KKM, the country station. As they say in TV infomercials, "But wait, there's more!" After a sip of water, a deep breath and a Venti-triple-caff-latte with extra sugar, Reese will handle PD/MD/midday chores for classic rock clustermate WFBY. Godspeed, Dallas Reese, Godspeed. Prior to his new gig, Reese was APD/MD/afternoons at WCMC/Raleigh prior to its flip to sports/talk.

J. Brooks is back in town ... town meaning Mason City, Iowa where he'll serve as OM for KSMA in addition to doing mornings. Back in the day, Brooks worked across the street as PD/MD/mornings for KIAI.

Tim Jones is officially and absolutely positively the new PD for Citadel's WGKX (Kix 106)/Memphis. This

story began as a maybe, grew into a probably and eventually became a full-fledged definitely over a period of 72 hours. Jones comes to Memphis from Clear Channel's KBQI/Albuquerque, where he was PD, in addition to tracking middays at urban AC clustermate KSYU (Hot 95.1). In Memphis, Jones takes over for Lance Tidwell, who left to program Entercom's KKWF (The Wolf)/Seattle.

We segue now from a new Citadel employee to a former one ... Cary Rolfe, who recently left the Citadel/Spokane cluster as OM to join Clear Channel's KWNRR/Las Vegas as PD. He started last week and has all sorts of fun new contact information: 702-238-7339; e-mail: caryrolfe@clearchannel.com.

The new market manager for Clear Channel/Panama City is Jimmy Vineyard ... somewhere along the line, he had to have been a jock, right? Anyway, Vineyard comes from CC/Birmingham-Tuscaloosa, succeeding Peter Norden who was named market manager for the CC/Sarasota cluster late last month.

Remember just weeks ago, we told you longtime country air personality Kim Leslie had taken a gig with Sirius, hosting noon-6 p.m. for its Prime Country channel? Well, she's at it again, taking yet another gig while retaining her Sirius duties. Leslie has joined South Central Communications AC WJXA (Mix 92.9)/Nashville as co-host of the morning show and, like that guy on the old "Ed Sullivan Show" who juggled an egg, a bowling ball and a chainsaw, Leslie will somehow manage all this without hurting herself ... or ending up with egg on her face.

Apparently for Robby Lynn, hosting the nationally syndicated "Sunday Kind of Country" didn't fulfill his insatiable appetite for work, so he now adds a Monday-Friday kind of country too, taking on PD/mornings for Prime Corp Broadcasting's KJCS (KJ-103)/Nacogdoches, Texas. Lynn replaces

©2007 Radio & Records. All Rights Reserved. No part of this material may be reproduced in any form or incorporated in any information retrieval system without written permission of the Publisher.

Taylor Swift

"OUR SONG"

Airpower!

Greatest Gainer!

Most Added!

Top 20 In Week #5!

Regis & Kelly This Wednesday!

THANKS COUNTRY RADIO!



Gator Wakeman, who exited recently.

Micky Fox joined "The Randy Carroll Morning Show" at Clear Channel's KAJA/San Antonio last week. Fox previously worked at KXLT/Boise, Idaho and KURR/Salt Lake City. In a statement, Clear Channel/San Antonio OM and KAJA PD George King said, "We're very excited to have Micky. She's an incredible talent and will fit in perfectly with our team!"

Say ... George King, didn't he used to program CC sister KNIX/Phoenix? You bet he did. Now that gig belongs to Ray Massie, whom we'll now congratulate after KNIX was named best country station for the third consecutive year by readers of *The Phoenix New Times* in its 29th annual "Best of Phoenix" edition.

They're having a Free-For-All in Dallas next month when Cumulus' KPLX (The Wolf) welcomes Travis Tritt, Blake Shelton, Steve Holy and Heartland to the Smirnoff Music Center. As the name suggests, tickets are free and available by listening to The Wolf and showing up at station appearances.

An Audio-Visual Family

While Faith Hill is busy with her greatest-hits CD release and new single "Red Umbrella," husband Tim McGraw is back on the big screen, with a small, yet intense role in the Jamie Foxx/Jennifer Garner film "The Kingdom." In it, McGraw plays a husband whose wife is killed in a terrorist attack in Saudi Arabia. In its first week of release, the movie pulled in more than \$17 million. Actually, Hill is getting some face time too, on the tube, singing the opening theme every Sunday night on NBC's Sunday night football package.

— R.J. Curtis/Country Editor 323-954-3444
Email: rcurtis@radioandrecords.com

On The Charts: Toby Returns To Summit After Extended Absence

With his first No. 1 in more than two years, **Toby Keith** caps the R&R Country chart with "Love Me If You Can" (Show Dog Nashville), which improves 2 million audience impressions and rises 3-1. That's the Oklahoman's 16th chart-topper since his debut single, "Should've Been a Cowboy," spent two weeks at the top of the page in June 1993. The new No. 1 closes Keith's longest gap between No. 1 singles since the three years that lapsed between "Me Too" (March 1997) and "How Do You Like Me Now?!" (March 2000). He last topped the chart when "As Good As I Once Was" ruled for six weeks during the warm months of 2005.

"Love Me If You Can" is Keith's 13th No. 1 since the beginning of 2000, breaking a tie for most No. 1s so far this decade. Previously, Keith and **Tim McGraw** were tied for that honor with 12 chart-toppers apiece. Keith's single also ascends to the summit on the R&R Country Indicator list.

Faith Hill's "Red Umbrella" (Warner Bros./WRN) claims Most Added on the R&R Country Indicator panel (20 reports), while **Sugarland's** "Stay" dominates the same list on the R&R Country panel (15 adds).

— Wade Jessen/Director of Charts & Operations, Nashville
615-321-4291 Email: wjessen@radioandrecords.com

©2007 Radio & Records. All Rights Reserved. No part of this material may be reproduced in any form or incorporated in any information retrieval system without written permission of the Publisher.



BREAKER BREAKER

IT'S GOOD TO BE BUCKY

bucky "IT'S GOOD TO BE US"
COVINGTON

OVER 1 MILLION NEW AUDIENCE IMPRESSIONS THIS WEEK!

+221 NEW SPINS 37* MEDIABASE 39* BDS

NEW THIS WEEK @ WXBQ, KCYE, KJYJ, WGNE, KTOM, KBEQ, WBEE, WRBT, KSSN, KWLI, WCTQ, WQBE, WZKX, KDRK, KIZN

LYRIC STREET RECORDS

MUSICNOTES

Sara Evans' "Greatest Hits" is on sale beginning tomorrow (Oct. 9), and she's on TV all week. Look for Evans appearing on "Good Morning America's Fall Concert Series"; "The View"; "Hannity & Colmes"; and Tuesday night with Suzanne Alexander, host of GAC's "On the Streets."

Wonder if Sara and **Taylor Swift** will bump into each other while in New York this week. Swift will perform her latest, "Our Song," on Wednesday (Oct. 10) on "Regis & Kelly."

Billy Ray Cyrus returns to "Dancing With the Stars" on Tuesday night (Oct. 9), this time with his daughter, Miley, a.k.a. "Hannah Montana." Father and daughter will perform a duet of his latest single "Ready, Set, Don't Go." Immediately following the performance, country radio gets an exclusive digital delivery of the tune.

Brad Paisley's "Bonfires and Amplifiers" tour is so hot, it's been extended through 2008. The second leg starts in Denver on Jan. 23 and goes through late Feb.

VIDEO ADDS

CMT

GARY ALLAN Watching Airplanes
GRETCHEN WILSON You Don't Have To Go Home
JASON ALDEAN Laughed Until We Cried

CMT PURE COUNTRY

GARY ALLAN Watching Airplanes
JASON ALDEAN Laughed Until We Cried

GAC

GARY ALLAN Watching Airplanes
JASON ALDEAN Laughed Until We Cried
SHOOTER JENNINGS Walk Of Life
CARRIE UNDERWOOD So Small



promosquad
HitPredictor

SONGS WITH HIT POTENTIAL

| | CHART RANK |
|--|------------|
| TOBY KEITH <i>Love Me If You Can</i> (Show Dog Nashville) (83.4) | 1 |
| KENNY CHESNEY <i>Don't Blink</i> (BNA) (85.6) | 2 |
| TIM MCGRAW <i>If You're Reading This</i> (Curb) (94.8) | 4 |
| DIERKS BENTLEY <i>Free And Easy (Down The Road I Go)</i> (Capitol Nashville) (94.1) | 7 |
| CARRIE UNDERWOOD <i>So Small</i> (Arista Nashville) (83.0) | 8 |
| GARTH BROOKS <i>More Than A Memory</i> (Big Machine) (91.5) | 9 |
| GEORGE STRAIT <i>How 'Bout Them Cowgirls</i> (MCA Nashville) (88.4) | 11 |
| JASON MICHAEL CARROLL <i>Livin' Our Love Song</i> (Arista Nashville) (88.6) | 12 |
| CLAY WALKER <i>Fall</i> (Asylum-Curb) (90.3) | 13 |
| JOSH TURNER <i>Firecracker</i> (MCA Nashville) (88.6) | 14 |
| KEITH URBAN <i>Everybody</i> (Capitol Nashville) (82.2) | 15 |
| MIRANDA LAMBERT <i>Famous In A Small Town</i> (Columbia) (75.7) | 17 |
| SARA EVANS <i>As If</i> (RCA) (89.7) | 18 |
| MONTGOMERY GENTRY <i>What Do Ya Think About That</i> (Columbia) (89.7) | 19 |
| TAYLOR SWIFT <i>Our Song</i> (Big Machine) (85.1) | 20 |
| LEANN RIMES <i>Nothin' Better To Do</i> (Asylum-Curb) (78.1) | 21 |
| JOE NICHOLS <i>Another Side Of You</i> (Universal South) (94.5) | 22 |
| GARY ALLAN <i>Watching Airplanes</i> (MCA Nashville) (80.5) | 24 |
| SUGARLAND <i>Stay</i> (Mercury) (87.4) | 25 |
| BLAKE SHELTON <i>The More I Drink</i> (Warner Bros.) (81.3) | 27 |
| CHUCK WICKS <i>Stealing Cinderella</i> (RCA) (76.0) | 28 |
| BILLY CURRINGTON <i>Tangled Up</i> (Mercury) (91.8) | 30 |
| JASON ALDEAN <i>Laughed Until We Cried</i> (Broken Bow) (88.5) | 31 |
| CHRIS CAGLE <i>What Kinda Gone</i> (Capitol Nashville) (88.3) | 33 |
| TRACE ADKINS <i>I Got My Game On</i> (Capitol Nashville) (84.4) | 34 |
| EMERSON DRIVE <i>You Still Own Me</i> (Midas) (86.6) | 35 |
| BUCKY COVINGTON <i>It's Good To Be Us</i> (Lyric Street) (76.4) | 39 |
| MARK CHESNUTT <i>Rollin' With The Flow</i> (Lofton Creek) (88.5) | 41 |
| CLINT BLACK <i>The Strong One</i> (Equity) (82.5) | 42 |
| KELLIE PICKLER <i>Things That Never Cross A Man's Mind</i> (BNA) (85.3) | 46 |
| BILLY RAY CYRUS <i>Ready, Set, Don't Go</i> (Walt Disney) (87.2) | 48 |

Copyright 2007, Think Fast, LLC. For more information and testing methodology, please visit HitPredictor.com or Promosquad.com.

©2007 Radio & Records. All Rights Reserved. No part of this material may be reproduced in any form or incorporated in any information retrieval system without written permission of the Publisher.

"Dear God"



Thank you Country Radio!

“Love Me If You Can”

#1

- #1** R&R
- #1** Country Aircheck
- #1** R&R Indicator
- #1** CA Activator
- #1** Music Row

The MOST **#1's** in this decade... and **23 #1's** in his incredible career!

A Great Artist + A Great Song = Great Radio



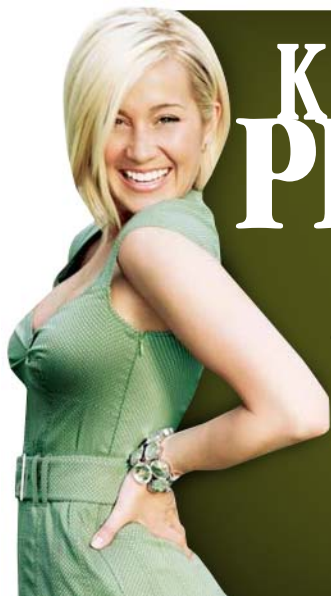
THE PARTY NEVER STOPS...WE'D LIKE YOU TO MEET

TEQUILA SHEILA

ON YOUR DESK NOW! — ADDS OCT. 15TH

| LW | TW | ARTIST Title Label(s) | Tot. Aud. (00) | +/- Aud. (00) | Total Plays | +/- Plays | Wks On | Sta On/ Adds TW |
|----|----|---|-------------------|------------------|----------------|--------------|-----------|--------------------|
| 3 | 1 | TOBY KEITH Love Me If You Can (<i>Show Dog Nashville</i>) | 381031 | +20785 | 5194 | +289 | 18 | 130/0 |
| 5 | 2 | KENNY CHESNEY Don't Blink (<i>BNA</i>) | 371923 | +40688 | 4904 | +396 | 7 | 130/0 |
| 1 | 3 | BRAD PAISLEY Online (<i>Arista Nashville</i>) | 368990 | -11185 | 4891 | -179 | 16 | 130/0 |
| 6 | 4 | TIM MCGRAW If You're Reading This (<i>Curb</i>) | 332212 | +4748 | 4444 | +68 | 21 | 129/1 |
| 2 | 5 | RASCAL FLATTS Take Me There (<i>Lyric Street</i>) | 332002 | -41252 | 4539 | -411 | 14 | 130/0 |
| 4 | 6 | BROOKS & DUNN Proud Of The House We Built (<i>Arista Nashville</i>) | 327008 | -6158 | 4510 | -60 | 19 | 130/0 |
| 8 | 7 | DIERKS BENTLEY Free And Easy... (<i>Capitol Nashville</i>) | 302568 | +14178 | 4051 | +205 | 20 | 130/0 |
| 9 | 8 | CARRIE UNDERWOOD So Small (<i>Arista/Arista Nashville</i>) | 280401 | +6327 | 3813 | +156 | 10 | 129/0 |
| 10 | 9 | GARTH BROOKS More Than A Memory (<i>Pearl/Big Machine</i>) | 278413 | +6530 | 3742 | -32 | 6 | 130/0 |
| 7 | 10 | LUKE BRYAN All My Friends Say (<i>Capitol Nashville</i>) | 239966 | -51949 | 3382 | -691 | 37 | 130/0 |
| 12 | 11 | GEORGE STRAIT How 'Bout Them Cowgirls (<i>MCA Nashville</i>) | 225126 | +28500 | 3279 | +248 | 9 | 129/0 |
| 11 | 12 | JASON M. CARROLL Livin' Our Love Song (<i>Arista Nashville</i>) | 223397 | +7414 | 3247 | +134 | 32 | 130/0 |
| 14 | 13 | CLAY WALKER Fall (<i>Asylum-Curb</i>) | 207966 | +17751 | 3138 | +263 | 29 | 129/2 |
| 15 | 14 | JOSH TURNER Firecracker (<i>MCA Nashville</i>) | 195396 | +11532 | 2841 | +117 | 15 | 129/0 |
| 17 | 15 | KEITH URBAN Everybody (<i>Capitol Nashville</i>) | 178948 | +22114 | 2654 | +293 | 7 | 129/3 |
| 13 | 16 | KENNY CHESNEY Never Wanted Nothing More (<i>BNA</i>) | 176641 | -18595 | 2097 | -242 | 19 | 128/0 |
| 16 | 17 | MIRANDA LAMBERT Famous In A Small Town (<i>Columbia</i>) | 172728 | +9463 | 2640 | +100 | 29 | 128/0 |
| 19 | 18 | SARA EVANS As If (<i>RCA</i>) | 162521 | +20999 | 2404 | +241 | 18 | 128/5 |
| 20 | 19 | MONTGOMERY GENTRY What Do Ya Think... (<i>Columbia</i>) | 155040 | +27273 | 2354 | +311 | 12 | 122/3 |
| 23 | 20 | TAYLOR SWIFT Our Song (<i>Big Machine</i>) | 147776 | +44933 | 2124 | +491 | 8 | 122/13 |
| 22 | 21 | LEANN RIMES Nothin' Better To Do (<i>Asylum-Curb</i>) | 125330 | +14472 | 1871 | +136 | 19 | 110/5 |
| 21 | 22 | JOE NICHOLS Another Side Of You (<i>Universal South</i>) | 123854 | +5205 | 2067 | +100 | 23 | 122/3 |
| 24 | 23 | TRISHA YEARWOOD Heaven, Heartache... (<i>Big Machine</i>) | 98269 | +7142 | 1687 | +149 | 12 | 115/0 |
| 27 | 24 | GARY ALLAN Watching Airplanes (<i>MCA Nashville</i>) | 90426 | +11676 | 1372 | +149 | 12 | 94/5 |
| 29 | 25 | SUGARLAND Stay (<i>Mercury</i>) | 81343 | +23705 | 1310 | +379 | 4 | 93/20 |
| 25 | 26 | EAGLES How Long (<i>ERC/Lost Highway/Mercury</i>) | 80915 | -407 | 1247 | +18 | 8 | 82/2 |
| 28 | 27 | BLAKE SHELTON The More I Drink (<i>Warner Bros./WRN</i>) | 72958 | +7998 | 1209 | +106 | 16 | 84/5 |
| 31 | 28 | CHUCK WICKS Stealing Cinderella (<i>RCA</i>) | 72285 | +18794 | 1030 | +178 | 7 | 87/12 |
| 30 | 29 | PAT GREEN Way Back Texas (<i>BNA</i>) | 62138 | +5197 | 1025 | +30 | 20 | 87/1 |
| 32 | 30 | BILLY CURRINGTON Tangled Up (<i>Mercury</i>) | 55715 | +4468 | 915 | +63 | 16 | 66/1 |

© 2007 Radio & Records



Kellie
PICKLER "Things That Never
Cross A Man's Mind"

INSTANT FEMALE PHONES!

OVER 60 EARLY BELIEVERS!
IMPACTING NOW!!

R&R 46 MB 45*



| LW | TW | ARTIST Title Label(s) | Tot. Aud. (00) | +/- Aud. (00) | Total Plays | +/- Plays | Wks On | Sta On/ Adds TW |
|----------------|----|--|-------------------|------------------|----------------|--------------|-----------|--------------------|
| 34 | 31 | JASON ALDEAN Laughed Until We Cried (<i>Broken Bow</i>) | 54454 | +6980 | 976 | +89 | 9 | 82/9 |
| 33 | 32 | WHISKEY FALLS Last Train Running (<i>Midas/New Revolution</i>) | 47624 | -3109 | 891 | +10 | 22 | 76/2 |
| 37 | 33 | CHRIS CAGLE What Kinda Gone (<i>Capitol Nashville</i>) | 44786 | +9354 | 833 | +69 | 12 | 71/4 |
| 36 | 34 | TRACE ADKINS I Got My Game On (<i>Capitol Nashville</i>) | 39191 | +3251 | 735 | +25 | 9 | 66/3 |
| 35 | 35 | EMERSON DRIVE You Still... (<i>Montage/Midas/New Revolution</i>) | 37163 | +629 | 710 | +17 | 12 | 60/6 |
| Breaker | 36 | FAITH HILL Red Umbrella (<i>Warner Bros./WRN</i>) | 34498 | +13745 | 561 | +280 | 3 | 49/18 |
| 38 | 37 | CRAIG MORGAN International Harvester (<i>Broken Bow</i>) | 34467 | +6833 | 593 | +151 | 4 | 48/9 |
| 39 | 38 | BIG & RICH Between Raising Hell... (<i>Warner Bros./WRN</i>) | 33206 | +7901 | 516 | +69 | 9 | 44/2 |
| Breaker | 39 | BUCKY COVINGTON It's Good To Be Us (<i>Lyric Street</i>) | 31188 | +10586 | 650 | +211 | 5 | 64/10 |
| 47 | 40 | RODNEY ATKINS Cleaning This Gun (Come On In Boy) (<i>Curb</i>) | 25256 | +13545 | 452 | +233 | 3 | 51/19 |
| 44 | 41 | MARK CHESNUTT Rollin' With The Flow (<i>Lofton Creek</i>) | 20101 | +4033 | 241 | +41 | 8 | 20/5 |
| 42 | 42 | CLINT BLACK The Strong One (<i>Equity</i>) | 19333 | +2351 | 332 | +58 | 16 | 34/0 |
| 43 | 43 | JENNIFER HANSON Joyride (<i>Universal South</i>) | 19156 | +2570 | 379 | +49 | 11 | 40/2 |
| 46 | 44 | LITTLE BIG TOWN I'm With The Band (<i>Equity</i>) | 18540 | +6435 | 344 | +59 | 7 | 44/7 |
| 51 | 45 | VAN ZANT Goes Down Easy (<i>Columbia</i>) | 12809 | +2721 | 271 | +42 | 7 | 29/3 |
| 45 | 46 | KELLIE PICKLER Things That Never Cross A Man's Mind (<i>BNA</i>) | 12713 | +438 | 344 | +63 | 3 | 50/8 |
| 49 | 47 | JAKE OWEN Something About A Woman (<i>RCA</i>) | 12183 | +572 | 338 | +28 | 6 | 42/3 |
| 53 | 48 | BILLY RAY CYRUS Ready, Set, Don't Go (<i>Walt Disney/CO5</i>) | 11970 | +3715 | 228 | +43 | 11 | 18/0 |
| 50 | 49 | ELI YOUNG BAND When It Rains (<i>Carnival</i>) | 11314 | +971 | 70 | +9 | 7 | 1/0 |
| 52 | 50 | DOLLY PARTON Better Get To Livin' (<i>Dolly</i>) | 10431 | +777 | 128 | +11 | 3 | 7/1 |
| Debut | 51 | ASHTON SHEPHERD Takin' Off This Pain (<i>MCA Nashville</i>) | 9281 | +4211 | 247 | +54 | 1 | 34/4 |
| 58 | 52 | ERIC CHURCH Sinners Like Me (<i>Capitol Nashville</i>) | 8699 | +2096 | 230 | +34 | 3 | 22/3 |
| Debut | 53 | LADY ANTEBELLUM Love Don't Live Here (<i>Capitol Nashville</i>) | 7525 | +3568 | 143 | +83 | 1 | 26/12 |
| 57 | 54 | KENNY CHESNEY W/GEORGE STRAIT Shiftwork (<i>BNA</i>) | 7285 | +681 | 99 | +13 | 4 | 5/0 |
| 54 | 55 | RISSI PALMER Country Girl (<i>1720</i>) | 7008 | -569 | 111 | -36 | 7 | 19/1 |
| Debut | 56 | BROOKS & DUNN Cowboy Town (<i>Arista Nashville</i>) | 6712 | +5624 | 55 | +44 | 1 | 0/0 |
| Debut | 57 | LEE BRICE Happy Endings (<i>Asylum-Curb</i>) | 6057 | +3417 | 155 | +98 | 1 | 25/8 |
| Debut | 58 | JAMES OTTO Just Got Started... (<i>Rayhaw/Warner Bros./WRN</i>) | 6041 | +1697 | 197 | +47 | 1 | 20/4 |
| 59 | 59 | ANDY GRIGGS What If It's Me (<i>Montage</i>) | 5839 | -663 | 189 | +32 | 2 | 27/4 |
| Debut | 60 | GRETCHEN WILSON You Don't Have To Go Home (<i>Columbia</i>) | 5780 | +3088 | 118 | +52 | 1 | 21/8 |

© 2007 Radio & Records

Feel the Power!

Bomshel
"Power Of One"



Just Added:
WMIL, KASE,
KHEY, WNKT,
KATC, WBUL,
WKXC, KJUG

The Power Begins with You!

THE VOCAL EVENT OF THE YEAR!

BILLY RAY CYRUS

On ABC'S DANCING WITH THE STARS

PERFORMING THE DUET VERSION OF

"Ready, Set, Don't Go"

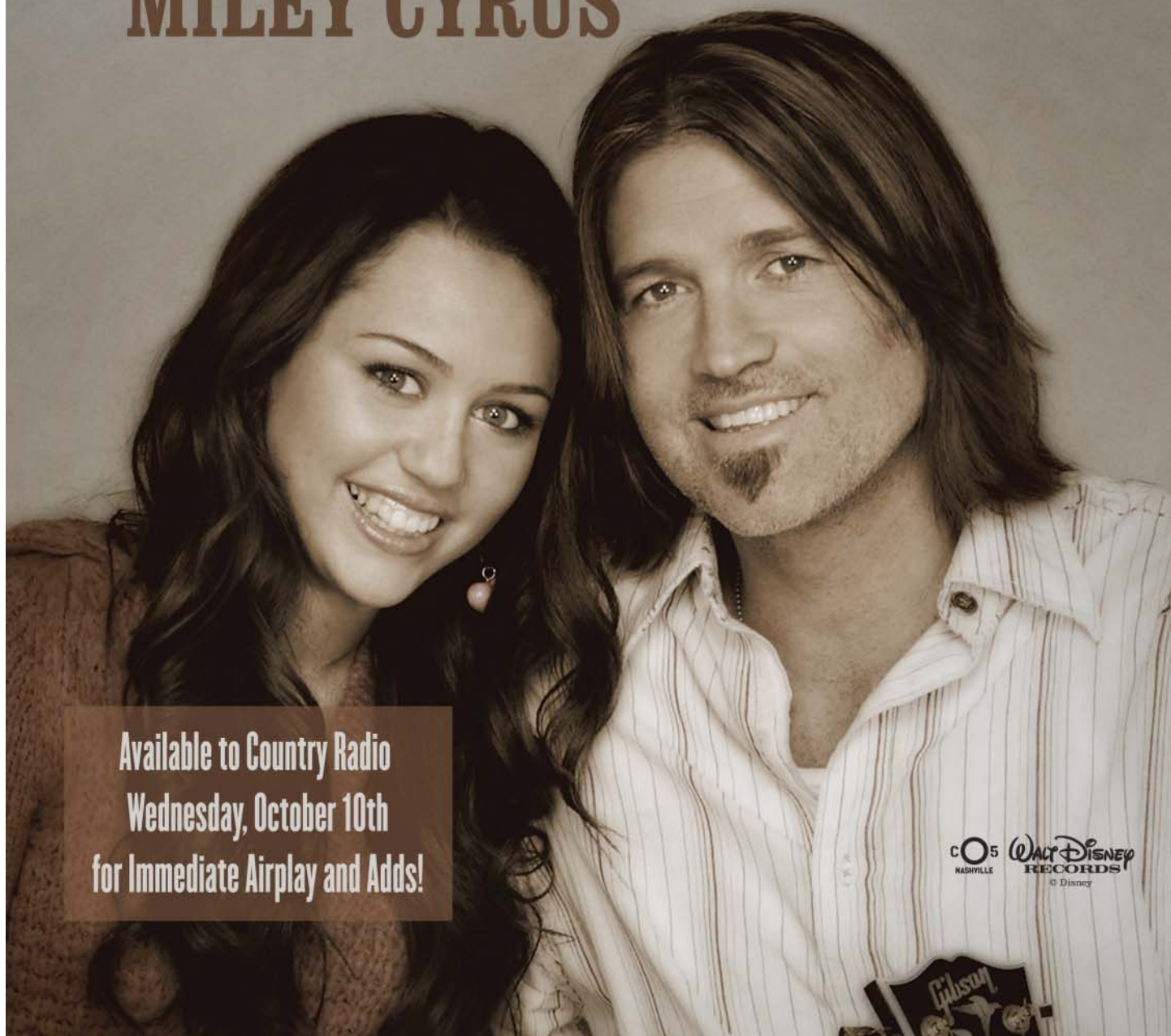
WITH SPECIAL GUEST APPEARANCE BY

MILEY CYRUS

Show Airs:

**Tuesday,
October 9th
on ABC**

**THIS ONE-TIME EVENT
WILL BE SEEN BY MORE THAN
20 MILLION PEOPLE!**



**Available to Country Radio
Wednesday, October 10th
for Immediate Airplay and Adds!**

C O 5 **WALT DISNEY**
NASHVILLE RECORDS
© Disney



COUNTRY

MOST ADDED

| ARTIST Title Label(s) | Adds |
|--|------|
| SUGARLAND Stay (Mercury) | 20 |
| RODNEY ATKINS Cleaning This Gun (Come On In Boy) (Curb) | 19 |
| FAITH HILL Red Umbrella (Warner Bros./WRN) | 18 |
| TAYLOR SWIFT Our Song (Big Machine) | 13 |
| CHUCK WICKS Stealing Cinderella (RCA) | 12 |
| LADY ANTEBELLUM Love Don't Live Here (Capitol Nashville) | 12 |
| BUCKY COVINGTON It's Good To Be Us (Lyric Street) | 10 |
| JASON ALDEAN Laughed Until We Cried (Broken Bow) | 9 |
| CRAIG MORGAN International Harvester (Broken Bow) | 9 |

MOST INCREASED AUDIENCE

| ARTIST Title Label(s) | Total Aud. Increase |
|--|---------------------|
| TAYLOR SWIFT Our Song (Big Machine) | +44933 |
| KENNY CHESNEY Don't Blink (BNA) | +40688 |
| GEORGE STRAIT How 'Bout Them Cowgirls (MCA Nashville) | +28500 |
| MONTGOMERY GENTRY What Do Ya Think About That (Columbia) | +27273 |
| SUGARLAND Stay (Mercury) | +23705 |
| KEITH URBAN Everybody (Capitol Nashville) | +22114 |
| SARA EVANS As If (RCA) | +20999 |
| TOBY KEITH Love Me If You Can (Show Dog Nashville) | +20785 |
| CHUCK WICKS Stealing Cinderella (RCA) | +18794 |
| CLAY WALKER Fall (Asylum-Curb) | +17751 |

MOST INCREASED PLAYS

| ARTIST Title Label(s) | Total Play Increase |
|--|---------------------|
| TAYLOR SWIFT Our Song (Big Machine) | +491 |
| KENNY CHESNEY Don't Blink (BNA) | +396 |
| SUGARLAND Stay (Mercury) | +379 |
| MONTGOMERY GENTRY What Do Ya Think About That (Columbia) | +311 |
| KEITH URBAN Everybody (Capitol Nashville) | +293 |
| TOBY KEITH Love Me If You Can (Show Dog Nashville) | +289 |
| FAITH HILL Red Umbrella (Warner Bros./WRN) | +280 |
| CLAY WALKER Fall (Asylum-Curb) | +263 |
| GEORGE STRAIT How 'Bout Them Cowgirls (MCA Nashville) | +248 |
| SARA EVANS As If (RCA) | +241 |

COUNTRY INDICATOR

MOST ADDED

| ARTIST Title Label(s) | Adds |
|--|------|
| FAITH HILL Red Umbrella (Warner Bros./WRN) | 15 |
| CRAIG MORGAN International Harvester (Broken Bow) | 14 |
| RODNEY ATKINS Cleaning This Gun (Come On In Boy) (Curb) | 13 |
| SUGARLAND Stay (Mercury) | 12 |
| CHUCK WICKS Stealing Cinderella (RCA) | 11 |
| LADY ANTEBELLUM Love Don't Live Here (Capitol Nashville) | 9 |
| LUKE BRYAN We Rode In Trucks (Capitol Nashville) | 8 |
| BLAKE SHELTON The More I Drink (Warner Bros./WRN) | 7 |
| GARY ALLAN Watching Airplanes (MCA/Nashville) | 6 |
| ASHTON SHEPHERD Takin' Of This Pain (MCA/Nashville) | 6 |
| RASCAL FLATTS International Harvester (Broken Bow) | 6 |

MOST INCREASED AUDIENCE

| ARTIST Title Label(s) | Total Aud. Increase |
|---|---------------------|
| SUGARLAND Stay (Mercury) | +9510 |
| DIERKS BENTLEY Free And Easy... (Capitol Nashville) | +5248 |
| MONTGOMERY GENTRY What Do Ya Think About That (Columbia) | +5225 |
| RODNEY ATKINS Cleaning This Gun (Come On In Boy) (Curb) | +4853 |
| TAYLOR SWIFT Our Song (Big Machine) | +4773 |
| FAITH HILL Red Umbrella (Warner Bros./WRN) | +4714 |
| CHUCK WICKS Stealing Cinderella (RCA) | +4708 |
| JASON MICHAEL CARROLL Livin' Our Love Song (Arista Nashville) | +4526 |
| KENNY CHESNEY Don't Blink (BNA) | +4479 |
| GEORGE STRAIT How 'Bout Them Cowgirls (MCA Nashville) | +3897 |

MOST INCREASED PLAYS

| ARTIST Title Label(s) | Total Play Increase |
|--|---------------------|
| SUGARLAND Stay (Mercury) | +457 |
| KENNY CHESNEY Don't Blink (BNA) | +253 |
| CHUCK WICKS Stealing Cinderella (RCA) | +245 |
| TAYLOR SWIFT Our Song (Big Machine) | +220 |
| RODNEY ATKINS Cleaning This Gun (Come On In Boy) (Curb) | +219 |
| FAITH HILL Red Umbrella (Warner Bros./WRN) | +214 |
| GARY ALLAN Watching Airplanes (MCA Nashville) | +202 |
| MONTGOMERY GENTRY What Do Ya Think About That (Columbia) | +191 |
| DIERKS BENTLEY Free And Easy... (Capitol Nashville) | +180 |
| CRAIG MORGAN International Harvester (Broken Bow) | +163 |

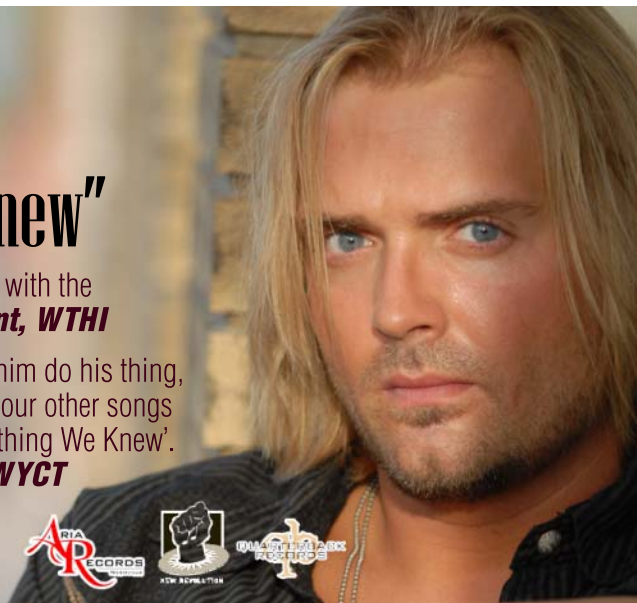
Stephen Cochran

"Everything We Knew"

"Stephen Cochran is tomorrow's star. He's the total package with the sound of a young Garth!" - **Barry Kent, WTHI**

"It won't be too much longer before Stephen goes BIG. After watching him do his thing, I can say he's got IT. I like 'Friday Night Fireside' a lot but there's about four other songs he does that are OUTSTANDING; including his new single, 'Everything We Knew'. He is easy to like and our listeners love him." - **Brent Lane, WYCT**

Going For Adds 10/15 • Available on Play MPE NOW!



© 2007 Radio & Records

COUNTRY NEW & ACTIVE

- JOSH GRACIN** We Weren't Crazy (*Lyric Street*)
Total Audience: 4472, Total Stations: 1, Adds: 1
- BROOKS & DUNN** God Must Be Busy (*Arista Nashville*)
Total Audience: 4189, Total Stations: 0, Adds: 0
- BROOKS & DUNN** Johnny Cash Junkie (Buck Owens Freak) (*Arista Nashville*)
Total Audience: 4010, Total Stations: 0, Adds: 0
- MARTINA MCBRIDE** For These Times (*RCA*)
Total Audience 3870, Total Stations: 2, Adds: 1
- BROOKS & DUNN** Cowgirls Don't Cry (*Arista Nashville*)
Total Audience: 3531, Total Stations: 0, Adds: 0
- BROOKS & DUNN** Put A Girl In It (*Arista Nashville*)
Total Audience: 3359, Total Stations: 0, Adds: 0

COUNTRY INDICATOR NEW & ACTIVE

- MARK CHESNUTT** Rollin' With The Flow (*Lofton Creek*)
Total Plays: 481, Total Stations: 30, Adds: 1
- BIG & RICH** Between Raising Hell... (*Warner Bros./WRN*)
Total Plays: 455, Total Stations: 28, Adds: 2
- ERIC CHURCH** Sinners Like Me (*Capitol Nashville*)
Total Plays: 366, Total Stations: 27, Adds: 2
- KELLIE PICKLER** Things That Never Cross A Man's Mind (*BNA*)
Total Plays: 330, Total Stations: 27, Adds: 4
- LITTLE BIG TOWN** I'm With The Band (*Equity*)
Total Plays: 318, Total Stations: 24, Adds: 1
- LADY ANTEBELLUM** Love Don't Live Here (*Capitol Nashville*)
Total Plays: 249, Total Stations: 26, Adds: 9
- GRETCHEN WILSON** You Don't Have To Go Home (*Columbia*)
Total Plays: 228, Total Stations: 15, Adds: 3
- CLINT BLACK** The Strong One (*Equity*)
Total Plays: 220, Total Stations: 15, Adds: 1
- VAN ZANT** Goes Down Easy (*Columbia*)
Total Plays: 195, Total Stations: 14, Adds: 1
- BILLY RAY CYRUS** Ready, Set, Don't Go (*Walt Disney/CO5*)
Total Plays: 193, Total Stations: 16, Adds: 2

R&R Going For Adds

- 10/15
DEANA CARTER W/WILLIE NELSON On The Road Again (*Vanguard*)
- DREW DAVIS BAND** Back There All The Time (*Lofton Creek*)
- FLYNNVILLE TRAIN** Tequila Sheila (*Show Dog Nashville*)
- KELLY WILLIS** The More That I'm Around You (*Rykodisc*)
- STEPHEN COCHRAN** Everything We Knew (*Aria/Quarterback*)
- 10/22
CROSSIN DIXON Make You Mine (*Broken Bow*)
- ELI YOUNG BAND** When It Rains (*Carnival*)
- HAL KETCHUM** One More Midnight (*Curb*)
- LUKE BRYAN** We Rode In Trucks (*Capitol Nashville*)
- MARTINA MCBRIDE** For These Times (*RCA*)
- RASCAL FLATTS** Winner At A Losing Game (*Lyric Street*)
- 10/29
JOSH GRACIN We Weren't Crazy (*Lyric Street*)
- PHIL VASSAR** Love Is A Beautiful Thing (*Universal South*)

TOP 10 RECURRENTS

| ARTIST Title Label(s) | Total Aud. (00) |
|--|-----------------|
| RODNEY ATKINS These Are My People (<i>Curb</i>) | 169931 |
| TRACY LAWRENCE Find Out Who Your Friends Are (<i>Rocky Comfort/CO5</i>) | 149298 |
| BILLY CURRINGTON Good Directions (<i>Mercury</i>) | 146074 |
| REBA MCBENTIRE W/KELLY CLARKSON Because Of You (<i>MCA Nashville</i>) | 129696 |
| MONTGOMERY GENTRY Lucky Man (<i>Columbia</i>) | 122433 |
| BIG & RICH Lost In This Moment (<i>Warner Bros./WRN</i>) | 117599 |
| RODNEY ATKINS Watching You (<i>Curb</i>) | 111480 |
| EMERSON DRIVE Moments (<i>Midas/New Revolution</i>) | 104654 |
| GEORGE STRAIT Wrapped (<i>MCA Nashville</i>) | 98585 |
| BUCKY COVINGTON A Different World (<i>Lyric Street</i>) | 95143 |



130 Country reporters. Songs ranked by total audience for the airplay week of 10/1-10/7. Bullets appear on songs gaining audience or remaining flat from previous week. A song will also receive a bullet if its percentage loss in audience does not exceed the percentage of monitored station downtime for the format. Country titles that decline in audience but increase in detections will also receive a bullet if the total audience erosion for the week does not exceed 3%. If two songs are tied in total audience, the song with the larger increase in audience is placed first. Descending, non-bulleted titles below No. 10 in either audience or detections are moved to recurrent after 20 weeks. Most Added is the total number of new adds officially reported to R&R by each reporting station or by automatic add thresholds for stations not allowed to report adds. Songs unreported as adds do not count toward overall total stations playing a song. Most Increased Audience lists the songs with the greatest week-to-week increases in total audience. Audience totals on the chart are derived, in part, using certain Arbitron Inc. copyrighted Persons 12+ audience estimates, under license (© 2007, Arbitron Inc.) © 2007 Radio & Records.

BBR TWO BBR songs in the Top 10 Most Added!

JASON ALDEAN
"Laughed Until We Cried"

RR 31 MB 30*

New Adds Include:
KATC, KFDI, WOGI, WCTQ, WFBE, WQDR, WUSJ, WNCY

Vote for Jason Now... CMA Horizon Award!

CROSSIN DIXON
"MAKE YOU MINE"
ON YOUR DESK NOW!
ADD DATE 10/22!

"'Make You Mine' Is the song that blew me away the first time I heard CROSSIN DIXON play it for me in our conference room. I can't get the hook out of my head!"
-John Sebastian, KPLX/Dallas

CRAIG MORGAN
"INTERNATIONAL HARVESTER"

R&R 37 MB 39*

BLOWIN' UP THE PHONES!

New Adds Include:
WCTO, WYAY, WZKX WOKO, KUPL, KEYE

October 8, 2007

| LW | TW | ARTIST Title Label(s) | Total Plays | +/- Plays | Tot. Aud. (00) | +/- (00) | Wks On | Total Stations |
|----|----|--|-------------|-----------|----------------|----------|--------|----------------|
| 2 | 1 | TOBY KEITH Love Me If You Can (<i>Show Dog Nashville</i>) | 3845 | +110 | 81531 | +2621 | 17 | 94/0 |
| 5 | 2 | KENNY CHESNEY Don't Blink (<i>BNA</i>) | 3728 | +253 | 82168 | +4479 | 7 | 94/2 |
| 1 | 3 | BRAD PAISLEY Online (<i>Arista Nashville</i>) | 3653 | -89 | 80350 | -909 | 14 | 93/0 |
| 3 | 4 | BROOKS & DUNN Proud Of The House We Built (<i>Arista Nashville</i>) | 3405 | -251 | 70296 | -6002 | 18 | 89/0 |
| 6 | 5 | DIERKS BENTLEY Free And Easy... (<i>Capitol Nashville</i>) | 3400 | +180 | 72767 | +5248 | 19 | 95/0 |
| 4 | 6 | RASCAL FLATTS Take Me There (<i>Lyric Street</i>) | 3325 | -309 | 68744 | -6590 | 14 | 89/0 |
| 8 | 7 | TIM MCGRAW If You're Reading This (<i>Curb</i>) | 3150 | +39 | 64581 | -638 | 18 | 84/0 |
| 10 | 8 | CARRIE UNDERWOOD So Small (<i>Arista/Arista Nashville</i>) | 2988 | +106 | 63433 | +1619 | 10 | 90/0 |
| 11 | 9 | JASON MICHAEL CARROLL Livin' Our Love Song (<i>Arista Nashville</i>) | 2937 | +150 | 63526 | +4526 | 26 | 90/1 |
| 9 | 10 | GARTH BROOKS More Than A Memory (<i>Pearl/Big Machine</i>) | 2884 | -74 | 60895 | -1435 | 6 | 93/0 |
| 12 | 11 | GEORGE STRAIT How 'Bout Them Cowgirls (<i>MCA Nashville</i>) | 2788 | +154 | 58684 | +3897 | 9 | 94/1 |
| 13 | 12 | JOSH TURNER Firecracker (<i>MCA Nashville</i>) | 2503 | +93 | 54408 | +2147 | 13 | 92/0 |
| 14 | 13 | CLAY WALKER Fall (<i>Asylum-Curb</i>) | 2388 | +99 | 50546 | +2450 | 24 | 86/1 |
| 15 | 14 | KEITH URBAN Everybody (<i>Capitol Nashville</i>) | 2347 | +70 | 51677 | +3629 | 7 | 92/2 |
| 17 | 15 | MONTGOMERY GENTRY What Do Ya Think About That (<i>Columbia</i>) | 2185 | +191 | 48182 | +5225 | 11 | 87/2 |
| 16 | 16 | JOE NICHOLS Another Side Of You (<i>Universal South</i>) | 2123 | +74 | 45315 | +2434 | 20 | 87/1 |
| 19 | 17 | SARA EVANS As If (<i>RCA</i>) | 2100 | +140 | 44634 | +3573 | 15 | 90/3 |
| 18 | 18 | MIRANDA LAMBERT Famous In A Small Town (<i>Columbia</i>) | 1977 | -7 | 41894 | -835 | 21 | 84/1 |
| 21 | 19 | TAYLOR SWIFT Our Song (<i>Big Machine</i>) | 1826 | +220 | 40433 | +4773 | 5 | 89/4 |
| 20 | 20 | TRISHA YEARWOOD Heaven, Heartache... (<i>Big Machine</i>) | 1582 | -34 | 33109 | -3356 | 10 | 83/2 |

© 2007 Radio & Records

Mark Chesnutt

"Rollin' With The Flow"

ADDED THIS WEEK AT: KMLE, WYRK,
WGNA, KMDL, WPUR, WKDQ

TOP 10 RESEARCH at The Wolf in Sacramento
CONTINUES to research POWER at The Wolf in Dallas
Moves into POWER in Oklahoma City

R&R: **41**

CLICK HERE TO LISTEN



October 8, 2007

| LW | TW | ARTIST Title Label(s) | Total Plays | +/- Plays | Tot. Aud. (00) | +/- (00) | Wks On | Total Stations |
|--------------|----|--|-------------|-----------|----------------|----------|--------|----------------|
| 23 | 21 | LEANN RIMES Nothin' Better To Do (<i>Asylum-Curb</i>) | 1477 | +140 | 30168 | +3484 | 16 | 71/4 |
| 25 | 22 | GARY ALLAN Watching Airplanes (<i>MCA Nashville</i>) | 1348 | +202 | 29883 | +2821 | 11 | 70/6 |
| 30 | 23 | SUGARLAND Stay (<i>Mercury</i>) | 1296 | +457 | 25438 | +9510 | 3 | 74/12 |
| 24 | 24 | EAGLES How Long (<i>ERC/Lost Highway/Mercury</i>) | 1250 | +63 | 25998 | +974 | 6 | 67/1 |
| 28 | 25 | BLAKE SHELTON The More I Drink (<i>Warner Bros./WRN</i>) | 1115 | +142 | 22806 | +3013 | 15 | 68/7 |
| 29 | 26 | BILLY CURRINGTON Tangled Up (<i>Mercury</i>) | 1031 | +62 | 20829 | +1338 | 12 | 66/2 |
| 22 | 27 | REBA MCENTIRE W/K. CLARKSON Because Of You (<i>MCA Nashville</i>) | 1014 | -472 | 20881 | -10275 | 20 | 59/0 |
| 36 | 28 | CHUCK WICKS Stealing Cinderella (<i>RCA</i>) | 938 | +245 | 19836 | +4708 | 2 | 58/11 |
| 27 | 29 | KENNY CHESNEY Never Wanted Nothing More (<i>BNA</i>) | 924 | -133 | 19953 | -2683 | 18 | 52/0 |
| 31 | 30 | JASON ALDEAN Laughed Until We Cried (<i>Broken Bow</i>) | 904 | +67 | 19520 | +1945 | 7 | 59/2 |
| 32 | 31 | CHRIS CAGLE What Kinda Gone (<i>Capitol Nashville</i>) | 851 | +49 | 17570 | +802 | 9 | 53/1 |
| 33 | 32 | PAT GREEN Way Back Texas (<i>BNA</i>) | 784 | +21 | 16297 | +348 | 11 | 51/0 |
| 35 | 33 | WHISKEY FALLS Last Train Running (<i>Midas/New Revolution</i>) | 750 | +27 | 15388 | +829 | 12 | 48/1 |
| 37 | 34 | TRACE ADKINS I Got My Game On (<i>Capitol Nashville</i>) | 749 | +61 | 15396 | +1828 | 7 | 50/2 |
| 39 | 35 | BUCKY COVINGTON It's Good To Be Us (<i>Lyric Street</i>) | 725 | +101 | 14884 | +1474 | 4 | 51/5 |
| 26 | 36 | TRAVIS TRITT You Never Take Me Dancing (<i>Category 5</i>) | 718 | -345 | 14786 | -7276 | 16 | 50/0 |
| 38 | 37 | EMERSON DRIVE You Still Own Me (<i>Montage/Midas/New Revolution</i>) | 694 | +42 | 15450 | +1025 | 6 | 47/2 |
| 40 | 38 | CRAIG MORGAN International Harvester (<i>Broken Bow</i>) | 677 | +163 | 15877 | +3384 | 2 | 44/14 |
| Debut | 39 | FAITH HILL Red Umbrella (<i>Warner Bros./WRN</i>) | 645 | +214 | 11713 | +4714 | 1 | 49/15 |
| Debut | 40 | RODNEY ATKINS Cleaning This Gun (Come On In Boy) (<i>Curb</i>) | 536 | +219 | 9901 | +4853 | 1 | 40/13 |

© 2007 Radio & Records

HER SATURDAY NIGHTS ARE HOTTER THAN EVER!

Whitney Allen's got the buzz and big numbers!

THE BIG TIME
saturday night

KKGO-FM Los Angeles, CA

| DEMO | AQH SHARE/RANK | INCREASE |
|--------|----------------|----------|
| P12+ | 0 to 6.0 | 32% |
| P18-34 | #31 to #15 | 213% |
| W25-54 | #34 to #17 | 343% |

WWVZ-FM Hartford, CT

| DEMO | AQH SHARE/RANK | INCREASE |
|--------|----------------|----------|
| P25-54 | #5 to #4 | 20% |
| W18-34 | #8 even | 100% |

"She's fun, high energy, and the production is flawless. Plus the guests and artist interviews absolutely kill the voice tracks across the street!"

-Eddie Haskell, PD, KRST-FM Albuquerque and OM/Regional Format General-Country for Citadel Country Stations



Get The Big Time Saturday Night and make your nights bigger, faster!

DIAL GLOBAL
www.dial-global.com

Live, Saturday, seven to midnight.
(212) 419-2926 • BigTime@dial-global.com

October 8, 2007

| ARTIST Title (Label) | PASSION | TOTAL POSITIVE | INDEX | NEUTRAL | FAMILIARITY | DISLIKE | STRONGLY DISLIKE |
|--|---------|----------------|-------|---------|-------------|---------|------------------|
| BROOKS & DUNN Proud Of The House We Built (Arista Nashville) | 28.3% | 73.5% | 3.92 | 18.3% | 99.5% | 5.5% | 2.3% |
| KENNY CHESNEY Don't Blink (BNA) | 37.0% | 73.5% | 3.97 | 15.5% | 99.3% | 6.8% | 3.5% |
| LUKE BRYAN All My Friends Say (Capitol Nashville) | 31.3% | 69.5% | 3.88 | 16.8% | 98.5% | 10.0% | 2.3% |
| TOBY KEITH Love Me If You Can (Show Dog Nashville) | 31.3% | 67.0% | 3.87 | 18.3% | 97.0% | 9.3% | 2.5% |
| RASCAL FLATTS Take Me There (Lyric Street) | 28.0% | 66.0% | 3.80 | 19.3% | 98.3% | 10.5% | 2.5% |
| TIM MCGRAW If You're Reading This (Curb) | 32.3% | 66.0% | 3.80 | 15.8% | 97.0% | 9.5% | 5.8% |
| JASON MICHAEL CARROLL Livin' Our Love Song (Arista Nashville) | 26.3% | 66.0% | 3.84 | 22.3% | 96.8% | 6.3% | 2.3% |
| BRAD PAISLEY Online (Arista Nashville) | 22.0% | 65.3% | 3.75 | 21.3% | 98.0% | 9.5% | 2.0% |
| DIERKS BENTLEY Free And Easy (Down The Road I Go) (Capitol Nashville) | 21.8% | 62.3% | 3.73 | 25.5% | 97.5% | 6.3% | 3.5% |
| CARRIE UNDERWOOD So Small (Arista/Arista Nashville) | 18.8% | 62.0% | 3.66 | 21.5% | 97.5% | 11.3% | 2.8% |
| MONTGOMERY GENTRY What Do Ya Think About That (Columbia) | 15.3% | 60.8% | 3.59 | 19.0% | 95.0% | 10.8% | 4.5% |
| CLAY WALKER Fall (Asylum-Curb) | 22.3% | 58.0% | 3.66 | 20.5% | 94.3% | 13.3% | 2.5% |
| JACK INGRAM Measure Of A Man (Big Machine) | 13.8% | 57.0% | 3.59 | 26.5% | 95.3% | 9.0% | 2.8% |
| JASON ALDEAN Laughed Until We Cried (Broken Bow) | 12.5% | 55.0% | 3.58 | 21.0% | 89.5% | 11.5% | 2.0% |
| GEORGE STRAIT How 'Bout Them Cowgirls (MCA Nashville) | 17.5% | 54.0% | 3.59 | 25.8% | 92.8% | 9.0% | 4.0% |
| WHISKEY FALLS Last Train Running (Midas/New Revolution) | 16.0% | 53.8% | 3.55 | 26.8% | 95.0% | 11.5% | 3.0% |
| SARA EVANS As If (RCA) | 11.3% | 53.5% | 3.50 | 30.5% | 96.5% | 8.5% | 4.0% |
| JOSH TURNER Firecracker (MCA Nashville) | 14.8% | 52.8% | 3.48 | 19.5% | 89.8% | 10.5% | 7.0% |
| JOE NICHOLS Another Side Of You (Universal South) | 17.3% | 52.8% | 3.43 | 18.8% | 93.3% | 13.3% | 8.5% |
| BILLY CURRINGTON Tangled Up (Mercury) | 14.8% | 52.0% | 3.52 | 29.8% | 96.0% | 11.3% | 3.0% |
| MIRANDA LAMBERT Famous In A Small Town (Columbia) | 12.3% | 52.0% | 3.52 | 27.8% | 93.3% | 11.0% | 2.5% |
| TRAVIS TRITT You Never Take Me Dancing (Category 5) | 15.5% | 52.0% | 3.48 | 25.3% | 95.0% | 14.0% | 3.8% |
| TRISHA YEARWOOD Heaven, Heartache... (Big Machine) | 13.8% | 51.8% | 3.45 | 26.8% | 96.8% | 14.5% | 3.8% |
| TRACE ADKINS I Got My Game On (Capitol Nashville) | 10.5% | 51.3% | 3.45 | 25.8% | 93.5% | 13.5% | 3.0% |
| EMERSON DRIVE You Still Own Me (Montage/Midas/New Revolution) | 10.3% | 49.3% | 3.44 | 27.8% | 91.5% | 9.5% | 5.0% |
| LEANN RIMES Nothin' Better To Do (Asylum-Curb) | 13.8% | 48.8% | 3.46 | 27.8% | 92.0% | 10.8% | 4.8% |
| BLAKE SHELTON The More I Drink (Warner Bros./WRN) | 17.3% | 47.5% | 3.35 | 22.0% | 95.0% | 19.3% | 6.3% |
| TRENT TOMLINSON Just Might Have Her Radio On (Lyric Street) | 13.3% | 46.5% | 3.50 | 36.5% | 93.5% | 8.3% | 2.3% |
| SUGARLAND Stay (Mercury) | 14.0% | 45.0% | 3.38 | 22.0% | 88.0% | 16.0% | 5.0% |
| TAYLOR SWIFT Our Song (Big Machine) | 8.8% | 38.3% | 3.22 | 27.8% | 88.0% | 16.3% | 5.8% |
| GARY ALLAN Watching Airplanes (MCA Nashville) | 8.0% | 38.3% | 3.26 | 34.0% | 92.0% | 17.5% | 2.3% |
| KEITH URBAN Everybody (Capitol Nashville) | 10.5% | 37.3% | 3.14 | 24.3% | 88.8% | 18.8% | 8.5% |
| GARTH BROOKS More Than A Memory (Pearl/Big Machine) | 10.8% | 36.3% | 3.18 | 24.8% | 86.8% | 20.0% | 5.8% |
| CHUCK WICKS Stealing Cinderella (RCA) | 9.0% | 35.5% | 3.29 | 28.5% | 81.5% | 14.5% | 3.0% |
| EAGLES How Long (ERC/Lost Highway/Mercury) | 9.5% | 32.3% | 3.23 | 34.5% | 85.0% | 14.5% | 3.8% |

Total sample size is 400 persons weekly with a margin of error of plus or minus 5%. Scoring is done each week using live interviewers conducting an interview with each respondent. Scores are: 5) I like it a lot, in fact it's one of my favorites; 4) I like it; 3) It's OK, just so-so; 2) I don't like it; 1) I strongly dislike it. The index score is an average of all 1-to-5 scores. The total positive score is an aggregate of the 4 and 5 scores. To be included in the weekly callout, songs must have entered the top 40 positions on R&R's Country airplay chart. The sample is composed of 400 25-54-year-olds who identify country as their favorite music and who listen daily to competitive Country radio in the sample markets. The sample is 50% male/female and evenly distributed in the 25-34, 35-44, and 45-54 demos. The sample is balanced by region and markets within that region. Bullseye Callout is conducted in these regions and markets. **SOUTH:** Charleston SC; Charlotte; Baton Rouge; Nashville; Atlanta. **MIDWEST:** Flint, MI; Indianapolis; Madison; Omaha; Cincinnati. **EAST:** Harrisburg; Rochester, NY; Springfield, MA; Providence; Washington, DC. **WEST:** Modesto, CA; Salt Lake City; Colorado Springs, CO; Portland, OR; Houston. © 2007 Radio & Records © 2007 Bullseye Marketing Research Inc.

© 2007 Radio & Records All Rights Reserved No part of this material may be reproduced in any form or incorporated in any information retrieval system without written permission of the Publisher.

BROOKS & DUNN

American Country Christmas

American Country Countdown Host Kix Brooks and musical partner Ronnie Dunn, along with some of the biggest names in Country music will host **24 hours of holiday favorites**. With Holiday standards from today's biggest stars, as well as classics by favorites such as Bing Crosby and Nat King Cole — Kix, Ronnie and friends will provide your listeners with the best of the sounds of the season.

Designed to air beginning Noon Monday, 12/24 through Noon Tuesday, 12/25.

For affiliation information, call Lisa Strickland 615.312.3539 or lisa.strickland@citcomm.com

