



JASON MICHAEL CARROLL "ALYSSA LIES"
TOP 5 ALL ADULTS, CORE ADULTS *Where are you ranked?*
*MEDIABASE GALLOUT 1/25

ARISTA
© 2007 BMG Music

INSIDE

Pareigis Out Cold,
Columbia Home Sweet
Home For Rector, Thorpe



A Truly Sad, Tragic Turn
Of Events in Nashville
Over Weekend



Capitol, Virgin Become One
Huge Label; Capitol Nashville
Still Dungan's Domain



Radio-Rama: Digital Revolution,
Legal Ramifications
And Other Rumbblings



Crystal Gayle's Kooky,
Crazy Bus Caper



A crocodile can't stick its tongue out.
Real news needed.
rcurtis@radioandrecords.com,
310-788-1661

© 2007 Radio & Records. All Rights Reserved. No part of this material may be reproduced in any form or incorporated in any information retrieval system without written permission of the Publisher.

Rector Shuns Mafia, Takes Columbia VP Post

Ordinarily, walking away from the Mafia is a complicated matter. Thankfully, **Jimmy Rector** only walked away from the *Muzik Mafia* and is now safely bound for Columbia after today's announcement that he's the new VP of national promotion at Sony BMG's Columbia Nashville. It marks a return of sorts for Rector, who previously spent 6 1/2 years at BNA. Today's announcement brings rapid closure to last Tuesday's sudden news that Larry Pareigis was leaving the building. In a statement, Sony BMG Nashville executive VP Butch Waugh said of Rector, "This is a great day at Sony BMG Nashville. Jimmy's love of the artists, the music and all of the people here at Sony BMG Nashville makes him the perfect choice for this position. Jimmy has always been ahead of the curve when it comes to promotion, but his wealth of experience and knowledge brings added value to this position that will spill over into all areas of the company. Everyone here shares my enthusiasm in having Jimmy come home." Rector had served as head of promotion for Raybaw Records since April 2006 and is a 15-year industry veteran, with additional stints at Capitol Nashville and Decca before joining BNA in 1999. About his return to Sony BMG, Rector said, "Although I'm sad to be leaving my friends at Raybaw and the projects we've begun, I'm so excited to be returning to 'Galante U' and working again with some of my mentors." Rector will report to Butch Waugh and starts the new job on Feb. 1.

There's another return player to Sony BMG's Columbia team this week. **Jennifer Thorpe** will join Columbia Nashville as manager of Southeast promotion, taking over for Lloyd Stark, who left the label last year. Thorpe began her career at Columbia as promotion coordinator following her college graduation. She later worked for the Nashville divisions of Atlantic, Warner Bros., MCA and Lyric Street. Thorpe moves to Columbia from Category 5, and will be based in Jacksonville. Commenting on Thorpe, Butch Waugh said, "We are all glad she has come home."



"A FEELIN' LIKE THAT"

8 ADDS TODAY

**KSCS, KSD, WYCD, KNIX,
KUPL, KSON, WIRK, KHEY**

Now That's a Good Feelin'



WE ARE SHOW DOG!



TOM MORAN
VP Promotion



TONY MORREALE
National Director
of Promotion

TOBY KEITH



CARTER'S CHORD



PJ OLSEN
Director, Information
Systems



ERIC BEGGS
Southeast
Promo Rep

BIG DOG

**LINDSEY
HAUN**



KEVIN ERICKSON
Midwest Promo Rep



GREG SAX
Southwest Promo Rep



WWW.SHOWDOGNASHVILLE.COM



RUSHLOW HARRIS



LISA OWEN
West Coast
Promo Rep



SUZANNE DURHAM
Northeast
Promo Rep



**JONATHAN
SAYLES**
Promo Coordinator



FLYNNVILLE TRAIN

Tragic Weekend News From Music City

There are two stories to report out of Nashville from this past weekend that are truly sad. **Kevin O'Neal**, the longtime country programmer whose resume included stops at WSM-FM/Nashville, WXTU/Philadelphia and WSOC/Charlotte, among others, was reportedly found dead in a hotel room Saturday afternoon. Very few details have been confirmed at this time, but **R&R** has learned O'Neal's legal name was Raymond Frazier Jr. His most recent radio programming position was OM for Beasley country KCYE/Las Vegas, but he left after a short stint for family reasons.

Our thoughts and prayers are also with the family of award winning songwriter **Jeffrey Steele** today, after the accidental death of his 13-year-old son, Alex Lavasseur, from injuries sustained in an ATV accident over the weekend. He is survived by his mother, father and three sisters. Cards and letters can be sent to P.O. Box 214, Franklin, TN 37065.

Capitol, Virgin Merge; Capitol Nashville Unaffected

In what seems like a rare moment of clarity and sanity, when the dust settled after a mega merger between the Capitol and Virgin record labels last week, **Mike Dungan** was left standing as president and CEO of Capitol Nashville. Dungan will continue to report to Ira Gavin, who retains his role as COO of EMI North America. The new label will be called Capitol Music Group, with Jason Flom assuming the title of CEO.

Moran Goes To The Doghouse

In this case, it's a good thing: We're talking about Toby Keith's Show Dog Records, where **Tom Moran** was named the new VP of promotion. Moran replaces Denise Roberts, who left Show Dog in September and moved on to Premiere Radio Networks in Los Angeles. Moran was formerly the VP of promotion for Epic Nashville. He got his start in the *Billboard* music department, eventually moving up to positions at Nashville's Columbia, Warner Bros. and Polydor

This Week At Callout America

Bullseye President **John Hart** brings our weekly analysis of his company's country callout research to you. View more complete information at <http://data.bullsi.com.bullseye/radioandrecords>.

"**Rodney Atkins** takes over the No. 1 spot at Callout America with 'Watching You' also ranking as the No. 1 passion song for the week. Females rank the song at No. 1 overall and as the No. 1 passion song, while men rank it at No. 3 and as the No. 3 passion song.

"**Trace Adkins**' 'Ladies Love Country Boys' is the No. 1 song with male listeners and the No. 1 male passion song. Overall in the sample, the song ranks at No. 3 and as the No. 3 passion song.

"**George Strait** stays in the top tier with 'It Just Come Natural' ranking at No. 4 overall and as the No. 5 passion song. Men overall are the strength, ranking the song at No. 2, and younger 25-34 males also rank it at No. 2. Females are showing strong passion, ranking the song at No. 6, and 35-44 females rank it as the No. 3 passion song.

"**Sara Evans**' 'I'll Always Be Your Baby' is new to the top 10 at No. 9 overall and as the No. 10 passion song. Females are the strength ranking the song at No. 4 and as the No. 8 passion song, females 25-44 rank it at No. 5.

"**Sugarland** see a strong debut with 'Settlin' ranking as the No. 19 song in their first Callout America appearance; females rank the song at No. 18.

"Heads up for **Steve Holy**'s 'Come on Rain,' which debuts at No. 22, No. 17 with 35-44s."

labels. Moran described new music from Show Dog's big dog Toby Keith as "the best so far in his amazing career."

The fur kept flying at Show Dog HQ, when **PJ Olsen** was named director of research & information systems, according to Show Dog GM George Nunes. Olsen will oversee radio airplay and sales research and analysis. Olsen makes the move from Sony BMG, where she was associate director of

If you experienced transmission problems ... please call our Circulation Department at 800-562-2706.

© 2007 Radio & Records. All Rights Reserved. No part of this material may be reproduced in any form or incorporated in any information retrieval system without written permission of the Publisher.

BIG Callout America Debut!

#17
Persons 35 - 44

#13
Females 35 - 44

"Come On Rain" Steve Holy

Just Added:
WXBQ, WWYZ, WBCT, KRST, WCKT, WYPY, KRYS

RR: 43 to 39 **MB: 41**

CURB
curb.com

sales and research. Prior to that, she was national account manager at Premiere Radio Networks/Mediabase and has promo experience working with Hollywood Records, MCA/Decca and Curb Records. Olsen started her career on radio with positions at KEGL/Dallas and WLOL/Minneapolis.

The Label Train Kept-a-Rollin'

Other label moves in what was an unusually nutty week: **Peter Strickland** happily took on the role of "senior" when he was named senior VP of sales and marketing after helping build careers for Faith, Big & Rich, Travis Tritt, Blake Shelton and others ... **Cynthia Grimson**, director of publicity for Big Machine Nashville, will shut it down to concentrate on running the machine called her family. She moves to full-time momhood after coming to Big Machine in 2005, with a stop at RLG before that ... UMG adds **Joe Fisher** as senior director of A&R; he comes from Lytle Management. Also at UMG, **Stephanie Wright** is upped to director of A&R.

Around The Radio Dial In A Typically Topsy-Turvy Week

After seven years as on-air personality and MD, CBS Radio country WYCD/Detroit MD **Ron Chatman** is promoted to the new position of director of digital media. He'll continue doing music and nights in addition to his new digital duties ... Early-afternoon personality **Jon Edwards** of Delmarva Broadcasting Co. Country WXCW/Wilmington, Del., exits, and the station lineup is shuffled as **Dave Hovel** moves to a 1-3 p.m. airshift and takes over music chores. **Chris Duff** jumps on for afternoons from WKDB & WZEB/Salisbury-Ocean City, Md. Mornings and middays are the same ... **Kyle McCoy** PD of top 40 KRSQ/Billings, Mont., was upped to OM of the cluster and is also now acting PD for all five stations: KRSQ, country KGHL-FM (98.5 The Wolf), classic country KGHL-AM, adult hits KQBL and hot AC KZRV (107.5 The River) ... At Clear Channel's WUBL/Atlanta, **Mary Beth Calland** is already on the job as cluster promotion director and holds similar duties for The Bull. Calland transfers from Clear Channel's WRVW

Dates & Deadlines:

Feb. 3: Max It Out Benefit, Nashville. Details at www.maxitout.org.

Feb. 11: 49th annual Grammy Awards, Los Angeles. Details at www.grammy.com.

Feb. 27: Country Music DJ and Radio Hall of Fame Inductions, Nashville. Details at www.crb.org.

Feb. 28-March 2: Country Radio Seminar 38, Nashville. Details at www.crb.org.

March 26-31: 15th annual Tin Pan South Songwriters Festival. Details at www.tinpansouth.com.

April 16: CMT Music Awards, Nashville. Details at www.cmt.com.

April 20-22: ASCAP "I Create Music" Expo, Nashville. Details at www.ascap.com.

April 24: Leadership Music Digital Summit, Nashville. Details at www.leadershipmusic.org.

April 25: 38th annual GMA Music Awards, Nashville. Details at www.gospelmusic.org.

May 15: 42nd annual Academy of Country Music Awards, Las Vegas. Details at www.acmcountry.com.

June 4: 40th annual IFCO Fun Fest, Nashville. Details at www.ifco.org.

June 7-10: CMA Music Festival, Nashville, Details at www.cmaeworld.com.

June 9: Leadership Music and SOLID Yard Sale, Nashville. Details at www.leadershipmusic.org.

and WUBT/Nashville ... Regent Broadcasting KUAD/Windsor, Colo. morning man **Brian Gary** ended up in the hospital with a heart attack, which he suffered while watching the Colts-Patriots game, but is resting comfortably and is listed as "probable" for Sunday's Super Bowl. According to KUAD APD Dave Jensen, Gary is anticipating a return on Feb. 5, the day after the Super Bowl ... Todd Alan of Westwood One is elevated to VP of affiliate sales and will oversee distribution efforts for all Westwood One entertainment programming. He'll continue to be based out of New York ... A Denver judge ordered CBS Radio KWLI to cease using the names and

© 2007 Radio & Records. All Rights Reserved. No part of this material may be reproduced in any form or incorporated in any information retrieval system without written permission of the Publisher.

TOBY KEITH

HIGH MAINTENANCE WOMAN

New Single...New Album...New Smash HIT!

On your desk and available via Promo Only on

FRIDAY, FEBRUARY 2

ADD DATE: FEBRUARY 12 www.ShowDogNashville.com



likenesses of **Jonathan Wilde & Tracy Taylor** for any marketing or advertising until their noncompete agreements expire. Both Wilde and Taylor jumped ship from KYGO last fall and then signed on with country competitor KWLI to do mornings. They are supposed to start wakeups on Feb. 19.

Down That 'Wrong Road Again'

If memory serves, that was a No. 6 song for **Crystal Gayle** back in '75, and it aptly describes a turn of events last week that can best be described as just plain weird. Christopher Daniel Gay was on the run from local authorities when he jumped onboard Gayle's 45-foot tour bus in Pleasant View, Tenn. and took off. Not satisfied with — what would this be called, grand theft bus? — Gay apparently couldn't control his, *ahem*, primal urge and was eventually apprehended when he dropped off a hooker right in the middle of an area where police were conducting a prostitution sting.

Promo-Props

KYGO/Denver wants to show the troops that Denver has a big, very human heart. Morning hosts **Kelly & Mudflap** this morning announced plans for a massive human-heart valentine, which will take shape on Valentine's Day at Invesco Field. The plans call for the KYGO nation to form this heart-shaped American flag from 25-yard line to 25-yard line and sideline to sideline. 903 recording artist Darryl Worley will be part of the activities, as well as local celebrities and guests. The valentine will be sent to troops via the Internet.

Congrats to director of programming and operations **John Shomby** and his staff at **WGH-FM/Norfolk** for raising an incredible \$354,000 in their recently completed two-day St. Jude radiothon!

Big Stars, Big Stage, Big Results

Kenny Chesney does everything big these days ... geez, the guy is putting together a tour of *NFL stadiums*, for crying out loud! So it's basically another day at the office when Chesney stops in on

BILLBOARD BOXSCORE

ARTIST VENUE/CITY/DATES	ATTENDANCE	GROSS
George Strait, Ronnie Milsap, Taylor Swift John Paul Jones Arena Charlottesville, Va. Jan. 19	14,246	\$832,677
George Strait, Ronnie Milsap, Taylor Swift CenturyTel Center Bossier City, La. Jan. 12	13,651	\$801,555
George Strait, Ronnie Milsap, Taylor Swift The Cajundome Lafayette, La. Jan. 11	12,775	\$703,520
Carrie Underwood, Rockie Lynne Municipal Auditorium Charleston, W. Va. Dec. 9	3,354	\$132,483
Dierks Bentley, Eric Church Fargodome Fargo, N.D. Jan. 19	4,527	\$100,830

Billboard Boxscore tracks recent country concert grosses and attendance figures. Copyright 2007, VNU Business Media. More concert grosses available at www.billboard.biz.

SHOWPREP 101

Tuesday, Jan. 30: Today is National Inane Answering Machine Message Day.

Wednesday, Jan. 31, 1874: Jesse James robbed a train near Gadshill, Mo., then gave the engineer a press release about the robbery and ordered him to pass it along to the local newspaper.

Thursday, Feb. 1: February is National Weddings Month. Most engagements take place between Christmas and Valentine's Day.

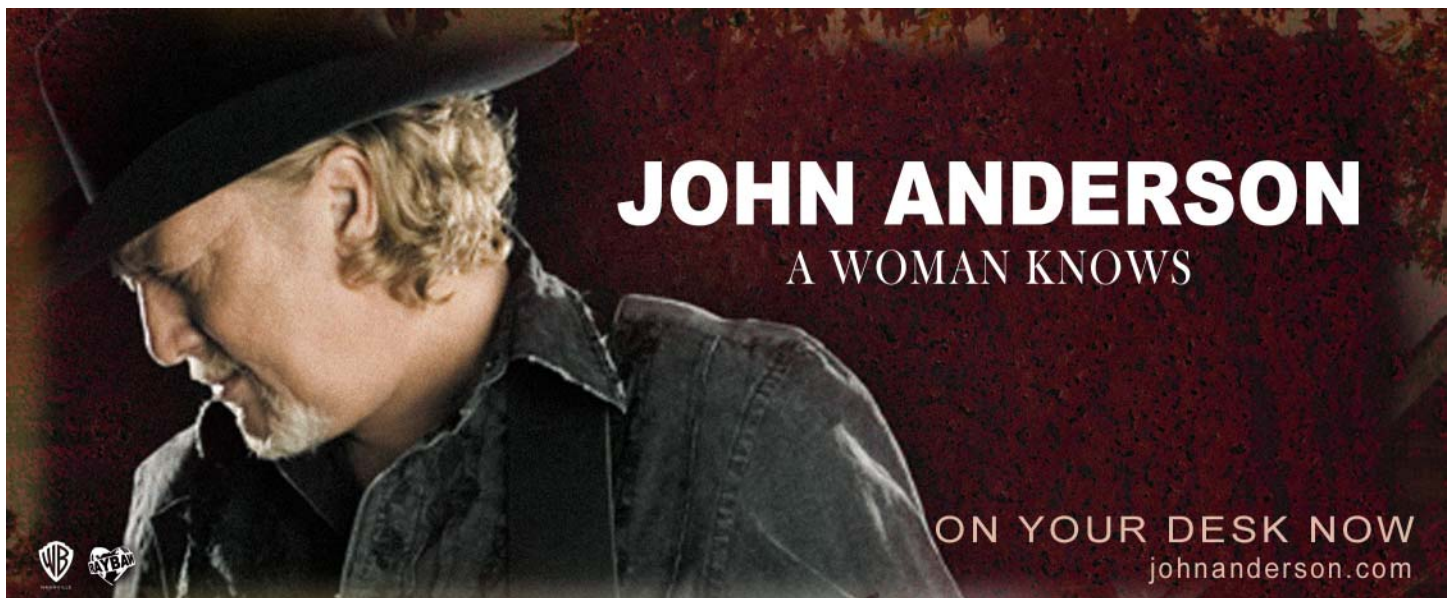
Friday, Feb. 2, 1993: First Lady Hillary Clinton banned smoking in the White House.

Quotable:

"Everyone who's ever taken a shower has an idea. It's the person who gets out of the shower, dries off and does something about it that makes a difference."

—Atari founder Nolan Bushnell

© 2007 Radio & Records. All Rights Reserved. No part of this material may be reproduced in any form or incorporated in any information retrieval system without written permission of the Publisher.



the CBS-TV "Early Show" on Monday, March 5 to announce the nominees for this years ACM Awards. Hmm, wonder how many times we'll hear the name "Chesney" roll off the tongue of, uh, Chesney? **Sugarland** and **Pat Green** will be there to assist, and "Early Show" co-anchor **Hannah Storm** will moderate from the Ford Theatre at the Country Music Hall of Fame in Nashville.

Another Reason To Attend CRS Week

It seems to keep getting better — and is now an additional opportunity for education, information and entertainment, courtesy of Jaye Albright and Michael O'Malley. It'll start early Wednesday morning, Feb. 28 with a lineup of speakers and presentations. Originally for their clients attending CRS, it's now open to the public by invitation only. Lyric Street records Bucky Covington will close out the presentation with an acoustic showcase, followed by a meet and greet that will conclude at 10 a.m., just in time to attend scheduled events at CRS 38. I've been fortunate to participate in this event in the past, and I would highly recommend attending. You'll definitely learn something you can take home. To receive an invitation, contact Michael O'Malley at 732-937-5757 or mike@radioconsult.com or Jaye Albright at 206-498-6261 or jaye@radioconsult.com.

As for the actual Country Radio Seminar, remember that this Friday, Feb. 2 is the final day to take advantage of two special rates for one-day-only access to the Spring Town Meeting on Thursday, March 1 or Radio Sales Day on Friday, March 2. Of course, full registrations are still available too. Call the CRB now at 615-327-4487.

This is your last reminder to get your **R&R** Reader's Poll ballot back by Wednesday, Jan. 31. We'll start tallying up the vote Feb. 1 ... and post results in the March 2 CRS special edition of **R&R**. Thanks to everyone who's responded so far!

— **RJ Curtis/Country Editor** 310-788-1661
Email: rcurtis@radioandrecords.com

On The Charts:

Atkins Makes It Three; Morgan Makes It Four

Rodney Atkins continues to hold at No. 1 with "Watching You" (Curb), which dominates the R&R country chart for a third week. Although Atkins controls the chart with 38.4 million impressions, it appears that he's loosening his grip. The single declines 427,000 audience impressions, but outpaces the No. 2 title by more than 2.9 million impressions. **George Strait's** "It Just Comes Natural" (MCA Nashville) gains 452,000 impressions to bullet at No. 2 for a second straight week. He rules the R&R country Indicator chart for a second consecutive week (3,904 plays).

Meanwhile, **Craig Morgan** lands his fourth top 10 on the R&R country chart with "Little Bit of Life" (Broken Bow), which gains 972,000 impressions (11-9). Morgan's top 10 history includes "That's What I Love About Sunday," which topped the chart for four weeks in March-April 2005. He most recently competed in the top 10 when "Redneck Yacht Club" peaked at No. 2 in October 2005.

Concurrently, **Tracy Lawrence** posts his highest position in more than two years as "Find Out Who Your Friends Are" (Rocky Comfort/C05 Nashville) gains 1.1 million audience and jumps 36-32. Lawrence hasn't risen this high since "Paint Me a Birmingham" peaked at No. 4 on the Nielsen Broadcast Data Systems-fueled country chart dated May 21, 2004. His prior chart history includes seven No. 1 singles and 14 other top 10 songs.

Rascal Flatts nail the Most Added prize and the biggest gains on both charts with "Stand" (Lyric Street). The new single claims 17 adds on the R&R Indicator scorecard and 26 on the R&R country list. The trio also wears the Most Increased Plays crown on the Indicator chart (+429) and the Most Increased Audience (+3.1 million impressions) on the R&R country tally.

— **Wade Jessen/Director of Charts & Operations, Nashville**
615-321-4291 Email: wjessen@radioandrecords.com

© 2007 Radio & Records. All Rights Reserved. No part of this material may be reproduced in any form or incorporated in any information retrieval system without written permission of the Publisher.

Tracy Lawrence

Find Out Who Your Friends Are

R&R/BB 32 Breaker Mediabase 37*

#6 Mediabase National Callout

Added by these FRIENDS this week:

KNIX/Phoenix	KNCI/Sacramento	WKDF/Nashville	KRST/Albuquerque
KSSN/Little Rock	WUSY/Chattanooga	KFDI/Wichita	KJJY/Des Moines
WQHK/Ft. Wayne	WCAT/Harrisburg	WEGX/Florence	WSTH/Columbus
WBVT/South Bend	WCEN/Saginaw	WKDQ/Evansville	WMUS/Muskegon
KOUT/Rapid City	KZKX/Lincoln	KUAD/Ft. Collins	WWFG/Salisbury

From the forthcoming cd, "For The Love". Release date: 1/30



MUSICNOTES

Legends Meet, CRS Spills Into Saturday

They're truly The "Last of the Breed," and that's also the title of a new album from Hall of Famers **Merle Haggard, Willie Nelson and Ray Price**.

Hard to believe it's the first time they've recorded together as a trio, but look for this two-disc, 22-song collection on Lost Highway on March 20. All titles are newly recorded versions of country classics and feature some of Nashville's finest studio musicians, including steel-guitar legend Buddy Emmons, renowned fiddler Johnny Gimble with backing vocals provided by The Jordanaires.

There's always plenty of music to see at CRS, and, this year, there's even some *after* the seminar ends. On Saturday night, March 3, at the Exit/In, you can check out Big Machine's **Jack Ingram** featuring **Sunny Sweeney**. **The Eli Young Band** will play too, but if you're planning on going, be sure to RSVP to Big Machine by Feb. 19.

By the time you read this, "Totally Country Vol. 6" will be in stores, featuring 17 cuts from the likes of **Kenny Chesney, Carrie Underwood, Faith Hill, Sugarland, The Wreckers, Keith Anderson** and more. The original collection was launched in 2001 and has proven so successful that five more versions have followed. It's distributed by Sony BMG Nashville.

VIDEO ADDS

CMT

HANK WILLIAMS JR. A Country Boy Can Survive (25th Anniversary Remix)

CMT PURE COUNTRY

HANK WILLIAMS JR. A Country Boy Can Survive (25th Anniversary Remix)

GREAT AMERICAN COUNTRY

DIERKS BENTLEY Long Trip Alone

SUGARLAND Settin'



promosquad
HitPredictor

SONGS WITH HIT POTENTIAL

	CHART RANK
GEORGE STRAIT It Just Comes Natural (<i>MCA Nashville</i>) (91.8)	2
JASON ALDEAN Amarillo Sky (<i>Broken Arrow</i>) (81.0)	4
TRACE ADKINS Ladies Love Country Boys (<i>Capitol</i>) (90.4)	5
KEITH URBAN Stupid Boy (<i>Capitol</i>) (79.5)	6
JASON MICHAEL CARROLL Alyssa Lies (<i>Arista Nashville</i>) (85.4)	7
MARTINA McBRIDE Anyway (<i>RCA</i>) (80.7)	8
KENNY CHESNEY Beer In Mexico (79.9)	11(new)
TRENT TOMLINSON One Wing In The Fire (<i>Lyric Street</i>) (89.4)	12
JOE NICHOLS I'll Wait For You (<i>Universal</i>) (91.5)	14
SARA EVANS You'll Always Be My Baby (<i>RCA</i>) (89.5)	15
ALAN JACKSON A Woman's Love (<i>Arista Nashville</i>) (88.4)	27(new)
BILLY CURRINGTON Good Directions (<i>Mercury</i>) (90.7)	29
TRACY LAWRENCE Find Out Who Your Friends Are (<i>C05</i>) (88.4)	32
BLAKE SHELTON Don't Make Me (<i>Warner Bros.</i>) (87.7)	33
GRETCHEN WILSON Come To Bed (<i>Columbia</i>) (82.5)	38
STEVE HOLY Come On Rain (<i>Curb</i>) (77.0)	39

Copyright 2007, Think Fast, LLC. For more information and testing methodology, please visit HitPredictor.com or Promosquad.com.

© 2007 Radio & Records. All Rights Reserved. No part of this material may be reproduced in any form or incorporated in any information retrieval system without written permission of the Publisher.

Jason continues to wow radio and audience with his recent station visits

Jason Meadows

"100% Cowboy"

Come see what the Buzz is about at CRS:

Tuesday night February 27th @ 9pm (*12th and Porter*)

Wednesday February 28th @ 4PM (*Baccerstick Showcase downstairs in the Convention Center*)

End the day with great new music from Jason Meadows. (*Fun activities and libations included*).

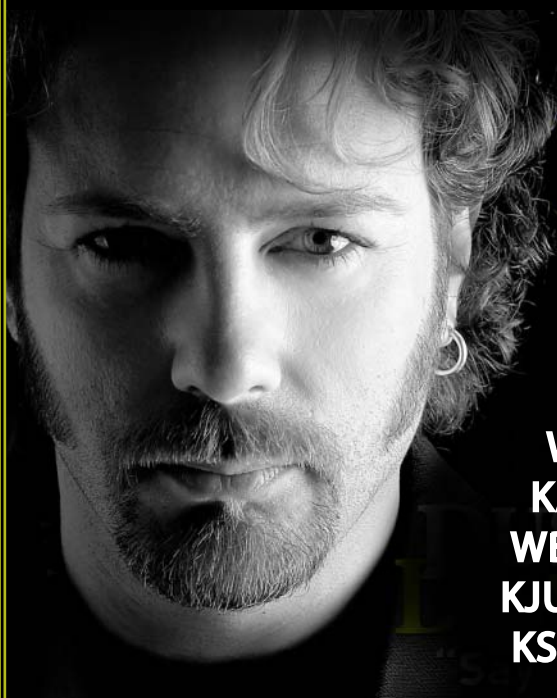
www.jasonmeadows.com

www.myspace.com/jasonmeadows100cowboy

BACCERSTICK records

C O 5

THANKS TO EVERYONE WHO SAID YES THIS WEEK



**DUSTY
DRAKE** "Say Yes"

MOST ADDED!

First week believers:

**WKL, WOGI, KRTY, KSD, KHKI, WPUR,
KATM, WITL, KUBL, KDRK, WUSY, WGTY,
WBEE, WPCV, WWNU, KIXZ, WOKQ, WFBE,
KJUG, WKML, WEGX, WTVY, WQRB, WHWK,
KSNI, XM Highway 16, Jones CD Country**

"They say "it all begins with a song." If you believe that – and I do – then the logical place to get great songs is from great songwriters. Check the writers on this one: Brett James, Don Schlitz, and Josh Turner. Drake should have had a hit back in his Warner Brothers days with "One Last Time". This will surely put him back on the charts and it has the potential to be his first top ten song."

-Bob Moody, Regent Communications

"This powerhouse vocalist has always deserved radio stardom, in my opinion. It has been years since country music has produced a classic wedding song, and this gorgeous ballad certainly is one. In the grand tradition of "Could I Have This Dance" (1980), "Forever's As Far As I'll Go" (1991), "From Here to Eternity" (1997), "I Do" (1996) and "If You Ever Have Forever in Mind" (1998). Both this song and its singer have the potential to be a major, huge, massive hit. Go for it."

-Robert K. Oermann, Music Row

**ON YOUR DESK & ON PROMO ONLY MPE NOW!
DIGITAL SINGLE AVAILABLE AT ALL ONLINE RETAILERS TODAY!**



LW	TW	ARTIST Title Label(s)	Tot. Aud. (00)	+/- Aud. (00)	Total Plays	+/- Plays	Wks On	Sta On/ Adds TW
1	1	RODNEY ATKINS Watching You (Curb)	384150	-4278	4736	-72	20	114/0
2	2	GEORGE STRAIT It Just Comes Natural (MCA Nashville)	354316	+4554	4445	+97	18	114/0
3	3	BRAD PAISLEY She's Everything (Arista Nashville)	309536	-35983	3783	-422	23	112/0
4	4	JASON ALDEAN Amarillo Sky (Broken Bow)	288432	+4690	3741	+113	30	114/0
6	5	TRACE ADKINS Ladies Love Country Boys (Capitol Nashville)	259564	+18950	3355	+163	21	114/1
8	6	KEITH URBAN Stupid Boy (Capitol Nashville)	247088	+16410	3315	+278	11	114/0
12	7	JASON MICHAEL CARROLL Alyssa Lies (Arista Nashville)	220876	+12418	2906	+91	19	112/0
10	8	MARTINA MCBRIDE Anyway (RCA)	220278	+11390	2790	+116	12	114/0
11	9	CRAIG MORGAN Little Bit Of Life (Broken Bow)	218474	+9721	3050	+183	26	113/1
9	10	WRECKERS My, Oh My (Maverick/Warner Bros./WRN)	208652	-9858	2680	-22	21	114/0
14	11	KENNY CHESNEY Beer In Mexico (BNA)	187924	+25324	2418	+380	6	114/7
13	12	TRENT TOMLINSON One Wing In The Fire (Lyric Street)	187878	+6230	2606	+142	31	111/0
18	13	TIM MCGRAW Last Dollar (Fly Away) (Curb)	153812	+27522	2041	+287	5	109/11
16	14	JOE NICHOLS I'll Wait For You (Universal South)	152838	+10422	2526	+124	26	106/1
17	15	SARA EVANS You'll Always Be My Baby (RCA)	144754	+12017	2057	+81	24	106/2
21	16	BROOKS & DUNN Hillbilly Deluxe (Arista Nashville)	130209	+10218	2017	+175	13	108/2
23	17	SUGARLAND Settlin' (Mercury)	129655	+25442	1693	+325	5	101/13
15	18	KELLIE PICKLER Red High Heels (BNA)	126273	-19606	1982	-92	20	110/1
19	19	DARRYL WORLEY I Just Came Back From A War (903 Music)	125053	-99	1799	-76	20	102/1
20	20	LITTLE BIG TOWN Good As Gone (Equity)	122133	-2281	1745	-16	20	103/1
25	21	CARRIE UNDERWOOD Wasted (Arista/Arista Nashville)	121564	+19612	1516	+460	10	95/20
26	22	DIERKS BENTLEY Long Trip Alone (Capitol Nashville)	110897	+18267	1550	+162	11	93/2
22	23	GARY ALLAN A Feelin' Like That (MCA Nashville)	110321	-1043	1679	-5	15	103/5
24	24	JACK INGRAM Lips Of An Angel (Big Machine)	106599	+4059	1455	+58	11	94/3
27	25	CLAY WALKER 'Fore She Was Mama (Asylum-Curb)	75785	+3051	1162	+56	20	88/3
35	26	RASCAL FLATTS Stand (Lyric Street)	70735	+31734	911	+391	4	74/26
30	27	ALAN JACKSON A Woman's Love (Arista Nashville)	69260	+16001	1102	+184	6	88/12
28	28	JOSH TURNER Me And God (MCA Nashville)	65249	+1286	1048	+110	12	73/9
29	29	BILLY CURRINGTON Good Directions (Mercury)	65097	+5925	1050	+46	17	70/4
34	30	JOSH GRACIN I Keep Coming Back (Lyric Street)	46011	+5665	687	+30	16	64/3

© 2007 Radio & Records

Most Added Again! 2nd Week In A Row!

46th RR/BB
Debut #49 Mediabase

Cole Deggs & the Lonesome

debut single
I GOT MORE

SONY BMG MUSIC ENTERTAINMENT
COLUMBIA TRISTAR
© 2007 SONY BMG MUSIC ENTERTAINMENT

LW	TW	ARTIST Title Label(s)	Tot. Aud. (00)	+/- Aud. (00)	Total Plays	+/- Plays	Wks On	Sta On/ Adds TW
32	31	EMERSON DRIVE Moments (Midas/New Revolution)	45557	+4654	766	+48	7	61/2
Breaker	32	TRACY LAWRENCE Find Out Who... (Rocky Comfort/CO5 Nashville)	44005	+10962	627	+178	22	38/6
33	33	BLAKE SHELTON Don't Make Me (Warner Bros./WRN)	43756	+2874	747	+64	14	67/9
31	34	JAKE OWEN Startin' With Me (RCA)	42999	-2140	758	-4	17	67/3
38	35	PAT GREEN Dixie Lullaby (BNA)	36665	+7377	516	+118	16	58/11
40	36	DANIELLE PECK Isn't That Everything (Big Machine)	29509	+2051	542	+108	13	42/1
39	37	ALISON KRAUSS & JOHN WAITE Missing You 2007 (Rounder)	27525	-56	250	+1	7	21/1
Breaker	38	GRETCHEN WILSON Come To Bed (Columbia)	26518	+5398	487	+60	12	47/0
43	39	STEVE HOLY Come On Rain (Curb)	19482	+2241	426	+37	9	41/1
44	40	CAROLINA RAIN Isn't She (Equity)	16690	+1735	293	+49	6	35/5
42	41	JOHN MELLENCAMP Our Country (Republic/Universal South)	14379	-3357	210	-42	9	27/0
45	42	RUSHLOW HARRIS Bagpipes Cryin' (Show Dog Nashville)	12765	-623	299	-5	9	31/1
53	43	ERIC CHURCH Guys Like Me (Capitol Nashville)	11032	+5085	173	+74	2	26/13
46	44	DONOVAN CHAPMAN House Like That (Category 5)	10683	+34	240	-11	4	27/2
47	45	BUCKY COVINGTON A Different World (Lyric Street)	10666	+356	240	+42	3	33/11
58	46	COLE DEGGS & THE LONESOME I Got More (Columbia)	9845	+5274	177	+69	2	27/6
48	47	HANK WILLIAMS JR. A Country Boy Can Survive (Asylum-Curb)	9633	+367	134	-10	4	4/0
54	48	MARK WILLS Take It All Out On Me (Equity)	9004	+3222	189	+37	2	21/2
49	49	ROCKIE LYNNE More (Universal South)	8394	+1149	60	+5	12	3/0
57	50	CATHERINE BRITT What I Did Last Night (RCA)	6140	+1135	90	+34	2	15/9
Debut	51	DUSTY DRAKE Say Yes (Big Machine)	5996	+3797	93	+47	1	13/11
51	52	BLUE COUNTY I Get To (Asylum-Curb)	5983	-607	172	-1	4	20/0
Debut	53	MONTGOMERY GENTRY Lucky Man (Columbia)	5599	+4205	94	+80	1	9/8
56	54	BLAINE LARSEN Spoken Like A Man (BNA)	5542	+70	140	+5	4	21/3
55	55	FAITH HILL Stealing Kisses (Warner Bros./WRN)	5123	-562	53	-22	18	9/0
59	56	SARA EVANS Missing Missouri (RCA)	4562	+238	39	-3	6	3/0
Debut	57	AARON TIPPIN He Believed (Nippit/Rust)	4080	+1836	97	+35	1	9/3
-	58	LINDSEY HAUN Broken (Show Dog Nashville)	3698	+577	51	+11	15	5/0
Debut	59	LUKE BRYAN All My Friends Say (Capitol Nashville)	3432	-14	47	+14	1	3/0
Debut	60	BOMSHEL Bomshel Stomp (Curb)	3249	+2377	25	+14	1	2/1

© 2007 Radio & Records



Mama Mia...that's a Hit Record!
"Fore She Was Mama" Clay Walker
Just Added: WXTU, WFMS, WDTW, KNIX, KSD, WSM, WGGY, WKXC
Awesome Research! MB # 15 Persons 25 - 34
Rate the Music:
10 with Persons 25 - 34
16 with Females Overall
13 with Females 35 - 44
RR: 27 to 25
MB 27

COUNTRY

MOST ADDED

ARTIST Title Label(s)	Adds
RASCAL FLATTS Stand (Lyric Street)	26
CARRIE UNDERWOOD Wasted (Arista/Arista Nashville)	20
SUGARLAND Settlin' (Mercury)	13
ERIC CHURCH Guys Like Me (Capitol Nashville)	13
ALAN JACKSON A Woman's Love (Arista Nashville)	12
TIM MCGRAW Last Dollar (Fly Away) (Curb)	11
PAT GREEN Dixie Lullaby (BNA)	11
BUCKY COVINGTON A Different World (Lyric Street)	11
DUSTY DRAKE Say Yes (Big Machine)	11

MOST INCREASED AUDIENCE

ARTIST Title Label(s)	Total Aud. Increase
RASCAL FLATTS Stand (Lyric Street)	+31734
TIM MCGRAW Last Dollar (Fly Away) (Curb)	+27522
SUGARLAND Settlin' (Mercury)	+25442
KENNY CHESNEY Beer In Mexico (BNA)	+25324
CARRIE UNDERWOOD Wasted (Arista/Arista Nashville)	+19612
TRACE ADKINS Ladies Love Country Boys (Capitol Nashville)	+18950
DIERKS BENTLEY Long Trip Alone (Capitol Nashville)	+18267
KEITH URBAN Stupid Boy (Capitol Nashville)	+16410
ALAN JACKSON A Woman's Love (Arista Nashville)	+16001
JASON MICHAEL CARROLL Alyssa Lies (Arista Nashville)	+12418

MOST INCREASED PLAYS

ARTIST Title Label(s)	Total Play Increase
CARRIE UNDERWOOD Wasted (Arista/Arista Nashville)	+460
RASCAL FLATTS Stand (Lyric Street)	+391
KENNY CHESNEY Beer In Mexico (BNA)	+380
SUGARLAND Settlin' (Mercury)	+325
TIM MCGRAW Last Dollar (Fly Away) (Curb)	+287
KEITH URBAN Stupid Boy (Capitol Nashville)	+278
ALAN JACKSON A Woman's Love (Arista Nashville)	+184
CRAIG MORGAN Little Bit Of Life (Broken Bow)	+183
TRACY LAWRENCE Find Out Who... (Rocky Comfort/CO5 Nashville)	+178
BROOKS & DUNN Hillbilly Deluxe (Arista Nashville)	+175

COUNTRY INDICATOR

MOST ADDED

ARTIST Title Label(s)	Adds
RASCAL FLATTS Stand (Lyric Street)	17
MONTGOMERY GENTRY Lucky Man (Columbia)	15
CARRIE UNDERWOOD Wasted (Arista/Arista Nashville)	12
TRACY LAWRENCE Find Out Who... (Rocky Comfort/CO5 Nashville)	10
BUCKY COVINGTON A Different World (Lyric Street)	10
ERIC CHURCH Guys Like Me (Capitol Nashville)	10
COLE DEGGS & THE LONESOME I Got More (Columbia)	10
RICK TREVINO Separate Ways (Warner Bros./WRN)	9
LONESTAR Nothing To Prove (BNA)	9
SUGARLAND Settlin' (Mercury)	8

MOST INCREASED AUDIENCE

ARTIST Title Label(s)	Total Aud. Increase
KENNY CHESNEY Beer In Mexico (BNA)	+9533
RASCAL FLATTS Stand (Lyric Street)	+9060
SUGARLAND Settlin' (Mercury)	+8700
CARRIE UNDERWOOD Wasted (Arista/Arista Nashville)	+6724
TIM MCGRAW Last Dollar (Fly Away) (Curb)	+5873
TRACE ADKINS Ladies Love Country Boys (Capitol Nashville)	+5270
MARTINA MCBRIDE Anyway (RCA)	+5216
KEITH URBAN Stupid Boy (Capitol Nashville)	+4493
BROOKS & DUNN Hillbilly Deluxe (Arista Nashville)	+4461
BUCKY COVINGTON A Different World (Lyric Street)	+3982

MOST INCREASED PLAYS

ARTIST Title Label(s)	Total Play Increase
KENNY CHESNEY Beer In Mexico (BNA)	+429
RASCAL FLATTS Stand (Lyric Street)	+429
SUGARLAND Settlin' (Mercury)	+369
CARRIE UNDERWOOD Wasted (Arista/Arista Nashville)	+301
TRACE ADKINS Ladies Love Country Boys (Capitol Nashville)	+239
KEITH URBAN Stupid Boy (Capitol Nashville)	+236
TIM MCGRAW Last Dollar (Fly Away) (Curb)	+233
MARTINA MCBRIDE Anyway (RCA)	+208
BROOKS & DUNN Hillbilly Deluxe (Arista Nashville)	+171
ALAN JACKSON A Woman's Love (Arista Nashville)	+154

Emerson Drive
"Moments"
LISTENERS LOVE THIS SONG !!!

New Adds:
KNIX, WMIL, KSD, WIVK
KWNR, WUSY, KZSN, WUSJ

R&R 31
Country
Aircheck 36*

Video
Countdown Debut
GAC #13 CMT #19
1st Callout Indication
KFRG #15 Debut (under 60 spins)

Montage Music
 MIDAS NEW REVOLUTION

COUNTRY NEW & ACTIVE

JOHN ANDERSON A Woman Knows (*Rayhaw/Warner Bros./WRN*)

Total Points: 2595, Total Stations: 1, Adds: 0

BRAD PAISLEY Waitin' On A Woman (*Arista Nashville*)

Total Points: 2588, Total Stations: 2, Adds: 0

LONESTAR Nothing To Prove (*BNA*)

Total Points: 2570, Total Stations: 2, Adds: 2

KATRINA ELAM Flat On The Floor (*Universal South*)

Total Points: 2105, Total Stations: 1, Adds: 0

JASON BROWN Touchdown (*Showcase*)

Total Points: 1352, Total Stations: 2, Adds: 0

SARAH BUXTON That Kind Of Day (*Lyric Street*)

Total Points: 1224, Total Stations: 3, Adds: 1

COUNTRY INDICATOR NEW & ACTIVE

BUCKY COVINGTON A Different World (*Lyric Street*)

Total Points: 335, Total Stations: 29, Adds: 10

ERIC CHURCH Guys Like Me (*Capitol Nashville*)

Total Points: 318, Total Stations: 27, Adds: 10

DONOVAN CHAPMAN House Like That (*Category 5*)

Total Points: 317, Total Stations: 29, Adds: 2

BLUE COUNTRY I Get To (*Asylum-Curb*)

Total Points: 293, Total Stations: 26, Adds: 3

CAROLINA RAIN Isn't She (*Equity*)

Total Points: 246, Total Stations: 22, Adds: 3

COLE DEGGS & THE LONESOME I Got More (*Columbia*)

Total Points: 237, Total Stations: 22, Adds: 10

HEARTLAND Built To Last (*Lofton Creek*)

Total Points: 232, Total Stations: 23, Adds: 5

ALISON KRAUSS & JOHN WAITE Missing You 2007 (*Rounder*)

Total Points: 189, Total Stations: 19, Adds: 3

MARK WILLS Take It All Out On Me (*Equity*)

Total Points: 120, Total Stations: 10, Adds: 2

MONTGOMERY GENTRY Lucky Man (*Columbia*)

Total Points: 107, Total Stations: 16, Adds: 15

R&R Going For Adds

2/5

BEVERLEY MITCHELL Heaven On Earth Down Here (*Daywind/Quarterback*)

JERROD NIEMANN I Love Women (My Momma Can't Stand) (*Category 5*)

2/12

LUKE BRYAN All My Friends Say (*Capitol Nashville*)

RANDY ROGERS BAND One More Goodbye (*Mercury Nashville*)

SARAH BUXTON That Kind Of Day (*Lyric Street*)

TOBY KEITH High Maintenance Woman (*Show Dog Nashville*)

2/19

No Going for Adds for this Week

TOP 10 RECURRENTS

ARTIST Title Label(s)	Total Aud. (00)
RASCAL FLATTS My Wish (<i>Lyric Street</i>)	225283
CARRIE UNDERWOOD Before He Cheats (<i>Arista/Arista Nashville</i>)	214077
TAYLOR SWIFT Tim McGraw (<i>Big Machine</i>)	202096
SUGARLAND Want To (<i>Mercury</i>)	171603
TIM MCGRAW My Little Girl (<i>Curb/Reprise</i>)	137241
RODNEY ATKINS If You're Going Through Hell... (<i>Curb</i>)	127248
JOSH TURNER Would You Go With Me (<i>MCA Nashville</i>)	122278
HEARTLAND I Loved Her First (<i>Lofton Creek</i>)	120711
MONTGOMERY GENTRY Some People Change (<i>Columbia</i>)	102517
KENNY CHESNEY You Save Me (<i>BNA</i>)	98404

Nielsen Broadcast Data Systems 114 Country reporters. Songs ranked by total audience for the airplay week of 1/22-1/28. Bullets appear on songs gaining audience or remaining flat from previous week. A song will also receive a bullet if its percentage loss in audience does not exceed the percentage of monitored station downtime for the format. Country titles that decline in audience but increase in detections will also receive a bullet if the total audience erosion for the week does not exceed 3%. If two songs are tied in total audience, the song with the larger increase in audience is placed first. Descending, non-bulleted titles below No. 10 in either audience or detections are moved to recurrent after 20 weeks. Most Added is the total number of new adds officially reported to R&R by each reporting station or by automatic add thresholds for stations not allowed to report adds. Songs unreported as adds do not count toward overall total stations playing a song. Most Increased Audience lists the songs with the greatest week-to-week increases in total audience. Audience totals on the chart are derived, in part, using certain Arbitron Inc. copyrighted Persons 12+ audience estimates, under license (© 2007, Arbitron Inc.) © 2007 Radio & Records.



LW	TW	ARTIST Title Label(s)	Total Plays	+/- Plays	Tot. Aud. (00)	+/- (00)	Wks On	Total Stations
1	1	GEORGE STRAIT It Just Comes Natural (MCA Nashville)	3904	-19	89526	-997	16	100/0
2	2	RODNEY ATKINS Watching You (Curb)	3818	-76	88331	-1654	17	98/0
4	3	TRACE ADKINS Ladies Love Country Boys (Capitol Nashville)	3547	+239	81406	+5270	17	98/2
7	4	KEITH URBAN Stupid Boy (Capitol Nashville)	3230	+236	75121	+4493	8	99/0
5	5	CRAIG MORGAN Little Bit Of Life (Broken Bow)	3184	+140	72952	+2699	20	98/0
8	6	JASON MICHAEL CARROLL Alyssa Lies (Arista Nashville)	3072	+111	71556	+2716	12	98/0
9	7	WRECKERS My, Oh My (Maverick/Warner Bros./WRN)	2867	-52	64289	-2289	18	99/0
11	8	MARTINA MCBRIDE Anyway (RCA)	2801	+208	64833	+5216	9	98/0
10	9	TRENT TOMLINSON One Wing In The Fire (Lyric Street)	2750	+2	63544	+1612	32	92/0
3	10	BRAD PAISLEY She's Everything (Arista Nashville)	2702	-651	65423	-15549	20	80/0
12	11	JOE NICHOLS I'll Wait For You (Universal South)	2554	+1	56740	-1436	24	92/0
13	12	KENNY CHESNEY Beer In Mexico (BNA)	2473	+429	57728	+9533	4	96/4
15	13	BROOKS & DUNN Hillbilly Deluxe (Arista Nashville)	2172	+171	49118	+4461	10	94/4
17	14	TIM MCGRAW Last Dollar (Fly Away) (Curb)	2134	+233	49927	+5873	4	94/5
16	15	DARRYL WORLEY I Just Came Back From A War (903 Music)	1969	+34	45753	+1273	13	90/2
14	16	KELLIE PICKLER Red High Heels (BNA)	1962	-43	45006	-1339	15	87/0
18	17	SARA EVANS You'll Always Be My Baby (RCA)	1959	+69	44546	+1014	18	93/0
19	18	GARY ALLAN A Feelin' Like That (MCA Nashville)	1890	+62	43485	+1598	10	94/1
22	19	DIERKS BENTLEY Long Trip Alone (Capitol Nashville)	1738	+148	40040	+3455	8	93/2
23	20	BILLY CURRINGTON Good Directions (Mercury)	1656	+139	38437	+3087	11	88/3

© 2007 Radio & Records



Decals Go Everywhere

Is your marketing effort mobile? It should be. **Print decals today.**








Call us today!

(800) 331-4438 www.cgilink.com

* When you see this symbol, you know you're buying quality printing DIRECT from the manufacturer.

January 29, 2007

LW	TW	ARTIST Title Label(s)	Total Plays	+/- Plays	Tot. Aud. (00)	+/- (00)	Wks On	Total Stations
27	21	SUGARLAND Settlin' (Mercury)	1652	+369	38372	+8700	4	93/8
25	22	CARRIE UNDERWOOD Wasted (Arista/Arista Nashville)	1645	+301	40009	+6724	4	89/12
20	23	LITTLE BIG TOWN Good As Gone (Equity)	1636	-140	35811	-4777	16	83/2
24	24	JACK INGRAM Lips Of An Angel (Big Machine)	1536	+89	35522	+2459	6	80/2
26	25	CLAY WALKER 'Fore She Was Mama (Asylum-Curb)	1432	+118	32680	+2688	11	77/1
30	26	RASCAL FLATTS Stand (Lyric Street)	1430	+429	33738	+9060	2	78/17
28	27	ALAN JACKSON A Woman's Love (Arista Nashville)	1419	+154	32491	+3923	4	80/5
29	28	JOSH TURNER Me And God (MCA Nashville)	1138	+47	27681	+641	7	66/5
31	29	BLAKE SHELTON Don't Make Me (Warner Bros./WRN)	1055	+106	23742	+2850	9	76/4
33	30	EMERSON DRIVE Moments (Midias/New Revolution)	878	+101	18343	+1994	4	65/5
34	31	JOSH GRACIN I Keep Coming Back (Lyric Street)	770	+61	17474	+2249	6	56/4
35	32	JAKE OWEN Startin' With Me (RCA)	658	+7	16294	+564	5	50/3
39	33	TRACY LAWRENCE Find Out Who... (Rocky Comfort/CO5 Nashville)	590	+129	12053	+2475	2	43/10
32	34	VINCE GILL The Reason Why (MCA Nashville)	553	-286	12832	-7799	17	50/0
36	35	DANIELLE PECK Isn't That Everything (Big Machine)	548	+56	13043	+648	3	43/3
37	36	STEVE HOLY Come On Rain (Curb)	510	+23	10166	+290	4	46/1
40	37	PAT GREEN Dixie Lullaby (BNA)	408	+13	10513	+519	2	29/1
-	38	GRETCHEN WILSON Come To Bed (Columbia)	391	+27	9727	+931	2	32/0
38	39	ASHLEY MONROE WRONNIE DUNN I Don't Want To (Columbia)	359	-103	8026	-3371	7	29/1
	Debut	40 JOHN MELLENCAMP Our Country (Republic/Universal South)	337	+2	7716	+92	1	29/0

© 2007 Radio & Records

COM QUEST CALLOUT
619.659.3600



We're the ones
that actually
TELL YOU
who we're
researching

Callout.com



January 29, 2007

Table with 8 columns: ARTIST Title (Label), PASSION, TOTAL POSITIVE, INDEX, NEUTRAL, FAMILIARITY, DISLIKE, STRONGLY DISLIKE. Lists artists like Rodney Atkins, Brad Paisley, Trace Adkins, etc.

Total sample size is 400 persons weekly with a margin of error of plus or minus 5%. Scoring is done each week using live interviewers conducting an interview with each respondent. Scores are: 5) I like it a lot, in fact it's one of my favorites; 4) I like it; 3) It's OK, just so-so; 2) I don't like it; 1) I strongly dislike it.

© 2007 Radio & Records All Rights Reserved No part of this material may be reproduced in any form or incorporated in any information retrieval system without written permission of the Publisher.

Advertisement for Sarah Buxton featuring a photo of her in a green and white striped shirt. Text includes 'SARAH BUXTON', 'THAT KIND OF DAY', 'BETTER THAN MINT ICE-CREAM!', and 'ON YOUR DESK FOR IMMEDIATE SPINS!'. Lyric Street Records logo is in the bottom left.