

Citadel Makes Deal With ABC, Gets Four Major Country Stations

As part of a \$2.7 billion deal announced late yesterday, Citadel will soon acquire four Country outlets from ABC Radio — KSCS & KTYS (The Twister)/Dallas and WKHX & WYAY/Atlanta. According to BIA, the four had more than \$52 million in revenue in 2004.

Twenty-two ABC Radio stations and the ABC Radio Networks will be combined with Citadel Broadcasting to create a group that will own 243 radio stations in 50 markets. The new company, to be named Citadel Communications, will be led by current Citadel CEO **Farid Suleman** and will become the industry's third-largest group. Through a 10-year licensing agreement, Citadel will deliver ABC News Radio programming but ABC parent Disney will continue to distribute ABC News content in other formats, such as broadband, wireless and satellite. ESPN Radio and Radio Disney are not included in the deal.

Suleman said, "We look forward to welcoming our talented new colleagues at ABC Radio, who have a long history of strong market performance and are eager to work together to integrate ABC's top-notch assets into our new strategically enhanced radio group."

Disney CEO **Robert Iger** said, "Our ABC Radio business represents a premier set of assets that have been exceptionally well-managed. ABC Radio and Citadel are a strong strategic fit."

Radio Sets Records For St. Jude

Fundraisers for St. Jude Children's Research hospital are in full swing, and the tallies are bigger and better than ever.

WKHX/Atlanta racked up \$1,172,000 during its weekend radiothon, besting the 2005 total by roughly \$20,000. A local St. Jude patient visited the live event at an area mall both days, sharing his experience with listeners, who made donations via phone and the Internet.

WGKX/Memphis set an all-time market record with \$521,476 during its recent radiothon.

KILT/Houston rang up \$849,224 in donations during its two-day event last week. **Joe Nichols** participated.

WMZQ/Washington scored \$806,000 for St. Jude during its 14th annual radiothon, on Saturday. Big Machine's **Danielle Peck** performed.

WKML/Fayetteville, NC's second annual auction and concert drummed up \$10,840, more than doubling last year's total. **Jeff Bates** headlined the sold-out show. The station's radiothon is set for later in the month.

CRS-37 Draws Near

Seminar is, whew, a week away and it's not too late for you to participate in a number of the week's prime events.

- CRB reports tickets are still available for the DJ Hall of Fame Dinner and Induction Ceremony on Tuesday evening, Feb. 14. **Terry Dorsey, Lon Helton, Arch Yancey, Jonathan Fricke and Ed Salamon** will be inducted. **Jack Lameier and Ronnie Milsap** will be honored, and **Phil Vassar and Joe Nichols** are expected to perform. Tickets run \$75 and will be available at the CRS registration desk.

- The Spring Town Meeting package (\$100) allows access to Thursday afternoon's activities, including

If you experienced transmission problems ... please call our Circulation Department at 310-788-1625.

© 2006 Radio & Records. All Rights Reserved. No part of this material may be reproduced in any form or incorporated in any information retrieval system without written permission of the Publisher.

**On your desk NOW!
ADD DATE THIS
MONDAY, FEB. 13th**

CHRIS CAGLE

WAL-MART PARKING LOT



 www.chriscagle.com
www.capitolnashville.com

MIDAS RECORDS NASHVILLE

LAUNCH PARTY & PERFORMANCE.

Wednesday, February 15th at 11p.m.
Renaissance Hotel's Fisk Room
(Fisk is at the top of the 1st escalator from the hotel lobby)



HOSTED BY BOB GUERRA. PERFORMERS INCLUDE:

*Emerson
Drive*

Lindsey Grant

with a surprise performance to be announced that night!

"Emerson Drive's Midas Records Nashville debut single "A Good Man"
will be on your desk in late February and will impact radio MARCH 13th"

**MIDAS
RECORDS
NASHVILLE**
A Division of Midas Records Inc.

the "Record Label Heads" panel (**Bill Bennett, Scott Borchetta, Mike Dungan, Joe Galante, John Grady and Luke Lewis**), the "Exhibit Hall Networking Hour" and "WCRS Live!" featuring **Miranda Lambert, Craig Morgan, Tim Nichols and Jon Randall**.

- Friday is Radio Sales Day, and \$300 entitles sales-staff registrants and their clients to attend a series of sales-focused panels: "Gettin' R Done With Country Radio," "Main Street to Madison Avenue," "We Don't All Live in Trailers" and "Drawing Winning Numbers." A ticket to the **R&R**-sponsored "New Faces Show & Dinner" is also included.

And, of course, full registrations are still available for \$620 onsite. Details at www.crb.org.

Crazy Radio Relays

In other CRS news, Capitol/Nashville President/CEO **Mike Dungan** has instituted the "Crazy Radio Relay Race Spectacular," set for CRS Thursday in the Convention Center Hall. Costumed teams of six will race for bragging rights and a trophy. The entry fee is \$100. MCA, Clear Channel, CBS Radio, Capitol, Sirius, XM, Warner Bros. and **R&R** are among the companies expected to participate. Contact CRB for details.

Radio News

Personalities: **Wendy White** has joined WGNU/Columbia, SC's *Jeff Roper in the Morning*. She previously had been on the air in Greenville, SC; Charlotte; and Albuquerque.

Marketing/Promotion: Former KPLX/Dallas Promotions Director **Steve Lee** has been named Marketing Director for the five-station Clear Channel/Dallas cluster: KJGE, KDMX, KEGL, KHKS and KZPS.

Management: VP/Cox Radio Interactive **Gregg Lindahl** has been named VP/Interactive & New Tech, a move which formalizes his oversight of new technologies including HD Radio. Lindahl first joined Cox in 1986, re-joined the company in 1997 and was President

This Week At Callout America

Our weekly analysis of Country callout research is brought to you by Bullseye President John Hart. Here's a look at some of the biggest stories Hart looks at in next week's issue.

"Josh Turner's 'Your Man' takes over the No. 1 slot this week in both positive and passion rankers, and it's No. 2 with male and female listeners. Carrie Underwood's 'Jesus Take the Wheel' is also powerful, ranking at No. 2 for the week and as the No. 3 passion song. Brad Paisley moves into the top five, with 'When I Get Where I'm Going' ranking at No. 4 overall, up from No. 6. Kenny Chesney is on a roll, with his 'Living in Fast Forward' ranking No. 6, up strong from No. 11. Van Zant move into the top 10 at No. 7, with 'Nobody Gonna Tell Me What to Do' up from No. 12 last week. Heads up for Toby Keith's 'Get Drunk and Be Somebody,' ranking at No. 13, up from No. 26."

of Cox Enterprises joint venture mp3radio.com until it was sold and he took his most recent post.

Chart Chat

Congrats to Arista/Nashville's **Skip Bishop** and **Teddi Bonadies** on this week's trifecta: The Arista team posted the top two songs on this week's **R&R** Country chart, with Carrie Underwood at No. 1, Brad Paisley at No. 2 and Phil Vassar as the week's Most Added with his new single, "Last Day of My Life."

Record News

Newly formed Nashville-based Katapult Records has assembled a staff including **Jim Butler** as VP/Product Development, **Ron Hall** as VP/Operations,

If you experienced transmission problems ... please call our Circulation Department at 310-788-1625.

© 2006 Radio & Records. All Rights Reserved. No part of this material may be reproduced in any form or incorporated in any information retrieval system without written permission of the Publisher.

Are You A Member???



HILLBILLY NATION

The new single from
COWBOY CRUSH

"I Love it! Wow!"
Travis Moon, KEEY

On your desk today, Impacting Feb 21st

Steve Baynes as Promotion Coordinator/Special Projects and Chris Borchetta as Manager/Regional Promotion.

Artist News

Dierks Bentley will headline his own Platinum & Porcelain tour before joining Kenny Chesney's The Road & The Radio tour package later this summer. Named for his two million-selling albums and the improved plumbing he's seeing as his shows transition from nightclubs and fairs with outdoor port-a-johns, Bentley's tour will feature **Miranda Lambert, Shooter Jennings, Jamey Johnson, The Randy Rogers Band** and **Wade Bowen** opening on various dates. Bentley logged 148,000 miles with his 206 shows last year.

Merle Haggard will receive a Lifetime Achievement Award at tomorrow night's Grammys. Last night he joined a number of luminaries at the Les Paul & Friends: 90th Birthday Salute at Los Angeles' Gibson Amphitheater. On March 9 he will perform with The Rolling Stones in Little Rock.

Alan Jackson will perform selections from his upcoming gospel album *Precious Memories* during a Ryman Auditorium concert on Feb. 27. The show will be taped for broadcast on GAC and DVD release. The album hits stores Feb. 28.

Craig Morgan has been added to February and March dates of **Trace Adkins'** Honky Tonk Badonkadonk tour. Morgan joined the tour Friday in Salisbury, MD.

Music News

Lost Highway will release **Willie Nelson's** *You Don't Know Me: Songs of Cindy Walker* on March 14.

Warner Bros. will release **Shannon Brown's** *Corn Fed* on Feb. 28.

Rust Records has signed **BlackHawk** and will release the single "Better at Hello" on April 24. The album *Voices* is expected later in the spring.

Industry News

Leadership Music will honor **Emmylou Harris** with the Dale Franklin Leadership Award during a banquet set for Sept. 19 at the new Schermerhorn Symphony Center in Nashville. Named for the organization's first executive director, the award recognizes "a music industry leader who exemplifies the highest quality of leadership and leading by example." Previous honorees are **Tony Brown** and **Gerry House**.

The first Grand Ole Opry Signature Show in this year's series will be "Love Songs" on Feb. 11. **Restless Heart, Jimmy Wayne, Del McCoury Band, Lorrie Morgan** and **Suzy Bogguss** are among the artists scheduled to perform. Other shows in the series will include Grand Ole Gospel on April 21, Star-Spangled Opry on July 1 and 4 and Bill Monroe Bluegrass Celebration on Sept. 26.

Benefit News

Little Big Town recently headlined Cowboy's in Crested Butte, CO during the Celebrity Bartender event during Country in the Rockies — a T.J. Martell Foundation fundraiser. Hoping to raise more than the \$75,000 **Big & Rich** brought in the prior year, the band pulled out the stops, as did MC **Doug Johnson** and writers **Dean Dillon, Chas Sanford** and **Wayne Kirkpatrick**. Labelmate **Clint Black** even served as a bartender.

Among the big draws, Dillon's guitar was auctioned for \$10,000, and an impromptu Black-LBT performance of "Killin' Time" and "Seven Bridges Road" brought \$6,500. A woman recently diagnosed with breast cancer offered \$25,000 for LBT to return to the town for a performance

If you experienced transmission problems ... please call our Circulation Department at 310-788-1625.

© 2006 Radio & Records. All Rights Reserved. No part of this material may be reproduced in any form or incorporated in any information retrieval system without written permission of the Publisher.

"This one's for the Working Man and the Soldiers who fight for this land."

GRETCHEN WILSON

"POLITICALLY UNCORRECT"

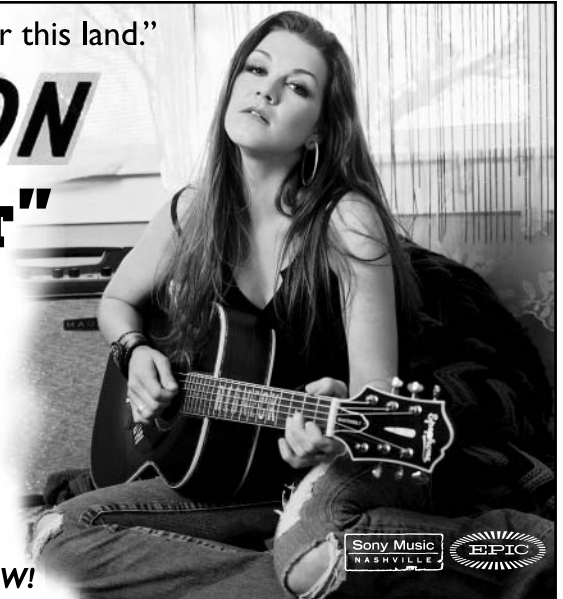
The New Grammy Nominated SMASH

featuring the legendary Merle Haggard

Official add date: 2/13

**Added early on: KYGO WIL WUBE WIVK
KUZZ KVOO WQHK KIXZ WFLS KFTX**

From the Platinum CD "All Jacked Up". Impacting your listeners NOW!



Sony Music
NASHVILLE



on her 50th birthday. Short \$1,600 from their goal, band members **Jimi Westbrook** and **Phillip Sweet** ended the night dancing shirtless on tables to narrowly beat last year's record.

Chely Wright's Reading, Writing and Rhythm Foundation recently donated \$26,000 worth of musical instruments to schools affected by Hurricane Katrina. Gulfport High, Pass Christian Elementary and Bay High, all in Mississippi, received replacement instruments and visits from Wright.

Life Notes

Best wishes to **Troy Gentry**, who had a second reconstructive surgery on his knee over the week-end. Gentry originally injured the joint while horse-back riding last summer.

Congrats to R&R Dir./Music Operations **Josh Bennett** and wife **Kyndle** on the arrival of son **James Taylor Bennett** Friday night.

Heartiest congratulations and sincerest best wishes to CBS Radio VP/Country and KILT/Houston OM **Jeff Garrison** on his engagement to longtime girlfriend **Becky Weyland**. Nuptials are set for June 3 in Houston.

Chronicle

Condolences are extended to **Earl Scruggs** and family and friends on the passing of bluegrass pioneer **Louise Scruggs**. She was 78. Working behind the scenes, Scruggs advanced the career of husband Earl and helped fuel the genre's growth as a business. A funeral service was held yesterday in Nashville. In lieu of flowers, the family asks donations be made to the Country Music Hall of Fame and Museum.

The Week's Major Stories

Here are some of the week's major news stories, as first reported in **R&R Country Daily**. Subscribe to **RRCD** by visiting our website, www.radioandrecords.com, and clicking "About Us" and "How To Subscribe."

Bill Gamble, PD of ABC Radio/Chicago's **WXCD & WZZN** for the past eight years, has been named PD of CBS Radio's recent Country convert **KWLI** (Willie)/Denver. Gamble's Country experience includes **WMAQ/Chicago**, and his programming background includes **Gamble Radio Consulting Services, WKLR/Indianapolis, WSUN/Tampa, WEFM/Chicago** and **WIFI/Philadelphia**. (**RRCD**, Feb. 3)

KSD-FM/St. Louis MD/afternoon driver Billy Greenwood has been promoted to PD of the Clear Channel Country outlet. He succeeds **Steve Geoffries**, who left for the OM post at **CC/Greenville, SC** last December. Greenwood was Asst. PD/MD/middayer at **WSIX/Nashville** when he left for **KSD-FM** in September 2003. (**RRCD**, Feb. 2)

The Week In Review

Below are more stories that first appeared in the **R&R Country Daily**. Get it by sending your name, company or call letters, job title, address, phone and fax numbers to subscribe@radioandrecords.com. For more on these stories, visit the Country Format Room at www.radioandrecords.com.

R&R Country Daily, Feb. 3: CMA Award-winning personality **Paul Koffy** is the new MD/afternoon driver at Clear Channel's **WFUS/Tampa**. He succeeds **Justin Taylor**, who is looking for an opportunity out West. Most recently in mornings at **KEGA (The Eagle)/Salt Lake City**, Koffy has also worked at Country

If you experienced transmission problems ... please call our Circulation Department at 310-788-1625.

© 2006 Radio & Records. All Rights Reserved. No part of this material may be reproduced in any form or incorporated in any information retrieval system without written permission of the Publisher.

Time To Convert MG! Callout IS The Story!

"SHE DON'T TELL ME TO"
the latest Columbia SMASH from **MONTGOMERY GENTRY**

JRA Callout #5 / Callout America #4 / Callout America's MarketWatch:

Houston #1; San Diego #2; Des Moines #3, Omaha #4; Wichita #5; Atlanta #6; Cincinnati #8; Providence #9; Washington DC #9, W. Palm Beach #3, Lexington #3, York #5, Nashville #8, Memphis #9, Milwaukee #9 & hundreds more coast-to-coast!

R&R: 11 +160x/+485 pts. BB: 13* +172x/+981,700

POWER IT UP NOW!

From the NEW Columbia CD, **SOMETHING TO BE PROUD OF: BEST OF 1999-2005**, in-stores NOW!



outlets WSSL/Greenville, SC and WXBM/Pensacola, FL. He starts in mid-February.

Category 5's promotion staff is taking shape, with promotion vet **Sam Harrell** handling West Coast, longtime Columbia pop promotion man **David Shaw** handling Northeast, and newcomer **Courtney Grimes** coming over from Gibson Guitar to handle Southwest. Harrell will be based in L.A., Shaw in Providence and Grimes in Nashville. VP/Promotion **Tony Benken** expects to add a fourth regional soon.

Promotion veteran **Rob Dalton** is working with Cupit Records as Strategic Planner to help formulate and oversee the label's radio-promotion launch.

Emmis-owned WLHK/Indianapolis *Wank and O'Brien* morning show part-timer **Ashley May** has been upped to Producer. OM **David Edgar** is also on the hunt for a new afternoon jock and MD. Rush T&Rs to him at 40 Monument Circle, Suite 600, Indianapolis, IN 46038.

Epic/Nashville Southeast Regional Promoter **Rick Hughes** exited his label home of 13 years. His contract was up Feb. 1, and it was not renewed. He can be reached at rhuge@netzero.com or 615-210-8581. Prior to joining Sony in 1993, he spent five years with MCA/Nashville.

WUSN/Chicago, KMPS/Seattle and KILT/Houston are among several CBS Radio stations that have launched live online streams of their broadcasts.

RRCD, Feb. 2: CHR/Pop KRRG/Laredo, TX is expected to flip to Country this Thursday. PD **Monica Salazar** and the entire airstaff will remain in place.

CC/Albuquerque-Santa Fe, NM Market Manager **Chuck Hammond** was named RVP for New Mexico. CC/Detroit RVP **Dave Pugh** is transferring to Washington, DC for the RVP chair vacated recently by **Bennett Zier**.

Lofton Creek's **Brad Taylor** was elevated to head of secondary promotion. Taylor's been with the label one year.

Dates & Deadlines

Feb. 8: 48th annual Grammy Awards, Los Angeles. Details at www.grammy.com.

Feb. 14: Country Radio & DJ Hall of Fame Dinner, Nashville. Details at www.crb.org.

Feb. 15-17: CRS-37, Nashville Convention Center. Details at www.crb.org.

March 28-April 1: 14th annual Tin Pan South Songwriters Festival, Nashville. Details at www.tinpansouth.com.

May 22: CRB Las Vegas. Details at www.crb.org.

May 23: 41st annual ACM Awards, Las Vegas. Details at www.acmcountry.com.

June 8-11: CMA Music Festival, Nashville. Details at www.cmafest.com.

Sept 20-22: R&R Convention, Dallas. Details at www.radioandrecords.com.

RRCD, Feb. 1: CMT partnered with game publisher Konami Digital Entertainment to develop games for the CMT audience. The first title is *CMT Presents: Karaoke Revolution Country*, due in March.

Artists including **Wayne Warner**, **Jason Aldean**, **Billy Dean** and **Trick Pony** are scheduled to record a song and video titled "God Bless the Children" next week in Nashville. The effort is aimed at raising awareness for adoption and the 119,000 children currently available for adoption in the foster-care system.

RRCD, Jan. 31: Beasley/Augusta, GA VP and co-GM **Coni Sansom** retired, effective Dec. 31, 2005. Co-GM **Kent Dunn** now assumes all management duties for the cluster, which includes Country

If you experienced transmission problems ... please call our Circulation Department at 310-788-1625.

© 2006 Radio & Records. All Rights Reserved. No part of this material may be reproduced in any form or incorporated in any information retrieval system without written permission of the Publisher.

MYTH: "NOBODY GONNA TELL ME WHAT TO DO" Only Appeals To Men.

TRUTH: #10 CORE 35-44 WOMEN in Mediabase AND Callout America!! VZ outrank Trace Adkins, Sugarland, Josh Turner, LBT, Rascal Flatts, Tim McGraw, Sara Evans, Blake Shelton, Brooks & Dunn, Chris Cagle, and Miranda Lambert in Mediabase's Callout!

SO, WHO'S YOUR DADDY NOW?



"NOBODY GONNA TELL ME WHAT TO DO"

the new Columbia smash from

R&R: 19 +178x / +566 pts.

BB 21* +1,050,900 - Top 10 Audience Increase!

New Airplay Today: KYGO & KKBQ!

POWER IT UP!



WKXC. Sansom started in the market as an air personality in 1976. She also worked in sales and, later, as GM at 'KXC, which she helped build into the market's top-rated Country station.

Marc Wood has rejoined Sony/ATV Publishing as Sr. Director/Film & Television Licensing & Advertising. Wood, a longtime employee of Acuff-Rose, departed the company in 2003, a year after it was acquired by Sony/ATV.

Van Wesley Stephenson II has been named Catalog Manager at Ten Ten Music Group, replacing **Joe Saul**, who recently left the company. Stephenson, most recently with Famous Music, is the son of late BlackHawk co-founder **Van Stephenson**.

The RIAA certified **George Strait's 50 #1s** multiplatinum for sales of 6 million copies, tying it with *Pure Country* as Strait's second-best-selling album, behind *Strait Out of the Box* (8 million).

Sugarland are set to perform at the *48th Annual Grammy Awards*, airing live on CBS from Los Angeles on Feb. 8.

— **Lon Helton/Country Editor** (615) 244-8822
Email: lhelton@radioandrecords.com

— **Chuck Aly/R&R Asst. Country Editor** 615-244-8822
Email: caly@radioandrecords.com

VIDEO ADDS

CMT

LEANN RIMES Something's Gotta Give
ROCKIE LYNNE Lipstick
SHEDAISY I'm Taking The Wheel

GREAT AMERICAN COUNTRY

LEANN RIMES Something's Gotta Give
PINMONKEY That Train Don't Run

RANDOM FAX®

Tuesday, 2/7

BIRTHDAYS: Wilma Lee Cooper, Garth Brooks, Deb Castle (deb.castle@sonybm.com), Summer Harman (summer@brokenbowrecords.com)

On TV: CBS: **Big & Rich**, *The Late Show With Craig Ferguson*; Syndicated: **Tim McGraw**, **Faith Hill**, *Oprah*.

Wednesday, 2/8

BIRTHDAYS: Dan Seals, David Bryan, Kimberly Dunn, David Friedman

On TV: ABC: **Dwight Yoakam**, *Jimmy Kimmel*; CBS: **Various Artists**, *The 48th Annual Grammy Awards*.

Thursday, 2/9

BIRTHDAYS: Joe Ely, Danni Leigh, Travis Tritt, Anne Sarosdy, Tamara Saviano, Janie West

On TV: CMT: **Garth Brooks**, *Garth Brooks: The Lost Sessions*.

Friday, 2/10

BIRTHDAYS: Lionel Cartwright, Misti Filipiak, Robin Gordon, Scott Heuerman, Chris Palmer (christian.palmer@disney.com)

On TV: Syndication: **Faith Hill**, *Ellen*.

Saturday, 2/11

BIRTHDAYS: Moe Bandy

On TV: GAC: **Vince Gill** (host), **Carrie Underwood**, **John Corbett**, **Rascal Flatts**, *Grand Ole Opry Live*.

Monday, 2/13

BIRTHDAYS: Randy Owen

If you experienced transmission problems ... please call our Circulation Department at 310-788-1625.

© 2006 Radio & Records. All Rights Reserved. No part of this material may be reproduced in any form or incorporated in any information retrieval system without written permission of the Publisher.

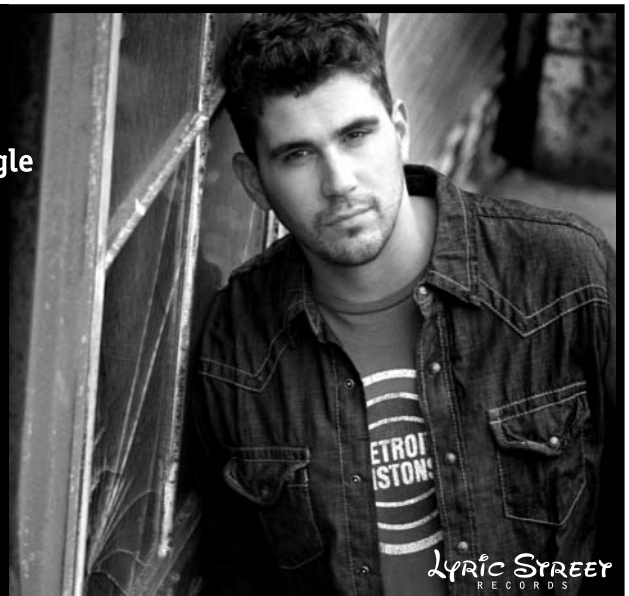
JOSH GRACIN

Coming off his GOLD selling Debut album...the new single

"FAVORITE STATE OF MIND"

On your desk this week
and digital download delivery
Tuesday, Feb 7 @ 3 PM/CT

look for e-mail notifications



LYRIC STREET
RECORDS

New No. 1s: WKXC, KIZN, WQBE, WTVY, KXIX, WBUK, WPOR, KIXZ and KTTS

Here's another batch of Country results from recently released Arbitrons. A reminder: Each week's **R&R Country HotFax** will feature Country stations' fall ratings. For daily, full-market updates, go to www.radioandrecords.com and click on "Ratings" — it's free! A "+" indicates a Classic Country outlet, a "^" designates Country stations in the same market owned by a single operator, and an "*" indicates a tie.

Station/City	12+ Share Last Arbitron	12+ Share Fall '05	12+ Rank Last Arbitron	12+ Rank Fall '05	Station/City	12+ Share Last Arbitron	12+ Share Fall '05	12+ Rank Last Arbitron	12+ Rank Fall '05
KBQI/Albuquerque	4.4	3.3	4	108	WPCK/Green Bay, WI	4.6	5.7	7	7
KRST/Albuquerque	3.7	3.6	10	14	WBUL/Lexington, KY	9.1	11.1	1	1
KKRG/Albuquerque+	3.9	2.7	9	15*	WLXX/Lexington, KY	7.2	7.4	2	2
WKXC/Augusta, GA	5.4	9.4	6*	1	WCYO/Lexington, KY	3.0	1.6	13	16*
WIBL/Augusta, GA	5.6	6.2	5	6	WWQM/Madison	8.1	7.1	2	3*
KIZN/Boise, ID^	7.5	7.3	1	1	WDMP-AM & FM/Madison	1.3	1.6	18	14*
KQFC/Boise, ID^	6.0	6.0	5	4	WJVL/Janesville, WI	0.8	1.2	21	18
KFXD-AM/Boise, ID+	2.2	1.9	16	17	(Madison Arbitron)				
WEZL/Charleston, SC	8.4	8.9	2	2	KTEX/McAllen	7.6	8.2	5	3
WNKT/Charleston, SC	3.1	3.8	12	9*	WLWI/Montgomery, AL	10.6	8.9	2	3
WQBE/Charleston, WV	17.8	19.1	1	1	WBAM/Montgomery, AL	5.3	5.4	7	8
WKWS/Charleston, WV	11.2	10.4	2	2	WGTR/Myrtle Beach, SC	6.4	6.1	5	4
WKNL/Columbus, GA	6.4	5.6	7	5*	WYAK/Myrtle Beach, SC	7.3	5.8	3	5
WSTH/Columbus, GA	6.8	4.4	6	10*	WEGX/Florence, SC	2.1	2.4	13*	13
KJJY/Des Moines^	6.0	5.0	6*	6*	(Myrtle Beach Arbitron)				
KHKI/Des Moines^	5.5	4.5	7	9*	WPOR/Portland, ME	6.7	9.1	3	1
WTVY/Dothan, AL	16.9	16.0	1	1	WTHT/Portland, ME	4.0	4.9	7	6
WDJR/Dothan, AL	12.4	11.2	2	2	KBUL/Reno, NV	6.2	4.8	3	4*
WBBK/Dothan, AL	3.0	3.0	9*	10*	KUUB/Reno, NV	4.9	2.6	5*	16
KHEY/EI Paso	4.1	3.9	8	8	WSLC/Roanoke, VA	12.9	8.6	1	3
WXTA/Erie, PA	8.5	11.1	4	3	WYYD/Roanoke, VA^	8.3	6.4	4	6
WUSE/Erie, PA	6.6	5.6	7	6	WZBL/Roanoke, VA^	1.2	1.4	14*	12*
WGY & WGYI/Erie, PA	2.2	2.0	10	10	WJCL/Savannah, GA	4.7	5.7	6*	5
WKDQ/Evansville, IN	11.0	12.1	2	2	WGZR/Savannah, GA	2.9	3.1	13*	13
WLFW/Evansville, IN	7.1	7.5	5	4*	KIXZ/Spokane	4.9	8.2	8*	1
WBKR/Owensboro, KY	2.1	2.3	13	12	KDRK/Spokane	4.9	6.3	8*	4
(Evansville, IN Arbitron)					KICR/Spokane	1.7	2.5	17*	16
WYNG/Evansville, IN	1.2	1.7	16*	13*	KTTS/Springfield, MO	11.7	16.9	1	1
KXIX/Fayetteville, AR	9.6	10.1	1	1	KOMG/Springfield, MO	5.5	5.1	5	5*
KAMO/Fayetteville, AR	4.7	5.6	7*	6	KSWF/Springfield, MO	4.8	3.1	8*	11
KQSM/Fayetteville, AR	4.1	3.9	9	10	WTNT/Tallahassee, FL	5.3	5.6	3*	5*
WQHK/Ft. Wayne, IN	9.7	9.5	2	2	WAIB/Tallahassee, FL	3.9	3.8	6*	8*
WBTU/Ft. Wayne, IN	4.8	2.8	8*	11	WGWD/Tallahassee, FL	2.6	2.4	14	12
WNCY/Green Bay, WI	12.8	10.7	1	2					

Miranda Lambert

R&R: **14-12** BB: **17***

"kerosene"

CD Sales Up over 11%

This is one record YOUR listeners are Passionate about!

#6 passion record with Females 25-44.

#6 passion record with Men 25-54.

Testing #8 with Adults 25-44 (Callout America)

Don't miss Miranda on the Sony CRS lunch show and on WCRS Live next Thursday!



Sales growth, Call Out Growth and Requests! This is a HIT Record!! Move Miranda Up Today!



If you experienced transmission problems ... please call our Circulation Department at 310-788-1625.

© 2006 Radio & Records. All Rights Reserved No part of this material may be reproduced in any form or incorporated in any information retrieval system without written permission of the Publisher.

LW	TW	ARTIST Title Label(s)	Total Points	+/- Points	Total Plays	+/- Plays	Tot. Aud. (00)	+/- Aud. (00)	Wks On	Total Station
1	1	CARRIE UNDERWOOD Jesus, Take The Wheel (Arista)	14572	-76	5094	+7	455159	-3603	14	120/0
3	2	BRAD PAISLEY f/D. PARTON When I Get Where I'm Going (Arista)	12312	674	4371	+275	377885	24030	18	119/0
2	3	TRACE ADKINS Honky Tonk Badonkadonk (Capitol)	12234	-127	4226	-37	364487	-8287	18	118/0
4	4	FAITH HILL Like We Never Loved At All (Curb/Warner Bros.)	10988	277	3985	+118	326198	6088	21	119/0
8	5	JOSH TURNER Your Man (MCA)	10644	983	3785	+372	323878	26918	27	119/1
6	6	TIM MCGRAW My Old Friend (Curb)	10150	78	3646	+84	295438	1855	17	118/0
9	7	SUGARLAND Just Might (Make Me Believe) (Mercury)	9833	452	3563	+201	300183	10718	20	118/0
10	8	KEITH URBAN Tonight I Wanna Cry (Capitol)	9806	582	3416	+263	300717	16591	10	119/0
11	9	RASCAL FLATTS What Hurts The Most (Lyric Street)	9295	800	3225	+295	280416	26587	5	120/0
13	10	KENNY CHESNEY Living In Fast Forward (BNA)	8913	909	2983	+330	269049	32973	10	118/0
12	11	MONTGOMERY GENTRY She Don't Tell Me To (Columbia)	8689	485	3090	+160	259889	15385	14	119/0
14	12	MIRANDA LAMBERT Kerosene (Epic)	7984	316	2785	+84	222911	11831	17	118/0
15	13	TOBY KEITH Get Drunk And Be ... (Show Dog Nashville/Universal)	7908	717	2658	+266	229092	17409	6	119/1
16	14	SARA EVANS Cheatin' (RCA)	7647	484	2634	+181	227851	14328	13	119/1
17	15	BLAKE SHELTON Nobody But Me (Warner Bros.)	7608	617	2728	+205	219275	18755	22	116/1
19	16	BROOKS & DUNN Believe (Arista)	7134	319	2568	+144	203491	14789	14	118/1
20	17	JAMEY JOHNSON The Dollar (BNA)	6813	428	2316	+187	190944	13432	21	116/0
22	18	BON JOVI W/J. NETTLES Who Says You Can't ... (Island/IDJMG)	5871	1055	1876	+355	169660	23393	9	102/4
21	19	VAN ZANT Nobody Gonna Tell Me What To Do (Columbia)	5488	566	1974	+178	146256	13408	18	112/1
26	20	TRENT TOMLINSON Drunker Than Me (Lyric Street)	4493	426	1598	+125	107098	5766	14	110/4
25	21	JACK INGRAM Wherever You Are (Big Machine/Show Dog Nashville)	4276	144	1436	+83	117433	5372	12	96/4
27	22	JASON ALDEAN Why (BBR)	3805	461	1450	+183	97073	10380	10	101/4
28	23	DANIELLE PECK I Don't (Big Machine/Show Dog Nashville)	3249	228	1149	+75	67638	2167	16	105/0
30	24	LEANN RIMES Something's Gotta Give (Asylum/Curb)	2994	479	1137	+190	80413	9600	6	95/5
29	25	SHEDAISY I'm Taking The Wheel (Lyric Street)	2777	55	1029	+24	66403	1855	10	94/1

© 2006 Radio & Records



MARTINA McBRIDE



"I Still Miss Someone"

Written by Johnny Cash

.....
25 early believers!
.....

ON TOUR EVERYWHERE
ADD IT NOW!

RCA
BMG
©2006 BMG Music
SONY & BMG
MUSIC ENTERTAINMENT



jeff bates

"NO SHAME"

ALREADY ON 50+ STATIONS
46* TO 40* @ R&R

***See Jeff Bates on the
"New Faces" Show at CRS***

ADD IT NOW!



LW	TW	ARTIST	Title	Label(s)	Total Points	+/- Points	Total Plays	+/- Plays	Tot. Aud. (00)	+/- Aud. (00)	Wks On	Total Station
37	26	T. YEARWOOD & G. BROOKS	Love Will ...	(Pearl/Lyric Street)	2692	1164	986	+458	70200	23376	3	94/15
32	27	ROCKIE LYNNE	Lipstick	(Universal South)	2632	212	940	+89	63792	4286	14	83/1
31	28	LEE ANN WOMACK	Twenty Years And Two Husbands Ago	(MCA)	2562	121	958	+31	56216	-1433	9	90/1
35	29	KEITH ANDERSON	Every Time I Hear Your Name	(Arista)	2442	514	890	+204	58493	12861	5	88/4
33	30	CRAIG MORGAN	I Got You	(BBR)	2395	261	957	+94	58639	7325	8	85/5
34	31	JO DEE MESSINA	Not Going Down	(Curb)	2183	173	842	+80	57641	6734	6	78/3
Breaker	32	DIERKS BENTLEY	Settle For A Slowdown	(Capitol)	2012	712	783	+259	58503	23030	4	77/11
Breaker	33	JOE NICHOLS	Size Matters (Someday)	(Universal South)	1769	312	647	+134	46046	9796	3	74/14
41	34	JAMIE O'NEAL	I Love My Life	(Capitol)	1554	333	562	+108	41786	12383	8	61/2
39	35	RAY SCOTT	My Kind Of Music	(Warner Bros.)	1311	-88	509	-50	31409	-3805	21	49/1
42	36	KENNY ROGERS	I Can't Unlove You	(Capitol)	1290	81	469	+39	31694	1575	5	56/3
43	37	RODNEY ATKINS	If You're Going Through Hell (Before ...)	(Curb)	1162	174	515	+70	27244	3686	4	52/4
44	38	GARY ALLAN	Life Ain't Always Beautiful	(MCA)	1118	159	486	+71	29492	4853	3	60/10
48	39	LONESTAR	I'll Die Tryin'	(BNA)	798	121	364	+43	17855	4060	5	43/1
46	40	JEFF BATES	No Shame	(RCA)	779	19	318	+12	12409	207	5	44/1
Debut	41	BIG & RICH	Never Mind Me	(Warner Bros.)	771	327	246	+110	20181	6061	1	37/12
47	42	CROSS CANADIAN RAGWEED	Fightin' For	(Universal South)	760	53	149	+8	22891	1509	17	10/0
45	43	TRACY LAWRENCE	If I Don't Make It Back	(Mercury)	722	-156	374	-84	16822	-4361	9	41/0
Debut	44	PHIL VASSAR	Last Day Of My Life	(Arista)	558	105	174	+39	16212	3260	1	44/35
50	45	CLINT BLACK	Drinkin' Songs & Other Logic	(Equity)	488	1	174	+13	7147	557	2	23/3
49	46	SUSAN HAYNES	Drinkin' In My Sunday Dress	(Epic)	476	-38	237	-11	7239	-1440	2	34/3
Debut	47	LITTLE BIG TOWN	Bring It On Home	(Equity)	426	347	175	+141	9549	7963	1	34/7
Debut	48	STEVE HOLY	Brand New Girlfriend	(Curb)	366	109	152	+47	10821	2933	1	14/6
Debut	49	JOHN PIERCE	I'd Still Have You	(RCA)	335	2	135	+4	4244	-1051	1	25/0
Debut	50	MARTINA MCBRIDE W/DOLLY PARTON	I Still Miss Someone	(RCA)	300	26	107	+7	7102	3610	1	24/7

© 2006 Radio & Records



Just Play The HELL Out Of It!

"Hell's Bells this is a SMASH!!" JD Cannon, WFMS

"...this is THE ONE!" Mike Kennedy, KBEQ



"If You're Goin' Through Hell" (Before the Devil Even Knows)

New adds this week:

WUSN, WFMS, KASE, WGH, WGNE, KZSN, KHKI, KATM, WKCN

COUNTRY

MOST ADDED

ARTIST Title Label(s)	Adds
PHIL VASSAR Last Day Of My Life (Arista)	35
T. YEARWOOD & G. BROOKS Love Will ... (Pearl/Lyric Street)	15
JOE NICHOLS Size Matters (Someday) (Universal South)	14
GEORGE STRAIT Seashores Of Old Mexico (MCA)	14
TERRI CLARK Damn Right (Mercury)	14
BLAINE LARSEN I Don't Know What She Said (Giantslayer/BNA)	13
BIG & RICH Never Mind Me (Warner Bros.)	12
DIERKS BENTLEY Settle For A Slowdown (Capitol)	11
GARY ALLAN Life Ain't Always Beautiful (MCA)	10

MOST INCREASED POINTS

ARTIST Title Label(s)	Total Pt. Increase
T. YEARWOOD & G. BROOKS Love Will ... (Pearl/Lyric Street)	+1164
BON JOVI W/J. NETTLES Who Says You Can't ... (Island/IDJMG)	+1055
JOSH TURNER Your Man (MCA)	+983
KENNY CHESNEY Living In Fast Forward (BNA)	+909
RASCAL FLATTS What Hurts The Most (Lyric Street)	+800
TOBY KEITH Get Drunk And ... (Show Dog Nashville/Universal)	+717
DIERKS BENTLEY Settle For A Slowdown (Capitol)	+712
BRAD PAISLEY f/D. PARTON When I Get Where I'm Going (Arista)	+674
BLAKE SHELTON Nobody But Me (Warner Bros.)	+617
KEITH URBAN Tonight I Wanna Cry (Capitol)	+582

MOST INCREASED PLAYS

ARTIST Title Label(s)	Total Play Increase
T. YEARWOOD & G. BROOKS Love Will ... (Pearl/Lyric Street)	+458
JOSH TURNER Your Man (MCA)	+372
BON JOVI W/J. NETTLES Who Says You Can't ... (Island/IDJMG)	+355
KENNY CHESNEY Living In Fast Forward (BNA)	+330
RASCAL FLATTS What Hurts The Most (Lyric Street)	+295
BRAD PAISLEY f/D. PARTON When I Get Where I'm ... (Arista)	+275
TOBY KEITH Get Drunk And ... (Show Dog Nashville/Universal)	+266
KEITH URBAN Tonight I Wanna Cry (Capitol)	+263
DIERKS BENTLEY Settle For A Slowdown (Capitol)	+259
BLAKE SHELTON Nobody But Me (Warner Bros.)	+205

COUNTRY INDICATOR

MOST ADDED

ARTIST Title Label(s)	Adds
GEORGE STRAIT Seashores Of Old Mexico (MCA)	29
DIERKS BENTLEY Settle For A Slowdown (Capitol)	15
LITTLE BIG TOWN Bring It On Home (Equity)	11
PHIL VASSAR Last Day Of My Life (Arista)	10
JOE NICHOLS Size Matters (Someday) (Universal South)	9
BIG & RICH Never Mind Me (Warner Bros.)	8
GRETCHEN WILSON Politically Uncorrect (Epic)	7
JO DEE MESSINA Not Going Down (Curb)	6

MOST INCREASED POINTS

ARTIST Title Label(s)	Total Pt. Increase
T. YEARWOOD & G. BROOKS Love Will ... (Pearl/Lyric Street)	+327
DIERKS BENTLEY Settle For A Slowdown (Capitol)	+275
JOSH TURNER Your Man (MCA)	+251
KENNY CHESNEY Living In Fast Forward (BNA)	+240
BRAD PAISLEY f/D. PARTON When I Get Where I'm Going (Arista)	+239
JOE NICHOLS Size Matters (Someday) (Universal South)	+224
GEORGE STRAIT Seashores Of Old Mexico (MCA)	+211
BON JOVI W/J. NETTLES Who Says You Can't ... (Island/IDJMG)	+181
SARA EVANS Cheatin' (RCA)	+169
BIG & RICH Never Mind Me (Warner Bros.)	+161

MOST INCREASED PLAYS

ARTIST Title Label(s)	Total Play Increase
DIERKS BENTLEY Settle For A Slowdown (Capitol)	+264
T. YEARWOOD & G. BROOKS Love Will ... (Pearl/Lyric Street)	+257
JOSH TURNER Your Man (MCA)	+222
KENNY CHESNEY Living In Fast Forward (BNA)	+213
GEORGE STRAIT Seashores Of Old Mexico (MCA)	+205
JOE NICHOLS Size Matters (Someday) (Universal South)	+198
BRAD PAISLEY f/D. PARTON When I Get Where I'm Going (Arista)	+194
BON JOVI W/J. NETTLES Who Says You Can't ... (Island/IDJMG)	+167
KEITH URBAN Tonight I Wanna Cry (Capitol)	+141
JACK INGRAM Wherever You Are (Big Machine/Show Dog Nashville)	+140

**SEEN BY MORE THAN 30,000 FANS
LAST WEEK WITH RASCAL FLATTS!**

JASON ALDEAN "WHY"

**NEW THIS WEEK: WUSN,
WMZQ, WKIS, WYRK**

**Another Big week of INCREASES:
SALES, AIRPLAY & AUDIENCE**

Big Chart Move: 27 - 22 +183 Plays, +1.03 Audience

This single is making an IMPACT!!

MOVING into the TOP 30 with MOMENTUM!

**CRAIG MORGAN
"I Got You"**

**New stations this week: WGAR, WFMS,
WYGY, KBQI, WSLC, KXKS, KBKO**

**33 - 30 Nearly 3/4 of a million
in audience increases!**

**Craig Morgan/Trace Adkins Tour -
One of the Hottest Tickets in the Nation!**

MEGAN MULLINS - You've heard the buzz...catch her live Thursday night at CRS! 

COUNTRY INDICATOR NEW & ACTIVE

- TIM MURPHY** Wild Wild West (*Big 7*)
Total Points: 78, Total Stations: 8, Adds: 2
- TERRI CLARK** Damn Right (*Mercury*)
Total Points: 76, Total Stations: 9, Adds: 5
- TRENT WILLMON** On Again Tonight (*Columbia*)
Total Points: 75, Total Stations: 11, Adds: 3
- GRETCHEN WILSON** Politically Uncorrect (*Epic*)
Total Points: 71, Total Stations: 8, Adds: 7
- BLAINE LARSEN** I Don't Know What She Said (*Giantslayer/BNA*)
Total Points: 70, Total Stations: 9, Adds: 3
- JOHN CORBETT** Good To Go (*Fun Bone*)
Total Points: 68, Total Stations: 10, Adds: 3
- CHRIS CAGLE** Wal-Mart Parking Lot (*Capitol*)
Total Points: 60, Total Stations: 8, Adds: 5
- MARK MCGUINN** One Man's Crazy (*Blue Flamingo/Quarterback*)
Total Points: 52, Total Stations: 7, Adds: 0

COUNTRY NEW & ACTIVE

- TRENT WILLMON** On Again Tonight (*Columbia*)
Total Points: 287, Total Stations: 27, Adds: 8
- HAL KETCHUM** Just This Side Of Heaven (Hal-Lelujah) (*Curb/Asylum*)
Total Points: 266, Total Stations: 26, Adds: 6
- JOHN CORBETT** Good To Go (*Fun Bone*)
Total Points: 258, Total Stations: 19, Adds: 7
- NEAL MCCOY** The Last Of A Dying Breed (*903*)
Total Points: 258, Total Stations: 17, Adds: 4
- GEORGE STRAIT** Seashores Of Old Mexico (*MCA*)
Total Points: 256, Total Stations: 15, Adds: 14
- BRICE LONG** Anywhere But Here (*Columbia*)
Total Points: 233, Total Stations: 14, Adds: 0
- ERIC CHURCH** How 'Bout You (*Capitol*)
Total Points: 209, Total Stations: 11, Adds: 6
- REBA MCENTIRE** Love Needs A Holiday (*MCA*)
Total Points: 182, Total Stations: 19, Adds: 5
- TERRI CLARK** Damn Right (*Mercury*)
Total Points: 128, Total Stations: 14, Adds: 14
- BLAINE LARSEN** I Don't Know What She Said (*Giantslayer/BNA*)
Total Points: 95, Total Stations: 17, Adds: 13



- 2/13
- CHRIS CAGLE** Wal-Mart Parking Lot (*Capitol*)
- FAITH HILL** The Lucky One (*Warner Bros.*)
- GEORGE STRAIT** Seashores Of Old Mexico (*MCA*)
- GRETCHEN WILSON** Politically Uncorrect (*Epic*)
- SHOOTER JENNINGS** Aviators (*Universal South*)
- TY ENGLAND** Redneck Anthem (*Triple T/Quarterback*)

- 2/21
- COWBOY CRUSH** Hillbilly Nation (*Asylum/Curb*)
- SHANE OWENS** Redneck (*Rust*)

- 2/27
- BILLY CURRINGTON** Why, Why, Why (*Mercury*)
- HOT APPLE PIE** Easy Does It (*MCA*)

MOST PLAYED RECURRENTS

ARTIST Title Label(s)	Total Points
GEORGE STRAIT She Let Herself Go (<i>MCA</i>)	9593
BILLY CURRINGTON Must Be Doin' Somethin' Right (<i>Mercury</i>)	9160
DIERKS BENTLEY Come A Little Closer (<i>Capitol</i>)	6250
LITTLE BIG TOWN Boondocks (<i>Equity</i>)	6129
KEITH URBAN Better Life (<i>Capitol</i>)	5690
JOE NICHOLS Tequila Makes Her Clothes Fall Off (<i>Universal South</i>)	5355
GARTH BROOKS Good Ride Cowboy (<i>Pearl/Lyric Street</i>)	5081
MONTGOMERY GENTRY Something To Be Proud Of (<i>Columbia</i>)	5018
KENNY CHESNEY Who You'd Be Today (<i>BNA</i>)	4699
TOBY KEITH As Good As I Once Was (<i>DreamWorks</i>)	3921



120 Country reporters. Songs ranked by total points for the airplay week of 1/29-2/4. Bullets appear on songs gaining points and/or plays or remaining flat from previous week. If two songs are tied in total points, the song with the larger increase in points is placed first. Songs below No. 1 and down in points and plays for three consecutive weeks are moved to recurrent. Most Added is the total number of new adds officially reported to R&R by each reporting station. Songs unreported as adds do not count toward overall total stations playing a song. Most Increased Points lists the songs with the greatest week-to-week increases in total points. Station Weight = AQH Persons + (Market rank X 10) divided by 4180. Total Audience equals Average Quarter Hour Persons times number of plays (times 100). Each daypart on each station is assigned an AQH number. Average Quarter Hour Persons used herein with permission from Arbitron Inc. (© 2006, Arbitron Inc.) © 2006 Radio & Records.

BIGGER IS BETTER...
61% of Professional Programmers still think "SIZE MATTERS"...Don't You?
Joe Nichols
His fastest Breaker EVER...
Most Added again!

ROCKIE LYNNE
is gaining momentum...
Driving up the Charts and to your Station.

"This is the BEST new artist visit we've EVER had."
Debbie Turpin, MD
KSOP/Salt Lake City (18 years at KSOP)

"I had two people from other radio stations call me to say how good it sounded when I had Rockie in-studio with me."
Pat Garrett, KUBL/Salt Lake City





February 7, 2006

LW	TW	ARTIST Title Label(s)	Total Points	+/- Points	Total Plays	+/- Plays	Tot. Aud. (00)	+/- Aud. (00)	Wks On	Total Station
1	1	CARRIE UNDERWOOD Jesus, Take The Wheel (Arista)	4094	-160	3353	-144	96662	-3481	13	87/0
3	2	BRAD PAISLEY f/D. PARTON When I Get Where I'm Going (Arista)	3990	239	3301	+194	94771	6222	18	87/0
2	3	TRACE ADKINS Honky Tonk Badonkadonk (Capitol)	3871	44	3213	+47	89900	585	18	84/0
4	4	FAITH HILL Like We Never Loved At All (Curb/Warner Bros.)	3588	66	2971	+39	81970	1525	22	87/1
7	5	JOSH TURNER Your Man (MCA)	3389	251	2831	+222	78512	6972	27	85/0
5	6	TIM MCGRAW My Old Friend (Curb)	3378	-21	2805	-45	77816	-112	19	86/0
6	7	SUGARLAND Just Might (Make Me Believe) (Mercury)	3265	43	2707	+64	75713	78	20	87/0
8	8	KEITH URBAN Tonight I Wanna Cry (Capitol)	3116	131	2646	+141	72632	3125	10	87/0
9	9	MONTGOMERY GENTRY She Don't Tell Me To (Columbia)	2934	148	2429	+97	68681	3976	15	87/0
10	10	RASCAL FLATTS What Hurts The Most (Lyric Street)	2695	114	2253	+118	62467	3060	5	87/0
12	11	KENNY CHESNEY Living In Fast Forward (BNA)	2690	240	2288	+213	60801	4559	6	86/1
11	12	BROOKS & DUNN Believe (Arista)	2615	93	2167	+92	62151	2299	17	87/1
13	13	SARA EVANS Cheatin' (RCA)	2613	169	2183	+139	61678	4002	14	87/0
14	14	BLAKE SHELTON Nobody But Me (Warner Bros.)	2535	144	2082	+91	58373	2993	23	85/1
15	15	MIRANDA LAMBERT Kerosene (Epic)	2329	88	1986	+93	54129	2347	16	84/2
16	16	TOBY KEITH Get Drunk And Be ... (Show Dog Nashville/Universal)	2318	134	1981	+118	52615	4334	6	86/0
17	17	JAMEY JOHNSON The Dollar (BNA)	1991	125	1696	+107	45267	3742	20	79/2
19	18	BON JOVI W/J. NETTLES Who Says You Can't Go Home (Island/IDJMG)	1816	181	1544	+167	40477	4225	8	74/3
18	19	VAN ZANT Nobody Gonna Tell Me What To Do (Columbia)	1751	103	1462	+84	39424	2200	19	74/0
21	20	TRENT TOMLINSON Drunker Than Me (Lyric Street)	1485	84	1256	+73	33341	1579	14	77/0
24	21	JACK INGRAM Wherever You Are (Big Machine/Show Dog Nashville)	1413	157	1194	+140	32014	4255	12	69/4
23	22	JASON ALDEAN Why (BBR)	1397	125	1129	+113	32153	3692	10	66/3
27	23	T. YEARWOOD & G.BROOKS Love Will Always Win (Pearl/Lyric Street)	1281	327	1124	+257	27248	6005	3	71/5
25	24	LEE ANN WOMACK Twenty Years And Two Husbands Ago (MCA)	1218	83	1004	+74	25510	1426	10	65/2
26	25	SHEDAISY I'm Taking The Wheel (Lyric Street)	1073	71	864	+69	23390	1270	11	61/1

© 2006 Radio & Records



THE DISCO PARTY IS ON!

This year, an "After Midnite" party pass is the only way to enter the hottest party at CRS.* Find a Premiere rep at CRS for your pass, or call Premiere Affiliate Relations, Entertainment, at 818-377-5300.

*CRS badges will not be accepted.



February 7, 2006

LW	TW	ARTIST Title Label(s)	Total Points	+/- Points	Total Plays	+/- Plays	Tot. Aud. (00)	+/- Aud. (00)	Wks On	Total Station
33	26	DIERKS BENTLEY Settle For A Slowdown (Capitol)	1013	275	921	+264	23088	5437	4	67/15
28	27	LEANN RIMES Something's Gotta Give (Asylum/Curb)	1010	147	846	+125	22040	2933	6	63/4
31	28	CRAIG MORGAN I Got You (BBR)	907	133	739	+124	21267	3303	9	56/3
29	29	JO DEE MESSINA Not Going Down (Curb)	904	95	759	+88	19825	1311	8	58/6
30	30	DANIELLE PECK I Don't (Big Machine/Show Dog Nashville)	854	48	721	+38	18683	551	15	60/2
34	31	KEITH ANDERSON Every Time I Hear Your Name (Arista)	792	122	632	+114	18099	2496	5	52/4
38	32	JOE NICHOLS Size Matters (Someday) (Universal South)	773	224	686	+198	16768	5662	3	58/9
32	33	ROCKIE LYNNE Lipstick (Universal South)	764	11	674	+17	16591	460	14	48/1
35	34	JAMIE O'NEAL I Love My Life (Capitol)	729	88	616	+70	15761	1606	9	43/2
37	35	GARY ALLAN Life Ain't Always Beautiful (MCA)	603	41	501	+40	13737	812	4	46/2
36	36	TRACY LAWRENCE If I Don't Make It Back (Mercury)	557	-59	438	-73	13145	-1321	11	34/0
40	37	NEAL MCCOY The Last Of A Dying Breed (903)	534	51	430	+34	12261	2278	4	40/2
39	38	LONESTAR I'll Die Tryin' (BNA)	532	22	444	+18	12225	927	7	38/1
41	39	RODNEY ATKINS If You're Going Through Hell (Before ... (Curb)	525	54	445	+51	10721	1453	4	43/4
42	40	KENNY ROGERS I Can't Unlove You (Capitol)	478	18	380	+5	9612	460	6	36/1
43	41	RAY SCOTT My Kind Of Music (Warner Bros.)	383	1	325	-9	7836	106	22	28/1
46	42	BIG & RICH Never Mind Me (Warner Bros.)	299	161	264	+134	5720	2914	2	32/8
44	43	JEFF BATES No Shame (RCA)	258	18	224	+9	5617	529	8	19/0
45	44	LITTLE BIG TOWN Bring It On Home (Equity)	240	92	176	+77	4316	1738	2	24/11
Debut	45	GEORGE STRAIT Seashores Of Old Mexico (MCA)	211	211	205	+205	4755	4755	1	29/29
48	46	PHIL VASSAR Last Day Of My Life (Arista)	184	81	122	+51	3710	1184	2	17/10
Debut	47	HAL KETCHUM Just This Side Of Heaven (Hal-Lelujah) (Curb/Asylum)	107	33	83	+30	2413	692	1	10/3
49	48	MARTINA MCBRIDE W/DOLLY PARTON I Still Miss Someone (RCA)	102	5	93	+15	2016	372	2	12/3
50	49	CROSS CANADIAN RAGWEED Fightin' For (Universal South)	86	-11	87	-8	1300	-138	5	7/0
Debut	50	SUSAN HAYNES Drinkin' In My Sunday Dress (Epic)	80	-14	58	-5	1982	-327	1	6/1

© 2006 Radio & Records

Promote your company, product, or event with
Roll-a-Sign's versatile disposable banners

Cost-effective and reusable

Many sizes and colors available

Durable enough for indoor or outdoor use

Advertise your message in any color

Call today for more information!
1-800-231-6074 www.rollasign.com





Artist Title (Label)	TW	LW	Fam.	Burn	P 25-54	W 25-54	M 25-54
JOSH TURNER Your Man (MCA)	4.33	4.23	90%	10%	4.32	4.43	4.13
BRAD PAISLEY f/DOLLY PARTON When I Get Where I'm Going (Arista)	4.23	4.19	96%	15%	4.32	4.36	4.24
BLAKE SHELTON Nobody But Me (Warner Bros.)	4.19	4.02	91%	11%	4.23	4.35	4.04
JASON ALDEAN Why (BBR)	4.18	—	62%	5%	4.08	4.15	3.98
GEORGE STRAIT She Let Herself Go (MCA)	4.17	4.31	98%	24%	4.21	4.24	4.17
BILLY CURRINGTON Must Be Doin' Somethin' Right (Mercury)	4.12	4.15	99%	26%	4.17	4.36	3.81
SUGARLAND Just Might (Make Me Believe) (Mercury)	4.11	4.08	96%	21%	4.11	4.09	4.15
CARRIE UNDERWOOD Jesus, Take The Wheel (Arista)	4.08	4.25	99%	30%	4.14	4.21	4.01
KEITH URBAN Tonight I Wanna Cry (Capitol)	4.08	4.06	88%	16%	4.11	4.08	4.14
SARA EVANS Cheatin' (RCA)	4.06	4.06	93%	16%	4.05	4.01	4.12
RASCAL FLATTS What Hurts The Most (Lyric Street)	4.04	3.90	82%	13%	4.02	4.06	3.96
TERRI CLARK She Didn't Have Time (Mercury)	4.03	4.09	89%	17%	4.07	4.22	3.83
JACK INGRAM Wherever You Are (Big Machine/Show Dog Nashville)	4.03	3.92	68%	8%	4.02	4.17	3.76
MONTGOMERY GENTRY She Don't Tell Me To (Columbia)	4.01	3.94	90%	16%	4.02	4.05	3.97
CHRIS CAGLE Miss Me Baby (Capitol)	4.00	3.90	94%	25%	4.00	4.16	3.72
BON JOVI w/JENNIFER NETTLES Who Says You Can't Go Home (Island/IDJMG)	4.00	4.04	83%	15%	4.00	4.13	3.78
LITTLE BIG TOWN Boondocks (Equity)	3.98	3.88	97%	32%	3.96	4.02	3.86
KENNY CHESNEY Living In Fast Forward (BNA)	3.95	3.90	90%	17%	3.96	4.01	3.86
BROOKS & DUNN Believe (Arista)	3.93	3.94	92%	24%	4.00	3.99	4.00
TIM MCGRAW My Old Friend (Curb)	3.88	3.98	96%	25%	3.96	4.01	3.87
JAMEY JOHNSON The Dollar (BNA)	3.79	3.97	76%	19%	3.90	3.97	3.81
MIRANDA LAMBERT Kerosene (Epic)	3.77	3.74	92%	26%	3.61	3.54	3.72
FAITH HILL Like We Never Loved At All (Curb/Warner Bros.)	3.76	3.87	99%	39%	3.79	3.90	3.58
DANIELLE PECK I Don't (Big Machine/Show Dog Nashville)	3.72	3.70	56%	12%	3.72	3.73	3.70
TRENT TOMLINSON Drunker Than Me (Lyric Street)	3.68	3.77	66%	13%	3.69	3.62	3.79
VAN ZANT Nobody Gonna Tell Me What To Do (Columbia)	3.67	3.68	85%	20%	3.74	3.71	3.78
TRACE ADKINS Honky Tonk Badonkadonk (Capitol)	3.64	3.74	99%	39%	3.62	3.60	3.65
TOBY KEITH Get Drunk And Be Somebody (Show Dog Nashville/Universal)	3.63	3.78	77%	18%	3.67	3.63	3.73
GRETCHEN WILSON I Don't Feel Like Loving You Today (Epic)	3.50	3.51	94%	31%	3.59	3.59	3.59

Total sample size is 342 respondents. Total average favorability estimates are based on a scale of 1-5. (1=dislike very much, 5 = like very much). Total familiarity represents the percentage of respondents who recognized the song. Total burn represents the number of respondents who said they are tired of hearing the song. Songs must have 40% familiarity to appear on survey. Sample composition is based on persons 12+. Persons are screened via the Internet. Once passed, they can take the music test based on the format/music preference. RateTheMusic.com results are not meant to replace callout research. The results are intended to show opinions of participants on the the Internet only. RateTheMusic is a registered trademark of RateTheMusic.com. The RTM system, is available for local radio stations by calling 818-377-5300. RateTheMusic.com data is provided by Mediabase Research, a division of Premiere Radio Networks.

If you experienced transmission problems ... please call our Circulation Department at 310-788-1625.

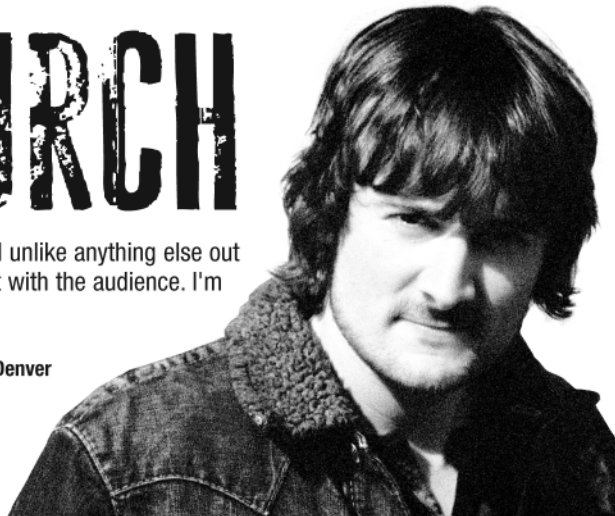
© 2006 Radio & Records. All Rights Reserved No part of this material may be reproduced in any form or incorporated in any information retrieval system without written permission of the Publisher.

ERIC CHURCH

"Eric Church *blew me away!* He has a fresh sound unlike anything else out there right now. His voice is real and will connect with the audience. I'm jumping in!" — Kerry Wolfe, PD, WMIL, Milwaukee

"I *had* to find room for it!" — Joel Burke, PD, KYGO, Denver

"How 'Bout You"
[on your desk tomorrow]



STATIONS THAT COULDN'T WAIT!

- KEY - Minneapolis
- KSOP - Salt Lake City
- KUBL - Salt Lake City
- KXKC - Lafayette
- KYGO - Denver
- WBCT - Grand Rapids
- WGAR - Cleveland
- WQYK - Tampa
- WUSY - Chattanooga
- WYCD - Detroit
- WYPY - Baton Rouge



★ ★ ★ Don't miss Eric at the Capitol luncheon during CRS 37 on Friday, 2/17 ★ ★ ★