

DANIELLE PECK "I Don't" BREAKER! 38 Most Added!



Country Radio Takes N.Y.C.

The Country Music Association, Big City Events and XM Satellite Radio are partnering with WNYE (91.5 FM)/New York — the City of New York's public-radio station — to present more than 100 hours of country music and the nation's top Country radio personalities. It's all part of "Country Takes N.Y.C.," a celebration of country music leading up to the 39th Annual CMA Awards telecast, Nov. 15 on CBS.

XM's Highway 16 (country hits) was heard on 91.5 FM on Nov. 2-4. On Nov. 7, KMPS/Seattle's **Ichabod Caine & The Waking Crew** kicked off a week of shows hosted by Country radio talent from around the U.S. Monday featured KZLA/Los Angeles middayer **Shawn Parr** and WKHX/Atlanta afternoon driver **Cadillac Jack**.

Other Country radio personalities confirmed to fill New York's airwaves with America's music for the first time in over three years are KNIX/Phoenix morning teamers **Tim & Willy**; WXTU/Philadelphia's **Evans & Andie** morning show and afternoon driver **Cadillac Jack**; WGAR/Cleveland wakeup artists **Mantel & Michelle**; KUPL/Portland, OR morning host **Lee Rogers**; WQYK/Tampa's **Cledus T. Judd, Chad Brock** and **Steve Austin** morning show and afternoon drivers **Randy & Dave**; KMLE/Phoenix morning personality **Dave Pratt**; WSIX/Nashville afternoon drivers and Premiere Radio Networks-syndicated **Big D & Bubba**; WYCD/Detroit morning talent **Dr. Don Rose**; Jones Radio Networks' **Lia**; and **Bob Kingsley**

R&R Salutes Kenny Chesney's First Decade Of Hits

Ten years ago, Kenny Chesney notched his first top five single, "Fall In Love." This week "Who You'd Be Today," the first single from his forthcoming *The Road and the Radio*, continues its climb through the top five. In our next issue (11/11), R&R celebrates the remarkable development and growth of an artist who went from floundering on independent Capricorn Records to becoming the flagship artist at one of Music Row's powerhouse label groups.

In addition to a candid interview with the man himself, we spoke with key team members including managers Dale Morris and Clint Higham, RLG Chairman Joe Galante and others. Collectively, they present an illuminating perspective on an artist who by his own admission drifted through several years as one of country's faceless hat acts before literally willing himself to last year's CMA Entertainer of the Year crown. Be sure to check out this week's R&R for the inside account of this extraordinary, ongoing journey.

of CMT's *Country Countdown USA* and *American Country Countdown With Bob Kingsley*. The special broadcasts conclude with MJI's *CMA Awards Special* from 5:30-7pm on Nov. 15. More Country talent will be added in the next few days.

The CMA will fill 7am-noon and 1-4pm every day, Monday-Friday, through Nov. 15, and from 1 1/2 to three hours each afternoon until 7pm, depending on

If you experienced transmission problems ... please call our Circulation Department at 310-788-1625.

© 2005 Radio & Records. All Rights Reserved. No part of this material may be reproduced in any form or incorporated in any information retrieval system without written permission of the Publisher.

THANK YOU COUNTRY RADIO!

NEAL MCCOY is TOP 10!

R&R: 10 Up +189 spins, Up +384 pts!

Heavy Spins, Great Sales,
Top 5 Callout and Still Climbing!



"I appreciate all you good folks at radio giving my fans & me something to cheer about. Congrats Cliffy, Bull, Larry, Ray & Bill - You're the best!"

the day. "Country Takes N.Y.C." is a five-borough grass-roots-promotion initiative designed to weave country music into the fabric of New York City and create exciting, memorable experiences for all New Yorkers. For more information about "Country Takes N.Y.C." events and promotions, visit www.nyc.gov/countrytakesnyc.

WXTU/Philly Takes N.Y.C.

New York's lack of a Country station means a lot of the heavy lifting in representing this format fell to WXTU/Philadelphia. Check out what PD **Bob McKay** and his troops have been up to since the beginning of September — and what's in store for the coming week:

- WXTU had a full staff in the Big Apple for the Sept. 7 CMA nominee announcements. Afternoon driver **Cadillac Jack** and **Lee Ann Womack** co-hosted the two-hour nationally syndicated show.
- The same week, **Andie Summers**, of the *Evans & Andie Morning Show*, was at every event and concert. WXTU was the only station present in Union Square Park for **Big & Rich**, **Gretchen Wilson** and **Blue County**. It aired live reports from all of the shows and events.
- On Nov. 5, WXTU presented a free **Jamie O'Neal** show in downtown Philadelphia and gave away a pair of gold tickets to the CMA show.
- Today, Beasley sisters WXTU and WKIS/Miami will host a luncheon at BB King's in N.Y.C. for media buyers, ad agencies and bankers. **LeAnn Rimes** is performing. **Evans & Andie** and **Cadillac Jack** will be hosting shows on WNYE 91.5 that will also serve as a backdrop for the BB King's lunch.
- In addition to broadcasting live from N.Y.C. during the MJI remotes, **Andie Summers** and **Cadillac Jack** have a number of other duties. Summers will serve as a reporter for the Philly CBS O&O, KYW-TV. **Cadillac Jack** is hosting the *Red Carpet Show*, with **Neal McCoy**, and the *Post Awards Show*, both to be broadcast nationally by Premiere Radio Networks.

This Week At Callout America

Our weekly analysis of Country callout research is brought to you by Bullseye President John Hart. Here's a look at some of the biggest stories Hart looks at in next week's issue.

"Keith Urban's 'Better Life' spends another week at No. 1 in the sample of 400 Country-radio listeners. Lonestar move to No. 2 from No. 4 with 'You're Like Coming Home.' Billy Currington is new to the top five, with 'Must Be Doin' Somethin' Right' ranking as the No. 4 song, up from No. 6. Rascal Flatts' 'Skin' shows power-level strength, with female listeners ranking it No. 4 overall and No. 4 passion too. Little Big Town move to No. 14 from No. 20, with 'Boondocks.' Heads up for Sugarland, who are making a lot of noise with females on 'Just Might.' Women rank this song at No. 16 in week eight. Younger females rank it No. 13, while core females place it at No. 15."

CRS Early-Bird Deadline Near

If you're looking to save a few bucks on registration for the 2006 CRS, you have until Nov. 18. That's the early-bird-registration deadline for the \$475 rate at the confab, set for Feb. 15-17, 2006 at the Nashville Convention Center. For more info call 615-327-4487 or go to www.crb.org.

Universal South Signs Wichmann

All of you who thought **Wix Wichmann** was a comedian when he was promoting records for Sony/Nashville are being proven correct. Since leaving the label in August of 2001, Wix has been working comedy clubs to perfect his standup routine. That was in addition to his job as the official Jim Beam tour manager for Montgomery Gentry (see, even the folks at Beam have a sense of humor). Now he has signed a record deal with Universal South, with a CD

If you experienced transmission problems ... please call our Circulation Department at 310-788-1625.

© 2005 Radio & Records. All Rights Reserved. No part of this material may be reproduced in any form or incorporated in any information retrieval system without written permission of the Publisher.

MISJUDGING.....MISINTERPRETING.....MISUNDERSTANDING
The Listeners aren't, this song is touching them.

Sawyer Brown "They Don't Understand"

#2 Testing Record
3 Waves in a Row
at WMIL!

Big Market Spinners: WUBE, WMIL, WIRK, KNCL
WWQM, KTOM, KJUG

Thanks today to: WSM, WGAR, WKKT

Introducing Tyler Dean "Somebody Who Would Die For You"
On Your Desk...NOW.

CURB
 RECORDS
curb.com

due in February or March. Not only that, but you can be part of the album, which will be recorded live at Zanies in Nashville on Nov. 29 and 30. Call the club for reservations at 615-269-0221. Congrats, Wix! Contact him at beamonwheels@hotmail.com.

Stationality

WKIS/Miami has teamed up with Miller Lite and New Times for Rusty's Last Call, a tribute to retiring NASCAR legend Rusty Wallace. The Nov. 16 event at the Hard Rock Live will feature a Q&A session with Wallace followed by a **Pat Green** concert.

KPLM/Palm Springs, CA raised \$109,658 and collected 522 children's bikes during its recent 10th annual Variety Club Cares for Kids Radiothon. The event has raised more than \$700,000 for children's charities to date.

Radio News

Management: **Hank Brigmond** has been named Dir./Operations for Staton Broadcasting in Macon, GA. The five-station cluster includes Country WHKN/Statesboro.

Personalities: KKCS/Colorado Springs, CO morning personality **Sammye Phelps** has been hired to join the WDAF/Kansas City afternoon show, where she'll team with **Rick Miller**.

Marketing/Promotion: **Vanessa Thill** has been named the Promotions & Marketing Director of Beasley's Las Vegas cluster, which includes Country KYCE (The Coyote), Classic Rock KKLZ and '80s KSTJ. Most recently Public Relations Manager for a Las Vegas resort, Thill spent 13 years with Infinity stations in Las Vegas.

Gig Alert: KMPS/Seattle needs a morning show producer to work with legendary Seattle morning personality **Ichabod Caine** and his *Waking Crew*. Send PD **Becky Brenner** your resume and writing samples at 1000 Dexter Ave. North #100, Seattle, WA 98109.

Chart Chat

Congrats to **Bill Mayne** and the entire crew at 903

Music for popping **Neal McCoy's** "Billy's Got His Beer Goggle's On" into the top 10. This is 903 proprietor McCoy's first single in that rarified air since hitting No. 1 with "You Gotta Love That" back in — are you ready? — April 1996.

Music News

Martina McBride returns to touring in January after a 10-month absence. The tour opens Jan. 13 in State College, PA and will include at least 25 dates, through April.

Carrie Underwood, winner of Fox's *American Idol*, will perform a portion of her new single, "Jesus Take the Wheel," and present an award on CBS's telecast of the *39th Annual CMA Awards* next Tuesday.

Industry News

The ACM's *40th Anniversary Celebration*, taped earlier this year in Las Vegas, will air Dec. 3 on CBS.

The American Association of Independent Music is hosting a meeting at Sunset Grill in Nashville on Wednesday. Initial meetings of the newly formed trade organization have already taken place in New York and Los Angeles. **Al Bunetta** chairs the local chapter. RSVP to Rob Weitzner at rsvp@a2im.org or 917-523-7874.

Shannon Andrews has joined Sony as Sales Assistant, reporting to Sr. VP Sales Dale Libby. Andrews is a graduate of the University of North Alabama.

Former Huntsman Entertainment Manager/Radio Marketing **Seth Necessary** has joined The Marketing Group/Impact Radio Networks in the Affiliate Relations department. Huntsman added Manager/Radio Marketing **Doak Turner**, who has a background in radio sales and clearance.

The limited-edition *Nashville's Guitar Art: The Art of a Music City Legend* book commemorating the citywide GuitarTown Project will be available Thursday. Benefiting local charities, the book features

If you experienced transmission problems ... please call our Circulation Department at 310-788-1625.

© 2005 Radio & Records. All Rights Reserved. No part of this material may be reproduced in any form or incorporated in any information retrieval system without written permission of the Publisher.



GRETCHEN WILSON Her new Epic Hit
"i don't feel like loving you today"
R&R: 33 - 31 BB: 31* +143 Spins
New this week: KNCI, WUSY, KHEY, WGKX, KSD, KZSN, WMUS, WFRE
Double Digit spins this week at over 60 stations including KMPS, KEYE, WUBE, KBEQ, KUPL, KFKF, WKIS, WYGY, KWJJ, WWYZ, KSSN, KRTY, WXBQ, and more!
Don't miss Gretchen's performance of this song on the CMA's next week. Move it up today!

Sony Music Nashville
 EPIC

photographs of the guitar sculptures showcased around Nashville. Borders Books is hosting a launch party featuring **Lee Roy Parnell**.

Writer, producer and former Spindletop Records President **Wyatt Easterling** has opened *Wyatt Easterling Productions*, located at 1508 South Street, Nashville, TN 37212.

Benefit News

Loews Vanderbilt Plaza Hotel is hosting a fundraiser for animals affected by Hurricane Katrina on Nov. 21 in Nashville. **Keith Anderson, Little Big Town, Radney Foster** and **Chely Wright** are among the artists performing. Details at www.animalhurricane.org.

CMT, Kroger, Comcast and Second Harvest Food Bank have launched food drives at more than 50 locations in Middle Tennessee. The effort is part of CMT's One Country Campaign.

Life Notes

Congrats to concert promoter **Louie Messina** and wife Christine on the Oct. 29 birth of Isabella.

Best wishes to Big & Rich's **Big Kenny Alphin** and his wife, Christiev, on the Nov. 2 birth of son Lincoln William Holiday Alphin.

WB/Southeast promoter **Brooks Quigley**, who was in a terrible traffic accident on Oct. 30, is back in Nashville after a longer-than-expected hospital stay. Although he was first diagnosed with just cuts and bruises, further tests revealed he had a cracked sternum, which resulted in a couple extra days in the hospital. His e-mail is brooks.quigley@wbr.com.

The Week In Review

Below are some of the major stories that first appeared in the **R&R Country Daily**. Get it by sending your name, company or call letters, job title, address, phone and fax numbers to subscribe@radioandrecords.com. For more on these stories, visit the Country Format Room at www.radioandrecords.com.

R&R Country Daily, Friday Nov. 4: CMT will air *Garth Brooks Unlimited*, a one-hour special featuring interviews with **Garth Brooks** and fiancée **Trisha Yearwood**, on Nov. 12. Brooks will discuss fatherhood, his engagement and "the inside story behind a bold new project that may turn the industry upside down — again."

RRCD, Thursday Nov. 3: Former KPLX/Dallas PD **Paul Williams**, who most recently was Operations/Marketing Manager for *Kidd Kraddick in the Morning*, has been named to the newly created position of Sr. Director/Strategic Marketing for RCA Label Group/Nashville. He's on the job now and can be reached at 615-301-4449 or paul.williams@sonybmj.com.

KRYS/Corpus Christi, TX MD/personality **Deena Blake** is the new MD at WMZQ/Washington. She'll also handle the evening airshift in place of the exiting Paula Young. Blake has also worked at KASE/Austin and WSIX/Nashville. She starts Nov. 28.

Former WSM-AM & FM & WWTN/Nashville OM **Kyle Cantrell** has been named PD of XM Satellite Radio's Bluegrass Junction channel. He'll remain based in Nashville.

CMA Awards Producer **Walter C. Miller** has been named Exec. Producer of the show he has contributed to for 35 years. He will be recognized during a panel at the Museum of Television & Radio in New York on Nov. 9.

Movie Gallery is sponsoring **Phil Vassar's** tour, beginning with Friday's show in Troy, AL. The sponsorship includes cross-promotional contests offering fans a chance to win concert tickets at Movie Gallery and Hollywood Video outlets.

RRCD, Wed. Nov. 2: WSDM/Terre Haute, IN flipped from Oldies to a Country-Rock hybrid dubbed "Crock." The station is also moving from 97.7 to 92.7 in a frequency swap with WSKT/Spencer, IN. Crock PD **Sketch** says the station will carry classic rock and country up through the early '90s, no currents, and will run

If you experienced transmission problems ... please call our Circulation Department at 310-788-1625.

© 2005 Radio & Records. All Rights Reserved. No part of this material may be reproduced in any form or incorporated in any information retrieval system without written permission of the Publisher.

Top Ten Spin & Point Increases = The Fastest Moving MG Single EVER!

"SHE DON'T TELL ME TO"
the new single from the **MONTGOMERY GENTRY**
CMA-nominated Duo Of The Year

R&R: 37 - 33 +154x/+494 pts.

BB 35* - 30* +153x/+1,141,200

New airplay: WUBE, WSOC, WFMS, WYRK, WCKT, WBCT, WGGY, KBQI, WIVK, KHEY, WRBT, WUSY, WBAM & WOKO!

Written by Bob DiPiero, Tom Shapiro & Rivers Rutherford/Produced by Rivers Rutherford & Mark Wright

From the new Columbia CD *SOMETHING TO BE PROUD OF: THE BEST OF 1999-2005* In-stores NOW!



jockless until January. Hopefuls can send T&Rs to him at 1301 Ohio St., Terre Haute, IN 47807.

Reigning CMA Entertainer of the Year **Kenny Chesney** will perform his next single, "Living in Fast Forward," to open the 39th annual CMA Awards in New York on Nov. 15. **Carrie Underwood, Cowboy Troy, Montgomery Gentry, Olivia Newton-John, Joe Nichols** and **Wynonna** will present awards. Underwood will also perform a truncated version of her current single, "Jesus, Take the Wheel." And **Dolly Parton** and **Sir Elton John** will be performing two songs on the CMA Awards. They'll duet on Dolly's new single, "Imagine," in addition to John's new release, "Turn the Lights Out When You Leave."

Lonestar played a USO show at Keesler Air Force Base in Biloxi, MS on Friday. They also participated in Monday's first annual Albert Haynesworth Dining for Dimes celebrity dinner in Nashville, benefiting the March of Dimes. Haynesworth plays defensive tackle for the Tennessee Titans.

RRCD, Tuesday Nov. 1: CHR/Pop KXXM/San Antonio middayer **Jamie Martin** has moved to middays at Clear Channel Country clustermate KAJA. She replaced **Crystal Stone**, who moved to evenings on KAJA. Stone also joined the morning show on the cluster's AC KQXT as co-host and traffic anchor.

Nashville publicist **Holly Gleason** will join **Joan** and **Melissa Rivers** for their TV Guide Channel *Live at the CMA Awards* special on Nov. 15. Gleason will provide commentary on red-carpet arrivals. The **Warren Brothers** will be featured on the next day's post-CMA *Fashion Wrap* telecast with the Riverses.

— Lon Helton/Country Editor (615) 244-8822
Email: lhelton@radioandrecords.com

— Chuck Aly/R&R Asst. Country Editor (615) 244-8822
Email: caly@radioandrecords.com

Dates & Deadlines

Nov. 15: 39th annual CMA Awards. Madison Square Garden. Details at www.cmaworld.com.

Nov. 18: CRS-37 early-bird registration deadline. Details at www.crb.org.

Feb. 14: Country Radio & DJ Hall of Fame Dinner. Details at www.crb.org.

Feb. 15-17: CRS-37. Nashville Convention Center. Details at www.crb.org.

CD GALLERY

Here are the releases new in stores today:

Kenny Chesney *The Road and the Radio* (BNA)



Chesney's latest alludes to the twin foundations upon which he has built his career: touring and airplay. And with first single "Who You'd Be Today" continuing its top five climb and a stadium tour planned for 2006, it appears the two are being very good to him. The R&R album (as we like to call it) will likely set the pace for country's fourth quarter.

Various Artists *Christmas Angels* (Capitol)



This compilation features holiday music from top female country and Christian artists, including Amber Dotson, Jamie O'Neal, Jennifer Hanson, Cyndi Thomson, Tanya Tucker, Suzy Boggus, Bethany Dillon and Nichole Nordeman. Tracks include "Blue Christmas," "Winter Wonderland" and "O Holy Night."

If you experienced transmission problems ... please call our Circulation Department at 310-788-1625.

© 2005 Radio & Records. All Rights Reserved. No part of this material may be reproduced in any form or incorporated in any information retrieval system without written permission of the Publisher.

Debuts on American Country Countdown This Weekend! "NOBODY GONNA TELL ME WHAT TO DO"

the new Columbia smash from the CMA-nominated Duo Of The Year

R&R **34** - **32** +124x

BB **38*** - **34*** +495,700

Double-digit BELIEVERS: **WBEE 13; WCTK 12; WCTO 10; WDSY 20; WGH 15; WOGI 12; WOKQ 12; WQMX 13; WEZL 10; WFUS 15; WGNE 15; WKHX 11; WKIS 13; WKXC 11; WNKT 17; WQBE 15; WRNS 10; WROO 22; WXBM 12; WXBQ 17; KBQI 14; KKCS 10; KXKS 10; KZSN 12; WYPY 13; KBKO 10; KFRG 14; KHAY 21; KIIM 14; KJUG 23; KNCI 11; KSOP 20; KTOM 13; KUBL 10; KZLA 10; KBEQ 17; KEEY 15; KHKI 14; KJJY 10; WFMS 12; WGKX 13; WKDF 18; WLXX 17; WMUS 10; WNCY 18; WWQM 28 & WGY 17!**



New airplay for VZ today from
KWNR, KCCY, WOKO & KSNI!

Callout America: Top 20 35-49 Adults With Only 77% Familiarity!
Upcoming VZ-TV: Blue Collar TV/Hannity & Colmes/Fox & Friends!
Major Tour Announcement THURSDAY @ 5:30!

From the Gold-bound Columbia CD and Dual Disc GET RIGHT WITH THE MAN



MUSICNOTES

↪ In this week's *TV Guide*, **Tim McGraw** discusses his gig singing the football-themed lyrics to "I Like It, I Love It" for broadcast on ABC's *Monday Night Football*. Noting the difficulty of finding rhymes for names like "Urlacher," McGraw says, "I hope I never have to see Green Bay's Kabeer Gbaja-Biamila have a big day."

↪ **Keni Thomas** will sing the national anthem at the Veteran's Day Eternal Light Monument Ceremony and will march in the Veteran's Day Parade in New York on Friday. He will perform at the American Freedom Festival at the city's Roseland Ballroom on Saturday.

↪ **Gretchen Wilson** has taped a performance for PBS's *Austin City Limits* that will air Jan. 28. **Miranda Lambert** is also on the show.

VIDEO ADDS

CMT

- ELTON JOHN** Turn The Lights Down When You Leave
- MONTGOMERY GENTRY** She Don't Tell Me To
- RASCAL FLATTS** Skin (Sarabeth)
- REBA MCENTIRE** You're Gonna Be

GREAT AMERICAN COUNTRY

- JACK INGRAM** Wherever You Are
- JOHN CORBETT** Bottle Of Whiskey
- REBA MCENTIRE** You're Gonna Be
- FORTY 5 SOUTH** I've Been There Too

RANDOM FAX®

Tuesday, 11/8

BIRTHDAYS: Patti Page, Bonnie Raitt, Kira Florita, Haley McLemore, Harold Shedd

NBC: **Big & Rich**, *Tonight Show*; Fox: **Patty Loveless**, *Fox and Friends*.

Wednesday, 11/9

BIRTHDAYS: D'ette Brosius, Deb Haus

On TV: CMT: **Toby Keith, Shelby Lynne, David Allen Coe, Merle Haggard, Jack Ingram, Billy Joe Shaver**, *CMT Outlaws*.

Thursday, 11/10

BIRTHDAYS: Donna Fargo, Chris Cagle, Jay J. McCrae, Ellen Powers, Carol Turner

On TV: GAC: **Wynonna, Diamond Rio, Jamie O'Neal, Josh Turner, Andy Griggs**, *Inspirational Country Music Awards*.

Friday, 11/11

BIRTHDAYS: Narvel Felts, Tom Sgro, Debi Fleisher-Robin, Heather Fricke, Dana Halverson, Neda Tobin

On TV: NBC: **Kenny Chesney**, *Tonight Show*, CNN: **John Carter Cash, Kris Kristofferson, Tommy Cash, Larry King Live**.

Saturday, 11/12

BIRTHDAYS: Barbara Fairchild, Chuck Aly, Jim Catino

On TV: GAC: **Vince Gill, Gretchen Wilson, Kathy Mattea, Mark Wills**, *Grand Ole Opry Live*.

Sunday, 11/13

BIRTHDAYS: Frank Liddell, Danny Montana, Smokey Rivers, Julie Daniel, Frank Mull

On TV: CMT: **Kenny Chesney**, *Top 20 Video Countdown*.

Monday, 11/14

BIRTHDAYS: Dottie Chamberlain, Eddie Mascolo

On TV: ABC: **Big & Rich**, *Good Morning America*, CMT: **Joaquin Phoenix, Reese Witherspoon**, *Making of Walk the Line*.

*premiere airing

If you experienced transmission problems ... please call our Circulation Department at 310-788-1625.

© 2005 Radio & Records. All Rights Reserved. No part of this material may be reproduced in any form or incorporated in any information retrieval system without written permission of the Publisher.

It's all about **"ATTITUDE"**

WYNONNA

Heavy Audience Increases
+650,000

New attitude today:
KZLA, WGAR, WUSY, KTOM, KBQI, KHKI

RR **50 - 46**
BB **50 - 47**



**"Ain't Wastin' Good
Whiskey On You"
Trick Pony**

Big Adds:
**KUZZ, WMIL, WCOL, KCCY
KWNR, WCTO**

**Strong Early Callout
in the Midwest!!!**

Twelve Repeat At No. 1; Two New 12+ Leaders

This final installment of Country ratings from the summer 2005 Arbitrons features No. 1 performances by 14 Country outlets.

For daily, full-market updates, go to www.radioandrecords.com and click on "Ratings" — it's free! A "+" indicates a Classic Country outlet, a "^" designates Country stations in the same market owned by a single operator and an "*" indicates a tie.

Station/City	12+ Share Sp '05	12+ Share Su '05	12+ Rank Sp '05	12+ Rank Su '05	Station/City	12+ Share Sp '05	12+ Share Su '05	12+ Rank Sp '05	12+ Rank Su '05
WGNA-FM/Albany, NY	10.6	8.9	1	1	WGKX/Memphis	8.5	6.8	1	3
WEGQ/Albany, NY	1.5	1.7	18	15*	WKSJ/Mobile^	13.3	10.1	1	2
WYNK/Baton Rouge	7.6	8.0	2	2	WXBM/Pensacola, FL	2.9	2.2	9*	12*
WTGE/Baton Rouge^+	5.4	6.3	6*	5	(Mobile Arbitron)				
WYPY/Baton Rouge^	2.8	2.5	12*	11*	KTOM/Monterey	3.0	3.9	8*	7
WDXB/Birmingham	6.8	5.5	3	3	WSIX/Nashville	6.6	6.0	3*	3*
WZZK/Birmingham^	5.1	5.1	6	7	WSM-FM/Nashville	5.7	4.2	6	9
WNCB/Birmingham^	1.6	1.7	19*	18	WKDF/Nashville	4.8	3.8	8	10
WEZL/Charleston, SC	9.5	8.4	2	2	WSM-AM/Nashville+	2.8	3.2	15	14
WNKT/Charleston, SC	4.4	3.1	7	12*	KTST/Oklahoma City^	6.4	5.5	3	2
WKKT/Charlotte	7.0	5.7	1	3*	KXXY/Oklahoma City^	4.7	5.2	7*	5*
WSOC/Charlotte	6.0	5.4	2	7	KKNG/Oklahoma City	7.3	5.1	1	8
WCOS/Columbia, SC	6.8	6.5	4	4	KXKT/Omaha^	7.6	8.2	3	1
WWNQ/Columbia, SC^+	2.9	3.4	14	12	KHUS/Omaha^	3.0	2.3	9	14
WWNU/Columbia, SC^	2.6	2.6	15	14	WKHK/Richmond	8.9	7.8	1	3
WHKO/Dayton	10.1	9.5	1	1	WBEE/Rochester, NY	10.9	12.0	1	1
WKSW/Dayton	1.3	2.0	19	12*	KNCI/Sacramento	5.3	5.5	2	2
WPFB/Dayton	1.9	1.9	14*	14	KUBL/Salt Lake City	6.3	5.7	2*	4
WBZI-AM & WEDI-AM/Dayton	1.4	1.0	16*	22	KSOP-FM/Salt Lake City	4.0	4.1	6*	8
KSKS/Fresno	5.6	6.4	4	2	KEGA & KEGH/Salt Lake City	2.2	1.6	19	21
KUUS/Fresno	1.4	1.6	21*	19	KAJA/San Antonio	5.1	5.3	6	4
WTQR/Greensboro	11.1	10.2	1	1	KCYY/San Antonio^	5.5	4.7	3	6
WFMX/Statesville, NC	1.7	1.5	13*	16	KKYX/San Antonio^+	1.5	1.5	20	19
WBRF/Greensboro	1.1	1.3	19	18	KRTY/San Jose	0.9	1.0	29*	26*
(Greensboro Arbitron)					(San Francisco Arbitron)				
WRBT/Harrisburg	9.7	9.1	2	2	WBBS/Syracuse	12.2	12.8	1	1
WCAT/Harrisburg	2.7	2.1	10	12*	WSCP-AM & FM/Syracuse	2.3	2.2	12*	14
WMSI/Jackson, MS	7.9	10.3	4	1	WKKO/Toledo	11.7	12.9	1	1
WUSJ/Jackson, MS	4.7	3.8	6	8*	WCKY-FM/Toledo	1.3	1.8	16*	14*
WXBQ/Johnson City	24.8	20.3	1	1	KIIM/Tucson	9.9	9.9	1	1
WGO-AM/Johnson City^+	4.4	4.8	5	5	KWEN/Tulsa	8.9	8.0	1	1
WMEV/Johnson City	2.0	1.5	12*	12*	KVOO-FM/Tulsa^	6.2	5.4	4	5
WRGS-AM/Johnson City+	1.1	1.1	15	17*	KXBL/Tulsa^+	4.7	5.0	7	6
WIVK/Knoxville	20.6	23.7	1	1	KITO/Tulsa	0.0	1.1	—	20*
KWNR/Las Vegas	8.3	8.6	1	1	WGTY/York, PA	8.4	11.7	1	1*

JASON ALDEAN

"WHY"

Impacting November 14th

"This will be Jason Aldean's 1st and BBR's 3rd #1 record!"

- Jay Cruze, APD - WDXB/Birmingham

"Got a GREAT response on 'Make it or Break it' with well over 20 phone calls in just a 2 minute period...near Gretchen Wilson 'Redneck Woman' status!"

- RJ McKay, PD - WPKX/Springfield MA

5 Night Winner - WDSY/ Pittsburgh, New Music Showdown

"34 calls and 89% Positive on our New Country Test!" - Dave Taft, MD - WBCT/Grand Rapids



"96% pick on Pick It or Skip It. They LOVED it." - Skip Clark, MD - WBBS/Syracuse NY

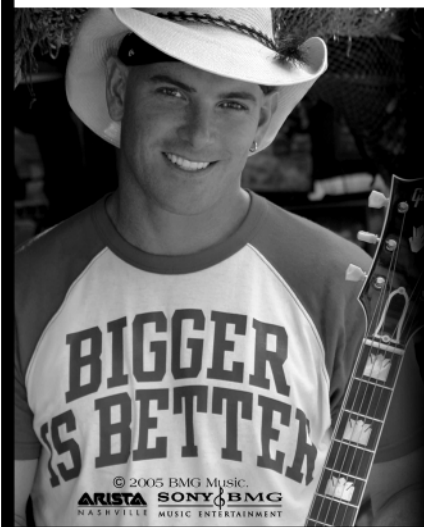
If you experienced transmission problems ... please call our Circulation Department at 310-788-1625.

© 2005 Radio & Records. All Rights Reserved No part of this material may be reproduced in any form or incorporated in any information retrieval system without written permission of the Publisher.

LW	TW	ARTIST Title Label(s)	Total Points	+/- Points	Total Plays	+/- Plays	Tot. Aud. (00)	+/- Aud. (00)	Wks On	Total Station
1	1	KEITH URBAN Better Life (Capitol)	13489	194	4610	+66	408781	-9948	15	119/0
4	2	KENNY CHESNEY Who You'd Be Today (BNA)	11566	759	3899	+228	345785	19629	8	120/0
2	3	RASCAL FLATTS Skin (Sarabeth) (Lyric Street)	11410	105	4080	+91	333216	-6922	27	120/0
5	4	JOE NICHOLS Tequila Makes Her Clothes Fall Off (Universal South)	10726	917	3788	+362	318142	18798	14	120/0
3	5	LEANN RIMES Probably Wouldn't Be This Way (Asylum/Curb)	10379	-709	3647	-323	311342	-23885	32	120/0
6	6	DIERKS BENTLEY Come A Little Closer (Capitol)	10211	529	3604	+241	313809	15255	16	119/0
7	7	GARTH BROOKS Good Ride Cowboy (Lyric Street/Pearl)	9842	371	3383	+140	300477	6540	5	119/0
8	8	LONESTAR You're Like Comin' Home (BNA)	9236	197	3233	+45	282347	2549	23	118/0
10	9	GARY ALLAN Best I Ever Had (MCA)	8959	557	3011	+168	268632	13300	23	119/0
11	10	NEAL MCCOY Billy's Got His Beer Goggles On (903)	8771	384	3157	+189	258666	3463	27	115/0
9	11	TOBY KEITH Big Blue Note (Show Dog/DreamWorks)	8764	355	3057	+129	259349	5805	9	120/0
13	12	GEORGE STRAIT She Let Herself Go (MCA)	7776	560	2800	+180	225812	15040	10	117/0
14	13	FAITH HILL Like We Never Loved At All (Warner Bros./Curb)	7505	443	2612	+155	216215	11189	10	119/0
15	14	BILLY CURRINGTON Must Be Doin' Somethin' Right (Mercury)	7106	951	2645	+336	202126	25333	23	118/3
16	15	LITTLE BIG TOWN Boondocks (Equity)	6511	362	2334	+157	185008	4434	24	112/2
19	16	TRACE ADKINS Honky Tonk Badonkadonk (Capitol)	6202	778	2252	+286	170415	19627	7	109/0
17	17	ALAN JACKSON USA Today (Arista)	6094	5	2274	+47	161903	-6425	13	114/0
20	18	TIM MCGRAW My Old Friend (Curb)	6006	789	2144	+215	165890	16910	6	117/1
18	19	CHRIS CAGLE Miss Me Baby (Capitol)	5844	356	2185	+136	156303	934	15	111/0
21	20	MARTINA MCBRIDE Rose Garden (RCA)	5123	126	1685	+84	141333	4088	13	107/3
26	21	CARRIE UNDERWOOD Jesus, Take The Wheel (Arista)	4637	1610	1502	+501	135773	40840	3	106/7
22	22	SUGARLAND Just Might (Make Me Believe) (Mercury)	4445	327	1618	+156	126748	5856	9	111/3
23	23	BRAD PAISLEY f/D. PARTON When I Get Where I'm Going (Arista)	4085	238	1523	+119	111644	4027	7	108/4
24	24	KEITH ANDERSON XXL (Arista)	3884	172	1405	+59	99646	3448	15	103/1
25	25	BIG & RICH Comin' To Your City (Warner Bros.)	3220	14	1133	+21	82241	-3869	10	90/3

© 2005 Radio & Records

One of the most exciting NEW FACES in Country Music today!



Keith ANDERSON

 R&R **24**

BB *26

"XXL"

- * Keith ranks as the highest new solo country artist in 2005 to land a debut single in the Billboard and Radio & Records country airplay Top 7!
- * Debut single "Pickin' Wildflowers" sold over 200,000 albums
- * Only new male act to have a #1 video on CMT in 2005
- * Currently touring with Rascal Flatts
- * Featured as one of **People Magazine's** 50 Hottest Bachelors
- * Ranked as **Country Weekly's** Top 3 Sexiest Bachelors
- * New video for "XXL" featuring Tommy Lee and Eddie George added to CMT and GAC.

LW	TW	ARTIST Title Label(s)	Total Points	+/- Points	Total Plays	+/- Plays	Tot. Aud. (00)	+/- Aud. (00)	Wks On	Total Station
27	26	JOSH TURNER Your Man (MCA)	3078	475	1130	+131	85651	10251	16	88/9
28	27	TERRI CLARK She Didn't Have Time (Mercury)	2942	467	1099	+170	78336	13111	16	81/1
31	28	REBA MCENTIRE You're Gonna Be (MCA)	2376	204	848	+76	59753	2720	10	80/1
30	29	BLAKE SHELTON Nobody But Me (Warner Bros.)	2365	122	948	+61	55638	1896	11	83/5
32	30	JAMEY JOHNSON The Dollar (BNA)	2336	195	863	+70	55527	4109	10	85/7
33	31	GRETCHEN WILSON I Don't Feel Like Loving You Today (Epic)	2255	191	875	+66	61112	4603	4	88/5
34	32	VAN ZANT Nobody Gonna Tell Me What To Do (Columbia)	2173	427	830	+124	53320	9881	7	83/2
37	33	MONTGOMERY GENTRY She Don't Tell Me To (Columbia)	2122	494	782	+154	59383	13974	3	84/12
Breaker	34	BROOKS & DUNN Believe (Arista)	1845	106	667	+48	46706	-255	3	78/11
Breaker	35	MIRANDA LAMBERT Kerosene (Epic)	1836	164	713	+67	41748	5128	6	76/5
29	36	SHANIA TWAIN Shoes (Lyric Street)	1505	-954	470	-360	37820	-26551	10	79/0
40	37	TRENT TOMLINSON Drunker Than Me (Lyric Street)	1442	438	562	+142	33568	11440	3	70/7
Breaker	38	DANIELLE PECK I Don't (Big Machine/Show Dog)	1310	47	532	+53	28223	734	5	74/6
41	39	RAY SCOTT My Kind Of Music (Warner Bros.)	1074	136	505	+46	22291	3370	10	40/1
48	40	SARA EVANS Cheatin' (RCA)	1018	488	353	+177	28591	13907	2	57/16
44	41	ROCKIE LYNNE Lipstick (Universal South)	965	174	374	+56	20848	3189	3	55/4
39	42	GEORGE STRAIT Texas (MCA)	952	-67	257	-7	30041	-3299	20	5/0
43	43	SAWYER BROWN They Don't Understand (Curb)	951	80	423	+42	23583	2232	10	39/3
42	44	TRICK PONY Ain't Wastin' Good Whiskey On You (Asylum/Curb)	906	33	456	+11	17024	1454	7	60/4
Debut	45	JACK INGRAM Wherever You Are (Big Machine/Show Dog)	794	333	251	+123	22208	10701	1	31/12
50	46	WYNONNA Attitude (Asylum/Curb)	772	257	284	+68	20681	8651	2	30/3
46	47	SHANNON BROWN Corn Fed (Warner Bros.)	737	104	336	+43	12679	2405	4	39/1
45	48	CROSS CANADIAN RAGWEED Fightin' For (Universal South)	722	53	217	+13	22221	1182	6	12/2
49	49	HOT APPLE PIE We're Makin' Up (MCA)	506	-11	250	+11	7877	-510	2	38/1
47	50	LUKE STRICKLIN American By God's Amazing Grace (Pacific Time)	505	-34	218	-11	13051	-891	6	14/1

© 2005 Radio & Records

SheDAISY

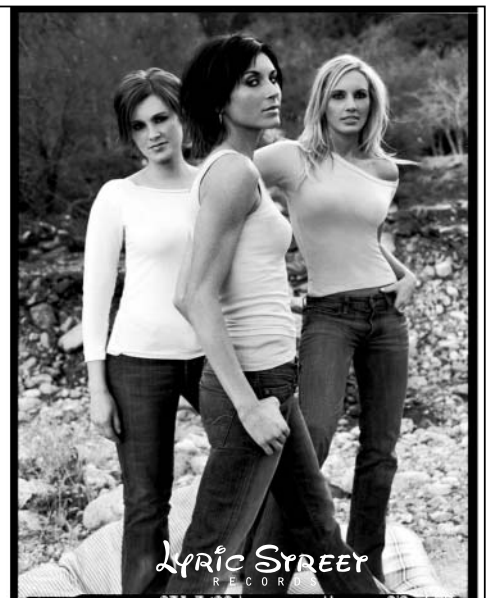
"I'M TAKING THE WHEEL"

KEYY KXKC KKCS WYPY

WNCY KSOP WWQM KKBQ

are some "already behind this wheel"

Impacting NOW!



LYRIC STREET
RECORDS

© 2005 Radio & Records

COUNTRY

MOST ADDED

ARTIST Title Label(s)	Adds
TRACY LAWRENCE If I Don't Make It Back (Mercury)	17
SARA EVANS Cheatin' (RCA)	16
MONTGOMERY GENTRY She Don't Tell Me To (Columbia)	12
JACK INGRAM Wherever You Are (Big Machine/Show Dog)	12
BROOKS & DUNN Believe (Arista)	11
JOSH TURNER Your Man (MCA)	9
CARRIE UNDERWOOD Jesus, Take The Wheel (Arista)	7
JAMEY JOHNSON The Dollar (BNA)	7
TRENT TOMLINSON Drunker Than Me (Lyric Street)	7
SHEDAISY I'm Taking The Wheel (Lyric Street)	7

MOST INCREASED POINTS

ARTIST Title Label(s)	Total Pt. Increase
CARRIE UNDERWOOD Jesus, Take The Wheel (Arista)	+1610
BILLY CURRINGTON Must Be Doin' Somethin' Right (Mercury)	+951
JOE NICHOLS Tequila Makes Her Clothes Fall Off (Universal South)	+917
TIM MCGRAW My Old Friend (Curb)	+789
TRACE ADKINS Honky Tonk Badonkadonk (Capitol)	+778
KENNY CHESNEY Who You'd Be Today (BNA)	+759
GEORGE STRAIT She Let Herself Go (MCA)	+560
GARY ALLAN Best I Ever Had (MCA)	+557
DIERKS BENTLEY Come A Little Closer (Capitol)	+529
MONTGOMERY GENTRY She Don't Tell Me To (Columbia)	+494

MOST INCREASED PLAYS

ARTIST Title Label(s)	Total Play Increase
CARRIE UNDERWOOD Jesus, Take The Wheel (Arista)	+501
JOE NICHOLS Tequila Makes Her Clothes Fall Off (Universal South)	+362
BILLY CURRINGTON Must Be Doin' Somethin' Right (Mercury)	+336
TRACE ADKINS Honky Tonk Badonkadonk (Capitol)	+286
DIERKS BENTLEY Come A Little Closer (Capitol)	+241
KENNY CHESNEY Who You'd Be Today (BNA)	+228
TIM MCGRAW My Old Friend (Curb)	+215
NEAL MCCOY Billy's Got His Beer Goggles On (903)	+189
GEORGE STRAIT She Let Herself Go (MCA)	+180
SARA EVANS Cheatin' (RCA)	+177

COUNTRY INDICATOR

MOST ADDED

ARTIST Title Label(s)	Adds
CARRIE UNDERWOOD Jesus, Take The Wheel (Arista)	27
SARA EVANS Cheatin' (RCA)	15
TRENT TOMLINSON Drunker Than Me (Lyric Street)	12
JACK INGRAM Wherever You Are (Big Machine/Show Dog)	12
TRACY LAWRENCE If I Don't Make It Back (Mercury)	12
TRISHA YEARWOOD Trying To Love You (MCA)	11
JOSH TURNER Your Man (MCA)	9
SHEDAISY I'm Taking The Wheel (Lyric Street)	8
BROOKS & DUNN Believe (Arista)	7
MIRANDA LAMBERT Kerosene (Epic)	6

MOST INCREASED POINTS

ARTIST Title Label(s)	Total Pt. Increase
CARRIE UNDERWOOD Jesus, Take The Wheel (Arista)	+577
JOE NICHOLS Tequila Makes Her Clothes Fall Off (Universal South)	+407
BILLY CURRINGTON Must Be Doin' Somethin' Right (Mercury)	+315
TRACE ADKINS Honky Tonk Badonkadonk (Capitol)	+312
KENNY CHESNEY Who You'd Be Today (BNA)	+298
DIERKS BENTLEY Come A Little Closer (Capitol)	+293
GARTH BROOKS Good Ride Cowboy (Lyric Street/Pearl)	+253
BRAD PAISLEY f/D. PARTON When I Get Where I'm Going (Arista)	+212
JOSH TURNER Your Man (MCA)	+195
TRENT TOMLINSON Drunker Than Me (Lyric Street)	+193

MOST INCREASED PLAYS

ARTIST Title Label(s)	Total Play Increase
CARRIE UNDERWOOD Jesus, Take The Wheel (Arista)	+500
JOE NICHOLS Tequila Makes Her Clothes Fall Off (Universal South)	+314
BILLY CURRINGTON Must Be Doin' Somethin' Right (Mercury)	+286
DIERKS BENTLEY Come A Little Closer (Capitol)	+262
KENNY CHESNEY Who You'd Be Today (BNA)	+255
TRACE ADKINS Honky Tonk Badonkadonk (Capitol)	+244
GARTH BROOKS Good Ride Cowboy (Lyric Street/Pearl)	+225
SARA EVANS Cheatin' (RCA)	+192
BRAD PAISLEY f/D. PARTON When I Get Where I'm Going (Arista)	+178
JOSH TURNER Your Man (MCA)	+159

Miranda Lambert **BREAKER!!**
R&R: 36 - 35
BB: 39* - 37*
+754,300 in audience.
"kerosene"

New adds this week at: WUBE WQMX KVOO KBQI WCTK WOKQ

HERE COMES THE RESEARCH!
Out of 30 records and with over 200 spins at WWQM:
#4 Men. #9 Females 18-34. #18 Overall.



Don't miss Miranda's performance of "Kerosene" on the CMA's next week!



COUNTRY INDICATOR NEW & ACTIVE

BRITTANY WELLS Too Long (*Spindletop*)
Total Points: 129, Total Stations: 14, Adds: 1

TRACY LAWRENCE If I Don't Make It Back (*Mercury*)
Total Points: 117, Total Stations: 13, Adds: 12

TRISHA YEARWOOD Trying To Love You (*MCA*)
Total Points: 107, Total Stations: 18, Adds: 11

KEITH BRYANT Somebody (*Lofton Creek*)
Total Points: 80, Total Stations: 15, Adds: 5

FORTY5 SOUTH I've Been There Too (*Tilo*)
Total Points: 62, Total Stations: 10, Adds: 3

COUNTRY NEW & ACTIVE

TRISHA YEARWOOD Trying To Love You (*MCA*)
Total Points: 341, Total Stations: 30, Adds: 6

CAROLINA RAIN Let's Get It On (*Equity*)
Total Points: 219, Total Stations: 18, Adds: 2

TRACY LAWRENCE If I Don't Make It Back (*Mercury*)
Total Points: 158, Total Stations: 17, Adds: 17

LILA MCCANN fJIM BRICKMAN I'm Amazed (*BBR*)
Total Points: 156, Total Stations: 15, Adds: 0

R&R Going For Adds

11/14

JASON ALDEAN Why (*BBR*)

SHEDAISY I'm Taking The Wheel (*Lyric Street*)

11/21

BRICE LONG Anywhere But Here (*Columbia*)

LEE ANN WOMACK Twenty Years And Two Husbands Ago (*MCA*)

TYLER DEAN Somebody Who Would Die For You (*Curb*)

11/28

JAMIE O'NEAL I Love My Life (*Capitol*)

STEVE AZAR Catfish Christmas (*Dang*)

MOST PLAYED RECURRENTS

ARTIST Title Label(s)	Total Points
MONTGOMERY GENTRY Something To Be Proud Of (<i>Columbia</i>)	8350
CRAIG MORGAN Redneck Yacht Club (<i>BBR</i>)	8176
JAMIE O'NEAL Somebody's Hero (<i>Capitol</i>)	6692
TOBY KEITH As Good As I Once Was (<i>DreamWorks</i>)	6551
SARA EVANS A Real Fine Place To Start (<i>RCA</i>)	6534
JOSH GRACIN Stay With Me (Brass Bed) (<i>Lyric Street</i>)	6374
SUGARLAND Something More (<i>Mercury</i>)	5979
RASCAL FLATTS Fast Cars And Freedom (<i>Lyric Street</i>)	4999
FAITH HILL Mississippi Girl (<i>Warner Bros.</i>)	4429
JASON ALDEAN Hicktown (<i>BBR</i>)	3913

POWERED BY MEDIABASE

120 Country reporters. Songs ranked by total points for the airplay week of 10/30-11/5. Bullets appear on songs gaining points and/or plays or remaining flat from previous week. If two songs are tied in total points, the song with the larger increase in points is placed first. Songs below No. 1 and down in points and plays for three consecutive weeks are moved to recurrent. Most Added is the total number of new adds officially reported to R&R by each reporting station. Songs unreported as adds do not count toward overall total stations playing a song. Most Increased Points lists the songs with the greatest week-to-week increases in total points. Station Weight = AQH Persons + (Market rank X 10) divided by 4180. Total Audience equals Average Quarter Hour Persons times number of plays (times 100). Each daypart on each station is assigned an AQH number. Average Quarter Hour Persons used herein with permission from Arbitron Inc. (© 2005, Arbitron Inc.) © 2005 Radio & Records.

Joe Nichols

"Tequila Makes Her Clothes Fall Off"

Here's the naked truth!

- 2nd Biggest Spin Increase On The Chart Again This Week!
- Fastest Growing Record in the Top 10 By Far!
- Quickest Top 5 in Joe's Career!

Now that's some Heavy SH&*(&(*&(!....

ROCKIE LYNNE
"LIPSTICK"

41 This Week

with 55 Total Stations Already!

**Double Digit Bangers... WSM KEYE
WWQM KBQI KJUG KXKC WDAF WGH WXBQ
New stations this week...**

WRBT WPCV KFKF KMDL WQXK WOKK WPAP

Don't be a backseat driver...



come on and get up front on this great artist!

November 8, 2005

LW	TW	ARTIST Title Label(s)	Total Points	+/- Points	Total Plays	+/- Plays	Tot. Aud. (00)	+/- Aud. (00)	Wks On	Total Station
1	1	KEITH URBAN Better Life (Capitol)	4466	-164	3689	-181	104838	-3202	15	98/0
2	2	RASCAL FLATTS Skin (Sarabeth) (Lyric Street)	4453	103	3716	+37	102127	2216	14	102/1
3	3	DIERKS BENTLEY Come A Little Closer (Capitol)	4239	293	3507	+262	102069	7863	18	101/0
4	4	KENNY CHESNEY Who You'd Be Today (BNA)	4220	298	3543	+255	97047	5437	8	103/1
7	5	JOE NICHOLS Tequila Makes Her Clothes Fall Off (Universal South)	4003	407	3333	+314	91206	9125	14	102/3
5	6	LONESTAR You're Like Comin' Home (BNA)	3846	106	3245	+126	88835	2602	23	100/0
8	7	GARY ALLAN Best I Ever Had (MCA)	3574	129	2963	+100	83190	1878	24	102/0
11	8	GARTH BROOKS Good Ride Cowboy (Lyric Street/Pearl)	3399	253	2871	+225	79610	6403	5	103/0
10	9	TOBY KEITH Big Blue Note (Show Dog/DreamWorks)	3292	112	2772	+98	76407	2669	10	103/0
12	10	GEORGE STRAIT She Let Herself Go (MCA)	3272	181	2791	+146	75076	4335	10	101/0
9	11	NEAL MCCOY Billy's Got His Beer Goggles On (903)	3242	-62	2696	+30	74432	-3293	31	98/0
6	12	LEANN RIMES Probably Wouldn't Be This Way (Asylum/Curb)	3153	-564	2621	-482	70580	-12622	34	87/1
13	13	BILLY CURRINGTON Must Be Doin' Somethin' Right (Mercury)	3038	315	2548	+286	72563	7587	23	101/2
14	14	FAITH HILL Like We Never Loved At All (Warner Bros./Curb)	2839	181	2409	+144	64529	4711	11	103/0
15	15	ALAN JACKSON USA Today (Arista)	2668	54	2293	+49	60412	1842	13	101/0
21	16	TRACE ADKINS Honky Tonk Badonkadonk (Capitol)	2471	312	1993	+244	56959	7563	7	93/3
18	17	TIM MCGRAW My Old Friend (Curb)	2388	152	2046	+136	54280	5036	8	98/3
19	18	CHRIS CAGLE Miss Me Baby (Capitol)	2384	161	1983	+136	56681	4703	15	90/3
20	19	LITTLE BIG TOWN Boondocks (Equity)	2380	166	1964	+142	53764	3339	25	92/3
22	20	BRAD PAISLEY f/D. PARTON When I Get Where I'm Going (Arista)	1999	212	1698	+178	46156	5417	7	99/5
23	21	SUGARLAND Just Might (Make Me Believe) (Mercury)	1911	137	1653	+138	43888	3623	9	93/4
24	22	MARTINA MCBRIDE Rose Garden (RCA)	1862	147	1560	+114	42483	4183	13	81/4
25	23	KEITH ANDERSON XXL (Arista)	1414	51	1187	+29	30956	1336	15	71/1
26	24	GRETCHEN WILSON I Don't Feel Like Loving You Today (Epic)	1365	41	1169	+36	30008	-131	5	81/4
34	25	CARRIE UNDERWOOD Jesus, Take The Wheel (Arista)	1291	577	1070	+500	29213	12776	2	88/27

© 2005 Radio & Records



"With PD Advantage, I Walk into My GM's Office Confident That I Know What I'm Talking About."

Find out what PD Advantage® insight can do for your station—contact your Arbitron representative or drop an e-mail to gary.marince@arbitron.com.



Rod Arquette
VP, News and Programming
KSL Newsradio 1160
Salt Lake City, UT



When You Know More, You Program Better

 05-PRG-341 10/05 www.ArbitronRadio.com

November 8, 2005

LW	TW	ARTIST Title Label(s)	Total Points	+/- Points	Total Plays	+/- Plays	Tot. Aud. (00)	+/- Aud. (00)	Wks On	Total Station
27	26	BROOKS & DUNN Believe (Arista)	1286	150	1129	+142	26813	3196	6	74/7
30	27	JOSH TURNER Your Man (MCA)	1263	195	1062	+159	28847	5166	16	64/9
29	28	BIG & RICH Comin' To Your City (Warner Bros.)	1234	120	1080	+109	26564	2293	9	74/4
28	29	TERRI CLARK She Didn't Have Time (Mercury)	1192	57	1035	+56	26144	716	16	68/5
31	30	MONTGOMERY GENTRY She Don't Tell Me To (Columbia)	1125	166	935	+126	27004	4900	4	72/2
32	31	BLAKE SHELTON Nobody But Me (Warner Bros.)	1032	78	852	+55	21987	1605	12	62/3
35	32	VAN ZANT Nobody Gonna Tell Me What To Do (Columbia)	879	177	692	+114	19124	3504	8	56/2
38	33	SARA EVANS Cheatin' (RCA)	752	191	689	+192	16431	3958	3	60/15
37	34	REBA MCENTIRE You're Gonna Be (MCA)	727	60	622	+40	15090	953	10	46/0
36	35	JAMEY JOHNSON The Dollar (BNA)	720	45	595	+39	15767	765	9	49/0
40	36	TRENT TOMLINSON Drunker Than Me (Lyric Street)	610	193	504	+158	13152	3927	3	49/12
33	37	SHANIA TWAIN Shoes (Lyric Street)	487	-372	357	-362	10025	-8405	10	33/0
41	38	MIRANDA LAMBERT Kerosene (Epic)	452	73	386	+66	9955	1519	5	37/6
39	39	RAY SCOTT My Kind Of Music (Warner Bros.)	442	-1	380	+1	9119	-34	11	34/2
42	40	ROCKIE LYNNE Lipstick (Universal South)	437	76	383	+74	9618	1516	3	37/3
43	41	TRICK PONY Ain't Wastin' Good Whiskey On You (Asylum/Curb)	378	20	338	+15	7999	515	8	32/1
44	42	DANIELLE PECK I Don't (Big Machine/Show Dog)	314	42	268	+39	6080	726	4	33/3
		Debut 43 JACK INGRAM Wherever You Are (Big Machine/Show Dog)	285	186	233	+138	5725	3813	1	26/12
46	44	SHANNON BROWN Corn Fed (Warner Bros.)	221	6	206	+6	4663	145	4	20/0
45	45	LUKE STRICKLIN American By God's Amazing Grace (Pacific Time)	207	-21	182	-26	4719	-309	11	17/0
48	46	WYNONNA Attitude (Asylum/Curb)	198	31	168	+24	4550	782	3	17/2
47	47	KEVIN SHARP I Think I'll Stay (Cupit)	165	-50	165	-50	3710	-925	9	12/0
50	48	HOT APPLE PIE We're Makin' Up (MCA)	145	-2	113	-1	3209	590	4	13/0
		Debut 49 CROSS CANADIAN RAGWEED Fightin' For (Universal South)	134	25	130	+21	2926	763	1	12/2
49	50	ZONA JONES I'll Give It To You (D/Quarterback)	130	-24	128	-9	2918	-57	2	18/2

© 2005 Radio & Records

Go Retro...



Get Ratings!

Now airing in over 100 markets. For more information contact Superadio
 508-480-9000 • 212-631-0800 • www.superadio.com



Artist Title (Label)	TW	LW	Fam.	Burn	P 25-54	W 25-54	M 25-54
GEORGE STRAIT She Let Herself Go (MCA)	4.20	4.18	86%	9%	4.22	4.27	4.17
KEITH URBAN Better Life (Capitol)	4.15	4.09	97%	20%	4.16	4.34	3.96
JOE NICHOLS Tequila Makes Her Clothes Fall Off (Universal South)	4.15	4.24	96%	15%	4.14	4.11	4.17
CHRIS CAGLE Miss Me Baby (Capitol)	4.15	4.12	90%	11%	4.13	4.37	3.85
GARY ALLAN Best I Ever Had (MCA)	4.12	4.07	95%	20%	4.12	4.19	4.05
GARTH BROOKS Good Ride Cowboy (Lyric Street/Pearl)	4.12	4.08	76%	9%	4.14	4.14	4.14
DIERKS BENTLEY Come A Little Closer (Capitol)	4.10	4.15	95%	16%	4.07	4.17	3.95
BILLY CURRINGTON Must Be Doin' Somethin' Right (Mercury)	4.08	4.17	90%	11%	4.03	4.27	3.76
BRAD PAISLEY f/DOLLY PARTON When I Get Where I'm Going (Arista)	4.07	—	57%	4%	4.12	4.09	4.14
CRAIG MORGAN Redneck Yacht Club (BBR)	4.04	4.17	99%	25%	4.02	4.13	3.89
LONESTAR You're Like Comin' Home (BNA)	4.02	4.01	97%	18%	4.05	4.10	3.98
KENNY CHESNEY Who You'd Be Today (BNA)	4.00	4.05	92%	17%	4.00	4.10	3.89
SUGARLAND Just Might (Make Me Believe) (Mercury)	3.97	4.07	75%	9%	3.96	3.93	3.99
RASCAL FLATTS Skin (Sarabeth) (Lyric Street)	3.96	4.14	97%	29%	3.95	4.12	3.75
JOSH GRACIN Stay With Me (Brass Bed) (Lyric Street)	3.96	3.97	95%	27%	3.89	4.02	3.74
JAMIE O'NEAL Somebody's Hero (Capitol)	3.93	4.02	98%	33%	3.93	3.99	3.86
NEAL MCCOY Billy's Got His Beer Goggles On (903)	3.92	4.04	96%	26%	3.84	3.95	3.72
LEANN RIMES Probably Wouldn't Be This Way (Asylum/Curb)	3.90	4.05	97%	29%	3.99	3.90	4.10
TIM MCGRAW My Old Friend (Curb)	3.89	3.92	74%	11%	3.92	3.98	3.86
PHIL VASSAR Good Ole Days (Arista)	3.85	3.83	88%	23%	3.86	3.88	3.83
TRACE ADKINS Honky Tonk Badonkadonk (Capitol)	3.85	3.81	85%	18%	3.81	3.72	3.92
MARTINA MCBRIDE Rose Garden (RCA)	3.84	3.84	94%	18%	3.86	3.73	4.01
ALAN JACKSON USA Today (Arista)	3.84	3.76	87%	18%	3.96	3.90	4.02
LITTLE BIG TOWN Boondocks (Equity)	3.84	3.82	84%	16%	3.78	3.81	3.76
JASON ALDEAN Hicktown (BBR)	3.81	3.85	95%	26%	3.78	3.79	3.78
TOBY KEITH Big Blue Note (Show Dog/DreamWorks)	3.79	3.69	90%	18%	3.86	3.80	3.93
FAITH HILL Like We Never Loved At All (Warner Bros./Curb)	3.77	3.92	90%	18%	3.79	3.83	3.73
KEITH ANDERSON XXL (Arista)	3.68	3.59	83%	21%	3.66	3.64	3.67
BIG & RICH Comin' To Your City (Warner Bros.)	3.51	—	90%	24%	3.55	3.67	3.42

Total sample size is 322 respondents. Total average favorability estimates are based on a scale of 1-5. (1=dislike very much, 5 = like very much). Total familiarity represents the percentage of respondents who recognized the song. Total burn represents the number of respondents who said they are tired of hearing the song. Songs must have 40% familiarity to appear on survey. Sample composition is based on persons 12+. Persons are screened via the Internet. Once passed, they can take the music test based on the format/music preference. RateTheMusic.com results are not meant to replace callout research. The results are intended to show opinions of participants on the the Internet only. RateTheMusic is a registered trademark of RateTheMusic.com. The RTM system, is available for local radio stations by calling 818-377-5300. RateTheMusic.com data is provided by Mediabase Research, a division of Premiere Radio Networks.

If you experienced transmission problems ... please call our Circulation Department at 310-788-1625.

© 2005 Radio & Records. All Rights Reserved. No part of this material may be reproduced in any form or incorporated in any information retrieval system without written permission of the Publisher.



Trent Tomlinson

"DRUNKER THAN ME"

The News is in the Numbers!

R&R 37 +142 spins

BB 40* +141 spins

KFDI, KMLE, WFMS, WSOC, KMPS, WEZL, WIOV, WFBE, WBAM, WKCN

