

Cledus T. Judd "Bake Me A Country Ham" Ham for the holidays...AIRPLAY NOW!!
David Lee Murphy "Inspiration" 92% Positive Test on After Midnite RR: 47



Entercom Bans Indies, Joining Infinity, CC

Entercom yesterday became the second major broadcast company in a week to announce its stations would no longer do business with independent record promoters.

The new policy is effective Dec. 31.

As first reported in yesterday's **R&R Country Daily**, Entercom President/CEO **David Field** sent an email to stations Monday that said, "Over the past few years, fundamental changes in the record business have adversely impacted the independent promotion business. The value of maintaining these relationships has diminished accordingly. In fact, today the vast majority of our stations no longer work with independent promoters.

"We are exceedingly proud of the excellent relationships with major and independent record labels and we also look forward to further enhancing those relationships in the wake of these changes. We remain committed to providing the highest quality of programming for our 15 million listeners each week."

Last week, Infinity announced it was prohibiting its stations from dealing with independents, a policy already in place at Clear Channel.

Radio And Records: Life After The Indie Ban

In case there was any doubt, the independent-promoter prohibition announced by Infinity and Entercom and already in place at Clear Channel

R&R Country Daily

Sign up now for **R&R Country Daily**, a completely free daily roundup of important news, as well as a glimpse of **R&R's** industry-leading chart info. To get it sent directly to your e-mail inbox blast your name, company/calls, title, address, phone and fax to moreinfo@radioandrecords.com. We'll do the rest.

further signals a dramatic change in the radio-record relationship. In fact, it may well mean the end of indie record promotion as it has been practiced for the last decade or so. To get a handle on what this means, we talked with a number folks on both sides of the business, all of whom would speak only on condition of anonymity.

One major label VP/Promotion told **R&R**, "Independent promoters represent over 25% of my promotion budget. Why should I continue to pay indies the retainers and add bonuses I've been paying them if they're now just able to talk to the smaller chains? Maybe I'll just take my chances. All I care about is the upper echelon [of stations] anyway."

Two other VPs expressed hope that the world of promotion will now focus more on the music and creative ways in which to advance both singles and artists' careers. One told **R&R**, "Maybe now we'll all have to go back to the old days and old ways of

If you experienced transmission problems ... please call our Circulation Department at 310/788-1625.

© 2004 Radio & Records, Inc. All Rights Reserved No part of this material may be reproduced in any form or incorporated in any information retrieval system without written permission of the Publisher.

TOBY KEITH

"Mockingbird"

duet w/ Krystal, Toby's daughter

One Of The Most Added Songs At Country Radio

1 Requested - WGAR

Great Phones - #5 requested- WKML

Immediate Phones - SUPER POSITIVE - KFDI



actually creatively crafting a promotion that benefits the station, the label and the listener. Hopefully this business will once again be about us pounding the pavement, working records and relationships, and not about the bullshit anymore."

Life will also, of course, be changing at radio. Last week Infinity spokesperson Karen Mateo told **R&R** of the company's new policy, saying, "It's the appropriate business decision for us. We are no longer using them."

The policy changes at Infinity were announced to programmers last week in meetings with their GMs. Word is that there were no e-mails or memos sent to PDs. The only physical communications issued went to GMs, who read the new policies to staffers. That left some of the new rules open to interpretation. For instance, at least one Infinity programmer took the pronouncement that they could no longer associate with indies as an order they could no longer even socialize with them. That was clarified in a subsequent conference call and is untrue.

It was also rumored that Infinity programmers could no longer tell record labels their adds or discuss rotations. That is also false. What is true is that indies will no longer be able to claim individual Infinity stations, and Infinity PDs can no longer tell indies their adds. Also, all adds and rotations at Infinity stations must be made available to all record labels simultaneously — there can be no parsing of information to individual label reps.

A couple of Infinity PDs told **R&R** that, for them, the mechanism to alert labels to adds and rotations on an equal basis will now be the trade-chart reporting system. That ensures all parties get the information at the same time.

Another PD affected by recent policy changes told **R&R**, "It's definitely going to be a very different way

This Week In R&R

- The guitars go to 11 on an astounding version of Bobby Helms' classic "Jingle Bell Rock," Alison Krauss is including all of us in her Christmas gift giving, and Jimmy Wayne gets personal with his story of holiday helpfulness
- as **R&R**'s Nashville bureau gives you a primer on this year's holiday music.
- Check your list twice against our helpful rundown of yuletide singles, and read the inside story of a radio pro who helped establish an annual classic.

of doing business. My preference would be to continue working with an indie, but if from a corporate standpoint it's too hairy an issue at this point, I understand. However, I can see that for some folks who depend on indies for their promotion budgets, it's going to be a pretty ugly situation."

Yet another PD said he preferred to deal with an indie because it meant talking to one person representing a number of labels, as opposed to dealing with multiple promo reps from a number of labels. Still another added, "This is going to make all of us re-think what we're doing — and why."

The saddest part of this whole sea change is what it's doing to country indies who, by and large, don't play the same game as their rock counterparts. Said one VP/Promotion, "I feel bad for country indies who call and actually work records — those who work records and talk music. They're a dying breed, and they're getting whacked."

New GM For WIL

Erik Hellum, currently VP/GM at Bonneville's WIL & WRTH/St. Louis, is heading to Phoenix as VP/Market Manager for the company's three-station cluster there: News/Talk KTAR, AC KKLK and Sports KMVP. Concurrently, WVRV & WSSM/St. Louis VP/GM **John Kijowski** moves up to become VP/GM for Bonneville's four-station Gateway City cluster. Both will report to Bonneville Sr. Regional VP **Drew Horowitz**.

If you experienced transmission problems ... please call our Circulation Department at 310/788-1625.

© 2004 Radio & Records, Inc. All Rights Reserved No part of this material may be reproduced in any form or incorporated in any information retrieval system without written permission of the Publisher.

The FUSE Is Lit and It's FIXIN' to BLOW!

the new single from country's hardest working band

SAWYER BROWN

"Mission Temple Fireworks Stand"

featuring Robert Randolph

on your desk This Monday

Curb Records
WELCOMES
BACK

Mark & the Boyz!

CURB
RECORDS
www.curb.com

Coming Soon: Raybaw Records

The long-rumored MuzikMafia label is close to fruition. In an interview with R&R late last week, Warner Bros. Chief Creative Officer **Paul Worley** says the imprint, Raybaw Records, will be run by Mafia co-founders **John Rich**, **Big Kenny**, **Jon Nicholson** and **Cory Gierman**.

"We couldn't make MusicMafia into a label, because to make something like that corporate would kill it," Worley says. Instead, the label's name is an acronym for "red and yellow, black and white," a line from the song "Jesus Loves the Little Children." Raybaw's first release is expected to be from country rapper **Cowboy Troy**.

Look for the full interview with Worley in the Dec. 3 issue of **Radio & Records**.

Marsh Promoted In Ft. Myers

WUSV/Ft. Myers, FL PD **Randy Marsh** has been elevated to Dir./Programming for Meridian's seven properties in the market. He will now also oversee Classic Rock WARO, AC WTLT, Rock WRQC and News/Talk WINK/WNOG-AM and WPTK-AM. Marsh joined Meridian in April to launch the new Country station. His background (much of which came under the name R.J. McCoy) includes programming and on-air stints at WKIS/Miami, WFOX/Atlanta and WIRK/West Palm Beach.

CMA Bump Sets Up Q4

Weekly country sales saw a huge spike following the Nov. 9 CMA Awards — 166% according to CMA. But much of that can be attributed to album debuts from **Shania Twain** and **Toby Keith**. RCA Label Group VP/Sales **Jim Saliby** says this year's 36% spike (with debuts excluded) is at the low end of the four-year trend. "In 2001 it was a 40% increase, 2002 was 36% and 2003 was 41%," he says. The 2003 numbers were probably aided by other television in

the week, including *48 Hours* and *60 Minutes* pieces on country stars.

As for individual artists, **Gretchen Wilson** saw a 74% spike, though the release of a repackaged *Here for the Party* likely contributed. "Maybe she got 13 points in incremental sales [from the reissue]," says Sony Sr. VP/Sales **Dale Libby**. "That's difficult to judge. Had we not had that release, I have to believe we'd be right there with **Rascal Flatts** and **Kenny Chesney**." Percentage increases for Flatts (60), Chesney (61), **Keith Urban** (62) and **Big & Rich** (53) were significant. The bigger story, however, may be in how this bump sets up the holiday shopping season.

"It gave us the opportunity to bolster our positioning and inventory heading into Black Friday," Libby says, referring to the day after Thanksgiving, when everybody goes into the black on the balance sheet.

Turkey In The Straw

The Country Music Association's new-found relationship with New York City — recently announced as the site of the 2005 CMA Awards Show — is already paying dividends. The Big Apple's Big3 Entertainment is sponsoring a CMA float carrying Mercury's **Julie Roberts** in this Thursday's Macy's Thanksgiving Day Parade. She'll be performing for an estimated 55 million TV viewers while aboard the iconic Tom Turkey float — the first float in the parade — which will also bare signage proclaiming that the 39th annual CMA Awards will be held in the Big Apple in 2005.

CMA Executive Director Ed Benson commented, "This is a quintessential New York event, and we are thrilled to be part of it with such a lovely and talented ambassador for the CMA Awards with Julie Roberts. One of the goals of hosting the CMA Awards in New York City in 2005 is raising the

If you experienced transmission problems ... please call our Circulation Department at 310/788-1625.

© 2004 Radio & Records, Inc. All Rights Reserved No part of this material may be reproduced in any form or incorporated in any information retrieval system without written permission of the Publisher.

Album sales up 103% in the last 3 weeks driven by...

"When I Think About Cheatin"

The Epic Smash from the CMA Horizon Award Winner

GRETCHEN WILSON

R&R: 15 +342 BB *17 +298/AIRPOWER

**The #1 Testing song across the board at
95.5 The Wolf, Nashville**

**Top 10 airplay at KZLA, WSM, KILT, KMPS, KAJA, KUPL and more!
Top 15 airplay at KPLX, WUSN, WBCT, KBEQ, KFKF, KEYE, WKDF,
WIL, WPOC, WMZQ, KFRG, KRTY, WKHX, WQIK, WKIS and more!**

Now is the time for your HEAVY rotation. The Epic revolution continues...



profile of country music in this important market, and participating in the Macy's Parade is a first step in that direction.

"We are excited to have CMA participate in one of New York City's and America's most beloved traditions," Benson said. "This is only the beginning of how we plan to integrate CMA activities into the fabric of New York City during the next year."

UMG Stuffs The Competition

UMG/Nashville took the trophy in Saturday's Music Row Turkey Bowl, an annual flag football tournament pitting teams from music biz companies against each other on the gridiron. UMG's ninth overall title, directed by GM/QB **Ken Robold**, came after it won three consecutive games by margins exceeding 20 points.

"The games were much closer than the scores indicate," said team captain **Royce Risser**. "And thanks to artist and not-so-defensive back **Steve Azar** for leaving guys wide open — at least we had a few scary moments."

CMT, SESAC, SOLID, Universal Music Group, Sony, RCA, Carnival Music, and Capitol Records participated. An associated food drive benefited Second Harvest Food Bank.

Radio News

Personalities: Changes at KJUG/Tulare, CA, where **J.P. Shane** takes over afternoon drive from **Mike O'Neil**, who segues to Production Director. Coming aboard for middays is KUZZ/Bakersfield personality **Jenna Jackson**.

Also, effective Dec. 6, KJUG is moving from Tulare into a new facility. KJUG's new address will be 1401 West Caldwell Avenue Visalia, CA 93277. The new phone is 559-553-1500; the fax is 559-627-1496.

Dates & Deadlines

March 2-4, 2005: CRS-36. More info at www.crb.org or 615-327-4487.

Syndication: The Salvation Army and DreamWork's artist **Jimmy Wayne** have teamed for a radio special called "Paper Angels." The public affairs-oriented show features Lt. Col. **Charles White**, founder of the Angel Tree program, and Wayne, a former Angel Tree gift recipient, who talks about how much the Angel Tree's help meant to him as a child. For details, contact show producer **Jamie Matteson** at 615-292-5368.

The nominees announcement for the 47th annual Grammy Awards, set for Dec. 7 in Hollywood, will be broadcast by Westwood One. **Gretchen Wilson** will be among the artists participating in the press conference.

NAB, the U.S. Department of Homeland Security and the Advertising Council have created new PSA spots encouraging public preparedness for emergencies. Visit www.nab.org/publicservice/Ready_PSAs.asp for details and downloads.

Industry News

Warner Bros. exec **Paul Worley**, producer **Wally Wilson**, **Chip Voorhis** and Texas attorney **Glen Morgan** have formed Skyline Music Publishing. The company, which looks to develop talent with an initial focus on Texas, is also now home to a 1,500-song catalog previously owned by Worley.

Travis Tritt is now being managed by **Duke Cooper** at Quantum Management. Reach him at 5340 Forest Acres Drive, Nashville, TN 37220; 615-370-2426; and duke@quantummgt.com.

The Nashville Film Festival has issued a call for music videos to compete for prizes at the 36th NaFF, set for April 14-21, 2005. Call 615-742-2500 for details.

If you experienced transmission problems ... please call our Circulation Department at 310/788-1625.

© 2004 Radio & Records, Inc. All Rights Reserved No part of this material may be reproduced in any form or incorporated in any information retrieval system without written permission of the Publisher.

From Their Fastest-Selling CD EVER... **"Gone"**

the new Columbia SMASH from

Montgomery Gentry

"Gone" is up and going. Look at these chart moves:

R&R 39 - 33 +226 spins! BB 45* - 35* +298 spins!

Most Added for the 2nd week in a row!

New airplay this week at: KYGO WYCD KMLE WIL KWNR WWQM
KSSN KRST WGTY KRYS WGNE WYNK WLXX WXBM WUSJ WKCK



The World Championships of Country Dance will be held at Nashville's Opryland Hotel Jan. 11-16, 2005. A televised special of the competition will air on GAC in February.

Life Notes

Best wishes to WBTU/Ft. Wayne, IN MD and morning personality **Chevy Smith** on the arrival of Cooper, who was added to the playlist Nov. 10. Smith will be on maternity leave until just after the first of the year; all music calls go to WBTU PD **Dave Michaels**.

The Week In Review

These are some of the major stories first appearing in the **R&R Country Daily**. For more on these stories visit the Country Format Room at www.radioandrecords.com.

R&R Country Daily, Nov. 18: WIL/St. Louis PD **Greg Mazingo** sent the word he has a night opening following the Nov. 16 departure of **Todd Michaels**. T&Rs to Mazingo at 11647 Olive Blvd. St. Louis, MO 63141 or email gmozingo@wil92.com.

R&R Country Daily, Nov. 17: It was announced that **Dierks Bentley** would name this year's CRS New Faces and Ralph Emery will announce the 2005 Country Music DJ Hall of Fame and Radio Hall of Fame inductees during a Nov. 29 press conference in Nashville.

R&R Country Daily, Nov. 16: KLLL/Lubbock, TX overnigher **Justin Dunlap** was promoted to MD/afternoon drive, replacing the exiting **Kelly Greene**. Also, **Leslie Lewis** joined **Jon Steele** and **Rick Gilbert** for mornings at the NextMedia Country outlet.

Nielsen ratings for the week ending Nov. 14 were released last week, and the 38th annual CMA Awards show proved to be quite a winner for CBS-TV. The network won the week in adults 25-54 (6.0 share/14 rating), adults 18-49 (4.8/13), women 25-54 (6.9/16) and men 25-54 (5.0/12). The show itself topped Tuesday in viewers in all key demos with an estimated

audience of 37 million viewers, and ranked seventh for the week.

R&R/Bullseye: "Did You Like The Show"

This week's **R&R Country Callout America** by Bullseye question posed to 1,000 Country listeners: Did you watch the CMA Awards on Tuesday, Nov. 9 on CBS? On a scale of 1 to 5, with "1" meaning you disliked the show a lot and "5" meaning you loved it, please rate the CMA Awards show.

Of the total sample, 52% watched the show, with 18% saying they loved it, 22% saying they liked it, 11% saying it was OK and 1% saying they really didn't like it.

For complete breakouts — including men and women, 25-34, 35-44 and 45-54 — check out the **R&R Country Callout America** by Bullseye research page in the Nov. 26 issue of **R&R**.

— **Lon Helton/Country Editor** (615) 244-8822
Email: lhelton@radioandrecords.com

— **Chuck Aly/R&R Asst. Country Editor** (615) 244-8822
Email: caly@radioandrecords.com

CD GALLERY

New in stores today, Nov. 23, 2004:

Alison Krauss & Union Station *Lonely Runs Both Ways* (Rounder)



Acoustic music's pace-setting ensemble returns with 15 tracks, including first single "Restless." They'll be featured on the *Tonight Show With Jay Leno* for two consecutive nights, this Wednesday and Thursday. A tour kicks off Dec. 1 in Evansville, IN and concludes Jan. 23 in Huntsville, AL. Look for them on *Good Morning America* on Dec. 10.

If you experienced transmission problems ... please call our Circulation Department at 310/788-1625.

© 2004 Radio & Records, Inc. All Rights Reserved No part of this material may be reproduced in any form or incorporated in any information retrieval system without written permission of the Publisher.

Listeners are talking about and requesting....

"Me And Charlie Talking"

the debut Epic hit from

**miranda
lambert**

This song is generating requests and breaking out of the pack.

"Me and Charlie Talking" is the
ONLY BREAKER on today's chart!!

R&R 31 Billboard 33*

New adds today
**WXTU, WPKX, WRNS,
WFLS and more!**



MUSICNOTES

↪ **Jessi Alexander, Jamie O'Neal and Jon Randall** will travel to the U.K. in January as part of CMA's "New From Nashville" showcase program. The three will perform in London and Glasgow.

↪ **Mark Chesnutt** kicks off the debut episode of GAC's *Country on the Gulf* on Dec. 4. Billed as country's "biggest live-in-concert television series to date," the new offering will also feature **Lee Ann Womack, LeAnn Rimes, Trick Pony, Joe Diffie, Restless Heart, Jeff Bates and Dierks Bentley** in its first season.

— **Chuck Aly/R&R Asst. Country Editor** (615) 244-8822
Email: caly@radioandrecords.com

VIDEO ADDS

CMT

KENNY CHESNEY Anything But Mine
ALAN JACKSON Monday Morning Church
BUDDY MILLER Worry Too Much
BRAD PAISLEY Mud On The Tires

GREAT AMERICAN COUNTRY

JIMMY BUFFETT f/MARTINA MCBRIDE Trip Around The Sun
TRACY BYRD Revenge Of A Middle-Aged Woman
ALAN JACKSON Monday Morning Church
BRAD PAISLEY Mud On The Tires

RANDOM FAX®

Tuesday, 11/23

BIRTHDAYS: EJ Foxx

On TV: CMT: **Alan Jackson, Toby Keith, Martina McBride** and more, *CMT 2004 Flame Worthy Video Music Awards*. GAC: **Restless Heart, Brad Paisley, Catherine Britt** and more, *Grand Ole Opry Live*; **Chad Brock, Celebrity Kitchen**.*

Wednesday, 11/24

BIRTHDAYS: **Johnny Carver, Donna Duarte, Duke Hamilton, Gator Harrison, Ken Kragen**

On TV: CMT: **Alabama, CMT Inside Fame**. GAC: **David Ball, GAC Classic***; **Jay Teter, Celebrity Kitchen***. NBC: **Tim McGraw, Today***; **Alison Krauss & Union Station, The Tonight Show With Jay Leno***.

Thursday, 11/25

BIRTHDAYS: **Amy Grant, Steve Lassiter, Patsy Wells**

On TV: CBS: **Trace Adkins**, to sing national anthem before Detroit Lions/Indianapolis Colts game*. CMT: **Alabama, Alan Jackson, Brad Paisley** and more, *CMA Red Carpet Special*; **Toby Keith, Brooks & Dunn, Gretchen Wilson** and more, *CMA Awards 2004*. GAC: **Jamie O'Neal, Celebrity Kitchen***. NBC: **Alison Krauss & Union Station, The Tonight Show With Jay Leno**. PBS: **George Jones, 50 Years of Hits: A Soundstage Special Event***.

Friday, 11/26

BIRTHDAYS: **Linda Davis, Joe Nichols, Anne Buchman, Bob Frank, Steve Grisaffe**

On TV: GAC: **T.G. Sheppard, Celebrity Kitchen***.

Saturday, 11/27

BIRTHDAYS: the late **Eddie Rabbitt, Darlene Starr**

On TV: CMT: **Alan Jackson, Brad Paisley, Blake Shelton** and more, *20 Sexiest Men*; **Chely Wright, Deana Carter, Carolyn Dawn Johnson** and more, *20 Sexiest Women*. GAC: **LeAnn Rimes, Katrina Elam, The Mavericks** and more, *Grand Ole Opry Live*; **Jamie O'Neal, Celebrity Kitchen**.

Sunday, 11/28

BIRTHDAYS: **Kristine Arnold, Cheryl Cranford, Gene Dries, Mike Kennedy**

On TV: GAC: **T.G. Sheppard, Celebrity Kitchen**. Oxygen: **Kenny Chesney, Oxygen's Custom Concert***.

Monday, 11/29

BIRTHDAYS: **Jody Miller, the late Merle Travis, Ryan Bitzer, Kory James**

On TV: CMT: *40 Greatest Women of Country Music*.

*premiere airing

If you experienced transmission problems ... please call our Circulation Department at 310/788-1625.

© 2004 Radio & Records, Inc. All Rights Reserved No part of this material may be reproduced in any form or incorporated in any information retrieval system without written permission of the Publisher.



**MARK CHESNUTT & VIVATON RECORDS
WOULD LIKE TO GIVE THANKS TO
ALL THOSE STATIONS PLAYING
“I’M A SAINT”**

Including...

**KZBR-San Francisco, KPLX-Dallas, KSCS-Dallas, KILT-Houston,
KMLE-Phoenix, KNIX-Phoenix, KSD-St. Louis, WYUU-Tampa,
KUPL-Portland, WYGY-Cincinnati, KSOP-Salt Lake City,
KUBL-Salt Lake City, KRTY-San Jose, WMIL-Milwaukee,
WKCK-Norfolk, WKDF-Nashville, WSM-Nashville, WGKX-Memphis,
WBEE-Rochester, KIIM-Tucson, KTEX-McAllen, WBCT-Grand Rapids,
WCKT-Ft. Myers, WGGY-Wilkes-Barre ...
Over 100 RR stations already playing....**

Don't be a Turkey, ADD "I'm A Saint".....

**Vivaton
RECORDS**

LW	TW	ARTIST Title Label(s)	Total Points	+/- Points	Total Plays	+/- Plays	Tot. Aud. (00)	+/- Aud. (00)	Wks On	Total Station
1	1	LONESTAR Mr. Mom (BNA)	12329	72	4534	+33	426492	-6755	20	114/1
3	2	GARY ALLAN Nothing On But The Radio (MCA)	12206	945	4477	+363	411316	22051	24	115/1
4	3	KENNY CHESNEY The Woman With You (BNA)	11760	1259	4201	+465	399249	43738	13	115/1
5	4	TIM MCGRAW Back When (Curb)	11444	986	4070	+339	387590	31235	13	113/1
6	5	BLAKE SHELTON Some Beach (Warner Bros.)	11063	1583	4061	+622	379576	42841	17	114/1
2	6	BROOKS & DUNN That's What It's All About (Arista)	9967	-1335	3500	-602	327967	-42463	22	115/1
8	7	DIERKS BENTLEY How Am I Doin' (Capitol)	8823	878	3379	+290	280477	14003	28	115/1
10	8	DARRYL WORLEY Awful, Beautiful Life (DreamWorks)	7842	499	2789	+141	264539	25515	21	114/2
11	9	SHANIA TWAIN w/ BILLY CURRINGTON Party For Two (Mercury)	7170	107	2643	+41	233808	9135	12	112/1
12	10	LEANN RIMES Nothin' 'Bout Love Makes Sense (Asylum/Curb)	7049	676	2527	+204	232738	25076	13	111/1
14	11	ALAN JACKSON Monday Morning Church (Arista)	6655	647	2470	+247	212396	20743	8	113/2
15	12	BRAD PAISLEY Mud On The Tires (Arista)	6607	596	2452	+225	217399	19897	11	111/1
13	13	SHEDAISY Come Home Soon (Lyric Street)	6517	432	2478	+189	208605	12962	21	112/1
18	14	KEITH URBAN You're My Better Half (Capitol)	6346	1248	2233	+442	213511	41165	6	112/2
17	15	GRETCHEN WILSON When I Think About Cheatin' (Epic)	6190	932	2142	+342	203218	28117	6	115/4
16	16	REBA MCENTIRE He Gets That From Me (MCA)	5736	323	2096	+124	180315	19737	14	110/2
19	17	BIG & RICH Holy Water (Warner Bros.)	5426	371	2035	+165	170134	5716	9	108/3
23	18	RASCAL FLATTS Bless The Broken Road (Lyric Street)	4994	1412	1667	+420	160700	50711	5	108/4
20	19	JIMMY BUFFETT f/M. MCBRIDE Trip Around ... (RCA/Mailboat)	4945	247	1739	+81	150237	1670	14	107/1
9	20	TOBY KEITH Stays In Mexico (DreamWorks)	4590	-3141	1743	-1184	144054	-84551	17	114/1
21	21	JOSH GRACIN Nothin' To Lose (Lyric Street)	4526	333	1699	+135	135056	7356	12	104/6
22	22	TRAVIS TRITT f/JOHN MELLENCAMP What Say You (Columbia)	4241	105	1587	+46	126823	-47	13	106/1
24	23	PAT GREEN Don't Break My Heart Again (Universal/Republic/Mercury)	3492	239	1184	+93	109650	6609	15	84/1
25	24	BILLY DEAN Let Them Be Little (Curb)	3150	144	1302	+77	95097	9056	12	90/7
26	25	LEE ANN WOMACK I May Hate Myself In The Morning (MCA)	2883	266	1020	+91	88952	4649	6	95/10

© 2004 Radio & Records, Inc.

MARTINA McBRIDE

"GOD'S WILL"

Her impactful new song that you saw her perform on The CMA's
(WHEN SHE WON HER 4TH FEMALE VOCALIST AWARD!)

20+ STATIONS ADDED IT EARLY...
AND THEY ARE WATCHING THE PHONES LIGHT UP!

ADD IT NOW.

© 2004 BMG Music

LW	TW	ARTIST Title Label(s)	Total Points	+/- Points	Total Plays	+/- Plays	Tot. Aud. (00)	+/- Aud. (00)	Wks On	Total Station
27	26	SUGARLAND Baby Girl (Mercury)	2834	370	1056	+115	91424	13044	18	79/4
28	27	KATRINA ELAM No End In Sight (Universal South)	2616	217	959	+42	83357	12053	19	86/2
29	28	JAMIE O'NEAL Trying To Find Atlantis (Capitol)	2207	258	840	+124	61492	5813	8	79/4
30	29	ANDY GRIGGS If Heaven (RCA)	2007	421	788	+155	59071	14536	6	75/5
33	30	CRAIG MORGAN That's What I Love About Sunday (BBR)	1708	434	704	+183	48420	9938	5	82/4
Breaker	31	MIRANDA LAMBERT Me And Charlie Talking (Epic)	1527	72	600	+14	37986	1222	7	69/3
32	32	TRACY BYRD Revenge Of A Middle-Aged Woman (BNA)	1415	142	571	+57	37844	3523	7	58/1
39	33	MONTGOMERY GENTRY Gone (Columbia)	1367	519	522	+226	40999	20104	2	56/14
35	34	TOBY KEITH Mockingbird (DreamWorks)	1311	135	461	+53	45174	6570	2	55/25
36	35	BLAINE LARSEN How Do You Get That Lonely (BNA/Giantslayer)	1222	154	459	+81	35941	2292	4	51/10
34	36	CATHERINE BRITT The Upside Of Being Down (RCA)	1173	0	481	-4	31404	1837	14	68/0
38	37	SHELLY FAIRCHILD You Don't Lie Here Anymore (Columbia)	1089	115	479	+45	26837	1999	7	61/1
41	38	JIMMY WAYNE Paper Angels (DreamWorks)	1070	250	434	+102	31250	8281	3	57/8
37	39	JEFF BATES Long, Slow Kisses (RCA)	1030	31	423	+26	27484	-279	8	51/3
46	40	TERRI CLARK The World Needs A Drink (Mercury)	972	366	464	+175	25843	7393	3	51/9
42	41	AMY DALLEY I Would Cry (Curb)	920	164	335	+49	25865	3147	4	48/4
40	42	CHELY WRIGHT Bumper Of My S.U.V. (Painted Red)	903	107	362	+42	36157	6674	2	19/7
47	43	JOE NICHOLS What's A Guy Gotta Do (Universal South)	847	265	319	+117	22782	3105	2	43/1
48	44	MARK CHESNUTT I'm A Saint (Vivaton)	735	175	251	+43	14177	1771	5	37/7
45	45	JULIE ROBERTS The Chance (Mercury)	637	0	269	+6	15436	-937	4	37/0
Debut	46	PHIL VASSAR I'll Take That As A Yes (The Hot Tub Song) (Arista)	605	372	198	+127	18729	11810	1	37/9
49	47	DAVID LEE MURPHY Inspiration (Koch)	550	25	263	+11	12871	1938	4	32/1
43	48	CAROLINA RAIN I Ain't Scared (Equity Music Group)	525	-194	223	-85	12398	-3816	9	37/1
Debut	49	RASCAL FLATTS Skin (Lyric Street)	465	23	80	+4	16907	1335	1	2/1
Debut	50	BROOKS & DUNN It's Getting Better All The Time (Arista)	452	290	162	+107	9837	5025	1	29/26

© 2004 Radio & Records, Inc.

 Her Debut Country Smash from the forthcoming CD *This Woman Is*
**"Nothin' 'Bout Love
 Makes Sense"**
**Top 10 - Thank you for the
 fastest growing single of her career**
**Research starting to kick in big time!
 Major media on the way everywhere!**
**"Different Kind Of Christmas" Co-written by LeAnn after the 9/11 Tragedy
 and the thousands of people Who have a Different Kind Of Christmas
 Because of it. Already added at KZLA**

Blue County - "Nothin' But Cowboy Boots"
2:45 of unrivaled fun
ADDS 11/29


© 2004 Radio & Records, Inc.

COUNTRY

MOST ADDED

ARTIST Title Label(s)	Adds
BROOKS & DUNN It's Getting Better All The Time (Arista)	26
TOBY KEITH Mockingbird (DreamWorks)	25
MARTINA MCBRIDE God's Will (RCA)	22
MONTGOMERY GENTRY Gone (Columbia)	14
LEE ANN WOMACK I May Hate Myself In The Morning (MCA)	10
BLAINE LARSEN How Do You Get That Lonely (BNA/Giantslayer)	10
TERRI CLARK The World Needs A Drink (Mercury)	9
PHIL VASSAR I'll Take That As A Yes (The Hot Tub Song) (Arista)	9
SARA EVANS Tonight (RCA)	9
JIMMY WAYNE Paper Angels (DreamWorks)	8

MOST INCREASED POINTS

ARTIST Title Label(s)	Total Pt. Increase
BLAKE SHELTON Some Beach (Warner Bros.)	+1583
RASCAL FLATTS Bless The Broken Road (Lyric Street)	+1412
KENNY CHESNEY The Woman With You (BNA)	+1259
KEITH URBAN You're My Better Half (Capitol)	+1248
TIM MCGRAW Back When (Curb)	+986
GARY ALLAN Nothing On But The Radio (MCA)	+945
GRETCHEN WILSON When I Think About Cheatin' (Epic)	+932
DIERKS BENTLEY How Am I Doin' (Capitol)	+878
LEANN RIMES Nothin' 'Bout Love Makes Sense (Asylum/Curb)	+676
ALAN JACKSON Monday Morning Church (Arista)	+647

MOST INCREASED PLAYS

ARTIST Title Label(s)	Total Play Increase
BLAKE SHELTON Some Beach (Warner Bros.)	+622
KENNY CHESNEY The Woman With You (BNA)	+465
KEITH URBAN You're My Better Half (Capitol)	+442
RASCAL FLATTS Bless The Broken Road (Lyric Street)	+420
GARY ALLAN Nothing On But The Radio (MCA)	+363
GRETCHEN WILSON When I Think About Cheatin' (Epic)	+342
TIM MCGRAW Back When (Curb)	+339
DIERKS BENTLEY How Am I Doin' (Capitol)	+290
ALAN JACKSON Monday Morning Church (Arista)	+247
MONTGOMERY GENTRY Gone (Columbia)	+229

COUNTRY INDICATOR

MOST ADDED

ARTIST Title Label(s)	Adds
BROOKS & DUNN It's Getting Better All The Time (Arista)	31
MONTGOMERY GENTRY Gone (Columbia)	24
TOBY KEITH Mockingbird (DreamWorks)	24
MARTINA MCBRIDE God's Will (RCA)	21
BILLY DEAN Let Them Be Little (Curb)	15
CHELY WRIGHT Bumper Of My S.U.V. (Painted Red)	12
JIMMY WAYNE Paper Angels (DreamWorks)	11
ALISON KRAUSS & UNION STATION Restless (Rounder)	11
CRAIG MORGAN That's What I Love About Sunday (BBR)	9
PHIL VASSAR I'll Take That As A Yes (The Hot Tub Song) (Arista)	9

MOST INCREASED POINTS

ARTIST Title Label(s)	Total Pt. Increase
RASCAL FLATTS Bless The Broken Road (Lyric Street)	+487
GRETCHEN WILSON When I Think About Cheatin' (Epic)	+453
BLAKE SHELTON Some Beach (Warner Bros.)	+428
KEITH URBAN You're My Better Half (Capitol)	+392
ALAN JACKSON Monday Morning Church (Arista)	+387
TOBY KEITH Mockingbird (DreamWorks)	+383
BROOKS & DUNN It's Getting Better All The Time (Arista)	+374
DARRYL WORLEY Awful, Beautiful Life (DreamWorks)	+353
TIM MCGRAW Back When (Curb)	+324
BILLY DEAN Let Them Be Little (Curb)	+302

MOST INCREASED PLAYS

ARTIST Title Label(s)	Total Play Increase
RASCAL FLATTS Bless The Broken Road (Lyric Street)	+379
GRETCHEN WILSON When I Think About Cheatin' (Epic)	+348
BROOKS & DUNN It's Getting Better All The Time (Arista)	+340
KEITH URBAN You're My Better Half (Capitol)	+334
BLAKE SHELTON Some Beach (Warner Bros.)	+316
ALAN JACKSON Monday Morning Church (Arista)	+315
TOBY KEITH Mockingbird (DreamWorks)	+298
DARRYL WORLEY Awful, Beautiful Life (DreamWorks)	+292
TIM MCGRAW Back When (Curb)	+269
BILLY DEAN Let Them Be Little (Curb)	+258

**Billy Dean
Let Them Be Little**

Research Out The Ying Yang!

**Phones Ringing Off The Hook!
8 Females Overall at MediaBase
Just Added**

**WKHX WAMZ KZLA WWYZ KWNR
WROO WKKO WOKQ WBUL**

RR 25 - 24 +77 BB 26 - 25 +102



Amy Dalley • I Would Cry

**"If Tears would help this song reach the Top,
Hell, I Would Cry. Doubt Amy will need it with
a Great Song like this!" Joe Roberts / KATM**

**Double Digit Spinners Already
KFRG WKLB KZLA KZBR WXTU
WXBQ KTOM KRST WWQM KHKI**

**Just Added
WYCD WSOC KASE WBCT WCOL WCAT WCTO**

RR 42 - 41 BB 44

COUNTRY INDICATOR NEW & ACTIVE

MARTINA MCBRIDE God's Will (RCA)
Total Plays: 170, Total Stations: 22, Adds: 21

JAY TETER Football, Beer And You (Quarterback)
Total Plays: 153, Total Stations: 16, Adds: 1

RANDY TRAVIS Four Walls (Word/Warner Bros.)
Total Plays: 152, Total Stations: 16, Adds: 3

ALISON KRAUSS & UNION STATION Restless (Rounder)
Total Plays: 143, Total Stations: 23, Adds: 11

BRAD & SHELLY He Only Talks About Her When He Drinks (Capitol)
Total Plays: 102, Total Stations: 10, Adds: 0

COUNTRY NEW & ACTIVE

RANDY TRAVIS Four Walls (Word/Warner Bros.)
Total Plays: 146, Total Stations: 28, Adds: 2

SARA EVANS Tonight (RCA)
Total Plays: 113, Total Stations: 26, Adds: 9

TRENT WILLMON Home Sweet Holiday Inn (Columbia)
Total Plays: 111, Total Stations: 23, Adds: 6

MARTINA MCBRIDE God's Will (RCA)
Total Plays: 102, Total Stations: 23, Adds: 22

ALISON KRAUSS & UNION STATION Restless (Rounder)
Total Plays: 96, Total Stations: 19, Adds: 4

R&R Going For Adds™

11/29

BLUE COUNTY Nothin' But Cowboy Boots (Asylum/Curb)

BROOKS & DUNN It's Getting Better All The Time (Arista)

CLINT BLACK Christmas With You (Equity)

DR. ELMO Christmas All Across The USA (Laughing Stock)

ERICA DAWSON The First Time Ever I Saw Your Face (Lofton Creek)

12/6

DOUG STONE Georgia On My Mind (Lofton Creek)

ELBERT WEST Kimberly Cooper's Eyes (BBR)

KEITH ANDERSON Pickin' Wildflowers (Arista)

ZONA JONES Two Hearts (D/Quarterback)

12/13

TRACE ADKINS Songs About Me (Capitol)

MOST PLAYED RECURRENTS

ARTIST Title Label(s)	Total Plays
PHIL VASSAR In A Real Love (Arista)	2805
SARA EVANS Suds In The Bucket (RCA)	2584
TIM MCGRAW Live Like You Were Dying (Curb)	2265
KEITH URBAN Days Go By (Capitol)	2139
GEORGE STRAIT I Hate Everything (MCA)	2055
KENNY CHESNEY I Go Back (BNA)	1721
JOHN MICHAEL MONTGOMERY Letters From Home (Warner Bros.)	1249
GRETCHEN WILSON Redneck Woman (Epic)	1218
ANDY GRIGGS She Thinks She Needs Me (RCA)	1156
JOE NICHOLS If Nobody Believed In You (Universal South)	1130

POWERED BY MEDIABASE

115 Country reporters. Songs ranked by total points for the airplay week of 11/14-11/20. Bullets appear on songs gaining points and/or plays or remaining flat from previous week. If two songs are tied in total points, the song with the larger increase in points is placed first. Songs below No. 1 and down in points and plays for three consecutive weeks are moved to recurrent. Most Added is the total number of new adds officially reported to R&R by each reporting station. Songs unreported as adds do not count toward overall total stations playing a song. Most Increased Points lists the songs with the greatest week-to-week increases in total points. Station Weight = AQH Persons + (Market rank X 10) divided by 4180. Total Audience equals Average Quarter Hour Persons times number of plays (times 100). Each daypart on each station is assigned an AQH number. Average Quarter Hour Persons used herein with permission from Arbitron Inc. © 2004, Arbitron Inc.). © 2004, R&R, Inc.

Rascal Flatts "Bless The Broken Road"

THE FASTEST MOVING SINGLE OF THEIR CAREER
R&R: 18 + 420 spins

THANKS COUNTRY RADIO! LYRIC SYREY RECORDS

November 23, 2004

LW	TW	ARTIST Title Label(s)	Total Points	+/- Points	Total Plays	+/- Plays	Tot. Aud. (00)	+/- Aud. (00)	Wks On	Total Station
2	1	GARY ALLAN Nothing On But The Radio (MCA)	5365	63	4136	+13	124415	2758	24	107/0
1	2	LONESTAR Mr. Mom (BNA)	5224	-157	4008	-155	120740	-3041	20	105/0
5	3	TIM MCGRAW Back When (Curb)	5213	324	4069	+269	118971	8183	11	108/0
3	4	KENNY CHESNEY The Woman With You (BNA)	5137	206	4013	+166	116504	5050	14	109/0
6	5	BLAKE SHELTON Some Beach (Warner Bros.)	5121	428	4001	+316	116542	10519	17	109/0
7	6	DIERKS BENTLEY How Am I Doin' (Capitol)	4454	201	3467	+144	100633	5746	29	107/1
4	7	BROOKS & DUNN That's What It's All About (Arista)	4448	-499	3423	-434	103247	-10072	22	100/0
8	8	DARRYL WORLEY Awful, Beautiful Life (DreamWorks)	4166	353	3243	+292	93229	7377	21	108/0
9	9	SHANIA TWAIN w/ BILLY CURRINGTON Party For Two (Mercury)	3837	142	2960	+116	87352	3170	12	108/0
10	10	ALAN JACKSON Monday Morning Church (Arista)	3725	387	2917	+315	83921	9396	8	109/1
11	11	SHEDAISY Come Home Soon (Lyric Street)	3409	231	2660	+171	78495	5198	21	103/1
12	12	LEANN RIMES Nothin' 'Bout Love Makes Sense (Asylum/Curb)	3243	109	2575	+98	74382	2618	13	106/1
13	13	BRAD PAISLEY Mud On The Tires (Arista)	3182	198	2496	+147	73292	4670	12	101/1
15	14	KEITH URBAN You're My Better Half (Capitol)	3076	392	2386	+334	69710	8822	6	105/2
14	15	BIG & RICH Holy Water (Warner Bros.)	2911	180	2288	+138	65661	4501	10	106/2
16	16	REBA MCENTIRE He Gets That From Me (MCA)	2907	222	2264	+148	67121	5058	14	104/3
18	17	GRETCHEN WILSON When I Think About Cheatin' (Epic)	2786	453	2139	+348	61497	10672	6	102/1
17	18	JIMMY BUFFETT f/M. MCBRIDE Trip Around ... (RCA/Mailboat)	2515	49	1964	+47	56989	881	14	92/0
21	19	RASCAL FLATTS Bless The Broken Road (Lyric Street)	2248	487	1754	+379	51748	10637	5	101/5
20	20	JOSH GRACIN Nothin' To Lose (Lyric Street)	2167	191	1678	+134	50255	4611	13	88/4
19	21	TRAVIS TRITT f/JOHN MELLENCAMP What Say You (Columbia)	2127	-31	1577	-59	51216	-574	12	87/0
23	22	BILLY DEAN Let Them Be Little (Curb)	1732	302	1322	+258	38835	6350	10	89/15
22	23	PAT GREEN Don't Break My Heart Again (Universal/Republic/Mercury)	1678	105	1341	+84	35294	2515	14	83/2
24	24	LEE ANN WOMACK I May Hate Myself In The Morning (MCA)	1594	184	1246	+146	34443	4074	6	83/5
26	25	JAMIE O'NEAL Trying To Find Atlantis (Capitol)	1435	48	1128	+33	30025	1020	8	85/2

© 2004 Radio & Records, Inc.

KEITH BRYANT "RIDIN' WITH THE LEGEND"

#1 most played song at Highway 16 this week!

"This is by far, THE most requested song on Highway 16."

- Jon Anthony,



SATELLITE
RADIO

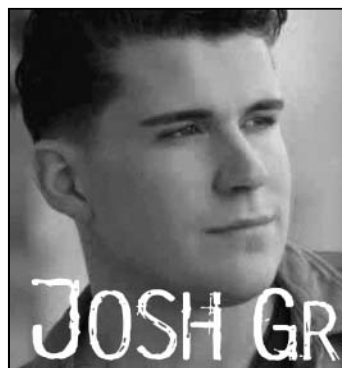


www.loftoncreekrecords.com

November 23, 2004

LW	TW	ARTIST Title Label(s)	Total Points	+/- Points	Total Plays	+/- Plays	Tot. Aud. (00)	+/- Aud. (00)	Wks On	Total Station
25	26	SUGARLAND Baby Girl (<i>Mercury</i>)	1389	-33	1059	-14	29874	-650	19	62/0
28	27	ANDY GRIGGS If Heaven (<i>RCA</i>)	1339	192	1072	+152	29507	4631	7	70/6
27	28	KATRINA ELAM No End In Sight (<i>Universal South</i>)	1241	32	1026	+30	26345	446	18	68/2
29	29	JEFF BATES Long, Slow Kisses (<i>RCA</i>)	912	47	752	+23	21743	1231	10	50/0
33	30	JIMMY WAYNE Paper Angels (<i>DreamWorks</i>)	887	241	703	+187	19161	5407	4	70/11
30	31	MARK CHESNUTT I'm A Saint (<i>Vivaton</i>)	883	88	683	+62	17097	1562	6	63/5
31	32	TRACY BYRD Revenge Of A Middle-Aged Woman (<i>BNA</i>)	853	157	661	+113	19330	3344	7	48/2
34	33	JOE NICHOLS What's A Guy Gotta Do (<i>Universal South</i>)	805	165	656	+142	17477	3903	3	56/5
38	34	TOBY KEITH Mockingbird (<i>DreamWorks</i>)	787	383	619	+298	18008	8435	2	51/24
32	35	MIRANDA LAMBERT Me And Charlie Talking (<i>Epic</i>)	733	33	564	+25	16497	553	7	47/1
35	36	SHELLY FAIRCHILD You Don't Lie Here Anymore (<i>Columbia</i>)	646	41	519	+27	14323	1191	7	41/0
36	37	CRAIG MORGAN That's What I Love About Sunday (<i>BBR</i>)	631	147	526	+133	14093	2969	4	53/9
42	38	MONTGOMERY GENTRY Gone (<i>Columbia</i>)	567	281	438	+220	13101	6462	2	51/24
41	39	TERRI CLARK The World Needs A Drink (<i>Mercury</i>)	566	183	486	+144	12006	4077	3	46/5
37	40	CATHERINE BRITT The Upside Of Being Down (<i>RCA</i>)	502	-11	386	-8	11662	-492	15	33/1
40	41	JULIE ROBERTS The Chance (<i>Mercury</i>)	417	22	348	+5	7882	557	6	29/0
Debut	42	BROOKS & DUNN It's Getting Better All The Time (<i>Arista</i>)	398	382	354	+343	8082	7578	1	32/31
43	43	SARA EVANS Tonight (<i>RCA</i>)	354	67	270	+43	8015	1781	4	25/2
50	44	PHIL VASSAR I'll Take That As A Yes (The Hot Tub Song) (<i>Arista</i>)	304	125	258	+101	6980	3329	2	29/9
Debut	45	CHELY WRIGHT Bumper Of My S.U.V. (<i>Painted Red</i>)	290	126	236	+103	6903	2673	1	20/12
44	46	AMY DALLEY I Would Cry (<i>Curb</i>)	257	10	184	+10	5752	146	3	20/2
Debut	47	BLAINE LARSEN How Do You Get That Lonely (<i>BNA/Giantslayer</i>)	254	108	209	+87	5926	2461	1	21/6
45	48	DAVID LEE MURPHY Inspiration (<i>Koch</i>)	228	-6	191	-10	5325	-257	6	18/0
48	49	GLENN CUMMINGS Big (<i>Gulf Coast</i>)	218	24	189	+19	3681	440	4	20/3
39	50	KERRY HARVICK Cowgirls (<i>Lyric Street</i>)	216	-214	158	-187	4779	-4482	7	18/0

© 2004 Radio & Records, Inc.



SheDAISY "Come Home Soon"
A great message for the holidays.

R&R **13** TRIPLE DIGIT SPIN INCREASE +189

JOSH GRACIN "NOTHIN' TO LOSE"

ON BOARD THIS WEEK:

WDSY, WESC, WYPY, WSM-FM, KCCY, WKKO

LYRIC STREEY
RECORDS

R&R **21** 104/6





Artist Title (Label)	TW	LW	Fam.	Burn	P 25-54	W 25-54	M 25-54
BLAKE SHELTON Some Beach (Warner Bros.)	4.41	4.18	96%	12%	4.48	4.49	4.48
TIM MCGRAW Back When (Curb)	4.29	4.30	96%	14%	4.32	4.46	4.22
GARY ALLAN Nothing On But The Radio (MCA)	4.21	4.21	96%	17%	4.18	4.33	4.08
KENNY CHESNEY The Woman With You (BNA)	4.16	4.10	94%	18%	4.07	4.28	3.93
LONESTAR Mr. Mom (BNA)	4.14	4.10	98%	30%	4.12	4.26	4.02
REBA MCENTIRE He Gets That From Me (MCA)	4.12	4.05	91%	14%	4.15	4.22	4.09
BRAD PAISLEY Mud On The Tires (Arista)	4.12	3.99	89%	9%	4.09	4.15	4.05
DIERKS BENTLEY How Am I Doin' (Capitol)	4.10	4.05	96%	24%	4.08	4.17	4.02
KEITH URBAN You're My Better Half (Capitol)	4.10	4.06	71%	5%	4.10	4.36	3.93
ALAN JACKSON Monday Morning Church (Arista)	4.09	4.01	80%	8%	4.18	4.31	4.09
DARRYL WORLEY Awful, Beautiful Life (DreamWorks)	4.08	3.92	87%	13%	4.07	4.07	4.07
BROOKS & DUNN That's What It's All About (Arista)	4.07	4.05	98%	26%	4.10	4.17	4.05
GRETCHEN WILSON When I Think About Cheatin' (Epic)	4.04	3.84	86%	11%	4.12	4.15	4.09
PHIL VASSAR In A Real Love (Arista)	4.03	3.95	96%	23%	4.00	4.13	3.90
JOSH GRACIN Nothin' To Lose (Lyric Street)	4.01	4.09	70%	7%	3.97	4.10	3.89
TRACE ADKINS Rough & Ready (Capitol)	3.99	3.98	96%	30%	4.03	4.13	3.97
SHEDAISY Come Home Soon (Lyric Street)	3.99	4.07	93%	21%	3.96	4.05	3.89
BILLY DEAN Let Them Be Little (Curb)	3.99	3.86	59%	7%	4.03	4.23	3.91
RASCAL FLATTS Bless The Broken Road (Lyric Street)	3.95	—	64%	9%	3.86	3.94	3.80
LEANN RIMES Nothin' 'Bout Love Makes Sense (Asylum/Curb)	3.84	3.81	84%	12%	3.85	3.88	3.83
JIMMY BUFFETT f/MARTINA MCBRIDE Trip Around The Sun (RCA/Mailboat)	3.83	3.75	77%	12%	3.84	3.93	3.78
SUGARLAND Baby Girl (Mercury)	3.82	3.86	65%	9%	3.81	3.88	3.77
LEE ANN WOMACK I May Hate Myself In The Morning (MCA)	3.77	—	51%	6%	3.79	3.69	3.84
SHANIA TWAIN w/ BILLY CURRINGTON Party For Two (Mercury)	3.76	3.76	96%	24%	3.76	3.73	3.77
KATRINA ELAM No End In Sight (Universal South)	3.76	3.85	56%	9%	3.72	3.77	3.69
TOBY KEITH Stays In Mexico (DreamWorks)	3.73	3.73	99%	39%	3.69	3.70	3.68
TRAVIS TRITT f/JOHN MELLENCAMP What Say You (Columbia)	3.73	3.77	79%	18%	3.77	3.93	3.67
PAT GREEN Don't Break My Heart Again (Universal/Republic/Mercury)	3.71	3.80	61%	11%	3.70	3.70	3.70
BIG & RICH Holy Water (Warner Bros.)	3.64	3.68	82%	19%	3.56	3.66	3.50

Total sample size is 396 respondents. Total average favorability estimates are based on a scale of 1-5. (1=dislike very much, 5 = like very much). Total familiarity represents the percentage of respondents who recognized the song. Total burn represents the number of respondents who said they are tired of hearing the song. Songs must have 40% familiarity to appear on survey. Sample composition is based on persons 12+. Persons are screened via the Internet. Once passed, they can take the music test based on the format/music preference. RateTheMusic.com results are not meant to replace callout research. The results are intended to show opinions of participants on the the Internet only. RateTheMusic is a registered trademark of RateTheMusic.com. The RTM system, is available for local radio stations by calling 818-377-5300. RateTheMusic.com data is provided by Mediabase Research, a division of Premiere Radio Networks.

If you experienced transmission problems ... please call our Circulation Department at 310/788-1625.

© 2004 Radio & Records, Inc. All Rights Reserved No part of this material may be reproduced in any form or incorporated in any information retrieval system without written permission of the Publisher.

REPORTING STATION PLAYLISTS

www.radioandrecords.com

