

“Traditional with and edge! Amy Dalley is a Hit Artist!”
— JD Cannon/WFMS



Radio Responds To Shuttle Disaster

Saturday's space shuttle Columbia disaster left many Country PDs scrambling to get live information into their normally voice-tracked or syndicated weekend programming. It also forced some programmers to make changes in their stations' music presentations. In markets that follow the space program even more closely than the rest of the nation, this was especially important.

KILT-FM/Houston PD **Jeff Garrison** was running a "best-of" show on Saturday morning when the news broke. Personality **Rowdy Yates** and a news staffer went live at 8:30am CT, and after the initial reports the station continued to break three times an hour for news updates. Between those news reports, Garrison says, "We fielded calls. People in Nachodoches, TX were in a state of panic about contamination. The families [of the shuttle crew] live here, and so many families and friends are involved in NASA. There were a lot of questions that needed to be answered." The station also covered the NASA and presidential press conferences live, and KILT-FM will cover today's memorial service for the shuttle crew as well.

KILT-FM continues to air two newscasts an hour through today's coverage of the memorial service, and is featuring locally-produced memorials and sweepers as part of its daylong programming. Musically, the station ran the special sweepers into songs like Tim McGraw's "Please Remember Me." Garrison pulled **Mark Wills'** "19 Somethin'." from rotation until Monday. "That song," Garrison says, "actually turned out to be a salute to the shuttle and it's not in any way distasteful."

Garrison wasn't the only programmer who opted to

This Week's Headlines

- Ochs Rises To Infinity/Tampa SVP/Mkt. Mgr.
- Tom Rivers New WUSN OM
- Mark Richards Now ABC/Atlanta OM
- Knippers Returns To Programming

remove the song, with its line *Space shuttle fell from the sky/ and the whole world cried*, for a time. WQYK & WYUU/Tampa OM **Mike Culotta** put the Wills' song back in by Monday afternoon. He says it was removed for a time simply in deference to people's feelings. "We just never want a listener to call and say, 'Do you know what you just played?'" The Country outlets also "played more patriotic music, although we steered away from Toby Keith's 'put a boot in your ass' kind of thing. [Morning personality] **Skip Mahaffey** went on the air and talked about telling his kids, 'You'll always remember where you were when you heard about this.'

While Tampa is not directly affected by the space program, Culotta says, "Because we are in the flight path, everybody here waits for the sonic boom as it pops through. We always have the opportunity to see them." Culotta's stations all had live talent on the air Saturday morning and immediately picked up CNN coverage as information unfolded. They also carried the presidential and NASA news conferences live. With a huge community parade set for Saturday morning, Culotta believes it became even more

If you experienced transmission problems ... please call our Circulation Department at 310/788-1625.

© 2003 Radio & Records, Inc. All Rights Reserved No part of this material may be reproduced in any form or incorporated in any information retrieval system without written permission of the Publisher.

Jimmy Wayne

"This charter chapter in the musical life of **Jimmy Wayne** is just the beginning of what promises to be a long career. **STAY GONE** is a **brilliant** song from a very talented artist-writer." — **Moon Mullins/Journal Broadcasting**

"Jimmy Wayne **turned WYNK upside down**. Our conference room crowd loved him. Jimmy Wayne has **star power and stellar songs**. Now, if I could just get my hands on that CD ..."
— **Paul Orr, PD/WYNK Baton Rouge**

"Jimmy performed for our employees at a station meeting, and the reaction to his music was **overwhelming!** Jimmy made an **immediate, emotional connection**." — **Mike James, PD/KMDL Lafayette, LA**

"I think Jimmy's **great**. When he opened his mouth to sing, **it blew me away**. It stopped me - I was not prepared for that kind of soul. I think **the prophet's** going to be somebody."
— **Justin Case, PD/US-99.5 Chicago**

"Stay Gone"

Airplay impact
2/10



We Believe
in Jimmy Wayne

"Traditional with and edge! Amy Dalley is a Hit Artist!"

— JD Cannon/WFMS

CURB
RADIO RECORDS
curb.com

important to get the most up-to-date news on the air quickly. "Hundreds of thousands of people weren't at home; they were on the road going to the parade, or they were at the parade."

With NASA's Marshall Space Flight Center located in his market, **Wes McShay**, OM of Clear Channel's WDRM/Huntsville, AL, believes coverage of Saturday's events was particularly important. Huntsville is also home to two Boeing plants that work on the rockets for a lot of spacecraft, he says. Clear Channel/Huntsville's stations were all airing voicetracked or syndicated programming with one board technician in the studio when Saturday's events unfolded. WDRM went to national news coverage at the top of every hour and cut in with updates two other times during each hour.

Ochs Returns To WQYK

WLLD, WRBQ & WSJT/Tampa VP/GM **Charlie Ochs** has been promoted to SVP/Market Manager for Infinity/Tampa. In addition to the CHR/Rhythmic, Oldies and Smooth Jazz stations, Ochs will now also oversee Country combo WQYK & WYUU, Sports WQYK-AM and the Tampa Bay Buccaneers Radio Network. He assumes those responsibilities from **Tom Rivers**, who is now OM of WUSN/Chicago. (See story, below.)

This marks a return to WQYK and to Country for Ochs, who has spent 31 of his 40 years in the radio business in the format. Ochs was WQYK's VP/GM from 1987-90, when he took the VP/GM post for WMZQ/Washington. He spent 10 years at the station before returning to Tampa in 2000. Ochs has also done mornings at KNIX/Phoenix and KIKK/Houston, programmed KIKK, and was VP/GM at KCBQ/San Diego.

Rivers Runs To WUSN

R&R's *Country HOT FAX* was the first to tell you last week that WQYK-AM & FM & WYUU/Tampa VP/GM **Tom Rivers** would soon be leaving for a post at an Infinity sister station and that you might be surprised where he was headed. Well, as we told you in the Country Format

Room at www.radioandrecords.com on Jan. 30, Rivers has accepted the OM post at WUSN/Chicago. He succeeds Eric Logan, who was promoted in November 2002 to VP/Programming for Infinity Broadcasting and is now based in New York.

Rivers joined WQYK in 1987 and held a variety of posts, including PD, MD and midday air talent. He was elevated to VP/GM in 1998 and added VP/GM duties for the other properties when they were acquired in 1999.

Richards Joins ABC Atlanta

Former KMPS/Seattle PD **Mark Richards** has been OM/PD of Cox's Oldies WFOX/Atlanta since January 2001. On Friday, Richards lost his station, as WFOX began stunting and yesterday morning flipped to an Urban format. Yesterday afternoon, word got out that Richards had already secured himself a new gig. He'll now serve as OM for ABC's Country combo in Atlanta, WKHX & WYAY. He succeeds **Dene Hallam**, who left the stations in September 2002.

Richards, who starts his new duties today, programmed KMPS from April 1997 until departing for Atlanta. Prior to KMPS, he programmed Country WKHK/Richmond for a 3 1/2-year-period. His programming background also includes stints at WQDR/Raleigh and WGSQ-FM & WPTN/Cookeville, TN.

Knippers Returns To Programming

Former WSOC/Charlotte air personality and WRNS/Greenville, NC PD **Dale Knippers** has been named PD/afternoon driver at KIXX/Tyler, TX. He replaces **Gary Greenwood**, who exited a couple of weeks ago. He can be reached at 903-759-1061 or at pd@thebull993.com. The move reunites him with owner **Rusty Reynolds**, for whom Knippers previously toiled at KYKS/Lufkin, TX and KIXS/Victoria, TX. (Country Format Room at www.radioandrecords.com, 1/30.)

CRS 34 Update

Toby Keith is among the many performers participating in CRS-34 this month. He'll partake in a Friday

If you experienced transmission problems ... please call our Circulation Department at 310/788-1625.

© 2003 Radio & Records, Inc. All Rights Reserved No part of this material may be reproduced in any form or incorporated in any information retrieval system without written permission of the Publisher.

**AMY DALLEY
WRITES SONGS THE
WAY PEOPLE TALK...
SHE'S GOT LOT'S
AND LOT'S OF STYLE!**

JUSTIN CASE / WUSN

CURB
RADIO RECORDS
www.curb.com

THE
DEBUT
SINGLE

**LOVE'S GOT
AN ATTITUDE
(IT IS WHAT IT IS)**

AMY DALLEY

ON YOUR DESK THIS WEEK

UNLEASHED ON TOUR WITH TOBY KEITH!

afternoon session called A Decade of Hits: An Intimate Chat with Toby Keith. *After Midnite* host **Blair Garner** will interview Keith, who will also perform acoustically. Opening ceremonies set for Thursday morning will feature the national anthem as performed by **Lonestar**. **Brooks & Dunn** will then present the Humanitarian Award. Thursday's MC/Mercury lunch will feature **Vince Gill** and **Gary Allan**, while the ASCAP/RCA Label Group lunch show on Friday will be highlighted with performances by **Diamond Rio**, **Brad Paisley** and **Aaron Lines**.

•We're nearing the last call for those who want to attend the **Jaye Albright & Michael O'Malley** pre-CRS seminar but haven't signed up as yet. The meeting is set for the morning of Feb. 19 in the Renaissance Hotel's Tennessee ballroom and is open to all those in noncompetitive situations with Albright & O'Malley client stations. However, an invitation is required. Get an invite by contacting O'Malley at 732-937-5757 or at mike@radioconsult.com or Albright at 206-498-6261 or at Jaye@radioconsult.com. Just added to the agenda: Research Director Inc.'s **Rhody Bosley** will be on hand to share the latest Arbitron ratings strategies, and Lyric Street's **Brian McComas** will perform.

•The advance registration price for CRS-34 will expire on Friday. The cost is \$469 and jumps to the full price of \$535 on Feb. 8.

St. Jude Updates

Country Cares For St. Jude's Kids radiothons are in full swing, and here are some updates from recent events:

•The WMZQ/Washington radiothon held Jan. 31 and Feb. 1 raised \$727,177 despite slow phones on Saturday following the space shuttle Columbia tragedy. Highlights included a pancake breakfast on Saturday and a concert from Aaron Lines.

•WGH-FM/Norfolk had its best-ever radiothon, raising over \$258,000.

Radio News

Programming: WQIK & WROO/Jacksonville PD **Marshall Howell** departs the two Country outlets for a position in the health care industry. No word on

whether or not a replacement will be named ... WDDD-FM/Marion-Carbondale, IL PD/morning co-host **Tess Taylor** exits. T&Rs to Clear Channel/Marion-Carbondale, IL OM Paxton Guy at WDDD, 1822 North Court Street, Marion, IL 62959 ... WWFG/Salisbury-Ocean City, MD MD/middayer and four-year station vet **Sandra Lee** adds Asst. PD duties. PD **Brian Cleary** says she's being rewarded for all her hard work with additional hard work.

Personalities: WKHX/Atlanta evening talent **Kevin O'Brien** leaves the shift, which is now being handled by **Wylie Rose**, who is upped from part-time status ... KIIM-FM/Tucson restructures its morning show. OM/morning host **Herb Crowe** is now joined by **Betsy Bruce**, who worked at the market's CHR/Pop KRQQ for 11 years. Exiting wake-ups are **Kris Daniels**, who tells the *Arizona Daily Star* that she is considering several offers — including one in Nashville, and newperson **Jeff Martin**.

At KTEX/McAllen-Brownsville, PD **Jo-Jo Cerda** moves from afternoons to morning drive, where he will team with **Amanda Flores** following the exit of **Aimee Martinez**. MD/morning personality **Patches** moves to afternoons.

There's some shufflin' goin' on in Northwest Arkansas as **Samantha Adams** and **Craig Morrison** leave KBTN/Joplin, MO's *Morning Jungle* to join KMAG/Ft Smith, AR. Morrison, who was also KBTN's PD, will now be MD/afternoons at KMAG. Adams, who was also KBTN's Promotions Director, will do middays and imaging. Meanwhile, over in Fayetteville, KKIX has moved afternoon driver **Jake McBride** to mornings where he will team with **Christa Banks**, who is newly arrived from middays at KMAG/Ft. Smith, AR. KKIX OM/PD **Tom Travis** segues to afternoons.

Syndication: United Stations' *Country Giants* series begins airing nationally in the second week of February, with KZLA/Los Angeles midday personality **Shawn Parr** as host. The show's lineup for 2003 includes stories from Alan Jackson, George Strait, Brooks & Dunn and Tim McGraw.

If you experienced transmission problems ... please call our Circulation Department at 310/788-1625.

© 2003 Radio & Records, Inc. All Rights Reserved No part of this material may be reproduced in any form or incorporated in any information retrieval system without written permission of the Publisher.

EPIC/MONUMENT HAS THE CURE FOR YOUR LATE WINTER BLUES

"Travelin' Soldier"

THE LATEST OPEN WIDE/MONUMENT SINGLE FROM

DIXIE CHICKS

R&R: **10-9** up 1745 points/700 spins
MOST INCREASED POINTS/SPINS!!

Billboard: 15*-10* +680 GREATEST GAINER!!

Top 5 callout COAST-TO-COAST!!



"Love Won't Let Me"

THE LATEST EPIC/MONUMENT SINGLE FROM

TAMMY COCHRAN

R&R: **40-37**

Billboard: 45*-39*



"I... am ... Spartacus!"



New Believers:

**WUBE WHOK WYUU WFMS WLLR WGGY
 WBCT KUZZ WPOR WGKX KKAT KVOO**



- On tour and in front of over a million people with George Strait!
- Come see Tammy at The New Faces Show at CRS 2003!

Label News

Lost Highway Sr. Director/Media & Artist Relations **Jim Flammia** is promoted to VP. In this expanded role, Flammia will continue to be responsible for publicity campaigns for Lost Highway artists while also now overseeing all tour press for artists on the Lost Highway, Mercury and MCA/Nashville.

- Sony/Nashville hires **Noelle Oliver** as A&R Coordinator. She joins from her position as OM at Jody Williams Publishing. A&R staffer **Michael Hiatt** departs Friday and is moving to Colorado.

Industry News

The CMA Awards will again get coveted airtime during the November ratings sweeps. The 37th Annual CMA Awards is slated for Wednesday, Nov. 5, 2003 on CBS-TV. Walter Miller will again be the show's producer.

Meanwhile, the 38th Annual Academy of Country Music Awards will be a lot different this year, not just because they will be held in Las Vegas but also because the ACM has redesigned their trophy. The new statuette will preserve the signature cowboy hat, but adopt a newer, sleek look. The ACM Awards telecast will take place May 21 on CBS-TV.

Ted Greene and **Brenner Van Meter** have joined to form a new Nashville management company, Modern Management Inc. The company already oversees the careers of **Diamond Rio**, **Sara Evans** and best-selling author **Scott McKain**. Also joining the staff of Modern Management are VP **Renee Behrman-Greiman**, Touring & Production Coordinator **Re Gupta** and Management Coordinator **Jessica Baum**.

Chart Chat

Congrats to Mercury's Promo Doms **Michael Powers** and **John Ettinger** and, of course, their entire crew as they celebrate five weeks at No. 1 with **Mark Wills'** "19 Somethin."

Stationality

Be sure to check out Friday night's episode of *Reba* on the WB network, as WSOC/Charlotte OM/PD/morning personality **Jeff Roper** makes an appearance.

You'll have to tune in to learn his role, but he does offer the tip that "someone dies" in this special musical episode.

Ever on the lookout for self-promotional opportunities, Roper also managed to sneak onto the set of *The Young And The Restless* during his trip to La-La Land. Look for his mug in an upcoming episode of that daytime drama. And, if that weren't enough, Roper and morning show sidekick **Carrie Ann** crashed KZLA's New Faces show, giving Charlotte native **Jimmy Wayne** as well as **Aaron Lines**, **Jennifer Hanson**, **Kellie Coffey** and **Dusty Drake** a chance to appear on the east coast during WSOC's morning show broadcasts from California.

Additionally, WSOC recently raised more than \$10,000 for the Juvenile Diabetes Research Foundation at a benefit concert with **Steve Holy** and **Andy Griggs**. And, Roper is also spearheading a fund for **Tim Hayes**, a Charlotte-area paramedic who was seriously injured while assisting another injured motorist during the recent snowstorms in North Carolina. The fund, collected through area banks, has already received more than \$150,000.

- A lot of stations do wedding promotions leading up to Valentine's Day, but probably one of the most, er, ribbeting is WOGI/Pittsburgh's My Big Fat Froggy Wedding promotion. The winning couple will be married during afternoon drive on the *Danger Frog Show*. And, as if that weren't incentive enough, they also receive about \$5,000 in prizes, including rings, a wedding gown, tuxedos, limo service, a honeymoon, and a mattress and box spring set.

VIDEO ADDS

GREAT AMERICAN COUNTRY	
MARY CHAPIN CARPTENTER, SHERYL CROW, EMMYLOU HARRIS	Flesh And Blood
KEITH URBAN	Somebody Like You (movie edit)
CMT	
MARY CHAPIN CARPTENTER, SHERYL CROW, EMMYLOU HARRIS	Flesh and Blood

If you experienced transmission problems ... please call our Circulation Department at 310/788-1625.

© 2003 Radio & Records, Inc. All Rights Reserved No part of this material may be reproduced in any form or incorporated in any information retrieval system without written permission of the Publisher.

Jo Dee Messina Was That My Life

Big Spinners

KILT WUSN KPLX KSCS
KBEQ WXBQ WIRK KSOP

16 Adds Including

KEEY KNIX WMIL WAMZ
KUPL WCKT KZSN WLLR
WRNS KMDL WGTY WOKQ WCTQ

R&R **34** +146 BB **38** +156

CURB
RECORDS
www.curb.com

Most
Added
Again

Steve Holy
Rock-A-Bye
Heart

R&R DEBUT **49**
BB **55** - **48**

Added This Week

KNIX WXTU WSIX WSSL
WKLB KBEQ WDAF WGGY
WHOK KRST WSM WEZL KIXZ
WCTQ KXKC WPUR WKML

• KHOZ/Harrison, AR has produced a moving tribute to the crew of the space shuttle Columbia. They'll MP3 it to you if you make a request at KHOZFM@alltel.net.

Chronicle

Heartiest congratulations to Infinity Broadcasting VP **Eric Logan** and former WQYK-AM/Tampa Sports Talk hostess **Erin Ritter**, who will be married tomorrow in Maui.

— **Lon Helton/R&R Country Editor** (615) 244-8822

Email: lhelton@radioandrecords.com

— **Angela King/R&R Asst. Country Editor** (615) 244-8822

Email: aking@radioandrecords.com

MUSIC NOTES

Details of a huge fundraising concert to benefit the Dale Earnhardt Foundation will be made public on Thursday as the late Winston Cup champion's wife, Teresa, announces the lineup, which features a number of Country and CHR performers on the bill. The concert, set for later this summer, promises to feature some of the biggest names in music today. The date and location of the event will be revealed at the Thursday press conference, which will be held in Daytona Beach.

Martina McBride will be keeping some pretty big (or, at least much taller) company on Sunday, as she's slated to sing the national anthem at the 2003 NBA All-Star Game in Atlanta. The telecast begins at 7:30 pm ET on TNT. **Mariah Carey** will be performing at halftime.

There are some adjustments to announce concerning RCA/Nashville's planned tribute album to **Waylon Jennings**. The original street date of April 1 has been pushed back to May 6, while **Phil Vassar's** planned duet with Matchbox 20's **Rob Thomas** has been cancelled due to scheduling conflicts. Among those slated to participate on the *I've Always Been Crazy: A Tribute To Waylon Jennings* album are **Travis Tritt**, **Hank Williams Jr.** and **John Mellencamp**. **Kenny Chesney** will do a duet with **Kid Rock**.

Keith Urban, whose vocal cord problems required him to cancel several appearances last week, is being ordered by his doctor to cancel performances for at least another six weeks. As a result, he won't be hosting WCRS Live or attending the artist-taping session scheduled during this year's Country Radio Seminar. He also won't be able to tour Canada with Carolyn Dawn Johnson this month. According to his physician, Urban risks permanent damage to his vocal cords if he resumes speaking or singing prematurely. Urban wrote, "There are no words to express my disappointment, but I know that I need to abide by my doctors' instructions so that I am completely healthy in time to kick off the tour with Kenny Chesney in April." Country Radio Broadcasters have not decided on a replacement for Urban at CRS.

Want to know the best place to spot **Faith Hill** while in Nashville? If it's early in the day, you may want to peak in the window at a Waffle House. Faith recently offered her take on Nashville for American Airlines' in-flight magazine and cited Waffle House as the best place for breakfast, where apparently she has her hash browns scattered, smothered, covered and chunked. She also recommends legendary hotspots like Tootsie's Orchid Lounge as a place to discover new music.

Faith is among the performers already announced to play at the 45th Annual Grammy Awards, set for Feb. 23. She joins Coldplay, Norah Jones, Bruce Springsteen, and Nelly, who'll share the stage with Kelly Rowland.

The recent earthquake that hit Colima, Mexico helped **Diamond Rio's** Dan Truman put some things in perspective. The quake, which registered 7.6 on the richter scale, killed 29 people and rocked the condo where Truman and some family members were enjoying a vacation. "A beautiful Mexican beach, a million-selling CD ... they become way unimportant," Truman says. "I've never felt more helpless or unable to move." Truman and his family were unhurt by the temblor.

If you experienced transmission problems ... please call our Circulation Department at 310/788-1625.

© 2003 Radio & Records, Inc. All Rights Reserved No part of this material may be reproduced in any form or incorporated in any information retrieval system without written permission of the Publisher.

TAKE WSM-AM into the future!

WSM-AM, **R&R's** Station of the Century, has an immediate opening for a Program Director.

Overnight Tapes and Resumes to Frankie Allen at:

**1 Gaylord Drive, Nashville, TN 37214 or
email resumes to careers@gaylordentertainment.com**

Gaylord is an EEOC employer

Some heavy metal reports are just in: The **Dixie Chicks'** *Home* CD has been certified five-times Platinum, their label reports. The project has now outsold their previous project, *Fly*, by several hundred-thousand units. **Martina McBride's** *Greatest Hits* has been certified double-Platinum by the RIAA. The disc also includes several new hits, such as "Concrete Angel" and "Blessed." **Reba McEntire Live** has been certified Platinum by the RIAA. It becomes the 15th project by the artist to reach or surpass that level of success. **Trace Adkins'** *Chrome* hits the Gold mark.

He may not be someone you'd want to pick out your home decor, but **Cledus T. Judd's** home will be featured in an upcoming issue of *Atlanta Homes &*

Lifestyle magazine. This issue should be available by the end of February or in March.

The Margaritas & Senioritas tour came to Tampa this weekend and **Montgomery Gentry** took the stage sporting Tampa Bay Buccaneers jerseys in a salute to the new Super Bowl champs. Bucs wide receiver Joe Jurevicius was in attendance and went backstage after the show to drink some Jim Beam with the boys. The conversation was a little more tame than you might expect, though. Troy and Joe, both fathers of premature babies, exchanged tips on baby care.

— Angela King/R&R Asst. Country Editor (615) 244-8822
Email: aking@radioandrecords.com

RANDOM FAX®

Tuesday, 2/04

BIRTHDAYS: Clint Black, Michelle Boyer, Carlton Davis, Angel Curry
On TV: NBC: **Kenny Chesney** on *The Late Show with Conan O'Brien* ... CMT: **Deana Carter** on *Inside Fame* (Episode Premiere); **Dolly Parton** on *CMT Showcase* ... GAC: **Phil Vassar** hosts the *Top 20 Country Countdown*

Wednesday, 2/05

BIRTHDAYS: Sara Evans, Cindy Mabe
On TV: CMT: **Rascal Flatts** — *Live From The Sunset Strip*; *Stranded* with **Kenny Chesney**, **Gary Allan**, **Andy Griggs**, **Keith Urban** on *CMT Inside Fame* — *Breaking Through*

Thursday, 2/06

BIRTHDAYS: Dan Seals, Anita Cochran
On TV: CMT: **Montgomery Gentry** on *Total Release*; **Brooks & Dunn** on *Star Pads*; **Brooks & Dunn** on *MWL Stacked*; *Top 20 Countdown*

Friday, 2/07

BIRTHDAYS: Wilma Lee Cooper, Garth Brooks, Summer Harman, Kenya Walker
On TV: TNT: **Tim McGraw** on *NBA All-Star Celebrity* ... CMT: **Ruby Jean** and **Joe** on *Cowboy Cool Theater*; **Toby Keith** — *Live, Uncut & Unleashed* on *MWL Special*; **Blake Shelton** on *MWL Star*

Saturday, 2/08

BIRTHDAYS: Dan Seals, David Bryan, Kevin Carlson, Kimberly Dunn, David Friedman
On TV: PBS: **Stevie Ray Vaughan** — *The Outtakes on Austin City Limits* ... CMT: **Emerson Drive** on *MWL Saturday Night*; **John Anderson**, **Mark Chestnutt** on *Opry Live*; **Emerson Drive** on *MWL*; **Trace Adkins** on *Inside Fame*

Sunday, 2/09

BIRTHDAYS: Travis Tritt, Joe Ely, Danni Leigh, Rich McCready, Anne Sarodsy, Tamara Saviano, Lisa Wahnish, Janie West, Carla Wallace
On TV: History Channel: **Willie Nelson** and **Kris Kristofferson** on *American Veteran Awards* ... TNT: **Martina McBride** sings the national anthem at the *NBA All-Star Game*

Monday, 2/10

BIRTHDAYS: Lionel Cartwright, Misti Filipiak, Robin Gordon, Scott Heuerman, Shauna Mosley, Chris Palmer
On TV: CMT: **Mark Wills** on *MWL Star* ... GAC: **Pam Tillis** CD special on *Behind The Scenes*

If you experienced transmission problems ... please call our Circulation Department at 310/788-1625.

© 2002 Radio & Records, Inc. All Rights Reserved No part of this material may be reproduced in any form or incorporated in any information retrieval system without written permission of the Publisher.



LYRIC SYREY
RECORDS

AARON & THEA TIPPIN

5 POINT MOVE ... 46 - 41

latest believers include:

KSSN/Little Rock	KSOP/Salt Lake City
WDAF/Kansas City	WRNS/Kinston
KKCS/Colorado Springs	KTOM/Monterey
WSLC/Roanoke	

Now more than ever ...

*"Love Like There's
No Tomorrow"*

LW	TW	ARTIST Title Label(s)	Total Points	+/- Points	Total Plays	+/- Plays	Wks on Chart	Total Sta/Add
1	1	MARK WILLS 19 Somethin' (Mercury)	17483	-1006	6140	-298	18	149/0
2	2	BLAKE SHELTON The Baby (Warner Bros.)	15877	+239	5713	+169	14	149/0
4	3	TERRI CLARK I Just Wanna Be Mad (Mercury)	15510	+594	5495	+221	23	148/0
3	4	EMERSON DRIVE Fall Into Me (DreamWorks)	14260	-874	5063	-346	29	148/0
5	5	AARON LINES You Can't Hide Beautiful (RCA)	13497	+24	4912	+41	24	148/0
7	6	GARY ALLAN Man To Man (MCA)	12979	+358	4716	+125	18	148/0
8	7	JOE NICHOLS Brokenheartsville (Universal South)	10660	+1011	3771	+380	14	143/2
9	8	BRAD PAISLEY I Wish You'd Stay (Arista)	10544	+898	3939	+318	23	146/0
10	9	DIXIE CHICKS Travelin' Soldier (Monument)	10348	+1745	3649	+700	16	148/4
14	10	ALAN JACKSON That'd Be Alright (Arista)	8297	+1117	2838	+374	6	144/6
12	11	TRACE ADKINS Chrome (Capitol)	8251	+239	3254	+113	18	138/2
13	12	SHANIA TWAIN Up! (Mercury)	8144	+241	2960	+114	8	135/1
11	13	LONESTAR Unusually Unusual (BNA)	7644	-933	2843	-378	22	142/1
15	14	JENNIFER HANSON Beautiful Goodbye (Capitol)	7353	+259	2726	+66	24	132/3
16	15	VINCE GILL Next Big Thing (MCA)	7325	+349	2707	+95	12	143/4
24	16	KENNY CHESNEY Big Star (BNA)	6494	+1562	2244	+542	5	141/13
19	17	KEITH URBAN Raining On Sunday (Capitol)	6369	+464	2384	+155	8	139/6
17	18	TRICK PONY On A Mission (H2E/WB)	6176	-647	2368	-217	21	135/0
21	19	DIAMOND RIO I Believe (Arista)	5843	+240	2241	+112	9	132/5
23	20	MARTINA MCBRIDE Concrete Angel (RCA)	5789	+560	2122	+260	11	136/7
20	21	FAITH HILL When The Lights Go Down (Warner Bros.)	5737	+36	1995	+43	11	126/4
22	22	DEANA CARTER There's No Limit (Arista)	5647	+226	2164	+43	14	136/1
18	23	KELLIE COFFEY At The End Of The Day (BNA)	5484	-1227	2014	-522	25	138/0
27	24	TIM MCGRAW She's My Kind Of Rain (Curb)	5206	+830	1831	+397	5	129/22
26	25	CHRIS CAGLE What A Beautiful Day (Capitol)	4753	+219	1638	+67	11	116/7

(c) 2003 Radio & Records, Inc.

Impact Date: 2/10

BRETT JAMES

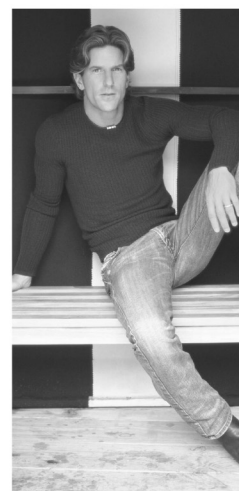
"After All"

"An amazing song with a very cool vibe."

- Bruce Logan, Clear Channel-Regional Vice-President of Programming

"Brett James' 'After All' is so well written and so passionately sung that this could be THE love song of 2003."

- Renee' Revett, Program Director, KXKC



LW	TW	ARTIST	Title	Label(s)	Total Points	+/- Points	Total Plays	+/- Plays	Wks on Chart	Total Sta/Add
28	26	TOBY KEITH	Rock You Baby	(DreamWorks)	4731	+1226	1682	+392	4	127/10
25	27	DARRYL WORLEY	Family Tree	(DreamWorks)	4301	-350	1674	-129	16	121/0
29	28	PHIL VASSAR	This Is God	(Arista)	4087	+609	1493	+240	5	112/10
30	29	JEFF BATES	The Love Song	(RCA)	3402	+116	1278	+63	5	112/7
34	30	JESSICA ANDREWS	There's More To Me Than You	(DreamWorks)	2585	+609	1066	+208	5	108/7
Breaker	31	RASCAL FLATTS	Love You Out Loud	(Lyric Street)	2574	+1155	897	+439	3	106/30
32	32	RANDY TRAVIS	Three Wooden Crosses	(Word/Curb/Warner Christian)	2537	+119	718	+73	8	62/11
Breaker	33	MONTGOMERY GENTRY	Speed	(Columbia)	2235	+447	954	+166	5	105/19
35	34	JO DEE MESSINA	Was That My Life	(Curb)	2209	+359	719	+146	4	88/16
37	35	CRAIG MORGAN	Almost Home	(Broken Bow)	1895	+143	859	+84	14	81/10
38	36	PINMONKEY	I Drove All Night	(BNA)	1657	+87	697	+39	9	87/3
40	37	TAMMY COCHRAN	Love Won't Let Me	(Epic)	1523	+236	664	+87	4	89/11
42	38	TRAVIS TRITT	Country Ain't Country	(Columbia)	1435	+297	550	+97	3	78/19
41	39	KID ROCK W/SHERYL CROW	Picture	(Lava/Atlantic)	1180	-62	344	-3	16	15/2
43	40	TIM MCGRAW F/ELTON JOHN	Tiny Dancer	(Curb)	1050	-30	228	+6	7	4/0
46	41	AARON TIPPIN F/THEA TIPPIN	Love Like There's No Tomorrow	(Lyric Street)	1021	+148	468	+68	4	67/7
45	42	TOBY KEITH	Beer For My Horses	(DreamWorks)	887	-181	127	-25	8	1/0
Debut	43	SAMMY KERSHAW	I Want My Money Back	(Audium)	844	+324	354	+129	1	56/18
48	44	TEBEY	We Shook Hands (Man To Man)	(BNA)	542	-103	248	-26	4	37/3
Debut	45	CHARLIE DANIELS/TRAVIS TRITT	Southern Boy	(Blue Hat/Audium)	534	+58	227	+2	1	31/0
Debut	46	ALISON KRAUSS	The Lucky One	(Rounder)	509	+152	138	+60	1	14/3
-	47	CROSS CANADIAN RAGWEED	17	(Universal South)	488	-10	91	-11	2	8/0
Debut	48	ANTHONY SMITH	Half A Man	(Mercury)	483	+100	190	+59	1	48/23
Debut	49	STEVE HOLY	Rock-A-Bye Heart	(Curb)	463	+102	187	+56	0	52/21
Debut	50	JOHN MICHAEL MONTGOMERY	Country Thang	(Warner Bros.)	422	-159	201	-5	0	34/8

(c) 2003 Radio & Records, Inc.

SAMMY KERSHAW


**R&R:
Highest Debut**
43
+129 spin increase

**MOST ADDED
again with 18
New Stations**
**Album in stores
March 25th**

**"I
Want
My
Money
Back"**

 AUDIUM
records

Spin Highlights
KSCS 20, KFKF 12, KXKC 27, KIXZ 26, WYNK 19, KJUG 17, WPCV 14, KDRK 13

(c) 2003 Radio & Records, Inc.

NEW & ACTIVE

RADNEY FOSTER Scary Old World (*Dualtone*)
Total Plays: 111, Total Stations: 17, Adds: 4

STEVE WARINER Snowfall On The Sand (*Selectone*)
Total Plays: 108, Total Stations: 16, Adds: 3

HOLLY LAMAR Unkissed (*Universal South*)
Total Plays: 55, Total Stations: 15, Adds: 4

Songs ranked by total plays

MOST INCREASED POINTS

ARTIST Title Label(s)	Total Pt. Increase
DIXIE CHICKS Travelin' Soldier (<i>Monument</i>)	+1745
KENNY CHESNEY Big Star (<i>BNA</i>)	+1562
TOBY KEITH Rock You Baby (<i>DreamWorks</i>)	+1226
RASCAL FLATTS Love You Out Loud (<i>Lyric Street</i>)	+1155
ALAN JACKSON That'd Be Alright (<i>Arista</i>)	+1117
JOE NICHOLS Brokenheartsville (<i>Universal South</i>)	+1011
BRAD PAISLEY I Wish You'd Stay (<i>Arista</i>)	+898
TIM MCGRAW She's My Kind Of Rain (<i>Curb</i>)	+830
DIXIE CHICKS Star Spangled Banner (<i>Monument</i>)	+630
JESSICA ANDREWS There's More To Me Than You (<i>DreamWorks</i>)	+609

MOST ADDED

ARTIST Title Label(s)	Adds
RASCAL FLATTS Love You Out Loud (<i>Lyric Street</i>)	30
ANTHONY SMITH Half A Man (<i>Mercury</i>)	23
TIM MCGRAW She's My Kind Of Rain (<i>Curb</i>)	22
STEVE HOLY Rock-A-Bye Heart (<i>Curb</i>)	21
MONTGOMERY GENTRY Speed (<i>Columbia</i>)	19
TRAVIS TRITT Country Ain't Country (<i>Columbia</i>)	19
SAMMY KERSHAW I Want My Money Back (<i>Audium</i>)	18
JO DEE MESSINA Was That My Life (<i>Curb</i>)	16
KENNY CHESNEY Big Star (<i>BNA</i>)	13
TAMMY COCHRAN Love Won't Let Me (<i>Epic</i>)	11
RANDY TRAVIS Three Wooden Crosses (<i>Word/Curb/Warner Christian</i>)	11
TOBY KEITH Rock You Baby (<i>DreamWorks</i>)	10
PHIL VASSAR This Is God (<i>Arista</i>)	10
CRAIG MORGAN Almost Home (<i>Broken Bow</i>)	10

MOST INCREASED PLAYS

ARTIST Title Label(s)	Total Play Increase
DIXIE CHICKS Travelin' Soldier (<i>Monument</i>)	+700
KENNY CHESNEY Big Star (<i>BNA</i>)	+542
RASCAL FLATTS Love You Out Loud (<i>Lyric Street</i>)	+439
TIM MCGRAW She's My Kind Of Rain (<i>Curb</i>)	+397
TOBY KEITH Rock You Baby (<i>DreamWorks</i>)	+392
JOE NICHOLS Brokenheartsville (<i>Universal South</i>)	+380
ALAN JACKSON That'd Be Alright (<i>Arista</i>)	+374
BRAD PAISLEY I Wish You'd Stay (<i>Arista</i>)	+318
MARTINA MCBRIDE Concrete Angel (<i>RCA</i>)	+260
PHIL VASSAR This Is God (<i>Arista</i>)	+240

PUUUSSSHHH!

RR **2**

BLAKE SHELTON
"THE BABY"

BB **2**

"The Baby" is the best country single released in 2002
-Chicago Sun-Times

THE CRITICALLY ACCLAIMED ALBUM, "The Dreamer," IN STORES NOW!



(c) 2003 Radio & Records, Inc.

MOST PLAYED RECURRENTS

ARTIST Title Label(s)	Total Plays
GEORGE STRAIT She'll Leave You With A Smile (MCA)	3902
RASCAL FLATTS These Days (Lyric Street)	3358
KEITH URBAN Somebody Like You (Capitol)	3226
TOBY KEITH Who's Your Daddy? (DreamWorks)	3122
DIAMOND RIO Beautiful Mess (Arista)	2579
DIXIE CHICKS Landslide (Monument)	2141
KENNY CHESNEY The Good Stuff (BNA)	2048
KENNY CHESNEY A Lot Of Things Different (BNA)	1983
TIM MCGRAW Red Ragtop (Curb)	1882
TRACY BYRD Ten Rounds With Jose Cuervo (RCA)	1710
JOE NICHOLS The Impossible (Universal South)	1665
TOBY KEITH Courtesy Of The Red, White... (DreamWorks)	1421
GEORGE STRAIT Living And Living Well (MCA)	1323
DARRYL WORLEY I Miss My Friend (DreamWorks)	1285
MARTINA MCBRIDE Where Would You Be (RCA)	1274
STEVE AZAR I Don't Have To Be (Till...) (Mercury)	1249
ALAN JACKSON Drive (For Daddy Gene) (Arista)	1207
ALAN JACKSON Work In Progress (Arista)	1176
TOBY KEITH My List (DreamWorks)	1145
MONTGOMERY GENTRY My Town (Columbia)	1128

GOING FOR ADDS

2/10	BRETT JAMES After All (Arista)
	JIMMY WAYNE Stay Gone (DreamWorks)
	MARK CHESNUTT I'm In Love With A Married Woman (Columbia)
	MEMARIE I Need A Change (Capitol)
2/17	KELLIE COFFEY Whatever It Takes (BNA)
	RONNIE BOWMAN Rise Above (Sugar Hill)
	TANYA TUCKER Old Weakness (Coming On Strong) (Tuckertime/Capitol)
2/24	
No adds	



149 Country reporters. Monitored airplay data supplied by Mediabase Research, a division of Premiere Radio Networks. Songs ranked by total points for the airplay week of 1/26/03-2/1/03. Bullets appear on songs gaining in points or remaining flat from previous week. If two songs are tied in total points, the song with the larger increase in points is placed first. Songs below No. 1 and down in plays and points for three consecutive weeks are moved to recurrent. Most Added is the total number of new adds officially reported to R&R by each reporting station. Songs unreported as adds do not count toward overall total stations playing a song. Most Increased Points lists the songs with the greatest week-to-week increases in total points. Breaker status is awarded to songs reported by 60% of the panel for the first time. Station Weight = AQH Persons + (Market rank X 10) divided by 4180. Gross Impressions equals Average Quarter Hour Persons times number of plays (times 100). Average Quarter Hour Persons used herein with permission from the Arbitron Company (copyright 2003, The Arbitron Company). (C) 2003, R&R, Inc.

RANDY TRAVIS
"Three Wooden Crosses"

1. Which artist is testing in the top 5 at KSCS?

- a. Randy Travis
- b. Dixie Chicks
- c. Terri Clark
- d. ALL OF THE ABOVE!

-Chris Huff-MD, KSCS/Dallas

2. KRKY's first call out ranks Randy Travis at:

- a. Top 15 (out of 34)
- b. 67% Total Positive
- c. Mainstream Country
- d. ALL OF THE ABOVE!

-Nate Deaton-MD, KRKY/San Jose

3. Which major markets have already added "Three Wooden Crosses?"

- a. Dallas, Chicago, Minneapolis, Kansas City, Cincinnati
- b. San Diego, Seattle, Houston, Baltimore, Tampa, Denver
- c. San Jose, Sacramento, Indianapolis, Milwaukee
- d. ALL OF THE ABOVE PLUS 46 MORE!

Test it for yourself!

Most Added with 11 new adds!



February 4, 2003

LW	TW	ARTIST Title Label(s)	Total Points	+/- Points	Total Plays	+/- Plays	Wks on Chart	Total Sta/Add
1	1	BLAKE SHELTON The Baby (Warner Bros.)	3531	-13	2778	-18	14	75/0
2	2	MARK WILLS 19 Somethin' (Mercury)	3331	-108	2638	-95	18	74/0
3	3	GARY ALLAN Man To Man (MCA)	3256	+129	2575	+92	20	73/0
4	4	TERRI CLARK I Just Wanna Be Mad (Mercury)	3127	+33	2488	+28	23	67/0
5	5	AARON LINES You Can't Hide Beautiful (RCA)	3080	+91	2469	+68	26	72/0
6	6	BRAD PAISLEY I Wish You'd Stay (Arista)	2845	-82	2234	-60	27	72/0
8	7	JOE NICHOLS Brokenheartsville (Universal South)	2842	+273	2271	+182	15	67/0
16	8	DIXIE CHICKS Travelin' Soldier (Monument)	2661	+647	2083	+489	7	74/3
10	9	TRACE ADKINS Chrome (Capitol)	2597	+130	2091	+114	19	74/0
7	10	EMERSON DRIVE Fall Into Me (DreamWorks)	2441	-215	1940	-201	32	62/1
14	11	ALAN JACKSON That'd Be Alright (Arista)	2269	+163	1796	+128	7	73/1
15	12	VINCE GILL Next Big Thing (MCA)	2179	+100	1724	+63	12	70/0
13	13	SHANIA TWAIN Up! (Mercury)	2133	+11	1717	+10	7	71/0
17	•	JENNIFER HANSON Beautiful Goodbye (Capitol)	2073	+63	1663	+39	24	73/1
9	15	LONESTAR Unusually Unusual (BNA)	2063	-440	1658	-332	24	63/0
18	16	KEITH URBAN Raining On Sunday (Capitol)	1928	+49	1560	+42	9	74/0
21	17	MARTINA MCBRIDE Concrete Angel (RCA)	1896	+205	1495	+161	10	72/2
20	18	DIAMOND RIO I Believe (Arista)	1894	+39	1524	+46	11	72/0
24	19	KENNY CHESNEY Big Star (BNA)	1717	+294	1345	+219	4	73/4
12	20	TRICK PONY On A Mission (H2E/WB)	1717	-468	1334	-396	24	57/0
22	21	DEANA CARTER There's No Limit (Arista)	1657	+27	1337	+22	15	70/0
25	22	TOBY KEITH Rock You Baby (DreamWorks)	1565	+204	1278	+166	4	72/0
27	23	TIM MCGRAW She's My Kind Of Rain (Curb)	1512	+318	1185	+241	2	75/6
26	24	CHRIS CAGLE What A Beautiful Day (Capitol)	1459	+161	1171	+133	10	68/4
29	25	PHIL VASSAR This Is God (Arista)	1401	+248	1102	+209	4	70/5

(c) 2003 Radio & Records, Inc.

CHARLIE ALLEN

"Better Said Than Done"

"Charlie has been a favorite of our show for some time now. His songs and lyrics are passionate and genuine country. He's got a heart as big as Tennessee and a voice to match it. We believe that Charlie is destined for stardom."

— John Boy of the John Boy & Billy Show.

Have YOU heard Charlie Allen yet?

Promotion Coordination: Debi Fleischer-Robin 615-352-8734

PARC
RECORDS

February 4, 2003

LW	TW	ARTIST Title Label(s)	Total Points	+/- Points	Total Plays	+/- Plays	Wks on Chart	Total Sta/Add
19	26	KELLIE COFFEY At The End Of The Day (BNA)	1289	-585	988	-474	26	51/0
28	27	FAITH HILL When The Lights Go Down (Warner Bros.)	1205	+22	971	+16	10	56/2
23	28	DARRYL WORLEY Family Tree (DreamWorks)	1146	-379	942	-296	18	47/0
32	29	RASCAL FLATTS Love You Out Loud (Lyric Street)	966	+283	787	+233	2	65/11
30	30	JESSICA ANDREWS There's More To Me Than You (DreamWorks)	966	+133	791	+108	6	63/5
31	31	JEFF BATES The Love Song (RCA)	952	+169	760	+138	3	58/7
34	32	RANDY TRAVIS Three Wooden Crosses (Word/Curb/Warner Christian)	789	+172	653	+120	8	44/7
36	33	MONTGOMERY GENTRY Speed (Columbia)	696	+122	573	+98	4	49/10
35	34	AARON TIPPIN F/THEA TIPPIN Love Like There's No Tomorrow (Lyric Street)	666	+91	537	+78	4	41/6
39	35	TAMMY COCHRAN Love Won't Let Me (Epic)	643	+187	521	+149	4	41/10
41	36	TRAVIS TRITT Country Ain't Country (Columbia)	636	+234	469	+148	3	36/9
38	37	JO DEE MESSINA Was That My Life (Curb)	625	+147	492	+110	3	44/7
42	38	PINMONKEY I Drove All Night (BNA)	417	+46	356	+37	11	25/2
43	39	DARON NORWOOD In God We Trust (H2E/Lofton Creek)	290	-22	254	-19	10	16/0
49	40	JOHN MICHAEL MONTGOMERY Country Thang (Warner Bros.)	280	+97	236	+85	2	27/9
50	41	SAMMY KERSHAW I Want My Money Back (Audium)	250	+69	202	+60	2	22/9
45	42	CHARLIE DANIELS/TRAVIS TRITT Southern Boy (Blue Hat/Audium)	240	-28	214	-23	7	16/0
47	43	CROSS CANADIAN RAGWEED 17 (Universal South)	212	+16	200	+17	3	14/1
Debut	44	ANTHONY SMITH Half A Man (Mercury)	178	+75	170	+69	1	16/5
48	45	KID ROCK F/ALLISON MOORER Picture (Lava/Universal South)	177	-6	148	-5	8	7/0
-	46	CRAIG MORGAN Almost Home (Broken Bow)	169	-7	161	-8	5	12/2
-	47	JAMIE LEE THURSTON It Can All Be Gone (View2/H2E)	167	+9	150	+11	2	14/1
Debut	48	HOLLY LAMAR Unkissed (Universal South)	119	+65	111	+63	1	12/6
Debut	49	TEBEY We Shook Hands (Man To Man) (BNA)	114	+17	107	+18	1	10/1
46	50	KEVIN DENNEY It'll Go Away (Lyric Street)	110	-91	90	-76	12	6/0

(c) 2003 Radio & Records, Inc.



"Yes!"

"THREE YEARS AND OUR DECALS STILL LOOK NEW."

Choose the decal printer more radio stations have relied on for 30 years.

Call Today!
800.331.4438
www.cgilink.com



Communication
Graphics Inc

THE DECAL COMPANY









(c) 2003 Radio & Records, Inc.

MOST ADDED

ARTIST Title Label(s)	Adds
RASCAL FLATTS Love You Out Loud (<i>Lyric Street</i>)	11
MONTGOMERY GENTRY Speed (<i>Columbia</i>)	10
TAMMY COCHRAN Love Won't Let Me (<i>Epic</i>)	10
TRAVIS TRITT Country Ain't Country (<i>Columbia</i>)	9
JOHN MICHAEL MONTGOMERY Country Thang (<i>Warner Bros.</i>)	9
SAMMY KERSHAW I Want My Money Back (<i>Audium</i>)	9
JEFF BATES The Love Song (<i>RCA</i>)	7
JO DEE MESSINA Was That My Life (<i>Curb</i>)	7
RANDY TRAVIS Three Wooden Crosses (<i>Word/Curb/Warner Christian</i>)	7
TIM MCGRAW She's My Kind Of Rain (<i>Curb</i>)	6
AARON TIPPIN F/THEA TIPPIN Love Like There's No Tomorrow (<i>Lyric Street</i>)	6
HOLLY LAMAR Unkissed (<i>Universal South</i>)	6
PHIL VASSAR This Is God (<i>Arista</i>)	5
JESSICA ANDREWS There's More To Me Than You (<i>DreamWorks</i>)	5
ANTHONY SMITH Half A Man (<i>Mercury</i>)	5
MARK CHESNUTT I'm In Love With A Married... (<i>Columbia</i>)	5
KENNY CHESNEY Big Star (<i>BNA</i>)	4
CHRIS CAGLE What A Beautiful Day (<i>Capitol</i>)	4
RADNEY FOSTER Scary Old World (<i>Dualtone</i>)	4
DIXIE CHICKS Travelin' Soldier (<i>Monument</i>)	3

MOST INCREASED POINTS

ARTIST Title Label(s)	Total Pt. Increase
DIXIE CHICKS Travelin' Soldier (<i>Monument</i>)	+647
TIM MCGRAW She's My Kind Of Rain (<i>Curb</i>)	+318
KENNY CHESNEY Big Star (<i>BNA</i>)	+294
RASCAL FLATTS Love You Out Loud (<i>Lyric Street</i>)	+283
JOE NICHOLS Brokenheartsville (<i>Universal South</i>)	+273
PHIL VASSAR This Is God (<i>Arista</i>)	+248
TRAVIS TRITT Country Ain't Country (<i>Columbia</i>)	+234
MARTINA MCBRIDE Concrete Angel (<i>RCA</i>)	+205
TOBY KEITH Rock You Baby (<i>DreamWorks</i>)	+204
TAMMY COCHRAN Love Won't Let Me (<i>Epic</i>)	+187

MOST INCREASED PLAYS

ARTIST Title Label(s)	Total Play Increase
DIXIE CHICKS Travelin' Soldier (<i>Monument</i>)	+489
TIM MCGRAW She's My Kind Of Rain (<i>Curb</i>)	+241
RASCAL FLATTS Love You Out Loud (<i>Lyric Street</i>)	+233
KENNY CHESNEY Big Star (<i>BNA</i>)	+219
PHIL VASSAR This Is God (<i>Arista</i>)	+209
JOE NICHOLS Brokenheartsville (<i>Universal South</i>)	+182
TOBY KEITH Rock You Baby (<i>DreamWorks</i>)	+166
MARTINA MCBRIDE Concrete Angel (<i>RCA</i>)	+161
TAMMY COCHRAN Love Won't Let Me (<i>Epic</i>)	+149
TRAVIS TRITT Country Ain't Country (<i>Columbia</i>)	+148
JEFF BATES The Love Song (<i>RCA</i>)	+138
CHRIS CAGLE What A Beautiful Day (<i>Capitol</i>)	+133
ALAN JACKSON That'd Be Alright (<i>Arista</i>)	+128
RANDY TRAVIS Three Wooden Crosses (<i>Word/Curb/Warner Christian</i>)	+120
TRACE ADKINS Chrome (<i>Capitol</i>)	+114
JO DEE MESSINA Was That My Life (<i>Curb</i>)	+110
JESSICA ANDREWS There's More To Me Than You (<i>DreamWorks</i>)	+108
MONTGOMERY GENTRY Speed (<i>Columbia</i>)	+98
GARY ALLAN Man To Man (<i>MCA</i>)	+92
JOHN MICHAEL MONTGOMERY Country Thang (<i>Warner Bros.</i>)	+85
AARON TIPPIN F/THEA TIPPIN Love Like There's No Tomorrow (<i>Lyric Street</i>)	+78
ANTHONY SMITH Half A Man (<i>Mercury</i>)	+69
AARON LINES You Can't Hide Beautiful (<i>RCA</i>)	+68
VINCE GILL Next Big Thing (<i>MCA</i>)	+63
HOLLY LAMAR Unkissed (<i>Universal South</i>)	+63
RADNEY FOSTER Scary Old World (<i>Dualtone</i>)	+63
SAMMY KERSHAW I Want My Money Back (<i>Audium</i>)	+60
KID ROCK W/SHERYL CROW Picture (<i>Lava/Atlantic</i>)	+57
DIAMOND RIO I Believe (<i>Arista</i>)	+46
KEITH URBAN Raining On Sunday (<i>Capitol</i>)	+42

63,782

UNIQUE VISITORS: 1/26/03 - 2/2/03

www.radioandrecords.com

The Industry's Leading Website





Artist Title (Label)	TW	W	Fam.	Burn	12+	Fam.	Burn
MARK WILLS 19 Somethin' (Mercury)	4.38	4.40	99%	19%	4.33	98%	22%
JOE NICHOLS Brokenheartsville (Universal South)	4.23	4.23	98%	23%	4.10	98%	25%
GARY ALLAN Man To Man (MCA)	4.19	4.15	97%	26%	3.92	95%	28%
DIAMOND RIO I Believe (Arista)	4.18	4.15	88%	14%	4.15	87%	12%
TERRI CLARK I Just Wanna Be Mad (Mercury)	4.18	4.20	96%	22%	4.09	96%	21%
GEORGE STRAIT She'll Leave You With A Smile (MCA)	4.18	4.24	84%	15%	3.93	85%	15%
BRAD PAISLEY I Wish You'd Stay (Arista)	4.17	4.27	94%	26%	4.11	94%	25%
ALAN JACKSON That'd Be Alright (Arista)	4.17	4.12	92%	25%	3.74	91%	27%
DIXIE CHICKS Travelin' Soldier (Monument)	4.16	4.00	88%	19%	3.63	87%	24%
MARTINA MCBRIDE Concrete Angel (RCA)	4.10	4.19	96%	18%	4.12	93%	20%
AARON LINES You Can't Hide Beautiful (RCA)	4.08	4.18	94%	36%	3.32	93%	34%
EMERSON DRIVE Fall Into Me (DreamWorks)	4.04	4.18	85%	7%	3.94	83%	11%
BLAKE SHELTON The Baby (Warner Bros.)	4.03	4.14	89%	19%	3.75	89%	24%
TOBY KEITH Rock You Baby (DreamWorks)	4.02	-	78%	9%	4.01	79%	9%
KEITH URBAN Raining On Sunday (Capitol)	4.01	4.14	70%	8%	4.06	69%	7%
CHRIS CAGLE What A Beautiful Day (Capitol)	4.01	4.05	76%	14%	3.72	76%	14%
KENNY CHESNEY Big Star (BNA)	3.98	3.90	99%	29%	4.04	98%	34%
TIM MCGRAW She's My Kind Of Rain (Curb)	3.89	-	62%	9%	3.86	58%	9%
PHIL VASSAR This Is God (Arista)	3.88	-	88%	16%	3.75	87%	18%
KELLIE COFFEY At The End Of The Day (BNA)	3.86	3.98	90%	7%	4.20	89%	10%
TRICK PONY On A Mission (H2E/WB)	3.86	3.91	83%	9%	4.03	83%	10%
JEFF BATES The Love Song (RCA)	3.81	3.70	40%	4%	3.75	40%	6%
DARRYL WORLEY Family Tree (DreamWorks)	3.80	3.98	95%	20%	4.12	94%	19%
LONESTAR Unusually Unusual (BNA)	3.80	3.93	94%	21%	3.66	94%	24%
JENNIFER HANSON Beautiful Goodbye (Capitol)	3.79	3.89	91%	13%	4.14	92%	15%
TRACE ADKINS Chrome (Capitol)	3.74	3.72	84%	7%	4.10	80%	8%
VINCE GILL Next Big Thing (MCA)	3.72	3.74	69%	7%	3.92	62%	9%
DEANA CARTER There's No Limit (Arista)	3.72	3.68	93%	31%	3.84	94%	29%
FAITH HILL When The Lights Go Down (Warner Bros.)	3.51	3.56	90%	28%	3.56	89%	25%
SHANIA TWAIN Up! (Mercury)	3.23	3.24	86%	16%	3.54	84%	19%

Total sample size is 739 respondents. **Total average favorability** estimates are based on a scale of 1-5. (1=dislike very much, 5=like very much). **Total familiarity** represents the percentage of respondents who recognized the song. **Total burn** represents the number of respondents who said they are tired of hearing the song. Songs are ranked by favorability among Persons 25-54. Persons are screened via the Internet. Once passed, they can take the music test based on their format/music preference. RateTheMusic.com results are not meant to replace callout research. The results are intended to show opinions of participants on the Internet only. RateTheMusic is a registered trademark of RateTheMusic.com. **The RTM system is available for local radio stations by calling 818/377-5300. RateTheMusic.com data is provided by Mediabase Research, A division of Premiere Radio Networks.**

If you experienced transmission problems ... please call our Circulation Department at 310/788-1625.

© 2003 Radio & Records, Inc. All Rights Reserved No part of this material may be reproduced in any form or incorporated in any information retrieval system without written permission of the Publisher.