

# TOP 40 AIRPLAY Monitor

• We Listen To Radio •

May 26, 2000 \$4.95 Volume 8 • No. 21

## TOP 40 HIGHLIGHTS

### MAINSTREAM TOP 40 page 6

#1

**MACY GRAY**

*I Try (EPIC)*

★ ★ AIRPOWER ★ ★

N SYNC • *It's Gonna Be Me (JIVE)*  
GOO GOO DOLLS • *Broadway (WARNER BROS.)*

★ MOST NEW STATIONS ★

WHITNEY HOUSTON & ENRIQUE IGLESIAS • *Could I Have This Kiss Forever (ARISTA)*

### RHYTHMIC TOP 40 page 13

#1

**AALIYAH**

*Try Again (BLACKGROUND/VIRGIN)*

★ ★ AIRPOWER ★ ★

NEXT • *Wifey (ARISTA)*

★ MOST NEW STATIONS ★

BUSTA RHYMES • *Get Out (FLIPMODE/ELEKTRA/EEG)*

### CROSSOVER page 18

#1

**JAY-Z FEATURING UGK**

*Big Pimpin' (ROC-A-FELLA/DEF JAM/IDJMG)*

★ ★ AIRPOWER ★ ★

NEXT • *Wifey (ARISTA)*

AVANT • *Separated (MAGIC JOHNSON/MCA)*

BIG PUNISHER FEATURING DONELL JONES • *It's So Hard (LOUD/COLUMBIA)*

★ MOST NEW STATIONS ★

LIL' KIM • *No Matter What They Say (ATLANTIC)*

### ADULT TOP 40 page 22

#1

**VERTICAL HORIZON**

*Everything You Want (RCA)*

★ ★ AIRPOWER ★ ★

SPLENDER • *I Think God Can Explain (C2)*

NINE DAYS • *Absolutely (Story Of A Girl) (550 MUSIC/550-WDRK)*

★ MOST NEW STATIONS ★

SISTER HAZEL • *Change Your Mind (UNIVERSAL)*

### ADULT CONTEMPORARY page 28

#1

**FAITH HILL**

*Breathe (WARNER BROS.)*

★ ★ AIRPOWER ★ ★

CHRISTINA AGUILERA • *I Turn To You (RCA)*

★ MOST NEW STATIONS ★

CHRISTINA AGUILERA • *I Turn To You (RCA)*

## Top 40 In '95 & Now: A Look At The Format's Musical Evolution

by Sean Ross

It's Memorial Day 1995. Do you remember where your format was?

Five years ago, Top 40 Airplay Monitor consisted primarily of charts, with one column—Top 40 Topics—wedged in on the Greatest Gainers page and often presented in unreadably small type due to the author's seeming inability to write short.

On the national radio scene, the modern rock revolution was claiming new stations weekly, having overtaken '70s gold as the format du jour. Modern AC was several months away from taking shape. Mainstream R&B stations were facing the prospect of skewing younger by acknowledging more hip-hop or having new players like WQHT New York come in beneath them. At the other end, country's halo

was just starting to fade, as many country PDs, concerned about the possibility of an upper-demo flank, went older themselves, thus disenfranchising some of the format's newest partisans.

Mainstream top 40, meanwhile, was just beginning its comeback. Some of the nation's largest markets were still without mainstream top 40. Others sort of had it, but a lot of 1995's top 40s still had considerable distance to go in becoming the stations they are now. With the hip-hop/R&B backlash of the early '90s still fresh in the minds of programmers and managers, the stations that had stayed the course as mainstream top 40s didn't sound that much hotter than those that had become hot ACs. And many of those stations that didn't sound like hot ACs sounded like modern rock stations. Today's top 40

Continued on page 5

## ALICE DEEJAY "Better Off Alone"



MAINSTREAM TOP 40 (21)

AUDIENCE OVER 45 MILLION!

HUGE CALL-OUT AT THESE STATIONS:

Z100/New York	50x	WKTU/New York	72x
KIIS/Los Angeles	66x	KZQZ/San Francisco	64x
WIOQ/Philadelphia	44x	WWZZ/Washington	54x
KRBE/Houston	60x	WDRQ/Detroit	52x
Y100/Miami	40x	WPOW/Miami	40x
KHTS/San Diego	60x	KZZP/Phoenix	39x
KCHZ/Kansas City	78x	WXXL/Orlando	43x
WPYO/Orlando	89x	WFLZ/Tampa	67x
KXXM/San Antonio	59x	WNOU/Indianapolis	82x
WSNX/Grand Rapids	48x	WFHN/Providence	63x

and more

Republic

## EIFFEL 65 "Move Your Body"

ON OVER 140 STATIONS INCLUDING THESE MAJOR MARKETS.

KIIS/Los Angeles	KZQZ/San Francisco
KHKS/Dallas	WDRQ/Detroit
WXKS/Boston	KRBE/Houston
WBTS/Atlanta	WHYI/Miami
KHTS/San Diego	WBLI/Long Island
KSLZ/St. Louis	WXYV/Baltimore
WFLZ/Tampa	WAKS/Cleveland
KKRZ/Portland	WKFS/Cincinnati
KDND/Sacramento	KMXV/Kansas City
WPRO/Providence	WNCI/Columbus
KZHT/Salt Lake City	WXXL/Orlando
KFMS/Las Vegas	WEZB/New Orleans

and many more



MAINSTREAM TOP 40 (38)

Republic

## SISTER HAZEL "Change Your Mind"



MAJOR MARKET AIRPLAY:

WPLJ	WTMX	WXKS	WBMX
WSTR	KBKS	KPLZ	KMSX
KDWB	WXPT	WVRV	WSSR
WQAL	KBBT	KRSK	KZZO
KMXV	WNCI	KZHT	KBEE
WVMX	WWDE	WPTE	WLNK
WZPL	WXXL	WKSI	WJLK
WDCG	KAMX	WMBX	WDJX
WVOR	WFLY	WQEN	WMXB
WNTQ	WSTW	WRHT	KLAL
WCPT			

and many more

DEBUT (36)

MODERN AC

★ GREATEST GAINER/MOST NEW STATIONS ★

#1 MOST ADDED

## TINA COUSINS "Pray"

"Tina Cousins 'Pray' is consistently Top 10 call-out and Top 10 phones and we are moving the rotations up to over 40+ this week."

- Jay Michaels, PD,  
KRBE/Houston



AIRPLAY NOW

Republic

# CREED

## "Higher"

**A Multi-Format Smash!!!**

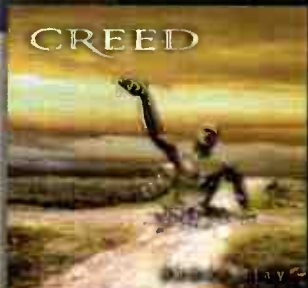
Mainstream Top 40 (5) Adult Top 40 (9) Modern AC #5

**The Surprise #1 Callout Song of the Year**



Appearing on the Tonight Show with Jay Leno June 16th

On Tour All Summer - Sold Out Everywhere



**Certified 4X Platinum**



Produced, Engineered and Mixed by John Kurzweg Photo: Sacha Waldman



[www.creednet.com](http://www.creednet.com)

212.251.9665

# RADIO CONCERT MONITOR

DATE	STATION	EVENT	PROMOTION DIRECTOR
May 26, 28	WAEB Allentown, Pa. APPEARING: Mandy Moore, Eiffel 65, Anastacia, Train, Mr. Big	Mayfair 2000	Laura St. James
May 27	WLLD Tampa, Fla. APPEARING: Run-D.M.C., Tone Loc, Sir Mix-a-Lot, Doug E. Fresh	Wild Old School Jam	Andrew Fleming
May 27	KJYO Oklahoma City, Okla. APPEARING: Melissa Etheridge, LFO, Anastacia, Shaggy, Westlife, Mandy Moore, Sonique, Blessid Union Of Souls, Tonic, Blaque, Kumbia Kings, Youngstown, Greg Brady (host)	Summerfest 2000	Mike McCoy
May 28	WNKS Charlotte, N.C. APPEARING: Christina Aguilera, more	Kiss Music Mania	Diana Ades
May 28	WBLI Long Island, N.Y. APPEARING: Shaggy, Eiffel 65, Enrique Iglesias, Hoku, Blaque, Pink, Splendor, B*Witched, No Authority	Summer Jam 2000	Nancy Cambino
May 29	WKSE Buffalo, N.Y. APPEARING: Destiny's Child, Blaque, Jessica Simpson, Eiffel 65, LFO, Vitamin C, Deborah Gibson, Mandy Moore, Sonique, D-Cru, soulDecision	Kiss The Summer Hello #12	Stephanie Ringer
May 31	WPST Trenton, N.J. APPEARING: Third Eye Blind, Mandy Moore, Tonic, Blessid Union Of Souls, Pink, Nine Days, Hoku	Birthday Bash	Robert Minton
May 31	WJBQ Portland, Maine APPEARING: LFO, Vertical Horizon, Train, Eiffel 65, Rustic Overtones, Westlife, CoCo Lee	The Q Concert	Mike Adam
June 1	WKQI Detroit APPEARING: Mandy Moore, Vertical Horizon, Jessica Simpson, Hanson, Macy Gray	Q-Topia	Barbara Adragna
June 1	WERZ Portsmouth, N.H. APPEARING: Train, Splendor, Westlife, Vitamin C	Beach Bash 2000	Dave Sandz
June 2	WHTZ New York APPEARING: Macy Gray, Christina Aguilera, Goo Goo Dolls, Sugar Ray, Savage Garden, Mandy Moore, Destiny's Child, Hanson, Jessica Simpson, Vitamin C	Zootopia	Sammy Simpson
June 2	KXHT Memphis APPEARING: Da Brat, Donell Jones, Black Rob, Jagged Edge, Youngbloodz	Hot Nite 2000	Jeff Lyons
June 2	WWKX Providence, R.I. APPEARING: Jay-Z, Busta Rhymes w/Rah Digga, Wyclef f/the Product G&B, Blaque, Mya, Joe, Solé	Hot Night 4	Janine Bacon
June 3	WXKS-FM Boston APPEARING: Goo Goo Dolls, Christina Aguilera, Bon Jovi, Hanson, Macy Gray, Sugar Ray, Third Eye Blind, Amber, BBMak, Blessid Union Of Souls, Eiffel 65, Jessica Simpson, Lonestar, Mandy Moore, Sonique, Train, Vitamin C, Westlife, more	Kiss Concert	Trish Gillis

Let us monitor your event! Call Jeff Silberman at 323-525-2303 or E-mail [jsilberman@airplaymonitor.com](mailto:jsilberman@airplaymonitor.com).

## Clear Channel Staffs The Boardroom

With Clear Channel's acquisition of AMFM expected to close in the third quarter, it is beginning to put its management in place. Clear Channel Radio president **Randy Michaels** is promoted to chairman/CEO of Clear Channel Radio, while AMFM chairman/CEO **Kenny O'Keefe** will become its president/COO. Both will report to Clear Channel COO **Mark Mays**.



**RADIO ACTIVE**  
BY JEFF SILBERMAN  
323-525-2303 • [jsilberman@airplaymonitor.com](mailto:jsilberman@airplaymonitor.com)

### PROGRAMMING: MCKENNA TO VP

**Jerry McKenna**, PD of WWKX (Hot 106) Providence, R.I., is named VP of programming at AAA Broadcasting. He'll oversee pending acquisitions in Champaign and Peoria, Ill., and Long Island, N.Y.

Several weeks ago, **KJR-FM** Seattle added '80s gold and reverts to its classic hits format, positioning itself as "a better mix of classic hits." Now it's finished the transition to rock-based adult top 40, adding currents and becoming Mix 95.7 under PD **Gary Bryan**. It will also get new calls.

**KUUU** (U92) Salt Lake City PD **Michael Knight** is promoted to a corporate programming position at Marathon Media. He's currently looking for someone to fill his PD job. Meanwhile, **WGTV** (Z93) Dayton, Ohio, P/T **Kevin Cruise** nabs the midday spot at U92.

**Doug Wilson**, OM for Citadel's Atlantic City, N.J., cluster, is assuming PD/afternoon duties for its modern AC **WKOE** (the Shore). He's replac-

ing **Adam Fendrich**, now PD of modern WLRS Louisville, Ky. . . . Adult top 40 **KMXF** Fayetteville, Ark., taps **Ken Wall** as PD from country **KRMD** Shreveport, La.

Former oldies **WOLX** Madison, Wis., PD **Ray Sherman** joins crosstown AC **WMLI** as MD/morning host, replacing **Tim Hein**.

Top 40 **WWHT** (Hot 107.9) Syracuse, N.Y., morning co-host **Tracy "Paige" Romans** joins suburban Boston AC **WATD-FM** as OM.

Sirius Satellite Radio ups **Maria Carchidi** to VP of music programming, **Jim Kressler** to VP of programming operations, and **Cindy Sivak** to VP of industry and talent affairs.

### MANAGEMENT: WELLS DOES WELL

With its purchase of five stations in Lincoln, Neb., completed, Triad Broadcasting names **KKOT/KZEN/KROR/KTTT** Columbus, Neb., GM **Greg Wells** VP/market manager, overseeing its cluster, which includes ACs **KEZG** and **KWBE**. **Joan Woods** remains station manager at **KWBE**.

Rhythmic top 40 **KHTN** (Hot 105) and country **KUBB** Modesto, Calif., ups GSM **Mike McAdam** to GM, replacing the late **Lee Nye**.

Top 40 **KEEZ** (Z99) Mankato, Minn., sales manager **Jim Gullikson** is named GM, replacing ex-owner **Mike Nolan**. Also, **KARP** Minneapolis night jock **Jamie Owens** joins for overnights, as country **KARP** segues to R&B.

### COMMENTS SPUR LAWSUIT

A suburban Baltimore business owner has filed an \$8 million defamation and slander lawsuit against Radio One and crossover **WERQ** (92Q) Baltimore middayer **Egypt** over on-air comments Jan. 13. The county Circuit Court suit claims Royalty Hand Car Wash and owners **Michael** and **Susan Levine** lost customers after **Egypt** allegedly "utter[ed] false and defamatory statements" about a verbal altercation during which **Egypt**



**The SPIN** BY STEVE GRAYBOW

212-536-5361 • [sgraybow@airplaymonitor.com](mailto:sgraybow@airplaymonitor.com)

## Mod AC Is Still Where Shared Titles Start

LAST WEEK, the Spin noted that modern AC continues to retain its foothold as the adult format where edgier songs get their start. Continuing that thought, more than three-quarters of the songs that appear on this week's adult top 40 chart also appear on the modern AC chart. However, of those 30-odd titles, only four debuted at both formats simultaneously, and only three decidedly non-rock titles—**Faith Hill's** "Breathe," **Lonestar's** "Amazed," and **Marc Anthony's** "You Sang To Me"—debuted at adult top 40 before modern AC. The remaining shared titles, which represent approximately half of the two charts, all debuted at modern AC a week or more before they did at adult top 40.

Although **Dido's** "Here With Me" (Arista) was removed to the recurrent adult top 40 and modern AC charts several weeks ago, the song's additional exposure as the theme to the TV show "Roswell" has given it an extended life. For this reason, Monitor is allowing the song back on the current adult top 40 and modern AC charts. When the song eventually begins declining in detections, it will return to the recurrent charts.

Just as it did on the modern AC and adult top 40 charts, **Vertical Horizon's** "Everything You Want" (RCA) is showing significant gains in both detections and audience at mainstream top 40 past its 20th chart week. Although titles generally become ineligible for bullets after 20 weeks, "Everything" keeps its bullet at mainstream top 40 due to its gains and will continue to be awarded bullets on a week-by-week-basis until it ceases to post increases. The song has already hit No. 1 on the mainstream top 40 audience chart.

**LABEL MONITOR:** VH1 VP of music programming and former **KUBE** Seattle PD **Mike Tierney** is named senior VP for Epic Records Group.

Industry veteran **Frank Murray**, most recently with Pellegrino Promotions, joins Robbins Entertainment as VP of promotion. In a separate development, promotion manager **Dee Sonoram** exits Robbins for a promotion position at Koch.

## 'PLJ Divas Strike Back



**WPLJ** New York's morning "divas" **Scott Shannon**, left, and **Todd Pettengill** show some love to VH1's "Divas" specials in the station's spring TV spot.

says the Levines used a racial slur and threatened to have her arrested. In a transcript of the broadcast included in the complaint, **Egypt** told listeners, "I'm never going to be caught dead in that car wash, and I hope you wouldn't either." **Egypt** did not identify the business by name, although she described its appearance and location. **WERQ** had not returned calls by press time.

### PEOPLE: NEW MANN AT Z95.7

**WNVZ** (Z104) Norfolk, Va., loses night jock **Michael Mann** to the late-night slot at **KZQZ** (Z95.7) San Francisco . . . **WBTS** (the Beat) Atlanta night jock **Stick** exits.

**KOST** Los Angeles promotion coordinator **Bonnie Bolin-Marquez** is upped to promotion director. Assuming her duties is former promotion assistant **Jose Arreola**.

**WXPT** (the Point) Minneapolis morning co-host "Cheeks" exits.

**KIXY** San Angelo, Texas, afternooner **Chris Marino** takes the same slot at **KPTY** (Party Radio) Phoenix, as **Marcus Jordan** exits.

Country **KKBQ** (93Q) Houston morning co-host **Cory "The Fitz" Fitzner** joins **KJYO** (KJ103) Oklahoma City, Okla., for nights, replacing **Eric Chase**. **Fitzner** was once PD at top 40 **KNIN** Wichita Falls, Texas.

AC **WBEB** (B101) Philadelphia P/T **Juan Varleta** is upped to middays, replacing **Donna Rowland**, who exited. Also, former crosstown **WIOQ**

(Q102) jock **Kim Douglas** joins **WBEB** for swing.

**WFLZ** Tampa, Fla., night jock **Kane** adds night duties at new sister **WFSJ** (Kiss FM) Jacksonville, Fla. Meanwhile, **WKCI** (KC101) New Haven, Conn., welcomes back **Samantha Stevens** to middays, replacing **Brent McKay**, now **WFSJ's** PD.

**KSFM** Sacramento, Calif., morning co-host **Davey D** exits . . . **KDGS** Wichita, Kan., adds ABC's "Doug Banks Morning Show."

**WRVZ** (the Beat) Charleston, W.Va., brings in **WLOL** Minneapolis morning producer **Dan Edwards** for nights . . . **Sara Trexler**, former PD of modern **KROX** Austin, Texas, is now doing P/T at AC **WLYT** Charlotte, N.C.

Following its segue from hot AC to top 40, **WERO** (Bob 93.3) New Bern, N.C., revises its lineup: Local actress **Penny Viglione** joins PD **Bill O'Brien** in mornings; former country **WYAK** Myrtle Beach, S.C., P/T **Mike Knight** joins for middays; and AC **WVZA** Carbondale, Ill., middayer **Rachel Young** is tapped for afternoon drive. AC **KDAY** Rolla, Mo., PD/MD **Patrick Steele** joins **WVZA** for middays.

**WZYP** Huntsville, Ala., overnights **Chase Fornow** joins top 40 **WBAM-FM** Montgomery, Ala., for nights, replacing **John Bishop**. P/T **Stryker** is handling **WZYP** overnights as PD **Bill West** seeks a full-time swing person.

Country **WIL-FM** St. Louis promotion director **Cheryl Bockstruck** joins AC **WJXA** (Mix 92.9) Nashville in the same capacity.

# PROMOGANDA

AN OVERVIEW OF RADIO PROMOTIONS • BY JEFF SILBERMAN

323-525-2303 • [jsilberman@airplaymonitor.com](mailto:jsilberman@airplaymonitor.com)

## Of High School Stunts And Falling Cars

Spring-book promotions returned to their familiar post atop the Topical Barometer, but stations didn't always resort to big cash contests or trips to make their presence felt during the big book. In top 40 WKSE Buffalo, N.Y.'s High School Spirit Contest, the winning school collected 2.1 million pennies to win a free LFO concert. More than 15 million pennies were collected. **Stephanie Ringer** has got a lot of change, if you need some.

On the West Coast, modern rock KROQ Los Angeles just concluded a Win a Free Blink-182 Concert contest, making schools jump through such hoops as getting the KROQ calls on TV, finding high school yearbook pictures of the band members, and, finally, a spelling bee. The winner is spelled A-M-Y-S-T-E-V-E-N-S.

Then there's top 40 WFLZ Tampa, Fla., which is having an auto drop. In the event, played like cowpie bingo, the station will create a numbered checkerboard at an area fair-ground, then will drop a car from a helicopter. **Shannon Wray** has the collision insurance.

### PROMO TOPIC OF THE WEEK: MONEY MATTERS

Discussing salaries is obviously a touchy subject, yet our panelists were willing to shed some light on this normally taboo subject, provided they weren't identified. Here's how they—and their employers—view their worth:

### TOPICAL BAROMETER

TW	LW	TOPIC
1	2	Spring-book promotions
2	—	Station concerts
3	4†	Internet/Web sites
4†	—	Job fairs
4†	—	Fan Fair (country)
6†	—	Auto racing
6†	9	Live pro wrestling
8	—	Amusement parks
9	4†	July 4 holiday
10	—	"Millionaire" cash contests

**HOTTEST NEW MOVIES:** "Gladiator," "The Patriot," "Dinosaur," "The Big Kahuna," "X-Men," "Mission: Impossible 2"

**HOTTEST CONCERTS:** Ricky Martin (top 40), Dixie Chicks (country), Metallica (rock), Santana (adult formats), Red Hot Chili Peppers (modern)

• More than 90% get a yearly review and bump, with the remaining few able to get raises at any time (obviously, in prosperous times). Of those raises, 61% get a set percentage, 33% get a bump based on personal performance, and the remainder's boost is tied to station performance. There are instances where raises are based on combinations of the above as well.

• Do they consider their job reviews fair? A good 70% think so. "We're encouraged to 'review ourselves,' which is often harder," says a modern AC panelist. "It depends on your company's policy and the management that enforces that policy. If you're lucky to work with mature, adultlike, reasonable managers, the review process shouldn't be all that painful."

Yet there are vehement dissenters. "I strive for perfection for myself and my staff," says a country panelist. "I give 200% and work every weekend, holiday, etc. I can't put so much into my job and still receive the same amount."

• Predictably, a majority believe they're not

getting paid according to the work they do, but it's not as great a majority as you'd think. About 58% believe they are underpaid, 21% believe they're adequately paid and, believe it or not, 21% believe they're more than adequately paid.

• One common tactic to get a better raise is to get a better offer elsewhere, then go to your current employer and request a suitable counteroffer. The Promogandist response to this was nearly unanimous: "Our senior management does not like the 'gun to the head' style of negotiating," says a top 40 panelist. "Several people have tried it only to be told, 'See ya.'"

"If you've got another offer, you've got to be prepared to take it if the corporation doesn't match the other company's offer," adds another. "If you don't take the chance, you've shot yourself in the foot for the rest of your career with that company."

• Just under 65% of the panelists do not get a piece of the nontraditional revenue they help generate for the station, but there's a growing sentiment that they should get a taste of that action. "I turn so many calls into sales," says a country panelist. "Clients call me for the free stuff, and I end up getting orders for them."

Finally, we asked what other things our panel would appreciate besides the salary bump. The most popular response is, no surprise, cash bonuses. A close second is extra days off. Tied for third are expense money for seminars and conventions and simple appreciation/recognition from higher-ups for the work they do. Rounding out the top five is more flex time.

### QUICK HITS: FIERCE RULING DIVAS

When the **Tina Turner** and **Lionel Richie** tour came through Dallas, modern AC KDMX (Mix 102.9) found two transvestites who made outfits out of KDMX banners. "One transvestite was over 6 foot 5 inches in heels, and the other was about 5 feet [tall]. They were all over the arena working the crowd," says **Loren Condron**. "Every person in the sold-out crowd was talking about the transvestites... It ruled!"

On top of giving away Lakers playoff tickets, **R&B KPWR** (Power 106) Los Angeles will hold an **Oscar De La Hoya Skybox Party** at Staples Center for his upcoming fight. "Pepsi donated one pair of ringside tickets," says **Dianna Obermeyer**. "Listeners will join morning host **Big Boy** [for] his version of 'The Pepsi Challenge' [by trying to drink] the most Pepsi during the morning show without going to the bathroom. The winner will sit ringside during the fight."

R&B oldies **WZMX** Hartford, Conn., honored **Soap Moms**, as listeners answer trivia questions about TV soaper "The Guiding Light." "Winners receive autographed show scripts, with the grand-prize winner receiving a limo and studio tour of 'The Guiding Light' in New York," says **Tristano Korlou**. "Also, morning duo **JD** and **Nancy** have walk-on roles on the show."

Modern AC **WBMX** (Mix 98.5) Boston is partnering with its local UPN station on "Star Trek: Voyager" **Quest for Cash**, a two-week watch and win promotion in which a total of \$30,000 will be given away in qualifying money, with two grand-prize winners beaming up \$10,000. **Anne-Marie Strzelecki** proves that there's intelligent life on her planet.

Want to participate? E-mail your best promotions to [jsilberman@airplaymonitor.com](mailto:jsilberman@airplaymonitor.com).

### PROMOGANDA HONOR ROLL

**Diana** Ades, CBS/WKBS Charlotte, N.C.; **Dan** Bowen, WSTR Atlanta; **Diana** Buckmann, KEYE Minneapolis; **Tina** L. Brando, Clear Channel Jacksonville, Fla.; **Steve** Burgess, WYRK Buffalo, N.Y.; **Melissa** Barrill, KHKS Dallas; **Scott** Colebrook, WKRG Cincinnati; **Loren** Condron, KJZZ/KDMX Dallas; **Mike** Calotta, WOJK Tampa, Fla.; **Dave** Demer, WWKA Orlando, Fla.; **Carroll** Doll, KYGO Denver; **Camie** Dunbar, Clear Channel Miami; **Katie** Eyerly, KMEJ San Francisco; **Lisa** Fields, WMEG/WHSI Greensboro, N.C.; **Vicki** Florell, KJNV/KESZ Phoenix; **Andrew** Fleming, WJLD Tampa, Fla.; **Vin** Freeman, KJIS Los Angeles; **Greg** Frey, KSON San Diego; **Jason** Gant, WJWZ Greenville, S.C.; **Trish** Gillis, WKBS-FM Boston; **Michael** Godfrey, CKJK Calgary, Alberta; **Kelly** Gross, WPLY Philadelphia; **Mike** Hammond, WYKX Knoxville, Tenn.; **Stephanie** Hogerman, WXYZ Hartford, Conn.; **Jay** Holloway, WTTT Chattanooga, Tenn.; **Carly** Johnson, KXTE Las Vegas; **Suzanne** Jones, WUSL Philadelphia; **Tristano** Korlou, CBS Hartford, Conn.; **Kim** Leeds, KJMB-FM San Diego; **Claudine** Lewis, KHFS San Diego; **Larry** Lutz, WJLB Detroit; **Jennifer** Markham Wynn, KMSB Las Vegas; **Julie** Maxwell, WNDG Detroit; **June** Monahan, KEDJ Phoenix; **Dianna** Obermeyer, KPWR Los Angeles; **Mike** O'Brien, WXIB Tampa, Fla.; **Mike** Peterson, KHFI Austin, Texas; **Marcia** Petrijan, KZLA Los Angeles; **Vicki** Preston, WDTJ Detroit; **Susan** Reynolds, KUPO/KBBT Portland, Ore.; **Stephanie** Ringer, WKSE Buffalo, N.Y.; **Jim** Sheehan, K350 San Francisco; **Sheila** Silverstein, WFOC Baltimore; **Jason** Steinberg, WYNY New York; **Anne-Marie** Strzelecki, WBMX Boston; **Donna** Talanco, WGAT Wilkes-Barre, Pa.; **Vanessa** Thill, KLUZ Las Vegas; **Shannon** Wray, WFLZ Tampa, Fla.

## BroadcastAmerica Takes On Wireless

Internet portal BroadcastAmerica.com is looking at taking its radio clients into the world of wireless Internet radio. Broadcast America president/COO John Brier says the company is working with a handful of technology groups to develop a system that will

Tristani says the show was "racist, bigoted, and demeaning" and attacked the agency's Enforcement Division for not finding it indecent. "The commission appears so averse to indecency cases, and has erected so many barriers to complaints from members of the public, that indecency enforcement has become virtually nonexistent," she says.

The FCC has flagged Clear Channel's purchase of top 40 WMGR-FM, R&B WJIZ, country WOBB, adult standards WMGR-AM, and gospel WJYZ Albany, Ga., from Radio Albany Corp., citing the usual concentration concerns.

### CAPITAL: BLUE CHIP BUCKS

Blue Chip Broadcasting has picked up a \$30 million equity investment from the Quetzal Fund, which was set up by the broadcast industry last year to provide capital for minority-owned businesses. The fund, which was formerly called the Prism Fund, was spearheaded by Clear Channel chairman **Lowry Mays** and Viacom COO **Mel Kamazain**. Blue Chip used those funds to close on its \$20 million purchase of **KARP** Minneapolis from Roosevelt Broadcasting, making it the first African-American radio station owner in Minnesota, culminating a decade-long campaign by Kandu Communications founder **Thomas Ross**.

Nearly 20 years after **William** and **Susan Dalton** bought their first station, the former **WXTR** Washington, D.C., the couple has sold its last radio holdings, modern **WEND** and oldies **WWMG** Charlotte, N.C., to Clear Channel for \$60 million. The Daltons paid a mere \$7 million for the stations in the early '90s. Clear Channel sought the properties to pair with crosstown classic rock **WRFX**, AC **WLYT**, and country **WFMX**, which it will soon own through AMFM. The Dalton Group will still have a connection to radio—it owns several broadcast towers in the Charlotte area.

Radio One's board of directors has declared a three-for-one stock split in the form of a stock dividend. Stockholders will get two shares of a newly created non-voting Class D stock for each share of common stock they hold. Beyond bringing more money to Radio One, president/CEO **Alfred Liggins** says it will also help preserve the company's minority ownership. It should also help the small investor. Radio One stock trades at approximately \$70 a share. Separately, the Bank of America has agreed to give Radio One \$750 million in financing to fund, in part, Radio One's \$1.3 billion deal to buy a dozen stations from Clear Channel and AMFM.

### SALES: ABC EXPANDS

ABC Radio buys Dallas-area country outlet **KHKC** Dallas from **Drew Ballard** for \$1 million. The station has been given an upgrade by the FCC, which will allow it to better cover the Dallas market. Its 103.1 frequency sits next to ABC's country **KEMM**, at 103.3.

Vital Communications buys top 40 **WPRR** and sports **WVAM** Altoona, Pa., for \$2 million.



allow its 515 stations to stream its audio via developing wireless technology.

"This is what the future holds for Internet radio," says Brier, who adds that consumer choice will be transformed. "You'll be in your automobile and be able to listen to any station in the world over the Internet; same thing in your home or on your cell phone. It will truly transform the way people can access content." The company has already beta-tested several receivers, and while those work, Brier says, more needs to be done to improve sound quality and listenability. "This allows people to bypass the computer to access Internet audio, and that's revolutionary."

He also believes it will help broadcast radio compete against other new technologies, saying it will be "a big blow to satellite radio." The company has about half of Citadel's stations on its client list, with the balance made up of smaller groups scattered around the country. It has already signed 73 stations to its new BroadcastUrban.com site.

Beyond radio, BroadcastAmerica is preparing to launch in late June a service called Super V. Billed as the first live, 24-hour video music channel on the Internet, Super V will be based at studios in Boston. Brier says the company has already spent \$1 million on the project, in which syndicator SuperRadio is a partner. BroadcastAmerica plans to eventually place the advertising-supported channel on traditional cable TV systems.

### CAPITOL: DON & MIKE DUNNED

A now-infamous phone bit in which syndicated **WJFK** Washington, D.C., duo **Don** and **Mike** berated a female City Council member in El Cenizo, Texas, for conducting business in Spanish has resulted in a \$4,000 fine for Infinity. The FCC was not sufficiently convinced that Don and Mike had the official's permission to air the call, even though it informed her they "were doing a live, national show right now." Infinity argued that because it was using two delay systems, giving them 16 seconds to dump the call, the call was neither live nor recorded and therefore not covered by FCC rules. The FCC disagreed. It did, however, reject complaints filed by the council member, the National Latino Media Council, and FCC Commissioner **Gloria Tristani**, who is Puerto Rican, claiming the call violated the FCC's decency standards.

Editor: Sean Ross  
Managing Editor: Jeff Silberman  
Director of Charts: Silvio Pietrolungo  
Associate Director of Charts: Steven Graybow  
Crossover Chart Manager: Stephanie Lopez  
Chart Assistant: Jonathan Kurant  
Reporters: Frank Saxe (N.Y.), Angela King (Nashville)  
Chart Production Manager: Michael Cusson  
Associate Chart Production Manager: Alex Vitoulis  
Administrative Assistant: Gordon Murray  
Editorial Production Managers: Barry Bishin, Susan Chicola  
Editorial Production: Leilla Brooks, Marc Giaquinto, Sunyoung Lee, Rodger Leonard, Maria Manliclic, Sandra Watanabe  
Copy Editor: Carl Rosen  
Advertising Production Manager: Lydia Mikulko  
Advertising Production Coordinator: Christine Paz  
Art Director: Ray Carlson  
Advertising Production Artist: Joanna Jasinska  
1515 Broadway, New York, NY 10036 212-764-7300  
5055 Wilshire Blvd., 7th floor, Los Angeles, CA 90036 323-525-2300  
For subscriptions call: 800-745-8922

National Advertising Manager: Hank Spann  
Account Managers: Jeff Somerstein  
Sales Assistants: Eric Vitoulis, Jamie Yates

Editorial Adviser: Timothy White  
Director of Production & Manufacturing: Marie Gombert  
Circulation Director: Jeanne Jamin  
Marketing Manager: Rob Accatino

Publisher: Jon Guyann



Billboard Music Group  
President: Howard Lander  
Vice Presidents: Howard Applebaum, Marie Gombert, Irwin Kornfeld, Karen Oertley, Ken Schlager, Joellen Sommer, Adam White

©2000 BPI Communications Inc. No part of this publication may be reproduced, stored in any retrieval system, or transmitted, in any form or by any means, electronic, mechanical, photocopying, recording, or otherwise, without the prior written permission of the publisher.

## Top 40 in '95 & Now: A Look At The Format's Musical Evolution

Continued from page 1

landscape, where most markets have a mainstream top 40 and some are working on their second, was hard to envision.

Yet even in spring '95, success stories were emerging that boded well for the eventual resurgence of the format. Some of the earliest successes, from KHKS Dallas to WFLZ Tampa, Fla., are, philosophically, very similar to the stations they were in 1995. Others have traveled a considerable distance over the course of five years. While the increasingly current nature of the format means that it's no longer a given that your top 40 station will celebrate Memorial Day with some sort of "Retro Flashback Top 300," Airplay Monitor is going for the gold this week. Here's a look at the stations on the first page of the mainstream Power Playlists today and how their programming philosophy in 1995 differs from their strategy for the year 2000.

### Z100: THE 'HOLE' NINE YARDS

WHTZ (Z100) New York was still playing some dance music—Real McCoy, Nicki French, Corona—but modern rock was, by then, the dominant flavor. Z100 would complete a three-year evolution, going almost totally modern a few months later when rival WNEW made a short-lived run at modern. Although Z100 had, by that time, filtered out most R&B titles (it sat out "This Is How We Do It," for instance), then PD Steve Kingston might still have acknowledged "Thong Song," if only for pop culture reasons. But May '95's Z100, which was playing "Plowed" by Sponge, "Violet" by Hole, and "Yellow Ledbetter" by Pearl Jam, was a long way from last week's Z100. That station was supporting all genres, including modern (Nine Days, Red Hot Chili Peppers, Creed, etc.), but had only one modern title, "Everything You Want," among its top 10 most-played tracks.

KIIS Los Angeles, under PD Steve Perun, was fast rhythm/slow rock, the same paradigm that was working so well for sister KHKS Dallas. KIIS at that point was playing Green Day's "When I Come Around" but little else like it. KIIS in 1995 probably wouldn't have played "Never Let You Go," "Bent," or "Otherside." I doubt it would have been an early supporter of "Desert Rose," which Dan Kieley's KIIS has been, but since Perun was looking for reaction records from all quarters—including Roula's "Lick It" and the Selena version of "Back On The Chain Gang"—the TV-commercial angle might have gotten it on. And while Perun has spoken in the past of KIIS' need to invent its own hits at the time, because of a dearth of top 40 product, Kieley's KIIS has taken that mission to heart, starting Jennifer Paige and Bosson when they were still unsigned.

WIOQ (Q102) Philadelphia was experimenting, briefly, with mainstream top 40. With then rival WYXR (Star 104.5) doing an early (pre-"Jammin' oldies") version of rhythmic AC, Q102 would eventually adapt a rhythmic top 40 format that anticipated the arrival of WKTU New York seven months later, eventually evolving back to the mainstream.

### WHICH KISS IS PLAYING BLIND MELON? SURPRISE, IT'S DALLAS!

By 1995, KHKS was the format's newest success story. Having leaned adult at its sign-on, Kiss was considerably more rhythmic by that point, indicating the role that records like "Another Night" played in expanding the format's parameters and showing that dance music was now adult music. As is the case today, most of the non-rhythmic titles on Kiss were ballads, although it was playing "No Rain" three times a day as a recurrent.

WXKS-FM (Kiss 108) Boston PD John Ivey, having recently inherited the station from Steve Rivers, was already filtering in the pop/modern titles that would eventually become its calling card, but it was still much closer to its rhythmic heritage (i.e., 41 spins that week on Brownstone's "If You Love Me") than it would be a year and a half later.

WSTR (Star 94) Atlanta was, as it is now, in the adult camp, but under PD Don Benson it was experimenting with some R&B titles ("Thank You" by Boyz II Men, "I Belong To You" by Toni Braxton) that it probably would not have played 18 months earlier or later.

### FROM THE JAYHAWKS TO EIFFEL 65

KRBE Houston, under PD Tom Poleman and MD Paul Bryant, was also only a few records away from modern in May '95 and would briefly complete the transition before returning to top 40. But certain aspects of KRBE haven't changed. Because the station was always modern-leaning and trend-conscious, however, today's mainstream KRBE might still play such 1995 playlist entries as "Blue" by the Jayhawks or "Fake Plastic Trees" by Radiohead if they came out now. And KRBE would likely play longtime core act Erasure's "I Love Saturday," although it might not be the week's most-played song.

WKIE Chicago was suburban modern rock-r WCBR. Its simulcast partner was WDEK, then a small-town hot AC outlet.

WDRQ Detroit was still soft AC WLTI. Its current rival, WKQI (Q95.5), was bright AC. Although both stations were flirting with mainstream top 40 within a year or so, it's only in the past year or so that both have finished the transition.

KZQZ (Z95.7) San Francisco was N/T KPXF-FM. Its eventual sister station, WWZZ (Z104) Washington, D.C., was a '70s oldies station.

### UNCHANGED BY TIME

KDWB Minneapolis, under then PD Kieley, was already more aggressive than the norm on R&B titles ("Thank You," "If You Love Me," etc.), but it also played Blues Traveler, Counting Crows, "I Live My Life For You" by Firehouse, etc. Since then, the station's gotten even more aggressive on R&B—until days ago, it had no commercial R&B FM competitor—but continues to play Creed, Kid Rock, etc., making it one of the stations whose basic model has remained the most consistent over time.

WFLZ also remains relatively unchanged, but in 1995 it had just made a pretty considerable leap, tempering its previous rhythmic lean with modern titles (Soul Asylum's "Misery" was one of them that week). Even though WFLZ had just given up its "Power Pig" handle, it hadn't sacrificed its outrageous image, and that included the music. In 1995, it was playing "I Kissed A Girl" by Jill Sobule. In 2000, it's playing "I Do Both Jay & Jane" by La Rissa.

WHYI (Y100) Miami had already begun its journey back from hot AC by restoring some pop/dance titles to the mix under PD Casey Keating, but there was still a noticeable adult lean (e.g., "House Of Love" by Amy Grant and "Believe" by Elton John, a Y100 core artist for 20-plus years) at the top of its list. Since then, Y100 has undergone top 40's most gradual evolution, becoming a little more rhythmic and a little less adult on an almost weekly basis. The Y100 that would have played "Forgot About Dre" or DMX's "Party Up (Up In Here)" didn't exist six months ago or maybe even three months ago, but when that song went on, it probably wasn't a jolt to anybody who'd listened the week before.

### ON TO PAGE TWO

As for some of the stations on page 2 of the Power Playlists:

- WBZZ Pittsburgh; WXXL Orlando, Fla.; KKRZ (Z100) Portland, Ore.; WKSS Hartford, Conn.; and WPRO-FM Providence, R.I., were mainstream top 40s that had survived the format's doldrums.
- WPST Trenton, N.J.; WNKS Charlotte, N.C. (then WEDJ); and WDCG (G105) Raleigh, N.C., were, like Z100 and KRBE, in the almost-modern camp.
- WXYV Baltimore, KXXM San Antonio, and KSLZ St. Louis were R&B stations.
- WKRQ (Q102) Cincinnati and WNCI Columbus, Ohio, were returning from forays toward hot AC, while WBLI Long Island, N.Y., and KZZP Phoenix (then KVRV) were hot ACs.
- KMXV Kansas City had segued from AC to mainstream top 40 to an aggressive, dance-leaning top 40 format.
- KBKS Seattle was country KRPM.
- KHTS San Diego was religious. In 15 months, it would no longer have a prayer. But its success and the success of so many of the stations listed above meant that the top 40 format would.

## MONITOR PROFILE

### Rik McNeil Returns To Las Vegas With A Brand-New Kiss As PD of KFMS

After working at now-defunct modern rock-r KEDG (the Edge) Las Vegas, Rik McNeil bounced around Fresno, Calif.—working at KTHI, KBOS, and, most recently, KSEQ—yet he always wanted to get back to Sin City. Then came Clear Channel's decision to flip heritage country outlet KFMS to mainstream top 40 as Kiss 102, the market's first such station since KYRK in the early '90s.

"I was pretty happy at KSEQ, but two things were definitely on my list of goals: working for Randy Michaels and coming back to Las Vegas," says McNeil. "When I heard about this job, there was never a doubt that I would go for it. I flew to Phoenix last December to meet B.J. Harris for dinner and spent time on the phone with [WFLZ Tampa, Fla., PD] Domino and Clear Channel Las Vegas market manager Mike Ginsburg. By the time they said, 'Let's go,' I was already packed."



However, Vegas wasn't the same place he left. "The city as a whole as always been pretty open to change, and I was concerned that the vibe of the city had changed since I was last here," he says. "There are a half-million more people here than there was a few years ago... Six years ago, the city had amazingly good press as the 'fastest-growing city in America.' Now the residents are seeing the effects of that huge growth every day."

After living in a hotel for the past three months, McNeil just moved into a house and is beginning to feel comfortable in the market again. "It was more a matter of coming back in, seeing how [Las Vegas] had grown, and getting a vibe for what might be different. There's always more to understand about your market. One of the great things about working for Clear Channel Las Vegas is that I've got three other PDs in the building only a few feet away. The other three stations here are top-notch market leaders, and it's great to talk to those guys about what's going on in the market and compare notes."

Kiss is a mainstream top 40 that's settling in between two strong Infinity properties, rhythmic top 40 KLUC and modern AC KMXB (Mix 94.1). Although Kiss has had a significant rhythmic component from the beginning, it's also covering the pop/rock records that KLUC can't play. "We expect to share some audience with Mix as well [as KLUC]," he says. "When we got into the market, [Mix] was playing TLC, Christina Aguilera, and Marc Anthony. They had a great ratings benefit from the fact that there was no mainstream top 40."

Here's a typical afternoon hour on KFMS: Santana, "Maria Maria"; Blaque, "Bring It All To Me"; Vitamin C, "Graduation (Friends Forever)"; Backstreet Boys, "Larger Than Life"; Sisqó, "Thong Song"; Christina Aguilera, "I Turn To You"; Smash mouth, "Then The Morning Comes"; Alice Deejay, "Better Off Alone"; Destiny's Child, "Say My Name"; Mandy Moore, "I Wanna Be With You"; 2Pac & Dr. Dre, "California Love"; 'N Sync, "Bye

Bye Bye"; and Blink-182, "All The Small Things."

Kiss debuted with the Clear Channel staple of 20,000 songs in a row, which, according to McNeil, enabled him, as well as Harris and Domino, to "put this station together in layers. We started with the music, we added Buck Head as night jock, then me in the afternoons, [KIIS Los Angeles' syndicated morning host] Rick Dees in the morning, and MD Nikki in middays. The commercials came, then news and promotions, but not all at once.

"One of the great things about working for this company is that they'll devote the resources to do it right," McNeil continues. "Domino was a great help in getting that timetable together so that it was a gradual thing and not so much of a jolt. The listeners didn't seem to have a problem with it: In the month of March, we were No. 1 in the market 18-34."

KFMS was the first major station to carry Dees, although several stations in the Midwest were using the Prophet System to import KIIS afternoon host Valentine for mornings. "The Rick Dees show has turned out to be amazing. Rick's show is right on the mark, but I was concerned about keeping it tight on the local level. Our producer Bob Catan is a pro. He runs the show manually, and the whole Dees show has worked with him on outcues and rejoins. Locally, we've got news from the Fox affiliate, and Bob does traffic. Rick's really tapped into the market also. He knows the players, knows what's going on here, and has Las Vegas people on the phone all the time, whether it's the guys at Studio 54 or Mayor Oscar Goodman. This show is more local than some of the shows [that are based] in town."

That passion for detail is shared by his local air staff. "Work ethic is king in this building," McNeil says. "Nikki and Buck Head both have the perfect mentality: They give 200% all the time... and if what they're doing isn't perfect, they both try harder. And before they call it a day, they always come to me and say, 'What else?' I couldn't ask for more. I'm looking for a few more weekenders with the same mentality right now."

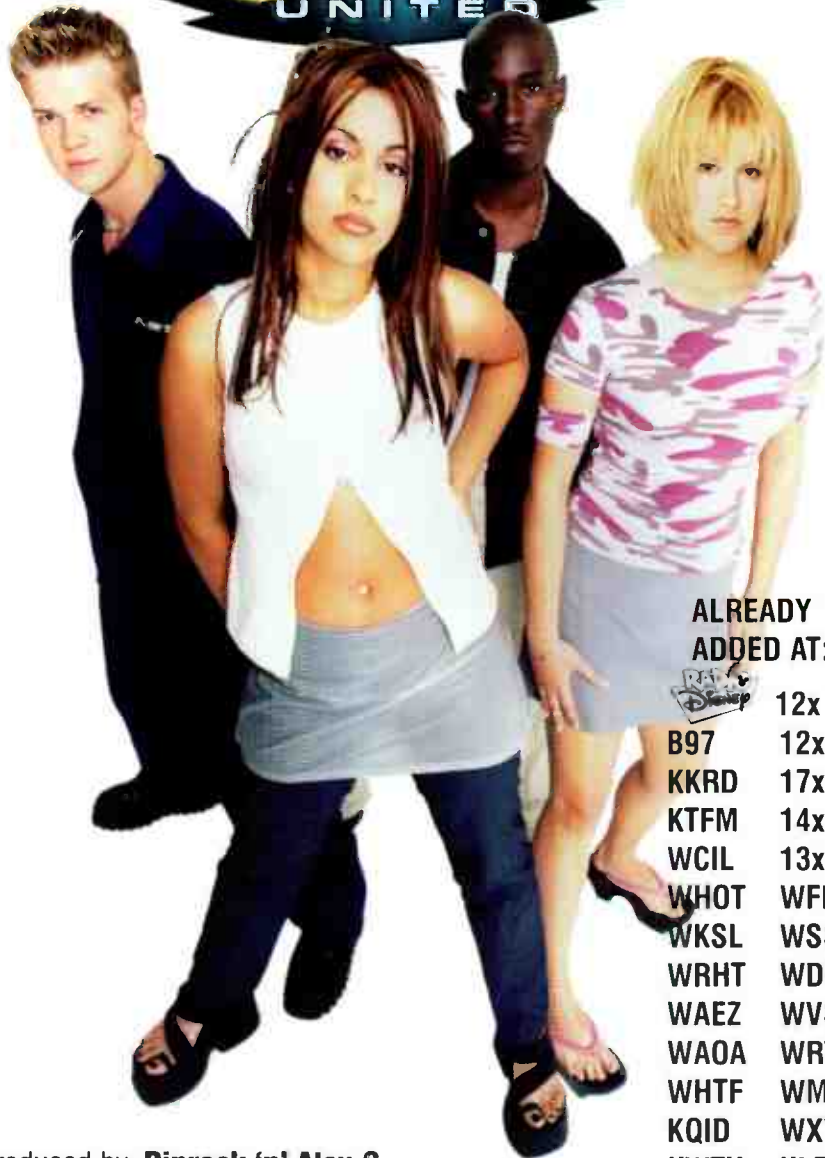
Naturally, KFMS was heavily involved with Clear Channel's recent "Dash For Cash" group contest, which culminated at KIIS' Wango Tango concert on the Dodger Stadium stage. "Actually, the Wango Tango concert itself was a pretty big focus for us," he says. "We're only a few hours from Dodger Stadium, and with Rick Dees doing mornings, there was never a doubt that we would come aboard for the show. We sent a lot of listeners, and we're already planning our involvement for next year."

While Kiss faces a tough battle sandwiched between KLUC and KMXB, McNeil believes the station is already a success and will continue to grow. "Our success is more closely tied to our product than anyone else's," he says. "As far as the profitability issue, we're there. The station's consistently hitting goals and has since the first spot aired. Do we want to be No. 1? Sure, and no one will say being No. 1 12-plus isn't sweet. But I'm more concerned about the target demos, and a lot of my goals also have to do with having a winning attitude in the building, treating people with respect, and helping my staff figure out what their goals are as well.

"Coming back to this market and working for this company have been my two biggest career goals for a long time," McNeil continues. "Now that I'm here, I'm having the time of my life. This station and the people here are very special to me. I'll concentrate my energy here for as long as they'll have me."

JEFF SILBERMAN

# BOYZ-N-GIRLZ UNITED



ALREADY  
ADDED AT:

- 12x
- B97 12x
- KKRD 17x
- KTFM 14x
- WCIL 13x
- WHOT WFMF
- WKSL WSSX
- WRHT WDDJ
- WAEZ WWSR
- WAOA WRTS
- WHTF WMGI
- KQID WXYK
- KWTX KLRS
- KSXY KLNA
- WXXP
- & MANY OTHERS!

Produced by: **Riprock 'n' Alex G.**

Written by: **Joshua "JC" Chazez of 'N SYNC**  
**Brad Daymond & Alex Greggs**

Executive Producer: **Johnny Wright**

Exclusive Management: **Doug Brown for Millennium Entertainment**

**VIDEO DOWNLOADING TO RADIO THIS WEEK!**

**ON NICKELODEON'S "ALL THAT" MUSIC & MORE TOUR THIS SUMMER!**

**SINGLE IN STORES THIS WEEK! ALBUM IN STORES JUNE 20!**

**MAJOR PRESS CAMPAIGN STARTING THIS MONTH!**

**WINNING RADIO BATTLES NIGHTLY! CHECK IT OUT TODAY!**

FROM THEIR FORTHCOMING DEBUT ALBUM  
"BOYZ N GIRLZ UNITED"



www.boyzngirlzu.com  
www.wirerecords.com



## Monitor MAINSTREAM TOP 40

Computed from a national sample of data supplied by Broadcast Data Systems to Top 40 Airplay. Monitor 118 mainstream top 40 stations are electronically monitored 24 hours a day, 7 days a week. © 2000 Billboard/BPI Communications.

FOR WEEK ENDING MAY 21, 2000

THIS WEEK	LAST WEEK	WKS. ON CHART	MAINSTREAM TOP 40 AIRPLAY		DETECTIONS		
			TITLE/IMPRINT/PROMOTION LABEL	ARTIST	TW	LW	
			★ ★ ★ NO. 1 ★ ★ ★				
1	1	16	I TRY EPIC	MACY GRAY	6056	6465	
(2)	2	23	EVERYTHING YOU WANT RCA	VERTICAL HORIZON	6050	6006	
(3)	3	7	OOPS!...I DID IT AGAIN JIVE	BRITNEY SPEARS	5736	5445	
(4)	4	9	THONG SONG DRAGON/DEF SOUL/DJMG	SISQO	5261	5245	
(5)	5	15	HIGHER WIND-UP	CREED	5202	4968	
(6)	8	11	BE WITH YOU INTERSCOPE	ENRIQUE IGLESIAS	4882	4774	
7	7	16	SAY MY NAME COLUMBIA	DESTINY'S CHILD	4507	4785	
8	6	19	BYE BYE BYE JIVE	'N SYNC	4316	4886	
(9)	11	8	I TURN TO YOU RCA	CHRISTINA AGUILERA	4312	4245	
10	9	18	MARIA MARIA ARISTA	SANTANA FEATURING THE PRODUCT G&B	4230	4635	
11	10	18	IT FEELS SO GOOD FARMCLUB.COM/REPUBLIC/UNIVERSAL	SONIQUE	4017	4457	
(12)	15	8	THERE YOU GO LAFACE/ARISTA	PINK	3829	3664	
(13)	16	10	GRADUATION (FRIENDS FOREVER) ELEKTRA/VEEG	VITAMIN C	3717	3566	
14	14	9	CRASH AND BURN COLUMBIA	SAVAGE GARDEN	3688	3755	
15	12	17	ONLY GOD KNOWS WHY TOP DOG/LAVA/ATLANTIC	KID ROCK	3682	4138	
			★ ★ AIRPOWER/GREATEST GAINER ★ ★				
(16)	22	4	IT'S GONNA BE ME JIVE	'N SYNC	3534	2721	
(17)	19	3	THE ONE JIVE	BACKSTREET BOYS	3466	2966	
18	13	16	BREATHE WARNER BROS.	FAITH HILL	3455	3948	
(19)	17	5	BENT LAVA/ATLANTIC	MATCHBOX TWENTY	3415	3091	
			★ ★ AIRPOWER ★ ★				
(20)	18	7	BROADWAY WARNER BROS.	GOD GOD DOLLS	3223	2986	
(21)	20	9	BETTER OFF ALONE REPUBLIC/UNIVERSAL	ALICE DEEJAY	3015	2909	
(22)	24	6	BACK HERE HOLLYWOOD	BBMAK	2607	2223	
23	21	13	YOU SANG TO ME COLUMBIA	MARC ANTHONY	2530	2855	
(24)	28	4	I WANNA KNOW JIVE	JOE	2441	2039	
25	23	19	NEVER LET YOU GO ELEKTRA/VEEG	THIRD EYE BLIND	2282	2548	
(26)	29	5	I WANNA BE WITH YOU 550 MUSIC/550-WORK	MANDY MOORE	2221	2020	
(27)	27	8	SWEAR IT AGAIN ARISTA	WESTLIFE	2185	2066	
(28)	26	8	OTHERSIDE WARNER BROS.	RED HOT CHILI PEPPERS	2183	2072	
(29)	32	3	ABSOLUTELY (STORY OF A GIRL) 550 MUSIC/550-WORK	NINE DAYS	2178	1684	
(30)	30	4	TRY AGAIN BACKGROUND/VIRGIN	AALIYAH	2160	1806	
(31)	36	3	THE REAL SLIM SHADY WEB/AFTERMATH/INTERSCOPE	EMINEM	1968	1360	
32	25	19	AMAZED BNA	LONESTAR	1940	2182	
(33)	33	5	I THINK GOD CAN EXPLAIN C2	SPLENDER	1754	1634	
34	31	26	ALL THE SMALL THINGS MCA	BLINK-182	1659	1796	
35	35	14	GET IT ON TONITE DEF SOUL/DJMG	MONTELL JORDAN	1352	1459	
36	34	23	SHOW ME THE MEANING OF BEING LONELY JIVE	BACKSTREET BOYS	1278	1531	
(37)	38	3	RIDDLE EASTWEST/VEEG	EN VOGUE	1123	1050	
(38)	37	4	MOVE YOUR BODY REPUBLIC/UNIVERSAL	EIFFEL 65	1111	1104	
(39)	39	2	I DO TRACK MASTERS/COLUMBIA	BLAQUE	1000	943	
40	40	26	BLUE (DA BA DEE) REPUBLIC/UNIVERSAL	EIFFEL 65	888	890	

Songs ranked by number of detections. ( ) Songs showing an increase in detections over the previous week, regardless of chart movement. A song that has been on the chart for more than 20 weeks will generally not receive a bullet, even if it registers an increase in detections. Airpower awarded to songs appearing in the top 20 on both the Airplay and Audience charts for the first time with increases in both detections and audience. Greatest Gainer awarded to the song with the largest increase in detections. Most New Stations awarded to the song registering six or more detections at the most stations for the first time this week. A song with a gain in detections over the previous week is placed first if tied with a song with a decline over the same period. When tied songs are each gaining detections or each losing detections, the song being played on more stations is placed first. Songs below the top 20 become recurrents and are removed from the chart after 26 weeks.

## GREATEST GAINERS MAINSTREAM TOP 40

INCREASE IN DETECTIONS

'N SYNC • <i>It's Gonna Be Me</i> (JIVE)	+813
KSLZ +36, KOOX +33, WBDR +28, KCHZ +24, WXXL +20, KSMB +19, WFMF +19, WHTZ +19, WBBO +18, WBTT +18	
EMINEM • <i>The Real Slim Shady</i> (WEB/AFTERMATH/INTERSCOPE)	+608
WXSS +43, WKIE +24, KHHT +24, WXXL +24, KBKS +20, WXLK +18, KZZP +17, WKZL +16, WXYV +16, WPST +15	
BACKSTREET BOYS • <i>The One</i> (JIVE)	+500
KCHQ +29, WKFS +29, WNKS +25, WVKV +24, KZZU +21, KOOX +18, KRBE +18, KZZP +17, WRVQ +16, KOOX +15	
NINE DAYS • <i>Absolutely (Story Of A Girl)</i> (550 MUSIC/550-WORK)	+494
WDRQ +22, KSLZ +20, WHYI +18, KMXV +17, WNKS +17, KOOX +16, KZQZ +15, KKDM +14, WKXJ +14, WNTQ +14	
JOE • <i>I Wanna Know</i> (JIVE)	+402
KZZU +30, KSLZ +24, KHST +24, KOOX +22, KRBE +20, KDND +16, WQZQ +15, WKSZ +14, WLKT +12, WKZL +12	

# Monitor MAINSTREAM TOP 40

Compiled from a national sample of data supplied by Broadcast Data Systems to Top 40 Airplay Monitor. 118 mainstream top 40 stations are electronically monitored 24 hours a day, 7 days a week. © 2000 Billboard/BPI Communications.

FOR WEEK ENDING MAY 21, 2000

## MAINSTREAM TOP 40 AUDIENCE

THIS WEEK	LAST WEEK	WKS. ON CHART	TITLE/IMPRINT/PROMOTION LABEL	ARTIST	AUDIENCE (millions)		
					TW	LW	
			★★★★ No. 1 ★★★★★				
1	2	20	EVERYTHING YOU WANT RCA	VERTICAL HORIZON	51.496	51.241	
2	1	17	I TRY EPIC	MACY GRAY	50.398	57.185	
3	6	7	OOPS!...I DID IT AGAIN JIVE	BRITNEY SPEARS	49.594	43.222	
4	3	11	BE WITH YOU INTERSCOPE	ENRIQUE IGLESIAS	46.783	46.936	
5	4	9	THONG SONG DRAGON/DEF SOUL/DJMG	SISQO	45.177	45.961	
6	7	19	IT FEELS SO GOOD FARMCLUB.COM/REPUBLIC/UNIVERSAL	SONIQUE	42.667	43.050	
7	10	13	HIGHER WIND-UP	CREED	40.005	37.403	
8	9	16	SAY MY NAME COLUMBIA	DESTINY'S CHILD	38.268	42.243	
9	8	18	MARIA MARIA ARISTA	SANTANA FEATURING THE PRODUCT G&B	37.923	42.329	
10	12	8	I TURN TO YOU RCA	CHRISTINA AGUILERA	37.197	34.565	
11	11	11	THERE YOU GO LAFACE/ARISTA	PINK	36.986	34.617	
12	5	19	BYE BYE BYE JIVE	'N SYNC	36.389	43.408	
13	18	5	IT'S GONNA BE ME JIVE	'N SYNC	34.315	25.056	
14	16	10	CRASH AND BURN COLUMBIA	SAVAGE GARDEN	31.384	28.766	
15	17	9	BETTER OFF ALONE REPUBLIC/UNIVERSAL	ALICE DEEJAY	30.788	28.017	
16	13	16	BREATHE WARNER BROS.	FAITH HILL	29.918	32.380	
17	15	10	GRADUATION (FRIENDS FOREVER) ELEKTRA/VEEG	VITAMIN C	28.605	29.161	
18	14	16	ONLY GOD KNOWS WHY TOP DOG/LAVA/ATLANTIC	KID ROCK	26.465	30.402	
19	19	6	BENT LAVA/ATLANTIC	MATCHBOX TWENTY	25.965	24.081	
20	21	7	BROADWAY WARNER BROS.	GOO GOO DOLLS	24.930	22.942	
21	23	3	THE ONE JIVE	BACKSTREET BOYS	24.575	18.948	
22	25	4	I WANNA KNOW JIVE	JOE	20.771	17.220	
23	24	4	TRY AGAIN BLACKGROUND/VIRGIN	AALIYAH	20.735	18.104	
24	20	14	YOU SANG TO ME COLUMBIA	MARC ANTHONY	20.113	23.212	
25	26	5	BACK HERE HOLLYWOOD	BBMAK	19.147	16.787	
26	22	19	NEVER LET YOU GO ELEKTRA/VEEG	THIRD EYE BLIND	18.468	20.915	
27	33	4	ABSOLUTELY (STORY OF A GIRL) 550 MUSIC/550-WORK	NINE DAYS	18.221	13.045	
28	29	7	OTHERSIDE WARNER BROS.	RED HOT CHILI PEPPERS	17.188	15.762	
29	35	3	THE REAL SLIM SHADY WEB/AFTERMATH/INTERSCOPE	EMINEM	16.386	11.030	
30	27	25	ALL THE SMALL THINGS MCA	BLINK-182	15.379	16.732	
31	30	7	SWEAR IT AGAIN ARISTA	WESTLIFE	15.069	14.851	
32	28	21	AMAZED BNA	LONESTAR	14.931	15.816	
33	34	4	I WANNA BE WITH YOU 550 MUSIC/550-WORK	MANDY MOORE	14.300	12.757	
34	32	23	SHOW ME THE MEANING OF BEING LONELY JIVE	BACKSTREET BOYS	12.079	13.335	
35	31	14	GET IT ON TONITE DEF SOUL/DJMG	MONTELL JORDAN	11.826	13.842	
36	37	3	I THINK GOD CAN EXPLAIN C2	SPLENDER	10.442	9.704	
37	38	2	RIDDLE EASTWEST/VEEG	EN VOGUE	8.387	6.409	
38	36	24	FALLS APART LAVA/ATLANTIC	SUGAR RAY	6.909	9.709	
39	34	26	BLUE (DA BA DEE) REPUBLIC/UNIVERSAL	EIFFEL 65	6.633	6.358	
40	NEW		I WILL LOVE AGAIN COLUMBIA	LARA FABIAN	6.183	2.630	

Songs ranked by number of audience, computed by cross-referencing exact times of airplay with Arbitron listener data. (○) Songs showing an increase in audience over the previous week, regardless of chart movement. A song that has been on the chart for more than 20 weeks will generally not receive a bullet, even if it registers an increase in audience. A song with a gain in audience over the previous week is placed first if tied with a song with a decline over the same period. When tied songs are each gaining in audience or each losing in audience, the song being played on more stations is placed first. Songs become recurrenents and are removed from this chart in conjunction with the Mainstream Top 40 Airplay chart.

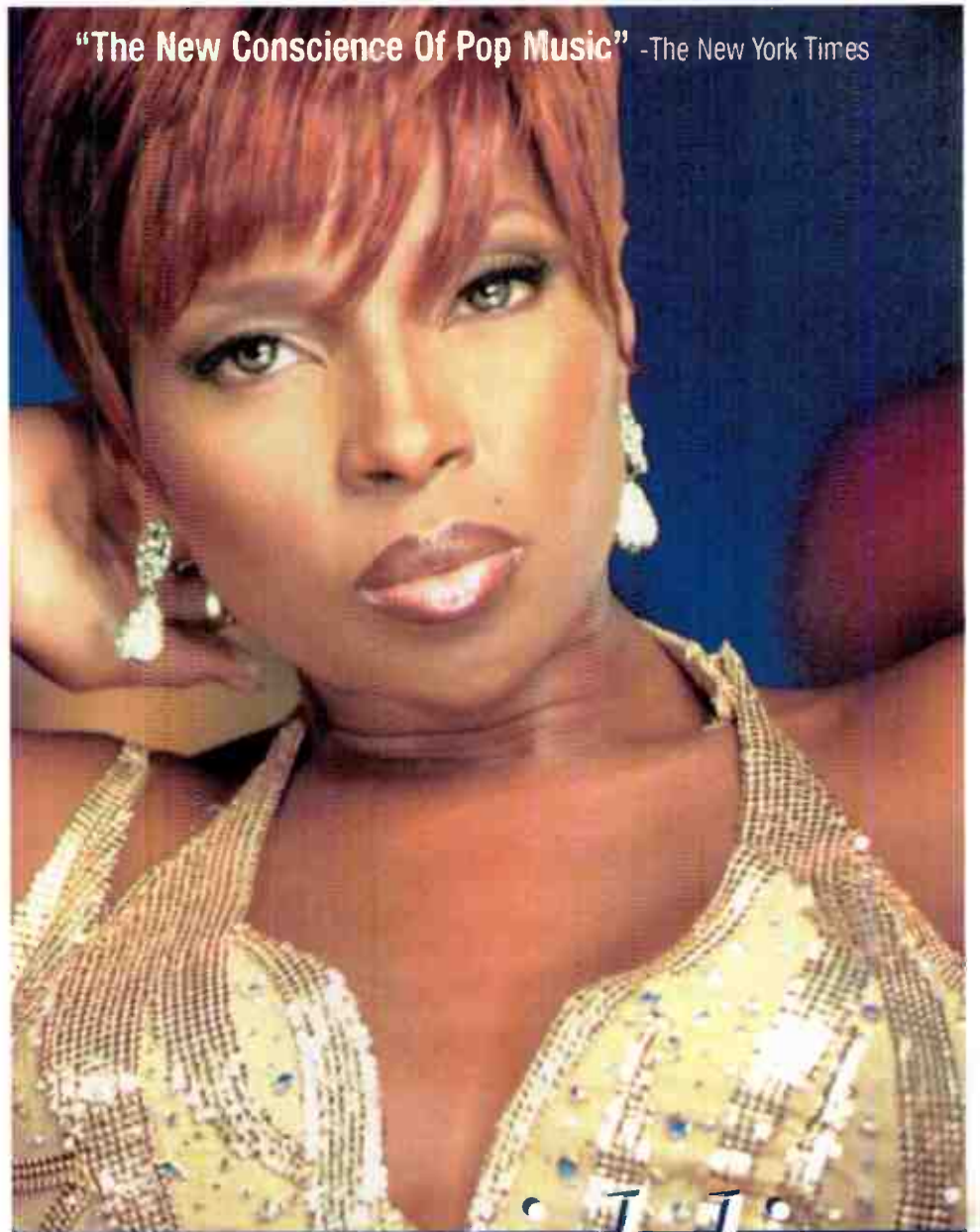
## Monitor RECURRENTS MAINSTREAM TOP 40

RANK	TITLE ARTIST (IMPRINT/PROMOTION LABEL)	DETECTIONS	
		TW	LW
1	SMOOTH SANTANA FEATURING ROB THOMAS (ARISTA)	1904	1954
2	BRING IT ALL TO ME BLAQUE (TRACK MASTERS/COLUMBIA)	1847	1973
3	WHAT A GIRL WANTS CHRISTINA AGUILERA (RCA)	1509	1587
4	I NEED TO KNOW MARC ANTHONY (COLUMBIA)	1306	1349
5	WHERE MY GIRLS AT? 702 (MOTOWN)	1118	1006
6	THAT'S THE WAY IT IS CELINE DION (550 MUSIC/550-WORK)	1104	1253
7	THEN THE MORNING COMES SMASH MOUTH (INTERSCOPE)	1091	1137
8	ALL STAR SMASH MOUTH (INTERSCOPE)	1070	1049

RANK	TITLE ARTIST (IMPRINT/PROMOTION LABEL)	DETECTIONS	
		TW	LW
9	I KNEW I LOVED YOU SAVAGE GARDEN (COLUMBIA)	1063	1179
10	MEET VIRGINIA TRAIN (AWARE/COLUMBIA)	983	1111
11	GENIE IN A BOTTLE CHRISTINA AGUILERA (RCA)	944	939
12	SOMEDAY SUGAR RAY (LAVA/ATLANTIC)	930	972
13	UNPRETTY TLC (LAFACE/ARISTA)	913	965
14	SLIDE GOO GOO DOLLS (WARNER BROS.)	911	859
15	BACK AT ONE BRIAN MCKNIGHT (MOTOWN/UNIVERSAL)	878	898
16	IF YOU HAD MY LOVE JENNIFER LOPEZ (WORK/550-WORK)	785	840
17	STEAL MY SUNSHINE LEN (WORK/550-WORK)	765	753
18	NO SCRUBS TLC (LAFACE/ARISTA)	754	749
19	EVERY MORNING SUGAR RAY (LAVA/ATLANTIC)	716	699
20	WAITING FOR TONIGHT JENNIFER LOPEZ (WORK/550-WORK)	690	690

Recurrenents are titles that have appeared on the Mainstream Top 40 Airplay chart for 26 weeks and have dropped below the top 20.

"The New Conscience Of Pop Music" -The New York Times



# mary j. blige

## give me you

- The New Video "Give Me You," Starring Mary and Michael Jordan, Heavy at **MV**, **BET** & **1080P**
- The Album Version & New Remix by Niño, the Single Written by Diane Warren
- From the Multi-Platinum Album **Mary**
- ★★★★★ - Rolling Stone
- On Tour All Summer!

Produced by The Federation: Manuel Seal for Seal Music Productions/Third Street Music Group  
Executive Producers: Mary J. Blige and Kirk Burrowes  
Management: Burrowes/Entertainment & Tra-La-La Management  
www.njblige.com www.mcarecords.com



Songs ranked by number of detections. Playlists are listed in order of TSA weekly cum, beginning with the highest-cumming station. Cumers are updated twice yearly following the release of the spring and fall Arbitron surveys. The number of stations shown each week varies depending upon space. First Impressions (FI) denotes songs with 6 or more detections at station for first time this week.

VIDEO PLAYLIST TRACKING FOR WEEK ENDING MAY 18, 2000

MTV Sr. VP/Music: Tom Calderone VP/Music & Talent Prog: Michele Dix VP/Music & Talent: Elli Cola Viacom 212-258-8000. Playlist table with columns TW, LW, and song titles.

VH1 Executive VP/Talent & Music Prog: Wayne Isaak VP/Music & Talent: Bruce Gillmer Viacom 212-258-7800. Playlist table with columns TW, LW, and song titles.

Radio Disney PD: Robin Jones ABC Radio 972-991-9200. Playlist table with columns TW, LW, and song titles.

WHTZ New York Sr. VP/Pgm: Tom Poleman DM: Kid Kelly MD: Paul Bryant AMFM 201-209-6200. Playlist table with columns TW, LW, and song titles.

KIIS Los Angeles PD: Dan Kieley APD/MD: Michael Steele Clear Channel 818-845-1027. Playlist table with columns TW, LW, and song titles.

WIOQ Philadelphia PD: Brian Bridgman MD: Marian Newsome AMFM 610-667-8100. Playlist table with columns TW, LW, and song titles.

KKHs Dallas DM: John Cook PD/MD: Mr. Ed Lambert AMFM 214-891-3400. Playlist table with columns TW, LW, and song titles.

WXKS Boston PD: John Ivey APD/MD: Kid David Corey AMD: Skip Kelly AMFM 781-396-1430. Playlist table with columns TW, LW, and song titles.

WSTR Atlanta PD: Dan Bowen MD: J.R. Ammons Jefferson Pilot 404-261-2970. Playlist table with columns TW, LW, and song titles.

KRBE Houston PD: Jay Michaels Susquehanna 713-266-1000. Playlist table with columns TW, LW, and song titles.

WKIE Chicago PD: Chris Shebel APD/MD: Harry Legg Big City Radio 312-573-9400. Playlist table with columns TW, LW, and song titles.

WDRQ Detroit PD: Alex Tear APD: Jay Towers MD: Keith Curry ABC/Disney 248-354-9300. Playlist table with columns TW, LW, and song titles.

KZQZ San Francisco PD: Casey Keating APD/MD: Matthew L.A. Reid Bonneville 415-957-0957. Playlist table with columns TW, LW, and song titles.

KDWB Minneapolis PD: Rob Morris MD: Derek Moran AMFM 612-340-9000. Playlist table with columns TW, LW, and song titles.

WFLZ Tampa PD: B.J. Harris MD: Dom Theodore MD: Stan "The Man" Priest Clear Channel 813-839-9393. Playlist table with columns TW, LW, and song titles.

WWZZ Washington, DC PD: Dale D'Brian MD: Sean Sellers Bonneville 703-522-1041. Playlist table with columns TW, LW, and song titles.

WKQI Detroit PD: Tim Richards APD/MD: J. Love AMFM 248-967-3750. Playlist table with columns TW, LW, and song titles.

WHYI Miami PD: Rob Roberts APD: Tony Banks MD: Deidre Poyner Clear Channel 954-463-9299. Playlist table with columns TW, LW, and song titles.



Monitor AIRPLAY MAINSTREAM TOP 40

POWER PLAYLIST

FOR WEEK ENDING MAY 21, 2000

Songs ranked by number of detections. Playlists are listed in order of TSA weekly counts, beginning with the highest-cumulative counts...

WBZZ Pittsburgh OM: Keith Clark PD: David Edgar MC: Nevin Dano



TW LW

Table with 2 columns: Rank, Song Title. Songs include Vertical Horizon Everything You Want, Britney Spears Oops! I Did It Again, Creed Higher, etc.

WKSS Hartford PD: Tracy Austin MD: Mike McGowan AMFM 860-723-6160



TW LW

Table with 2 columns: Rank, Song Title. Songs include Destiny's Child Say My Name, Pink There You Go, Montell Jordan Get It On Tonight, etc.

WPST Trenton Sr. VP/Pgmng: Michelle Stevens PD: Dave McKay APD/MD: Chris Puorro



TW LW

Table with 2 columns: Rank, Song Title. Songs include Vertical Horizon Everything You Want, Sisqo Thong Song, Faith Hill Breathe, etc.

KBKS Seattle PD: Mike Preston MD: Marcus D MC: Jerry Kelly



TW LW

Table with 2 columns: Rank, Song Title. Songs include Sisqo Thong Song, Britney Spears Oops! I Did It Again, Red Hot Chili Peppers Otherside, etc.

WBLI Long Island PD: J.J. Rice APD/MD: Al Levine AMD: Bill Fisher



TW LW

Table with 2 columns: Rank, Song Title. Songs include Enrique Iglesias Be With You, Santana Feat. The Product G&B Maria Maria, Destiny's Child Say My Name, etc.

WNKS Charlotte PD: John Reynolds MD: Jason McCormick



TW LW

Table with 2 columns: Rank, Song Title. Songs include Creed Higher, N Sync Be Bye Bye, Macy Gray I Try, etc.

KSLZ St. Louis PD: Jeff Kapug APD: Kandy Klutch MD: Boomer



TW LW

Table with 2 columns: Rank, Song Title. Songs include Britney Spears Oops! I Did It Again, N Sync Be Bye Bye, Sisqo Thong Song, etc.

KMXV Kansas City PD: Jon Zellner APD/MD: Dylan



TW LW

Table with 2 columns: Rank, Song Title. Songs include Britney Spears Oops! I Did It Again, Creed Higher, Third Eye Blind Never Let You Go, etc.

KHTS San Diego PD: Diana Laird MD: Hitman Haze



TW LW

Table with 2 columns: Rank, Song Title. Songs include Joe I Wanna Know, Aaliyah Try Again, Mary Mary Shakes, etc.

WNCL Columbus PD: Todd Shannon



TW LW

Table with 2 columns: Rank, Song Title. Songs include Creed Higher, Macy Gray I Try, Vertical Horizon Everything You Want, etc.

KZZP Phoenix PD: Marc Summers APD/MD: Karen Rite



TW LW

Table with 2 columns: Rank, Song Title. Songs include Britney Spears Oops! I Did It Again, Vertical Horizon Everything You Want, Enrique Iglesias Be With You, etc.

WXFL Orlando OM/MD: Adam Cook APD/MD: Pete deGraaf



TW LW

Table with 2 columns: Rank, Song Title. Songs include Creed Higher, Enrique Iglesias Be With You, N Sync Be Bye Bye, etc.

KKRZ Portland PD: Tommy Austin APD: Dr. Doug MD: Harrison Wood



TW LW

Table with 2 columns: Rank, Song Title. Songs include Pink There You Go, Christina Aguilera I Turn To You, Savage Garden Crash And Burn, etc.

WKRC Cincinnati PD: Mike Marino MD: Jim Kelly



TW LW

Table with 2 columns: Rank, Song Title. Songs include Vertical Horizon Everything You Want, N Sync Be Bye Bye, Macy Gray I Try, etc.

KXXM San Antonio PD: Krash Kelly APD/MD: Duncan James



TW LW

Table with 2 columns: Rank, Song Title. Songs include Vertical Horizon Everything You Want, Blink-182 Adam's Song, Faith Hill Breathe, etc.

WXYV Baltimore VP/Prog: Bill Pasha OM: Kristie McIntyre APD/MD: Throb



TW LW

Table with 2 columns: Rank, Song Title. Songs include Sisqo Thong Song, Faith Hill Breathe, Macy Gray I Try, etc.

WDCC Raleigh PD: Brian Burns APD: Chris Edge



TW LW

Table with 2 columns: Rank, Song Title. Songs include Nine Days Absolutely (Story Of A Girl), Marc Anthony You Sang To Me, Red Hot Chili Peppers Otherside, etc.

WPRO Providence PD: Tony Bristol MD: Davey Morris



TW LW

Table with 2 columns: Rank, Song Title. Songs include Britney Spears Oops! I Did It Again, Vertical Horizon Everything You Want, N Sync Be Bye Bye, etc.

Upward-moving songs ranked in order of detections. Songs are removed if they lose more than 5% of their detections from previous week or if their detections decline for two consecutive weeks.

**MOST NEW STATIONS**

**Songs with 6 or more detections at new stations this week**

NEW STATIONS	
<b>WHITNEY HOUSTON &amp; ENRIQUE IGLESIAS</b> <i>Could I Have This Kiss Forever (Arista/Interscope)</i>	<b>33</b>
<b>'N SYNC</b> <i>It's Gonna Be Me (Jive)</i>	<b>26</b>
<b>SISTER HAZEL</b> <i>Change Your Mind (Universal)</i>	<b>23</b>
<b>JOE</b> <i>I Wanna Know (Jive)</i>	<b>16</b>
<b>EMINEM</b> <i>The Real Slim Shady (Web/Aftermath/Interscope)</i>	<b>15</b>



Total Detections/Gain

**'N SYNC 3534/813**

**It's Gonna Be Me (Jive)**  
 Total Stations: 117/Chart Move: 22-16  
 Heavy (45+ detections): 18 KCHZ, KHFI, KIOX, KRUF, KSLZ, WBAM, WBBO, WBTT, WDRQ, WHTZ, WKCI, WKFS, WPST, WPXY, WSNX, WYKS, WXXL, WXXX  
 Medium (25-44): 48 KBFM, KBKS, KCHO, KDND, KDWB, KFMS, KHFI, KJYO, KKDM, KKMGM, KMXV, KQAR, KQKQ, KRBE, KSMB, KXXM, KZHT, KZZU, WAPE, WYAV, WBDN, WBLI, WBTJ, WDJX, WFNH, WFLZ, WFMF, WHYY, WHOT, WHYI, WIOG, WJBO, WKRO, WKSL, WKXJ, WLKT, WNOK, WNTQ, WRVQ, WRVW, WSTR, WWHH, WYKS, WYXK, WYXN, WZNY  
 Light (Under 25): 51  
 First Impressions: 26 KHKS, KHFI, KHYS, KKRZ, KRQO, KXMM, WAEB, WBZZ, WBDN, WBHT, WBTT, WDCG, WDDJ, WFBC, WGTZ, WKIE, WKRZ, WKSS, WKSZ, WKZL, WNNK, WQEN, WYSS, WYZZ, WYCR, WZPL

**AIRPLAY LEADER**

(FIRST STATION TO 150 PLAYS)

**WHTZ • New York, NY**

**PD: Tom Poleman**

**MD: Paul Bryant**

**Date: 04/30/00**



**GOO GOO DOLLS 3223/237**

**Broadway (Warner Bros.)**  
 Total Stations: 116/Chart Move: 18-20  
 Heavy (45+): 9 KCHO, KKDM, KMXV, KRUF, KXMM, WAEB, WBAM, WBTT, WKIE  
 Medium (25-44): 64 KBKS, KHFI, KHTO, KIIS, KQAR, KSMB, KZHT, WAEV, WAPE, WYAV, WBBO, WBDN, WBFA, WBLI, WDCG, WDJX, WDRQ, WFBC, WFLZ, WFMF, WGTZ, WHYY, WHOT, WHTZ, WIOG, WJBO, WKFS, WKFI, WKRO, WKZL, WKSE, WKSL, WKXJ, WLDI, WNNK, WNKX, WNNK, WNKX, WNTQ, WPRO, WPST, WSTW, WQZG, WRVQ, WRVW, WSNX, WSTR, WTTW, WVKC, WWHH, WWTW, WZZZ, WXKS, WXKX, WYSS, WYCR, WYQZ, WZAT, WZNY, WZPL  
 Light (Under 25): 43  
 First Impressions: 3 WBLI, WIOG, WVKX

**AIRPLAY LEADER**

(FIRST STATION TO 150 PLAYS)

**KXMM • San Antonio, TX**

**PD: Krash Kelly**

**MD: Duncan James**

**Date: 04/16/00**

**Also: WXKS • Boston, MA**



**AIRPOWER BOUND**

Total Detections/Gain

**BACKSTREET BOYS 3466/500**

**The One (Jive)**  
 Total Stations: 117/Chart Move: 19-17  
 Heavy (45+): 17 KCHO, KCHZ, KKDM, KIOX, KMXV, KQKQ, KRUF, KZZU, WBDN, WBTJ, WBTT, WDJX, WDRQ, WFLZ, WKFS, WYKS, WYXK

Medium (25-44): 53 KDND, KFMS, KHFI, KHYS, KHTT, KJYO, KKRD, KQAR, KSLZ, KSMB, KXXM, KZHT, KZQZ, WYAV, WBAM, WBFA, WCIL, WDDJ, WFNH, WFMF, WGTZ, WHOT, WHTZ, WHYY, WIOG, WJBO, WKCI, WKIE, WKSL, WKZL, WKXJ, WLDI, WNNK, WNKX, WNNK, WNKX, WNTQ, WPRO, WPST, WPXY, WQZG, WRVW, WYSS, WYCR, WYQZ, WZAT, WZNY  
 Light (Under 25): 47  
 First Impressions: 5 KDWB, KRBE, WBLI, WDCG, WNKX

**BBMAK 2607/384**

**Back Here (Hollywood)**  
 Total Stations: 115/Chart Move: 24-22  
 Heavy (45+): 4 KCHO, KSMB, WBTJ, WBTT  
 Medium (25-44): 46 KFMS, KIIS, KKDM, KRQO, KSLZ, KXMM, KZHT, KZQZ, WYAV, WAEV, WAPE, WYAV, WBAM, WBDN, WBDZ, WCIL, WDCG, WDDJ, WDJX, WFBC, WFNH, WFMF, WGTZ, WHTZ, WHYY, WIOG, WKCI, WKFS, WKIE, WKSL, WKSZ, WKXJ, WLDI, WNNK, WNKX, WNNK, WNKX, WNTQ, WPRO, WPST, WPXY, WQZG, WRVW, WYSS, WYCR  
 Light (Under 25): 65  
 First Impressions: 6 KIOX, KRBE, KZZP, WHYY, WQEN, WXXL

**JOE 2441/402**

**I Wanna Know (Jive)**  
 Total Stations: 114/Chart Move: 28-24  
 Heavy (45+): 15 KCHZ, KDND, KDWB, KHFI, KHKS, KHYS, KKRZ, KQAR, KRUF, KXXM, KZQZ, WBHT, WBTJ, WFLZ, WXXX  
 Medium (25-44): 26 KCHO, KFMS, KJYO, KKMGM, KMXV, KRBE, KRQO, KSLZ, KZZP, KZZU, WAEV, WBTJ, WCIL, WDDJ, WDJX, WFNH, WFMF, WIOG, WKSS, WKSZ, WRVQ, WRVW, WSNX, WYSS, WYCR, WYQZ, WZAT, WZNY  
 Light (Under 25): 73  
 First Impressions: 16 KHTT, KIIS, KZZU, WAPE, WGTZ, WHYY, WKFS, WKOI, WKSL, WKZL, WPRO, WPST, WQZG, WRHT, WWCK, WZZZ

**MANDY MOORE 2221/201**

**I Wanna Be With You (550 Music/550-Work)**  
 Total Stations: 115/Chart Move: 29-26  
 Heavy (45+): 4 KCHO, KHTT, KZHT, KZZU  
 Medium (25-44): 33 KCHZ, KDND, KHYS, KKDM, KQAR, KSLZ, WAEV, WYAV, WBAM, WBDN, WCIL, WDDJ, WDJX, WFNH, WHYY, WHOT, WHTZ, WHYY, WJBO, WKSE, WKSI, WKXJ, WLDI, WNNK, WNKX, WNNK, WNKX, WNTQ, WPRO, WPST, WPXY, WQEN, WRVW, WYSS, WYCR, WYQZ, WZAT, WZNY  
 Light (Under 25): 78  
 First Impressions: 3 WKCI, WRVQ, WSNX

**WESTLIFE 2185/119**

**Swear It Again (Arista)**  
 Total Stations: 111/Chart Move: 27-27  
 Heavy (45+): 5 KCHO, KHTO, KJYO, KQAR, WDJX  
 Medium (25-44): 30 KDND, KHYS, KKRZ, KQKQ, KZZU, WAEV, WBDN, WCIL, WDDJ, WFNH, WHOT, WHTZ, WHYY, WKSE, WKSL, WKZL, WLKT, WNNK, WNKX, WNTQ, WPRO, WPXY, WQZG, WRVQ, WYSS, WYCR  
 Light (Under 25): 76  
 First Impressions: 7 KBKS, WBAM, WKSS, WRVW, WSNX, WSTW, WZNY

**RED HOT CHILI PEPPERS 2183/111**

**Otherside (Warner Bros.)**  
 Total Stations: 110/Chart Move: 26-28  
 Heavy (45+): 7 KBKS, KIOX, KXXM, WAEB, WDCG, WKIE, WXSS  
 Medium (25-44): 31 KCHO, KHTO, KKDM, KSLZ, KUMX, KZQZ, WAEV, WBAM, WBBO, WBZZ, WCIL, WDDJ, WFBC, WFMF, WHTZ, WJBO, WKRZ, WKZL, WLDI, WNNK, WNKX, WPRO, WQEN, WRVW, WSTW, WYSS, WYCR, WYQZ, WZAT, WZPL  
 Light (Under 25): 72  
 First Impressions: 4 KJYO, WHYY, WIOG, WZZZ

**NINE DAYS 2178/494**

**Absolutely (Story Of A Girl) (550 Music/550-Work)**  
 Total Stations: 102/Chart Move: 32-29  
 Light (45+): 2 KXXM, WDCG

Medium (25-44): 41 KBKS, KCHO, KCHZ, KHYS, KHYS, KJYO, KKDM, KSLZ, KZQZ, KZZP, WAEV, WBDN, WBLI, WDCG, WCIL, WDDJ, WFNH, WHOT, WHTZ, WHYY, WIOG, WJBO, WKCI, WKIE, WKRO, WKSL, WKSZ, WKXJ, WKZL, WNKX, WNTQ, WPST, WQEN, WRVW, WSTR, WXXX, WYCR, WZNY, WZYP  
 Light (Under 25): 59  
 First Impressions: 10 KDWB, KHTT, KMXV, KRUF, KUMX, WDRQ, WFLZ, WRVQ, WZZZ, WXXL

**AALIYAH 2160/354**

**Try Again (Blackground/Virgin)**  
 Total Stations: 115/Chart Move: 30-30  
 Heavy (45+): 10 KHKS, KZZU, WBDN, WYSS  
 Medium (25-44): 26 KCHZ, KDND, KDWB, KJYO, KKMG, KKRZ, KRBE, KRQO, KRUF, KSLZ, KZZU, WBBO, WBTJ, WCIL, WFNH, WFLZ, WFMF, WFBC, WFNH, WHTZ, WHYY, WKSE, WPST, WPXY, WXXL, WXXX  
 Light (Under 25): 79  
 First Impressions: 10 KSMB, KXXM, WYAV, WJBO, WKCI, WKSZ, WNNK, WPST, WYQY, WZNY

**EMINEM 1968/608**

**The Real Slim Shady (Web/Aftermath/Interscope)**  
 Total Stations: 110/Chart Move: 36-31  
 Heavy (45+): 4 KHKS, KZZU, WBDN, WYSS  
 Medium (25-44): 27 KBKS, KCHZ, KDWB, KHYS, KHYS, KJYO, KKDM, KKRZ, KQKQ, KRBE, KRBE, KRQO, KRUF, KZZP, WBDN, WBDN, WDRQ, WFBC, WFNH, WHTZ, WHYY, WKSE, WPST, WPXY, WXXL, WXXX, WYAV  
 Light (Under 25): 79  
 First Impressions: 15 KDND, KQAR, WABB, WCIL, WGTZ, WHYY, WKIE, WKSZ, WKZL, WNKX, WRVQ, WZZZ, WXLK, WYQY, WZAT

**SPLENDER 1754/120**

**I Think God Can Explain (C2)**  
 Total Stations: 109/Chart Move: 33-33  
 Heavy (45+): 5 KZHT, WABB, WFBC, WNTQ, WYSS  
 Medium (25-44): 22 KKDM, KQAR, KRUF, KSMB, KXXM, KZZP, WAEV, WBBO, WZZZ, WFNH, WIOG, WJBO, WBSL, WLAN, WLKT, WNNK, WNKX, WPXY, WRHT, WSTW, WXLK, WYSS  
 Light (Under 25): 82  
 First Impressions: 6 KFMS, KJYO, WKCI, WQZG, WYSS, WXXX

**EN VOGUE 1123/73**

**Riddle (EastWest/EEG)**  
 Total Stations: 110/Chart Move: 38-37  
 Heavy (45+): 2 KKRZ, KZZU  
 Medium (25-44): 8 KCHZ, KDWB, KHKS, KHYS, KZHT, WFLY, WVKX, WWHH  
 Light (Under 25): 100  
 First Impressions: 5 KCHO, KFMS, KHFI, WHTZ, WLAN

**EIFFEL 65 1111/7**

**Move Your Body (Republic/Universal)**  
 Total Stations: 110/Chart Move: 37-38  
 Heavy (45+): 0  
 Medium (25-44): 8 KDND, KRBE, KZZU, WBBO, WDDJ, WDJX, WYSS, WYCR  
 Light (Under 25): 102  
 First Impressions: 2 WPRO, WYQY

**BLAQUE 1000/57**

**I Do (Track Masters/Columbia)**  
 Total Stations: 109/Chart Move: 39-39  
 Heavy (45+): 0  
 Medium (25-44): 10 KDWB, KFMS, KHYS, KZQZ, KZZU, WCIL, WDJX, WKSL, WYSS, WYCR  
 Light (Under 25): 99  
 First Impressions: 3 KHFI, KRBE, KZZP

**CHART BOUND**

Total Detections/Gain

**MARY J. BLIGE 837/-13**

**Give Me Love (MCA)**  
 Total Stations: 81  
 Heavy (45+): 0  
 Medium (25-44): 4 KHYS, KZZU, WFNH, WOXJ  
 Light (Under 25): 77  
 First Impressions: 2 KKDM, WLDI

**ANASTACIA 822/-26**

**I'm Outta Love (Daylight/Epic)**  
 Total Stations: 79  
 Heavy (45+): 0  
 Medium (25-44): 9 KZQZ, WAEV, WAEV, WDDJ, WDJX, WYSS, WPRO, WQZG, WZZZ, WXXX  
 Light (Under 25): 70  
 First Impressions: 1 WHOT

**TONI BRAXTON 799/102**

**He Wasn't Man Enough (LaFace/Arista)**  
 Total Stations: 58  
 Heavy (45+): 2 KHYS, WKSS  
 Medium (25-44): 10 KKRZ, WAEV, WDDJ, WHYY, WJJS, WKSE, WYSS, WWHH, WZZZ, WXXX  
 Light (Under 25): 46  
 First Impressions: 4 KFMS, KHKS, KZZP, WIOQ

**TRAIN 671/-3**

**I Am (Aware/Columbia)**  
 Total Stations: 38  
 Heavy (45+): 0  
 Medium (25-44): 11 WAEV, WDCG, WDDJ, WJBO, WNKX, WNKX, WRVW, WSTW, WZZZ, WYQY, WZPL  
 Light (Under 25): 27

**M2M 639/33**

**Mirror Mirror (Atlantic)**  
 Total Stations: 62  
 Heavy (45+): 1 KZHT  
 Medium (25-44): 5 KCHO, WAEV, WBAM, WDDJ, WYSS  
 Light (Under 25): 46  
 First Impressions: 2 KHKS, WKFS

**DMX 613/115**

**Party Up (Up In Here) (Ruff Ryders/Def Jam/IDJMG)**  
 Total Stations: 60  
 Heavy (45+): 0  
 Medium (25-44): 4 KCHZ, WKSE, WRVQ, WWHH  
 Light (Under 25): 58  
 First Impressions: 10 KQAR, KRBE, KRUF, KSLZ, KZZU, WLDI, WLKT, WRHT, WSNX, WZZZ

**STING FEATURING CHEB MAMI 609/186**

**Desert Rose (A&M/Interscope)**  
 Total Stations: 59  
 Heavy (45+): 0  
 Medium (25-44): 2 WKXJ, WYCR  
 Light (Under 25): 57  
 First Impressions: 10 KCHO, KKRZ, WAEV, WDDJ, WJJS, WKSZ, WQEN, WRHT, WSTR, WYSS

**MOBY 583/68**

**Bodyrock (V2)**  
 Total Stations: 59  
 Heavy (45+): 0  
 Medium (25-44): 0  
 Light (Under 25): 59  
 First Impressions: 7 KFMS, KKRZ, KRUF, WBHT, WIOG, WJJS, WYCR

**WHITNEY HOUSTON & ENRIQUE IGLESIAS 575/385**

**Could I Have This Kiss Forever (Arista/Interscope)**  
 Total Stations: 74  
 Heavy (45+): 0  
 Medium (25-44): 1 WWHH  
 Light (Under 25): 73  
 First Impressions: 33 KBFM, KDWB, KHYS, KHYS, KIIS, KKDM, KKRZ, KQKQ, KRQO, WAEV, WBAM, WBBO, WBDN, WBFA, WFNH, WFLZ, WGTZ, WHYY, WHOT, WHTZ, WHYY, WIOG, WJBO, WKSZ, WHOT, WPRO, WRVQ, WYSS, WYSS, WYCR, WZAT, WZNY

**TRINKET 520/47**

**Boom (RCA)**  
 Total Stations: 45  
 Heavy (45+): 0  
 Medium (25-44): 5 KCHZ, WKRZ, WXXJ, WRVW, WYSS  
 Light (Under 25): 40  
 First Impressions: 7 KSMB, KZHT, WHOT, WNCI, WSTR, WYSS, WYSS

**LARA FABIAN 515/205**

**I Will Love Again (Columbia)**  
 Total Stations: 49  
 Heavy (45+): 0  
 Medium (25-44): 4 KDND, KZQZ, WBLI, WYSS  
 Light (Under 25): 45  
 First Impressions: 8 KZZP, WAEV, WBHT, WHTZ, WJBO, WNTQ, WZZZ, WYSS

**BON JOVI 509/155**

**It's My Life (Island/IDJMG)**  
 Total Stations: 37  
 Heavy (45+): 1 WBAM  
 Medium (25-44): 4 KZHT, WPRO, WYSS, WZPL  
 Light (Under 25): 32  
 First Impressions: 9 KHKS, KKMGM, KRQO, WBBO, WCIL, WNNK, WNTQ, WRVW, WYSS

**MARY MARY 503/63**

**Shackles (Praise You) (C2)**  
 Total Stations: 37  
 Heavy (45+): 1 KHYS  
 Medium (25-44): 6 KZZP, WAEV, WDDJ, WKSS, WYSS, WZZZ  
 Light (Under 25): 36  
 First Impressions: 4 WJBO, WPRO, WYSS, WWHH

**SISTER HAZEL 447/355**

**Change Your Mind (Universal)**  
 Total Stations: 57  
 Heavy (45+): 0  
 Medium (25-44): 3 KMXV, WNKX, WSTR  
 Light (Under 25): 54  
 First Impressions: 23 KBKS, KKRD, KZHT, WDJX, WHYY, WHOT, WJBO, WLAN, WNCI, WNKX, WNKX, WPST, WQEN, WSTW, WYSS, WYSS, WXXL, WXXX, WYCR, WYQY, WZNY, WZYP

**LEANN RIMES 345/58**

**I Need You (Sparrow/Capitol/Curb)**  
 Total Stations: 23  
 Heavy (45+): 0  
 Medium (25-44): 3 WAEV, WBDN, WQEN  
 Light (Under 25): 20  
 First Impressions: 3 WNCI, WPRO, WYSS

**BRIAN MCKNIGHT 344/90**

**6, 8, 12 (Motown/Universal)**  
 Total Stations: 42  
 Heavy (45+): 0  
 Medium (25-44): 3 KHFI, KHYS, WFLZ  
 Light (Under 25): 39  
 First Impressions: 7 KHFI, KKRD, WFNH, WFMF, WKFS, WKSE, WYSS

**CELINE DION 323/-10**

**I Want You To Need Me (550 Music/550-Work)**  
 Total Stations: 34  
 Heavy (45+): 1 WXXX  
 Medium (25-44): 1 WXXX  
 Light (Under 25): 33  
 First Impressions: 4 KZHT, WBAM, WPXY, WRHT

**BEN HARPER AND THE INNOCENT CRIMINALS 318/-4**

**Steal My Kisses (Virgin)**  
 Total Stations: 32  
 Heavy (45+): 1 KXXM  
 Medium (25-44): 1 WDCG  
 Light (Under 25): 30  
 First Impressions: 1 WXXX

**DESTINY'S CHILD 312/92**

**Jumpin, Jumpin (Columbia)**  
 Total Stations: 26  
 Heavy (45+): 0  
 Medium (25-44): 6 KDWB, KHYS, WBTJ, WFNH, WHYY, WYSS  
 Light (Under 25): 20  
 First Impressions: 2 KRUF, WBHT

**SAMMIE 278/-5**

**I Like It (Freeworld/Capitol)**  
 Total Stations: 22  
 Heavy (45+): 0  
 Medium (25-44): 3 KHKS, WBAM, WFBC  
 Light (Under 25): 19  
 First Impressions: 2 KJYO, WYSS

**BLINK-182 277/-1**

**Adam's Song (MCA)**  
 Total Stations: 16  
 Heavy (45+): 1 KXXM  
 Medium (25-44): 3 WBAM, WBBO, WKIE  
 Light (Under 25): 12

**A\*TEENS 256/6**

**Dancing Queen (Stockholm/MCA)**  
 Total Stations: 35  
 Heavy (45+): 0  
 Medium (25-44): 0  
 Light (Under 25): 35

**NU FLAVOR 235/52**

**3 Little Words (Reprise)**  
 Total Stations: 37  
 Heavy (45+): 0  
 Medium (25-44): 0  
 Light (Under 25): 37  
 First Impressions: 2 KKMG, WBBO

**AMBER 195/4**

**Above The Clouds (Tommy Boy)**  
 Total Stations: 45  
 Heavy (45+): 0  
 Medium (25-44): 1 WFNH  
 Light (Under 25): 44  
 First Impressions: 1 WBHT

**JESSICA SIMPSON 194/82**

**I Think I'm In Love With You (Columbia)**  
 Total Stations: 38  
 Heavy (45+): 0  
 Medium (25-44): 2 WDRQ, WFLZ  
 Light (Under 25): 36  
 First Impressions: 2 WIOX, WYKS

**HANSON 161/84**

**If Only (Moe/Island/IDJMG)**  
 Total Stations: 22  
 Heavy (45+): 0  
 Medium (25-44): 2 KHYS, WBAM  
 Light (Under 25): 20  
 First Impressions: 4 WBAM, WHYY, WKSL, WYAV

**INNOSENSE 152/111**

**Say No More (RCA)**  
 Total Stations: 30  
 Heavy (45+): 0  
 Medium (25-44): 0  
 Light (Under 25): 30  
 First Impressions: 6 KCHZ, KRBE, KSMB, WCIL, WIOG, WXXK

**JAY-Z FEATURING UGK 143/51**

**Big Pimpin' (Roc-A-Fella/Def Jam/IDJMG)**  
 Total Stations: 15  
 Heavy (45+): 0  
 Medium (25-44): 0  
 Light (Under 25): 15  
 First Impressions: 2 WPXY, WYSS

**GRAN TORINO 136/8**

**Moments With You (26.2 Music)**  
 Total Stations: 5

# SINGLES REPORT

**TOP 40 AIRPLAY MONITOR MAINSTAY TOP 40** FOR WEEK ENDING MAY 21, 2000

AALIYAH		2160/354	
Try Again (Blackground/Virgin)			
Total Stations: 115			
MTV	15 15 18	128	Albany WFLY
WTX	15 23 18	128	Tucson KRDO
KIIS	15 23 18	128	Tulsa KHTT
WJLA	15 23 18	128	McAllen KFMB
WHD	15 23 18	128	San Antonio WJIA
WDRB	15 23 18	128	Dallas KRIS
WQOW	15 23 18	128	San Francisco KZQZ
WISN	15 23 18	128	Gr Rapids WISN
KHNS	15 23 18	128	Albany WAFB
KHNS	15 23 18	128	Albany WAFB
WDRB	15 23 18	128	Dallas KRIS
WQOW	15 23 18	128	San Francisco KZQZ
WISN	15 23 18	128	Gr Rapids WISN
KHNS	15 23 18	128	Albany WAFB
KHNS	15 23 18	128	Albany WAFB

CHRISTINA AGUILERA		4312/67	
I Turn To You (RCA)			
Total Stations: 117			
MTV	14 13 10	91	Albany WFLY
WTX	14 13 10	91	Tucson KRDO
KIIS	14 13 10	91	Tulsa KHTT
WJLA	14 13 10	91	McAllen KFMB
WHD	14 13 10	91	San Antonio WJIA
WDRB	14 13 10	91	Dallas KRIS
WQOW	14 13 10	91	San Francisco KZQZ
WISN	14 13 10	91	Gr Rapids WISN
KHNS	14 13 10	91	Albany WAFB
KHNS	14 13 10	91	Albany WAFB

ALICE DEEJAY		3015/106	
Better Off Alone (Republic/Universal)			
Total Stations: 116			
MTV	14 13 10	91	Albany WFLY
WTX	14 13 10	91	Tucson KRDO
KIIS	14 13 10	91	Tulsa KHTT
WJLA	14 13 10	91	McAllen KFMB
WHD	14 13 10	91	San Antonio WJIA
WDRB	14 13 10	91	Dallas KRIS
WQOW	14 13 10	91	San Francisco KZQZ
WISN	14 13 10	91	Gr Rapids WISN
KHNS	14 13 10	91	Albany WAFB
KHNS	14 13 10	91	Albany WAFB

BACKSTREET BOYS		3466/500	
The One (Jive)			
Total Stations: 117			
MTV	14 13 10	91	Albany WFLY
WTX	14 13 10	91	Tucson KRDO
KIIS	14 13 10	91	Tulsa KHTT
WJLA	14 13 10	91	McAllen KFMB
WHD	14 13 10	91	San Antonio WJIA
WDRB	14 13 10	91	Dallas KRIS
WQOW	14 13 10	91	San Francisco KZQZ
WISN	14 13 10	91	Gr Rapids WISN
KHNS	14 13 10	91	Albany WAFB
KHNS	14 13 10	91	Albany WAFB

BBMAK		2607/384	
Back Here (Hollywood)			
Total Stations: 115			
MTV	14 13 10	91	Albany WFLY
WTX	14 13 10	91	Tucson KRDO
KIIS	14 13 10	91	Tulsa KHTT
WJLA	14 13 10	91	McAllen KFMB
WHD	14 13 10	91	San Antonio WJIA
WDRB	14 13 10	91	Dallas KRIS
WQOW	14 13 10	91	San Francisco KZQZ
WISN	14 13 10	91	Gr Rapids WISN
KHNS	14 13 10	91	Albany WAFB
KHNS	14 13 10	91	Albany WAFB

BLAQUE		1000/57	
I Do (Track Masters/Columbia)			
Total Stations: 109			
MTV	13 11 10	54	Albany WFLY
WTX	13 11 10	54	Tucson KRDO
KIIS	13 11 10	54	Tulsa KHTT
WJLA	13 11 10	54	McAllen KFMB
WHD	13 11 10	54	San Antonio WJIA
WDRB	13 11 10	54	Dallas KRIS
WQOW	13 11 10	54	San Francisco KZQZ
WISN	13 11 10	54	Gr Rapids WISN
KHNS	13 11 10	54	Albany WAFB
KHNS	13 11 10	54	Albany WAFB

TONI BRAXTON		799/102	
He Wasn't Man Enough (LaFace/Arista)			
Total Stations: 58			
MTV	11 10 5	47	Albany WFLY
WTX	11 10 5	47	Tucson KRDO
KIIS	11 10 5	47	Tulsa KHTT
WJLA	11 10 5	47	McAllen KFMB
WHD	11 10 5	47	San Antonio WJIA
WDRB	11 10 5	47	Dallas KRIS
WQOW	11 10 5	47	San Francisco KZQZ
WISN	11 10 5	47	Gr Rapids WISN
KHNS	11 10 5	47	Albany WAFB
KHNS	11 10 5	47	Albany WAFB

CREED		5202/234	
Higher (Wind-up)			
Total Stations: 113			
MTV	11 10 5	47	Albany WFLY
WTX	11 10 5	47	Tucson KRDO
KIIS	11 10 5	47	Tulsa KHTT
WJLA	11 10 5	47	McAllen KFMB
WHD	11 10 5	47	San Antonio WJIA
WDRB	11 10 5	47	Dallas KRIS
WQOW	11 10 5	47	San Francisco KZQZ
WISN	11 10 5	47	Gr Rapids WISN
KHNS	11 10 5	47	Albany WAFB
KHNS	11 10 5	47	Albany WAFB

DMX		613/115	
Party Up (Up In Here) (Roc-A-Fella/Def Jam/JMGM)			
Total Stations: 62			
MTV	14 13 19	94	Albany WFLY
WTX	14 13 19	94	Tucson KRDO
KIIS	14 13 19	94	Tulsa KHTT
WJLA	14 13 19	94	McAllen KFMB
WHD	14 13 19	94	San Antonio WJIA
WDRB	14 13 19	94	Dallas KRIS
WQOW	14 13 19	94	San Francisco KZQZ
WISN	14 13 19	94	Gr Rapids WISN
KHNS	14 13 19	94	Albany WAFB
KHNS	14 13 19	94	Albany WAFB

EIFFEL 65		1111/7	
Move Your Body (Republic/Universal)			
Total Stations: 110			
MTV	14 13 19	94	Albany WFLY
WTX	14 13 19	94	Tucson KRDO
KIIS	14 13 19	94	Tulsa KHTT
WJLA	14 13 19	94	McAllen KFMB
WHD	14 13 19	94	San Antonio WJIA
WDRB	14 13 19	94	Dallas KRIS
WQOW	14 13 19	94	San Francisco KZQZ
WISN	14 13 19	94	Gr Rapids WISN
KHNS	14 13 19	94	Albany WAFB
KHNS	14 13 19	94	Albany WAFB

EMINEM		1968/608	
The Real Slim Shady (Web/Aftermath/Interscope)			
Total Stations: 110			
MTV	24 24 29	95	Albany WFLY
WTX	24 24 29	95	Tucson KRDO
KIIS	24 24 29	95	Tulsa KHTT
WJLA	24 24 29	95	McAllen KFMB
WHD	24 24 29	95	San Antonio WJIA
WDRB	24 24 29	95	Dallas KRIS
WQOW	24 24 29	95	San Francisco KZQZ
WISN	24 24 29	95	Gr Rapids WISN
KHNS	24 24 29	95	Albany WAFB
KHNS	24 24 29	95	Albany WAFB

EN VOQUE		1123/73	
Riddle (EastWest/EEG)			
Total Stations: 110			
MTV	11 10 5	47	Albany WFLY
WTX	11 10 5	47	Tucson KRDO
KIIS	11 10 5	47	Tulsa KHTT
WJLA	11 10 5	47	McAllen KFMB
WHD	11 10 5	47	San Antonio WJIA
WDRB	11 10 5	47	Dallas KRIS
WQOW	11 10 5	47	San Francisco KZQZ
WISN	11 10 5	47	Gr Rapids WISN
KHNS	11 10 5	47	Albany WAFB
KHNS	11 10 5	47	Albany WAFB

GOO GOO DOLLS		3223/237	
Broadway (Warner Bros.)			
Total Stations: 116			
MTV	11 10 5	47	Albany WFLY
WTX	11 10 5	47	Tucson KRDO
KIIS	11 10 5	47	Tulsa KHTT
WJLA	11 10 5	47	McAllen KFMB
WHD	11 10 5	47	San Antonio WJIA
WDRB	11 10 5	47	Dallas KRIS
WQOW	11 10 5	47	San Francisco KZQZ
WISN	11 10 5	47	Gr Rapids WISN
KHNS	11 10 5	47	Albany WAFB
KHNS	11 10 5	47	Albany WAFB

ENRIQUE IGLESIAS		4882/108	
Be With You (Interscope)			
Total Stations: 116			
MTV	20 19 20	100	Albany WFLY
WTX	20 19 20	100	Tucson KRDO
KIIS	20 19 20	100	Tulsa KHTT
WJLA	20 19 20	100	McAllen KFMB
WHD	20 19 20	100	San Antonio WJIA
WDRB	20 19 20	100	Dallas KRIS
WQOW	20 19 20	100	San Francisco KZQZ
WISN	20 19 20	100	Gr Rapids WISN
KHNS	20 19 20	100	Albany WAFB
KHNS	20 19 20	100	Albany WAFB

JOE		2441/402	
I Wanna Know (Jive)			
Total Stations: 114			
MTV	10 10 5	47	Albany WFLY
WTX	10 10 5	47	Tucson KRDO
KIIS	10 10 5	47	Tulsa KHTT
WJLA	10 10 5	47	McAllen KFMB
WHD	10 10 5	47	San Antonio WJIA
WDRB	10 10 5	47	Dallas KRIS
WQOW	10 10 5	47	San Francisco KZQZ
WISN	10 10 5	47	Gr Rapids WISN
KHNS	10 10 5	47	Albany WAFB
KHNS	10 10 5	47	Albany WAFB

Total Detections/Gain

M2M 639/33

Table with columns for station (MTV, VHI, etc.), ID, and Gain. Includes sub-header 'Mirror Mirror (Atlantic)' and 'Total Stations: 52'.

Total Detections/Gain

MATCHBOX TWENTY 3415/324

Table with columns for station (New York, L.A., etc.), ID, and Gain. Includes sub-header 'Bent (Lava/Atlantic)' and 'Total Stations: 115'.

Total Detections/Gain

MOBY 583/68

Table with columns for station (New York, L.A., etc.), ID, and Gain. Includes sub-header 'Bodyrock (V2)' and 'Total Stations: 59'.

Total Detections/Gain

MANDY MOORE 2221/201

Table with columns for station (New York, L.A., etc.), ID, and Gain. Includes sub-header 'I Wanna Be With You (550 Music/550-Work)' and 'Total Stations: 115'.

Total Detections/Gain

'N SYNC 3534/813

Table with columns for station (New York, L.A., etc.), ID, and Gain. Includes sub-header 'It's Gonna Be Me (Jive)' and 'Total Stations: 117'.

Total Detections/Gain

NINE DAYS 2178/494

Table with columns for station (New York, L.A., etc.), ID, and Gain. Includes sub-header 'Absolutely (Story Of A Girl) (550 Music/550-Work)' and 'Total Stations: 102'.

Total Detections/Gain

PINK 3829/165

Table with columns for station (New York, L.A., etc.), ID, and Gain. Includes sub-header 'There You Go (LaFace/Arista)' and 'Total Stations: 112'.

Total Detections/Gain

RED HOT CHILI PEPPERS 2183/111

Table with columns for station (New York, L.A., etc.), ID, and Gain. Includes sub-header 'Otherside (Warner Bros.)' and 'Total Stations: 110'.

Total Detections/Gain

SISQO 5261/16

Table with columns for station (New York, L.A., etc.), ID, and Gain. Includes sub-header 'Thong Song (Dragon/Def Soul/IDJMG)' and 'Total Stations: 117'.

Total Detections/Gain

BRITNEY SPEARS 5736/291

Table with columns for station (New York, L.A., etc.), ID, and Gain. Includes sub-header 'Oops...I Did It Again (Jive)' and 'Total Stations: 118'.

Total Detections/Gain

SPLENDER 1754/120

Table with columns for station (New York, L.A., etc.), ID, and Gain. Includes sub-header 'I Think God Can Explain (C2)' and 'Total Stations: 109'.

Total Detections/Gain

STING FEATURING CHERMAM 609/186

Table with columns for station (New York, L.A., etc.), ID, and Gain. Includes sub-header 'Desert Rose (A&M/Interscope)' and 'Total Stations: 59'.

Total Detections/Gain

VERTICAL HORIZON 6050/44

Table with columns for station (New York, L.A., etc.), ID, and Gain. Includes sub-header 'Everything You Want (RCA)' and 'Total Stations: 117'.

Total Detections/Gain

VITAMIN C 3717/151

Table with columns for station (New York, L.A., etc.), ID, and Gain. Includes sub-header 'Graduation (Friends Forever) (Elektra/EEG)' and 'Total Stations: 116'.

Total Detections/Gain

WESTLIFE 2185/119

Table with columns for station (New York, L.A., etc.), ID, and Gain. Includes sub-header 'Swear It Again (Arista)' and 'Total Stations: 111'.

Compiled from a national sample of data supplied by Broadcast Data Systems to Top 40 Airplay Monitor. 40 Rhythmic Top 40 stations are electronically monitored 24 hours a day, 7 days a week. © 2000 Billboard/BPM Company.

THIS WEEK	LAST WEEK	WKS. ON CHART	TITLE/IMPRINT/PROMOTION LABEL	ARTIST	DETECTIONS		
					TW	LW	
			★ ★ ★ No. 1 ★ ★ ★				
1	2	12	TRY AGAIN BLACKGROUND/VIRGIN	AALIYAH	2439	2377	
2	3	5	THE REAL SLIM SHADY WEB/AFTERMATH/INTERSCOPE	EMINEM	2323	2118	
3	1	16	THONG SONG DRAGN/DEF SOUL/DJMG	SISQO	2288	2516	
4	4	17	I WANNA KNOW JIVE	JOE	1932	1955	
5	5	11	JUMPIN, JUMPIN COLUMBIA	DESTINY'S CHILD	1917	1884	
6	6	6	BIG PIMPIN' ROC-A-FELLA/DEF JAM/IDJMG	JAY-Z FEATURING UGK	1748	1583	
7	7	18	THERE YOU GO LAFACE/ARISTA	PINK	1444	1540	
8	8	12	PARTY UP (UP IN HERE) RUFF RYDERS/DEF JAM/IDJMG	DMX	1377	1385	
9	9	7	OOPS!... I DID IT AGAIN JIVE	BRITNEY SPEARS	1332	1333	
10	11	8	I TURN TO YOU RCA	CHRISTINA AGUILERA	1179	1179	
11	12	20	FORGOT ABOUT DRE AFTERMATH/INTERSCOPE	DR. DRE FEATURING EMINEM	1148	1178	
12	10	12	HE WASN'T MAN ENOUGH LAFACE/ARISTA	TONI BRAXTON	1144	1181	
13	13	19	BYE BYE BYE JIVE	'N SYNC	1024	1148	
14	16	10	3 LITTLE WORDS REPRISE	NU FLAVOR	936	905	
15	14	24	SAY MY NAME COLUMBIA	DESTINY'S CHILD	915	1026	
			★ ★ AIRPOWER/GREATEST GAINER ★ ★				
16	27	3	WIFEY ARISTA	NEXT	898	591	
17	17	12	BETTER OFF ALONE REPUBLIC/UNIVERSAL	ALICE DEEJAY	884	896	
18	18	7	BEST OF ME UNIVERSITY/INTERSCOPE	MYA FEATURING JADAKISS	841	887	
19	20	10	BE WITH YOU INTERSCOPE	ENRIQUE IGLESIAS	819	791	
20	19	9	IT WASN'T ME DREAMWORKS	SOLE FEATURING GINUWINE	799	815	
21	15	21	IT FEELS SO GOOD FARMCLUB.CDM/REPUBLIC/UNIVERSAL	SONIQUE	778	940	
22	29	3	THE NEXT EPISODE AFTERMATH/INTERSCOPE	DR. DRE FEATURING SNOOP DOGG	693	572	
23	32	3	IT'S GONNA BE ME JIVE	'N SYNC	671	523	
24	23	6	GRADUATION (FRIENDS FOREVER) ELEKTRA/VEEG	VITAMIN C	668	625	
25	22	7	MONICA RCA	BEFORE DARK	650	626	
26	30	4	(HOT S**) COUNTRY GRAMMAR FD' REEL/UNIVERSAL	NELLY	614	544	
27	21	9	UNTIL WE RICH LENCH MDB/PRIORITY	ICE CUBE FEATURING KRAYZIE BONE	608	790	
28	24	5	I LIKE IT FREEWORLD/CAPITOL	SAMMIE	602	612	
29	34	2	WHATCHU LIKE SD SD DEF/COLUMBIA	DA BRAT FEATURING TYRESE	583	440	
30	25	9	SHACKLES (PRAISE YOU) C2	MARY MARY	559	592	
31	33	2	6, 8, 12 MDTOWN/UNIVERSAL	BRIAN MCKNIGHT	516	442	
32	28	23	HOT BOYZ THE GOLD MIND/EASTWEST/EEG	MISSY "MISDEMEANOR" ELLIOTT FEATURING NAS, EVE & Q-TIP	512	576	
33	26	10	WHOA! BAD BOY/ARISTA	BLACK ROB	488	591	
34	31	7	THE BAD TOUCH REPUBLIC/GEFFEN/INTERSCOPE	BLOODHOUND GANG	426	532	
35	35	2	THE ONE JIVE	BACKSTREET BOYS	415	414	
36	37	2	WOBBLE WOBBLE NO LIMIT/PRIORITY	504 BOYZ	377	325	
37	40	2	I WISH BAD BOY/ARISTA	CARL THOMAS	351	287	
38	36	9	THIS I PROMISE YOU JIVE	'N SYNC	290	372	
39	NEW		IT'S SO HARD LDUD/COLUMBIA	BIG PUNISHER FEATURING DONELL JONES	285	216	
40	NEW		DAILY CLOCKWORK/EPIC	TQ	279	211	

Songs ranked by number of detections. ○ Songs showing an increase in detections over the previous week, regardless of chart movement. A song that has been on the chart for more than 20 weeks will generally not receive a bullet, even if it registers an increase in detections. Airpower awarded to songs appearing in the top 20 on both the Airplay and Audience charts for the first time with increases in both detections and audience. Greatest Gainer awarded to the song with the largest increase in detections. Most New Stations awarded to the song registering six or more detections at the most stations for the first time this week. A song with a gain in detections over the previous week is placed first if tied with a song with a decline over the same period. When tied songs are each gaining detections or each losing detections, the song being played on more stations is placed first. Songs below the top 20 become recurrences and are removed from the chart after 26 weeks.

GREATEST GAINERS		RHYTHMIC TOP 40
INCREASE IN DETECTIONS		
NEXT • Wifey (ARISTA)		+307
KJBE +36, KISV +34, WJMN +29, KYLZ +28, KZFM +20, KIKI +18, WLLD +15, KDON +14, KGGI +13, KBTE +12		
EMINEM • The Real Slim Shady (WEB/AFTERMATH/INTERSCOPE)		+205
KPTY +21, WLLD +20, WEZB +20, WBBM +20, KDGS +18, KQBT +13, WNVZ +12, KSFM +12, KFR +11, KBTE +10		
JAY-Z FEATURING UGK • Big Pimpin' (ROC-A-FELLA/DEF JAM/IDJMG)		+165
KYLZ +45, WNVZ +30, KIKI +27, WJMN +18, KQMQ +12, KKSS +12, KSEQ +11, WDBT +11, KOCH +10, KOHT +9		
'N SYNC • It's Gonna Be Me (JIVE)		+148
KLUC +27, KOCH +23, KQMQ +22, KTFM +17, WLLD +16, KQME +15, WNVZ +15, KDON +12, KQBT +6, KDGS +6		
DA BRAT FEATURING TYRESE • What'chu Like (SO SO DEF/COLUMBIA)		+143
KYLZ +39, KQBT +26, KYLD +20, KQKS +18, KSEQ +14, KIKI +9, KBOS +7, WNVZ +6, KDGS +4, KOHT +4		

THIS WEEK	LAST WEEK	WKS. ON CHART	TITLE/IMPRINT/PROMOTION LABEL	ARTIST	AUDIENCE (millions)	
					TW	LW
			★ ★ ★ No. 1 ★ ★ ★			
1	1	16	THONG SONG DRAGN/DEF SOUL/DJMG	SISQO	26.264	28.277
2	2	12	TRY AGAIN BLACKGROUND/VIRGIN	AALIYAH	24.207	24.128
3	3	5	THE REAL SLIM SHADY WEB/AFTERMATH/INTERSCOPE	EMINEM	23.622	21.003
4	4	15	I WANNA KNOW JIVE	JOE	20.252	20.229
5	5	11	JUMPIN, JUMPIN COLUMBIA	DESTINY'S CHILD	18.870	17.718
6	7	7	BIG PIMPIN' ROC-A-FELLA/DEF JAM/IDJMG	JAY-Z FEATURING UGK	17.388	16.797
7	9	7	OOPS!... I DID IT AGAIN JIVE	BRITNEY SPEARS	16.817	15.301
8	6	18	THERE YOU GO LAFACE/ARISTA	PINK	14.766	17.274
9	8	11	PARTY UP (UP IN HERE) RUFF RYDERS/DEF JAM/IDJMG	DMX	14.648	15.441
10	14	14	BETTER OFF ALONE REPUBLIC/UNIVERSAL	ALICE DEEJAY	13.352	12.491
11	10	23	SAY MY NAME COLUMBIA	DESTINY'S CHILD	13.124	13.272
12	16	20	FORGOT ABOUT DRE AFTERMATH/INTERSCOPE	DR. DRE FEATURING EMINEM	12.399	12.018
13	12	12	HE WASN'T MAN ENOUGH LAFACE/ARISTA	TONI BRAXTON	12.048	13.051
14	13	19	BYE BYE BYE JIVE	'N SYNC	11.666	12.711
15	15	10	BE WITH YOU INTERSCOPE	ENRIQUE IGLESIAS	11.444	12.051
16	11	22	IT FEELS SO GOOD FARMCLUB.CDM/REPUBLIC/UNIVERSAL	SONIQUE	11.374	13.087
17	18	7	IT'S GONNA BE ME JIVE	'N SYNC	10.247	9.089
18	23	3	WIFEY ARISTA	NEXT	9.245	6.145
19	17	8	I TURN TO YOU RCA	CHRISTINA AGUILERA	9.222	9.811
20	21	3	THE NEXT EPISODE AFTERMATH/INTERSCOPE	DR. DRE FEATURING SNOOP DOGG	7.595	6.398
21	19	9	IT WASN'T ME DREAMWORKS	SOLE FEATURING GINUWINE	7.527	7.672
22	20	23	HOT BOYZ THE GOLD MIND/EASTWEST/EEG	MISSY "MISDEMEANOR" ELLIOTT FEATURING NAS, EVE & Q-TIP	6.833	7.257
23	24	8	3 LITTLE WORDS REPRISE	NU FLAVOR	6.473	5.738
24	22	6	BEST OF ME UNIVERSITY/INTERSCOPE	MYA FEATURING JADAKISS	5.570	6.201
25	30	2	WHATCHU LIKE SO SO DEF/COLUMBIA	DA BRAT FEATURING TYRESE	5.519	4.336
26	31	19	YOU SANG TO ME COLUMBIA	MARC ANTHONY	5.413	4.030
27	35	2	(HOT S**) COUNTRY GRAMMAR FD' REEL/UNIVERSAL	NELLY	4.503	3.656
28	26	5	I LIKE IT FREEWORLD/CAPITOL	SAMMIE	4.436	5.028
29	25	8	UNTIL WE RICH LENCH MDB/PRIORITY	ICE CUBE FEATURING KRAYZIE BONE	4.349	5.531
30	27	2	THE ONE JIVE	BACKSTREET BOYS	4.318	4.768
31	38	2	COULD I HAVE THIS KISS FOREVER ARISTA/INTERSCOPE	WHITNEY HOUSTON & ENRIQUE IGLESIAS	4.140	3.379
32	32	2	6, 8, 12 MDTOWN/UNIVERSAL	BRIAN MCKNIGHT	4.076	3.899
33	33	5	GRADUATION (FRIENDS FOREVER) ELEKTRA/VEEG	VITAMIN C	4.064	3.827
34	34	5	MONICA RCA	BEFORE DARK	3.997	3.688
35	29	5	THE BAD TOUCH REPUBLIC/GEFFEN/INTERSCOPE	BLOODHOUND GANG	3.477	4.651
36	28	9	WHOA! BAD BOY/ARISTA	BLACK ROB	3.364	4.674
37	39	3	SHACKLES (PRAISE YOU) C2	MARY MARY	3.106	3.377
38	RE-ENTRY		SHOW ME THE MEANING OF BEING LONELY JIVE	BACKSTREET BOYS	2.895	2.840
39	NEW		I BELIEVE IN LOVE IMAGD/WARNER BROS.	PAULA COLE BAND	2.880	1.633
40	NEW		WOBBLE WOBBLE NO LIMIT/PRIORITY	504 BOYZ	2.833	2.487

Songs ranked by number of audience, computed by cross-referencing exact times of airplay with Arbitron listener data. ○ Songs showing an increase in audience over the previous week, regardless of chart movement. A song that has been on the chart for more than 20 weeks will generally not receive a bullet, even if it registers an increase in audience. A song with a gain in audience over the previous week is placed first if tied with a song with a decline over the same period. When tied songs are each gaining in audience or each losing in audience, the song being played on more stations is placed first. Songs become recurrences and are removed from this chart in conjunction with the Rhythmic Top 40 Airplay chart.

GREATEST GAINERS		RHYTHMIC TOP 40
INCREASE IN DETECTIONS		
9	BACK AT ONE	309 295
BRIAN MCKNIGHT (MOTOWN)		
10	CAN I GET A...	297 306
JAY-Z FEATURING AMIL (OF MAJOR COINZ) & JA (DEF JAM/IDJMG)		
11	HEARTBREAKER	276 289
MARTINA CAREY FEATURING JAY-Z (COLUMBIA)		
12	808	274 294
BLAQUE (TRACK MASTERS/COLUMBIA)		
13	NO SCRUBS	262 293
TLC (LAFACE/ARISTA)		
14	TOO CLOSE	231 226
NEXT (ARISTA)		
15	BUG A BOO	223 227
DESTINY'S CHILD (COLUMBIA)		
16	ANYWHERE	196 207
112 FEATURING LIL'Z (BAD BOY/ARISTA)		
17	IF YOU HAD MY LOVE	191 197
JENNIFER LOPEZ (WORLD/550-WORK)		
18	I NEED TO KNOW	185 209
MARC ANTHONY (COLUMBIA)		
19	SATISFY YOU	184 189
PUFF DADDY FEATURING R. KELLY (BAD BOY/ARISTA)		
20	WANNA BE A BALLER	183 166
LIL' TROY (SHORT STOP/REPUBLIC/UNIVERSAL)		

Recurrences are titles that have appeared on the Rhythmic Top 40 Airplay chart for 26 weeks and have dropped below the top 20.

Songs ranked by number of detections. Playlists are listed in order of TSA weekly come, beginning with the highest-cumming station. Comes are updated twice yearly following the release of the spring and fall Arbitron surveys. The number of stations shown each week varies depending upon space. First Impressions (FI) denotes songs with 6 or more detections at station for first time this week.

WKUT New York PD: Frankie Blue APD/Research: Jeff Z MD: Geronimo AMFM 201-429-3700

WBBM Chicago PD: Todd Cavanah MD: Erik Bradley Infinity 312-944-6000

WJMN Boston PD: Cadillac Jack APD: Dennis O'Heron MD: Michelle Williams AMFM 781-663-2500

KYLD San Francisco PD: Michael Martin MD: "Jazzy" Jim Archer AMFM 415-356-0949

WPOW Miami PD: Kid Curry MD: Tony The Tiger MD: Eddie Mix Beasley 305-653-6796

KUBE Seattle OM: Shellee Hart APD: Eric Powers MD: Julie Piat Ackerley 206-285-2295

Table with 2 columns: Rank and Song/Artist. Top songs include 'Alice Deejay Better Off Alone', 'Sonique It Feels So Good', 'Sisqo Thong Song'.

Table with 2 columns: Rank and Song/Artist. Top songs include 'Dr. Dre Forgot About Dre', 'Aaliyah Try Again', 'Destiny's Child Jumpin, Jumpin'.

Table with 2 columns: Rank and Song/Artist. Top songs include 'Jay-Z Feat. UGK Big Pimpin', 'Eminem The Real Slim Shady', 'Madison Avenue Don't Call Me Baby'.

Table with 2 columns: Rank and Song/Artist. Top songs include 'Eminem The Real Slim Shady', 'Joe I Wanna Know', 'Destiny's Child Jumpin, Jumpin'.

Table with 2 columns: Rank and Song/Artist. Top songs include 'Sisqo Thong Song', 'Jay-Z Feat. UGK Big Pimpin', 'Aaliyah Try Again'.

Table with 2 columns: Rank and Song/Artist. Top songs include 'Destiny's Child Jumpin, Jumpin', 'Eminem The Real Slim Shady', 'Joe I Wanna Know'.

FI No First Impressions This Week

FI 504 Boyz Wobble Wobble

FI Lil' Kim No Matter What They Say

FI Kurupt Feat. Daz Who Ride Wit Us

FI Busta Rhymes Get Out

FI Before Dark Monica

WMEG San Juan PD: Raymond Torres MD: Edwin Santiago SBS 787-720-5001

KRRV Dallas PD: Carmy Ferrari MD: Pete Manriquez Infinity 214-630-3011

KGGI Riverside PD: Jesse Duran MD: Gina D AMFM 909-684-1991

KSFM Sacramento PD: Bob West MD: C.K. Infinity 916-920-1025

KTFM San Antonio PD: Cliff Tredway APD/MD: Steve Chavez Waterman 210-599-5500

KQKS Denver PD: Cat Collins MD: John E. Kage Jefferson-Pilot 303-321-0950

Table with 2 columns: Rank and Song/Artist. Top songs include 'Britney Spears Oops!... I Did It Again', 'Vertical Horizon Everything You Want'.

Table with 2 columns: Rank and Song/Artist. Top songs include 'Sisqo Thong Song', 'Britney Spears Oops!... I Did It Again', 'Dr. Dre Forgot About Dre'.

Table with 2 columns: Rank and Song/Artist. Top songs include 'Sisqo Thong Song', 'Pink There You Go', 'Aaliyah Try Again'.

Table with 2 columns: Rank and Song/Artist. Top songs include 'Eminem The Real Slim Shady', 'DMX Party Up', 'Aaliyah Try Again'.

Table with 2 columns: Rank and Song/Artist. Top songs include 'Joe I Wanna Know', 'Sisqo Thong Song', 'Destiny's Child Jumpin, Jumpin'.

Table with 2 columns: Rank and Song/Artist. Top songs include 'Eminem The Real Slim Shady', 'Destiny's Child Jumpin, Jumpin', 'Joe I Wanna Know'.

FI No First Impressions This Week

FI Pink There You Go

FI Strings The Tongue Song

FI 504 Boyz Wobble Wobble

FI 'N Sync It's Gonna Be Me

FI Da Brat Feat. Tyrese What'chu Like

WLDD Tampa PD/MD: Orlando Infinity 813-221-2925

KKFR Phoenix PD: Bruce St. James APD/MD: Charlie Huero AMFM 602-258-6161

XHTZ San Diego OM/MD: Lisa Vazquez PD: Lisa Karsting MD: Dale Soliven California 619-575-9090

WNVZ Norfolk PD: Don London APD/MD: Jay West Entercom 757-497-2000

KJVM Portland, OR PD: Mark Adams MD: Pretty Boy Dontay Rose City 503-243-7595

KLUC Las Vegas PD: Cat Thomas MD: J.B. King Infinity 702-364-8400

Table with 2 columns: Rank and Song/Artist. Top songs include 'Sammie I Like It', 'Jay-Z Feat. UGK Big Pimpin', 'Eminem The Real Slim Shady'.

Table with 2 columns: Rank and Song/Artist. Top songs include 'Eminem The Real Slim Shady', 'DMX Party Up', 'Sole It Wasn't Me'.

Table with 2 columns: Rank and Song/Artist. Top songs include 'Aaliyah Try Again', 'Sole It Wasn't Me', 'Before Dark Monica'.

Table with 2 columns: Rank and Song/Artist. Top songs include 'Pink There You Go', 'Aaliyah Try Again', 'Eminem The Real Slim Shady'.

Table with 2 columns: Rank and Song/Artist. Top songs include 'DMX Party Up', 'Jay-Z Feat. UGK Big Pimpin', 'The Eastsidaz G'd Up'.

Table with 2 columns: Rank and Song/Artist. Top songs include 'Aaliyah Try Again', 'Sisqo Thong Song', 'Destiny's Child Jumpin, Jumpin'.

FI Miracle bounce

FI 'N Sync It's Gonna Be Me

FI Jocelyn Enriquez When I Get Close To You

FI Backstreet Boys The One

FI 504 Boyz Wobble Wobble

FI Innonense Say No More

# BIG PUN

Featuring

# DONELL JONES

## IMPACTING NOW

## IT'S SO HARD

"The video did it for us! We put it on and it is Top Ten phones in San Diego." - Lisa Vasquez, PD/Z90

"Big Pun is solid Top Ten requests! Not dayparted and blowing up in Tucson." - Paco Lopez, KOHT

"People love this song! We started it out slow, but it just took off. Unstoppable!" - Sana G., PD/KBMB

"Bangin' It. Ranked #6!" - C.K., MD/KSFM

Rhythmic Top 40 Debut **(39)!**  
★★AIRPOWER★★ CROSSOVER **(18) - (17)!**  
Monitor RAP **(6)!** Mainstream R&B **(15)!**

HOT97 Ranked #7!  
KSFM Ranked #6!  
WPGC Ranked #8  
WJMH Ranked #1  
WOCQ Top 10 phones  
WBHJ Ranked #19  
KBTE  
KKFR Ranked #20  
KBMB Top 10 phones  
KDGS Top 10 phones  
KYLZ  
KWWV  
KKUU Top 15 phones

KMEL Ranked #20  
WBOT Top 5 phones  
WERQ Ranked #7  
WWKX Ranked #15  
WJBT Ranked #1  
WDBT  
WKGS Top 10 phones  
KOHT Ranked #6  
Z90 Ranked #10  
WENZ Ranked #11  
KCAQ Ranked #20  
KHTN

The Album

# YEEEAH BABY

Upward-moving songs ranked in order of detections. Songs are removed if they lose more than 5% of their detections from previous week or if their detections decline for two consecutive weeks.

## MOST NEW STATIONS

Songs with 6 or more detections at new stations this week

Artist	Song	NEW STATIONS
BUSTA RHYMES	Get Out (FlipMode/Elektra/EEG)	9
'N SYNC	It's Gonna Be Me (Jive)	6
AVANT	Separated (Magic Johnson/MCA)	6
NEXT	Wifey (Arista)	5
DA BRAT FEATURING TYRESE	What'chu Like (So So Def/Columbia)	5



Total Detections/Gain

**NEXT** **898/307**  
Wifey (Arista)  
Total Stations: 29/Chart Move: 27-16  
Heavy (45+ detections): 5 KBOS, KQBT, KSEQ, KXJM, WJMN  
Medium (25-44): 15 KBTE, KDGS, KDON, KGGI, KISV, KKFR, KQKS, KSFM, KTFM, KUBE, KYLZ, WBBM, WHHH, WWKX, XHTZ  
Light (Under 25): 9  
First Impressions: 5 KIKI, KISV, KZFM, WLLD, WPOW

**AIRPLAY LEADER**  
(FIRST STATION TO 100 PLAYS)

**KBOS • Fresno, CA**  
PD: E. Curtis Johnson  
MD: Travis X. Loughran  
Date: 05/14/00



## AIRPOWER BOUND

Total Detections/Gain

**NU FLAVOR** **936/31**  
3 Little Words (Reprise)  
Total Stations: 35/Chart Move: 16-14  
Heavy (45+): 7 KBTE, KDON, KKFR, KKSS, KQMQ, KYLZ, KZFM  
Medium (25-44): 13 KDGS, KGGI, KIKI, KLUC, KPRR, KPTY, KQBT, KQKS, KSEQ, KTFM, KYLD, WDBT, WNVZ  
Light (Under 25): 15  
First Impressions: 1 WPOW

**DR. DRE FEATURING SNOOP DOGG** **693/121**  
The Next Episode (Aftermath/Interscope)  
Total Stations: 28/Chart Move: 29-22  
Heavy (45+): 4 KIKI, KKFR, KSFM, WJMN  
Medium (25-44): 11 KBOS, KDGS, KOHT, KQKS, KSEQ, KUBE, KXJM, KYLD, KYLZ, WWKX, XHTZ  
Light (Under 25): 13  
First Impressions: 3 KGGI, KLUC, WPOW

**'N SYNC** **671/148**  
It's Gonna Be Me (Jive)  
Total Stations: 30/Chart Move: 32-23  
Heavy (45+): 4 KQCH, KXME, WEZB, WJMN  
Medium (25-44): 5 KISV, KLUC, KZFM, WDBT, WKTU  
Light (Under 25): 21  
First Impressions: 6 KDGS, KDON, KQBT, KQMQ, KTFM, WLLD

**VITAMIN C** **668/43**  
Graduation (Friends Forever) (Elektra/EEG)  
Total Stations: 32/Chart Move: 23-24  
Heavy (45+): 7 KPTY, KQCH, KRBV, KXME, KZFM, WDBT, WNVZ  
Medium (25-44): 3 KIKI, KQMQ, WEZB  
Light (Under 25): 22  
First Impressions: 2 KLUC, KOHT

**BEFORE DARK** **650/24**  
Monica (RCA)  
Total Stations: 32/Chart Move: 22-25  
Heavy (45+): 3 KKSS, KOHT, XHTZ  
Medium (25-44): 9 KBTE, KDGS, KDON, KIKI, KPRR, KPTY, KQBT, KZFM, WHHH  
Light (Under 25): 20  
First Impressions: 1 KUBE

**NELLY** **614/70**  
(Hot S\*\*t) Country Grammar (Fo' Reel/Universal)  
Total Stations: 27/Chart Move: 30-26  
Heavy (45+): 6 KIKI, KOHT, KUBE, KXJM, KYLZ, WHHH  
Medium (25-44): 5 KKFR, KKSS, KQBT, KQKS, XHTZ  
Light (Under 25): 16

**SAMMIE** **602/-10**  
I Like It (Freeworld/Capitol)  
Total Stations: 26/Chart Move: 24-28  
Heavy (45+): 4 KRBV, KXME, WEZB, WLLD  
Medium (25-44): 5 KBOS, KIKI, KISV, KPTY, KSFM  
Light (Under 25): 17

**DA BRAT FEATURING TYRESE** **583/143**  
What'Chu Like (So So Def/Columbia)  
Total Stations: 27/Chart Move: 34-29  
Heavy (45+): 4 KBOS, KSFM, KYLD, XHTZ  
Medium (25-44): 8 KIKI, KOHT, KQBT, KUBE, KXJM, KYLZ, WLLD, WWKX  
Light (Under 25): 15  
First Impressions: 5 KQBT, KQKS, KSEQ, KYLZ, WNVZ

**BRIAN MCKNIGHT** **516/74**  
6, 8, 12 (Motown/Universal)  
Total Stations: 32/Chart Move: 33-31  
Heavy (45+): 0  
Medium (25-44): 8 KDON, KISV, KKSS, KOHT, KQMQ, KYLZ, KZFM, XHTZ  
Light (Under 25): 24  
First Impressions: 3 KKFR, KPRR, KSEQ

**BACKSTREET BOYS** **415/1**  
The One (Jive)  
Total Stations: 16/Chart Move: 35-35  
Heavy (45+): 1 KRBV  
Medium (25-44): 8 KLUC, KQMQ, KTFM, KXME, KZFM, WBBM, WDBT, WEZB  
Light (Under 25): 7  
First Impressions: 3 KDGS, KQCH, WNVZ

**504 BOYZ** **377/52**  
Wobble Wobble (No Limit/Priority)  
Total Stations: 24/Chart Move: 37-36  
Heavy (45+): 1 KDGS  
Medium (25-44): 6 KBTE, KPRR, KYLZ, WHHH, WLLD, XHTZ  
Light (Under 25): 17  
First Impressions: 3 KSFM, KXJM, WBBM

**CARL THOMAS** **351/64**  
I Wish (Bad Boy/Arista)  
Total Stations: 24/Chart Move: 40-37  
Heavy (45+): 0  
Medium (25-44): 7 KBOS, KDGS, KIKI, KKFR, KOHT, KSEQ, KXJM  
Light (Under 25): 17

**BIG PUNISHER FEAT. DONELL JONES** **285/69**  
It's So Hard (Loud/Columbia)  
Total Stations: 21/Chart Move: Debut 39  
Heavy (45+): 2 KOHT, KSFM  
Medium (25-44): 2 WWKX, XHTZ  
Light (Under 25): 17

**TQ** **279/68**  
Daily (ClockWork/Epic)  
Total Stations: 18/Chart Move: Debut 40  
Heavy (45+): 0  
Medium (25-44): 4 KDGS, KOHT, KUBE, XHTZ  
Light (Under 25): 14  
First Impressions: 3 KKFR, KQKS, KSEQ

## CHART BOUND

Total Detections/Gain

**BUSTA RHYMES** **257/101**  
Get Out (FlipMode/Elektra/EEG)  
Total Stations: 25  
Heavy (45+): 0  
Medium (25-44): 3 KOHT, WWKX, XHTZ  
Light (Under 25): 22  
First Impressions: 9 KDON, KISV, KQKS, KTFM, KZFM, WDBT, WJMN, WLLD, WPOW

**WHITNEY HOUSTON & ENRIQUE IGLESIAS** **255/101**  
Could I Have This Kiss Forever (Arista/Interscope)  
Total Stations: 16  
Heavy (45+): 0  
Medium (25-44): 4 KPTY, KZFM, WBBM, WEZB  
Light (Under 25): 12  
First Impressions: 4 KDON, KOHT, KPTY, WDBT

**KURUPT FEATURING DAZ** **220/58**  
Who Ride Wit Us (Antra/Artemis)  
Total Stations: 19  
Heavy (45+): 0  
Medium (25-44): 3 KBOS, KSFM, KXJM  
Light (Under 25): 16  
First Impressions: 2 KDON, KYLD

**JAGGED EDGE** **198/47**  
Let's Get Married (So So Def/Columbia)  
Total Stations: 14  
Heavy (45+): 0  
Medium (25-44): 2 WHHH, XHTZ  
Light (Under 25): 12  
First Impressions: 2 KBOS, KKSS

**TRICK DADDY** **191/26**  
Shut Up (Slip-N-Slide/Atlantic)  
Total Stations: 17  
Heavy (45+): 0  
Medium (25-44): 3 KKFR, WHHH, WLLD  
Light (Under 25): 14  
First Impressions: 1 KTFM

**TORREY CARTER FEAT. MISSY ELLIOTT** **178/38**  
Take That (The Gold Mind/EastWest/EEG)  
Total Stations: 14  
Heavy (45+): 0  
Medium (25-44): 2 KDGS, KIKI  
Light (Under 25): 12  
First Impressions: 1 KBOS

**MANDY MOORE** **169/31**  
I Wanna Be With You (550 Music/550-Work)  
Total Stations: 7  
Heavy (45+): 0  
Medium (25-44): 5 KPTY, KQMQ, WBBM, WDBT, WEZB  
Light (Under 25): 2

**JOE WITH 'N SYNC** **165/9**  
I Believe In You (Jive)  
Total Stations: 3  
Heavy (45+): 1 KXME  
Medium (25-44): 1 KRBV  
Light (Under 25): 1  
First Impressions: 1 KSEQ

**SNOOP DOGG PRESENTS THA EASTSIDAZ** **157/55**  
Got Beef (Dogg House/TVT)  
Total Stations: 18  
Heavy (45+): 0  
Medium (25-44): 1 KOHT  
Light (Under 25): 17  
First Impressions: 4 KBOS, KIKI, KYLZ, XHTZ

**SON BY FOUR** **148/28**  
Purest Of Pain (A Puro Dolor) (Sony Discos/Columbia)  
Total Stations: 5  
Heavy (45+): 1 WPOW  
Medium (25-44): 2 KPRR, KTFM  
Light (Under 25): 2

**AVANT** **119/103**  
Separated (Magic Johnson/MCA)  
Total Stations: 11  
Heavy (45+): 0  
Medium (25-44): 2 KDGS, KISV  
Light (Under 25): 9  
First Impressions: 6 KISV, KKSS, KOHT, KQBT, KTFM, WHHH

**VERTICAL HORIZON** **115/15**  
Everything You Want (RCA)  
Total Stations: 7  
Heavy (45+): 1 WMEG  
Medium (25-44): 1 KPTY  
Light (Under 25): 5  
First Impressions: 1 WDBT

**FAITH HILL** **109/4**  
Breathe (Warner Bros.)  
Total Stations: 10  
Heavy (45+): 1 KPRR  
Medium (25-44): 1 WMEG  
Light (Under 25): 8

**SAVAGE GARDEN** **98/48**  
Crash And Burn (Columbia)  
Total Stations: 7  
Heavy (45+): 1 KQCH  
Medium (25-44): 0  
Light (Under 25): 6

**IDEAL FEATURING LIL' MO** **93/62**  
Whatever (Virgin)  
Total Stations: 12  
Heavy (45+): 0  
Medium (25-44): 0  
Light (Under 25): 12  
First Impressions: 4 KDGS, KOHT, WHHH, XHTZ

**LUCY PEARL** **86/35**  
Dance Tonight (Overbrook/Pookie/Beyond)  
Total Stations: 7  
Heavy (45+): 0  
Medium (25-44): 2 KDGS, XHTZ  
Light (Under 25): 5  
First Impressions: 1 XHTZ

**KEVON EDMONDS** **82/13**  
No Love (I'm Not Used To) (RCA)  
Total Stations: 6  
Heavy (45+): 0  
Medium (25-44): 1 XHTZ  
Light (Under 25): 5  
First Impressions: 1 KDGS

**DR. DRE** **82/19**  
F\*\*k You (Aftermath/Interscope)  
Total Stations: 3  
Heavy (45+): 1 KYLD  
Medium (25-44): 1 KSFM  
Light (Under 25): 1

**DJ LAZ** **80/27**  
Ki Ki Ri Bu (Pandisc)  
Total Stations: 2  
Heavy (45+): 1 KPRR  
Medium (25-44): 0  
Light (Under 25): 1

**JONNY Z** **77/8**  
Ku Ku (Thump)  
Total Stations: 7  
Heavy (45+): 0  
Medium (25-44): 1 KYLD  
Light (Under 25): 6  
First Impressions: 1 KTFM

**IMX** **77/4**  
Keep It On The Low (MCA)  
Total Stations: 3  
Heavy (45+): 0  
Medium (25-44): 2 KISV, XHTZ  
Light (Under 25): 1

★ **MADISON AVENUE** **74/51**  
Don't Call Me Baby (Vicious Grooves/C2)  
Total Stations: 8  
Heavy (45+): 1 KYLD  
Medium (25-44): 0  
Light (Under 25): 7

★ **WYCLEF JEAN** **72/32**  
Thug Angels (Columbia)  
Total Stations: 4  
Heavy (45+): 1 WLLD  
Medium (25-44): 0  
Light (Under 25): 3

**DJ QUIK** **67/7**  
Pitch In Ona Party (Arista 2001/Arista)  
Total Stations: 12  
Heavy (45+): 0  
Medium (25-44): 0  
Light (Under 25): 12  
First Impressions: 1 KYLZ

**LARA FABIAN** **67/17**  
I Will Love Again (Columbia)  
Total Stations: 7  
Heavy (45+): 0  
Medium (25-44): 1 WKTU  
Light (Under 25): 6  
First Impressions: 1 KRBV

★ **STRINGS** **67/52**  
The Tongue Song (Epic)  
Total Stations: 5  
Heavy (45+): 0  
Medium (25-44): 1 KYLZ  
Light (Under 25): 4  
First Impressions: 2 KDGS, KGGI

**DR. DRE** **63/9**  
Xplosive (Aftermath/Interscope)  
Total Stations: 11  
Heavy (45+): 0  
Medium (25-44): 0  
Light (Under 25): 11

★ **MIRACLE** **59/34**  
Bounce (Major Turnout/Sound Of Atlanta/Universal)  
Total Stations: 6  
Heavy (45+): 0  
Medium (25-44): 1 WLLD  
Light (Under 25): 5  
First Impressions: 2 KYLZ, WLLD

★ **BIG TYMERS** **58/36**  
Get Your Roll On (Cash Money/Universal)  
Total Stations: 8  
Heavy (45+): 0  
Medium (25-44): 0  
Light (Under 25): 8  
First Impressions: 2 KOHT, WLLD

★ **JERMAINE DUPRI FEAT. NAS & MONICA** **56/33**  
I've Got To Have It (So So Def/Columbia)  
Total Stations: 7  
Heavy (45+): 0  
Medium (25-44): 0  
Light (Under 25): 7  
First Impressions: 2 KDGS, WWKX

★ **AALIYAH FEATURING DMX** **54/49**  
Come Back In One Piece (Blackground/Virgin)  
Total Stations: 15  
Heavy (45+): 0  
Medium (25-44): 0  
Light (Under 25): 15

★ **D-CRU** **52/22**  
I Will Be Waiting (Dexter/Elektra/EEG)  
Total Stations: 5  
Heavy (45+): 0  
Medium (25-44): 1 KPTY  
Light (Under 25): 4  
First Impressions: 2 KDGS, KQMQ

★ **DONELL JONES** **51/13**  
Where I Wanna Be (Untouchables/LaFace/Arista)  
Total Stations: 5  
Heavy (45+): 0  
Medium (25-44): 1 WHHH  
Light (Under 25): 4  
First Impressions: 1 KTFM

★ **BRITNEY SPEARS** **51/51**  
Lucky (Jive)  
Total Stations: 3  
Heavy (45+): 0  
Medium (25-44): 1 KXME  
Light (Under 25): 2  
First Impressions: 2 KPTY, KXME

**MISS JANE** **50/9**  
It's A Fine Day (Rampage)  
Total Stations: 12  
Heavy (45+): 0  
Medium (25-44): 0  
Light (Under 25): 12

**PRECIOUS** **50/6**  
Precious Little Fantasy (Sonic Gruv)  
Total Stations: 2  
Heavy (45+): 0  
Medium (25-44): 1 WPYO  
Light (Under 25): 1



504 BOYZ Wobble Wobble (No Limit/Priority) Total Stations: 24 Chart Move: 37-36

AALIYAH Try Again (Blackground/Virgin) Total Stations: 40 Chart Move: 2-1

AVANT Separated (Magic Johnson/MCA) Total Stations: 11

BACKSTREET BOYS The One (Jive) Total Stations: 16 Chart Move: 35-35

BEFORE DARK Monica (RCA) Total Stations: 32 Chart Move: 22-25

BIG PUNISHER FEAT. DONELL JONES It's So Hard (Foad/Columbia) Total Stations: 21 Chart Move: Debut 39

BUSTA RHYMES Get Out (FlipMode/Elektra/EEG) Total Stations: 25 Chart Move: 1-1

TORREY CARTER FEAT. MISSY ELLIOTT Take That (The Gold Mind/EastWest/EEG) Total Stations: 14

DA BRAT FEATURING TYRESE What'Chu Like (So So Def/Columbia) Total Stations: 27 Chart Move: 34-29

DESTINY'S CHILD Jumpin, Jumpin (Columbia) Total Stations: 38 Chart Move: 5-5

DR. DRE FEATURING SNOOP DOGG The Next Episode (Aftermath/Interscope) Total Stations: 28 Chart Move: 29-22

EMINEM The Real Slim Shady (Web/Aftermath/Interscope) Total Stations: 40 Chart Move: 3-2

WHITNEY HOUSTON & ENRIQUE IGLESIAS Could I Have This Kiss Forever (Arista/Interscope) Total Stations: 16

ENRIQUE IGLESIAS Be With You (Interscope) Total Stations: 30 Chart Move: 20-19

JAGGED EDGE Let's Get Married (So So Def/Columbia) Total Stations: 14

JAY-Z FEATURING UGK Big Pimpin' (Roc-A-Fella/Def Jam/IDJMG) Total Stations: 35 Chart Move: 6-6

JOE WITH 'N SYNC I Believe 'n You (Jive) Total Stations: 3

KURUPT FEATURING DAZ Who Ride Wit Us (Antra/Artemis) Total Stations: 19

BRIAN MCKNIGHT 6, 8, 12 (Motown/Universal) Total Stations: 32 Chart Move: 33-31

MANDY MOORE I Wanna Be With You (550 Music/550-Work) Total Stations: 7

'N SYNC It's Gonna Be Me (Jive) Total Stations: 30 Chart Move: 32-23

NELLY (Hot S\*\*t) Country Grammar (Fo' Reel/Universal) Total Stations: 27 Chart Move: 30-26

NEXT Wifey (Arista) Total Stations: 29 Chart Move: 27-16

NU FLAVOR 3 Little Words (Reprise) Total Stations: 35 Chart Move: 16-14

SNOOP DOGG PRESENTS THA EASTSIDAZ Got Beef (Dogg House/TVT) Total Stations: 18

SON BY FOUR Purest Pain (A Puro Dolor) (Sony Discos/Columbia) Total Stations: 5

CARL THOMAS I Wish (Bad Boy/Arista) Total Stations: 24 Chart Move: 48-37

TQ Daily (ClockWork/Epic) Total Stations: 18 Chart Move: Debut 40

TRICK DADDY Shut Up (Slip-N-Slide/Atlantic) Total Stations: 17

VITAMIN C Graduation (Friends Forever) (Elektra/EEG) Total Stations: 32 Chart Move: 23-24



Monitor AIRPLAY Crossover

POWER PLAYLIST

FOR WEEK ENDING MAY 21, 2000

Songs ranked by number of detections... Playlists are listed in order of TSA weekly count...

WQHT New York: PD: Tracy Cloherly, MD: Sean Taylor, Emmis 212-229-9797. List of 30 songs with radio numbers and airplay data.

KPWR Los Angeles: VP/Pgm: Jimmy Steal, APD: Damion Young, MD: E-man, Emmis 818-953-4200. List of 30 songs with radio numbers and airplay data.

KKBT Los Angeles: MD: Dorsey Fuller, AMD: Tawala Sharp, AMFM 323-634-1800. List of 30 songs with radio numbers and airplay data.

WUSL Philadelphia: OM: Helen Little, APD/MD: Glenn Cooper, AMFM 215-483-8900. List of 30 songs with radio numbers and airplay data.

WVEE Atlanta: PD: Tony Brown, APD: Greg Street, MD: Tasha Love, Infinity 404-898-8900. List of 30 songs with radio numbers and airplay data.

WPGC Washington, DC: PD: Jay Stevens, APD: Reggie Rouse, MD: Thea Mitchell, Infinity 301-918-0956. List of 30 songs with radio numbers and airplay data.

KBXX Houston: OM: Robert Scorpio, MD: Kathon Powell, Clear Channel 713-623-2108. List of 30 songs with radio numbers and airplay data.

WJLB Detroit: VP/Pgm: Michael Saunders, MD: Kris Kelley, AMFM 313-965-2000. List of 30 songs with radio numbers and airplay data.

WKYS Washington, DC: VP/Pgm: Steve Hegwood, APD: Daryl Huckaby, MD: Lisa Lisa, Radio One 301-306-1111. List of 30 songs with radio numbers and airplay data.

KKDA Dallas: PD: Skip Cheatham, Service 972-263-9911. List of 30 songs with radio numbers and airplay data.

KMEL San Francisco: PD: Joey Arbogay, MD: Glen Aure, MC: Larry Jackson, AMFM 415-538-1061. List of 30 songs with radio numbers and airplay data.

WDTJ Detroit: PD: Nate Bell, MD: Phil Mahone, Radio One 313-871-0591. List of 30 songs with radio numbers and airplay data.

WPHI Philadelphia: PD: Maurice Devote, APD: Lamonda Williams, MD: Raphael George, Radio One 215-884-9400. List of 30 songs with radio numbers and airplay data.

WERQ Baltimore: Dir: E. Coast Pgm: Tom Calococi, PD: Dion Summers, MD: Butthman, Radio One 410-332-8200. List of 30 songs with radio numbers and airplay data.

WHTA Atlanta: VP/Pgm: Steve Hegwood, APD: Darrell Johnson, MD: Ramona DeBraux, Radio One 404-765-9750. List of 30 songs with radio numbers and airplay data.

WQVE New Orleans: OM: Gerod Stevens, MD: Angela Harrison, Clear Channel 504-827-6000. List of 30 songs with radio numbers and airplay data.

WENZ Cleveland: VP/Pgm: Steve Hegwood, PD: Lance Stanton, MD: Sam Syk, Radio One 216-579-1111. List of 30 songs with radio numbers and airplay data.

WPEG Charlotte: PD: Andre Carson, MD: Nate Quick, Infinity 704-333-0131. List of 30 songs with radio numbers and airplay data.

WJHM Orlando: OM: Adam Cook, PD: Russ Allen, Interim MD: Jay Love, AMFM 407-919-1000. List of 30 songs with radio numbers and airplay data.

WHRK Memphis: PD: Bobby O'Jay, APD/MD: Eileen Nathaniel, Clear Channel 901-529-4300. List of 30 songs with radio numbers and airplay data.

WJMH Greensboro: OM/MD: Brian Douglas, MD: Boogie D., Entercom 336-605-5200. List of 30 songs with radio numbers and airplay data.

WQOK Raleigh: OM: Hozie Mack, MD: Jodi Berry, Clear Channel 919-848-9736. List of 30 songs with radio numbers and airplay data.

WBHJ Birmingham: PD: Mickey Johnson, APD/MD: Mary K, Cox 205-322-2987. List of 30 songs with radio numbers and airplay data.

WBXL Mobile: Interim PD: Myranda Reuben, Cumulus 334-432-7609. List of 30 songs with radio numbers and airplay data.



504 BOYZ Wobble Wobble (No Limit/Priority) Total Stations: 60 Chart Move: 11-12

1596/47 AVANT Separated (Magic Johnson/MCA) Total Stations: 45 Chart Move: 16-19

BEFORE DARK Monica (RCA) Total Stations: 34 Chart Move: Debut 36

527/46 BIG PUNISHER FEAT. DONELL JONES It's So Hard (Loud/Columbia) Total Stations: 55 Chart Move: 18-17

864/136 BIG TYMERS Get Your Roll On (Cash Money/Universal) Total Stations: 38 Chart Move: 31-26

752/265 BUSTA RHYMES Get Out (FlipMode/Elektra/EEG) Total Stations: 59 Chart Move: Debut 31

1426/200 DA BRAT FEATURING TYRESE What'Chu Like (So So Def/Columbia) Total Stations: 61 Chart Move: 15-13

1376/22 DESTINY'S CHILD Jumpin, Jumpin (Columbia) Total Stations: 33 Chart Move: 13-14

1233/189 DR. DRE FEATURING SNOOP DOGG The Next Episode (Aftermath/Interscope) Total Stations: 56 Chart Move: 20-18

2613/239 EMINEM The Real Slim Shady (Web/Aftermath/Interscope) Total Stations: 61 Chart Move: 6-3

546/56 WHITNEY HOUSTON & DEBORAH COX Same Script, Different Cast (Arista) Total Stations: 33 Chart Move: Debut 35

733/185 IDEAL FEATURING LIB' MO Whatever (Virgin) Total Stations: 46 Chart Move: 36-32

1924/205 JAGGED EDGE Let's Get Married (So So Def/Columbia) Total Stations: 53 Chart Move: 10-7

2836/98 JAY-Z FEATURING UGK Big Pimpin' (Roc-A-Fella/Def Jam/IDJMG) Total Stations: 61 Chart Move: 2-1

1682/176 DONELL JONES Where I Wanna Be (Untouchables/LaFace/Arista) Total Stations: 42 Chart Move: 12-11

970/156 LUCY PEARL Dance Tonight (Overbrook/Pookie/Beyond) Total Stations: 45 Chart Move: 29-24

569/69 BRIAN MCKNIGHT 6, 8, 12 (Motown) Total Stations: 42 Chart Move: 40-34

999/170 NELLY Hot S\*\*t Country Grammar (Fo' Reel/Universal) Total Stations: 47 Chart Move: 27-22

1365/407 NEXT Wifey (Arista) Total Stations: 56 Chart Move: 23-15

987/46 TRICK DADDY Shut Up (Slip-N-Slide/Atlantic) Total Stations: 52 Chart Move: 24-23

# PHISH

## HEAVY THINGS

The first single from the new album **FARMHOUSE**



**#1 PHONES AT WTMX/CHICAGO**

**MONITOR MODERN AC DEBUT 37 !!**

PRODUCED BY BRYCE GOGGIN AND TREY ANASTASIO

MANAGEMENT: JOHN PALUSKA/DIONYSIAN PRODUCTIONS

**10 - 8 MONITOR TRIPLE-A**

**10\* - 5\* R&R AAA**

**WSSR/TAMPA #1 PHONES AT NIGHT**

**WBMX/BOSTON TOP 5 PHONES ALREADY**

**WKDD/AKRON #3 MOST REQUESTED ON WEBSITE AFTER 14 SPINS**

**WFKS/DAYTONA BEACH TOP 5 PHONES AFTER 11 SPINS**

**WCPT/ALBANY TOP 10 MOST REQUESTED**

**#3 MOST ADDED AT ADULT TOP 40 THIS WEEK/  
#2 MOST ADDED LAST WEEK**

**#5 MOST INCREASED AIRPLAY AT MODERN ADULT**

**MAJOR MARKET AIRPLAY:**

**WBMX/BOSTON  
KBBT/PORTLAND  
WTMX/CHICAGO  
WPTE/NORFOLK  
KQMB/SALT LAKE CITY**

**WPHH/PITTSBURGH  
WTIC/HARTFORD  
WSSR/TAMPA  
KISN/SALT LAKE CITY  
CKEY/BUFFALO**

On Elektra compact discs and cassettes © 2000 Elektra Entertainment Group Inc., A Time Warner Company.

# AIRPLAY Monitor ADULT TOP 40

Compiled from a national sample of data supplied by Broadcast Data Systems to Top 40 Airplay Monitor. All Adult Top 40 stations are electronically monitored 24 hours a day, 7 days a week. © 2000 Elektra Entertainment Group Inc.

FOR WEEK ENDING MAY 21, 2000

THIS WEEK	LAST WEEK	WKS. ON CHART	TITLE/IMPRINT/PROMOTION LABEL	ARTIST	DETECTIONS	
					TW	LW
			<b>*** No. 1 ***</b>			
1	1	26	<b>EVERYTHING YOU WANT</b> RCA 7 weeks at No. 1	VERTICAL HORIZON	3434	3379
2	2	22	I TRY EPIC	MACY GRAY	2966	2968
3	3	18	BREATHE WARNER BROS.	FAITH HILL	2760	2834
4	4	21	NEVER LET YOU GO ELEKTRA/VEEG	THIRD EYE BLIND	2584	2619
5	7	6	BENT LAVA/ATLANTIC	MATCHBOX TWENTY	2294	2098
6	5	48	SMOOTH ARISTA	SANTANA FEATURING ROB THOMAS	2171	2262
7	6	32	THEN THE MORNING COMES INTERSCOPE	SMASH MOUTH	2101	2227
8	8	8	BROADWAY WARNER BROS.	GOO GOO DOLLS	2083	1930
9	10	15	HIGHER WIND-UP	CREED	1812	1782
10	11	20	AMAZED BNA	LONESTAR	1777	1780
11	14	11	OTHERSIDE WARNER BROS.	RED HOT CHILI PEPPERS	1696	1604
12	13	8	MARIA MARIA ARISTA	SANTANA FEATURING THE PRODUCT G&B	1659	1636
13	9	17	TELLING STORIES (THERE IS FICTION IN THE SPACE BETWEEN) ELEKTRA/VEEG	TRACY CHAPMAN	1654	1808
14	12	44	MEET VIRGINIA AWARE/COLUMBIA	TRAIN	1577	1716
15	15	7	CRASH AND BURN COLUMBIA	SAVAGE GARDEN	1570	1515
16	17	8	DESERT ROSE A&M/INTERSCOPE	STING FEATURING CHEB MAMI	1513	1307
17	20	7	STEAL MY KISSES VIRGIN	BEN HARPER AND THE INNOCENT CRIMINALS	1373	1263
18	22	12	<b>I THINK GOD CAN EXPLAIN</b> C2 <b>** AIRPOWER **</b>	SPLENDER	1314	1244
19	24	6	<b>ABSOLUTELY (STORY OF A GIRL)</b> 550 MUSIC/550 WORK <b>** AIRPOWER **</b>	NINE DAYS	1292	1178
20	16	29	I NEED TO KNOW COLUMBIA	MARC ANTHONY	1283	1358
21	23	9	YOU SANG TO ME COLUMBIA	MARC ANTHONY	1250	1239
22	19	11	BYE BYE BYE JIVE	'N SYNC	1246	1270
23	21	15	I BELONG TO YOU VIRGIN	LENNY KRAVITZ	1007	1263
24	25	19	SHOW ME THE MEANING OF BEING LONELY JIVE	BACKSTREET BOYS	971	1039
25	26	15	ONLY GOD KNOWS WHY TOP DOG/LAVA/ATLANTIC	KID ROCK	922	956
26	28	5	FA FA (NEVER BE THE SAME AGAIN) HYBRID/SIRE/LONDON	GUSTER	703	637
27	27	26	TAKE A PICTURE REPRISE	FILTER	664	739
28	34	2	TAKING YOU HOME WARNER BROS.	DON HENLEY	652	458
29	31	3	I TURN TO YOU RCA	CHRISTINA AGUILERA	631	555
30	30	17	ALL THE SMALL THINGS MCA	BLINK-182	543	563
31	33	4	BACK HERE HOLLYWOOD	BBMAK	542	500
32	32	24	FALLS APART LAVA/ATLANTIC	SUGAR RAY	466	522
33	29	14	CHARM ATTACK OUTPOST/MCA	LEONA NAESS	465	568
34	<b>NEW</b>		<b>OOPS!...I DID IT AGAIN</b> JIVE	BRITNEY SPEARS	433	300
35	36	4	I AM AWARE/COLUMBIA	TRAIN	421	424
36	38	2	BOOM RCA	TRINKET	412	363
37	37	24	BACK AT ONE MOTOWN/UNIVERSAL	BRIAN MCKNIGHT	381	408
38	35	12	EVEN ANGELS FALL HOLLYWOOD	JESSICA RIDDLE	367	454
39	<b>NEW</b>		<b>SIMPLE KIND OF LIFE</b> TRAUMA/INTERSCOPE	NO DOUBT	349	153
40	<b>NEW</b>		<b>BE WITH YOU</b> INTERSCOPE	ENRIQUE IGLESIAS	335	259

Songs ranked by number of detections. ○ Songs showing an increase in detections over the previous week, regardless of chart movement. A song that has been on the chart for more than 20 weeks will generally not receive a bullet, even if it registers an increase in detections. Airpower awarded to songs appearing in the top 20 on both the Airplay and Audience charts for the first time with increases in both detections and audience. Greatest Gainer awarded to the song with the largest increase in detections. Most New Stations awarded to the song registering six or more detections at the most stations for the first time this week. A song with a gain in detections over the previous week is placed first if tied with a song with a decline over the same period. When tied songs are each gaining detections or each losing detections, the song being played on more stations is placed first. Songs below the top 20 become recurrenents and are removed from the chart after 26 weeks.

## GREATEST GAINERS

## ADULT TOP 40

INCREASE IN DETECTIONS

<b>SISTER HAZEL • Change Your Mind (UNIVERSAL)</b>	<b>+275</b>
WCPT +26, WMBX +20, WSSR +20, WPTE +18, KTOZ +16, WKDD +14, WTMX +13, KCDA +12, KLLY +12, KALZ +12	
<b>STING FEATURING CHEB MAMI • Desert Rose (A&amp;M/INTERSCOPE)</b>	<b>+206</b>
KMXB +36, WMGX +23, KYSR +19, WXPT +17, KBIG +15, KZON +11, WVRV +9, WMC +9, WTSS +9, KLLC +8	
<b>MATCHBOX TWENTY • Bent (LAVA/ATLANTIC)</b>	<b>+196</b>
KVSR +26, KAMX +22, KUCC +18, KYIS +14, KHMV +14, WKTI +10, WMGX +9, KMXB +9, KALZ +9, WMBX +8	
<b>NO DOUBT • Simple Kind Of Life (TRAUMA/INTERSCOPE)</b>	<b>+196</b>
WMBX +21, WMBX +20, KLLY +17, WTMX +16, KYIS +15, KALZ +15, KEZR +14, WJLK +13, CKEY +12, KAMX +11	
<b>DON HENLEY • Taking You Home (WARNER BROS.)</b>	<b>+194</b>
WOMX +20, KFMB +18, KZZO +17, KQMB +15, KSRZ +12, KSII +11, KMSX +10, WQLH +10, WPLJ +10, KRUZ +9	









Detected tracking for songs with an increase in detections. Or Deleted/Down charted tracks indicate they were listed in a prior report.

CHRISTINA AGUILERA 631/76 I Turn To You (RCA) Total Stations: 39 Chart Move: 31-29

MARC ANTHONY 1250/11 You Sang To Me (Columbia) Total Stations: 56 Chart Move: 23-21

BBMAK 542/42 Back Here (Hollywood) Total Stations: 35 Chart Move: 33-31

CREED 1812/30 Higher (Wind-up) Total Stations: 66 Chart Move: 10-9

GOO GOO DOLLS 2083/153 Broadway (Warner Bros.) Total Stations: 78 Chart Move: 8-8

GUSTER 703/66 Fa Fa (Never Be The Same Again) (Sire/Hybrid/London) Total Stations: 40 Chart Move: 28-26

BEN HARPER and the INNOCENT CRIMINALS 1373/110 Steal My Kisses (Virgin) Total Stations: 56 Chart Move: 20-17

DON HENLEY 652/194 Taking You Home (Warner Bros.) Total Stations: 41 Chart Move: 34-28

ENRIQUE IGLESIAS 335/76 Be With You (Interscope) Total Stations: 28 Chart Move: Debut 40

MATCHBOX TWENTY 2294/196 Bent (Lava/Atlantic) Total Stations: 79 Chart Move: 7-5

NINE DAYS 1292/114 Absolutely (Story Of A Girl) (550 Music/550-Work) Total Stations: 56 Chart Move: 24-19

NO DOUBT 349/196 Simple Kind Of Life (Trauma/Interscope) Total Stations: 24 Chart Move: Debut 39

RED HOT CHILI PEPPERS 1696/92 Otherside (Warner Bros.) Total Stations: 68 Chart Move: 14-11

SANTANA FEAT. THE PRODUCT G&B 1659/23 Maria Maria (Arista) Total Stations: 68 Chart Move: 13-12

SAVAGE GARDEN 1570/55 Crash And Burn (Columbia) Total Stations: 66 Chart Move: 15-15

SISTER HAZEL 329/275 Change Your Mind (Universal) Total Stations: 32 Chart Move: 22-21

BRITNEY SPEARS 433/133 Oops...I Did It Again (Jive) Total Stations: 24 Chart Move: Debut 34

SPLENDER 1314/70 I Think God Can Explain (C2) Total Stations: 67 Chart Move: 22-18

STING FEATURING CHEB MAMI 1513/206 Desert Rose (A&M/Interscope) Total Stations: 58 Chart Move: 17-16

TRINKET 412/49 Boom (RCA) Total Stations: 25 Chart Move: 38-36



Compiled from a national sample of data supplied by Broadcast Data Systems to Top 40 Airplay Monitor. 40 modern AC stations are electronically monitored 24 hours a day, 7 days a week. © 2000 Billboard/BPI Communications.

THIS WEEK	LAST WEEK	WKS. ON CHART	MODERN AC AIRPLAY		DETECTIONS	
			TITLE/IMPRINT/PROMOTION LABEL	ARTIST	TW	LW
			<b>★★★ NO. 1 ★★★</b>			
1	1	28	<b>EVERYTHING YOU WANT</b> RCA	13 weeks at No. 1 VERTICAL HORIZON	1791	1761
2	3	6	<b>BENT</b> LAVA/ATLANTIC	MATCHBOX TWENTY	1536	1399
3	2	23	<b>NEVER LET YOU GO</b> ELEKTRA/EEG	THIRD EYE BLIND	1428	1432
4	4	23	<b>I TRY</b> EPIC	MACY GRAY	1357	1397
5	5	23	<b>HIGHER</b> WIND-UP	CREED	1313	1326
6	7	9	<b>BROADWAY</b> WARNER BROS.	GOO GOO DOLLS	1296	1240
7	6	14	<b>OTHERSIDE</b> WARNER BROS.	RED HOT CHILI PEPPERS	1295	1250
8	10	11	<b>DESERT ROSE</b> A&M/INTERSCOPE	STING FEATURING CHEB MAMI	1158	1008
9	8	18	<b>TELLING STORIES (THERE IS FICTION IN THE SPACE BETWEEN)</b> ELEKTRA/EEG	TRACY CHAPMAN	1056	1164
10	11	8	<b>ABSOLUTELY (STORY OF A GIRL)</b> 550 MUSIC/550-WORK	NINE DAYS	1054	978
11	12	10	<b>STEAL MY KISSES</b> VIRGIN	BEN HARPER AND THE INNOCENT CRIMINALS	1029	972
12	9	48	<b>MEET VIRGINIA</b> AWARE/COLUMBIA	TRAIN	942	1044
13	13	17	<b>BREATHE</b> WARNER BROS.	FAITH HILL	866	916
14	16	8	<b>MARIA MARIA</b> ARISTA	SANTANA FEATURING THE PRODUCT G&B	864	829
15	15	33	<b>THEN THE MORNING COMES</b> INTERSCOPE	SMASH MOUTH	836	914
16	18	14	<b>I THINK GOD CAN EXPLAIN</b> C2	SPLENDER	834	799
17	17	49	<b>SMOOTH</b> ARISTA	SANTANA FEATURING ROB THOMAS	813	815
18	14	16	<b>I BELONG TO YOU</b> VIRGIN	LENNY KRAVITZ	741	915
19	20	50	<b>BLACK BALLOON</b> WARNER BROS.	GOO GOO DOLLS	614	600
			<b>★★ AIRPOWER ★★</b>			
20	22	6	<b>FA FA (NEVER BE THE SAME AGAIN)</b> HYBRID/SIRE/LONDON	GUSTER	610	565
21	21	7	<b>CRASH AND BURN</b> COLUMBIA	SAVAGE GARDEN	578	581
22	24	19	<b>ALL THE SMALL THINGS</b> MCA	BLINK-182	508	518
23	23	16	<b>ONLY GOD KNOWS WHY</b> TOP DOG/LAVA/ATLANTIC	KID ROCK	434	524
24	27	3	<b>BOOM</b> RCA	TRINKET	396	345
25	25	16	<b>CHARM ATTACK</b> OUTPOST/MCA	LEONA NAESS	368	436
26	28	5	<b>MRS. POTTER'S LULLABY</b> DGC/INTERSCOPE	COUNTING CROWS	342	342
27	29	5	<b>I AM</b> AWARE/COLUMBIA	TRAIN	330	336
28	30	16	<b>AMAZED</b> BNA	LONESTAR	327	331
29	37	2	<b>SIMPLE KIND OF LIFE</b> TRAUMA/INTERSCOPE	NO DOUBT	313	190
30	26	25	<b>FALLS APART</b> LAVA/ATLANTIC	SUGAR RAY	309	364
31	31	4	<b>YOU SANG TO ME</b> COLUMBIA	MARC ANTHONY	265	261
32	33	2	<b>NO MAN'S WOMAN</b> ATLANTIC	SINEAD O'CONNOR	256	223
33	<b>RE-ENTRY</b>		<b>HERE WITH ME</b> ARISTA	DIDO	249	245
34	32	2	<b>WHY DOES IT ALWAYS RAIN ON ME?</b> INDEPENDIENTE/EPIC	TRAVIS	242	239
35	<b>NEW</b>		<b>TAKING YOU HOME</b> WARNER BROS.	DON HENLEY	241	162
			<b>★ GREATEST GAINER/MOST NEW STATIONS ★</b>			
36	<b>NEW</b>		<b>CHANGE YOUR MIND</b> UNIVERSAL	SISTER HAZEL	223	44
37	<b>NEW</b>		<b>HEAVY THINGS</b> ELEKTRA/EEG	PHISH	218	138
38	34	5	<b>SPACESHIP</b> MELISMA/ARISTA	ANGIE APARO	194	223
39	39	2	<b>PORCELAIN</b> V2	MOBY	177	177
40	35	9	<b>WASTE</b> INTERSCOPE	SMASH MOUTH	177	217

Songs ranked by number of detections. **○** Songs showing an increase in detections over the previous week, regardless of chart movement. A song that has been on the chart for more than 20 weeks will generally not receive a bullet, even if it registers an increase in detections. Airpower awarded to songs appearing in the top 20 on both the Airplay and Audience charts for the first time with increases in both detections and audience. Greatest Gainer awarded to the song with the largest increase in detections. Most New Stations awarded to the song registering six or more detections at the most stations for the first time this week. A song with a gain in detections over the previous week is placed first if tied with a song with a decline over the same period. When tied songs are each gaining detections or each losing detections, the song being played on more stations is placed first. Songs below the top 20 become recurrents and are removed from the chart after 26 weeks.

## GREATEST GAINERS

## MODERN AC

INCREASE IN DETECTIONS

- SISTER HAZEL • Change Your Mind (UNIVERSAL)** +179  
WCPT +26, WSSR +20, WPTE +18, KTOZ +16, WTMX +13, KCDA +12, KLLY +12, WCDA +9, WVVR +9, WLNK +9
- STING FEATURING CHEB MAMI • Desert Rose (A&M/INTERSCOPE)** +150  
KMXB +36, WMMX +23, KYSR +19, WXPT +17, KZON +11, WVVR +9, KLLC +8, KPEK +7, KALC +5, KRUI +4
- MATCHBOX TWENTY • Bent (LAVA/ATLANTIC)** +137  
KVSR +26, KAMX +22, KJCD +18, KYIS +14, WMMX +9, KMXB +9, WXPT +7, KRUI +7, WPTE +7, WSSR -7
- NO DOUBT • Simple Kind Of Life (TRAUMA/INTERSCOPE)** +123  
WMMX +21, KLLY +17, WTMX +16, KYIS +15, CKEY +12, KAMX +11, KFMB +11, KSRZ +10, KCDA +8, KPEK +8
- PHISH • Heavy Things (ELEKTRA/EEG)** +80  
WMMX +30, KJCD +11, KCDA +9, WMMX +8, KVUU +5, KLLY +4, WTMX +4, WZNE +3, KAMX +3, KAEP +3

## MODERN AC AUDIENCE

THIS WEEK	LAST WEEK	WKS. ON CHART	MODERN AC AUDIENCE		AUDIENCE (millions)	
			TITLE/IMPRINT/PROMOTION LABEL	ARTIST	TW	LW
			<b>★★★ NO. 1 ★★★</b>			
1	1	22	<b>EVERYTHING YOU WANT</b> RCA	12 weeks at No. 1 VERTICAL HORIZON	14.747	14.122
2	2	19	<b>NEVER LET YOU GO</b> ELEKTRA/EEG	THIRD EYE BLIND	11.834	11.824
3	4	6	<b>BENT</b> LAVA/ATLANTIC	MATCHBOX TWENTY	11.369	10.803
4	3	17	<b>I TRY</b> EPIC	MACY GRAY	10.802	10.940
5	6	8	<b>BROADWAY</b> WARNER BROS.	GOO GOO DOLLS	9.732	9.208
6	10	6	<b>DESERT ROSE</b> A&M/INTERSCOPE	STING FEATURING CHEB MAMI	9.415	7.559
7	5	11	<b>OTHERSIDE</b> WARNER BROS.	RED HOT CHILI PEPPERS	9.379	9.236
8	8	5	<b>ABSOLUTELY (STORY OF A GIRL)</b> 550 MUSIC/550 WORK	NINE DAYS	9.127	7.970
9	7	11	<b>HIGHER</b> WIND-UP	CREED	9.045	8.945
10	14	7	<b>STEAL MY KISSES</b> VIRGIN	BEN HARPER AND THE INNOCENT CRIMINALS	7.680	6.992
11	11	7	<b>MARIA MARIA</b> ARISTA	SANTANA FEATURING THE PRODUCT G&B	7.548	7.240
12	12	14	<b>BREATHE</b> WARNER BROS.	FAITH HILL	6.895	7.149
13	19	9	<b>I THINK GOD CAN EXPLAIN</b> C2	SPLENDER	6.649	5.376
14	9	31	<b>THEN THE MORNING COMES</b> INTERSCOPE	SMASH MOUTH	6.569	7.953
15	13	39	<b>MEET VIRGINIA</b> AWARE/COLUMBIA	TRAIN	5.821	7.143
16	18	48	<b>BLACK BALLOON</b> WARNER BROS.	GOO GOO DOLLS	5.677	5.477
17	15	13	<b>TELLING STORIES (THERE IS FICTION IN THE SPACE BETWEEN)</b> ELEKTRA/EEG	TRACY CHAPMAN	5.556	6.745
18	16	45	<b>SMOOTH</b> ARISTA	SANTANA FEATURING ROB THOMAS	5.545	5.845
19	<b>NEW</b>		<b>FA FA (NEVER BE THE SAME AGAIN)</b> HYBRID/SIRE/LONDON	GUSTER	3.890	3.797
20	20	12	<b>I BELONG TO YOU</b> VIRGIN	LENNY KRAVITZ	3.623	4.209

Songs ranked by number of audience, computed by cross-referencing exact times of airplay with Arbitron listener data. **○** Songs showing an increase in audience over the previous week, regardless of chart movement. A song that has been on the chart for more than 20 weeks will generally not receive a bullet, even if it registers an increase in audience. A song with a gain in audience over the previous week is placed first if tied with a song with a decline over the same period. When tied songs are each gaining in audience or each losing in audience, the song being played on more stations is placed first. Songs become recurrents and are removed from this chart in conjunction with the Modern AC Airplay chart.

## MODERN ROCK AIRPLAY

THIS WEEK	LAST WEEK	WKS. ON CHART	MODERN ROCK AIRPLAY		DETECTIONS	
			TITLE/IMPRINT/PROMOTION LABEL	ARTIST	TW	LW
			<b>★★★ NO. 1 ★★★</b>			
1	1	11	<b>KRYPTONITE</b> REPUBLIC/UNIVERSAL	3 weeks at No. 1 3 DOORS DOWN	2314	2237
2	2	12	<b>ADAM'S SONG</b> MCA	BLINK-182	1953	2018
3	4	9	<b>WITH ARMS WIDE OPEN</b> WIND UP	CREED	1720	1712
4	6	7	<b>SOUR GIRL</b> ATLANTIC	STONE TEMPLE PILOTS	1652	1562
5	3	23	<b>OTHERSIDE</b> WARNER BROS.	RED HOT CHILI PEPPERS	1649	1734
6	5	30	<b>PARDON ME</b> IMMORTAL/EPIC	INCUBUS	1531	1630
7	7	16	<b>MAKE ME BAD</b> IMMORTAL/EPIC	KORN	1388	1408
8	8	10	<b>BREAKOUT</b> ROSWELL/RCA	FOO FIGHTERS	1322	1382
9	12	6	<b>JUDITH</b> VIRGIN	A PERFECT CIRCLE	1279	1227
10	10	8	<b>ABSOLUTELY (STORY OF A GIRL)</b> 550 MUSIC/550 WORK	NINE DAYS	1266	1255
11	9	16	<b>VOODOO</b> REPUBLIC/UNIVERSAL	GODSMACK	1266	1314
12	11	9	<b>SO SAD TO SAY</b> BIG RIG/ISLAND/IDJMG	THE MIGHTY MIGHTY BOSSTONES	1255	1241
13	13	6	<b>NOTHING AS IT SEEMS</b> EPIC	PEARL JAM	1115	1200
14	14	15	<b>SLEEP NOW IN THE FIRE</b> EPIC	RAGE AGAINST THE MACHINE	1093	1187
15	17	5	<b>I DISAPPEAR</b> HOLLYWOOD	METALLICA	1084	1038
16	18	5	<b>BOYZ-N-THE HOOD</b> FARMCLUB COM/UNIVERSAL	DYNAMITE HACK	1058	985
17	16	6	<b>BENT</b> LAVA/ATLANTIC	MATCHBOX TWENTY	1049	1072
18	27	2	<b>CHANGE (IN THE HOUSE OF FLIES)</b> MAVERICK	DEFTONES	1035	746
19	15	25	<b>MISERABLE</b> RCA	LIT	1028	1153
20	23	7	<b>LAST RESORT</b> DREAMWORKS	PAPA ROACH	997	864

The chart, reprinted from Rock Airplay Monitor, is compiled from a national sample of data supplied by Broadcast Data Systems. 68 modern rock stations are electronically monitored 24 hours a day, seven days a week. Songs ranked by number of detections. **○** Songs showing an increase in detections over the previous week, regardless of chart movement. A song that has been on the chart for more than 20 weeks will generally not receive a bullet, even if it registers an increase in detections. Airpower awarded to songs appearing in the top 20 on both the Airplay and Audience charts for the first time with increases in both detections and audience. Greatest Gainer awarded to the song with the largest increase in detections. Most New Stations awarded to the song registering six or more detections at the most stations for the first time this week. A song with a gain in detections over the previous week is placed first if tied with a song with a decline over the same period. When tied songs are each gaining detections or each losing detections, the song being played on more stations is placed first. Songs below the top 20 become recurrents and are removed from the chart after 26 weeks. © 2000 Billboard/BPI Communications

Compiled from a national sample of data supplied by Broadcast Data Systems to Top 40 Airplay Monitor. 72 adult contemporary stations are electronically monitored 24 hours a day, 7 days a week. © 2000 Billboard/IFPI Communications.

THIS WEEK	LAST WEEK	WKS. ON CHART	ADULT CONTEMPORARY AIRPLAY		DETECTIONS		
			TITLE/IMPRINT/PROMOTION LABEL	ARTIST	TW	LW	
			<b>*** No. 1 ***</b>				
1	1	18	BREATHE WARNER BROS.	7 weeks at No. 1	FAITH HILL	1759 1762	
2	2	38	AMAZED BNA		LONESTAR	1579 1567	
3	3	18	SHOW ME THE MEANING OF BEING LONELY JIVE		BACKSTREET BOYS	1562 1531	
4	4	34	I KNEW I LOVED YOU COLUMBIA		SAVAGE GARDEN	1506 1500	
5	6	13	YOU SANG TO ME COLUMBIA		MARC ANTHONY	1446 1400	
6	5	14	SOMEDAY OUT OF THE BLUE DREAMWORKS		ELTON JOHN	1397 1442	
7	7	32	THAT'S THE WAY IT IS 550 MUSIC/550 WORK		CELINE DION	1246 1255	
8	9	23	BACK AT ONE MDTOWN/UNIVERSAL		BRIAN MCKNIGHT	1236 1236	
9	8	9	I NEED YOU SPARROW/CAPITOL/CURB		LEANN RIMES	1224 1237	
10	10	59	YOU'LL BE IN MY HEART WALT DISNEY/HOLLYWOOD		PHIL COLLINS	997 1029	
			<b>* GREATEST GAINER *</b>				
11	15	4	TAKING YOU HOME WARNER BROS.		DON HENLEY	917 713	
12	11	9	CRASH AND BURN COLUMBIA		SAVAGE GARDEN	807 792	
13	13	31	SMOOTH ARISTA	SANTANA FEATURING ROB THOMAS		730 741	
14	14	5	I WANT YOU TO NEED ME 550 MUSIC/550 WORK		CELINE DION	707 716	
15	12	40	I DO (CHERISH YOU) UNIVERSAL		98 DEGREES	704 779	
16	16	57	I WILL REMEMBER YOU (LIVE) ARISTA		SARAH MCLACHLAN	676 678	
17	17	56	I WANT IT THAT WAY JIVE		BACKSTREET BOYS	633 654	
			<b>** AIRPOWER/MOST NEW STATIONS **</b>				
18	21	4	I TURN TO YOU RCA		CHRISTINA AGUILERA	630 475	
19	20	81	ANGEL WARNER SUNSET/REPRISE		SARAH MCLACHLAN	502 531	
20	19	50	I COULD NOT ASK FOR MORE LAVA/ATLANTIC		EDWIN MCCAIN	495 534	
21	22	10	WHEN SHE LOVED ME GARDEN CITY/GTSP	JOHN TESH FEATURING RICHARD PAGE		368 394	
22	23	7	I TRY EPIC		MACY GRAY	342 319	
23	NEW	▶	COULD I HAVE THIS KISS FOREVER ARISTA/INTERSCOPE		WHITNEY HOUSTON & ENRIQUE IGLESIAS	291 134	
24	24	3	SWEAR IT AGAIN ARISTA		WESTLIFE	266 237	
25	25	7	BYE BYE BYE JIVE		'N SYNC	251 227	
26	27	24	ANGELS CAPITOL		ROBBIE WILLIAMS	223 179	
27	28	3	VIENNA ATLANTIC		LINDA EDER	181 173	
28	NEW	▶	MR. TOO DAMN GOOD EASTWEST/EEG		GERALD LEVERT	179 116	
29	NEW	▶	IF YOU BELIEVE REPRISE		SASHA	129 75	
30	NEW	▶	KNOW YOU BY HEART CAPITOL		DAVE KOZ	128 102	

Songs ranked by number of detections. ( ) Songs showing an increase in detections over the previous week, regardless of chart movement. A song that has been on the chart for more than 20 weeks will generally not receive a bullet, even if it registers an increase in detections. Airpower awarded to songs appearing in the top 20 on both the Airplay and Audience charts for the first time with increases in both detections and audience. Greatest Gainer awarded to the song with the largest increase in detections. Most New Stations awarded to the song registering six or more detections at the most stations for the first time this week. A song with a gain in detections over the previous week is placed first if tied with a song with a decline over the same period. When tied songs are each gaining detections or each losing detections, the song being played on more stations is placed first. Songs below the top 20 become recurrenents and are removed from the chart after 26 weeks.

## MOST NEW STATIONS

Songs with 6 or more detections at new stations this week

ARTIST	NEW STATIONS
<b>CHRISTINA AGUILERA</b> <i>I Turn To You (RCA)</i>	<b>13</b>
<b>WHITNEY HOUSTON &amp; ENRIQUE IGLESIAS</b> <i>Could I Have This Kiss Forever (Arista/Interscope)</i>	<b>10</b>
<b>SASHA</b> <i>If You Believe (Reprise)</i>	<b>9</b>
<b>DON HENLEY</b> <i>Taking You Home (Warner Bros.)</i>	<b>7</b>
<b>GERALD LEVERT</b> <i>Mr. Too Damn Good (EastWest/EEG)</i>	<b>7</b>

## GREATEST GAINERS ADULT CONTEMPORARY

ARTIST	INCREASE IN DETECTIONS
<b>DON HENLEY</b> • <i>Taking You Home (Warner Bros.)</i> WVAF +15, WIND +14, WMXS +11, WDOI +11, WAHR +10, WJXB +9, WWLJ +8, KRBB +8, KMXZ +8, KVIL +8	<b>+204</b>
<b>WHITNEY HOUSTON &amp; ENRIQUE IGLESIAS</b> • <i>Could I Have This Kiss Forever (Arista/Interscope)</i> KSRC +21, WVAF +13, WALK +12, WLIT +11, WMXC +8, WDEF +8, KEZK +8, WHUD +7, WTCB +7, WRSN +7	<b>+157</b>
<b>CHRISTINA AGUILERA</b> • <i>I Turn To You (RCA)</i> WGSY +17, KXLY +12, WEAT +11, WEZF +11, KESZ +11, WASH +10, WWLJ +9, KKCW +8, WSUY +7, WBBQ +7	<b>+155</b>
<b>KENNY ROGERS WITH ALISON KRAUSS &amp; BILLY DEAN</b> • <i>Buy Me A Rose (DreamCatcher)</i> WHUD +2, KXLY +2, WSUY +2, WLEF +2, WLQT +2, WEAT +2, WMGF +2, WRCH +2, WBBQ +2, KTDY +2	<b>+70</b>
<b>GERALD LEVERT</b> • <i>Mr. Too Damn Good (EastWest/EEG)</i> WPCH +7, WSHH +6, WDOI +5, KVLY +3, WMGF +3, KMGA +3, WDEF +3, WJXB +3, WLTO +3, KSSK +2	<b>+63</b>

ADULT CONTEMPORARY AUDIENCE						AUDIENCE (millions)	
THIS WEEK	LAST WEEK	WKS. ON CHART	TITLE/IMPRINT/PROMOTION LABEL	ARTIST	DETECTIONS		
					TW	LW	
			<b>*** No. 1 ***</b>				
1	1	18	BREATHE WARNER BROS.	6 weeks at No. 1	FAITH HILL	18.367 18.276	
2	3	33	I KNEW I LOVED YOU COLUMBIA		SAVAGE GARDEN	16.308 15.495	
3	2	18	SHOW ME THE MEANING OF BEING LONELY JIVE		BACKSTREET BOYS	16.259 16.303	
4	4	36	AMAZED BNA		LONESTAR	15.194 14.806	
5	7	17	YOU SANG TO ME COLUMBIA		MARC ANTHONY	14.566 13.827	
6	6	15	SOMEDAY OUT OF THE BLUE DREAMWORKS		ELTON JOHN	13.956 14.266	
7	5	32	THAT'S THE WAY IT IS 550 MUSIC/550 WORK		CELINE DION	13.859 14.735	
8	8	25	BACK AT ONE MDTOWN/UNIVERSAL		BRIAN MCKNIGHT	12.451 12.708	
9	10	9	I NEED YOU SPARROW/CAPITOL/CURB		LEANN RIMES	10.780 9.809	
10	9	60	YOU'LL BE IN MY HEART WALT DISNEY/HOLLYWOOD		PHIL COLLINS	9.975 10.216	
11	11	31	SMOOTH ARISTA	SANTANA FEATURING ROB THOMAS		9.821 9.670	
12	14	4	TAKING YOU HOME WARNER BROS.		DON HENLEY	8.638 6.755	
13	16	8	I TURN TO YOU RCA		CHRISTINA AGUILERA	7.606 6.212	
14	12	8	CRASH AND BURN COLUMBIA		SAVAGE GARDEN	7.297 8.295	
15	13	57	I WILL REMEMBER YOU (LIVE) ARISTA		SARAH MCLACHLAN	6.750 7.082	
16	17	57	I WANT IT THAT WAY JIVE		BACKSTREET BOYS	6.266 5.899	
17	15	40	I DO (CHERISH YOU) UNIVERSAL		98 DEGREES	6.231 6.438	
18	19	10	I TRY EPIC		MACY GRAY	5.936 5.238	
19	18	5	I WANT YOU TO NEED ME 550 MUSIC/550 WORK		CELINE DION	5.904 5.842	
20	20	68	ANGEL WARNER SUNSET/REPRISE		SARAH MCLACHLAN	5.038 5.187	
21	23	3	COULD I HAVE THIS KISS FOREVER ARISTA/INTERSCOPE	WHITNEY HOUSTON & ENRIQUE IGLESIAS		4.181 2.451	
22	22	50	I COULD NOT ASK FOR MORE LAVA/ATLANTIC		EDWIN MCCAIN	3.863 4.140	
23	25	3	BE WITH YOU INTERSCOPE		ENRIQUE IGLESIAS	3.246 2.212	
24	26	21	ANGELS CAPITOL		ROBBIE WILLIAMS	2.730 1.755	
25	24	11	BYE BYE BYE JIVE		'N SYNC	2.169 2.450	
26	27	6	WHEN SHE LOVED ME GARDEN CITY/GTSP	JOHN TESH FEATURING RICHARD PAGE		1.649 1.645	
27	30	28	STRANGERS LIKE ME WALT DISNEY/HOLLYWOOD		PHIL COLLINS	1.148 1.044	
28	29	13	PRIVATE EMOTION C2	RICKY MARTIN FEATURING MEJA		1.037 1.131	
29	NEW	▶	SWEAR IT AGAIN ARISTA		WESTLIFE	0.995 0.995	
30	NEW	▶	I WILL LOVE AGAIN COLUMBIA		LARA FABIAN	0.929 0.905	

Songs ranked by number of audience, computed by cross-referencing exact times of airplay with Arbitron listener data. ( ) Songs showing an increase in audience over the previous week, regardless of chart movement. A song that has been on the chart for more than 20 weeks will generally not receive a bullet, even if it registers an increase in audience. A song with a gain in audience over the previous week is placed first if tied with a song with a decline over the same period. When tied songs are each gaining in audience or each losing in audience, the song being played on more stations is placed first. Songs below the top 20 become recurrenents and are removed from this chart in conjunction with the Adult Contemporary Airplay chart.

## ADULT CONTEMPORARY RECURRENENTS

RANK	TITLE	ARTIST (IMPRINT/PROMOTION LABEL)	DETECTIONS TW	DETECTIONS LW
1	FROM THIS MOMENT ON	SHANIA TWAIN (MERCURY/DJMG)	535	443
2	TRULY MADLY DEEPLY	SAVAGE GARDEN (COLUMBIA)	526	470
3	GOD MUST HAVE SPENT A LITTLE MORE TIME ON YOU	'N SYNC (RCA)	514	442
4	THE HARDEST THING	98 DEGREES (UNIVERSAL)	475	453
5	MUSIC OF MY HEART	'N SYNC & GLORIA ESTEFAN (MIRAMAX/EPIC)	474	555
6	YOU'RE STILL THE ONE	SHANIA TWAIN (MERCURY/DJMG)	473	530
7	BELIEVE	CHER (WARNER BROS.)	466	487
8	KISS ME	SIXPENCE NONE THE RICHER (SQUINT/COLUMBIA)	426	413
9	THIS KISS	FAITH HILL (WARNER BROS.)	419	405
10	BECAUSE YOU LOVED ME	CELINE DION (550 MUSIC)	412	416
11	I'LL BE	EDWIN MCCAIN (LAVA/ATLANTIC)	406	435
12	SHE'S ALL I EVER HAD	RICKY MARTIN (C2)	392	415

RANK	TITLE	ARTIST (IMPRINT/PROMOTION LABEL)	DETECTIONS TW	DETECTIONS LW
13	EVERY BREATH YOU TAKE	THE POLICE (A&M/UNKNOWN)	389	383
14	I NEED TO KNOW	MARC ANTHONY (COLUMBIA)	381	389
15	FAITHFULLY	JOURNEY (COLUMBIA)	371	329
16	AS LONG AS YOU LOVE ME	BACKSTREET BOYS (JIVE)	367	354
17	(EVERYTHING I DO) I DO IT FOR YOU	BRYAN ADAMS (A&M/INTERSCOPE)	365	398
18	I DON'T WANT TO WAIT	PAULA COLE (IMAGO/WARNER BROS.)	352	347
19	TORN	NATALIE IMBRUGLIA (RCA)	348	340
20	I'LL NEVER BREAK YOUR HEART	BACKSTREET BOYS (JIVE)	344	264
21	AS I LAY ME DOWN	SOPHIE B. HAWKINS (COLUMBIA)	338	314
22	SOMETHING TO TALK ABOUT	BONNIE RAITT (CAPITOL)	336	355
23	KISS FROM A ROSE	SEAL (ZTT/SIRE/WARNER BROS.)	297	312
24	I DON'T WANT TO MISS A THING	AEROSMITH (COLUMBIA)	296	300
25	YOU WERE MEANT FOR ME	JEWEL (ATLANTIC)	289	219

Recurrenents are titles that have appeared on the Adult Contemporary Airplay chart for 26 weeks and have dropped below the top 20.



AIRPOWER

CHART BOUND

Total Detections/Gain

LARA FABIAN 114/22

I Will Love Again (Columbia)
Total Stations: 15
Heavy (21+): 1 KYMX
Medium (14-20): 11 WNNW
Light (Under 14): 13
First Impressions: 4 KGBY, WRSN, WSHH, WTCB

MARIAH CAREY 113/31

Can't Take That Away (Mariah's Theme) (Columbia)
Total Stations: 21
Heavy (21+): 0
Medium (14-20): 1 WVAF
Light (Under 14): 20
First Impressions: 3 KGBY, WDEF, WLTE

ENRIQUE IGLESIAS 108/7

Be With You (Interscope)
Total Stations: 9
Heavy (21+): 1 KYMX
Medium (14-20): 2 WALK, WLTW
Light (Under 14): 6

SOLEIL MOON 101/23

Willingly (MFO)
Total Stations: 20
Heavy (21+): 0
Medium (14-20): 0
Light (Under 14): 20
First Impressions: 1 KRBB

BETH NIELSEN CHAPMAN 96/25

Shake My Soul (RCA)
Total Stations: 20
Heavy (21+): 0
Medium (14-20): 0
Light (Under 14): 20
First Impressions: 3 KISC, WMJJ, WSHH

KENNY ROGERS WITH ALISON KRAUSS & BILLY DEAN 84/70

Buy Me A Rose (Dreamcatcher)
Total Stations: 37
Heavy (21+): 0
Medium (14-20): 0
Light (Under 14): 37
First Impressions: 1 WRCH

DC TALK 70/18

Godsend (Virgin)
Total Stations: 16
Heavy (21+): 0
Medium (14-20): 0
Light (Under 14): 16

TINA TURNER 49/1

Whatever You Need (Virgin)
Total Stations: 9
Heavy (21+): 0
Medium (14-20): 0
Light (Under 14): 9
First Impressions: 2 KUOL, WLHT

SANTANA FEAT. THE PRODUCT G&B 44/7

Maria Maria (Arista)
Total Stations: 7
Heavy (21+): 0
Medium (14-20): 1 KLSY
Light (Under 14): 6

MANDY MOORE 27/27

I Wanna Be With You (550 Music/550-Work)
Total Stations: 2
Heavy (21+): 1 KYMX
Medium (14-20): 0
Light (Under 14): 1
First Impressions: 1 KYMX

BBMAK 25/2

Back Here (Hollywood)
Total Stations: 2
Heavy (21+): 0
Medium (14-20): 1 KLSY
Light (Under 14): 1

THIRD EYE BLIND 25/-1

Never Let You Go (Elektra/EEG)
Total Stations: 4
Heavy (21+): 0
Medium (14-20): 1 KEFM
Light (Under 14): 3

CHRISTINA AGUILERA 630/155

I Turn To You (RCA)

Table with columns: Total Stations: 57, Chart Move: 21-18, and a grid of station codes and counts.

MARC ANTHONY 1446/46

You Sang To Me (Columbia)

Table with columns: Total Stations: 72, Chart Move: 6-5, and a grid of station codes and counts.

BACKSTREET BOYS 1562/31

Show Me The Meaning Of Being Lonely (Jive)

Table with columns: Total Stations: 73, Chart Move: 3-3, and a grid of station codes and counts.

LINDA EDER 181/8

Vienna (Atlantic)

Table with columns: Total Stations: 32, Chart Move: 28-27, and a grid of station codes and counts.

MACY GRAY 342/23

I Try (Epic)

Table with columns: Total Stations: 32, Chart Move: 23-22, and a grid of station codes and counts.

DON HENLEY 917/204

Taking You Home (Warner Bros.)

Table with columns: Total Stations: 72, Chart Move: 15-11, and a grid of station codes and counts.

WHITNEY HOUSTON & ENRIQUE IGLESIAS 291/157

Could I Have This Kiss Forever (Arista/Interscope)

Table with columns: Total Stations: 35, Chart Move: Debut 23, and a grid of station codes and counts.

GERALD LEVERT 179/63

Mr. Too Damn Good (EastWest/EEG)

Table with columns: Total Stations: 49, Chart Move: Debut 28, and a grid of station codes and counts.

'N SYNC 251/24

Bye Bye Bye (Jive)

Table with columns: Total Stations: 38, Chart Move: 25-25, and a grid of station codes and counts.

SASHA 129/54

If You Believe (Reprise)

Table with columns: Total Stations: 24, Chart Move: Debut 29, and a grid of station codes and counts.

SAVAGE GARDEN 807/15

Crash And Burn (Columbia)

Table with columns: Total Stations: 67, Chart Move: 11-12, and a grid of station codes and counts.

WESTLIFE 266/29

Swear It Again (Arista)

Table with columns: Total Stations: 31, Chart Move: 24-24, and a grid of station codes and counts.

CHRISTINA AGUILERA 630/155

I Turn To You (RCA)

Total Stations: 57/Chart Move: 21-18
Heavy (21+): 1 KYMX, WRSN, WSHH, WTCB
Medium (14-20): 11 KRBB, WALK, WBBO, WBEB, WZEF, WGSY, WHUD, WLIT, WLTW, WMJX, WTCB
Light (Under 14): 43
First Impressions: 13 KEZK, KRCW, KXLY, WARM, WASH, WEAT, WGSY, WMGF, WRVR, WSHH, WWDE, WWLI, WYJB

AIRPLAY LEADER (FIRST STATION TO 100 PLAYS)

KYMX • Sacramento, CA
PD: Brian Jackson
Date: 04/30/00

AIRPOWER BOUND

MACY GRAY 342/23

I Try (Epic)

Total Stations: 32/Chart Move: 23-22
Heavy (21+): 3 KGBY, KLSY, WNNW
Medium (14-20): 8 KEFM, KXLY, WALK, WASH, WLIT, WLTW, WMJX, WVAF
Light (Under 14): 21
First Impressions: 3 WASH, WBBO, WHUD

WHITNEY HOUSTON & ENRIQUE IGLESIAS 291/157

Could I Have This Kiss Forever (Arista/Interscope)

Total Stations: 35/Chart Move: Debut 23
Heavy (21+): 1 KSRK
Medium (14-20): 4 KMGA, WHUD, WLTW, WTCB
Light (Under 14): 30
First Impressions: 10 KEZK, KRBB, KSRK, KXLY, WALK, WDEF, WLIT, WMXC, WRSN, WVAF

WESTLIFE 266/29

Swear It Again (Arista)

Total Stations: 31/Chart Move: 24-24
Heavy (21+): 1 KYMX
Medium (14-20): 3 KGBY, KRBB, WYJB
Light (Under 14): 27
First Impressions: 3 WDEF, WLHT, WVAF

'N SYNC 251/24

Bye Bye Bye (Jive)

Total Stations: 38/Chart Move: 25-25
Heavy (21+): 3 KGBY, KLSY, WMGS
Medium (14-20): 4 KGBY, KXLY, WSNY, WVAF
Light (Under 14): 31
First Impressions: 1 WPCB

LINDA EDER 181/8

Vienna (Atlantic)

Total Stations: 32/Chart Move: 28-27
Heavy (21+): 0
Medium (14-20): 0
Light (Under 14): 32
First Impressions: 1 WLTW

GERALD LEVERT 179/63

Mr. Too Damn Good (EastWest/EEG)

Total Stations: 49/Chart Move: Debut 28
Heavy (21+): 0
Medium (14-20): 1 WRVF
Light (Under 14): 48
First Impressions: 7 KXLY, WDOK, WJXB, WMGF, WPCB, WRSN, WSHH

SASHA 129/54

If You Believe (Reprise)

Total Stations: 24/Chart Move: Debut 29
Heavy (21+): 0
Medium (14-20): 0
Light (Under 14): 24
First Impressions: 9 KGBY, KMGA, KRBB, KSSK, WHUD, WLTE, WMJJ, WTCB, WTVR

DAVE KOZ 128/26

Know You By Heart (Capitol)

Total Stations: 25/Chart Move: Debut 30
Heavy (21+): 0
Medium (14-20): 0
Light (Under 14): 25
First Impressions: 4 WLTE, WPCB, WTFM, WYJB

Airpower awarded to songs appearing in the top 20 on both the Airplay and Audience charts for the first time with increases in both detections and audience. ★ First impact: songs appearing on this page for the first time.

## Billboard Hot 100 Singles Sales SoundScan

THE CHART, REPRINTED FROM BILLBOARD MAGAZINE, IS COMPILED FROM A NATIONAL SAMPLE OF RETAIL STORE, MASS MERCHANT, AND INTERNET SALES REPORTS COLLECTED, COMPILED, AND PROVIDED BY SOUNDSCAN, INC.

THIS WEEK	LAST WEEK	WKS. ON CHART	TITLE/IMPRINT/PROMOTION LABEL	ARTIST
<b>▶ No. 1 ◀</b>				
1	1	6	HE WASN'T MAN ENOUGH LAFACE/ARISTA	TONI BRAXTON
2	<b>NEW</b>		YOU SANG TO ME COLUMBIA	MARC ANTHONY
3	3	16	MARIA MARIA ARISTA	SANTANA FEATURING THE PRODUCT G&B
4	9	12	MIRROR MIRROR ATLANTIC	M2M
5	2	5	SEPARATED MAGIC JOHNSON/MCA	AVANT
6	6	10	SHACKLES (PRAISE YOU) C2	MARY MARY
7	13	6	THIS TIME AROUND MOE/ISLAND/DJMG	HANSON
8	11	11	(HOT S**) COUNTRY GRAMMAR FO REEL/UNIVERSAL	NELLY
9	12	10	SWEAR IT AGAIN ARISTA	WESTLIFE
10	5	14	BREATHE WARNER BROS. (NASHVILLE)/WRN	FAITH HILL
11	10	15	FROM THE BOTTOM OF MY BROKEN HEART JIVE	BRITNEY SPEARS
12	7	2	FEELIN' SO GOOD WORK/550-WORK	JENNIFER LOPEZ FEATURING BIG PUN & FAT JOE
13	21	2	OTHERSIDE WARNER BROS.	RED HOT CHILI PEPPERS
14	4	7	WOBBLE WOBBLE NO LIMIT/PRIORITY	504 BOYZ
15	14	5	BACK HERE HOLLYWOOD	BBMAK
16	17	3	MONICA RCA	BEFORE DARK
17	8	11	GOODBYE EARL MONUMENT	DIXIE CHICKS
18	26	6	SOMEDAY OUT OF THE BLUE DREAMWORKS	ELTON JOHN
19	23	8	I DON'T WANNA KISS YOU GOODNIGHT ARISTA	LFO
20	18	3	LOVE SETS YOU FREE DEF SOUL/DJMG	KELLY PRICE & FRIENDS

Records with the greatest sales gains. © 2000 Billboard/BPI Communications and SoundScan, Inc.

## AIRPLAY LEADERBOARD

### THE STATIONS THAT BREAK THE HITS

MAINSTREAM TOP 40				
#1	<b>Z100</b> New York, NY PD: Tom Poleman MD: Paul Bryant Airplay Leader Designations: 3	#2	WKSL Memphis, TN (PD/MD: Taylor/Hughes)	3
		#3	KXXW, San Antonio, TX (PD/MD: Kelly/James)	2
		#4	WHYI, Miami, FL (PD/MD: Roberts/Poyner)	2
		#5	WXYV, Baltimore, MD (PD/MD: McIntyre/Throb)	2
RHYTHMIC TOP 40				
#1	<b>X 104.3</b> Honolulu, HI PD: Jamie Hyatt MD: James Celes Airplay Leader Designations: 7	#2	WJMN Boston, MA (PD/MD: Jack/Williams)	3
		#3	WPOW Miami, FL (PD/MD: Curry/Mix)	3
		#4	WWKX, Providence, RI (PD/MD: McKenna/Ryan)	2
		#5	WBBW, Chicago, IL (PD/MD: Cavanah/Bradley)	2
CROSSOVER				
#1	<b>HOT 97</b> New York, NY PD: Tracy Ciocherty MD: Sean Taylor Airplay Leader Designations: 4	#2	WVEE, Atlanta, GA (PD/MD: Brown/Love)	3
		#3	KYLD, San Francisco, CA (PD/MD: Martin/Archer)	2
		#4	WPHI Philadelphia, PA (PD/MD: Devoe/George)	2
		#5	KBXX, Houston, TX (PD/MD: Scorpio/Powell)	2
ADULT TOP 40				
#1	<b>100.5 THE zone</b> Sacramento, CA PD: Alan Oda MD: Jim Matthews Airplay Leader Designations: 5	#2	KZON, Phoenix, AZ (PD/MD: Ebbott/Mannion)	2
		#3	KBBT, Portland, OR (PD/MD: Engel/Adams)	2
		#4	WMBX, West Palm Beach, FL (PD/MD: O'Connell/Clarke)	2
		#5	KTOZ, Springfield, MO (PD/MD: Matthews/Nights)	2
ADULT CONTEMPORARY				
#1	<b>mix 96</b> Sacramento, CA PD: Brian Jackson Airplay Leader Designations: 3	#2	WLTW, New York, NY (PD/MD: Ryan/Hunter)	1
		#3	KKCW, Portland, OR (PD: Minckler)	1

The Airplay Leaderboard ranks taste-maker stations that have been the most successful in identifying future hit songs as measured by the amount of AIRPOWER titles for which they were Airplay Leaders. Refer to each format's IMPACT! page to see this week's Airplay Leaders.

## THE Billboard 200 SoundScan

THE CHART, REPRINTED FROM BILLBOARD MAGAZINE, LISTS THE TOP-SELLING ALBUMS COMPILED FROM A NATIONAL SAMPLE OF RETAIL STORE, MASS MERCHANT, AND INTERNET SALES REPORTS COLLECTED, COMPILED, AND PROVIDED BY SOUNDSCAN, INC.

THIS WEEK	LAST WEEK	2 WKS. AGO	WKS. ON CHART	ARTIST IMPRINT & CATALOG NUMBER/DISTRIBUTING LABEL (SUGGESTED LIST PRICE)	TITLE	PEAK POSITION
<b>▶ No. 1 ◀</b>						
1	1	1	8	'N SYNC ▲ JIVE 41702 (11.98/18.98)	NO STRINGS ATTACHED	1
2	<b>NEW</b>		1	SOUNDTRACK HOLLYWOOD 162244 (12.98/18.98)	MISSION:IMPOSSIBLE 2	2
3	6	6	48	SANTANA ▲◆ ARISTA 19080 (11.98/18.98)	SUPERNATURAL	1
4	3	4	24	SISQO ▲ DRAGON/DEF SOUL 546816*/DJMG (12.98/18.98)	UNLEASH THE DRAGON	2
5	4	3	4	JOE JIVE 41703 (11.98/17.98)	MY NAME IS JOE	2
6	7	8	33	CREED ▲ WIND-UP 13053* (11.98/17.98)	HUMAN CLAY	1
7	5	2	3	TONI BRAXTON LAFACE 26069/ARISTA (11.98/18.98)	THE HEAT	2
8	2	—	2	504 BOYZ NO LIMIT 50722*/PRIORITY (11.98/17.98)	GOODFELLAS	2
9	14	17	37	DIXIE CHICKS ▲ MONUMENT 69678/SONY (NASHVILLE) (11.98 EQ/17.98)	FLY	1
10	16	25	27	FAITH HILL ▲ WARNER BROS. (NASHVILLE) 47373/WRN (12.98/18.98)	BREATHE	1

Albums with the greatest sales gains. ● Recording Industry Assn. Of America (RIAA) certification for sales of 500,000 album units. ▲ RIAA certification for sales of 1 million units (Platinum). ◆ RIAA certification for net shipment of 10 million units (Diamond). Numerical following Platinum or Diamond symbol indicates album's multi-platinum level. Greatest Gainer shows chart's largest unit increase. Pacesetter indicates biggest percentage growth. © 2000 Billboard/BPI Communications and SoundScan, Inc.

ON YOUR DESK! Going For Airplay This Week	MAINSTREAM	RHYTHMIC	CROSSOVER	ADULT TOP 40	AC	MODERN ADULT
CAP-1 FEATURING NOKIO • They Luv Dat (MOTOWN/UNIVERSAL)		✓	✓			
LIL' KIM • No Matter What They Say (QUEEN BEE/UNDEAS/ATLANTIC)			✓			
LIL WAYNE • Respect Us (CASH MONEY/UNIVERSAL)		✓	✓			
MARAH • Point Breeze (ARTEMIS)				✓		✓
PHOENIX STONE • Still Be Loving You (TRANSCONTINENTAL/UNIVERSAL)	✓	✓	✓	✓		
STROKE9 • Letters (CHERRY/UNIVERSAL)	✓			✓		✓

To be included contact Steve Graybow at 212-536-5361 or email sgraybow@airplaymonitor.com

# OUR PLAYLISTS ARE ALWAYS **FRESH** NEVER FROZEN



THIS WEEK	LAST WEEK	WKS. ON CHART	MAINSTREAM TOP 40		DETECTIONS		
			TITLE/IMPRINT/PROMOTION LABEL	ARTIST	TW	LW	
			<b>★★★ No. 1 ★★★</b>				
1	1	16	I TRY EPIC	MACY GRAY	6056	6465	
			4 weeks at No. 1				
2	2	23	EVERYTHING YOU WANT RCA	VERTICAL HORIZON	6050	6006	
3	3	7	OOPS!...I DID IT AGAIN JIVE	BRITNEY SPEARS	5736	5445	
4	4	9	THONG SONG DRAGON/DEF SOUL/IDJMG	SISQO	5261	5245	
5	5	15	HIGHER WIND-UP	CREED	5202	4968	
6	8	11	BE WITH YOU INTERSCOPE	ENRIQUE IGLESIAS	4882	4774	
7	7	16	SAY MY NAME COLUMBIA	DESTINY'S CHILD	4507	4785	
8	6	19	BYE BYE BYE JIVE	'N SYNC	4316	4886	
9	11	8	I TURN TO YOU RCA	CHRISTINA AGUILERA	4312	4245	
10	9	18	MARIA MARIA ARISTA	SANTANA FEATURING THE PRODUCT G&B	4230	4635	
11	10	18	IT FEELS SO GOOD FARMLUB.COM/REPUBLIC/UNIVERSAL	SONIQUE	4017	4457	
12	15	8	THERE YOU GO LAFACE/ARISTA	PINK	3829	3664	
13	16	10	GRADUATION (FRIENDS FOREVER) ELEKTRA/VEEG	VITAMIN C	3717	3566	
14	14	9	CRASH AND BURN COLUMBIA	SAVAGE GARDEN	3688	3755	
15	12	17	ONLY GOD KNOWS WHY TOP DOG/LAVA/ATLANTIC	KID ROCK	3682	4138	
			<b>★★ AIRPOWER/GREATEST GAINER ★★</b>				
16	22	4	IT'S GONNA BE ME JIVE	'N SYNC	3534	2721	
17	19	3	THE ONE JIVE	BACKSTREET BOYS	3466	2966	
18	13	16	BREATHE WARNER BROS.	FAITH HILL	3455	3948	
19	17	5	BENT LAVA/ATLANTIC	MATCHBOX TWENTY	3415	3091	
			<b>★★ AIRPOWER ★★</b>				
20	18	7	BROADWAY WARNER BROS.	GOO GOO DOLLS	3223	2986	

THIS WEEK	LAST WEEK	WKS. ON CHART	ADULT TOP 40		DETECTIONS		
			TITLE/IMPRINT/PROMOTION LABEL	ARTIST	TW	LW	
			<b>★★★ No. 1 ★★★</b>				
1	1	26	EVERYTHING YOU WANT RCA	VERTICAL HORIZON	3434	3379	
			7 weeks at No. 1				
2	2	22	I TRY EPIC	MACY GRAY	2966	2968	
3	3	18	BREATHE WARNER BROS.	FAITH HILL	2760	2834	
4	4	21	NEVER LET YOU GO ELEKTRA/VEEG	THIRD EYE BLIND	2584	2619	
5	7	6	BENT LAVA/ATLANTIC	MATCHBOX TWENTY	2294	2098	
6	5	48	SMOOTH ARISTA	SANTANA FEATURING ROB THOMAS	2171	2262	
7	6	32	THEN THE MORNING COMES INTERSCOPE	SMASH MOUTH	2101	2227	
8	8	8	BROADWAY WARNER BROS.	GOO GOO DOLLS	2083	1930	
9	10	15	HIGHER WIND-UP	CREED	1812	1782	
10	11	20	AMAZED BNA	LONESTAR	1777	1780	
11	14	11	OTHERSIDE WARNER BROS.	RED HOT CHILI PEPPERS	1696	1604	
12	13	8	MARIA MARIA ARISTA	SANTANA FEATURING THE PRODUCT G&B	1659	1636	
13	9	17	TELLING STORIES (THERE IS FICTION IN THE SPACE BETWEEN) ELEKTRA/VEEG	TRACY CHAPMAN	1654	1808	
14	12	44	MEET VIRGINIA AWARE/COLUMBIA	TRAIN	1577	1716	
15	15	7	CRASH AND BURN COLUMBIA	SAVAGE GARDEN	1570	1515	
16	17	8	DESERT ROSE A&M/INTERSCOPE	STING FEATURING CHEB MAMI	1513	1307	
17	20	7	STEAL MY KISSES VIRGIN	BEN HARPER AND THE INNOCENT CRIMINALS	1373	1263	
			<b>★★ AIRPOWER ★★</b>				
18	22	12	I THINK GOD CAN EXPLAIN C2	SPLENDER	1314	1244	
			<b>★★ AIRPOWER ★★</b>				
19	24	6	ABSOLUTELY (STORY OF A GIRL) 150 MUSIC/ISSA WARD	NINE DAYS	1292	1178	
20	16	29	I NEED TO KNOW COLUMBIA	MARC ANTHONY	1283	1358	

THIS WEEK	LAST WEEK	WKS. ON CHART	RHYTHMIC TOP 40		DETECTIONS		
			TITLE/IMPRINT/PROMOTION LABEL	ARTIST	TW	LW	
			<b>★★★ No. 1 ★★★</b>				
1	2	12	TRY AGAIN BLACKGROUND/VIRGIN	AALIYAH	2439	2377	
			1 week at No. 1				
2	3	5	THE REAL SLIM SHADY WEB/AFTERMATH/INTERSCOPE	EMINEM	2323	2118	
3	1	16	THONG SONG DRAGON/DEF SOUL/IDJMG	SISQO	2288	2516	
4	4	17	I WANNA KNOW JIVE	JOE	1932	1955	
5	5	11	JUMPIN, JUMPIN COLUMBIA	DESTINY'S CHILD	1917	1884	
6	6	6	BIG PIMPIN' ROC-A-FELLA/DEF JAM/IDJMG	JAY-Z FEATURING UGK	1748	1583	
7	7	18	THERE YOU GO LAFACE/ARISTA	PINK	1444	1540	
8	8	12	PARTY UP (UP IN HERE) RUFF RYDERS/DEF JAM/IDJMG	DMX	1377	1385	
9	9	7	OOPS!...I DID IT AGAIN JIVE	BRITNEY SPEARS	1332	1333	
10	11	8	I TURN TO YOU RCA	CHRISTINA AGUILERA	1179	1179	
11	12	20	FORGOT ABOUT DRE AFTERMATH/INTERSCOPE	DR. DRE FEATURING EMINEM	1148	1178	
12	10	12	HE WASN'T MAN ENOUGH LAFACE/ARISTA	TONI BRAXTON	1144	1181	
13	13	19	BYE BYE BYE JIVE	'N SYNC	1024	1148	
14	16	10	3 LITTLE WORDS REPRISE	NU FLAVOR	936	905	
15	14	24	SAY MY NAME COLUMBIA	DESTINY'S CHILD	915	1026	
			<b>★★ AIRPOWER/GREATEST GAINER ★★</b>				
16	27	3	WIFEY ARISTA	NEXT	898	591	
17	17	12	BETTER OFF ALONE REPUBLIC/UNIVERSAL	ALICE DEEJAY	884	896	
18	18	7	BEST OF ME UNIVERSITY/INTERSCOPE	MYA FEATURING JADAKISS	841	887	
19	20	10	BE WITH YOU INTERSCOPE	ENRIQUE IGLESIAS	819	791	
20	19	9	IT WASN'T ME DREAMWORKS	SOLE FEATURING GINUWINE	799	815	

THIS WEEK	LAST WEEK	WKS. ON CHART	CROSSOVER		DETECTIONS		
			TITLE/IMPRINT/PROMOTION LABEL	ARTIST	TW	LW	
			<b>★★★ No. 1 ★★★</b>				
1	2	8	BIG PIMPIN' ROC-A-FELLA/DEF JAM/IDJMG	JAY-Z FEATURING UGK	2836	2738	
			1 week at No. 1				
2	1	12	TRY AGAIN BLACKGROUND/VIRGIN	AALIYAH	2820	3005	
3	6	5	THE REAL SLIM SHADY WEB/AFTERMATH/INTERSCOPE	EMINEM	2613	2374	
4	4	22	I WANNA KNOW JIVE	JOE	2340	2408	
5	3	15	PARTY UP (UP IN HERE) RUFF RYDERS/DEF JAM/IDJMG	DMX	2266	2409	
6	5	19	THONG SONG DRAGON/DEF SOUL/IDJMG	SISQO	2074	2401	
7	10	6	LET'S GET MARRIED SO SO DEF/COLUMBIA	JAGGED EDGE	1924	1719	
8	7	9	I WISH BAD BOY/ARISTA	CARL THOMAS	1915	2056	
9	8	9	BEST OF ME UNIVERSITY/INTERSCOPE	MYA FEATURING JADAKISS	1825	1844	
10	9	12	HE WASN'T MAN ENOUGH LAFACE/ARISTA	TONI BRAXTON	1718	1766	
11	12	8	WHERE I WANNA BE UNTOUCHABLES/LAFACE/ARISTA	DONELL JONES	1682	1506	
12	11	8	WOBBLE WOBBLE NO LIMIT/PRIORITY	504 BOYZ	1596	1549	
13	15	3	WHATCHU LIKE SO SO DEF/COLUMBIA	DA BRAT FEATURING TYRESE	1426	1226	
14	13	7	JUMPIN, JUMPIN COLUMBIA	DESTINY'S CHILD	1376	1354	
			<b>★★ AIRPOWER/GREATEST GAINER ★★</b>				
15	23	2	WIFEY ARISTA	NEXT	1365	958	
			<b>★★ AIRPOWER ★★</b>				
16	19	5	SEPARATED MAGE/IRHONSON/MCA	AVANT	1332	1061	
			<b>★★ AIRPOWER ★★</b>				
17	18	7	IT'S SO HARD 150/COLUMBIA	BIG PUNISHER FEATURING DONELL JONES	1267	1144	
18	20	4	THE NEXT EPISODE AFTERMATH/INTERSCOPE	DR. DRE FEATURING SNOOP DOGG	1233	1044	
19	17	10	IT WASN'T ME DREAMWORKS	SOLE FEATURING GINUWINE	1075	1205	
20	16	19	I DONT WANNA BLACKGROUND/PRIORITY	AALIYAH	1074	1218	

Compiled from a national sample of data supplied by Broadcast Data Systems. 118 mainstream top 40, 40 rhythmic top 40, 87 adult top 40 and 61 crossover stations are electronically monitored 24 hours a day, 7 days a week. Songs ranked by number of detections. Songs showing an increase in detections over the previous week, regardless of chart movement. A song that has been on a chart for more than 20 weeks will generally not receive a bullet, even if it registers an increase in detections. Airpower awarded to songs appearing in the top 20 on both the Airplay and Audience charts for the first time with increases in both detections and audience. Greatest Gainer awarded to the song with the largest increase in detections. Most New Stations awarded to the song registering six or more detections at the most stations for the first time this week. A song with a gain in detections over the previous week is placed first if tied with a song with a decline over the same period. When tied songs are each gaining detections or each losing detections, the song being played on more stations is placed first. ©2000 Billboard/BPI Communications.

Radio's most read, most helpful,  
most important  
trade publication

**AIRPLAY**  
**Monitor**