

TOP 40 AIRPLAY Monitor

• We Listen To Radio •

May 7, 1999

\$4.95

Volume 7 • No. 19

TOP 40 HIGHLIGHTS

MAINSTREAM TOP 40

#1

SIXPENCE NONE THE RICHER

Kiss Me (SQUINT/COLUMBIA)

★ ★ AIRPOWER ★ ★

NO RECORDS QUALIFIED FOR AIRPOWER THIS WEEK

★ MOST NEW STATIONS ★

BRITNEY SPEARS • *Sometimes (JIVE)*

RHYTHMIC TOP 40

#1

TLC

No Scrubs (LAFACE/ARISTA)

★ ★ AIRPOWER ★ ★

NO RECORDS QUALIFIED FOR AIRPOWER THIS WEEK

★ MOST NEW STATIONS ★

JENNIFER LOPEZ • *If You Had My Love (WORK/ERG)*

CROSSOVER

#1

TLC

No Scrubs (LAFACE/ARISTA)

★ ★ AIRPOWER ★ ★

BLAQUE • *808 (TRACK MASTERS/COLUMBIA)*

★ MOST NEW STATIONS ★

SPORTY THIEVZ FEAT. MR. WOODS • *No Pigeons (RUFFHOUSE/COLUMBIA)*

ADULT TOP 40

#1

SUGAR RAY

Every Morning (LAVA/ATLANTIC)

★ ★ AIRPOWER ★ ★

NATALIE MERCHANT • *Life Is Sweet (ELEKTRA/EEG)*

★ MOST NEW STATIONS ★

SMASH MOUTH • *All Star (INTERSCOPE)*

ADULT CONTEMPORARY

#1

SARAH MCLACHLAN

Angel (WARNER SUNSET/REPRISE)

★ ★ AIRPOWER ★ ★

NO RECORDS QUALIFIED FOR AIRPOWER THIS WEEK

★ MOST NEW STATIONS ★

BACKSTREET BOYS • *I Want It That Way (JIVE)*

Once R&B Crossover's Ground Zero, Southern T40 Leans Modern Adult

by Sean Ross

For years, the South was the region where R&B crossovers began their journey to top 40 radio. Now, it's where R&B records close out the panel last. Or don't close out at all.

Over the past few years, a cluster of successful mid-South top 40s has emerged that leans toward the modern adult side, adding even the biggest, most-pop-leaning R&B records late or avoiding them outright. To varying degrees, those stations include WSTR (Star 94) Atlanta; WAPE Jacksonville, Fla.; WZYP Huntsville, Ala.; WQEN Birmingham, Ala.; WYOY (Y101.9) Jackson, Miss.; WABB-FM Mobile, Ala.; and WZAT (Z102) Savannah, Ga.

WZYP began playing TLC's "No Scrubs," one of the fastest-crossing R&B records of the year, in late May, when it was top 10 at mainstream top 40. WYOY came in two weeks later, when it was No. 3 nationally. WSTR,

in the band's hometown, came in a week or so after that. And while a few other Southern top 40s hit "No Scrubs" earlier, it was often the only R&B record on those stations.

Conversely, only a handful of mid-South top 40s championed Tyrese's "Sweet Lady" before it hit the mainstream top 40 chart last issue. Among them: WFBC-FM (B93.7) Greenville, S.C.; WNOK Columbia, S.C.; WLKT Lexington, Ky.; WEZB (B97) New Orleans; and WJJS Roanoke, Va., the latter of which recently segued from rhythmic to mainstream top 40.

'JUST AS SURPRISED AS YOU'

Southern PDs who are slow to add R&B crossovers emphasize that it's not for lack of trying. "I'm just as surprised as you are," says WAPE PD Cat Thomas, who will play some, but not all, major R&B crossovers. "We put some of those big R&B records that are

Continued on page 6

Cher Strong Enough

The follow-up to the #1 single "Believe"

From her new platinum album BELIEVE

Impacting Radio This Week!!

These Stations Couldn't Wait:

WK TU
KR BE
WX YV

WB LI
WIO Q
WH YI

KI IS
KZ QZ
WFL Z



Produced by Mark Taylor and Brian Rawling for Metro/Rive Droite Music Productions
L.S. Management, Inc./RD Worldwide Management, B.V.

www.cher.com www.wbr.com



© 1999 Warner Music UK Ltd.

**Impacting
Rhythm Crossover
and R&B Radio
May 10th**

IT'S & REAL

"tell me it's real"

early airplay

WJMN	45x	KSFM	32x	KKFR	10x
WPGC	10x	WHHH	20x	KIKI	20x
WERQ	15x	WWKX	20x	KXME	35x
KQKS	25x	KGGI	15x	KLUC	29x
KYLD	15x	Z90	10x	KKXX	30x
B96	10x	WPYO	30x	KKSS	50x

plus many more

THE FIRST SINGLE FROM IT'S REAL, THE HIGHLY ANTICIPATED FOLLOW-UP TO THEIR 4 MILLION-SELLING DEBUT ALBUM, LOVE ALWAYS


IT'S REAL - JUNE 22ND - ALSO FEATURES TOP 5 R&B HIT "LIFE"

Management: DEVOUR ENTERTAINMENT www.mcarecords.com ©1999 MCA Records, Inc.

World Radio History

M·C·A
MUSIC
AMERICA

Top 40 Station Growth Stagnates In April Tally

RANK		The M Street  FORMAT MONITOR	STATION COUNT			NET GAIN OR LOSS THIS MONTH
THIS MONTH	LAST MONTH		APRIL '99	MAR. '99	APRIL '98	
1	1	Country	2,344	2,347	2,432	-3
2	2	News/Talk	1,127	1,132	1,121	-5
3	3	Adult Contemporary	831	835	873	-4
4	4	Oldies	780	786	776	-6
5	5	Religion (Music)	737	739	716	-2
6	6	Adult Standards	568	558	559	10
7	7	Spanish	515	505	482	10
8	8	Classic Rock/Hits	497	488	444	9
9	9	Soft AC/Easy Listening	422	417	401	5
10	10	Top 40	389	390	368	-1
11	11	Religion (Talk)	352	356	356	-4
12	12	Adult Top 40	294	281	264	13
13	13	Mainstream Rock	266	270	258	-4
14	14	Sports	254	253	240	1
15	15	R&B Adult/Oldies	208	200	178	8
16	16	Miscellaneous	171	174	167	-3
17	17	Mainstream R&B	166	167	148	-1
18	18	Modern Rock	136	139	145	-3
19	19	Triple-A	93	94	94	-1
20	20	Jazz	82	84	88	-2
21	21	Modern Adult	76	79	76	-3
22	22	Classical	38	39	43	-1
Total commercial operating stations			10,346	10,333	10,229	
Stations off the air			103	105	102	

M Street Corp. is a Nashville-based provider of radio station information to the radio and music industries. Call 615-251-1525 for more information.

Chancellor Realigns Programming Team

Chancellor Media has restructured its radio programming division. **David Lebow** will serve as COO, and **Steve Rivers** will continue as chief programming officer for the new office of product and strategy. Under them will be senior VPs of programming **Ken Benson** (responsible for San Francisco; Denver; San Diego; Dallas; Houston; Minneapolis; Orlando, Fla.; and Sacramento, Calif.), **WHTZ** (Z100) New York PD **Tom Poleman** (Washington, D.C.; Boston; Atlanta; Pittsburgh; and Long Island, N.Y.), and **Steve Smith** (Los Angeles; Chicago; Philadelphia; Detroit; Phoenix; Cleveland; Miami; Cincinnati; Riverside, Calif.; and Puerto Rico).

Among those named format specialists are



RADIO ACTIVE



BY JEFF SILBERMAN
323-525-2303 • jsilberman@airplaymonitor.com

WJMN (Jammin' 94.5) Boston PD **Cadillac Jack McCartney** (top 40) and **WLTW** New York (Lite FM) OM **Jim Ryan** and **KBIG** L.A. PD **Steve Streit** (AC).

In other Chancellor news **WIOQ** (Q102) Philadelphia VP/GM **Gerry DeFrancesco** exits. Smooth jazz sister **WJJZ** GM **Sil Scaglione** will assume the GM post of both **WIOQ** and adult top 40 sister **WYXR** (Star 104.5). Former Star GM **Jeff Spector** is set to be reassigned at Chancellor.

Finally, **Frankie Blue** is upped to VP of operations and programming at **WKTU** New York.

MANAGEMENT: PEARLMAN PLUS

As part of the Clear Channel spin-off to CBS, rhythmic top 40 **WLLD** and oldies **WYUU** Tampa, Fla., GM **Harvey Pearlman** adds jazz **WSJT** to his portfolio.

Country **WBBS** Syracuse, N.Y., GM **Joel Delmonico** adds AC **WYYY** (Y94) and top 40 **WWHT** (Hot 107) to his purview, replacing **Jay O'Connor**, now GM of Cox's Tampa, Fla., cluster. **WWHT** night jock **Shawn Michaels** joins rhythmic top 40 **KQKS** (KS107.5) Denver for nights.

Classic rock **WING**, top 40 **WGTZ**, and N/T **WING** Dayton, Ohio, GM **David Macejko** exits; he'll become a GM for Dame Media once Clear Channel closes on that group.

In Louisville, Jacor GM **Bill Gentry** stays GM under Blue Chip Broadcasting, which has

bought modern **WLRS**, top 40 **WDJX**, and religious **WFIA**. Cox GM **Brent Millar** adds classic rock **WSFR**, AC **WVEZ**, and adult top 40 **WMHX**, as Cox takes over the trio.

PROGRAMMING: DOMINO, A PRINCIPAL

Longtime **WFLZ** Tampa, Fla., APD/MD **Dom "Domino" Theodore** is upped to PD. And **WZOK** Rockford, Ill., PD **Scott Chase** reportedly heads to Tampa's **WSSR**.

Former **KPWR** (Power 106) and **KIIS** Los Angeles PD **Jeff Wyatt** resurfaces as PD at new R&B oldies outlet **WGAY** Washington, D.C.

Amid the speculation about who'll go top 40 in Cleveland to replace **WZJM**, Clear Channel's religious **WZLE** is now using the name **Kiss 104.9**.

Album **WXBE** (the Bear) Wilkes-Barre, Pa., PD **Aaron Roberts** becomes OM of the seven-station Citadel Wilkes-Barre group, including top 40 **WBHT**, AC **WMGS**, and country **WCTD**.

With Blue Chip having closed on **WDJX** Louisville, Ky., and modern sister **WLRS**, OM **C.C. Matthews** will stay with Clear Channel and was being detailed to Toledo, Ohio, at press time.

At modern adult **WBAM-FM** (Star 98.9) Montgomery, Ala., morning host **Trish Carpenter** reclaims PD duties, replacing **Robert Elfman**. Middayer **Nikki Stewart** adds MD duties.

As tipped here previously, **Brian Krysz** now has an official title, director of programming, at **WQZZ** (the Party) Nashville and has named **Scotty O'Brien** permanent morning host.

Oldies **WSEN** Syracuse, N.Y., promotion director **John Carucci** travels down the Thruway to join top 40/rhythm **WOWZ** Utica, N.Y., as PD, replacing **J.P. Marks**, who exits radio.

Wondering what happened to **WKLI/WKBE** Albany, N.Y., owner/PD **Paul Bendat** since the modern adult station's sale to Tele-Media? Bendat is now running **WABY.com**, using the call letters of **WKLI**'s adult standards sister station. The Internet-only station is running a broad-based standards format. Also swingin' over to the adult standards side, at least part time, is adult top 40 **WKQI** (Q95.5) Detroit morning man **Steve Cochran**, now hosting a new two-hour syndicated show, "Rat Pack Weekends."

PEOPLE: DANGER PAYS OFF

WPXY Rochester, N.Y., OM **Clarke Ingram** keeps the much-courted MD **Mike Danger** in-house by promoting him to APD/MD. He will also move from nights to a shorter daytime air shift, while **Norm on the Barstool** will take over the night shift, and P/T **Jeff Walker** will take over **Norm's** late-night hours.

KDWB Minneapolis p.m. driver **Michael**



212-536-5361 • sgraybow@airplaymonitor.com

'Kiss Me' Tops Mainstream, Modern Adult

Sixpence None The Richer hits the top spot on the mainstream top 40 and modern adult audience charts, marking the band's first No. 1's in Airplay Monitor. "Kiss Me" (Squint/Columbia) has reached No. 2 at modern adult and adult top 40, continuing to bullet in its 28th week at adult top 40, thanks to a continuous increase in detections. The title also bullets at mainstream top 40 despite a loss in spins, since it hits No. 1 for the first time. The first-ever detection that **BDS** received for "Kiss Me" occurred more than a year ago, on April 13, 1998. The format? Modern rock.

Smash mouth returns with "All Star" (Interscope), the Greatest Gainer at modern adult and the song with the most new stations at modern adult and adult top 40. It's the group's first chart appearance since last year's top 10 modern adult hit "Can't Get Enough Of You Baby."

Modern adult and adult top 40 continue to be viable formats for breaking new songs, as both **Fastball's** "Out Of My Head" (Hollywood) and **Citizen King's** "Better Days (And The Bottom Drops Out)" (Warner Bros.) hit the mainstream top 40 chart this week, several weeks after charting at modern adult and adult top 40. **Fastball** debuted on Monitor's modern adult chart with "The Way" in March '98; the song hit mainstream top 40 two months later.

PANELS: Effective this week, **WSHE** Orlando, Fla., is removed from the adult top 40 and modern adult panels due to a format change. There are now 74 adult top 40 and 33 modern adult reporters. **KZFM** Corpus Christi, Texas, is temporarily removed from the rhythmic top 40 panel, due to technical difficulties.

Clear Channel, Jacor Merger In Motion

With final regulatory approval from the FCC, the merger of Jacor into Clear Channel was scheduled to be completed May 4, after a series of six spin-off deals were completed. Blue Chip Broadcasting has closed on classic rock **WING**, top 40 **WGTZ**, and N/T **WING** in Dayton,

too much influence over the upstate New York radio landscape. But the FCC saw no evidence that the deal violates antitrust laws. It also struck down petitions filed by owners in Tampa; Lexington, Ky.; and Medford, Ore.

Citadel and **Capstar** have agreed to scrap a joint sales agreement between the two companies' radio stations in Colorado Springs, Colo., and Spokane, Wash. The decision was hardly voluntary, as it was filed the same day a lawsuit was filed in the U.S. District Court for Washington, D.C., in which the DOJ accused the companies of violating antitrust statutes. The two companies filed the settlement to move forward with a series of station swaps between the two in both markets.



CAPITAL & CAPITOL



BY FRANK SAXE
212-536-5268 • fsaxe@airplaymonitor.com

Ohio, as well as modern **WLRS**, rhythmic top 40 **WDJX**, and religious **WFIA** Louisville, Ky.; CBS/Infinity closed on album **WNCX** Cleveland and country **WRBQ** and jazz **WSJT** Tampa, Fla.; Radio One closed on modern **WENZ** and N/T **WERE** Cleveland; ABC closed on R&B oldies **WRBQ-AM** Tampa, which it plans to flip to Radio Disney; and Mega closed on sports **WZTM** Tampa and flipped its format to Spanish. At press time, Cox Radio was closing on triple-A **WHPT**, R&B oldies **WFJO**, and AC **WDUV** Tampa.

The FCC deferred to the Justice Department's decision that the merger doesn't violate antitrust laws. "This determination, together with our independent economic analysis... persuades us that approval of the merger will not have an adverse effect on competition and diversity."

As part of the deal, Cox Radio swapped its Syracuse, N.Y., group for Tampa signals **WHPT**, **WFJO**, and **WTBT** (which will take **WDUV's** programming). That deal prompted protest from Syracuse station owner the Radio Corp., which argued Clear Channel would have

FCC: KTNP ADDS EARS FROM KIOA

The FCC has approved lowering the power of Saga's oldies **KIOA** Des Moines, Iowa, in order to boost the signal of modern adult **KTNP** Omaha, Neb., which is owned by Capstar. While the FCC estimates 6,500 people will lose **KIOA** reception, **KTNP** will pick up an additional 89,000 ears.

SALES

Citadel is paying \$63.5 million for 10 Fuller-Jeffrey stations. They are country **WOKQ** and classic rock **WXBB/WXBP** Portsmouth, N.H., and album **WBLM**, modern **WCYI/WCYY**, AC **WHOM**, top 40 **WJBQ**, country **WPKQ**, and triple-A **WCLZ** Portland, Maine.

Big City Radio jumps into Phoenix, compounding its \$37 million purchase of modern **KEDJ** with oldies **KBZR**, standards **KMYL**, and religious **KLVA**. It plans to simulcast the Edge on 106.3 and 106.5, while a new format will debut shortly on 105.3 and 105.5.

Aurora Communications is buying AC **WEBE** and AC **WICC** Bridgeport, Conn., from **ML Media Partners** for \$66 million.

Knight has accepted afternoons at new rhythmic top 40 **WQSX** (Star 93.7) Boston. **John "J.T." Tillman** is named production assistant at **KDWB**.

KRBV (Hot 100) Dallas taps new middayer **Vic Caballero** from crosstown Tejano station **KHCK** (Kick FM). Named creative services director is **Fernando Flores** from crosstown Spanish outlets **KSFF** and **KDXX**.

Night host **Jim Cech** exits adult top 40 **WMYX** Milwaukee. T&Rs to PD **Brian Kelly**.

WRWV (the River) Nashville afternooner **Blake Thunder** exits, so PD **Jimmy Steele** moves **Kato** from nights to afternoons and brings in former **WZEE** (Z104) Madison, Wis., night host **Bruce "Tommy Wacker" Kelly** for nights.

Citadel adult top 40 **WIOG** Saginaw, Mich., assembles "Kelly & Company"—APD/MD/middayer **Keith Kelly**; ex-**WTCT** Saginaw morning

co-host **Lisa Farrell**; and **WPHM/WBTI** Port Huron, Mich., morning news reporter **Andrea Patzer**—to do mornings. PD **Mark Anderson** will take over Kelly's APD/MD duties in the interim, while morning producer **Aaron Addams** segues to Kelly's old midday slot.

WZYP Huntsville, Ala.'s **Ray Steele** joins Capstar's Birmingham, Ala., cluster, including AC **WMJJ** and top 40 **WQEN**, as news director.

KISX Tyler, Texas, which had been using Capstar's Star System automation in several dayparts, goes local in afternoons, with **WZNS** Fort Walton Beach, Fla.'s **Stevie B.** in nights, with **Rex Ray**, a former intern at **KHKS** (Kiss 106.1) Dallas.

Bruce Goldberg, most recently on the advertising side as executive VP of creative at **Homerun Radio**, returns to radio as executive producer for **WPLJ** New York's **Scott and Todd** morning show.

PROMOGANDA

AN OVERVIEW OF RADIO PROMOTIONS • BY JEFF SILBERMAN

323-525-2303 • jsilberman@airplaymonitor.com

Promos Stuck On 'Menace' And Mothers Day

For the third week in a row (and sixth out of the last eight), "The Phantom Menace" conquered the Topical Barometer chart, and Mother's Day finished second. Father's Day was third.

R&B **KPWR** Los Angeles is tying in to the "Menace" in a novel way, via a billboard campaign that has morning host **Big Boy** dressed as a Jedi warrior. **Dianna Obermeyer** is using a film tie-in for Mother's Day, as listeners can take their "mummies" to see "The Mummy."

Also feeling maternal is country **WBEE** Rochester, N.Y., with its **I Remember Mama Brunch**. Listeners make a \$15 donation in memory of a special woman in their lives and sponsor a "senior" lady. Up to 300 seniors will enjoy dance routines, a women's barbershop quartet, raffle prizes, corsages, gift bags, and men from Volunteers of America to dance with. **Stephanie Hogerman** is a great chaperone.

Top 40 **CKIK** (Power 107) Calgary, Alberta, Canada, hosts a brunch for mothers of its morning show and listeners. Moms get flowers, other goodies, and a chance to win a \$1,000 shopping spree, while a portion of proceeds goes to a charity. **Michael Godfrey** leaves a big tip.

Back on the chart this week is the Internet, which stations continue to exploit. Modern rock **WPLY** (Y100) Philadelphia is advertising its \$1,000 Song of the Day contest in banners on Net sites such as AOL and Yahoo! that link directly to its contest page. Once there, people can sign up for the **Y100 Unfair Internet Advantage**, a daily E-mail that tells them the name of the song of the day and the approximate time it's played. "The response has been amazing," **Kelly Gross** says. "In just eight days, nearly 2,000 people signed up."

Modern adult **WKZL** Greensboro, N.C., which broadcasts in RealAudio, is doing the same thing. PD **Jeff McHugh** says, "We've had winners from Philadelphia, Minneapolis, Chattanooga, Tenn., and San Diego."

Top 40 **WSTR** (Star 94) Atlanta is giving away laptop computers with free Internet access from Mindspring. "With computer usage still on the rise, and more people getting online, this is very topical," PD **Dan Bowen** says. "Laptops are the sports cars of computers."

TOPICAL BAROMETER

TW	LW	TOPIC
1	1	"Phantom Menace" hype
2	2	Mother's Day (May 9)
3	5	Father's Day (June 20)
4	3	Memorial Day (May 31)
5†	4	Year 2000 events
5†	6	Independence Day events
7	—	Woodstock III
8	10	Baseball season
9†	—	The Internet
9†	—	Lilith Fair tour

HOTTEST NEW MOVIES:

"The Matrix," "The Phantom Menace," "The Mummy," "Never Been Kissed," "Entrapment," "Austin Powers" sequel
HOTTEST NEW TV: "The Family Guy," "Futurama," "It's Like, You Know"

PROMO TOPIC OF THE WEEK: MID-BOOK BUDGET REVISIONS

Here's the situation: A few weeks into a busy spring-book promo schedule, a high-profile incident pops up. It is a natural promo tie-in but

will cost some bucks to do, and funds have long since been budgeted for other things. What to do? One-third of the panel would take resources allocated for summer or fall events to cover costs. Another third would tie in clients to partly cover costs, more than 27% would persuade the GM to allocate more money, and the rest claim to not have this problem, thanks to backup funds.

One believer in fund reallocation is **Anne-Marie Strzelecki** of modern adult **WBMX** (Mix 98.5) Boston, who says, "It's fairly easy to rearrange the mechanics of a cash contest to fit around the amount you have to play with. [You can have] a rolling jackpot of money, daily giveaways to force TSL, etc. Whatever budget you borrow from, you have several months to figure out how you'll make up for that cash loss in the fall and rearrange your plans accordingly."

Opting for client/sponsor tie-ins is **WBEE's** Hogerman, who says, "My GM pays me for creativity and execution on promotional projects, not to continually beg at his door for money for unexpected opportunities every month. Be tenacious and set yourself up for a new adventure to make things happen."

Yet both add that going to the GM might be necessary. Country **KEEY** (K102) Minneapolis' **Diana Buckmann** has a three-point plan to do that: "One, gather as many details as possible about the promo and brainstorm the best ideas. Two, create a detailed proposal including length, on-air commitment, and costs. Three, present it to the sales staff and discuss sales opportunities to offset costs. Usually, if I convince my GM that the promotion is a win for the station, sales staff, and listeners, I get the OK to go ahead. The key is to pick my battles, because I do have a limited budget, and I can only increase it so much."

QUICK HITS

Top 40 **KHKS** (Kiss 106.1) Dallas has a great way to raise money for morning man **Kidd Kraddick's Kidd's Kids** charity. Every year, **Melissa Burrill** sends a plane load (about 60) of terminally or chronically ill kids and their families to Disney World, Universal Studios Florida, or, this year, a free camp. To pay for it, they'll throw a **Second Chance Prom** and a concert with **Morris Day & the Time**, **LeAnn Rimes**, and **Rick Springfield**.

R&B oldies **KISQ** (Kiss 98.1) San Francisco threw the **Ultimate Kiss Party**, at which all 200 ticket winners won a prize worth at least \$100, with top prizes being a BMW convertible, \$10,000, a trip to the Bahamas resort where **Oprah** did her show, Blockbuster packages, local concert tickets, and spa treatments.

Still reacting to the Columbine tragedy is **KBBT** (the Beat) Portland, Ore., as morning hosts **Gina**, **Cort**, and **Rebecca** planted rose bushes at area high schools as a memorial. Modern rock **KEDJ** (the Edge) Phoenix's **Music Over Violence: A Symbol for Peace Concert** will start with a peace procession/motorcade from its studios to the venue, then a violence-prevention group leads a candlelight vigil (using glow sticks in lieu of candles) before the hands play. "We'll also have a symbol for peace, by tying white ribbons to all cars entering the venue and participating in the motorcade," says **Jane Monzures**. "The ribbons will also be distributed by clients."

Want to participate? E-mail your best promotions to jsilberman@airplaymonitor.com.

PROMOGANDA HONOR ROLL

Diana Ades, WNKX Charlotte, N.C. • **Dan Bowen**, WSTR Atlanta • **Darryl Brandt**, WNCI Columbus, Ohio • **Diana Buckmann**, KEEY Minneapolis • **Steve Burgess**, WYRK Buffalo, N.Y. • **Melissa Burrill**, KHKS Dallas • **Scott Calebrook**, WRQX Cincinnati • **Wayne Collins**, WJTT Chattanooga, Tenn. • **Loren Condrion**, NEGLADMX Dallas • **Garret Doll**, KYGO Denver • **Kate Eperly**, KMEI San Francisco • **Viola Fiorelli**, KNIN/KNESZ Phoenix • **Angela Fleming**, WCCJ Chicago • **Wendi Foster**, KRRZ Portland, Ore. • **Mariana Franco-Robertson**, WALC Charleston, S.C. • **Von Freeman**, KHIS Los Angeles • **Michael Godfrey**, CKIK Calgary, Alberta, Canada • **Kelly Gross**, WPLY Philadelphia • **Jude Heller**, KFOG San Francisco • **Stephanie Hogerman**, WBEE Rochester, N.Y. • **T.J. NHTZ**, San Diego • **Carly Johnston**, KATZ Las Vegas • **Irisano Korlou**, WPAV Rochester, N.Y. • **Kim Leeds**, KPMB-FM San Diego • **Barbara Luchinsinger**, KXZN Dallas • **Jane Monzures**, KEDJ Las Vegas • **Dianna Obermeyer**, KPWR Los Angeles • **Mike Paterson**, KHFI Austin, Tex. • **Viola Preston**, WDTJ Detroit • **Stephanie Ringer**, WKSE Buffalo, N.Y. • **Sheila Silverstein**, WPOC Baltimore • **Keith Spangola**, WRQX Chicago • **Cheryl Sparks**, WWWW Detroit • **Jason Steinberg**, WYNY New York • **Anne-Marie Strzelecki**, WBMX Boston • **Vanessa Thill**, KLLC Las Vegas • **Maria Toubas**, WNKX-FM Boston • **Connie Welch**, WVJZ Chicago • **Lenny Whiteside**, WVEE Atlanta • **Paul Williams**, KPXM Dallas

TOP 40 TOPICS BY SEAN ROSS

212-536-5264 • sross@airplaymonitor.com

Classic Rock Kicks Ass Again

It was one of the most successful periods in album rock history, but you don't hear much now about album rock's "kick-ass rock'n'roll" period, the years 1979-82, when the music got harder and the imaging got sillier (sample liner, "While the other stations are talking, we're rockin' our nuts off"). The kick-ass years began ignominiously with **Steve Dahl's** disco demolition at **WLUP** Chicago. It came to be typified by a handful of research-driven, one-hit wonders whose airplay success rarely translated into sales, i.e., "I Could Be Good To You" by **707**, "No Time To Lose" by the **Tarney/Spencer Band**, "Last Chance" by **Shooting Star**, etc.

By 1982-83, the rise of **Prince** and **Michael Jackson** and the glut of disposable rock acts combined to return R&B to center stage and rob the "disco sucks" movement of any credibility it might have possessed. The rock acts that kept having hits either incorporated keyboards (i.e., **ZZ Top**, **Van Halen**) or made the move to power ballads (**Loverboy**, **REO Speedwagon**). Album rock stations were suddenly playing "Running With The Night" by **Lionel Richie** or switching to top 40 altogether. It wasn't until the advent of classic rock in 1985 that rock radio refocused again, becoming much more adult.

I didn't like the exclusionary nature of the kick-ass period—the whole "disco sucks" aspect was rife with barely coded messages. It also lured a lot of top 40 stations into the rock 40 camp for several years, among them **WRQX** Washington, D.C., **WLS** Chicago, and **WRVQ** (Q94) Richmond, Va. Those were all good-sounding radio stations, but they were also the only place to hear the hits in their markets, meaning that for several years if you wanted to hear variety on top 40, you were out of luck. But I remember some of the music, including the one-hit wonders, pretty fondly. And with songs like "Nicole" by **Point Blank** disappearing from the radio pretty quickly, I knew there'd be some demand to hear them one day.

Some of the first active rockers used those songs as their calling card, until **Nirvana** came along and suddenly "I Like To Rock" by **April Wine** didn't fit. But now, album rock's kick-ass years are being tapped by two new sub-formats. Some of Jacor's adult top 40 Mix outlets, par-

ticularly **WMVX** (Mix 106.5) Cleveland, prominently incorporate early-'80s rock, ranging from "Jukebox Hero" by **Foreigner** to "You Shook Me All Night Long" by **AC/DC**. So do the new slew of harder-edged classic rockers, such as **WNRQ** Nashville, **KXOK** St. Louis, and **WOCT** Baltimore, that use the "classic rock that really rocks" positioner.

The new classic rockers aren't built entirely around the early '80s; there's also a heavy late-'80s "hair band" element and plenty of **Van Halen**, **Led Zeppelin**, **Black Sabbath**, etc. But musically and presentationally, they invoke the early '80s more than anything previous. And already they seem to be having an impact on rock radio in general. I hadn't heard "Ah! Leah!" by **Donnie Iris** on the radio for 18 years until recently, when I heard it three times in 10 days on different stations.

Does the "classic rock that really rocks" format have any possible implications for top 40 or, at least, hot AC, where early-'80s rock gold from **REO**, **Pat Benatar**, **Tom Petty**, etc., remained a significant part of the format until modern AC came along and many stations refocused? Well, **WNRQ's** and **KXOK's** listening is about 70% male. So it's possible that such stations will touch more of a nerve with top 40 PDs than with their listeners. But **WNRQ** did well enough to have an impact on almost every station in town, at least initially. Besides, the success of the Jacor Mix outlets proves that "Tainted Love" isn't the only early-'80s title listeners remember fondly. And because so many early-'80s top 40s were rockin' their nuts off, too, there could be more female nostalgia for those songs than we know.

If I programmed an adult top 40 in a rock-driven market, I'd want to at least test some early-'80s rock titles to see what sort of appetite exists. At an adult-leaning mainstream top 40, there might be something to be said for those songs in very controlled doses during weekend or lunchtime retro programming. The return of late-'70s disco has shown that people crave the respectable ("Got To Be Real") and the reviled ("Y.M.C.A.") in almost equal proportions, meaning they don't necessarily differentiate between "Refugee" and "The Stroke" either.

RADIO CONCERT MONITOR

DATE	STATION	EVENT	PROMOTION DIRECTOR
May 12	Capitol FM London APPEARING: KC & the Sunshine Band, Rose Royce, Sister Sledge, Odyssey, Tavares, more	Best Disco in Town	V.J. Solanki
May 15	KPRR El Paso, Texas APPEARING: Divine, Eminem, Tyrese, Mya, DJ Laz, JT Money	Power Jam '99	Chris Lucy
May 17	WYOY Jackson, Miss. APPEARING: Collective Soul, Marvelous 3, Blessid Union Of Souls, Everything	Jubilee Jam	Nikki Brown
May 20	WKSL Memphis APPEARING: Edwin McCain, Spin Doctors, Joey McIntyre, Shaggy, Coolio, Jordan Knight, 98°, ETC, C-Note, Blessid Union Of Souls, Jana	Kiss Tango II	Jeff Lyons
May 22	WDCG Raleigh, N.C. APPEARING: Edwin McCain, Smash mouth, Fastball, Semisonic, 98° Everything, Joey McIntyre, Sixpence None The Richer, Train, Marvelous 3, Rufus Wainwright, My Friend Steve, Radio Star, Skwzbox	Big Shindig	Pam Dziuba
May 29	KQKQ Omaha, Neb. APPEARING: 'N Sync, Everything, Sixpence None The Richer, Flys, Joey McIntyre, Fastball, Far Too Jones, Blessid Union Of Souls, Coolio, Shades Apart, Murrms, more	SweetStock II	Kris Padon
May 31	WKSE Buffalo, N.Y. APPEARING: TBA	Kiss the Summer Hello	Stephanie Ringer
May 31	WJBQ Portland, Maine APPEARING: Blessid Union Of Souls, 98°	"Q" Concert	Daphne Perkins
June 1	WWHT Syracuse, N.Y. APPEARING: Jordan Knight, Mya, Monifah, more	Summer Jam	Dan Connelly

Let us monitor your event! Call Jeff Silberman at 323-525-2303 or E-mail jsilberman@airplaymonitor.com.

Already on:

Hot 97 40x Top 10 Phones & Callout
KPWR 44x Top 5 Phones & Top 15 Callout
WPYO 30x
WBHJ
WJMH

New at:

WPOW Add
KBMB Add
WWKX Add
KKPW Add
KOHT Add
KDGS Add
WPGC 11x
92Q 10x
KMEL 8x
KBXX 7x
& More

**Over 69,000
singles
already
scanned**

**THE FIRST SINGLE FROM THE HIGHLY
ANTICIPATED ALBUM VENNI VETTI VECCI**

**"HOLLA HOLLA"
JA RULE**

A MOST ADDED AT CROSSOVER RADIO!

ALBUM IN STORES JUNE 1



ADD ADD ADD



www.defjam.com

Once R&B Crossover's Ground Zero, Southern T40 Now Leans Modern Adult

Continued from page 1

top 10 or top 15 nationally on our station, and they just do not test with our audience, [although] you'll still get the kids calling for them." Thomas, a native of the region, says, "The South just made a major turnaround. They seem to like more of the rock- or alternative-edged records than when I was a kid and they were going for the R&B [hits]."

"There's just a lot of resistance to black music or anything that has that sound in the South," adds one programmer, who would not speak for attribution. "There's no other way to say it." The programmer in question notes that he has a hard time not only getting R&B records to test but even getting acceptance of some of the more R&B-flavored male-harmony teen acts.

Star 94 PD Dan Bowen also notes some resistance to those teen acts. As for actual R&B crossovers, he says, "We have every reason based on the research we've seen for years now to believe that those records aren't likely to be successful here. . . . If you were looking in from the outside, your perspective would be, 'Why not?' But when you're here, and you've seen it and had a chance to live it. . . . you understand a little better."

Bowen, who had initially thought that he would never be able to play "No Scrubs," no matter how big a hit it became, thinks that WSTR's history as rock-leaning WQXI-FM (94Q) in the '70s and '80s created a listener expectation that's hard to contradict. Atlantic VP of A&R and senior director of national promotion Kim Stephens, a veteran Southern PD, thinks that WABB-FM, which evolved from rock, may have similar issues.

FROM 'SALT-AND-PEPPER RADIO' . . .

But WAPE and WZAT have a longstanding R&B heritage. So does Birmingham, Ala., where WQEN leans to the modern adult side. Consultant Steve Davis of Zapoleon Media Strategies grew up there and recalls heritage top 40s WERC and WSGN as "salt-and-pepper radio." He recalls Birmingham as a "town that always accepted black music, even with the history of problems that city had from a social viewpoint."

WZNY (Y105) Augusta, Ga., PD Bruce Stevens recalls the day when his former station, WBBQ, leaned heavily R&B and "had a huge, huge urban audience. [Even having evolved to AC,] it still has a respectable urban audience." But at Y105, Stevens says, "I don't think top 10 is too long to wait on [R&B crossovers] to make sure they're going to be huge pop records also."

So what has changed? Stevens, like several counterparts, says that most Southern markets are now "over-served by R&B stations. These markets were historically under-served, and the top 40 was the R&B station until several years ago." In this more niched era, he says, R&B hits are burned out with that format's partisans by the time a top 40 can play them.

Then again, outgoing WDJX Louisville, Ky., OM C.C. Matthews, whose station is more rhythmic-leaning than many in the region, notes that his market is also saturated with R&B competition. And yet, he says, if the biggest R&B records weren't on the station, "the core wouldn't be happy and would wander somewhere else."

. . . TO THE HIP-HOP BACKLASH

Some other common themes emerge when you ask Southern top 40 PDs why they are slow on R&B titles. Among them:

- The mid-South hasn't entirely recovered from the hip-hop backlash that gripped many top 40s in all regions during the mid-'90s. "I think there's a deep-seated fear of going down that rap road," says WZYP PD Bill West.

- The region still has a higher percentage of mainstream top 40s that emphasize 25-plus listeners. During the hip-hop boom, West says, "top 40 started [super-serving] 13- to 18-year-olds. I think there's a fear of that. And the South is one of the last bastions of hands-on management."

- To that end, there's an even greater emphasis on call-out research than in the rest of the country. And unlike the top 40s of the '60s and '70s that placed a heavy reliance on record sales, "most top 40s are not testing anybody except white participants, and I think that [affects] the results to some degree," says Zapoleon's Davis.

- Davis also notes that "the modern AC [boom] seems to be happening a little later here." Even in New Orleans, where top 40s KUMX and B97 will play some R&B crossovers that aren't pop hits nationally, there's still an increased emphasis on modern rock at those two stations. "When you're talking about mainstream top 40 and its emphasis on the young female, their No. 1 music style is pop/alternative," Davis says.

- And a lot of the PDs we surveyed who grew up with more R&B-leaning top 40 stations recall the R&B of that era as being "more mass-appeal" than today's crossovers. And in the deep South, many of the R&B hits are heavily stylized Southern hip-hop records of the Master P/Juvenile variety, a genre that, until recently, faced considerable resistance, even from R&B programmers in other regions.

A SELF-FULFILLING PROPHECY

Not every Southern top 40 PD believes R&B records won't work. "It depends on what they prime the audience to hear," says WROX (96X) Norfolk, Va., PD Bill Thorman. "If I walk into town and blow off all the black songs, six years down the road I'll ask people if they like black records, and they'll say no. It's not a fair call."

And there are Southern markets in which PDs who initially saw a lack of interest in rhythmic music have reversed. Arista VP of top 40 promotion Jim Elliott cites WDCG (G105) Raleigh, N.C., as a station that, after a long stretch on the modern adult side, has moved back to the center. Sister station WRVW (the River) Nashville re-added R&B crossovers about 12-18 months ago.

And while Arista has more luck with R&B crossovers at mainstream top 40 than most labels, Elliott still says that the resistance to those records "hasn't changed much anywhere. It's not just the deep South"—an assessment that Zapoleon's Davis seconds. Elliott was MD of WPGC-FM Washington, D.C., 20 years ago, when it was the market's top 40 powerhouse. While he's seen many stations' openness toward top 40 crossovers dissipate since then, "one thing is just as true as it was 20 years ago," he says. "When you play the right crossover music, it is top 40's ace in the hole. It is the one thing that top 40 can create an identity with. When you find the right music that the white listener hears as a hit record, you own that record, and people will come to you to hear it."

MONITOR PROFILE

Music And A Mil Help John Ivey Heat Up Winter Book At WXKS-FM Boston

Last summer, having duked it out with crosstown WBMX for the modern adult franchise, WXKS-FM (Kiss 108) Boston began moving back toward the center of mainstream top 40, filtering in some of the dance and R&B product it had avoided for several years. As was the case for sister WHTZ (Z100) New York upon its return to mainstream top 40, the results weren't readily apparent. But in the just-released winter Arbitron ratings, PD John Ivey and crew roared ahead 5.0-5.8, including a top three finish in 25-54.

"We really worked to make sure we were focused and tight," he says. "Actually, we've been reviewing everything over the past year to make sure the station was buttoned up. We always do tweaks here and there. This winter, we ran a great contest, the \$1 million birthday game with \$20 Million Thursdays [20 chances to win \$1 million]. We also ran TV spots for the first time in a decade; it focused on [morning man] Matty Siegel and was very personality-driven. Add all that to this being our 20th anniversary, and we created a really big buzz."



John Ivey
Program Director
WXKS Boston

Owner: Chancellor
Ratings: 5.8-5.6-5.0-5.8

'If you're a top 40, you can't be ashamed to play the hits of today'

Despite three down books, Ivey didn't panic. "Like any mature radio station, Kiss has traditionally been cyclical and is prone to having peaks and valleys," he says. "The other thing is that other stations around us got better. They marketed themselves aggressively and came right at us, which is what we experienced last year. Fortunately, our cume is so strong that the listeners who sampled other stations came back and spent more time with us again."

Ivey says that Kiss has benefited from a growing listener interest in a variety of music genres. "For a while, one niche of music—female pop/rock à la Alanis Morissette, Sheryl Crow, Fiona Apple, Sarah McLachlan, [etc.]—got so hot that, coupled with modern pop from matchbox 20 and Third Eye Blind, it was all that was on people's minds," he says. "And we haven't had a whole lot of luck in the past with rhythm product. "Now, Britney Spears, Cher, and Will Smith have put out very mainstream records, which has worked well for us. They've helped [separate] us [from other stations] and gave this station some depth and tempo."

"Now we're going even further with great songs by TLC, 98°, and Monica," Ivey adds. "And we're also seeing really good product from different types of acts. Ricky Martin and Jennifer Lopez are leading an influx that could take us in a completely different direction over the summer. It'll just add more depth to top 40. The key is to remember that if you're a top 40, you can't be ashamed to play the hits of today."

Here's a sample hour on WXKS-FM: TLC, "No Scrubs"; Sixpence None The Richer, "Kiss Me"; Everlast, "What It's Like"; Natalie Imbruglia, "Torn"; Tonic, "If You Could Only See"; 'N Sync, "I Drive Myself Crazy"; Cranberries, "Dreams"; matchbox 20, "Back 2 Good"; Britney Spears, ". . . Baby One More Time"; Blues Traveler, "But Anyway"; Sugar

Ray, "Every Morning"; and Sheryl Crow, "My Favorite Mistake."

Ivey credits MD "Kid" David Corey for being his perfect complement in making music decisions. "We both hear different types of records, which makes it great. He hears certain kinds of hit records that I don't and vice versa. So we have to convince each other on a record. That's real important, because it can really help the station stay balanced."

"I give him a lot of leeway, while at the same time I help him learn how to be a programmer, which is what he has wanted to do since he first came here over four years ago," Ivey adds. "He's made huge strides on his way to becoming one."

Ivey believes Kiss' six-figure cash giveaway helped its winter book, even though crosstown rival WBMX was running a similar cash contest and no one actually won \$1 million. "We still gave away over \$400,000, which made it an awfully big promotion," he says. "It made sense for to have \$20 Million Thursdays because it tied in to our 20th Kiss concert in June."

As successful as it was, Ivey is reticent on doing the \$1 million giveaway again any time soon. "You run a risk of ringing out anything if you do it too much," he says. "The key is to be fluid, a moving target promotionally. You want to do different things and not become just a one-trick pony."

The contest does lead nicely into their huge 20th Kiss Concert, which features some major names such as Rod Stewart, Elton John, Melissa Etheridge, and Aerosmith's Steve Tyler and Joe Perry. Which leaves us all wondering, for now, how Kiss will follow such a one-two punch promotionally in the summer. "We always do great contests in the spring and summer," Ivey says. "Those seasons are usually better for us. My main concern is to keep the station sounding up-tempo, fresh, and exciting. We have a built-in, active audience, so we do a lot of outdoor activities and spend a lot of time on the streets. We shake a lot of hands and kiss a lot of babies."

One thing Ivey doesn't concern himself with is Kiss' air staff. Most staffers have spent a good decade at the station, led by afternooner Dale Dorman, a 30-year vet. While airchecks with these vets make little sense, that doesn't mean Ivey puts them on automatic pilot. "I still talk with all the jocks," he says. "We have regular morning-show meetings, I talk with Dale and [middayer] Ed McMann daily, and I speak with [night host] Artie [the One Man Party] while I'm on my way home. It's not a high-maintenance staff; I don't have to wonder what's going out over the airwaves. I basically inform them what we're doing and how to position things, just to keep the station fresh."

Many of the staffers are taking advantage of Proffit-created dayparts for other stations. "We've got a few cyberjocks on staff," Ivey says. "Ed McMann, Dale, and [late-night host] Skip Kelly are all doing work for some other Chancellor stations, such as the new 'Jammin' oldies' stations in Chicago, New York, and Orlando, Fla. Ed also fills in for [syndicated countdown-show host] Casey Kasem when he's out."

Is he worried about the staff burning out? "No, quite the opposite," he says. "This is what they live for. They love this stuff. These guys are pros who give me 1,000%."

Could Ivey see himself following Steve Rivers to a group programming post? "I hope to stay at Kiss for a long time; this is my dream station," he says. "I don't see myself leaving, but I have been used on certain projects in the Chancellor chain. I'm always available to help in any situation; it helps broaden me as a programmer."

"Just as we're tapped on for a start-up station, I have outside PDs come here and give me an outside opinion," he says. "You can get tunnel vision from hearing your station over and over."

JEFF SILBERMAN

Editor: Sean Ross
Managing Editor: Jeff Silberman
Chart Administrator: Silvio Pietroluongo
Associate Director of Charts: Steven Graybow
Writer/Reporter: Frank Saxe
Chart Production Manager: Michael Cusson
Assistant Chart Production Manager: Gordon Murray
Editorial Production Managers: Barry Bishin, Marcia Repinski
Editorial Production: Susan Chicola, Marc Giaquinto, Juliana Koo, Maria Manlicic, Sandra Watanabe
Copy Editor: Carl Rosen
Advertising Production Manager: Lydia Mikulko
Advertising Production Coordinator: Paul Page
Art Director: Ray Carlson
Advertising Production Artist: Karen Platt

National Advertising Manager: Hank Spann
Account Managers: Jeff Somerstein, Sharon White
Advertising Services Manager: Alyse Zigman
Sales Assistants: Evelyn Aszodi, Erica Bengtson, Jason Rashford

Editorial Adviser: Timothy White
Director of Production & Manufacturing: Marie Gombert
Circulation Director: Jeanne Jamin
Marketing Manager: Rob Accatino

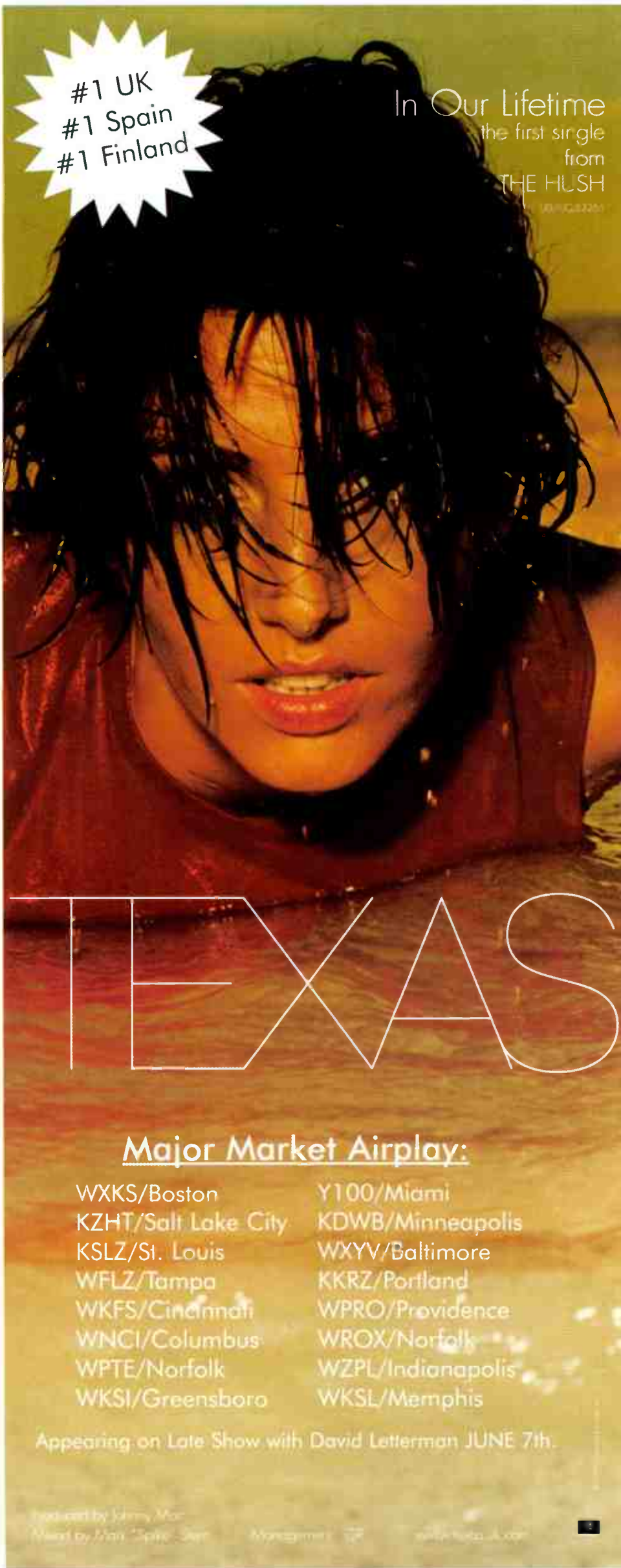
Publisher: Jon Guynn

Billboard Music Group

President: Howard Lander
Senior VP/General Counsel: Georgina Challis
Vice Presidents: Irwin Kornfeld, Karen Oertley, Adam White
Director of Strategic Development: Ken Schlager
Business Manager: Joellen Sommer

1515 Broadway, New York, NY 10036 212-764-7300
5055 Wilshire Blvd., 7th floor, Los Angeles, CA 90036 323-525-2300
For subscriptions call: 800-745-8922

©1999 BPI Communications Inc. No part of this publication may be reproduced, stored in any retrieval system, or transmitted, in any form or by any means, electronic, mechanical, photocopying, recording, or otherwise, without the prior written permission of the publisher.



#1 UK
#1 Spain
#1 Finland

In Our Lifetime
the first single
from
THE HUSH

Major Market Airplay:

WXKS/Boston	Y100/Miami
KZHT/Salt Lake City	KDWB/Minneapolis
KSLZ/St. Louis	WXYV/Baltimore
WFLZ/Tampa	KKRZ/Portland
WKFS/Cincinnati	WPRO/Providence
WNCI/Columbus	WROX/Norfolk
WPTE/Norfolk	WZPL/Indianapolis
WKSI/Greensboro	WKSL/Memphis

Appearing on Late Show with David Letterman JUNE 7th.

Produced by Jimmy Mac
Mixed by Matt Spivey
Management: [Logo]
www.monster.com

AIRPLAY Monitor MAINSTREAM TOP 40

FOR WEEK ENDING MAY 2, 1999

MAINSTREAM TOP 40 AIRPLAY

THIS WEEK	LAST WEEK	WKS. ON CHART	TITLE/IMPRINT/PROMOTION LABEL	ARTIST	DETECTIONS		
					TW	LW	
			★ ★ ★ No. 1 ★ ★ ★				
1	2	12	KISS ME SQUINT/COLUMBIA	SIXPENCE NONE THE RICHER	6114	6126	
2	3	11	NO SCRUBS LAFACE/ARISTA	TLC	6089	5886	
3	1	17	EVERY MORNING LAVA/ATLANTIC	SUGAR RAY	6037	6206	
4	4	5	LIVIN' LA VIDA LOCA C2	RICKY MARTIN	5602	4881	
5	5	13	WHAT IT'S LIKE TOMMY BOY	EVERLAST	4793	4579	
6	6	9	THE HARDEST THING UNIVERSAL	98 DEGREES	4531	4385	
7	8	18	FLY AWAY VIRGIN	LENNY KRAVITZ	4114	4253	
8	7	31	SLIDE WARNER BROS.	GOO GOO DOLLS	4030	4341	
9	12	4	I WANT IT THAT WAY JIVE	BACKSTREET BOYS	4024	3680	
10	10	9	HEARTBREAK HOTEL ARISTA	WHITNEY HOUSTON FEAT. FAITH EVANS & KELLY PRICE	3960	3753	
11	13	6	THAT DON'T IMPRESS ME MUCH MERCURY	SHANIA TWAIN	3547	3107	
12	9	30	...BABY ONE MORE TIME JIVE	BRITNEY SPEARS	3508	4116	
13	11	20	BELIEVE WARNER BROS.	CHER	3427	3687	
14	15	19	ANGEL OF MINE ARISTA	MONICA	2945	3026	
15	14	28	BACK 2 GOOD LAVA/ATLANTIC	MATCHBOX 20	2878	3084	
16	16	6	I DRIVE MYSELF CRAZY RCA	'N SYNC	2844	2836	
17	19	8	ANYTHING BUT DOWN A&M/INTERSCOPE	SHERYL CROW	2497	2285	
18	18	10	SPECIAL ALMO SOUNDS/INTERSCOPE	GARBAGE	2482	2386	
19	17	36	SAVE TONIGHT WORK/ERG	EAGLE-EYE CHERRY	2393	2465	
20	23	5	GIVE IT TO YOU INTERSCOPE	JORDAN KNIGHT	2234	2026	
21	21	6	DOWN SO LONG ATLANTIC	JEWEL	2117	2141	
22	28	4	WHY DON'T YOU GET A JOB? COLUMBIA	THE OFFSPRING	1746	1488	
23	26	7	WE LIKE TO PARTY! GROOVILICIOUS/STRICTLY RHYTHM	VENGABOYS	1691	1665	
			★ GREATEST GAINER/MOST NEW STATIONS ★				
24	NEW ▶		SOMETIMES JIVE	BRITNEY SPEARS	1679	702	
25	29	3	HEY LEONARDO (SHE LIKES ME FOR ME) PUSH/V2	BLESSID UNION OF SOULS	1679	1478	
26	20	7	EVERYBODY'S FREE (TO WEAR SUNSCREEN) CAPITOL	BAZ LUHRMANN	1544	2191	
27	31	3	PRaise YOU SKINT/ASTRALWERKS/VIRGIN	FATBOY SLIM	1534	1326	
28	30	5	CAN I GET A... DEF JAM/MERCURY	JAY-Z FEAT. AMIL (OF MAJOR COINZ) & JA	1467	1365	
29	25	24	ANGEL WARNER SUNSET/REPRISE	SARAH MCLACHLAN	1428	1703	
30	34	2	MILLENNIUM CAPITOL	ROBBIE WILLIAMS	1392	1210	
31	40	2	ALMOST DOESN'T COUNT ATLANTIC	BRANDY	1350	978	
32	27	13	C'EST LA VIE EPIC	B*WITCHED	1210	1541	
33	35	3	WAIT TILL I GET HOME TRANS CONTINENTAL/EPIC	C-NOTE	1180	1090	
34	39	2	SWEET LADY RCA	TYRESE	1175	1017	
35	32	21	ALL I HAVE TO GIVE JIVE	BACKSTREET BOYS	1079	1250	
36	37	3	HARMLESS REFUGE/MCA	MULBERRY LANE	1043	1032	
37	NEW ▶		OUT OF MY HEAD HOLLYWOOD	FASTBALL	1027	899	
38	NEW ▶		BETTER DAYS (AND THE BOTTOM DROPS OUT) WARNER BROS.	CITIZEN KING	1019	850	
39	38	26	DOO WOP (THAT THING) RUFFHOUSE/COLUMBIA	LAURYN HILL	998	1027	
40	NEW ▶		ALL 'BOUT THE MONEY C2	MEJA	980	953	

Songs ranked by number of detections. ○ Records showing an increase in detections over the previous week, regardless of chart movement. A record that has been on the chart for more than 20 weeks will not receive a bullet, even if it registers an increase in detections. Airpower awarded to those records that attain 2,000 detections for the first time. Greatest Gainer awarded to the record with the largest increase in detections. Most New Stations awarded to the record registering six or more detections at the most stations for the first time this week. If two records are tied in number of detections, the record being played on more stations is placed first. Records below the top 20 become recurrents and are removed from the chart after 26 weeks.

GREATEST GAINERS MAINSTREAM TOP 40

INCREASE IN DETECTIONS

BRITNEY SPEARS • Sometimes (JIVE)	+977
KOKQ +34, WXXL +32, KZZU +30, WXLK +26, KDND +22, WXYV +22, WFHN +21, WKXJ +20, WAEZ +19, KSMB +19	
RICKY MARTIN • Livin' La Vida Loca (C2)	+721
WFLY +36, KCHZ +30, WEZB +28, WDRQ +24, KHYS +20, KUMX +20, KHTO +19, WNKS +19, KALC +19, WLSS +18	
SHANIA TWAIN • That Don't Impress Me Much (MERCURY)	+440
WNTQ +33, WROX +30, KDWB +26, KALC +24, WAPE +22, WZPL +20, WLAN +17, WKSL +16, KJYO +15, WAEZ +14	
JENNIFER LOPEZ • If You Had My Love (WORK/ERG)	+384
KDND +26, WXXL +26, WFLZ +24, WKSZ +23, KHKS +21, WFHN +16, KHYS +15, WNNK +15, WKSS +15, WIOQ +13	
BRANDY • Almost Doesn't Count (ATLANTIC)	+372
WDRQ +21, WROX +19, WIOQ +18, WZNY +17, WBHT +15, WKXJ +15, KHFI +15, WBLI +15, WLKT +14, KKRO +14	

WWZZ Washington, DC PD: Dale O'Brian APD/MD: Ron Ross 703-522-1041 Bonneville

Table with 2 columns: Rank and Song/Artist. Top songs include TLC, No Scrubs; Shania Twain, That Don't Impress Me Much; Ricky Martin, Livin' La Vida Loca.

KZQZ San Francisco PD: Mark Adams APD: Lara Scott 415-957-0957 Bonneville

Table with 2 columns: Rank and Song/Artist. Top songs include Ricky Martin, Livin' La Vida Loca; TLC, No Scrubs; Backstreet Boys, I Want It That Way.

KBKS Seattle PD: Mike Preston APD: L.A. Reid MD: Paul Anthony 206-282-5477 Infinity

Table with 2 columns: Rank and Song/Artist. Top songs include Everlast, What It's Like; TLC, No Scrubs; Sugar Ray, Every Morning.

WBZZ Pittsburgh PD: Keith Clark OM: David Edgar MD: Jonny Hartwell 412-920-9400 Infinity

Table with 2 columns: Rank and Song/Artist. Top songs include Goo Goo Dolls, Slide; Britney Spears, Baby One More Time; Sugar Ray, Every Morning.

WHYI Miami PD: Rob Roberts APD: Al Chio MD: Deidre Poyner 954-463-9299 Clear Channel

Table with 2 columns: Rank and Song/Artist. Top songs include Ricky Martin, Livin' La Vida Loca; Sixpence None The Richer, Kiss Me; Goo Goo Dolls, Slide.

WKSS Hartford OM: Jeremy Savage PD: Tracy Austin MD: Mike McGowan 860-723-6160 Capstar

Table with 2 columns: Rank and Song/Artist. Top songs include TLC, No Scrubs; Ricky Martin, Livin' La Vida Loca; Brandy, Have You Ever?

WDRQ Detroit PD: Alex Tear APD: Jay Towers 248-354-9300 ABC/Disney

Table with 2 columns: Rank and Song/Artist. Top songs include TLC, No Scrubs; Britney Spears, Baby One More Time; Sixpence None The Richer, Kiss Me.

KKRZ Portland PD: Tommy Austin APD: Dr. Doug MD: Johnny Quest 503-226-0100 Jacor

Table with 2 columns: Rank and Song/Artist. Top songs include Whitney Houston, Heartbreak Hotel; TLC, No Scrubs; Ricky Martin, Livin' La Vida Loca.

WPST Trenton Sr. VP/Pgm: Michelle Stevens APD/MD: Chris Puorro 609-924-3600 Nassau

Table with 2 columns: Rank and Song/Artist. Top songs include Sugar Ray, Every Morning; Everlast, What It's Like; Sixpence None The Richer, Kiss Me.

WNCI Columbus PD: Todd Shannon APD/MD: Neal Sharpe 614-224-9624 Jacor

Table with 2 columns: Rank and Song/Artist. Top songs include Everlast, What It's Like; Sugar Ray, Every Morning; Cher, Believe.

KHTS San Diego PD: Diana Laird MD: Michael Haze 619-291-9191 Jacor

Table with 2 columns: Rank and Song/Artist. Top songs include Monica, Angel Of Mine; Whitney Houston, Heartbreak Hotel; TLC, No Scrubs.

WNKS Charlotte PD: John Reynolds MD: Jason McCormick 704-331-9510 Infinity

Table with 2 columns: Rank and Song/Artist. Top songs include Britney Spears, Baby One More Time; TLC, No Scrubs; Backstreet Boys, All I Have To Give.

KSZZ St. Louis PD: Jeff Kapugi 314-692-5108 Jacor

Table with 2 columns: Rank and Song/Artist. Top songs include TLC, No Scrubs; Whitney Houston, Heartbreak Hotel; Sixpence None The Richer, Kiss Me.

KMXV Kansas City PD: Jon Zelner APD/MD: Dylan 816-756-5698 Infinity

Table with 2 columns: Rank and Song/Artist. Top songs include Sugar Ray, Every Morning; TLC, No Scrubs; Sixpence None The Richer, Kiss Me.

KZZP Phoenix OM: Dan Persigehl PD: Dave Cooper 602-279-5579 Jacor

Table with 2 columns: Rank and Song/Artist. Top songs include Britney Spears, Baby One More Time; Shania Twain, That Don't Impress Me Much; Sixpence None The Richer, Kiss Me.

WXLL Orlando OM/PD: Adam Cook APD/MD: Pete deGraaf 407-919-1000 Chancellor

Table with 2 columns: Rank and Song/Artist. Top songs include Ricky Martin, Livin' La Vida Loca; Monica, Angel Of Mine; Sugar Ray, Every Morning.

KALC Denver PD: Jim Lawson APD/MD: Kozman 303-572-7000 Chancellor

Table with 2 columns: Rank and Song/Artist. Top songs include Sugar Ray, Every Morning; Goo Goo Dolls, Slide; Sixpence None The Richer, Kiss Me.

WKRQ Cincinnati OM: Mike Marino MD: Jim Kelly 513-763-5500 Infinity

Table with 2 columns: Rank and Song/Artist. Top songs include Everlast, What It's Like; Blessid Union Of Souls, Hey Leonardo; Goo Goo Dolls, Slide.

WXVY Baltimore
OM: Kristie McIntyre
PD: Lajeun McCain
MD: Albie Dee
410-889-0098
Infinity

WBLI Long Island
PD: J.J. Rice
MD: Al Levine
516-732-1061
Cox

WZPL Indianapolis
PD: Tom Gjerdrum
MD: Dave Decker
317-816-4000
Mystar

KUMX New Orleans
OM: Dave Stewart
MD: 679-7300
Clear Channel

WFBC Greenville, SC
PD: Nikki Nite
MD: Skip Church
864-271-9200
Sinclair

WDGC Raleigh
OM: Brian Burns
PD: Kip Taylor
919-871-1051
Capstar

Table with 2 columns: Rank and Song/Artist. Top songs include TLC, No Scrubs; Sissieq None The Richer, Kiss Me; Britney Spears, Baby One More Time.

Table with 2 columns: Rank and Song/Artist. Top songs include Ricky Martin, Livin' La Vida Loca; Deborah Cox, Nobody's Supposed To Be Here; Britney Spears, Baby One More Time.

Table with 2 columns: Rank and Song/Artist. Top songs include Sugar Ray, Every Morning; TLC, No Scrubs; Cher, Believe; Matchbox 20, Back 2 Good.

Table with 2 columns: Rank and Song/Artist. Top songs include Sugar Ray, Every Morning; TLC, No Scrubs; Sissieq None The Richer, Kiss Me; The Phys. Got You.

Table with 2 columns: Rank and Song/Artist. Top songs include TLC, No Scrubs; Everlast, What It's Like; Sissieq None The Richer, Kiss Me; Sugar Ray, Every Morning.

Table with 2 columns: Rank and Song/Artist. Top songs include Ricky Martin, Livin' La Vida Loca; Meja, All 'bout The Money; Sissieq None The Richer, Kiss Me; Sugar Ray, Every Morning.

WRVW Nashville
OM: Charlie Quinn
PD: Jimmy Steele
APD: Tom Peace
615-664-2400
Capstar

WXSS Milwaukee
PD: Brian Kelly
MD: Jolo Martinez
414-529-1250
Sinclair

KZHT Salt Lake City
PD: Marc Summers
APD/MD: Jeff McCartney
801-908-1300
Jacor

KJVO Oklahoma City
PD: Mike McCoy
APD/MD: Jimmy Barreda
405-840-5271
Clear Channel

WGTZ Dayton
OM: Michael Luczak
AMD: Scott Sharp
937-294-5858
Clear Channel

WPRO Providence
PD: Tony Bristol
MD: Davey Morris
401-433-4200
Citadel

Table with 2 columns: Rank and Song/Artist. Top songs include Sissieq None The Richer, Kiss Me; Matchbox 20, Back 2 Good; Sugar Ray, Every Morning.

Table with 2 columns: Rank and Song/Artist. Top songs include Vengaboys, We Like To Party; TLC, No Scrubs; The Offspring, Why Don't You Get A Job?

Table with 2 columns: Rank and Song/Artist. Top songs include TLC, No Scrubs; Everlast, What It's Like; Britney Spears, Baby One More Time.

Table with 2 columns: Rank and Song/Artist. Top songs include TLC, No Scrubs; Lenny Kravitz, Fly Away; Shania Twain, That Don't Impress Me Much.

Table with 2 columns: Rank and Song/Artist. Top songs include TLC, No Scrubs; Sissieq None The Richer, Kiss Me; Sugar Ray, Every Morning.

Table with 2 columns: Rank and Song/Artist. Top songs include Ricky Martin, Livin' La Vida Loca; 98 Degrees, The Hardest Thing; TLC, No Scrubs.

WFLY Albany
OM: Mike Morgan
PD: Rob Dawes
MD: Ellen Rockwell
518-786-6600
Albany Broadcasting

KOXM San Antonio
PD: Krash Kelly
MD: Duncan James
210-736-9700
Clear Channel

WIXX Green Bay
PD: Dan Stone
MD: David Burns
920-435-3771
Midwest Communications

KDND Sacramento
Stn. Mgr./PD: Steve Weed
MD: Christopher K.
916-334-7777
Entercom

WQEN Birmingham
OM: John Jenkins
PD/MD: Scott Bohannon
205-439-9600
Capstar

WKSE Buffalo
OM: Sue O'Neil
PD/MD: Dave Universal
716-884-5101
Sinclair

Table with 2 columns: Rank and Song/Artist. Top songs include TLC, No Scrubs; Ricky Martin, Livin' La Vida Loca; Sugar Ray, Every Morning.

Table with 2 columns: Rank and Song/Artist. Top songs include Ricky Martin, Livin' La Vida Loca; Lenny Kravitz, Fly Away; Sugar Ray, Every Morning.

Table with 2 columns: Rank and Song/Artist. Top songs include Ricky Martin, Livin' La Vida Loca; Everlast, What It's Like; Sissieq None The Richer, Kiss Me.

Table with 2 columns: Rank and Song/Artist. Top songs include Sissieq None The Richer, Kiss Me; TLC, No Scrubs; Whitney Houston, Heartbreak Hotel.

Table with 2 columns: Rank and Song/Artist. Top songs include Ricky Martin, Livin' La Vida Loca; 98 Degrees, The Hardest Thing; Sissieq None The Richer, Kiss Me.

Table with 2 columns: Rank and Song/Artist. Top songs include Ricky Martin, Livin' La Vida Loca; Matchbox 20, Back 2 Good; 98 Degrees, The Hardest Thing.

SONG AIRPLAY MONITOR MAINSTREAM TOP 40 FOR WEEK ENDING MAY 2, 1999

JORDAN KNIGHT 2234/208 Give It To You (Interscope)

Total Stations: 102 Chart Move: 23-20

Table with 5 columns: Station, TW, LW, ZW, IP. Lists stations and their chart positions for Jordan Knight's song.

JENNIFER LOPEZ 480/384 If You Had My Love (550 Music/WOR)

Total Stations: 52

Table with 5 columns: Station, TW, LW, ZW, IP. Lists stations and their chart positions for Jennifer Lopez's song.

RICKY MARTIN 5602/721 Livin' La Vida Loca (C2)

Total Stations: 110 Chart Move: 4-4

Table with 5 columns: Station, TW, LW, ZW, IP. Lists stations and their chart positions for Ricky Martin's song.

MEJA 980/27 All 'Bout The Money (C2)

Total Stations: 91 Chart Move: Debut 40

Table with 5 columns: Station, TW, LW, ZW, IP. Lists stations and their chart positions for Meja's song.

MULBERRY LANE 1043/11 Harmless (Refuge/MCA)

Total Stations: 93 Chart Move: 37-36

Table with 5 columns: Station, TW, LW, ZW, IP. Lists stations and their chart positions for Mulberry Lane's song.

SHAWN LOBBIN 633/44 Shimmer (Columbia)

Total Stations: 46 Chart Move: 16-16

Table with 5 columns: Station, TW, LW, ZW, IP. Lists stations and their chart positions for Shawn Lobbin's song.

'N SYNC 2844/8 I Drive Myself Crazy (RCA)

Total Stations: 106 Chart Move: 16-16

Table with 5 columns: Station, TW, LW, ZW, IP. Lists stations and their chart positions for 'N Sync's song.

THE OFFSPRING 1746/258 Why Don't You Get A Job? (Columbia)

Total Stations: 106 Chart Move: 28-22

Table with 5 columns: Station, TW, LW, ZW, IP. Lists stations and their chart positions for The Offspring's song.

ORGY 904/176 Blue Monday (Elementree/Reprise)

Total Stations: 59 Chart Move: 28-22

Table with 5 columns: Station, TW, LW, ZW, IP. Lists stations and their chart positions for Orgy's song.

BRITNEY SPEARS 1679/977 Sometimes (Jive)

Total Stations: 100 Chart Move: Debut 24

Table with 5 columns: Station, TW, LW, ZW, IP. Lists stations and their chart positions for Britney Spears' song.

TLC 6089/203 No Scrubs (LaFace/Arista)

Total Stations: 109 Chart Move: 3-2

Table with 5 columns: Station, TW, LW, ZW, IP. Lists stations and their chart positions for TLC's song.

SHANIA TWAIN 3547/440 That Don't Impress Me Much (Mercury)

Total Stations: 105 Chart Move: 13-11

Table with 5 columns: Station, TW, LW, ZW, IP. Lists stations and their chart positions for Shania Twain's song.

TYRESE 1175/158 Sweet Lady (RCA)

Total Stations: 77 Chart Move: 39-34

Table with 5 columns: Station, TW, LW, ZW, IP. Lists stations and their chart positions for Tyrese's song.

VENGABOYS 1691/26 We Like To Party! (Groovilicious/Strictly Rhythm)

Total Stations: 102 Chart Move: 26-23

Table with 5 columns: Station, TW, LW, ZW, IP. Lists stations and their chart positions for Vengaboys' song.

ROBBIE WILLIAMS 1392/182 Millennium (Capitol)

Total Stations: 87 Chart Move: 34-30

Table with 5 columns: Station, TW, LW, ZW, IP. Lists stations and their chart positions for Robbie Williams' song.

Compiled from a national sample of data supplied by Broadcast Data Systems to Top 40 Airplay Monitor. 35 rhythmic top 40 stations are electronically monitored 24 hours a day, 7 days a week. © 1999 Billboard/BPI Communications.

RHYTHMIC TOP 40 AIRPLAY table with columns: THIS WEEK, LAST WEEK, WKS. ON CHART, TITLE/IMPRINT/PROMOTION LABEL, ARTIST, TW, LW. Includes top entries like 'NO SCRUBS' by TLC at No. 1.

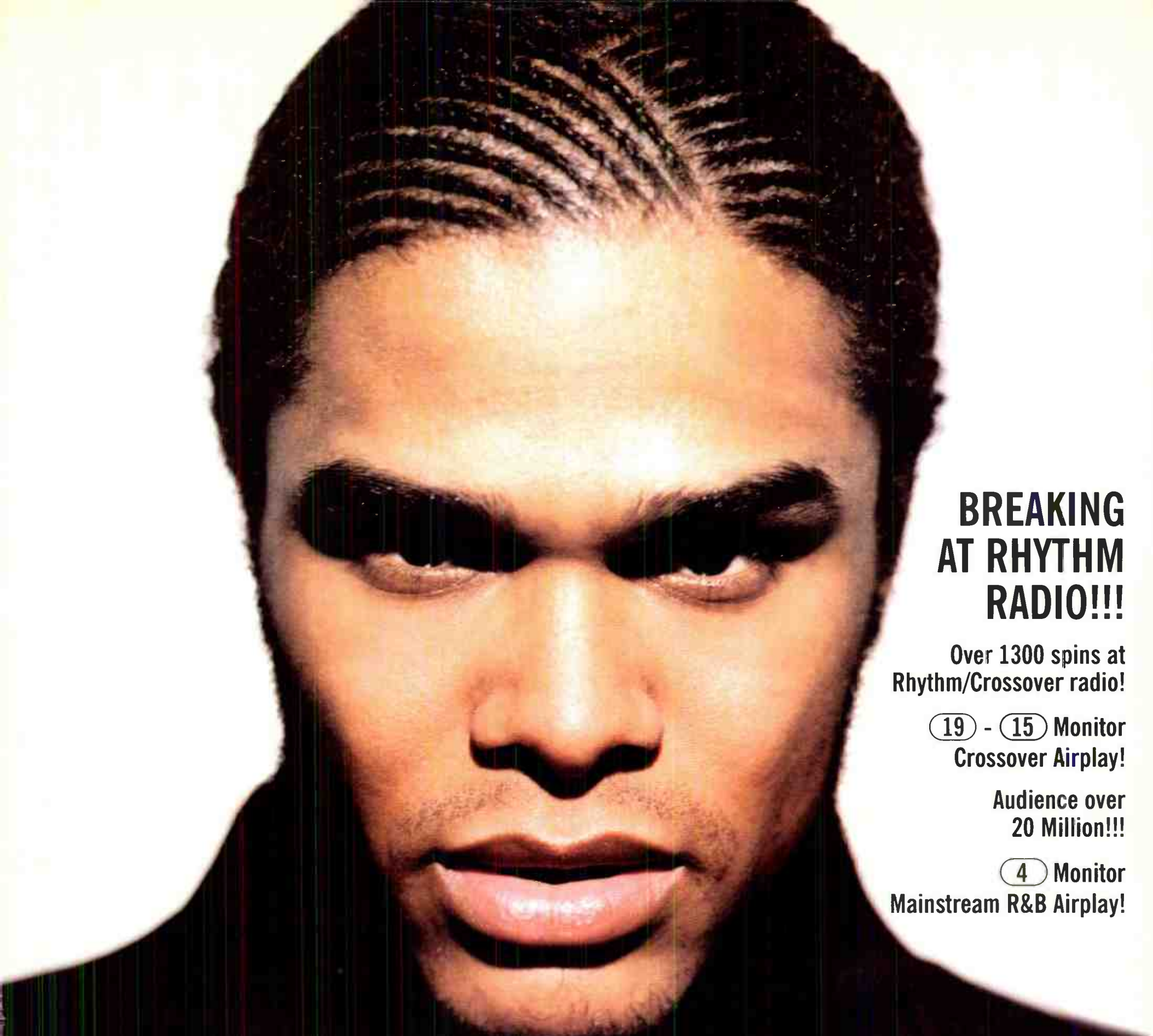
Songs ranked by number of detections. ○ Records showing an increase in detections over the previous week, regardless of chart movement. A record that has been on the chart for more than 20 weeks will not receive a bullet, even if it registers an increase in detections.

GREATEST GAINERS RHYTHMIC TOP 40 section listing songs with significant increases in detections, such as Jennifer Lopez's 'If You Had My Love' (+314).

RHYTHMIC TOP 40 AUDIENCE table with columns: THIS WEEK, LAST WEEK, WKS. ON CHART, TITLE/IMPRINT/PROMOTION LABEL, ARTIST, TW, LW, AUDIENCE (millions). Includes top entries like 'NO SCRUBS' by TLC with 29.842 million audience.

Songs ranked by audience, computed by cross-referencing exact times of airplay with Arbitron listener data. ○ Records showing an increase in audience over the previous week, regardless of chart movement.

Monitor RECURRENENTS RHYTHMIC TOP 40 section listing songs that have reappeared on the chart after a period of absence, including 'TOO CLOSE' by Next.



BREAKING AT RHYTHM RADIO!!!

Over 1300 spins at Rhythm/Crossover radio!

19 - 15 Monitor Crossover Airplay!

Audience over 20 Million!!!

4 Monitor Mainstream R&B Airplay!

WJMN (12x)
Hot 97 (25x)
B96 (15x)

WPGC (60x)
WWKX (10x)
KMEL (20x)

WERQ (40x)
KDGS (30x)
KQKS (15x)

KIKI (20x)
Z90 (10x)
KBXX (50x)



MAXWELL FORTUNATE

SOMETIMES YOU NEED TIME TO REALIZE JUST HOW FORTUNATE YOU REALLY ARE

NEW FROM THE FORTHCOMING UNIVERSAL MOTION PICTURE AND SOUNDTRACK "LIFE," STARRING EDDIE MURPHY AND MARTIN LAWRENCE. SOUNDTRACK IN STORES NOW. "LIFE" IN THEATERS APRIL 16.

PRODUCED, WRITTEN AND ARRANGED BY R. KELLY REPRESENTATION: HOFFMAN ENTERTAINMENT WWW.MUSZE.COM "COLUMBIA"

REG. U.S. PAT. & TM. OFF. MARCA REGISTRADA. © 1999 SONY MUSIC ENTERTAINMENT INC. MOTION PICTURE ARTWORK & ARTWORK TITLE. © 1999 UNIVERSAL STUDIOS

COLUMBIA



WKTU New York PD: Frankie Blue APD/MD: Andy Shane 201-420-3700 Chanceller

WBBM Chicago PD: Todd Cavanah APD/MD: Erik Bradley 312-944-6000 Infinity

WJMN Boston PD: Cadillac Jack APD/MD: Danny Ocean 781-663-2500 Chanceller

KYLD San Francisco PD: Michael Martin MD: "Jazzy" Jim Archer 415-391-1077 Chanceller

WPOW Miami PD: Kid Curry APD: Tonye Tiger MD: Eddie Mix 305-653-6796 Beasley

KUBE Seattle PD: Eric Powers MD: Julie Pilot 206-285-2295 Ackerley

Table with 2 columns: Rank and Song/Artist. Top songs include Deborah Cox, Ricky Martin, Backstreet Boys, Britney Spears, TLC, etc.

Table with 2 columns: Rank and Song/Artist. Top songs include TLC, No Scrubs, Tyrese, Sweet Lady, Lauryn Hill, etc.

Table with 2 columns: Rank and Song/Artist. Top songs include Tanto Metro & Devonte, Everyone Falls In, TLC, No Scrubs, etc.

Table with 2 columns: Rank and Song/Artist. Top songs include T.W.D.Y., Players Holiday, TLC, No Scrubs, etc.

Table with 2 columns: Rank and Song/Artist. Top songs include TLC, No Scrubs, Britney Spears, Baby One More Time, etc.

Table with 2 columns: Rank and Song/Artist. Top songs include Ginuwine, What's So Different, TLC, No Scrubs, etc.

KGGI Riverside PD: Mark Feather APD/MD: Jesse Duran 909-684-1991 Chanceller

KSFM Sacramento PD: Bob West MD: John E. Kage 916-920-1025 Infinity

XHTZ San Diego DM/MD: Lisa Vazquez MD: Dale Soliven 619-585-9090 Noventa FM 90

KTFM San Antonio PD: Cliff Tredway MD: Steve Chavez 210-599-5500 Waterman

KKFR Phoenix PD/MD: Bruce St. James APD: Krazy Kid Stevenz MD: Mark Medina 602-258-6161 Chanceller

KQKS Denver PD: Cat Collins MD: Harrison Wood 303-321-0950 Jefferson-Pilot

Table with 2 columns: Rank and Song/Artist. Top songs include TLC, No Scrubs, Whitney Houston, etc.

Table with 2 columns: Rank and Song/Artist. Top songs include TLC, No Scrubs, 112, Anywhere, etc.

Table with 2 columns: Rank and Song/Artist. Top songs include Blackstreet W/Janet, Girlfriend/Boyfriend, TLC, No Scrubs, etc.

Table with 2 columns: Rank and Song/Artist. Top songs include TLC, No Scrubs, Lauryn Hill, Ex-Factor, etc.

Table with 2 columns: Rank and Song/Artist. Top songs include TLC, No Scrubs, Ginuwine, What's So Different, etc.

Table with 2 columns: Rank and Song/Artist. Top songs include TLC, No Scrubs, Tyrese, Sweet Lady, etc.

WLLD Tampa PD: Dave Ferguson APD/MD: Drlando 813-221-2925 Infinity

KRBV Dallas PD: Carmy Ferrari MD: Pete Manriquez 214-630-3011 Infinity

WNVZ Norfolk PD: Don London APD/MD: Jay West 757-497-2000 Sinclair

KLUC Las Vegas PD: Cat Thomas MD: Melissa Stetas 702-364-8400 Infinity

KPRR El Paso DM: John Candelaria PD: Victor Starr 915-566-9301 Clear Channel

WSNX Grand Rapids PD: Todd Michaels MD: Keith Curry 616-956-6696 Goodrich

Table with 2 columns: Rank and Song/Artist. Top songs include TLC, No Scrubs, Busta Rhymes Feat. Janet, What's I, etc.

Table with 2 columns: Rank and Song/Artist. Top songs include Tyrese, Sweet Lady, TLC, No Scrubs, etc.

Table with 2 columns: Rank and Song/Artist. Top songs include TLC, No Scrubs, Whitney Houston, etc.

Table with 2 columns: Rank and Song/Artist. Top songs include TLC, No Scrubs, Ricky Martin, Luv'n' La Vida Loca, etc.

Table with 2 columns: Rank and Song/Artist. Top songs include TLC, No Scrubs, Vengaboys, We Like To Party!, etc.

Table with 2 columns: Rank and Song/Artist. Top songs include TLC, No Scrubs, Backstreet Boys, I Want It That Way, etc.

Upward-moving songs ranked in order of detections. Songs are removed if they lose more than 5% of their detections from previous week or if their detections decline for two consecutive weeks.

MOST NEW STATIONS

Songs with 6 or more detections at new stations this week

	NEW STATIONS
JENNIFER LOPEZ <i>If You Had My Love (WORK/ERG)</i>	15
K-CI & JOJO <i>Tell Me It's Real (MCA)</i>	13
SPORTY THIEVZ FEAT. MR. WOODS <i>No Pigeons (Ruffhouse/Columbia)</i>	12
MASE FEAT. BLACKSTREET <i>Get Ready (Bad Boy/Arista)</i>	7



NO RECORDS QUALIFIED FOR AIRPOWER THIS WEEK

AIRPOWER BOUND

Total Detections/Gain

SILKK THE SHOCKER FEAT. MYA 459/65
Somebody Like Me (No Limit/Priority)
Total Stations: 20/Chart Move: 33-22
Heavy (40+ plays): 2 KKSS, KIOX
Medium (20-39): 9 KBOS, KCAQ, KDGS, KOHT, KSFM, KYLD, KYLZ, WHHH, WLLD
Light (Under 20): 9
New Airplay This Week: 2 KQBT, WSNX

JENNIFER LOPEZ 455/314
If You Had My Love (WORK/ERG)
Total Stations: 24/Chart Move: Debut 23
Heavy (40+): 1 KYLZ
Medium (20-39): 11 KDON, KIOX, KOHT, KQBT, KQKS, KSEQ, KTFM, WBBM, WKTU, WSNX, XHTZ
Light (Under 20): 12
New Airplay This Week: 15 KDGS, KIKI, KKFR, KIOX, KPRR, KQBT, KQKS, KSEQ, KTFM, WBTT, WHHH, WJMN, WSNX, WWKX, XHTZ

'N SYNC 451/8
I Drive Myself Crazy (RCA)
Total Stations: 22/Chart Move: 26-24
Heavy (40+): 2 KKXX, KSEQ
Medium (20-39): 8 KDGS, KDON, KIKI, KLUC, KXME, WBTT, WNVZ, WSNX
Light (Under 20): 12

JESSE POWELL 430/-21
You (Silas/MCA)
Total Stations: 22/Chart Move: 27-27
Heavy (40+): 2 KBOS, KDGS
Medium (20-39): 8 KKSS, KIOX, KQKS, KRBV, KSFM, WBBM
Light (Under 20): 14
New Airplay This Week: 2 KLUC, KUBE

WHITNEY HOUSTON 427/153
It's Not Right But It's Okay (Arista)
Total Stations: 23/Chart Move: Debut 28
Heavy (40+): 2 KBOS, KSFM
Medium (20-39): 10 KDON, KISV, KIOX, KQBT, KQKS, WBBM, WHHH, WKTU, WSNX, XHTZ
Light (Under 20): 11
New Airplay This Week: 4 KISV, KQBT, WSNX, XHTZ

BLAQUE 418/17
808 (Track Masters/Columbia)
Total Stations: 21/Chart Move: 31-29
Heavy (40+): 3 KIKI, KISV, XHTZ
Medium (20-39): 6 KDGS, KKFR, KIOX, KOHT, KTFM, WSNX
Light (Under 20): 12
New Airplay This Week: 2 KXME, KYLD

JT MONEY FEATURING SOLE 379/7
Who Dat (Freeworld/Tony Mercedes/Priority)
Total Stations: 25/Chart Move: 36-33
Heavy (40+): 2 KBOS, KDGS
Medium (20-39): 6 KCAQ, KKFR, KKSS, KOHT, KPRR, WPOW
Light (Under 20): 17
New Airplay This Week: 1 KYLZ

TRICK DADDY FEAT. TRINA 335/54
Nann (Slip-N-Slide/Warlock)
Total Stations: 17/Chart Move: Debut 37
Heavy (40+): 1 WLLD
Medium (20-39): 6 KRBV, KSFM, KTFM, KYLD, WHHH, WPOW
Light (Under 20): 10
New Airplay This Week: 2 KIOX, WBBM

★ SPORTY THIEVZ FEAT. MR. WOODS 329/299
No Pigeons (Ruffhouse/Columbia)
Total Stations: 17/Chart Move: Debut 38
Heavy (40+): 1 WLLD
Medium (20-39): 7 KKSS, KOHT, KRBV, KSFM, KXME, WPOW, WWKX
Light (Under 20): 9
New Airplay This Week: 12 KCAQ, KDGS, KKFR, KLUC, KOHT, KQBT, KRBV, KSFM, KTFM, KXME, WPOW, WWKX

TOTAL 304/6
Sitting Home (Bad Boy/Arista)
Total Stations: 22/Chart Move: 39-40
Heavy (40+): 1 KISV
Medium (20-39): 7 KBOS, KCAQ, KDGS, KIKI, KKFR, KOHT, WWKX
Light (Under 20): 14
New Airplay This Week: 1 KYLZ

CHART BOUND

Total Detections/Gain

★ K-CI & JOJO 302/302
Tell Me It's Real (MCA)
Total Stations: 22
Heavy (40+): 1 KCAQ
Medium (20-39): 6 KIOX, KLUC, KQKS, KSFM, KXME, WJMN
Light (Under 20): 15
New Airplay This Week: 13 KCAQ, KGGI, KIKI, KKSS, KIOX, KLUC, KQKS, KSFM, KXME, KYLD, WHHH, WJMN, WWKX

DJ QUIK 261/7
You're A Ganxta (Profile/Arista)
Total Stations: 18
Heavy (40+): 2 KBOS, KCAQ
Medium (20-39): 4 KISV, KKFR, KKSS, XHTZ
Light (Under 20): 12

T.W.D.Y. 236/16
Players Holiday (Thump Street)
Total Stations: 13
Heavy (40+): 2 KOHT, KYLD
Medium (20-39): 2 KCAQ, XHTZ
Light (Under 20): 9
New Airplay This Week: 1 KKSS

JORDAN KNIGHT 226/94
Give It To You (Interscope)
Total Stations: 15
Heavy (40+): 2 KSEQ, WSNX
Medium (20-39): 4 KDGS, KTFM, WLLD, WNVZ
Light (Under 20): 9
New Airplay This Week: 3 KTFM, WBTT, WHHH

BRITNEY SPEARS 215/69
Sometimes (Jive)
Total Stations: 12
Heavy (40+): 1 WBTT
Medium (20-39): 4 KIKI, KTFM, WNVZ, WSNX
Light (Under 20): 7
New Airplay This Week: 3 KGGI, WBBM, WHHH

SIXPENCE NONE THE RICHER 207/3
Kiss Me (Squint/Columbia)
Total Stations: 8
Heavy (40+): 3 KXME, WBBM, WBTT
Medium (20-39): 0
Light (Under 20): 5

R. KELLY 200/69
Did You Ever Think (Jive)
Total Stations: 14
Heavy (40+): 1 KKSS
Medium (20-39): 4 KDGS, WHHH, WWKX, XHTZ
Light (Under 20): 9
New Airplay This Week: 4 KISV, KOHT, KQBT, XHTZ

MASE FEAT. BLACKSTREET 193/139
Get Ready (Bad Boy/Arista)
Total Stations: 24
Heavy (40+): 1 KIOX
Medium (20-39): 3 WJMN, WSNX, WWKX
Light (Under 20): 20
New Airplay This Week: 7 KCAQ, KDGS, KDON, KISV, KKSS, WSNX, WWKX

DRU HILL 187/0
You Are Everything (University/Island/Mercury)
Total Stations: 18
Heavy (40+): 1 KBOS
Medium (20-39): 2 KIOX, WHHH
Light (Under 20): 15
New Airplay This Week: 1 KTFM

DMX 178/-8
Slippin' (Ruff Ryders/Def Jam/Mercury)
Total Stations: 9
Heavy (40+): 1 KUBE
Medium (20-39): 1 WLLD
Light (Under 20): 7

TLC 173/16
Unpretty (LaFace/Arista)
Total Stations: 6
Heavy (40+): 1 KUBE, WBBM
Medium (20-39): 2 KQKS, WJMN
Light (Under 20): 2

TANTO METRO & DEVONTE 150/28
Everyone Falls In Love (Penthouse/VP)
Total Stations: 8
Heavy (40+): 1 WJMN
Medium (20-39): 1 WWKX
Light (Under 20): 6
New Airplay This Week: 2 KTFM, WWKX

LAURYN HILL 143/38
Everything Is Everything (Ruffhouse/Columbia)
Total Stations: 9
Heavy (40+): 0
Medium (20-39): 4 KBOS, KDGS, WBBM, WJMN
Light (Under 20): 5
New Airplay This Week: 3 KBOS, KOHT, WPOW

MAXWELL 137/17
Fortunate (Rock Land/Interscope/Columbia)
Total Stations: 16
Heavy (40+): 0
Medium (20-39): 2 KDGS, KIKI
Light (Under 20): 14
New Airplay This Week: 2 KISV, XHTZ

MISSY "MISDEMEANOR" ELLIOTT 132/47
She's A Bitch (The Gold Mind/EastWest/EEG)
Total Stations: 20
Heavy (40+): 0
Medium (20-39): 0
Light (Under 20): 20
New Airplay This Week: 4 KKSS, KQKS, KUBE, WHHH

LINK 126/15
I Don't Wanna See (Relativity)
Total Stations: 8
Heavy (40+): 1 KOHT
Medium (20-39): 1 WHHH
Light (Under 20): 4

DEBORAH COX 116/19
It's Over Now (Arista)
Total Stations: 14
Heavy (40+): 0
Medium (20-39): 1 KBOS
Light (Under 20): 13
New Airplay This Week: 1 KYLZ

NASTYBOY KLICK FEATURING ANGELINA 102/18
Perfect Man (Upstairs)
Total Stations: 4
Heavy (40+): 1 KQBT
Medium (20-39): 2 KDON, KTFM
Light (Under 20): 1

TQ 101/-5
Better Days (ClockWork/Epic)
Total Stations: 9
Heavy (40+): 0
Medium (20-39): 1 KKSS
Light (Under 20): 8
New Airplay This Week: 2 WHHH, XHTZ

★ NAUGHTY BY NATURE 101/69
Jamboree (Arista)
Total Stations: 10
Heavy (40+): 1 KUBE
Medium (20-39): 1 KYLD
Light (Under 20): 8
New Airplay This Week: 1 KKFR

★ WILL SMITH 95/95
Wild Wild West (Columbia)
Total Stations: 7
Heavy (40+): 0
Medium (20-39): 2 KSEQ, WBTT
Light (Under 20): 5
New Airplay This Week: 4 KSEQ, KSFM, WBTT, WHHH

JUVENILE 86/11
Follow Me Now (Cash Money/Universal)
Total Stations: 17
Heavy (40+): 0
Medium (20-39): 0
Light (Under 20): 17
New Airplay This Week: 2 KOHT, KQBT

TLC 81/17
Dear Lie (LaFace/Arista)
Total Stations: 1
Heavy (40+): 1 KXME
Medium (20-39): 0
Light (Under 20): 0

EVERLAST 80/1
What It's Like (Tommy Boy)
Total Stations: 4
Heavy (40+): 1 WBTT
Medium (20-39): 0
Light (Under 20): 3

★ BILLIE 69/25
She Wants You (Innocent/Virgin)
Total Stations: 6
Heavy (40+): 0
Medium (20-39): 2 KDGS, KDON
Light (Under 20): 4
New Airplay This Week: 1 KDON

JAY-Z FEAT. BIG JAZ 66/11
Jigga What (Roc-A-Fella/Def Jam/Mercury)
Total Stations: 12
Heavy (40+): 0
Medium (20-39): 1 KCAQ
Light (Under 20): 11
New Airplay This Week: 1 KQBT

★ REEL TIGHT 66/66
I Want U (G-Funk/Restless)
Total Stations: 5
Heavy (40+): 0
Medium (20-39): 1 XHTZ
Light (Under 20): 4
New Airplay This Week: 3 KOHT, WSNX, XHTZ

NALIN & KANE 56/0
Beachball (Ultra)
Total Stations: 4
Heavy (40+): 1 WPOW
Medium (20-39): 0
Light (Under 20): 3
New Airplay This Week: 2 KTFM, WPOW


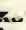
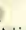
A new voice...

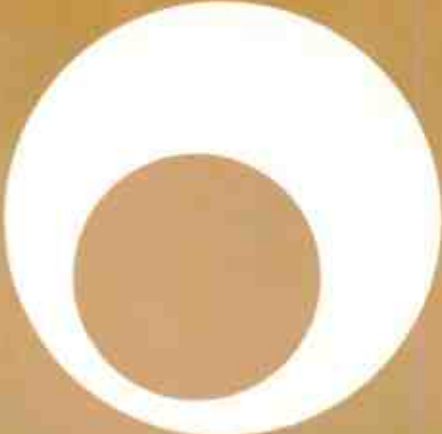
introducing
christina aguilera 
genie in a bottle
the first track from her RCA debut album

www.rca.com/christina • www.christina-A.com

Produced, Recorded and Arranged by David Frank and Steve Kiper
Mixed by Dave Way

Executive Producer/A&R Direction: Ron Fair
Personal Representation: Steve Kurtz for
Marquee Management, (212) 889-0420

   The RCA Records Label is a unit of BMG Entertainment • TM(s) © Registered • Marca(s) Registrada(s) ©
General Electric Co., USA • BMG and Peeps logos are trademarks of BMG Music • © 1999 BMG Entertainment



"Her voice is unbelievable! The last time I felt this strongly about a female solo artists debut was back when I heard Celine Dion for the first time. Christina Aguilera evokes the same emotion and the same 'tear the house' down attitude that will catapult her to similar stardom."

**Andy Shane, APD/MD
WKTU New York**

"Incredible vocal range... Christina Aguilera has a fresh mature pop sound that radio needs right now!"

**John Reynolds, PD
WNKS/Charlotte**

"Christina is simply a great singer and a stunning performer. She has a long career ahead of her starting with 'Genie In A Bottle' which sounds like a KIIS-FM smash!"

**Michael Steele, MD
KIIS-FM Los Angeles**

"It's talented artists like this that remind me why I got in the music business to begin with. Christina Aguilera is one of those true rare talents."

**Cat Thomas, PD
KLUC/Las Vegas**

"This record is a smash! If she's the Genie in the bottle... then I wanna be Major Nelson!! I couldn't wait to get it on the air... and it's already my #1 phone record! This one will work next to anything you play!"

**Jeff Kapugi, PD
Z107-7 St. Louis**

"We both saw Christina perform and she is truly stunning... period! She has great songs for Top 40 radio."

**Todd Cavanaugh, PD
Erik Bradley, MD
B96/Chicago**

"Christina Aguilera's great looks are only surpassed by her commanding voice and dynamic range. This is an artist who can really sing and she proves it on every song."

**Scott Wheeler, PD
WHHN/Indianapolis**

"Her voice knocks me out!"

**Mr. Ed Lambert, PD
KHKS/Dallas**

Station codes are listed with an area code in parentheses. Total detections are listed in parentheses. Station codes are listed in parentheses.

98 DEGREES 767/2 The Hardest Thing (Universal) Total Stations: 25 Chart Move: 12-13

112 FEAT. LIL'Z 1651/158 Anywhere (Bad Boy/Arista) Total Stations: 34 Chart Move: 3-2

702 792/92 Where My Girls At? (Motown/Universal) Total Stations: 28 Chart Move: 17-12

BACKSTREET BOYS 761/47 I Want It That Way (Jive) Total Stations: 21 Chart Move: 13-14

BLAQUE 418/17 808 (Track Masters/Columbia) Total Stations: 21 Chart Move: 31-29

BRANDY 819/38 Almost Doesn't Count (Atlantic) Total Stations: 31 Chart Move: 11-10

DJ QUIK 261/7 Youz A Ganxta (Profile/Arista) Total Stations: 18

MISSY "MISDEMEANOR" ELLIOTT 132/47 She's A Bitch (The Gold Mind/EastWest/EEG) Total Stations: 20

GINUWINE 1380/9 What's So Different (550 Music/ERG) Total Stations: 32 Chart Move: 5-4

LAURYN HILL 143/38 Everything Is Everything (Ruffhouse/Columbia) Total Stations: 9

WHITNEY HOUSTON 427/153 It's Not Right But It's Okay (Arista) Total Stations: 23 Chart Move: Debut 28

JT MONEY FEAT. SOLE 379/7 Who Dat (Freeworld/Tony Mercedes/Priority) Total Stations: 25 Chart Move: 36-33

K-CI & JOJO 302/302 Tell Me It's Real (MCA) Total Stations: 22

R. KELLY 200/69 Did You Ever Think (Jive) Total Stations: 14

JORDAN KNIGHT 226/94 Give It To You (Interscope) Total Stations: 15

JENNIFER LOPEZ 455/314 If You Had My Love (WORK/ERG) Total Stations: 24 Chart Move: Debut 23

RICKY MARTIN 1002/198 Livin' La Vida Loca (C2) Total Stations: 27 Chart Move: 10-8

MASE FEAT. BLACKSTREET 193/139 Get Ready (Bad Boy/Arista) Total Stations: 24

MAXWELL 137/17 Fortunate (Rock Land/Interscope/Columbia) Total Stations: 16

TANTO METRO & DEVONTE 150/28 Everyone Falls In Love (Penthouse/VP) Total Stations: 8

'N SYNC 451/8 I Drive Myself Crazy (RCA) Total Stations: 22 Chart Move: 26-24

SILKK THE SHOCKER FEAT. MYA 459/65 Somebody Like Me (No Limit/Priority) Total Stations: 20 Chart Move: 33-22

SIXPENCE NONE THE RICHER 207/3 Kiss Me (Squint/Columbia) Total Stations: 8

BRITNEY SPEARS 215/69 Sometimes (Jive) Total Stations: 12

SPORTY THIEVZ FEAT. MR. WOODS 329/299 No Pigeons (Ruffhouse/Columbia) Total Stations: 17 Chart Move: Debut 38

T.W.D.Y. 236/16 Players Holiday (Thump Street) Total Stations: 13

TLC 2287/18 No Scrubs (LaFace/Arista) Total Stations: 34 Chart Move: 1-1

TLC 173/16 Unpretty (LaFace/Arista) Total Stations: 6

TOTAL 304/6 Sitting Home (Bad Boy/Arista) Total Stations: 22 Chart Move: 39-40

TRICK DADDY FEAT. TRINA 335/54 Nann (Slip-N-Slide/Warlock) Total Stations: 17 Chart Move: Debut 37

Monitor CROSSEDOVER POWER PLAYLIST FOR WEEK ENDING MAY 2, 1999

WQHT New York PD: Tracy Clothery MD: Sean Taylor AMD: Deneen Womack 212-229-9797 Emmis

KPWR Los Angeles APD: Damon Young MD: E-man 818-953-4200 Emmis

KKBT Los Angeles PD: Michael Saunders MD: Dorsey Fuller AMD: Tawala Sharp 323-634-1800 Chancellor

WGCI Chicago PD: Elroy R.C. Smith APD/MD: Jay Alan 312-427-4800 Chancellor

WUSL Philadelphia OM: Helen Little APD/MD: Glenn Cooper 215-483-8900 Chancellor

WPGC Washington, DC PD: Jay Stevens APD/MD: Maurice Devoe 301-441-3500 Infinity

WVEE Atlanta PD: Tony Brown MD: Rajeyah Shabazz 404-898-8900 Infinity

WJLB Detroit MD: Kris Kelley 313-965-2000 Chancellor

KBXX Houston OM: Robert Scorpio MD: Kashon Powell 713-623-2108 Clear Channel

KMEL San Francisco PD: Joey Arbogast MD: Glen Aure 415-538-1061 Chancellor

WKYS Washington, DC VP/Pgm: Steve Hegwood APD: Daryl Huckabay MD: Lisa Lisa 301-306-1111 Radio One

KKDA Dallas PD: Skip Cheatham 972-263-9911 Service Broadcasting

WDTJ Detroit PD: Nate Bell MD: Lance Pantan 313-871-0591 Radio One

WPHI Philadelphia PD: Mic Fox APD: Lamonda Williams MC: Egypt 215-884-9400 Radio One

WHTA Atlanta VP/Pgm: Steve Hegwood PD: Darrel Johnson 404-765-9750 Radio One

WERQ Baltimore OM: Tom Calococco APD: Dion Summers MD: Buttahman 410-332-8200 Radio One

WPEG Charlotte PD: Andre Carson MD: Nate Quick 704-333-0131 Infinity

WQNE New Orleans OM: Gerod Stevens MD: Angela Harrison 504-827-6000 Clear Channel

WJMH Greensboro OM/MD: Brian Douglas Interim MD: Boogie D. 336-605-5200 Sinclair

WJHM Orlando OM: Adam Cook PD: Russ Allen MD: Al Fiala 407-333-0072 Chancellor

WQOK Raleigh OM: Hozie Mack MD: Jodi Berry 919-848-9736 Clear Channel

WKKV Milwaukee PD: Gary Young MD: Dallas Scott 414-321-1007 Clear Channel

WIZF Cincinnati VP/Pgm: Tony Fields PD: Phillip March MD: Lauri Jones 513-697-6000 Blue Chip

WJMZ Greenville, S.C. PD: Mary Hankston MD: Doug Davis 864-235-1073 Clear Channel

Upward-moving songs ranked in order of detections. Songs are removed if they lose more than 5% of their detections from previous week or if their detections decline for two consecutive weeks.

MOST NEW STATIONS

Songs with 6 or more detections at new stations this week

	NEW STATIONS
SPORTY THIEVZ FEAT. MR. WOODS <i>No Pigeons (Ruffhouse/Columbia)</i>	18
JENNIFER LOPEZ <i>If You Had My Love (WORK/Epic)</i>	16
K-CI & JOJO <i>Tell Me It's Real (MCA)</i>	15
MISSY "MISDEMEANOR" ELLIOTT <i>She's A Bitch (The Gold Mind/EastWest/EEG)</i>	11
R. KELLY <i>Did You Ever Think (Jive)</i>	10
MASE FEAT. BLACKSTREET <i>Get Ready (Bad Boy/Arista)</i>	9

DEBORAH COX 462/28
It's Over Now (Arista)
Total Stations: 40
Heavy (30+): 0
Medium (15-29): 14 KBOS, KDGS, KDKS, KOHT, KRRQ, WCKX, WEAS, WHHH, WJHM, WKKV, WQHT, WROU, WTL, WWWZ
Light (Under 15): 26
New Airplay This Week: 2 KYLZ, WERO

DJ QUIK 462/-22
You're A Ganxta (Profile/Arista)
Total Stations: 36
Heavy (30+): 4 KBMB, KBOS, KCAQ, KPWR
Medium (15-29): 9 KISV, KKBT, KKDA, KKFR, KKSS, KOHT, KYLZ, WQUE, XHTZ
Light (Under 15): 23

DAVE HOLLISTER 460/10
My Favorite Girl (Def Squad/DreamWorks)
Total Stations: 29
Heavy (30+): 5 KRRQ, WFXA, WJMI, WKKV, WWWZ
Medium (15-29): 7 KKDA, WDTJ, WEAS, WJLB, WJMJ, WPEG, WROU
Light (Under 15): 17
New Airplay This Week: 1 WUSL

JA RULE 441/82
Holla Holla (Murder Inc./Def Jam)
Total Stations: 42
Heavy (30+): 4 KPWR, WHTA, WPHI, WQHT
Medium (15-29): 6 KCAQ, KKDA, WJHM, WPEG, WQUE, WUSL
Light (Under 15): 32
New Airplay This Week: 5 KYLD, WCKX, WKKV, WPEG, WPGC

LAURYN HILL 436/164
Everything Is Everything (Ruffhouse/Columbia)
Total Stations: 26
Heavy (30+): 7 KKBT, KXJM, WJBT, WJMH, WJMN, WJWZ, WQUE
Medium (15-29): 5 KBMB, KBOS, KDGS, WJHM, WPEG
Light (Under 15): 14
New Airplay This Week: 6 KBMB, KBOS, KDKS, KOHT, WJMH, WKKV

JENNIFER LOPEZ 416/325
If You Had My Love (WORK/Epic)
Total Stations: 31
Heavy (30+): 4 KBXX, KIOX, KYLZ, WSNX
Medium (15-29): 6 KOHT, KPWR, KQBT, KOKS, KSEQ, XHTZ
Light (Under 15): 21
New Airplay This Week: 16 KBMB, KDGS, KIKI, KKFR, KIOX, KPWR, KQBT, KOKS, KSEQ, WHHH, WJHM, WJMN, WJWZ, WSNX, WWKX, XHTZ

TYRESE 383/2
Lately (RCA)
Total Stations: 30
Heavy (30+): 1 WJBT
Medium (15-29): 12 KBXX, KRRQ, WCKX, WDTJ, WEAS, WERQ, WJMI, WJWZ, WKKV, WPGC, WUSL, WWWZ
Light (Under 15): 17
New Airplay This Week: 1 WBLX

JUVENILE 379/85
Follow Me Now (Cash Money/Universal)
Total Stations: 43
Heavy (30+): 2 WJMI, WQUE
Medium (15-29): 7 KBMB, KKSS, KRRQ, WBLX, WHTA, WWKX, WWWZ
Light (Under 15): 34
New Airplay This Week: 7 KOHT, KQBT, WCKX, WDTJ, WEAS, WHTA, WJHM

T.W.D.Y. 378/36
Players Holiday (Thump Street)
Total Stations: 19
Heavy (30+): 6 KBMB, KMEL, KOHT, KPWR, KYLD, XHTZ
Medium (15-29): 4 KBOS, KCAQ, KKFR, WJMI
Light (Under 15): 9
New Airplay This Week: 1 KKSS

MASE FEAT. BLACKSTREET 360/199
Get Ready (Bad Boy/Arista)
Total Stations: 45
Heavy (30+): 2 KIOX, KXJM
Medium (15-29): 7 KCAQ, WFXA, WHTA, WJMN, WPEG, WSNX, WWKX
Light (Under 15): 36
New Airplay This Week: 9 KBMB, KCAQ, KDGS, KISV, KKSS, WFXA, WQOK, WSNX, WWKX

DRU HILL 333/13
Beauty (University/Island/Def Jam)
Total Stations: 11
Heavy (30+): 6 WDTJ, WERO, WKYS, WPGC, WPHI, WUSL
Medium (15-29): 3 KKBT, WCKX, WYOK
Light (Under 15): 2

BACKSTREET BOYS 329/28
I Want It That Way (Jive)
Total Stations: 11
Heavy (30+): 7 KDGS, KIKI, KLUC, KSEQ, KYLZ, WHHH, WSNX
Medium (15-29): 0
Light (Under 15): 4

K-CI & JOJO 321/321
Tell Me It's Real (MCA)
Total Stations: 31
Heavy (30+): 3 KCAQ, KXJM, WJMN
Medium (15-29): 4 KIOX, KLUC, KOKS, WHHH
Light (Under 15): 24
New Airplay This Week: 15 KCAQ, KIKI, KKSS, KIOX, KLUC, KOKS, KXJM, KYLD, WERO, WHHH, WHTA, WJMN, WPEG, WVEE, WWKX

'N SYNC 291/10
I Drive Myself Crazy (RCA)
Total Stations: 12
Heavy (30+): 4 KIOX, KLUC, KSEQ, WSNX
Medium (15-29): 4 KDGS, KIKI, KKFR, KQBT
Light (Under 15): 4

JUVENILE FEAT. MANNY FRESH 284/24
Back That Azz Up (Cash Money/Universal)
Total Stations: 16
Heavy (30+): 3 KXHT, WBHJ, WJBT
Medium (15-29): 1 WHTA
Light (Under 15): 12
New Airplay This Week: 2 KUBE, WVEE

MARC DORSEY 275/32
If You Really Wanna Know (Jive)
Total Stations: 33
Heavy (30+): 0
Medium (15-29): 5 KDGS, KRRQ, WEAS, WJMI, WQOK
Light (Under 15): 28
New Airplay This Week: 2 KOHT, WHTA

TLC 237/6
I'm Good At Being Bad (LaFace/Arista)
Total Stations: 22
Heavy (30+): 3 WBHJ, WKYS, WPGC
Medium (15-29): 4 WERQ, WJMH, WPEG, WPHI
Light (Under 15): 15

LINK 217/-6
I Don't Wanna See (Relativity)
Total Stations: 14
Heavy (30+): 3 KOHT, WBHJ, WHHH
Medium (15-29): 3 KIKI, WJMI, XHTZ
Light (Under 15): 8

LES NUBIANS 213/-1
Makeda (Omtown/Higher Octave/Virgin)
Total Stations: 25
Heavy (30+): 0
Medium (15-29): 6 KMEL, WBLX, WGC, WJMI, WKKV, WROU
Light (Under 15): 19
New Airplay This Week: 2 KBXX, KDGS

JORDAN KNIGHT 211/73
Give It To You (Interscope)
Total Stations: 13
Heavy (30+): 3 KBXX, KSEQ, WSNX
Medium (15-29): 3 KDGS, WHHH, WLLD
Light (Under 15): 7
New Airplay This Week: 1 WHHH

TANTO METRO & DEVONTE 208/46
Everyone Falls In Love (Penthouse/VP)
Total Stations: 13
Heavy (30+): 3 WJBT, WJMN, WWKX
Medium (15-29): 2 KYLD, WQHT
Light (Under 15): 9
New Airplay This Week: 2 WQHT, WWKX

CHER 205/2
Believe (Warner Bros.)
Total Stations: 13
Heavy (30+): 3 KLUC, KRBV, KSEQ
Medium (15-29): 1 KYLZ
Light (Under 15): 9

EVE AND NOKIO 196/99
What Ya Want (Ruff Ryders/Interscope)
Total Stations: 31
Heavy (30+): 1 KXHT
Medium (15-29): 3 KBMB, KMEL, WBLX
Light (Under 15): 27
New Airplay This Week: 3 KDGS, WJMH, WUSL

TEVIN CAMPBELL 195/51
For Your Love (Qwest/Warner Bros.)
Total Stations: 17
Heavy (30+): 0
Medium (15-29): 6 WDTJ, WFXA, WJWZ, WIZF, WKKV, WQUE
Light (Under 15): 11
New Airplay This Week: 4 WGZB, WPEG, WVEE, WYOK

SHANICE 191/17
Yesterday (LaFace/Arista)
Total Stations: 25
Heavy (30+): 0
Medium (15-29): 5 KKBT, KMEL, WFXA, WJMJ, WWWZ
Light (Under 15): 20
New Airplay This Week: 2 KDGS, XHTZ

LIL' CEASE FEAT. LIL' KIM, JOE HOOKER & MR. ORNSTAL 181/78
Play Around (Undeas/Big Beat/Atlantic)
Total Stations: 28
Heavy (30+): 2 WJMH, WPHI
Medium (15-29): 1 WUSL
Light (Under 15): 25
New Airplay This Week: 2 WJHM, WWWZ

DONELL JONES 168/-4
Shorty (LaFace/Arista)
Total Stations: 21
Heavy (30+): 0
Medium (15-29): 4 KBXX, KOHT, WJMI, WJWZ
Light (Under 15): 17

TLC 163/39
Unpretty (LaFace/Arista)
Total Stations: 6
Heavy (30+): 2 KUBE, KXJM
Medium (15-29): 3 KOKS, WJMN, WSNX
Light (Under 15): 1
New Airplay This Week: 1 WGZB

BEFORE DARK 162/10
Baby (RCA)
Total Stations: 20
Heavy (30+): 1 WBLX
Medium (15-29): 2 KRRQ, WWWZ
Light (Under 15): 17
New Airplay This Week: 1 WYOK

AIRPOWER
(Minimum 900 detections for the first time)

Total Detections/Gain

BLAQUE 966/81
808 (Track Masters/Columbia)
Total Stations: 46/Chart Move: 29-24
Heavy (30+ detections): 14 KDGS, KIKI, KISV, KIOX, KOHT, KRRQ, KXHT, WBLX, WFXA, WHTA, WJMH, WQUE, WSNX, XHTZ
Medium (15-29): 15 KDKS, KKFR, WBHJ, WEAS, WGC, WIZF, WJMI, WJMJ, WJWZ, WKKV, WPEG, WQOK, WVEE, WWWZ, WYOK
Light (Under 15): 17
New Airplay This Week: 3 KYLD, WDTJ, WUSL

AIRPOWER BOUND

Total Detections/Gain

JAY-Z FEAT. BIG JAZ 856/10
Jigga What (Roc-A-Fella/Def Jam)
Total Stations: 45/Chart Move: 31-28
Heavy (30+): 14 KPWR, KRRQ, WBLX, WDTJ, WJBT, WJHM, WJLB, WJMH, WJWZ, WPEG, WPHI, WQHT, WQUE, WYOK
Medium (15-29): 10 KBMB, KCAQ, KKDA, WGZB, WHTA, WJMI, WKYS, WPGC, WROU, WUSL
Light (Under 15): 21
New Airplay This Week: 1 KQBT

SPORTY THIEVZ FEAT. MR. WOODS 783/575
No Pigeons (Ruffhouse/Columbia)
Total Stations: 37/Chart Move: Debut 31
Heavy (30+): 11 KBMB, KKSS, KMEL, KXHT, WERQ, WHTA, WJHM, WJMH, WLLD, WPHI, WUSL
Medium (15-29): 11 KOHT, KQBT, KRBV, WBHJ, WDTJ, WJBT, WJLB, WPGC, WQHT, WVEE, WWKX
Light (Under 15): 15
New Airplay This Week: 18 KBMB, KBXX, KCAQ, KDGS, KKBT, KKFR, KLUC, KOHT, KQBT, KRBV, WBHJ, WDTJ, WFXA, WJBT, WJWZ, WKYS, WVEE, WWKX

R. KELLY 776/272
Did You Ever Think (Jive)
Total Stations: 52/Chart Move: 40-32
Heavy (30+): 7 KKSS, WHTA, WPGC, WQHT, WQOK, WUSL, XHTZ
Medium (15-29): 20 KDGS, KDKS, KOHT, KRRQ, KYLZ, WCKX, WDTJ, WEAS, WERQ, WFXA, WHHH, WJMI, WJMJ, WJWZ, WKKV, WKYS, WPHI, WTL, WWKX, WWWZ

Light (Under 15): 25
New Airplay This Week: 10 KISV, KOHT, KQBT, KRRQ, KXJM, WBLX, WJLB, WPGC, WROU, XHTZ

MISSY "MISDEMEANOR" ELLIOTT 745/208
She's A Bitch (The Gold Mind/EastWest/EEG)
Total Stations: 58/Chart Move: 37-34
Heavy (30+): 7 WHTA, WJMH, WJWZ, WPEG, WPHI, WQUE, WUSL
Medium (15-29): 16 KBMB, KDGS, KKBT, KKDA, KXHT, WBLX, WFXA, WJWZ, WJHM, WJMI, WJMN, WKYS, WQHT, WQOK, WWKX, WWWZ
Light (Under 15): 35
New Airplay This Week: 11 KKSS, KOKS, KRRQ, KUBE, KXHT, WCKX, WHHH, WJBT, WJLB, WJMI, WYOK

CHANTE MOORE 745/163
Chante's Got A Man (Sinas/MCA)
Total Stations: 34/Chart Move: 34-35
Heavy (30+): 11 KBXX, KRRQ, WEAS, WGC, WIZF, WJMI, WKYS, WPGC, WQUE, WUSL, WWWZ
Medium (15-29): 14 KDKS, WBLX, WCKX, WDTJ, WERQ, WFXA, WGZB, WJBT, WJMJ, WKKV, WQOK, WROU, WTL, WVEE
Light (Under 15): 9
New Airplay This Week: 2 WJHM, WPEG

DRU HILL 599/33
You Are Everything (University/Island/Def Jam)
Total Stations: 48/Chart Move: 35-38
Heavy (30+): 1 KBOS
Medium (15-29): 16 KCAQ, KDKS, KIOX, KRRQ, WBLX, WCKX, WEAS, WERQ, WHHH, WHTA, WJHM, WJMI, WPEG, WPGC, WQHT, WTL
Light (Under 15): 31
New Airplay This Week: 3 WJBT, WJMJ, WKYS

CASE 561/23
Happily Ever After (Def Jam)
Total Stations: 34/Chart Move: 36-40
Heavy (30+): 6 KRRQ, WBLX, WDTJ, WEAS, WJMJ, WWWZ
Medium (15-29): 12 KDKS, WFXA, WHTA, WJBT, WJLB, WJMI, WKKV, WPEG, WQOK, WQUE, WROU, WYOK
Light (Under 15): 16
New Airplay This Week: 2 KBMB, WIZF

RICKY MARTIN 521/77
Livin' La Vida Loca (C2)
Total Stations: 19
Heavy (30+): 11 KDGS, KIKI, KIOX, KLUC, KOHT, KQBT, KSEQ, KYLD, KYLZ, WSNX, XHTZ
Medium (15-29): 1 WJMN
Light (Under 15): 7
New Airplay This Week: 3 KKFR, KIOX, WJMN

CHART BOUND

Total Detections/Gain

Chart position based on stations. Double check station list for accuracy. Any changes from last week are indicated by a plus sign (+).

702 1490/236 Where My Girls At? (Motown) Total Stations: 60 Chart Move: 12-7

BLAQUE 808 (Track Masters/Columbia) Total Stations: 46 Chart Move: 29-24

BRANDY 966/81 Almost Doesn't Count (Atlantic) Total Stations: 57 Chart Move: 17-13

CASE 561/23 Happily Ever After (Def Jam) Total Stations: 34 Chart Move: 36-40

DEBORAH COX 462/28 It's Over Now (Arista) Total Stations: 40 Chart Move: 10-11

DRU HILL 599/33 You Are Everything (University/Island/Def Jam) Total Stations: 48 Chart Move: 35-38

MISSY "MISDEMEANOR" ELLIOTT 745/208 She's A Bitch (The Gold Mind/EastWest/EEG) Total Stations: 58 Chart Move: 37-34

LAURYN HILL 436/164 Everything Is Everything (Ruffhouse/Columbia) Total Stations: 29 Chart Move: 26-27

DAVE HOLLISTER 460/10 My Favorite Girl (Def Squad/DreamWorks) Total Stations: 29 Chart Move: 29-30

JA RULE 441/82 Holla Holla (Murder Inc./Def Jam/Island) Total Stations: 42 Chart Move: 21-22

JAY-Z FEAT. BIG JAY 856/10 Jigga What... (Roc-A-Fella/Def Jam) Total Stations: 45 Chart Move: 31-28

JT MAYER FEAT. SOLE 1341/121 Who Dat (Freeworld/Tony Mercedes/Priority) Total Stations: 60 Chart Move: 14-11

R. KELLY 776/272 Did You Ever Think (Jive) Total Stations: 52 Chart Move: 40-32

RICKY MARTIN 521/77 Livin' La Vida Loca (C2) Total Stations: 19 Chart Move: 28-29

MAXWELL 1204/98 Fortunate (Rock Label/MCA/Interscope) Total Stations: 45 Chart Move: 19-15

CHANTE MOORE 745/163 Chante's Got A Man (Silas/MCA) Total Stations: 34 Chart Move: 34-35

SILK 1237/11 If You (Lovin' Me) (Elektra/EEG) Total Stations: 45 Chart Move: 13-12

SILK THE SHOCKER FEAT. MYA 972/38 Somebody Like Me (No Limit/Priority) Total Stations: 47 Chart Move: 28-23

SPORTY THIEVZ FEAT. MR. WOODS 783/575 No Pigeons (Ruffhouse/Columbia) Total Stations: 37 Chart Move: Debut 31

TOTAL 1363/8 Sitting Home (Bad Boy/Arista) Total Stations: 57 Chart Move: 9-10

Compiled from a national sample of data supplied by Broadcast Data Systems to Top 40 Airplay Monitor. 74 adult top 40 stations are electronically monitored 24 hours a day, 7 days a week. © 1999 Billboard/RIPI Communications.

THIS WEEK	LAST WEEK	WKS. ON CHART	ADULT TOP 40 AIRPLAY		DETECTIONS	
			TITLE/IMPRINT/PROMOTION LABEL	ARTIST	TW	LW
1	1	21	★ ★ ★ No. 1 ★ ★ ★ EVERY MORNING LAVA/ATLANTIC 6 weeks at No. 1		SUGAR RAY	3118 3143
2	2	28	KISS ME SQUINT/COLUMBIA	SIXPENCE NONE THE RICHER	3024 2981	
3	3	33	SLIDE WARNER BROS.	GOO GOO DOLLS	2868 2828	
4	4	31	BACK 2 GOOD LAVA/ATLANTIC	MATCHBOX 20	2315 2403	
5	5	16	BELIEVE WARNER BROS.	CHER	1886 2037	
6	6	30	ANGEL WARNER SUNSET/REPRISE	SARAH MCLACHLAN	1826 1996	
7	7	42	SAVE TONIGHT WORK/ERG	EAGLE-EYE CHERRY	1821 1861	
8	9	12	ANYTHING BUT DOWN A&M/INTERSCOPE	SHERYL CROW	1752 1679	
9	8	24	FLY AWAY VIRGIN	LENNY KRAVITZ	1708 1661	
10	11	8	DOWN SO LONG ATLANTIC	JEWEL	1540 1475	
11	12	13	WHAT IT'S LIKE TOMMY BOY	EVERLAST	1515 1458	
12	17	4	★ GREATEST GAINER ★ LIVIN' LA VIDA LOCA C2		RICKY MARTIN 1435 1097	
13	13	37	JUMPER ELEKTRA/EEG	THIRD EYE BLIND	1386 1470	
14	14	15	RUN HOLLYWOOD/ATLANTIC	COLLECTIVE SOUL	1371 1414	
15	10	35	LULLABY SMG/COLUMBIA	SHAWN MULLINS	1362 1511	
16	20	7	THAT DON'T IMPRESS ME MUCH MERCURY	SHANIA TWAIN	1201 973	
17	16	11	SPECIAL ALMO SOUNDS/INTERSCOPE	GARBAGE	1157 1165	
18	22	6	★ ★ AIRPOWER ★ ★ LIFE IS SWEET ELEKTRA/EEG		NATALIE MERCHANT 962 843	
19	19	27	YOU GET WHAT YOU GIVE MCA	NEW RADICALS	936 986	
20	15	9	EVERYBODY'S FREE (TO WEAR SUNSCREEN) CAPITOL	BAZ LUHRMANN	935 1312	
21	18	16	MARIA BEYOND	BLONDIE	876 995	
22	23	7	PRAISE YOU SKINT/ASTRALWERKS/VIRGIN	FATBOY SLIM	873 807	
23	21	26	CRUSH RCA	DAVE MATTHEWS BAND	844 832	
24	25	6	I'M NOT RUNNING ANYMORE COLUMBIA	JOHN MELLENCAMP	658 578	
25	29	3	MILLENNIUM CAPITOL	ROBBIE WILLIAMS	593 491	
26	26	5	OUT OF MY HEAD HOLLYWOOD	FASTBALL	571 532	
27	28	10	...BABY ONE MORE TIME JIVE	BRITNEY SPEARS	571 535	
28	36	2	SHE'S SO HIGH COLUMBIA	TAL BACHMAN	479 388	
29	31	5	RICK JAMES MAVERICK/REPRISE	JUDE	473 433	
30	37	2	BETTER DAYS (AND THE BOTTOM DROPS OUT) WARNER BROS.	CITIZEN KING	469 386	
31	27	8	SHIMMER SMG/COLUMBIA	SHAWN MULLINS	466 520	
32	24	11	THE ANIMAL SONG HOLLYWOOD/COLUMBIA	SAVAGE GARDEN	430 627	
33	32	23	IT'S ALL BEEN DONE REPRISE	BARENAKED LADIES	406 419	
34	30	5	CHARMED MAMMOTH	MY FRIEND STEVE	395 424	
35	35	14	(GOD MUST HAVE SPENT) A LITTLE MORE TIME ON YOU RCA	'N SYNC	387 413	
36	NEW		I WILL REMEMBER YOU (LIVE) ARISTA	SARAH MCLACHLAN	359 239	
37	33	21	NEVER THERE CAPRICORN/MERCURY	CAKE	342 405	
38	NEW		THE HARDEST THING UNIVERSAL	98 DEGREES	340 269	
39	40	6	I SEE THE SUN CAPITOL	TOMMY HENRIKSEN	338 304	
40	NEW		CALL AND ANSWER REPRISE	BARENAKED LADIES	309 149	

Songs ranked by number of detections. ○ Records showing an increase in detections over the previous week, regardless of chart movement. A record that has been on the chart for more than 20 weeks will not receive a bullet, even if it registers an increase in detections. Airpower awarded to those records that attain 900 detections for the first time. Greatest Gainer awarded to the record with the largest increase in detections. Most New Stations awarded to the record registering six or more detections at the most stations for the first time this week. If two records are tied in number of detections, the record being played on more stations is placed first. Records below the top 20 become recurrenents and are removed from the chart after 26 weeks.

GREATEST GAINERS

ADULT TOP 40

INCREASE IN DETECTIONS

RICKY MARTIN • *Living' La Vida Loca* (C2) +338
WKZL +35, KVSR +27, WXXM +23, WKTI +21, WMYX +19, WSNE +18, KBBT +18, KMXB +17, KYSR +15, KALZ +14

SHANIA TWAIN • *That Don't Impress Me Much* (MERCURY) +228
KMXB +37, KKOB +27, KVUU +16, WRQX +16, KURB +14, WWDE +12, WPLJ +12, WMYX +11, WMMX +10, KSII +10

SMASH MOUTH • *All Star* (INTERSCOPE) +226
KYIS +33, KVSR +19, KSTZ +19, WXXM +18, KYSR +18, KLLY +17, WSSR +15, WKZL +14, KFMB +13, KBBT +12

BARENAKED LADIES • *Call And Answer* (REPRISE) +160
KTNP +20, WMMX +20, KRUZ +17, KLLC +14, WLNK +12, WKDD +11, WPLJ +10, KDMX +9, KLLY +8, WIOG +8

SARAH MCLACHLAN • *I Will Remember You (Live)* (ARISTA) +120
WVRV +11, WIOG +11, WBMX +11, WPTD +10, KLLC +10, WWMX +10, WAKS +10, KYKY +9, KURB +9, WTIC +8

THIS WEEK	LAST WEEK	WKS. ON CHART	ADULT TOP 40 AUDIENCE		AUDIENCE (millions)	
			TITLE/IMPRINT/PROMOTION LABEL	ARTIST	TW	LW
1	1	13	★ ★ ★ No. 1 ★ ★ ★ EVERY MORNING LAVA/ATLANTIC 6 weeks at No. 1		SUGAR RAY	25.003 24.980
2	3	13	KISS ME SQUINT/COLUMBIA	SIXPENCE NONE THE RICHER	23.950 22.741	
3	2	13	SLIDE WARNER BROS.	GOO GOO DOLLS	23.311 23.187	
4	4	13	BACK 2 GOOD LAVA/ATLANTIC	MATCHBOX 20	18.391 18.784	
5	7	13	SAVE TONIGHT WORK/ERG	EAGLE-EYE CHERRY	15.065 15.394	
6	5	13	ANGEL WARNER SUNSET/REPRISE	SARAH MCLACHLAN	15.051 16.455	
7	6	13	BELIEVE WARNER BROS.	CHER	13.985 16.049	
8	8	13	JUMPER ELEKTRA/EEG	THIRD EYE BLIND	12.275 13.171	
9	9	13	FLY AWAY VIRGIN	LENNY KRAVITZ	12.236 12.599	
10	11	12	ANYTHING BUT DOWN A&M/INTERSCOPE	SHERYL CROW	12.058 11.365	
11	14	5	LIVIN' LA VIDA LOCA C2	RICKY MARTIN	12.041 9.858	
12	12	13	WHAT IT'S LIKE TOMMY BOY	EVERLAST	11.145 10.506	
13	10	13	LULLABY SMG/COLUMBIA	SHAWN MULLINS	10.966 12.083	
14	13	8	DOWN SO LONG ATLANTIC	JEWEL	9.990 9.975	
15	15	13	YOU GET WHAT YOU GIVE MCA	NEW RADICALS	9.821 9.293	
16	21	6	THAT DON'T IMPRESS ME MUCH MERCURY	SHANIA TWAIN	8.937 6.668	
17	16	13	MARIA BEYOND	BLONDIE	8.297 9.044	
18	17	13	RUN HOLLYWOOD/ATLANTIC	COLLECTIVE SOUL	8.150 8.265	
19	19	11	SPECIAL ALMO SOUNDS/INTERSCOPE	GARBAGE	7.300 7.597	
20	20	13	CRUSH RCA	DAVE MATTHEWS BAND	7.161 6.799	
21	25	3	MILLENNIUM CAPITOL	ROBBIE WILLIAMS	6.393 5.476	
22	23	10	I'M NOT RUNNING ANYMORE COLUMBIA	JOHN MELLENCAMP	6.221 5.844	
23	24	8	LIFE IS SWEET ELEKTRA/EEG	NATALIE MERCHANT	6.177 5.729	
24	22	8	PRAISE YOU SKINT/ASTRALWERKS/VIRGIN	FATBOY SLIM	6.075 5.936	
25	26	13	IT'S ALL BEEN DONE REPRISE	BARENAKED LADIES	4.871 4.784	
26	18	9	EVERYBODY'S FREE (TO WEAR SUNSCREEN) CAPITOL	BAZ LUHRMANN	4.666 7.729	
27	NEW		I WILL REMEMBER YOU (LIVE) ARISTA	SARAH MCLACHLAN	4.021 2.623	
28	31	2	SHE'S SO HIGH COLUMBIA	TAL BACHMAN	3.564 2.964	
29	27	4	OUT OF MY HEAD HOLLYWOOD	FASTBALL	3.523 3.732	
30	30	3	BETTER DAYS (AND THE BOTTOM DROPS OUT) WARNER BROS.	CITIZEN KING	3.508 3.090	
31	32	10	...BABY ONE MORE TIME JIVE	BRITNEY SPEARS	3.325 2.943	
32	35	7	I SEE THE SUN CAPITOL	TOMMY HENRIKSEN	3.133 2.745	
33	28	13	NEVER THERE CAPRICORN/MERCURY	CAKE	3.111 3.599	
34	29	13	FATHER OF MINE CAPITOL	EVERCLEAR	3.001 3.217	
35	NEW		ALL STAR INTERSCOPE	SMASH MOUTH	2.648 1.177	
36	34	13	(GOD MUST HAVE SPENT) A LITTLE MORE TIME ON YOU RCA	'N SYNC	2.528 2.820	
37	36	6	SHIMMER SMG/COLUMBIA	SHAWN MULLINS	2.258 2.411	
38	NEW		YOU'LL BE IN MY HEART WALT DISNEY/HOLLYWOOD	PHIL COLLINS	2.096 1.555	
39	38	7	RICK JAMES MAVERICK/REPRISE	JUDE	2.092 2.080	
40	NEW		CALL AND ANSWER REPRISE	BARENAKED LADIES	2.049 1.218	

Songs ranked by audience, computed by cross-referencing exact times of airplay with Arbitron listener data. ○ Records showing an increase in audience over the previous week, regardless of chart movement. A record that has been on the chart for more than 20 weeks will not receive a bullet, even if it registers an increase in audience. If two records are tied in total audience, the record being played on more stations is placed first. Records become recurrenents and are removed from this chart in conjunction with the Adult Top 40 Airplay chart.

Monitor RECURRENTS

ADULT TOP 40

RANK	TITLE ARTIST (IMPRINT/PROMOTION LABEL)	DETECTIONS	
		TW	LW
9	HANDS JEWEL (ATLANTIC)	725	789
10	THE WAY FASTBALL (HOLLYWOOD)	725	713
11	SWEETEST THING U2 (ISLAND/MERCURY)	725	779
12	CLOSING TIME SEMISONIC (MCA)	661	694
13	ALL FOR YOU SISTER HAZEL (UNIVERSAL)	647	647
14	SEMI-CHARMED LIFE THIRD EYE BLIND (ELEKTRA/EEG)	627	624
15	3 AM MATCHBOX 20 (LAVA/ATLANTIC)	626	596
16	I DON'T WANT TO MISS A THING AEROSMITH (COLUMBIA)	598	582
17	FLY SUGAR RAY (LAVA/ATLANTIC)	537	500
18	BARELY BREATHING DUNCAN SHEIK (ATLANTIC)	521	523
19	WALKIN' ON THE SUN SMASH MOUTH (INTERSCOPE)	512	526
20	KIND & GENEROUS NATALIE MERCHANT (ELEKTRA/EEG)	503	507

Recurrenents are titles that have appeared on the Adult Top 40 Airplay chart for 26 weeks and have dropped below the top 20.

WPLJ New York
VP/Pgm: Tom Cuddy
PD: Scott Shannon
MD: Tony Mascaro
212-613-8000
ABC/Disney



Table with 2 columns: Rank, Song/Artist. Songs include Sugar Ray, Everlast, Ricky Martin, etc.

KYSR Los Angeles*
PD: Angela Perelli
Interim MD: Greg Simms
818-955-7000
Chancellor



Table with 2 columns: Rank, Song/Artist. Songs include Sugar Ray, Everlast, Lenny Kravitz, etc.

WTMX Chicago*
VP/Pgm: Barry James
APD/MD: Jaime Karatz
312-946-1019
Bonnevillle



Table with 2 columns: Rank, Song/Artist. Songs include New Radicals, John Mellencamp, Citizen King, etc.

WBMX Boston*
PD: Greg Strossell
APD/MD: Mike Mulloney
617-779-2000
Infinity



Table with 2 columns: Rank, Song/Artist. Songs include Goo Goo Dolls, New Radicals, Sugar Ray, etc.

WKQX Detroit
PD: Tom O'Brien
MD: Dana London
248-967-3750
Chancellor



Table with 2 columns: Rank, Song/Artist. Songs include Goo Goo Dolls, Sugar Ray, Everlast, etc.

WROX Washington, DC
Dir/Ops: Steve Kosbau
MD: Carol Parker
202-686-3100
ABC/Disney



Table with 2 columns: Rank, Song/Artist. Songs include Sugar Ray, Everlast, New Radicals, etc.

KDMX Dallas*
PD: Jimmy Steal
APD: Race Taylor
MD: Lisa Thomas
972-991-1029
Jacor



Table with 2 columns: Rank, Song/Artist. Songs include Limp Bizkit, Everlast, Sugar Ray, etc.

WYXR Philadelphia
PD: Kurt Johnson
MD: Joe Proke
610-668-0750
Chancellor



Table with 2 columns: Rank, Song/Artist. Songs include Monica, Sarah McLachlan, Backstreet Boys, etc.

KLLC San Francisco*
PD: Louis Kaplan
APD/MD: Julie Stoessel
615-765-4000
Infinity



Table with 2 columns: Rank, Song/Artist. Songs include Fatboy Slim, Natalie Merchant, Collective Soul, etc.

KHMX Houston
Dir. of Pgm: Randy James
APD: Jim Oktavec
713-790-0965
Jacor



Table with 2 columns: Rank, Song/Artist. Songs include New Radicals, Matchbox 20, Eagle Eye Cherry, etc.

WXOM Philadelphia*
PD/MD: Chuck Trsa
215-482-6000
Greater Media



Table with 2 columns: Rank, Song/Artist. Songs include Limp Bizkit, Everlast, Sugar Ray, etc.

KSTP Minneapolis
Dir. of Pgm: Todd Fisher
OM: Leighton Peck
612-642-4141
Hubbard



Table with 2 columns: Rank, Song/Artist. Songs include Sugar Ray, Everlast, Limp Bizkit, etc.

WQAL Cleveland
PD: Mary Ellen Kachinsky
MD: Steve Brown
216-696-6666
Chancellor



Table with 2 columns: Rank, Song/Artist. Songs include Cher, Shawn Mullins, Goo Goo Dolls, etc.

KPLZ Seattle
OM: Rob Dunlop
PD: Casey Keating
MD: Ailsa Hashimoto
206-223-5700
Fisher



Table with 2 columns: Rank, Song/Artist. Songs include Sugar Ray, Everlast, Matchbox 20, etc.

WWMX Baltimore
PD: Bill Pasha
MD: Greg Carpenter
410-825-5400
Infinity



Table with 2 columns: Rank, Song/Artist. Songs include Goo Goo Dolls, Third Eye Blind, Sugar Ray, etc.

WTIC Hartford*
OM: Steve Salfany
MD: David Simpson
860-522-1080
Infinity



Table with 2 columns: Rank, Song/Artist. Songs include Goo Goo Dolls, Third Eye Blind, Cher, etc.

WMVX Cleveland
OM: Greg Auscham
MD: Jay Hudson
216-696-4444
Jacor



Table with 2 columns: Rank, Song/Artist. Songs include Eagle Eye Cherry, Goo Goo Dolls, Sugar Ray, etc.

KFMB San Diego*
PD: Scott Sands
619-292-7600
Midwest TV



Table with 2 columns: Rank, Song/Artist. Songs include Limp Bizkit, Everlast, Sugar Ray, etc.

WOMX Orlando
PD: David Isreal
MD: Tim Baldwin
407-629-5105
Chancellor



Table with 2 columns: Rank, Song/Artist. Songs include Shawn Mullins, Cher, Phil Collins, etc.

WRAL Raleigh
PD: Steve Reynolds
MD: Rob Poulin
919-890-6101
WRAL, Inc



Table with 2 columns: Rank, Song/Artist. Songs include U2, Goo Goo Dolls, Third Eye Blind, etc.

WDRV Pittsburgh
PD: Michael Hayes
MD: Scott Alexander
412-937-1441
Chancellor



Table with 2 columns: Rank, Song/Artist. Songs include Matchbox 20, Goo Goo Dolls, Sugar Ray, etc.

KYKY St. Louis
PD: Smokey Rivers
MD: Greg Hewitt
314-531-0000
Infinity



Table with 2 columns: Rank, Song/Artist. Songs include Limp Bizkit, Sugar Ray, Everlast, etc.

KRSK Portland
PD: Joel Grey
APD/MD: Jim Allen
503-223-0105
Entercom



Table with 2 columns: Rank, Song/Artist. Songs include Sugar Ray, Cher, Everlast, etc.

KZZO Sacramento*
APD: Jim Matthews
MD: Sonia Jackson
916-923-6800
Infinity



Table with 2 columns: Rank, Song/Artist. Songs include Everlast, Limp Bizkit, Sugar Ray, etc.

Someday we'll know

New Radicals

from the **gold** album *Maybe you've been brainwashed too.*

Produced & Arranged by Gregg Alexander

Management: Steve Jensen and Martin Kirkup/Direct Management Group, Inc.

www.mcarecords.com • www.newradicals.com



WTMX Chicago

17 out of 25 in Callout!!!
52 Spins and Ranked #1!!!

“Someday We'll Know' is
calling out, selling tons
and requesting...
what more can I say!!!”

Barry James, PD

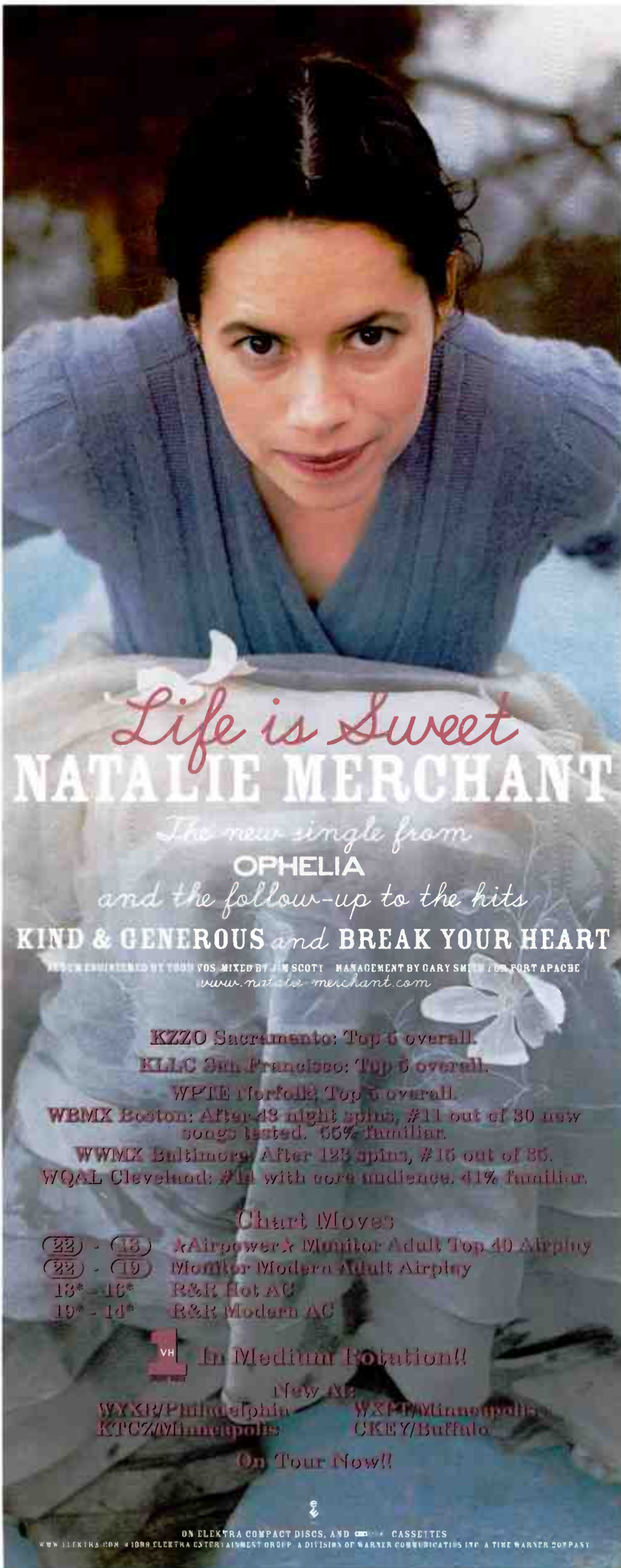
In the last 4 weeks our sales
ranking in Chicago has
moved from:

649 pieces - Rank #104
1014 pieces - Rank #85
1005 pieces - Rank #57
1165 pieces - Rank #51
1410 pieces - Rank #34!!!!

Most Added at
Modern Adult!

WTMX
KENZ
WXXM
WBAM
KTOZ
KVSR
KAEP
KLLY
WLIR
KOSO
KKYS
KCDU
WKLI





Life is Sweet

NATALIE MERCHANT

The new single from

OPHELIA

and the follow-up to the hits

KIND & GENEROUS and BREAK YOUR HEART

PRODUCED BY TOMMY VOS MIXED BY JIM SCOTT MANAGEMENT BY GARY SMITH LOS ANGELES

www.natalie-merchant.com

KZZO Sacramento: Top 6 overall.

KLCC San Francisco: Top 6 overall.

WPTL Norfolk: Top 5 overall.

WBMX Boston: After 43 night spins, #11 out of 30 new songs listed. 55% familiar.

WWMX Baltimore: After 123 spins, #16 out of 35.

WQAL Cleveland: #14 with core audience. 41% familiar.

Chart Moves

(22) - (13) *Airpower* Monitor Adult Top 40 Airplay

(22) - (19) Monitor Modern Adult Airplay

13* - 16* R&R Hot AC

19* - 14* R&R Modern AC



In Medium Rotation!!

New Air

WYXR/Pittsburgh

WXPW/Minneapolis

KTCZ/Minneapolis

CKEY/Buffalo

On Tour Now!!

ON ELEKTRA COMPACT DISCS, AND CASSETTES

WWW.ELEKTRA.COM © 1998 ELEKTRA ENTERTAINMENT GROUP, A DIVISION OF WARNER COMMUNICATIONS LTD. A TIME WARNER COMPANY

Monitor POWER PLAYLISTS ADULT TOP 40 FOR WEEK ENDING MAY 2, 1999

WSSR Tampa MD: Robert Harder Interim PD: Ken Martin 813-536-9600 Clear Channel



Table with 2 columns: Rank and Song/Artist. Songs include Lenny Kravitz, Goo Goo Dolls, Sugar Ray, etc.

WKTI Milwaukee PD: Danny Clayton APD/MD: Leonard Peace 414-967-5339 Journal



Table with 2 columns: Rank and Song/Artist. Songs include Goo Goo Dolls, Sugar Ray, New Radicals, etc.

WVMX Milwaukee PD/MD: Brian Kelly APD: Jim Morales 414-529-1250 Sinclair



Table with 2 columns: Rank and Song/Artist. Songs include Matchbox 20, Sugar Ray, Sixpence None The Richer, etc.

WENS Indianapolis PD: Greg Dunkin MD: Jim Cerone 317-266-9700 Emmis



Table with 2 columns: Rank and Song/Artist. Songs include Sugar Ray, Baz Luhrmann, Sarah McLachlan, etc.

KSMG San Antonio OM: Virgil Thompson PD: Andy Holt MD: Tom Lazar 210-615-5400 Cox



Table with 2 columns: Rank and Song/Artist. Songs include Cher, Eagle-Eye Cherry, Sarah McLachlan, etc.

WLNK Charlotte* PD: Mike Edwards MD: Patty Vaughn 704-374-3500 Jefferson Pilot



Table with 2 columns: Rank and Song/Artist. Songs include Barenaked Ladies, Hootie & The Blowfish, Goo Goo Dolls, etc.

WVRV St. Louis* OM: Allan Fee PD: Joe Larson MD: David Myers 314-231-3699 Sinclair



Table with 2 columns: Rank and Song/Artist. Songs include Dave Matthews Band, Matchbox 20, Everlast, etc.

WKZL Greensboro* PD: Jeff McHugh MD: Doug McKnight 336-274-8042 Dick Broadcasting



Table with 2 columns: Rank and Song/Artist. Songs include Goo Goo Dolls, Lenny Kravitz, Everlast, etc.

KISN Salt Lake City PD: Sam Elliott MD: Brian DeGuis 801-262-9797 Trumper



Table with 2 columns: Rank and Song/Artist. Songs include Sixpence None The Richer, Cher, Mariah Carey, etc.

WAKS Tampa PD: Mason Dixon MD: Rico Blanco 813-839-9393 Jacor



Table with 2 columns: Rank and Song/Artist. Songs include Shania Twain, Cher, New Radicals, etc.

WVMX Cincinnati PD/MD: Brad Ellis 513-763-5700 Jacor



Table with 2 columns: Rank and Song/Artist. Songs include Goo Goo Dolls, Matchbox 20, Cher, etc.

KQMB Salt Lake City* PD: Marc Waldi 801-524-2600 Simmons Media, Inc.



Table with 2 columns: Rank and Song/Artist. Songs include Goo Goo Dolls, Matchbox 20, Sugar Ray, etc.

Upward-moving songs ranked in order of detections. Songs are removed if they lose more than 5% of their detections from previous week or if their detections decline for two consecutive weeks.

MOST NEW STATIONS

Songs with 6 or more detections at new stations this week

	NEW STATIONS
SMASH MOUTH <i>All Star (Interscope)</i>	12
BARENAKED LADIES <i>Call And Answer (Reprise)</i>	11
SARAH MCLACHLAN <i>I Will Remember You (Live) (Arista)</i>	8
NATALIE MERCHANT <i>Life Is Sweet (Elektra/EEG)</i>	6
CITIZEN KING <i>Better Days (And The Bottom Drops Out) (Warner Bros.)</i>	5



Total Detections/Gain

NATALIE MERCHANT 962/119
Life Is Sweet (Elektra/EEG)
Total Stations: 61/Chart Move: 22-18
Heavy (30+ detections): 9 KAMX, KEZR, KLLC, KPEK, KRUZ, KSRZ, KTNP, KZZO, WPTE
Medium (15-29): 15 KBBT, KRSK, KSTZ, KTOZ, WAEV, WKDD, WKZL, WMC, WMBX, WPLJ, WSSR, WTIC, WTMX, WVRV, WWMX
Light (Under 15): 37
New Airplay This Week: 6 KVSR, KVUU, WAKS, WKZL, WQLH, WYXR

AIRPOWER BOUND

Total Detections/Gain

FATBOY SLIM 873/66
Praise You (Skint/Astralwerks/Virgin)
Total Stations: 43/Chart Move: 23-22
Heavy (30+): 14 KFMB, KLLC, KLLY, KPEK, KSRZ, KTNP, KTOZ, KYSR, KZZO, WBAM, WKZL, WMBX, WXXM, WZNE
Medium (15-29): 13 KBBT, KEZR, KQMB, KSTZ, KYSR, KYIS, WAEV, WKDD, WMBX, WPLJ, WPTE, WTMX, WVRV
Light (Under 15): 16
New Airplay This Week: 1 WAEV

JOHN MELLENCAMP 658/80
I'm Not Running Anymore (Columbia)
Total Stations: 33/Chart Move: 25-24
Heavy (30+): 8 KSTP, KYIS, WAEV, WENS, WMBX, WMC, WTMX, WVRV
Medium (15-29): 12 KLLY, KPEK, KSRZ, KURB, KVUU, KYKY, WIOG, WKQI, WKTI, WPLJ, WQAL, WWMX
Light (Under 15): 13
New Airplay This Week: 3 WDRV, WIOG, WVOR

ROBBIE WILLIAMS 593/102
Millennium (Capitol)
Total Stations: 33/Chart Move: 29-25
Heavy (30+): 3 KQMB, KYSR, WTMX
Medium (15-29): 16 KBBT, KDMX, KFMB, KLLC, KMXB, KPEK, KRUS, KSRZ, WAEV, WKTI, WMC, WPLJ, WPTE, WQLH, WXXM
Light (Under 15): 14
New Airplay This Week: 3 KALZ, WAKS, WQAL

FASTBALL 571/39
Out Of My Head (Hollywood)
Total Stations: 33/Chart Move: 26-26
Heavy (30+): 4 KAMX, KLLY, KZZO, WIOG
Medium (15-29): 14 KBBT, KLLC, KPEK, KSTZ, KTNP, KYSR, WAKS, WKDD, WMC, WPLJ, WPTE, WRAL, WVRV, WXXM
Light (Under 15): 15
New Airplay This Week: 2 WMBX, WVMX

BRITNEY SPEARS 571/36
...Baby One More Time (Jive)
Total Stations: 29/Chart Move: 28-27
Heavy (30+): 8 KBEE, KQOB, KSII, WAEV, WAKS, WIOG, WMYX, WQLH
Medium (15-29): 6 KPLZ, WKQI, WLTS, WMC, WWWW, WYXR
Light (Under 15): 15
New Airplay This Week: 3 KALZ, KISN, KSTZ

TAL BACHMAN 479/91
She's So High (Columbia)
Total Stations: 30/Chart Move: 36-28
Heavy (30+): 3 KFMB, KQMB, KSRZ
Medium (15-29): 14 KBBT, KEZR, KHMV, KLLC, KLLY, KPEK, KPLZ, KRUZ, KTNP, KYSR, WKDD, WKZL, WMBX, WXXM
Light (Under 15): 13
New Airplay This Week: 3 KALZ, KTNP, KTOZ

JUDE 473/40
Rick James (Maverick/Reprise)
Total Stations: 28/Chart Move: 31-29
Heavy (30+): 4 KBBT, KPEK, KTNP, WBAM
Medium (15-29): 12 KFMB, KLLY, KMXB, KQMB, KTOZ, KYSR, KZZO, WKDD, WPTE, WTMX, WZNE
Light (Under 15): 12

CITIZEN KING 469/83
Better Days (And The Bottom Drops Out) (Warner Bros.)
Total Stations: 28/Chart Move: 37-30
Heavy (30+): 3 KYSR, WBAM, WTMX
Medium (15-29): 12 KBBT, KFMB, KLLC, KLLY, KMXB, KPEK, KTNP, KTOZ, WKZL, WMBX, WQLH, WTIC
Light (Under 15): 13
New Airplay This Week: 5 KQMB, KZZO, WIOG, WMBX, WSSR

SARAH MCLACHLAN 359/120
I Will Remember You (Live) (Arista)
Total Stations: 56/Chart Move: Debut 36
Heavy (30+): 3 KBBT, WPLJ, WVRV
Medium (15-29): 2 KLLC, WMBX
Light (Under 15): 51
New Airplay This Week: 8 KLLC, KQMB, KURB, KYKY, WAKS, WIOG, WPTE, WWWW

98 DEGREES 340/71
The Hardest Thing (Universal)
Total Stations: 27/Chart Move: Debut 38
Heavy (30+): 4 KQOB, KSII, KURB, WIOG

Medium (15-29): 5 WAKS, WKDD, WLTS, WMYX, WWWW
Light (Under 15): 18
New Airplay This Week: 2 WMYX, WWDE

BARENAKED LADIES 309/160
Call And Answer (Reprise)
Total Stations: 21/Chart Move: Debut 40
Heavy (30+): 3 KBBT, WMBX, WKZL
Medium (15-29): 5 KRUS, KTNP, WMBX, WTMX, WZNE
Light (Under 15): 13
New Airplay This Week: 11 KDMX, KLLC, KLLY, KRUS, KTNP, WIOG, WKDD, WLNK, WMBX, WPLJ, WSSR

CHART BOUND

Total Detections/Gain

FUEL 308/-9
Shimmer (550 Music/ERG)
Total Stations: 19
Heavy (30+): 3 KZZO, WBAM, WPTE
Medium (15-29): 5 KBBT, KTNP, KYIS, WKZL, WVRV
Light (Under 15): 11

SMASH MOUTH 294/226
All Star (Interscope)
Total Stations: 22
Heavy (30+): 1 KYIS
Medium (15-29): 8 KLLY, KPLZ, KSTZ, KYSR, WMBX, WSSR, WXXM
Light (Under 15): 13
New Airplay This Week: 12 KBBT, KEZR, KFMB, KLLY, KPEK, KSTZ, KYSR, KVUU, KYIS, WKZL, WMBX, WXXM

PHIL COLLINS 283/72
You'll Be In My Heart (Walt Disney/Hollywood)
Total Stations: 19
Heavy (30+): 2 KISN, KURB
Medium (15-29): 8 KRUS, WLTS, WMYX, WSNE, WWDE, WWWW
Light (Under 15): 11
New Airplay This Week: 2 KRUS, WAKS

MONICA 266/-6
Angel Of Mine (Arista)
Total Stations: 14
Heavy (30+): 6 KISN, KQOB, KSII, WIOG, WMYX, WYXR
Medium (15-29): 0
Light (Under 15): 8

BACKSTREET BOYS 265/95
I Want It That Way (Jive)
Total Stations: 22
Heavy (30+): 3 WAKS, WIOG, WQLH
Medium (15-29): 5 KISN, KSII, KYKY, WAEV, WWWW
Light (Under 15): 14
New Airplay This Week: 3 KRUS, WAEV, WFKS

MULBERRY LANE 259/-6
Harmless (Refuge/MCA)
Total Stations: 30
Heavy (30+): 1 KISN
Medium (15-29): 5 KSTZ, KYIS, WKDD, WQLH, WWWW
Light (Under 15): 24
New Airplay This Week: 3 WMMX, WMXL, WVMX

BLESSID UNION OF SOULS 234/17
Hey Leonardo (She Likes Me For Me) (Push/V2)
Total Stations: 25
Heavy (30+): 0

Medium (15-29): 7 KDMX, KLLC, KZZO, WBAM, WMBX, WPLJ, WXXM
Light (Under 15): 18
New Airplay This Week: 2 KRUS, WVMX

EAGLE-EYE CHERRY 233/2
Falling In Love Again (WORK/ERG)
Total Stations: 18
Heavy (30+): 1 WMBX
Medium (15-29): 5 KLLC, KRUS, KTOZ, WKZL, WPLJ
Light (Under 15): 12
New Airplay This Week: 1 KLLY

THE CORRS 171/29
So Young (Atlantic)
Total Stations: 11
Heavy (30+): 1 WBAM
Medium (15-29): 4 KYSR, WQLH, WTMX, WWWW
Light (Under 15): 6
New Airplay This Week: 1 WKQI

VONDA SHEPARD FEAT. EMILY SALIERS 146/62
Baby, Don't You Break My Heart (Reprise)
Total Stations: 13
Heavy (30+): 1 KAMX
Medium (15-29): 2 KTNP, KYSR
Light (Under 15): 10
New Airplay This Week: 4 KDMX, KHMV, KTNP, WVRV

TLC 141/43
No Scrubs (LaFace/Arista)
Total Stations: 18
Heavy (30+): 1 WIOG
Medium (15-29): 2 KSII, WQLH
Light (Under 15): 15
New Airplay This Week: 1 WMBX

'N SYNC 102/-2
I Drive Myself Crazy (RCA)
Total Stations: 19
Heavy (30+): 2 KQOB, WIOG
Medium (15-29): 0
Light (Under 15): 17

THE CRANBERRIES 98/11
Promises (Island/Mercury)
Total Stations: 12
Heavy (30+): 0
Medium (15-29): 2 KLLC, WPTE
Light (Under 15): 10

STRETCH PRINCESS 86/20
Sorry (Wind-Up)
Total Stations: 8
Heavy (30+): 1 KAMX
Medium (15-29): 2 KEZR, KTOZ
Light (Under 15): 5

SARAH MCLACHLAN 81/50
Possession (Live) (Arista)
Total Stations: 6
Heavy (30+): 1 KBBT
Medium (15-29): 1 WMBX
Light (Under 15): 4
New Airplay This Week: 3 KZZO, WMBX, WPLJ

LIT 78/44
My Own Worst Enemy (RCA)
Total Stations: 11
Heavy (30+): 0
Medium (15-29): 2 KTNP, KYSR
Light (Under 15): 9
New Airplay This Week: 4 KAMX, KBBT, KTNP, WZNE

GINGER MACKENZIE 66/1
The Garden Of You And I (Earthnoise)
Total Stations: 3
Heavy (30+): 1 KAMX
Medium (15-29): 1 KTOZ
Light (Under 15): 1

NEW RADICALS 63/-2
Someday We'll Know (MCA)
Total Stations: 7
Heavy (30+): 1 WTMX
Medium (15-29): 0
Light (Under 15): 8
New Airplay This Week: 1 KLLY

RICK SPRINGFIELD 55/27
It's Always Somethin' (Platinum)
Total Stations: 11
Heavy (30+): 0
Medium (15-29): 0
Light (Under 15): 11
New Airplay This Week: 4 KHMV, KURB, WKQI, WMBX

★ SHOOTER 51/22
Life's A Bitch (C2)
Total Stations: 5
Heavy (30+): 0
Medium (15-29): 2 KFMB, WTMX
Light (Under 15): 3
New Airplay This Week: 1 WMBX

★ TEXAS 38/20
In Our Lifetime (Universal)
Total Stations: 3
Heavy (30+): 0
Medium (15-29): 2 WKDD, WPTE
Light (Under 15): 1
New Airplay This Week: 1 WKDD

★ BETH ORTON 33/11
Stolen Car (Arista)
Total Stations: 3
Heavy (30+): 0
Medium (15-29): 1 KBBT
Light (Under 15): 2
New Airplay This Week: 1 KLLC

★ GOO GOO DOLLS 32/20
Black Balloon (Warner Bros.)
Total Stations: 2
Heavy (30+): 1 WXXM
Medium (15-29): 0
Light (Under 15): 1

★ JORDAN KNIGHT 29/24
Give It To You (Interscope)
Total Stations: 4
Heavy (30+): 0
Medium (15-29): 1 WIOG
Light (Under 15): 3
New Airplay This Week: 1 WIOG

FAITH HILL 28/4
Let Me Let Go (Warner Bros.)
Total Stations: 9
Heavy (30+): 0
Medium (15-29): 0
Light (Under 15): 9

JIM BRICKMAN FEAT. MICHAEL W. SMITH 27/17
Love Of My Life (Windham Hill)
Total Stations: 5
Heavy (30+): 0
Medium (15-29): 0
Light (Under 15): 5

98 DEGREES 340/71

The Hardest Thing (Universal)
Total Stations: 27 Chart Move: Debut 38

Table with columns: City, Station, and Airplay Index for '98 DEGREES'.

TAL BACHMAN 479/91

She's So High (Columbia)
Total Stations: 30 Chart Move: 36-28

Table with columns: City, Station, and Airplay Index for 'TAL BACHMAN'.

BARENAKED LADIES 309/160

Call And Answer (Reprise)
Total Stations: 21 Chart Move: Debut 40

Table with columns: City, Station, and Airplay Index for 'BARENAKED LADIES'.

CITIZEN KING 469/83

Better Days (And The Bottom Drops Out) (Warner Bros.)
Total Stations: 28 Chart Move: 37-30

Table with columns: City, Station, and Airplay Index for 'CITIZEN KING'.

SHERYL CROW 1752/73

Anything But Down (A&M/Interscope)
Total Stations: 67 Chart Move: 29-18

Table with columns: City, Station, and Airplay Index for 'SHERYL CROW'.

EVERLAST 1515/57

What It's Like (Tommy Boy)
Total Stations: 55 Chart Move: 12-11

Table with columns: City, Station, and Airplay Index for 'EVERLAST'.

FASTBALL 571/39

Out Of My Head (Hollywood)
Total Stations: 33 Chart Move: 26-26

Table with columns: City, Station, and Airplay Index for 'FASTBALL'.

FATBOY SLIM 873/66

Praise You (Skint/Astralwerks/Virgin)
Total Stations: 43 Chart Move: 23-22

Table with columns: City, Station, and Airplay Index for 'FATBOY SLIM'.

JEWEL 1540/65

Down So Long (Atlantic)
Total Stations: 68 Chart Move: 11-10

Table with columns: City, Station, and Airplay Index for 'JEWEL'.

JUDE 473/40

Rick James (Maverick/Reprise)
Total Stations: 28 Chart Move: 31-29

Table with columns: City, Station, and Airplay Index for 'JUDE'.

LENNY KRAVITZ 1708/47

Fly Away (Virgin)
Total Stations: 63 Chart Move: 8-9

Table with columns: City, Station, and Airplay Index for 'LENNY KRAVITZ'.

RICKY MARTIN 1435/338

Livin' La Vida Loca (C2)
Total Stations: 63 Chart Move: 17-12

Table with columns: City, Station, and Airplay Index for 'RICKY MARTIN'.

SARAH MCLACHLAN 359/120

I Will Remember You (Live) (Arista)
Total Stations: 56 Chart Move: Debut 36

Table with columns: City, Station, and Airplay Index for 'SARAH MCLACHLAN'.

JOHN MELLENCAMP 658/80

I'm Not Running Anymore (Columbia)
Total Stations: 33 Chart Move: 25

Table with columns: City, Station, and Airplay Index for 'JOHN MELLENCAMP'.

NATALIE MERCHANT 962/119

Life Is Sweet (Elektra/EEG)
Total Stations: 61 Chart Move: 22-18

Table with columns: City, Station, and Airplay Index for 'NATALIE MERCHANT'.

SIXPENCE NONE THE RICHER 3024/43

Kiss Me (Squint/Columbia)
Total Stations: 73 Chart Move: 2-2

Table with columns: City, Station, and Airplay Index for 'SIXPENCE NONE THE RICHER'.

SMASH MOUTH 294/226

All Star (Interscope)
Total Stations: 22 Chart Move: 28-27

Table with columns: City, Station, and Airplay Index for 'SMASH MOUTH'.

BRITNEY SPEARS 571/36

Baby One More Time (Jive)
Total Stations: 29 Chart Move: 28-27

Table with columns: City, Station, and Airplay Index for 'BRITNEY SPEARS'.

SHANIA TWAIN 1201/228

That Don't Impress Me Much (Mercury)
Total Stations: 55 Chart Move: 20-16

Table with columns: City, Station, and Airplay Index for 'SHANIA TWAIN'.

ROBBIE WILLIAMS 593/102

Millennium (Capitol)
Total Stations: 33 Chart Move: 29-25

Table with columns: City, Station, and Airplay Index for 'ROBBIE WILLIAMS'.

Compiled from a national sample of data supplied by Broadcast Data Systems to Top 40 Airplay Monitor. 33 modern adult stations are electronically monitored 24 hours a day, 7 days a week. © 1999 Billboard/BPI Communications.

THIS WEEK	LAST WEEK	WKS. ON CHART	MODERN ADULT AIRPLAY		DETECTIONS		
			TITLE/IMPRINT/PROMOTION LABEL	ARTIST	TW	LW	
			★ ★ ★ No. 1 ★ ★ ★				
1	1	21	EVERY MORNING LAVA/ATLANTIC 11 weeks at No. 1	SUGAR RAY	1551	1580	
2	2	26	KISS ME SQUINT/COLUMBIA	SIXPENCE NONE THE RICHER	1531	1512	
3	3	33	SLIDE WARNER BROS.	GOO GOO DOLLS	1380	1369	
4	4	19	WHAT IT'S LIKE TOMMY BOY	EVERLAST	1174	1170	
5	5	31	BACK 2 GOOD LAVA/ATLANTIC	MATCHBOX 20	1113	1168	
6	7	13	ANYTHING BUT DOWN A&M/INTERSCOPE	SHERYL CROW	1067	1033	
7	6	26	FLY AWAY VIRGIN	LENNY KRAVITZ	1021	1034	
8	8	16	RUN HOLLYWOOD/ATLANTIC	COLLECTIVE SOUL	988	994	
9	10	14	SPECIAL ALMO SOUNDS/INTERSCOPE	GARBAGE	894	851	
10	9	8	DOWN SO LONG ATLANTIC	JEWEL	889	854	
11	11	38	INSIDE OUT RCA	EVE 6	861	843	
12	13	10	PRAISE YOU SKINT/ASTRALWERKS/VIRGIN	FATBOY SLIM	832	777	
13	12	42	SAVE TONIGHT WORK/ERG	EAGLE-EYE CHERRY	736	786	
14	15	26	CRUSH RCA	DAVE MATTHEWS BAND	734	721	
15	14	37	JUMPER ELEKTRA/VEG	THIRD EYE BLIND	701	778	
16	21	4	LIVIN' LA VIDA LOCA C2	RICKY MARTIN	693	503	
17	16	28	ANGEL WARNER SUNSET/REPRISE	SARAH MCLACHLAN	623	680	
18	18	27	YOU GET WHAT YOU GIVE MCA	NEW RADICALS	590	631	
19	22	6	LIFE IS SWEET ELEKTRA/VEG	NATALIE MERCHANT	589	521	
20	20	31	SWEETEST THING ISLAND/MERCURY	U2	536	605	
21	19	16	MARIA BEYONO	BLONDIE	476	581	
22	27	4	BETTER DAYS (AND THE BOTTOM DROPS OUT) WARNER BROS.	CITIZEN KING	470	393	
23	26	7	RICK JAMES MAVERICK/REPRISE	JUDE	439	414	
24	17	9	EVERYBODY'S FREE (TO WEAR SUNSCREEN) CAPITOL	BAZ LUHRMANN	419	690	
25	32	3	SHE'S SO HIGH COLUMBIA	TAL BACHMAN	404	334	
26	23	22	NEVER THERE CAPRICORN/MERCURY	CAKE	401	469	
27	28	3	MILLENNIUM CAPITOL	ROBBIE WILLIAMS	397	350	
28	25	13	BELIEVE WARNER BROS.	CHER	392	449	
29	24	15	CHARMED MAMMOTH	MY FRIEND STEVE	376	406	
30	29	10	SHIMMER 550 MUSIC/ERG	FUEL	362	353	
31	31	6	OUT OF MY HEAD HOLLYWOOD	FASTBALL	354	341	
32	35	2	THAT DON'T IMPRESS ME MUCH MERCURY	SHANIA TWAIN	338	251	
33	34	10	I SEE THE SUN CAPITOL	TOMMY HENRIKSEN	318	292	
34	30	12	SHIMMER SMG/COLUMBIA	SHAWN MULLINS	308	339	
35	33	19	GOT YOU (WHERE I WANT YOU) DELICIOUS VINYL/TRAUMA	THE FLYS	305	319	
			★ GREATEST GAINERS/MOST NEW STATIONS ★				
36	NEW		ALL STAR INTERSCOPE	SMASH MOUTH	272	44	
37	NEW		CALL AND ANSWER REPRISE	BARENAKED LADIES	248	126	
38	NEW		I WILL REMEMBER YOU (LIVE) ARISTA	SARAH MCLACHLAN	227	158	
39	38	4	I'M NOT RUNNING ANYMORE COLUMBIA	JOHN MELLENCAMP	227	212	
40	36	23	IT'S ALL BEEN DONE REPRISE	BARENAKED LADIES	215	224	

Songs ranked by number of detections. ○ Records showing an increase in detections over the previous week, regardless of chart movement. A record that has been on the chart for more than 20 weeks will not receive a bullet, even if it registers an increase in detections. Airpower awarded to those records that attain 700 detections for the first time. Greatest Gainer awarded to the record with the largest increase in detections. Most New Stations awarded to the record registering six or more detections at the most stations for the first time this week. If two records are tied in number of detections, the record being played on more stations is placed first. Records below the top 20 become recurrent and are removed from the chart after 26 weeks.

GREATEST GAINERS MODERN ADULT

INCREASE IN DETECTIONS

SMASH MOUTH • All Star (INTERSCOPE) +228
KYIS +33, KAEP +23, KYSR +19, WXXM +18, KYSR +18, KLLY +17, WSSR +15, WKZL +14, KFMB +13, KBBT +12

RICKY MARTIN • Livin' La Vida Loca (C2) +190
WKZL +35, KYSR +27, WXXM +23, KALC +19, KBBT +18, KMXB +17, KYSR +15, KDMX +9, KSRZ +8, KYIS +8

BARENAKED LADIES • Call And Answer (REPRISE) +122
KTNP +20, WMXB +20, KRUZ +17, KLLC +14, WLNK +12, KDMX +9, KLLY +8, KBBT +7, KAMX +5, WTMX +5

SHANIA TWAIN • That Don't Impress Me Much (MERCURY) +87
KMXB +37, KALC +24, KYIS +7, KQMB +6, KPEK +6, WMBX +4, KLLY +3, KYSR +2, KYSR +1, WBMX +1

CITIZEN KING • Better Days (And The Bottom Drops Out) (WARNER BROS.) +77
WMXB +16, KTOZ +14, KZZO +10, KALC +8, KQMB +7, KBBT +7, WPTE +3, KYSR +3, WSSR +3, WKZL +3

THIS WEEK	LAST WEEK	WKS. ON CHART	MODERN ADULT AUDIENCE		AUDIENCE (millions)		
			TITLE/IMPRINT/PROMOTION LABEL	ARTIST	TW	LW	
			★ ★ ★ No. 1 ★ ★ ★				
1	2	13	KISS ME SQUINT/COLUMBIA 1 week at No. 1	SIXPENCE NONE THE RICHER	11.425	10.740	
2	1	13	EVERY MORNING LAVA/ATLANTIC	SUGAR RAY	11.381	11.504	
3	3	13	SLIDE WARNER BROS.	GOO GOO DOLLS	10.399	10.787	
4	4	13	BACK 2 GOOD LAVA/ATLANTIC	MATCHBOX 20	8.091	8.858	
5	6	9	WHAT IT'S LIKE TOMMY BOY	EVERLAST	7.990	7.751	
6	5	13	FLY AWAY VIRGIN	LENNY KRAVITZ	7.628	8.059	
7	9	9	ANYTHING BUT DOWN A&M/INTERSCOPE	SHERYL CROW	6.720	6.329	
8	11	13	INSIDE OUT RCA	EVE 6	6.213	6.021	
9	14	13	CRUSH RCA	DAVE MATTHEWS BAND	6.202	5.700	
10	13	6	DOWN SO LONG ATLANTIC	JEWEL	6.108	5.823	
11	15	3	PRAISE YOU SKINT/ASTRALWERKS/VIRGIN	FATBOY SLIM	6.026	5.563	
12	19	2	LIVIN' LA VIDA LOCA C2	RICKY MARTIN	5.923	4.386	
13	7	13	JUMPER ELEKTRA/VEG	THIRD EYE BLIND	5.883	6.857	
14	12	10	RUN HOLLYWOOD/ATLANTIC	COLLECTIVE SOUL	5.799	5.833	
15	8	13	SAVE TONIGHT WORK/ERG	EAGLE-EYE CHERRY	5.774	6.337	
16	10	13	ANGEL WARNER SUNSET/REPRISE	SARAH MCLACHLAN	5.661	6.262	
17	17	4	SPECIAL ALMO SOUNDS/INTERSCOPE	GARBAGE	5.434	5.267	
18	16	13	YOU GET WHAT YOU GIVE MCA	NEW RADICALS	4.967	5.231	
19	NEW		MILLENNIUM CAPITOL	ROBBIE WILLIAMS	4.511	3.974	
20	18	10	MARIA BEYONO	BLONDIE	4.433	4.875	

Songs ranked by number of audience, computed by cross-referencing exact times of airplay with Arbitron listener data. ○ Records showing an increase in audience over the previous week, regardless of chart movement. A record that has been on the chart for more than 20 weeks will not receive a bullet, even if it registers an increase in audience. If two records are tied in total audience, the record being played on more stations is placed first. Records become recurrent and are removed from this data in conjunction with the Modern Adult Airplay chart.

THIS WEEK	LAST WEEK	WKS. ON CHART	MODERN ROCK AIRPLAY		DETECTIONS		
			TITLE/IMPRINT/PROMOTION LABEL	ARTIST	TW	LW	
			★ ★ ★ No. 1 ★ ★ ★				
1	1	14	MY OWN WORST ENEMY RCA 6 weeks at No. 1	LIT	2325	2269	
2	2	16	PRAISE YOU SKINT/ASTRALWERKS/VIRGIN	FATBOY SLIM	1959	1972	
3	3	21	ONE WIND-UP	CREED	1690	1758	
4	6	11	BETTER DAYS (AND THE BOTTOM DROPS OUT) WARNER BROS.	CITIZEN KING	1662	1616	
5	4	24	BLUE MONDAY ELEMENTREE/REPRISE	ORGY	1637	1685	
6	7	17	HEAVY ATLANTIC	COLLECTIVE SOUL	1614	1626	
7	8	10	NEW WORK/ERG	NO DOUBT	1595	1530	
8	13	4	FALLS APART LAVA/ATLANTIC	SUGAR RAY	1484	1215	
9	5	16	WHY DON'T YOU GET A JOB? COLUMBIA	THE OFFSPRING	1468	1667	
10	9	7	ENDS TOMMY BOY	EVERLAST	1463	1362	
11	11	13	FREAK ON A LEASH IMMORTAL/EPIC	KORN	1407	1326	
12	10	11	DIZZY WARNER BROS.	GOO GOO DOLLS	1246	1337	
			★ ★ AIRPOWER ★ ★				
13	27	2	WHAT'S MY AGE AGAIN? MCA	BLINK 182	1174	710	
14	12	10	ANTHEM FOR THE YEAR 2000 EPIC	SILVERCHAIR	1168	1247	
15	15	32	WHAT IT'S LIKE TOMMY BOY	EVERLAST	1127	1117	
16	16	5	AWFUL OGC/INTERSCOPE	HOLE	1091	990	
17	14	8	PROMISES ISLAND/MERCURY	THE CRANBERRIES	1050	1212	
			★ GREATEST GAINER/MOST NEW STATIONS ★				
18	36	2	ALL STAR INTERSCOPE	SMASH MOUTH	1022	477	
19	22	4	ARMY 550 MUSIC/ERG	BEN FOLDS FIVE	918	788	
20	18	29	CRUSH RCA	DAVE MATTHEWS BAND	879	927	

The chart, reprinted from Rock Airplay Monitor, is compiled from a national sample of data compiled by Broadcast Data Systems. 69 modern rock stations are electronically monitored 24 hours a day, seven days a week. Songs ranked by number of detections. ○ Records showing an increase in detections over the previous week, regardless of chart movement. A record that has been on the chart for more than 20 weeks will not receive a bullet, even if it registers an increase in detections. Airpower awarded to those records that attain 1,100 detections for the first time. Greatest Gainer awarded to the record with the largest increase in detections. Most New Stations awarded to the record registering six or more detections at the most stations for the first time this week. If two records are tied in number of detections, the record being played on more stations is placed first. Records below the top 20 become recurrent and are removed from the chart after 26 weeks. ©1999 Billboard/BPI Communications

Compiled from a national sample of data supplied by Broadcast Data Systems to Top 40 Airplay Monitor. 77 adult contemporary stations are electronically monitored 24 hours a day, 7 days a week. © 1999 Billboard/BPI Communications.

THIS WEEK	LAST WEEK	WKS. ON CHART	ADULT CONTEMPORARY AIRPLAY		DETECTIONS		
			TITLE/IMPRINT/PROMOTION LABEL	ARTIST	TW	LW	
			★ ★ ★ No. 1 ★ ★ ★				
1	1	26	ANGEL WARNER SUNSET/REPRISE 11 weeks at No. 1	SARAH MCLACHLAN	1435	1454	
2	2	20	(GOD MUST HAVE SPENT) A LITTLE MORE TIME ON YOU RCA	'N SYNC	1327	1306	
3	4	4	YOU'LL BE IN MY HEART WALT DISNEY/HOLLYWOOD	PHIL COLLINS	1277	1146	
4	3	12	BELIEVE WARNER BROS.	CHER	1203	1190	
5	6	8	KISS ME SQUINT/COLUMBIA	SIXPENCE NONE THE RICHER	1115	1031	
6	5	36	FROM THIS MOMENT ON MERCURY	SHANIA TWAIN	991	1052	
7	8	16	ANGEL OF MINE ARISTA	MONICA	950	941	
8	7	18	WRITTEN IN THE STARS CURB/ROCKET/ISLAND	ELTON JOHN & LEANN RIMES	908	953	
9	9	14	ALL I HAVE TO GIVE JIVE	BACKSTREET BOYS	824	834	
10	10	70	TRULY MADLY DEEPLY COLUMBIA	SAVAGE GARDEN	763	804	
11	14	66	YOU'RE STILL THE ONE MERCURY	SHANIA TWAIN	698	684	
12	16	15	FOREVER MORE (I'LL BE THE ONE) GTSP/MERCURY	JOHN TESH FEAT. JAMES INGRAM	695	662	
13	13	16	I STILL BELIEVE COLUMBIA	MARIAH CAREY	687	691	
14	12	30	I'M YOUR ANGEL JIVE	R. KELLY & CELINE DION	678	750	
15	22	5	THAT DON'T IMPRESS ME MUCH MERCURY	SHANIA TWAIN	671	551	
16	15	18	LOVE OF MY LIFE WINDHAM HILL	JIM BRICKMAN FEATURING MICHAEL W. SMITH	652	672	
17	11	18	FAITH OF THE HEART UNIVERSAL	ROD STEWART	640	798	
18	18	41	I'LL NEVER BREAK YOUR HEART JIVE	BACKSTREET BOYS	637	639	
19	20	34	I'LL BE ATLANTIC	EDWIN MCCAIN	606	608	
20	21	7	LET ME LET GO WARNER BROS.	FAITH HILL	595	566	
21	25	2	I WILL REMEMBER YOU (LIVE) ARISTA	SARAH MCLACHLAN	342	246	
22	24	7	LOVING YOU IS ALL I KNOW HOLLYWOOD	PRETENDERS	311	315	
23	30	2	THE HARDEST THING UNIVERSAL	98 DEGREES	289	182	
★ GREATEST GAINER/MOST NEW STATIONS ★							
24	NEW		I WANT IT THAT WAY JIVE	BACKSTREET BOYS	251	97	
25	26	2	POETRY MAN NLP	NA LEO PILIMEHANA	214	211	
26	27	25	CRUSH EDEL AMERICA/HOLLYWOOD	JENNIFER PAIGE	204	207	
27	29	3	EVERY MORNING LAVA/ATLANTIC	SUGAR RAY	202	188	
28	NEW		I'M NOT RUNNING ANYMORE COLUMBIA	JOHN MELLENCAMP	196	154	
29	28	3	HARMLESS REFUGE/MCA	MULBERRY LANE	185	195	
30	RE-ENTRY		THE PRAYER 550 MUSIC/ERG	CELINE DION WITH ANDREA BOCELLI	169	181	

Songs ranked by number of detections. ○ Records showing an increase in detections over the previous week, regardless of chart movement. A record that has been on the chart for more than 20 weeks will not receive a bullet, even if it registers an increase in detections. Airpower awarded to those records that attain 400 detections for the first time. Greatest Gainer awarded to the record with the largest increase in detections. Most New Stations awarded to the record registering six or more detections at the most stations for the first time this week. If two records are tied in number of detections, the record being played on more stations is placed first. Records below the top 20 become re-entrants and are removed from the chart after 26 weeks.

MOST NEW STATIONS

Songs with 6 or more detections at new stations this week

ARTIST	TITLE	NEW STATIONS
BACKSTREET BOYS	<i>I Want It That Way (Jive)</i>	12
98 DEGREES	<i>The Hardest Thing (Universal)</i>	5
ALL-4-ONE	<i>I Will Be Right Here (Blitz/Atlantic)</i>	5
MULBERRY LANE	<i>Harmless (Refuge/MCA)</i>	4
VONDA SHEPARD FEAT. EMILY SALIERS	<i>Baby, Don't You Break My Heart Slow (Vesper Alley)</i>	4

GREATEST GAINERS ADULT CONTEMPORARY

ARTIST	TITLE	INCREASE IN DETECTIONS
BACKSTREET BOYS	<i>I Want It That Way (JIVE)</i>	+154
PHIL COLLINS	<i>You'll Be In My Heart (WALT DISNEY/HOLLYWOOD)</i>	+131
SHANIA TWAIN	<i>That Don't Impress Me Much (MERCURY)</i>	+120
98 DEGREES	<i>The Hardest Thing (UNIVERSAL)</i>	+107
SARAH MCLACHLAN	<i>I Will Remember You (Live) (ARISTA)</i>	+96

THIS WEEK	LAST WEEK	WKS. ON CHART	ADULT CONTEMPORARY AUDIENCE		AUDIENCE (millions)		
			TITLE/IMPRINT/PROMOTION LABEL	ARTIST	TW	LW	
			★ ★ ★ No. 1 ★ ★ ★				
1	1	13	ANGEL WARNER SUNSET/REPRISE 9 weeks at No. 1	SARAH MCLACHLAN	16.114	16.391	
2	2	13	BELIEVE WARNER BROS.	CHER	15.902	15.665	
3	5	5	YOU'LL BE IN MY HEART WALT DISNEY/HOLLYWOOD	PHIL COLLINS	13.985	11.926	
4	3	13	(GOD MUST HAVE SPENT) A LITTLE MORE TIME ON YOU RCA	'N SYNC	13.979	14.179	
5	4	9	KISS ME SQUINT/COLUMBIA	SIXPENCE NONE THE RICHER	12.811	12.009	
6	6	13	FROM THIS MOMENT ON MERCURY	SHANIA TWAIN	12.147	11.683	
7	7	13	ALL I HAVE TO GIVE JIVE	BACKSTREET BOYS	10.259	10.373	
8	8	13	YOU'RE STILL THE ONE EPIC	SHANIA TWAIN	9.307	9.217	
9	9	13	I STILL BELIEVE COLUMBIA	MARIAH CAREY	9.257	9.155	
10	10	13	TRULY MADLY DEEPLY COLUMBIA	SAVAGE GARDEN	9.160	9.126	
11	11	13	I'LL NEVER BREAK YOUR HEART JIVE	BACKSTREET BOYS	8.774	9.062	
12	12	13	WRITTEN IN THE STARS CURB/ROCKET/ISLAND	ELTON JOHN & LEANN RIMES	8.168	7.967	
13	14	13	ANGEL OF MINE ARISTA	MONICA	8.132	7.646	
14	13	13	I'M YOUR ANGEL JIVE	R. KELLY & CELINE DION	6.885	7.706	
15	20	6	THAT DON'T IMPRESS ME MUCH MERCURY	SHANIA TWAIN	6.488	5.097	
16	16	13	I'LL BE LAVA/ATLANTIC	EDWIN MCCAIN	6.482	6.609	
17	23	8	LET ME LET GO WARNER BROS.	FAITH HILL	5.013	4.615	
18	18	13	FAITH OF THE HEART UNIVERSAL	ROD STEWART	4.993	5.974	
19	21	12	FOREVER MORE (I'LL BE THE ONE) GTSP/MERCURY	JOHN TESH FEAT. JAMES INGRAM	4.850	4.866	
20	22	13	LOVE OF MY LIFE WINDHAM HILL	JIM BRICKMAN FEATURING MICHAEL W. SMITH	4.328	4.807	
21	25	2	I WANT IT THAT WAY JIVE	BACKSTREET BOYS	3.020	2.708	
22	24	13	TOGETHER AGAIN VIRGIN	JANET	2.973	3.860	
23	26	2	I WILL REMEMBER YOU (LIVE) ARISTA	SARAH MCLACHLAN	2.942	2.636	
24	28	13	IRIS WARNER SUNSET/REPRISE	GOO GOO DOLLS	2.215	2.458	
25	27	13	THE PRAYER 550 MUSIC/ERG	CELINE DION WITH ANDREA BOCELLI	2.165	2.536	
26	NEW		THE HARDEST THING UNIVERSAL	98 DEGREES	2.096	1.311	
27	29	12	CRUSH EDEL AMERICA/HOLLYWOOD	JENNIFER PAIGE	1.821	1.941	
28	RE-ENTRY		EVERY MORNING LAVA/ATLANTIC	SUGAR RAY	1.748	1.560	
29	RE-ENTRY		EVERYBODY'S FREE (TO WEAR SUNSCREEN) CAPITOL	BAZ LUHRMANN	1.616	1.364	
30	30	13	THE POWER OF GOOD-BYE MAVERICK/WARNER BROS.	MADONNA	1.456	1.766	

Songs ranked by number of audience, computed by cross-referencing exact times of airplay with Arbitron listener data. ○ Records showing an increase in audience over the previous week, regardless of chart movement. A record that has been on the chart for more than 20 weeks will not receive a bullet, even if it registers an increase in audience. If two records are tied in total audience, the record being played on more stations is placed first. Records become re-entrants and are removed from this chart in conjunction with the Adult Contemporary Airplay chart.

Monitor RECURRENTS ADULT CONTEMPORARY

RANK	TITLE	ARTIST (IMPRINT/PROMOTION LABEL)	DETECTIONS	
			TW	LW
13	TO LOVE YOU MORE	CELINE DION (550 MUSIC/ERG)	418	442
14	HAVE I TOLD YOU LATELY	ROD STEWART (WARNER BROS.)	410	357
15	SOMETHING ABOUT THE WAY YOU LOOK TONIGHT	ELTON JOHN (ROCKET/INTERSCOPE)	396	406
16	SOMETHING TO TALK ABOUT	BONNIE RAITT (CAPITOL)	369	342
17	CHANGE THE WORLD	ERIC CLAPTON (DUCK/REPRISE)	367	395
18	SAVE THE BEST FOR LAST	VANESSA WILLIAMS (WING/MERCURY)	345	306
19	AS I LAY ME DOWN	SOPHIE B. HAWKINS (COLUMBIA)	336	319
20	I DON'T WANT TO MISS A THING	AEROSMITH (COLUMBIA)	333	286
21	TEARS IN HEAVEN	ERIC CLAPTON (REPRISE)	325	301
22	I CAN SEE CLEARLY NOW	JIMMY CLIFF (WORK/ERG)	317	272
23	I LOVE YOU ALWAYS FOREVER	DONNA LEWIS (ATLANTIC)	316	289
24	FOREVER YOUNG	ROD STEWART (WARNER BROS.)	312	335
25	FIELDS OF GOLD	STING (A&M)	279	260

Recurrents are titles that have appeared on the Adult Contemporary Airplay chart for 26 weeks and have dropped below the top 20.

Billboard. Hot 100 Singles Sales SoundScan

THE CHART, REPRINTED FROM BILLBOARD MAGAZINE, IS COMPILED FROM A NATIONAL SAMPLE OF RETAIL STORE, MASS MERCHANT, AND INTERNET SALES REPORTS COLLECTED, COMPILED, AND PROVIDED BY SOUNDSCAN, INC.

THIS WEEK	LAST WEEK	WKS. ON CHART	TITLE/IMPRINT/PROMOTION LABEL	ARTIST
BILLBOARD ISSUE DATE: MAY 8, 1999				
No. 1				
1	48	2	LIVIN' LA VIDA LOCA C2	RICKY MARTIN
2	1	5	NO SCRUBS LAFACE/ARISTA	TLC
3	2	7	WHAT'S IT GONNA BE?! FLIPMODE/ELEKTRA/EEG	BUSTA RHYMES FEATURING JANET
4	8	10	GIVE IT TO YOU INTERSCOPE	JORDAN KNIGHT
5	6	3	WHO DAT FREEWORLD/TONY MERCEDES/PRIORITY	JT MONEY FEATURING SOLE
6	3	23	BELIEVE WARNER BROS.	CHER
7	4	15	C'EST LA VIE EPIC	B*WITCHED
8	5	13	KISS ME SQUINT/COLUMBIA	SIXPENCE NONE THE RICHER
9	7	9	IF YOU (LOVIN' ME) ELEKTRA/EEG	SILK
10	10	10	IT AIN'T MY FAULT 2 NO LIMIT/PRIORITY	SILKK THE SHOCKER FEATURING MYSTIKAL
11	23	5	808 TRACK MASTERS/COLUMBIA	BLAQUE
12	13	11	STAY THE SAME C2	JOEY MCINTYRE
13	9	14	HEARTBREAK HOTEL ARISTA	WHITNEY HOUSTON FEAT. FAITH EVANS & KELLY PRICE
14	12	6	WHEN I CLOSE MY EYES LAFACE/ARISTA	SHANICE
15	16	6	ONE MORE TRY PENDULUM/RED ANT	DIVINE
16	11	11	I STILL BELIEVE COLUMBIA	MARIAH CAREY
17	17	5	PLEASE REMEMBER ME/FOR A LITTLE WHILE CURB	TIM MCGRAW
18	20	15	WE LIKE TO PARTY! GROOVILICIOUS/STRICTLY RHYTHM	VENGABOYS
19	19	8	MY FIRST NIGHT WITH YOU UNIVERSITY/INTERSCOPE	MYA
20	18	8	HARD KNOCK LIFE (GHETTO ANTHEM) ROC-A-FELLA/DEF JAM/MERCURY	JAY-Z

Records with the greatest sales gains. © 1999 Billboard/BPI Communications and SoundScan, Inc.

THE Billboard 200 SoundScan

THE CHART, REPRINTED FROM BILLBOARD MAGAZINE, LISTS THE TOP-SELLING ALBUMS COMPILED FROM A NATIONAL SAMPLE OF RETAIL STORE, MASS MERCHANT, AND INTERNET SALES REPORTS COLLECTED, COMPILED, AND PROVIDED BY SOUNDSCAN, INC.

THIS WEEK	LAST WEEK	2 WKS. AGO	WKS. ON CHART	ARTIST IMPRINT & CATALOG NUMBER/DISTRIBUTING LABEL (SUGGESTED LIST PRICE)	TITLE	PEAK POSITION
BILLBOARD ISSUE DATE: MAY 8, 1999						
No. 1/GREATEST GAINER						
1	2	2	9	TLC ▲ ² LAFACE 26055*/ARISTA (11.98/17.98)	FANMAIL	1
2	1	1	3	NAS COLUMBIA 68773* (11.98 EQ/17.98)	I AM...	1
3	4	6	77	SHANIA TWAIN ◆ ¹⁰ MERCURY (NASHVILLE) 536003 (10.98/17.98)	COME ON OVER	2
4	5	12	24	CHER ▲ ² WARNER BROS. 47121 (10.98/17.98)	BELIEVE	4
5	3	3	15	BRITNEY SPEARS ▲ ³ JIVE 41651 (10.98/16.98)	...BABY ONE MORE TIME	1
6	6	5	9	EMINEM ▲ ² WEB/AFTERMATH 90287*/INTERSCOPE (11.98/17.98)	THE SLIM SHADY LP	2
7	9	8	23	THE OFFSPRING ▲ ³ COLUMBIA 69661* (11.98 EQ/17.98)	AMERICANA	2
8	7	9	4	SOUNDTRACK MAVERICK 47390/WARNER BROS. (11.98/17.98)	THE MATRIX	7
9	NEW		1	B.G. CASH MONEY 53265/UNIVERSAL (10.98/16.98)	CHOPPER CITY IN THE GHETTO	9
10	8	7	4	ANDREA BOCELLI POLYDOR 547222 (10.98/17.98)	SOGNO	4

Albums with the greatest sales gains. ● Recording Industry Assn. Of America (RIAA) certification for sales of 500,000 album units. ▲ RIAA certification for sales of 1 million units (Platinum). ◆ RIAA certification for net shipment of 10 million units (Diamond). Numeral following Platinum or Diamond symbol indicates album's multi-platinum level. Greatest Gainer shows chart's largest unit increase. Pacesetter indicates biggest percentage growth. © 1999 Billboard/BPI Communications and SoundScan, Inc.

VIDEO PLAYLISTS

FOR WEEK ENDING MAY 2, 1999

MUSIC TELEVISION®			MUSIC FIRST					
TW	LW	TH	TW	LW	TH	LW	TH	LW
1	47	42	1	30	39	1	34	32
2	37	35	2	26	36	2	34	32
3	36	33	3	22	34	3	33	31
4	30	21	4	22	30	4	29	22
5	29	22	5	20	26	5	25	29
6	25	27	6	20	24	6	25	22
7	25	22	7	19	23	7	21	14
8	25	24	8	19	23	8	21	13
9	24	18	9	17	18	9	21	19
10	23	25	10	17	15	10	17	15
11	22	16	11	16	31	11	16	12
12	21	23	12	16	28	12	15	18
13	21	16	13	16	0	13	15	20
14	18	4	14	14	15	14	15	16
15	17	19	15	14	26	15	14	15
16	17	18	16	14	21	16	14	26
17	17	15	17	12	19	17	14	15
18	16	6	18	12	19	18	13	15
19	16	13	19	11	0	19	12	12
20	15	16	20	11	21	20	12	15
21	15	14	21	11	15	21	12	10
22	15	16	22	10	14	22	9	9
23	15	0	23	9	0	23	8	7
24	14	14	24	9	16	24	8	6
25	14	14	25	9	17	25	8	5
26	14	9	26	9	19	26	8	11
27	14	11	27	9	15	27	7	5
28	14	10	28	9	9	28	7	10
29	14	0	29	8	0	29	7	0
30	13	17	30	8	18	30	6	4

ON YOUR DESK! Going For Airplay This Week

TATYANA ALI • *Everytime* (MJJ/WORK/ERG)

ALL-4-ONE • *I Will Be Right Here* (BLITZZI/ATLANTIC)

CHER • *Strong Enough* (WARNER BROS.)

DJ DMD • *25 Lighters* (EASTWEST/EEG)

MAINSTREAM	RHYTHMIC	CROSSOVER	ADULT TOP 40	AC	MODERN ADULT
✓	✓	✓			
✓					
✓	✓	✓	✓		✓
		✓			

To be included contact Steve Graybow at 212-536-5361 or email sgraybow@airplaymonitor.com

05/03/99 08:49:22 AM

To: Mark Snider/New_York/V2 Music@V2 Music Group

cc:

Subject: Re:Blessid Union Research

Mark,

Overall, with 18-34 women "Hey Leonardo" ranks #11 this week out of 40. It's still doing better on the younger end (18-24), it's #8. It's gonna be BIG! Good luck!

John Ivey / KISS 108



THIS WEEK	LAST WEEK	WKS. ON CHART	MAINSTREAM TOP 40		FOR FULL CHART, SEE PG. 8		
			TITLE/IMPRINT/PROMOTION LABEL	ARTIST	DETECTIONS TW	LW	
			★ ★ ★ No. 1 ★ ★ ★				
1	2	12	KISS ME SQUINT/COLUMBIA	SIXPENCE NONE THE RICHER	6114	6126	
2	3	11	NO SCRUBS LAFACE/ARISTA	TLC	6089	5886	
3	1	17	EVERY MORNING LAVA/ATLANTIC	SUGAR RAY	6037	6206	
4	4	5	LIVIN' LA VIDA LOCA C2	RICKY MARTIN	5602	4881	
5	5	13	WHAT IT'S LIKE TOMMY BOY	EVERLAST	4793	4579	
6	6	9	THE HARDEST THING UNIVERSAL	98 DEGREES	4531	4385	
7	8	18	FLY AWAY VIRGIN	LENNY KRAVITZ	4114	4253	
8	7	31	SLIDE WARNER BROS.	GOO GOO DOLLS	4030	4341	
9	12	4	I WANT IT THAT WAY JIVE	BACKSTREET BOYS	4024	3680	
10	10	9	HEARTBREAK HOTEL ARISTA	WHITNEY HOUSTON FEAT. FAITH EVANS & KELLY PRICE	3960	3753	
11	13	6	THAT DON'T IMPRESS ME MUCH MERCURY	SHANIA TWAIN	3547	3107	
12	9	30	...BABY ONE MORE TIME JIVE	BRITNEY SPEARS	3508	4116	
13	11	20	BELIEVE WARNER BROS.	CHER	3427	3687	
14	15	19	ANGEL OF MINE ARISTA	MONICA	2945	3026	
15	14	28	BACK 2 GOOD LAVA/ATLANTIC	MATCHBOX 20	2878	3084	
16	16	6	I DRIVE MYSELF CRAZY RCA	'N SYNC	2844	2836	
17	19	8	ANYTHING BUT DOWN A&M/INTERSCOPE	SHERYL CROW	2497	2285	
18	18	10	SPECIAL ALMO SOUNDS/INTERSCOPE	GARBAGE	2482	2386	
19	17	36	SAVE TONIGHT WORK/ERG	EAGLE-EYE CHERRY	2393	2465	
20	23	5	GIVE IT TO YOU INTERSCOPE	JORDAN KNIGHT	2234	2026	

THIS WEEK	LAST WEEK	WKS. ON CHART	ADULT TOP 40		FOR FULL CHART, SEE PG. 27		
			TITLE/IMPRINT/PROMOTION LABEL	ARTIST	DETECTIONS TW	LW	
			★ ★ ★ No. 1 ★ ★ ★				
1	1	21	EVERY MORNING LAVA/ATLANTIC	SUGAR RAY	3118	3143	
2	2	28	KISS ME SQUINT/COLUMBIA	SIXPENCE NONE THE RICHER	3024	2981	
3	3	33	SLIDE WARNER BROS.	GOO GOO DOLLS	2868	2828	
4	4	31	BACK 2 GOOD LAVA/ATLANTIC	MATCHBOX 20	2315	2403	
5	5	16	BELIEVE WARNER BROS.	CHER	1886	2037	
6	6	30	ANGEL WARNER SUNSET/REPRISE	SARAH MCLACHLAN	1826	1996	
7	7	42	SAVE TONIGHT WORK/ERG	EAGLE-EYE CHERRY	1821	1861	
8	9	12	ANYTHING BUT DOWN A&M/INTERSCOPE	SHERYL CROW	1752	1679	
9	8	24	FLY AWAY VIRGIN	LENNY KRAVITZ	1708	1661	
10	11	8	DOWN SO LONG ATLANTIC	JEWEL	1540	1475	
11	12	13	WHAT IT'S LIKE TOMMY BOY	EVERLAST	1515	1458	
			★ GREATEST GAINER ★				
12	17	4	LIVIN' LA VIDA LOCA C2	RICKY MARTIN	1435	1097	
13	13	37	JUMPER ELEKTRA/VEEG	THIRD EYE BLIND	1386	1470	
14	14	15	RUN HOLLYWOOD/ATLANTIC	COLLECTIVE SOUL	1371	1414	
15	10	35	LULLABY SMG/COLUMBIA	SHAWN MULLINS	1362	1511	
16	20	7	THAT DON'T IMPRESS ME MUCH MERCURY	SHANIA TWAIN	1201	973	
17	16	11	SPECIAL ALMO SOUNDS/INTERSCOPE	GARBAGE	1157	1165	
			★ ★ AIRPOWER ★ ★				
18	22	6	LIFE IS SWEET ELEKTRA/VEEG	NATALIE MERCHANT	962	843	
19	19	27	YOU GET WHAT YOU GIVE MCA	NEW RADICALS	936	986	
20	15	9	EVERYBODY'S FREE (TO WEAR SUNSCREEN) CAPITOL	BAZ LUHRMANN	935	1312	

THIS WEEK	LAST WEEK	WKS. ON CHART	RHYTHMIC TOP 40		FOR FULL CHART, SEE PG. 16		
			TITLE/IMPRINT/PROMOTION LABEL	ARTIST	DETECTIONS TW	LW	
			★ ★ ★ No. 1 ★ ★ ★				
1	1	13	NO SCRUBS LAFACE/ARISTA	TLC	2287	2269	
2	3	7	ANYWHERE BAD BOY/ARISTA	112 FEATURING LIL'Z	1651	1493	
3	2	15	SWEET LADY RCA	TYRESE	1474	1590	
4	5	15	WHAT'S SO DIFFERENT 550 MUSIC/ERG	GINUWINE	1380	1371	
5	6	10	WHAT'S IT GONNA BE?! FLIPMODE/ELEKTRA/VEEG	BUSTA RHYMES FEATURING JANET	1313	1363	
6	4	21	HEARTBREAK HOTEL ARISTA	WHITNEY HOUSTON FEAT. FAITH EVANS & KELLY PRICE	1204	1412	
7	7	29	CAN I GET A... DEF JAM/MERCURY	JAY-Z FEATURING AMIL (OF MAJOR COINZ) & JA	1140	1120	
8	10	5	LIVIN' LA VIDA LOCA C2	RICKY MARTIN	1002	804	
9	8	25	ANGEL OF MINE ARISTA	MONICA	838	922	
10	11	6	ALMOST DOESN'T COUNT ATLANTIC	BRANDY	819	781	
11	9	9	MY FIRST NIGHT WITH YOU UNIVERSITY/INTERSCOPE	MYA	812	864	
12	17	3	WHERE MY GIRLS AT? MOTOWN/UNIVERSAL	702	792	700	
13	12	8	THE HARDEST THING UNIVERSAL	98 DEGREES	767	765	
14	13	3	I WANT IT THAT WAY JIVE	BACKSTREET BOYS	761	714	
15	14	17	EX-FACTOR RUFFHOUSE/COLUMBIA	LAURYN HILL	758	761	
16	18	35	HOW DEEP IS YOUR LOVE ISLAND/DEF JAM/MERCURY	DRU HILL FEATURING REDMAN	660	631	
17	16	20	...BABY ONE MORE TIME JIVE	BRITNEY SPEARS	617	672	
18	22	14	WHEN A WOMAN'S FED UP JIVE	R. KELLY	596	603	
19	20	16	RUFF RYDERS' ANTHEM RUFF RYDERS/DEF JAM/MERCURY	DMX	594	646	
20	15	11	GIRLFRIEND/BOYFRIEND LIL' MAN/INTERSCOPE	BLACKSTREET WITH JANET	568	713	

THIS WEEK	LAST WEEK	WKS. ON CHART	CROSSOVER		FOR FULL CHART, SEE PG. 23		
			TITLE/IMPRINT/PROMOTION LABEL	ARTIST	DETECTIONS TW	LW	
			★ ★ ★ No. 1 ★ ★ ★				
1	1	13	NO SCRUBS LAFACE/ARISTA	TLC	3452	3498	
2	2	9	ANYWHERE BAD BOY/ARISTA	112 FEATURING LIL'Z	2945	2972	
3	3	12	WHAT'S IT GONNA BE?! FLIPMODE/ELEKTRA/VEEG	BUSTA RHYMES FEAT. JANET	2727	2772	
4	4	22	SWEET LADY RCA	TYRESE	2035	2289	
5	5	17	YOU SILAS/MCA	JESSE POWELL	1604	1693	
6	7	20	EX-FACTOR RUFFHOUSE/COLUMBIA	LAURYN HILL	1572	1580	
7	12	3	WHERE MY GIRLS AT? MOTOWN	702	1490	1254	
8	8	15	WHAT'S SO DIFFERENT 550 MUSIC/EPIC	GINUWINE	1426	1552	
9	6	22	HEARTBREAK HOTEL ARISTA	WHITNEY HOUSTON FEAT. FAITH EVANS & KELLY PRICE	1402	1656	
10	9	8	SITTING HOME BAD BOY/ARISTA	TOTAL	1363	1355	
11	14	6	WHO DAT FREEWORLD/TONY MERCEDES/PRIORITY	JT MONEY FEATURING SOLE	1341	1220	
12	13	6	IF YOU (LOVIN' ME) ELEKTRA/VEEG	SILK	1237	1226	
13	17	5	ALMOST DOESN'T COUNT ATLANTIC	BRANDY	1216	1188	
14	11	31	CAN I GET A... DEF JAM	JAY-Z FEATURING AMIL (OF MAJOR COINZ) & JA	1215	1257	
15	19	6	FORTUNATE ROCK LAND/INTERSCOPE/COLUMBIA	MAXWELL	1204	1106	
16	15	5	HATE ME NOW COLUMBIA	NAS FEATURING PUFF DADDY	1153	1203	
17	16	22	WHEN A WOMAN'S FED UP JIVE	R. KELLY	1144	1193	
18	21	17	ALL NIGHT LONG BAD BOY/ARISTA	FAITH EVANS FEATURING PUFF DADDY	1081	1083	
19	20	11	LIFE ROCK LAND/MCA/INTERSCOPE	K-CI & JOJO	1069	1104	
20	22	10	NANN SLIP-N-SLIDE/WARLOCK	TRICK DADDY FEATURING TRINA	1032	1077	

Compiled from a national sample of data supplied by Broadcast Data Systems. 111 mainstream top 40, 35 rhythmic top 40, 74 adult top 40 and 65 crossover stations are electronically monitored 24 hours a day, 7 days a week. Songs ranked by number of detections. () Records showing an increase in detections over the previous week, regardless of chart movement. A record that has been on a chart for more than 20 weeks will not receive a bullet, even if it registers an increase in detections. Airpower awarded to those records that attain 2,000 detections (mainstream), 600 detections (rhythmic) or 900 detections (adult top 40 and crossover) for the first time. Greatest Gainer awarded to the record with the largest increase in detections. Most New Stations awarded to the record registering six or more detections at the most stations for the first time this week. If two records are tied in number of detections, the record being played on more stations is placed first. 1999 Billboard/BPI Communications.

jennifer lopez | if you had my love
the first single from the debut album
On the 6

"It hardly seems fair that she gets to sizzle on the screen and on this slow funk track."
Entertainment Weekly (A-)

Hot Shot Debut (23)
Monitor Rhythmic Top 40 Airplay +314
Monitor Mainstream Top 40 Airplay +384

B96 (35x) KBXX (31x) KHKS (21x)
WKTU (20x) KPWR (26x) KZQZ (28x)
Z90 (23x) WXXL (28x) KDND (27x)
KQKS (22x) KTFM (24x) WKSS (24x)

Produced by Rodney Jerkins for Darkchild Entertainment Inc., executive producers: Cory Rooney and Jennifer Lopez
management: Benny Medina, David Guillod & Jonathan Cohen for Handprint Entertainment
© 1999 Sony Music Entertainment Inc. "WORK" is a trademark of Sony Music Entertainment Inc. <http://www.workgroupnet.com>

WORK

WILL SMITH

WILD WILD WEST



FEATURING DRU HILL

**THE WORLD PREMIERE SINGLE FROM THIS
SUMMER'S BLOCKBUSTER FILM "WILD WILD WEST,"
STARRING WILL SMITH.**

**VIDEO PREMIERE WEDNESDAY, MAY 12.
MOVIE IN THEATERS FRIDAY, JULY 2.**

PRODUCED BY ROB FUSARI FOR WHITE CHOCOLATE PRODUCTIONS.

MANAGEMENT: JAMES LASSITER

www.willsmith.net www.whitechocolateproductions.com © 2005 White Chocolate Productions, Inc. All rights reserved. "Wild Wild West" is a trademark of White Chocolate Productions, Inc. "Wild Wild West" is a registered service mark of White Chocolate Productions, Inc. All other trademarks are the property of their respective owners.



THE FIRST HIT SINGLE FROM THE MOST
ROMANTIC SOUNDTRACK OF THE SUMMER

Notting Hill

#1 in 18 countries! Over 5 million singles sold! A global phenomenon!



boyzone
no matter what

Impacts
May 10th.

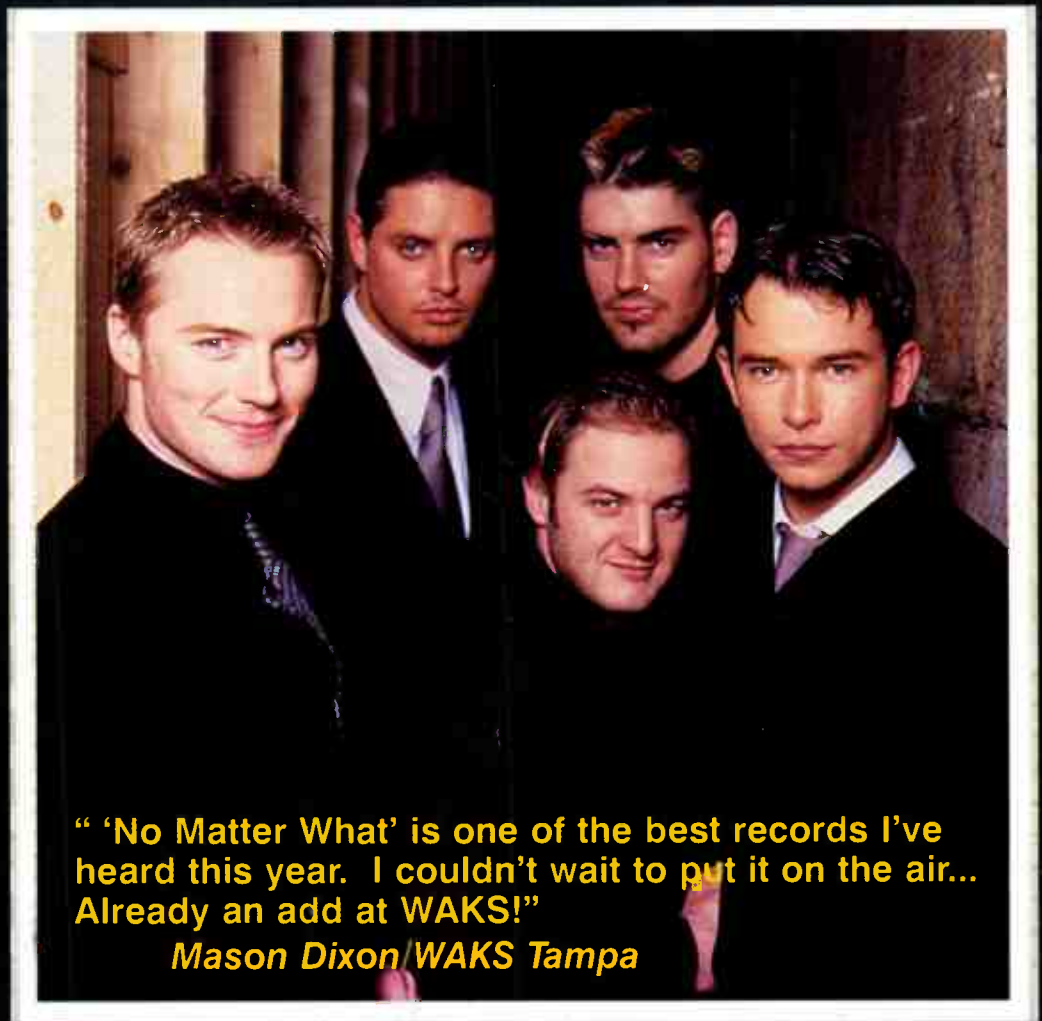
Performance of "No Matter What" on *The Rosie O'Donnell Show* - May 26

A hit in the following countries

UK: #1! Record Of The Year (ahead of Celine, Cher, Backstreet Boys, Spice Girls, etc) Biggest phone poll in history. Over 1 million votes in 45 minutes, over 30% total for Boyzone. 1.5 million copies sold! In its first week, "No Matter What" sold 293K, the highest total for any single in any week in all of 1998.
Germany: #1! 1,000,000 sold! **Holland:** #1 for six weeks! Over 500,000 sold! **Ireland:** #1 for eight weeks! **Norway:** #1 for seven weeks! **Belgium:** #1 for four weeks! **Sweden:** #1! **Denmark:** #1! **New Zealand:** #1! **Switzerland:** #2! **Austria:** #3! **Australia:** #3 and rising!

Executive Producers: Jim Steinman & Andrew Lloyd-Webber

**In Stores
May 18th**



"'No Matter What' is one of the best records I've heard this year. I couldn't wait to put it on the air... Already an add at WAKS!"

Mason Dixon/WAKS Tampa

Also includes songs from
98°, Elvis Costello, Steve Poltz, Shania Twain & more.

From the creators of "Four Weddings And A Funeral".
Starring Julia Roberts & Hugh Grant.
Wide film release - over 2,000 screens - on May 28

www.polygram-us.com/boyzone

