

TOP 40 AIRPLAY Monitor

• We Listen To Radio •

November 13, 1998 \$4.95 Volume 6 • No. 46

TOP 40 HIGHLIGHTS

MAINSTREAM TOP 40

#1

BARENAKED LADIES

One Week (REPRISE)

★★★ AIRPOWER ★★★

NO RECORDS QUALIFIED FOR AIRPOWER THIS WEEK

GOING FOR AIRPLAY

JENNIFER LOVE HEWITT • *How Do I Deal* (143/WARNER BROS.)

NATALIE IMBRUGLIA • *Smoke* (RCA)

JAY-Z • *Hard Knock Life (Ghetto Anthem)* (ROC-A-FELLA/DEF JAM/MERCURY)

RHYTHMIC TOP 40

#1

LAURYN HILL

Doo Wop (That Thing) (RUFFHOUSE/COLUMBIA)

★★★ AIRPOWER ★★★

NO RECORDS QUALIFIED FOR AIRPOWER THIS WEEK

CROSSOVER

#1

LAURYN HILL

Doo Wop (That Thing) (RUFFHOUSE/COLUMBIA)

★★★ AIRPOWER ★★★

OUTKAST • *Rosa Parks* (LAFACE/ARISTA)

GOING FOR AIRPLAY

GERALD LEVERT • *Taking Everything* (ELEKTRA/EEG)

BUSTA RHYMES • *Gimme Some More* (ELEKTRA/EEG)

ADULT TOP 40

#1

GOO GOO DOLLS

Iris (WARNER SUNSET/REPRISE)

★★★ AIRPOWER ★★★

U2 • *Sweetest Thing* (ISLAND)

EVE 6 • *Inside Out* (RCA)

SHANIA TWAIN • *From This Moment On* (MERCURY)

SARAH MCLACHLAN • *Angel* (WARNER SUNSET/REPRISE)

FASTBALL • *Fire Escape* (HOLLYWOOD)

ALTERNATIVE CONTEMPORARY

#1

BACKSTREET BOYS

I'll Never Break Your Heart (JIVE)

★★★ AIRPOWER ★★★

WHITNEY HOUSTON & MARIAH CAREY • *When You Believe* (DREAMWORKS/GEFFEN)

BETTE MIDLER • *My One True Friend* (WARNER BROS.)

GOING FOR AIRPLAY

ARETHA FRANKLIN • *How Many Times* (ARISTA)

JENNIFER LOVE HEWITT • *How Do I Deal* (143/WARNER BROS.)

NATALIE IMBRUGLIA • *Smoke* (RCA)

CAROLE KING • *Anyone At All* (ATLANTIC)

More Than Heritage Keeps Y100 Miami Vital For 25 Years

by Jeff Silberman

Heritage top 40 WHYI (Y100) Miami celebrated its 25th birthday with an anniversary concert, held Oct. 24, and with a 3.9-4.2 12-plus rise in the summer book, its best number in several years. But

PD Rob Roberts is doing everything but rest on the station's lengthy laurels. Also the PD of AC sister WPLL (the Planet), Roberts has spent the past several years adjusting both stations to keep them from cannibalizing each other's numbers. "I can point to three specific musical shifts I've been doing both jobs," he says. "We've been able to see those changes coming and

roll with them."

In fact, as he and other key players in Y100's development point out, that mentality has been instrumental throughout WHYI's history.

In 1973, owner Cecil Hefel put Y100 on the air. "It was a top 40 from the get-go," recalls Robert W. Walker, who played a part in the sign-on. "It was put on the air to compete with the dominant top 40s in the market, WQAM and WMYQ. The latter was one of the first FM top 40s in the country. With Buzz Bennett as PD, they came in with big-money contests, high rotations, and energetic DJs."

Hefel sent Walker to a Hawaiian station for a year; he returned in May '74. In the interim, national PD John Rook hired Bill Tanner to be Y100's PD. "Bill

Continued on page 4

THE FOLLOWING 7-STEP PROGRAM
HAS BEEN TRIED AND PROVEN:

STEP 1:

Play "Crush"

STEP 2:

After approximately 150 spins, put "Crush" in your callout

STEP 3:

Review callout results, check SoundScan

STEP 4:

Play "Crush" more

STEP 5:

Repeat step 3

STEP 6:

Move "Crush" to POWER rotation

STEP 7:

Set up your own toll free phone number to tell the world
(CALL 1-877-840-JOHN FOR A FREE EXAMPLE)

Already over 1800 "Crush" spins!
1998 Album Sales: 3.5 million!

1998 Concert Tour: **SOLD OUT!**

DAVE MATTHEWS BAND



CRUSH

The **New Single** From The Multi-Platinum Album *Before These Crowded Streets* ■ Produced by Steve Lillywhite
Mixed by Steve Lillywhite & Steve Harris ■ Management: Red Light ■ www.dmband.com



M A R I A H

#1'S

HER 13 #1 SINGLES

VISION OF LOVE

LOVE TAKES TIME

SOMEDAY

I DON'T WANNA CRY

EMOTIONS

I'LL BE THERE

DREAMLOVER

HERO

FANTASY

ONE SWEET DAY

ALWAYS BE MY BABY

HONEY

MY ALL

PLUS 4 NEWLY RECORDED BONUS TRACKS

SWEETHEART WITH JERMAINE DUPRI

WHENEVER YOU CALL WITH BRIAN MCKNIGHT

I STILL BELIEVE

INCLUDING

WHEN YOU BELIEVE

(FROM THE PRINCE OF EGYPT)

THE LANDMARK DUET WITH **WHITNEY HOUSTON**

JERMAINE DUPRI APPEARS COURTESY OF SO SO DEF/COLUMBIA RECORDS
BRIAN MCKNIGHT APPEARS COURTESY OF MOTOWN RECORD COMPANY, L.P.,
A POLYGRAM COMPANY
WHITNEY HOUSTON APPEARS COURTESY OF ARISTA RECORDS

ALBUM IN STORES

TUESDAY NOVEMBER 17



DON'T MISS MARIAH ON THE LATE SHOW WITH DAVID LETTERMAN
MONDAY, NOVEMBER 16 AND THE VIEW TUESDAY, NOVEMBER 17.





Only A Few Hit Top 10 More Than Once

In a world that most agree is now powered by hit songs rather than hit artists, the Spin began wondering how many acts have managed to have more than one top 10 song on any chart this year. The answer: only 17, and that's when you look at all of Airplay Monitor's formats in four weekly publications, not just those featured in Top 40 Airplay Monitor.

There have been 45 top 10 songs on the mainstream top 40 chart so far this year, 40 on the adult top 40 chart, 56 on the rhythmic top 40 chart, and 59 on the mainstream R&B chart, demonstrating the quick turnover of titles at the top 40 and R&B formats. There were 38 AC, 48 modern rock, and 53 mainstream rock top 10s.

The group that managed to score a top 10 most often on any one chart is **Metallica**, with four top 10 songs at mainstream rock but relatively little airplay elsewhere. By contrast, **matchbox 20** managed three top 10s at mainstream top 40 and adult top 40. **Usher** charted three top 10s on the mainstream R&B and rhythmic top 40 charts. **The Backstreet Boys** had three top 10 AC and two mainstream top 40 top 10 songs.

Celine Dion managed three top 10 AC tracks. **Janet** and **Brandy** each had three top 10 rhythmic top 40 records, while **Dru Hill** and **Next** dominated the mainstream R&B chart with three top 10 tracks each. **Everclear** is the only modern rock act to have charted three top 10 tracks this year, while **Kenny Wayne Shepard**, **Days Of The New**, and **Aerosmith** all had three top 10 songs on the mainstream rock chart.

Alanis Morissette had two top 10 tracks on the adult top 40 and mainstream top 40 charts. **Will Smith**, who never reached the top 10 at mainstream R&B, struck gold twice on the mainstream top 40 chart. Similarly, **Laury Hill** charted one top 10 mainstream R&B record but had two at rhythmic top 40. And with two top 10 mainstream top 40 hits under its belt, 'N Sync has tied the Backstreet Boys as leader of the boy groups at that format.

MUSICAL CHAIRS: Priority VP of promotion **Sean Lynch** will stay through the first of the year to smooth the transition for newly installed VP **Johnny Coppola**. Lynch will announce his next move in January. . . Warner Bros. director of adult top 40 promotion **Marcia Welch** exits. Welch can be reached at 818-366-0532. Warner Bros. VP of triple-A promotion **Nancy Stein** assumes adult top 40 and modern adult promotion responsibilities.

Atlantic ups **Lee Stimmel** from senior director of product development to VP of marketing. . . Epic appoints **Matthew Marshall** VP of A&R. He was VP of A&R for Zoo/Volcano.

ARTIST MONITOR: "My Love Is Your Love" (Arista), **Whitney Houston's** first studio album in eight years, was completed with just 12 days to spare before the Nov. 17 street date. . . Did you know that newly elected Minnesota governor **Jesse "The Body" Ventura** once wanted to pursue a career in music? Ventura cut "Eve Of Destruction," which appeared on an obscure sampler 10 years ago. Virgin's **Michael Plen** masterminded the project. . . **Eve 6**, which took its name from a character on "The X-Files," shot its video for "Leech" on a set used in a recent "X-Files" episode.

FCC: Station Concerts May Be Payola

In a Nov. 5 story that cites the free appearance of recording acts at station concerts as "raising the specter of a new form of payola," The Los Angeles Times quotes FCC mass media bureau enforcement chief **Charles Kelly** as saying the practice could run afoul of FCC disclosure rules. "If a broadcaster is getting something valuable, like an artist performing at the station's concert, in exchange for playing the artist's song, and they don't identify the sponsor of the record, then they are in violation of the law," Kelly says. "If we get evidence that this practice is going on, sanctions could be imposed against the violating station." The paper goes on to quote modern **KROQ** Los Angeles PD **Kevin Weatherly** and **WHTZ** (Z100) New York PD **Tom Poleman** as stating that only acts the stations are already supporting are solicited for station shows.

Meanwhile, just when you hadn't heard much about pay-for-play recently, Airplay Monitor's European sister Music & Media reports that British indie-reissue label Westside Records is buying advertorial time on two Eastern U.K. stations to promote its catalog of albums from the **O'Jays**, **ELO** predecessor **the Move**, and **Procol Harum**.

MANAGEMENT: KKFR CLOSING

With Chancellor having closed on **KKFR** (Power 92) Phoenix, the group's **John Madison** assumes interim GM duties from former

owner **Fred Weber**.

David Meszaros segues from **WJZF/WCWN** Atlanta to Cox N/T-AC sisters **WSB-AM-FM** as GM.

Kevin Miller, most recently VP of marketing for Pizza Hut, is the new senior VP/chief marketing officer for ABC Radio Networks.

Sorry to report the Nov. 4 death of **George Wolfson**, former GM of Viacom's AC **WLTW** and classic rock **WAXQ** (Q104) New York, of a heart attack at the age of 61.

PROGRAMMING: MIX MAKES A CHANGE

Top 40 **KUMX** (Mix 104.1) New Orleans PD **Kandy Klutch** exits. Those duties will now be covered by OM **Dave Stewart**. Also at the Mix, outgoing night talent **Adam Smasher** is replaced by **Scotty Valentine**, in from the night shift at top 40 **WBBO** (B98) Monmouth County, N.J.

Former rhythmic top 40 **KQBT** (the Beat) Austin, Texas, PD **Rick Thomas** is now PD at adult R&B **XHRM** San Diego, replacing **Todd Shannon**.

Lisa Rodman, former PD of top 40 outlet **WDRQ** Detroit, is the new PD at crosstown **WYCD** (Young Country). She replaces **Eddie Haskell**, who remains for mornings. Meanwhile, **WYCD** GM **Joe Armao** transfers to that post at AC sister stations **KBAY/KEZR** San Jose, Calif.

Interim no longer, **Todd Michaels** is now the official PD at **WSNX** Grand Rapids, Mich.

RADIO ACTIVE
BY JEFF SILBERMAN
323-525-2303 • jsilberman@airplaymonitor.com

AC, Top 40 Off In Monitor's Quarterly Roundup Of National Arbitron Numbers

by Sean Ross

For the past six months, we've been looking at Airplay Monitor's exclusive national Arbitron numbers and wondering when the presidential sex scandal was finally going to help news/talk radio. But after six months of decline at N/T radio, the double-header, if you will, of baseball and Bill finally boosted the country's perennial No. 1 format.

News/talk led Monitor's quarterly survey of national listening by format, up 16.1-16.5 12-plus. The format was up in all dayparts, particularly in mornings, where it scored nearly a 20 share of listening.

News/talk was followed by No. 2 adult contemporary, which was off 14.9-14.5, hurt possibly by both N/T radio and country. R&B radio rebounded from an off spring book, up 11.7-11.8, amid signs that much of its listening is being redistributed from adult to mainstream outlets. No. 4 country rebounded 9.7-9.8, thus quelling concerns that AC's and top 40's interest in its product would further damage the format. Top 40, after a strong spring book, was off slightly, 8.9-8.8.

Album rock remained flat at No. 6 with a 7.2 share. Spanish radio, which posted its best-ever numbers in the spring, was off 6.6-6.5, despite sporting the No. 1 station in New York and the top two in Los Angeles. No. 8 oldies was flat at a 5.6 share, followed by classic rock, flat at a 4.8. Modern rock, despite its loss of stations, was flat at a 3.8, suggesting up books for the stations that stayed the course.

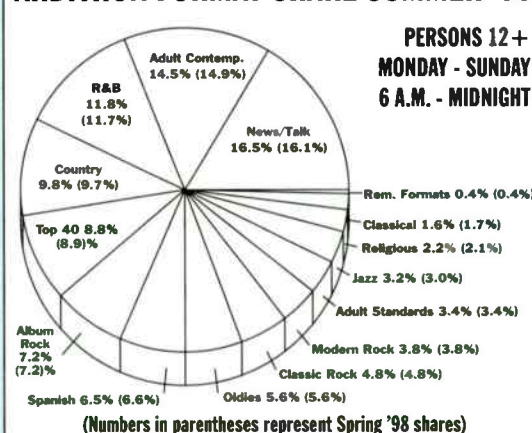
Those formats were followed by adult standards (flat at a 3.4), smooth jazz (3.0-3.2), religion (2.1-2.2), and classical (1.7-1.6). The numbers reflect summer books from Arbitron's continuous-measurement markets.

Country's success seemed to resolve the issue of whether the multi-format success of Shania Twain, Faith Hill, and LeAnn Rimes was a good thing for the format. Country was up 18-34 (8.6-8.9), 25-54 (where it returned to double digits, 9.7-10.0), and 35-64 (11.1-11.2). AC was off 16.2-16.1 18-34, down 17.5-16.9 25-54, and off 16.9-16.2 35-64. AC's drops suggest a couple of possibilities. One is that it was hurt by N/T's strong showing, especially at the upper end. It's also possible that the increasingly rock-driven nature of the format is finally hurting the format's upper

per demos and sending some listeners back to country. It's also worth noting that unlike top 40, which has played three country acts, AC went further this summer, also accommodating Garth Brooks and other country acts.

Top 40's losses were greatest at the young end this summer: it was off in teens (30.5-29.9), 18-34 (13.4-13.0), and 25-54 (7.4-7.2) but flat in 35-64 (at a 4.6). It was off in mornings (8.0-7.5), afternoons (9.6-9.3), and nights (11.8-11.4) but got its customary summer boost in middays, due to the annual redistribution of teen listening, up 7.5-7.9. Top 40 was at a 9.0 share 12-plus in summer '97, although given the industry's consensus that last year's available product was stronger, that may not be such a major differential compared with summer '98's 8.8 12-plus share.

ARBITRON FORMAT SHARE SUMMER '98



Dan O'Neil, former PD of suburban Washington, D.C., AM top 40 **WINX**, joins AC/triple-A hybrid **WNAV** Annapolis, Md., for sales.

FORMATS: MORE MAGIC

Longtime triple-A **WXLE** Albany, N.Y., flips to hot AC as "Magic 104.5" under new owner Capstar. PD **Neil Hunter** remains.

Hot AC **WWVW** (Wave 106.9) Savannah, Ga., evolves from AC to modern adult under new PD/p.m. driver **Phil Conn**, formerly with crosstown album outlet **WIXV**. He replaces **Bob Lewis**. **WWVW**, consulted by Broadcast Programming's **L.J. Smith**, uses the syndicated **Bob and Sherri** in mornings. The station needs service; call Conn at 843-785-9569.

PEOPLE: STAGING A KISSNAPPING

When **Dave "Leroy" Dawson** joined **WKSL** (Kiss 107.5) Memphis from **WJET** Erie, Pa., he did so by "kidnapping" PD **Chris Taylor** live on the air and holding him "hostage" for the weekend. The stunt, Taylor says, drew "police, FBI, and tons of calls," but no long-term repercussions, perhaps because the station didn't tell listeners their old \$20 bills were worthless.

Here's **WEDA** (Hot 97.3) Birmingham, Ala.'s new lineup: **Robbie Raggs** from now-defunct crosstown top 40 **WAPI-FM** (195) and **Kathy Knight** in mornings; **Rachael Addams** from **KTNP** (the Point) Omaha, Neb., in mid-days; PD **Greg Brady** in early afternoons; **Brian Scott** from **KHTS** Davenport, Iowa, in late afternoons; and MD **Mike Thomas** from **WHOT** Youngstown, Ohio, in nights. Meanwhile, owner Cox has closed on R&B combo **WBHJ/WBHK**, which it had been operating under an LMA.

WDRQ Detroit ups night jock **Domino** to the morning show. PD **Alex Tear** is looking for

a morning co-host.

WBZZ (B94) Pittsburgh PD **David Edgar** adds **Melanie Taylor** from suburban top 40 **WZKT** (Z98) for overnights, while B94 alumnus **Zak Szabo** takes time off from his karate school to chop out a weekend shift.

Kid Corona replaces **Brandi** in nights at **KSFM** (Jammin 102.5) Sacramento, Calif.

KKXX Bakersfield, Calif., PD **Chris Squires** brings in **Mr. Clean** from **KBOS** (B95) Fresno, Calif., for afternoons and **Romeo** from **KSFM** to do nights.

Longtime AC **KSNE** (Sunny 106.5) Las Vegas night host **Robert Holiday** exits and is replaced by the syndicated **Delilah**.

AND THERE'S MORE

AC **KMZQ** Las Vegas night host **Marshall Sylver**, a performing hypnotist and host of the infomercial "Passion, Profit, And Power," appears on the syndicated "Donny & Marie" show Dec. 1.

Syndicated retro show "Backtrax USA" releases its first compilation, "The Best of Backtrax USA," on SAR Records Nov. 17.

ON SOME WINGS & SOME PRAYERS

WHYI (Y100) Miami morning man **Footy** hosts his 12th annual Wing Ding festival Nov. 21. Besides local eateries showing off their best chicken wings (which will raise about \$250,000 for a local substance-abuse program), the festival will include performances by **Billie Myers**, **Edwin McCain**, **PM Dawn**, and **Better Than Ezra**. Footy recalls Wing Ding's origin in the story on Y100's 25th anniversary on page 1.

Also on the good Samaritan tip, **KHKS** (Kiss 106.1) Dallas morning man **Kidd Kraddick** took 51 chronically and/or terminally ill children and their families to Disney World in Orlando, Fla. It was the fifth Kidd's Kids trip.

More Than Heritage Keeps WHYI Miami Vital For 25 Years

Continued from page 1

and I arrived almost at the same time," Walker recalls. "We immediately hit it off, even though he had a ton of programming experience, and I had none—I had only done afternoon drive. Yet I was always interested in programming, and my philosophy matched his, so he made me APD."

The key to upending their strong competition came from the duo's diverse-yet-complementary styles. "Tanner coined the term 'predictable unpredictability,' which meant the only thing the listeners could expect when they tuned in to Y100 was unpredictable, high-personality DJs," Walker says. "Yet I came from the Bill Drake school of succinct, short bursts—on-and-gone jocks. Together, we perfected a way to deliver a lot of personality and energy in a very short period of time, to be great and off the wall in seven seconds. My quickness and his show-biz [mentality] created a quite potent blend."

Another integral part of the story was new GM David Ross, who came with Metroplex, which purchased Y100 in 1977. "All I did was provide a business acumen to the creative environment," he says. "Y100 had been a decently rated station in the '70s, but it wasn't profitable. Within a year, we turned around over a million dollars."

No sooner had Y100 become a major player than Tanner journeyed to WKTQ (13Q) Pittsburgh and Walker became PD. Yet it wasn't long before Tanner returned home. "He told me he wanted to come back only to do mornings," Walker says. "This man is the singular most intelligent and accomplished radio person I had ever met . . . and he was only going to do mornings? I was happy to step aside and become APD again."

Needing a sports guy for his morning show, Tanner picked a novice whose only radio experience was in public affairs. He named the neophyte Athlete's Foot (eventually shortened to just Footy), soon involving him in various character bits as well.

Eventually, Tanner would go off again, this time to WASH Washington, D.C. "It was tough when he left," Footy recalls. "He really was the heart and soul of the whole deal, but GM Dave Ross kept the heart beating and continued on."

Walker, who reclaimed the programming reins, recalls Y100 being an early leader in call-out research. He credits the station's continued success to a "very creative group of people. I inherited what Bill Tanner built. Its legacy was high-energy and very audience-oriented. We wouldn't allow promotions to interfere with our sound. We never ran things like, 'It's 82 Pepsi degrees outside.'"

With Tanner gone from mornings, Sunny Fox came in and teamed up with Footy. "If Bill was a genius in the morning—and he was—then Sunny was a madman," Footy asserts. "And I am every bit as crazy as he was. We created a unique magic on the air; some of my favorite on-air moments were with him. The 'Wing Ding' was born out of an argument between us over which restaurant served the best chicken wings. Now it's a famous international

event."

Walker, who received the South Florida Broadcasters' lifetime achievement award on Nov. 9, took Y100 to an Arbitron high of a 9.4 share 12-plus in the fall of 1984, then left in 1986. In early 1985, Tanner returned to Miami to launch WHQT (Hot 105) and then WPOW as rhythmic top 40 outlets, something that would eventually force Y100 to regroup. Currently owner of Airwaves Recording Studios in Miami, Walker is not at all surprised that Y100 has prospered for so long. "The station has always been very well-run," he notes. "Some of the people who worked with me during our heyday are still there—Footy, MD Al Chio, and marketing/promotion director Julie Wilson. They came up when its high standards were set, and they uphold those standards today."

BACK TO THE ROOTS

With Hot 105 and Power 96 in the mix, Y100's heritage wasn't always enough to keep it going strong. After trying to take on those stations as a younger-leaning, reaction-record-driven top 40 under Steve Perun, Y100 changed again. As Roberts notes, "The station [went] through a dark period where it tried to decide if would become an adult top 40," he says. "It had a couple of consultants; it just didn't sound very focused."

Ross says, "I originally brought Rob in to be PD of WAXY [now WBGG], its oldies LMA sister. I saw that he was a good musicologist and knew how to put sizzle on the air, so I decided to have him program Y100. It was a gamble that turned out to be a great move."

Roberts notes, "I had basically been listening to Y100 from the outside, so I had a better vantage point from which to take the station back to its top 40 roots. After my first full book there, we went 2.8-4.4, so I knew we were on our way back up."

How did he do it? By not over-relying on research. "Oftentimes, radio thinks too hard on what the audience wants," Roberts says. "To this day, when you research our audience, you'll get data that suggests we be more adult and play more '80s hits. In reality, what our listeners expect from Y100 is a fun top 40 station that plays the hottest hits, whatever they may be. We do better when we're noisier and more boisterous. We get better adult numbers whenever we eliminate the adult attitude."

Another key to Y100's revitalization has been Roberts' reworked morning show. "Footy had been teaming with Bobby Mitchell for about five years, and at times, they did extremely well," he says. "But when I became PD, they were underperforming the rest of the dayparts. I had to refocus the show until they outperformed the station." Which they did until Roberts took another job. About 18 months later, Ross persuaded Roberts to return to what the latter describes as "my last radio move. This was a 'coming home' situation, where I could finally settle down with my wife and kids."

Once again, Roberts found Y100 to be too adult. "The afternoon drive jock, Kenny Walker,

RADIO CONCERT MONITOR

DATE	CALL LETTERS	EVENT	SCHEDULED TO APPEAR
Nov. 13	KDON Monterey, Calif.	Temple Of Boom	Coolio, Divine, Nicole, TQ, Voices Of Theory
Nov. 21	KYLZ Albuquerque, N.M.	Ladies Only Concert	Voices Of Theory, Reel Tight, more
Nov. 22	KBTE Odessa, Texas	Super Car Show	Monifah, Zapp & Roger
Dec. 2	WPXY Rochester, N.Y.	16th Birthday Concert	Jennifer Paige, PM Dawn, Inner Circle
Dec. 4	WJMN Boston	Super Jam '98	Usher, Monica, Dru Hill, Divine, Busta Rhymes, Foxy Brown, and more
Dec. 12	KZHT Salt Lake City	Jingle Ball	PM Dawn, Edwin McCain, Alana Davis, Shawn Mullins
Dec. 12	WNNX Atlanta	Acoustic Christmas	Barenaked Ladies, Squirrel Nut Zippers, more
Dec. 14	WBZZ Pittsburgh	Jingle Ball	PM Dawn, Jennifer Paige
Dec. 18	KZQZ San Francisco	Jingle Ball	TBA
Dec. 19	WIOQ Philadelphia	Third Jingle Ball	Taylor Dayne, Britney Spears, L.F.O., Divine
Dec. 19	WXXL Orlando, Fla.	Christmas Concert	Bryan Adams, 98°, more

Let us monitor your event! Call Jeff Silberman at 323-525-2303 or E-mail jsilberman@airplaymonitor.com

picked me up at the airport, and on our way to dinner, I heard a Journey song on the station," Roberts says. "We immediately turned around and headed straight for the station to make music changes. Again, the research said we should go adult, but that's not what people wanted from Y100. It's like you ask someone if they'd like a better-tasting Coke. Of course, they'd say yes. Then look what happened with New Coke. We did what they did with New Coke: Go back to what we did well in the first place."

NEW MORNINGS IN A NEW CITY

Regaining Y100's luster was a unique challenge, as Miami wasn't the same after Hurricane Andrew hit in 1994. "The city has undergone as big a transformation in the last 25 years as any city in America," Roberts says. "As Bill Tanner once said, 'As soon as you realize that you'll never be able to figure out Miami, you've figured out Miami.'"

Further complicating things, both literally and figuratively, was Andrew. "It destroyed so much of Dade County that the entire makeup of the city changed. People moved back and forth; Miami became a true melting pot," he says.

"Its Latin influence is not as homogenous as in Los Angeles, where [Hispanics] are almost all of Mexican descent," Walker adds. "Here, it's primarily Cubans, but there are also large pockets of

Colombians, Argentinians, and Dominicans. All these people have slightly different tastes."

Roberts notes, "Obviously, a lot of people want to work here. But to succeed in the convertible capital of the world, you better speak Spanish. Our staff reflects a 50% Hispanic market, what with MD Al Chio, night guy Fernando, and morning jocks Jade Alexander and Tina Malave. Our staff maintains the culture of the community."

The morning duo, along with Ricky Ricardo, revolves around Footy, who has become the elder statesman of the recently revamped morning show. "I see a lot of myself in Ricky and Tina," Footy says. "I'm forcing on them every single bit of wisdom and trick I learned when I was in their position, whether they like it or not."

"It's funny, I never wanted to be the morning host," he admits. "Yet we've created an amazing dynamic that has energized me and is one of the main reasons I'm excited to get up this early in the morning. Now I don't know what the future holds. Maybe it'll be 'Footy And The Chix At 6' in the year 3000."

And what of the millennium and beyond? "About every three or four years, we reinvent ourselves," Ross states. "We did it in 1985, in '89, '93, and now in '98. We're streamlined and well-positioned for the future."

Y100's 25th Birthday Concert . . .



Shown, from left, are Columbia Records' Charlie Walk, Valerie Ross, Clear Channel South Florida GM David Ross, Columbia's Richie Tardancio, and WHYI (Y100) Miami's PD Rob Roberts and GM Ronna Woulfe.

. . . And Ace Of Base Joins The Party



Shown, from left, are Clear Channel GM David Ross, Arista Records' Jeff Backer, Y100 PD Rob Roberts, Ace Of Base's Jonas Berggren, Y100's MD Deidre Poyner and morning host Footy, Ace Of Base's Jenny Berggren and Ulf Ekberg, and Arista's Richard Spiers.

KIIS/Los Angeles - Top 10 Callout, #1 phones, #7 single sales.



Week Of	Daypart	Mon	Tues	Wed	Thu	Fri	Sat	Sun	Weekly Total
11/02 - 11/08		5	6	6	6	4	7	5	39
10/26 - 11/01		4	4	5	4	5	7	5	34
10/19 - 10/25		4	4	2	4	5	6	6	31
10/12 - 10/18		3	2	3	4	5	5	5	27

KHKS/Dallas - Top 15 Callout, Top 5 phones, #19 single sales.

106.1 KISSFM

Week Of	Daypart	Mon	Tues	Wed	Thu	Fri	Sat	Sun	Weekly Total
11/02 - 11/08		5	5	3	4	6	9	7	39
10/26 - 11/01		3	3	4	3	5	7	6	31
10/19 - 10/25		4	4	5	3	4	4	5	29
10/12 - 10/18		4	3	4	2	4	5	7	29

WZJM/Cleveland - #2 Callout, Top 5 phones, #10 single sales.



Week Of	Daypart	Mon	Tues	Wed	Thu	Fri	Sat	Sun	Weekly Total
11/02 - 11/08		7	9	8	10	10	7	7	58
10/26 - 11/01		11	10	5	6	6	6	5	49
10/19 - 10/25		3	4	8	8	10	9	6	48
10/12 - 10/18		6	7	5	5	4	6	6	39

KHTT/Tulsa - Top 5 Callout, Top 5 phones, #10 single sales.



Week Of	Daypart	Mon	Tues	Wed	Thu	Fri	Sat	Sun	Weekly Total
11/02 - 11/08		12	13	13	12	13	12	8	83
10/26 - 11/01		6	12	12	13	12	10	11	76
10/19 - 10/25		10	10	7	6	6	8	6	53
10/12 - 10/18		10	11	10	11	10	10	7	69

Play It With Frequency.

MONIEAH

“Touch It”



PRODUCED BY: JACK KNIGHT FOR DAKODA HOUSE PRODUCTIONS, INC. • CO-PRODUCED BY: SCREWFACE
WRITTEN BY: JACK KNIGHT & SCREWFACE

© 1998 Universal Records Inc. World Radio History





TOP 40 TOPICS BY SEAN ROSS

212-536-5264 • sross@airplaymonitor.com

Top 40 Takes On A Spiritual Bent For 4th Qtr

Noticed how mainstream top 40 has taken on a more spiritual bent this fall? There's **Alanis Morissette**, stereotyped as the leader of the angry singer/songwriter women, but who is returning, with "Thank U," to the more philosophical tack of "You Learn"/"Hand In My Pocket"/"Ironic." There's **Jewel**, who first came to our attention with the social commentary of "Who Will Save Your Soul," again venturing in that direction on "Hands." There's **Bryan Adams** "On A Day Like Today"; "I'm Your Angel" by **Celine Dion & R. Kelly**; **Whitney Houston & Mariah Carey's** "The Prince Of Egypt" duet, "If You Believe"; and the **Bravo All Stars** "Let The Music Heal Your Soul."

Both Houston and Carey have touched on the inspirational and their previous releases, too (Carey's "Make It Happen," "One Sweet Day," and "Hero"; Houston's "Miracle," "The Greatest Love Of All," and "Love Will Save The Day"). Kelly has shown himself capable of both the sacred and the profane. Even Adams made a brief run at social commentary with "Heat Of The Night" before returning to love ballads. So what's unusual about the current spiritual bent of the chart is less the individual entries themselves as much as their concentration. Then again, it is the fourth quarter.

The tendency for pop music to turn its attention to larger concerns around Christmas-time is just one more way the U.S. is becoming like the U.K. For decades, labels have set their sights on the Christmas week No. 1, which has usually resulted in such holiday hits as "There's No One Quite Like Grandma" by the **St. Winifred's School Choir**. But by the early '80s, the international event stature of **Band Aid's** "Do They Know It's Christmas?" had changed the nature of the American charts, too.

Since **Band Aid** (not as big here in those pre-SoundScan days as it was in the U.K., but a noticeable presence nonetheless), music with a message hasn't controlled the charts every Christmas, but there's been a greater correlation than before: **Phil Collins**' "Another Day In Paradise" at the end of 1989, **Michael Jackson's** "Black Or White" in 1991, Carey's "Hero" in 1993 and "One Sweet Day" in 1995. (Carey was sharing the top 10 with Houston's "Exhale [Shoop, Shoop]," which also falls into the "spiritual healing" category.)

Two years ago, the trend was less noticeable. Kelly's "I Believe I Can Fly" was climbing the charts at Christmas '96 but would peak during the first quarter of '97. (Another "Space Jam" track, **Seal's** cover of the philosophical "Fly Like An Eagle," was already on its way down by that time.) Otherwise, the holiday was dominated by **No Doubt's** "Don't Speak" and other more traditionally themed hits.

Last year's holiday hits weren't as clearly calculated for the fourth quarter, but there was a philosophical bent nonetheless. Listeners probably didn't earmark last year's holiday No. 1, **Chumbawamba's** "Tubthumping," as the trib-

ute to the indomitability of the proletarian spirit the group intended, or **Smash Mouth's** "Walkin' On The Sun" as a plea for the return of '60s/'70s-style political activism. But they were. And they were joined by **Janet Jackson's** more clearly spiritual "Together Again." (And, on the sales side, **Elton John's** "Candle In The Wind 1997" was still a factor at holiday time.)

One ironic note. Because of the shorter shelf life of British hits, most of the songs geared for that Christmas year end are just making their way to radio now. Meaning there's less of a spiritual/philosophical feel than there is here, although the Morissette record is already a hit and the Dion/Kelly and Houston/Carey duets are starting to materialize on the radio.

So what's dominating the U.K. this fall? The **Cher** and **George Michael** singles (already major hits there); "Falling In Love Again," **Eagle-Eye Cherry's** follow-up to "Save Tonight"; teen idols **911's** remake of "More Than A Woman" (one of several recent "Saturday Night Fever" remakes); **Boyzone's** remake of **John Michael Montgomery's** country hit "I Love The Way You Love Me" (the group scored earlier this year with **Tracy Chapman's** "Baby Can I Hold You"); and teen idols **Another Level** with "Guess I Was A Fool," which strongly recalls "End Of The Road."

U2's "The Sweetest Thing" is a top five British hit. So is **Culture Club's** reunion effort, "I Just Wanna Be Loved." **Des'ree's** "Time" was a major European hit before its release in the U.S.; she's already scaling the U.K. chart again with "What's Your Sign." **The Beautiful South**, unknown outside triple-A here but a longtime hitmaker at home, has been top five with "Perfect 10," a tribute to full-figured women and the men who love them. **Manic Street Preachers**, another longtime U.K. chart act, have also been top five with the **Oasis/Verve**-like ballad, "If You Tolerate This, Your Children Will Be Next." **The Corrs**, whose remake of **Fleetwood Mac's** "Dreams" was also a bigger hit in the U.K. than here, followed that up with "What Can I Do," which evokes the feel of **Edie Brickell's** "What I Am."

British dance act **Bus Stop** scored over the summer with an **N-Trance**-like rap remake of "Kung Fu Fighting," featuring **Carl Douglas**. It has followed that with a similar remake of "You Ain't Seen Nothing Yet," featuring **Randy Bachman**, due out shortly on Universal. Theirs aren't the only unusual dance novelties of the moment. There's **Touch & Go's** "Would You . . . ?" (which features a woman asking, "Would you like to go to bed with me?") over a **Propellerheads**-like techno/MOR track, just-released here; **Spacedust's** recent No. 1, "Gym And Tonic," which features aerobic instructions; or the **Tamperer's** follow-up to "Feel It," which recycles **Madonna's** "Material Girl" into a new song, "If You Buy This Record, Your Life Will Be Better," perhaps best capturing the true spirit of the season.

MONITOR PROFILE

After 18 Months, KBKS Breaks Through, And Mike Preston Breaks His Silence

The particulars of the station's music have fluctuated a few times, but, says PD Mike Preston, the game plan for KBKS (Kiss 106.1) Seattle has been essentially the same since his station flipped from rhythmic AC to mainstream top 40 18 months ago. Kiss 106.1, he says, was designed to fill Seattle's modern adult niche without being locked into it, giving Preston flexibility to cover all the turf between adult top 40 KPLZ (Star 101.5) and R&B-leaning heritage top 40 KUBE.

KBKS, relaunched on Memorial Day weekend '97, quickly found itself locked in what seemed, for a while, like a modern AC war of attrition with KPLZ. But in recent months, KPLZ seems to have refocused on the '80s franchise, with Kiss 106.1 moving slightly more rhythmic. In the just-released summer Arbitron survey, KBKS had its best book to date, up 3.9-4.8 12-plus and tied for fifth in the market. (KUBE was up 6.2-6.6; KPLZ was flat at a 4.2.)

Preston, who programmed top 40s KWSS San Jose, Calif., and KSDO-FM (KS103) San Diego during the '80s, returned to the West Coast last year after eight years as APD/MD of

product is added late, if at all. The rhythmic records that do best for KBKS, Preston says, are the pop/rhythmic titles that KUBE no longer plays: All Saints, Backstreet Boys, Madonna, Robyn, 'N Sync, etc.

Those titles, which were usually on KBKS to some extent but that are more prominent now, are helping KBKS separate itself from KPLZ, which, Preston says, was initially "doing a good job of trying to block our entree into the market. They did a lot to try and masquerade as much as they could as being us, in a way. As our momentum continued, I think they had to make a decision: What were they going to try and protect?" Now, Preston says, KPLZ has "done a better job of owning the '80s than almost any station I've ever seen." To differentiate itself, KBKS doesn't play any '80s titles, billing itself initially as "the '90s music mix." In October, Preston and creative director Mike Hansen changed the station's positioning elements to "Your music for the new millennium, today."

Here's a recent midday sample of KBKS: Fastball, "Fire Escape"; Toad The Wet Sprocket, "All I Want"; Goo Goo Dolls, "Slide"; Imbruglia, "Wishing I Was There"; Third Eye Blind, "Jumper"; Green Day, "Time Of Your Life (Good Riddance)"; Eagle-Eye Cherry, "Save Tonight"; Sheryl Crow, "If It Makes You Happy"; Alanis Morissette, "Thank U"; and Blues Traveler, "Hook."

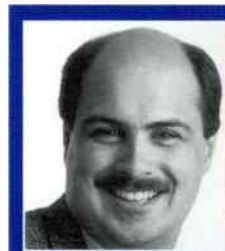
Promotionally, KBKS did a TV blitz in the spring book to reinforce its music image, which Preston thinks may have helped drive its summer numbers. In addition, he credits promotion director Gina Thompson and her assistant Yvonne Rhodes for making Kiss, which debuted its new window sticker with a 10-week series of sticker stops, ubiquitous during the summer. Finally, Preston says, the station is picking up a "hit music station" image of the sort that KUBE has controlled for years.

Morning host Chris Collins worked with Preston at KSFM Sacramento, Calif. Preston reclaimed him from a play-by-play job with the San Jose Sharks and teamed him with Dana Dearden, who handled mornings in KBKS' rhythmic AC days. Like middayer Corey Dillon, who came from classic rock sister KZOK, and late-nighter Candy, from country sister KYCW, Dearden was a local and relative newcomer. Dearden is cast as the "young, swinging single gal" to Collins' married curmudgeon. "Their on-air relationship is the thing that makes the morning show interesting," Preston says. "There's rarely agreement on anything, and people love to hear the back-and-forth and how she will react to what he says."

Born out of one ownership change, KBKS has already been through a second merger, as well as a GM change from Fred Schumacher to CBS cluster GM Lisa Decker (there may be a separate GM named after Jan. 1, 1999). The ARS/CBS merger, Preston says, "hasn't been a huge change. Don Bouloukos," whom Preston worked with at ABC, "was at ARS and is now with us at CBS as well, so that's very consistent . . . CBS has a very decentralized system, which is how the ARS stations were as well. There aren't a lot of layers and hoops to go through."

Throughout KBKS' first 18 months, the usually very public Preston kept a low profile in the industry, to the bewilderment of some. "I thought it was just extremely important to be focused on my job as much as possible," he says. "I wanted to show people that I could make a change in what I was doing and make it work. Moving my family was a major experience. They were in New York the first six months I was here. So it was hard to juggle all of that. I just felt like the most important thing was to focus on those two [tasks] and wait until we got things solidified before we jumped back out into the fray."

SEAN ROSS



Mike Preston
Program Director
KBKS Seattle

'I wanted to show people that I could make a change and make it work'

WPLJ New York during its tenure as adult top 40's most-watched outlet. KBKS had been intended as a low-maintenance flanker outlet by original owner EZ Communications. Subsequent owner ARS "wanted to see it competing on the level of all the stations in the market."

To that end, Preston knew that "the basis of the music could be similar to what people were starting to call modern AC at the time. But the goal was not to be all the way pigeonholed as that," he says. "We wanted to keep our feet a little more in the middle of things." Although there are times, particularly in middays, when KBKS' music will be almost entirely pop/alternative, "we see ourselves as the mainstream top 40 in the market. We rotate our music like a top 40. We have a much more active presentation. And we think we have a texture that is harder than many of the modern ACs."

"The appetite in this marketplace for pop/alternative music is extremely high," Preston adds. "While this may not have been the alternative music hotbed that it was during the grunge era, people still have this voracious appetite for new pop/alternative rock music, and we've seen that confirmed on a regular basis by the music we play from that genre reacting extremely quickly—and not just from the actives but all the way down to call-out. As time has gone by, we've been able to identify songs that are going to be core to our sound a lot quicker. We can spot an Eve 6 and go, 'Wow, that's the sound of the station.'"

The net effect is that KBKS looks like the inverse of most large-market top 40s, save WXKS-FM (Kiss 108) Boston, one of the stations that Preston, along with MD/night jock Paul Anthony and APD/afternoon L.A. Reid, watches. Records that don't become big-city hits elsewhere until their call-out kicks in become KBKS hits almost immediately. Songs like Natalie Imbruglia's "Wishing I Was There" that don't come home nationally receive significant airplay well after other PDs have moved on. R&B

Publisher: Jon Guynn
Editor: Sean Ross
Managing Editor: Jeff Silberman
Director of Charts: Theda Sandiford-Waller
Associate Director of Charts: Steven Graybow
Chart Production Manager: Michael Cusson
Associate Chart Production Manager: Alex Vitoulis
Editorial Production Managers: Barry Bishin, Marcia Repinski
Editorial Production: Susan Chicola, Marc Giaquinto, Juliana Koo, Maria Manlicic, Sandra Watanabe
Copy Editor: Carl Rosen
Advertising Production Manager: Lydia Mikulko
Advertising Production Coordinator: Paul Page
Art Director: Ray Carlson
Advertising Production Artist: Karen Platt

National Advertising Manager: Hank Spann
Account Managers: Jeff Somerstein, Sharon White
Advertising Services Manager: Alyse Zigman
Sales Assistants: Evelyn Aszodi, Erica Bengtson, Jason Rashford

Editorial Adviser: Timothy White
Director of Production & Manufacturing: Marie Gombert
Circulation Director: Jeanne Jamir
Marketing Manager: Rob Accatino



President: Howard Lander
Senior VP/General Counsel: Georgina Challis
Vice Presidents: Irwin Kornfeld, Karen Dertley, Adam White
Director of Strategic Development: Ken Schliager
Business Manager: Joellen Sommer

1515 Broadway, New York, NY 10036 212-764-7300
5055 Wilshire Blvd., 7th floor, Los Angeles, CA 90036 323-525-2300
For subscriptions call: 800-745-8922

©1998 BPI Communications Inc. No part of this publication may be reproduced, stored in any retrieval system, or transmitted, in any form or by any means, electronic, mechanical, photocopying, recording, or otherwise, without the prior written permission of the publisher.

Lenny Kravitz Fly Away



**Great New Majors
This Week Include:**
KLLC/San Francisco
KFMB/San Diego
WTMX/Chicago
WXSS/Milwaukee

Over 65 Pop Adds in 3 Weeks Including:

KBKS	KALC	WPLT	WBMX	WBHT
WSSR	WKCI	WPRO	WEZB	KBBT
WPNT	KZHT	WLCE	WILI	KVSR
WZNE	WKRZ	KPEK	WNTQ	KLLY
WSTW	KLAZ	WABB	WLLC	WJET
WZNY	KTNPAnd Many More!		

#1

Modern Rock/Active Rock/Mainstream Rock

Modern AC - Debut at 28

the new song from the album

5 GOLD!

produced, written, arranged and performed by Lenny Kravitz
 representation: Craig Fruin and Howard Kaufman / HK Management

**Good Pop Research
in San Diego,
Atlanta and
New Orleans**



www.virginrecords.com
 AOL Keyword: Virgin Records
 ©1998 Virgin Records America, Inc.

Strongest Increase In Airplay This Week

MAINSTREAM TOP 40

	INCREASE IN PLAYS
SHAWN MULLINS • Lullaby (SMG/COLUMBIA)	+587
KSLZ +39, WFLY +33, WBLL +32, KZZU +26, WXSS +24, WABB +24, KHHT +21, WJBQ +18, WVTI +17, WRHT +15	
'N SYNC • (God Must Have Spent) A Little More Time On You (RCA)	+552
WROX +35, WZNY +29, WHOT +22, KHHS +21, KSLZ +19, KXXM +18, WXLK +17, KKRZ +17, WXXL +15, WHYI +13	
EAGLE-EYE CHERRY • Save Tonight (WORK)	+515
WPST +32, KZHT +31, WGTZ +27, KQAR +24, WXSS +22, WNTQ +20, KXXM +19, WSTR +19, KKRZ +18, WVTI +17	
WHITNEY HOUSTON & MARIAH CAREY • When You Believe (DREAMWORKS/GEFFEN)	+489
KHHT +46, WHOT +23, WEZB +21, WLKT +19, WJBQ +19, KRUF +17, WTWR +17, WFHN +16, WKSS +16, WBHT +15	
NEW RADICALS • You Get What You Give (MCA)	+480
KQKQ +29, WKXJ +22, WQSL +21, KDND +17, WTWR +17, KRUF +16, KMXV +15, WYCR +15, KZHT +15, WYOY +14	
WILL SMITH • Miami (COLUMBIA)	+399
KCHZ +44, WDJX +31, WBLL +28, WXXL +26, WKFS +25, KHHT +23, KKMJ +18, KHFI +18, WYCR +16, KKRZ +13	
BRITNEY SPEARS • ...Baby One More Time (JIVE)	+377
WQZQ +19, KHKS +17, WKSL +15, KRUF +15, KKMJ +15, WKSZ +14, WKCI +14, WSSX +13, KZHT +12, KUMX +11	
BRANDY • Have You Ever? (ATLANTIC)	+337
KHFI +30, WROX +27, KUMX +25, WDDJ +16, KKRZ +16, KZQZ +14, KQMQ +12, KSLZ +11, WWHT +11, WNKS +10	
BLACKSTREET & MYA FEAT. MASE & BLINKY BLINK • Take Me There (INTERSCOPE)	+314
KCHZ +22, WROX +19, WXSS +16, WCIL +14, WZAT +13, WSTW +11, WXLK +11, WFBC +11, WKSE +11, WXYV +11	
R. KELLY & CELINE DION • I'm Your Angel (JIVE)	+282
KZQZ +29, WRVQ +21, KQMQ +20, WAPE +16, WKSS +16, KHHT +13, KHKS +13, WRHT +11, WZAT +11, WABB +11	

RHYTHMIC TOP 40

	INCREASE IN PLAYS
2PAC • Changes (DEATH ROW/INTERSCOPE)	+174
KCAQ +28, WJMN +26, KYLZ +25, KKSS +21, KBOS +18, WPOW +13, WWKX +6, WHHH +5, KZFM +4, KSFM +4	
BLACKSTREET & MYA FEAT. MASE & BLINKY BLINK • Take Me There (INTERSCOPE)	+171
KYLD +30, KKSS +21, WPOW +20, WHHH +19, KOHT +16, KIKI +14, XHTZ +14, WNVZ +12, KTFM +11, WWKX +6	
BRANDY • Have You Ever? (ATLANTIC)	+170
KDGS +21, KZFM +19, KPRR +18, KYLZ +17, KSFM +17, KTFM +15, WBTT +14, WNVZ +9, KIOX +8, KKSS +8	
TIMBALAND FEAT. MISSY ELLIOTT & MAGOO • Here We Come (BLACKGROUND/ATLANTIC)	+148
XHTZ +29, KCAQ +27, KIOX +18, KKRZ +16, KSFM +13, WHHH +12, WWKX +12, KDGS +11, WBTT +7, KBOS +5	
LAURYN HILL • Doo Wop (That Thing) (RUFFHOUSE/COLUMBIA)	+147
WBBM +48, WBTT +21, KOHT +21, KKRZ +12, KZFM +11, WJJS +10, KIKI +9, KDON +6, KYLD +6, KQKS +6	
'N SYNC • (God Must Have Spent) A Little More Time On You (RCA)	+134
WBTT +25, KTFM +22, KDON +18, KZFM +15, KISV +13, WKTU +12, WJJS +12, WHHH +12, WNVZ +9, WDRQ +7	
WILL SMITH • Miami (COLUMBIA)	+122
KUBE +47, KKRZ +16, WHHH +11, KKSS +10, KLUC +8, KQKS +8, KDGS +7, KTFM +6, KOHT +5, WWKX +5	
WHITNEY HOUSTON & MARIAH CAREY • When You Believe (DREAMWORKS/GEFFEN)	+119
WBTT +28, KPRR +20, KQKS +19, KTFM +16, WDRQ +12, KKRZ +11, WKTU +9, KGGI +9, WJJS +7, WNVZ +7	
DRU HILL FEAT. REDMAN • How Deep Is Your Love (ISLAND/DEF JAM/MERCURY)	+113
KIOX +14, KKRZ +12, KDON +10, WJMN +10, KZFM +8, KLUC +8, WNVZ +8, KIKI +7, WDRQ +7, KYLD +6	
JAY-Z FEAT. AMIL & JA • Can I Get A... (DEF JAM/MERCURY)	+104
KQKS +19, WWKX +18, WJMN +16, KKSS +13, KKRZ +11, KYLD +10, KYLZ +5, KZFM +5, KOHT +5, KBOS +5	

CROSSOVER

	INCREASE IN PLAYS
TIMBALAND FEAT. MISSY ELLIOTT & MAGOO • Here We Come (BLACKGROUND/ATLANTIC)	+359
KXHT +45, WJMH +45, XHTZ +29, WHTA +27, KCAQ +27, WBHJ +23, KKRZ +16, KPWR +15, WHHH +12, WWKX +12	
DEBORAH COX • Nobody's Supposed To Be Here (ARISTA)	+327
WERQ +24, WYOK +21, WPHI +20, WCXK +17, WPEG +17, WENN +16, WIZF +15, KDGS +14, WVEE +14, WDTJ +13	
2PAC • Changes (DEATH ROW/INTERSCOPE)	+300
KCAQ +28, WJMN +26, KYLZ +25, WPGC +24, KKSS +21, KBOS +18, WJMI +16, WGLI +15, WKYS +11, WBHJ +10	
BRANDY • Have You Ever? (ATLANTIC)	+276
WBHJ +35, KDGS +21, WEAS +19, KYLZ +17, WBTT +14, WKYS +14, KRRQ +13, KKDA +13, WJMJ +10, WERQ +10	
OUTKAST • Rosa Parks (LAFACE/ARISTA)	+259
WJBT +33, KXHT +30, KBOS +23, WJMH +18, KRRQ +13, WFXA +12, WWWZ +12, WQOK +11, WPEG +10, WJHM +10	

MODERN ADULT

	INCREASE IN PLAYS
SARAH MCLACHLAN • Angel (WARNER SUNSET/REPRISE)	+202
KQMB +19, KBBT +19, WKRQ +19, WTIC +16, WBMX +16, KLLY +11, WXLE +10, KDMX +10, WDCG +10, KTNP +9	
NEW RADICALS • You Get What You Give (MCA)	+175
WBAM +21, KAEP +16, KQMB +14, WLNK +12, WMBX +11, KBBT +10, KYIS +9, WMBX +9, WMBX +9, KLLY +8	
HOOTIE & THE BLOWFISH • Only Lonely (ATLANTIC)	+146
KZZP +26, KYSR +20, WDCG +17, KMXB +15, KLLY +14, WTIC +14, KFMB +8, WSSR +7, KDMX +6, WLNK +6	
SEAL • Human Beings (WARNER BROS.)	+145
KQMB +21, WTIC +20, KMXB +19, KYIS +17, KYSR +16, KRUZ +14, KPEK +13, WVRV +10, KFMB +6, KLLY +5	
THIRD EYE BLIND • Jumper (ELEKTRA/EEG)	+140
WTMX +27, WMBX +18, WBAM +18, KZON +12, WSSR +12, KFMB +12, WKRQ +12, KYSR +10, KYIS +8, WTIC +8	

ADULT TOP 40

	INCREASE IN PLAYS
SHAWN MULLINS • Lullaby (SMG/COLUMBIA)	+267
WKZL +28, WRAL +24, KSTP +21, WMYX +18, KMXB +17, KEZR +16, WYXR +15, WMBX +14, WKTI +13, WTIC +12	
SEAL • Human Beings (WARNER BROS.)	+204
KQMB +21, WTIC +20, KMXB +19, KVUU +19, WVAF +18, KYIS +17, KYSR +16, WQLH +15, KRUZ +14, WKQI +14	
WHITNEY HOUSTON & MARIAH CAREY • When You Believe (DREAMWORKS/GEFFEN)	+177
KISN +29, KSII +18, KPLZ +18, KRSK +16, WAKS +16, WMXL +13, KYKY +13, WIOG +12, WLTS +11, KBEE +9	
HOOTIE & THE BLOWFISH • Only Lonely (ATLANTIC)	+176
KZZP +26, KYSR +20, KMXB +15, KLLY +14, WTIC +14, WVAF +13, WPLJ +11, WKQI +8, KFMB +8, KPLZ +8	
SARAH MCLACHLAN • Angel (WARNER SUNSET/REPRISE)	+167
KQMB +19, KBBT +19, WTIC +16, WMBX +16, KLLY +11, KDMX +10, KTNP +9, WPTE +8, WSSR +8, WKZL +7	

ADULT CONTEMPORARY

	INCREASE IN PLAYS
WHITNEY HOUSTON & MARIAH CAREY • When You Believe (DREAMWORKS/GEFFEN)	+384
WSNY +32, WMJQ +23, WSLQ +18, KESZ +17, KMZQ +16, KBIG +15, WLTO +13, WARM +13, KTDY +12, KSFI +11	
R. KELLY & CELINE DION • I'm Your Angel (JIVE)	+201
WLEV +18, WAHR +17, WBEB +15, WMJJ +12, KSFI +10, WGSY +10, KESZ +9, WRVF +9, WPCH +9, WJXB +8	
PHIL COLLINS • True Colors (FACE VALUE/ATLANTIC)	+108
WLIT +15, WARM +13, KOST +11, WNND +9, KMGA +8, WLTO +7, KESZ +7, WBBO +6, KBIG +6, WSHH +6	
EDWIN MCCAIN • I'll Be (LAVA/ATLANTIC)	+70
KIOI +15, WRMF +13, KSSK +8, WSLQ +8, WLHT +5, WRRM +5, WMXS +4, KISC +4, KIMN +3, KLSY +3	
JEWEL • Hands (ATLANTIC)	+63
KBIG +18, KMGA +10, WLEV +8, WGSY +6, KLSY +5, WRCH +3, WRMF +3, KGBY +3, KTDY +2, WTFM +2	



WHO WILL TAKE HOME TOP HONORS?

TO FIND OUT WHICH SONGS, ARTISTS AND LABELS DOMINATED RADIO IN 1998, CHECK OUT AIRPLAY MONITOR'S MUST-READ YEAR-END SPECIAL.

TO GET IN ON THIS UNIQUE ADVERTISING VEHICLE, CALL 323-525-2308.

Already In Rotation At:
KBKS KDND KJYO
KKRZ WXSS WXXL

Jennifer Love Hewitt • "How Do I Deal"

The featured single. Music From The Motion Picture **I Still Know What You Did Last Summer**



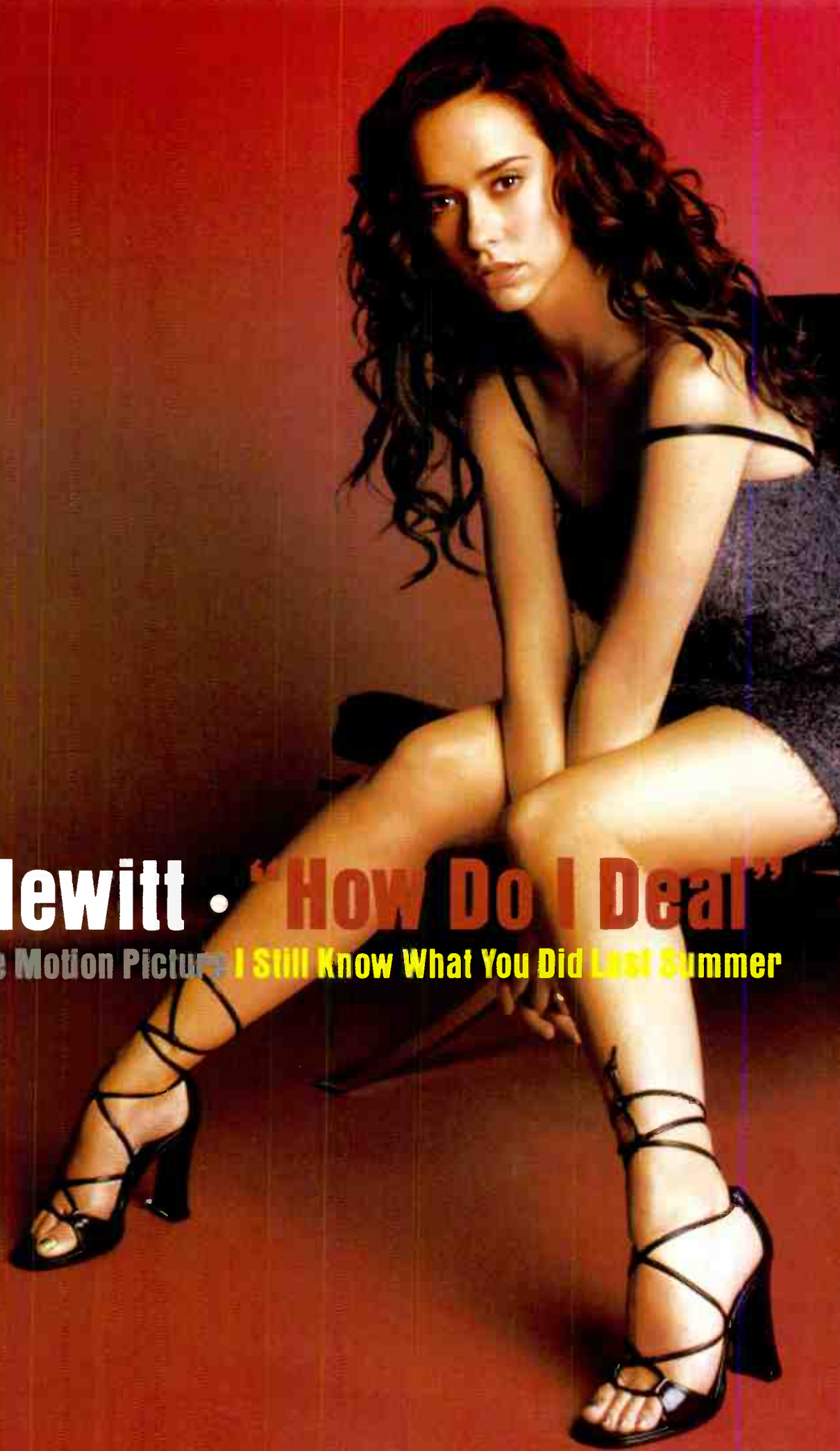
www.wbr.com



© 1999 Warner Bros. 143 Screenplay, Motion Picture artwork and photographs © 1999 Columbia Pictures Industries, Inc.

World Radio History

Produced by Bruce Fairbairn and David Foster Contact: Joel Roman, William Morris Agency



POWER PLAYLIST

Songs ranked by number of plays in monitored week. Playlists are listed in order of TSA weekly cumes, beginning with the highest-cumulative station. Cumulative are updated twice yearly following the release of the spring and fall Arbitron surveys. The number of stations shown each week varies depending upon space.

WXL Orlando OM/PD: Adam Cook APD/MD: Pete deGraaf 407-339-1067 Chancellor

WBLI Long Island PD: John Thomas MD: Al Levine 516-732-1061 Cox

WXYV Baltimore OM: Bill Pasha APD: Throb MD: Albie Dee 410-889-0098 CBS

WZPL Indianapolis PD: Tom Gjerdrum MD: Dave Decker 317-816-4000 Mystar

WPRO Providence PD: Tony Bristol MD: Davey Morris 401-433-4200 Citadel

KJYO Oklahoma City PD: Mike McCoy APD/MD: Joe Friday 405-840-5271 Clear Channel

Table with columns: Song, Airplay, Station, Song, Airplay, Station. Top 40 songs for WXL Orlando.

Table with columns: Song, Airplay, Station, Song, Airplay, Station. Top 40 songs for WBLI Long Island.

Table with columns: Song, Airplay, Station, Song, Airplay, Station. Top 40 songs for WXYV Baltimore.

Table with columns: Song, Airplay, Station, Song, Airplay, Station. Top 40 songs for WZPL Indianapolis.

Table with columns: Song, Airplay, Station, Song, Airplay, Station. Top 40 songs for WPRO Providence.

Table with columns: Song, Airplay, Station, Song, Airplay, Station. Top 40 songs for KJYO Oklahoma City.

KUMX New Orleans OM: Dave Stewart PD/MD: Kandy Klutch 504-679-7300 Clear Channel

WFBC Greenville, SC PD: Nikki Nite 864-271-9200 Sinclair

WDCG Raleigh OM: Brian Burns PD: Kip Taylor 919-871-1051 Capstar

KZHT Salt Lake City PD: Marc Summers MD: Jeff McCartney 801-908-1300 Jacor

WRKR Wilkes-Barre PD: Tony Banks APD/MD: Jerry Padden 717-883-9850 Sinclair

WRVW Nashville OM: Charlie Quinn PD/MD: Tom Peace 615-664-2400 Capstar

Table with columns: Song, Airplay, Station, Song, Airplay, Station. Top 40 songs for KUMX New Orleans.

Table with columns: Song, Airplay, Station, Song, Airplay, Station. Top 40 songs for WFBC Greenville, SC.

Table with columns: Song, Airplay, Station, Song, Airplay, Station. Top 40 songs for WDCG Raleigh.

Table with columns: Song, Airplay, Station, Song, Airplay, Station. Top 40 songs for KZHT Salt Lake City.

Table with columns: Song, Airplay, Station, Song, Airplay, Station. Top 40 songs for WRKR Wilkes-Barre.

Table with columns: Song, Airplay, Station, Song, Airplay, Station. Top 40 songs for WRVW Nashville.

WFLY Albany OM: Mike Morgan PD: Rob Dawes MD: Ron 'Sugarbear' Williams 518-786-6600 Albany Broadcasting

WIXX Green Bay PD: Dan Stone MD: David Burns 920-435-3771 Midwest Communications

WKSE Buffalo OM: Sue O'Neil PD/MD: Dave Universal 716-884-5101 Sinclair

WGTZ Dayton OM: Michael Luczak PD/MD: Dave Baird 937-294-5858 Clear Channel

WAPE Knoxville PD: Cat Thomas APD/MD: Tony Mann 904-642-1055 Capstar

KHFI Austin PD/Pgm: John Roberts PD/MD: Leslie Basenberg 512-474-9233 Clear Channel

Table with columns: Song, Airplay, Station, Song, Airplay, Station. Top 40 songs for WFLY Albany.

Table with columns: Song, Airplay, Station, Song, Airplay, Station. Top 40 songs for WIXX Green Bay.

Table with columns: Song, Airplay, Station, Song, Airplay, Station. Top 40 songs for WKSE Buffalo.

Table with columns: Song, Airplay, Station, Song, Airplay, Station. Top 40 songs for WGTZ Dayton.

Table with columns: Song, Airplay, Station, Song, Airplay, Station. Top 40 songs for WAPE Knoxville.

Table with columns: Song, Airplay, Station, Song, Airplay, Station. Top 40 songs for KHFI Austin.

Upward-moving songs ranked in order of spin count. Songs are removed if they lose more than 5% of their detections from previous week or if their spin count declines for two consecutive weeks.

MOST NEW STATIONS

Songs detecting six or more spins at new stations this week

	NEW STATIONS
WHITNEY HOUSTON & MARIAH CAREY <i>When You Believe (DreamWorks/Geffen)</i>	29
NEW RADICALS <i>You Get What You Give (MCA)</i>	28
BLACKSTREET & MYA FEAT. MASE & BLINKY BLINK <i>Take Me There (Interscope)</i>	27
'N SYNC <i>(God Must Have Spent) A Little More Time On You (RCA)</i>	23
HOOTIE & THE BLOWFISH <i>Only Lonely (Atlantic)</i>	13

AIRPOWER
Minimum 2000 detections for the first time

NO RECORDS QUALIFIED FOR AIRPOWER THIS WEEK

AIRPOWER BOUND

Total Plays/Gain

SHANIA TWAIN 1991/151
From This Moment On (Mercury)
Total Stations: 96/Chart Move: 27-25
Heavy (40+): 7 KQAR, WFLY, WGTZ, WJBO, WKSE, WKSS, WLAN, WWZZ, WXLK
Medium (20-39): 40 KBFM, KHTO, KJYO, KRBE, KRUF, KSLZ, KSMB, KUMX, WAEB, WBHT, WDDJ, WFBC, WFHN, WHTZ, WHYI, WIXX, WKRO, WKRZ, WKXJ, WLSS, WNCI, WNKX, WNNK, WPRO, WPST, WPKY, WQSL, WQZQ, WRVQ, WTVR, WWSR, WXIS, WKXS, WKSS, WXXL, WXXX, WXYV, WZAT, WZJM, WZNY
Light (Under 20): 47

MONIFAH 1784/160
Touch It (Uptown/Universal)
Total Stations: 100/Chart Move: 31-26
Heavy (40+): 7 KHTS, KHTT, WFHN, WKFS, WROX, WSNX, WZJM
Medium (20-39): 33 KDND, KHFI, KHKS, KHTO, KIIS, KJYO, KKM, KKRZ, KQAR, KRBE, KRQ, KRUF, KSMB, KZZU, WCIL, WDDJ, WDJX, WFBC, WFLY, WFLZ, WGTZ, WKSS, WLKT, WLSS, WQZQ, WWSR, WWTI, WWCK, WWHT, WWZZ, WXIS, WXXX, WYCR
Light (Under 20): 60
New Airplay This Week: 4 WBLI, WHTZ, WKSE, WRVW

SHAGGY FEAT. JANET 1591/239
Luv Me, Luv Me (Flyte Tyme/MCA)
Total Stations: 91/Chart Move: 34-28
Heavy (40+): 17 KDND, KDWB, KHFI, KHTS, KIIS, KXME, KZQZ, KZZU, WBLI, WDJX, WKFS, WKSS, WRVQ, WSNX, WWZZ, WXKB, WZJM
Medium (20-39): 12 KBFM, KKM, KQK, KSLZ, WDDJ, WFLY, WFLZ, WKSZ, WLKT, WQZQ, WWTI, WWHT
Light (Under 20): 62
New Airplay This Week: 4 KKRZ, WEZB, WFHN, WWHT

BRANDY 1505/337
Have You Ever? (Atlantic)
Total Stations: 95/Chart Move: 36-29
Heavy (40+): 6 KHFI, KHKS, KKRZ, KZZU, WROX, WXIS
Medium (20-39): 24 KBFM, KHTS, KQMQ, KRBE, KRUF, KSLZ, KUMX, KZQZ, WDDJ, WEZB, WFBC, WFHN, WFLY, WLKT, WQSL, WQZQ, WSNX, WSSX, WTVR, WWSR, WWHT, WXLK, WKSS, WYCR
Light (Under 20): 65
New Airplay This Week: 2 KUMX, WXKB

R. KELLY & CELINE DION 1454/282
I'm Your Angel (Jive)
Total Stations: 97/Chart Move: 35-31
Heavy (40+): 6 KHKS, KQMQ, KZQZ, WKSS, WKSZ, WWZZ
Medium (20-39): 20 KKRZ, KRUF, WAEB, WAPE, WBHT, WFHN, WJBO, WKSE, WNOK, WNTQ, WPRO, WRVQ, WSNX, WSSX, WTVR, WXIS, WXLK, WXYV, WZAT, WZPL
Light (Under 20): 71
New Airplay This Week: 8 KHTO, KMXV, KRQ, WLDI, WRHT, WRVQ, WRVW, WWST

WILL SMITH 1445/399
Miami (Columbia)
Total Stations: 85/Chart Move: 40-33
Heavy (40+): 6 KCHZ, KZZU, WDJX, WQZQ, WSNX, WXXL
Medium (20-39): 26 KDWB, KHFI, KHTS, KHTT, KIIS, KKM, KKRZ, KRQ, KRUF, KSLZ, KSMB, KZQZ, WBLI, WCIL, WFHN, WFLY, WFLZ, WHYI, WKFS, WRVQ, WVKX, WWZZ, WXIS, WXKB, WYCR, WZJM
Light (Under 20): 53
New Airplay This Week: 8 KHTT, KJYO, KKRZ, KRBE, KZHT, WBLI, WKFS, WXLK

'N SYNC 1351/552
(God Must Have Spent) A Little More Time On You (RCA)
Total Stations: 86/Chart Move: Debut 35
Heavy (40+): 1 WROX
Medium (20-39): 28 KDND, KHFI, KHTS, KKRZ, KMXV, KQAR, KQK, KRUF, KSLZ, KUMX, WABB, WAPE, WFLY, WFLZ, WHOT, WIXX, WLSS, WSNX, WTVR, WWTI, WWCK, WWZZ, WXIS, WXLK, WYCR, WZJM, WZNY
Light (Under 20): 57
New Airplay This Week: 23 KHTS, KKRZ, KSLZ, KSMB, KXXM, KZZU, WAEB, WBHT, WBLI, WCIL, WDJX, WHYI, WKCI, WKRO, WKSE, WLAN, WNTQ, WPST, WSTW, WXXS, WXLK, WXXL, WZNY

MATCHBOX 20 1247/177
Back 2 Good (Lava/Atlantic)
Total Stations: 89/Chart Move: 38-36
Heavy (40+): 3 WABB, WDCG, WDJX
Medium (20-39): 25 KBKS, KJYO, KKRZ, KMXV, KQK, KRBE, KRUF, KSMB, WCIL, WDDJ, WEZB, WFBC, WJBO, WKRO, WKZ, WKSL, WPRO, WSTW, WTVR, WWSR, WWCK, WXIS, WXLK, WKSS, WYCY
Light (Under 20): 61
New Airplay This Week: 2 KALC, WBZZ

FASTBALL 1216/155
Fire Escape (Hollywood)
Total Stations: 81/Chart Move: 39-37
Heavy (40+): 2 WDCG, WKRO
Medium (20-39): 23 KBKS, KDND, KMXV, KQK, KSMB, WBHT, WDDJ, WIXX, WJBO, WKRZ, WKXJ, WLSS, WQSL, WRVW, WSTW, WWSR, WXIS, WXLK, WXXX, WYCY, WYCY, WZPL
Light (Under 20): 56
New Airplay This Week: 7 WDJX, WKSL, WLAN, WPST, WQSL, WWHT, WWZZ

LAURYN HILL 1178/190
Doo Wop (That Thing) (Ruffhouse/Columbia)
Total Stations: 89/Chart Move: Debut 38
Heavy (40+): 6 KXME, KZQZ, WBLI, WROX, WSNX, WWHT
Medium (20-39): 15 KHFI, KKM, KQK, KRQ, WEZB, WFHN, WFLY, WFLZ, WHTZ, WKSE, WKSL, WKSS, WLSS, WSSX, WZJM
Light (Under 20): 48
New Airplay This Week: 9 KHFI, KKRZ, WBHT, WCIL, WLSS, WNKX, WNOK, WRHT, WWZZ

NICOLE FEAT. MISSY ELLIOTT & MOCHA 1163/79
Make It Hot (The Gold Mind/EastWest/EEG)
Total Stations: 76/Chart Move: 37-39
Heavy (40+): 9 KXME, WEZB, WKFS, WROX, WSNX, WWHT, WXIS, WXXX, WZJM
Medium (20-39): 14 KHTO, KHTS, KQMQ, KSMB, KUMX, WDJX, WFBC, WKSE, WLKT, WLSS, WQZQ, WWZZ, WXXB, WYCR
Light (Under 20): 53
New Airplay This Week: 2 KDND, WNKX

CHART BOUND

Total Plays/Gain

DIVINE 1026/135
Lately (Pendulum/Red Ant)
Total Stations: 58
Heavy (40+): 5 KHTT, KQMQ, WFLZ, WLKT, WROX
Medium (20-39): 15 KCHZ, KHFI, KHKS, KHTS, KRQ, KSLZ, WDJX, WEZB, WFHN, WGTZ, WHYI, WKSL, WLSS, WSNX, WWSR
Light (Under 20): 38
New Airplay This Week: 7 KBFM, KDWB, KZZU, WHOT, WKSZ, WWCK, WXXL

WHITNEY HOUSTON & MARIAH CAREY 996/489
When You Believe (DreamWorks/Geffen)
Total Stations: 70
Heavy (40+): 1 KHTT
Medium (20-39): 15 KHTS, KQMQ, KRUF, WEZB, WFHN, WFLZ, WHOT, WHTZ, WJBO, WKSE, WLKT, WNCI, WWZZ, WYCR, WZNY
Light (Under 20): 54
New Airplay This Week: 29 KBFM, KKRZ, KRUF, KSLZ, WBHT, WDDJ, WEZB, WFLY, WHOT, WIXX, WJBO, WKSS, WKSZ, WKXJ, WLAN, WLSS, WPST, WQSL, WQZQ, WSTR, WTVR, WWSR, WWCK, WXIS, WXXX, WXYV, WZAT, WZYP

SARAH MCLACHLAN 917/244
Angel (Warner Sunset/Reprise)
Total Stations: 55
Heavy (40+): 6 KBKS, KXXM, WDCG, WEZB, WKSE, WXXX
Medium (20-39): 10 KHFI, KQAR, KRBE, KUMX, WFBC, WKRZ, WSTR, WWTI, WYCY, WZNY
Light (Under 20): 39
New Airplay This Week: 10 KHFI, KQAR, KUMX, WFHN, WHOT, WKRO, WNKX, WPST, WTVR, WWTI

NEW RADICALS 725/480
You Get What You Give (MCA)
Total Stations: 63
Heavy (40+): 0
Medium (20-39): 11 KALC, KBKS, KMXV, KQK, WDCG, WKRZ, WKXJ, WQSL, WSSX, WWCK, WXXX
Light (Under 20): 52
New Airplay This Week: 28 KDND, KHTO, KIIS, KQK, KRUF, KZHT, WABB, WDDJ, WFLY, WHYI, WIXX, WKCI, WKSZ, WKXJ, WLKT, WLSS, WNNK, WPST, WQSL, WTVR, WWST, WXIS, WXLK, WXXX, WYCR, WYCY, WZNY, WZYP

U2 719/17
Sweetest Thing (Island)
Total Stations: 49
Heavy (40+): 0
Medium (20-39): 13 KBKS, WAEB, WDCG, WFBC, WJBO, WKRZ, WKXJ, WQSL, WWSR, WWCK, WXIS, WXLK, WYCY
Light (Under 20): 36
New Airplay This Week: 2 KMXV, WHOT

EVERCLEAR 689/122
Father Of Mine (Capitol)
Total Stations: 43
Heavy (40+): 1 KPTY
Medium (20-39): 10 KBKS, KHTO, KRBE, KUMX, WBHT, WEZB, WKRO, WKRZ, WSTW, WXLK
Light (Under 20): 32
New Airplay This Week: 3 WIXX, WNCI, WXXX

FIVE 681/114
It's The Things You Do (Arista)
Total Stations: 49
Heavy (40+): 2 KZQZ, WKSZ
Medium (20-39): 8 KDND, WLSS, WSNX, WWCK, WWZZ, WXLK, WYCR, WZJM
Light (Under 20): 39
New Airplay This Week: 5 WBHT, WHOT, WPKY, WRHT, WXYV

BRAVO ALLSTARS 638/104
Let The Music Heal Your Soul (Edel America)
Total Stations: 45
Heavy (40+): 2 KDND, WROX
Medium (20-39): 10 KZQZ, KZZU, WFHN, WJBO, WKSS, WLDI, WNTQ, WRVW, WXLK, WZJM
Light (Under 20): 33
New Airplay This Week: 3 WRVQ, WXLK, WZYP

SUGAR RAY 534/200
Abracadabra (Geffen)
Total Stations: 44
Heavy (40+): 1 WXYV
Medium (20-39): 12 KQK, KRUF, WABB, WDDJ, WFLY, WIXX, WNNK, WROX, WXIS, WXLK, WYCR, WYCY
Light (Under 20): 31
New Airplay This Week: 10 KQMQ, KSLZ, WAEB, WDJX, WHYI, WKXJ, WNTQ, WWSR, WXLK, WZNY

CAKE 485/192
Never There (Capricorn/Mercury)
Total Stations: 55
Heavy (40+): 1 KPTY
Medium (20-39): 4 KALC, KBKS, WABB, WDCG
Light (Under 20): 50
New Airplay This Week: 6 KIIS, KPTY, KSMB, WEZB, WPRO, WXXX

NEXT 477/3
I Still Love You (Arista)
Total Stations: 38
Heavy (40+): 1 WROX
Medium (20-39): 6 KDND, WKSS, WLKT, WWSR, WWHT, WWZZ
Light (Under 20): 31

BLACKSTREET & MYA FEAT. MASE & BLINKY BLINK 455/314
Take Me There (Interscope)
Total Stations: 50
Heavy (40+): 1 WROX
Medium (20-39): 2 KCHZ, WCIL
Light (Under 20): 47
New Airplay This Week: 27 KCHZ, KIIS, KKM, KQK, KRQ, KSLZ, KSMB, WBLI, WDJX, WFBC, WFHN, WFLZ, WHOT, WKFS, WKRZ, WKSE, WKSS, WKSZ, WQZQ, WRHT, WSTW, WTVR, WXLK, WXXX, WXYV, WYCR, WZAT

SEAL 372/139
Human Beings (Warner Bros.)
Total Stations: 41
Heavy (40+): 0
Medium (20-39): 4 WKSZ, WKXJ, WXIS, WXXX
Light (Under 20): 37
New Airplay This Week: 6 KBFM, KHTO, KJYO, WDDJ, WNTQ, WXYV

NATALIE MERCHANT 340/44
Break Your Heart (Elektra/EEG)
Total Stations: 36
Heavy (40+): 0
Medium (20-39): 3 WSTR, WXLK, WYCY
Light (Under 20): 33
New Airplay This Week: 3 WNKX, WTVR, WXXX

BRANDY FEAT. MASE 300/16
Top Of The World (Atlantic)
Total Stations: 17
Heavy (40+): 2 WROX, WWHT
Medium (20-39): 4 KHTS, KZQZ, WKSE, WZJM
Light (Under 20): 11

THE OFFSPRING 296/44
Pretty Fly (For A White Guy) (Columbia)
Total Stations: 26
Heavy (40+): 2 KPTY, KXME
Medium (20-39): 2 WRVQ, WSSX
Light (Under 20): 22
New Airplay This Week: 8 KALC, KBKS, KRQ, WKRO, WKSZ, WXXX, WYCY, WZNY

LENNY KRAVITZ 283/49
Fly Away (Virgin)
Total Stations: 27
Heavy (40+): 1 WEZB
Medium (20-39): 5 KALC, KBKS, WABB, WSTW, WXIS
Light (Under 20): 21
New Airplay This Week: 2 WJBO, WPRO

TQ 276/83
Westside (ClockWork/Epic)
Total Stations: 28
Heavy (40+): 1 WROX
Medium (20-39): 4 KRQ, KXME, KZZU, WSNX
Light (Under 20): 23
New Airplay This Week: 6 KCHZ, KSLZ, WDJX, WFHN, WFLY, WQZQ

HOOTIE & THE BLOWFISH 242/178
Only Lonely (Atlantic)
Total Stations: 26
Heavy (40+): 0
Medium (20-39): 2 WSSX, WSTR
Light (Under 20): 24
New Airplay This Week: 13 KBKS, KIIS, WDCG, WDDJ, WKSZ, WKXJ, WNOK, WPRO, WQSL, WSTW, WTVR, WXIS, WZAT

JANET 231/106
Every Time (Virgin)
Total Stations: 29
Heavy (40+): 0
Medium (20-39): 0
Light (Under 20): 29
New Airplay This Week: 9 KHFI, KQMQ, KSLZ, WFHN, WJBO, WKFS, WKSZ, WWCK, WXIS

MYA FEAT. SILKK THE SHOCKER 227/14
Movin' On (University/Interscope)
Total Stations: 24
Heavy (40+): 1 WROX
Medium (20-39): 2 KHTS, WSNX
Light (Under 20): 21
New Airplay This Week: 3 KRUF, WCIL, WDJX

HOLE 198/44
Celebrity Skin (DGC/Geffen)
Total Stations: 9
Heavy (40+): 2 KPTY, KXME
Medium (20-39): 1 WDCG
Light (Under 20): 6

R.E.M. 192/7
Daysleeper (Warner Bros.)
Total Stations: 24
Heavy (40+): 0
Medium (20-39): 3 WJBO, WLSS, WXLK
Light (Under 20): 21
New Airplay This Week: 3 WDJX, WKSS, WXXX

CHER 192/81
Believe (Warner Bros.)
Total Stations: 42
Heavy (40+): 0
Medium (20-39): 1 WWSR
Light (Under 20): 41
New Airplay This Week: 7 KJYO, KQK, KRUF, WDDJ, WHYI, WXXX, WZYP

ROCKELL 189/7
In A Dream (Robbins)
Total Stations: 12
Heavy (40+): 2 KIIS, WXXL
Medium (20-39): 1 WPXY
Light (Under 20): 9

DRU HILL FEAT. REDMAN 185/19
How Deep Is Your Love (Island/Def Jam/Mercury)
Total Stations: 17
Heavy (40+): 2 WROX, WSNX
Medium (20-39): 0
Light (Under 20): 15
New Airplay This Week: 1 WFHN

MO THUGS FAMILY 184/10
Ghetto Cowboy (Mo Thugs/Relativity)
Total Stations: 3
Heavy (40+): 2 KPTY, KXME
Medium (20-39): 0
Light (Under 20): 1
New Airplay This Week: 1 KRQ

JAY-Z 167/44
Hard Knock Life (Ghetto Anthem) (Roc-A-Fella/Def Jam/Mercury)
Total Stations: 17
Heavy (40+): 1 WROX
Medium (20-39): 2 WSNX, WWHT
Light (Under 20): 14

LFO (LYTE FUNKY ONES) FEAT. KAYO 152/19
If I Can't Have You (Logic)
Total Stations: 28
Heavy (40+): 0
Medium (20-39): 2 KBFM, WZJM
Light (Under 20): 26

STARS ON 54: ULTRA NATE, AMBER, JOCELYN ENRIQUEZ 148/10
If You Could Read My Mind (Tommy Boy)
Total Stations: 27
Heavy (40+): 0
Medium (20-39): 4 KBFM, KIIS, WKSE, WSSX
Light (Under 20): 23

CYPRESS HILL 140/23
Dr. GreenThumb (Ruffhouse/Columbia)
Total Stations: 2
Heavy (40+): 2 KPTY, KXME
Medium (20-39): 0
Light (Under 20): 0

AIRPLAY Monitor RHYTHMIC TOP 40

POWER PLAYLIST

FOR WEEK ENDING NOVEMBER 8, 1998

Songs ranked by number of plays in monitored areas. Playlists are listed in order of TBA weekly counts, beginning with the highest counting station. Counts are updated twice weekly following the release of the spring and fall Arbitron surveys. The number of stations shown each week varies depending upon space.

WKU New York PD: Frankie Blue APD/MD: Andy Shane 201-420-3700 Chancellor

WBBM Chicago PD: Todd Cavanah MD: Erik Bradley 312-944-6000 CBS

WJMN Boston PD: Cadillac Jack APD/MD: Danny Ocean 781-663-2500 Chancellor

KYLD San Francisco PD: Michael Martin MD: "Jazzy" Jim Archer 415-391-1077 Chancellor

WPOW Miami PD: Dick Curry APD: Tony The Tiger MD: Eddie Mix 305-653-6796 Beasley

WDRQ Detroit PD: Alex Tear MD: Jimi Jamm 248-354-9300 ABC/Disney

KUBE Seattle PD: Eric Powers MD: Julie Pilot 206-285-2295 Ackley

KGGI Riverside APD: Jesse Duran MC: Ricky Fuentes 909-684-1991 Chancellor

KFSM Sacramento PD: Bob West MD: John E. Kage 916-920-1025 CBS

KTFM San Antonio PD: Cliff Tredway MD: Steve Chavez 210-599-5500 Waterman

KKFR Phoenix PD/MD: Bruce St. James APD: Krazy Kid Stenzel MD: Mark Medina 602-258-6161 The Broadcast Group

XHTZ San Diego OM/MD: Lisa Vazquez MD: Dale Soliven 619-585-9090 Noventa FM 90

KQKS Denver PD: Cat Collins MD: Jennifer Wilde 303-321-0950 Jefferson-Pilot

WNVZ Norfolk PD: Don London APD/MD: Jay West 757-497-2000 Sinclair

KLUC Las Vegas PD: Cat Thomas MD: Melissa Stefan 702-364-8400 CBS

KPRR El Paso PD/MD: John Candelaria 915-566-9301 Clear Channel

KBOS Fresno PD: Steve Wall MD: Travis X. Loughran 209-243-4300 Capstar

WWKX Providence PD: Jerry McKenna MD: Sandy B. 401-723-1063 Back Bay Broadcasters

FROM THE FIRST RAP ALBUM IN THE SO

J A A

“HARD KN
THE GHETT

37 STATIONS AI

14 STATIONS NEEDED TO COME JOIN TH

CROSSOVER &
MAINSTREAM
IMPACT DATE:

NOVEI



VOL. 2...HARD KNOCK LIFE

©1998 ROC-A-FELLA RECORDS, L.L.C.

World Radio History

OUNDSCAN ERA TO LOG **5** WEEKS AT #1

Y - Z

**"ROCK LIFE"
ROCK ANTHEM**

ALREADY ADDED

TO THE PARTY... YOU KNOW WHO YOU ARE

SEPTEMBER 16TH

ALBUM IN STORES NOW!!!





Upward-moving songs ranked in order of spin count. Songs are removed if they lose more than 5% of their detections from previous week or if their spin count declines for two consecutive weeks.

MOST NEW STATIONS

Songs detecting six or more spins at new stations this week

	NEW STATIONS
BLACKSTREET & MYA FEAT. MASE & BLINKY BLINK <i>Take Me There (Interscope)</i>	8
2PAC <i>Changes (Death Row/Interscope)</i>	7
WHITNEY HOUSTON & MARIAH CAREY <i>When You Believe (DreamWorks/Geffen)</i>	6
UNCLE SAM <i>When I See You Smile (550 Music)</i>	4
'N SYNC <i>(God Must Have Spent) A Little More Time On You (RCA)</i>	4



NO RECORDS QUALIFIED FOR AIRPOWER THIS WEEK



Total Plays/Gain

JAY-Z 586/98
Hard Knock Life (Ghetto Anthem) (Roc-A-Fella/Def Jam/Mercury)
Total Stations: 26/Chart Move: 18-15
Heavy (40+ plays): 5 KKSS, KIOX, KSFM, KUBE, WPOW
Medium (20-39): 9 KCAQ, KDGS, KTFM, KYLD, KYLZ, WHHH, WJMN, WWKX, XHTZ
Light (Under 20): 12
New Airplay This Week: 3 KDON, KQKS, KZFM

NASTYBOY KLICK 552/67
Lost In Love (NastyBoy/Upstairs)
Total Stations: 20/Chart Move: 20-18
Heavy (40+): 6 KIKI, KISV, KPRR, KYLD, KZFM, WPOW
Medium (20-39): 3 KCAQ, KTFM, KYLZ
Light (Under 20): 11
New Airplay This Week: 1 KIOX

WILL SMITH 534/122
Miami (Columbia)
Total Stations: 23/Chart Move: 29-19
Heavy (40+): 5 KDON, KQKS, KUBE, KYLZ, WBTT
Medium (20-39): 8 KDGS, KGGI, KKFR, KOHT, KTFM, KZFM, WHHH, WPOW
Light (Under 20): 10
New Airplay This Week: 2 KKSS, KUBE

KURUPT 488/60
We Can Freak It (Antra/A&M)
Total Stations: 16/Chart Move: 26-20
Heavy (40+): 6 KBOS, KCAQ, KISV, KKFR, KKSS, KIOX
Medium (20-39): 2 KOHT, KYLD
Light (Under 20): 8
New Airplay This Week: 1 KDON

FAITH EVANS 471/33
Love Like This (Bad Boy/Arista)
Total Stations: 27/Chart Move: 25-21
Heavy (40+): 1 KDGS
Medium (20-39): 10 KBOS, KCAQ, KKFR, KIOX, KOHT, KSFM, WHHH, WJMN, WNVZ, XHTZ
Light (Under 20): 16
New Airplay This Week: 2 KGGI, KLUC

TAMIA 453/12
So Into You (Qwest/Warner Bros.)
Total Stations: 22/Chart Move: 24-23
Heavy (40+): 5 KIKI, KIOX, KLUC, KSFM, WDRQ
Medium (20-39): 4 KBOS, KQKS, KYLD, KYLZ
Light (Under 20): 13

JANET 420/44
Every Time (Virgin)
Total Stations: 21/Chart Move: 32-26
Heavy (40+): 2 KIKI, KLUC
Medium (20-39): 8 KDGS, KDON, KKFR, KQKS, KZFM, WBTT, WJJS, XHTZ
Light (Under 20): 11
New Airplay This Week: 1 KKSS

TIMBALAND FEAT. MISSY ELLIOTT & MAGOO 401/148
Here We Come (Blackground/Atlantic)
Total Stations: 22/Chart Move: Debut 28
Heavy (40+): 3 KCAQ, KIKI, KUBE
Medium (20-39): 5 KKFR, KIOX, KSFM, WHHH, XHTZ
Light (Under 20): 14
New Airplay This Week: 3 KDGS, WBTT, WWKX

112 FEAT. MASE 363/2
Love Me (Bad Boy/Arista)
Total Stations: 17/Chart Move: 34-32
Heavy (40+): 2 KIOX, KYLZ
Medium (20-39): 6 KBOS, KCAQ, KDGS, KKSS, WWKX, XHTZ
Light (Under 20): 9

VOICES OF THEORY 355/61
Wherever You Go (H.O.L.A./Red Ant)
Total Stations: 20/Chart Move: 40-33
Heavy (40+): 2 KPRR, KZFM
Medium (20-39): 6 KDGS, KDON, KIKI, KSFM, KYLZ, XHTZ
Light (Under 20): 12
New Airplay This Week: 2 KKFR, KOHT

'N SYNC 348/134
(God Must Have Spent) A Little More Time On You (RCA)
Total Stations: 16/Chart Move: Debut 34
Heavy (40+): 2 KTFM, WBBM
Medium (20-39): 8 KDON, KIKI, KZFM, WBTT, WDRQ, WHHH, WKTU, WNVZ
Light (Under 20): 6
New Airplay This Week: 4 KDGS, KGGI, KISV, WBTT

NICOLE (FEAT. MOCHA) 334/15
I Can't See (The Gold Mind/EastWest/EEG)
Total Stations: 21/Chart Move: 38-36
Heavy (40+): 0
Medium (20-39): 9 KBOS, KDGS, KDON, KKSS, KIOX, KOHT, WHHH, WJJS, XHTZ
Light (Under 20): 12
New Airplay This Week: 1 KYLD

BLACKSTREET & MYA FEAT. MASE & BLINKY BLINK 328/171
Take Me There (Interscope)
Total Stations: 18/Chart Move: Debut 38
Heavy (40+): 0
Medium (20-39): 7 KDGS, KKSS, KOHT, KYLD, WHHH, WPOW, XHTZ
Light (Under 20): 11
New Airplay This Week: 8 KGGI, KIKI, KKSS, KTFM, KYLD, WJJS, WNVZ, WWKX

REEL TIGHT 301/41
(Do You) Wanna Ride (G-Funk/Restless)
Total Stations: 19/Chart Move: Debut 39
Heavy (40+): 0
Medium (20-39): 7 KBOS, KCAQ, KDGS, KDON, KKSS, KOHT, XHTZ
Light (Under 20): 12

CHART BOUND

Total Plays/Gain

WHITNEY HOUSTON & MARIAH CAREY 286/119
When You Believe (DreamWorks/Geffen)
Total Stations: 18
Heavy (40+): 0
Medium (20-39): 5 KLUC, KPRR, KTFM, KZFM, WBTT
Light (Under 20): 13
New Airplay This Week: 6 KDGS, KQKS, WBTT, WDRQ, WJJS, WKTU

98 DEGREES 285/50
Because Of You (Motown)
Total Stations: 10
Heavy (40+): 4 KIKI, WBTT, WDRQ, WJJS
Medium (20-39): 2 KZFM, WNVZ
Light (Under 20): 4
New Airplay This Week: 1 WBBM

STARDUST 244/-10
Music Sounds Better With You (Rouge/Virgin)
Total Stations: 17
Heavy (40+): 2 KPRR, WPOW
Medium (20-39): 2 KTFM, WDRQ
Light (Under 20): 13

R. KELLY FEAT. KEITH MURRAY 241/78
Home Alone (Jive)
Total Stations: 18
Heavy (40+): 2 KISV, XHTZ
Medium (20-39): 1 KDGS
Light (Under 20): 15
New Airplay This Week: 3 KKFR, KYLZ, WBBM

MO THUGS FAMILY 230/63
Ghetto Cowboy (Mo Thugs/Relativity)
Total Stations: 8
Heavy (40+): 2 KIKI, KSFM
Medium (20-39): 3 KCAQ, KKFR, KOHT
Light (Under 20): 3
New Airplay This Week: 1 KYLD

BRIAN MCKNIGHT 215/43
Hold Me (Motown)
Total Stations: 16
Heavy (40+): 0
Medium (20-39): 4 KDGS, KQKS, WJJS, XHTZ
Light (Under 20): 12
New Airplay This Week: 2 KOHT, WPOW

OUTKAST 204/53
Rosa Parks (LaFace/Arista)
Total Stations: 19
Heavy (40+): 1 KIOX
Medium (20-39): 3 KBOS, KKSS, KUBE
Light (Under 20): 15
New Airplay This Week: 1 KYLD

USHER 193/32
One Day You'll Be Mine (LaFace/Arista)
Total Stations: 9
Heavy (40+): 0
Medium (20-39): 6 KDGS, KKSS, KOHT, KQKS, WJMN, XHTZ
Light (Under 20): 3
New Airplay This Week: 2 KOHT, XHTZ

LINK 183/9
I Really Wanna Sex Your Body (Relativity)
Total Stations: 11
Heavy (40+): 0
Medium (20-39): 4 KIOX, KOHT, WHHH, XHTZ
Light (Under 20): 7

★ 2PAC 174/174
Changes (Death Row/Interscope)
Total Stations: 22
Heavy (40+): 0
Medium (20-39): 4 KCAQ, KKSS, KYLZ, WJMN
Light (Under 20): 18
New Airplay This Week: 7 KBOS, KCAQ, KKSS, KYLZ, WJMN, WPOW, WWKX

MONICA 170/90
Angel Of Mine (Arista)
Total Stations: 12
Heavy (40+): 1 KUBE
Medium (20-39): 3 KQKS, KSFM, WBBM
Light (Under 20): 8
New Airplay This Week: 2 KLUC, KQKS

JON B. 165/-8
I Do (Whatcha Say Boo) (Yab Yum/550 Music)
Total Stations: 11
Heavy (40+): 0
Medium (20-39): 3 KCAQ, KDGS, XHTZ
Light (Under 20): 8
New Airplay This Week: 1 KBOS

BRITNEY SPEARS 157/22
...Baby One More Time (Jive)
Total Stations: 10
Heavy (40+): 1 WBTT
Medium (20-39): 3 KDON, KLUC, WDRQ
Light (Under 20): 6

A+ 147/13
Enjoy Yourself (Kedar/Universal)
Total Stations: 15
Heavy (40+): 0
Medium (20-39): 2 KOHT, XHTZ
Light (Under 20): 13
New Airplay This Week: 2 KBOS, KDGS

DEBORAH COX 134/41
Nobody's Supposed To Be Here (Arista)
Total Stations: 14
Heavy (40+): 0
Medium (20-39): 3 KDGS, KZFM, WHHH
Light (Under 20): 11
New Airplay This Week: 1 WJMN

TATYANA ALI FEAT. WILL SMITH 134/46
Boy You Knock Me Out (MJJ/WORK)
Total Stations: 11
Heavy (40+): 1 XHTZ
Medium (20-39): 2 KDGS, KKFR
Light (Under 20): 8
New Airplay This Week: 1 KOHT

DRU HILL 130/50
These Are The Times (University/Island)
Total Stations: 10
Heavy (40+): 1 WJMN
Medium (20-39): 1 KQKS
Light (Under 20): 8
New Airplay This Week: 2 KQKS, XHTZ

ICE CUBE FEAT. MR. SHORT KHOP 121/18
Pushin' Weight (Priority)
Total Stations: 17
Heavy (40+): 0
Medium (20-39): 2 KCAQ, KKSS
Light (Under 20): 15

CYPRESS HILL 120/-4
Dr. Greenthumb (Ruffhouse/Columbia)
Total Stations: 13
Heavy (40+): 0
Medium (20-39): 2 KBOS, KIOX
Light (Under 20): 11
New Airplay This Week: 2 KCAQ, KOHT

ELVIS CRESPO 102/8
Suavemente (Sony Discos)
Total Stations: 3
Heavy (40+): 1 WPOW
Medium (20-39): 0
Light (Under 20): 2
New Airplay This Week: 1 WKTU

STARS ON 54: ULTRA NATE, AMBER, JOCELYN ENRIQUEZ 97/29
If You Could Read My Mind (Tommy Boy)
Total Stations: 5
Heavy (40+): 1 WKTU
Medium (20-39): 1 WDRQ
Light (Under 20): 3

★ UNCLE SAM 92/87
When I See You Smile (550 Music)
Total Stations: 11
Heavy (40+): 0
Medium (20-39): 2 KUBE, WBTT
Light (Under 20): 9
New Airplay This Week: 4 KIKI, KTFM, KUBE, WBTT

LFO (LYTE FUNKY ONES) FEAT. KAYO 85/13
If I Can't Have You (Logic)
Total Stations: 7
Heavy (40+): 0
Medium (20-39): 3 KDGS, KLUC, WDRQ
Light (Under 20): 4

COLLAGE 83/23
Love Of A Lifetime (Metropolitan)
Total Stations: 6
Heavy (40+): 1 KTFM
Medium (20-39): 1 KOHT
Light (Under 20): 4
New Airplay This Week: 1 KOHT

TANTO METRO & DEVONTE 82/-4
Everyone Falls In Love (Penthouse/V.P.)
Total Stations: 1
Heavy (40+): 1 WPOW
Medium (20-39): 0
Light (Under 20): 0

LIL SUZY 80/27
I Still Love You (Metropolitan)
Total Stations: 3
Heavy (40+): 1 WPOW
Medium (20-39): 1 KTFM
Light (Under 20): 1
New Airplay This Week: 1 KTFM

★ CASE FEAT. JOE 78/47
Faded Pictures (Def Jam/Mercury)
Total Stations: 6
Heavy (40+): 0
Medium (20-39): 2 KKSS, XHTZ
Light (Under 20): 4
New Airplay This Week: 1 KKSS

DEBORAH COX 73/3
Things Just Ain't The Same (Arista)
Total Stations: 2
Heavy (40+): 1 WKTU
Medium (20-39): 1
Light (Under 20): 1

★ DJ QUIK 66/31
Hand In Hand (Profile/Arista)
Total Stations: 15
Heavy (40+): 0
Medium (20-39): 1 KCAQ
Light (Under 20): 14
New Airplay This Week: 1 KIOX

★ BRANDY 60/38
Angel In Disguise (Atlantic)
Total Stations: 2
Heavy (40+): 1 KUBE
Medium (20-39): 0
Light (Under 20): 1

NOREAGA 57/-1
SuperThug (What What) (Penalty/Tommy Boy)
Total Stations: 11
Heavy (40+): 0
Medium (20-39): 1 WWKX
Light (Under 20): 10
New Airplay This Week: 1 KDGS

★ INSANE CLOWN POSSE 54/13
I.C.P. Party Remix (Island)
Total Stations: 3
Heavy (40+): 0
Medium (20-39): 1 WPOW
Light (Under 20): 2
New Airplay This Week: 1 KDGS

★ MASTER P 51/1
Kenny's Dead (American/Columbia)
Total Stations: 5
Heavy (40+): 0
Medium (20-39): 1 WHHH
Light (Under 20): 4

★ SHE MOVES 50/1
It's Your Love (Geffen)
Total Stations: 1
Heavy (40+): 1 WDRQ
Medium (20-39): 0
Light (Under 20): 0

★ Initial impact: records appearing on this page for the first time.

OUTCAST *presents* ROSA PARKS

Exploding Everywhere!!

Crossover Monitor (27) - (17) ★★★AIRPOWER★★★

KPWR	42x	#10	KBOS	37x	#12
WBHJ	66x	#1	KKXX	47x	#15
WJMH	66x	#6	KUBE	20x	#20
WJBT	34x	#11	...more to come!		

Platinum Album in ONLY 5 Weeks!



Mixed and Engineered by Neal Pogue.
Flavor Unit Management



World Radio History



The album **Aquemini**
In-Stores Now!

Detailed tracking for songs with increased spins this week. Total Plays/Gain does not include video play. Markets listed in order of population.

112 FEAT. MASE 363/2 Love Me (Bad Boy/Arista) Total Stations: 17 Chart Move: 34-32

2PAC 174/174 Changes (Death Row/Interscope) Total Stations: 22

98 DEGREES 285/50 Because Of You (Motown) Total Stations: 10

BLACKSTREET & MYA FEAT. MASE & BLINKY BLINK 328/171 Take Me There (Interscope) Total Stations: 18 Chart Move: Debut 38

BRANDY 1178/170 Have You Ever? (Atlantic) Total Stations: 30 Chart Move: 8-5

DIVINE 1215/36 Lately (Pendulum/Red Ant) Total Stations: 31 Chart Move: 5-4

DRU HILL FEAT. REDMAN 1533/113 How Deep Is Your Love (Island/Def Jam/Mercury) Total Stations: 30 Chart Move: 3-2

FAITH EVANS 471/33 Love Like This (Bad Boy/Arista) Total Stations: 27 Chart Move: 25-21

Lauryn Hill 1639/147 Doo Wop (That Thing) (Ruffhouse/Columbia) Total Stations: 31 Chart Move: 1-1

Whitney Houston & Mariah Carey 286/119 When You Believe (DreamWorks/Geffen) Total Stations: 18

JANET 420/44 Every Time (Virgin) Total Stations: 21 Chart Move: 32-26

JAY-Z 586/98 Hard Knock Life (Ghetto Anthem) (Roc-A-Fella/Def Jam/Mercury) Total Stations: 26 Chart Move: 18-15

JAY-Z FEAT. AMIL & JA 740/104 Can I Get A... (Def Jam/Mercury) Total Stations: 27 Chart Move: 14-12

R. Kelly Feat. Keith Murray 241/78 Home Alone (Jive) Total Stations: 18

KURUPT 488/60 We Can Freak It (Antra/A&M) Total Stations: 16 Chart Move: 26-20

LINK 183/9 I Really Wanna Sex Your Body (Relativity) Total Stations: 11

Brian McKnight 215/43 Hold Me (Motown) Total Stations: 16

MO THUGS FAMILY 230/63 Ghetto Cowboy (Mo Thugs/Relativity) Total Stations: 8

'N SYNC 348/134 (God Must Have Spent) A Little More Time On You (RCA) Total Stations: 16 Chart Move: Debut 34

NASTYBOY KLICK 552/67 Lost In Love (NastyBoy/Upstairs) Total Stations: 20 Chart Move: 20-18

NEXT 752/48 I Still Love You (Arista) Total Stations: 27 Chart Move: 13-11

NICOLE (FEAT. MOCHA) 334/15 I Can't See (The Gold Mind/EastWest/EEG) Total Stations: 21 Chart Move: 38-36

OUTKAST 204/53 Rosa Parks (LaFace/Arista) Total Stations: 19

REEL TIGHT 301/41 (Do You) Wanna Ride (G-Funk/Restless) Total Stations: 19 Chart Move: Debut 39

WILL SMITH 534/122 Miami (Columbia) Total Stations: 23 Chart Move: 29-19

TAMIA 453/12 So Into You (Qwest/Warner Bros.) Total Stations: 22 Chart Move: 24-23

TIMBALAND FEAT. MISSY ELLIOTT & MOCHA 401/148 Here We Come (Blackground/Atlantic) Total Stations: 22 Chart Move: Debut 28

USHER 193/32 One Day You'll Be Mine (LaFace/Arista) Total Stations: 9

VOICES OF THEORY 355/61 Wherever You Go (H.O.L.A./Red Ant) Total Stations: 20 Chart Move: 40-33

XSCAPE 1059/5 My Little Secret (So So Def/Columbia) Total Stations: 27 Chart Move: 7-7

MOST NEW STATIONS

Songs detecting six or more spins at new stations this week

- WHITNEY HOUSTON & MARIAH CAREY 29
BRANDY 4
JEWEL 4



AIRPOWER BOUND

LIONEL RICHIE 330/3

MADONNA 266/-3

JEWEL 258/63

BRYAN ADAMS 78/7

GOO GOO DOLLS 257/21

MAX CARL & BIG DANCE 73/18

SARAH MCLACHLAN 160/22

Angel (Warner Sunset/Reprise/Arista)
Total Stations: 18/Chart Move: Debut 30

CHART BOUND

Total Plays/Gain

MARILYN SCOTT 157/13

The Last Day (Warner Bros.)
Total Stations: 22

JENNIFER PAIGE 146/-3

Crush (EdeI America/Hollywood)
Total Stations: 10

SHERYL CROW 104/18

My Favorite Mistake (A&M)
Total Stations: 8

GLORIA ESTEFAN 87/31

Don't Let This Moment End (Epic)
Total Stations: 16

BRYAN ADAMS 78/7

On A Day Like Today (A&M)
Total Stations: 9

MAX CARL & BIG DANCE 73/18

One More River (Mission)
Total Stations: 32

Table with columns: THIS WEEK, LAST WEEK, WEEKS ON, TITLE/IMPRINT/PROMOTION LABEL, ARTIST, TW, LW. Contains chart data for songs like 'I'll Never Break Your Heart', 'From This Moment On', etc.

Records showing an increase in detections over the previous week, regardless of chart movement. A record that has been on the chart for more than 20 weeks will not receive a bullet...

ADULT CONTEMPORARY POWER PLAYLISTS

Grid of 12 radio station playlists including WLTW New York, KOST Los Angeles, KBIG Los Angeles, WBEB Philadelphia, and others, listing songs and spin counts.

Impact tracks upward-moving songs ranked in order of spin count. Songs are removed if they lose more than 5% of their detections from previous week...



COMBINED TOP 40 AUDIENCE											AIRPLAY BY FORMAT														
TW	LW	WKS	TITLE (IMPRINT/PROMOTION LABEL)	ARTIST	THIS WEEK			LAST WEEK			MAINSTREAM TOP 40			RHYTHMIC TOP 40			ADULT TOP 40			AC			MODERN		
					Audience (millions)	Detections No.	Rank	Audience (millions)	Detections No.	Rank	Audience (millions)	Detections No.	Rank	Audience (millions)	Detections No.	Rank	Audience (millions)	Detections No.	Rank	Audience (millions)	Detections No.	Rank	Audience (millions)	Detections No.	Rank
1	1	30	IRIS (WARNER SUNSET/REPRISE)	GOO GOO DOLLS	84.0588	7770	3	84.6276	7931	3	48.3590	4230	3	2.4337	115	—	26.5950	2644	1	3.4074	257	28	3.2637	524	—
2	2	18	ONE WEEK (REPRISE)	BARENAKED LADIES	66.9415	8428	1	70.2633	8880	1	40.4898	5034	1	0.1536	40	—	21.5124	2507	4	0.0107	11	—	4.7750	836	34
3	3	7	THANK U (MAVERICK/REPRISE)	ALANIS MORISSETTE	64.4374	8110	2	62.7024	8016	2	34.8049	4241	2	0.0825	25	—	22.8593	2637	2	0.1714	46	—	6.5189	1161	17
4	6	29	I'LL BE (LAVA/ATLANTIC)	EDWIN MCCAIN	60.3170	5468	10	57.6338	5377	12	33.4624	2952	12	0.0200	3	—	18.6671	1737	10	7.3942	717	9	0.7733	59	—
5	4	19	CRUSH (EDEL AMERICA/HOLLYWOOD)	JENNIFER PAIGE	59.3830	5105	15	61.2766	5409	11	37.9349	3474	9	9.8355	342	35	10.7293	1143	21	0.8833	146	—	—	—	—
6	10	7	LULLABY (SMG/COLUMBIA)	SHAWN MULLINS	56.6902	7494	4	48.6315	6699	5	28.3852	3652	7	0.0282	4	—	20.2297	2284	5	0.1870	52	—	7.8601	1502	12
7	12	10	SAVE TONIGHT (WORNO)	EAGLE-EYE CHERRY	53.5089	7290	5	47.8008	6646	6	26.4670	3557	8	0.0159	2	—	17.5457	2147	6	0.0538	29	—	9.4265	1555	11
8	9	9	JUMPER (ELEKTRA/EEG)	THIRD EYE BLIND	52.4405	7067	6	50.3794	6872	4	30.4625	4002	4	0.0330	4	—	13.2515	1672	11	0.0064	7	—	8.6871	1382	14
9	5	22	I DON'T WANT TO MISS A THING (COLUMBIA)	AEROSMITH	51.7166	5461	11	57.7237	5932	8	27.3361	2956	11	3.4588	250	—	15.0482	1761	9	5.8735	494	18	—	—	—
10	8	15	ARE YOU THAT SOMEBODY? (BLACKGROUND/ATLANTIC)	AALIYAH	51.3166	4808	17	52.7005	4834	17	32.7221	3669	6	18.5723	1132	6	0.0222	7	—	—	—	—	—	—	—
11	11	10	MY FAVORITE MISTAKE (A&M)	SHERYL CROW	50.5675	6613	7	48.3504	6259	7	24.5080	3390	10	0.0243	4	—	22.0408	2540	3	0.6386	104	—	3.3558	575	—
12	7	17	I'LL NEVER BREAK YOUR HEART (JIVE)	BACKSTREET BOYS	50.2716	5272	13	52.9355	5855	9	24.7859	2867	14	5.3359	382	30	4.9650	680	28	15.1848	1343	1	—	—	—
13	16	5	HANDS (ATLANTIC)	JEWEL	46.0664	5618	9	42.3047	5243	16	24.6623	2880	13	0.0523	21	—	17.9554	2109	7	1.8235	258	27	1.5729	350	—
14	14	13	THIS KISS (WARNER BROS.)	FAITH HILL	44.7113	5235	14	44.9740	5248	14	20.3432	2686	18	0.0340	5	—	13.3368	1489	14	10.9973	1055	5	—	—	—
15	13	40	TORN (RCA)	NATALIE IMBRUGLIA	42.1365	4009	21	45.0734	4225	20	16.6334	1584	—	1.7084	127	—	13.5405	1466	16	9.5455	687	10	0.7087	145	—
16	15	28	REAL WORLD (LAVA/ATLANTIC)	MATCHBOX 20	41.2418	5086	16	44.9565	5355	13	21.7328	2829	15	0.0370	11	—	18.1376	1977	8	0.1452	44	—	1.1892	225	—
17	18	7	FROM THIS MOMENT ON (MERCURY)	SHANIA TWAIN	37.7717	4167	20	37.8229	3961	21	16.9891	1991	25	0.1111	34	—	8.5389	927	24	12.1326	1215	2	—	—	—
18	20	6	SLIDE (WARNER BROS.)	GOO GOO DOLLS	37.2119	5994	8	35.0362	5656	10	13.7630	2261	22	0.0218	5	—	9.7105	1318	19	0.1283	28	—	13.5883	2382	3
19	17	30	TOO CLOSE (ARISTA)	NEXT	34.3863	3209	27	38.1174	3357	26	24.5026	2534	—	9.7601	646	14	0.1236	29	—	—	—	—	—	—	—
20	19	19	NEVER EVER (LONDON/ISLAND)	ALL SAINTS	33.7043	4211	19	35.7148	4387	19	30.3099	3937	5	2.1445	111	—	1.1760	156	—	0.0739	7	—	—	—	—
21	25	8	INSIDE OUT (RCA)	EVE 6	33.6903	5395	12	31.7604	5245	15	15.6911	2616	19	0.0120	2	—	5.7608	927	23	—	—	—	12.2264	1850	7
22	21	27	CLOSING TIME (MCA)	SEMISONIC	33.3522	3765	22	34.5508	3870	22	15.2757	1714	27	0.0171	3	—	15.0078	1525	13	0.0531	21	—	2.9985	502	—
23	23	33	YOU'RE STILL THE ONE (MERCURY)	SHANIA TWAIN	32.5789	2798	40	32.5945	2774	32	8.6432	902	—	2.5553	120	—	8.8891	913	—	12.4913	863	8	—	—	—
24	22	18	TEARIN' UP MY HEART (RCA)	'N SYNC	32.1410	3270	24	33.4146	3577	24	25.1576	2769	17	5.5052	299	40	0.7083	173	—	0.7699	29	—	—	—	—
25	29	3	I'M YOUR ANGEL (JIVE)	R. KELLY & CELINE DION	31.6716	3137	28	29.1108	2629	41	11.3752	1454	31	3.9829	141	—	2.9639	404	34	13.3496	1138	4	—	—	—
26	35	4	DOO WOP (THAT THING) (RUFFHOUSE/COLUMBIA)	LAURYN HILL	30.9287	2819	38	25.6702	2482	44	9.5658	1178	38	21.3302	1639	1	—	—	—	—	—	—	0.0327	2	—
27	27	52	TRULY MADLY DEEPLY (COLUMBIA)	SAVAGE GARDEN	30.8895	2791	41	29.6772	2763	34	10.6241	974	—	1.3857	108	—	6.6529	811	—	12.1998	885	7	0.0270	13	—
28	24	42	TIME OF YOUR LIFE (GOOD RIDDANCE) (REPRISE)	GREEN DAY	30.2427	3121	30	31.8166	3250	27	9.3014	1034	—	—	—	—	16.0199	1397	18	0.1390	27	—	4.7824	663	37
29	30	4	THE POWER OF GOOD-BYE (MAVERICK/WARNER BROS.)	MADONNA	29.6006	2809	39	28.9762	2764	33	22.6209	2186	23	2.6805	105	—	1.7589	252	—	2.5403	265	26	—	—	—
30	28	35	THE WAY (HOLLYWOOD)	FASTBALL	29.4015	3395	23	29.3757	3405	25	11.4110	1368	—	0.0207	6	—	14.8597	1486	15	0.4992	41	—	2.6109	494	—
31	31	5	TOUCH IT (UPTOWN/UNIVERSAL)	MONIFAH	28.8911	3234	26	27.2658	3078	28	12.6300	1784	26	16.2442	1447	3	0.0169	3	—	—	—	—	—	—	—
32	34	53	3 AM (LAVA/ATLANTIC)	MATCHBOX 20	28.1041	2841	37	25.7236	2709	37	13.7837	1306	—	0.0099	5	—	10.9686	1143	—	1.9742	122	—	1.3677	265	—
33	32	8	THE FIRST NIGHT (ARISTA)	MONICA	27.8395	3065	31	27.0320	3070	29	16.8081	2119	24	10.9888	942	10	0.0007	1	—	—	—	—	0.0419	3	—
34	36	2	HAVE YOU EVER? (ATLANTIC)	BRANDY	27.8301	2768	42	21.9759	2244	47	12.1802	1505	29	14.4966	1178	5	0.1328	42	—	0.2205	43	—	—	—	—
35	33	5	HOOSH (BLACKBIRD/SIRE)	EVERYTHING	25.9780	4357	18	26.6699	4547	18	13.2975	2472	21	0.0200	3	—	11.2922	1576	12	0.0526	16	—	1.3157	290	—
36	26	13	JUMP JIVE AN' WAIL (INTERSCOPE)	THE BRIAN SETZER ORCHESTRA	25.7113	3063	32	30.6250	3619	23	10.6950	1457	30	0.0411	15	—	12.4676	1201	20	0.1544	27	—	2.3532	363	—
37	NEW		BECAUSE OF YOU (MOTOWN)	98 DEGREES	22.8767	2940	36	19.4699	2702	38	19.9820	2545	20	2.4268	285	—	0.3472	86	—	0.1207	24	—	—	—	—
38	NEW		...BABY ONE MORE THERE (JIVE)	BRITNEY SPEARS	22.5477	3031	33	18.5564	2606	42	21.0408	2789	16	1.2242	157	—	0.2827	85	—	—	—	—	—	—	—
39	NEW		WHEN YOU BELIEVE (DREAMWORKS/GEFFEN)	WHITNEY HOUSTON & MARIAH CAREY	21.7961	2124	50	15.4373	955	123	8.4465	996	—	4.4688	286	—	1.9201	265	—	6.9607	577	14	—	—	—
40	NEW		LATELY (PENDULUM/RED ANT)	DIVINE	18.9838	2242	49	16.7384	2070	48	7.0143	1026	—	11.9693	1215	4	—	—	—	—	—	—	0.0002	1	—

Records showing an increase in audience over the previous week regardless of chart movement. Rankings by format (on right side of this page) correspond to 40-position charts printed in this week's Monitor (30 positions for adult contemporary); therefore rankings do not exist for recurrences and records below No. 40 (No. 30 for adult contemporary). Audience computed by cross-referencing exact times of airplay with Arbitron listener data. ©1998, Billboard/BPI Communications.

The **power** of information... right at your fingertips!



The 1999 Radio Power Book contains all the information to make your job easier.

Locate Thousands of Listings in a Snap: Comprehensive listings of radio stations in all 15 formats covered by Airplay Monitor Consultants: ♦ Complete Label Promotion Directory ♦ Arbitron Ratings and History for Top 100 Markets ♦ BDS and How It Works

Order your copy now for \$95 (plus \$6 shipping and handling) by calling 1-800-344-7119. Fax your order to (732) 363-0338 or mail this ad with check or money order to: Billboard Directories, P.O. Box 2016, Lakewood, NJ 08701

Please add appropriate sales tax in NY, NJ, PA, CA, TN, MA, IL, OH, VA & DC. Orders payable in U.S. funds only. All sales are final.

To advertise call Alyse Zigman (323) 525-2308

ORDER NOW!

BDPB3168



Computed from a national sample of airplay supplied by Broadcast Data Systems' Radio Track service to Top 40 Airplay Monitor. Top mainstream Top 40 and 21 Rhythmic Top 40 stations are electronically monitored 24 hours a day, 7 days a week. Songs are ranked by number of detections. © 1998 Billboard/EMI Communications.

THIS WEEK	LAST WEEK	WKS. ON CHART	MAINSTREAM TOP 40		DETECTIONS		
			TITLE/IMPRINT/PROMOTION LABEL	ARTIST	TW	LW	
			★★★ No. 1 ★★★				
1	1	16	ONE WEEK REPRISE 6 weeks at No. 1	BARENAKED LADIES	5034	5386	
(2)	4	7	THANK U MAVERICK/REPRISE	ALANIS MORISSETTE	4241	4049	
3	2	30	IRIS WARNER SUNSET/REPRISE	GOO GOO DOLLS	4230	4385	
(4)	5	11	JUMPER ELEKTRA/EEG	THIRD EYE BLIND	4002	3863	
5	3	24	NEVER EVER LONDON/ISLAND	ALL SAINTS	3937	4060	
(6)	7	13	ARE YOU THAT SOMEBODY? BLACKGROUND/ATLANTIC	AALIYAH	3669	3591	
(7)	11	7	LULLABY SMG/COLUMBIA	SHAWN MULLINS	3652	3065	
(8)	12	11	SAVE TONIGHT WORK	EAGLE-EYE CHERRY	3557	3042	
9	6	21	CRUSH EDEL AMERICA/HOLLYWOOD	JENNIFER PAIGE	3474	3705	
(10)	10	10	MY FAVORITE MISTAKE A&M	SHERYL CROW	3390	3183	
11	9	25	I DON'T WANT TO MISS A THING COLUMBIA	AEROSMITH	2956	3340	
12	15	36	I'LL BE LAVA/ATLANTIC	EDWIN MCCAIN	2952	2957	
(13)	18	5	HANDS ATLANTIC	JEWEL	2880	2630	
14	8	19	I'LL NEVER BREAK YOUR HEART JIVE	BACKSTREET BOYS	2867	3436	
15	14	26	REAL WORLD LAVA/ATLANTIC	MATCHBOX 20	2829	2974	
(16)	21	5	...BABY ONE MORE TIME JIVE	BRITNEY SPEARS	2789	2412	
17	13	20	TEARIN' UP MY HEART RCA	'N SYNC	2769	3007	
18	16	15	THIS KISS WARNER BROS.	FAITH HILL	2686	2705	
(19)	20	10	INSIDE OUT RCA	EVE 6	2616	2425	
(20)	22	9	BECAUSE OF YOU MOTOWN	98 DEGREES	2545	2368	
21	17	13	HOOOH BLACKBIRD/SIRE	EVERYTHING	2472	2638	
(22)	24	6	SLIDE WARNER BROS.	GOO GOO DOLLS	2261	2097	
(23)	23	9	THE POWER OF GOOD-BYE MAVERICK/WARNER BROS.	MADONNA	2186	2174	
(24)	25	8	THE FIRST NIGHT ARISTA	MONICA	2119	2095	
(25)	27	8	FROM THIS MOMENT ON MERCURY	SHANIA TWAIN	1991	1840	
(26)	31	6	TOUCH IT UPTOWN/UNIVERSAL	MONIFAH	1784	1624	
27	29	24	CLOSING TIME MCA	SEMISONIC	1714	1749	
(28)	34	4	LUV ME, LUV ME FLYTE TYME/MCA	SHAGGY FEATURING JANET	1591	1352	
(29)	36	2	HAVE YOU EVER? ATLANTIC	BRANDY	1505	1168	
30	28	16	JUMP JIVE AN' WAIL INTERSCOPE	THE BRIAN SETZER ORCHESTRA	1457	1756	
(31)	35	2	I'M YOUR ANGEL JIVE	R. KELLY & CELINE DION	1454	1172	
32	26	17	GO DEEP VIRGIN	JANET	1451	1870	
(33)	40	2	MIAMI COLUMBIA	WILL SMITH	1445	1046	
34	30	23	JUST THE TWO OF US COLUMBIA	WILL SMITH	1443	1687	
(35) NEW▶			(GOD MUST HAVE SPENT) A LITTLE MORE TIME ON YOU RCA	'N SYNC	1351	799	
(36)	38	3	BACK 2 GOOD LAVA/ATLANTIC	MATCHBOX 20	1247	1070	
(37)	39	2	FIRE ESCAPE HOLLYWOOD	FASTBALL	1216	1061	
(38) NEW▶			DOO WOP (THAT THING) RUFFHOUSE/COLUMBIA	LAURYN HILL	1178	988	
(39)	37	4	MAKE IT HOT THE GOLD MIND/EASTWEST/EEG NICOLE FEAT. MISSY "MISDEMEANOR" ELLIOTT & MOCHA		1163	1084	
40	33	25	THE BOY IS MINE ATLANTIC	BRANDY & MONICA	1158	1359	

THIS WEEK	LAST WEEK	WKS. ON CHART	RHYTHMIC TOP 40		DETECTIONS		
			TITLE/IMPRINT/PROMOTION LABEL	ARTIST	TW	LW	
			★★★ No. 1 ★★★				
(1)	1	11	DOO WOP (THAT THING) RUFFHOUSE/COLUMBIA 3 weeks at No. 1	LAURYN HILL	1639	1492	
(2)	3	10	HOW DEEP IS YOUR LOVE ISLAND/DEF JAM/MERCURY	DRU HILL FEAT. REDMAN	1533	1420	
3	2	16	TOUCH IT UPTOWN/UNIVERSAL	MONIFAH	1447	1450	
(4)	5	11	LATELY PENDULUM/RED ANT	DIVINE	1215	1179	
(5)	8	5	HAVE YOU EVER? ATLANTIC	BRANDY	1178	1008	
6	4	21	ARE YOU THAT SOMEBODY? BLACKGROUND/ATLANTIC	AALIYAH	1132	1235	
(7)	7	12	MY LITTLE SECRET SO SO DEF/COLUMBIA	XSCAPE	1059	1054	
8	6	15	MOVIN' ON UNIVERSITY/INTERSCOPE	MYA FEATURING SILKK THE SHOCKER	1036	1080	
9	9	12	WESTSIDE CLOCKWORK/EPIC	TQ	960	999	
10	10	17	THE FIRST NIGHT ARISTA	MONICA	942	972	
(11)	13	15	I STILL LOVE YOU ARISTA	NEXT	752	704	
(12)	14	4	CAN I GET A... DEF JAM/MERCURY	JAY-Z FEAT. AMIL (OF MAJOR COINZ) AND JA	740	636	
13	11	23	MAKE IT HOT THE GOLD MIND/EASTWEST/EEG	NICOLE FEAT. MISSY "MISDEMEANOR" ELLIOTT & MOCHA	715	730	
14	12	42	TOO CLOSE ARISTA	NEXT	646	712	
(15)	18	3	HARD KNOCK LIFE (GHETTO ANTHEM) ROC-A-FELLA/DEF JAM/MERCURY	JAY-Z	586	488	
16	15	27	STILL NOT A PLAYER LOUD/RCA	BIG PUNISHER FEATURING JOE	578	609	
17	16	24	CAN'T TAKE MY EYES OFF OF YOU RUFFHOUSE/COLUMBIA	LAURYN HILL	575	565	
(18)	20	6	LOST IN LOVE NASTYBOY/UPSTAIRS	NASTYBOY KLICK	552	485	
(19)	29	2	MIAMI COLUMBIA	WILL SMITH	534	412	
(20)	26	4	WE CAN FREAK IT ANTRA/A&M	KURUPT	488	428	
(21)	25	6	LOVE LIKE THIS BAD BOY/ARISTA	FAITH EVANS	471	438	
22	17	16	SAME OL' G BLACKGROUND/ATLANTIC	GINUWINE	467	490	
(23)	24	8	SO INTO YOU QWEST/WARNER BROS.	TAMIA	453	441	
24	21	20	DAYDREAMIN' MJJ/WORK	TATYANA ALI	426	477	
25	23	9	SWEETHEART SO SO DEF/COLUMBIA	JD & MARIAH CAREY	421	445	
(26)	32	2	EVERY TIME VIRGIN	JANET	420	376	
27	28	20	ALL GOOD MO THUGS/RELATIVITY	MO THUGS FAMILY FEAT. FELECIA & KRZYDIE BONE	419	424	
(28) NEW▶			HERE WE COME BLACKGROUND/ATLANTIC	TIMBALAND FEAT. MISSY "MISDEMEANOR" ELLIOTT & MAGOO	401	253	
29	22	11	COME GET WITH ME ELEKTRA/EEG	KEITH SWEAT FEATURING SNOOP DOGG	385	472	
30	30	18	I'LL NEVER BREAK YOUR HEART JIVE	BACKSTREET BOYS	382	412	
31	27	10	EVERYTHING'S GONNA BE ALRIGHT RCA	SWEETBOX	364	425	
(32)	34	2	LOVE ME BAD BOY/ARISTA	112 FEATURING MASE	363	361	
(33)	40	2	WHEREVER YOU GO H.O.L.A./RED ANT	VOICES OF THEORY	355	294	
(34) NEW▶			(GOD MUST HAVE SPENT) A LITTLE MORE TIME ON YOU RCA	'N SYNC	348	214	
35	31	12	CRUSH EDEL AMERICA/HOLLYWOOD	JENNIFER PAIGE	342	377	
(36)	38	3	I CAN'T SEE THE GOLD MIND/EASTWEST/EEG	NICOLE (FEATURING MOCHA)	334	319	
37	33	16	MONEY AIN'T A THANG SO SO DEF/COLUMBIA	JD FEATURING JAY-Z	331	364	
(38) NEW▶			TAKE ME THERE INTERSCOPE	BLACKSTREET & MYA FEAT. MASE & BLINKY BLINK	328	157	
(39) NEW▶			(DO YOU) WANNA RIDE G-FUNK/RESTLESS	REEL TIGHT	301	260	
40	36	17	TEARIN' UP MY HEART RCA	'N SYNC	299	342	

Records showing an increase in detections over the previous week, regardless of chart movement. A record that has been on either chart for more than 20 weeks will not receive a bullet, even if it registers an increase in detections. Airpower awarded to those records that attain 2,000 detections (mainstream) or 600 detections (rhythm) for the first time. If two records are tied in number of plays, the record being played on more stations is placed first. Records below the top 20 are removed from the chart after 26 weeks.



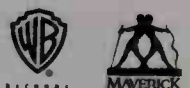
"Every week the callout ranking gets higher and higher. Now Top 5 in callout. Top 10 phones." -Frankie Blue, WKTU/New York

"Madonna has spent the last month Top 3 in research. 'The Power Of Goodbye' is going to spend the rest of '98 in Power Rotation!" -Rob Roberts, Y100/Miami

**ALSO TREMENDOUS PHONES AND/OR CALLOUT AT:
OPEN HOUSE PARTY
MEDIABASE RESEARCH**



**Z100 WXXL KRBE WXKS
WZJM KZQZ WZPL KBKS**



TRAMA RECORDS



**Impacting Modern Adult and
Top 40 Mainstream
November 16th**

Modern Rock Monitor (6)

Active Rock Monitor (7)

Rock Big Picture (7)

Over 3,700 combined spins

Strong Research At:

Atlanta	99x	#2 females 18-24 #3 overall
Portland	KNRK	#3 core/ #4 overall #1 males 18 - 23 #1 females 23 - 29
Seattle	KNDD	Top 5
Phoenix	KEDJ	#3 overall
Indianapolis	WRZX	#1 overall
Miami	WZTA	#3 overall
Orlando	WJRR	#5 overall
St. Louis	WXTM	#7 overall
New Orleans		Top 10
Detroit		Top 10
Phoenix	KZON	#3 best testing record

**Soundscan New Alternative Artist: #1
Heatseekers: #12**

**Featured in Rolling Stone, Guitar World,
Spin, Entertainment Weekly**

**Catch the Flys on
Late Night with Conan O'Brien 12/18**

On:    

ON TOUR FOREVER!

GOT YOU (where i want you)

FROM THEIR DEBUT ALBUM **HOLIDAY MAN** (7886474006)

PRODUCED BY CHRIS GOSS MIXED BY HOLMAN AND PAUL PALMER

World Radio History

©1998 Trauma Records. Allrights reserved.
www.traumarecords.com  

THE OFFSPRING

PRETTY FLY (FOR A WHITE GUY)

**#1 POP
PHONES.**

KALC
WAPE
XL106.7
KCHZ
B94
KRQ
KKRZ
Q102
WXSS
KBKS
WSSX
WZNY
WRVQ

**CATCH
THE OFFSPRING
ON TOUR!**



THE FIRST SINGLE FROM THE NEW ALBUM

AMERICANA

IN STORES TUESDAY, NOVEMBER 17

PRODUCED AND MIXED BY DAVE JERDEN • MANAGEMENT: REBEL WALTZ, INC.

WWW.OFFSPRING.COM

COLUMBIA

"COLUMBIA" REG. U.S. PAT. & TM. OFF. MARCA REGISTRADA. © 1998 SONY MUSIC ENTERTAINMENT INC.

